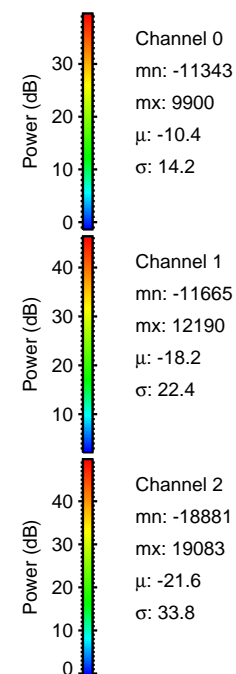
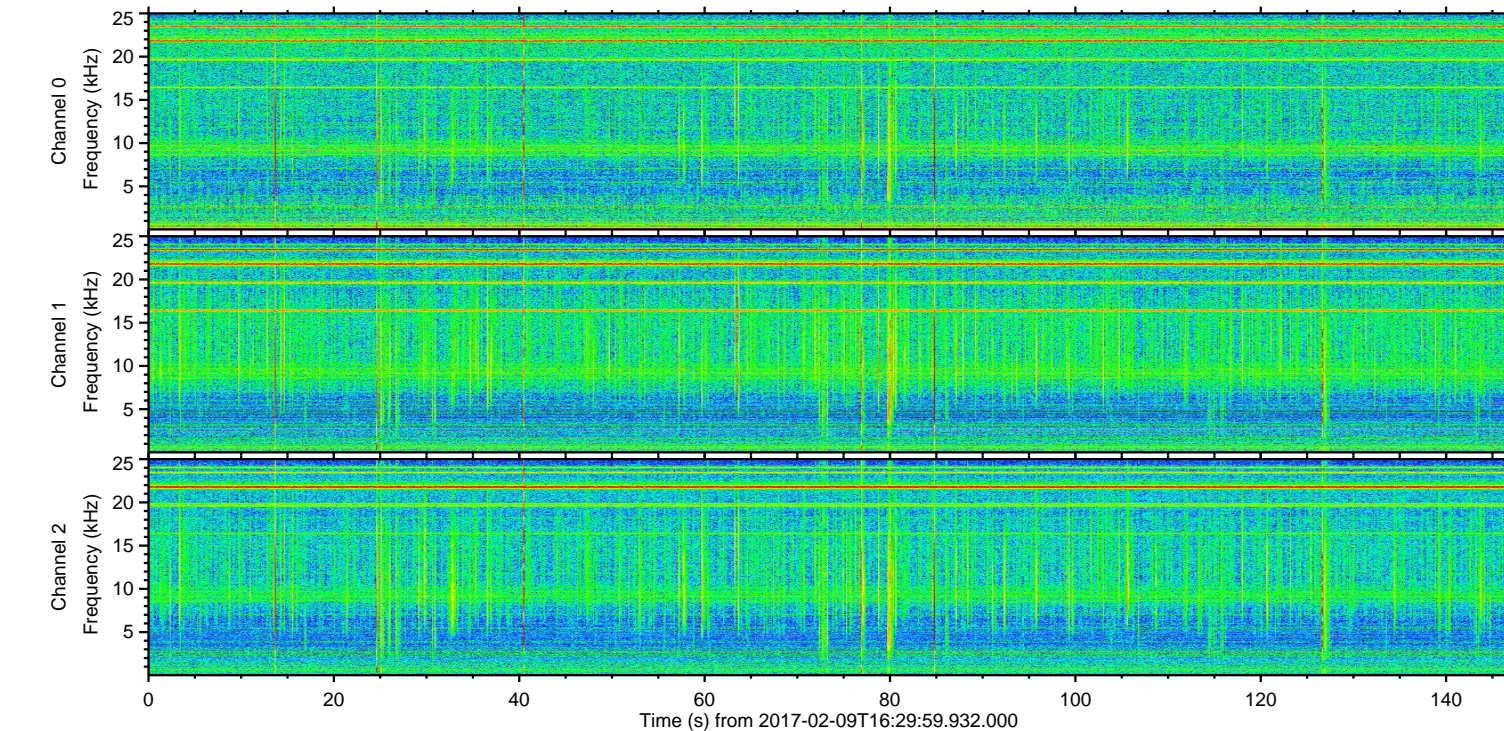
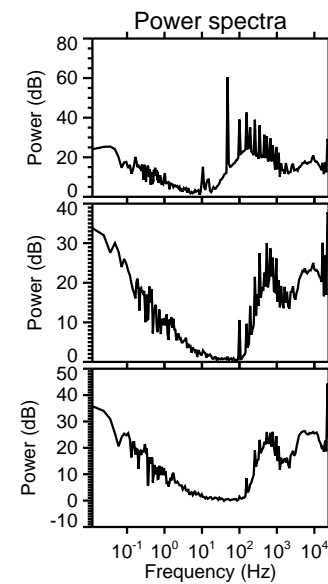
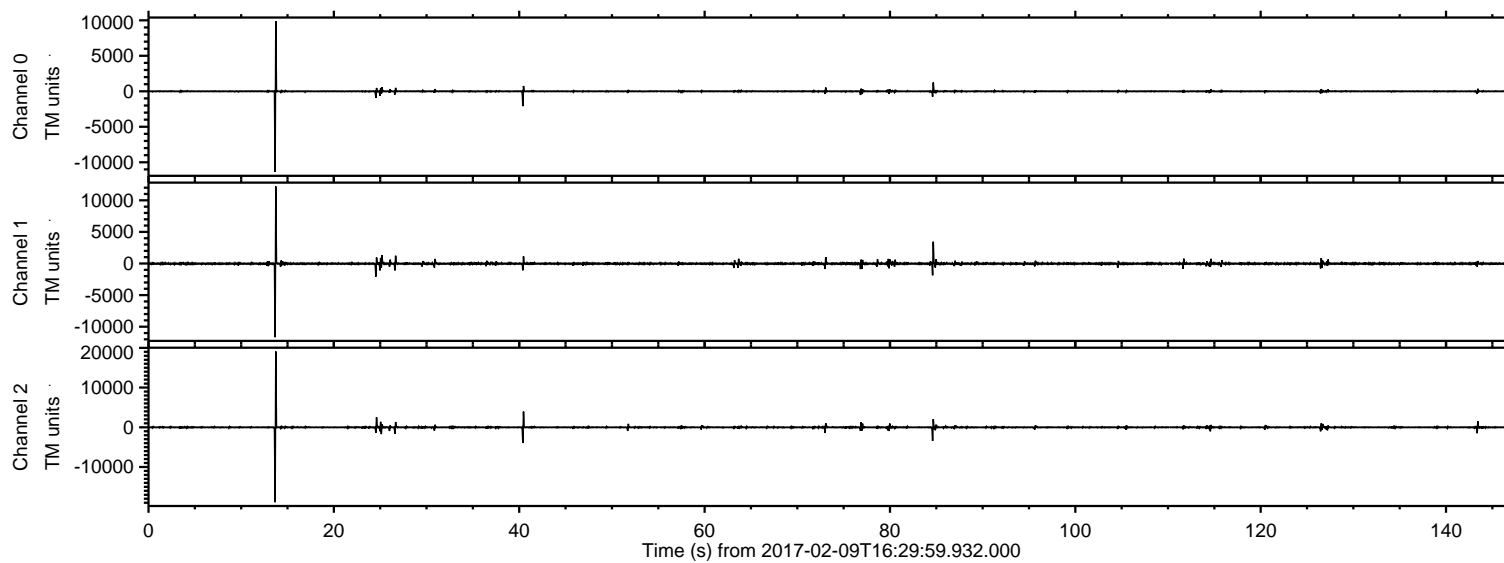


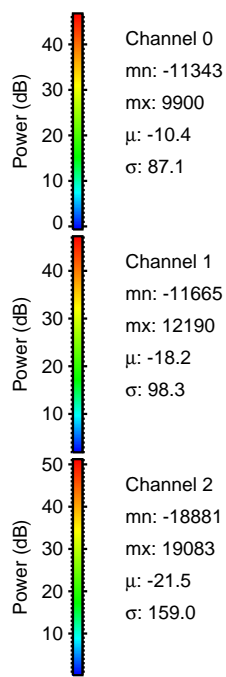
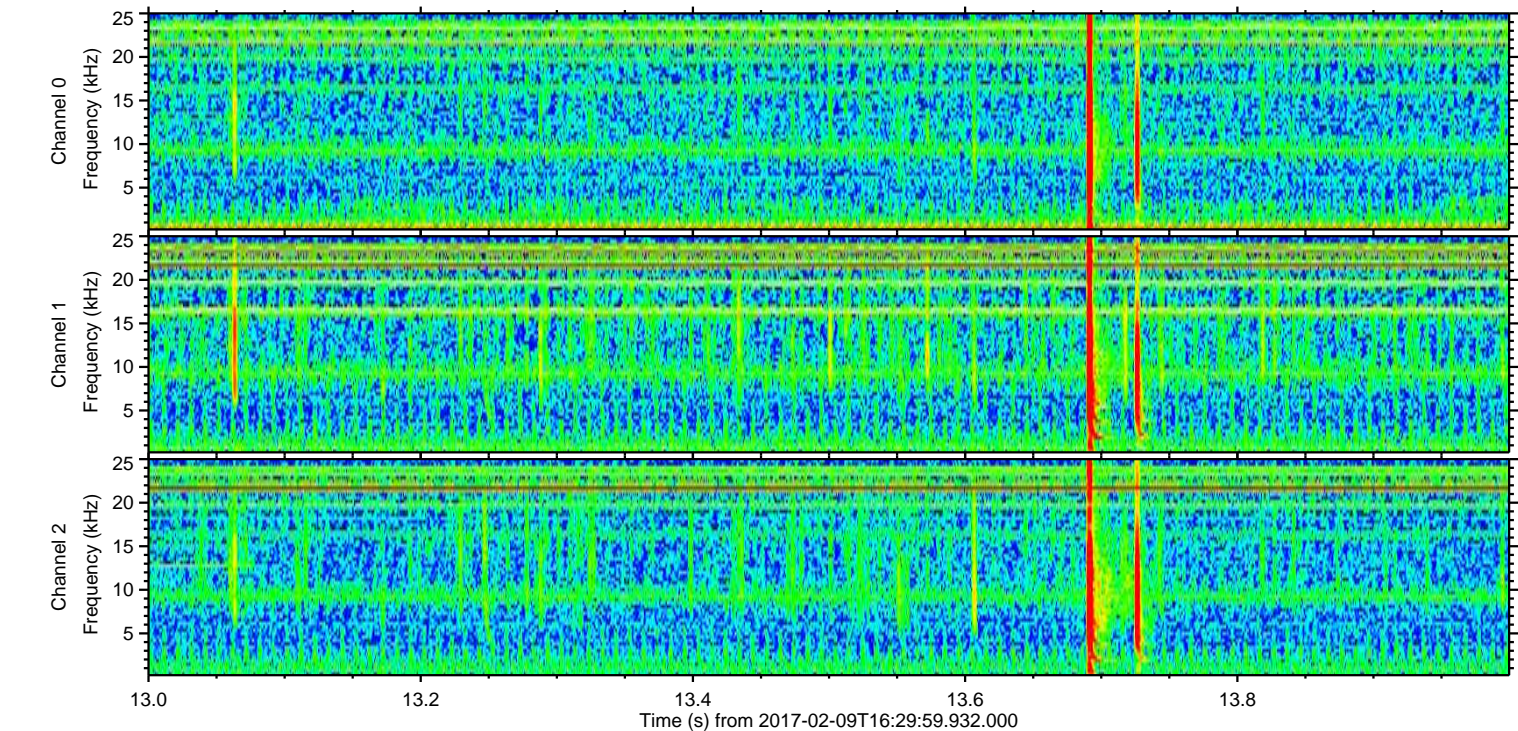
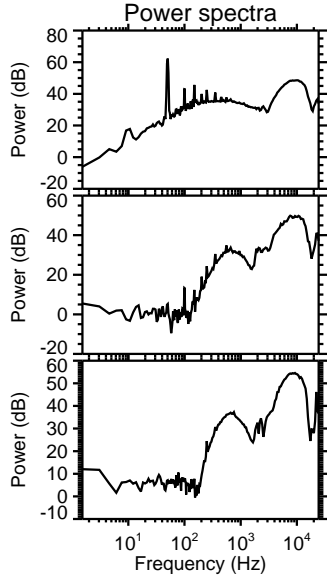
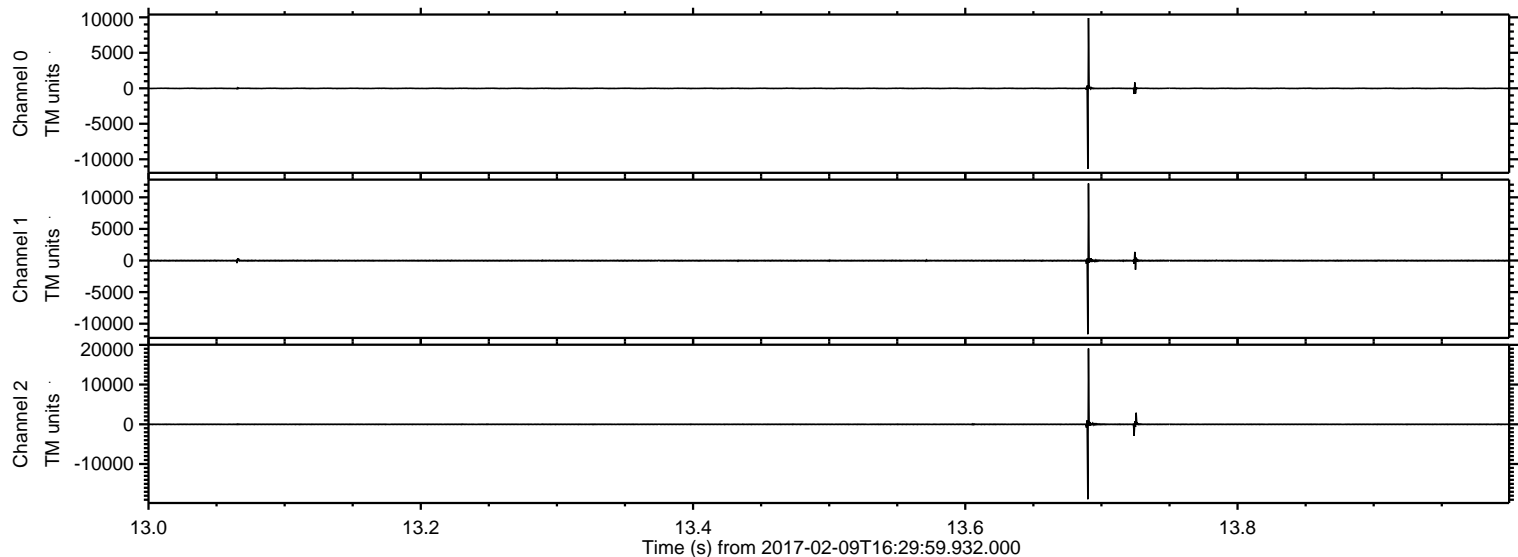
# ELMAVAN 3D WAVEFORMS (Measured data sampled at 50 kHz) 51000 packets of 144 samples from 2017-02-09T16:29:59.932.000.

Processed Thu Feb 9 17:38:05 2017 by ELM ver.2012-10-06 from 001\_\_elm20170209\_162958\_\_dat00.bin



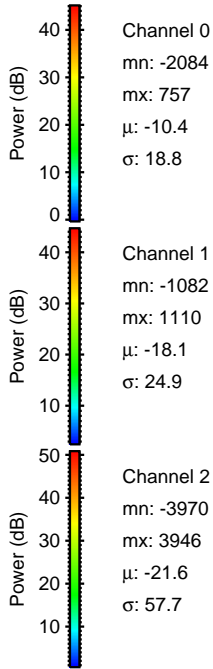
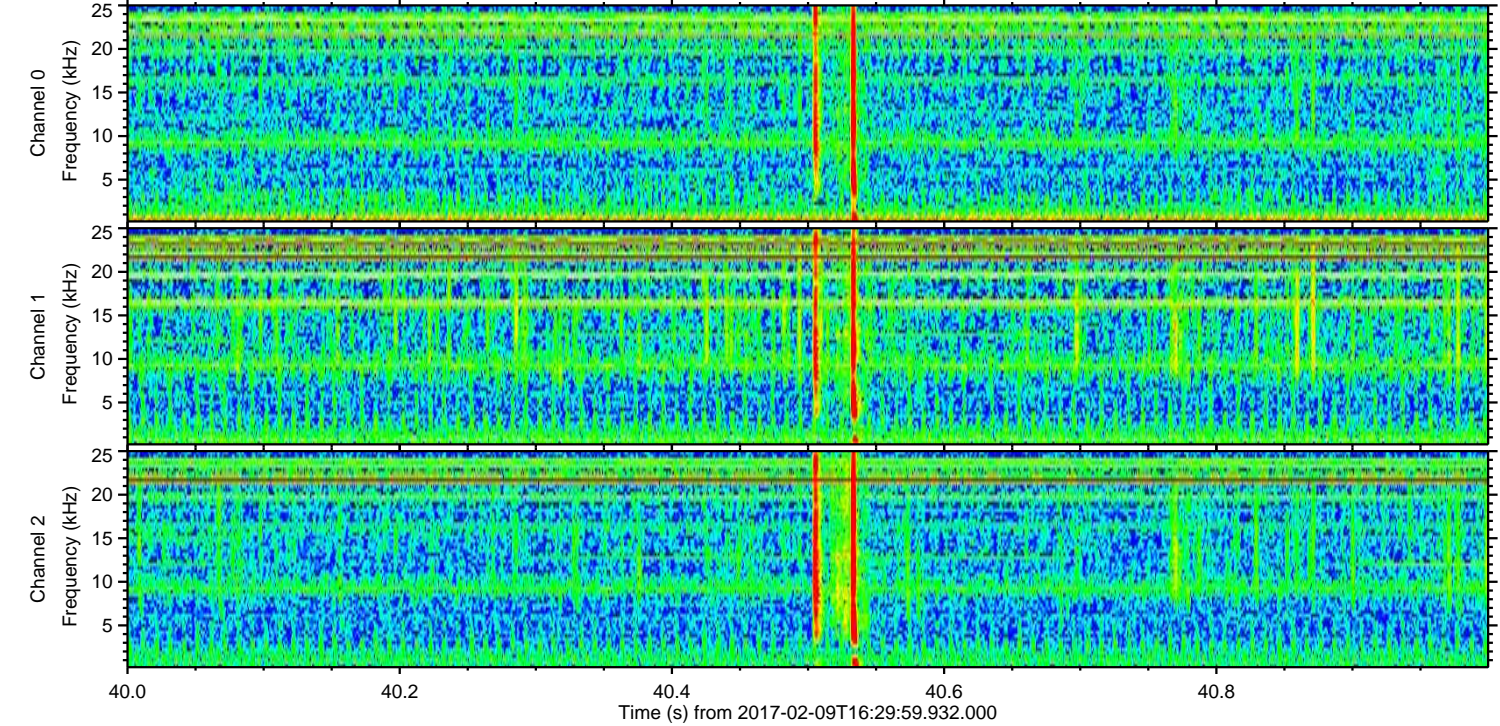
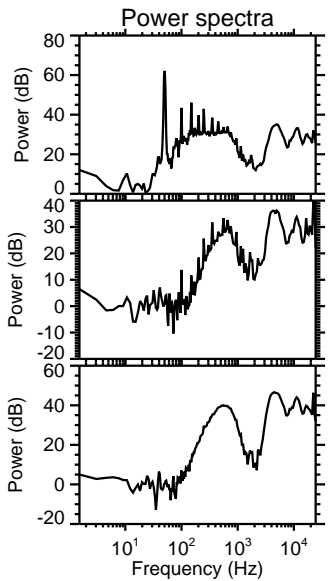
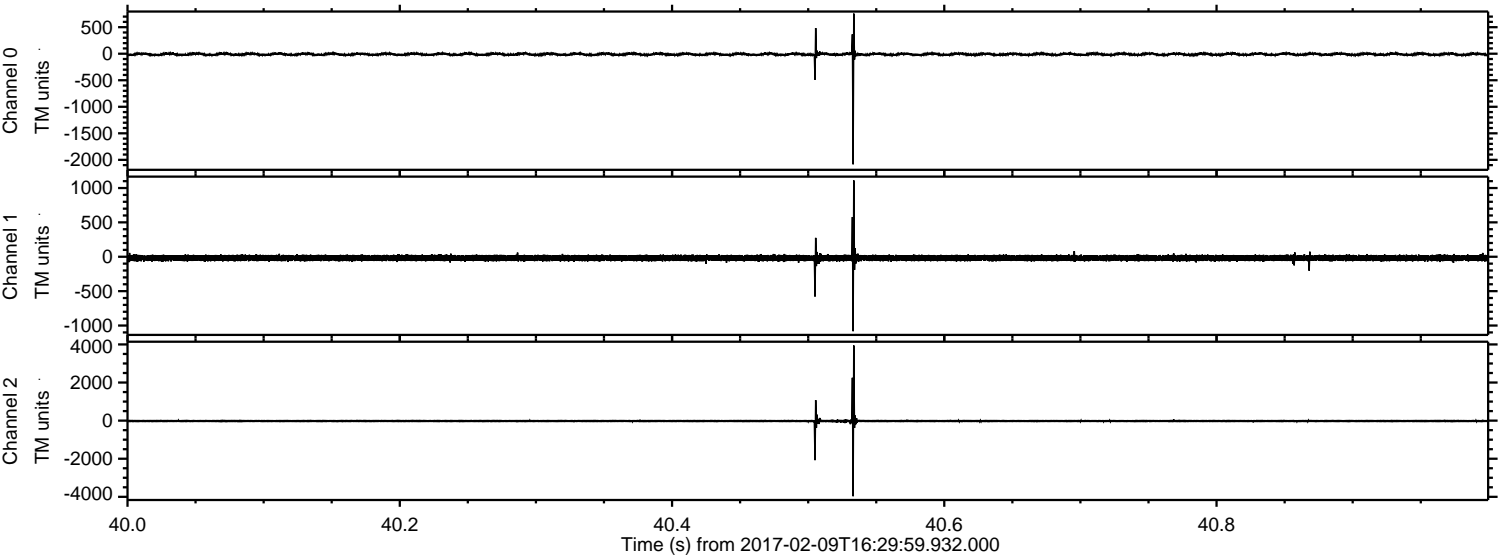


Processed Thu Feb 9 17:38:16 2017 by ELM ver.2012-10-06 from 001\_\_elm20170209\_162958\_\_dat00.bin



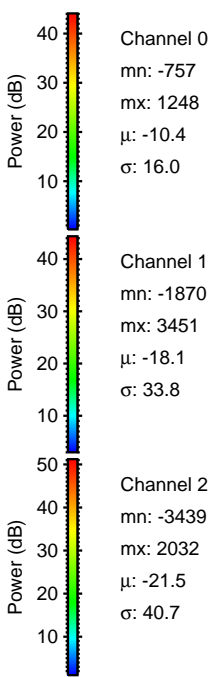
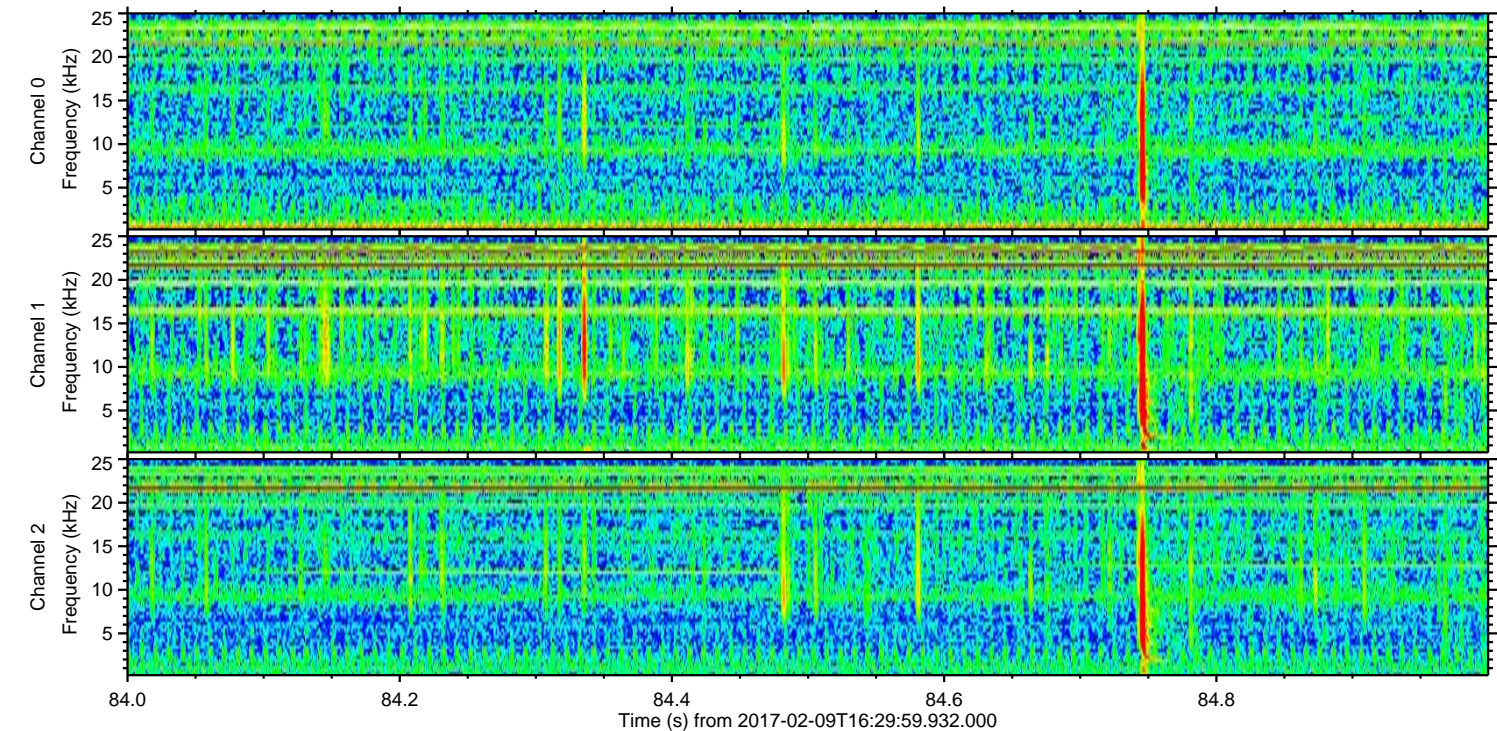
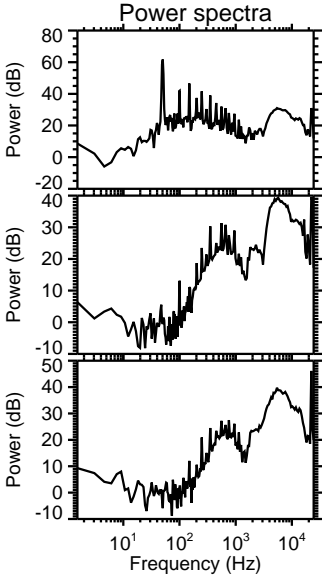
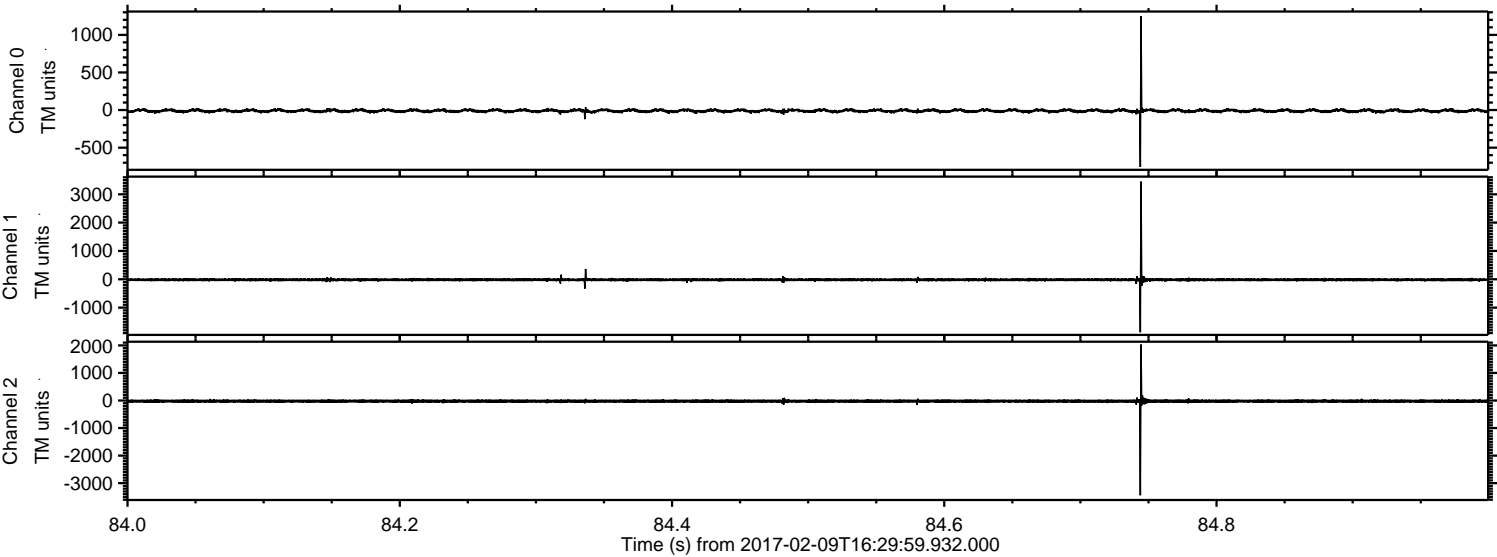


Processed Thu Feb 9 17:38:17 2017 by ELM ver.2012-10-06 from 001\_\_elm20170209\_162958\_\_dat00.bin



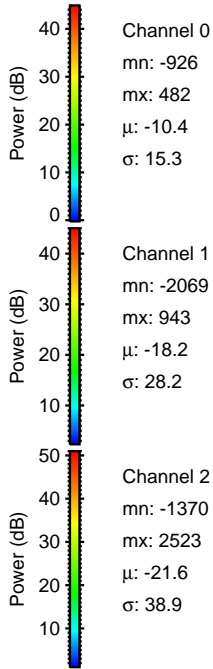
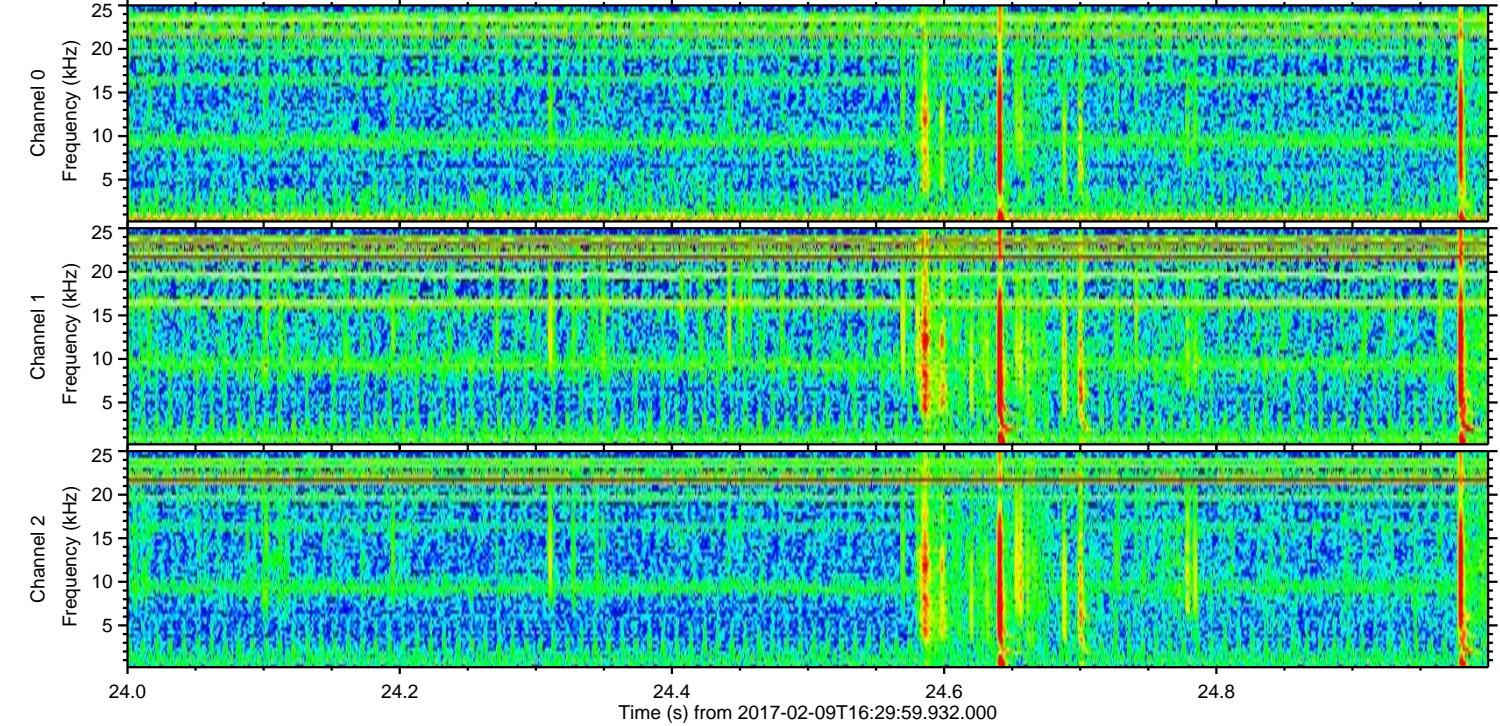
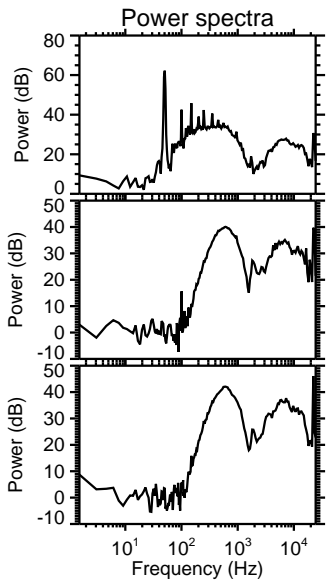
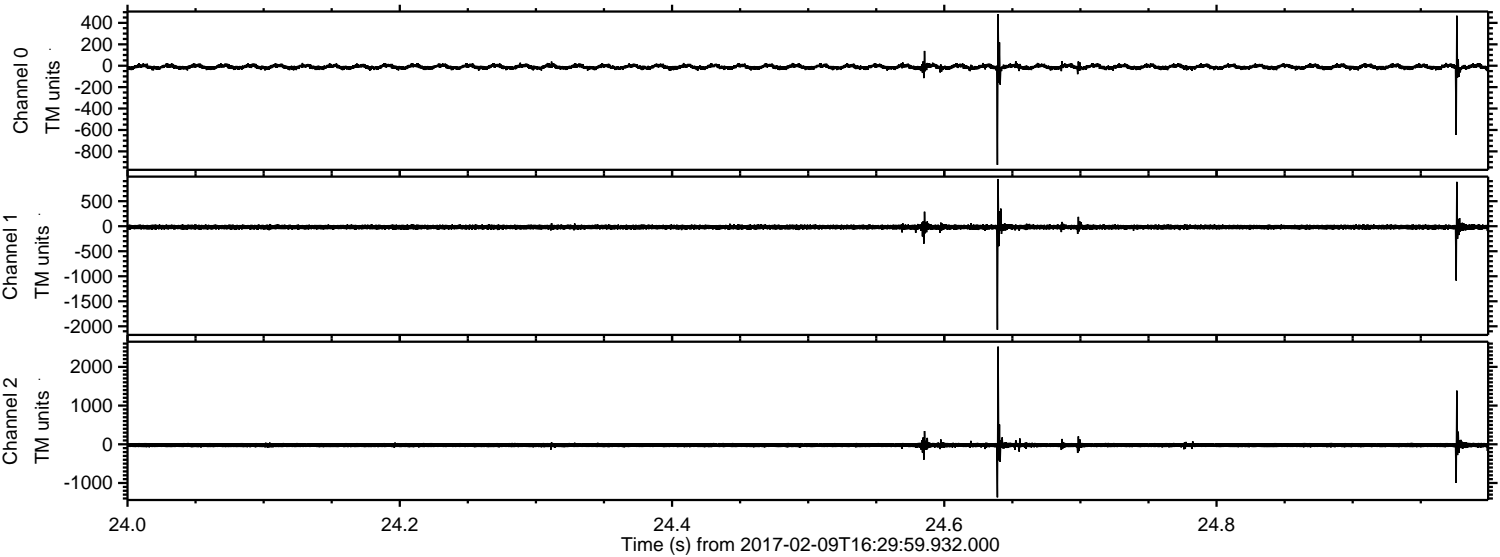


Processed Thu Feb 9 17:38:18 2017 by ELM ver.2012-10-06 from 001\_\_elm20170209\_162958\_\_dat00.bin



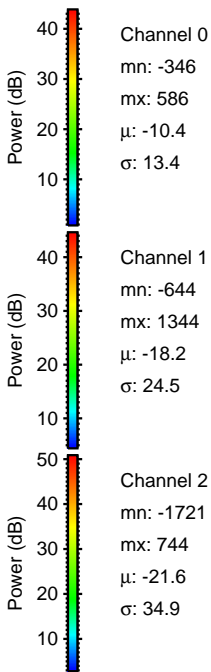
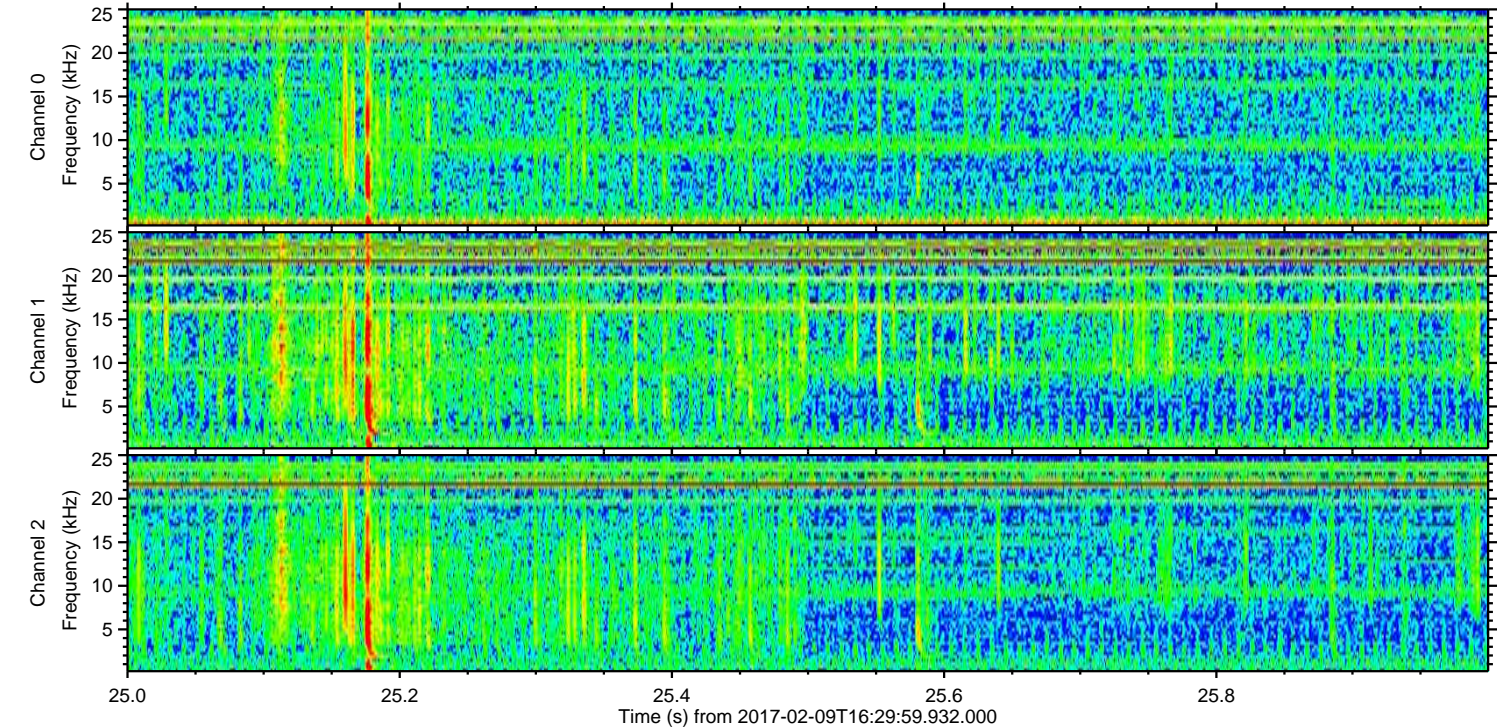
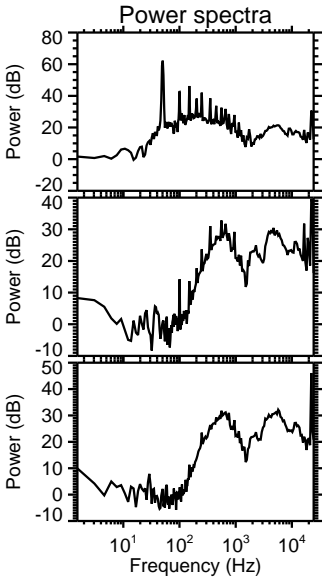
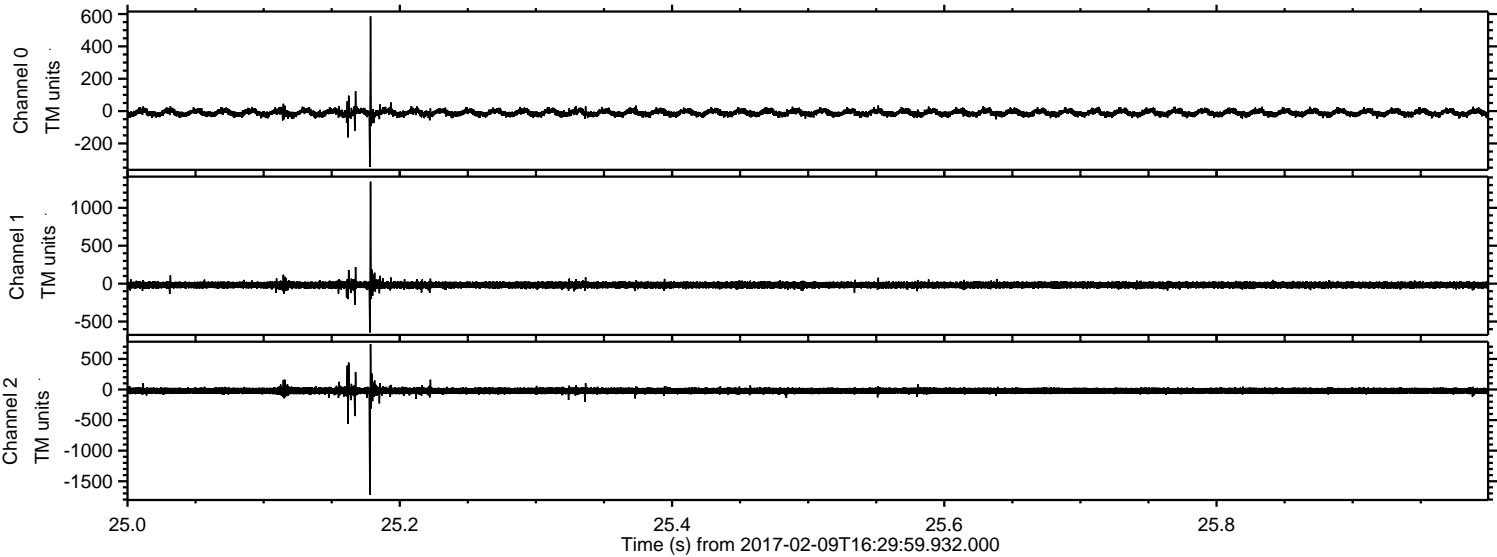


Processed Thu Feb 9 17:38:19 2017 by ELM ver.2012-10-06 from 001\_\_elm20170209\_162958\_\_dat00.bin



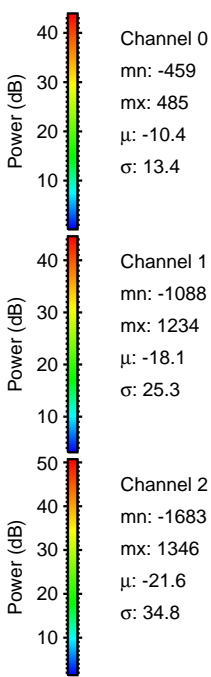
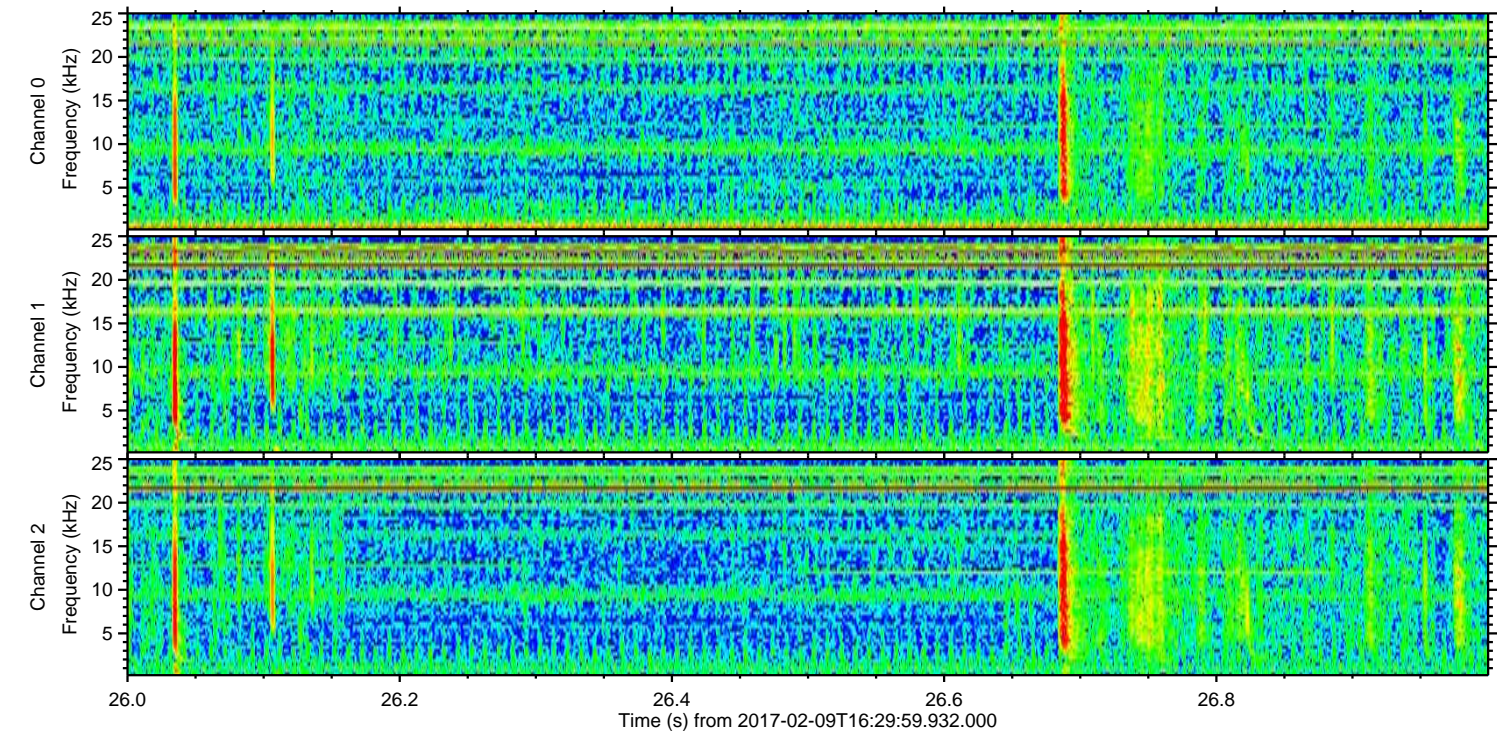
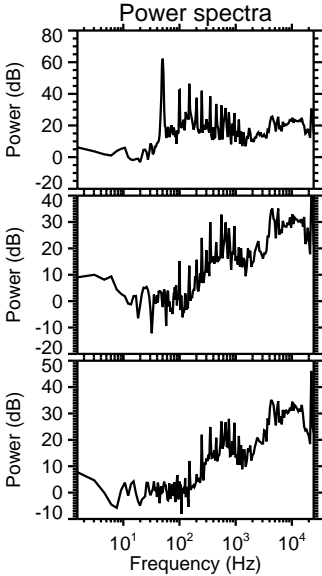
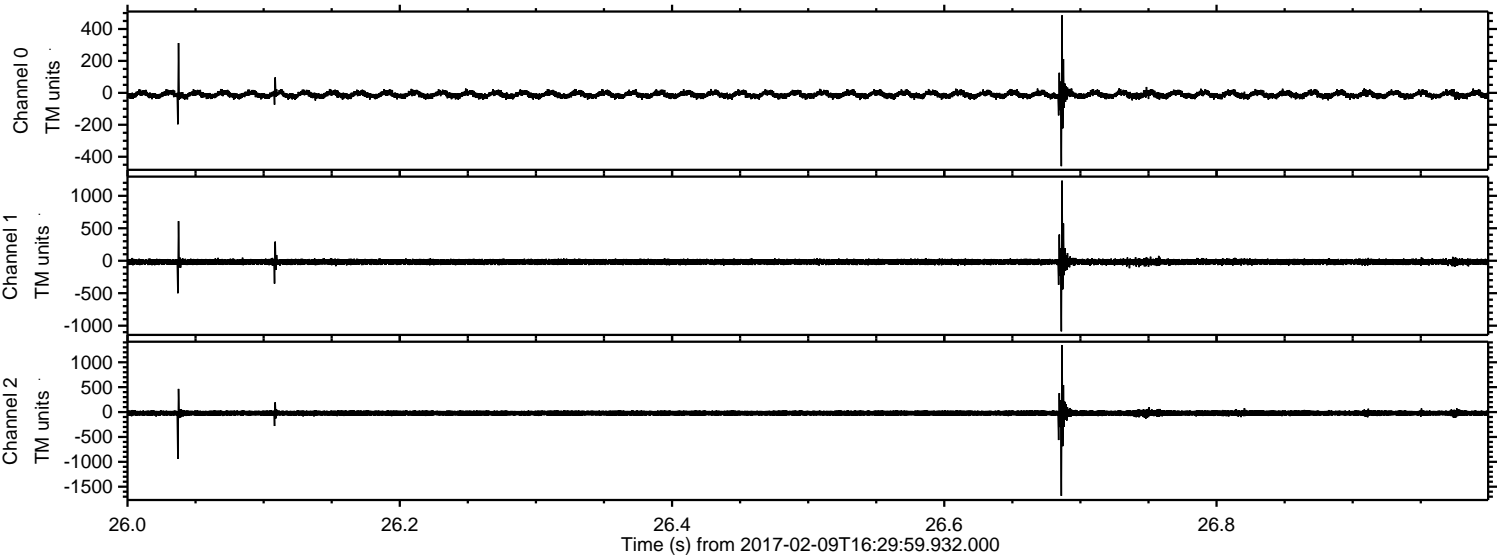


Processed Thu Feb 9 17:38:20 2017 by ELM ver.2012-10-06 from 001\_\_elm20170209\_162958\_\_dat00.bin





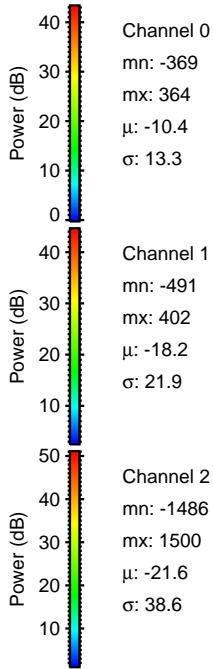
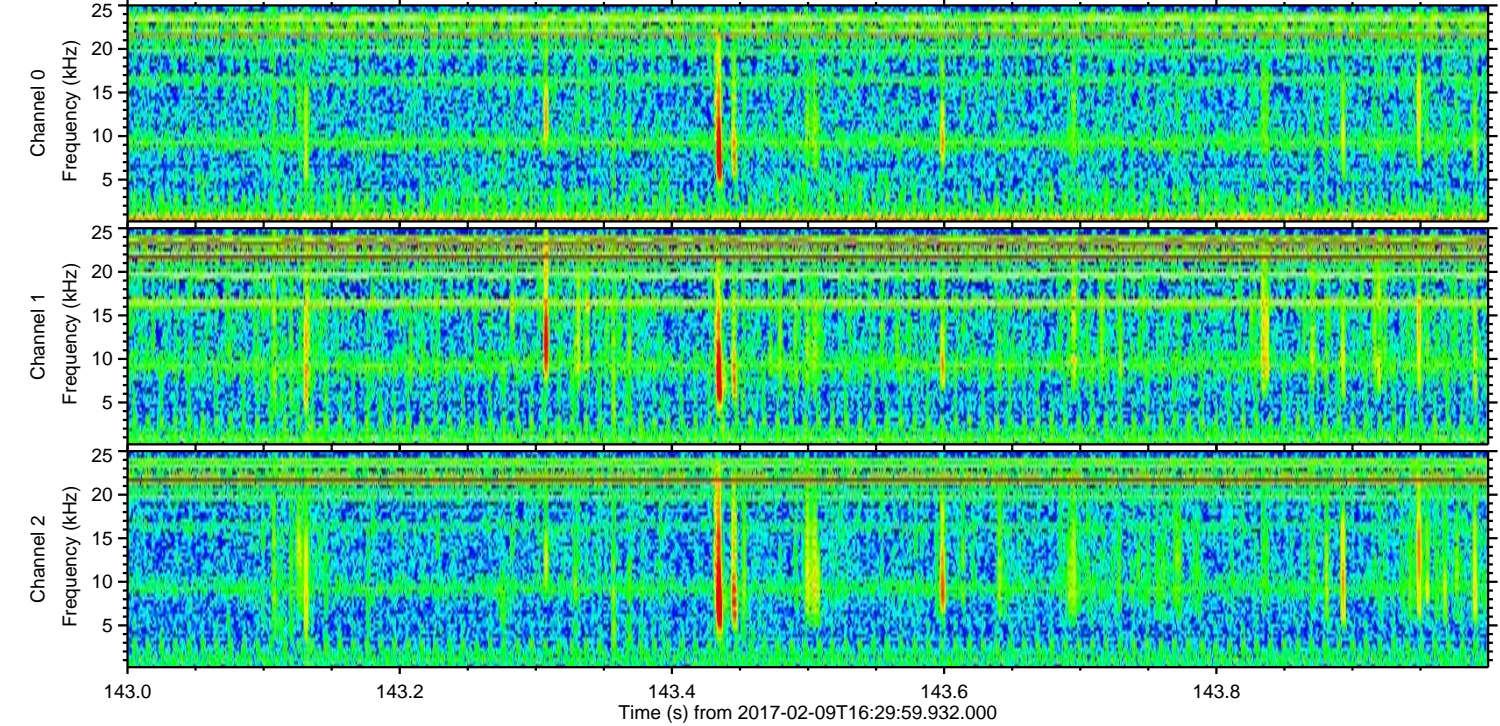
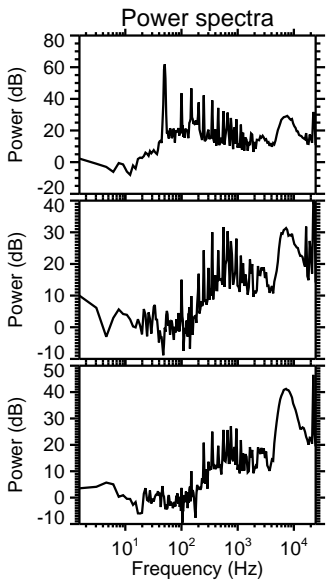
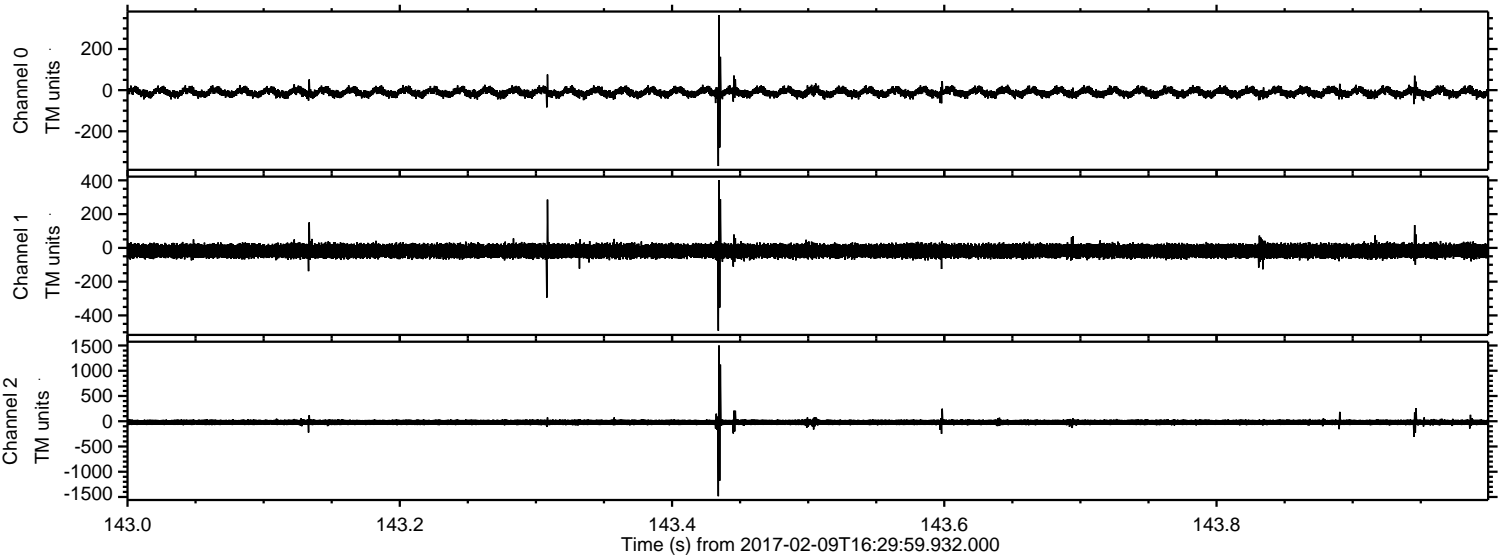
Processed Thu Feb 9 17:38:21 2017 by ELM ver.2012-10-06 from 001\_\_elm20170209\_162958\_\_dat00.bin





ELMAVAN 3D WAVEFORMS (Measured data sampled at 50 kHz) 51000 packets of 144 samples from 2017-02-09T16:29:59.932.000. Part 144/147

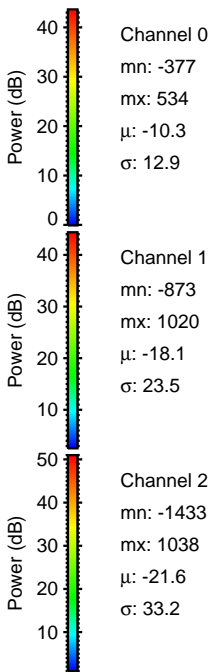
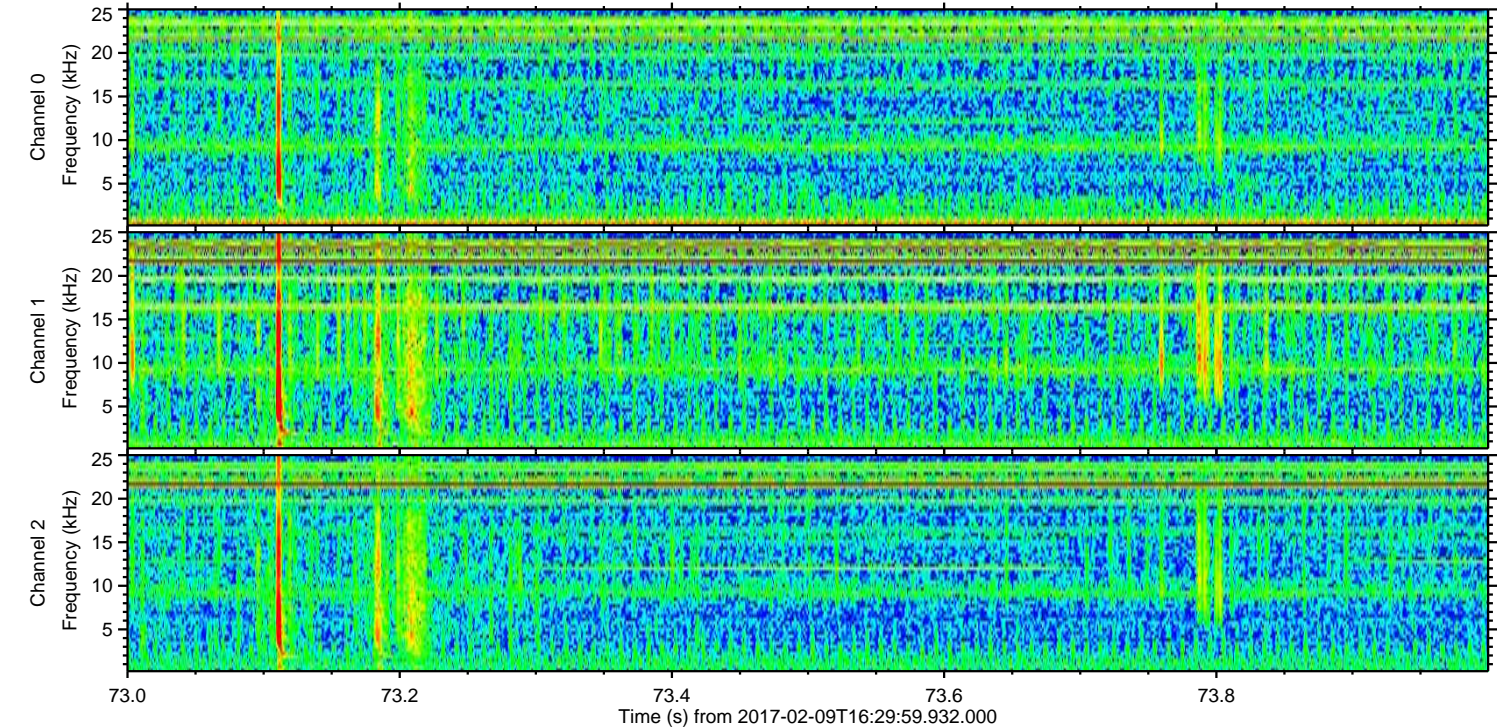
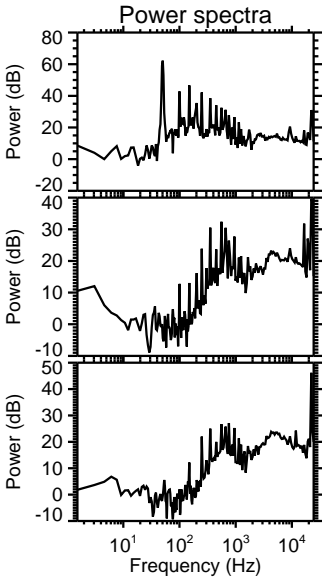
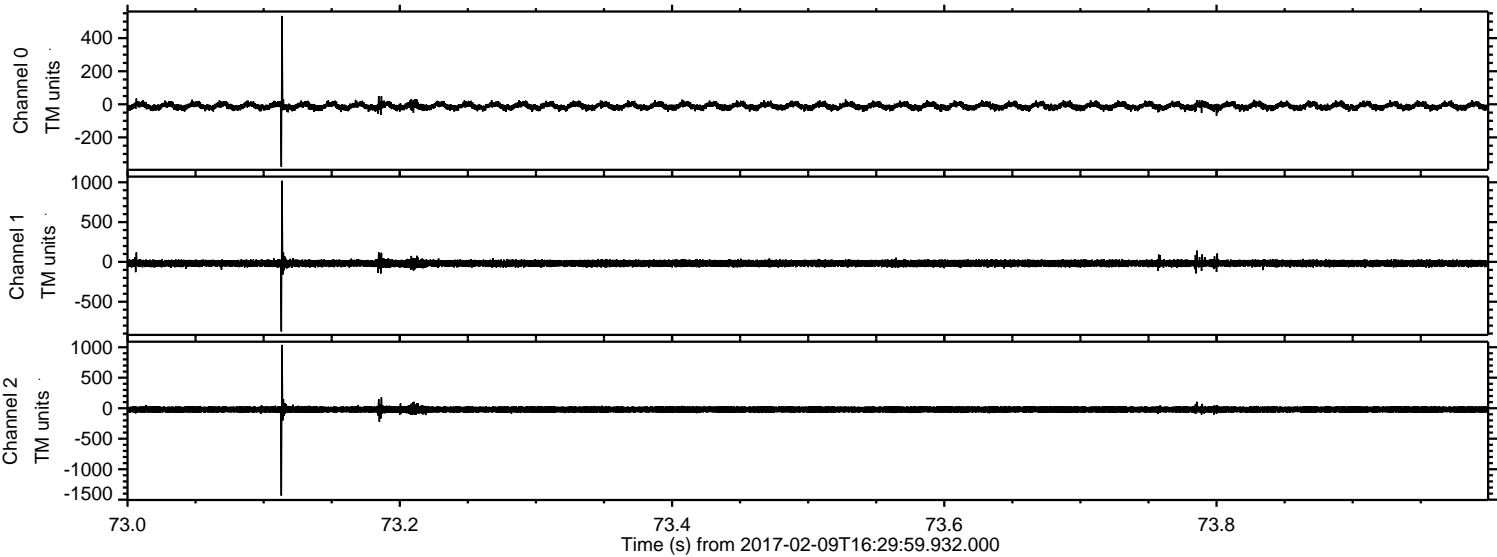
Processed Thu Feb 9 17:38:22 2017 by ELM ver.2012-10-06 from 001\_\_elm20170209\_162958\_\_dat00.bin





ELMAVAN 3D WAVEFORMS (Measured data sampled at 50 kHz) 51000 packets of 144 samples from 2017-02-09T16:29:59.932.000. Part 74/147

Processed Thu Feb 9 17:38:23 2017 by ELM ver.2012-10-06 from 001\_\_elm20170209\_162958\_\_dat00.bin





Processed Thu Feb 9 17:38:23 2017 by ELM ver.2012-10-06 from 001\_\_elm20170209\_162958\_\_dat00.bin

