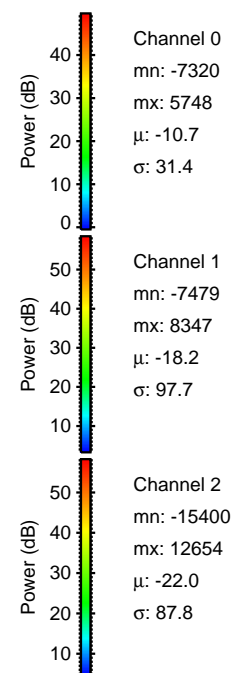
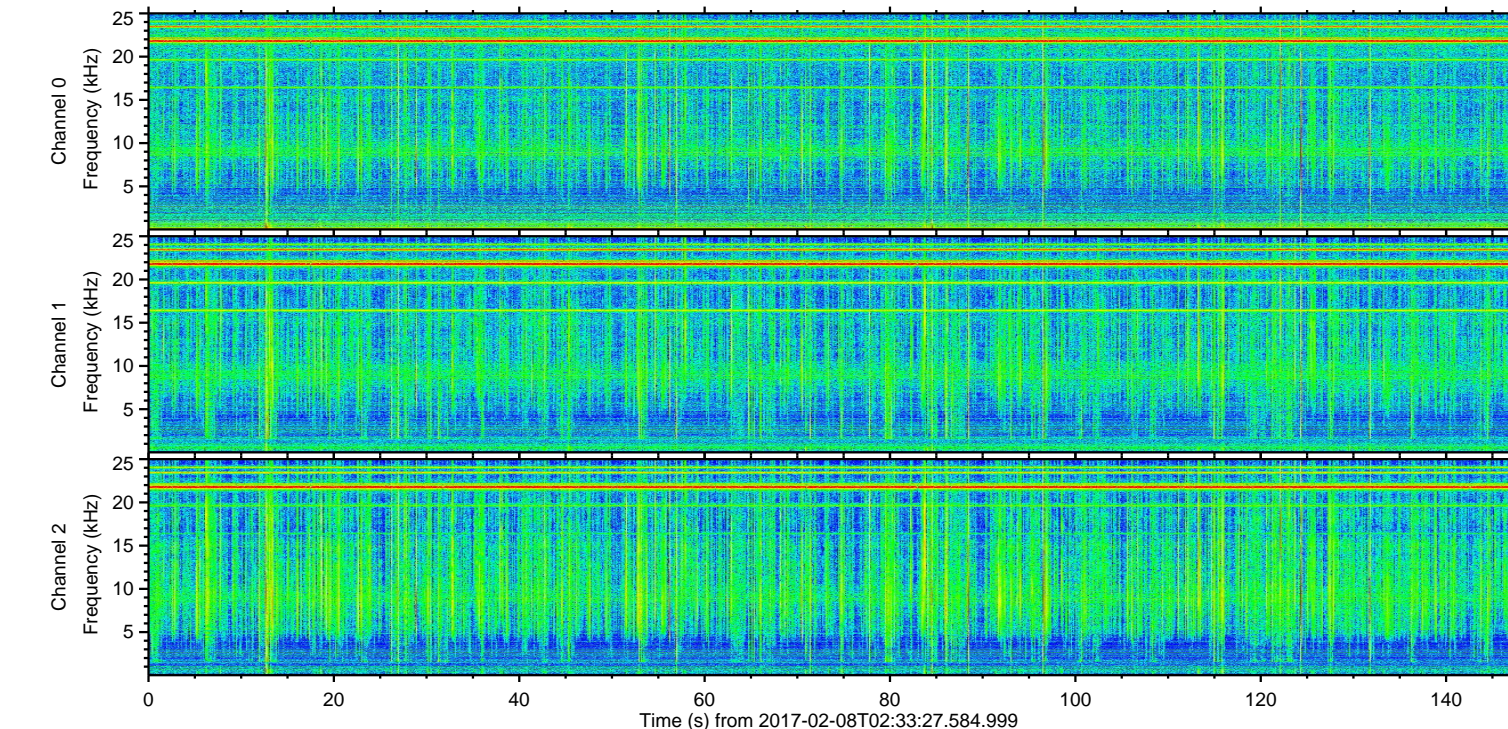
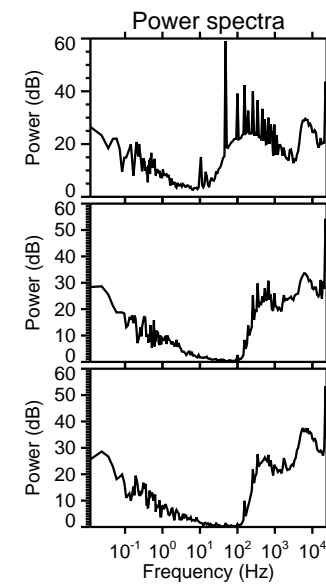
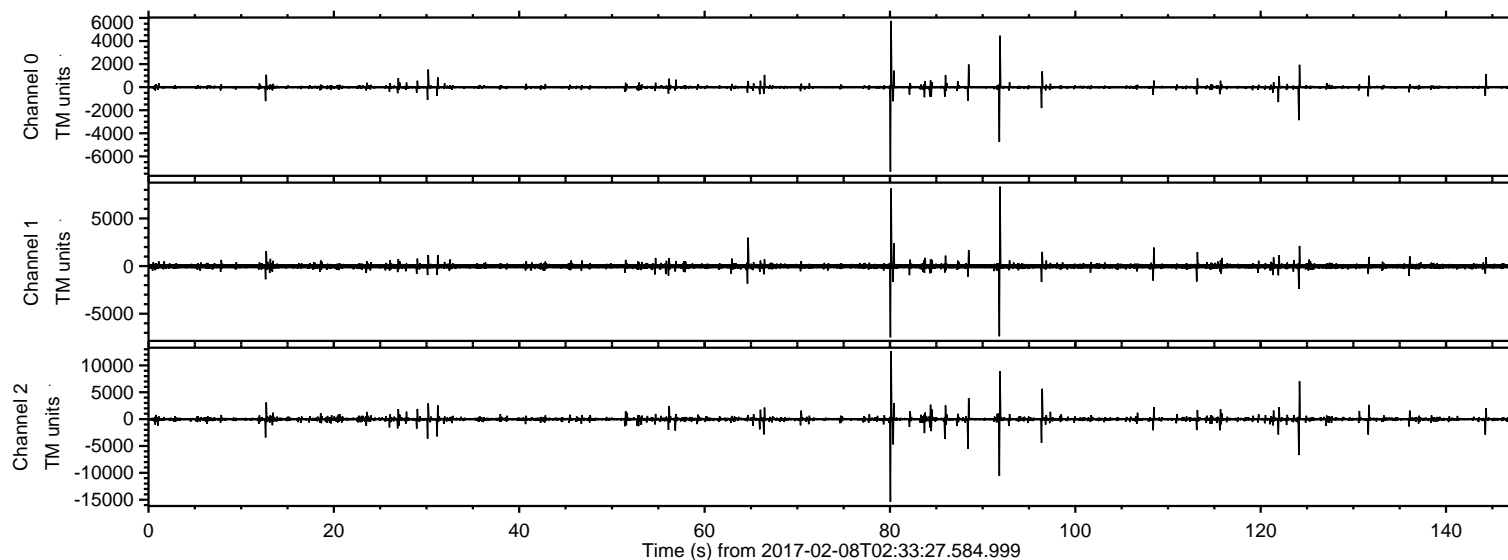


# ELMAVAN 3D WAVEFORMS (Measured data sampled at 50 kHz) 51000 packets of 144 samples from 2017-02-08T02:33:27.584.999.

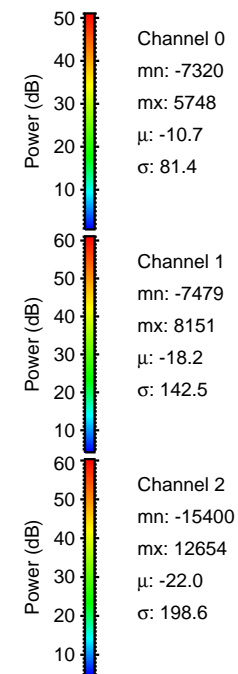
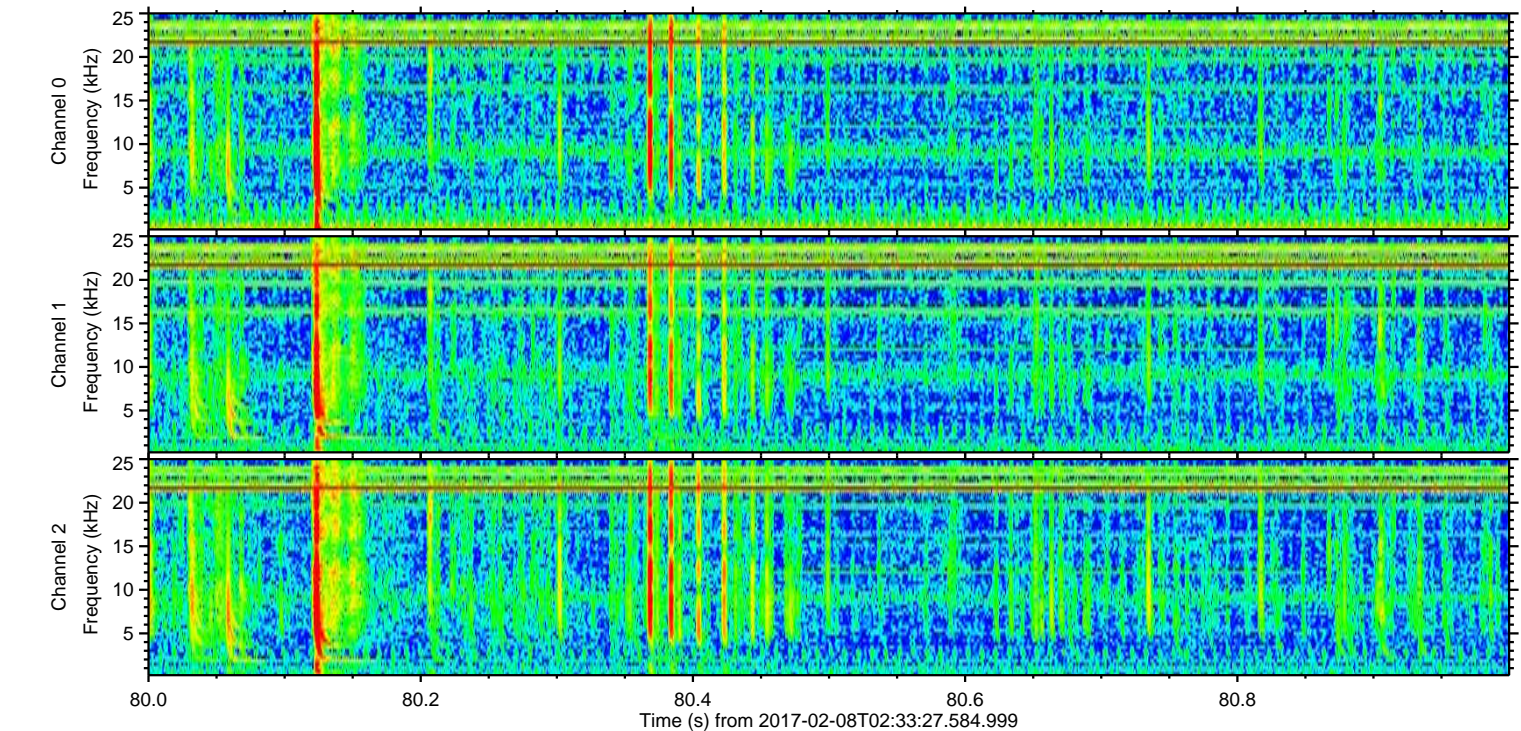
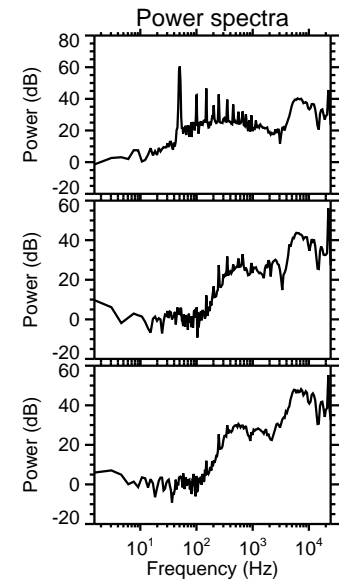
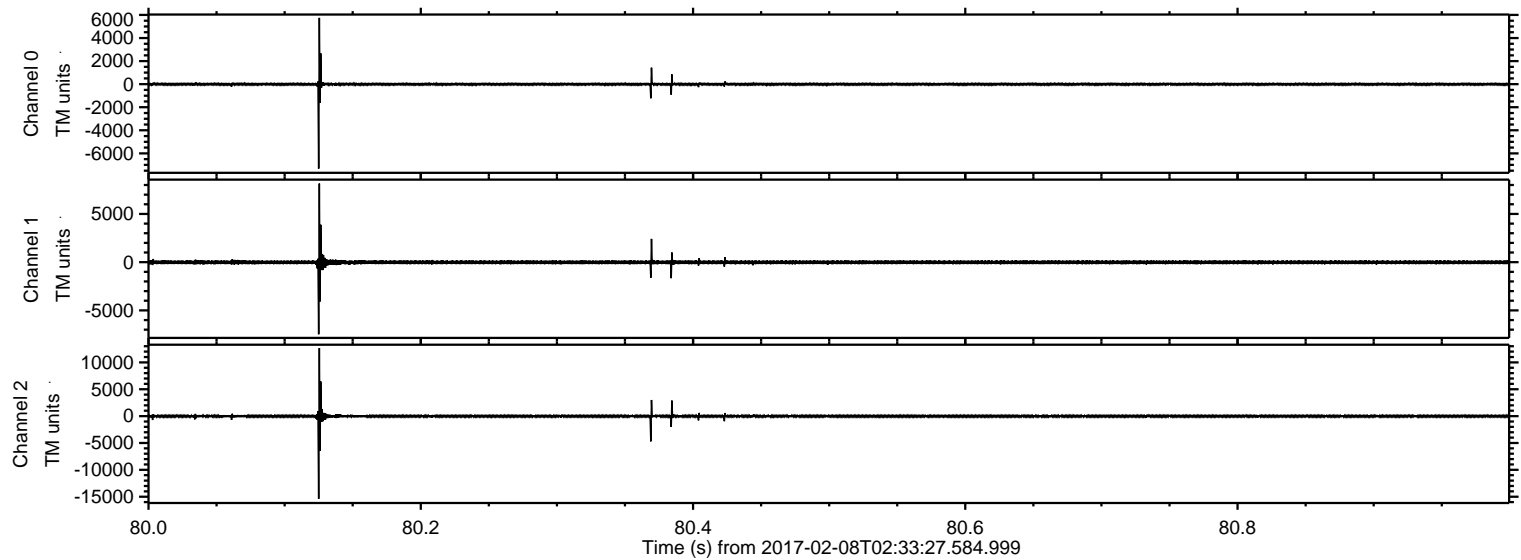
Processed Wed Feb 8 03:40:49 2017 by ELM ver.2012-10-06 from 001\_\_elm20170208\_023326\_\_dat00.bin





ELMAVAN 3D WAVEFORMS (Measured data sampled at 50 kHz) 51000 packets of 144 samples from 2017-02-08T02:33:27.584.999. Part 81/147

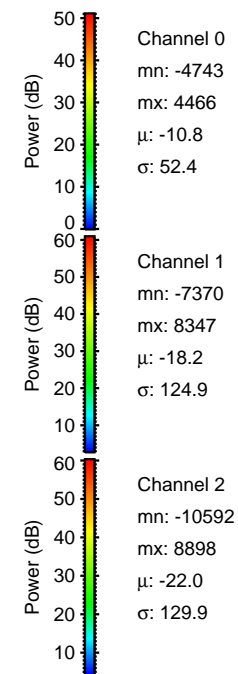
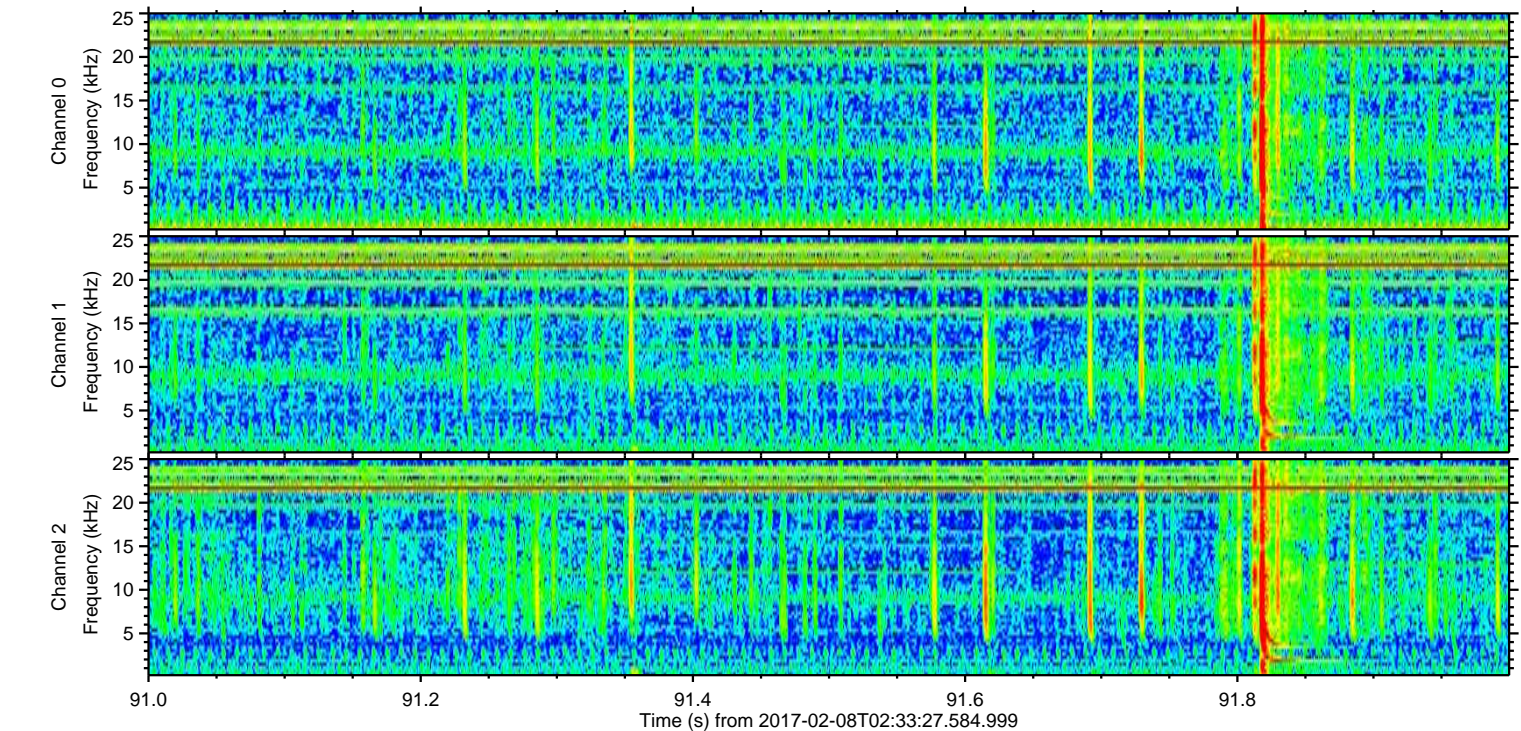
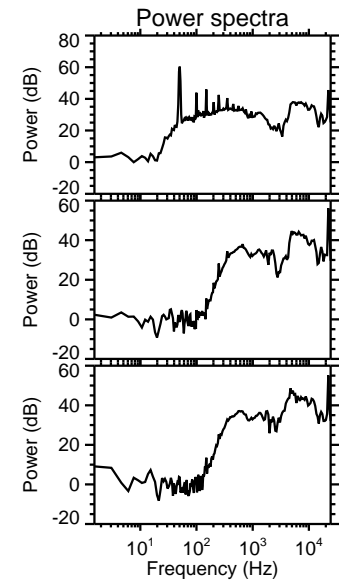
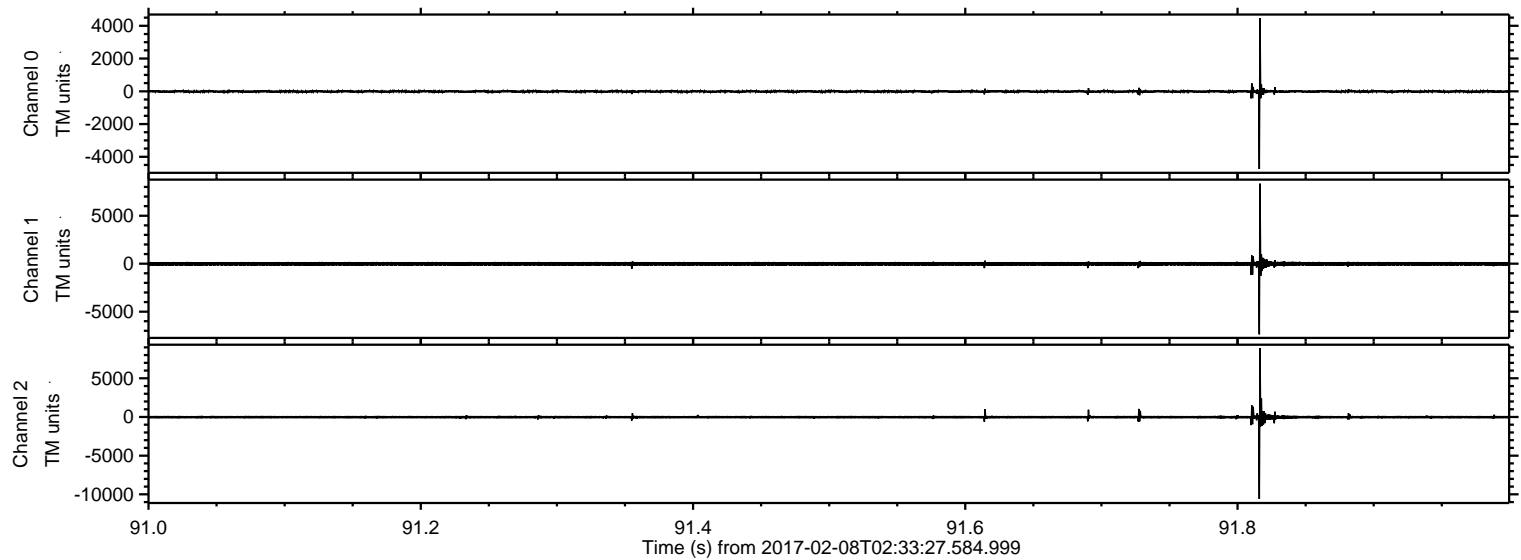
Processed Wed Feb 8 03:41:00 2017 by ELM ver.2012-10-06 from 001\_\_elm20170208\_023326\_\_dat00.bin





ELMAVAN 3D WAVEFORMS (Measured data sampled at 50 kHz) 51000 packets of 144 samples from 2017-02-08T02:33:27.584.999. Part 92/147

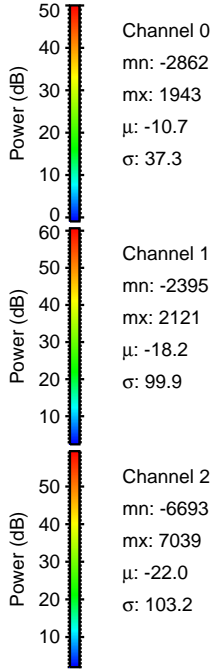
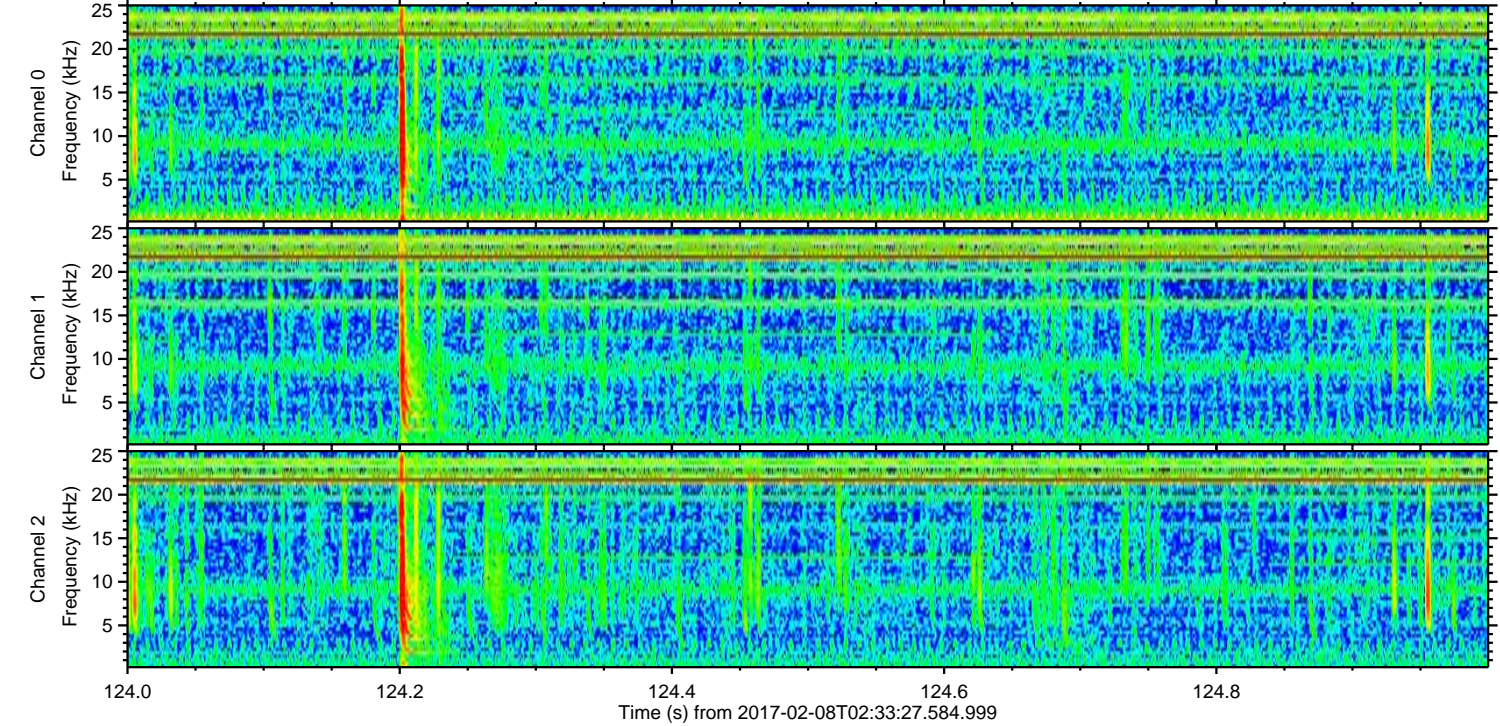
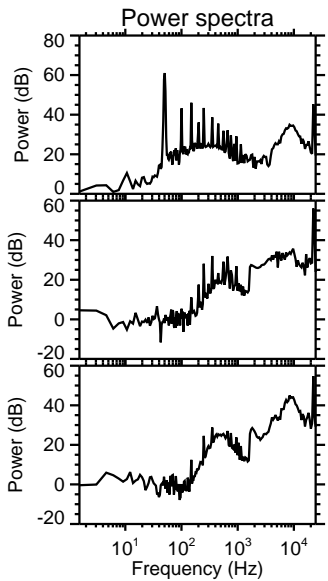
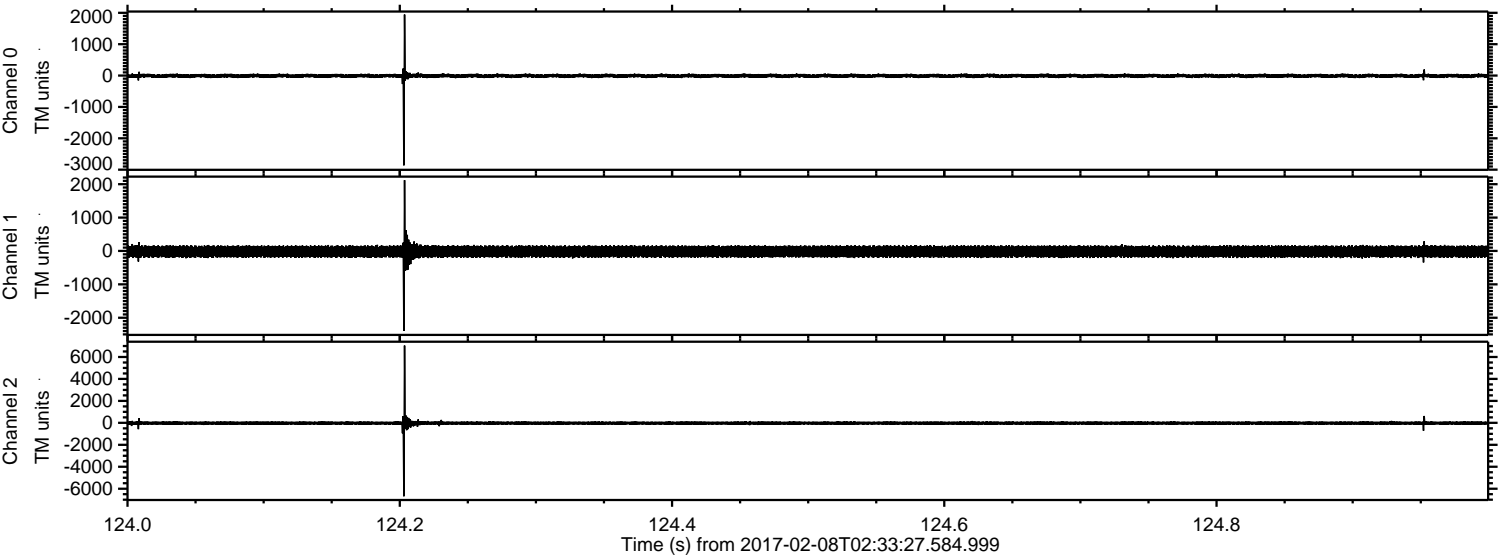
Processed Wed Feb 8 03:41:01 2017 by ELM ver.2012-10-06 from 001\_\_elm20170208\_023326\_\_dat00.bin





ELMAVAN 3D WAVEFORMS (Measured data sampled at 50 kHz) 51000 packets of 144 samples from 2017-02-08T02:33:27.584.999. Part 125/147

Processed Wed Feb 8 03:41:02 2017 by ELM ver.2012-10-06 from 001\_\_elm20170208\_023326\_\_dat00.bin



Channel 0  
mn: -2862  
mx: 1943  
 $\mu$ : -10.7  
 $\sigma$ : 37.3

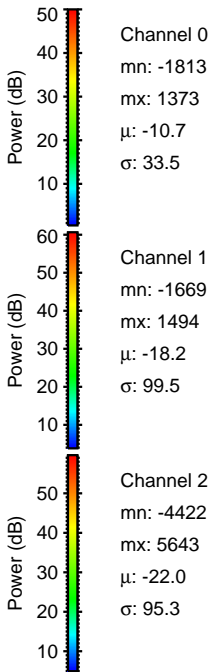
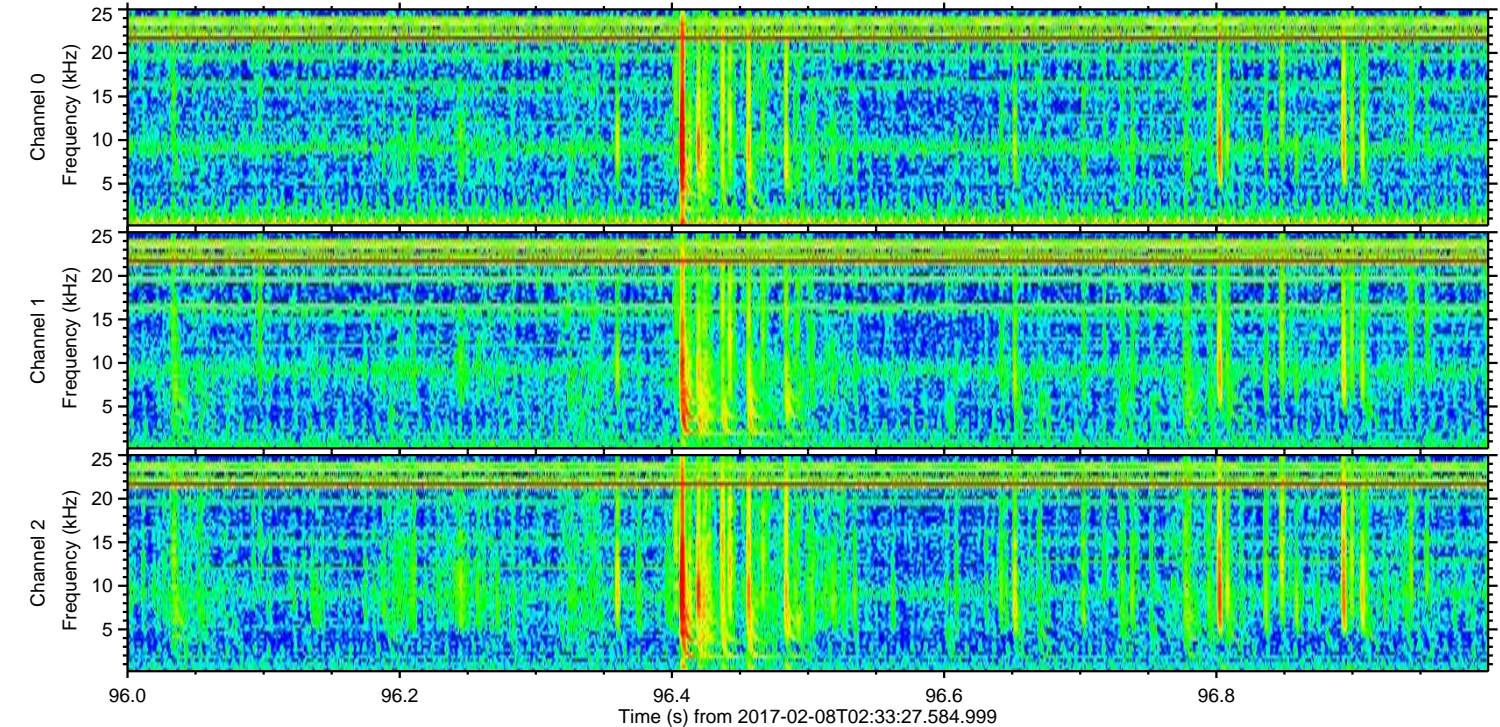
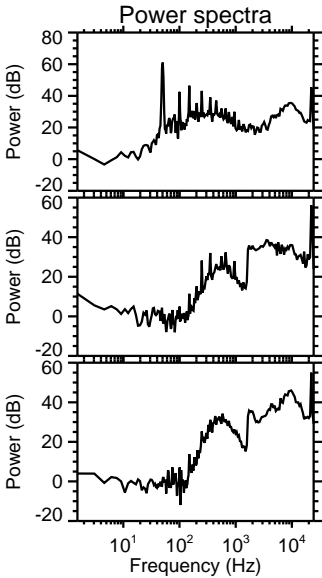
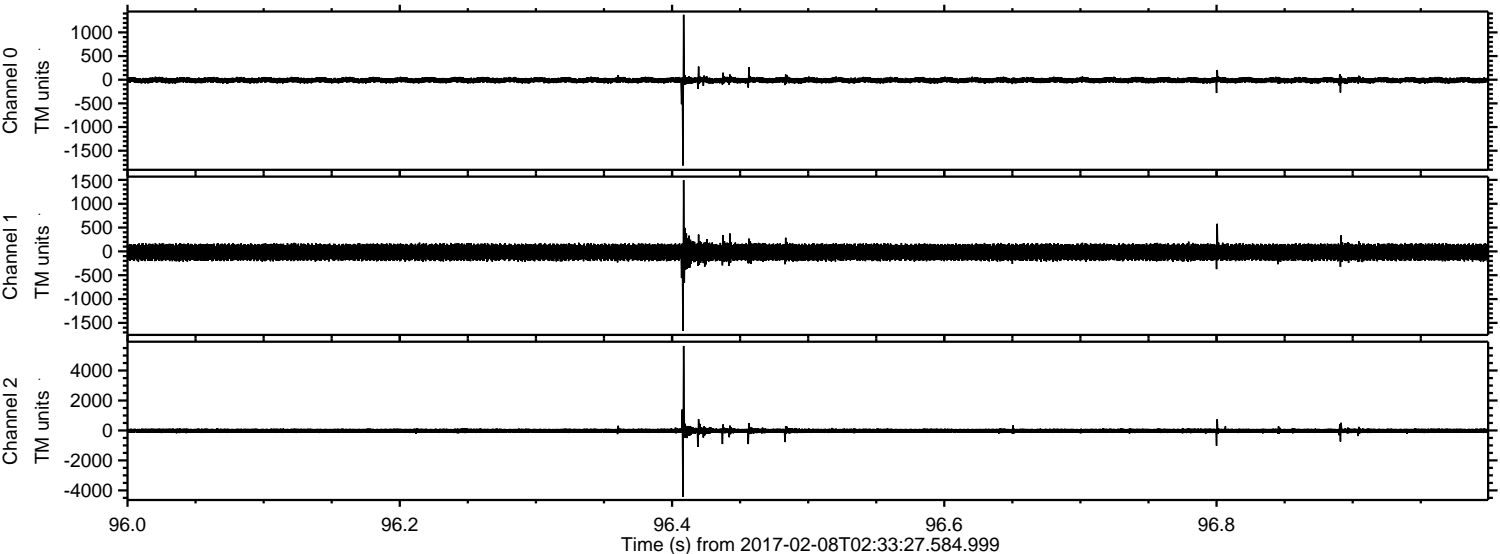
Channel 1  
mn: -2395  
mx: 2121  
 $\mu$ : -18.2  
 $\sigma$ : 99.9

Channel 2  
mn: -6693  
mx: 7039  
 $\mu$ : -22.0  
 $\sigma$ : 103.2



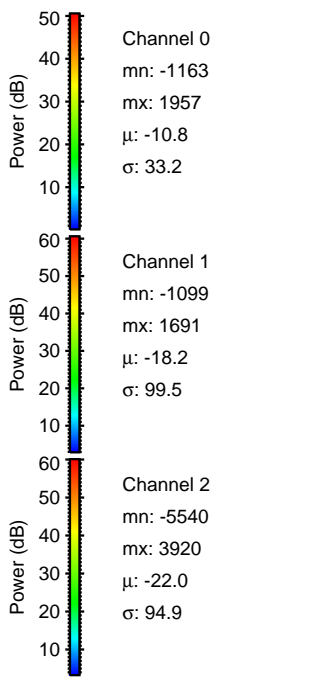
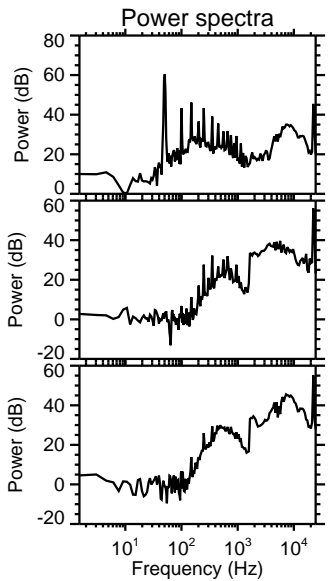
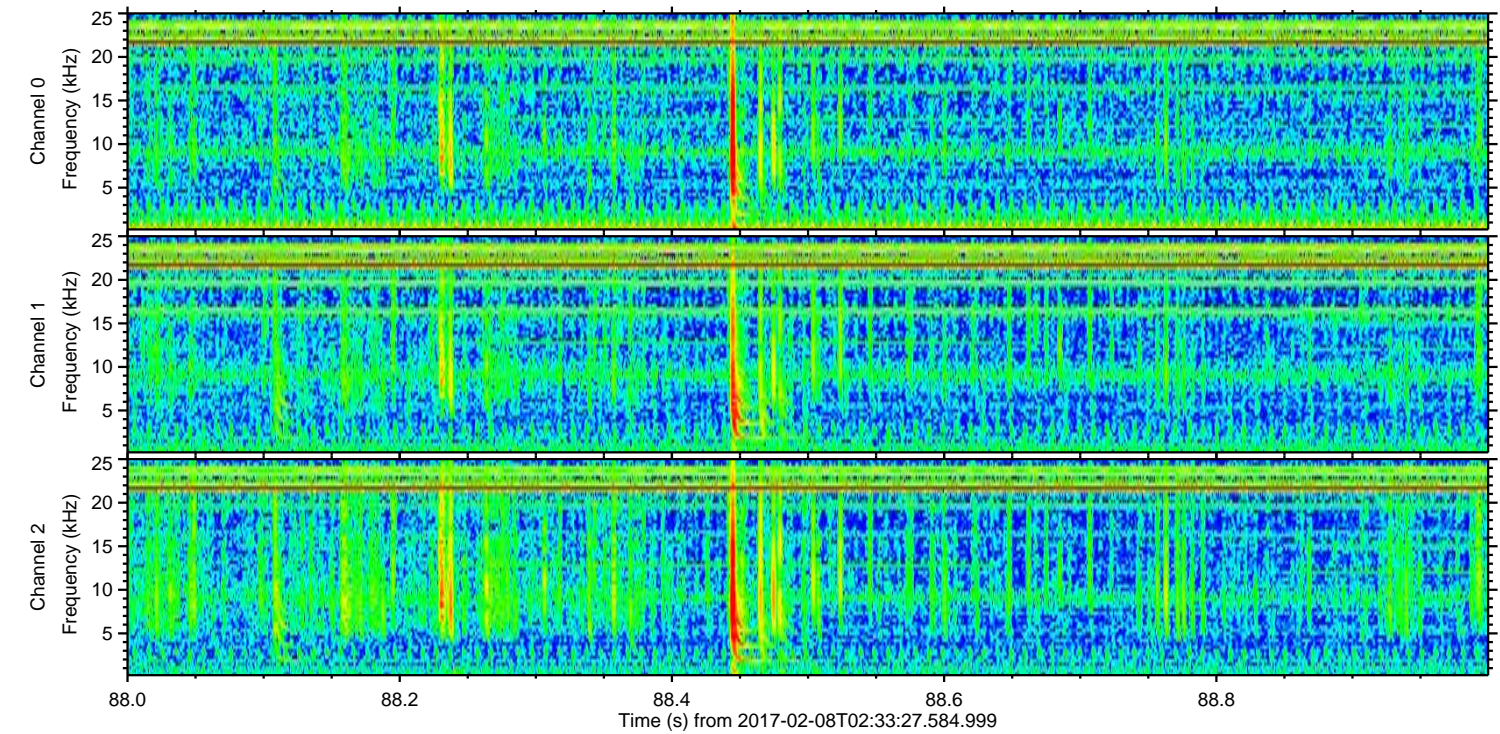
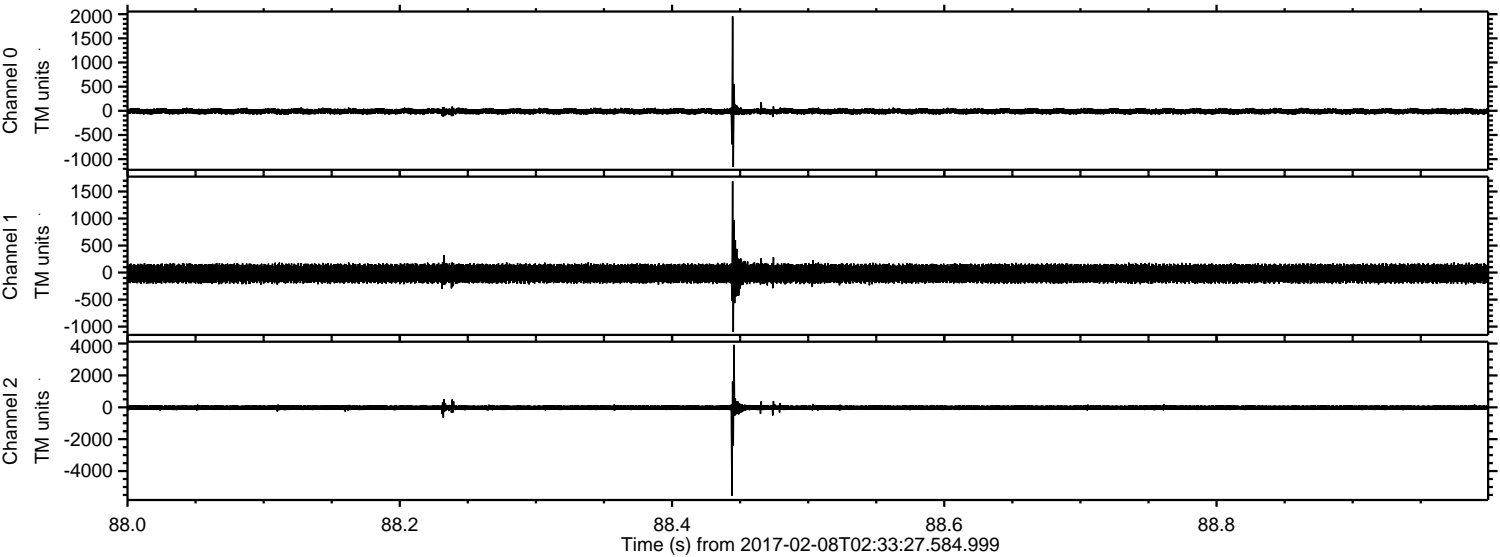
ELMAVAN 3D WAVEFORMS (Measured data sampled at 50 kHz) 51000 packets of 144 samples from 2017-02-08T02:33:27.584.999. Part 97/147

Processed Wed Feb 8 03:41:03 2017 by ELM ver.2012-10-06 from 001\_\_elm20170208\_023326\_\_dat00.bin





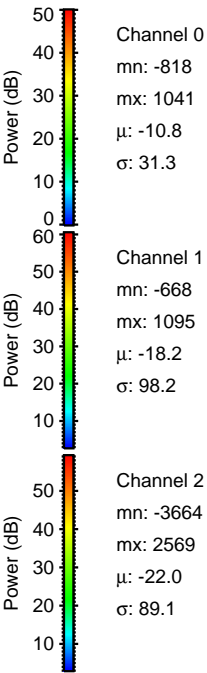
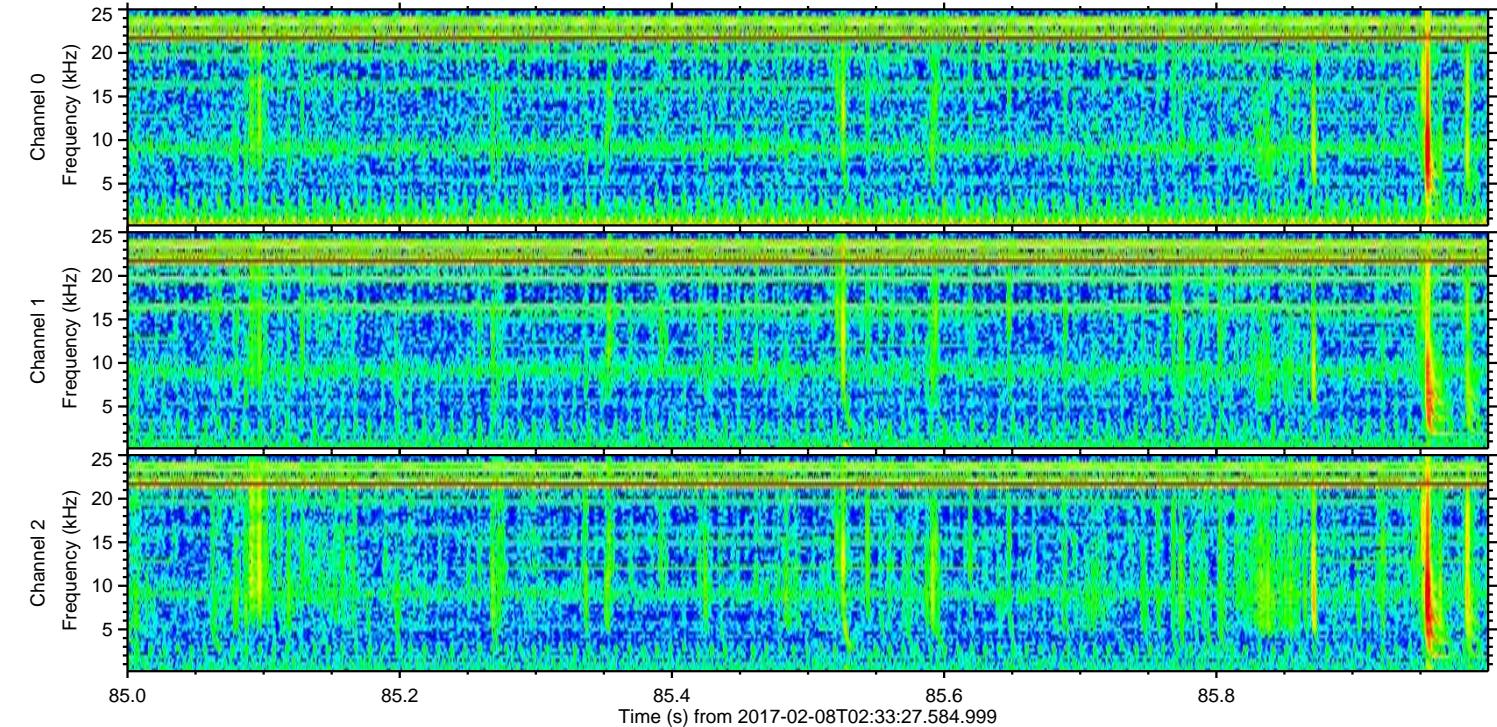
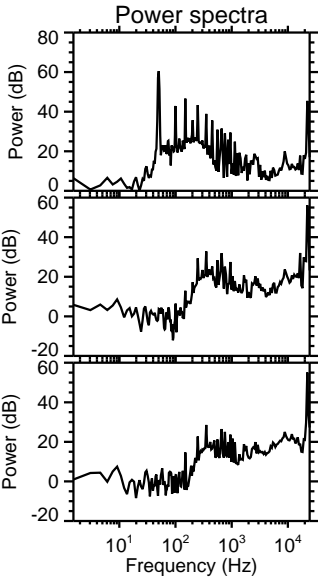
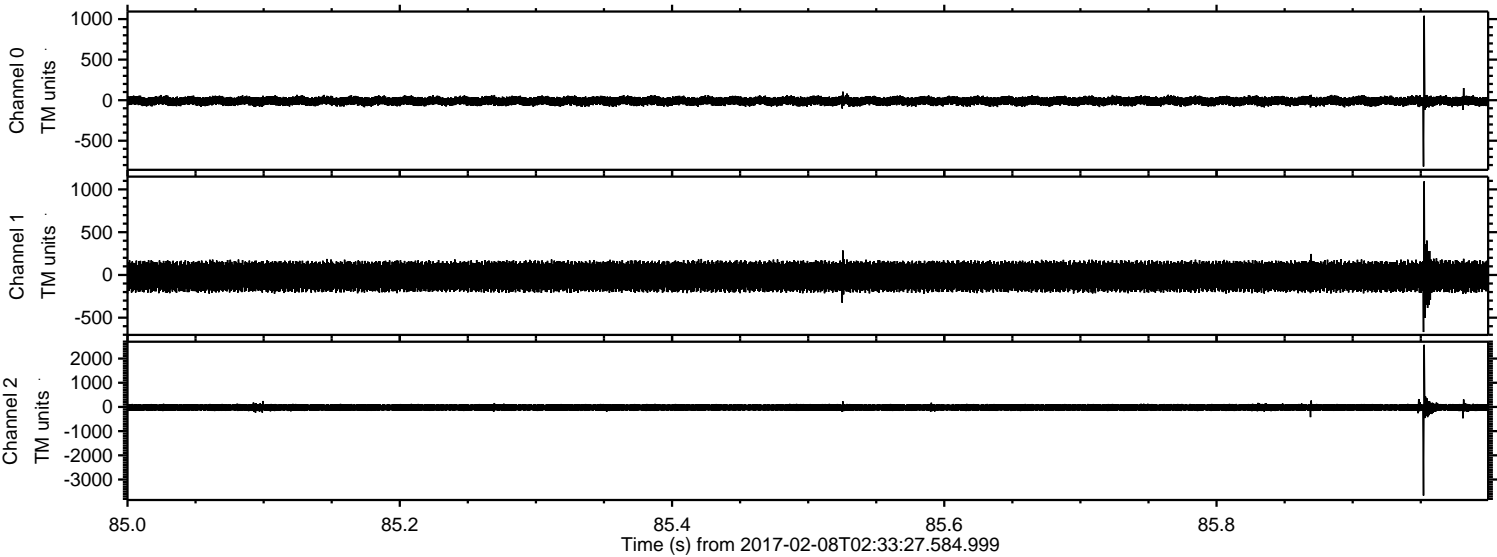
Processed Wed Feb 8 03:41:04 2017 by ELM ver.2012-10-06 from 001\_\_elm20170208\_023326\_\_dat00.bin





ELMAVAN 3D WAVEFORMS (Measured data sampled at 50 kHz) 51000 packets of 144 samples from 2017-02-08T02:33:27.584.999. Part 86/147

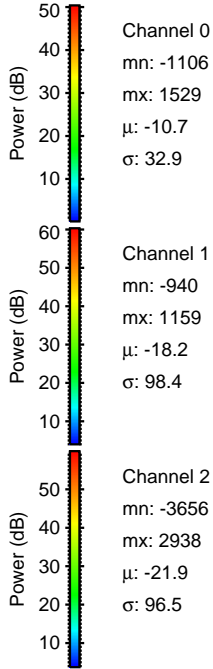
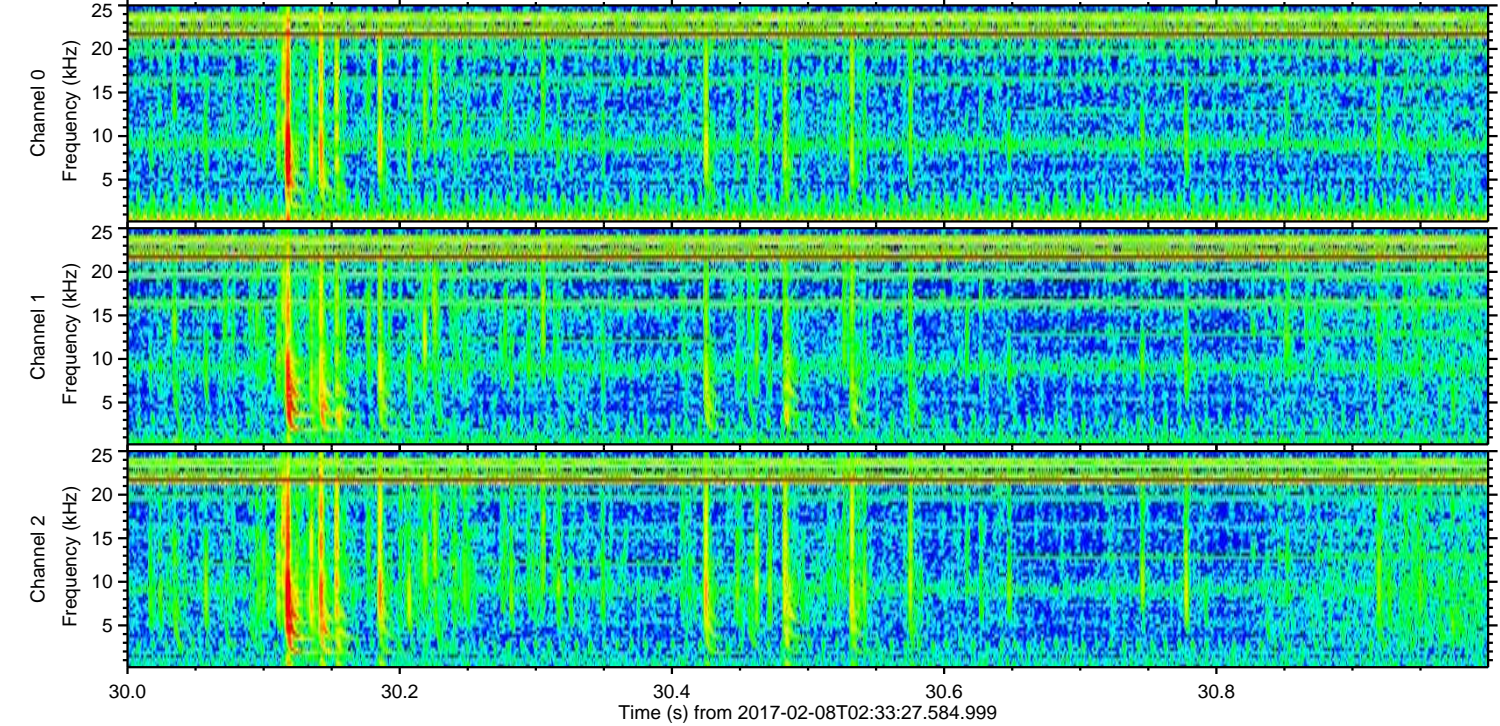
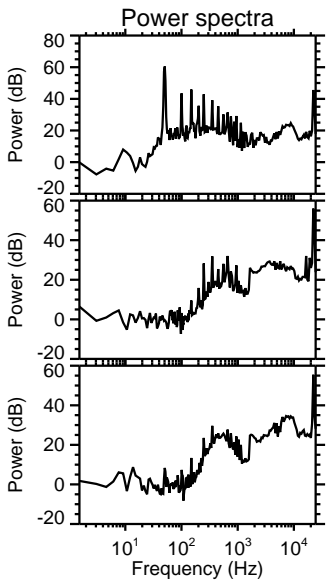
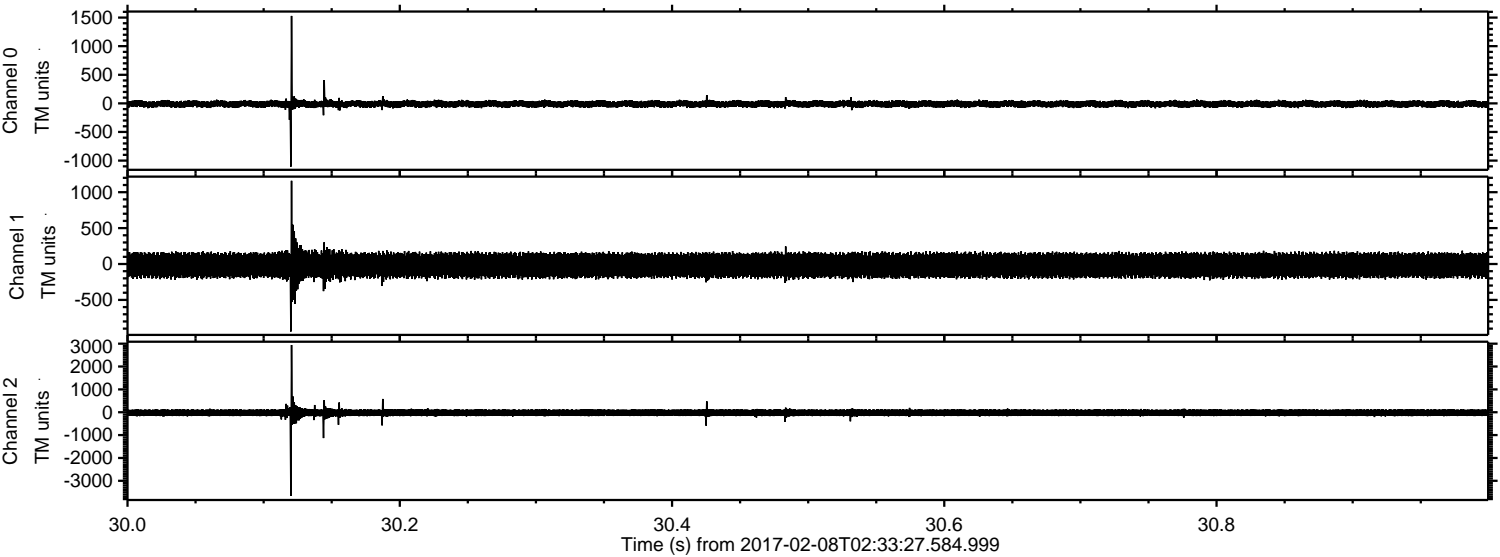
Processed Wed Feb 8 03:41:05 2017 by ELM ver.2012-10-06 from 001\_\_elm20170208\_023326\_\_dat00.bin





ELMAVAN 3D WAVEFORMS (Measured data sampled at 50 kHz) 51000 packets of 144 samples from 2017-02-08T02:33:27.584.999. Part 31/147

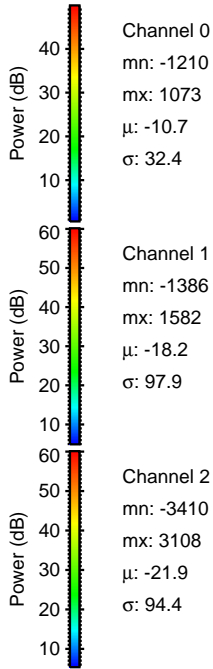
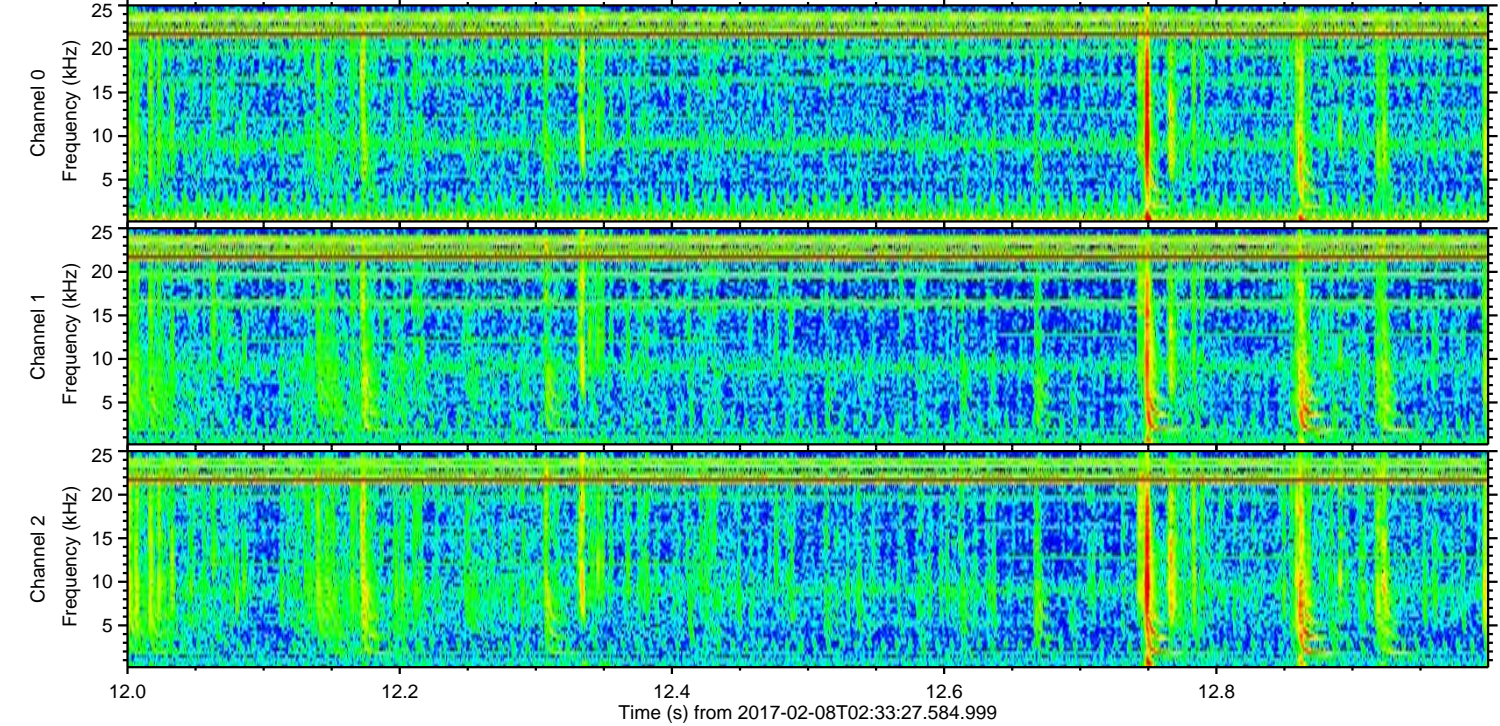
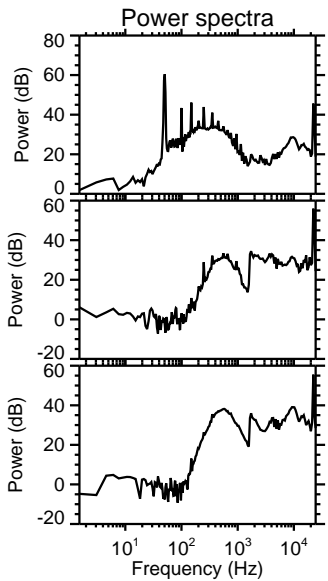
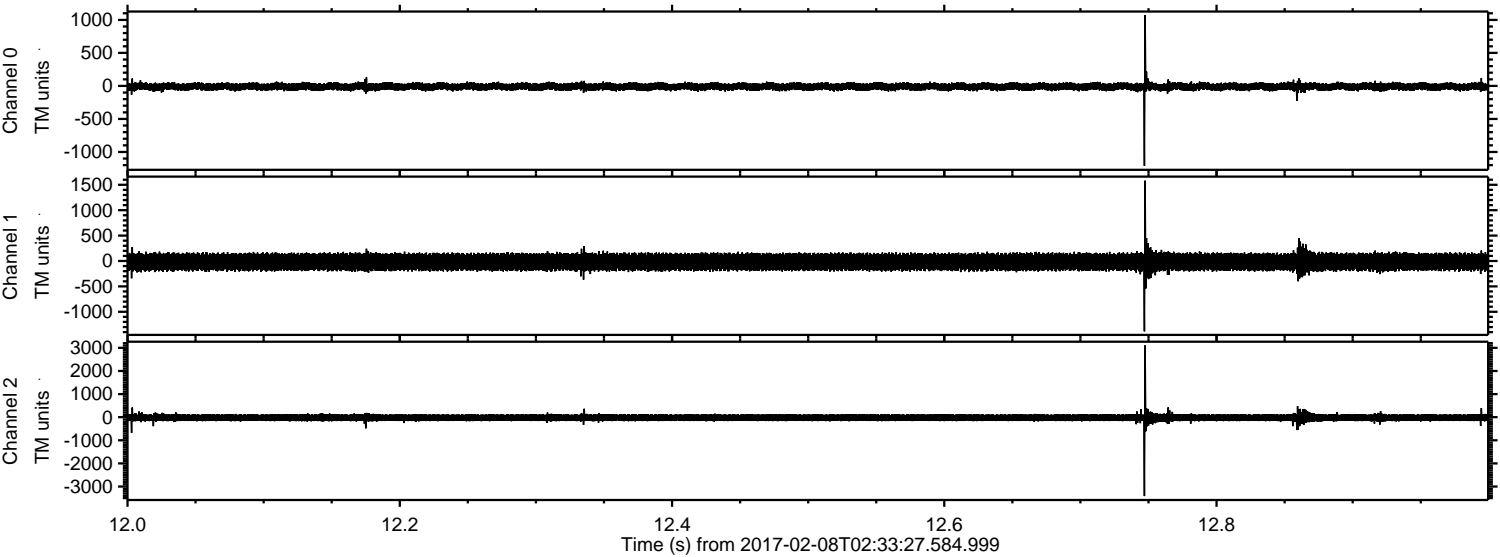
Processed Wed Feb 8 03:41:06 2017 by ELM ver.2012-10-06 from 001\_\_elm20170208\_023326\_\_dat00.bin





ELMAVAN 3D WAVEFORMS (Measured data sampled at 50 kHz) 51000 packets of 144 samples from 2017-02-08T02:33:27.584.999. Part 13/147

Processed Wed Feb 8 03:41:07 2017 by ELM ver.2012-10-06 from 001\_\_elm20170208\_023326\_\_dat00.bin



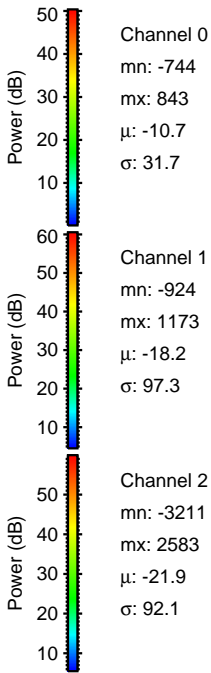
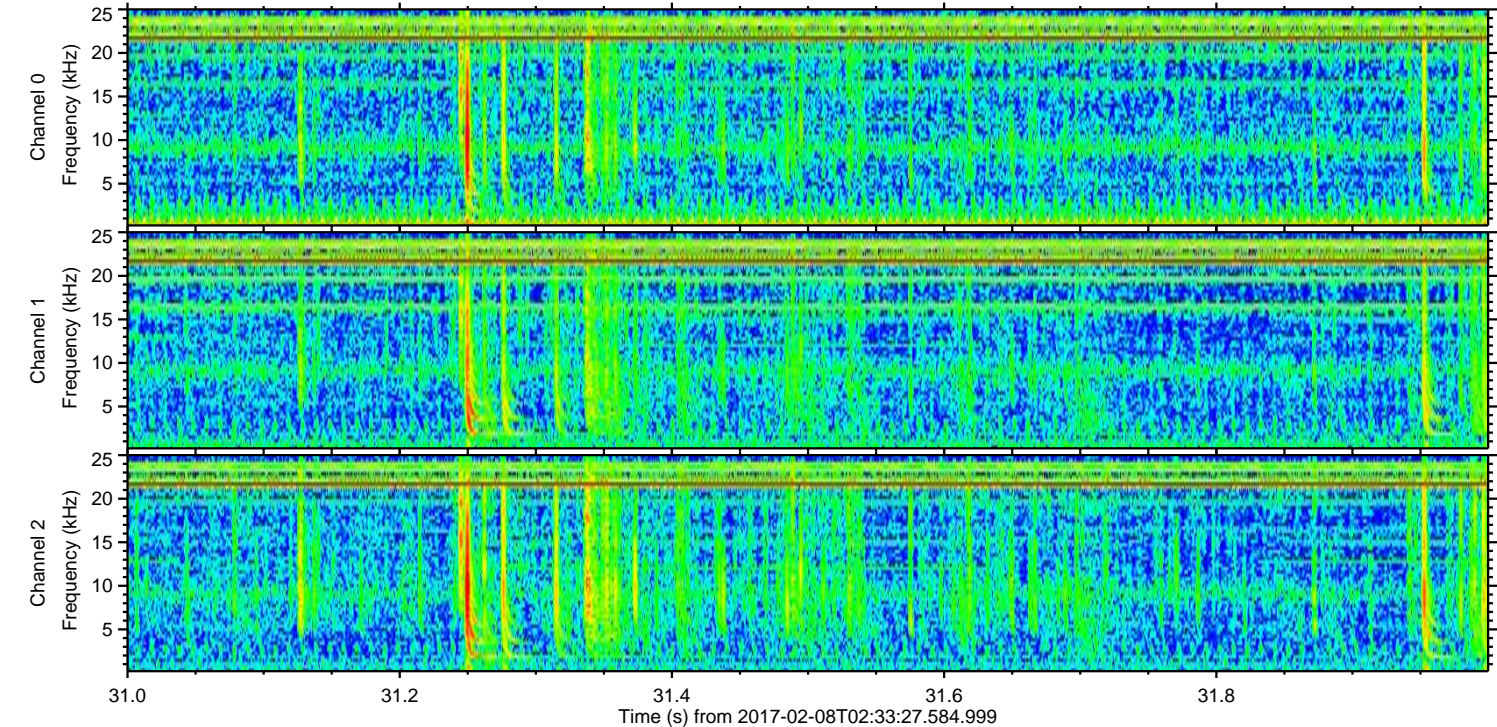
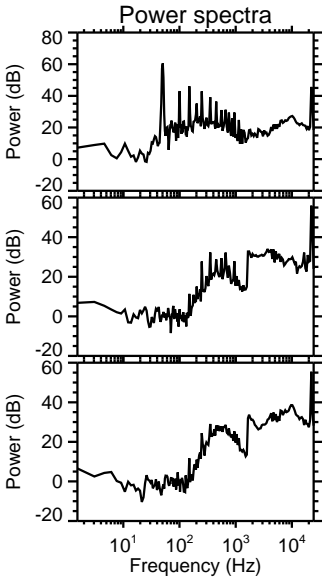
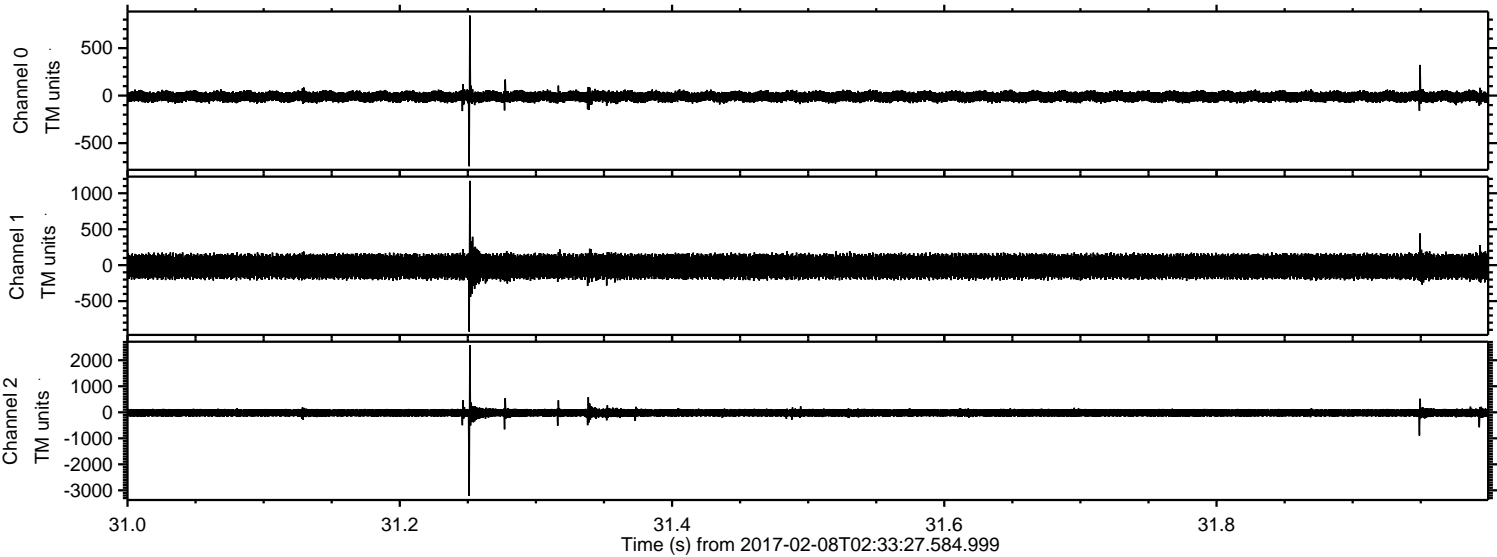
Channel 0  
mn: -1210  
mx: 1073  
 $\mu$ : -10.7  
 $\sigma$ : 32.4

Channel 1  
mn: -1386  
mx: 1582  
 $\mu$ : -18.2  
 $\sigma$ : 97.9

Channel 2  
mn: -3410  
mx: 3108  
 $\mu$ : -21.9  
 $\sigma$ : 94.4



Processed Wed Feb 8 03:41:08 2017 by ELM ver.2012-10-06 from 001\_\_elm20170208\_023326\_\_dat00.bin



Channel 0  
mn: -744  
mx: 843  
 $\mu$ : -10.7  
 $\sigma$ : 31.7

Channel 1  
mn: -924  
mx: 1173  
 $\mu$ : -18.2  
 $\sigma$ : 97.3

Channel 2  
mn: -3211  
mx: 2583  
 $\mu$ : -21.9  
 $\sigma$ : 92.1



ELMAVAN 3D WAVEFORMS (Measured data sampled at 50 kHz) 51000 packets of 144 samples from 2017-02-08T02:33:27.584.999. Part 90/147

Processed Wed Feb 8 03:41:08 2017 by ELM ver.2012-10-06 from 001\_\_elm20170208\_023326\_\_dat00.bin

