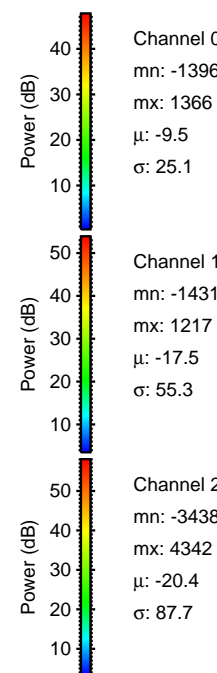
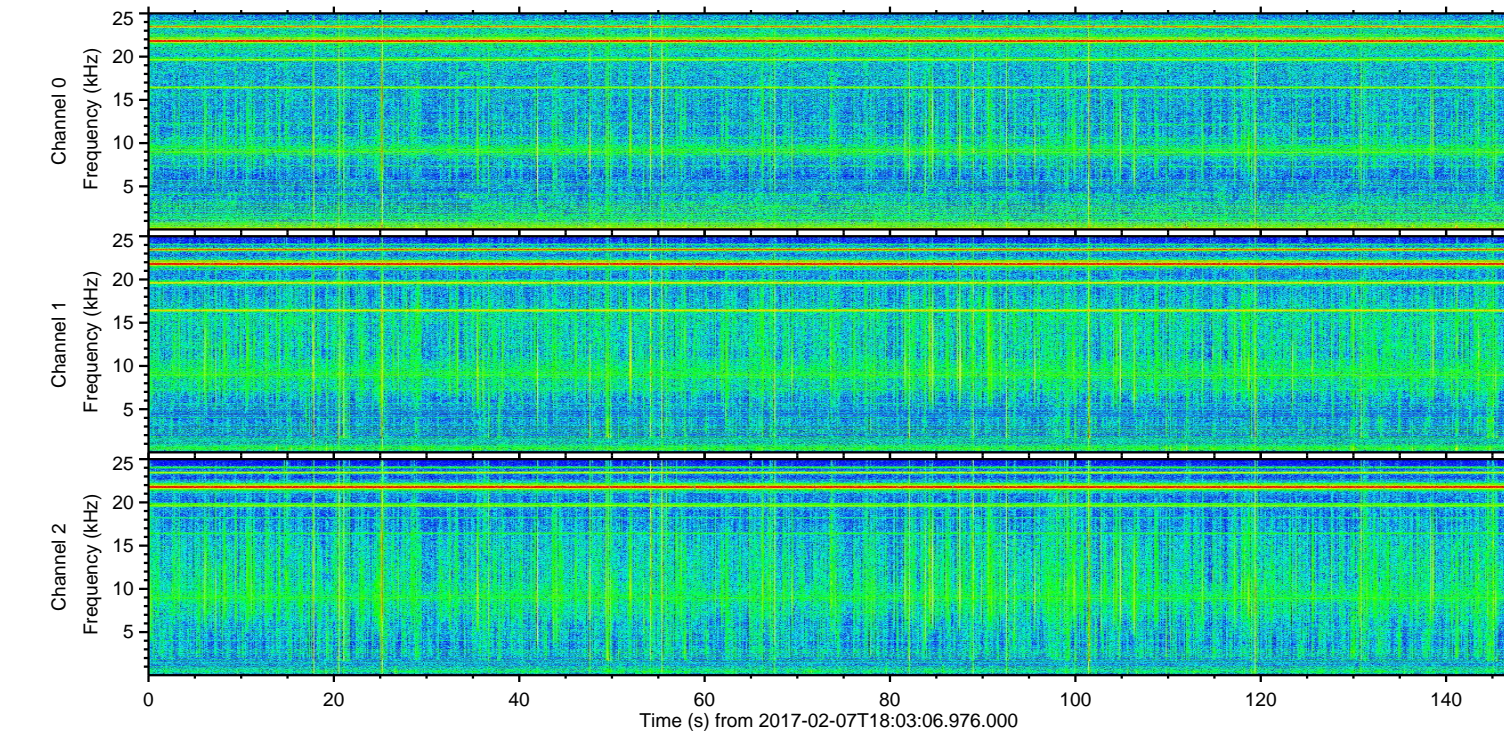
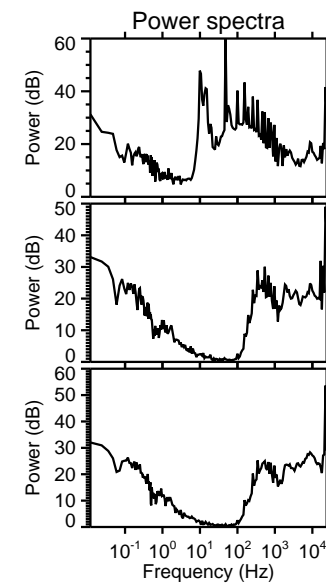
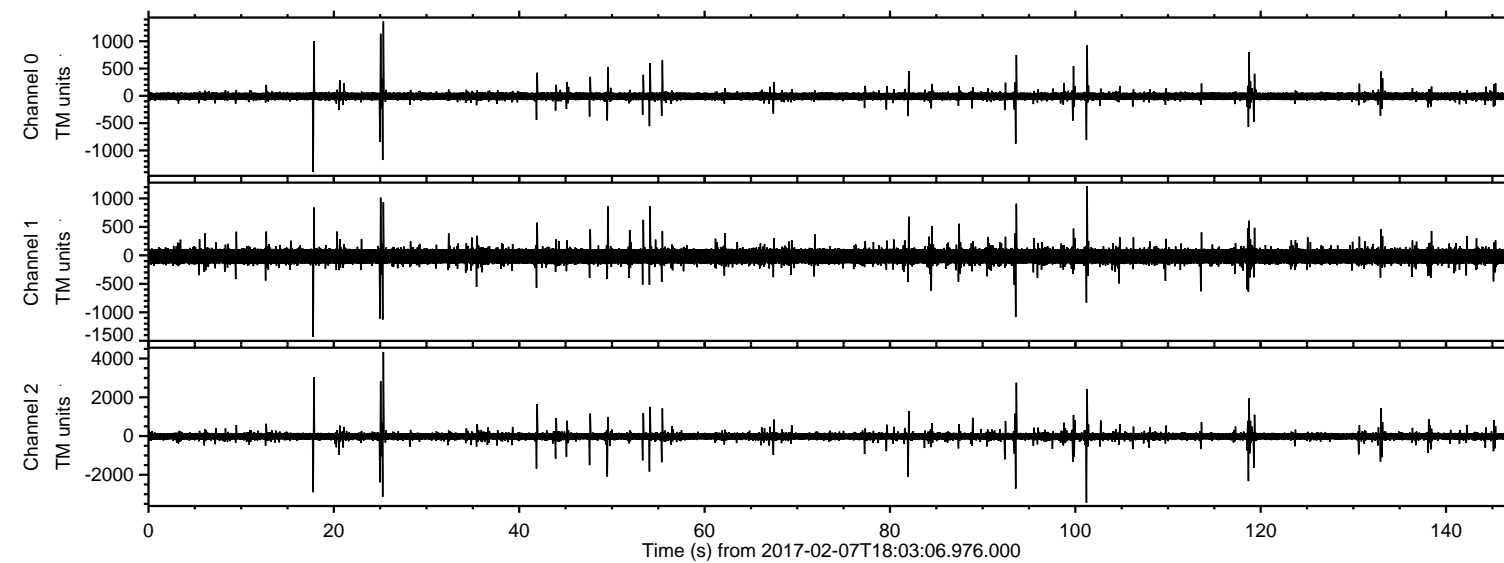


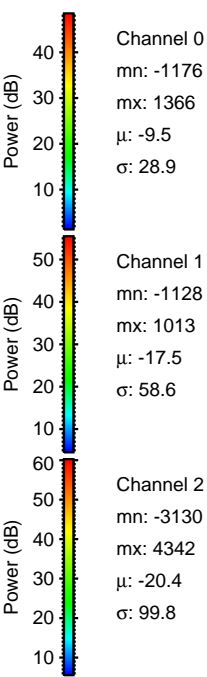
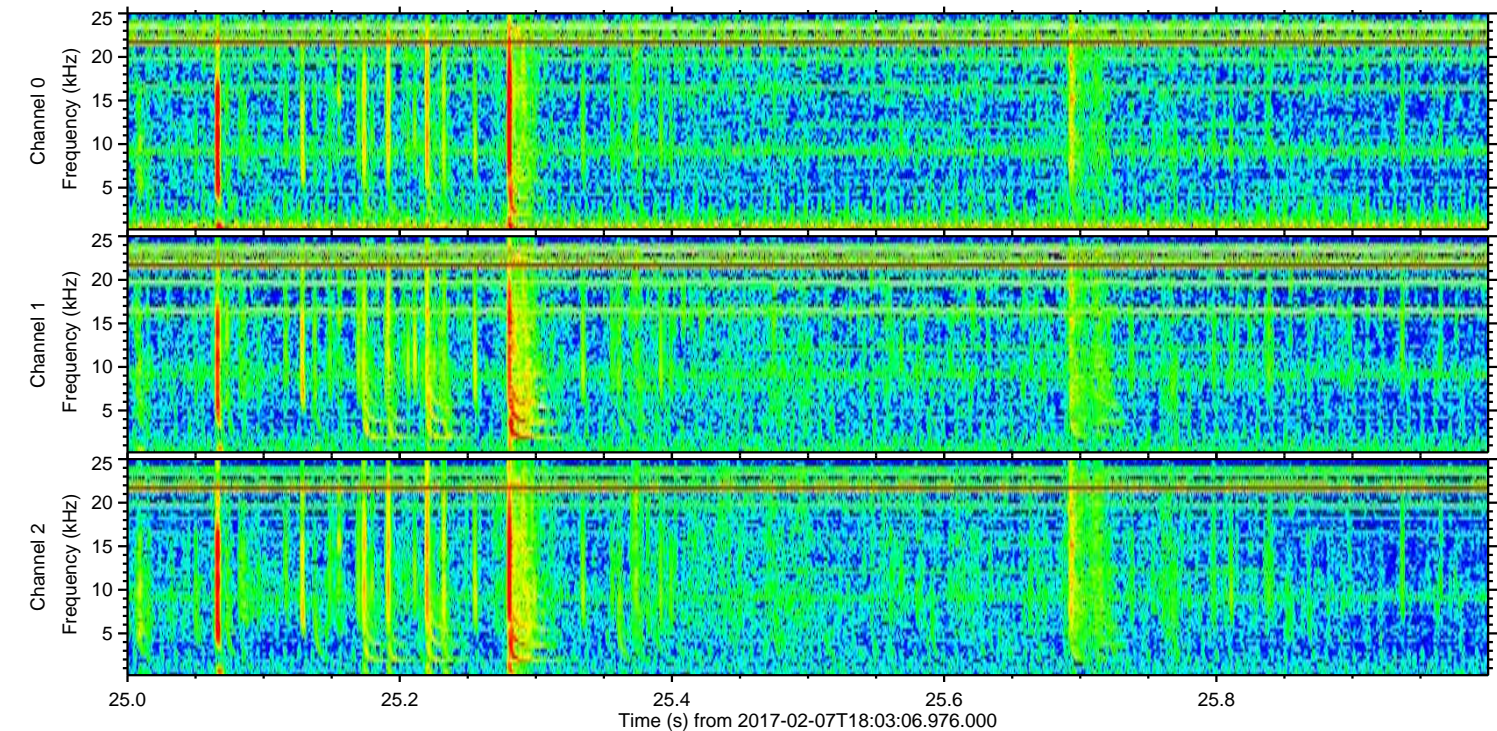
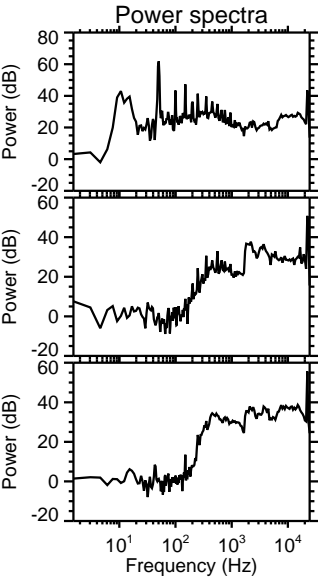
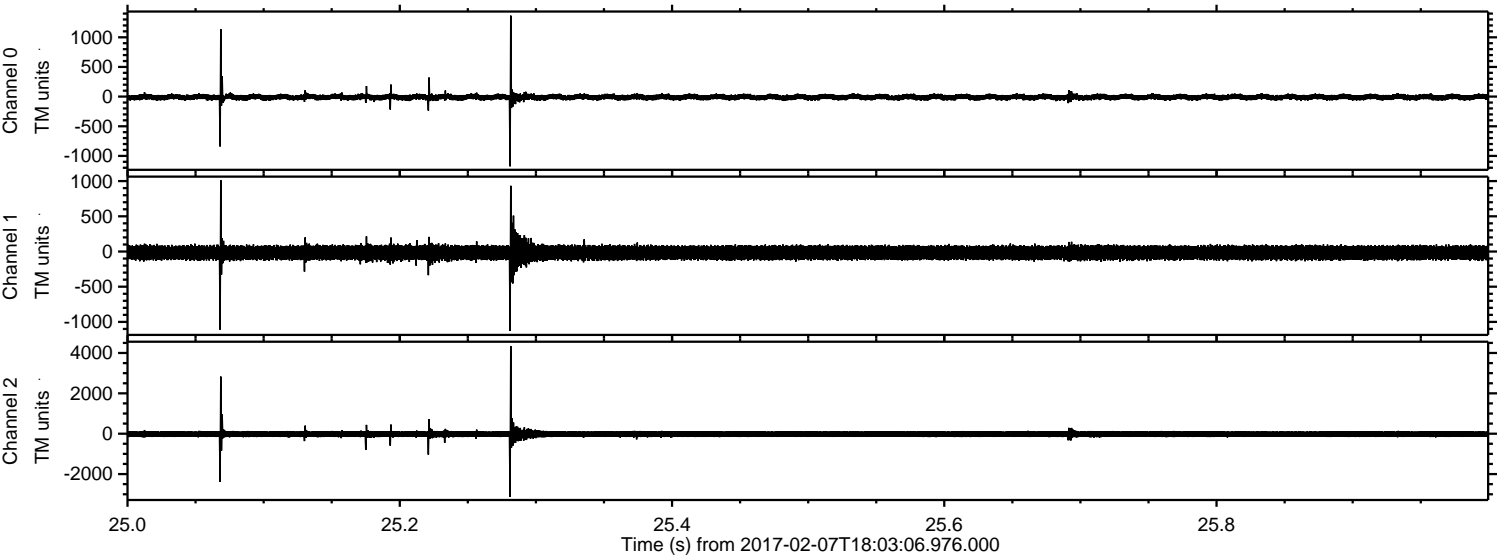
# ELMAVAN 3D WAVEFORMS (Measured data sampled at 50 kHz) 51000 packets of 144 samples from 2017-02-07T18:03:06.976.000.

Processed Tue Feb 7 19:10:37 2017 by ELM ver.2012-10-06 from 001\_\_elm20170207\_180305\_\_dat00.bin





Processed Tue Feb 7 19:10:48 2017 by ELM ver.2012-10-06 from 001\_\_elm20170207\_180305\_\_dat00.bin



Channel 0  
mn: -1176  
mx: 1366  
 $\mu$ : -9.5  
 $\sigma$ : 28.9

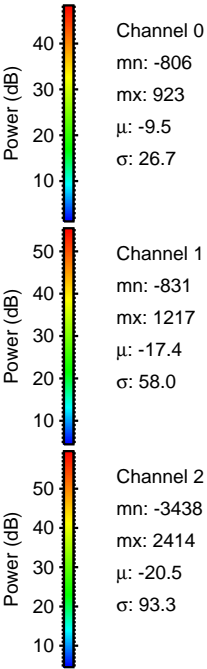
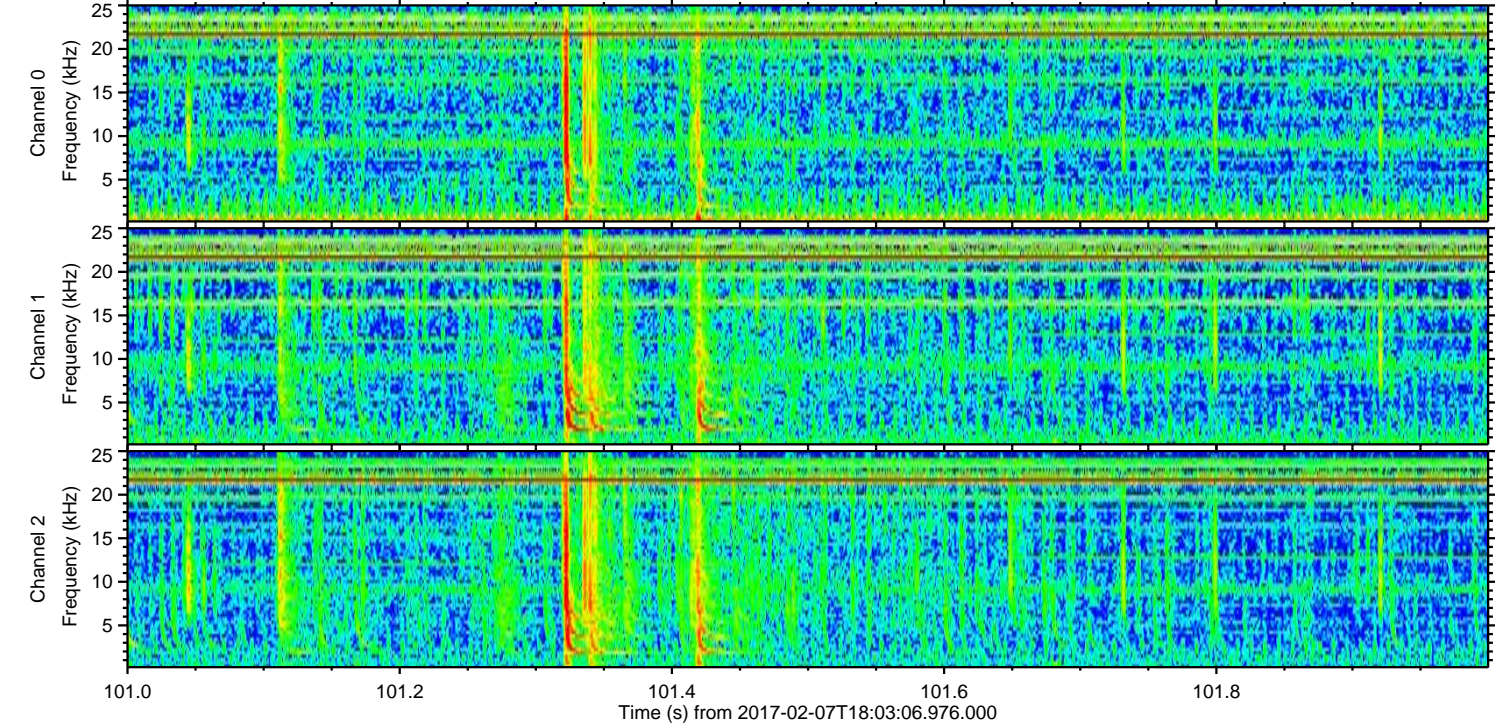
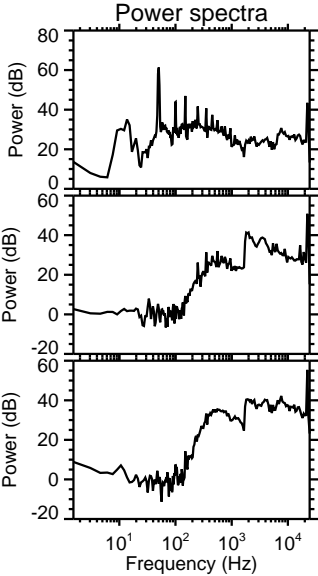
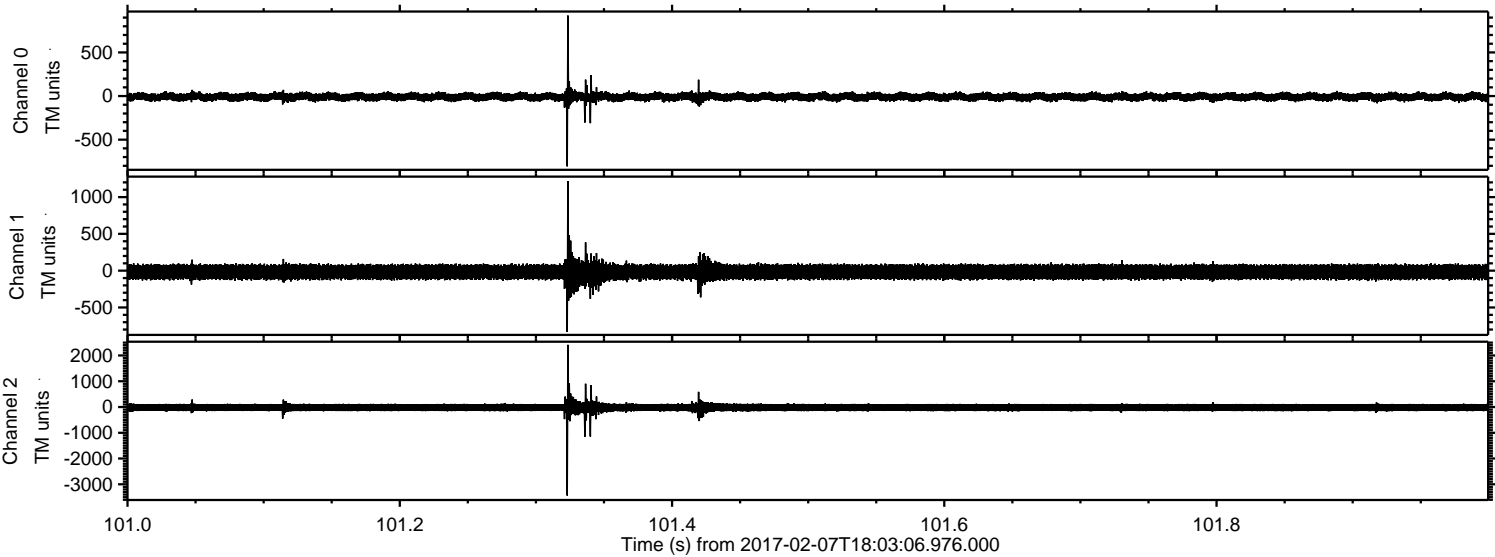
Channel 1  
mn: -1128  
mx: 1013  
 $\mu$ : -17.5  
 $\sigma$ : 58.6

Channel 2  
mn: -3130  
mx: 4342  
 $\mu$ : -20.4  
 $\sigma$ : 99.8



ELMAVAN 3D WAVEFORMS (Measured data sampled at 50 kHz) 51000 packets of 144 samples from 2017-02-07T18:03:06.976.000. Part 102/147

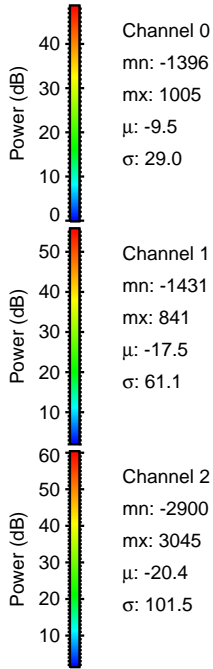
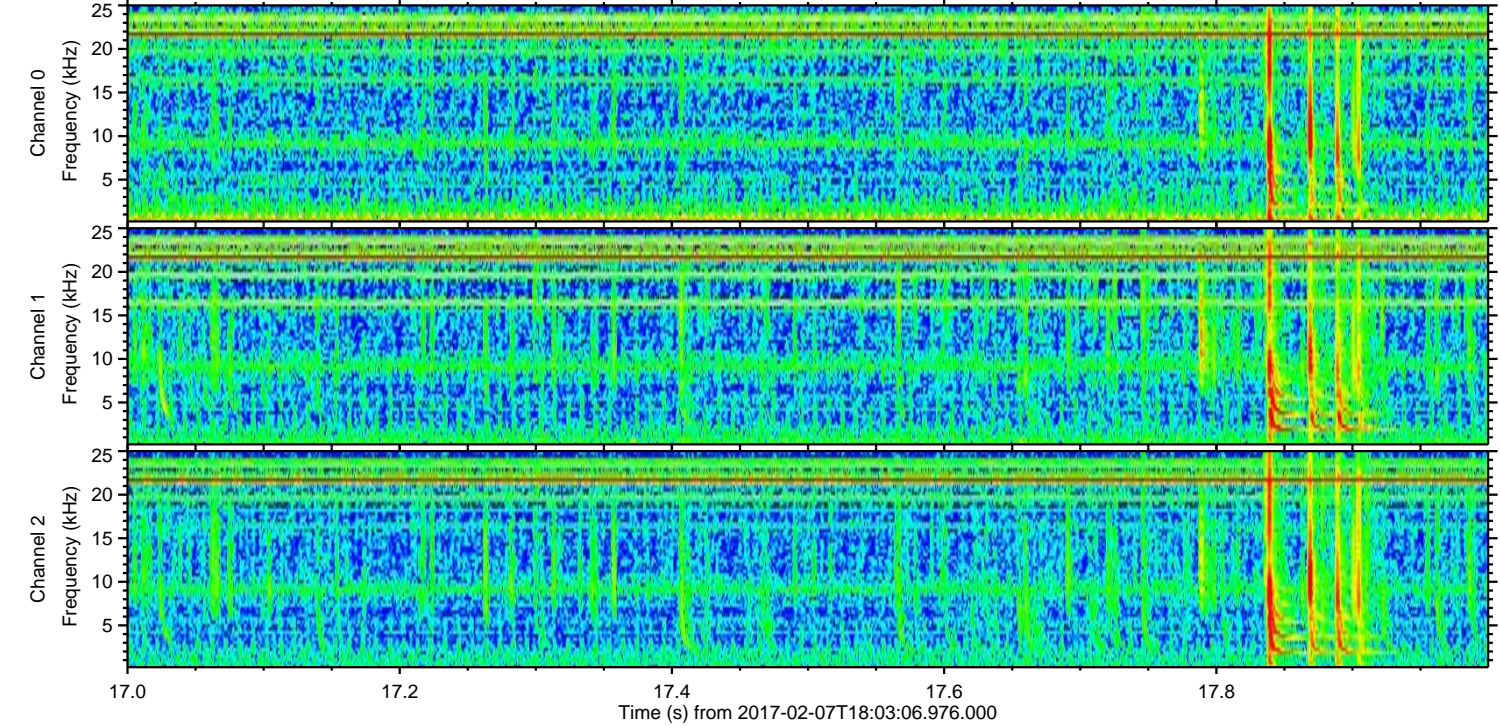
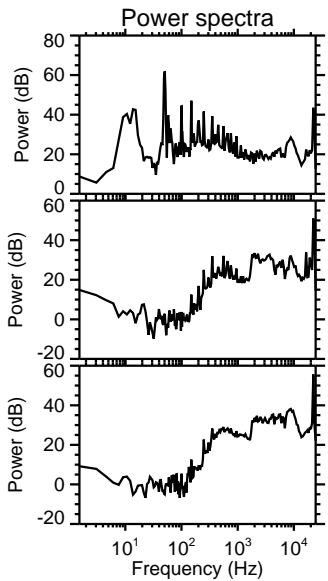
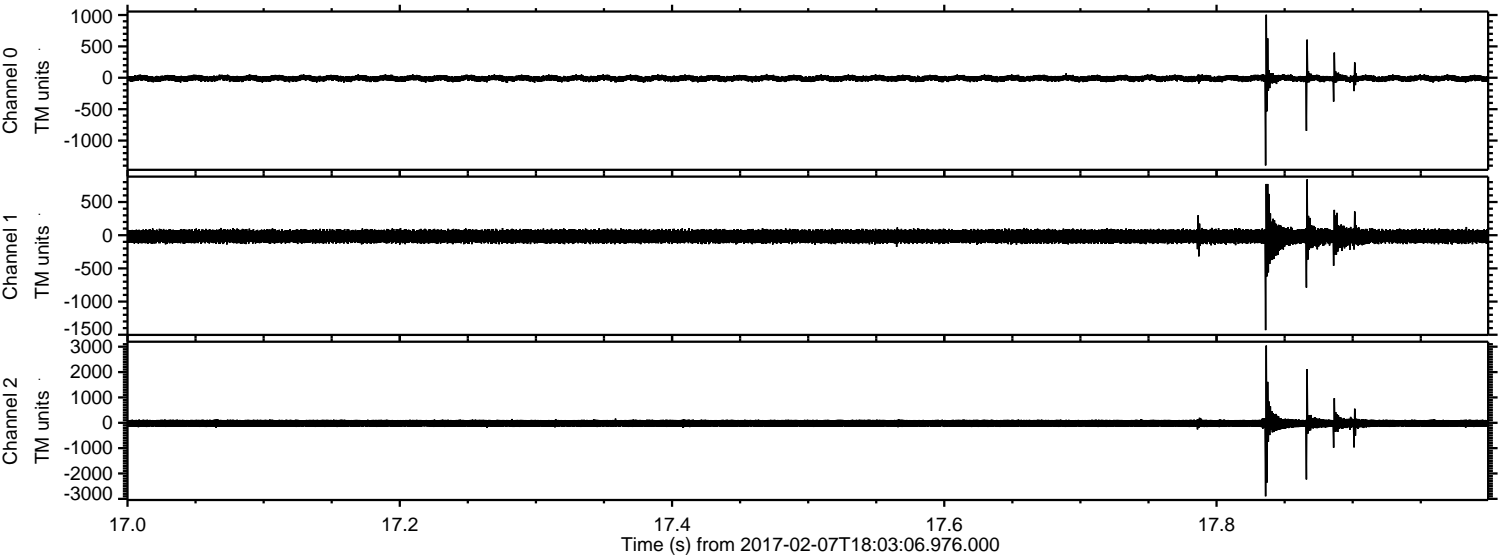
Processed Tue Feb 7 19:10:49 2017 by ELM ver.2012-10-06 from 001\_\_elm20170207\_180305\_\_dat00.bin





ELMAVAN 3D WAVEFORMS (Measured data sampled at 50 kHz) 51000 packets of 144 samples from 2017-02-07T18:03:06.976.000. Part 18/147

Processed Tue Feb 7 19:10:50 2017 by ELM ver.2012-10-06 from 001\_\_elm20170207\_180305\_\_dat00.bin



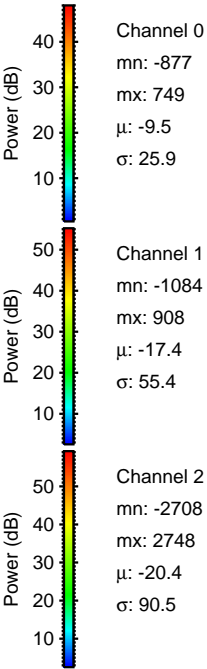
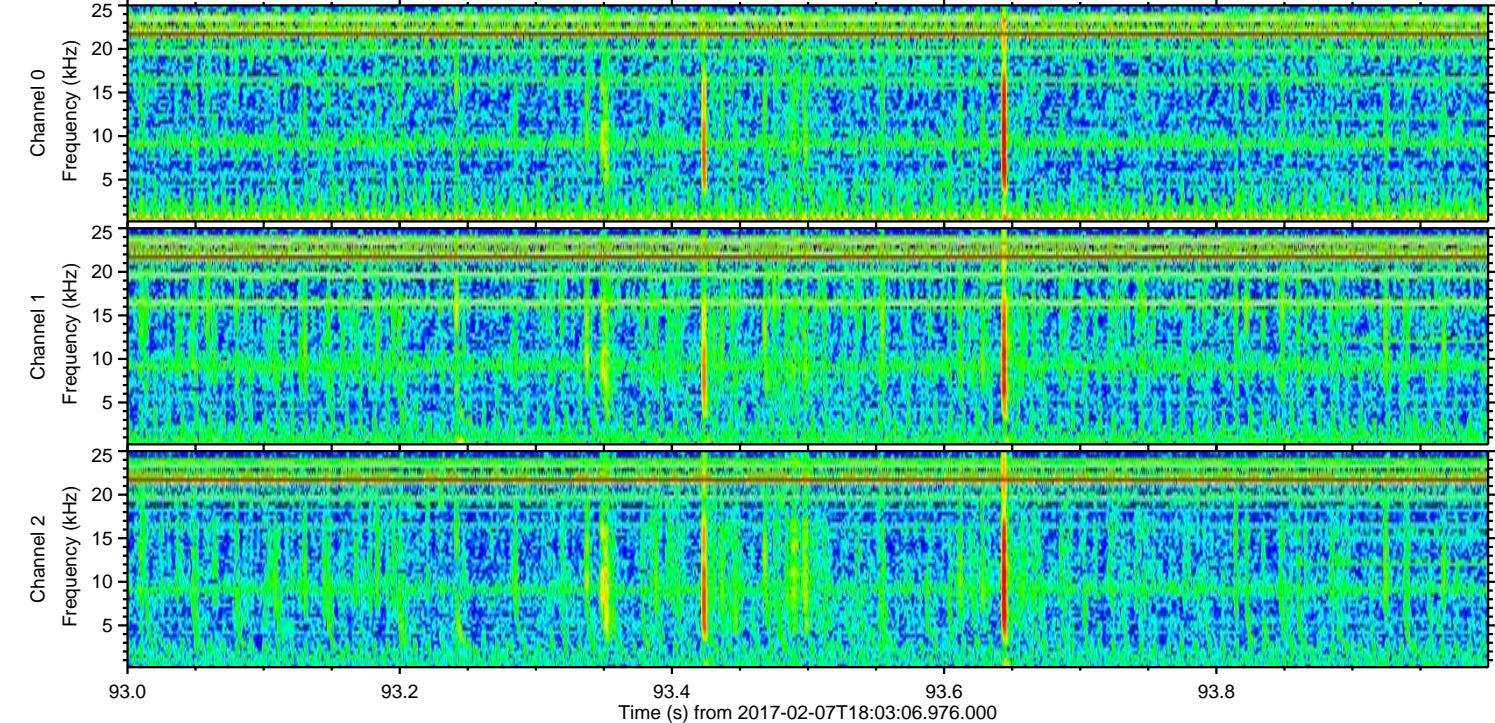
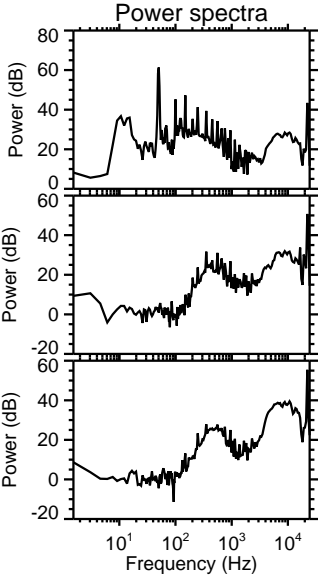
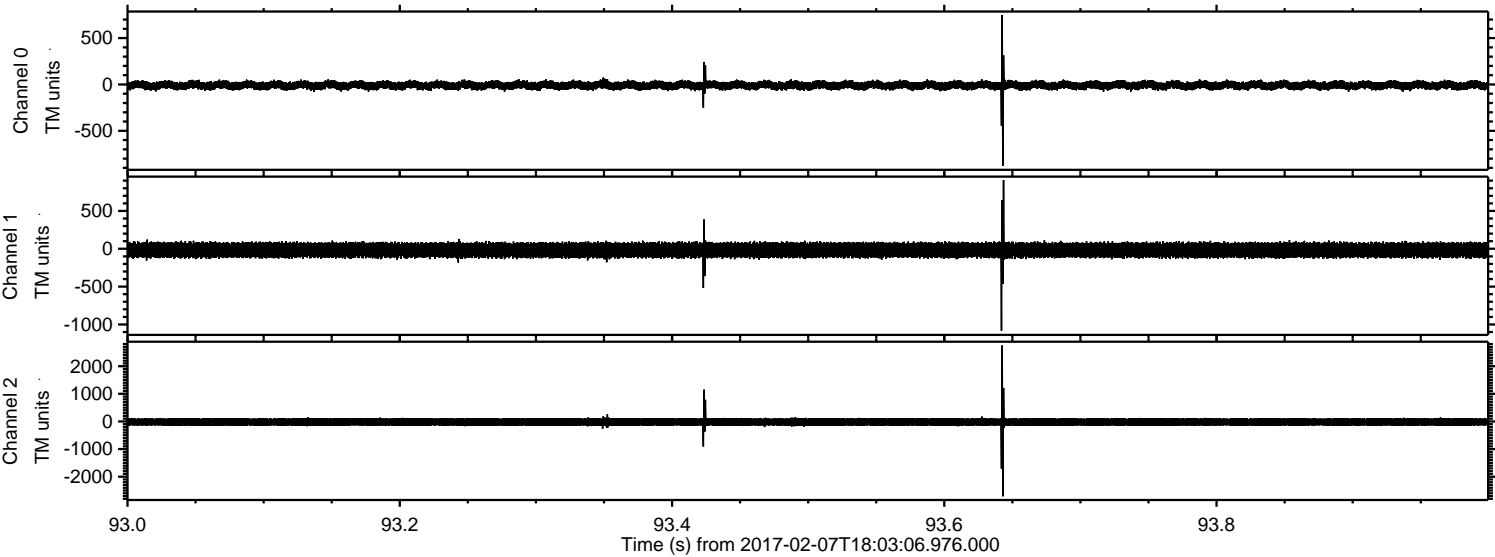
Channel 0  
mn: -1396  
mx: 1005  
 $\mu$ : -9.5  
 $\sigma$ : 29.0

Channel 1  
mn: -1431  
mx: 841  
 $\mu$ : -17.5  
 $\sigma$ : 61.1

Channel 2  
mn: -2900  
mx: 3045  
 $\mu$ : -20.4  
 $\sigma$ : 101.5



Processed Tue Feb 7 19:10:51 2017 by ELM ver.2012-10-06 from 001\_\_elm20170207\_180305\_\_dat00.bin



Channel 0  
mn: -877  
mx: 749  
 $\mu$ : -9.5  
 $\sigma$ : 25.9

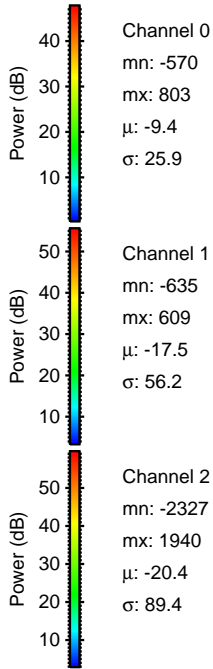
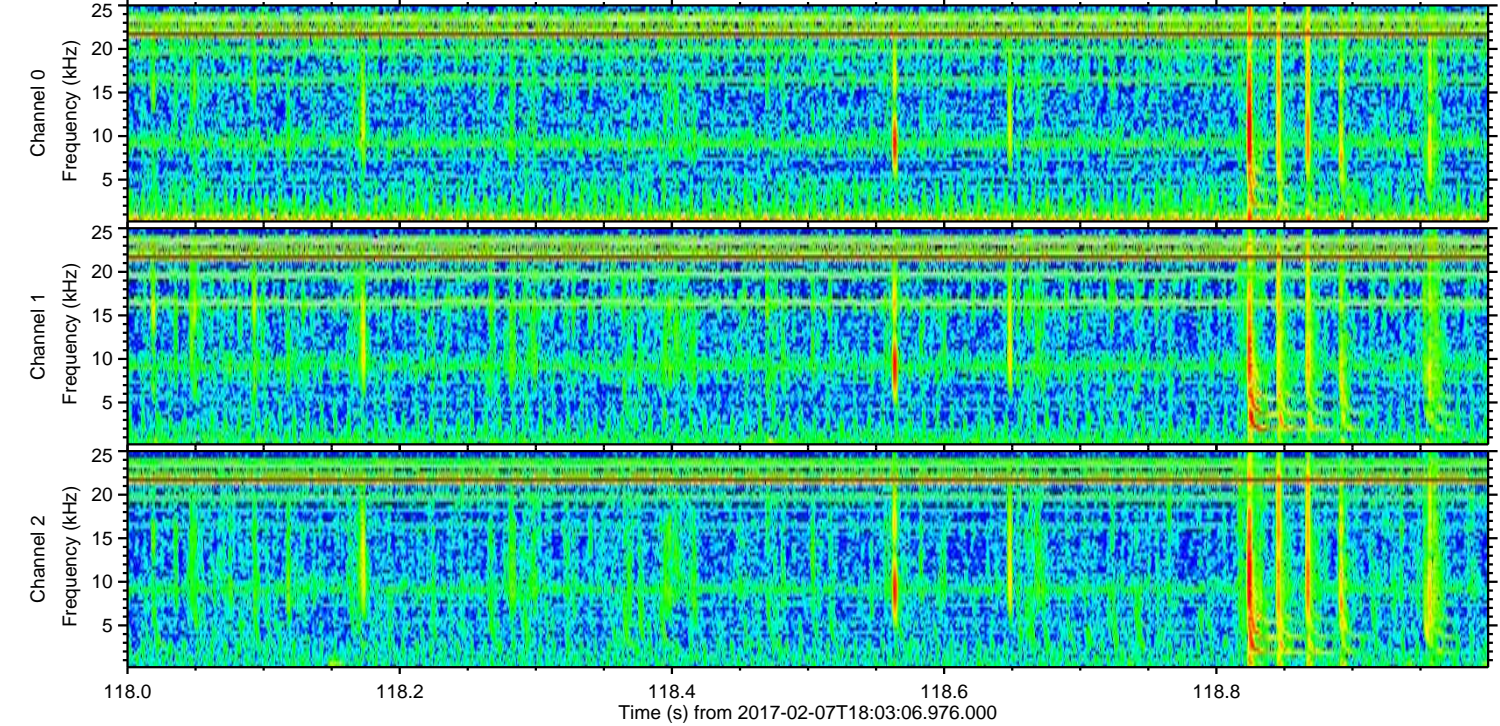
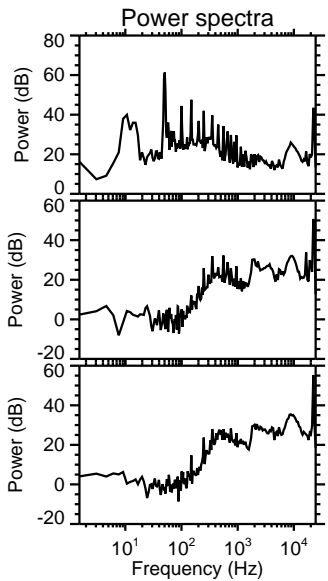
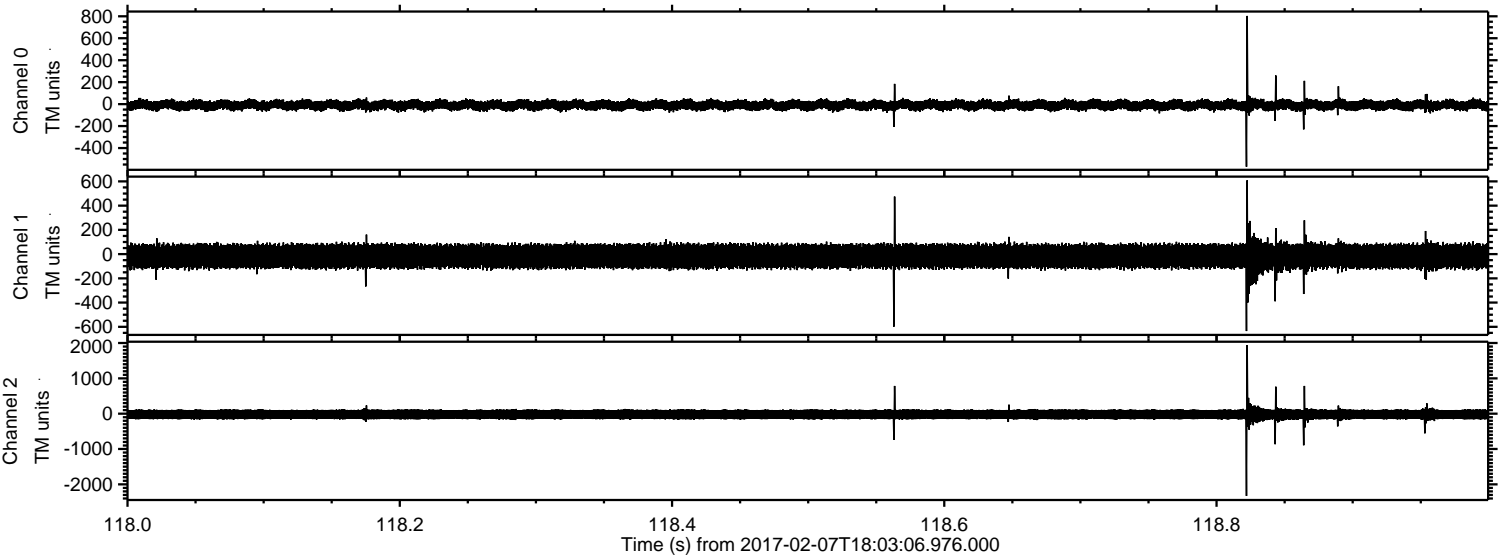
Channel 1  
mn: -1084  
mx: 908  
 $\mu$ : -17.4  
 $\sigma$ : 55.4

Channel 2  
mn: -2708  
mx: 2748  
 $\mu$ : -20.4  
 $\sigma$ : 90.5



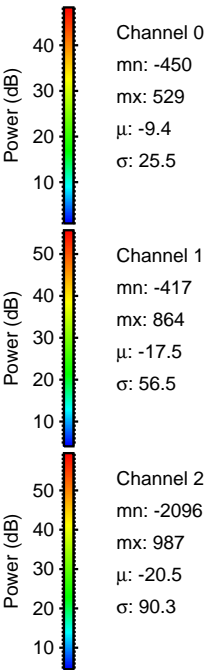
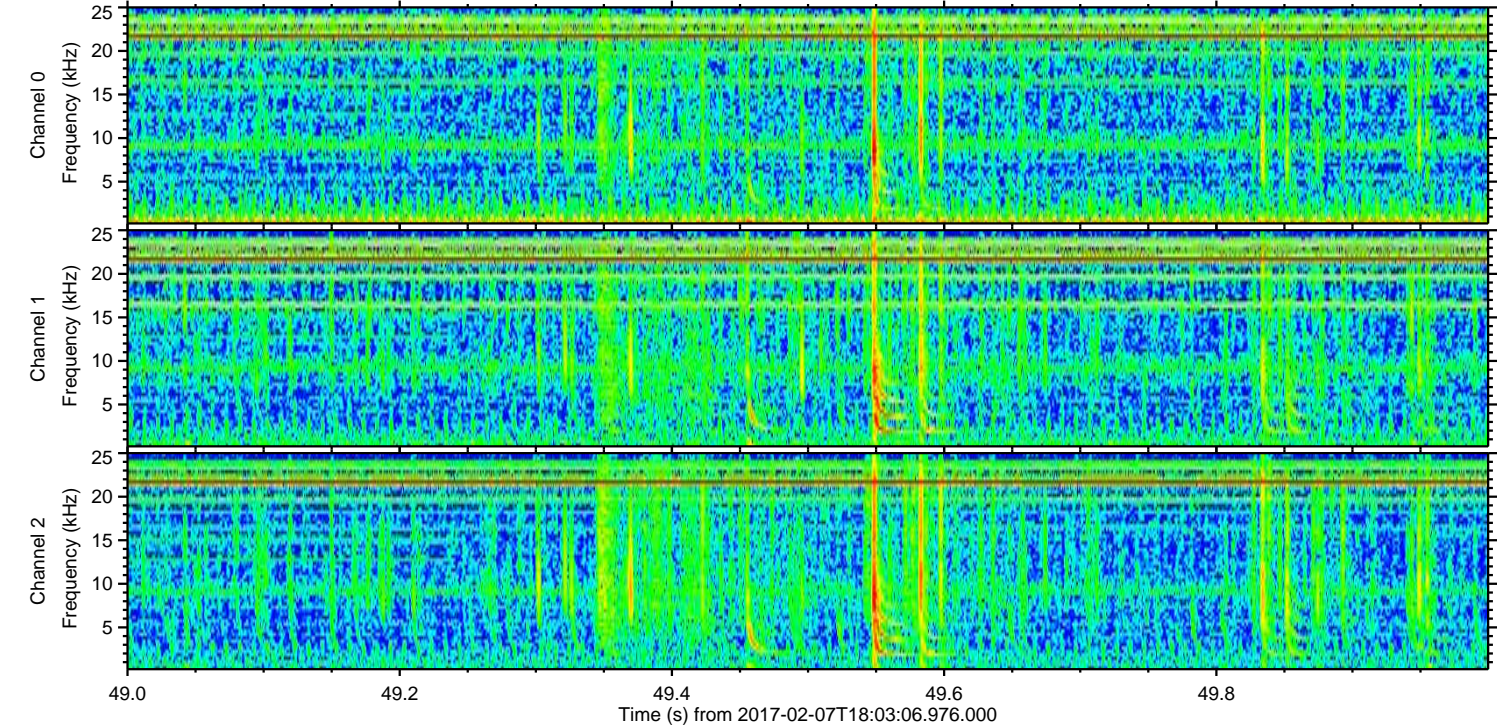
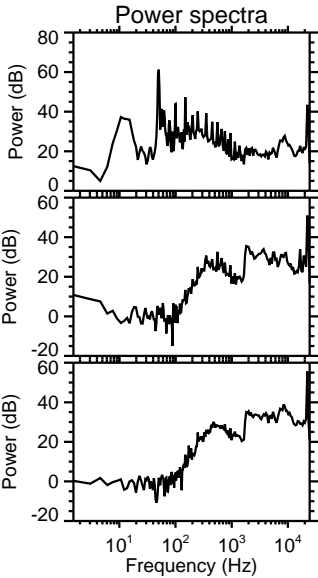
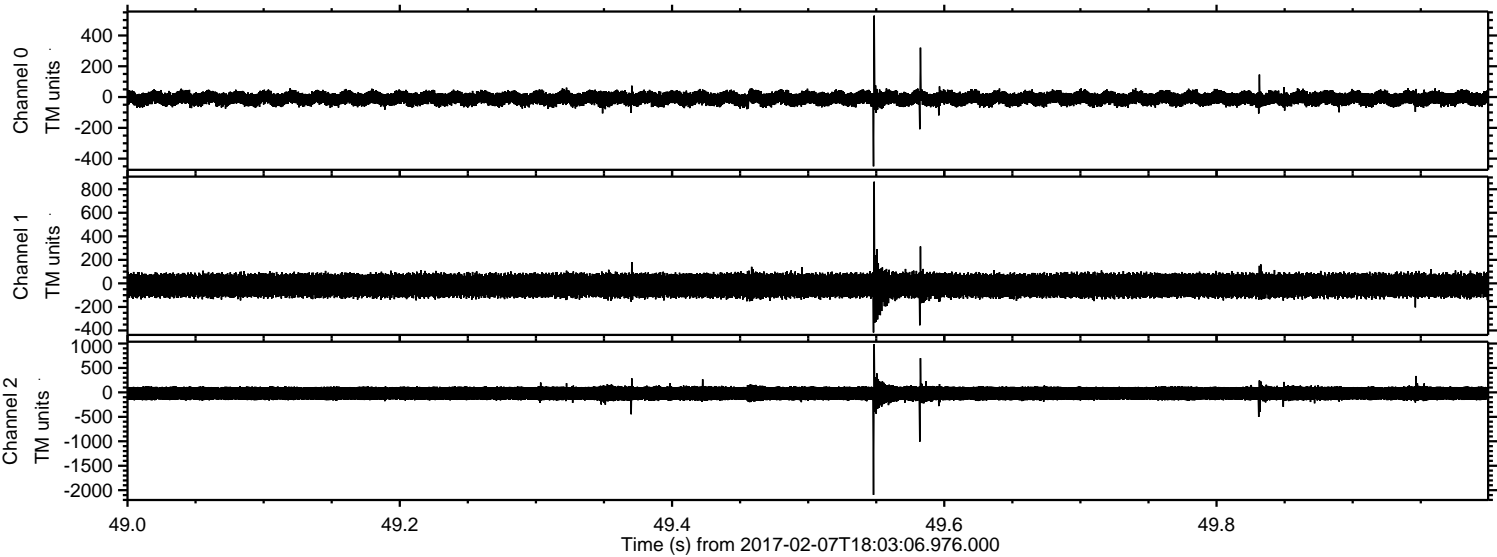
ELMAVAN 3D WAVEFORMS (Measured data sampled at 50 kHz) 51000 packets of 144 samples from 2017-02-07T18:03:06.976.000. Part 119/147

Processed Tue Feb 7 19:10:52 2017 by ELM ver.2012-10-06 from 001\_\_elm20170207\_180305\_\_dat00.bin



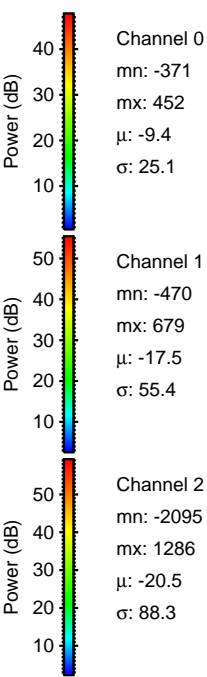
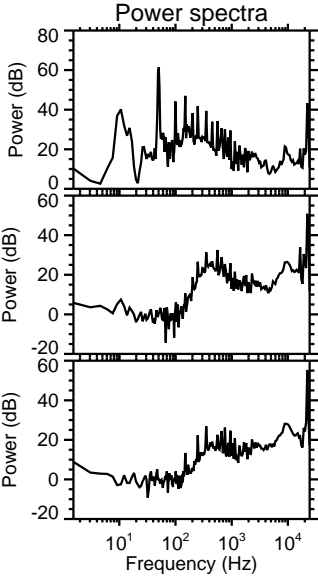
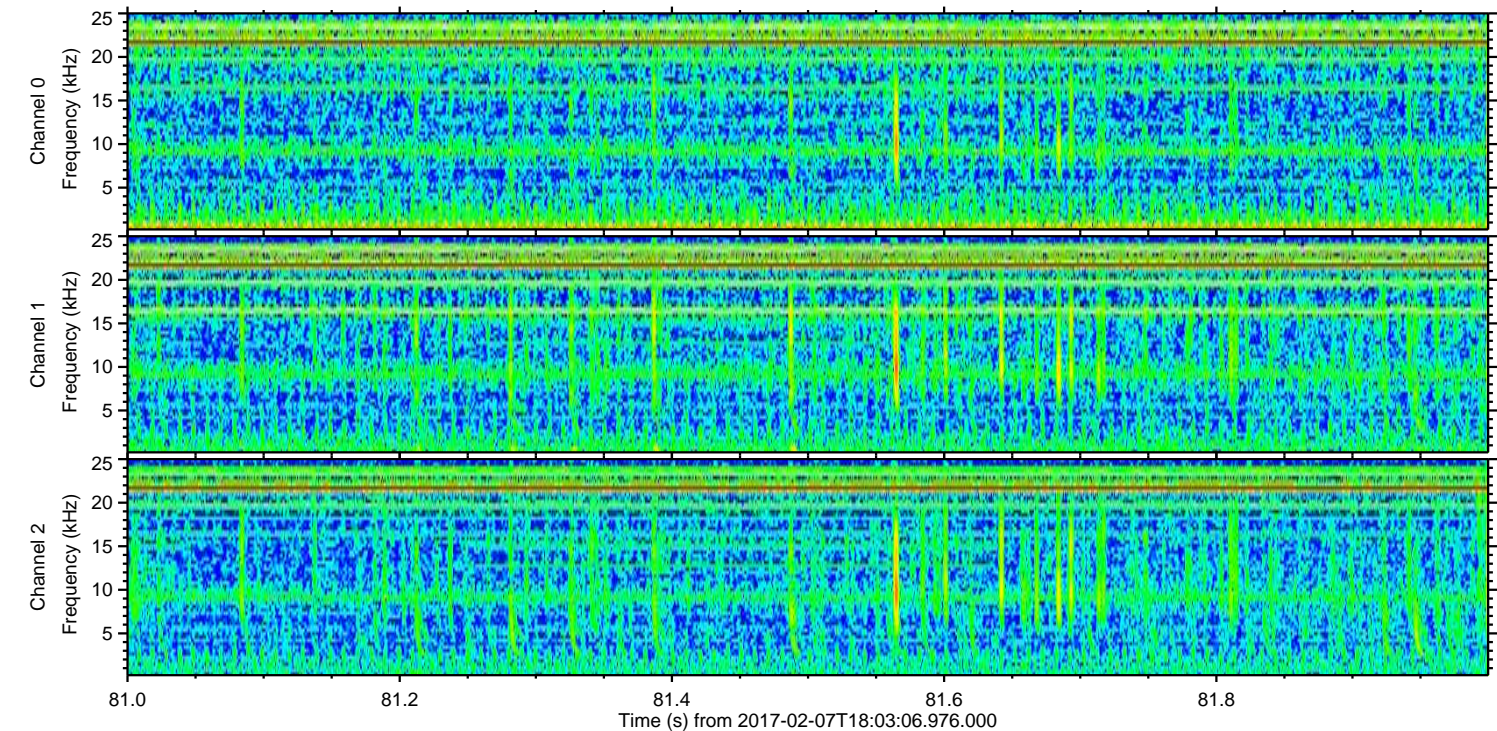
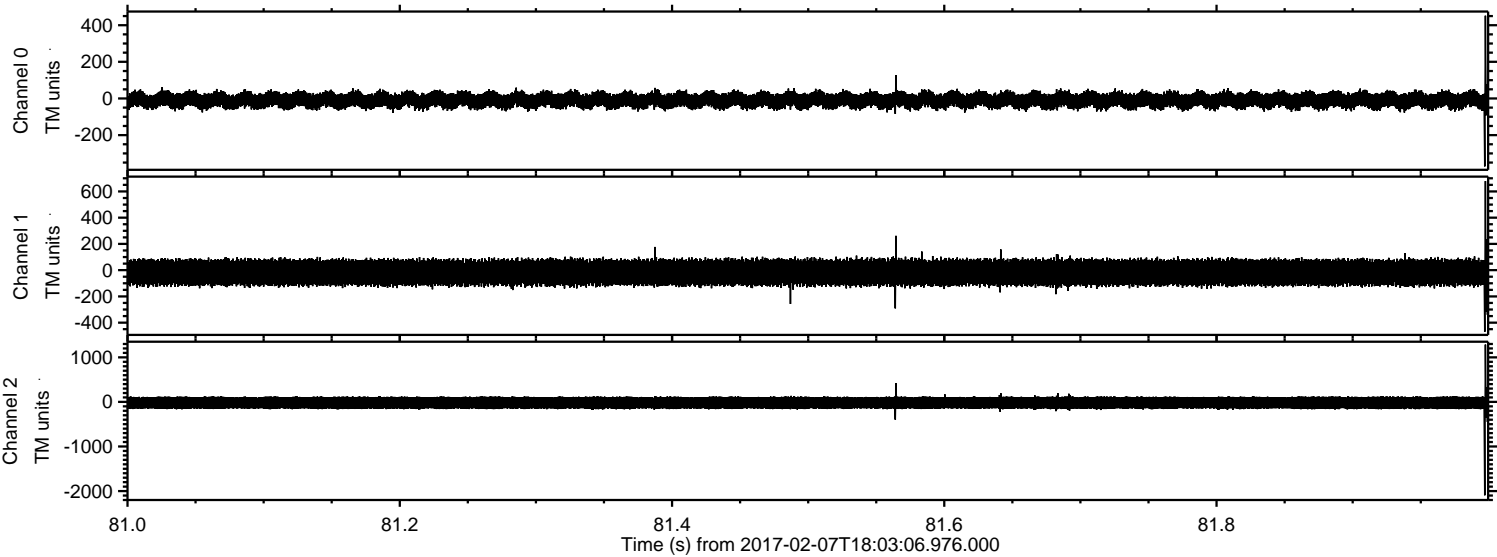


Processed Tue Feb 7 19:10:53 2017 by ELM ver.2012-10-06 from 001\_\_elm20170207\_180305\_\_dat00.bin





Processed Tue Feb 7 19:10:54 2017 by ELM ver.2012-10-06 from 001\_\_elm20170207\_180305\_\_dat00.bin



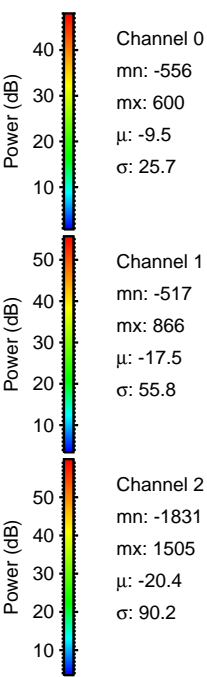
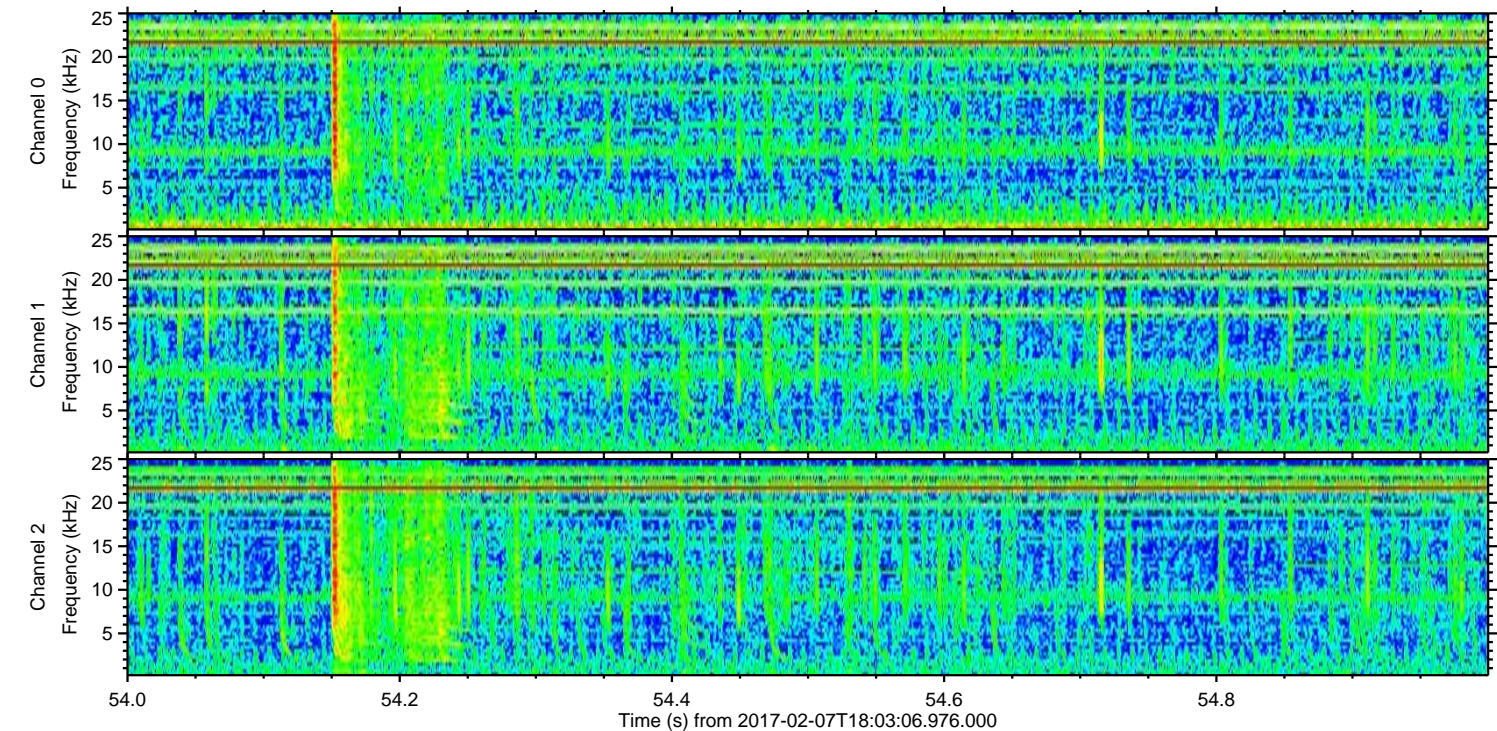
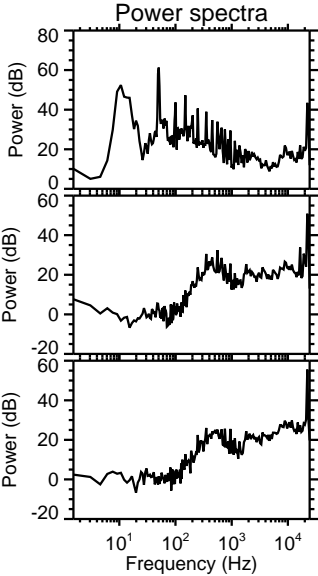
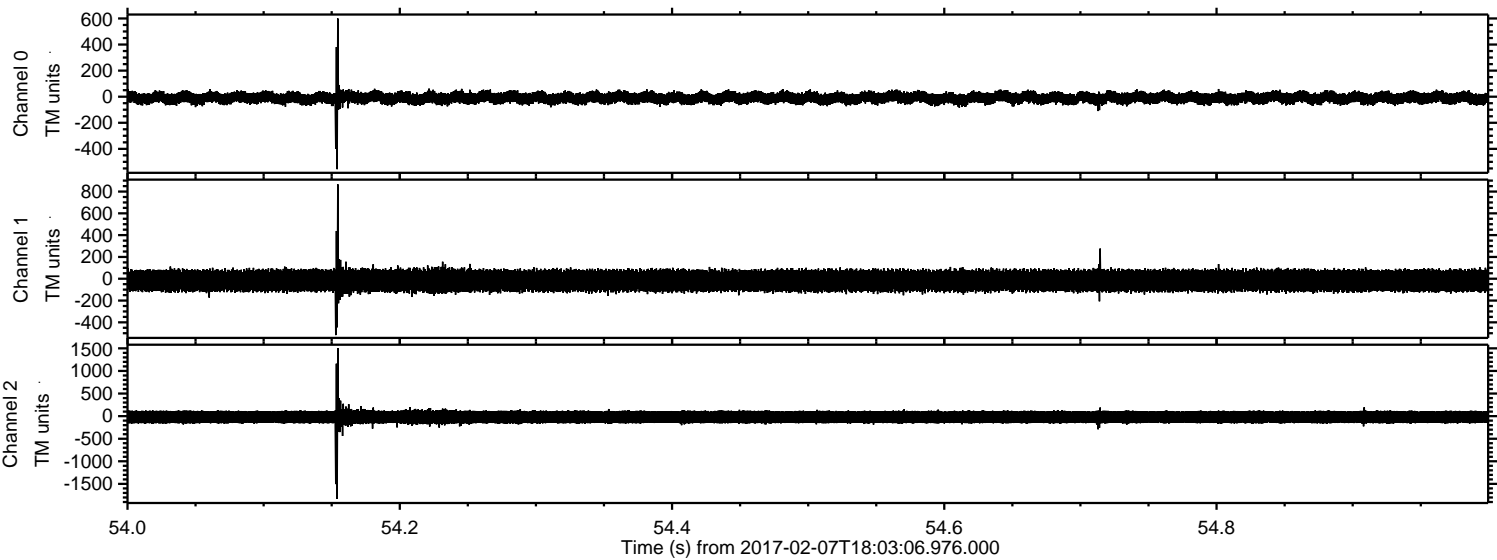
Channel 0  
mn: -371  
mx: 452  
 $\mu$ : -9.4  
 $\sigma$ : 25.1

Channel 1  
mn: -470  
mx: 679  
 $\mu$ : -17.5  
 $\sigma$ : 55.4

Channel 2  
mn: -2095  
mx: 1286  
 $\mu$ : -20.5  
 $\sigma$ : 88.3

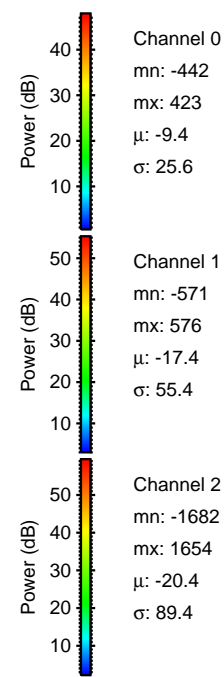
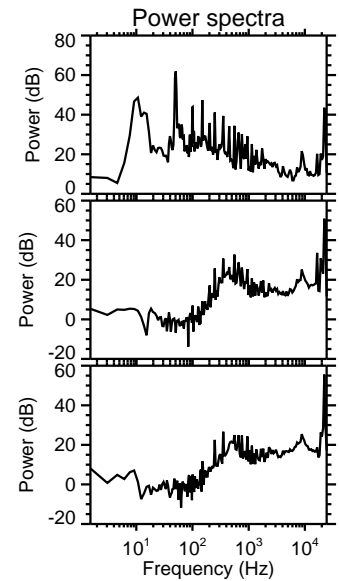
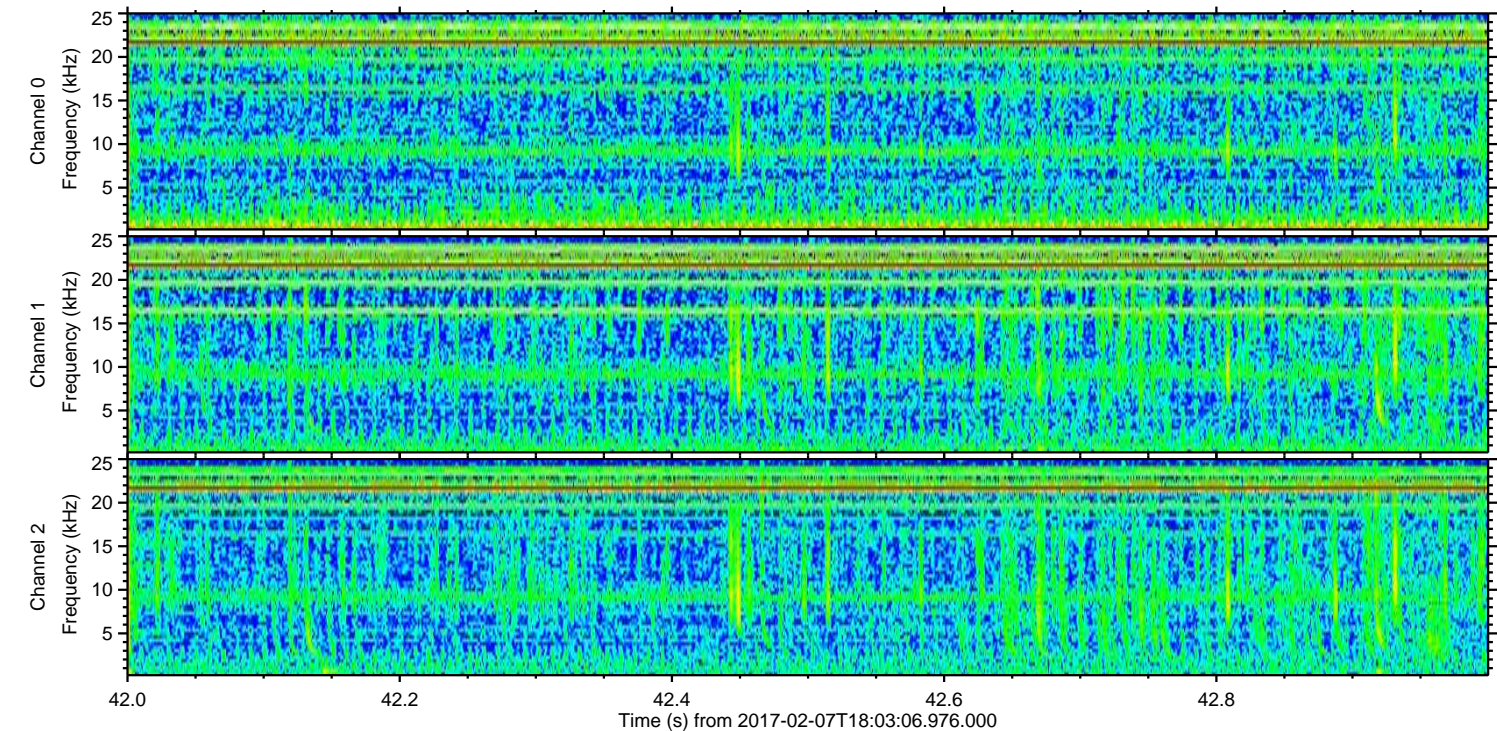
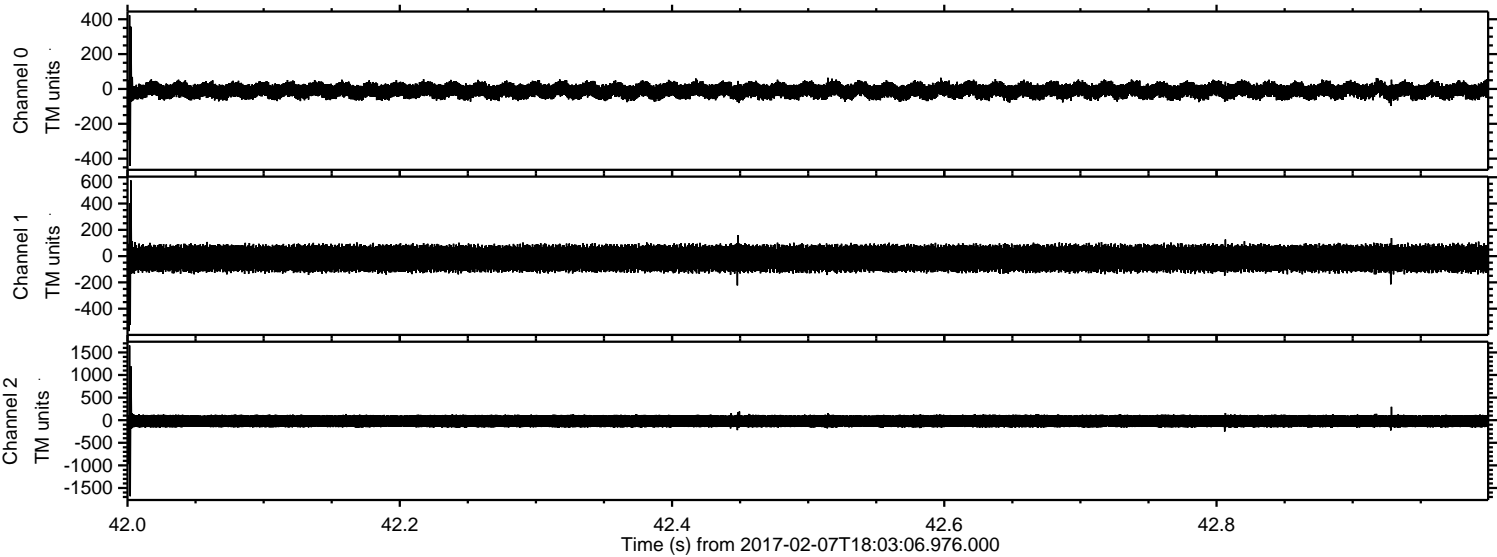


Processed Tue Feb 7 19:10:55 2017 by ELM ver.2012-10-06 from 001\_\_elm20170207\_180305\_\_dat00.bin





Processed Tue Feb 7 19:10:55 2017 by ELM ver.2012-10-06 from 001\_\_elm20170207\_180305\_\_dat00.bin



Channel 0  
mn: -442  
mx: 423  
 $\mu$ : -9.4  
 $\sigma$ : 25.6

Channel 1  
mn: -571  
mx: 576  
 $\mu$ : -17.4  
 $\sigma$ : 55.4

Channel 2  
mn: -1682  
mx: 1654  
 $\mu$ : -20.4  
 $\sigma$ : 89.4



