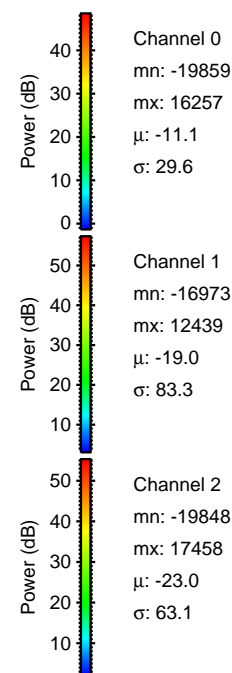
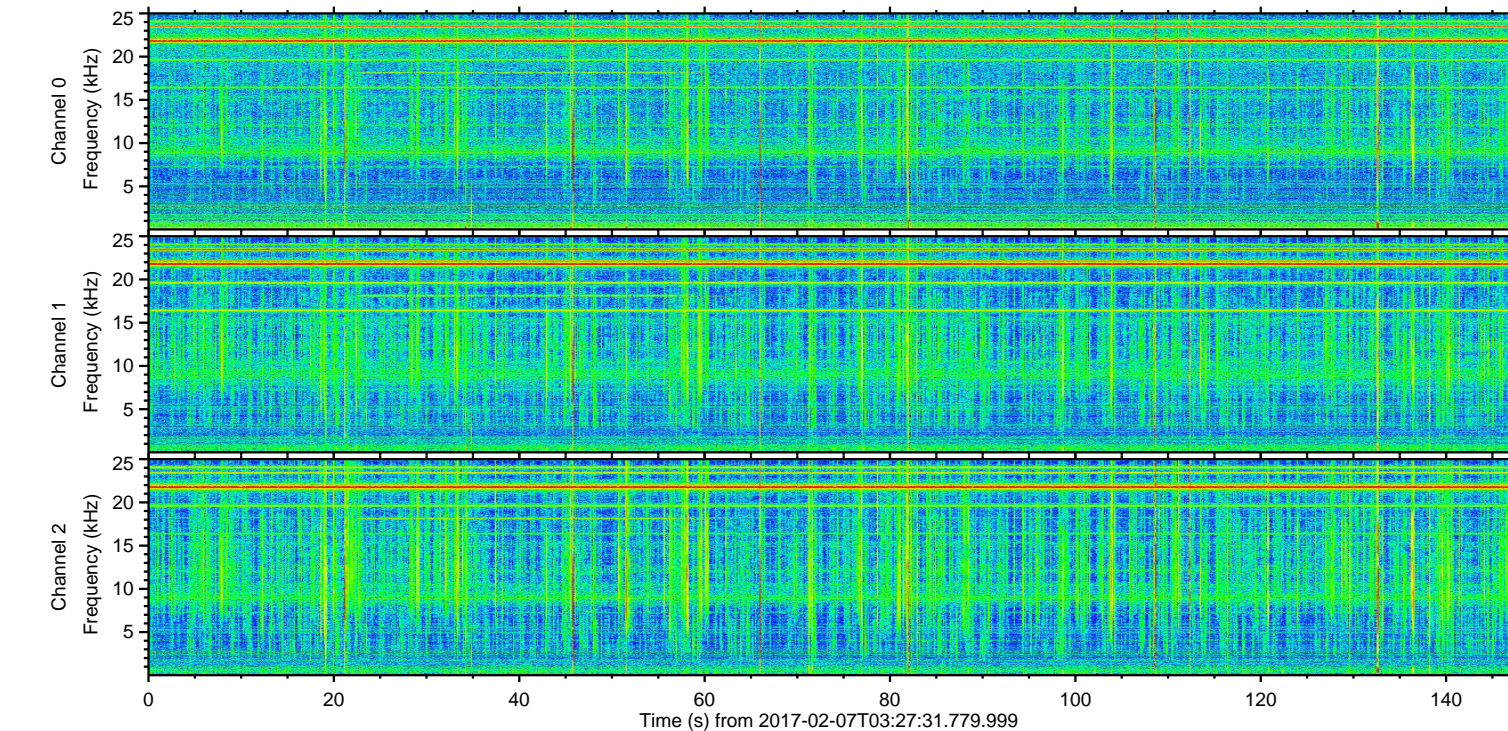
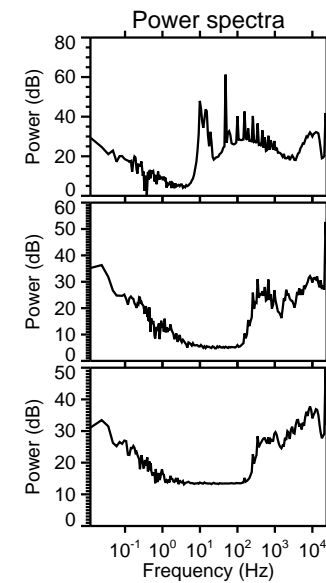
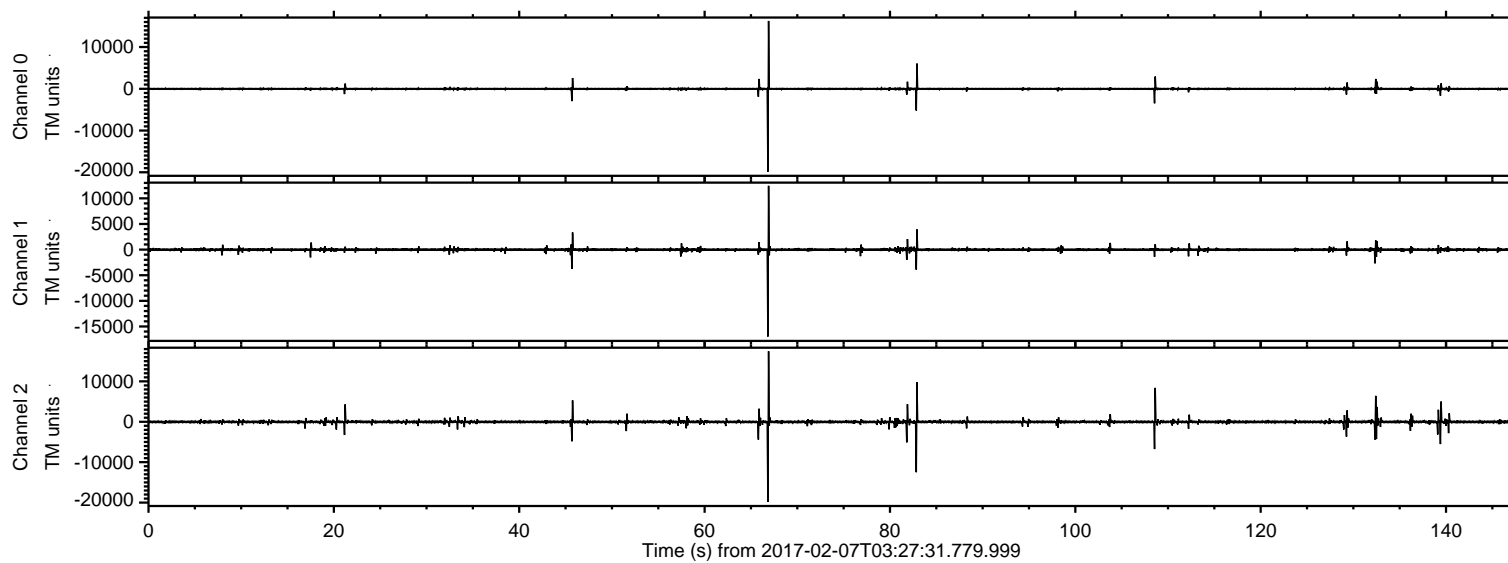


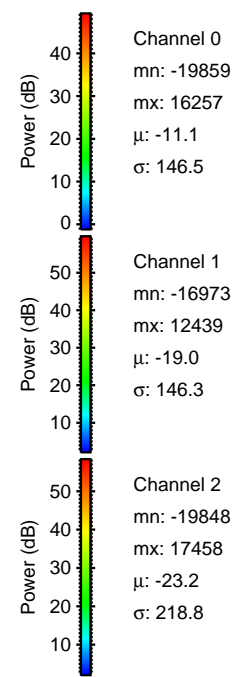
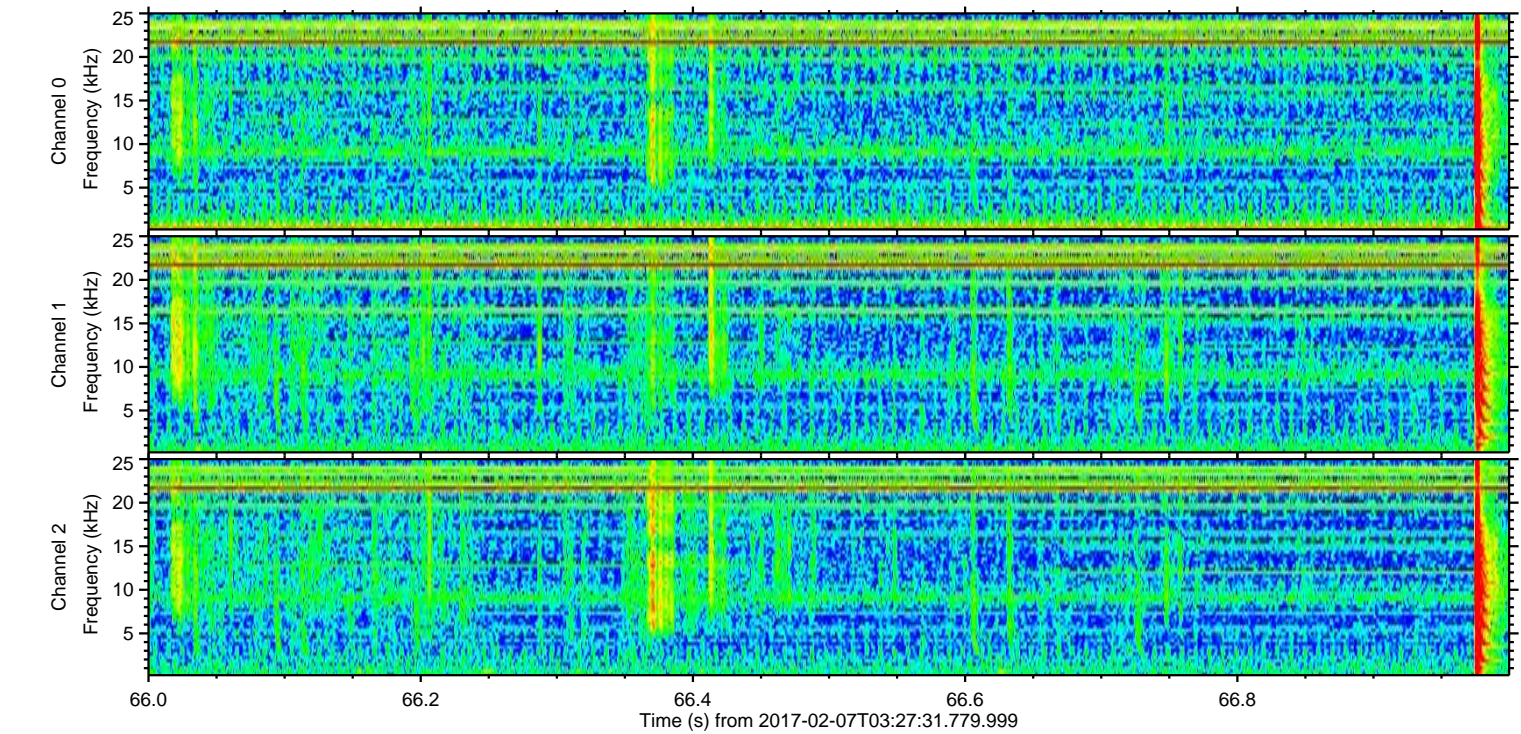
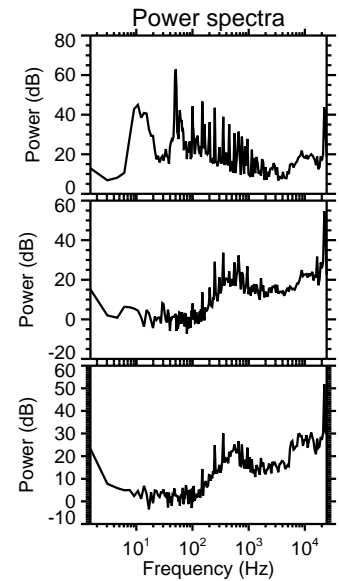
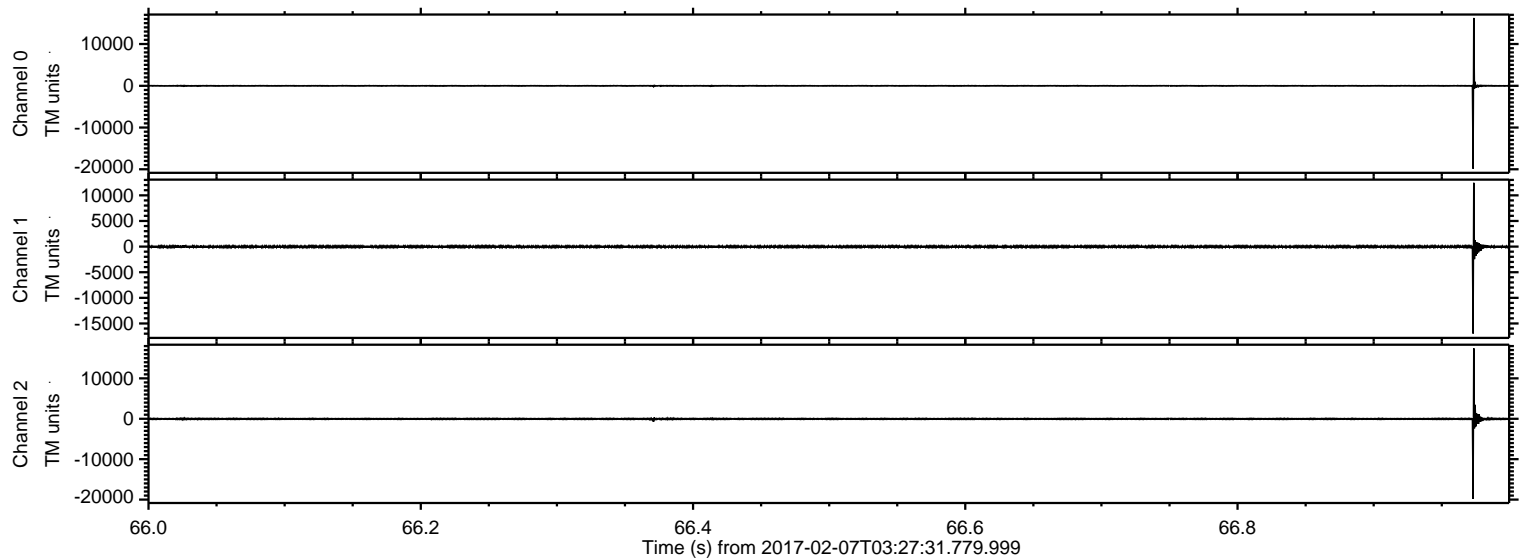
ELMAVAN 3D WAVEFORMS (Measured data sampled at 50 kHz) 51000 packets of 144 samples from 2017-02-07T03:27:31.779.999.

Processed Tue Feb 7 04:35:20 2017 by ELM ver.2012-10-06 from 001__elm20170207_032730__dat00.bin



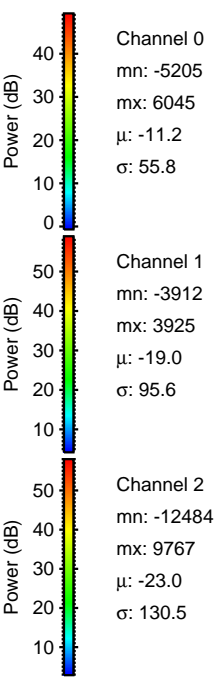
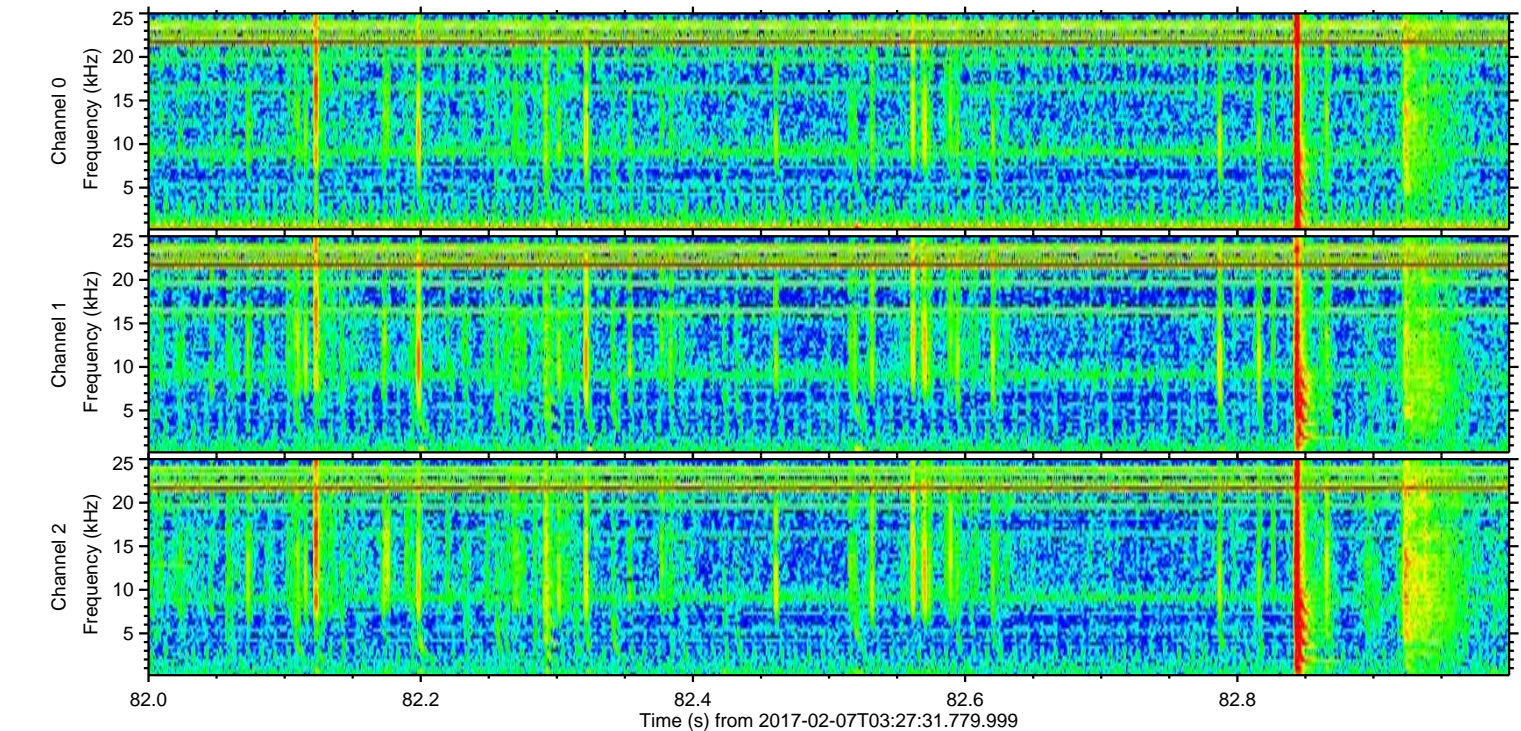
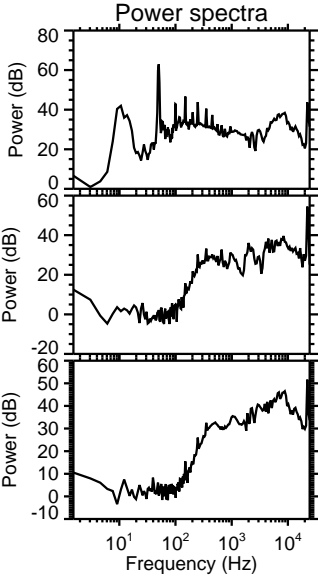
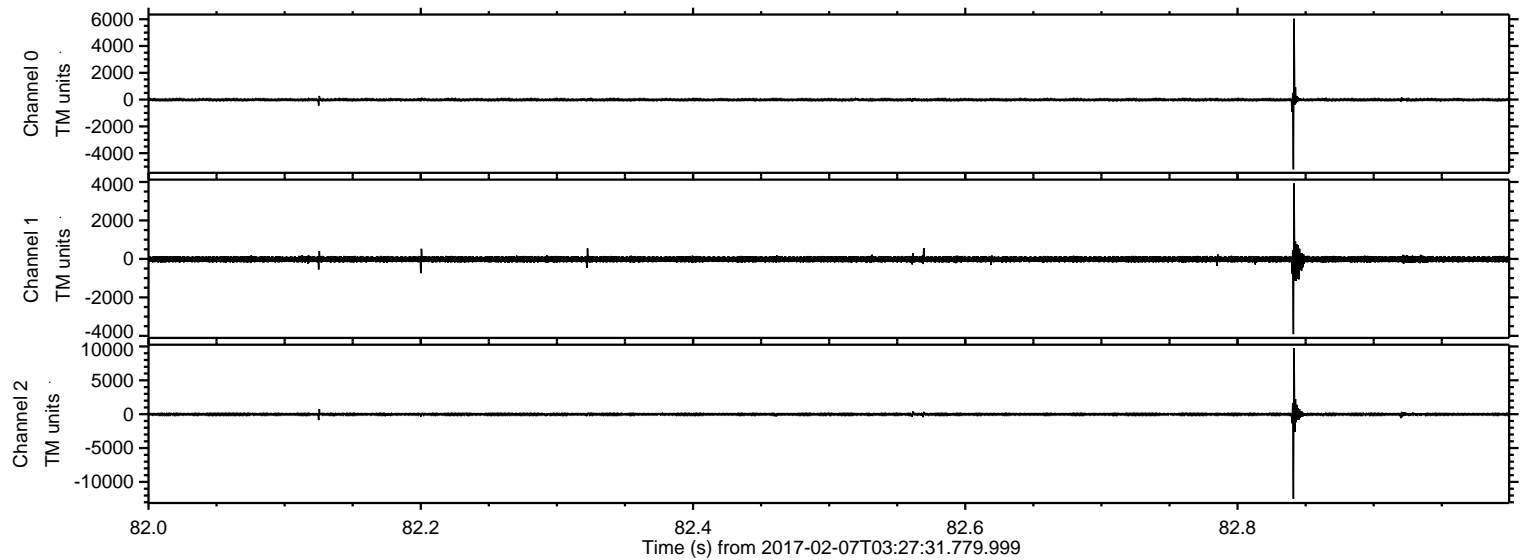
ELMAVAN 3D WAVEFORMS (Measured data sampled at 50 kHz) 51000 packets of 144 samples from 2017-02-07T03:27:31.779.999. Part 67/147

Processed Tue Feb 7 04:35:31 2017 by ELM ver.2012-10-06 from 001__elm20170207_032730__dat00.bin



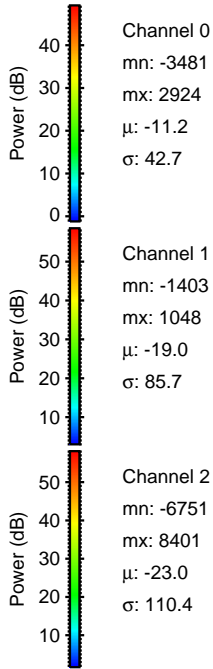
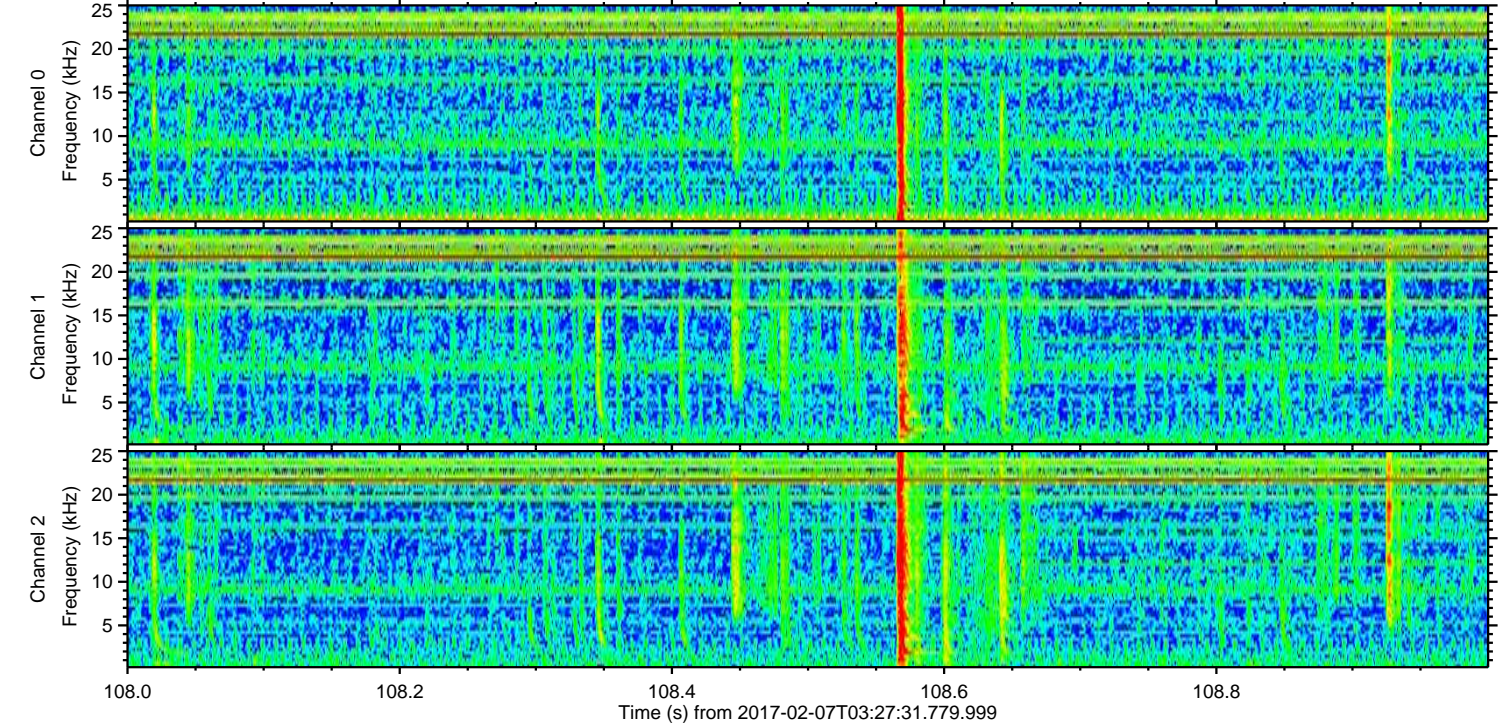
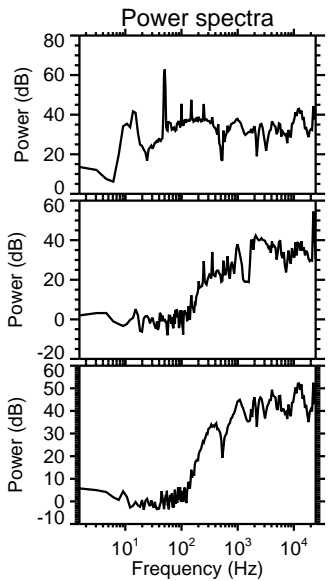
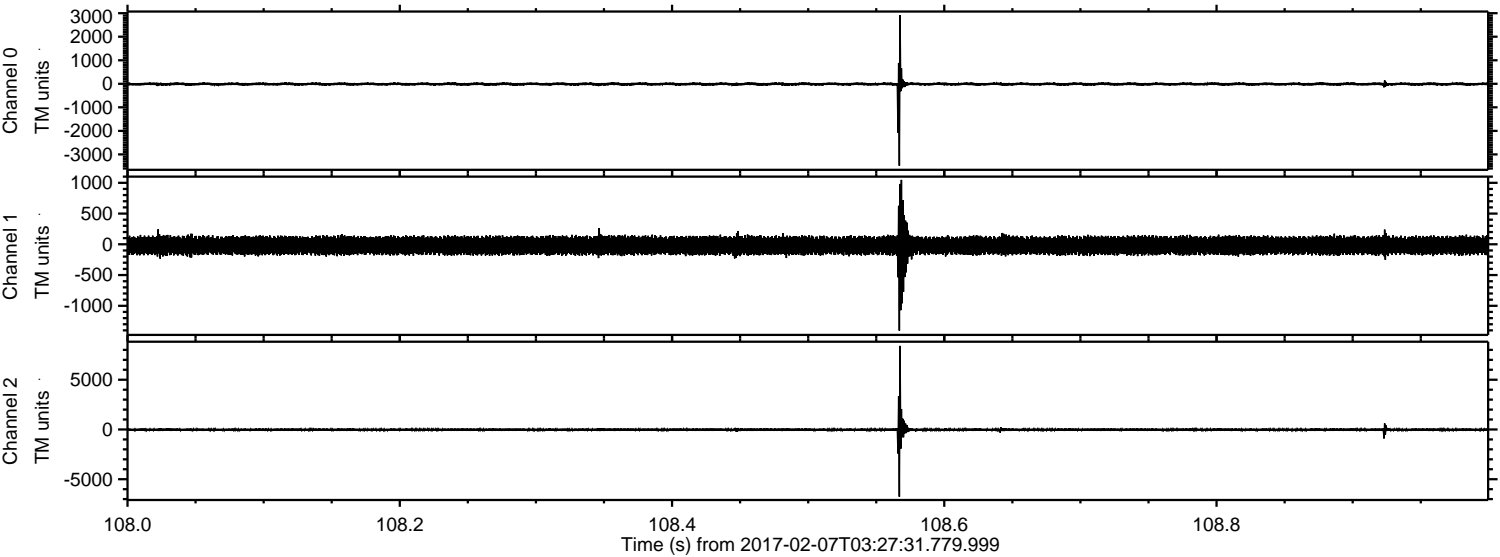
ELMAVAN 3D WAVEFORMS (Measured data sampled at 50 kHz) 51000 packets of 144 samples from 2017-02-07T03:27:31.779.999. Part 83/147

Processed Tue Feb 7 04:35:32 2017 by ELM ver.2012-10-06 from 001__elm20170207_032730__dat00.bin



ELMAVAN 3D WAVEFORMS (Measured data sampled at 50 kHz) 51000 packets of 144 samples from 2017-02-07T03:27:31.779.999. Part 109/147

Processed Tue Feb 7 04:35:33 2017 by ELM ver.2012-10-06 from 001__elm20170207_032730__dat00.bin



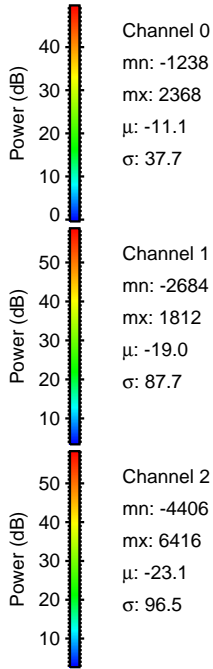
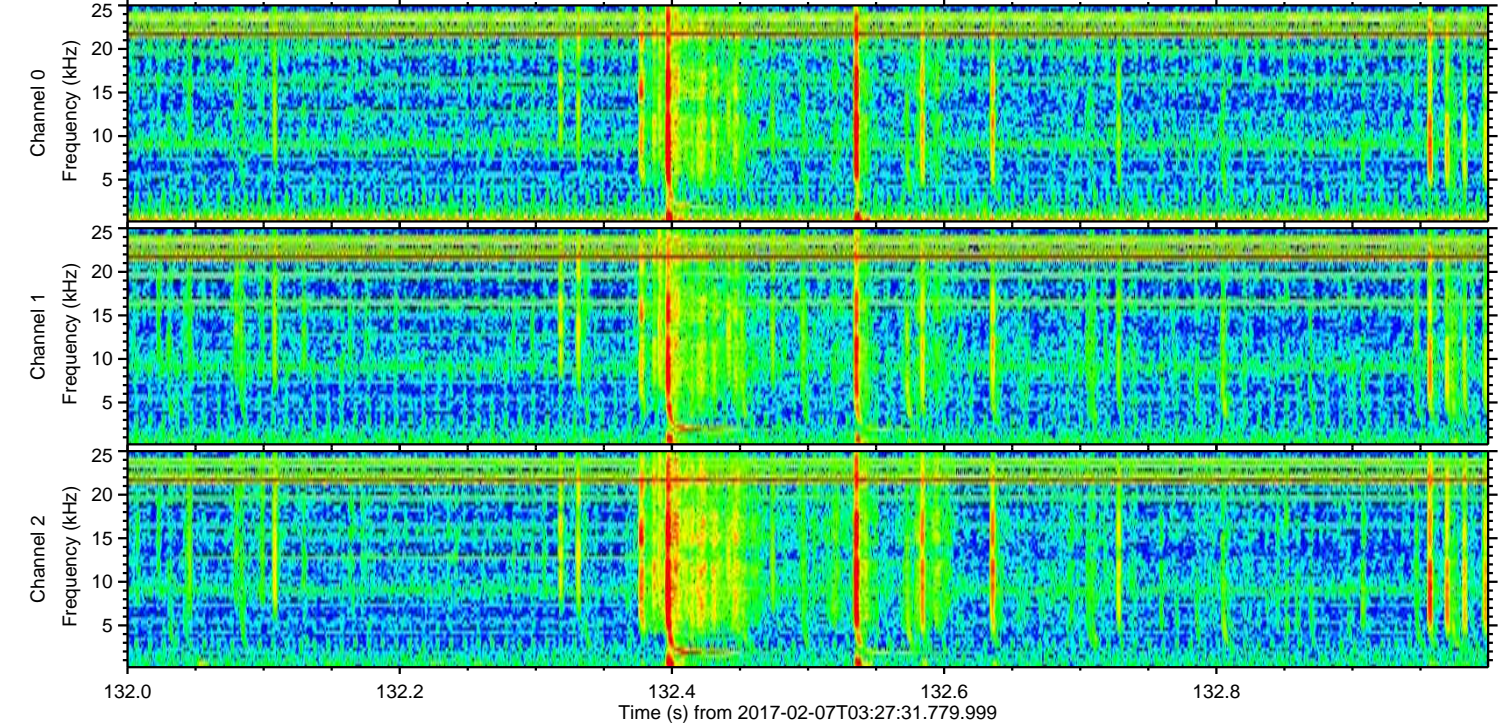
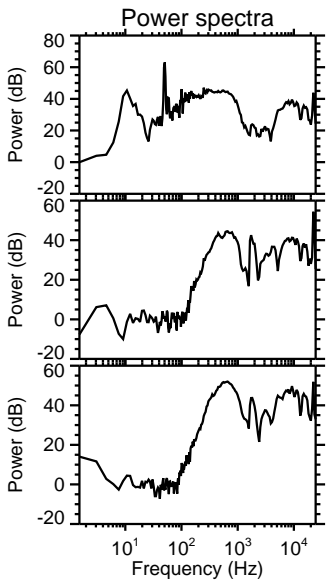
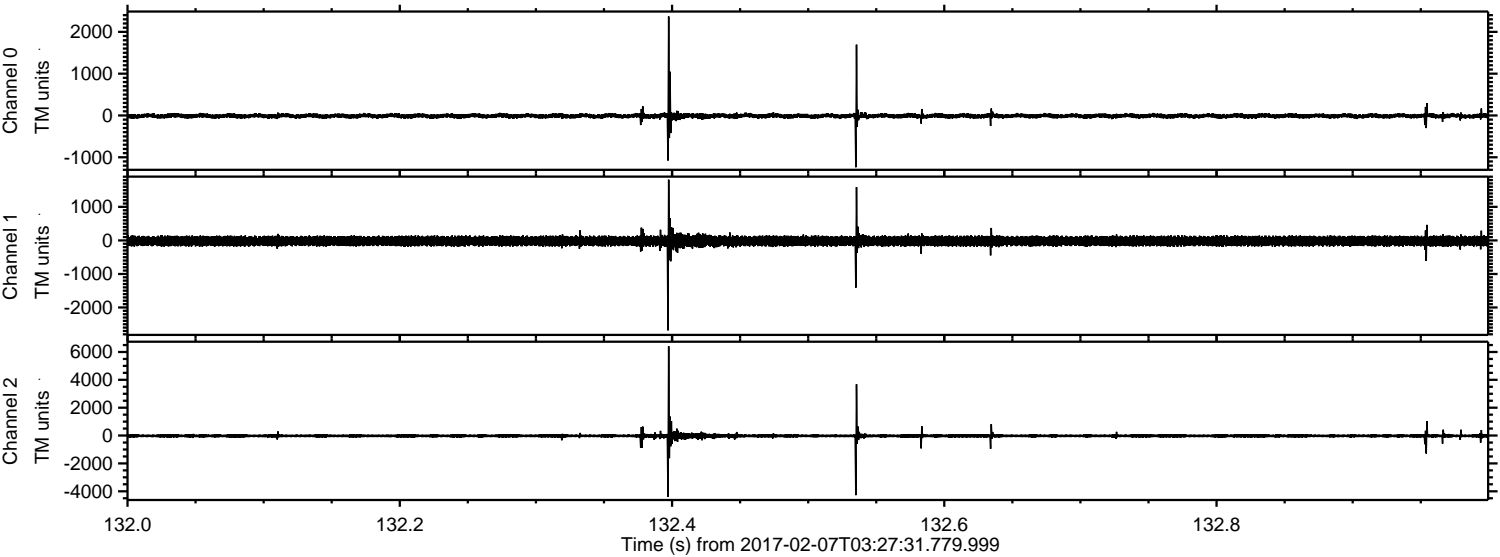
Channel 0
mn: -3481
mx: 2924
 μ : -11.2
 σ : 42.7

Channel 1
mn: -1403
mx: 1048
 μ : -19.0
 σ : 85.7

Channel 2
mn: -6751
mx: 8401
 μ : -23.0
 σ : 110.4

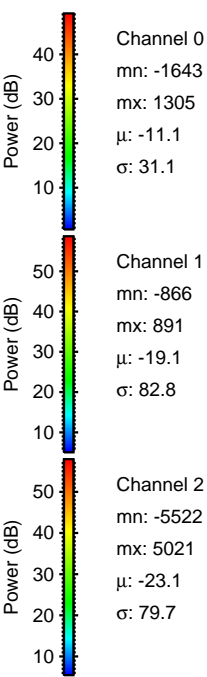
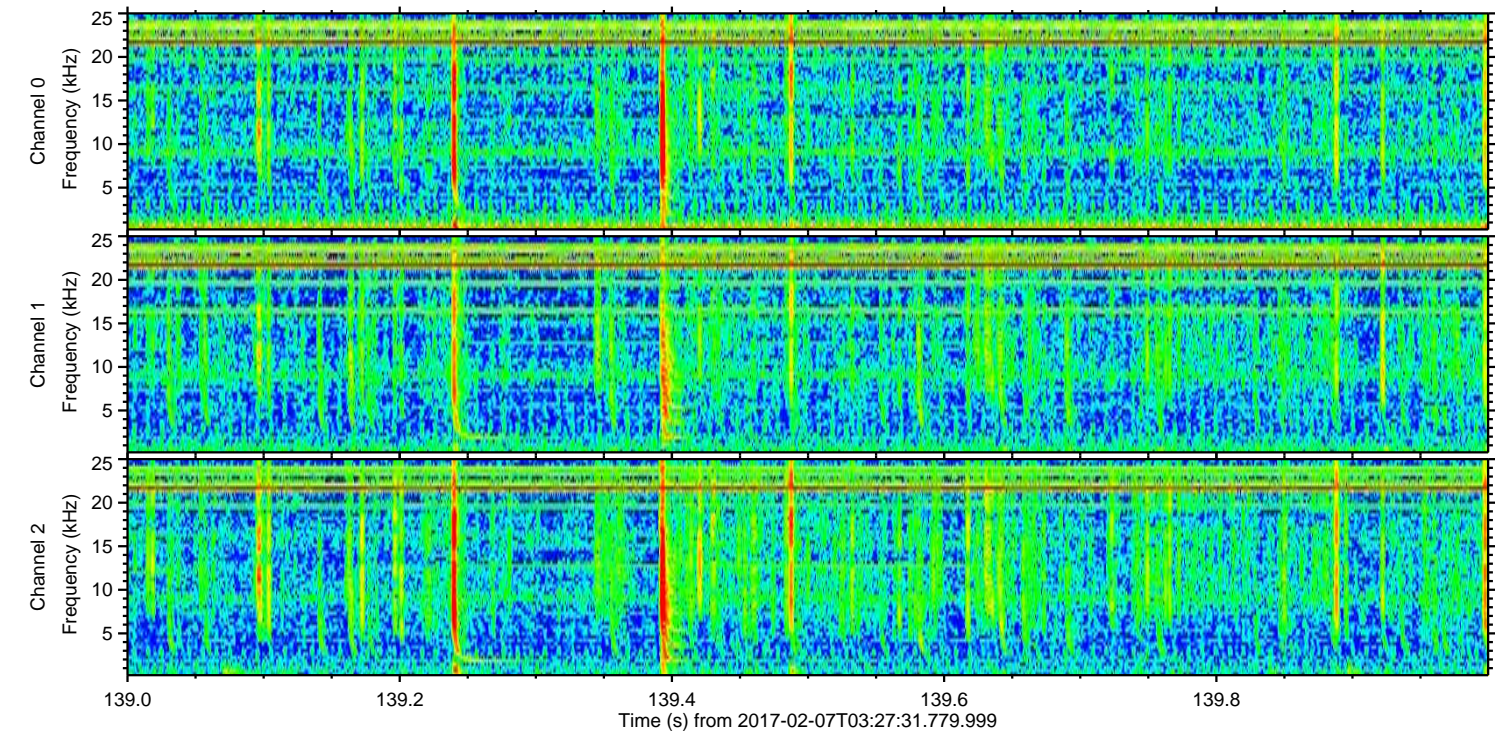
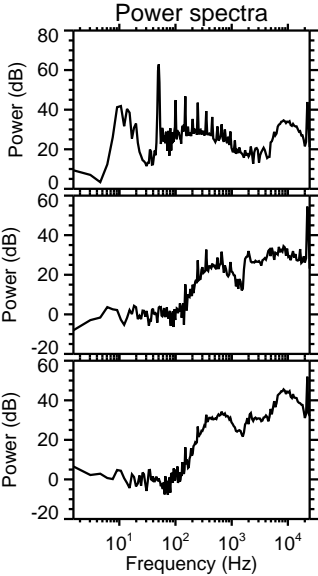
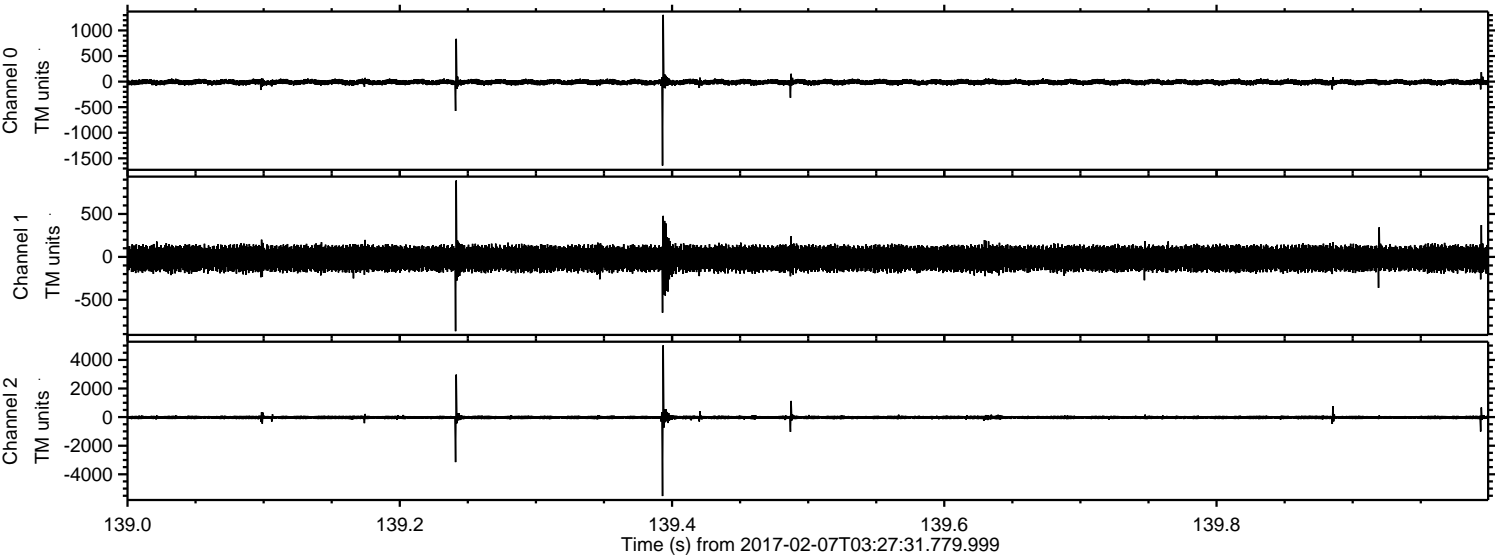
ELMAVAN 3D WAVEFORMS (Measured data sampled at 50 kHz) 51000 packets of 144 samples from 2017-02-07T03:27:31.779.999. Part 133/147

Processed Tue Feb 7 04:35:34 2017 by ELM ver.2012-10-06 from 001__elm20170207_032730__dat00.bin



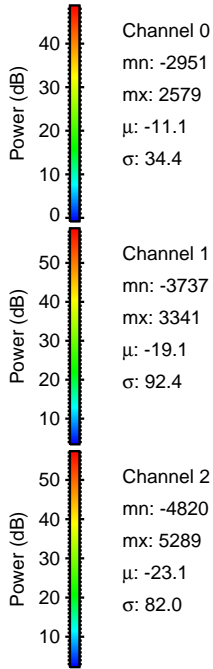
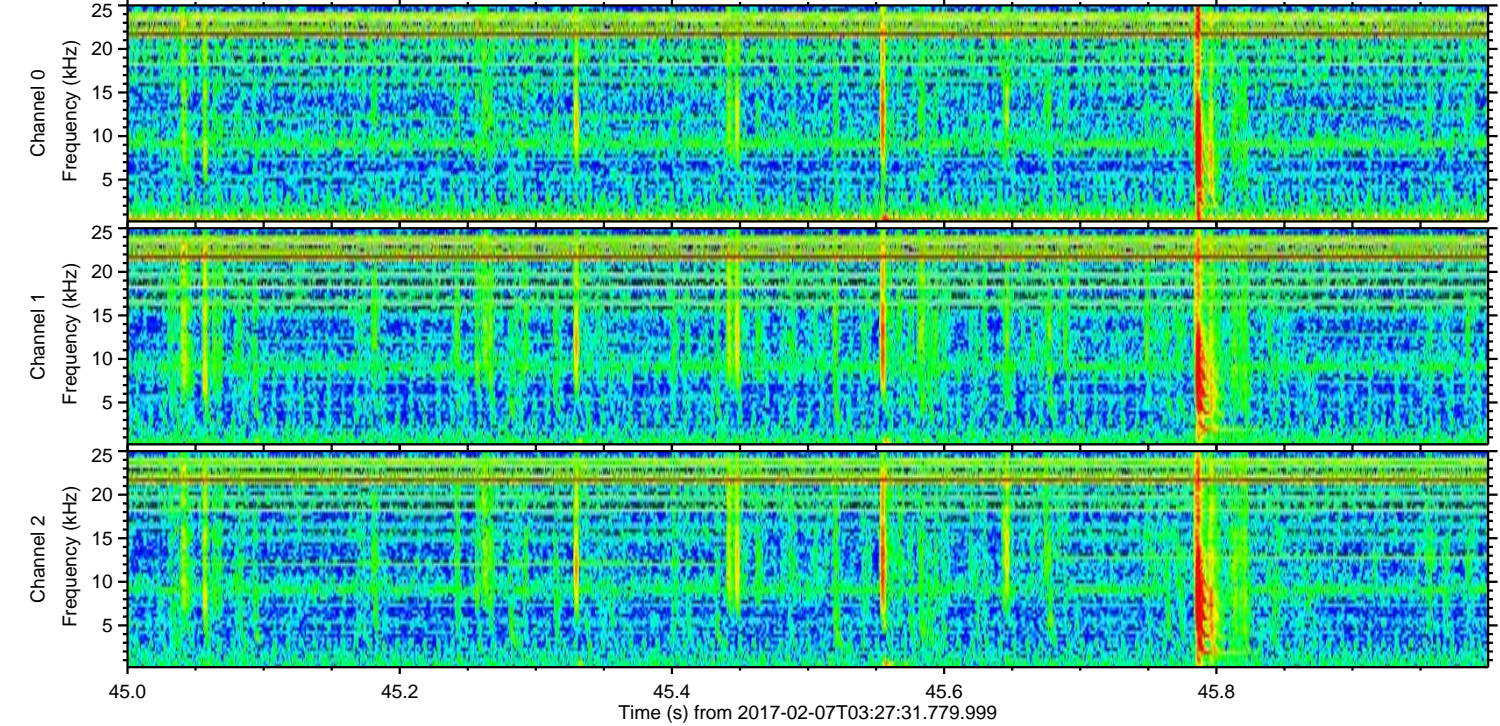
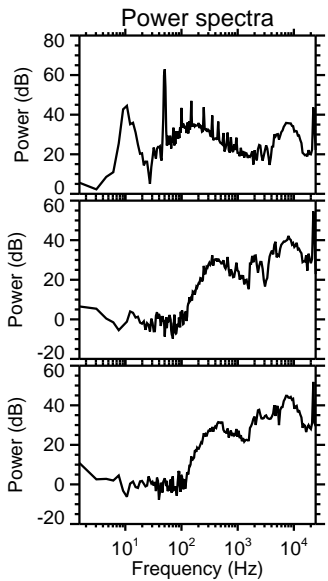
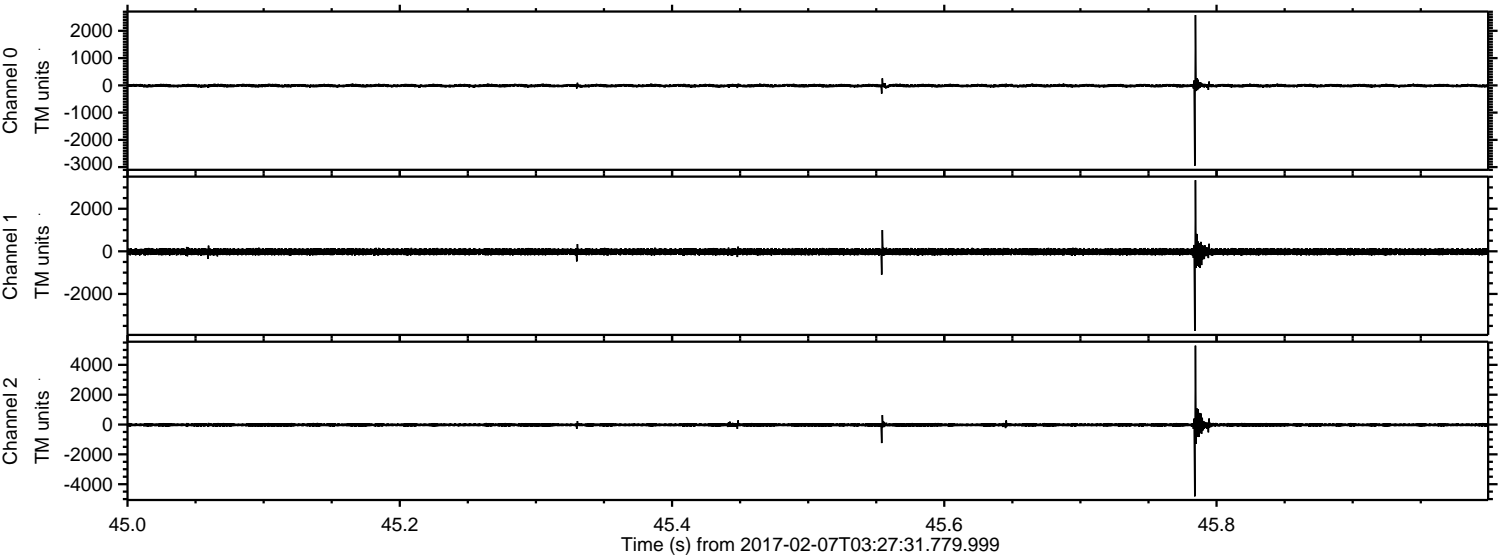
ELMAVAN 3D WAVEFORMS (Measured data sampled at 50 kHz) 51000 packets of 144 samples from 2017-02-07T03:27:31.779.999. Part 140/147

Processed Tue Feb 7 04:35:35 2017 by ELM ver.2012-10-06 from 001__elm20170207_032730__dat00.bin



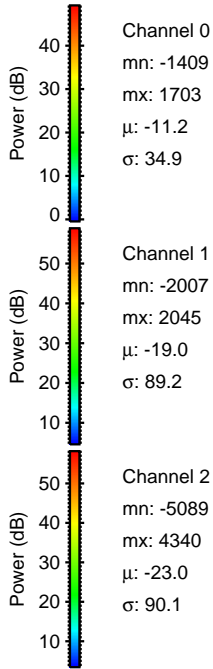
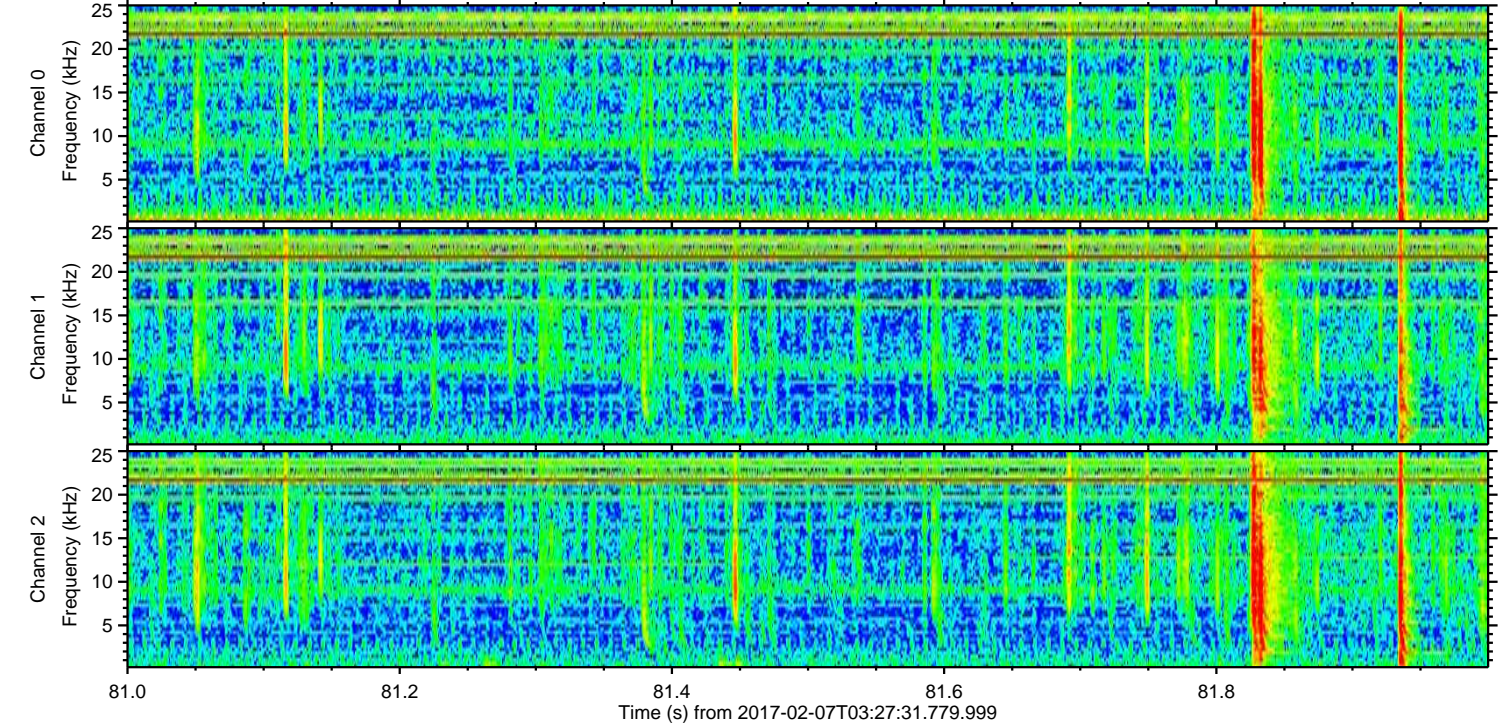
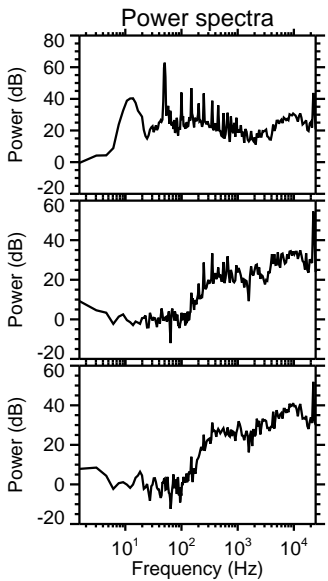
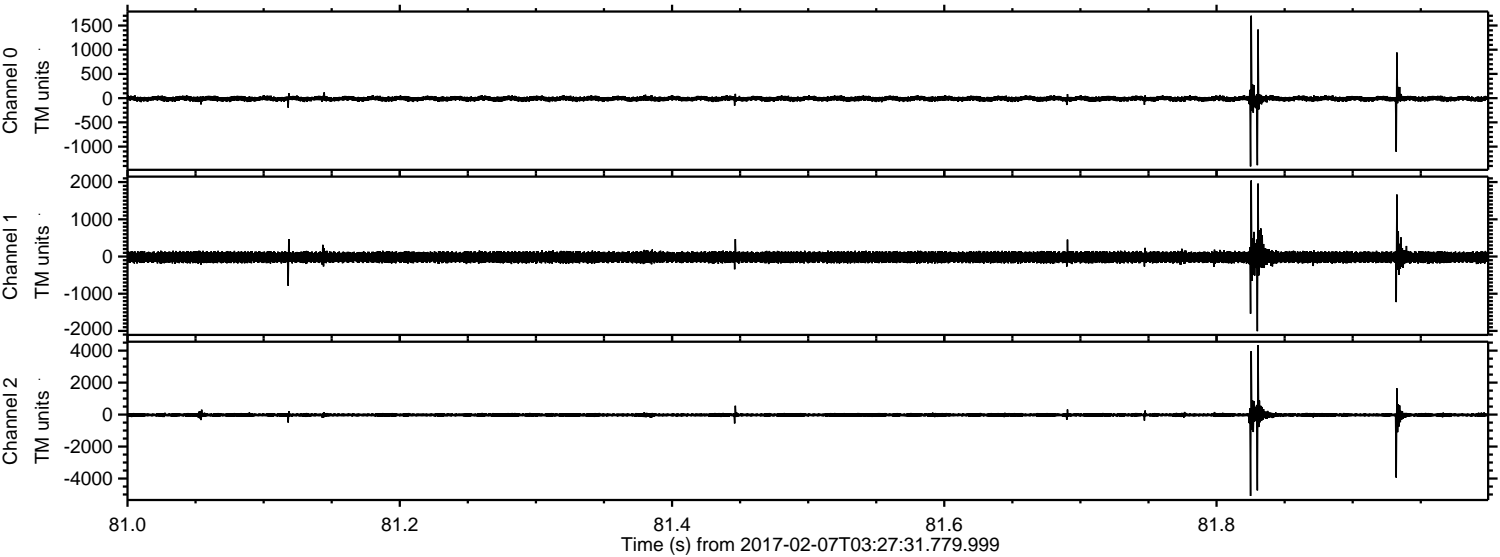
ELMAVAN 3D WAVEFORMS (Measured data sampled at 50 kHz) 51000 packets of 144 samples from 2017-02-07T03:27:31.779.999. Part 46/147

Processed Tue Feb 7 04:35:36 2017 by ELM ver.2012-10-06 from 001__elm20170207_032730__dat00.bin



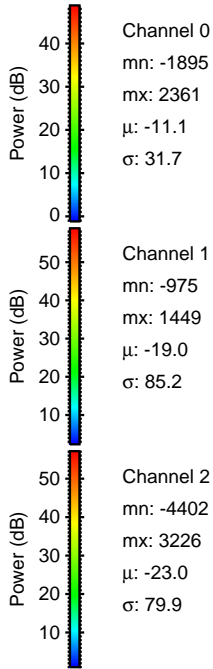
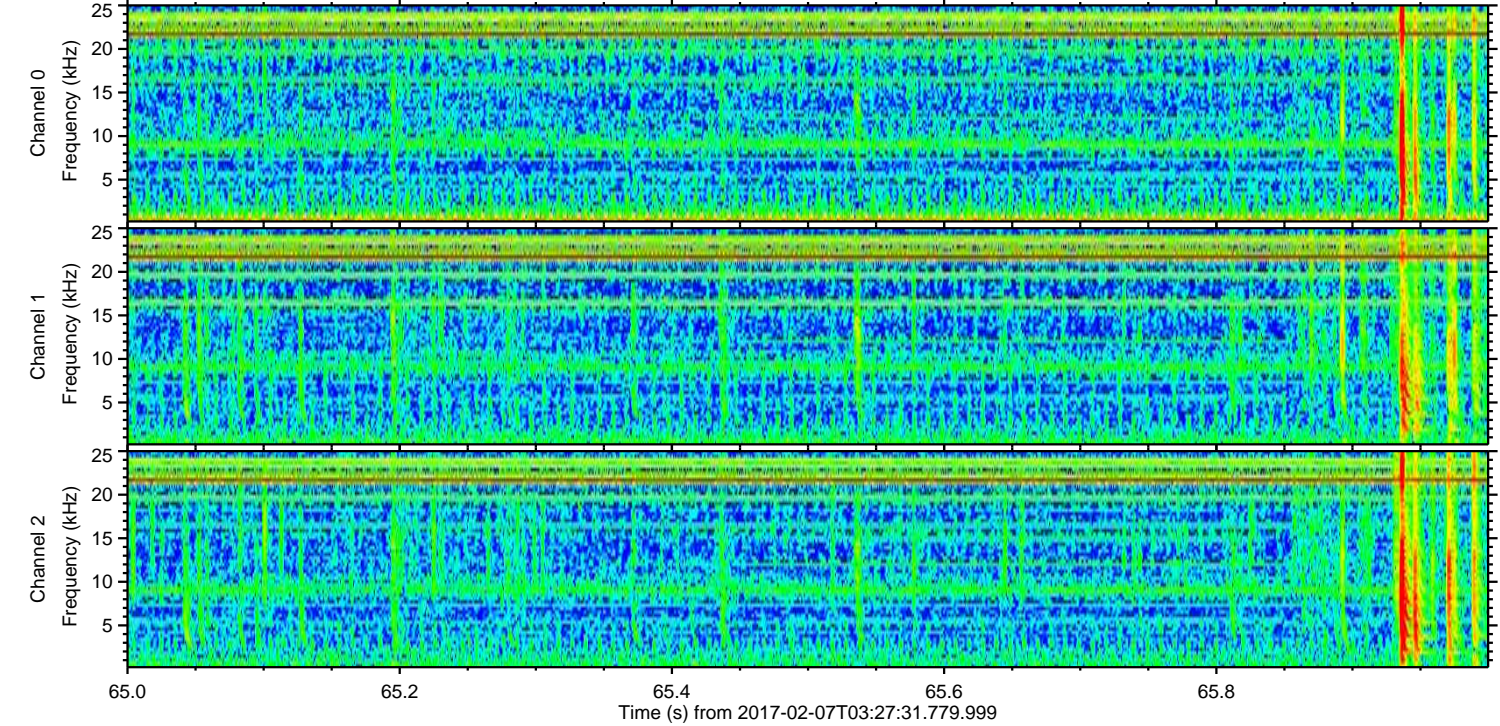
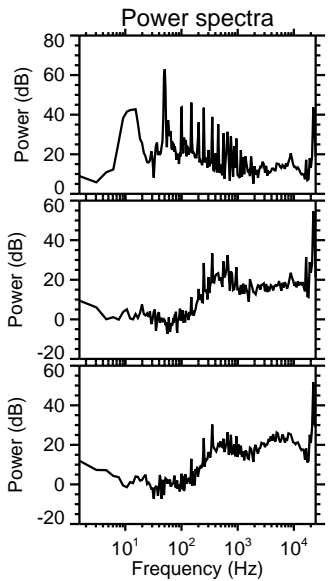
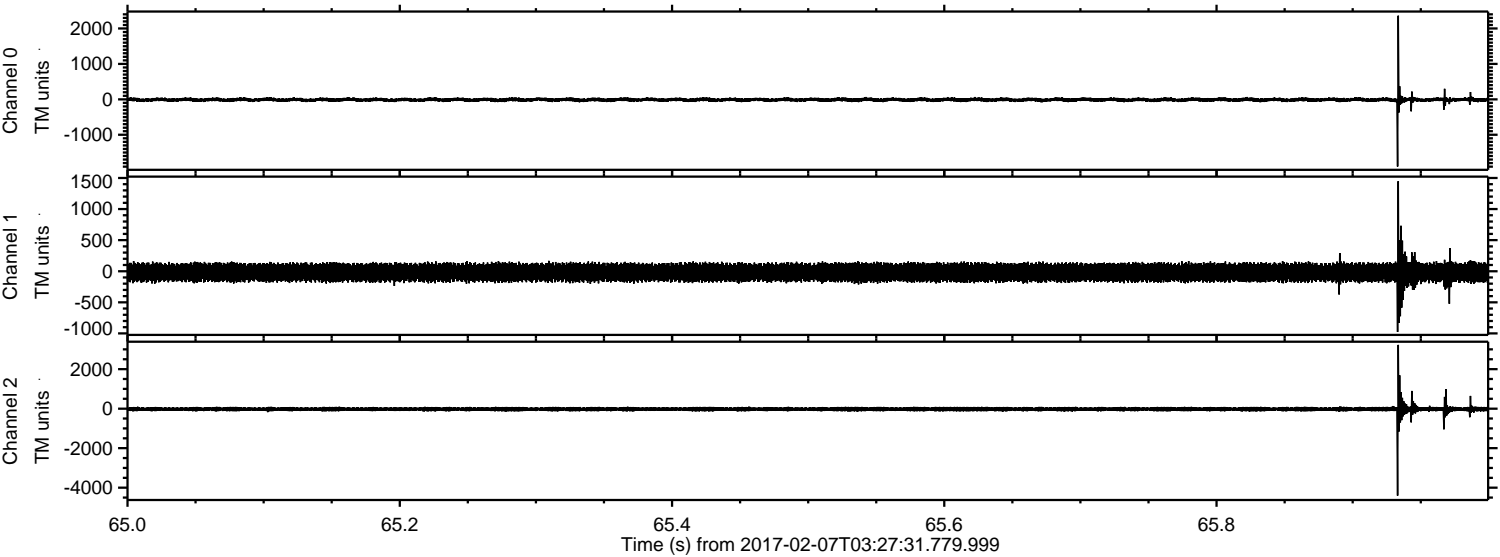
ELMAVAN 3D WAVEFORMS (Measured data sampled at 50 kHz) 51000 packets of 144 samples from 2017-02-07T03:27:31.779.999. Part 82/147

Processed Tue Feb 7 04:35:37 2017 by ELM ver.2012-10-06 from 001__elm20170207_032730__dat00.bin



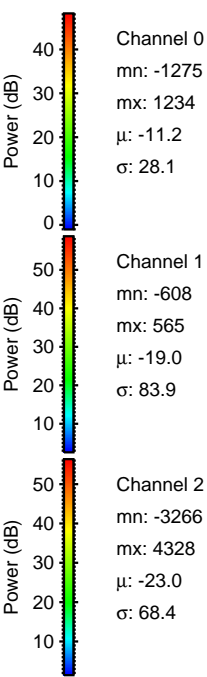
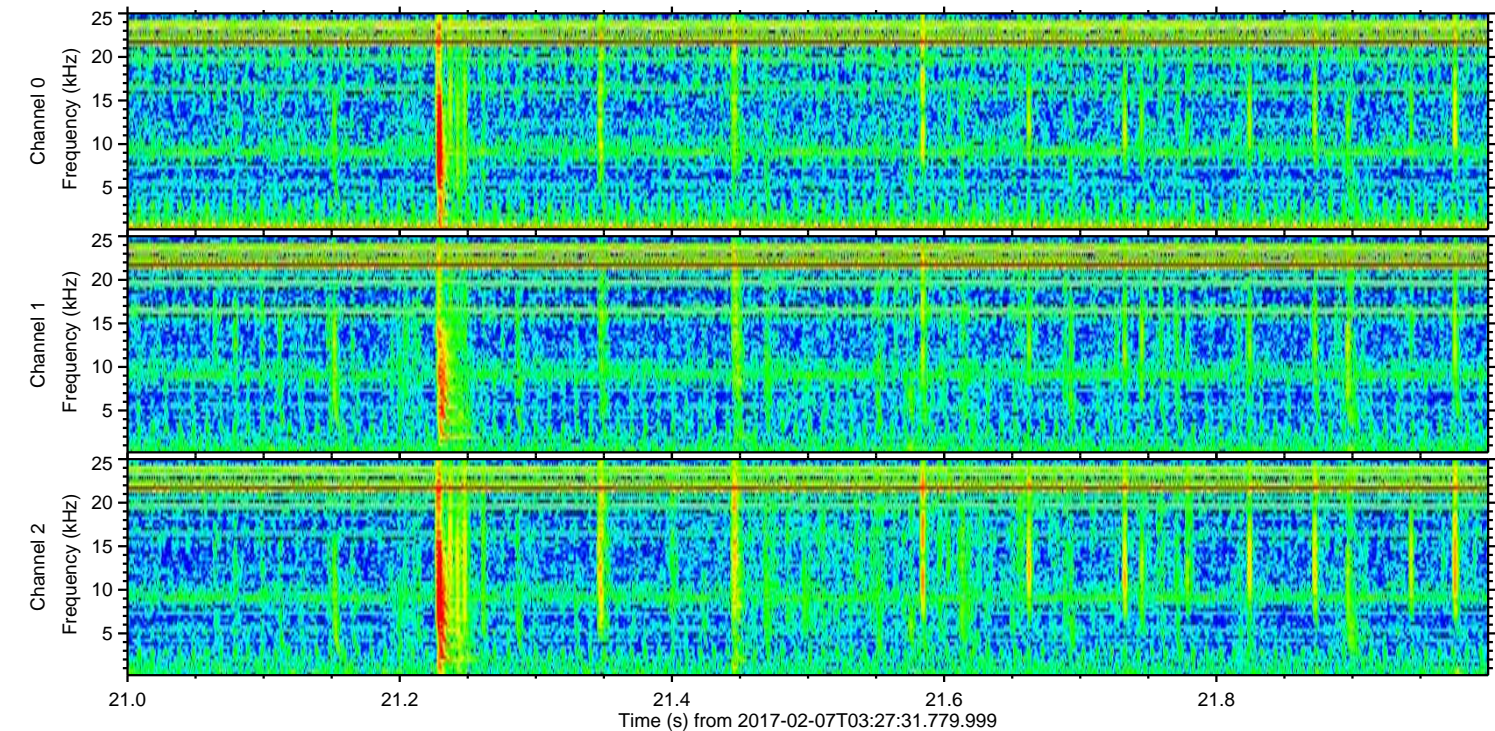
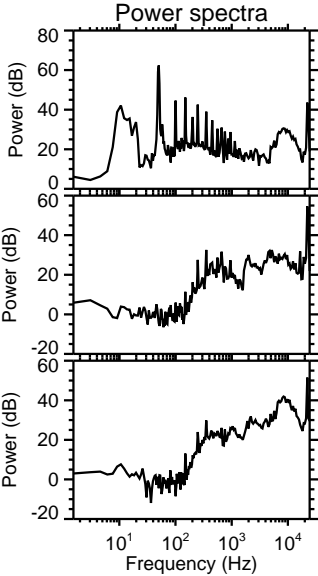
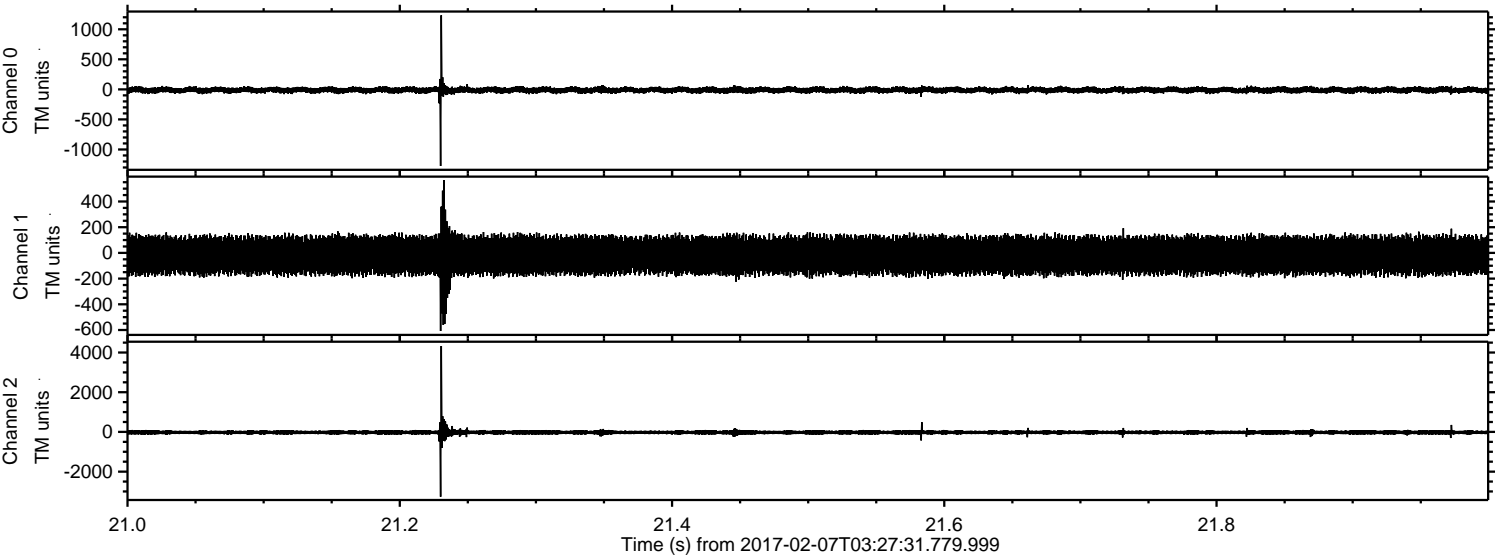
ELMAVAN 3D WAVEFORMS (Measured data sampled at 50 kHz) 51000 packets of 144 samples from 2017-02-07T03:27:31.779.999. Part 66/147

Processed Tue Feb 7 04:35:38 2017 by ELM ver.2012-10-06 from 001__elm20170207_032730__dat00.bin



ELMAVAN 3D WAVEFORMS (Measured data sampled at 50 kHz) 51000 packets of 144 samples from 2017-02-07T03:27:31.779.999. Part 22/147

Processed Tue Feb 7 04:35:39 2017 by ELM ver.2012-10-06 from 001__elm20170207_032730__dat00.bin



Channel 0
mn: -1275
mx: 1234
 μ : -11.2
 σ : 28.1

Channel 1
mn: -608
mx: 565
 μ : -19.0
 σ : 83.9

Channel 2
mn: -3266
mx: 4328
 μ : -23.0
 σ : 68.4

ELMAVAN 3D WAVEFORMS (Measured data sampled at 50 kHz) 51000 packets of 144 samples from 2017-02-07T03:27:31.779.999. Part 15/147

Processed Tue Feb 7 04:35:40 2017 by ELM ver.2012-10-06 from 001__elm20170207_032730__dat00.bin

