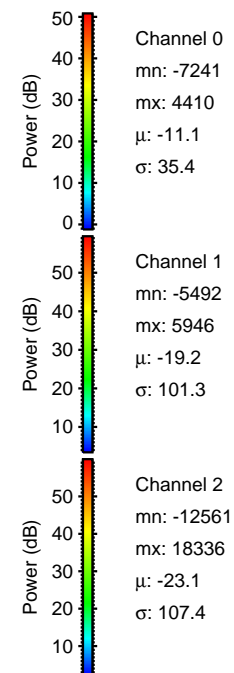
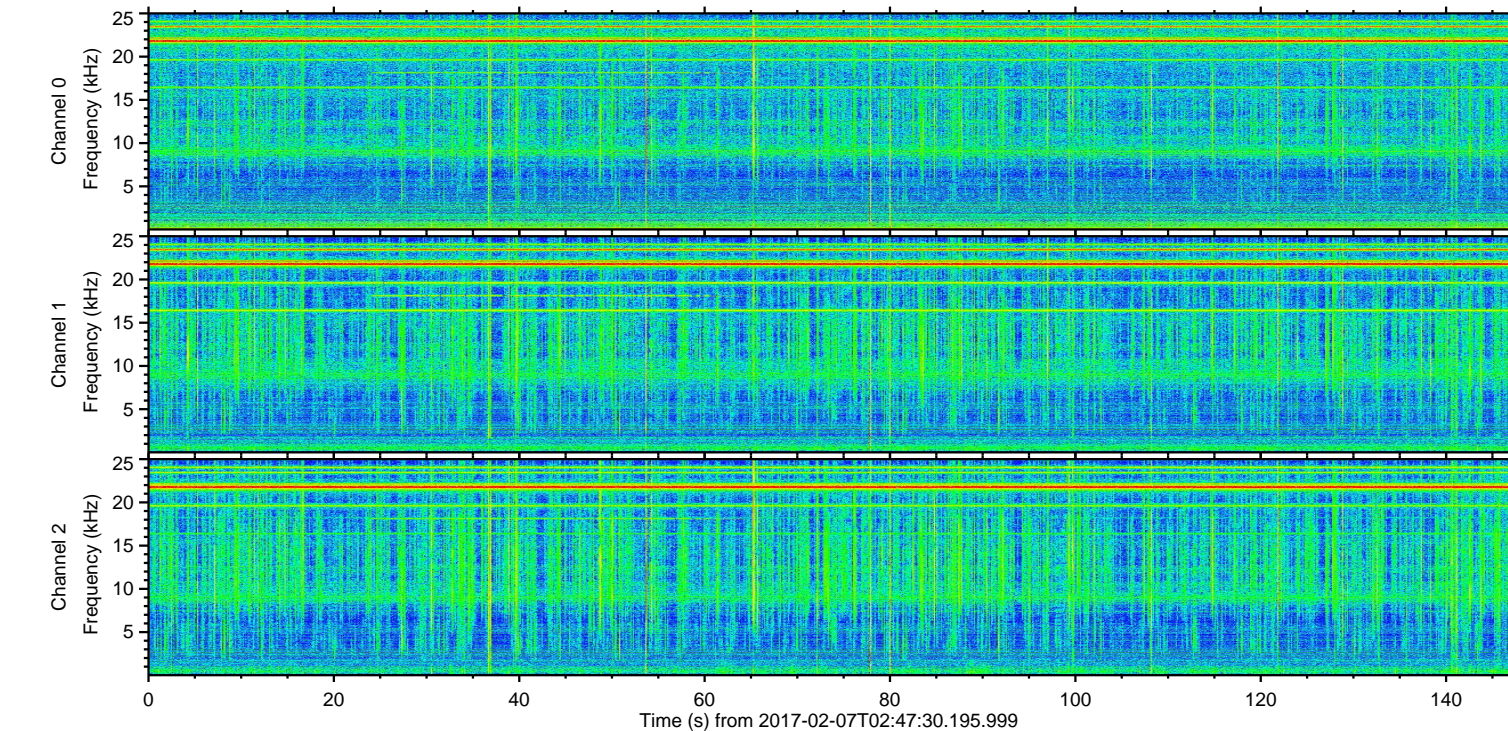
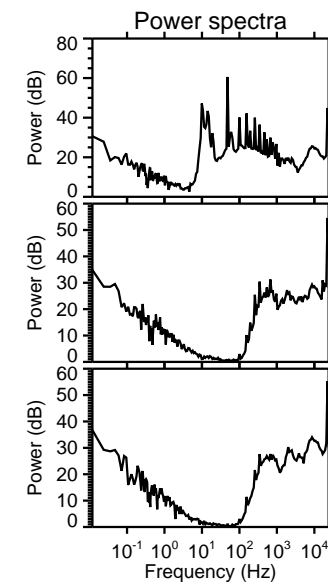
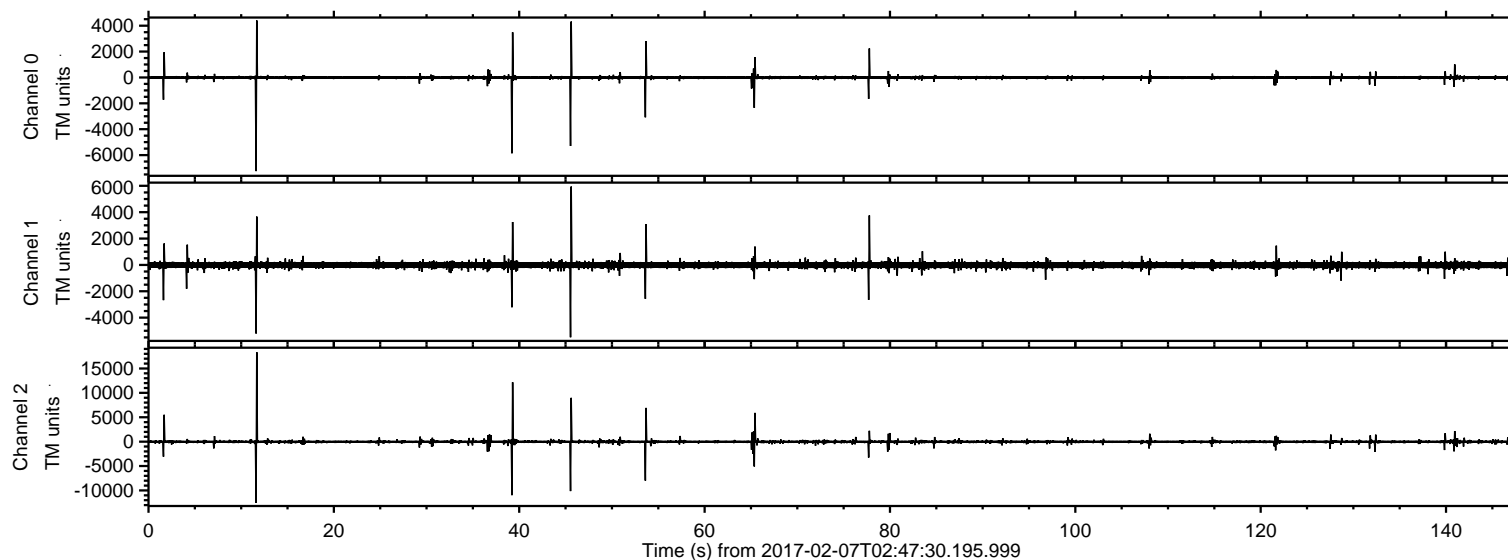


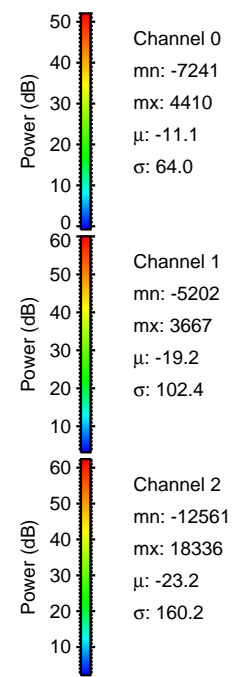
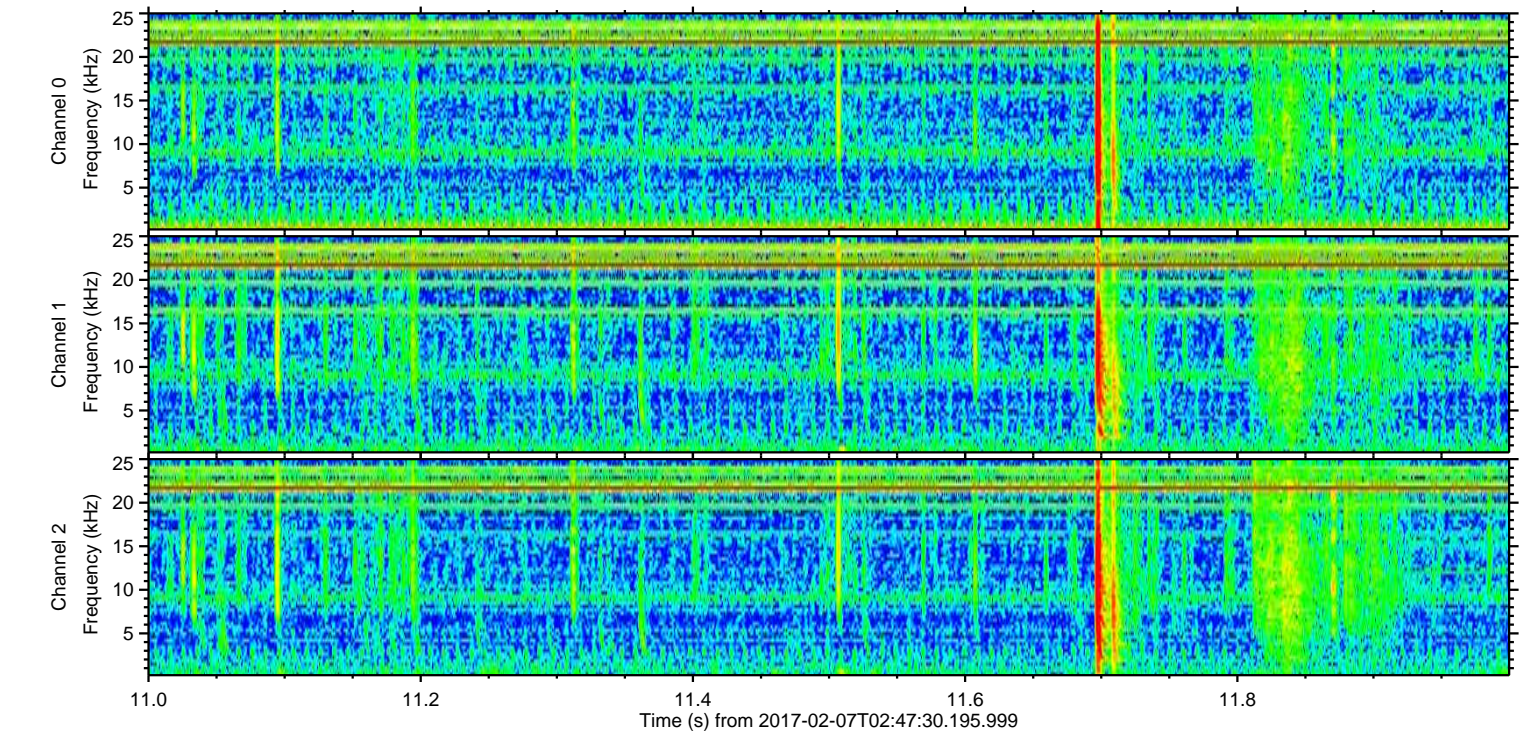
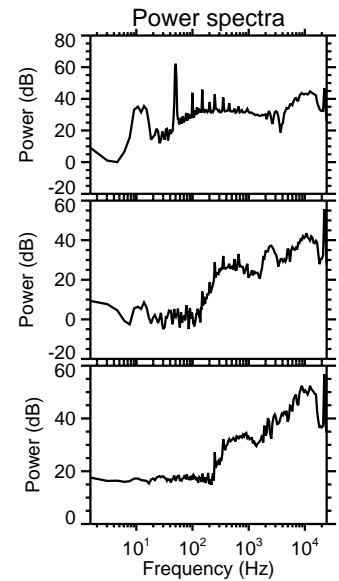
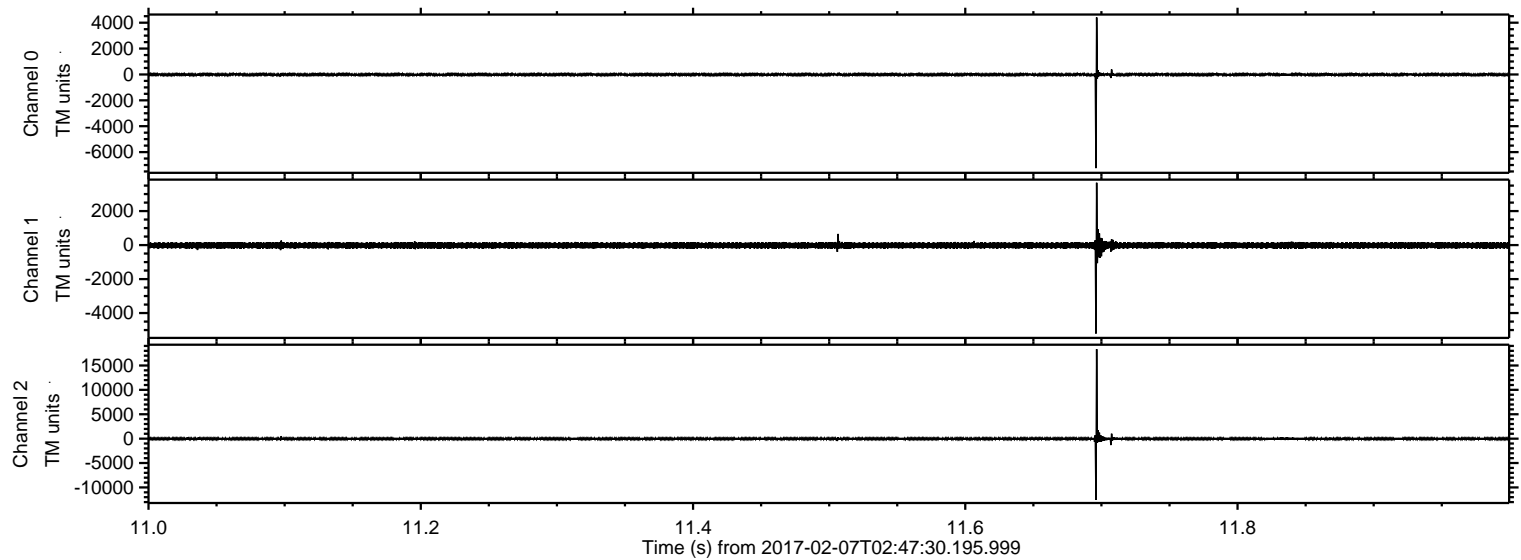
ELMAVAN 3D WAVEFORMS (Measured data sampled at 50 kHz) 51000 packets of 144 samples from 2017-02-07T02:47:30.195.999.

Processed Tue Feb 7 03:55:37 2017 by ELM ver.2012-10-06 from 001__elm20170207_024729__dat00.bin



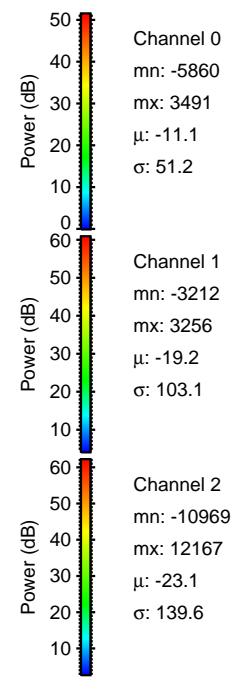
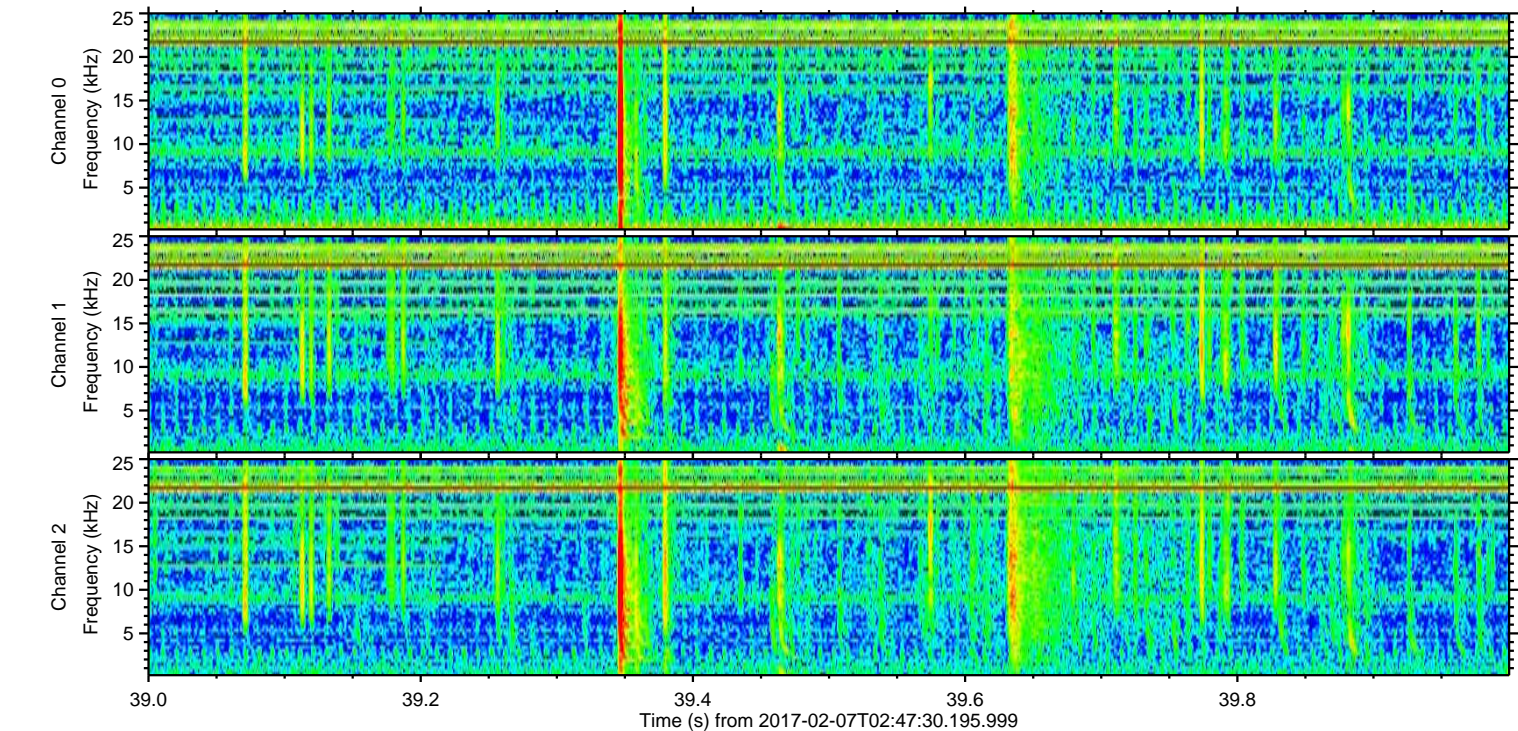
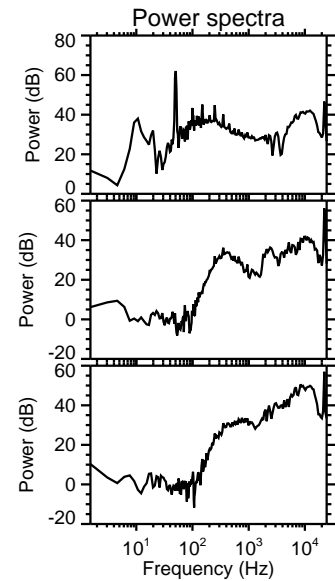
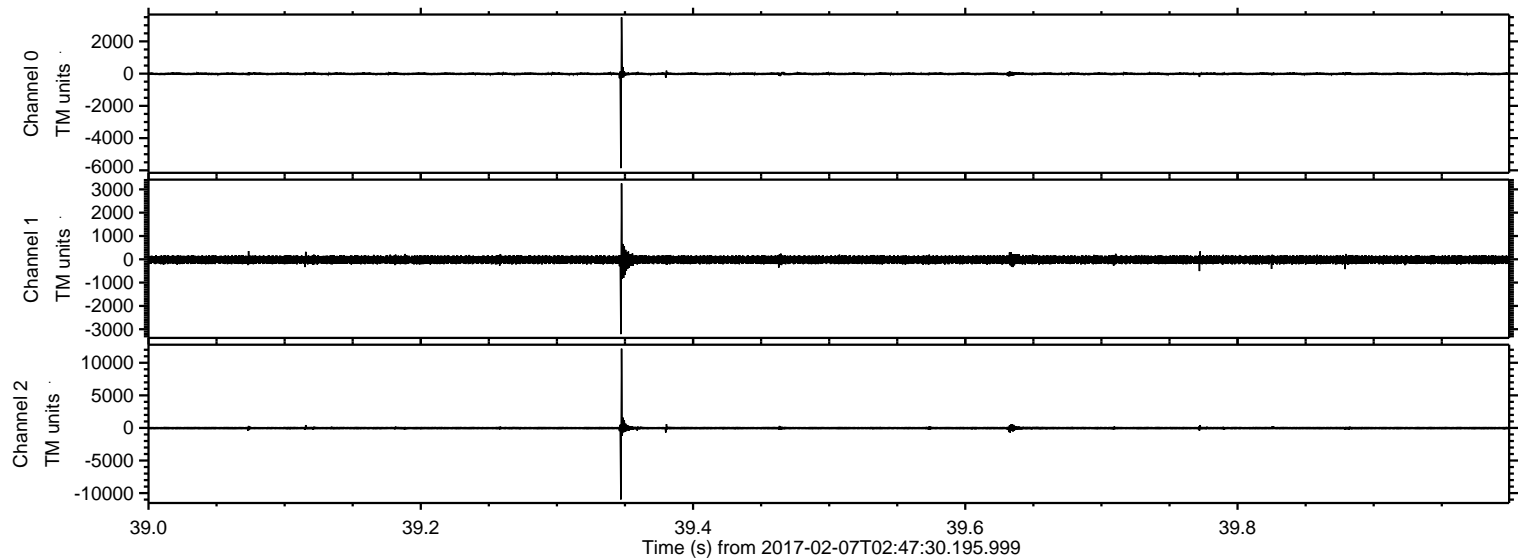
ELMAVAN 3D WAVEFORMS (Measured data sampled at 50 kHz) 51000 packets of 144 samples from 2017-02-07T02:47:30.195.999. Part 12/147

Processed Tue Feb 7 03:55:48 2017 by ELM ver.2012-10-06 from 001__elm20170207_024729__dat00.bin



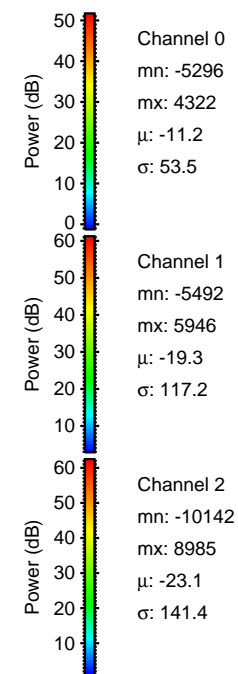
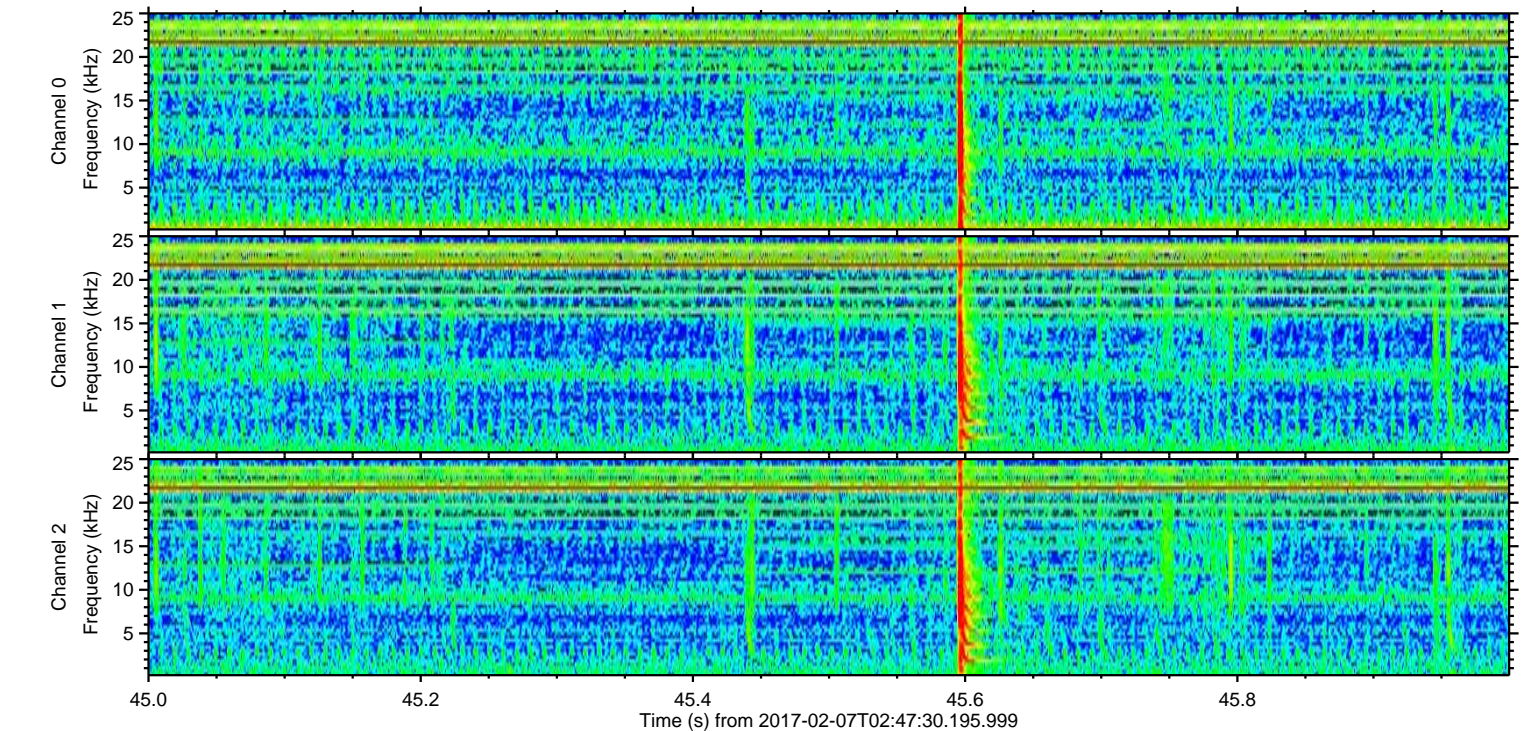
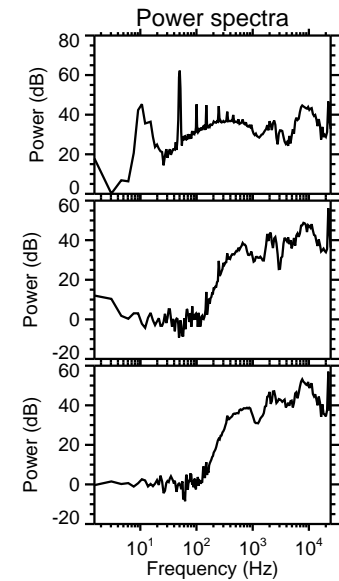
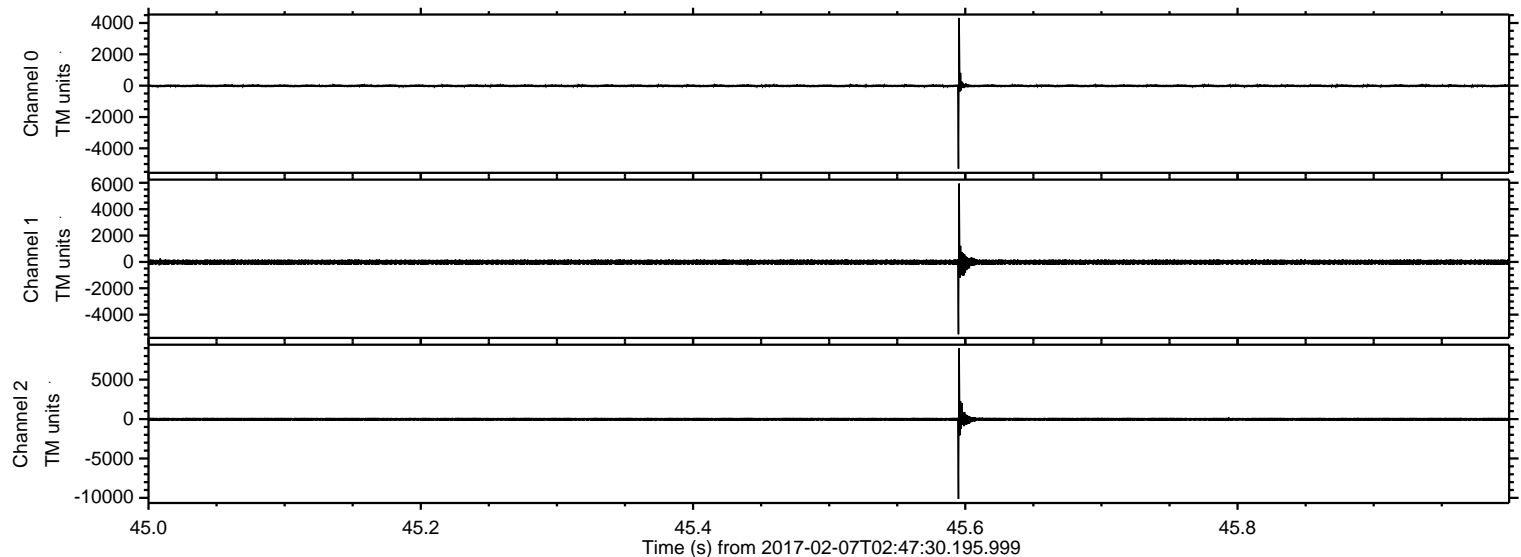
ELMAVAN 3D WAVEFORMS (Measured data sampled at 50 kHz) 51000 packets of 144 samples from 2017-02-07T02:47:30.195.999. Part 40/147

Processed Tue Feb 7 03:55:49 2017 by ELM ver.2012-10-06 from 001__elm20170207_024729__dat00.bin



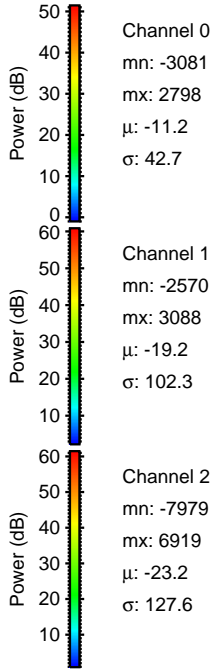
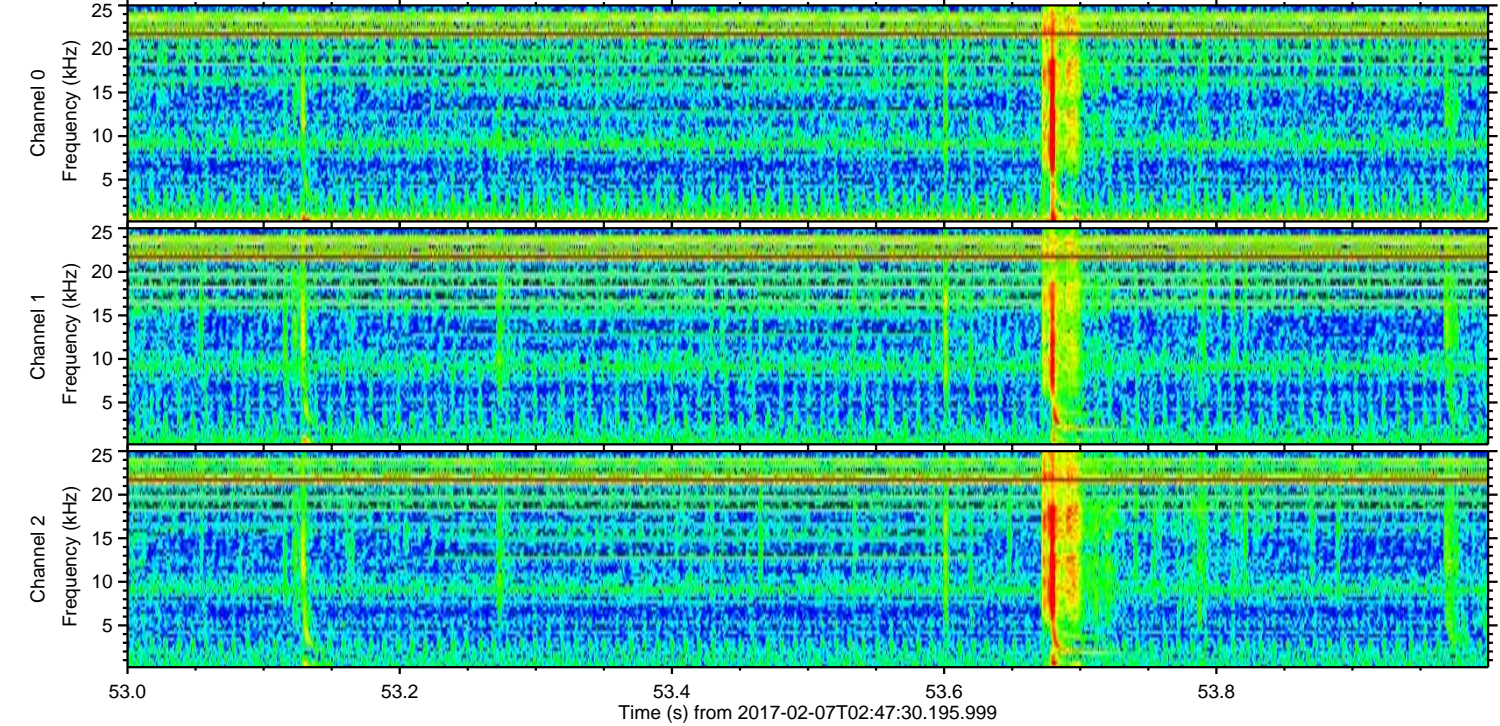
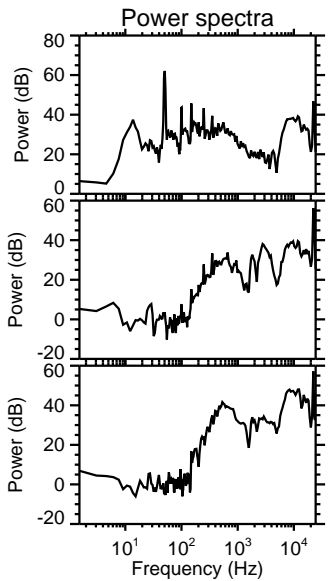
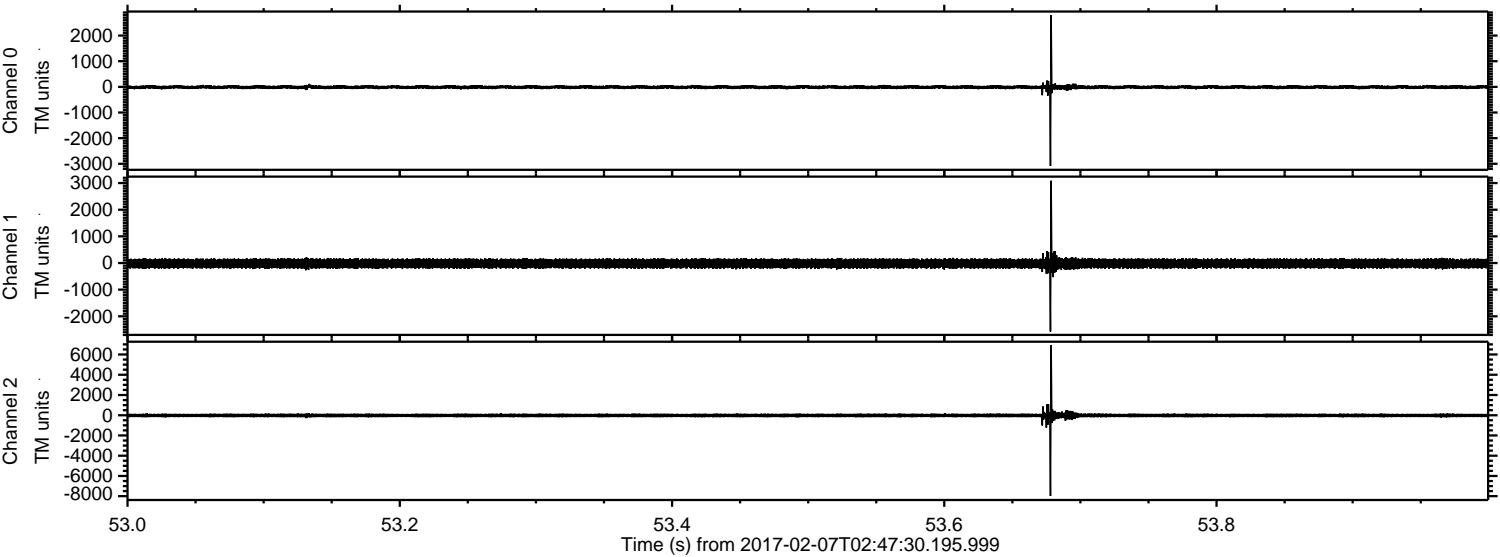
ELMAVAN 3D WAVEFORMS (Measured data sampled at 50 kHz) 51000 packets of 144 samples from 2017-02-07T02:47:30.195.999. Part 46/147

Processed Tue Feb 7 03:55:50 2017 by ELM ver.2012-10-06 from 001__elm20170207_024729__dat00.bin



ELMAVAN 3D WAVEFORMS (Measured data sampled at 50 kHz) 51000 packets of 144 samples from 2017-02-07T02:47:30.195.999. Part 54/147

Processed Tue Feb 7 03:55:51 2017 by ELM ver.2012-10-06 from 001__elm20170207_024729__dat00.bin

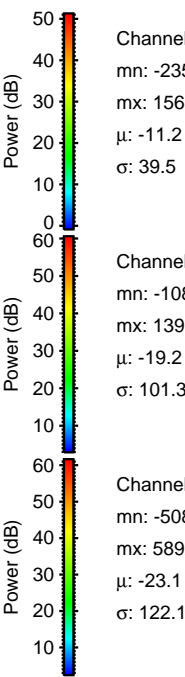
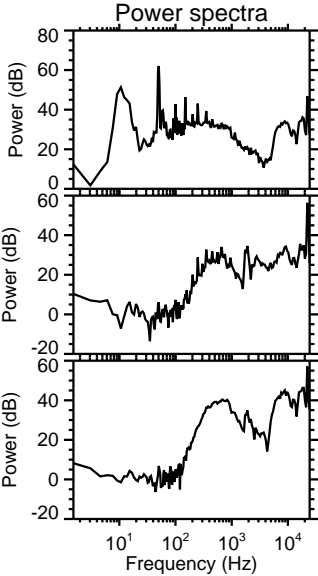
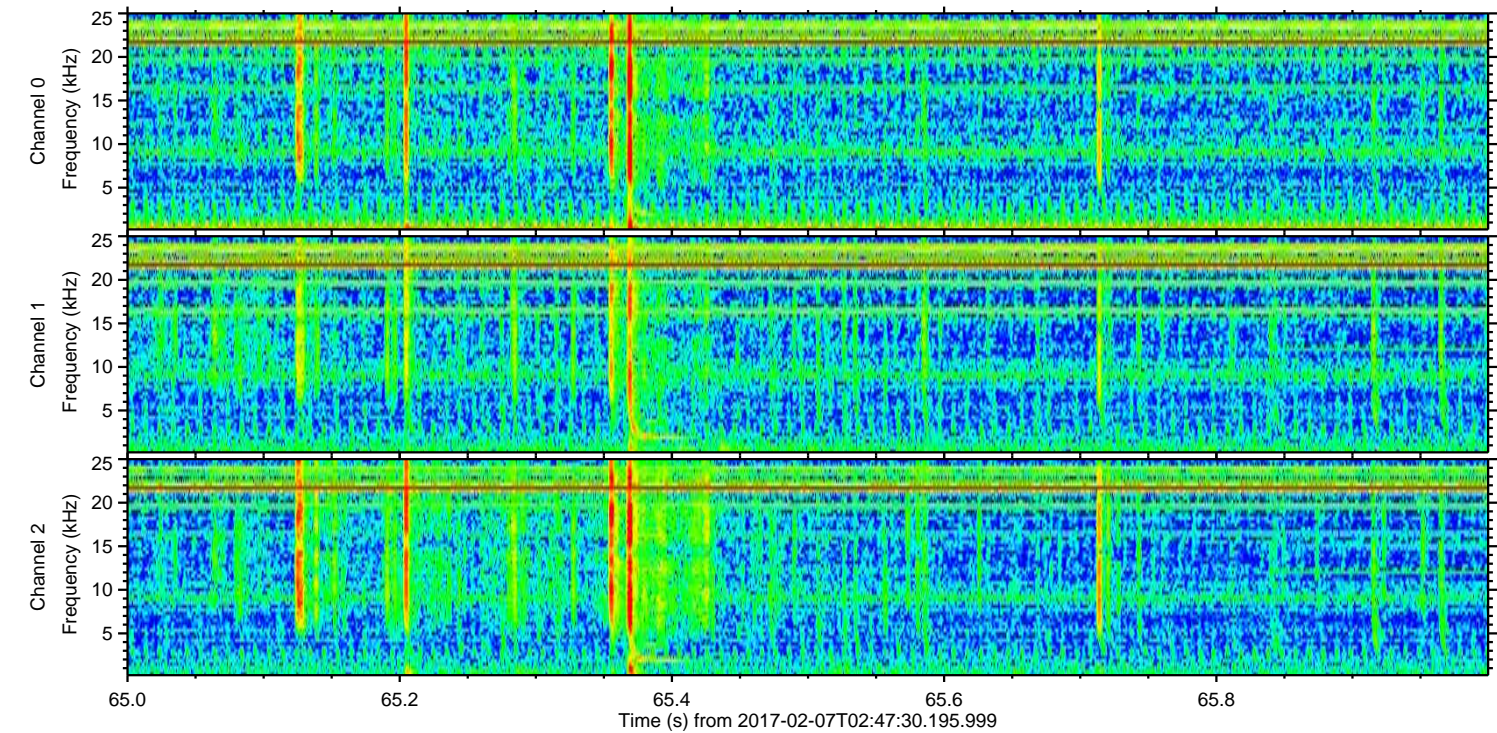
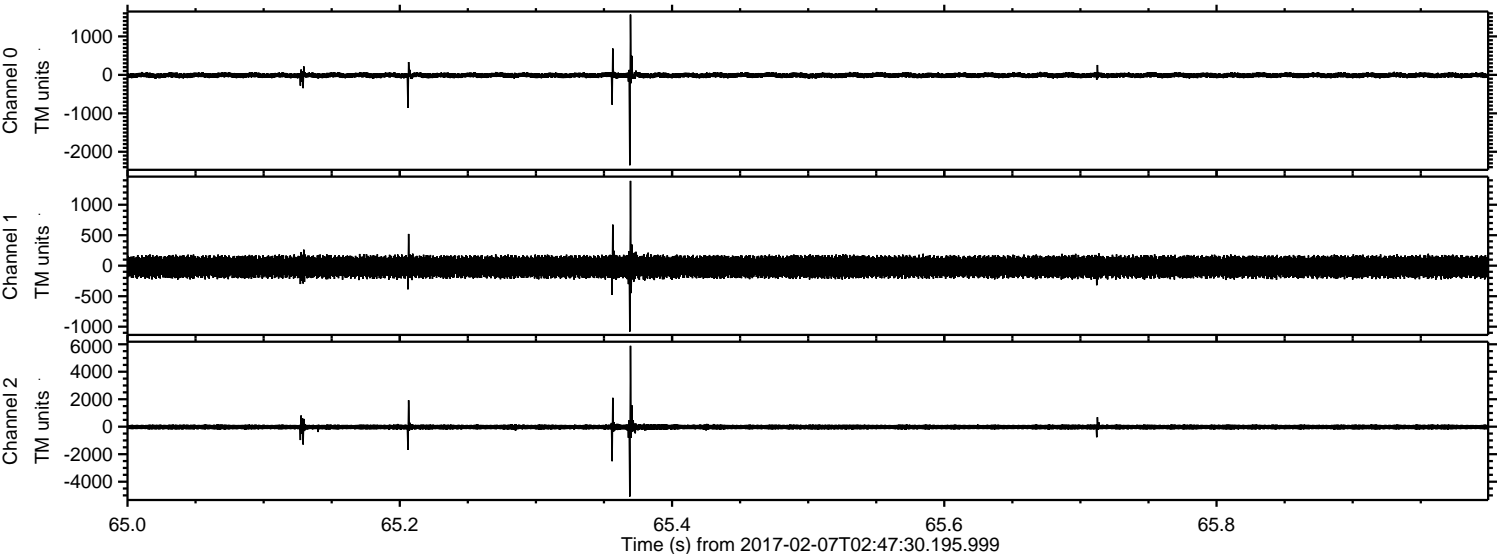


Channel 0
mn: -3081
mx: 2798
 μ : -11.2
 σ : 42.7

Channel 1
mn: -2570
mx: 3088
 μ : -19.2
 σ : 102.3

Channel 2
mn: -7979
mx: 6919
 μ : -23.2
 σ : 127.6

Processed Tue Feb 7 03:55:52 2017 by ELM ver.2012-10-06 from 001__elm20170207_024729__dat00.bin



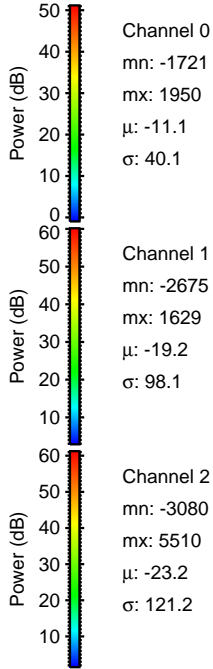
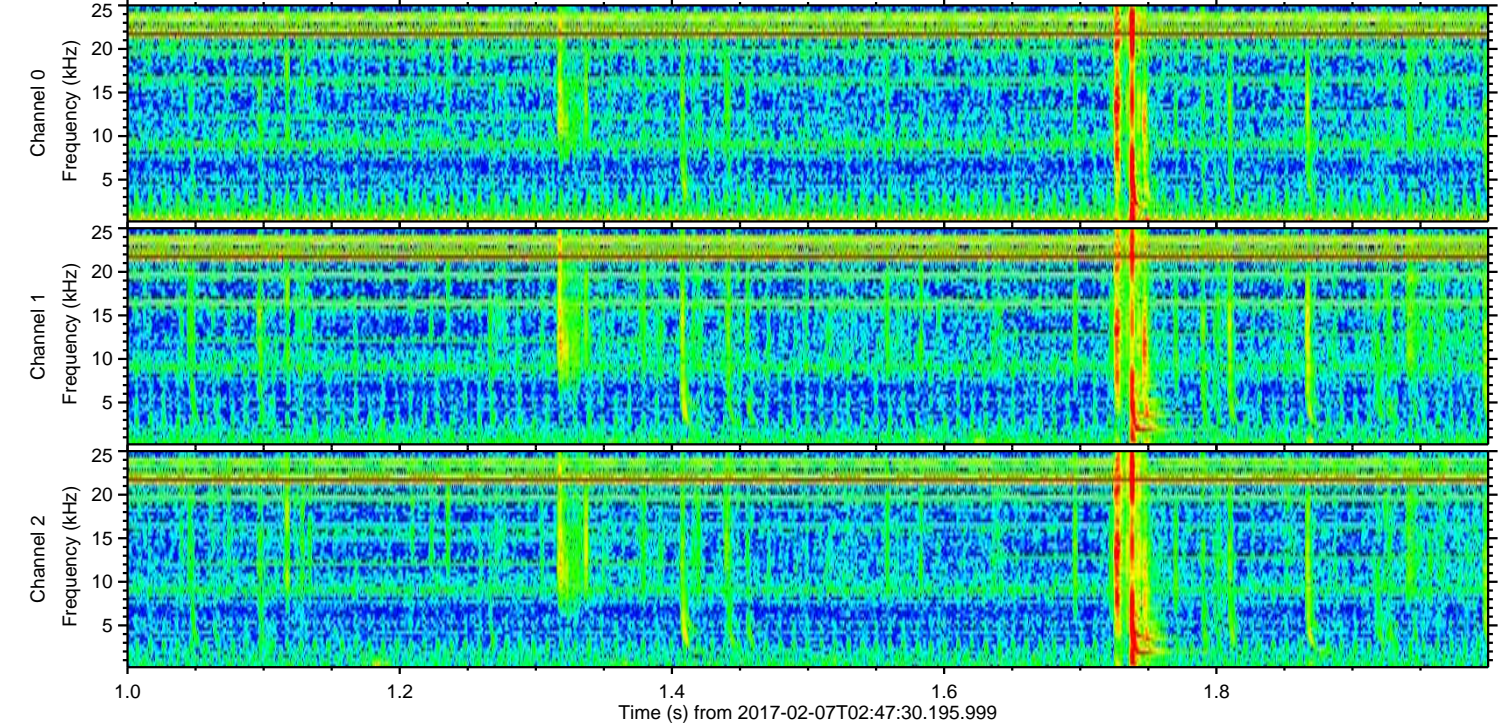
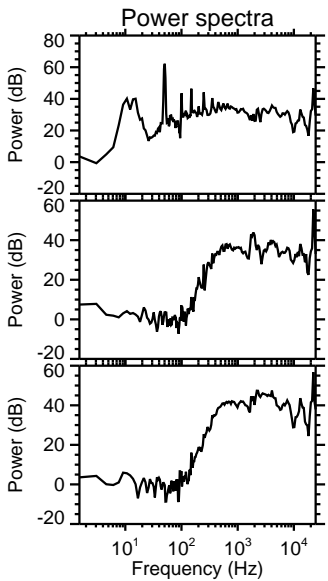
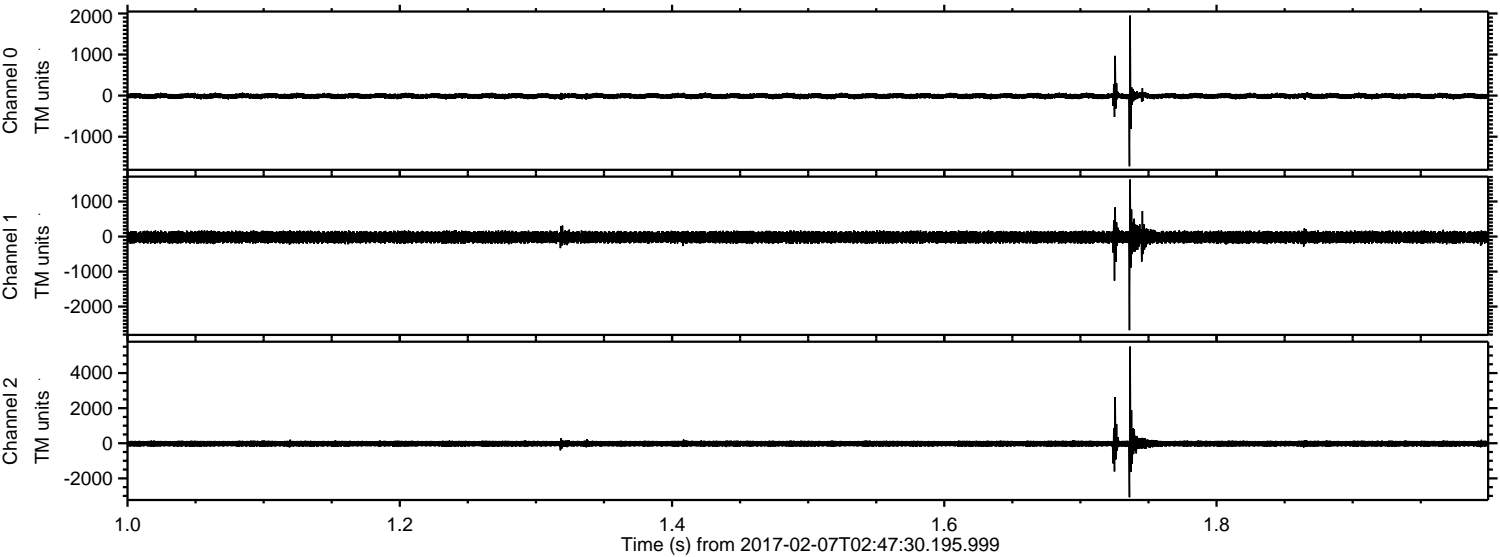
Channel 0
mn: -2352
mx: 1569
 μ : -11.2
 σ : 39.5

Channel 1
mn: -1081
mx: 1391
 μ : -19.2
 σ : 101.3

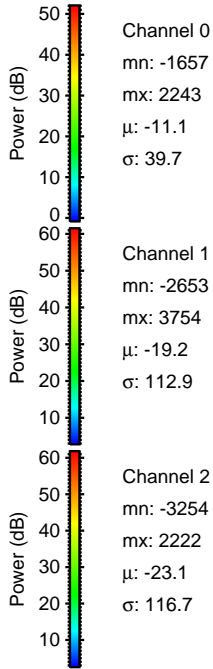
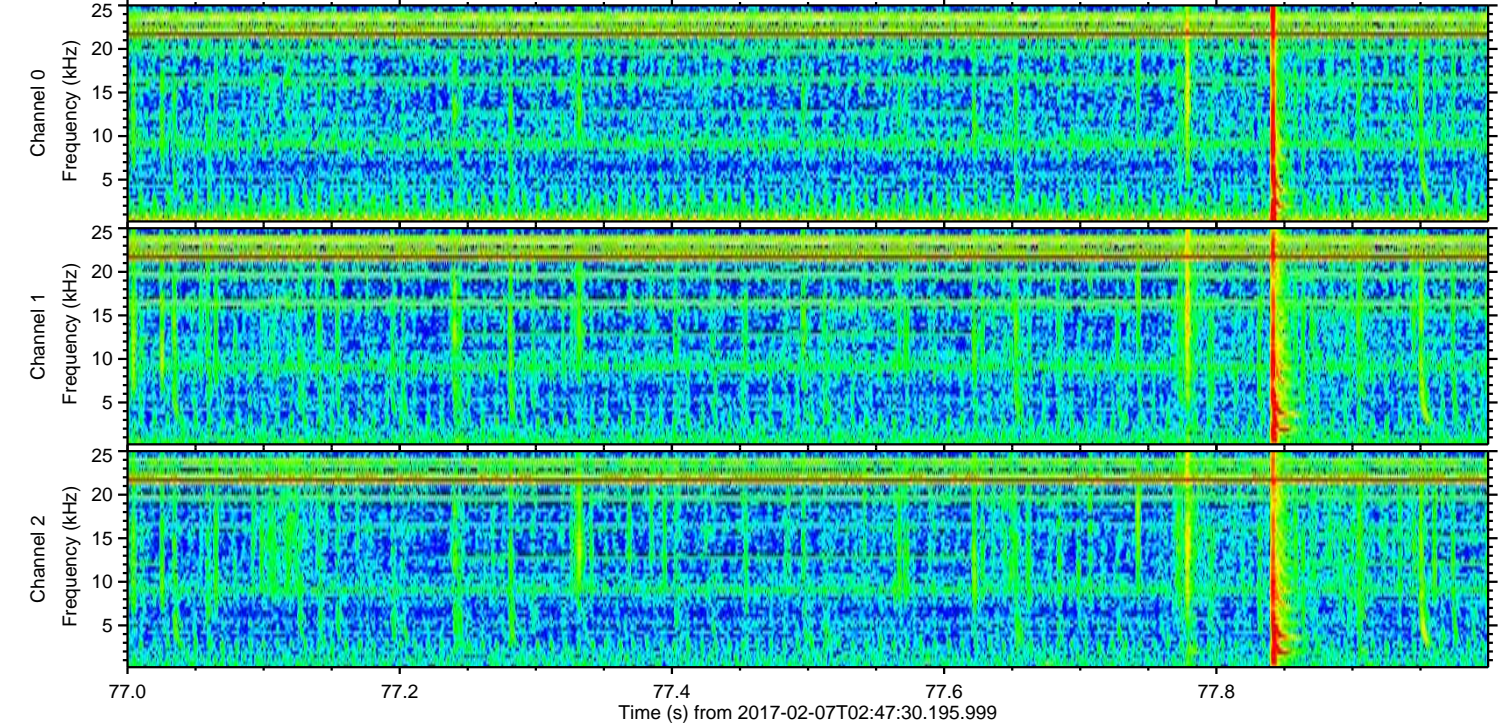
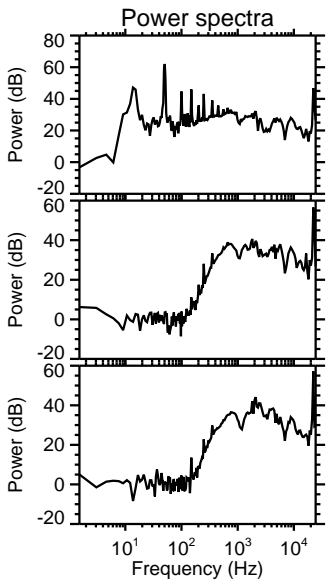
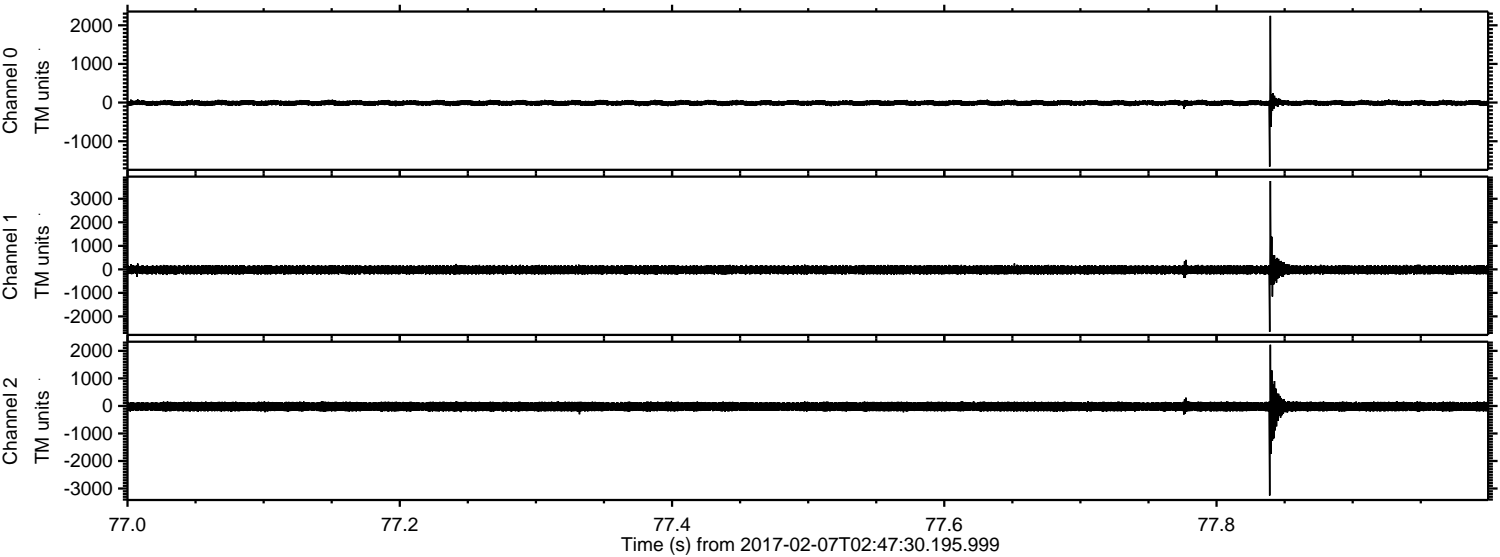
Channel 2
mn: -5080
mx: 5892
 μ : -23.1
 σ : 122.1

ELMAVAN 3D WAVEFORMS (Measured data sampled at 50 kHz) 51000 packets of 144 samples from 2017-02-07T02:47:30.195.999. Part 2/147

Processed Tue Feb 7 03:55:53 2017 by ELM ver.2012-10-06 from 001__elm20170207_024729__dat00.bin



Processed Tue Feb 7 03:55:54 2017 by ELM ver.2012-10-06 from 001__elm20170207_024729__dat00.bin



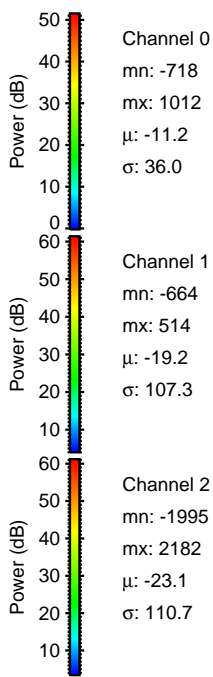
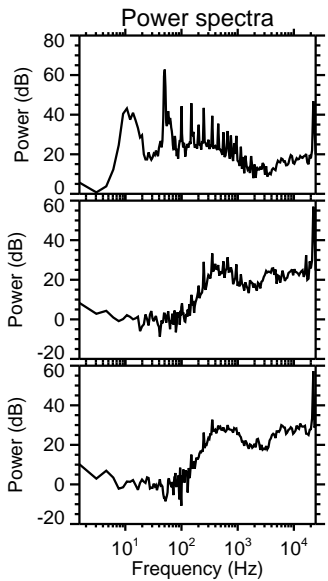
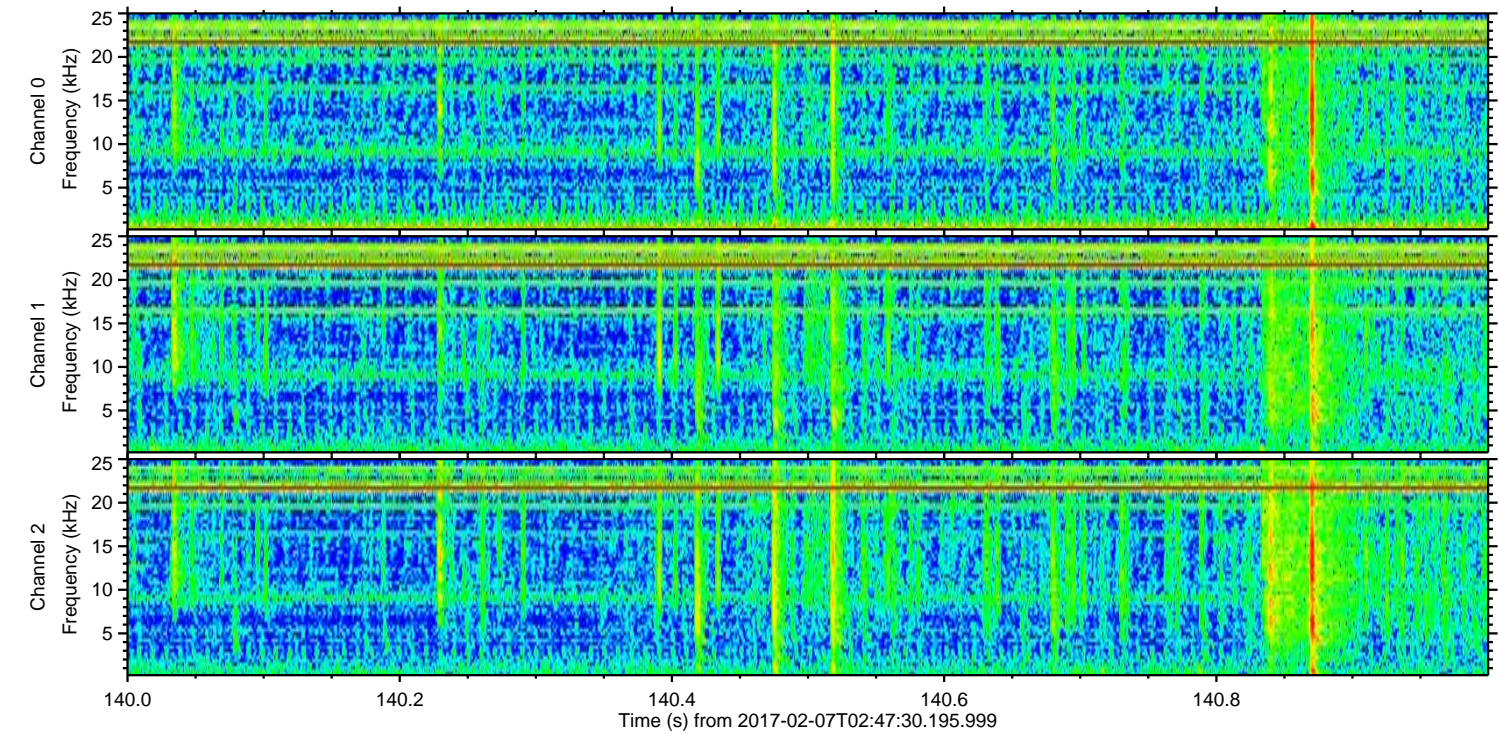
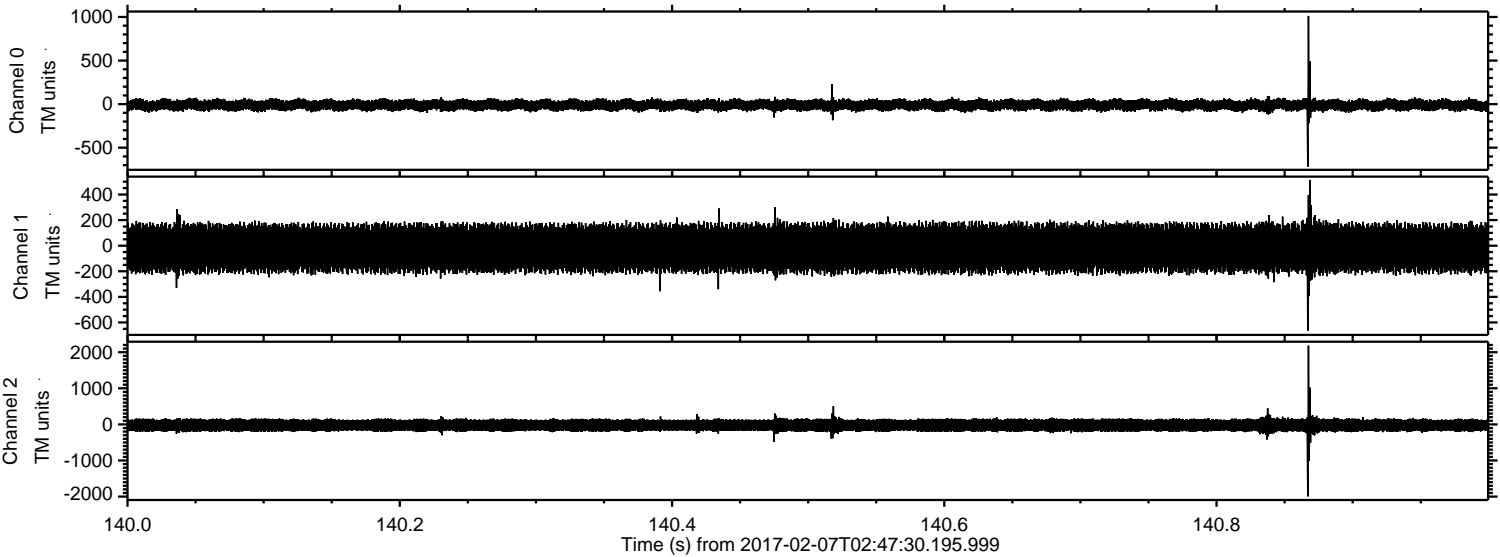
Channel 0
mn: -1657
mx: 2243
 μ : -11.1
 σ : 39.7

Channel 1
mn: -2653
mx: 3754
 μ : -19.2
 σ : 112.9

Channel 2
mn: -3254
mx: 2222
 μ : -23.1
 σ : 116.7

ELMAVAN 3D WAVEFORMS (Measured data sampled at 50 kHz) 51000 packets of 144 samples from 2017-02-07T02:47:30.195.999. Part 141/147

Processed Tue Feb 7 03:55:55 2017 by ELM ver.2012-10-06 from 001__elm20170207_024729__dat00.bin



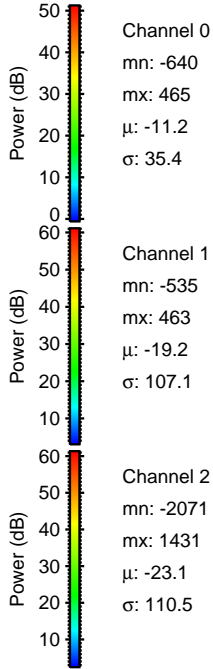
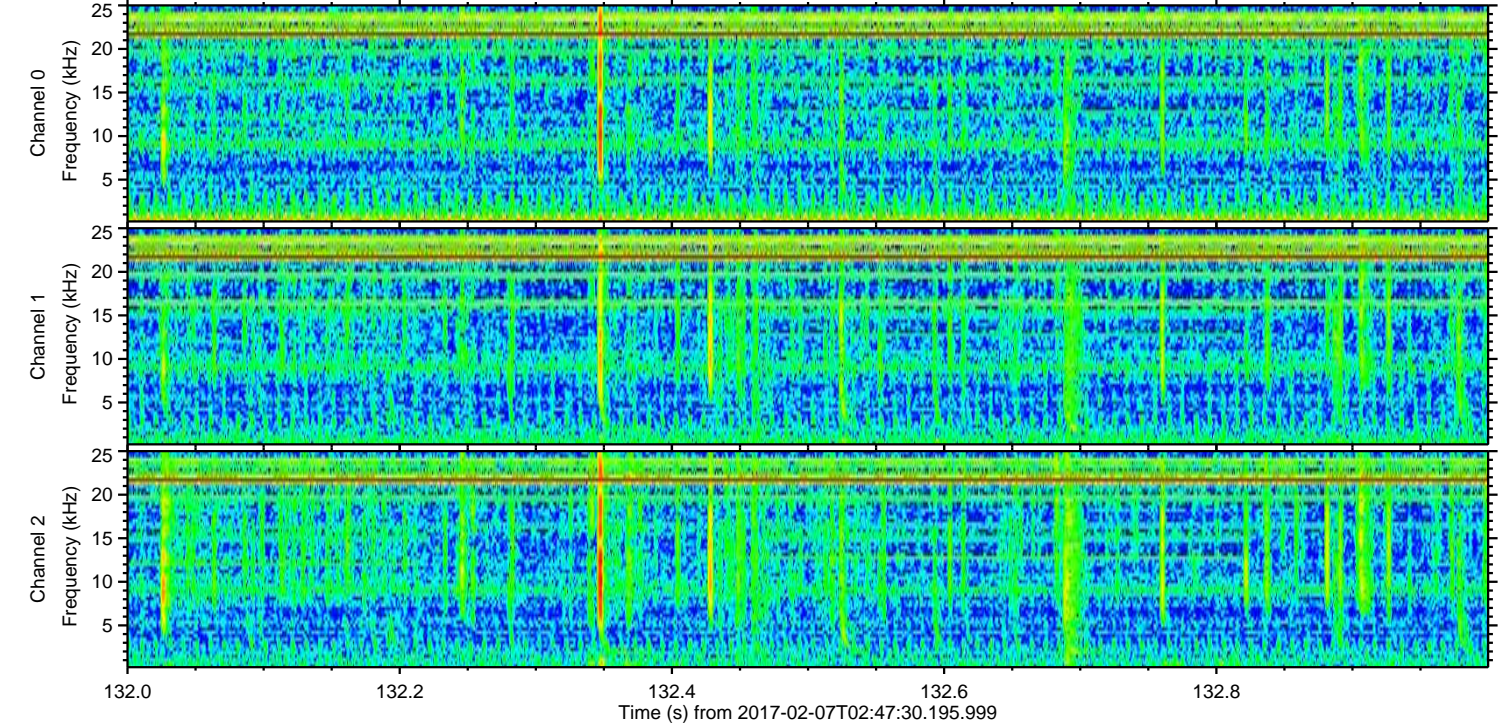
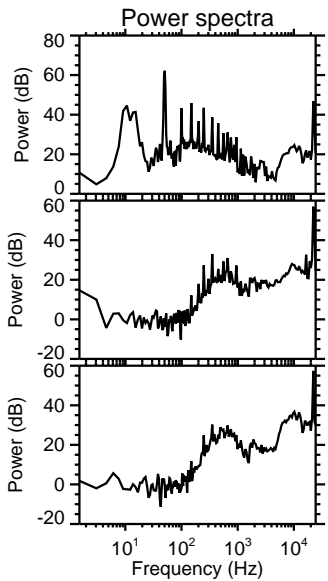
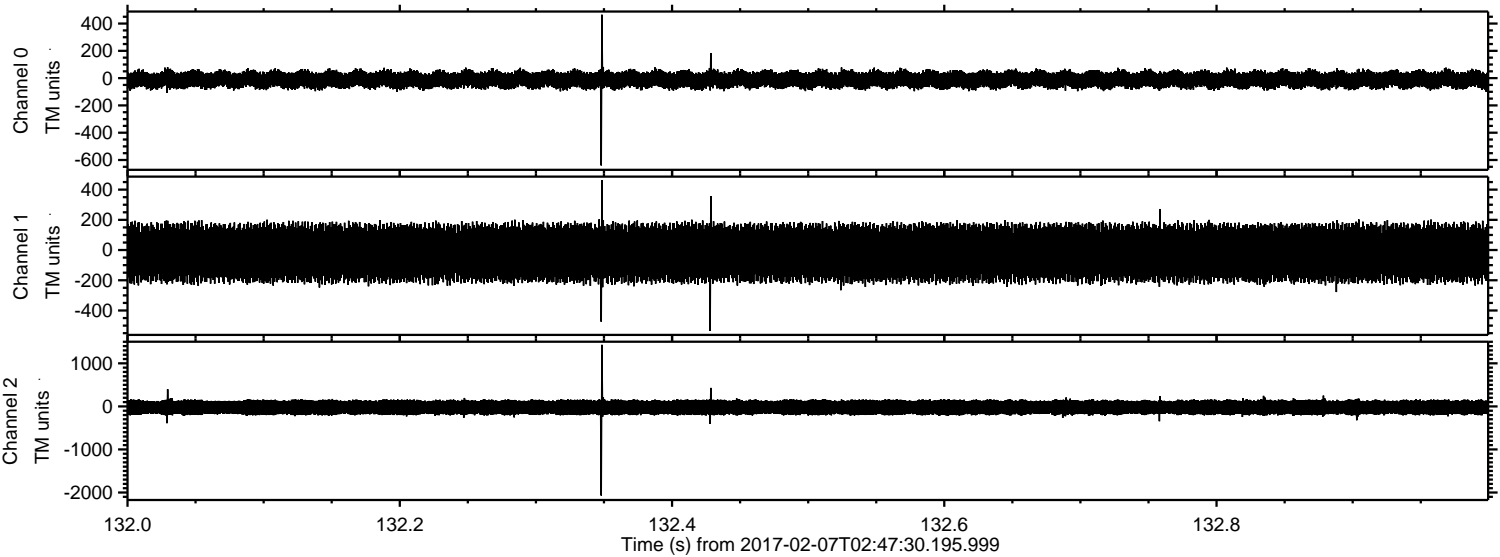
Channel 0
mn: -718
mx: 1012
 μ : -11.2
 σ : 36.0

Channel 1
mn: -664
mx: 514
 μ : -19.2
 σ : 107.3

Channel 2
mn: -1995
mx: 2182
 μ : -23.1
 σ : 110.7

ELMAVAN 3D WAVEFORMS (Measured data sampled at 50 kHz) 51000 packets of 144 samples from 2017-02-07T02:47:30.195.999. Part 133/147

Processed Tue Feb 7 03:55:56 2017 by ELM ver.2012-10-06 from 001__elm20170207_024729__dat00.bin



ELMAVAN 3D WAVEFORMS (Measured data sampled at 50 kHz) 51000 packets of 144 samples from 2017-02-07T02:47:30.195.999. Part 18/147

Processed Tue Feb 7 03:55:57 2017 by ELM ver.2012-10-06 from 001__elm20170207_024729__dat00.bin

