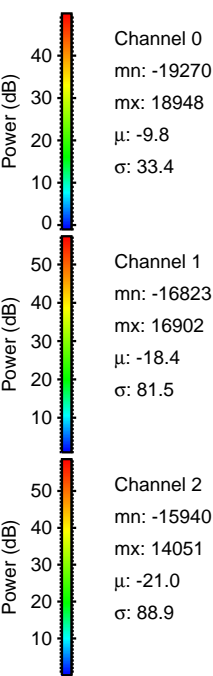
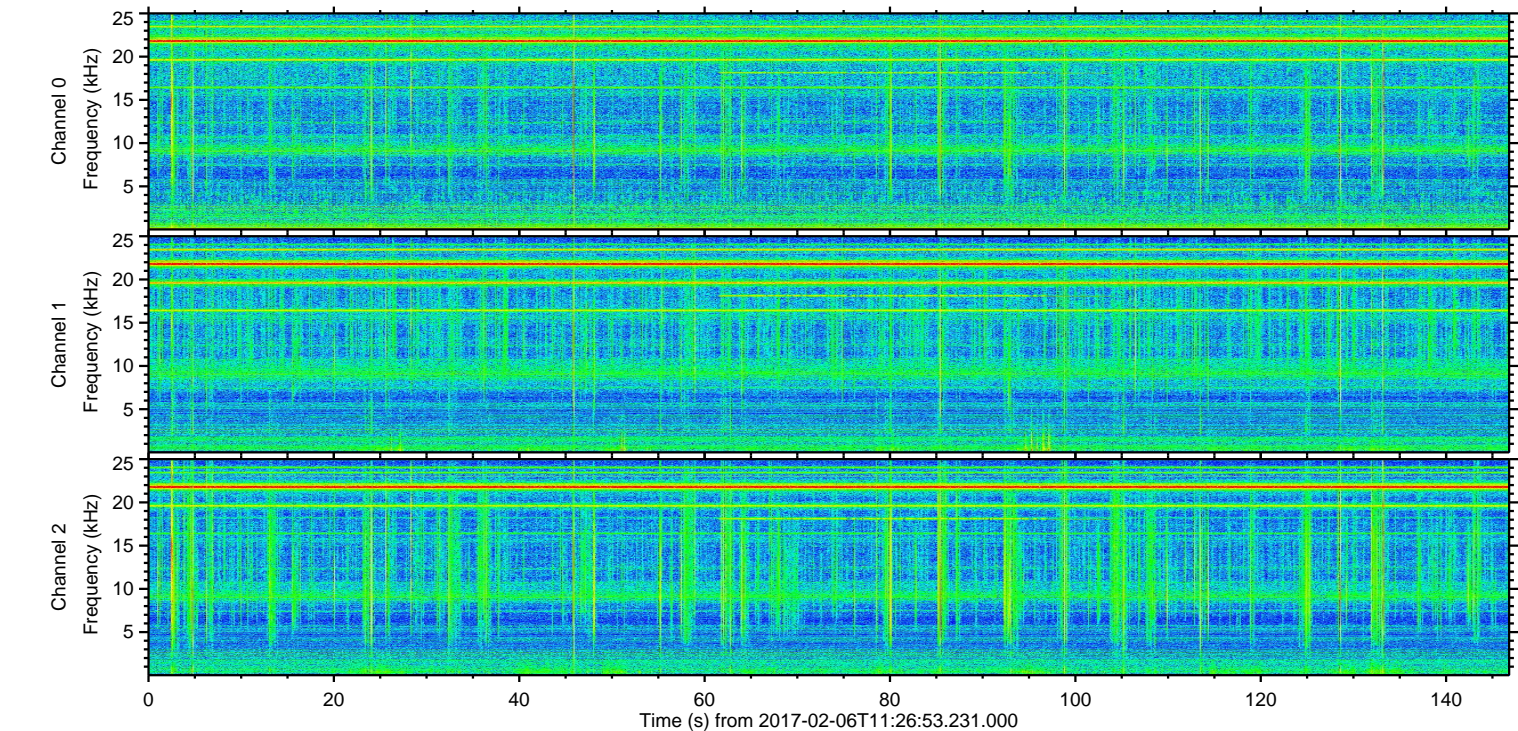
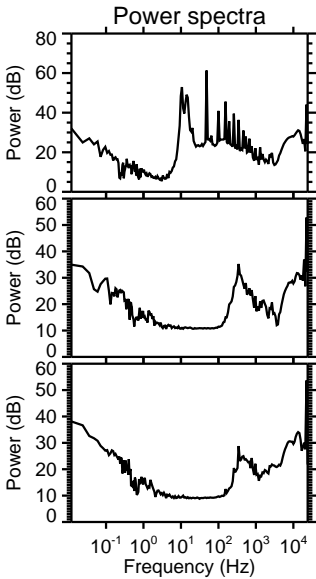
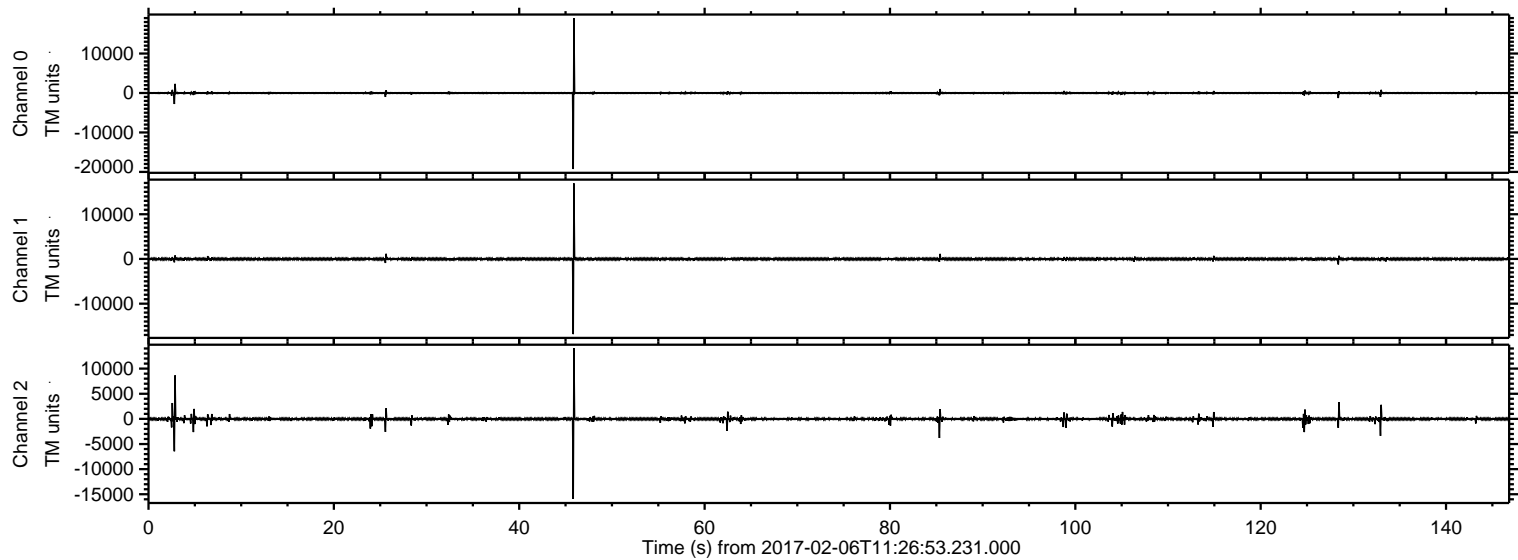
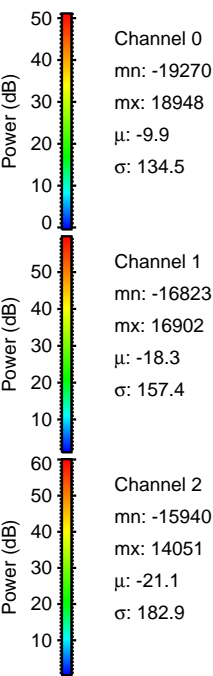
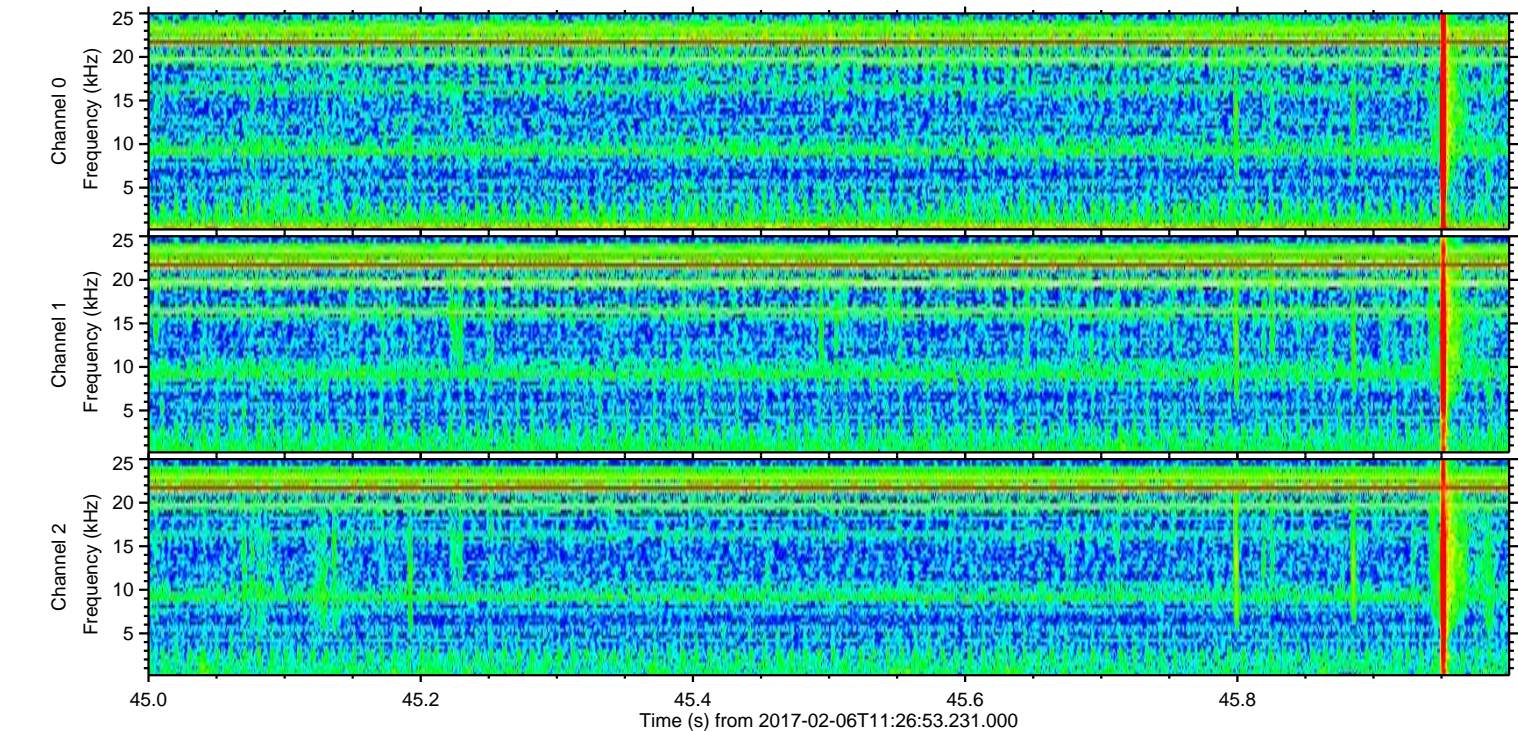
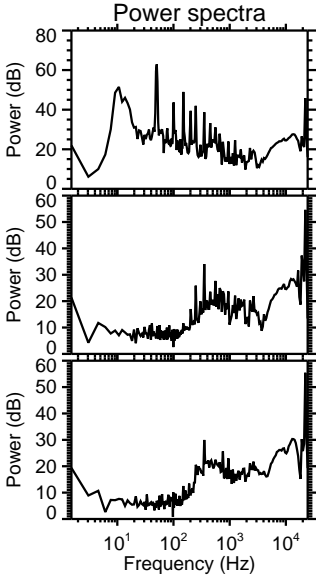
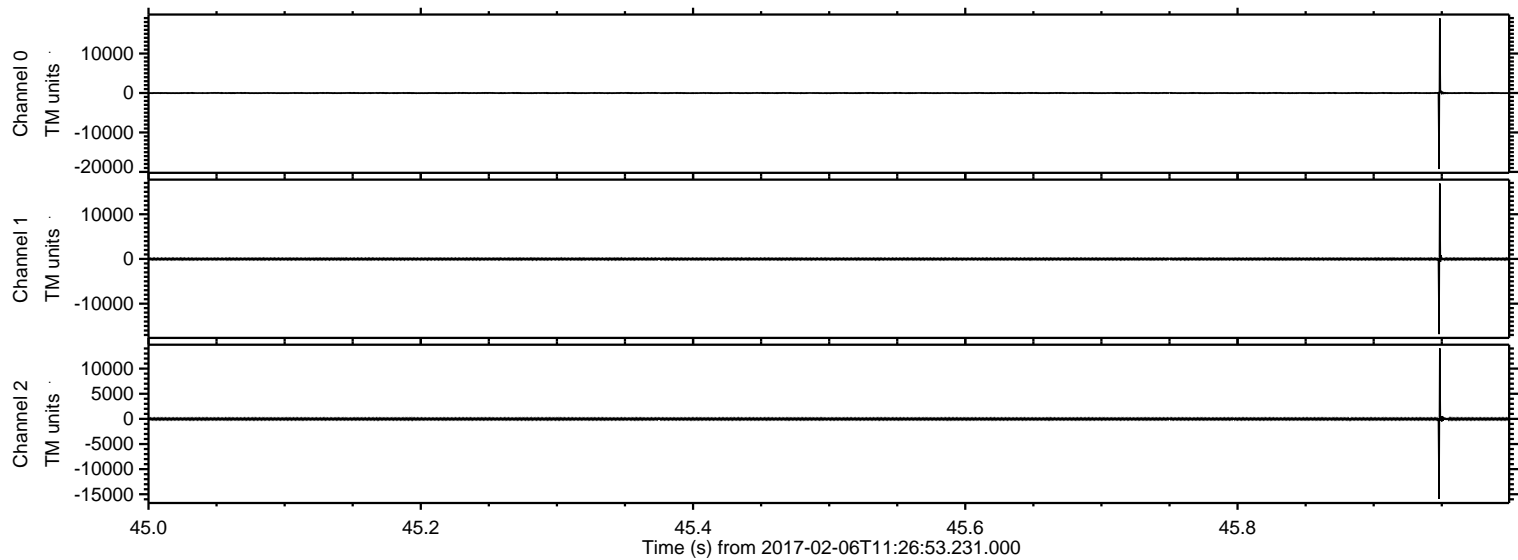


ELMAVAN 3D WAVEFORMS (Measured data sampled at 50 kHz) 51000 packets of 144 samples from 2017-02-06T11:26:53.231.000.

Processed Mon Feb 6 12:34:17 2017 by ELM ver.2012-10-06 from 001__elm20170206_112652__dat00.bin

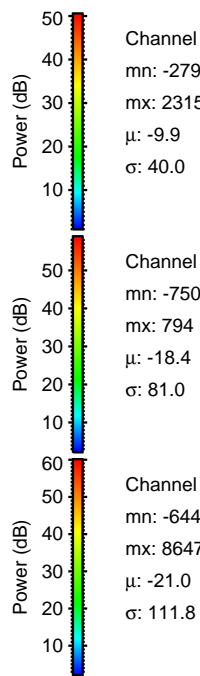
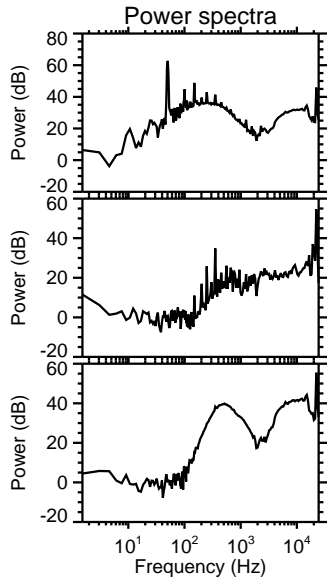
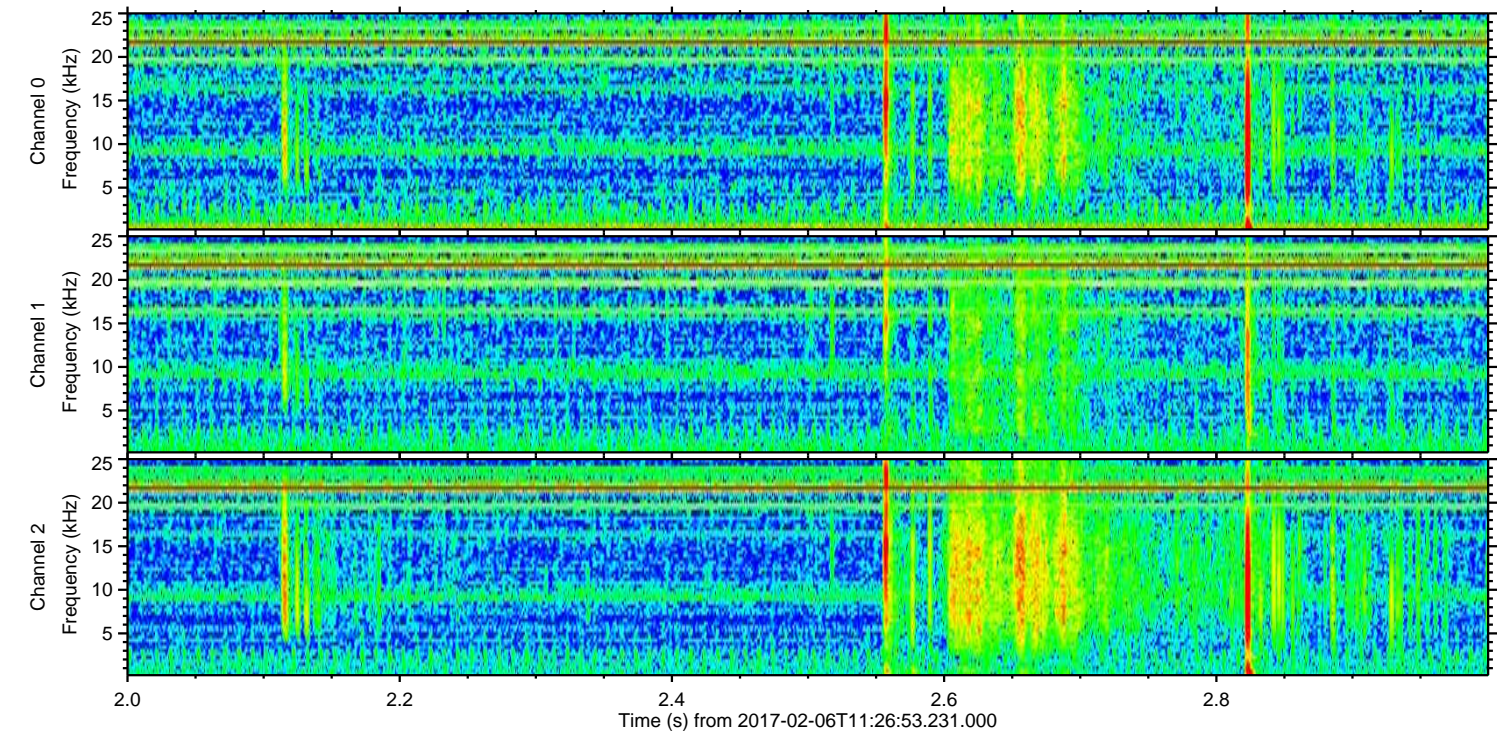
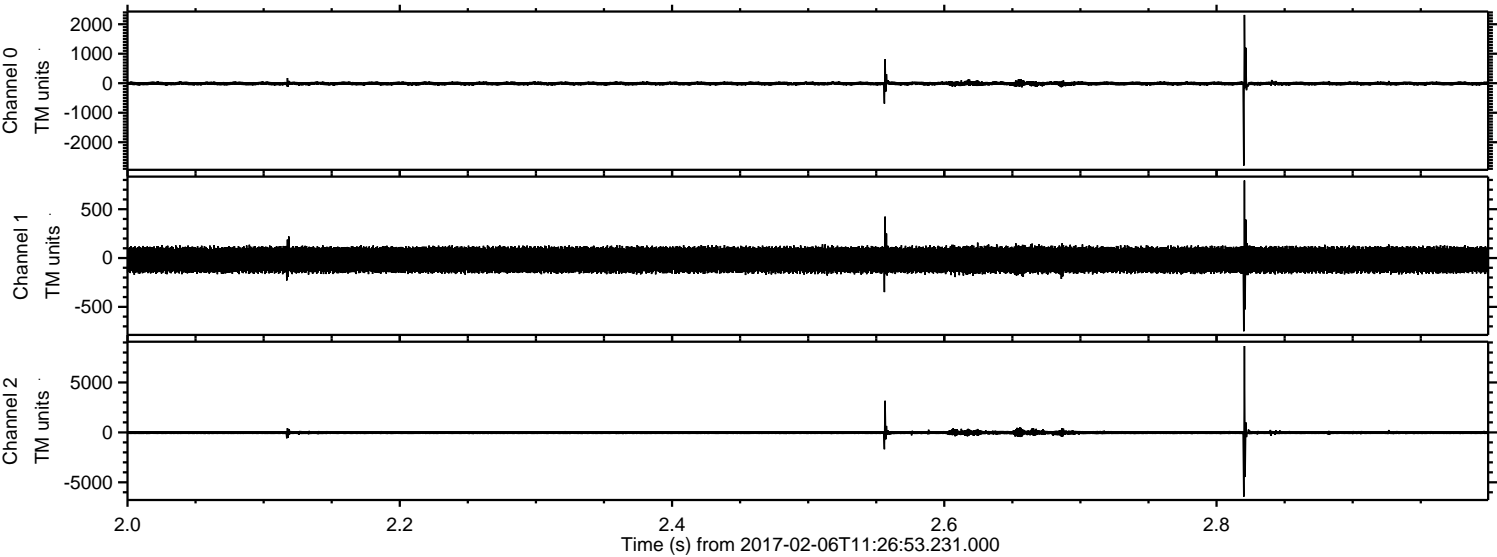


Processed Mon Feb 6 12:34:29 2017 by ELM ver.2012-10-06 from 001__elm20170206_112652__dat00.bin

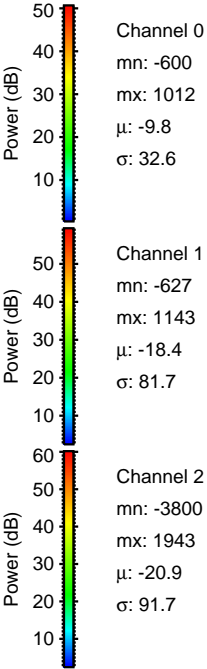
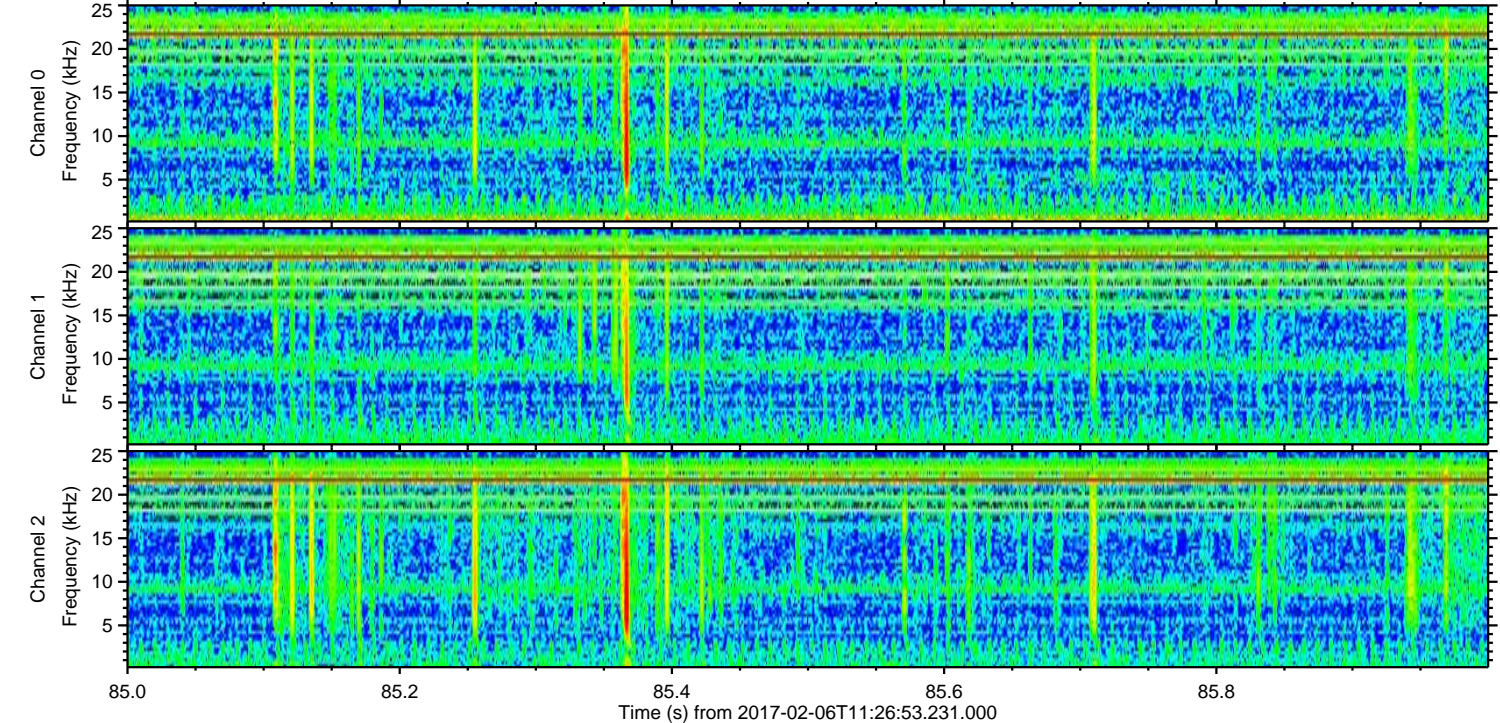
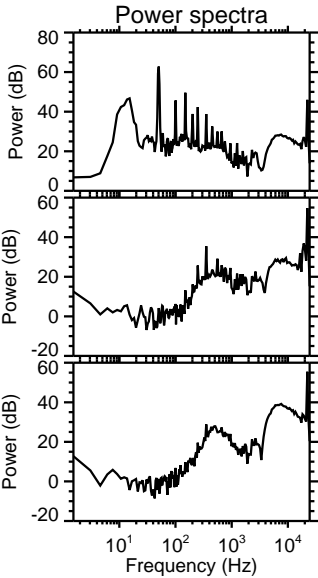
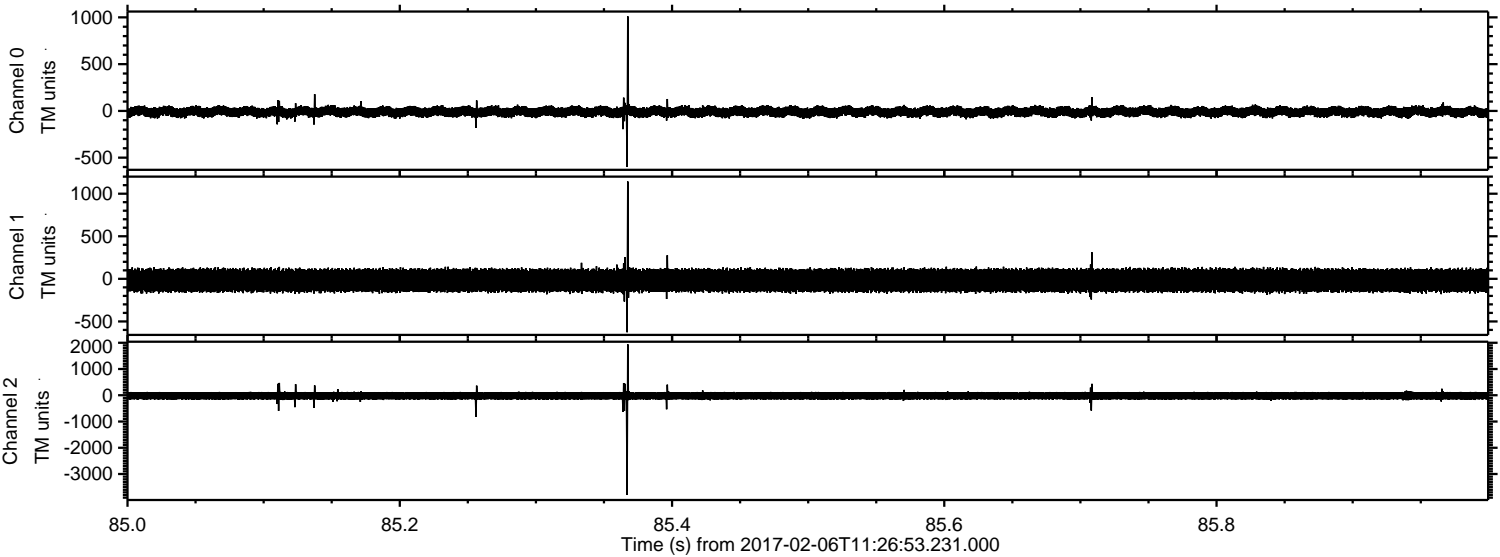


ELMAVAN 3D WAVEFORMS (Measured data sampled at 50 kHz) 51000 packets of 144 samples from 2017-02-06T11:26:53.231.000. Part 3/147

Processed Mon Feb 6 12:34:29 2017 by ELM ver.2012-10-06 from 001__elm20170206_112652__dat00.bin

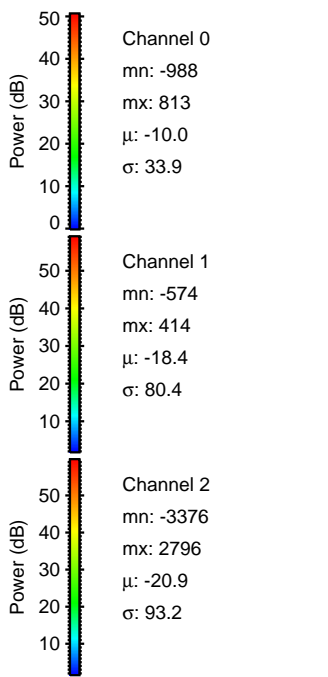
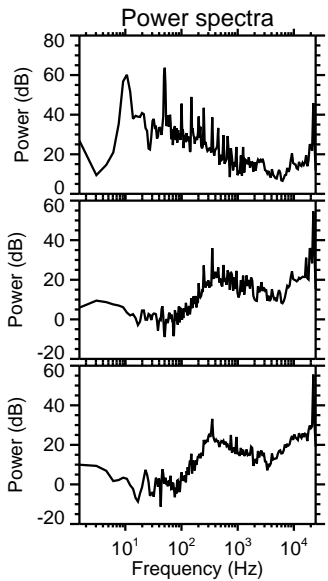
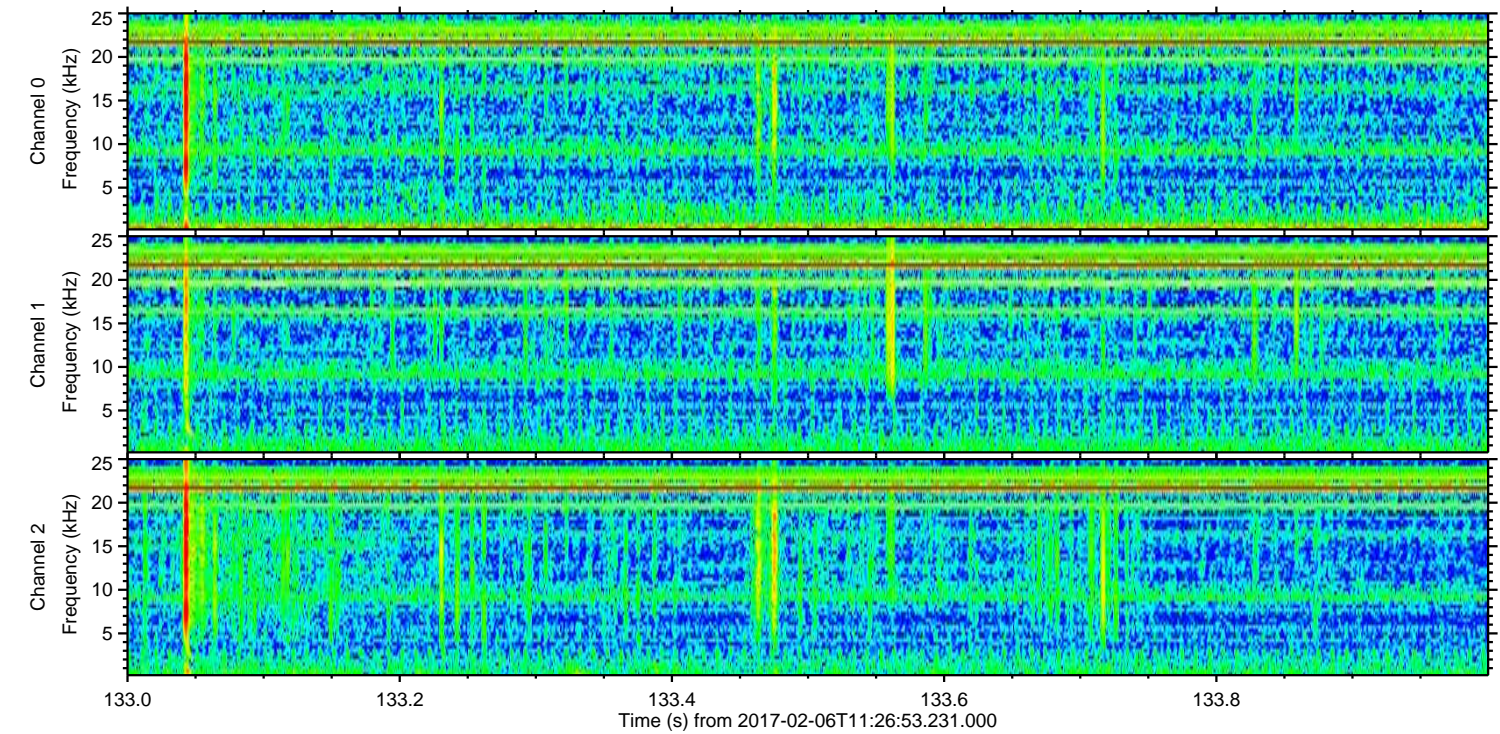
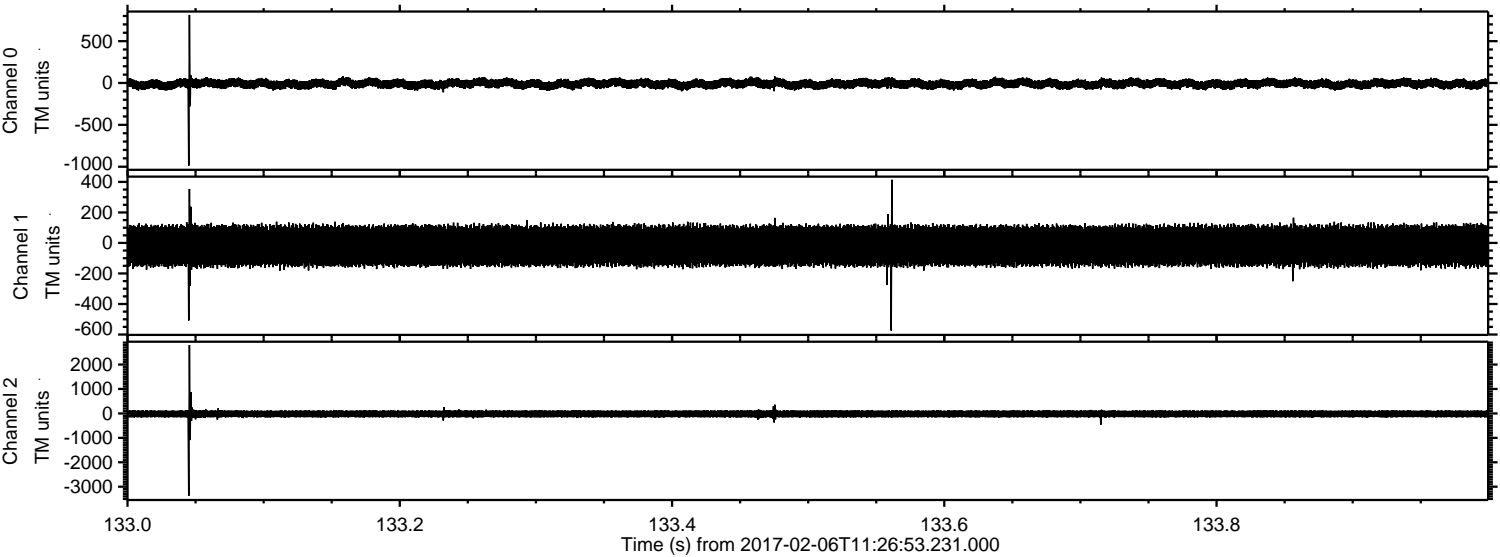


Processed Mon Feb 6 12:34:30 2017 by ELM ver.2012-10-06 from 001__elm20170206_112652__dat00.bin



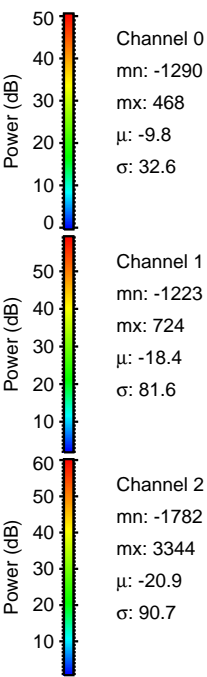
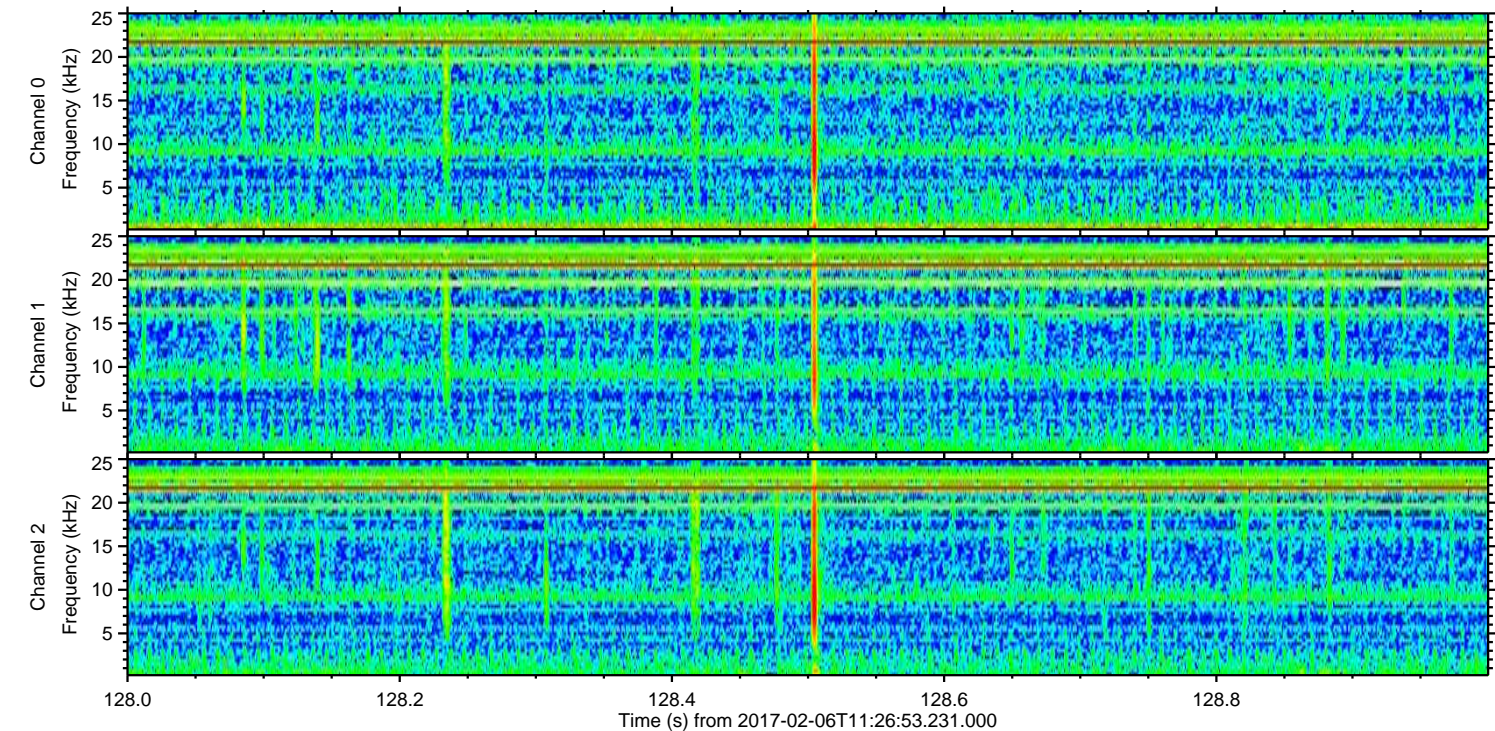
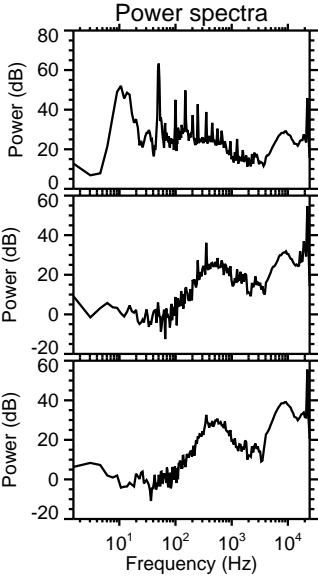
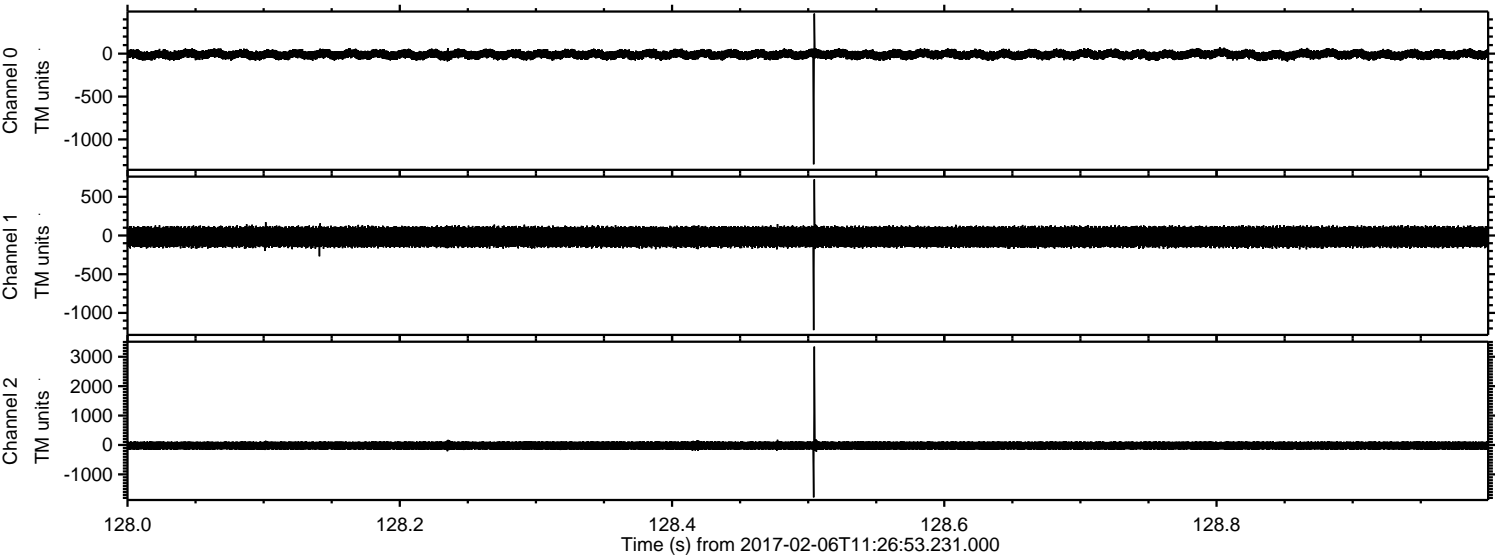
ELMAVAN 3D WAVEFORMS (Measured data sampled at 50 kHz) 51000 packets of 144 samples from 2017-02-06T11:26:53.231.000. Part 134/147

Processed Mon Feb 6 12:34:31 2017 by ELM ver.2012-10-06 from 001__elm20170206_112652__dat00.bin

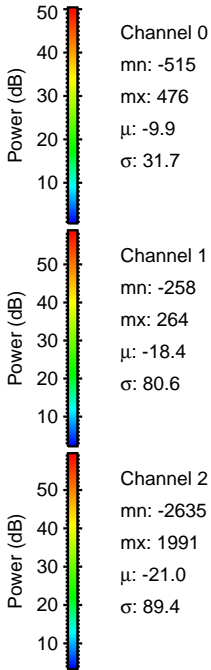
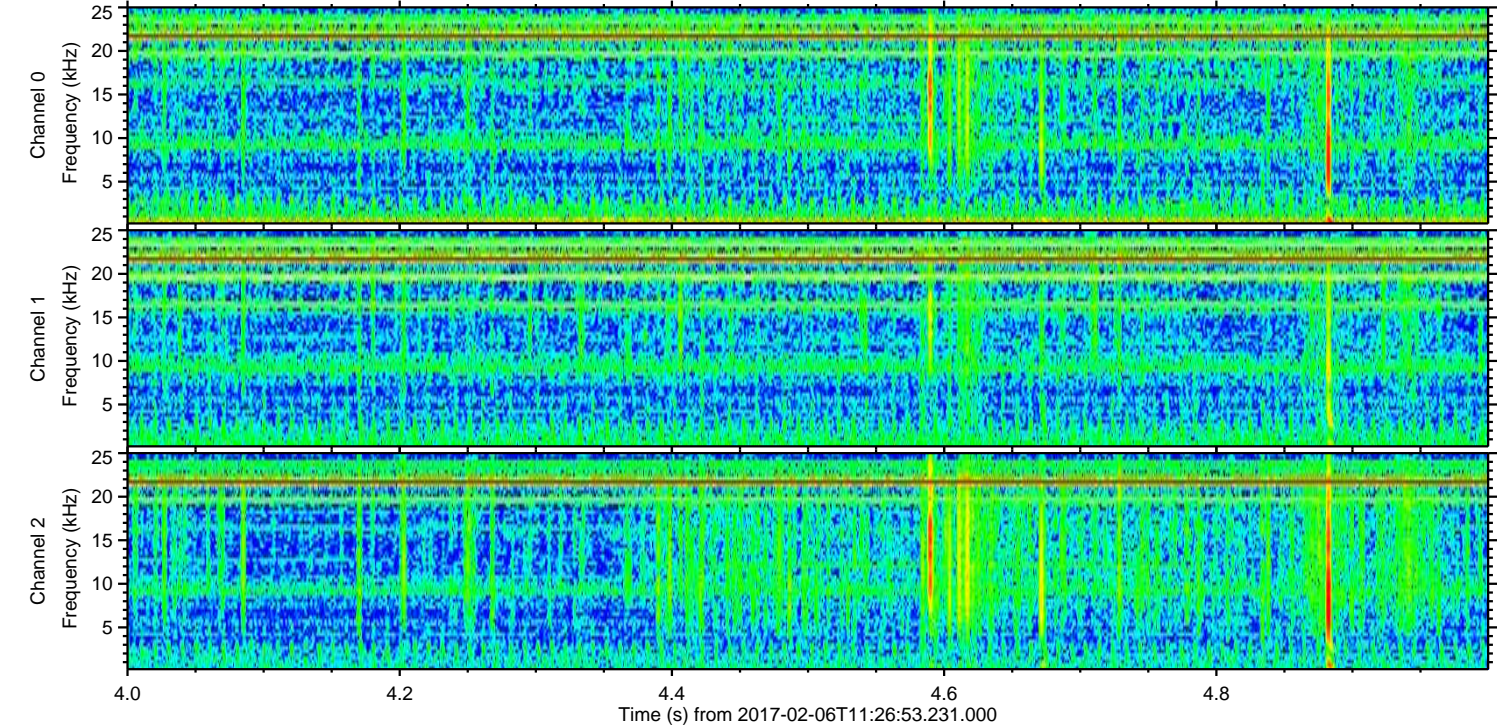
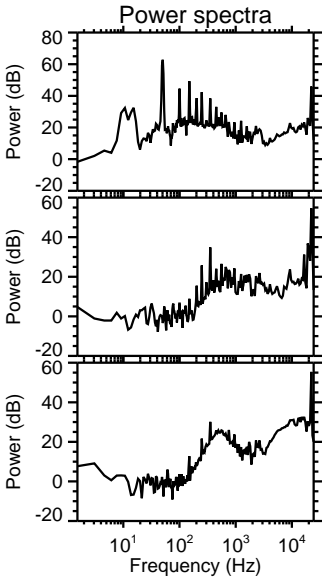
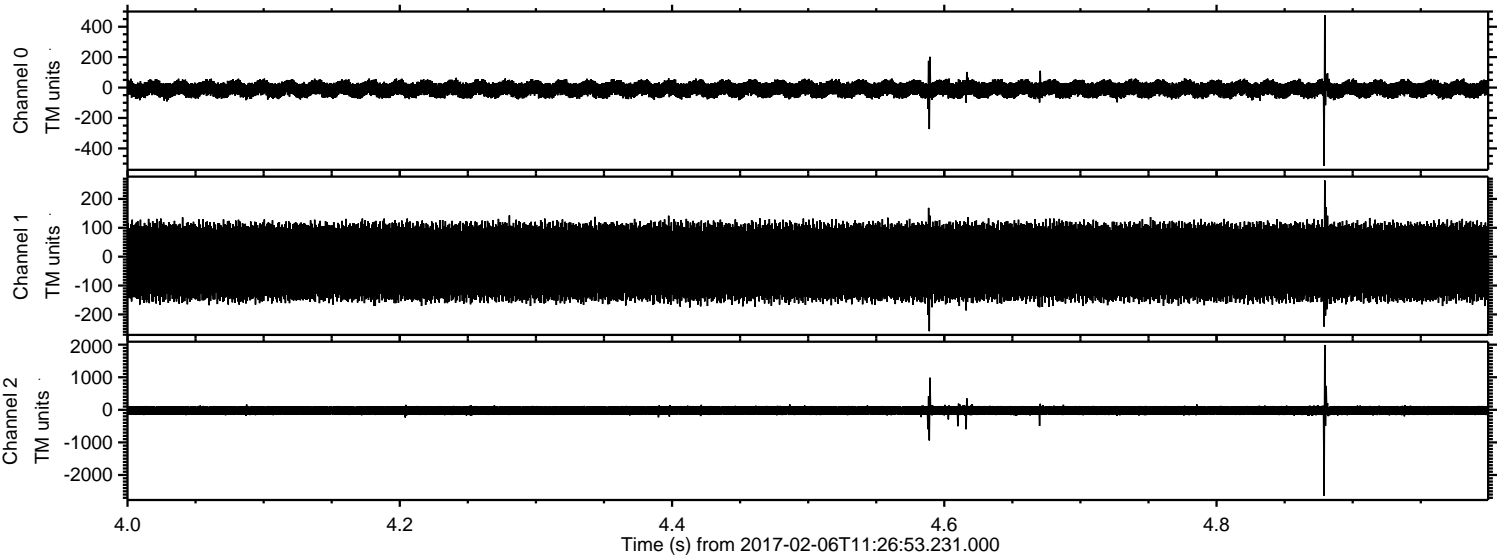


ELMAVAN 3D WAVEFORMS (Measured data sampled at 50 kHz) 51000 packets of 144 samples from 2017-02-06T11:26:53.231.000. Part 129/147

Processed Mon Feb 6 12:34:32 2017 by ELM ver.2012-10-06 from 001__elm20170206_112652__dat00.bin

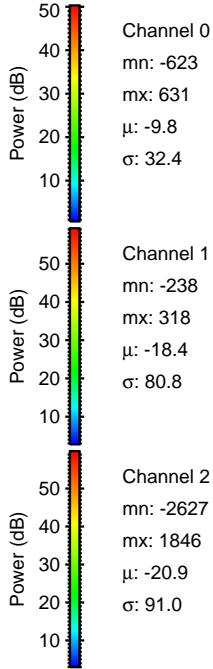
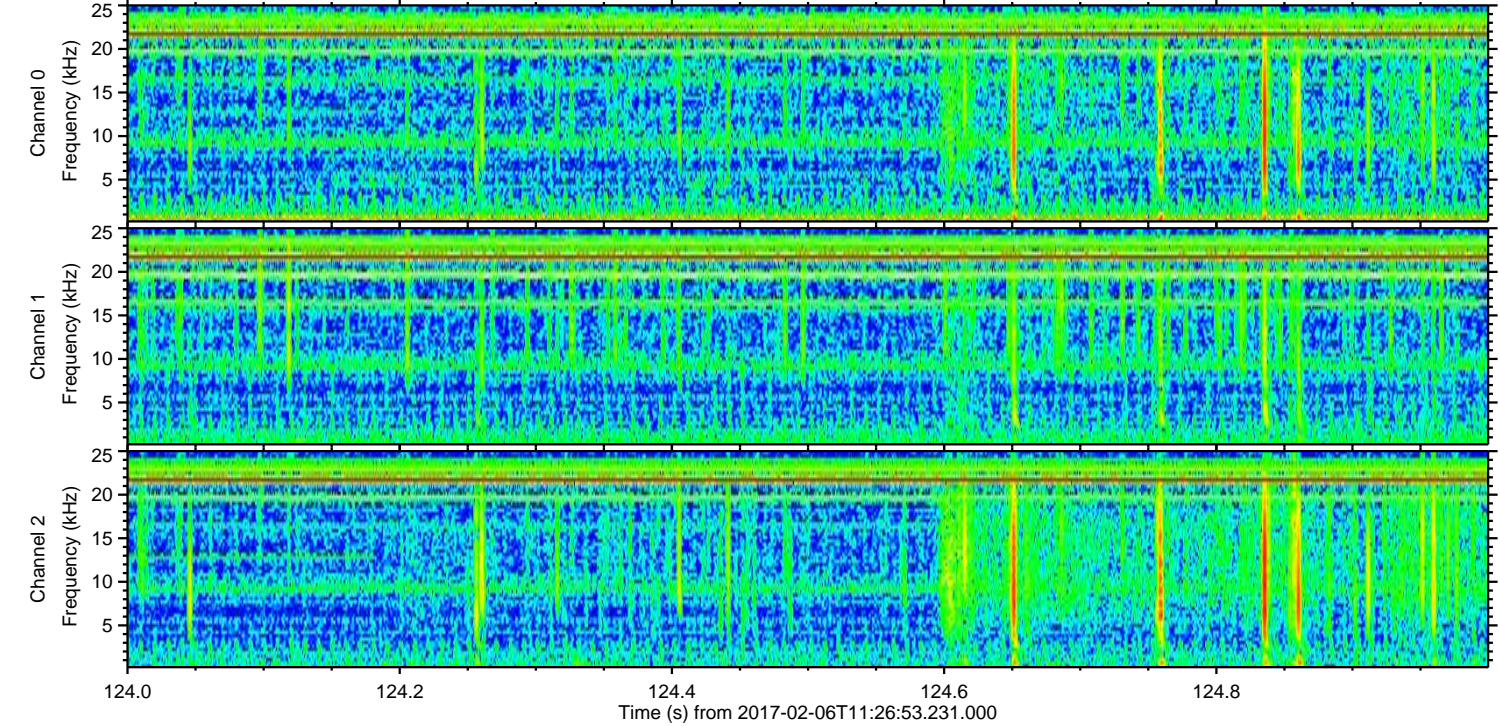
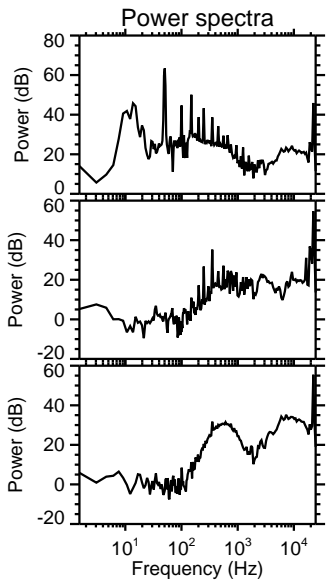
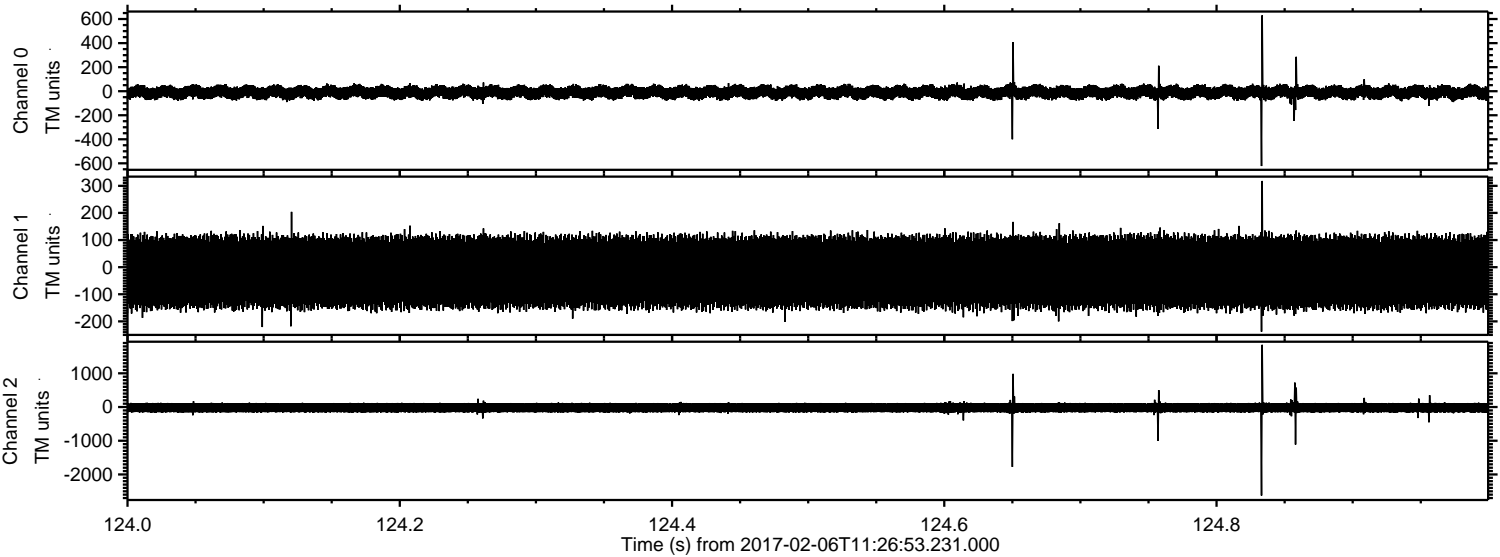


Processed Mon Feb 6 12:34:33 2017 by ELM ver.2012-10-06 from 001__elm20170206_112652__dat00.bin

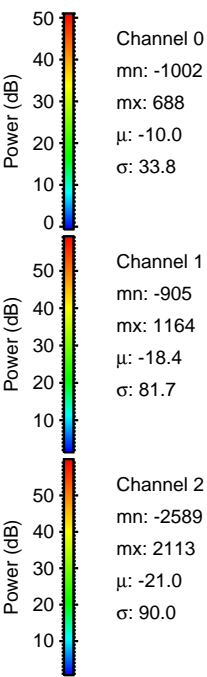
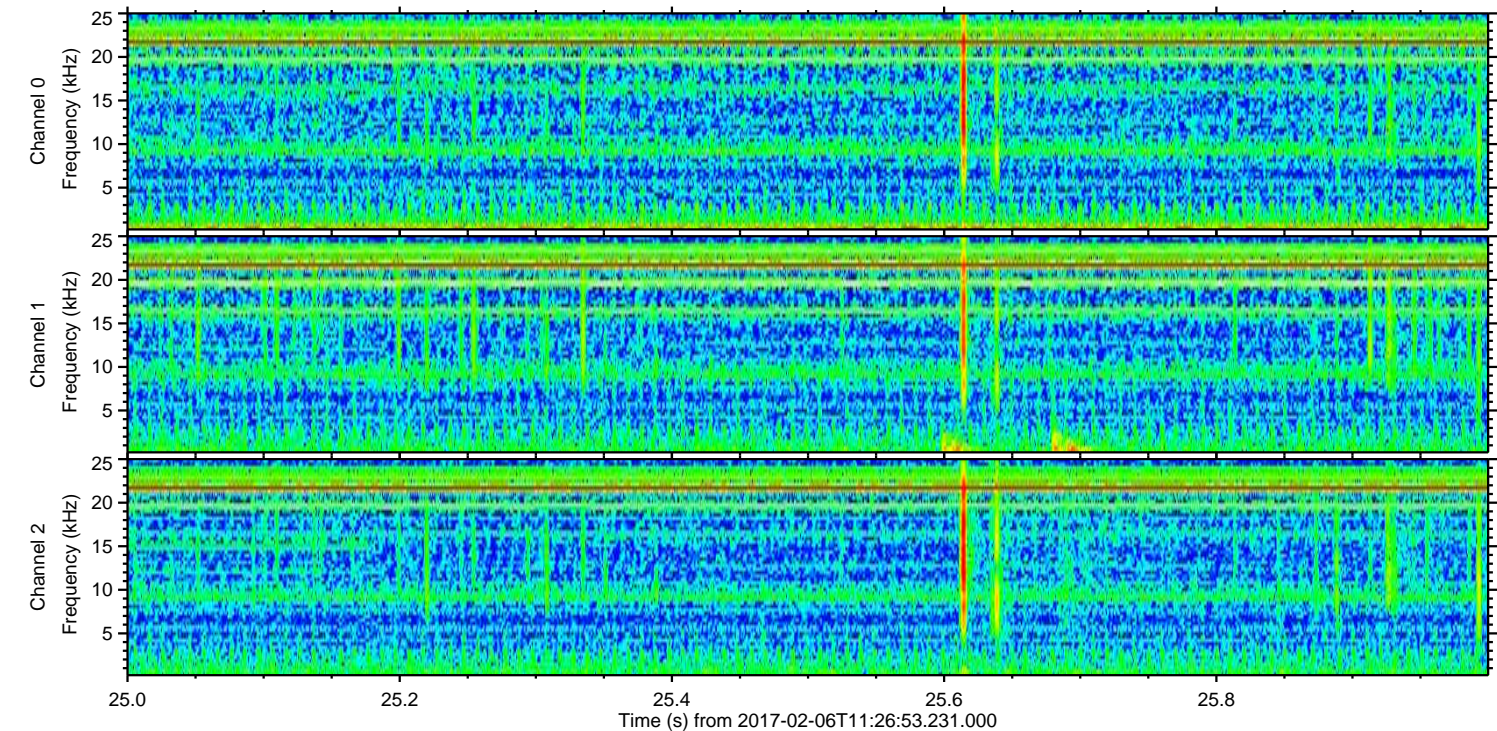
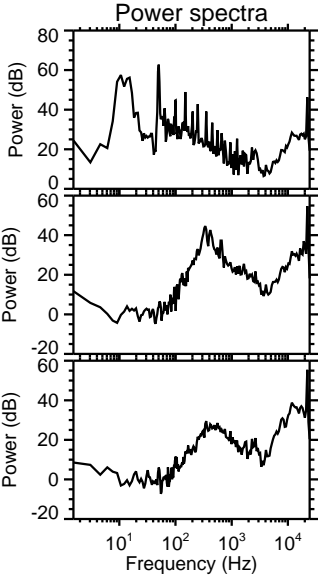
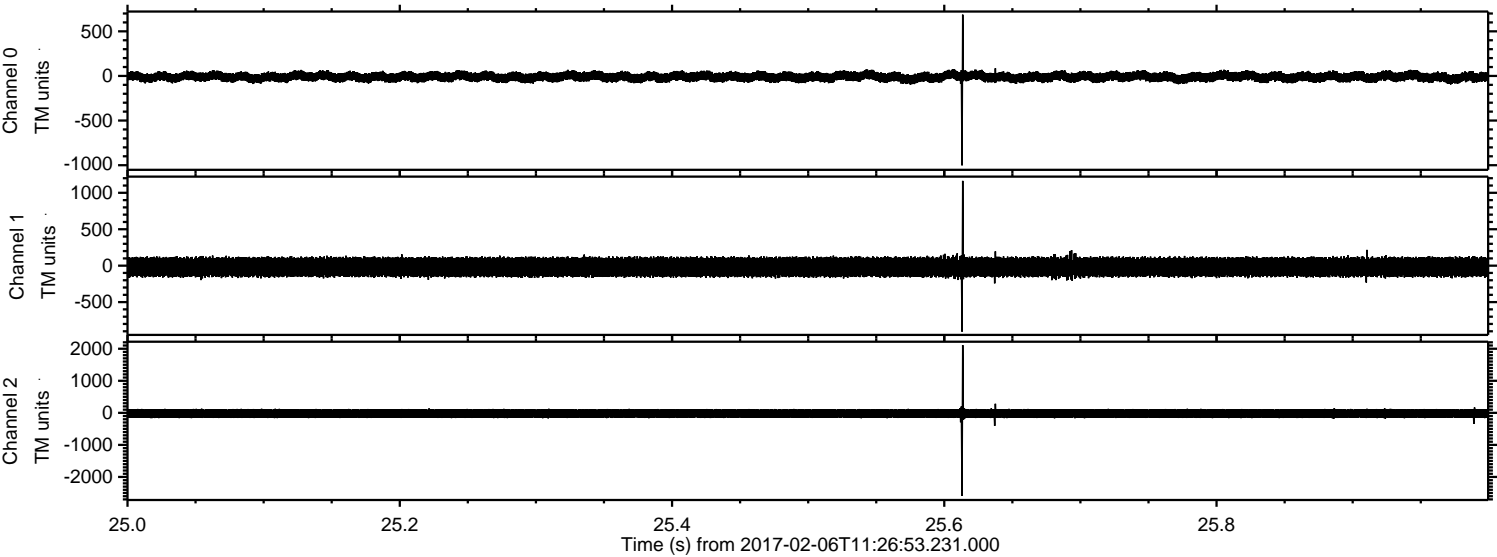


ELMAVAN 3D WAVEFORMS (Measured data sampled at 50 kHz) 51000 packets of 144 samples from 2017-02-06T11:26:53.231.000. Part 125/147

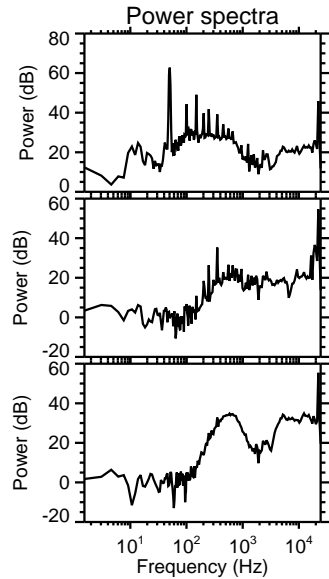
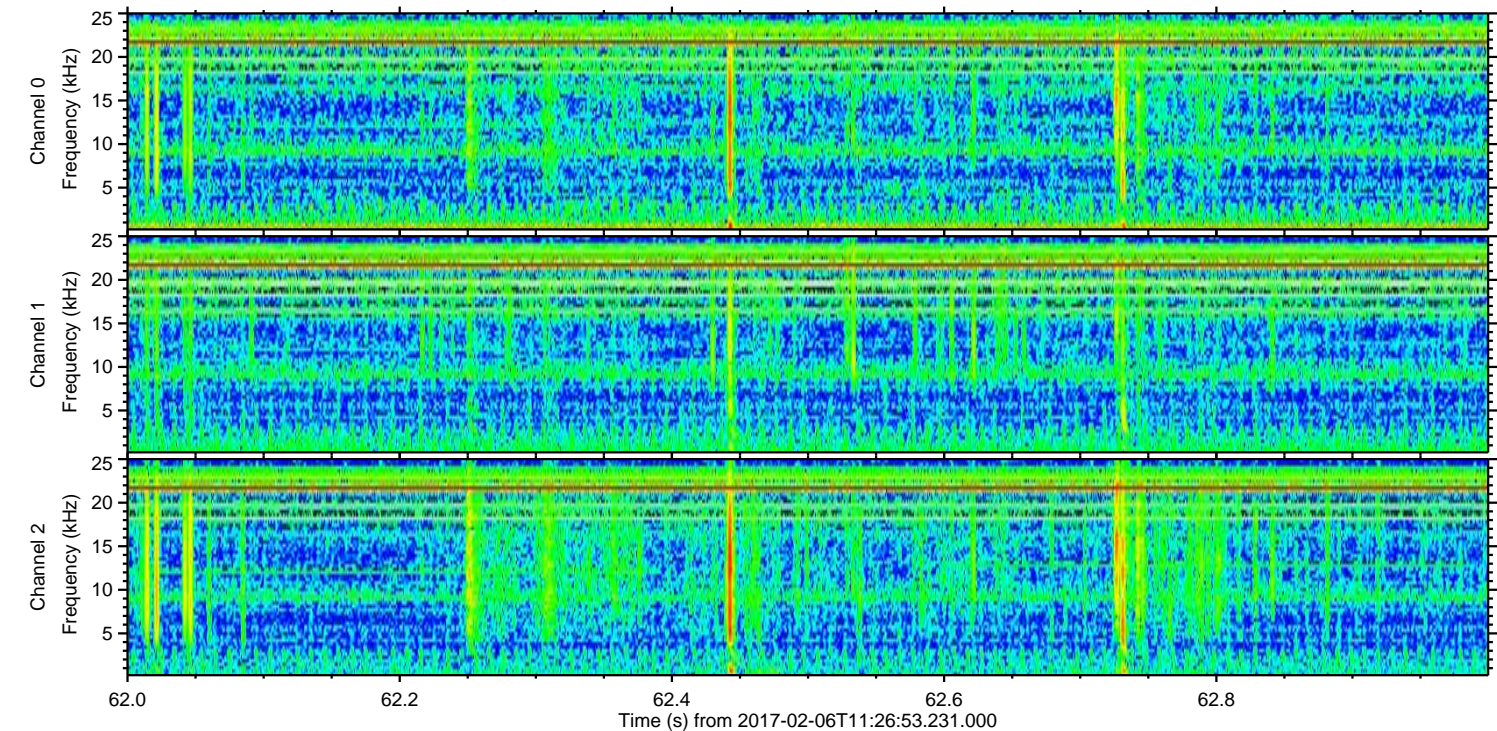
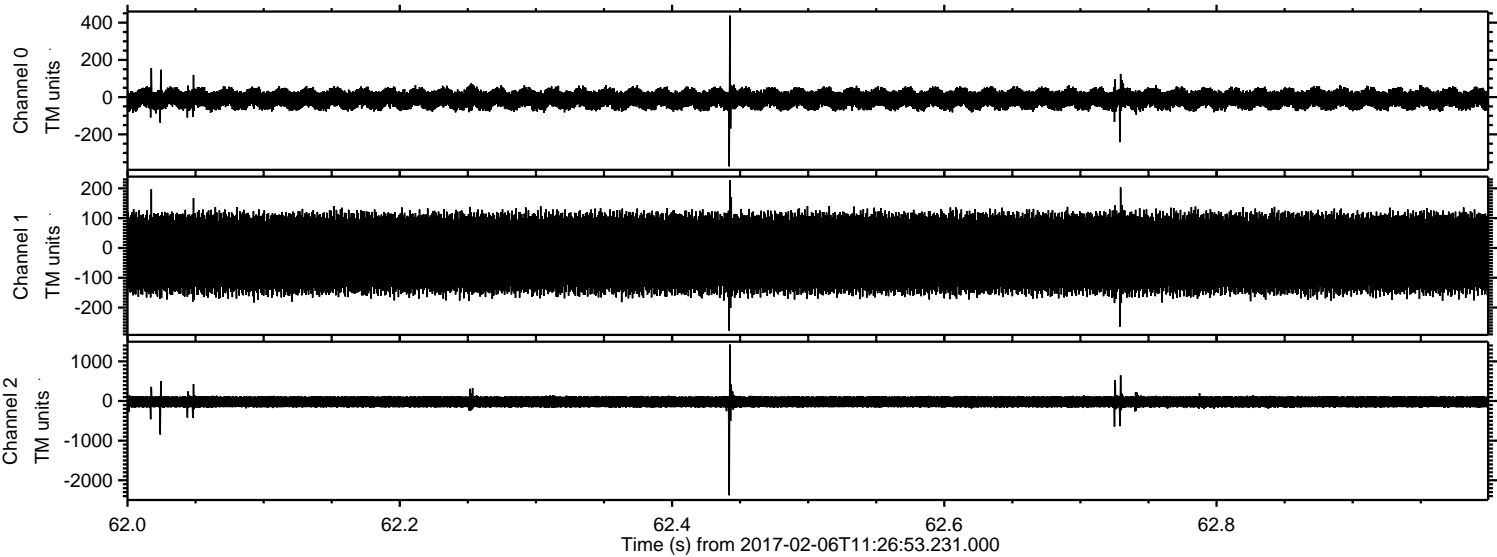
Processed Mon Feb 6 12:34:34 2017 by ELM ver.2012-10-06 from 001__elm20170206_112652__dat00.bin



Processed Mon Feb 6 12:34:35 2017 by ELM ver.2012-10-06 from 001__elm20170206_112652__dat00.bin



Processed Mon Feb 6 12:34:36 2017 by ELM ver.2012-10-06 from 001__elm20170206_112652__dat00.bin



Channel 0
mn: -372
mx: 438
 μ : -9.8
 σ : 31.8

Channel 1
mn: -278
mx: 228
 μ : -18.4
 σ : 80.6

Channel 2
mn: -2379
mx: 1425
 μ : -21.1
 σ : 89.6

Processed Mon Feb 6 12:34:37 2017 by ELM ver.2012-10-06 from 001__elm20170206_112652__dat00.bin

