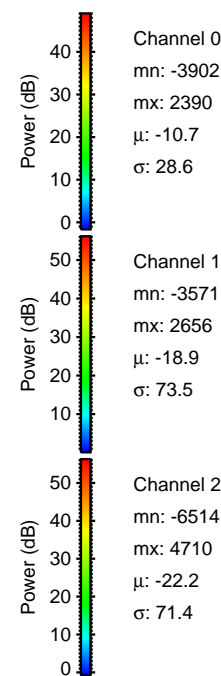
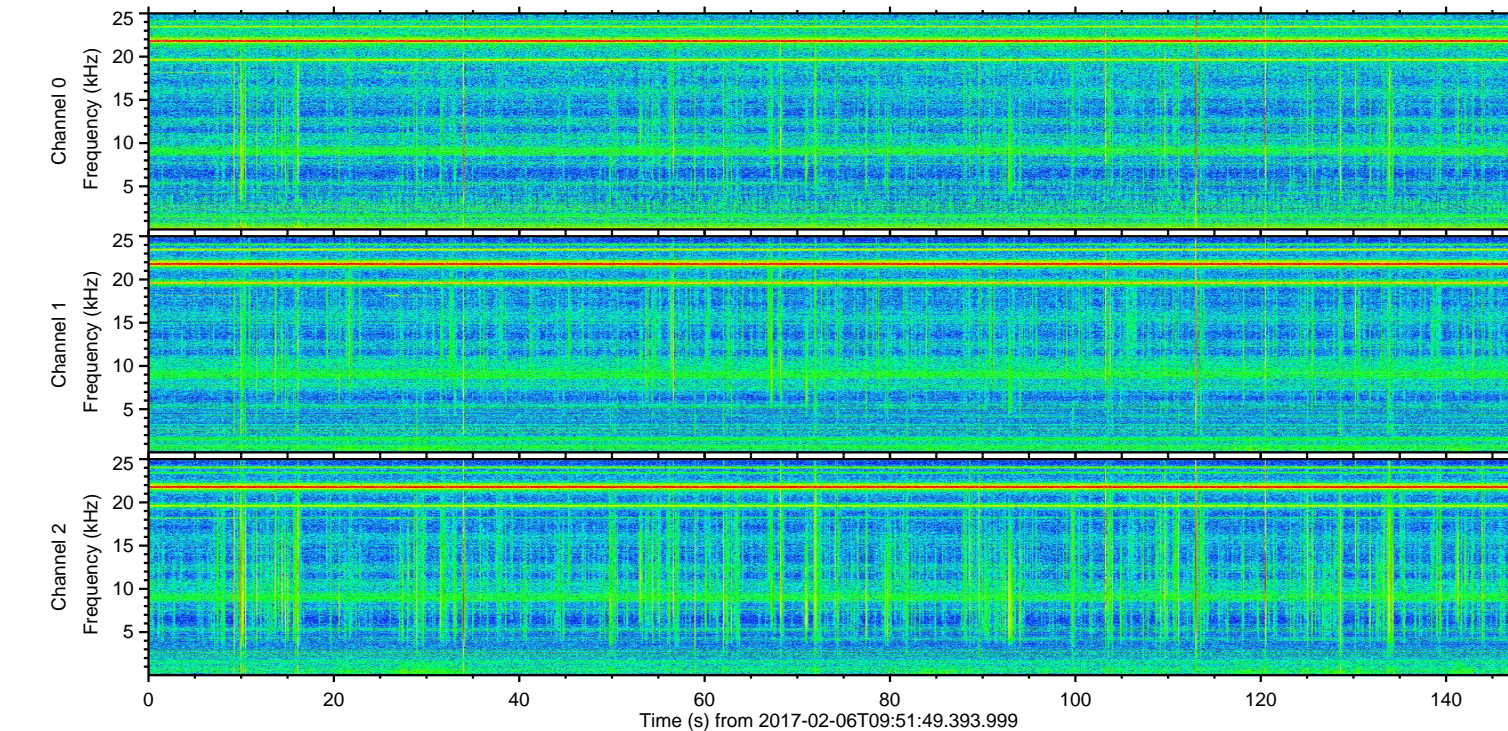
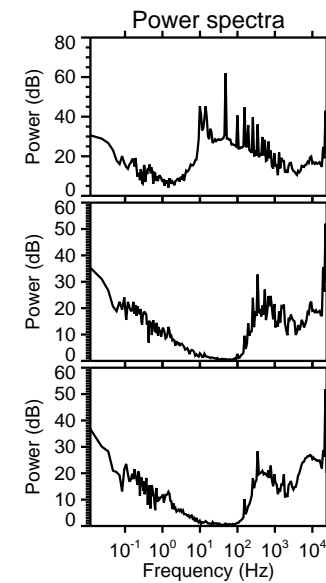
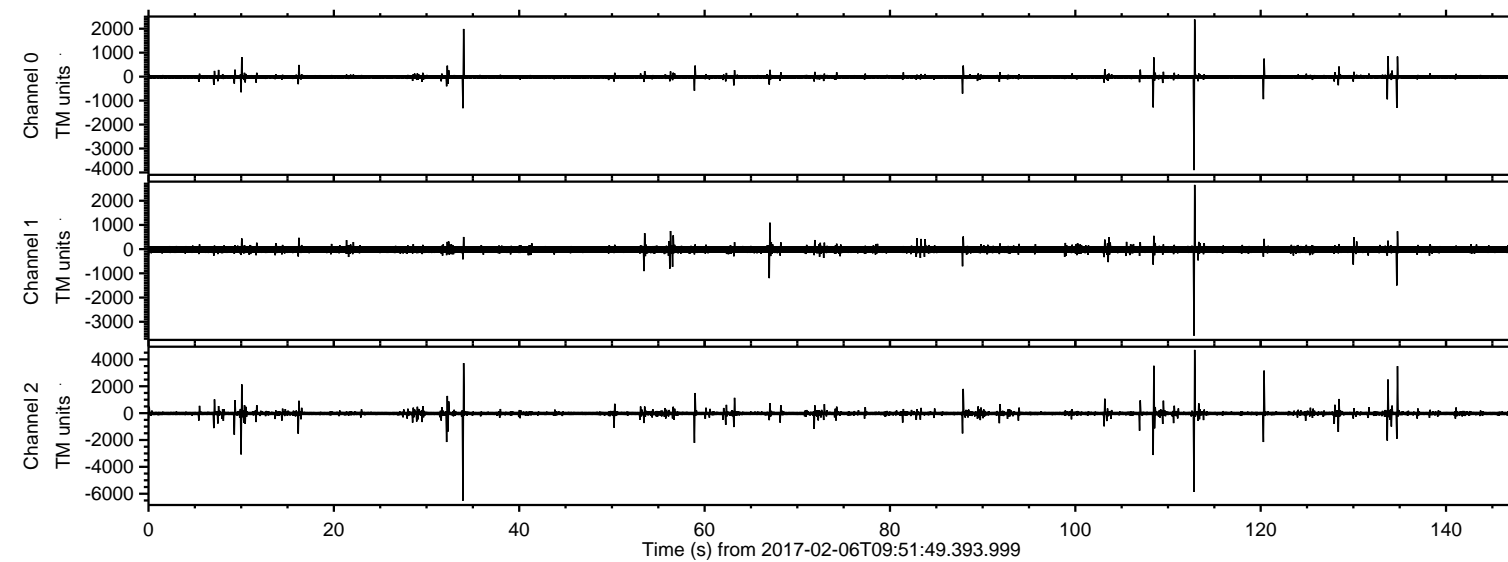


ELMAVAN 3D WAVEFORMS (Measured data sampled at 50 kHz) 51000 packets of 144 samples from 2017-02-06T09:51:49.393.999.

Processed Mon Feb 6 10:59:44 2017 by ELM ver.2012-10-06 from 001__elm20170206_095148__dat00.bin



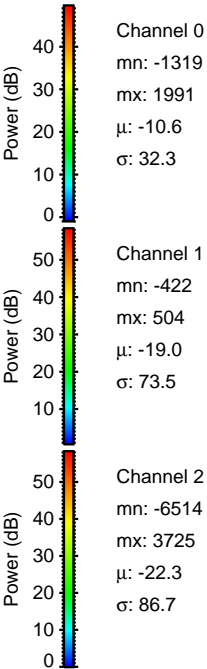
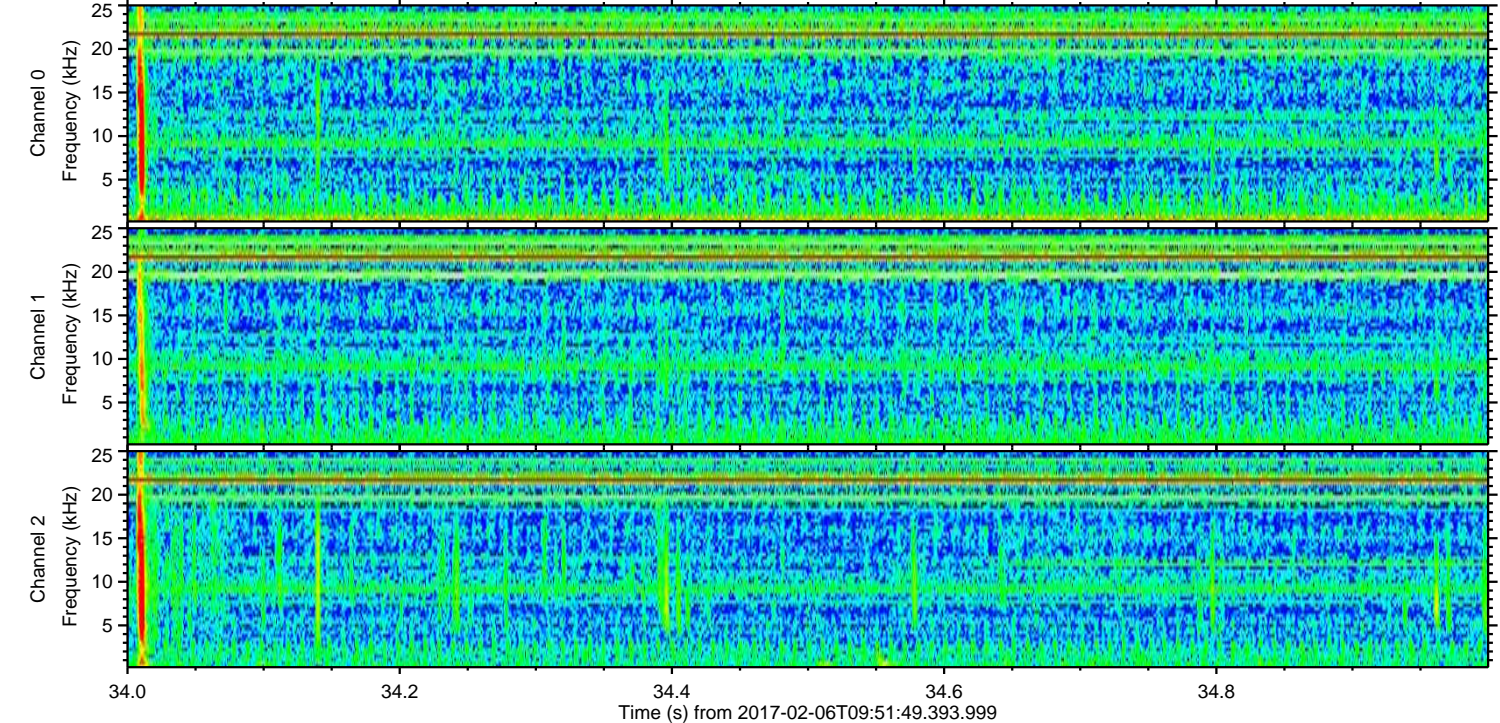
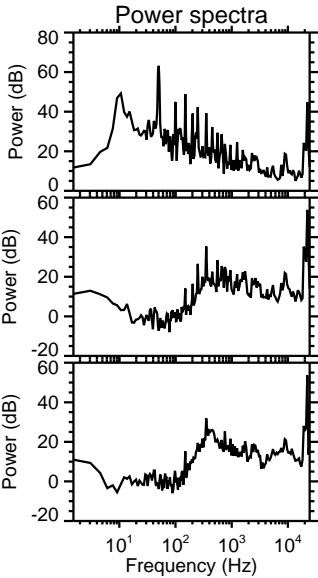
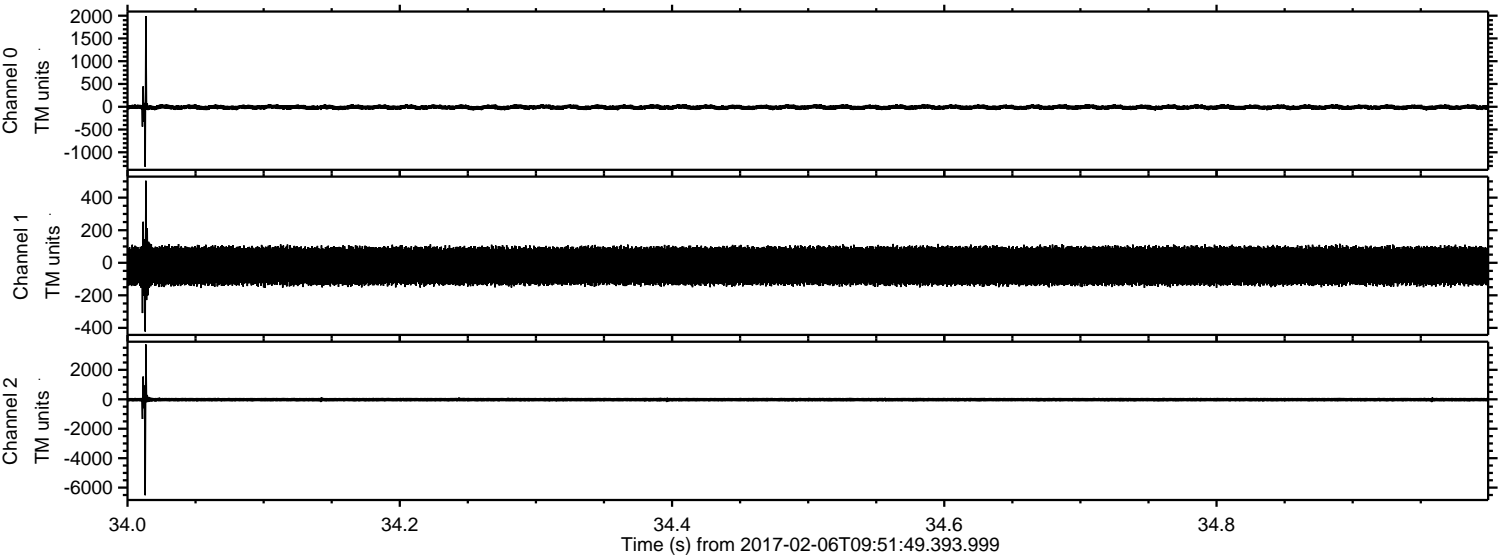
Channel 0
mn: -3902
mx: 2390
 μ : -10.7
 σ : 28.6

Channel 1
mn: -3571
mx: 2656
 μ : -18.9
 σ : 73.5

Channel 2
mn: -6514
mx: 4710
 μ : -22.2
 σ : 71.4

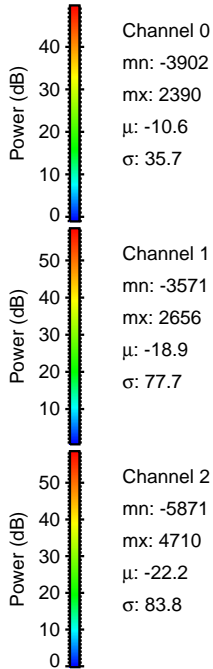
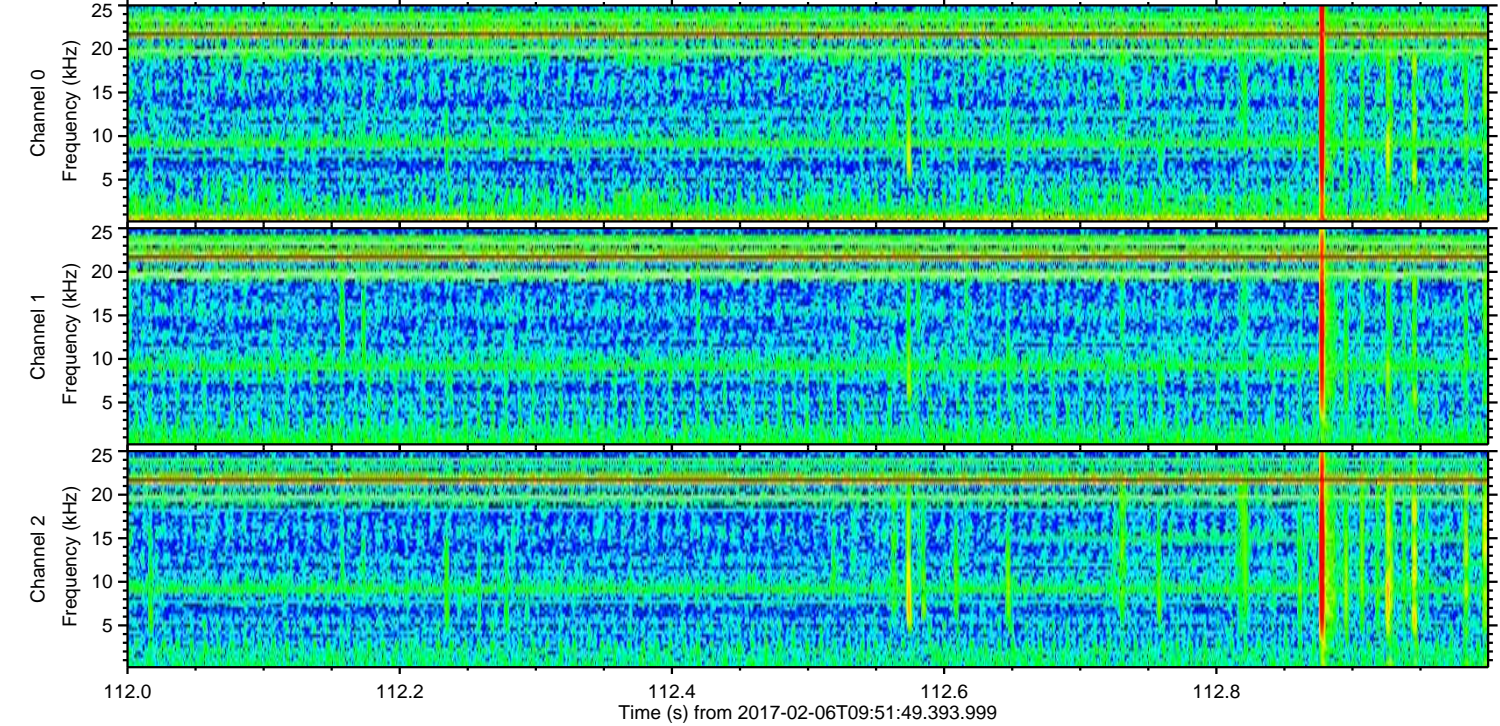
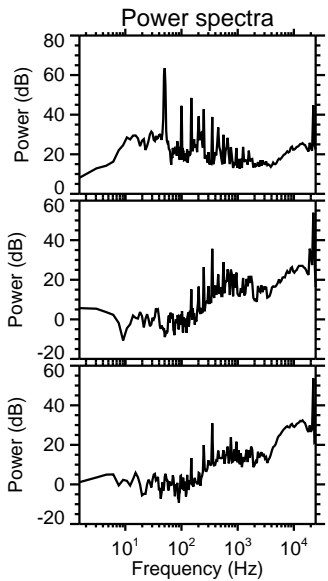
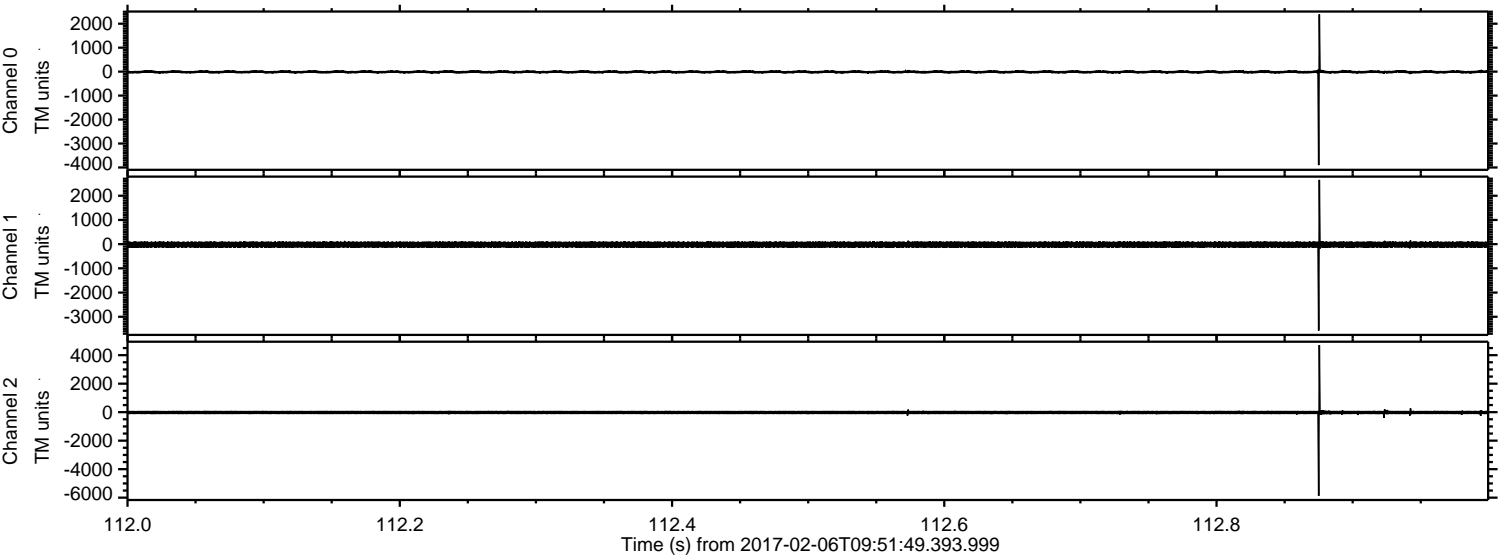
ELMAVAN 3D WAVEFORMS (Measured data sampled at 50 kHz) 51000 packets of 144 samples from 2017-02-06T09:51:49.393.999. Part 35/147

Processed Mon Feb 6 10:59:55 2017 by ELM ver.2012-10-06 from 001__elm20170206_095148__dat00.bin



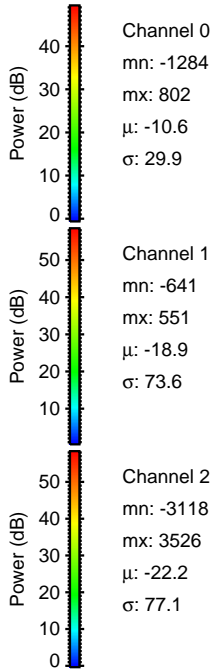
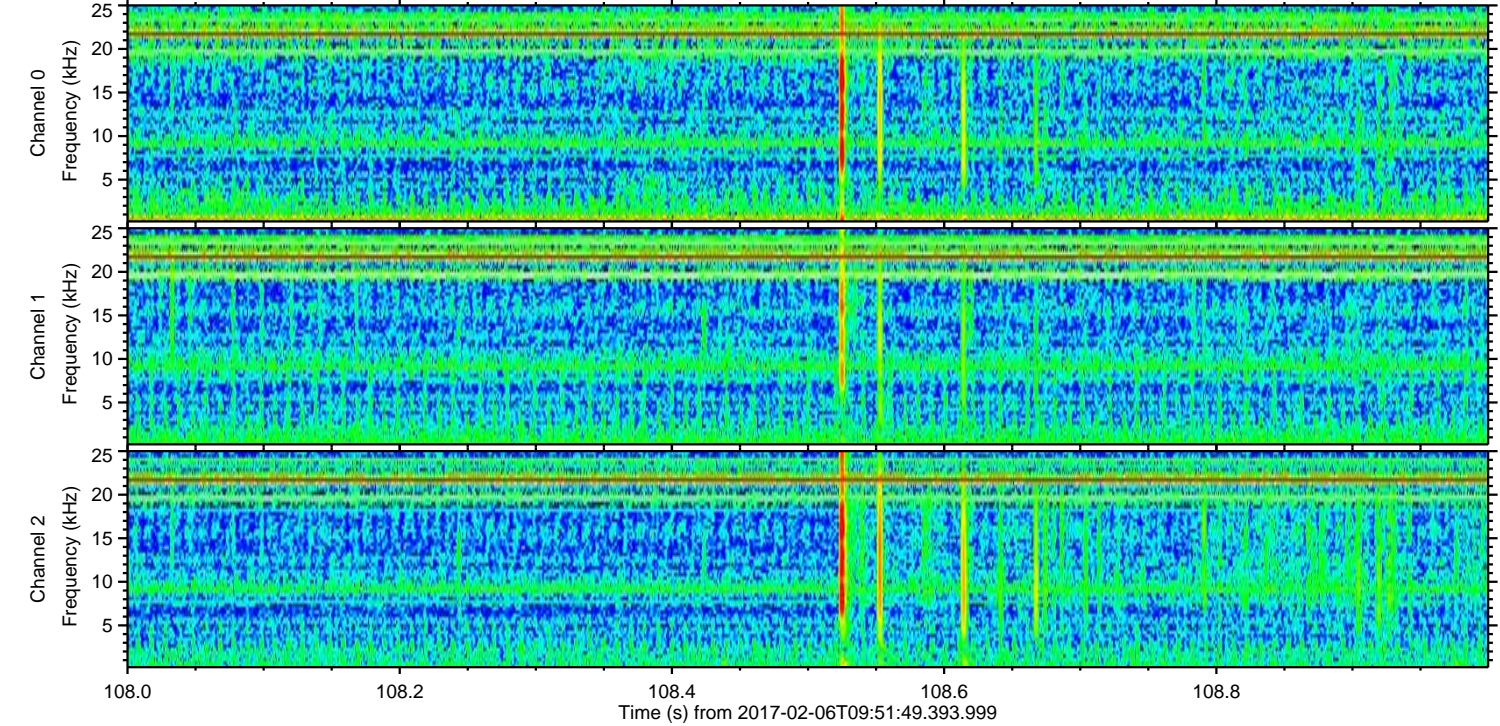
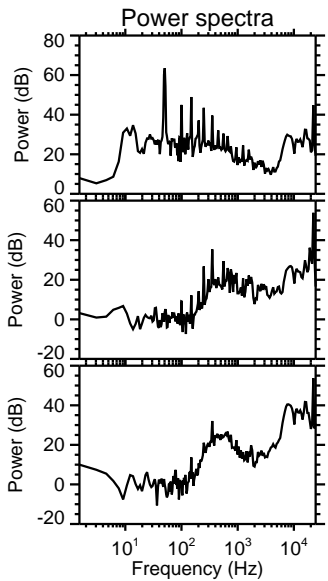
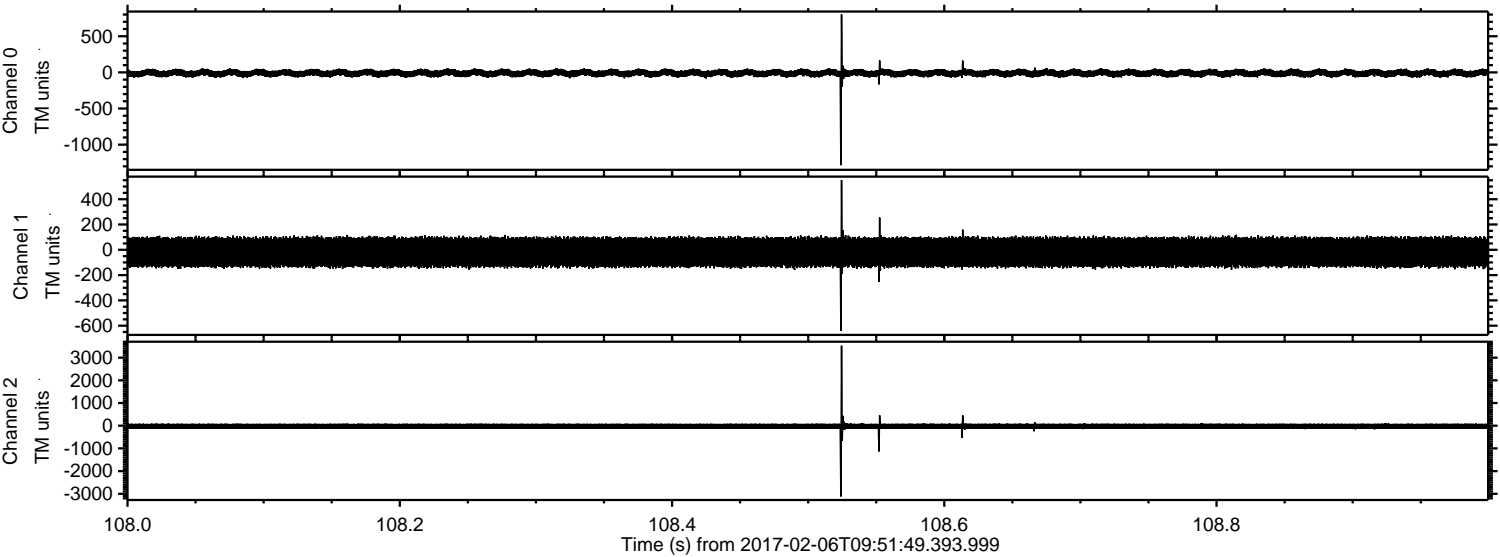
ELMAVAN 3D WAVEFORMS (Measured data sampled at 50 kHz) 51000 packets of 144 samples from 2017-02-06T09:51:49.393.999. Part 113/147

Processed Mon Feb 6 10:59:56 2017 by ELM ver.2012-10-06 from 001__elm20170206_095148__dat00.bin



ELMAVAN 3D WAVEFORMS (Measured data sampled at 50 kHz) 51000 packets of 144 samples from 2017-02-06T09:51:49.393.999. Part 109/147

Processed Mon Feb 6 10:59:57 2017 by ELM ver.2012-10-06 from 001__elm20170206_095148__dat00.bin



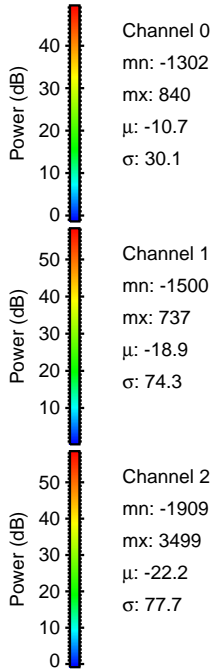
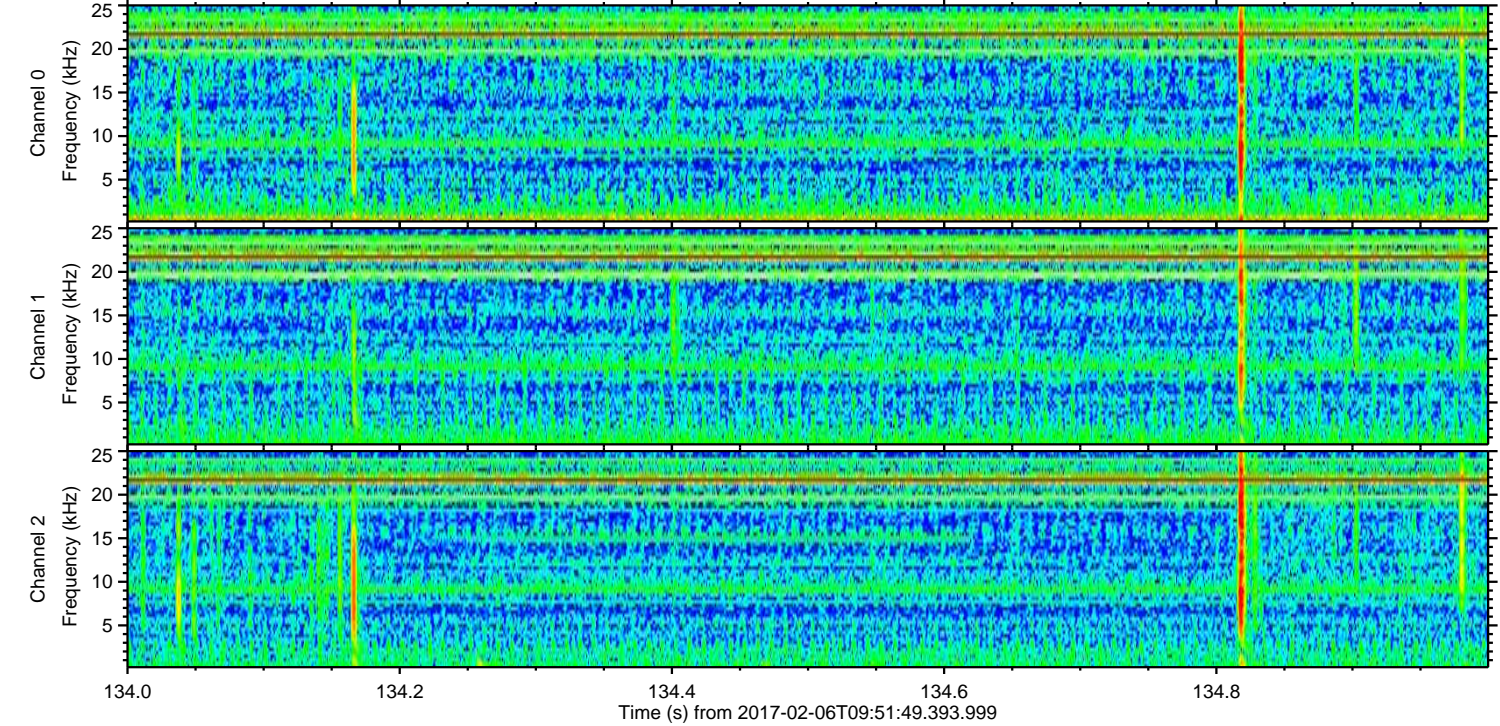
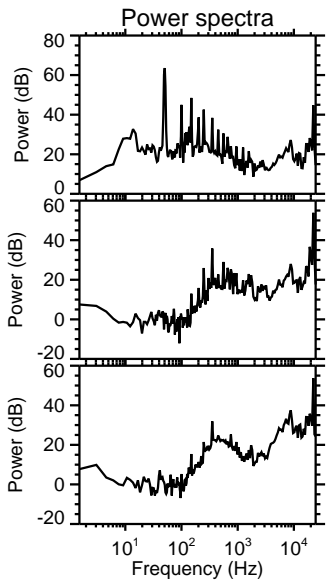
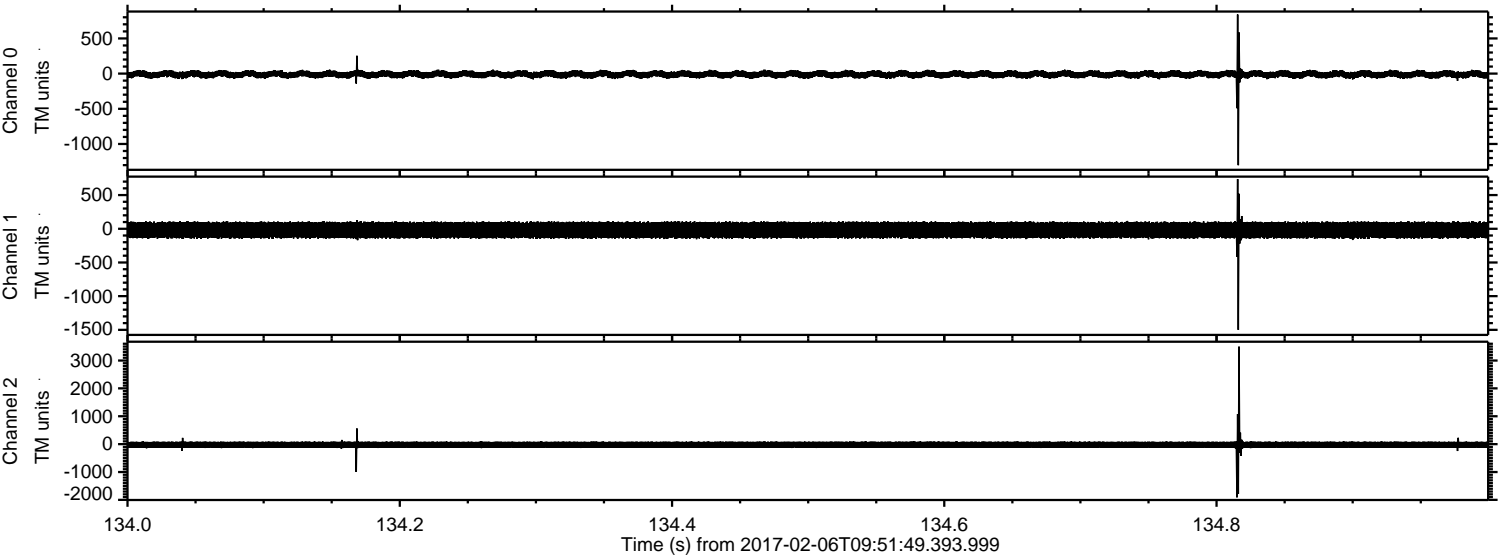
Channel 0
mn: -1284
mx: 802
 μ : -10.6
 σ : 29.9

Channel 1
mn: -641
mx: 551
 μ : -18.9
 σ : 73.6

Channel 2
mn: -3118
mx: 3526
 μ : -22.2
 σ : 77.1

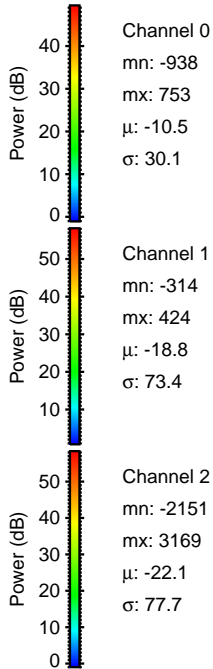
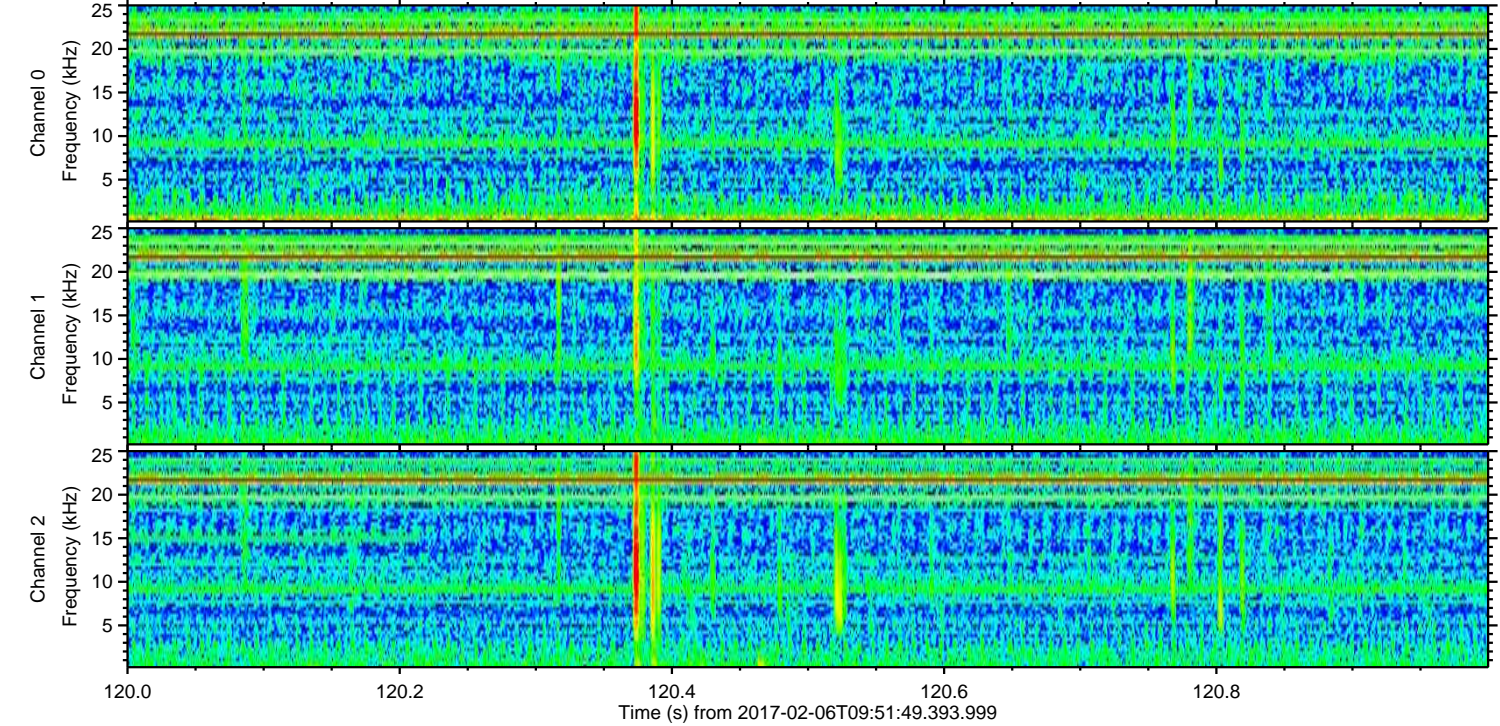
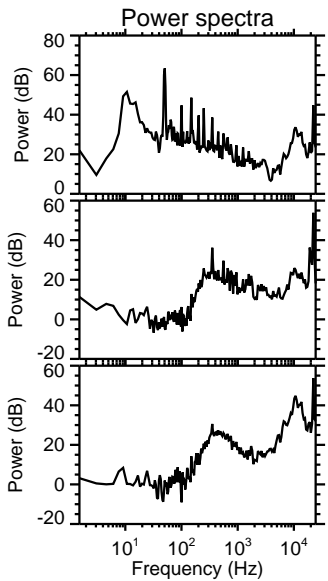
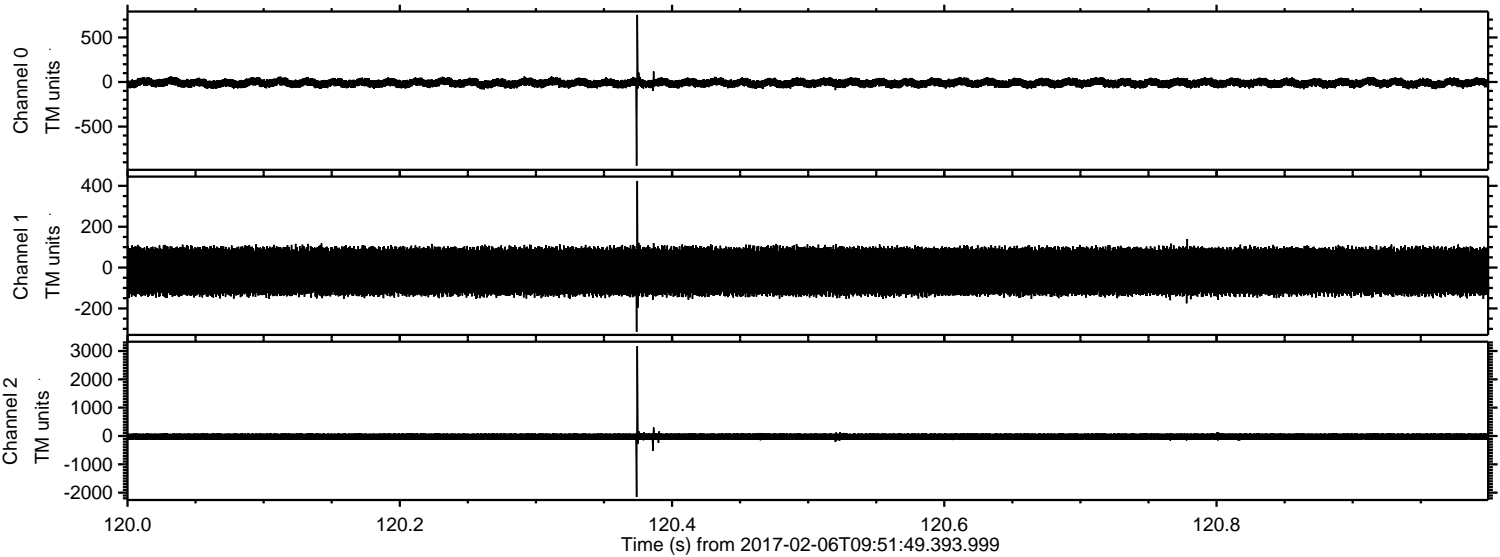
ELMAVAN 3D WAVEFORMS (Measured data sampled at 50 kHz) 51000 packets of 144 samples from 2017-02-06T09:51:49.393.999. Part 135/147

Processed Mon Feb 6 10:59:58 2017 by ELM ver.2012-10-06 from 001__elm20170206_095148__dat00.bin



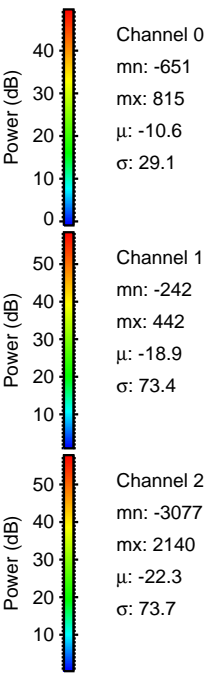
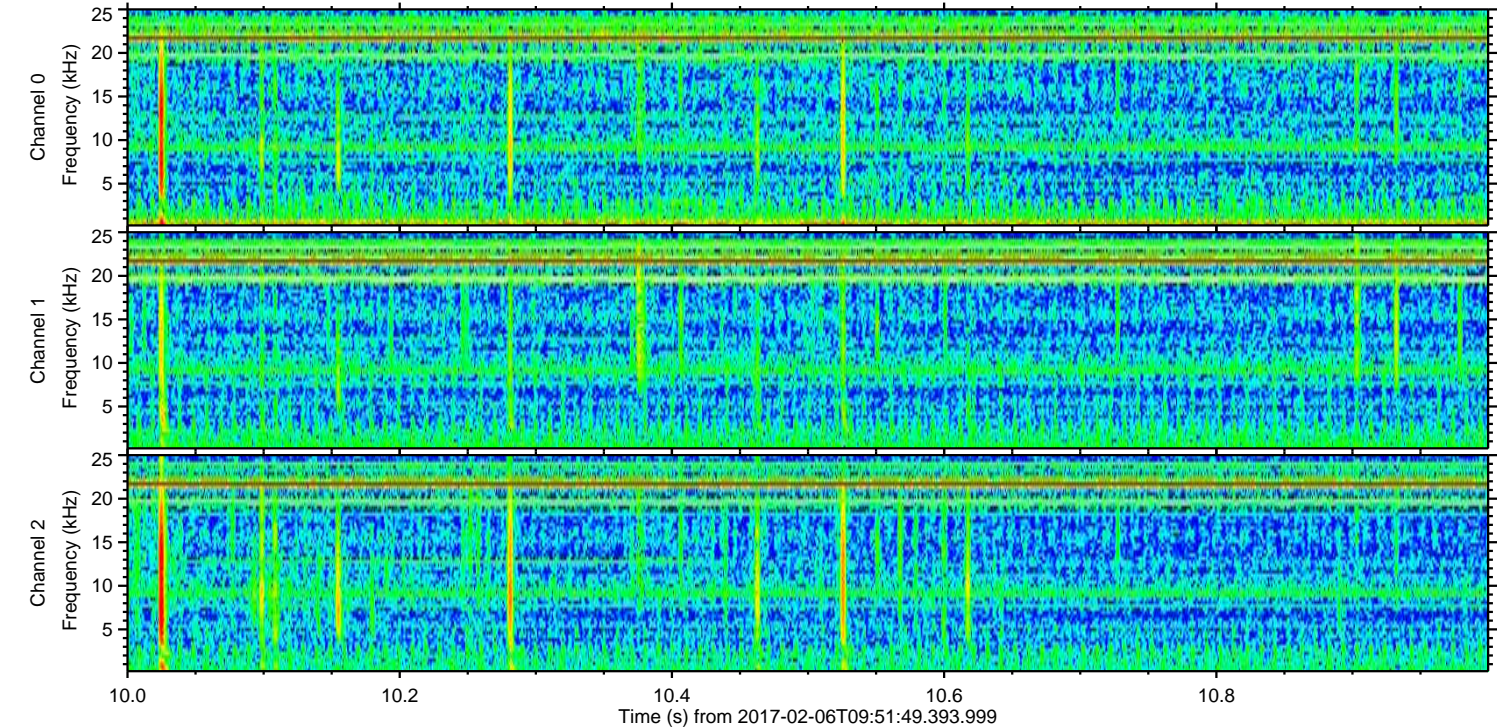
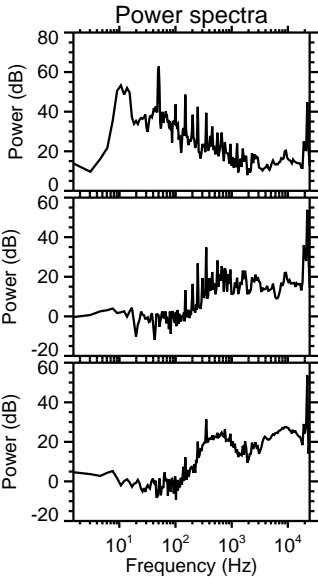
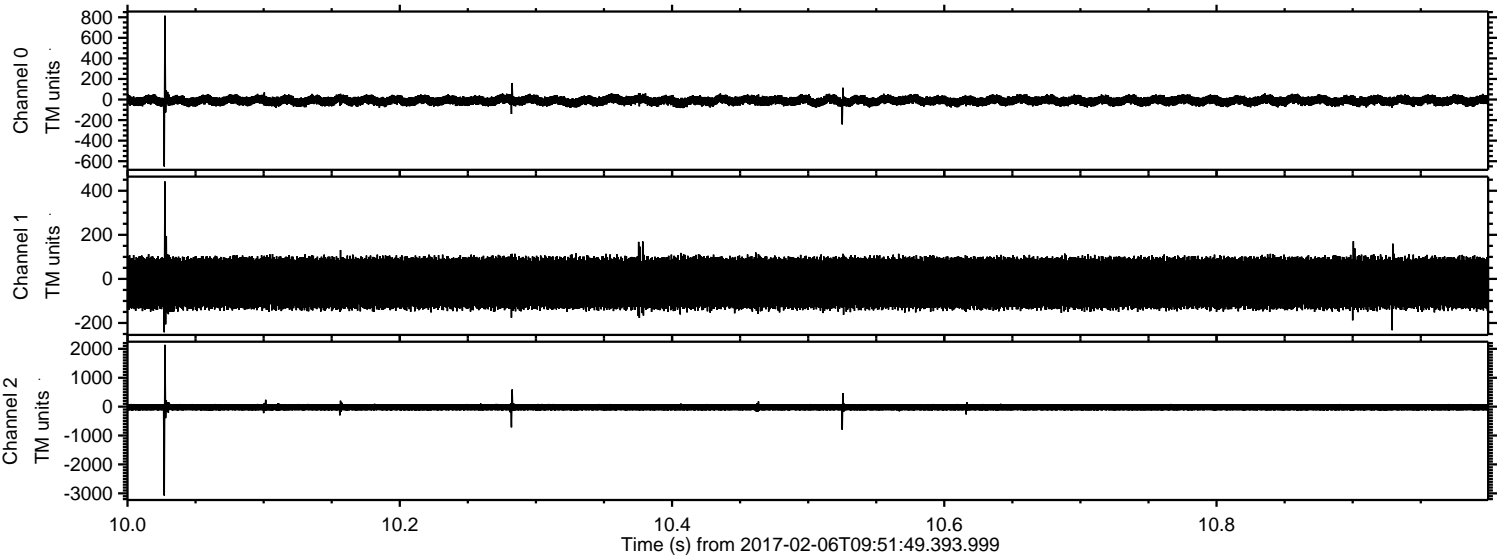
ELMAVAN 3D WAVEFORMS (Measured data sampled at 50 kHz) 51000 packets of 144 samples from 2017-02-06T09:51:49.393.999. Part 121/147

Processed Mon Feb 6 10:59:59 2017 by ELM ver.2012-10-06 from 001__elm20170206_095148__dat00.bin



ELMAVAN 3D WAVEFORMS (Measured data sampled at 50 kHz) 51000 packets of 144 samples from 2017-02-06T09:51:49.393.999. Part 11/147

Processed Mon Feb 6 11:00:00 2017 by ELM ver.2012-10-06 from 001__elm20170206_095148__dat00.bin



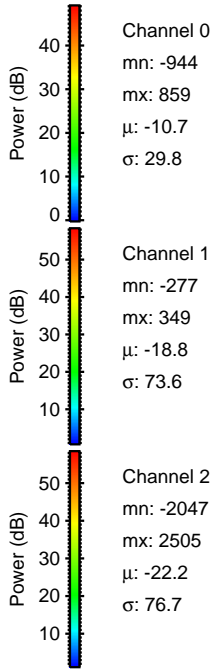
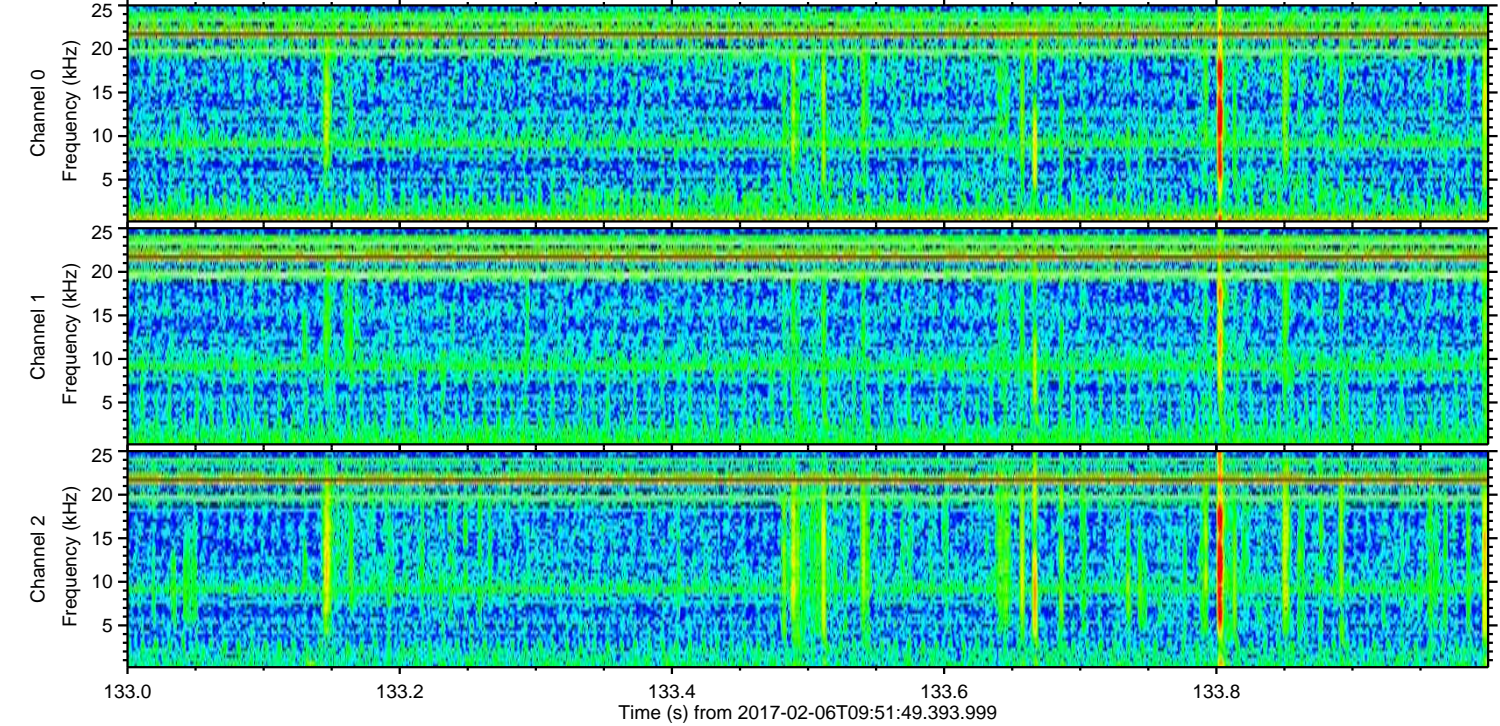
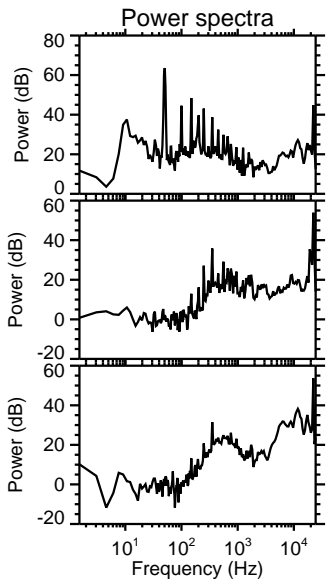
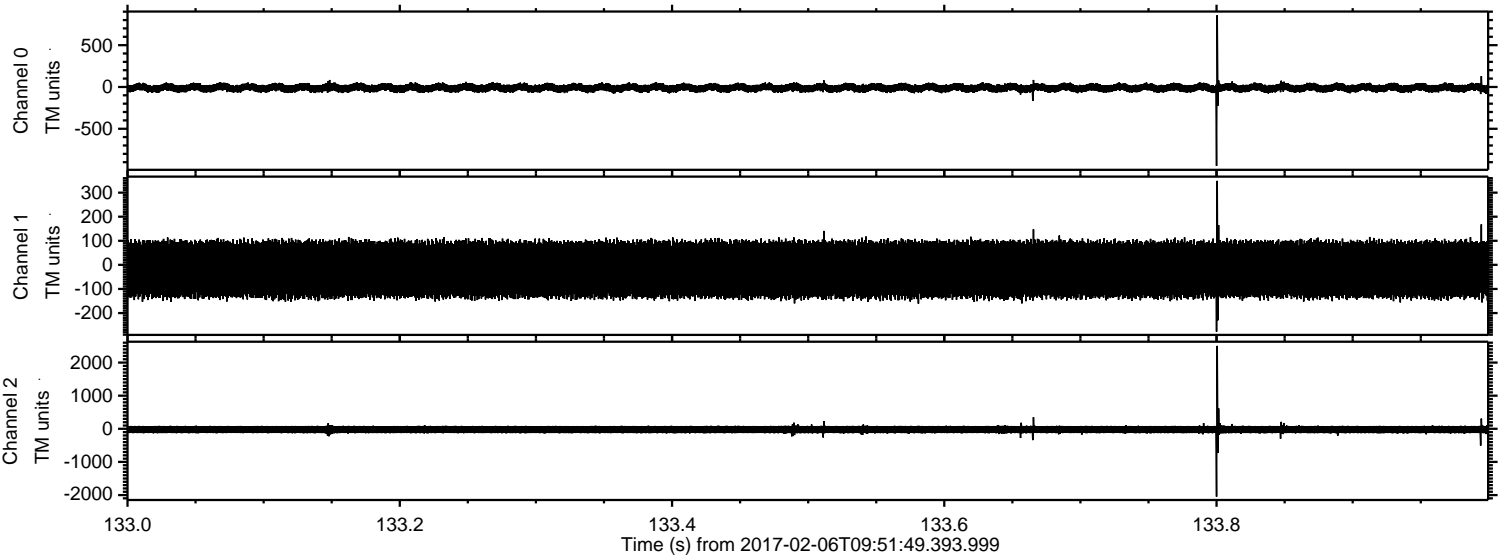
Channel 0
mn: -651
mx: 815
 μ : -10.6
 σ : 29.1

Channel 1
mn: -242
mx: 442
 μ : -18.9
 σ : 73.4

Channel 2
mn: -3077
mx: 2140
 μ : -22.3
 σ : 73.7

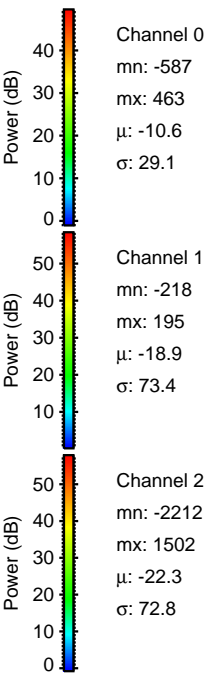
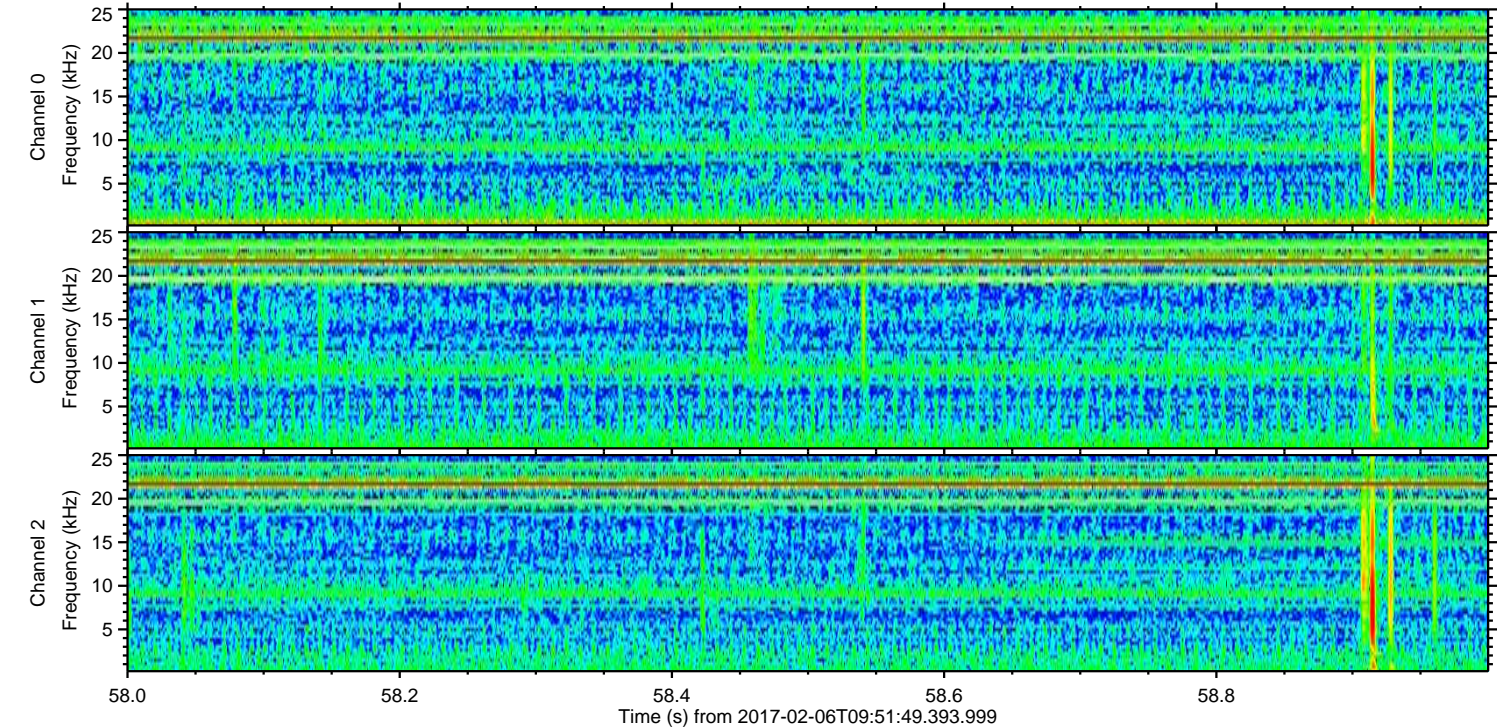
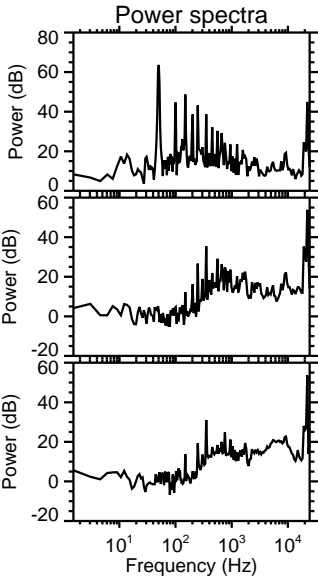
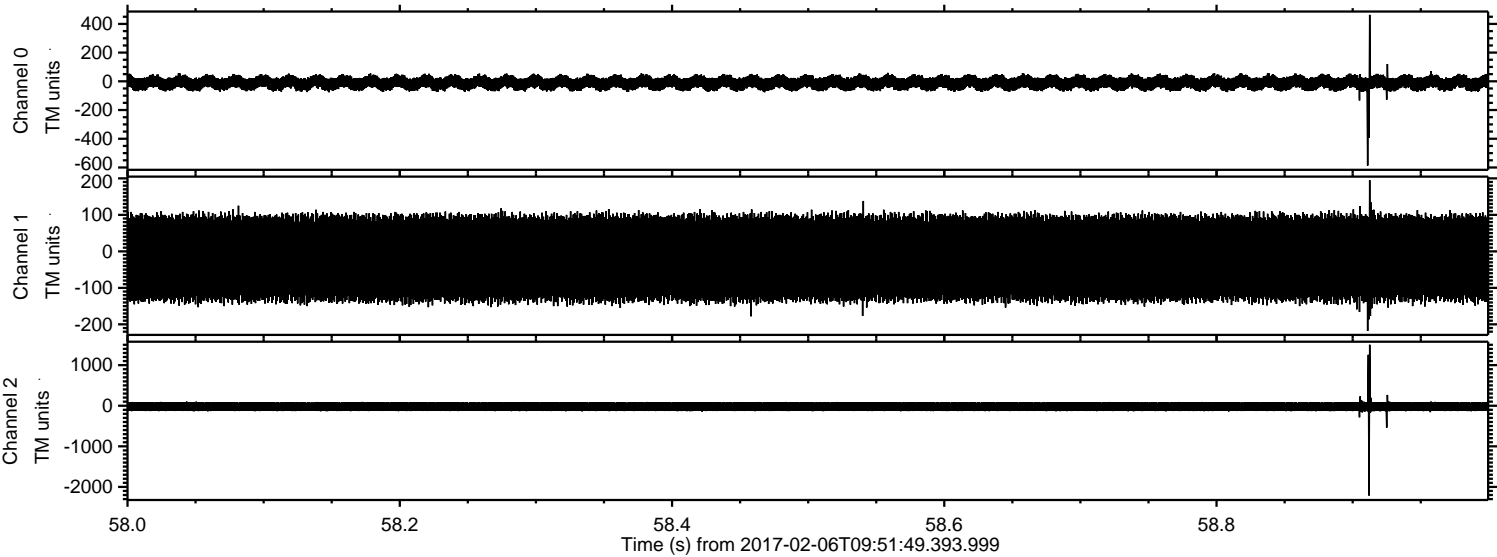
ELMAVAN 3D WAVEFORMS (Measured data sampled at 50 kHz) 51000 packets of 144 samples from 2017-02-06T09:51:49.393.999. Part 134/147

Processed Mon Feb 6 11:00:01 2017 by ELM ver.2012-10-06 from 001__elm20170206_095148__dat00.bin

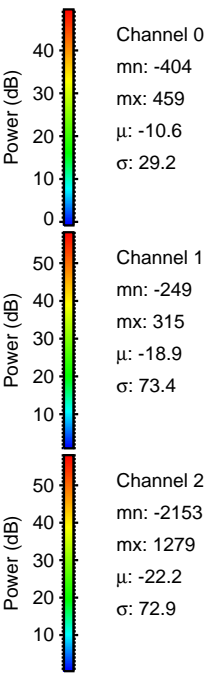
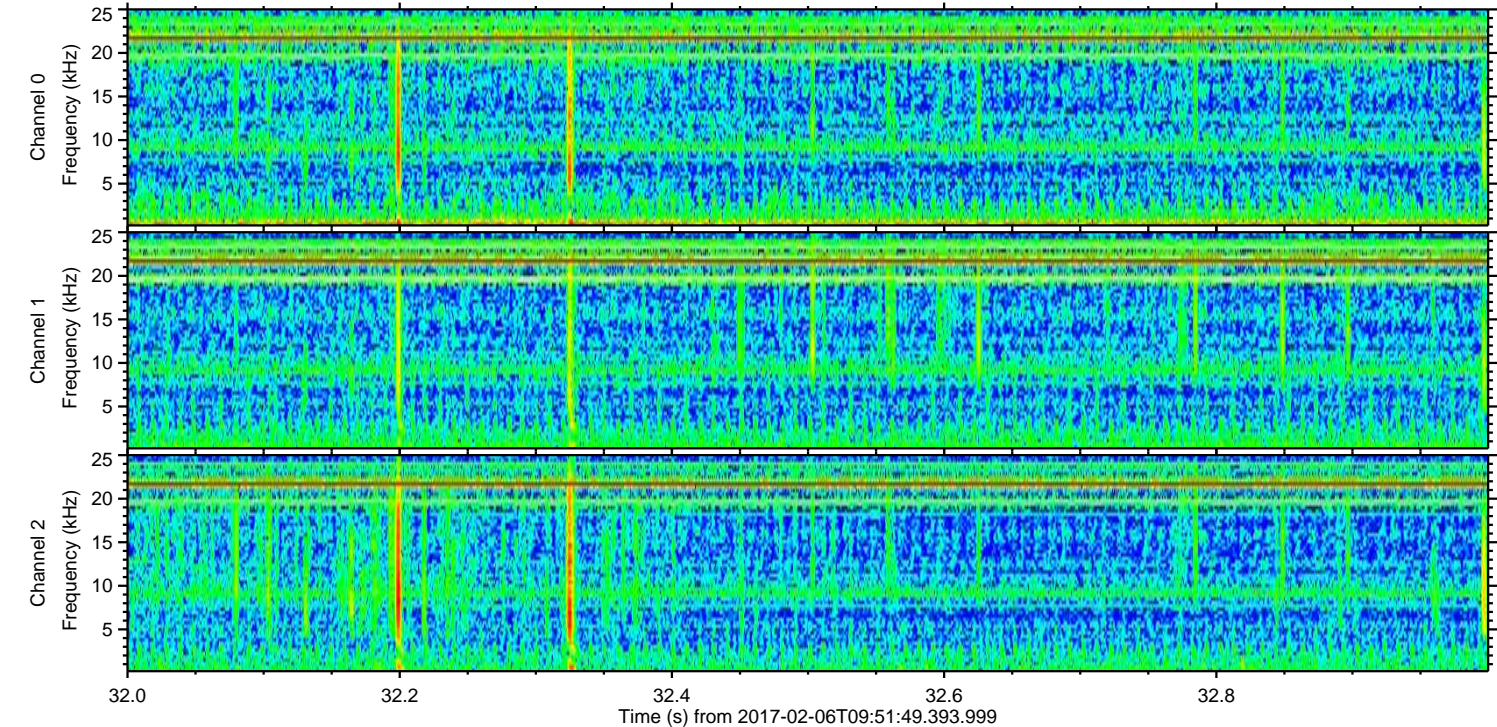
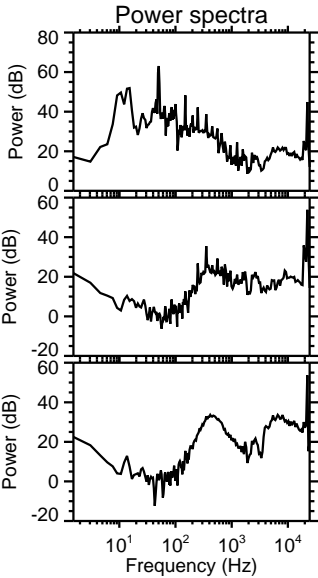
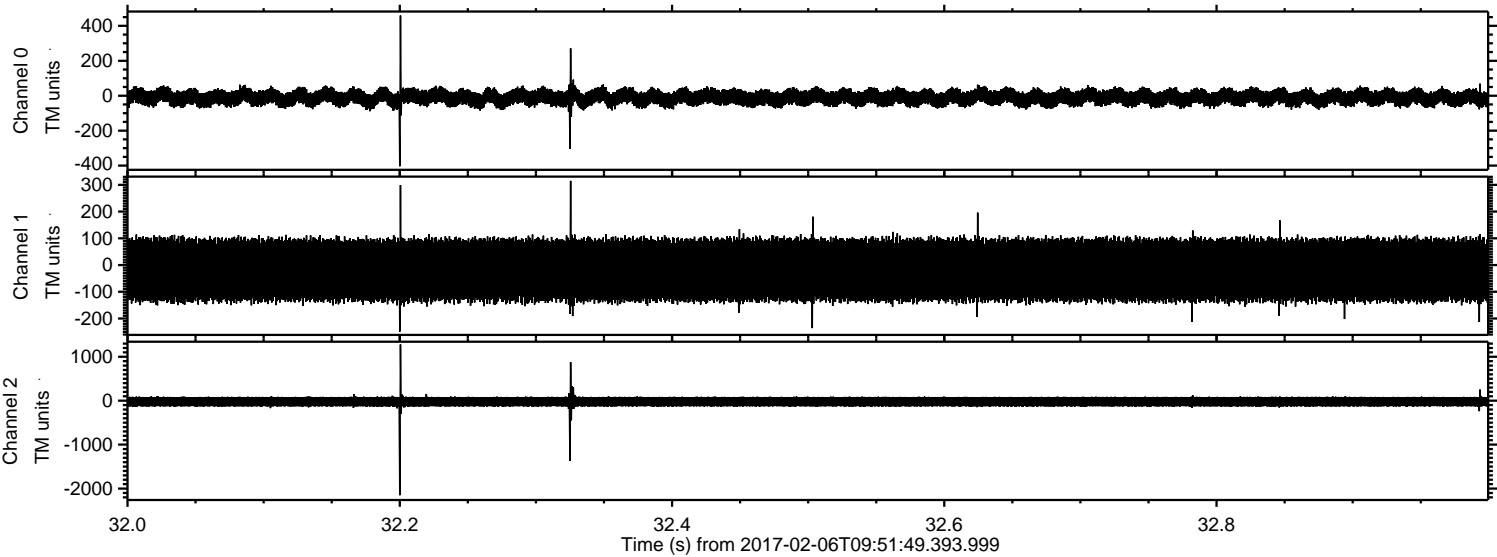


ELMAVAN 3D WAVEFORMS (Measured data sampled at 50 kHz) 51000 packets of 144 samples from 2017-02-06T09:51:49.393.999. Part 59/147

Processed Mon Feb 6 11:00:02 2017 by ELM ver.2012-10-06 from 001__elm20170206_095148__dat00.bin



Processed Mon Feb 6 11:00:03 2017 by ELM ver.2012-10-06 from 001__elm20170206_095148__dat00.bin



ELMAVAN 3D WAVEFORMS (Measured data sampled at 50 kHz) 51000 packets of 144 samples from 2017-02-06T09:51:49.393.999. Part 25/147

Processed Mon Feb 6 11:00:04 2017 by ELM ver.2012-10-06 from 001__elm20170206_095148__dat00.bin

