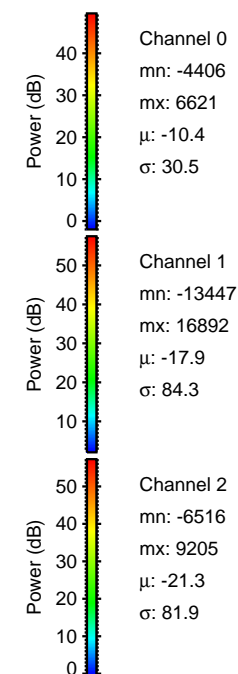
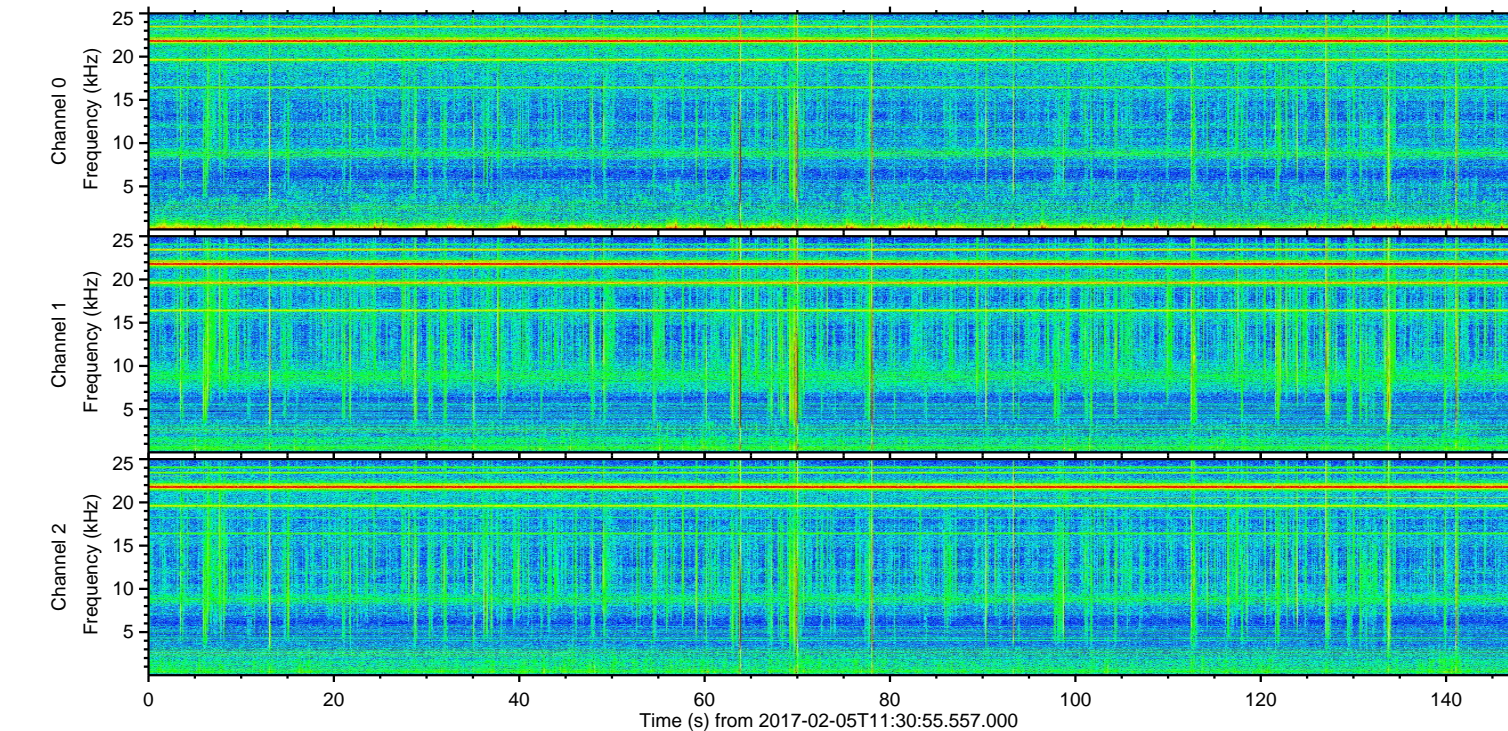
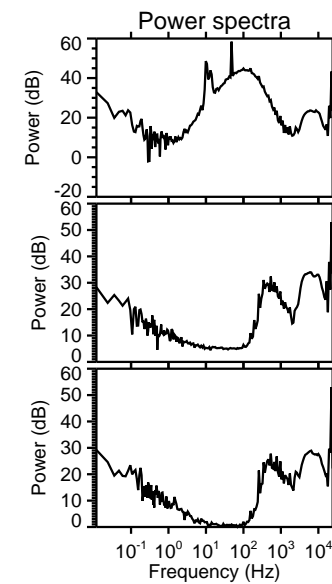
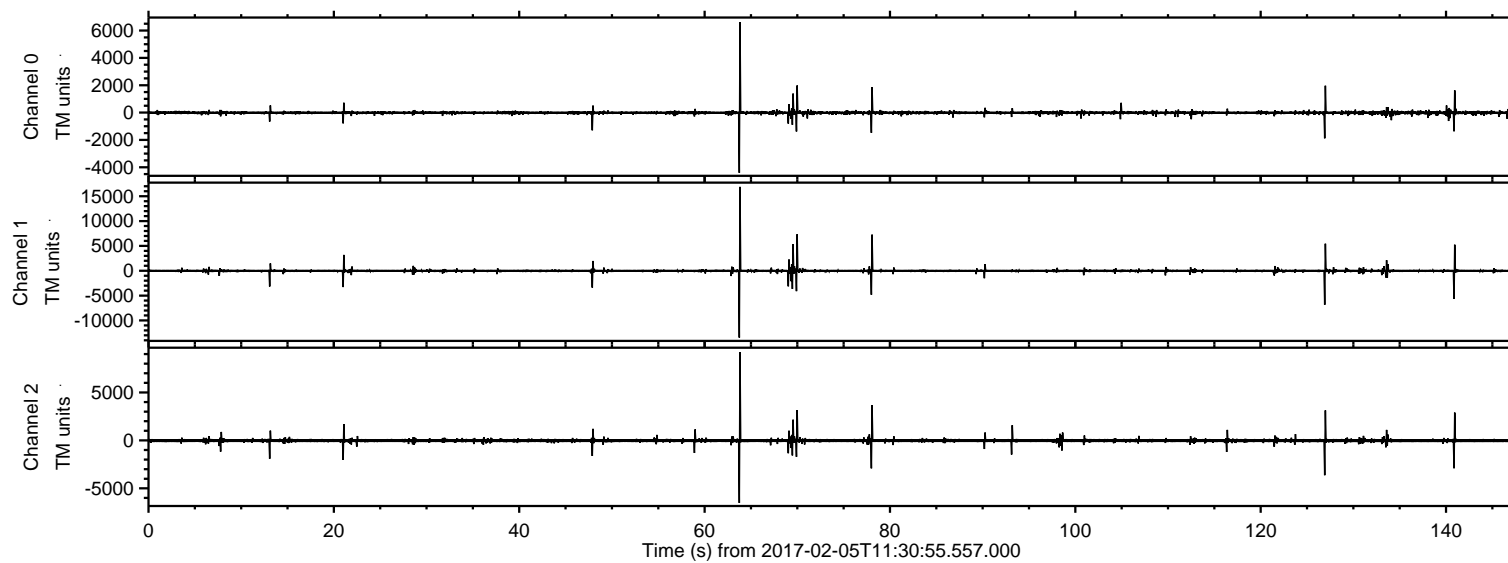


# ELMAVAN 3D WAVEFORMS (Measured data sampled at 50 kHz) 51000 packets of 144 samples from 2017-02-05T11:30:55.557.000.

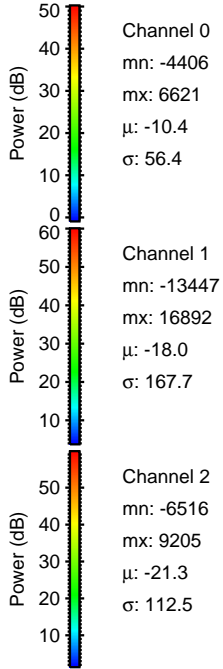
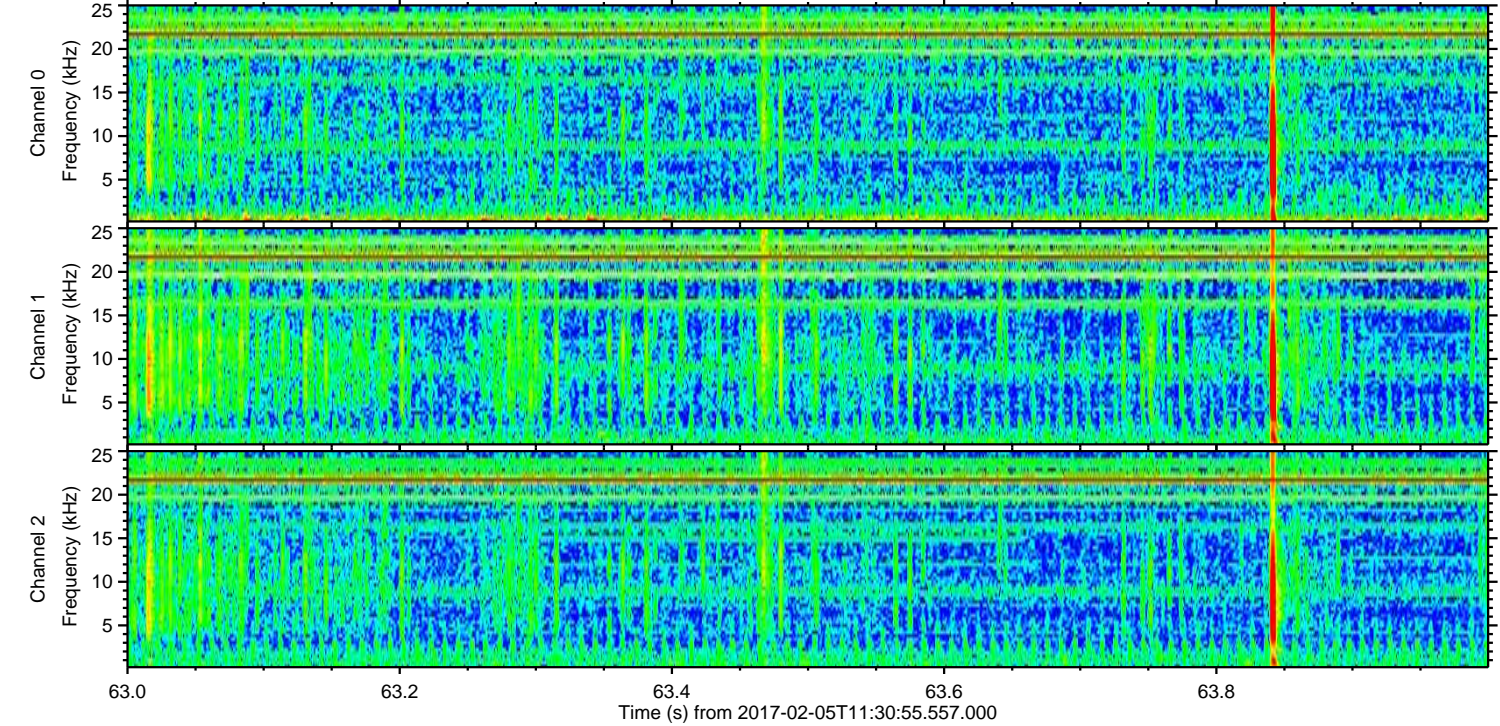
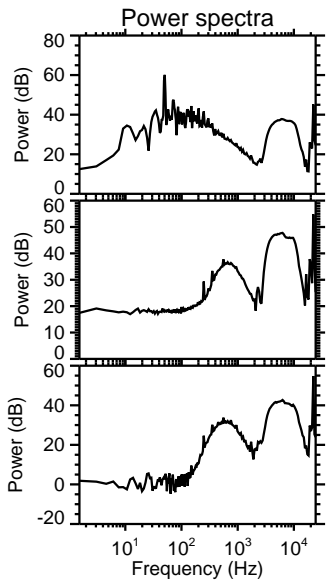
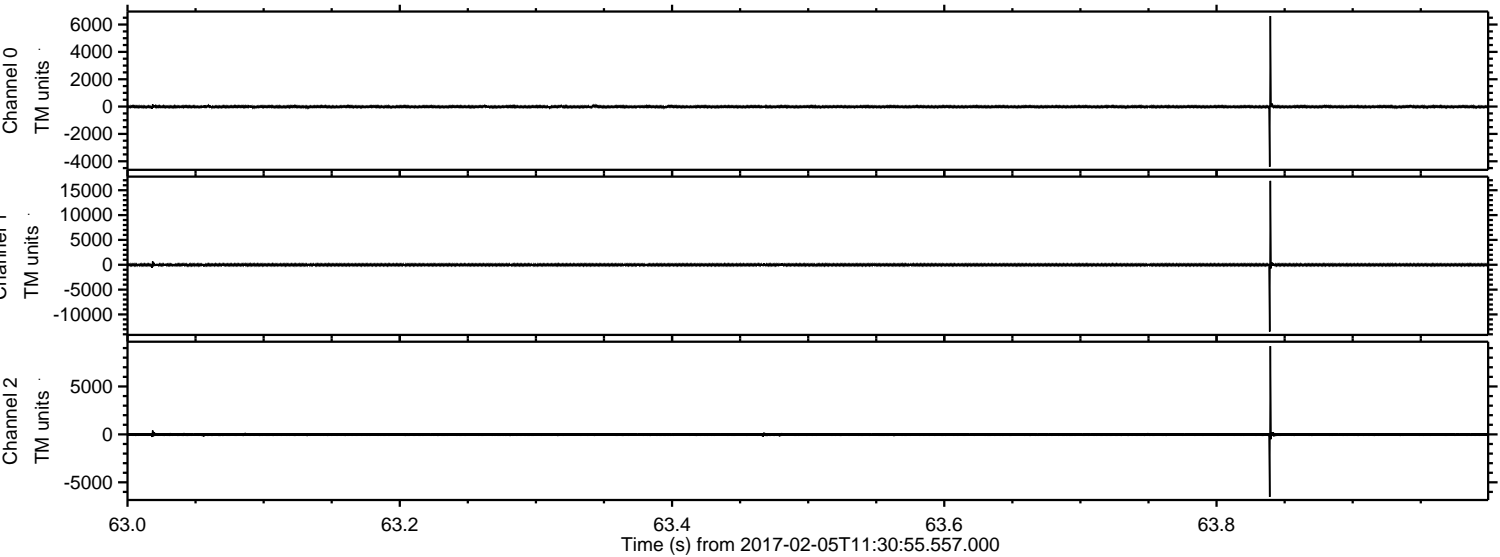
Processed Sun Feb 5 12:39:03 2017 by ELM ver.2012-10-06 from 001\_\_elm20170205\_113054\_\_dat00.bin





ELMAVAN 3D WAVEFORMS (Measured data sampled at 50 kHz) 51000 packets of 144 samples from 2017-02-05T11:30:55.557.000. Part 64/147

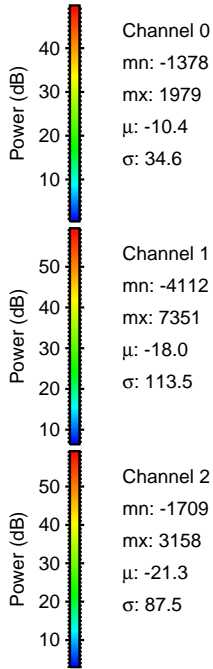
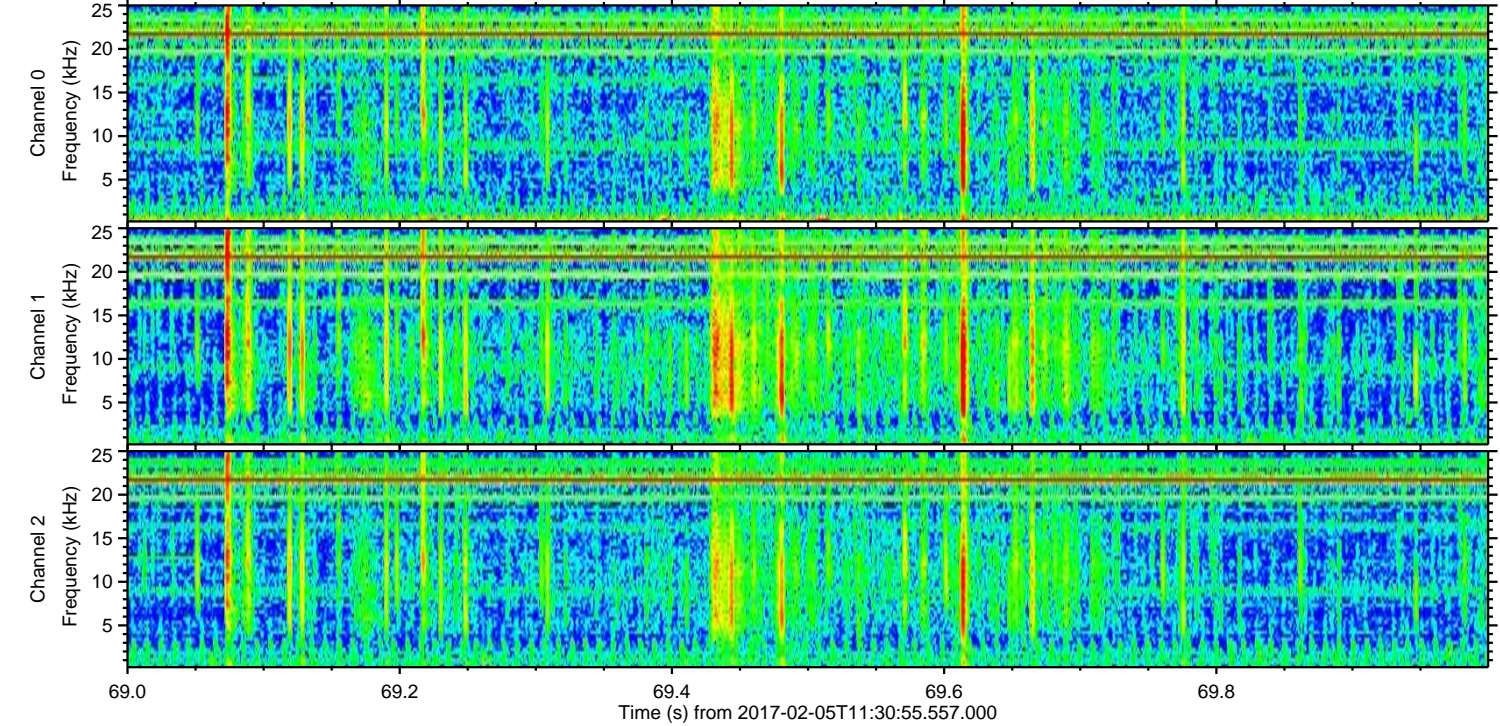
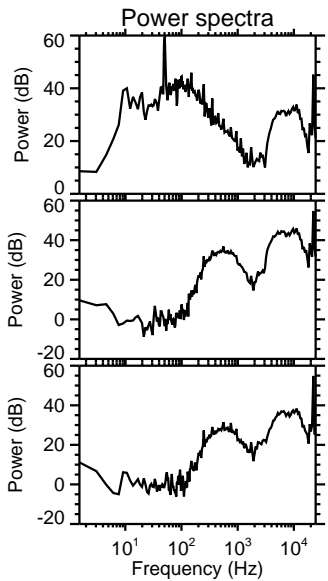
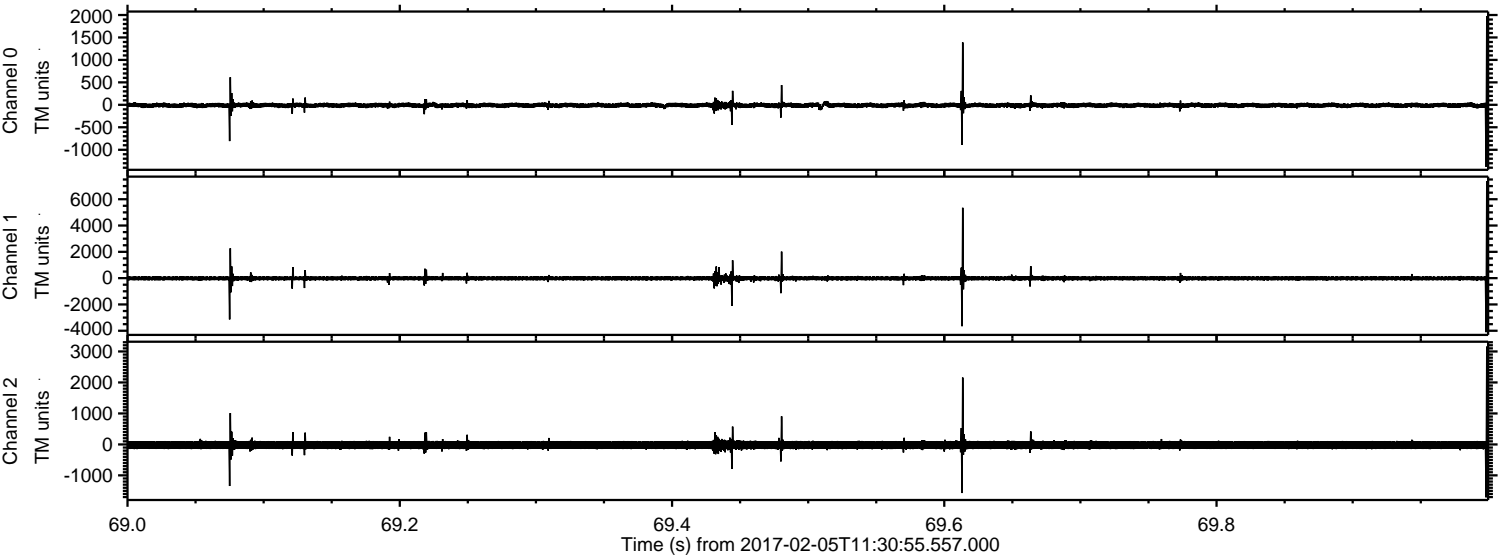
Processed Sun Feb 5 12:39:15 2017 by ELM ver.2012-10-06 from 001\_\_elm20170205\_113054\_\_dat00.bin





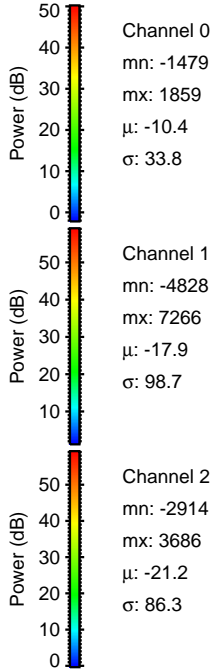
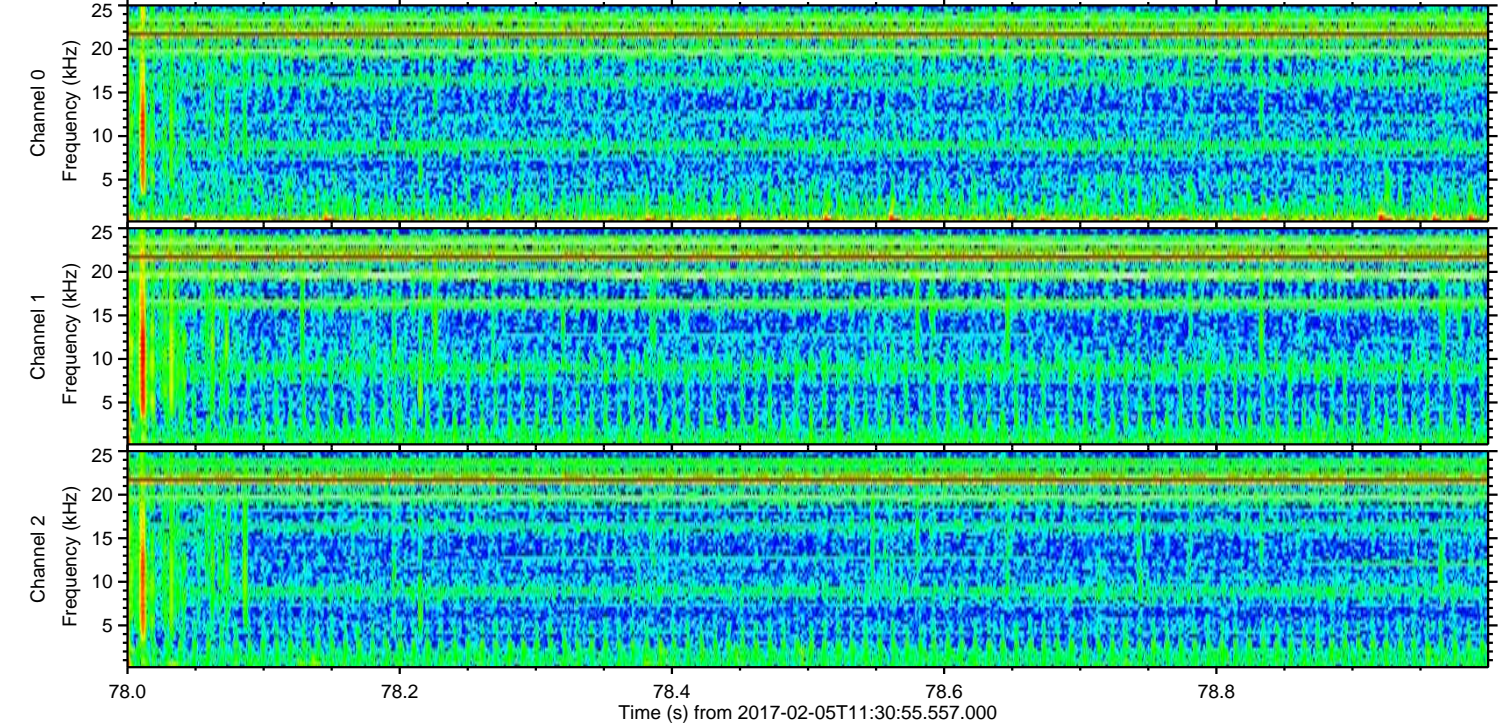
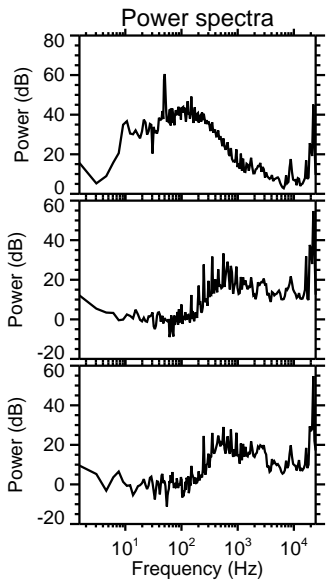
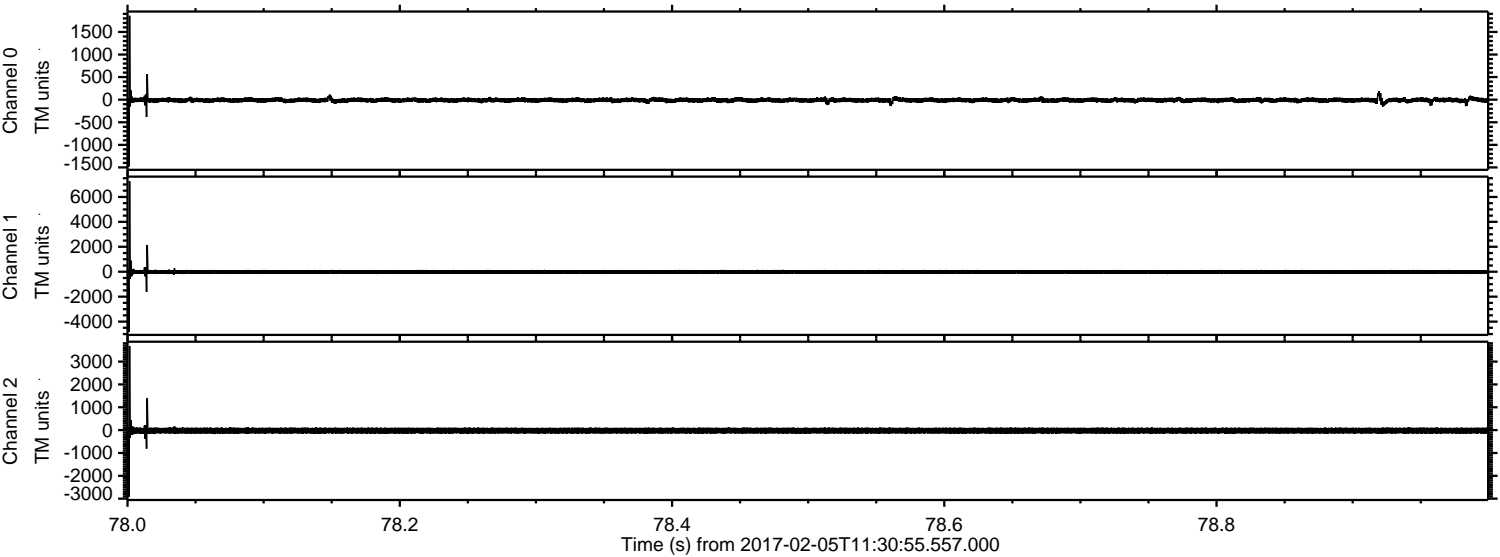
ELMAVAN 3D WAVEFORMS (Measured data sampled at 50 kHz) 51000 packets of 144 samples from 2017-02-05T11:30:55.557.000. Part 70/147

Processed Sun Feb 5 12:39:16 2017 by ELM ver.2012-10-06 from 001\_\_elm20170205\_113054\_\_dat00.bin





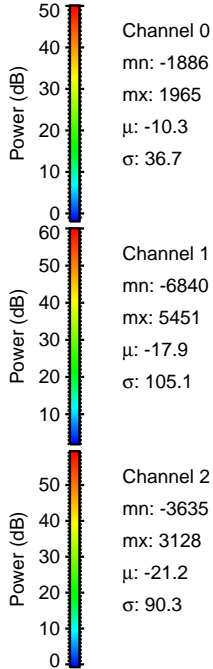
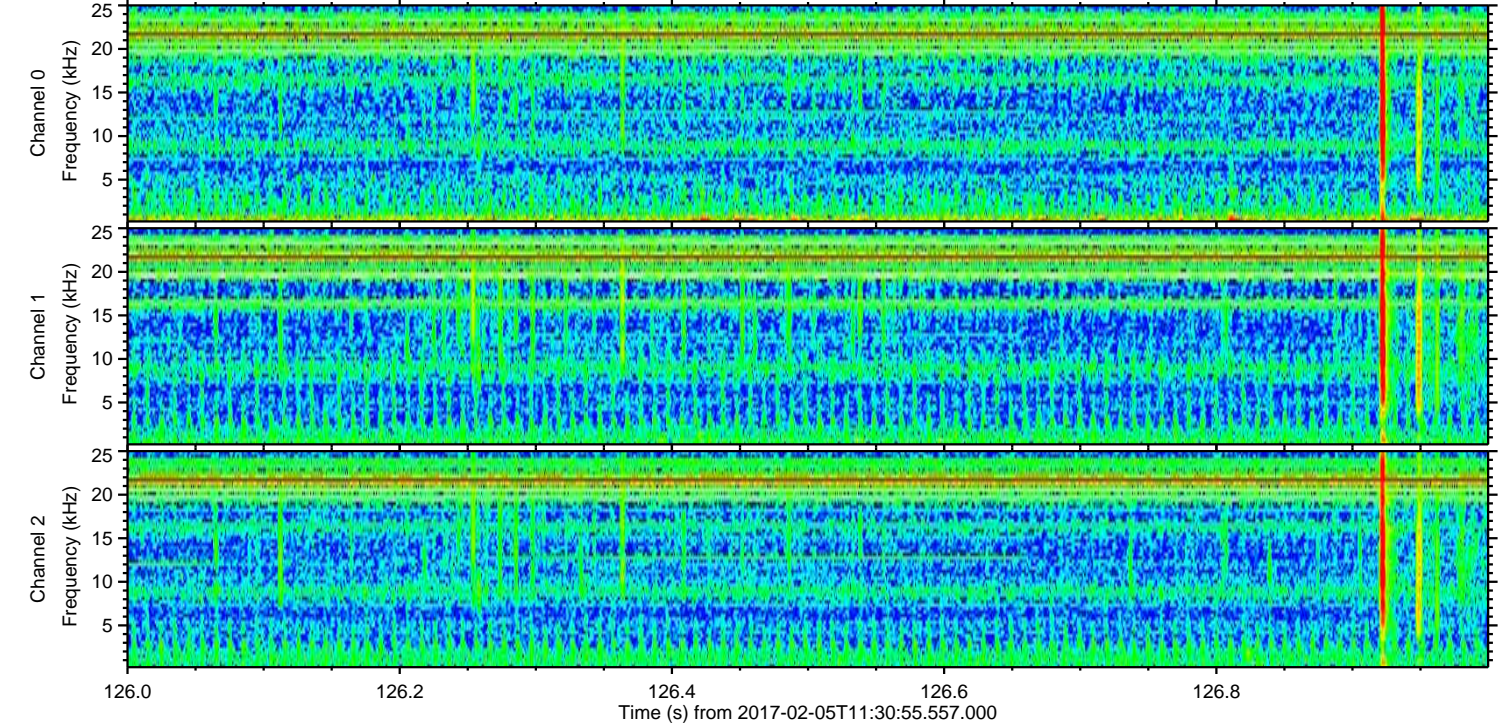
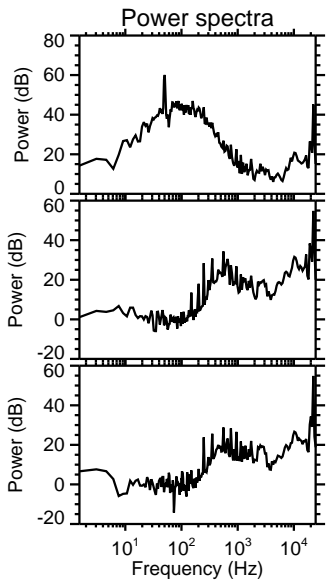
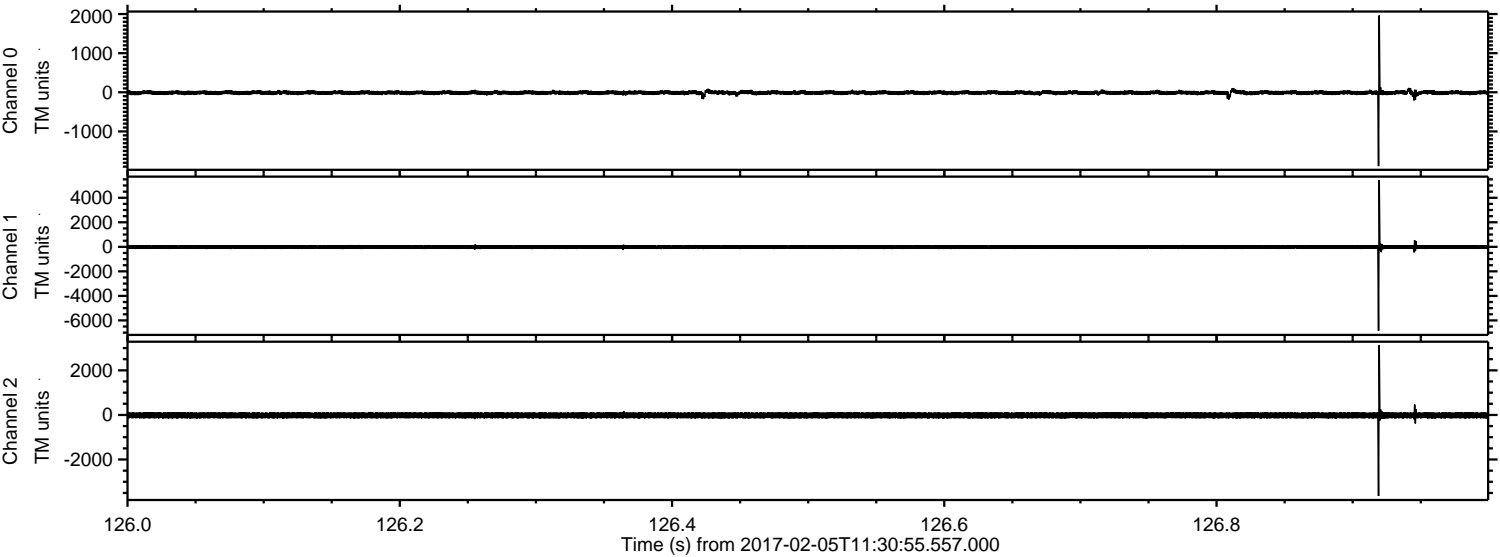
Processed Sun Feb 5 12:39:17 2017 by ELM ver.2012-10-06 from 001\_\_elm20170205\_113054\_\_dat00.bin





ELMAVAN 3D WAVEFORMS (Measured data sampled at 50 kHz) 51000 packets of 144 samples from 2017-02-05T11:30:55.557.000. Part 127/147

Processed Sun Feb 5 12:39:18 2017 by ELM ver.2012-10-06 from 001\_\_elm20170205\_113054\_\_dat00.bin



Channel 0  
mn: -1886  
mx: 1965  
 $\mu$ : -10.3  
 $\sigma$ : 36.7

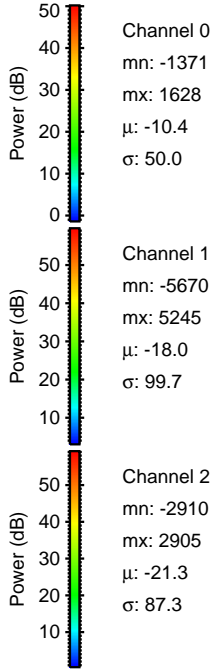
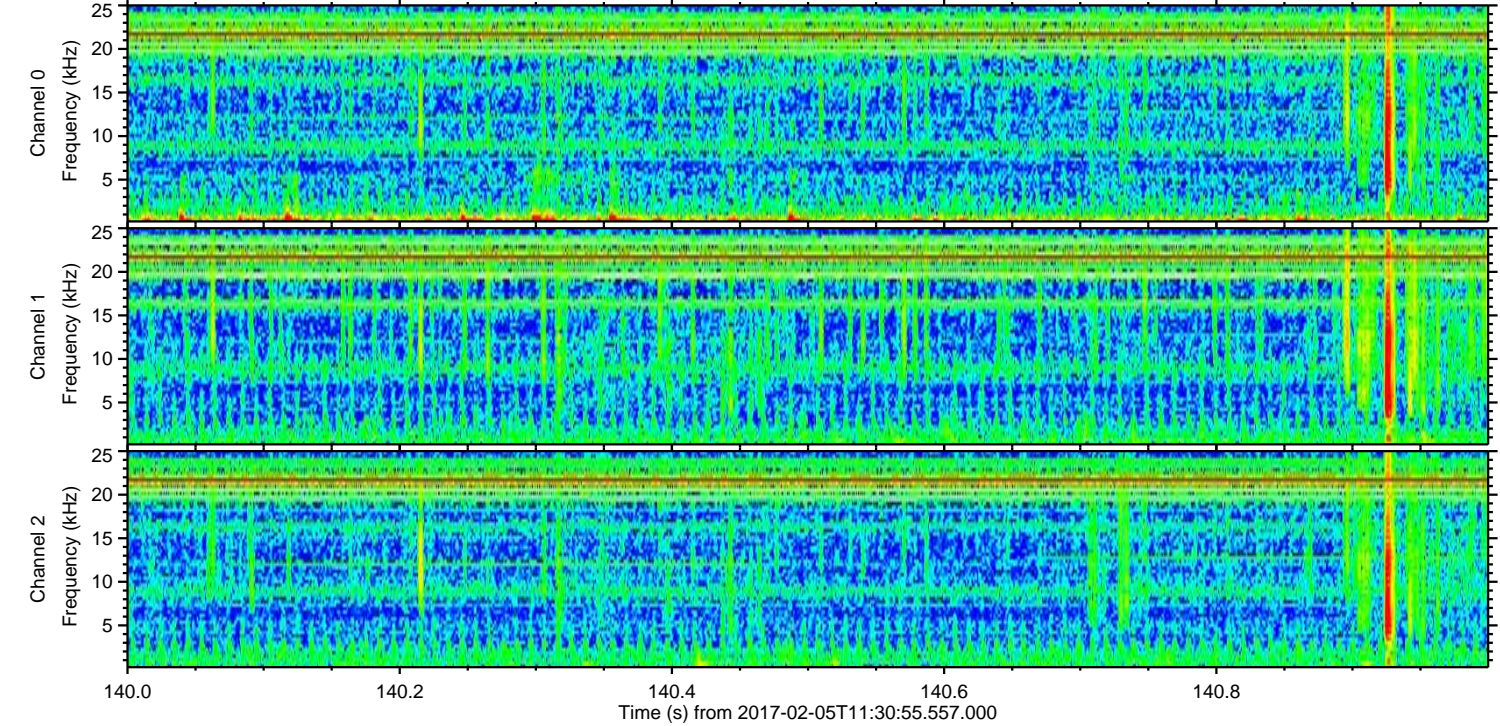
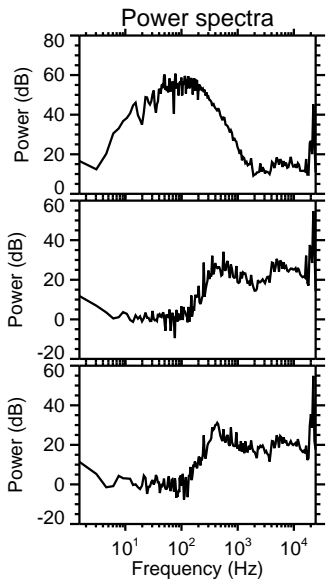
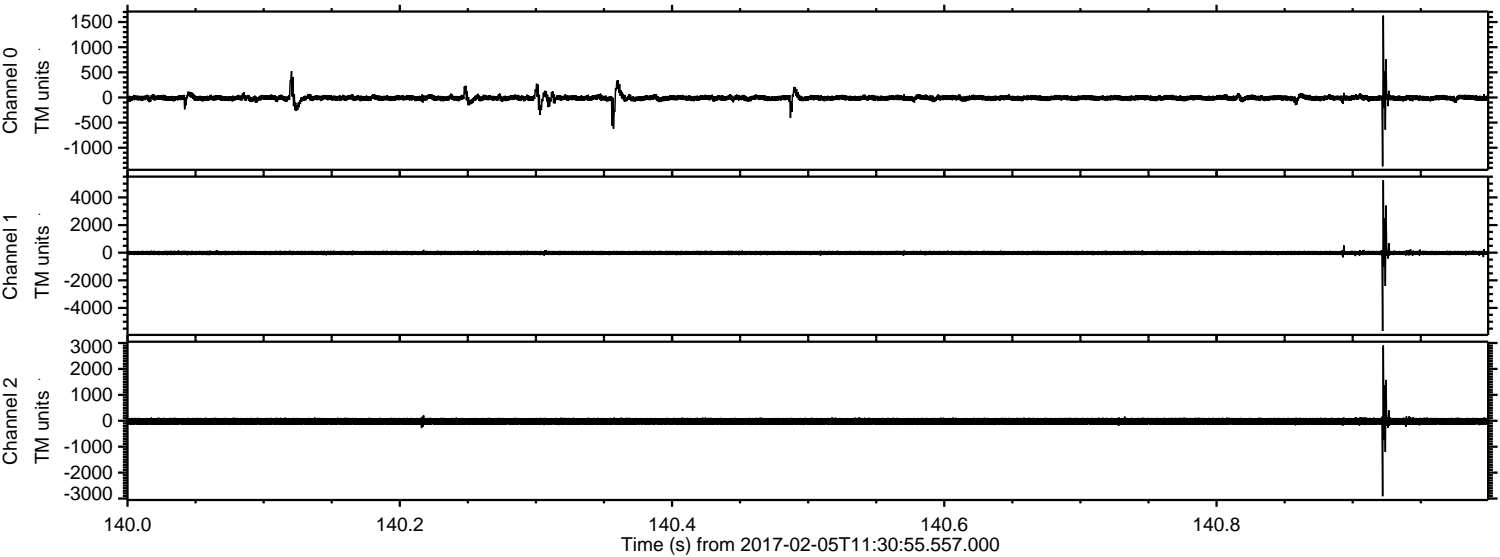
Channel 1  
mn: -6840  
mx: 5451  
 $\mu$ : -17.9  
 $\sigma$ : 105.1

Channel 2  
mn: -3635  
mx: 3128  
 $\mu$ : -21.2  
 $\sigma$ : 90.3



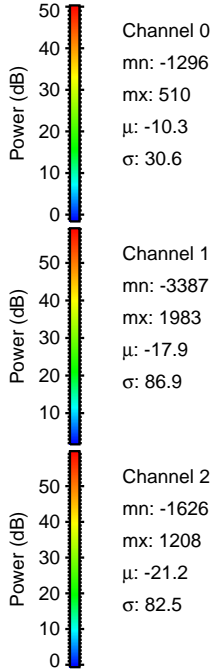
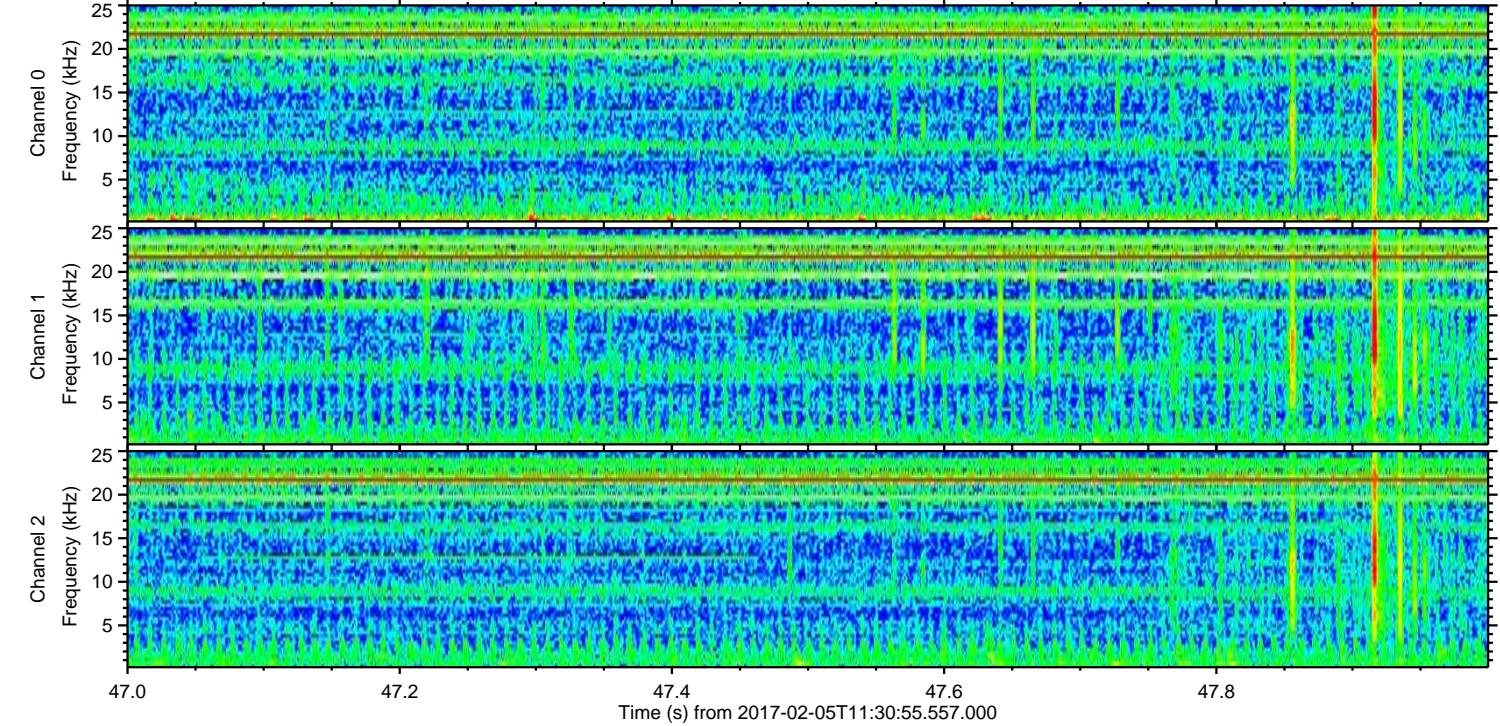
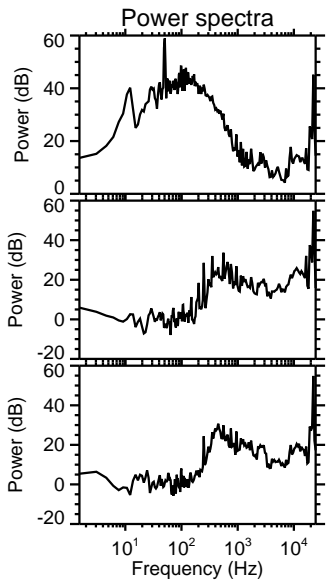
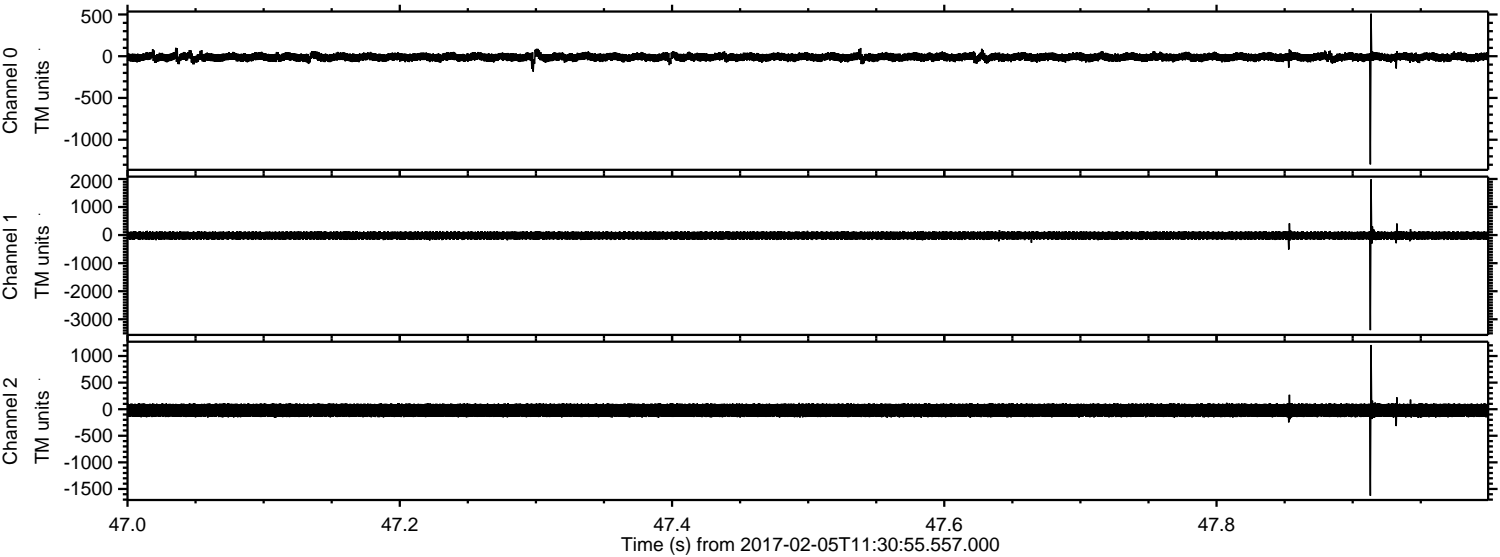
ELMAVAN 3D WAVEFORMS (Measured data sampled at 50 kHz) 51000 packets of 144 samples from 2017-02-05T11:30:55.557.000. Part 141/147

Processed Sun Feb 5 12:39:19 2017 by ELM ver.2012-10-06 from 001\_\_elm20170205\_113054\_\_dat00.bin



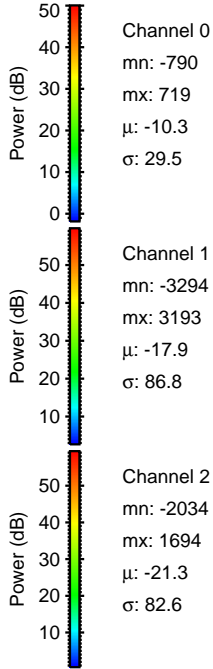
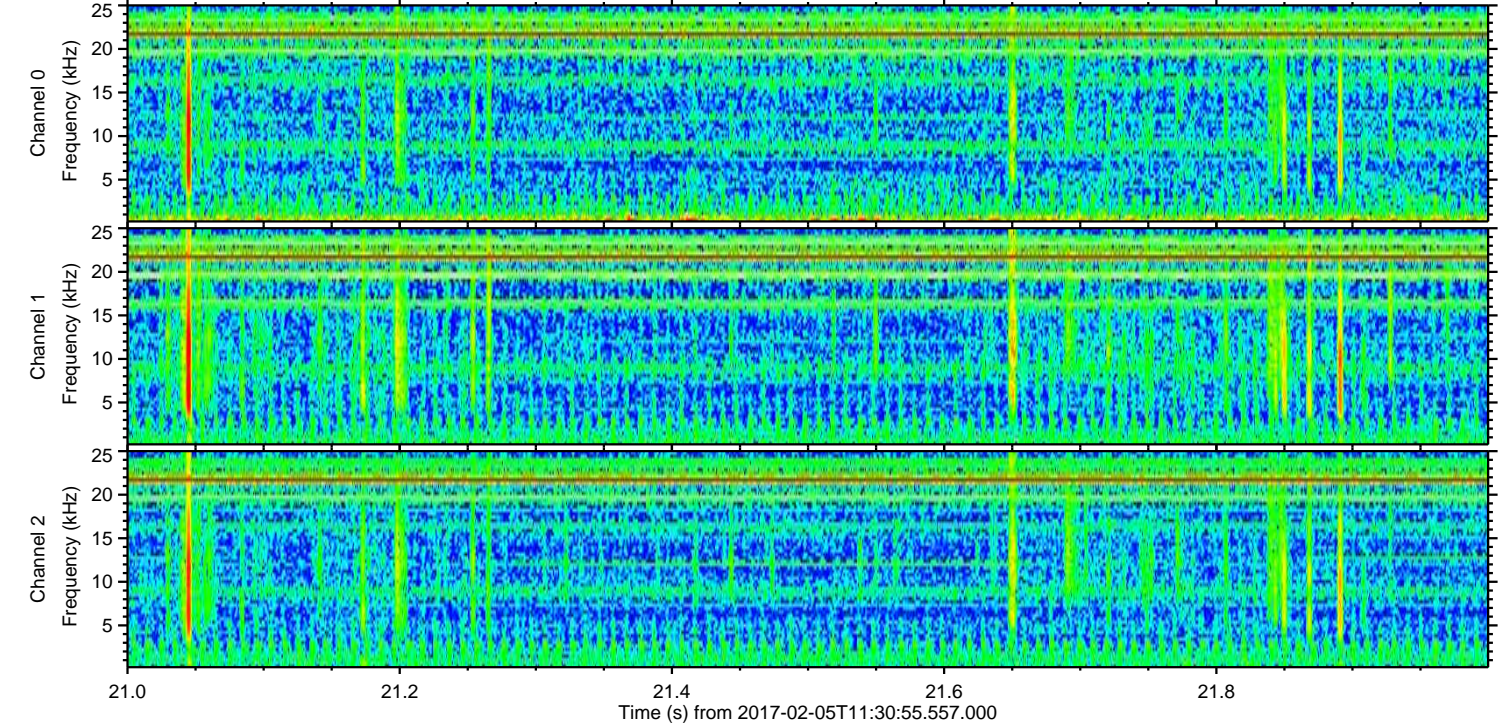
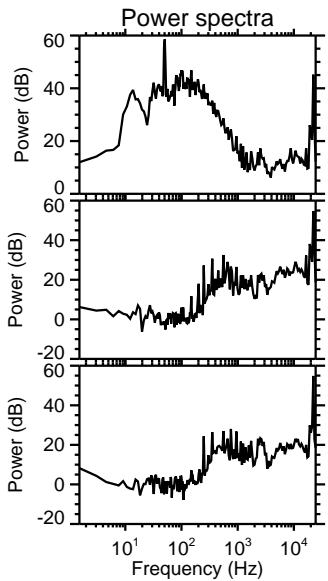
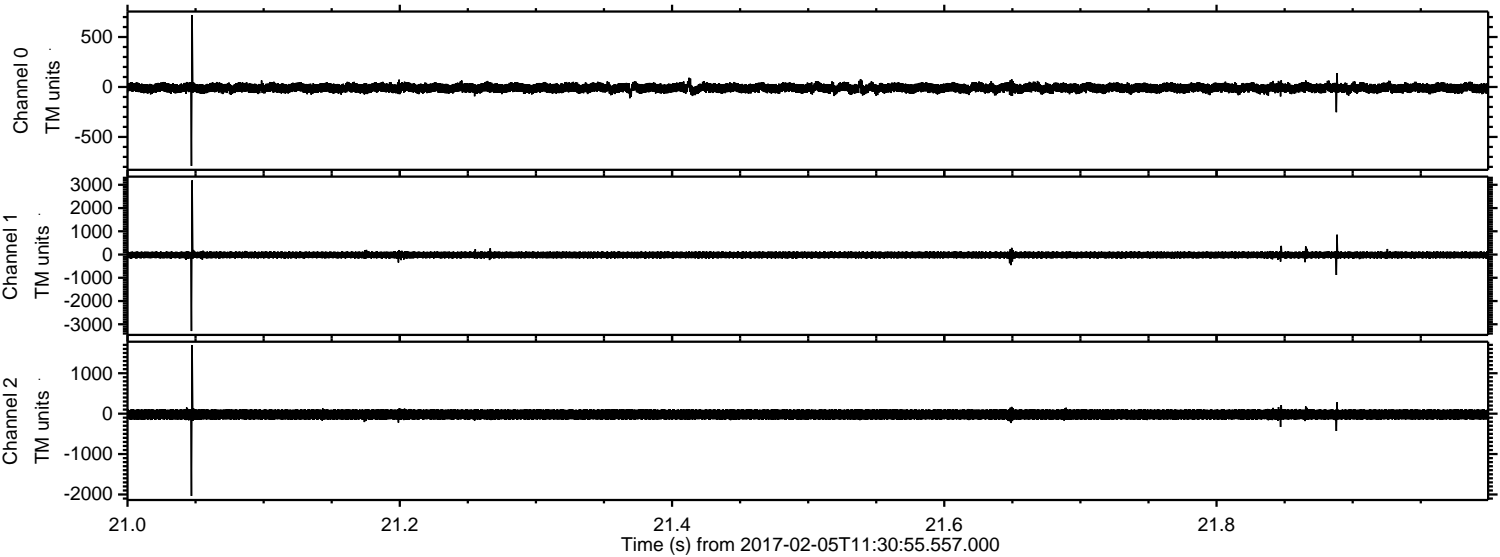


Processed Sun Feb 5 12:39:20 2017 by ELM ver.2012-10-06 from 001\_\_elm20170205\_113054\_\_dat00.bin





Processed Sun Feb 5 12:39:21 2017 by ELM ver.2012-10-06 from 001\_\_elm20170205\_113054\_\_dat00.bin



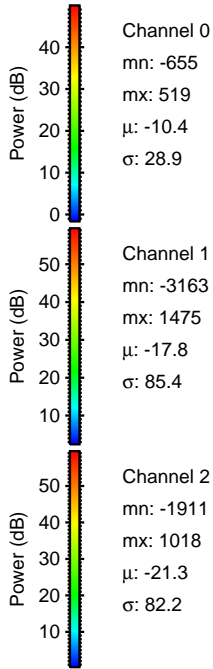
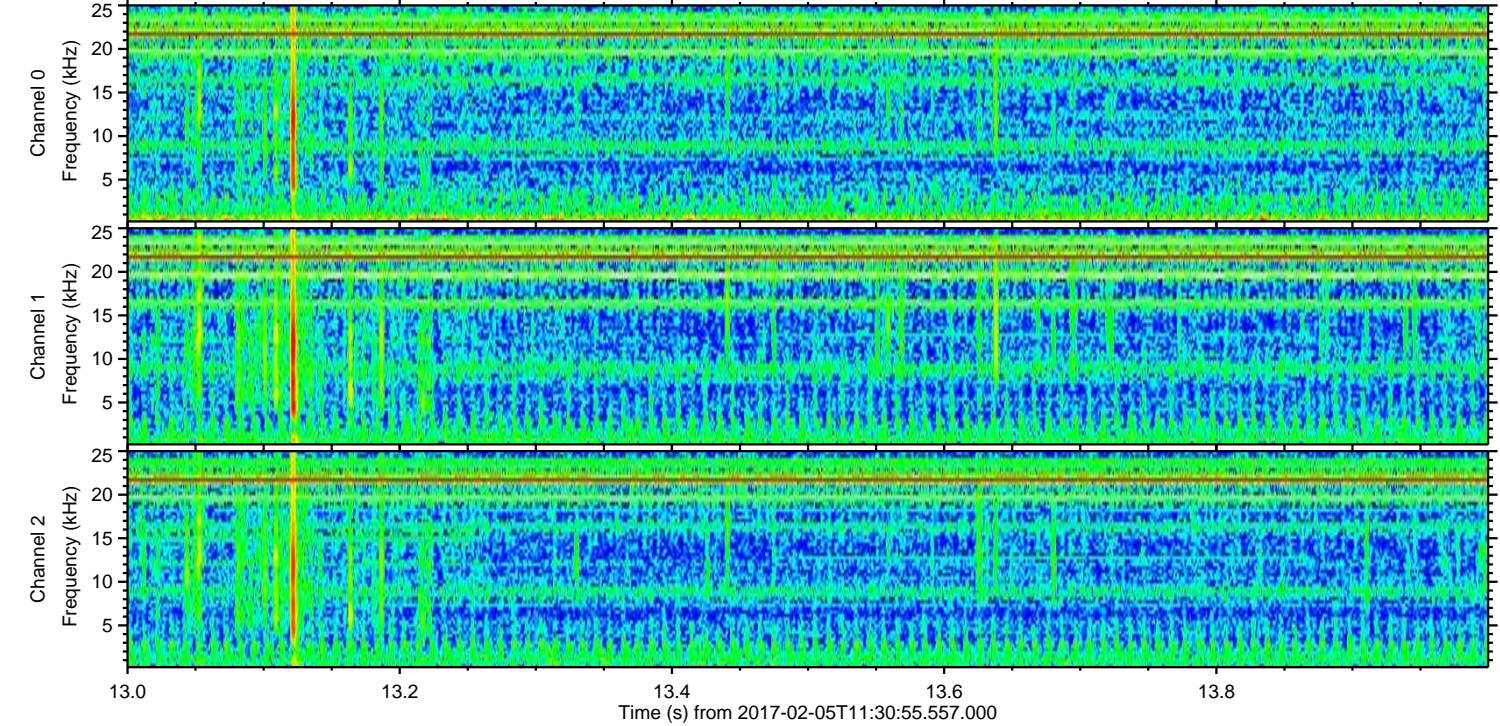
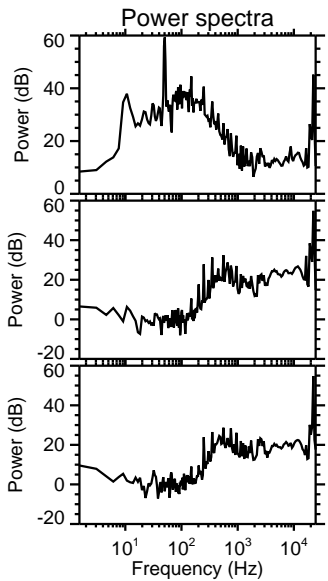
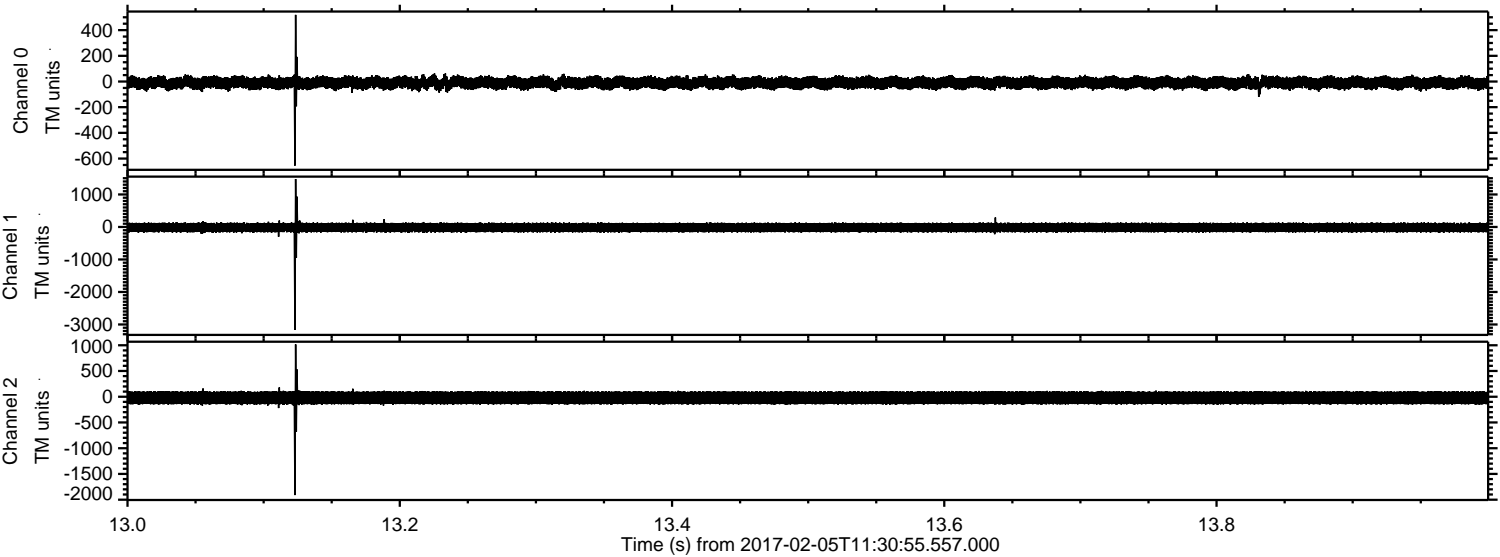
Channel 0  
mn: -790  
mx: 719  
 $\mu$ : -10.3  
 $\sigma$ : 29.5

Channel 1  
mn: -3294  
mx: 3193  
 $\mu$ : -17.9  
 $\sigma$ : 86.8

Channel 2  
mn: -2034  
mx: 1694  
 $\mu$ : -21.3  
 $\sigma$ : 82.6



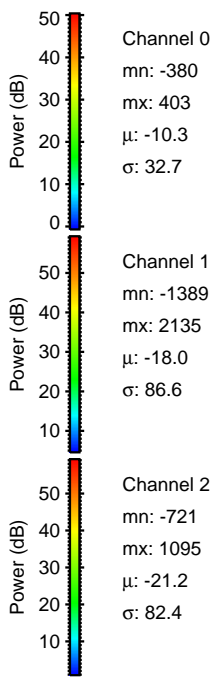
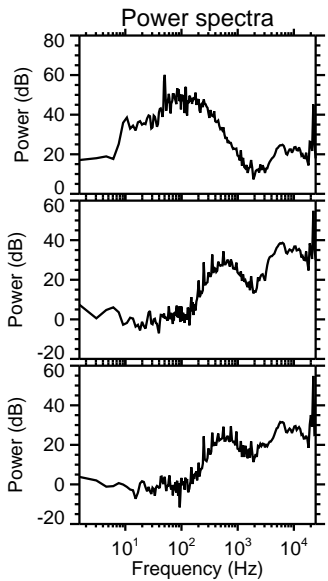
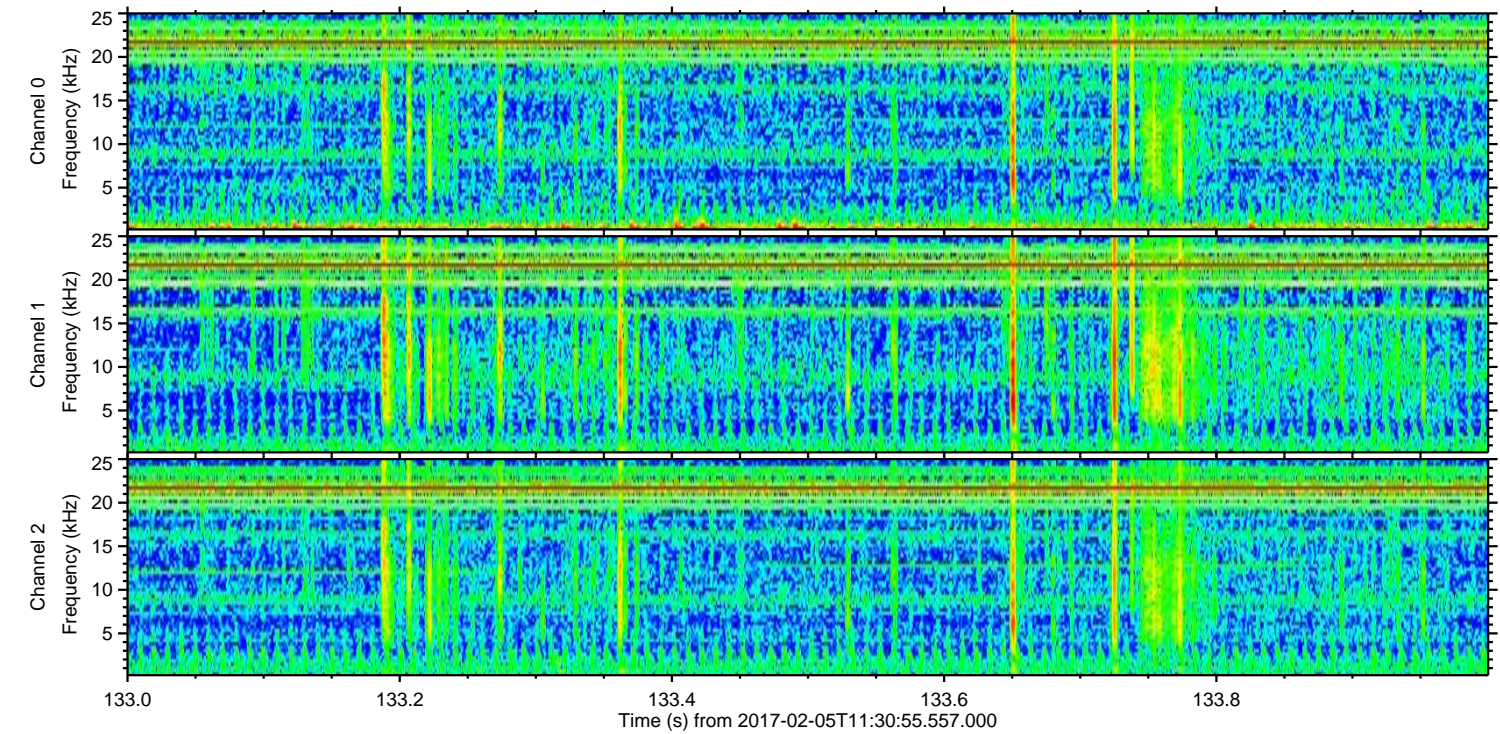
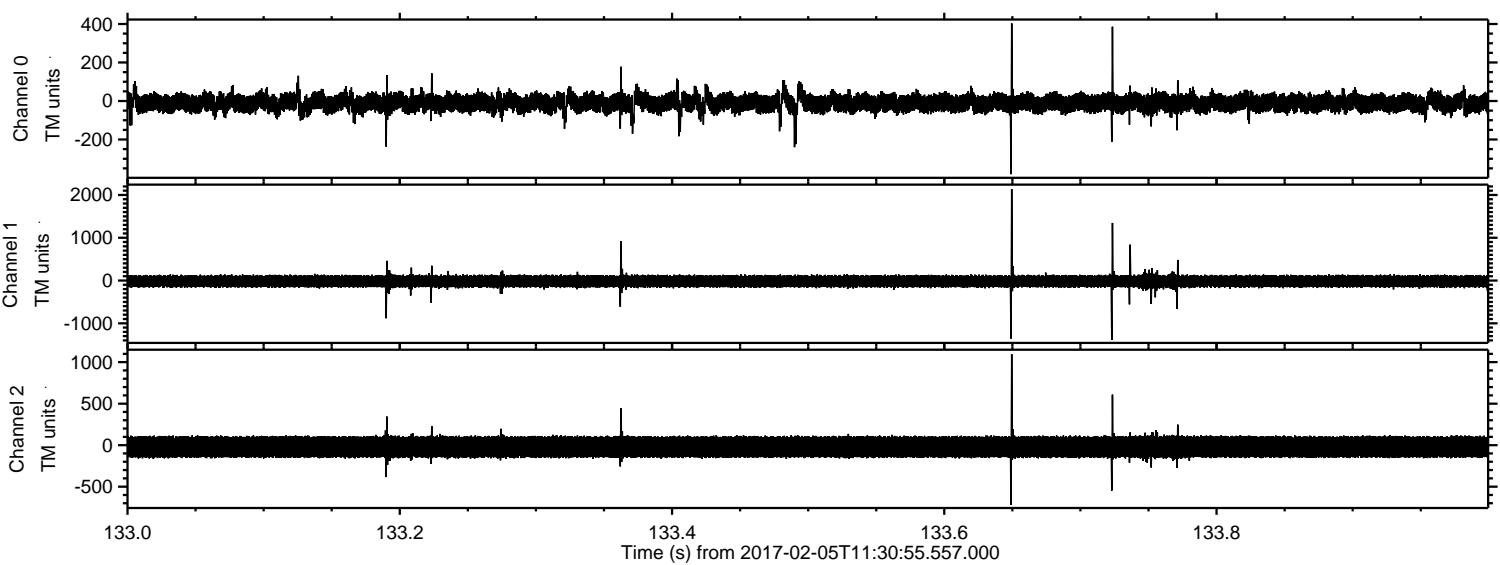
Processed Sun Feb 5 12:39:22 2017 by ELM ver.2012-10-06 from 001\_\_elm20170205\_113054\_\_dat00.bin





ELMAVAN 3D WAVEFORMS (Measured data sampled at 50 kHz) 51000 packets of 144 samples from 2017-02-05T11:30:55.557.000. Part 134/147

Processed Sun Feb 5 12:39:23 2017 by ELM ver.2012-10-06 from 001\_\_elm20170205\_113054\_\_dat00.bin





ELMAVAN 3D WAVEFORMS (Measured data sampled at 50 kHz) 51000 packets of 144 samples from 2017-02-05T11:30:55.557.000. Part 2/147

Processed Sun Feb 5 12:39:24 2017 by ELM ver.2012-10-06 from 001\_\_elm20170205\_113054\_\_dat00.bin

