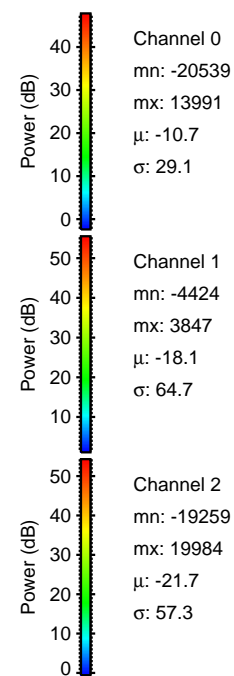
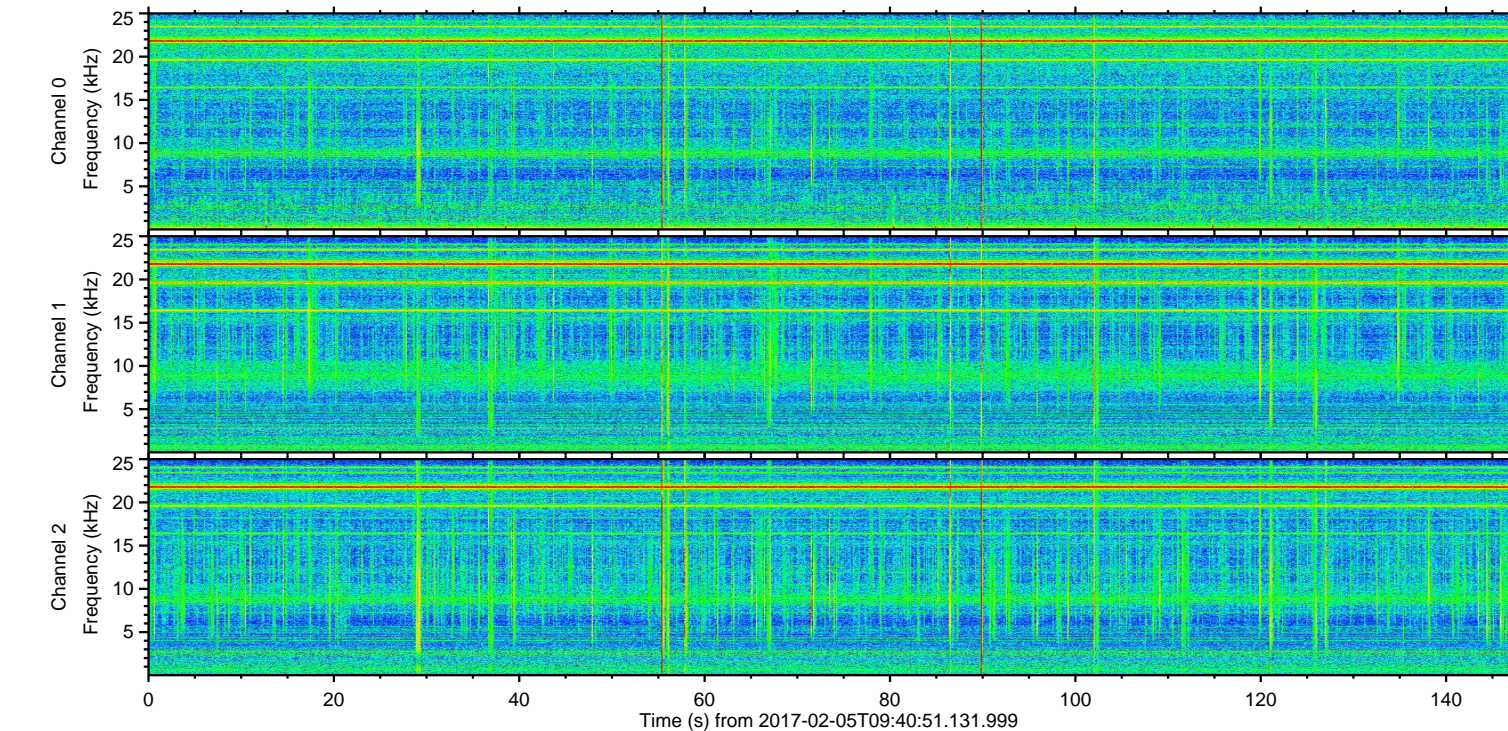
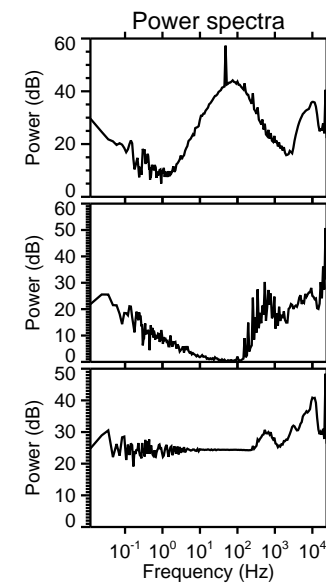
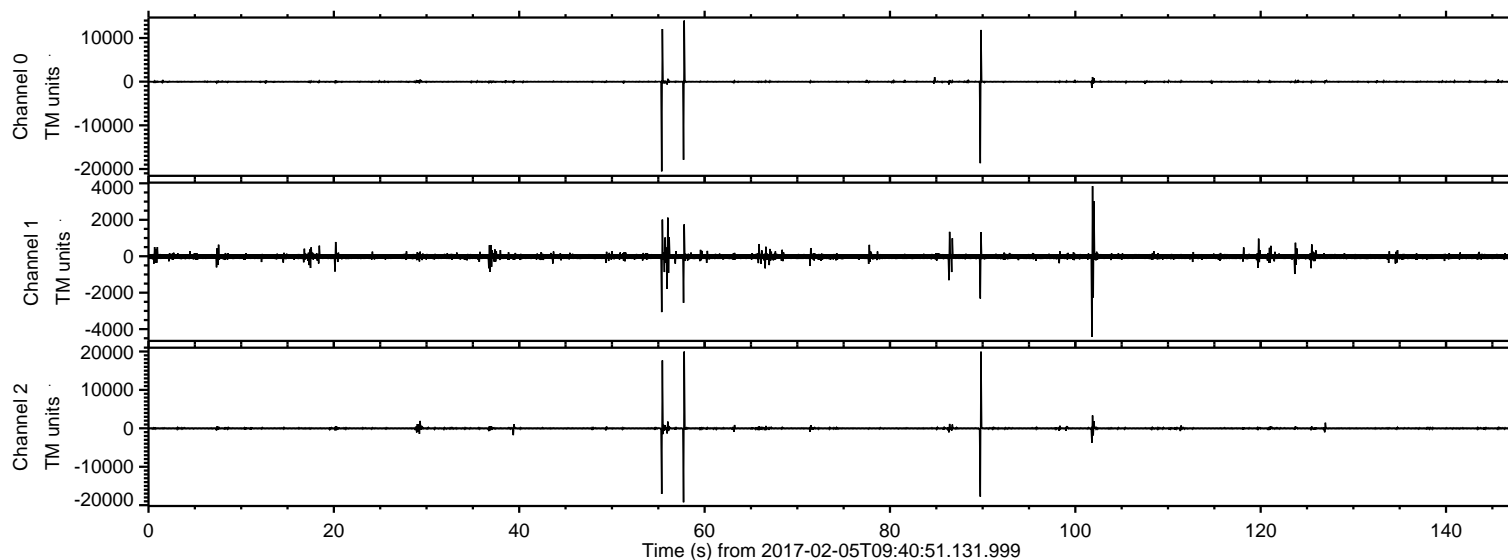
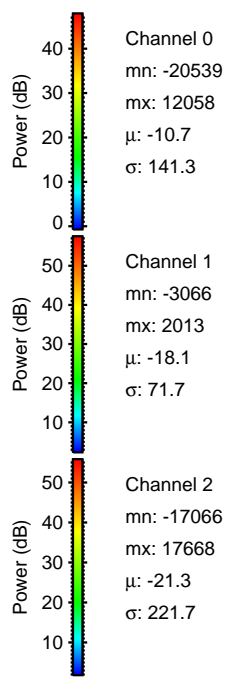
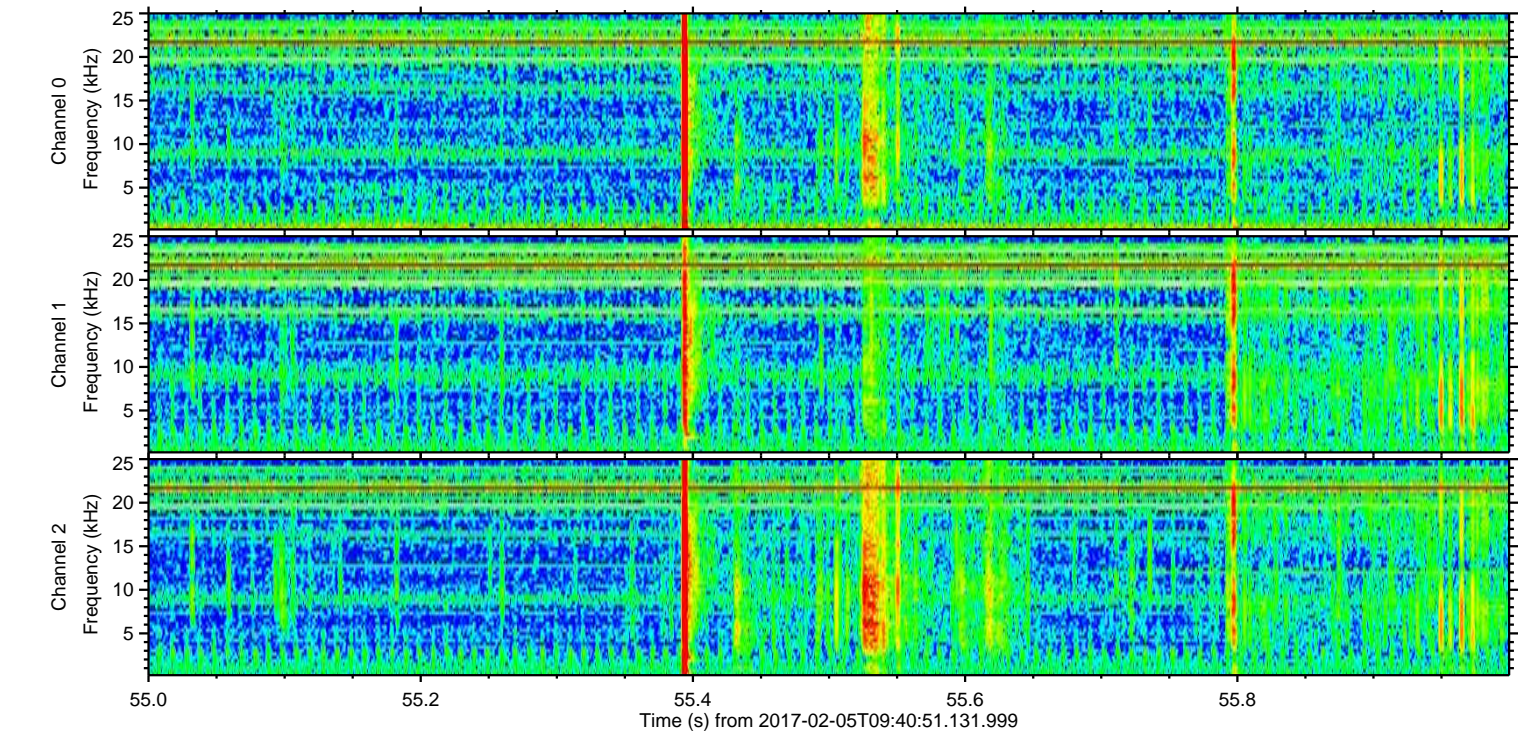
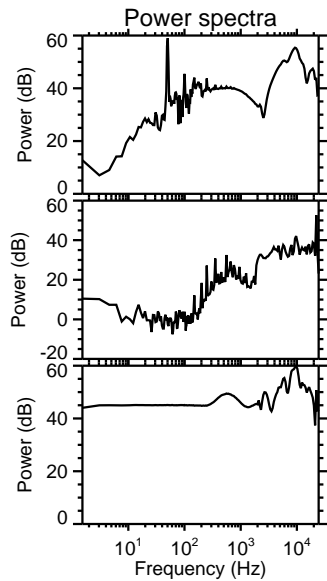
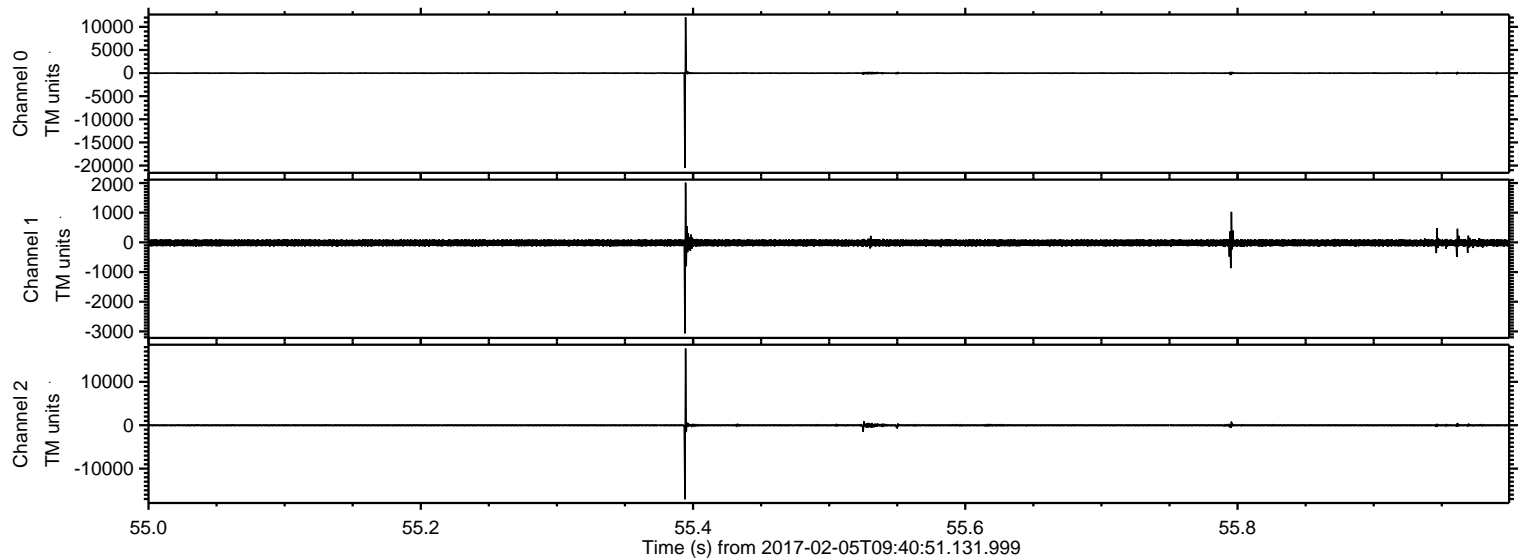


ELMAVAN 3D WAVEFORMS (Measured data sampled at 50 kHz) 51000 packets of 144 samples from 2017-02-05T09:40:51.131.999.

Processed Sun Feb 5 10:48:55 2017 by ELM ver.2012-10-06 from 001__elm20170205_094050__dat00.bin

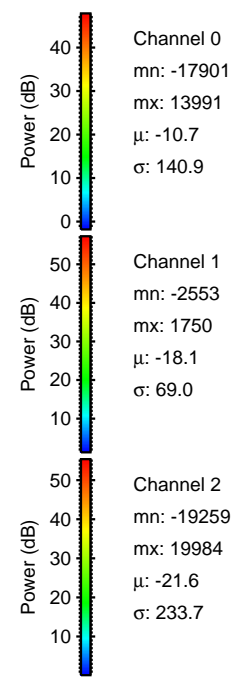
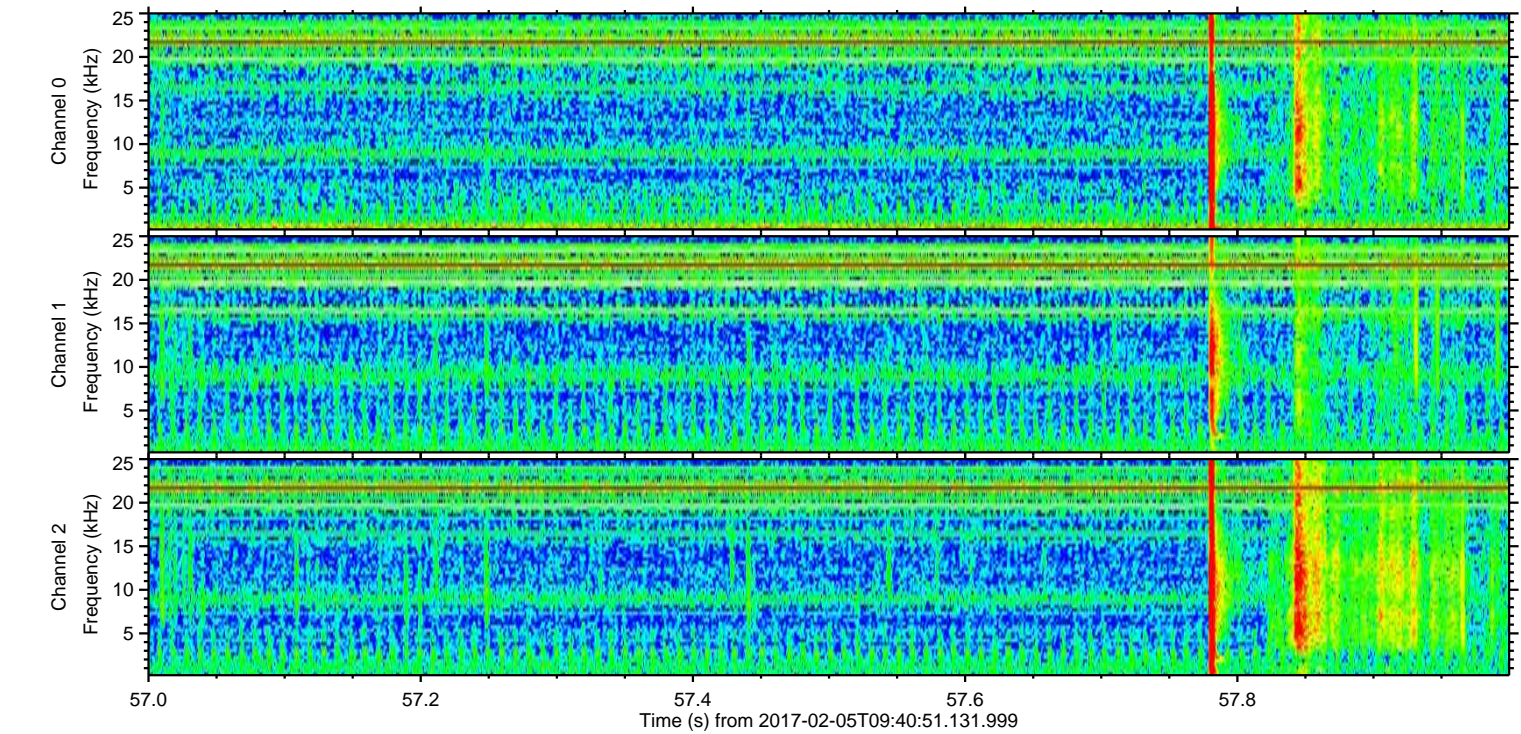
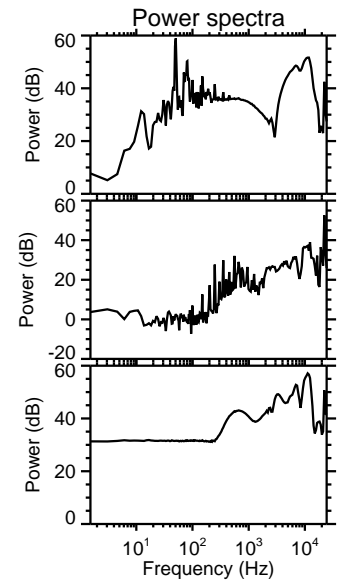
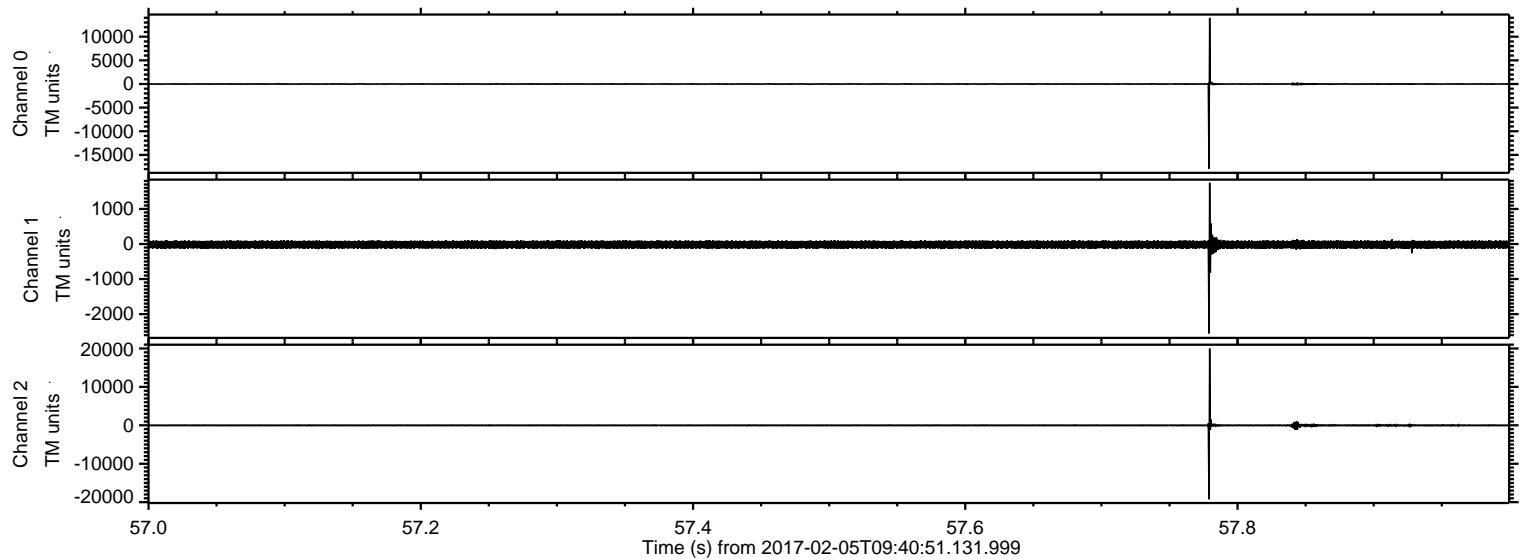


Processed Sun Feb 5 10:49:07 2017 by ELM ver.2012-10-06 from 001__elm20170205_094050__dat00.bin

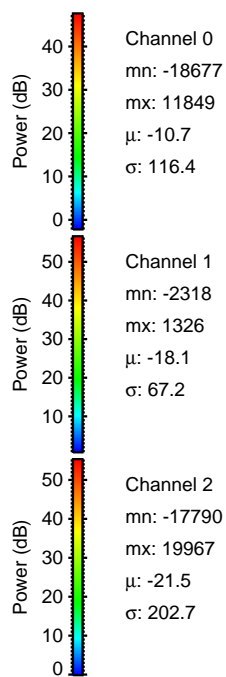
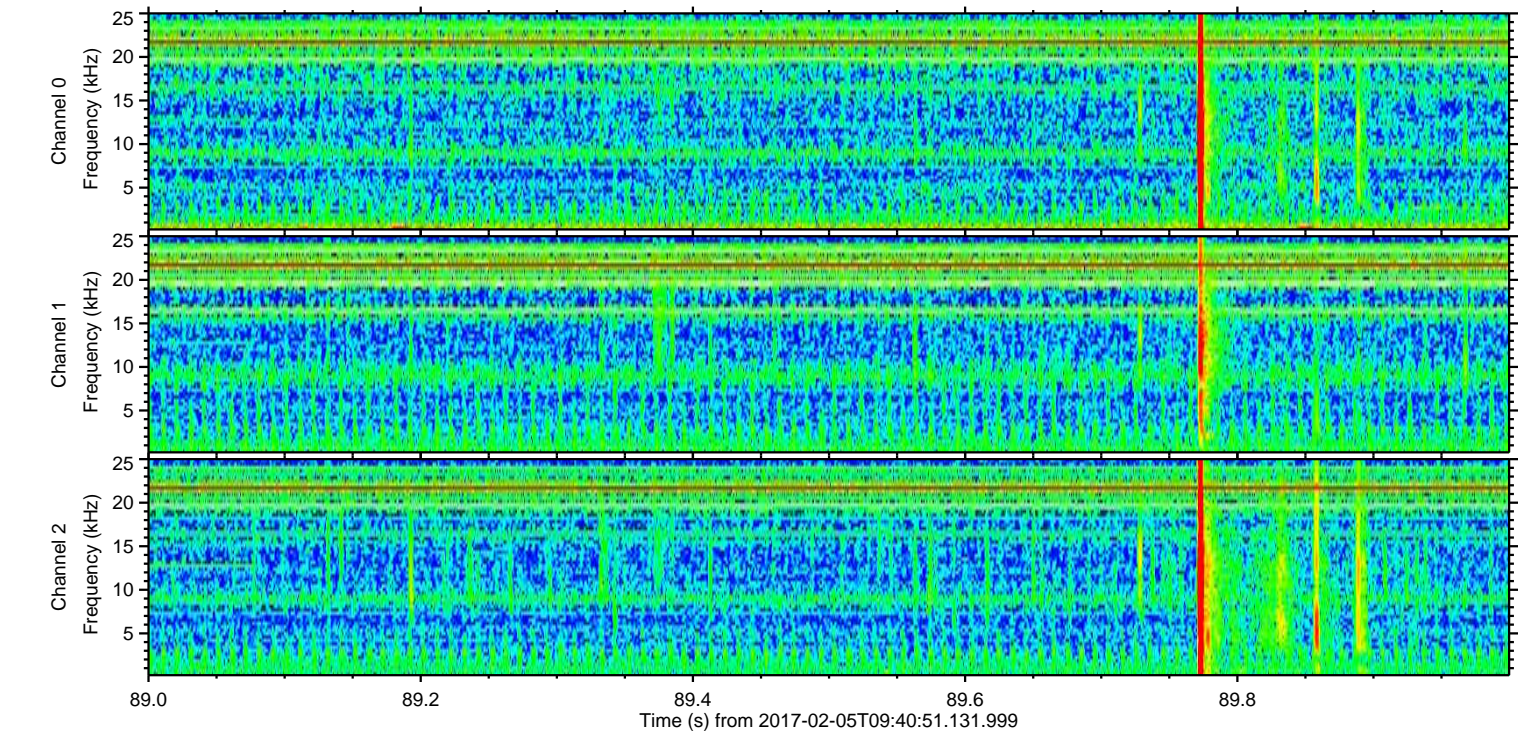
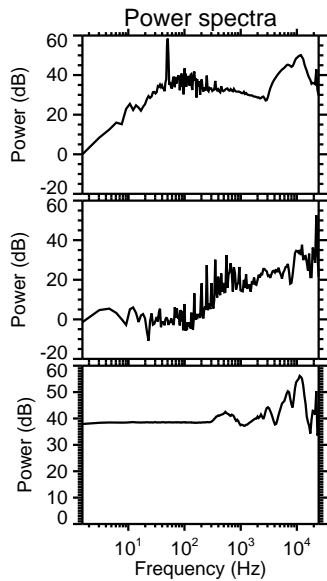
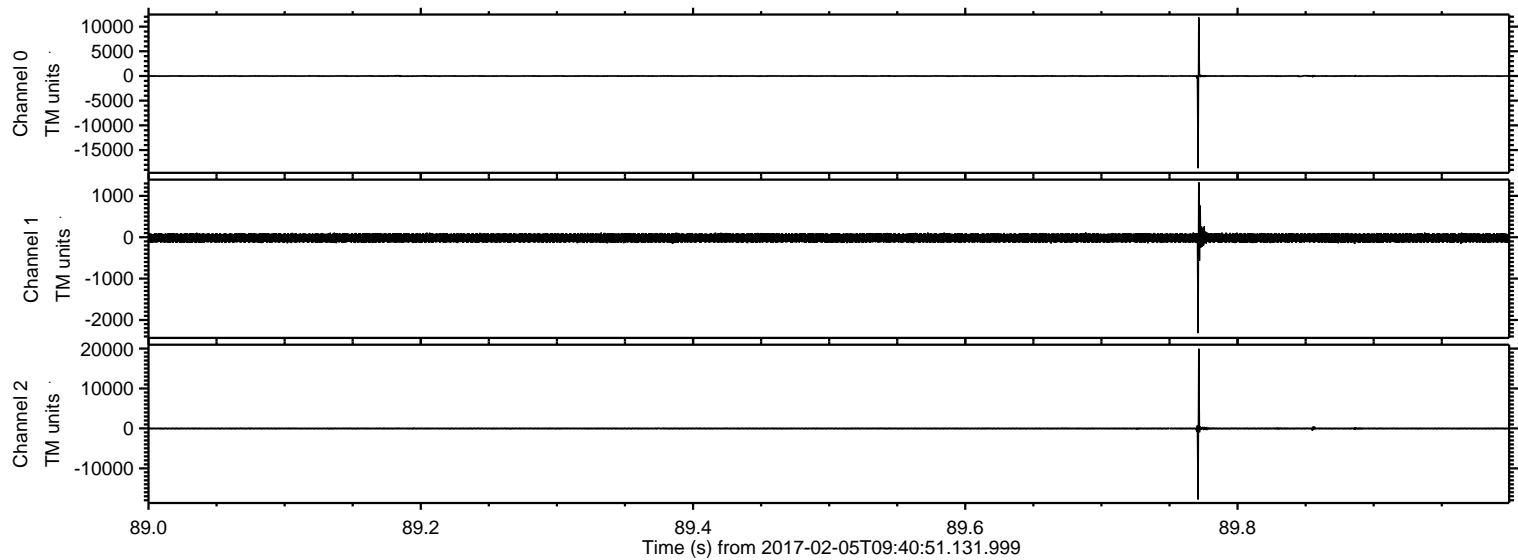


ELMAVAN 3D WAVEFORMS (Measured data sampled at 50 kHz) 51000 packets of 144 samples from 2017-02-05T09:40:51.131.999. Part 58/147

Processed Sun Feb 5 10:49:08 2017 by ELM ver.2012-10-06 from 001__elm20170205_094050__dat00.bin



Processed Sun Feb 5 10:49:08 2017 by ELM ver.2012-10-06 from 001__elm20170205_094050__dat00.bin



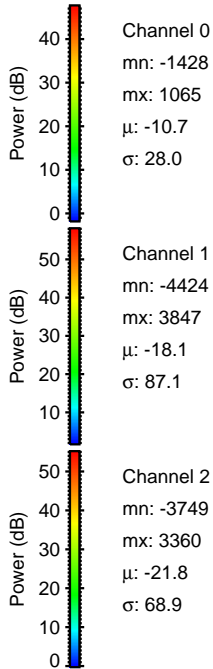
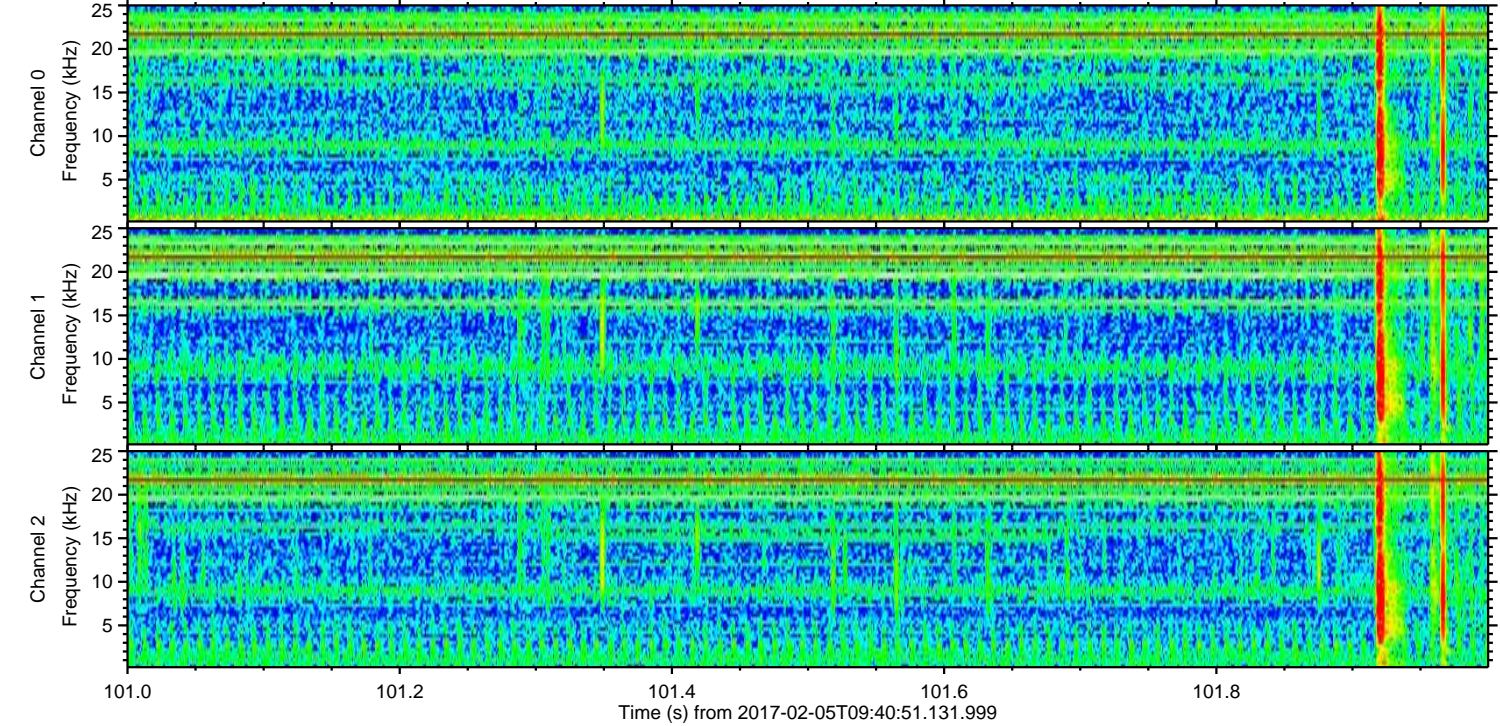
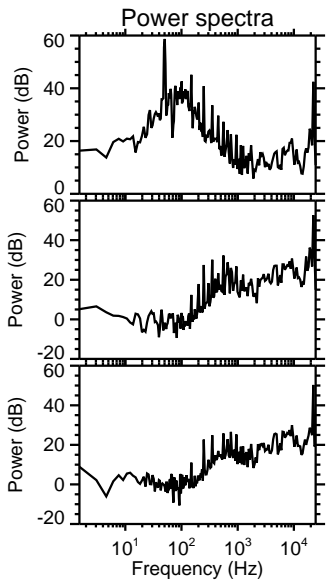
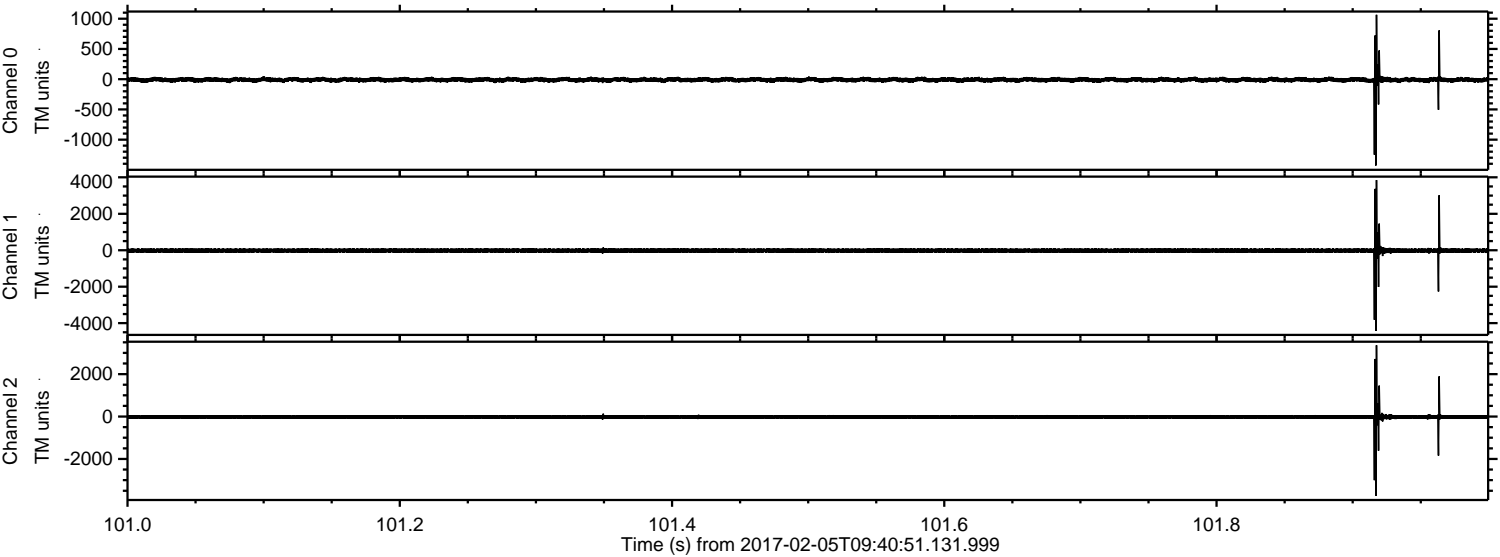
Channel 0
mn: -18677
mx: 11849
 μ : -10.7
 σ : 116.4

Channel 1
mn: -2318
mx: 1326
 μ : -18.1
 σ : 67.2

Channel 2
mn: -17790
mx: 19967
 μ : -21.5
 σ : 202.7

ELMAVAN 3D WAVEFORMS (Measured data sampled at 50 kHz) 51000 packets of 144 samples from 2017-02-05T09:40:51.131.999. Part 102/147

Processed Sun Feb 5 10:49:09 2017 by ELM ver.2012-10-06 from 001__elm20170205_094050__dat00.bin



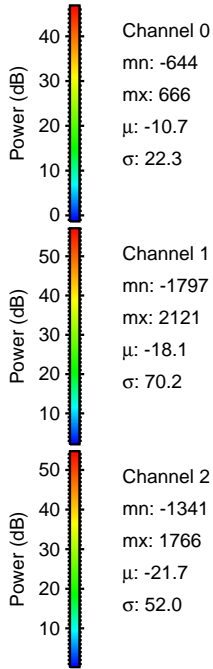
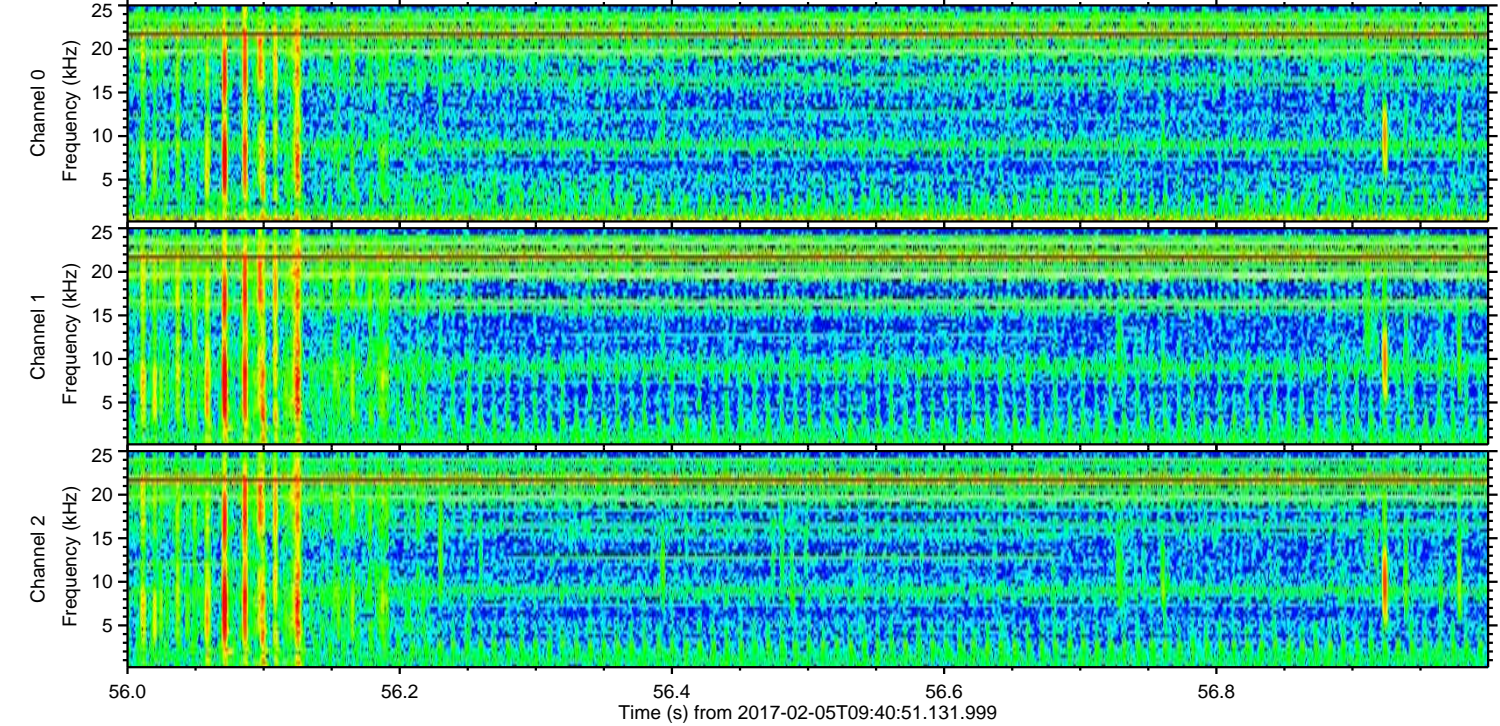
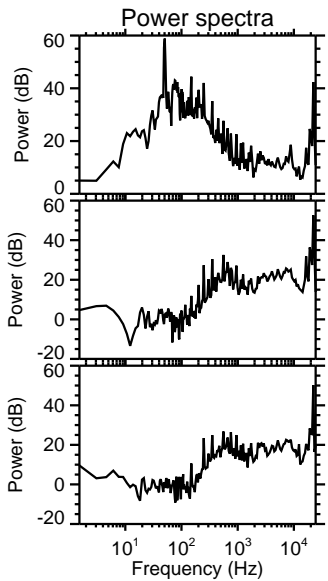
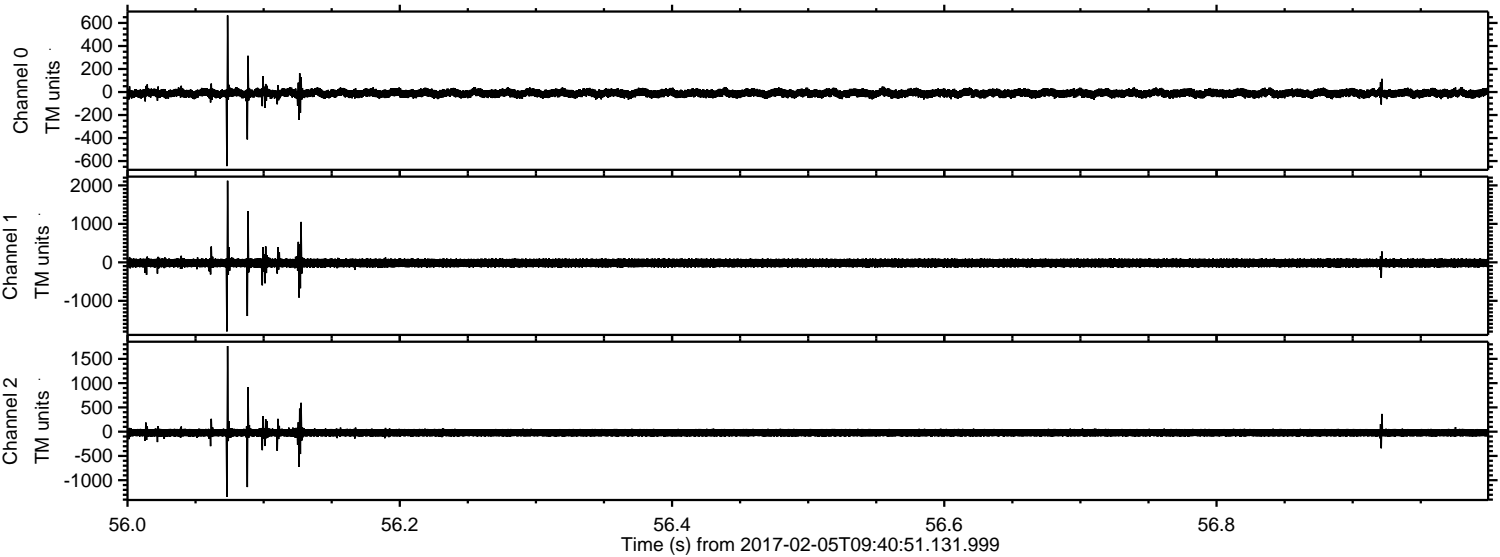
Channel 0
mn: -1428
mx: 1065
 μ : -10.7
 σ : 28.0

Channel 1
mn: -4424
mx: 3847
 μ : -18.1
 σ : 87.1

Channel 2
mn: -3749
mx: 3360
 μ : -21.8
 σ : 68.9

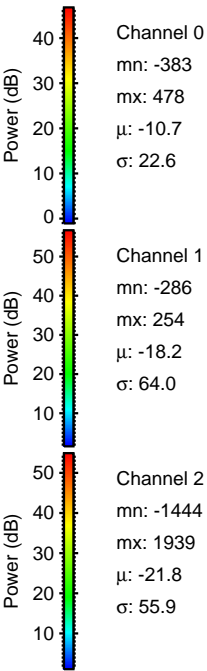
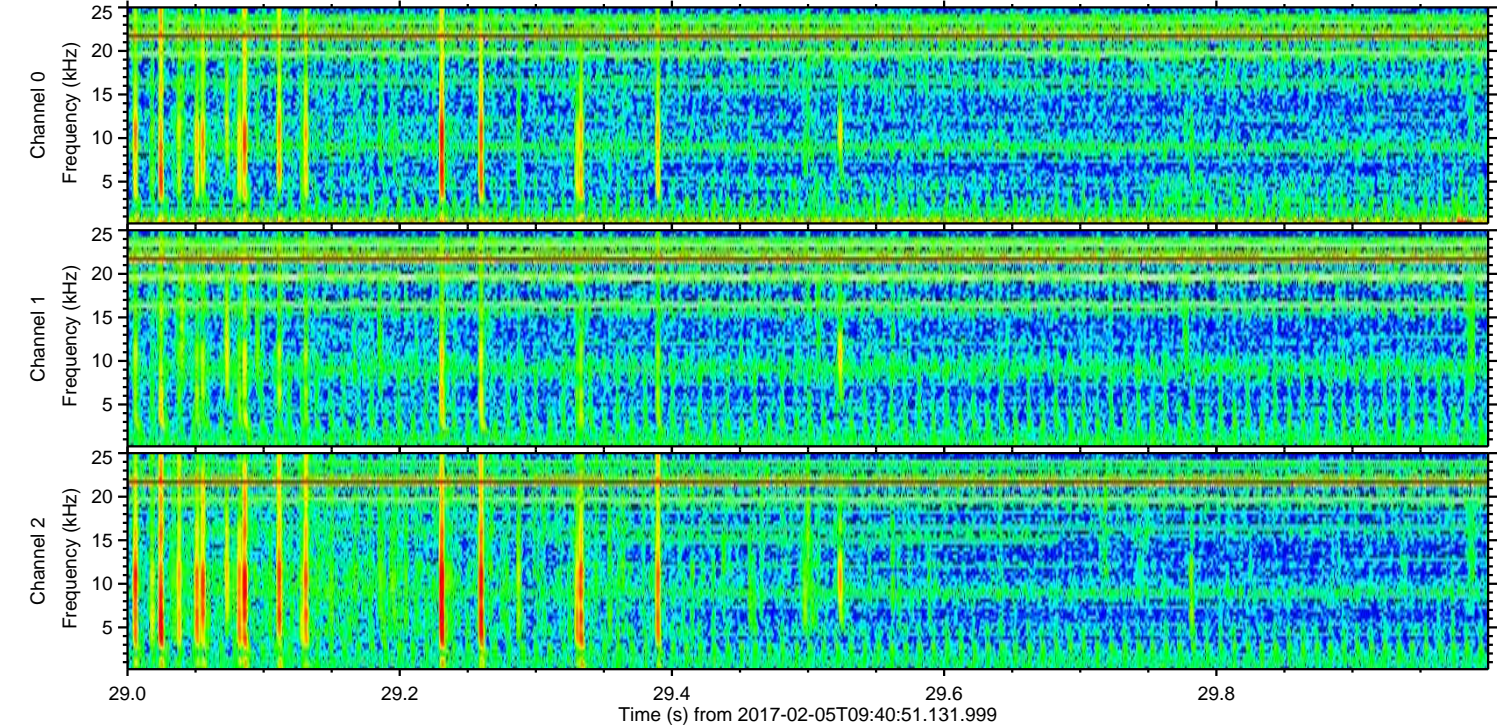
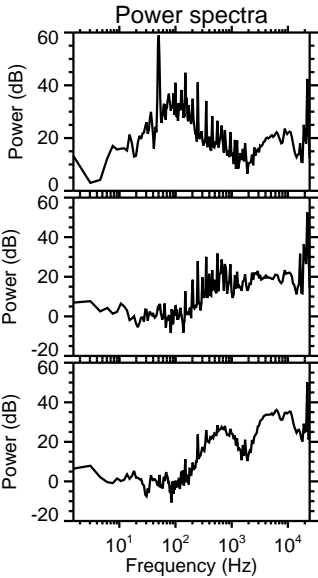
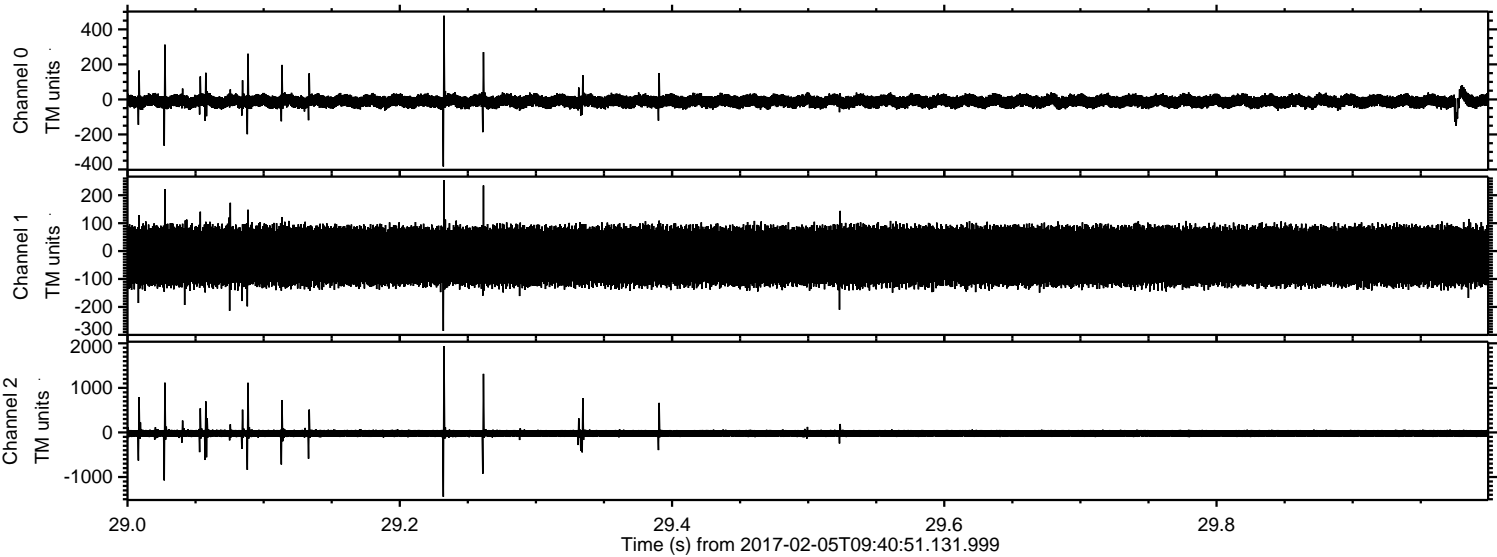
ELMAVAN 3D WAVEFORMS (Measured data sampled at 50 kHz) 51000 packets of 144 samples from 2017-02-05T09:40:51.131.999. Part 57/147

Processed Sun Feb 5 10:49:10 2017 by ELM ver.2012-10-06 from 001__elm20170205_094050__dat00.bin



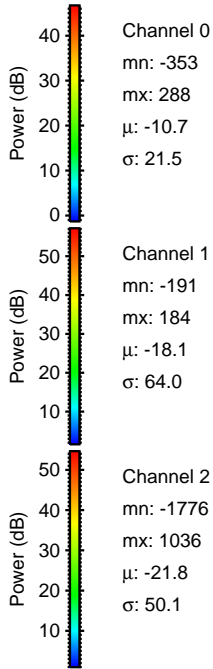
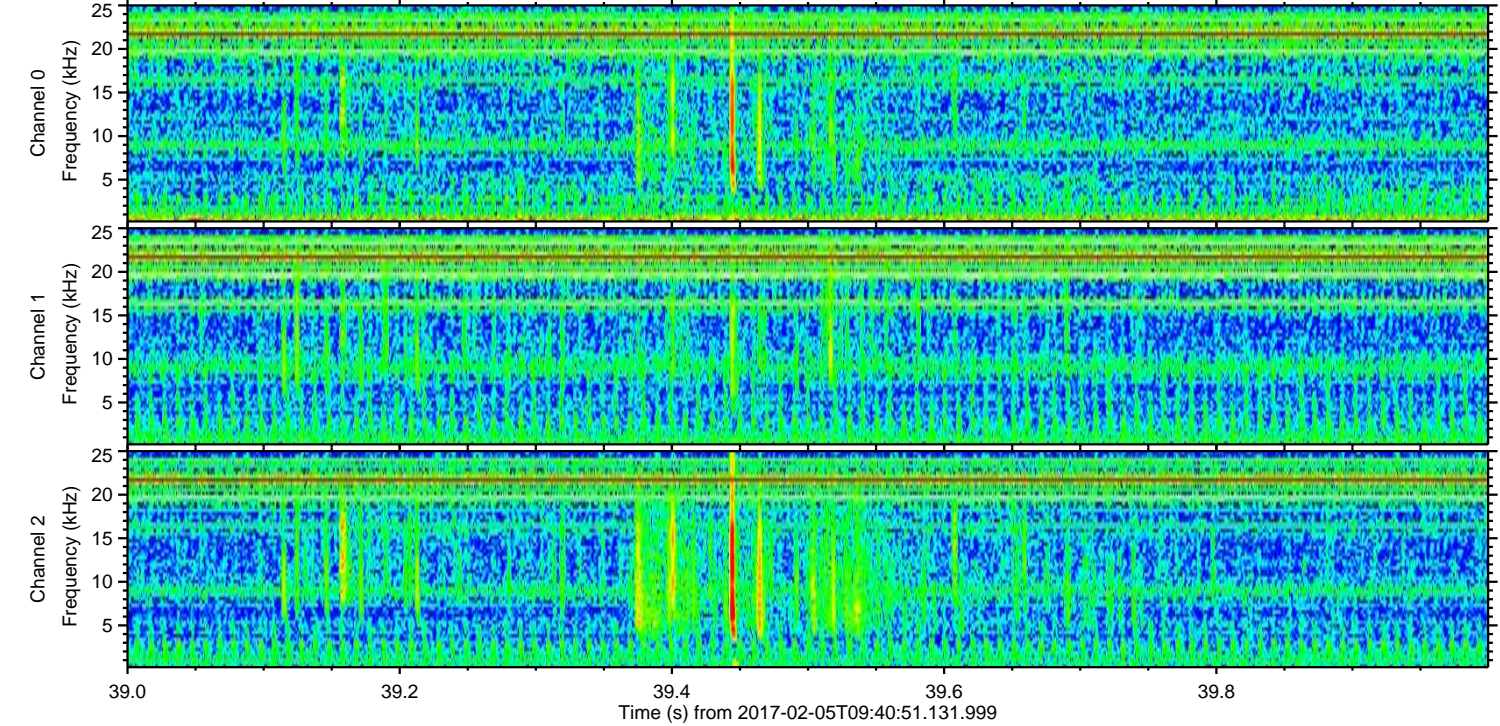
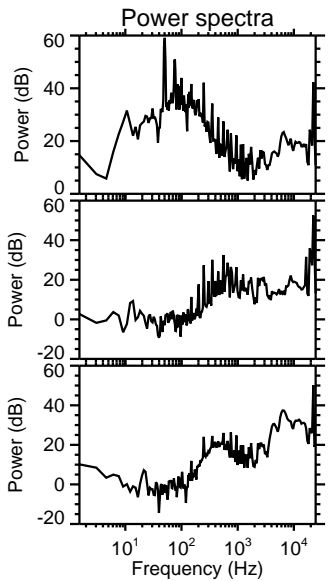
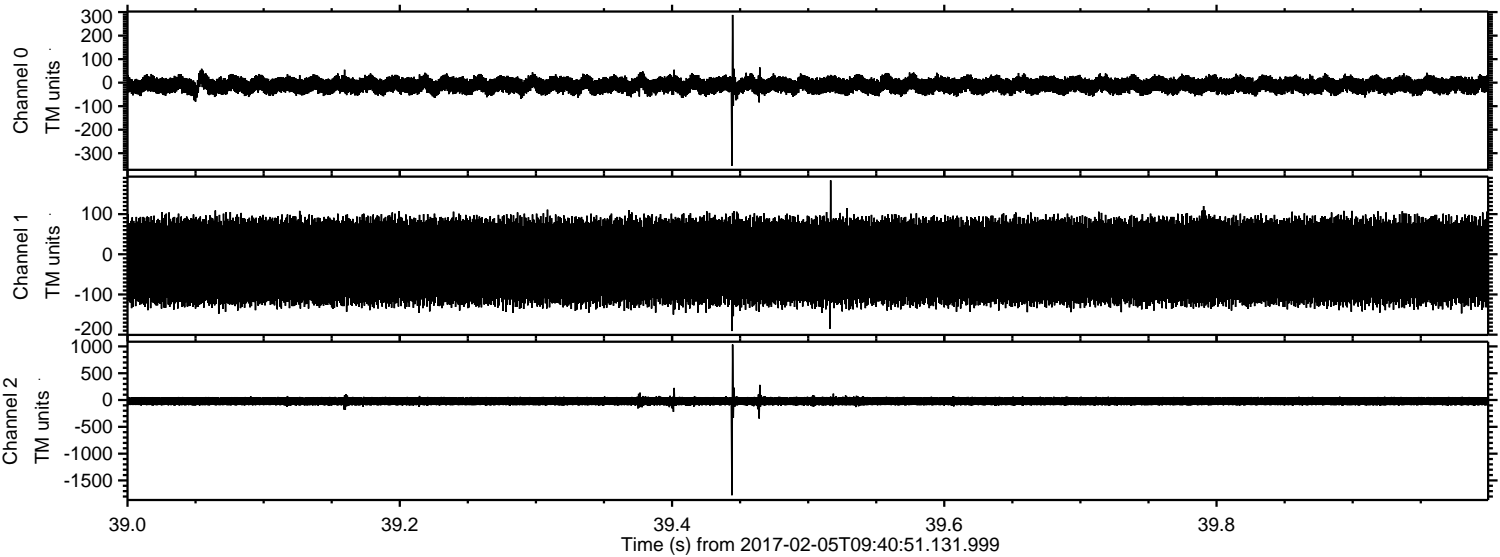
ELMAVAN 3D WAVEFORMS (Measured data sampled at 50 kHz) 51000 packets of 144 samples from 2017-02-05T09:40:51.131.999. Part 30/147

Processed Sun Feb 5 10:49:11 2017 by ELM ver.2012-10-06 from 001__elm20170205_094050__dat00.bin



ELMAVAN 3D WAVEFORMS (Measured data sampled at 50 kHz) 51000 packets of 144 samples from 2017-02-05T09:40:51.131.999. Part 40/147

Processed Sun Feb 5 10:49:12 2017 by ELM ver.2012-10-06 from 001__elm20170205_094050__dat00.bin



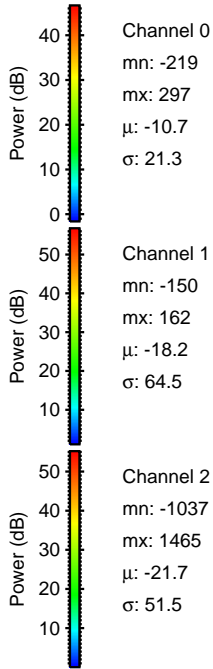
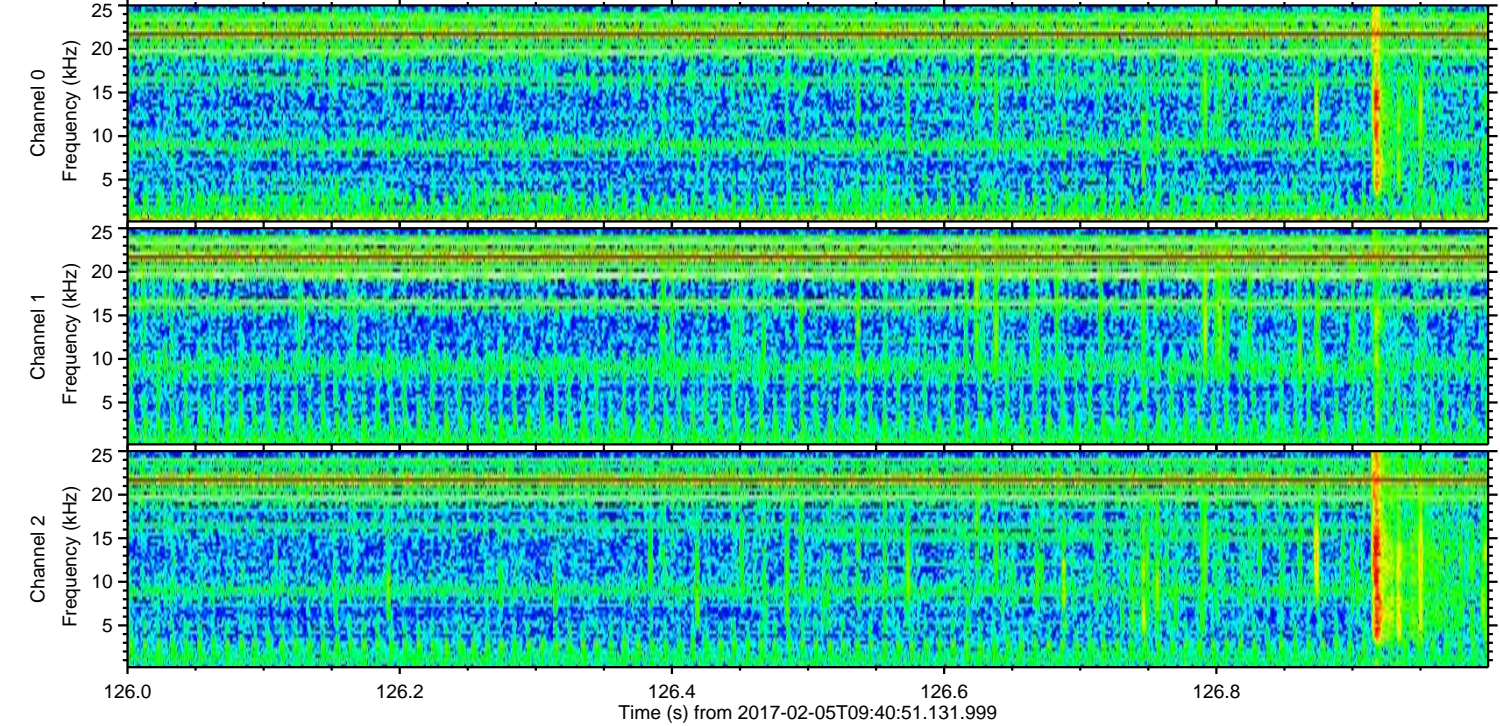
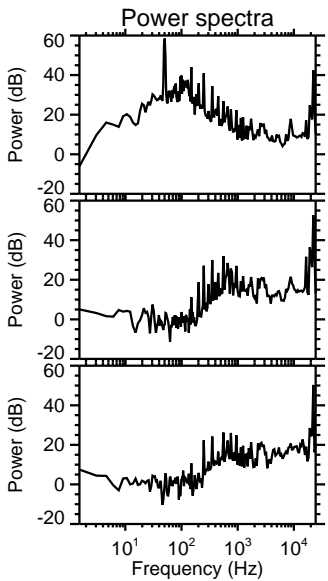
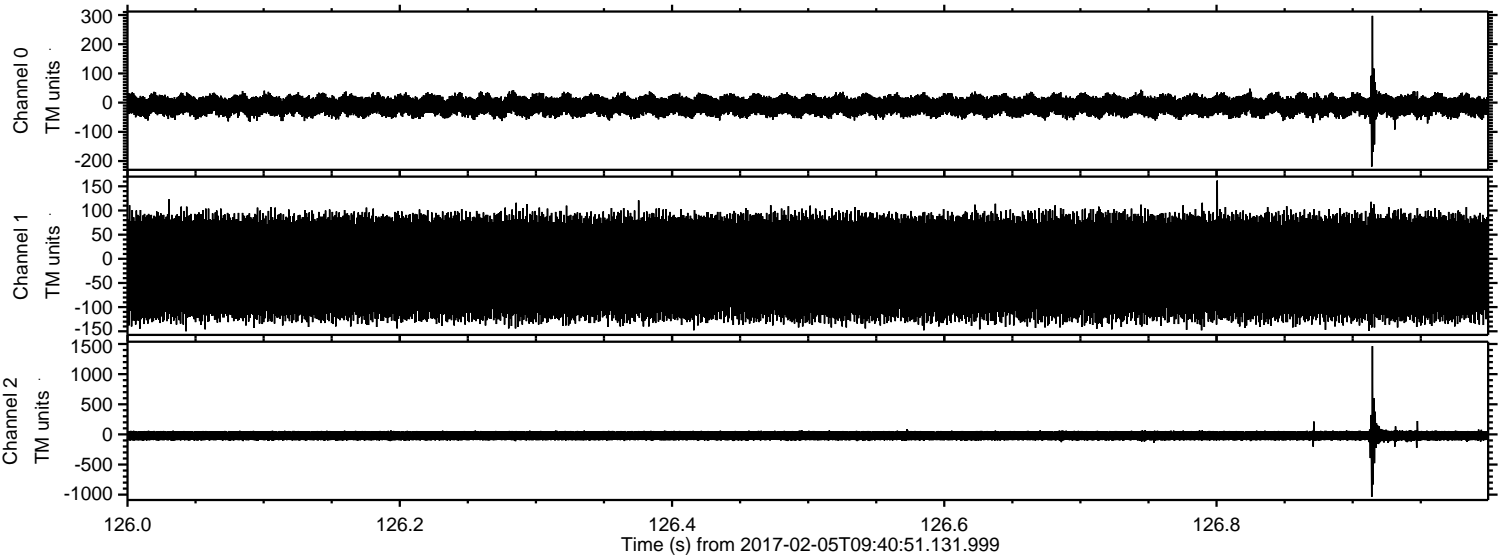
Channel 0
mn: -353
mx: 288
 μ : -10.7
 σ : 21.5

Channel 1
mn: -191
mx: 184
 μ : -18.1
 σ : 64.0

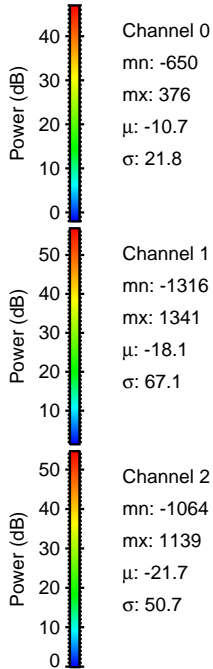
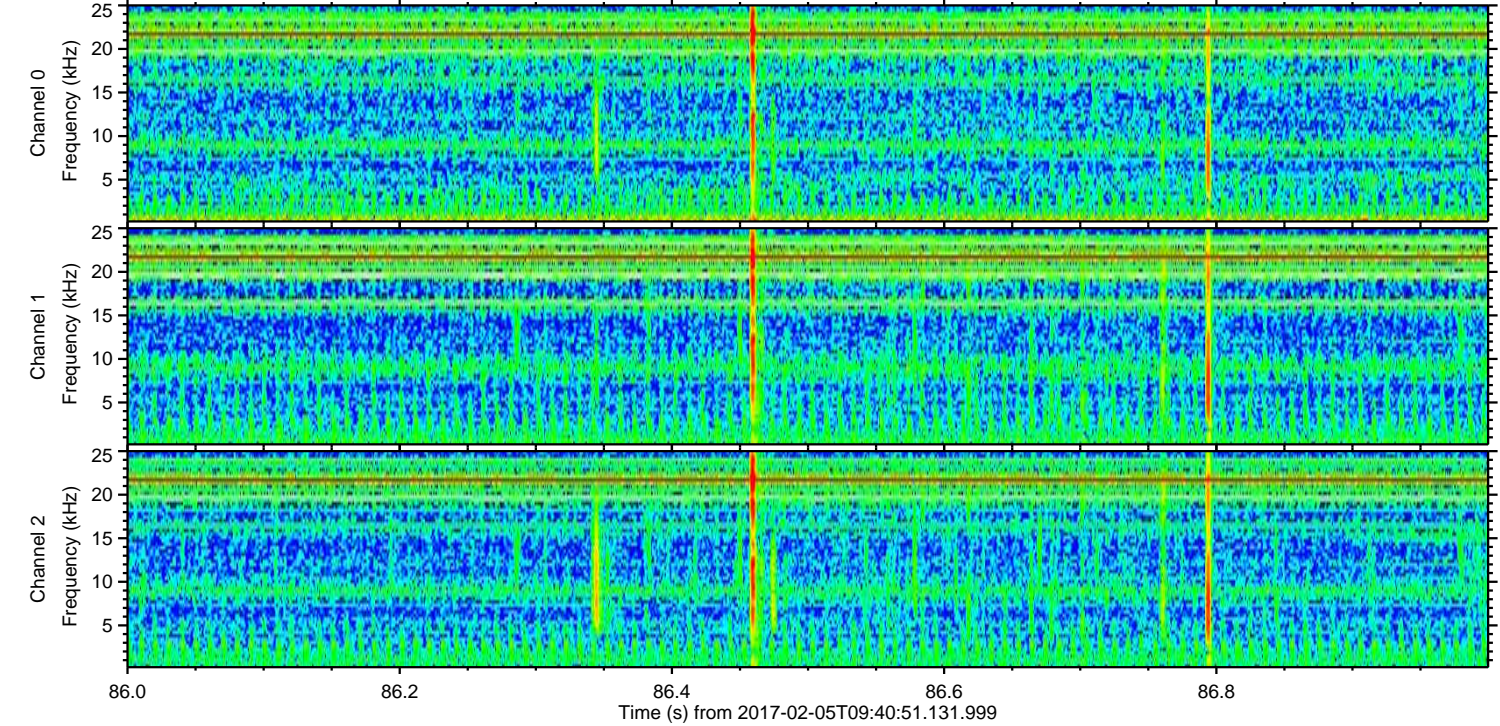
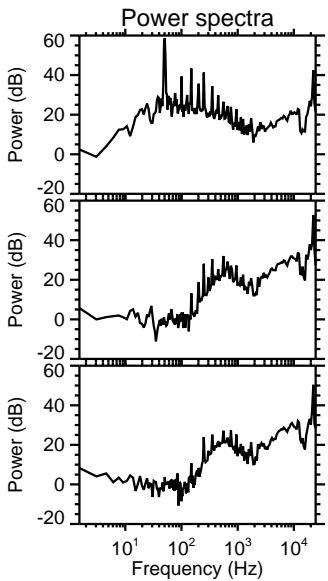
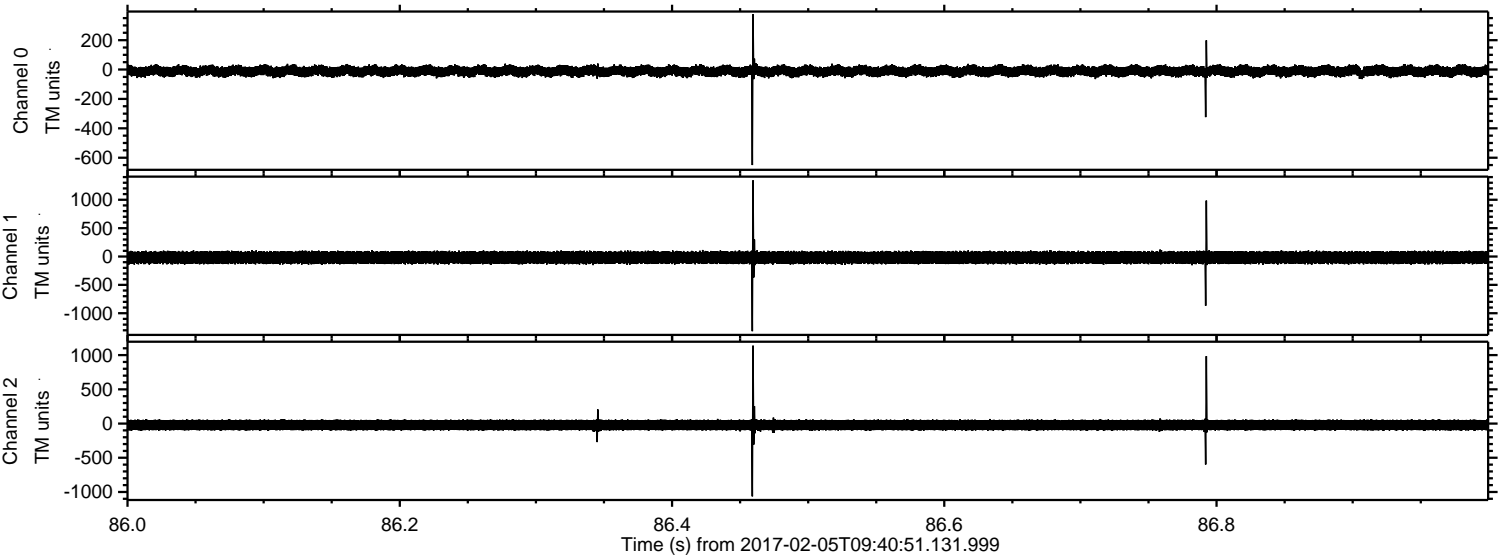
Channel 2
mn: -1776
mx: 1036
 μ : -21.8
 σ : 50.1

ELMAVAN 3D WAVEFORMS (Measured data sampled at 50 kHz) 51000 packets of 144 samples from 2017-02-05T09:40:51.131.999. Part 127/147

Processed Sun Feb 5 10:49:13 2017 by ELM ver.2012-10-06 from 001__elm20170205_094050__dat00.bin



Processed Sun Feb 5 10:49:14 2017 by ELM ver.2012-10-06 from 001__elm20170205_094050__dat00.bin



ELMAVAN 3D WAVEFORMS (Measured data sampled at 50 kHz) 51000 packets of 144 samples from 2017-02-05T09:40:51.131.999. Part 23/147

Processed Sun Feb 5 10:49:15 2017 by ELM ver.2012-10-06 from 001__elm20170205_094050__dat00.bin

