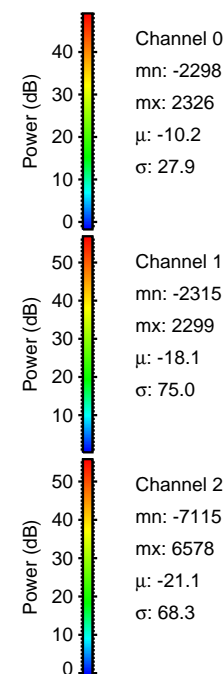
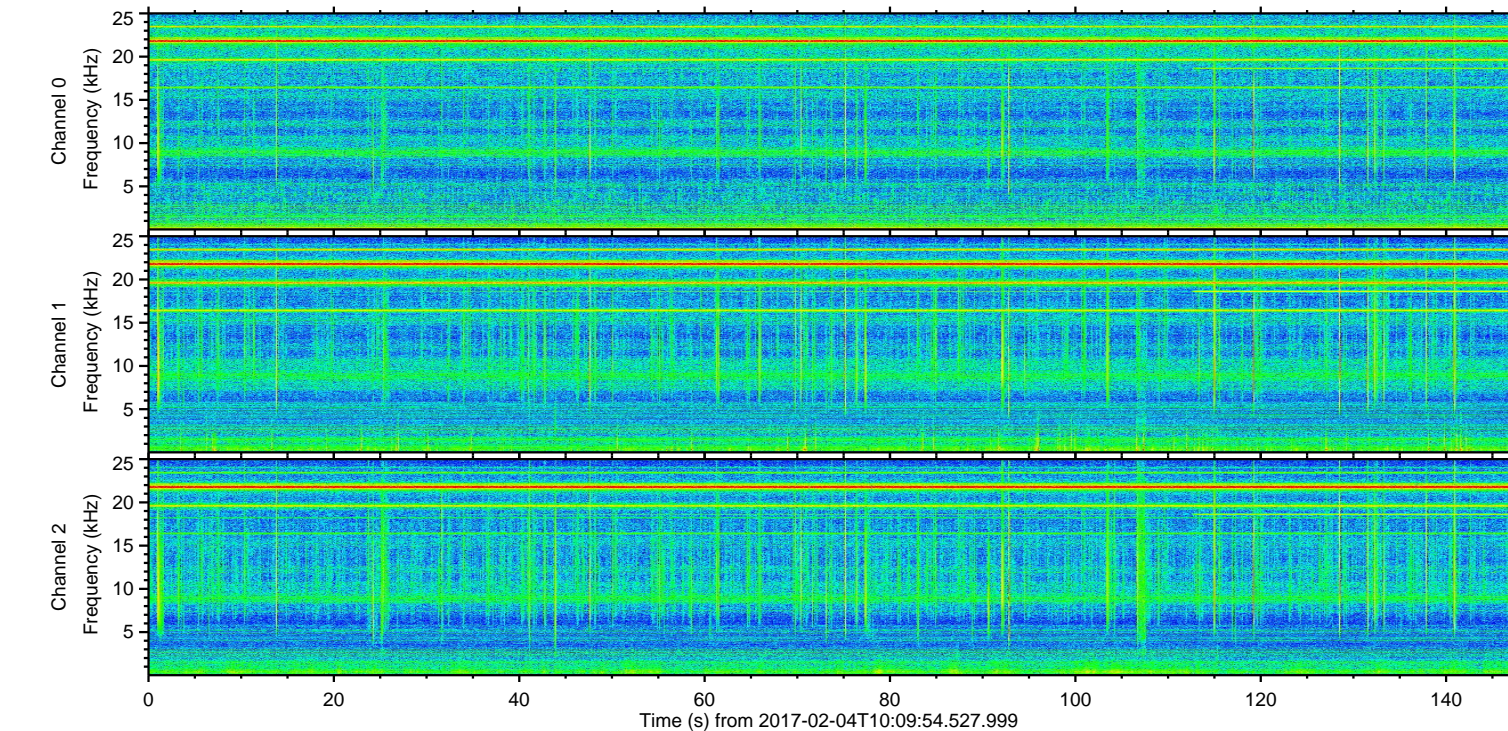
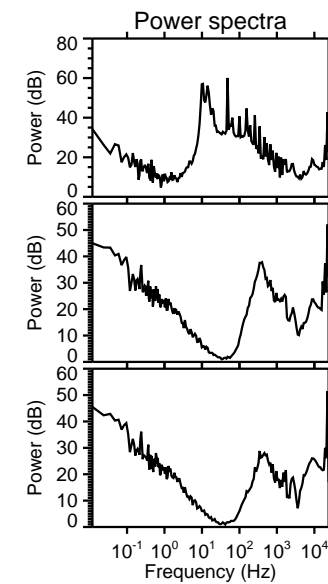
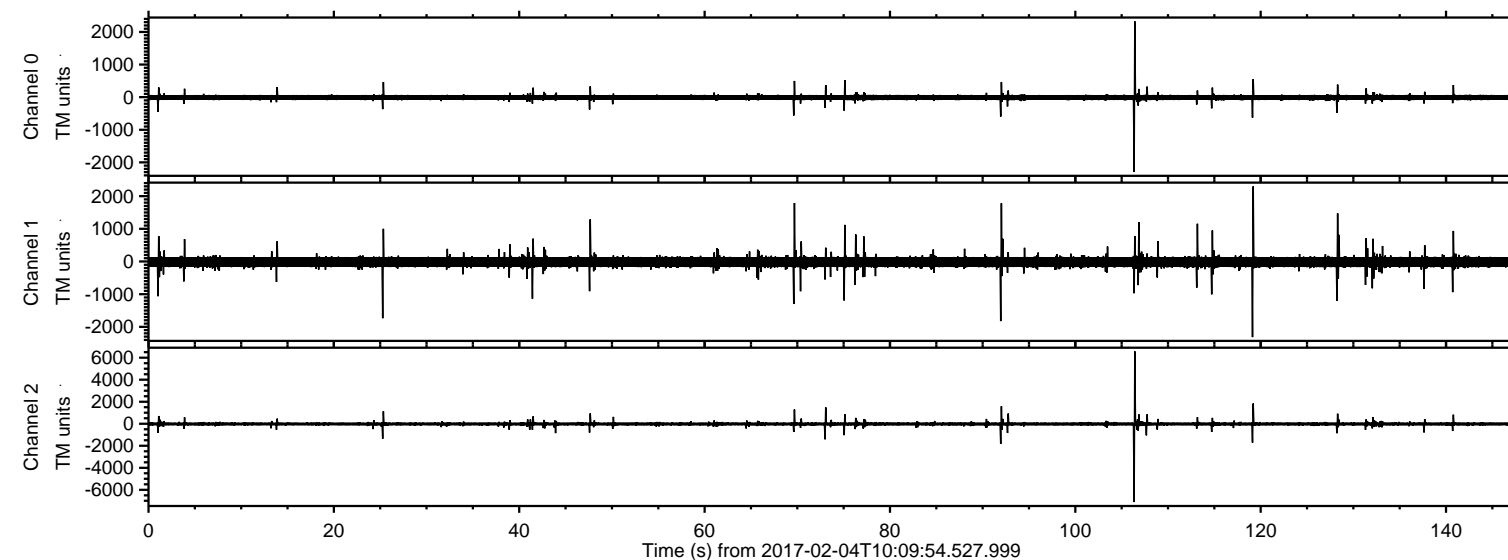


# ELMAVAN 3D WAVEFORMS (Measured data sampled at 50 kHz) 51000 packets of 144 samples from 2017-02-04T10:09:54.527.999.

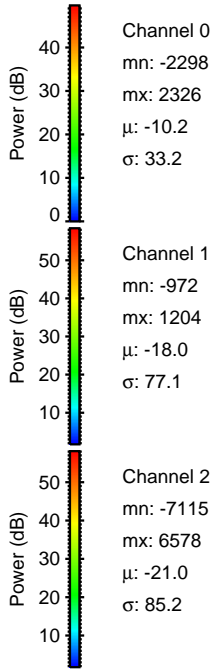
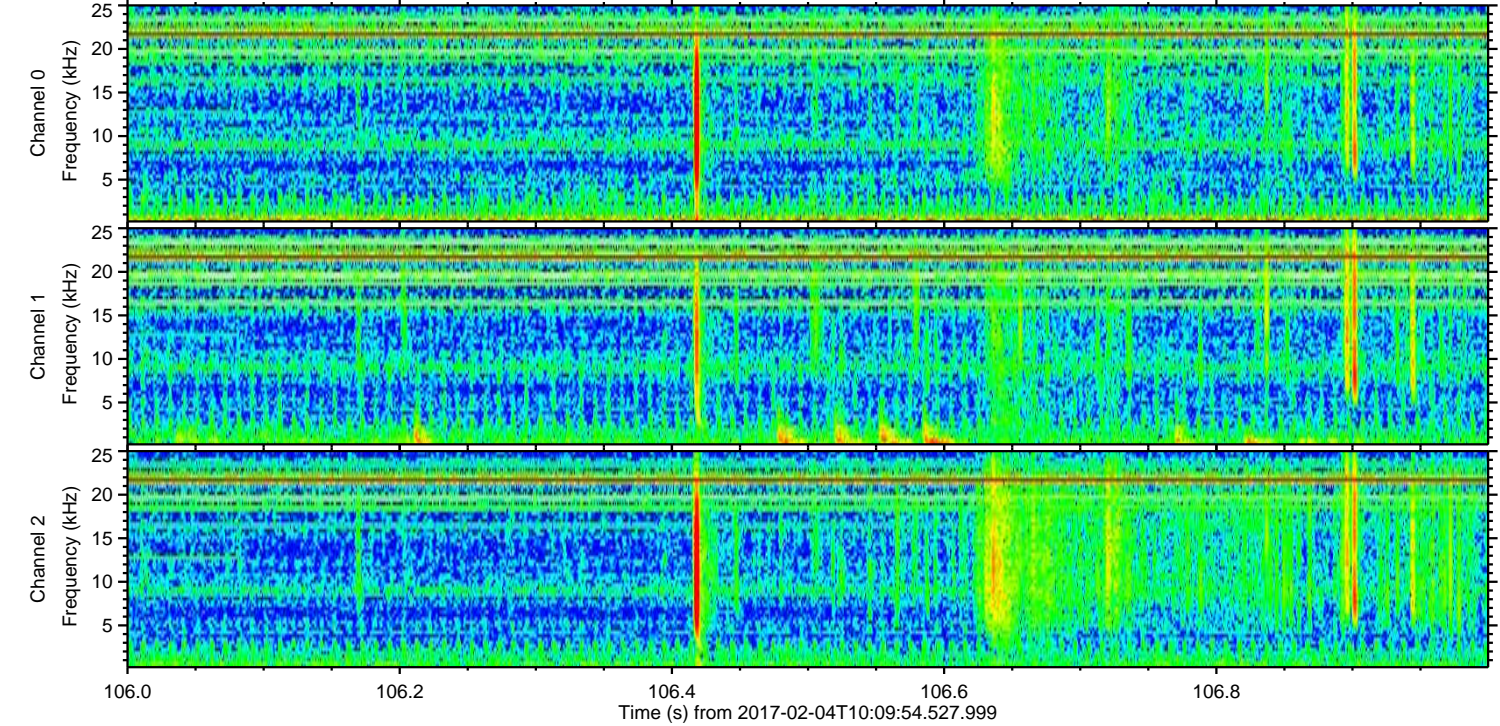
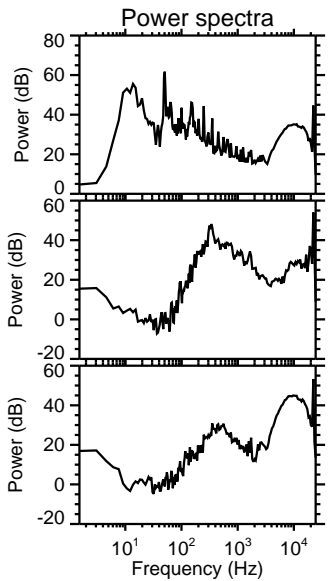
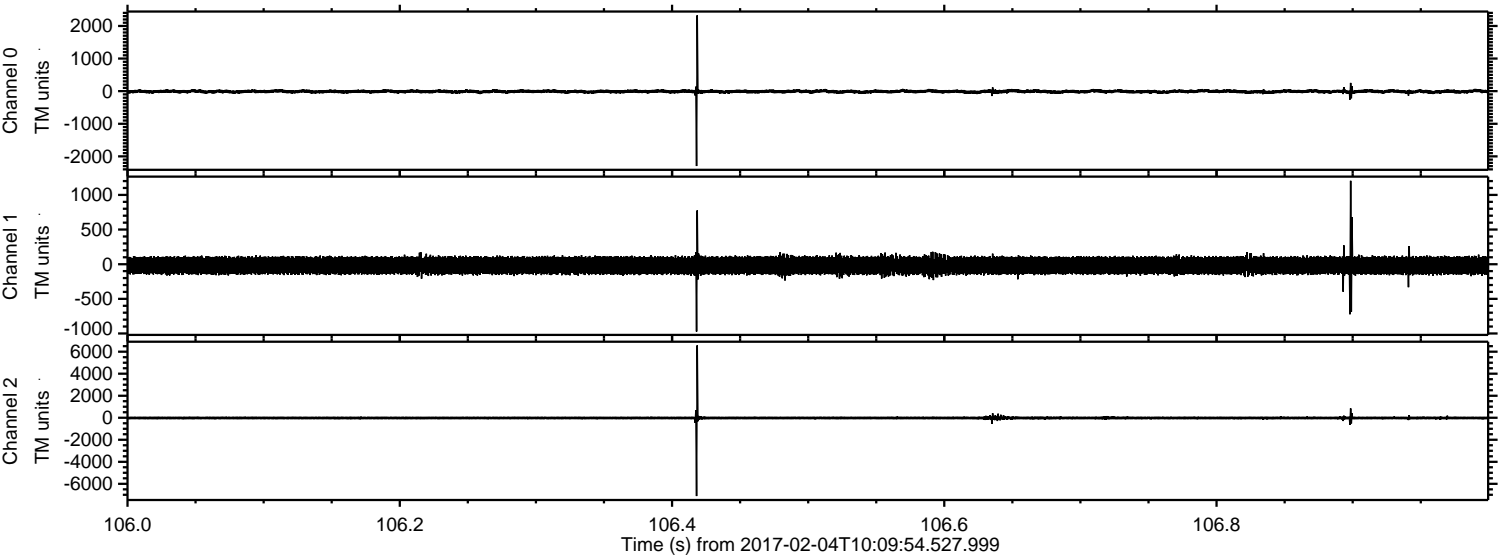
Processed Sat Feb 4 11:17:49 2017 by ELM ver.2012-10-06 from 001\_\_elm20170204\_100953\_\_dat00.bin





ELMAVAN 3D WAVEFORMS (Measured data sampled at 50 kHz) 51000 packets of 144 samples from 2017-02-04T10:09:54.527.999. Part 107/147

Processed Sat Feb 4 11:18:00 2017 by ELM ver.2012-10-06 from 001\_\_elm20170204\_100953\_\_dat00.bin



Channel 0  
mn: -2298  
mx: 2326  
 $\mu$ : -10.2  
 $\sigma$ : 33.2

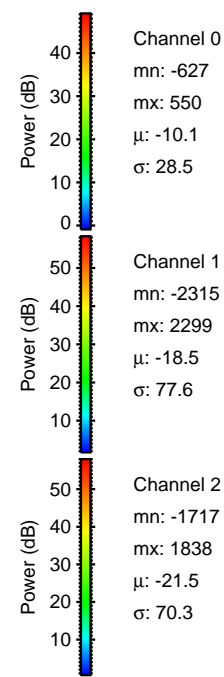
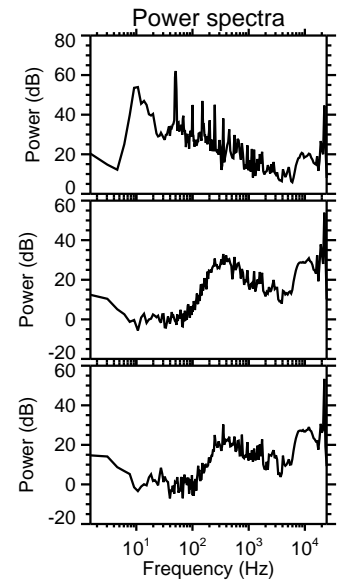
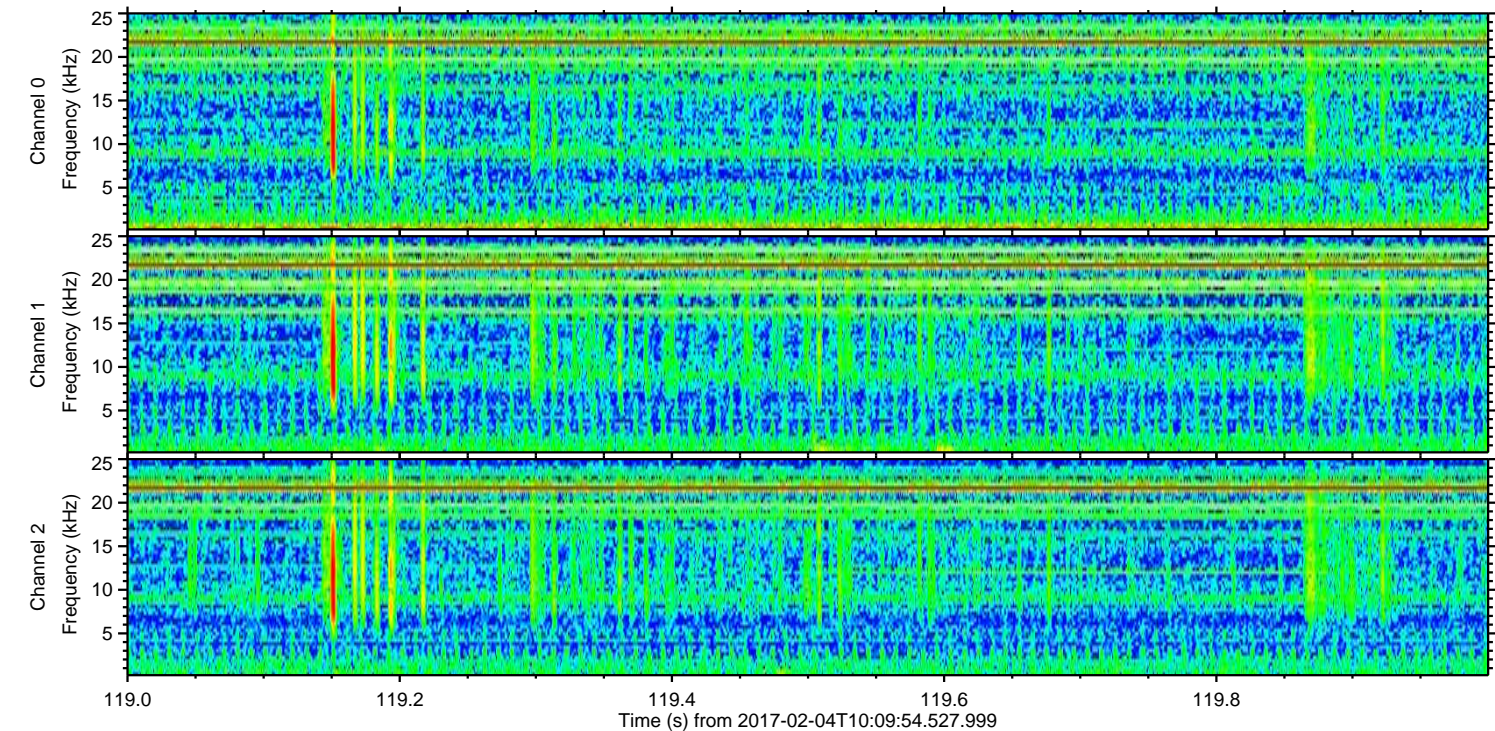
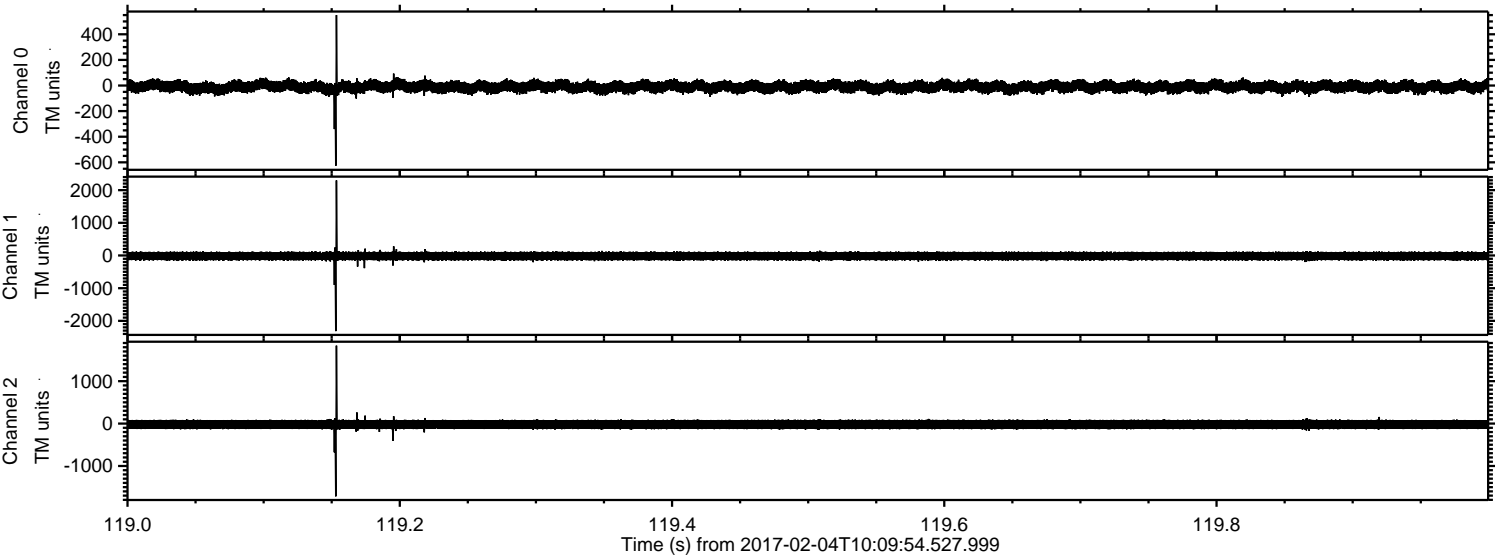
Channel 1  
mn: -972  
mx: 1204  
 $\mu$ : -18.0  
 $\sigma$ : 77.1

Channel 2  
mn: -7115  
mx: 6578  
 $\mu$ : -21.0  
 $\sigma$ : 85.2



ELMAVAN 3D WAVEFORMS (Measured data sampled at 50 kHz) 51000 packets of 144 samples from 2017-02-04T10:09:54.527.999. Part 120/147

Processed Sat Feb 4 11:18:01 2017 by ELM ver.2012-10-06 from 001\_\_elm20170204\_100953\_\_dat00.bin



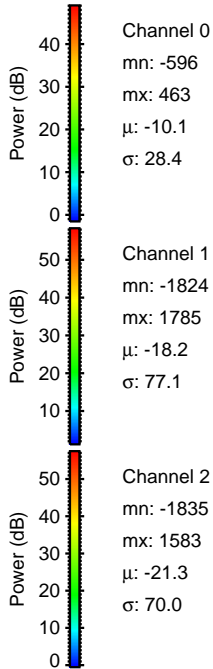
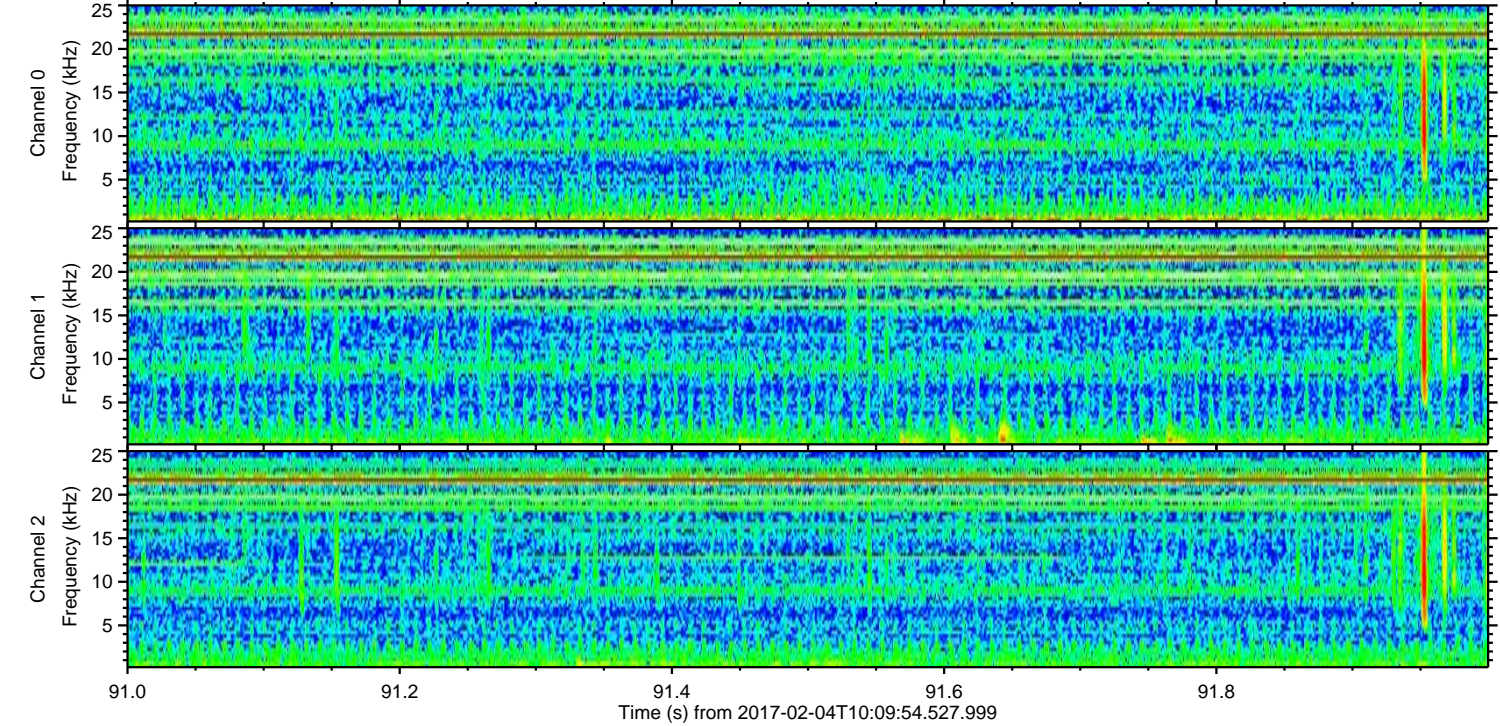
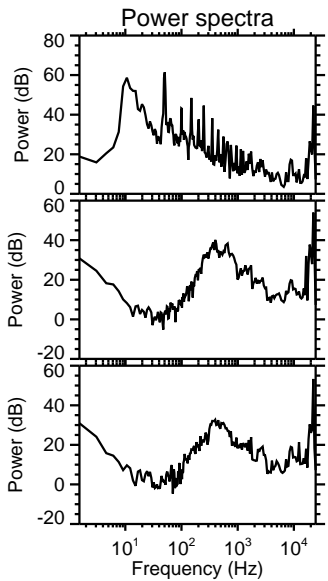
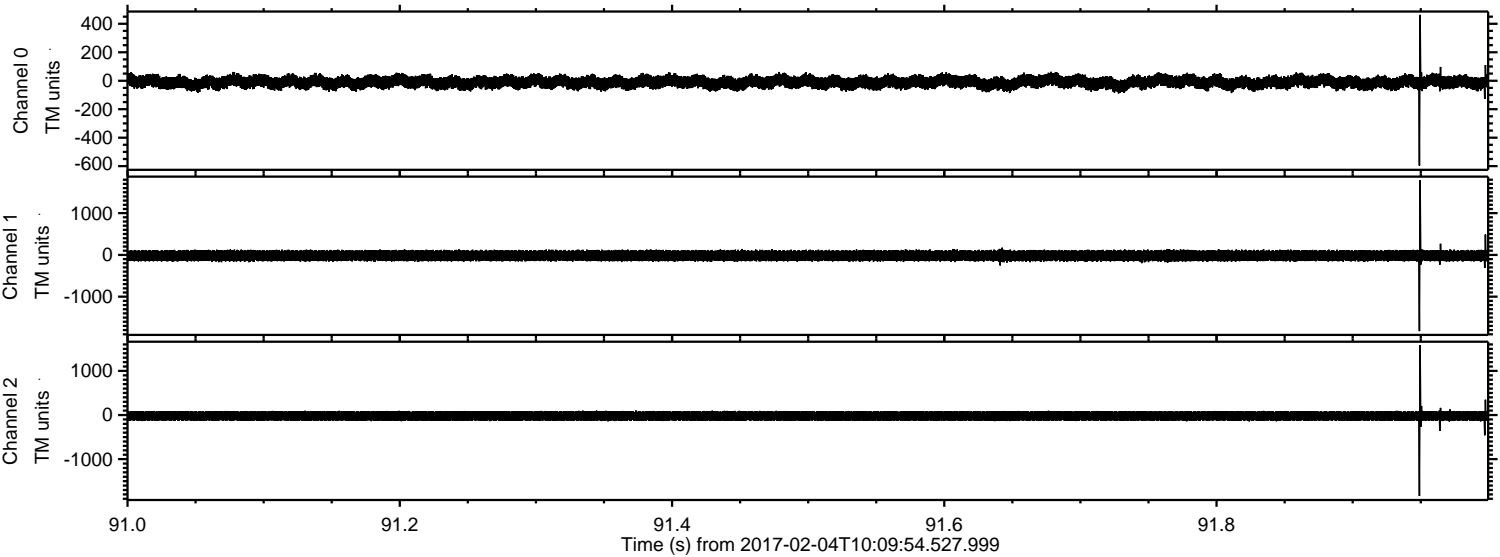
Channel 0  
mn: -627  
mx: 550  
 $\mu$ : -10.1  
 $\sigma$ : 28.5

Channel 1  
mn: -2315  
mx: 2299  
 $\mu$ : -18.5  
 $\sigma$ : 77.6

Channel 2  
mn: -1717  
mx: 1838  
 $\mu$ : -21.5  
 $\sigma$ : 70.3



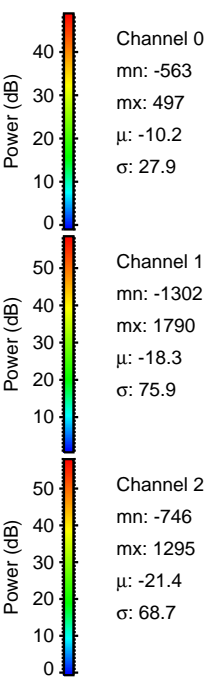
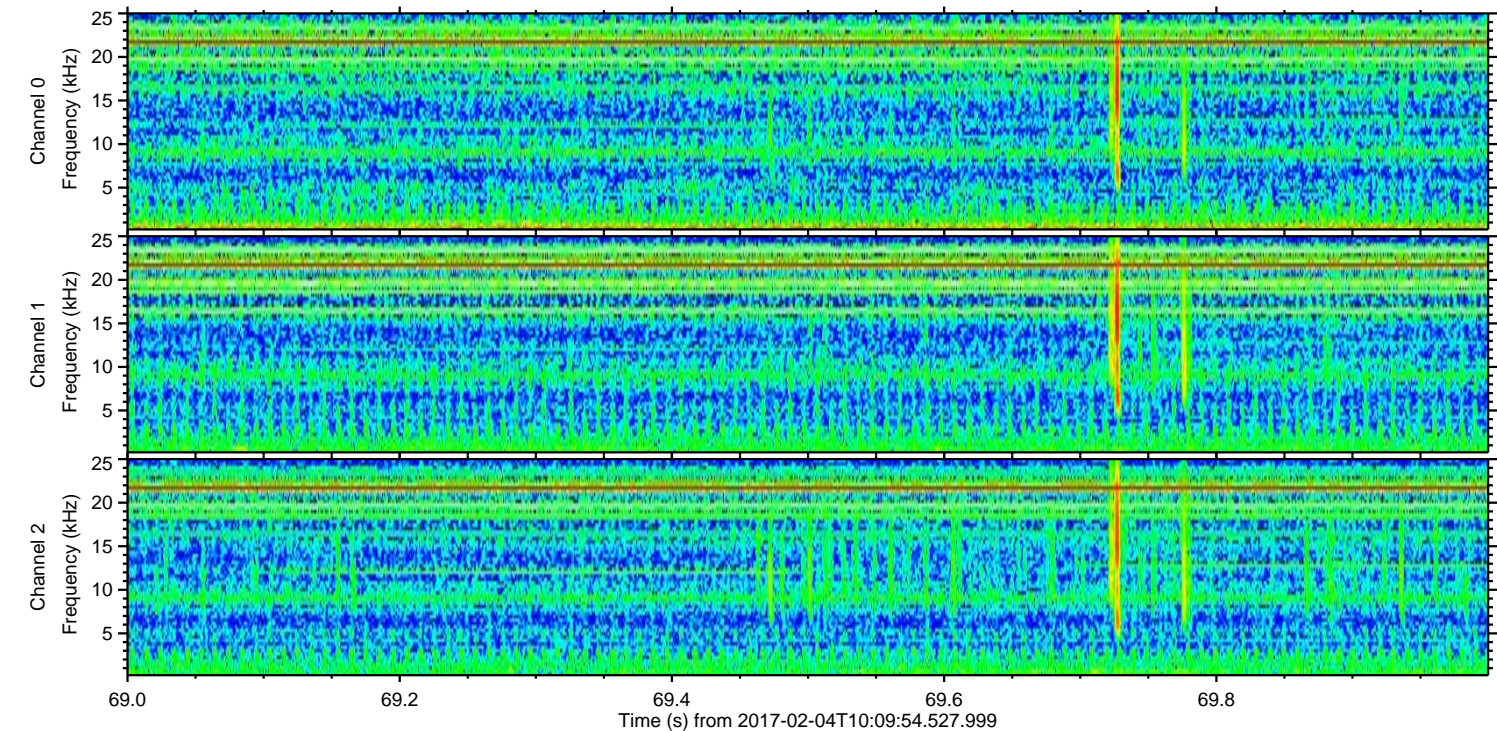
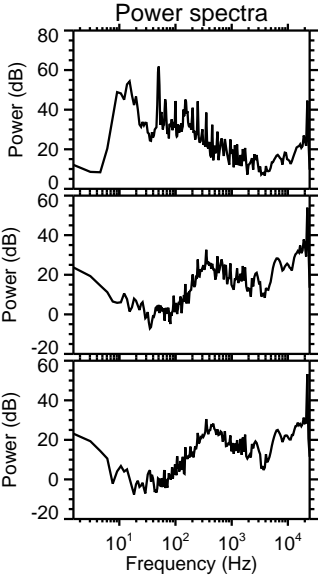
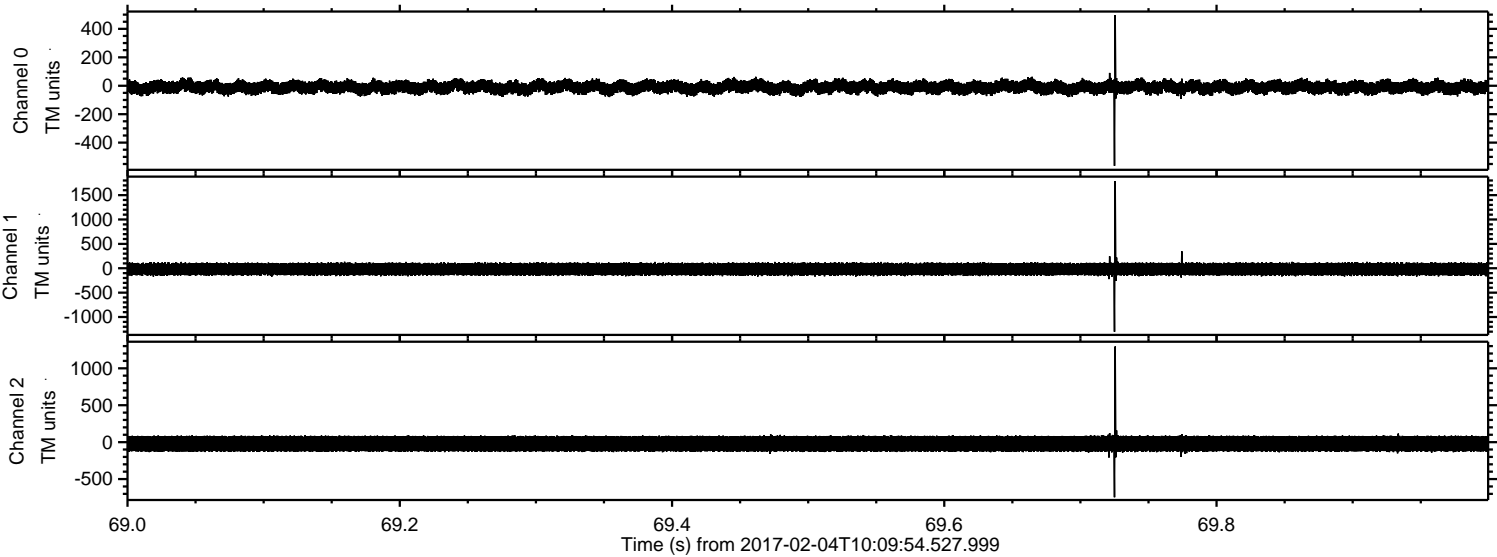
Processed Sat Feb 4 11:18:02 2017 by ELM ver.2012-10-06 from 001\_\_elm20170204\_100953\_\_dat00.bin





ELMAVAN 3D WAVEFORMS (Measured data sampled at 50 kHz) 51000 packets of 144 samples from 2017-02-04T10:09:54.527.999. Part 70/147

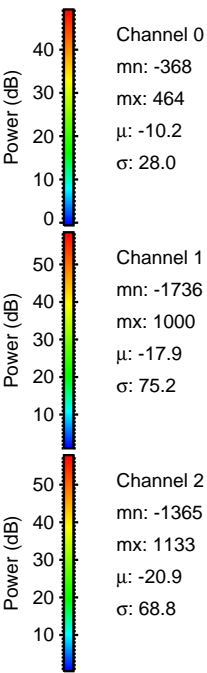
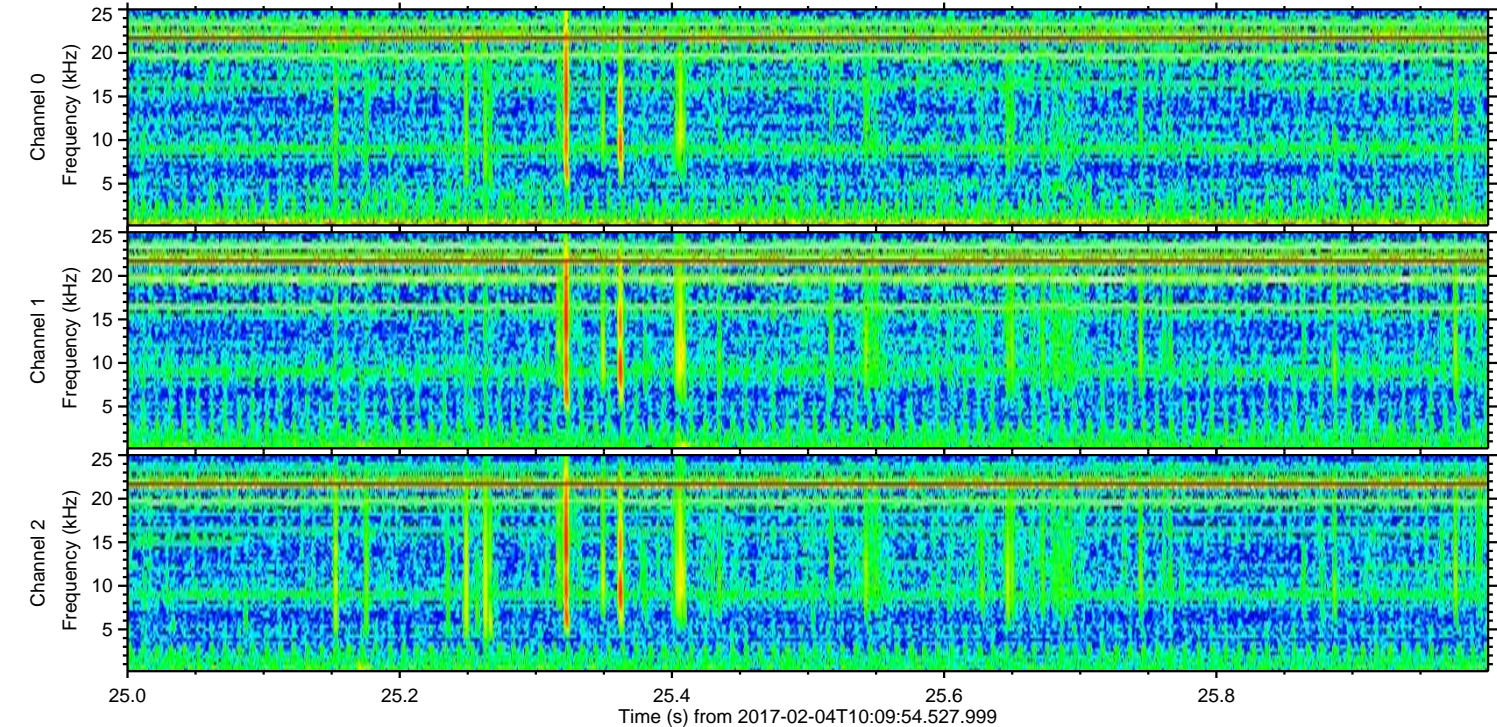
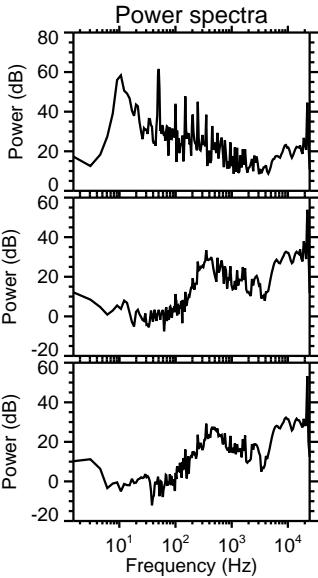
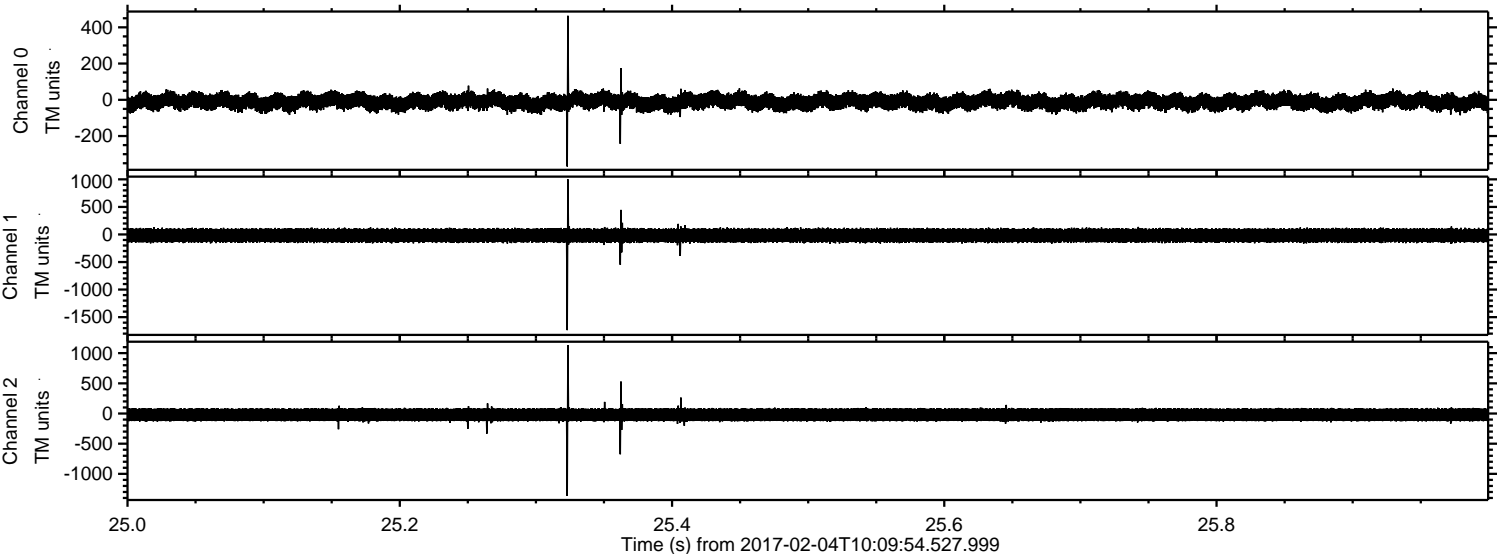
Processed Sat Feb 4 11:18:03 2017 by ELM ver.2012-10-06 from 001\_\_elm20170204\_100953\_\_dat00.bin





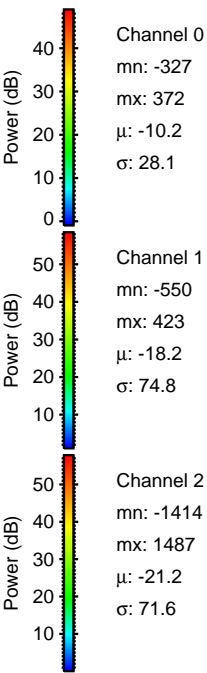
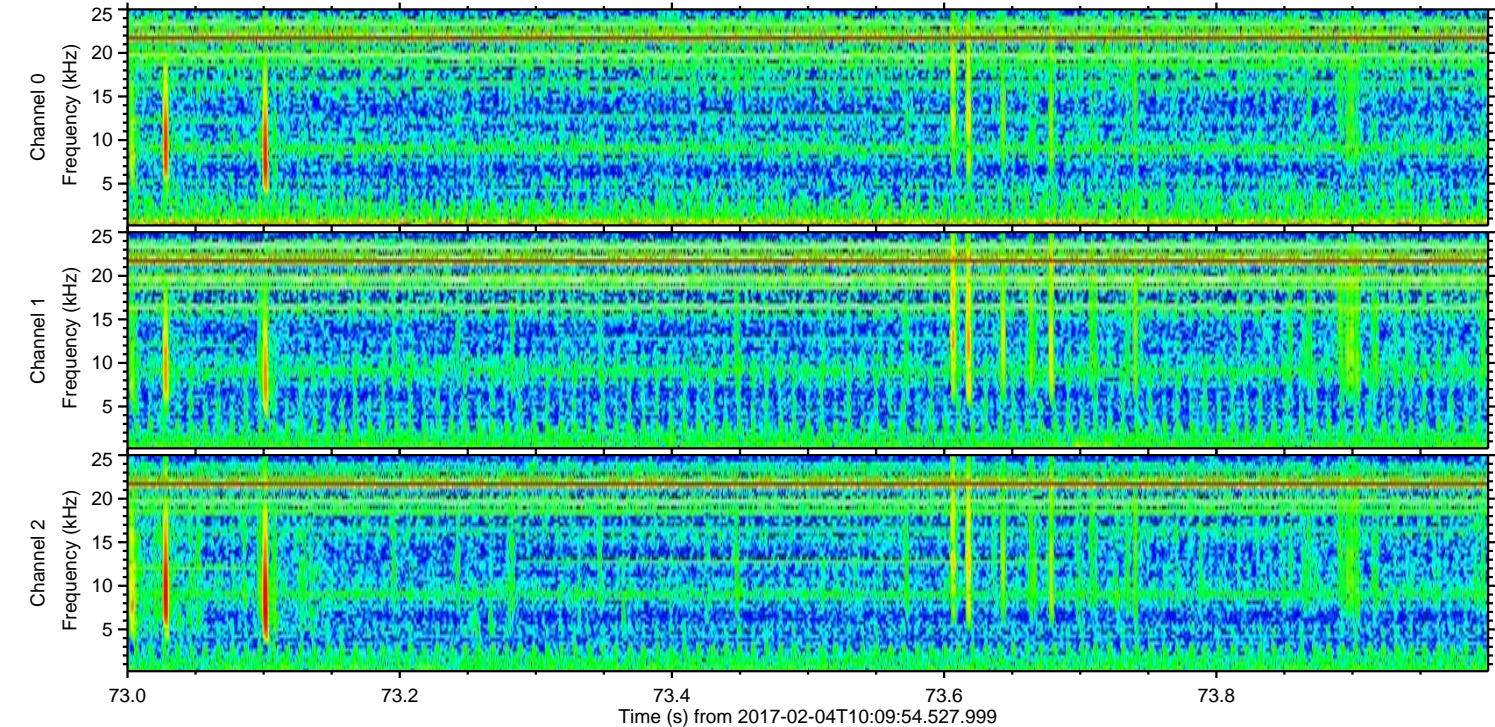
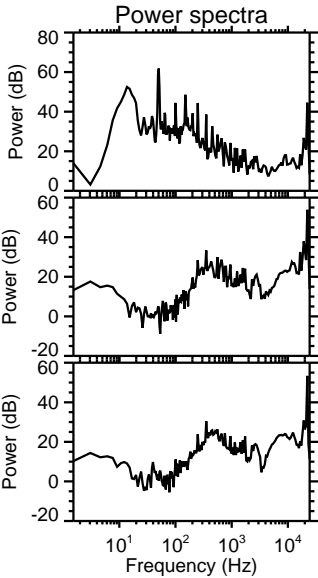
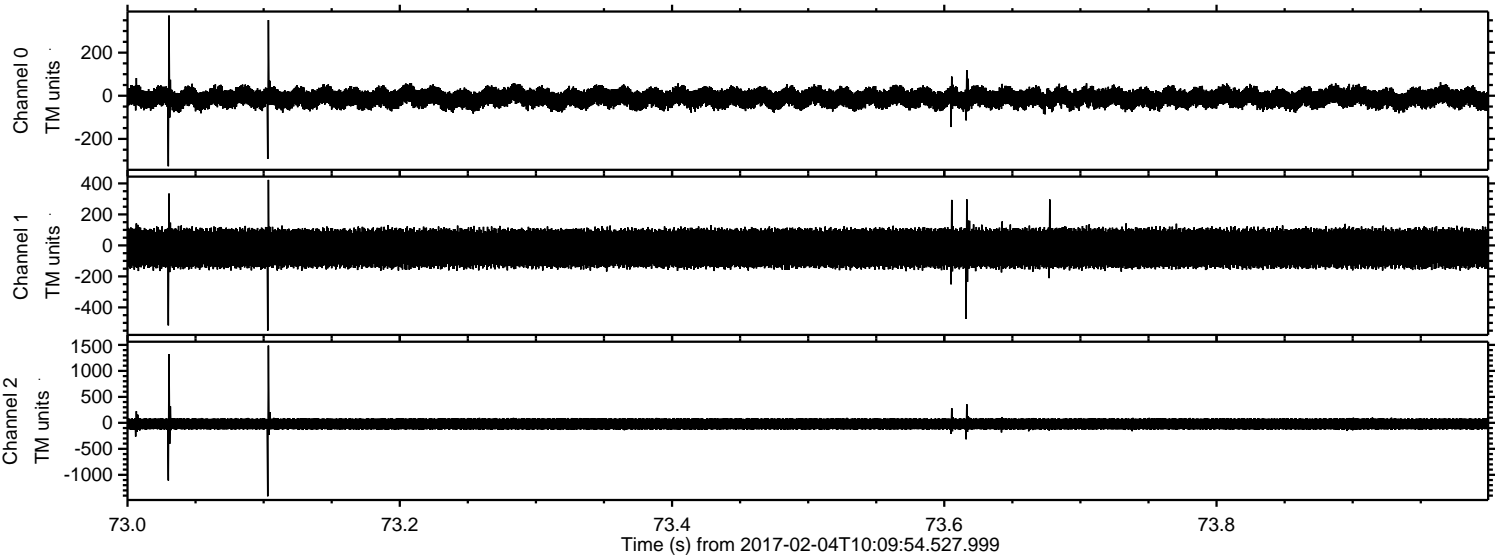
ELMAVAN 3D WAVEFORMS (Measured data sampled at 50 kHz) 51000 packets of 144 samples from 2017-02-04T10:09:54.527.999. Part 26/147

Processed Sat Feb 4 11:18:04 2017 by ELM ver.2012-10-06 from 001\_\_elm20170204\_100953\_\_dat00.bin





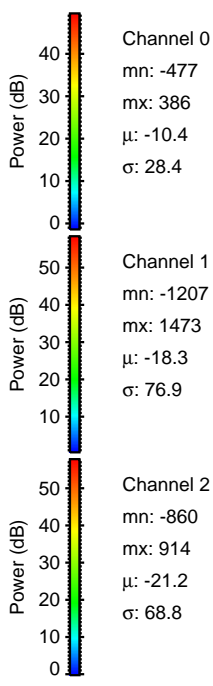
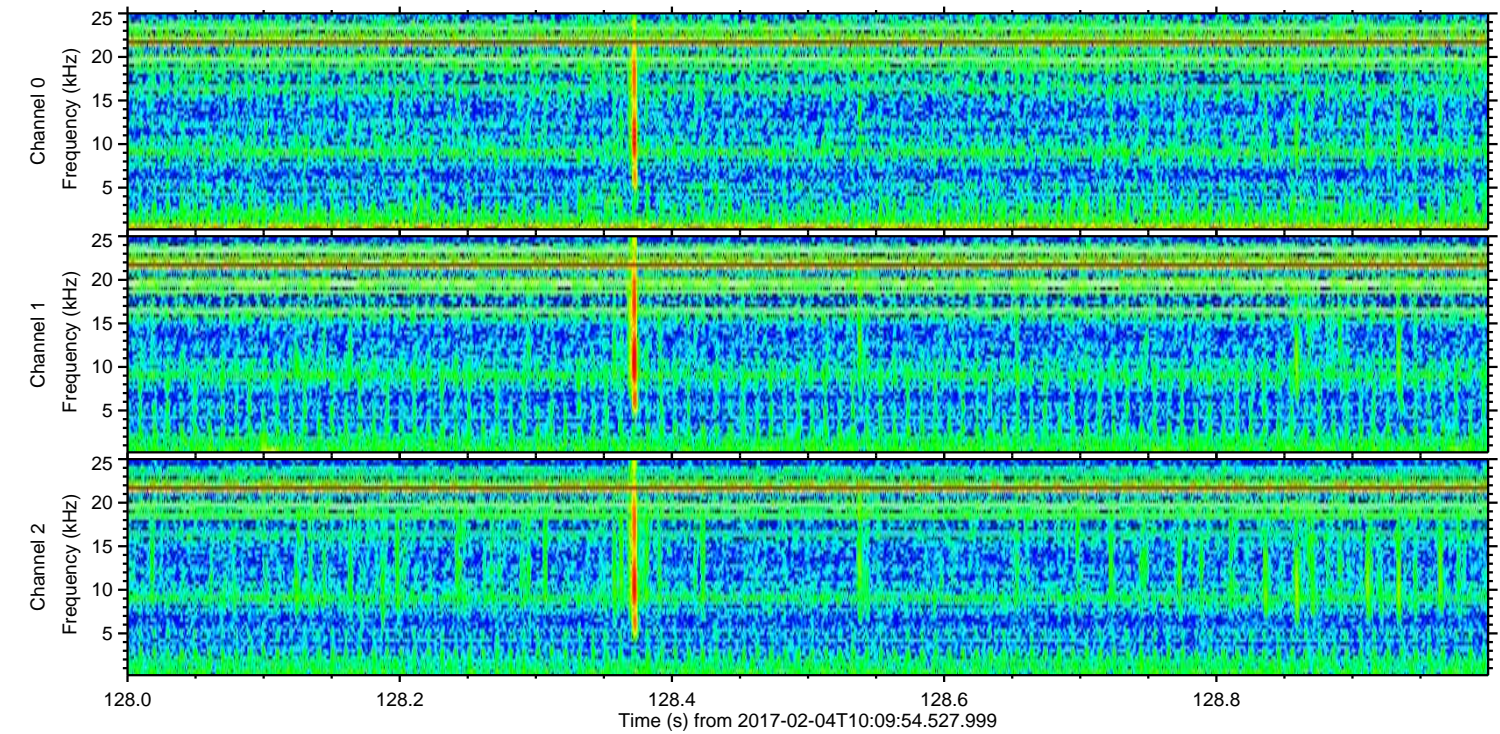
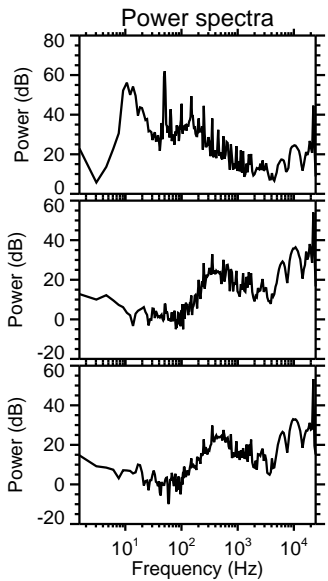
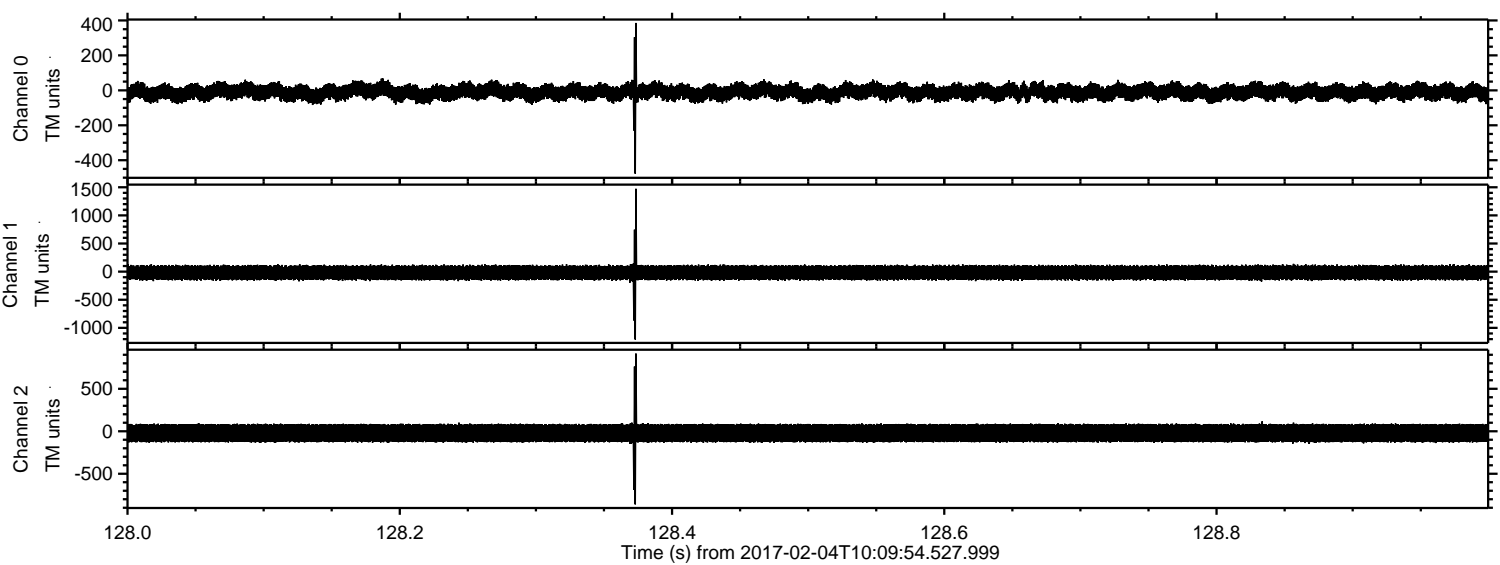
Processed Sat Feb 4 11:18:05 2017 by ELM ver.2012-10-06 from 001\_\_elm20170204\_100953\_\_dat00.bin





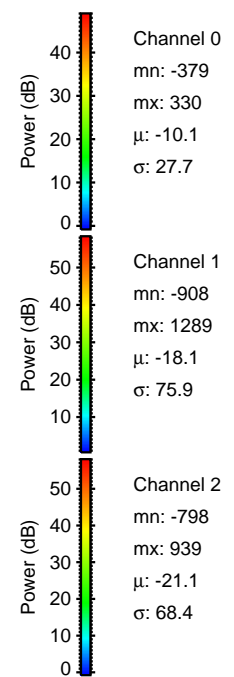
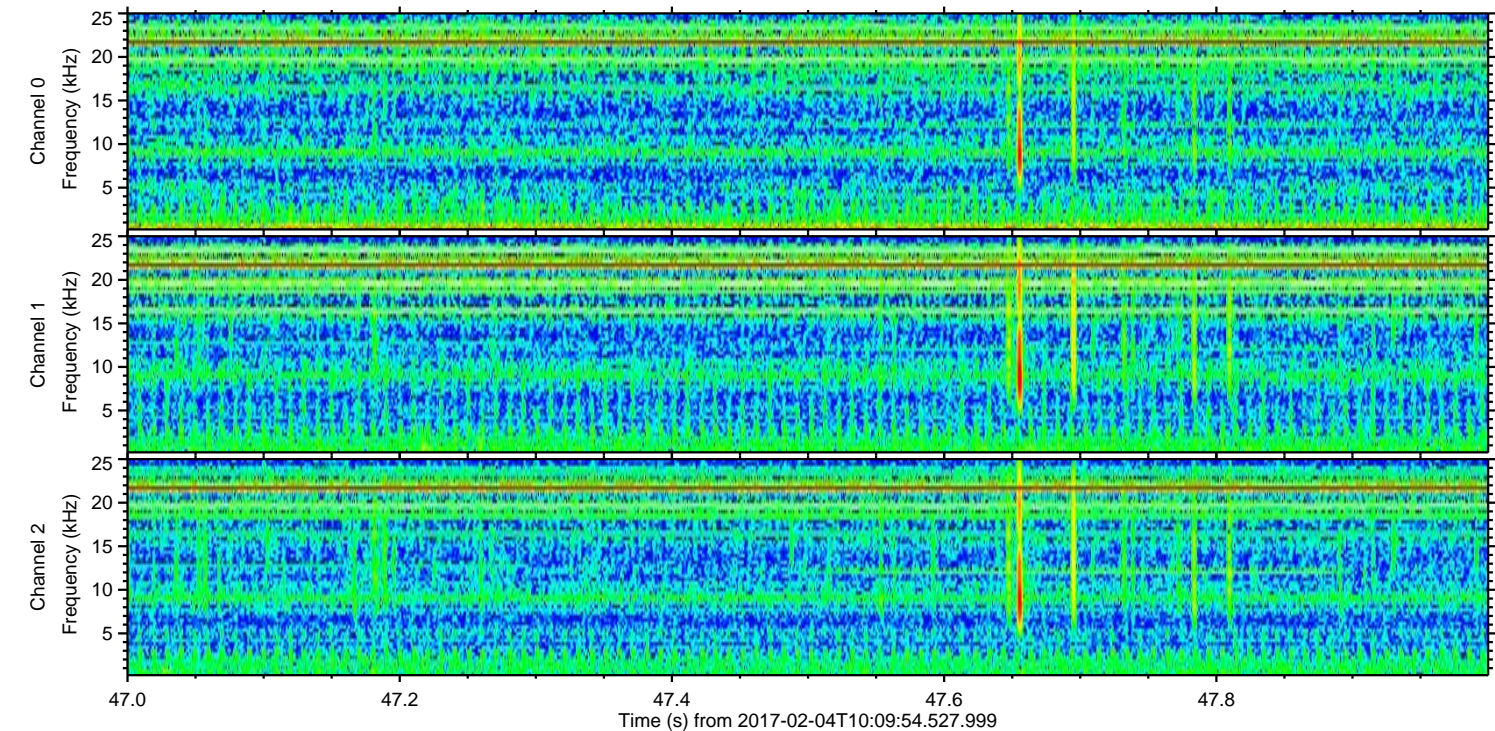
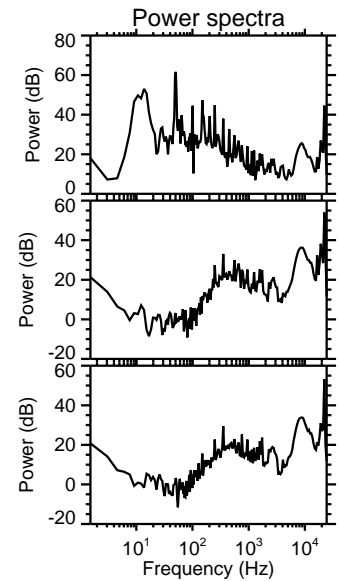
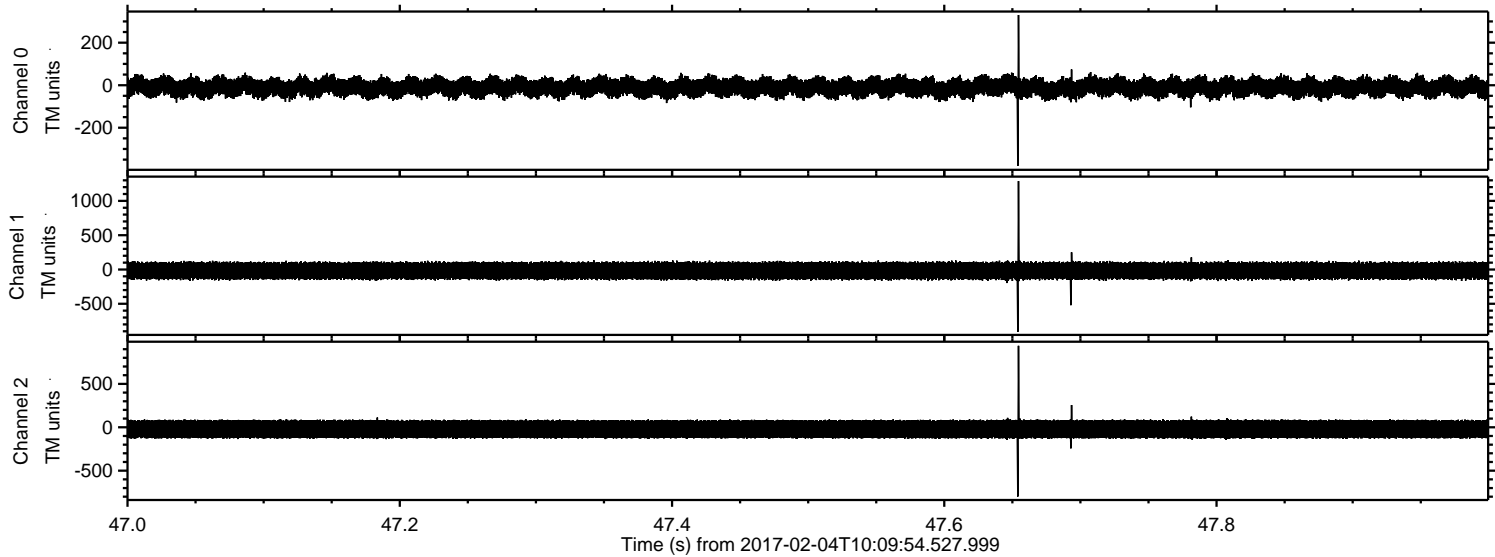
ELMAVAN 3D WAVEFORMS (Measured data sampled at 50 kHz) 51000 packets of 144 samples from 2017-02-04T10:09:54.527.999. Part 129/147

Processed Sat Feb 4 11:18:06 2017 by ELM ver.2012-10-06 from 001\_\_elm20170204\_100953\_\_dat00.bin





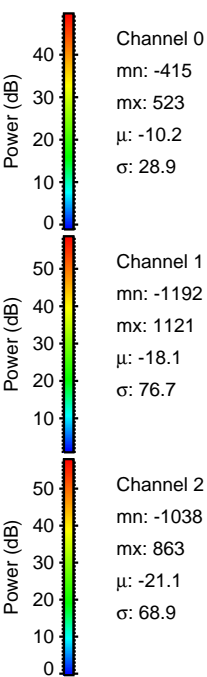
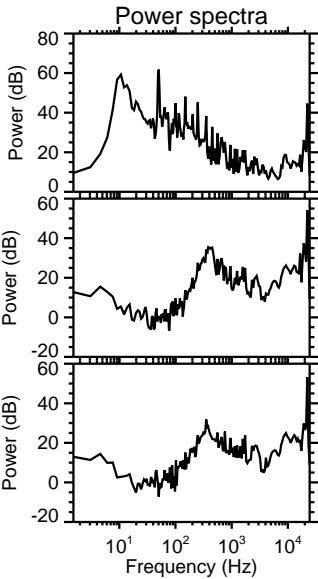
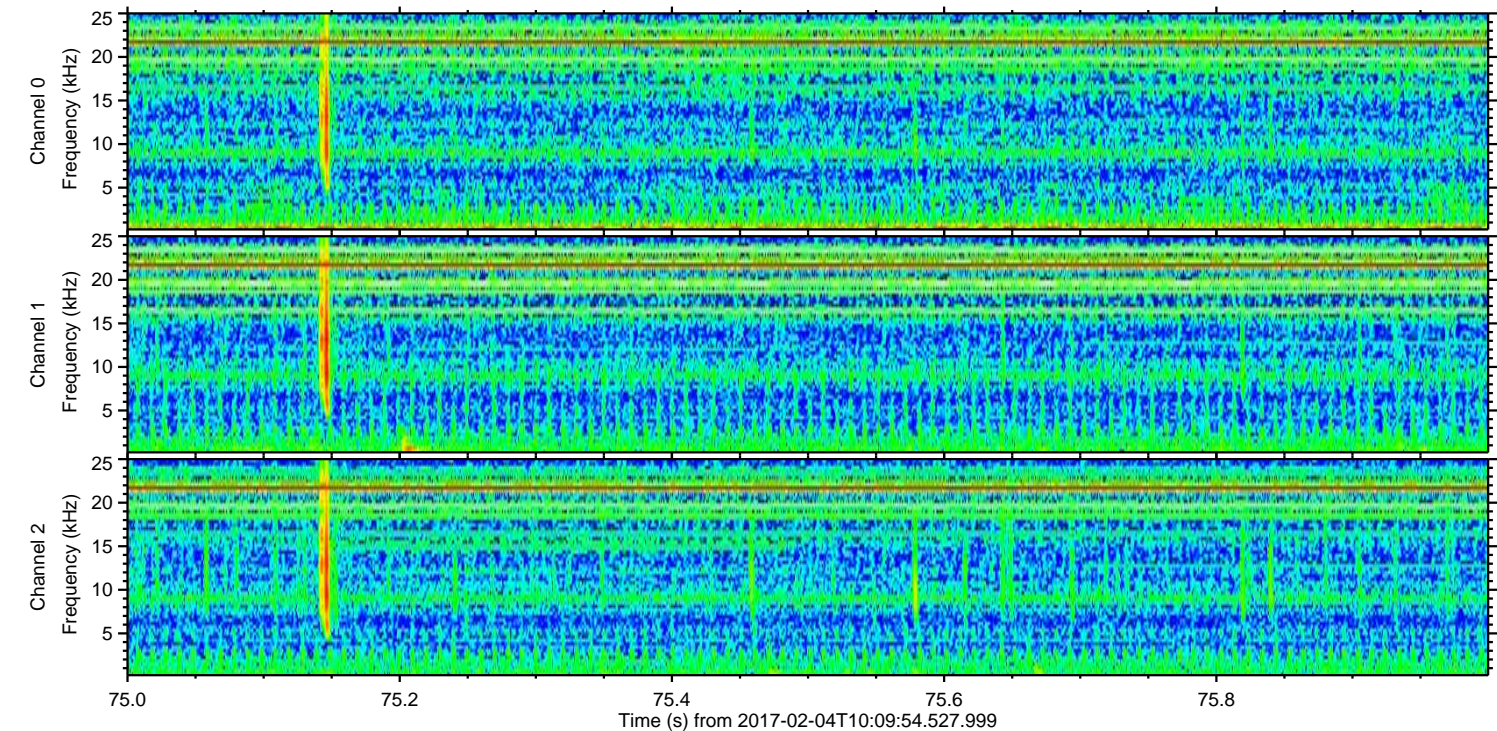
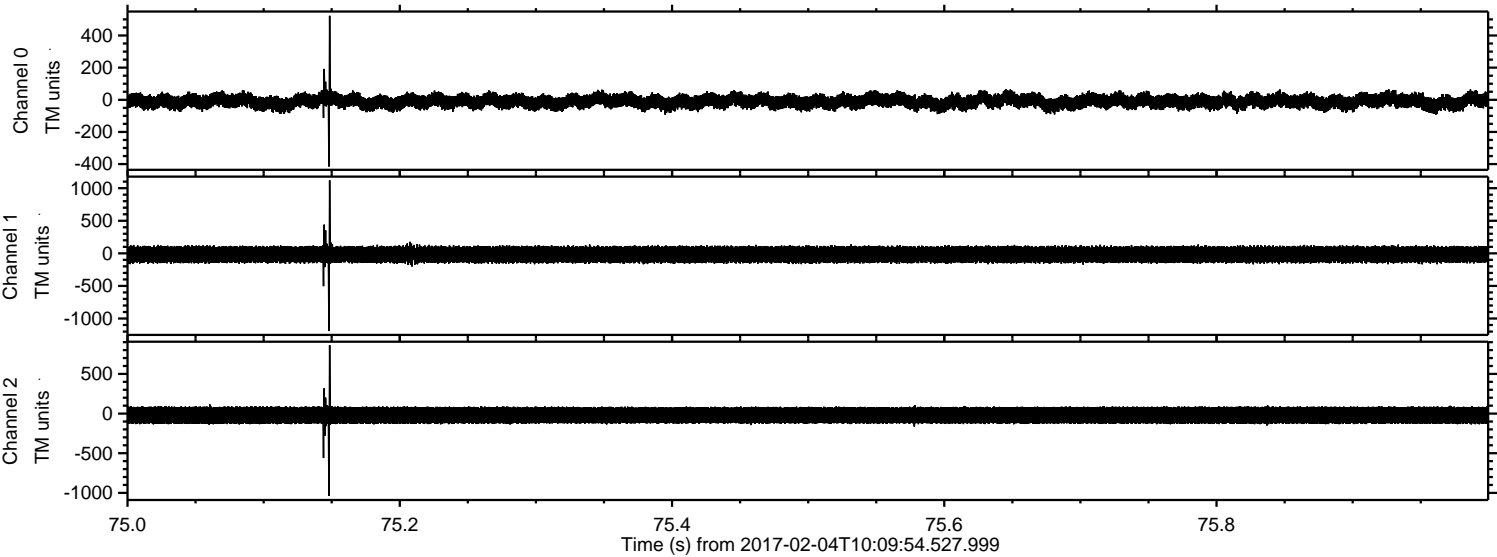
Processed Sat Feb 4 11:18:07 2017 by ELM ver.2012-10-06 from 001\_\_elm20170204\_100953\_\_dat00.bin





ELMAVAN 3D WAVEFORMS (Measured data sampled at 50 kHz) 51000 packets of 144 samples from 2017-02-04T10:09:54.527.999. Part 76/147

Processed Sat Feb 4 11:18:07 2017 by ELM ver.2012-10-06 from 001\_\_elm20170204\_100953\_\_dat00.bin





ELMAVAN 3D WAVEFORMS (Measured data sampled at 50 kHz) 51000 packets of 144 samples from 2017-02-04T10:09:54.527.999. Part 36/147

Processed Sat Feb 4 11:18:08 2017 by ELM ver.2012-10-06 from 001\_\_elm20170204\_100953\_\_dat00.bin

