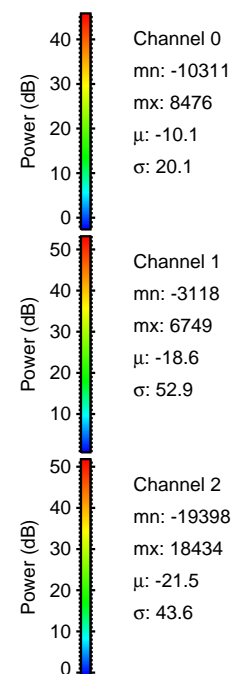
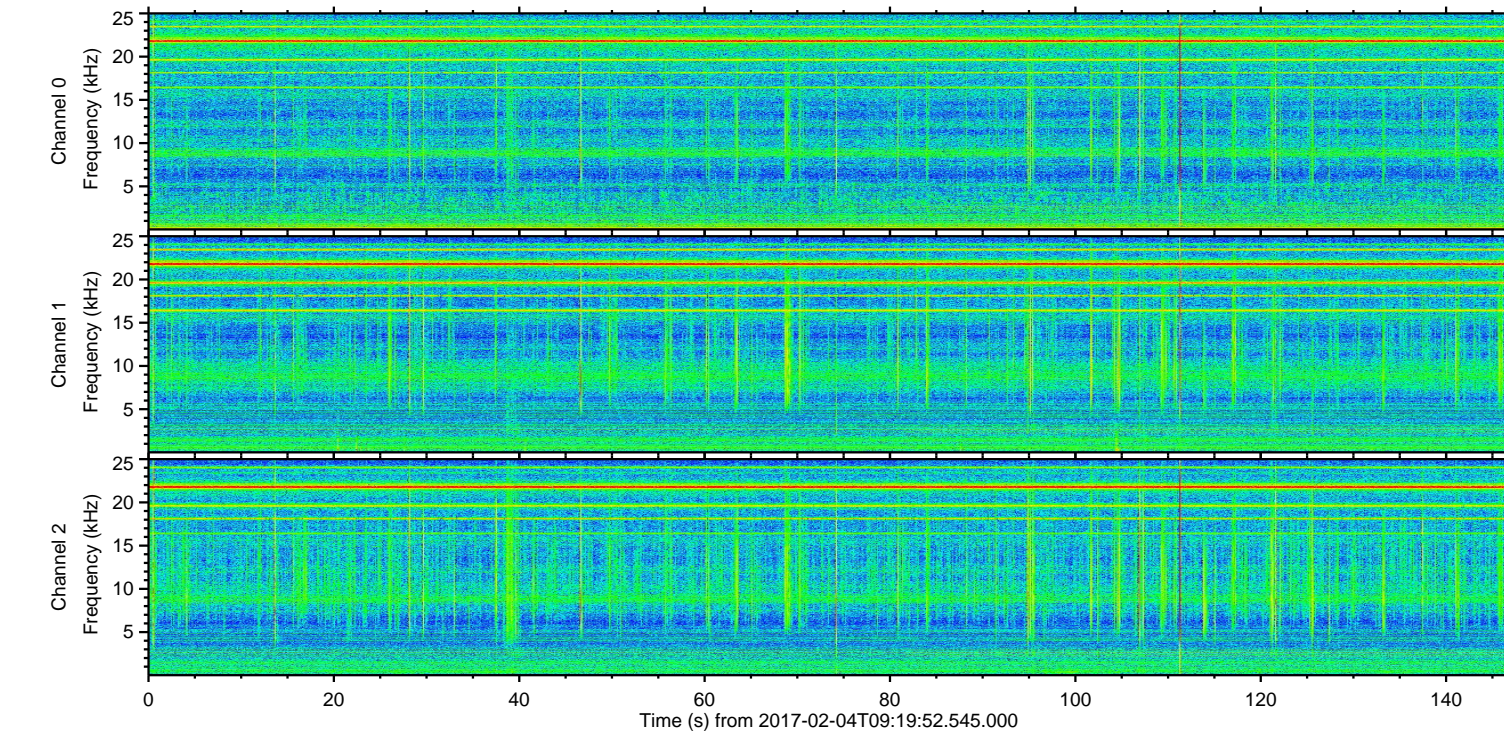
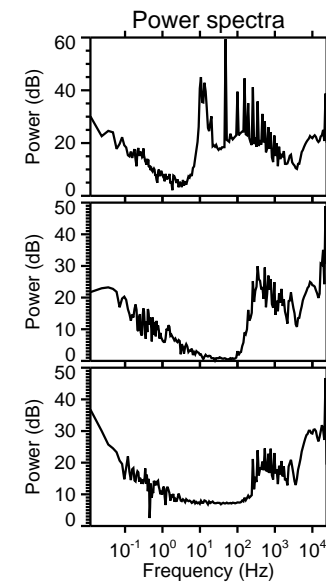
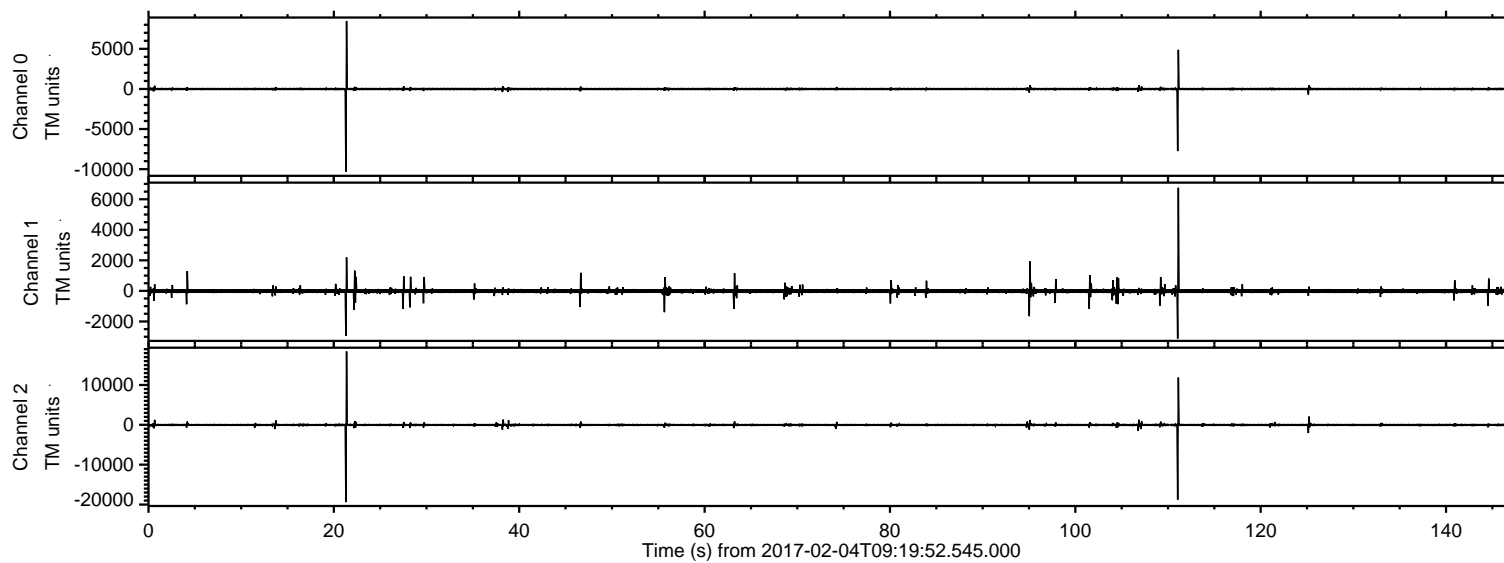
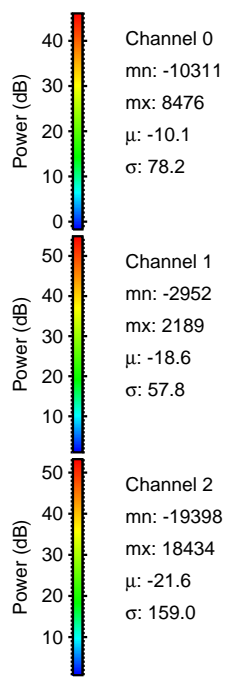
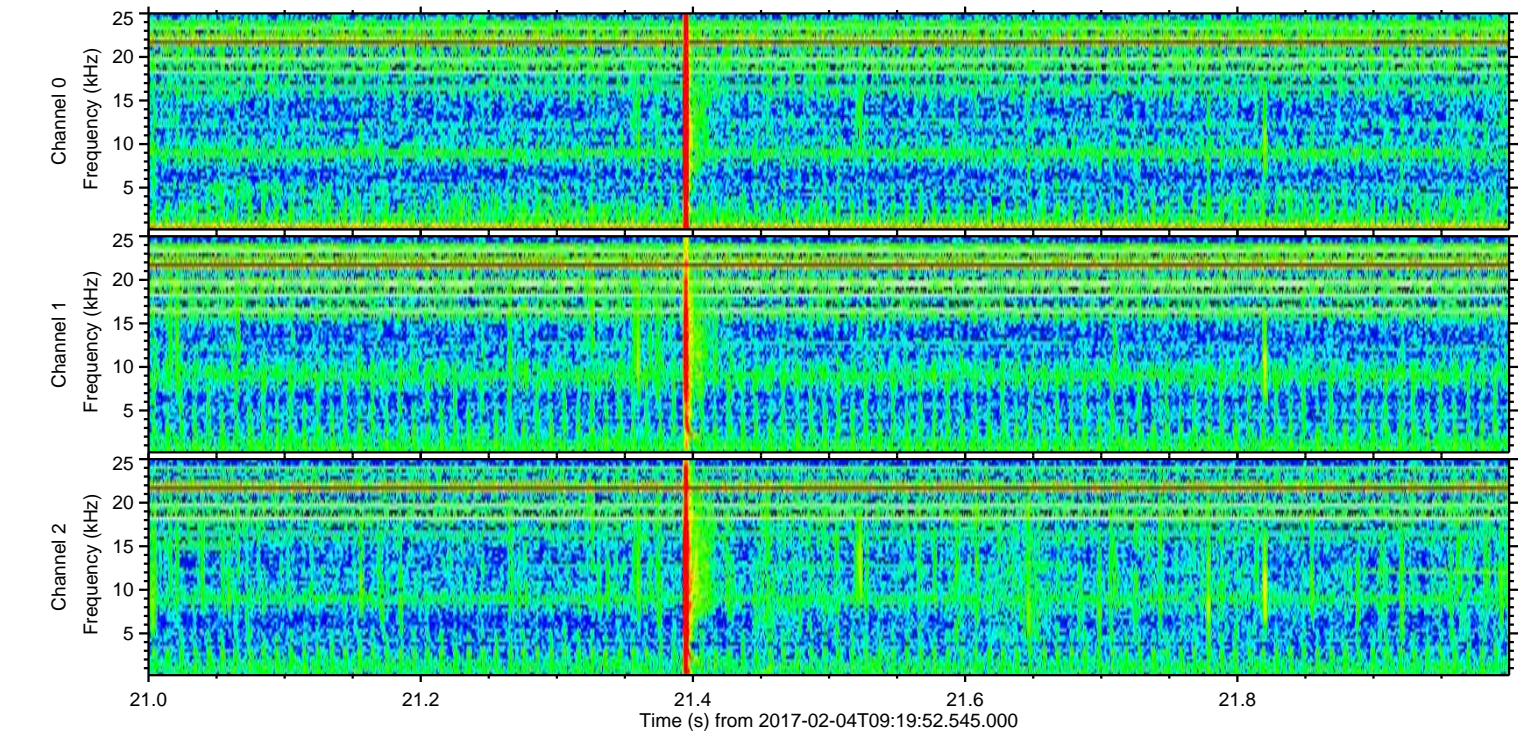
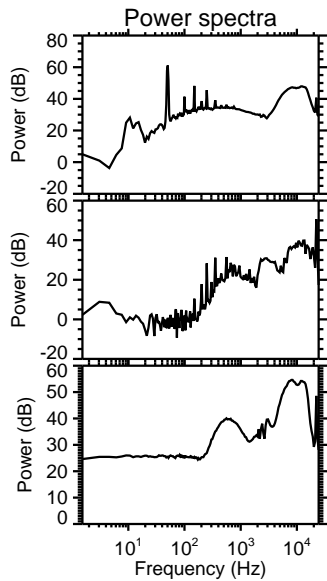
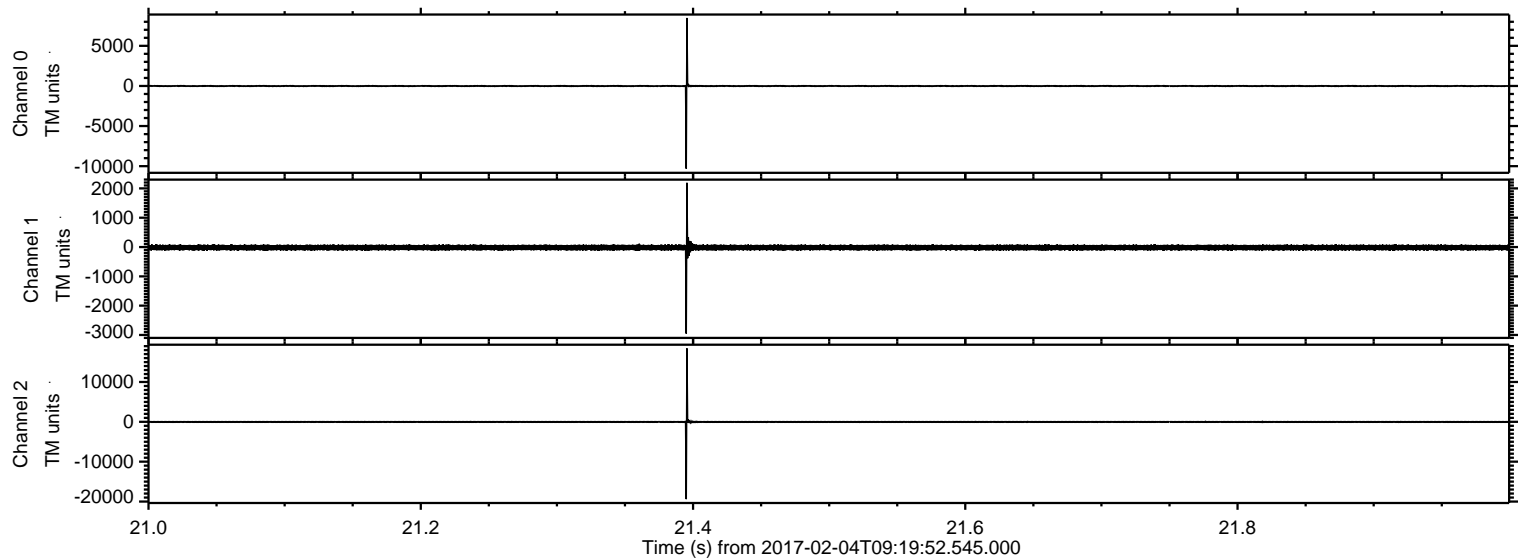


ELMAVAN 3D WAVEFORMS (Measured data sampled at 50 kHz) 51000 packets of 144 samples from 2017-02-04T09:19:52.545.000.

Processed Sat Feb 4 10:28:14 2017 by ELM ver.2012-10-06 from 001__elm20170204_091951__dat00.bin

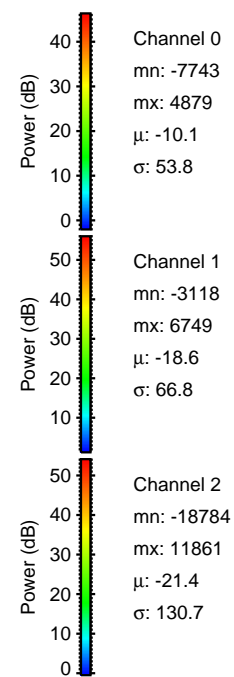
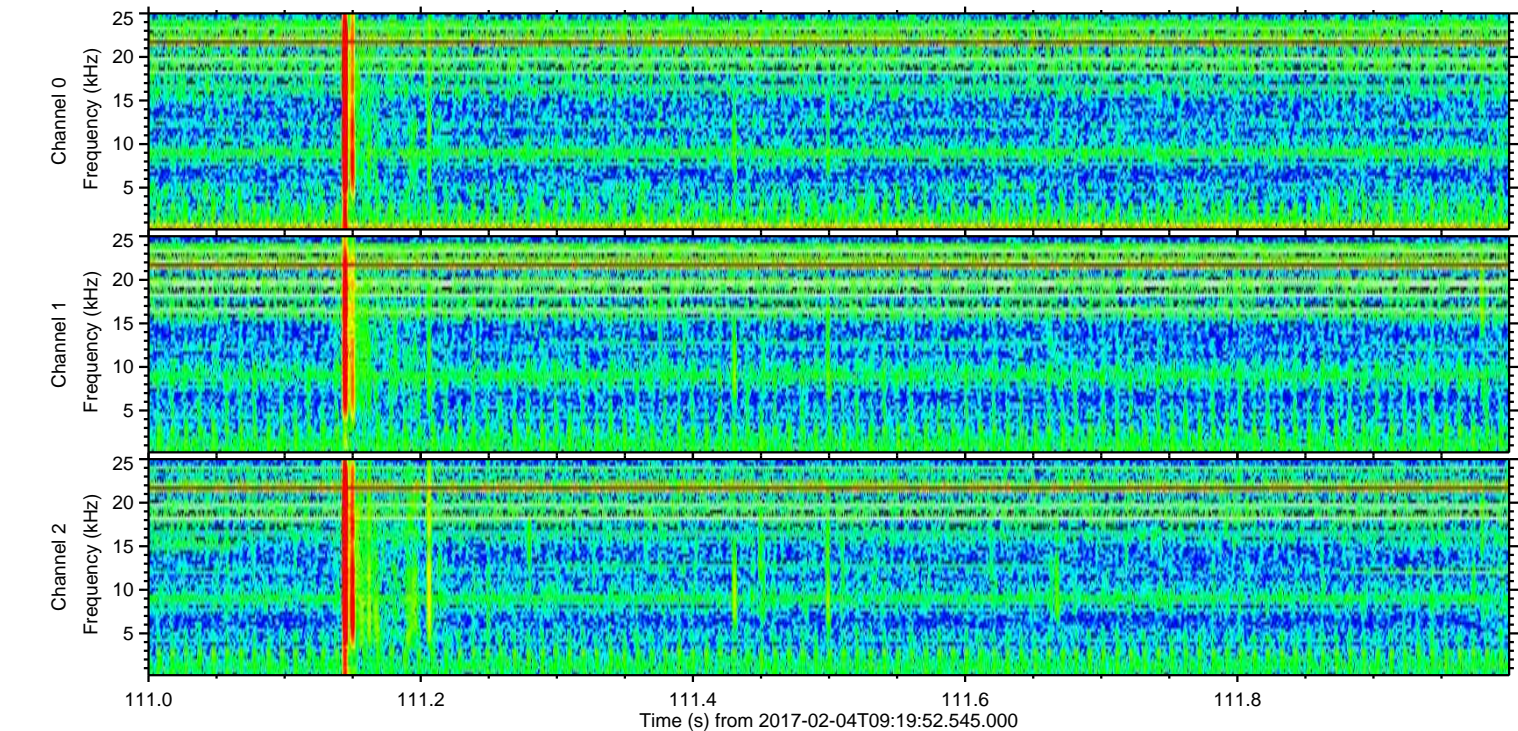
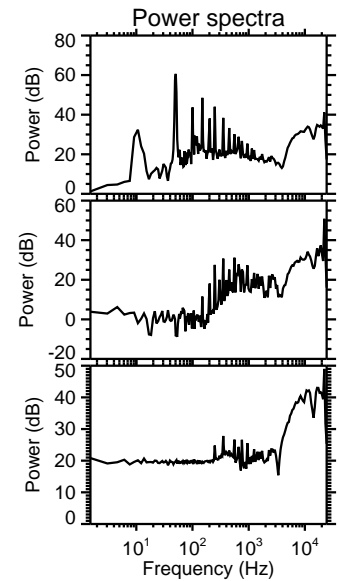
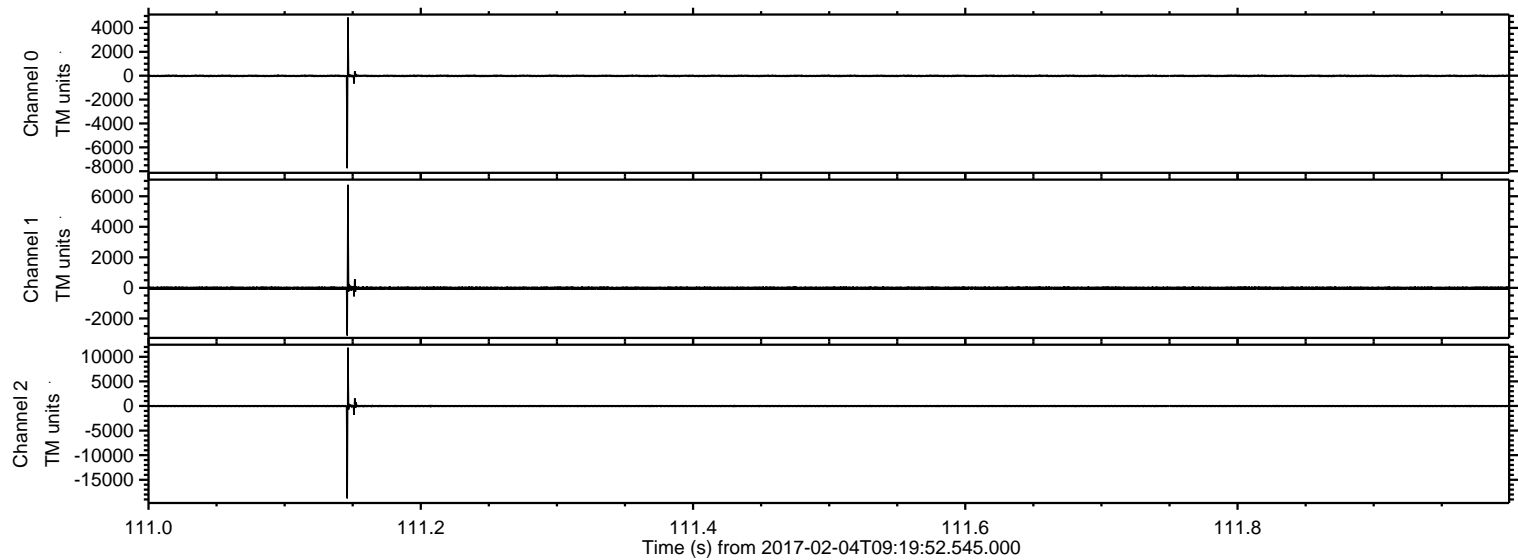


Processed Sat Feb 4 10:28:26 2017 by ELM ver.2012-10-06 from 001__elm20170204_091951__dat00.bin



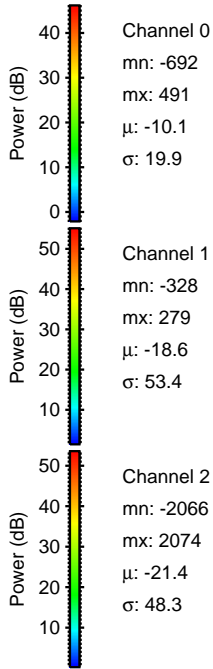
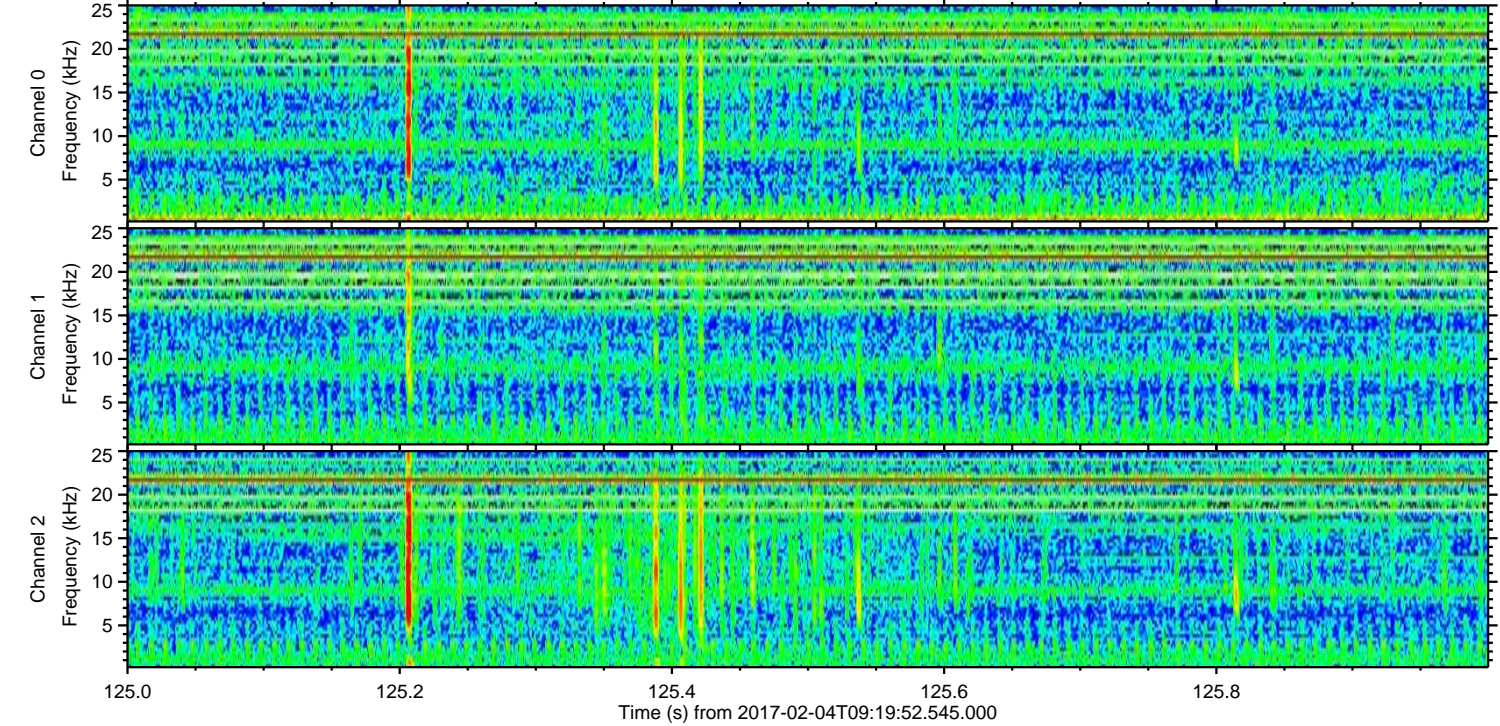
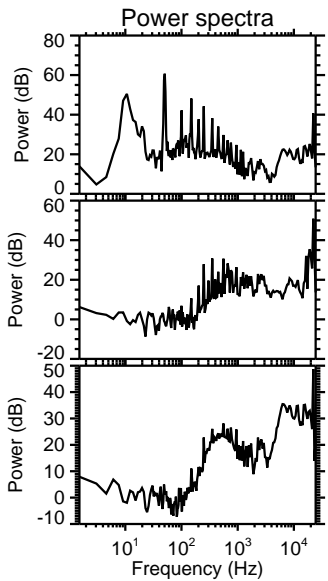
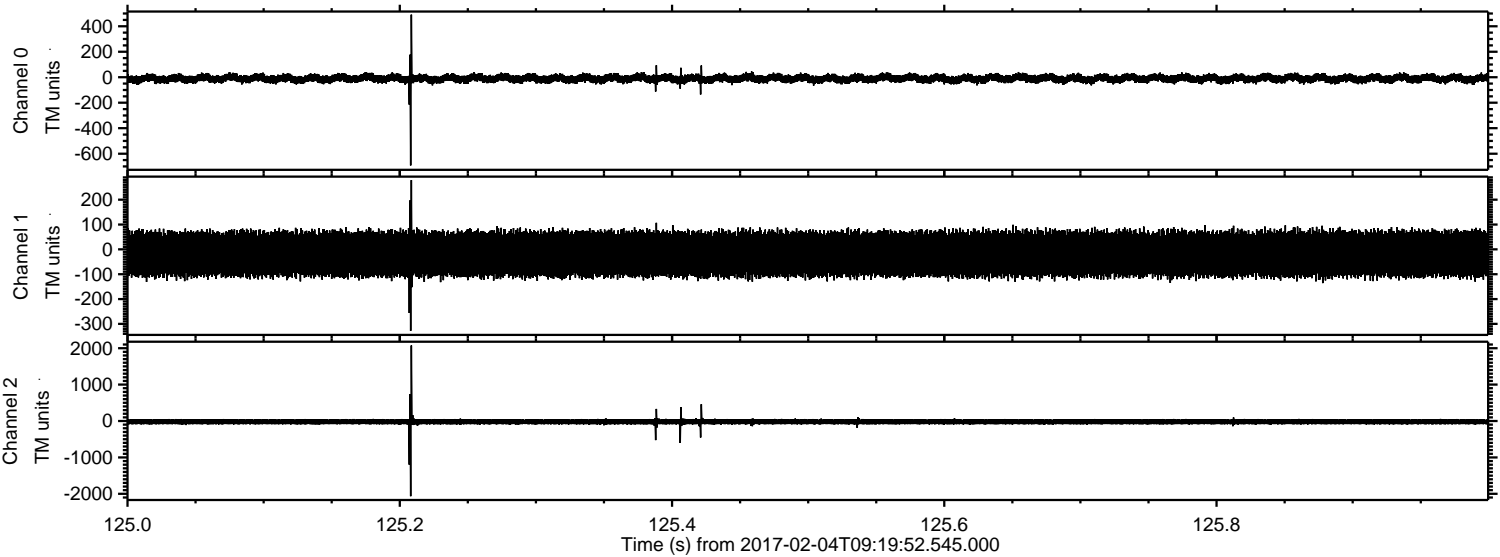
ELMAVAN 3D WAVEFORMS (Measured data sampled at 50 kHz) 51000 packets of 144 samples from 2017-02-04T09:19:52.545.000. Part 112/147

Processed Sat Feb 4 10:28:27 2017 by ELM ver.2012-10-06 from 001__elm20170204_091951__dat00.bin



ELMAVAN 3D WAVEFORMS (Measured data sampled at 50 kHz) 51000 packets of 144 samples from 2017-02-04T09:19:52.545.000. Part 126/147

Processed Sat Feb 4 10:28:27 2017 by ELM ver.2012-10-06 from 001__elm20170204_091951__dat00.bin

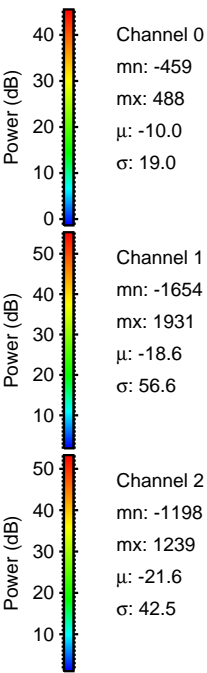
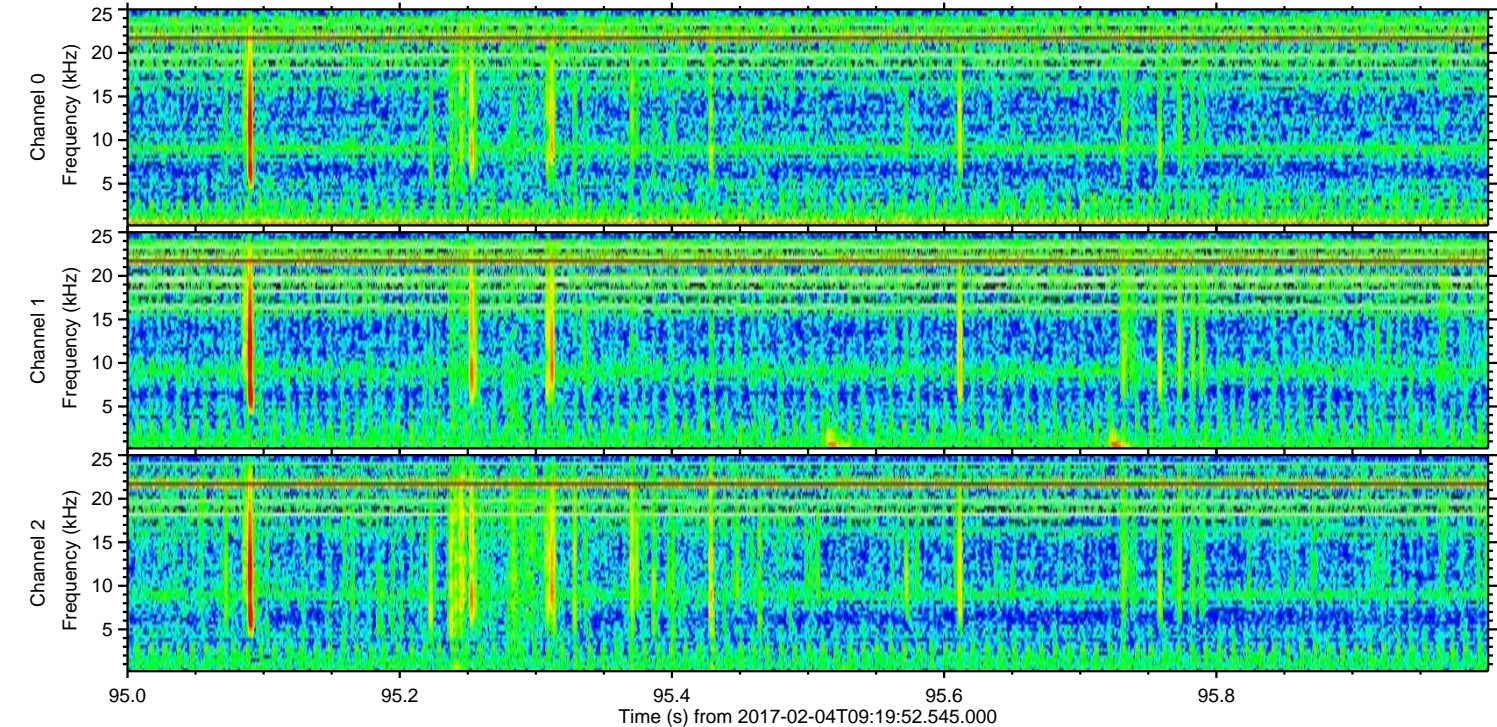
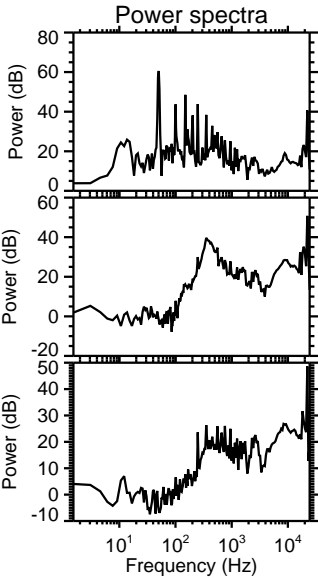
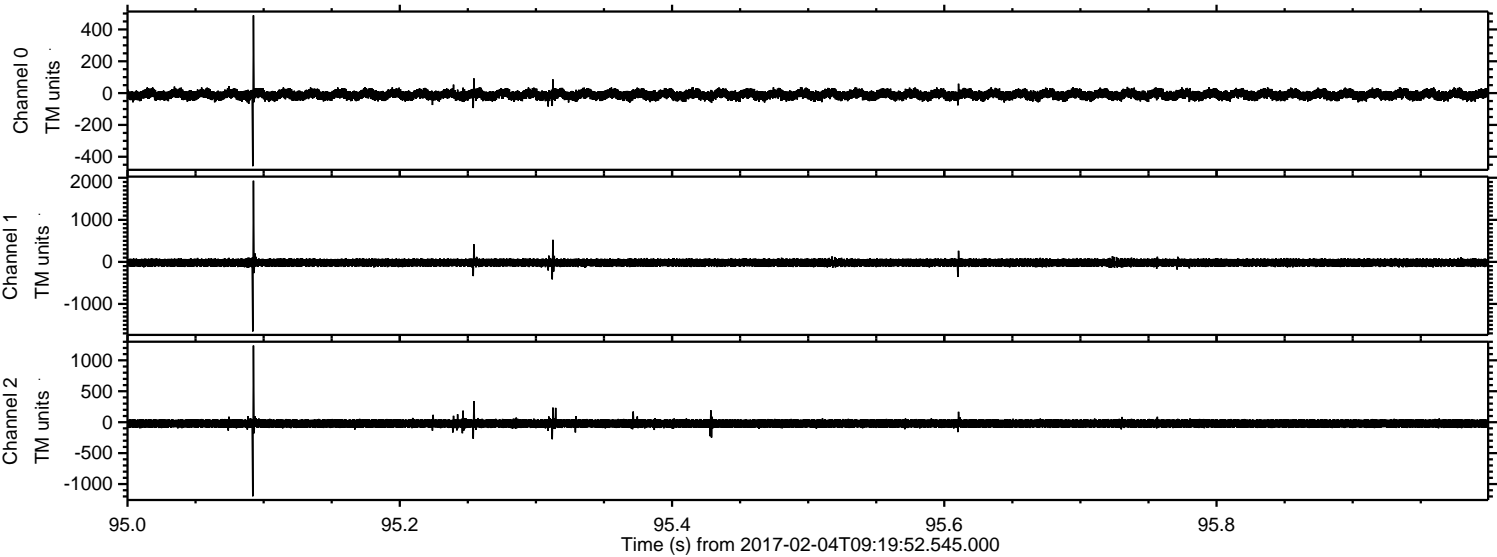


Channel 0
mn: -692
mx: 491
 μ : -10.1
 σ : 19.9

Channel 1
mn: -328
mx: 279
 μ : -18.6
 σ : 53.4

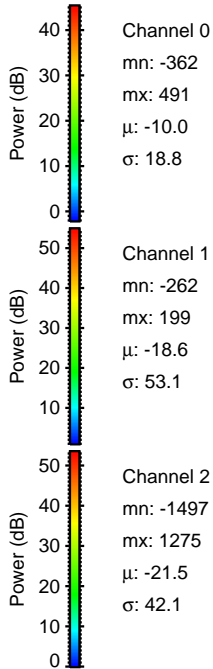
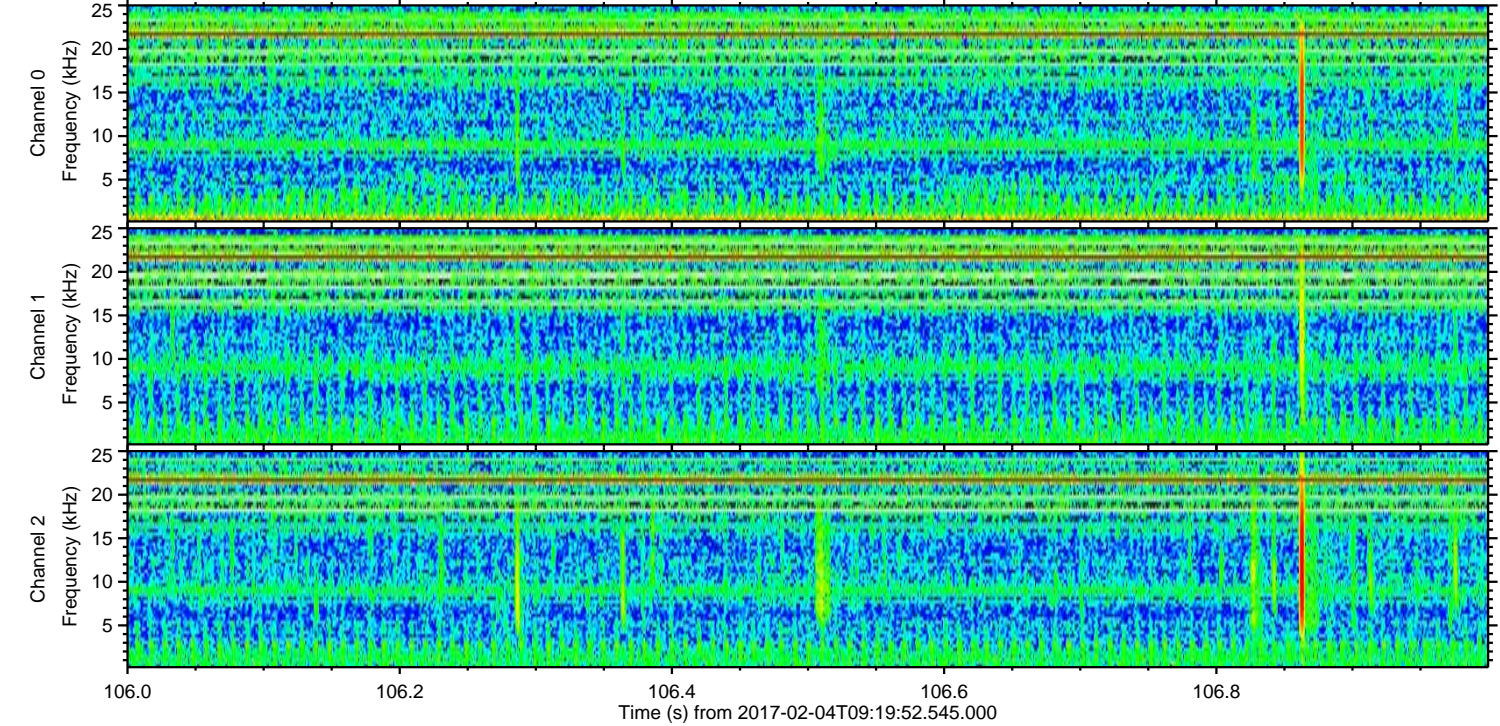
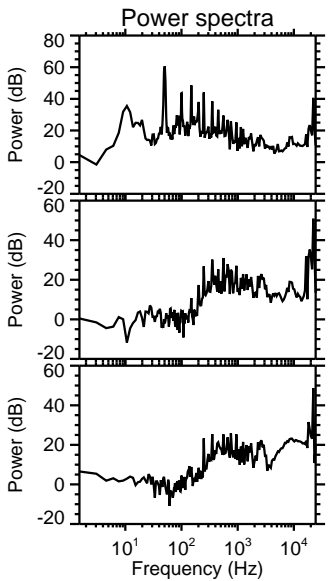
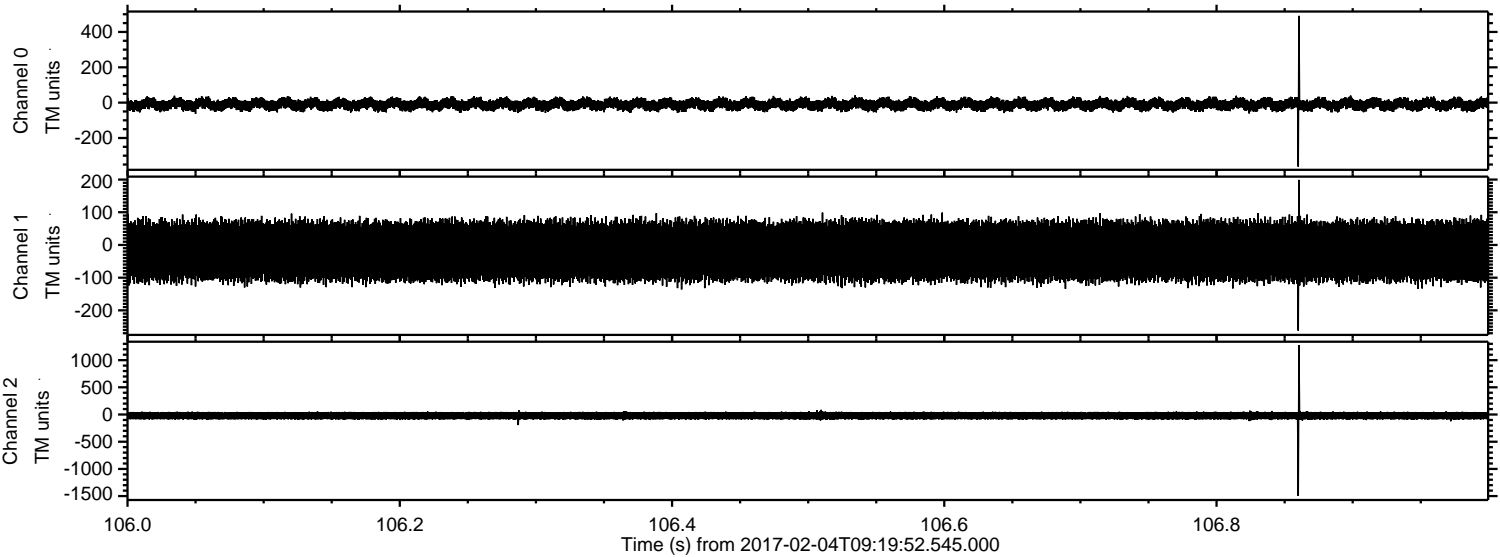
Channel 2
mn: -2066
mx: 2074
 μ : -21.4
 σ : 48.3

Processed Sat Feb 4 10:28:28 2017 by ELM ver.2012-10-06 from 001__elm20170204_091951__dat00.bin

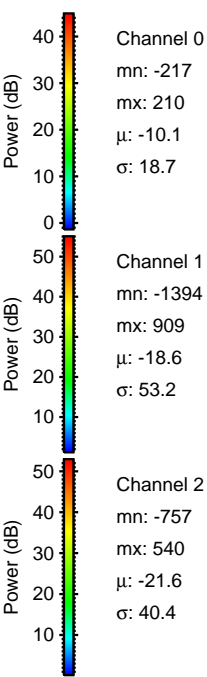
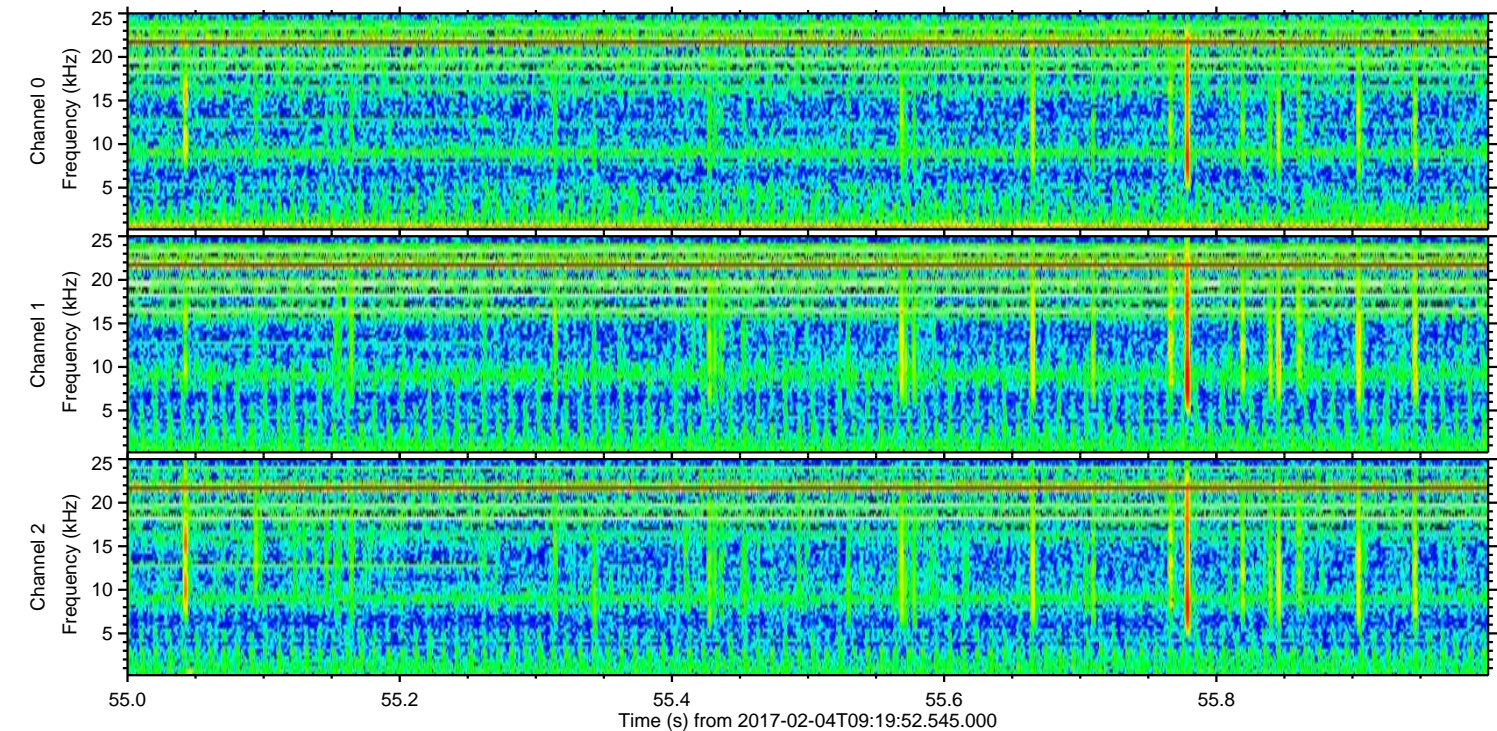
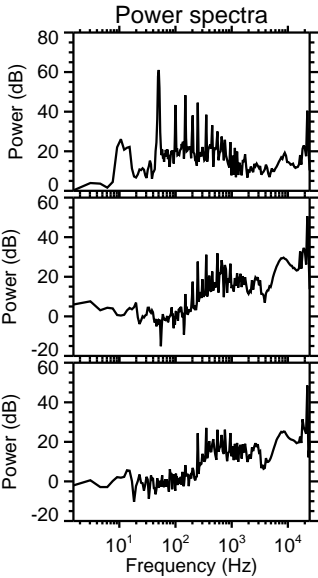
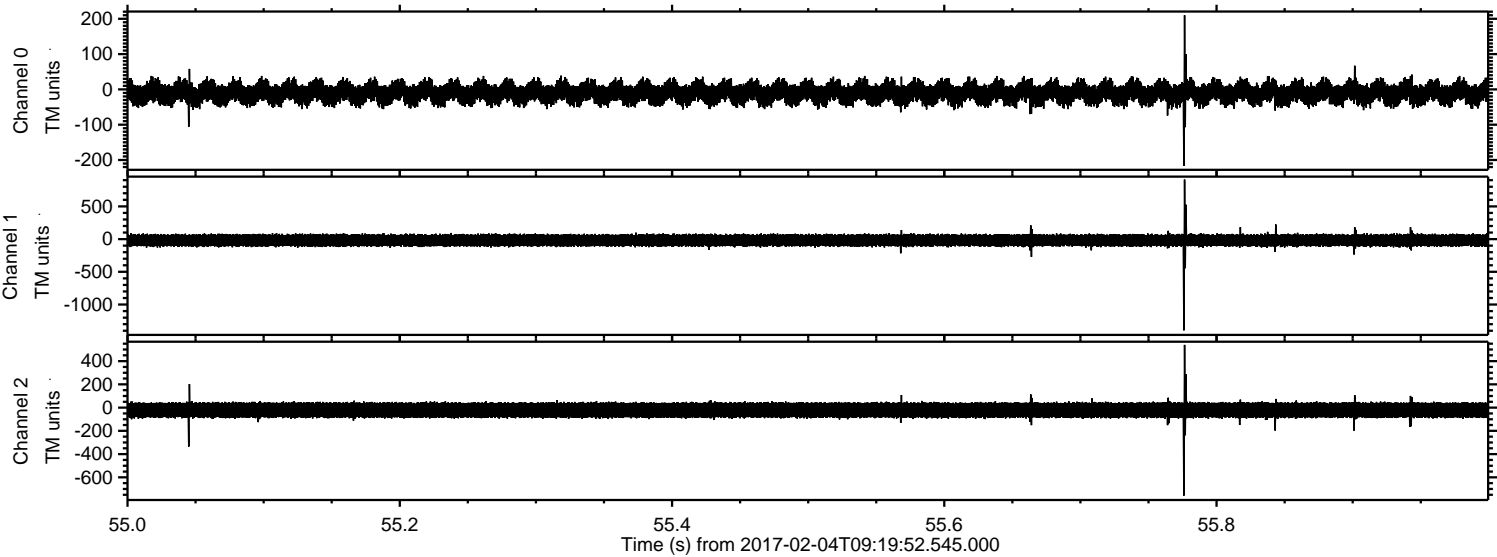


ELMAVAN 3D WAVEFORMS (Measured data sampled at 50 kHz) 51000 packets of 144 samples from 2017-02-04T09:19:52.545.000. Part 107/147

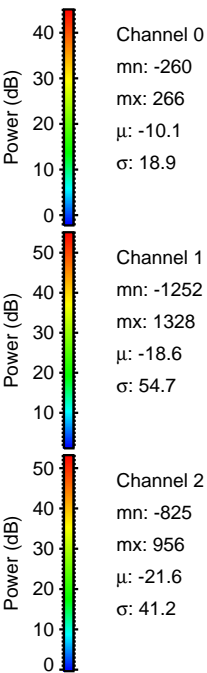
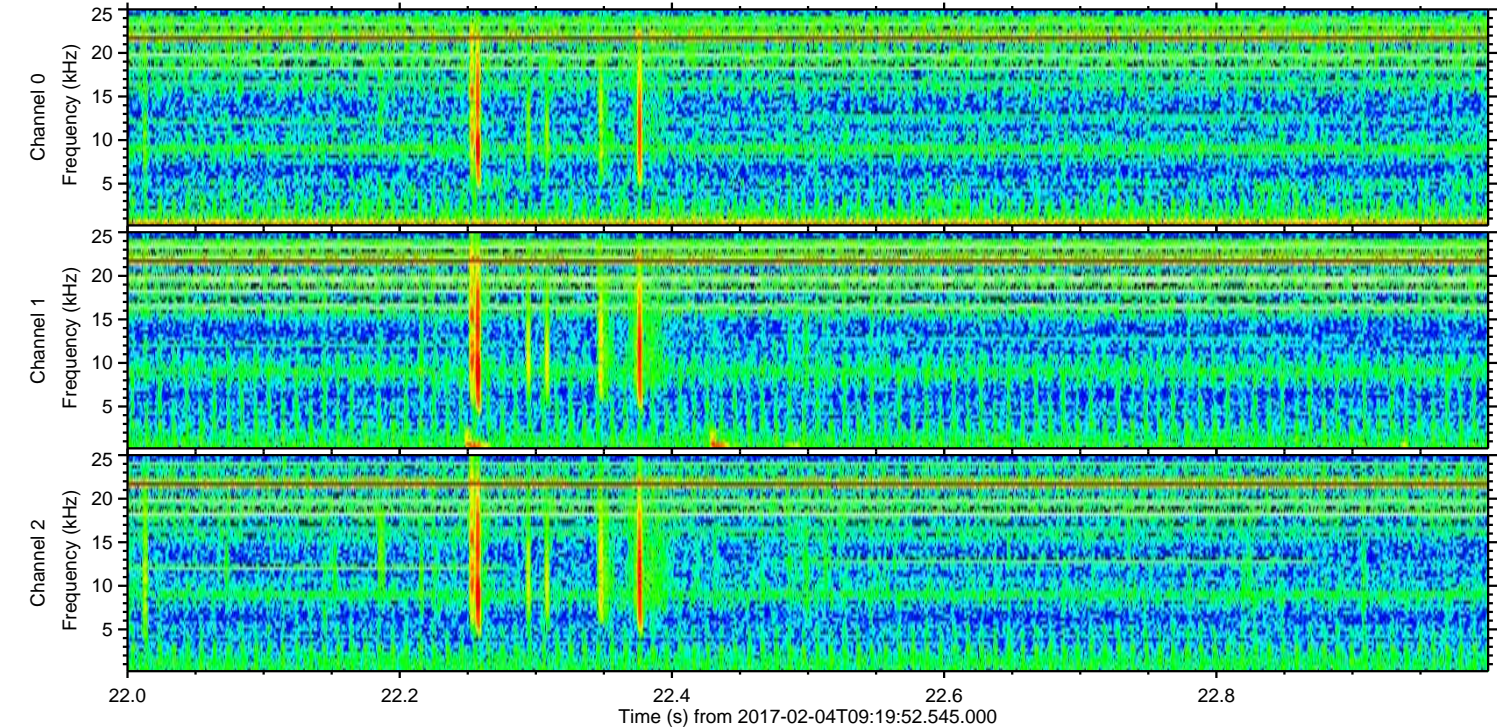
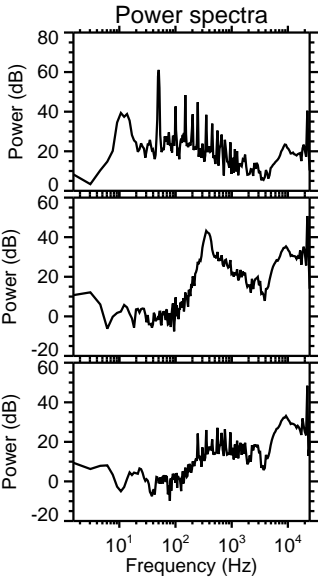
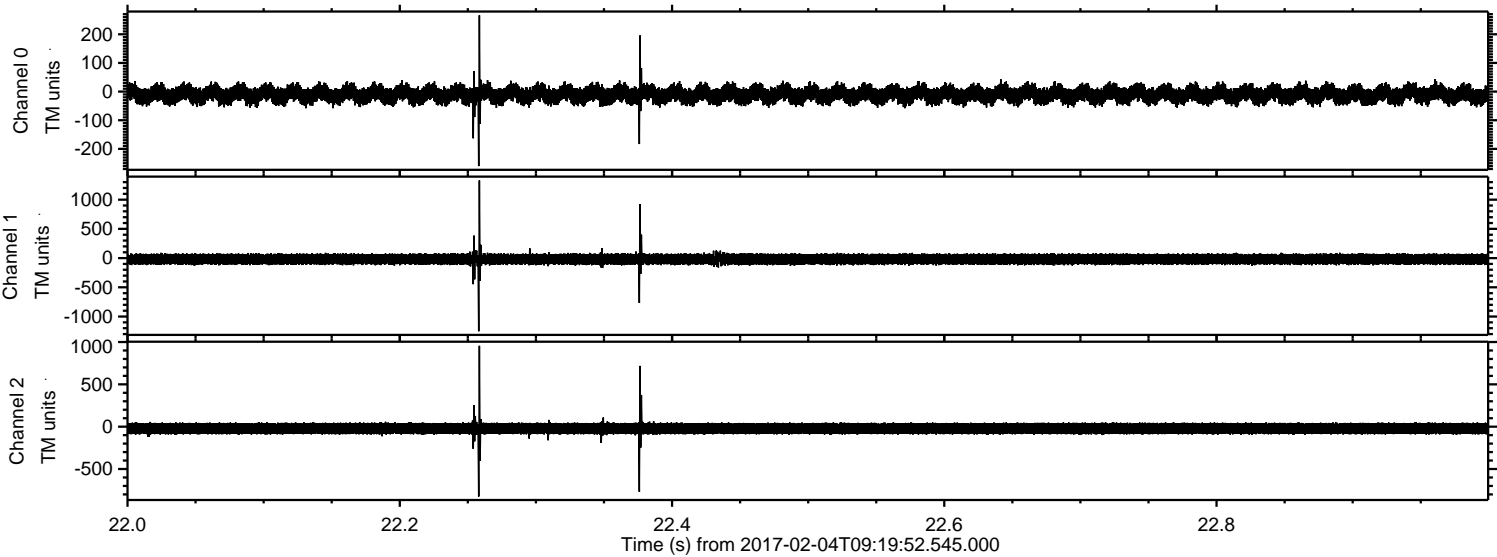
Processed Sat Feb 4 10:28:29 2017 by ELM ver.2012-10-06 from 001__elm20170204_091951__dat00.bin



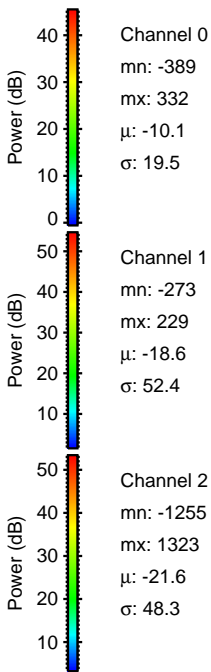
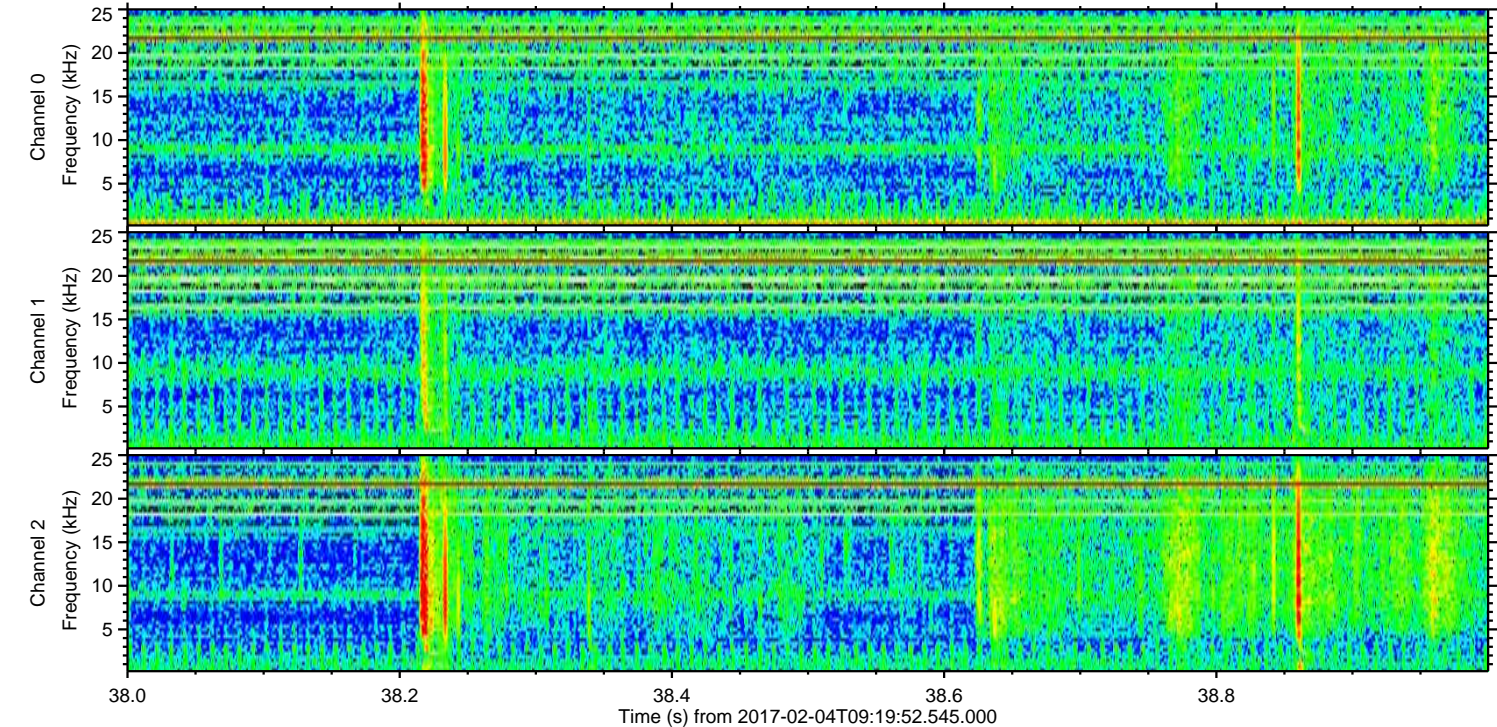
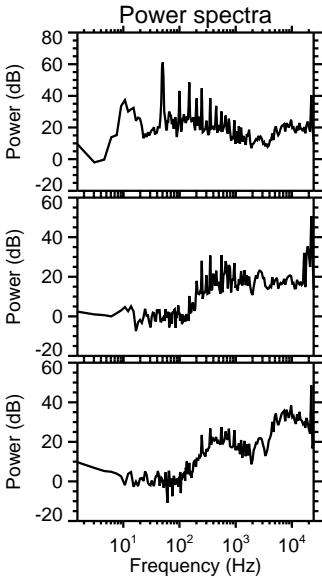
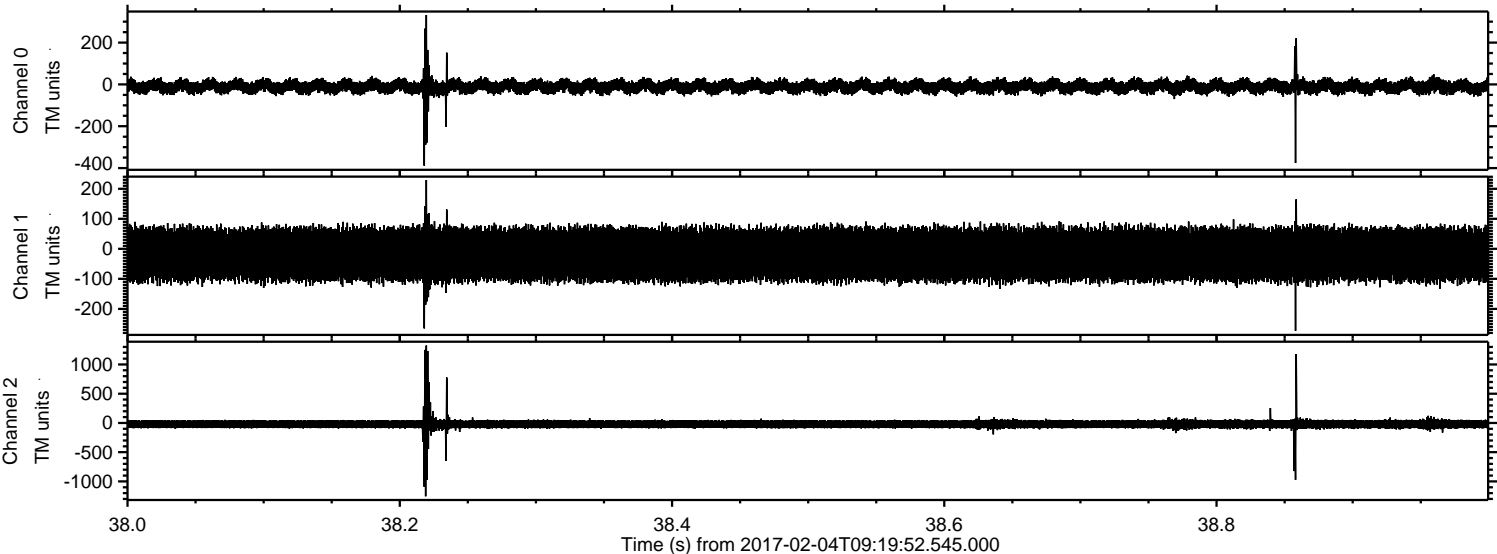
Processed Sat Feb 4 10:28:30 2017 by ELM ver.2012-10-06 from 001__elm20170204_091951__dat00.bin



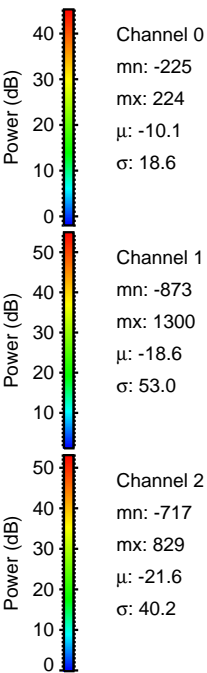
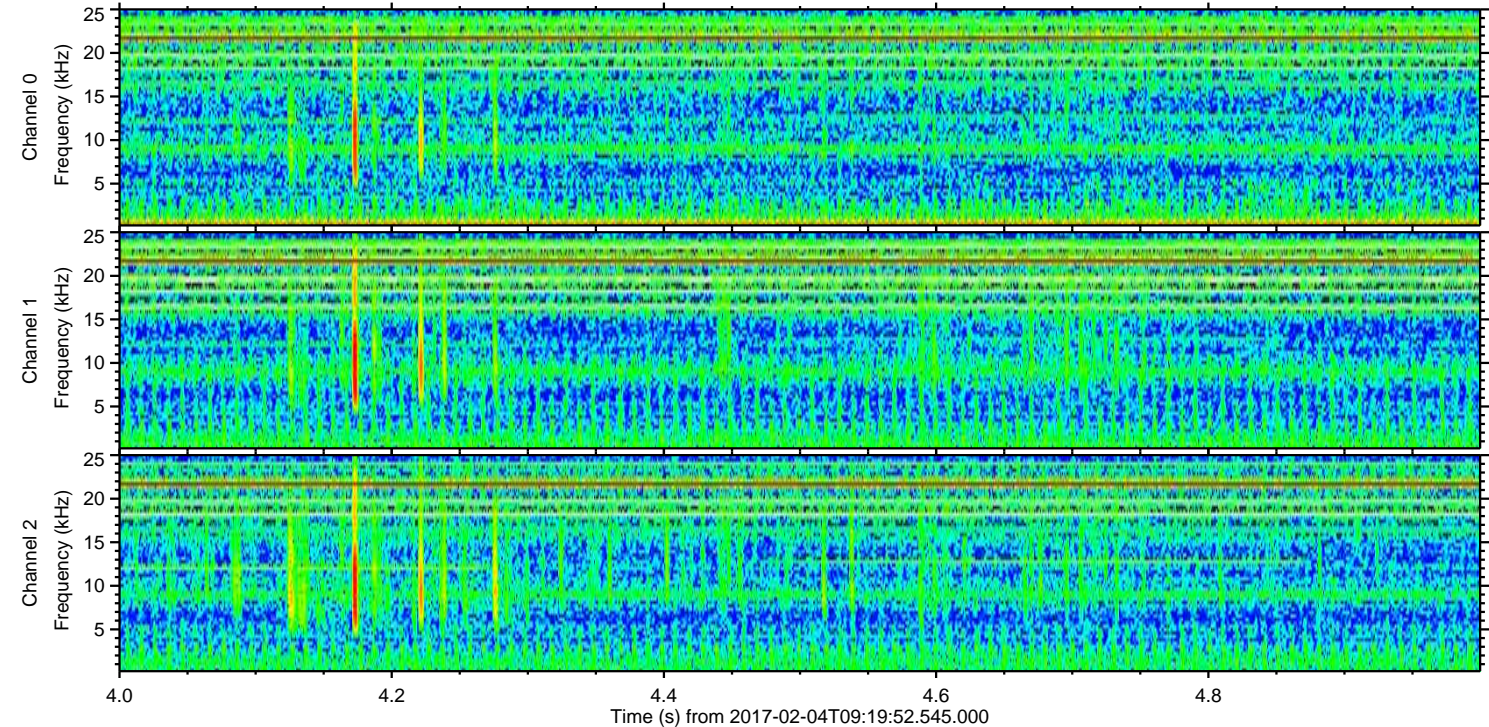
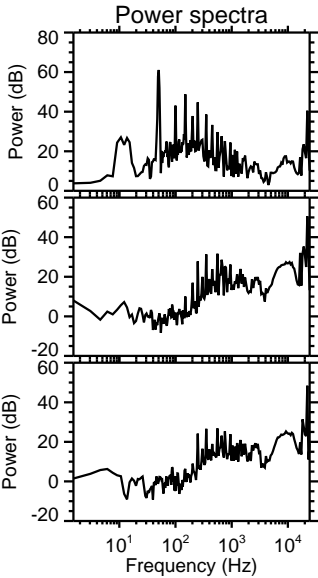
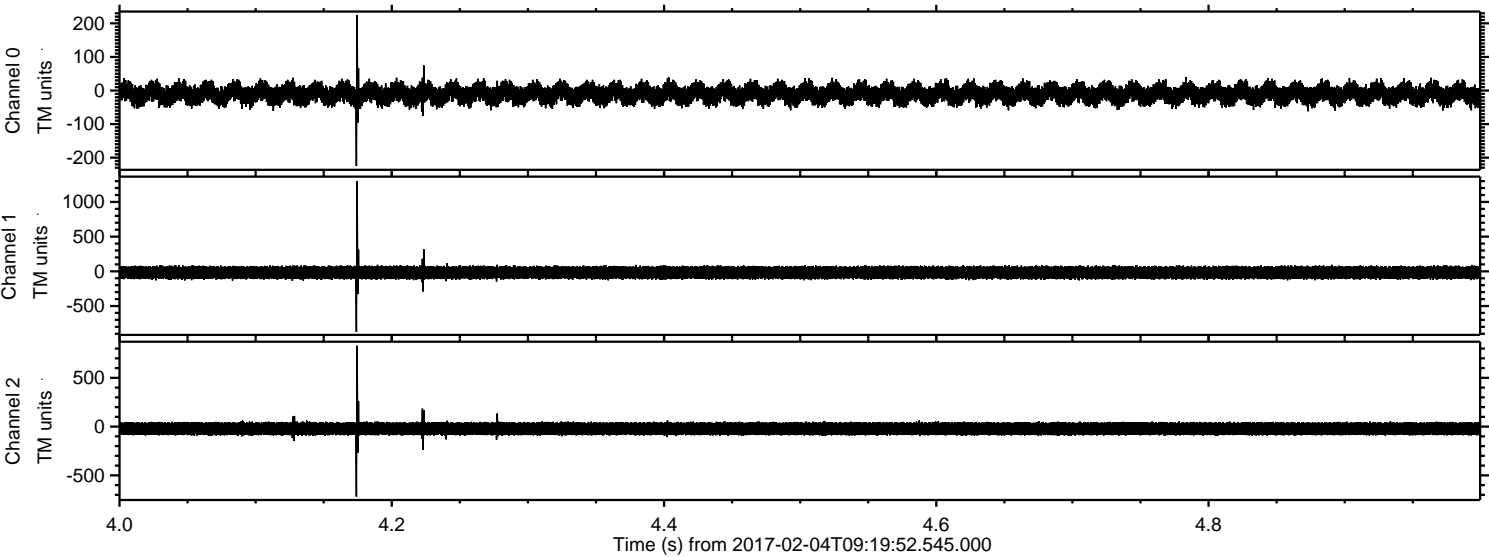
Processed Sat Feb 4 10:28:31 2017 by ELM ver.2012-10-06 from 001__elm20170204_091951__dat00.bin



Processed Sat Feb 4 10:28:32 2017 by ELM ver.2012-10-06 from 001__elm20170204_091951__dat00.bin



Processed Sat Feb 4 10:28:33 2017 by ELM ver.2012-10-06 from 001__elm20170204_091951__dat00.bin



Processed Sat Feb 4 10:28:34 2017 by ELM ver.2012-10-06 from 001__elm20170204_091951__dat00.bin

