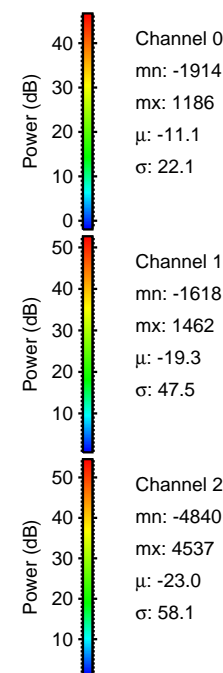
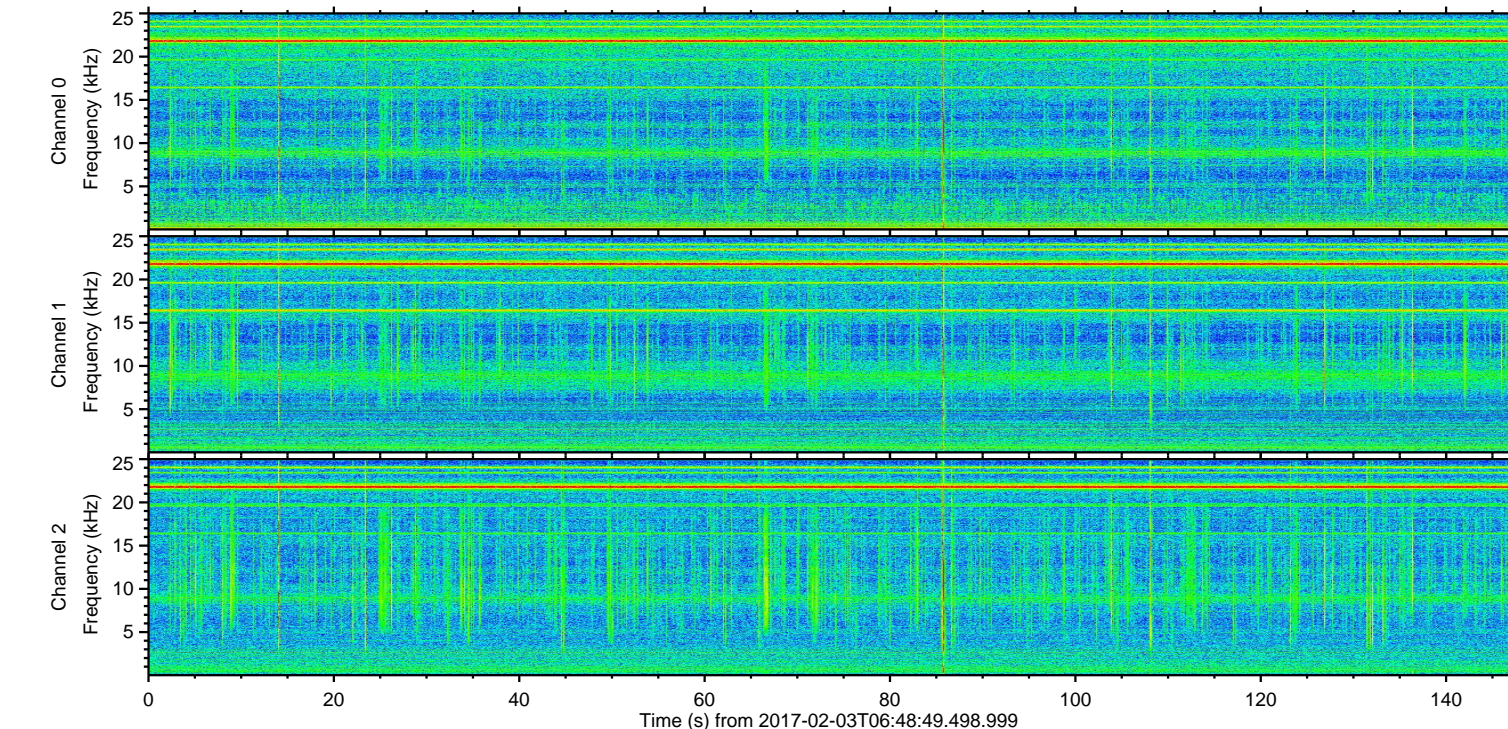
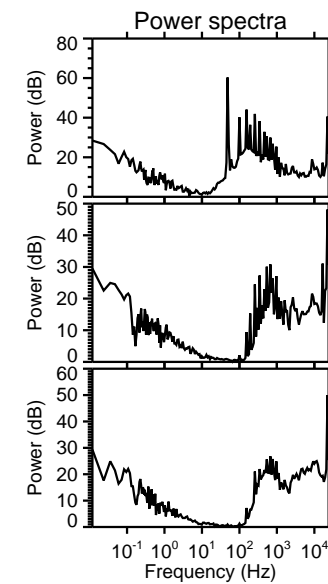
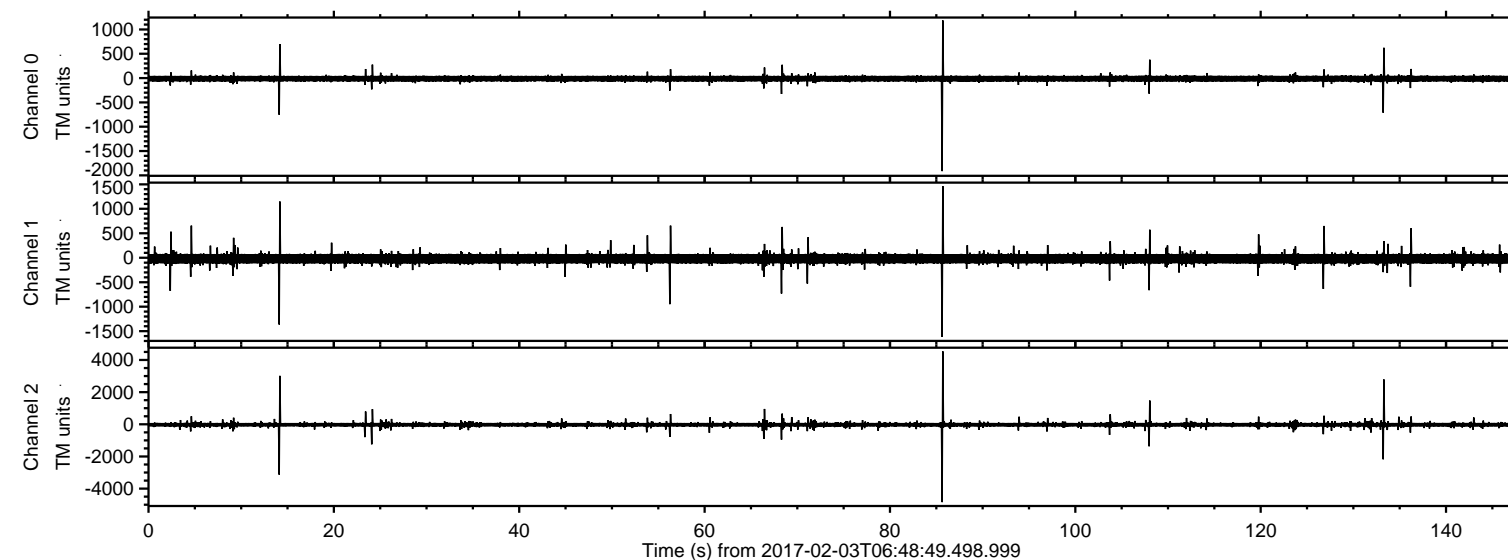
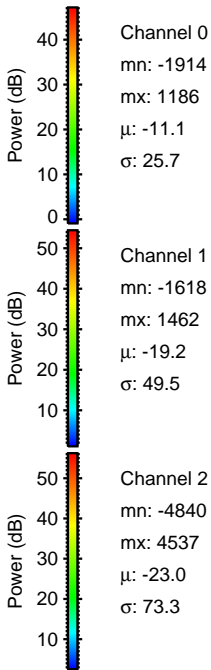
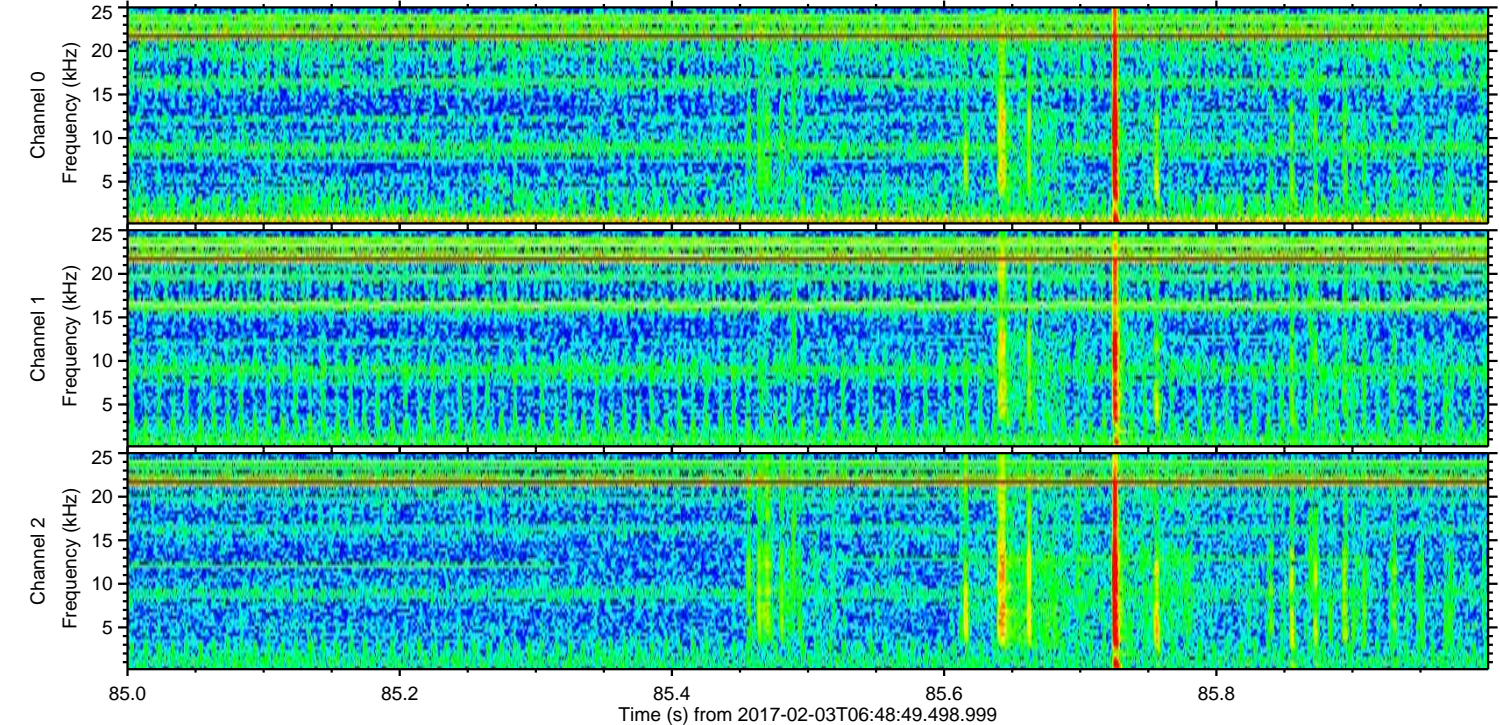
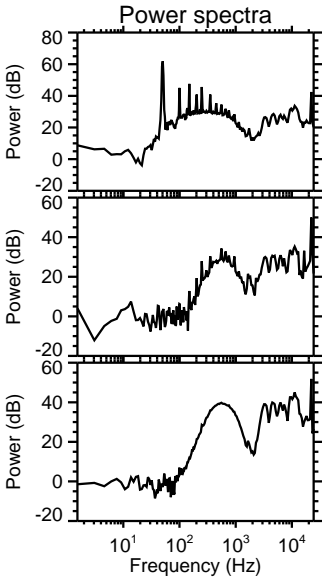
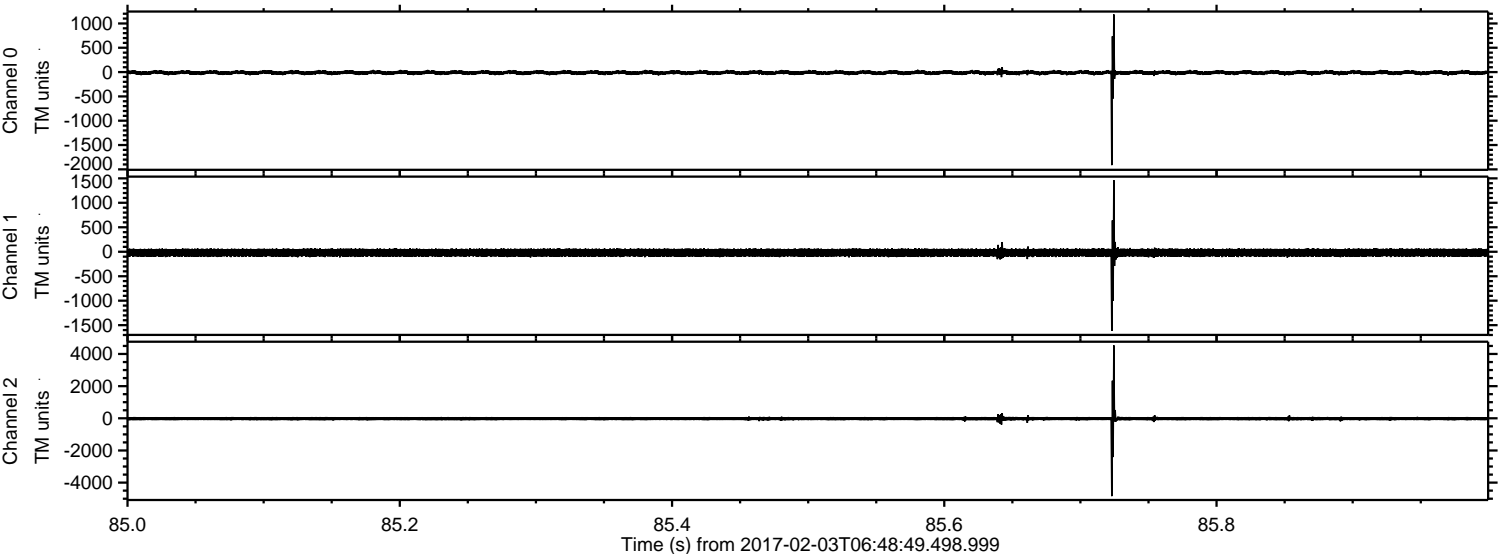


ELMAVAN 3D WAVEFORMS (Measured data sampled at 50 kHz) 51000 packets of 144 samples from 2017-02-03T06:48:49.498.999.

Processed Fri Feb 3 07:56:34 2017 by ELM ver.2012-10-06 from 001__elm20170203_064848__dat00.bin

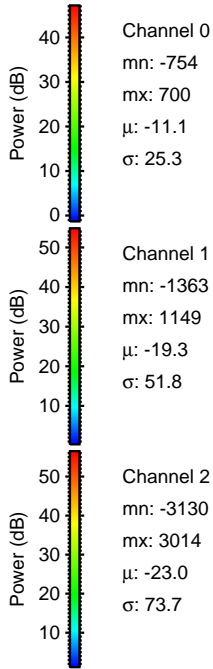
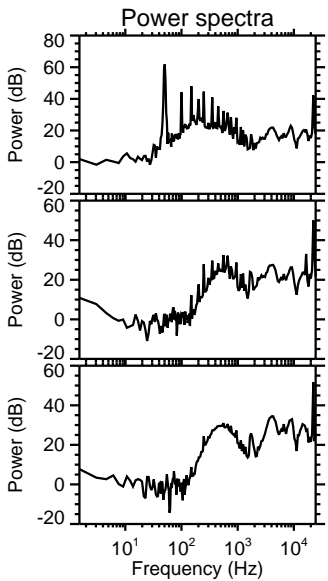
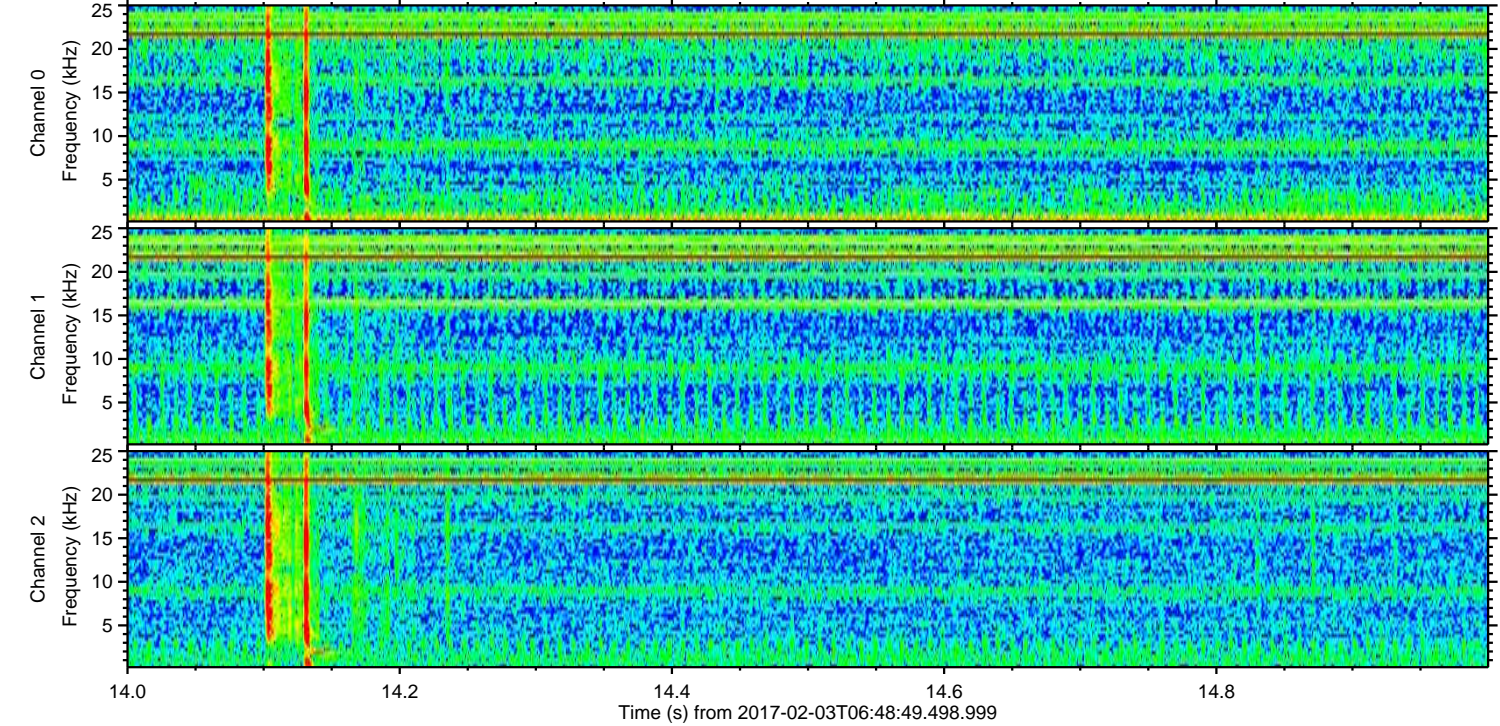
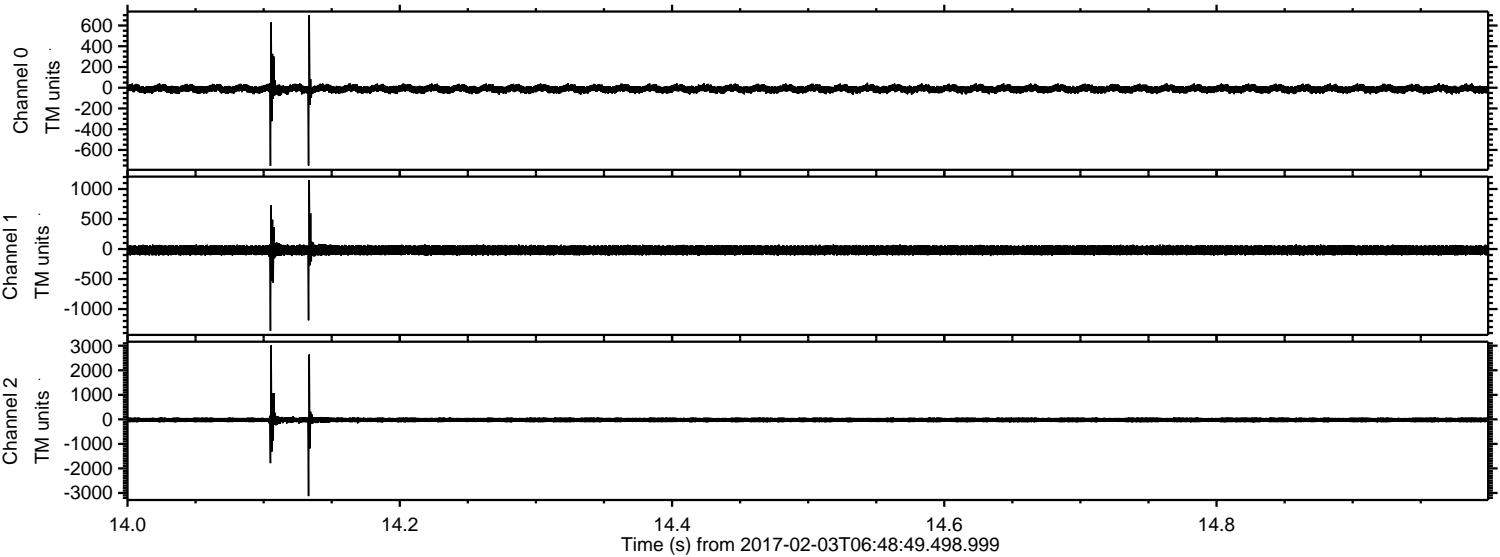


Processed Fri Feb 3 07:56:45 2017 by ELM ver.2012-10-06 from 001__elm20170203_064848__dat00.bin



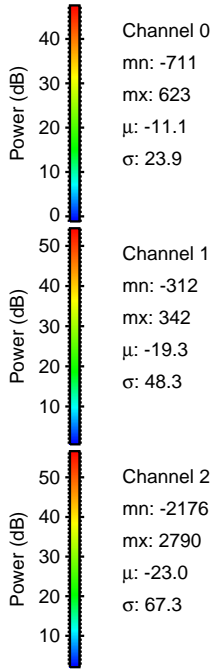
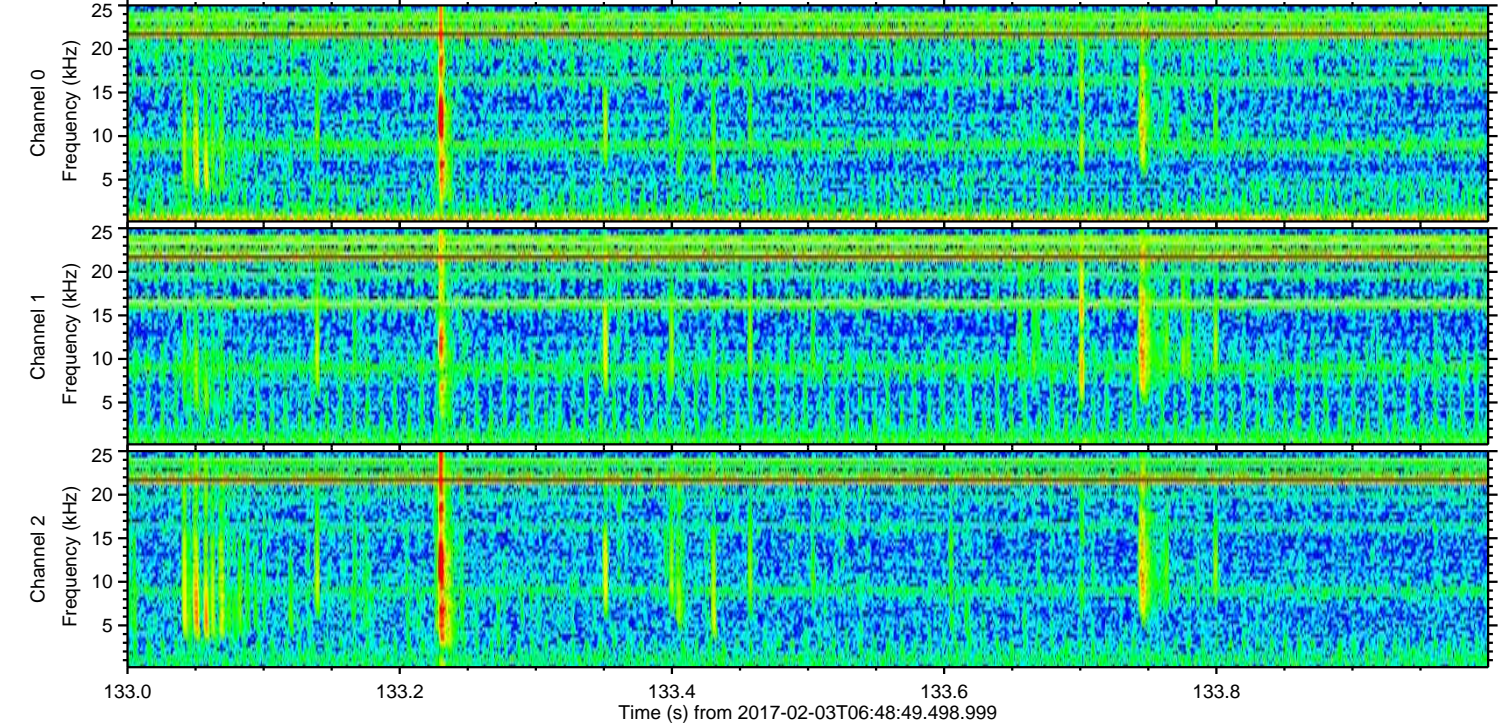
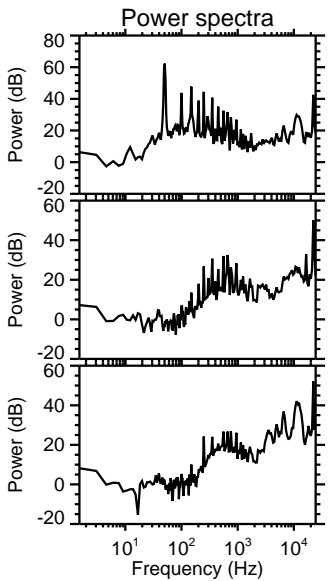
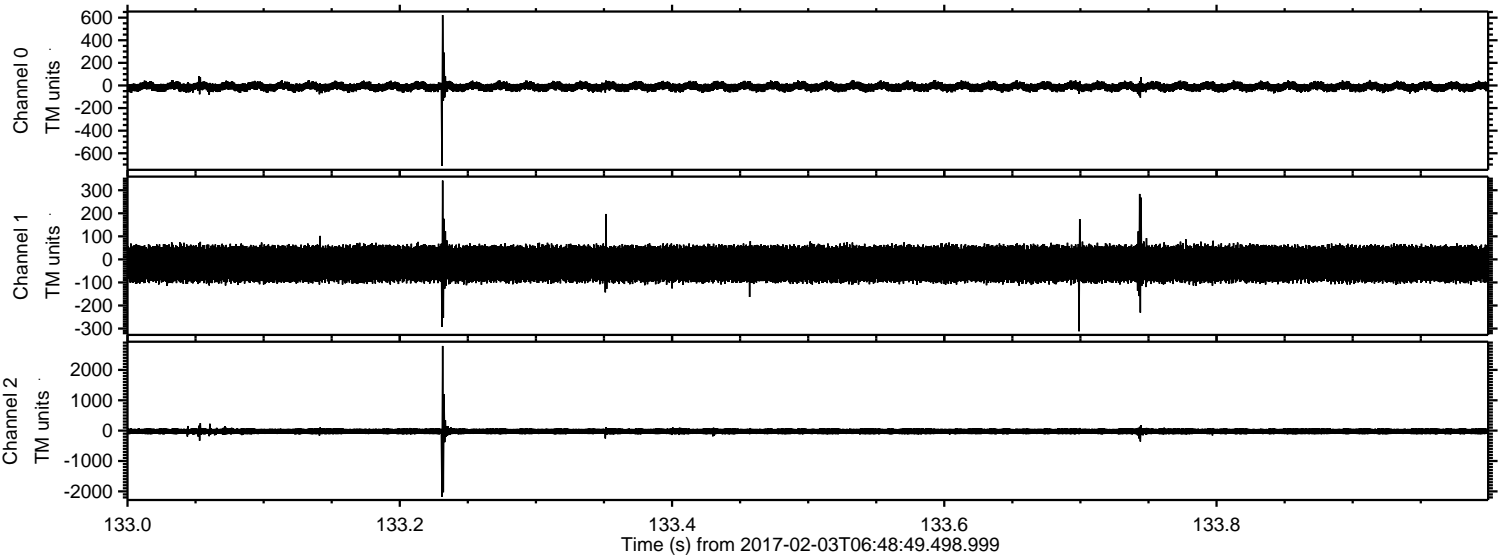
ELMAVAN 3D WAVEFORMS (Measured data sampled at 50 kHz) 51000 packets of 144 samples from 2017-02-03T06:48:49.498.999. Part 15/147

Processed Fri Feb 3 07:56:46 2017 by ELM ver.2012-10-06 from 001__elm20170203_064848__dat00.bin



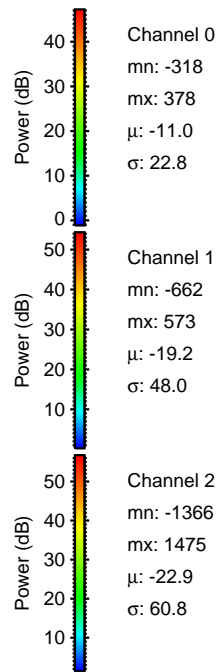
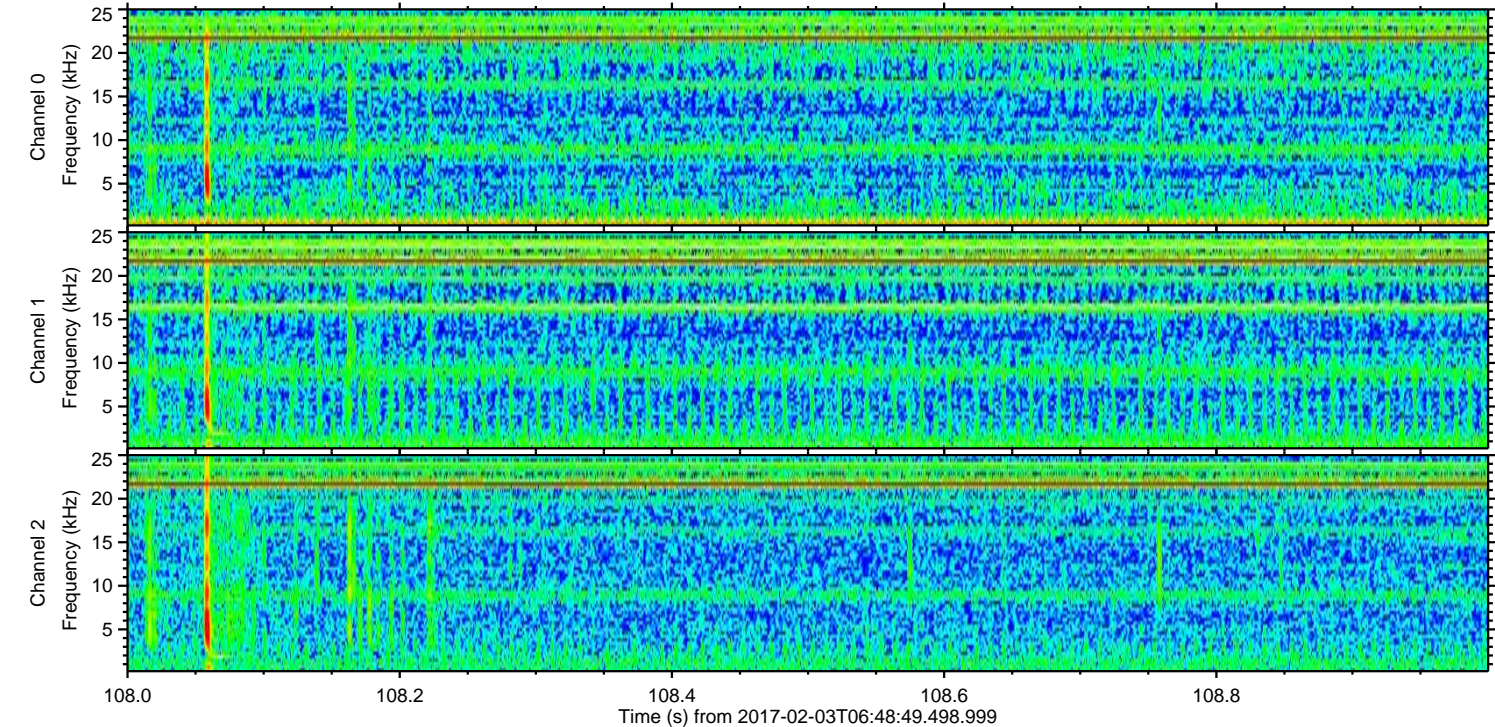
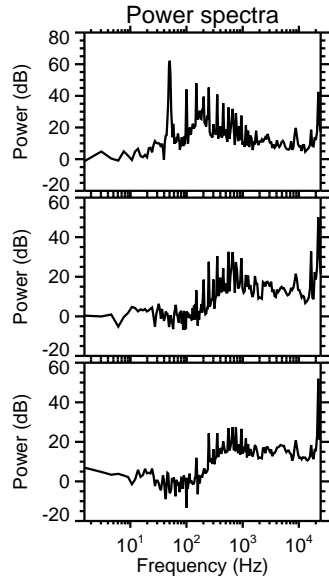
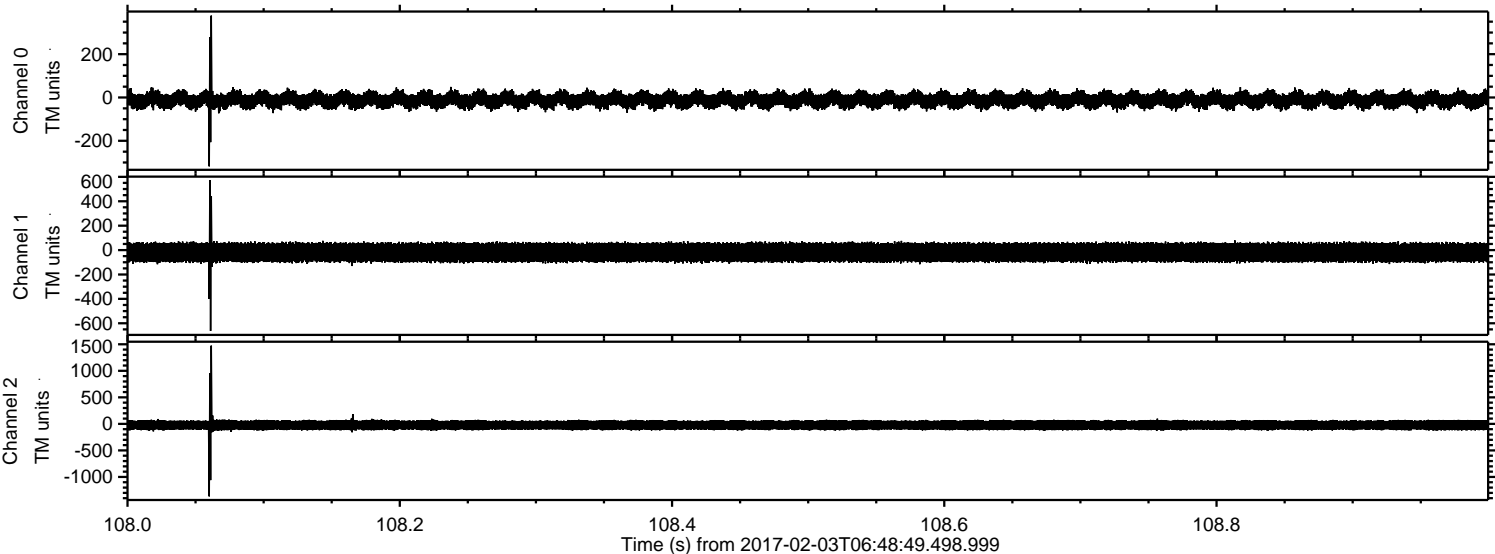
ELMAVAN 3D WAVEFORMS (Measured data sampled at 50 kHz) 51000 packets of 144 samples from 2017-02-03T06:48:49.498.999. Part 134/147

Processed Fri Feb 3 07:56:47 2017 by ELM ver.2012-10-06 from 001__elm20170203_064848__dat00.bin

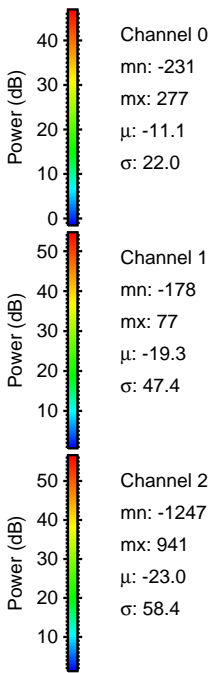
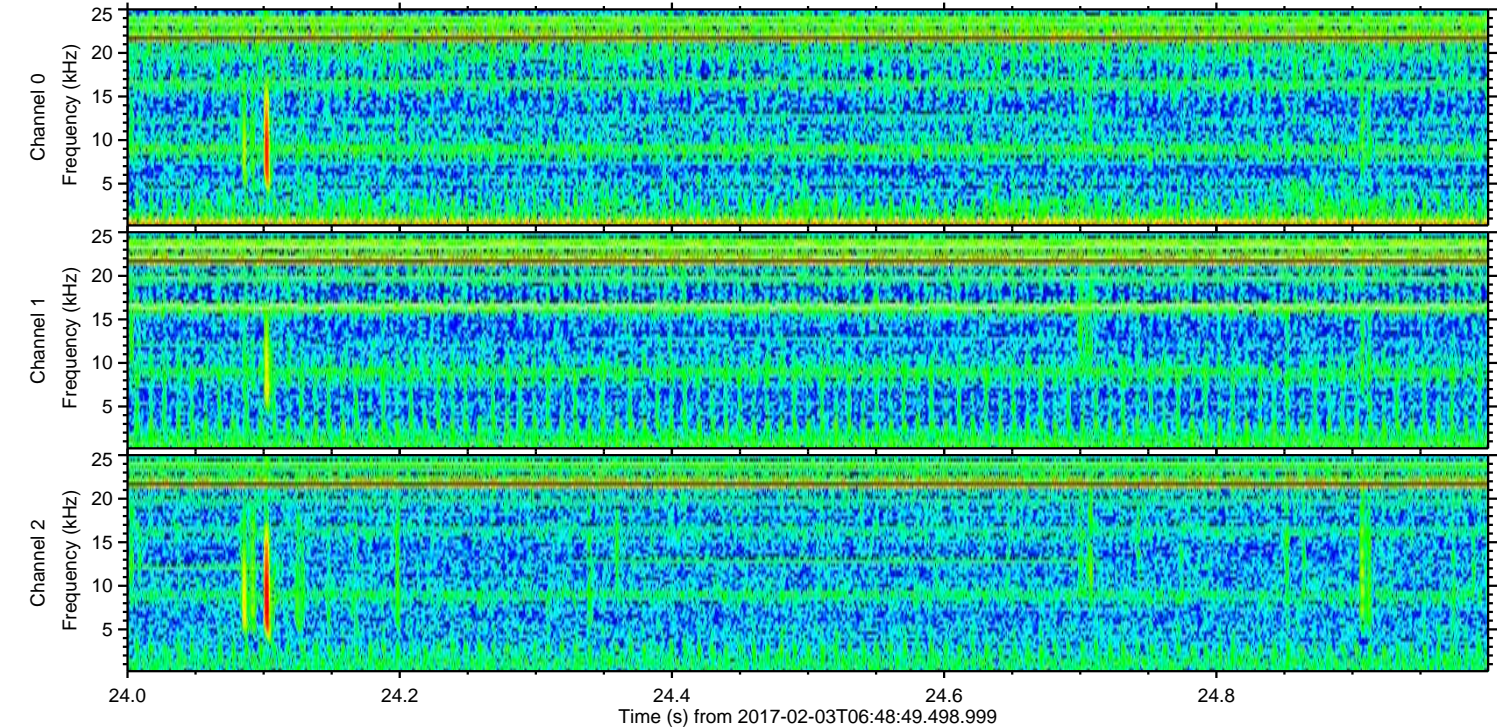
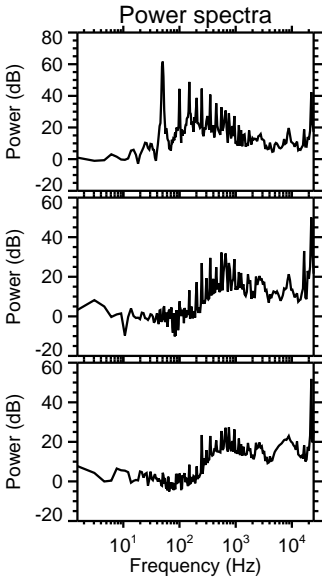
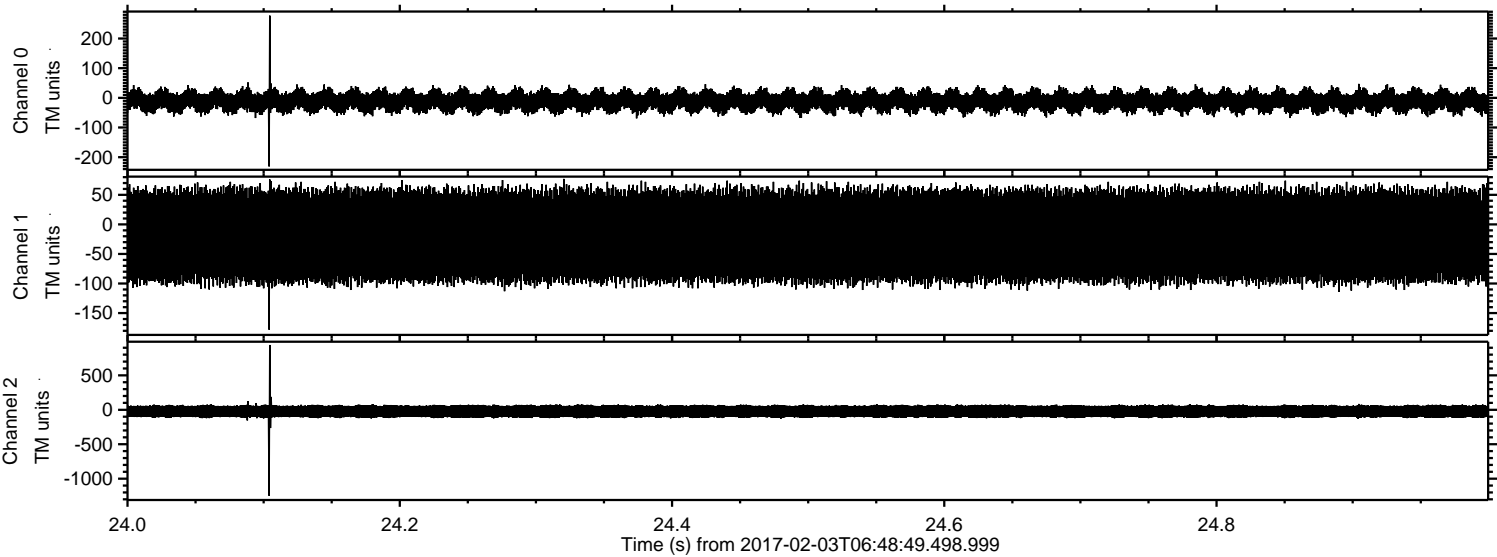


ELMAVAN 3D WAVEFORMS (Measured data sampled at 50 kHz) 51000 packets of 144 samples from 2017-02-03T06:48:49.498.999. Part 109/147

Processed Fri Feb 3 07:56:48 2017 by ELM ver.2012-10-06 from 001__elm20170203_064848__dat00.bin

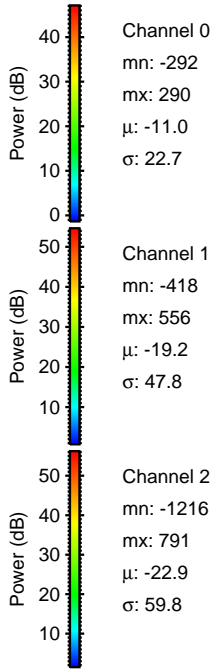
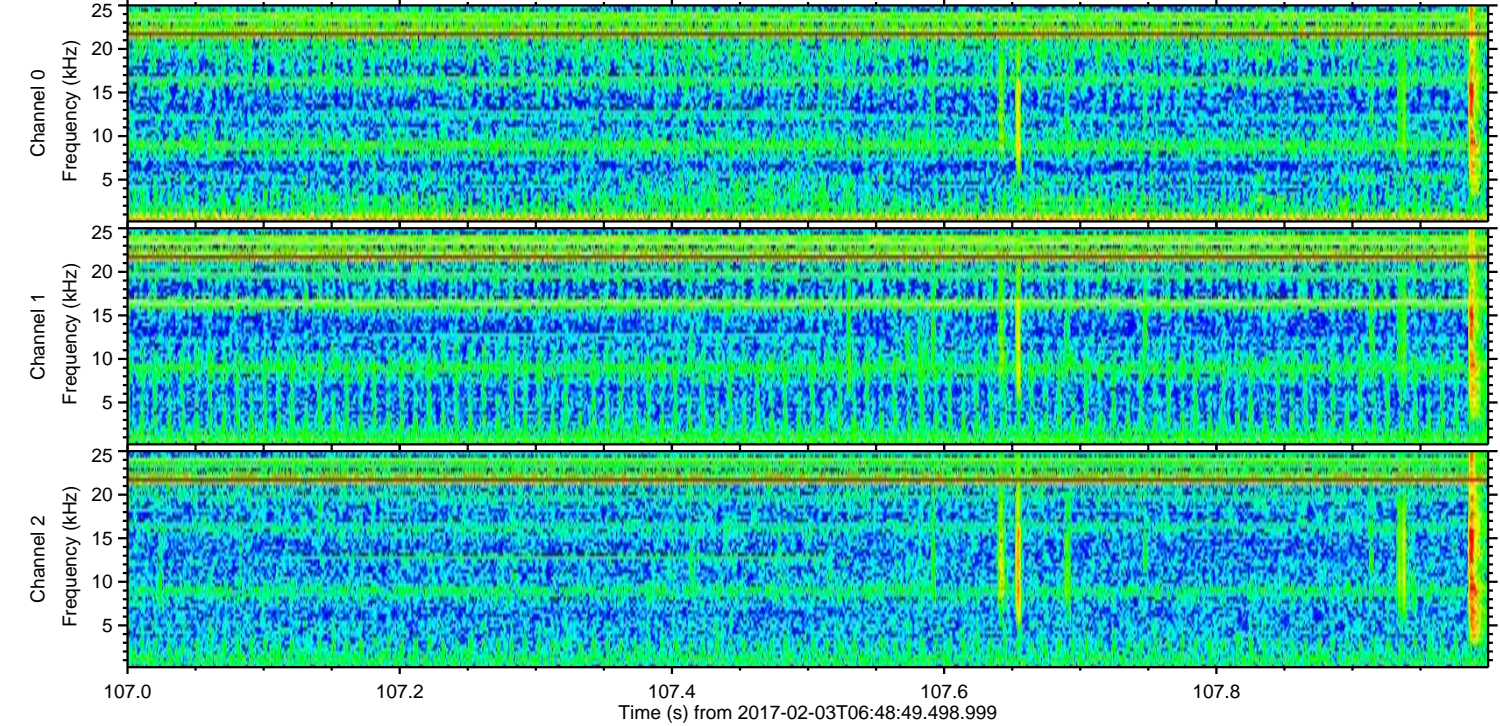
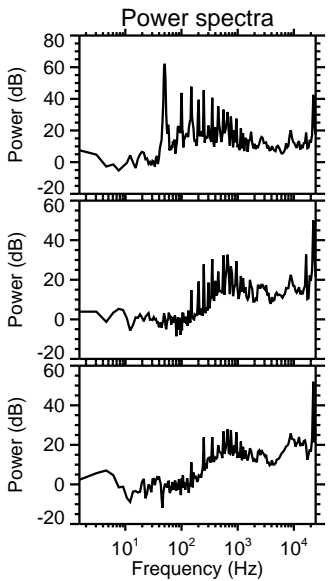
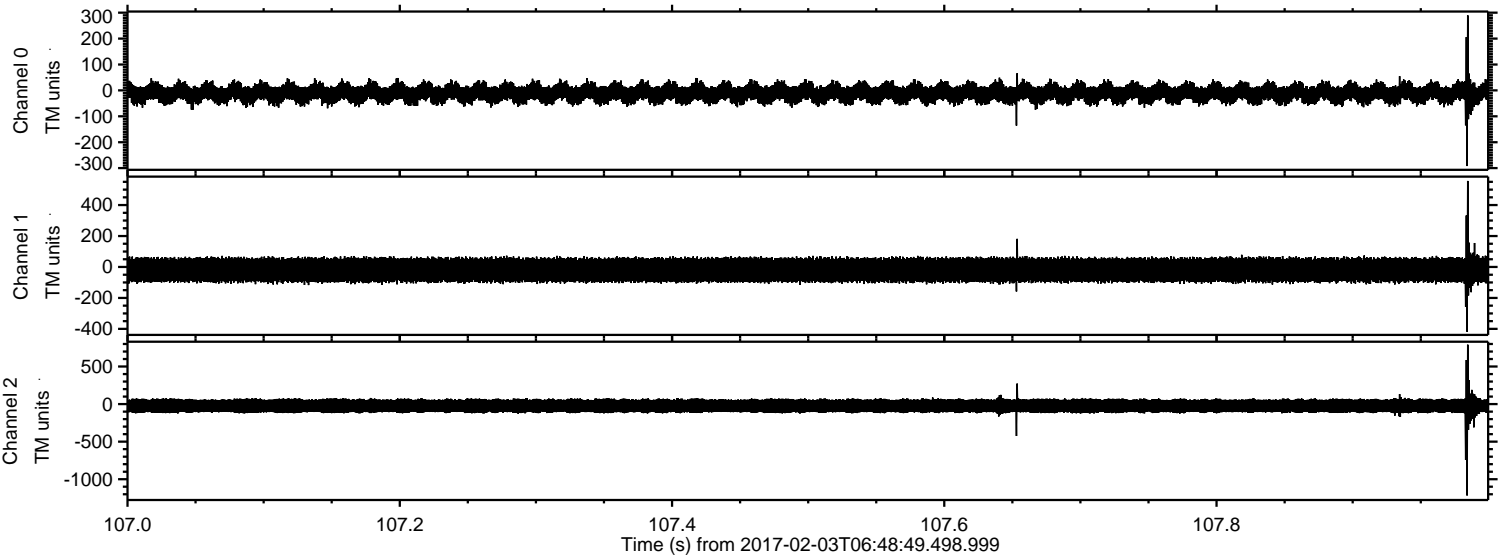


Processed Fri Feb 3 07:56:49 2017 by ELM ver.2012-10-06 from 001__elm20170203_064848__dat00.bin

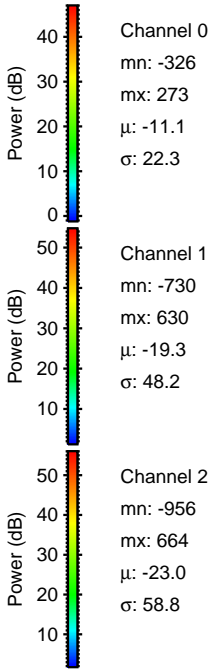
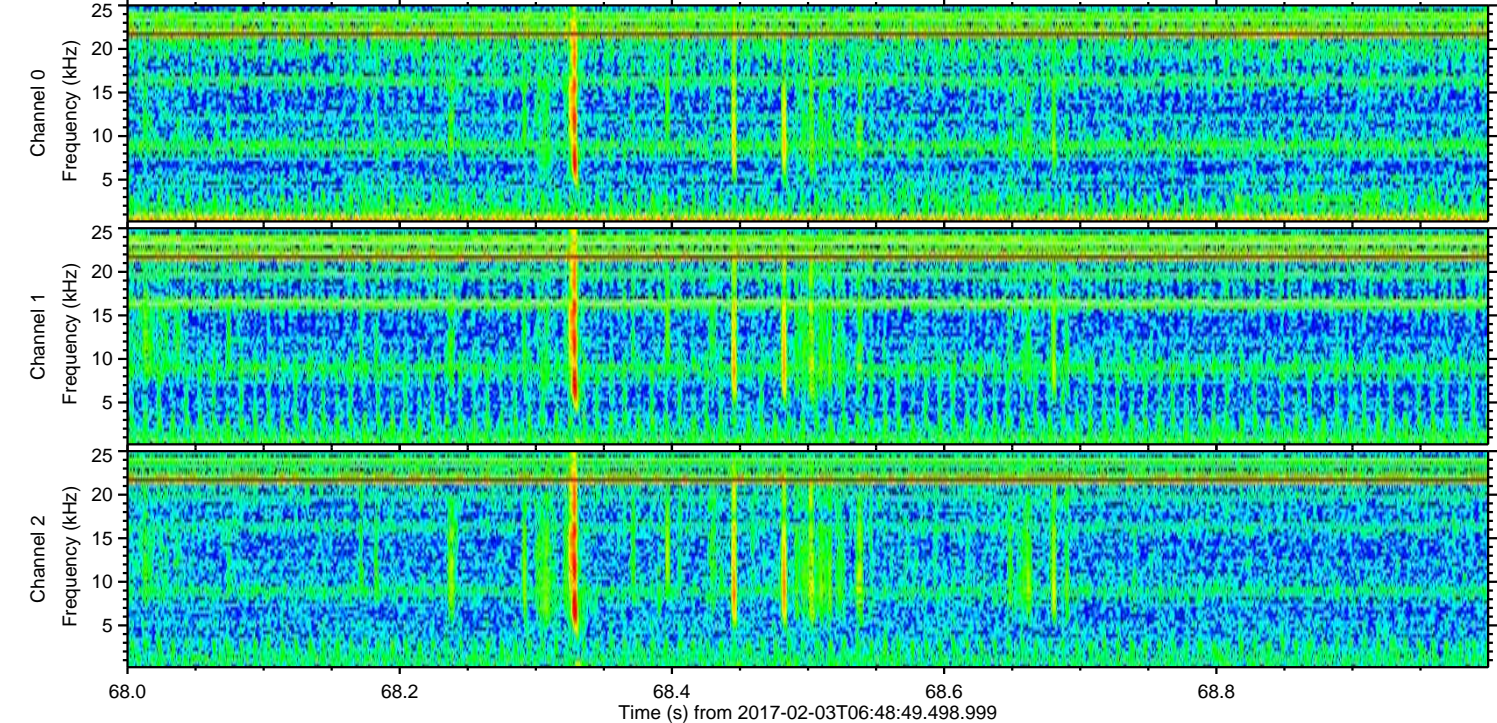
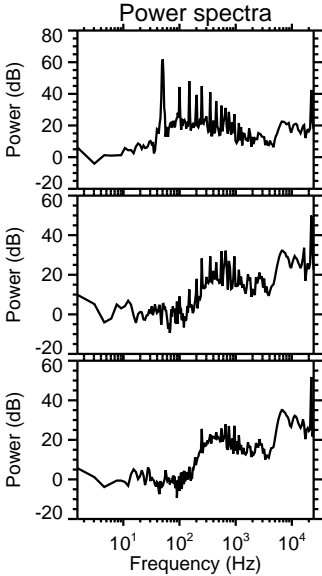
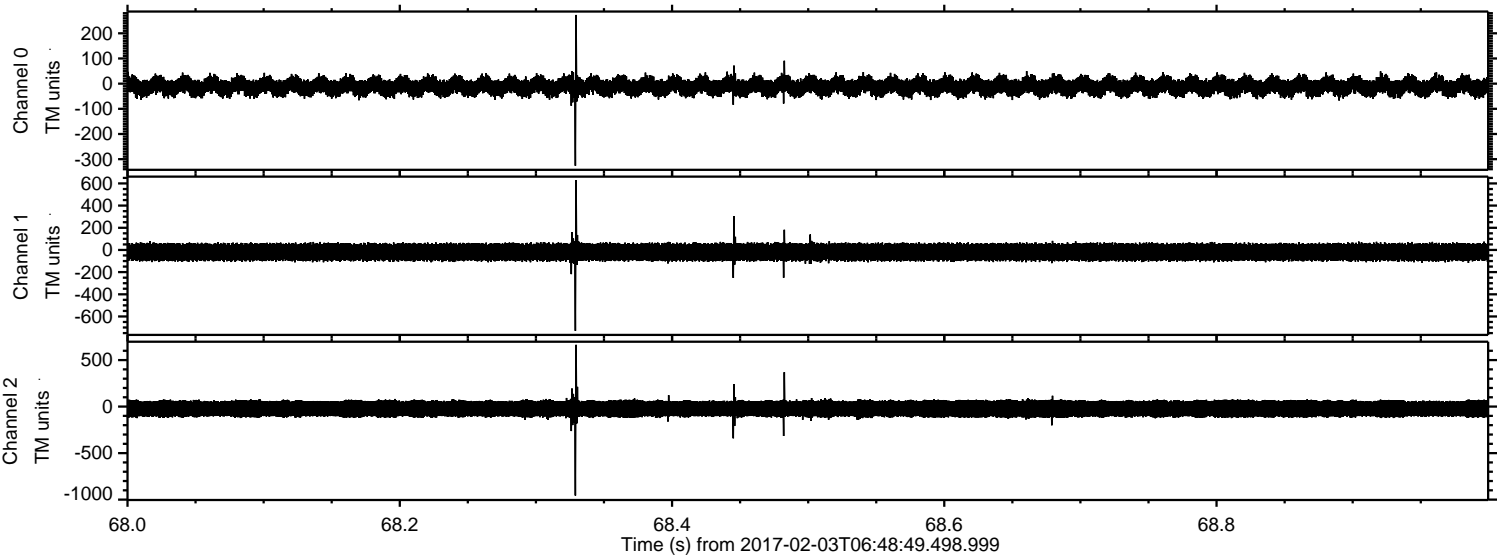


ELMAVAN 3D WAVEFORMS (Measured data sampled at 50 kHz) 51000 packets of 144 samples from 2017-02-03T06:48:49.498.999. Part 108/147

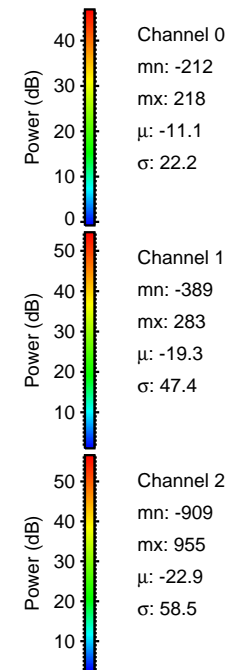
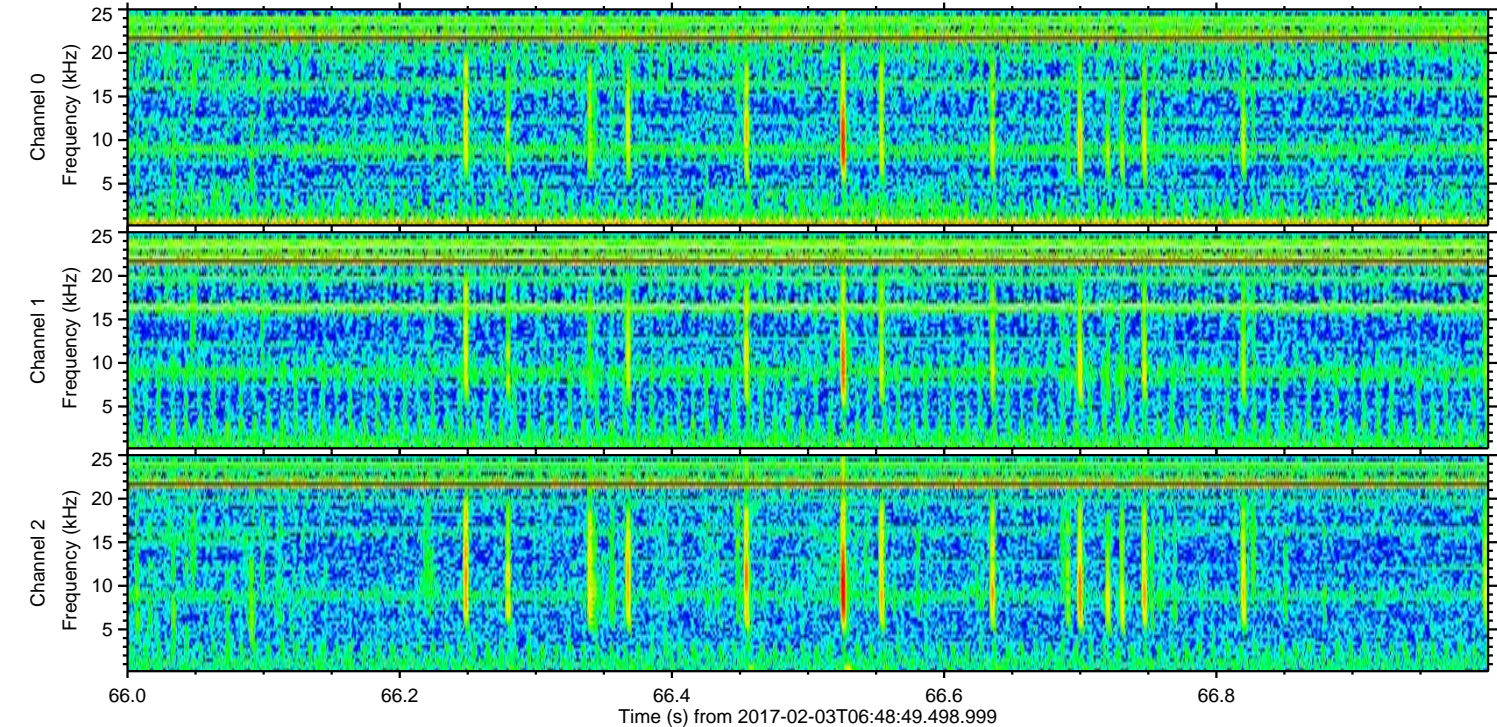
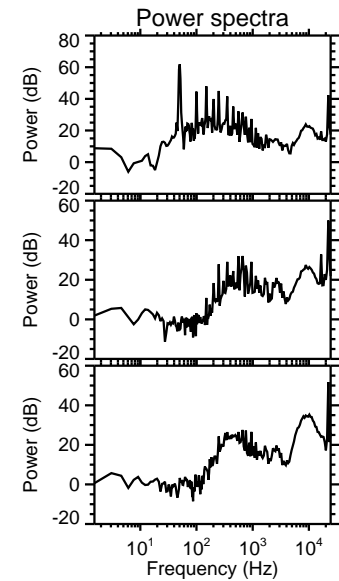
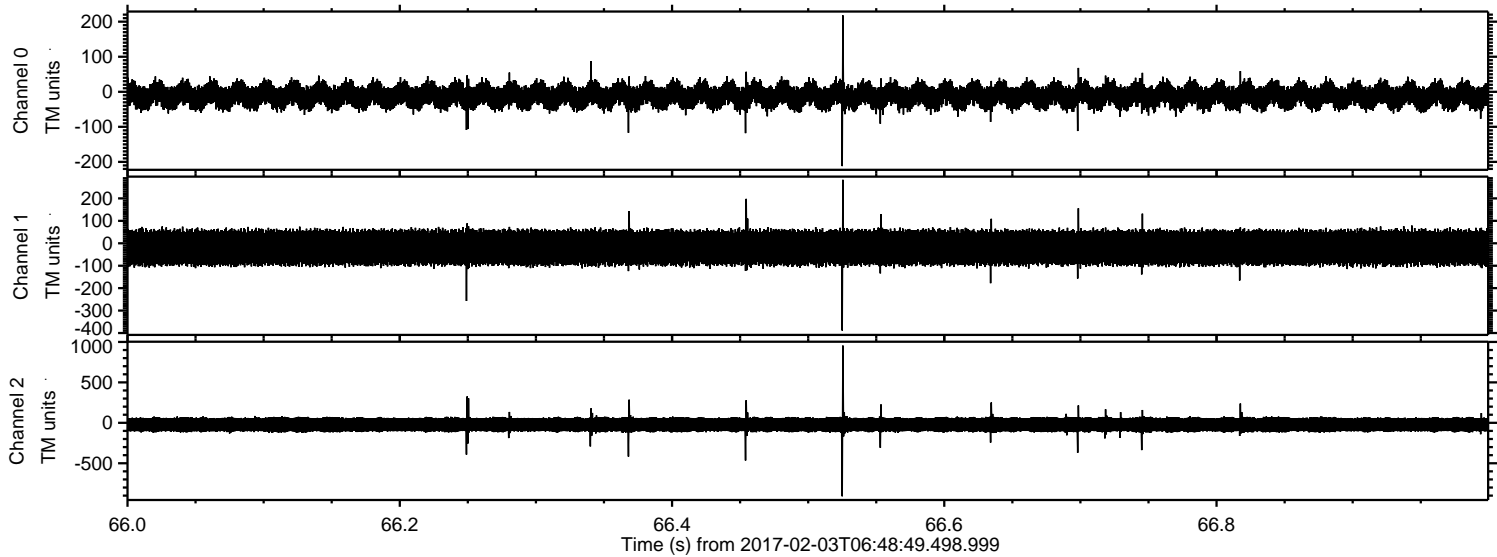
Processed Fri Feb 3 07:56:50 2017 by ELM ver.2012-10-06 from 001__elm20170203_064848__dat00.bin



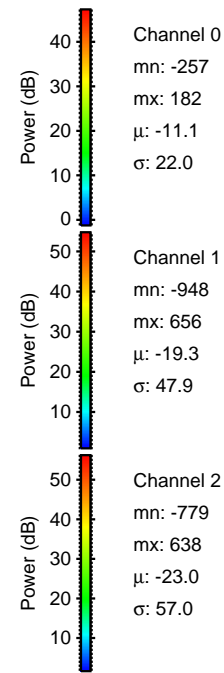
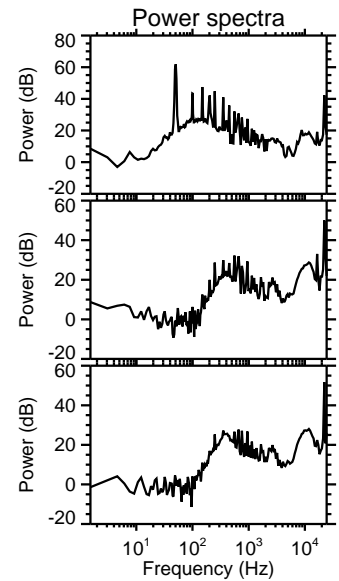
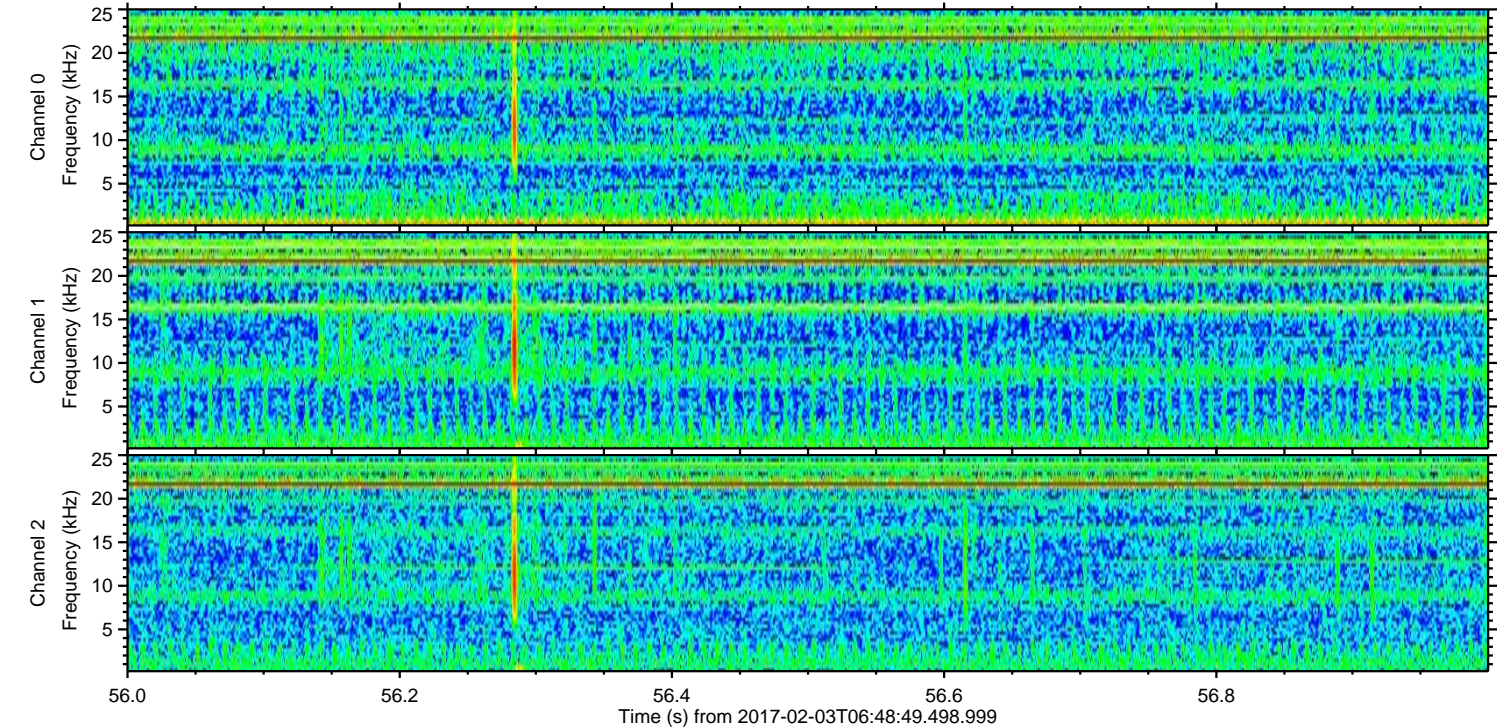
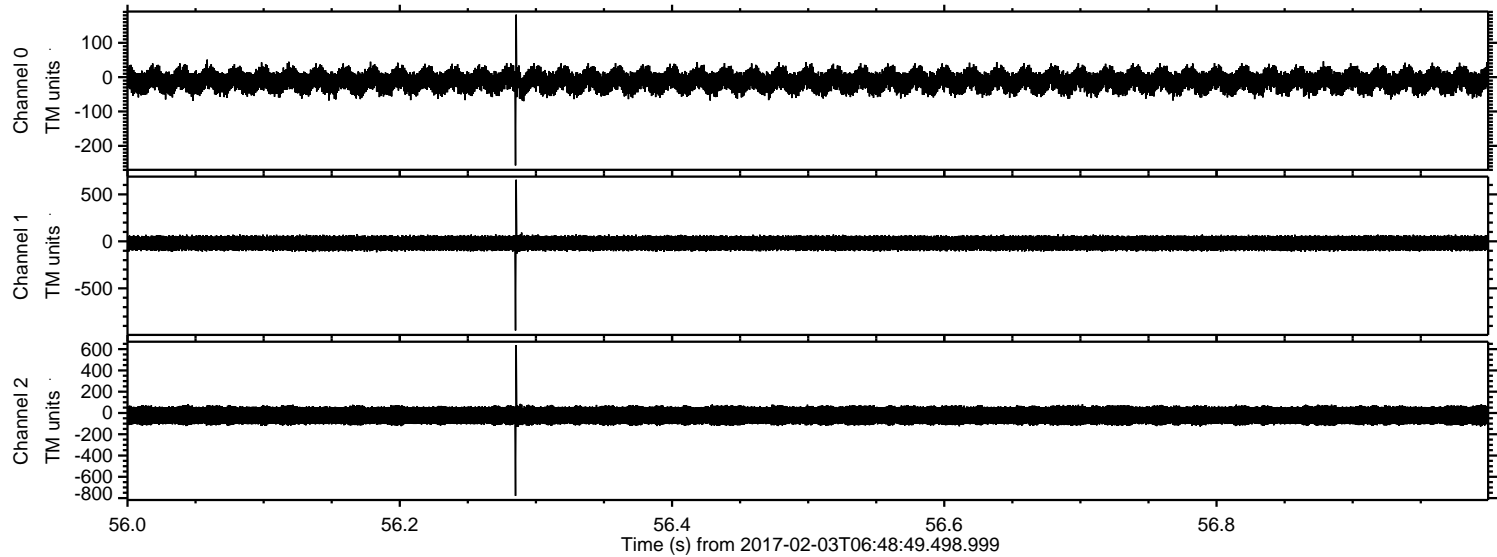
Processed Fri Feb 3 07:56:51 2017 by ELM ver.2012-10-06 from 001__elm20170203_064848__dat00.bin



Processed Fri Feb 3 07:56:52 2017 by ELM ver.2012-10-06 from 001__elm20170203_064848__dat00.bin



Processed Fri Feb 3 07:56:52 2017 by ELM ver.2012-10-06 from 001__elm20170203_064848__dat00.bin



Power spectra

Channel 0
mn: -257
mx: 182
 μ : -11.1
 σ : 22.0

Channel 1
mn: -948
mx: 656
 μ : -19.3
 σ : 47.9

Channel 2
mn: -779
mx: 638
 μ : -23.0
 σ : 57.0

Processed Fri Feb 3 07:56:53 2017 by ELM ver.2012-10-06 from 001__elm20170203_064848__dat00.bin

