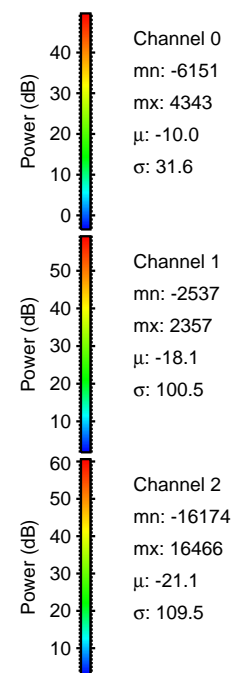
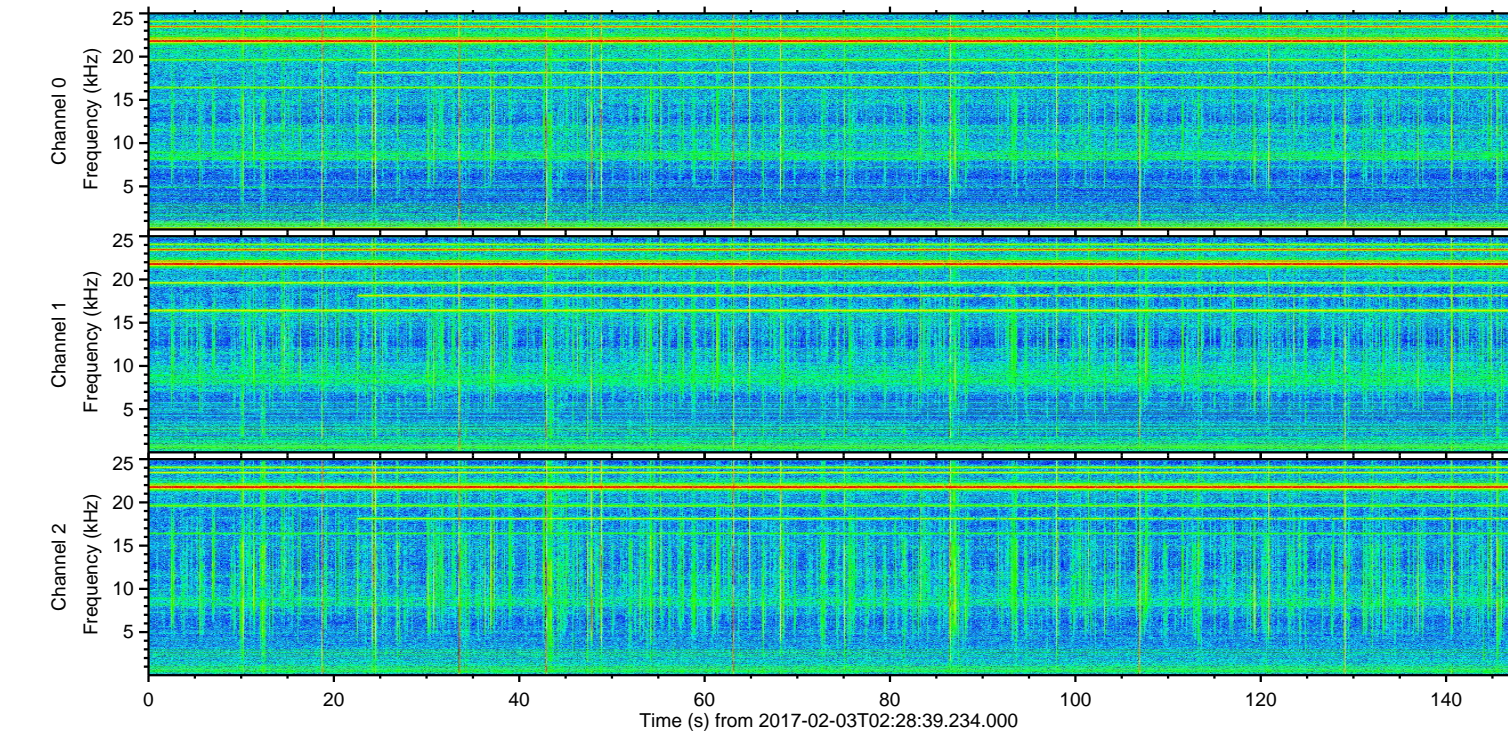
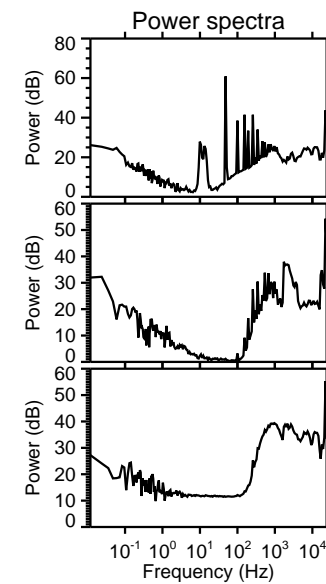
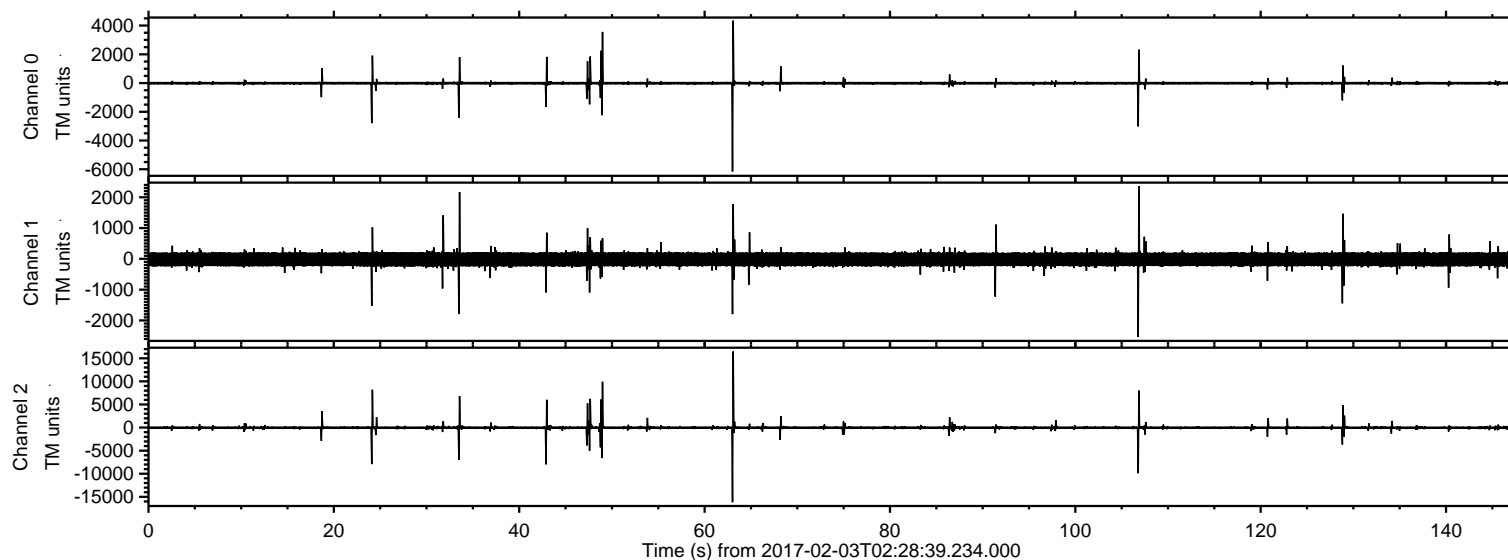


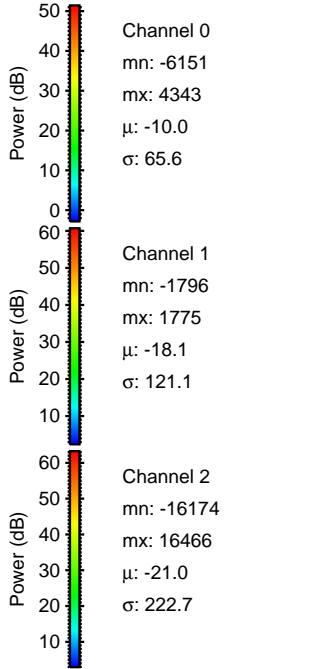
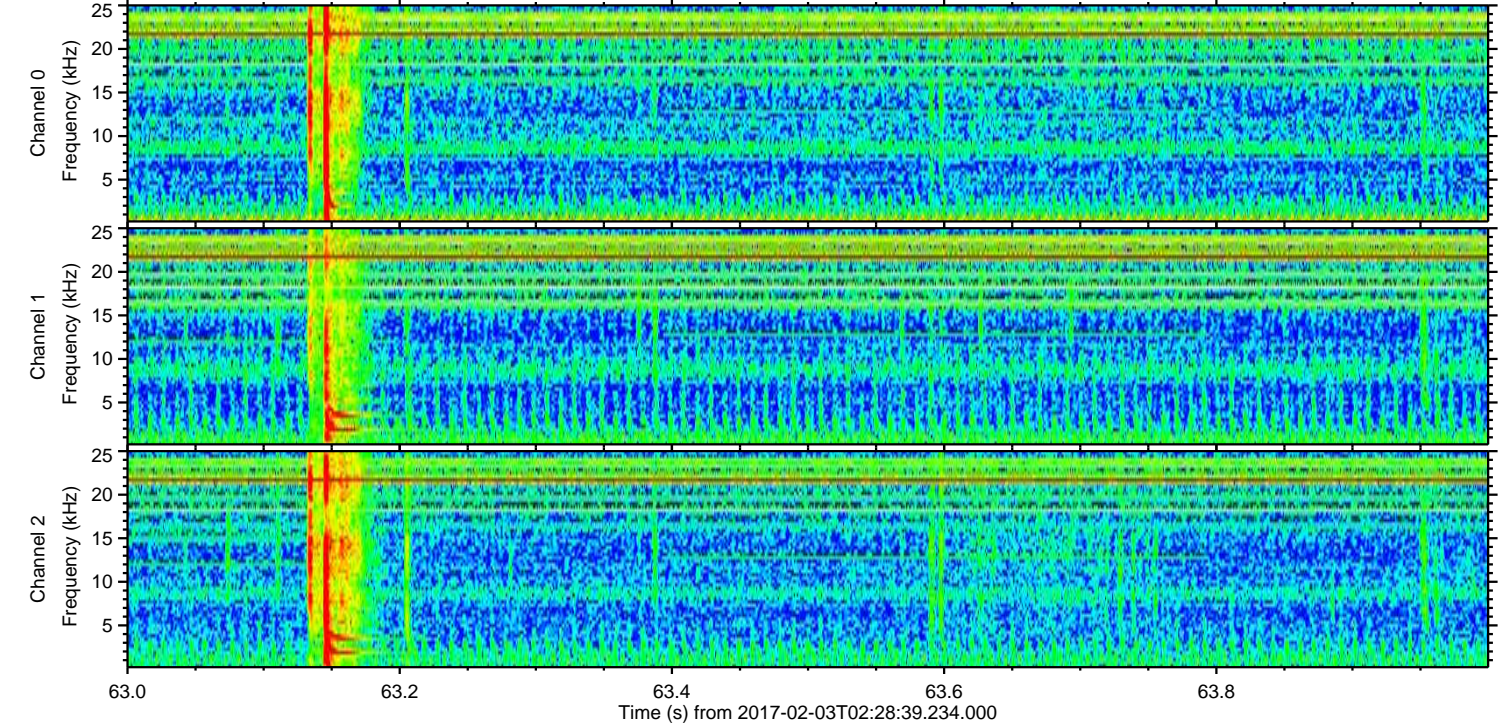
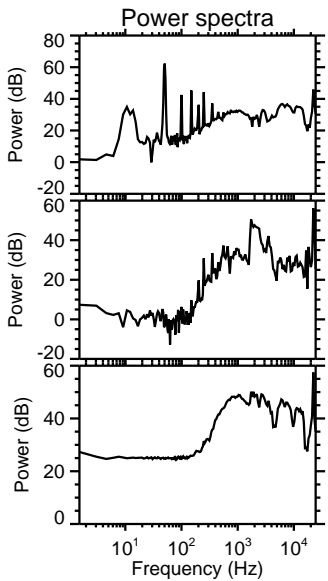
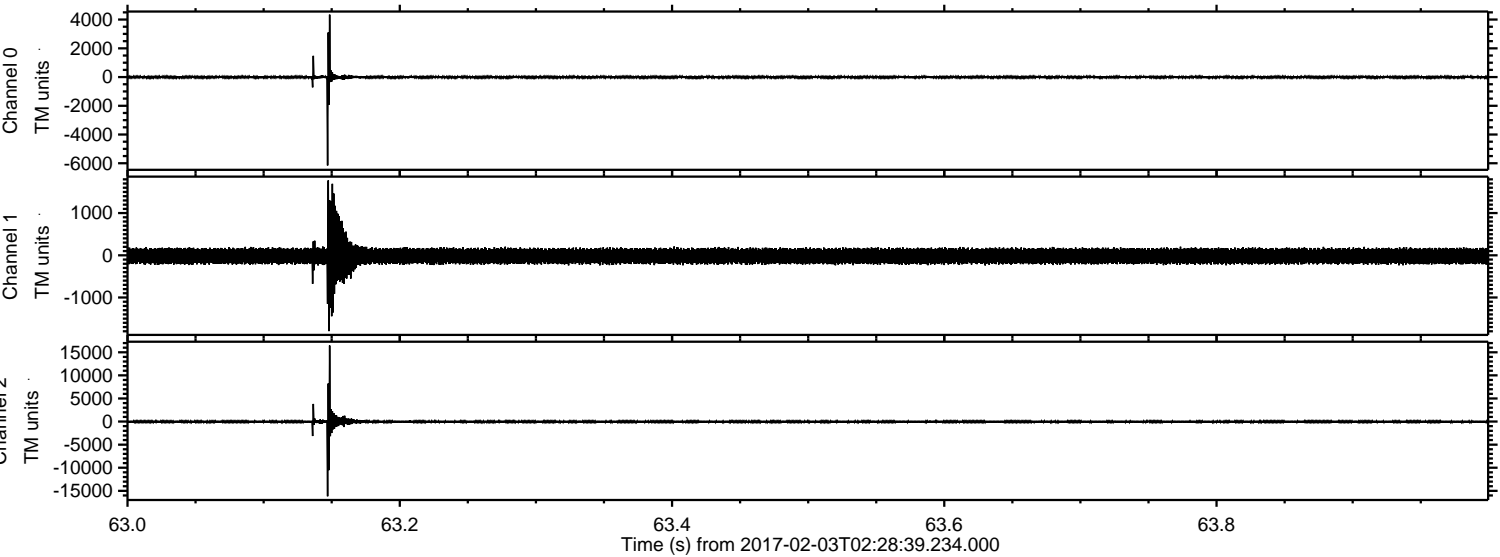
ELMAVAN 3D WAVEFORMS (Measured data sampled at 50 kHz) 51000 packets of 144 samples from 2017-02-03T02:28:39.234.000.

Processed Fri Feb 3 03:36:39 2017 by ELM ver.2012-10-06 from 001__elm20170203_022838__dat00.bin



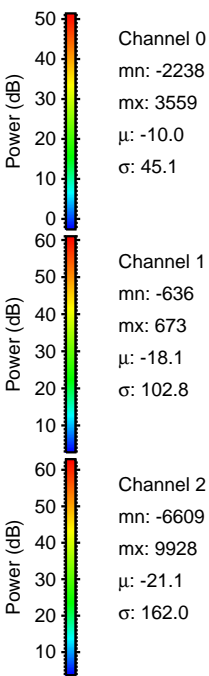
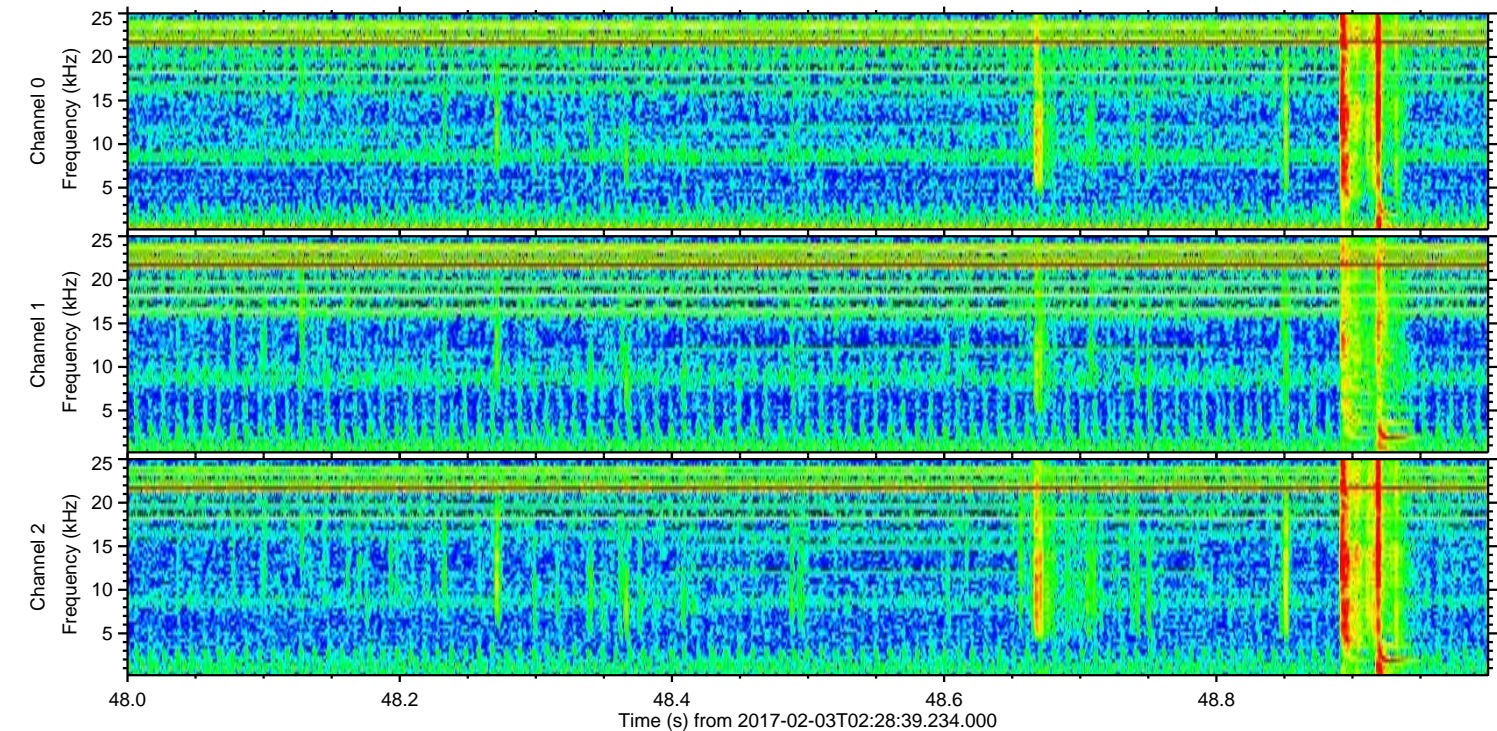
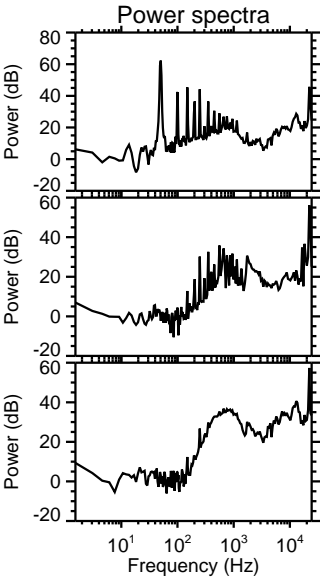
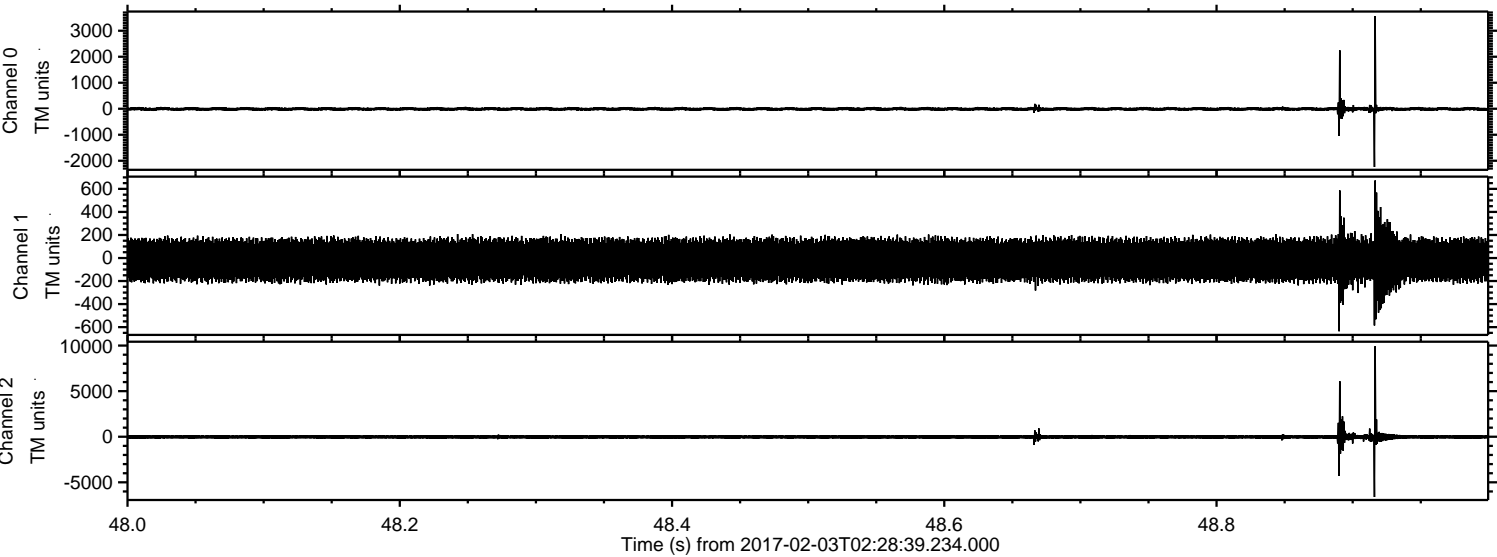
ELMAVAN 3D WAVEFORMS (Measured data sampled at 50 kHz) 51000 packets of 144 samples from 2017-02-03T02:28:39.234.000. Part 64/147

Processed Fri Feb 3 03:36:53 2017 by ELM ver.2012-10-06 from 001__elm20170203_022838__dat00.bin



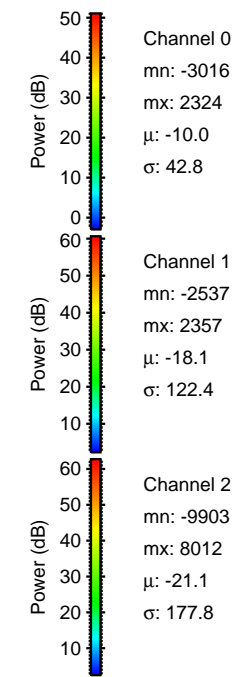
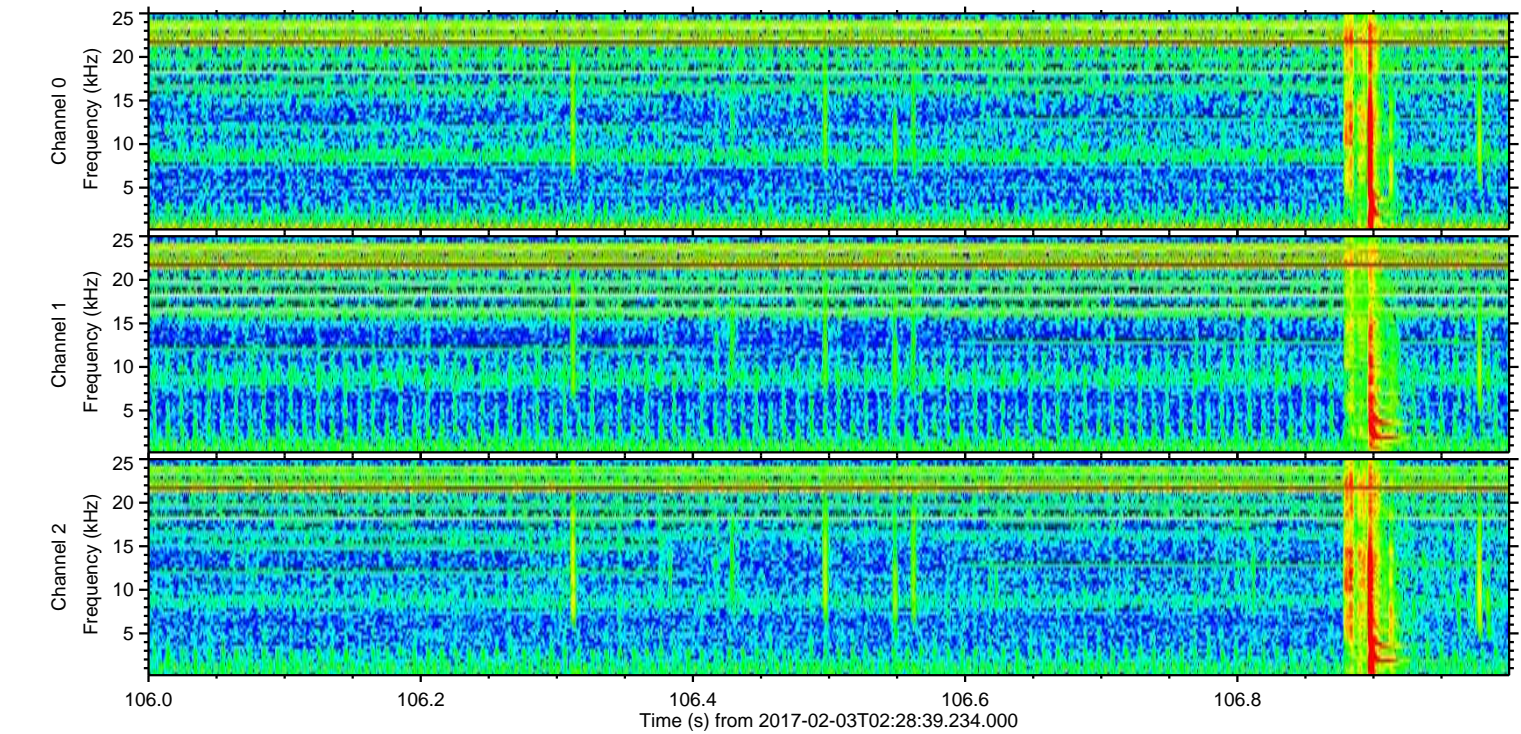
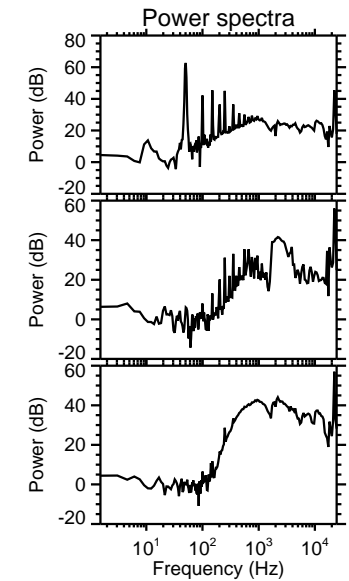
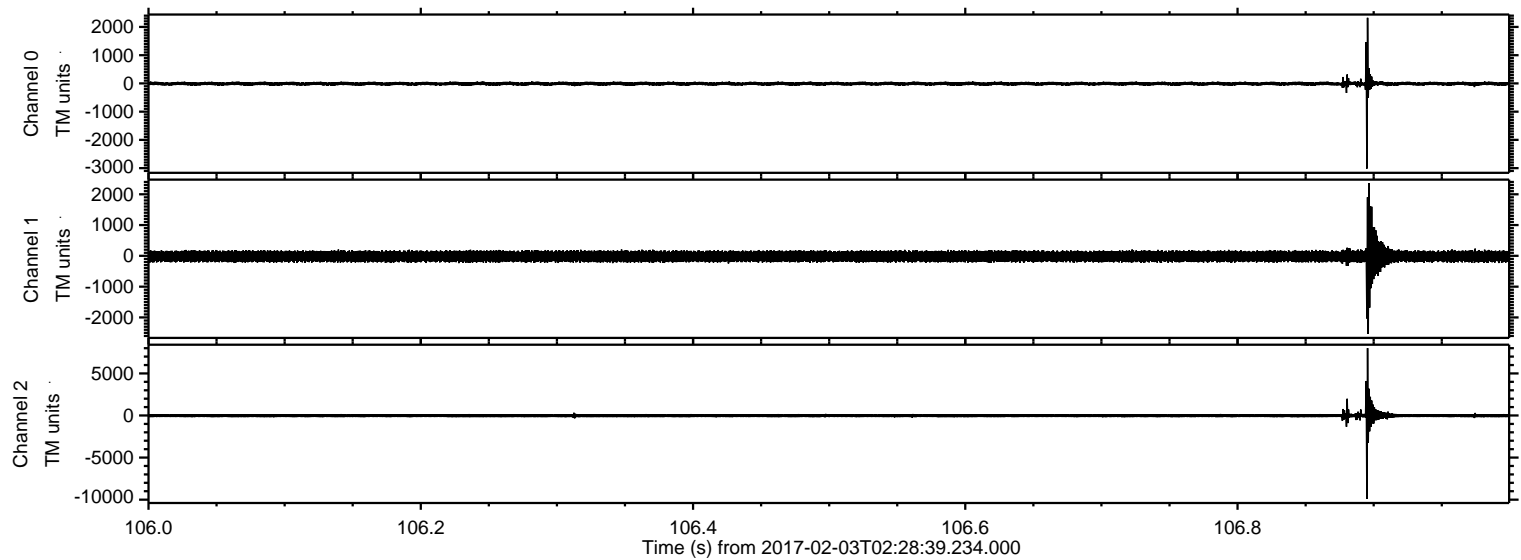
ELMAVAN 3D WAVEFORMS (Measured data sampled at 50 kHz) 51000 packets of 144 samples from 2017-02-03T02:28:39.234.000. Part 49/147

Processed Fri Feb 3 03:36:54 2017 by ELM ver.2012-10-06 from 001__elm20170203_022838__dat00.bin



ELMAVAN 3D WAVEFORMS (Measured data sampled at 50 kHz) 51000 packets of 144 samples from 2017-02-03T02:28:39.234.000. Part 107/147

Processed Fri Feb 3 03:36:55 2017 by ELM ver.2012-10-06 from 001__elm20170203_022838__dat00.bin

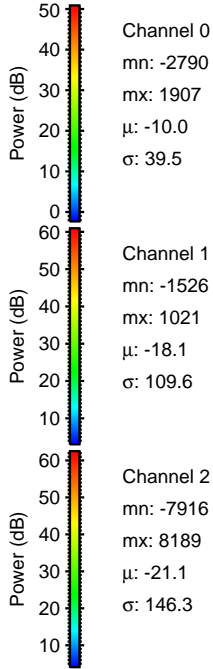
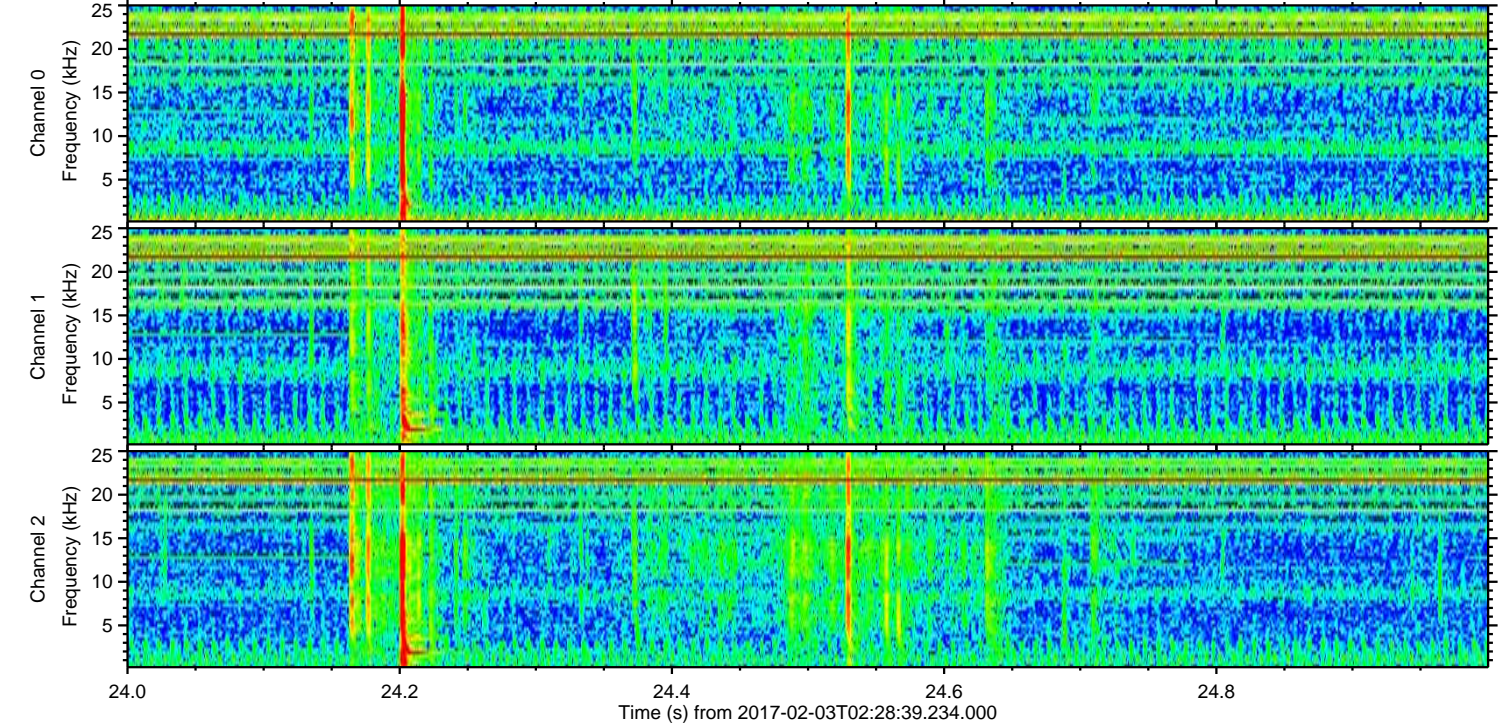
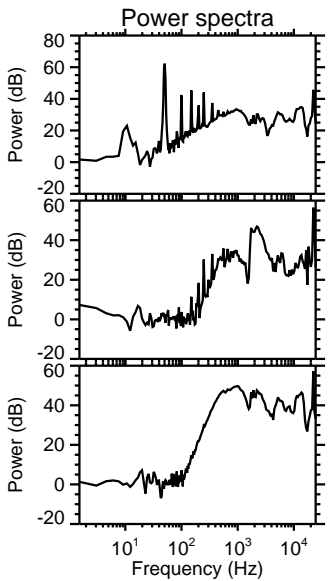
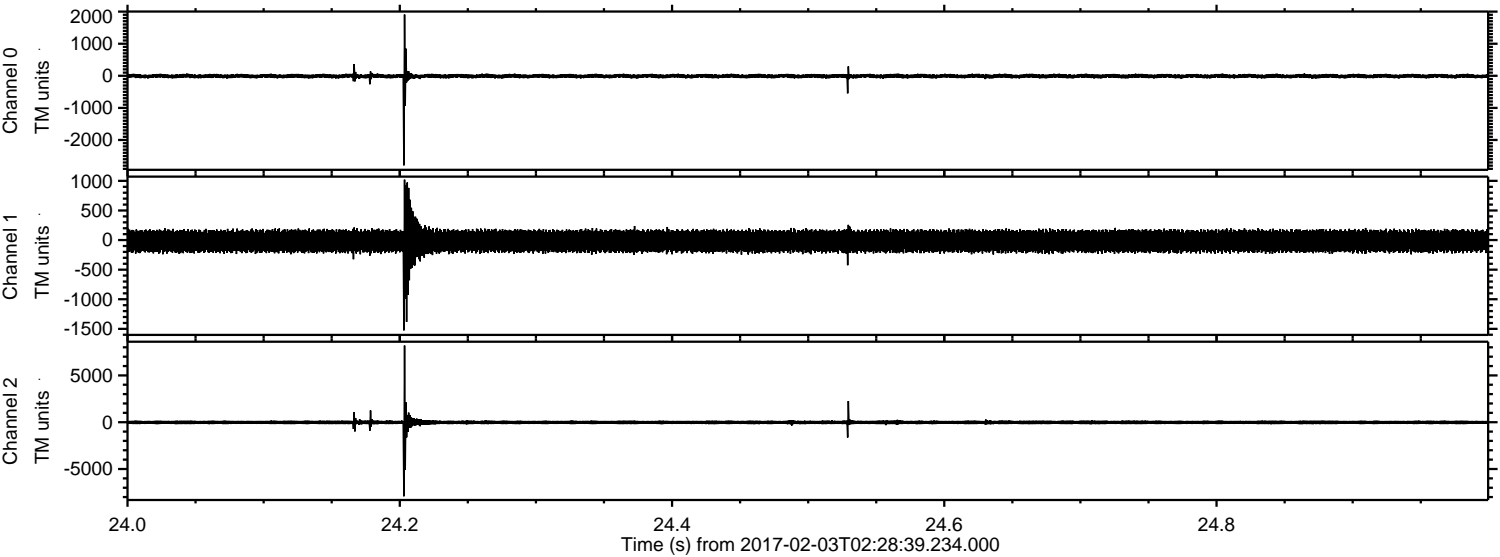


Channel 0
mn: -3016
mx: 2324
 μ : -10.0
 σ : 42.8

Channel 1
mn: -2537
mx: 2357
 μ : -18.1
 σ : 122.4

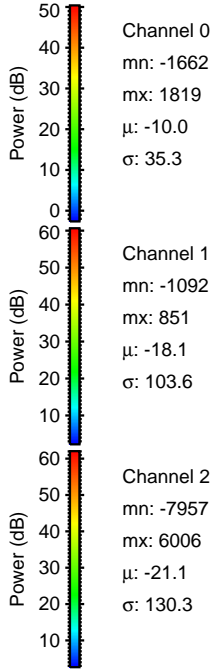
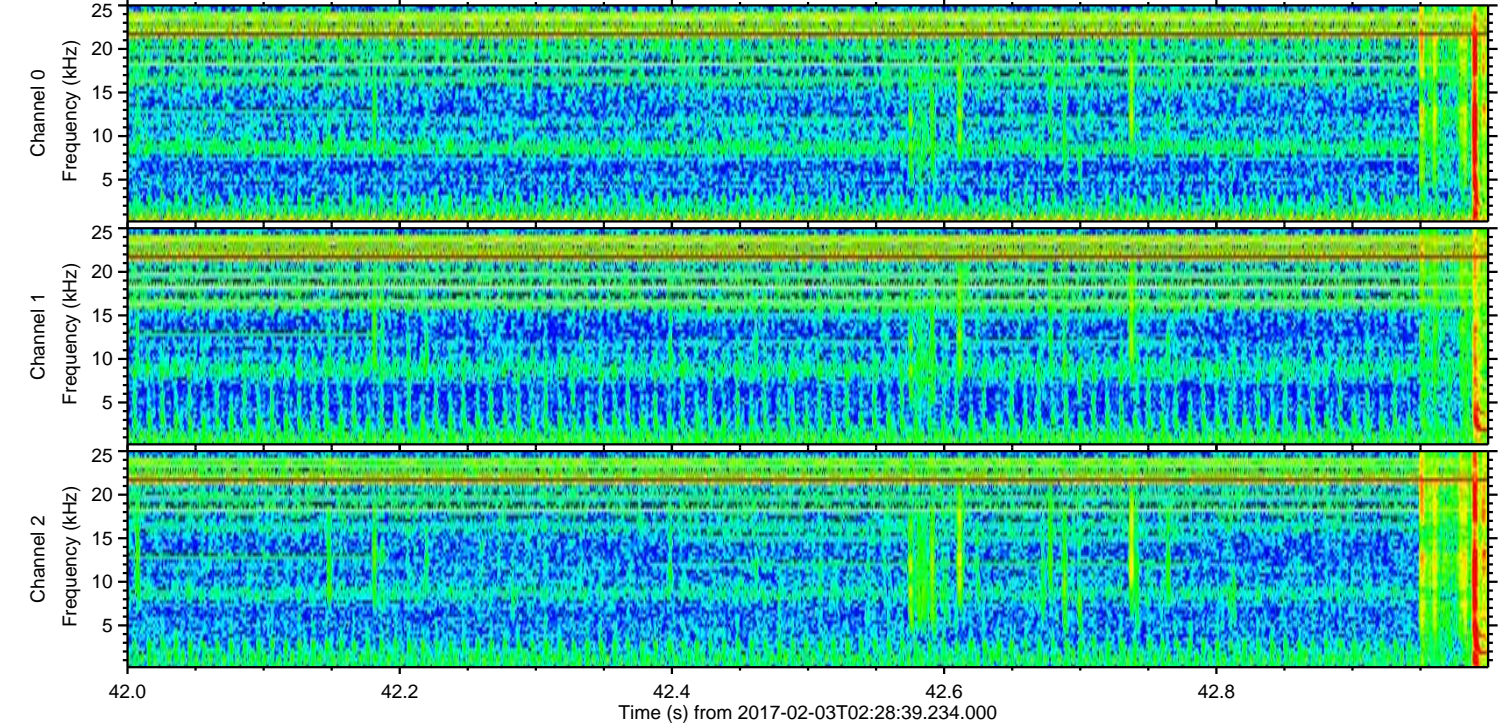
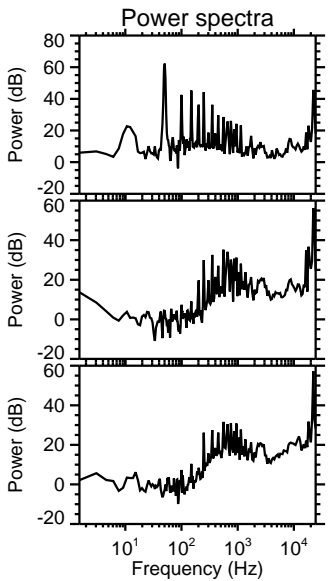
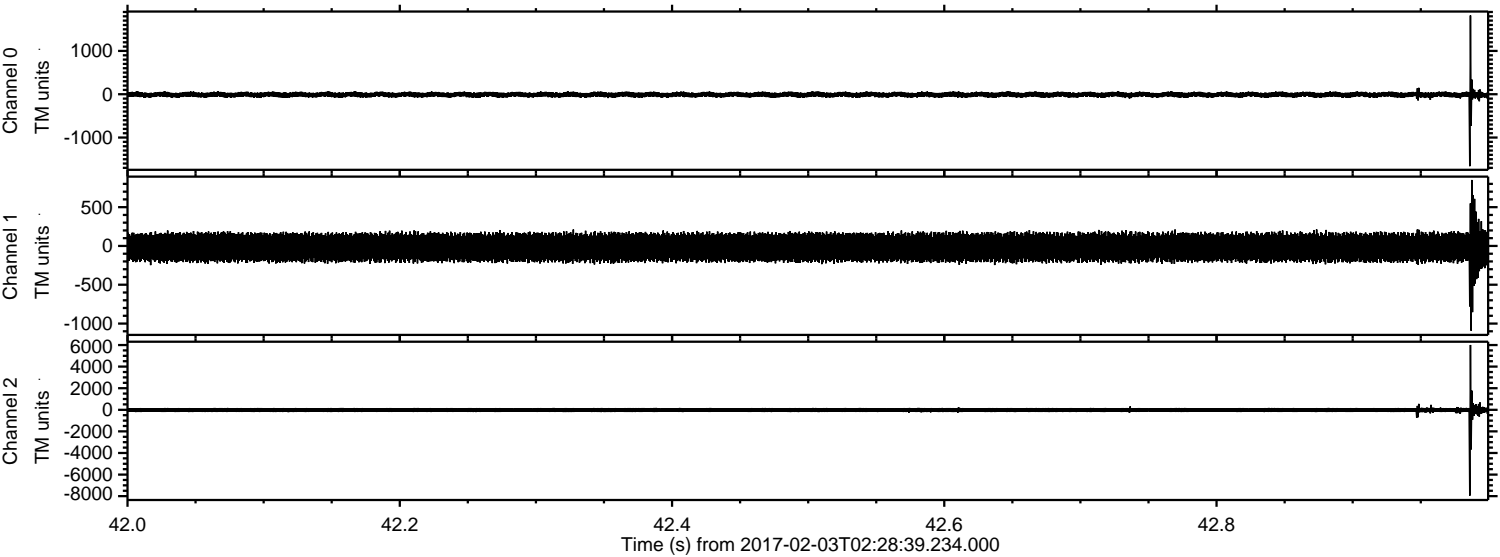
Channel 2
mn: -9903
mx: 8012
 μ : -21.1
 σ : 177.8

Processed Fri Feb 3 03:36:56 2017 by ELM ver.2012-10-06 from 001__elm20170203_022838__dat00.bin



ELMAVAN 3D WAVEFORMS (Measured data sampled at 50 kHz) 51000 packets of 144 samples from 2017-02-03T02:28:39.234.000. Part 43/147

Processed Fri Feb 3 03:36:57 2017 by ELM ver.2012-10-06 from 001__elm20170203_022838__dat00.bin



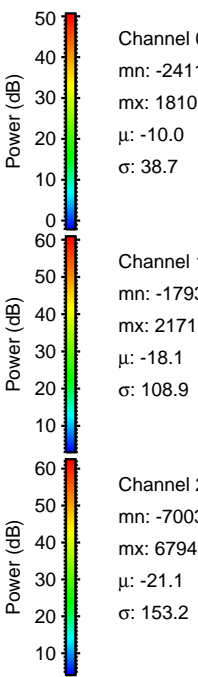
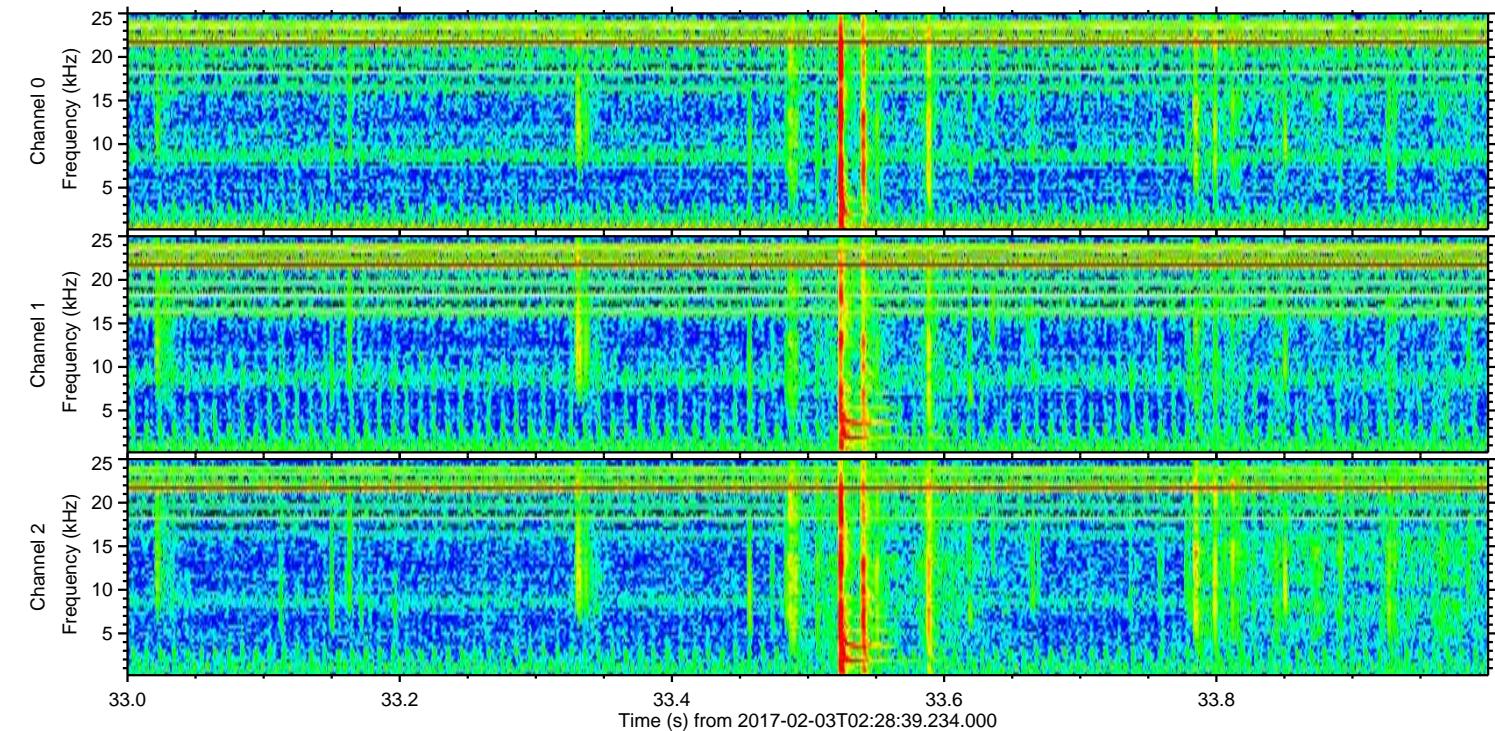
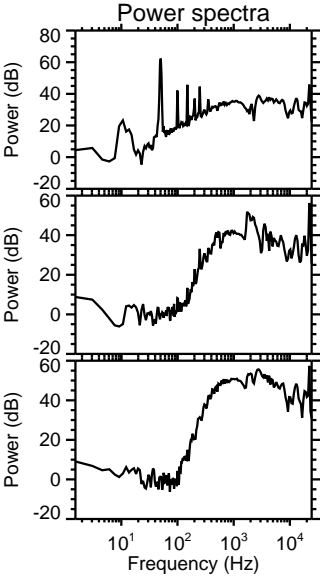
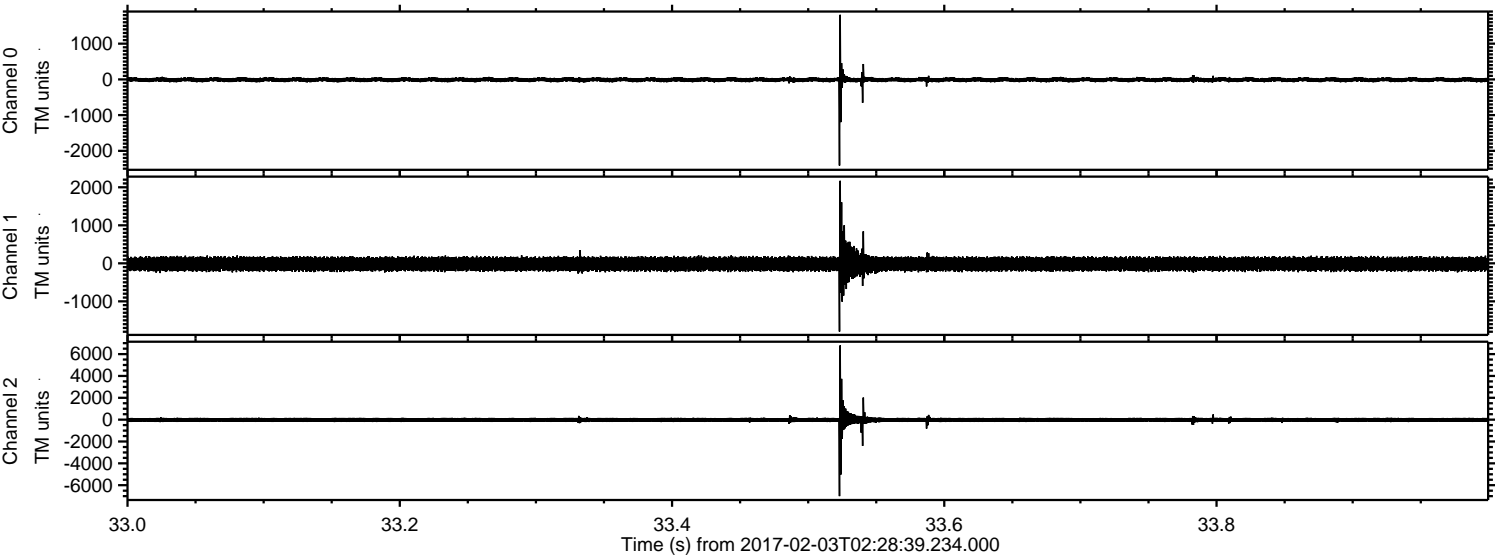
Channel 0
mn: -1662
mx: 1819
 μ : -10.0
 σ : 35.3

Channel 1
mn: -1092
mx: 851
 μ : -18.1
 σ : 103.6

Channel 2
mn: -7957
mx: 6006
 μ : -21.1
 σ : 130.3

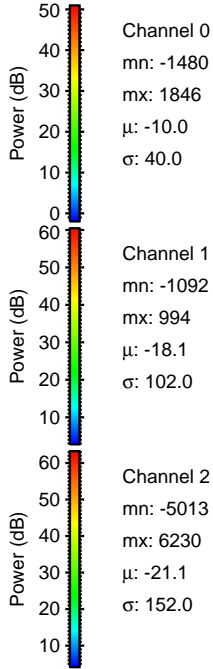
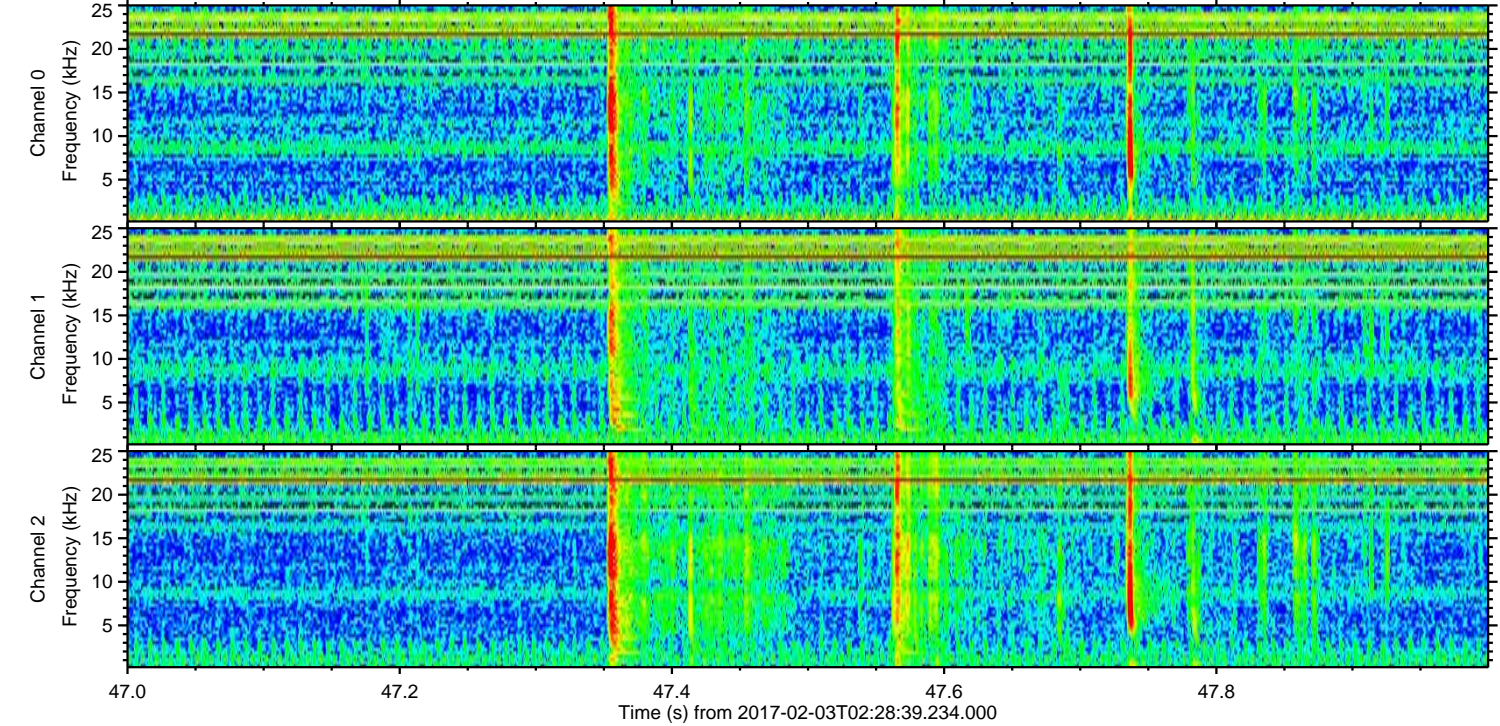
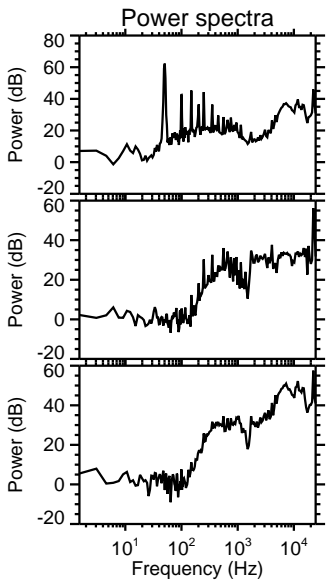
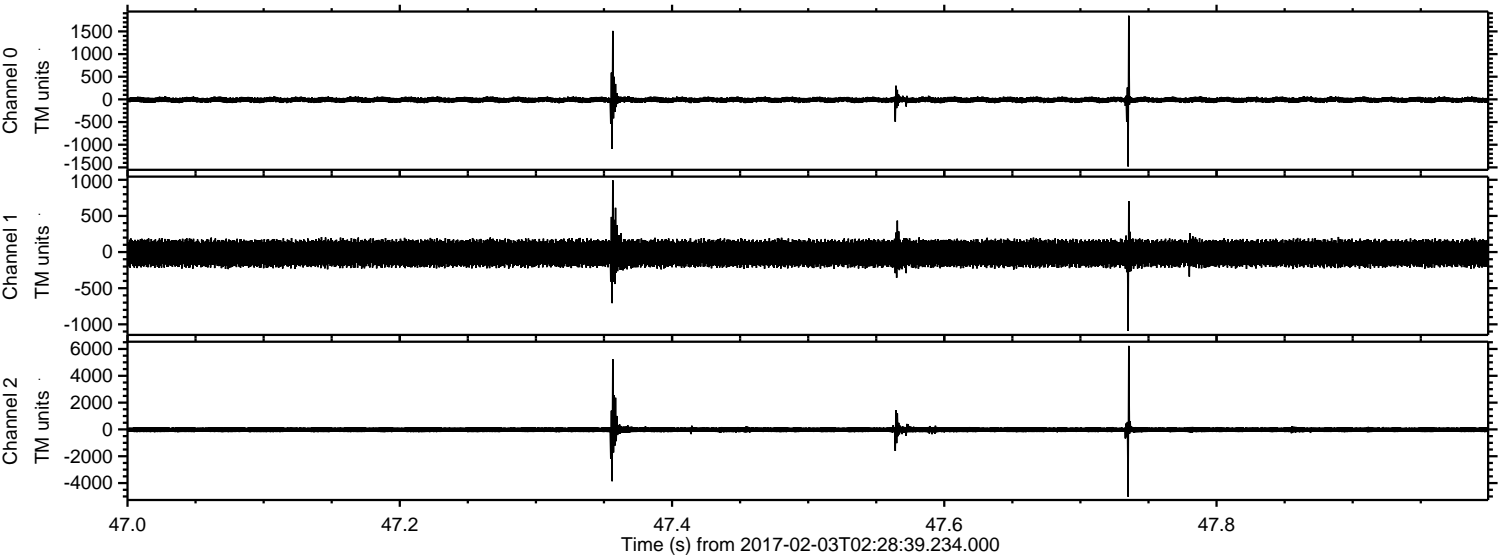
ELMAVAN 3D WAVEFORMS (Measured data sampled at 50 kHz) 51000 packets of 144 samples from 2017-02-03T02:28:39.234.000. Part 34/147

Processed Fri Feb 3 03:36:58 2017 by ELM ver.2012-10-06 from 001__elm20170203_022838__dat00.bin



ELMAVAN 3D WAVEFORMS (Measured data sampled at 50 kHz) 51000 packets of 144 samples from 2017-02-03T02:28:39.234.000. Part 48/147

Processed Fri Feb 3 03:36:59 2017 by ELM ver.2012-10-06 from 001__elm20170203_022838__dat00.bin



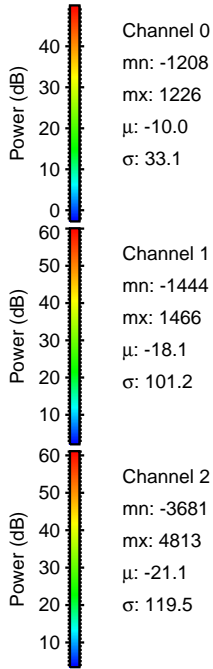
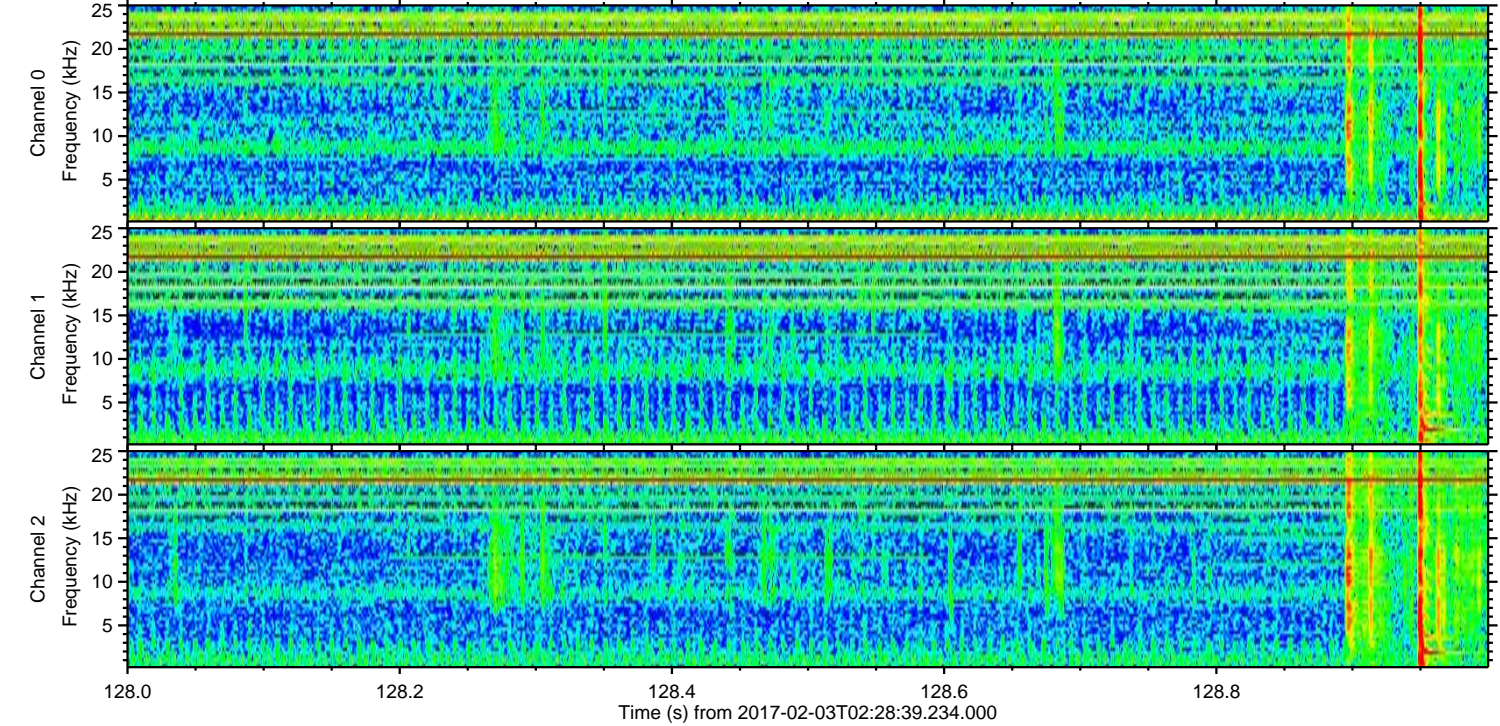
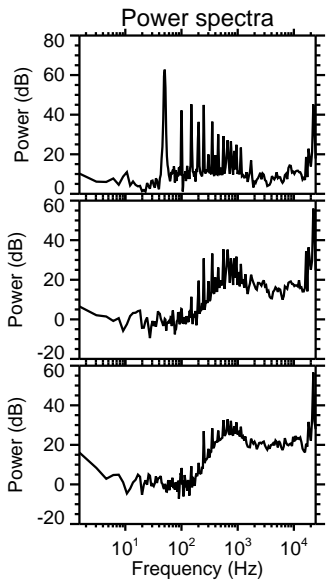
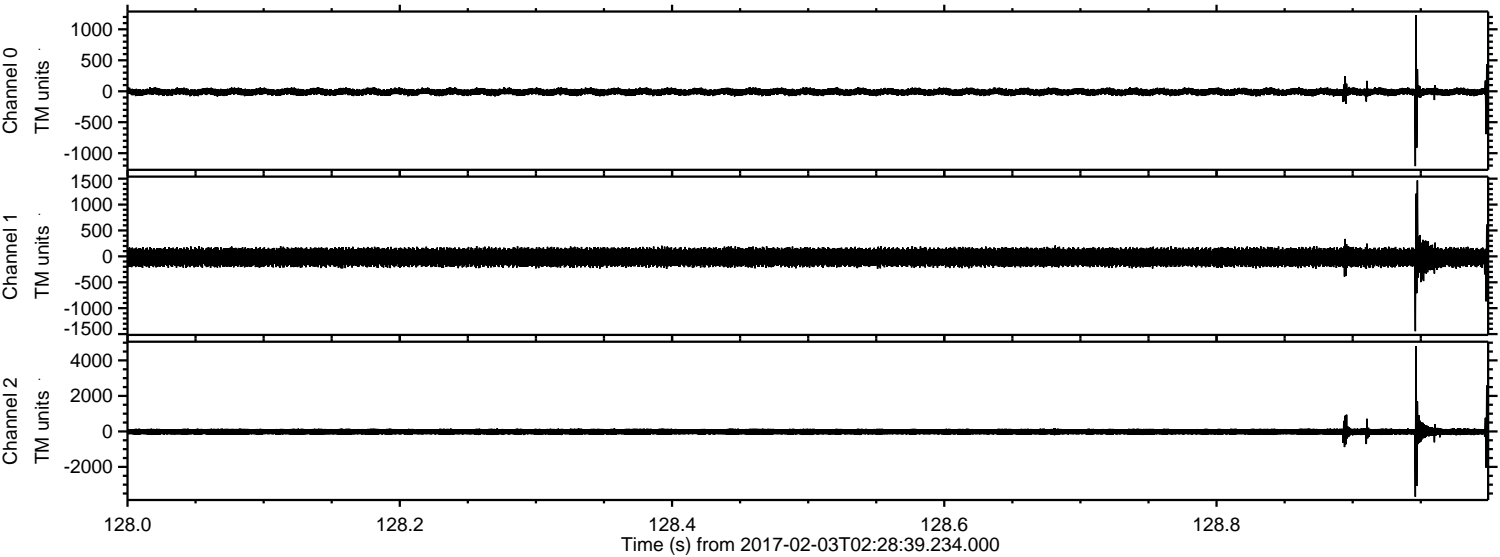
Channel 0
mn: -1480
mx: 1846
 μ : -10.0
 σ : 40.0

Channel 1
mn: -1092
mx: 994
 μ : -18.1
 σ : 102.0

Channel 2
mn: -5013
mx: 6230
 μ : -21.1
 σ : 152.0

ELMAVAN 3D WAVEFORMS (Measured data sampled at 50 kHz) 51000 packets of 144 samples from 2017-02-03T02:28:39.234.000. Part 129/147

Processed Fri Feb 3 03:37:00 2017 by ELM ver.2012-10-06 from 001__elm20170203_022838__dat00.bin



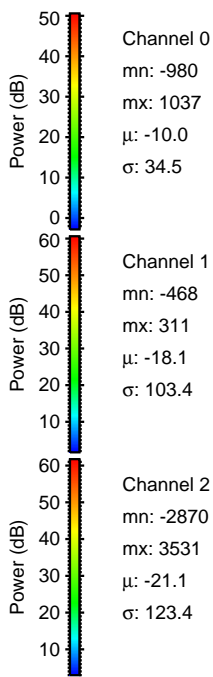
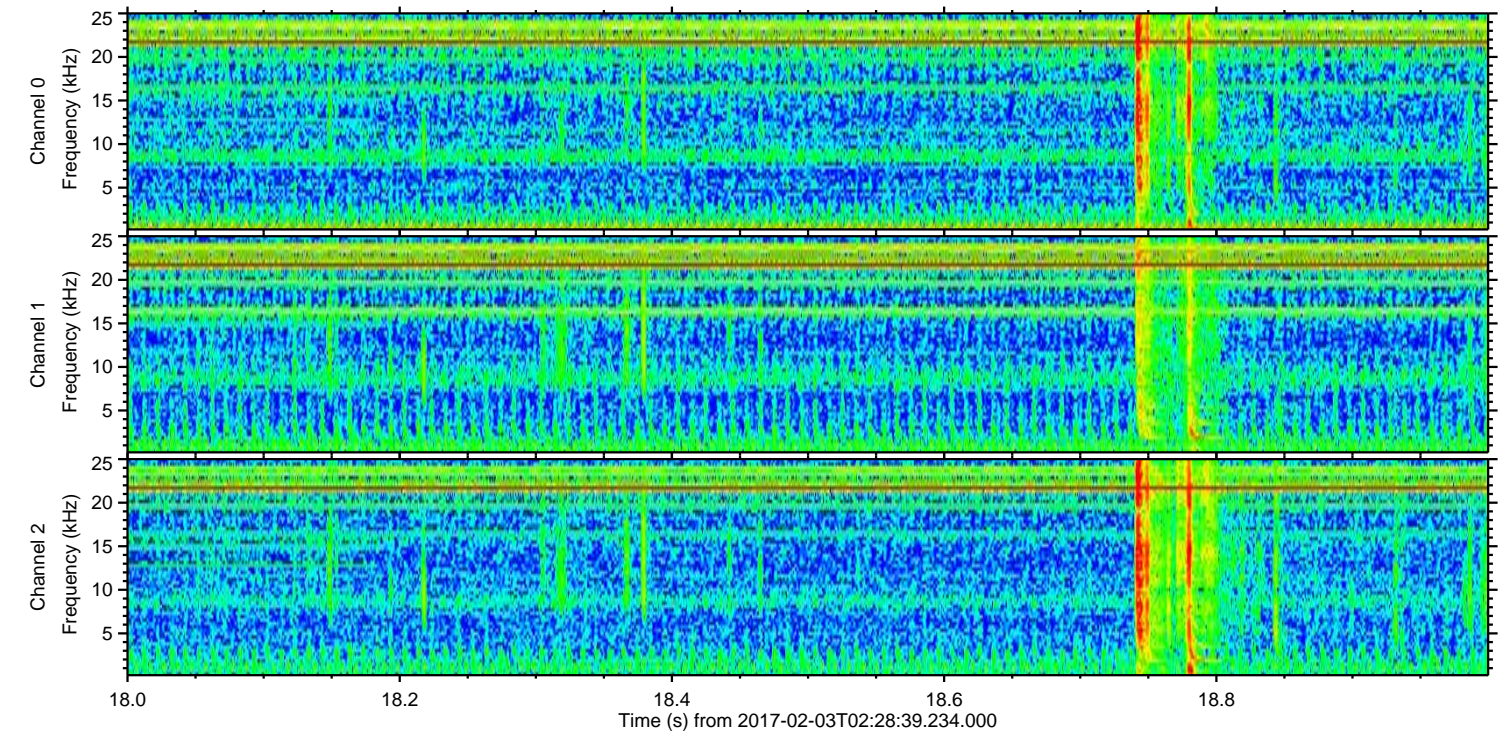
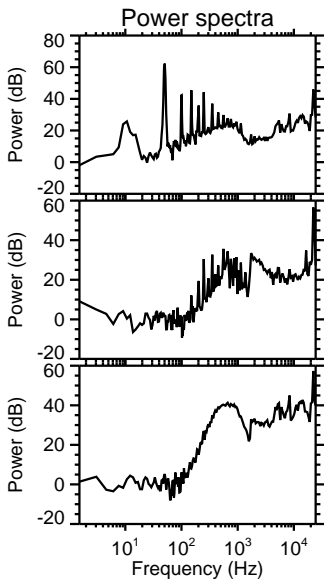
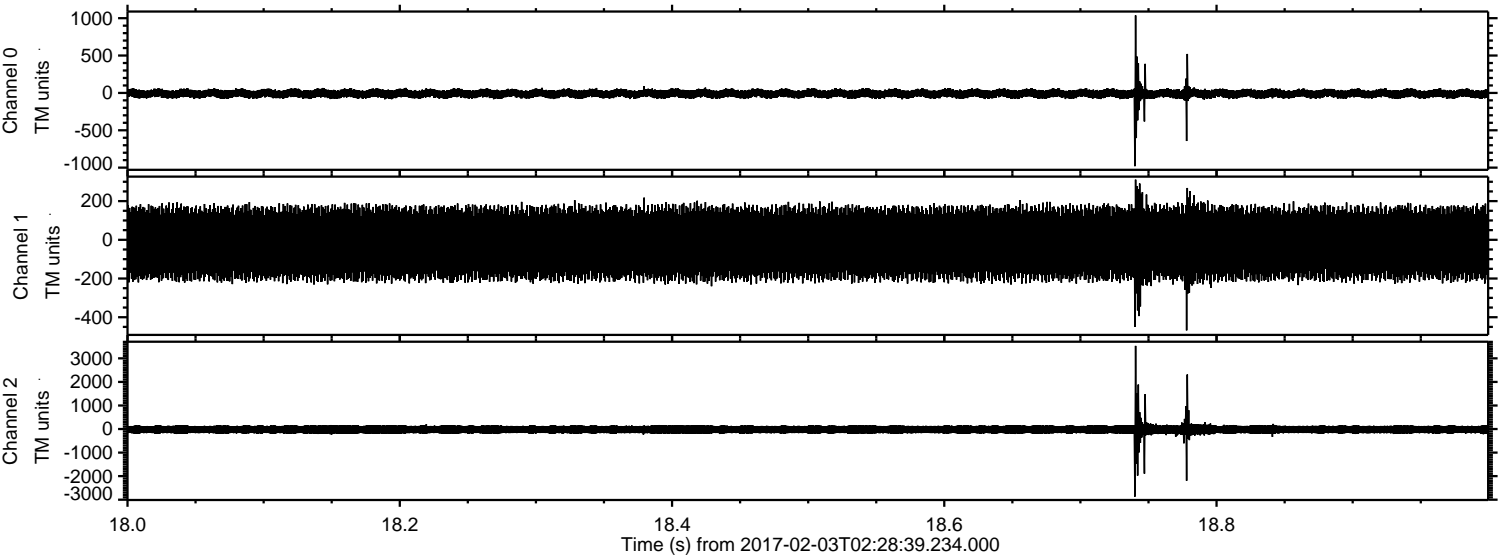
Channel 0
mn: -1208
mx: 1226
 μ : -10.0
 σ : 33.1

Channel 1
mn: -1444
mx: 1466
 μ : -18.1
 σ : 101.2

Channel 2
mn: -3681
mx: 4813
 μ : -21.1
 σ : 119.5

ELMAVAN 3D WAVEFORMS (Measured data sampled at 50 kHz) 51000 packets of 144 samples from 2017-02-03T02:28:39.234.000. Part 19/147

Processed Fri Feb 3 03:37:01 2017 by ELM ver.2012-10-06 from 001__elm20170203_022838__dat00.bin



Processed Fri Feb 3 03:37:02 2017 by ELM ver.2012-10-06 from 001__elm20170203_022838__dat00.bin

