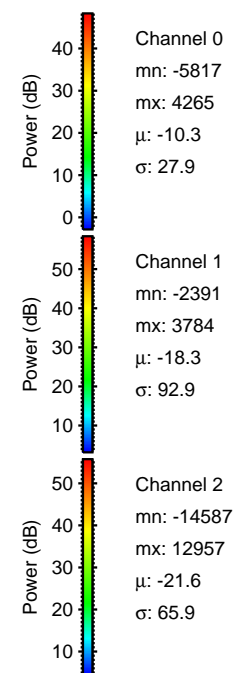
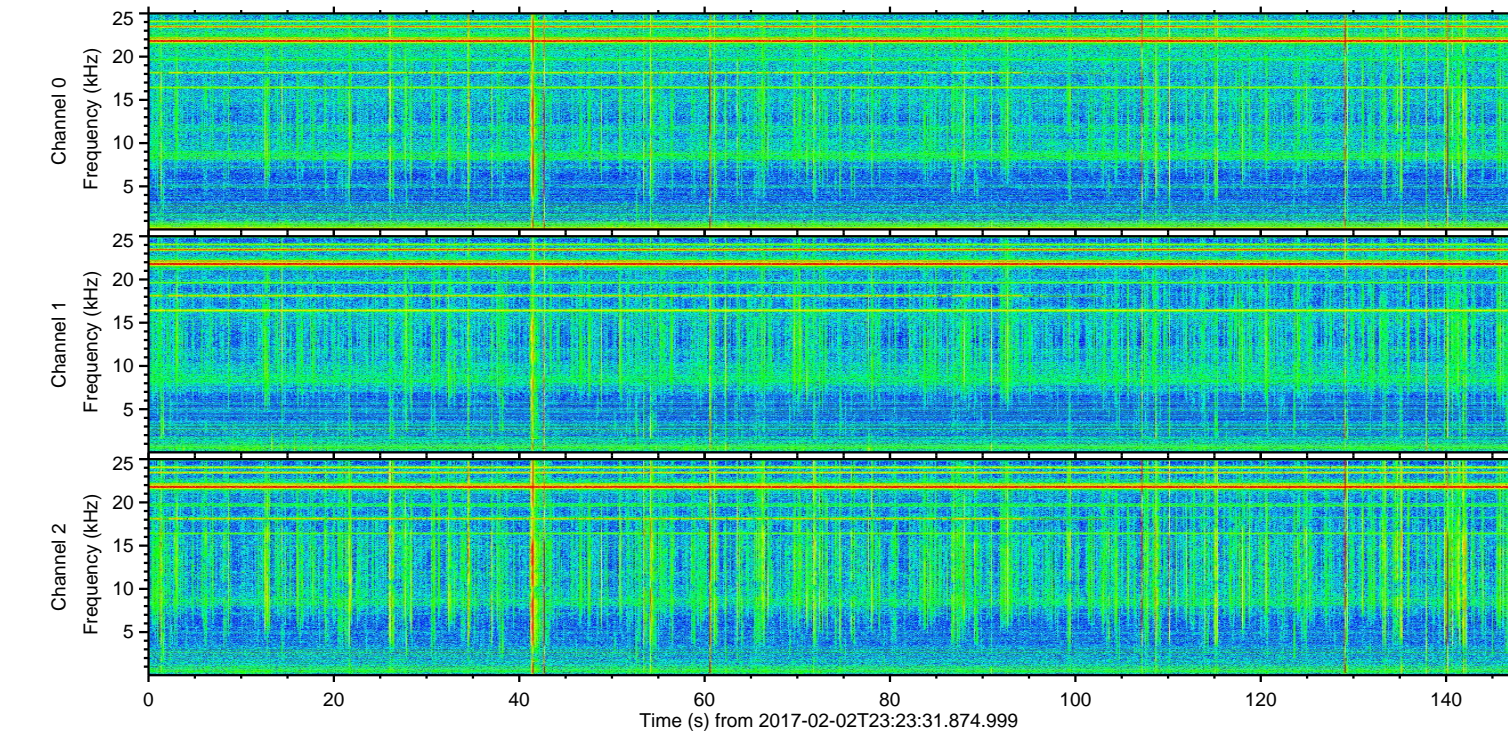
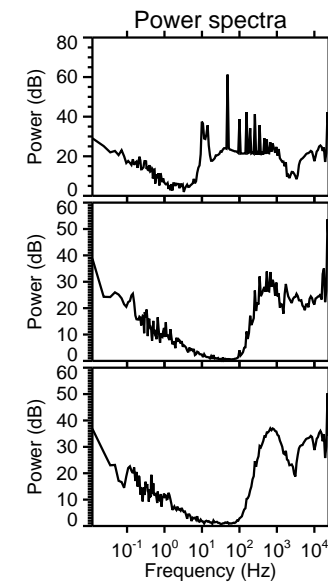
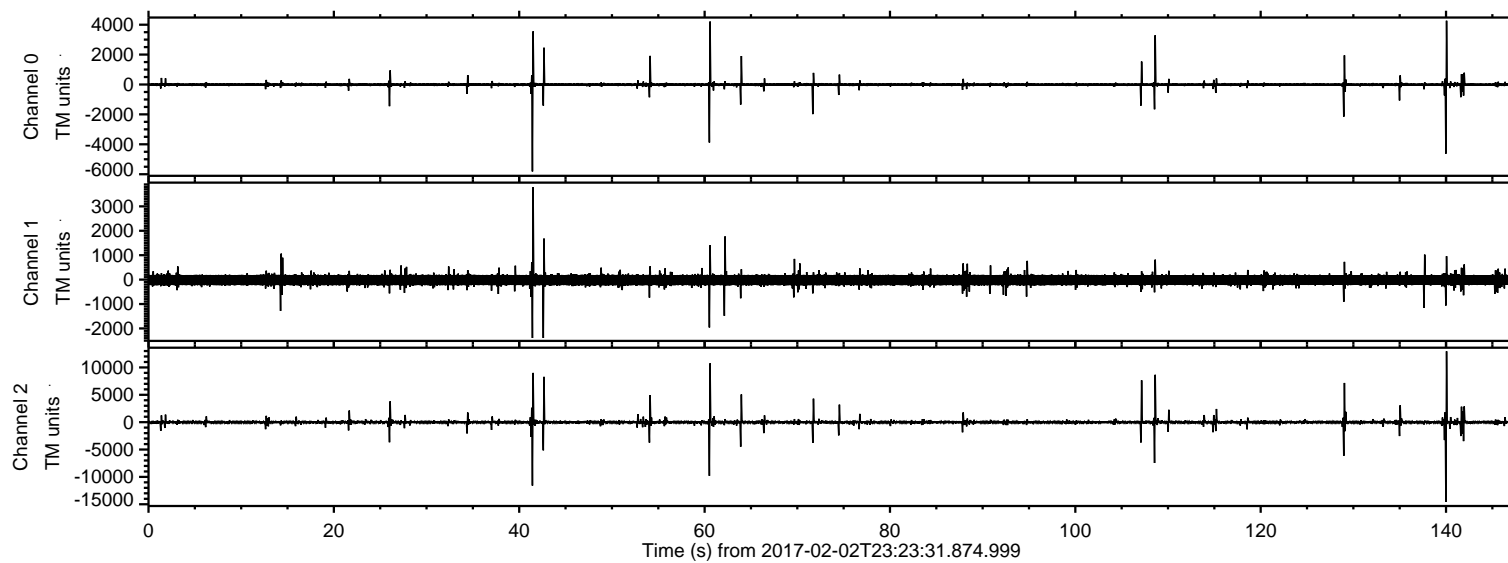


ELMAVAN 3D WAVEFORMS (Measured data sampled at 50 kHz) 51000 packets of 144 samples from 2017-02-02T23:23:31.874.999.

Processed Fri Feb 3 00:31:33 2017 by ELM ver.2012-10-06 from 001__elm20170202_232330__dat00.bin



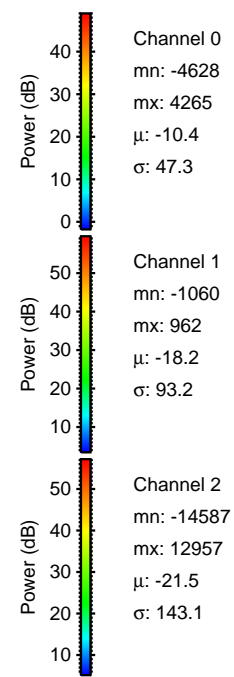
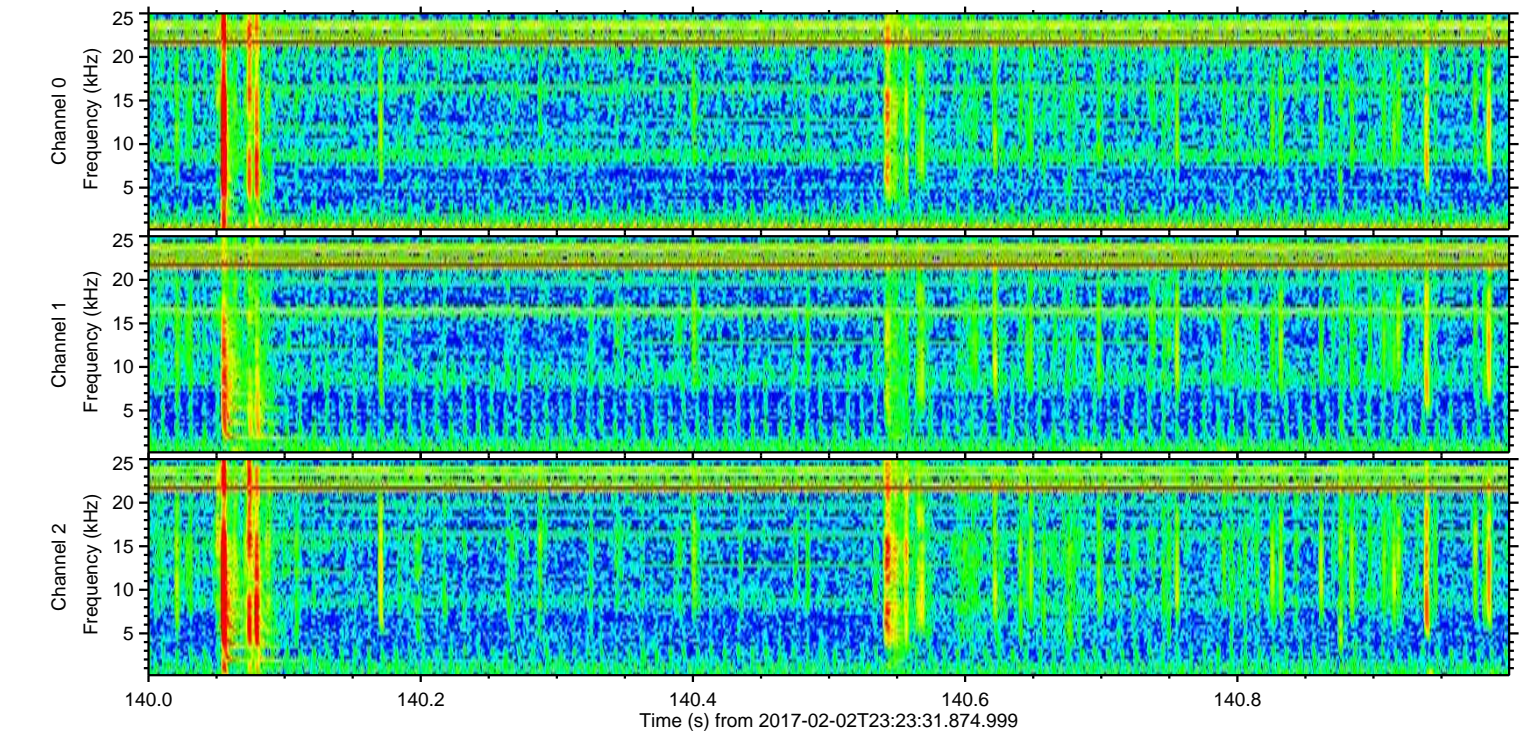
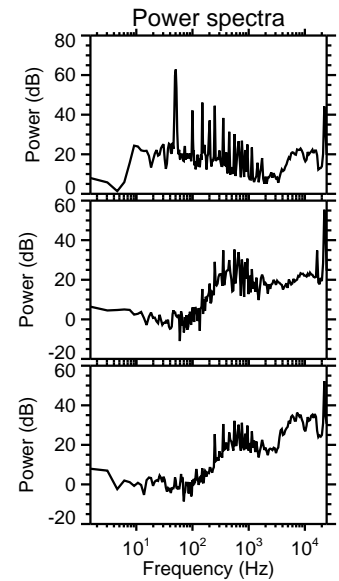
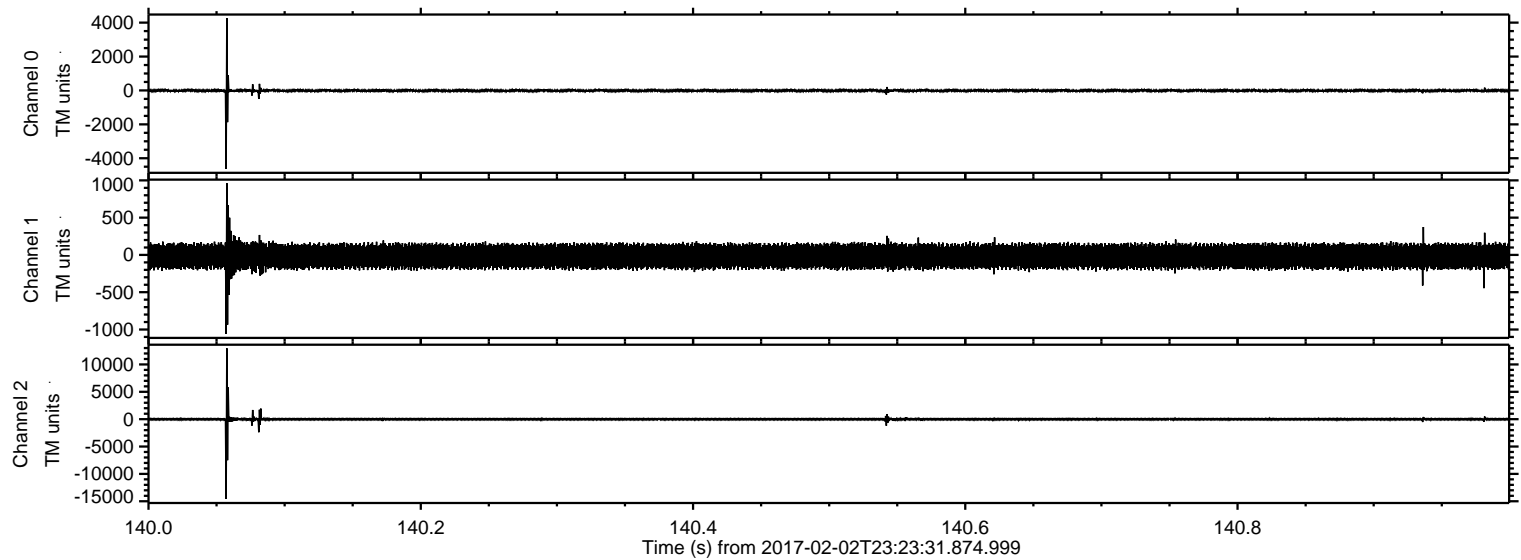
Channel 0
mn: -5817
mx: 4265
 μ : -10.3
 σ : 27.9

Channel 1
mn: -2391
mx: 3784
 μ : -18.3
 σ : 92.9

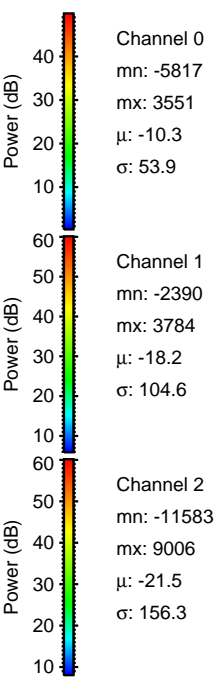
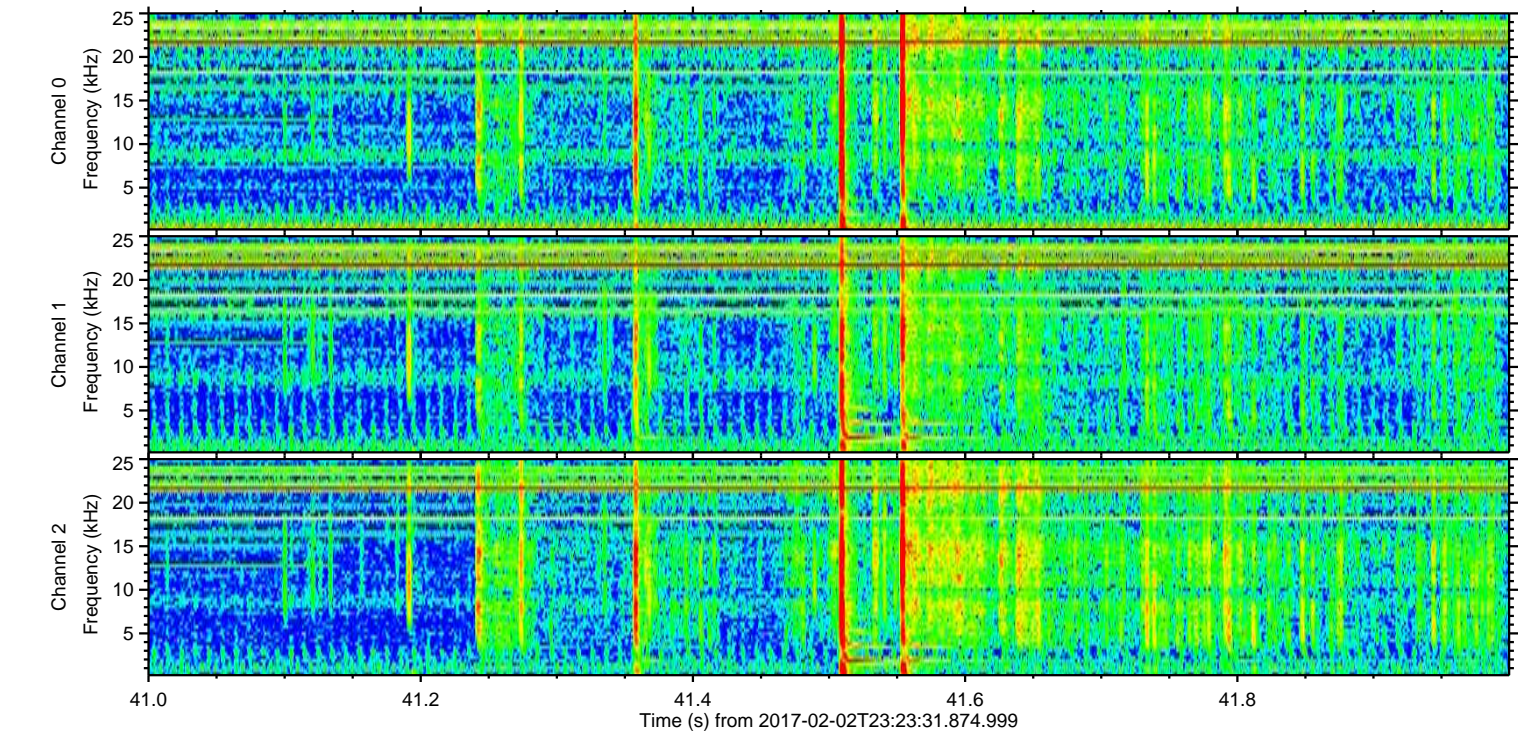
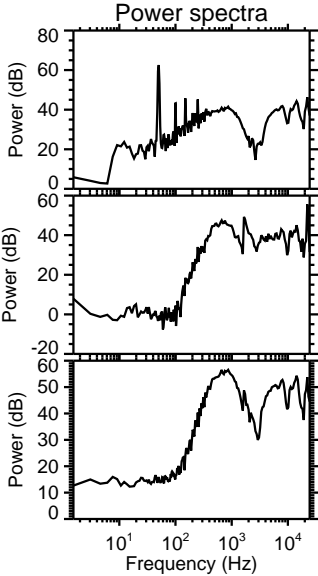
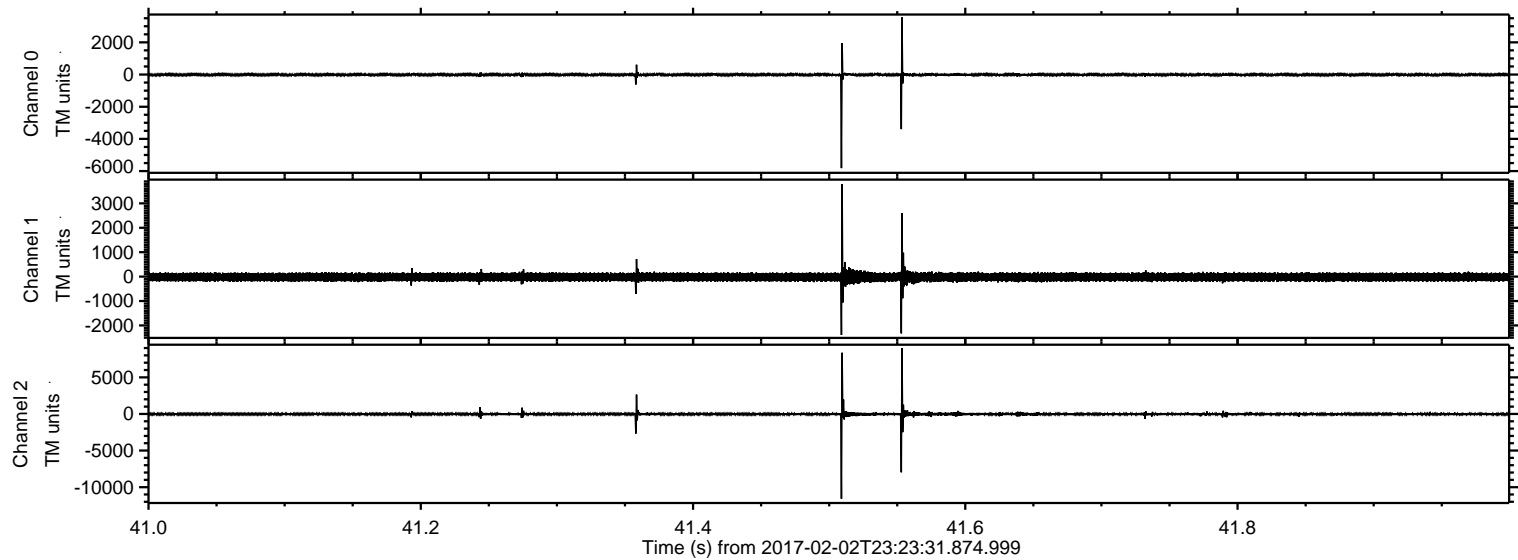
Channel 2
mn: -14587
mx: 12957
 μ : -21.6
 σ : 65.9

ELMAVAN 3D WAVEFORMS (Measured data sampled at 50 kHz) 51000 packets of 144 samples from 2017-02-02T23:23:31.874.999. Part 141/147

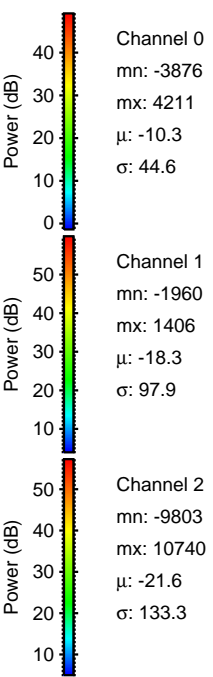
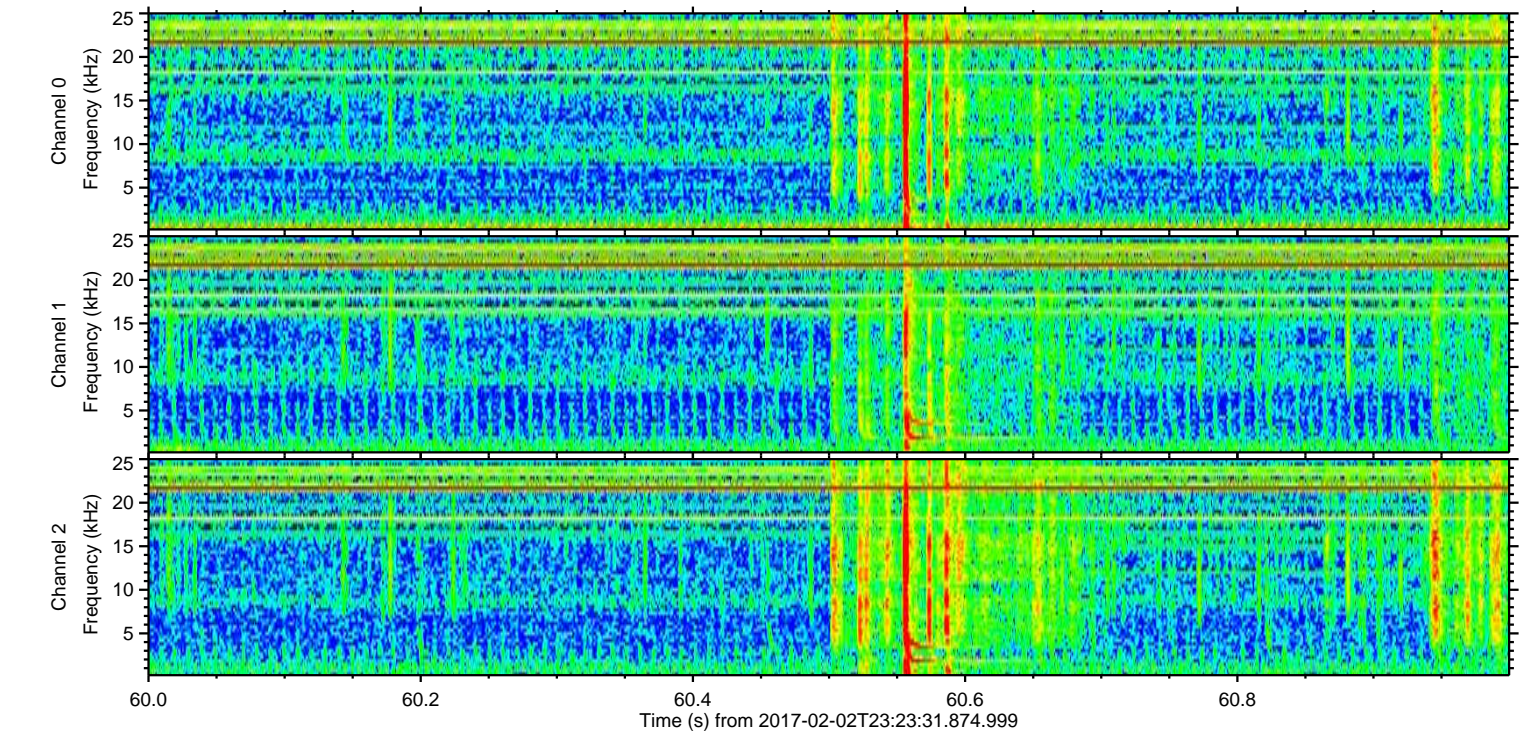
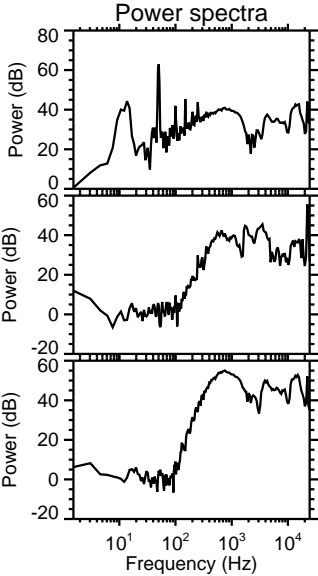
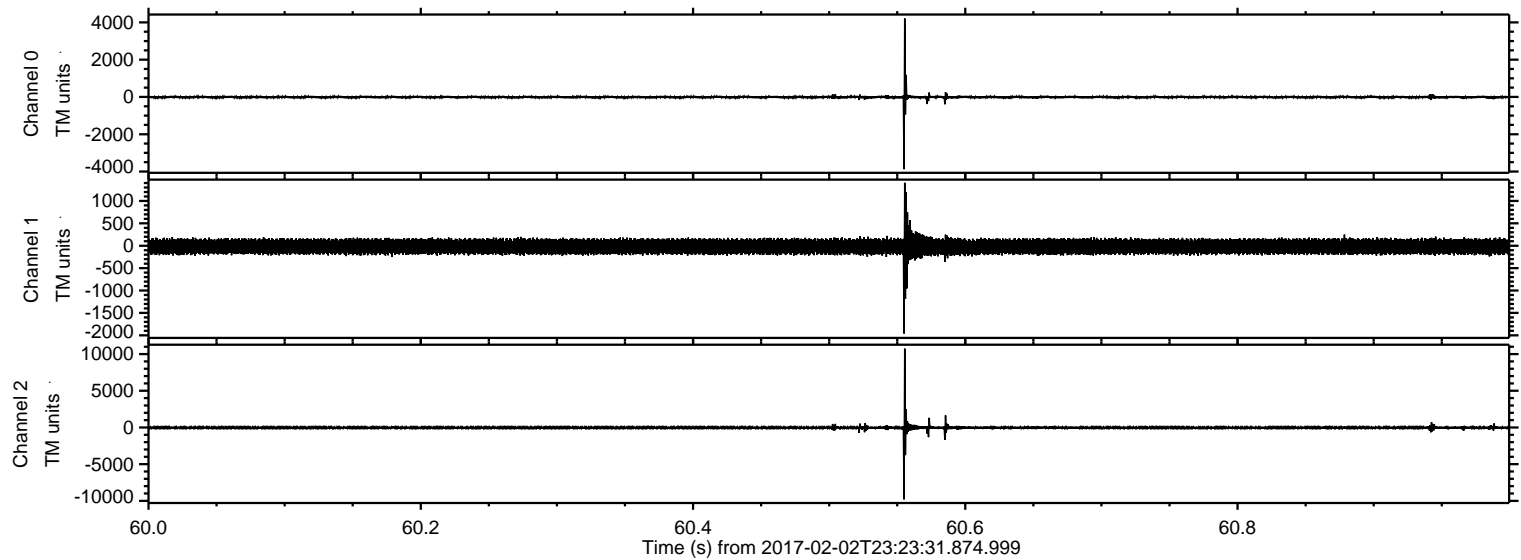
Processed Fri Feb 3 00:31:48 2017 by ELM ver.2012-10-06 from 001__elm20170202_232330__dat00.bin



Processed Fri Feb 3 00:31:49 2017 by ELM ver.2012-10-06 from 001__elm20170202_232330__dat00.bin



Processed Fri Feb 3 00:31:50 2017 by ELM ver.2012-10-06 from 001__elm20170202_232330__dat00.bin



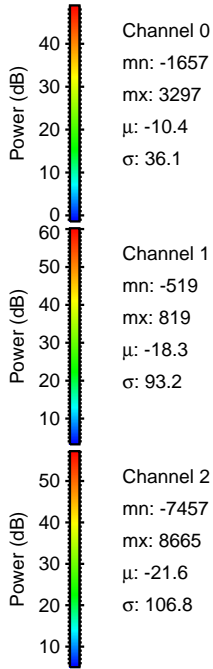
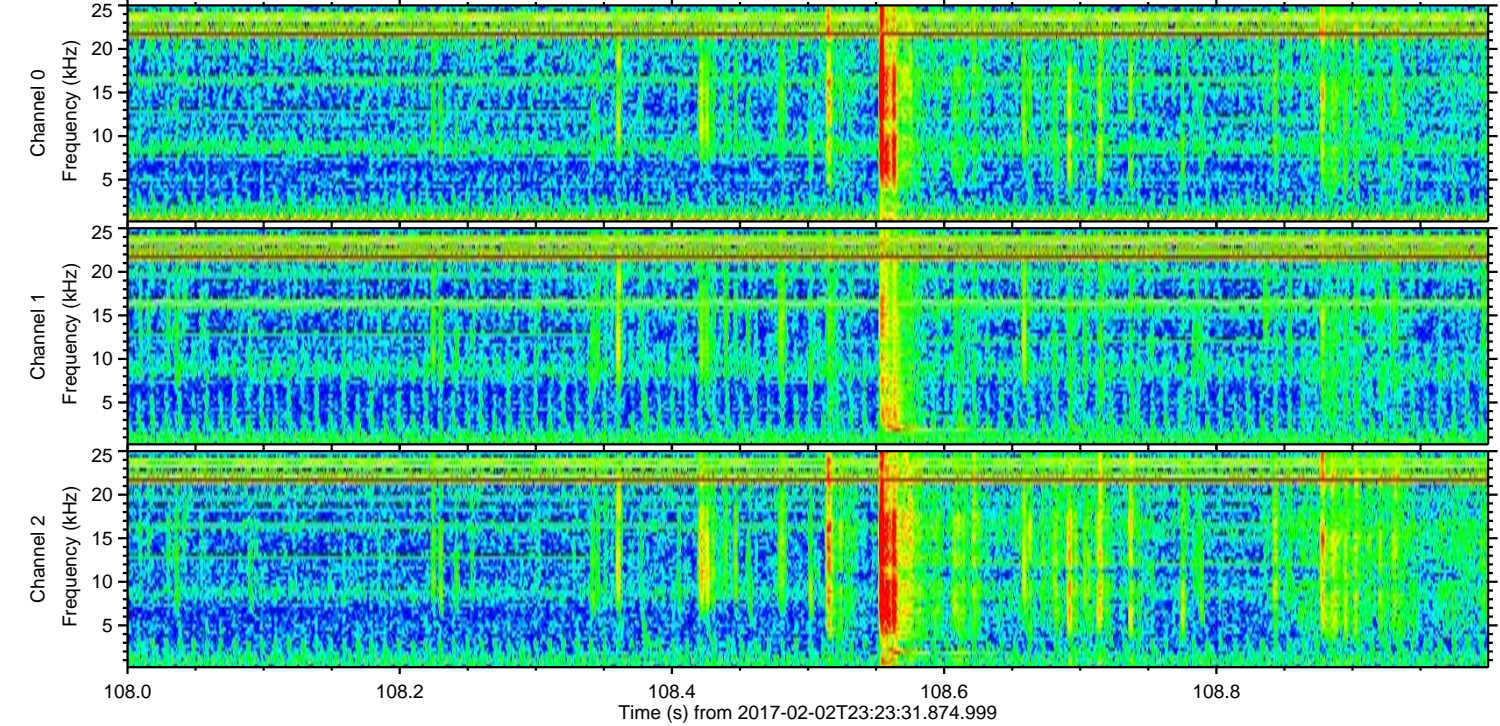
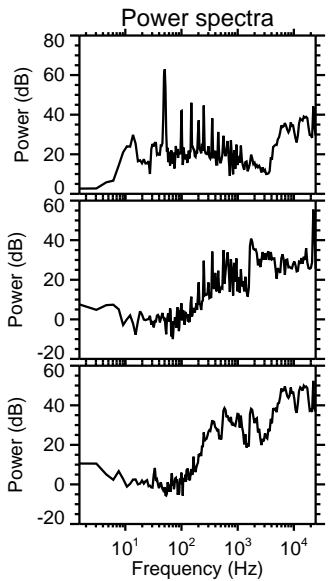
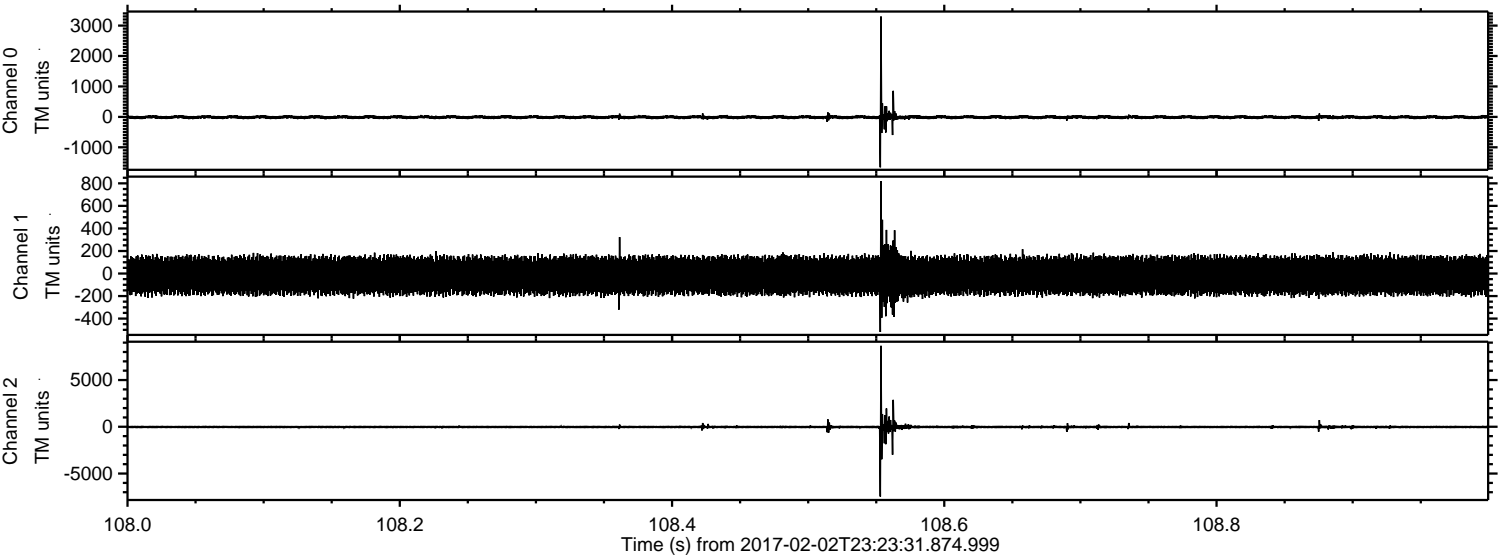
Channel 0
mn: -3876
mx: 4211
 μ : -10.3
 σ : 44.6

Channel 1
mn: -1960
mx: 1406
 μ : -18.3
 σ : 97.9

Channel 2
mn: -9803
mx: 10740
 μ : -21.6
 σ : 133.3

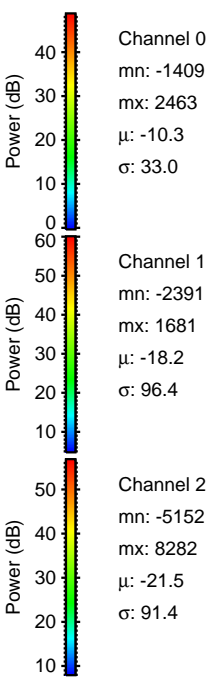
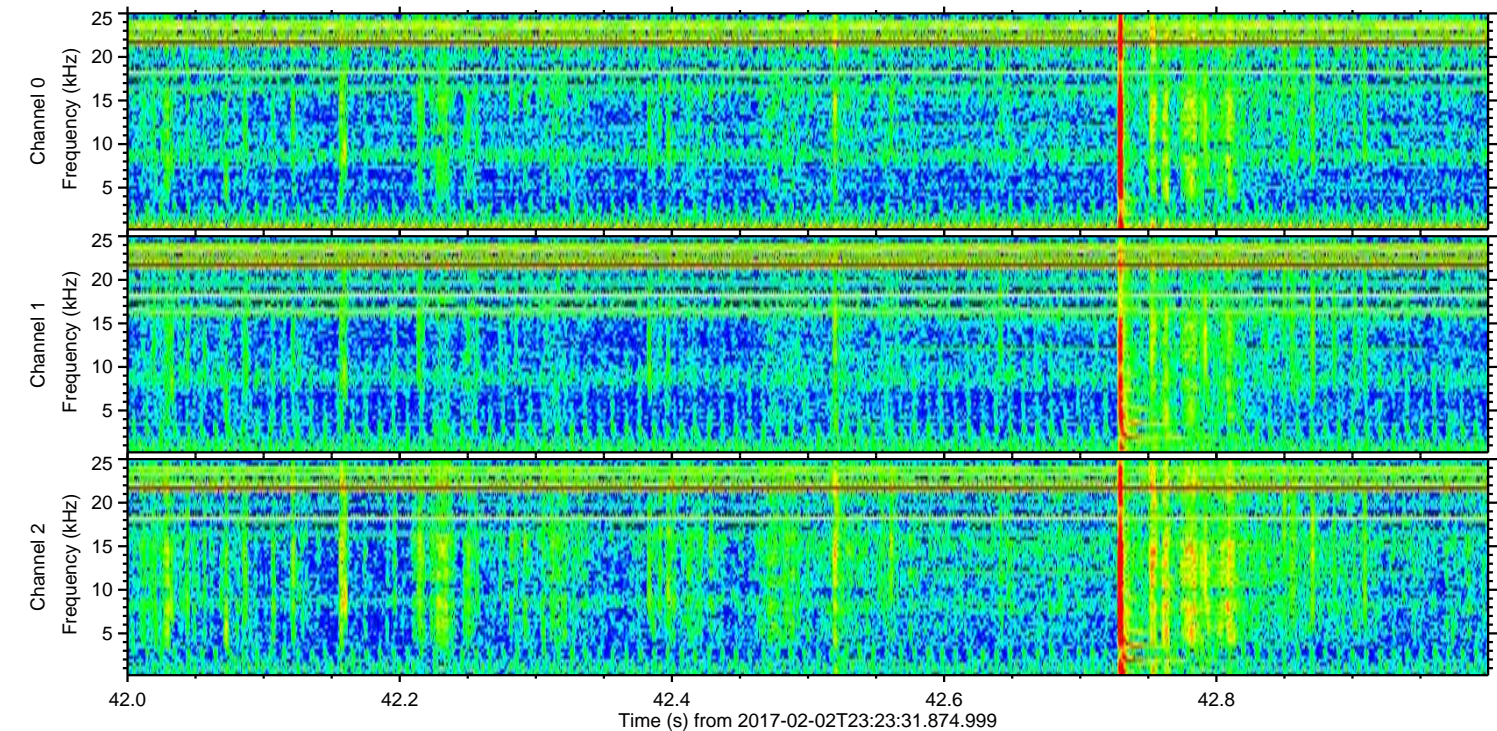
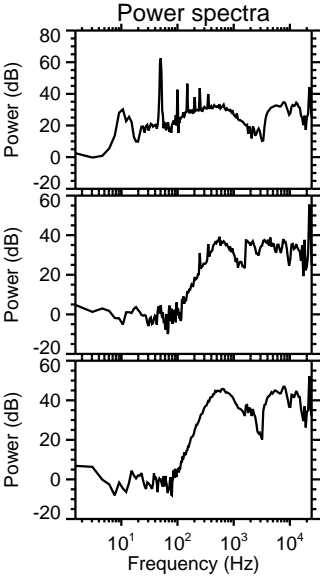
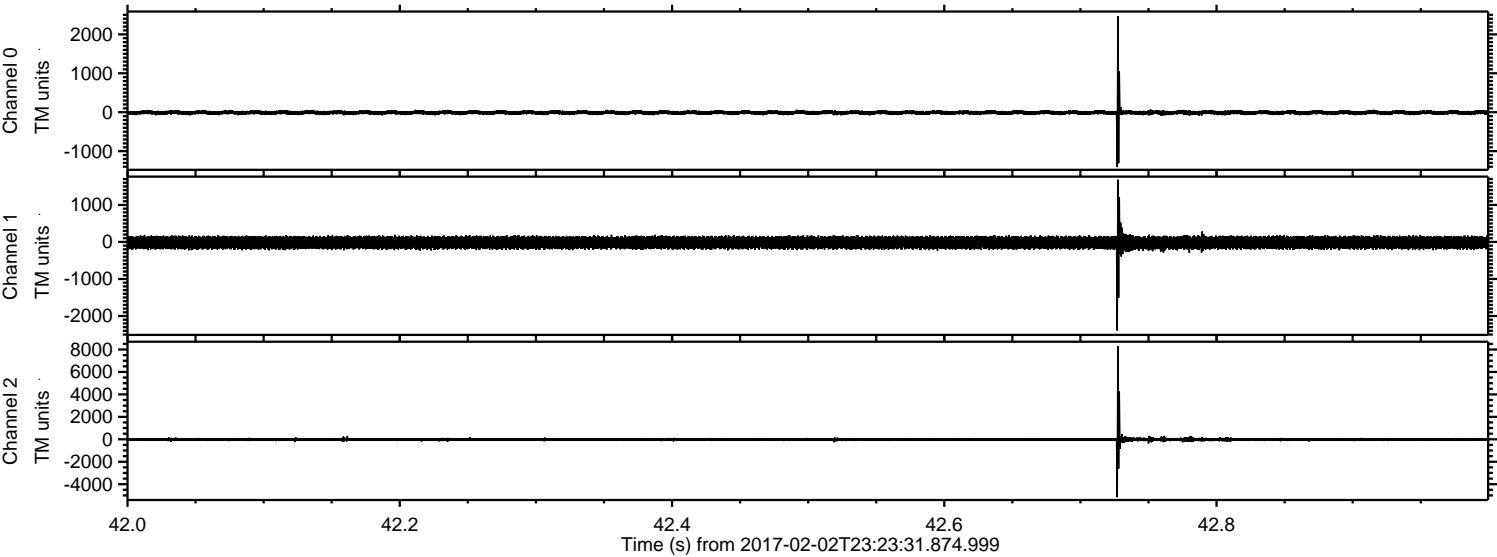
ELMAVAN 3D WAVEFORMS (Measured data sampled at 50 kHz) 51000 packets of 144 samples from 2017-02-02T23:23:31.874.999. Part 109/147

Processed Fri Feb 3 00:31:51 2017 by ELM ver.2012-10-06 from 001__elm20170202_232330__dat00.bin



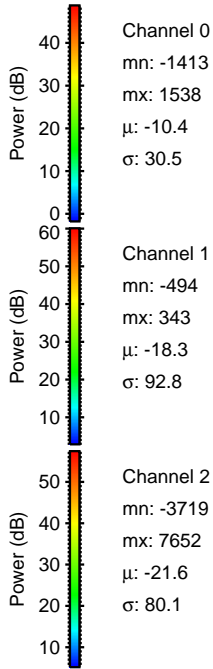
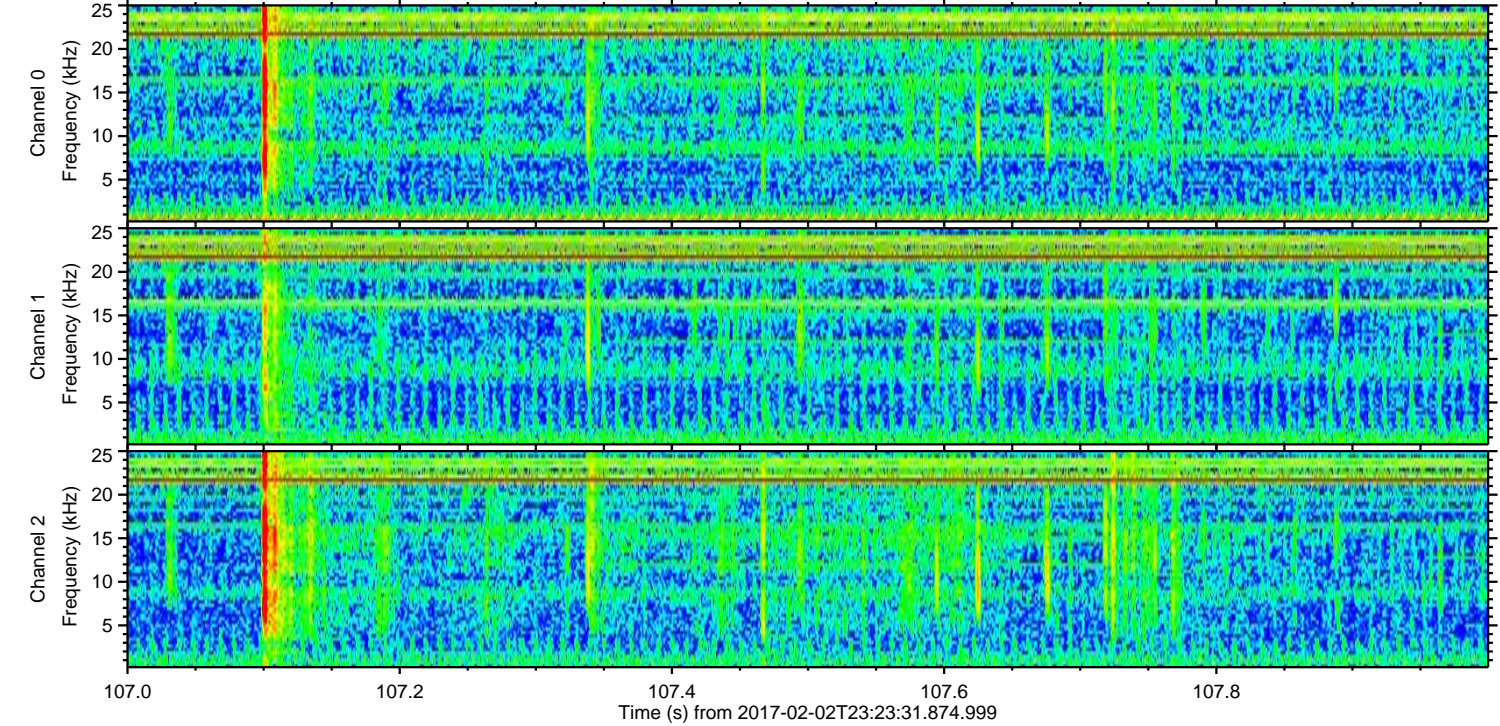
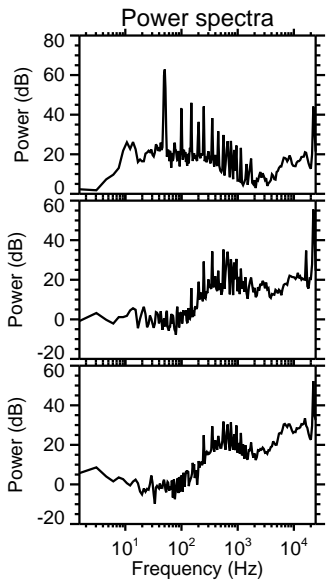
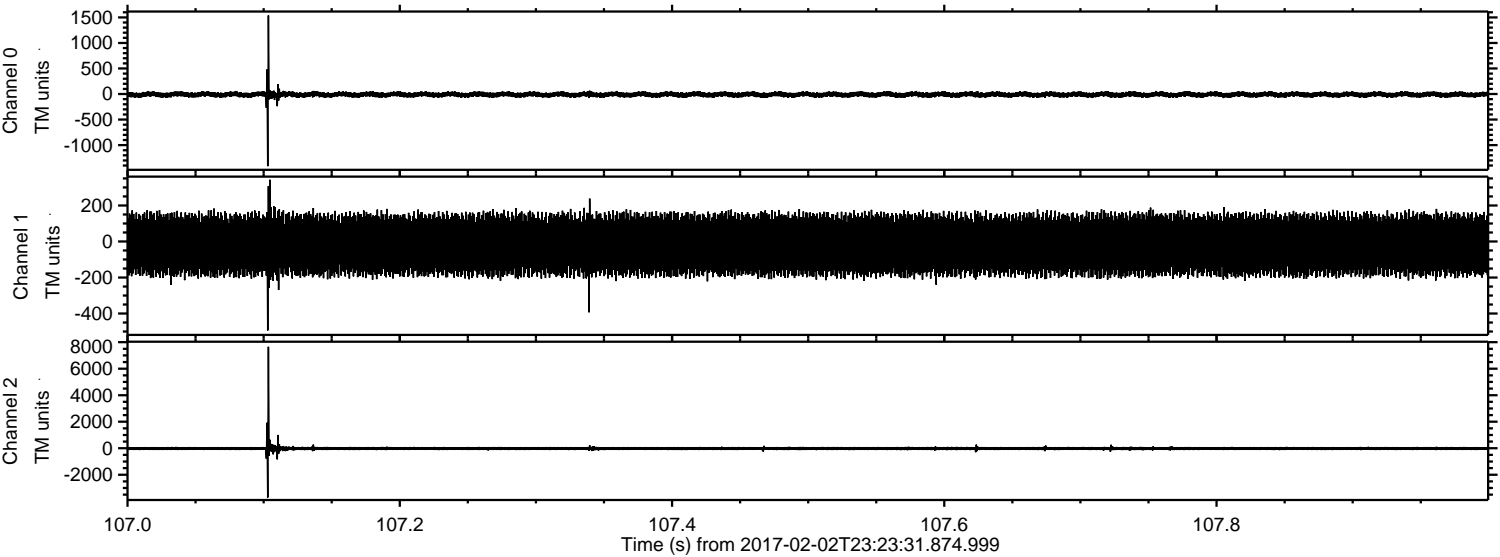
ELMAVAN 3D WAVEFORMS (Measured data sampled at 50 kHz) 51000 packets of 144 samples from 2017-02-02T23:23:31.874.999. Part 43/147

Processed Fri Feb 3 00:31:52 2017 by ELM ver.2012-10-06 from 001__elm20170202_232330__dat00.bin



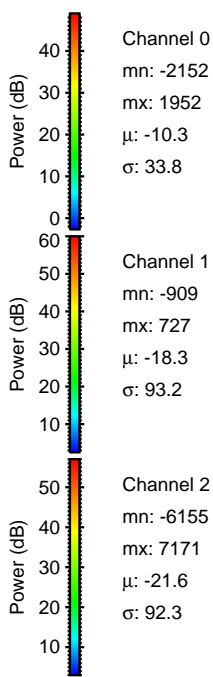
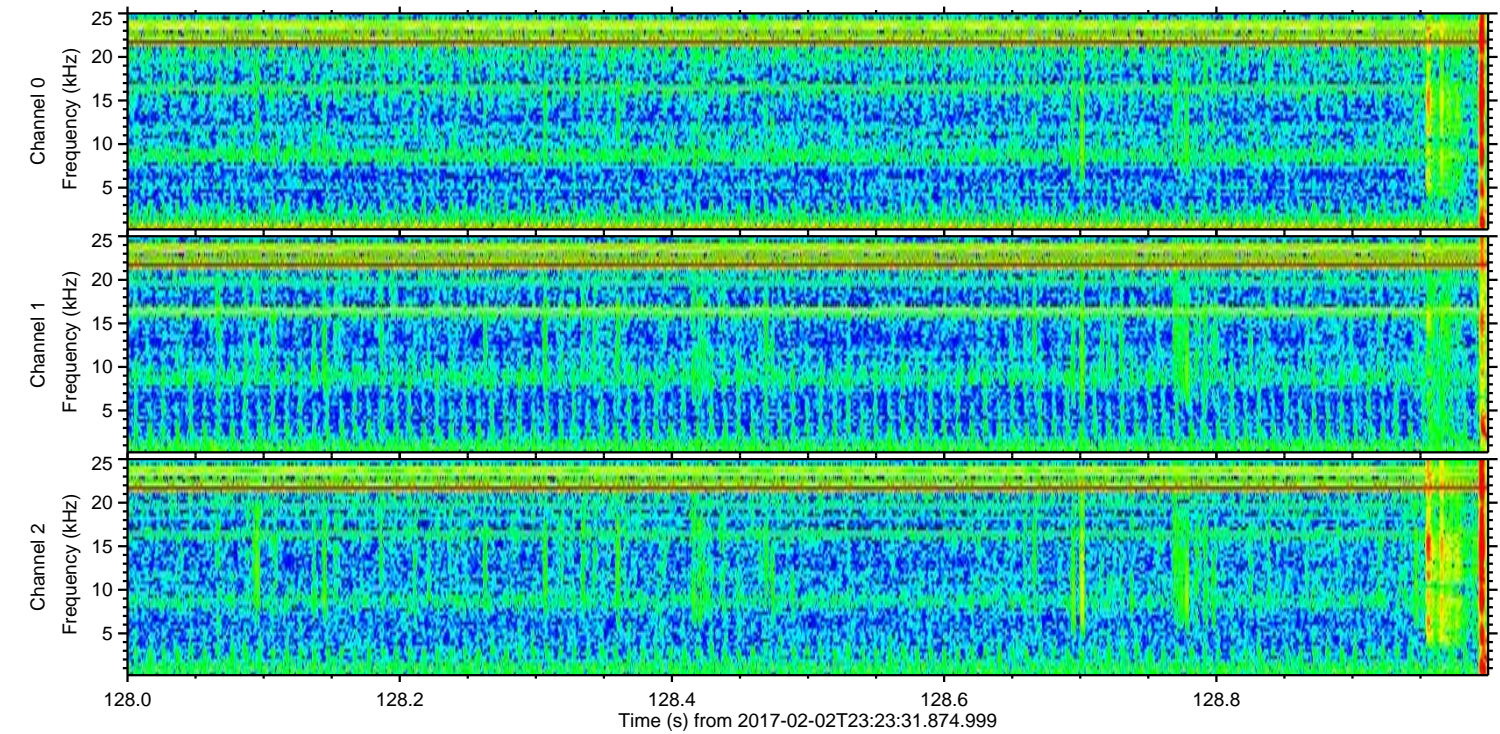
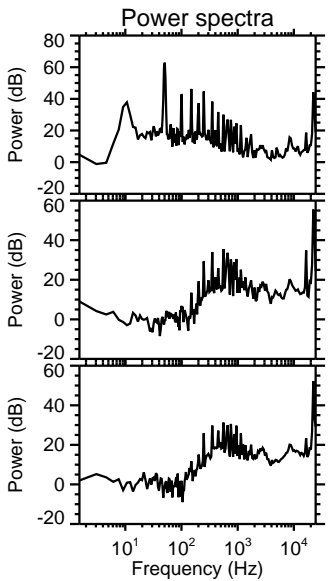
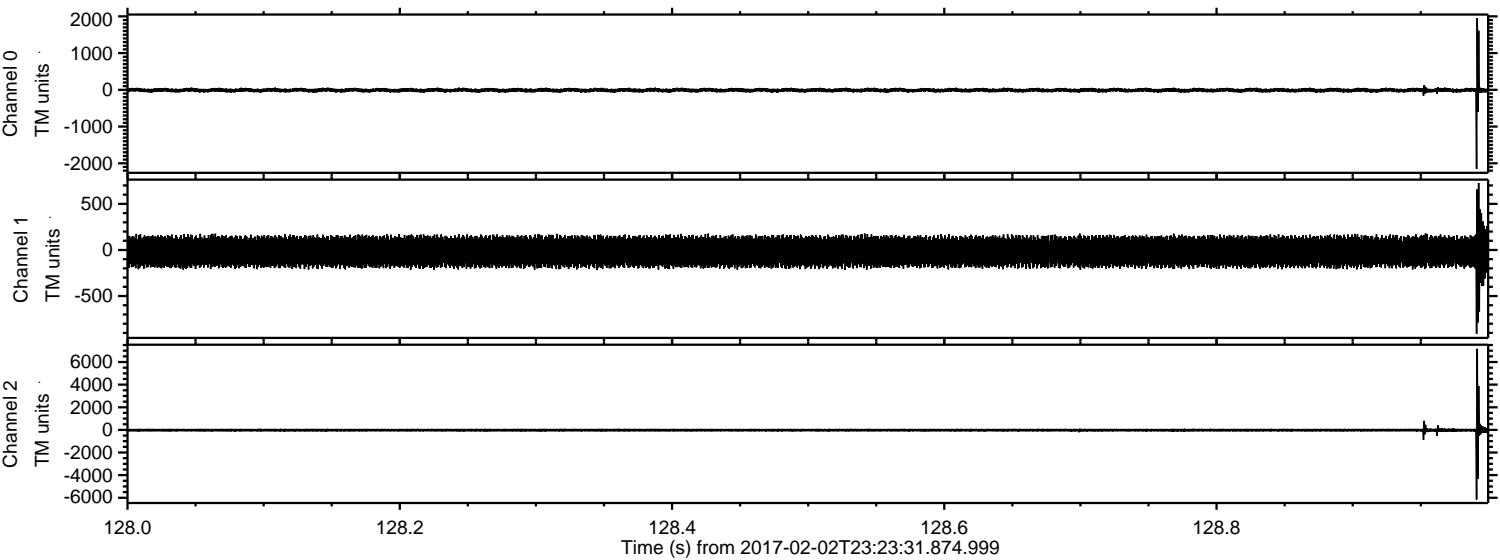
ELMAVAN 3D WAVEFORMS (Measured data sampled at 50 kHz) 51000 packets of 144 samples from 2017-02-02T23:23:31.874.999. Part 108/147

Processed Fri Feb 3 00:31:54 2017 by ELM ver.2012-10-06 from 001__elm20170202_232330__dat00.bin



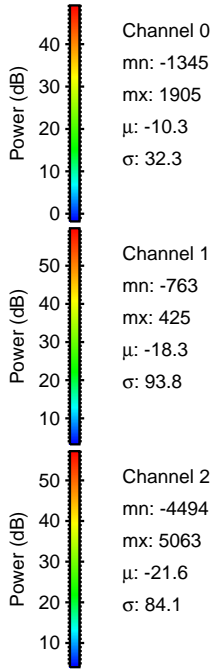
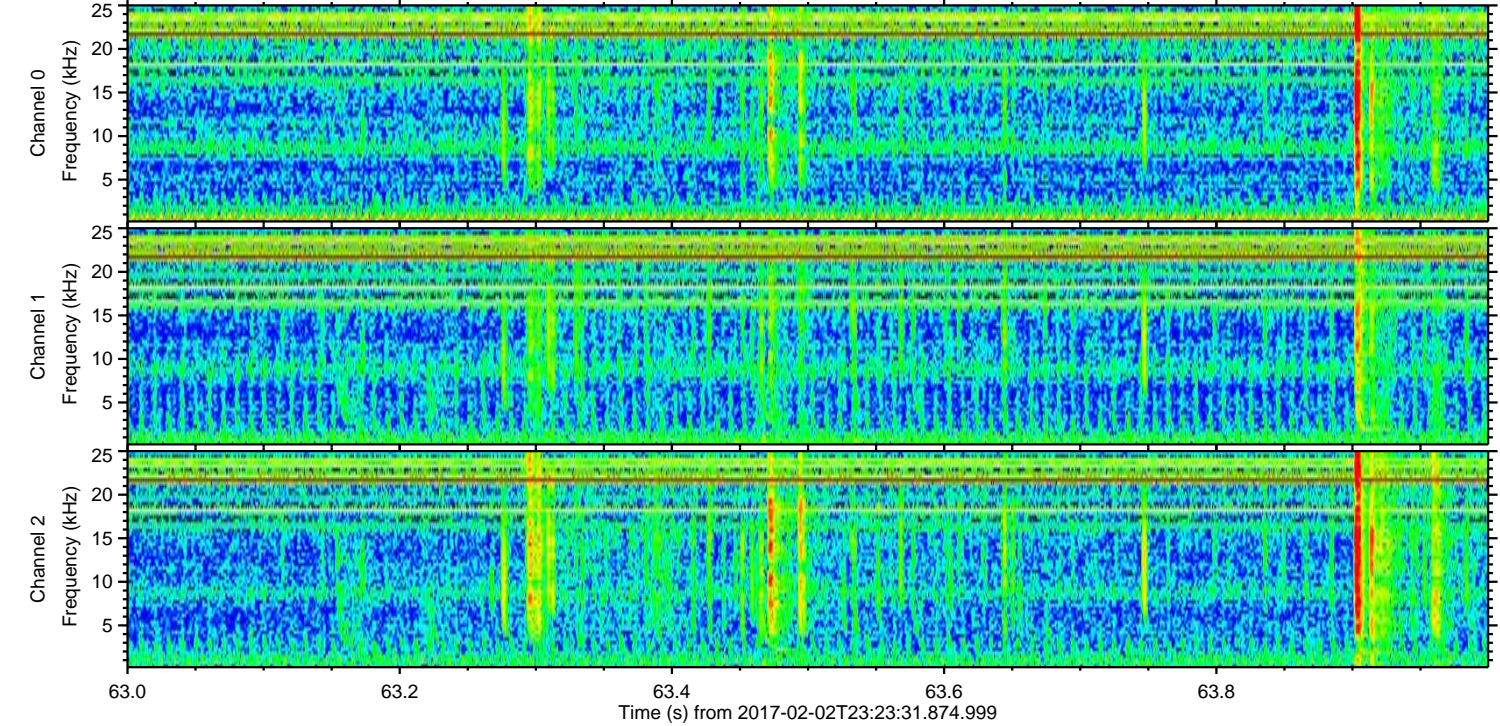
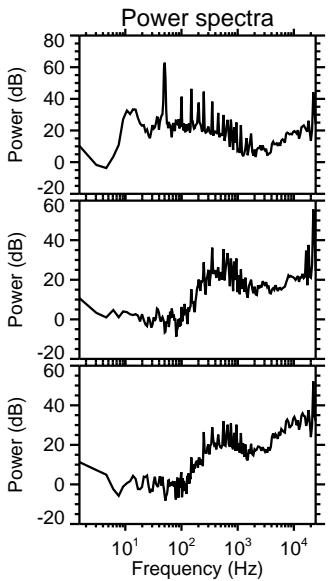
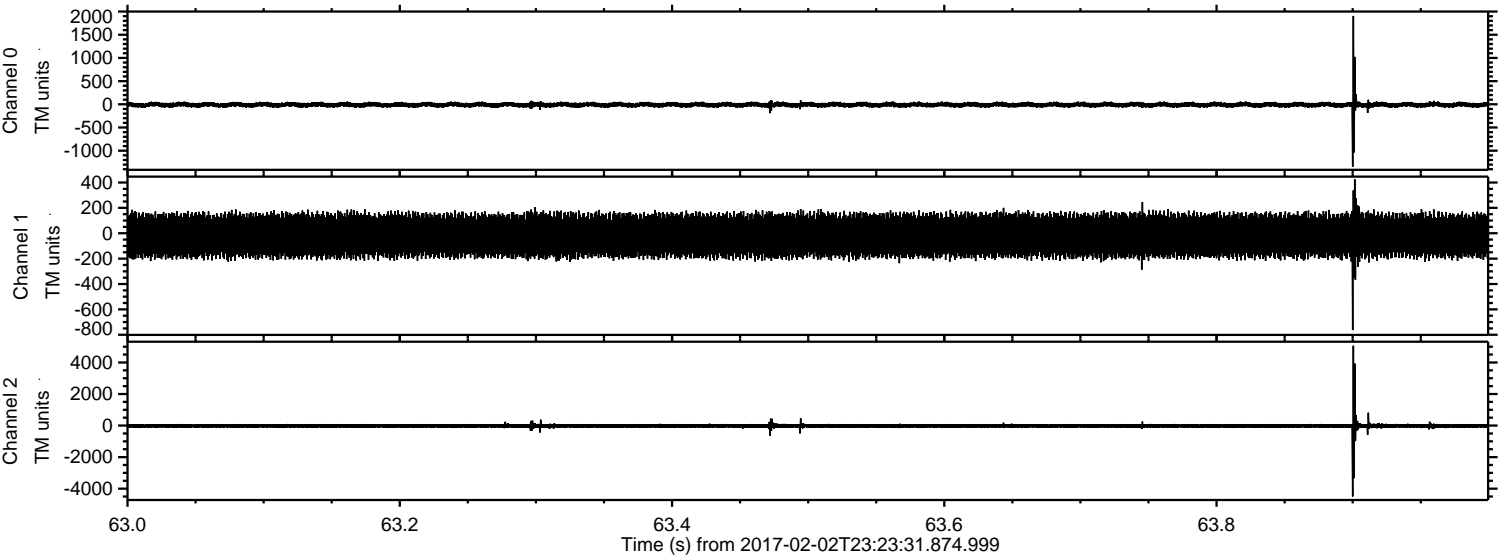
ELMAVAN 3D WAVEFORMS (Measured data sampled at 50 kHz) 51000 packets of 144 samples from 2017-02-02T23:23:31.874.999. Part 129/147

Processed Fri Feb 3 00:31:55 2017 by ELM ver.2012-10-06 from 001__elm20170202_232330__dat00.bin



ELMAVAN 3D WAVEFORMS (Measured data sampled at 50 kHz) 51000 packets of 144 samples from 2017-02-02T23:23:31.874.999. Part 64/147

Processed Fri Feb 3 00:31:56 2017 by ELM ver.2012-10-06 from 001__elm20170202_232330__dat00.bin

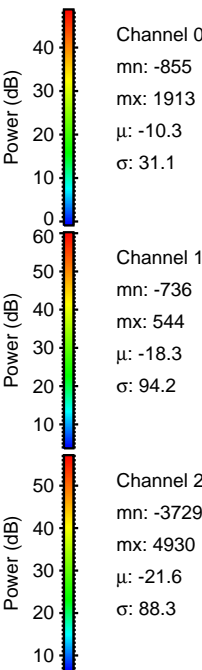
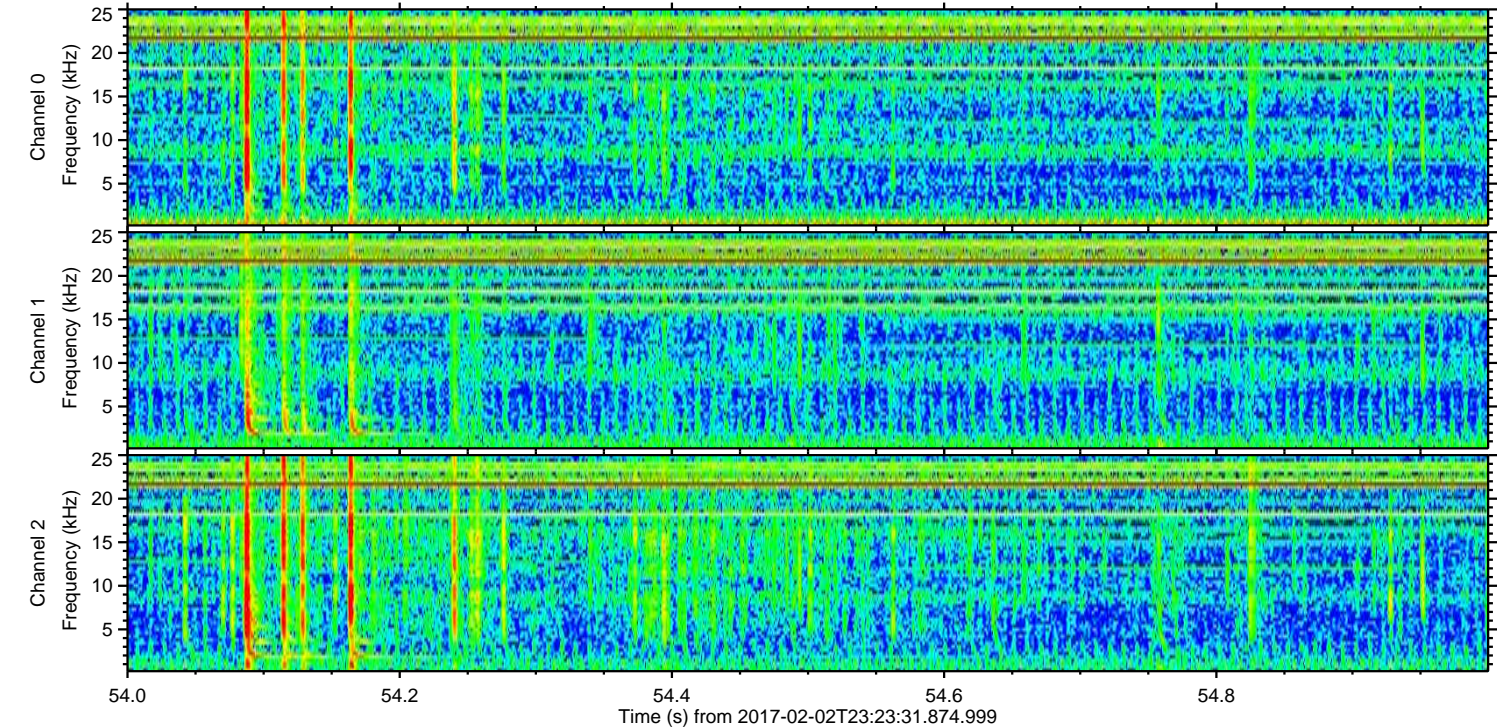
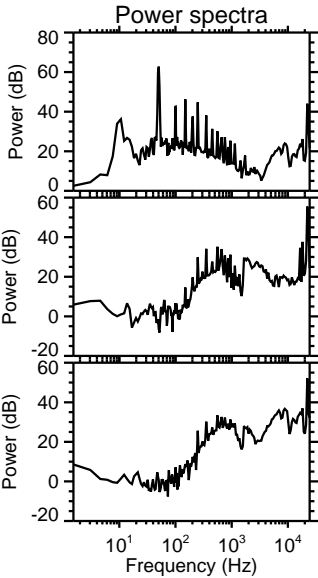
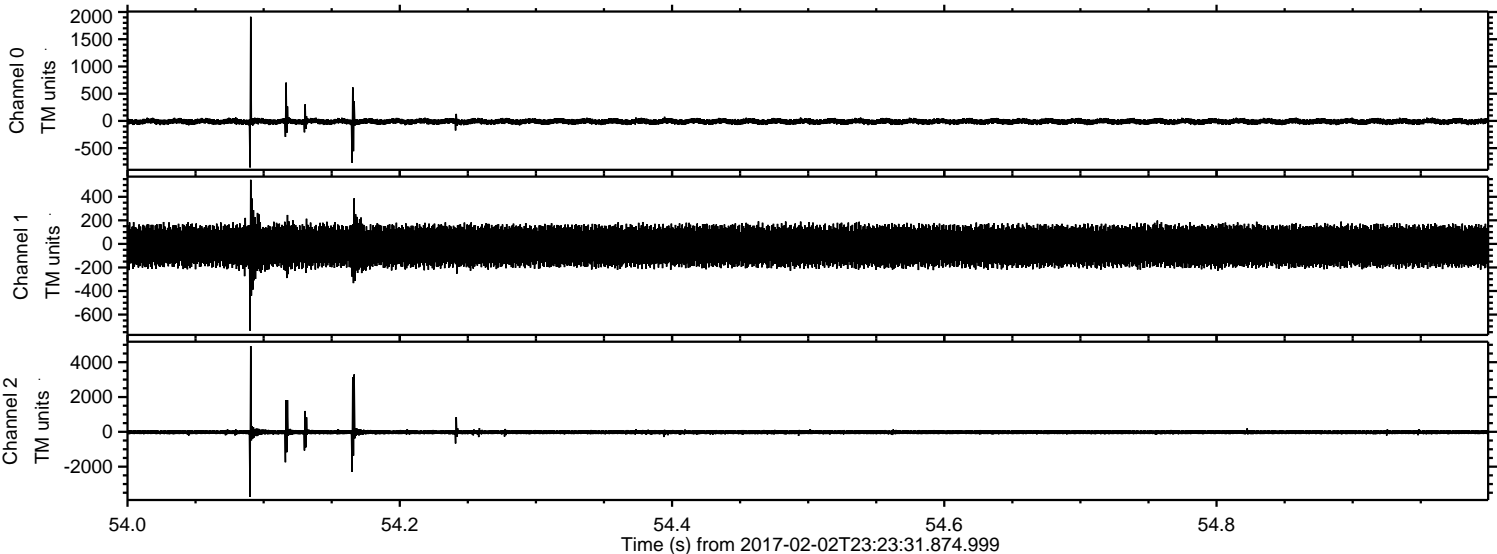


Channel 0
mn: -1345
mx: 1905
 μ : -10.3
 σ : 32.3

Channel 1
mn: -763
mx: 425
 μ : -18.3
 σ : 93.8

Channel 2
mn: -4494
mx: 5063
 μ : -21.6
 σ : 84.1

Processed Fri Feb 3 00:31:57 2017 by ELM ver.2012-10-06 from 001__elm20170202_232330__dat00.bin



Channel 0
mn: -855
mx: 1913
 μ : -10.3
 σ : 31.1

Channel 1
mn: -736
mx: 544
 μ : -18.3
 σ : 94.2

Channel 2
mn: -3729
mx: 4930
 μ : -21.6
 σ : 88.3

ELMAVAN 3D WAVEFORMS (Measured data sampled at 50 kHz) 51000 packets of 144 samples from 2017-02-02T23:23:31.874.999. Part 120/147

