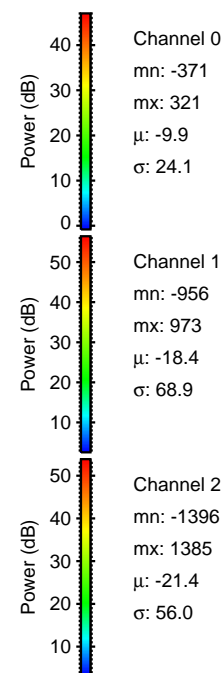
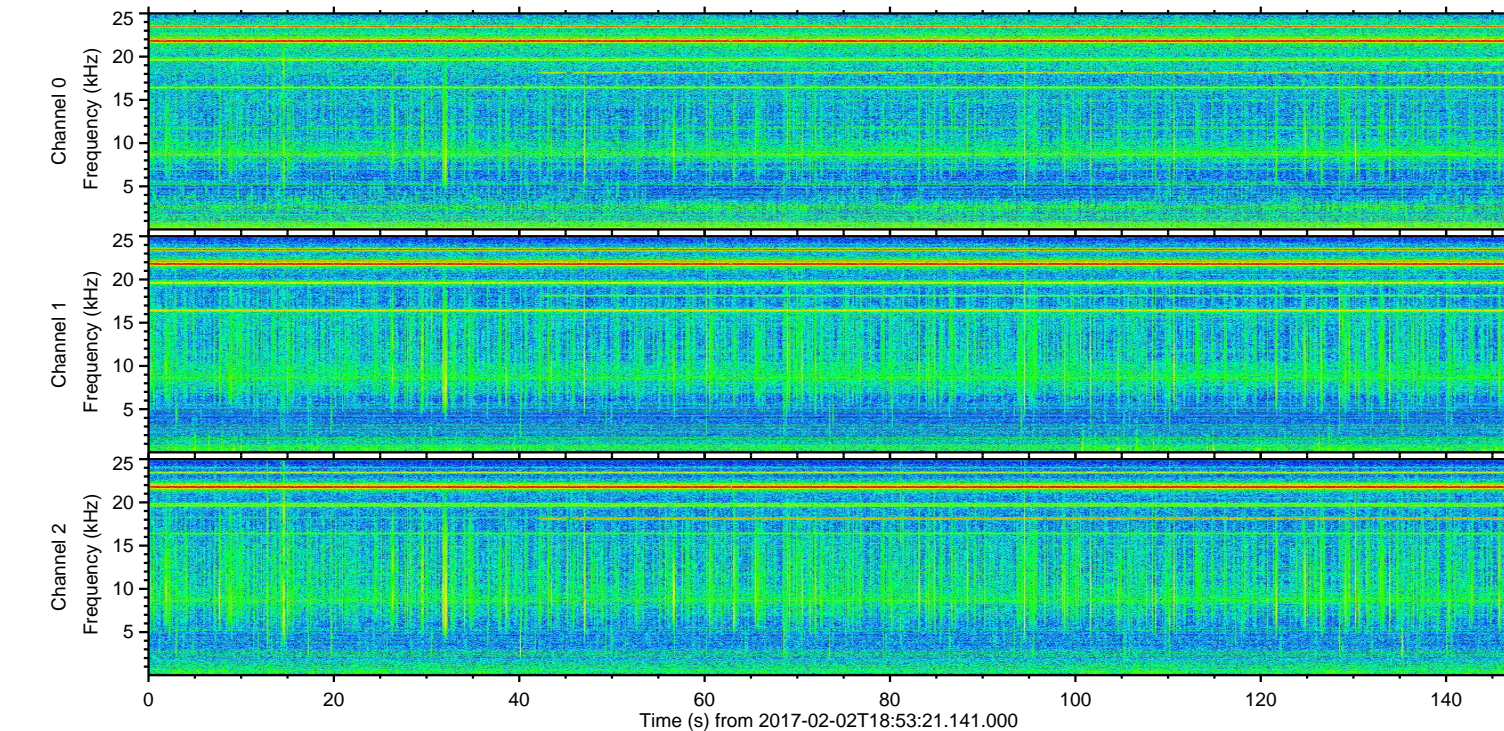
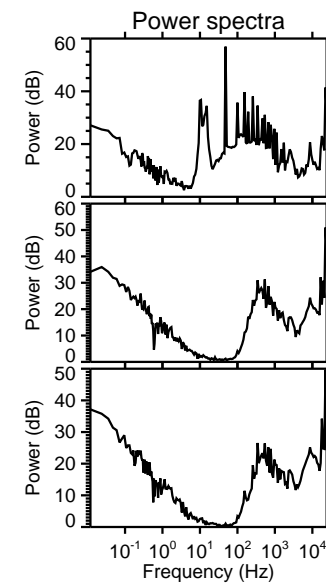
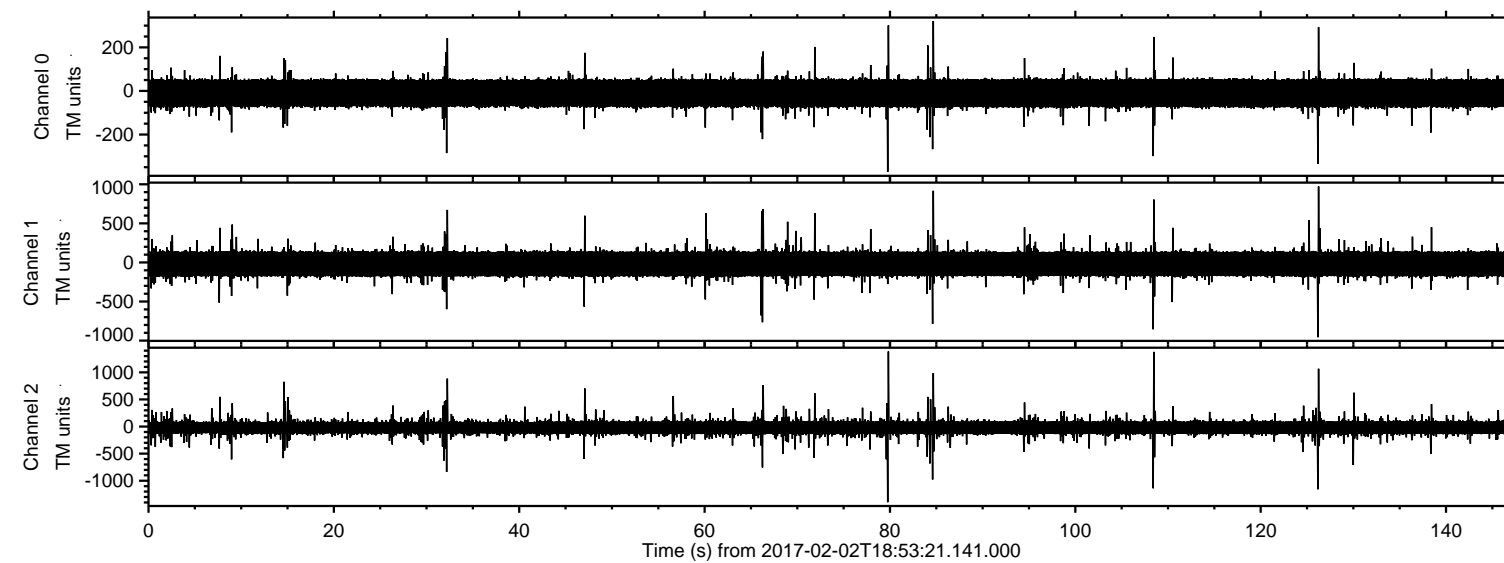


ELMAVAN 3D WAVEFORMS (Measured data sampled at 50 kHz) 51000 packets of 144 samples from 2017-02-02T18:53:21.141.000.

Processed Thu Feb 2 20:01:28 2017 by ELM ver.2012-10-06 from 001__elm20170202_185320__dat00.bin



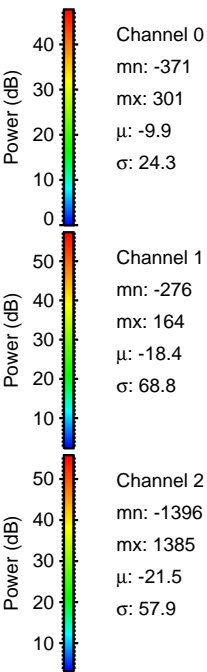
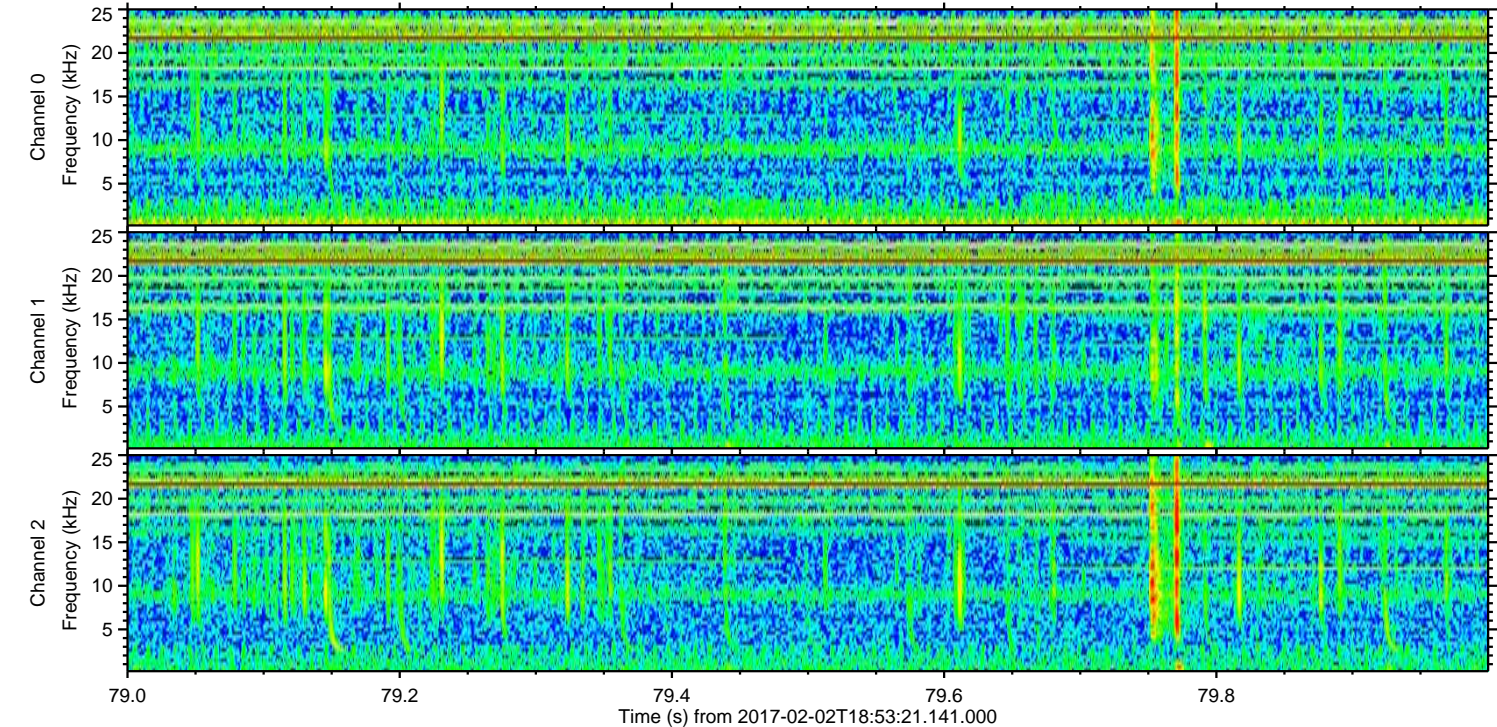
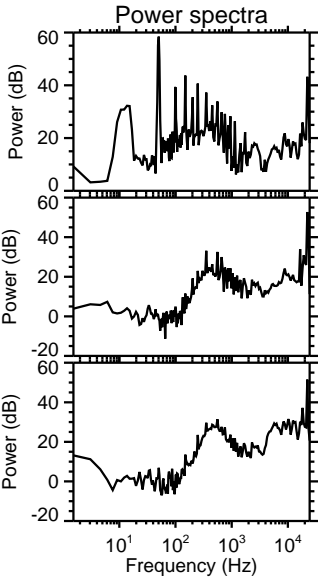
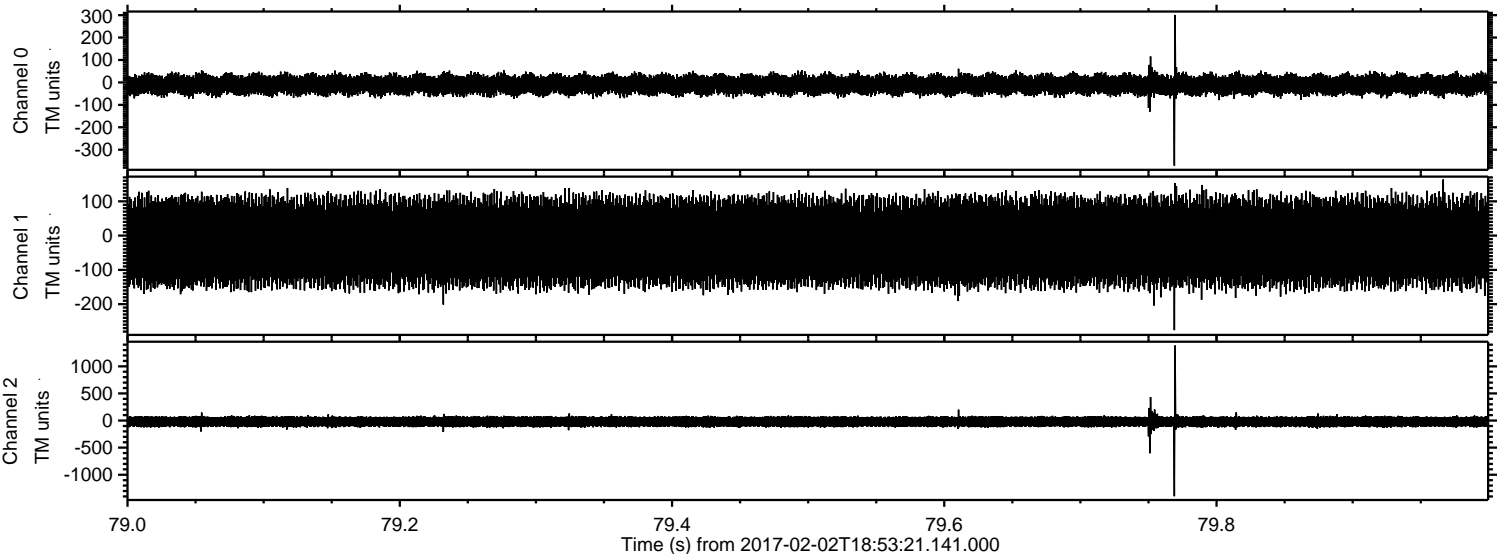
Channel 0
mn: -371
mx: 321
 μ : -9.9
 σ : 24.1

Channel 1
mn: -956
mx: 973
 μ : -18.4
 σ : 68.9

Channel 2
mn: -1396
mx: 1385
 μ : -21.4
 σ : 56.0

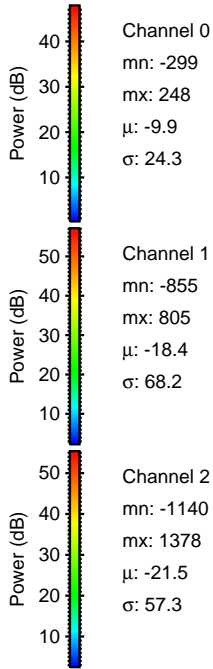
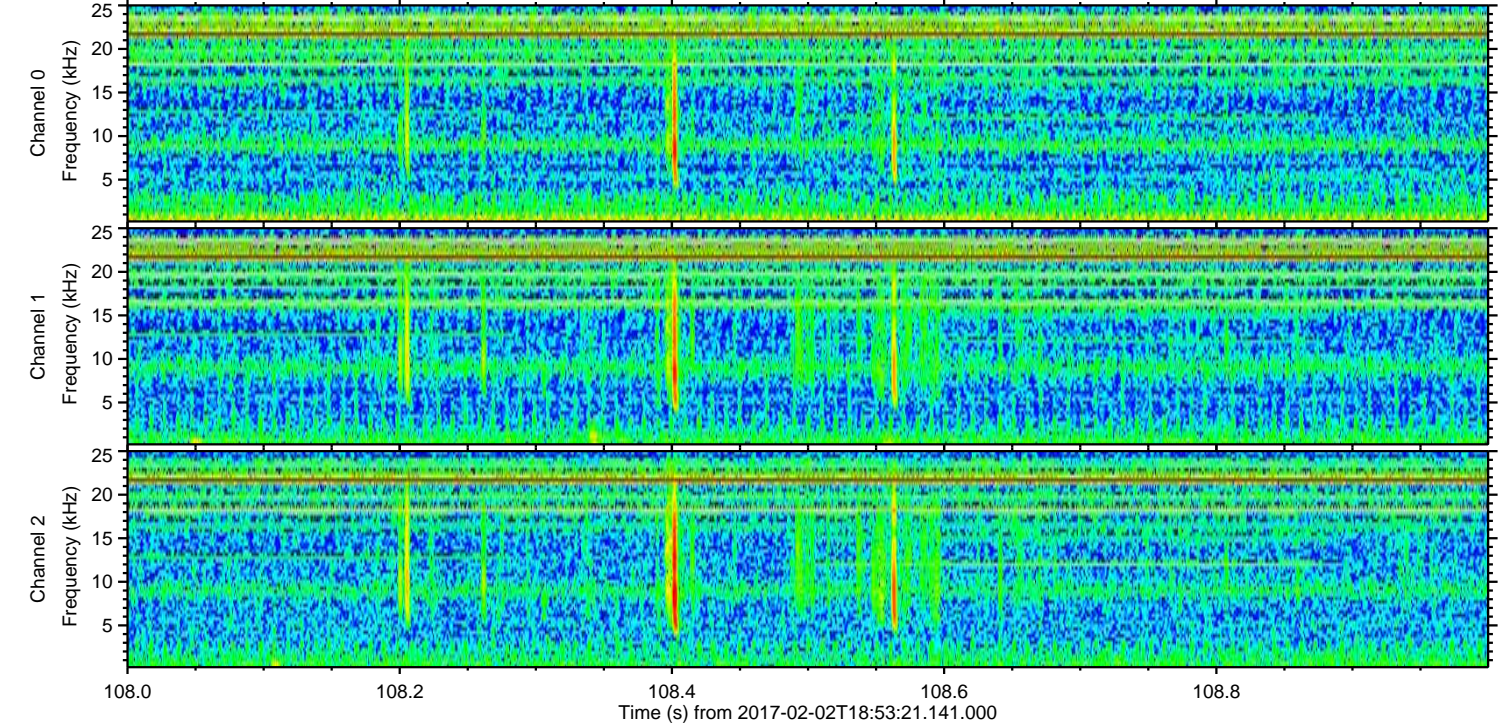
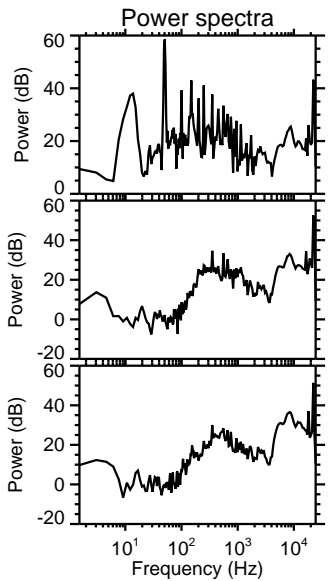
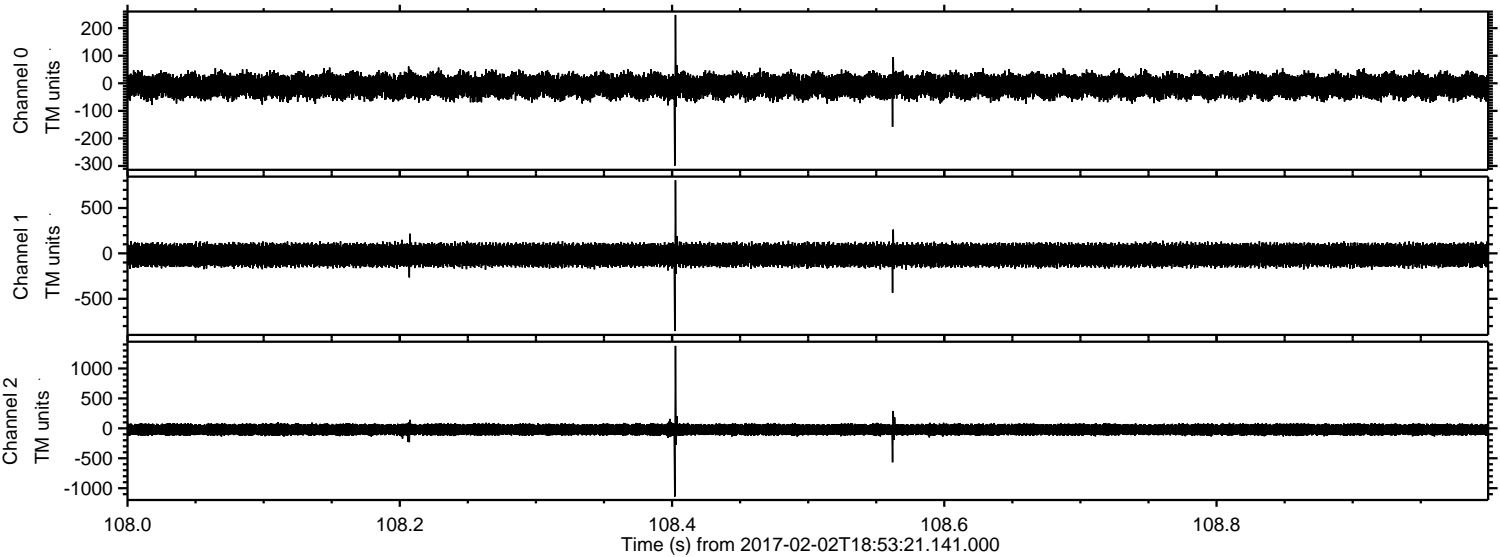
ELMAVAN 3D WAVEFORMS (Measured data sampled at 50 kHz) 51000 packets of 144 samples from 2017-02-02T18:53:21.141.000. Part 80/147

Processed Thu Feb 2 20:01:40 2017 by ELM ver.2012-10-06 from 001__elm20170202_185320__dat00.bin



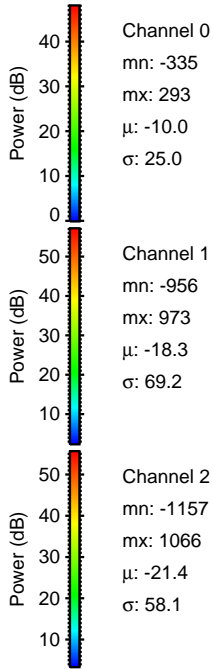
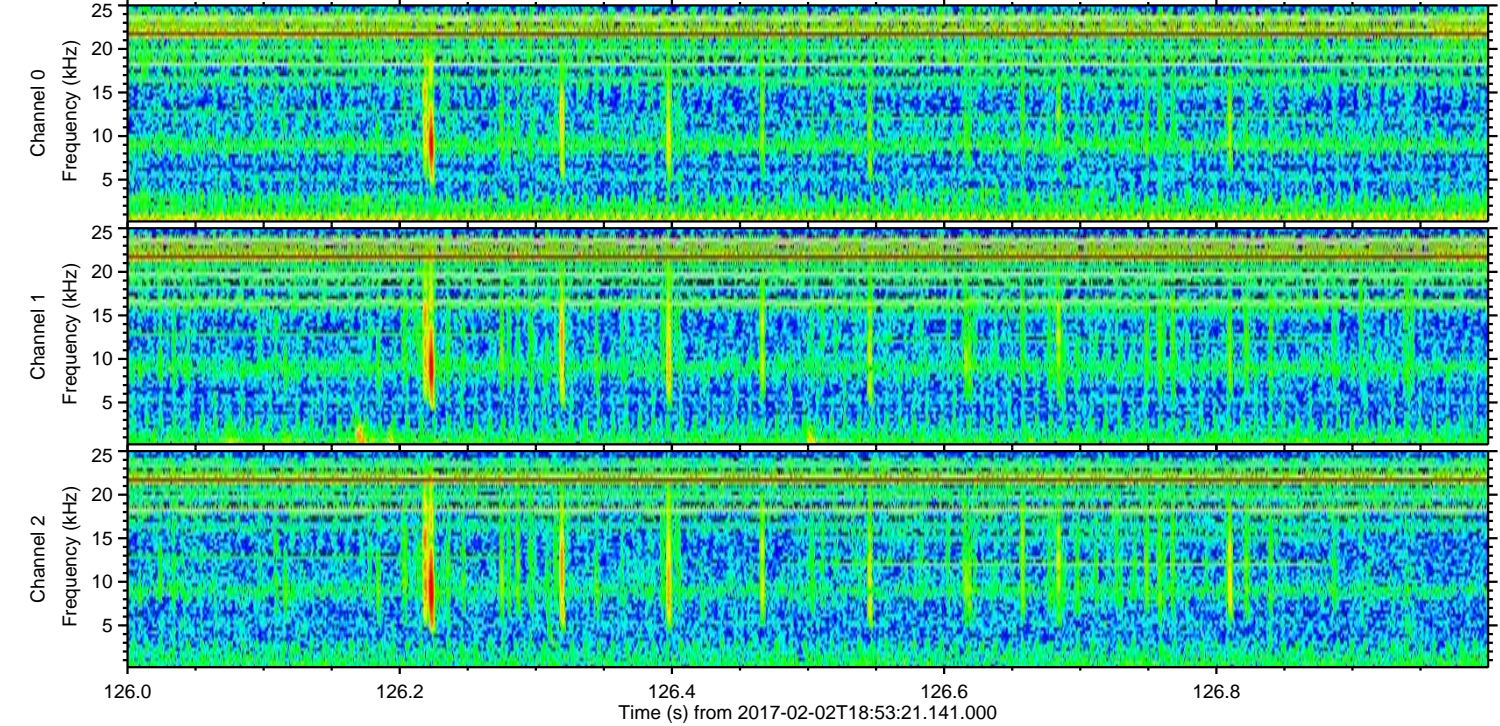
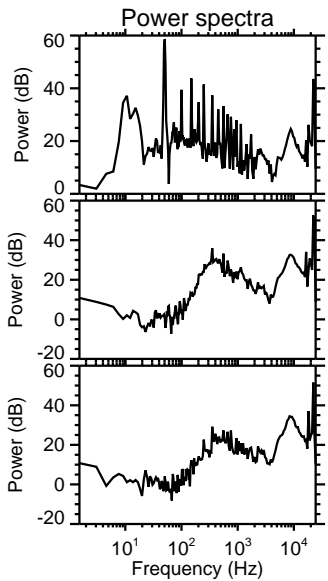
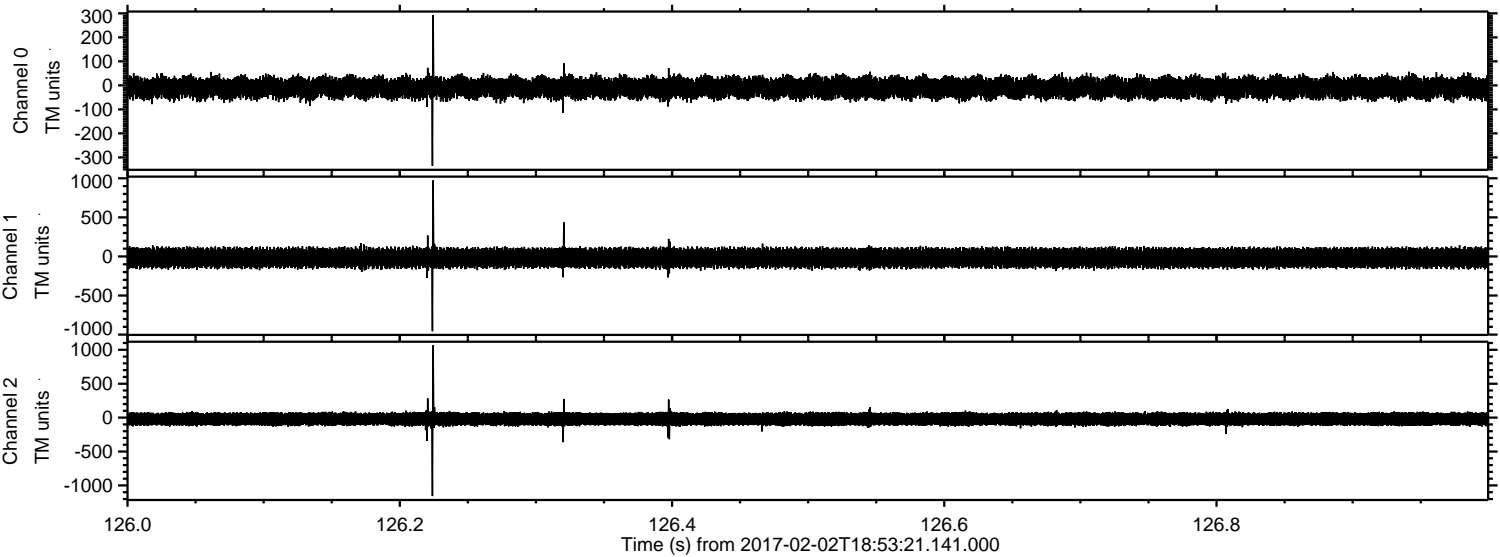
ELMAVAN 3D WAVEFORMS (Measured data sampled at 50 kHz) 51000 packets of 144 samples from 2017-02-02T18:53:21.141.000. Part 109/147

Processed Thu Feb 2 20:01:41 2017 by ELM ver.2012-10-06 from 001__elm20170202_185320__dat00.bin



ELMAVAN 3D WAVEFORMS (Measured data sampled at 50 kHz) 51000 packets of 144 samples from 2017-02-02T18:53:21.141.000. Part 127/147

Processed Thu Feb 2 20:01:42 2017 by ELM ver.2012-10-06 from 001__elm20170202_185320__dat00.bin

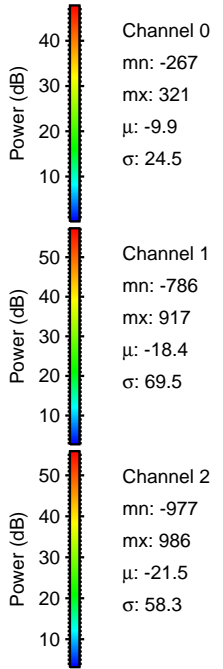
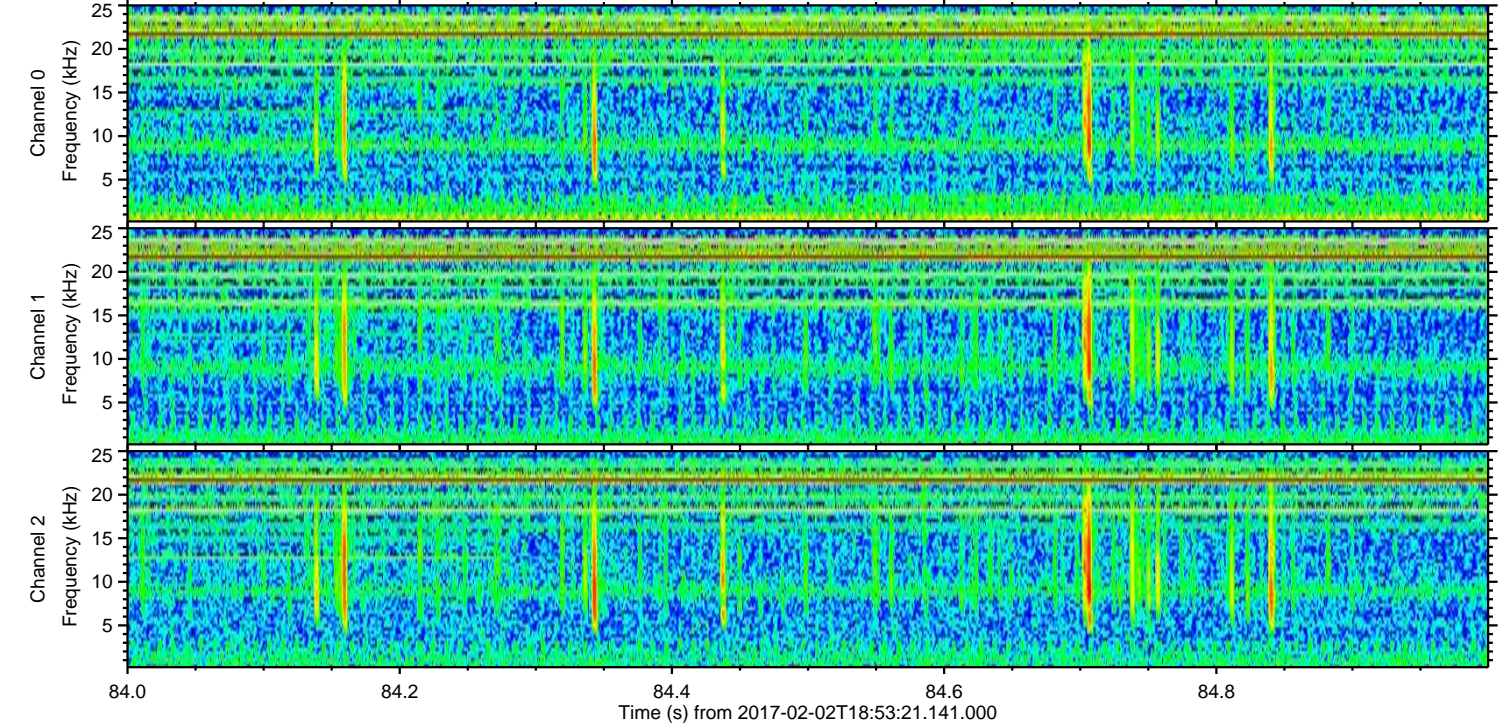
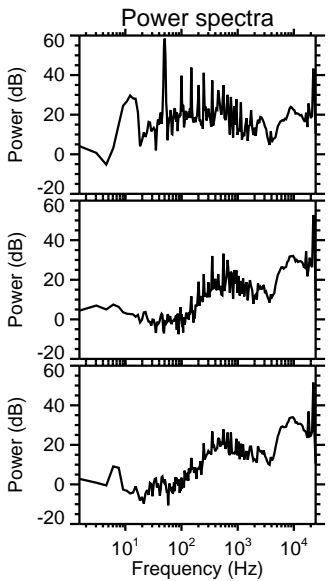
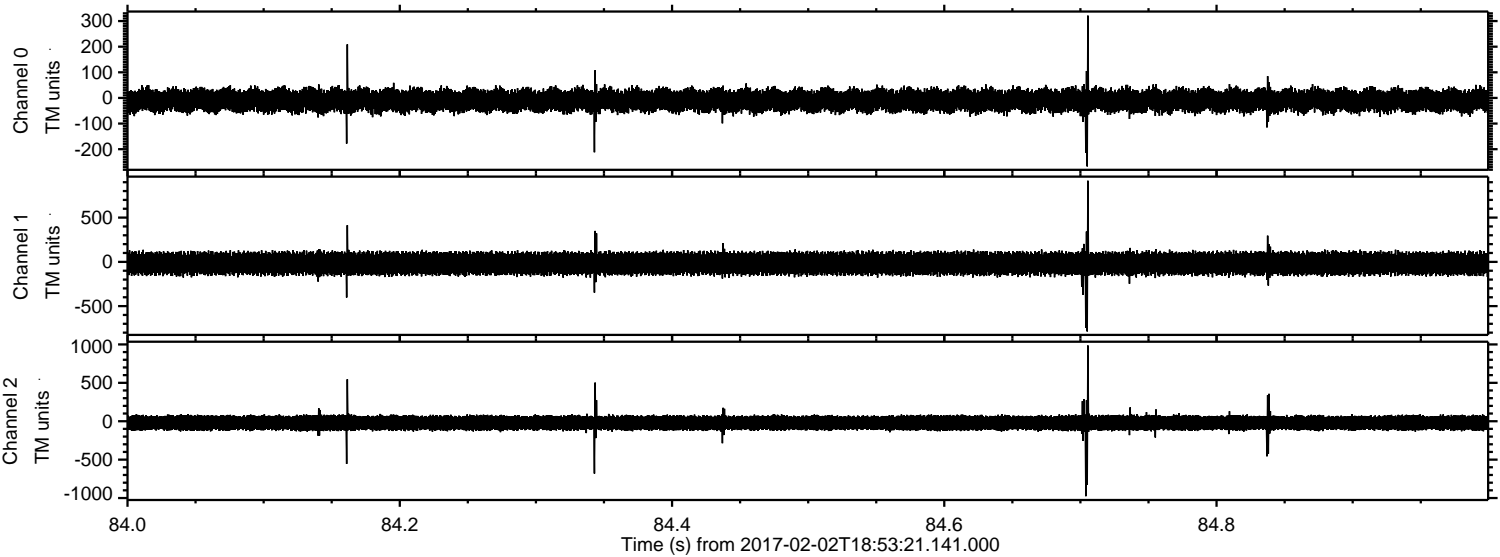


Channel 0
mn: -335
mx: 293
 μ : -10.0
 σ : 25.0

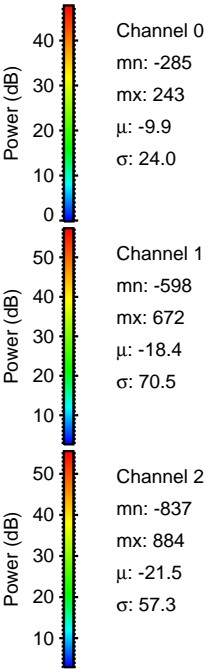
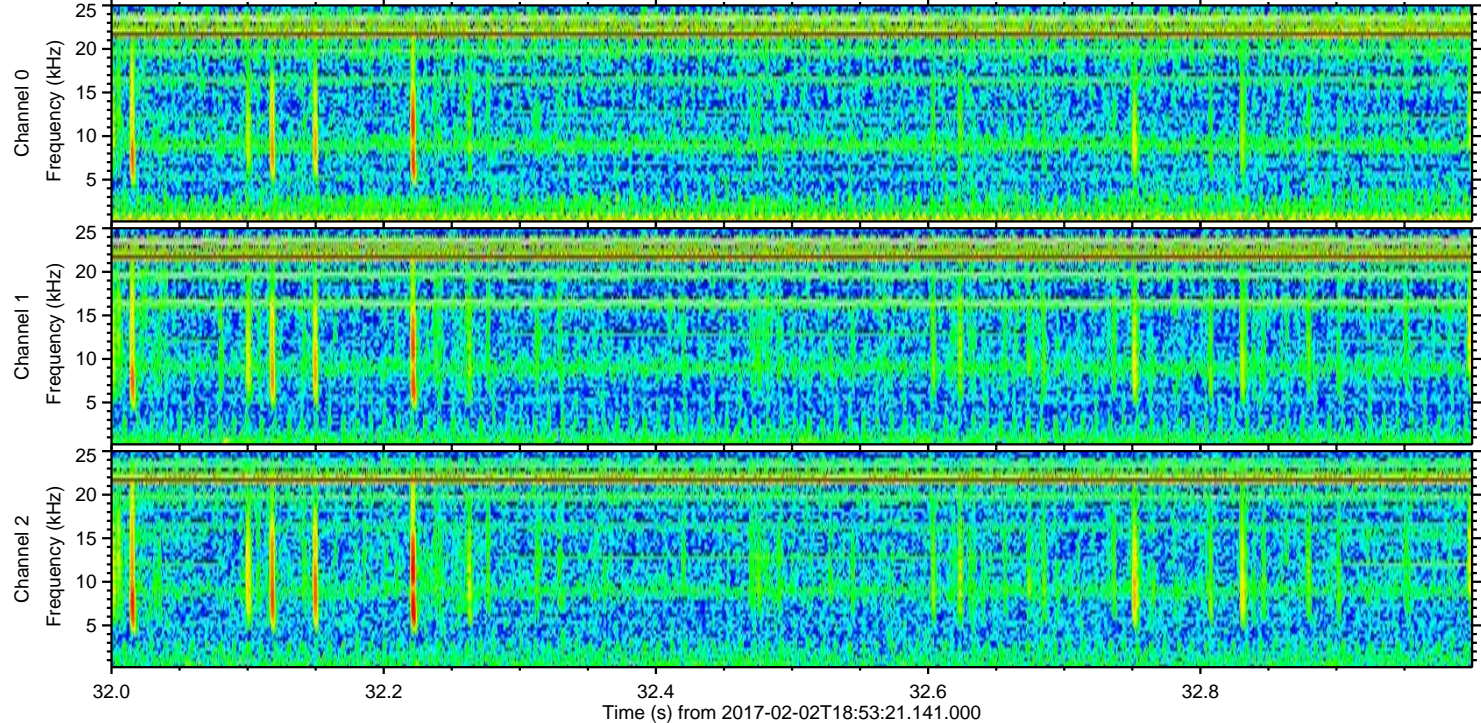
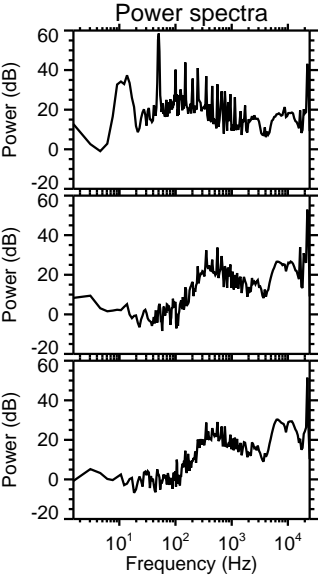
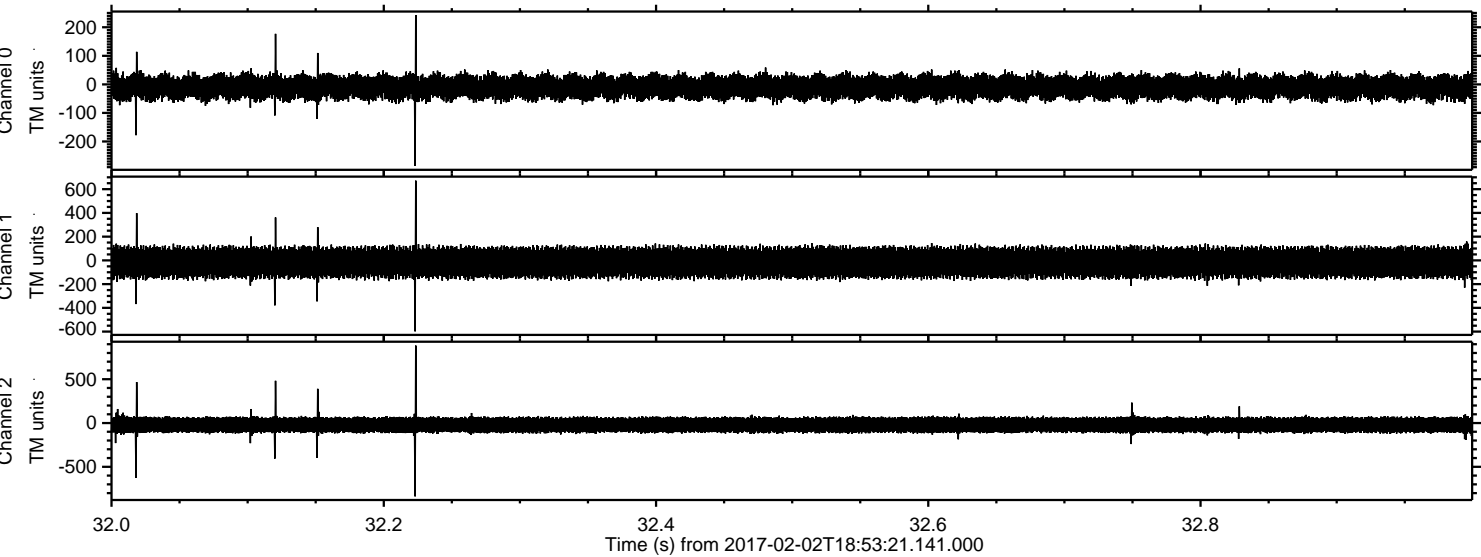
Channel 1
mn: -956
mx: 973
 μ : -18.3
 σ : 69.2

Channel 2
mn: -1157
mx: 1066
 μ : -21.4
 σ : 58.1

Processed Thu Feb 2 20:01:43 2017 by ELM ver.2012-10-06 from 001__elm20170202_185320__dat00.bin

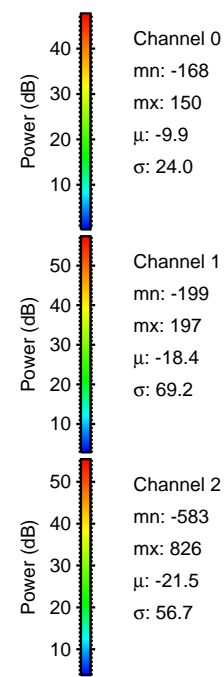
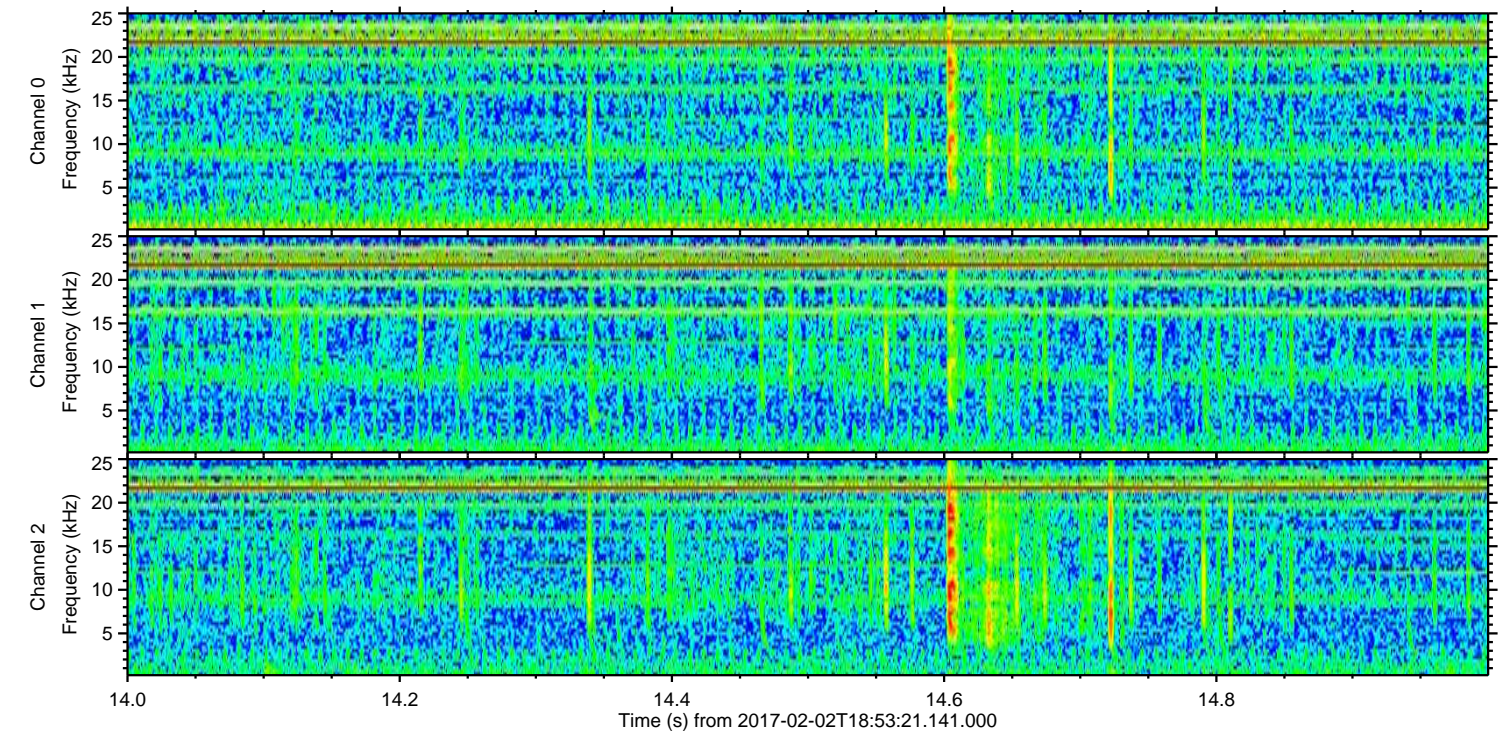
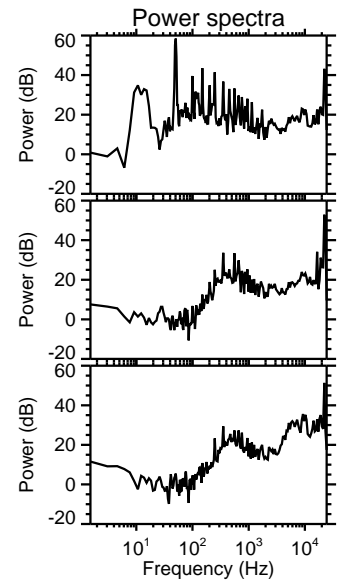
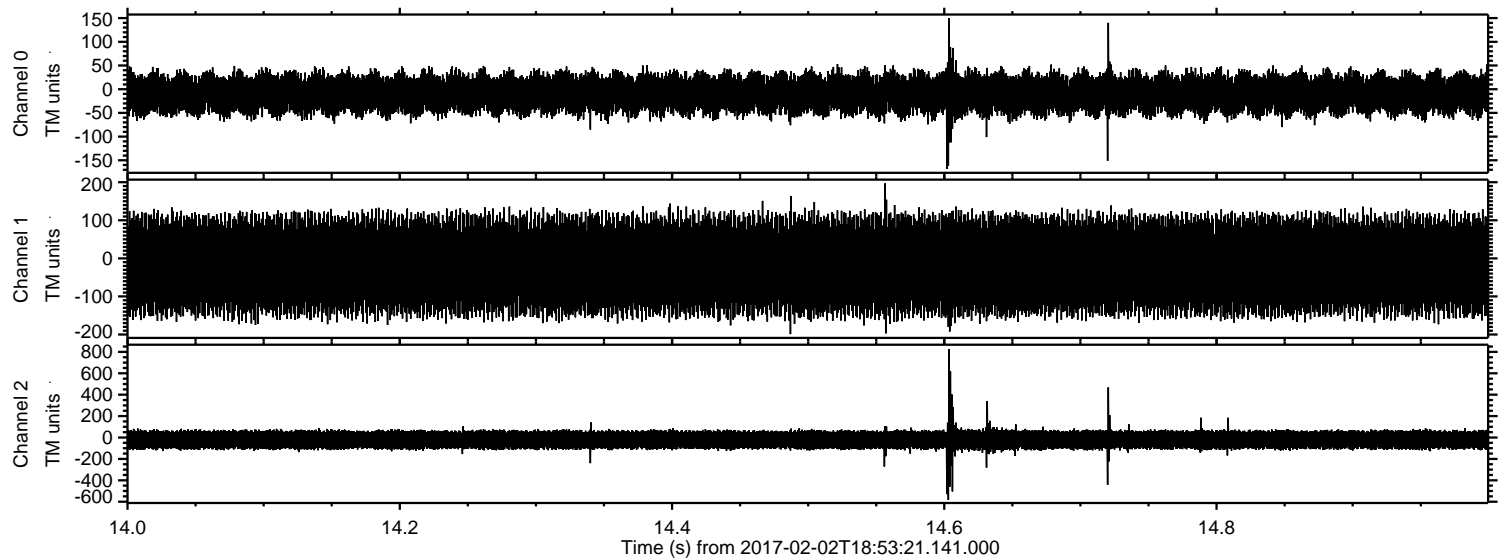


Processed Thu Feb 2 20:01:44 2017 by ELM ver.2012-10-06 from 001__elm20170202_185320__dat00.bin

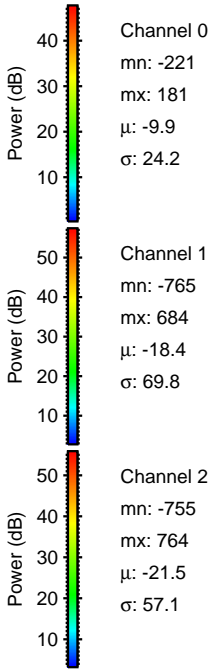
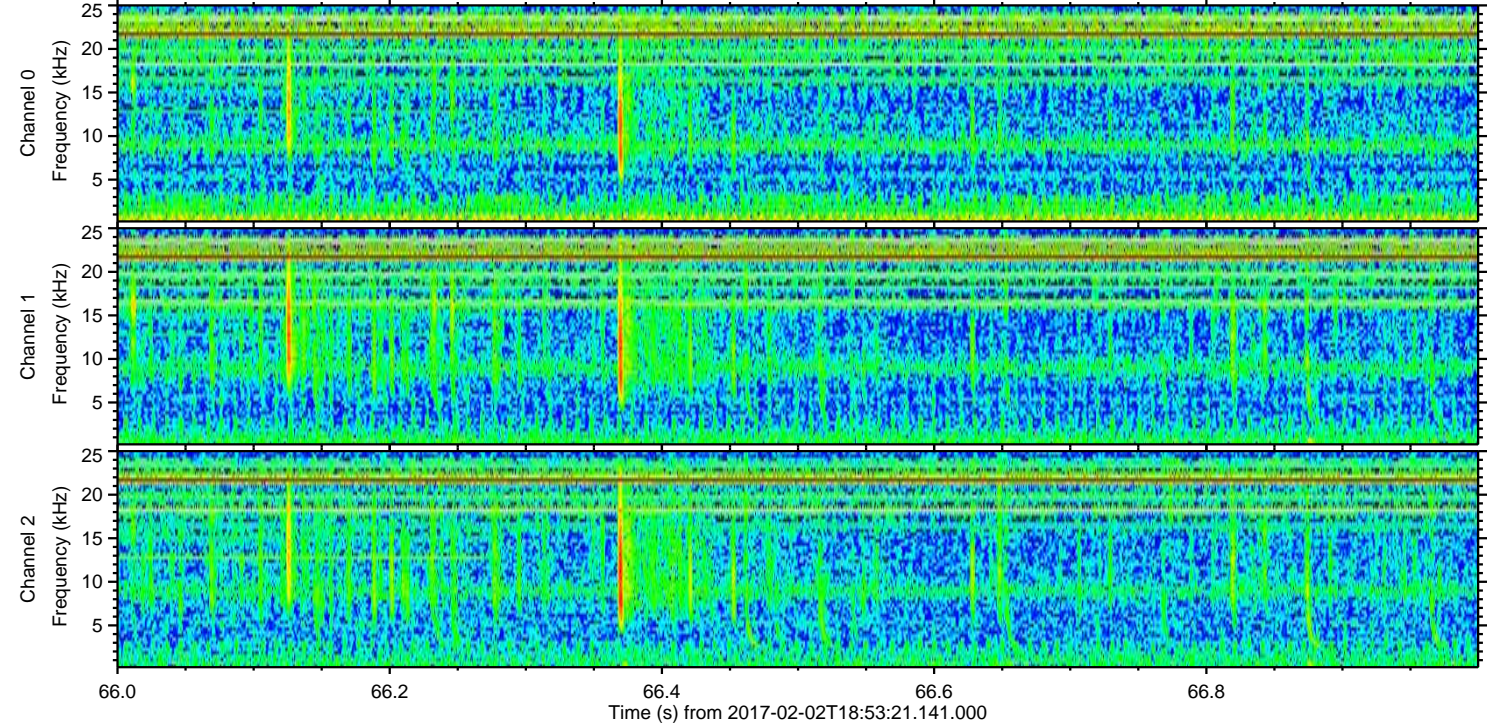
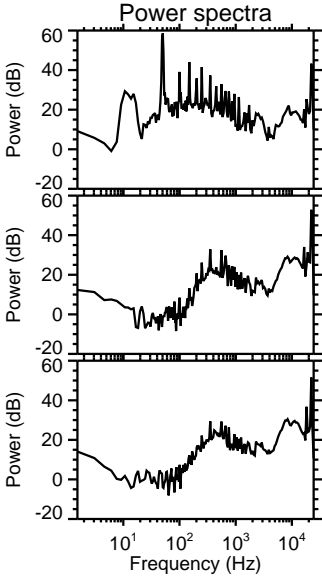
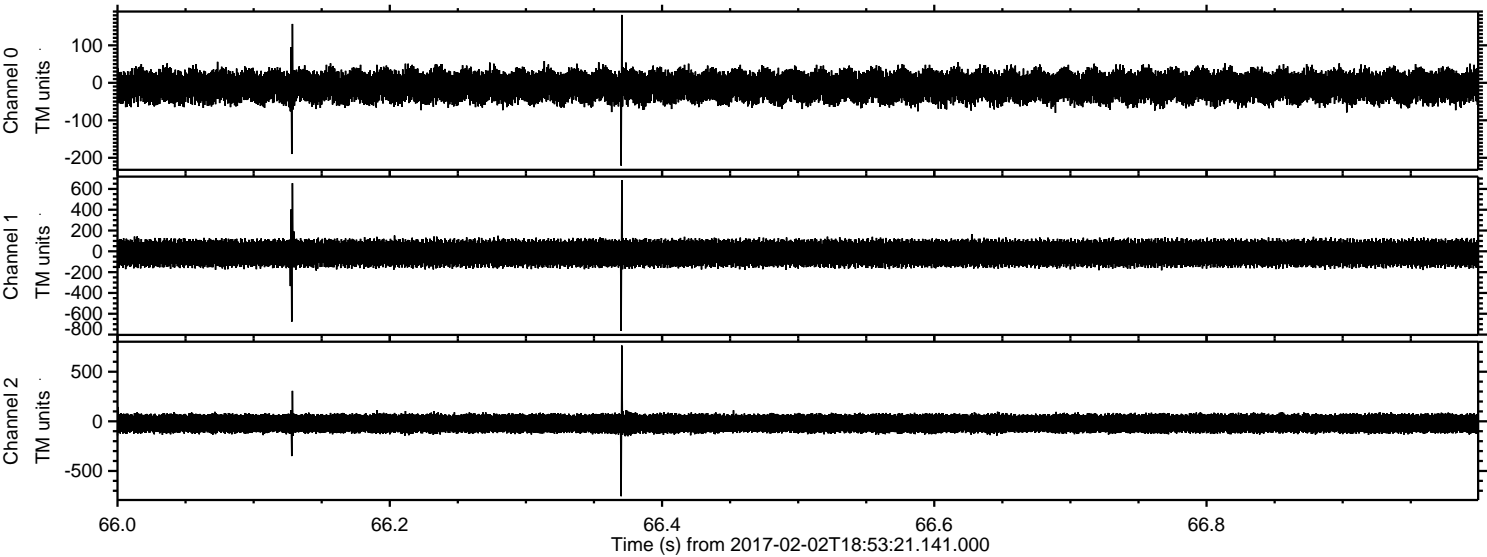


ELMAVAN 3D WAVEFORMS (Measured data sampled at 50 kHz) 51000 packets of 144 samples from 2017-02-02T18:53:21.141.000. Part 15/147

Processed Thu Feb 2 20:01:45 2017 by ELM ver.2012-10-06 from 001__elm20170202_185320__dat00.bin

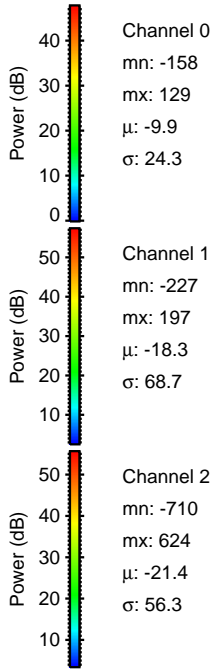
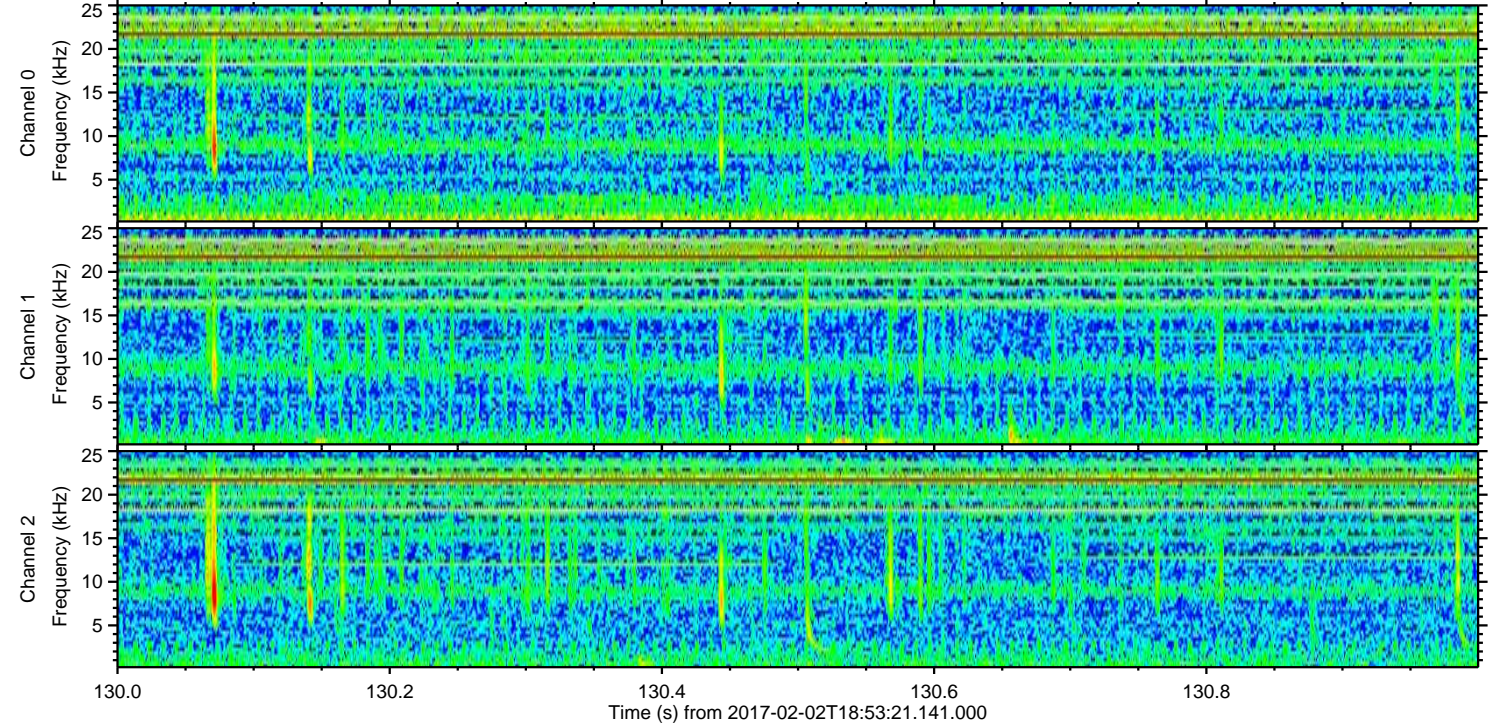
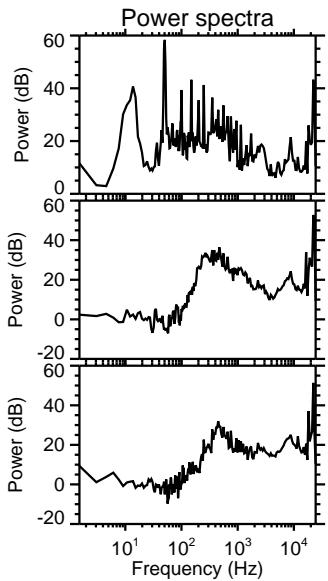
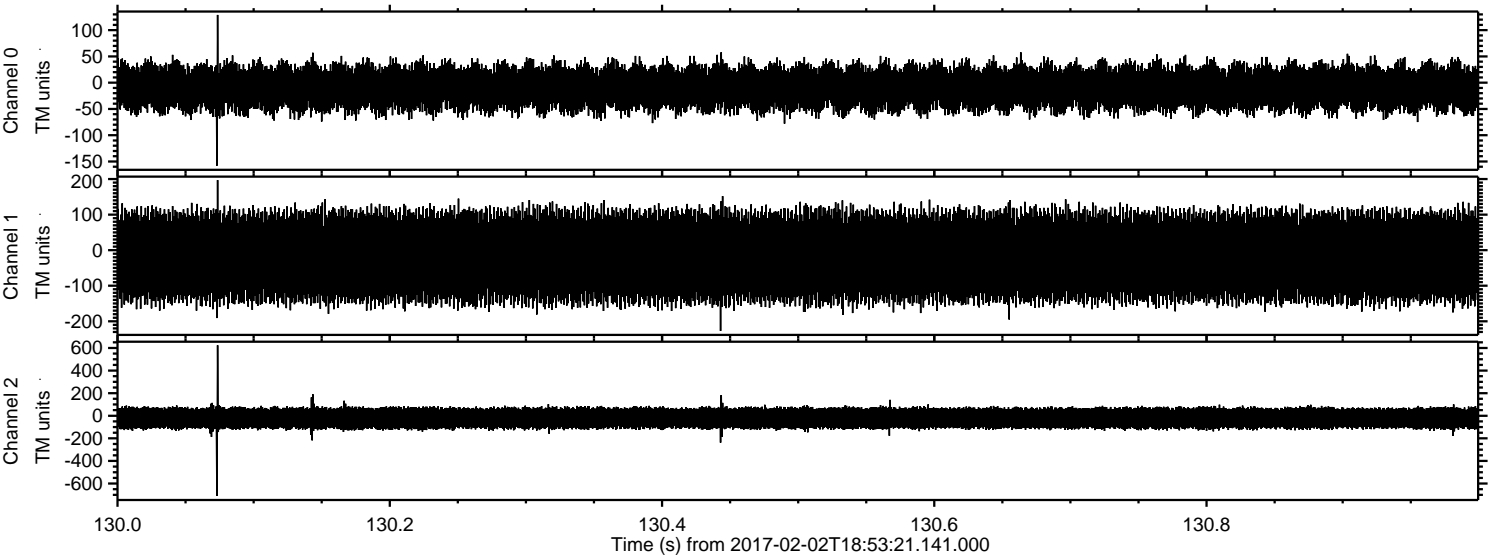


Processed Thu Feb 2 20:01:46 2017 by ELM ver.2012-10-06 from 001__elm20170202_185320__dat00.bin



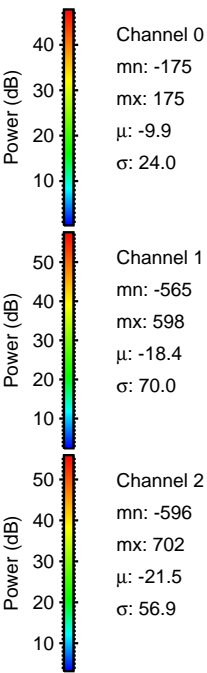
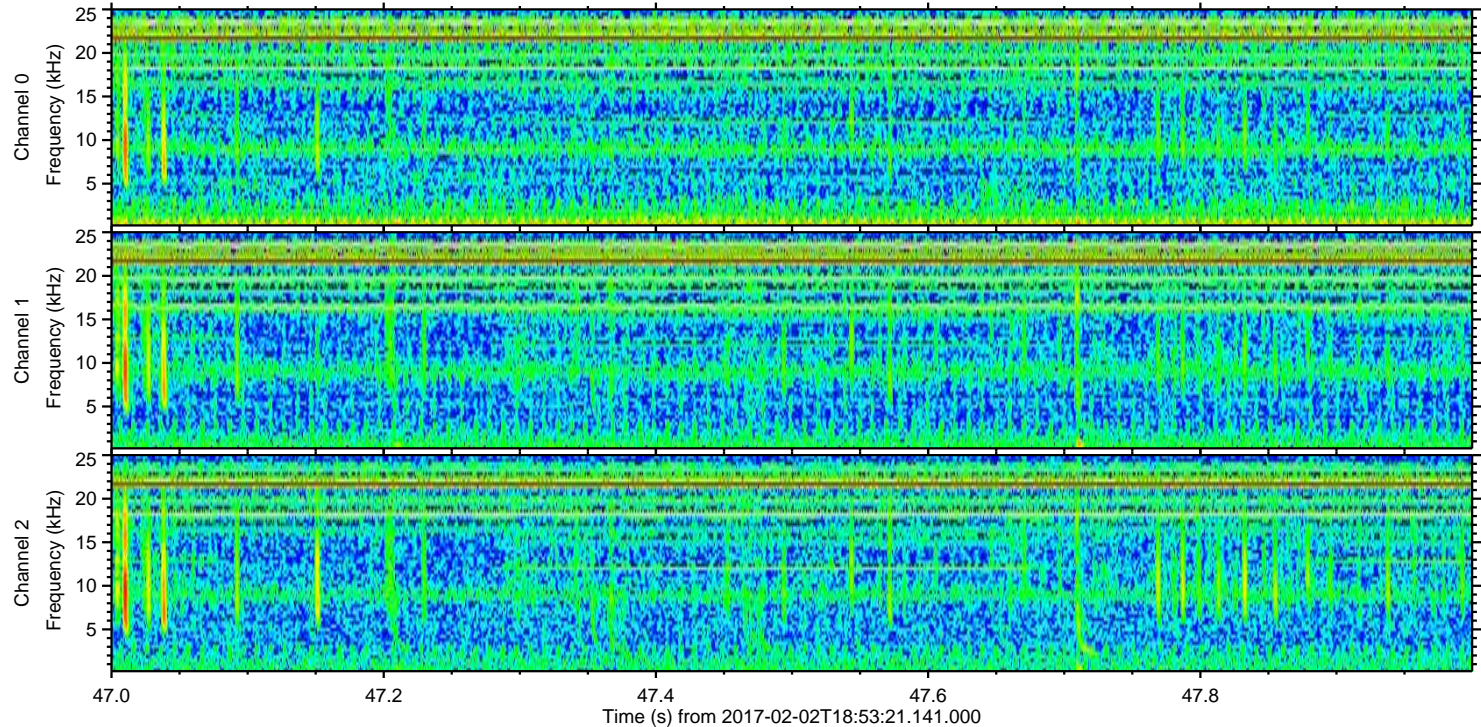
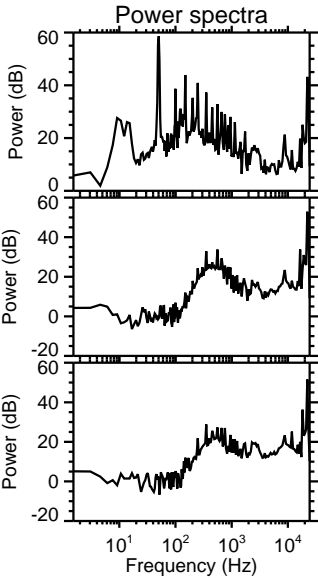
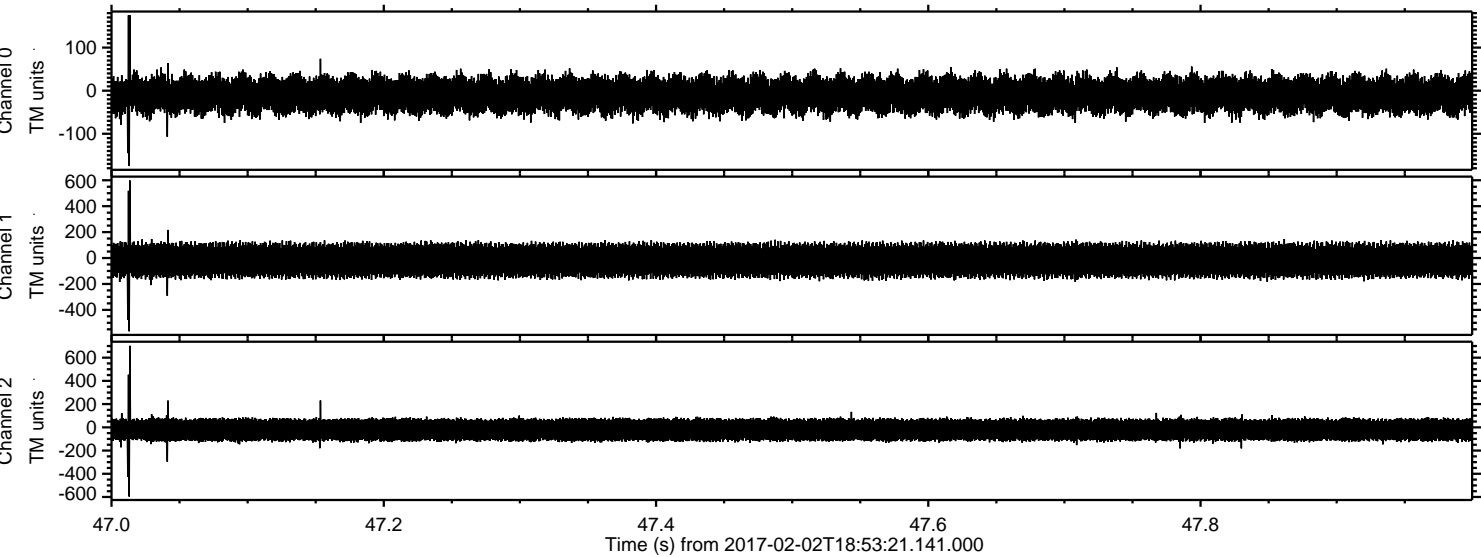
ELMAVAN 3D WAVEFORMS (Measured data sampled at 50 kHz) 51000 packets of 144 samples from 2017-02-02T18:53:21.141.000. Part 131/147

Processed Thu Feb 2 20:01:46 2017 by ELM ver.2012-10-06 from 001__elm20170202_185320__dat00.bin



ELMAVAN 3D WAVEFORMS (Measured data sampled at 50 kHz) 51000 packets of 144 samples from 2017-02-02T18:53:21.141.000. Part 48/147

Processed Thu Feb 2 20:01:47 2017 by ELM ver.2012-10-06 from 001__elm20170202_185320__dat00.bin



Channel 0
mn: -175
mx: 175
 μ : -9.9
 σ : 24.0

Channel 1
mn: -565
mx: 598
 μ : -18.4
 σ : 70.0

Channel 2
mn: -596
mx: 702
 μ : -21.5
 σ : 56.9

ELMAVAN 3D WAVEFORMS (Measured data sampled at 50 kHz) 51000 packets of 144 samples from 2017-02-02T18:53:21.141.000. Part 116/147

