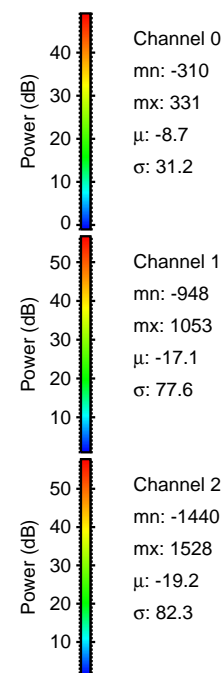
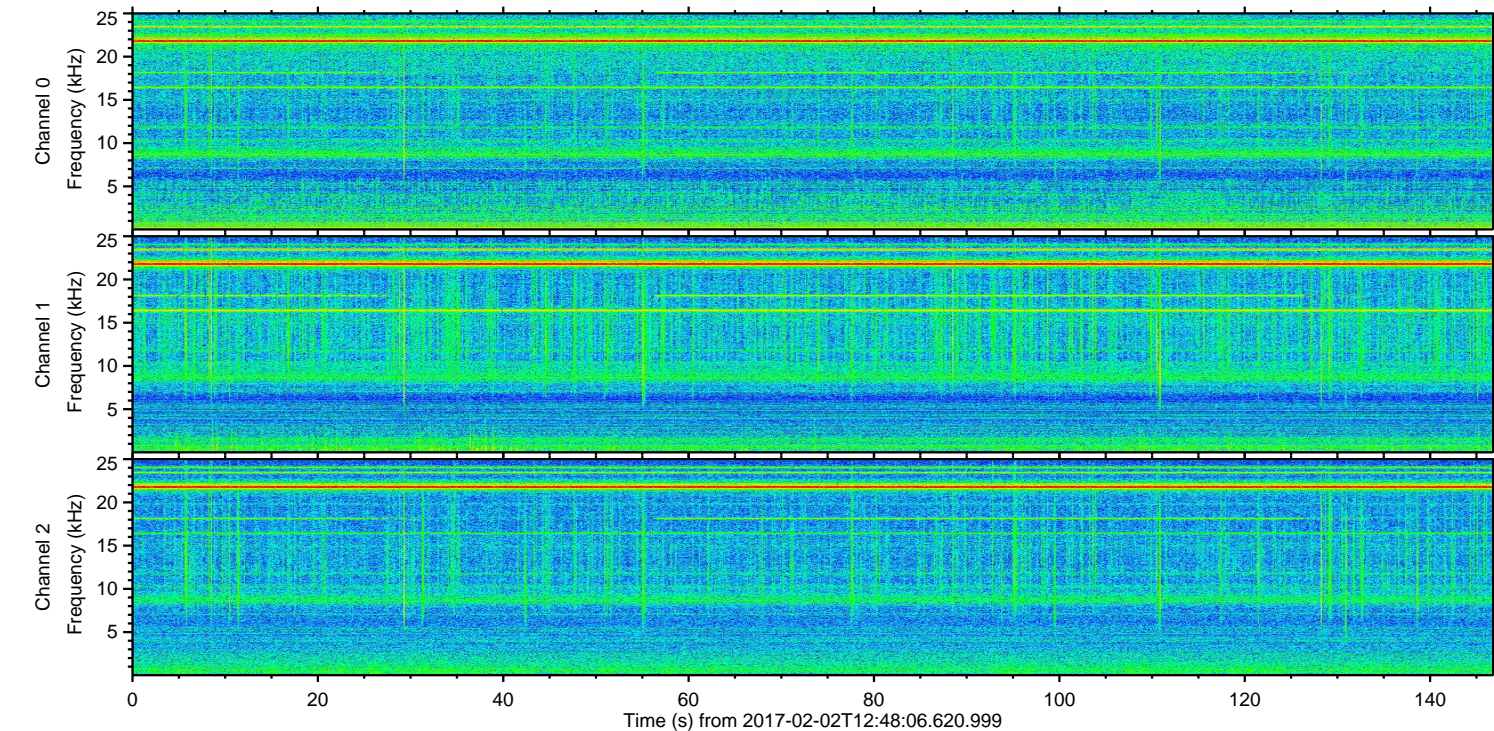
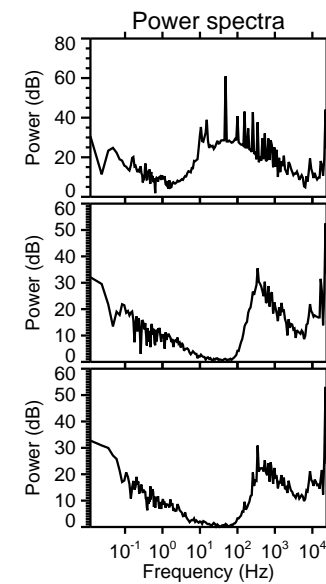
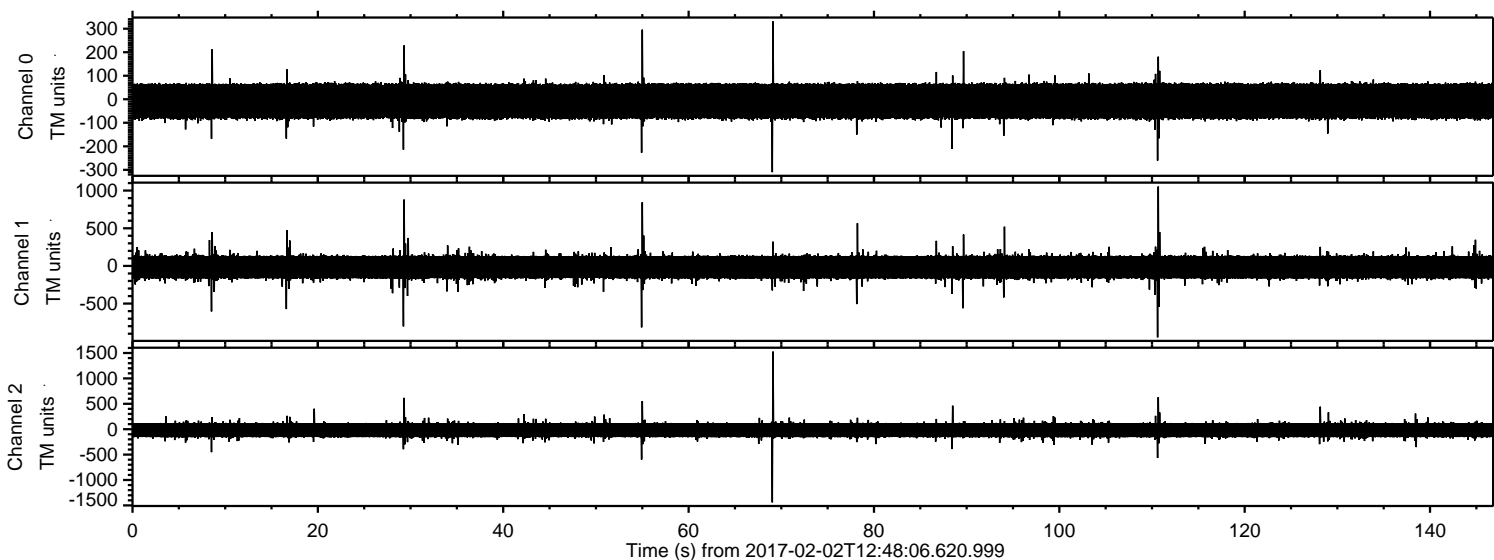


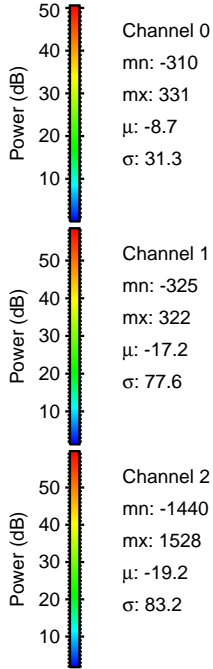
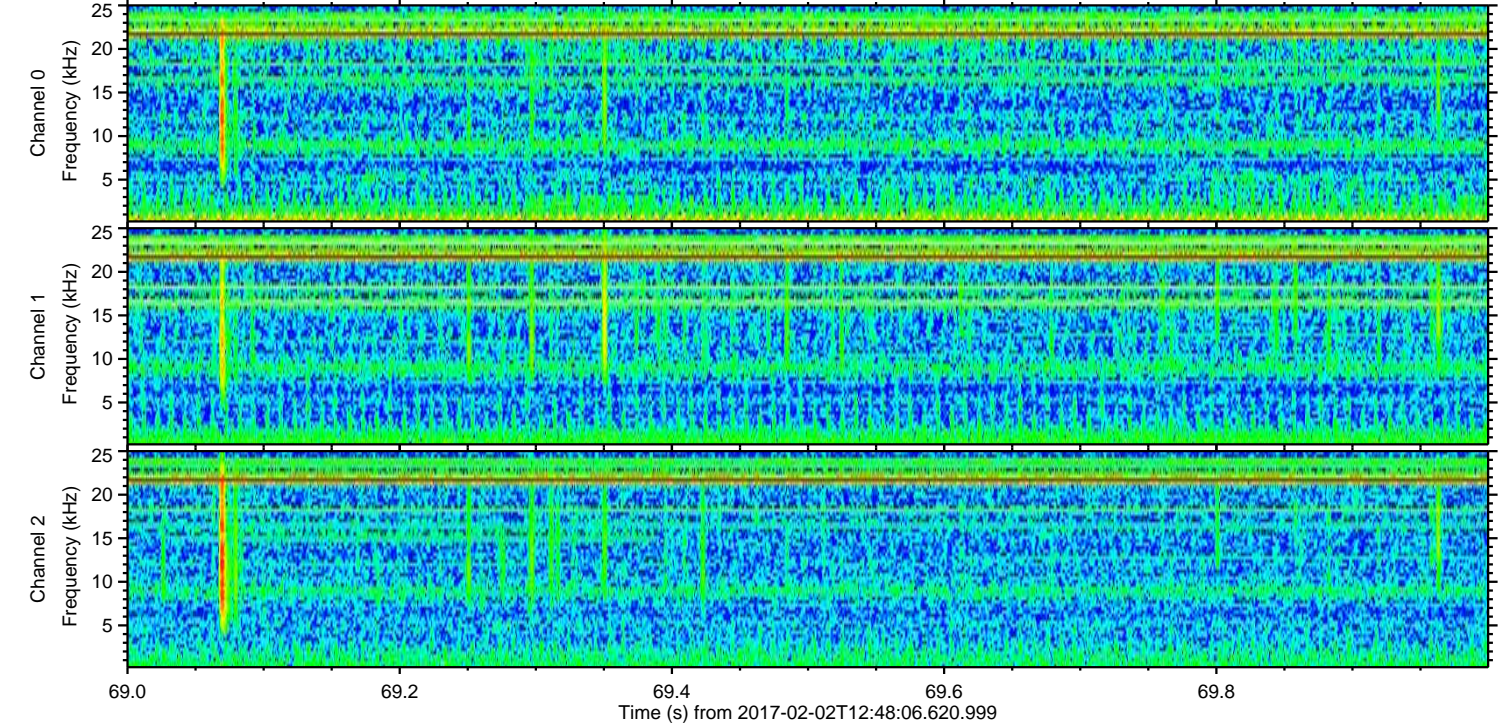
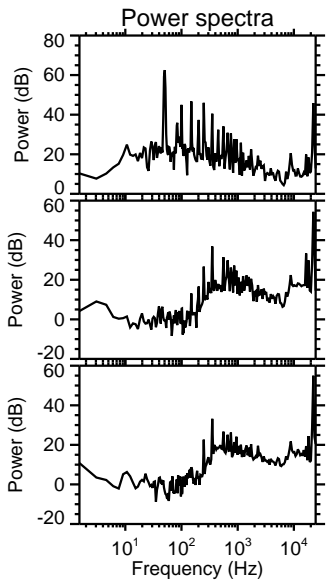
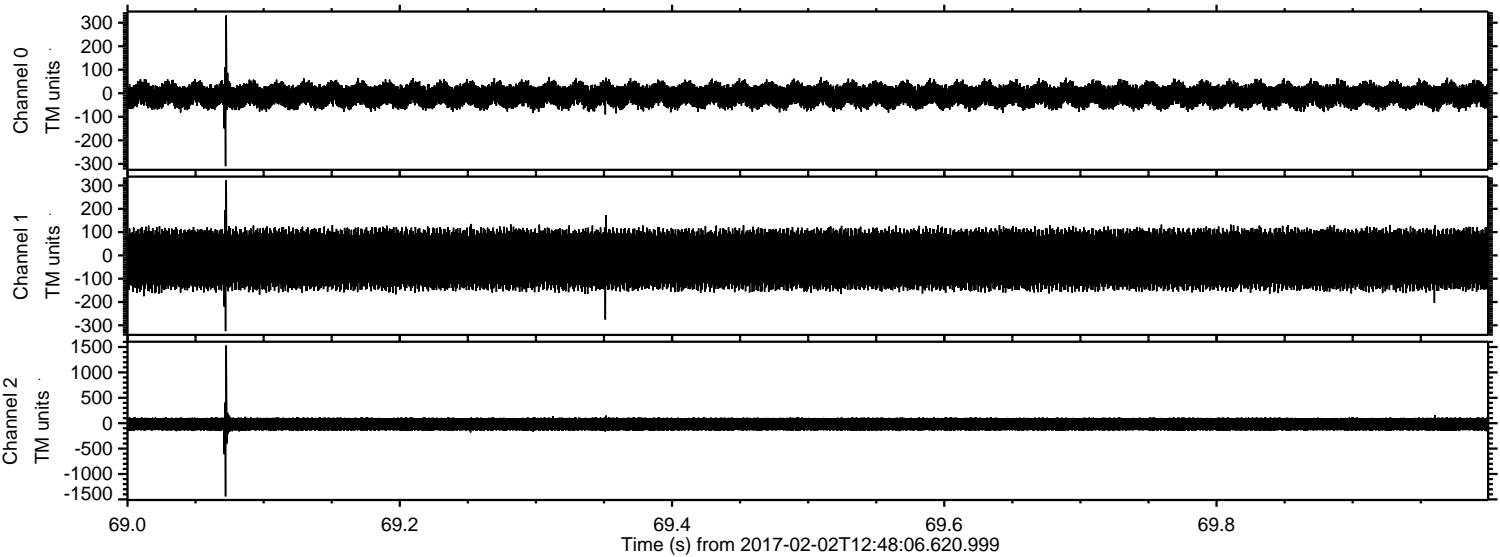
# ELMAVAN 3D WAVEFORMS (Measured data sampled at 50 kHz) 51000 packets of 144 samples from 2017-02-02T12:48:06.620.999.

Processed Thu Feb 2 13:56:04 2017 by ELM ver.2012-10-06 from 001\_\_elm20170202\_124805\_\_dat00.bin





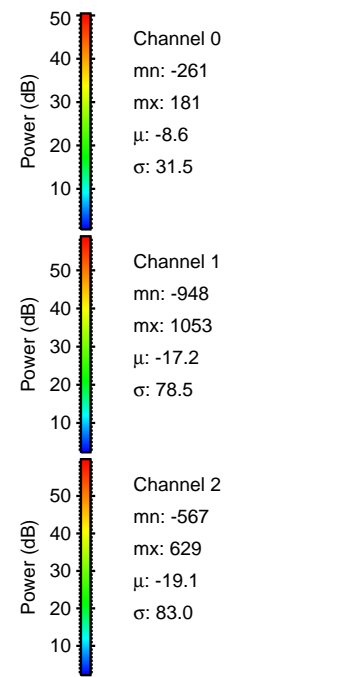
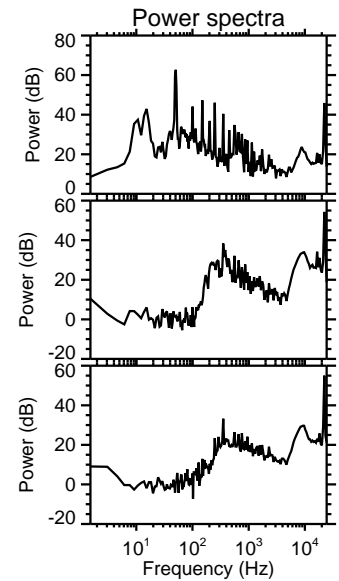
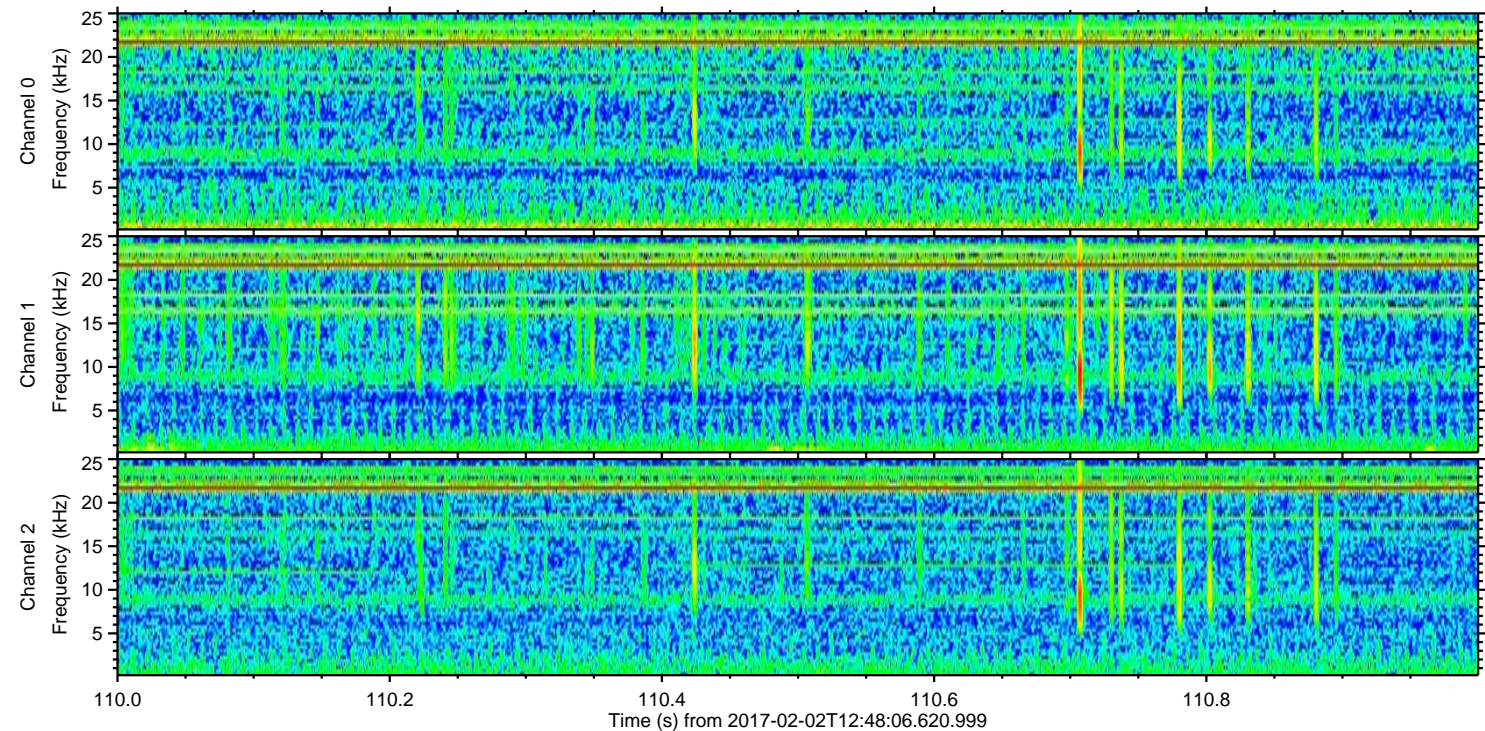
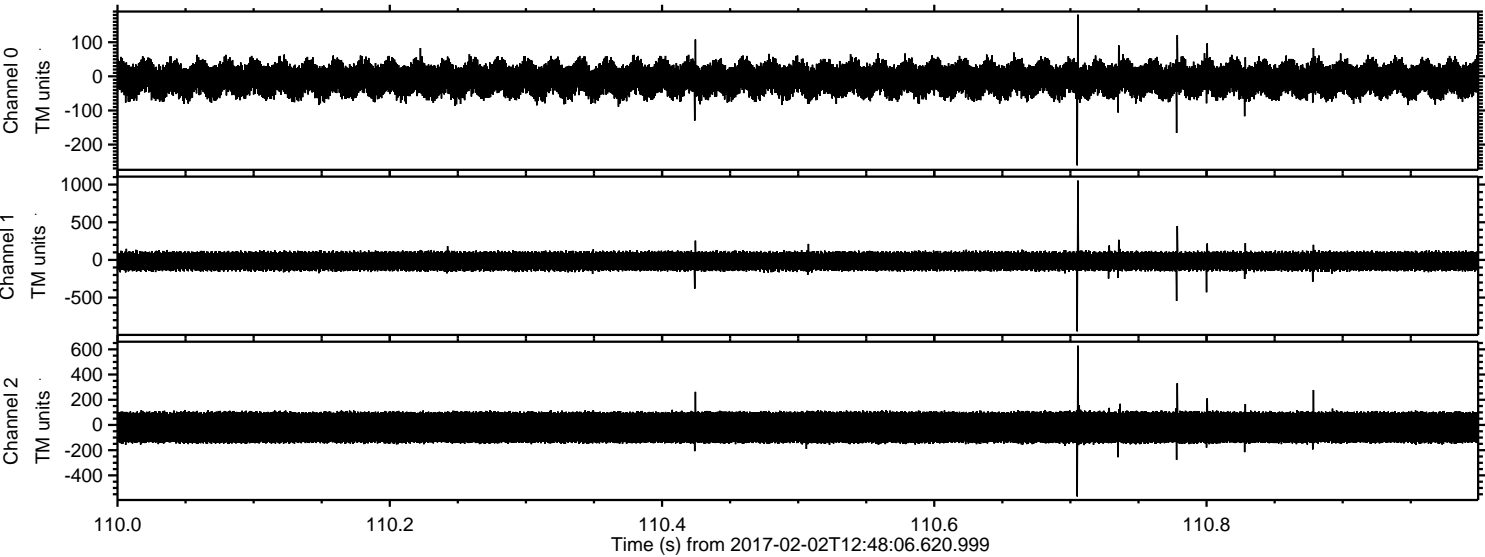
Processed Thu Feb 2 13:56:15 2017 by ELM ver.2012-10-06 from 001\_\_elm20170202\_124805\_\_dat00.bin





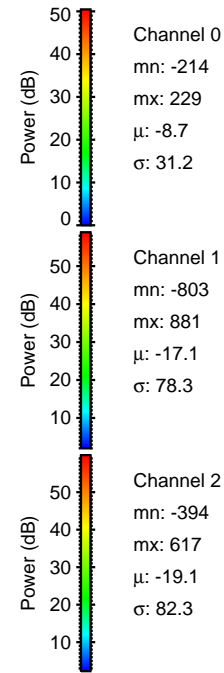
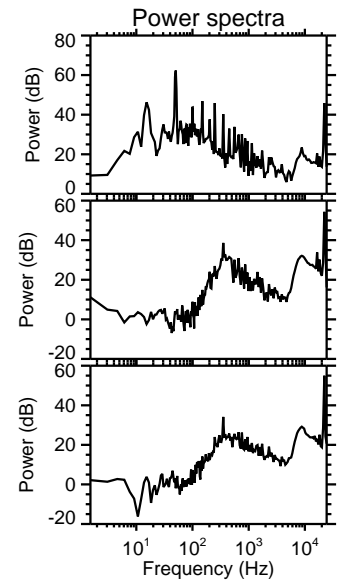
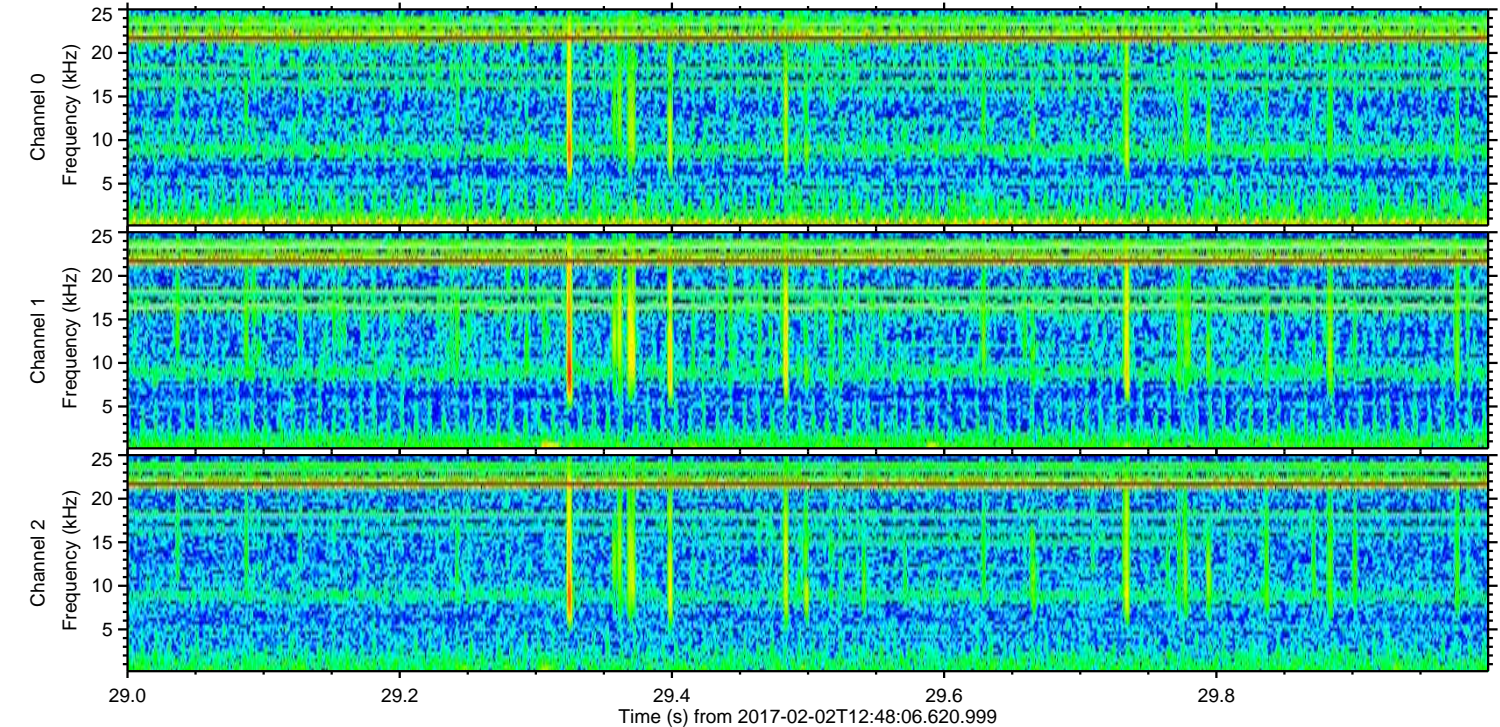
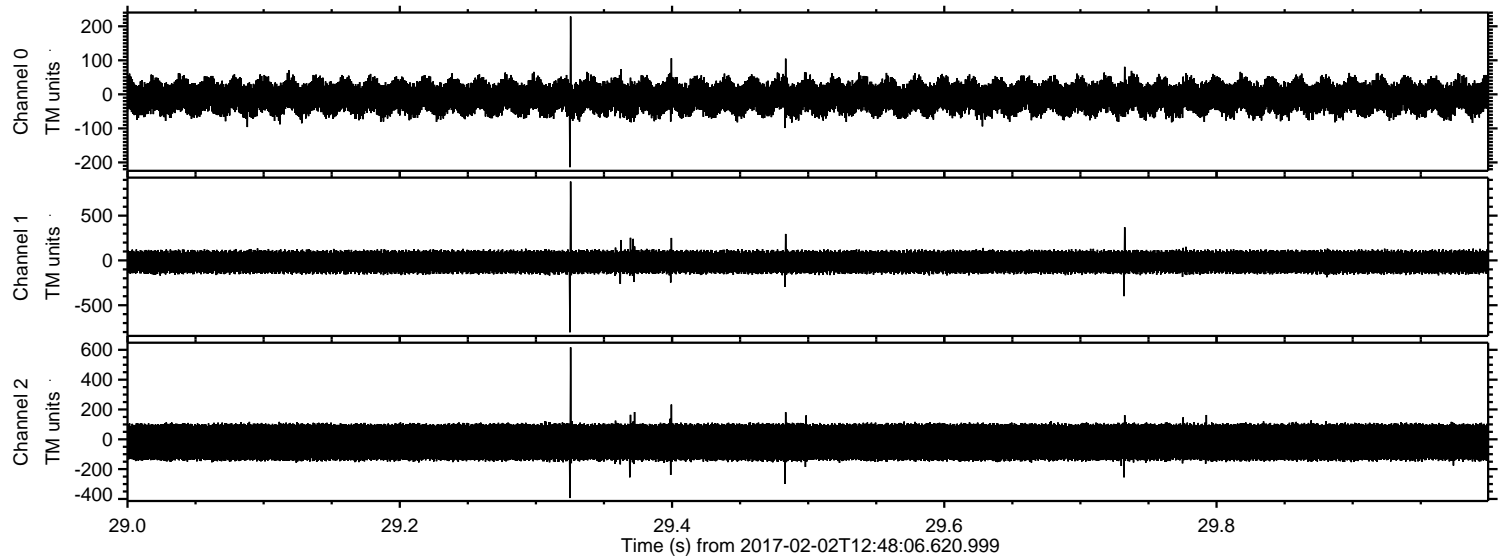
ELMAVAN 3D WAVEFORMS (Measured data sampled at 50 kHz) 51000 packets of 144 samples from 2017-02-02T12:48:06.620.999. Part 111/147

Processed Thu Feb 2 13:56:16 2017 by ELM ver.2012-10-06 from 001\_\_elm20170202\_124805\_\_dat00.bin





Processed Thu Feb 2 13:56:17 2017 by ELM ver.2012-10-06 from 001\_\_elm20170202\_124805\_\_dat00.bin



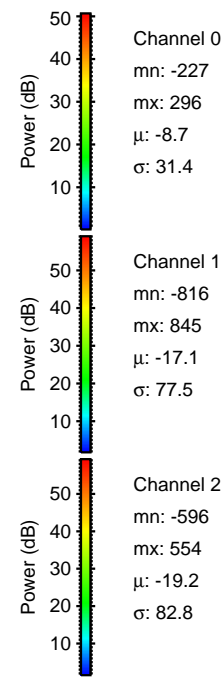
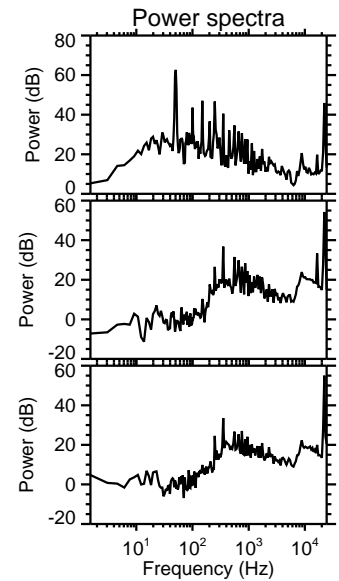
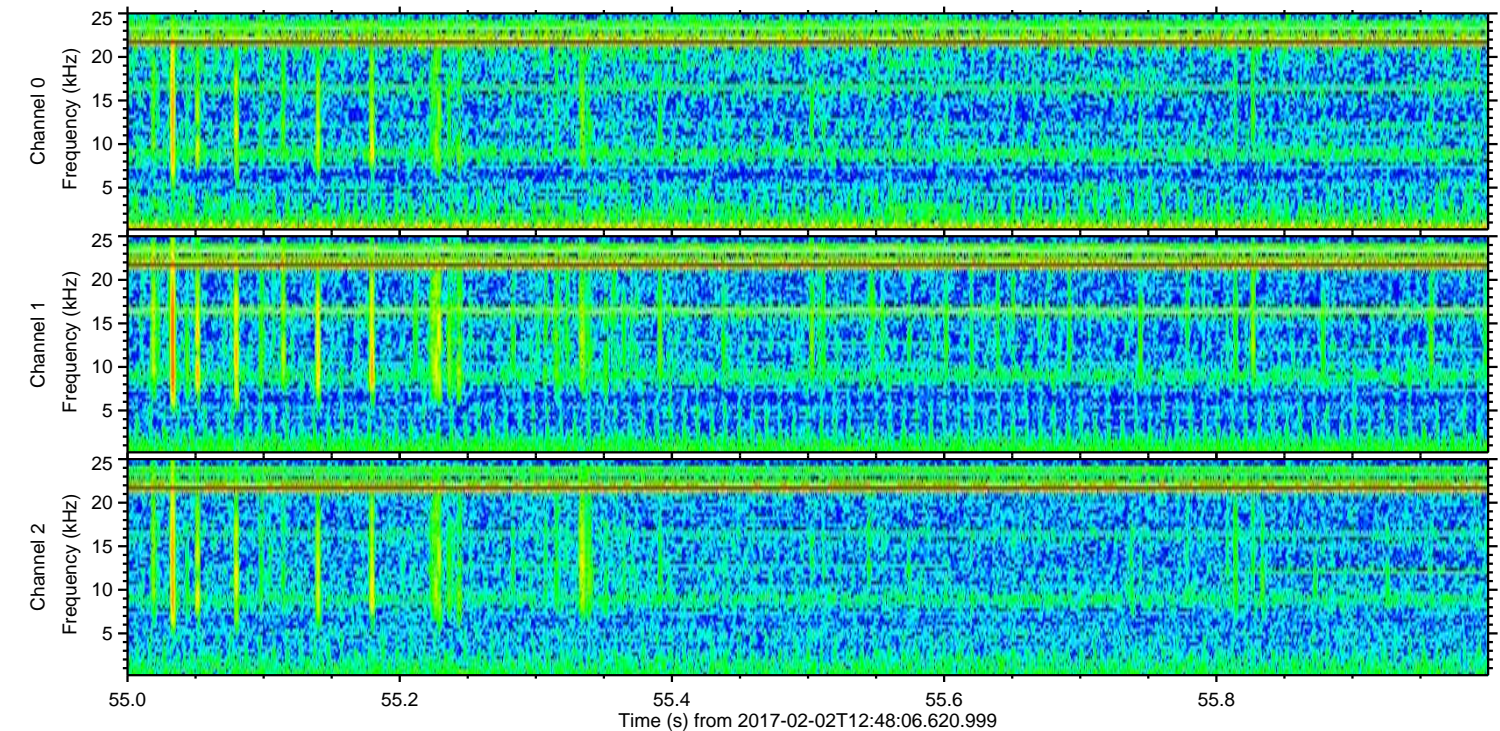
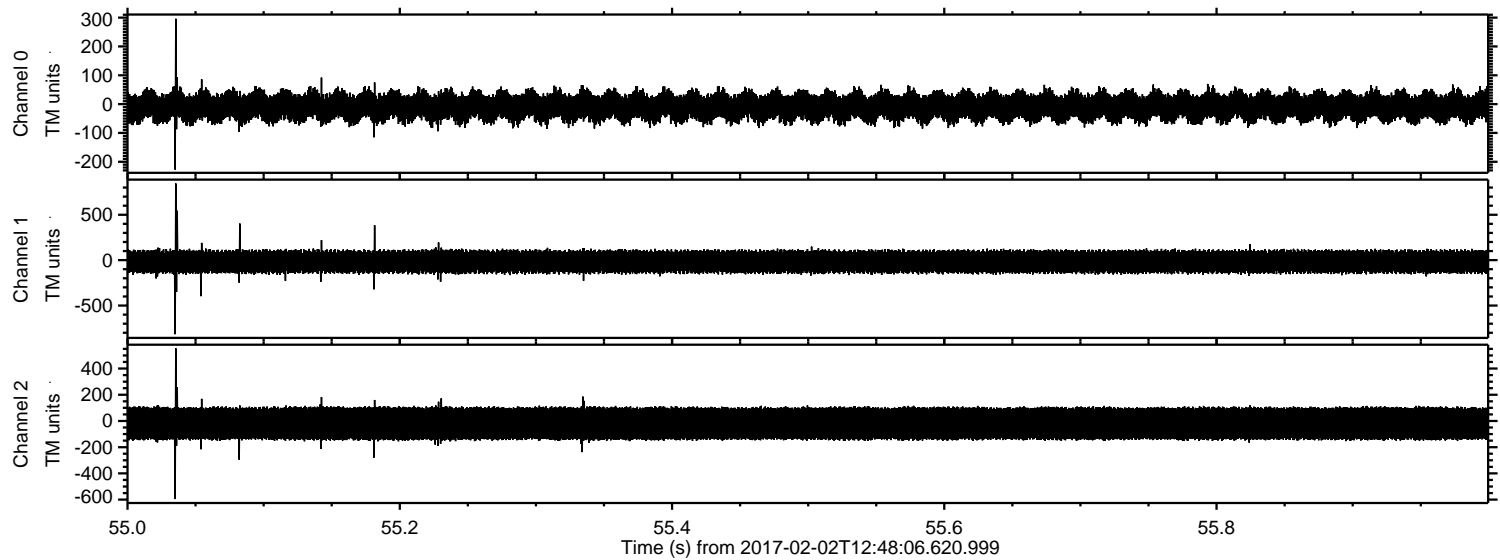
Channel 0  
mn: -214  
mx: 229  
 $\mu$ : -8.7  
 $\sigma$ : 31.2

Channel 1  
mn: -803  
mx: 881  
 $\mu$ : -17.1  
 $\sigma$ : 78.3

Channel 2  
mn: -394  
mx: 617  
 $\mu$ : -19.1  
 $\sigma$ : 82.3

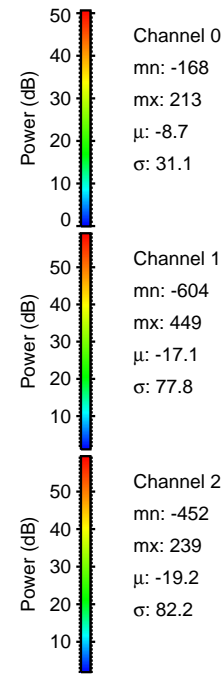
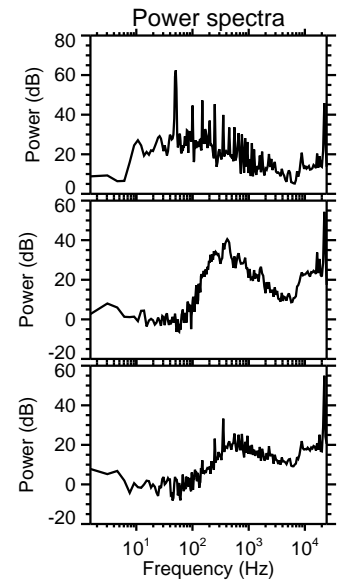
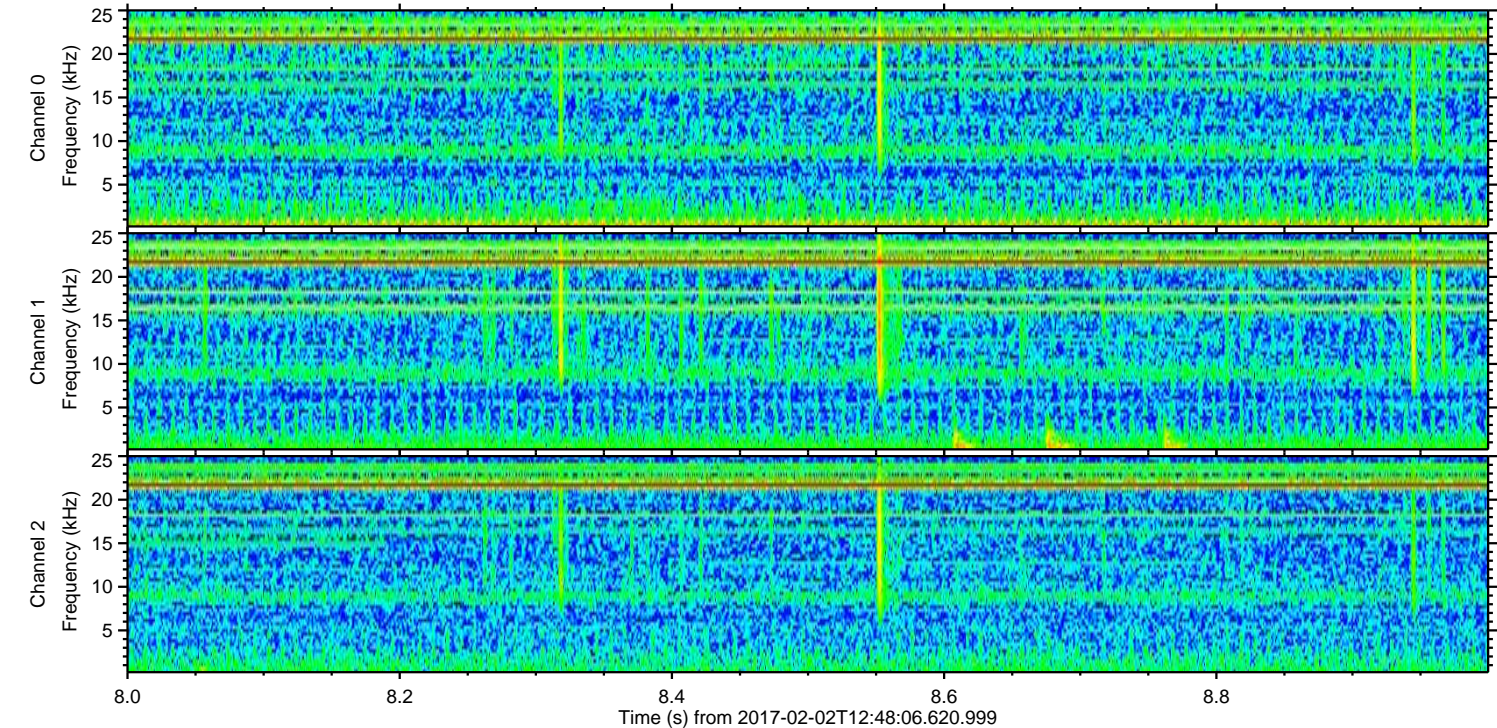
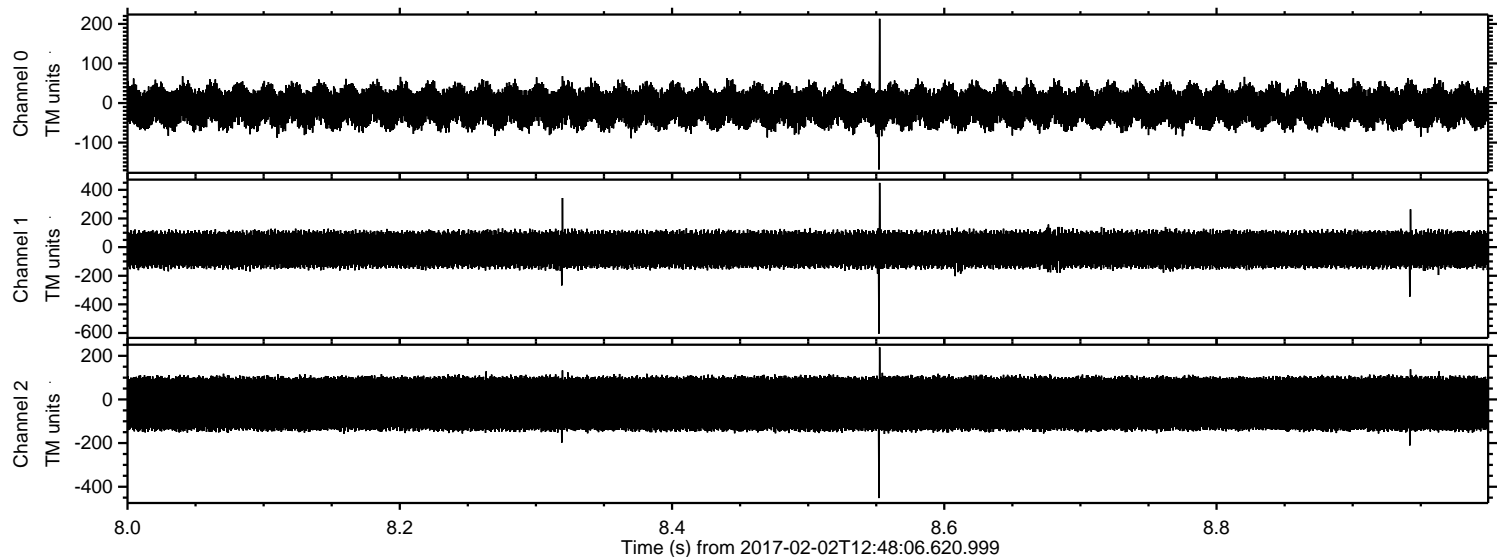


Processed Thu Feb 2 13:56:18 2017 by ELM ver.2012-10-06 from 001\_\_elm20170202\_124805\_\_dat00.bin





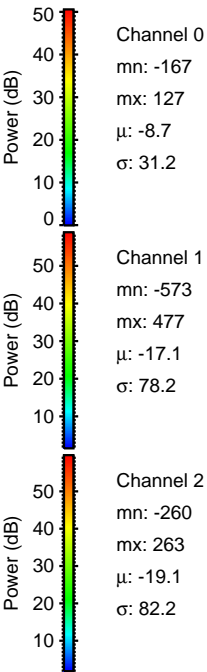
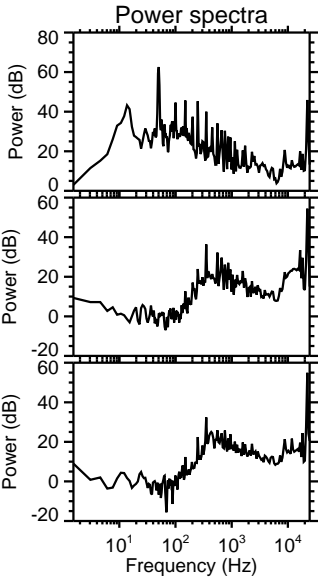
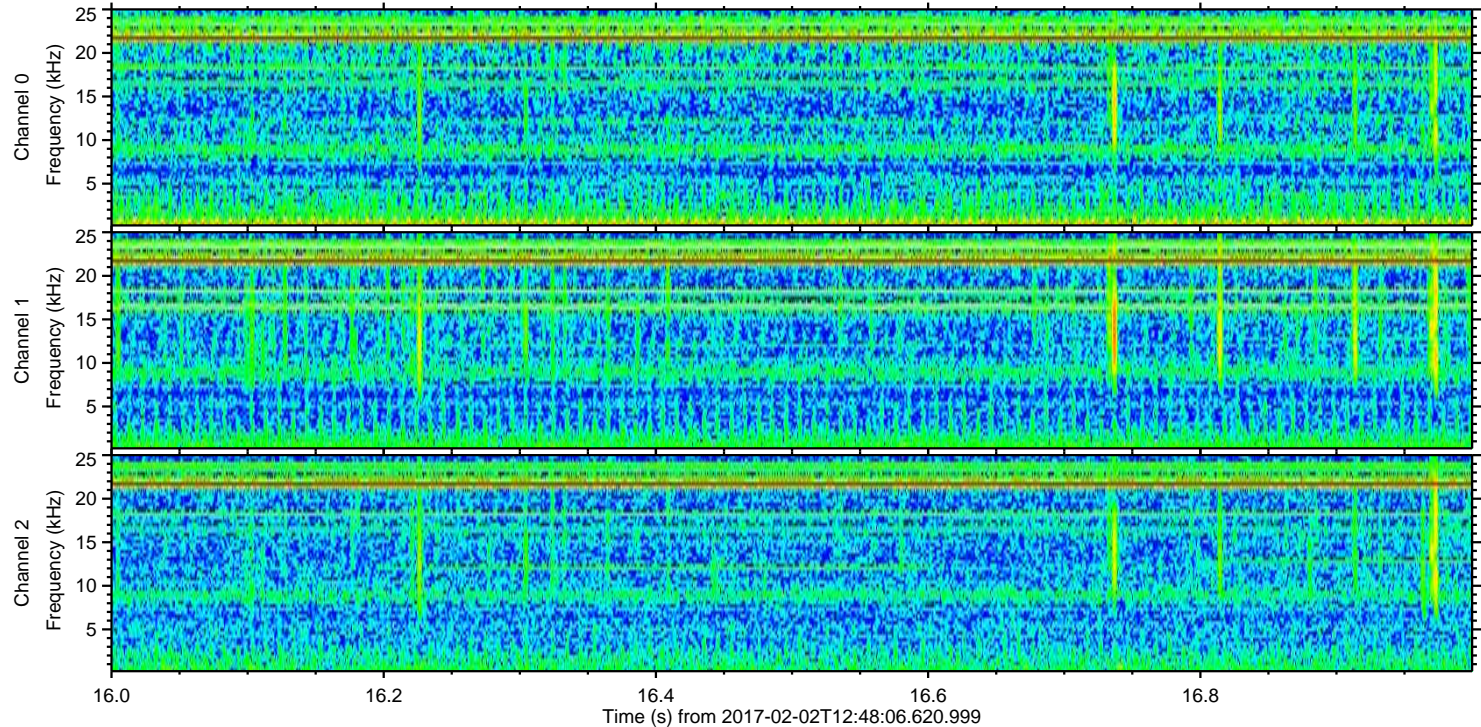
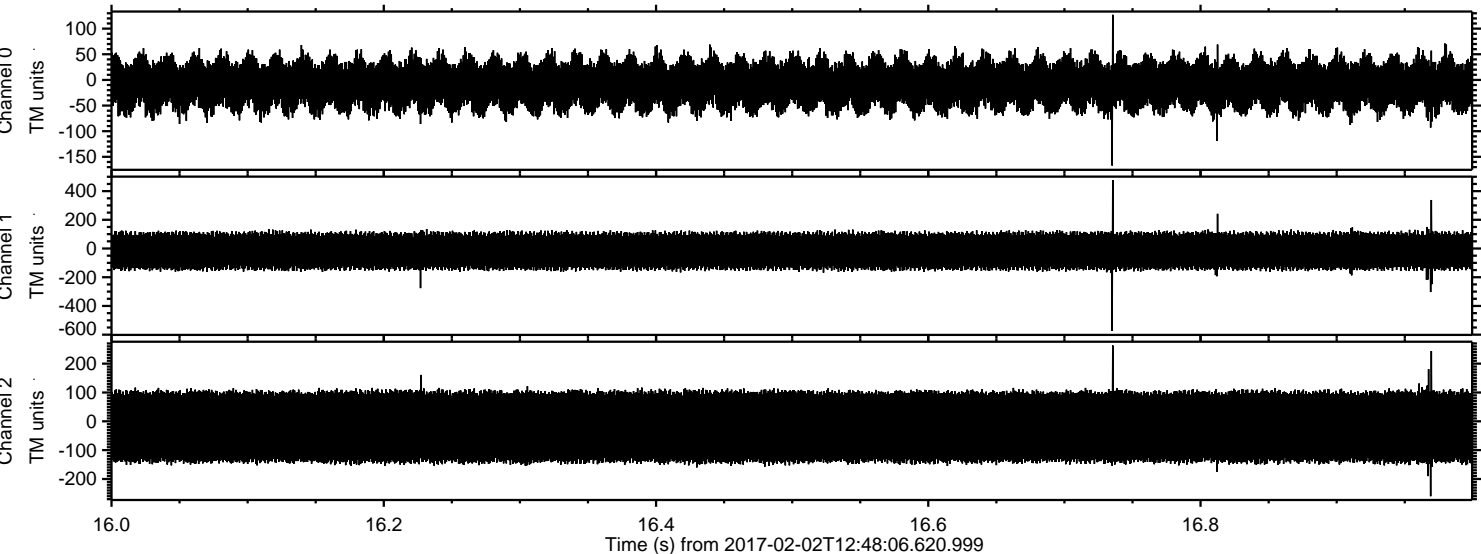
Processed Thu Feb 2 13:56:19 2017 by ELM ver.2012-10-06 from 001\_\_elm20170202\_124805\_\_dat00.bin





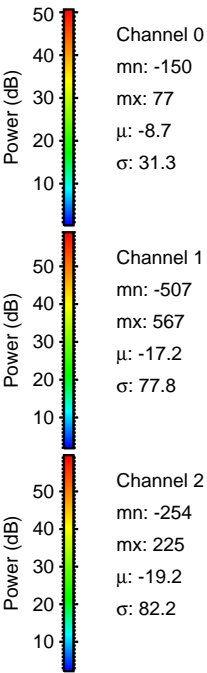
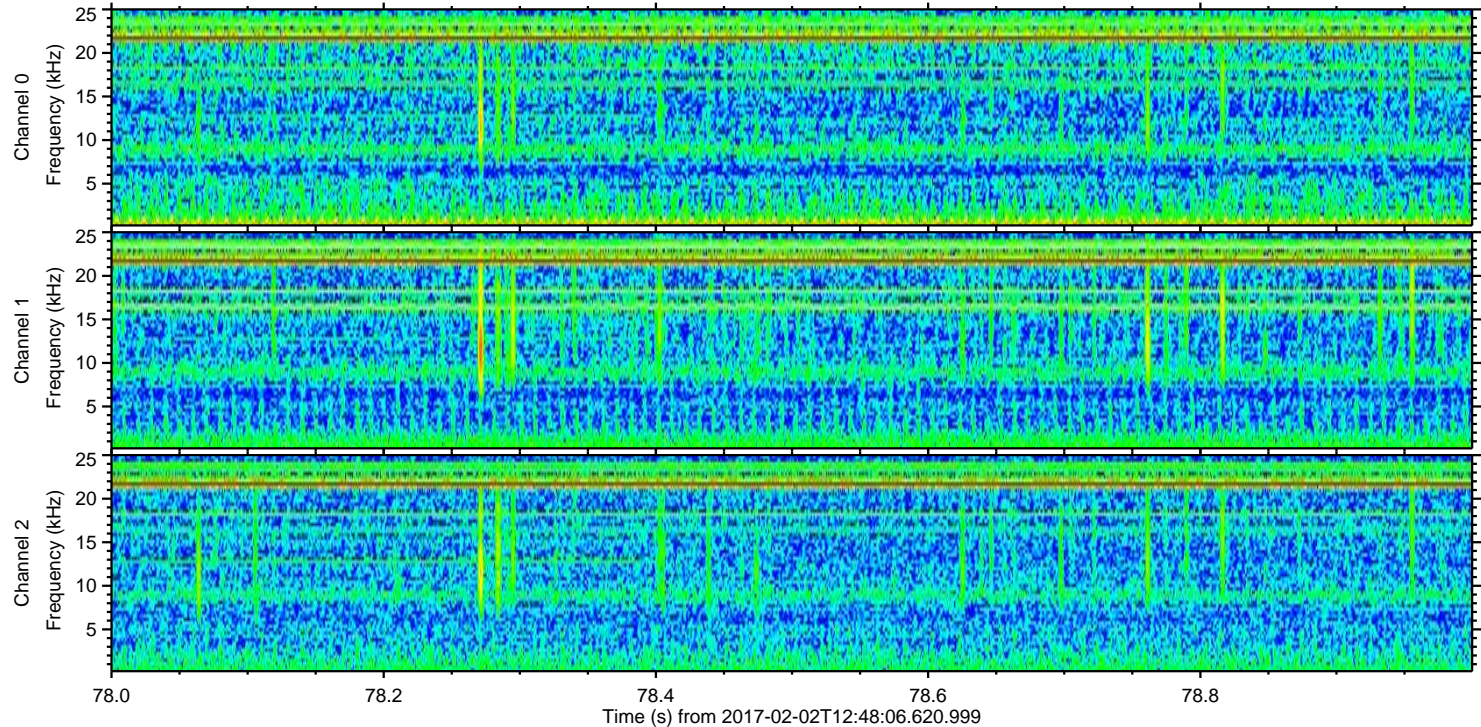
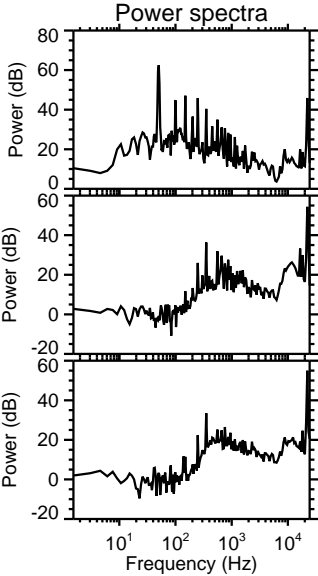
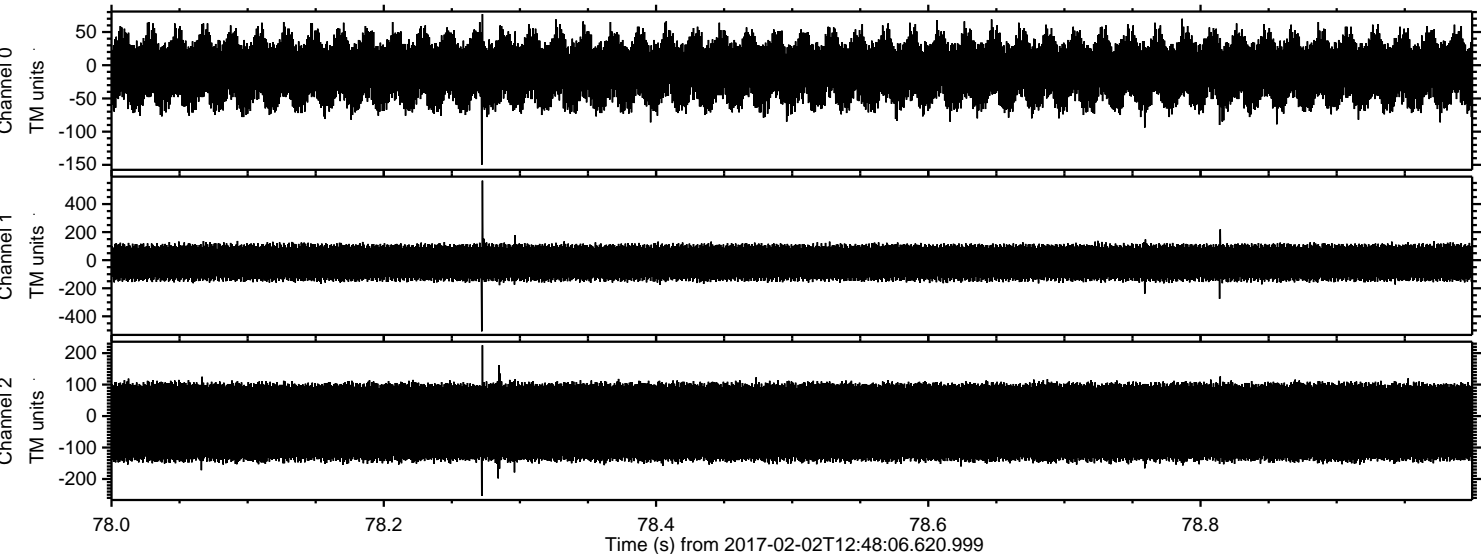
ELMAVAN 3D WAVEFORMS (Measured data sampled at 50 kHz) 51000 packets of 144 samples from 2017-02-02T12:48:06.620.999. Part 17/147

Processed Thu Feb 2 13:56:20 2017 by ELM ver.2012-10-06 from 001\_\_elm20170202\_124805\_\_dat00.bin



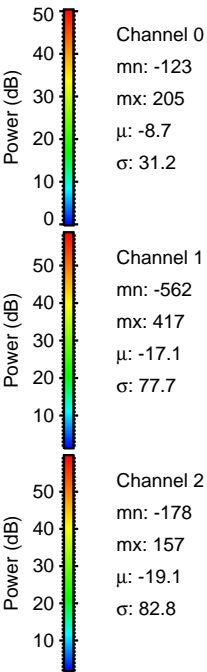
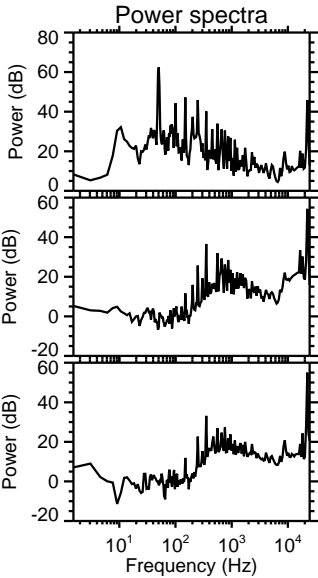
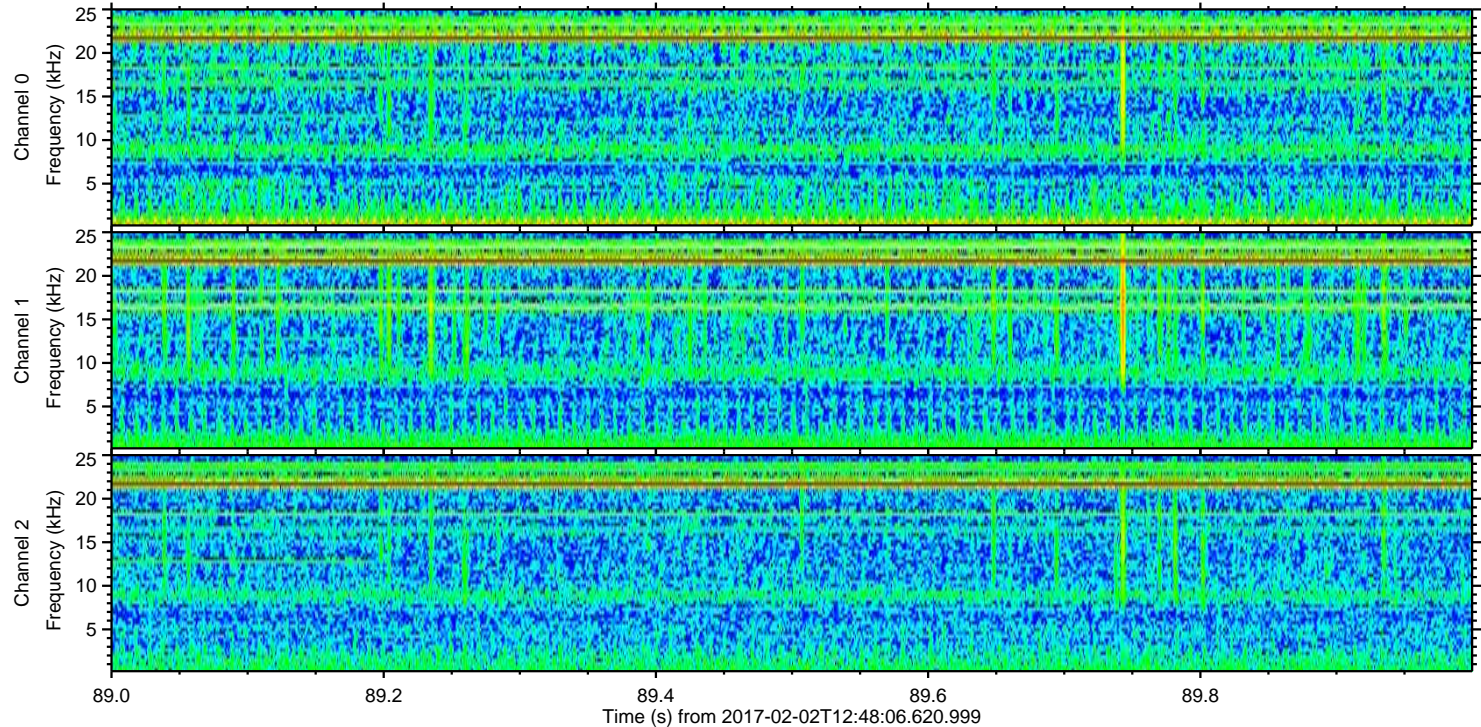
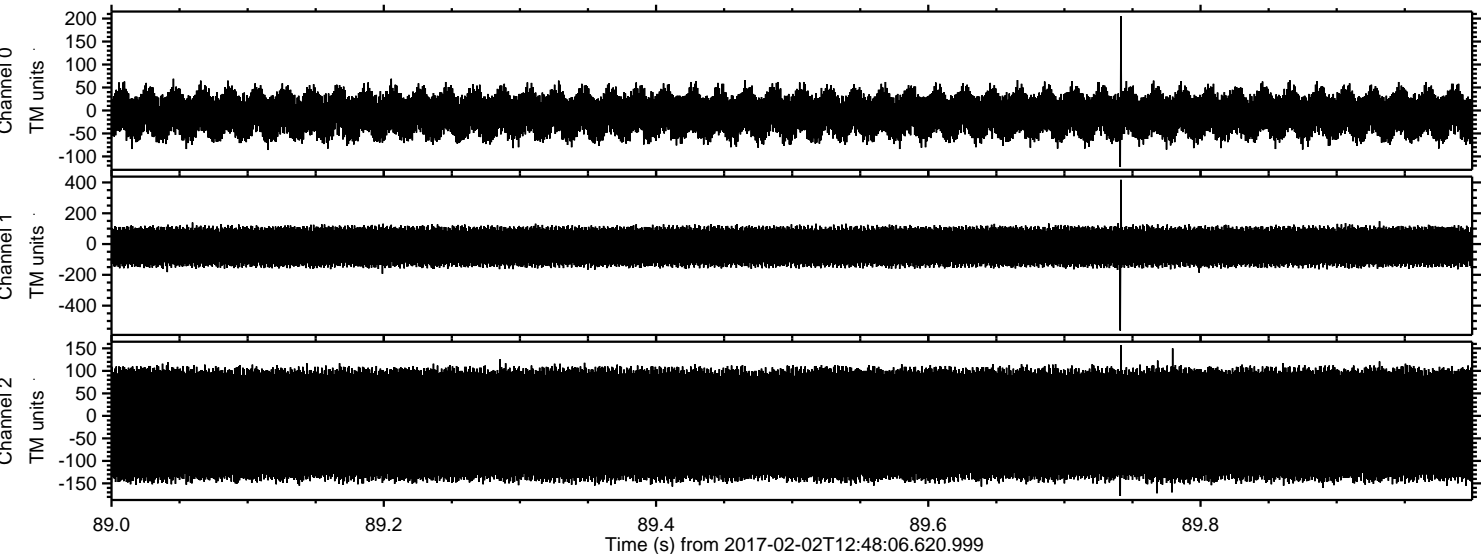


Processed Thu Feb 2 13:56:21 2017 by ELM ver.2012-10-06 from 001\_\_elm20170202\_124805\_\_dat00.bin



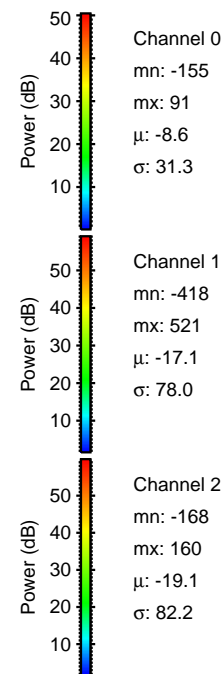
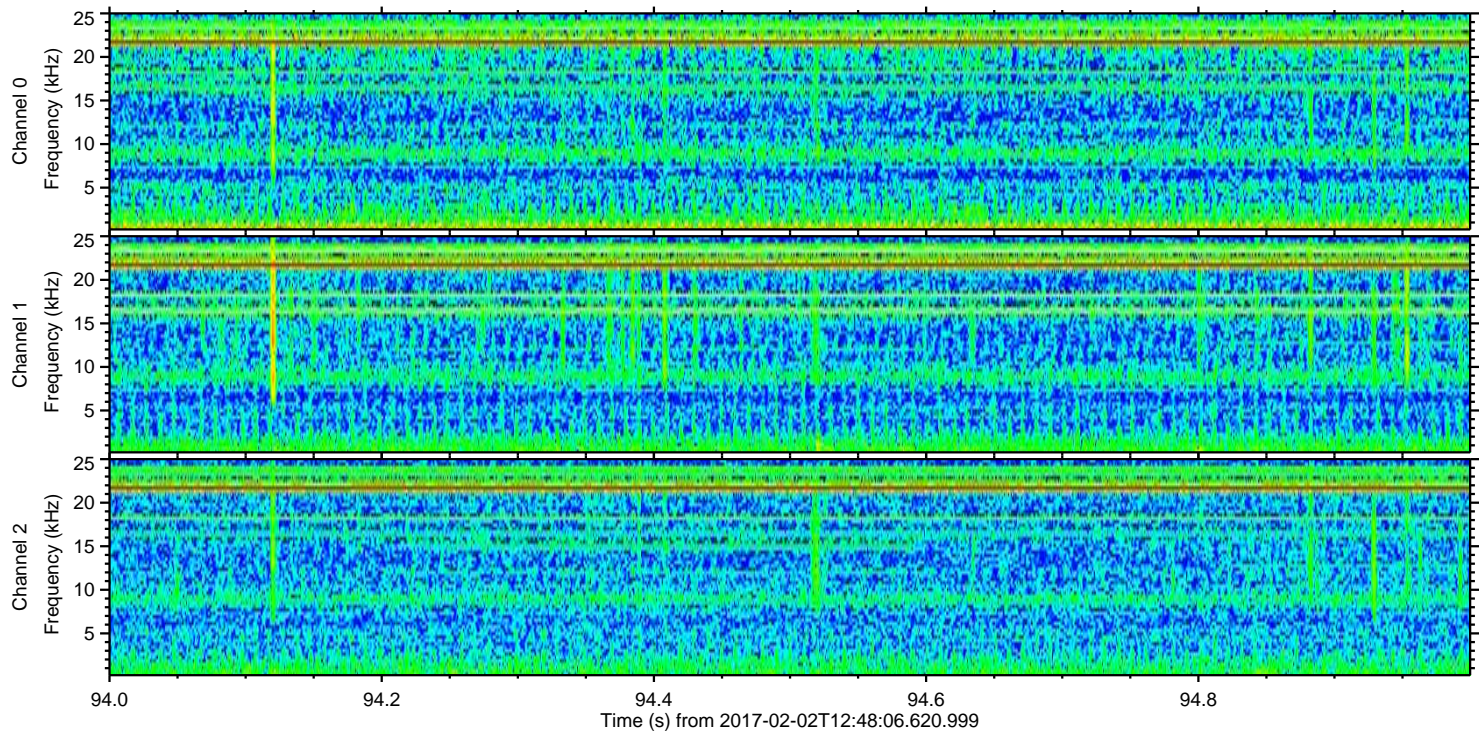
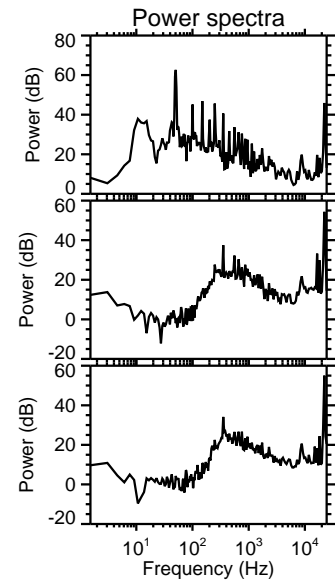
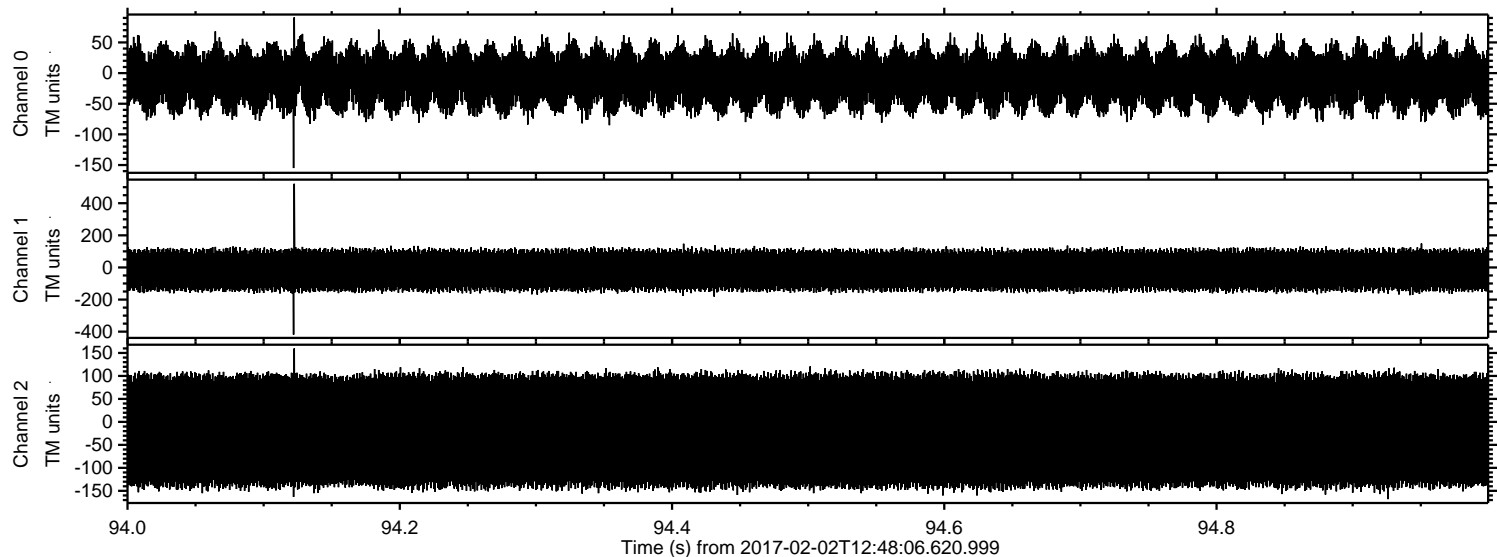


Processed Thu Feb 2 13:56:22 2017 by ELM ver.2012-10-06 from 001\_\_elm20170202\_124805\_\_dat00.bin





Processed Thu Feb 2 13:56:23 2017 by ELM ver.2012-10-06 from 001\_\_elm20170202\_124805\_\_dat00.bin





Processed Thu Feb 2 13:56:24 2017 by ELM ver.2012-10-06 from 001\_\_elm20170202\_124805\_\_dat00.bin

