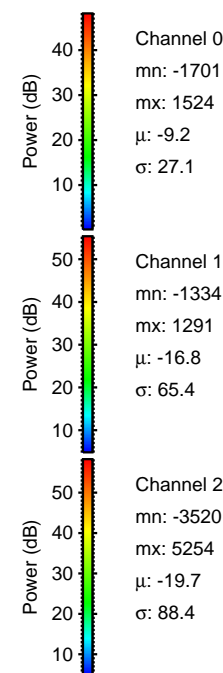
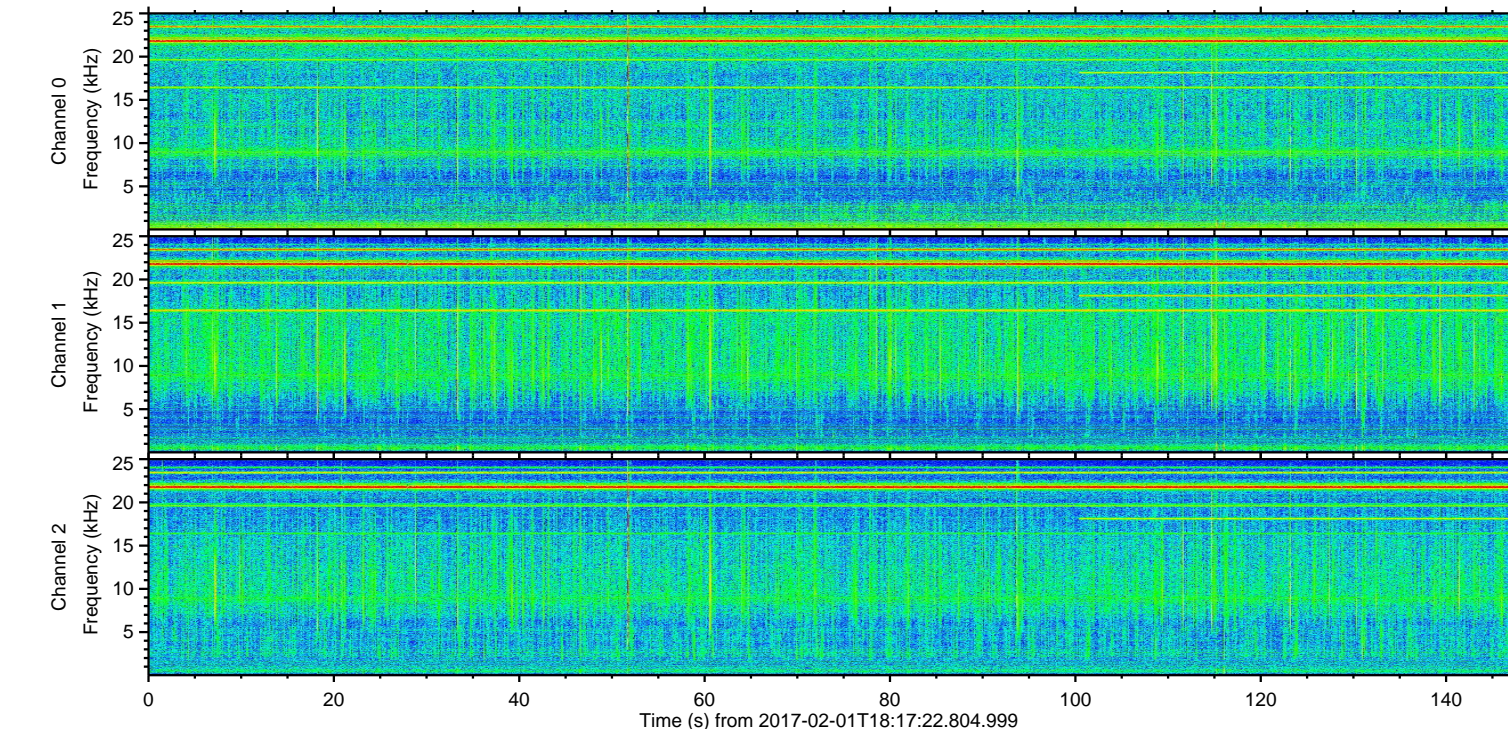
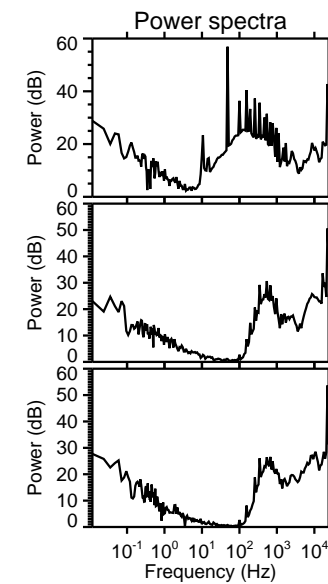
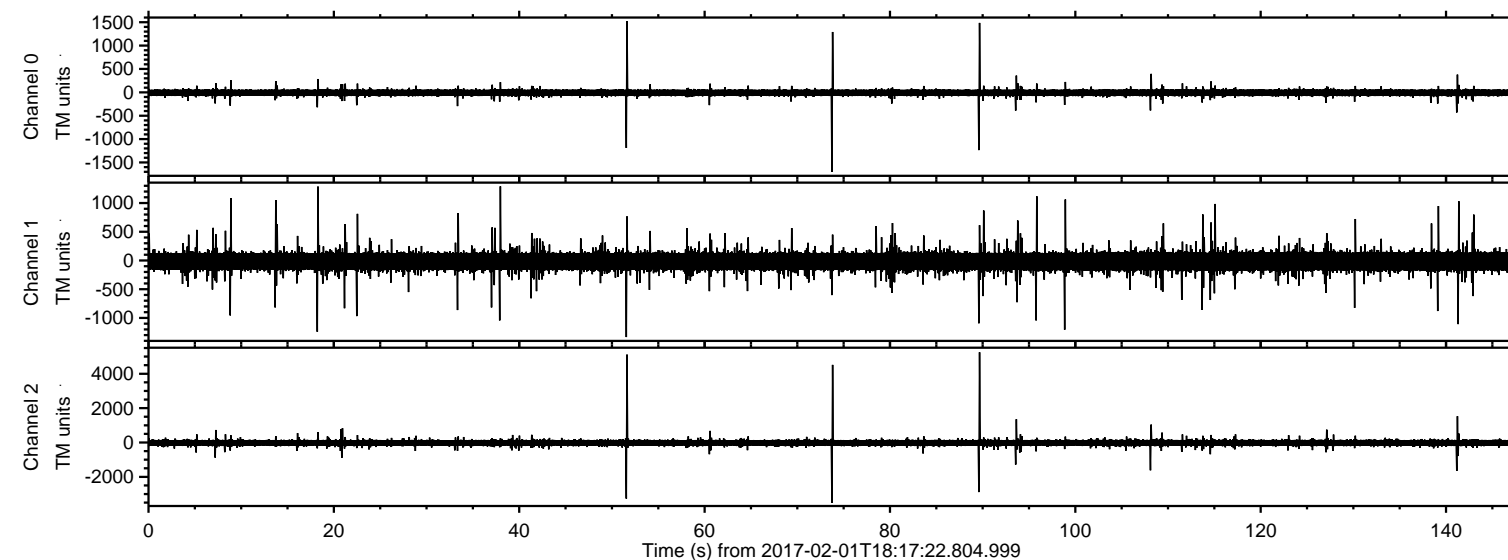


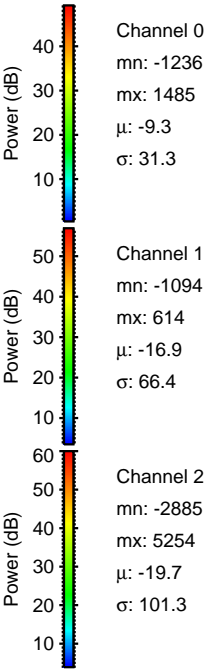
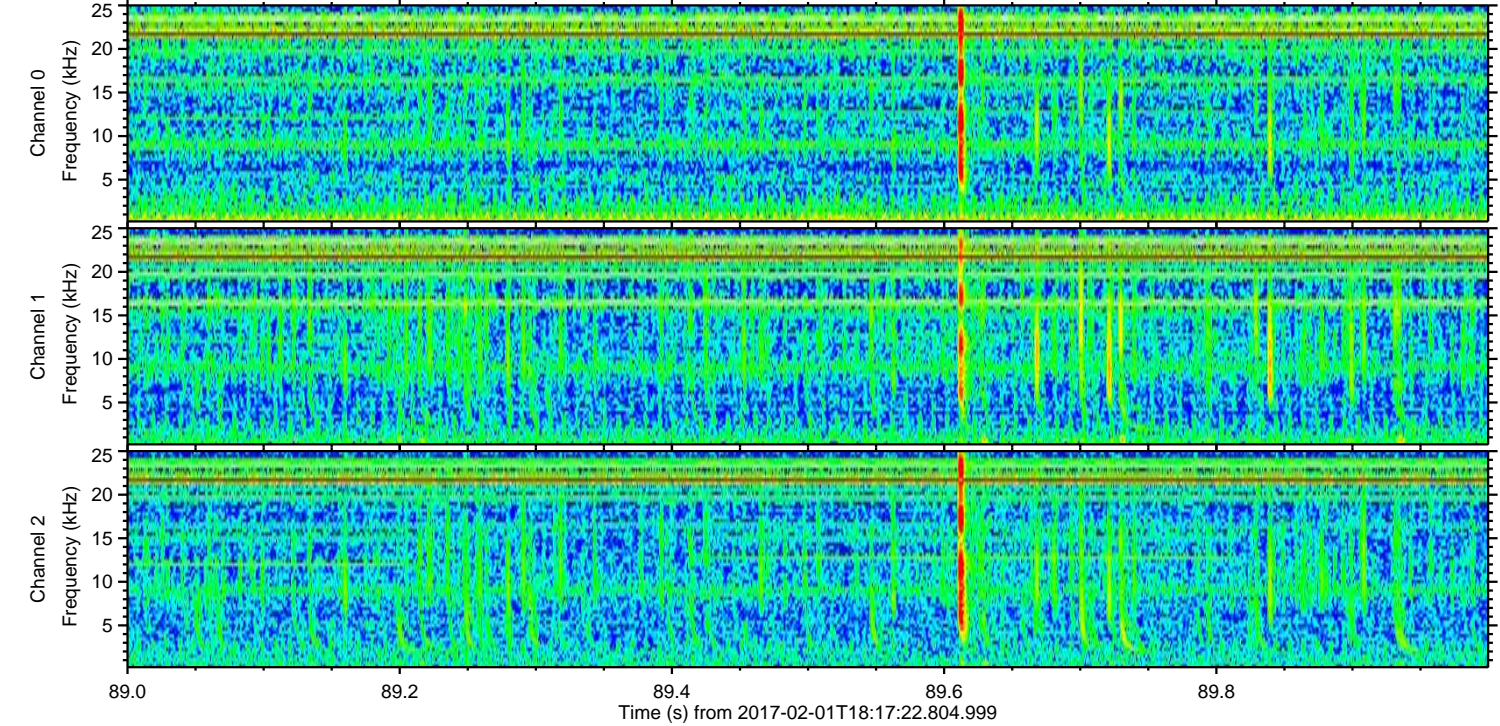
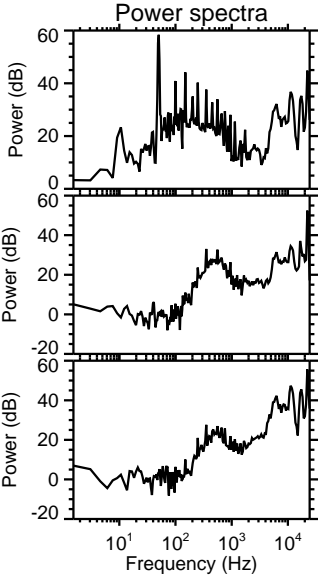
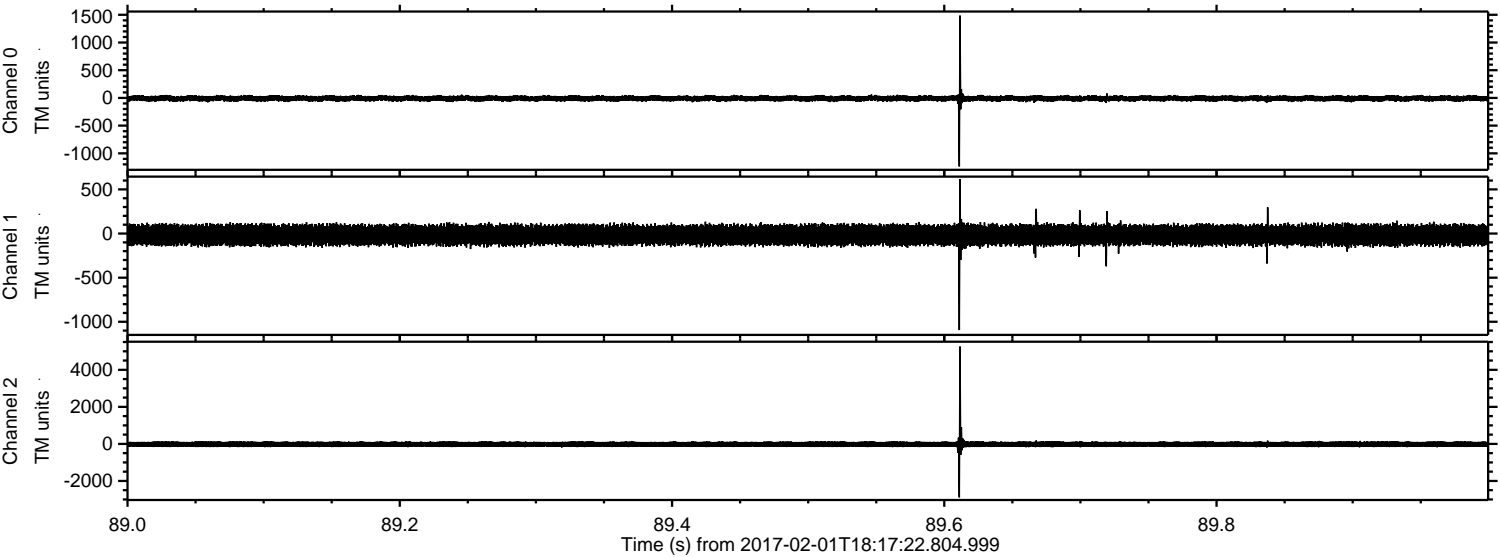
ELMAVAN 3D WAVEFORMS (Measured data sampled at 50 kHz) 51000 packets of 144 samples from 2017-02-01T18:17:22.804.999.

Processed Wed Feb 1 19:25:18 2017 by ELM ver.2012-10-06 from 001__elm20170201_181721__dat00.bin



ELMAVAN 3D WAVEFORMS (Measured data sampled at 50 kHz) 51000 packets of 144 samples from 2017-02-01T18:17:22.804.999. Part 90/147

Processed Wed Feb 1 19:25:29 2017 by ELM ver.2012-10-06 from 001__elm20170201_181721__dat00.bin

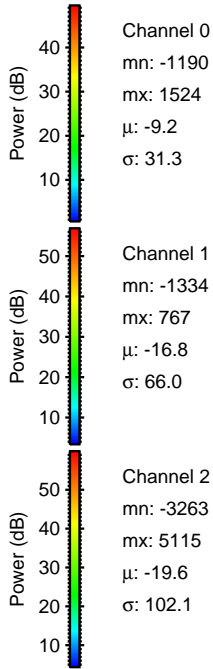
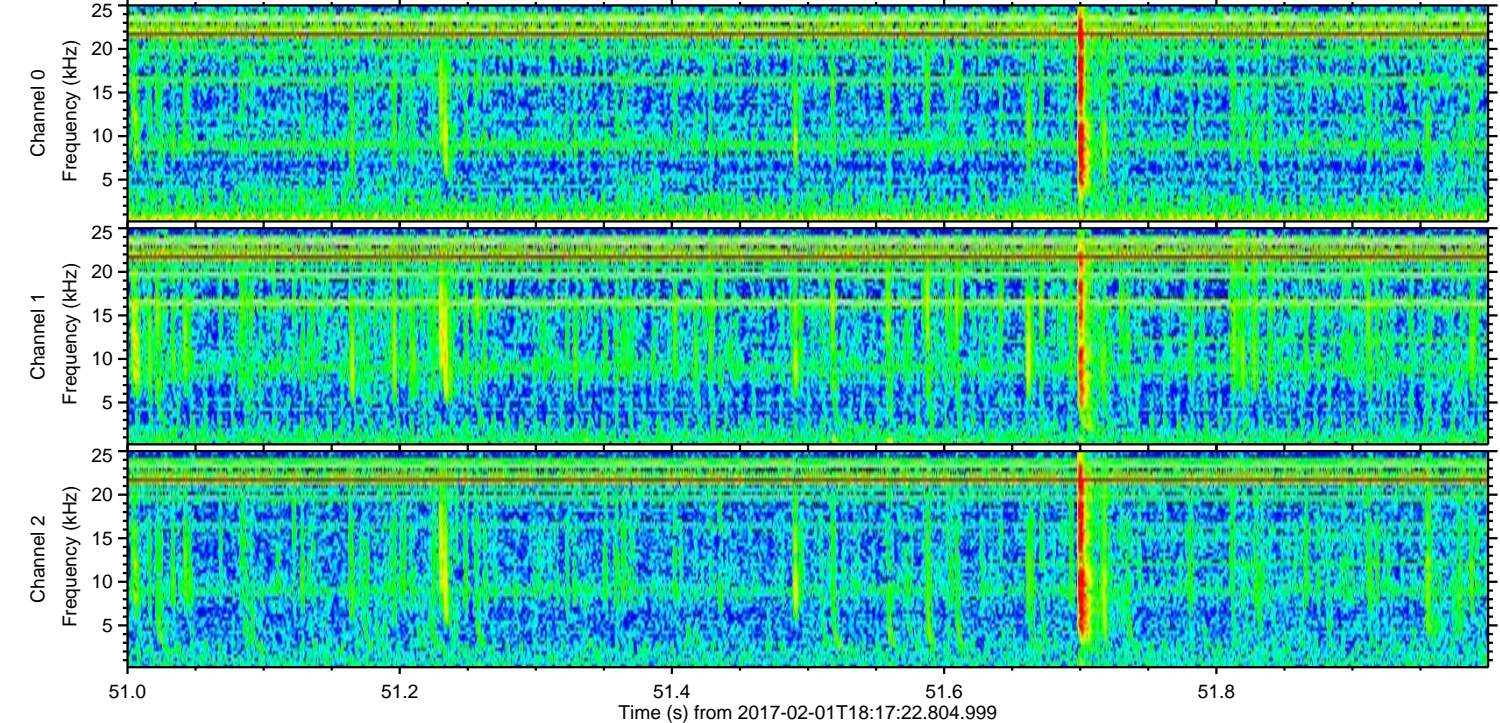
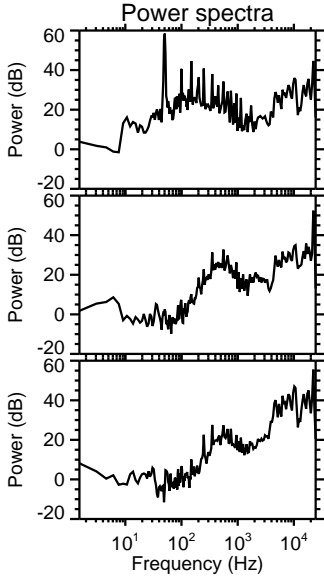
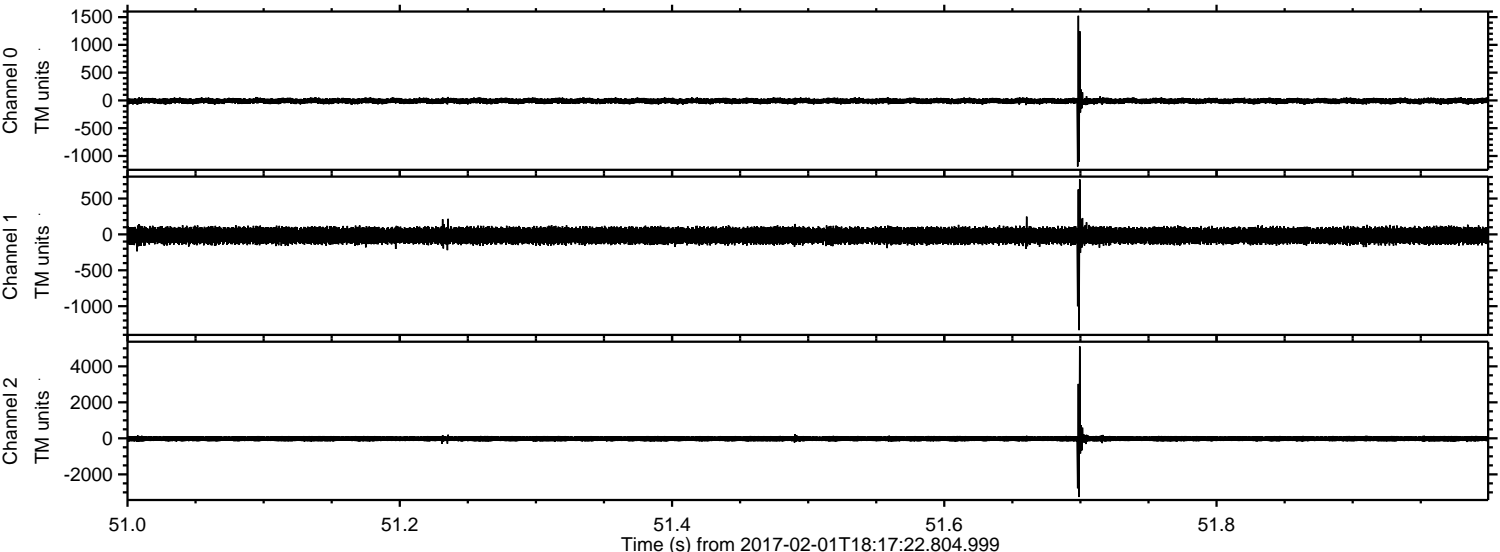


Channel 0
mn: -1236
mx: 1485
 μ : -9.3
 σ : 31.3

Channel 1
mn: -1094
mx: 614
 μ : -16.9
 σ : 66.4

Channel 2
mn: -2885
mx: 5254
 μ : -19.7
 σ : 101.3

Processed Wed Feb 1 19:25:30 2017 by ELM ver.2012-10-06 from 001__elm20170201_181721__dat00.bin



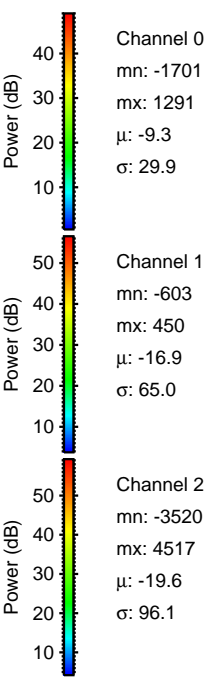
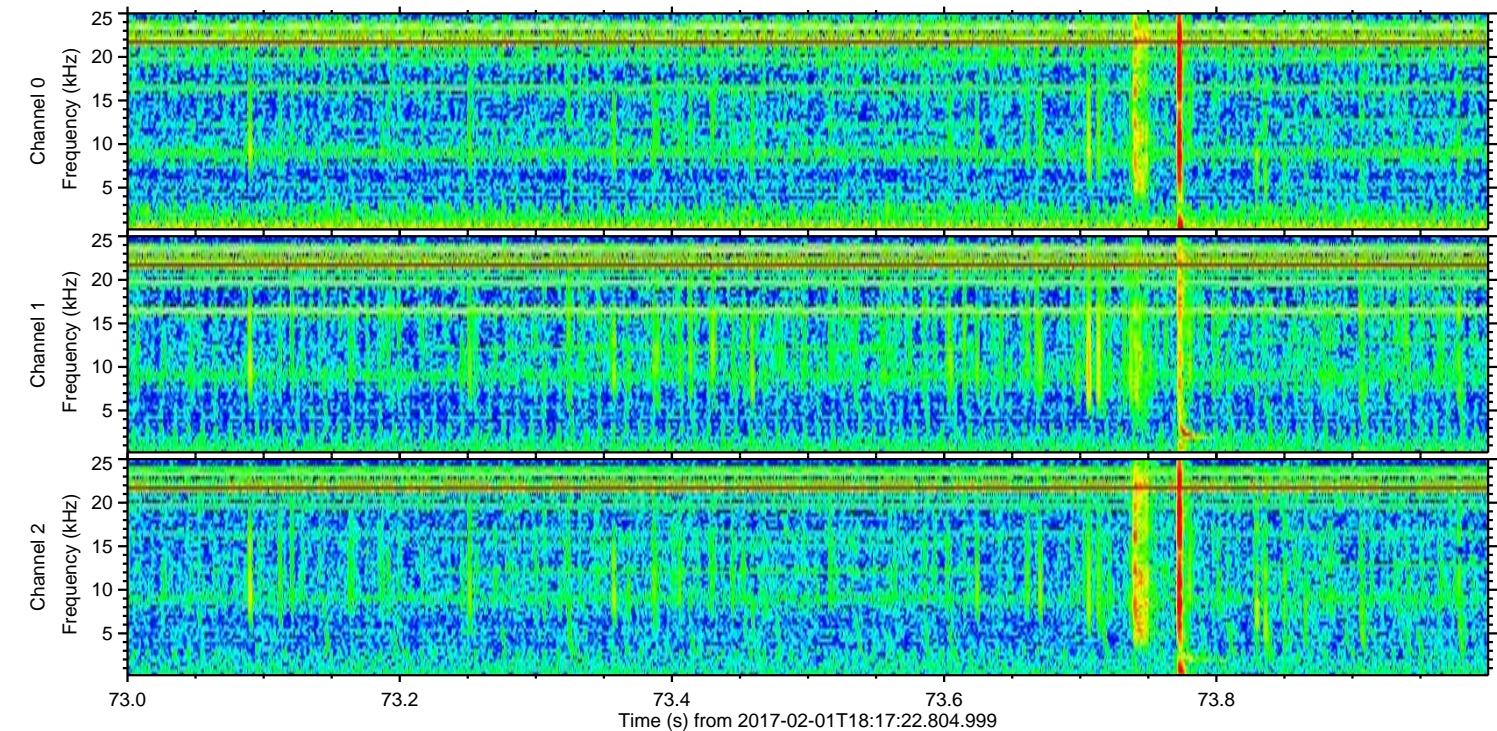
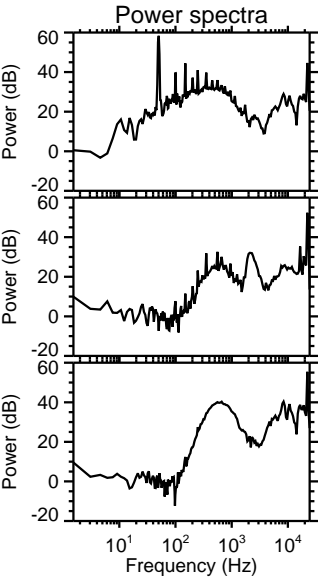
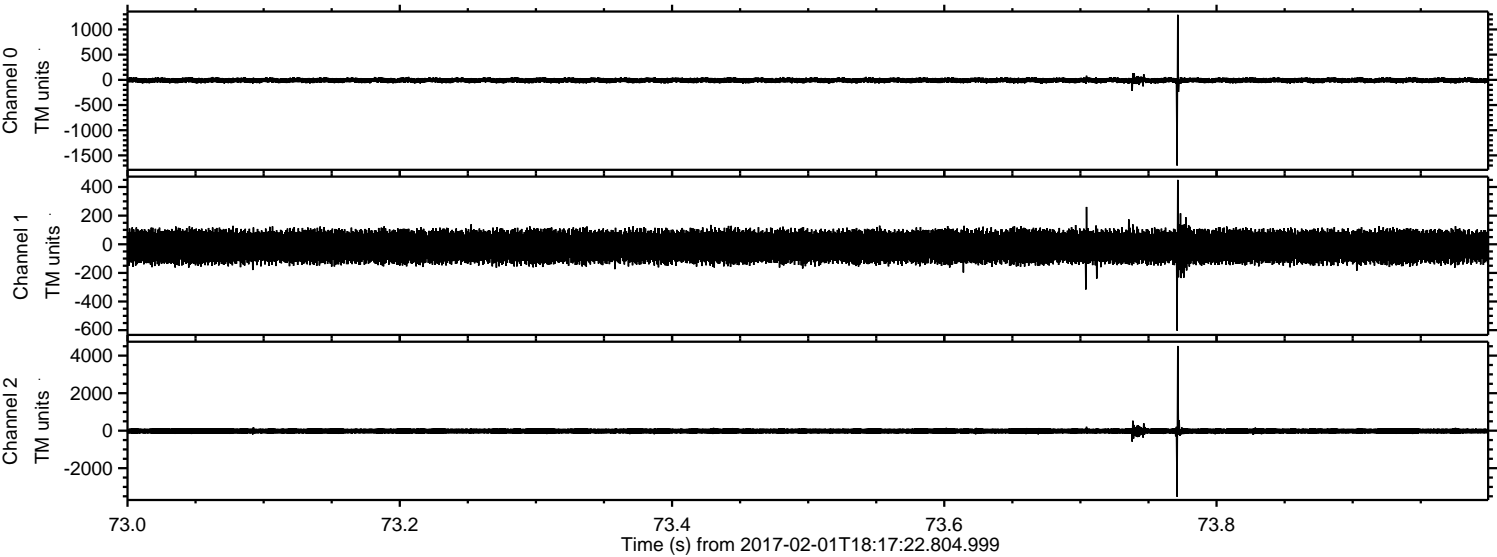
Channel 0
mn: -1190
mx: 1524
 μ : -9.2
 σ : 31.3

Channel 1
mn: -1334
mx: 767
 μ : -16.8
 σ : 66.0

Channel 2
mn: -3263
mx: 5115
 μ : -19.6
 σ : 102.1

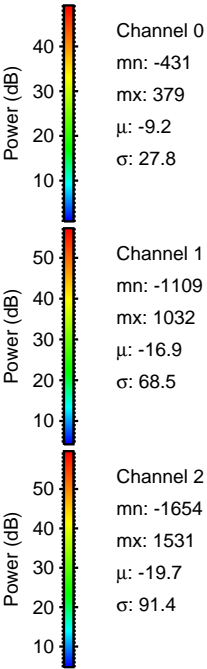
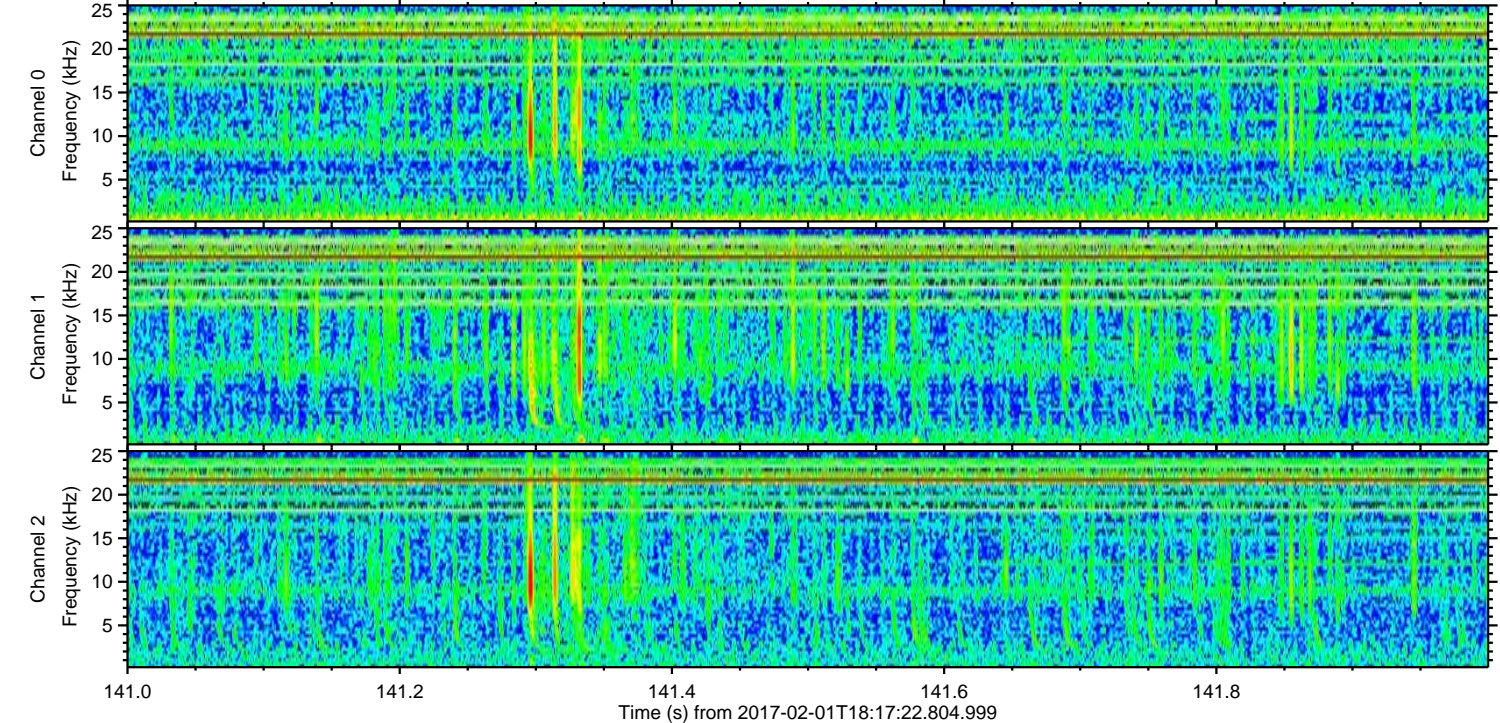
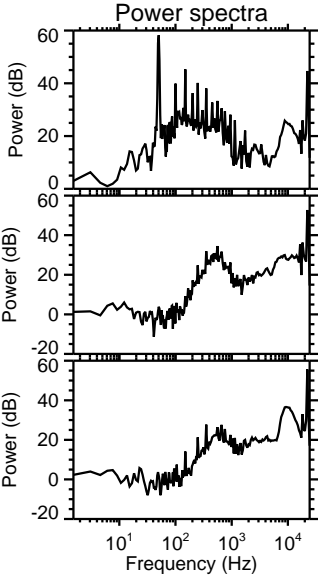
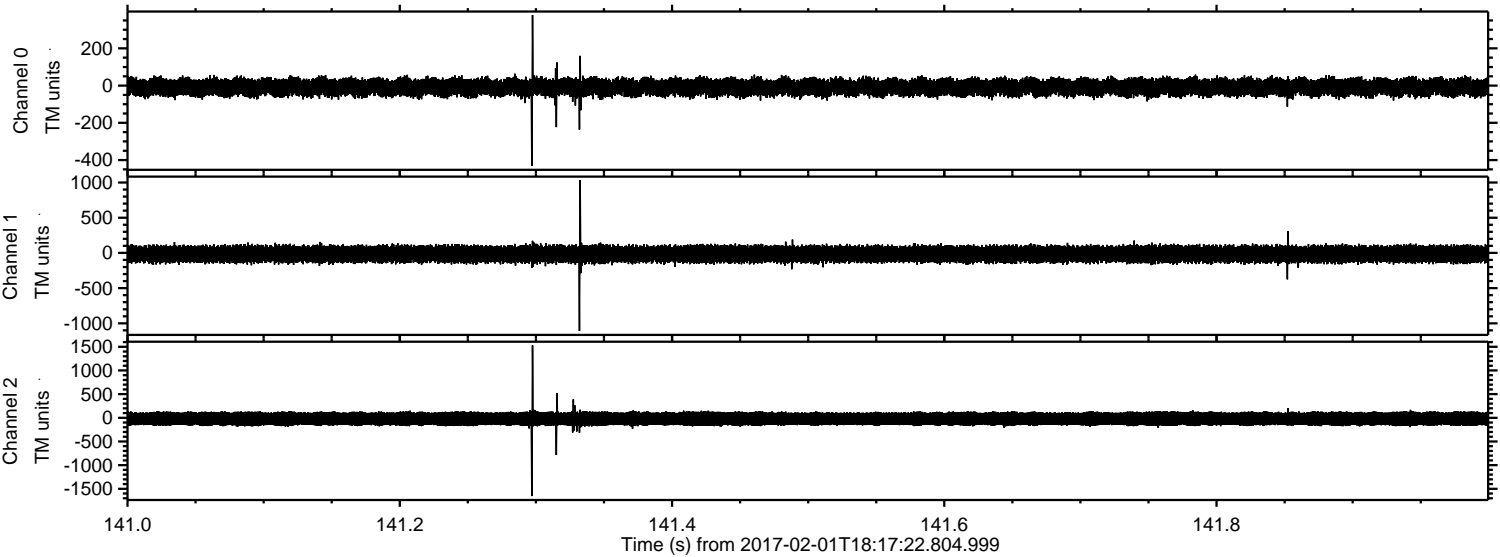
ELMAVAN 3D WAVEFORMS (Measured data sampled at 50 kHz) 51000 packets of 144 samples from 2017-02-01T18:17:22.804.999. Part 74/147

Processed Wed Feb 1 19:25:31 2017 by ELM ver.2012-10-06 from 001__elm20170201_181721__dat00.bin



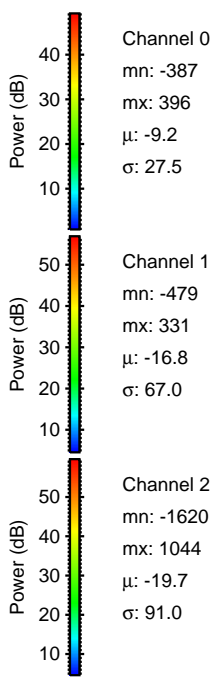
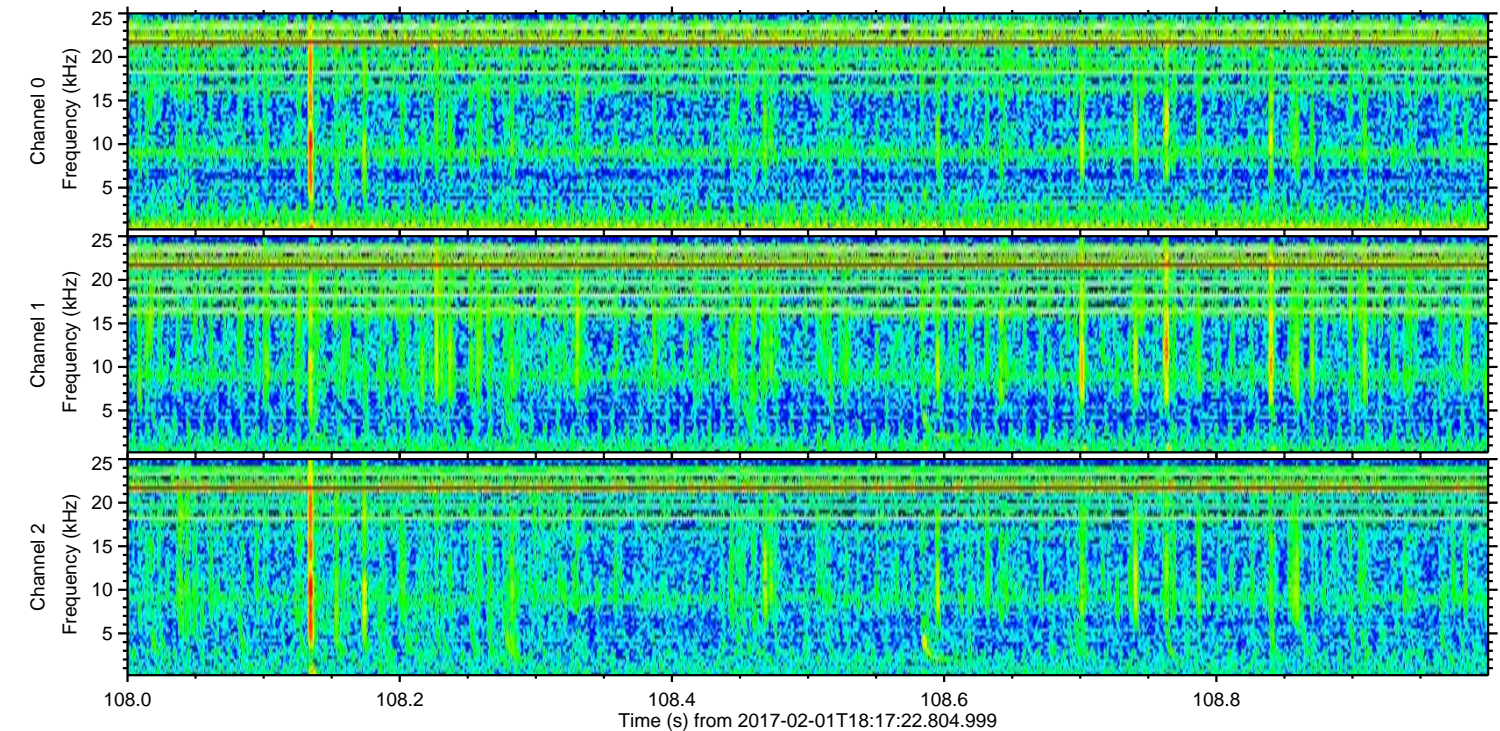
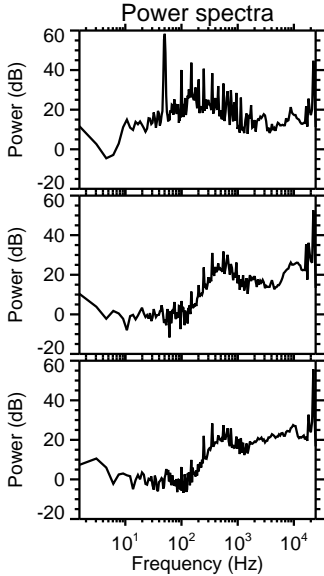
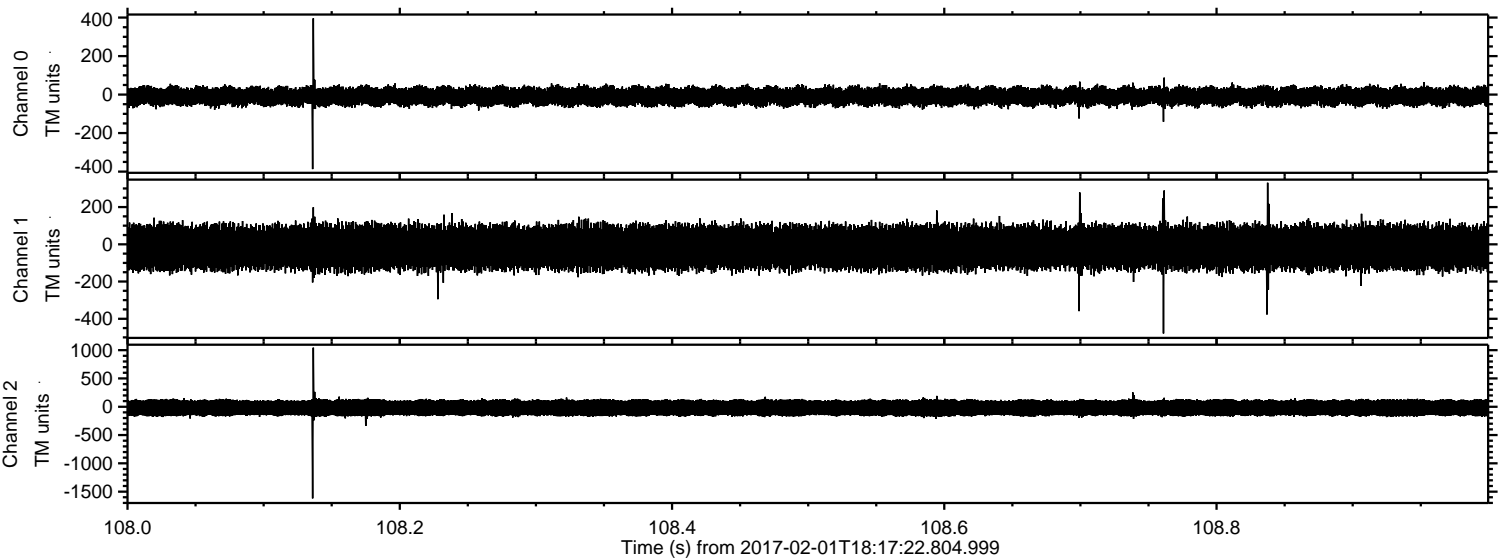
ELMAVAN 3D WAVEFORMS (Measured data sampled at 50 kHz) 51000 packets of 144 samples from 2017-02-01T18:17:22.804.999. Part 142/147

Processed Wed Feb 1 19:25:32 2017 by ELM ver.2012-10-06 from 001__elm20170201_181721__dat00.bin



ELMAVAN 3D WAVEFORMS (Measured data sampled at 50 kHz) 51000 packets of 144 samples from 2017-02-01T18:17:22.804.999. Part 109/147

Processed Wed Feb 1 19:25:33 2017 by ELM ver.2012-10-06 from 001__elm20170201_181721__dat00.bin



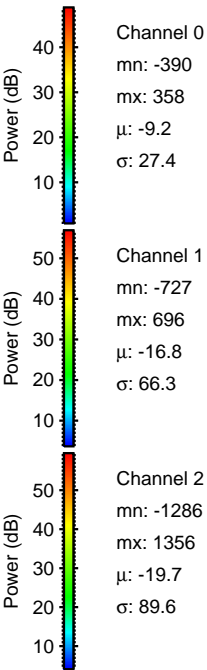
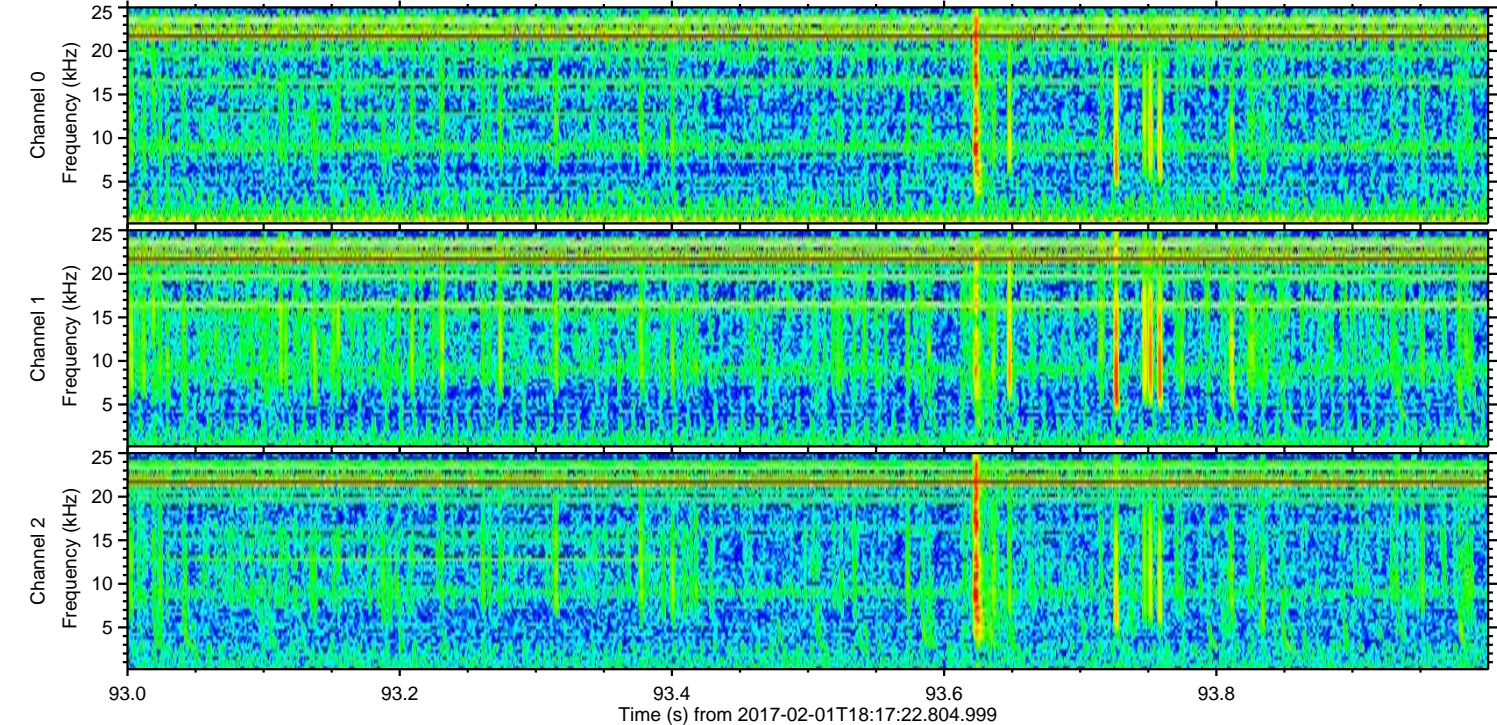
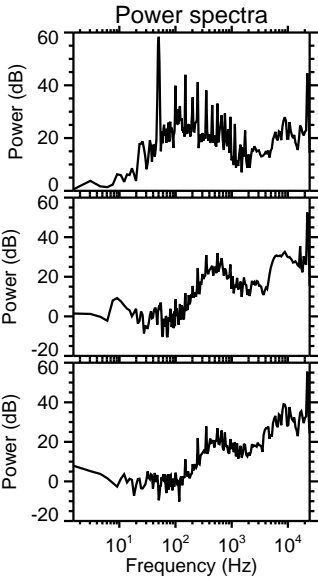
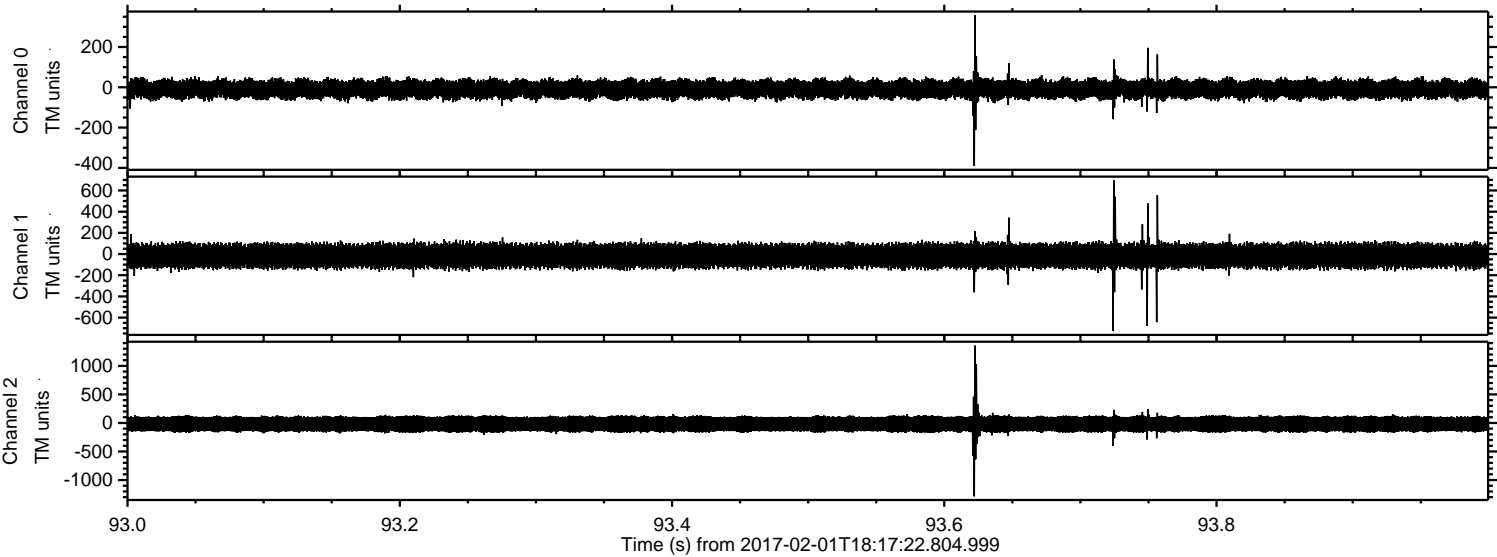
Channel 0
mn: -387
mx: 396
 μ : -9.2
 σ : 27.5

Channel 1
mn: -479
mx: 331
 μ : -16.8
 σ : 67.0

Channel 2
mn: -1620
mx: 1044
 μ : -19.7
 σ : 91.0

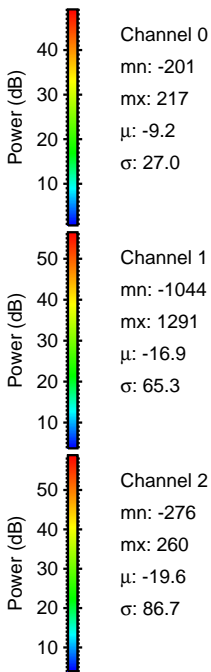
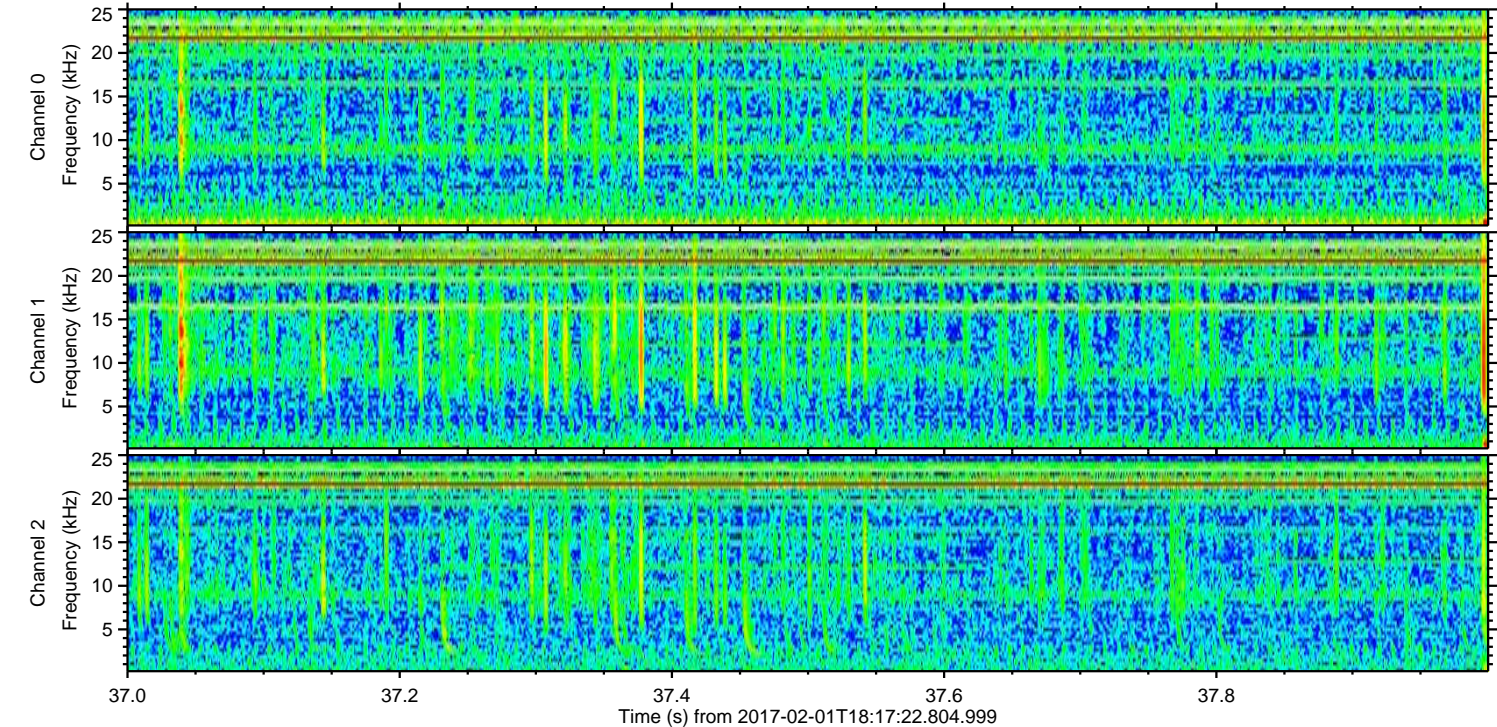
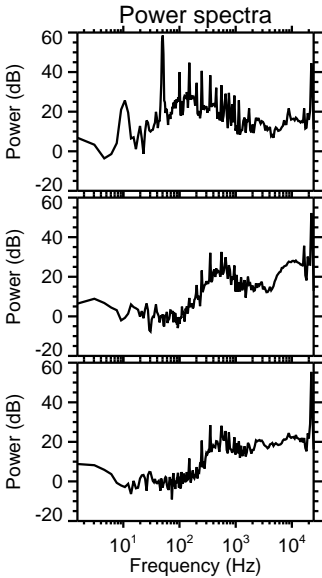
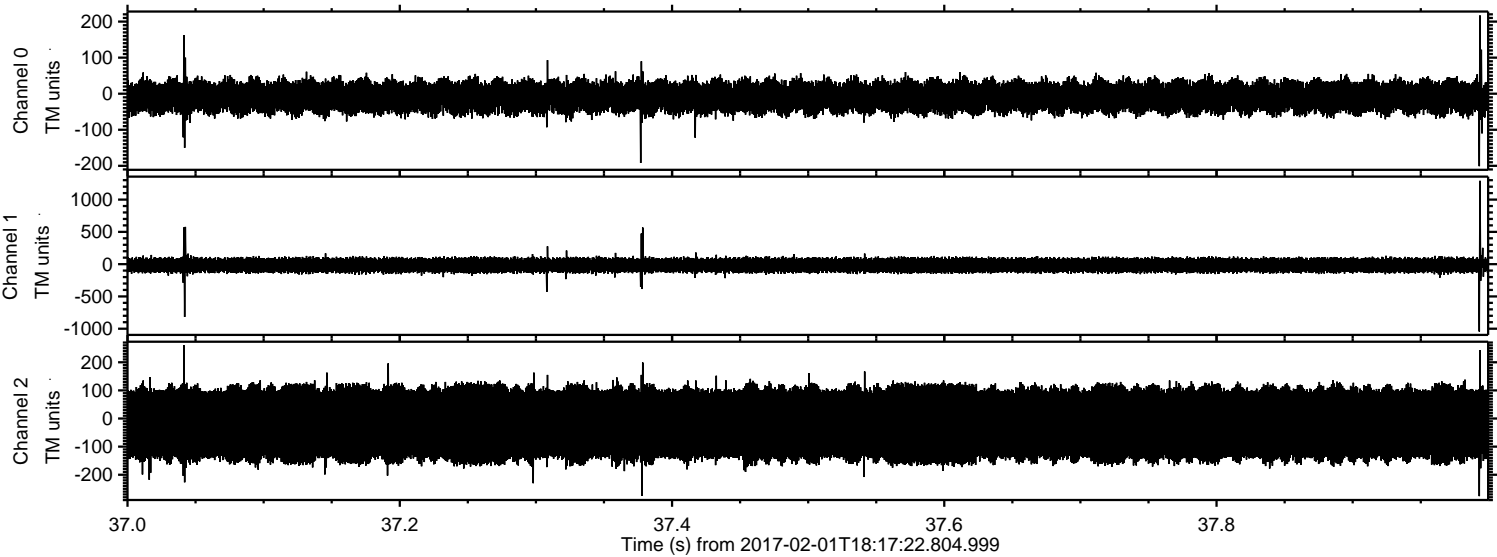
ELMAVAN 3D WAVEFORMS (Measured data sampled at 50 kHz) 51000 packets of 144 samples from 2017-02-01T18:17:22.804.999. Part 94/147

Processed Wed Feb 1 19:25:34 2017 by ELM ver.2012-10-06 from 001__elm20170201_181721__dat00.bin



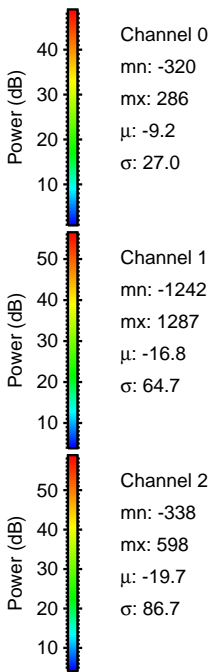
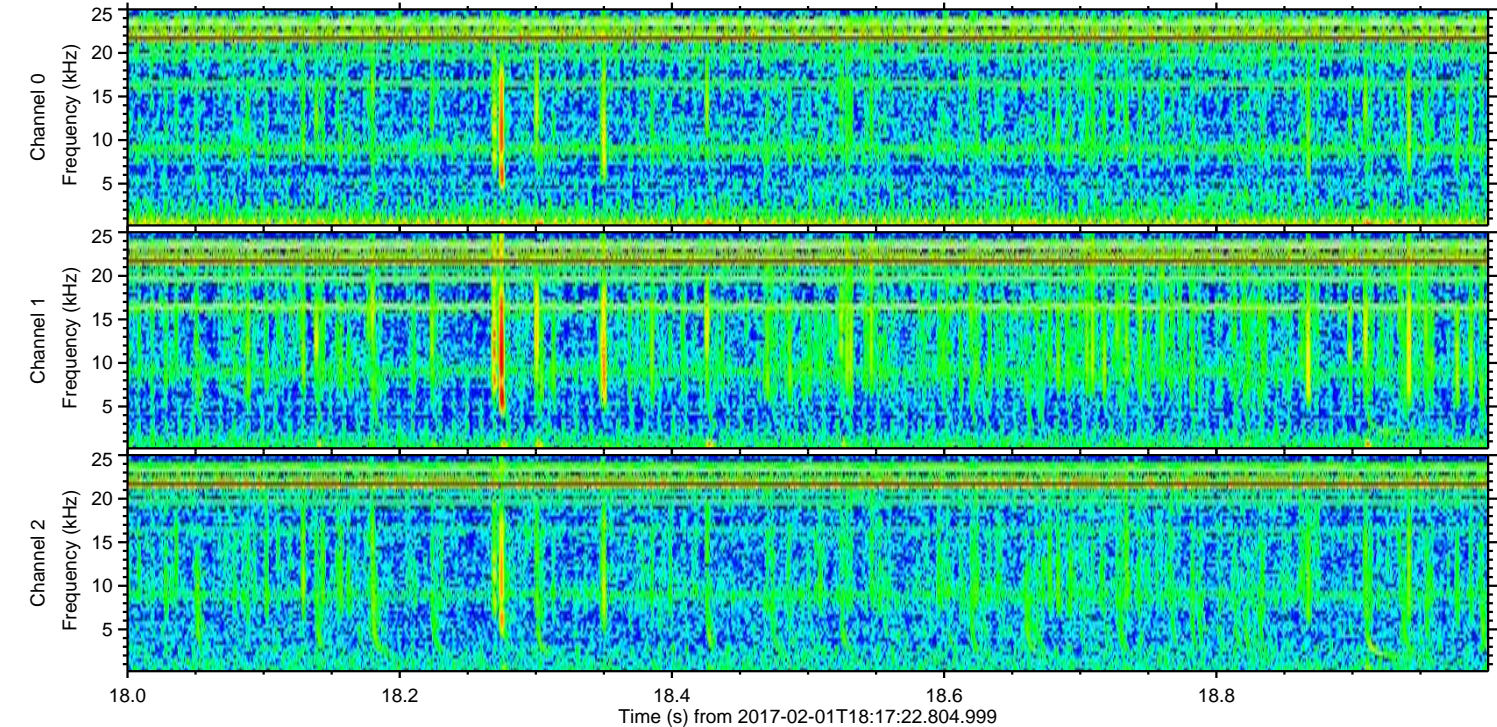
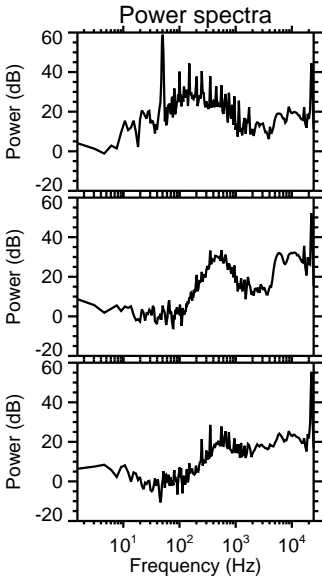
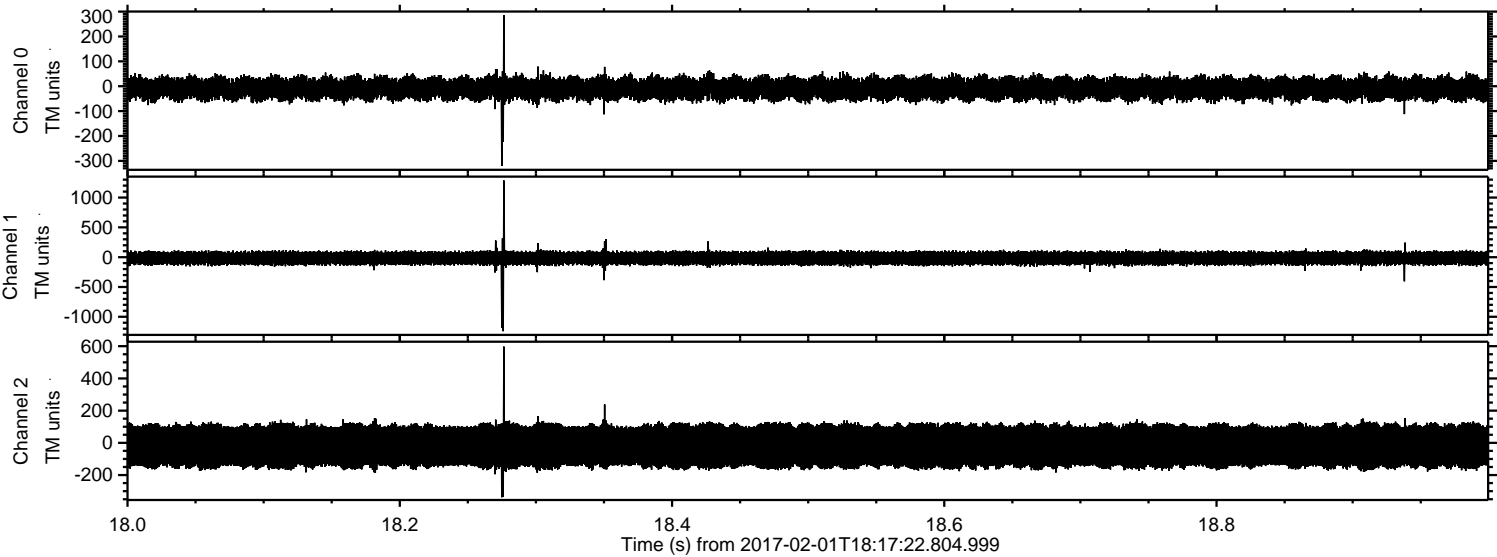
ELMAVAN 3D WAVEFORMS (Measured data sampled at 50 kHz) 51000 packets of 144 samples from 2017-02-01T18:17:22.804.999. Part 38/147

Processed Wed Feb 1 19:25:35 2017 by ELM ver.2012-10-06 from 001__elm20170201_181721__dat00.bin



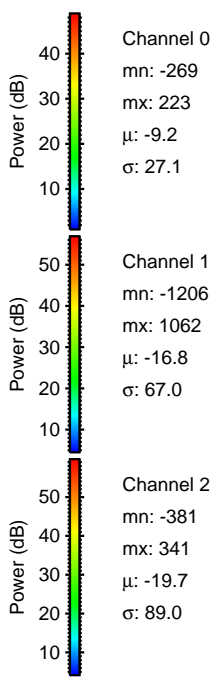
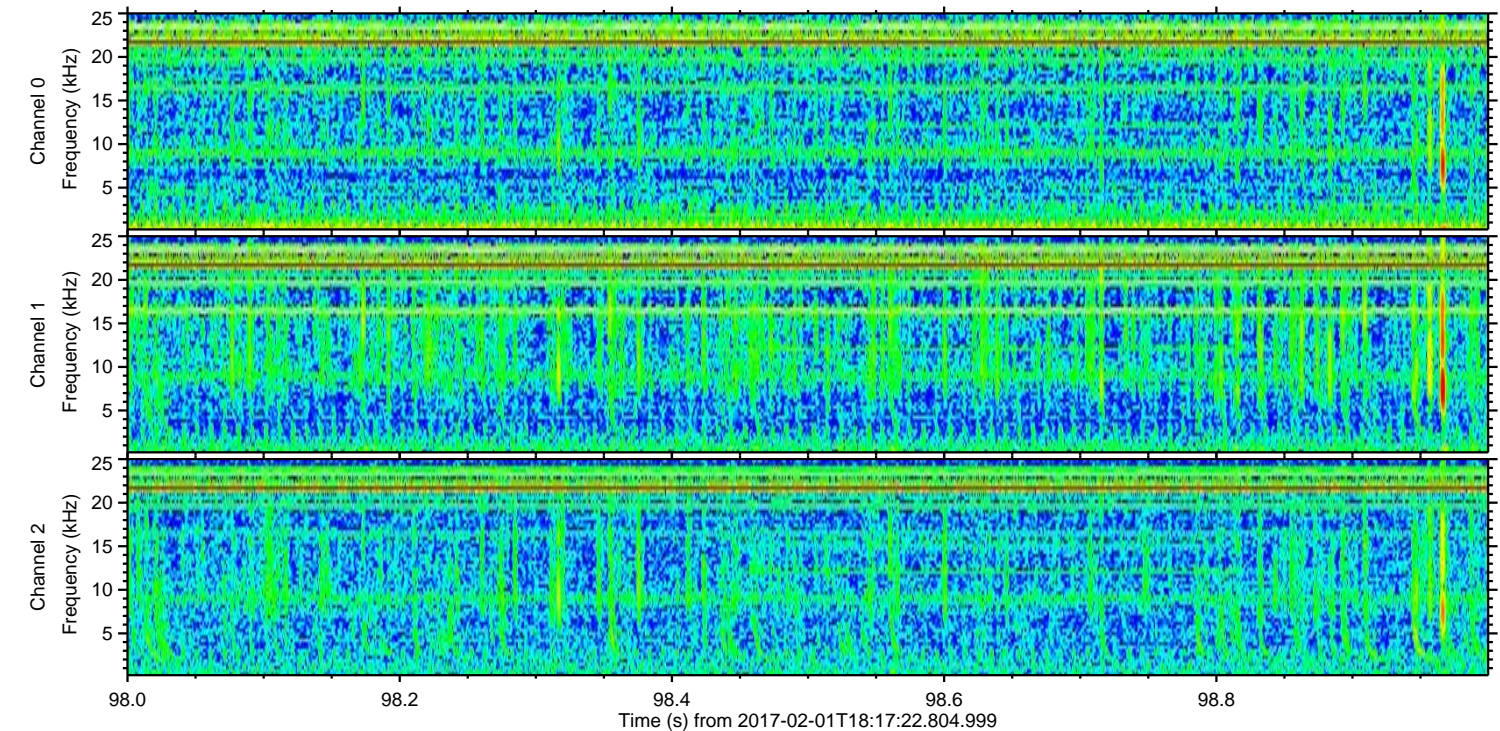
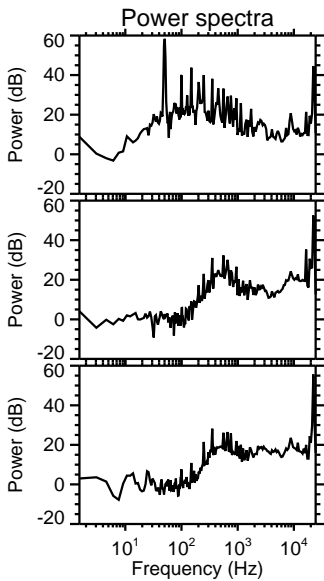
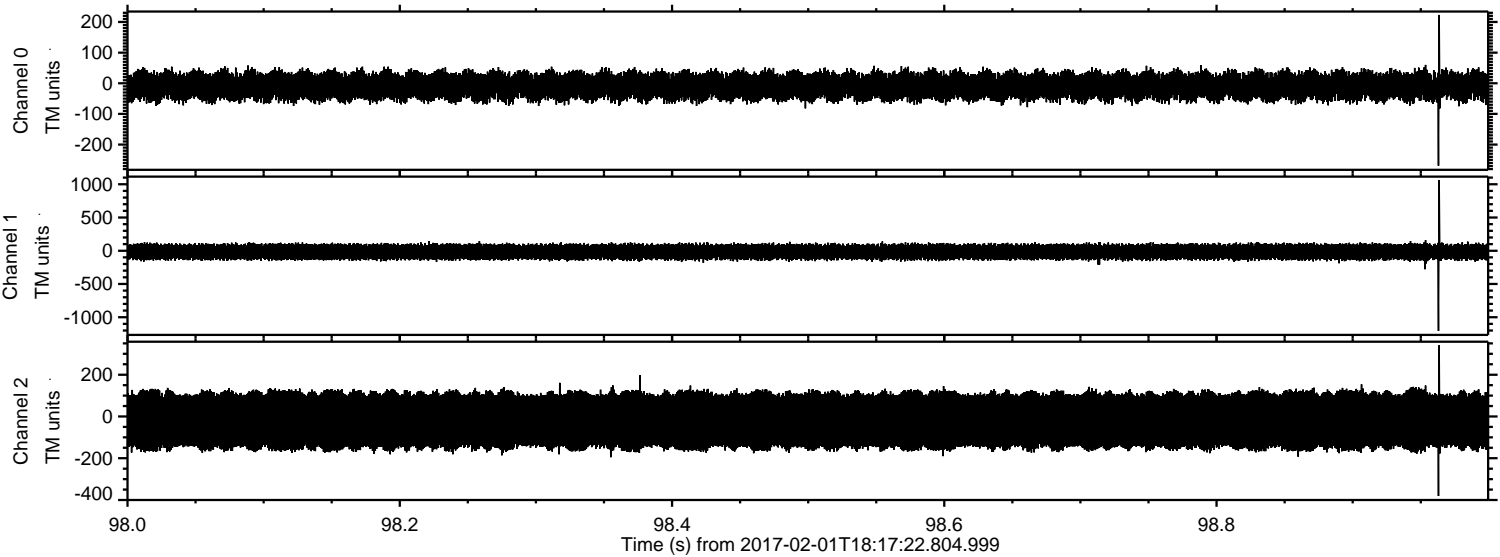
ELMAVAN 3D WAVEFORMS (Measured data sampled at 50 kHz) 51000 packets of 144 samples from 2017-02-01T18:17:22.804.999. Part 19/147

Processed Wed Feb 1 19:25:36 2017 by ELM ver.2012-10-06 from 001__elm20170201_181721__dat00.bin



ELMAVAN 3D WAVEFORMS (Measured data sampled at 50 kHz) 51000 packets of 144 samples from 2017-02-01T18:17:22.804.999. Part 99/147

Processed Wed Feb 1 19:25:36 2017 by ELM ver.2012-10-06 from 001__elm20170201_181721__dat00.bin



Processed Wed Feb 1 19:25:37 2017 by ELM ver.2012-10-06 from 001__elm20170201_181721__dat00.bin

