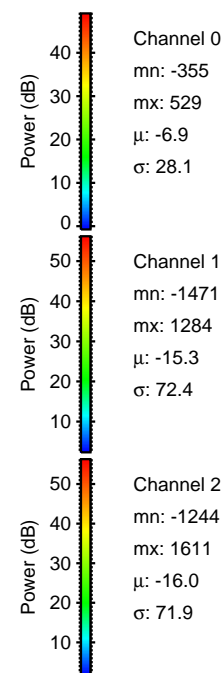
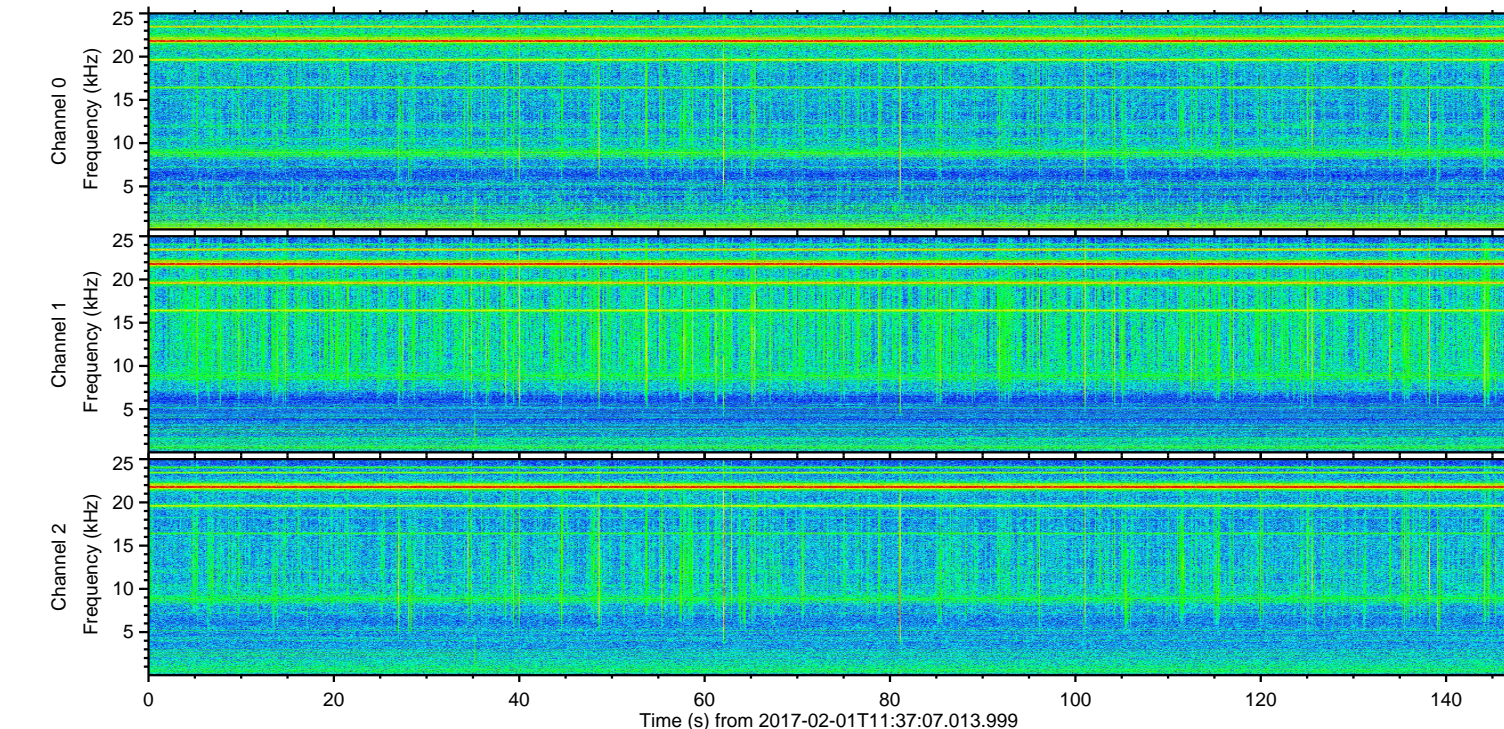
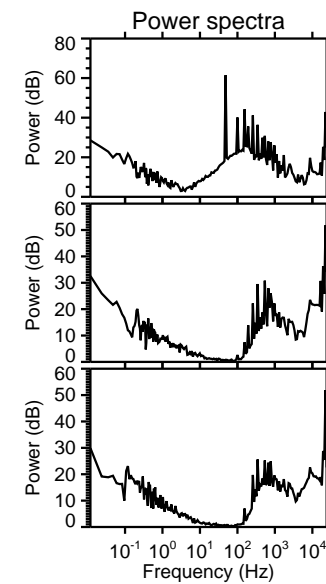
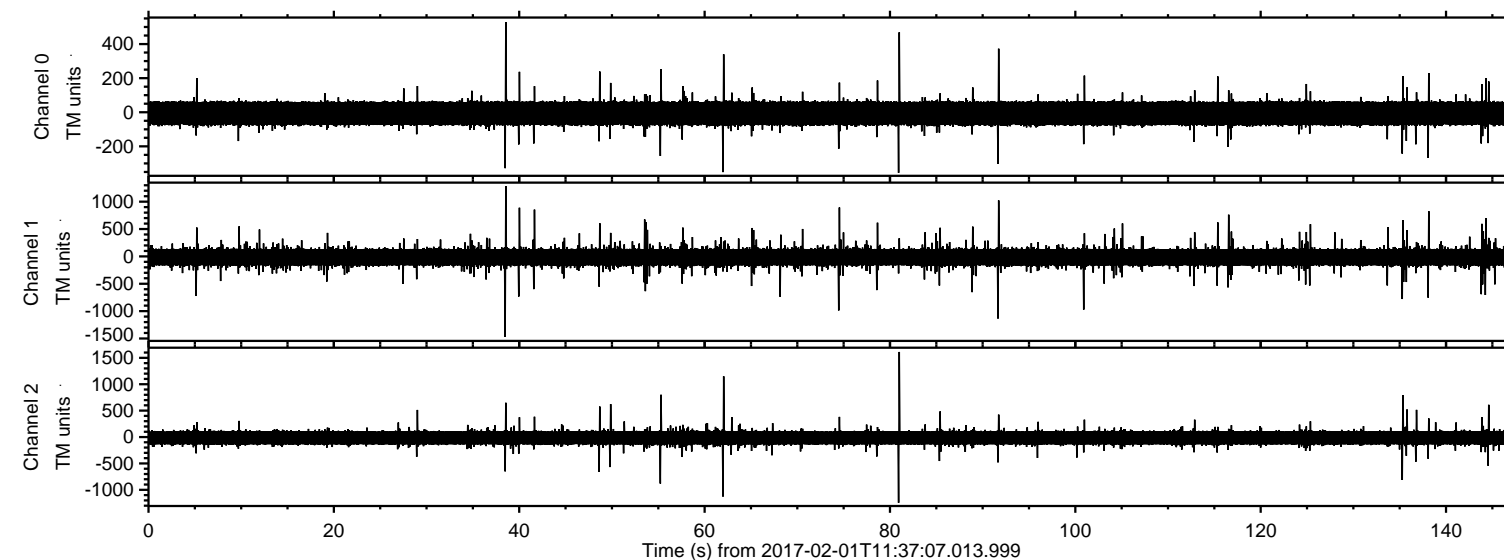
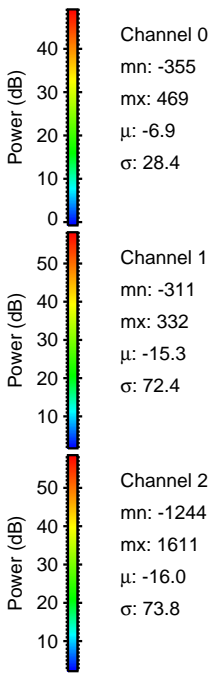
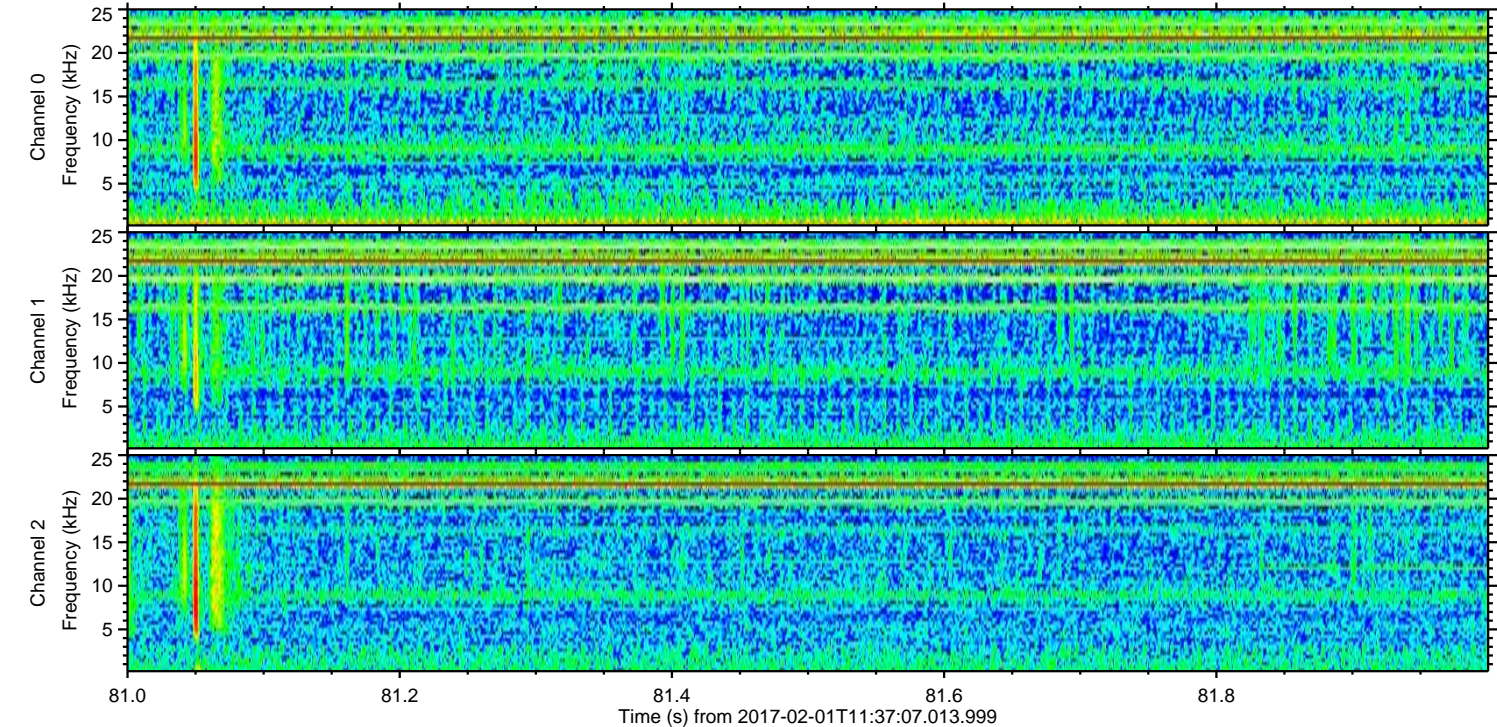
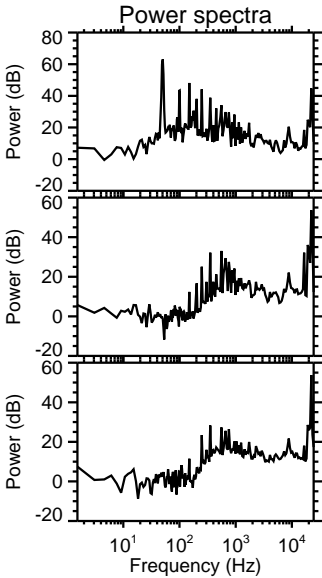
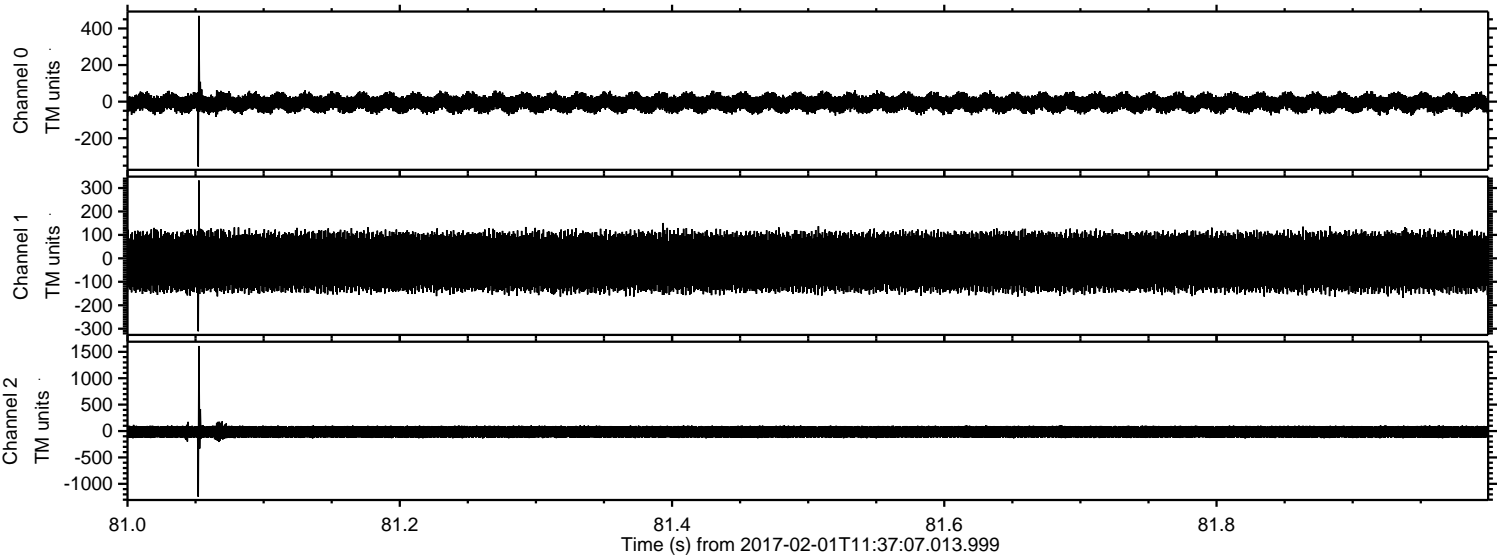


ELMAVAN 3D WAVEFORMS (Measured data sampled at 50 kHz) 51000 packets of 144 samples from 2017-02-01T11:37:07.013.999.

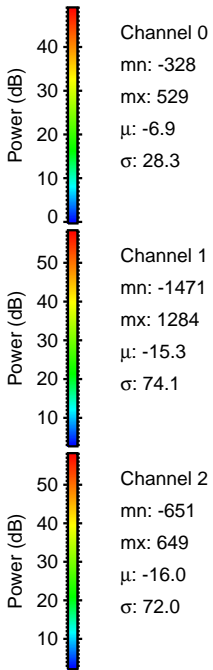
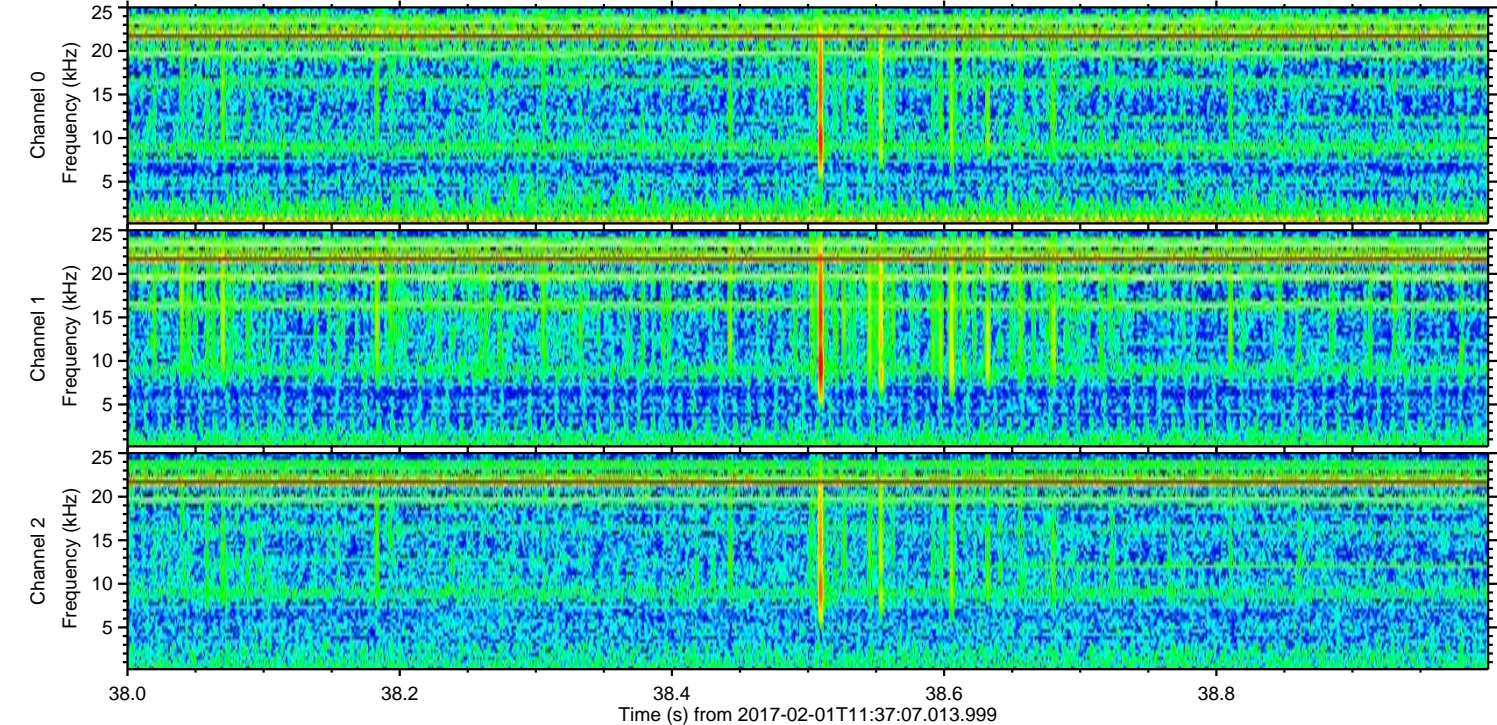
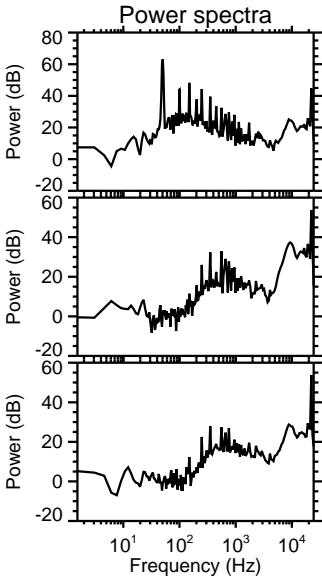
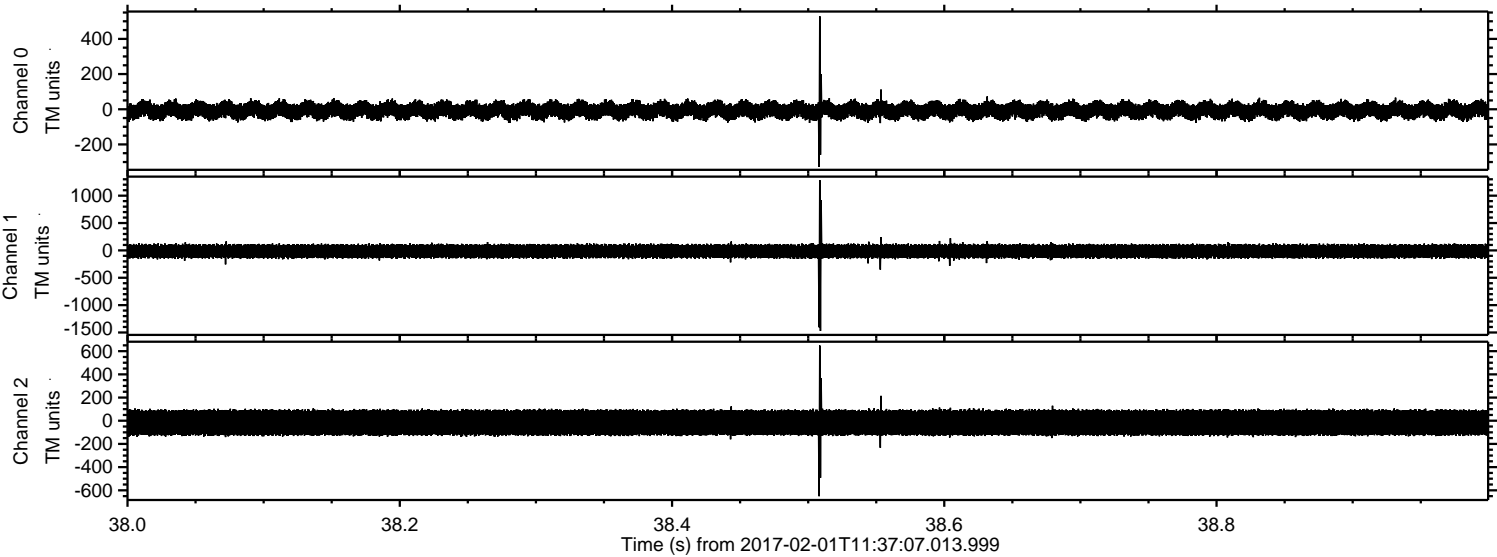
Processed Wed Feb 1 12:44:46 2017 by ELM ver.2012-10-06 from 001__elm20170201_113706__dat00.bin



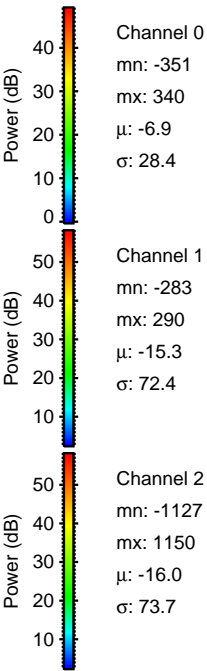
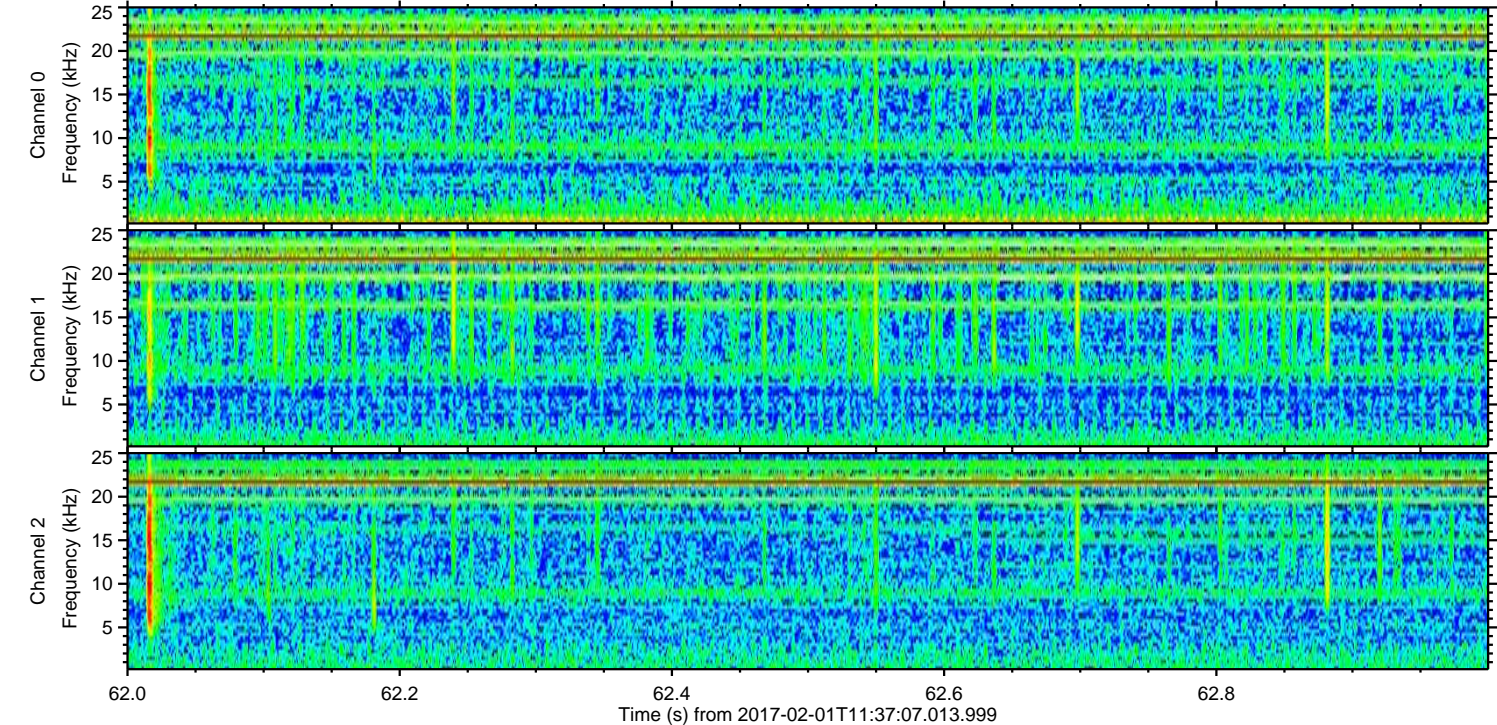
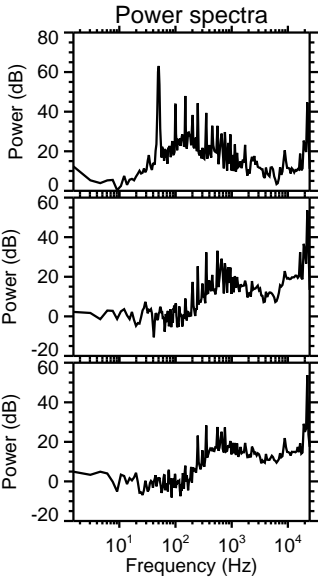
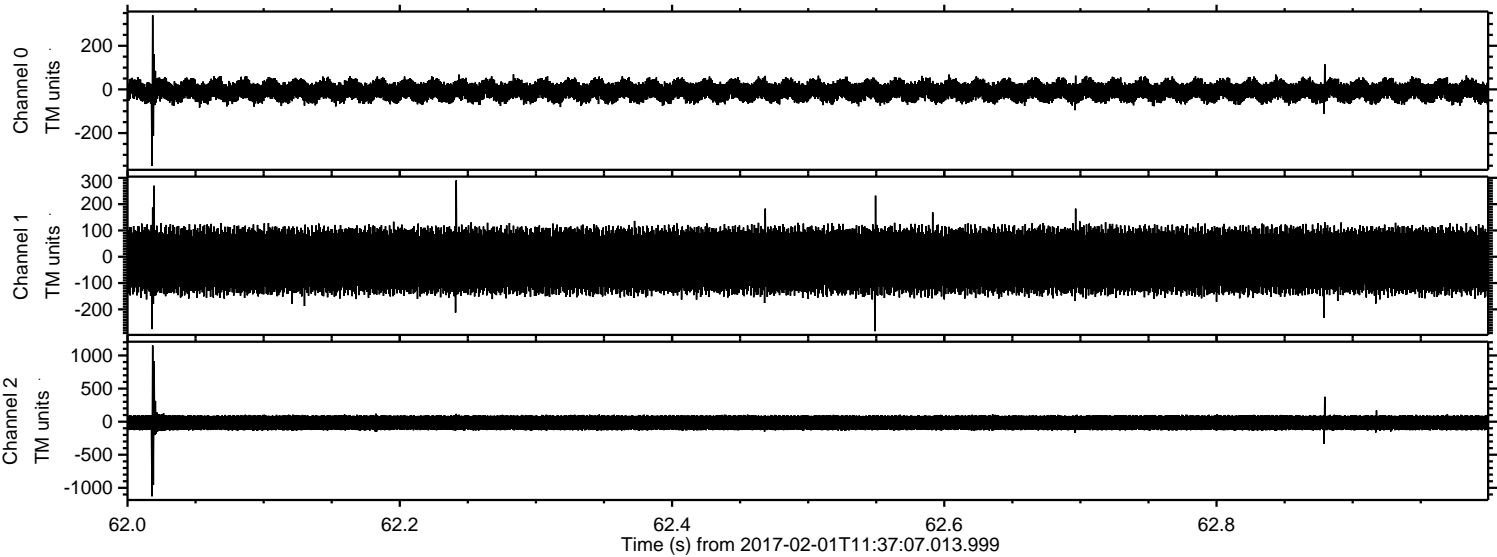
Processed Wed Feb 1 12:44:57 2017 by ELM ver.2012-10-06 from 001__elm20170201_113706__dat00.bin



Processed Wed Feb 1 12:44:58 2017 by ELM ver.2012-10-06 from 001__elm20170201_113706__dat00.bin

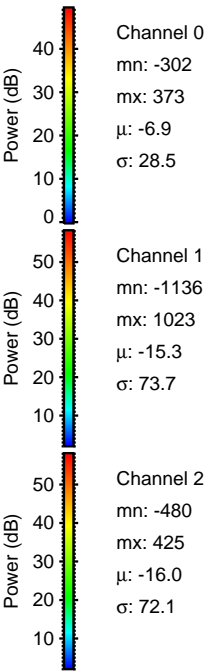
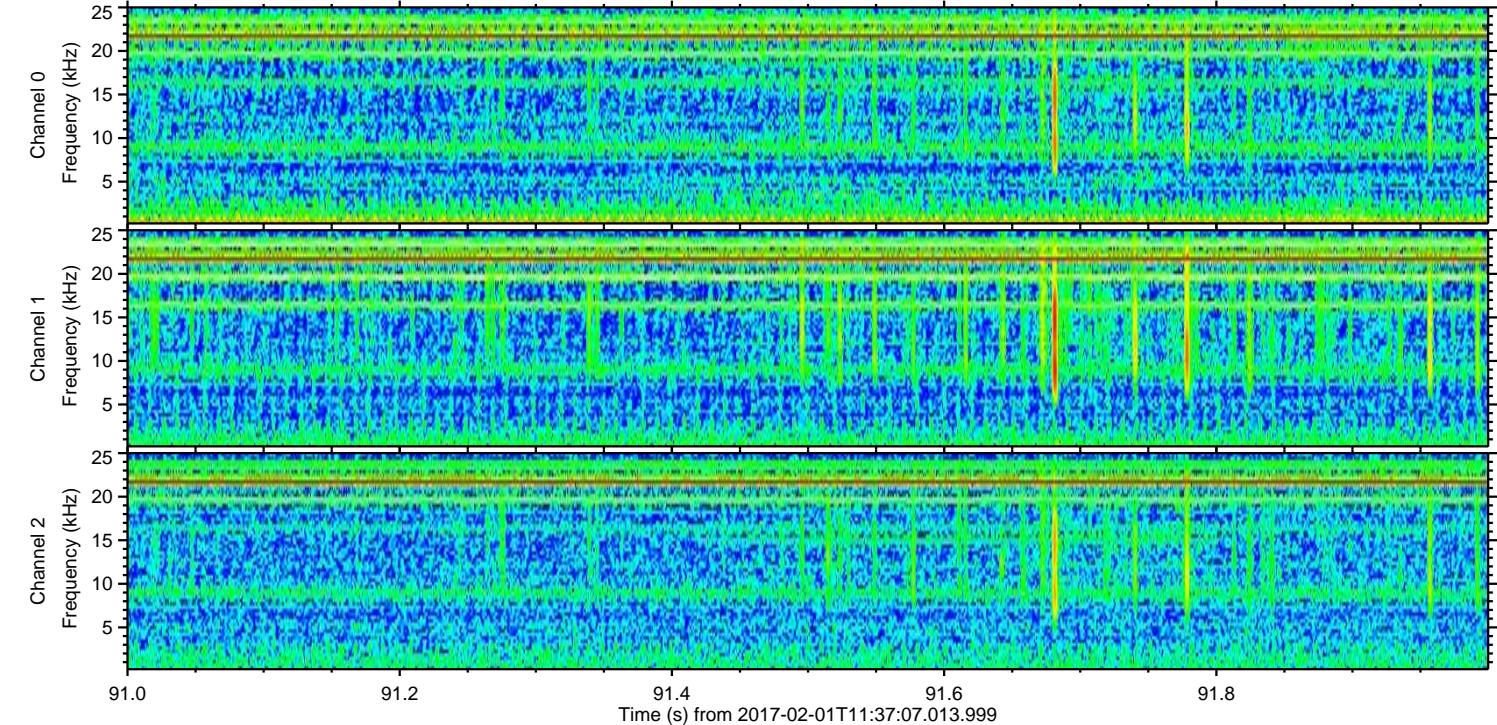
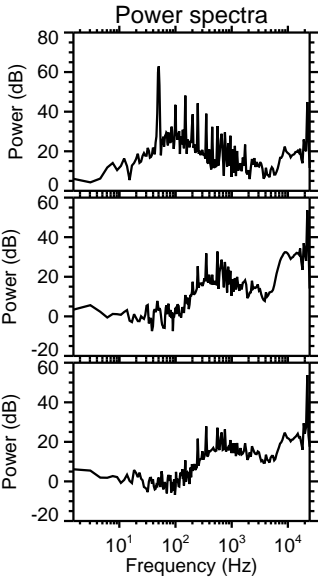
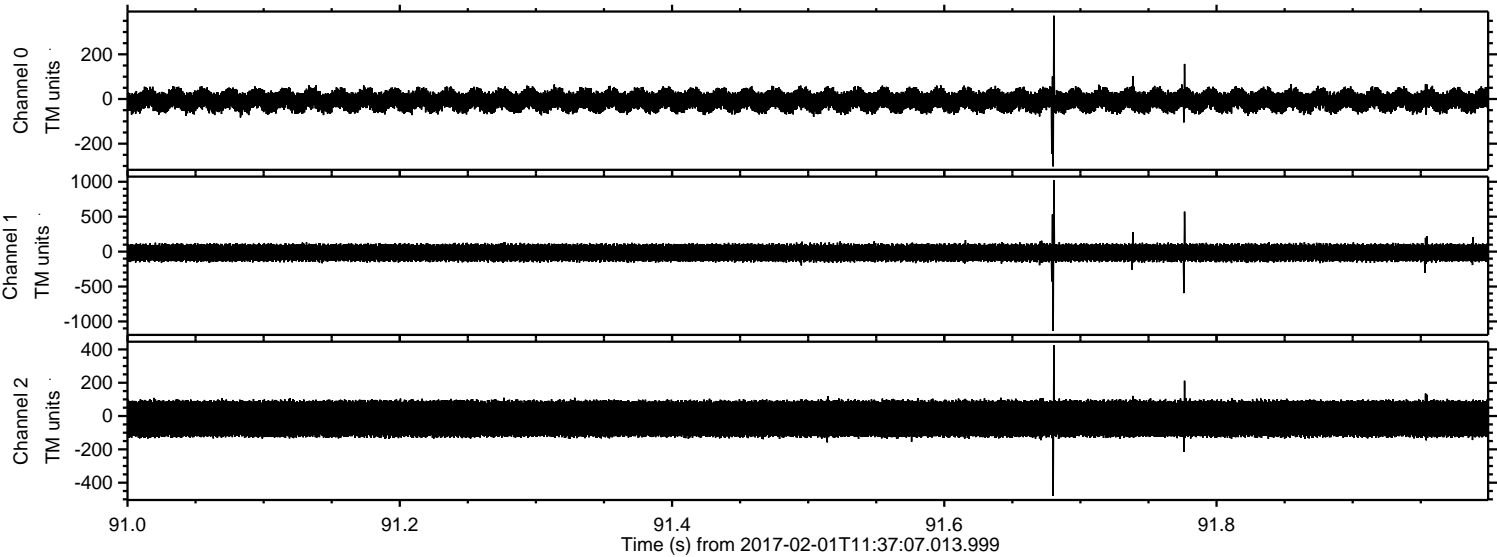


Processed Wed Feb 1 12:44:59 2017 by ELM ver.2012-10-06 from 001__elm20170201_113706__dat00.bin

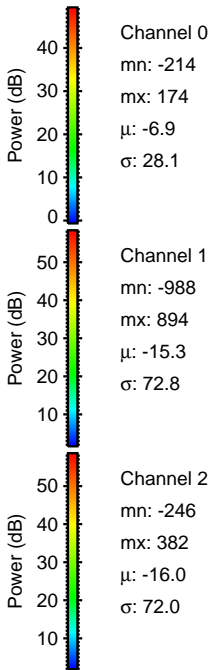
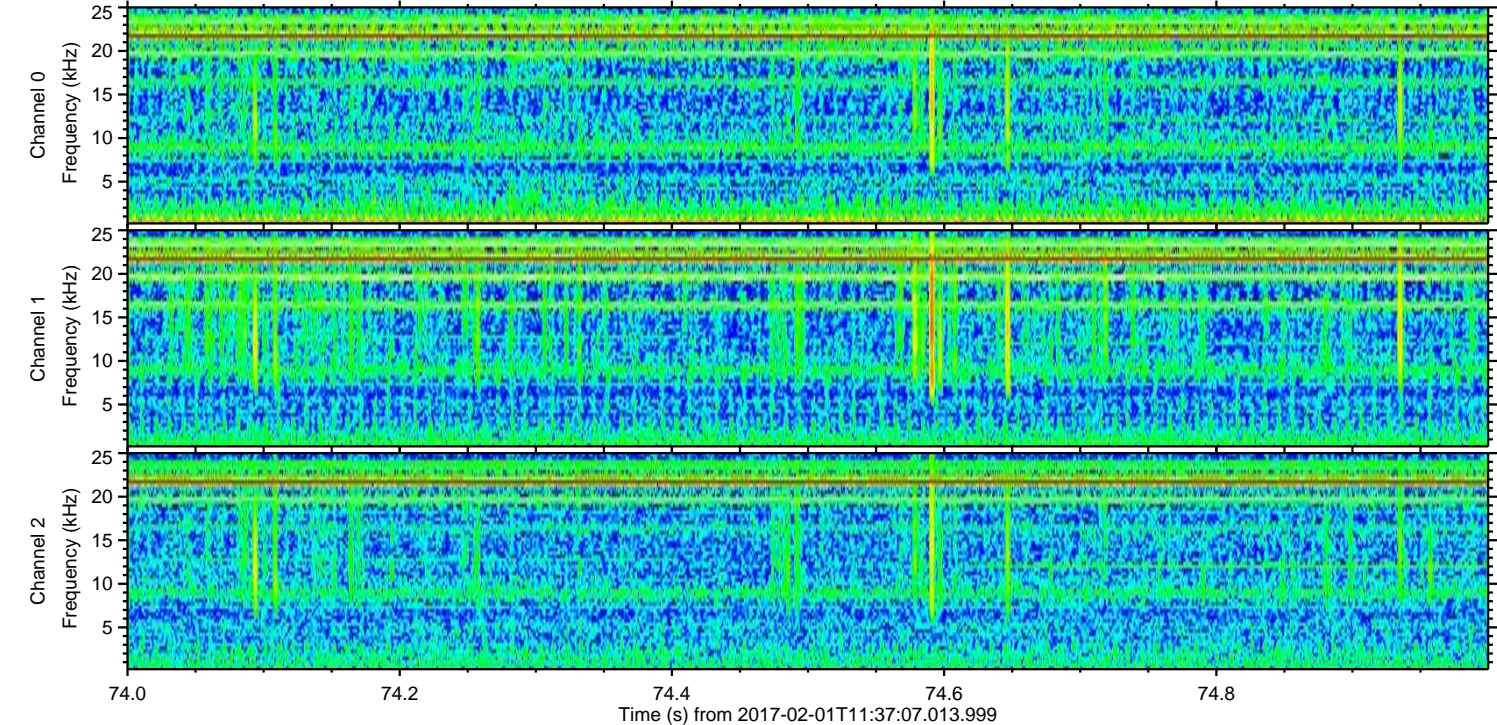
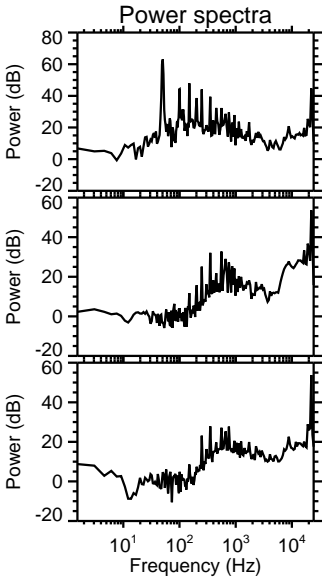
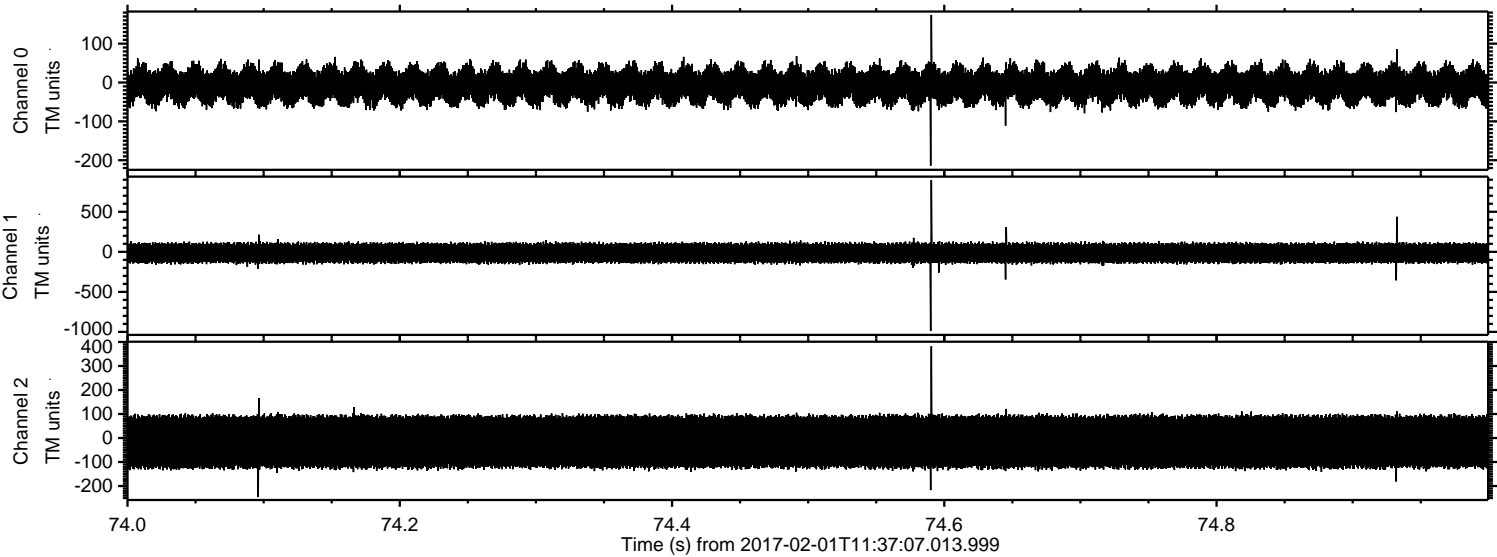


ELMAVAN 3D WAVEFORMS (Measured data sampled at 50 kHz) 51000 packets of 144 samples from 2017-02-01T11:37:07.013.999. Part 92/147

Processed Wed Feb 1 12:45:00 2017 by ELM ver.2012-10-06 from 001__elm20170201_113706__dat00.bin

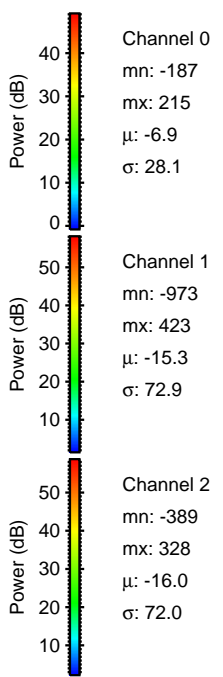
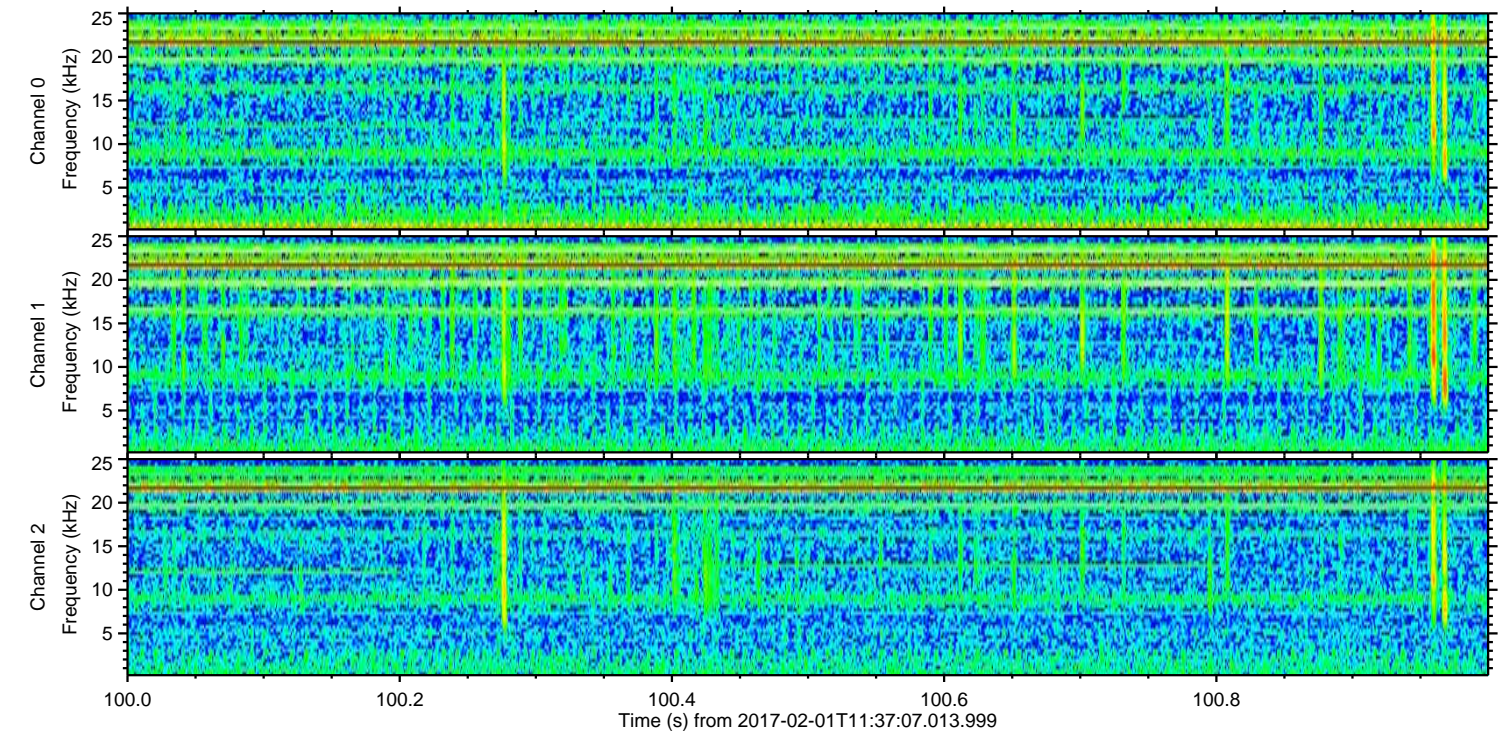
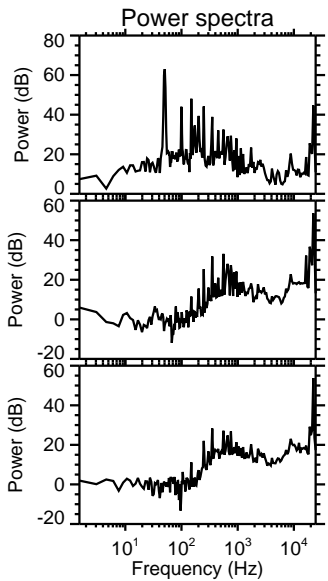
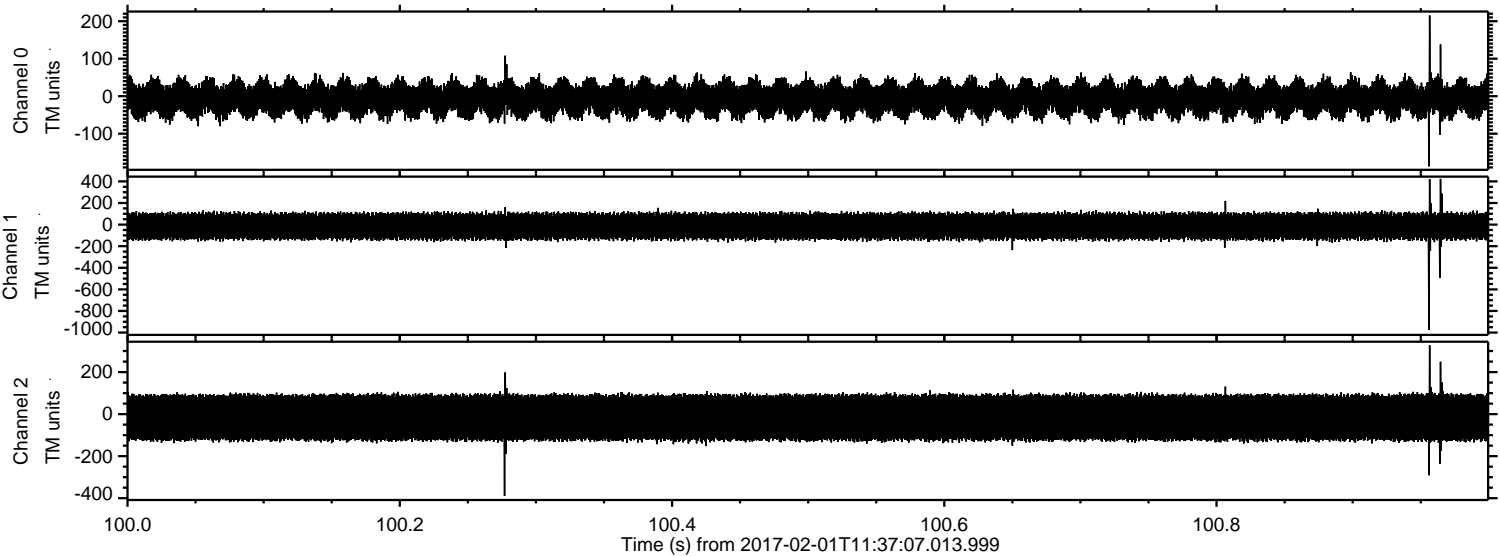


Processed Wed Feb 1 12:45:01 2017 by ELM ver.2012-10-06 from 001__elm20170201_113706__dat00.bin

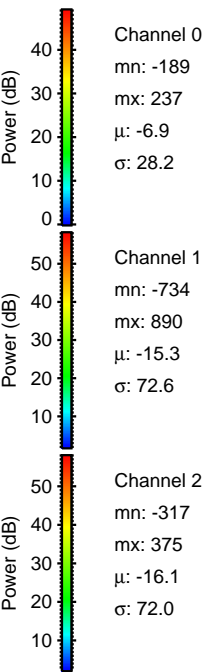
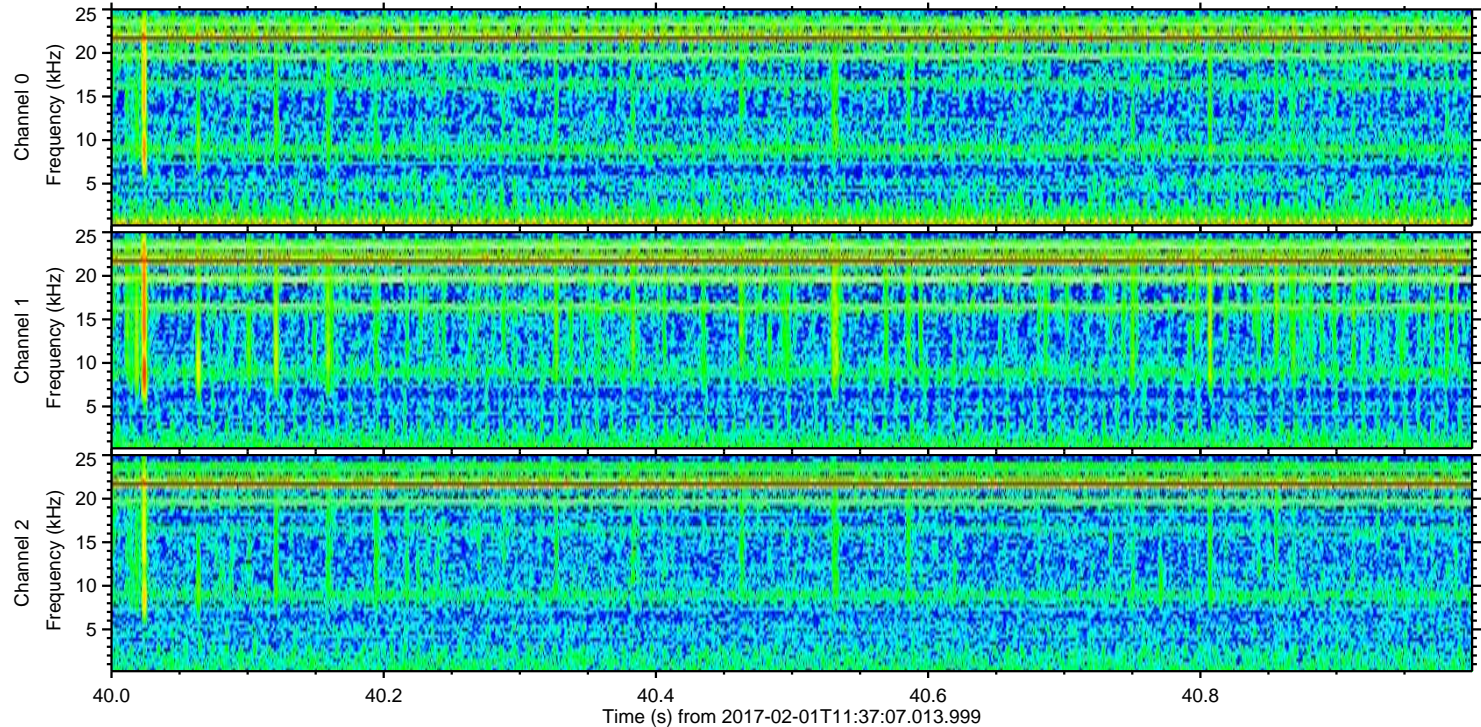
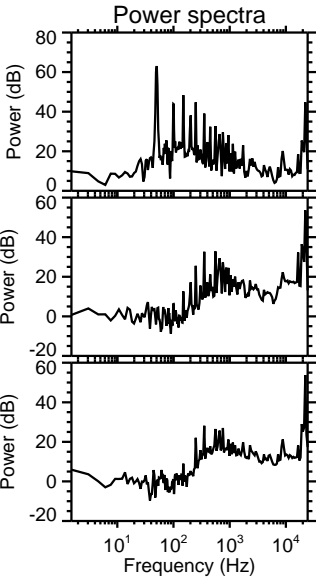
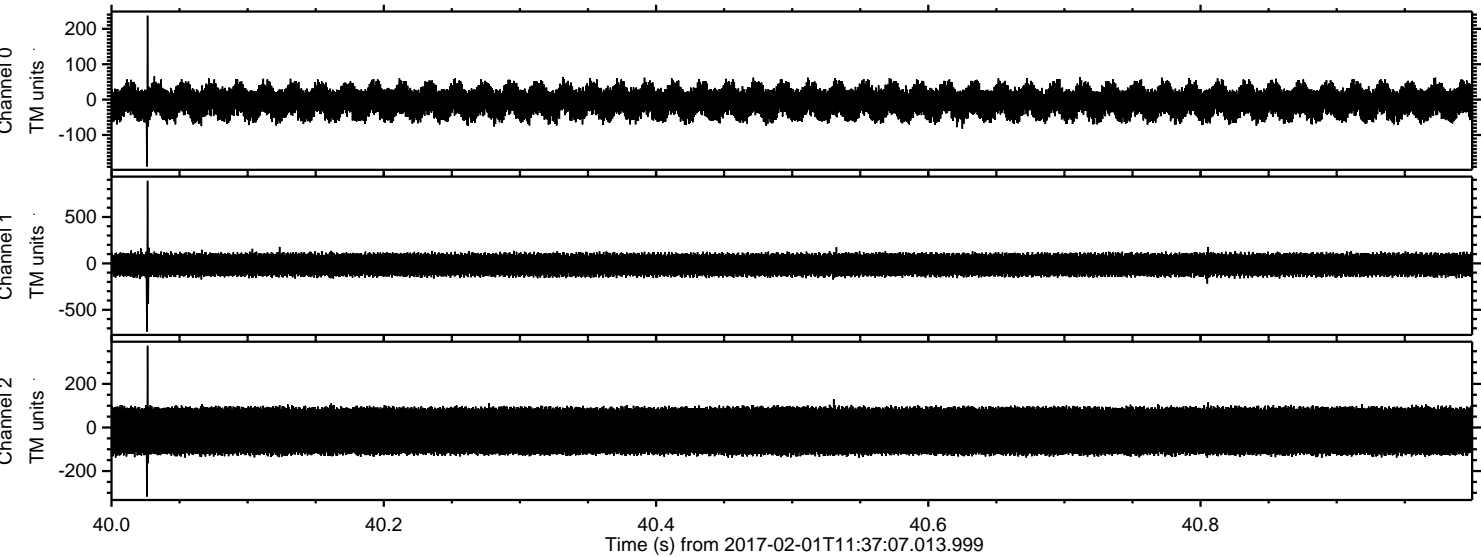


ELMAVAN 3D WAVEFORMS (Measured data sampled at 50 kHz) 51000 packets of 144 samples from 2017-02-01T11:37:07.013.999. Part 101/147

Processed Wed Feb 1 12:45:02 2017 by ELM ver.2012-10-06 from 001__elm20170201_113706__dat00.bin

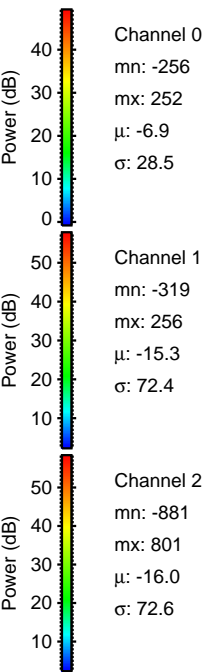
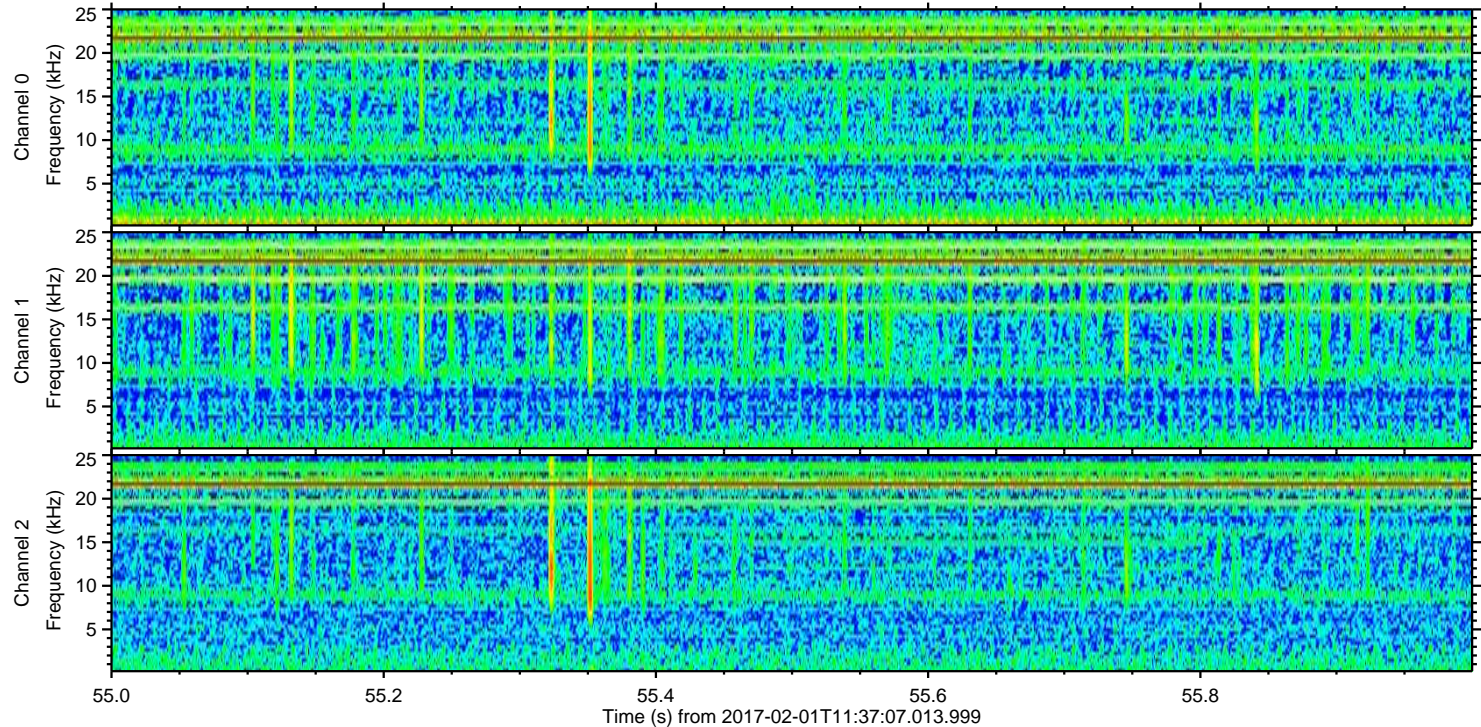
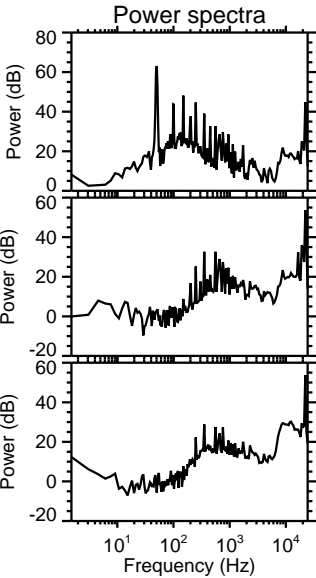
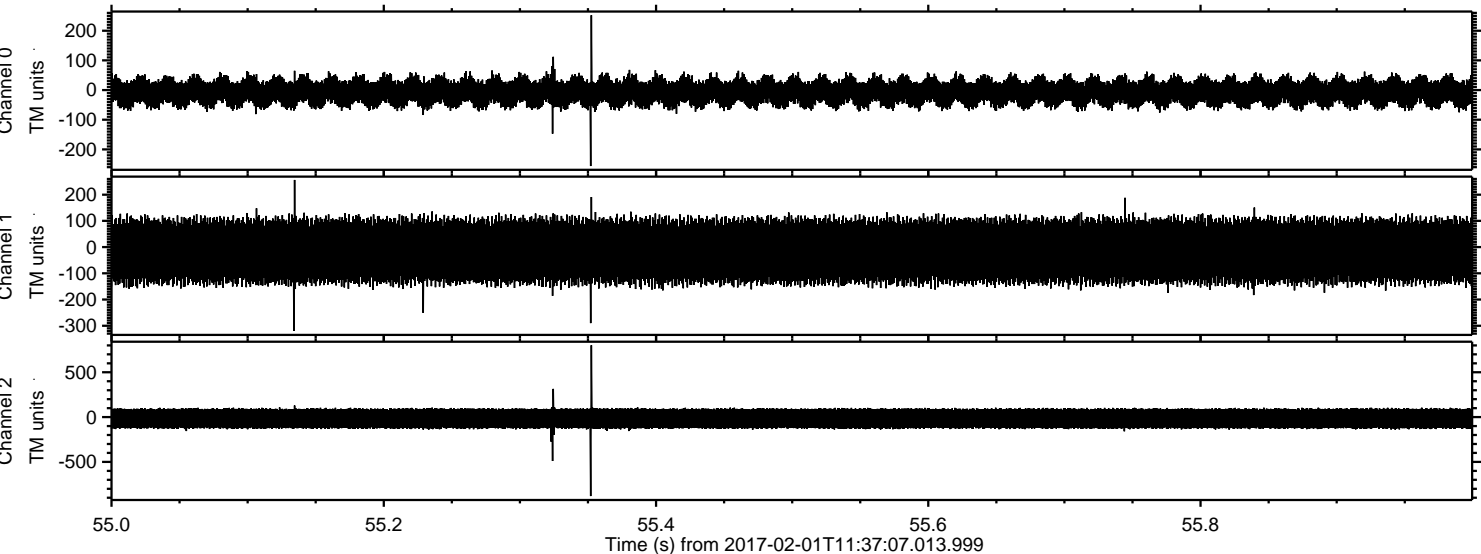


Processed Wed Feb 1 12:45:03 2017 by ELM ver.2012-10-06 from 001__elm20170201_113706__dat00.bin

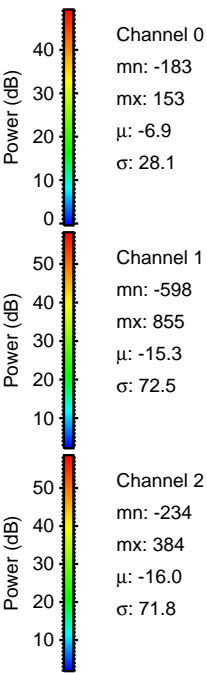
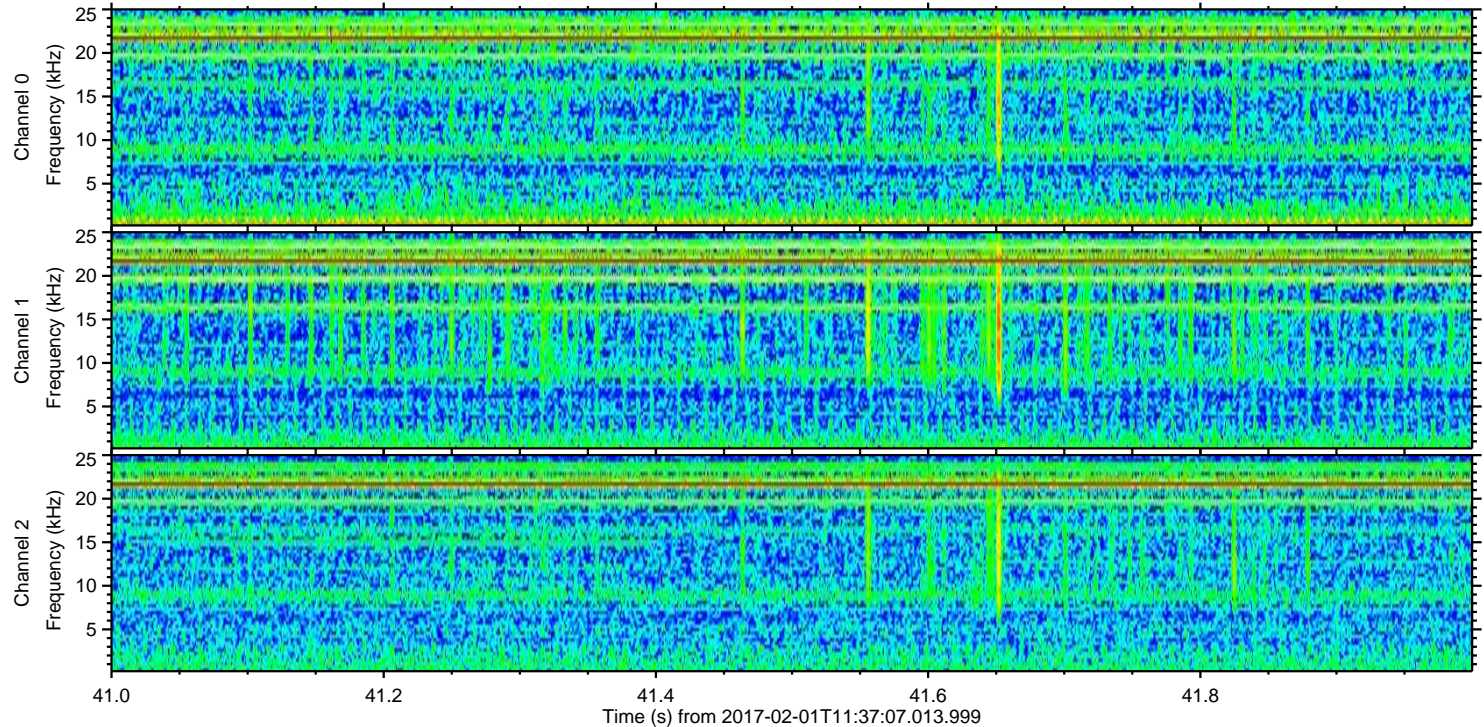
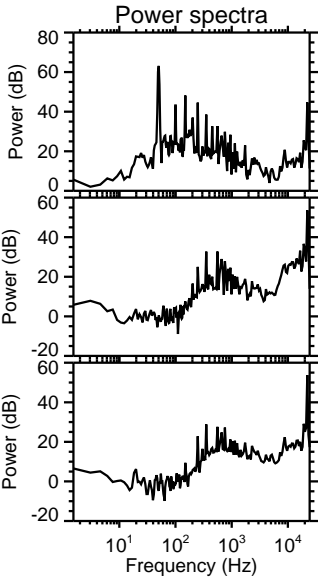
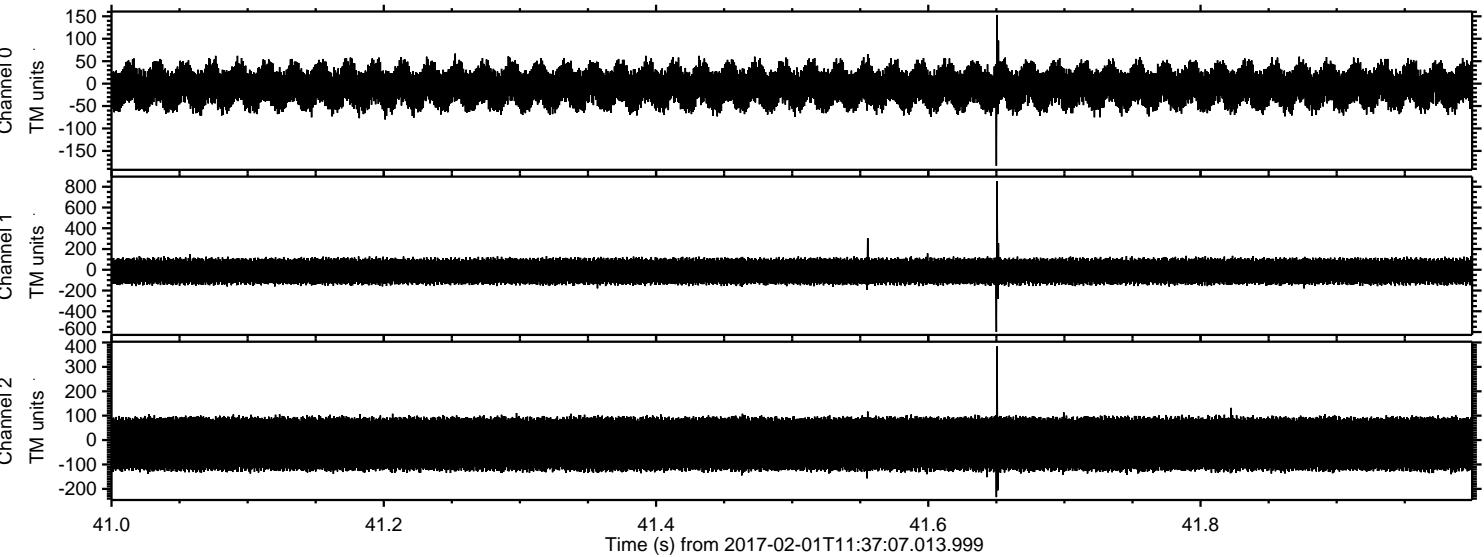


ELMAVAN 3D WAVEFORMS (Measured data sampled at 50 kHz) 51000 packets of 144 samples from 2017-02-01T11:37:07.013.999. Part 56/147

Processed Wed Feb 1 12:45:04 2017 by ELM ver.2012-10-06 from 001__elm20170201_113706__dat00.bin



Processed Wed Feb 1 12:45:05 2017 by ELM ver.2012-10-06 from 001__elm20170201_113706__dat00.bin



Channel 0
mn: -183
mx: 153
 μ : -6.9
 σ : 28.1

Channel 1
mn: -598
mx: 855
 μ : -15.3
 σ : 72.5

Channel 2
mn: -234
mx: 384
 μ : -16.0
 σ : 71.8

Processed Wed Feb 1 12:45:05 2017 by ELM ver.2012-10-06 from 001__elm20170201_113706__dat00.bin

