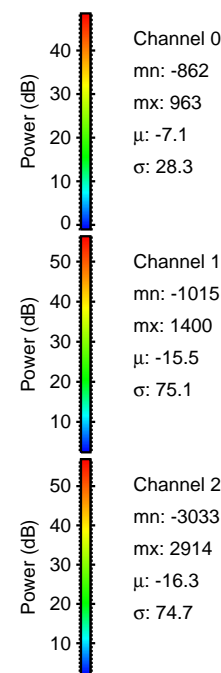
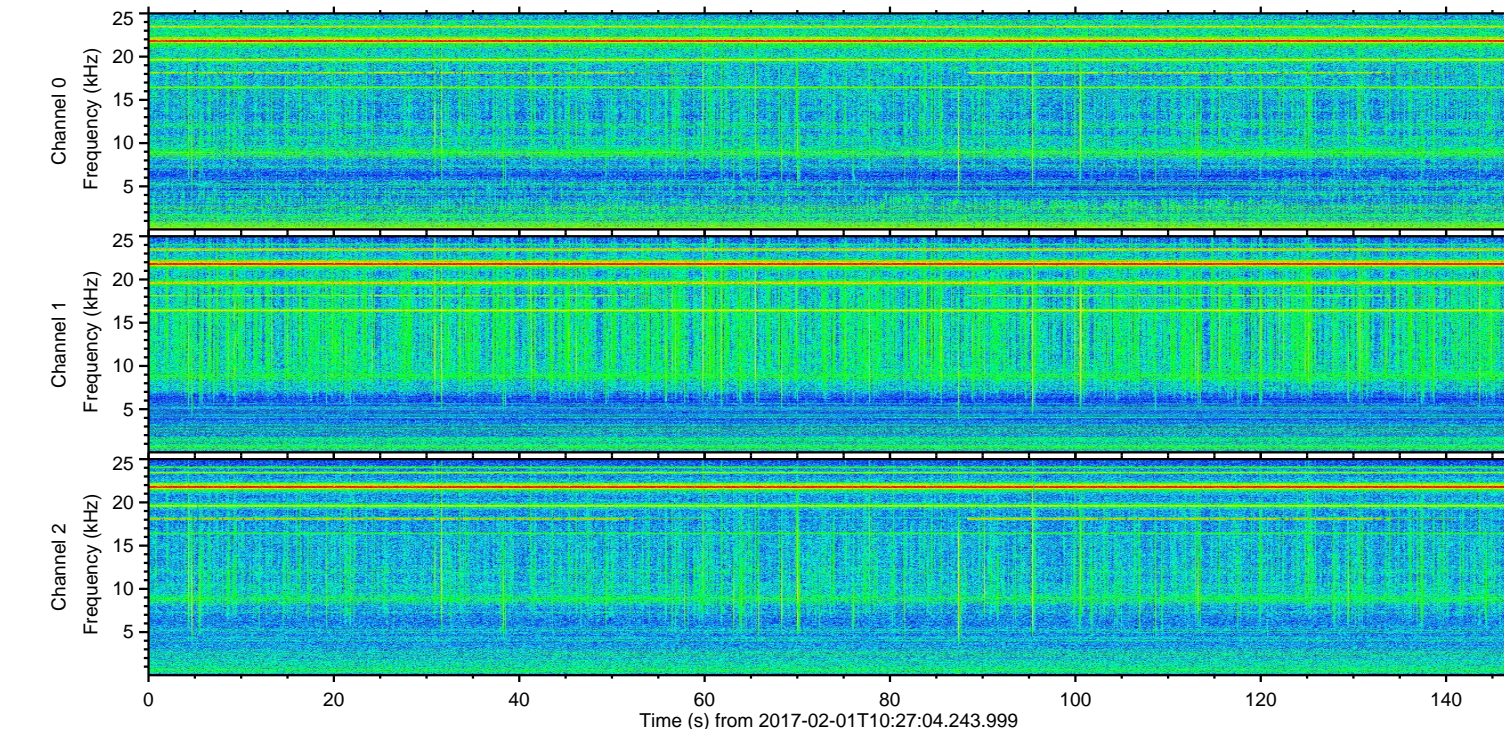
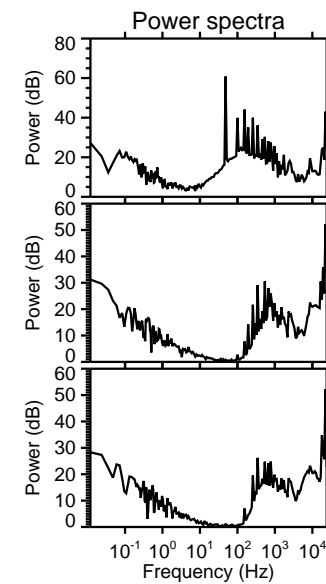
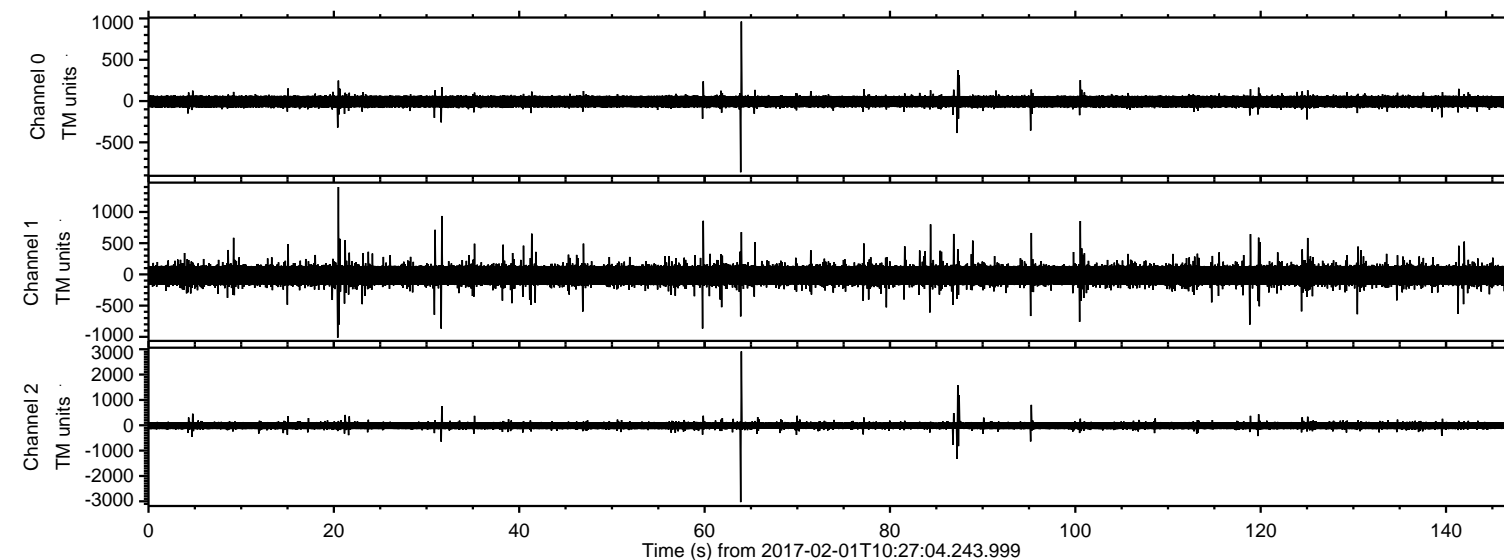


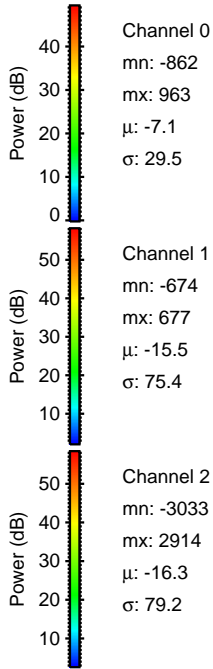
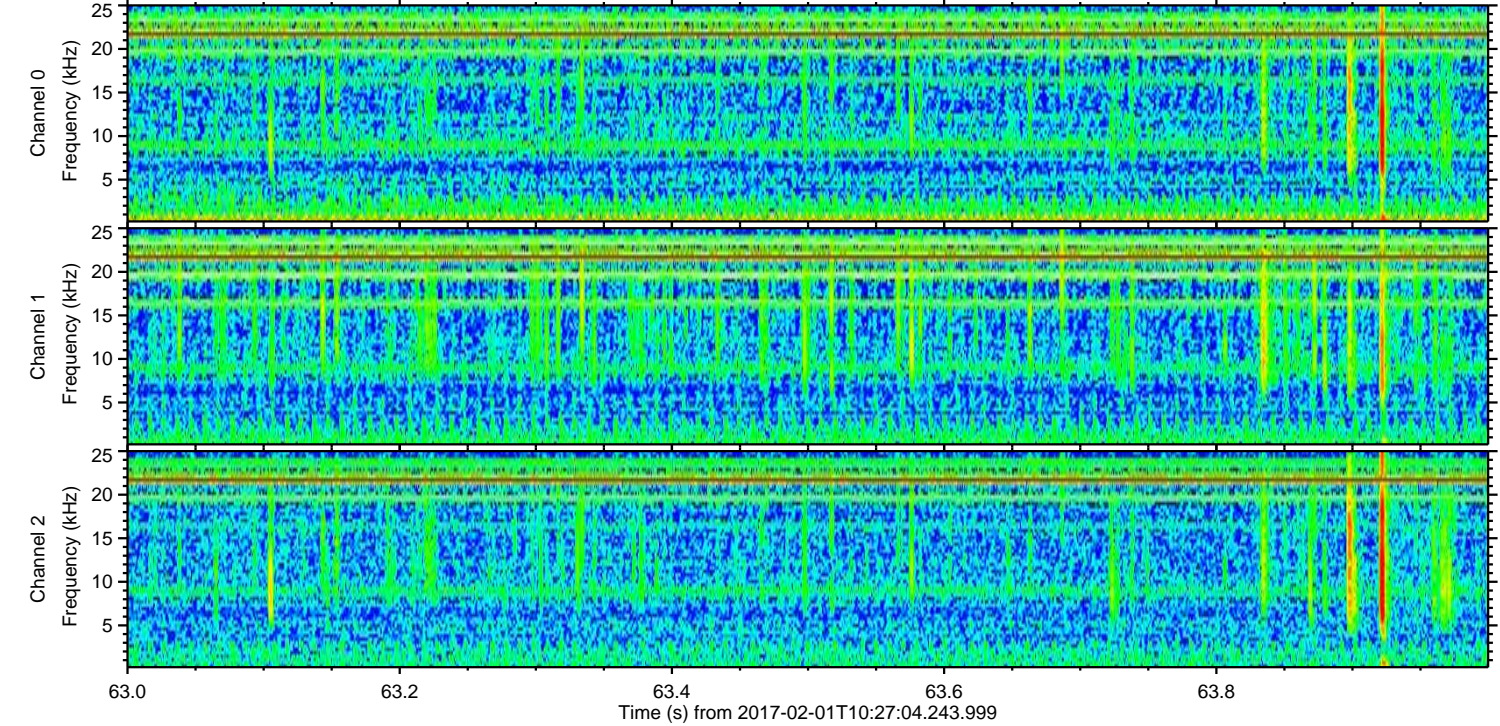
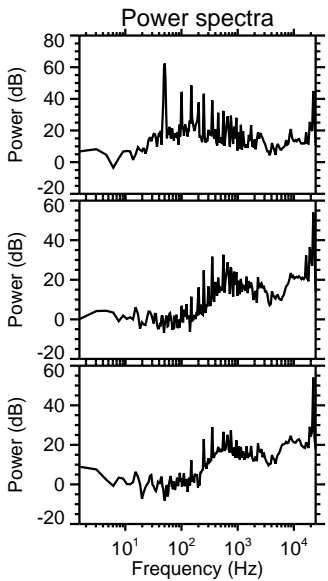
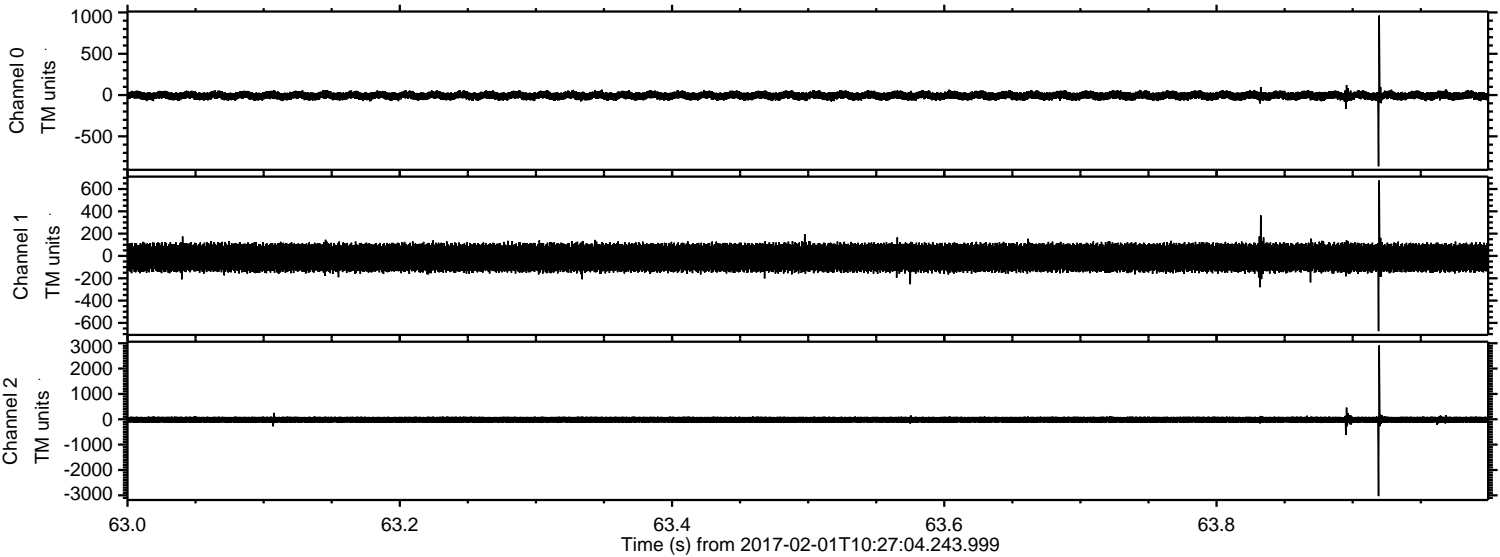
ELMAVAN 3D WAVEFORMS (Measured data sampled at 50 kHz) 51000 packets of 144 samples from 2017-02-01T10:27:04.243.999.

Processed Wed Feb 1 11:34:51 2017 by ELM ver.2012-10-06 from 001__elm20170201_102703__dat00.bin

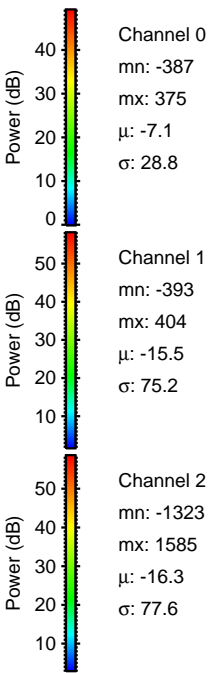
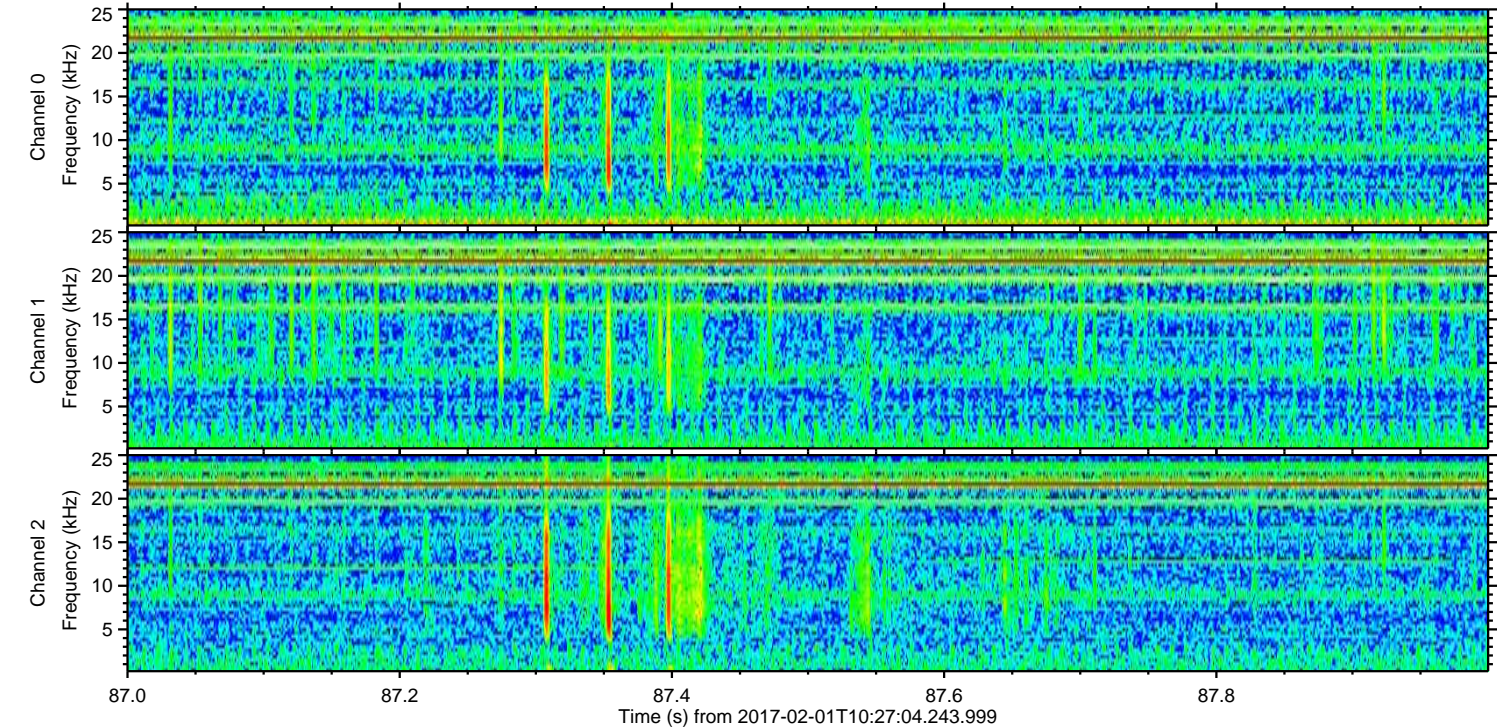
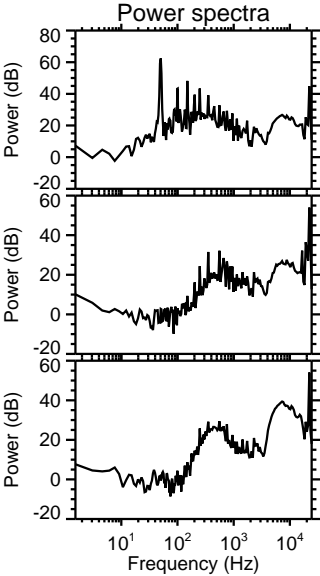
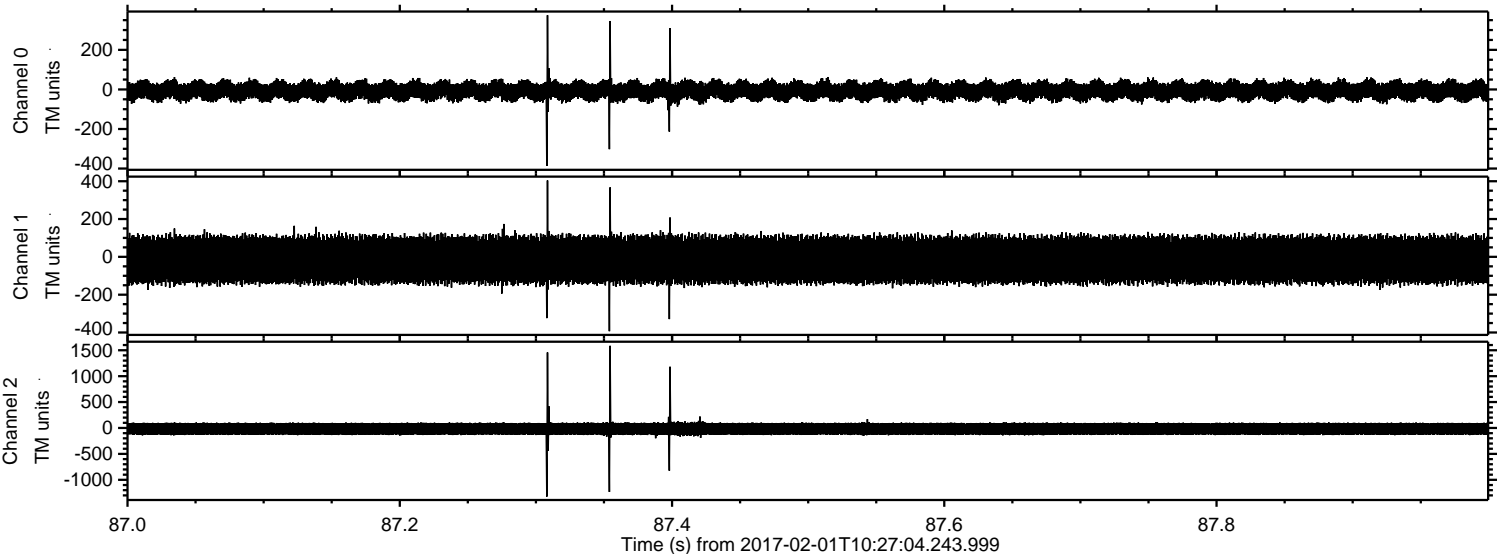


ELMAVAN 3D WAVEFORMS (Measured data sampled at 50 kHz) 51000 packets of 144 samples from 2017-02-01T10:27:04.243.999. Part 64/147

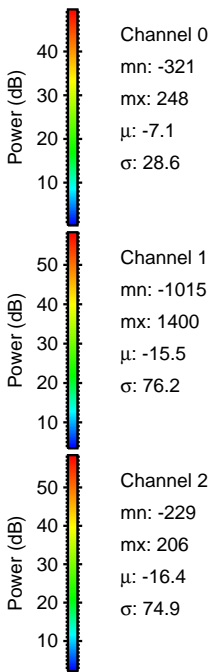
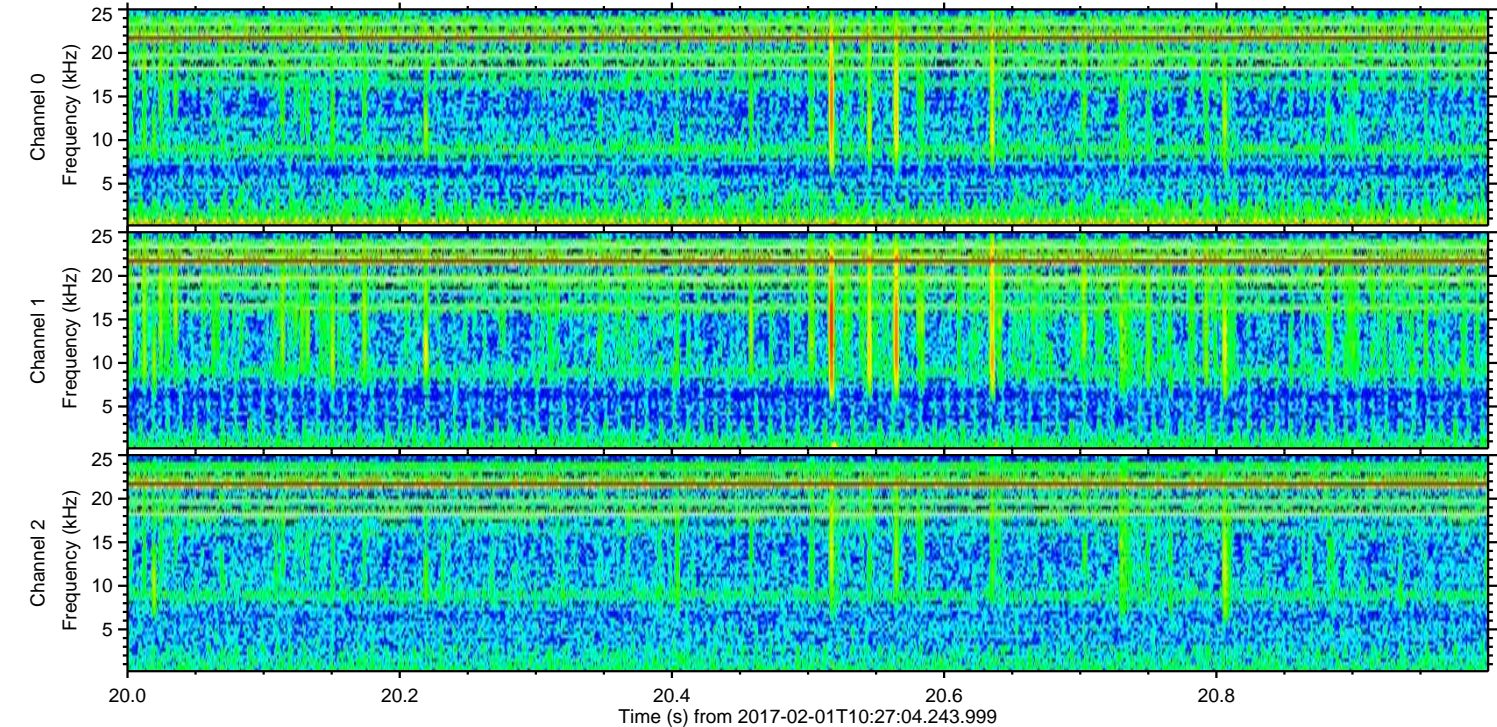
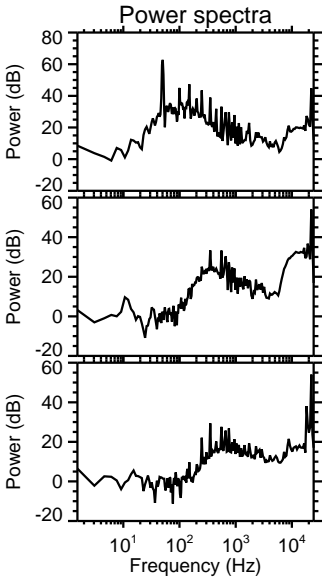
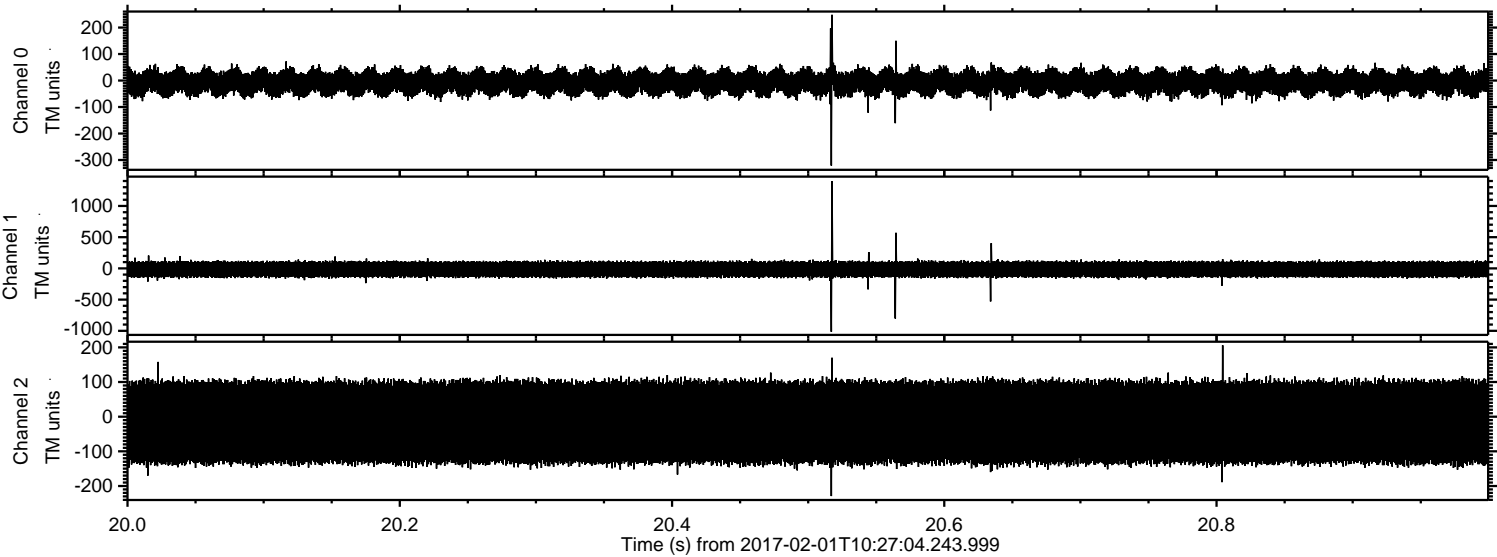
Processed Wed Feb 1 11:35:03 2017 by ELM ver.2012-10-06 from 001__elm20170201_102703__dat00.bin



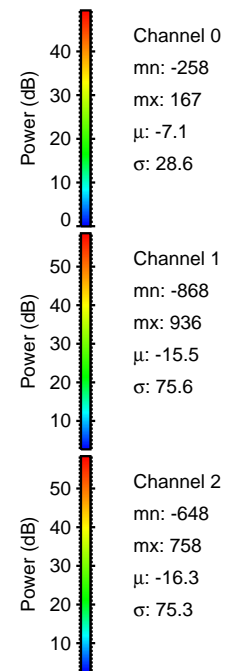
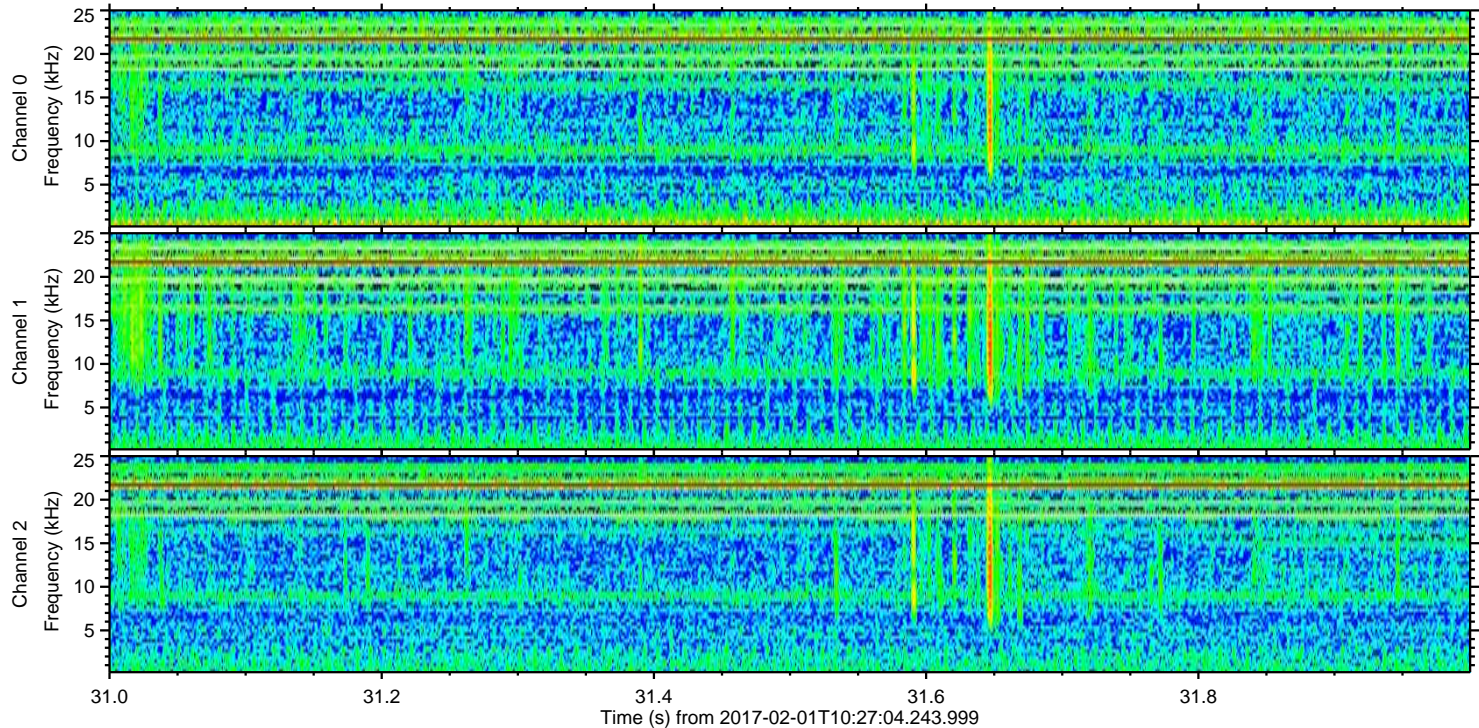
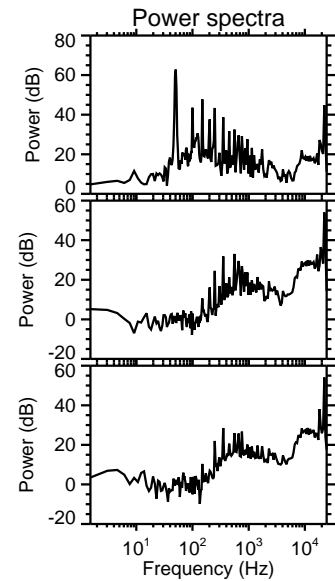
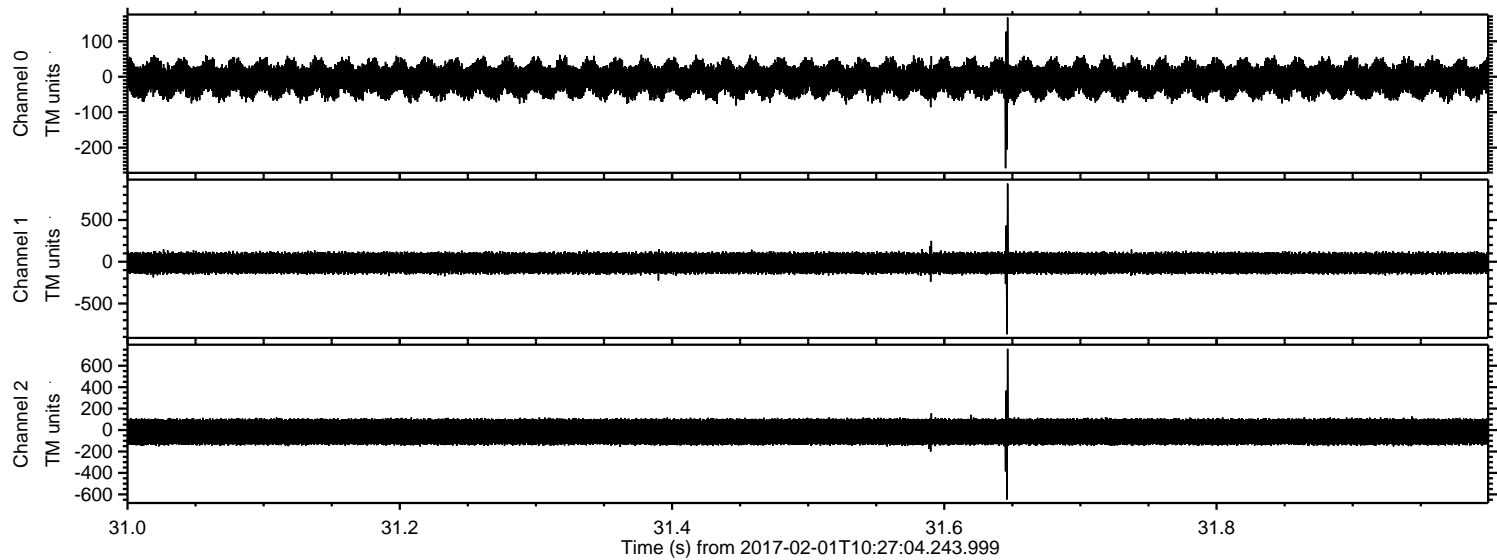
Processed Wed Feb 1 11:35:04 2017 by ELM ver.2012-10-06 from 001__elm20170201_102703__dat00.bin



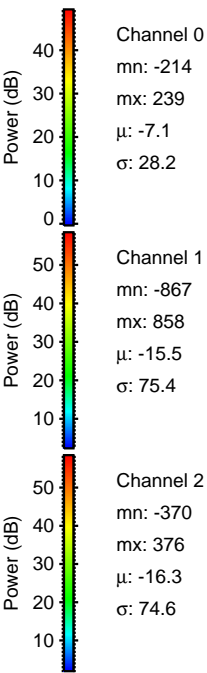
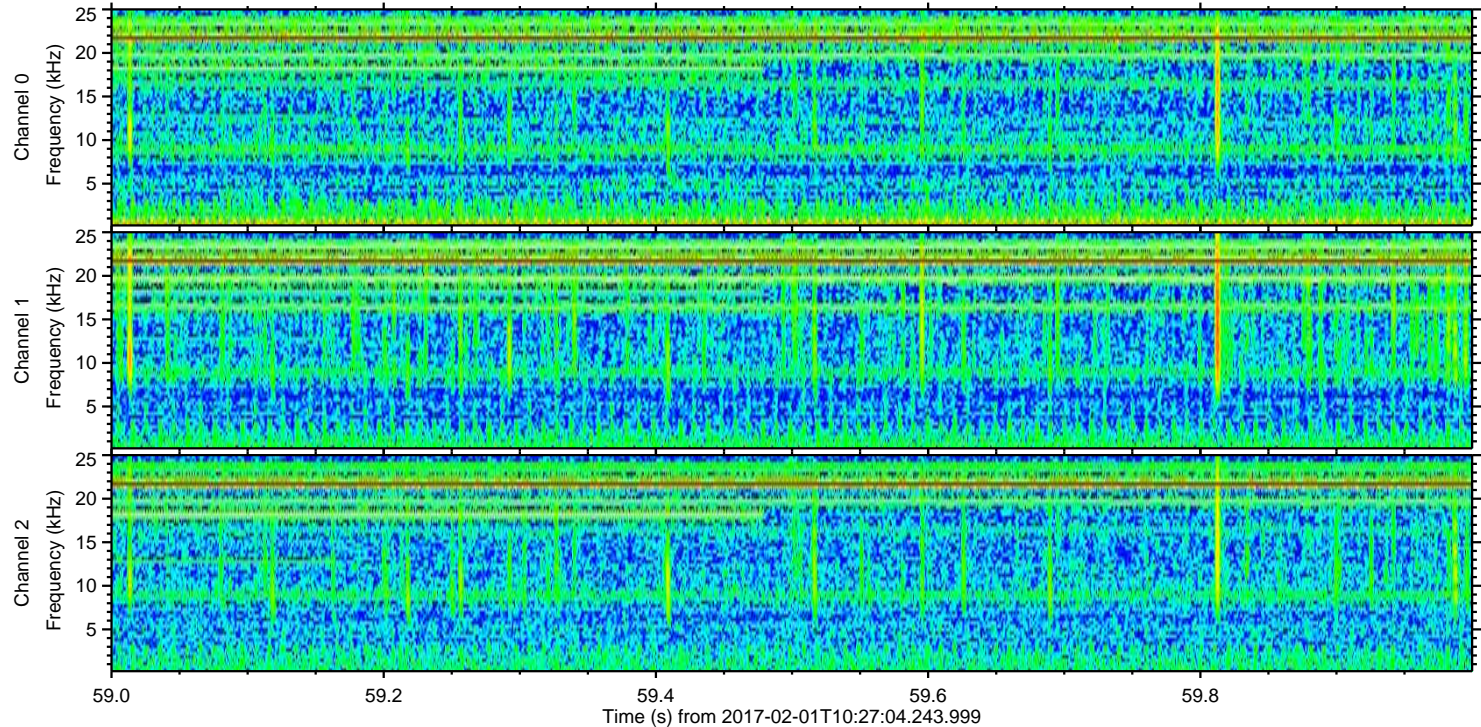
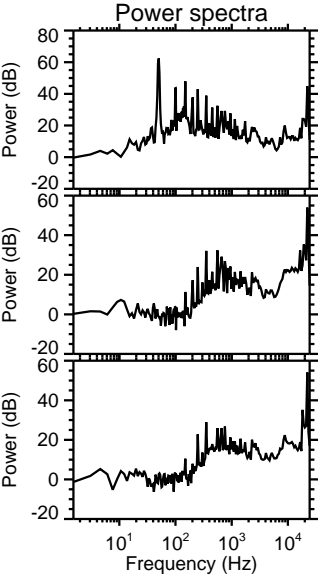
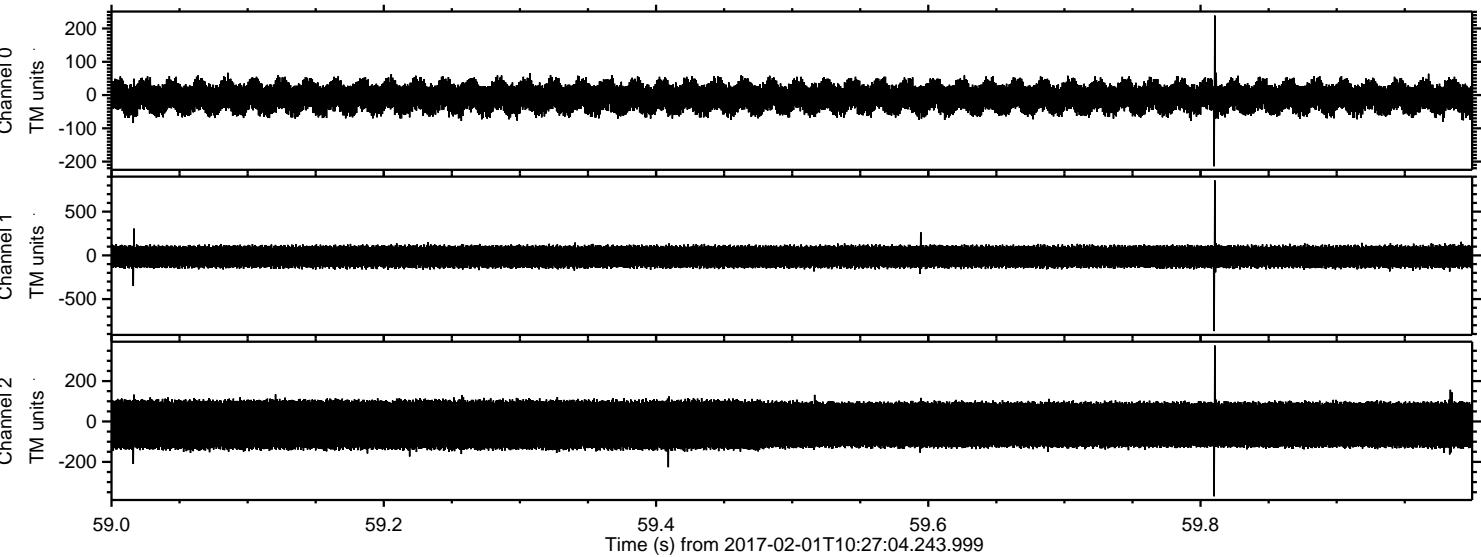
Processed Wed Feb 1 11:35:05 2017 by ELM ver.2012-10-06 from 001__elm20170201_102703__dat00.bin



Processed Wed Feb 1 11:35:06 2017 by ELM ver.2012-10-06 from 001__elm20170201_102703__dat00.bin

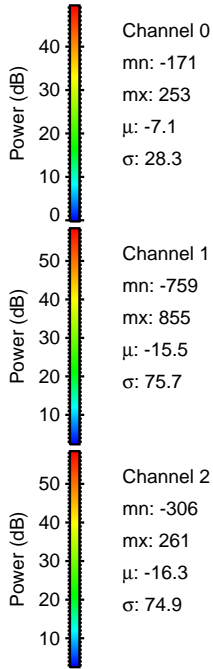
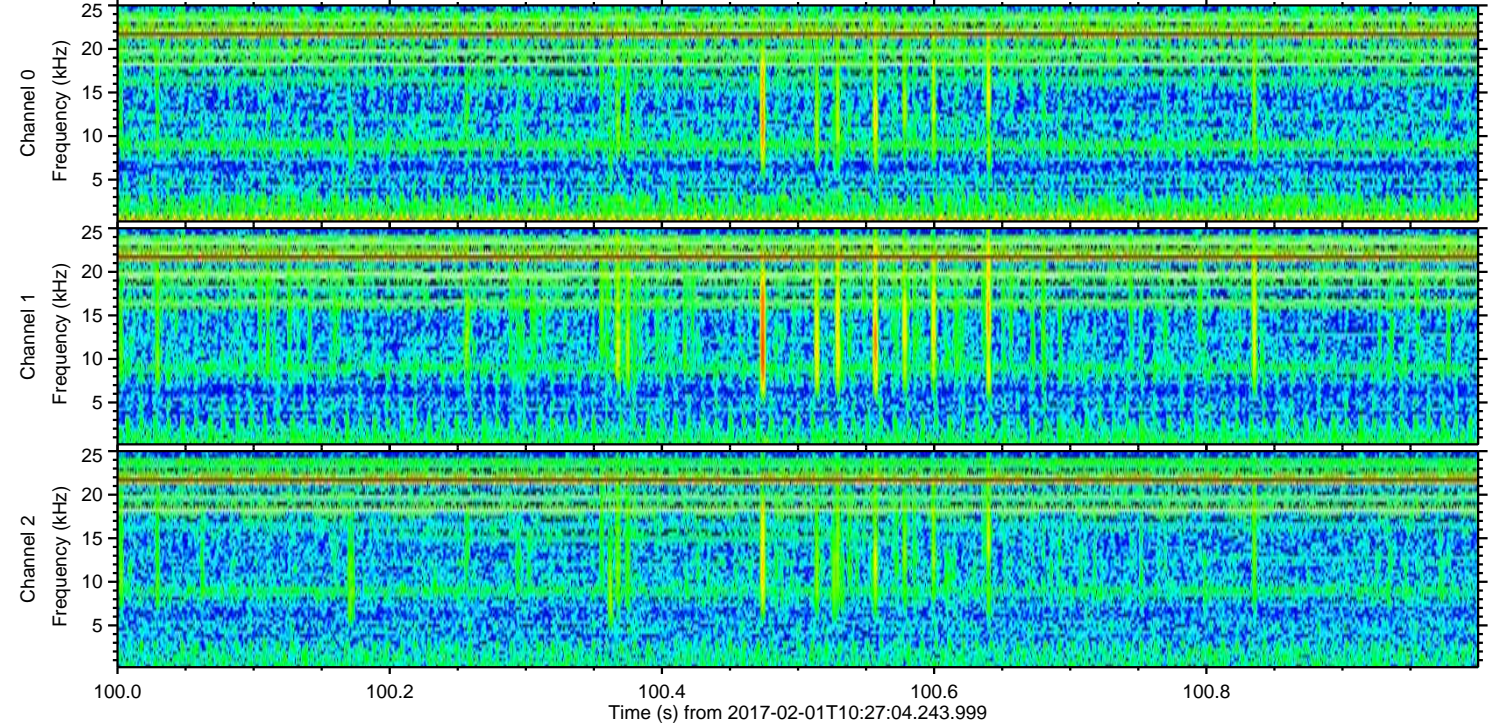
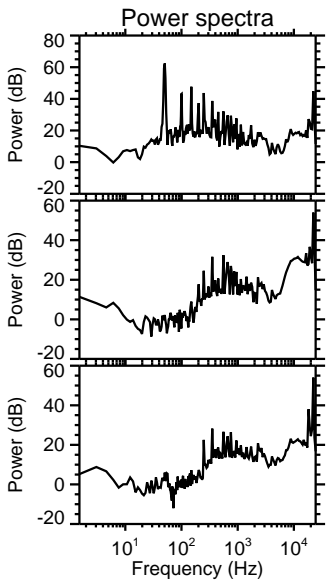
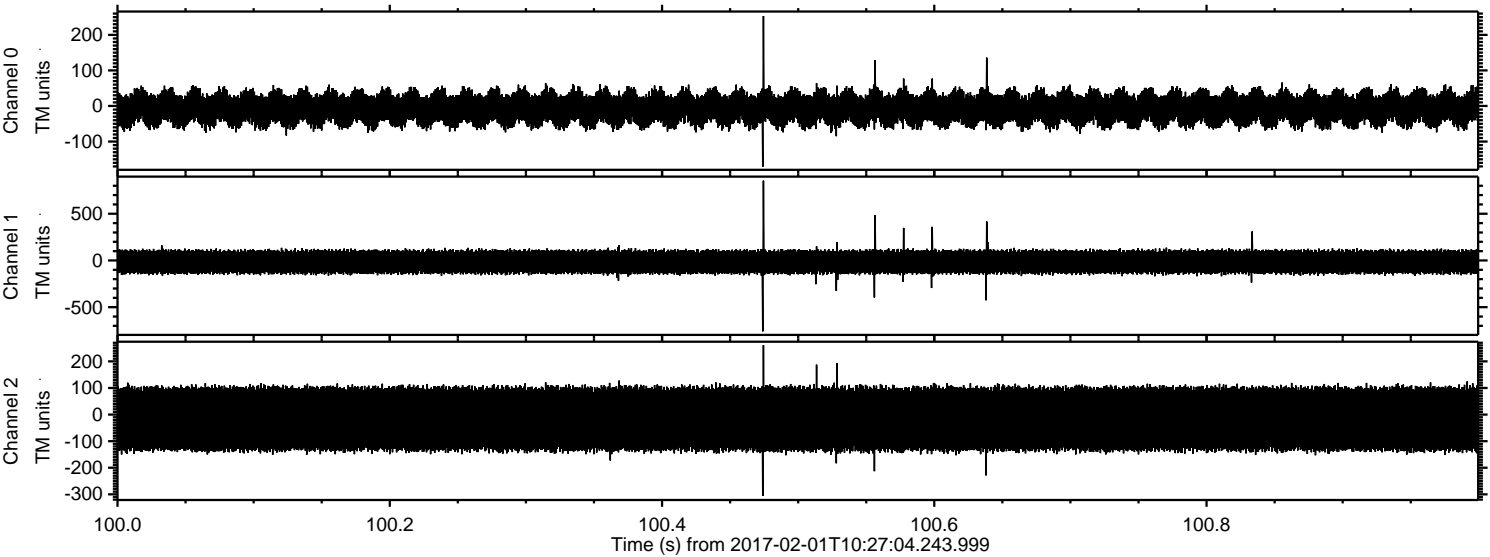


Processed Wed Feb 1 11:35:07 2017 by ELM ver.2012-10-06 from 001__elm20170201_102703__dat00.bin



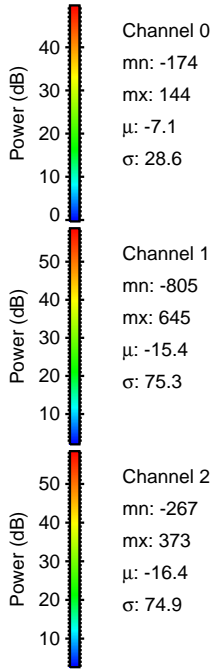
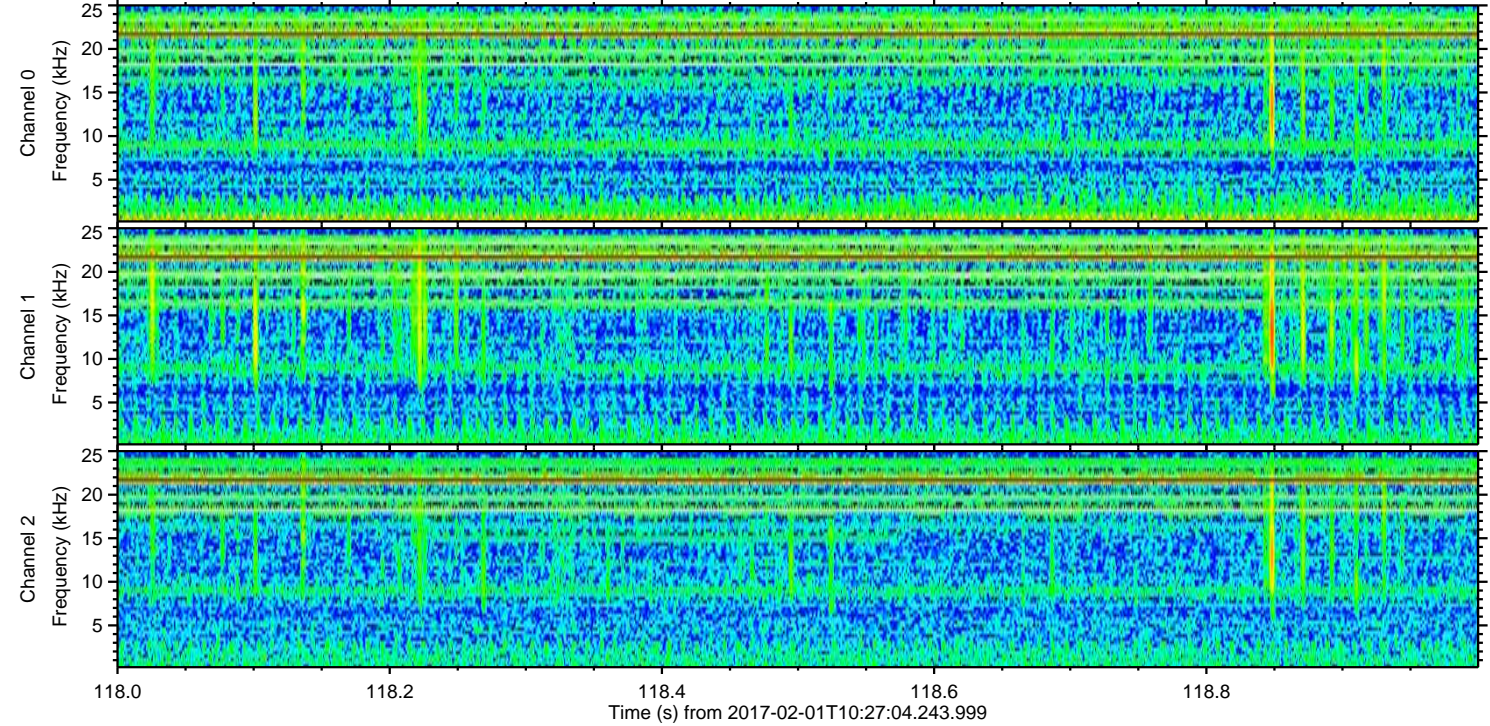
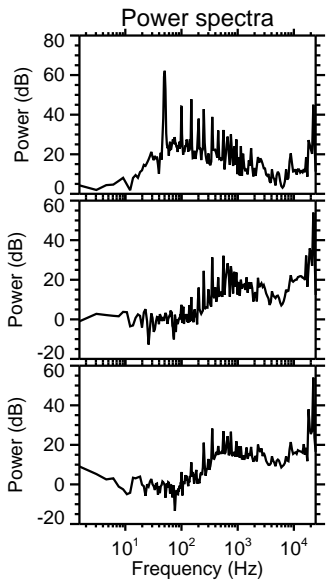
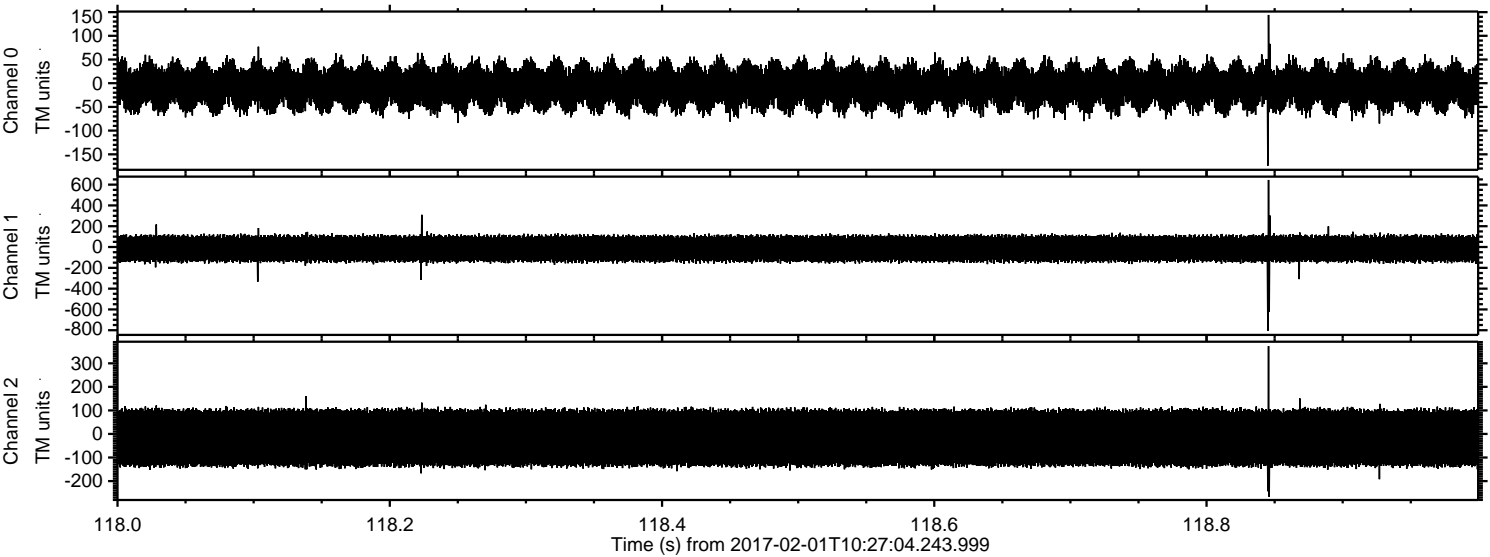
ELMAVAN 3D WAVEFORMS (Measured data sampled at 50 kHz) 51000 packets of 144 samples from 2017-02-01T10:27:04.243.999. Part 101/147

Processed Wed Feb 1 11:35:08 2017 by ELM ver.2012-10-06 from 001__elm20170201_102703__dat00.bin

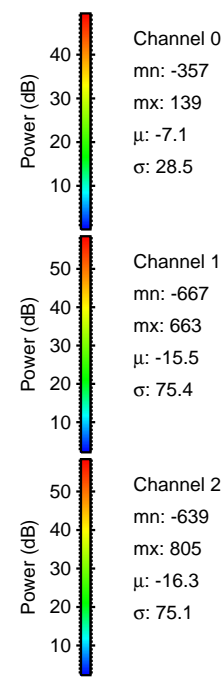
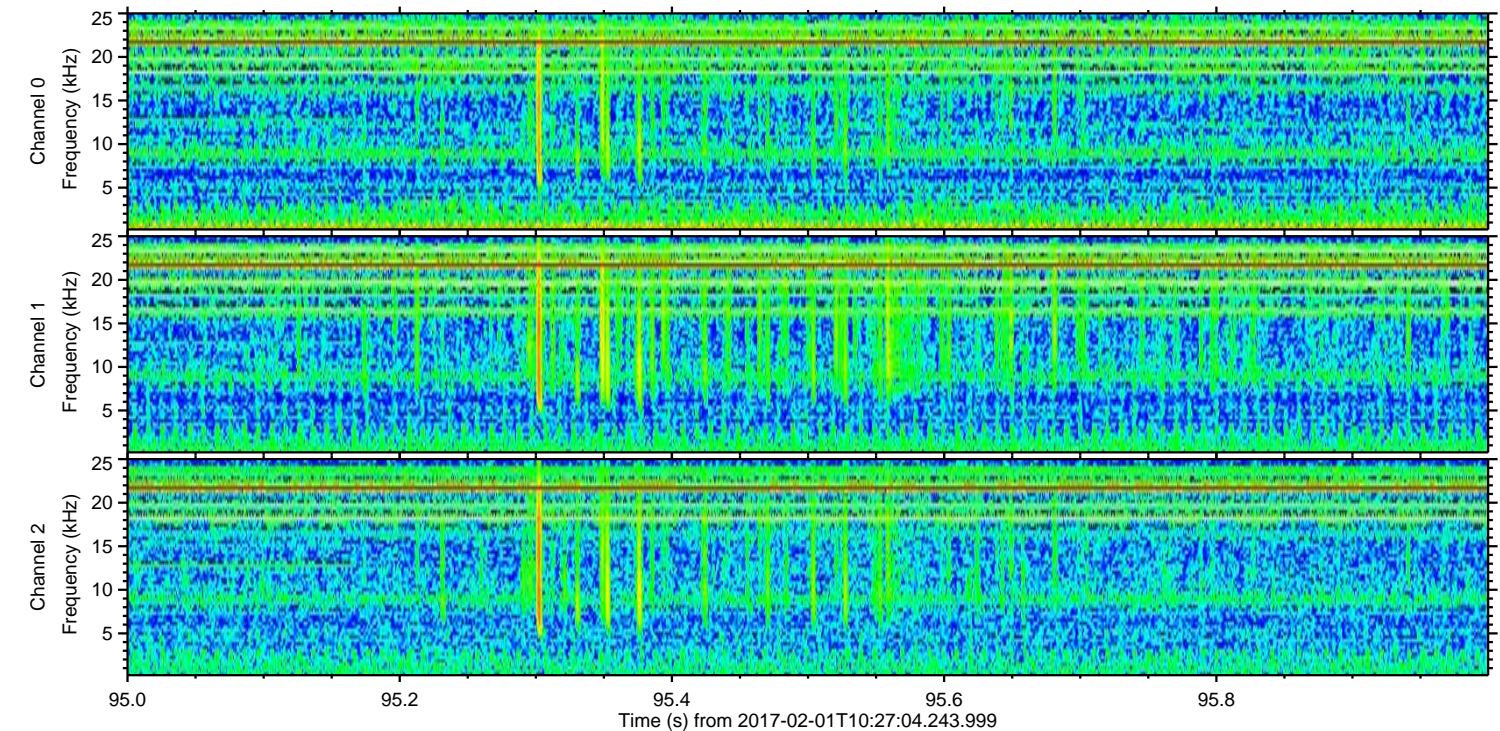
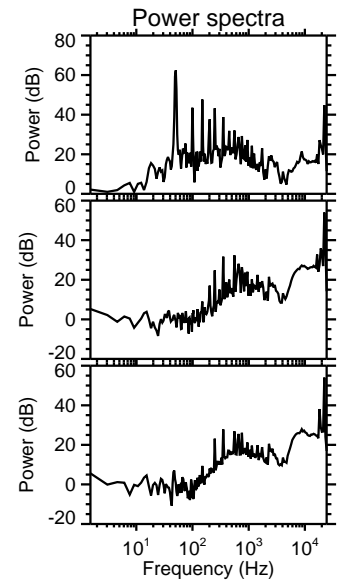
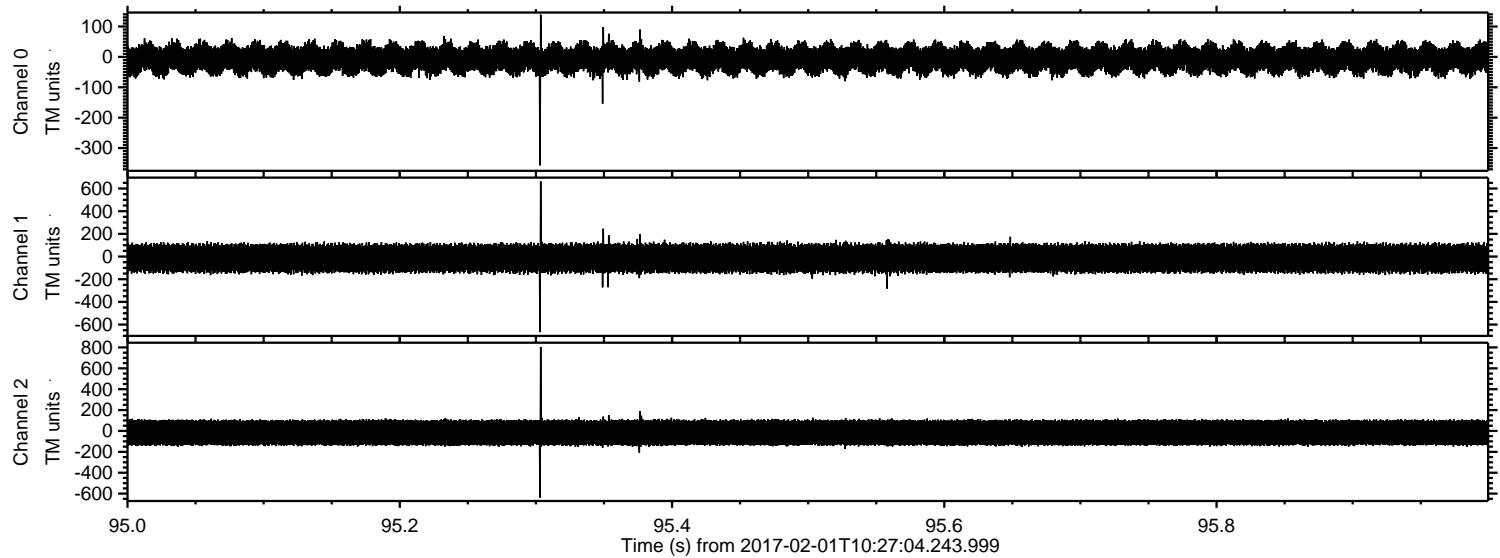


ELMAVAN 3D WAVEFORMS (Measured data sampled at 50 kHz) 51000 packets of 144 samples from 2017-02-01T10:27:04.243.999. Part 119/147

Processed Wed Feb 1 11:35:09 2017 by ELM ver.2012-10-06 from 001__elm20170201_102703__dat00.bin



Processed Wed Feb 1 11:35:09 2017 by ELM ver.2012-10-06 from 001__elm20170201_102703__dat00.bin

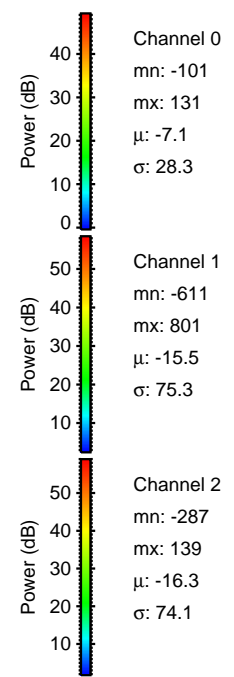
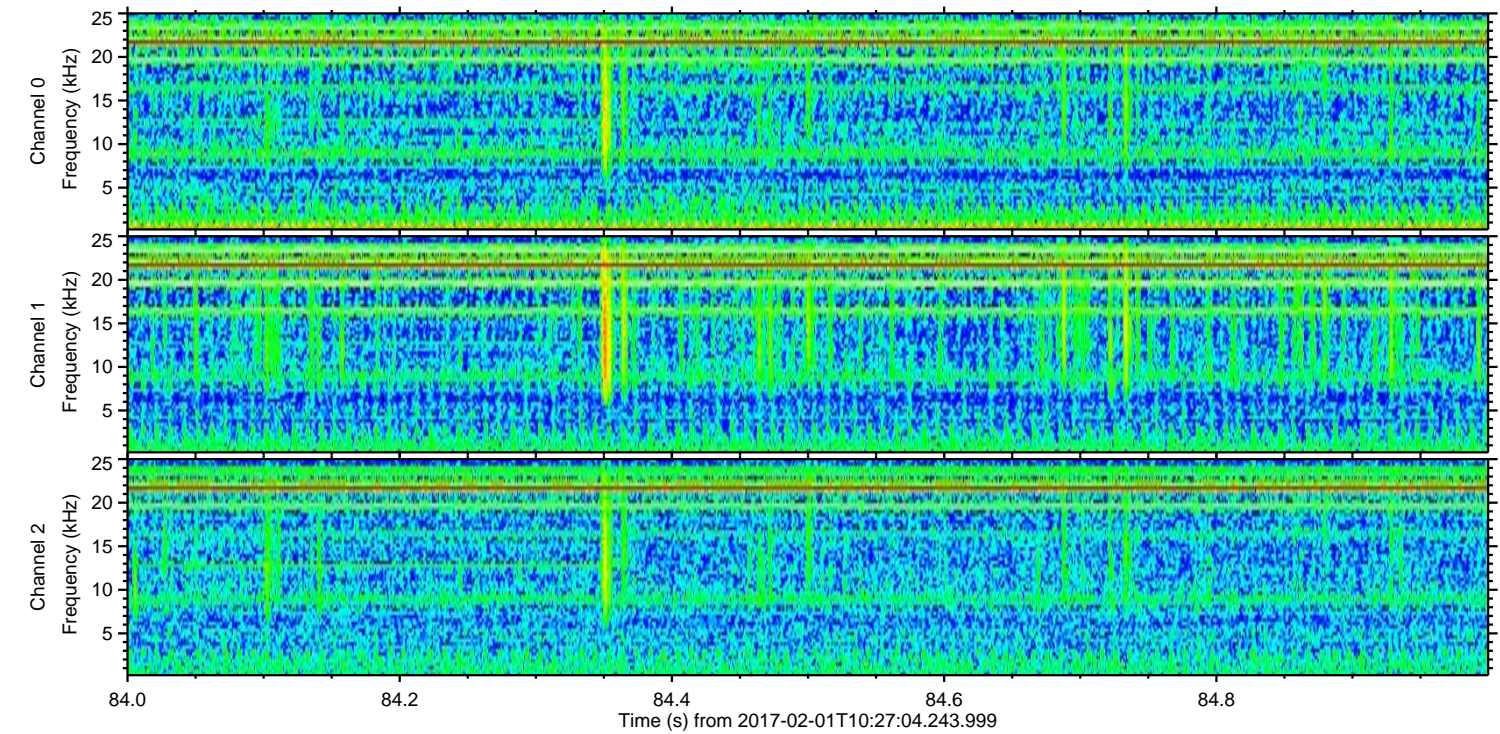
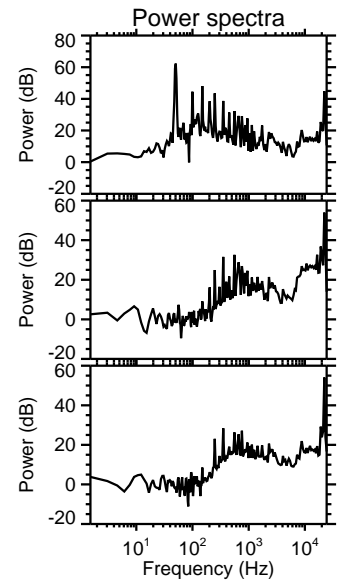
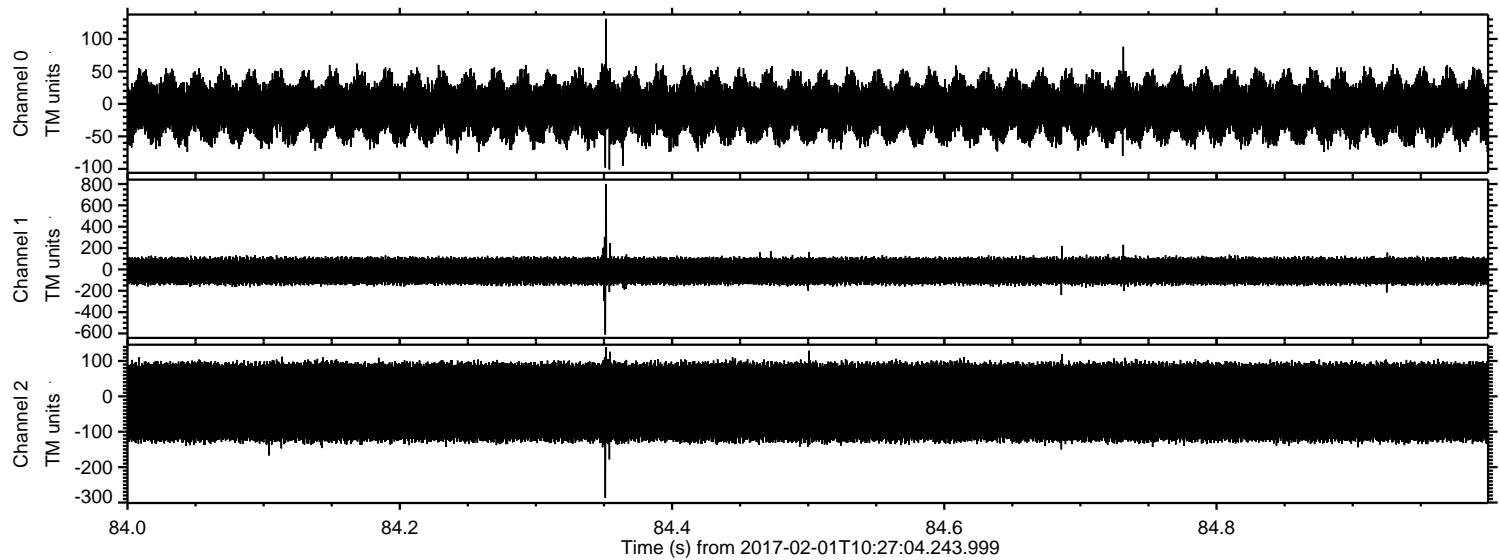


Channel 0
mn: -357
mx: 139
 μ : -7.1
 σ : 28.5

Channel 1
mn: -667
mx: 663
 μ : -15.5
 σ : 75.4

Channel 2
mn: -639
mx: 805
 μ : -16.3
 σ : 75.1

Processed Wed Feb 1 11:35:10 2017 by ELM ver.2012-10-06 from 001__elm20170201_102703__dat00.bin



Processed Wed Feb 1 11:35:11 2017 by ELM ver.2012-10-06 from 001__elm20170201_102703__dat00.bin

