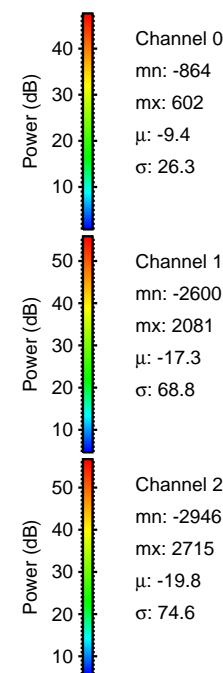
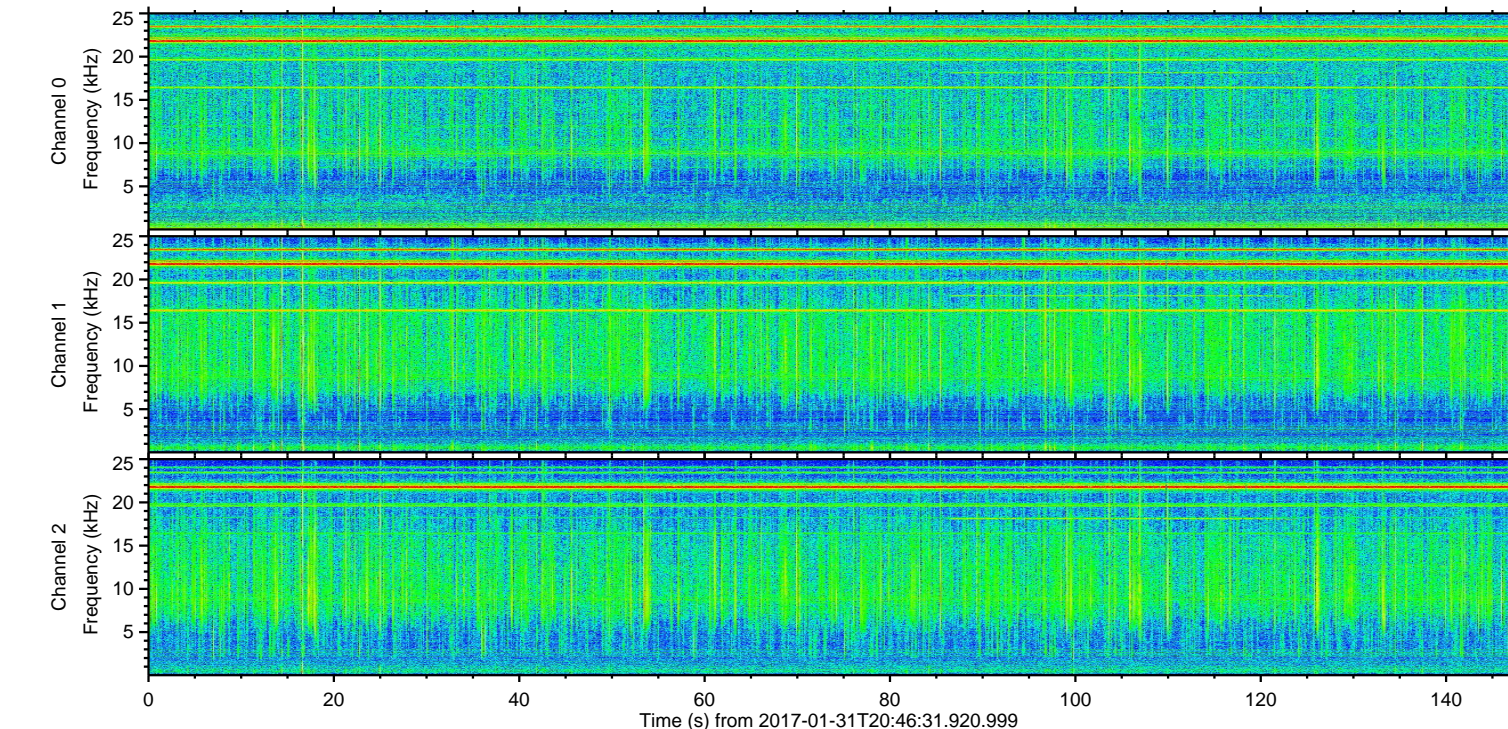
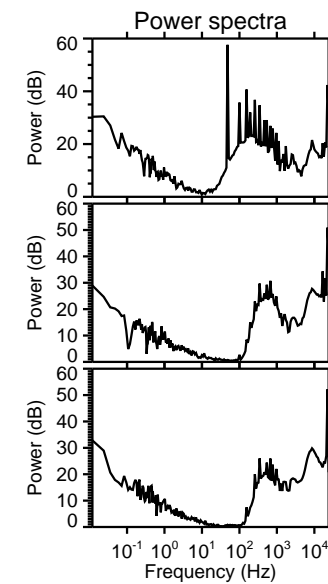
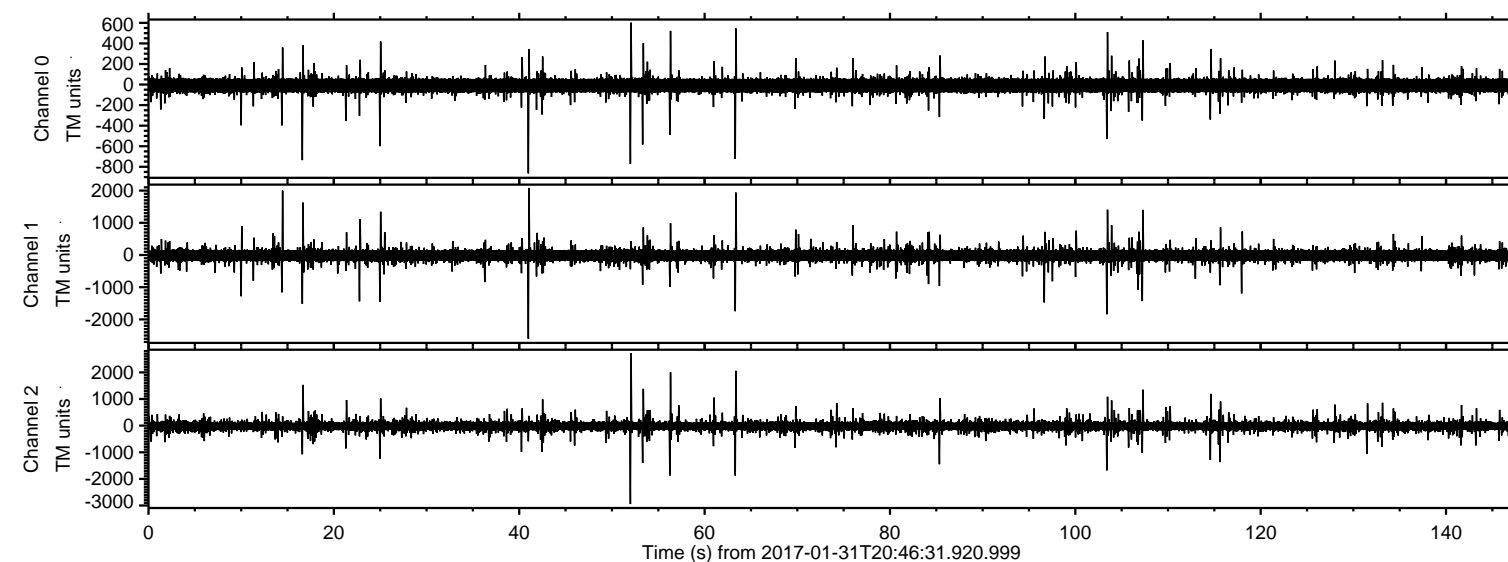
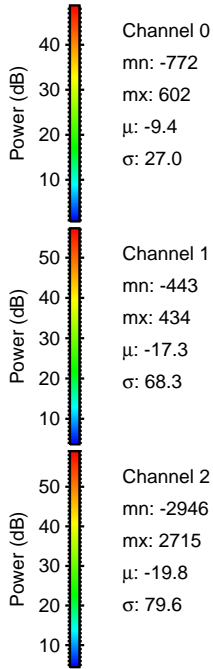
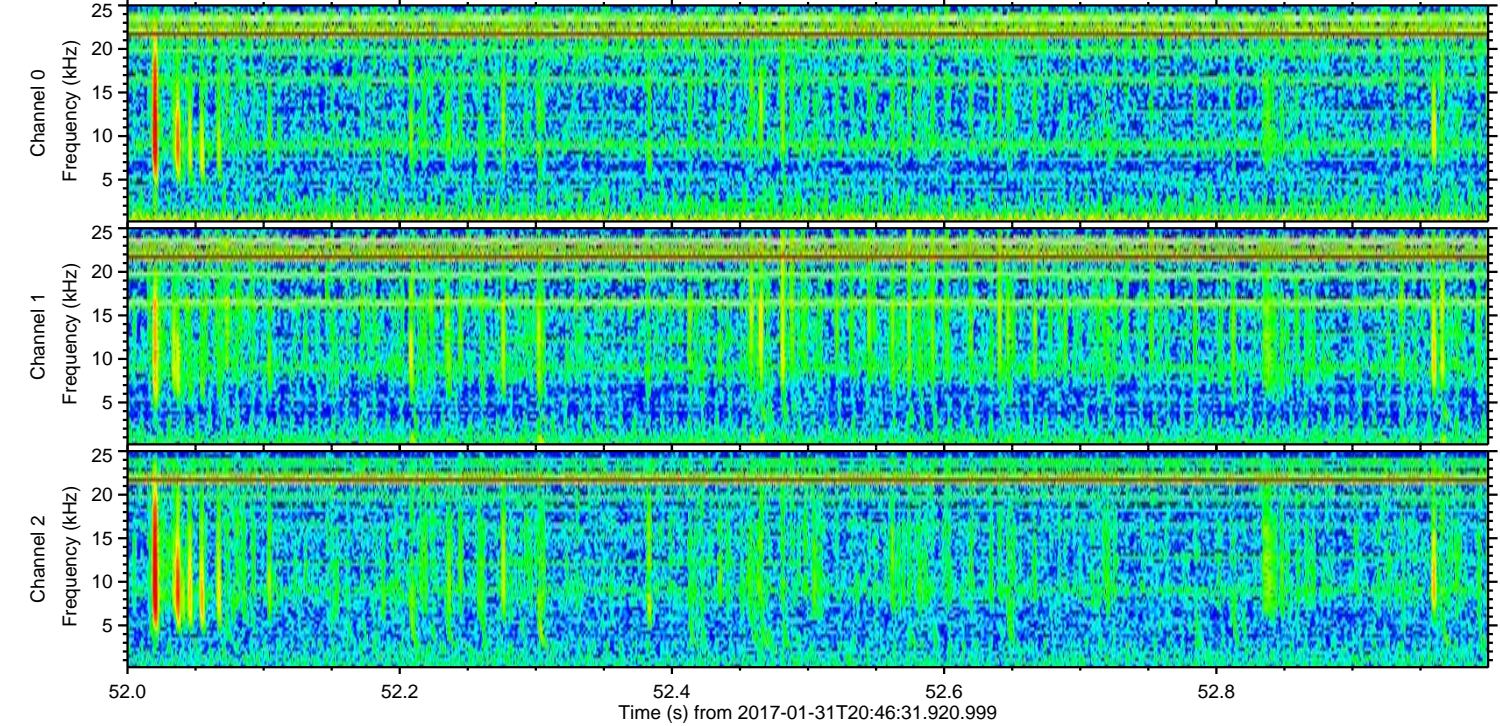
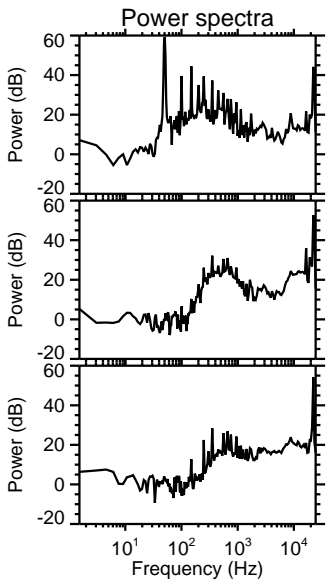
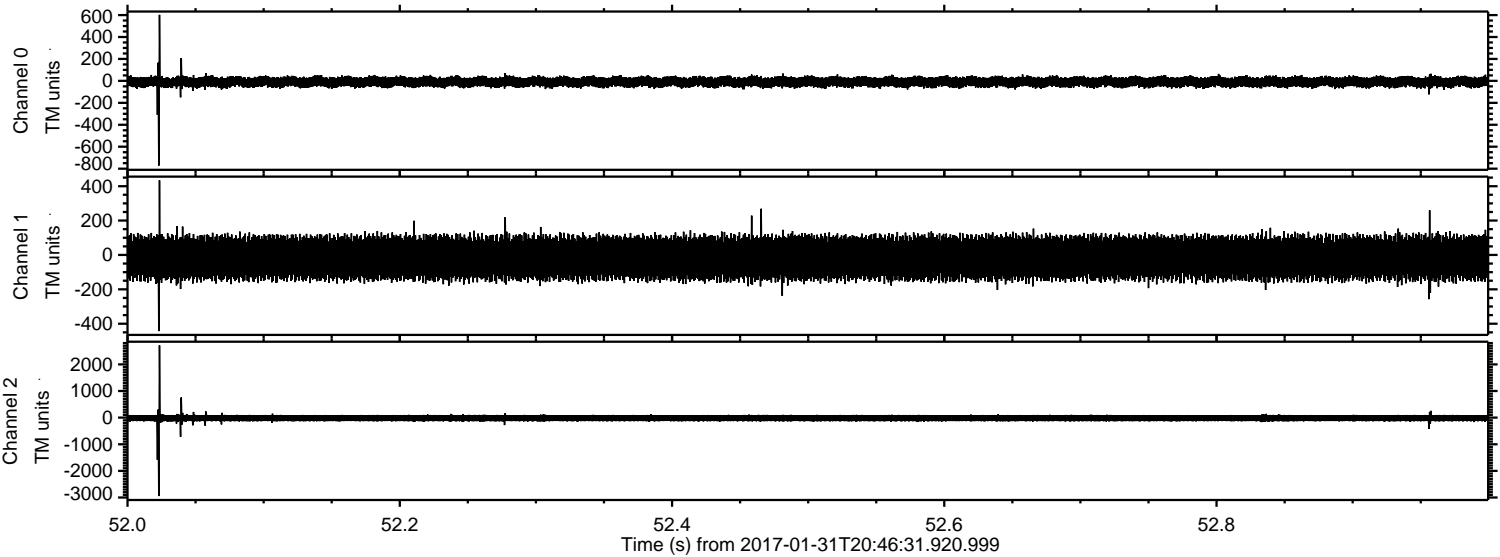


ELMAVAN 3D WAVEFORMS (Measured data sampled at 50 kHz) 51000 packets of 144 samples from 2017-01-31T20:46:31.920.999.

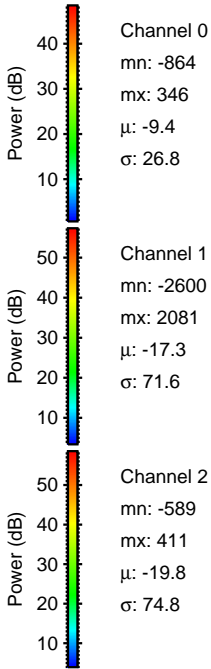
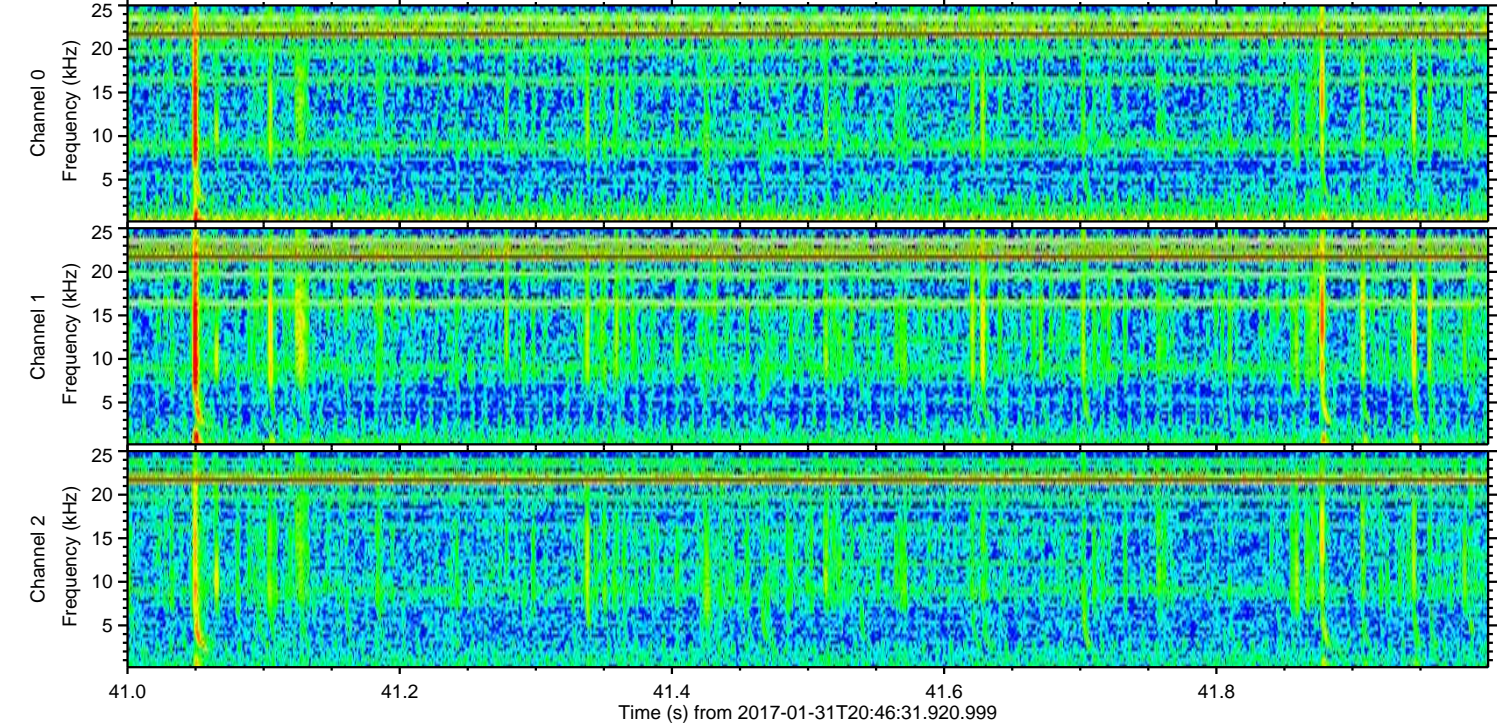
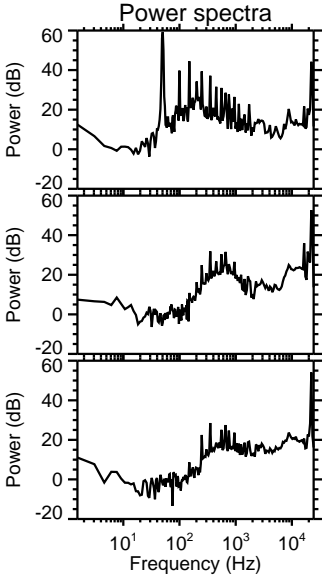
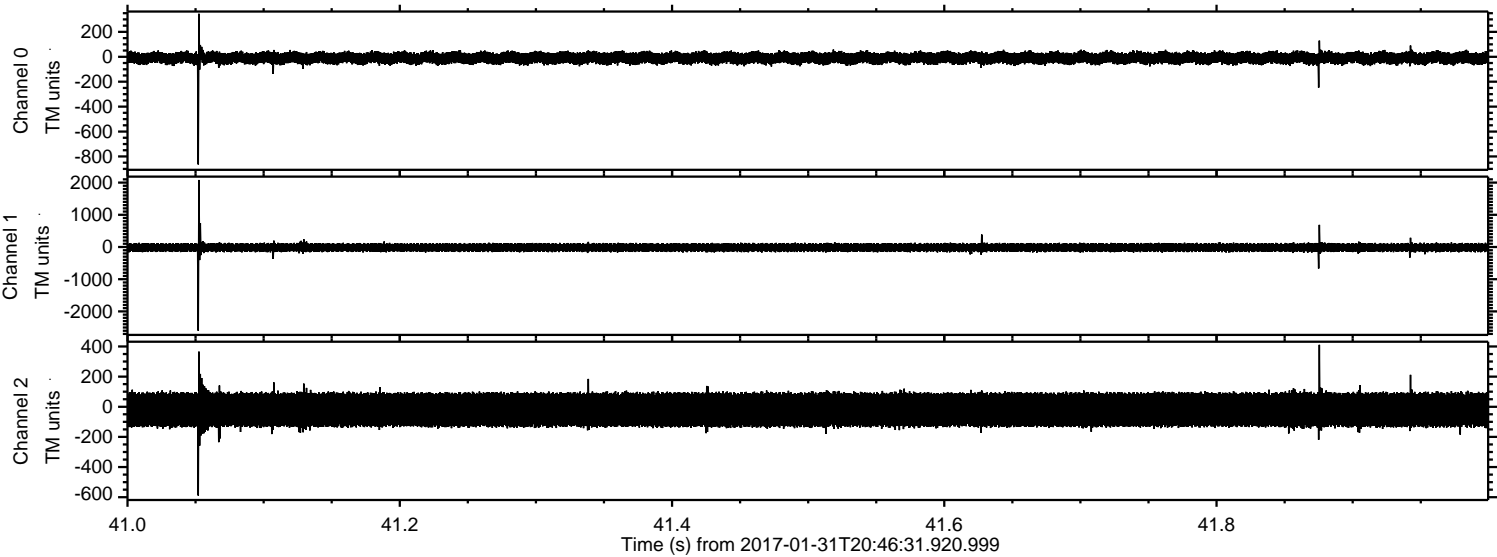
Processed Tue Jan 31 21:53:57 2017 by ELM ver.2012-10-06 from 001__elm20170131_204630__dat00.bin



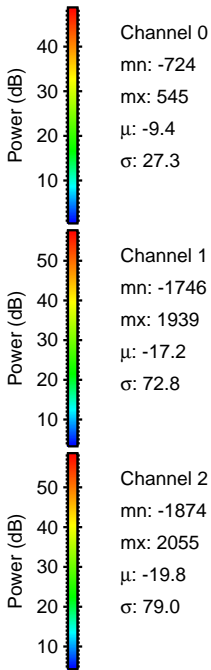
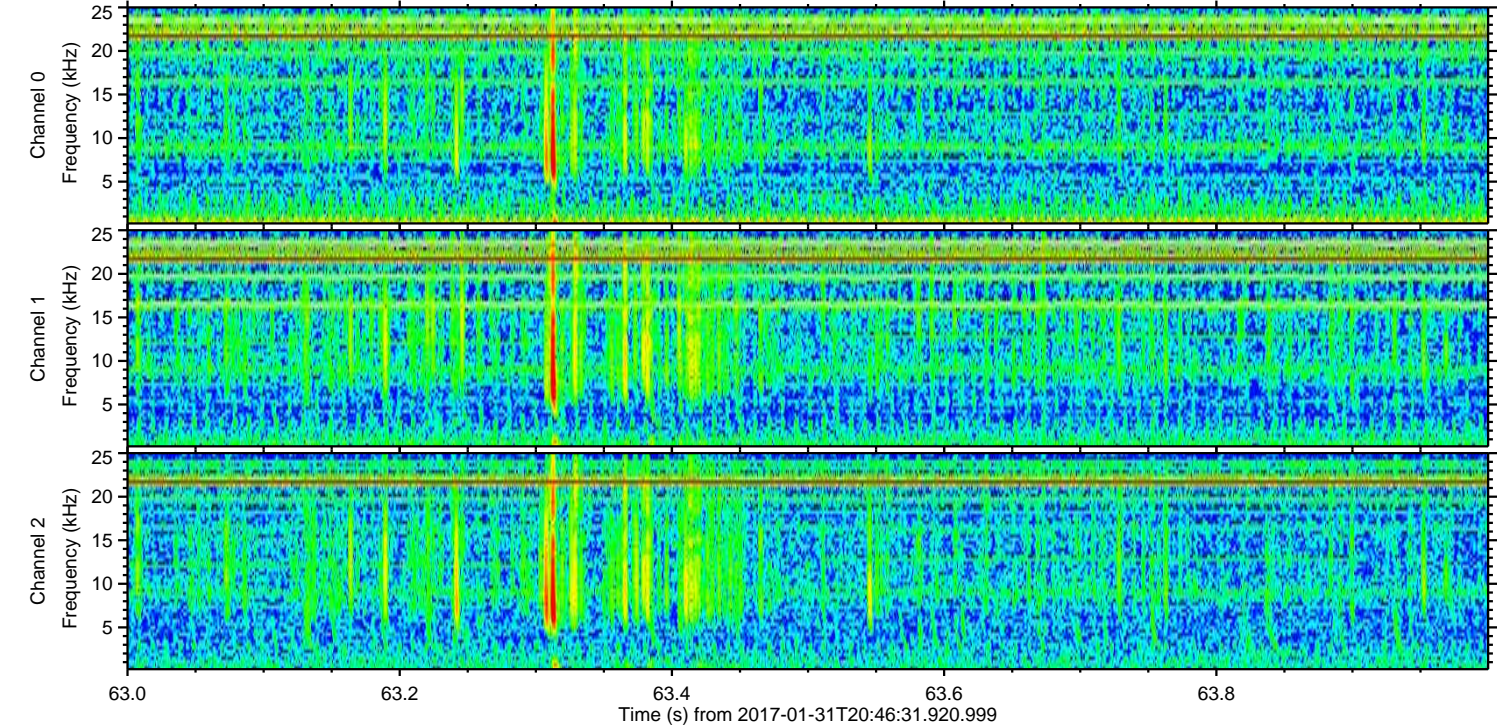
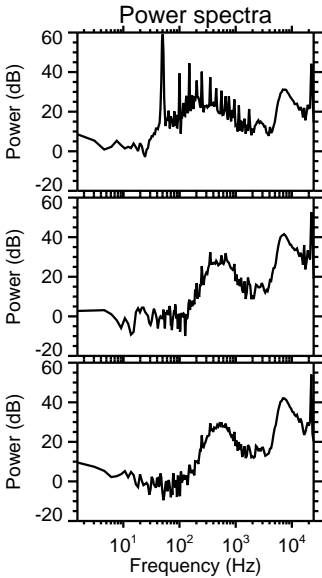
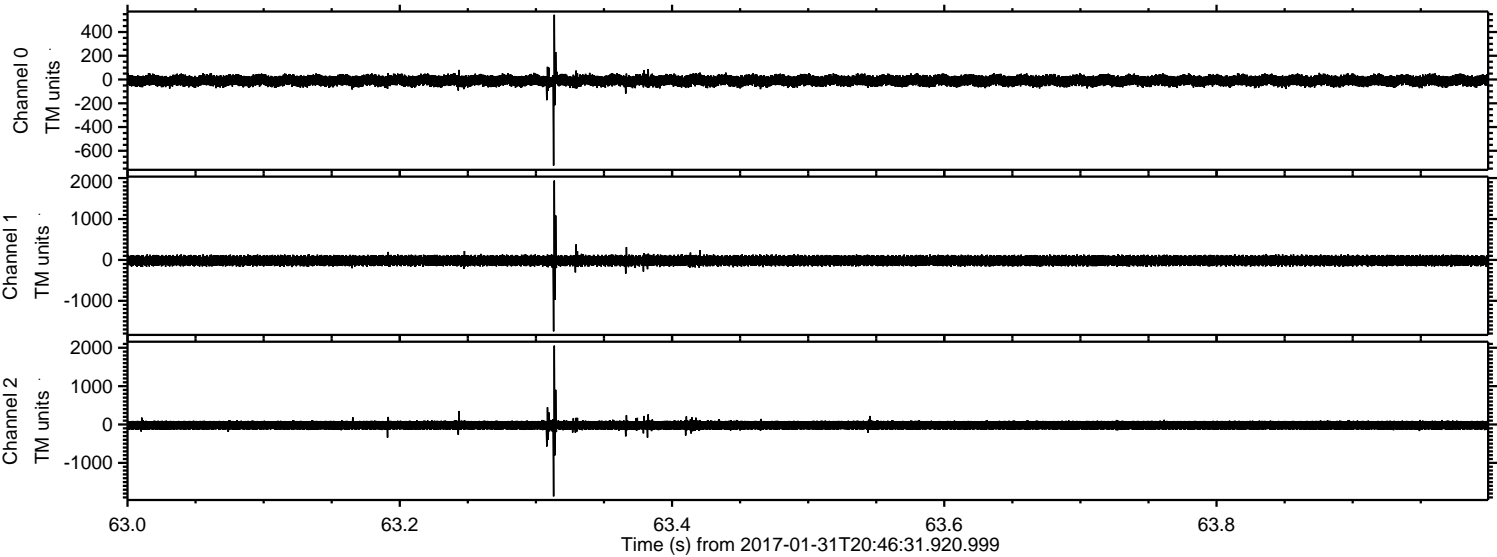
Processed Tue Jan 31 21:54:08 2017 by ELM ver.2012-10-06 from 001__elm20170131_204630__dat00.bin



Processed Tue Jan 31 21:54:09 2017 by ELM ver.2012-10-06 from 001__elm20170131_204630__dat00.bin

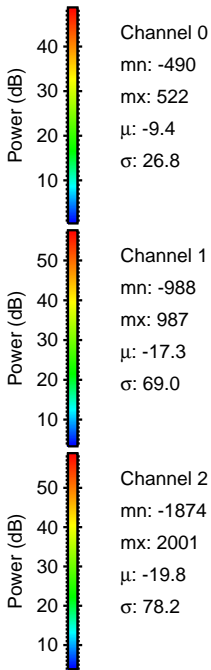
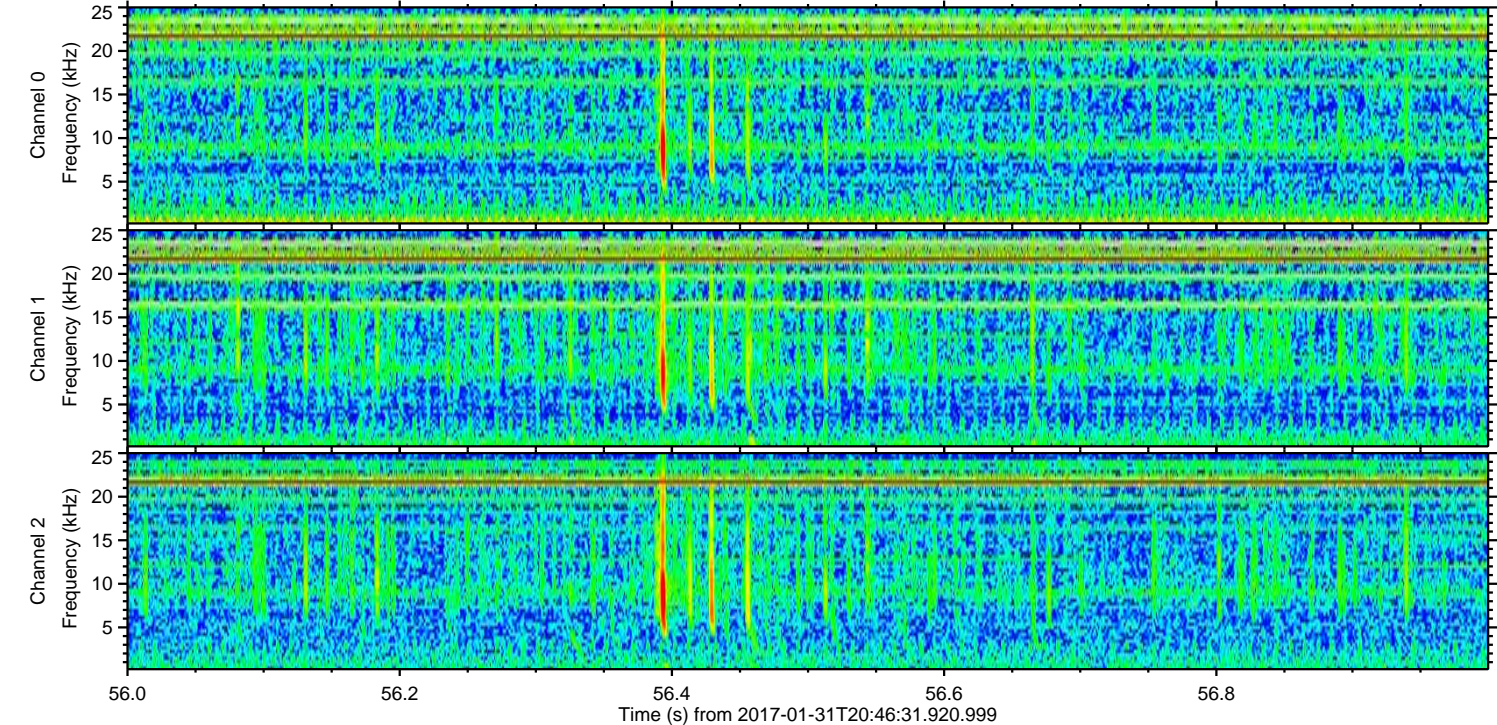
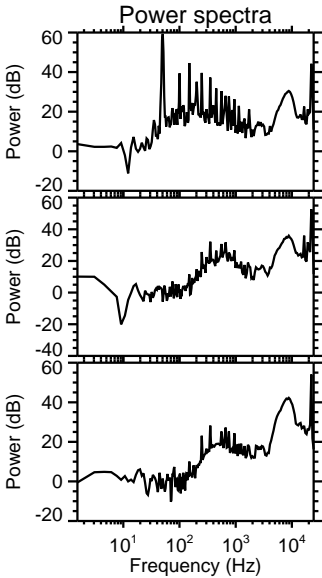
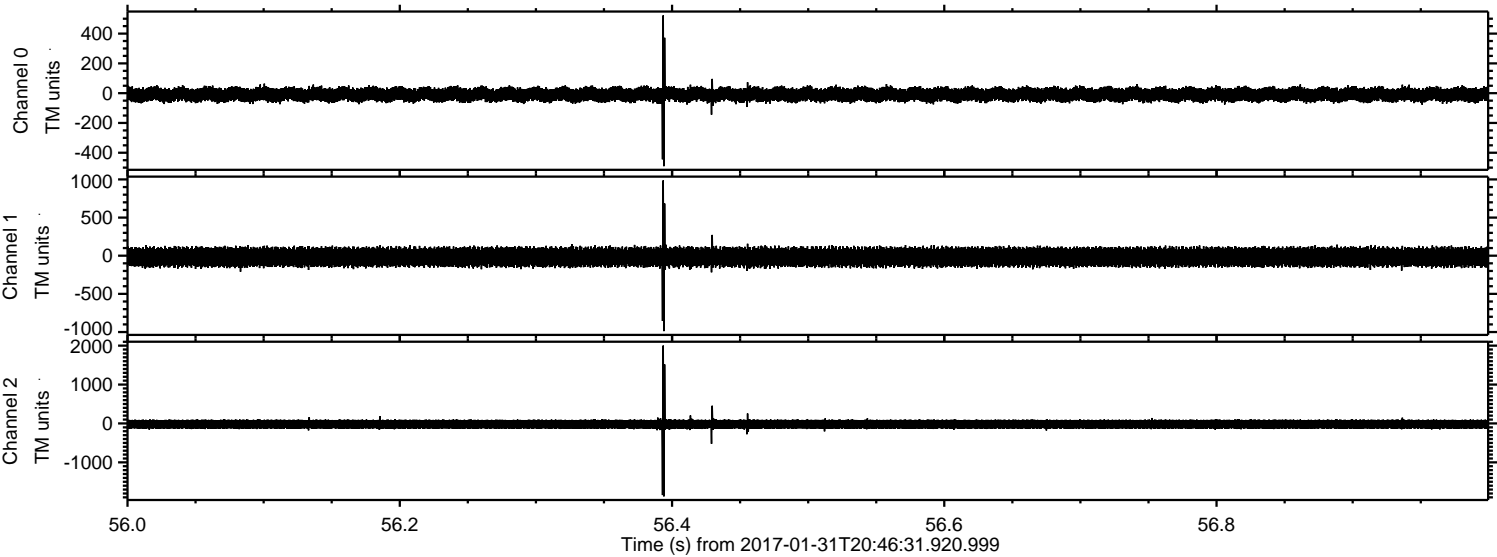


Processed Tue Jan 31 21:54:10 2017 by ELM ver.2012-10-06 from 001__elm20170131_204630__dat00.bin

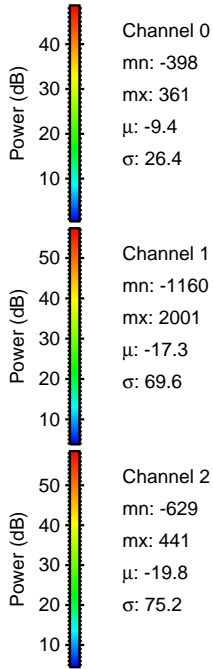
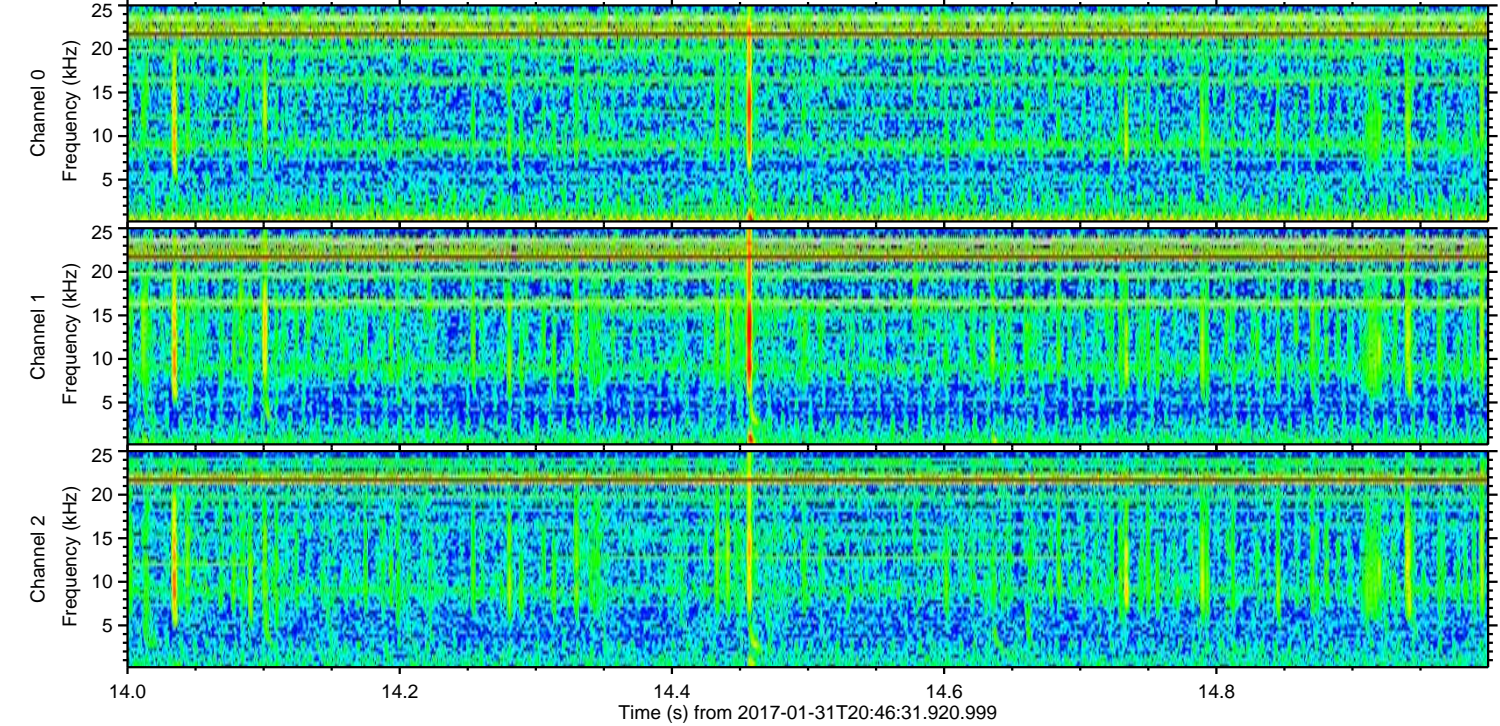
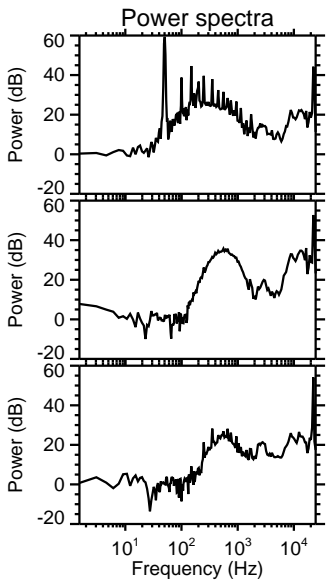
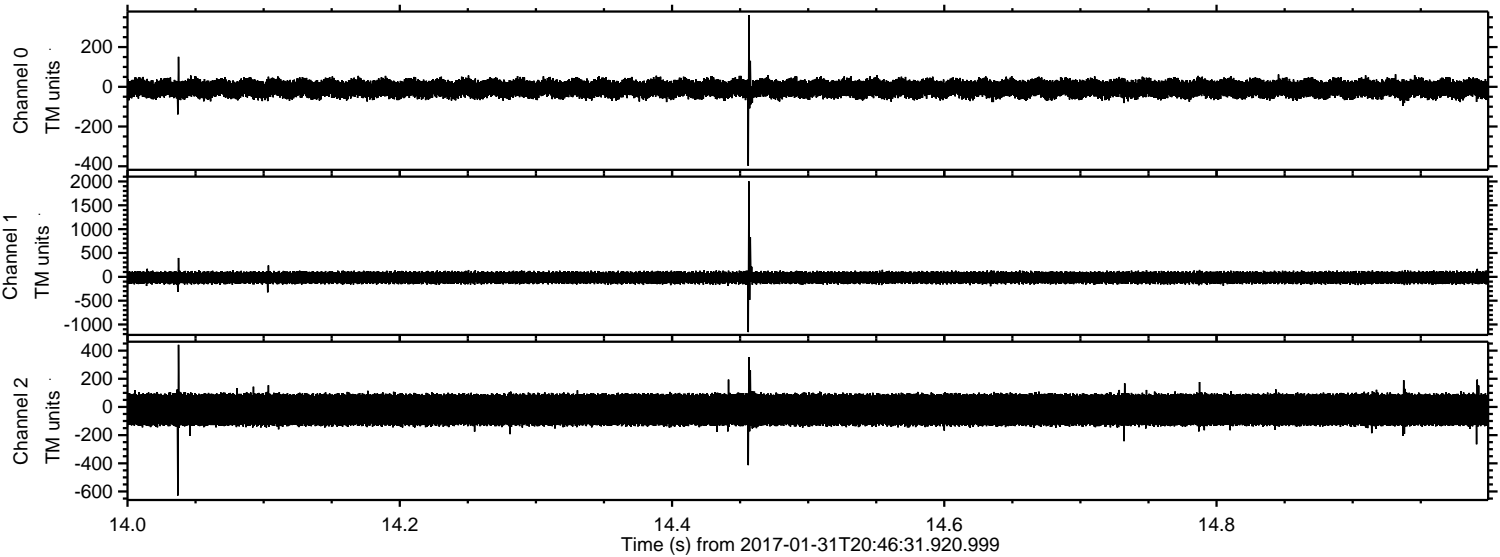


ELMAVAN 3D WAVEFORMS (Measured data sampled at 50 kHz) 51000 packets of 144 samples from 2017-01-31T20:46:31.920.999. Part 57/147

Processed Tue Jan 31 21:54:11 2017 by ELM ver.2012-10-06 from 001__elm20170131_204630__dat00.bin

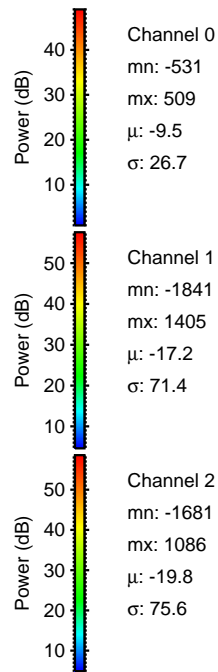
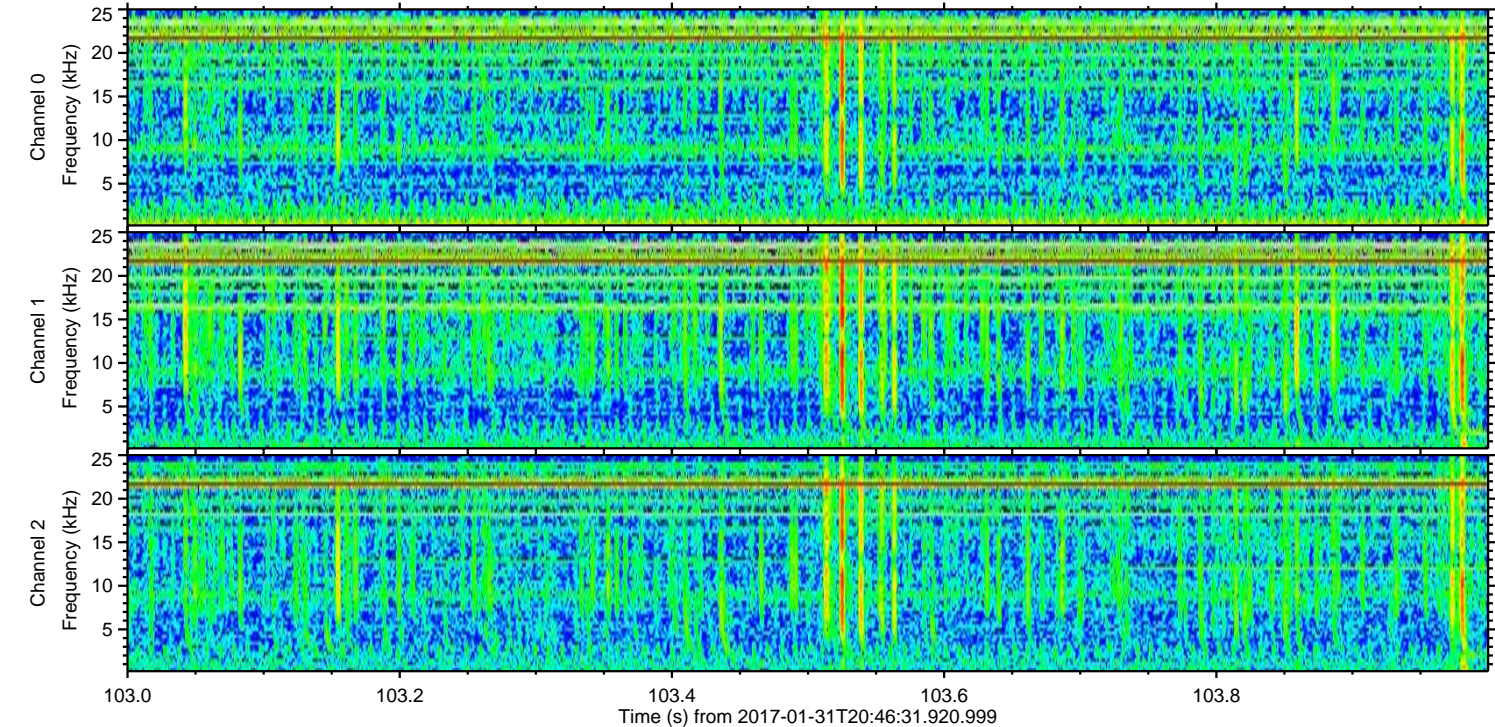
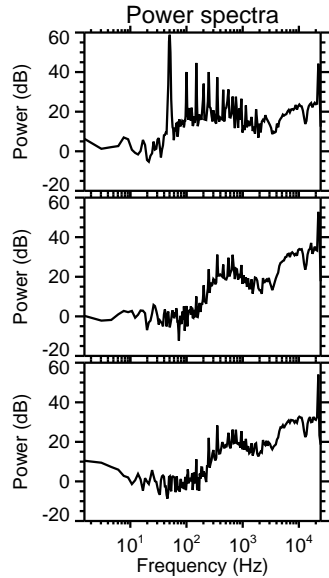
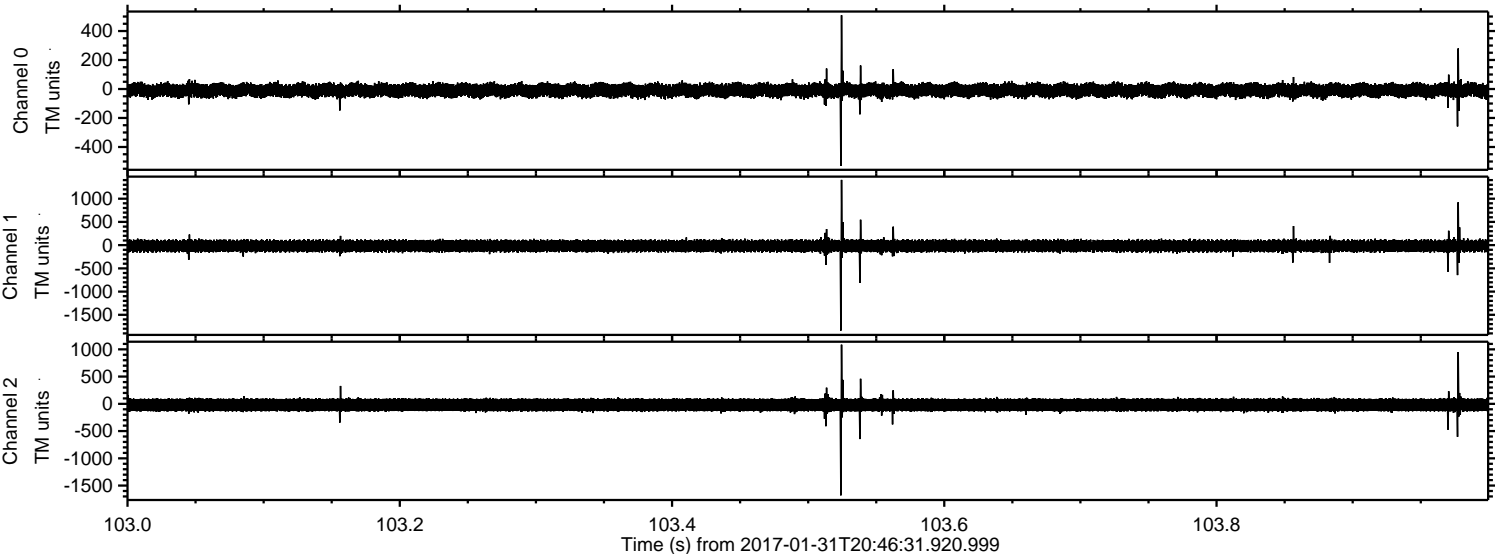


Processed Tue Jan 31 21:54:12 2017 by ELM ver.2012-10-06 from 001__elm20170131_204630__dat00.bin



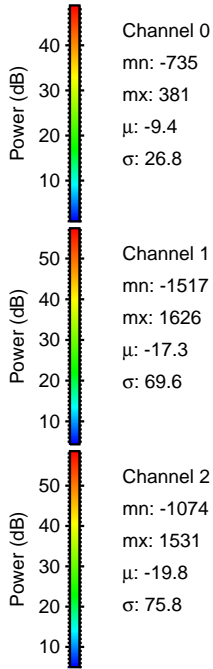
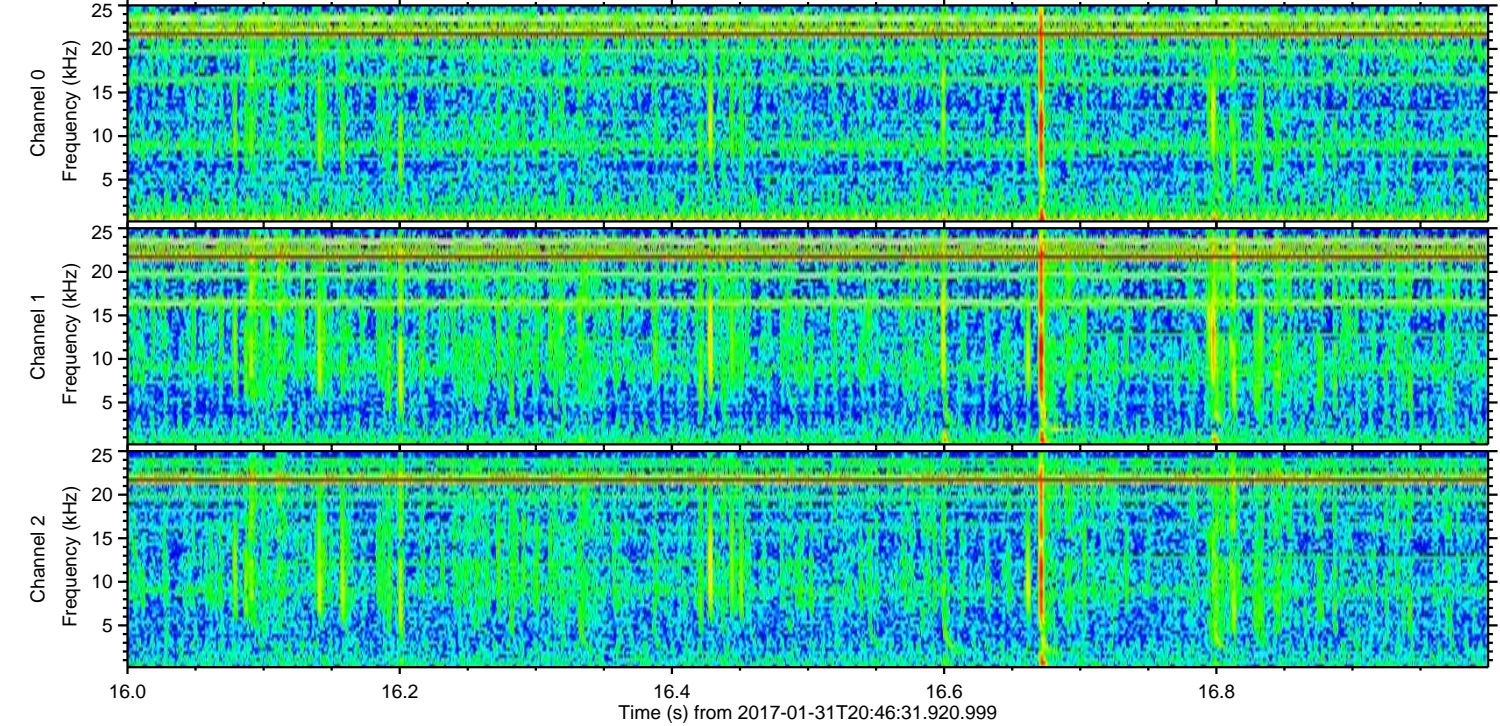
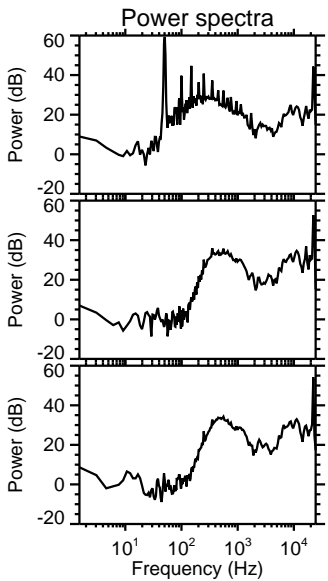
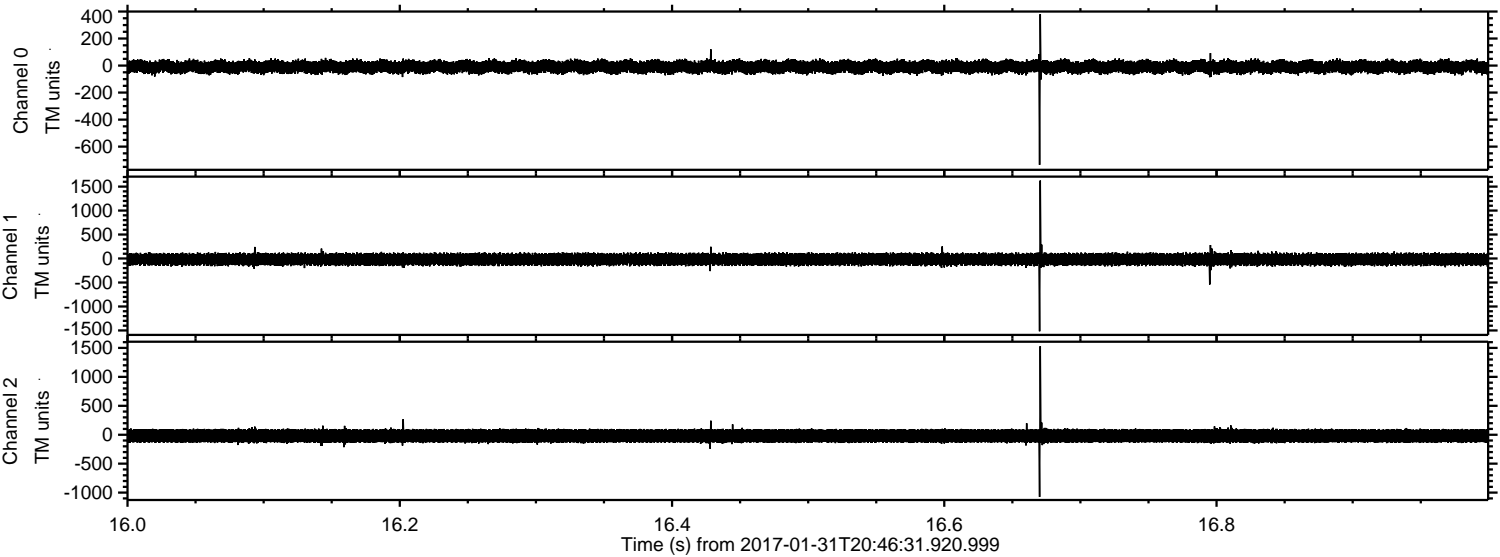
ELMAVAN 3D WAVEFORMS (Measured data sampled at 50 kHz) 51000 packets of 144 samples from 2017-01-31T20:46:31.920.999. Part 104/147

Processed Tue Jan 31 21:54:13 2017 by ELM ver.2012-10-06 from 001__elm20170131_204630__dat00.bin



ELMAVAN 3D WAVEFORMS (Measured data sampled at 50 kHz) 51000 packets of 144 samples from 2017-01-31T20:46:31.920.999. Part 17/147

Processed Tue Jan 31 21:54:14 2017 by ELM ver.2012-10-06 from 001__elm20170131_204630__dat00.bin

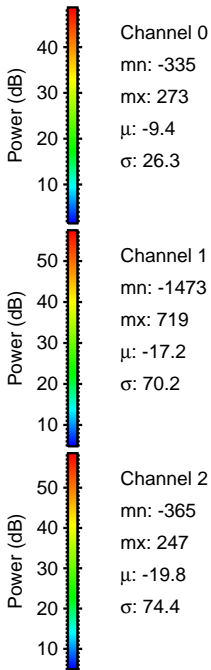
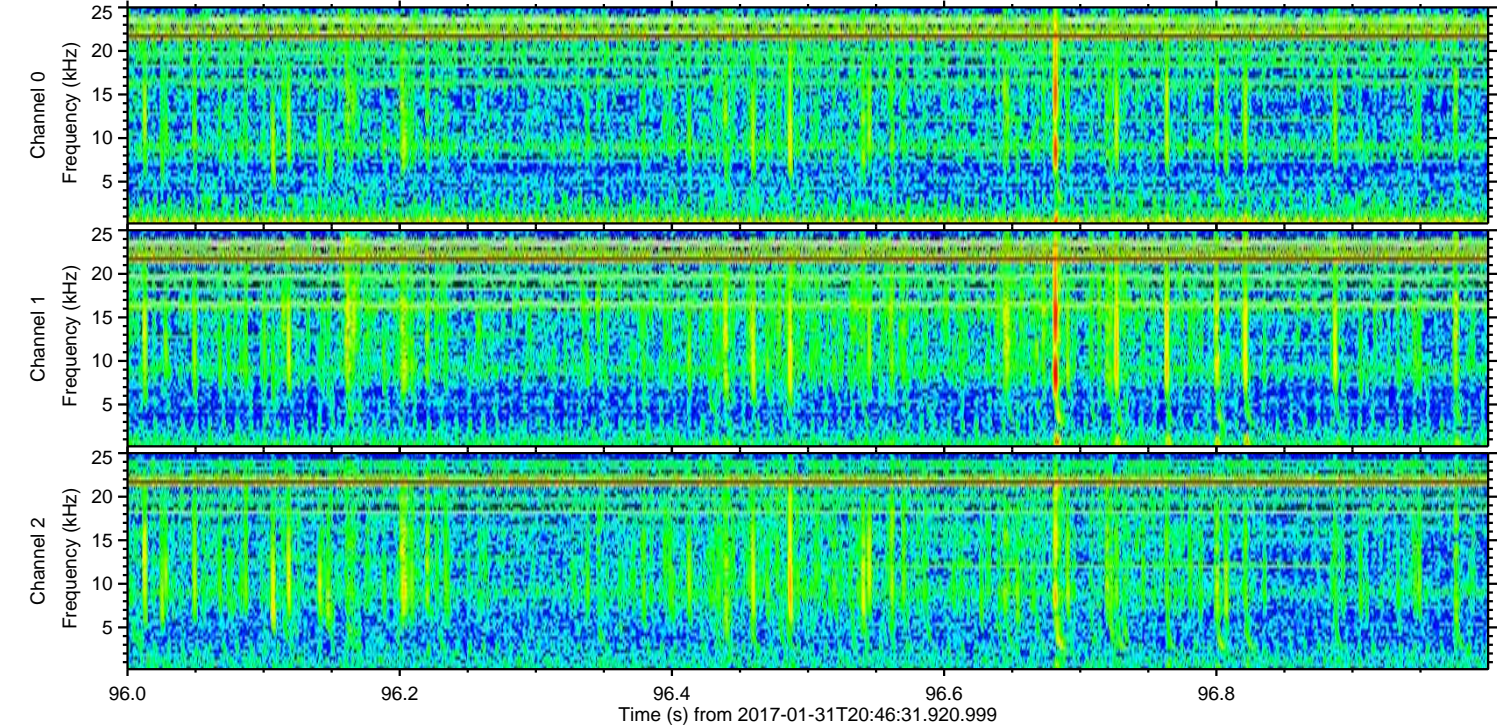
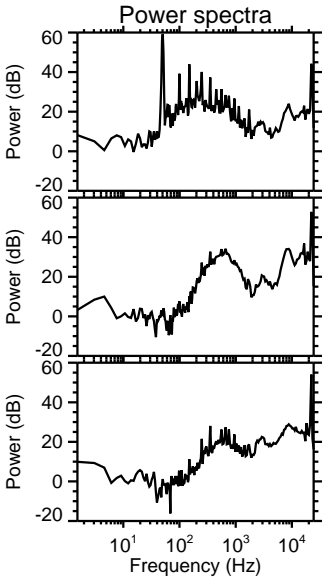
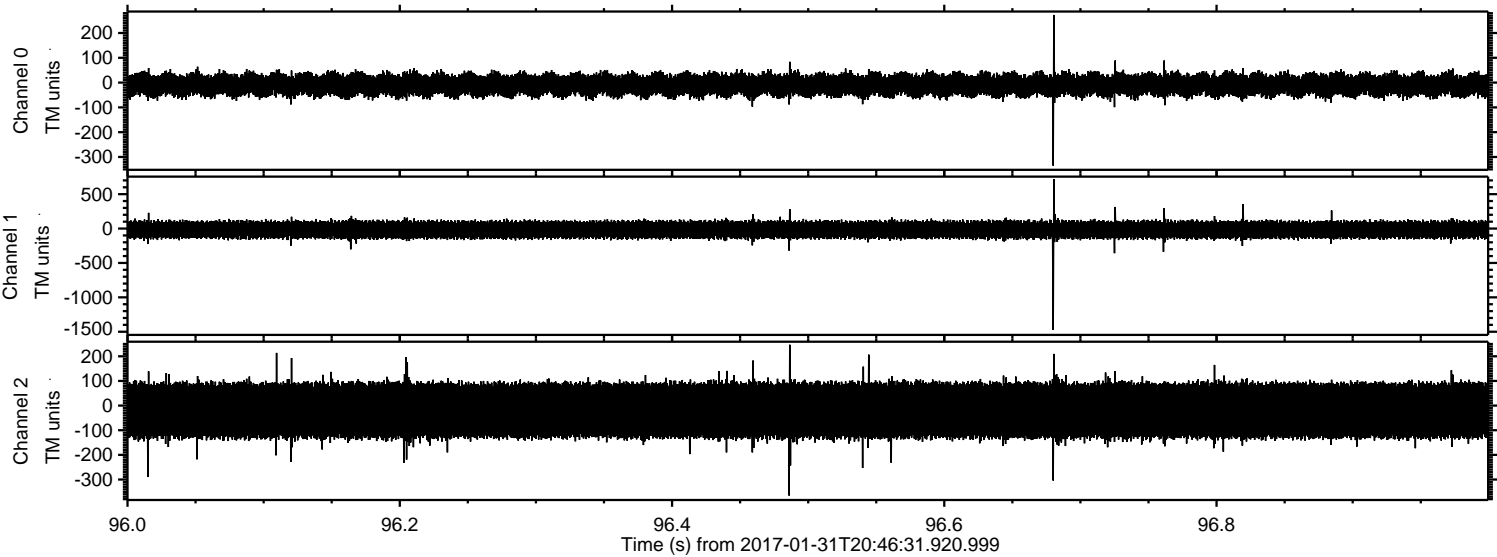


Channel 0
mn: -735
mx: 381
 μ : -9.4
 σ : 26.8

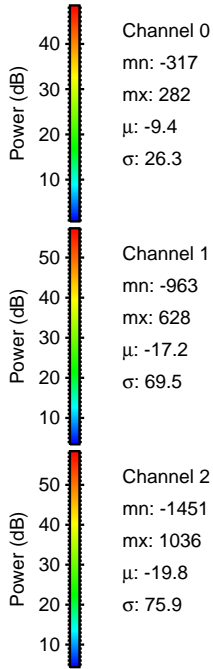
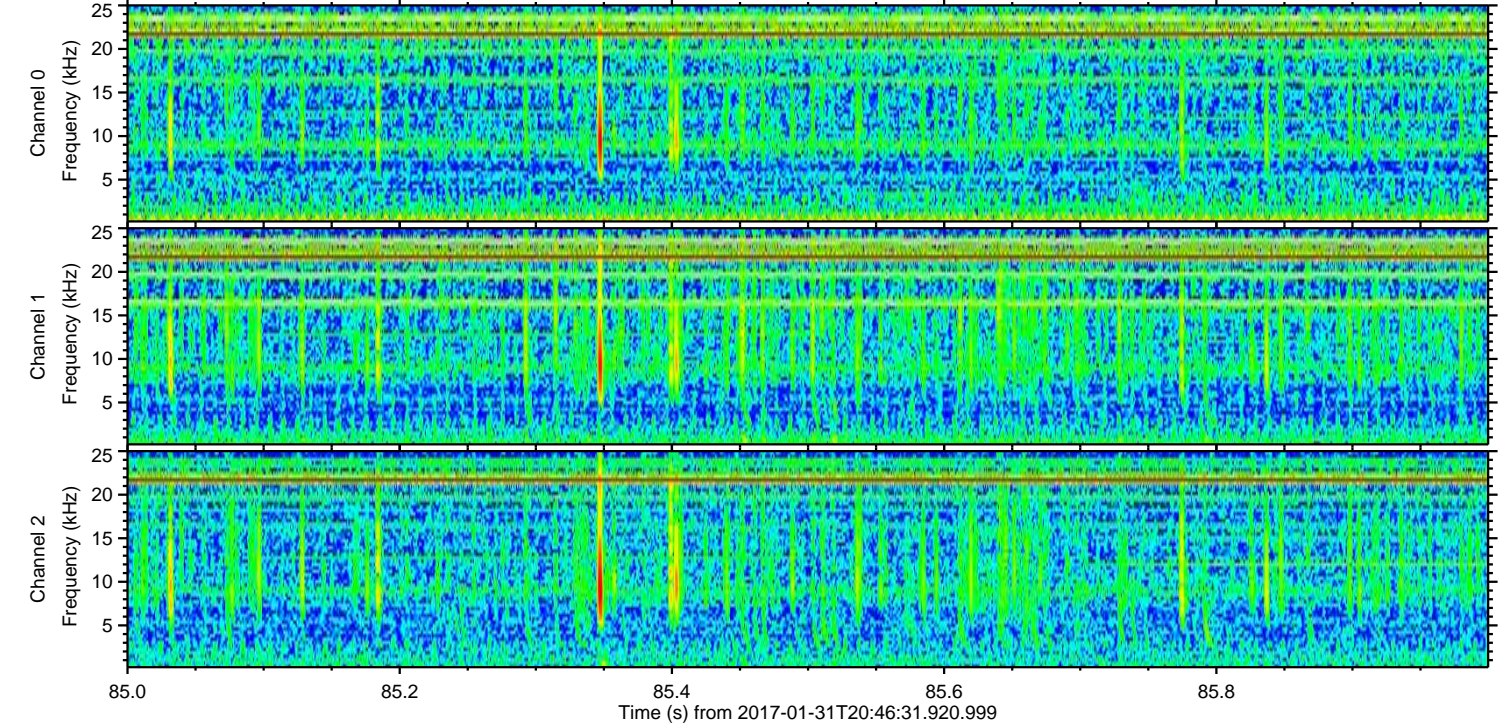
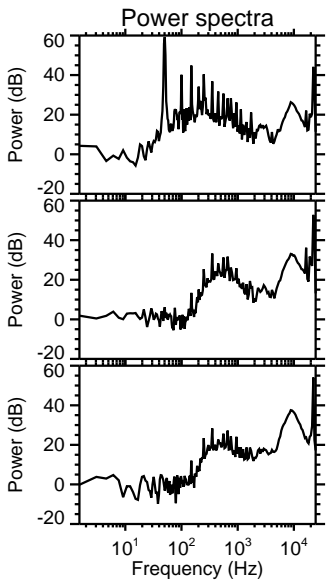
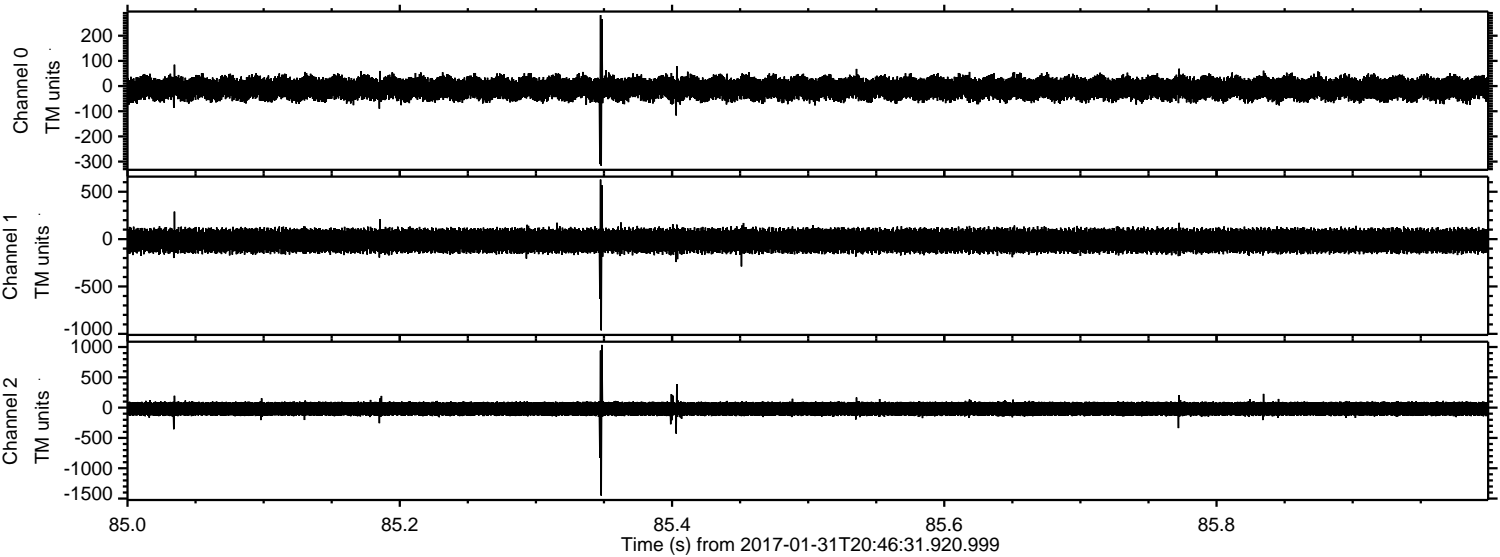
Channel 1
mn: -1517
mx: 1626
 μ : -17.3
 σ : 69.6

Channel 2
mn: -1074
mx: 1531
 μ : -19.8
 σ : 75.8

Processed Tue Jan 31 21:54:15 2017 by ELM ver.2012-10-06 from 001__elm20170131_204630__dat00.bin



Processed Tue Jan 31 21:54:16 2017 by ELM ver.2012-10-06 from 001__elm20170131_204630__dat00.bin



ELMAVAN 3D WAVEFORMS (Measured data sampled at 50 kHz) 51000 packets of 144 samples from 2017-01-31T20:46:31.920.999. Part 109/147

