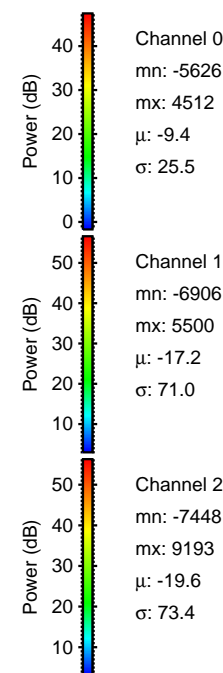
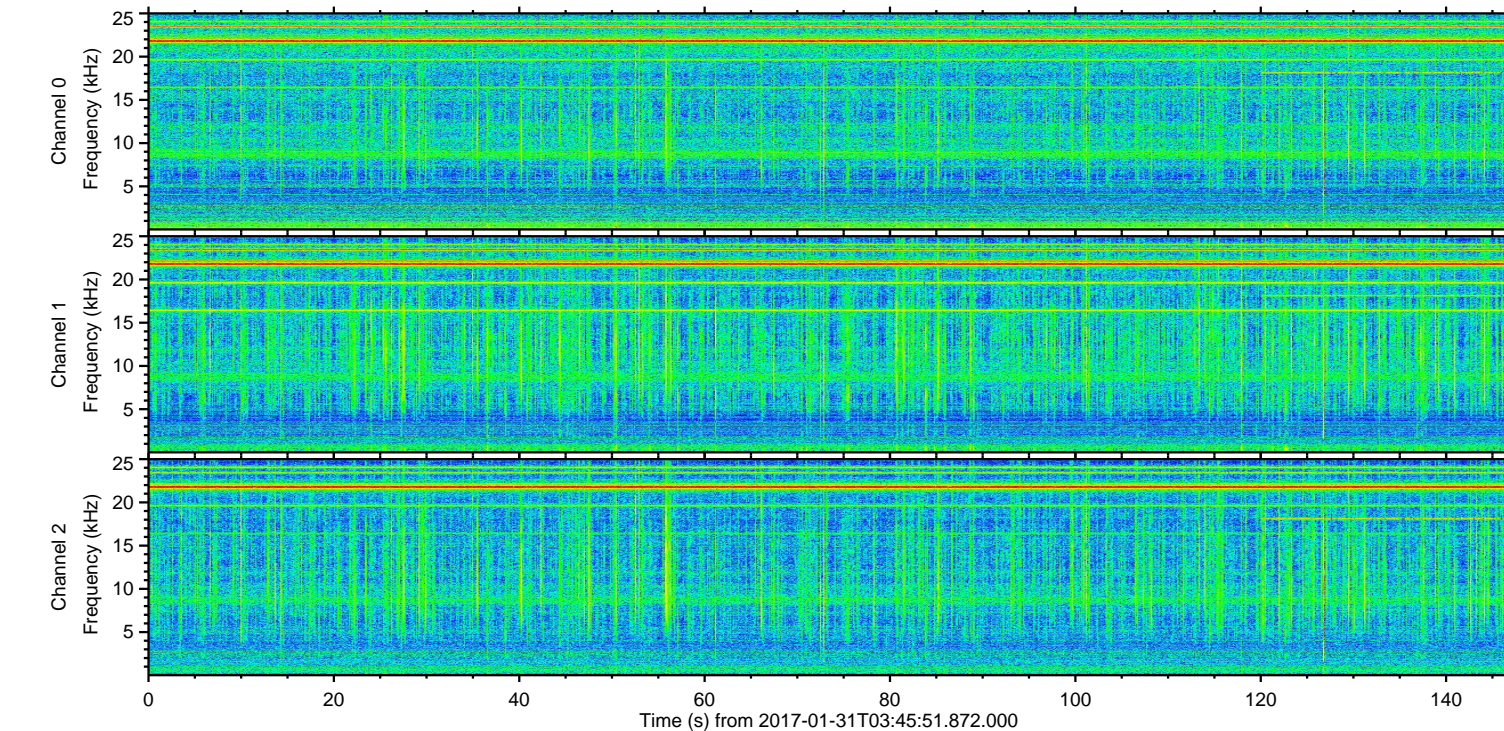
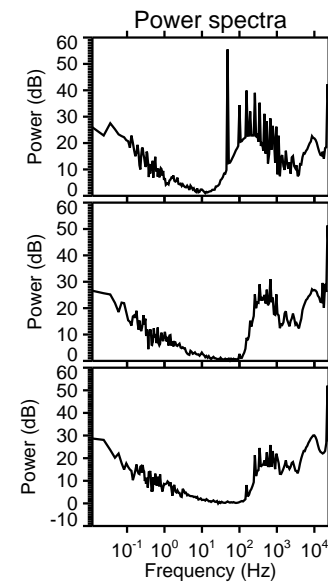
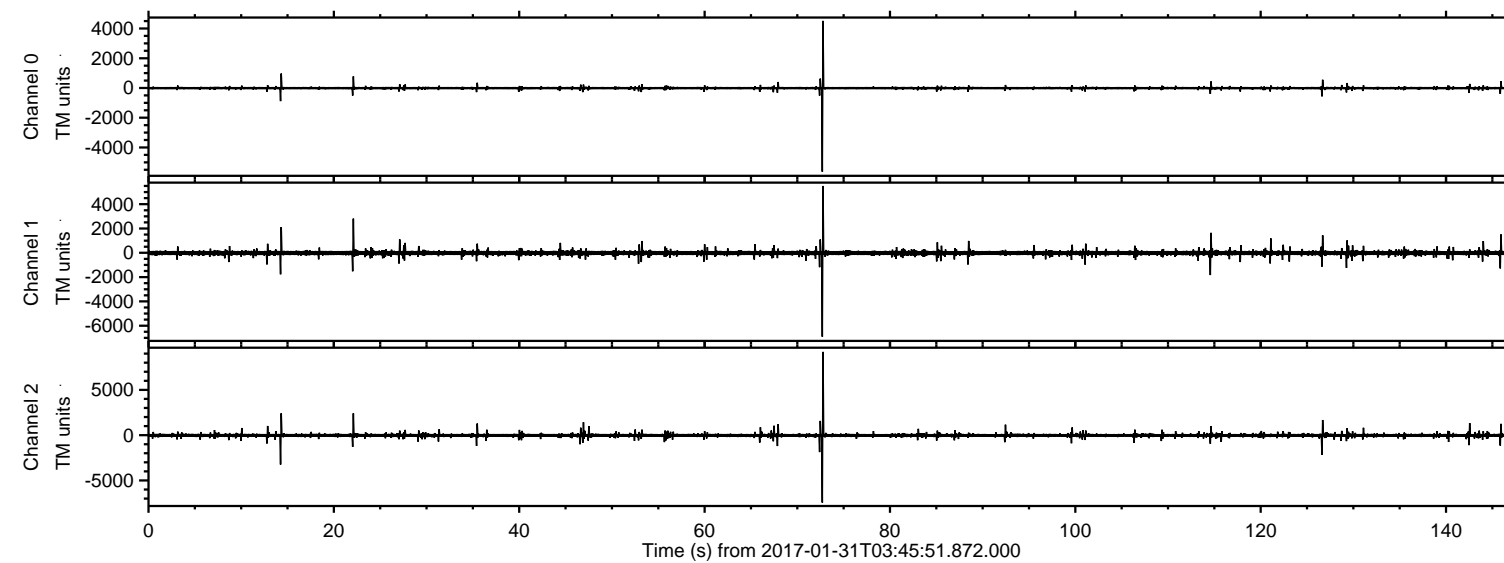


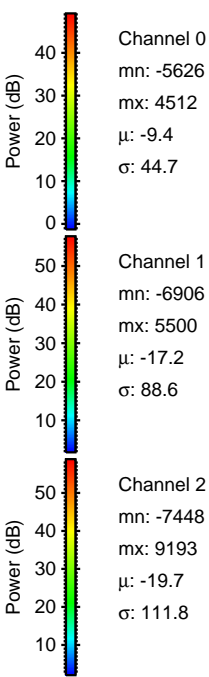
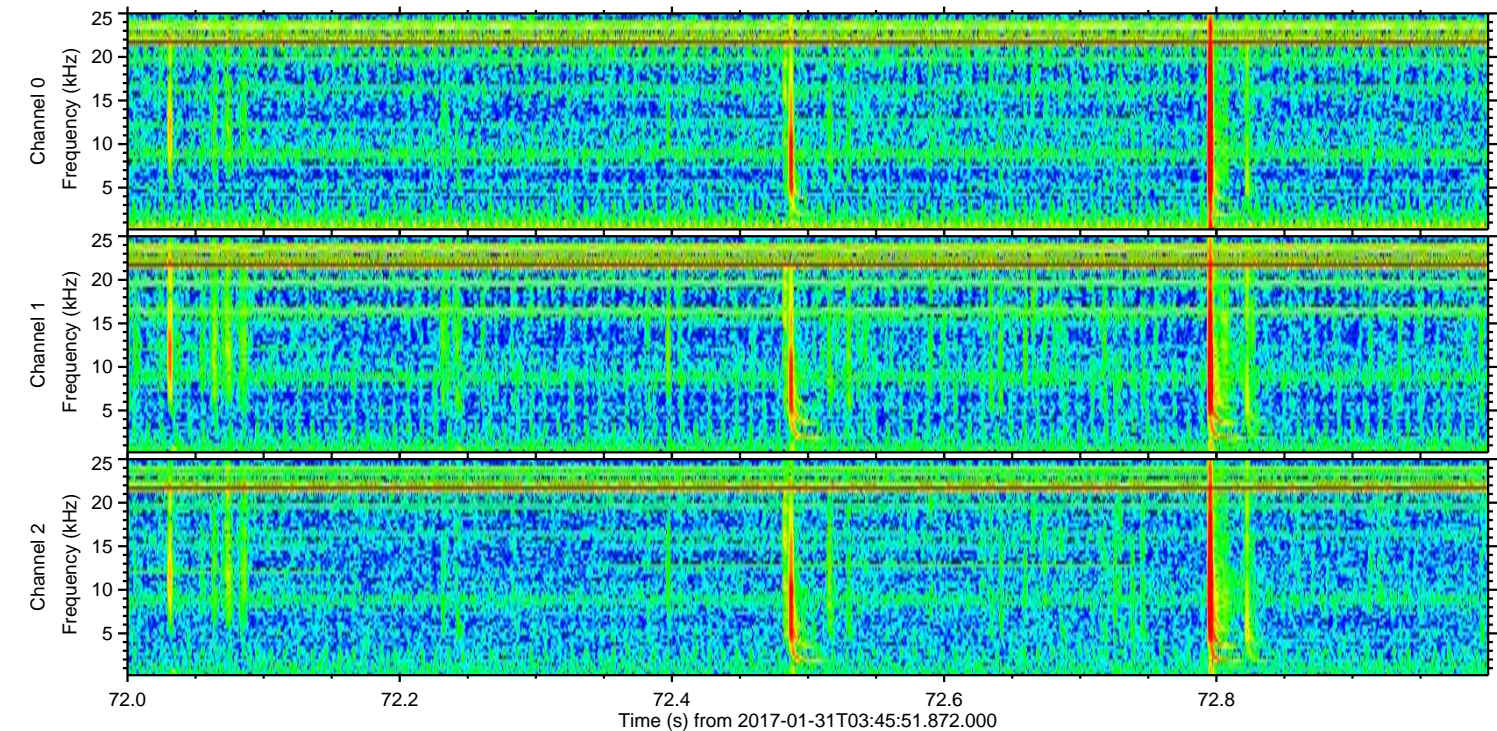
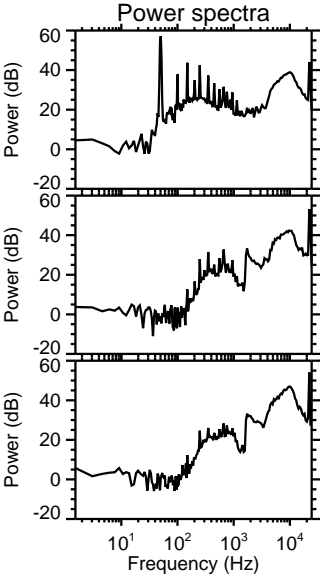
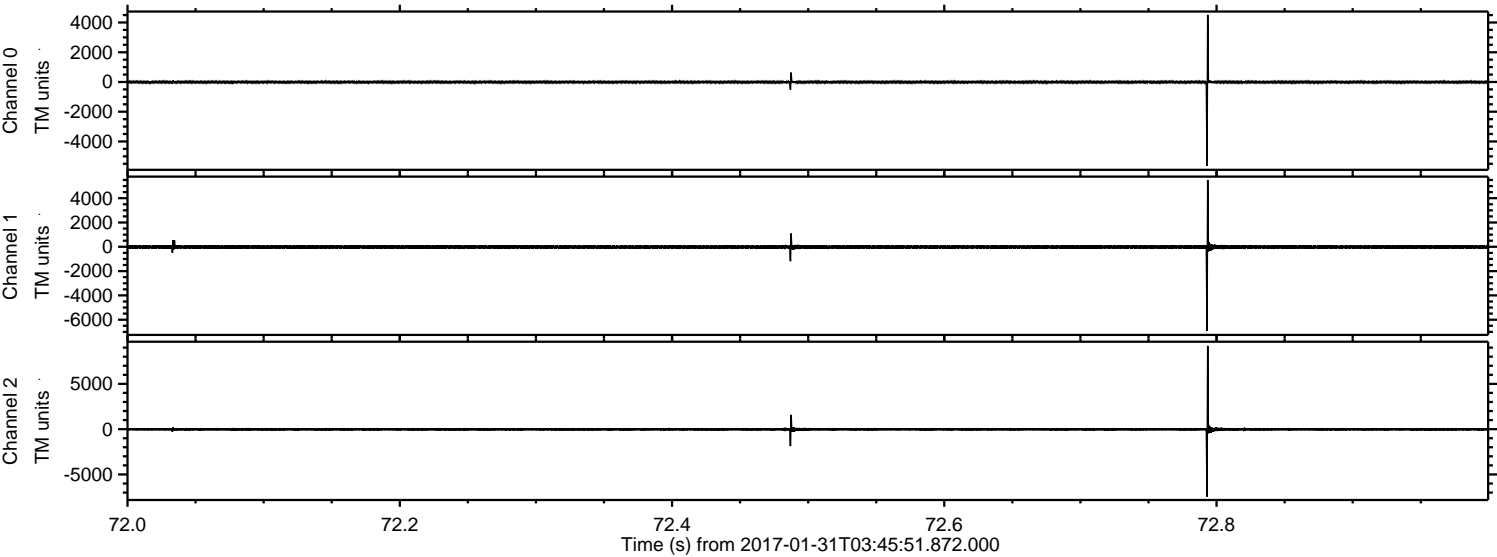
ELMAVAN 3D WAVEFORMS (Measured data sampled at 50 kHz) 51000 packets of 144 samples from 2017-01-31T03:45:51.872.000.

Processed Tue Jan 31 04:53:45 2017 by ELM ver.2012-10-06 from 001__elm20170131_034550__dat00.bin



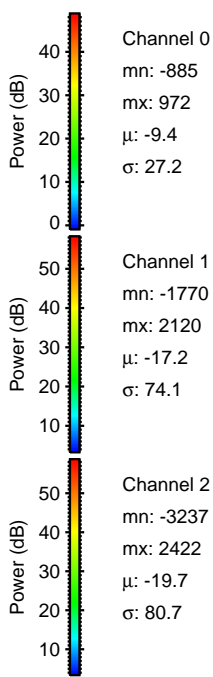
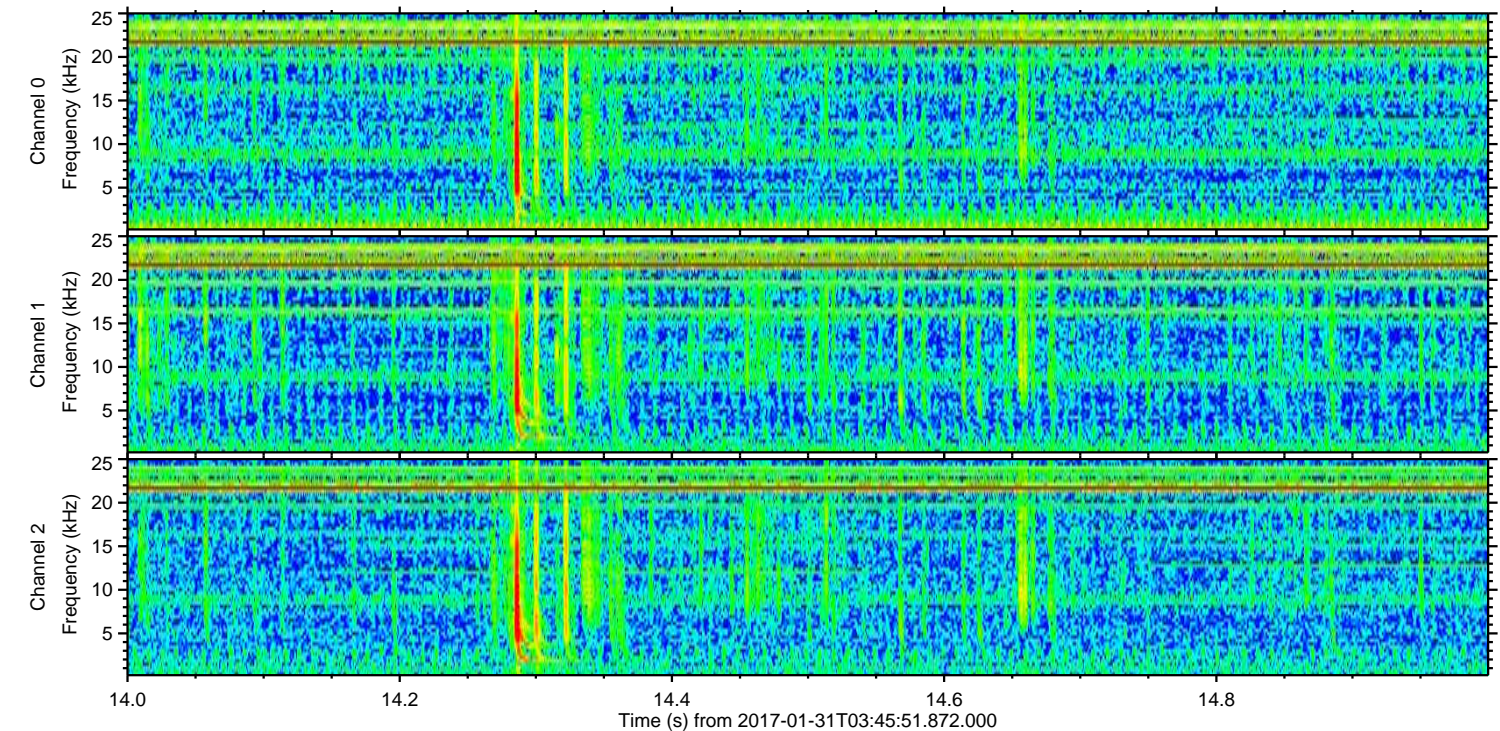
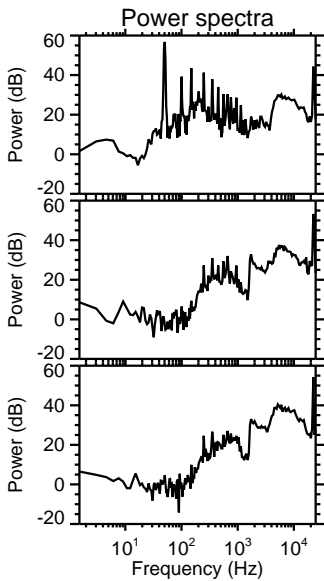
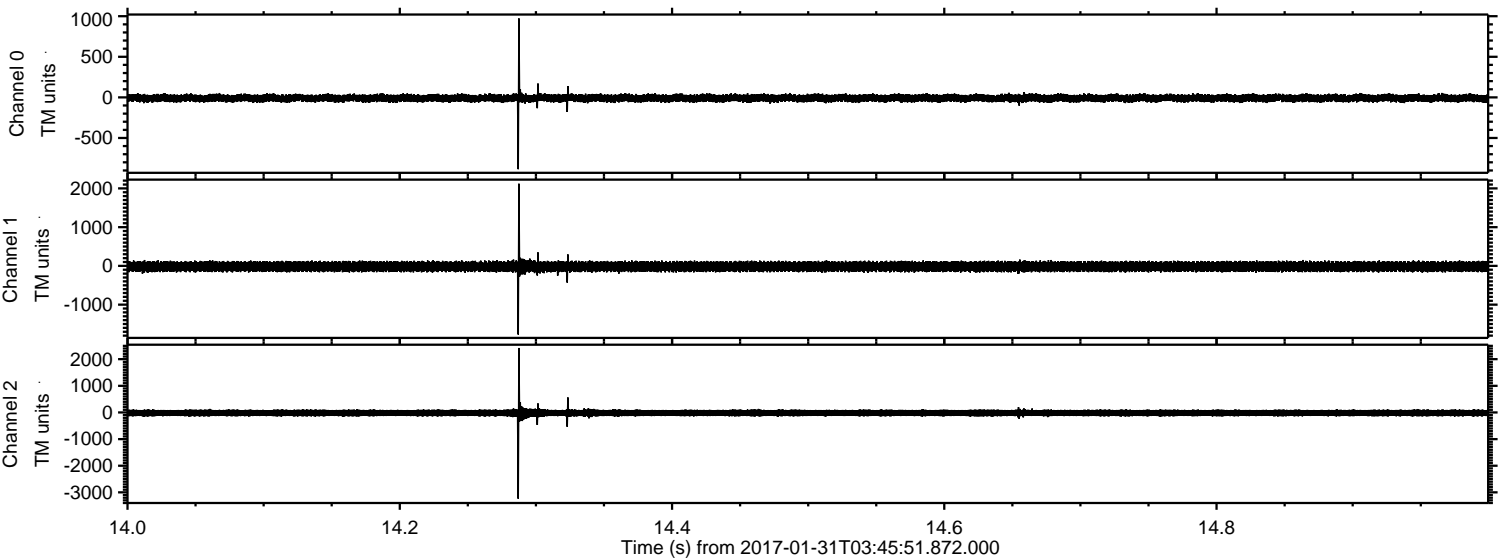
ELMAVAN 3D WAVEFORMS (Measured data sampled at 50 kHz) 51000 packets of 144 samples from 2017-01-31T03:45:51.872.000. Part 73/147

Processed Tue Jan 31 04:53:56 2017 by ELM ver.2012-10-06 from 001__elm20170131_034550__dat00.bin



ELMAVAN 3D WAVEFORMS (Measured data sampled at 50 kHz) 51000 packets of 144 samples from 2017-01-31T03:45:51.872.000. Part 15/147

Processed Tue Jan 31 04:53:57 2017 by ELM ver.2012-10-06 from 001__elm20170131_034550__dat00.bin

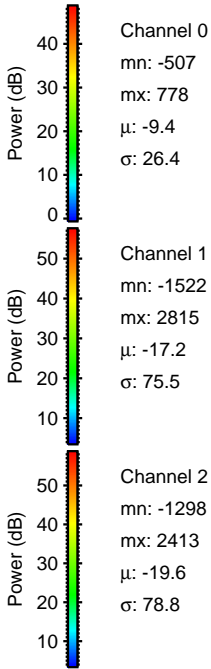
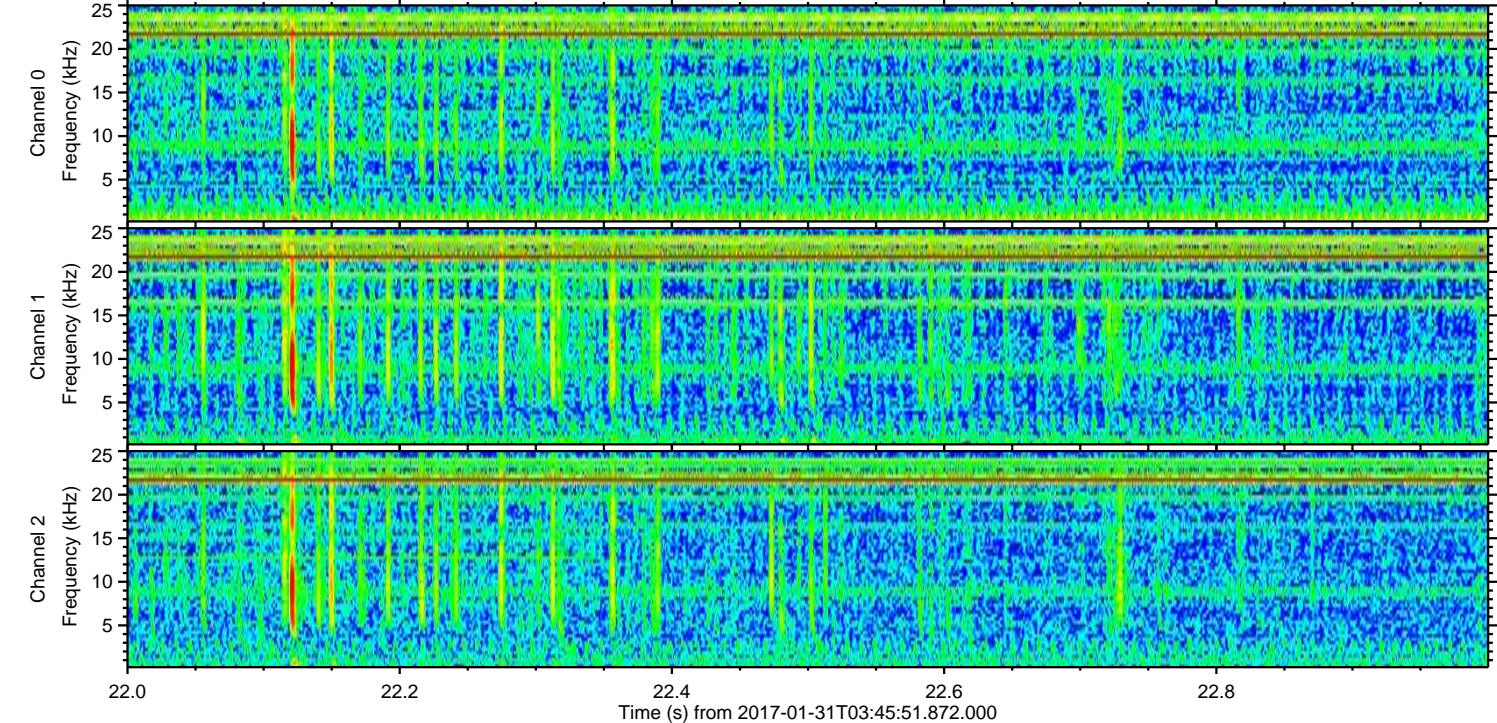
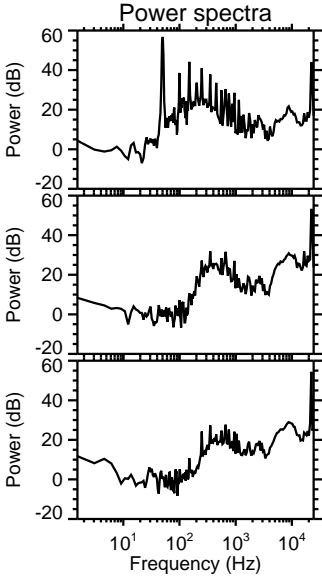
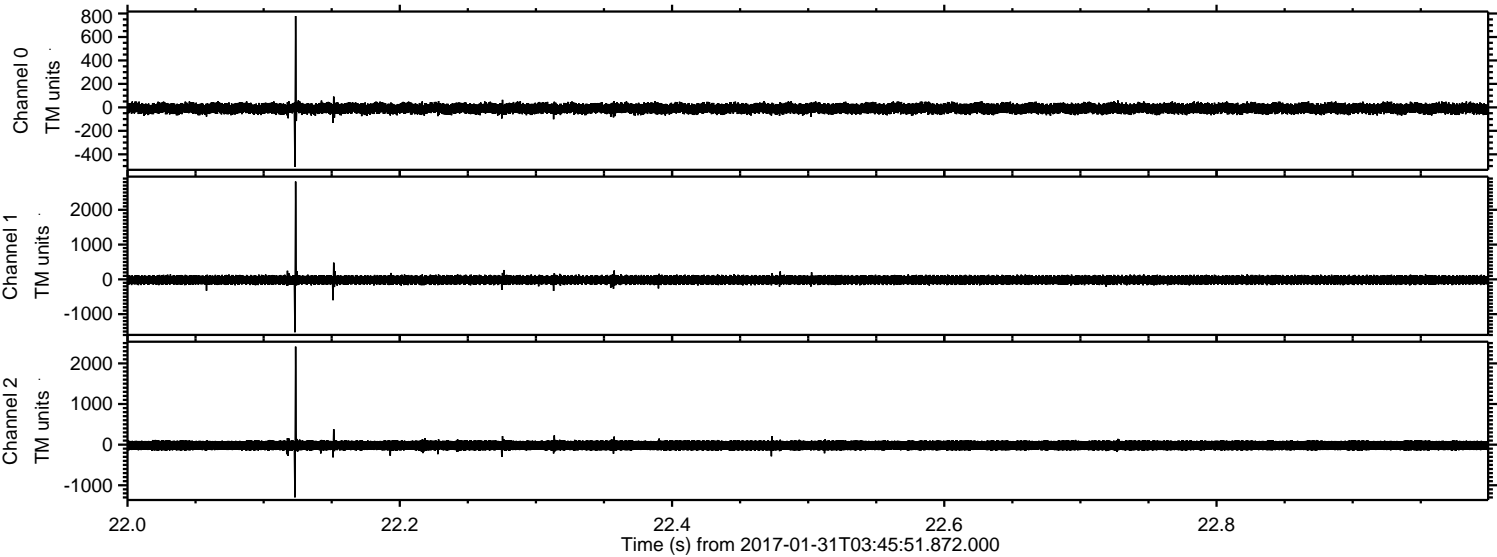


Channel 0
mn: -885
mx: 972
 μ : -9.4
 σ : 27.2

Channel 1
mn: -1770
mx: 2120
 μ : -17.2
 σ : 74.1

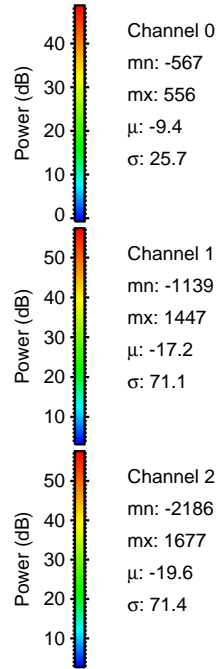
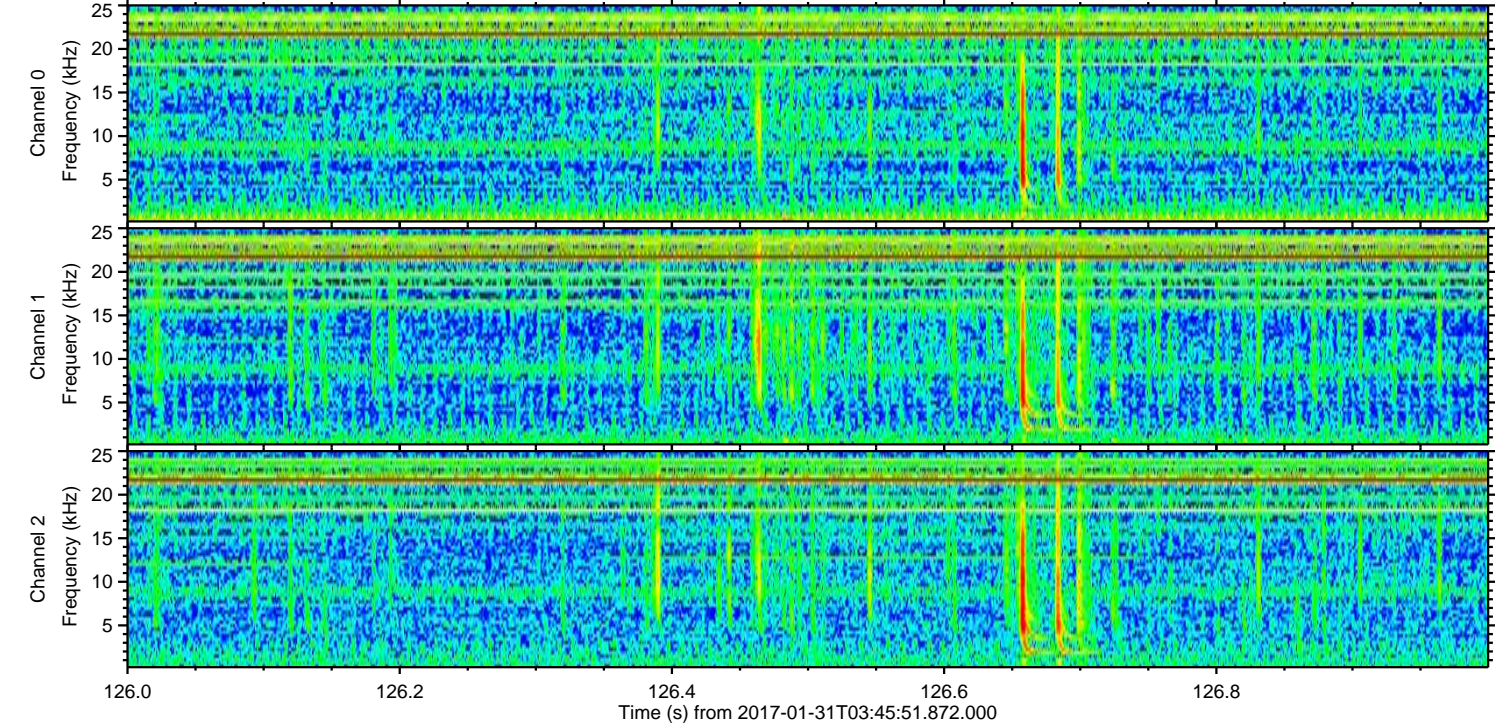
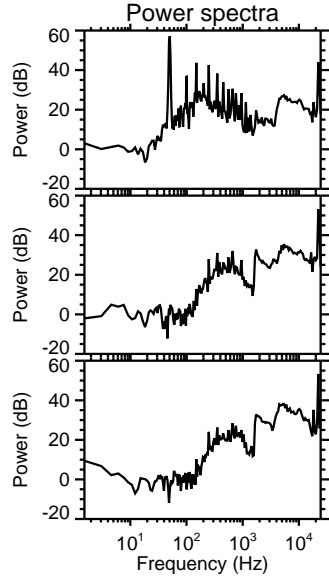
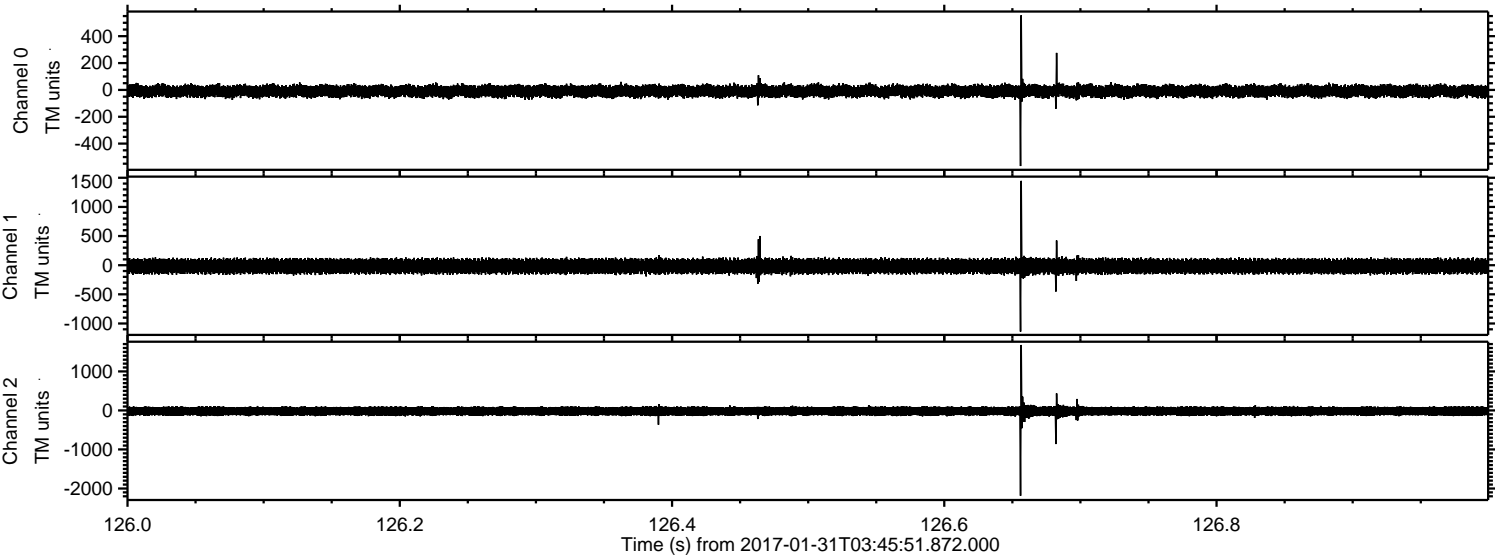
Channel 2
mn: -3237
mx: 2422
 μ : -19.7
 σ : 80.7

Processed Tue Jan 31 04:53:58 2017 by ELM ver.2012-10-06 from 001__elm20170131_034550__dat00.bin



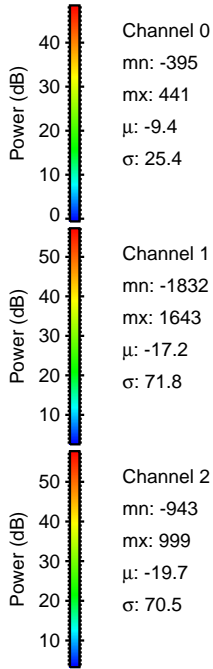
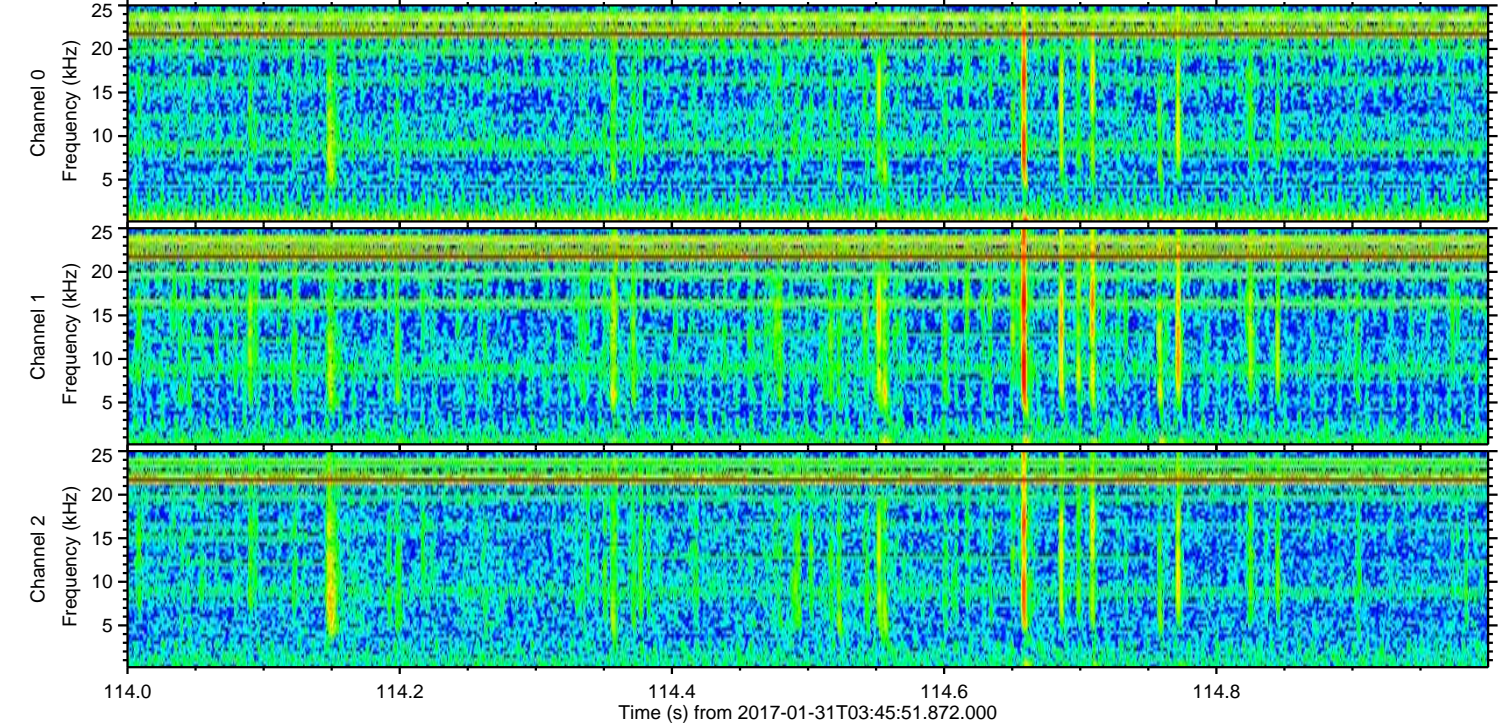
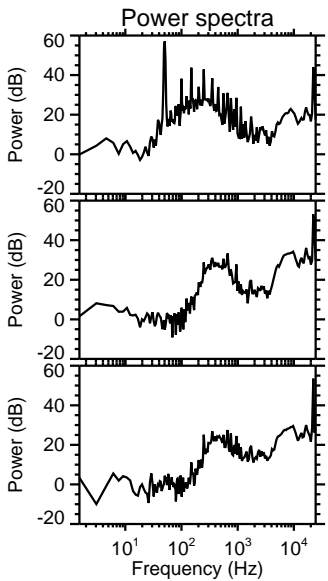
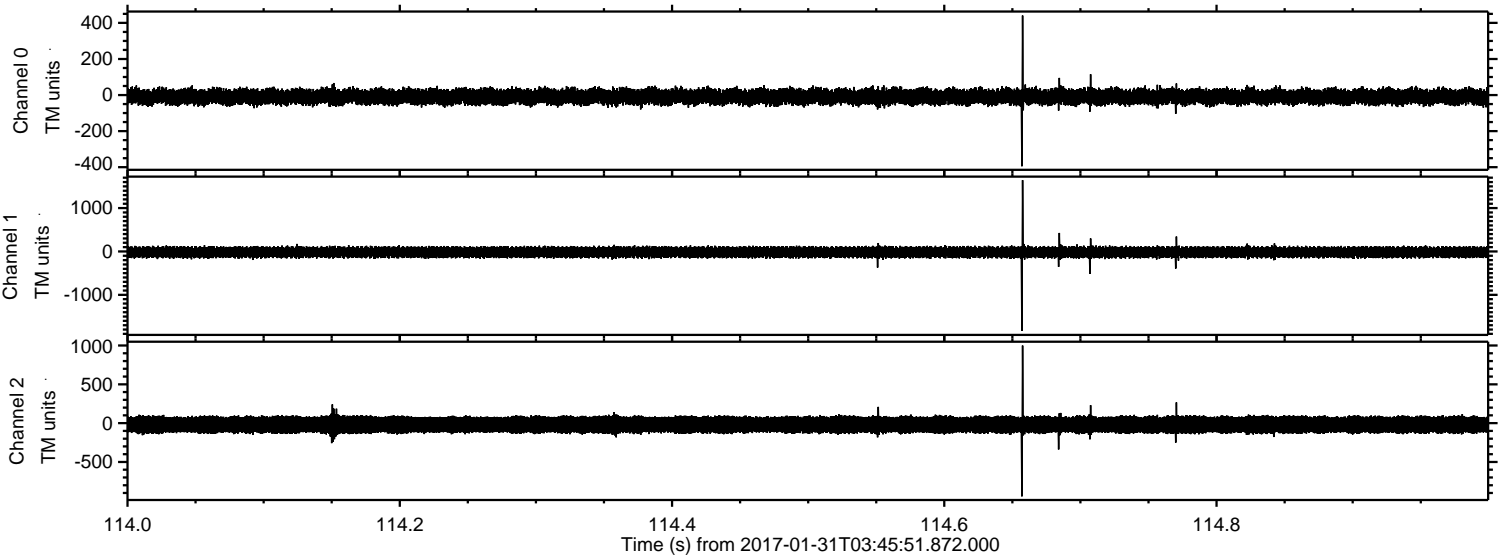
ELMAVAN 3D WAVEFORMS (Measured data sampled at 50 kHz) 51000 packets of 144 samples from 2017-01-31T03:45:51.872.000. Part 127/147

Processed Tue Jan 31 04:53:59 2017 by ELM ver.2012-10-06 from 001__elm20170131_034550__dat00.bin



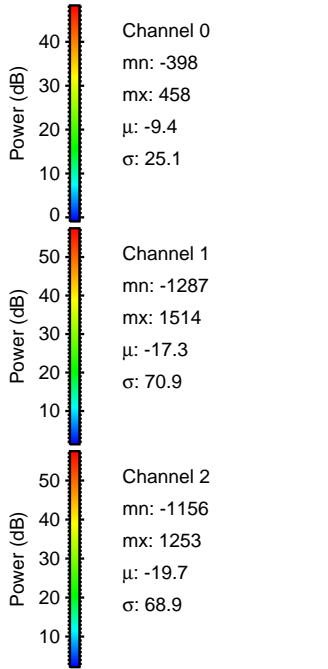
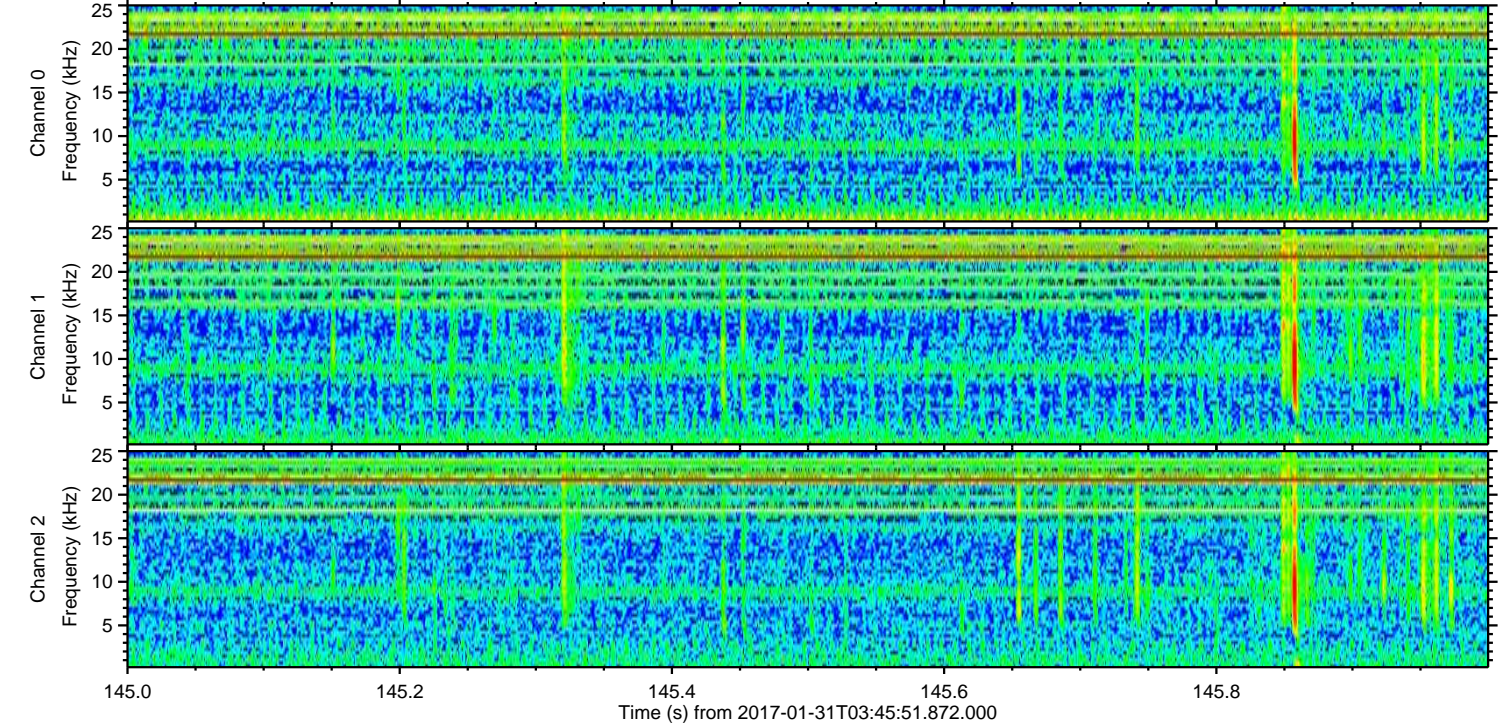
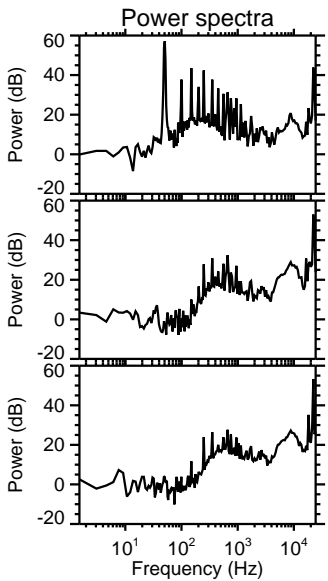
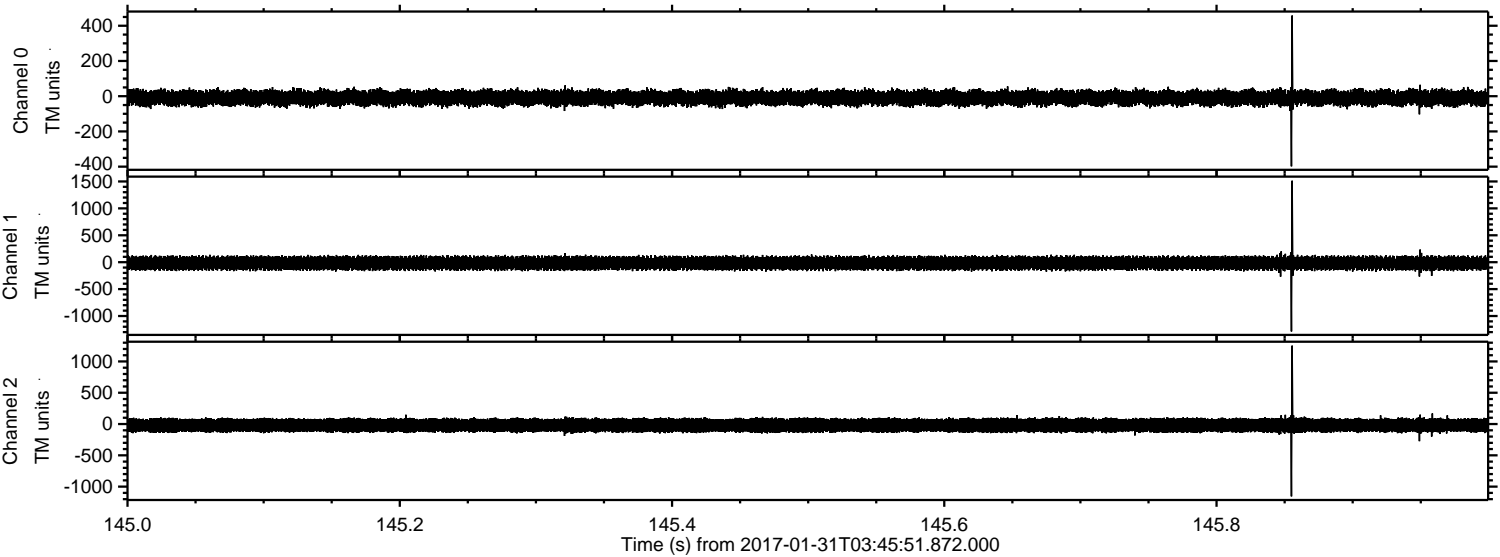
ELMAVAN 3D WAVEFORMS (Measured data sampled at 50 kHz) 51000 packets of 144 samples from 2017-01-31T03:45:51.872.000. Part 115/147

Processed Tue Jan 31 04:54:00 2017 by ELM ver.2012-10-06 from 001__elm20170131_034550__dat00.bin

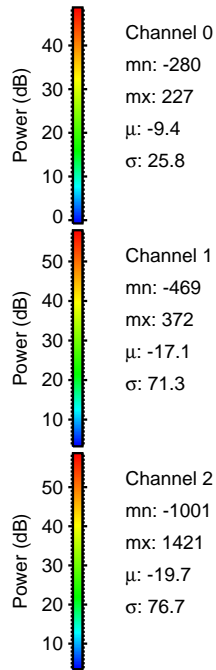
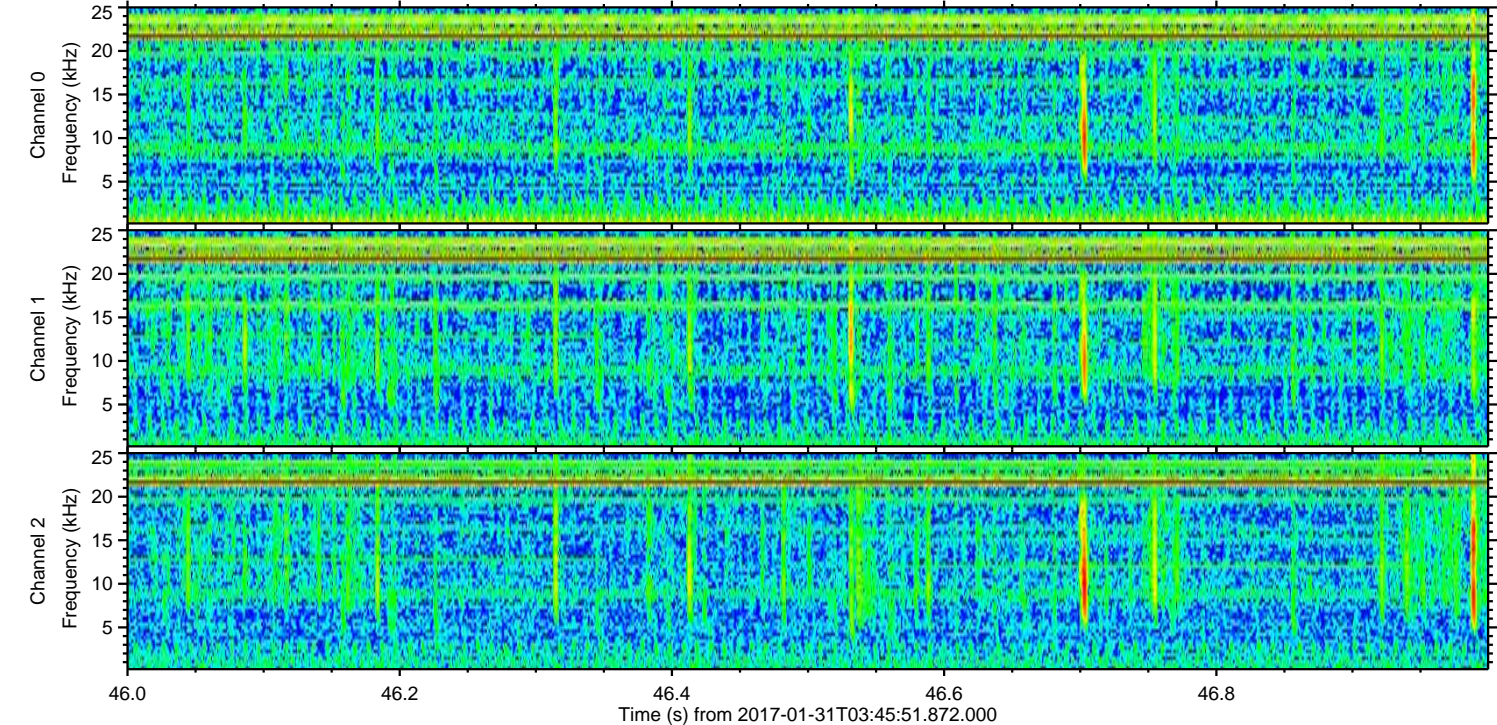
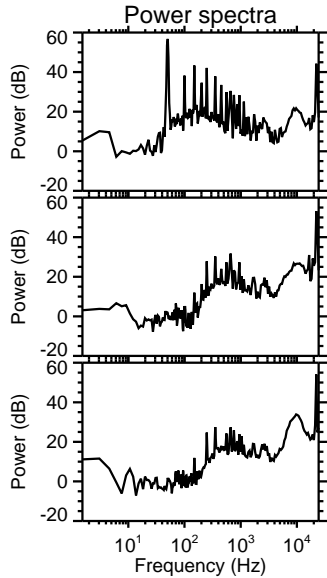
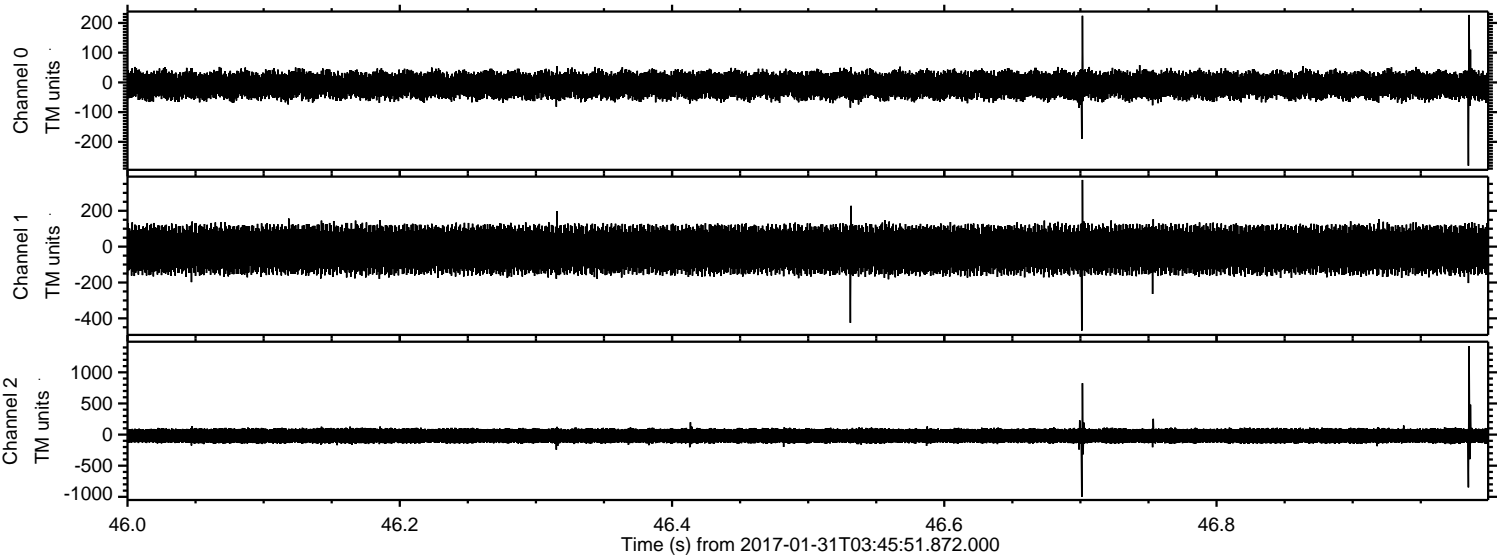


ELMAVAN 3D WAVEFORMS (Measured data sampled at 50 kHz) 51000 packets of 144 samples from 2017-01-31T03:45:51.872.000. Part 146/147

Processed Tue Jan 31 04:54:01 2017 by ELM ver.2012-10-06 from 001__elm20170131_034550__dat00.bin

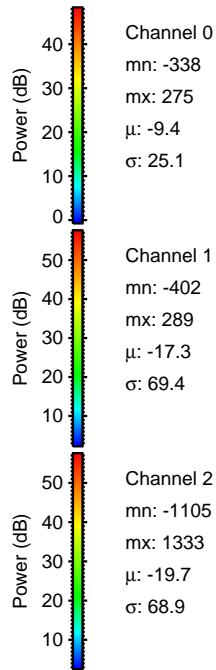
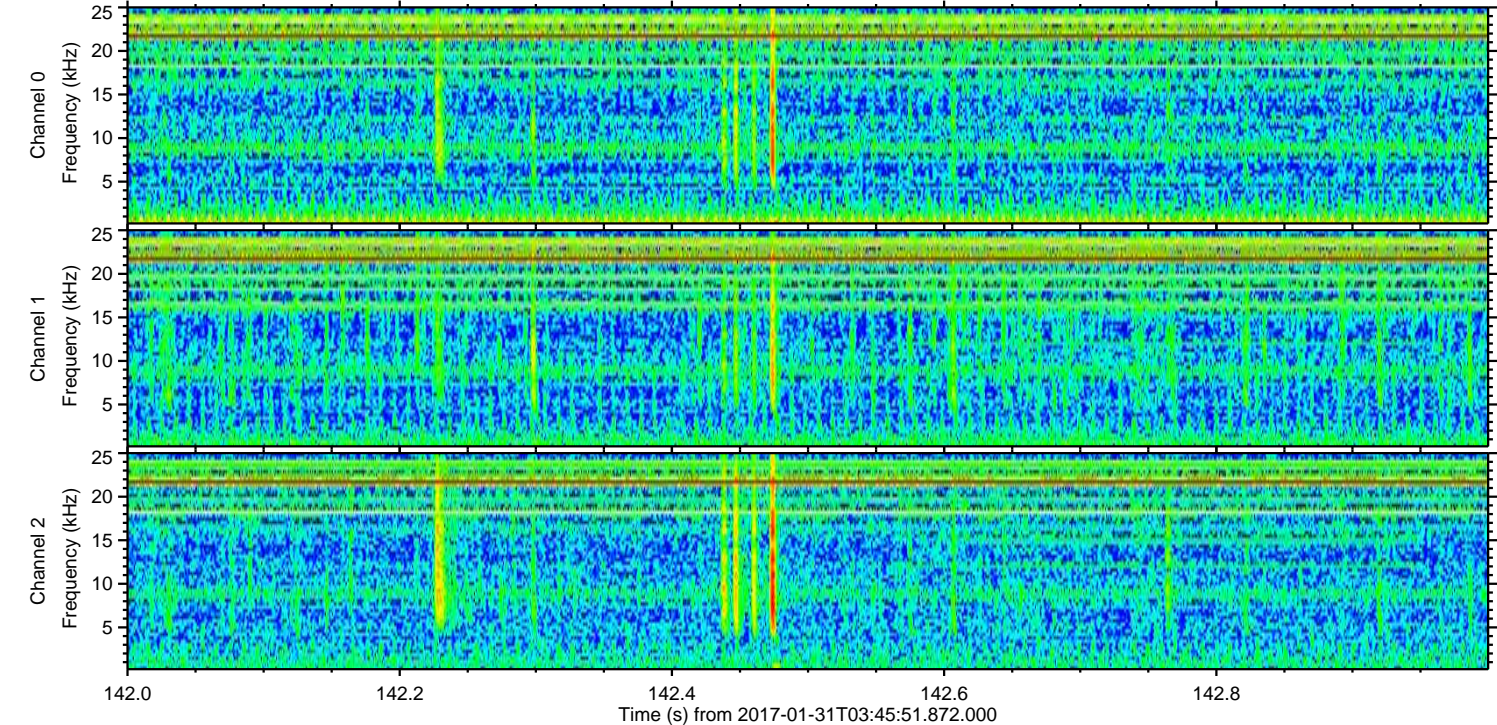
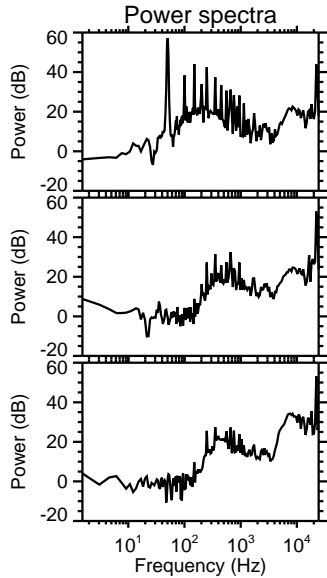
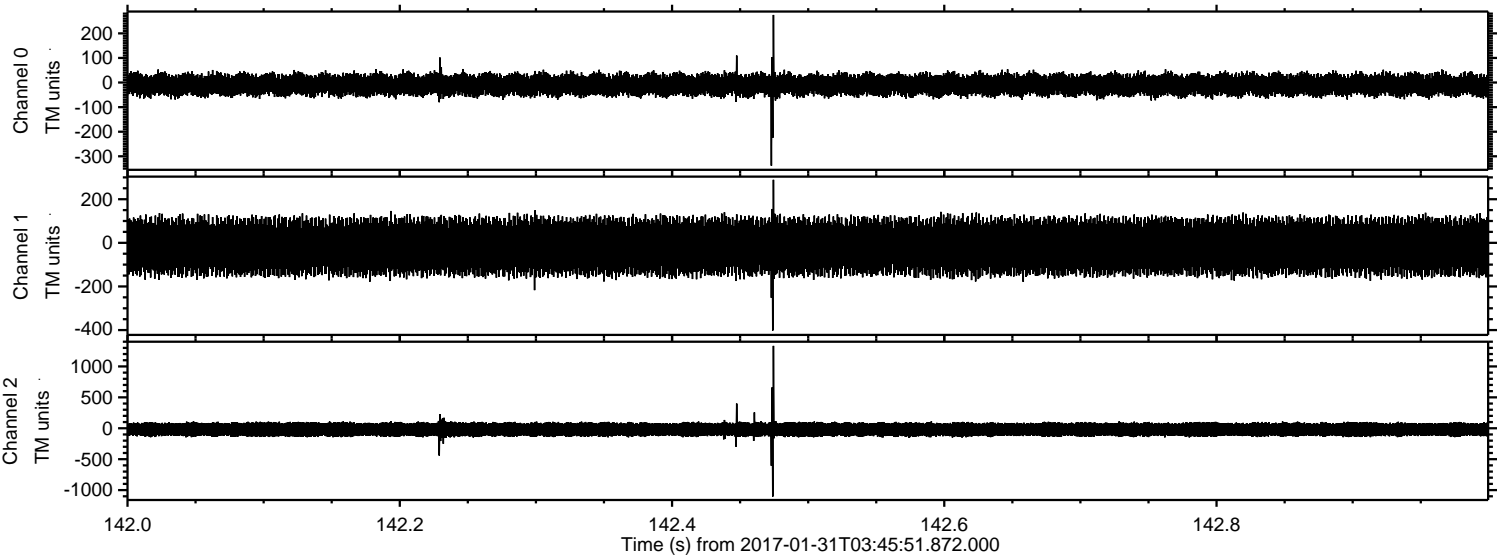


Processed Tue Jan 31 04:54:02 2017 by ELM ver.2012-10-06 from 001__elm20170131_034550__dat00.bin



ELMAVAN 3D WAVEFORMS (Measured data sampled at 50 kHz) 51000 packets of 144 samples from 2017-01-31T03:45:51.872.000. Part 143/147

Processed Tue Jan 31 04:54:03 2017 by ELM ver.2012-10-06 from 001__elm20170131_034550__dat00.bin

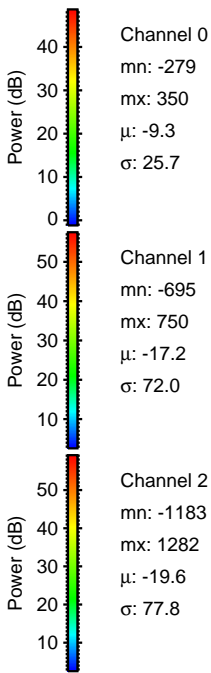
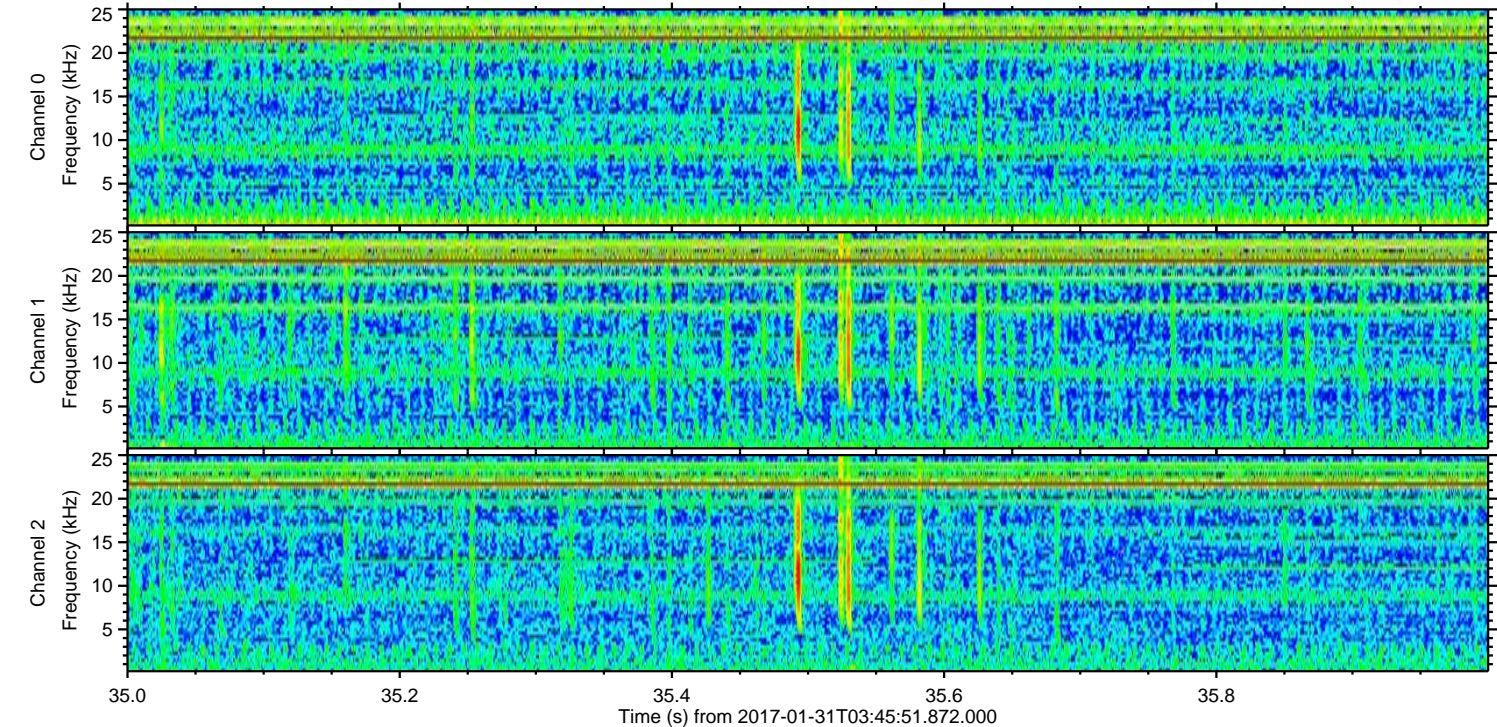
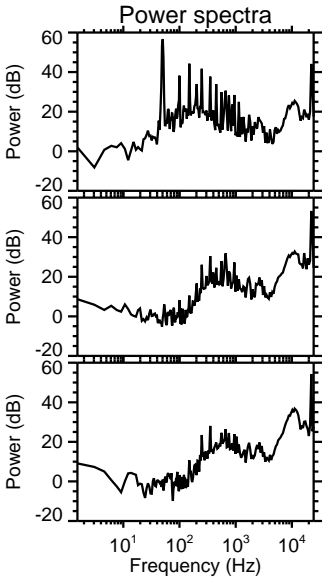
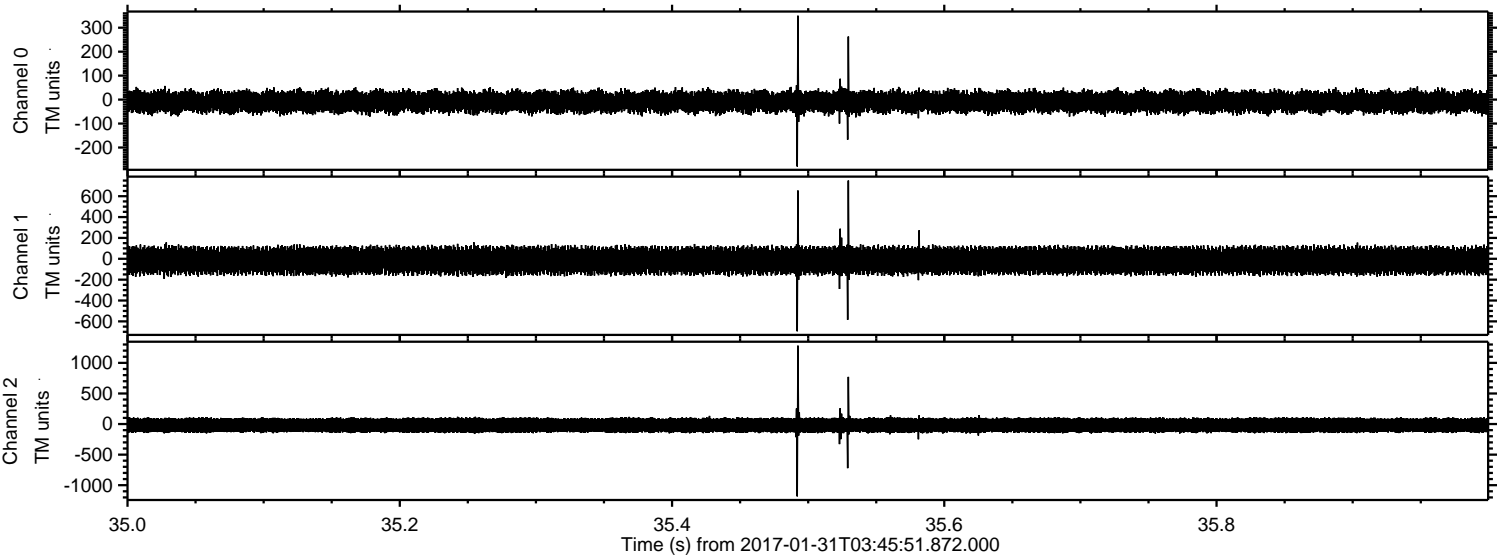


Channel 0
mn: -338
mx: 275
 μ : -9.4
 σ : 25.1

Channel 1
mn: -402
mx: 289
 μ : -17.3
 σ : 69.4

Channel 2
mn: -1105
mx: 1333
 μ : -19.7
 σ : 68.9

Processed Tue Jan 31 04:54:04 2017 by ELM ver.2012-10-06 from 001__elm20170131_034550__dat00.bin



Processed Tue Jan 31 04:54:05 2017 by ELM ver.2012-10-06 from 001__elm20170131_034550__dat00.bin

