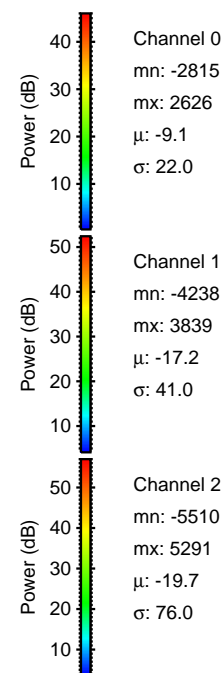
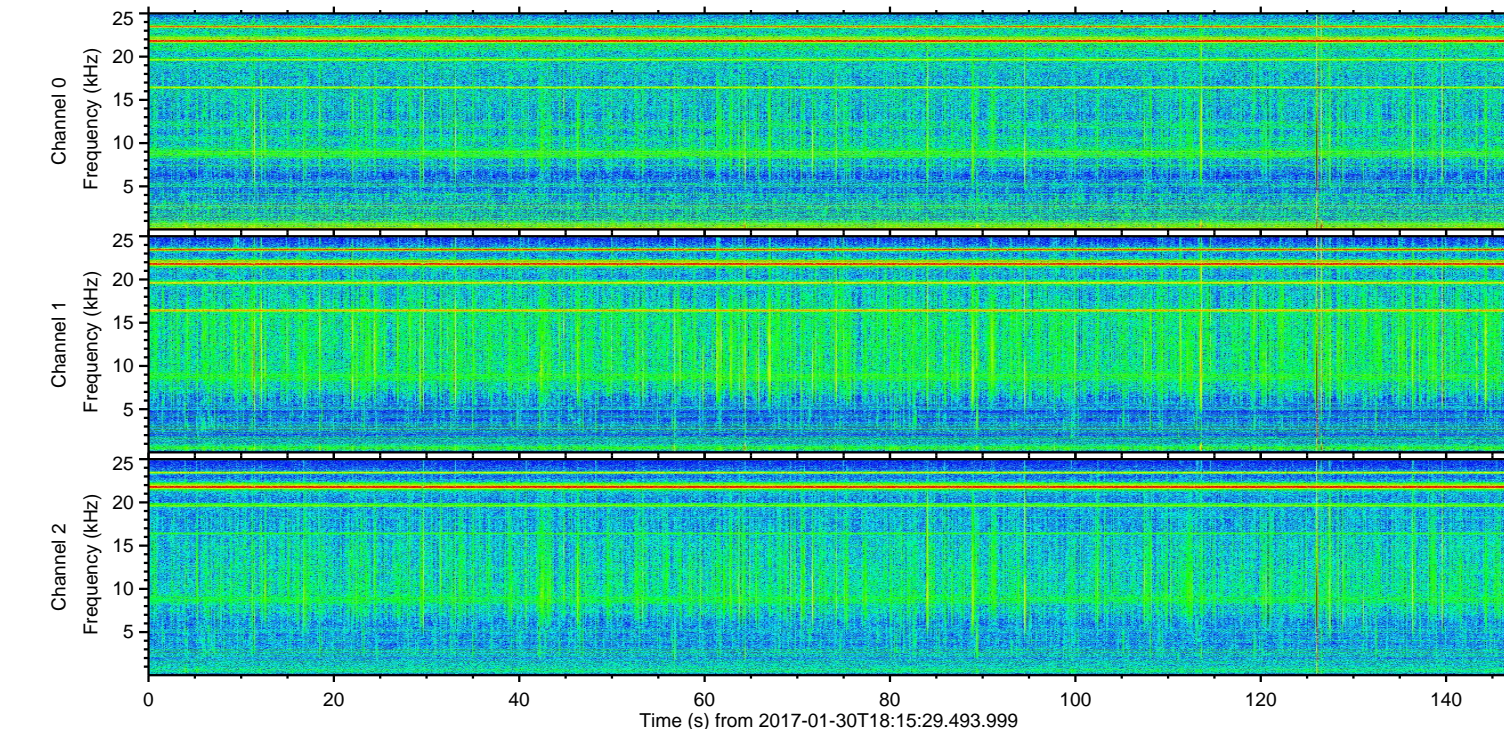
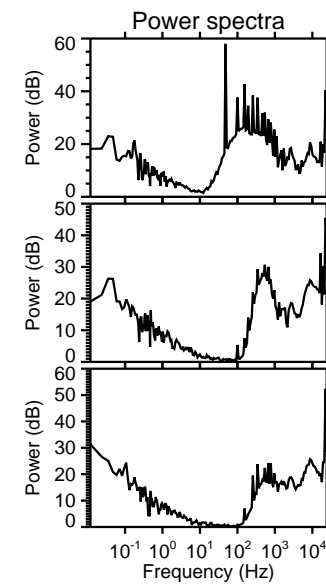
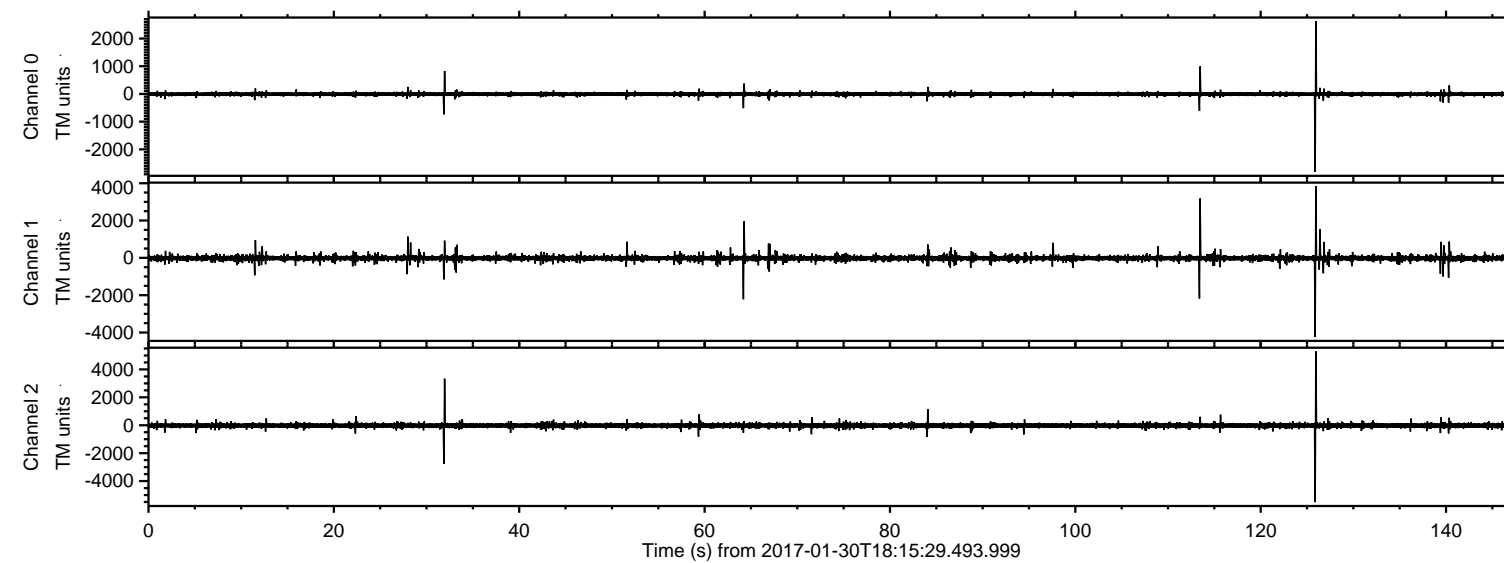


# ELMAVAN 3D WAVEFORMS (Measured data sampled at 50 kHz) 51000 packets of 144 samples from 2017-01-30T18:15:29.493.999.

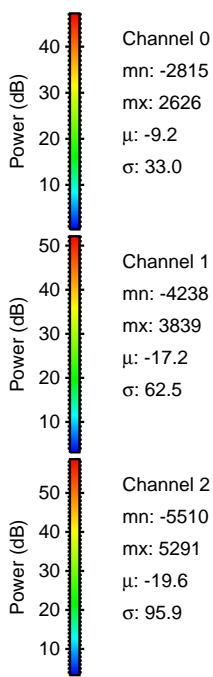
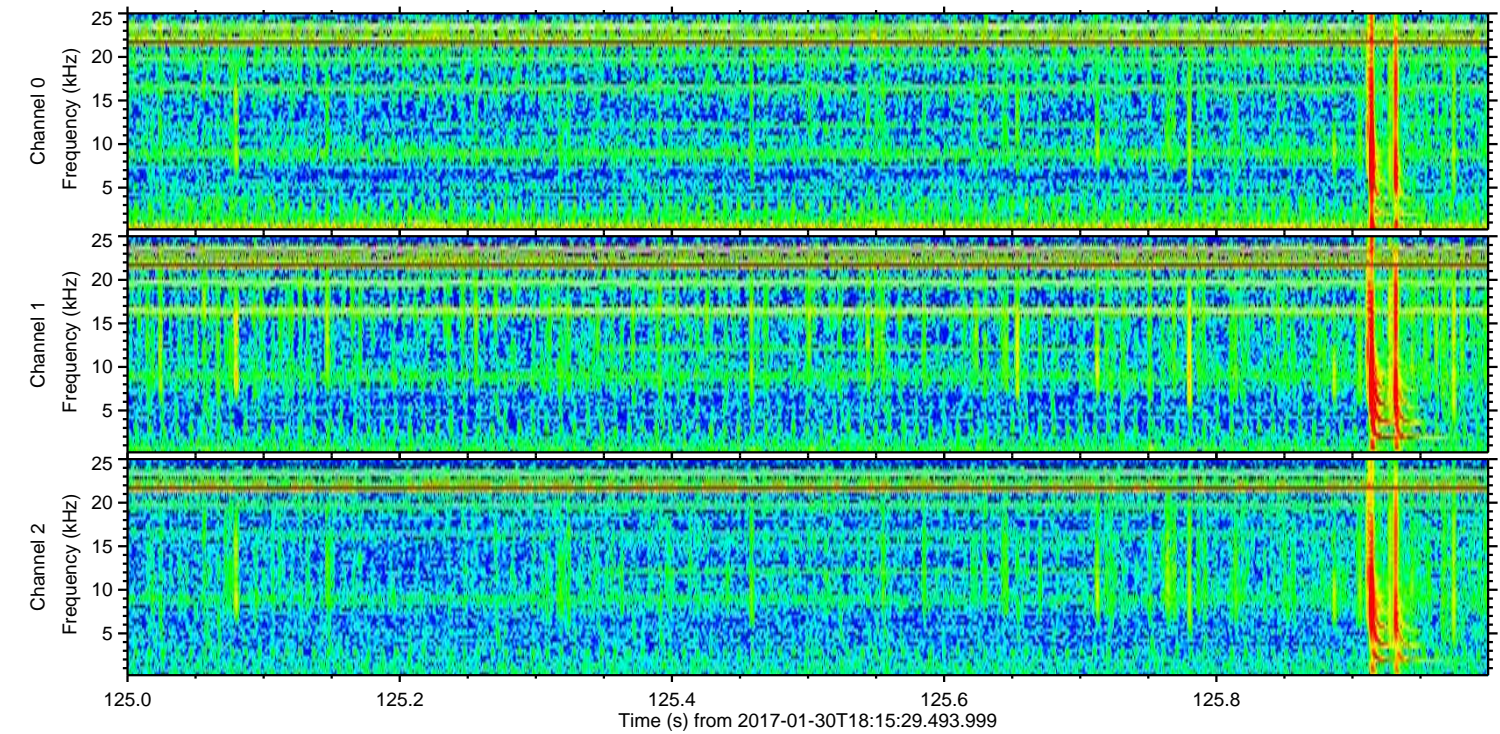
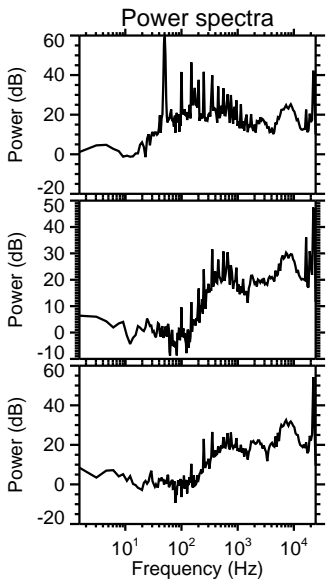
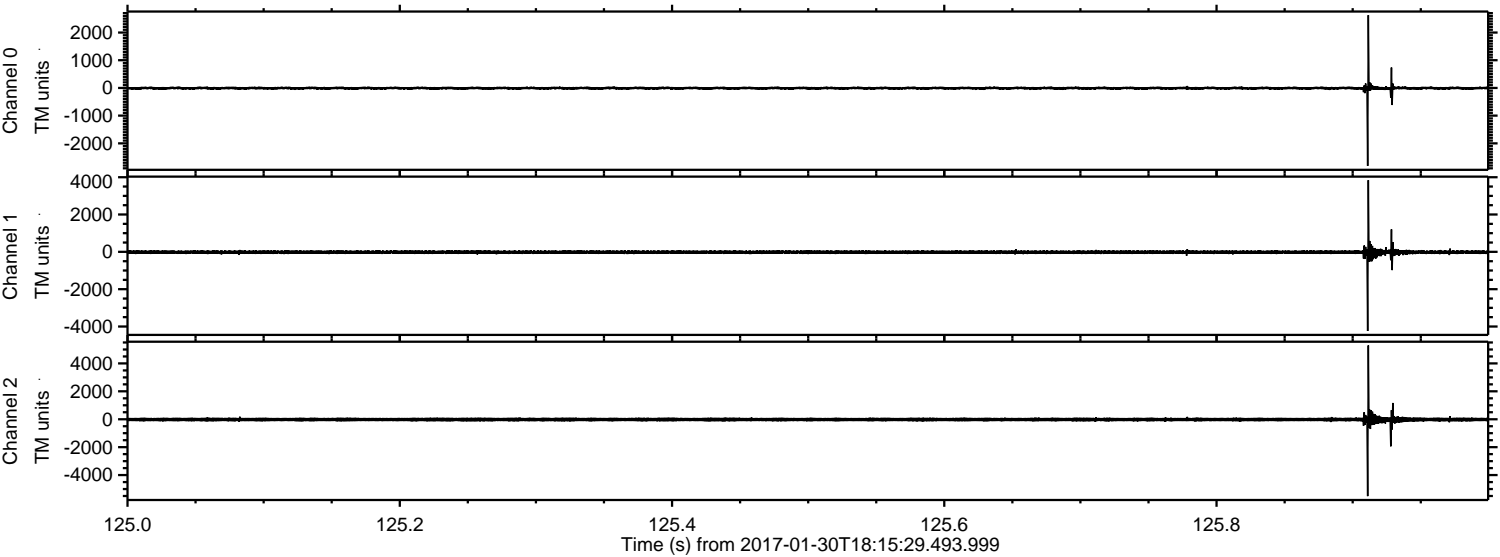
Processed Mon Jan 30 19:23:16 2017 by ELM ver.2012-10-06 from 001\_\_elm20170130\_181528\_\_dat00.bin





ELMAVAN 3D WAVEFORMS (Measured data sampled at 50 kHz) 51000 packets of 144 samples from 2017-01-30T18:15:29.493.999. Part 126/147

Processed Mon Jan 30 19:23:27 2017 by ELM ver.2012-10-06 from 001\_\_elm20170130\_181528\_\_dat00.bin



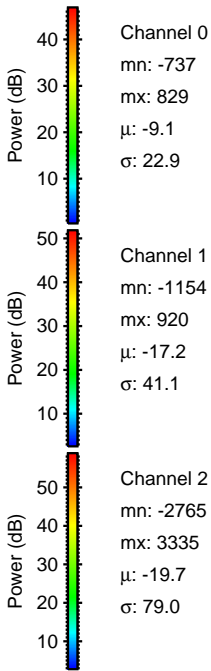
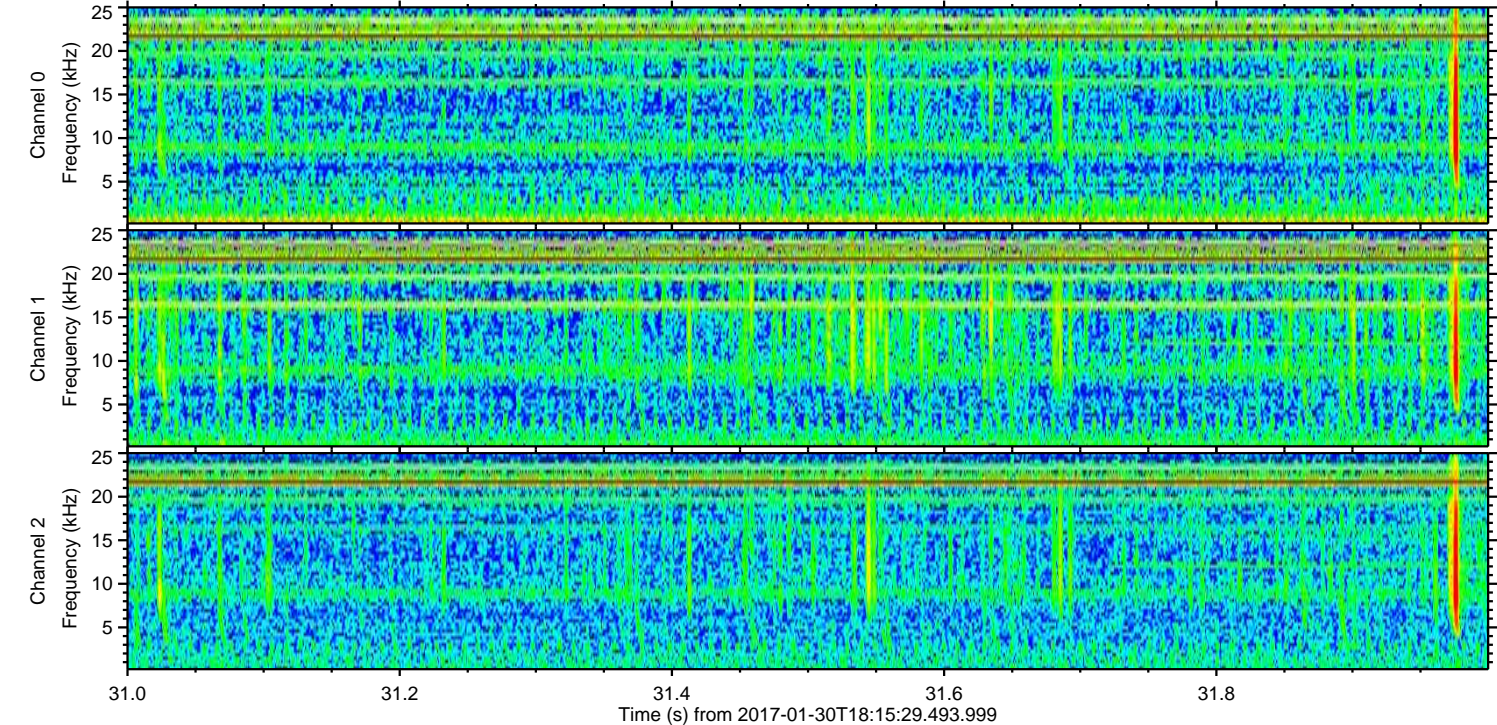
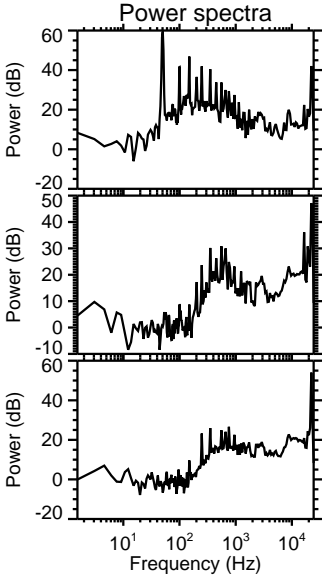
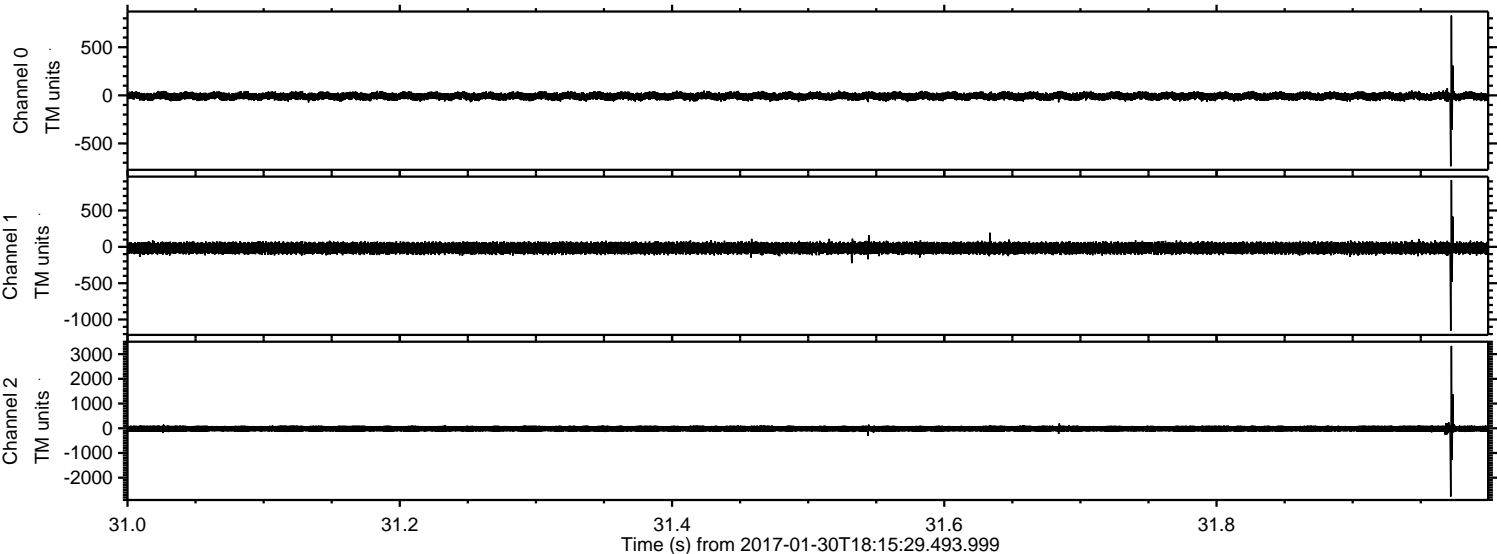
Channel 0  
mn: -2815  
mx: 2626  
 $\mu$ : -9.2  
 $\sigma$ : 33.0

Channel 1  
mn: -4238  
mx: 3839  
 $\mu$ : -17.2  
 $\sigma$ : 62.5

Channel 2  
mn: -5510  
mx: 5291  
 $\mu$ : -19.6  
 $\sigma$ : 95.9



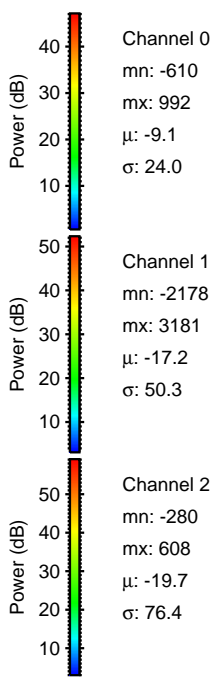
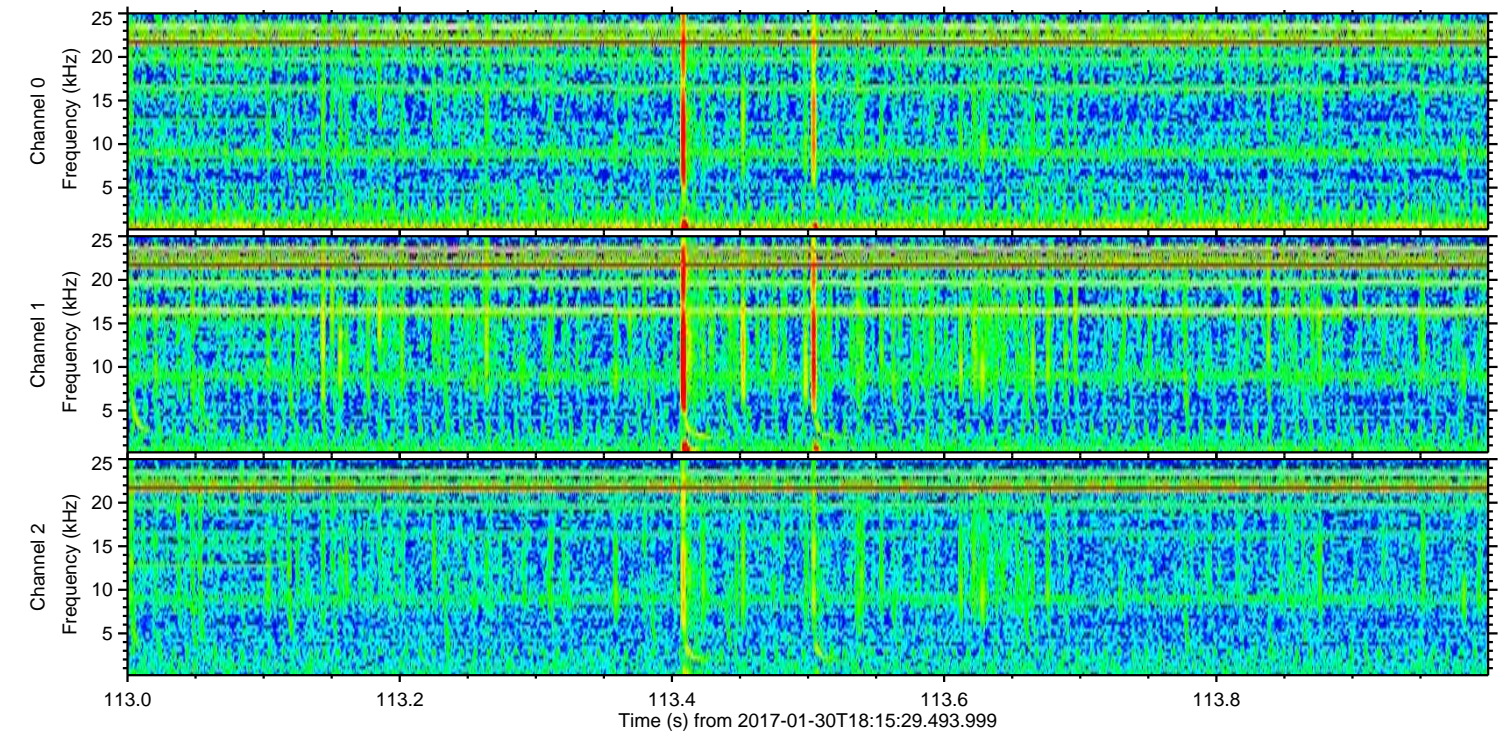
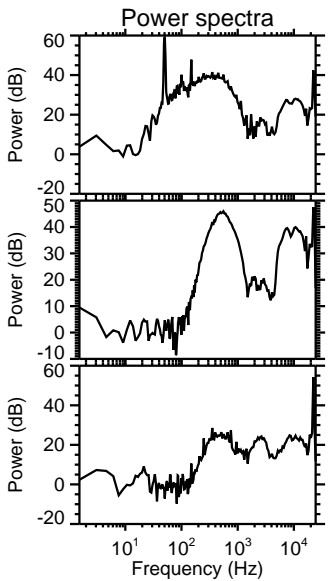
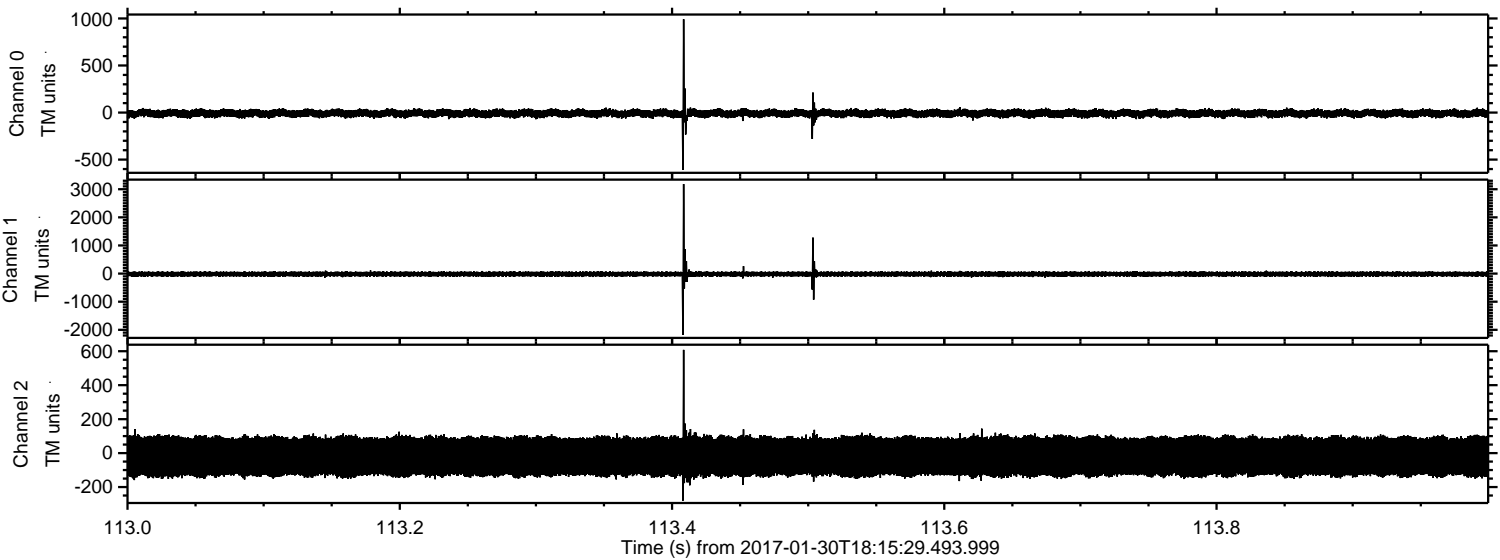
Processed Mon Jan 30 19:23:28 2017 by ELM ver.2012-10-06 from 001\_\_elm20170130\_181528\_\_dat00.bin





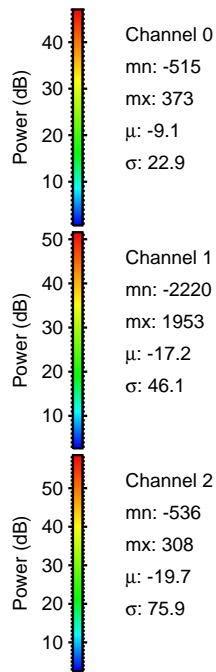
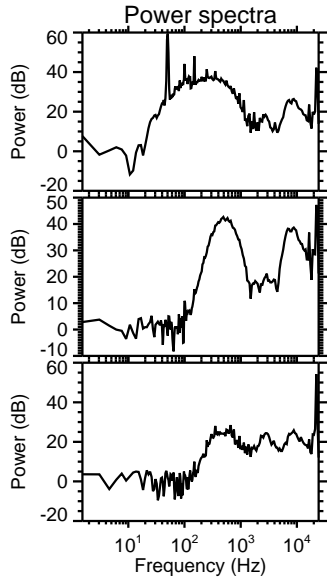
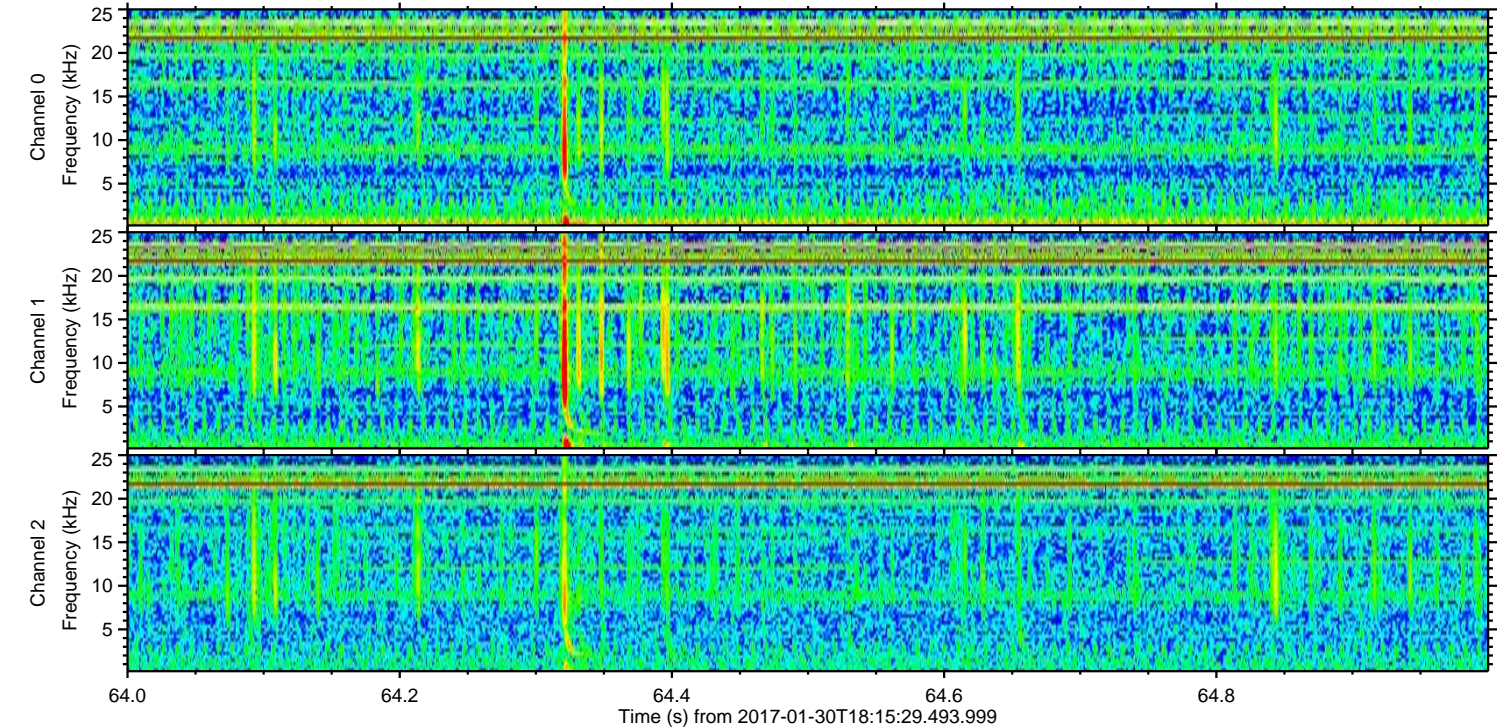
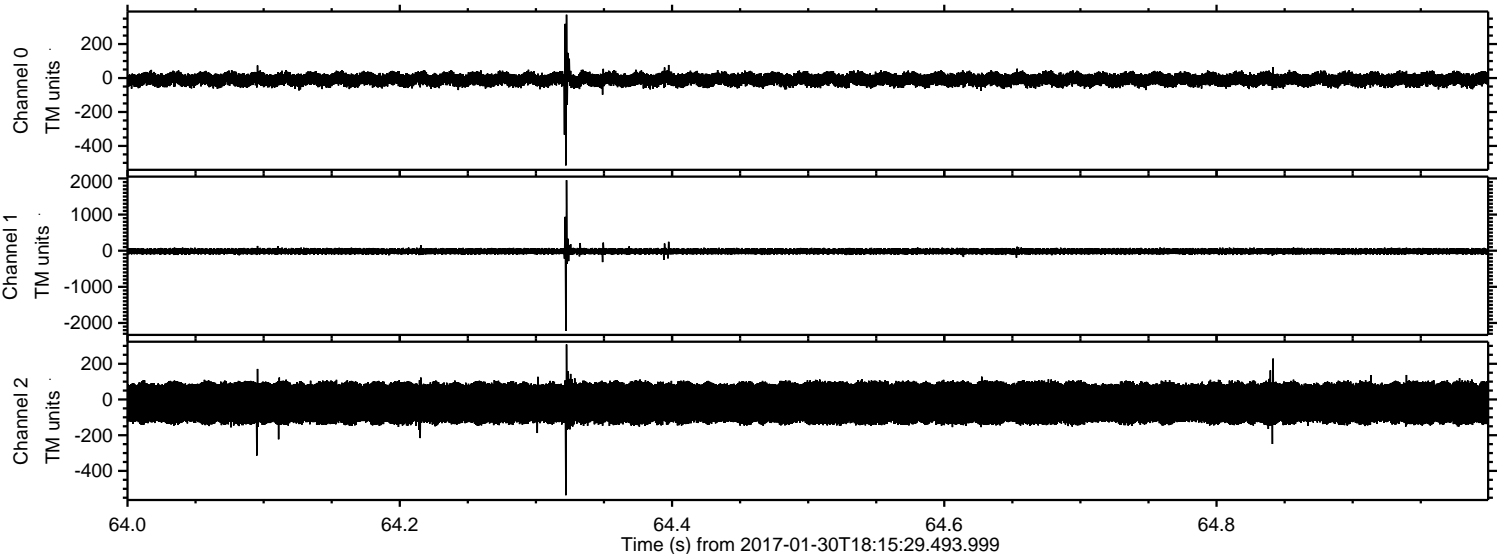
ELMAVAN 3D WAVEFORMS (Measured data sampled at 50 kHz) 51000 packets of 144 samples from 2017-01-30T18:15:29.493.999. Part 114/147

Processed Mon Jan 30 19:23:29 2017 by ELM ver.2012-10-06 from 001\_\_elm20170130\_181528\_\_dat00.bin





Processed Mon Jan 30 19:23:30 2017 by ELM ver.2012-10-06 from 001\_\_elm20170130\_181528\_\_dat00.bin



Channel 0  
mn: -515  
mx: 373  
 $\mu$ : -9.1  
 $\sigma$ : 22.9

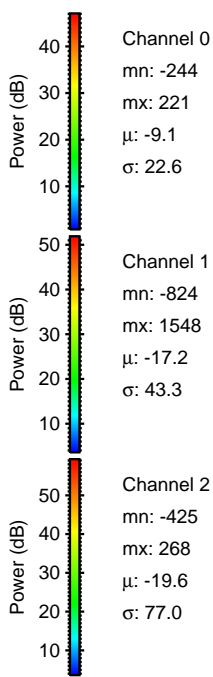
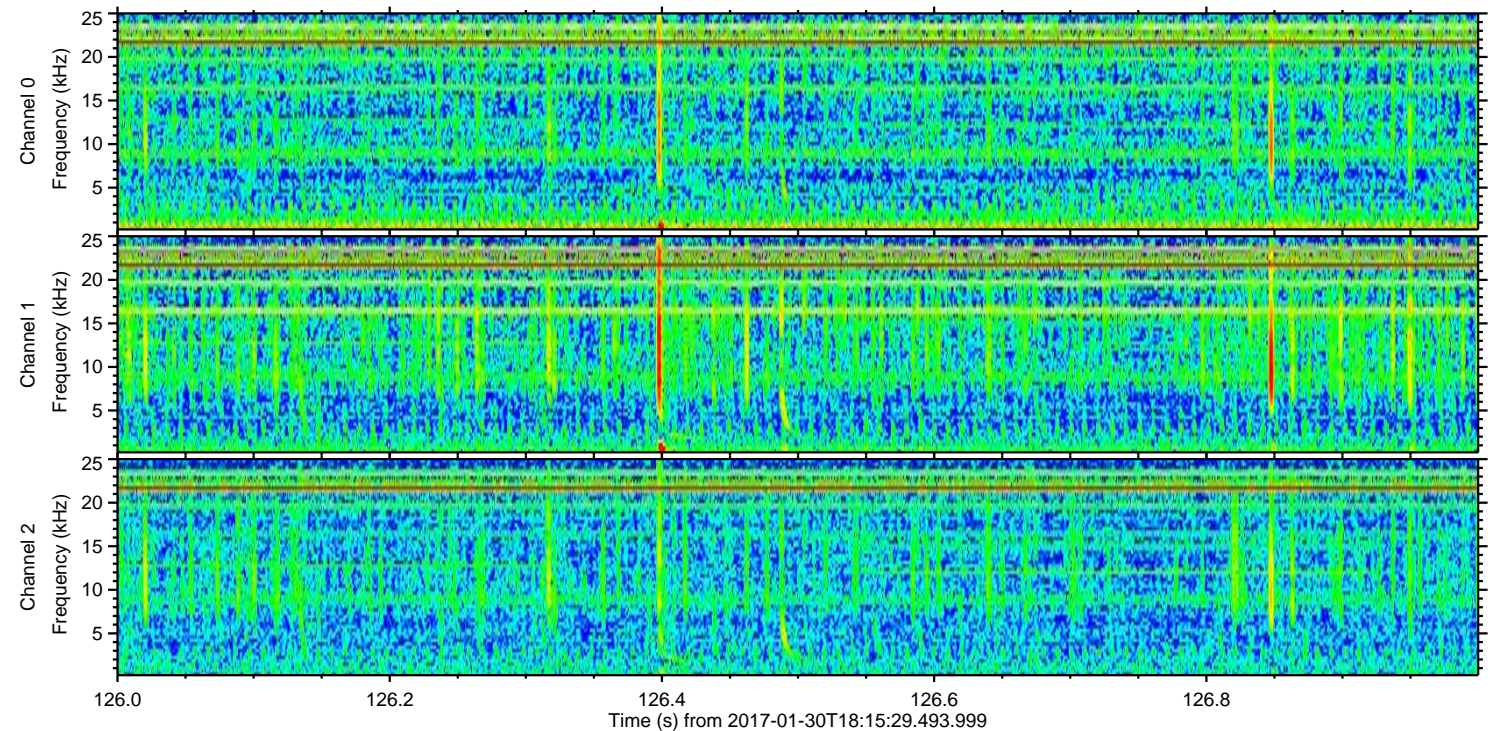
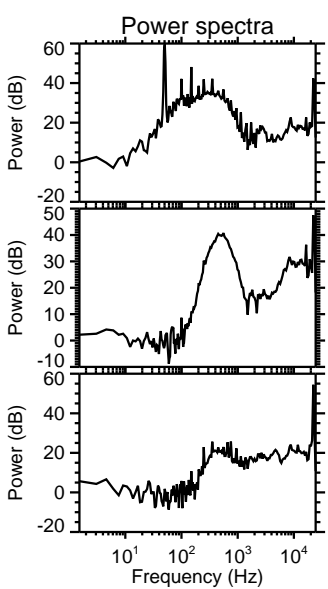
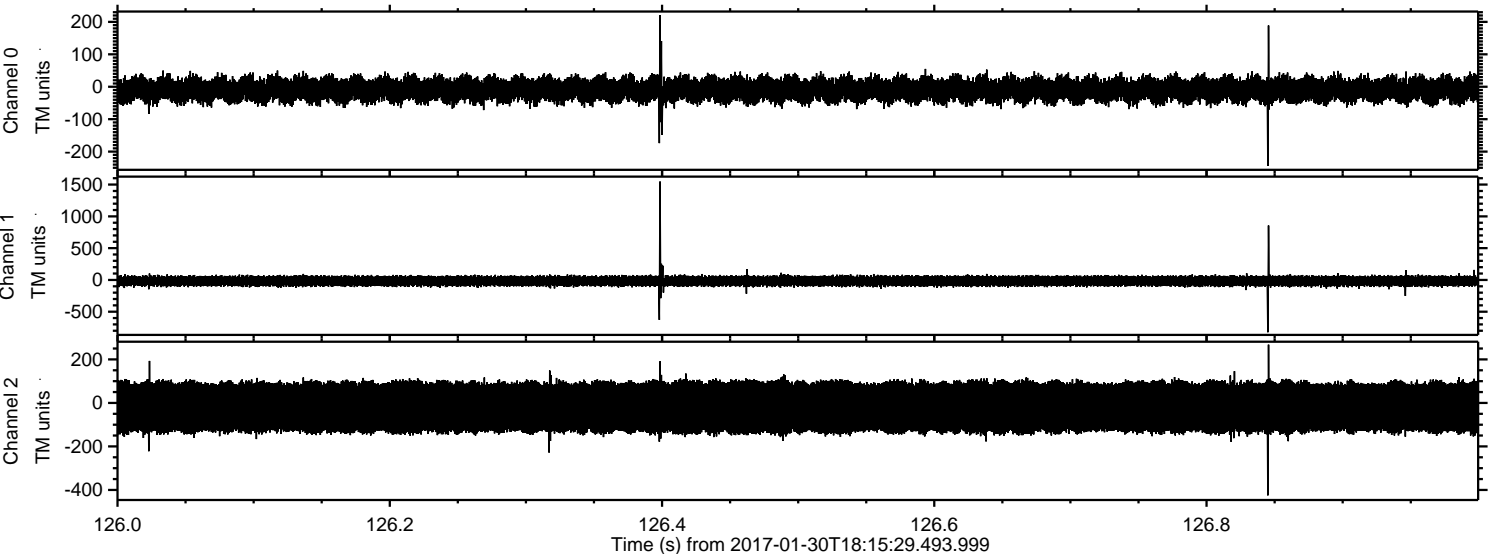
Channel 1  
mn: -2220  
mx: 1953  
 $\mu$ : -17.2  
 $\sigma$ : 46.1

Channel 2  
mn: -536  
mx: 308  
 $\mu$ : -19.7  
 $\sigma$ : 75.9



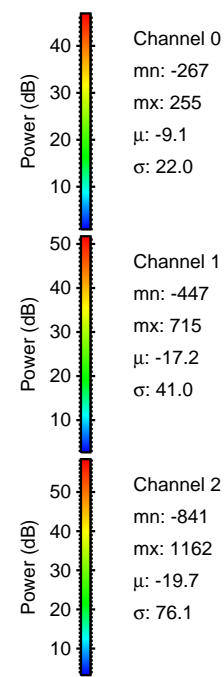
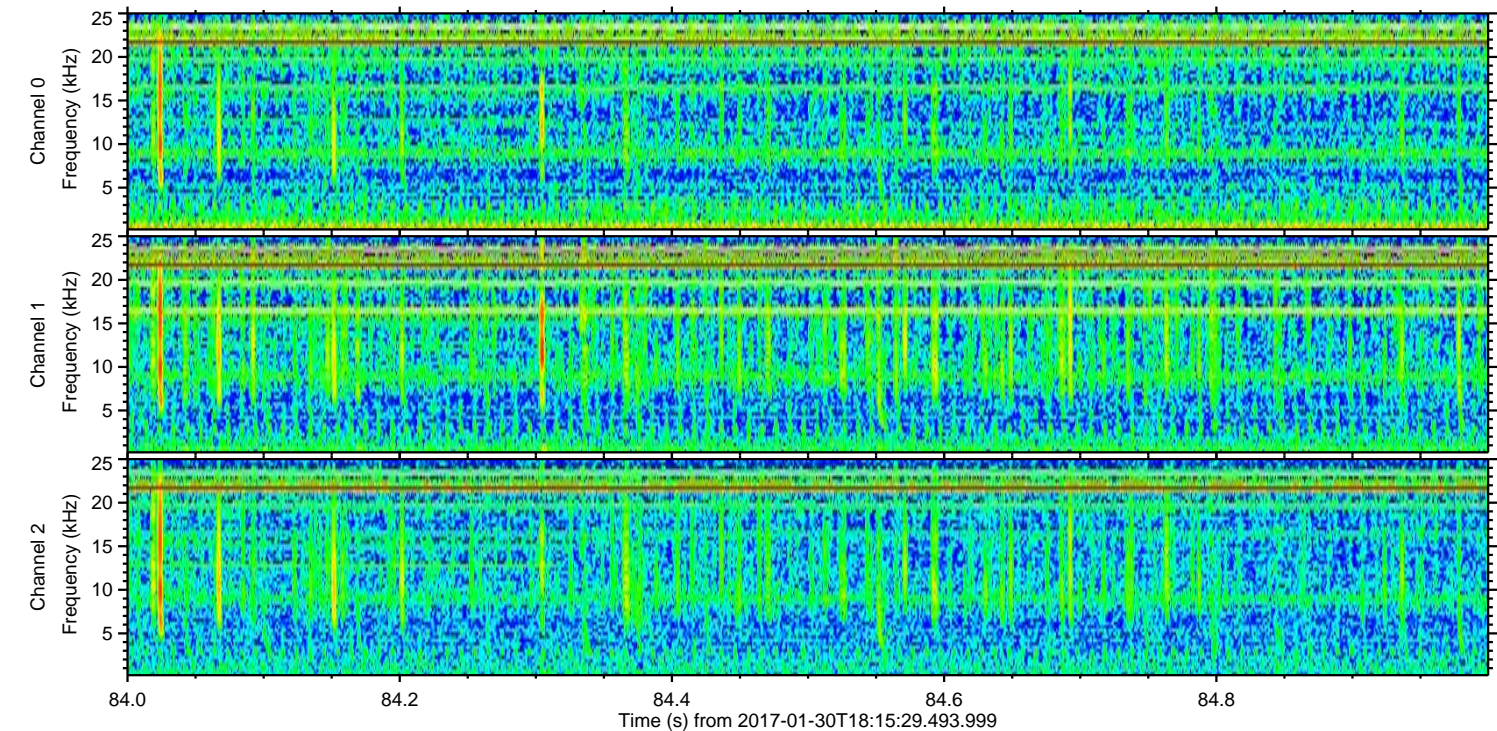
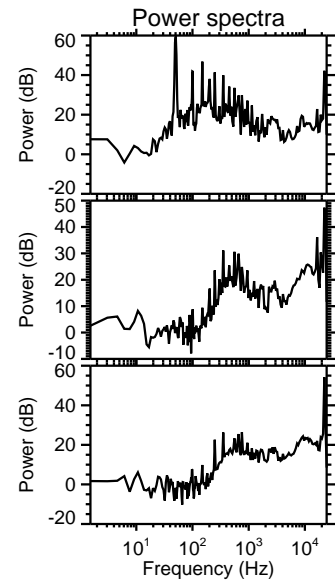
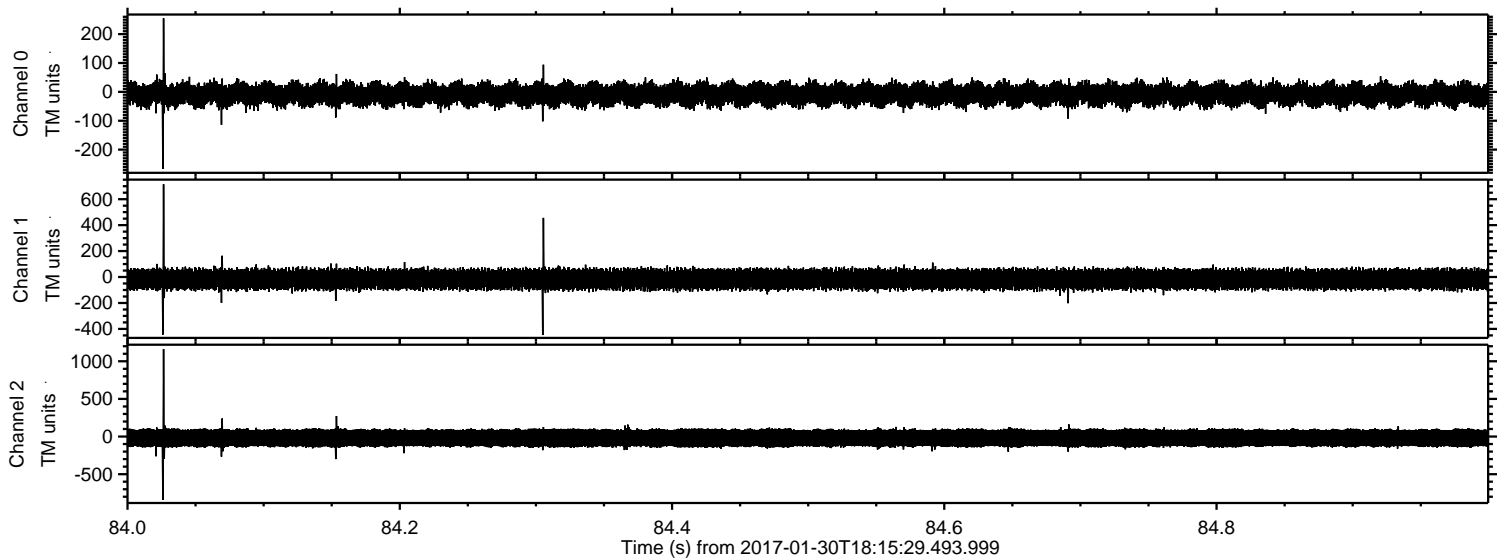
ELMAVAN 3D WAVEFORMS (Measured data sampled at 50 kHz) 51000 packets of 144 samples from 2017-01-30T18:15:29.493.999. Part 127/147

Processed Mon Jan 30 19:23:31 2017 by ELM ver.2012-10-06 from 001\_\_elm20170130\_181528\_\_dat00.bin



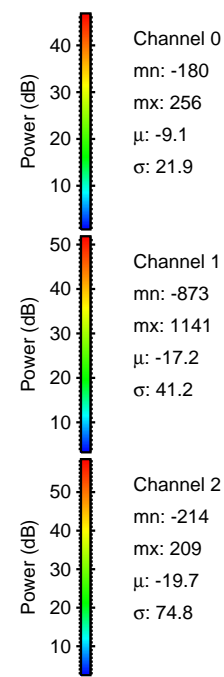
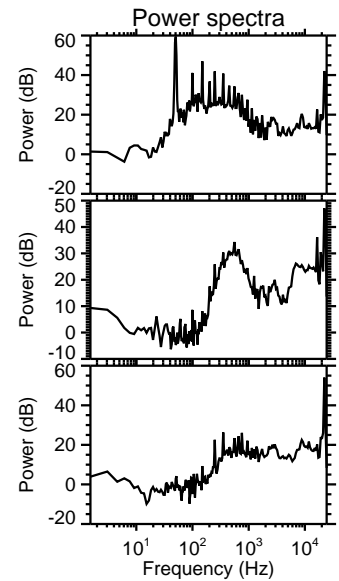
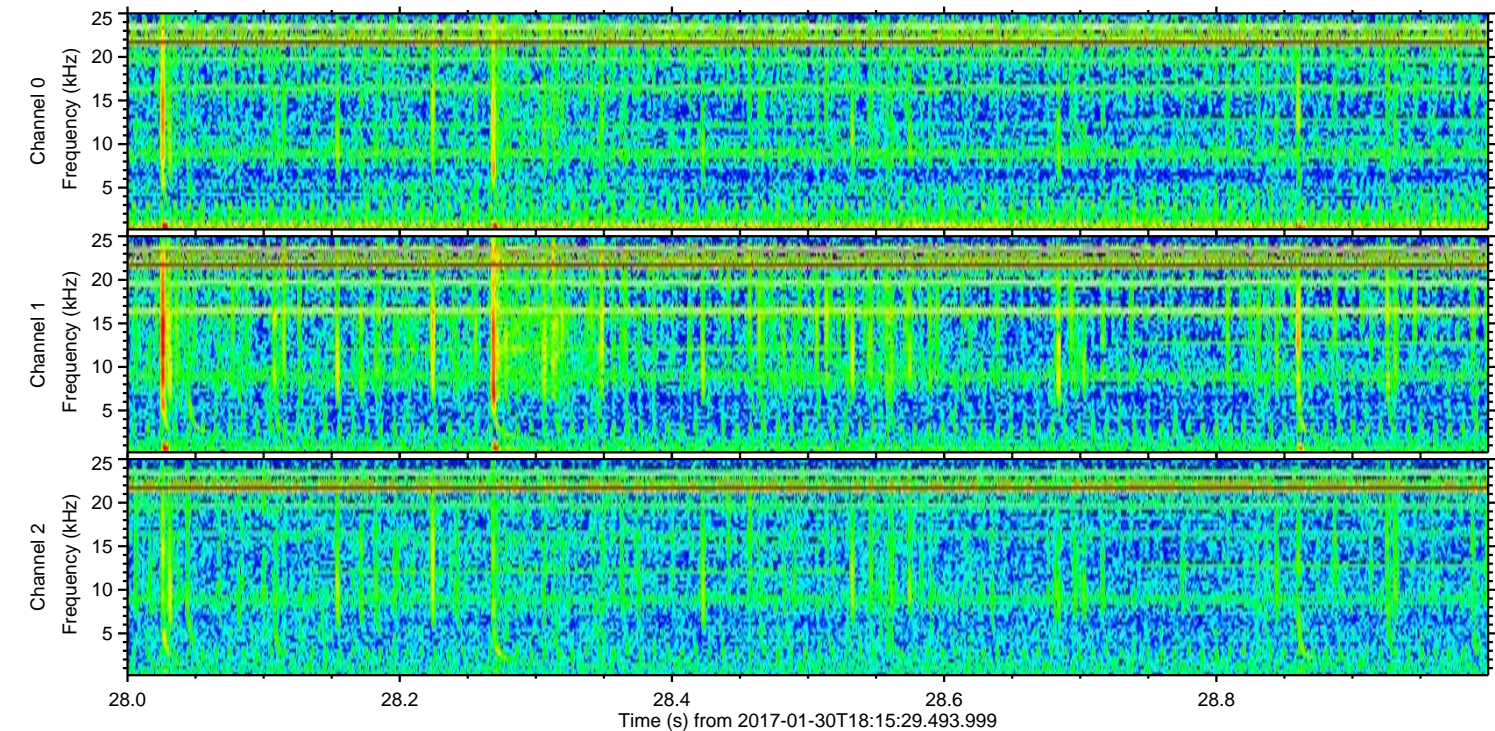
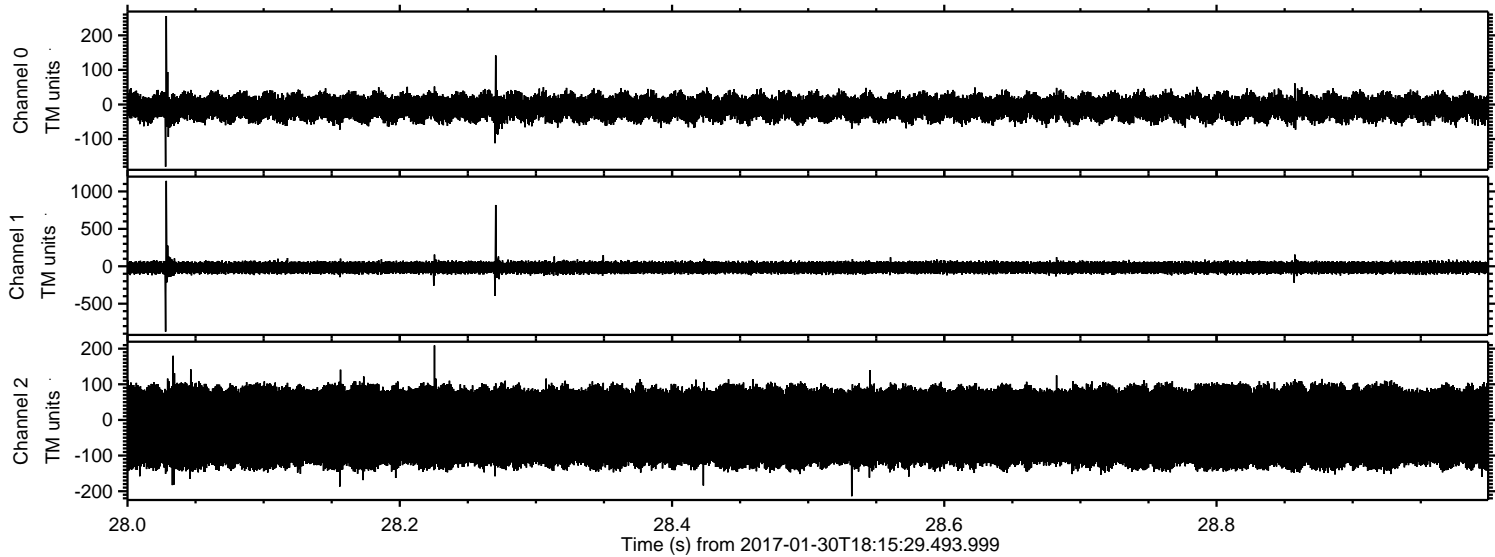


Processed Mon Jan 30 19:23:32 2017 by ELM ver.2012-10-06 from 001\_\_elm20170130\_181528\_\_dat00.bin





Processed Mon Jan 30 19:23:33 2017 by ELM ver.2012-10-06 from 001\_\_elm20170130\_181528\_\_dat00.bin



Channel 0  
mn: -180  
mx: 256  
 $\mu$ : -9.1  
 $\sigma$ : 21.9

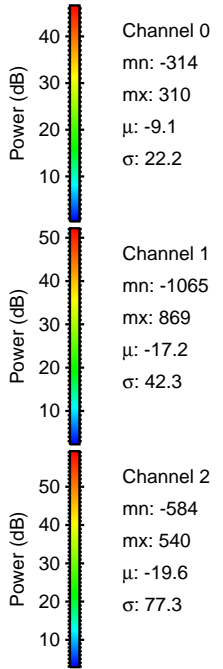
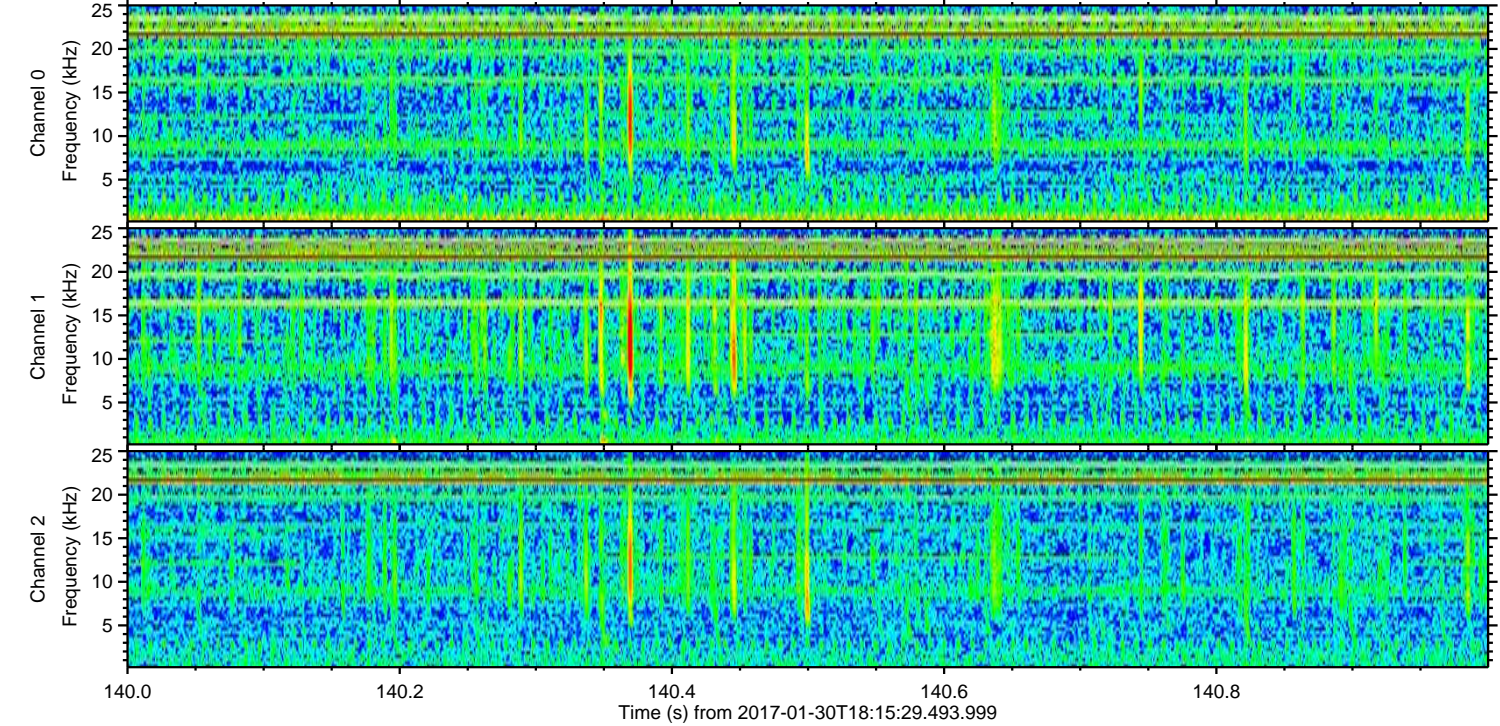
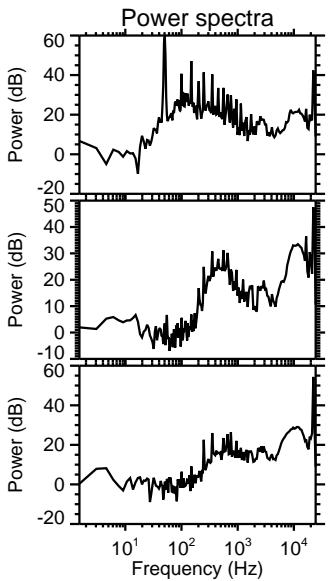
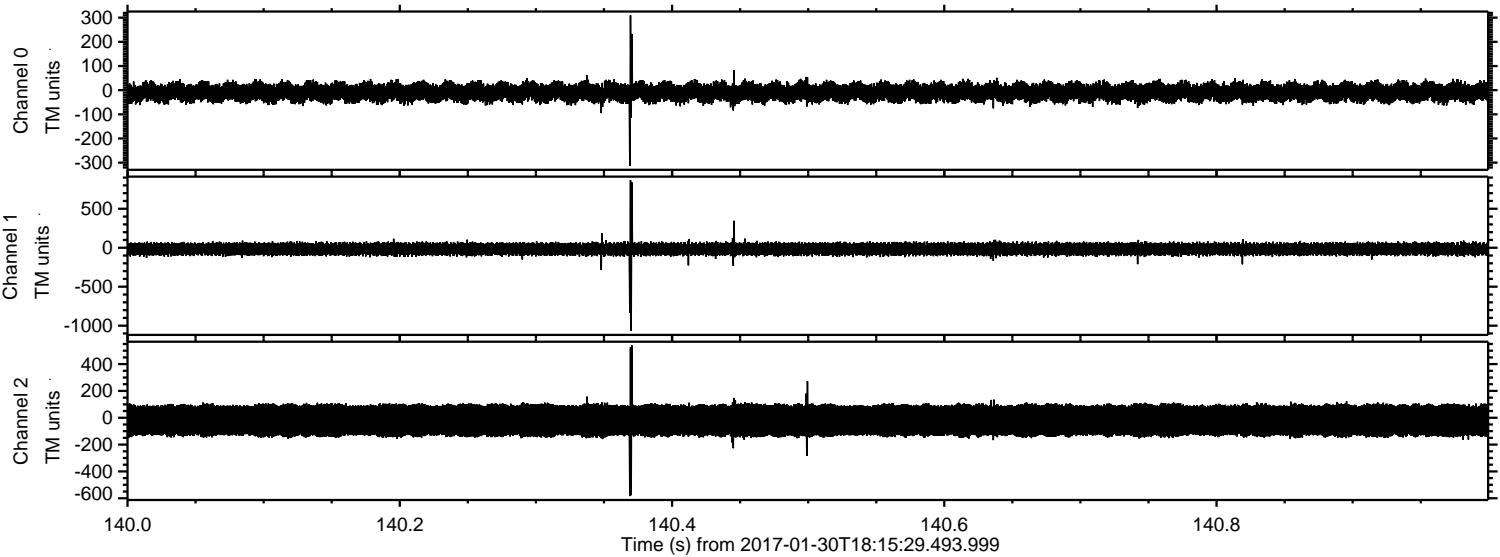
Channel 1  
mn: -873  
mx: 1141  
 $\mu$ : -17.2  
 $\sigma$ : 41.2

Channel 2  
mn: -214  
mx: 209  
 $\mu$ : -19.7  
 $\sigma$ : 74.8



ELMAVAN 3D WAVEFORMS (Measured data sampled at 50 kHz) 51000 packets of 144 samples from 2017-01-30T18:15:29.493.999. Part 141/147

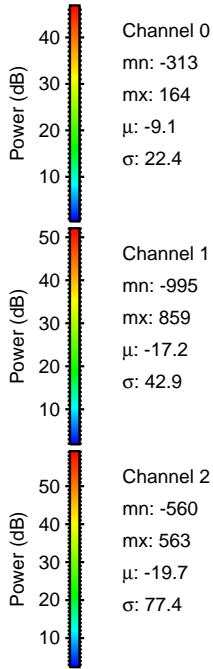
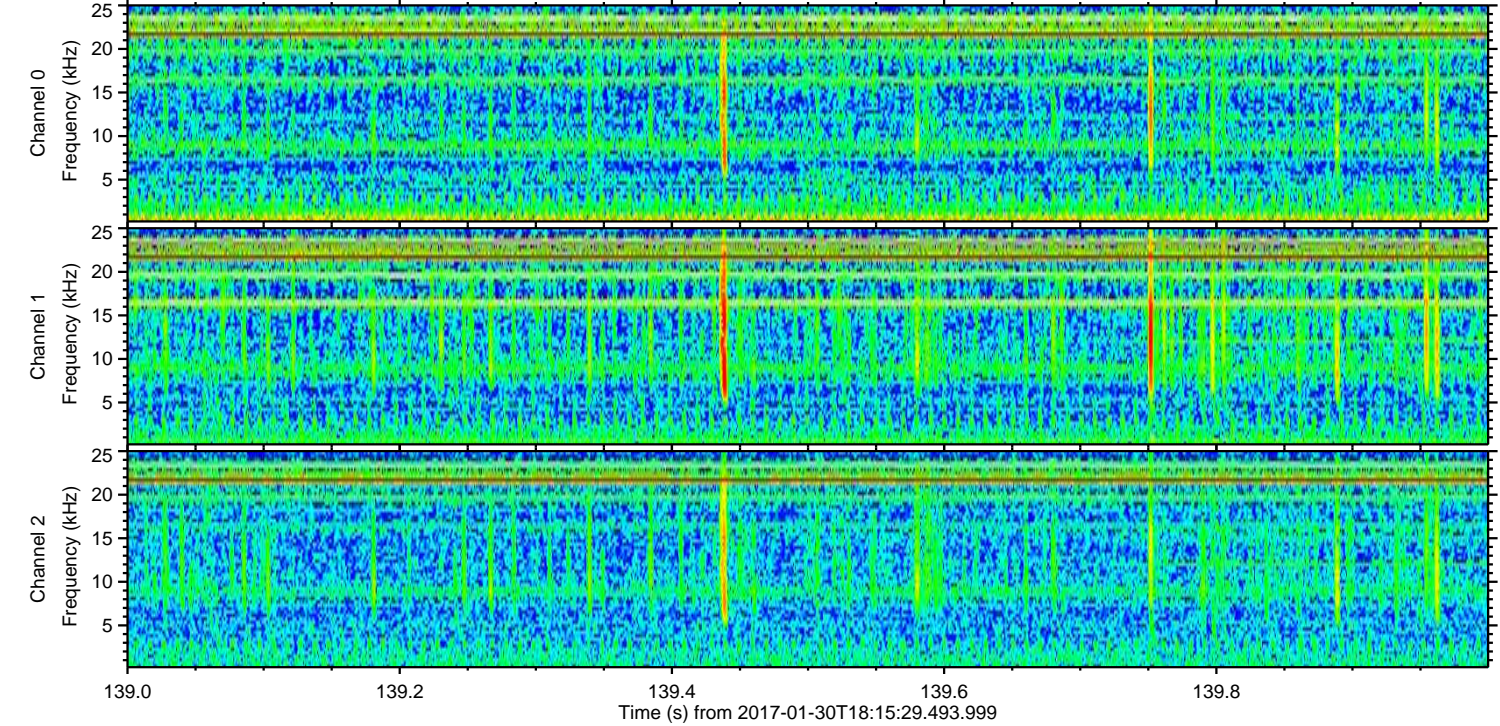
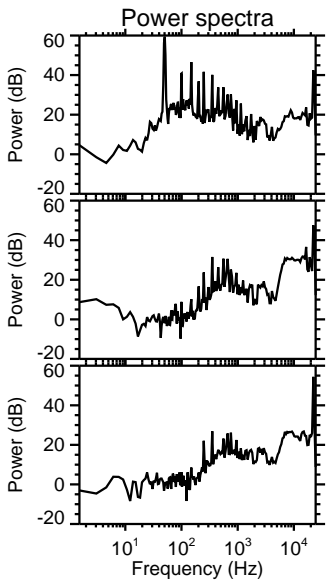
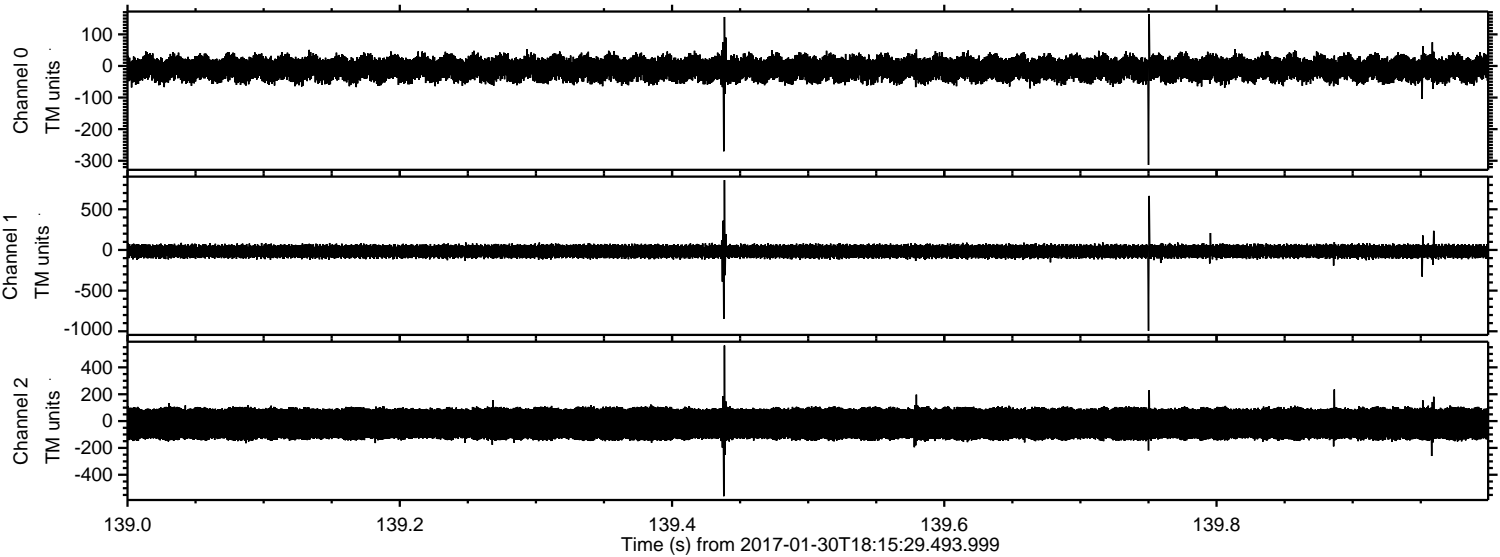
Processed Mon Jan 30 19:23:34 2017 by ELM ver.2012-10-06 from 001\_\_elm20170130\_181528\_\_dat00.bin





ELMAVAN 3D WAVEFORMS (Measured data sampled at 50 kHz) 51000 packets of 144 samples from 2017-01-30T18:15:29.493.999. Part 140/147

Processed Mon Jan 30 19:23:35 2017 by ELM ver.2012-10-06 from 001\_\_elm20170130\_181528\_\_dat00.bin





Processed Mon Jan 30 19:23:36 2017 by ELM ver.2012-10-06 from 001\_\_elm20170130\_181528\_\_dat00.bin

