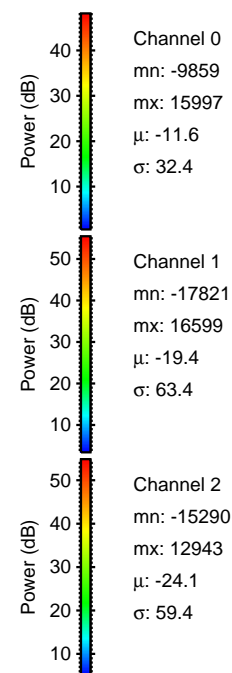
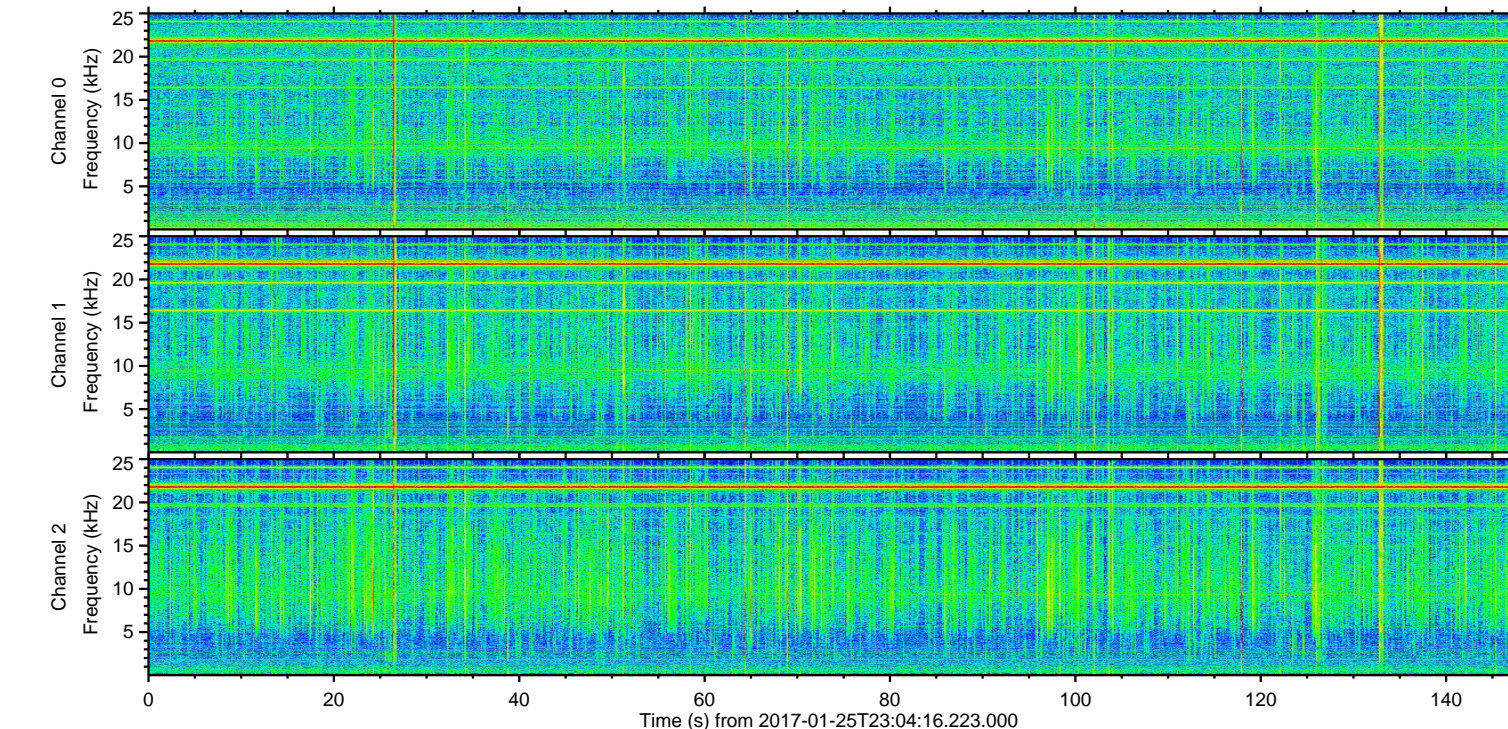
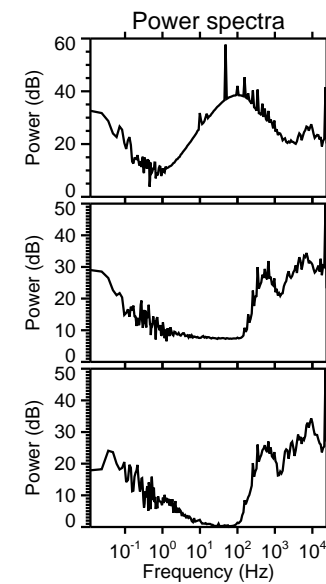
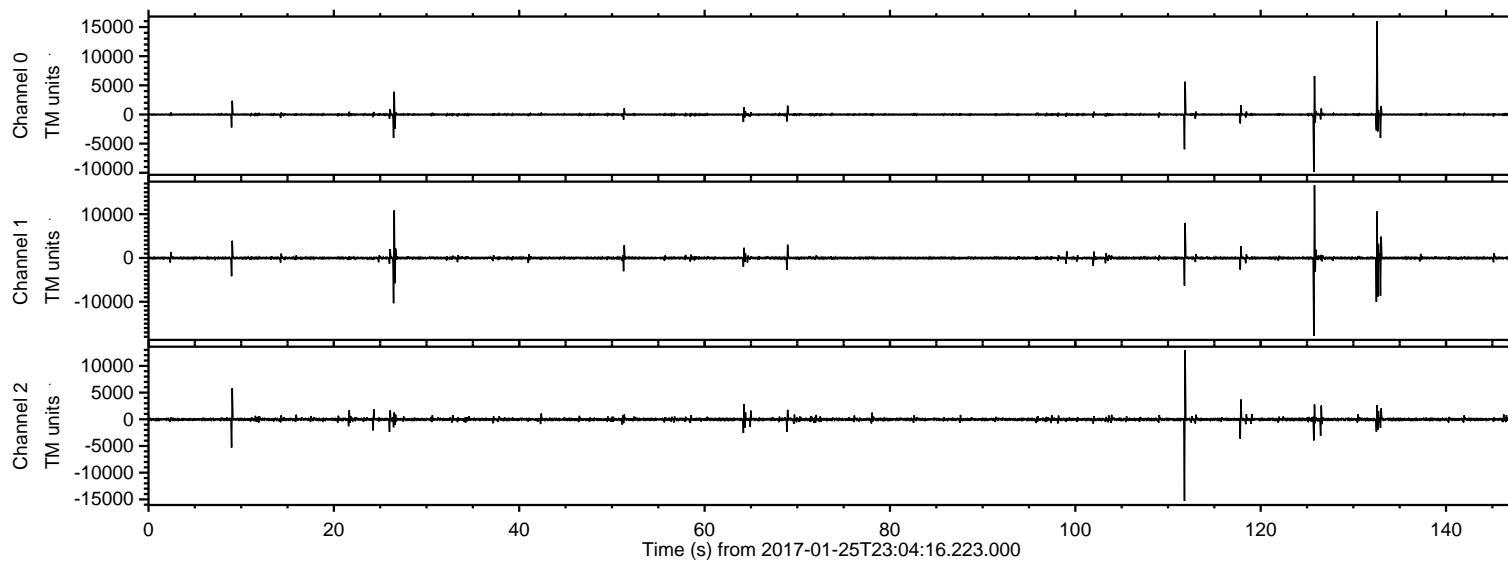


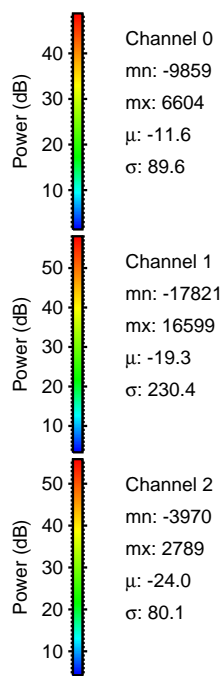
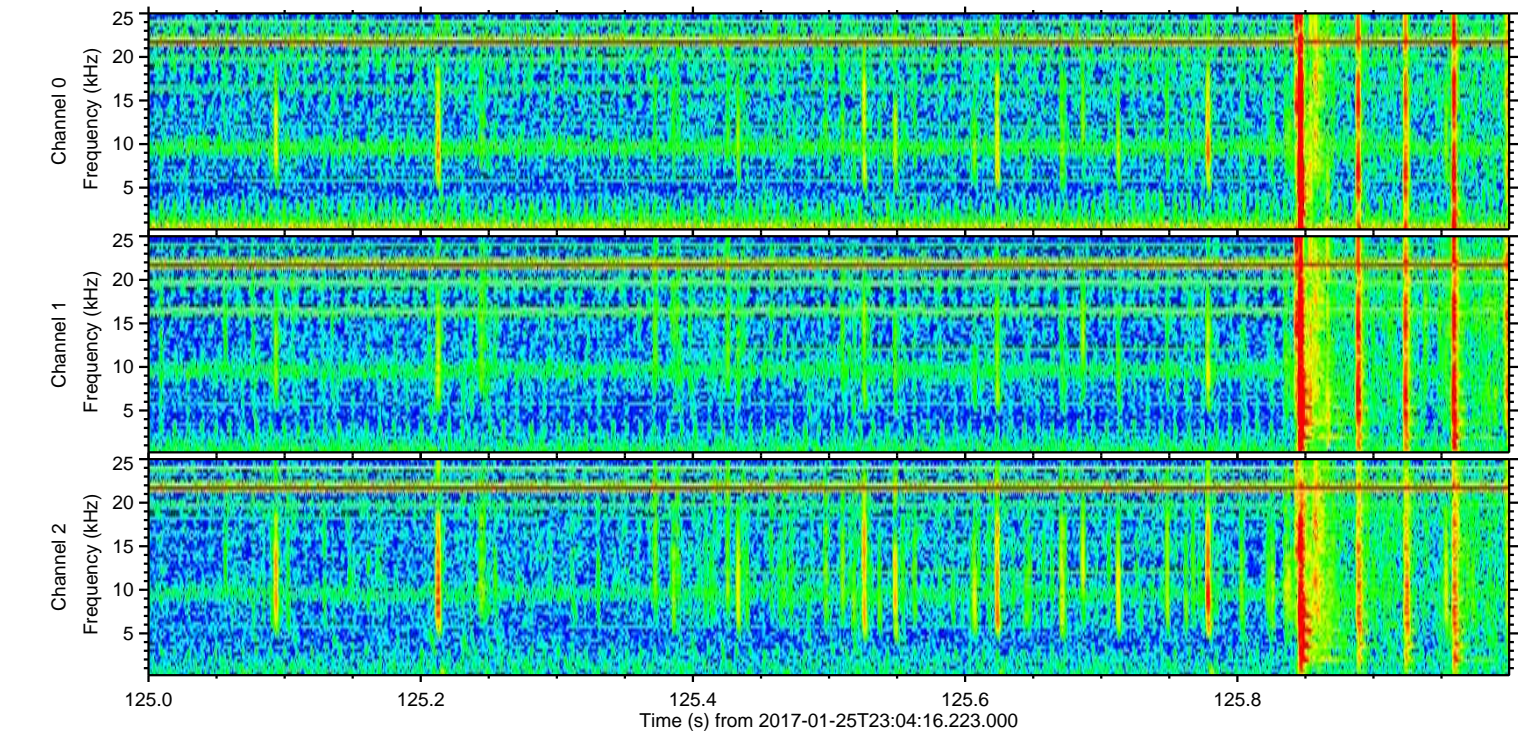
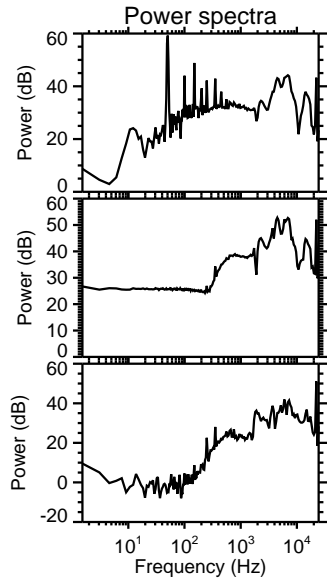
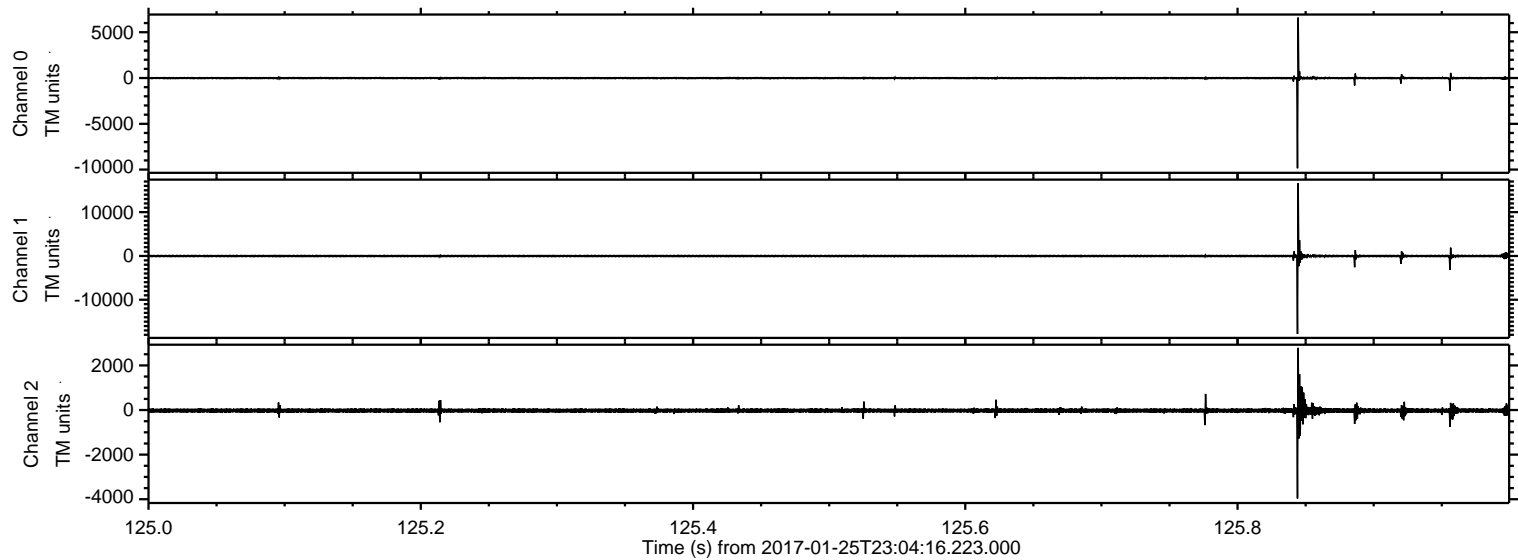
ELMAVAN 3D WAVEFORMS (Measured data sampled at 50 kHz) 51000 packets of 144 samples from 2017-01-25T23:04:16.223.000.

Processed Thu Jan 26 00:12:26 2017 by ELM ver.2012-10-06 from 001__elm20170125_230415__dat00.bin



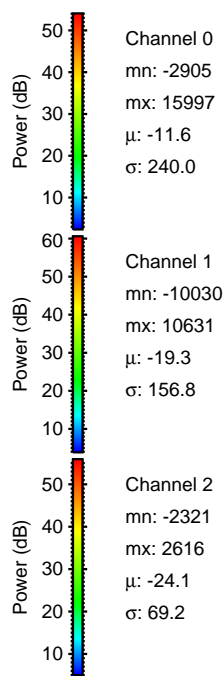
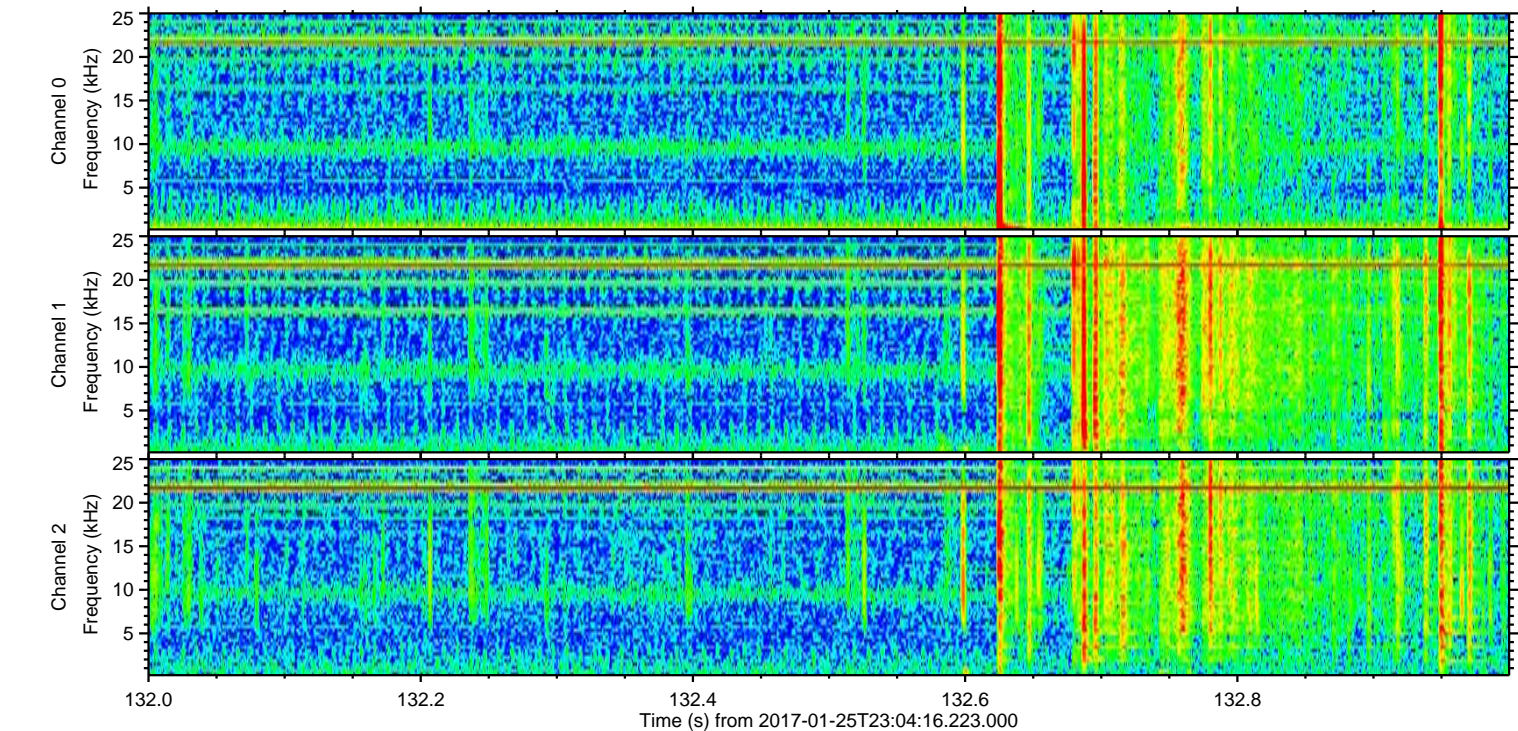
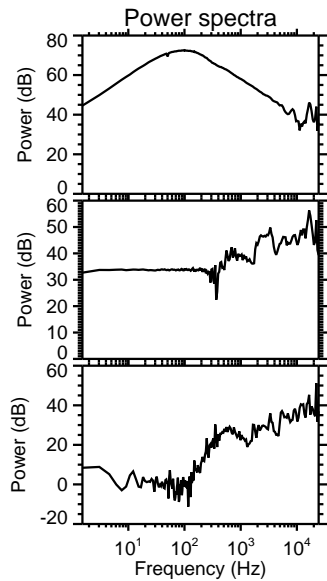
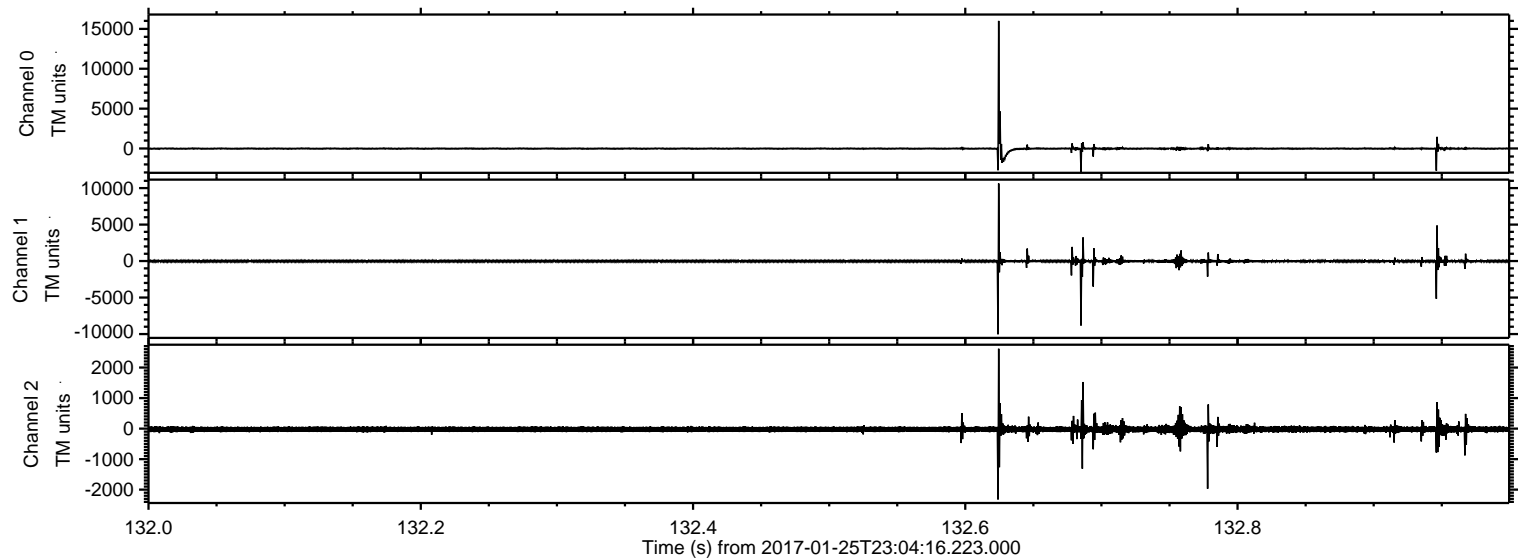
ELMAVAN 3D WAVEFORMS (Measured data sampled at 50 kHz) 51000 packets of 144 samples from 2017-01-25T23:04:16.223.000. Part 126/147

Processed Thu Jan 26 00:12:38 2017 by ELM ver.2012-10-06 from 001__elm20170125_230415__dat00.bin



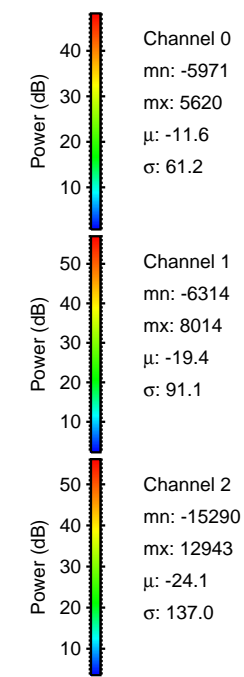
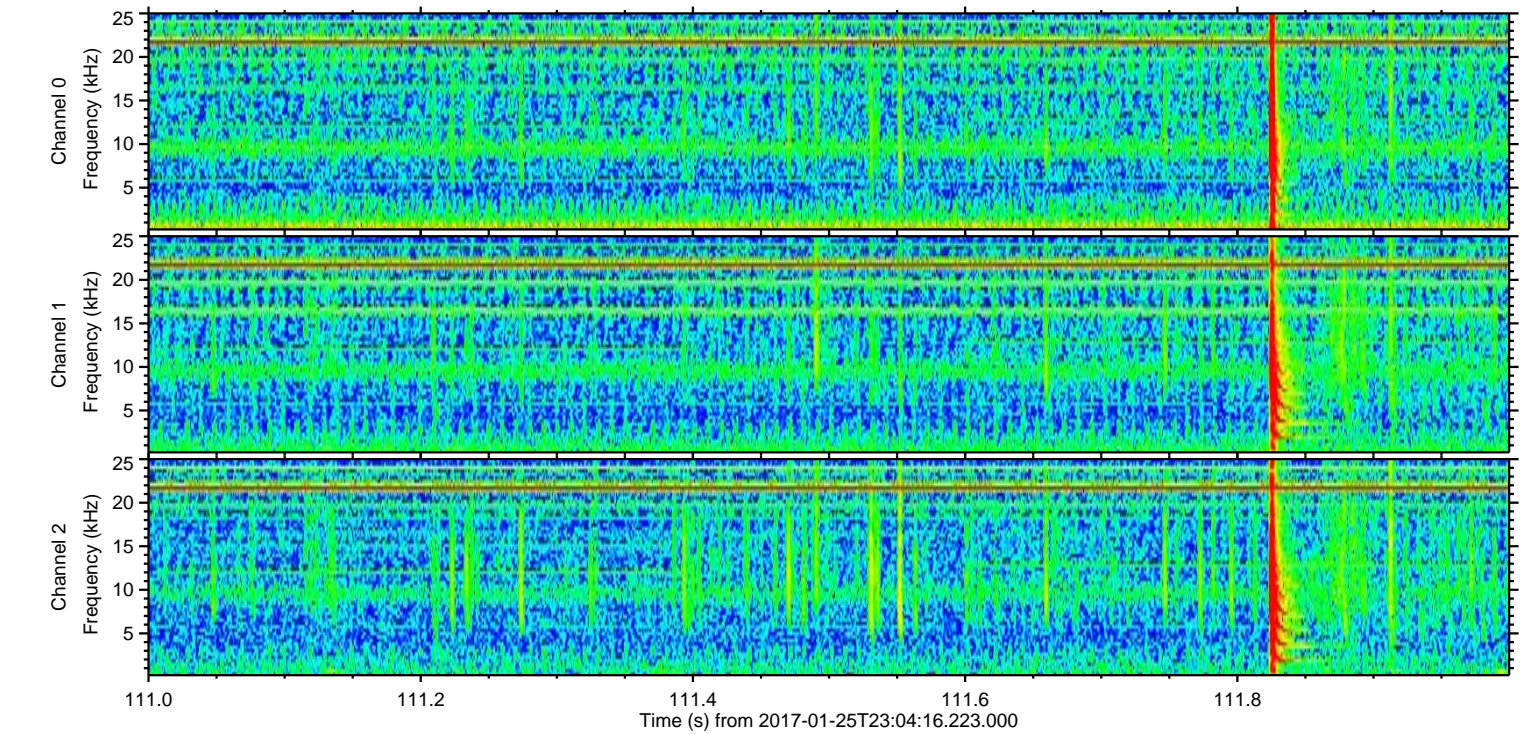
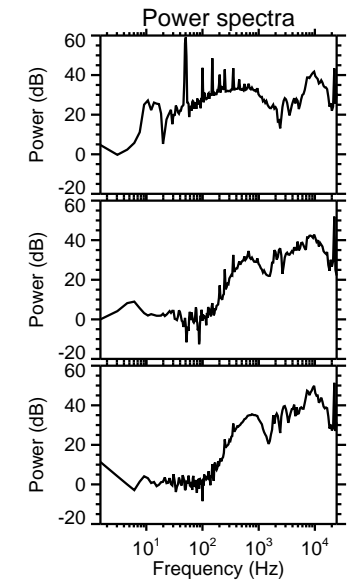
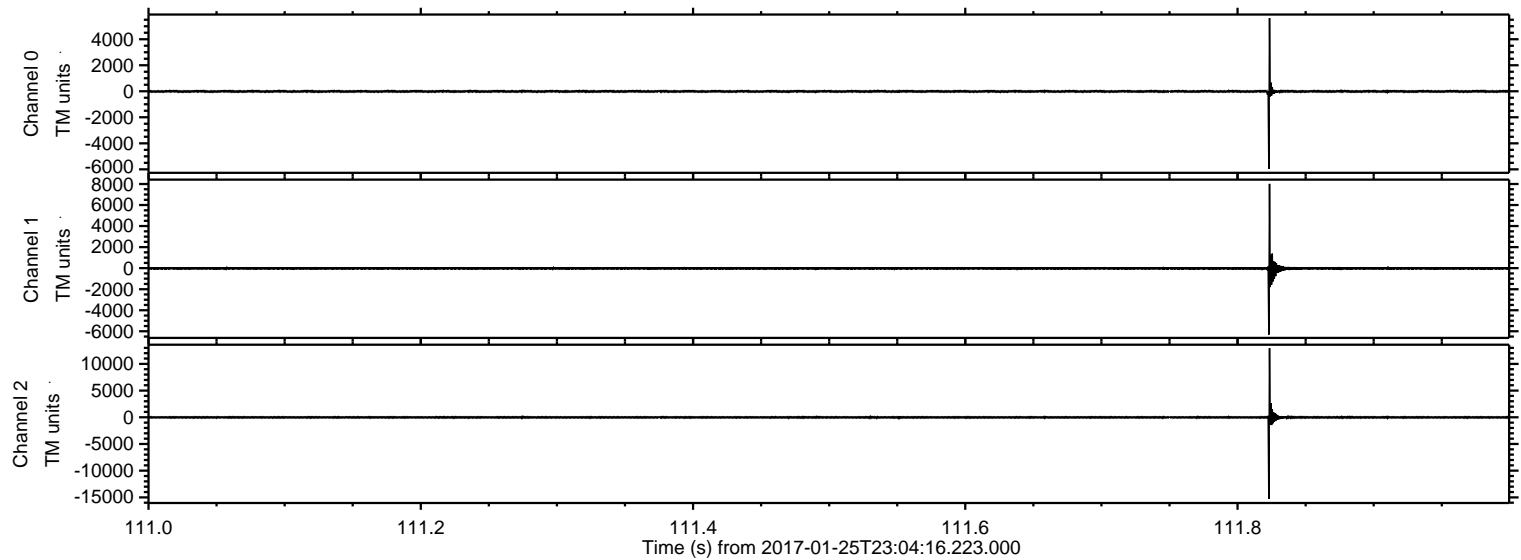
ELMAVAN 3D WAVEFORMS (Measured data sampled at 50 kHz) 51000 packets of 144 samples from 2017-01-25T23:04:16.223.000. Part 133/147

Processed Thu Jan 26 00:12:39 2017 by ELM ver.2012-10-06 from 001__elm20170125_230415__dat00.bin



ELMAVAN 3D WAVEFORMS (Measured data sampled at 50 kHz) 51000 packets of 144 samples from 2017-01-25T23:04:16.223.000. Part 112/147

Processed Thu Jan 26 00:12:40 2017 by ELM ver.2012-10-06 from 001__elm20170125_230415__dat00.bin



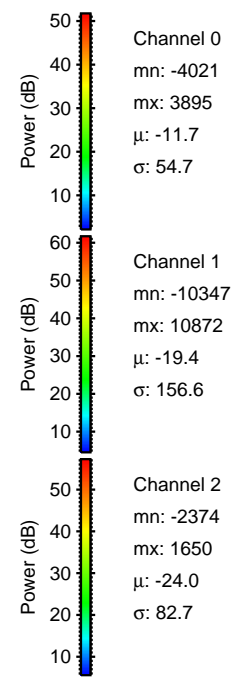
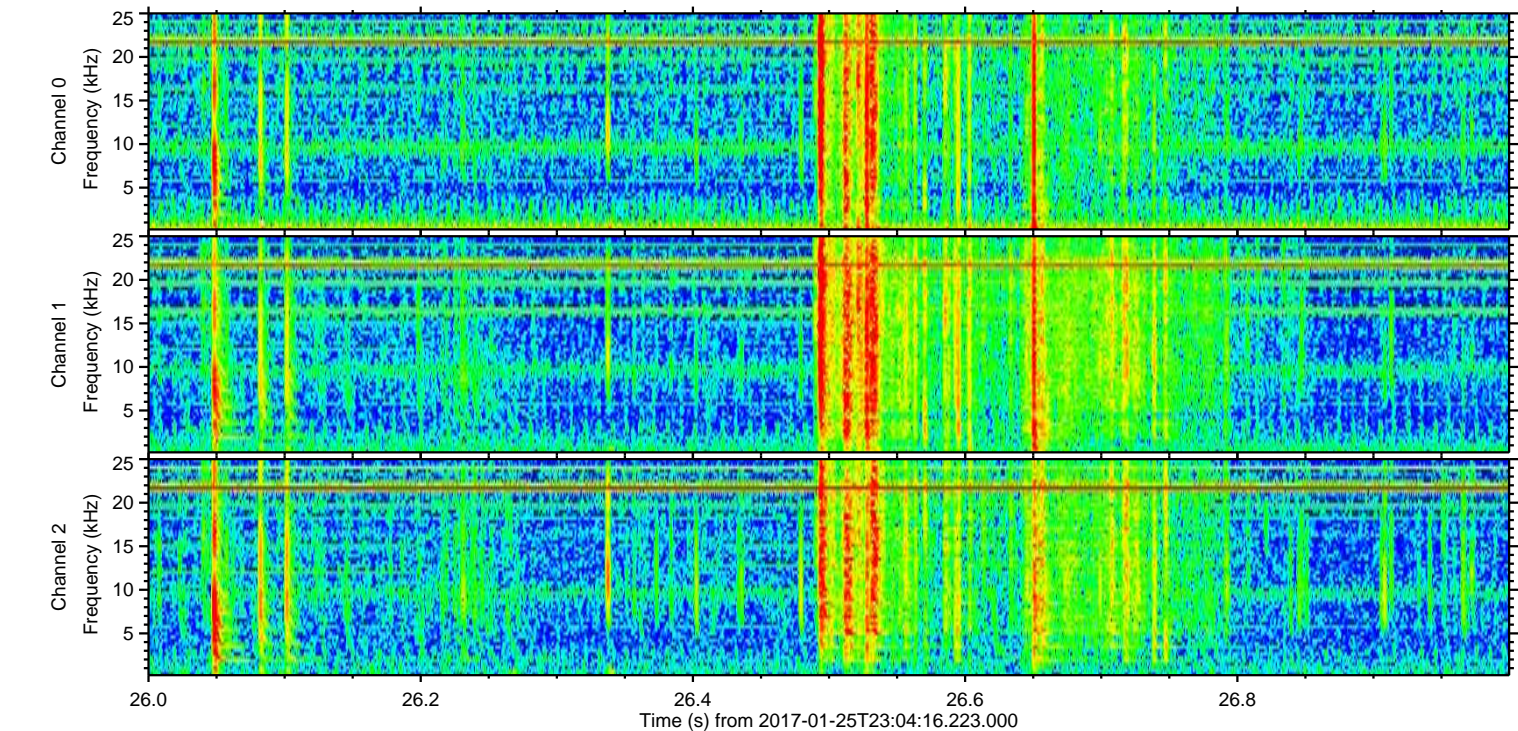
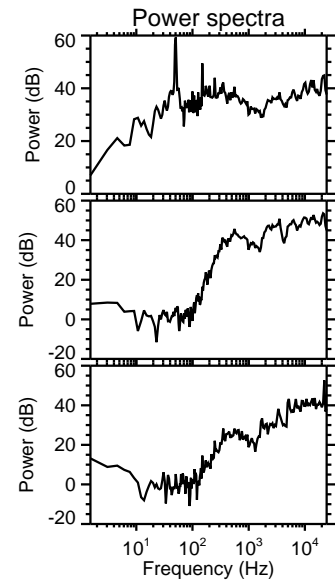
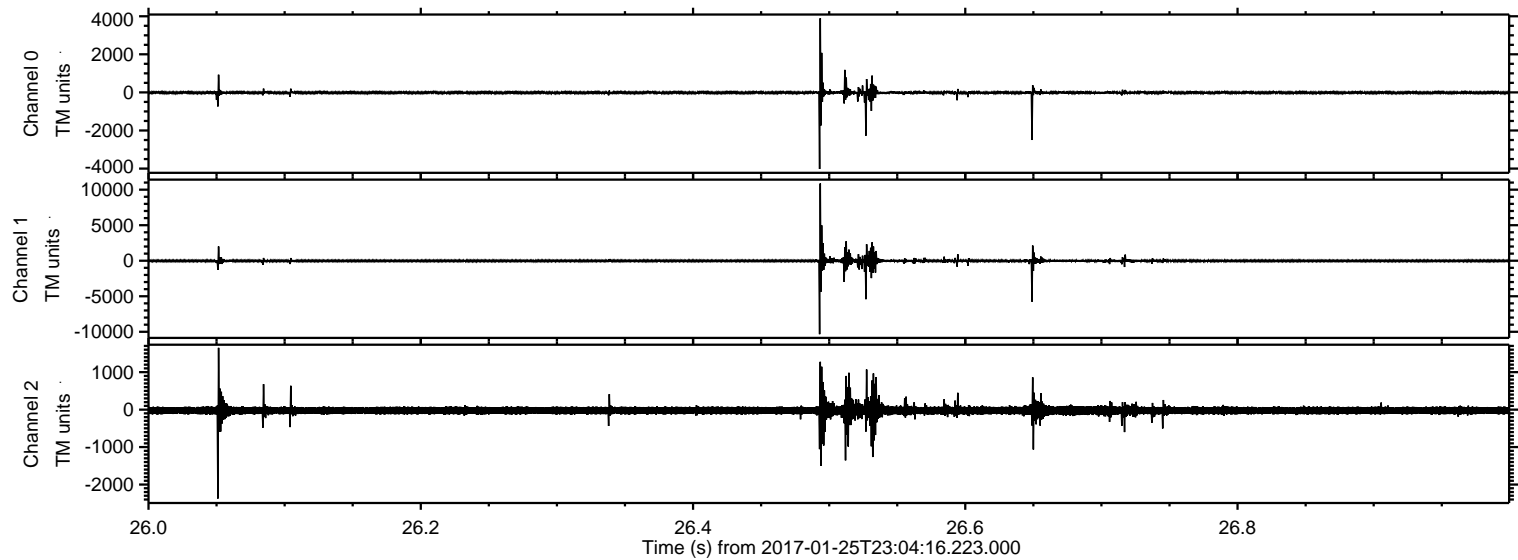
Channel 0
mn: -5971
mx: 5620
 μ : -11.6
 σ : 61.2

Channel 1
mn: -6314
mx: 8014
 μ : -19.4
 σ : 91.1

Channel 2
mn: -15290
mx: 12943
 μ : -24.1
 σ : 137.0

ELMAVAN 3D WAVEFORMS (Measured data sampled at 50 kHz) 51000 packets of 144 samples from 2017-01-25T23:04:16.223.000. Part 27/147

Processed Thu Jan 26 00:12:41 2017 by ELM ver.2012-10-06 from 001__elm20170125_230415__dat00.bin



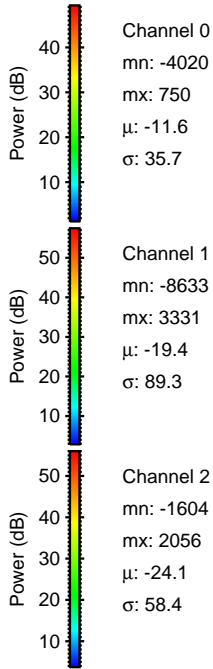
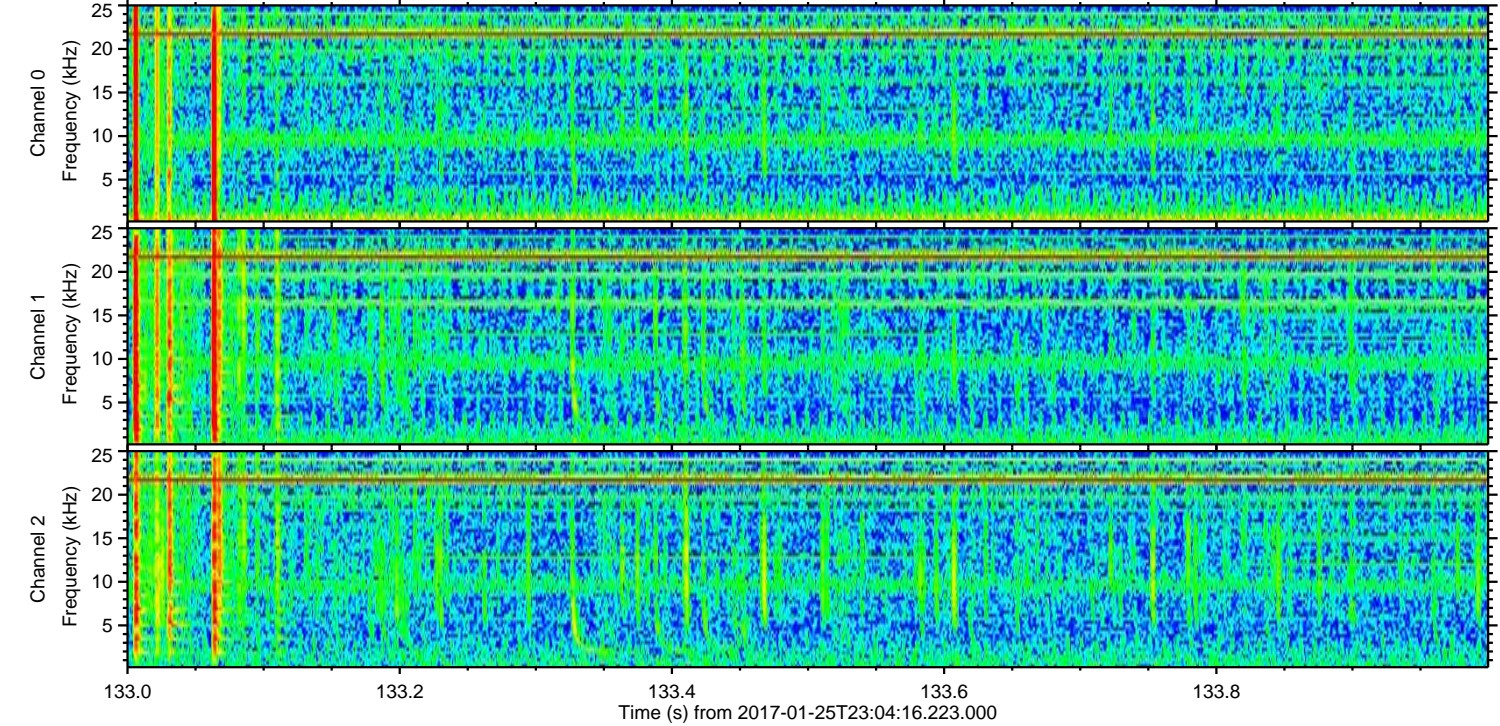
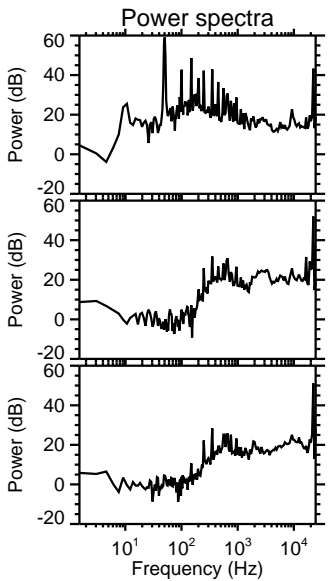
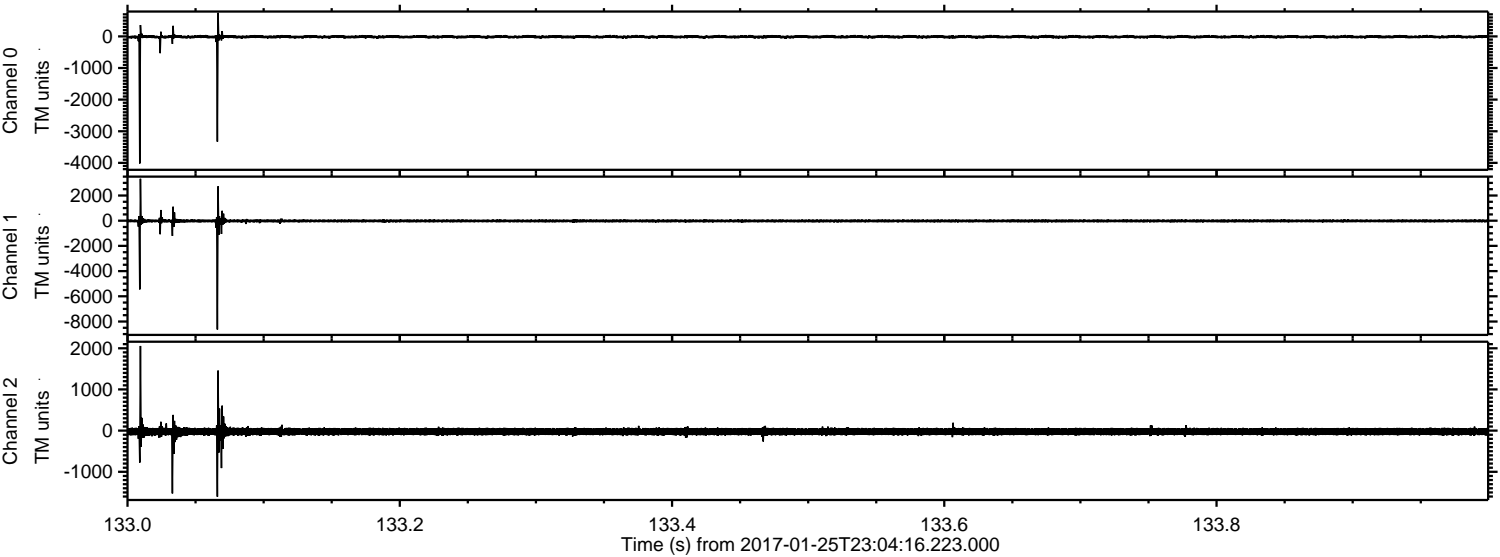
Channel 0
mn: -4021
mx: 3895
 μ : -11.7
 σ : 54.7

Channel 1
mn: -10347
mx: 10872
 μ : -19.4
 σ : 156.6

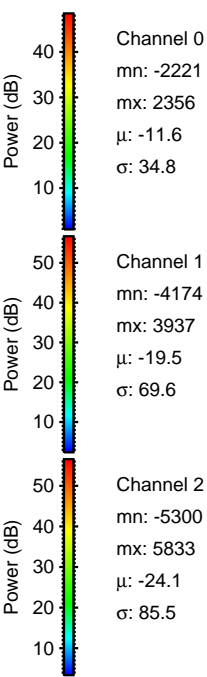
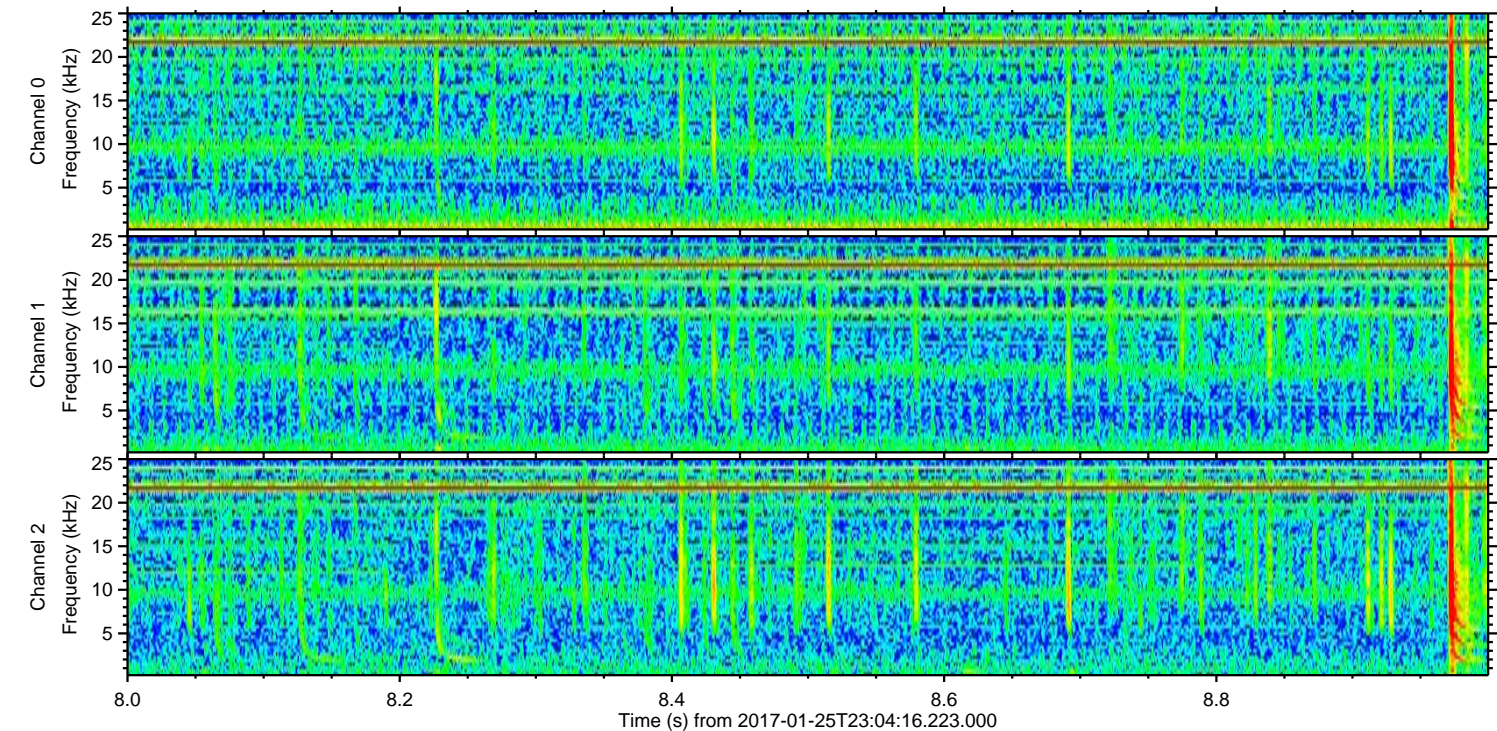
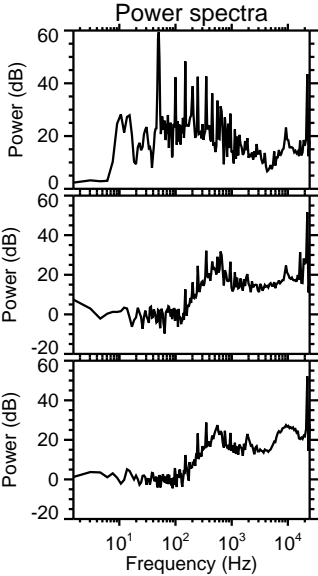
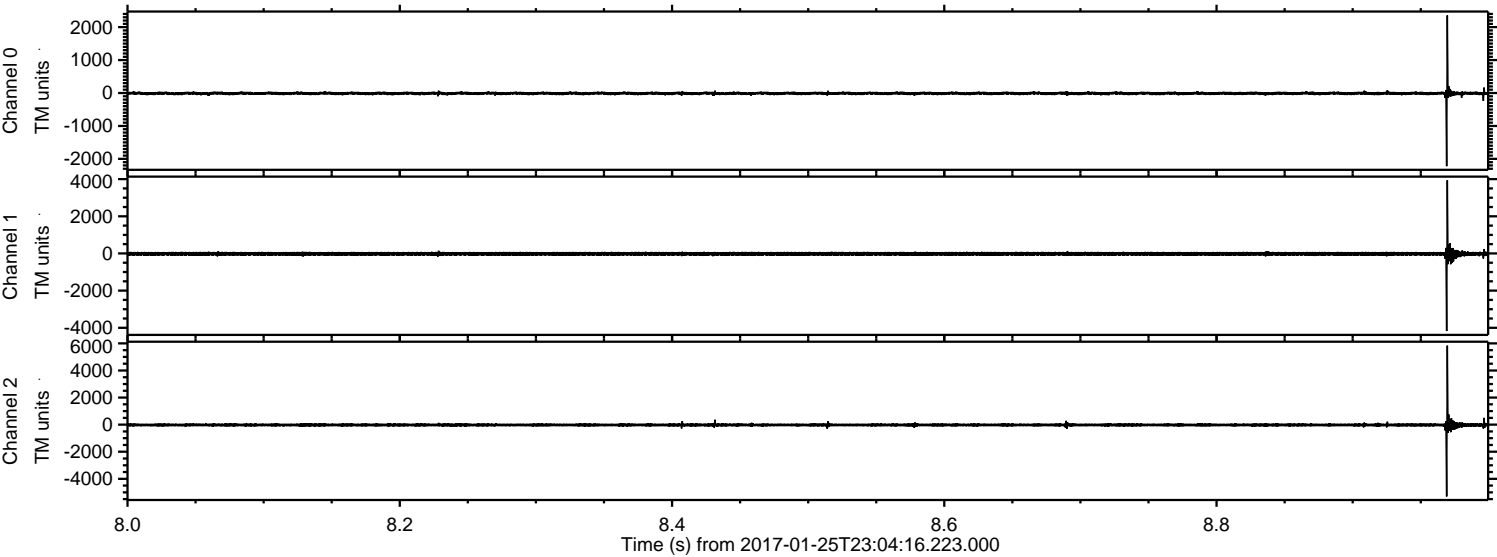
Channel 2
mn: -2374
mx: 1650
 μ : -24.0
 σ : 82.7

ELMAVAN 3D WAVEFORMS (Measured data sampled at 50 kHz) 51000 packets of 144 samples from 2017-01-25T23:04:16.223.000. Part 134/147

Processed Thu Jan 26 00:12:41 2017 by ELM ver.2012-10-06 from 001__elm20170125_230415__dat00.bin

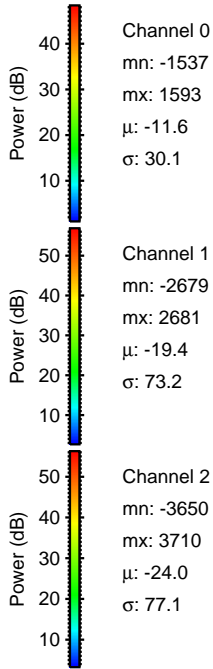
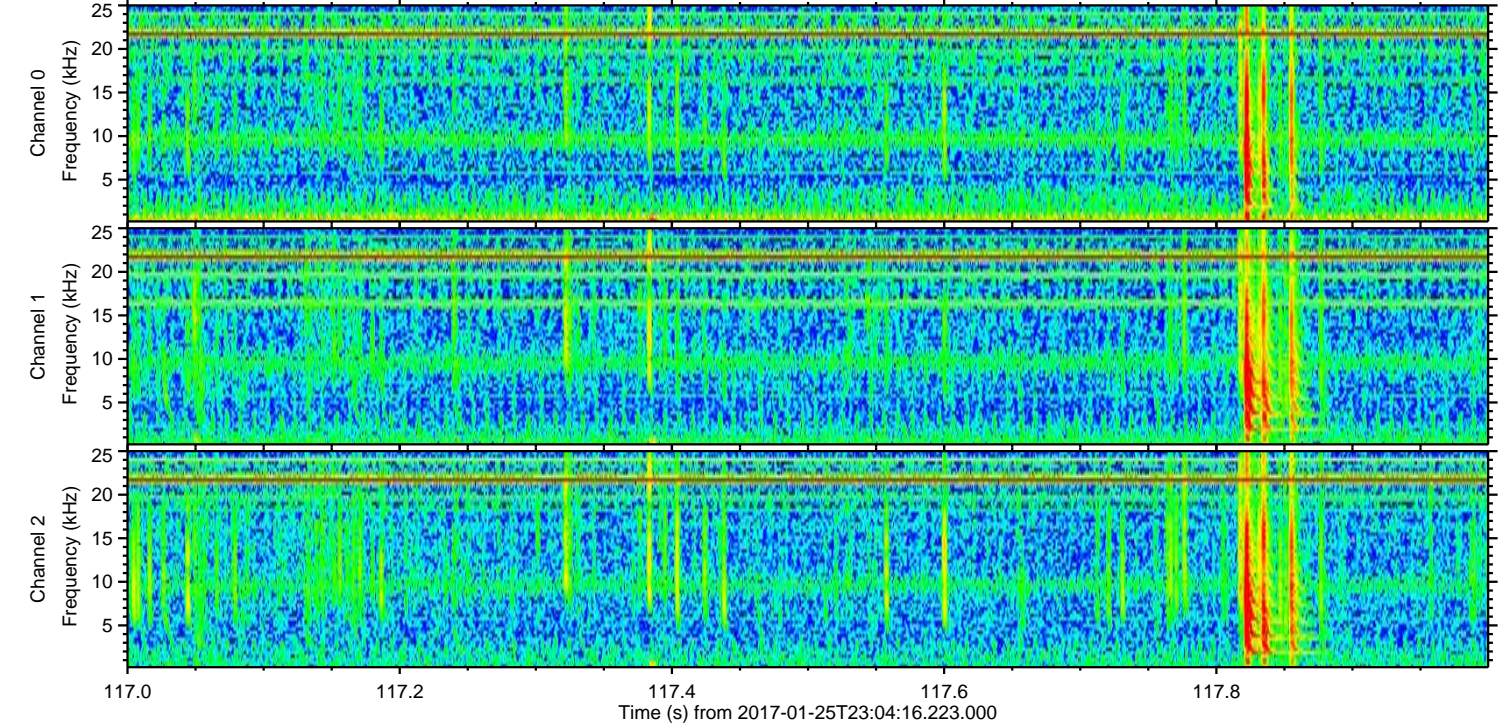
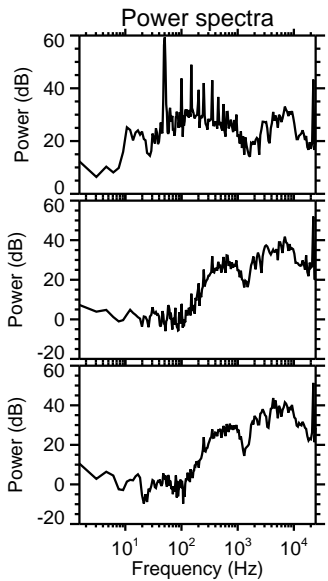
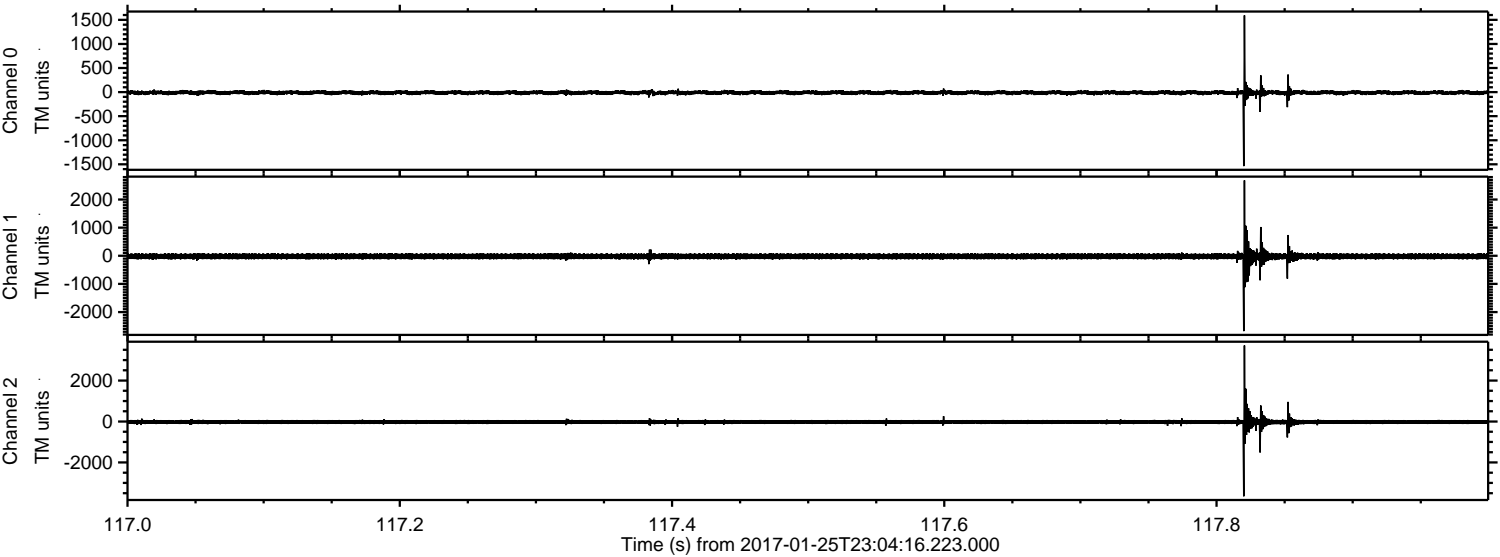


Processed Thu Jan 26 00:12:42 2017 by ELM ver.2012-10-06 from 001__elm20170125_230415__dat00.bin



ELMAVAN 3D WAVEFORMS (Measured data sampled at 50 kHz) 51000 packets of 144 samples from 2017-01-25T23:04:16.223.000. Part 118/147

Processed Thu Jan 26 00:12:43 2017 by ELM ver.2012-10-06 from 001__elm20170125_230415__dat00.bin



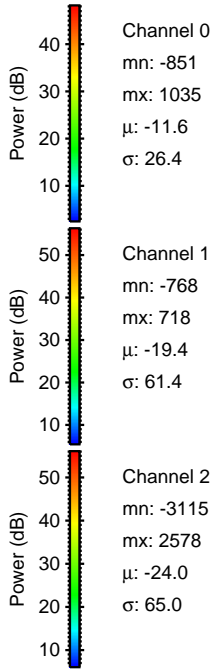
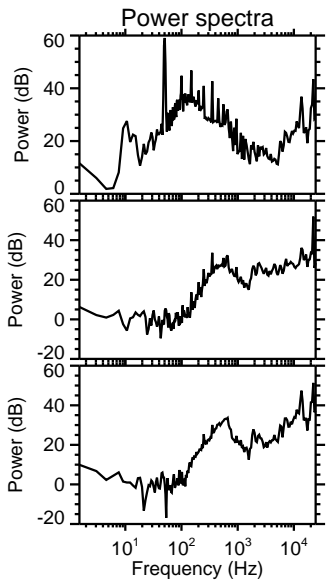
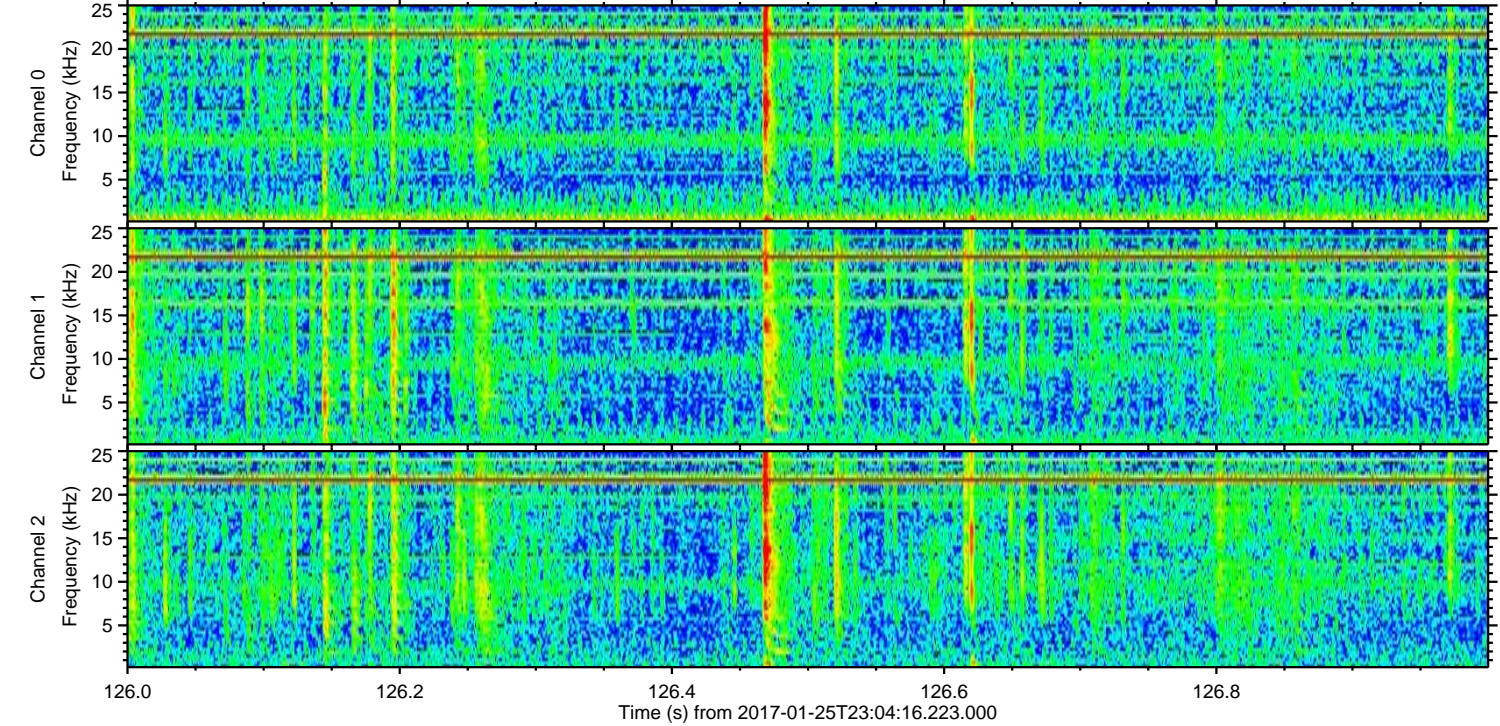
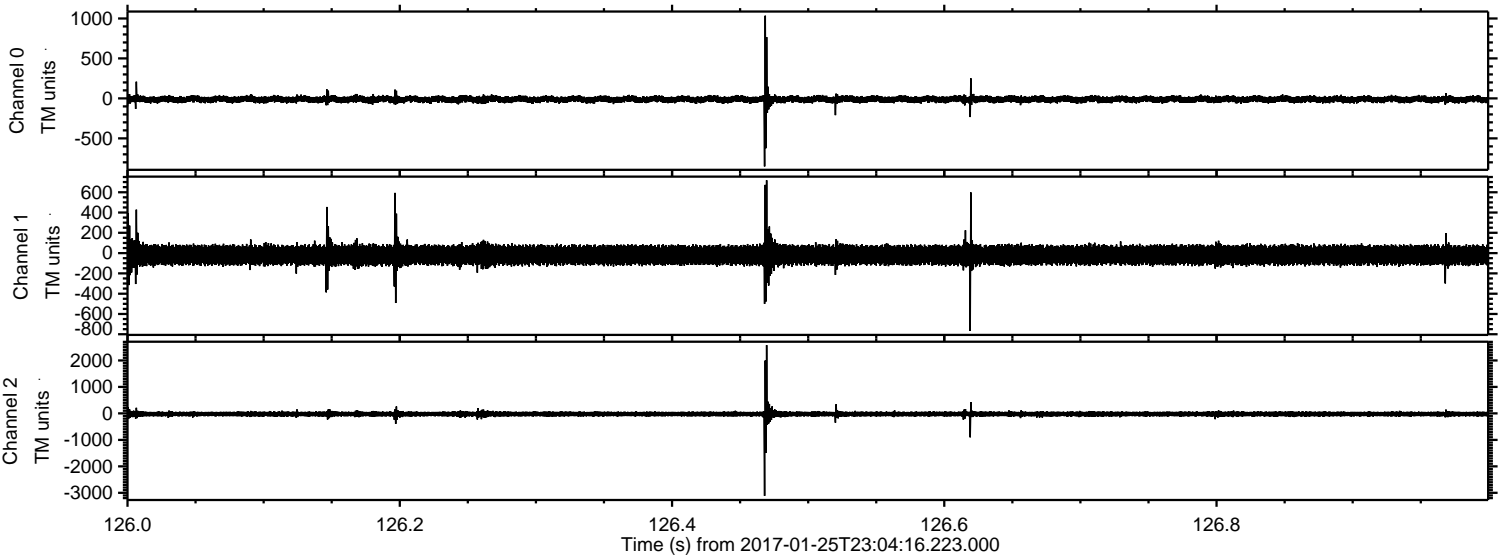
Channel 0
mn: -1537
mx: 1593
 μ : -11.6
 σ : 30.1

Channel 1
mn: -2679
mx: 2681
 μ : -19.4
 σ : 73.2

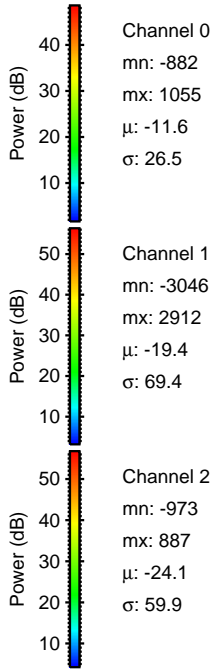
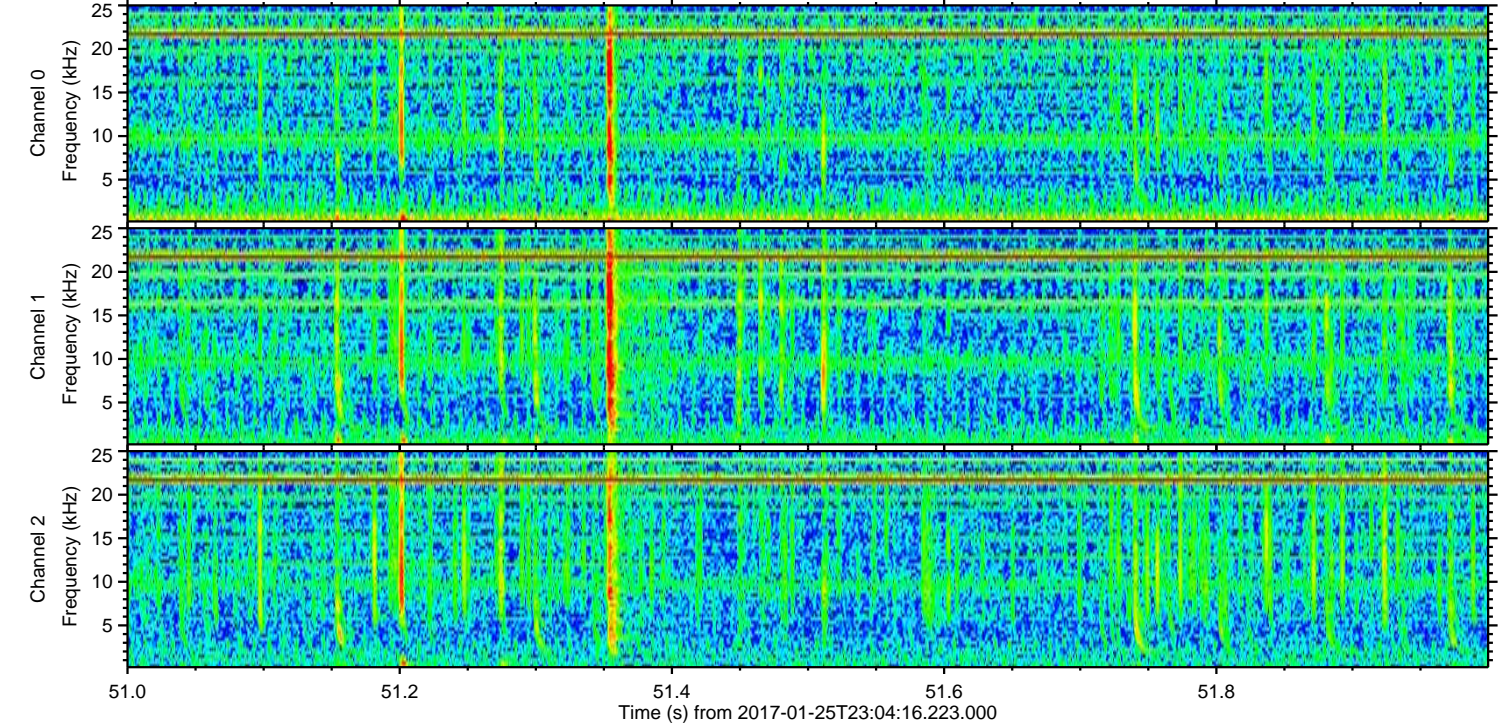
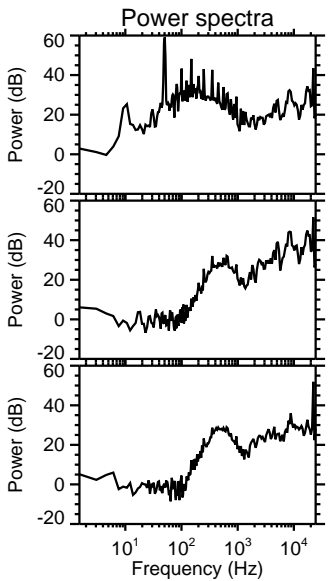
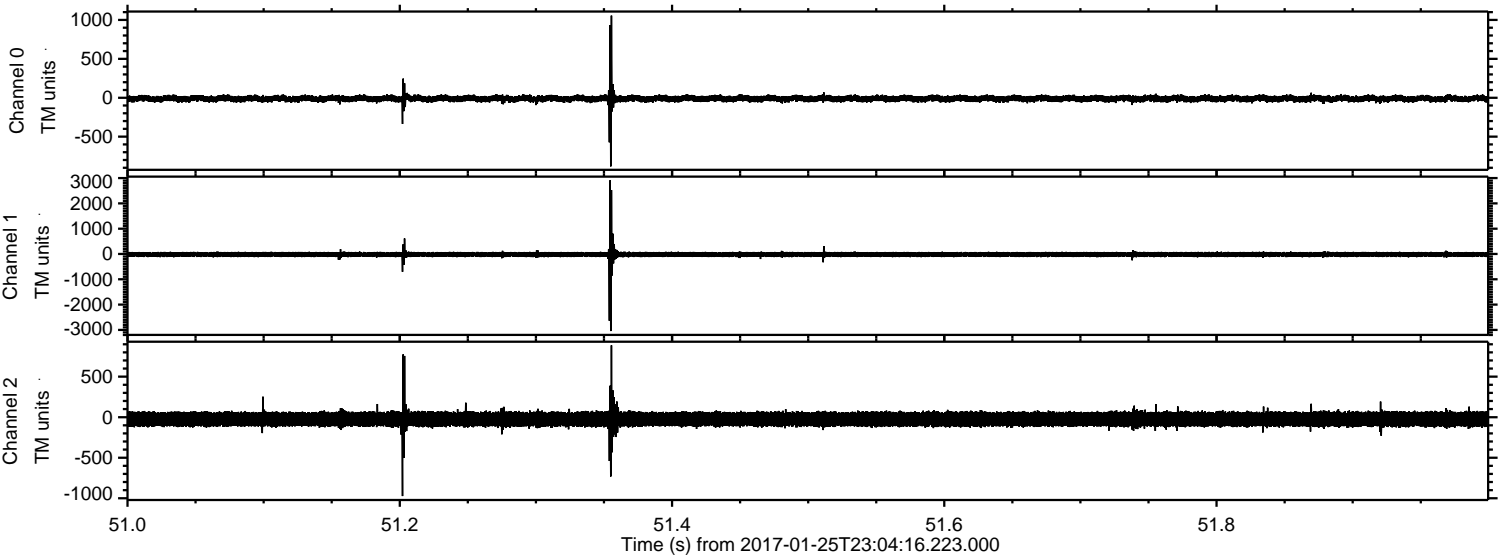
Channel 2
mn: -3650
mx: 3710
 μ : -24.0
 σ : 77.1

ELMAVAN 3D WAVEFORMS (Measured data sampled at 50 kHz) 51000 packets of 144 samples from 2017-01-25T23:04:16.223.000. Part 127/147

Processed Thu Jan 26 00:12:44 2017 by ELM ver.2012-10-06 from 001__elm20170125_230415__dat00.bin



Processed Thu Jan 26 00:12:45 2017 by ELM ver.2012-10-06 from 001__elm20170125_230415__dat00.bin



ELMAVAN 3D WAVEFORMS (Measured data sampled at 50 kHz) 51000 packets of 144 samples from 2017-01-25T23:04:16.223.000. Part 135/147

