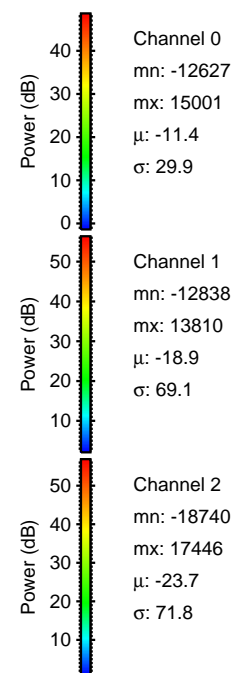
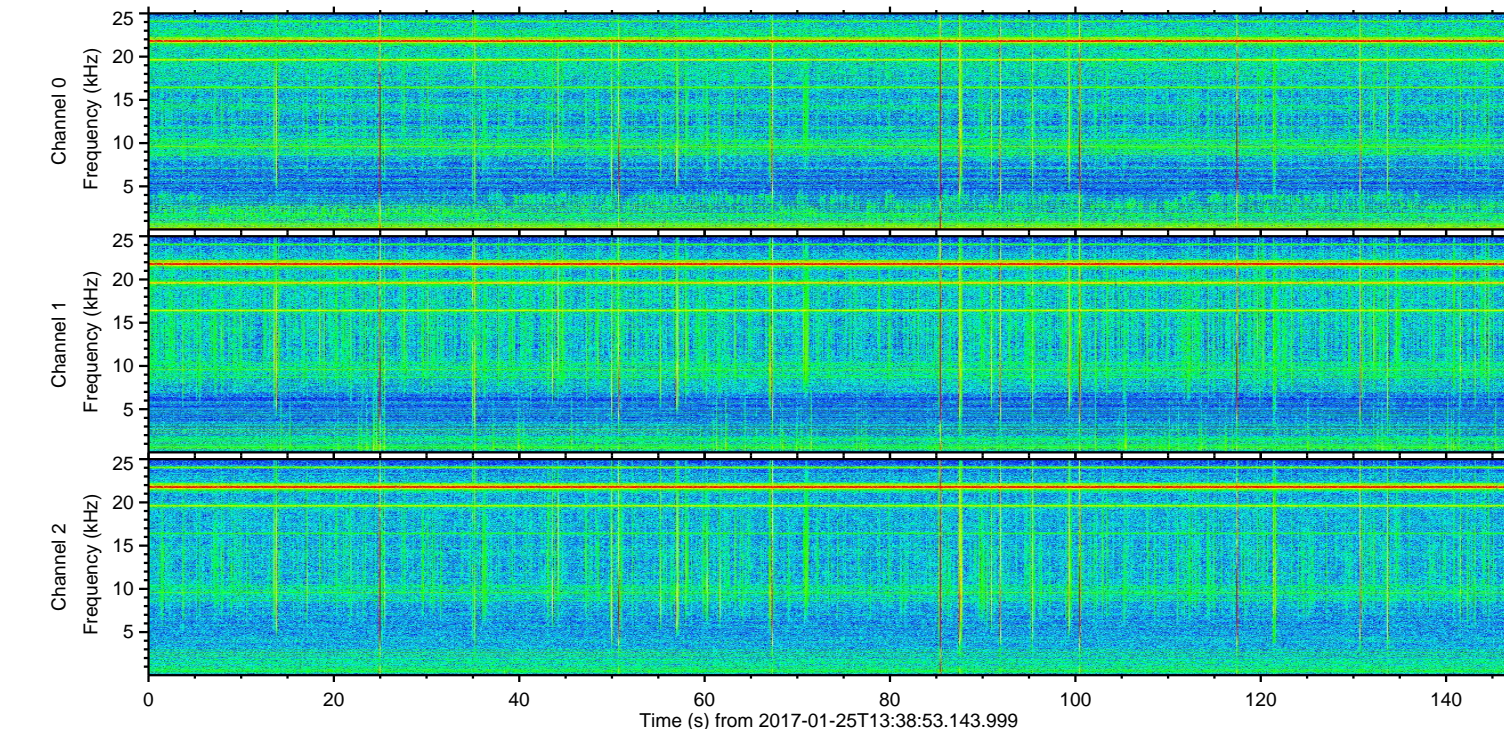
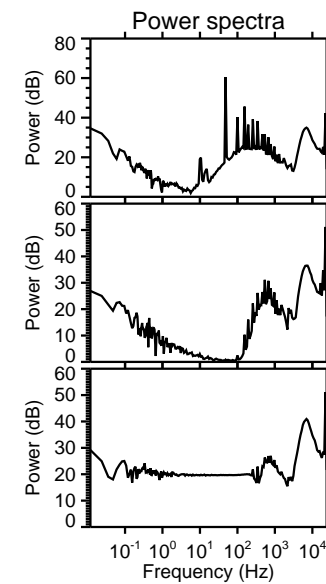
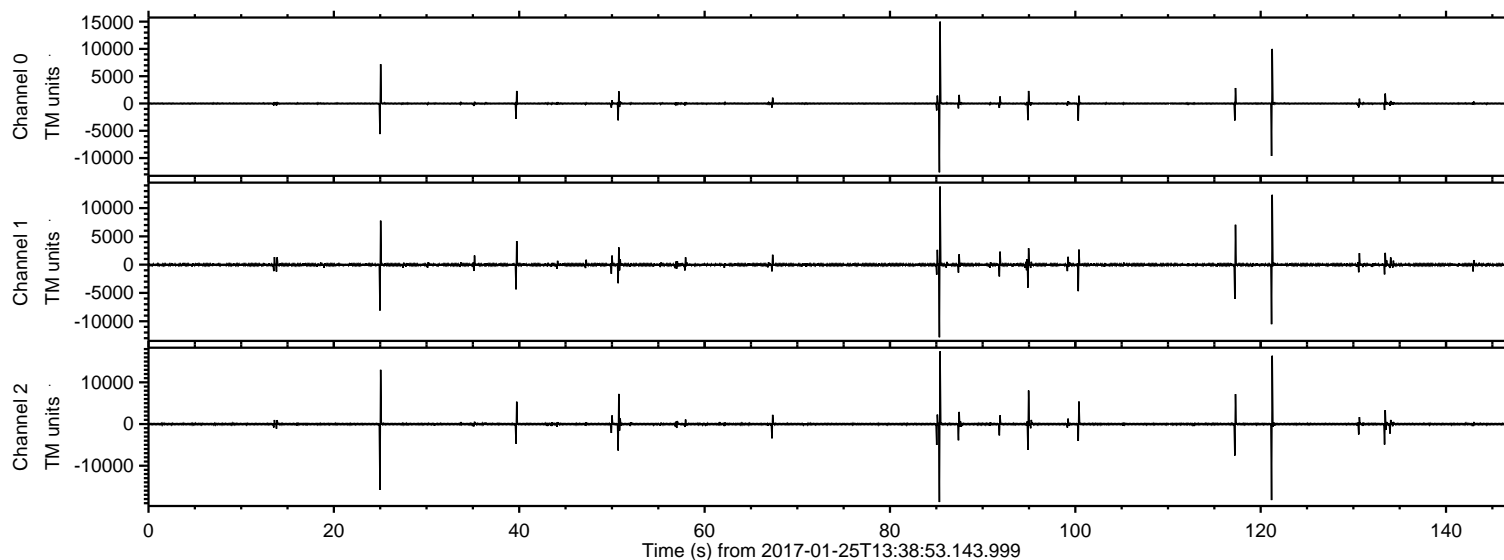
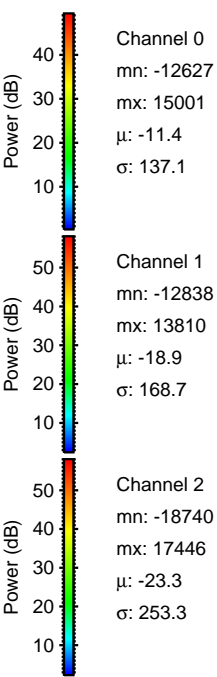
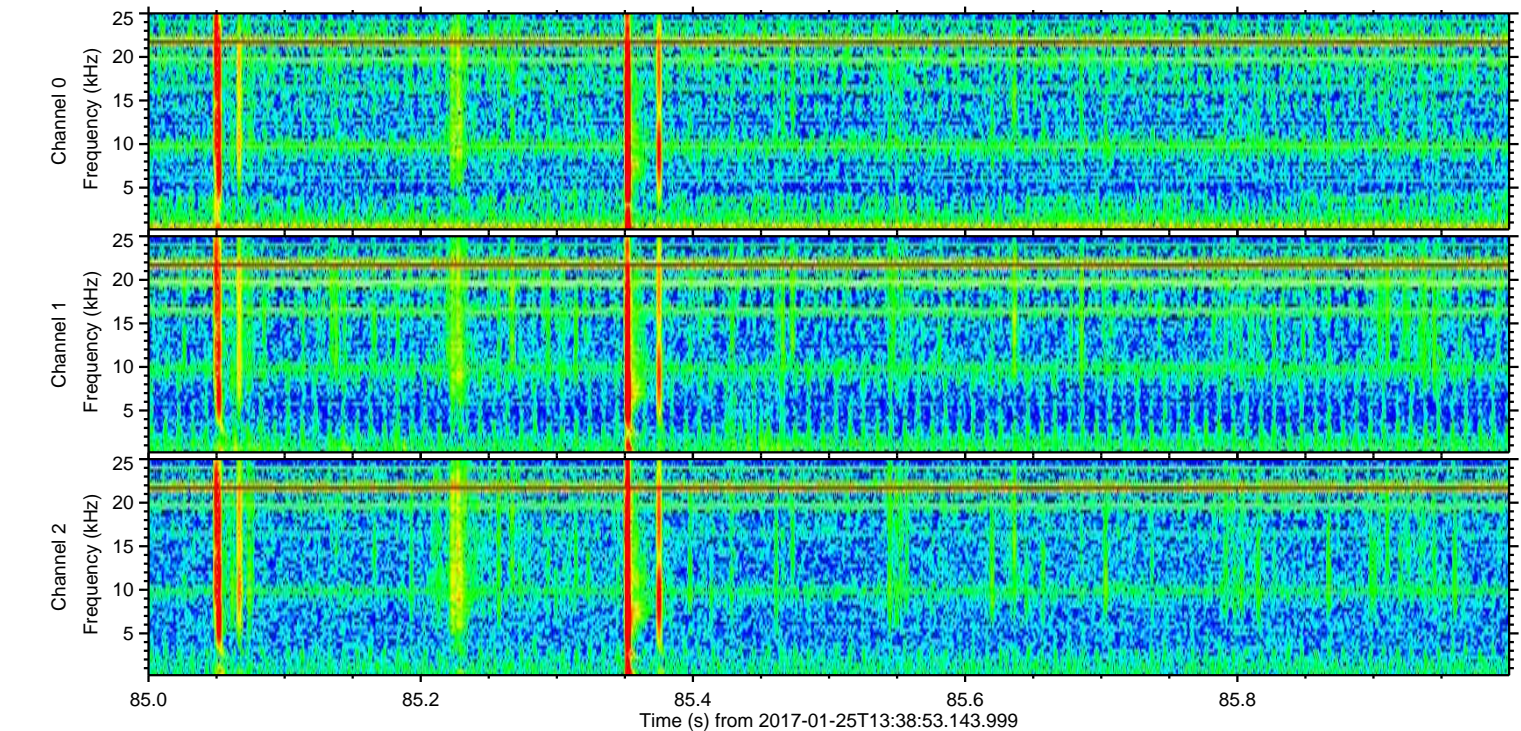
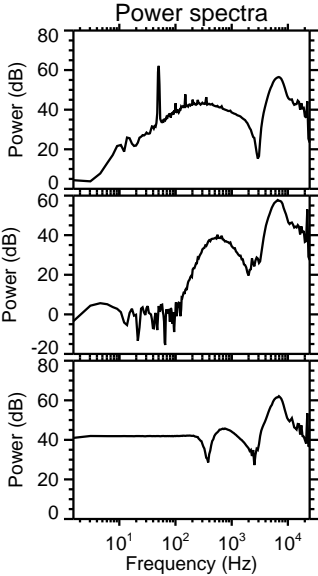
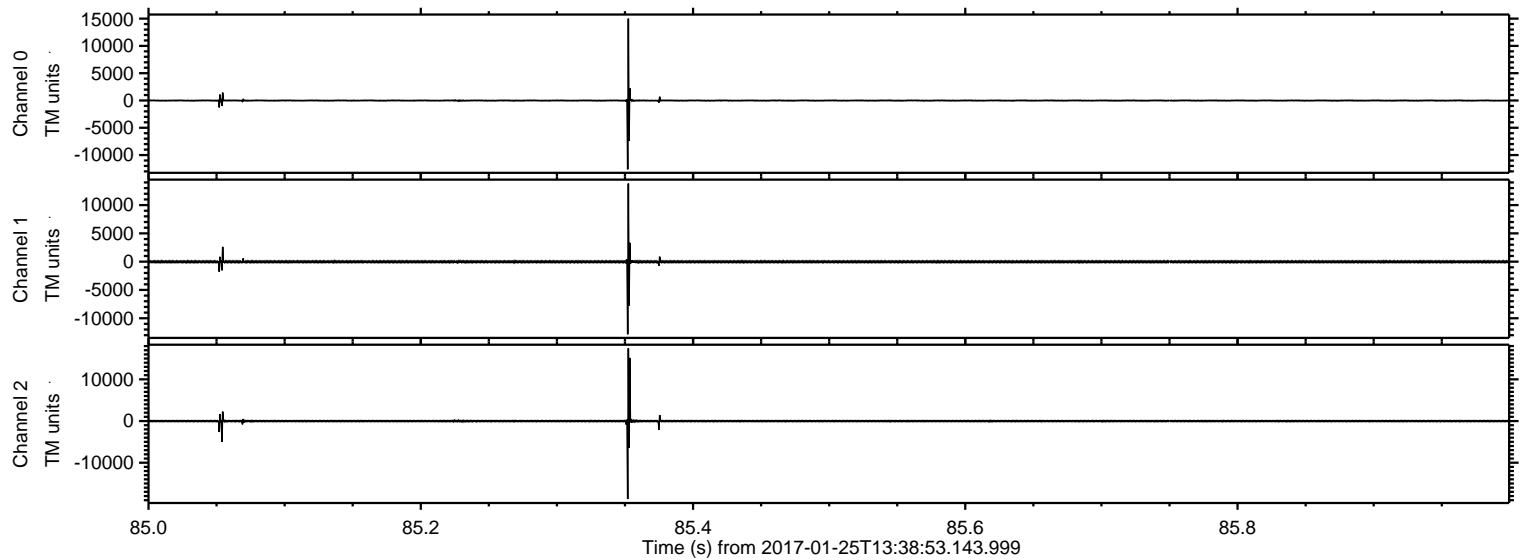


ELMAVAN 3D WAVEFORMS (Measured data sampled at 50 kHz) 51000 packets of 144 samples from 2017-01-25T13:38:53.143.999.

Processed Wed Jan 25 14:46:10 2017 by ELM ver.2012-10-06 from 001__elm20170125_133852__dat00.bin

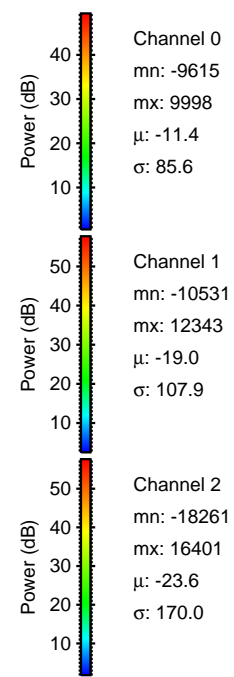
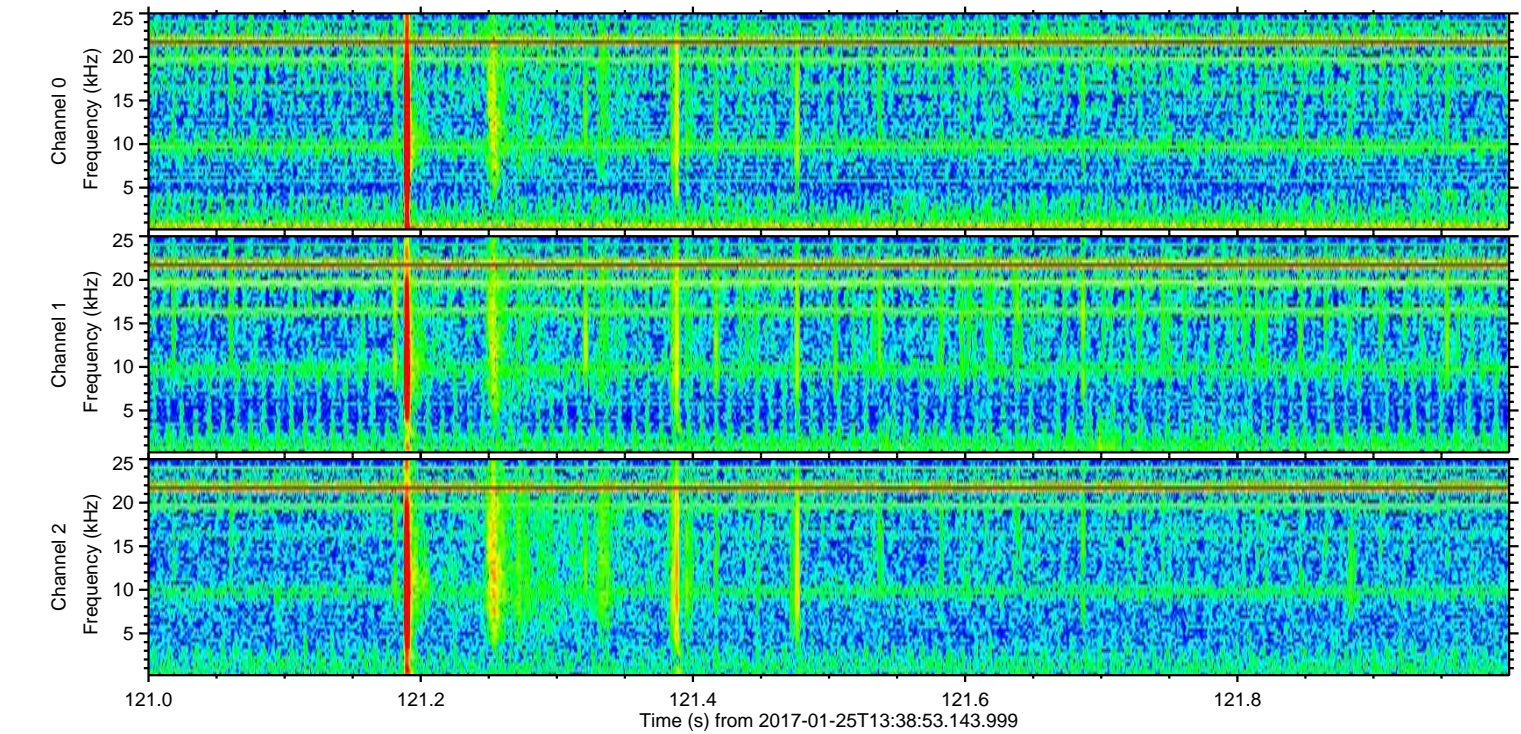
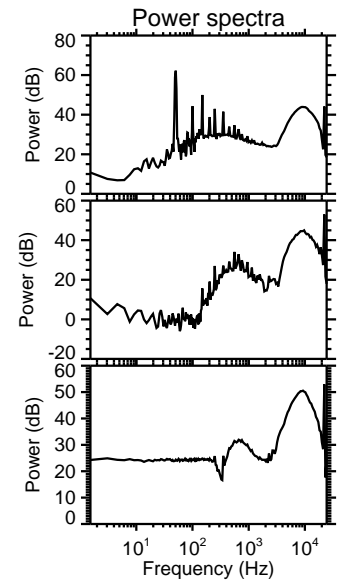
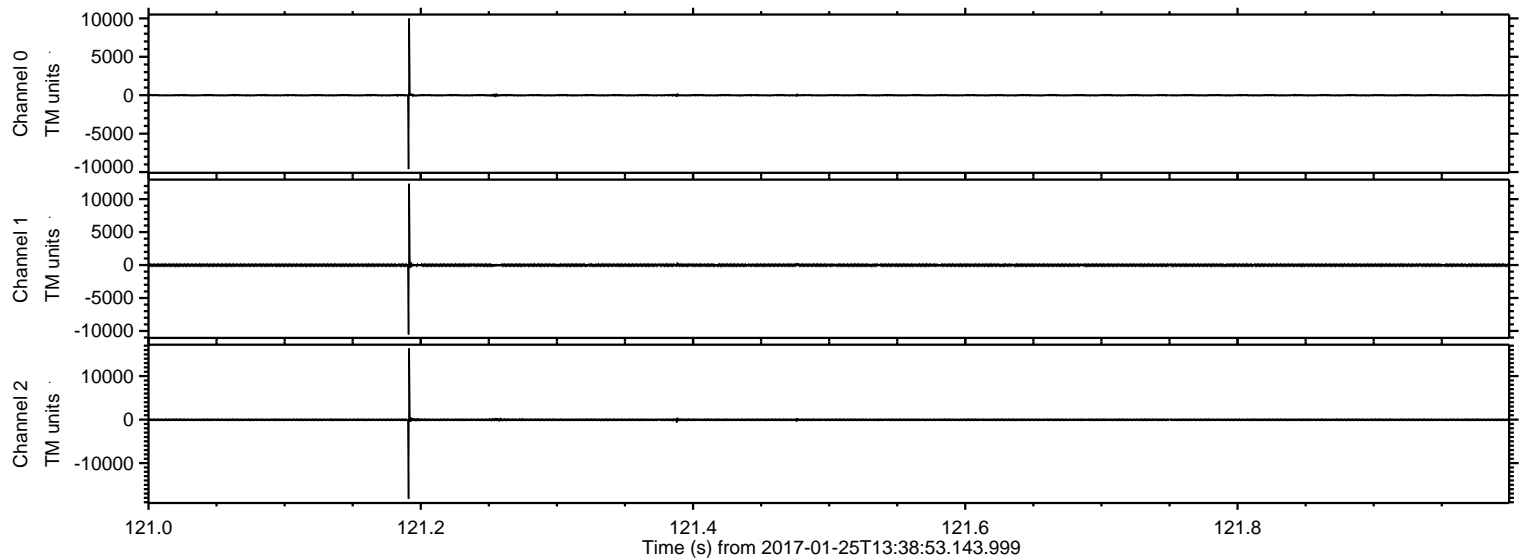


Processed Wed Jan 25 14:46:22 2017 by ELM ver.2012-10-06 from 001__elm20170125_133852__dat00.bin



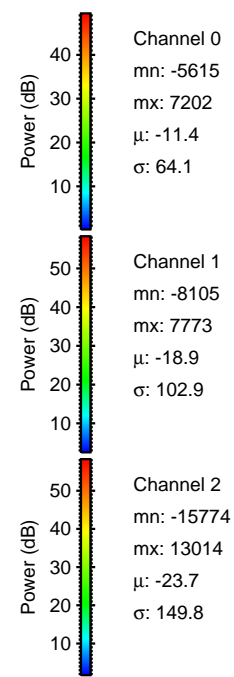
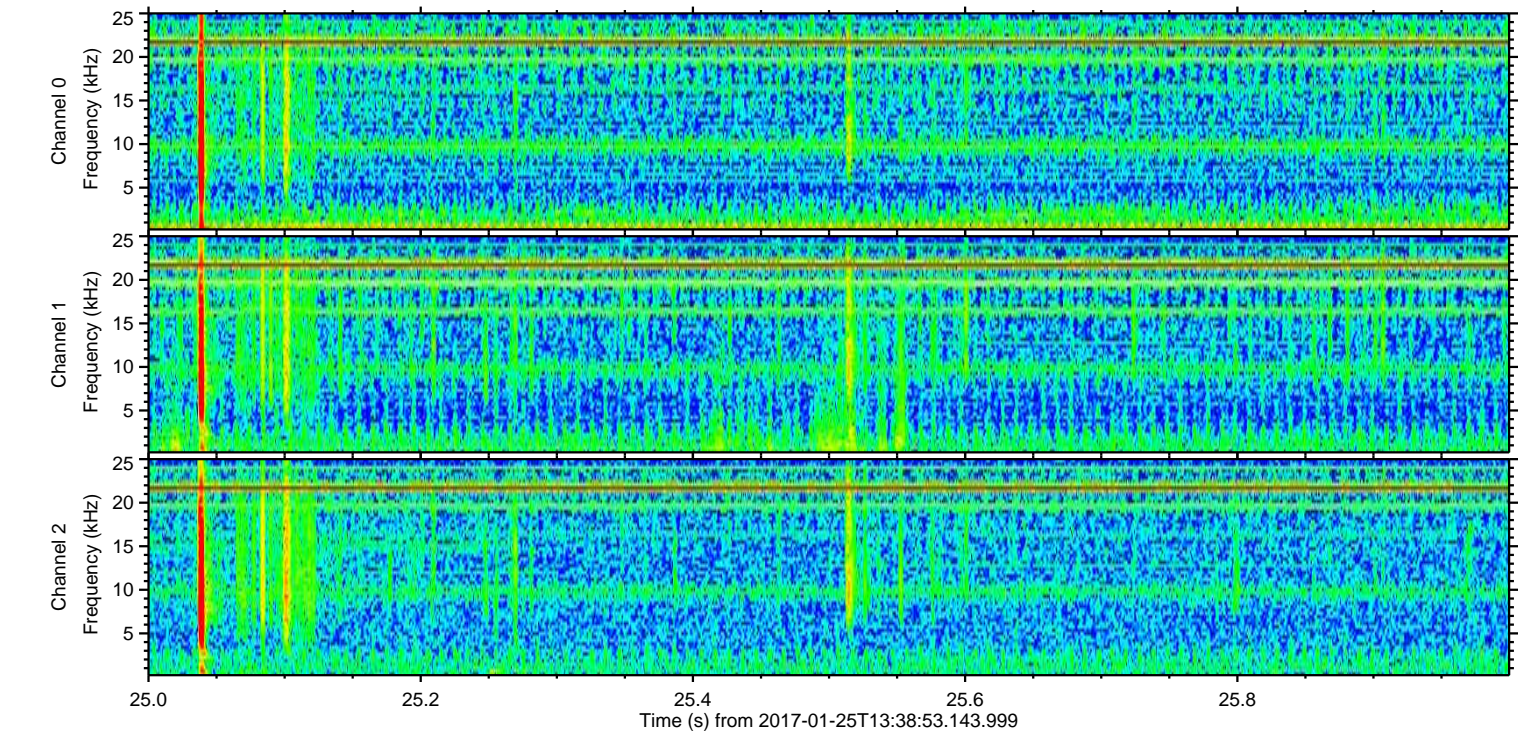
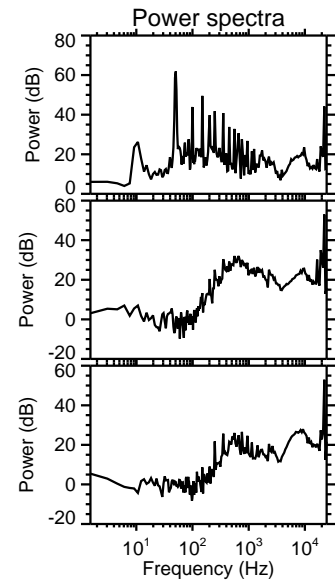
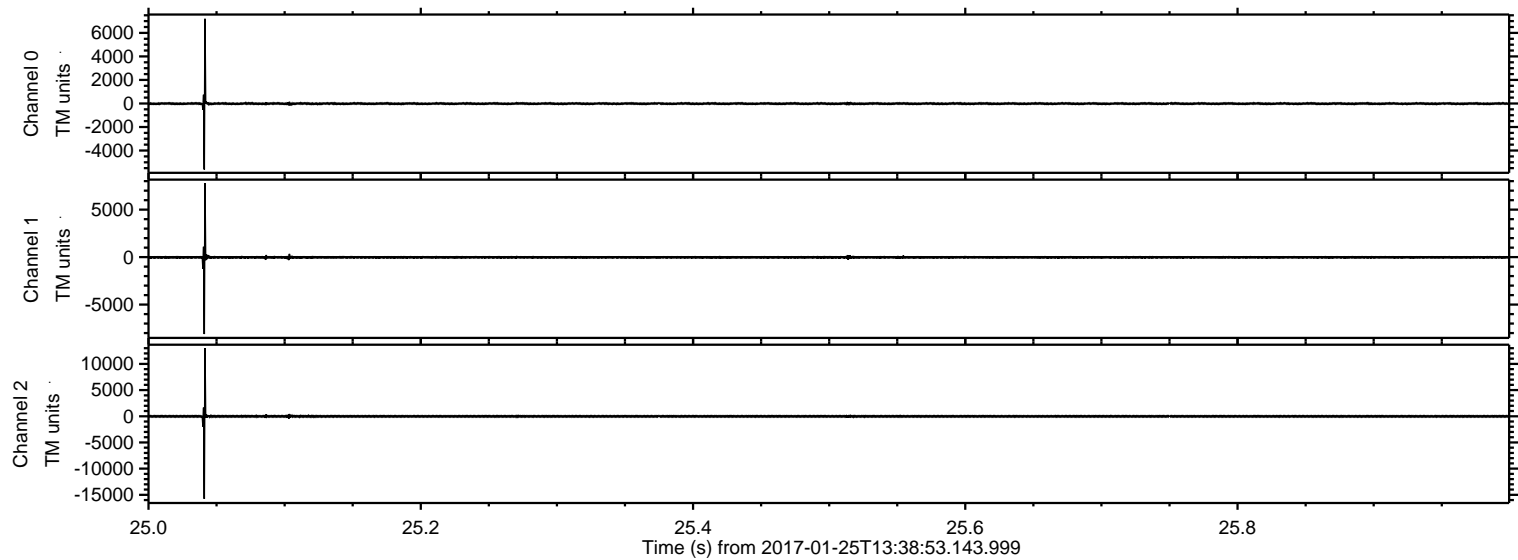
ELMAVAN 3D WAVEFORMS (Measured data sampled at 50 kHz) 51000 packets of 144 samples from 2017-01-25T13:38:53.143.999. Part 122/147

Processed Wed Jan 25 14:46:23 2017 by ELM ver.2012-10-06 from 001__elm20170125_133852__dat00.bin



ELMAVAN 3D WAVEFORMS (Measured data sampled at 50 kHz) 51000 packets of 144 samples from 2017-01-25T13:38:53.143.999. Part 26/147

Processed Wed Jan 25 14:46:24 2017 by ELM ver.2012-10-06 from 001__elm20170125_133852__dat00.bin

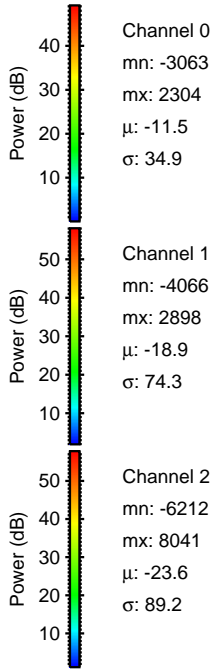
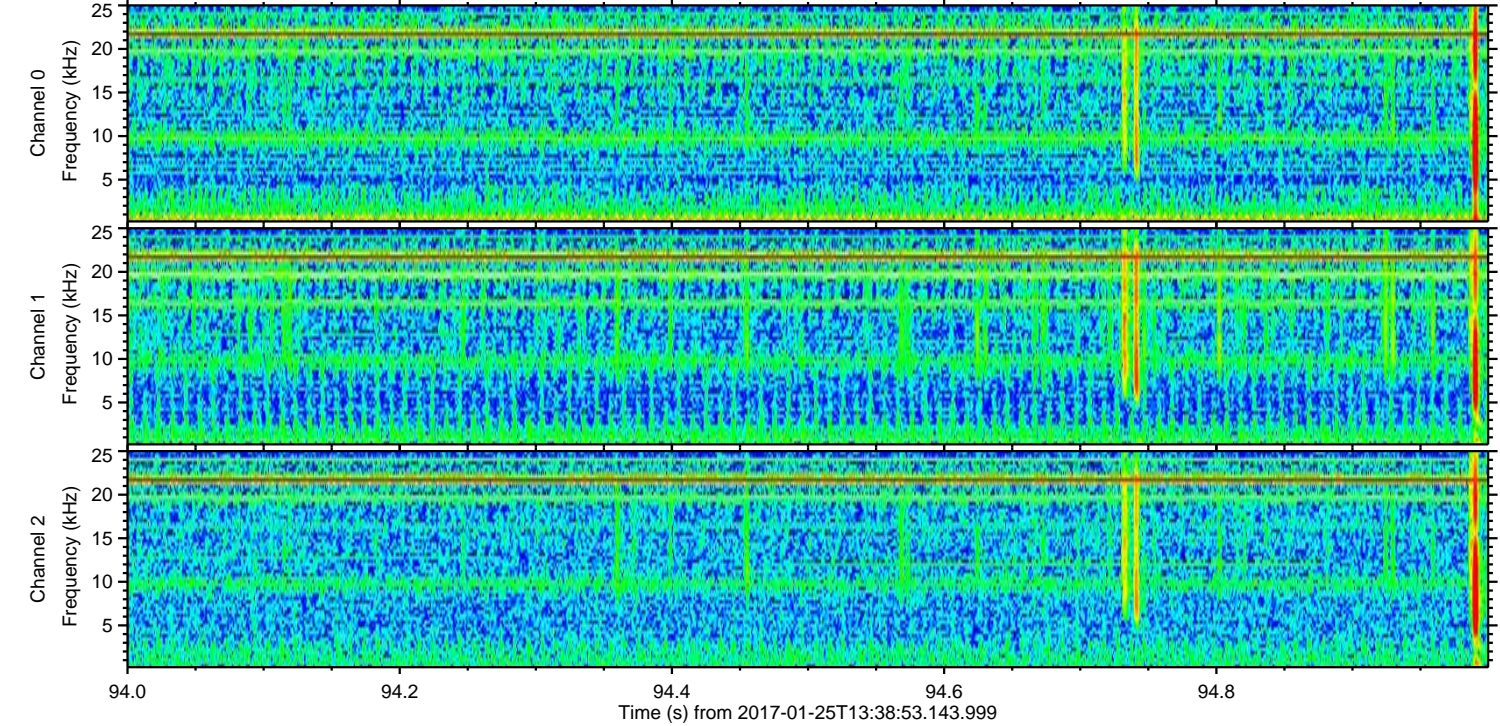
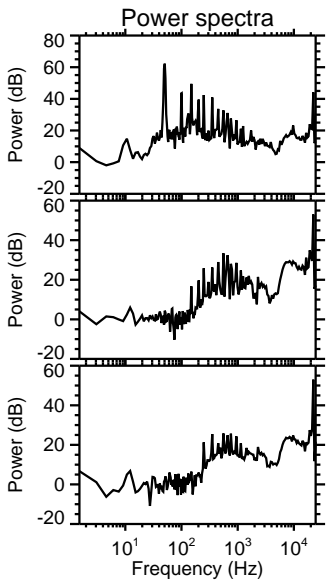
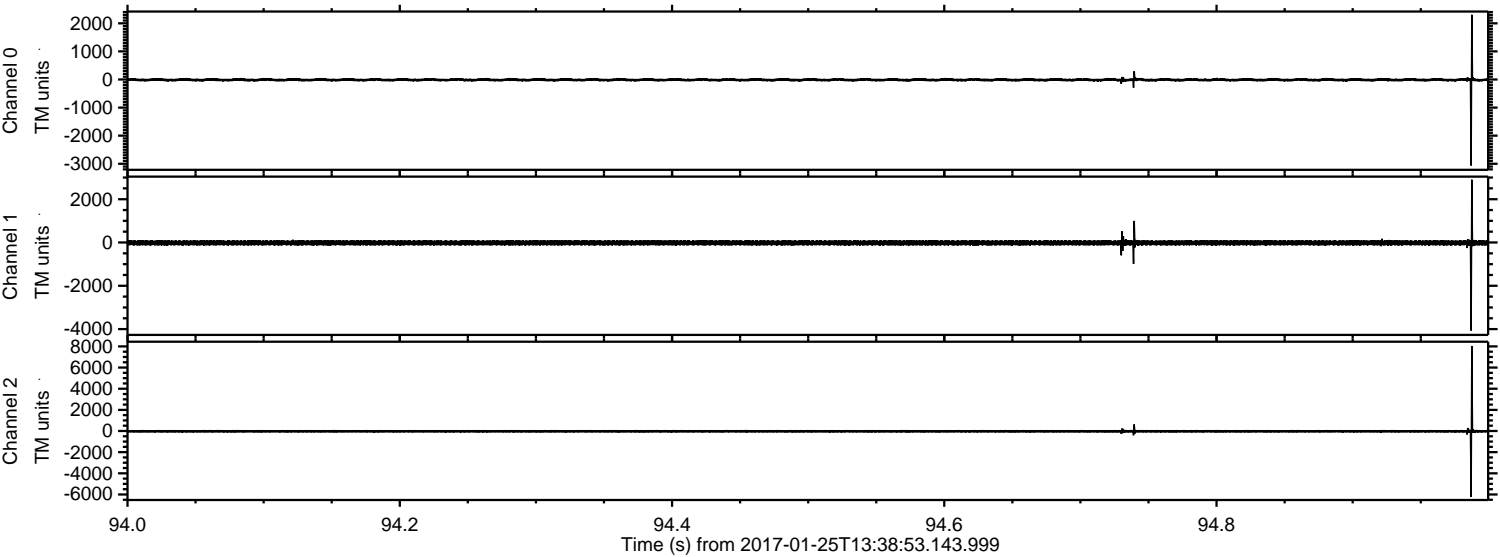


Channel 0
mn: -5615
mx: 7202
 μ : -11.4
 σ : 64.1

Channel 1
mn: -8105
mx: 7773
 μ : -18.9
 σ : 102.9

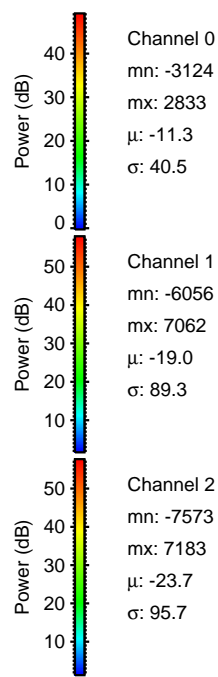
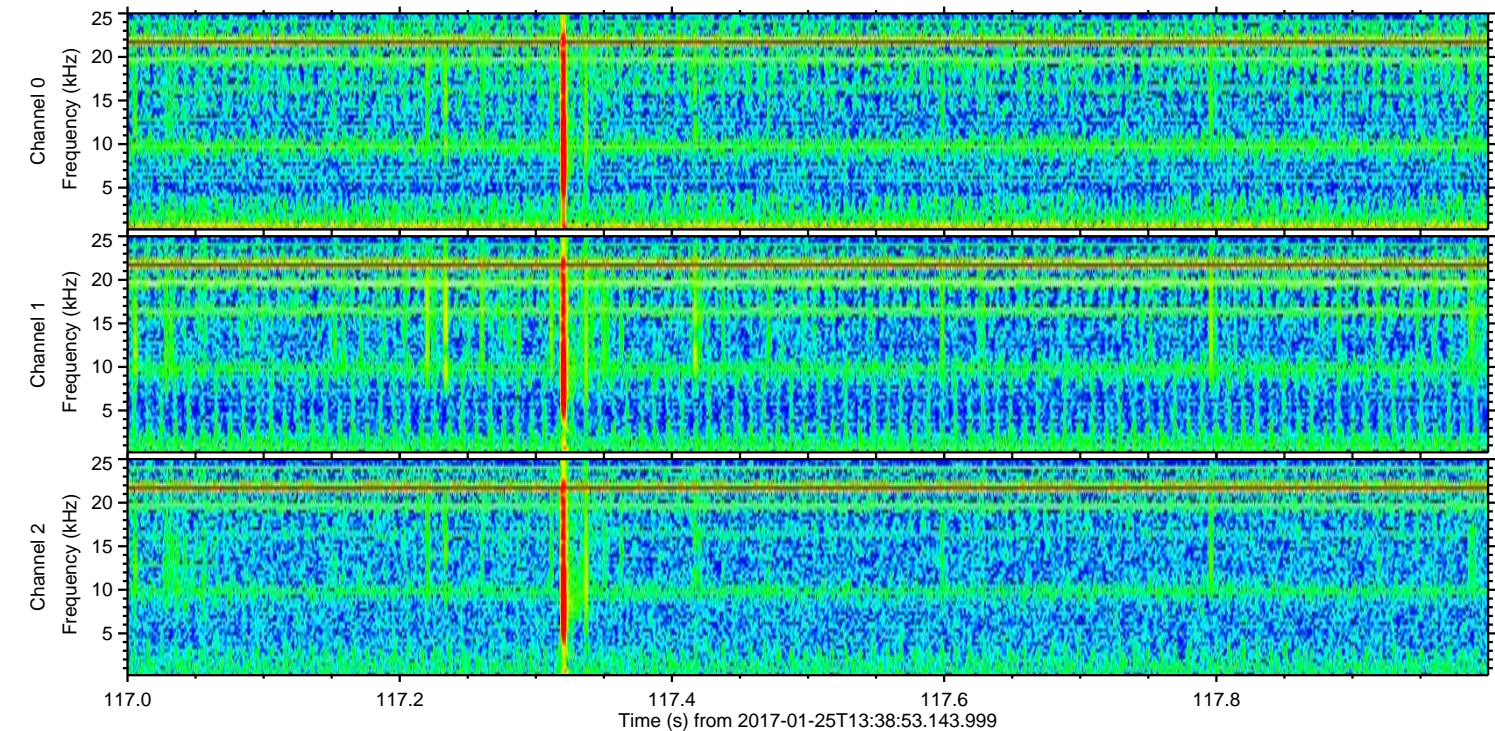
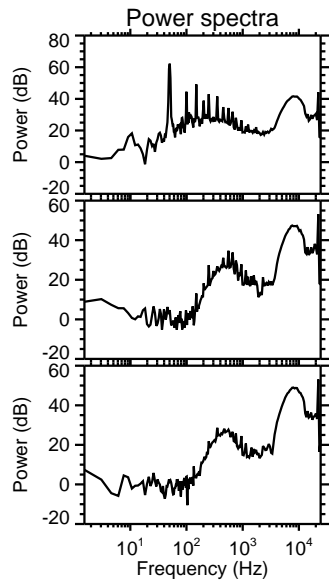
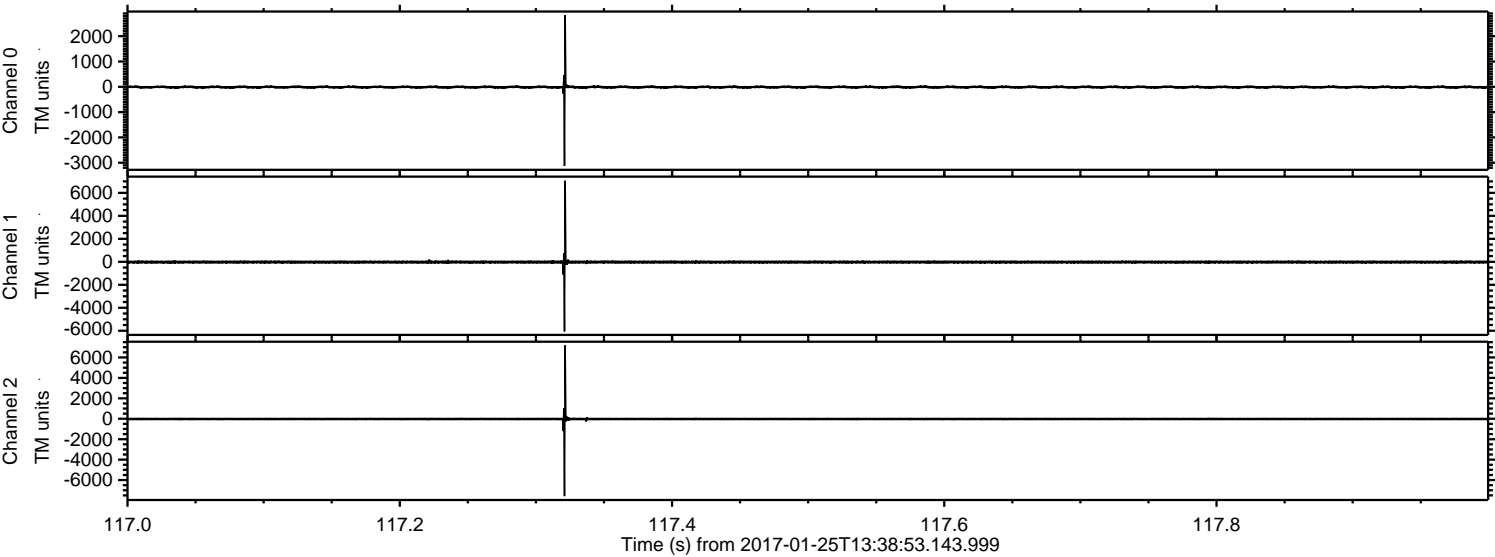
Channel 2
mn: -15774
mx: 13014
 μ : -23.7
 σ : 149.8

Processed Wed Jan 25 14:46:25 2017 by ELM ver.2012-10-06 from 001__elm20170125_133852__dat00.bin

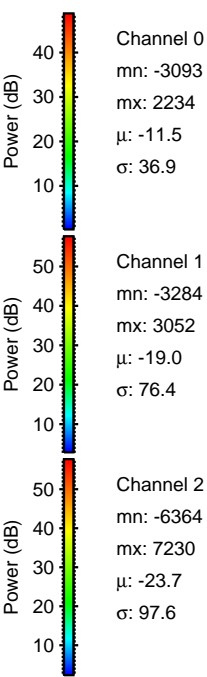
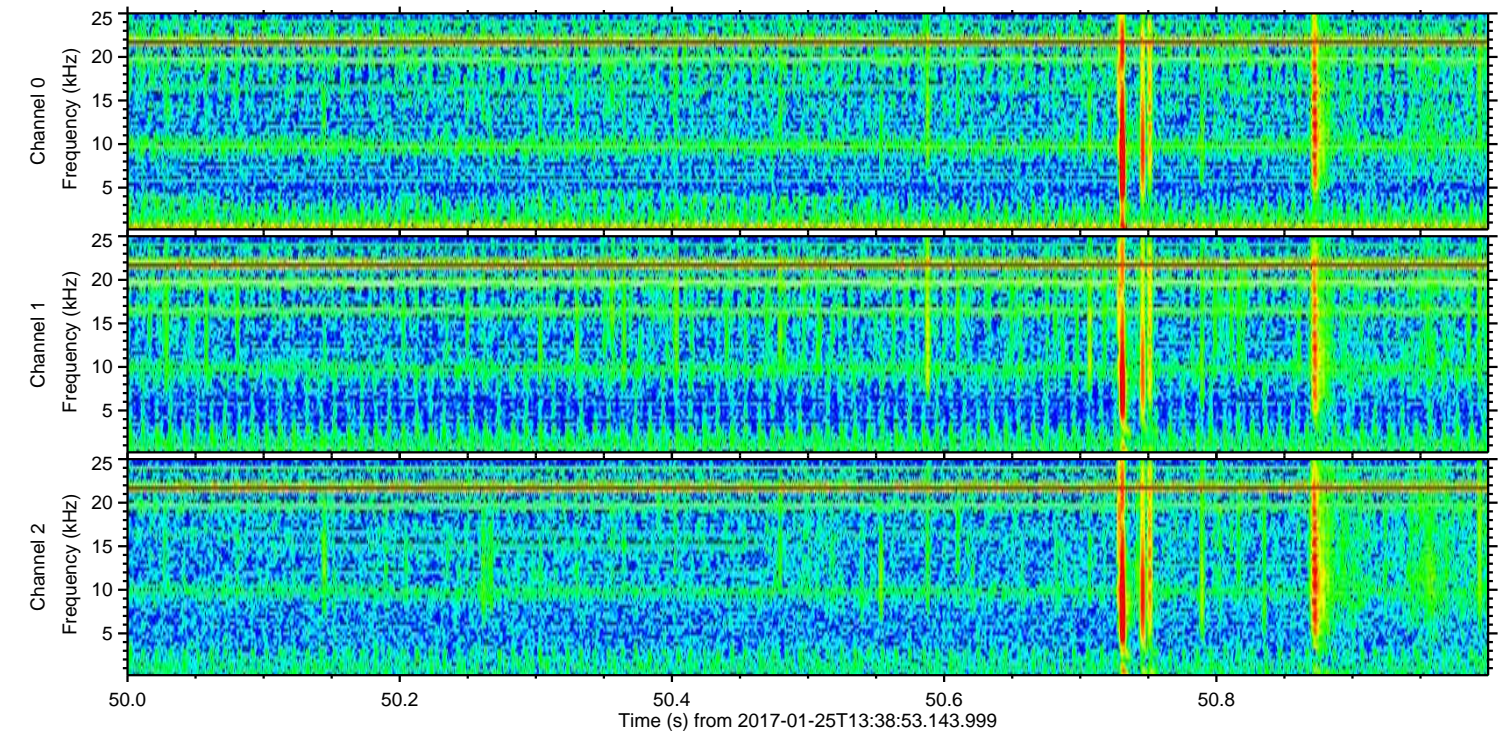
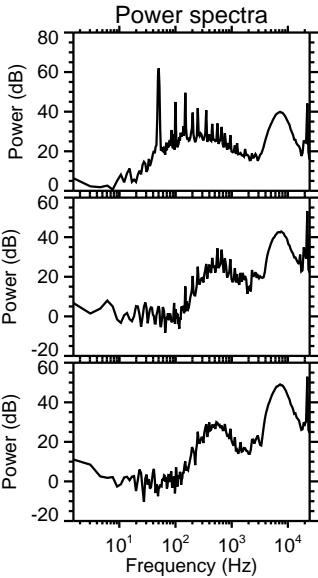
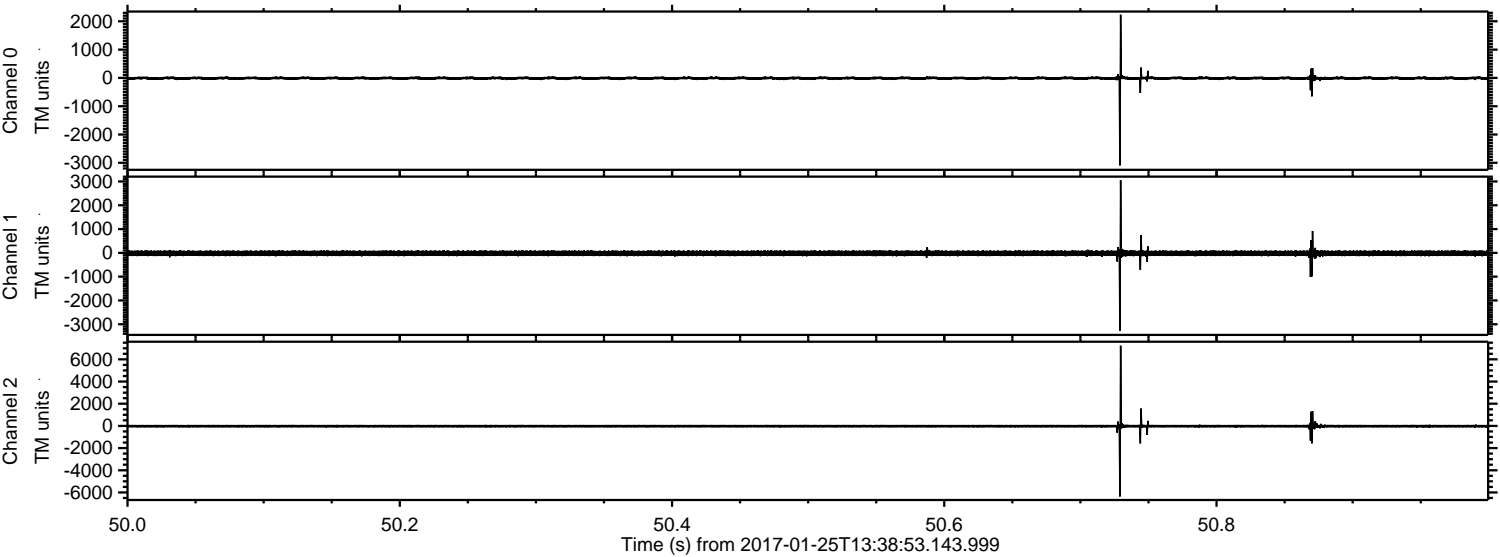


ELMAVAN 3D WAVEFORMS (Measured data sampled at 50 kHz) 51000 packets of 144 samples from 2017-01-25T13:38:53.143.999. Part 118/147

Processed Wed Jan 25 14:46:26 2017 by ELM ver.2012-10-06 from 001__elm20170125_133852__dat00.bin

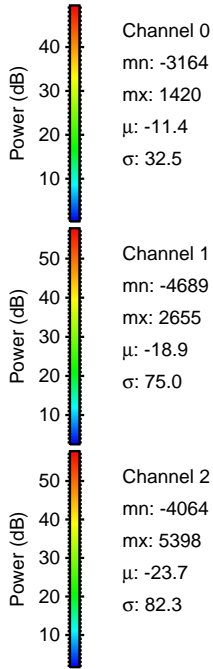
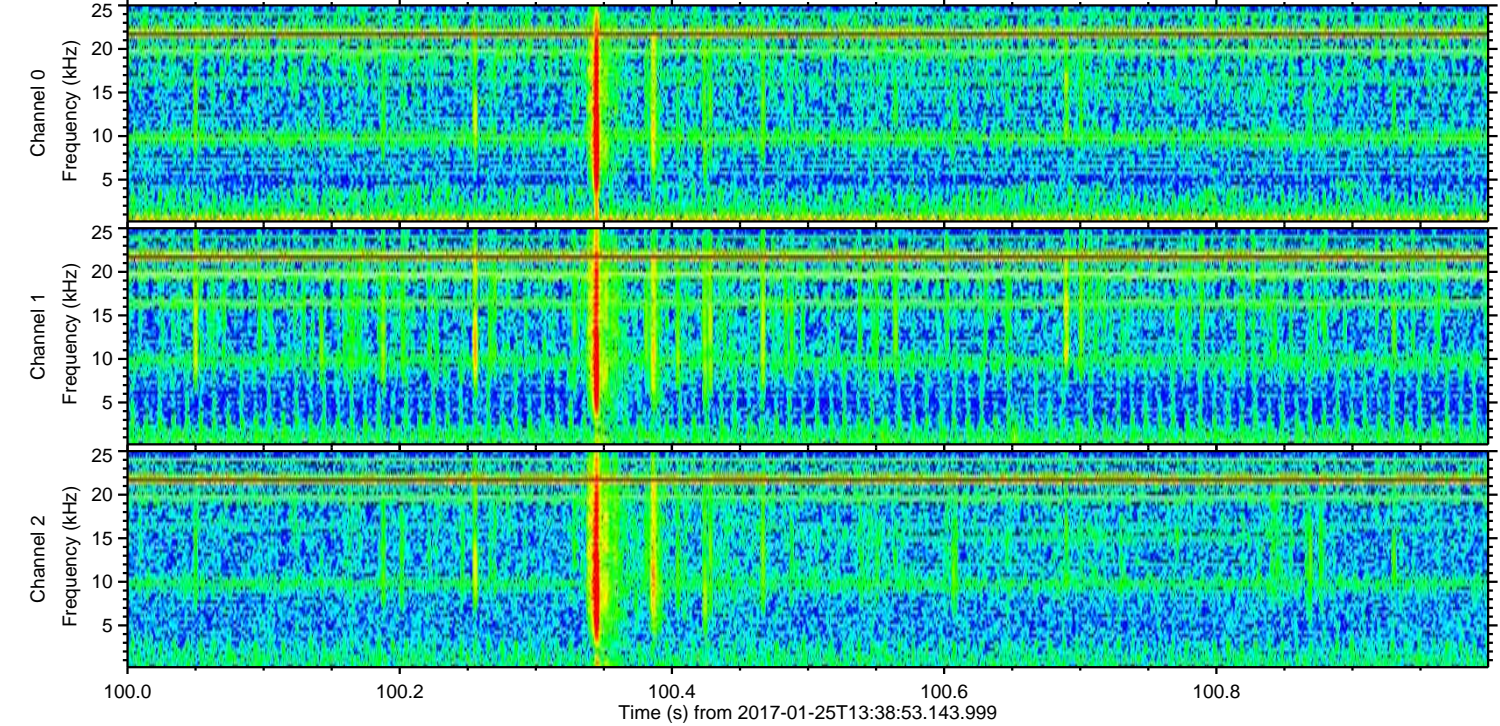
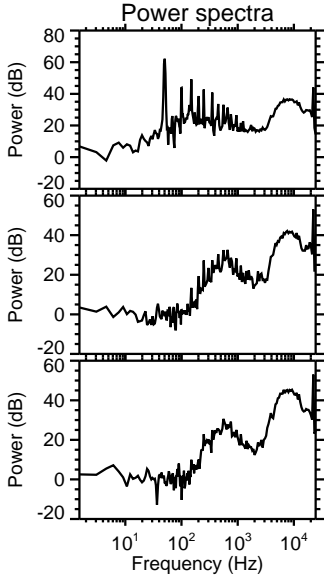
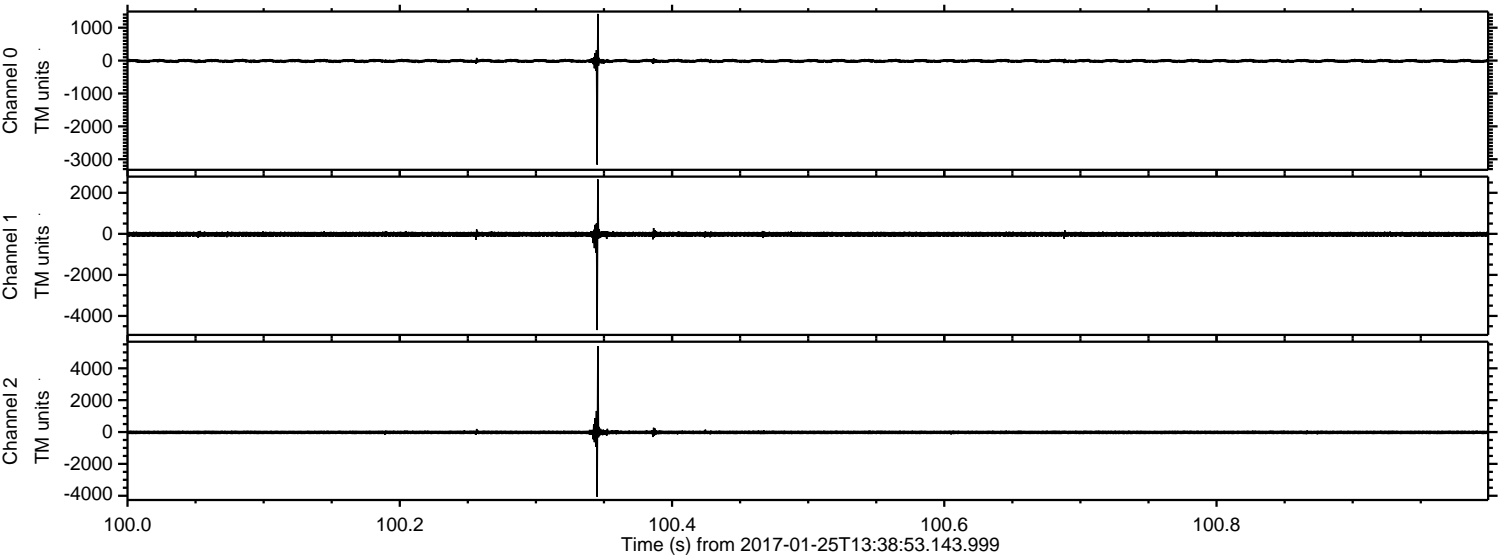


Processed Wed Jan 25 14:46:27 2017 by ELM ver.2012-10-06 from 001__elm20170125_133852__dat00.bin

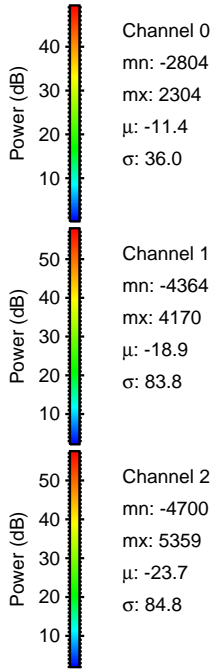
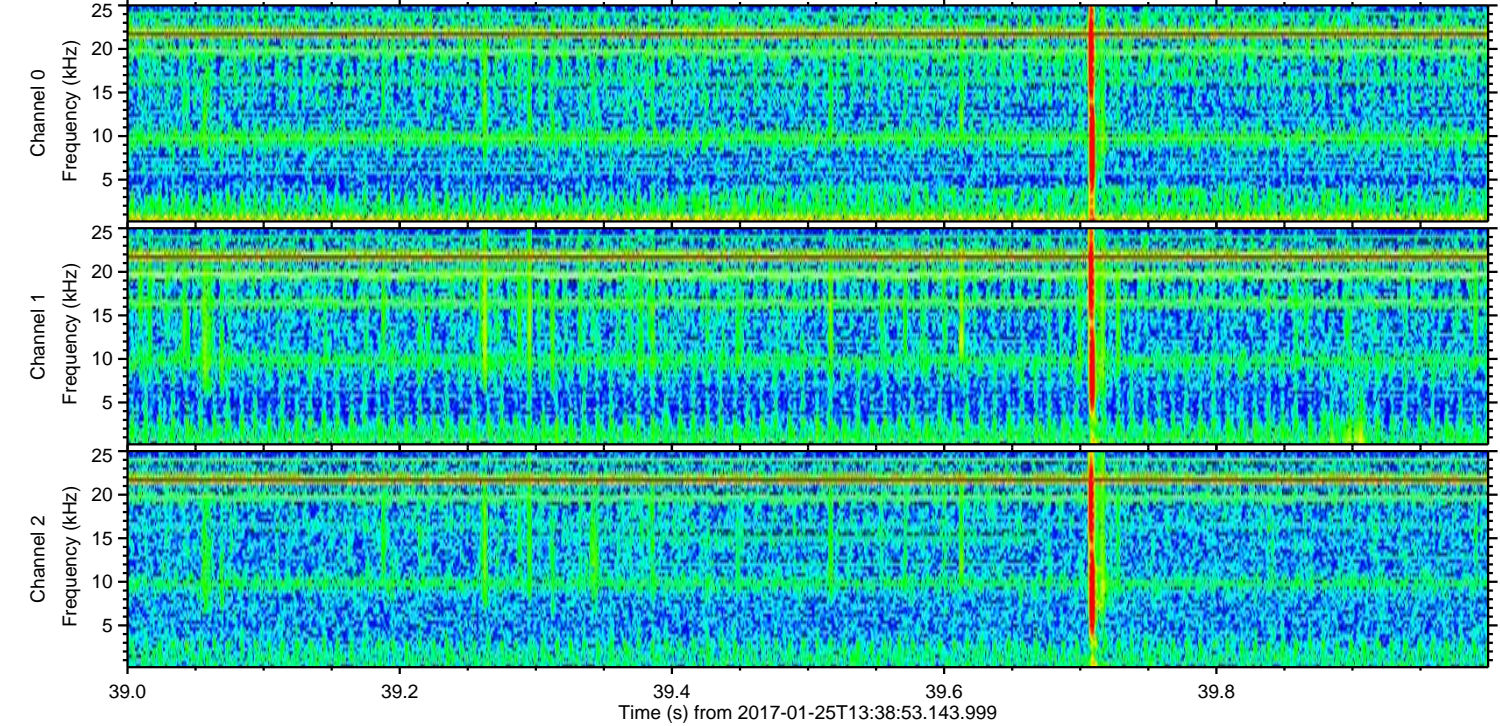
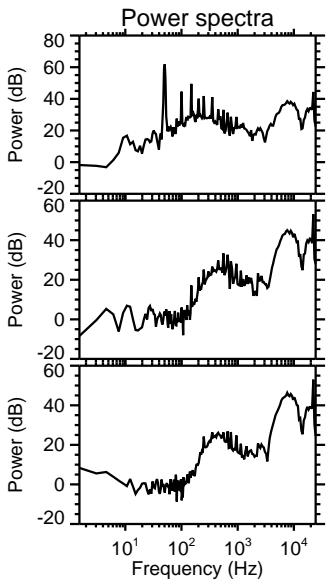
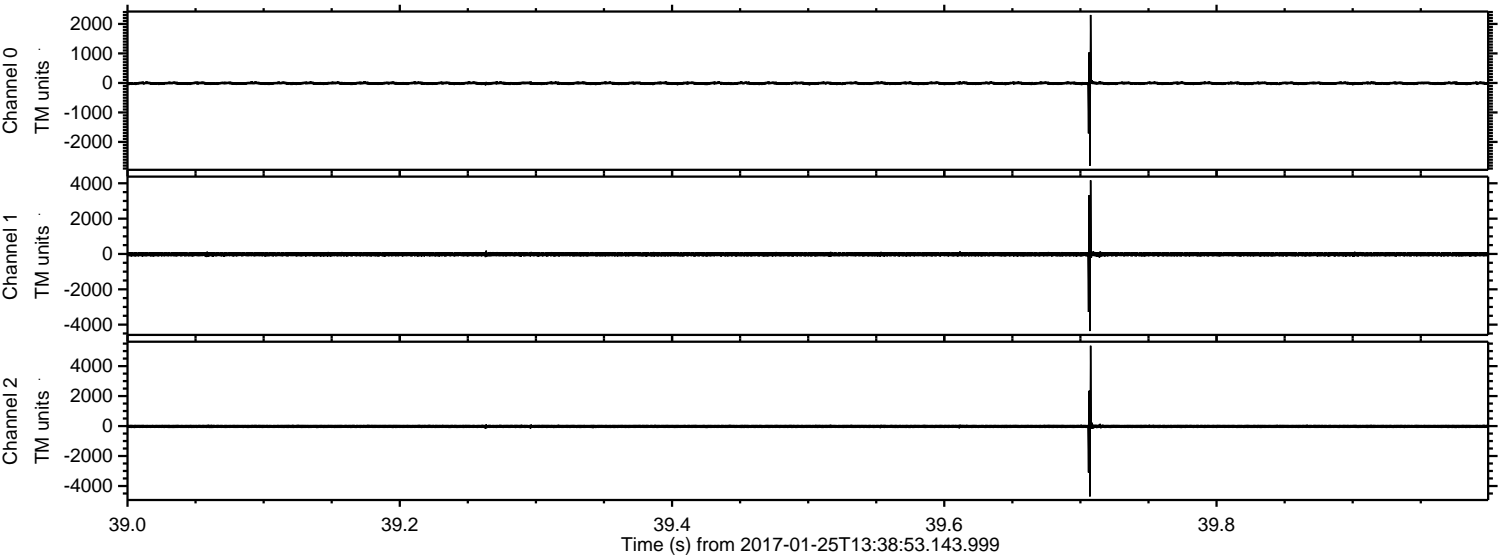


ELMAVAN 3D WAVEFORMS (Measured data sampled at 50 kHz) 51000 packets of 144 samples from 2017-01-25T13:38:53.143.999. Part 101/147

Processed Wed Jan 25 14:46:28 2017 by ELM ver.2012-10-06 from 001__elm20170125_133852__dat00.bin

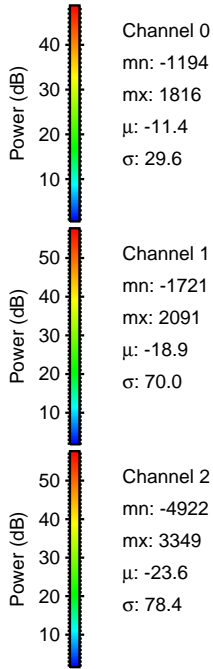
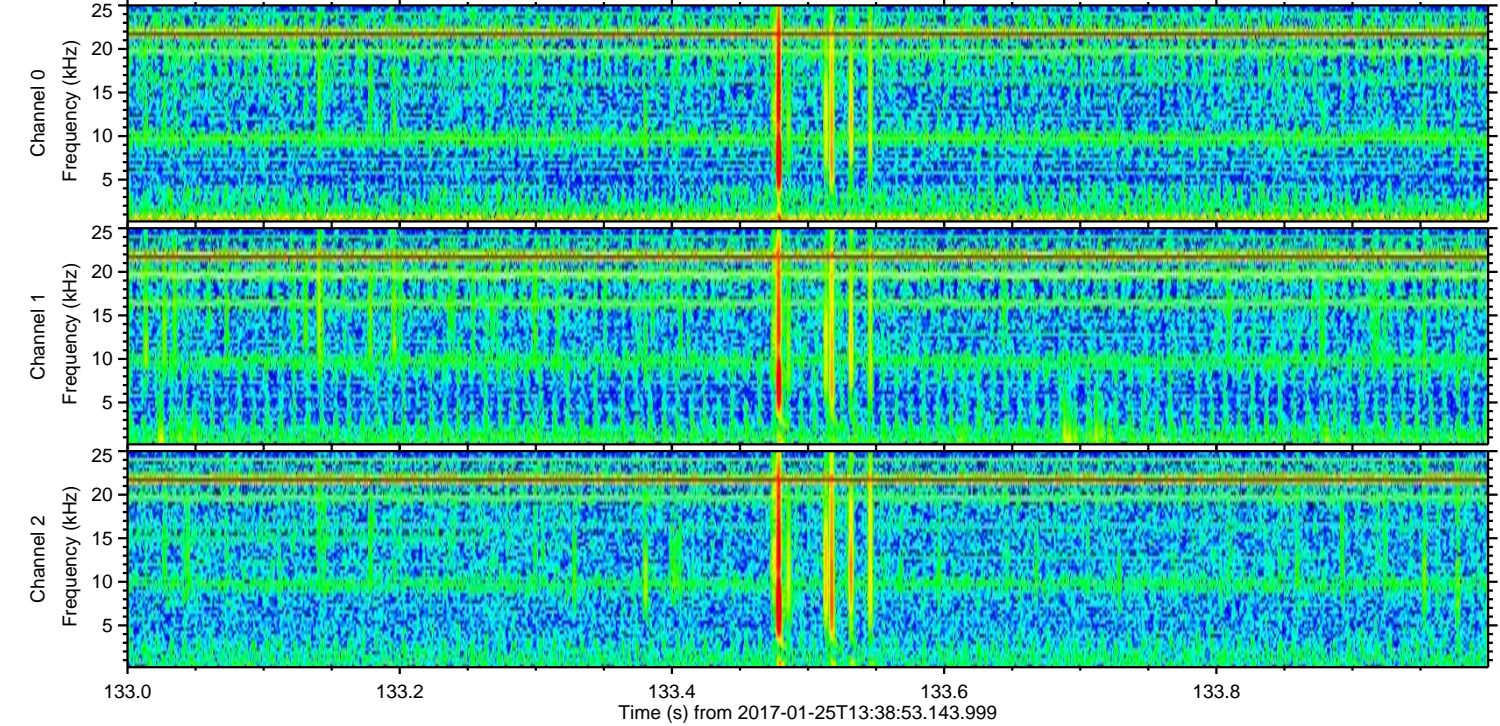
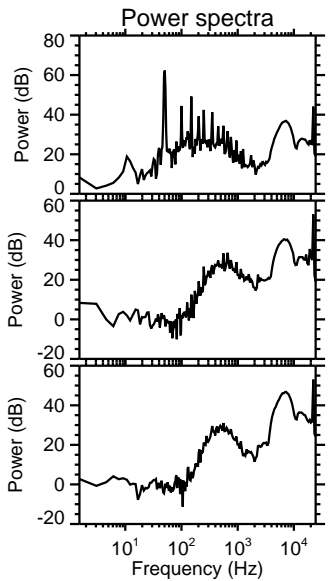
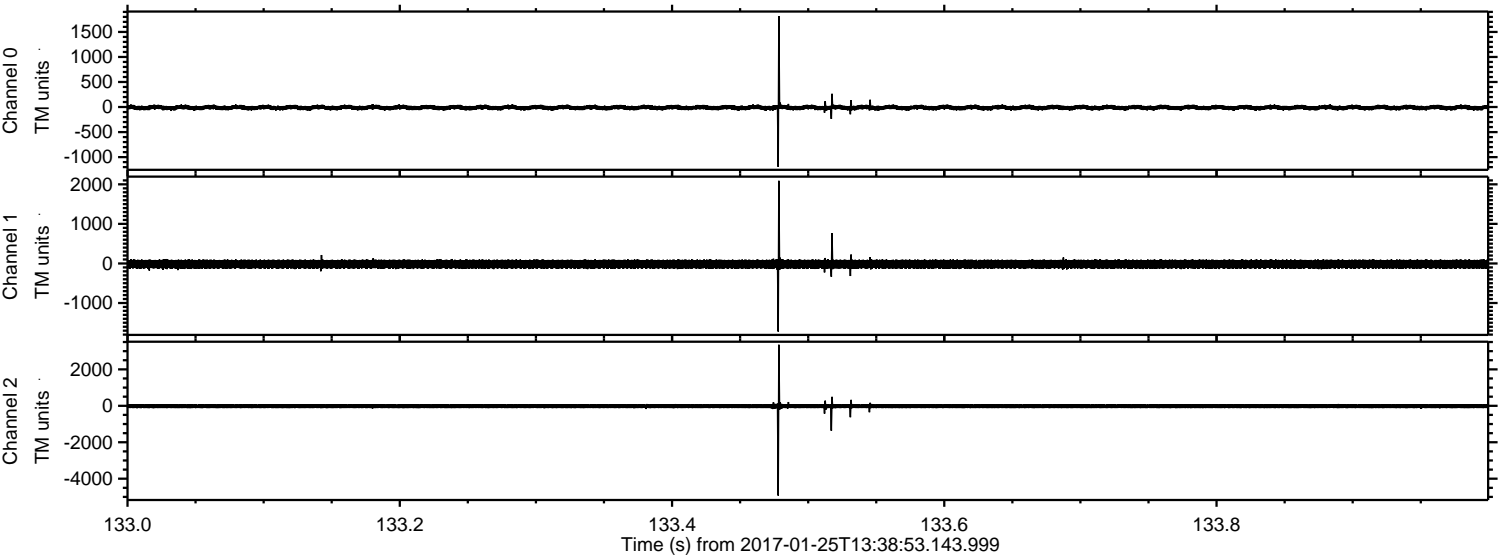


Processed Wed Jan 25 14:46:29 2017 by ELM ver.2012-10-06 from 001__elm20170125_133852__dat00.bin



ELMAVAN 3D WAVEFORMS (Measured data sampled at 50 kHz) 51000 packets of 144 samples from 2017-01-25T13:38:53.143.999. Part 134/147

Processed Wed Jan 25 14:46:30 2017 by ELM ver.2012-10-06 from 001__elm20170125_133852__dat00.bin



Channel 0
mn: -1194
mx: 1816
 μ : -11.4
 σ : 29.6

Channel 1
mn: -1721
mx: 2091
 μ : -18.9
 σ : 70.0

Channel 2
mn: -4922
mx: 3349
 μ : -23.6
 σ : 78.4

ELMAVAN 3D WAVEFORMS (Measured data sampled at 50 kHz) 51000 packets of 144 samples from 2017-01-25T13:38:53.143.999. Part 27/147

Processed Wed Jan 25 14:46:31 2017 by ELM ver.2012-10-06 from 001__elm20170125_133852__dat00.bin

