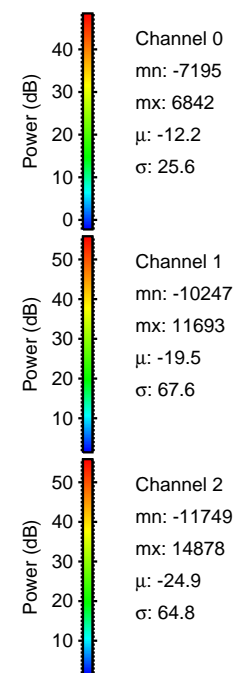
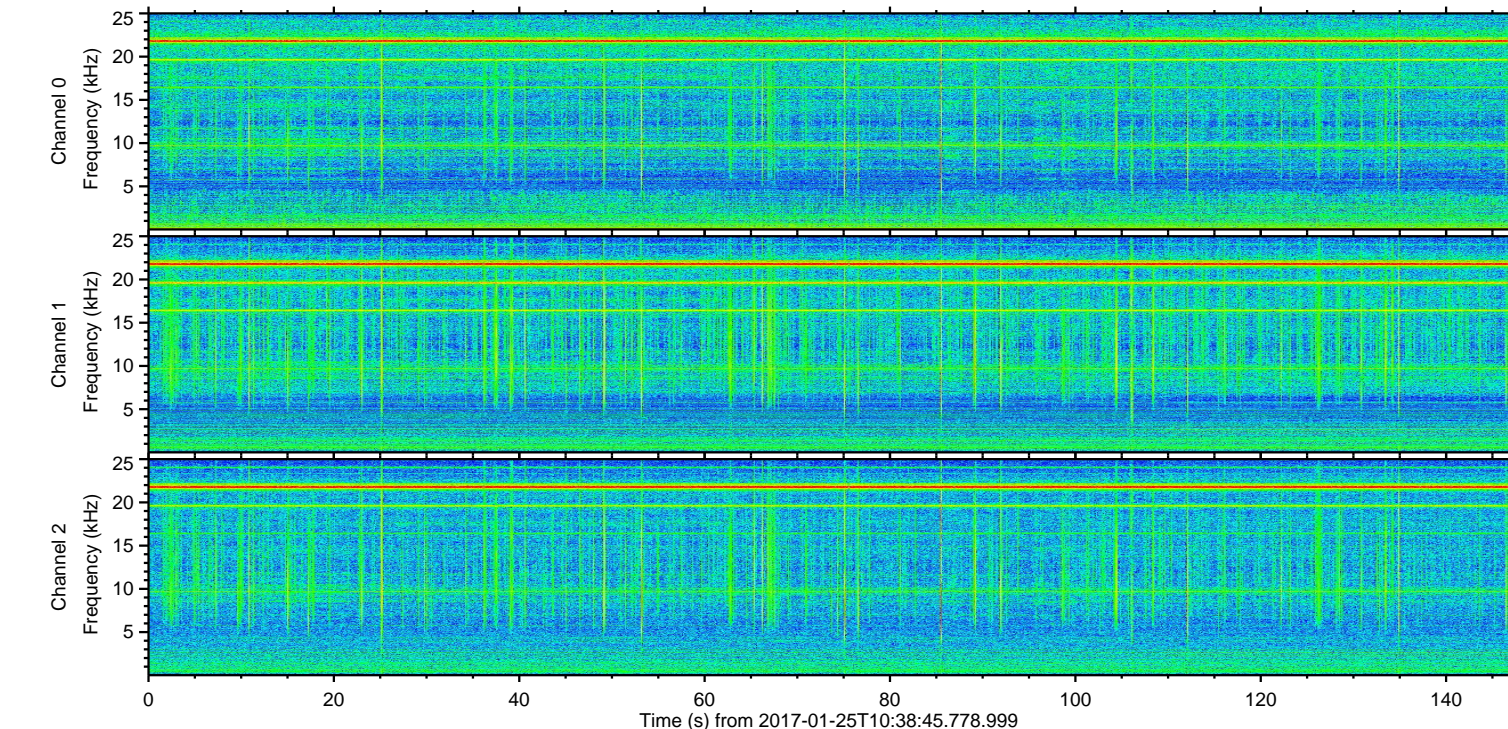
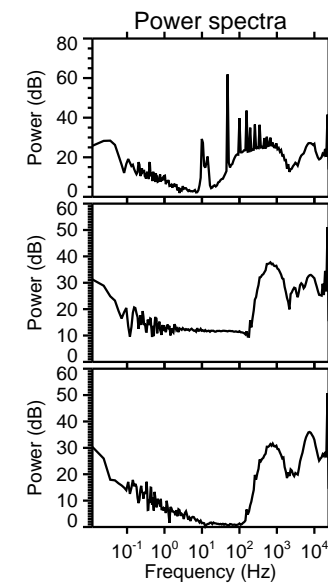
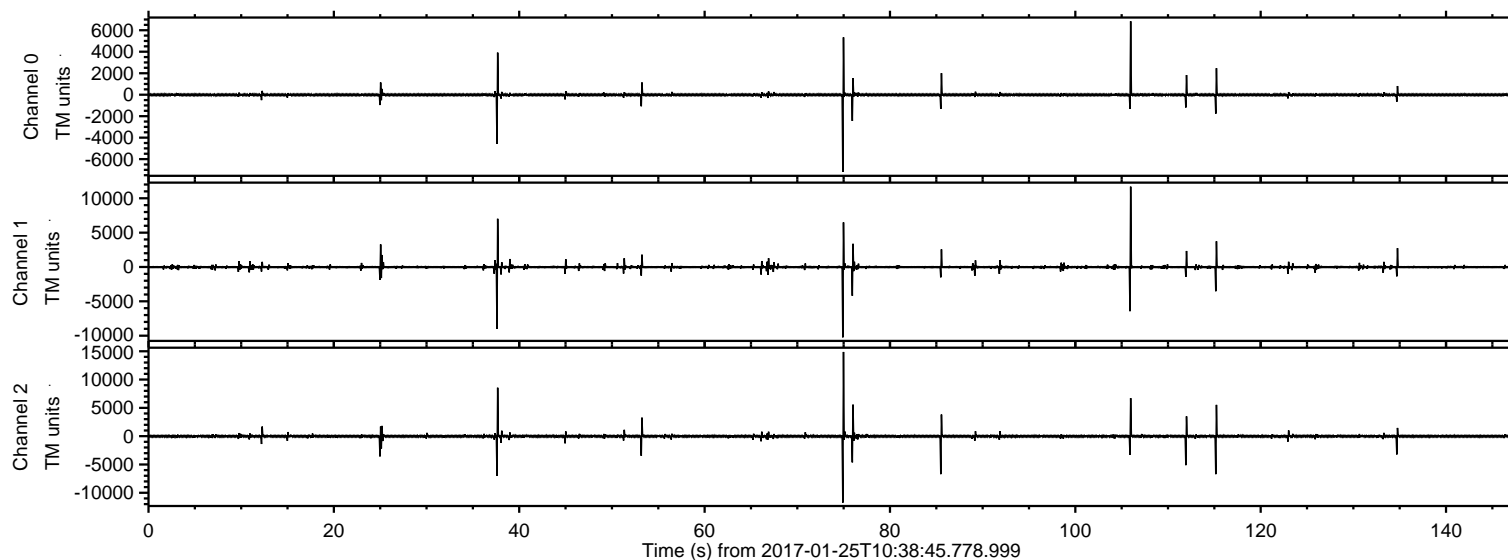
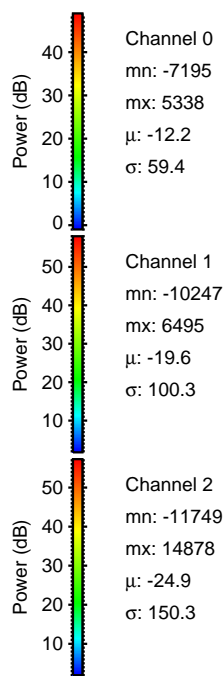
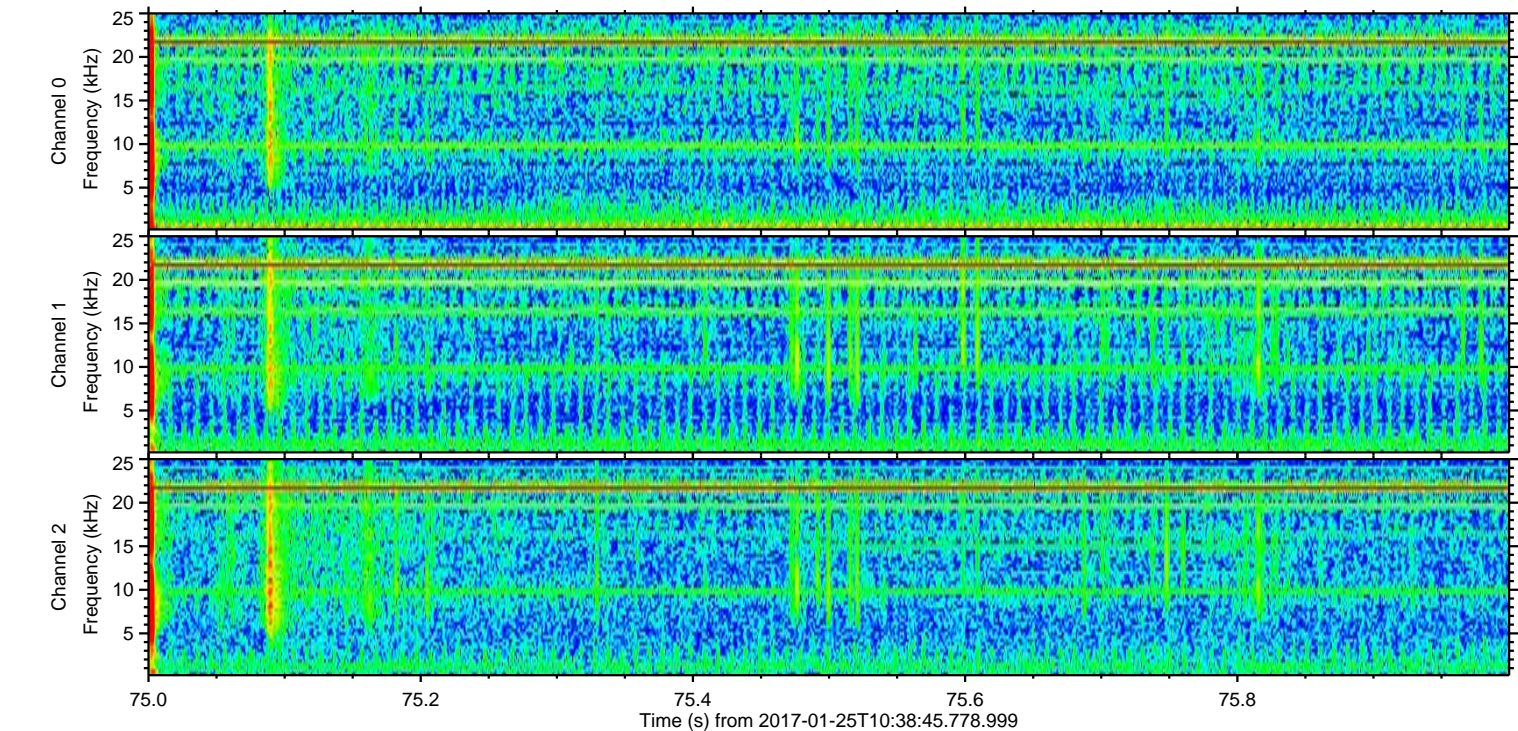
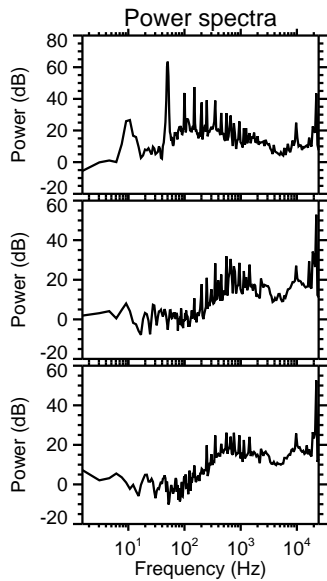
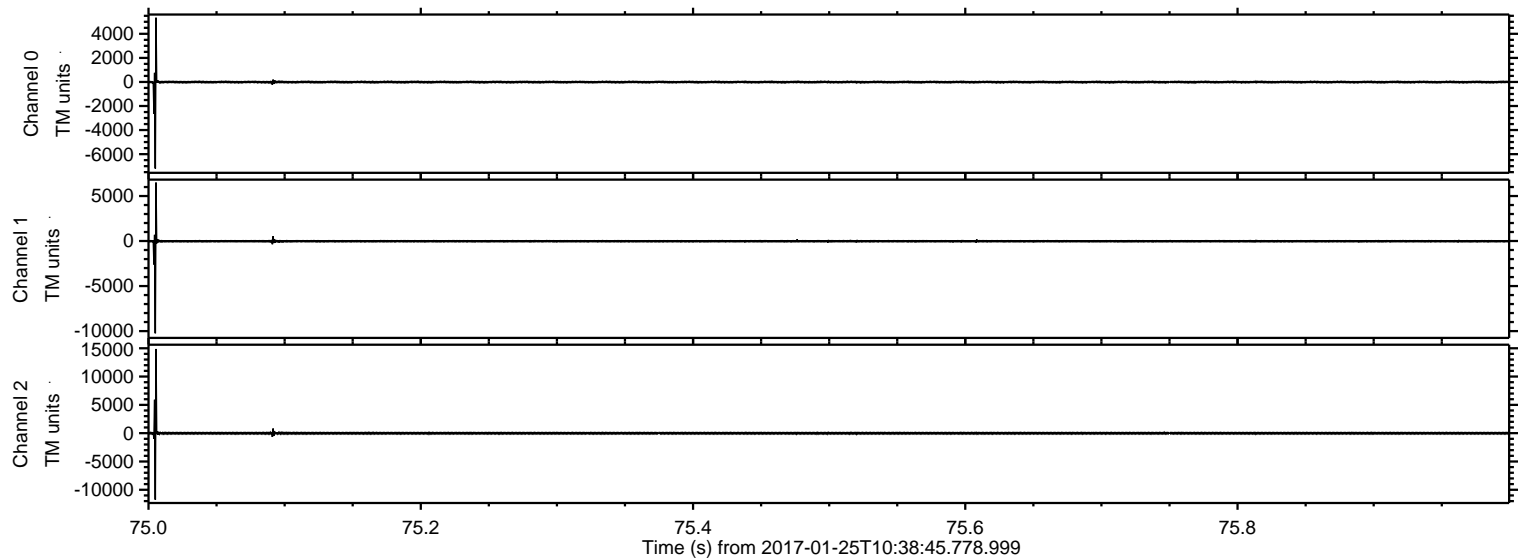


ELMAVAN 3D WAVEFORMS (Measured data sampled at 50 kHz) 51000 packets of 144 samples from 2017-01-25T10:38:45.778.999.

Processed Wed Jan 25 11:46:06 2017 by ELM ver.2012-10-06 from 001__elm20170125_103844__dat00.bin

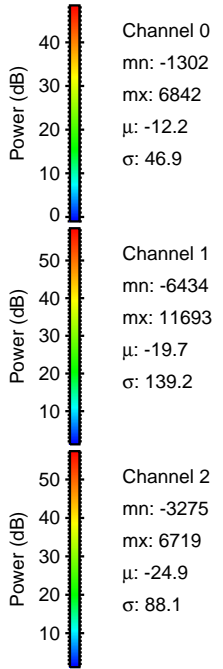
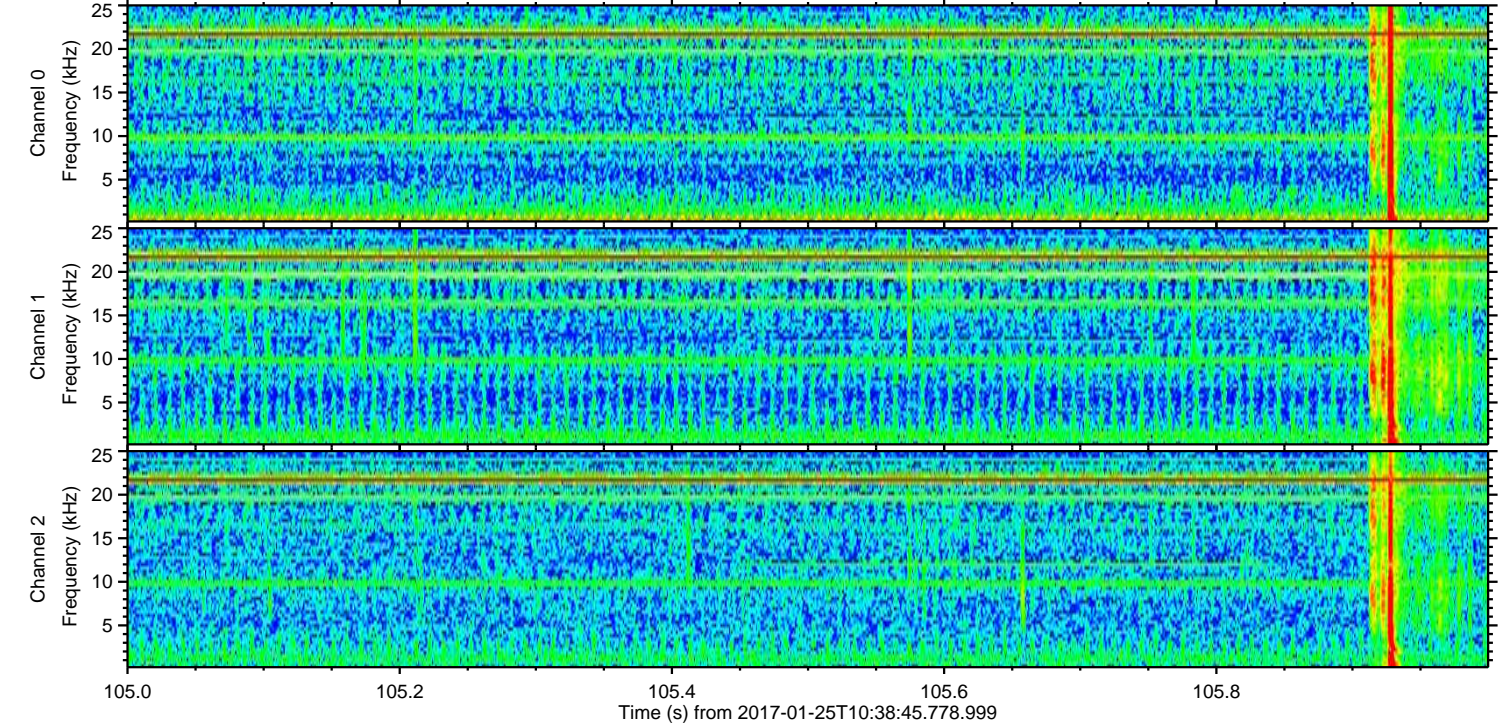
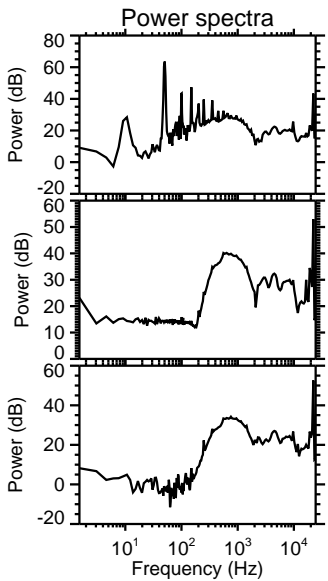
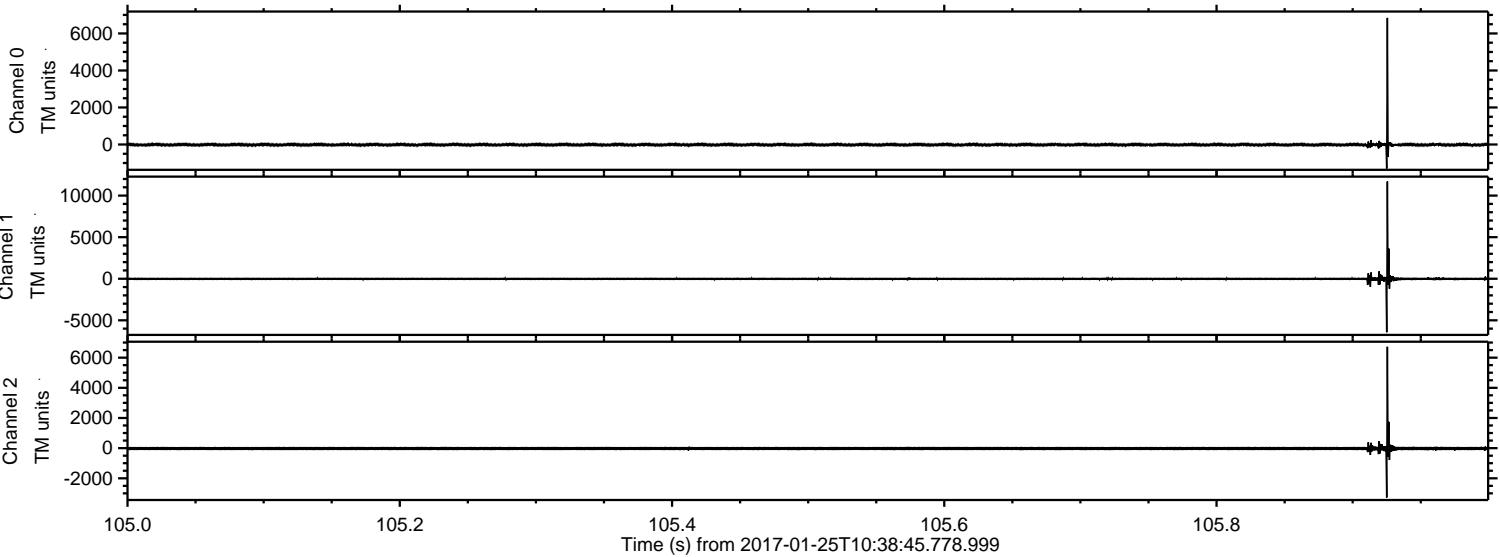


Processed Wed Jan 25 11:46:21 2017 by ELM ver.2012-10-06 from 001__elm20170125_103844__dat00.bin

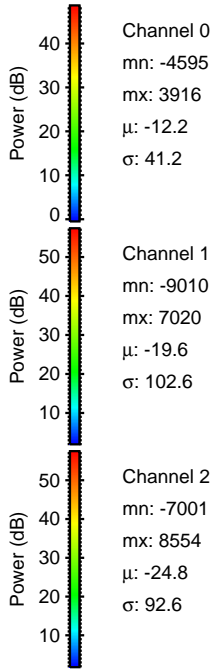
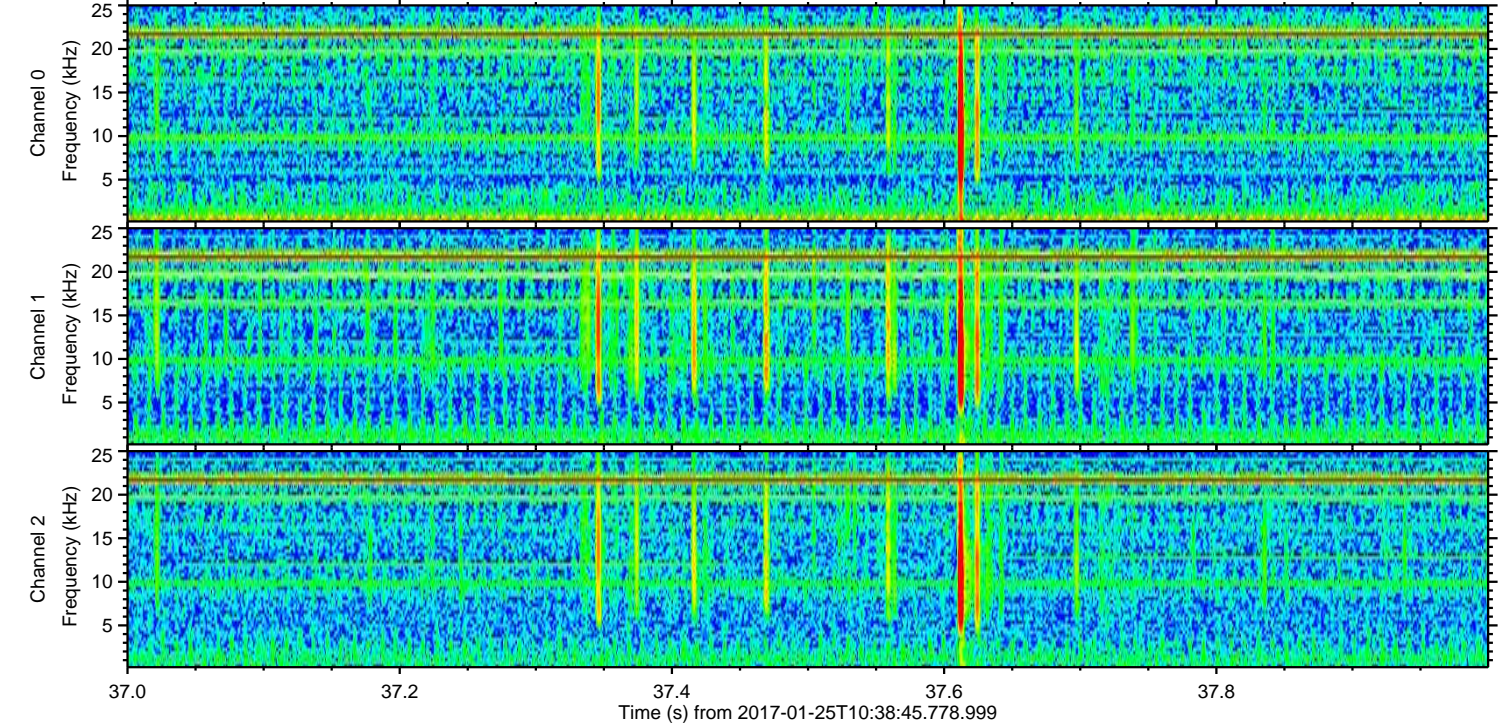
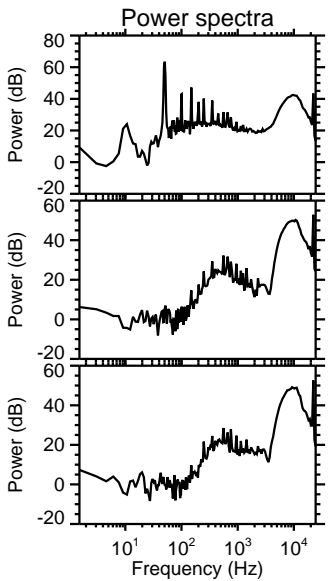
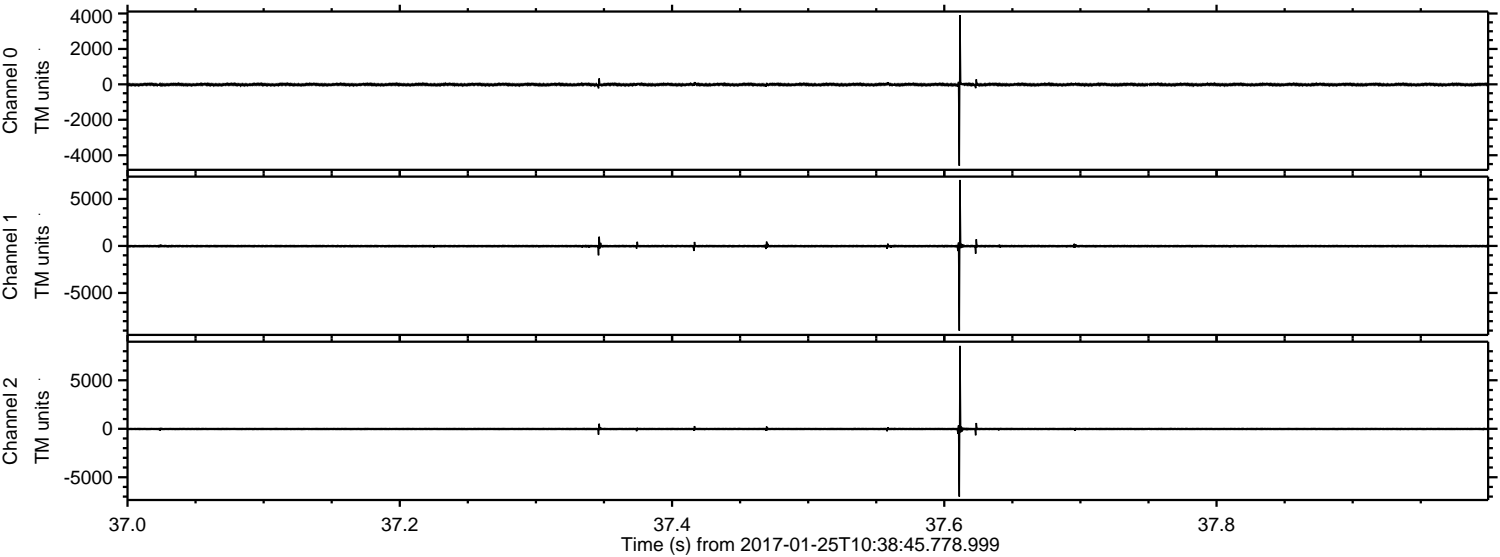


ELMAVAN 3D WAVEFORMS (Measured data sampled at 50 kHz) 51000 packets of 144 samples from 2017-01-25T10:38:45.778.999. Part 106/147

Processed Wed Jan 25 11:46:22 2017 by ELM ver.2012-10-06 from 001__elm20170125_103844__dat00.bin

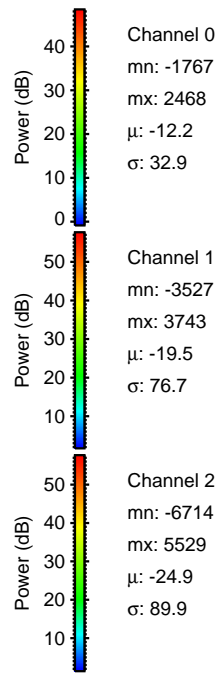
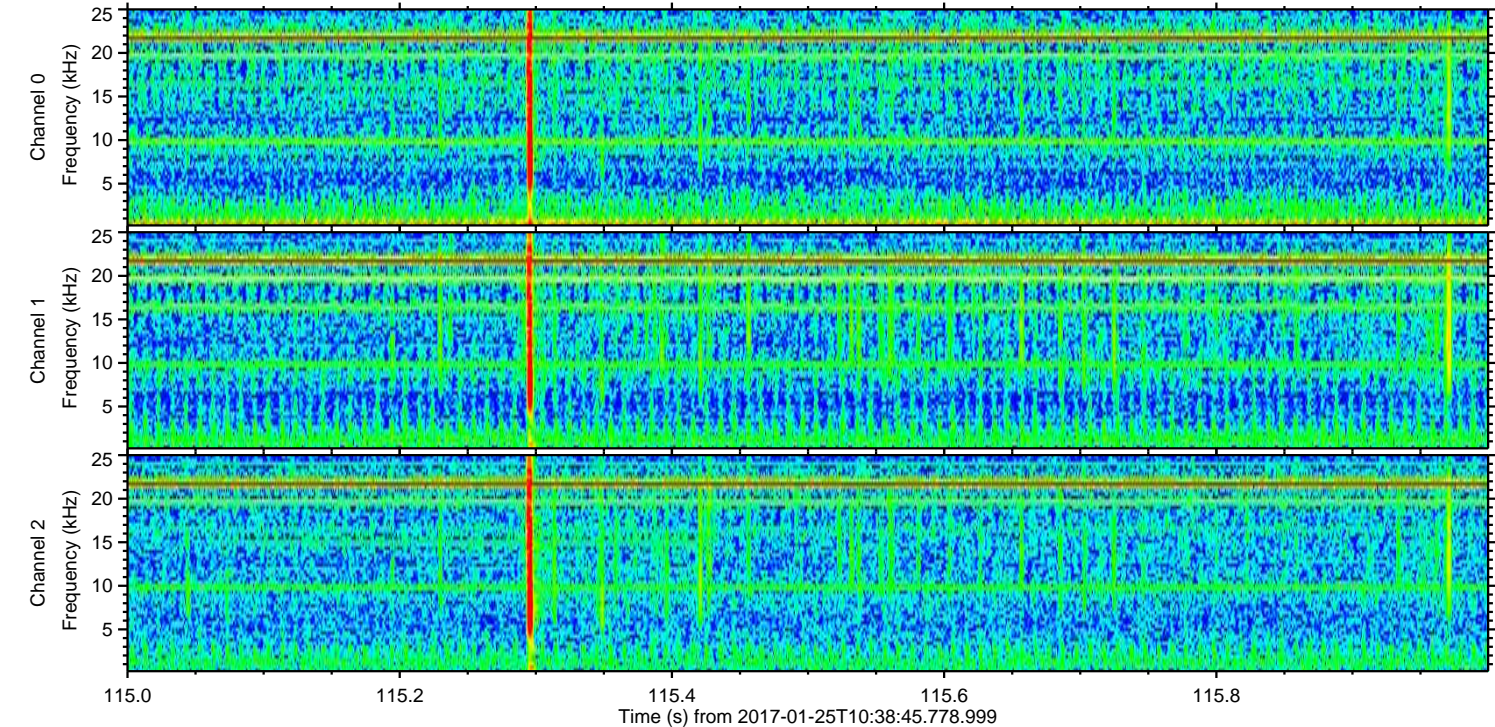
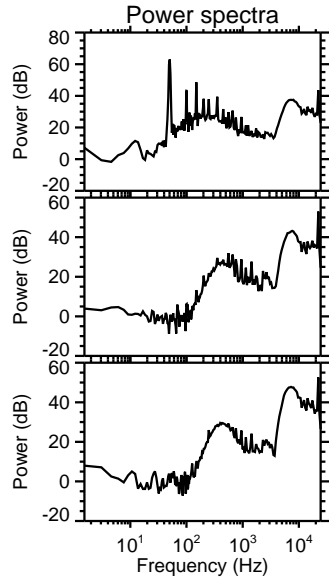
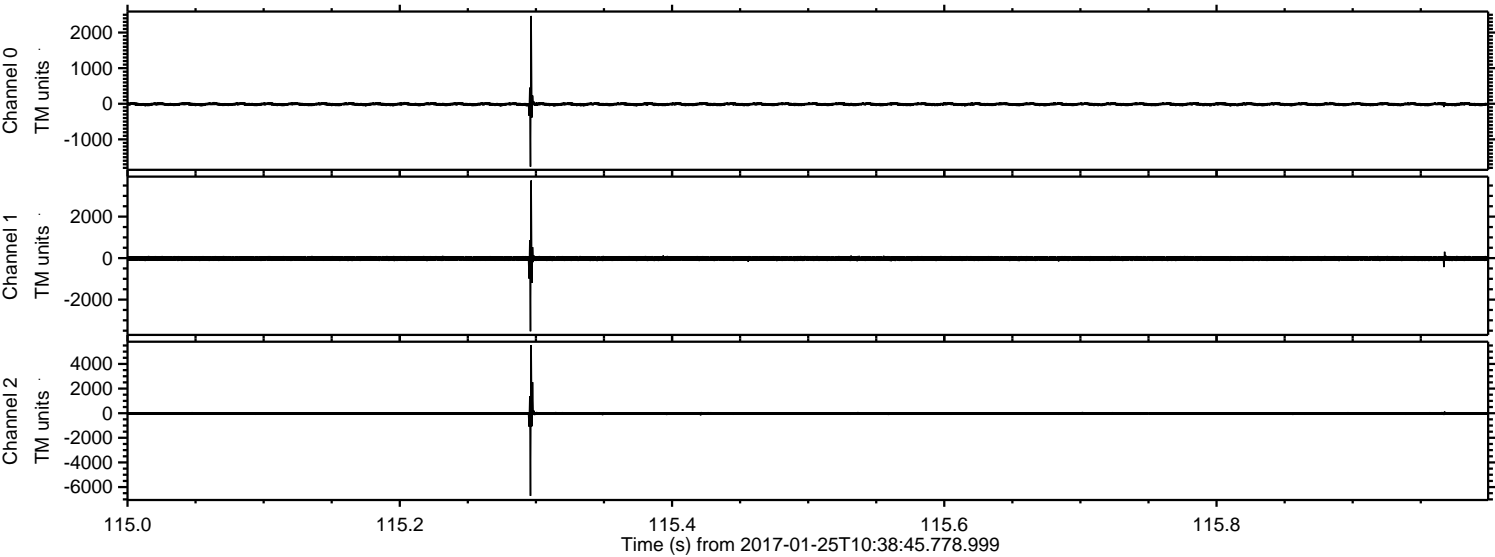


Processed Wed Jan 25 11:46:23 2017 by ELM ver.2012-10-06 from 001__elm20170125_103844__dat00.bin

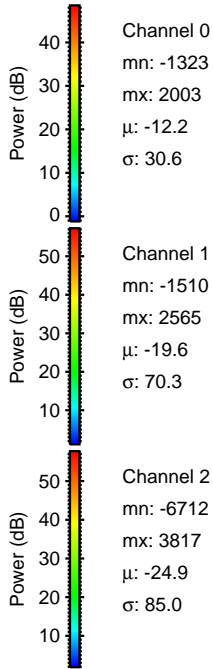
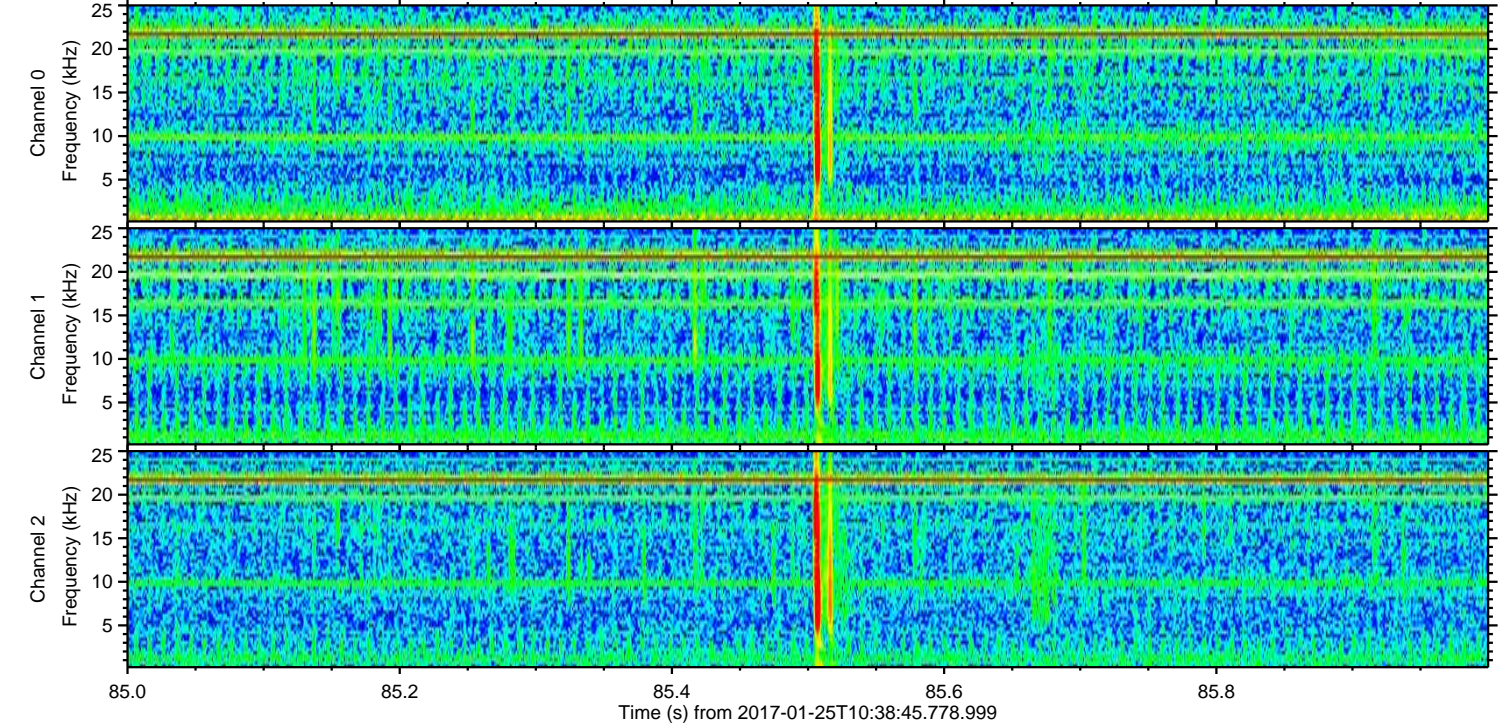
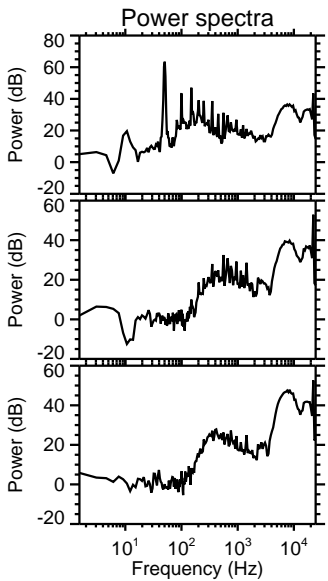
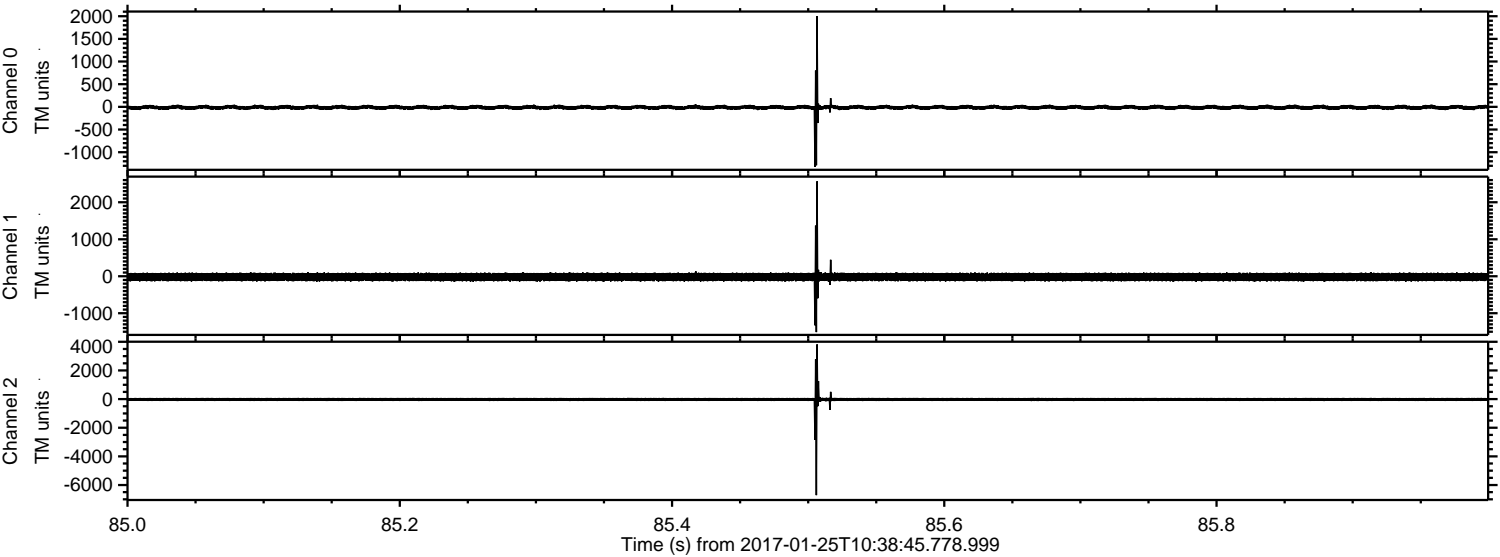


ELMAVAN 3D WAVEFORMS (Measured data sampled at 50 kHz) 51000 packets of 144 samples from 2017-01-25T10:38:45.778.999. Part 116/147

Processed Wed Jan 25 11:46:24 2017 by ELM ver.2012-10-06 from 001__elm20170125_103844__dat00.bin



Processed Wed Jan 25 11:46:25 2017 by ELM ver.2012-10-06 from 001__elm20170125_103844__dat00.bin

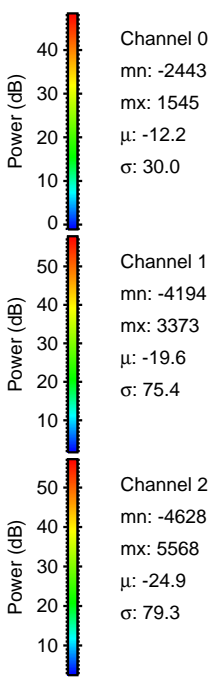
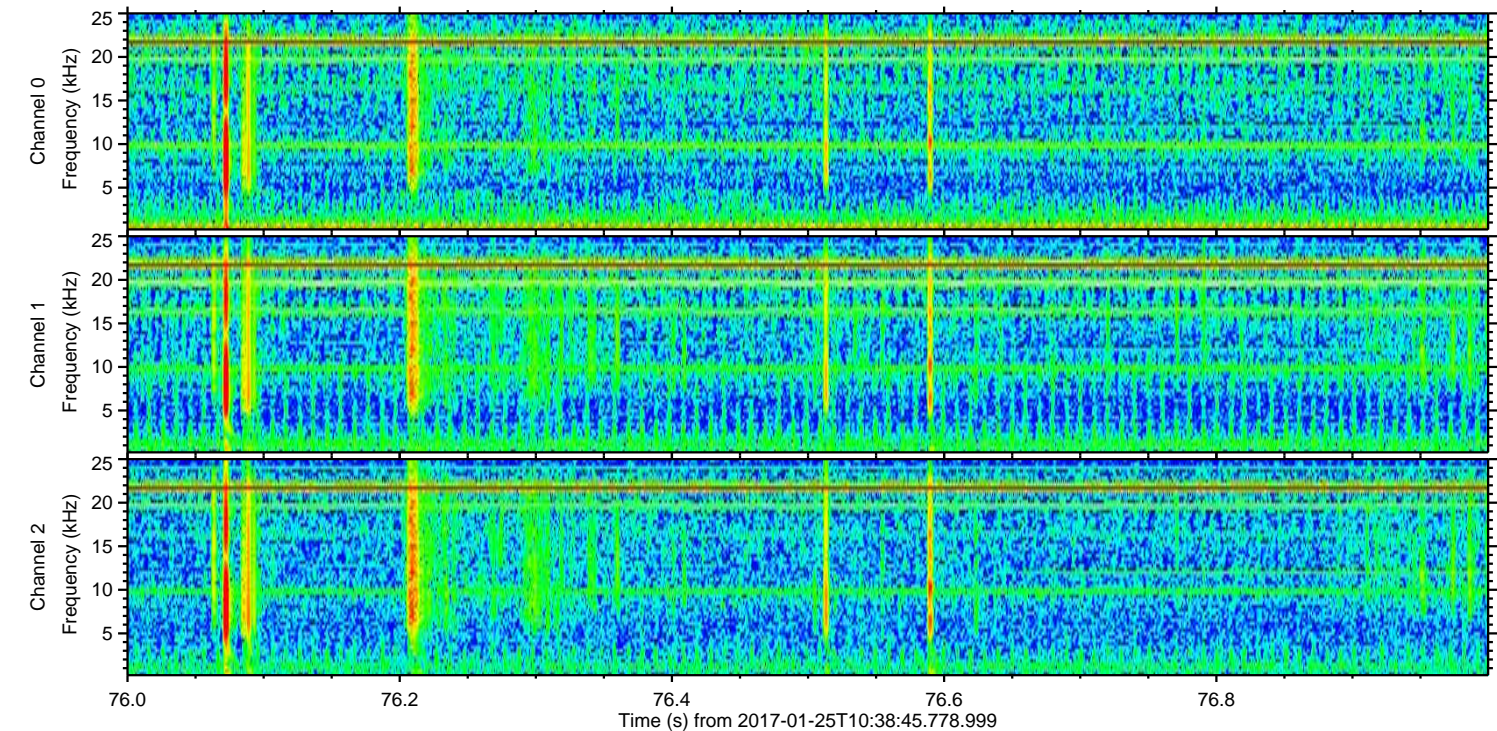
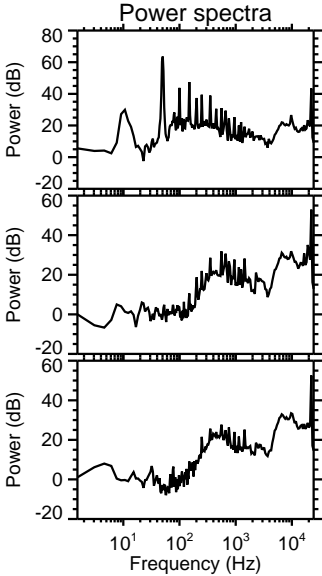
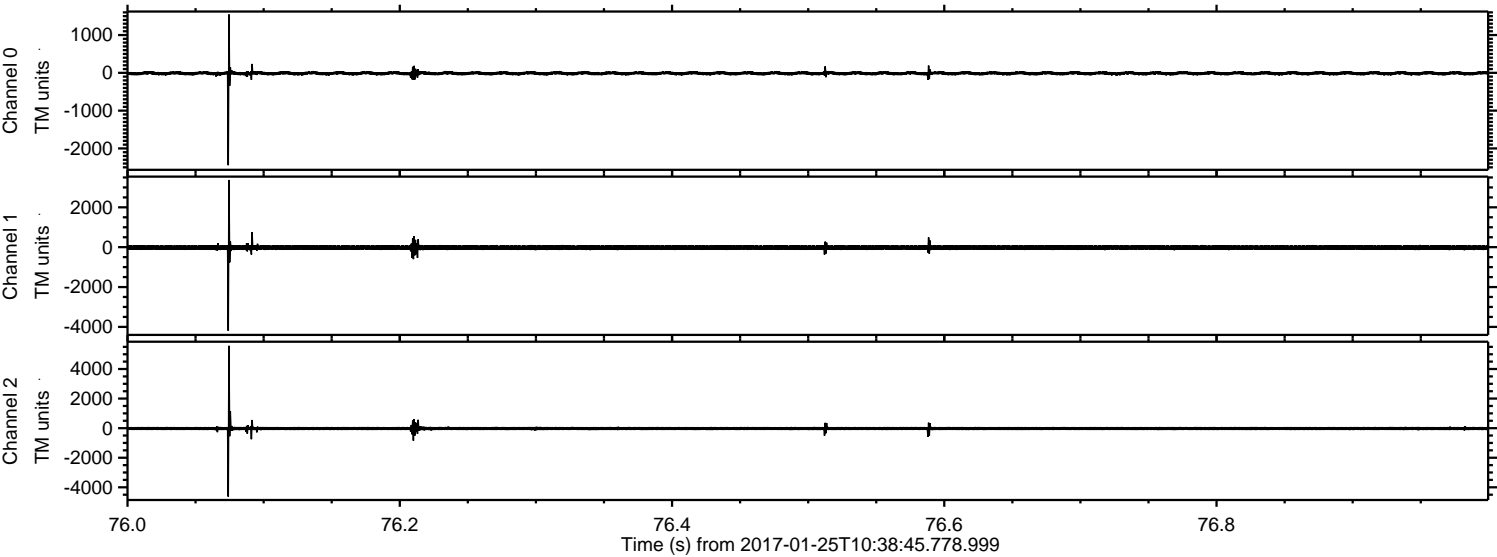


Channel 0
mn: -1323
mx: 2003
 μ : -12.2
 σ : 30.6

Channel 1
mn: -1510
mx: 2565
 μ : -19.6
 σ : 70.3

Channel 2
mn: -6712
mx: 3817
 μ : -24.9
 σ : 85.0

Processed Wed Jan 25 11:46:26 2017 by ELM ver.2012-10-06 from 001__elm20170125_103844__dat00.bin



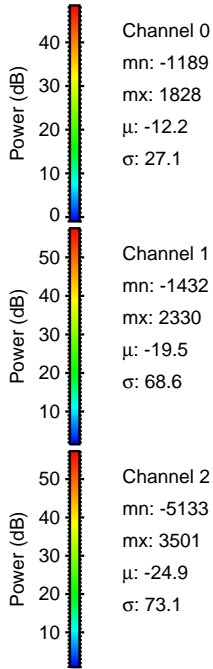
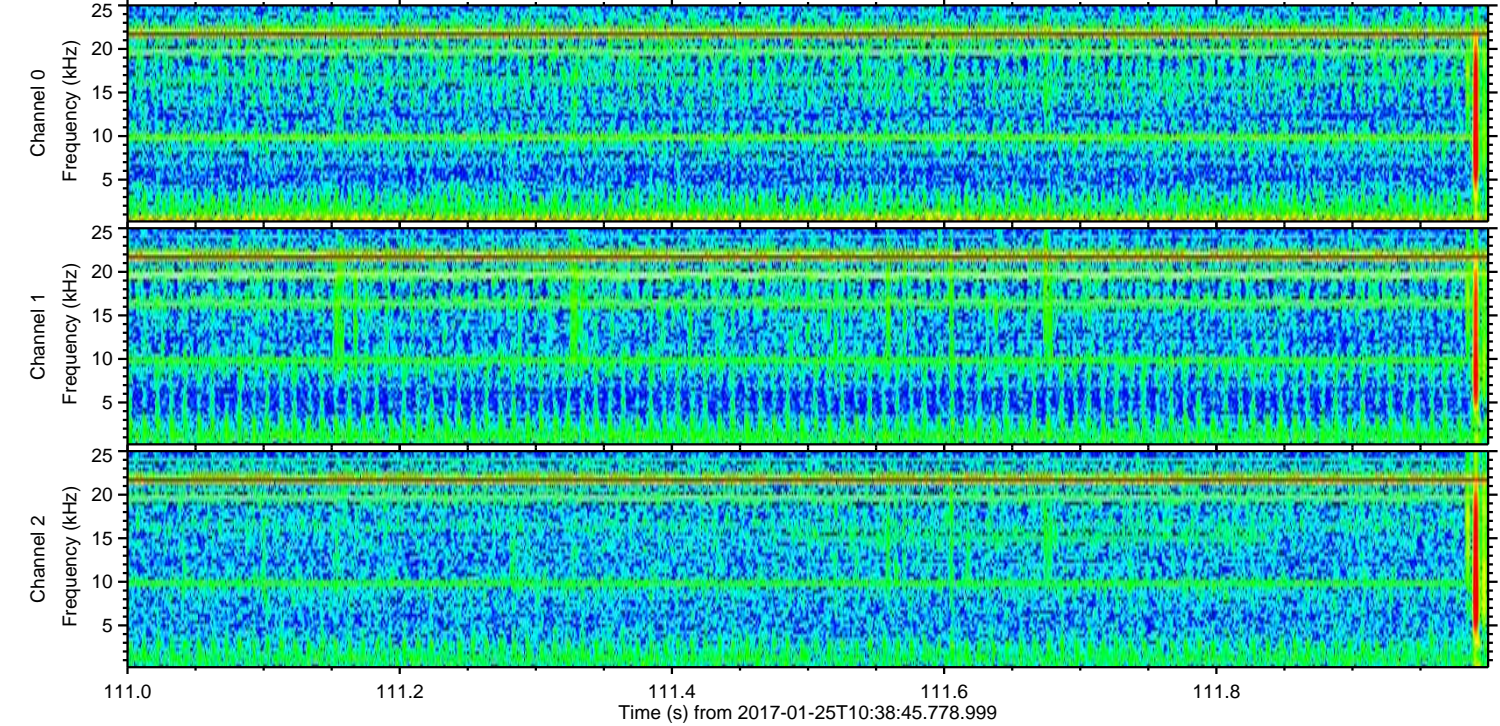
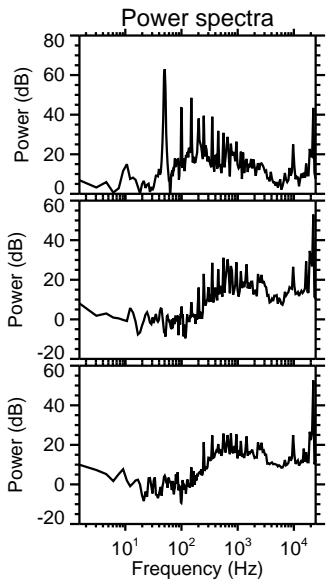
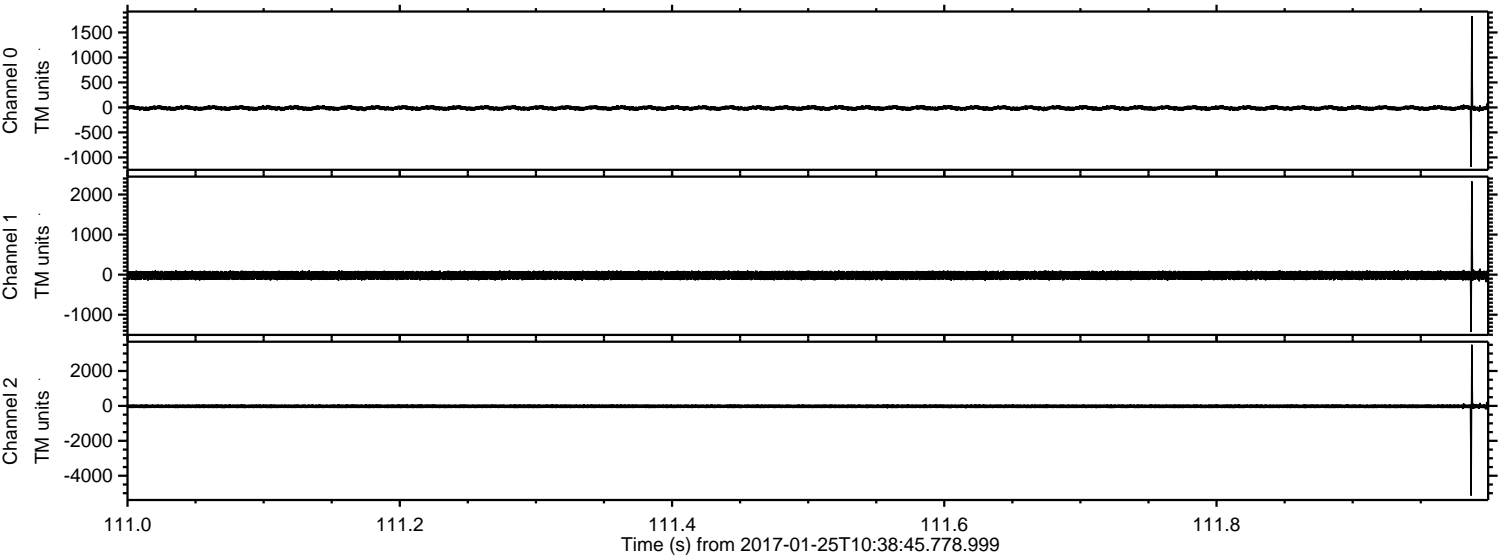
Channel 0
mn: -2443
mx: 1545
 μ : -12.2
 σ : 30.0

Channel 1
mn: -4194
mx: 3373
 μ : -19.6
 σ : 75.4

Channel 2
mn: -4628
mx: 5568
 μ : -24.9
 σ : 79.3

ELMAVAN 3D WAVEFORMS (Measured data sampled at 50 kHz) 51000 packets of 144 samples from 2017-01-25T10:38:45.778.999. Part 112/147

Processed Wed Jan 25 11:46:28 2017 by ELM ver.2012-10-06 from 001__elm20170125_103844__dat00.bin

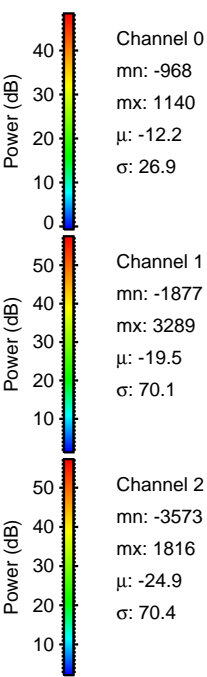
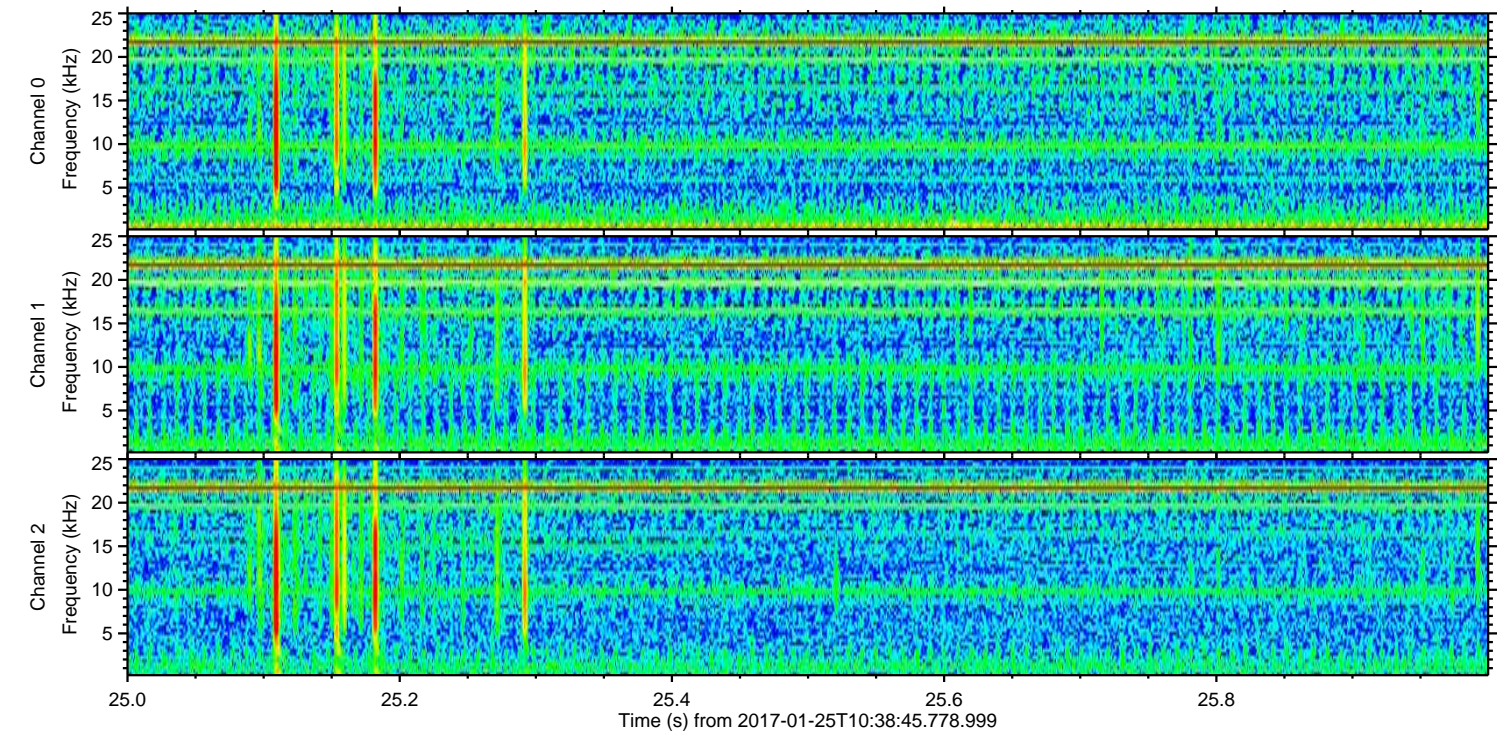
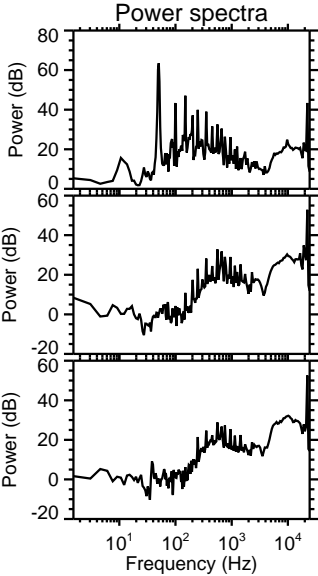
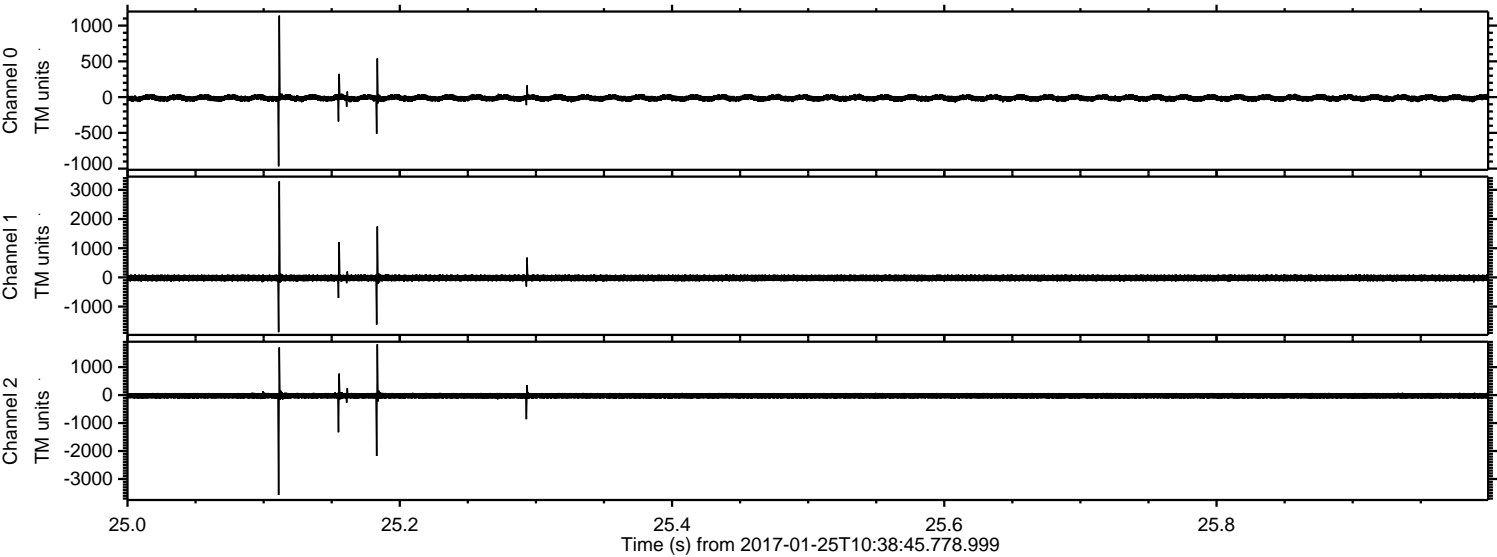


Channel 0
mn: -1189
mx: 1828
 μ : -12.2
 σ : 27.1

Channel 1
mn: -1432
mx: 2330
 μ : -19.5
 σ : 68.6

Channel 2
mn: -5133
mx: 3501
 μ : -24.9
 σ : 73.1

Processed Wed Jan 25 11:46:29 2017 by ELM ver.2012-10-06 from 001__elm20170125_103844__dat00.bin



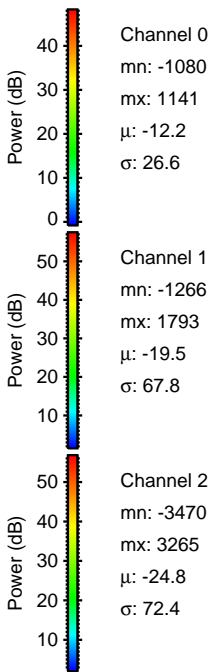
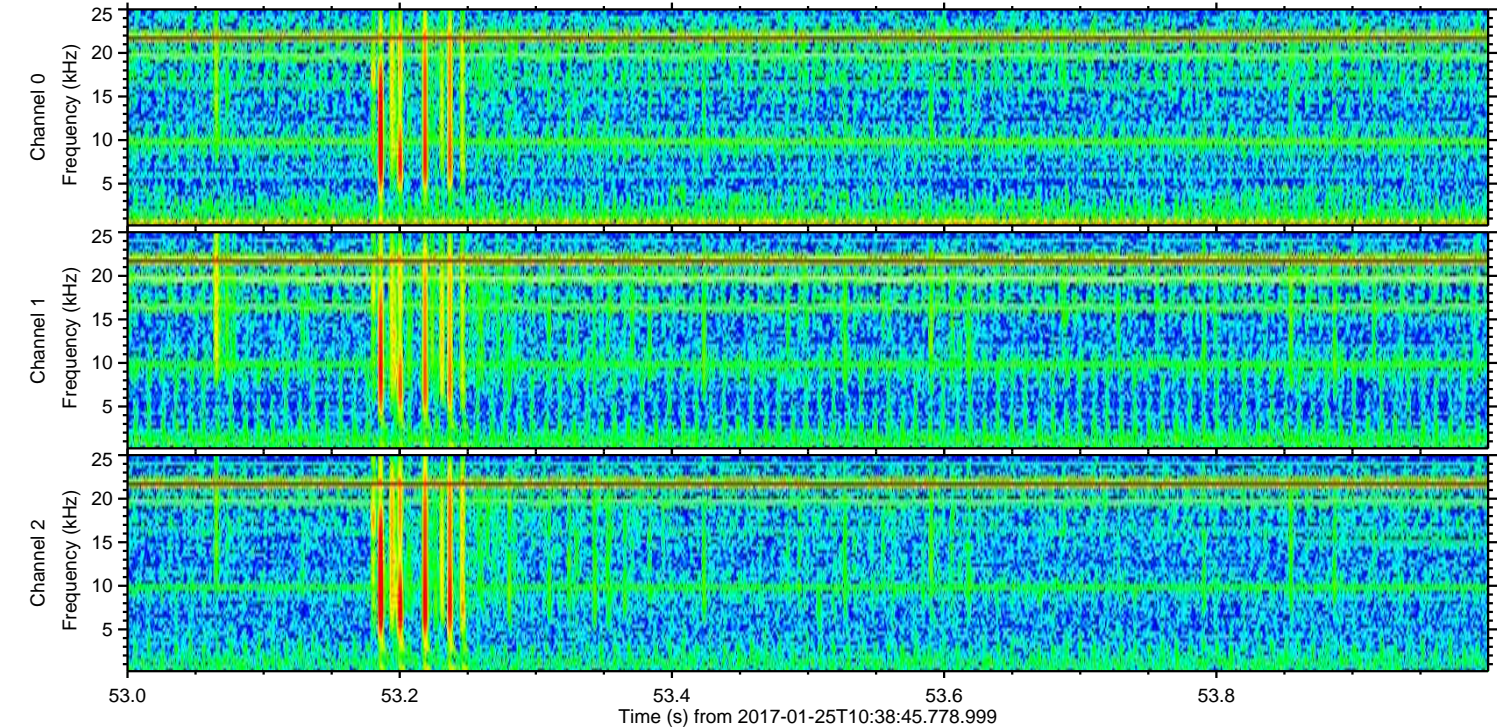
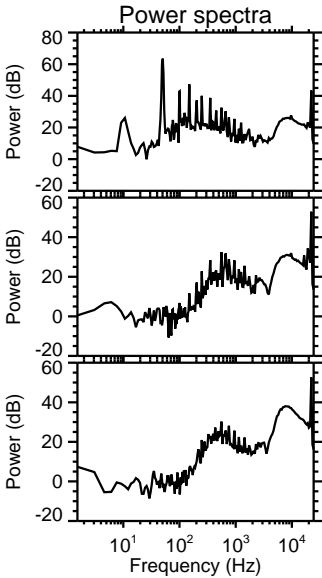
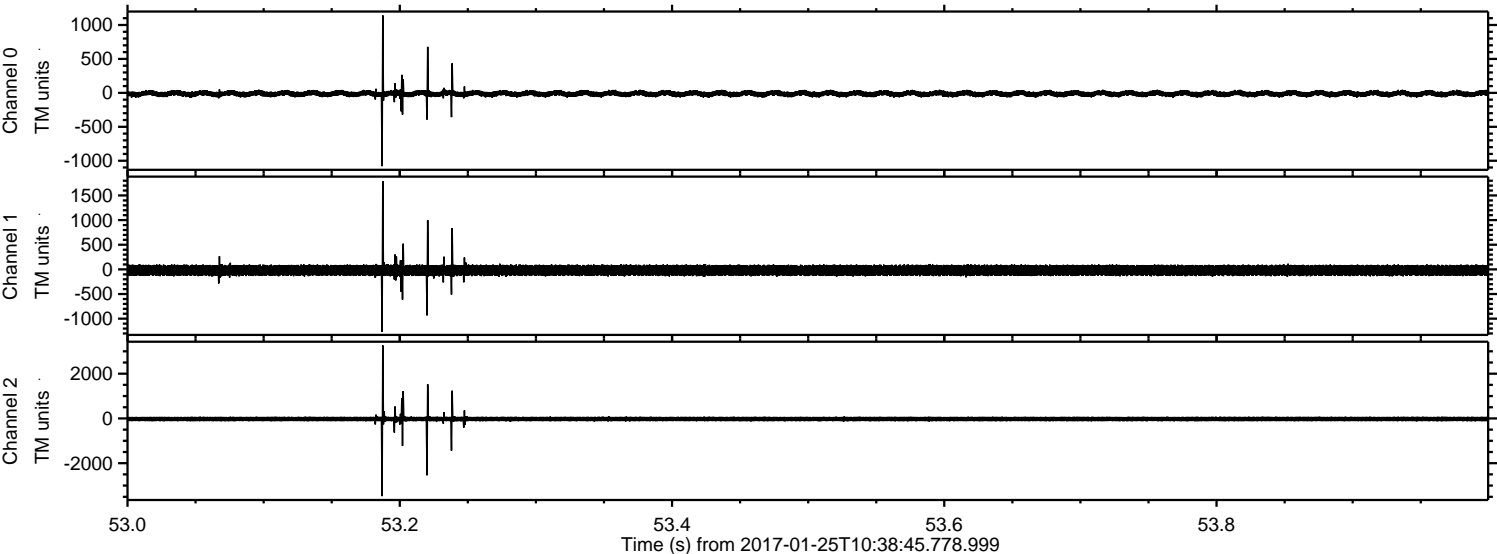
Channel 0
mn: -968
mx: 1140
 μ : -12.2
 σ : 26.9

Channel 1
mn: -1877
mx: 3289
 μ : -19.5
 σ : 70.1

Channel 2
mn: -3573
mx: 1816
 μ : -24.9
 σ : 70.4

ELMAVAN 3D WAVEFORMS (Measured data sampled at 50 kHz) 51000 packets of 144 samples from 2017-01-25T10:38:45.778.999. Part 54/147

Processed Wed Jan 25 11:46:30 2017 by ELM ver.2012-10-06 from 001__elm20170125_103844__dat00.bin



Channel 0
mn: -1080
mx: 1141
 μ : -12.2
 σ : 26.6

Channel 1
mn: -1266
mx: 1793
 μ : -19.5
 σ : 67.8

Channel 2
mn: -3470
mx: 3265
 μ : -24.8
 σ : 72.4

Processed Wed Jan 25 11:46:31 2017 by ELM ver.2012-10-06 from 001__elm20170125_103844__dat00.bin

