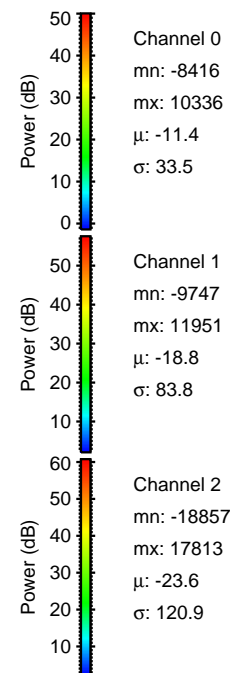
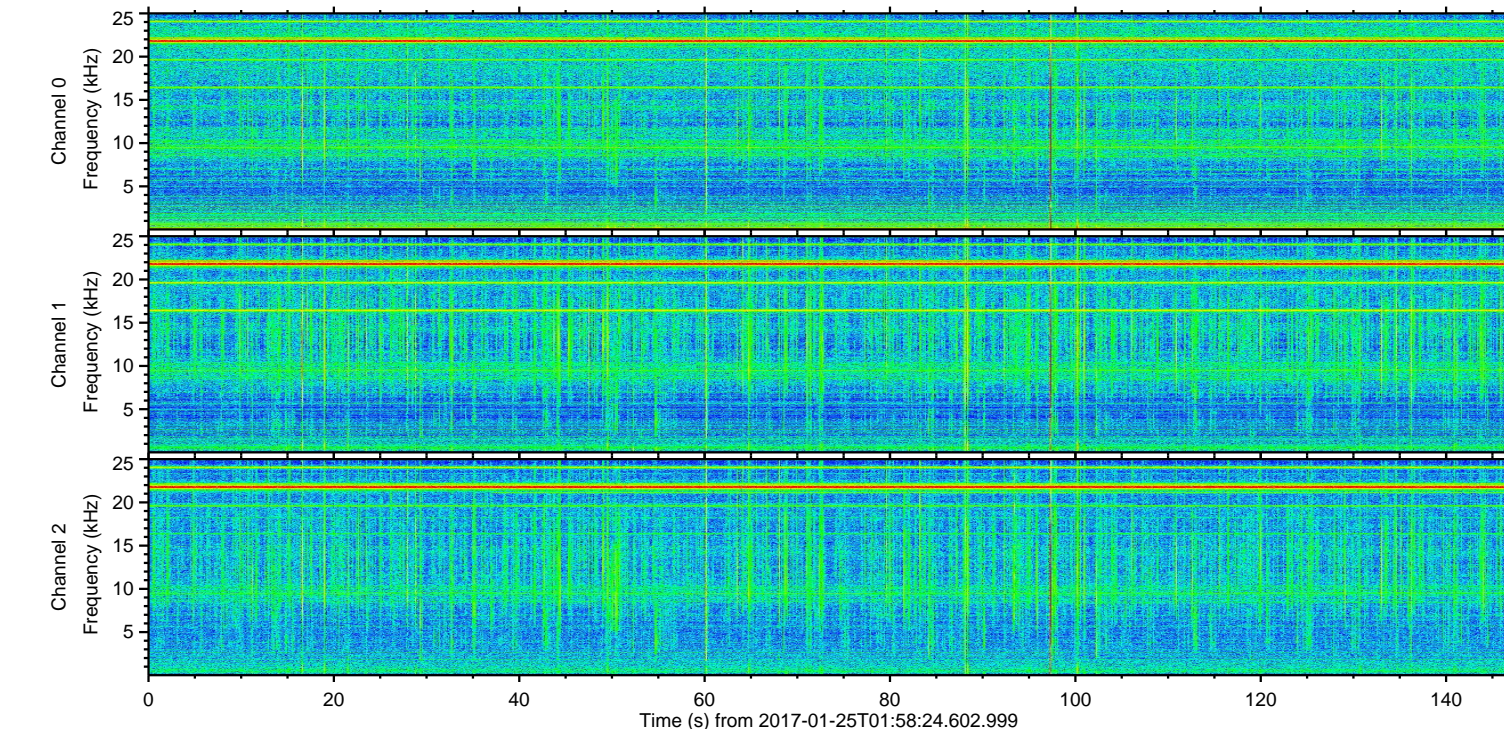
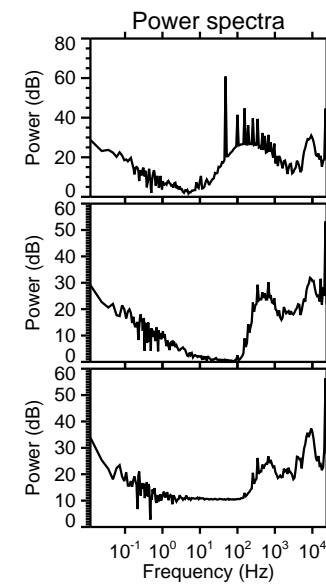
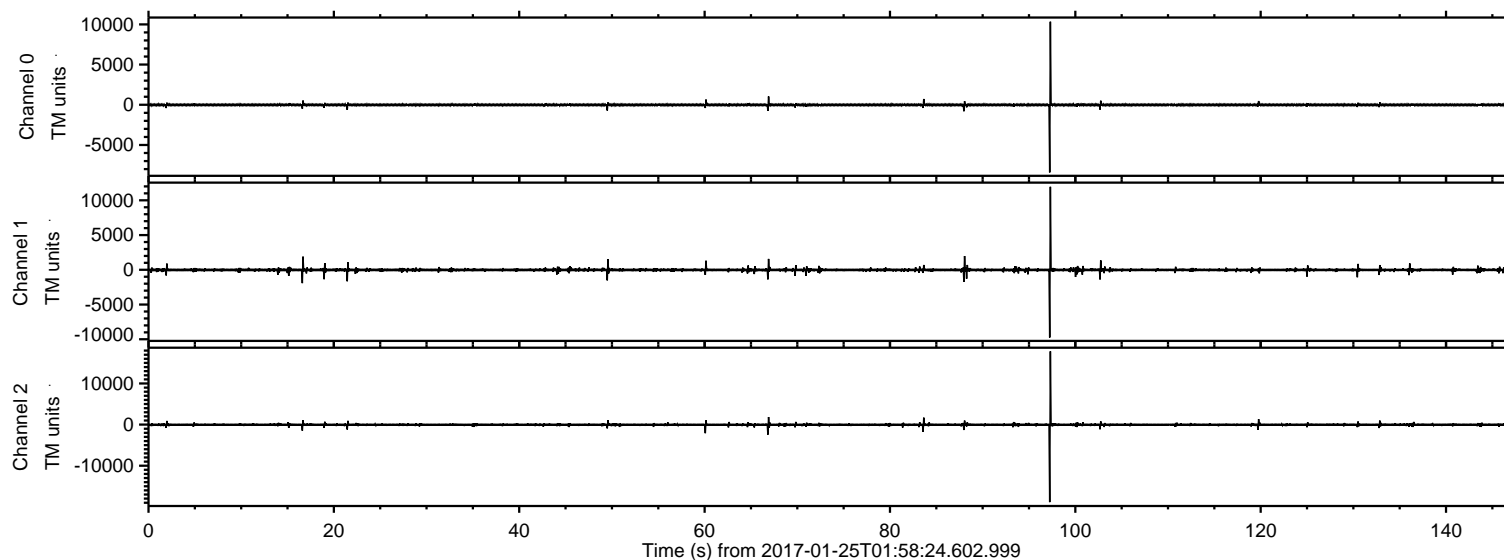
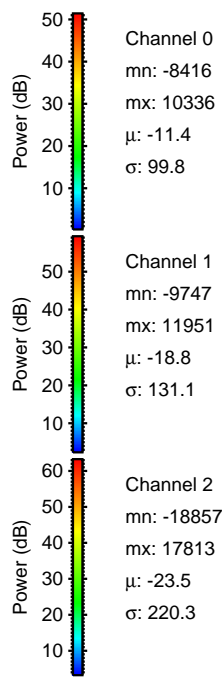
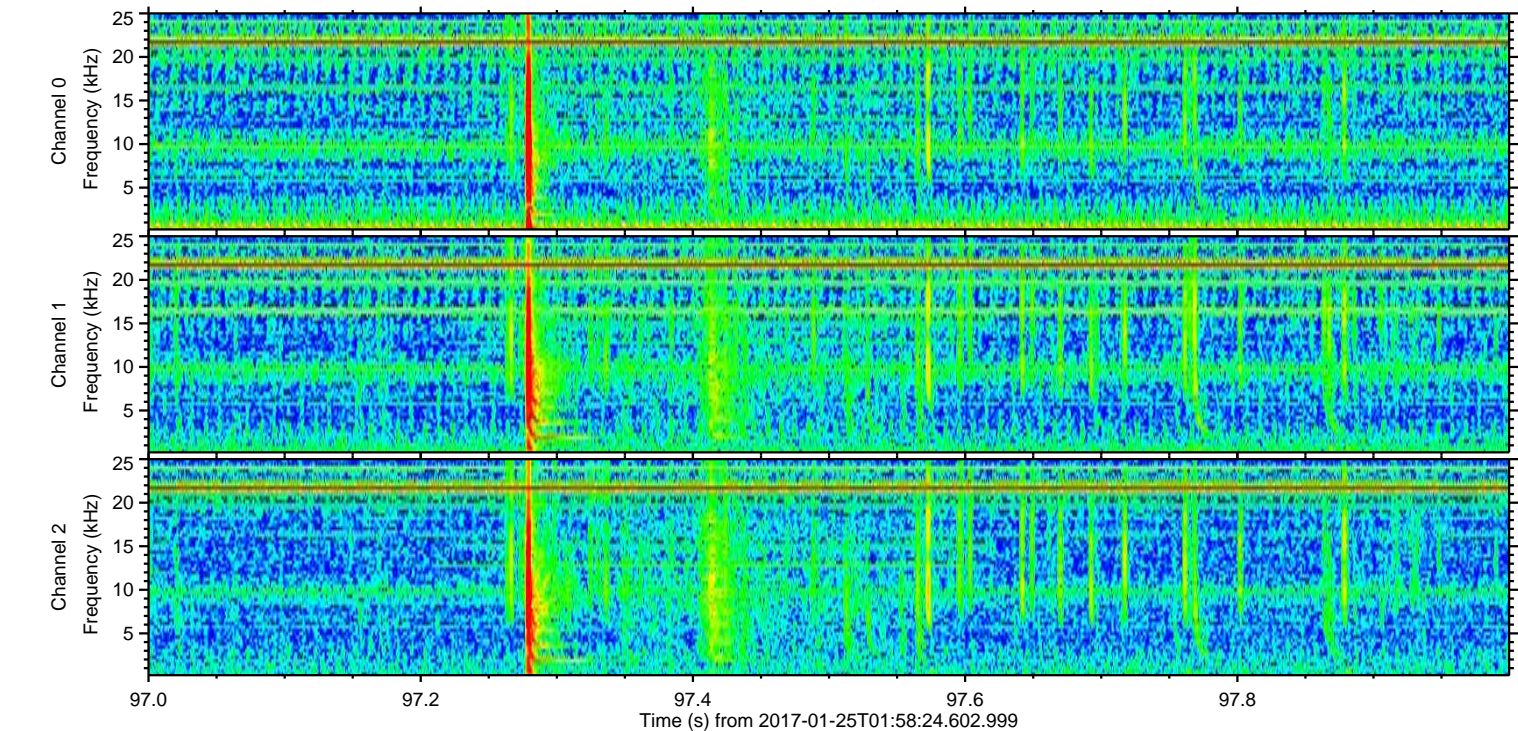
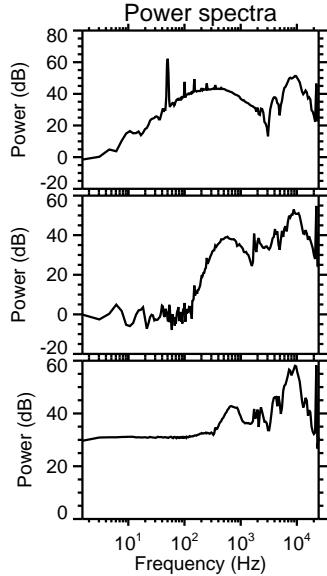
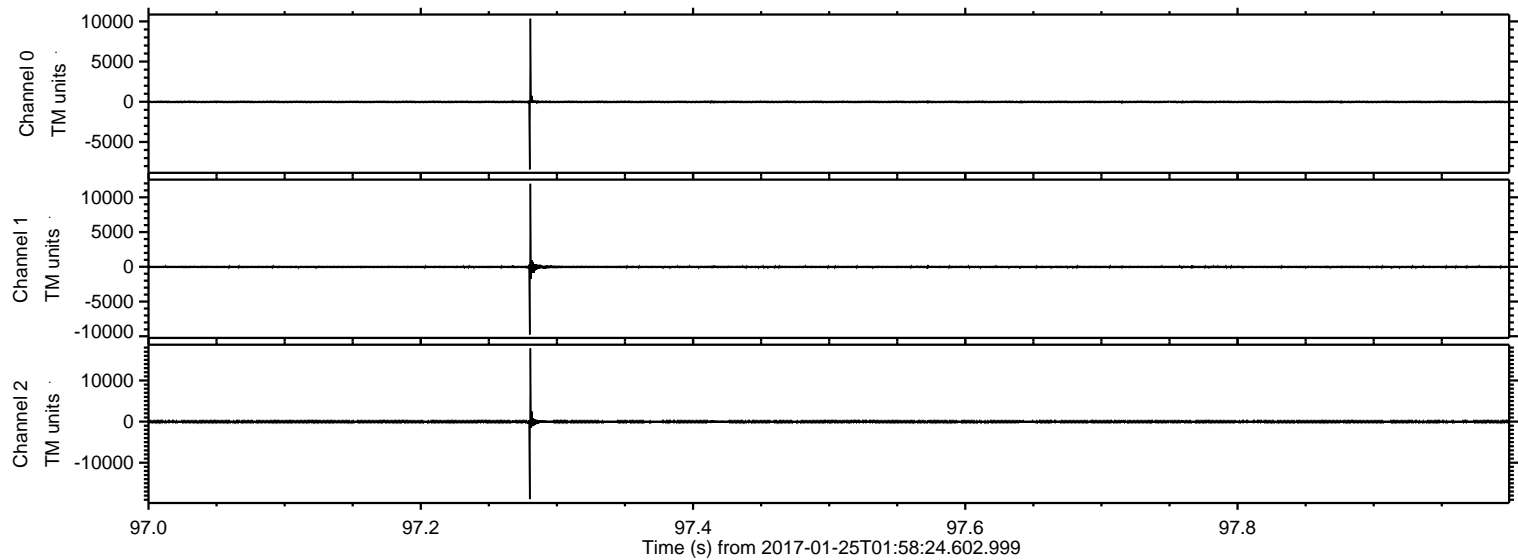


ELMAVAN 3D WAVEFORMS (Measured data sampled at 50 kHz) 51000 packets of 144 samples from 2017-01-25T01:58:24.602.999.

Processed Wed Jan 25 03:06:14 2017 by ELM ver.2012-10-06 from 001__elm20170125_015823__dat00.bin

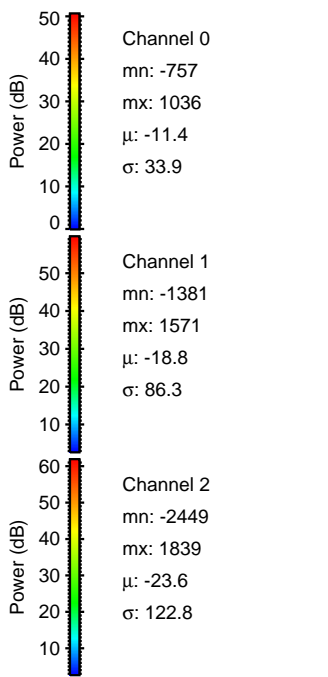
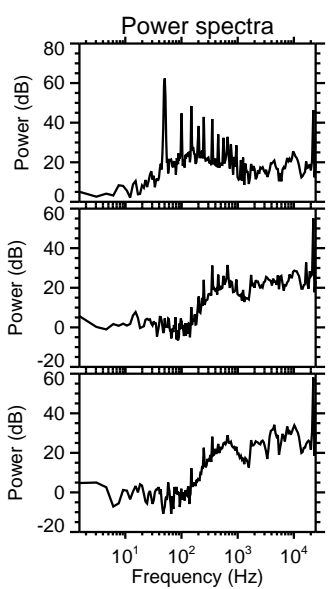
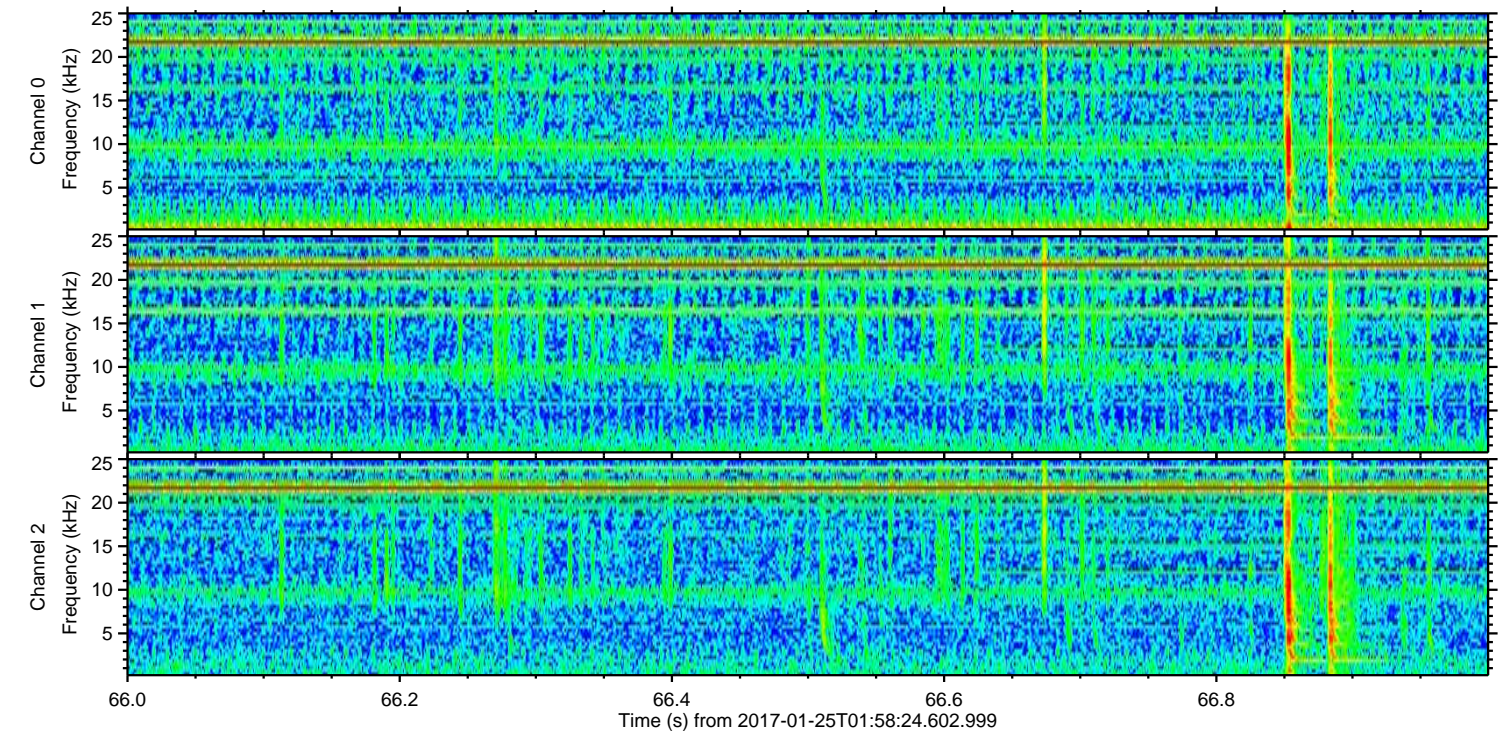
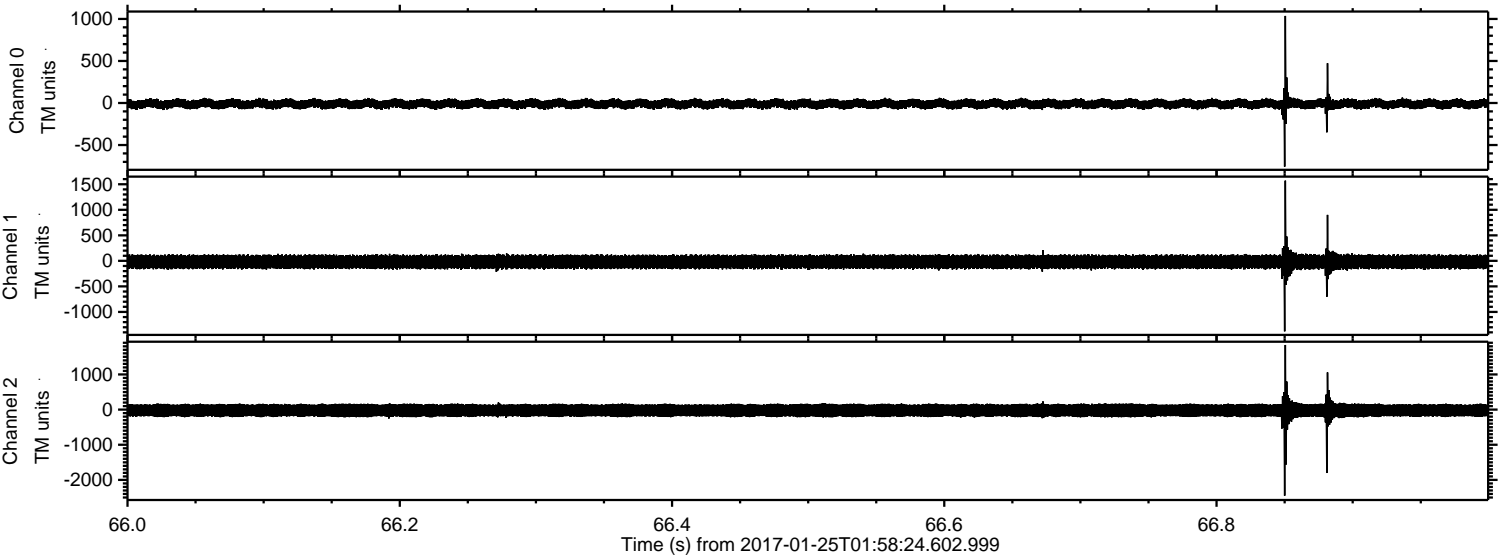


Processed Wed Jan 25 03:06:29 2017 by ELM ver.2012-10-06 from 001__elm20170125_015823__dat00.bin

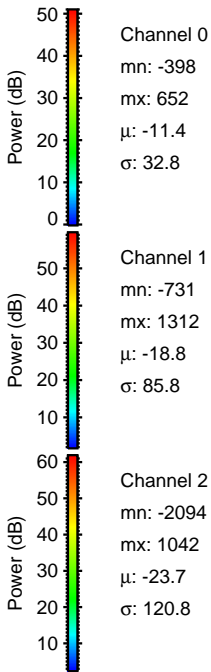
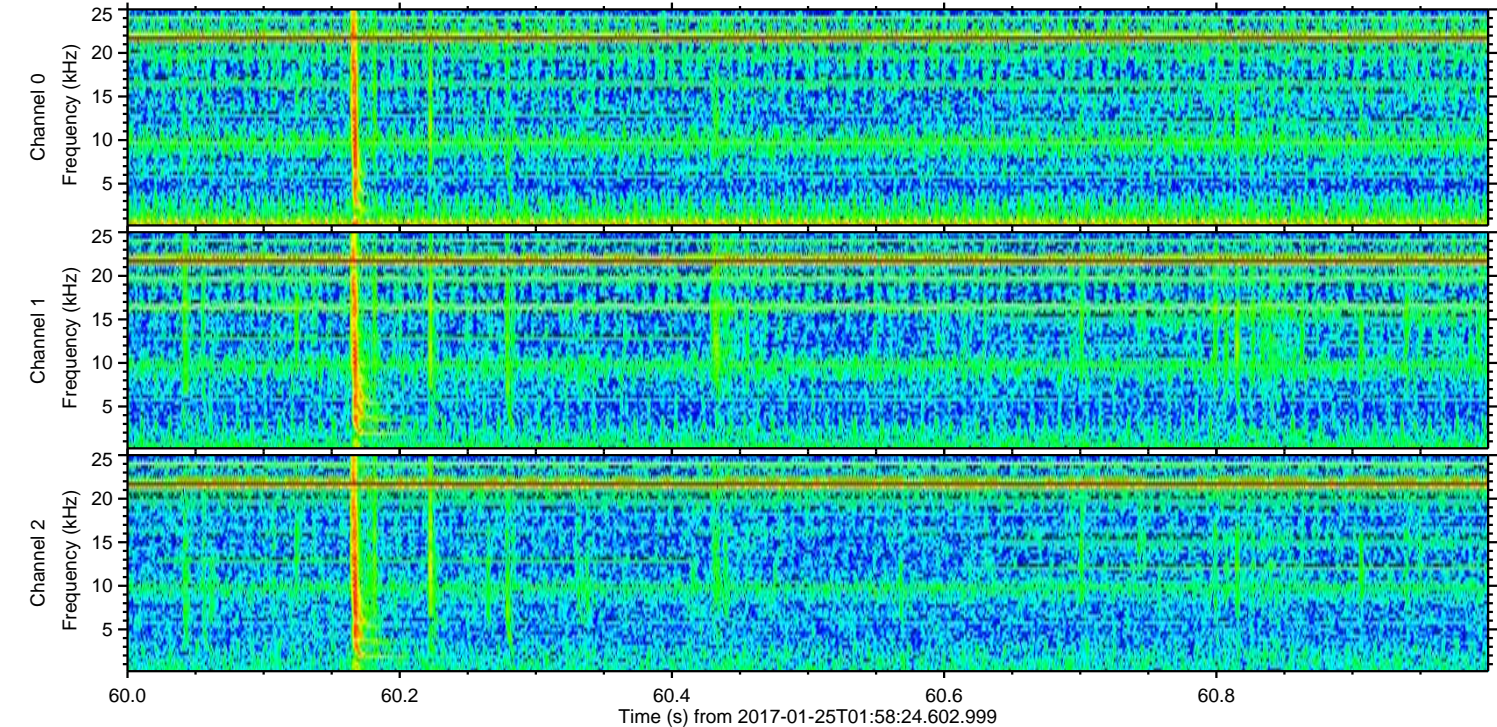
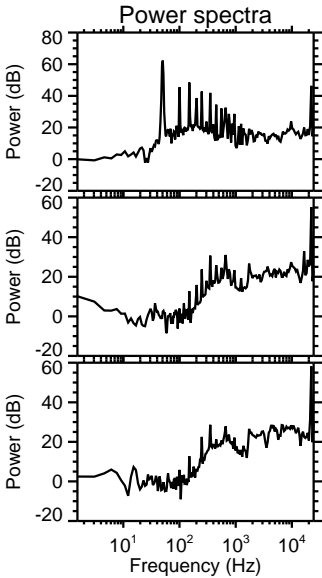
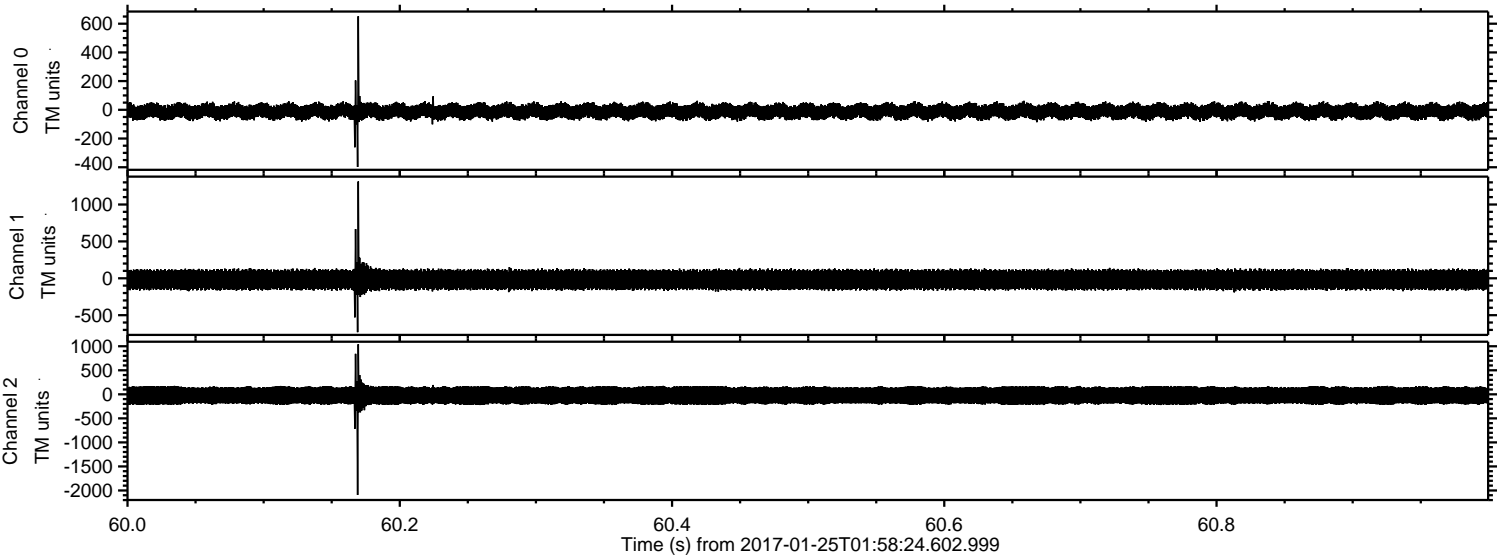


ELMAVAN 3D WAVEFORMS (Measured data sampled at 50 kHz) 51000 packets of 144 samples from 2017-01-25T01:58:24.602.999. Part 67/147

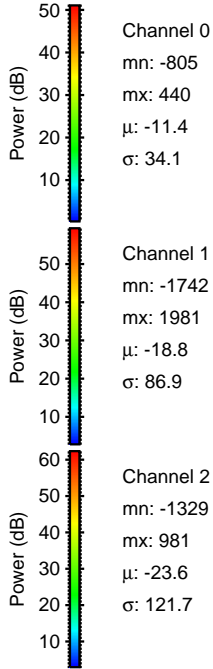
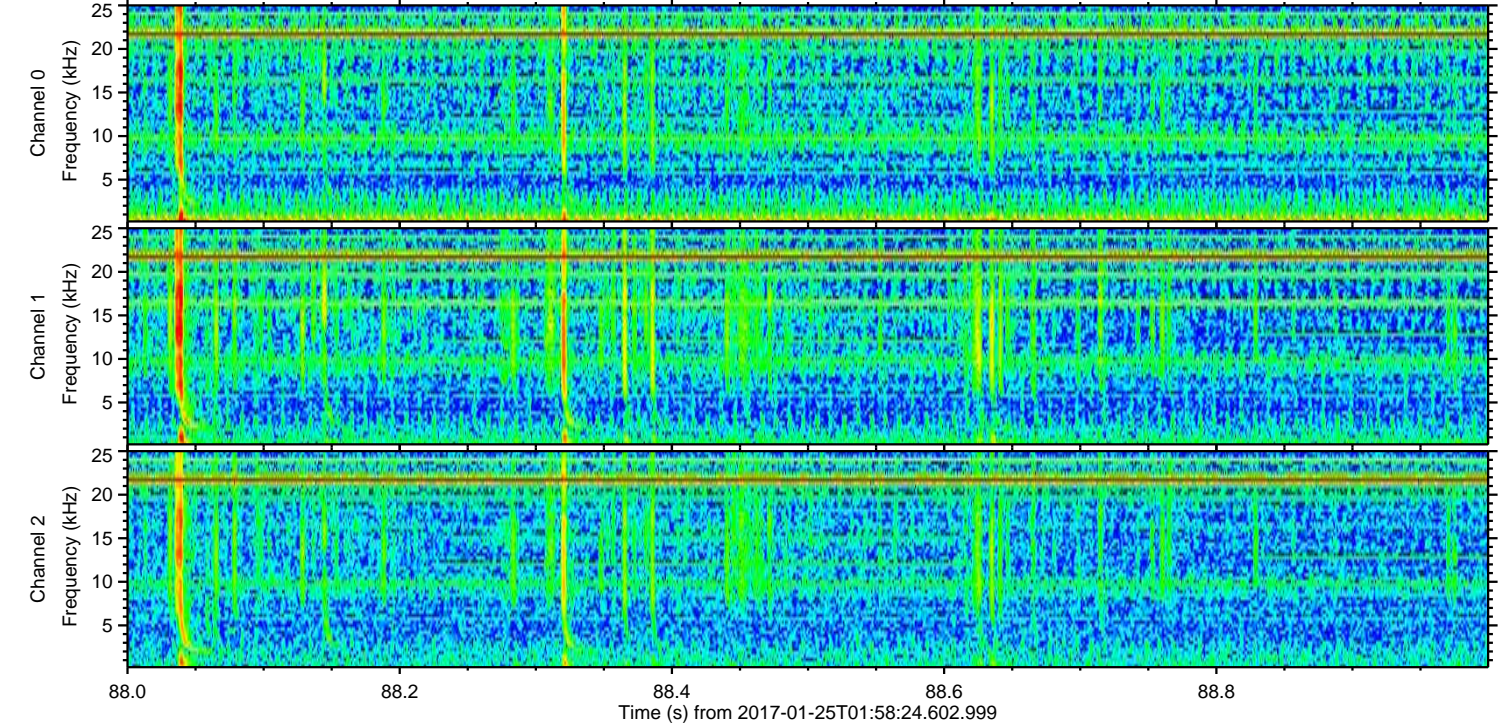
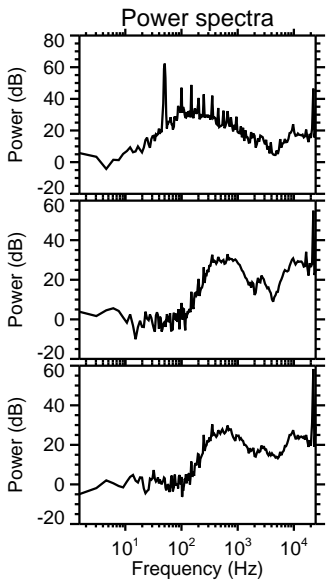
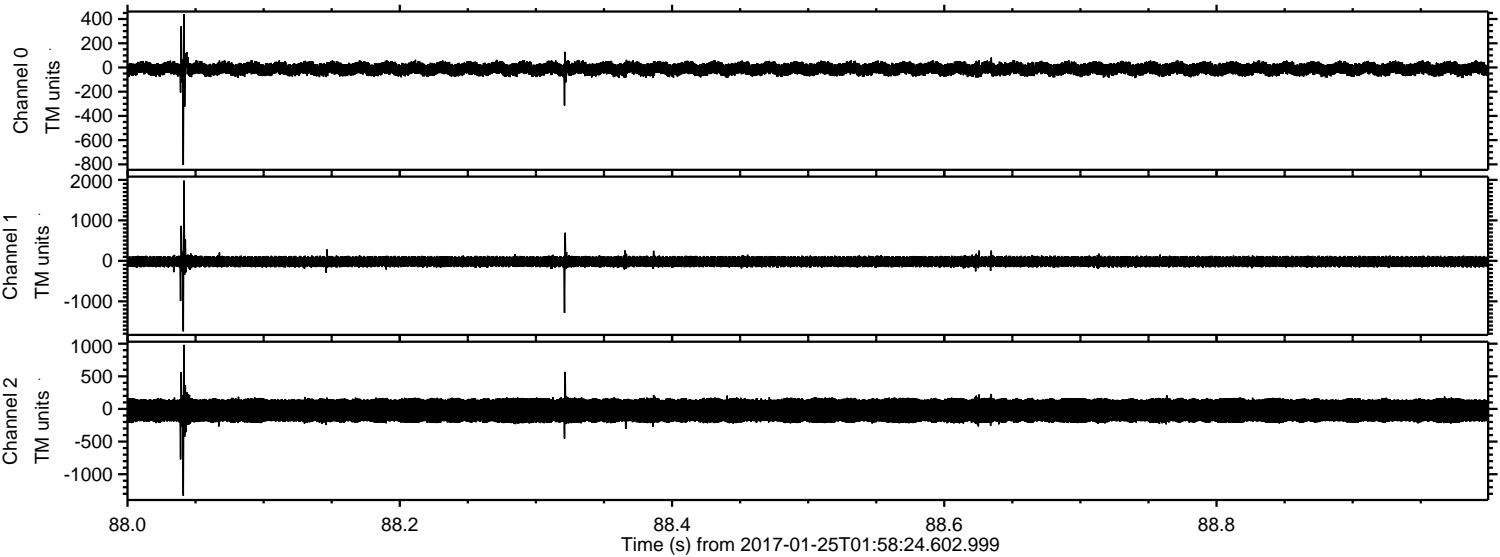
Processed Wed Jan 25 03:06:31 2017 by ELM ver.2012-10-06 from 001__elm20170125_015823__dat00.bin



Processed Wed Jan 25 03:06:32 2017 by ELM ver.2012-10-06 from 001__elm20170125_015823__dat00.bin



Processed Wed Jan 25 03:06:33 2017 by ELM ver.2012-10-06 from 001__elm20170125_015823__dat00.bin

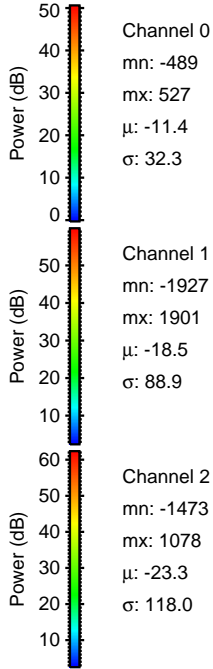
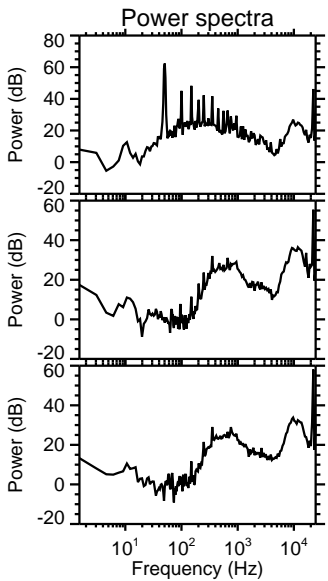
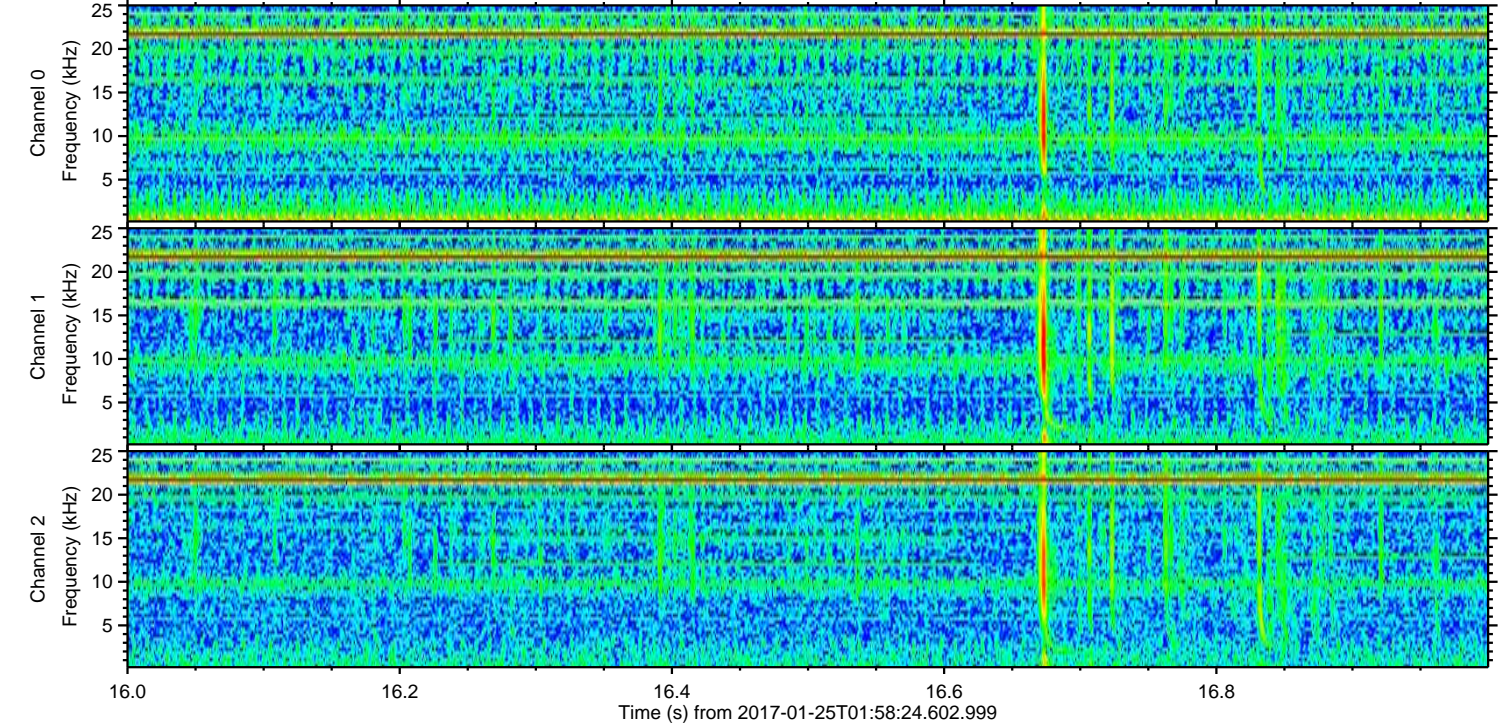
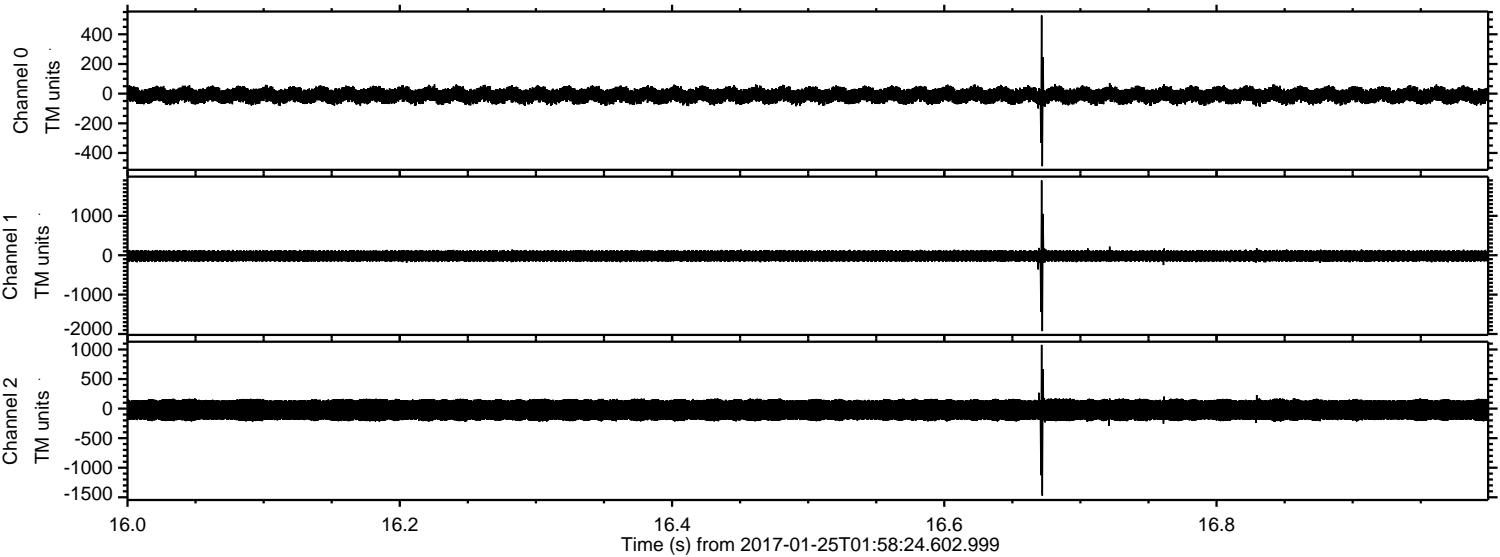


Channel 0
mn: -805
mx: 440
 μ : -11.4
 σ : 34.1

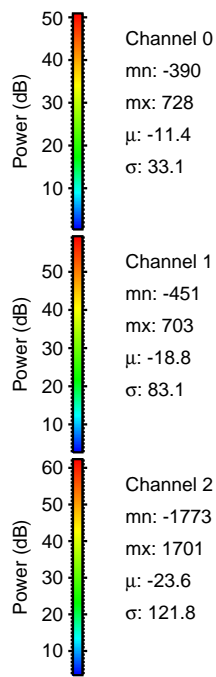
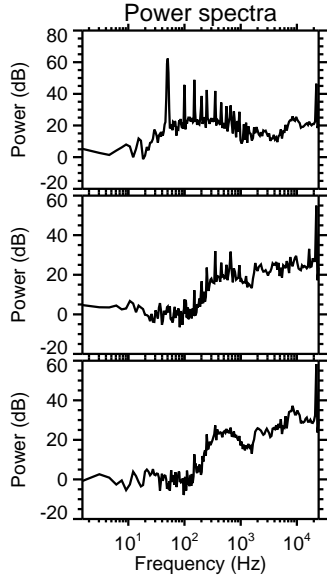
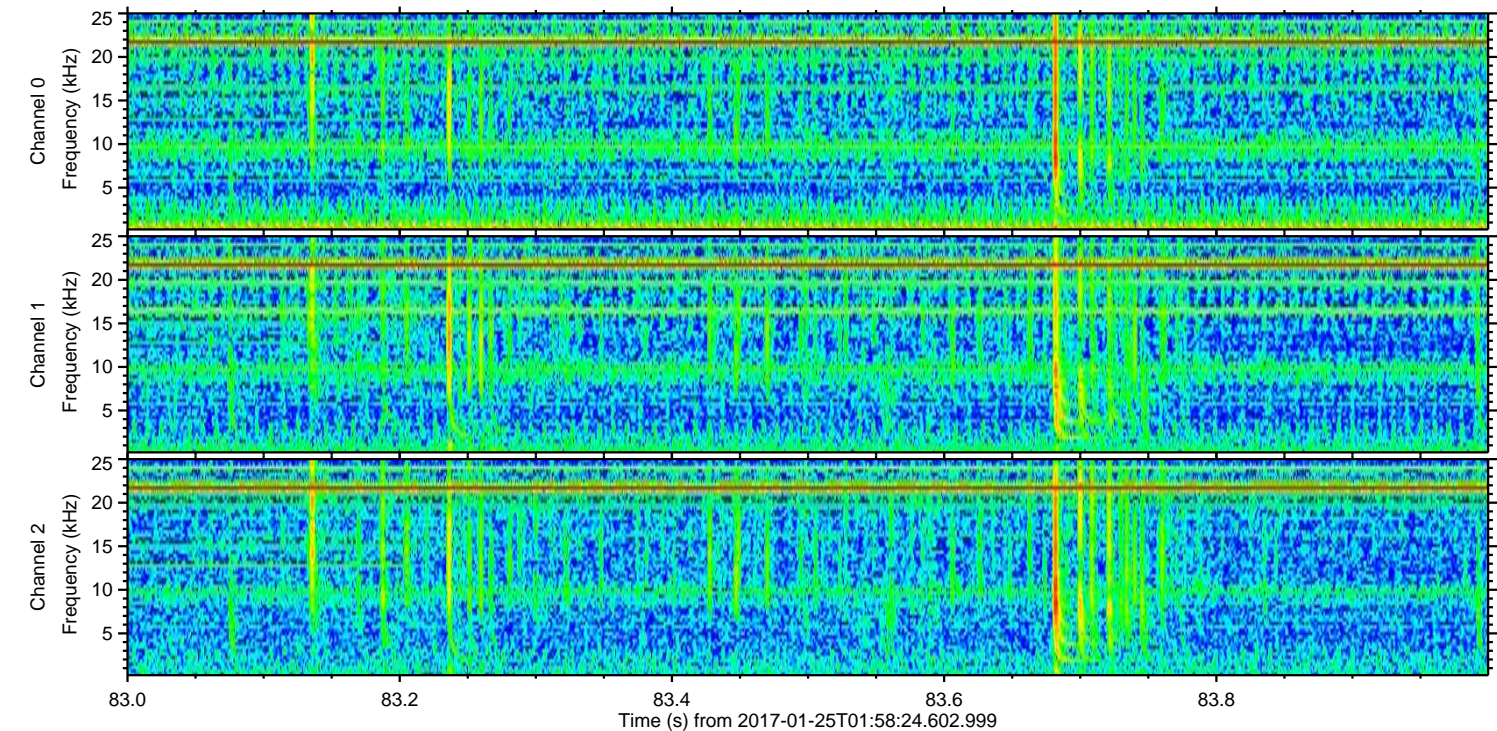
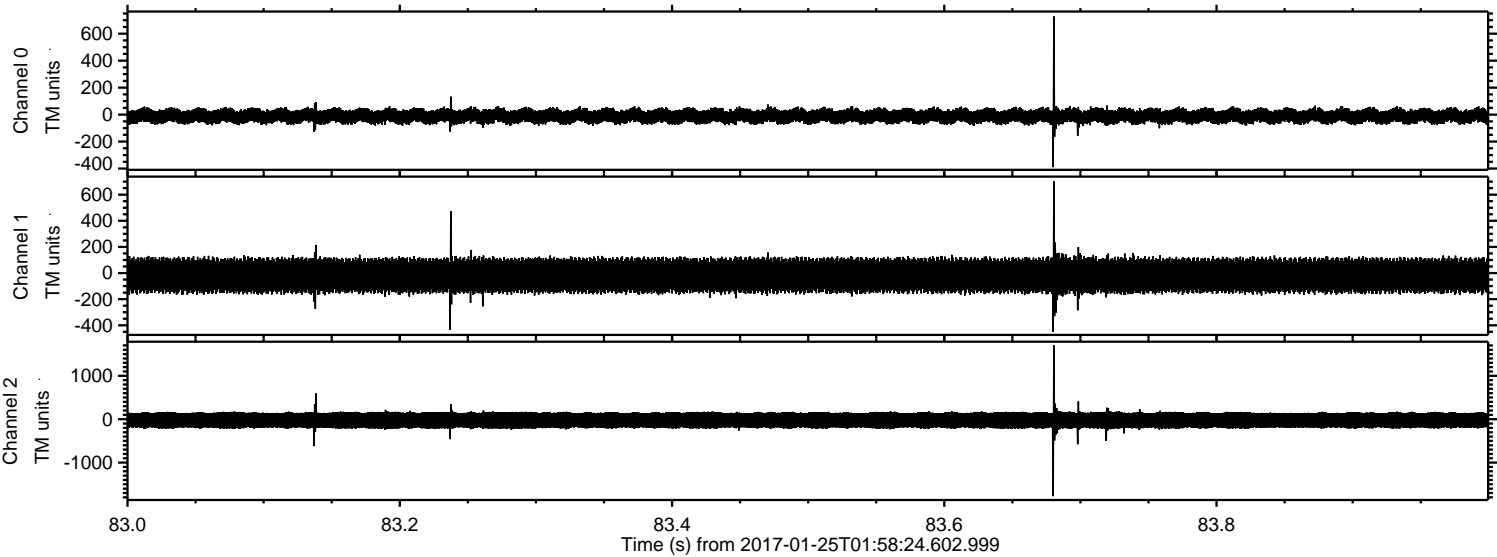
Channel 1
mn: -1742
mx: 1981
 μ : -18.8
 σ : 86.9

Channel 2
mn: -1329
mx: 981
 μ : -23.6
 σ : 121.7

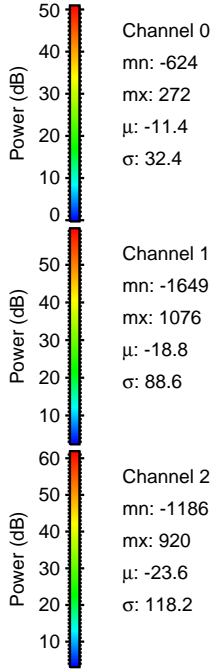
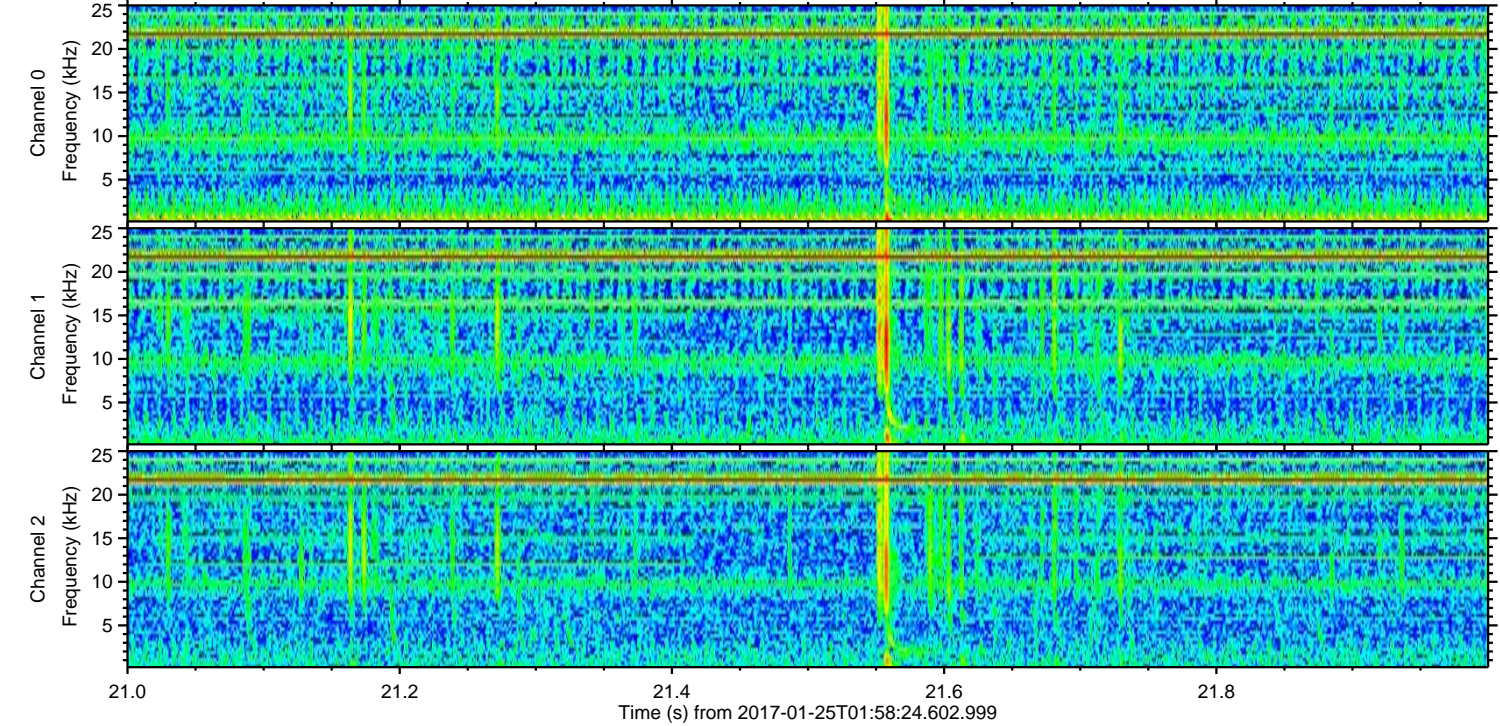
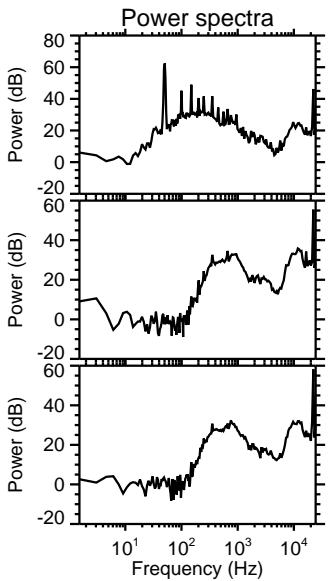
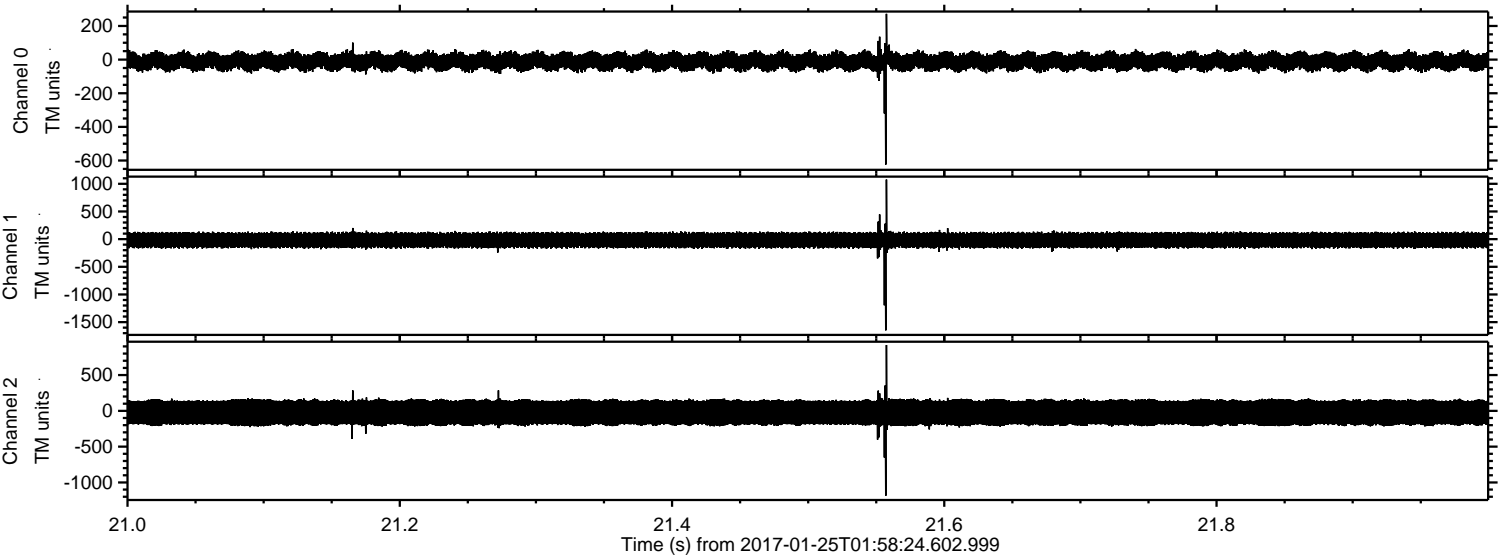
Processed Wed Jan 25 03:06:34 2017 by ELM ver.2012-10-06 from 001__elm20170125_015823__dat00.bin



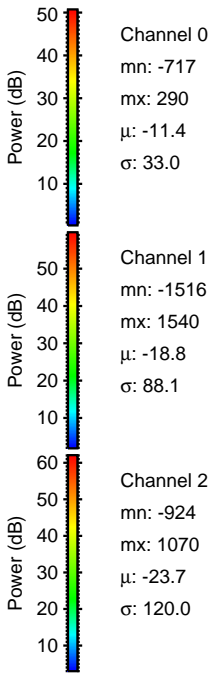
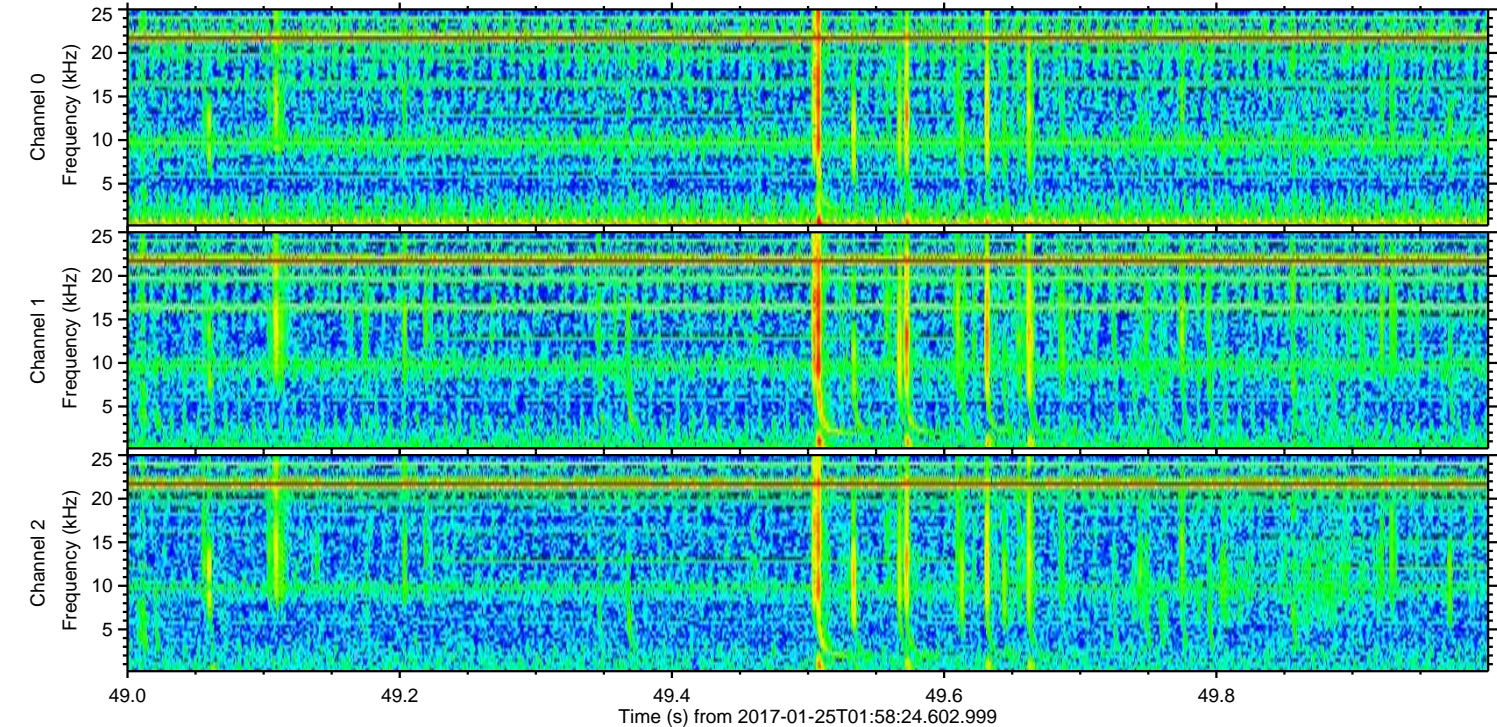
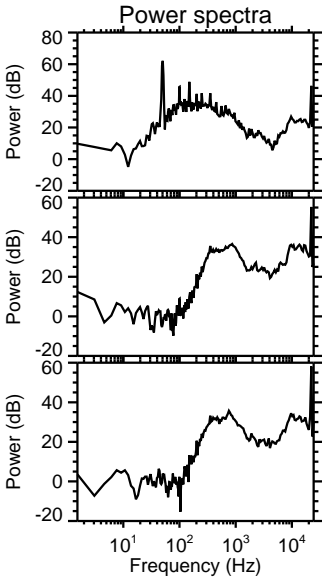
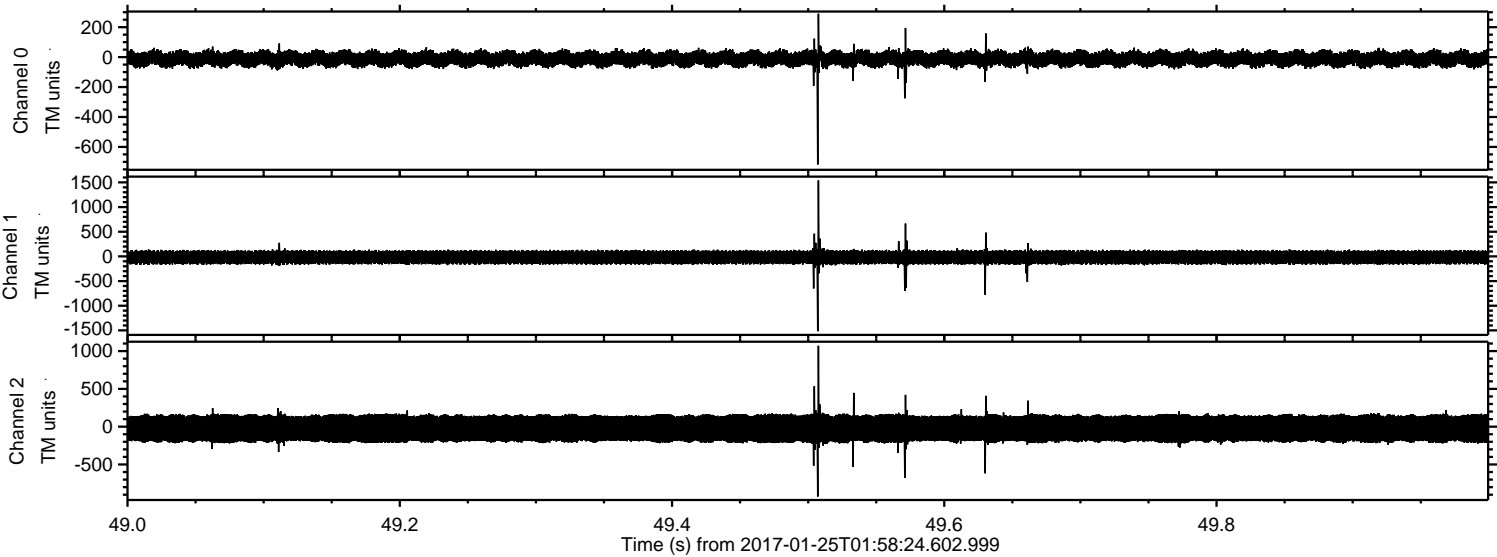
Processed Wed Jan 25 03:06:35 2017 by ELM ver.2012-10-06 from 001__elm20170125_015823__dat00.bin



Processed Wed Jan 25 03:06:36 2017 by ELM ver.2012-10-06 from 001__elm20170125_015823__dat00.bin

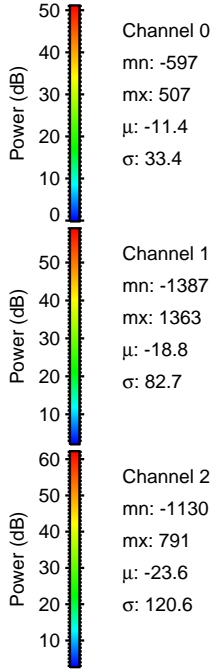
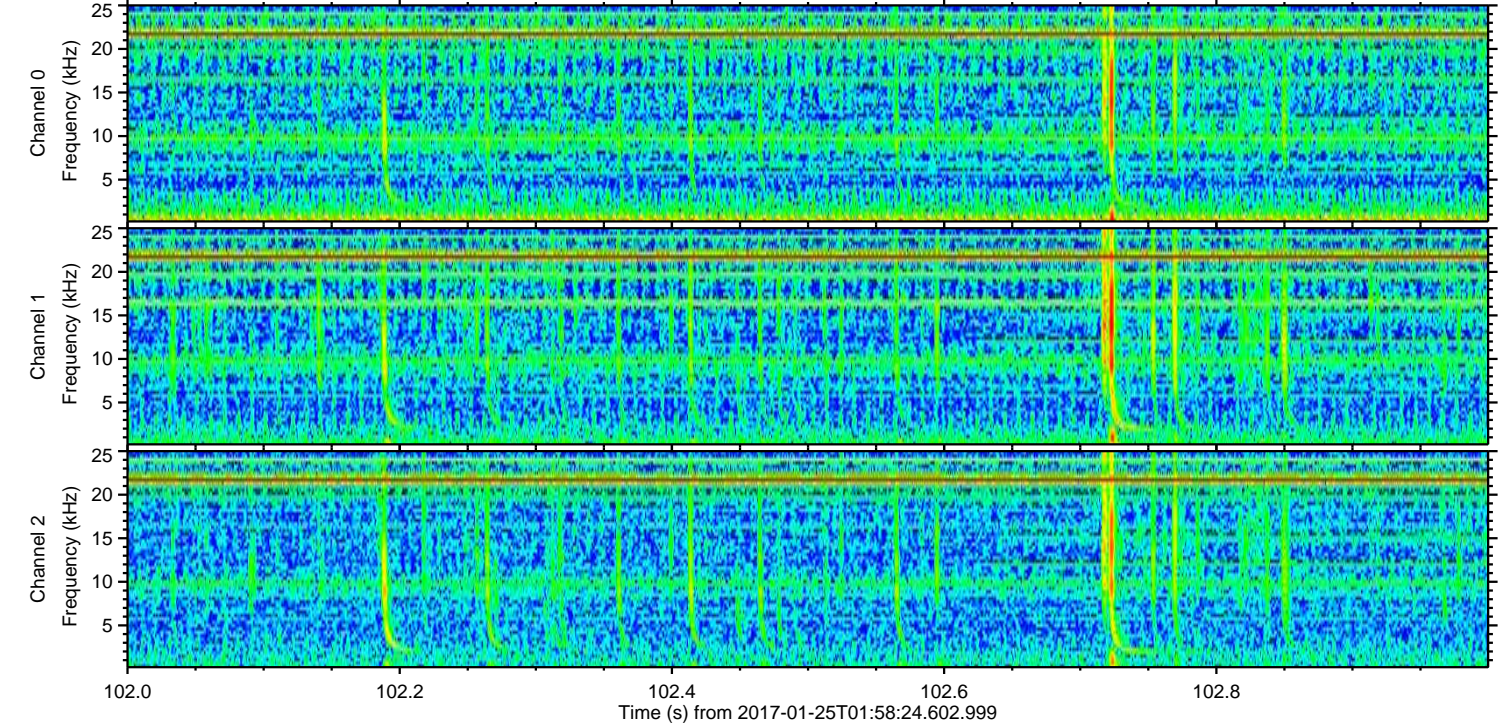
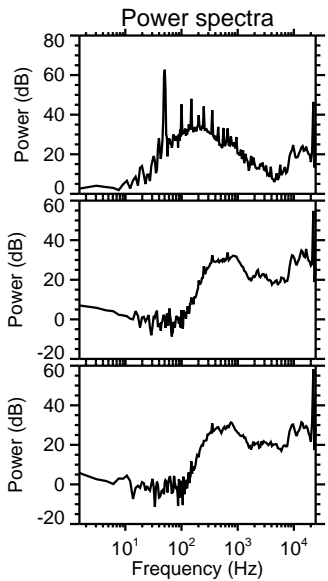
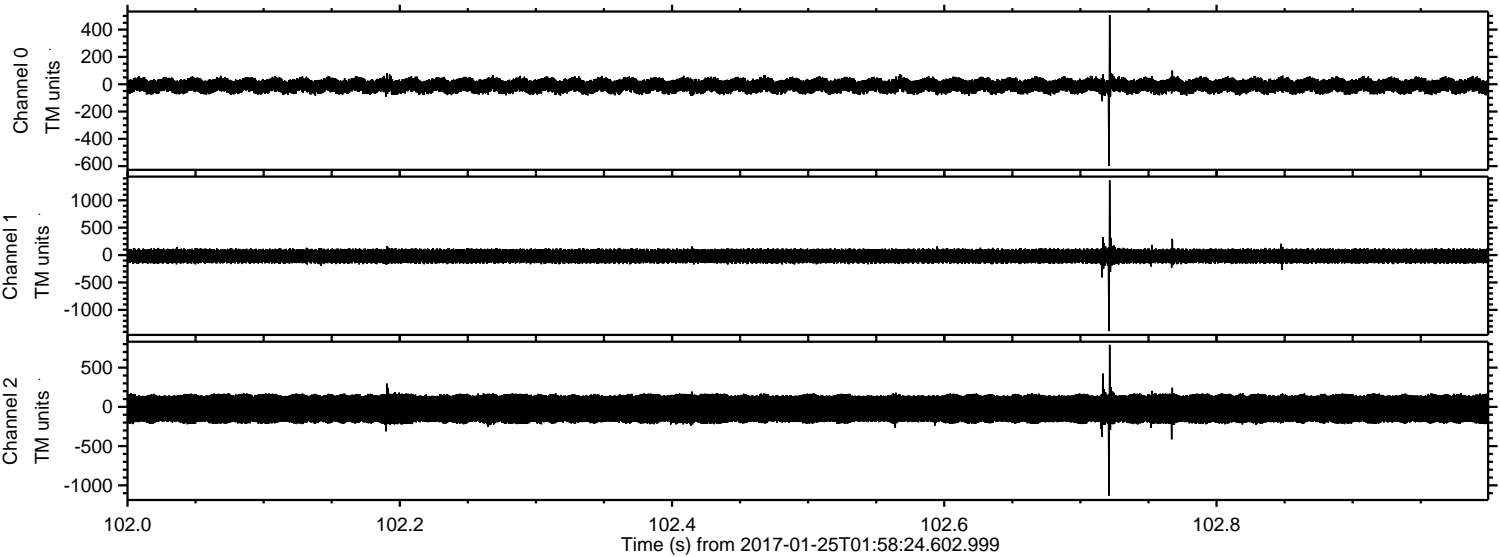


Processed Wed Jan 25 03:06:37 2017 by ELM ver.2012-10-06 from 001__elm20170125_015823__dat00.bin



ELMAVAN 3D WAVEFORMS (Measured data sampled at 50 kHz) 51000 packets of 144 samples from 2017-01-25T01:58:24.602.999. Part 103/147

Processed Wed Jan 25 03:06:38 2017 by ELM ver.2012-10-06 from 001__elm20170125_015823__dat00.bin



Processed Wed Jan 25 03:06:39 2017 by ELM ver.2012-10-06 from 001__elm20170125_015823__dat00.bin

