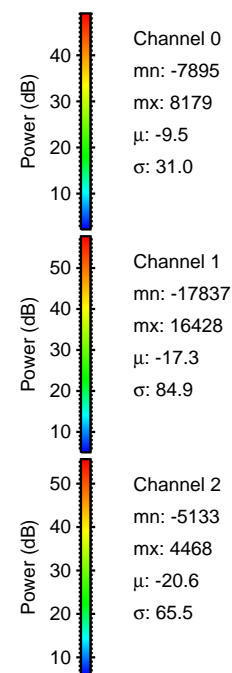
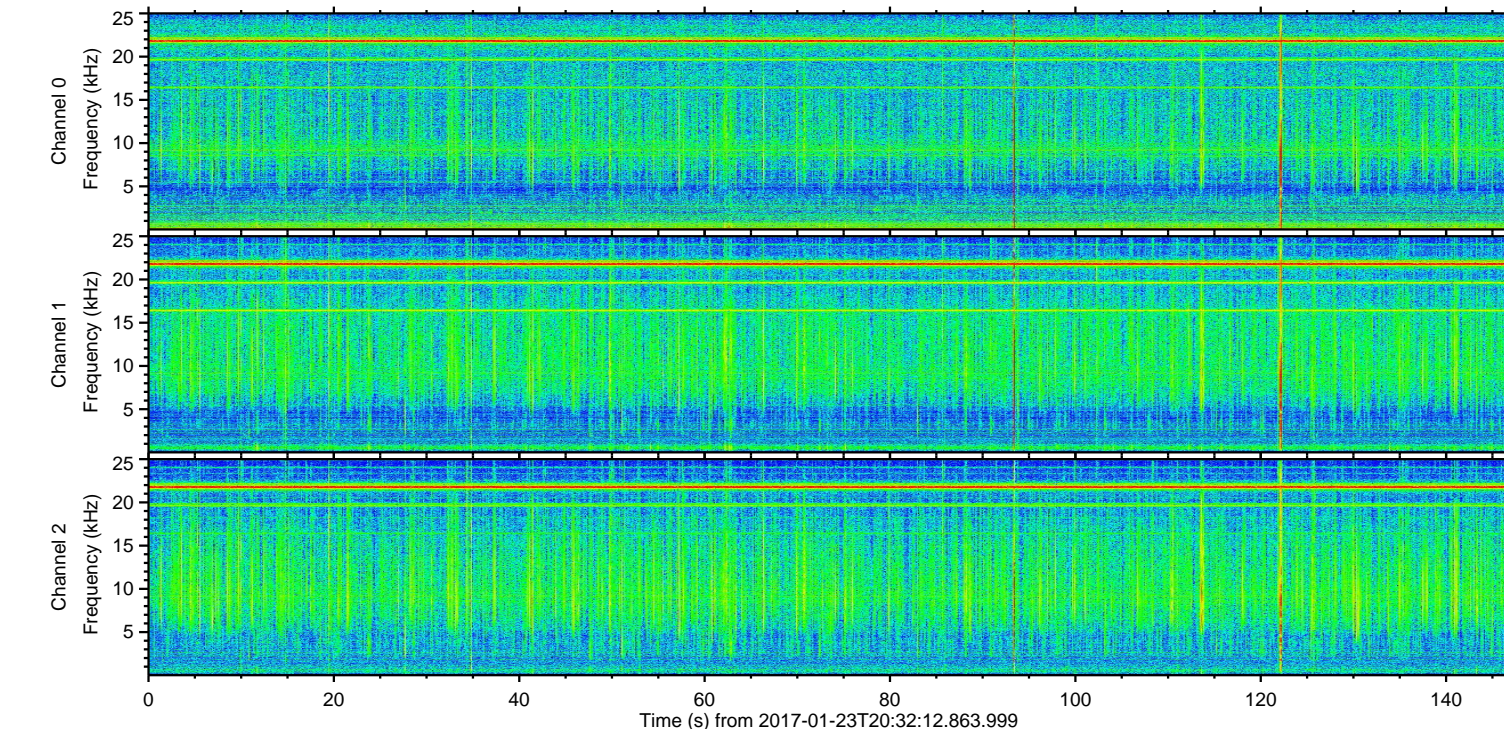
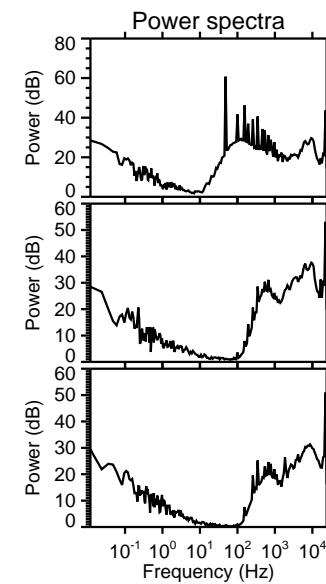
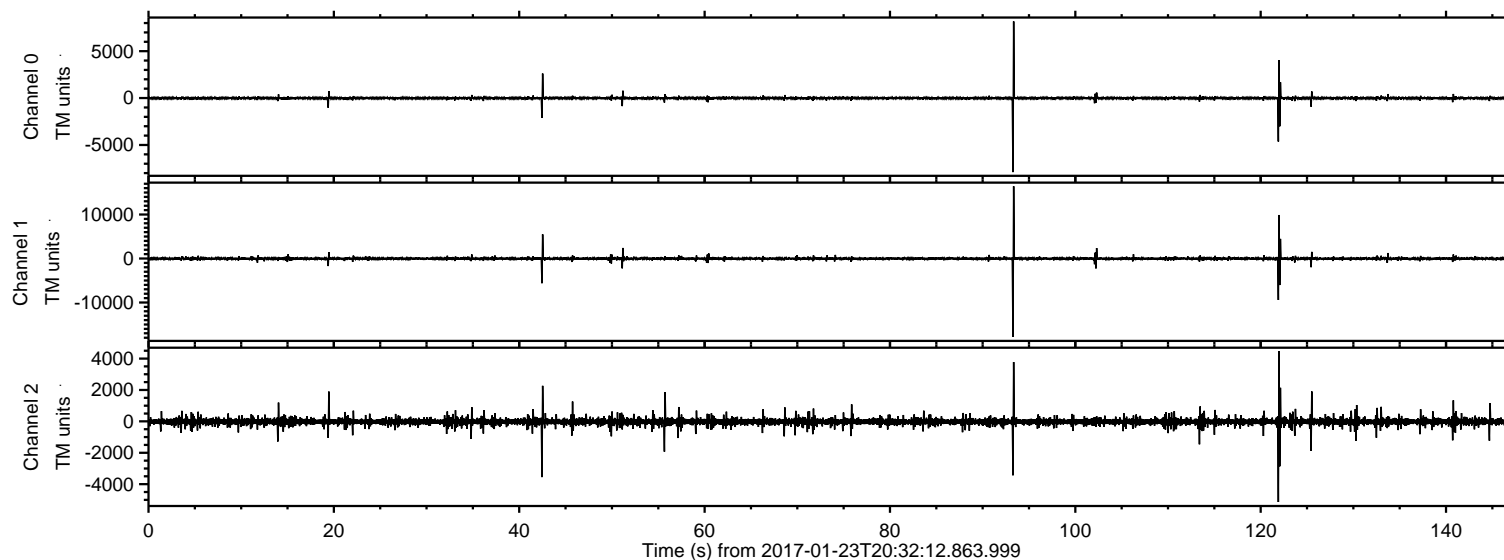
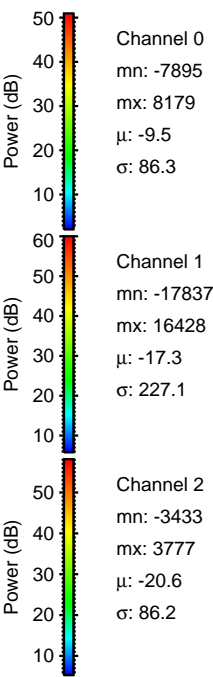
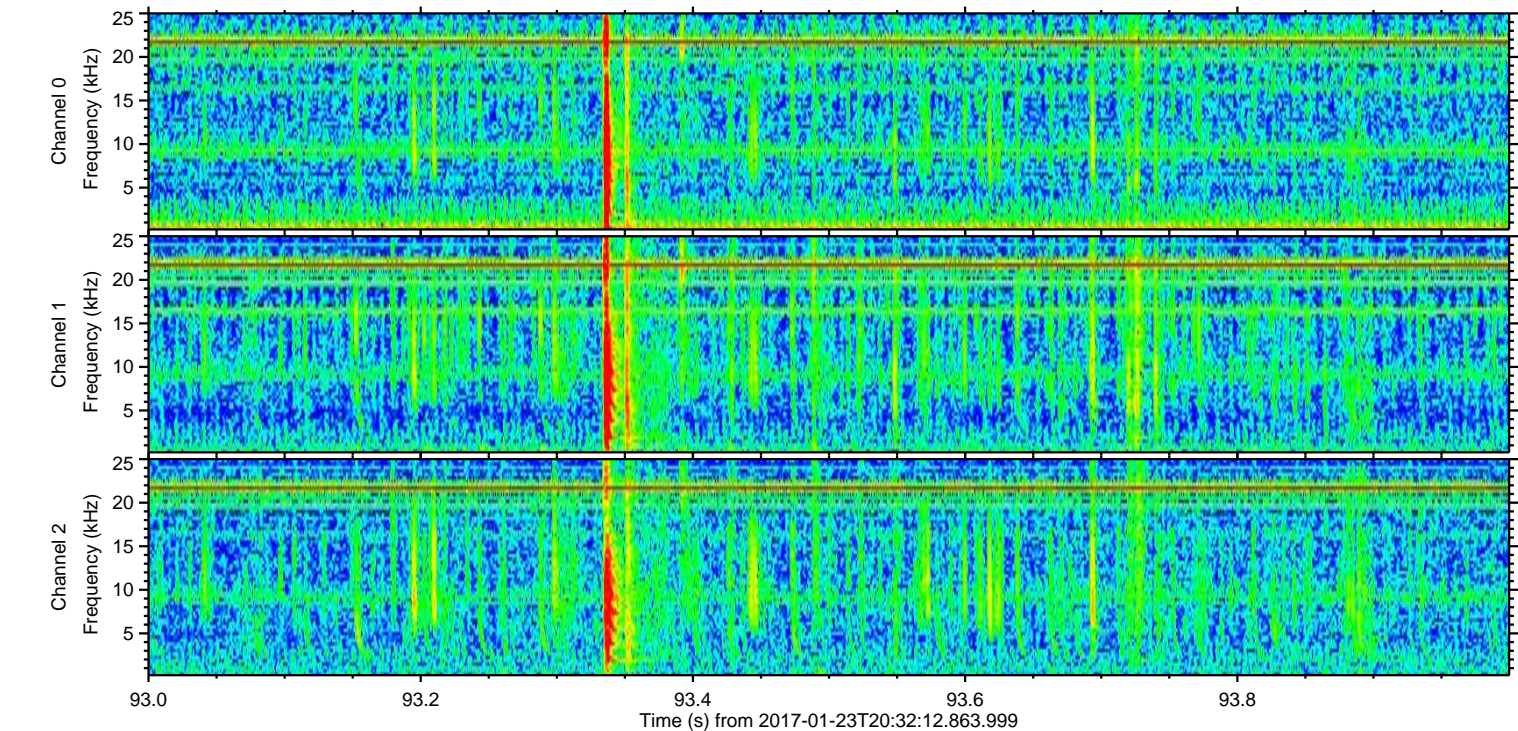
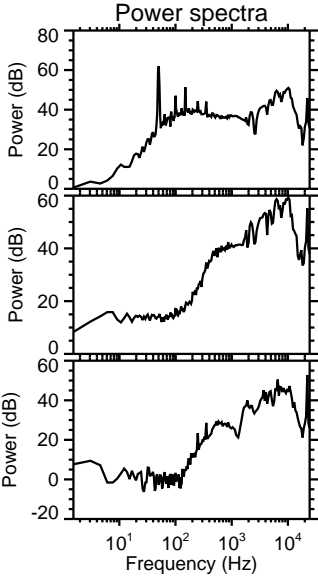
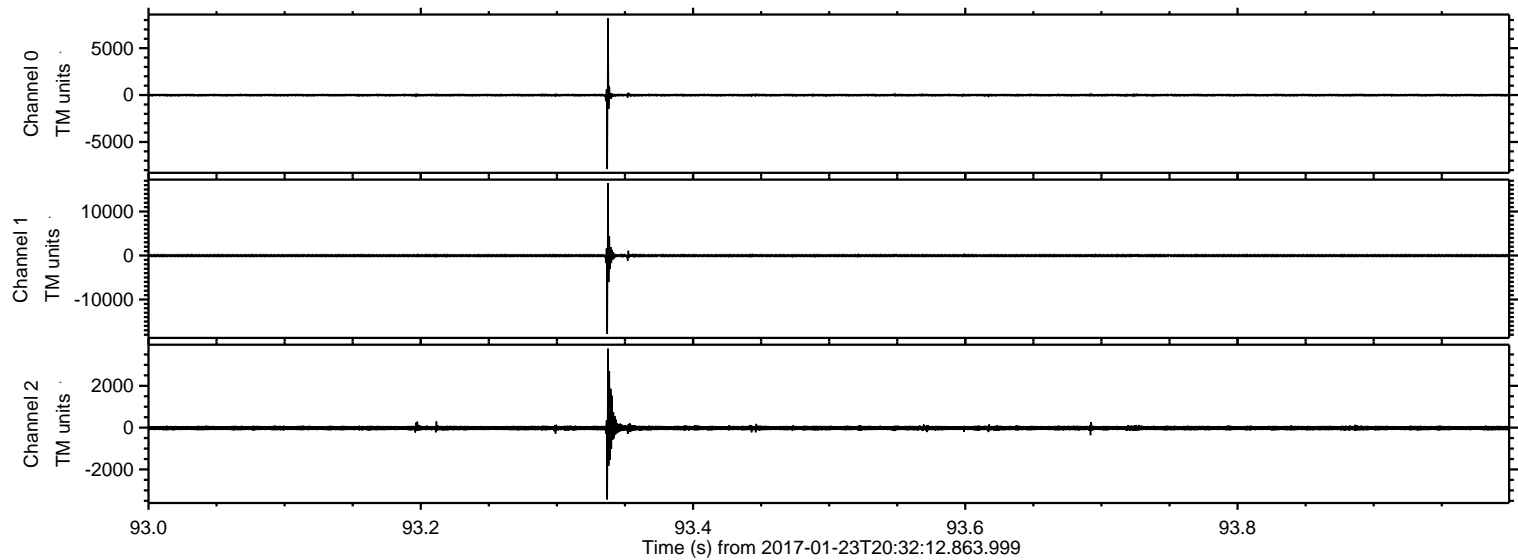


ELMAVAN 3D WAVEFORMS (Measured data sampled at 50 kHz) 51000 packets of 144 samples from 2017-01-23T20:32:12.863.999.

Processed Mon Jan 23 21:40:23 2017 by ELM ver.2012-10-06 from 001__elm20170123_203211__dat00.bin

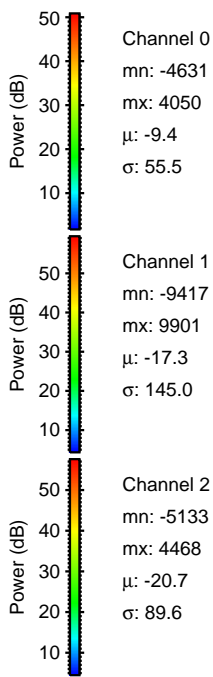
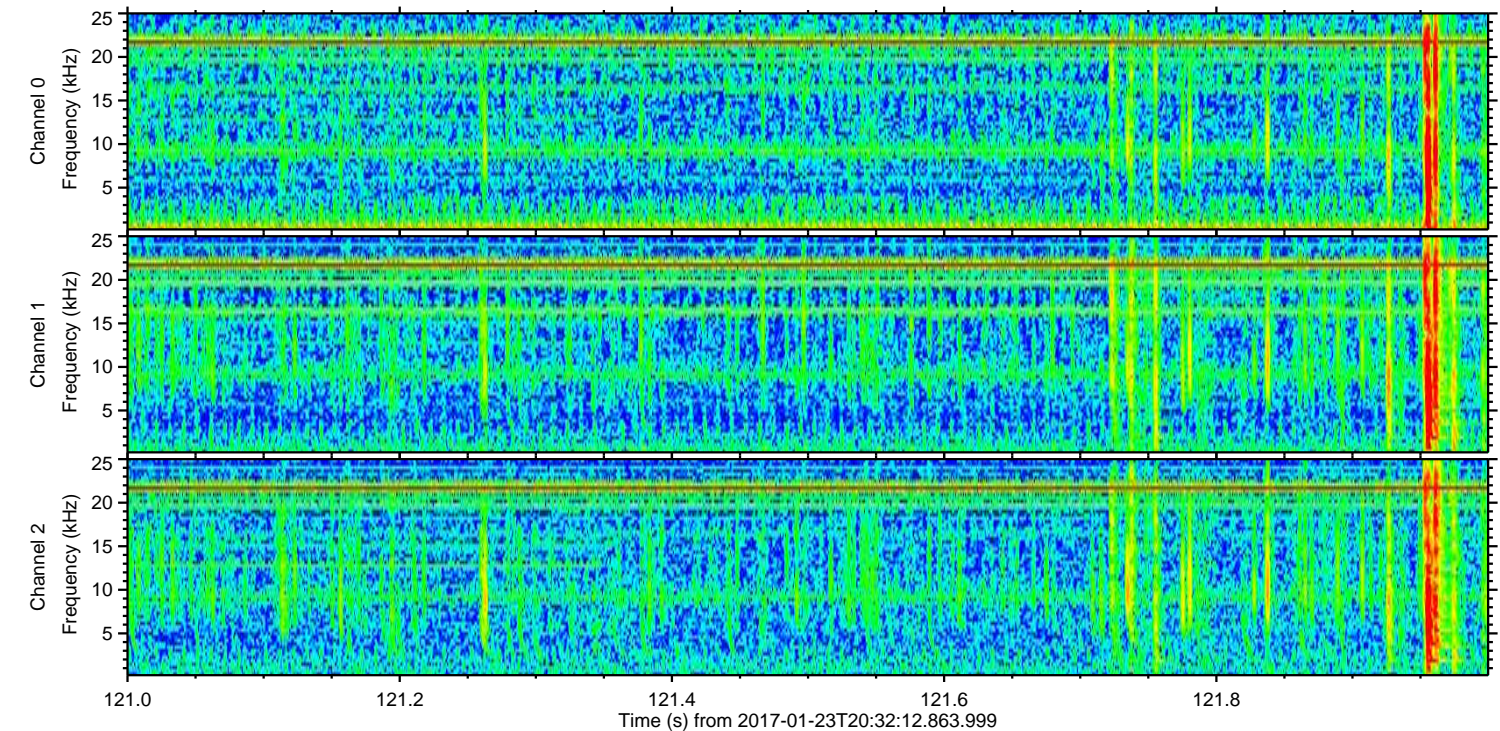
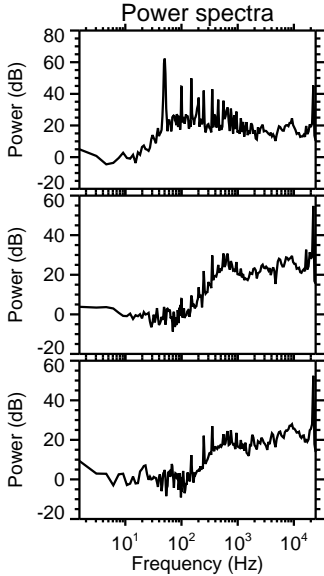
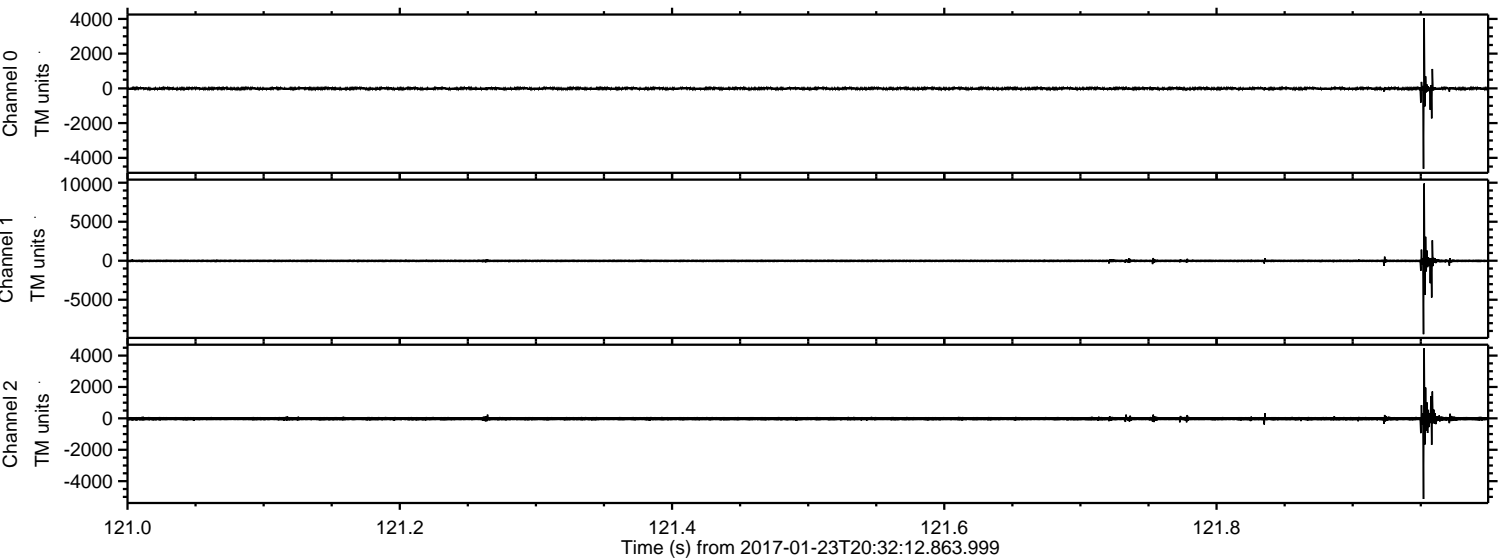


Processed Mon Jan 23 21:40:35 2017 by ELM ver.2012-10-06 from 001__elm20170123_203211__dat00.bin



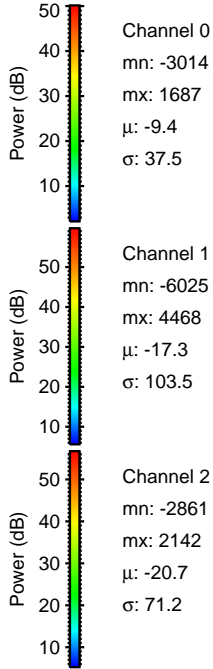
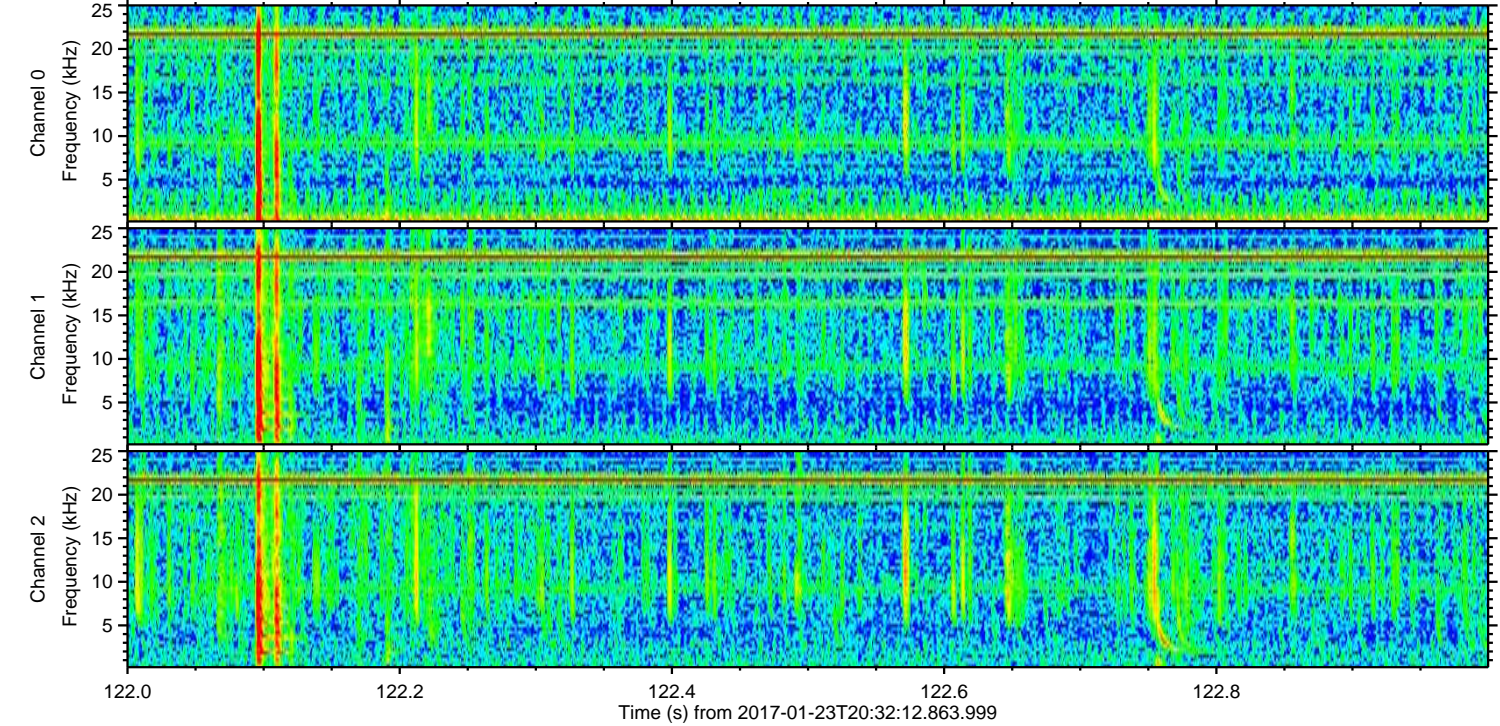
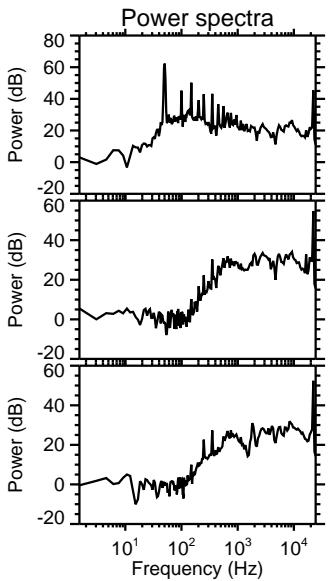
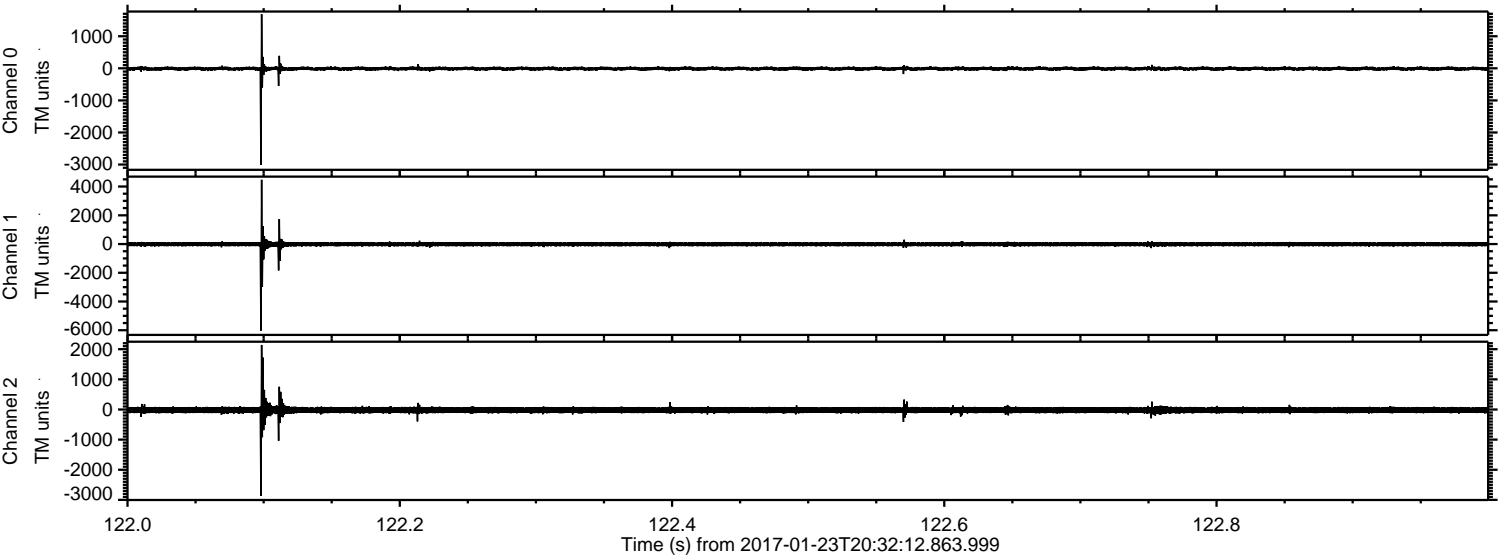
ELMAVAN 3D WAVEFORMS (Measured data sampled at 50 kHz) 51000 packets of 144 samples from 2017-01-23T20:32:12.863.999. Part 122/147

Processed Mon Jan 23 21:40:36 2017 by ELM ver.2012-10-06 from 001__elm20170123_203211__dat00.bin

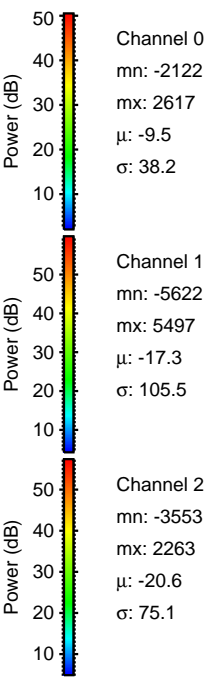
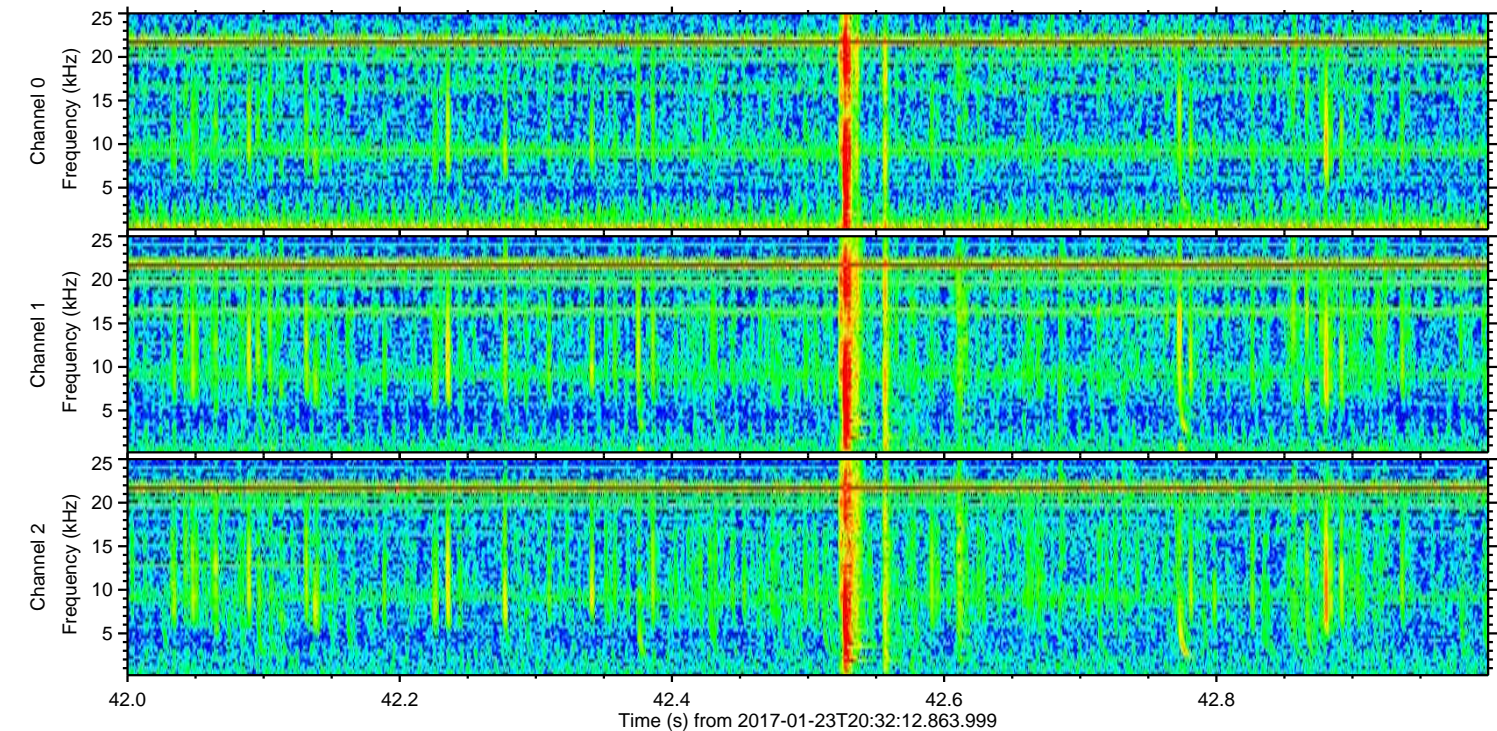
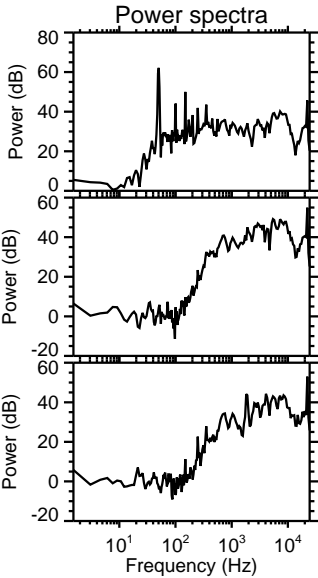
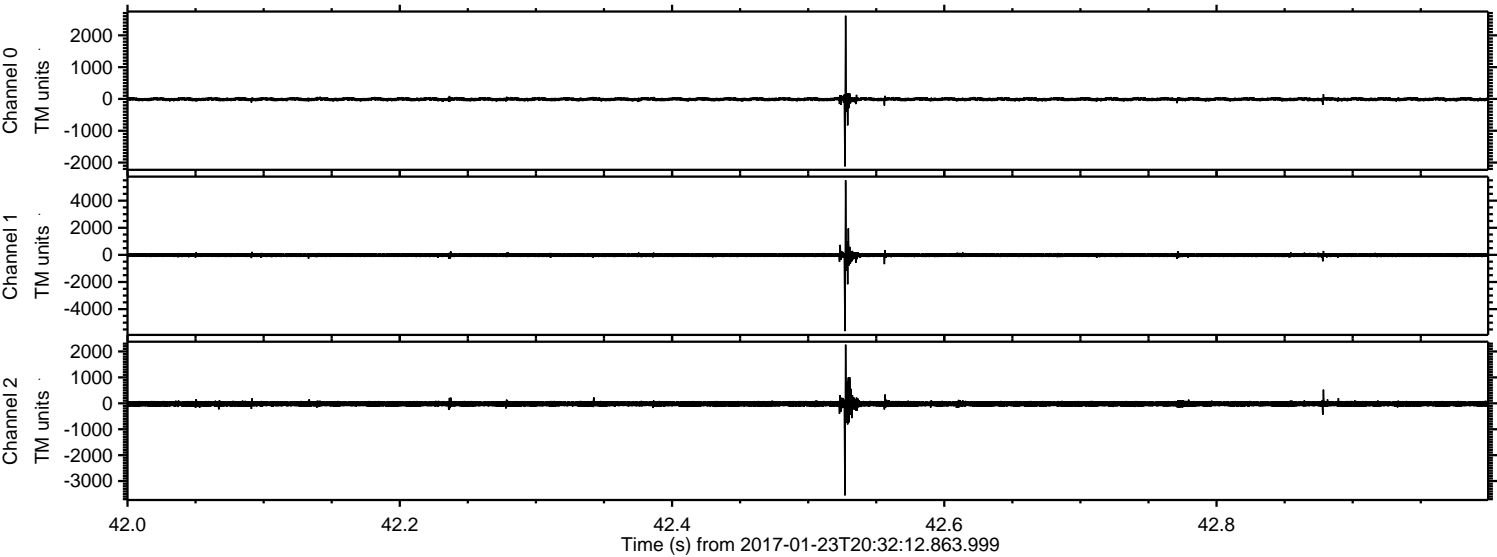


ELMAVAN 3D WAVEFORMS (Measured data sampled at 50 kHz) 51000 packets of 144 samples from 2017-01-23T20:32:12.863.999. Part 123/147

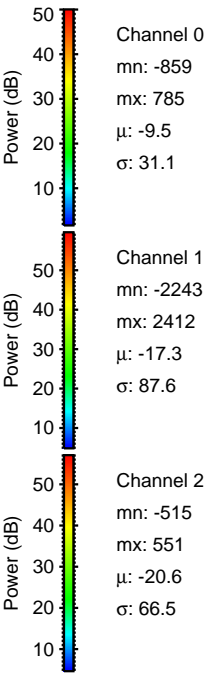
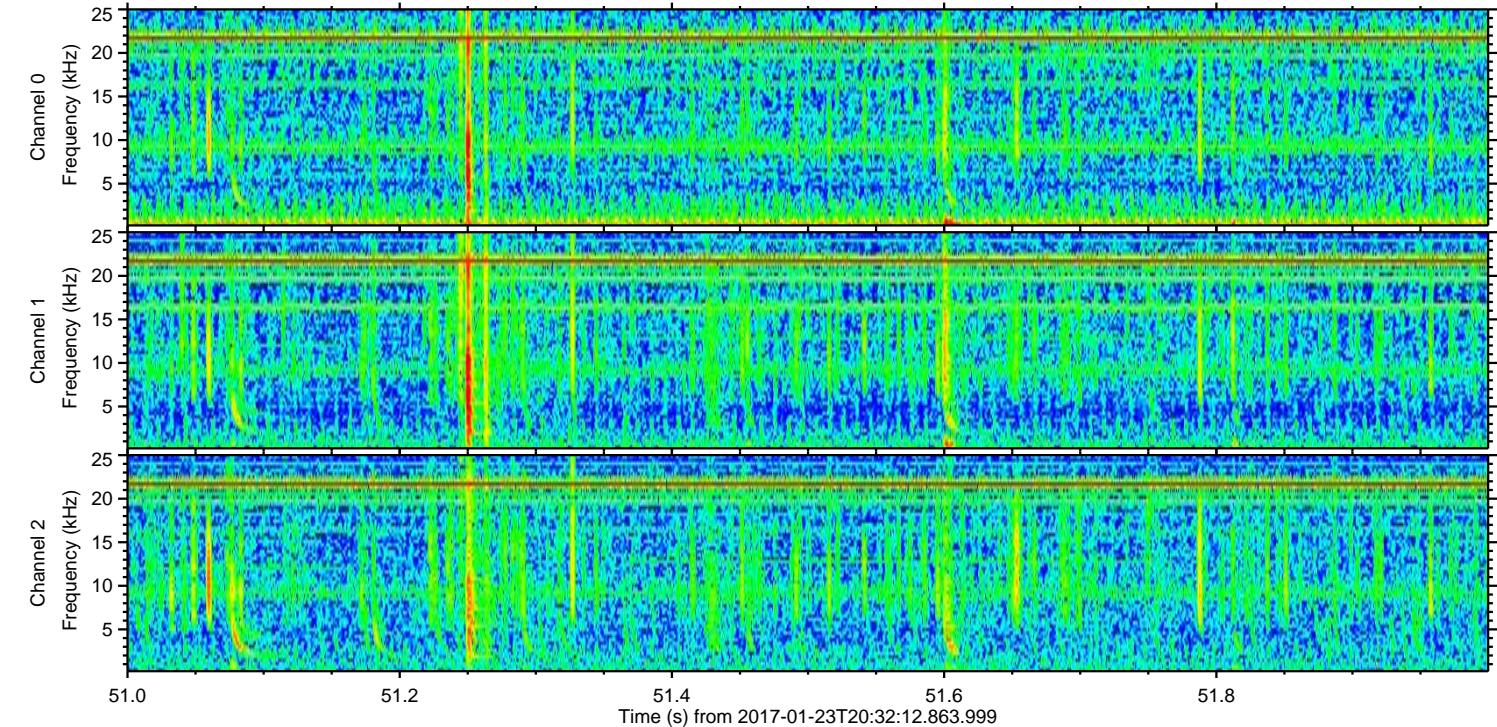
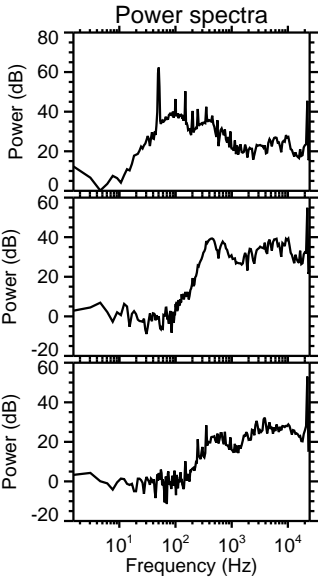
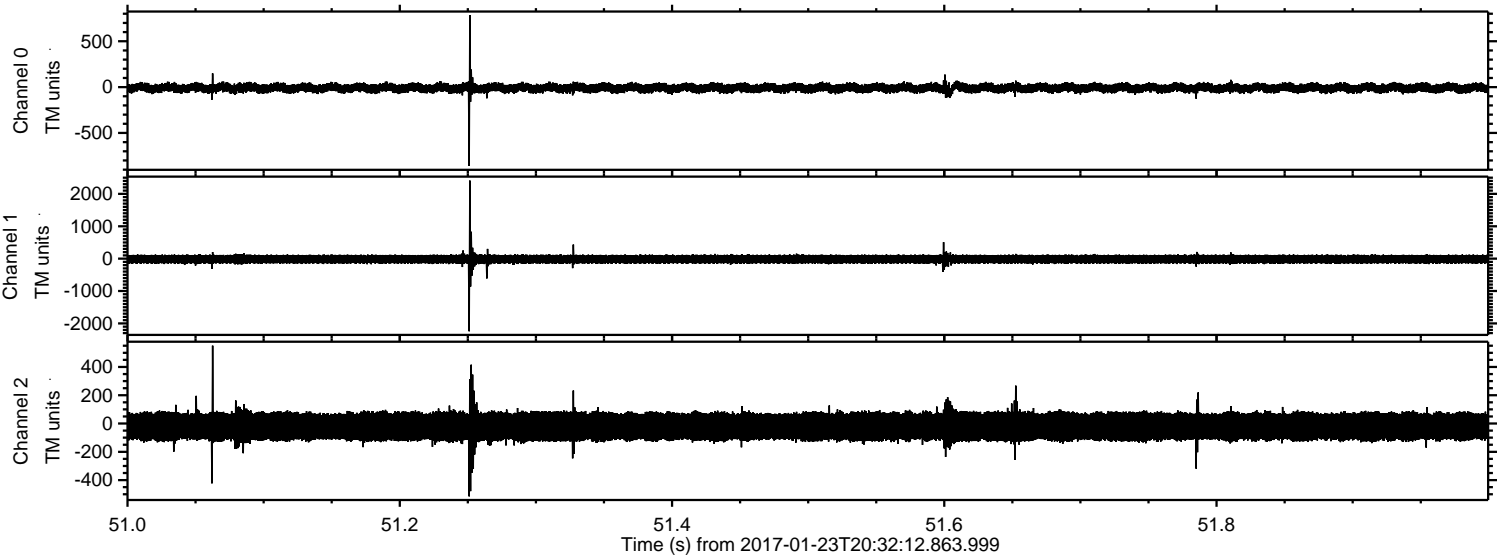
Processed Mon Jan 23 21:40:37 2017 by ELM ver.2012-10-06 from 001__elm20170123_203211__dat00.bin



Processed Mon Jan 23 21:40:38 2017 by ELM ver.2012-10-06 from 001__elm20170123_203211__dat00.bin

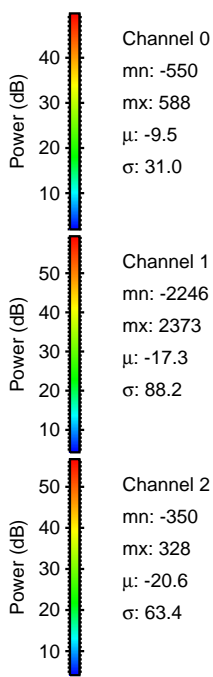
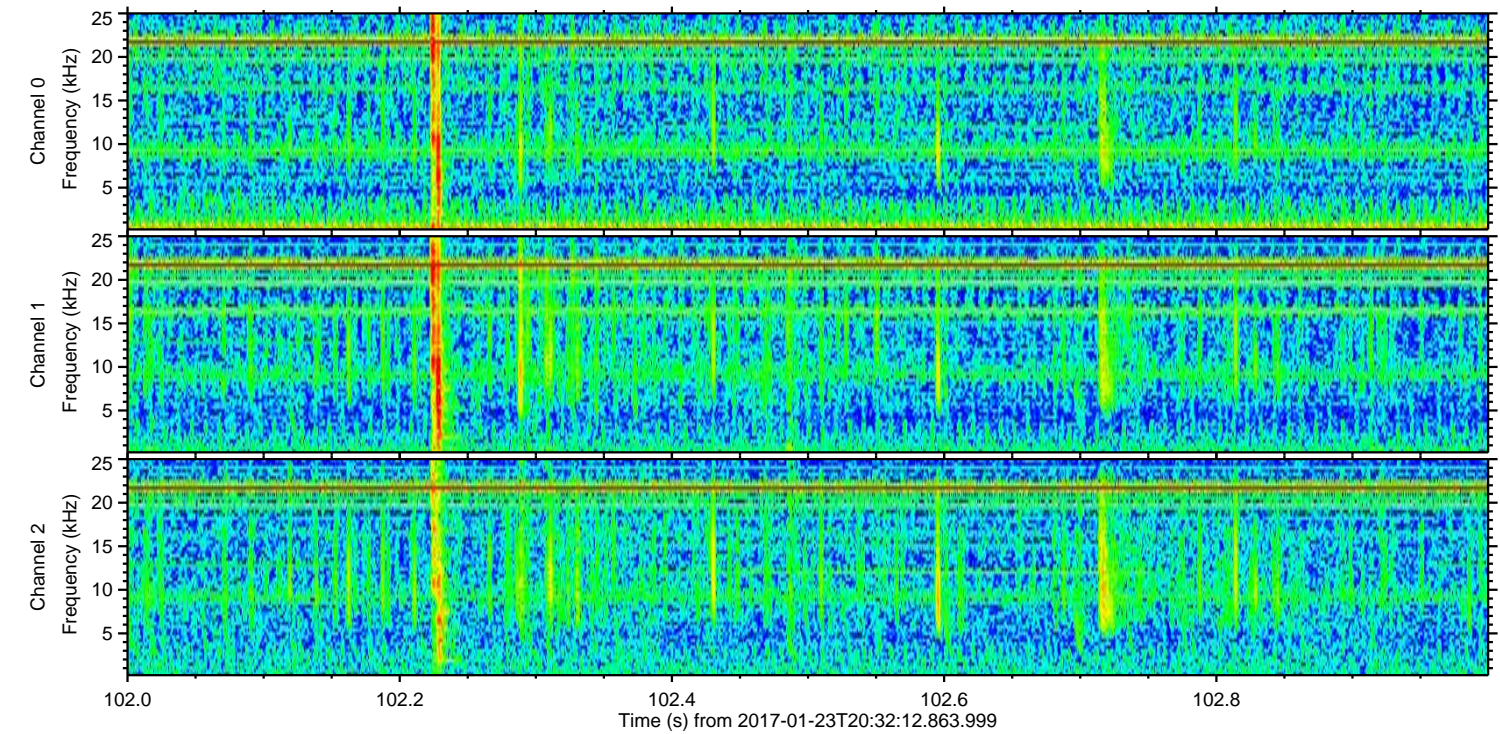
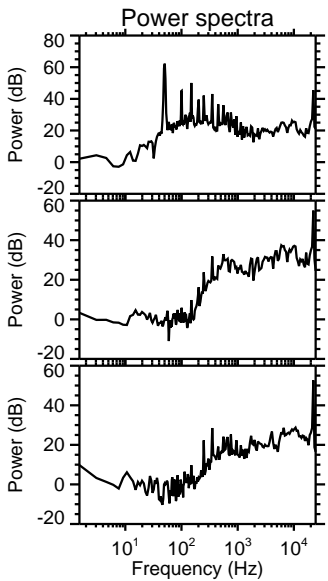
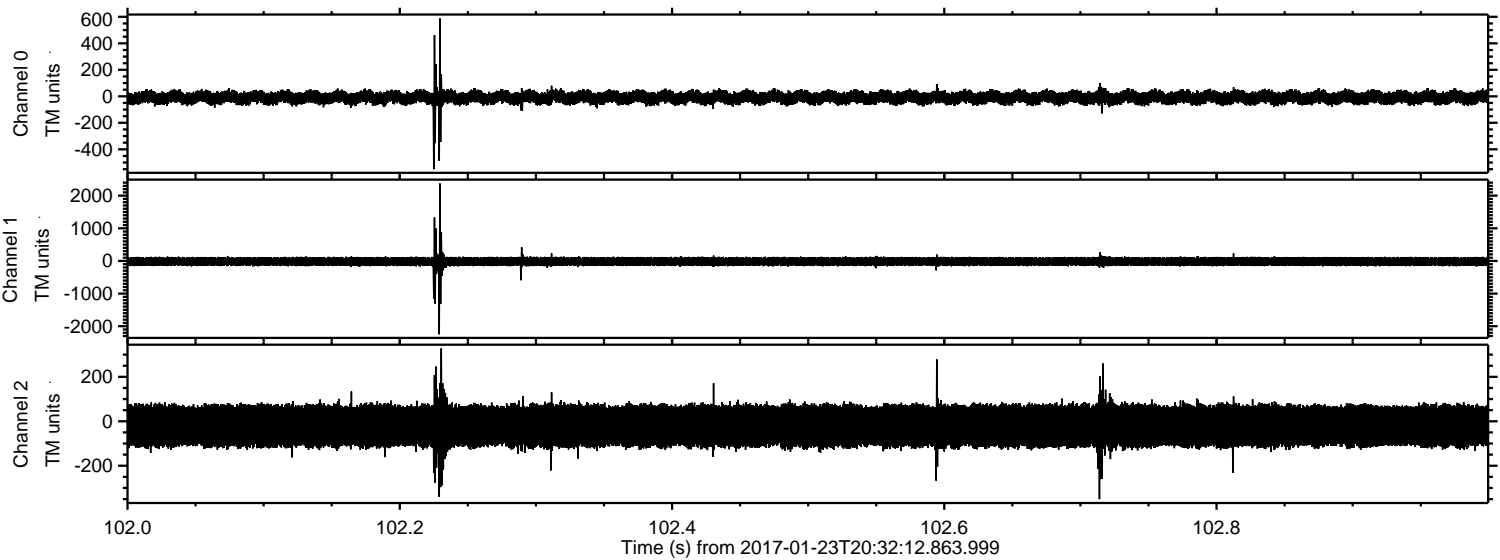


Processed Mon Jan 23 21:40:39 2017 by ELM ver.2012-10-06 from 001__elm20170123_203211__dat00.bin



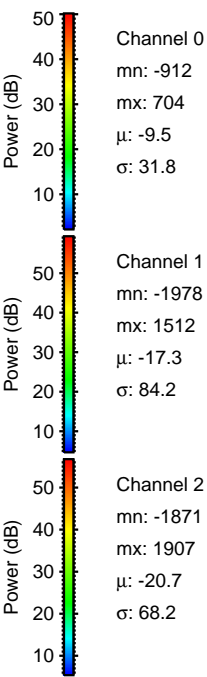
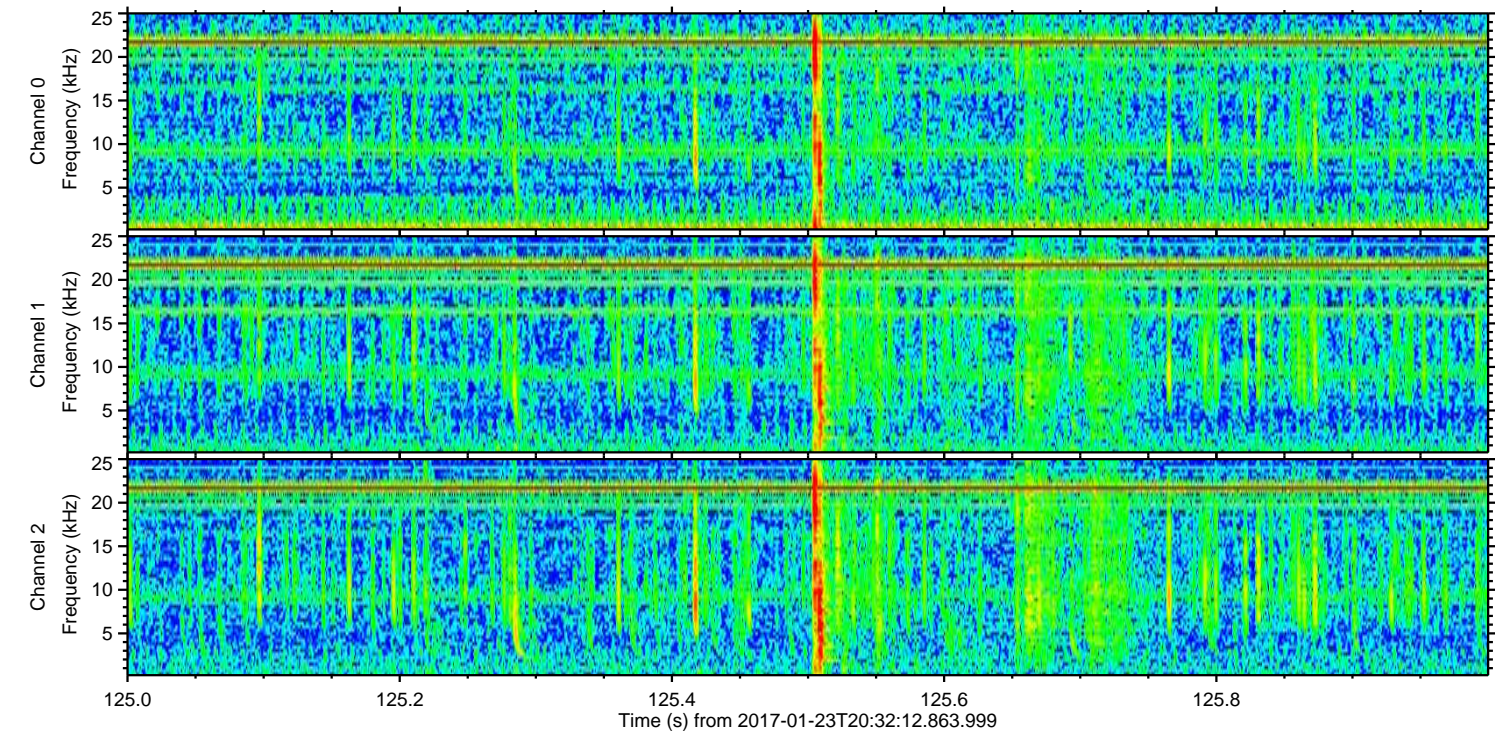
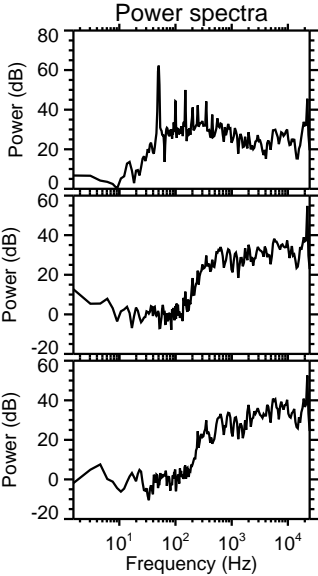
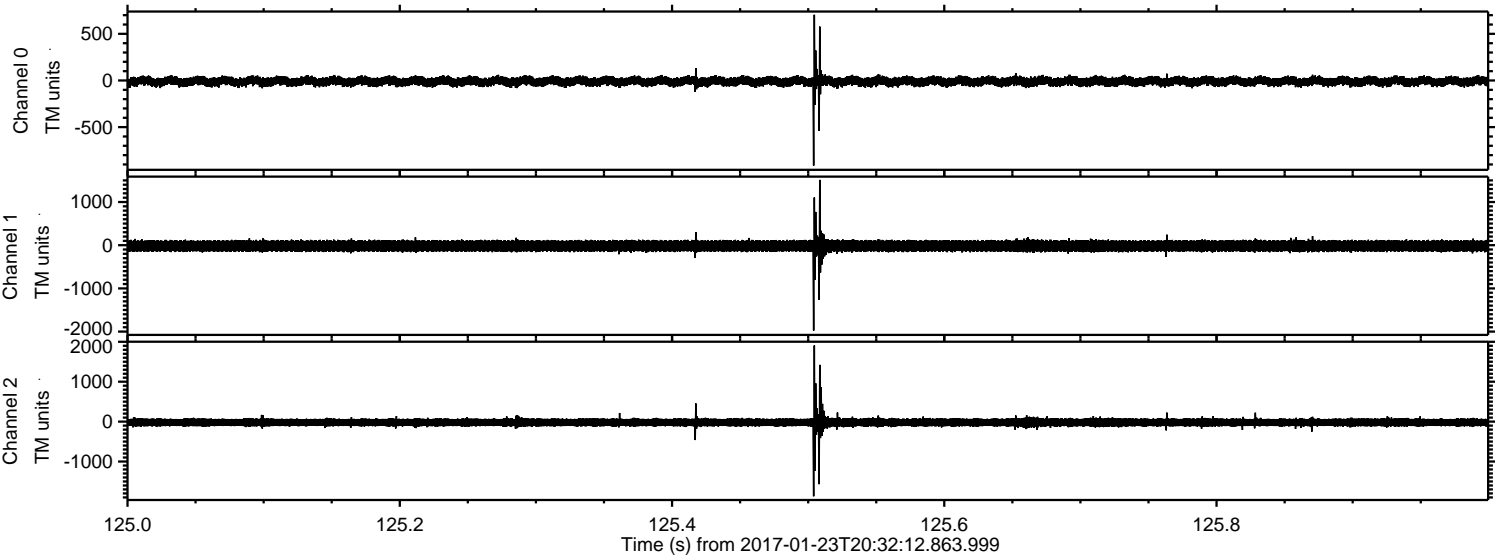
ELMAVAN 3D WAVEFORMS (Measured data sampled at 50 kHz) 51000 packets of 144 samples from 2017-01-23T20:32:12.863.999. Part 103/147

Processed Mon Jan 23 21:40:40 2017 by ELM ver.2012-10-06 from 001__elm20170123_203211__dat00.bin

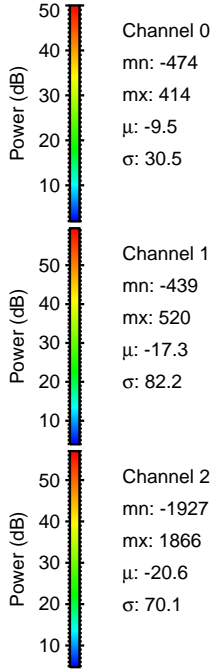
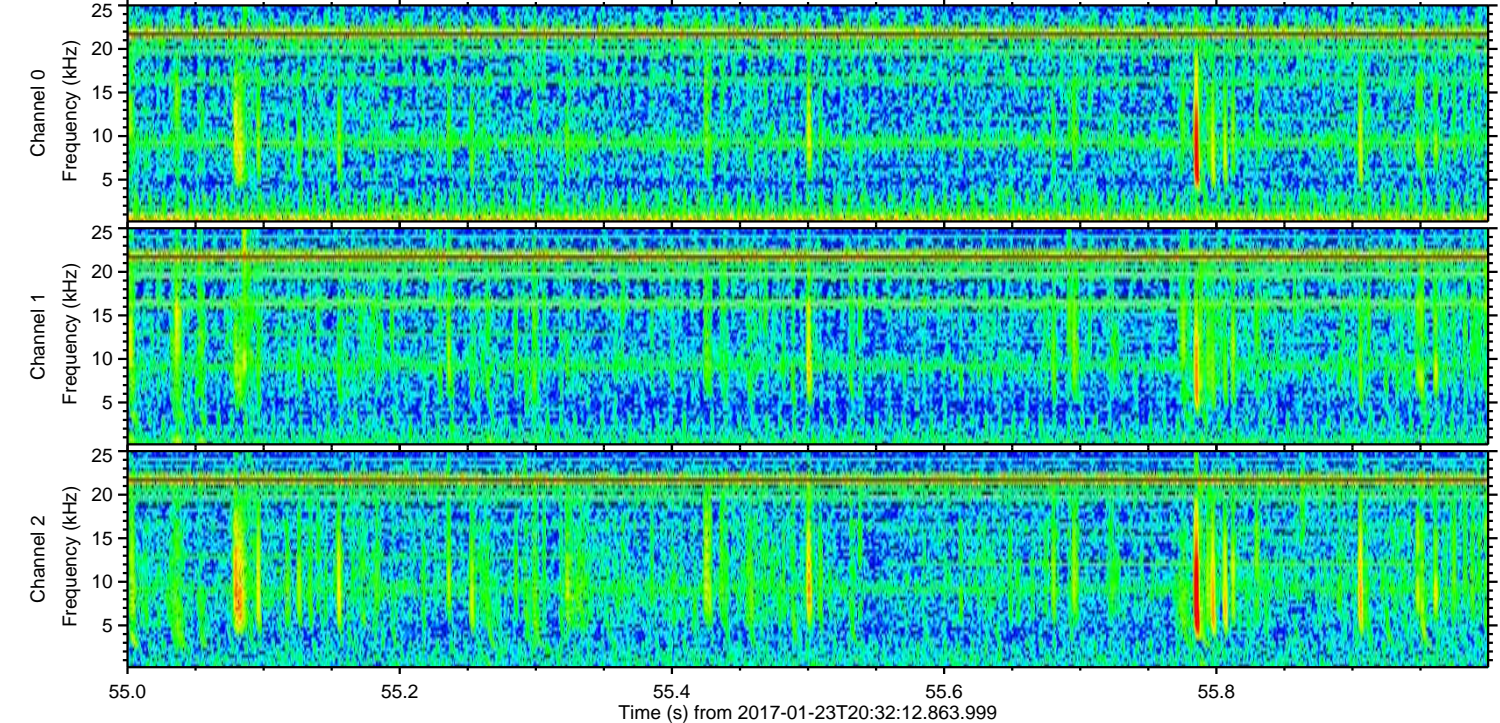
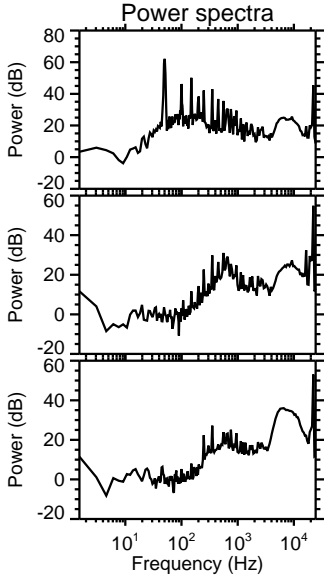
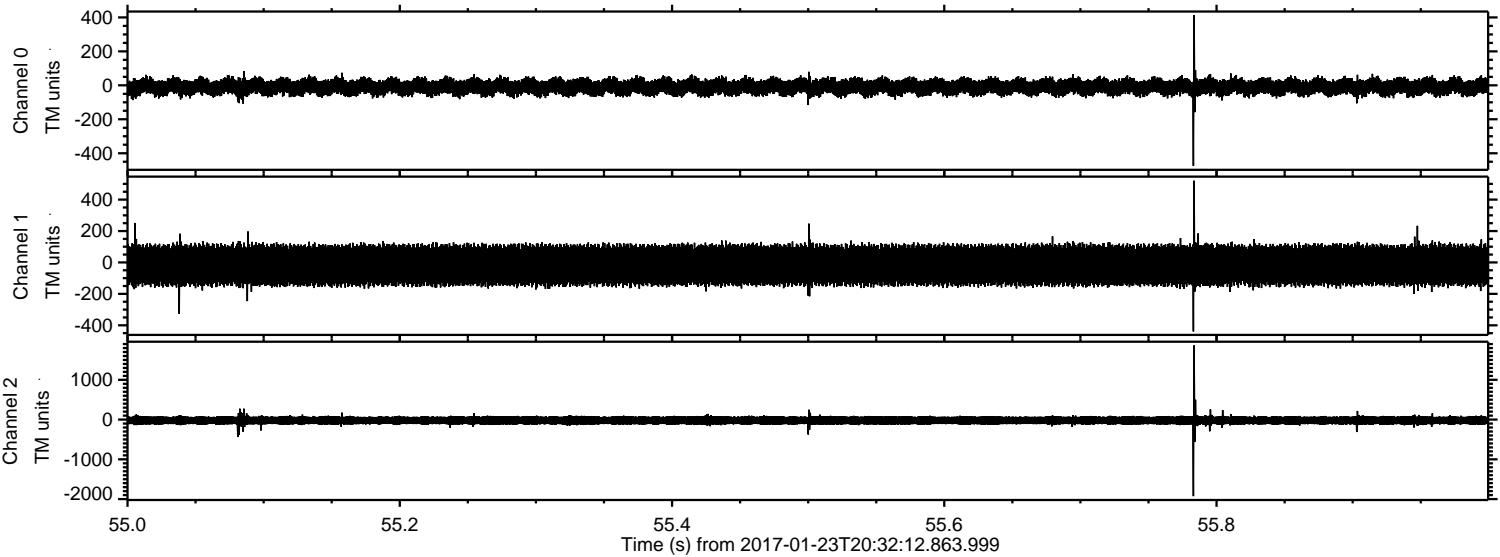


ELMAVAN 3D WAVEFORMS (Measured data sampled at 50 kHz) 51000 packets of 144 samples from 2017-01-23T20:32:12.863.999. Part 126/147

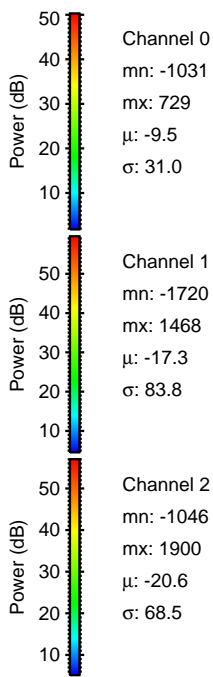
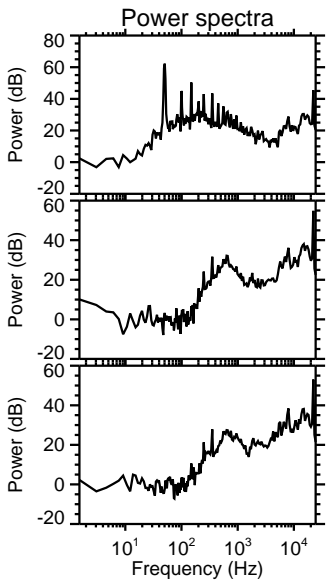
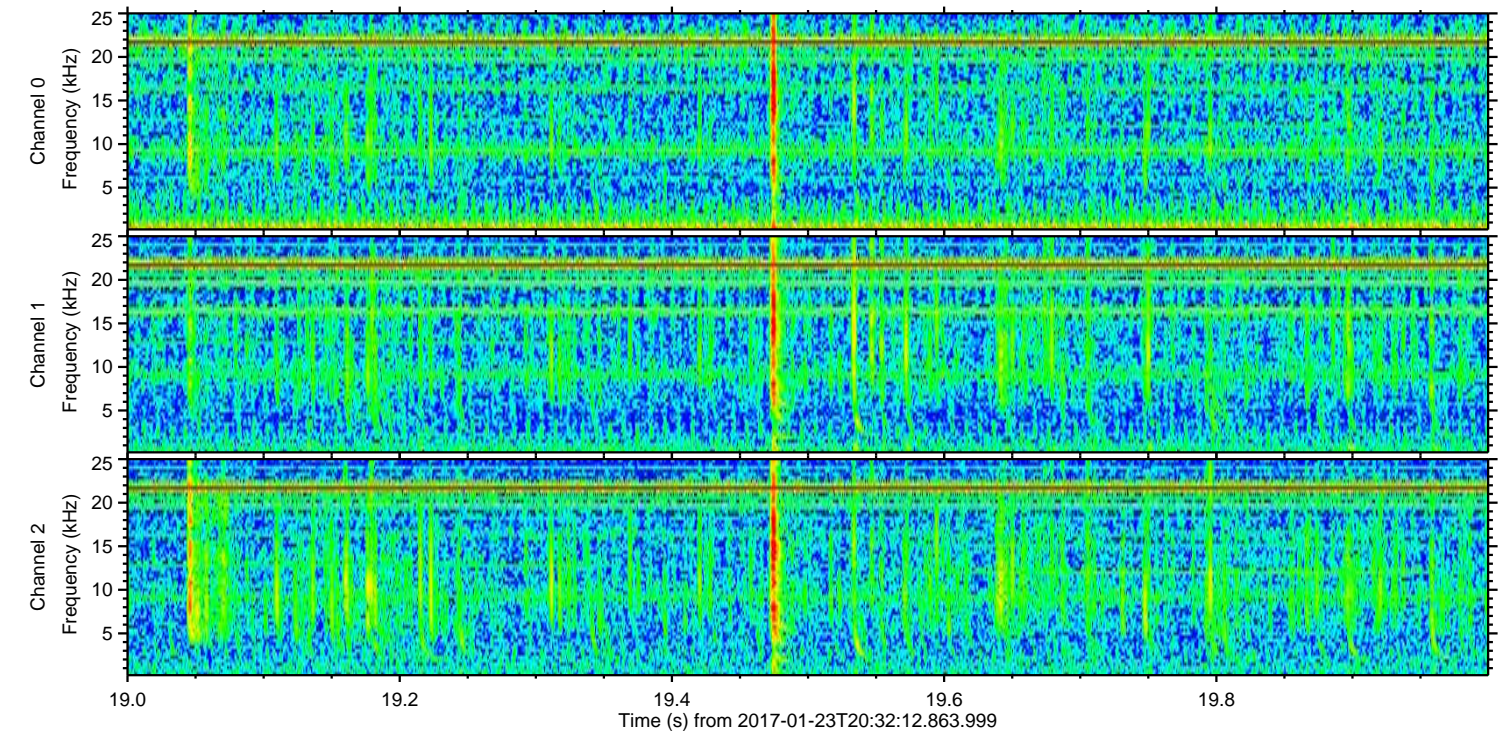
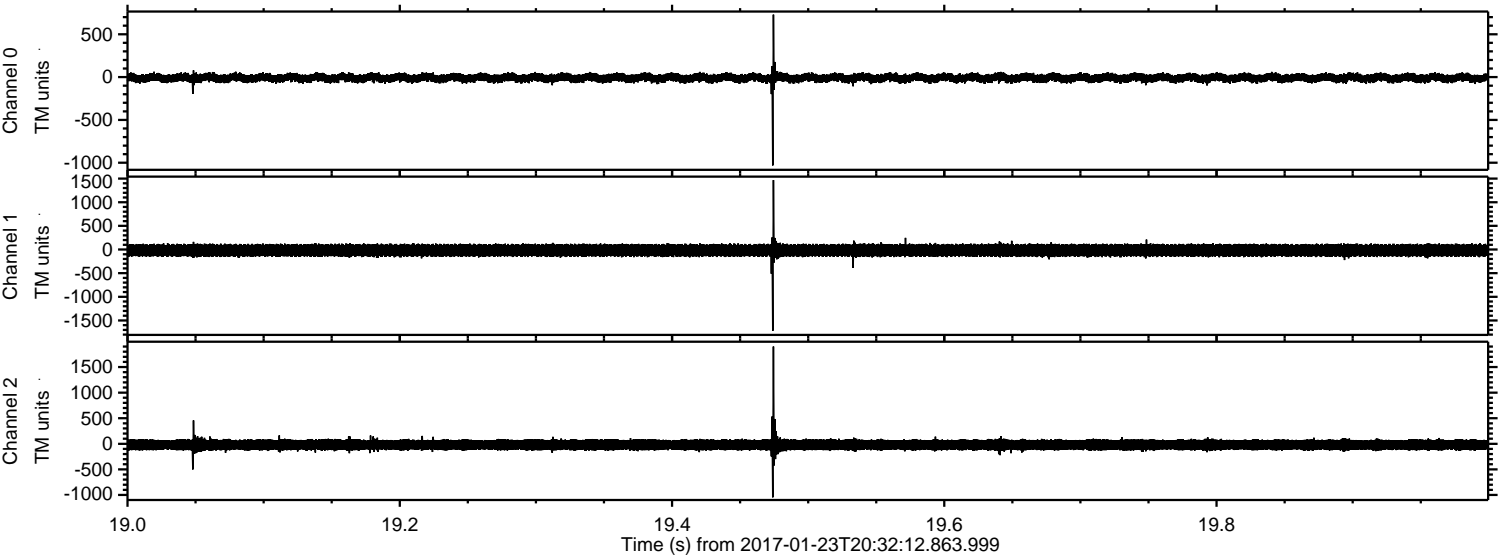
Processed Mon Jan 23 21:40:41 2017 by ELM ver.2012-10-06 from 001__elm20170123_203211__dat00.bin



Processed Mon Jan 23 21:40:41 2017 by ELM ver.2012-10-06 from 001__elm20170123_203211__dat00.bin



Processed Mon Jan 23 21:40:42 2017 by ELM ver.2012-10-06 from 001__elm20170123_203211__dat00.bin



Channel 0
mn: -1031
mx: 729
 μ : -9.5
 σ : 31.0

Channel 1
mn: -1720
mx: 1468
 μ : -17.3
 σ : 83.8

Channel 2
mn: -1046
mx: 1900
 μ : -20.6
 σ : 68.5

Processed Mon Jan 23 21:40:43 2017 by ELM ver.2012-10-06 from 001__elm20170123_203211__dat00.bin

