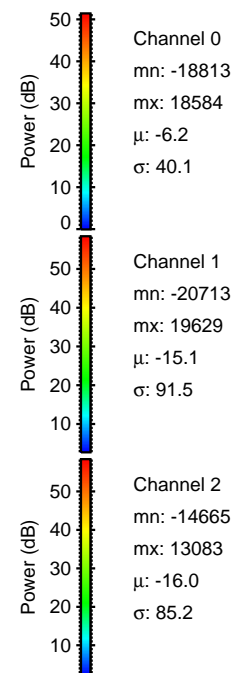
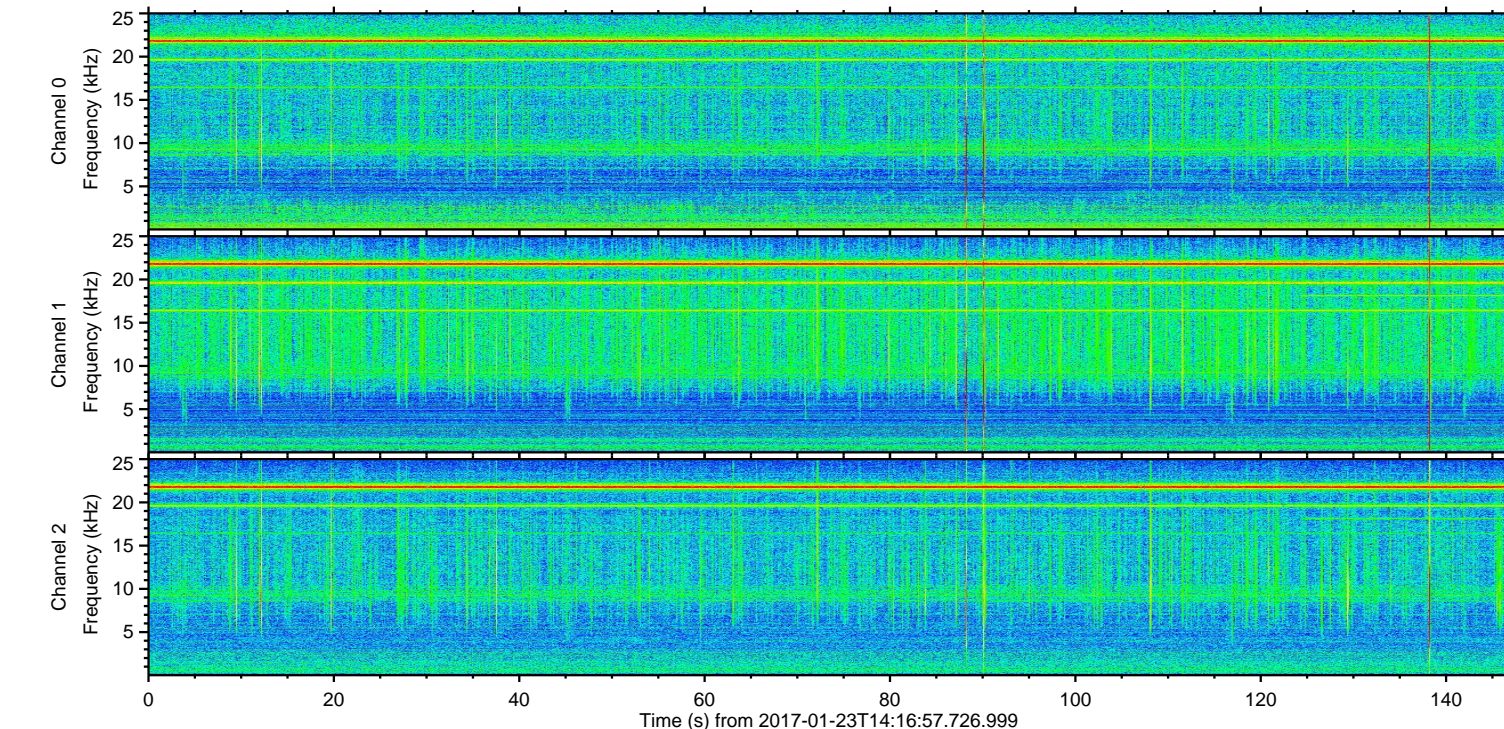
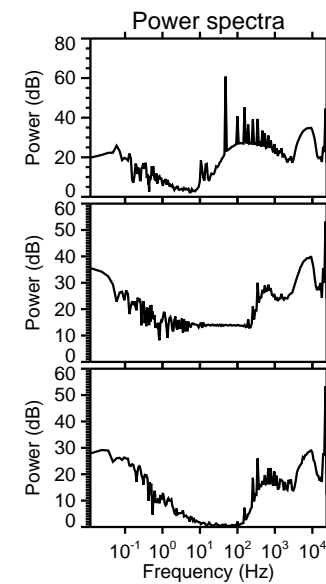
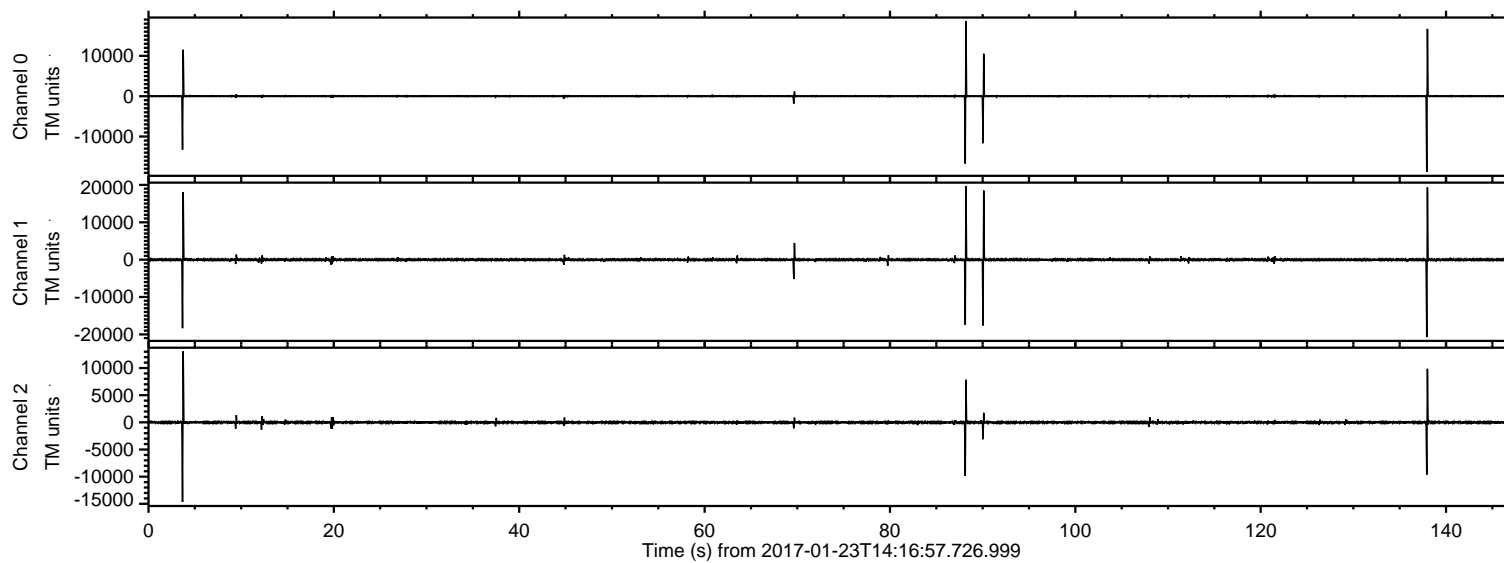


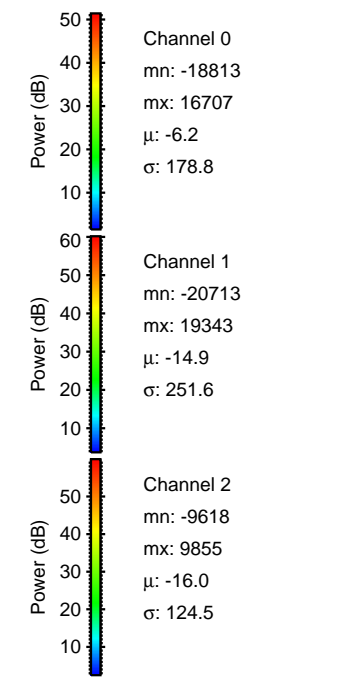
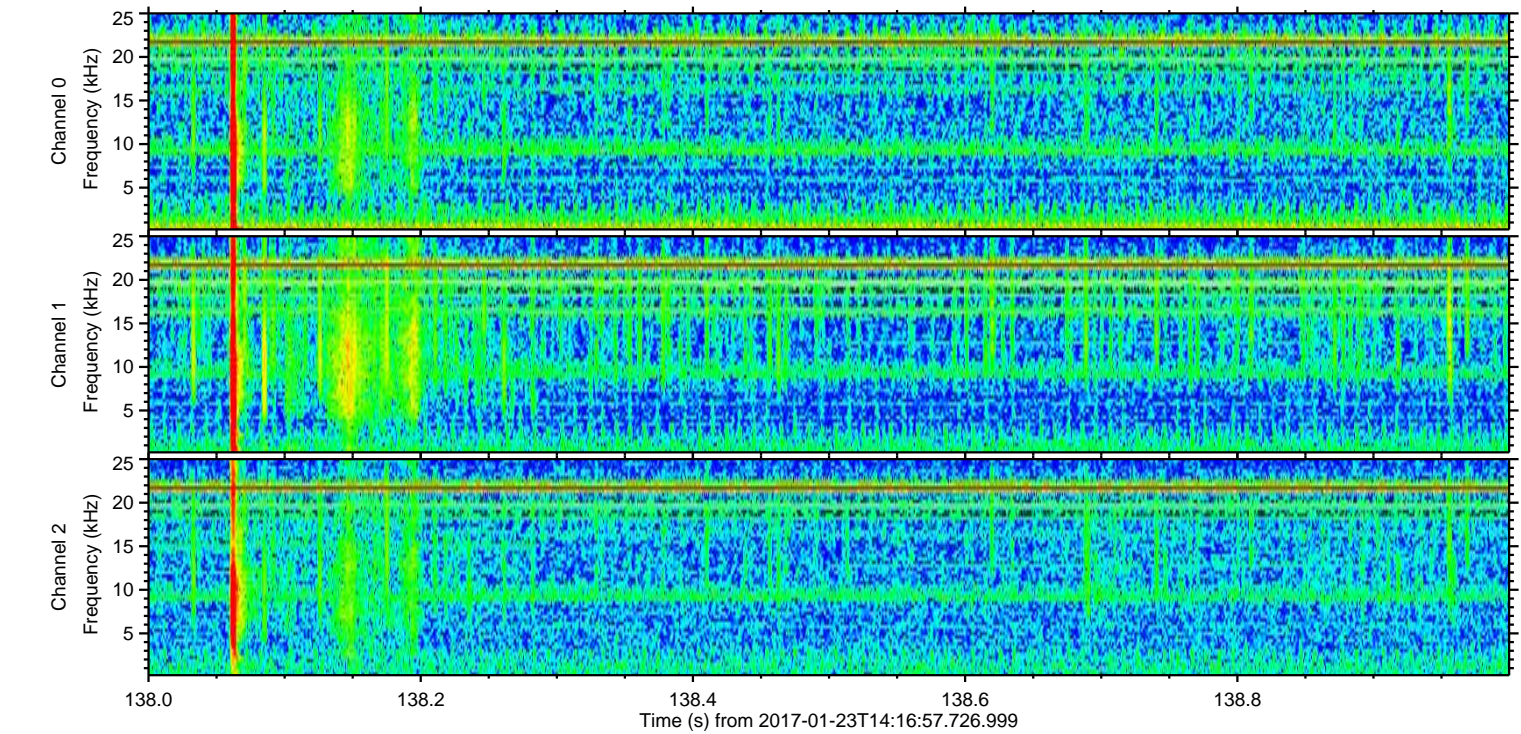
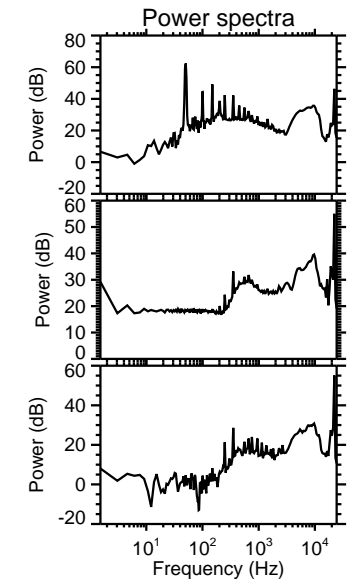
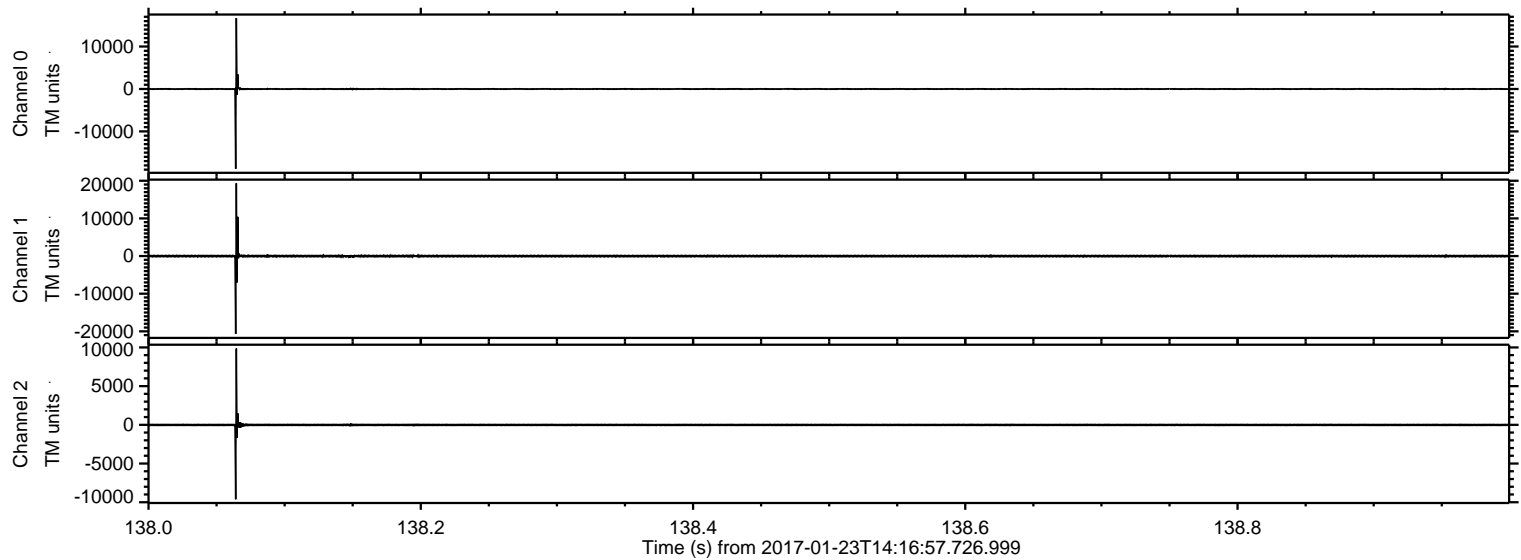
ELMAVAN 3D WAVEFORMS (Measured data sampled at 50 kHz) 51000 packets of 144 samples from 2017-01-23T14:16:57.726.999.

Processed Mon Jan 23 15:24:38 2017 by ELM ver.2012-10-06 from 001__elm20170123_141656__dat00.bin

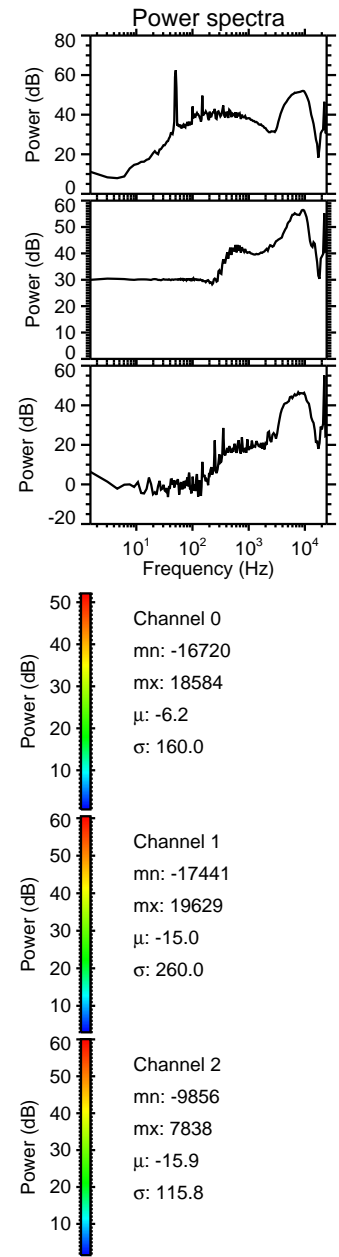
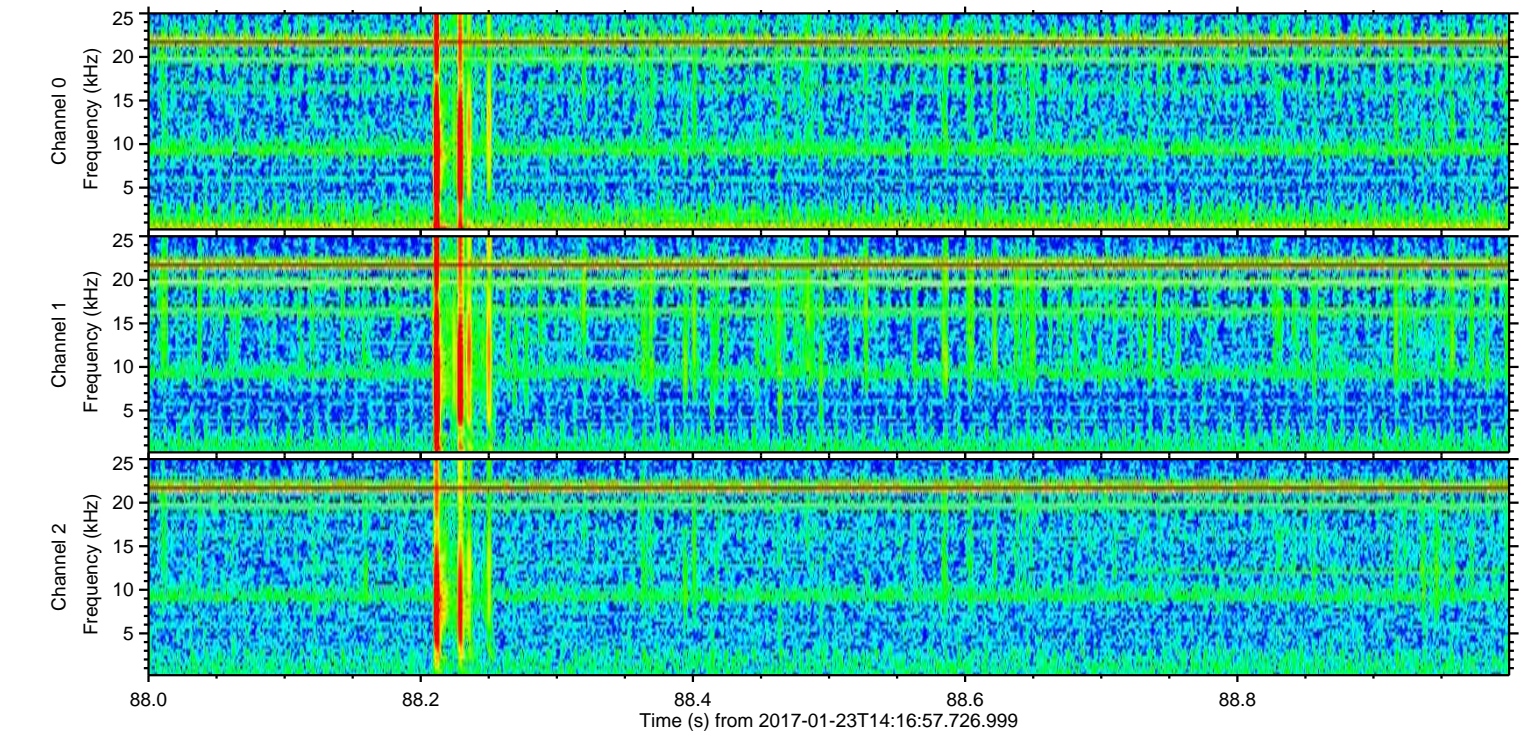
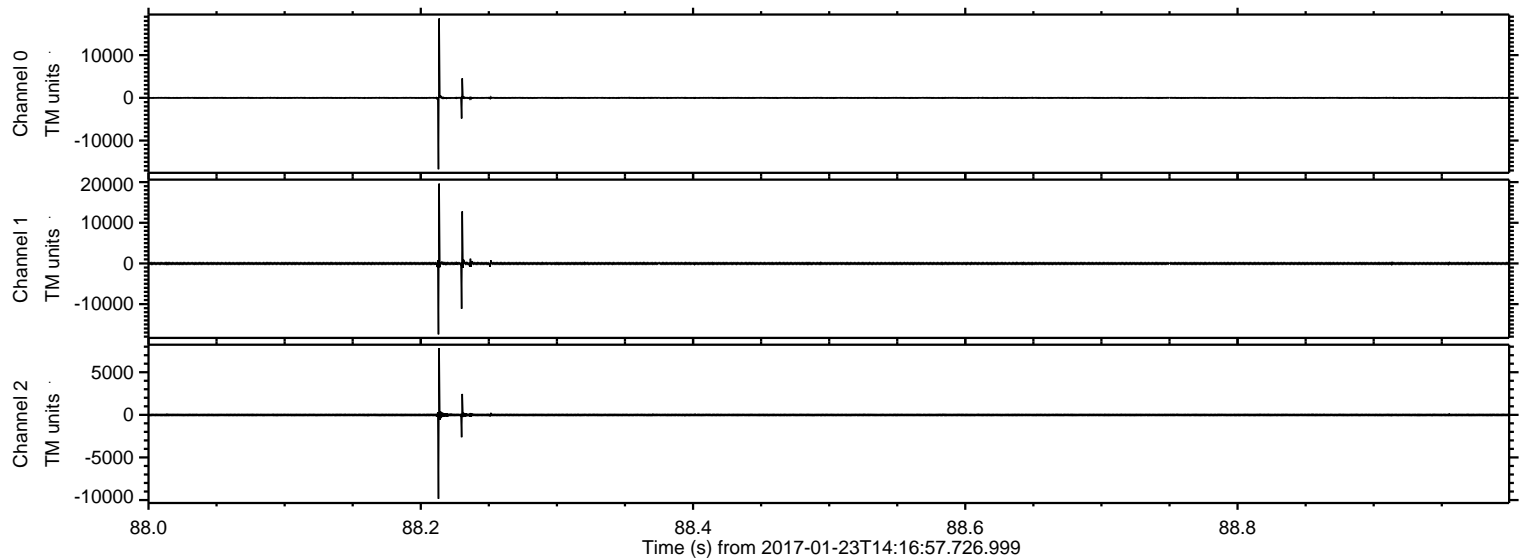


ELMAVAN 3D WAVEFORMS (Measured data sampled at 50 kHz) 51000 packets of 144 samples from 2017-01-23T14:16:57.726.999. Part 139/147

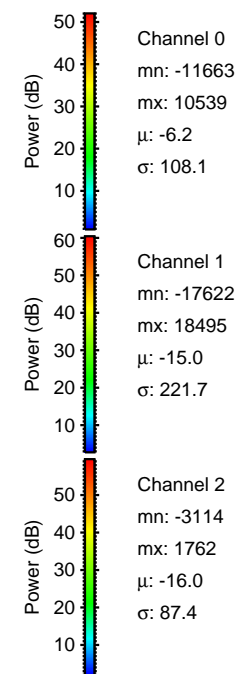
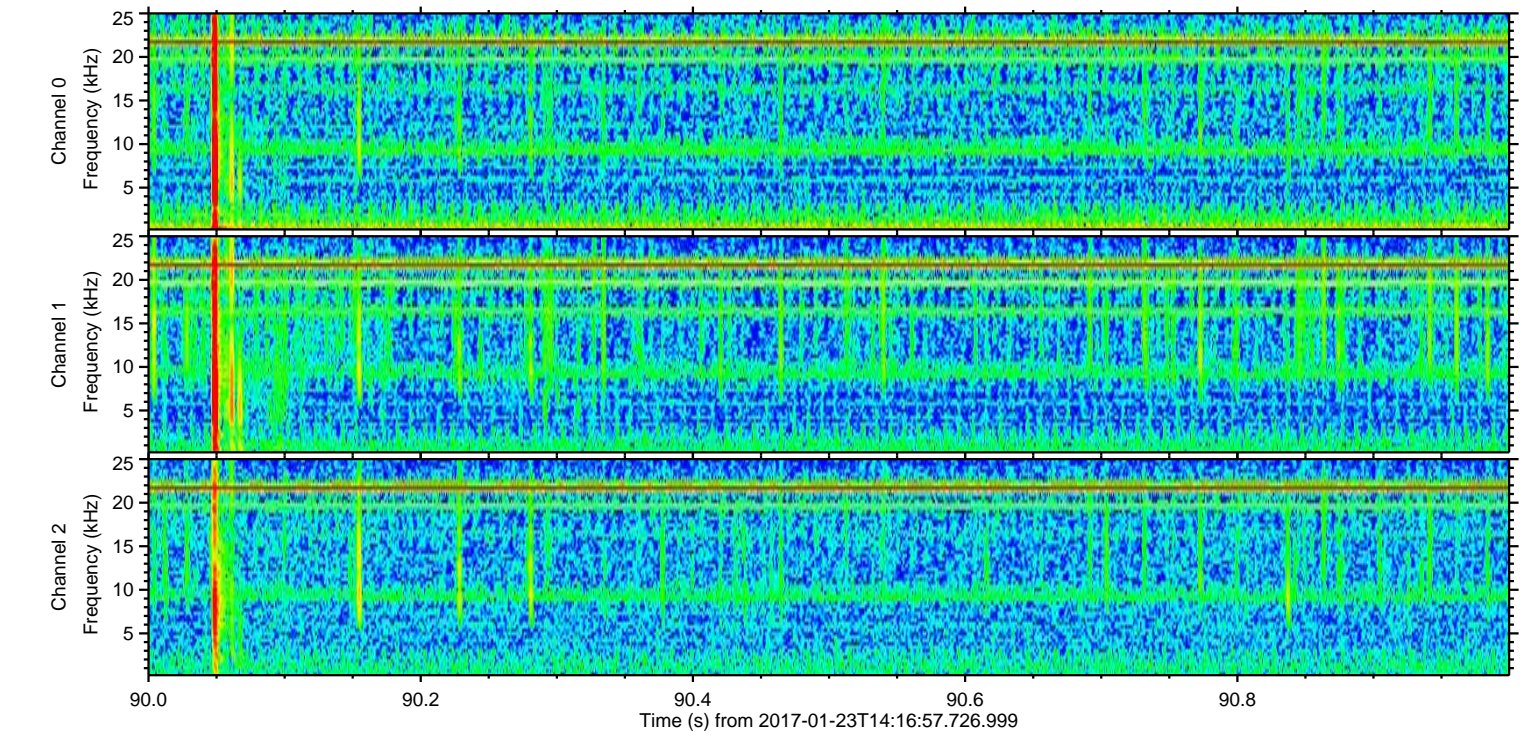
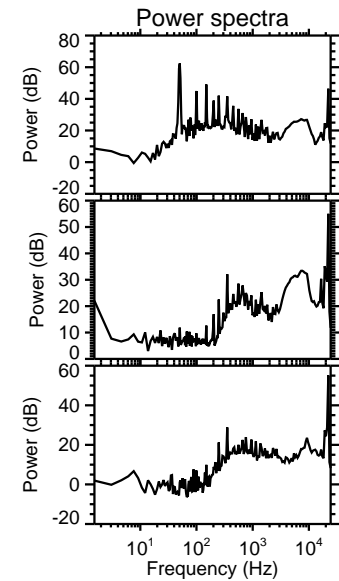
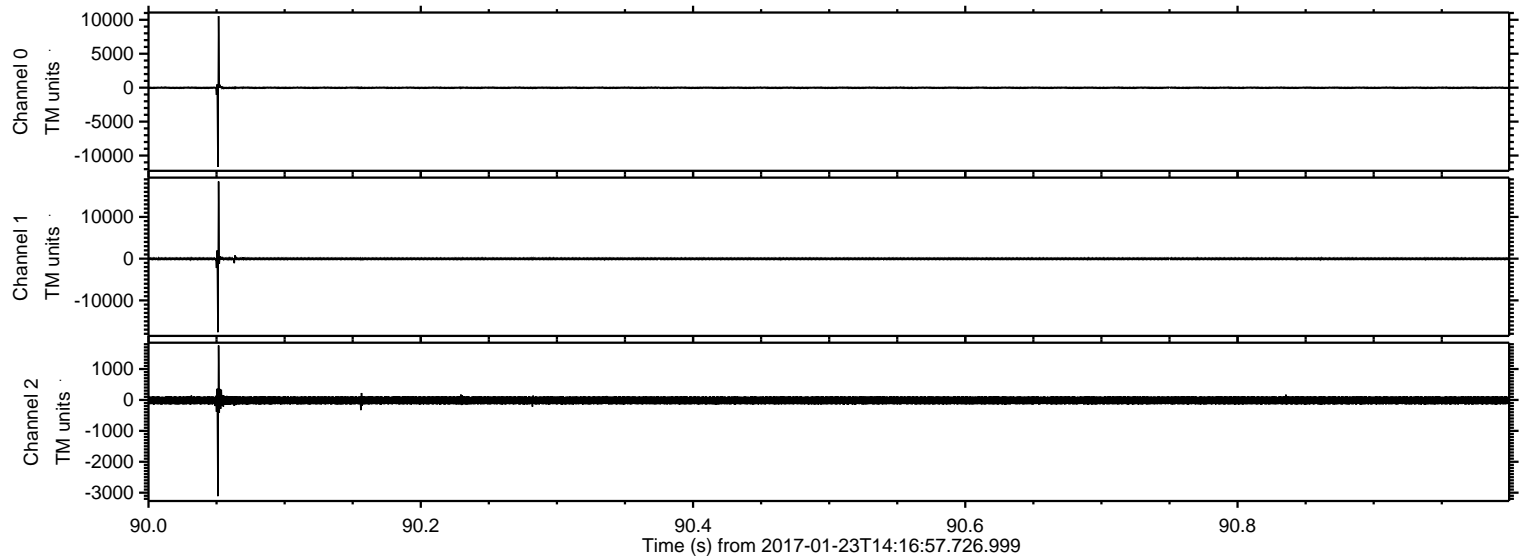
Processed Mon Jan 23 15:24:49 2017 by ELM ver.2012-10-06 from 001__elm20170123_141656__dat00.bin



Processed Mon Jan 23 15:24:50 2017 by ELM ver.2012-10-06 from 001__elm20170123_141656__dat00.bin

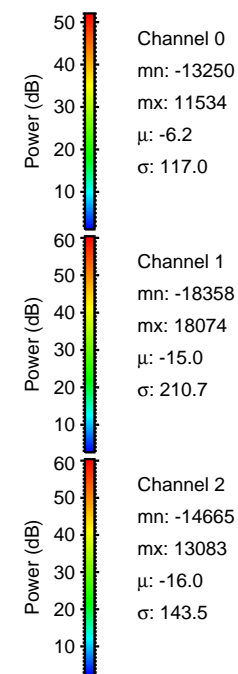
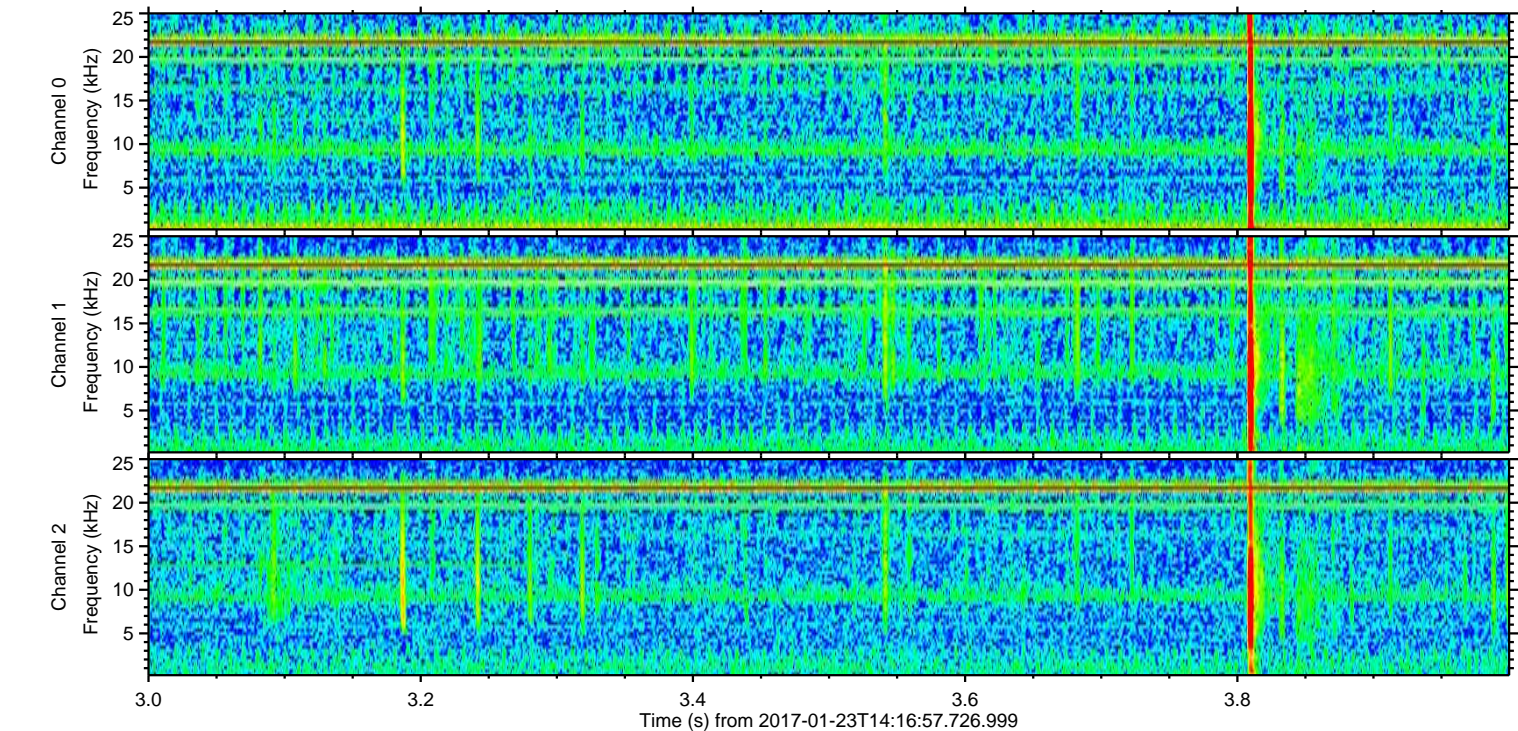
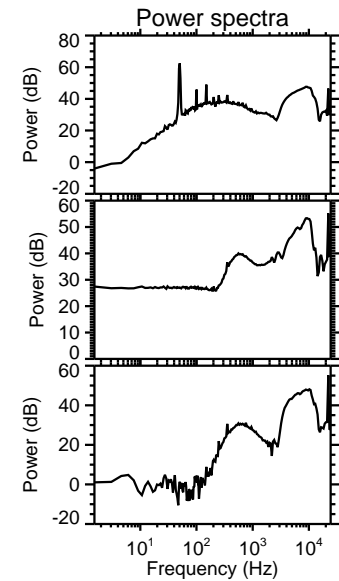
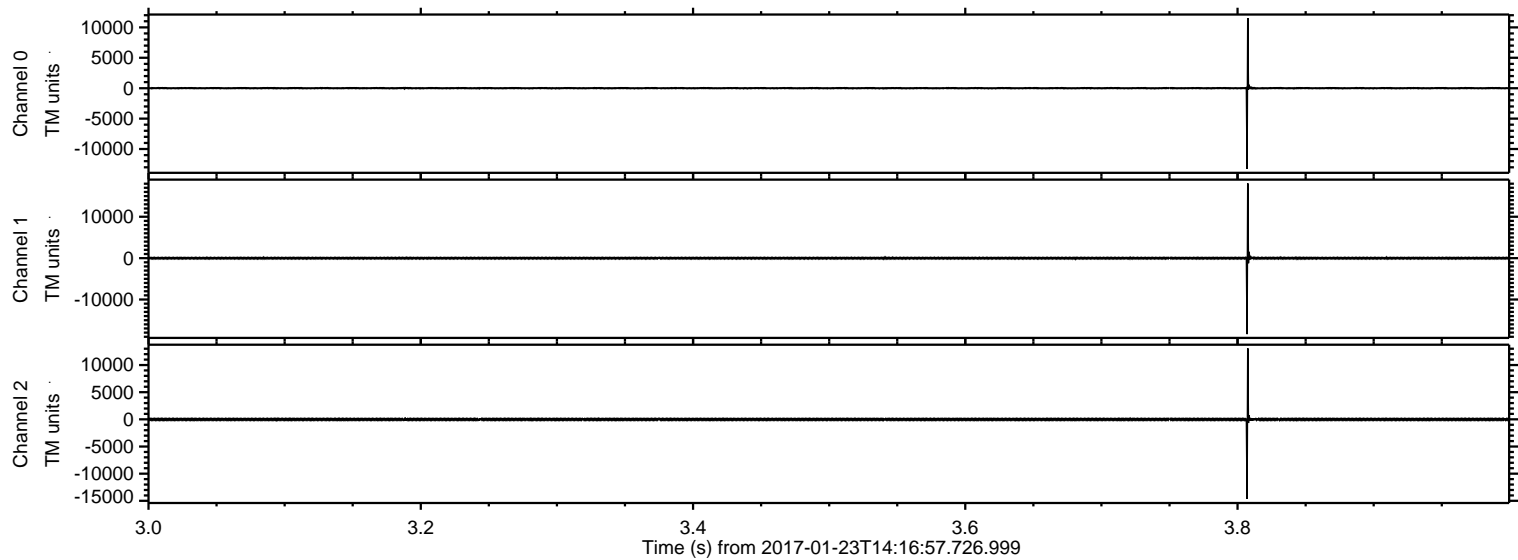


Processed Mon Jan 23 15:24:51 2017 by ELM ver.2012-10-06 from 001__elm20170123_141656__dat00.bin

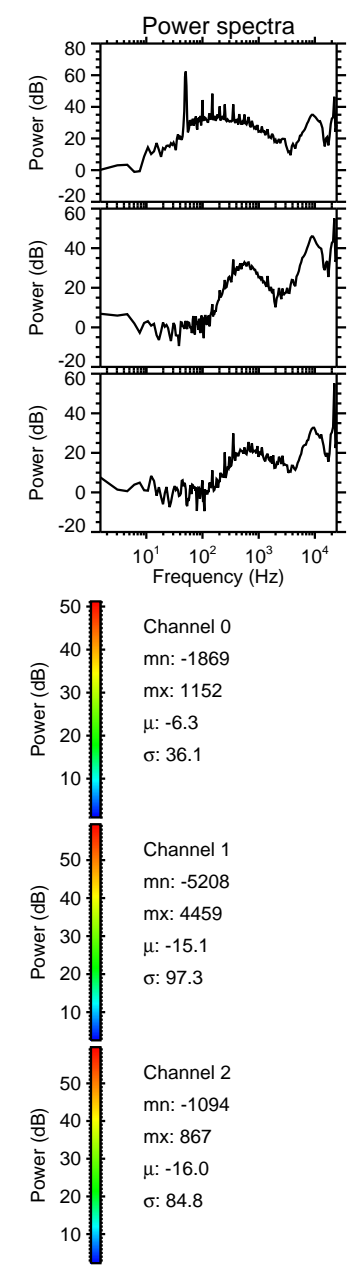
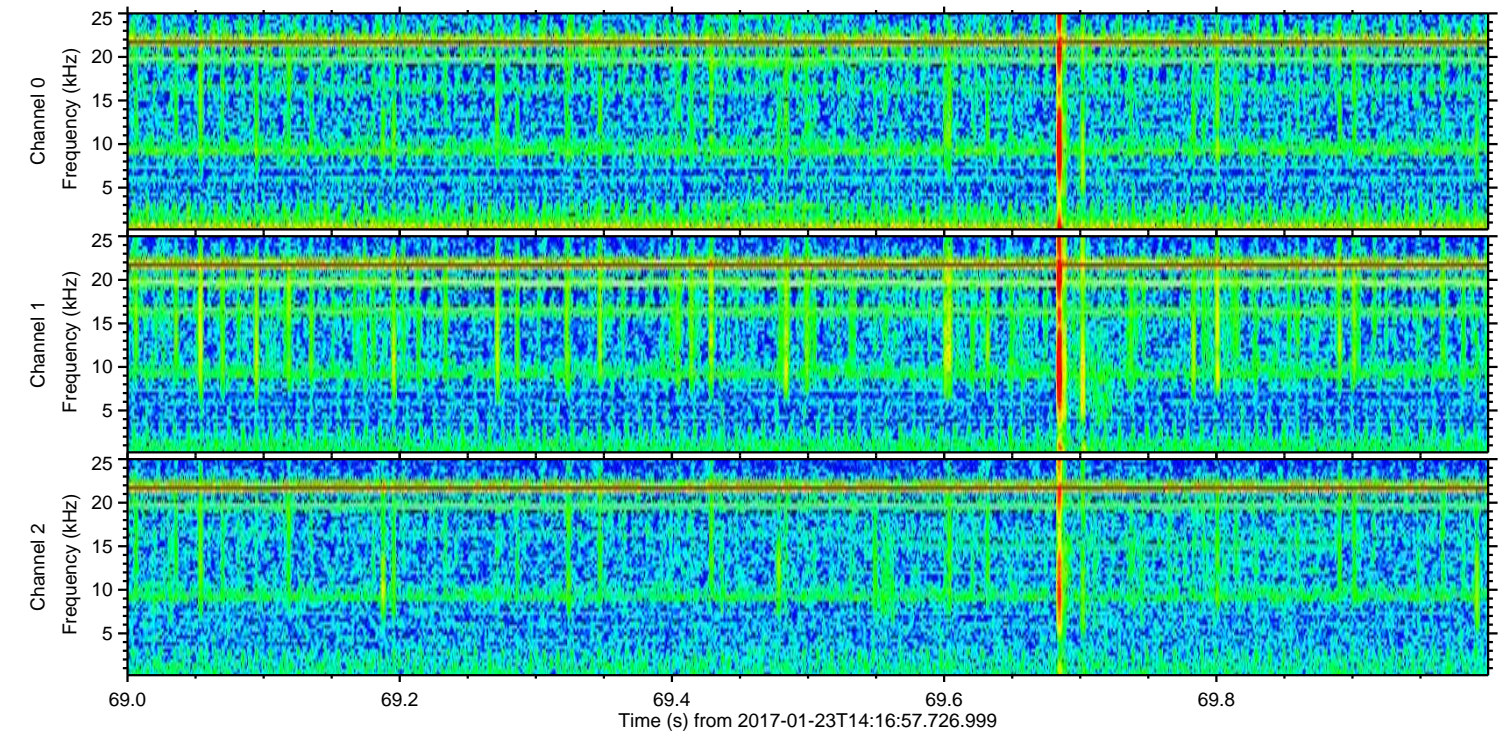
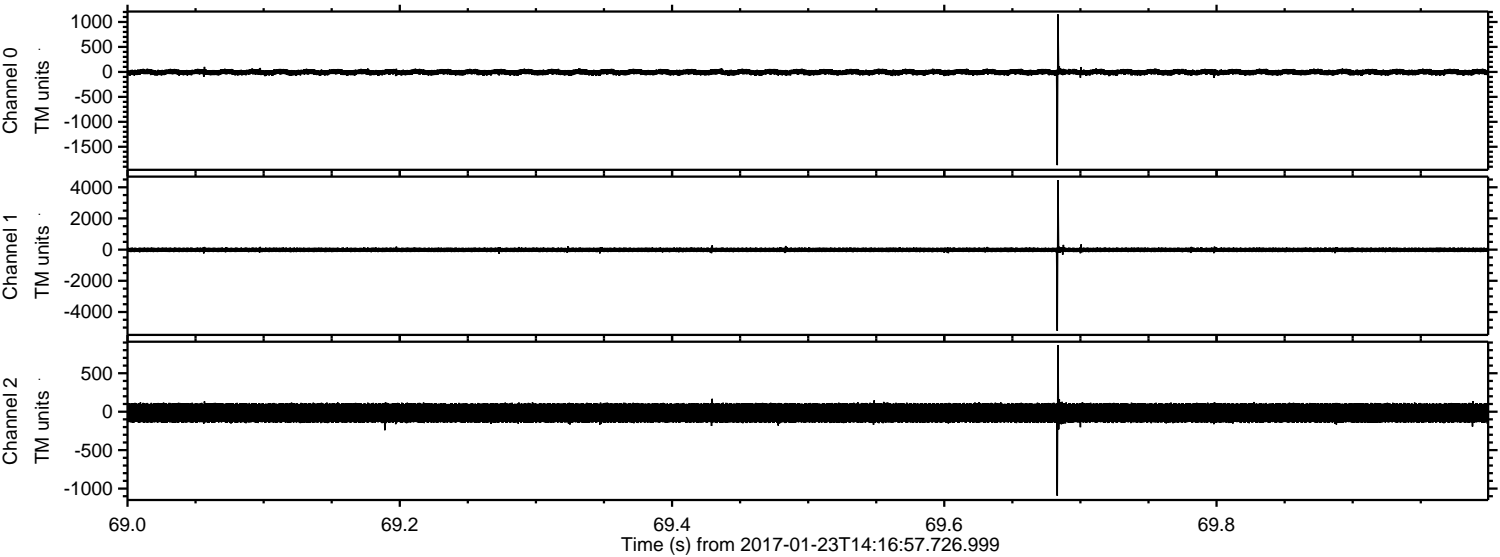


ELMAVAN 3D WAVEFORMS (Measured data sampled at 50 kHz) 51000 packets of 144 samples from 2017-01-23T14:16:57.726.999. Part 4/147

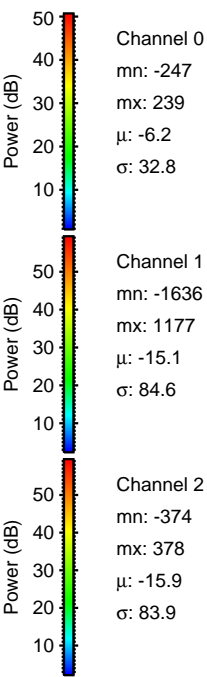
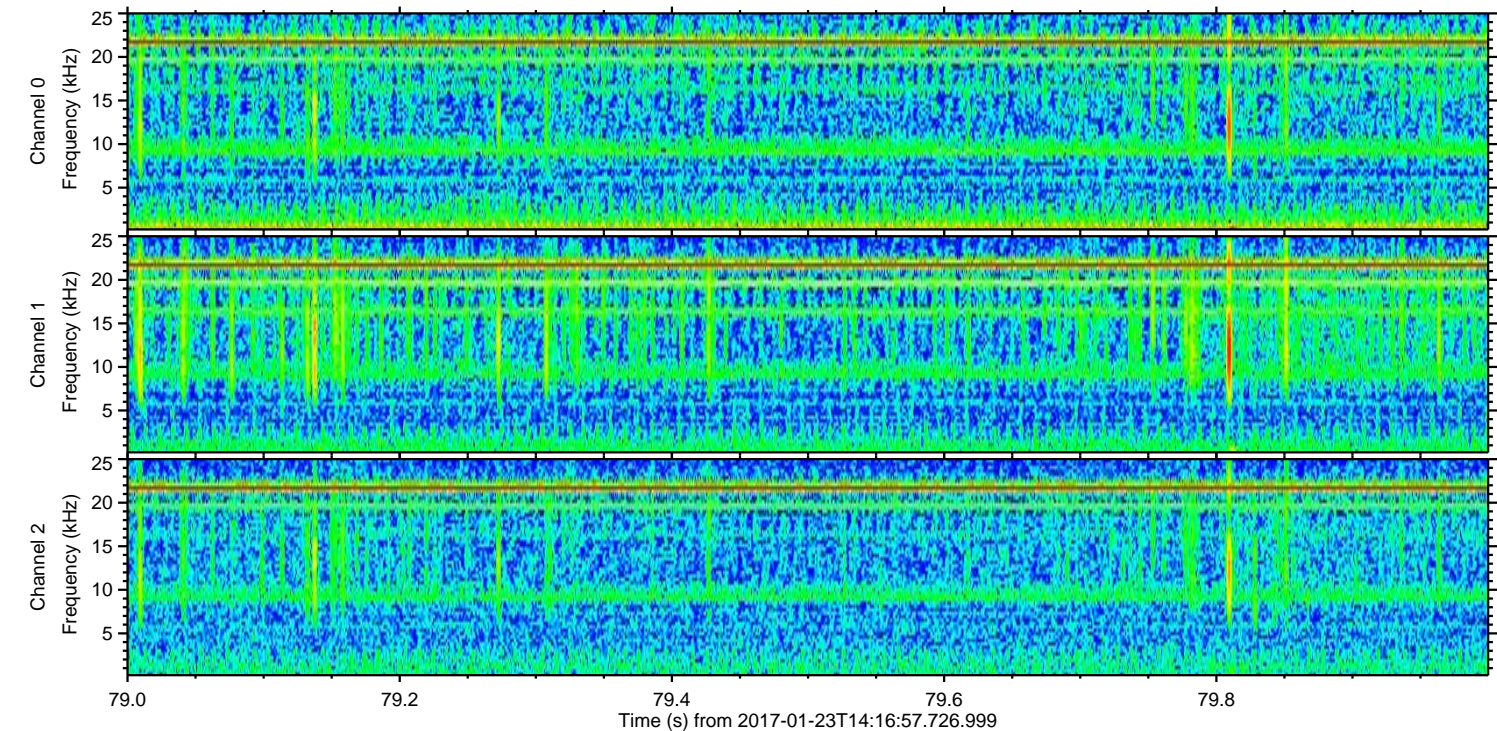
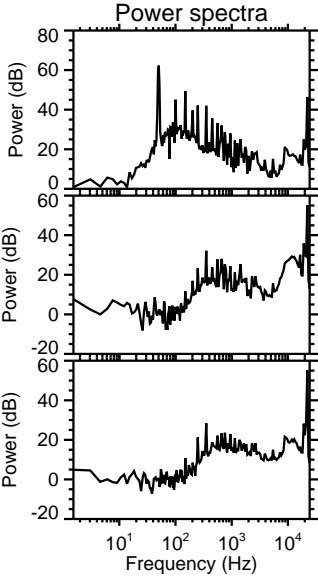
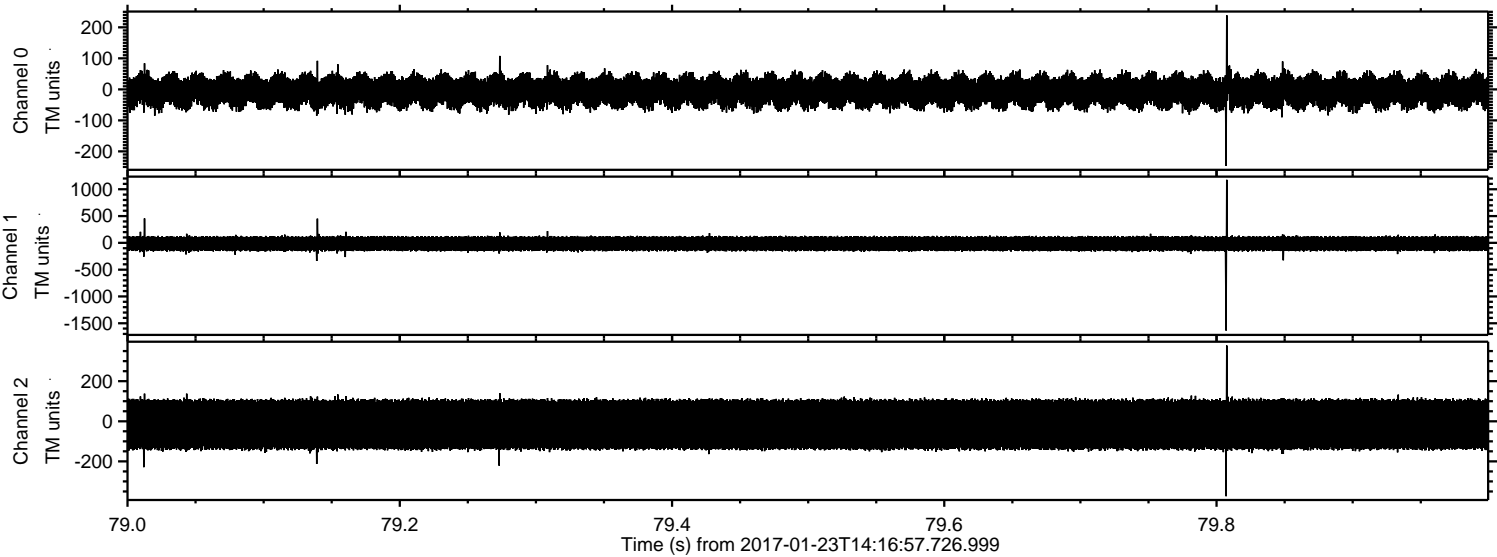
Processed Mon Jan 23 15:24:52 2017 by ELM ver.2012-10-06 from 001__elm20170123_141656__dat00.bin



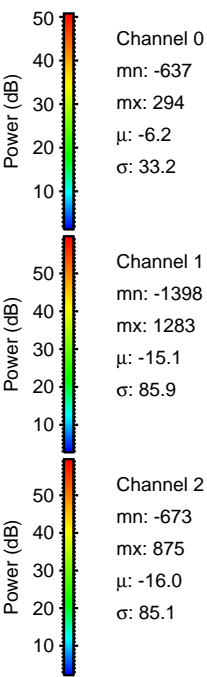
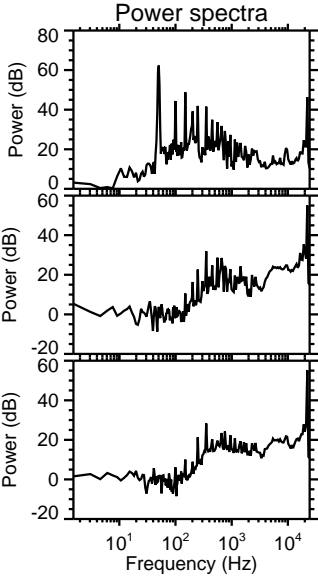
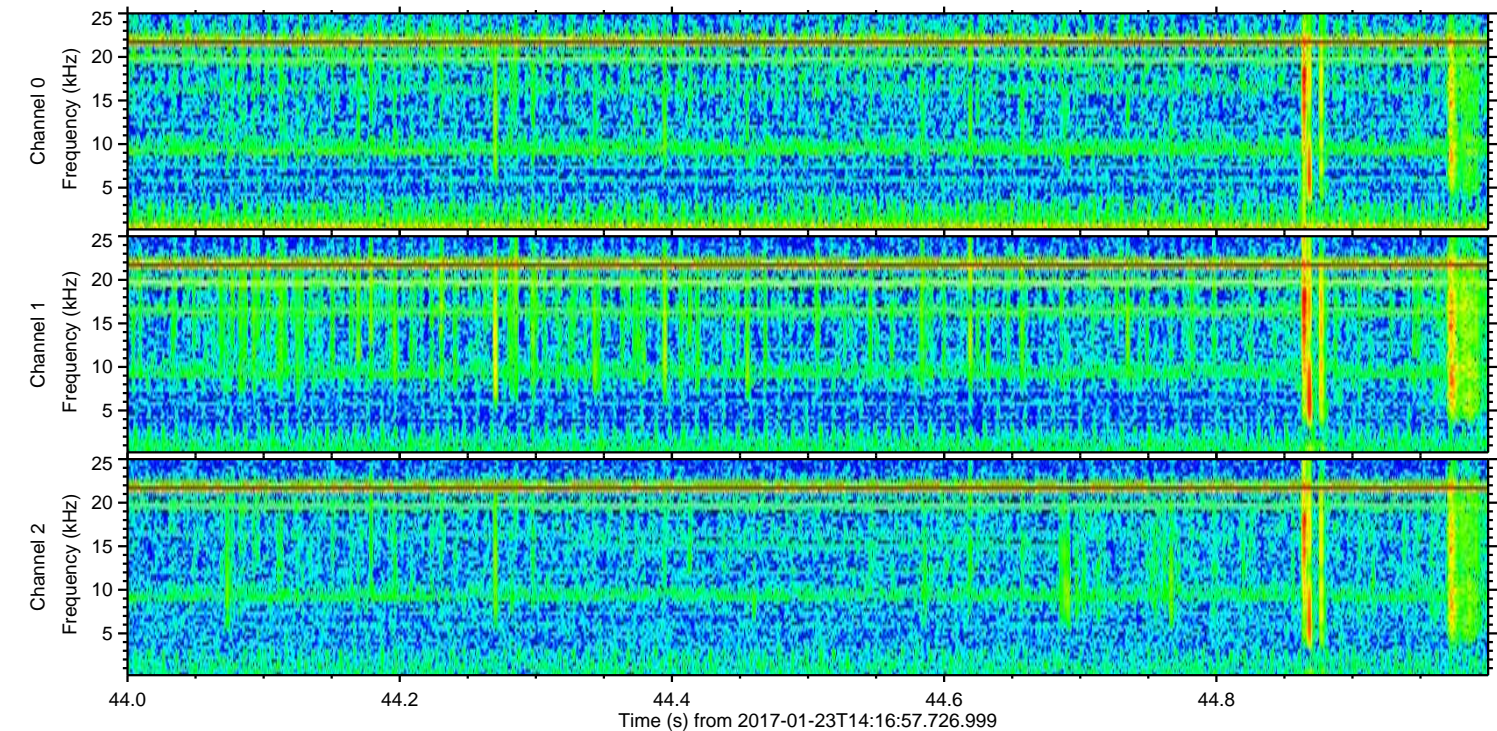
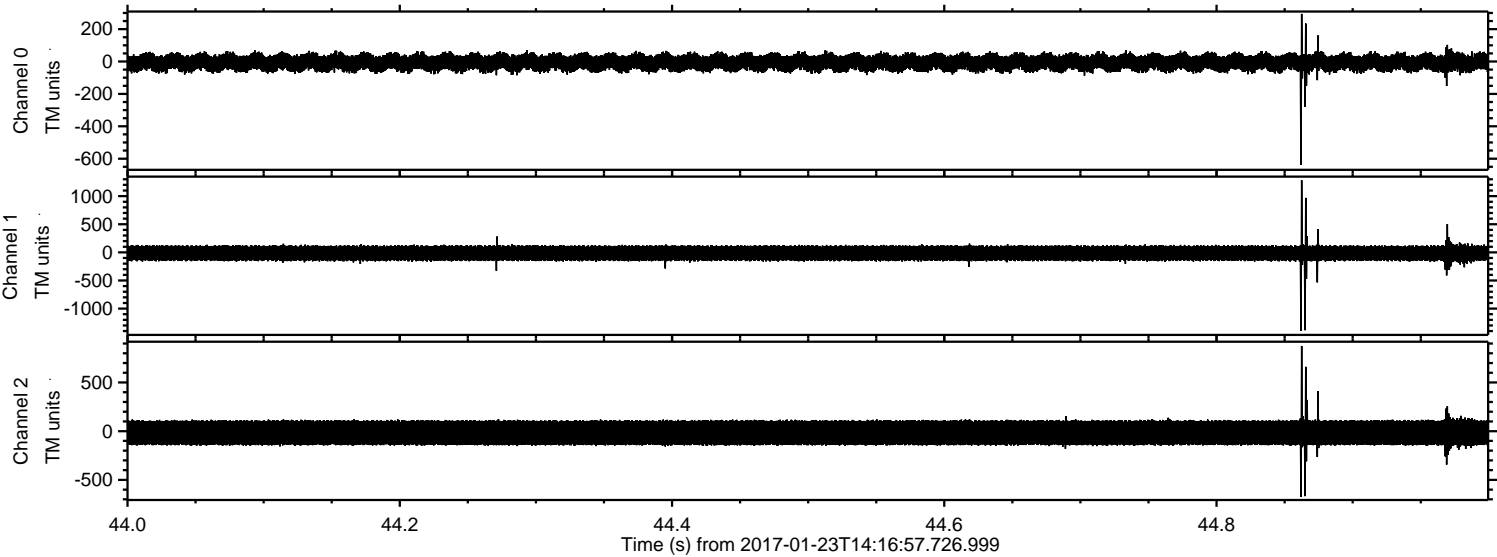
Processed Mon Jan 23 15:24:53 2017 by ELM ver.2012-10-06 from 001__elm20170123_141656__dat00.bin



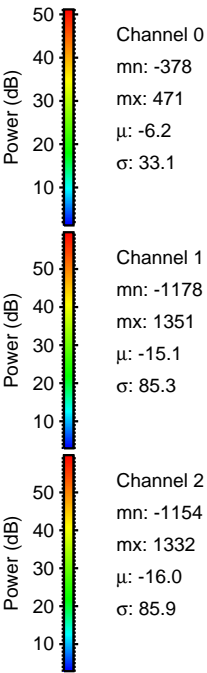
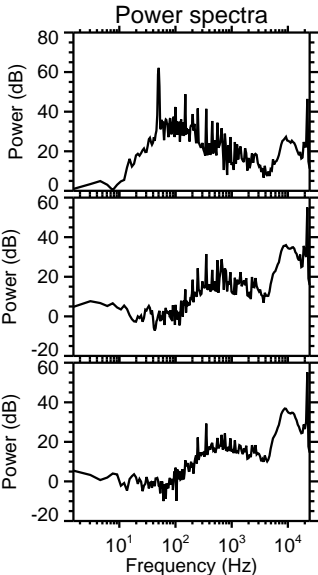
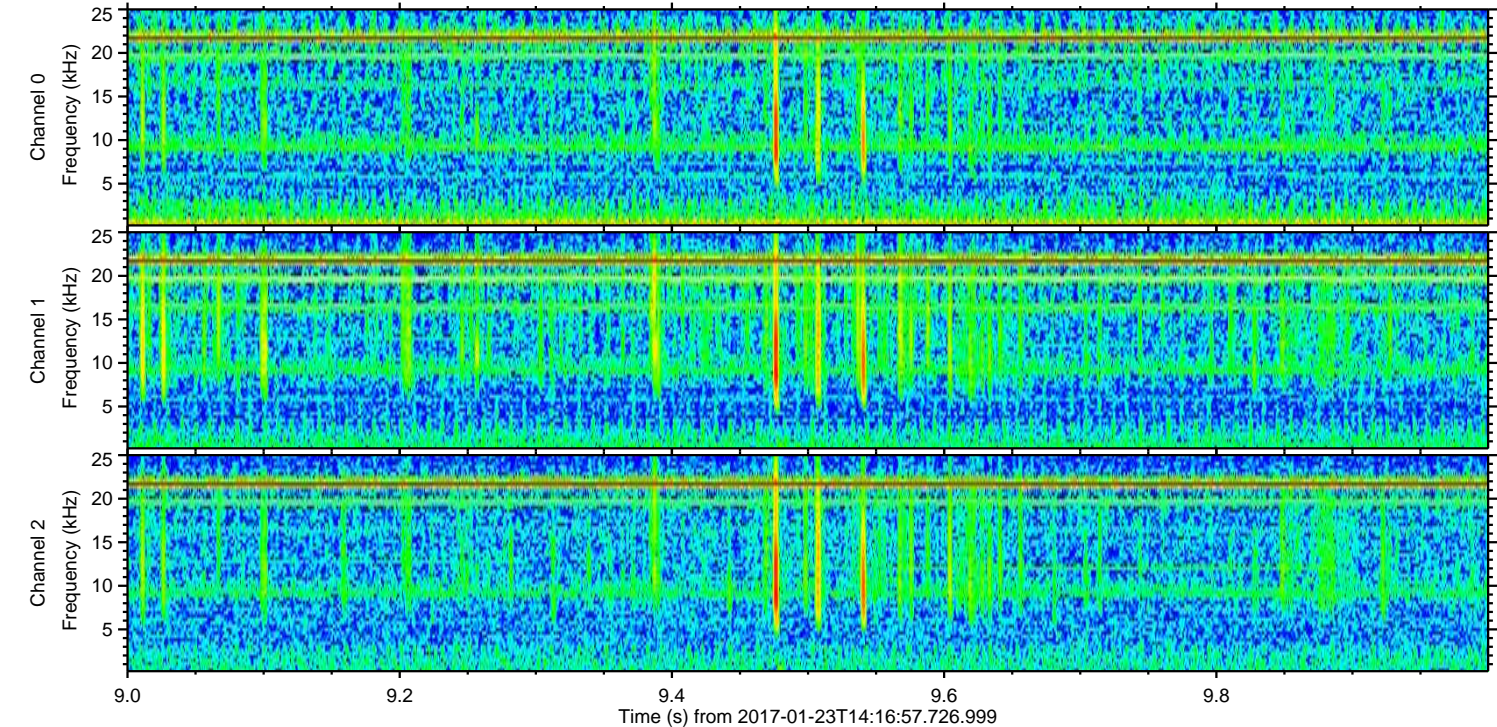
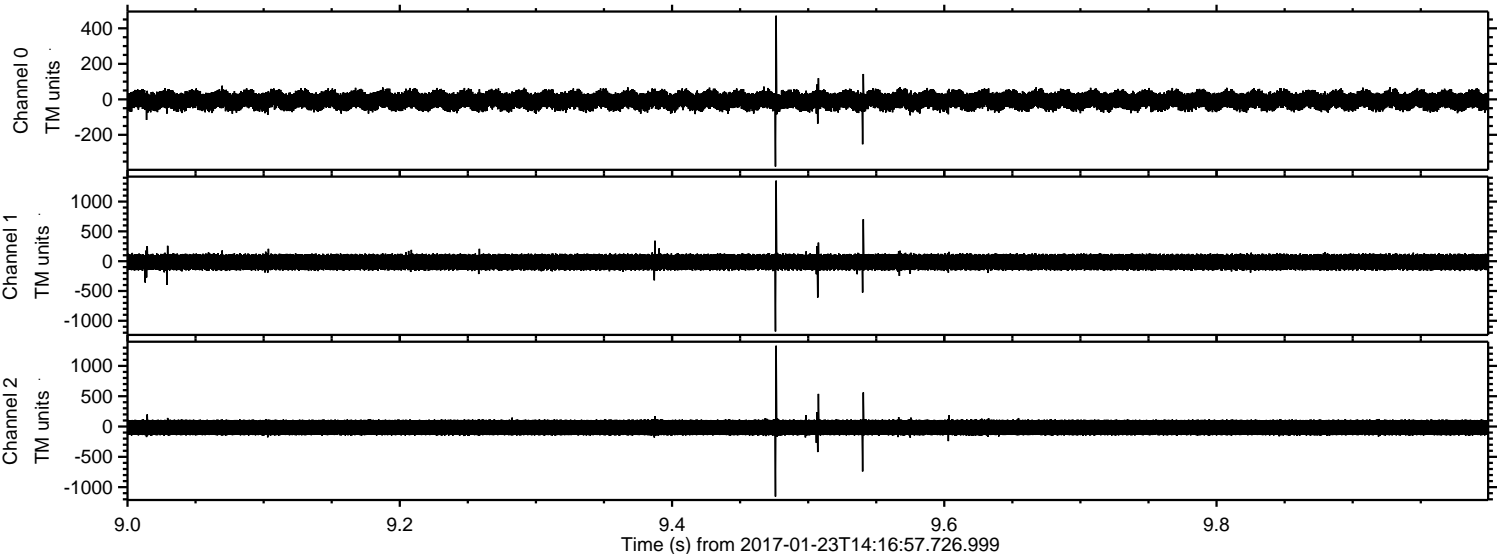
Processed Mon Jan 23 15:24:54 2017 by ELM ver.2012-10-06 from 001__elm20170123_141656__dat00.bin



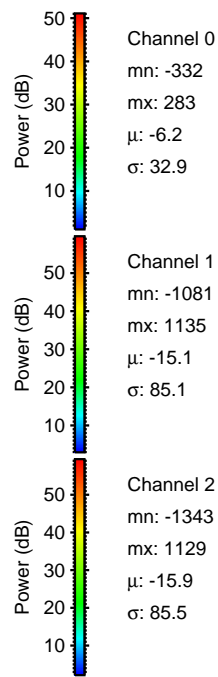
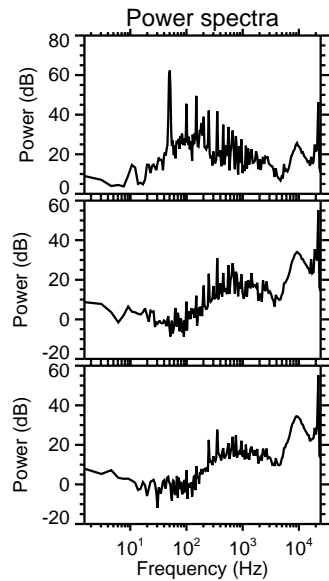
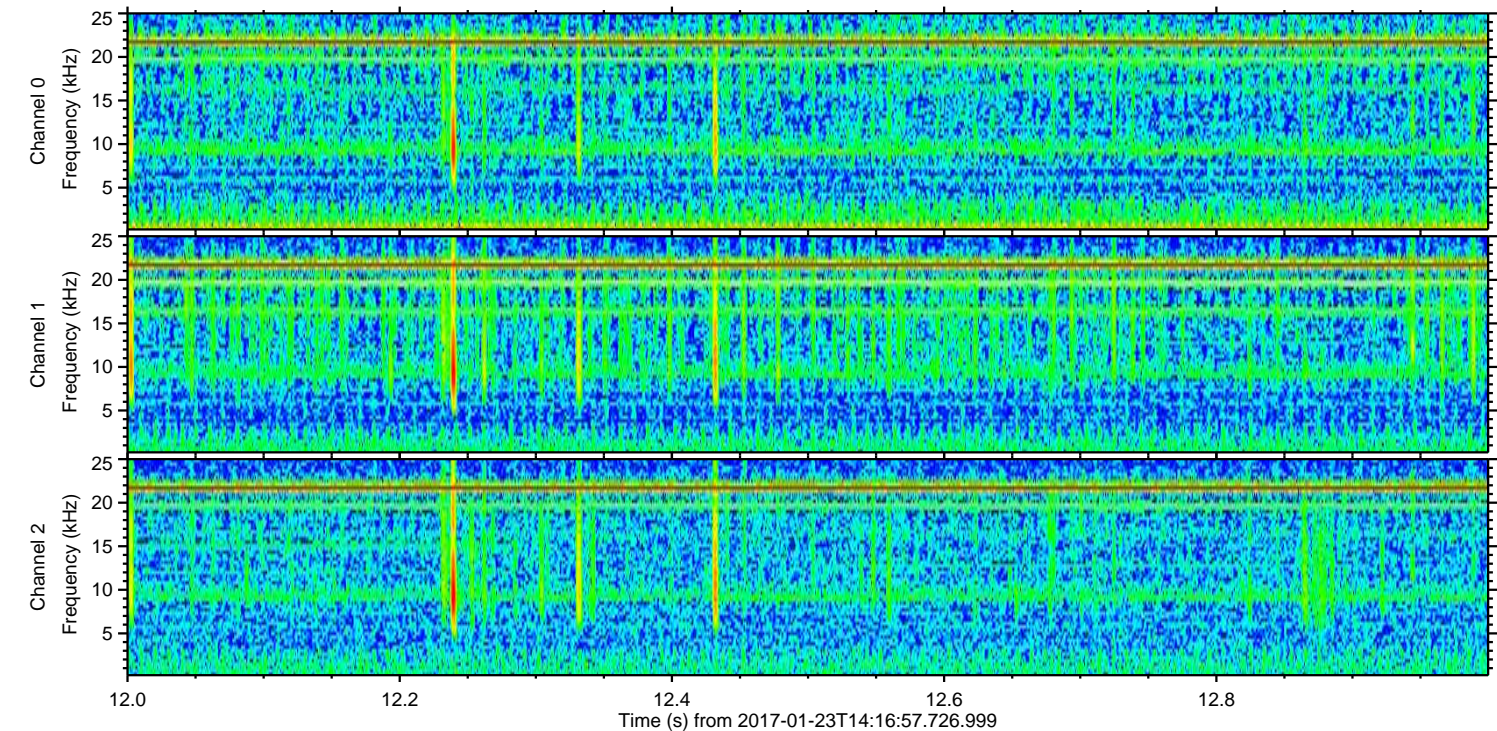
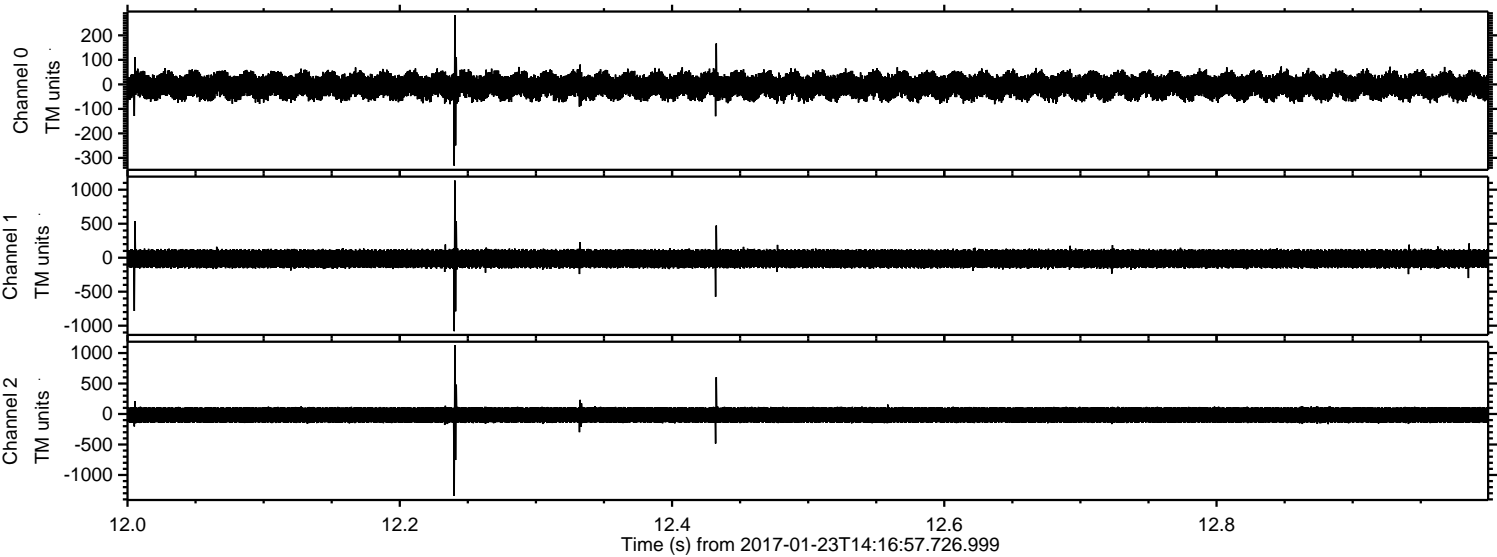
Processed Mon Jan 23 15:24:55 2017 by ELM ver.2012-10-06 from 001__elm20170123_141656__dat00.bin



Processed Mon Jan 23 15:24:56 2017 by ELM ver.2012-10-06 from 001__elm20170123_141656__dat00.bin



Processed Mon Jan 23 15:24:57 2017 by ELM ver.2012-10-06 from 001__elm20170123_141656__dat00.bin



Channel 0
mn: -332
mx: 283
 μ : -6.2
 σ : 32.9

Channel 1
mn: -1081
mx: 1135
 μ : -15.1
 σ : 85.1

Channel 2
mn: -1343
mx: 1129
 μ : -15.9
 σ : 85.5

Processed Mon Jan 23 15:24:58 2017 by ELM ver.2012-10-06 from 001__elm20170123_141656__dat00.bin

