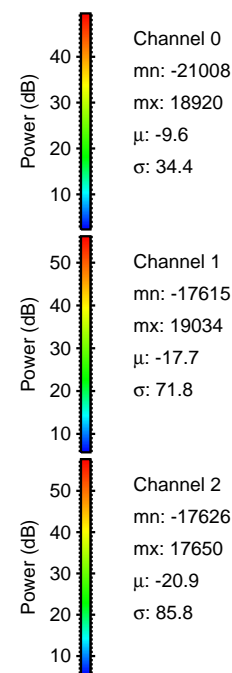
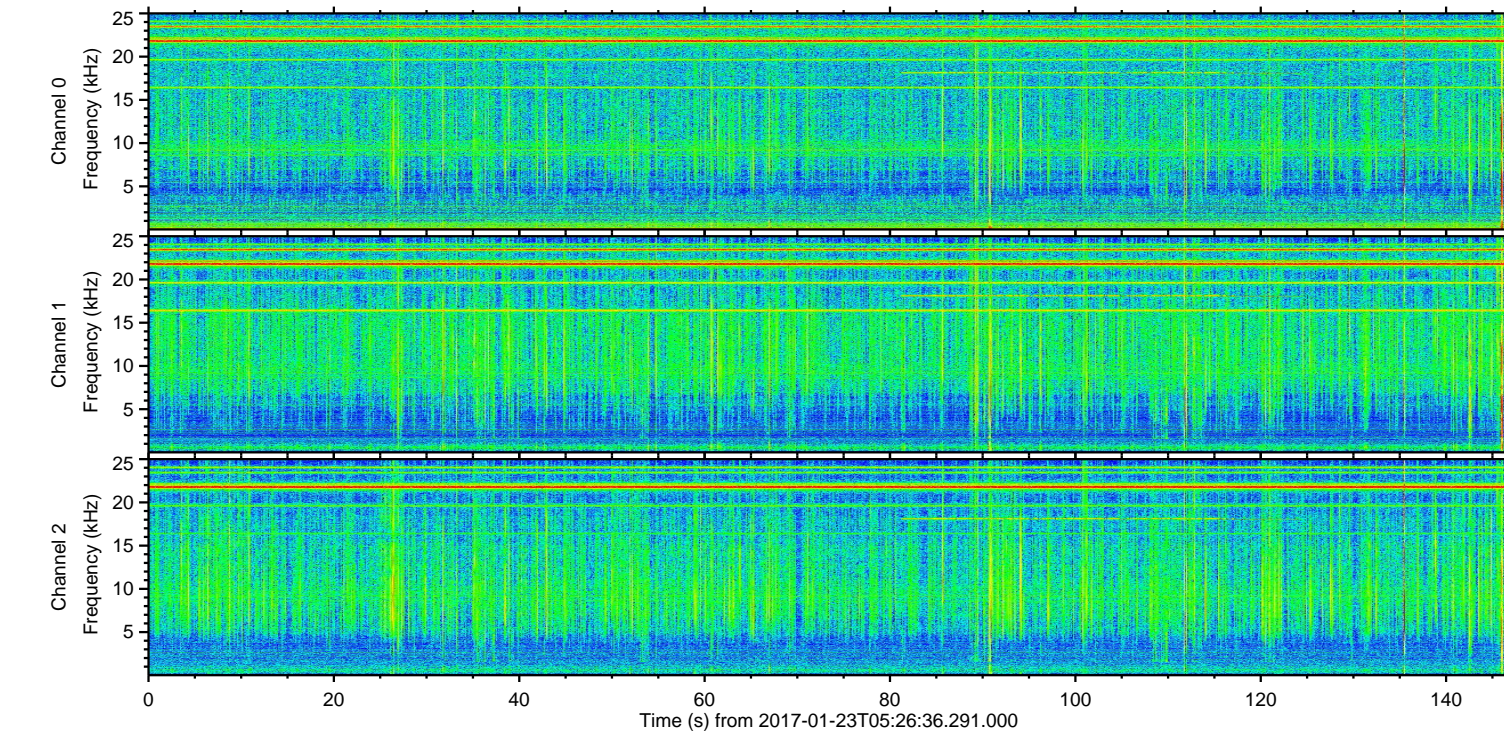
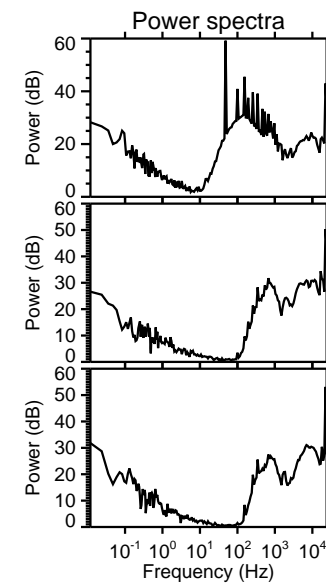
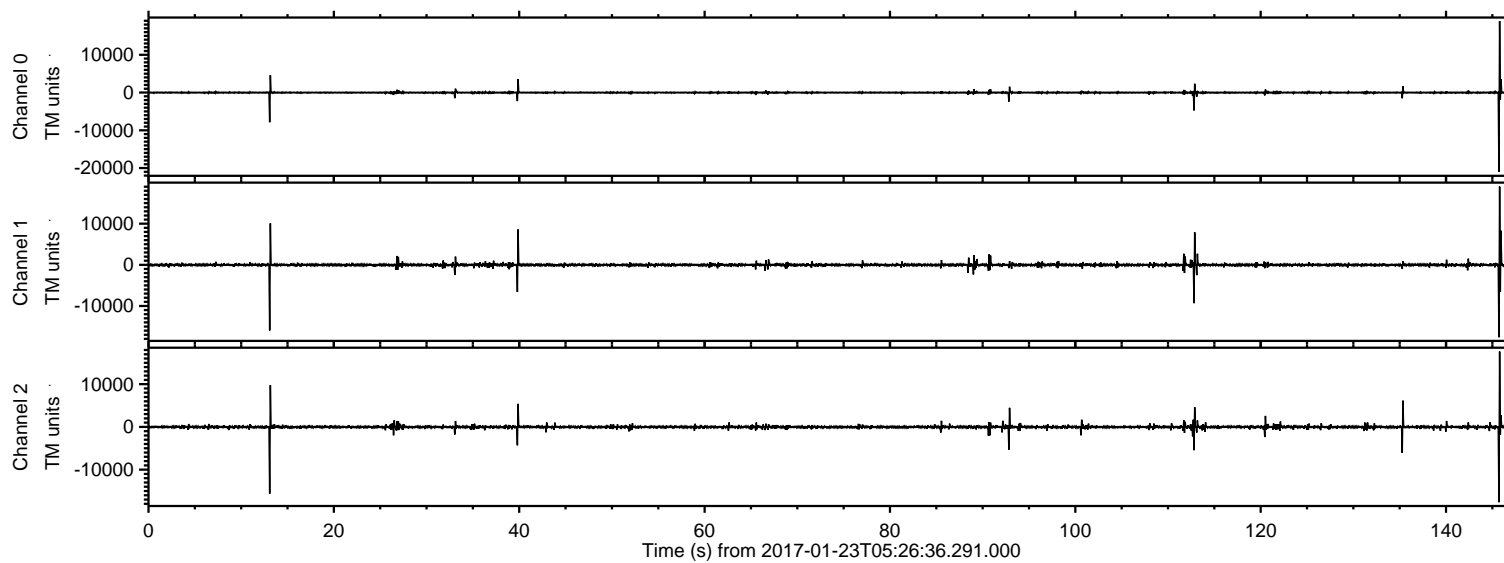


# ELMAVAN 3D WAVEFORMS (Measured data sampled at 50 kHz) 51000 packets of 144 samples from 2017-01-23T05:26:36.291.000.

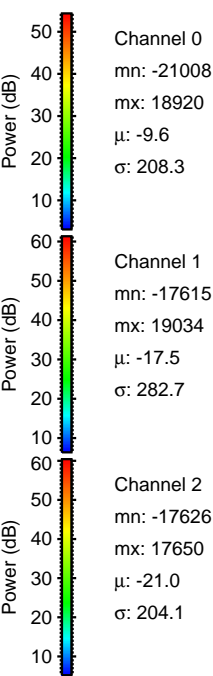
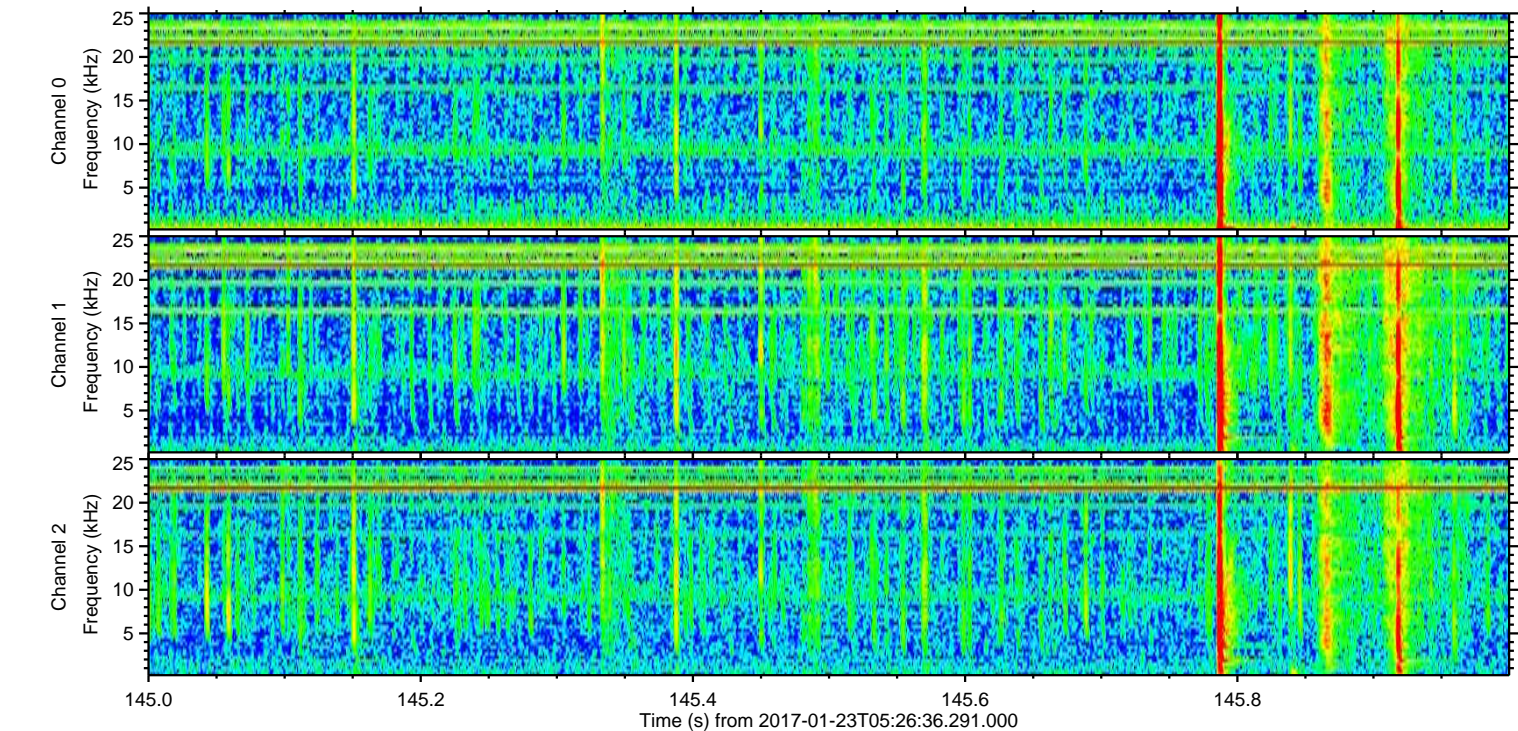
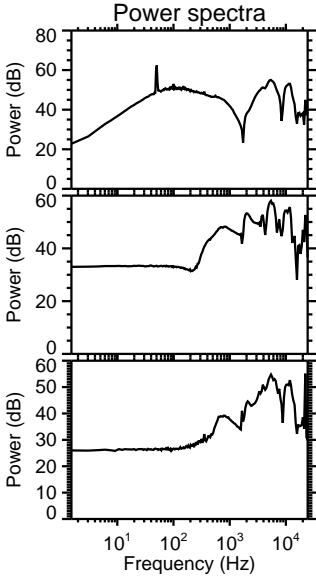
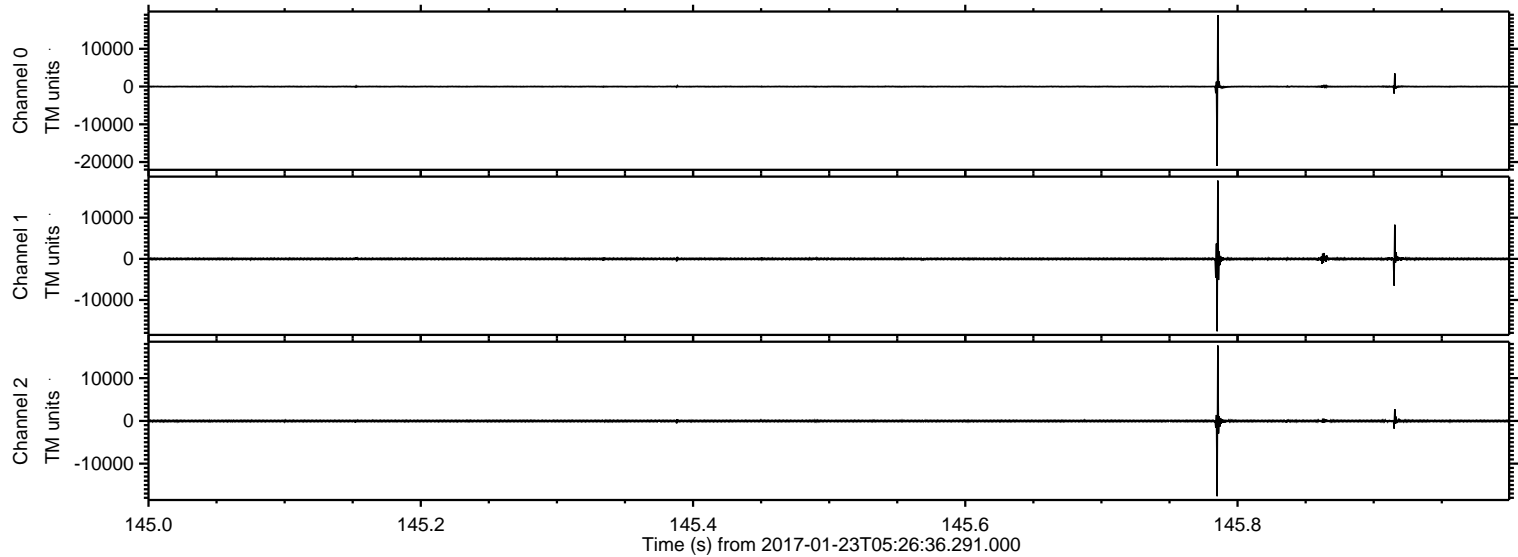
Processed Mon Jan 23 06:34:35 2017 by ELM ver.2012-10-06 from 001\_\_elm20170123\_052635\_\_dat00.bin





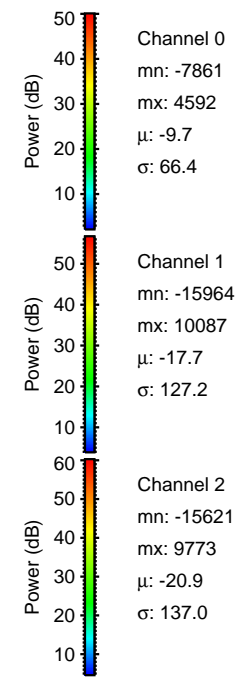
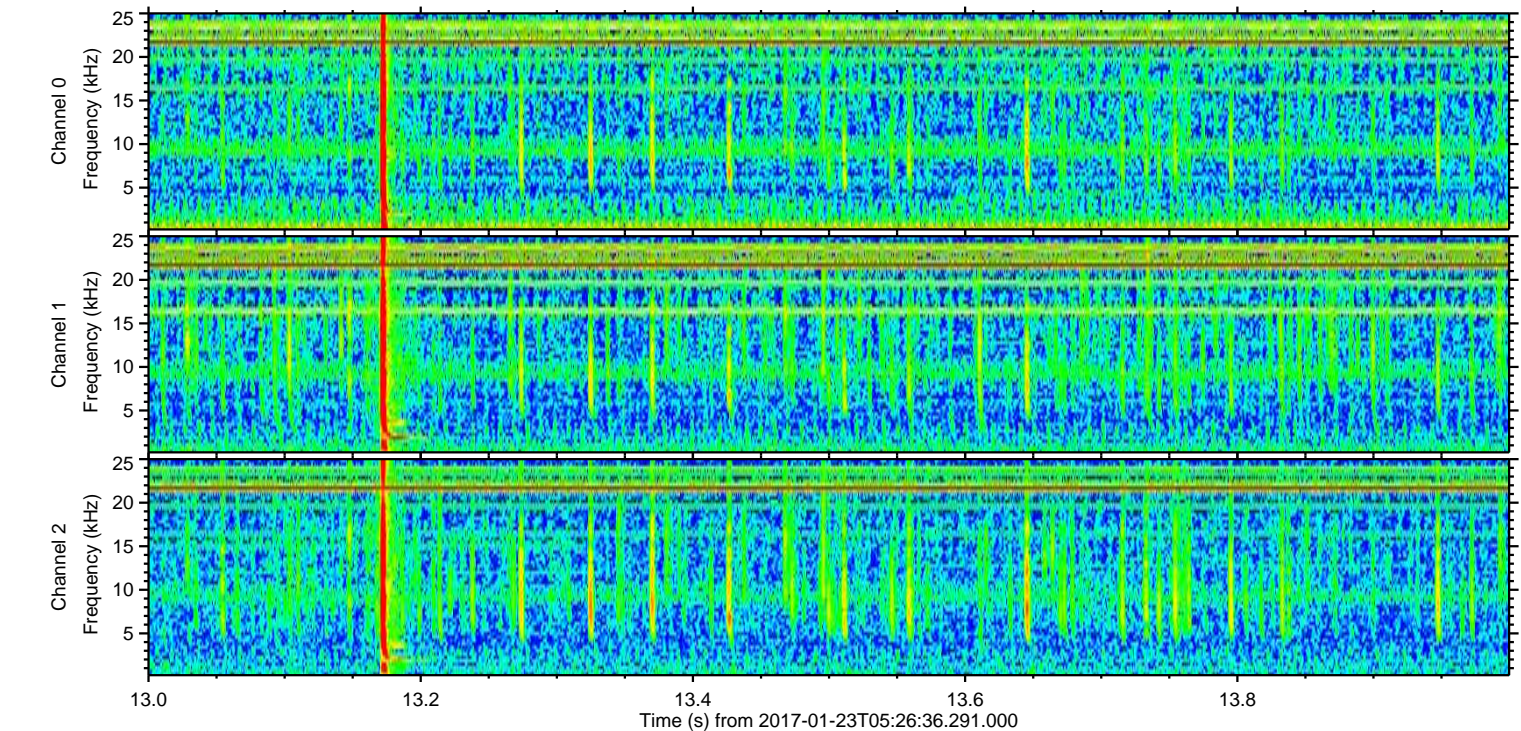
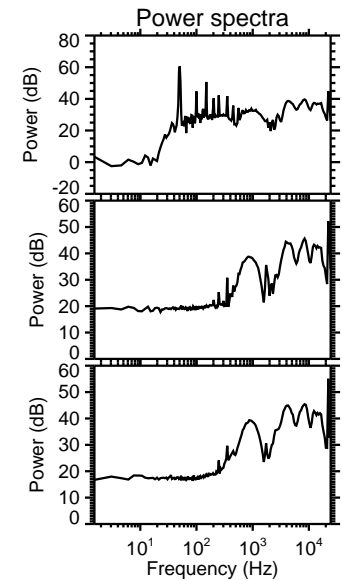
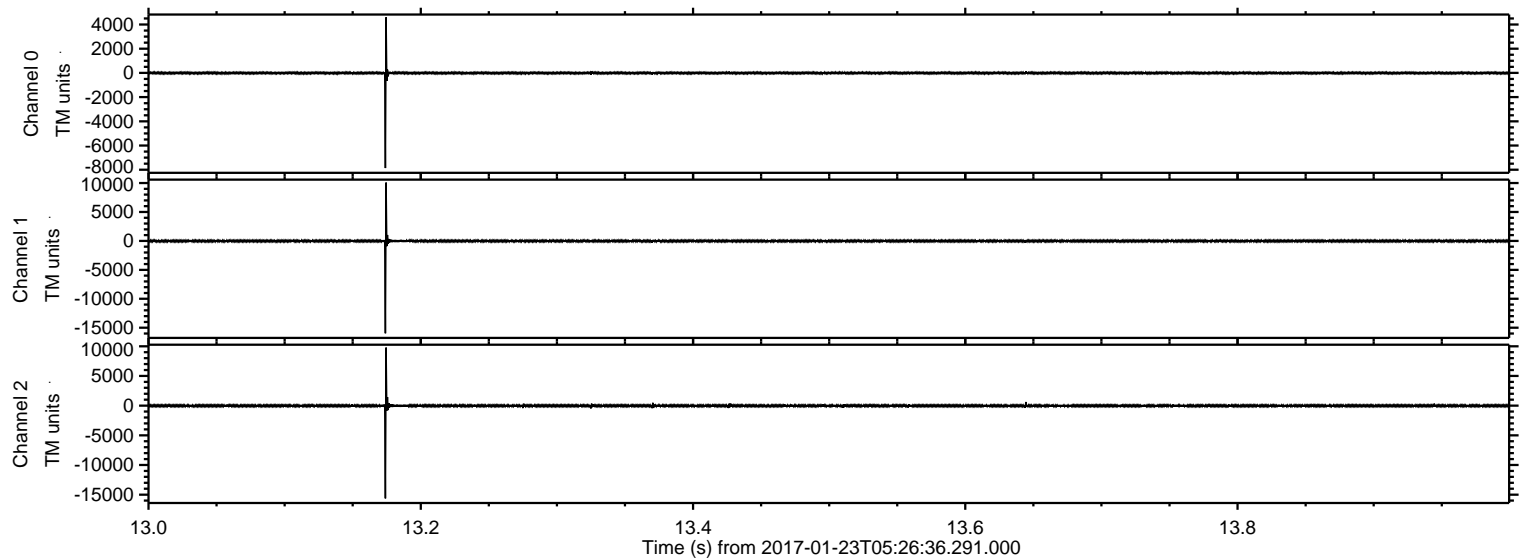
ELMAVAN 3D WAVEFORMS (Measured data sampled at 50 kHz) 51000 packets of 144 samples from 2017-01-23T05:26:36.291.000. Part 146/147

Processed Mon Jan 23 06:34:47 2017 by ELM ver.2012-10-06 from 001\_\_elm20170123\_052635\_\_dat00.bin





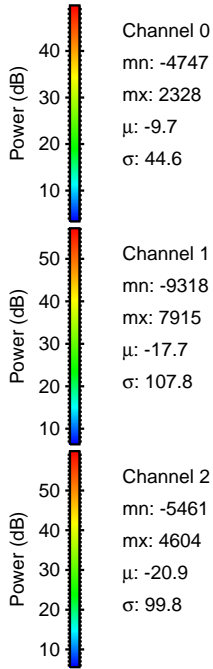
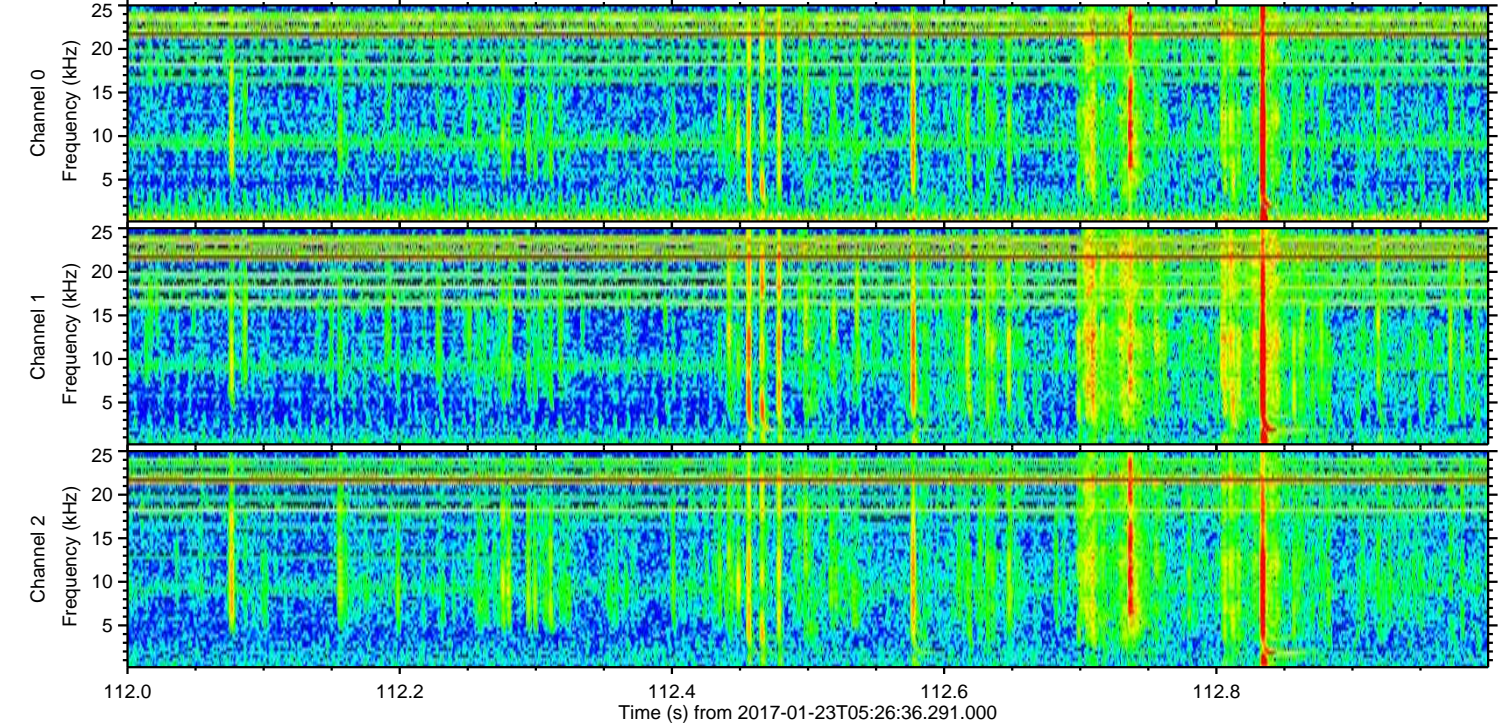
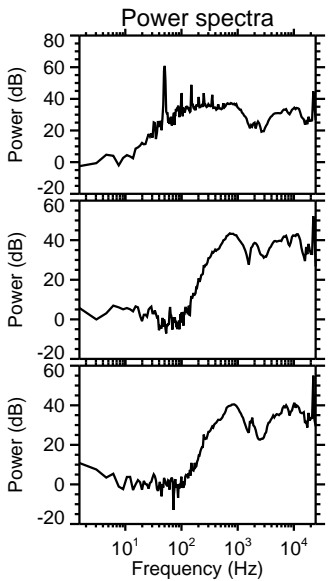
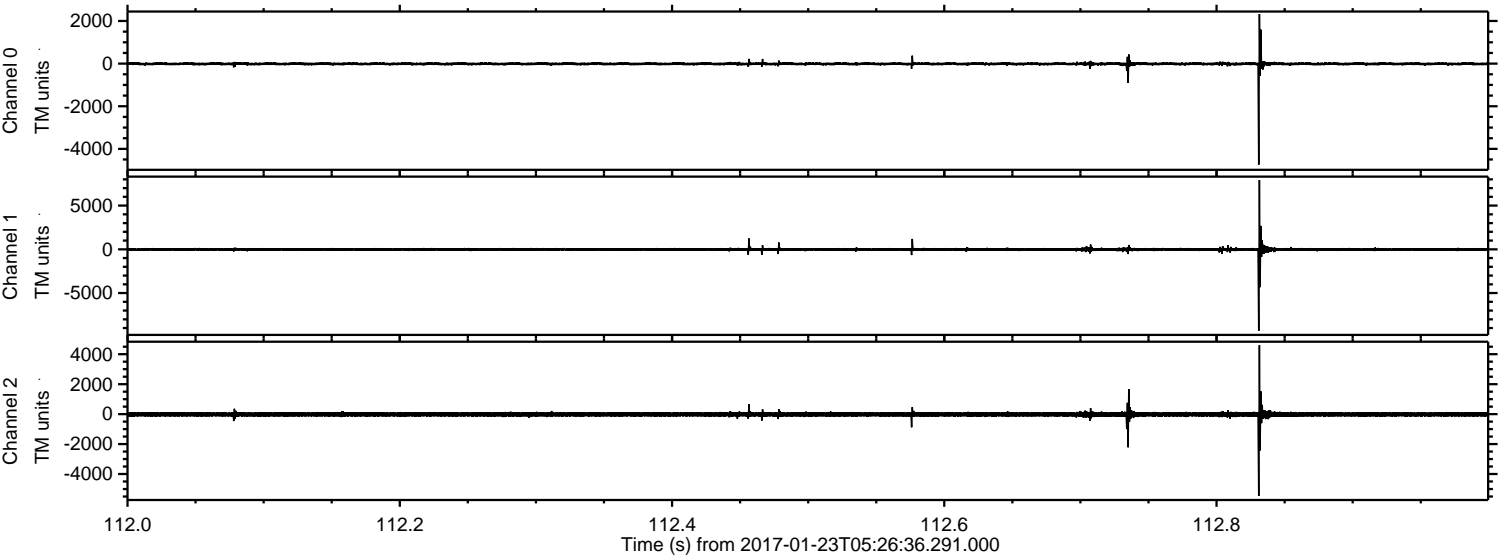
Processed Mon Jan 23 06:34:48 2017 by ELM ver.2012-10-06 from 001\_\_elm20170123\_052635\_\_dat00.bin





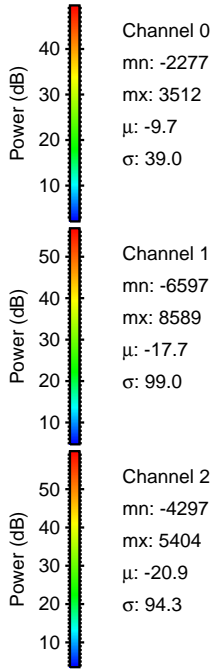
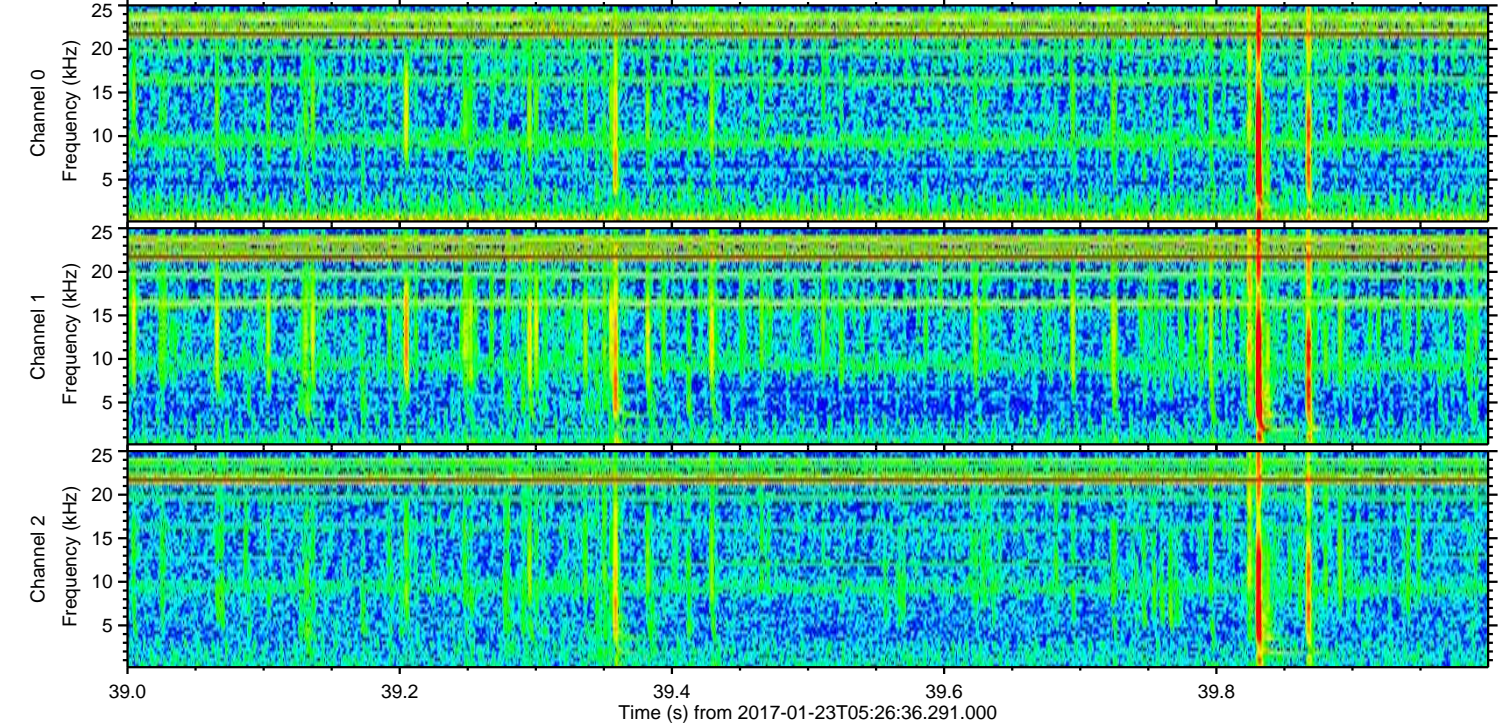
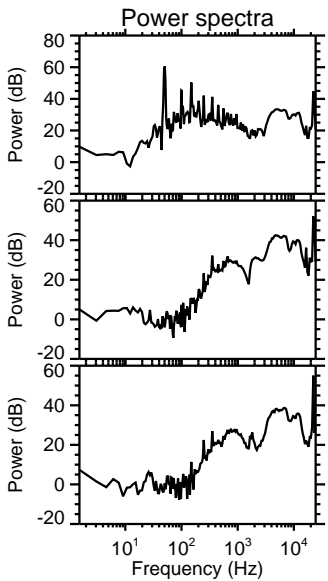
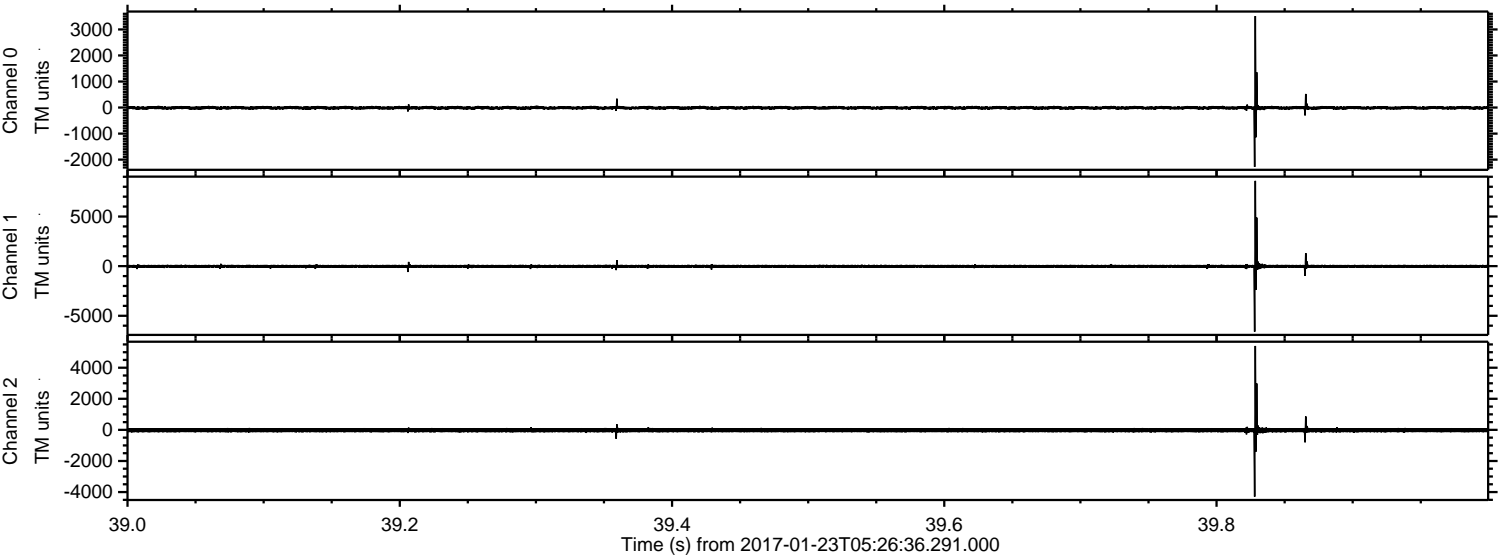
ELMAVAN 3D WAVEFORMS (Measured data sampled at 50 kHz) 51000 packets of 144 samples from 2017-01-23T05:26:36.291.000. Part 113/147

Processed Mon Jan 23 06:34:48 2017 by ELM ver.2012-10-06 from 001\_\_elm20170123\_052635\_\_dat00.bin





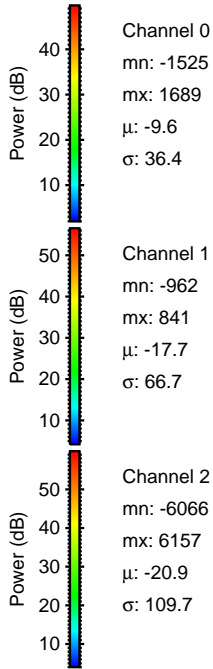
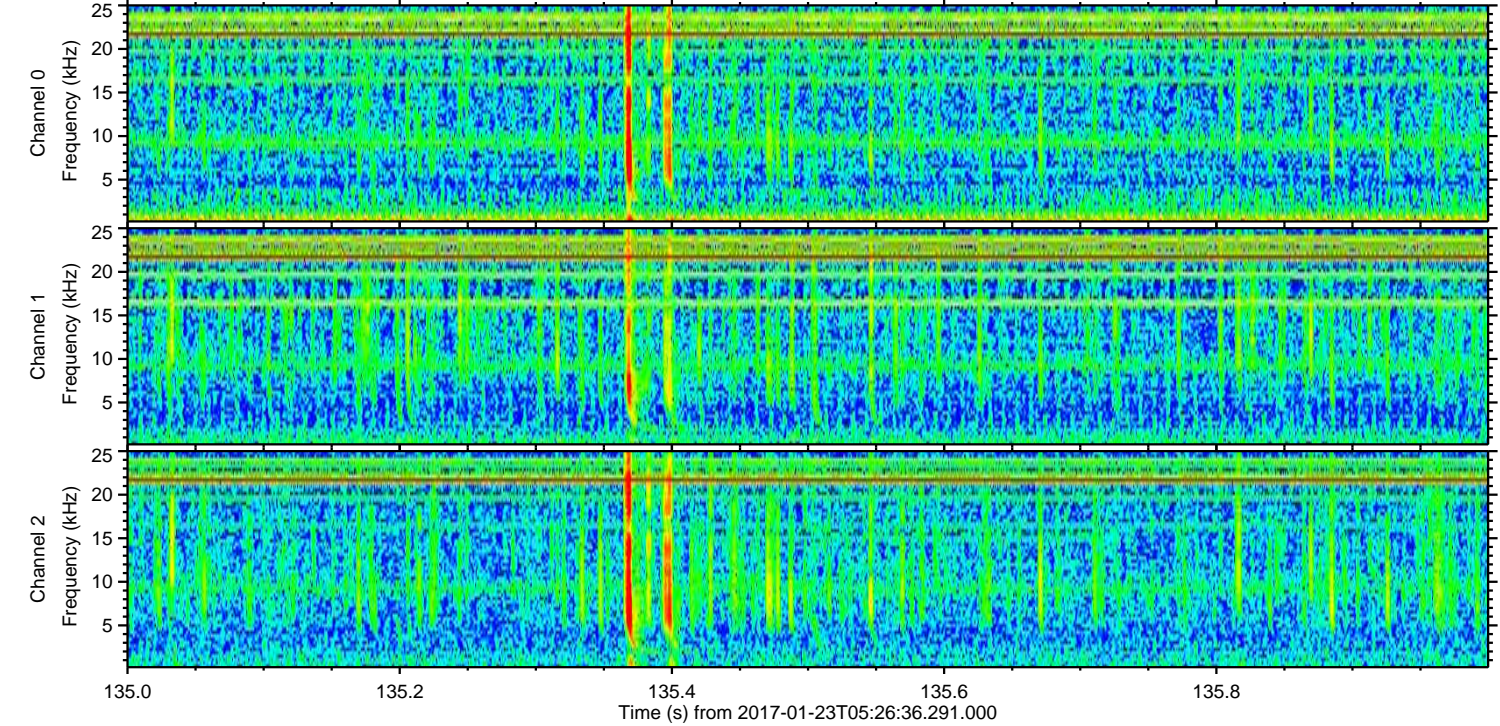
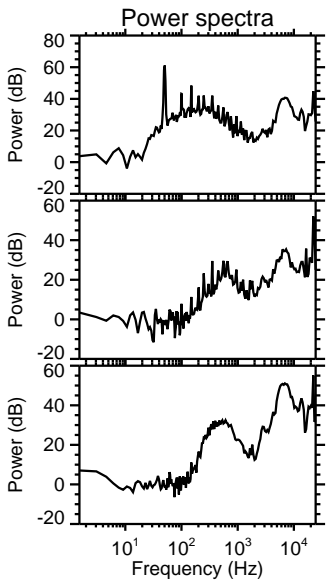
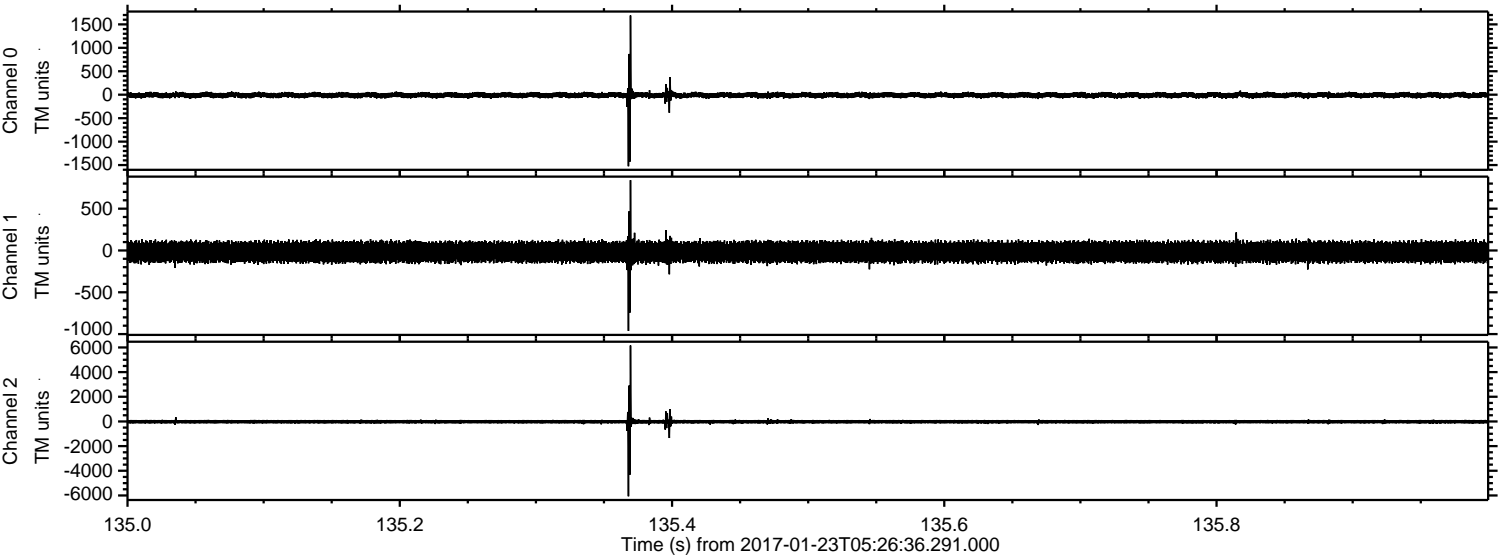
Processed Mon Jan 23 06:34:49 2017 by ELM ver.2012-10-06 from 001\_\_elm20170123\_052635\_\_dat00.bin





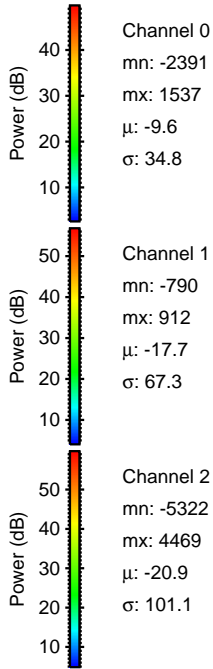
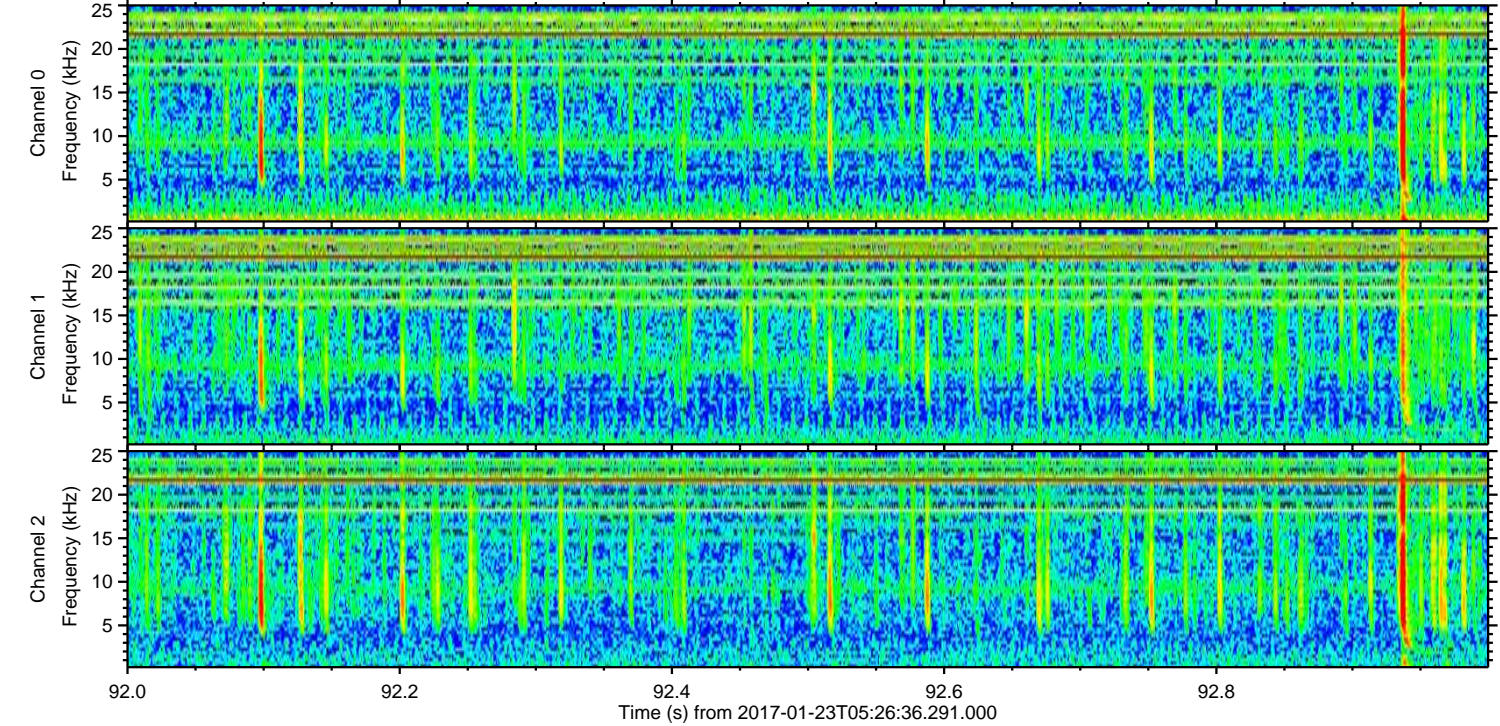
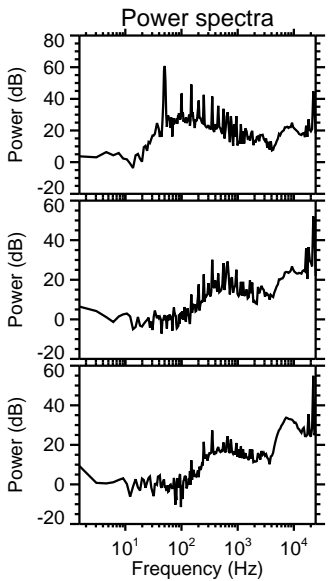
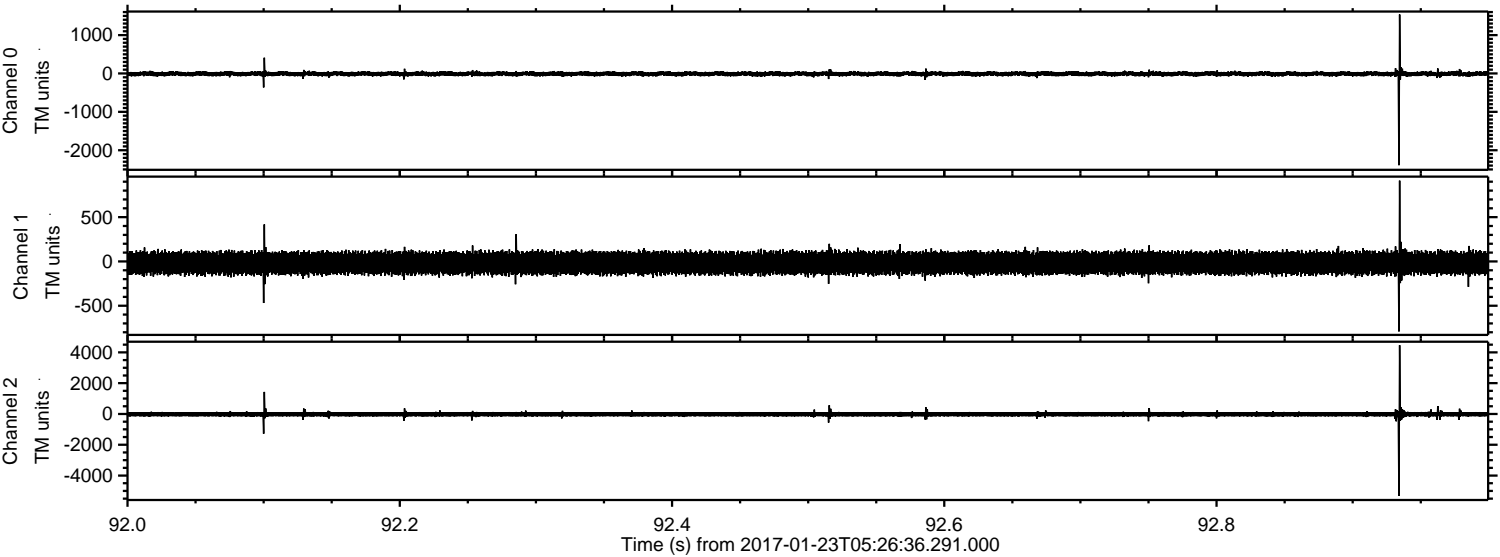
ELMAVAN 3D WAVEFORMS (Measured data sampled at 50 kHz) 51000 packets of 144 samples from 2017-01-23T05:26:36.291.000. Part 136/147

Processed Mon Jan 23 06:34:50 2017 by ELM ver.2012-10-06 from 001\_\_elm20170123\_052635\_\_dat00.bin





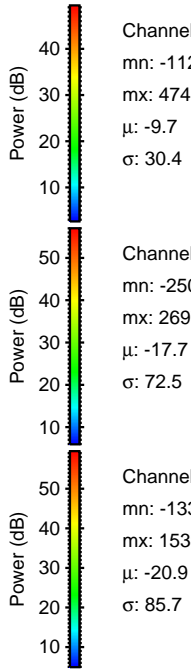
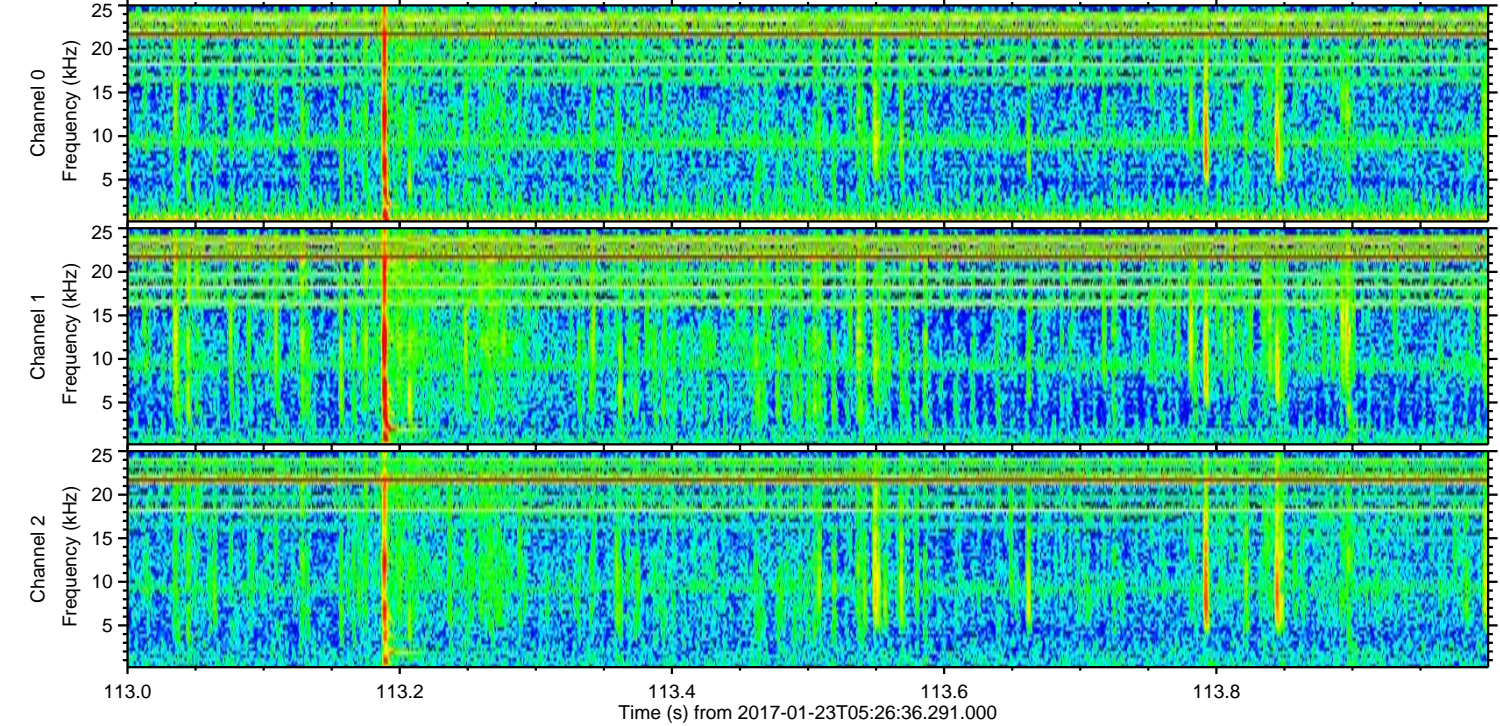
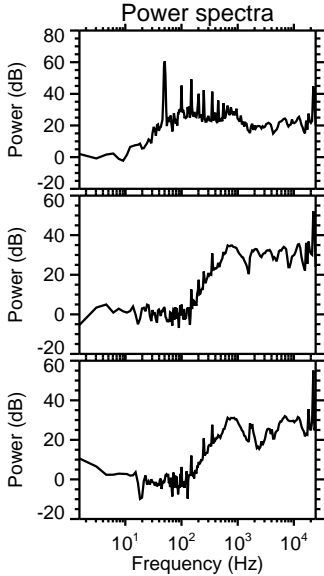
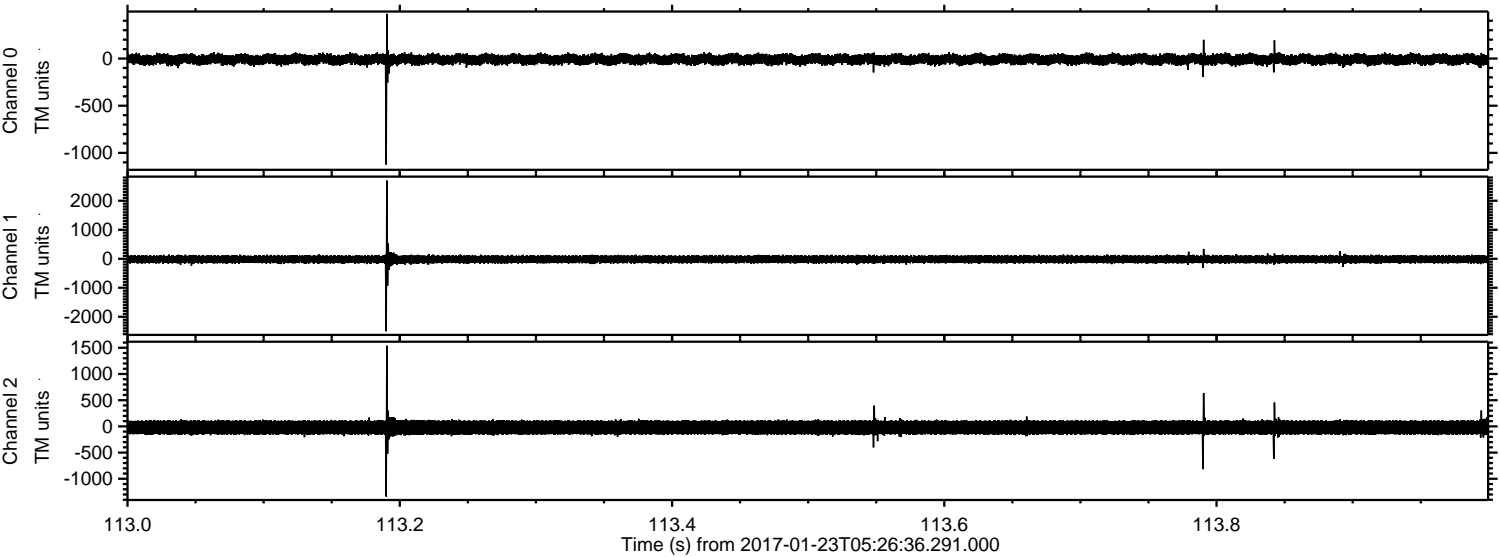
Processed Mon Jan 23 06:34:51 2017 by ELM ver.2012-10-06 from 001\_\_elm20170123\_052635\_\_dat00.bin





ELMAVAN 3D WAVEFORMS (Measured data sampled at 50 kHz) 51000 packets of 144 samples from 2017-01-23T05:26:36.291.000. Part 114/147

Processed Mon Jan 23 06:34:52 2017 by ELM ver.2012-10-06 from 001\_\_elm20170123\_052635\_\_dat00.bin



Channel 0  
mn: -1123  
mx: 474  
 $\mu$ : -9.7  
 $\sigma$ : 30.4

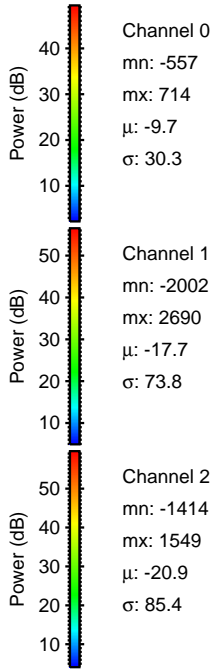
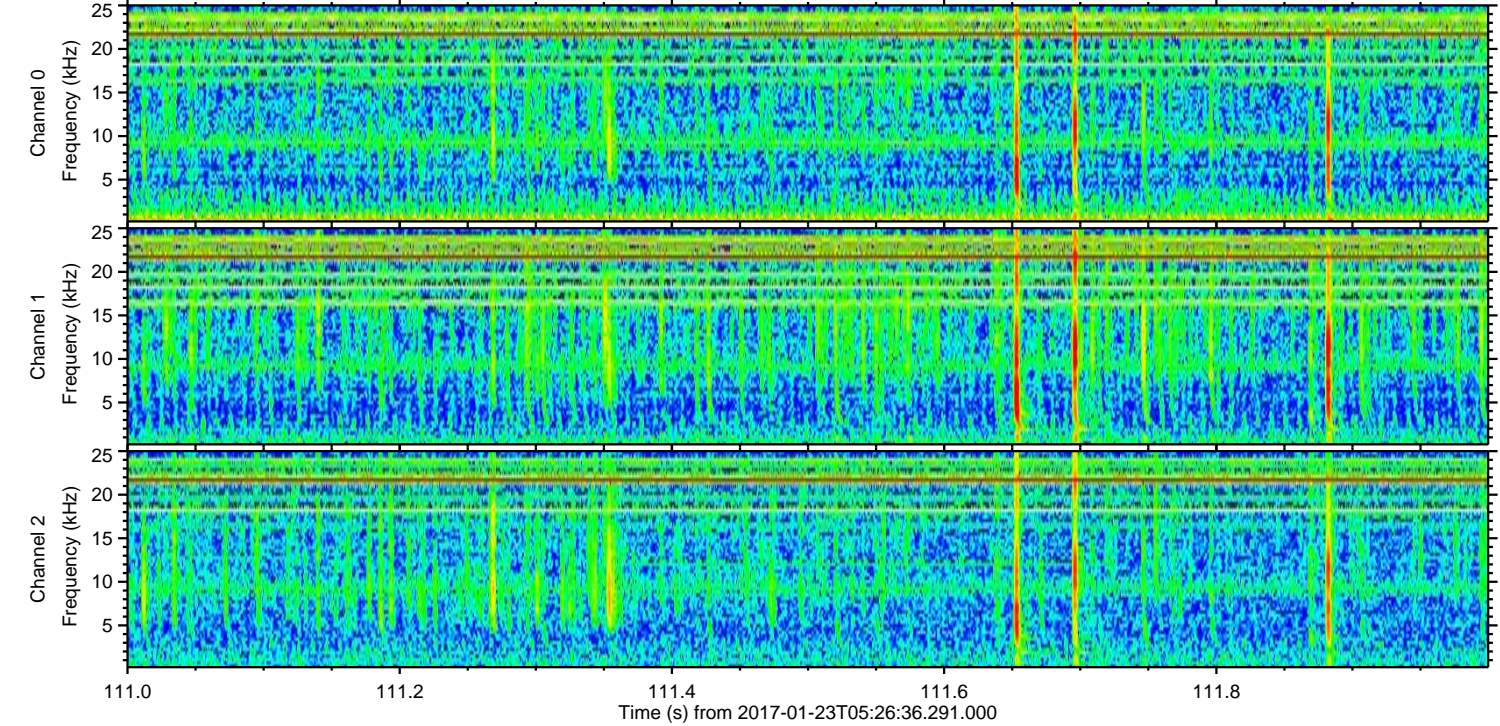
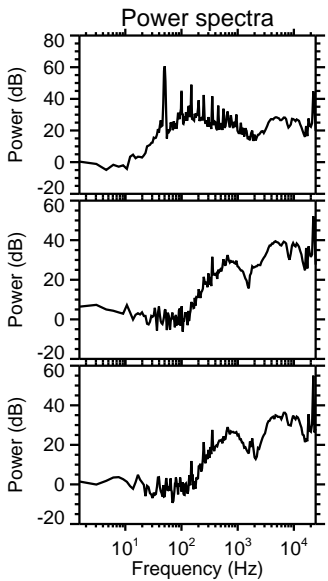
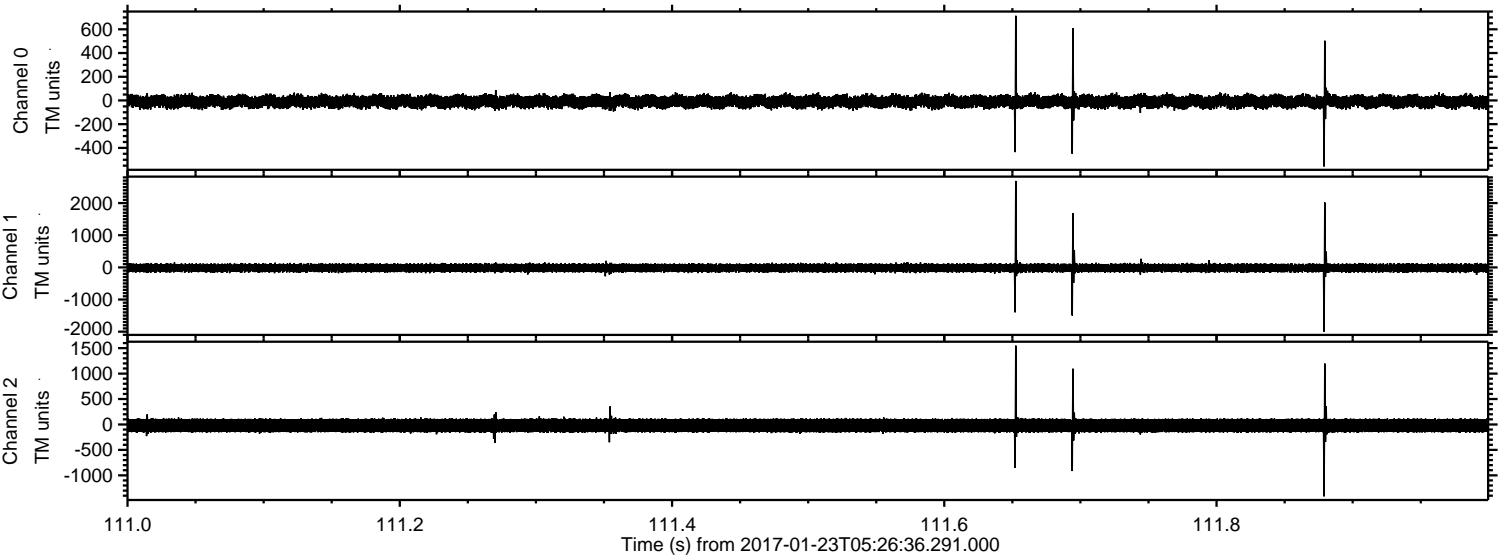
Channel 1  
mn: -2500  
mx: 2697  
 $\mu$ : -17.7  
 $\sigma$ : 72.5

Channel 2  
mn: -1338  
mx: 1539  
 $\mu$ : -20.9  
 $\sigma$ : 85.7



ELMAVAN 3D WAVEFORMS (Measured data sampled at 50 kHz) 51000 packets of 144 samples from 2017-01-23T05:26:36.291.000. Part 112/147

Processed Mon Jan 23 06:34:53 2017 by ELM ver.2012-10-06 from 001\_\_elm20170123\_052635\_\_dat00.bin



Channel 0  
mn: -557  
mx: 714  
 $\mu$ : -9.7  
 $\sigma$ : 30.3

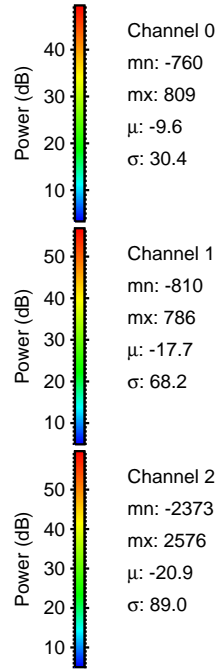
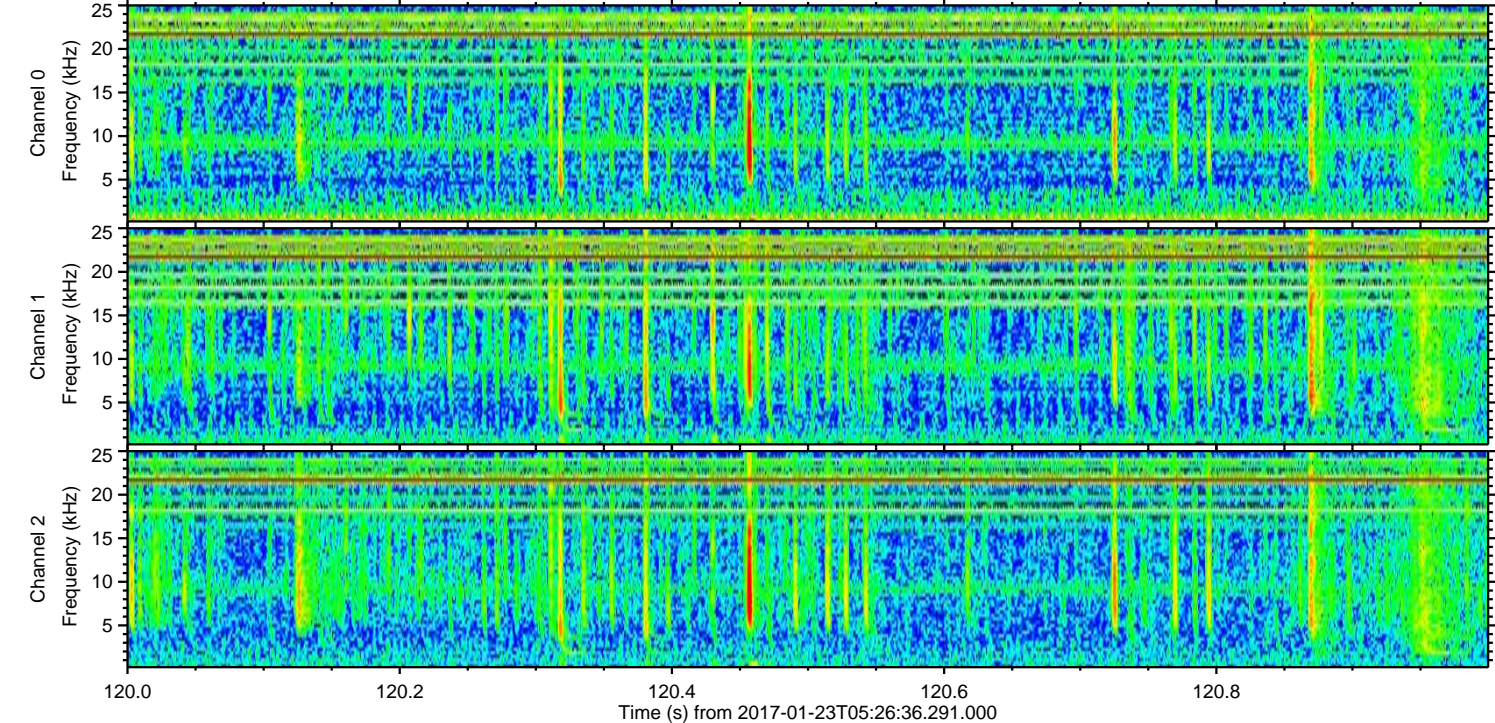
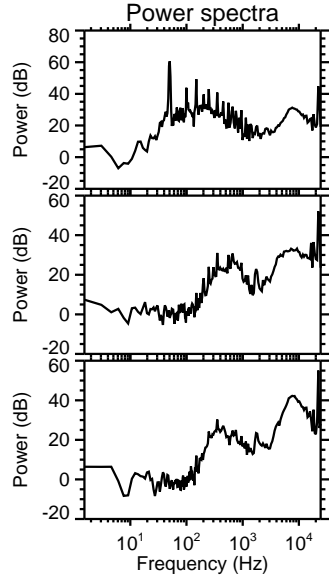
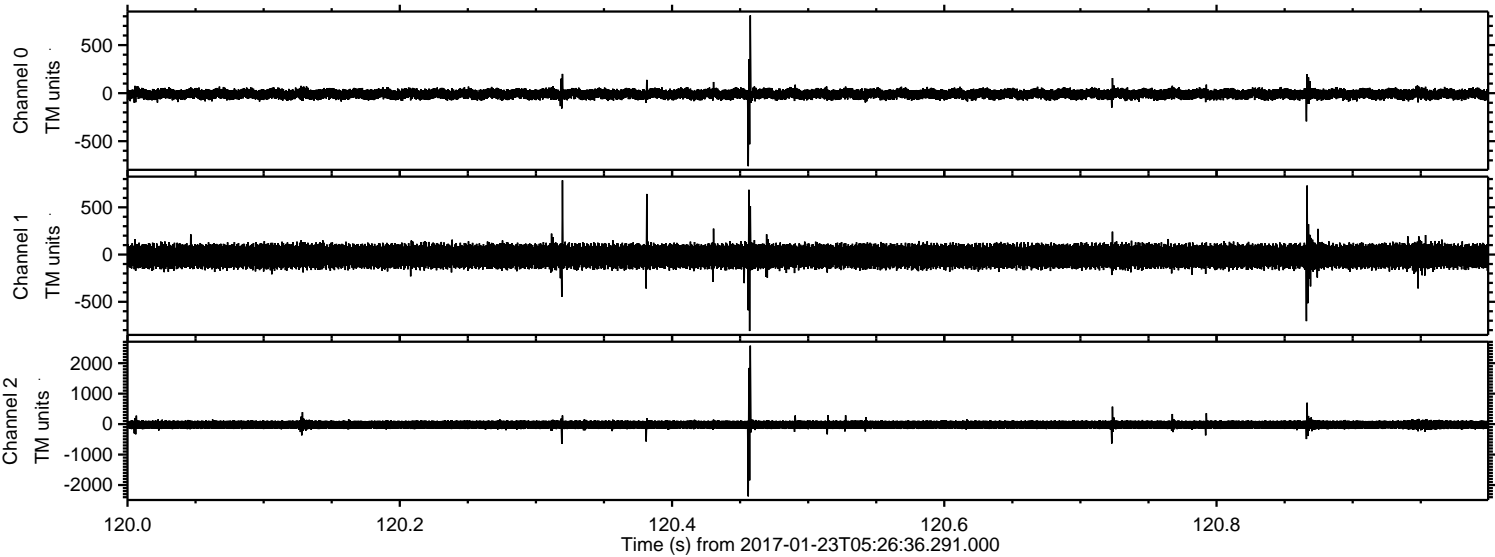
Channel 1  
mn: -2002  
mx: 2690  
 $\mu$ : -17.7  
 $\sigma$ : 73.8

Channel 2  
mn: -1414  
mx: 1549  
 $\mu$ : -20.9  
 $\sigma$ : 85.4



ELMAVAN 3D WAVEFORMS (Measured data sampled at 50 kHz) 51000 packets of 144 samples from 2017-01-23T05:26:36.291.000. Part 121/147

Processed Mon Jan 23 06:34:54 2017 by ELM ver.2012-10-06 from 001\_\_elm20170123\_052635\_\_dat00.bin





ELMAVAN 3D WAVEFORMS (Measured data sampled at 50 kHz) 51000 packets of 144 samples from 2017-01-23T05:26:36.291.000. Part 104/147

