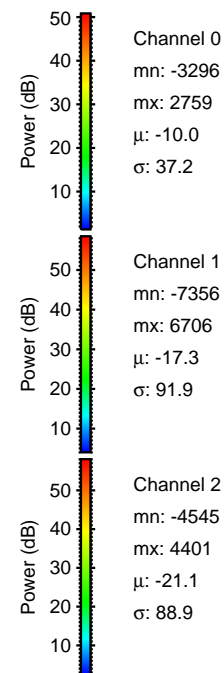
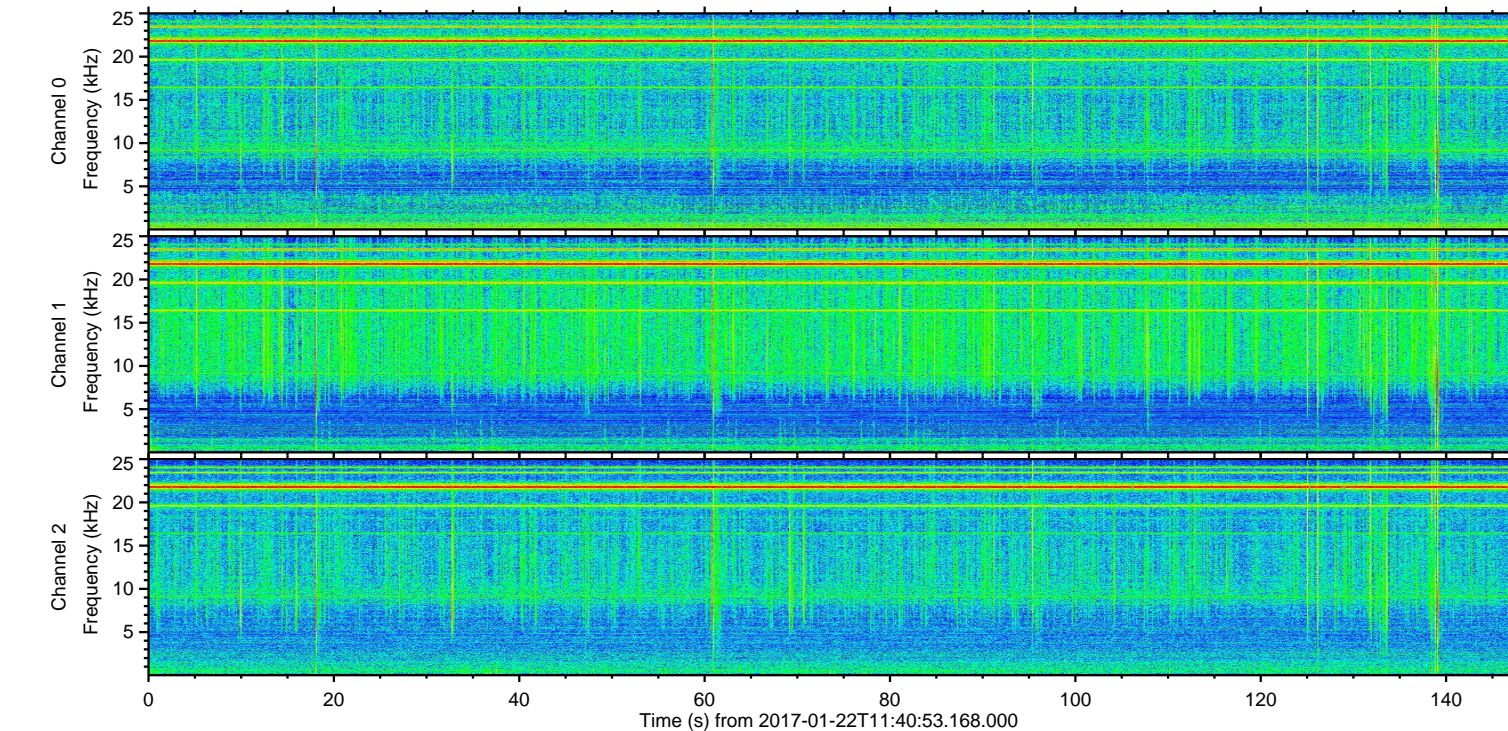
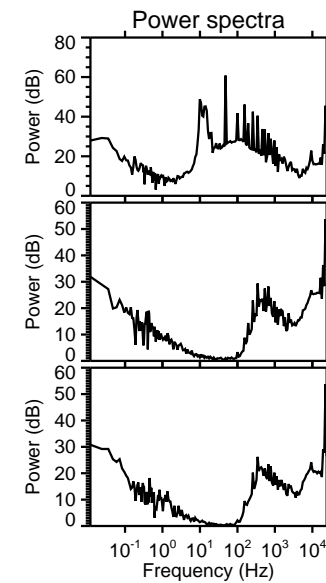
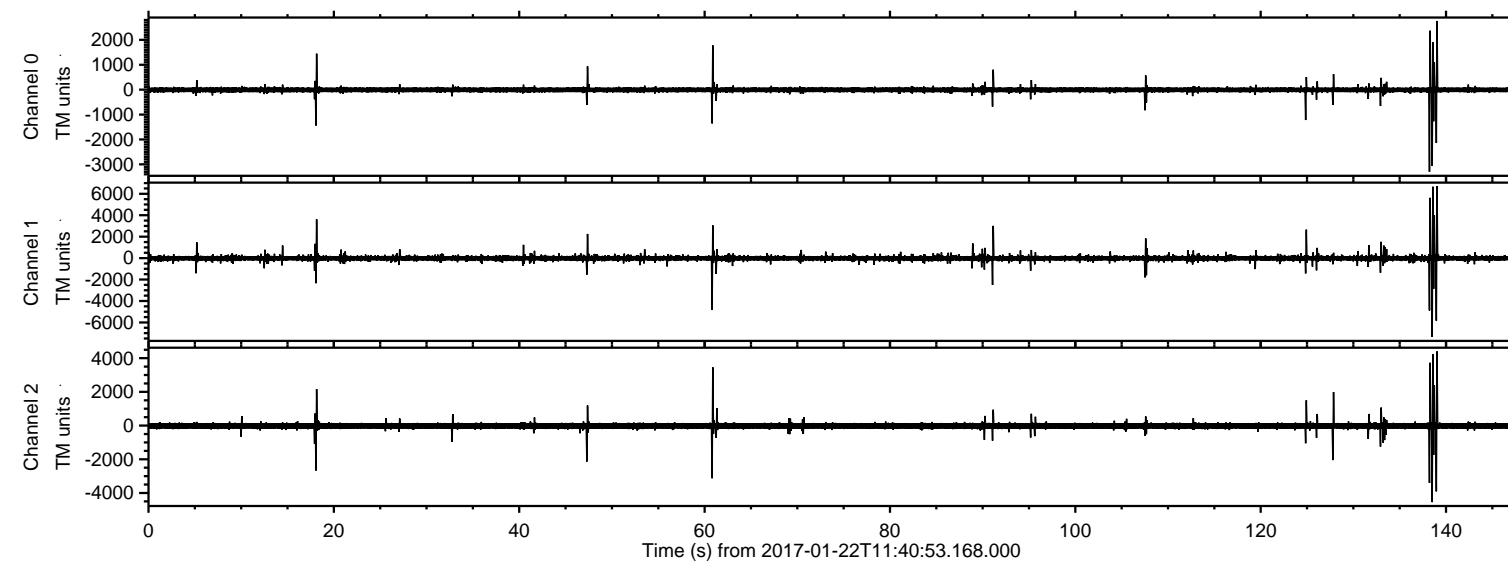


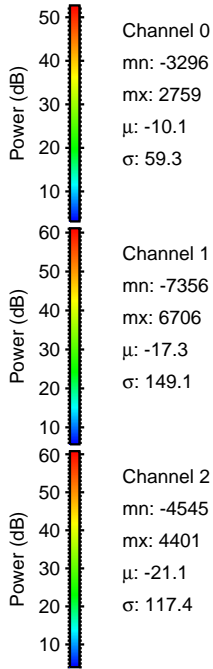
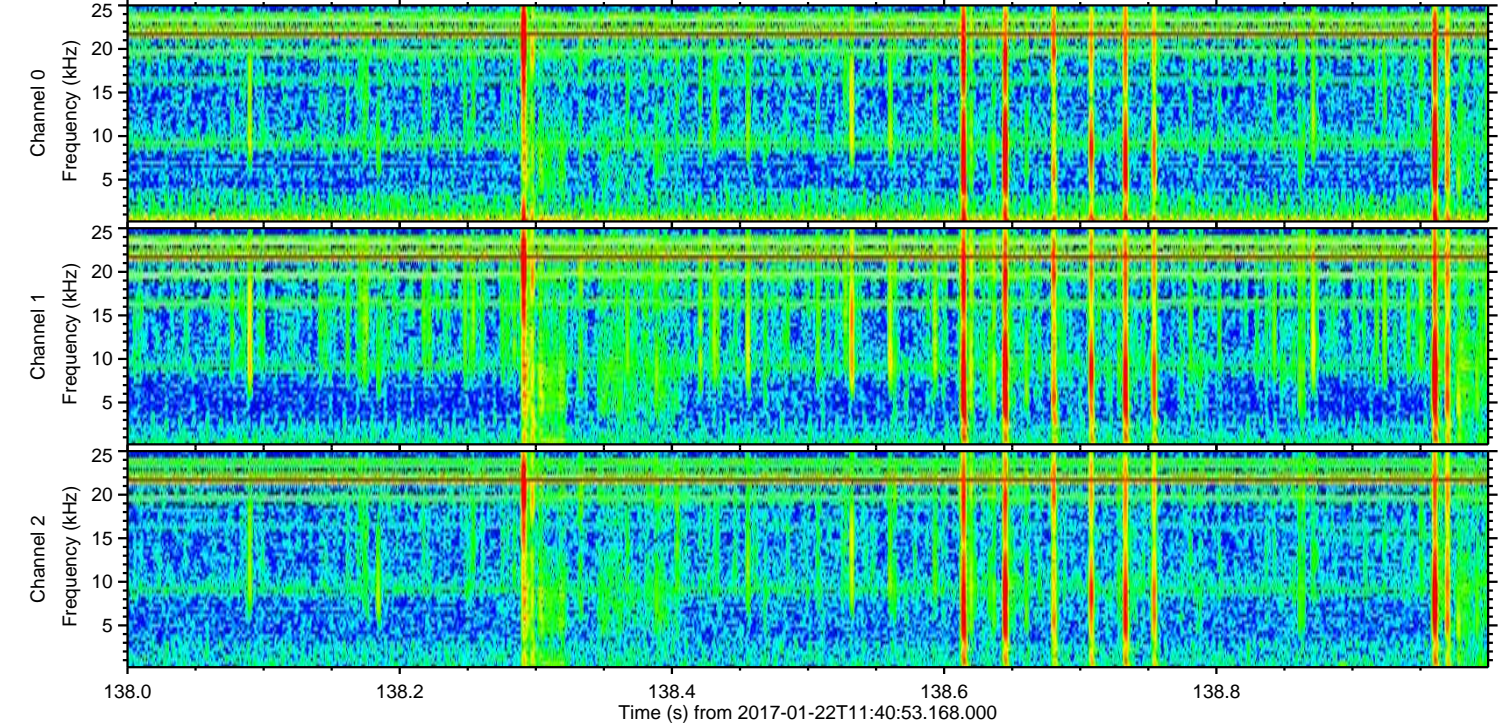
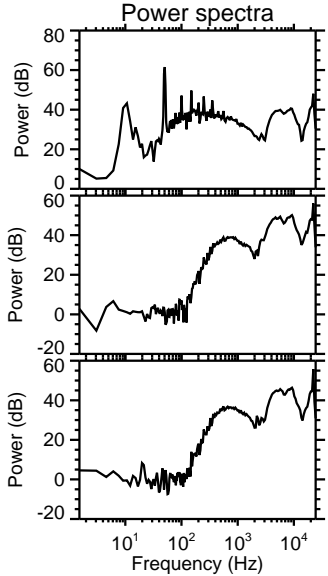
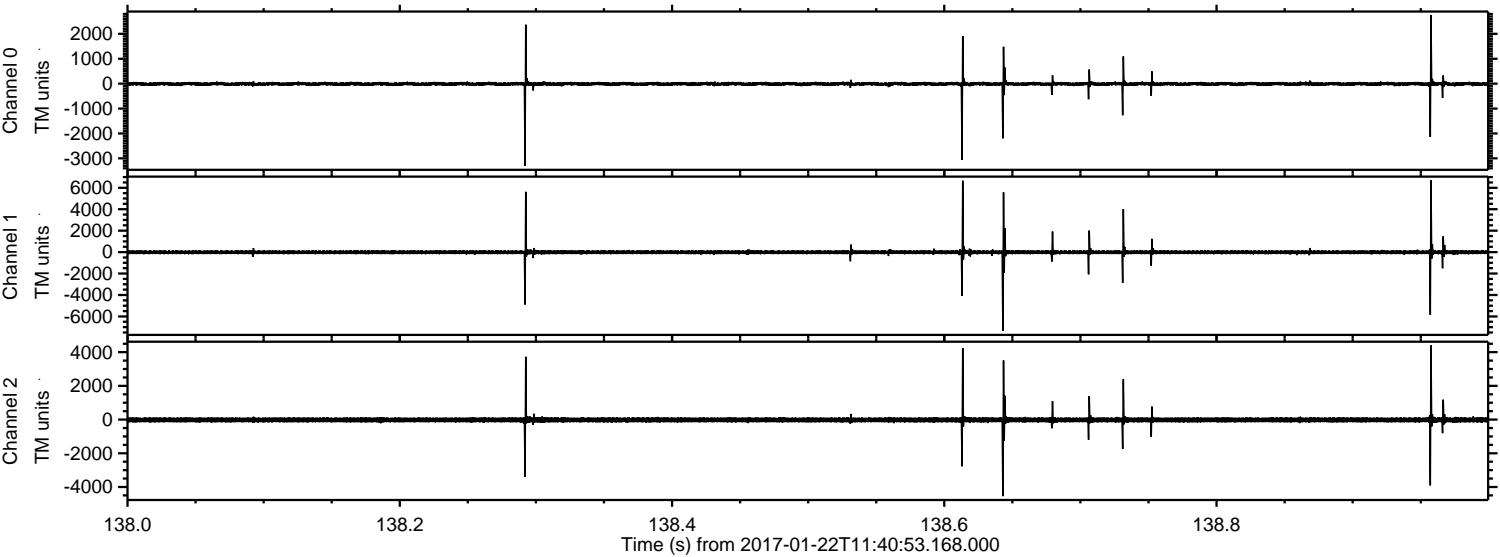
ELMAVAN 3D WAVEFORMS (Measured data sampled at 50 kHz) 51000 packets of 144 samples from 2017-01-22T11:40:53.168.000.

Processed Sun Jan 22 12:48:28 2017 by ELM ver.2012-10-06 from 001__elm20170122_114052__dat00.bin



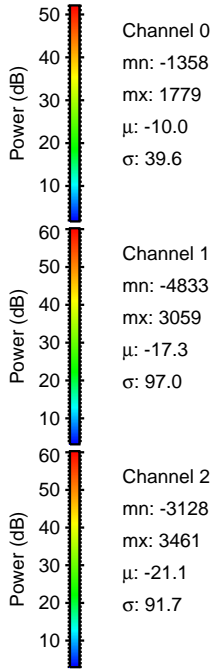
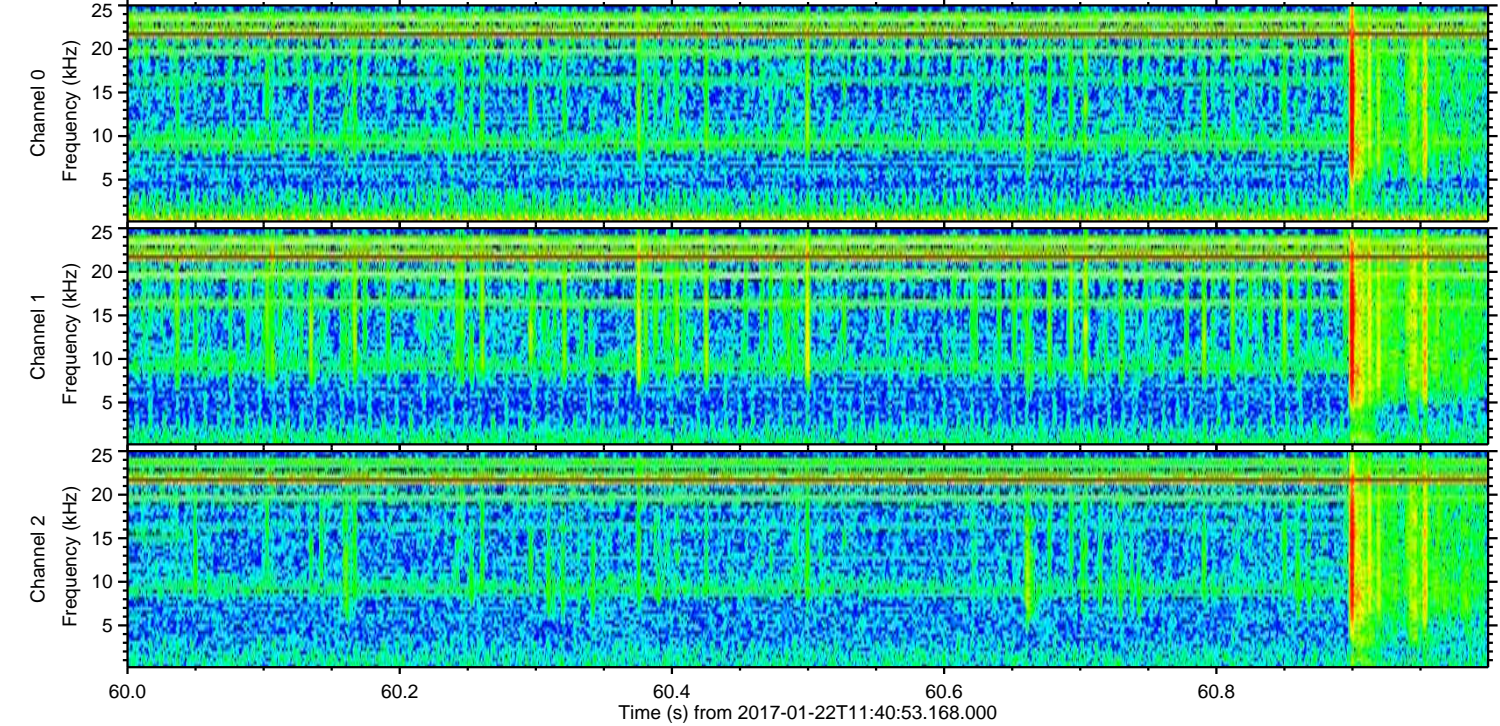
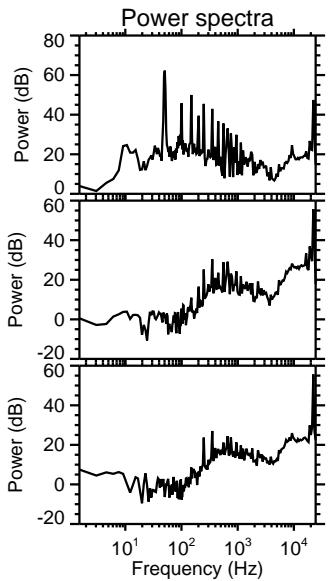
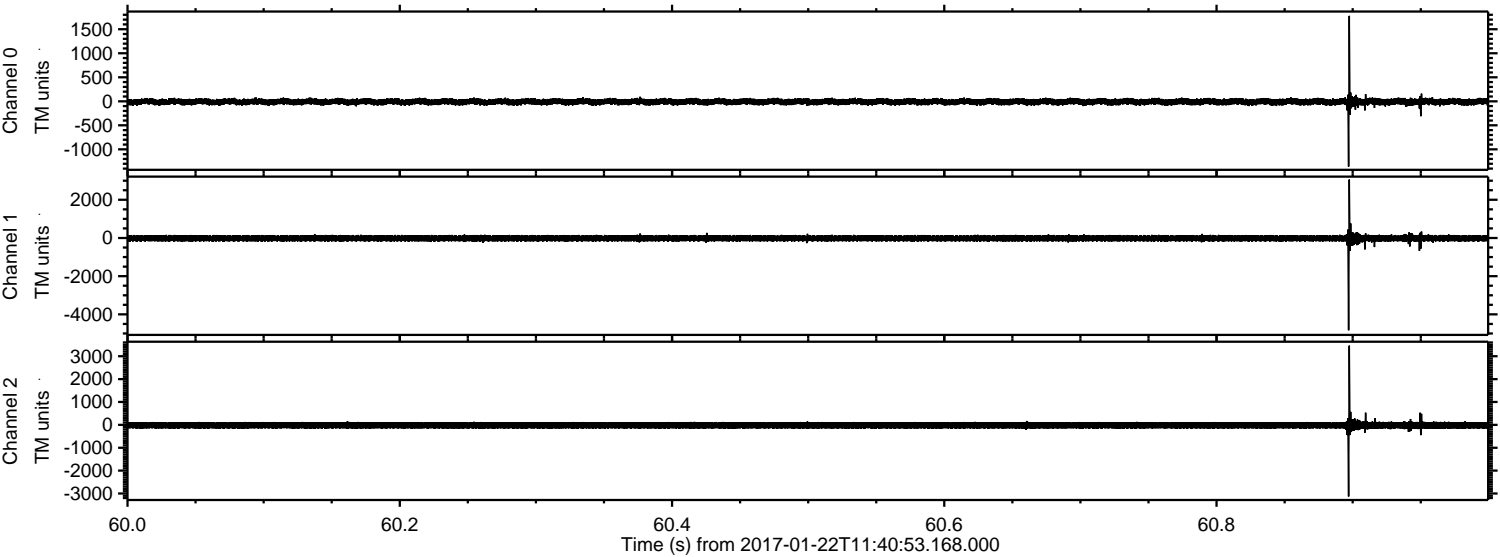
ELMAVAN 3D WAVEFORMS (Measured data sampled at 50 kHz) 51000 packets of 144 samples from 2017-01-22T11:40:53.168.000. Part 139/147

Processed Sun Jan 22 12:48:40 2017 by ELM ver.2012-10-06 from 001__elm20170122_114052__dat00.bin



ELMAVAN 3D WAVEFORMS (Measured data sampled at 50 kHz) 51000 packets of 144 samples from 2017-01-22T11:40:53.168.000. Part 61/147

Processed Sun Jan 22 12:48:41 2017 by ELM ver.2012-10-06 from 001__elm20170122_114052__dat00.bin

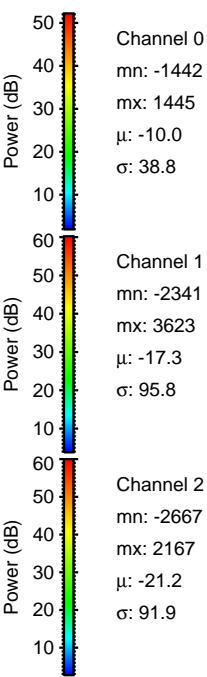
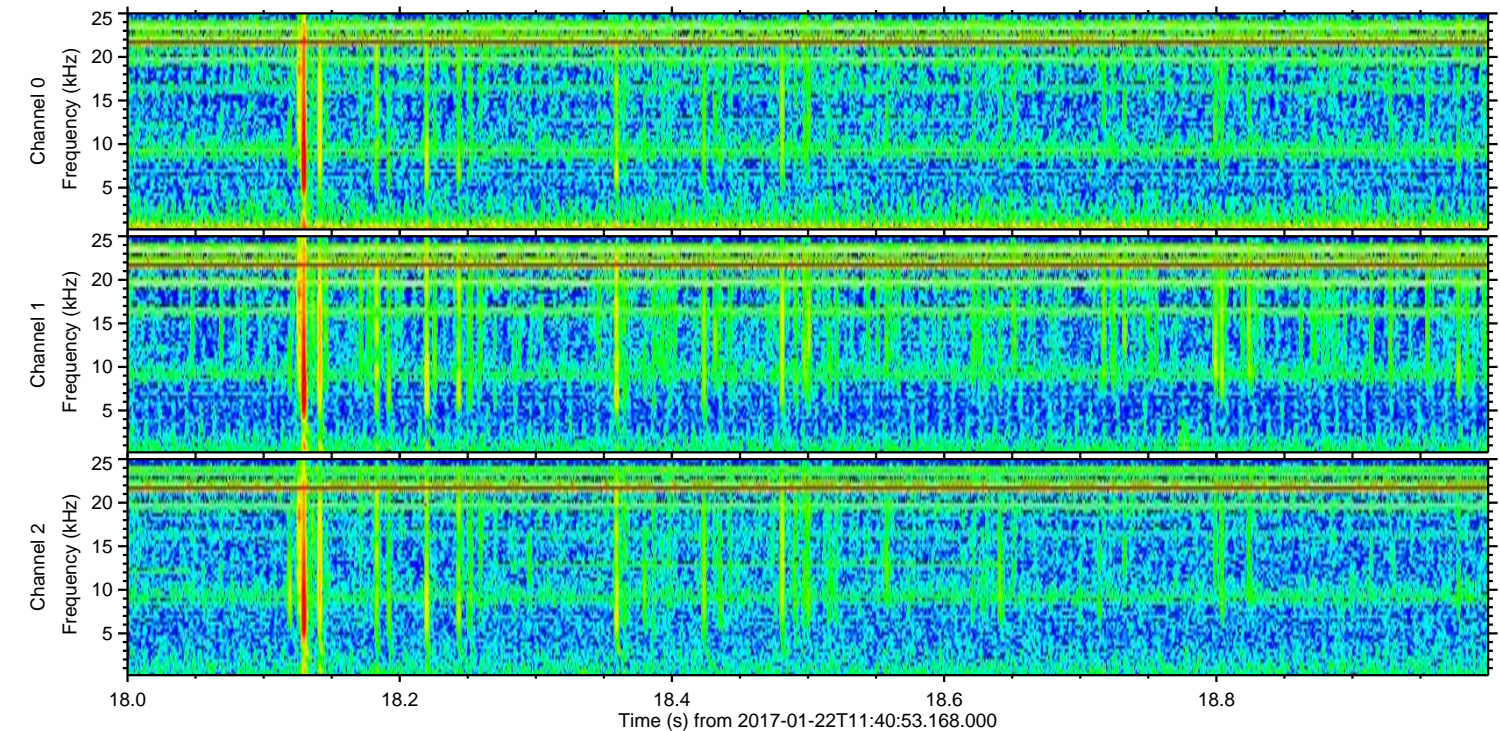
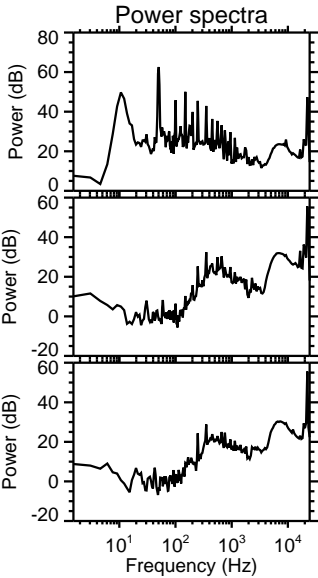
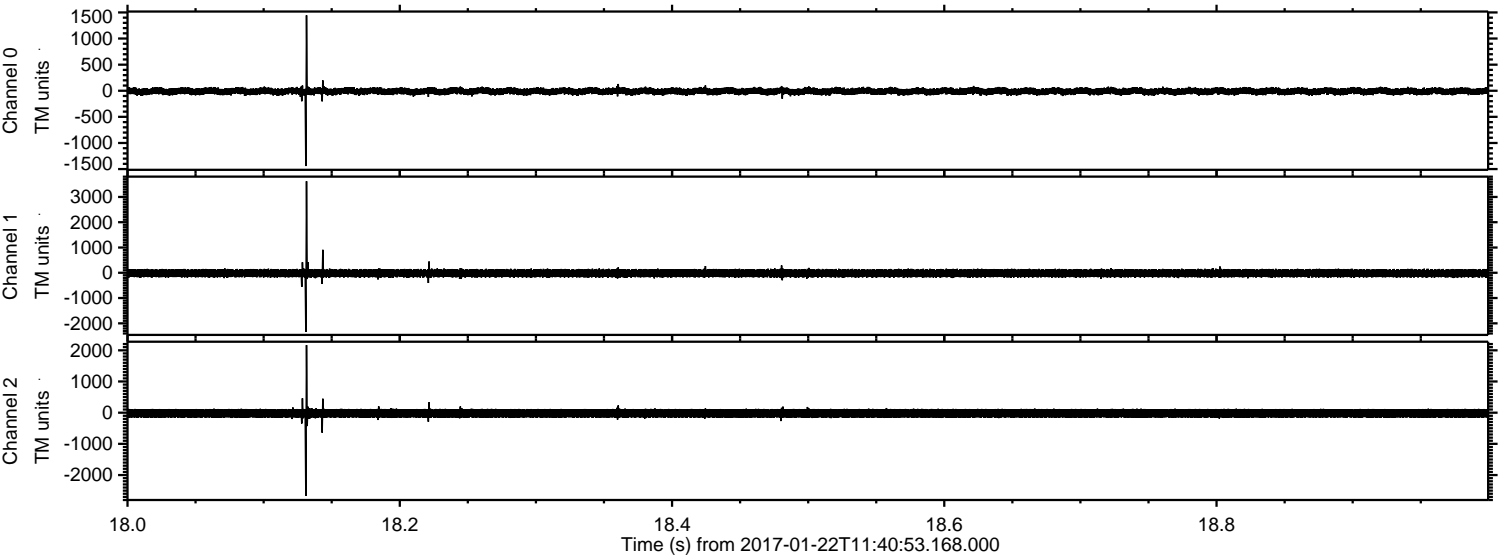


Channel 0
mn: -1358
mx: 1779
 μ : -10.0
 σ : 39.6

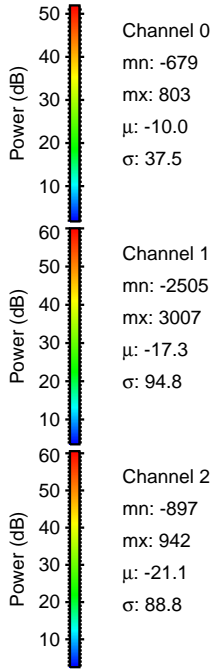
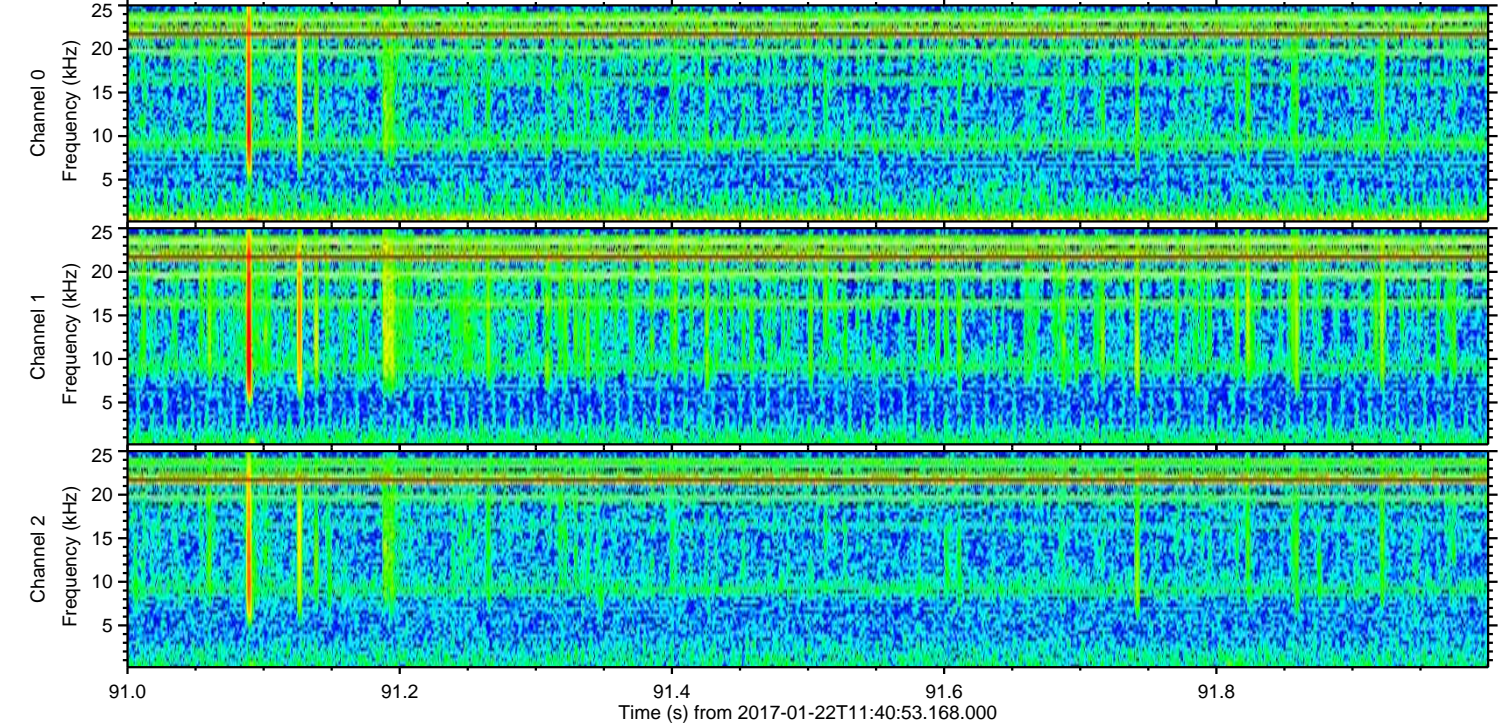
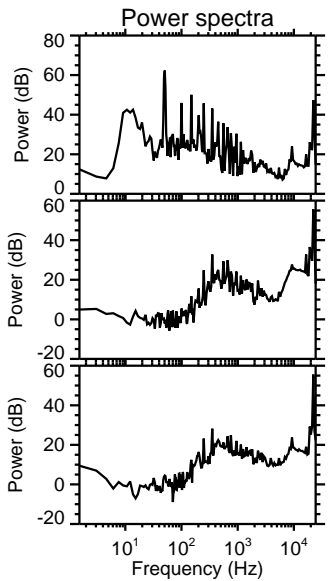
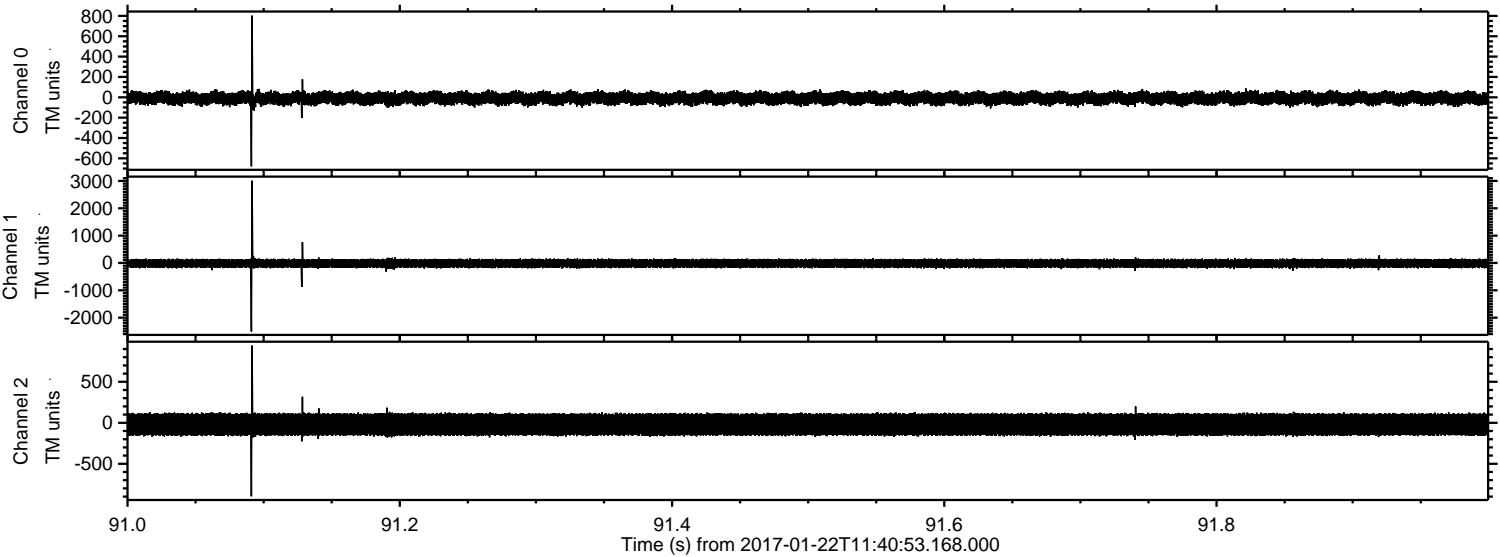
Channel 1
mn: -4833
mx: 3059
 μ : -17.3
 σ : 97.0

Channel 2
mn: -3128
mx: 3461
 μ : -21.1
 σ : 91.7

Processed Sun Jan 22 12:48:41 2017 by ELM ver.2012-10-06 from 001__elm20170122_114052__dat00.bin

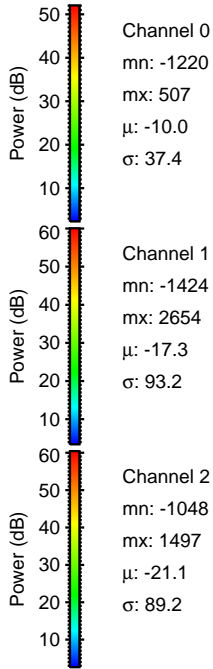
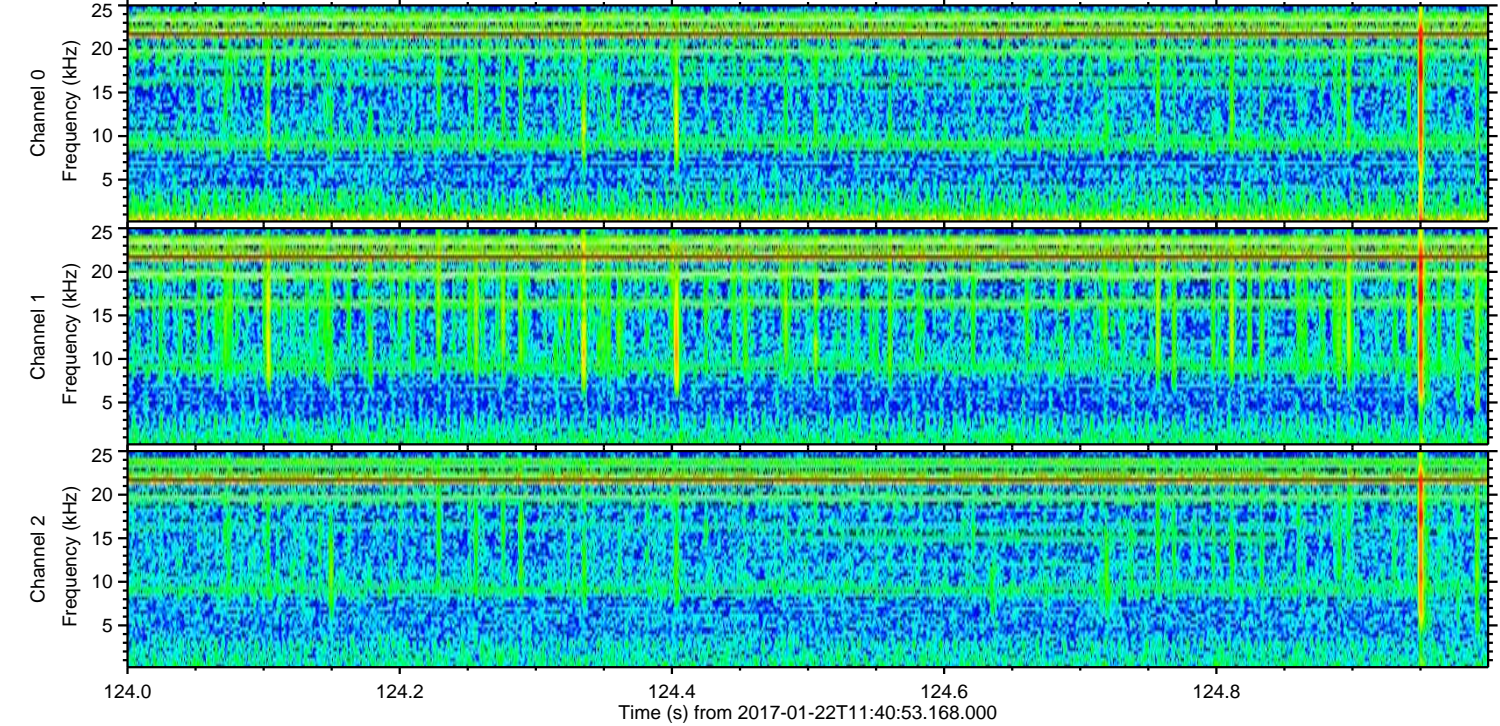
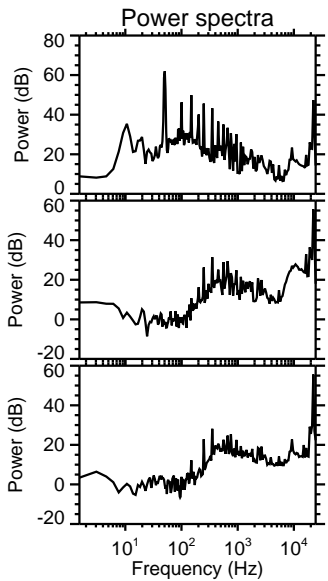
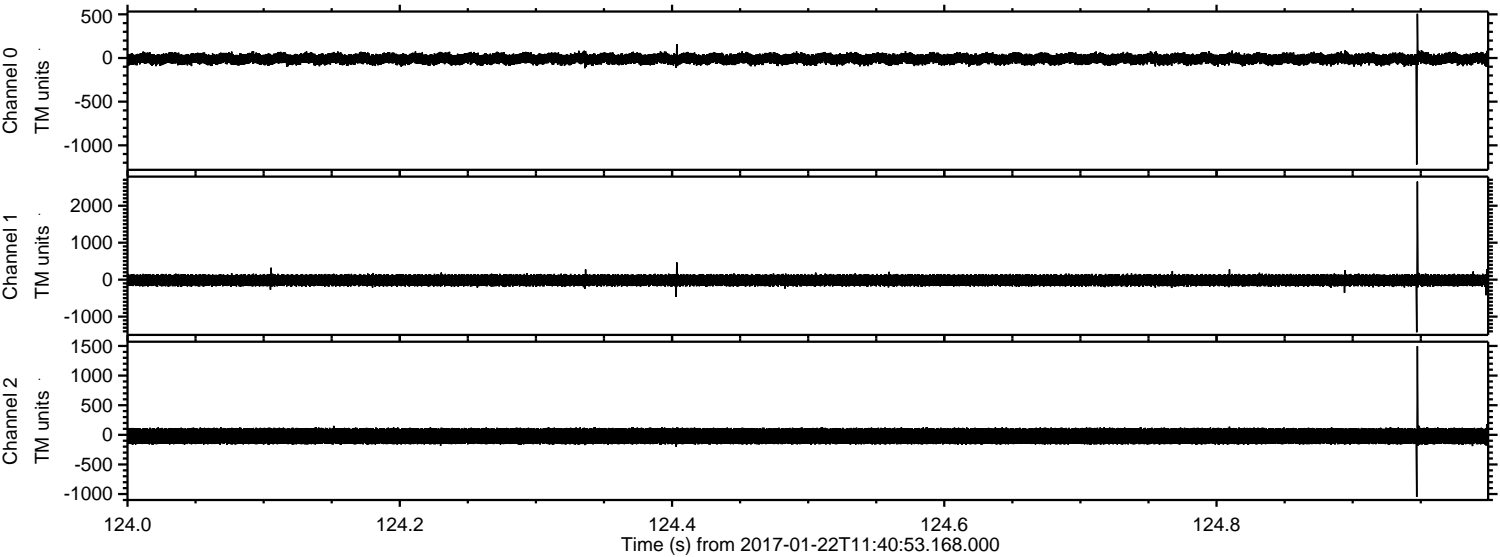


Processed Sun Jan 22 12:48:42 2017 by ELM ver.2012-10-06 from 001__elm20170122_114052__dat00.bin



ELMAVAN 3D WAVEFORMS (Measured data sampled at 50 kHz) 51000 packets of 144 samples from 2017-01-22T11:40:53.168.000. Part 125/147

Processed Sun Jan 22 12:48:43 2017 by ELM ver.2012-10-06 from 001__elm20170122_114052__dat00.bin

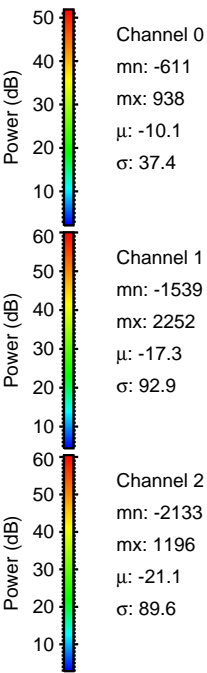
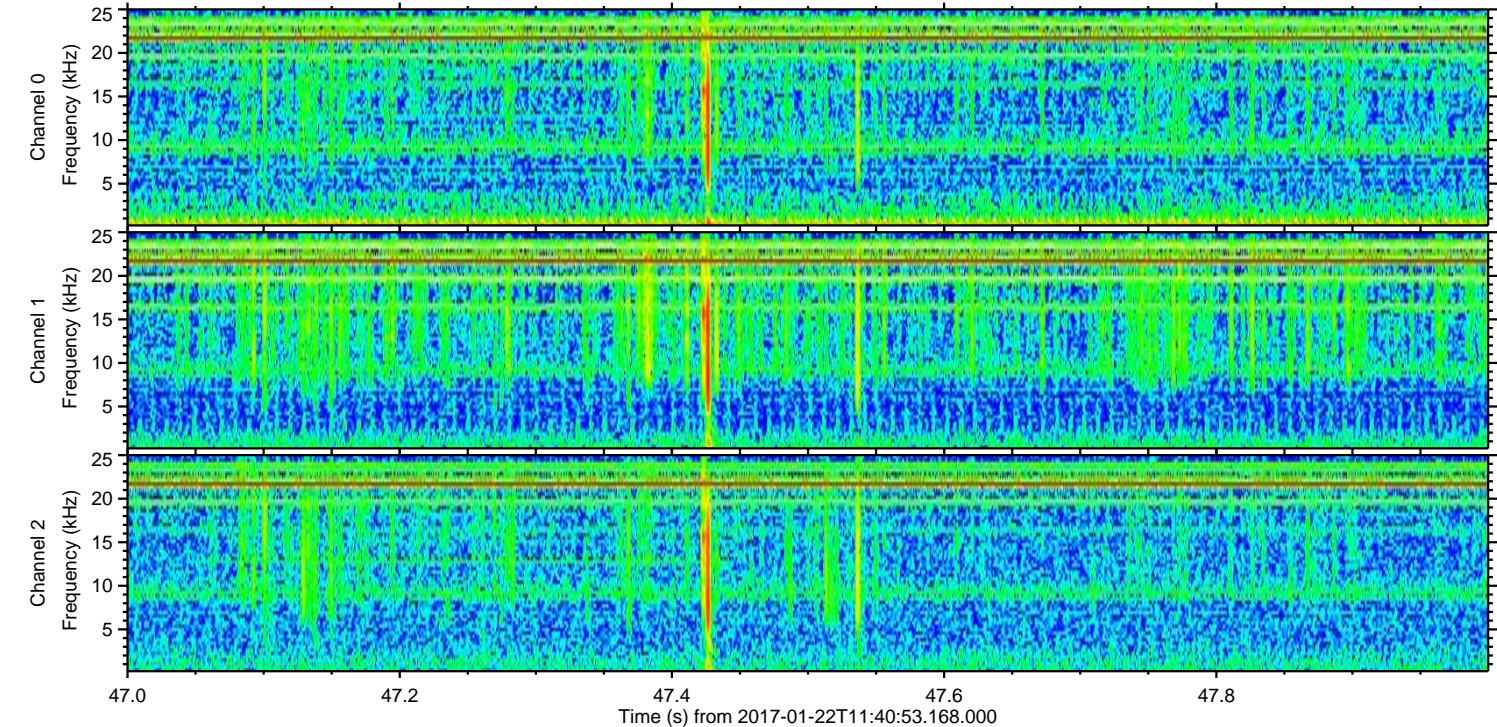
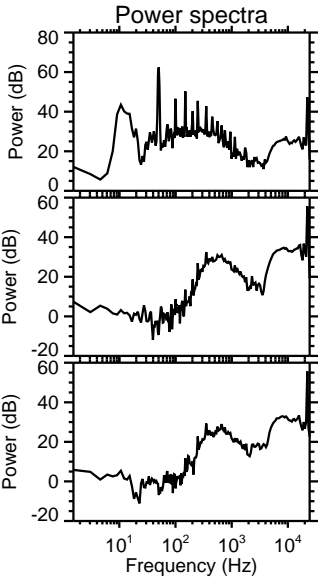
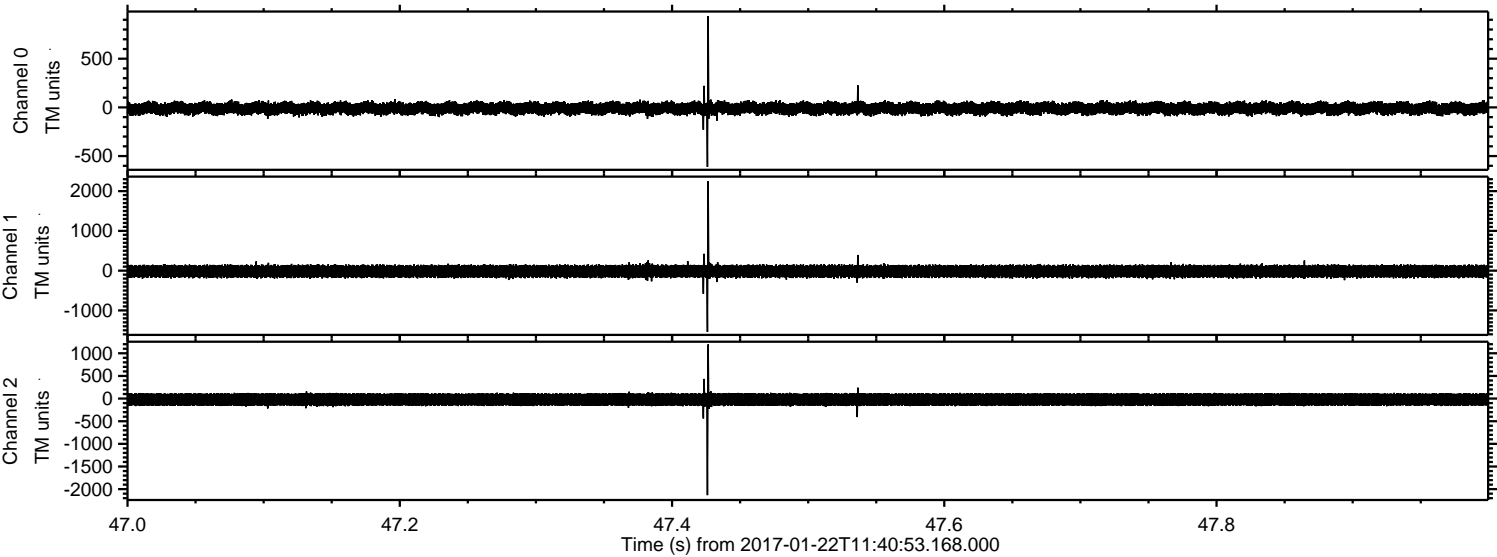


Channel 0
mn: -1220
mx: 507
 μ : -10.0
 σ : 37.4

Channel 1
mn: -1424
mx: 2654
 μ : -17.3
 σ : 93.2

Channel 2
mn: -1048
mx: 1497
 μ : -21.1
 σ : 89.2

Processed Sun Jan 22 12:48:44 2017 by ELM ver.2012-10-06 from 001__elm20170122_114052__dat00.bin



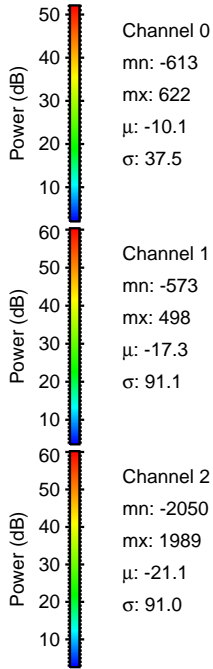
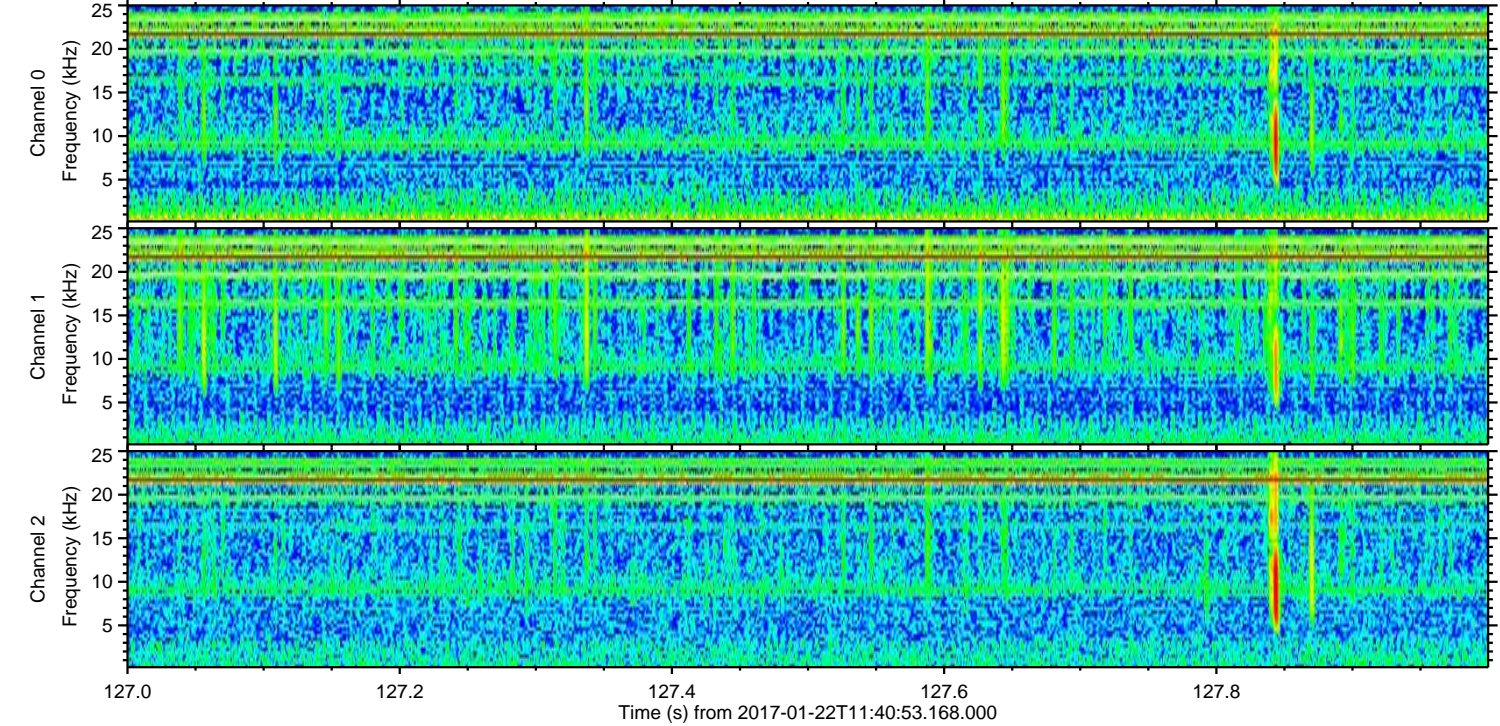
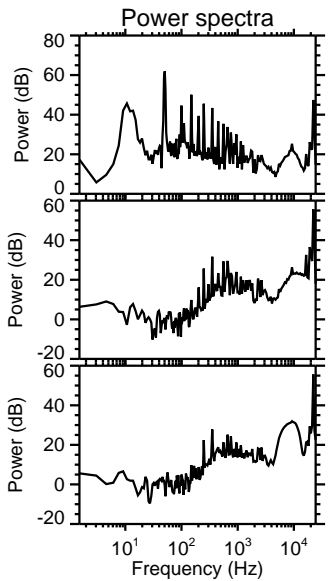
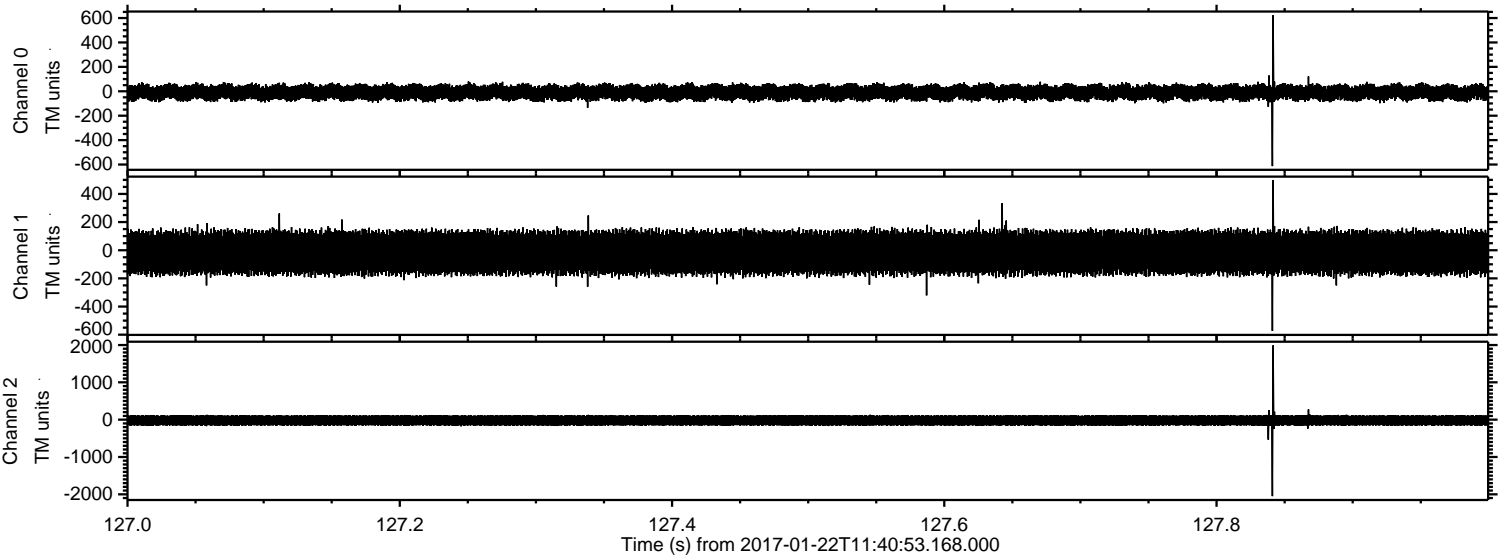
Channel 0
mn: -611
mx: 938
 μ : -10.1
 σ : 37.4

Channel 1
mn: -1539
mx: 2252
 μ : -17.3
 σ : 92.9

Channel 2
mn: -2133
mx: 1196
 μ : -21.1
 σ : 89.6

ELMAVAN 3D WAVEFORMS (Measured data sampled at 50 kHz) 51000 packets of 144 samples from 2017-01-22T11:40:53.168.000. Part 128/147

Processed Sun Jan 22 12:48:45 2017 by ELM ver.2012-10-06 from 001__elm20170122_114052__dat00.bin



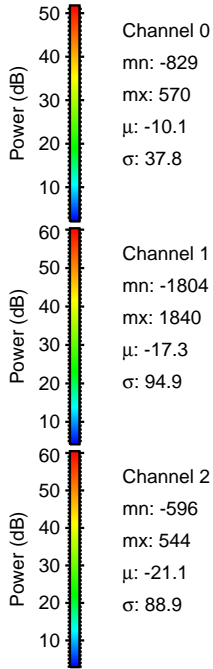
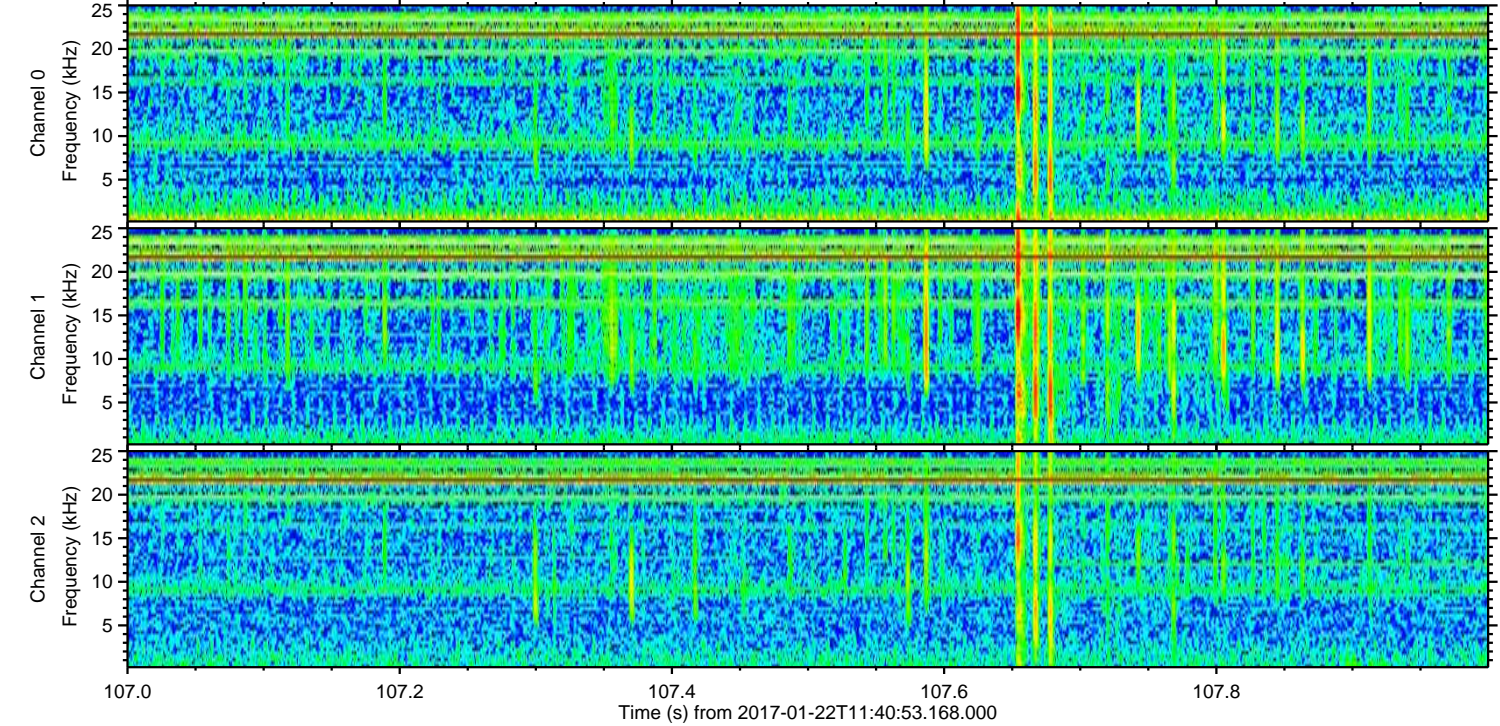
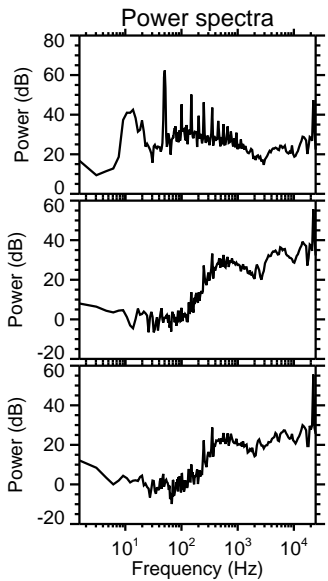
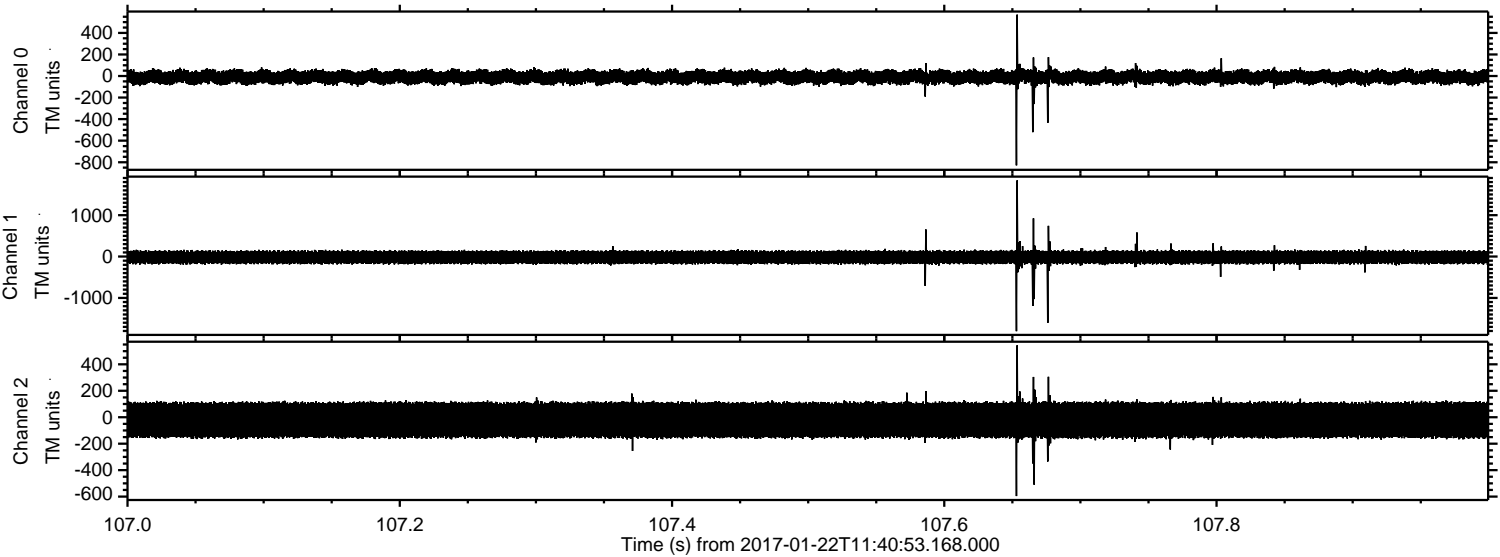
Channel 0
mn: -613
mx: 622
 μ : -10.1
 σ : 37.5

Channel 1
mn: -573
mx: 498
 μ : -17.3
 σ : 91.1

Channel 2
mn: -2050
mx: 1989
 μ : -21.1
 σ : 91.0

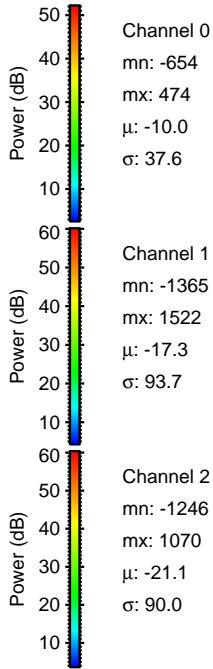
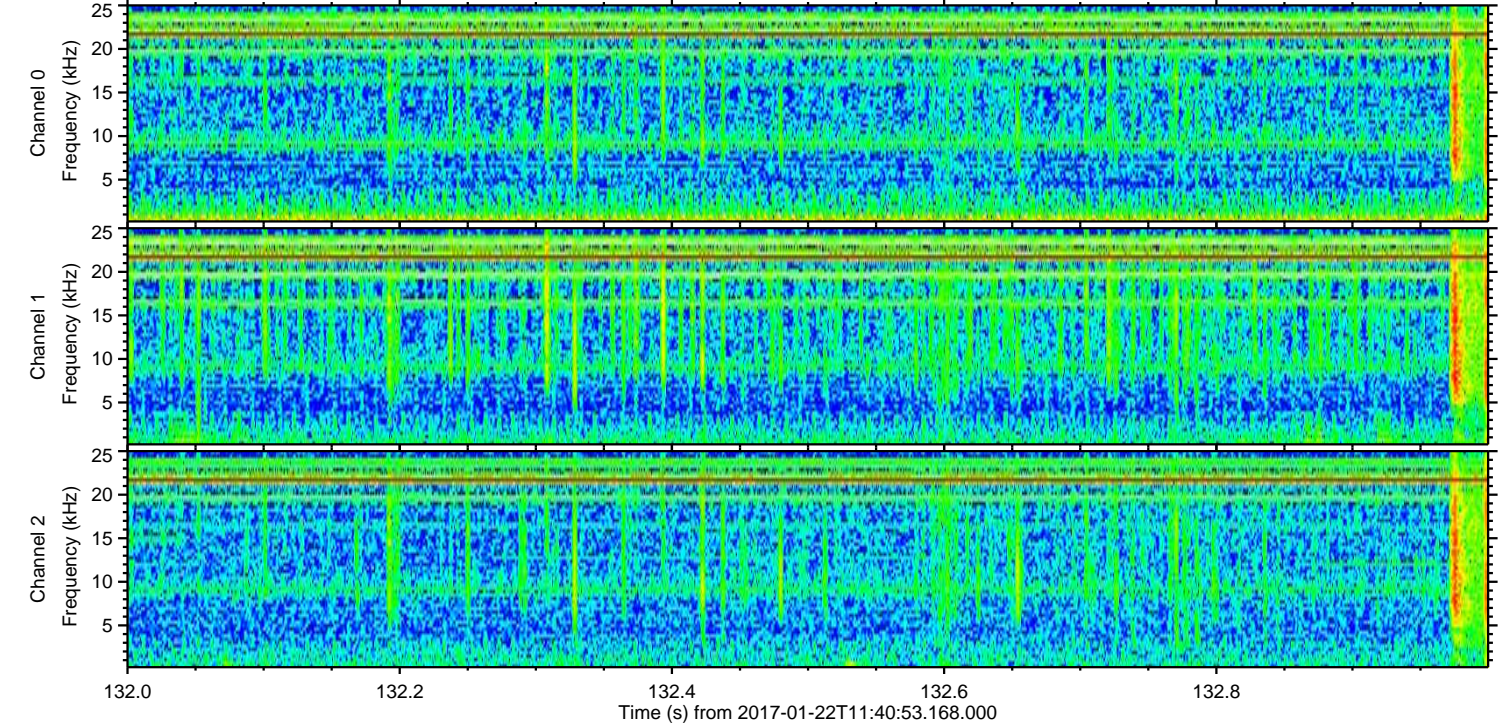
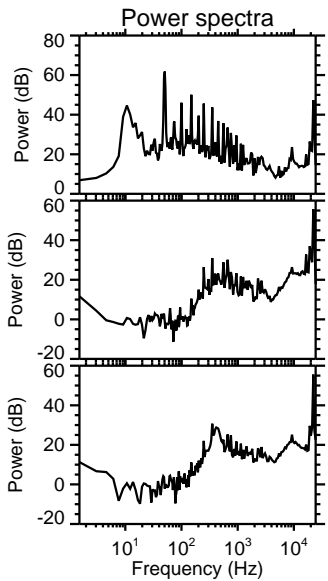
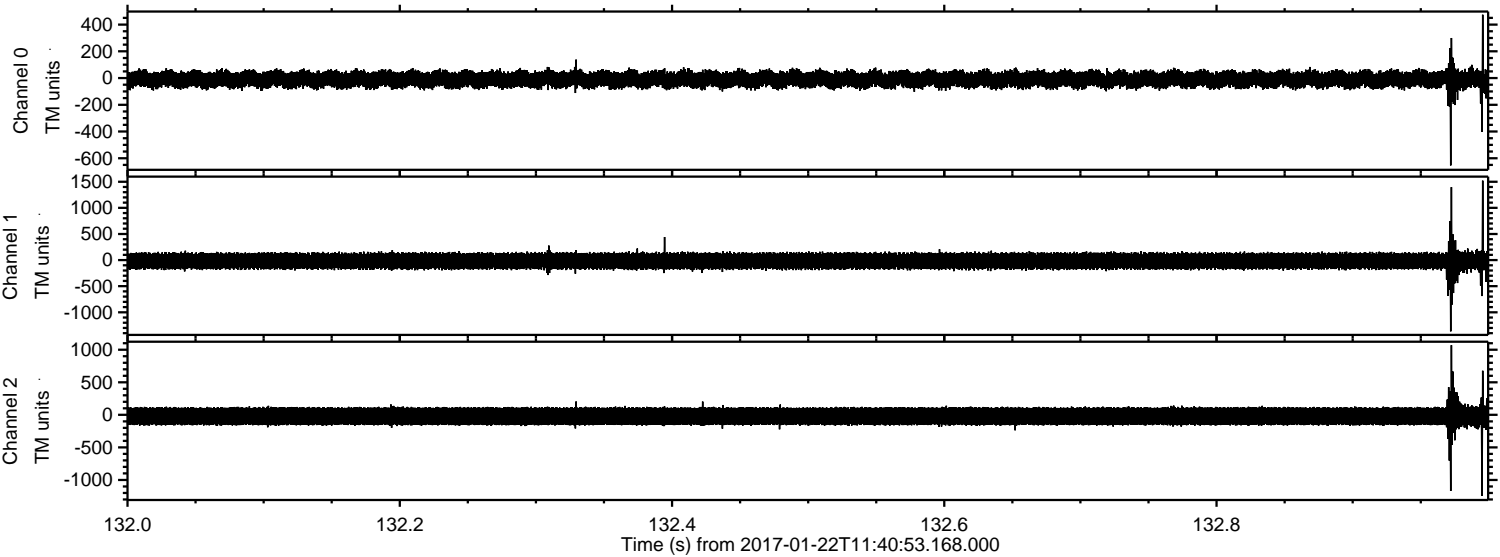
ELMAVAN 3D WAVEFORMS (Measured data sampled at 50 kHz) 51000 packets of 144 samples from 2017-01-22T11:40:53.168.000. Part 108/147

Processed Sun Jan 22 12:48:46 2017 by ELM ver.2012-10-06 from 001__elm20170122_114052__dat00.bin



ELMAVAN 3D WAVEFORMS (Measured data sampled at 50 kHz) 51000 packets of 144 samples from 2017-01-22T11:40:53.168.000. Part 133/147

Processed Sun Jan 22 12:48:47 2017 by ELM ver.2012-10-06 from 001__elm20170122_114052__dat00.bin



Channel 0
mn: -654
mx: 474
 μ : -10.0
 σ : 37.6

Channel 1
mn: -1365
mx: 1522
 μ : -17.3
 σ : 93.7

Channel 2
mn: -1246
mx: 1070
 μ : -21.1
 σ : 90.0

Processed Sun Jan 22 12:48:48 2017 by ELM ver.2012-10-06 from 001__elm20170122_114052__dat00.bin

