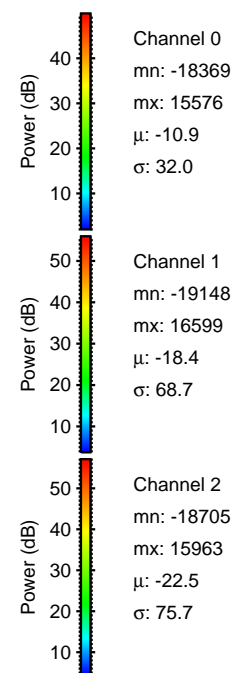
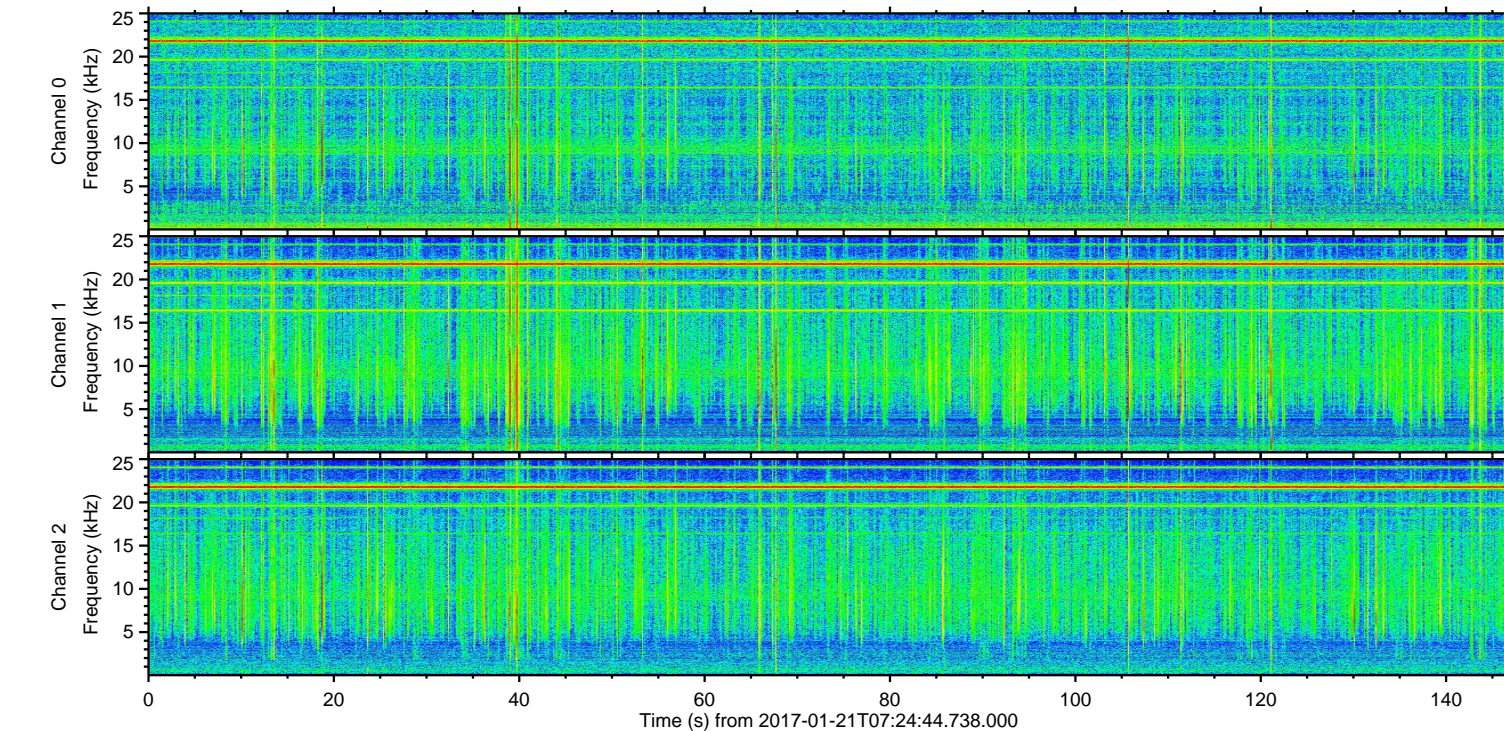
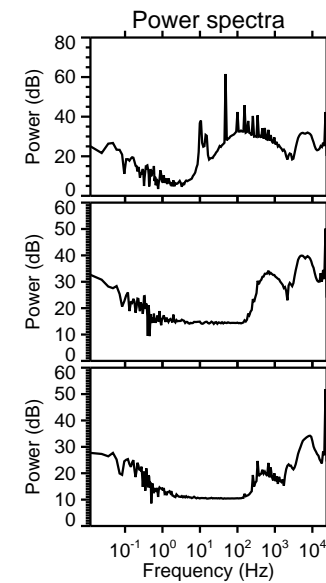
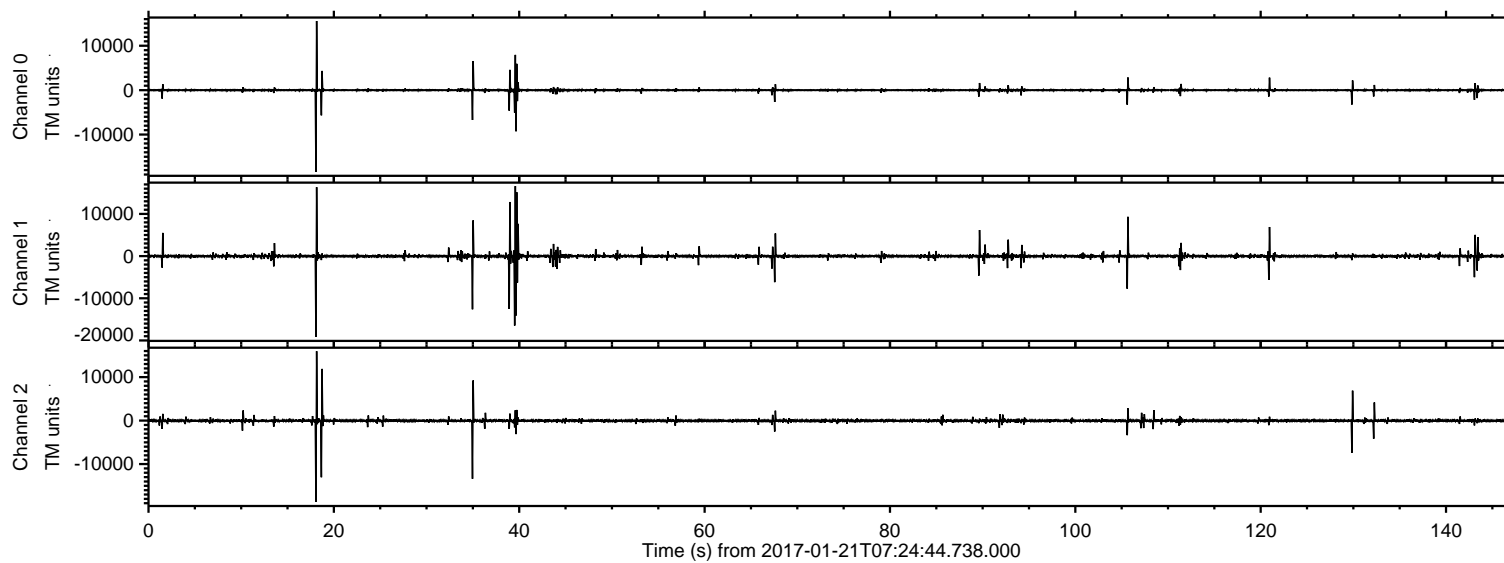
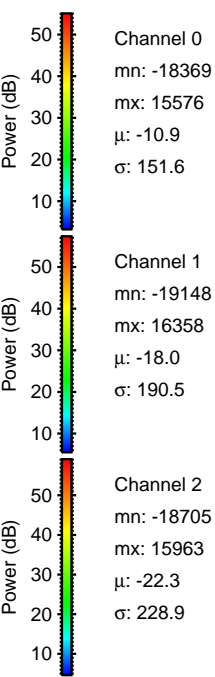
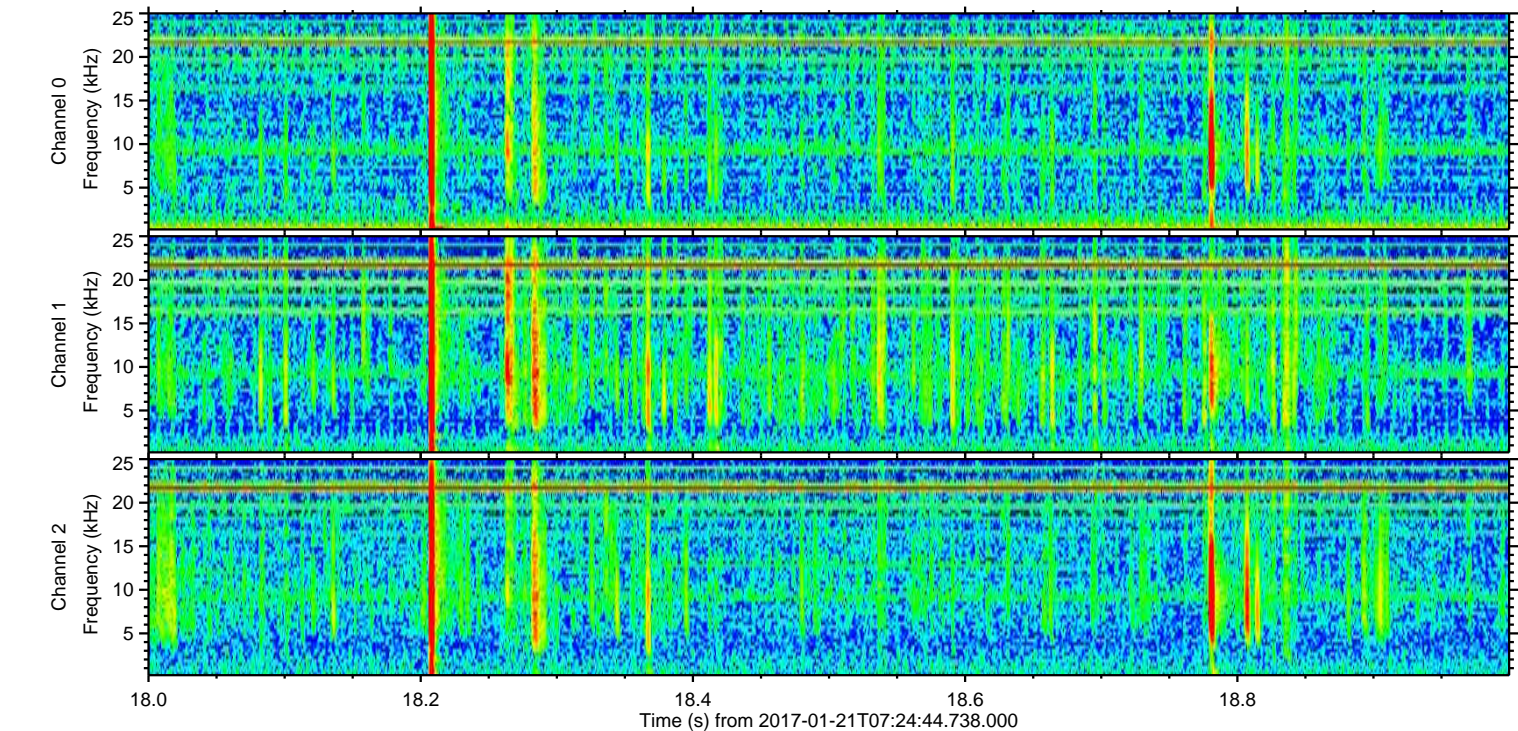
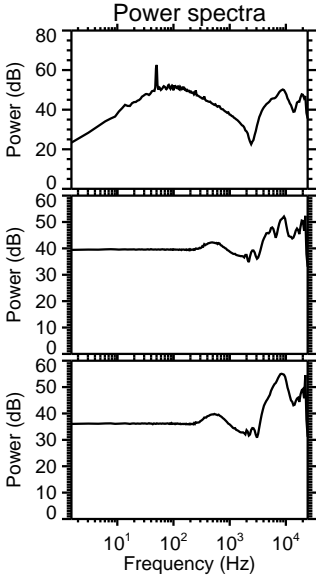
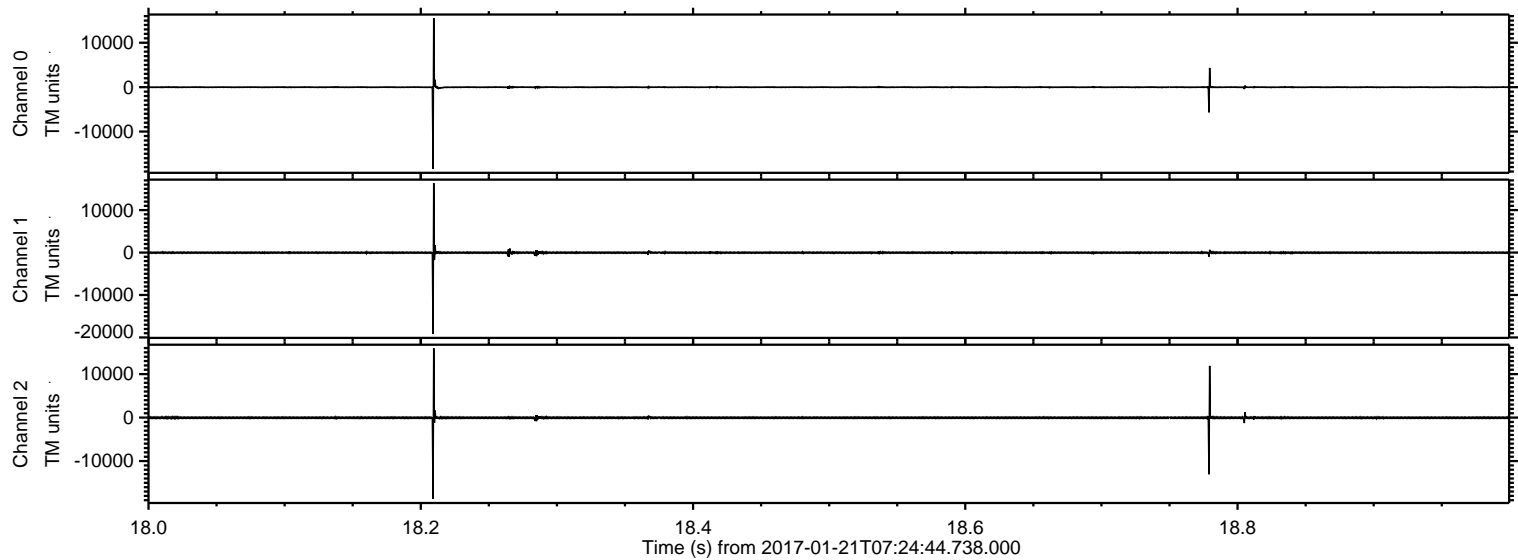


ELMAVAN 3D WAVEFORMS (Measured data sampled at 50 kHz) 51000 packets of 144 samples from 2017-01-21T07:24:44.738.000.

Processed Sat Jan 21 08:32:28 2017 by ELM ver.2012-10-06 from 001__elm20170121_072443__dat00.bin

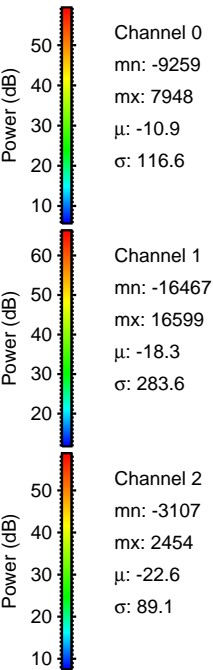
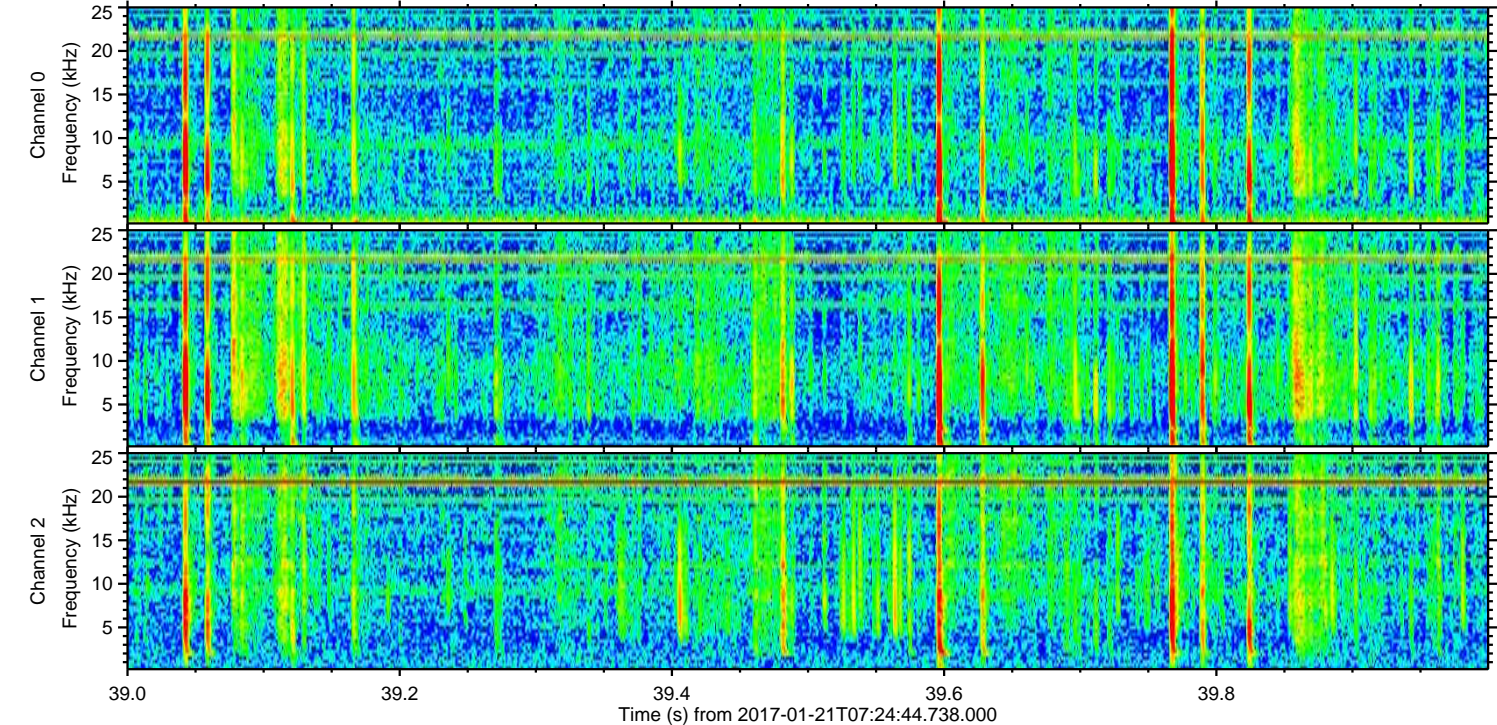
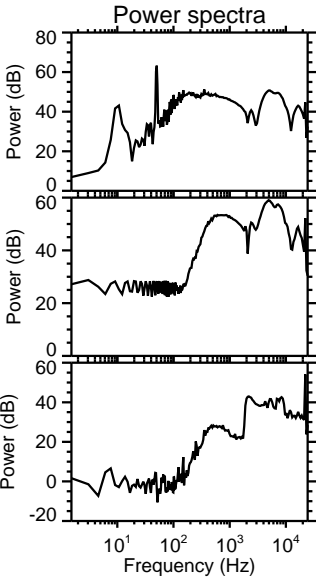
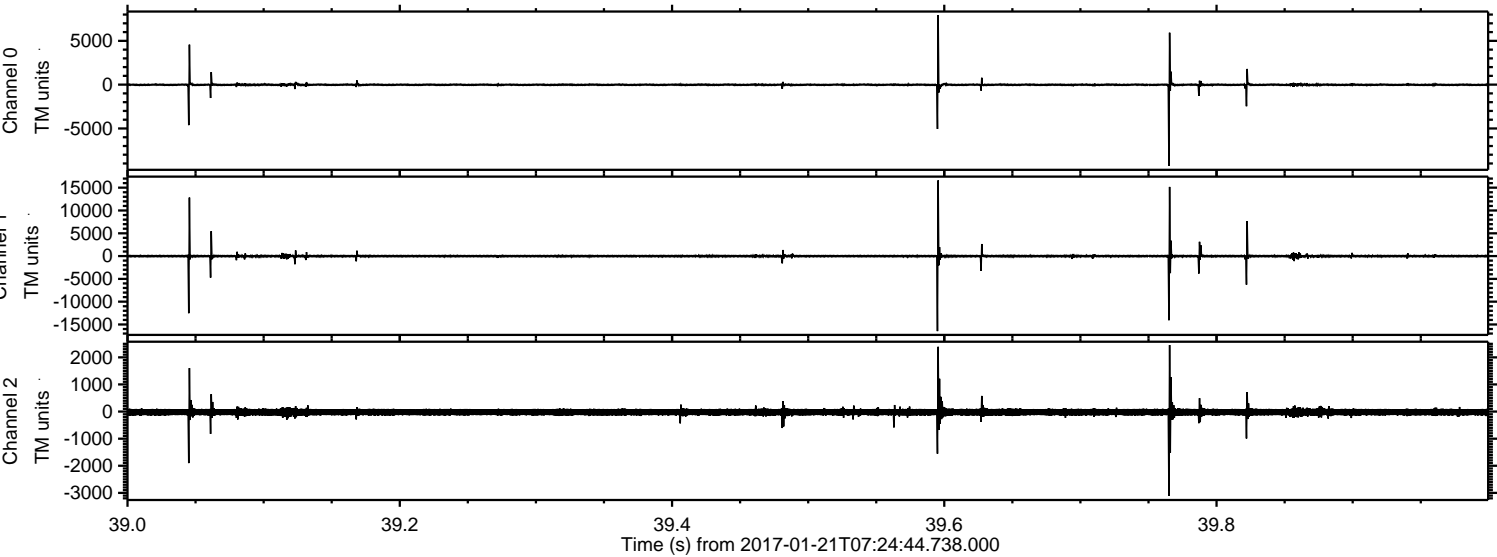


Processed Sat Jan 21 08:32:43 2017 by ELM ver.2012-10-06 from 001__elm20170121_072443__dat00.bin



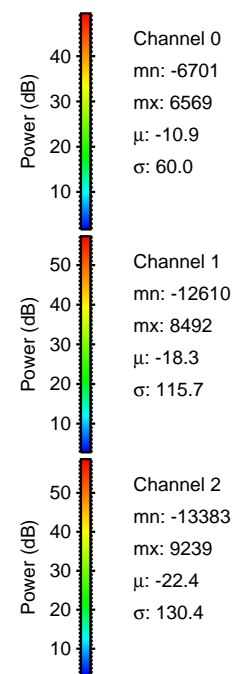
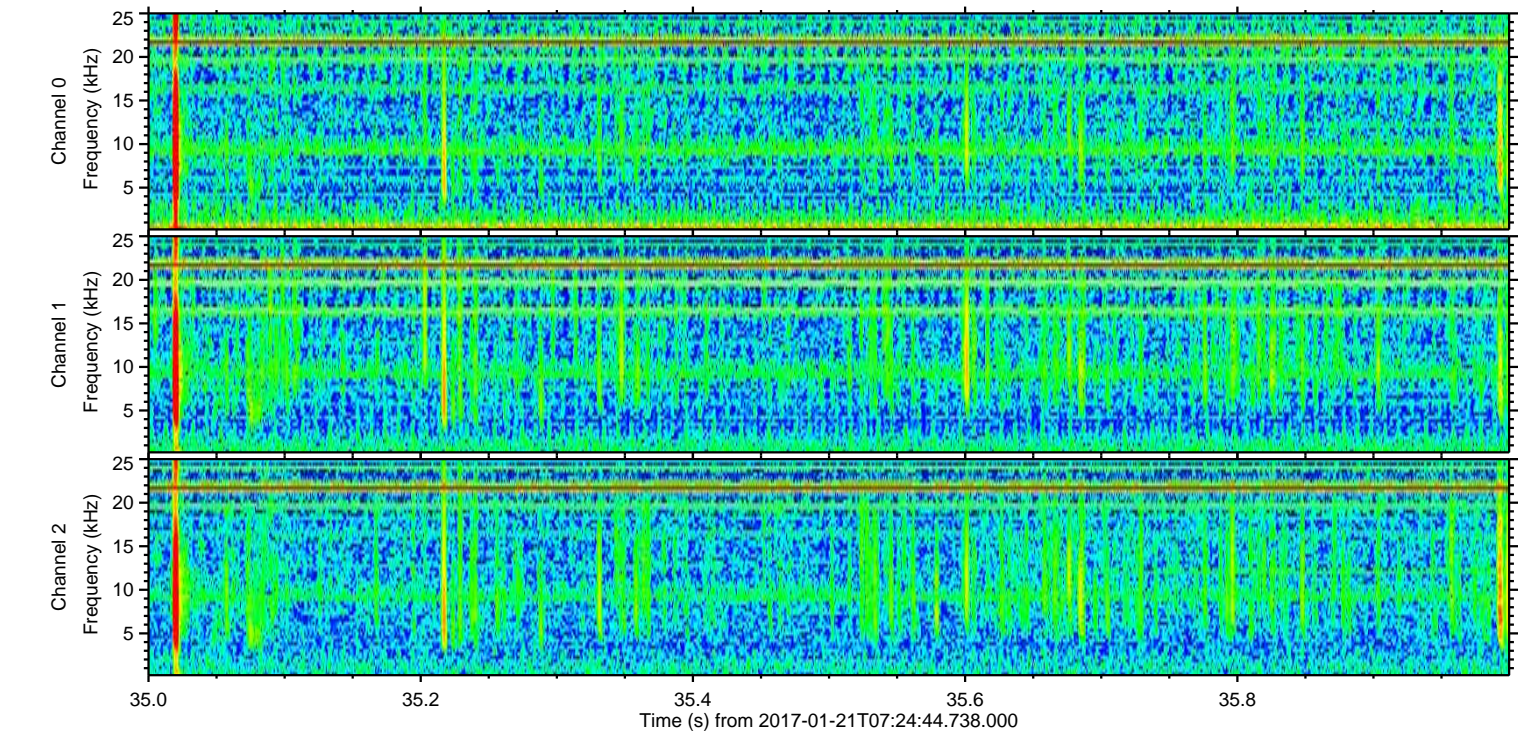
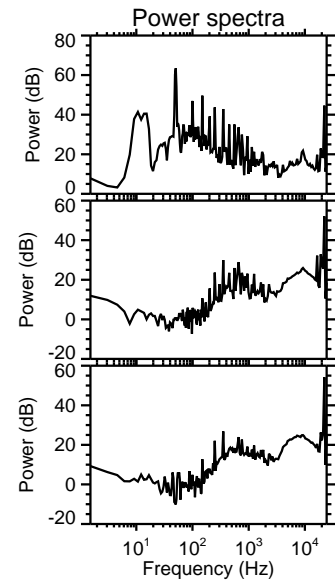
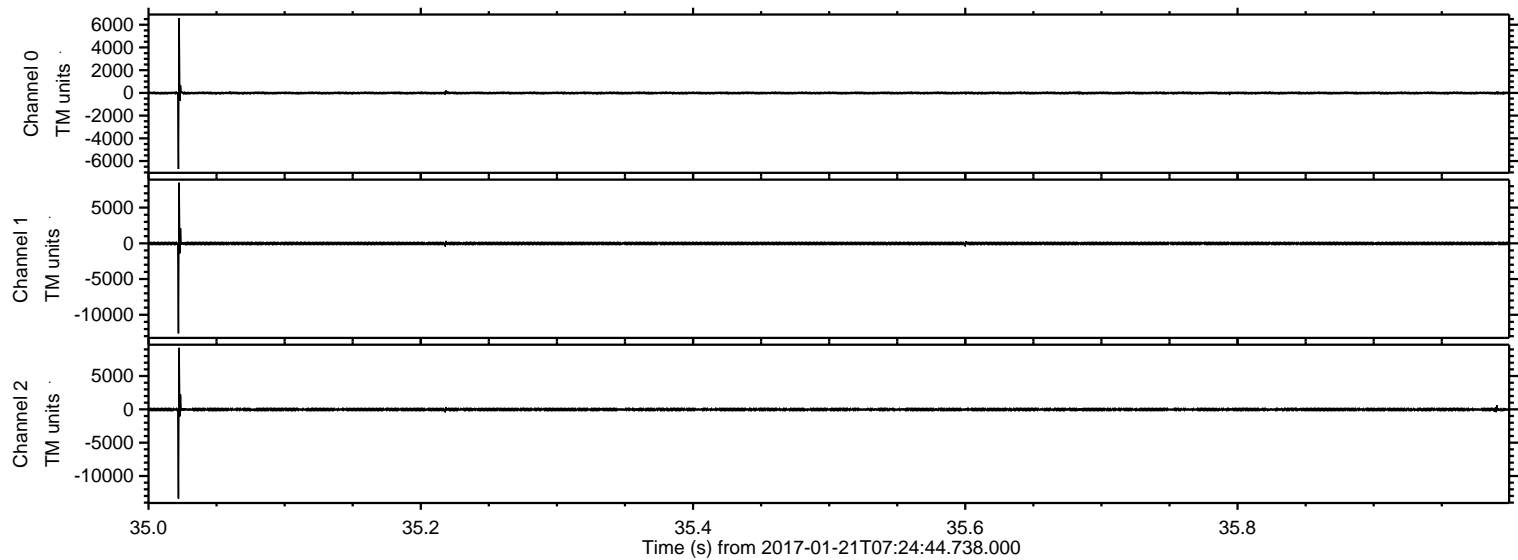
ELMAVAN 3D WAVEFORMS (Measured data sampled at 50 kHz) 51000 packets of 144 samples from 2017-01-21T07:24:44.738.000. Part 40/147

Processed Sat Jan 21 08:32:44 2017 by ELM ver.2012-10-06 from 001__elm20170121_072443__dat00.bin



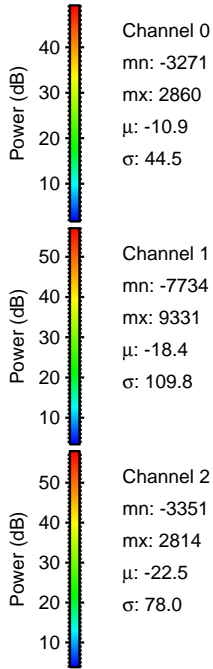
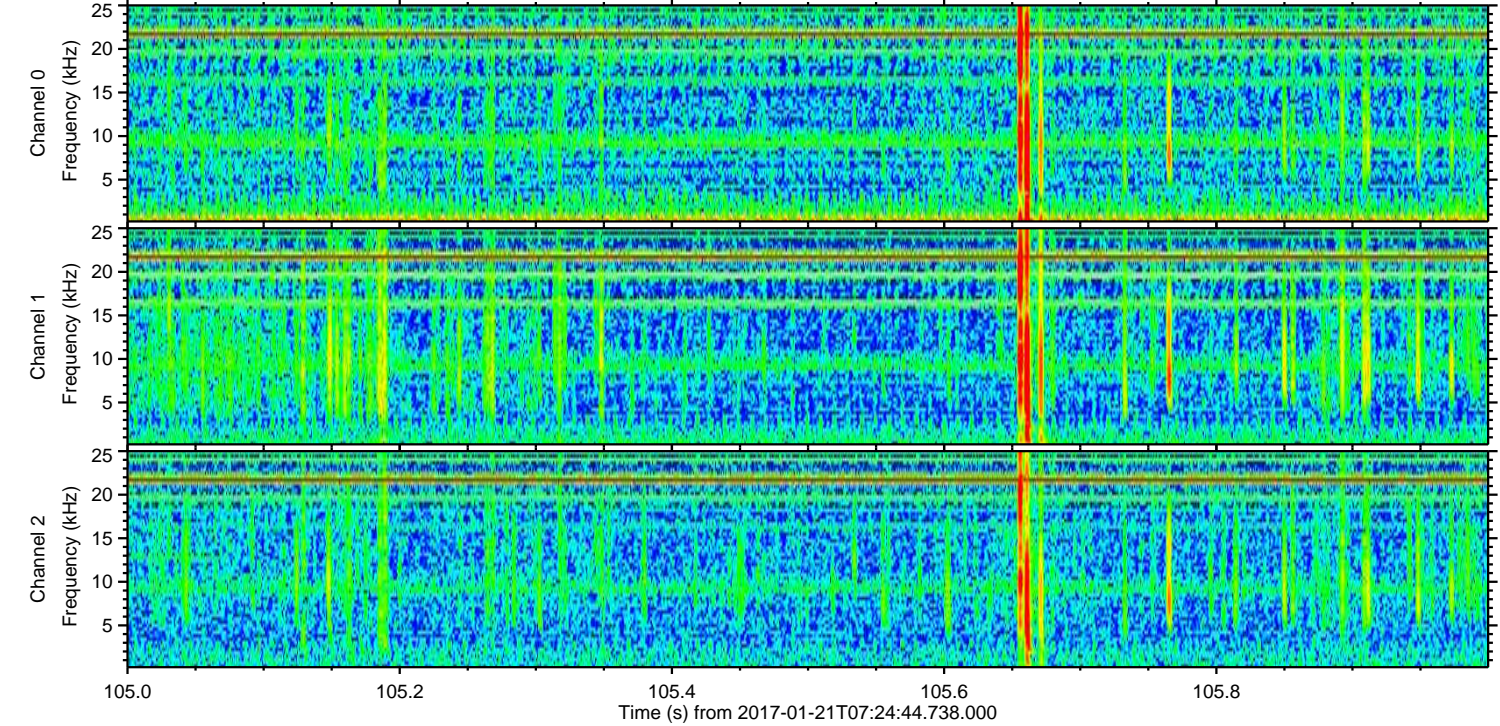
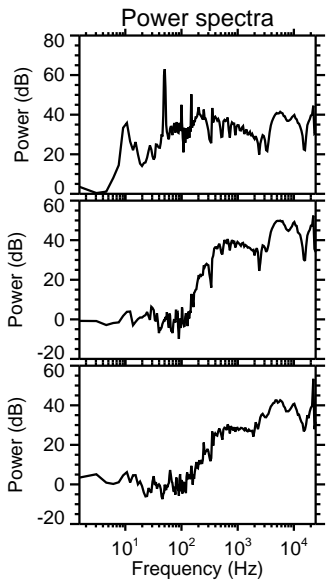
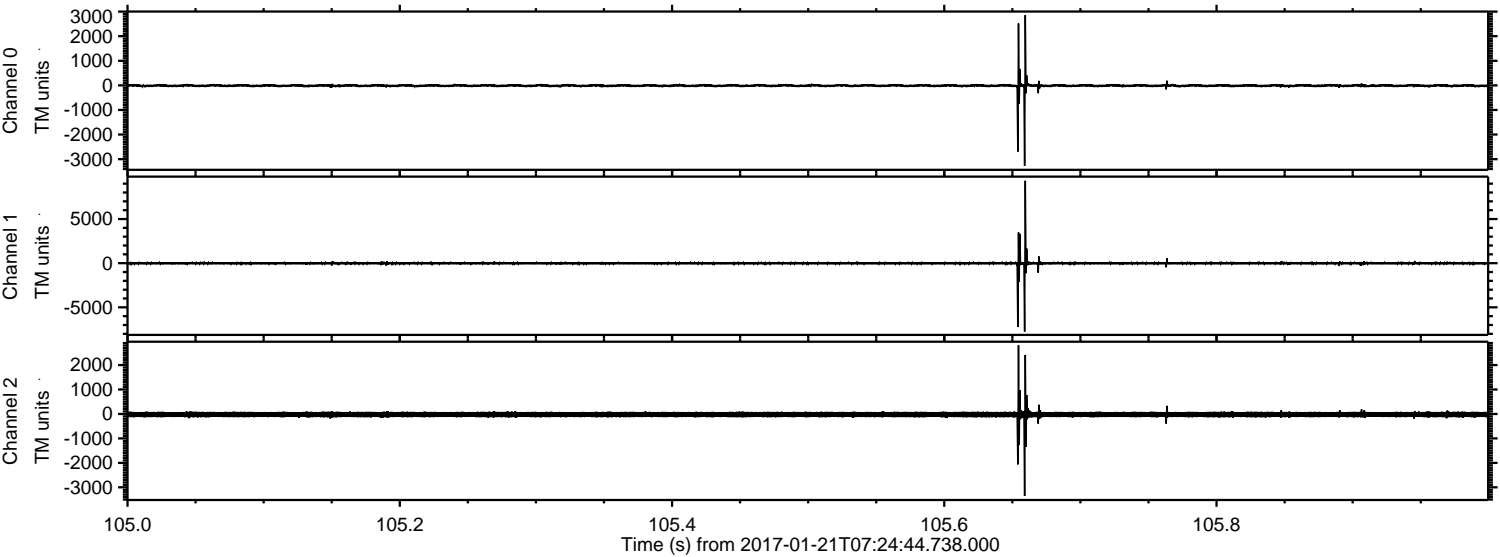
ELMAVAN 3D WAVEFORMS (Measured data sampled at 50 kHz) 51000 packets of 144 samples from 2017-01-21T07:24:44.738.000. Part 36/147

Processed Sat Jan 21 08:32:45 2017 by ELM ver.2012-10-06 from 001__elm20170121_072443__dat00.bin



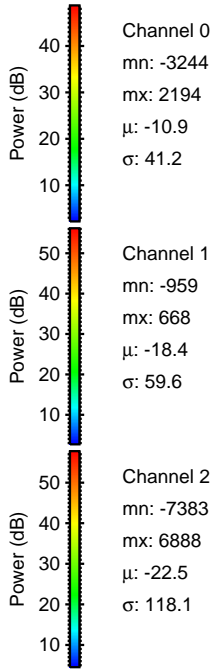
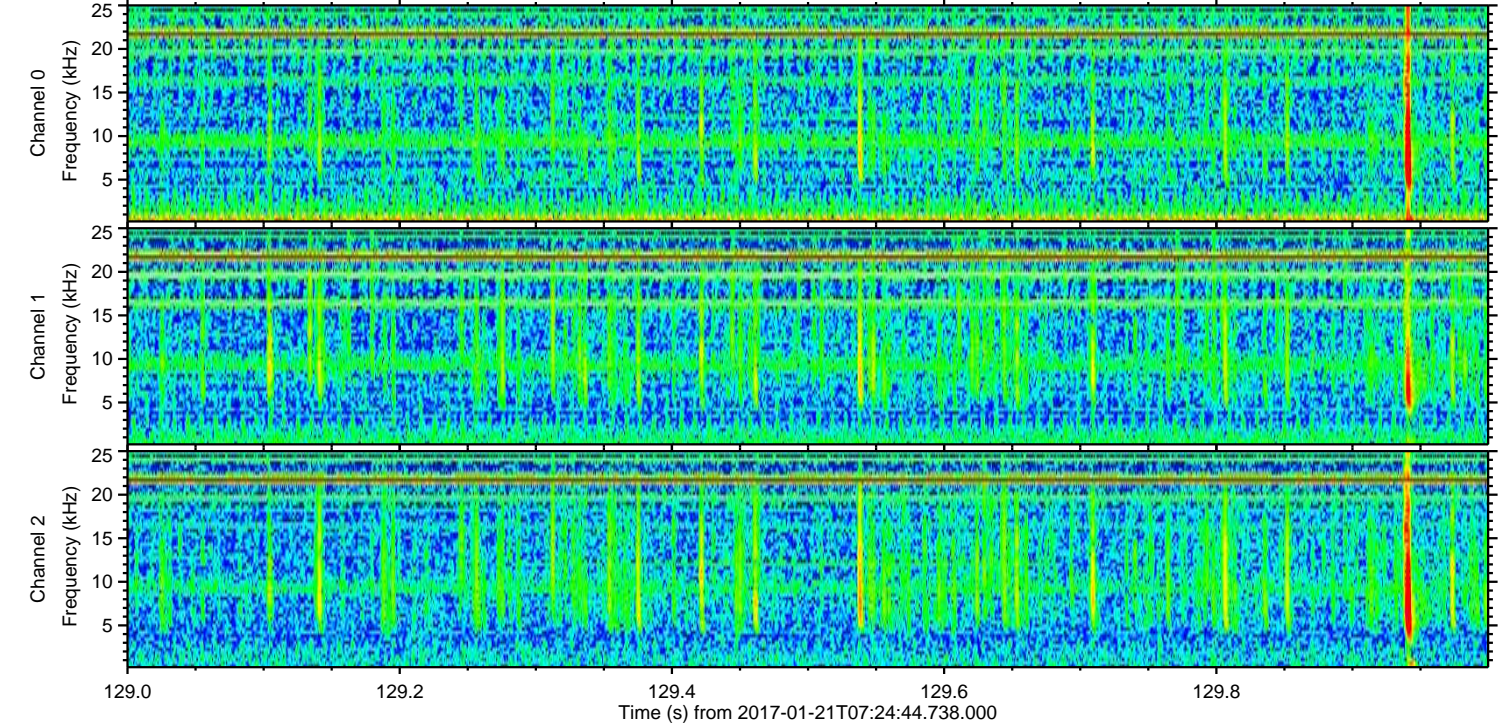
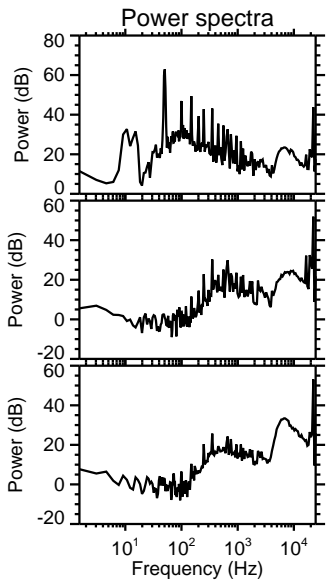
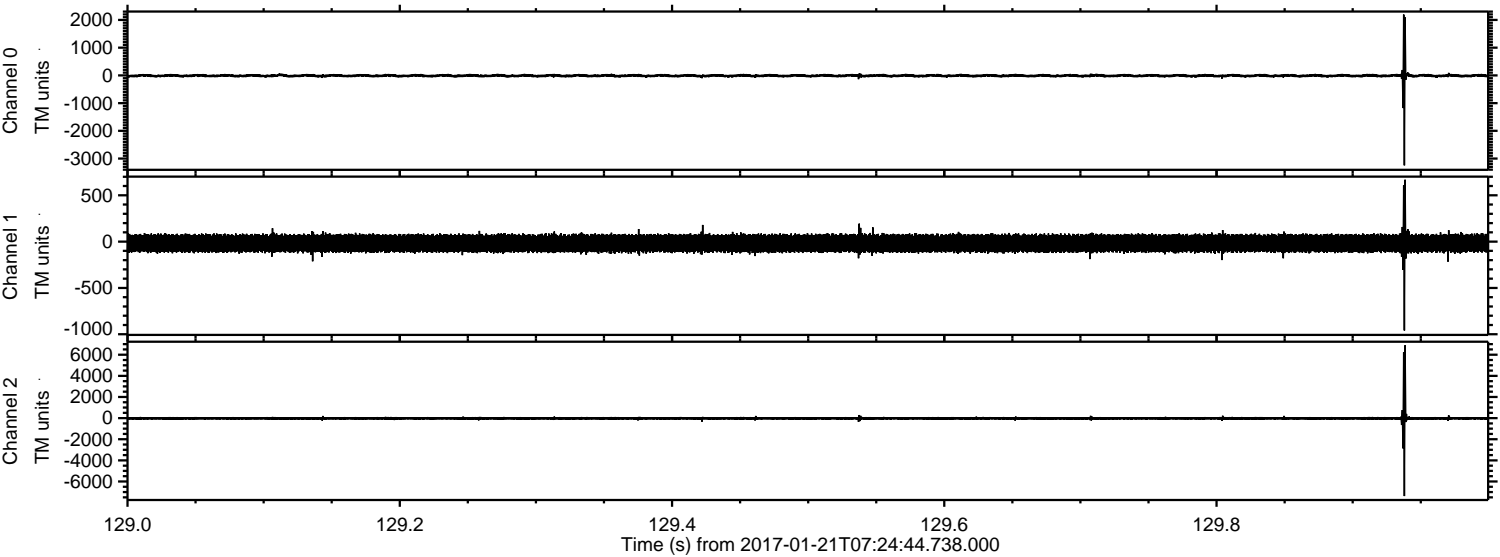
ELMAVAN 3D WAVEFORMS (Measured data sampled at 50 kHz) 51000 packets of 144 samples from 2017-01-21T07:24:44.738.000. Part 106/147

Processed Sat Jan 21 08:32:46 2017 by ELM ver.2012-10-06 from 001__elm20170121_072443__dat00.bin



ELMAVAN 3D WAVEFORMS (Measured data sampled at 50 kHz) 51000 packets of 144 samples from 2017-01-21T07:24:44.738.000. Part 130/147

Processed Sat Jan 21 08:32:47 2017 by ELM ver.2012-10-06 from 001__elm20170121_072443__dat00.bin



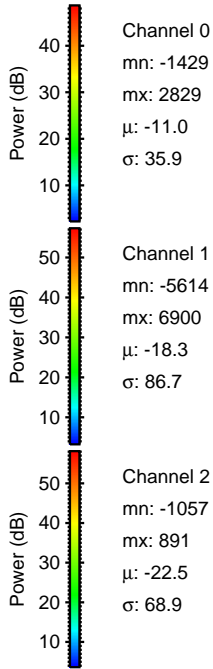
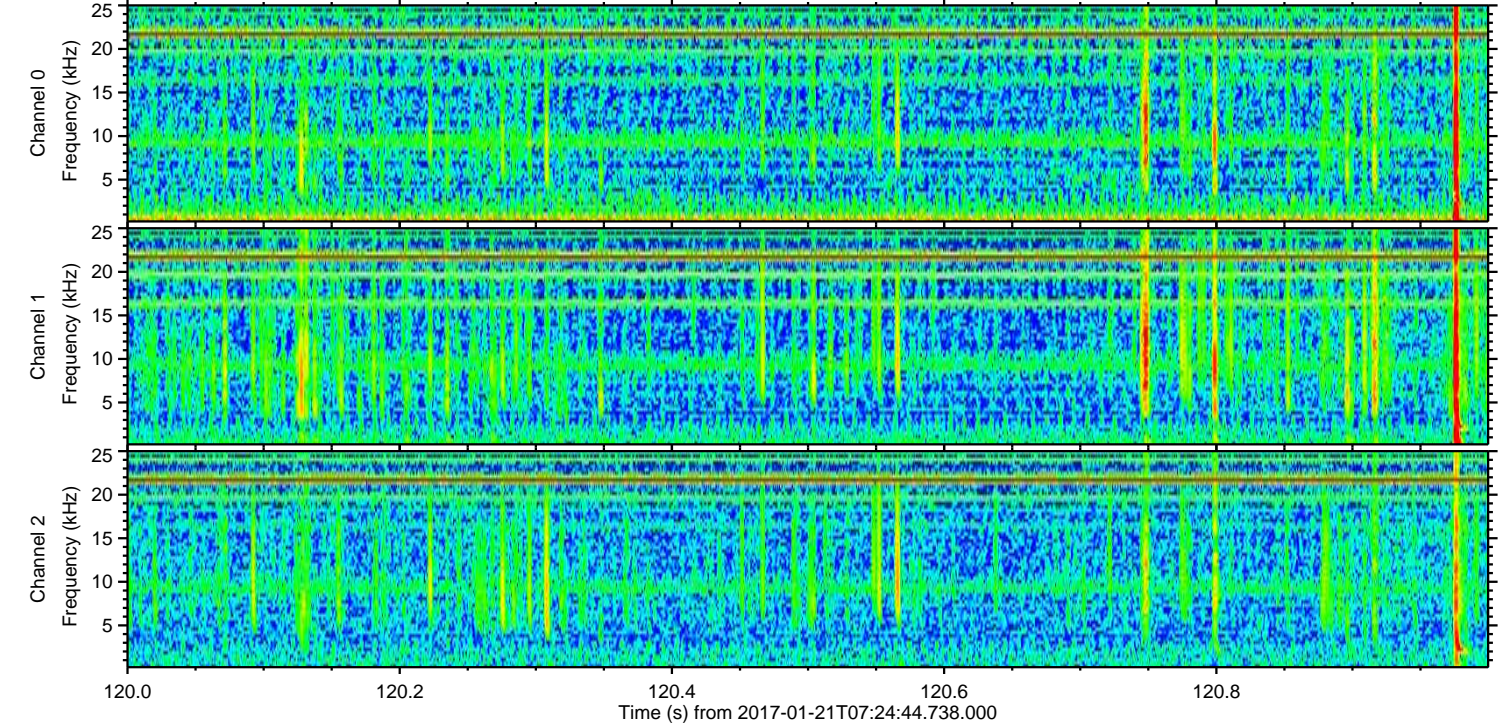
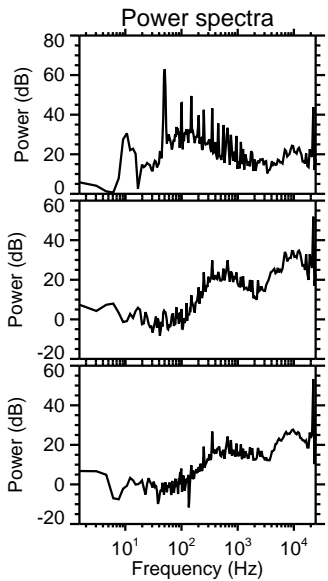
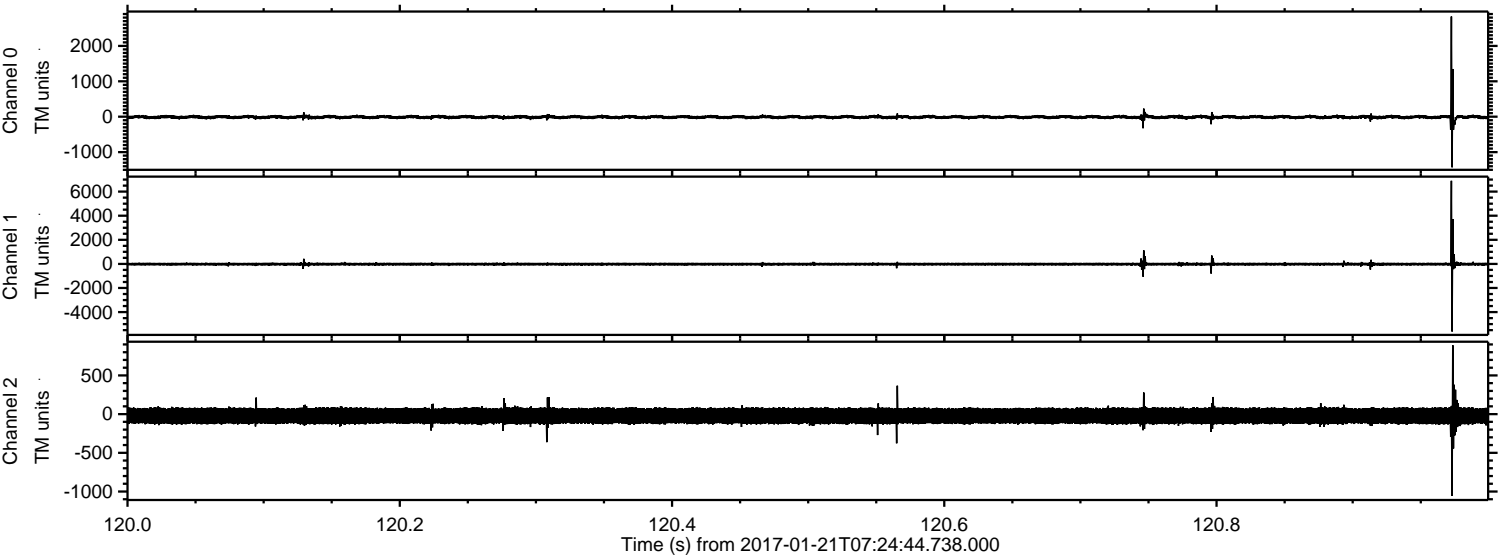
Channel 0
mn: -3244
mx: 2194
 μ : -10.9
 σ : 41.2

Channel 1
mn: -959
mx: 668
 μ : -18.4
 σ : 59.6

Channel 2
mn: -7383
mx: 6888
 μ : -22.5
 σ : 118.1

ELMAVAN 3D WAVEFORMS (Measured data sampled at 50 kHz) 51000 packets of 144 samples from 2017-01-21T07:24:44.738.000. Part 121/147

Processed Sat Jan 21 08:32:48 2017 by ELM ver.2012-10-06 from 001__elm20170121_072443__dat00.bin

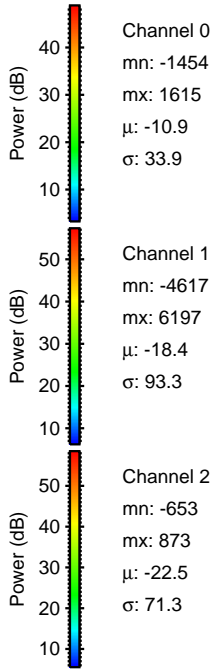
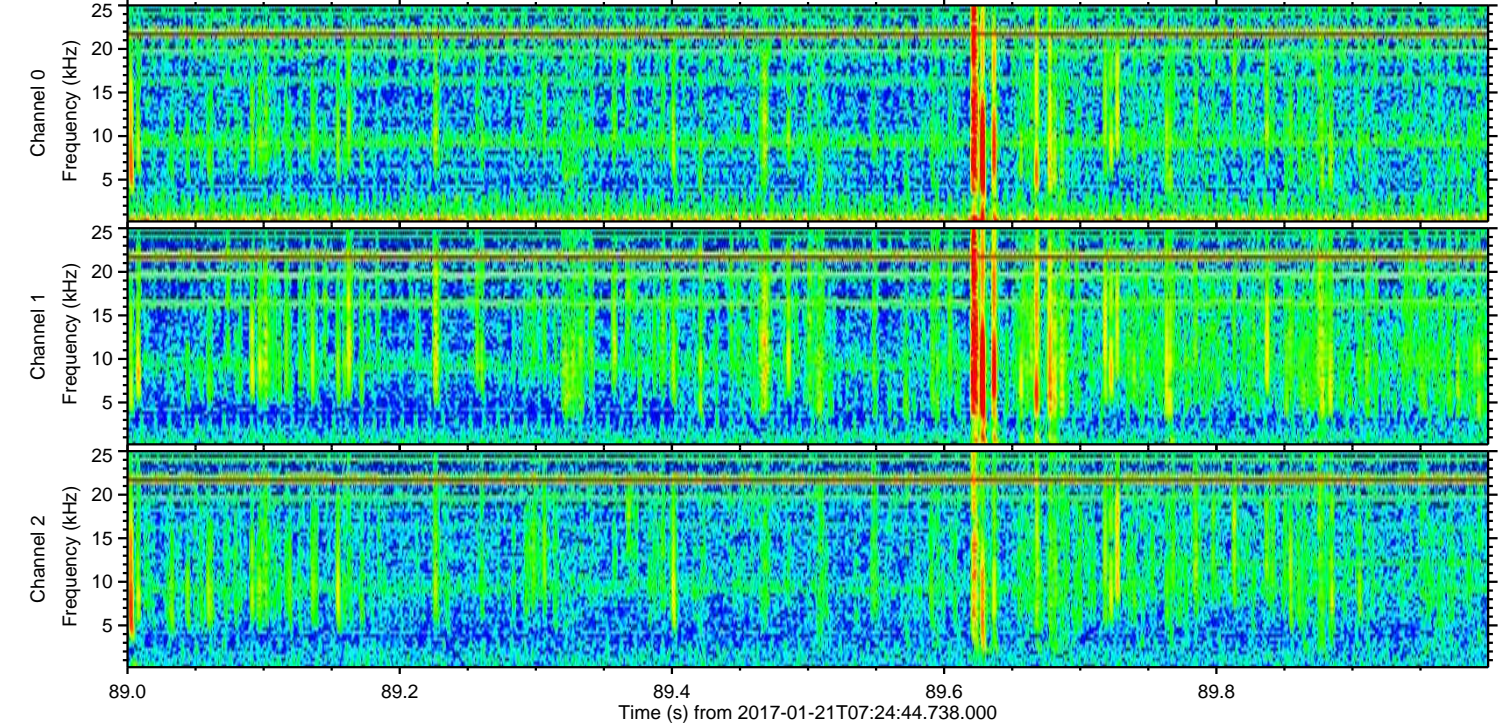
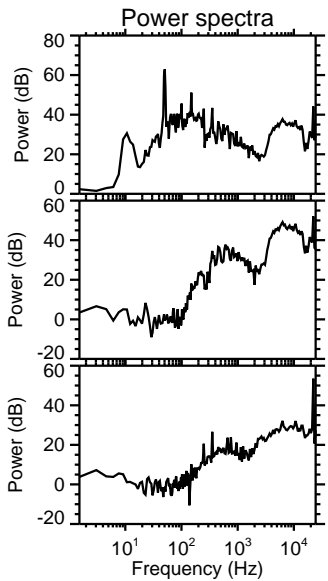
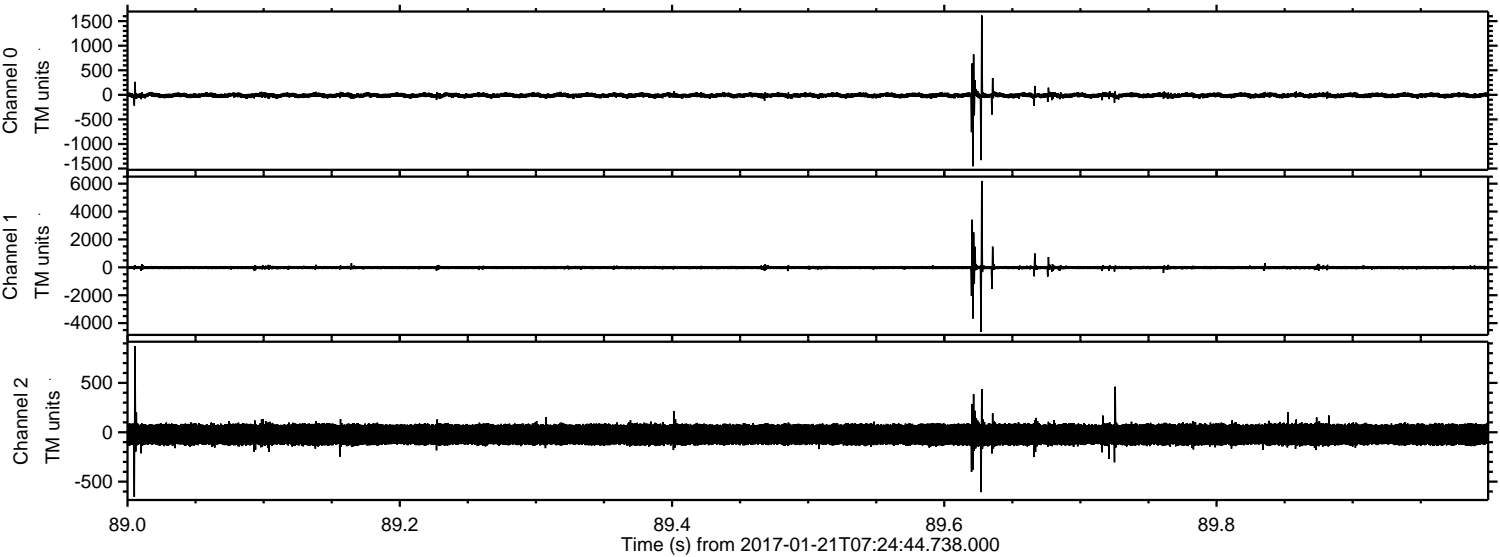


Channel 0
mn: -1429
mx: 2829
 μ : -11.0
 σ : 35.9

Channel 1
mn: -5614
mx: 6900
 μ : -18.3
 σ : 86.7

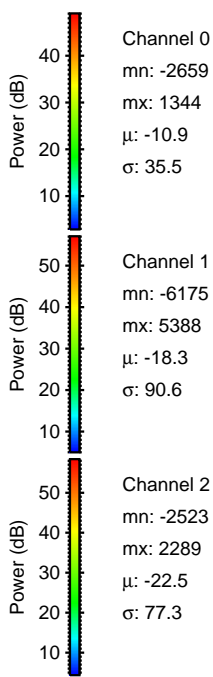
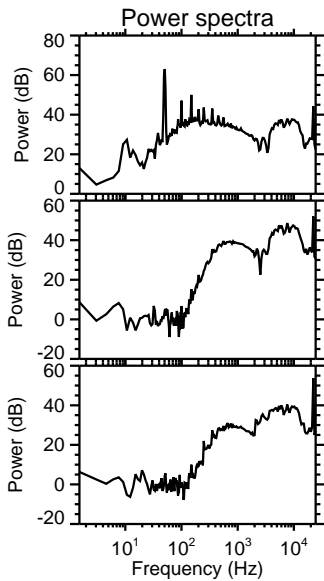
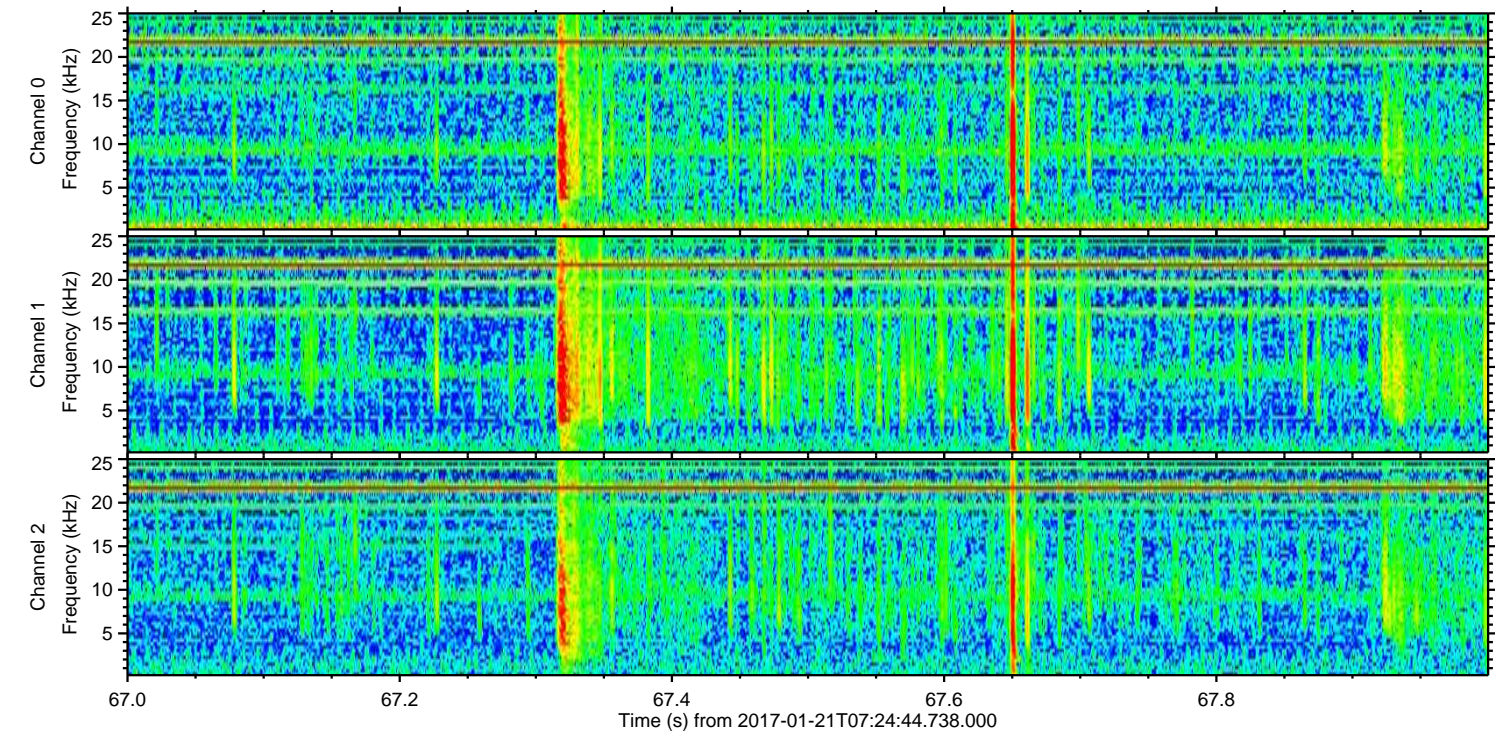
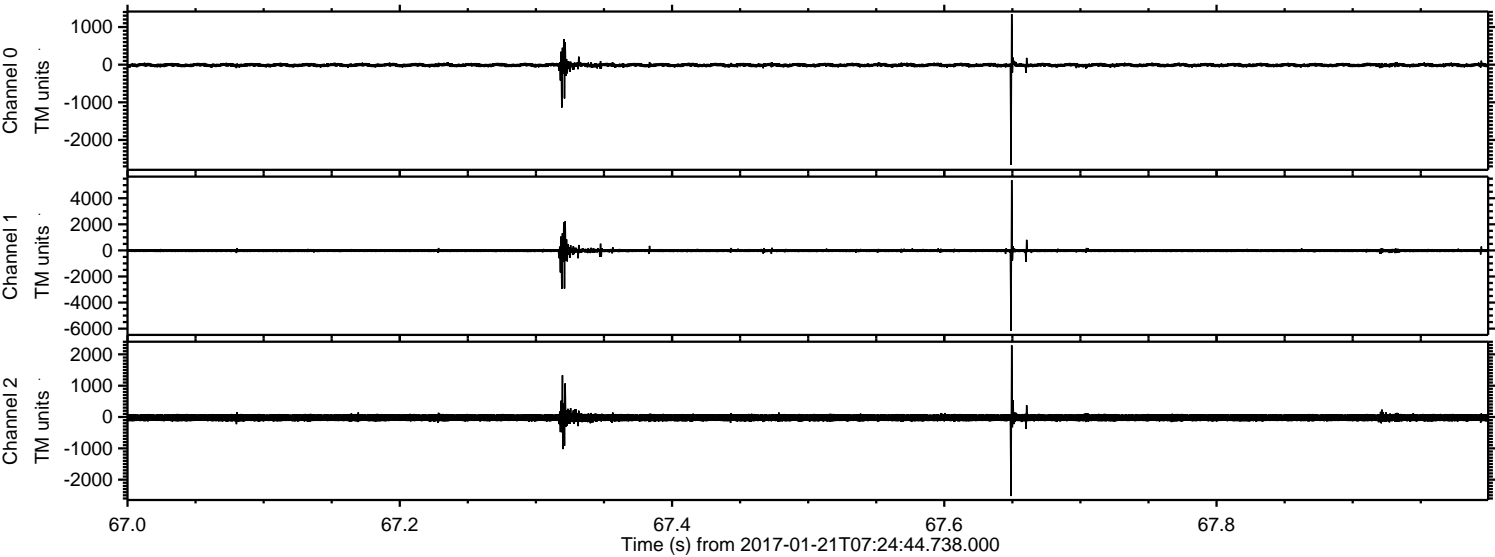
Channel 2
mn: -1057
mx: 891
 μ : -22.5
 σ : 68.9

Processed Sat Jan 21 08:32:49 2017 by ELM ver.2012-10-06 from 001__elm20170121_072443__dat00.bin



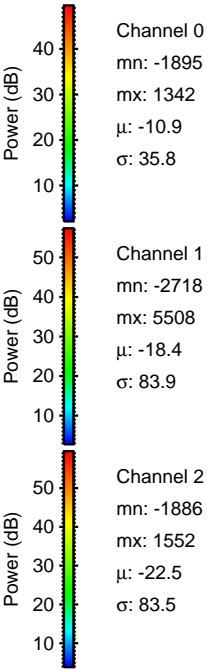
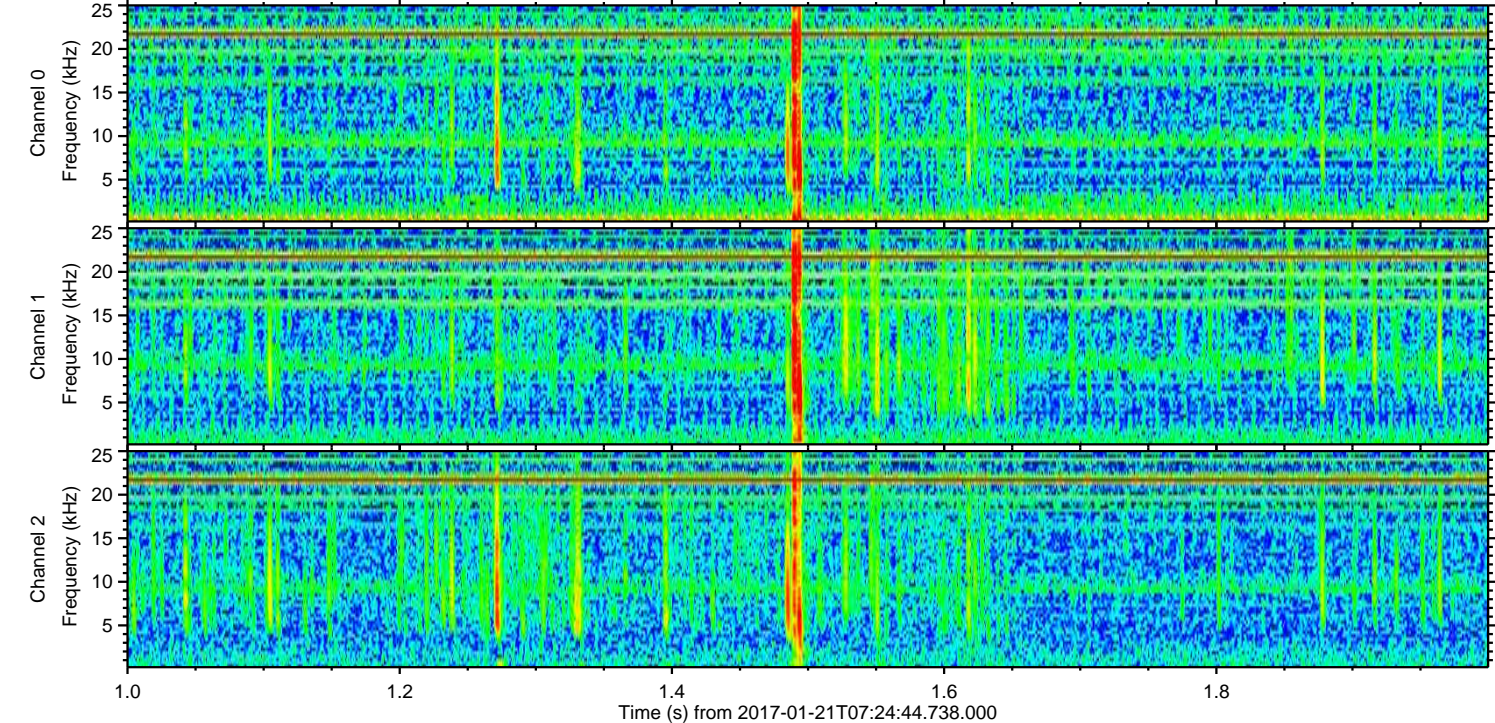
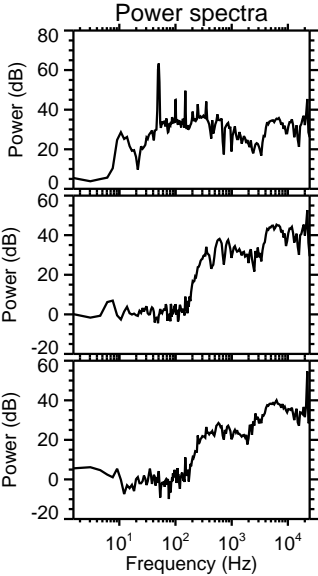
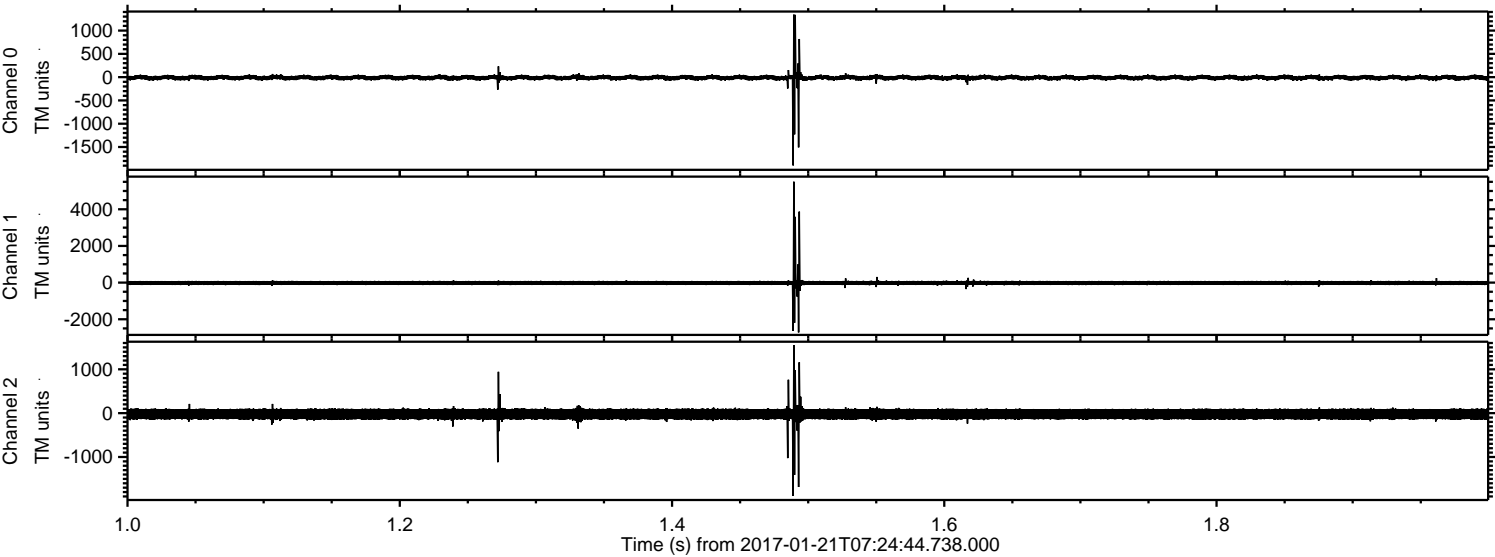
ELMAVAN 3D WAVEFORMS (Measured data sampled at 50 kHz) 51000 packets of 144 samples from 2017-01-21T07:24:44.738.000. Part 68/147

Processed Sat Jan 21 08:32:51 2017 by ELM ver.2012-10-06 from 001__elm20170121_072443__dat00.bin



ELMAVAN 3D WAVEFORMS (Measured data sampled at 50 kHz) 51000 packets of 144 samples from 2017-01-21T07:24:44.738.000. Part 2/147

Processed Sat Jan 21 08:32:52 2017 by ELM ver.2012-10-06 from 001__elm20170121_072443__dat00.bin



Channel 0
mn: -1895
mx: 1342
 μ : -10.9
 σ : 35.8

Channel 1
mn: -2718
mx: 5508
 μ : -18.4
 σ : 83.9

Channel 2
mn: -1886
mx: 1552
 μ : -22.5
 σ : 83.5

Processed Sat Jan 21 08:32:53 2017 by ELM ver.2012-10-06 from 001__elm20170121_072443__dat00.bin

