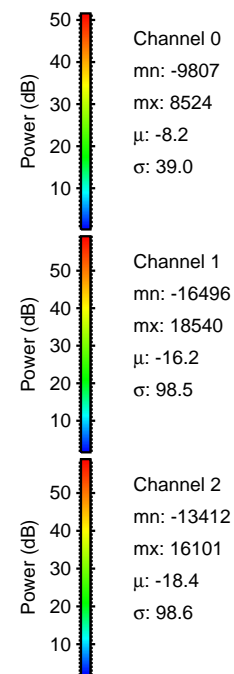
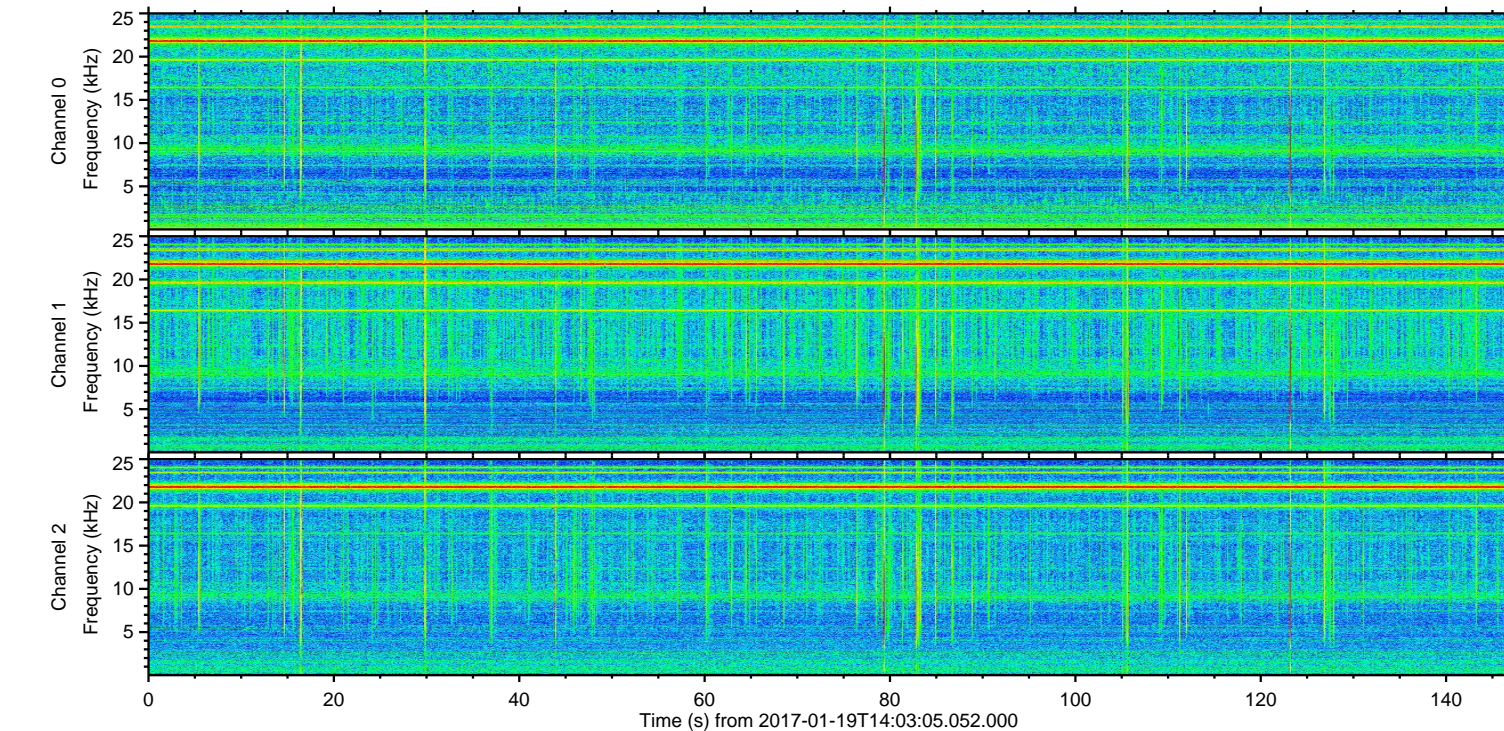
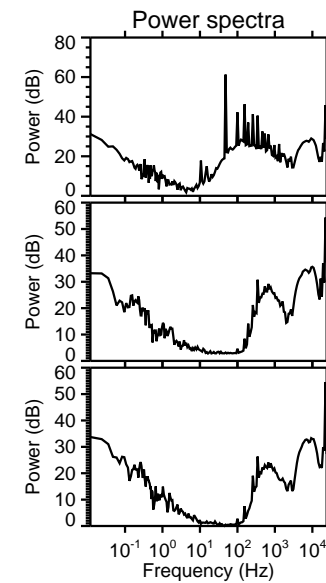
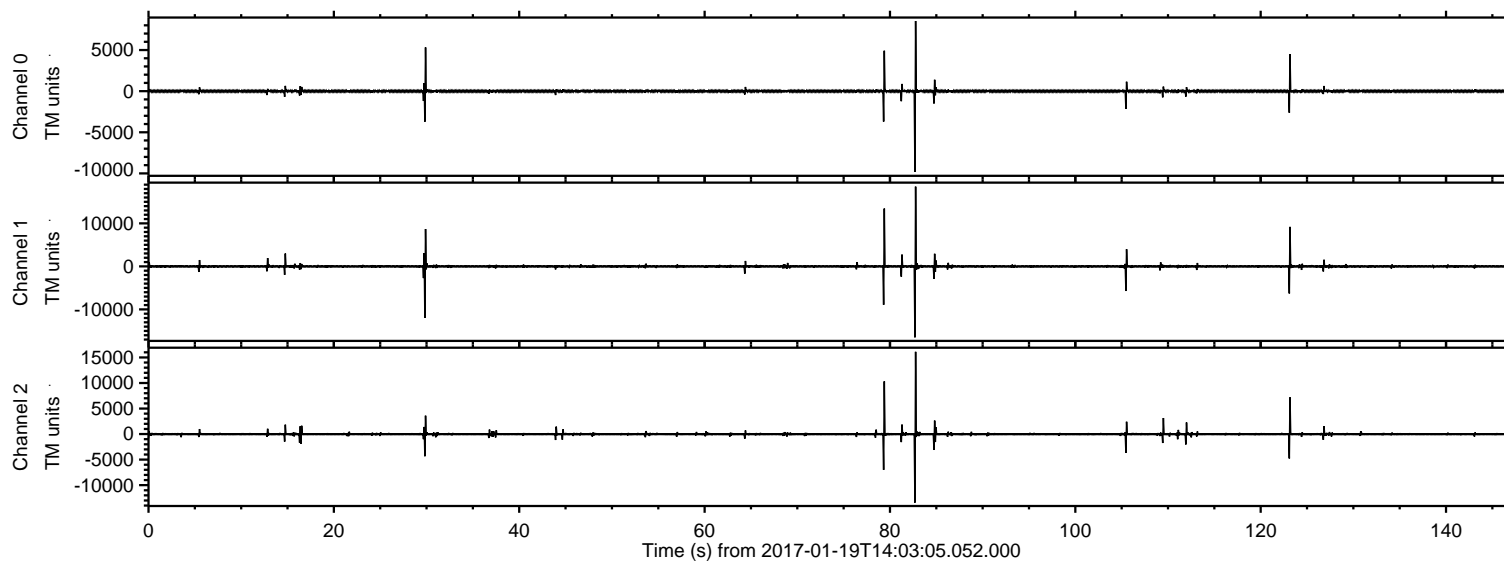
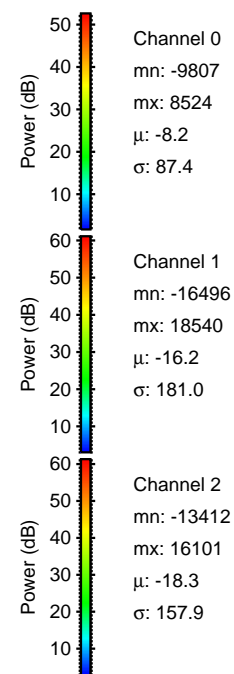
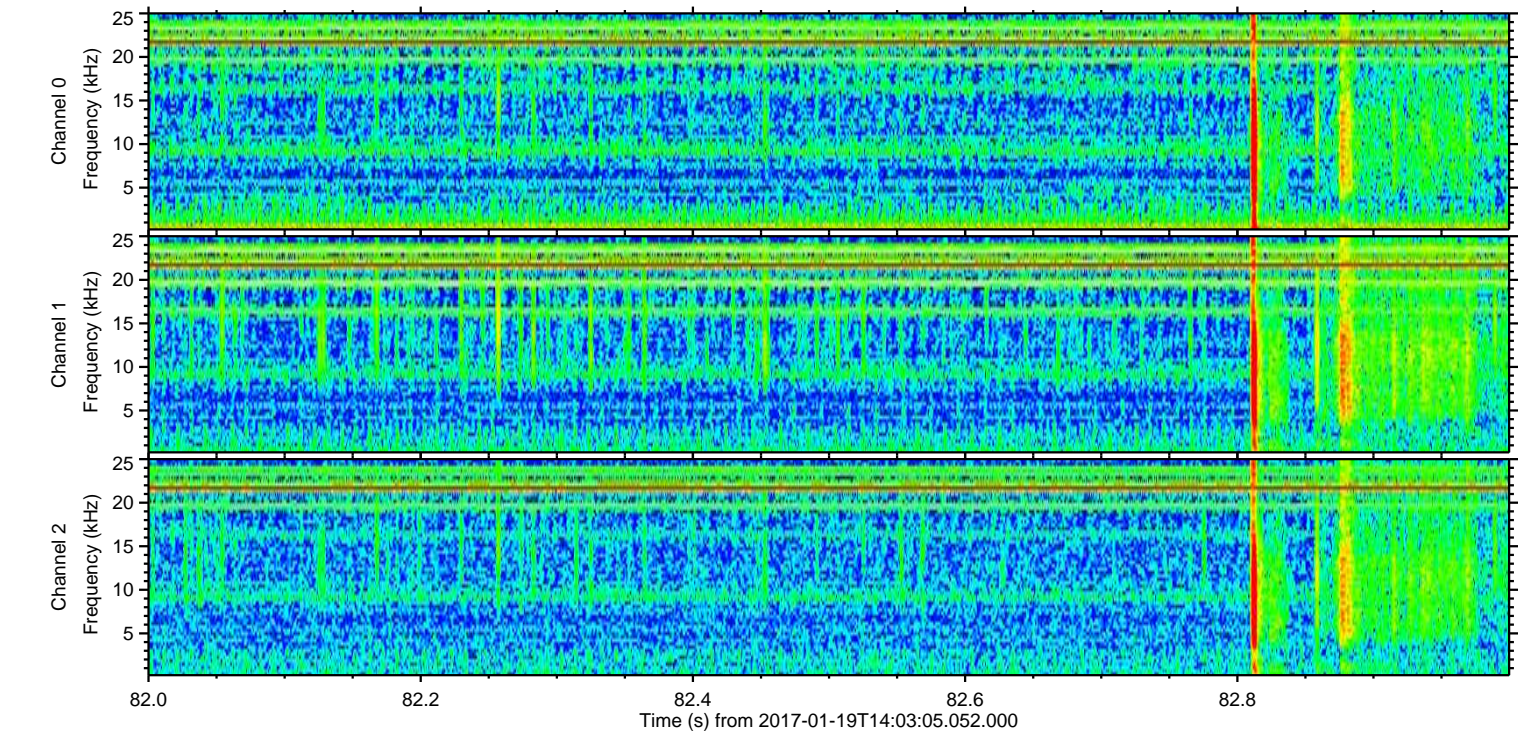
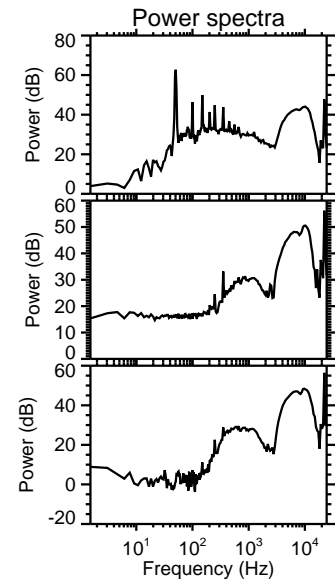
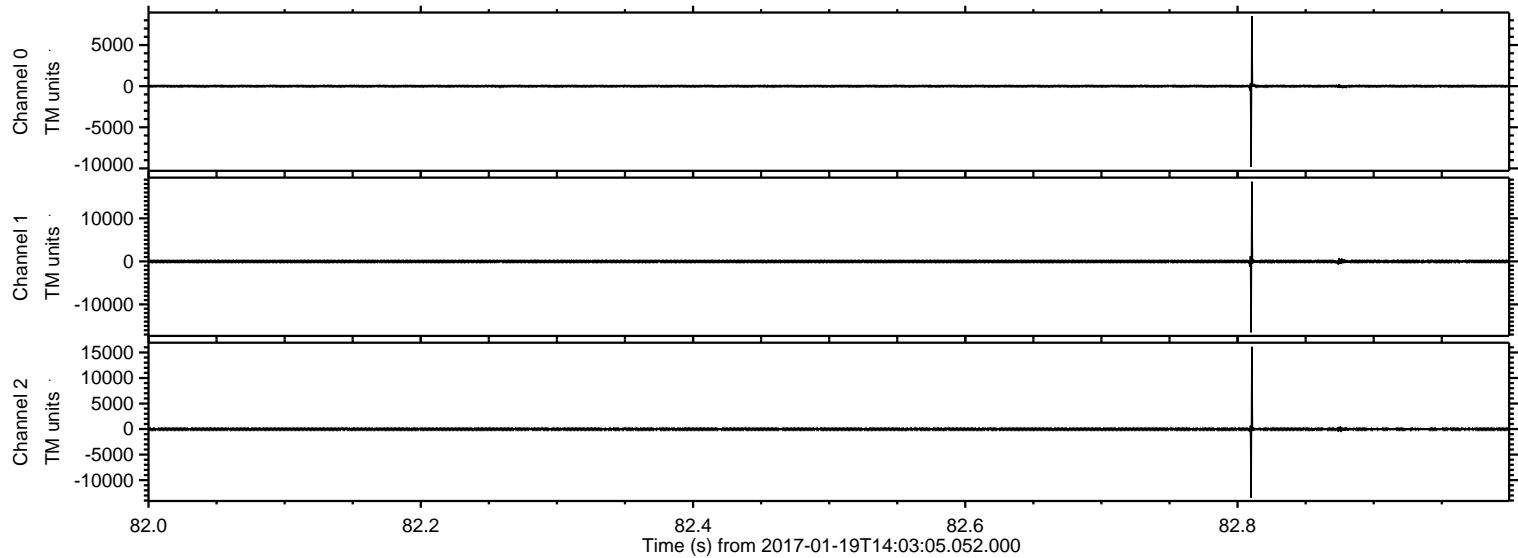


ELMAVAN 3D WAVEFORMS (Measured data sampled at 50 kHz) 51000 packets of 144 samples from 2017-01-19T14:03:05.052.000.

Processed Thu Jan 19 15:10:53 2017 by ELM ver.2012-10-06 from 001__elm20170119_140304__dat00.bin



Processed Thu Jan 19 15:11:05 2017 by ELM ver.2012-10-06 from 001__elm20170119_140304__dat00.bin

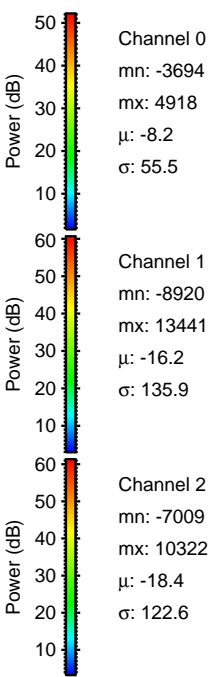
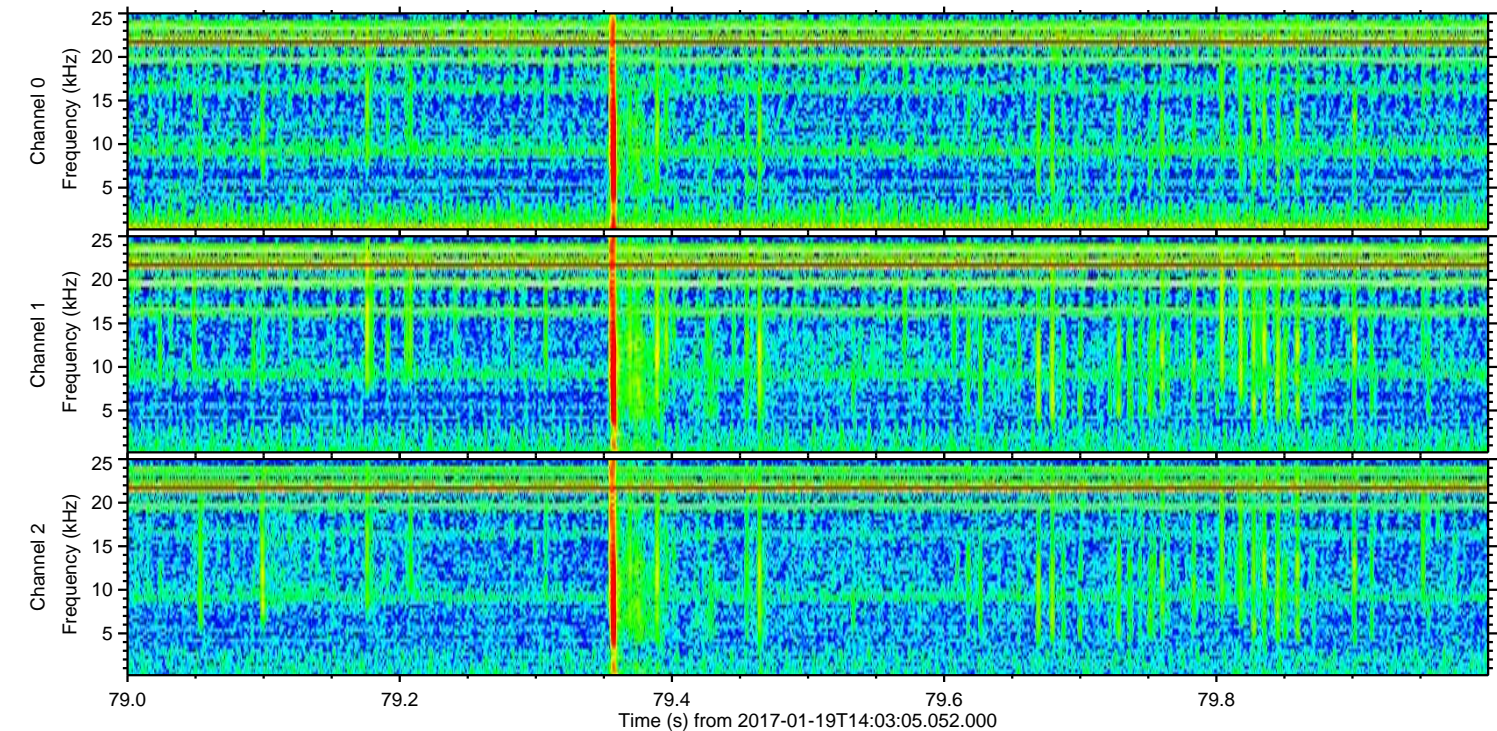
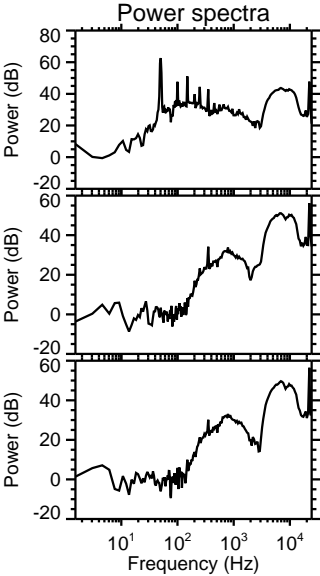
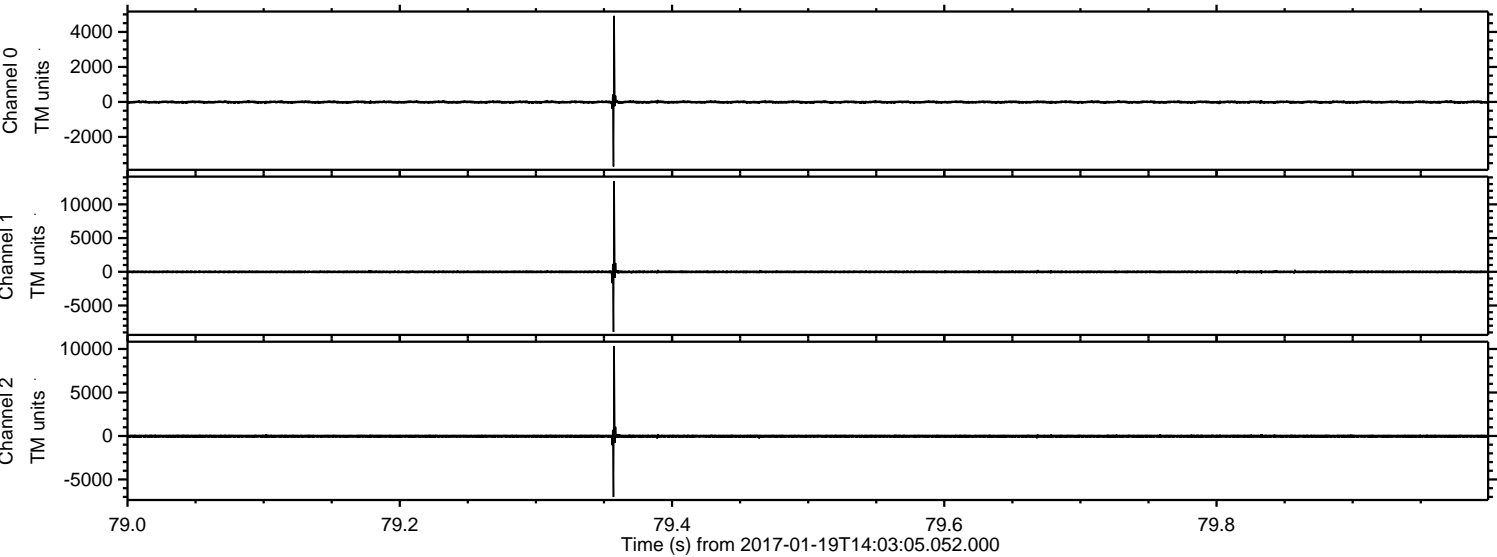


Channel 0
mn: -9807
mx: 8524
 μ : -8.2
 σ : 87.4

Channel 1
mn: -16496
mx: 18540
 μ : -16.2
 σ : 181.0

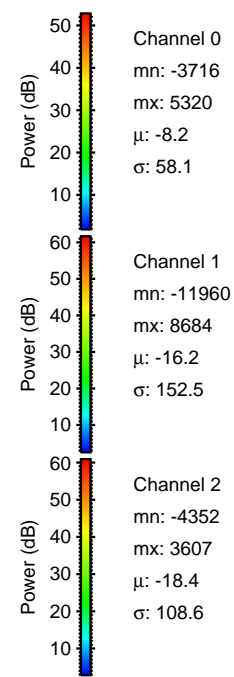
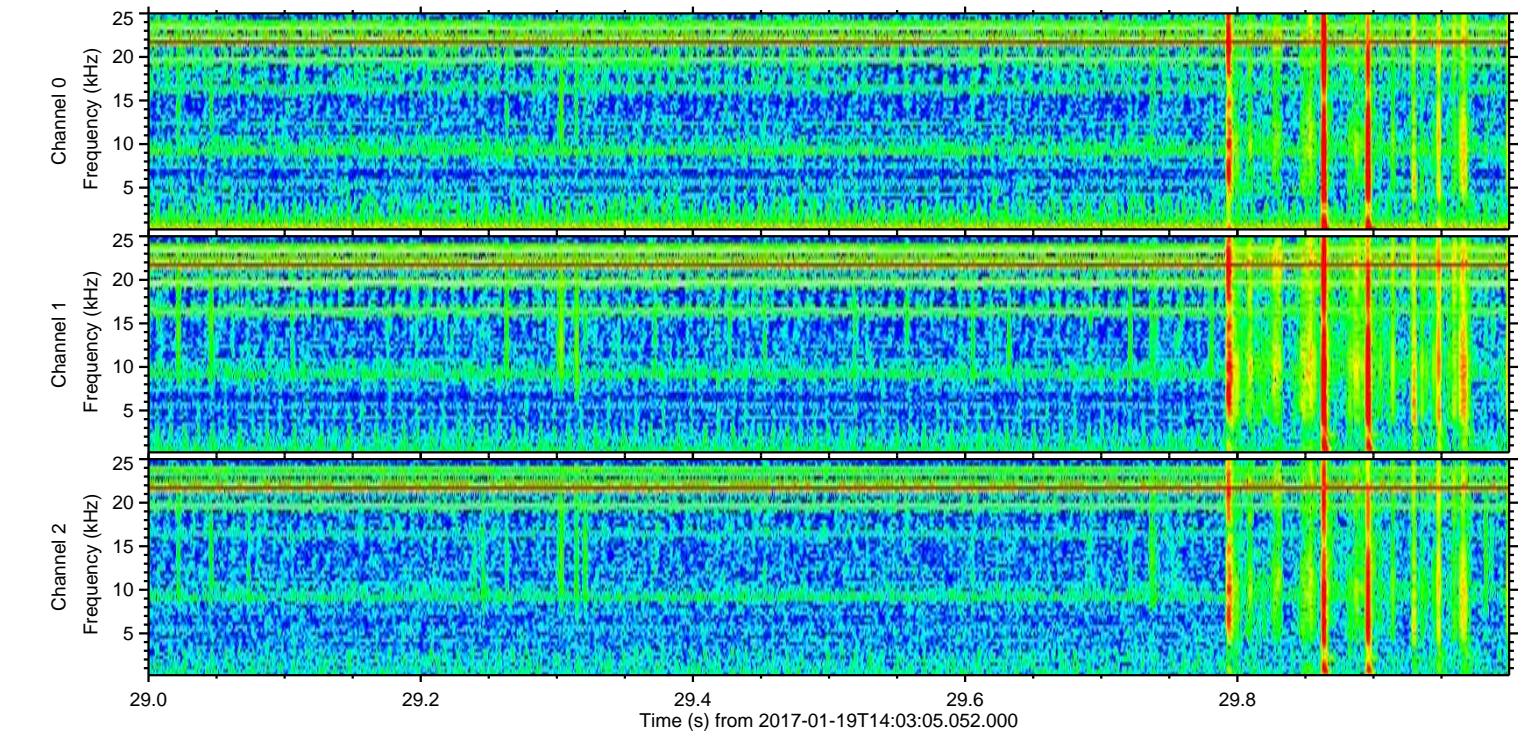
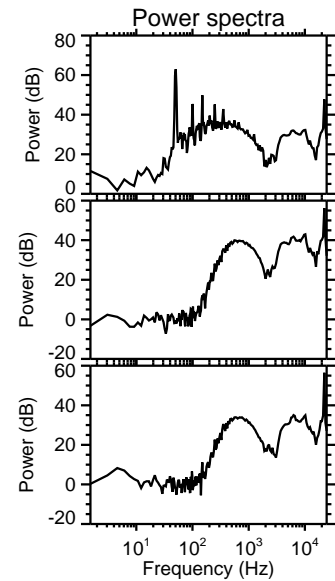
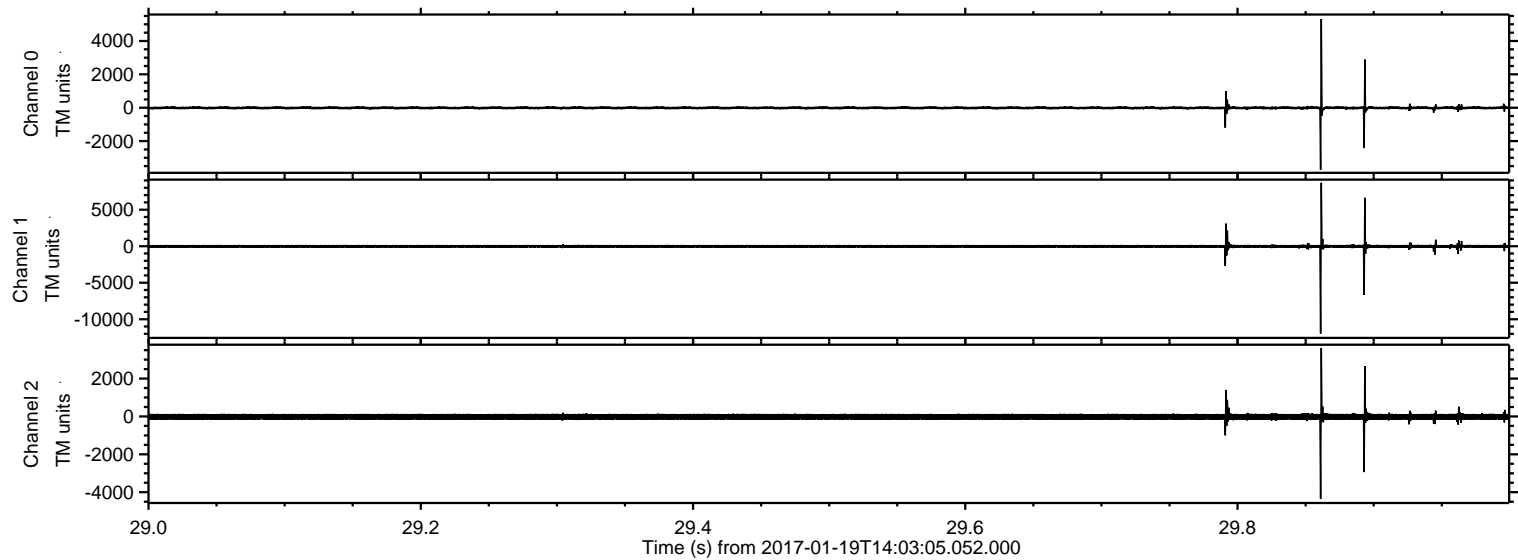
Channel 2
mn: -13412
mx: 16101
 μ : -18.3
 σ : 157.9

Processed Thu Jan 19 15:11:06 2017 by ELM ver.2012-10-06 from 001__elm20170119_140304__dat00.bin



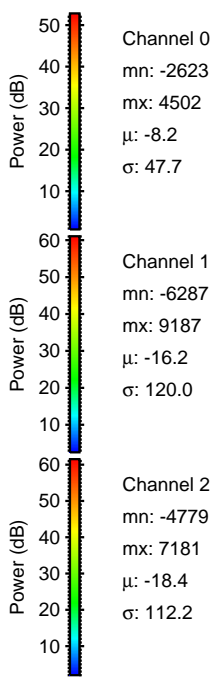
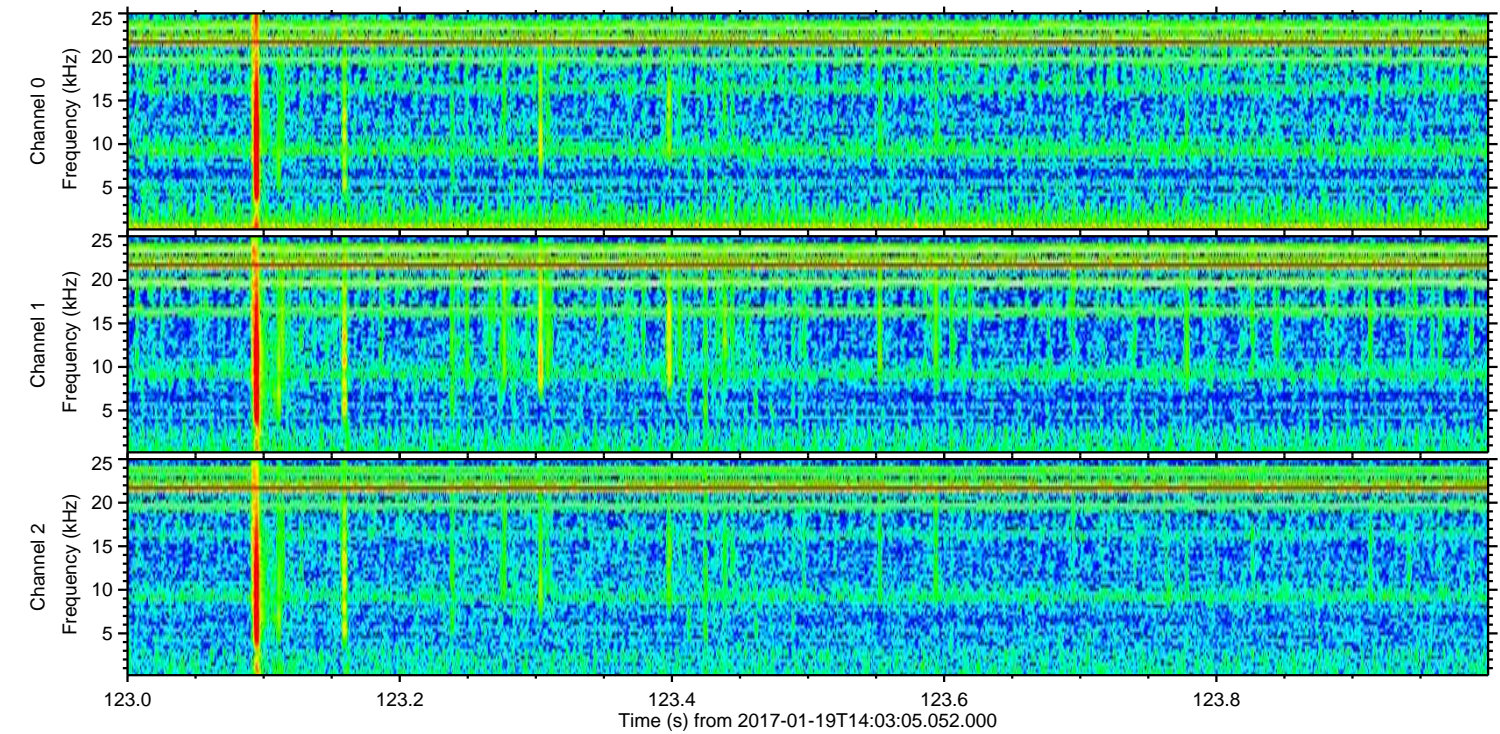
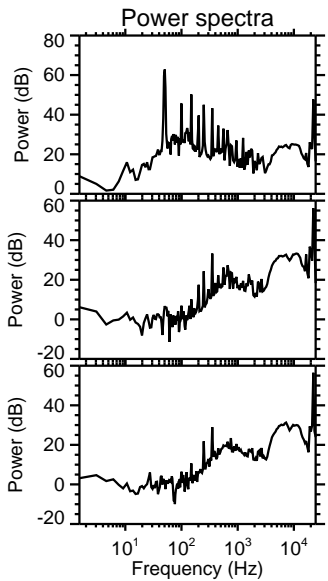
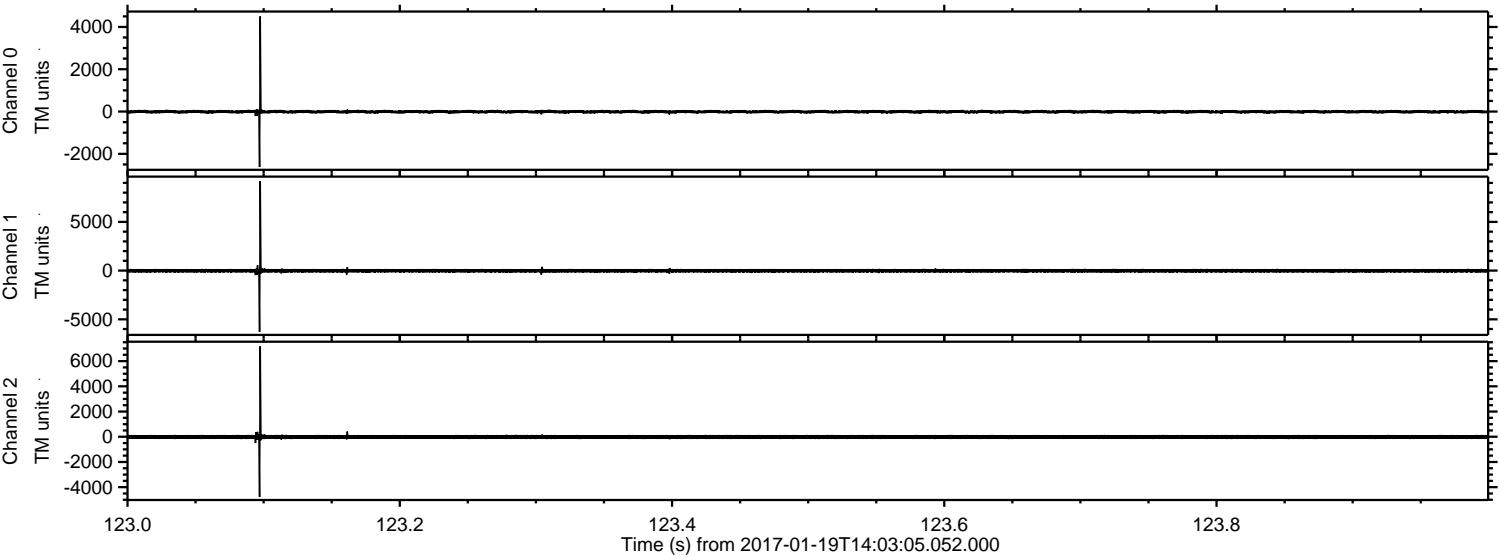
ELMAVAN 3D WAVEFORMS (Measured data sampled at 50 kHz) 51000 packets of 144 samples from 2017-01-19T14:03:05.052.000. Part 30/147

Processed Thu Jan 19 15:11:07 2017 by ELM ver.2012-10-06 from 001__elm20170119_140304__dat00.bin



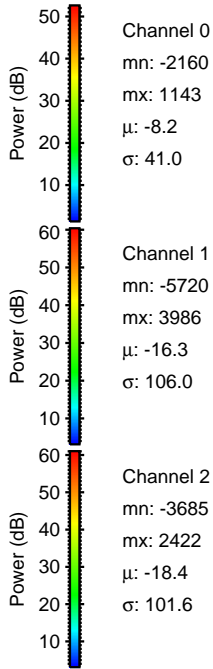
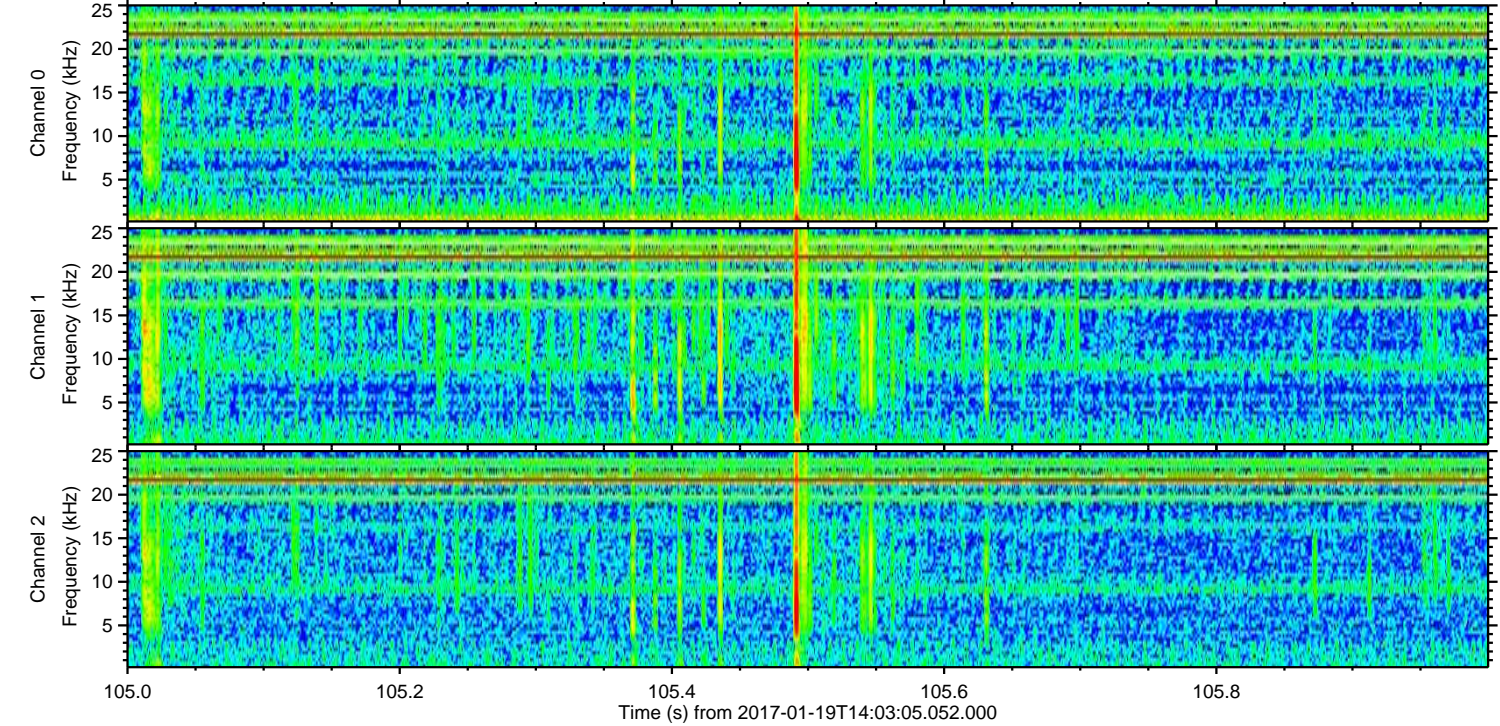
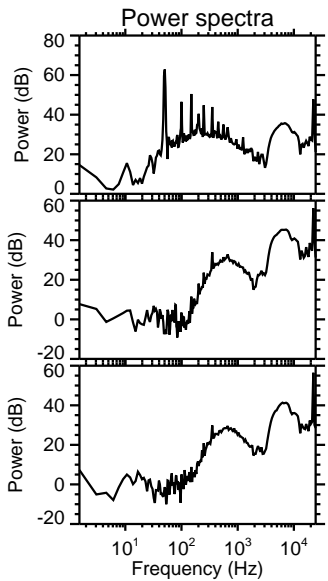
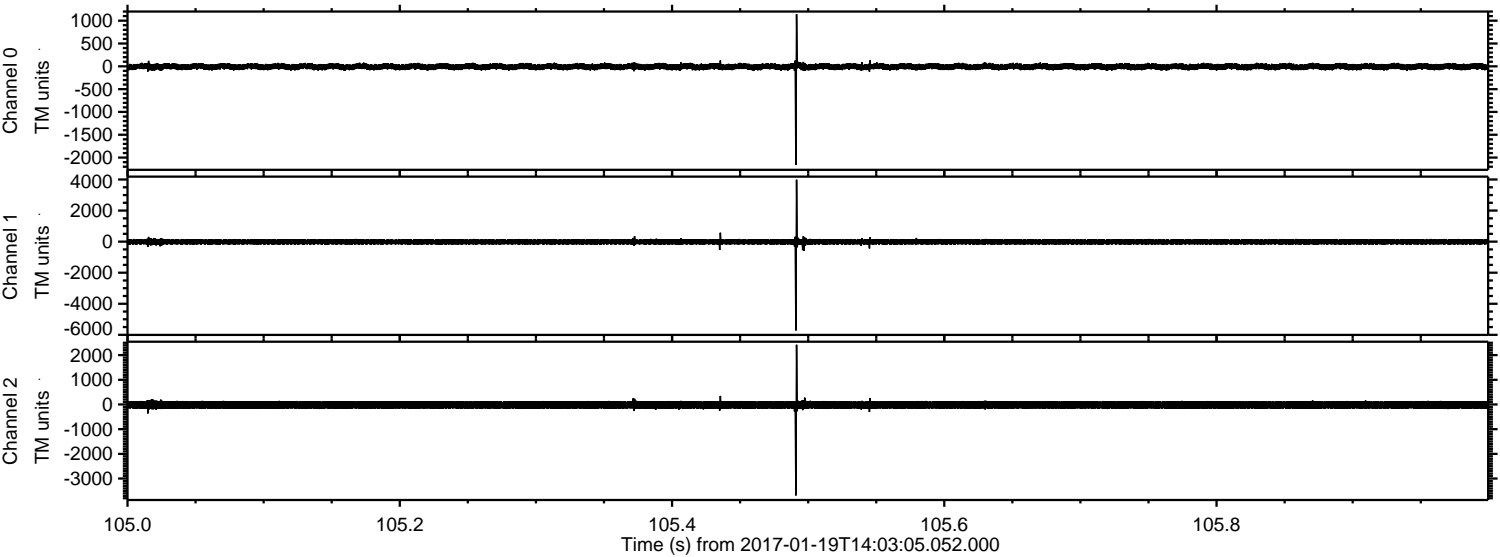
ELMAVAN 3D WAVEFORMS (Measured data sampled at 50 kHz) 51000 packets of 144 samples from 2017-01-19T14:03:05.052.000. Part 124/147

Processed Thu Jan 19 15:11:08 2017 by ELM ver.2012-10-06 from 001__elm20170119_140304__dat00.bin



ELMAVAN 3D WAVEFORMS (Measured data sampled at 50 kHz) 51000 packets of 144 samples from 2017-01-19T14:03:05.052.000. Part 106/147

Processed Thu Jan 19 15:11:09 2017 by ELM ver.2012-10-06 from 001__elm20170119_140304__dat00.bin



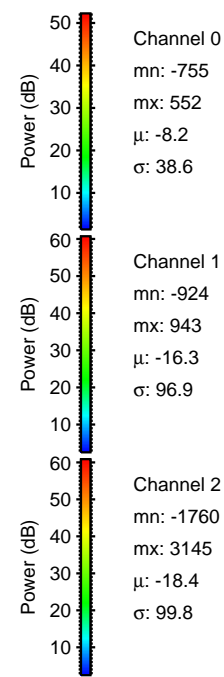
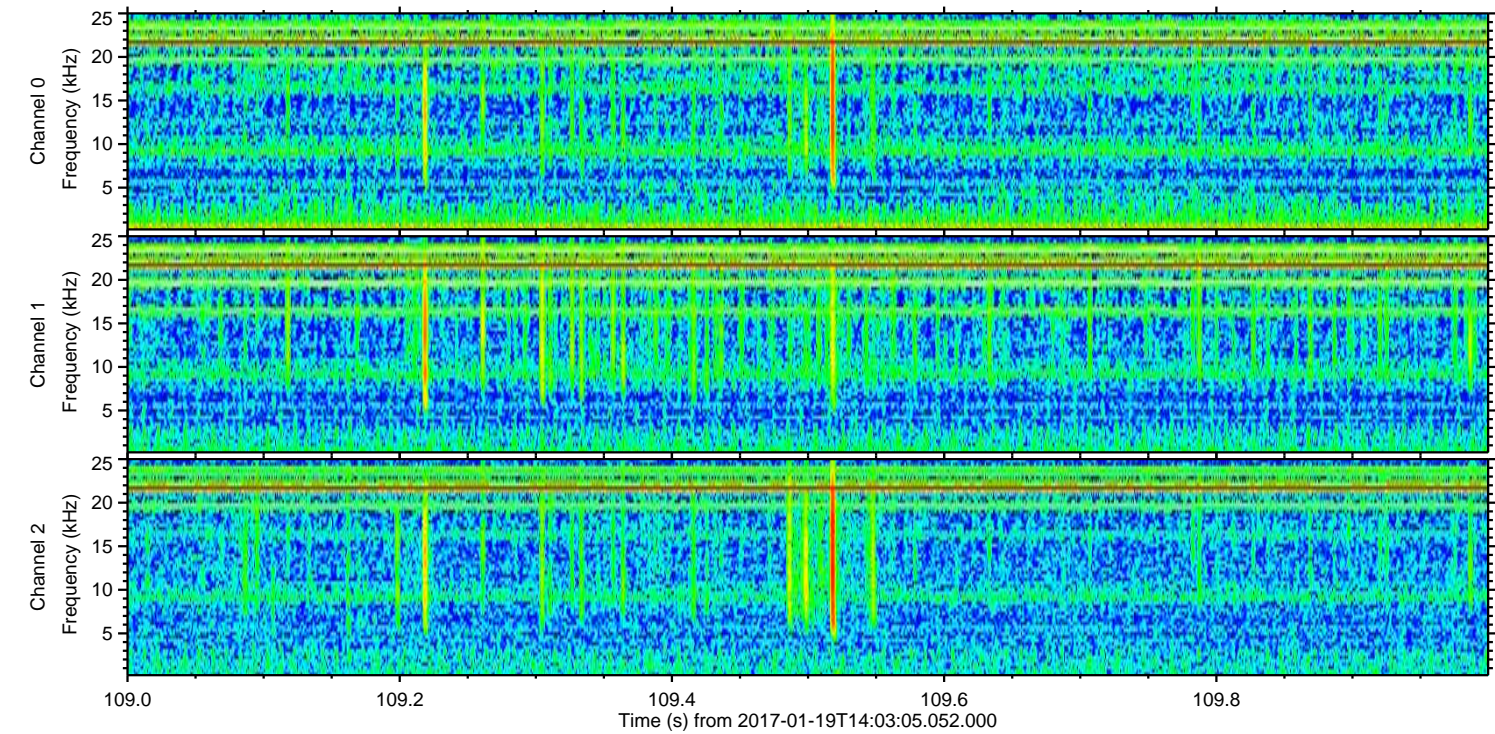
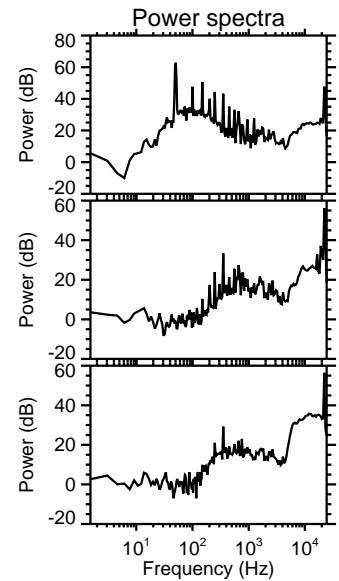
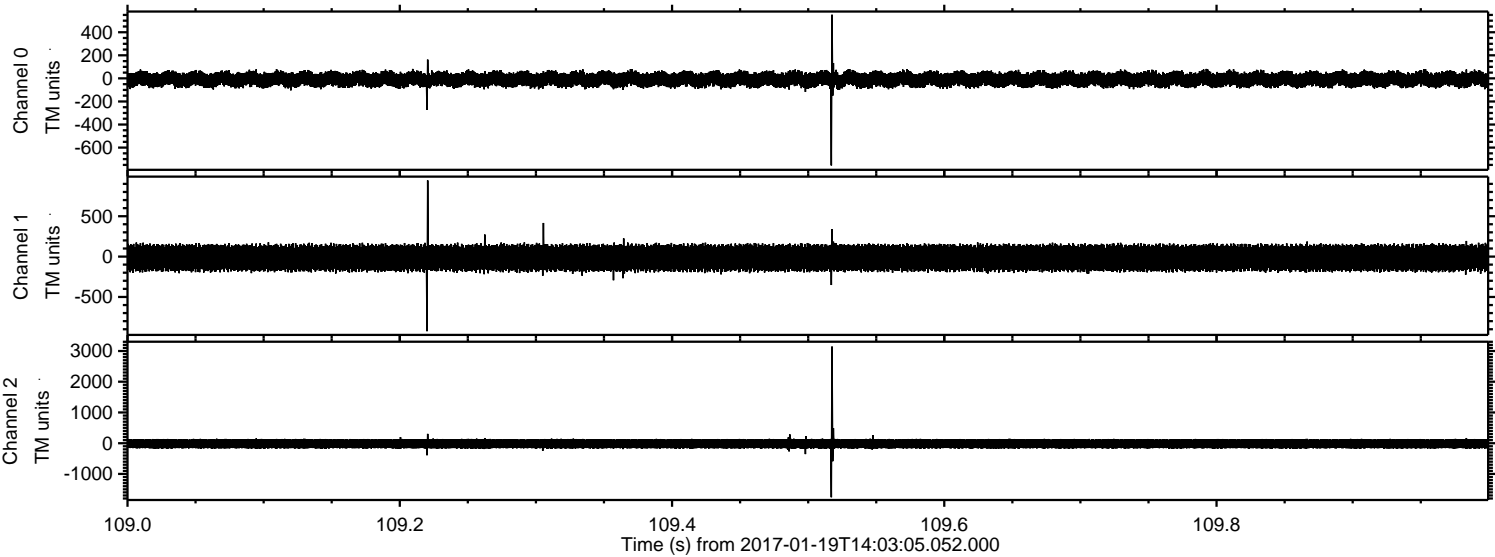
Channel 0
mn: -2160
mx: 1143
 μ : -8.2
 σ : 41.0

Channel 1
mn: -5720
mx: 3986
 μ : -16.3
 σ : 106.0

Channel 2
mn: -3685
mx: 2422
 μ : -18.4
 σ : 101.6

ELMAVAN 3D WAVEFORMS (Measured data sampled at 50 kHz) 51000 packets of 144 samples from 2017-01-19T14:03:05.052.000. Part 110/147

Processed Thu Jan 19 15:11:10 2017 by ELM ver.2012-10-06 from 001__elm20170119_140304__dat00.bin

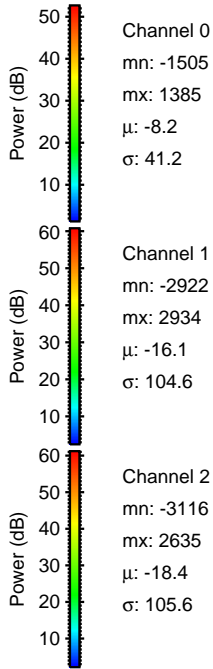
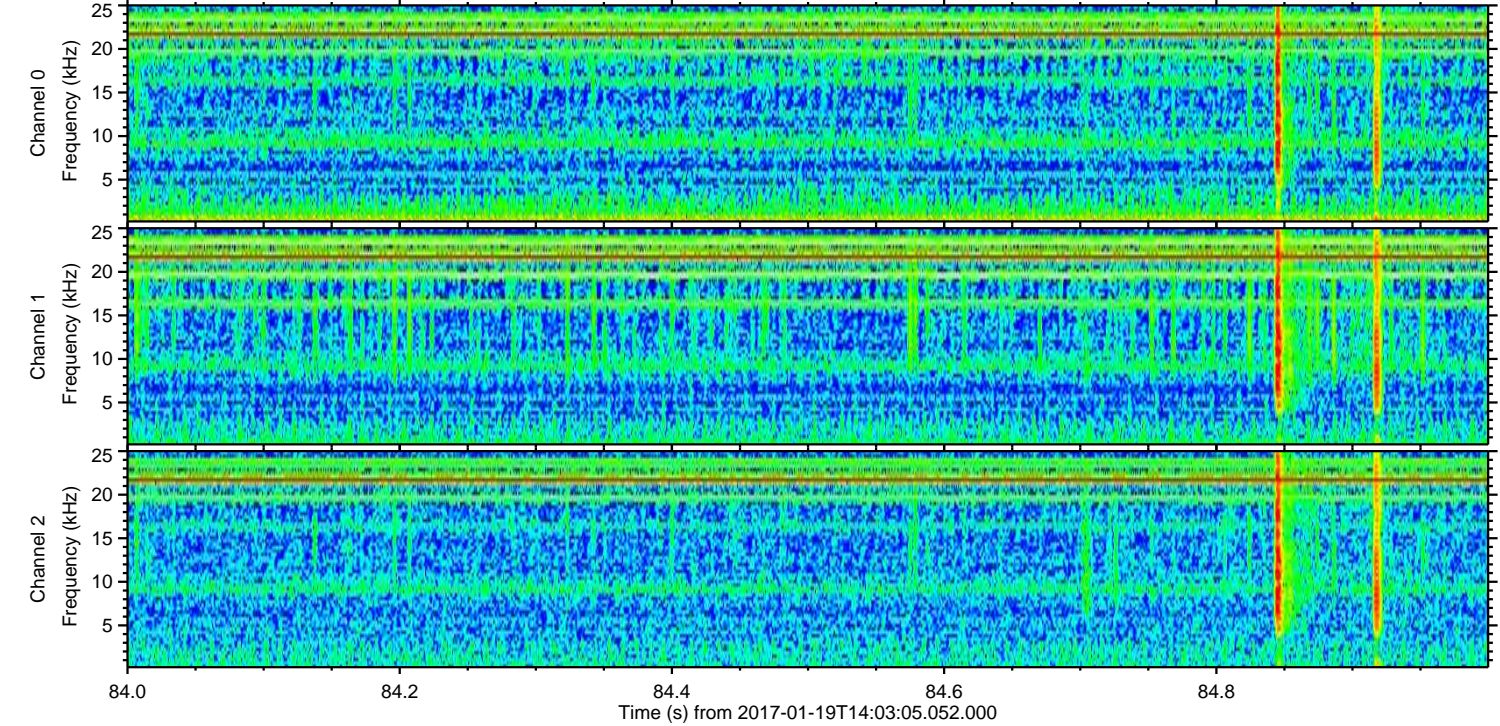
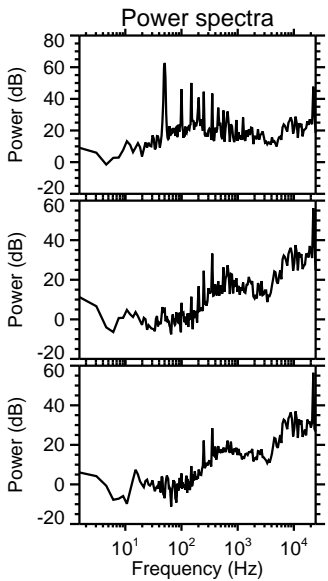
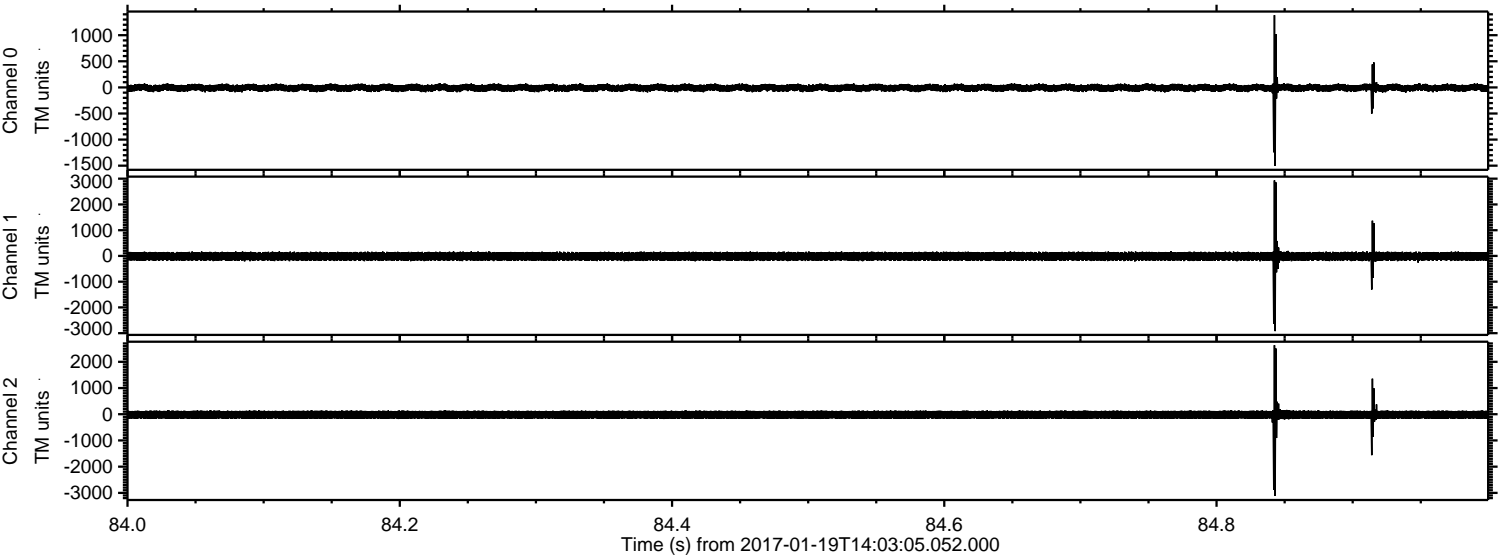


Channel 0
mn: -755
mx: 552
 μ : -8.2
 σ : 38.6

Channel 1
mn: -924
mx: 943
 μ : -16.3
 σ : 96.9

Channel 2
mn: -1760
mx: 3145
 μ : -18.4
 σ : 99.8

Processed Thu Jan 19 15:11:10 2017 by ELM ver.2012-10-06 from 001__elm20170119_140304__dat00.bin

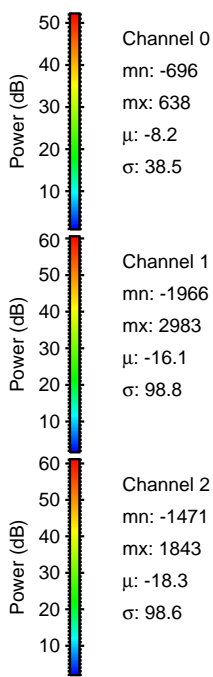
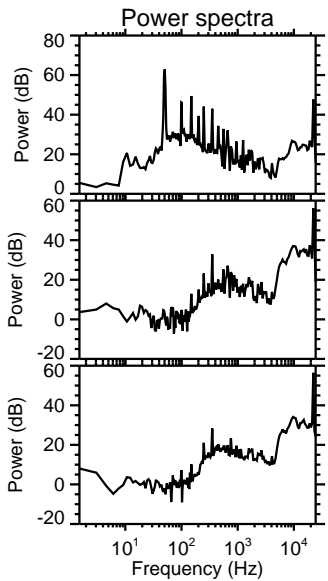
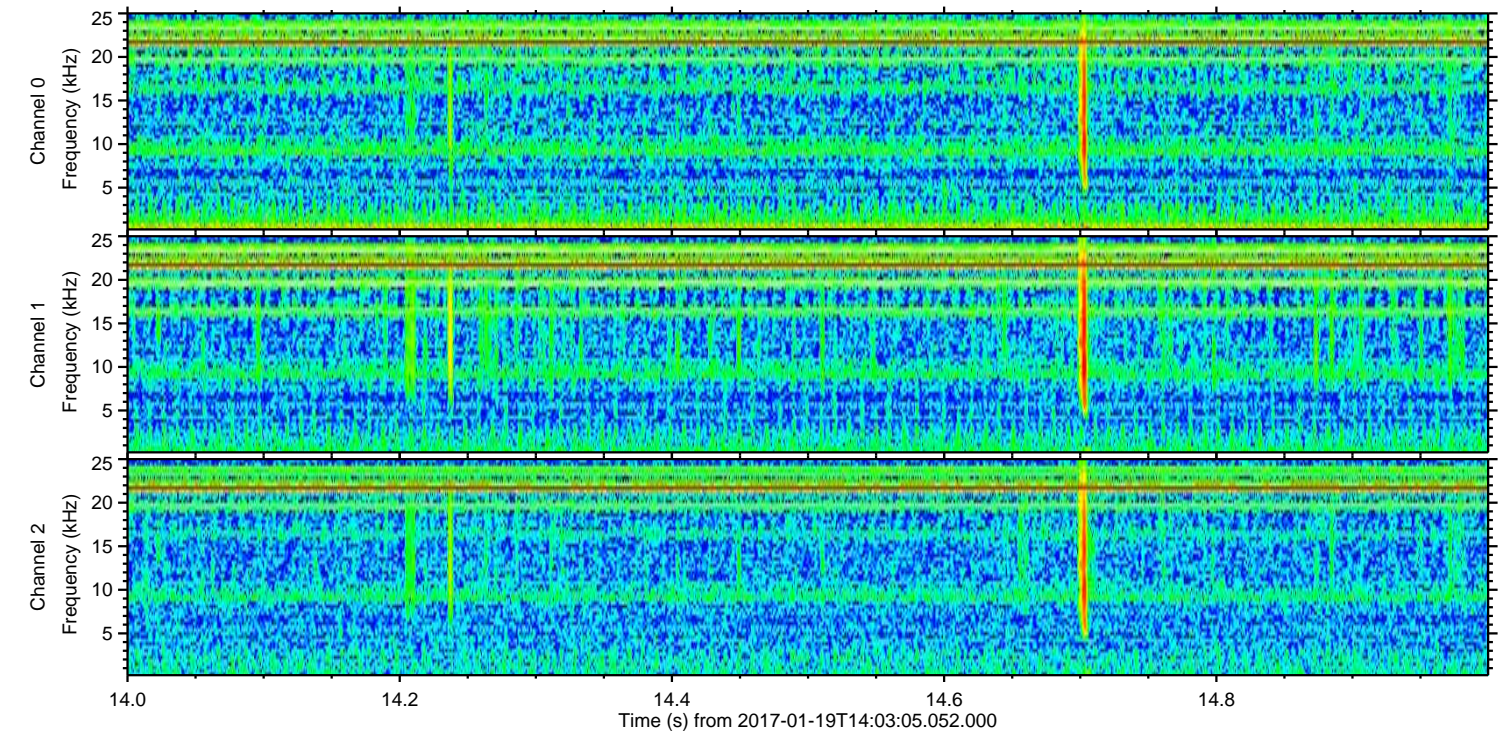
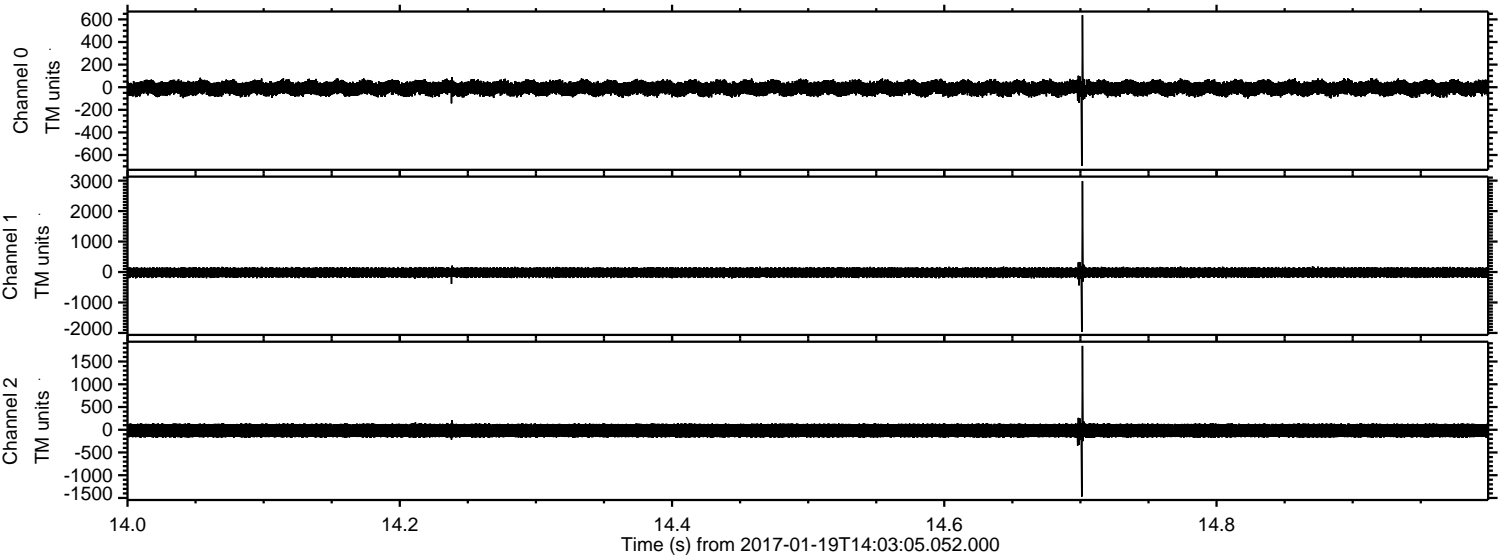


Channel 0
mn: -1505
mx: 1385
 μ : -8.2
 σ : 41.2

Channel 1
mn: -2922
mx: 2934
 μ : -16.1
 σ : 104.6

Channel 2
mn: -3116
mx: 2635
 μ : -18.4
 σ : 105.6

Processed Thu Jan 19 15:11:11 2017 by ELM ver.2012-10-06 from 001__elm20170119_140304__dat00.bin



Channel 0

mn: -696
mx: 638
 μ : -8.2
 σ : 38.5

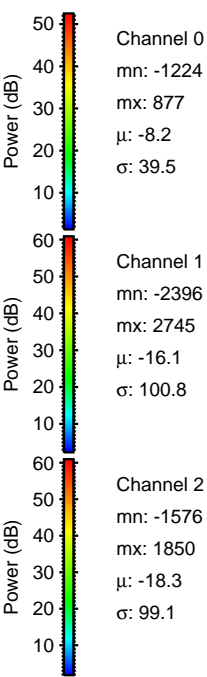
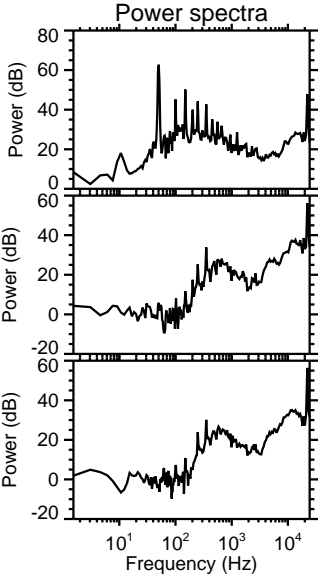
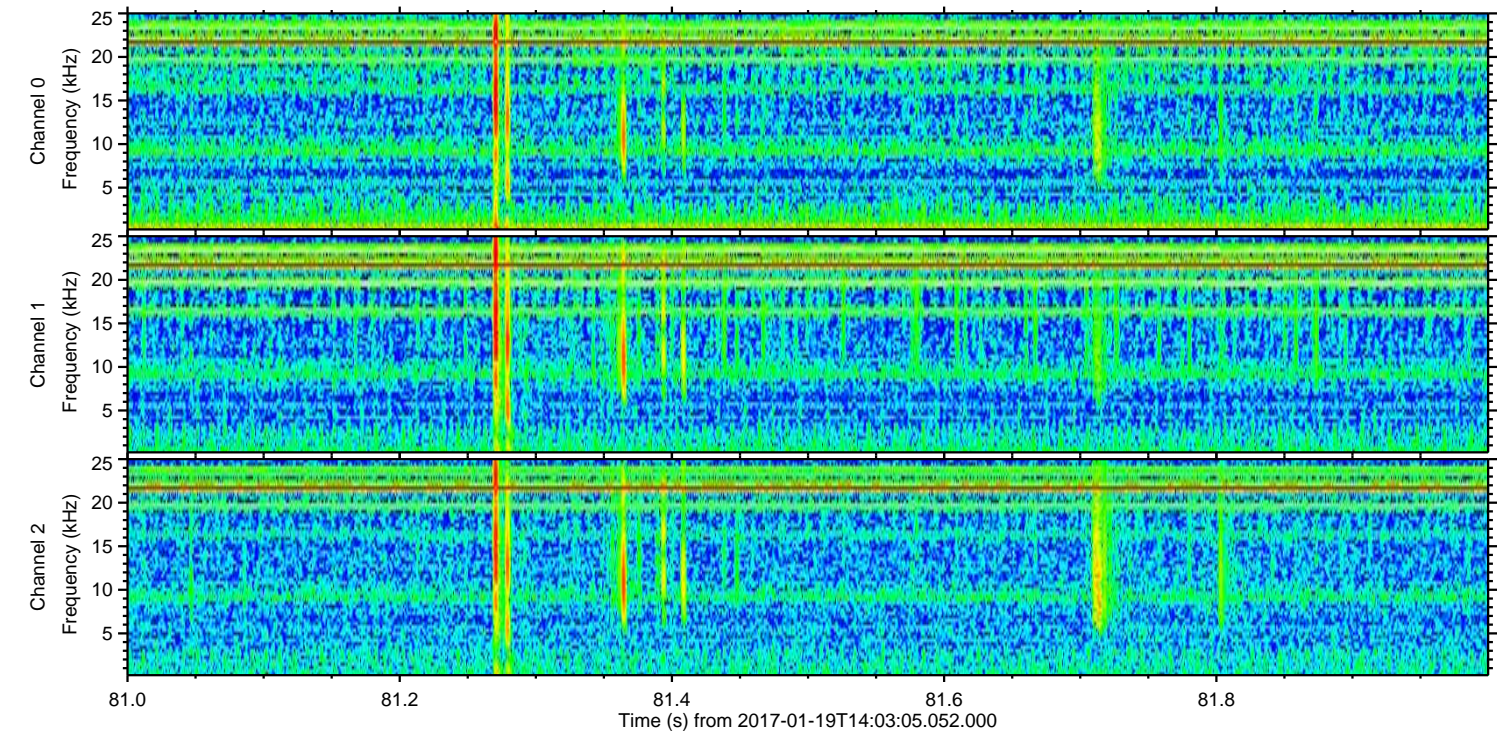
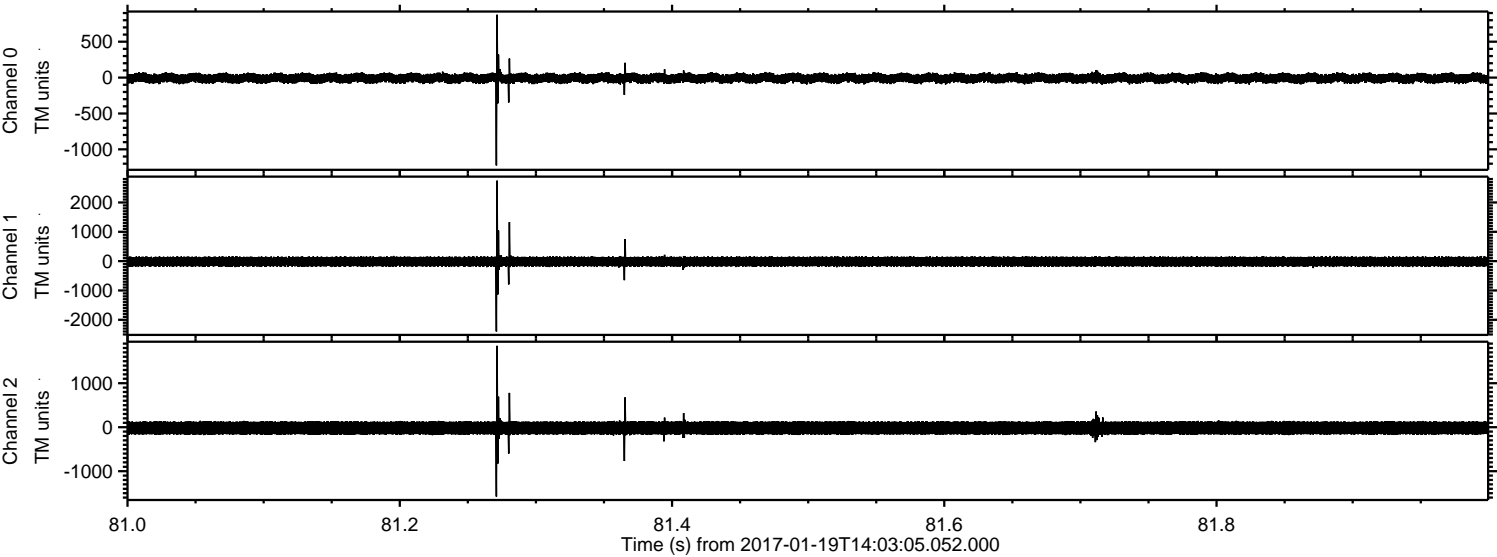
Channel 1

mn: -1966
mx: 2983
 μ : -16.1
 σ : 98.8

Channel 2

mn: -1471
mx: 1843
 μ : -18.3
 σ : 98.6

Processed Thu Jan 19 15:11:12 2017 by ELM ver.2012-10-06 from 001__elm20170119_140304__dat00.bin



ELMAVAN 3D WAVEFORMS (Measured data sampled at 50 kHz) 51000 packets of 144 samples from 2017-01-19T14:03:05.052.000. Part 145/147

