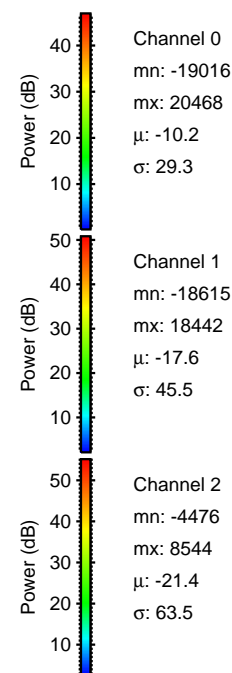
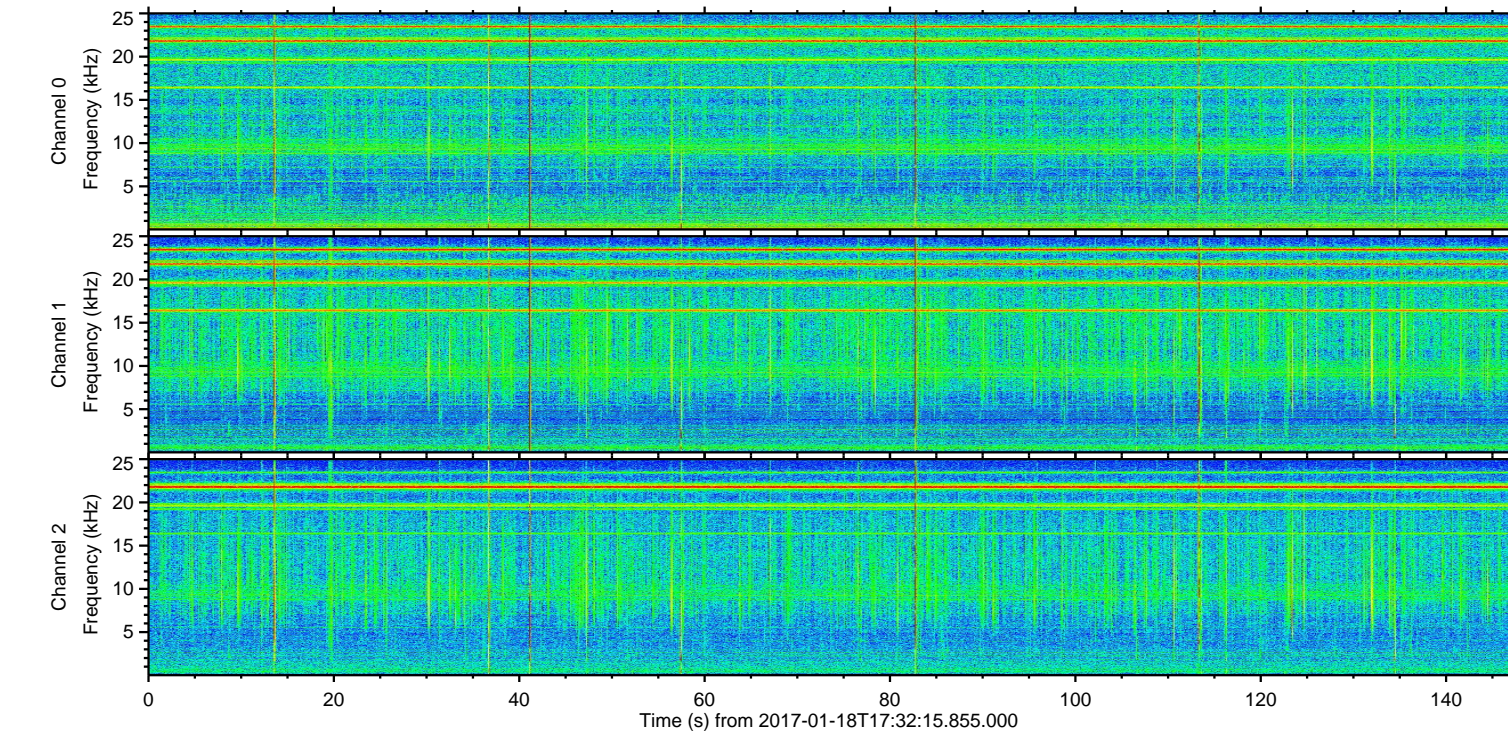
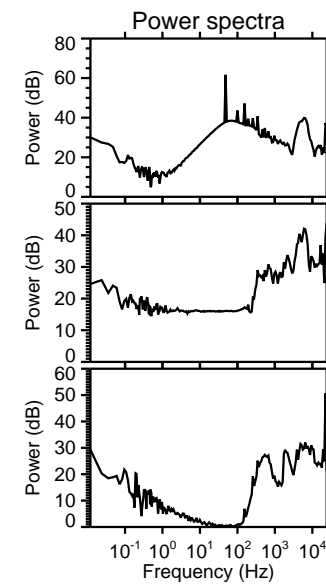
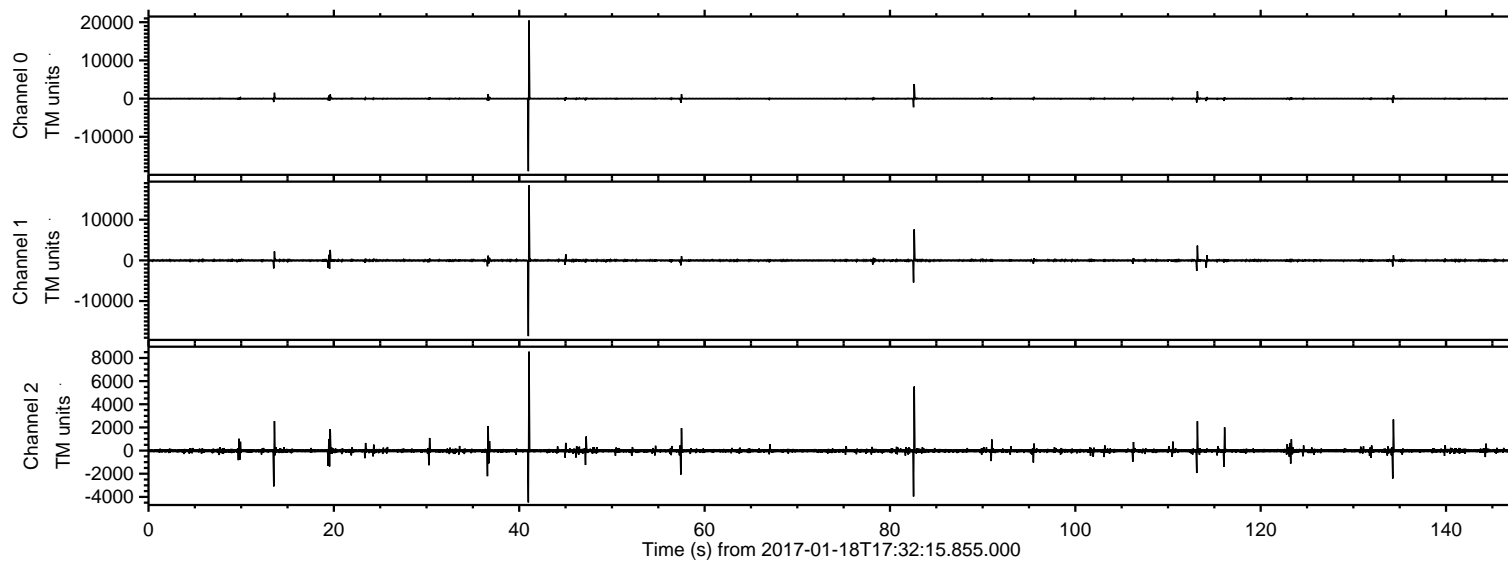


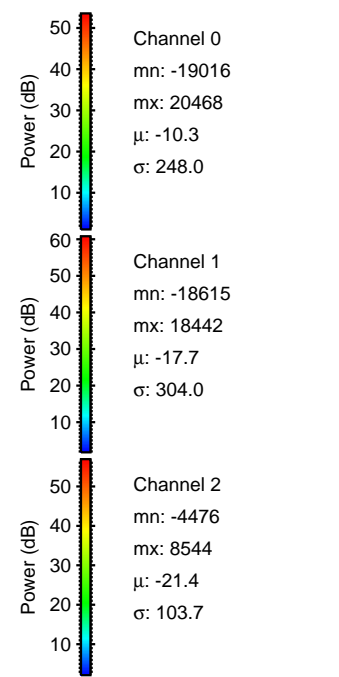
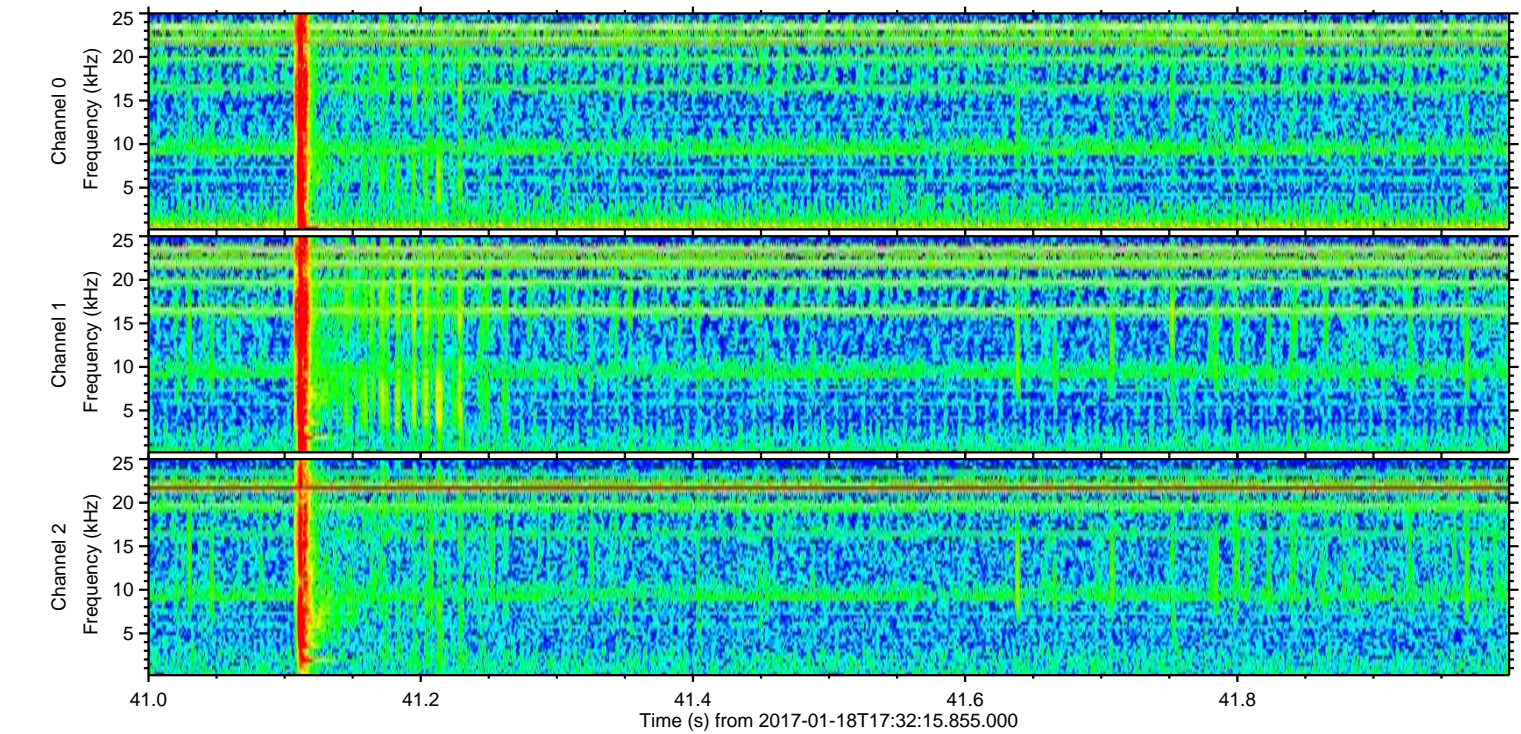
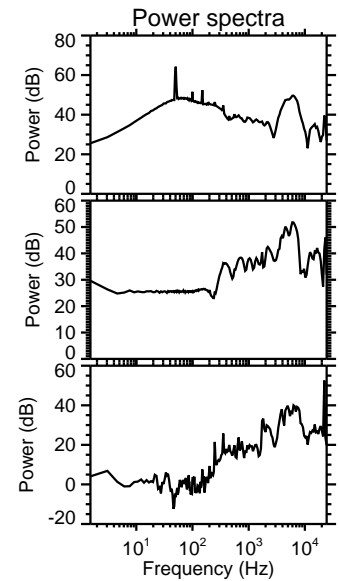
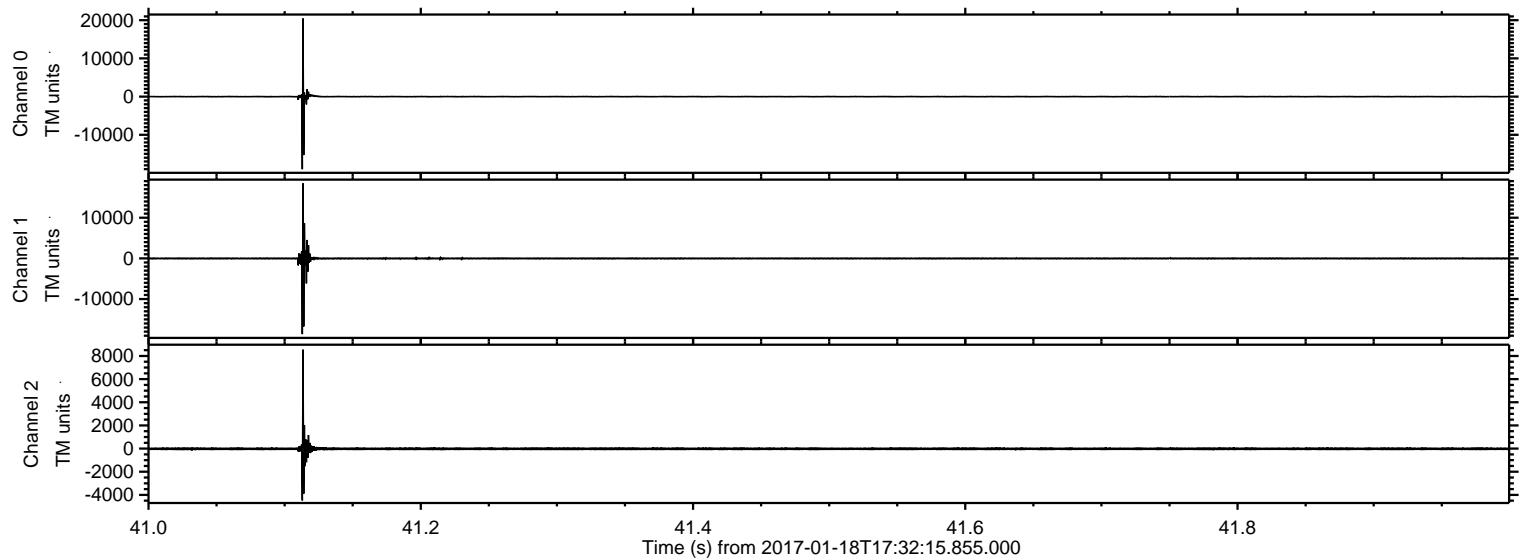
ELMAVAN 3D WAVEFORMS (Measured data sampled at 50 kHz) 51000 packets of 144 samples from 2017-01-18T17:32:15.855.000.

Processed Wed Jan 18 18:40:07 2017 by ELM ver.2012-10-06 from 001__elm20170118_173214__dat00.bin



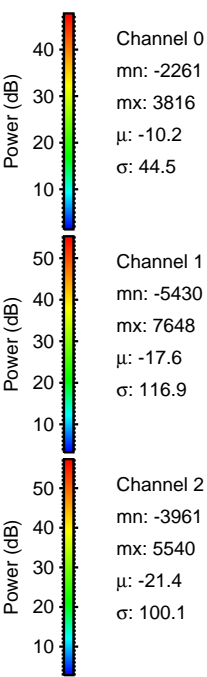
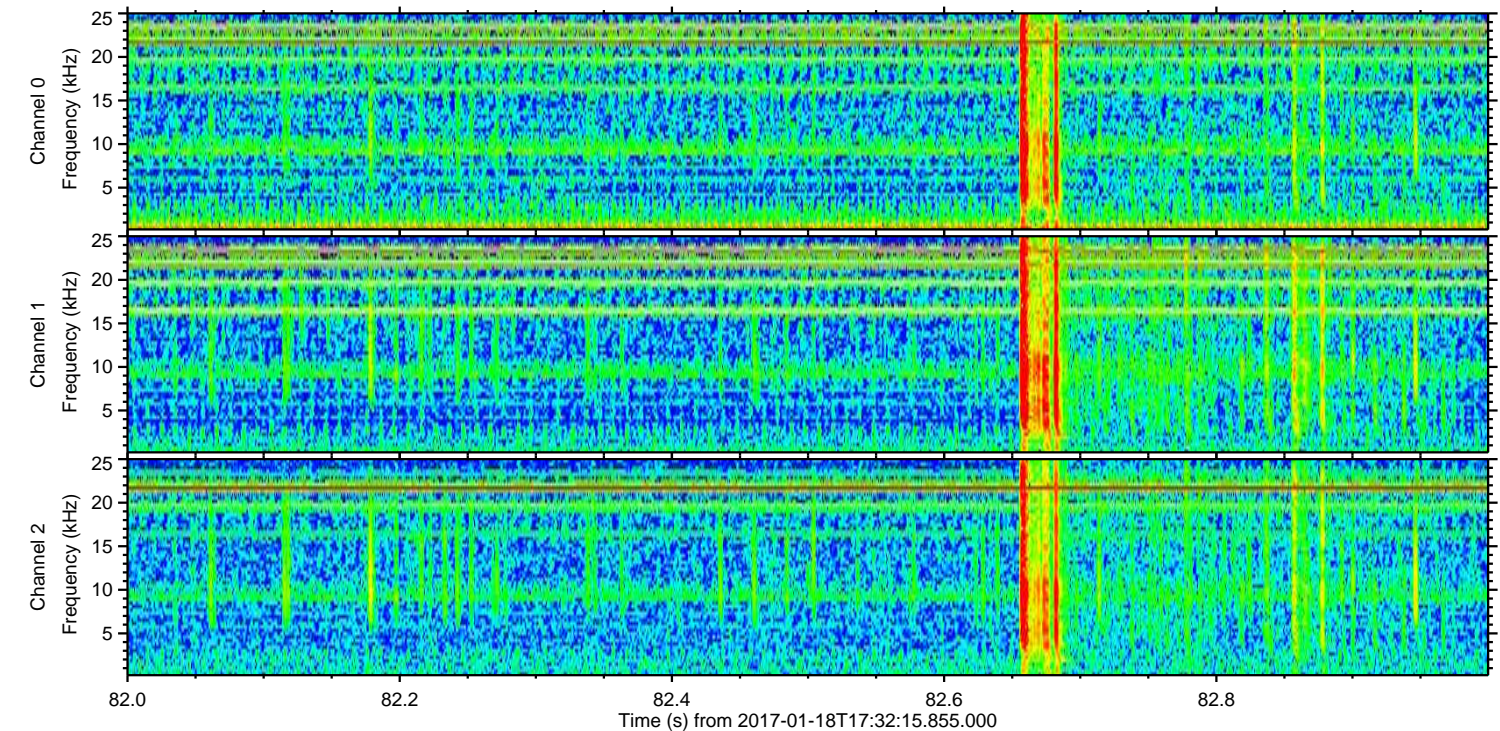
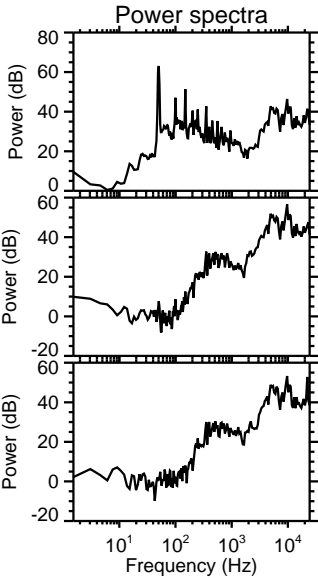
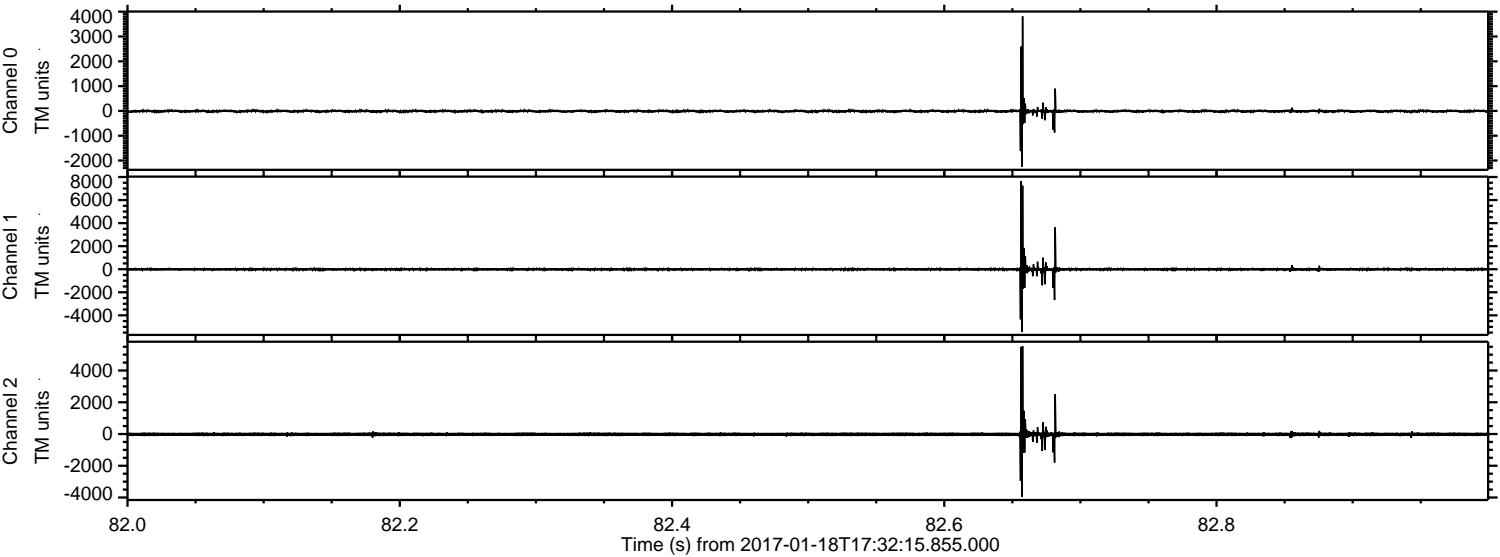
ELMAVAN 3D WAVEFORMS (Measured data sampled at 50 kHz) 51000 packets of 144 samples from 2017-01-18T17:32:15.855.000. Part 42/147

Processed Wed Jan 18 18:40:18 2017 by ELM ver.2012-10-06 from 001__elm20170118_173214__dat00.bin



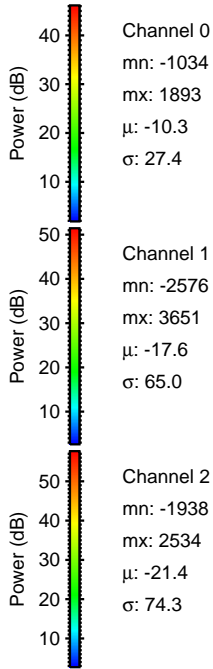
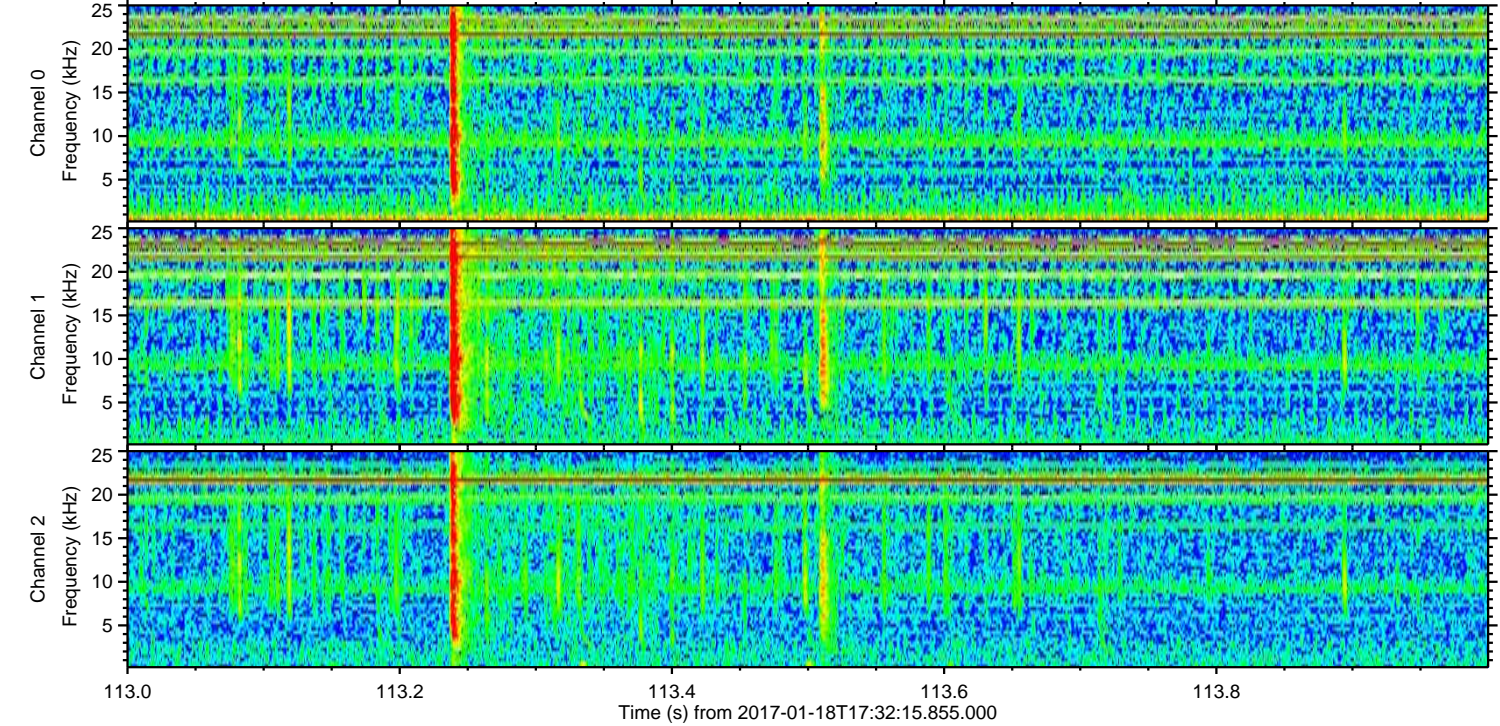
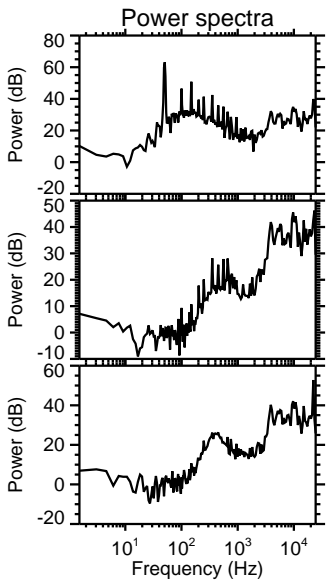
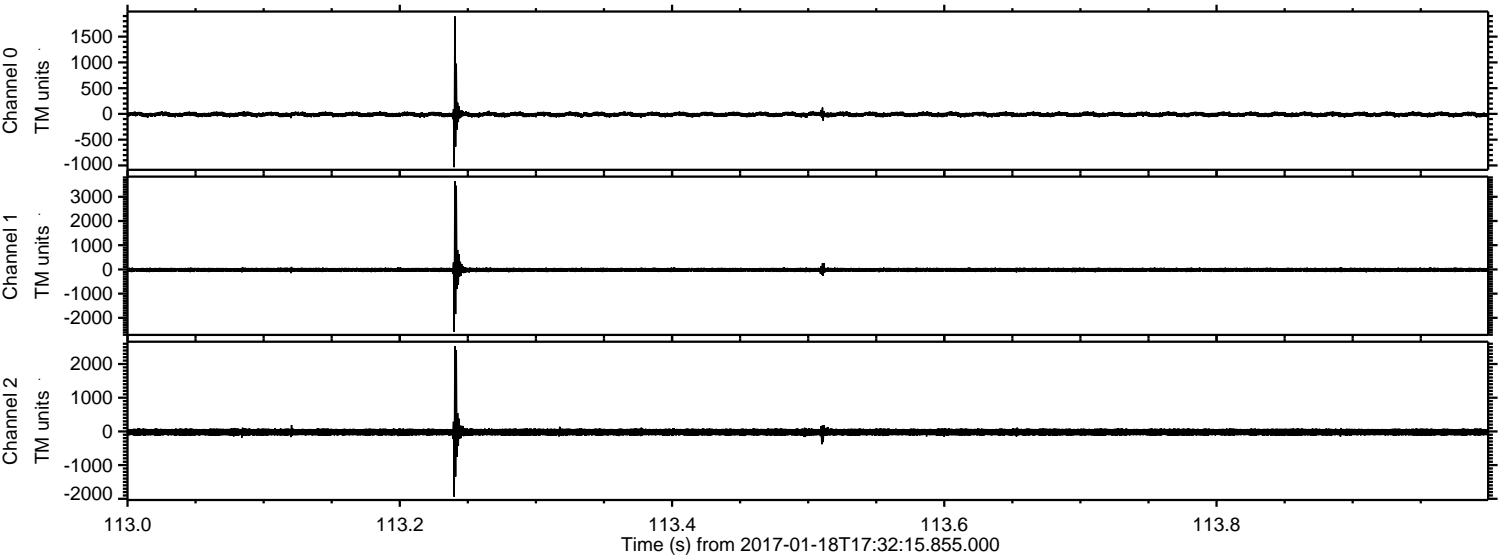
ELMAVAN 3D WAVEFORMS (Measured data sampled at 50 kHz) 51000 packets of 144 samples from 2017-01-18T17:32:15.855.000. Part 83/147

Processed Wed Jan 18 18:40:19 2017 by ELM ver.2012-10-06 from 001__elm20170118_173214__dat00.bin

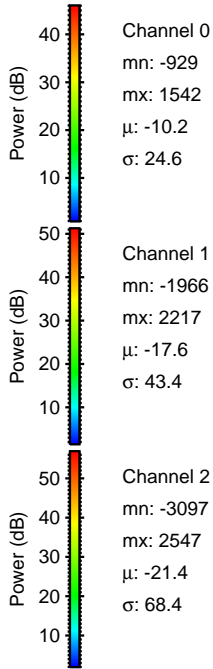
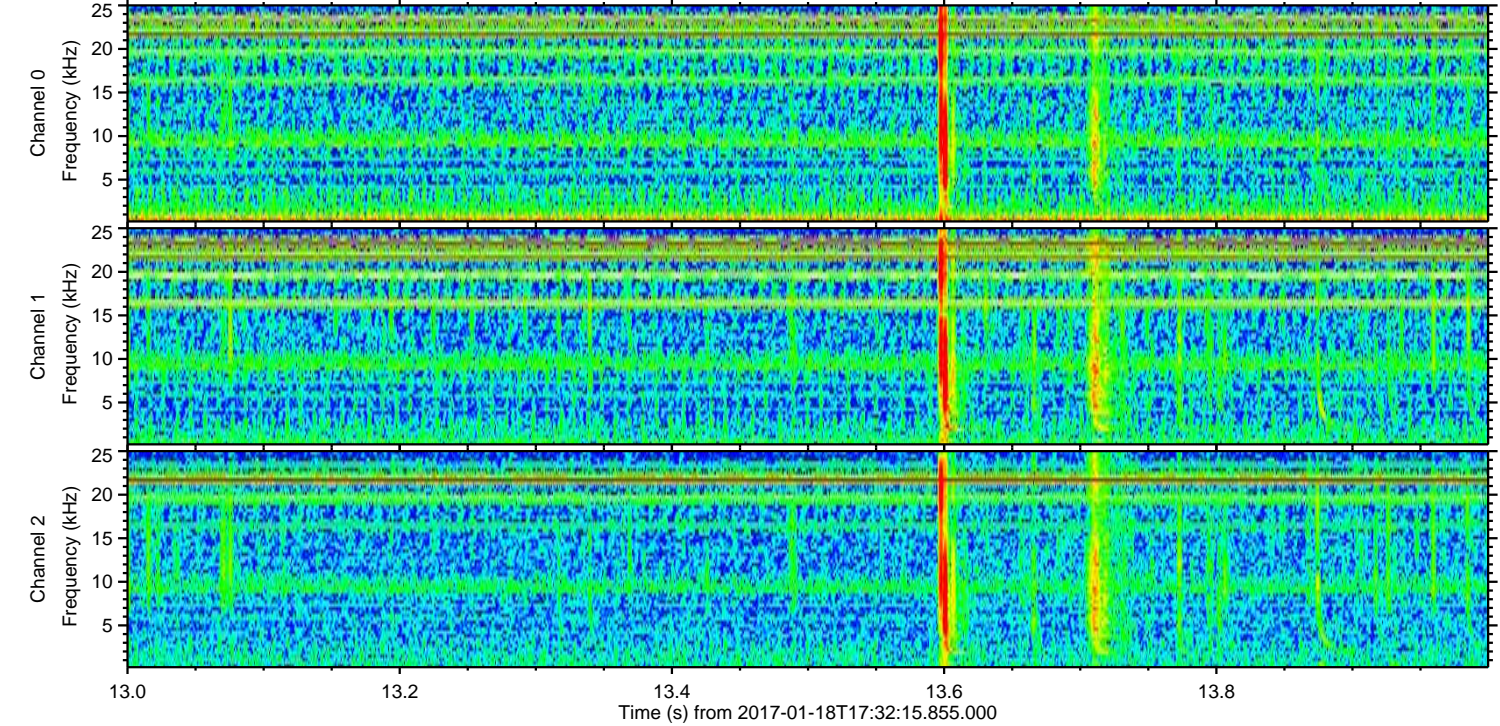
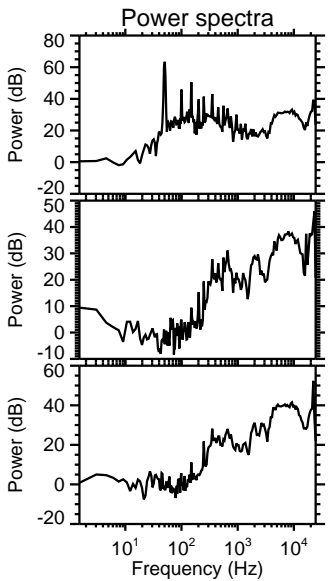
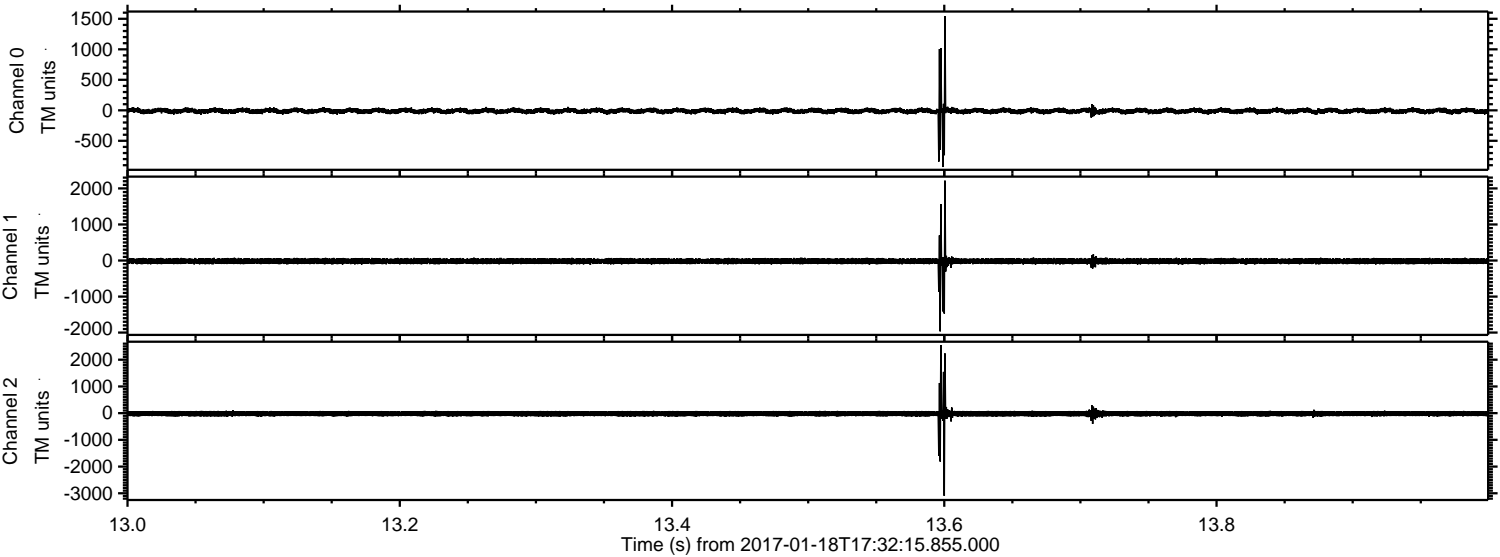


ELMAVAN 3D WAVEFORMS (Measured data sampled at 50 kHz) 51000 packets of 144 samples from 2017-01-18T17:32:15.855.000. Part 114/147

Processed Wed Jan 18 18:40:20 2017 by ELM ver.2012-10-06 from 001__elm20170118_173214__dat00.bin



Processed Wed Jan 18 18:40:21 2017 by ELM ver.2012-10-06 from 001__elm20170118_173214__dat00.bin



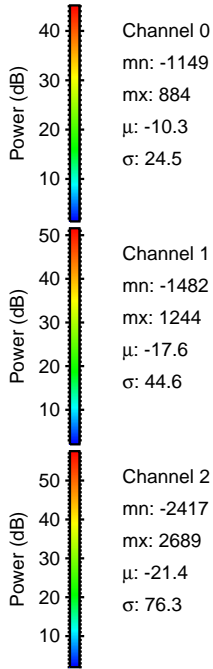
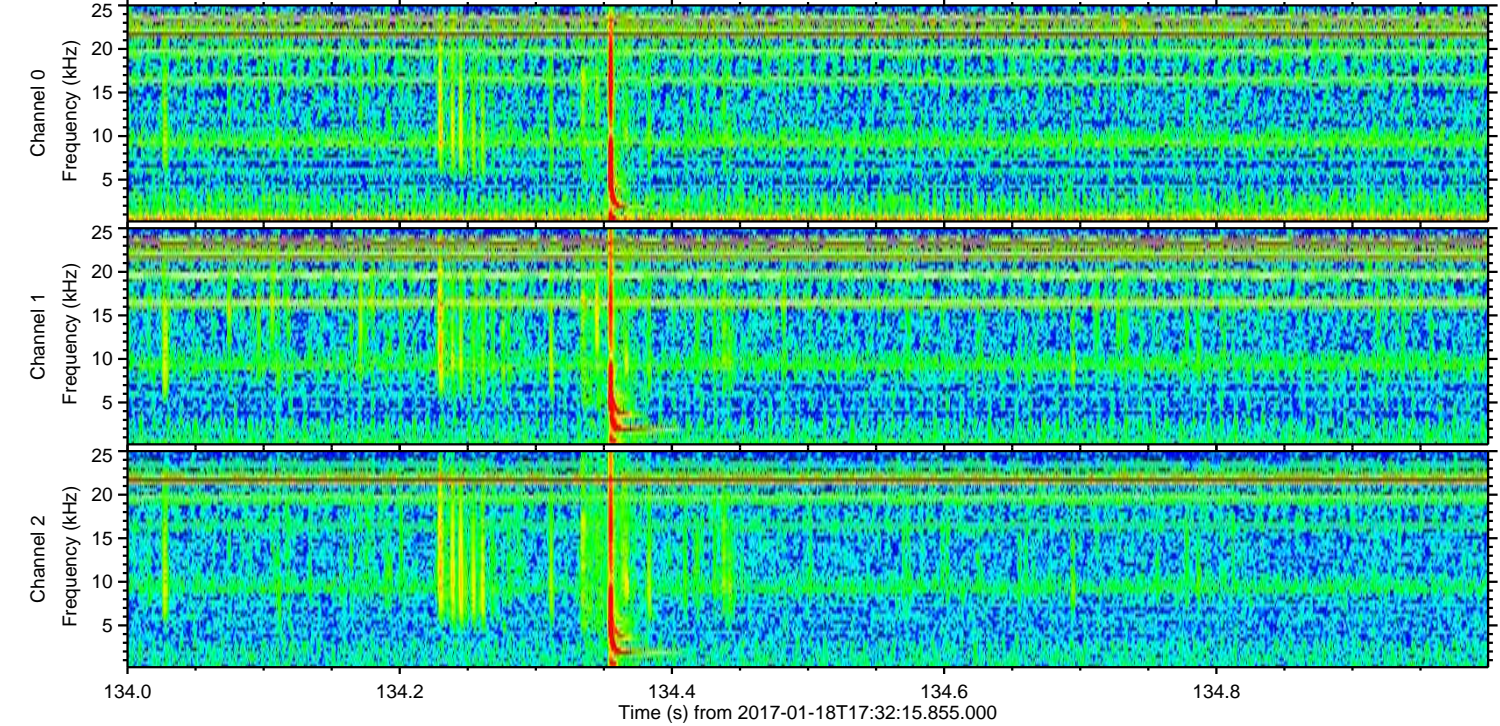
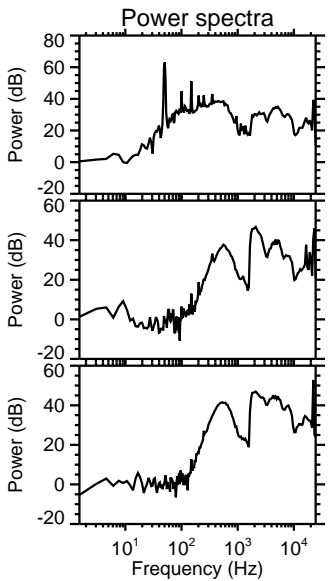
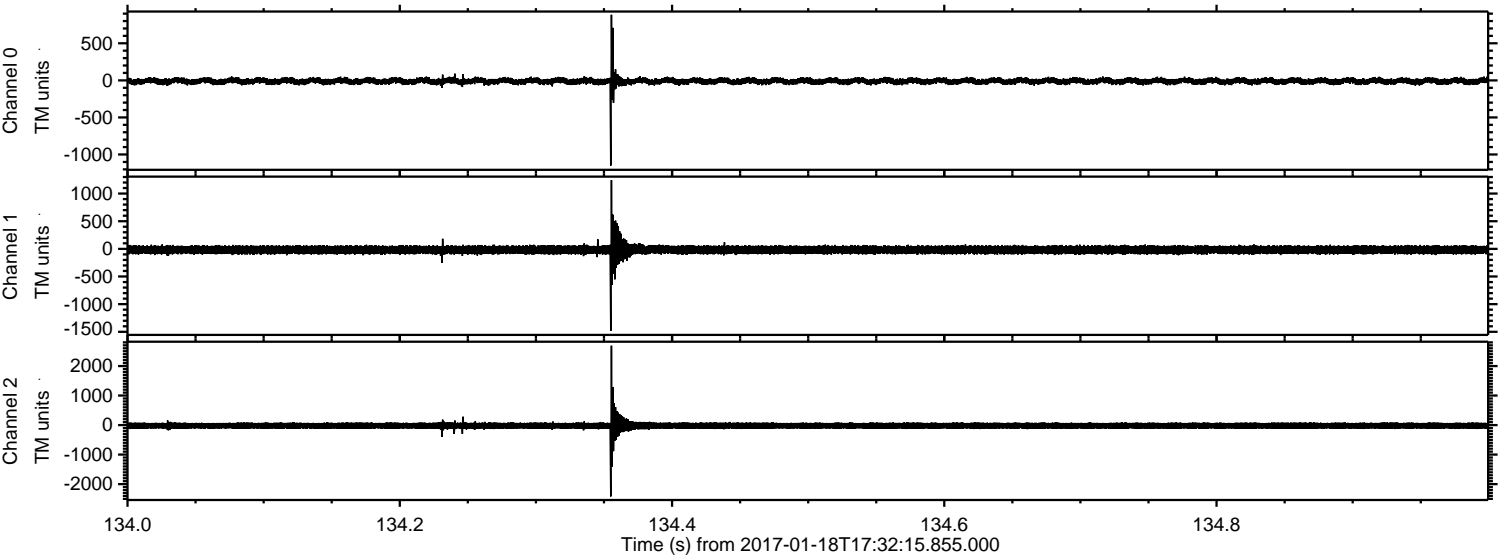
Channel 0
mn: -929
mx: 1542
 μ : -10.2
 σ : 24.6

Channel 1
mn: -1966
mx: 2217
 μ : -17.6
 σ : 43.4

Channel 2
mn: -3097
mx: 2547
 μ : -21.4
 σ : 68.4

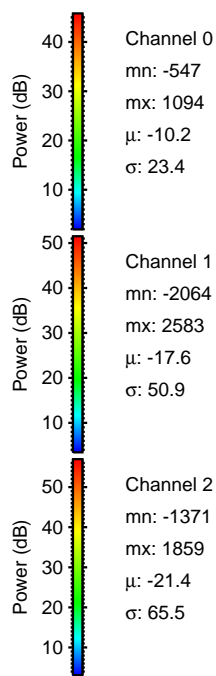
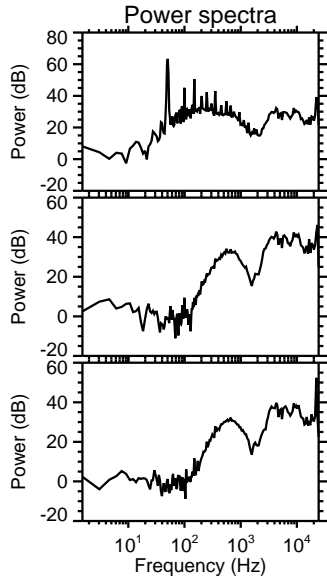
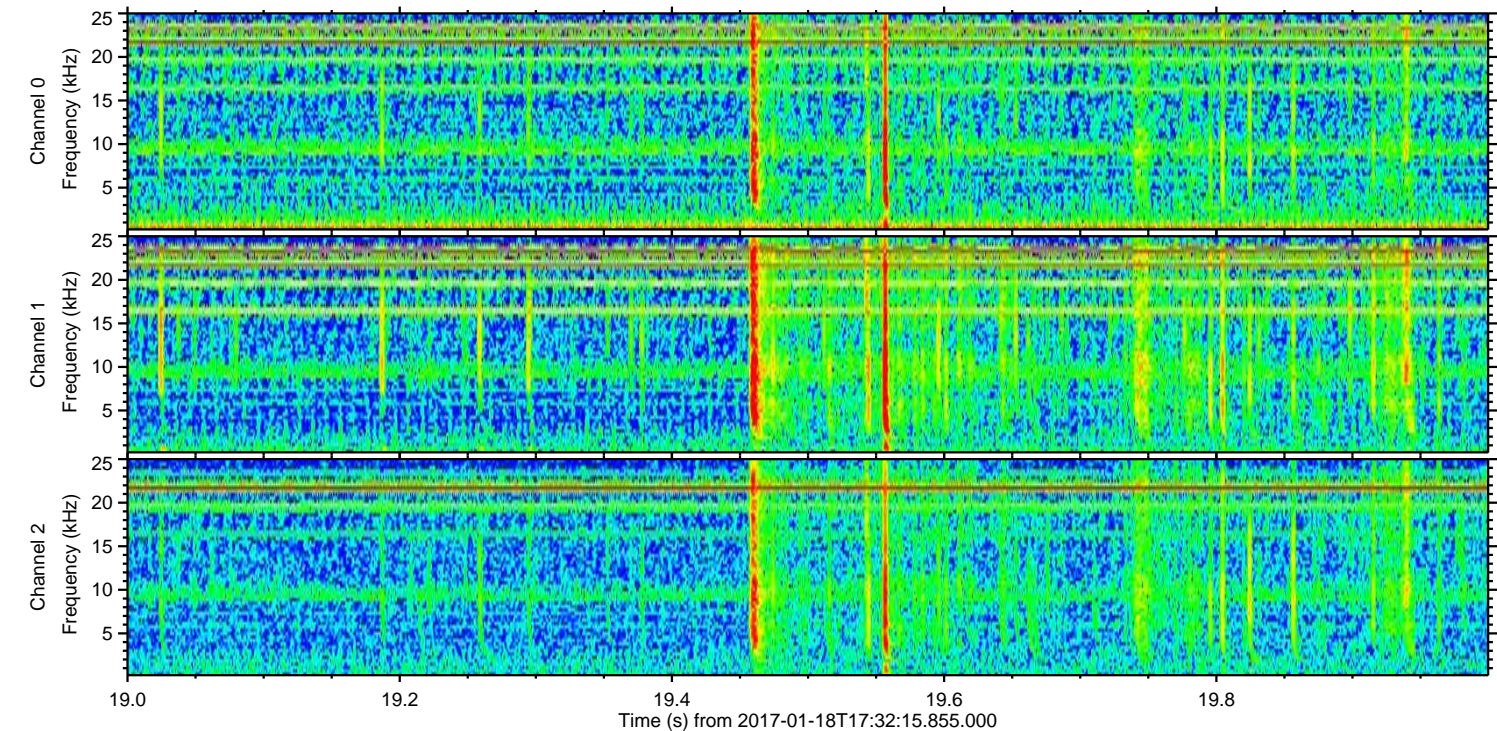
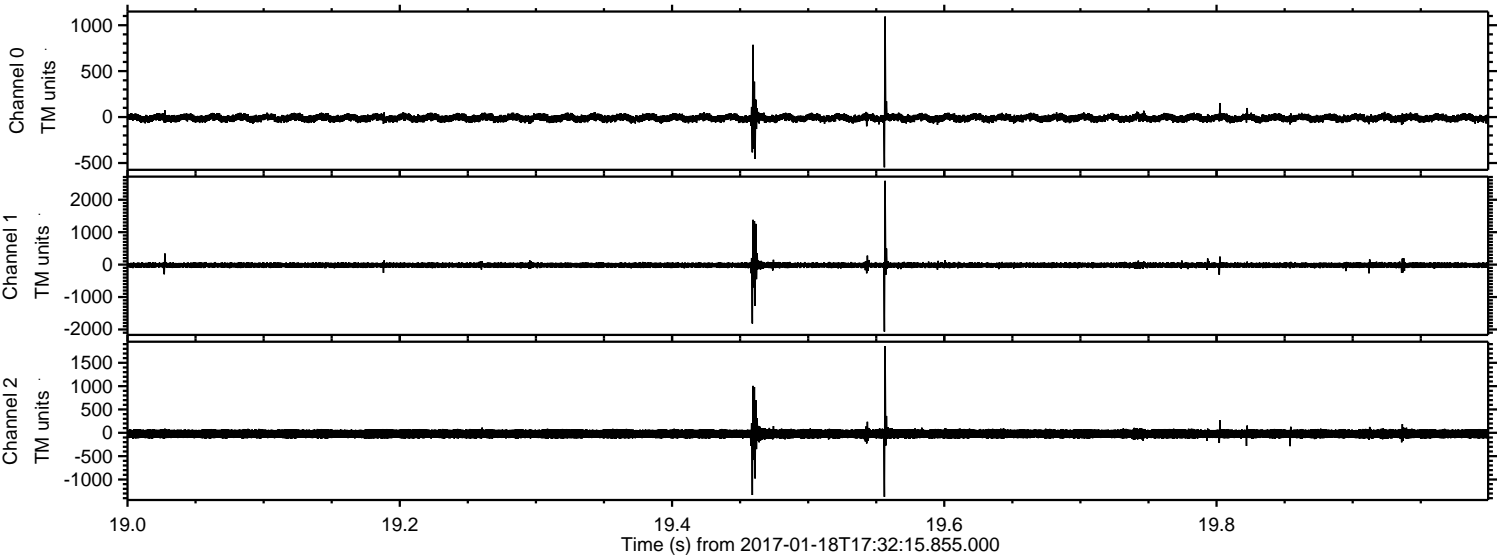
ELMAVAN 3D WAVEFORMS (Measured data sampled at 50 kHz) 51000 packets of 144 samples from 2017-01-18T17:32:15.855.000. Part 135/147

Processed Wed Jan 18 18:40:22 2017 by ELM ver.2012-10-06 from 001__elm20170118_173214__dat00.bin

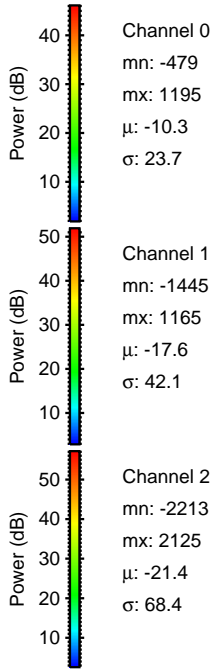
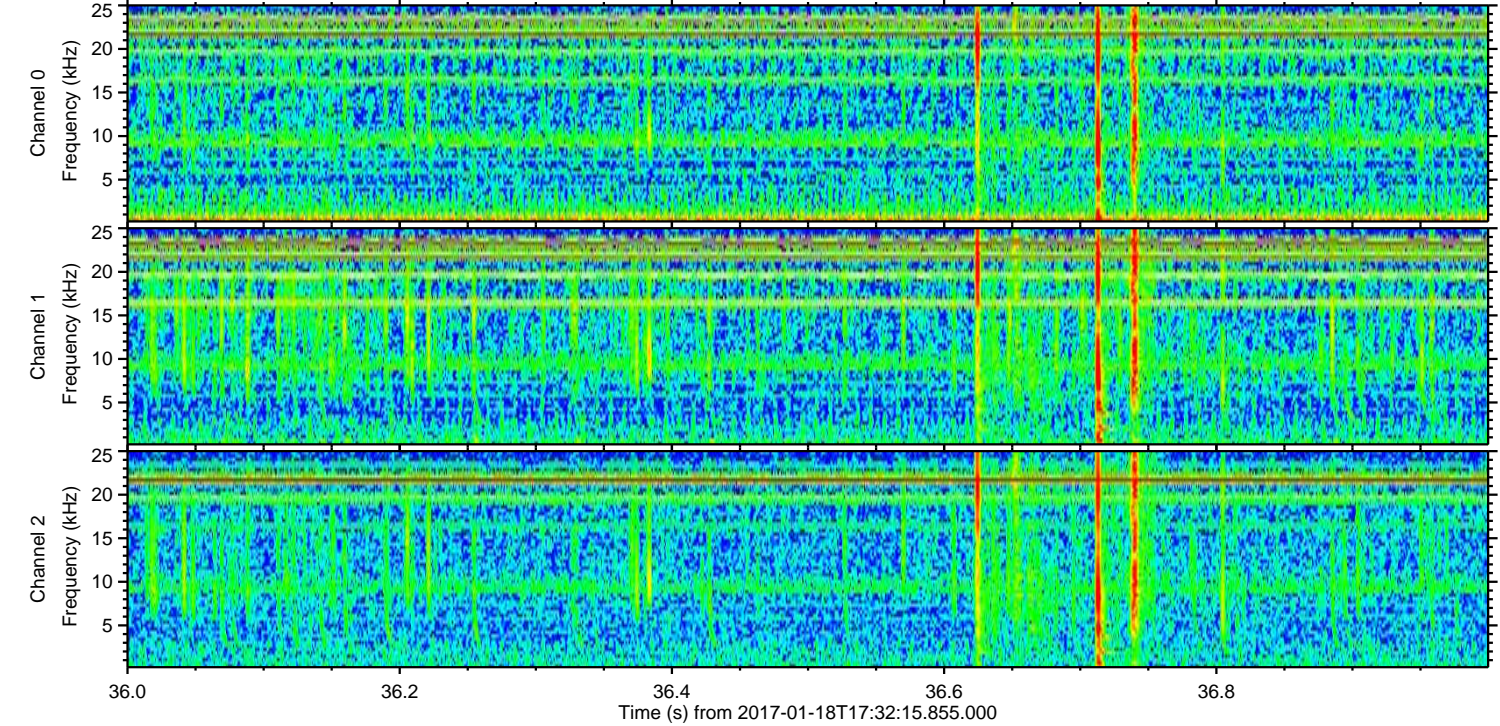
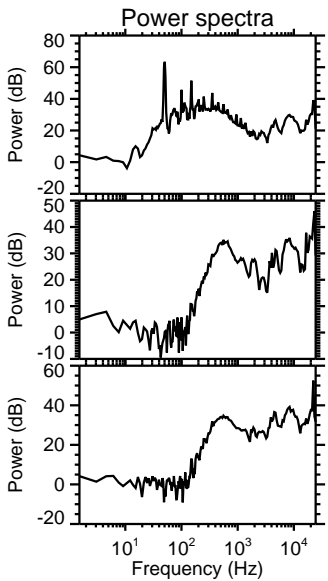
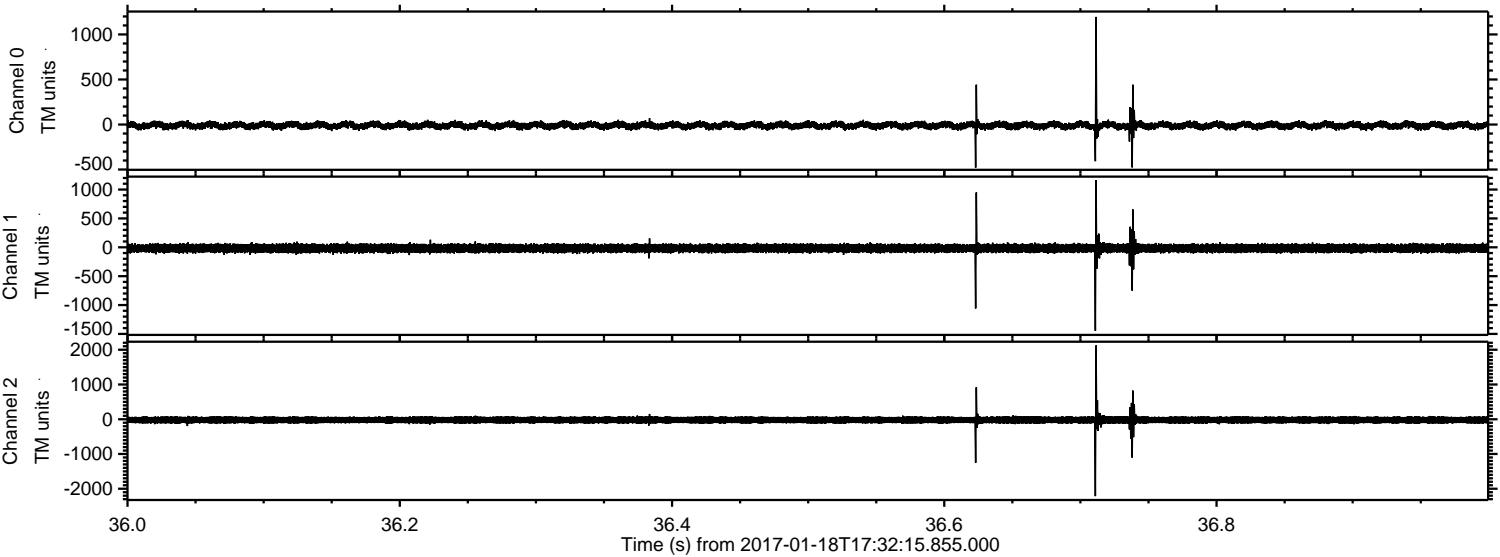


ELMAVAN 3D WAVEFORMS (Measured data sampled at 50 kHz) 51000 packets of 144 samples from 2017-01-18T17:32:15.855.000. Part 20/147

Processed Wed Jan 18 18:40:23 2017 by ELM ver.2012-10-06 from 001__elm20170118_173214__dat00.bin



Processed Wed Jan 18 18:40:24 2017 by ELM ver.2012-10-06 from 001__elm20170118_173214__dat00.bin

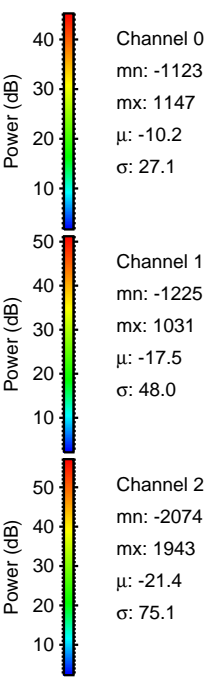
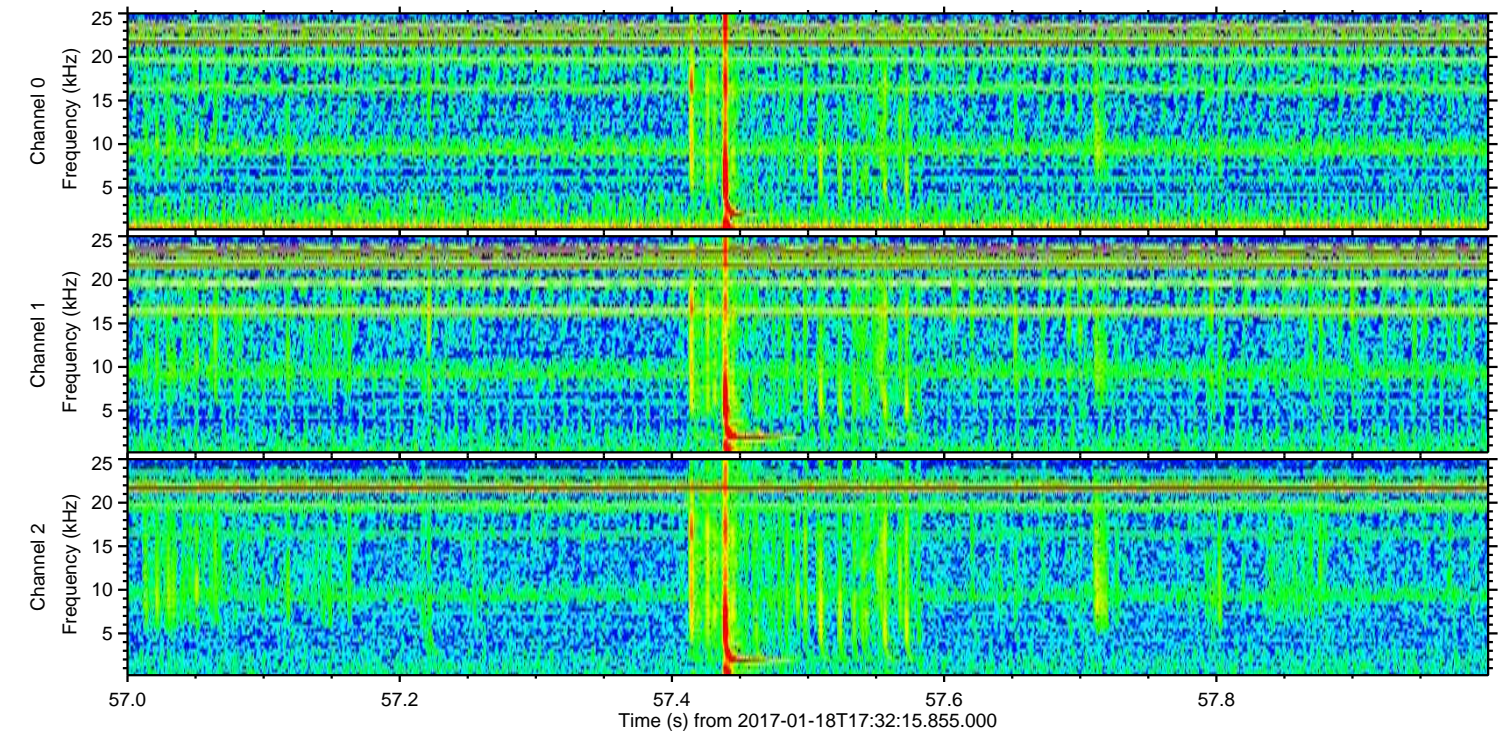
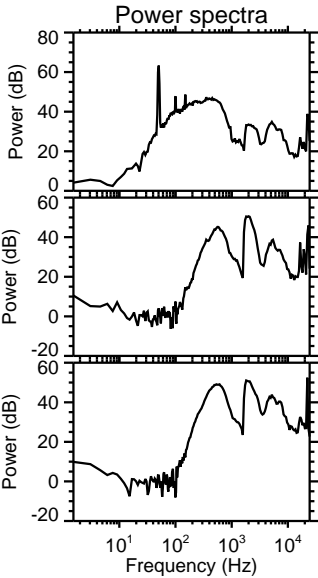
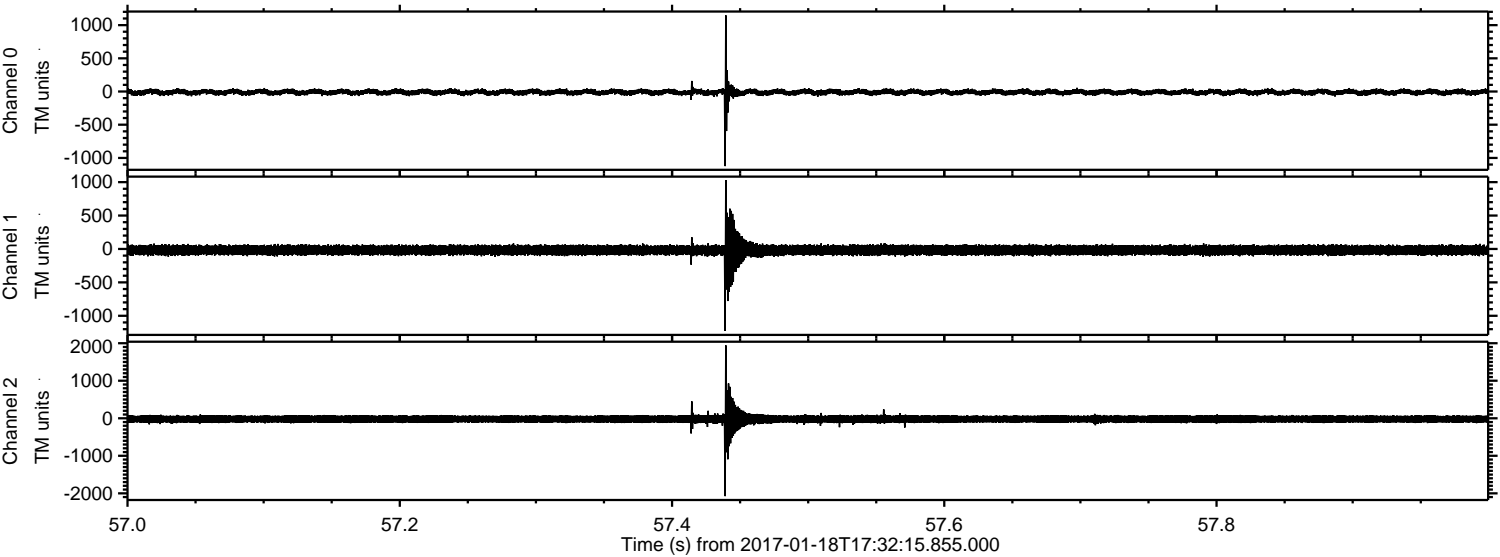


Channel 0
mn: -479
mx: 1195
 μ : -10.3
 σ : 23.7

Channel 1
mn: -1445
mx: 1165
 μ : -17.6
 σ : 42.1

Channel 2
mn: -2213
mx: 2125
 μ : -21.4
 σ : 68.4

Processed Wed Jan 18 18:40:25 2017 by ELM ver.2012-10-06 from 001__elm20170118_173214__dat00.bin



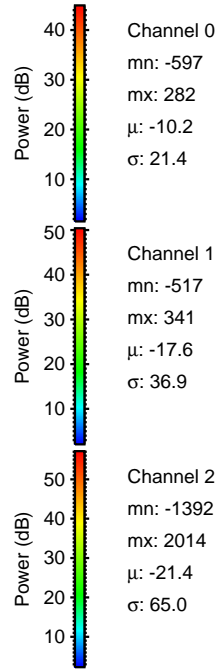
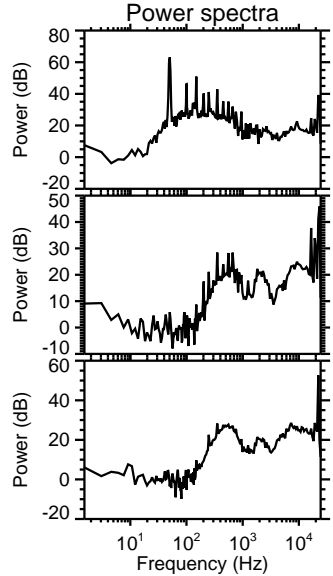
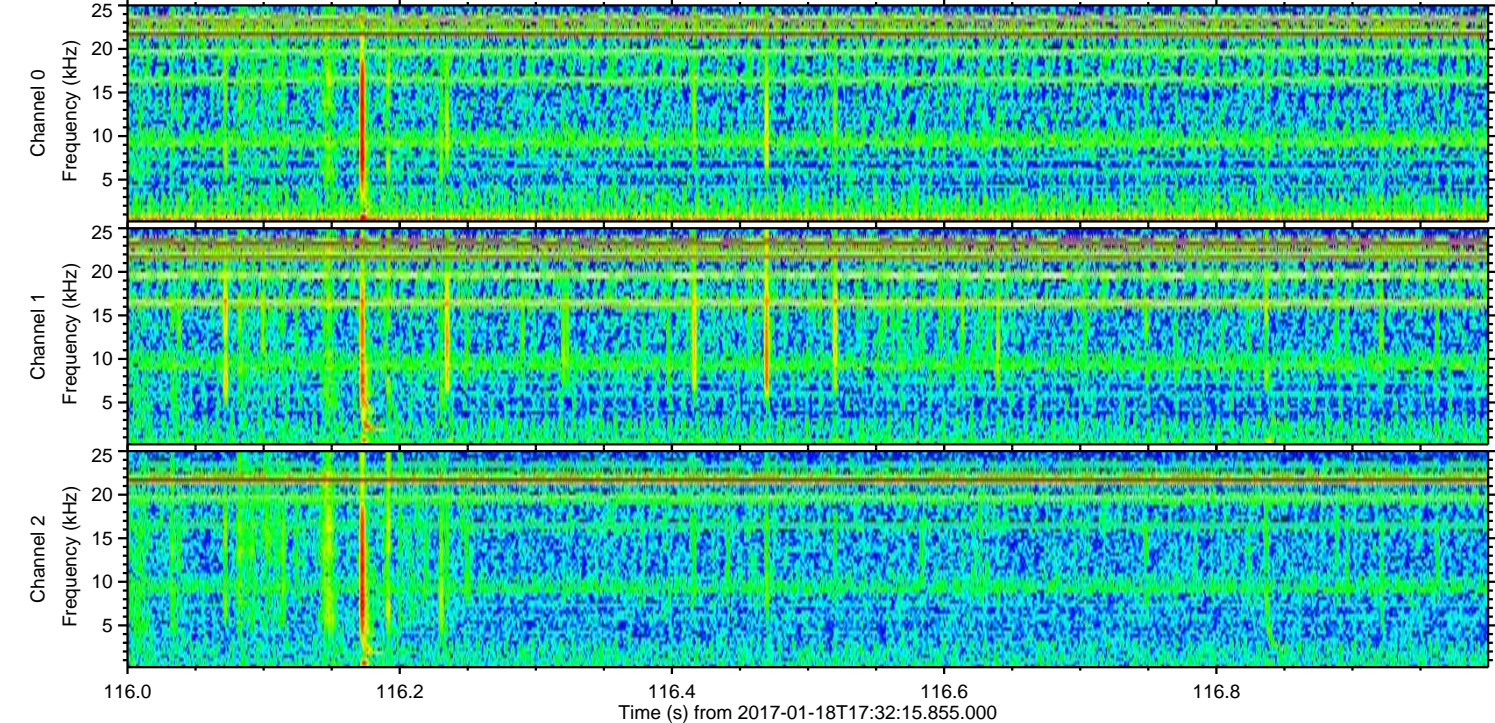
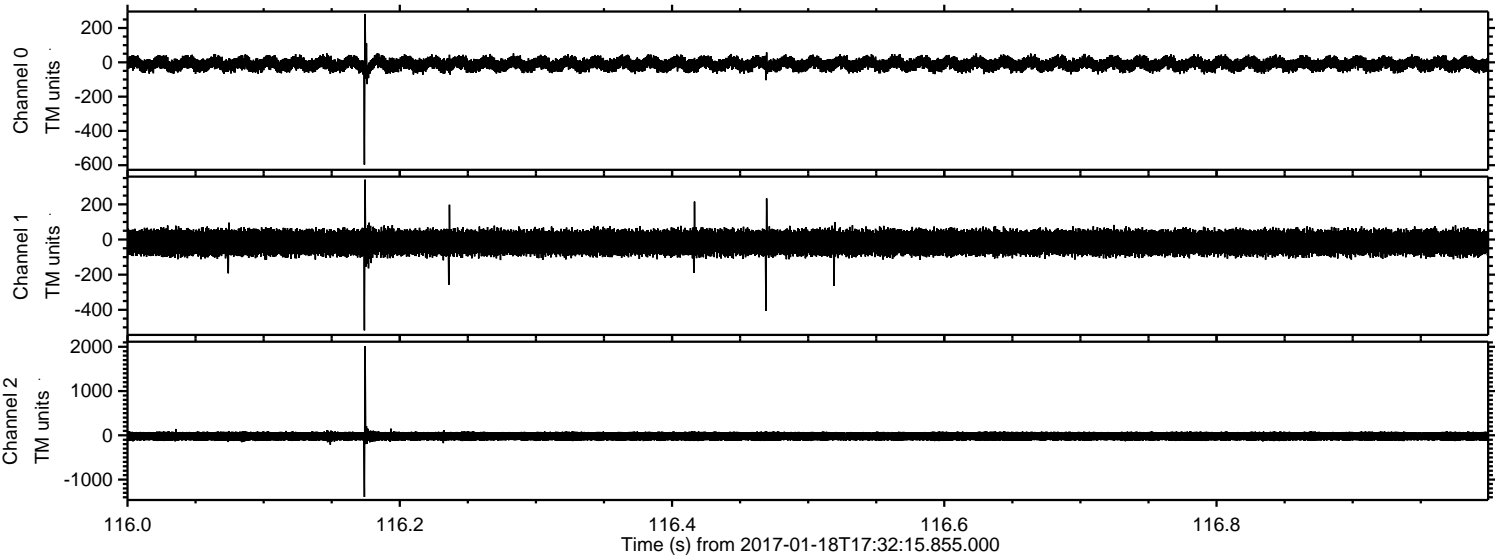
Channel 0
mn: -1123
mx: 1147
 μ : -10.2
 σ : 27.1

Channel 1
mn: -1225
mx: 1031
 μ : -17.5
 σ : 48.0

Channel 2
mn: -2074
mx: 1943
 μ : -21.4
 σ : 75.1

ELMAVAN 3D WAVEFORMS (Measured data sampled at 50 kHz) 51000 packets of 144 samples from 2017-01-18T17:32:15.855.000. Part 117/147

Processed Wed Jan 18 18:40:26 2017 by ELM ver.2012-10-06 from 001__elm20170118_173214__dat00.bin



ELMAVAN 3D WAVEFORMS (Measured data sampled at 50 kHz) 51000 packets of 144 samples from 2017-01-18T17:32:15.855.000. Part 128/147

