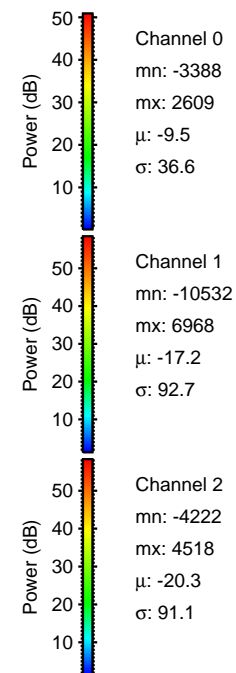
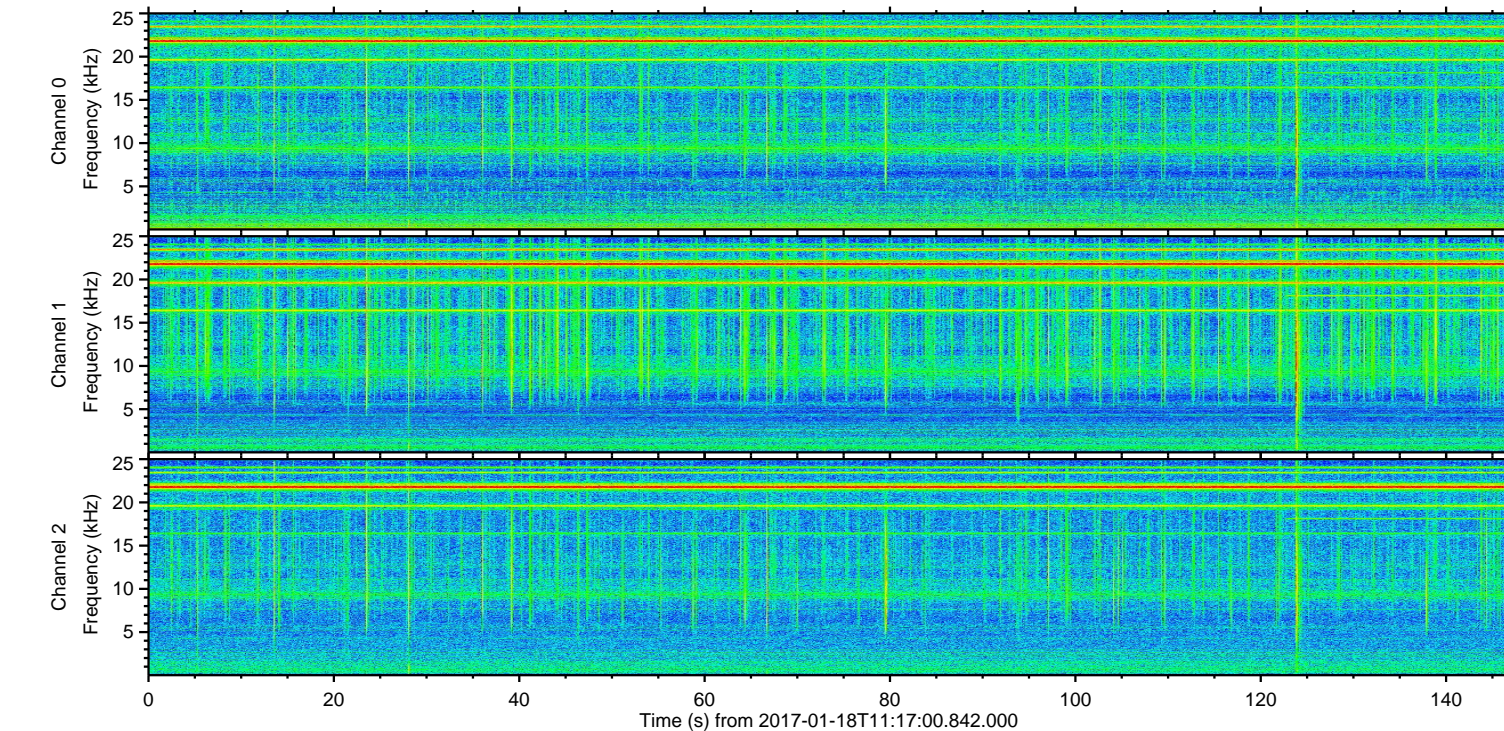
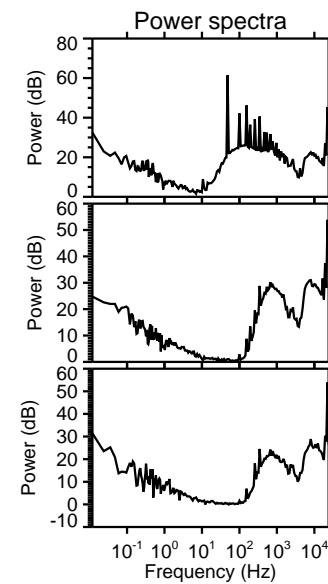
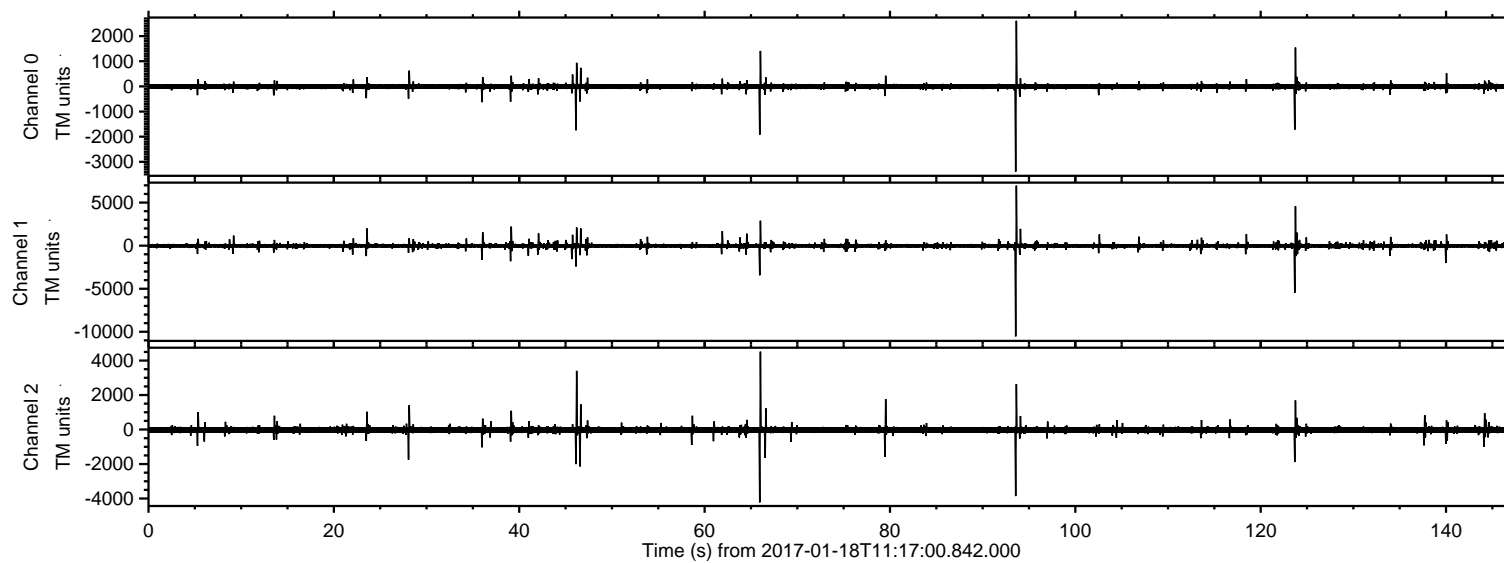
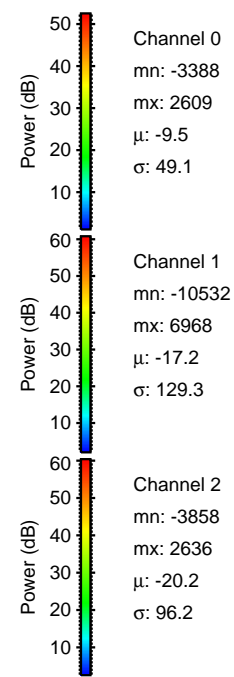
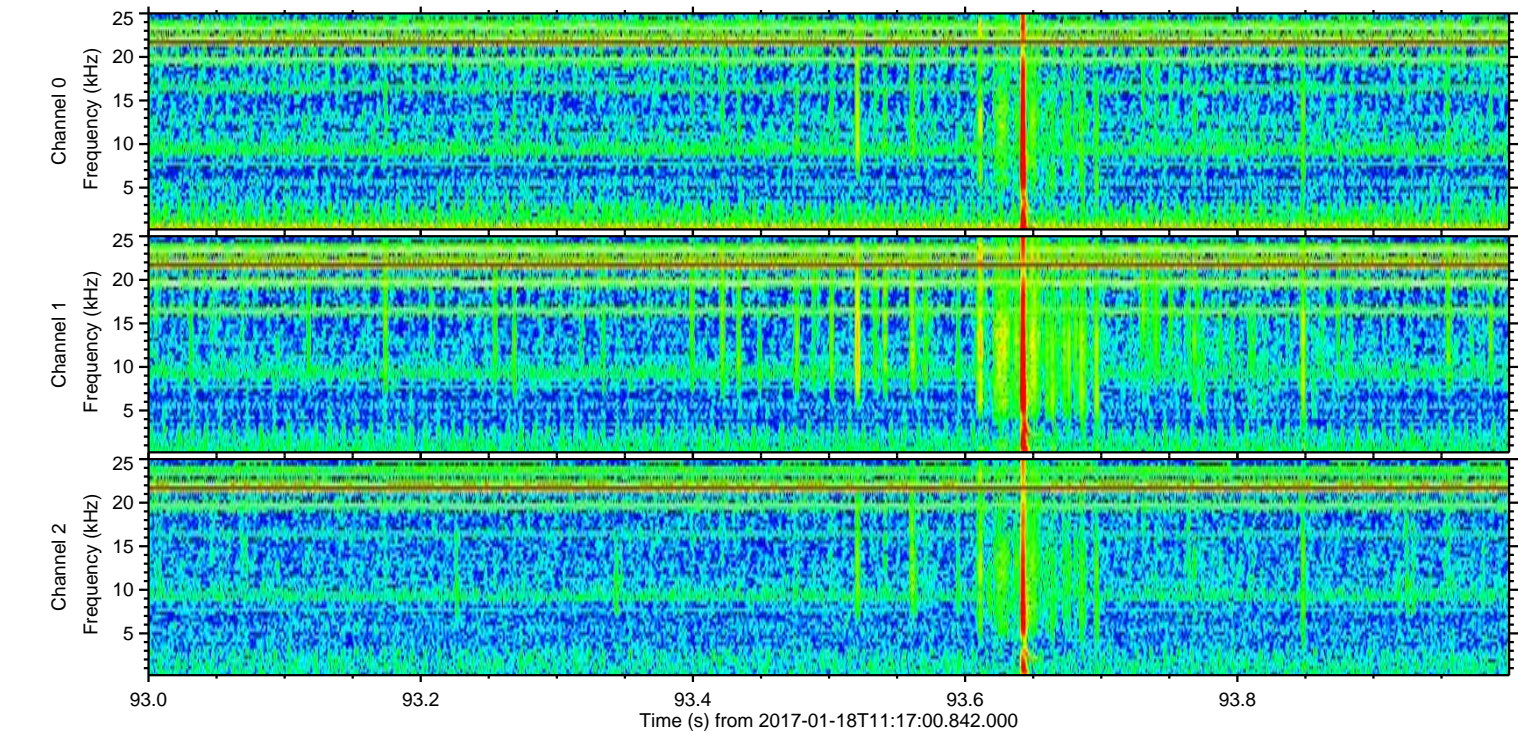
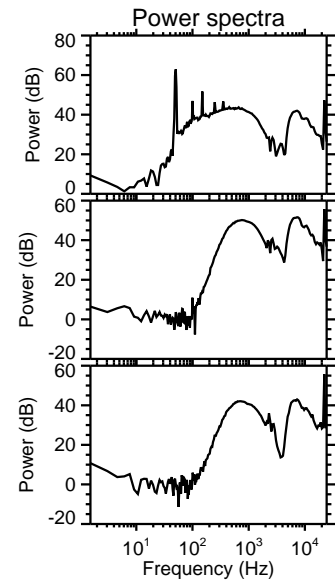
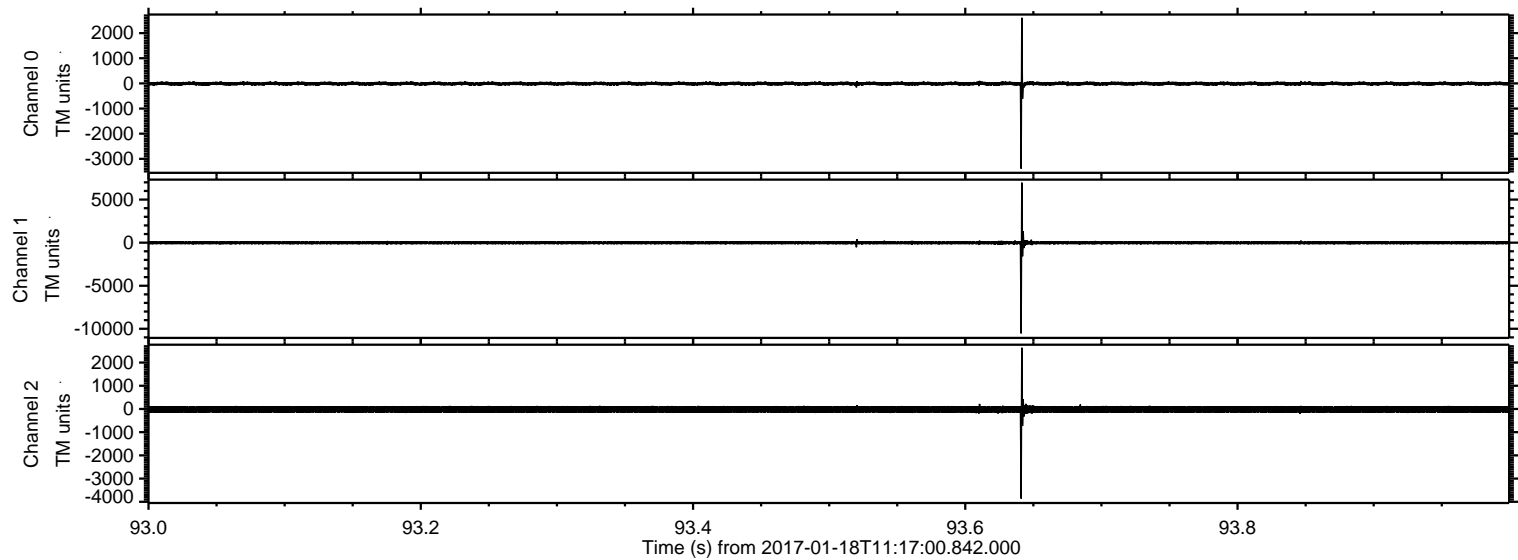


ELMAVAN 3D WAVEFORMS (Measured data sampled at 50 kHz) 51000 packets of 144 samples from 2017-01-18T11:17:00.842.000.

Processed Wed Jan 18 12:25:03 2017 by ELM ver.2012-10-06 from 001__elm20170118_111659__dat00.bin

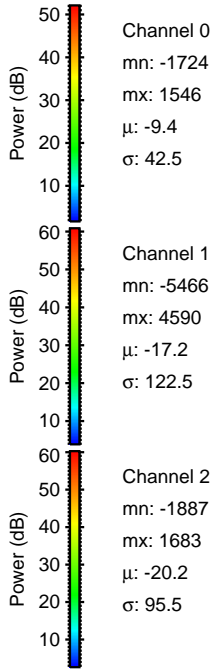
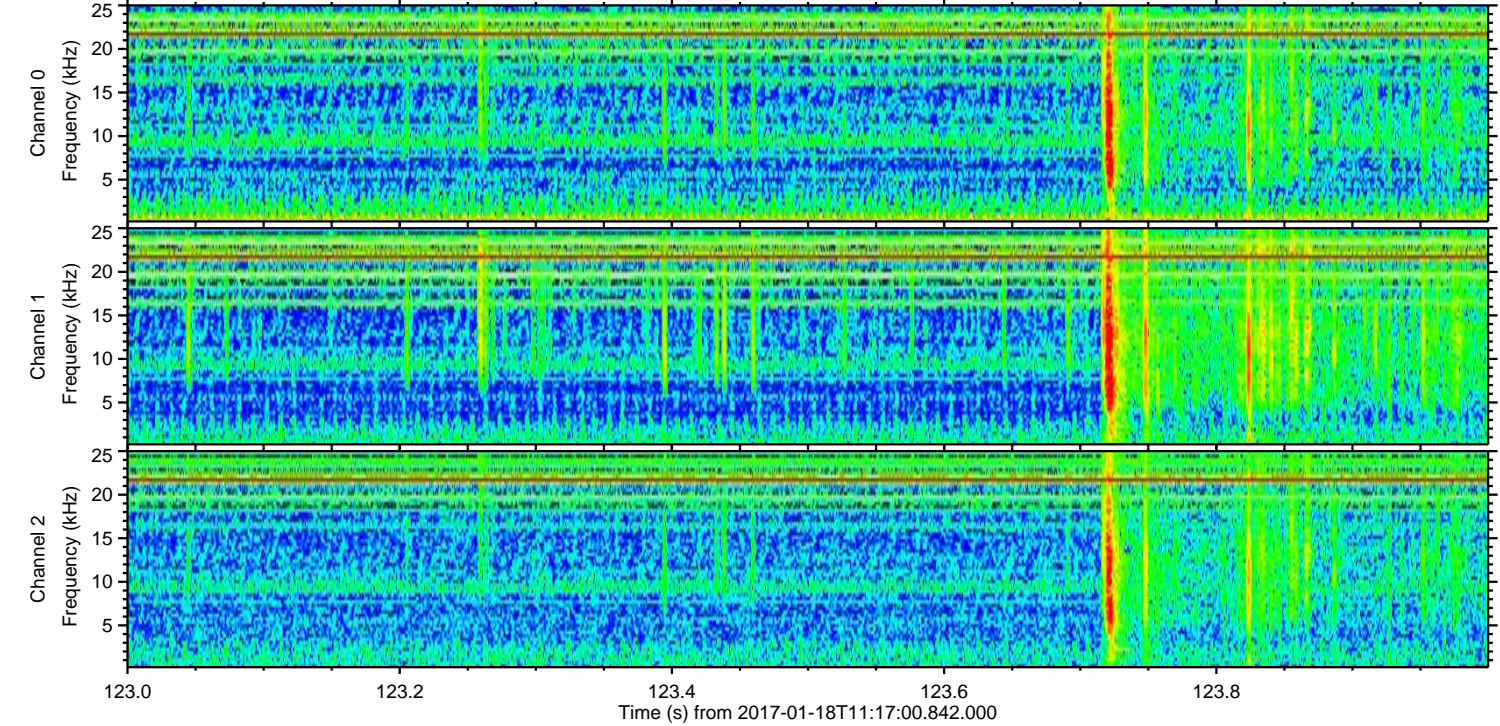
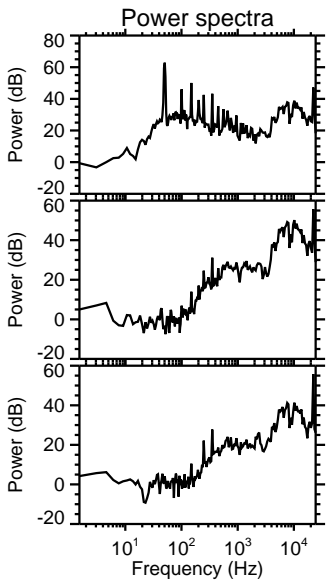
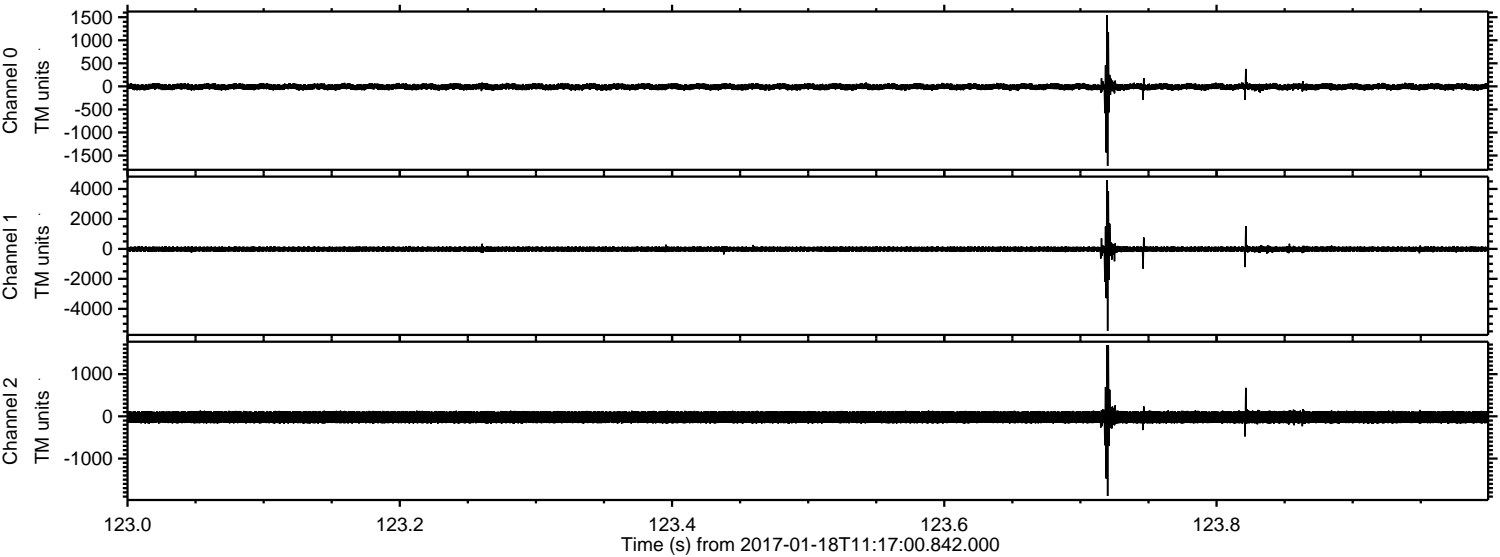


Processed Wed Jan 18 12:25:14 2017 by ELM ver.2012-10-06 from 001__elm20170118_111659__dat00.bin

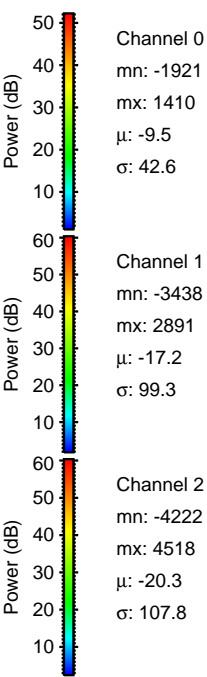
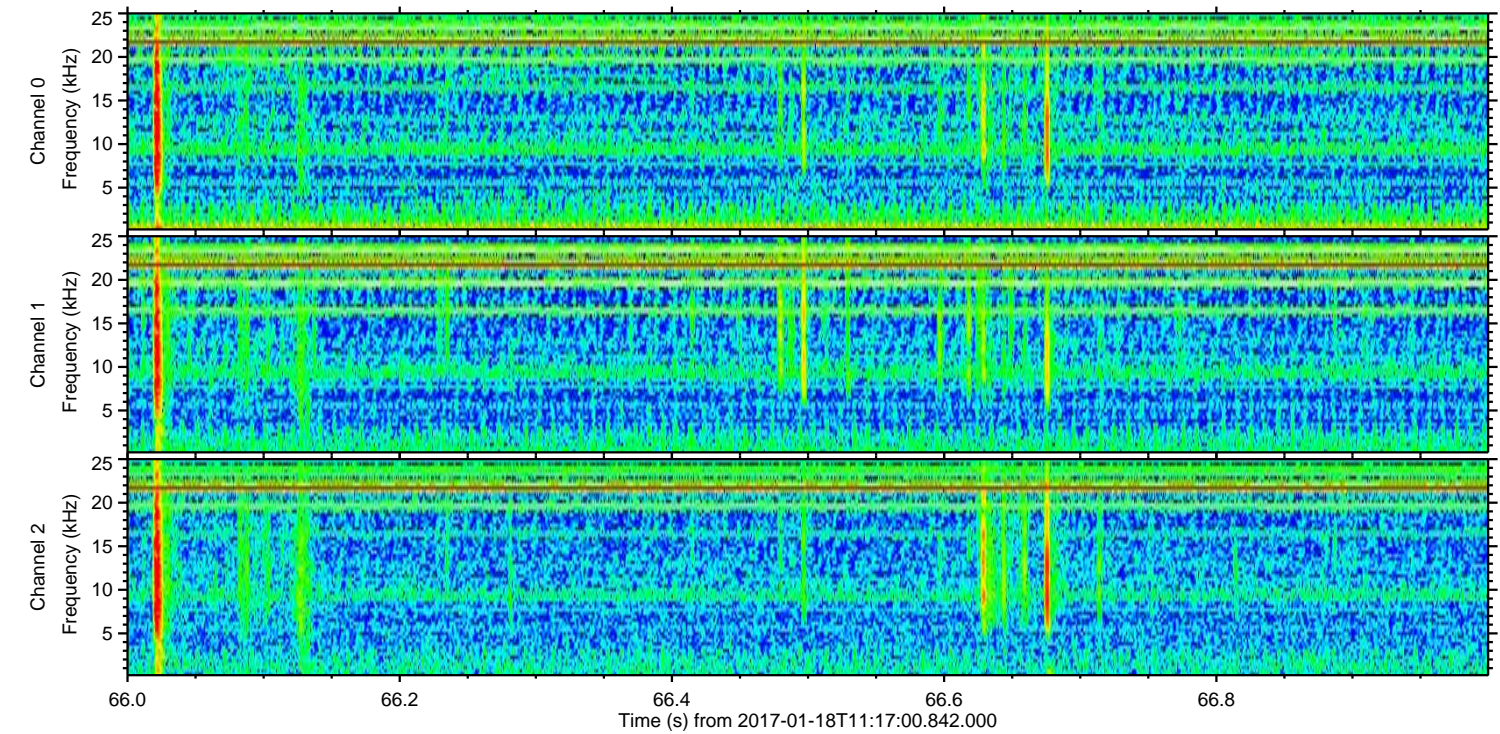
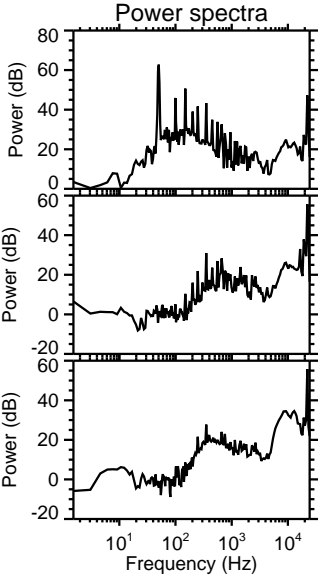
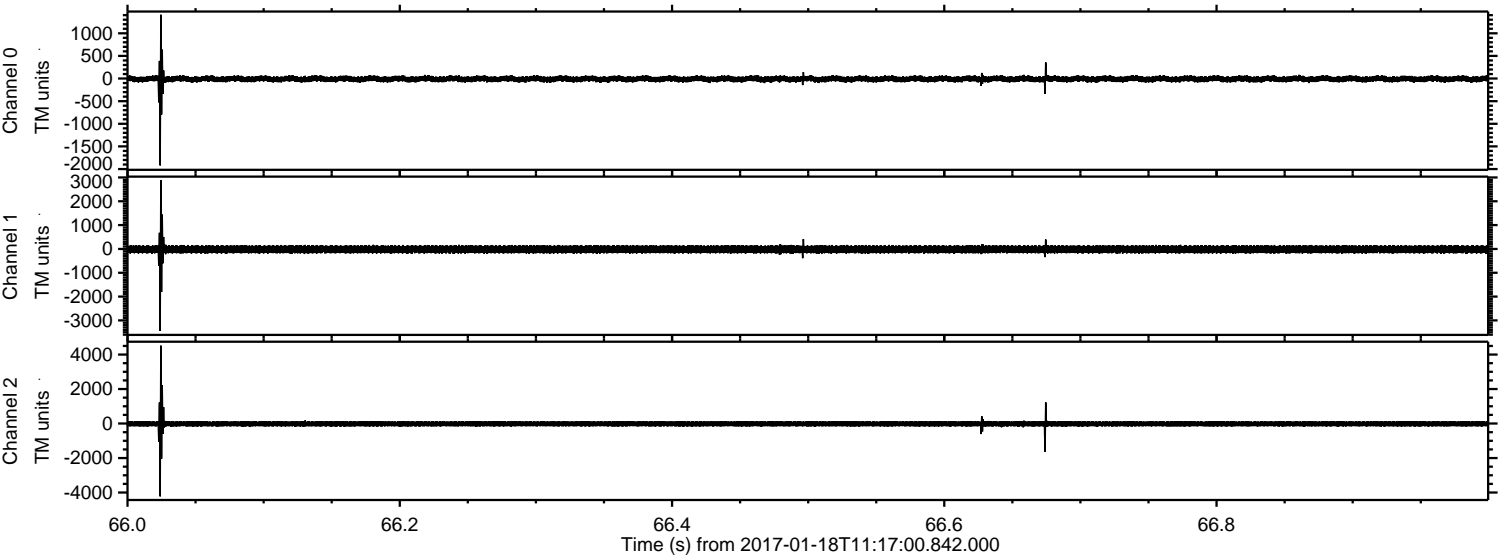


ELMAVAN 3D WAVEFORMS (Measured data sampled at 50 kHz) 51000 packets of 144 samples from 2017-01-18T11:17:00.842.000. Part 124/147

Processed Wed Jan 18 12:25:15 2017 by ELM ver.2012-10-06 from 001__elm20170118_111659__dat00.bin

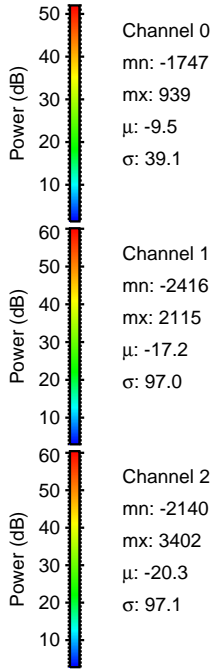
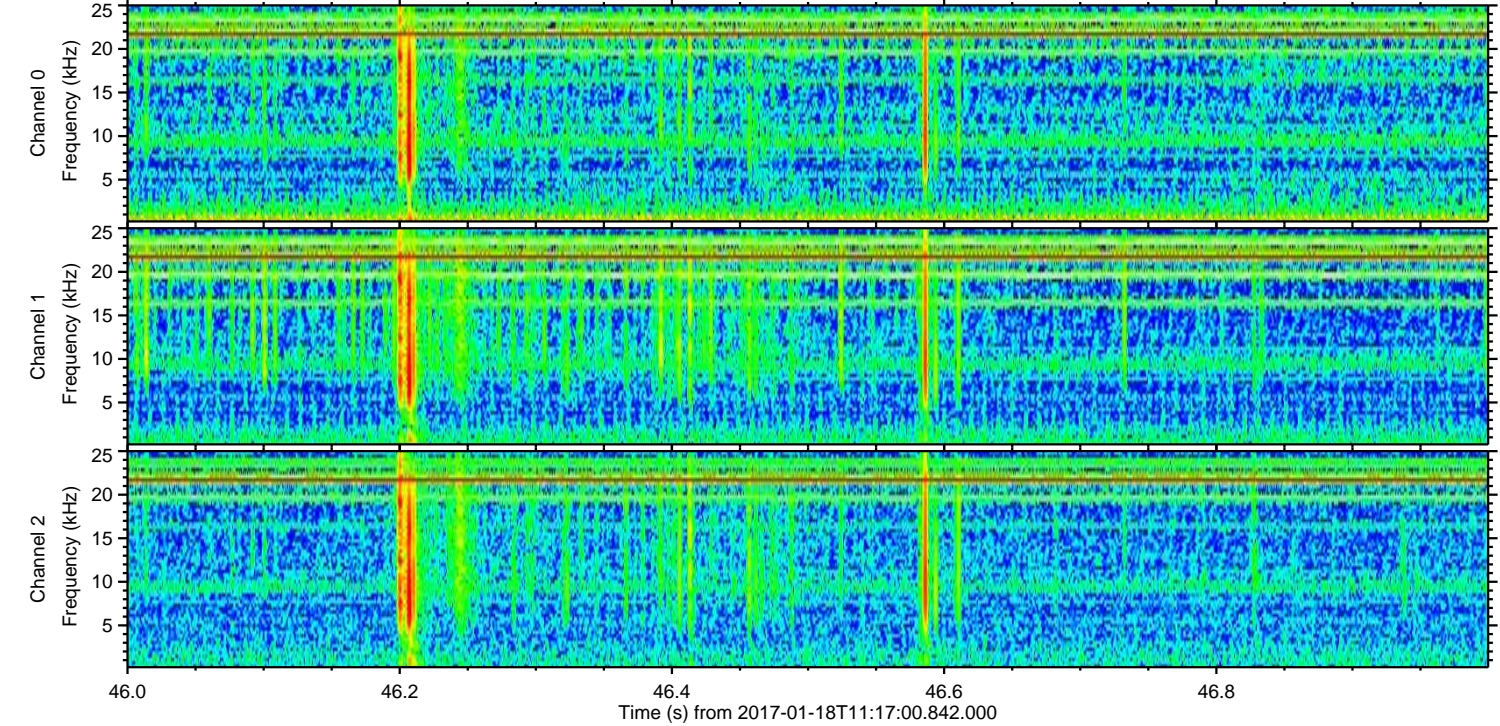
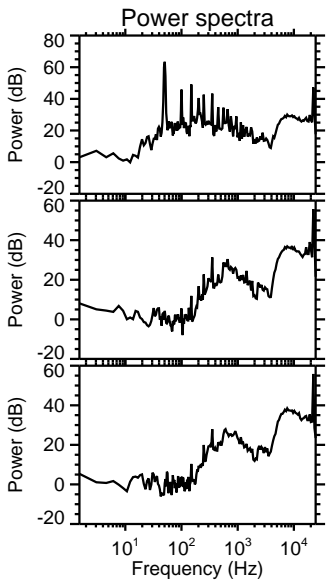
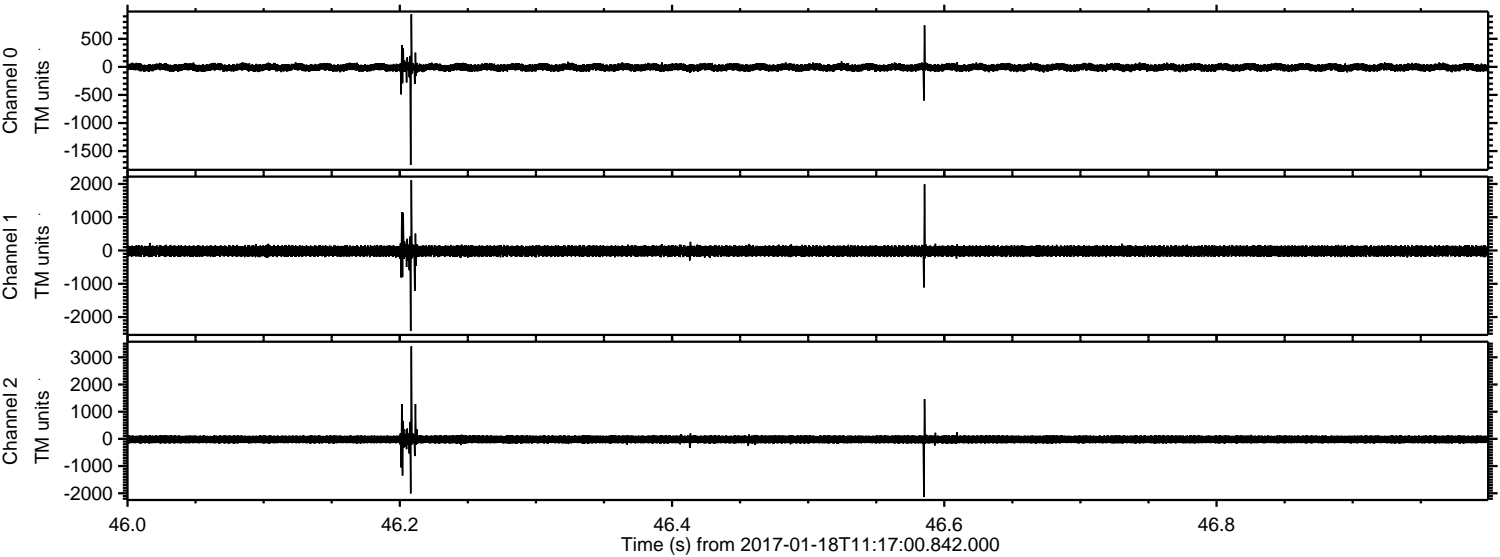


Processed Wed Jan 18 12:25:16 2017 by ELM ver.2012-10-06 from 001__elm20170118_111659__dat00.bin

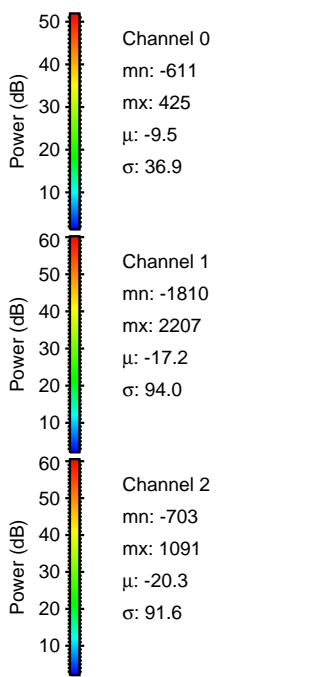
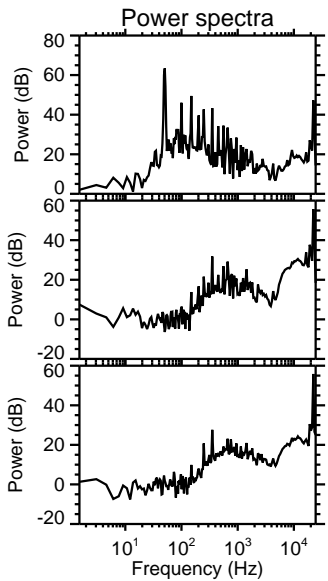
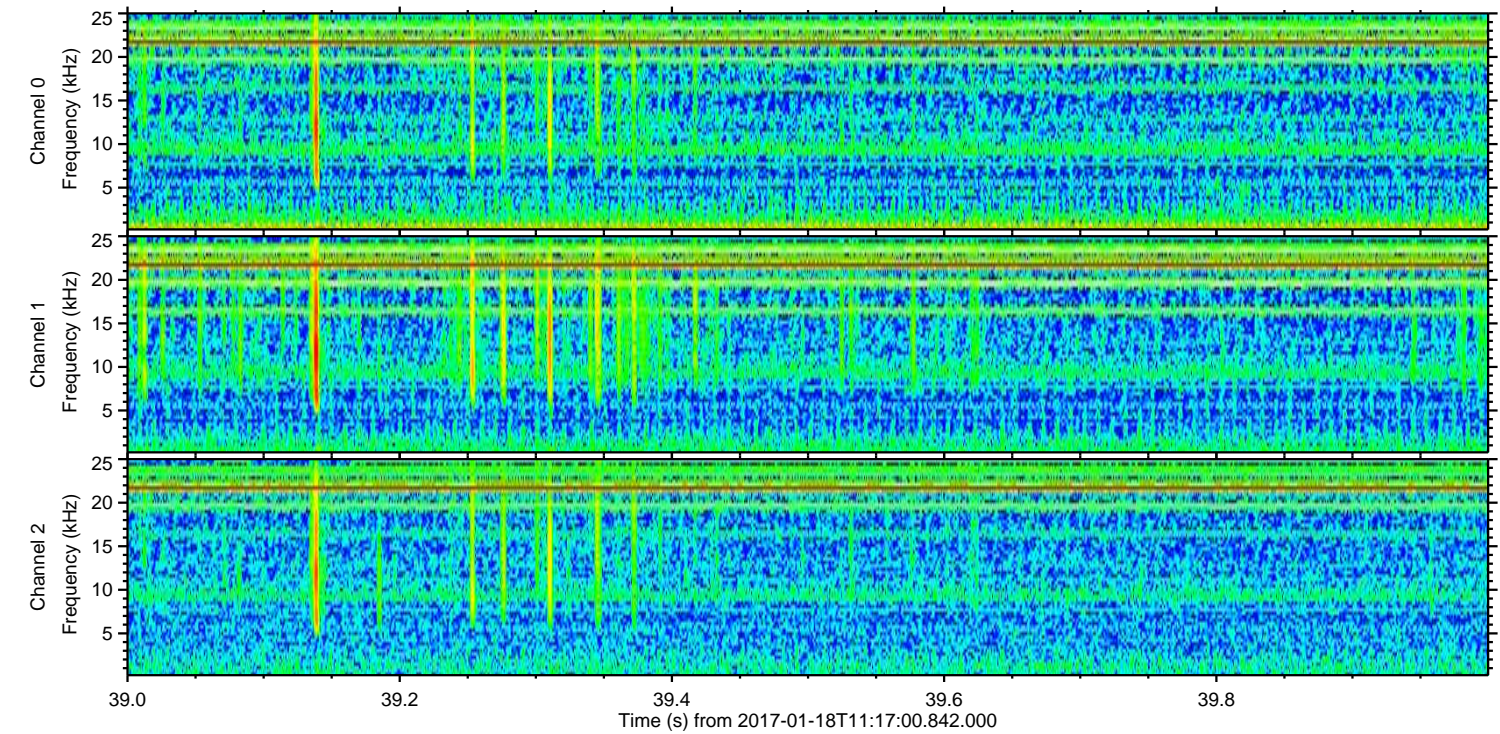
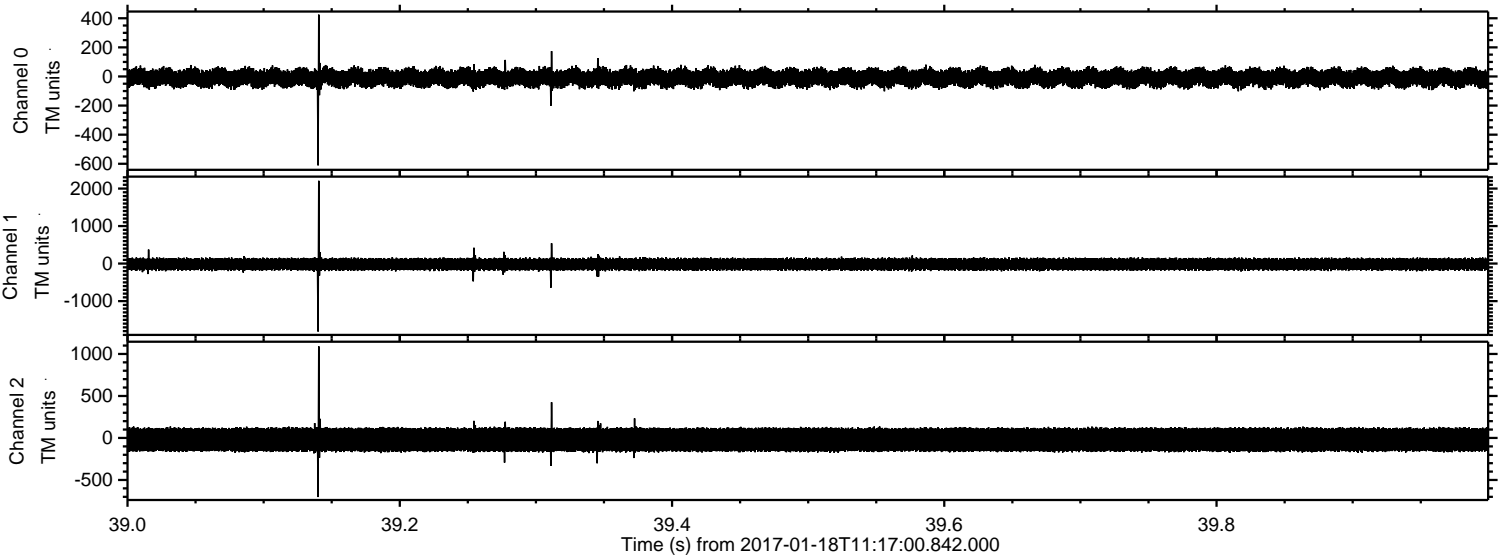


ELMAVAN 3D WAVEFORMS (Measured data sampled at 50 kHz) 51000 packets of 144 samples from 2017-01-18T11:17:00.842.000. Part 47/147

Processed Wed Jan 18 12:25:17 2017 by ELM ver.2012-10-06 from 001__elm20170118_111659__dat00.bin

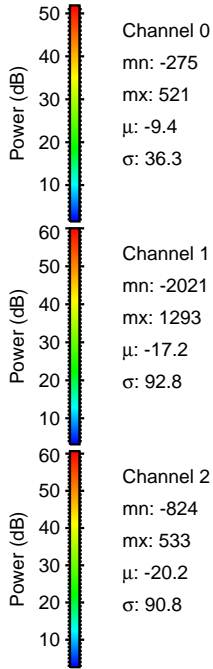
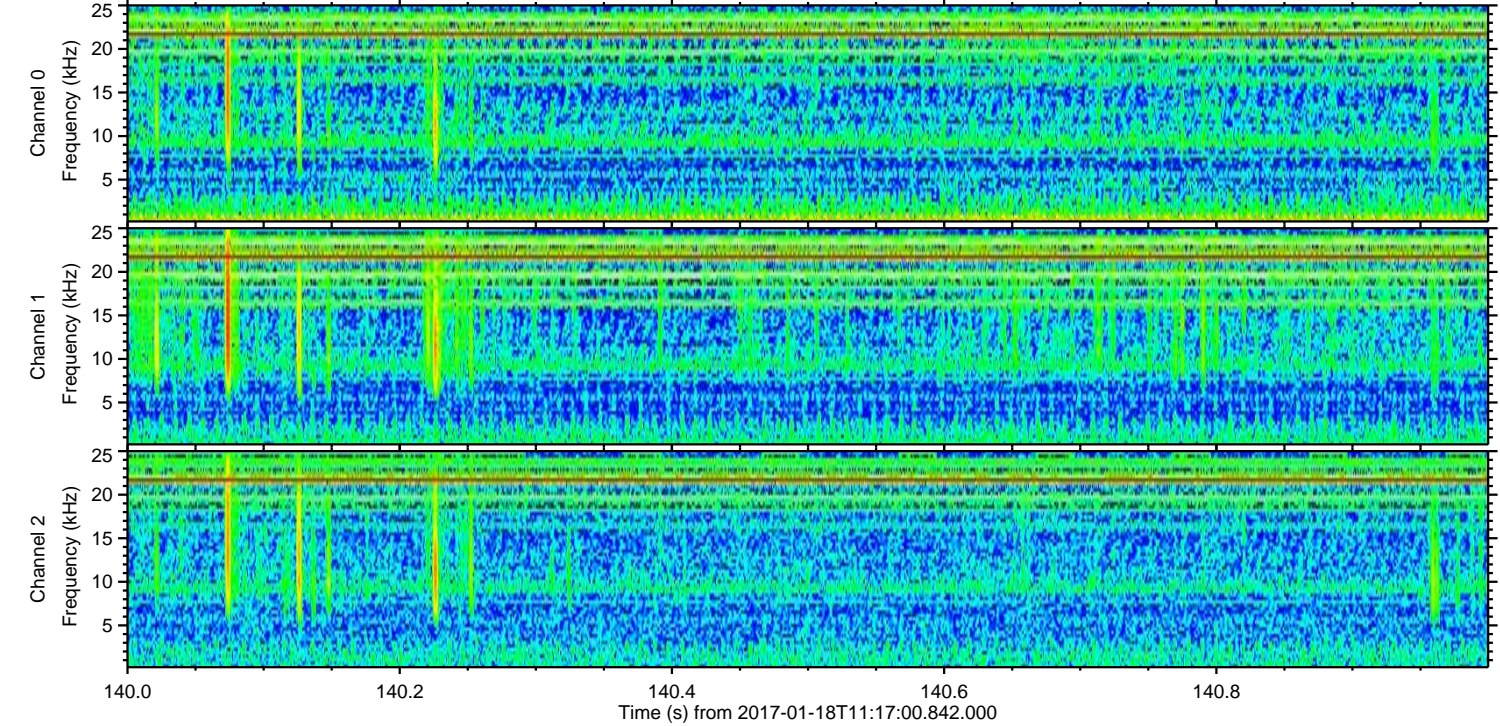
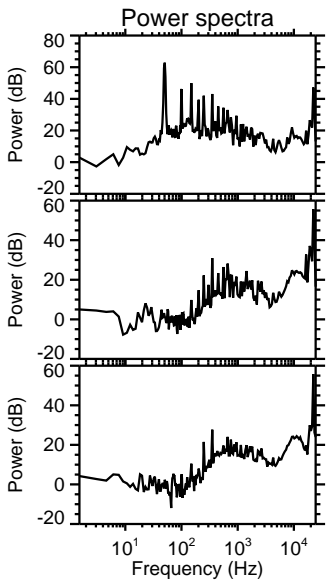
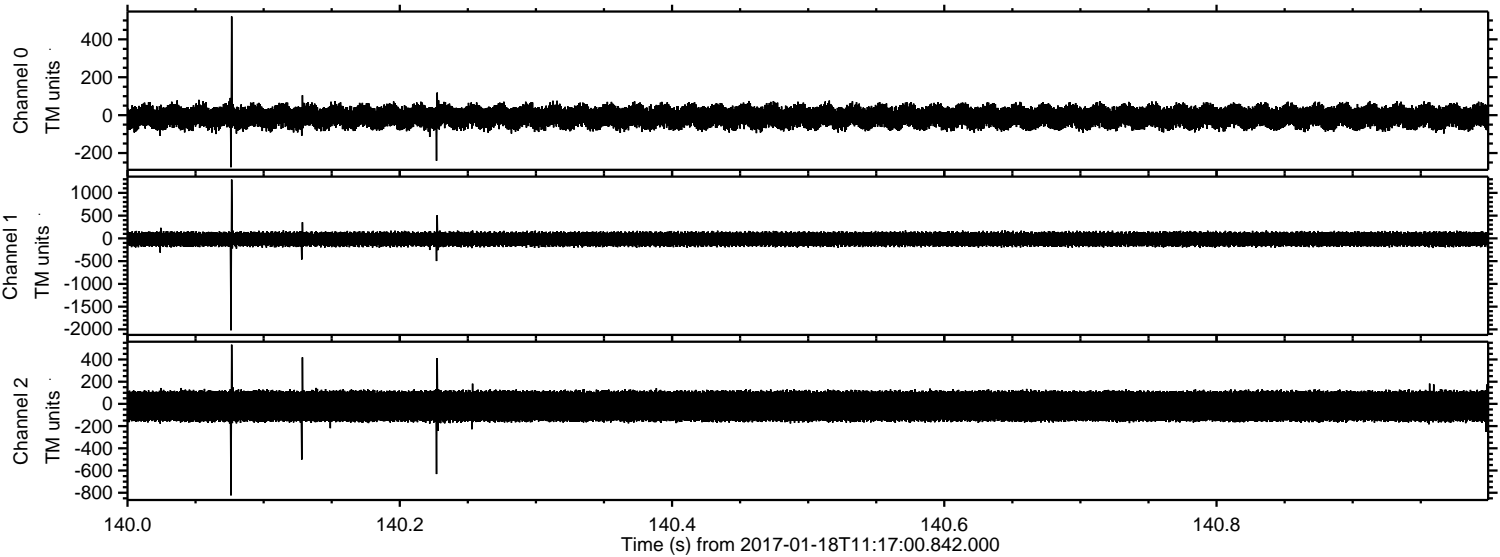


Processed Wed Jan 18 12:25:18 2017 by ELM ver.2012-10-06 from 001__elm20170118_111659__dat00.bin

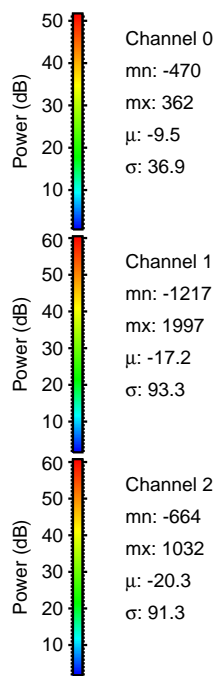
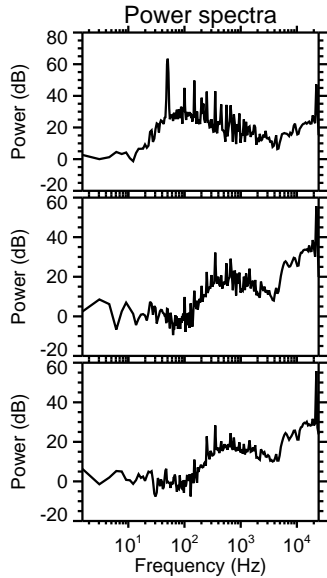
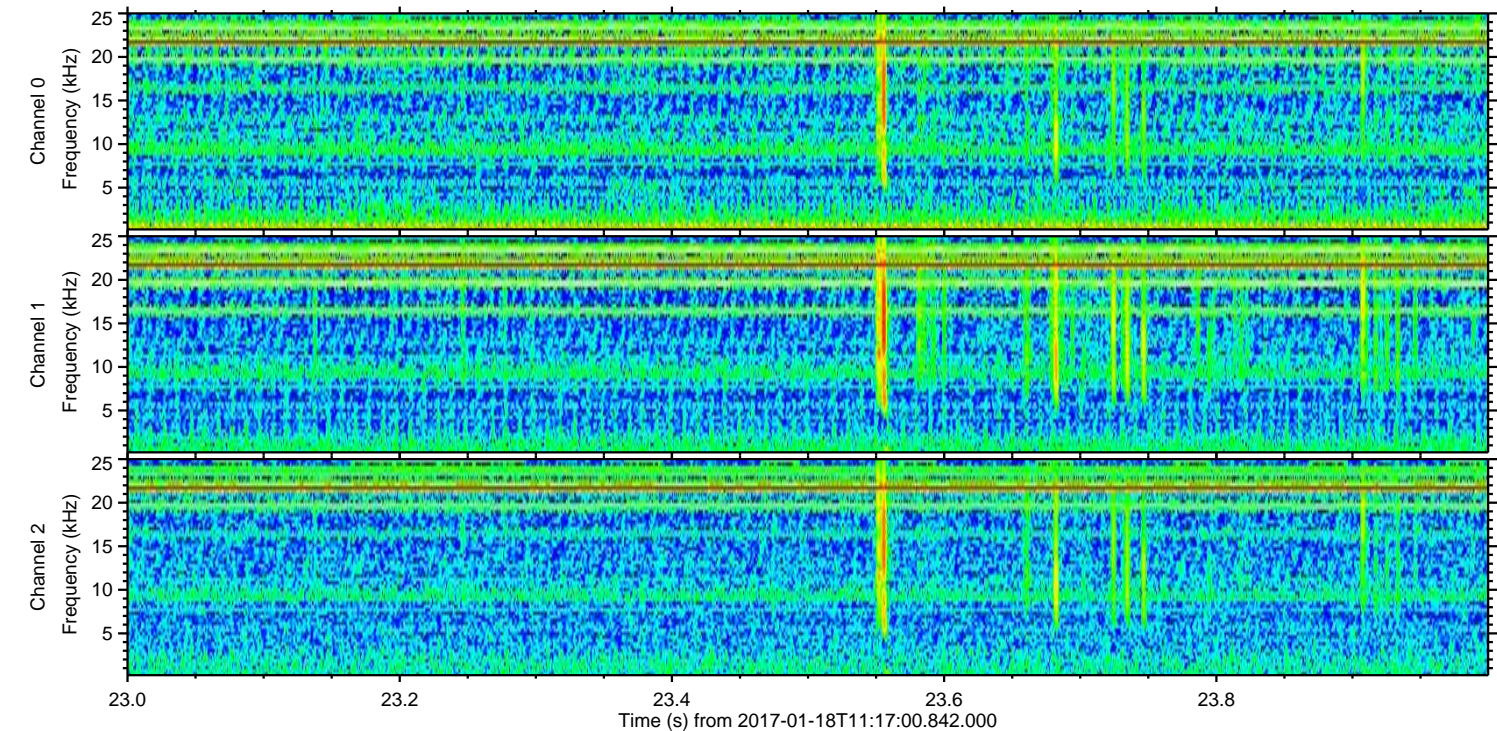
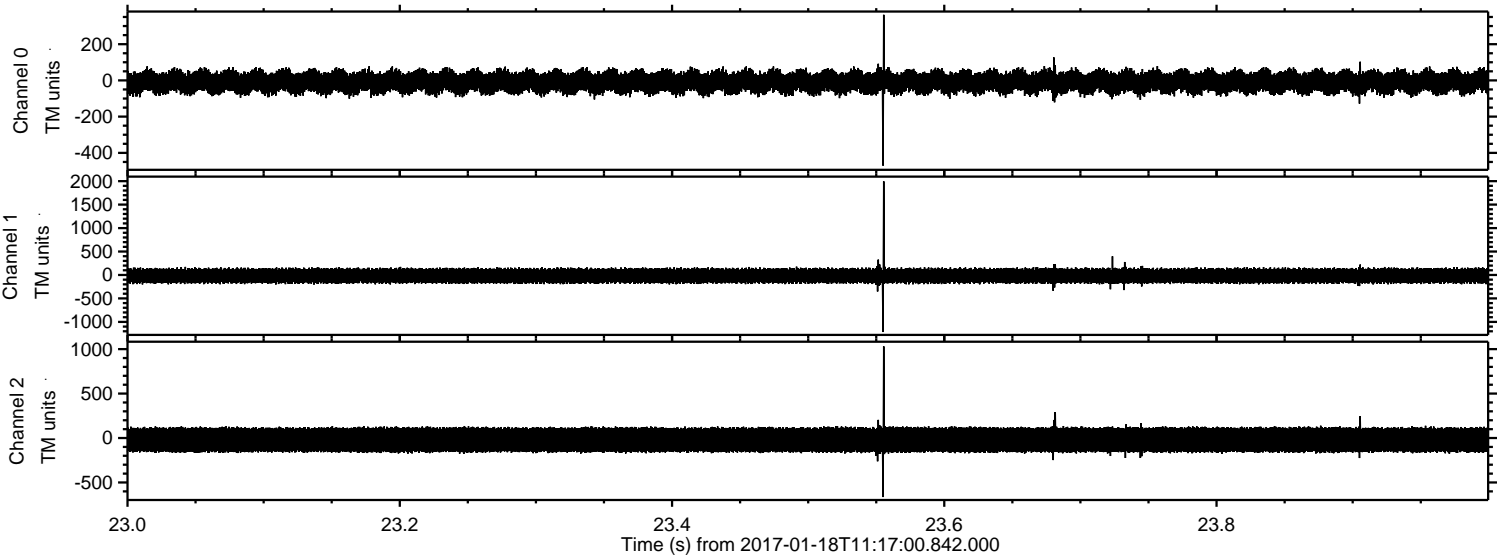


ELMAVAN 3D WAVEFORMS (Measured data sampled at 50 kHz) 51000 packets of 144 samples from 2017-01-18T11:17:00.842.000. Part 141/147

Processed Wed Jan 18 12:25:19 2017 by ELM ver.2012-10-06 from 001__elm20170118_111659__dat00.bin



Processed Wed Jan 18 12:25:20 2017 by ELM ver.2012-10-06 from 001__elm20170118_111659__dat00.bin

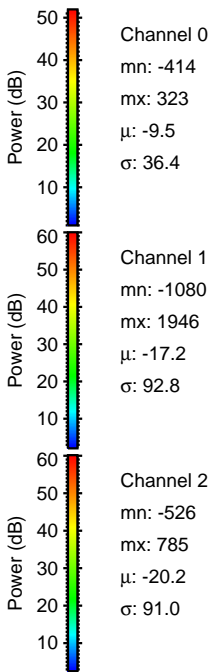
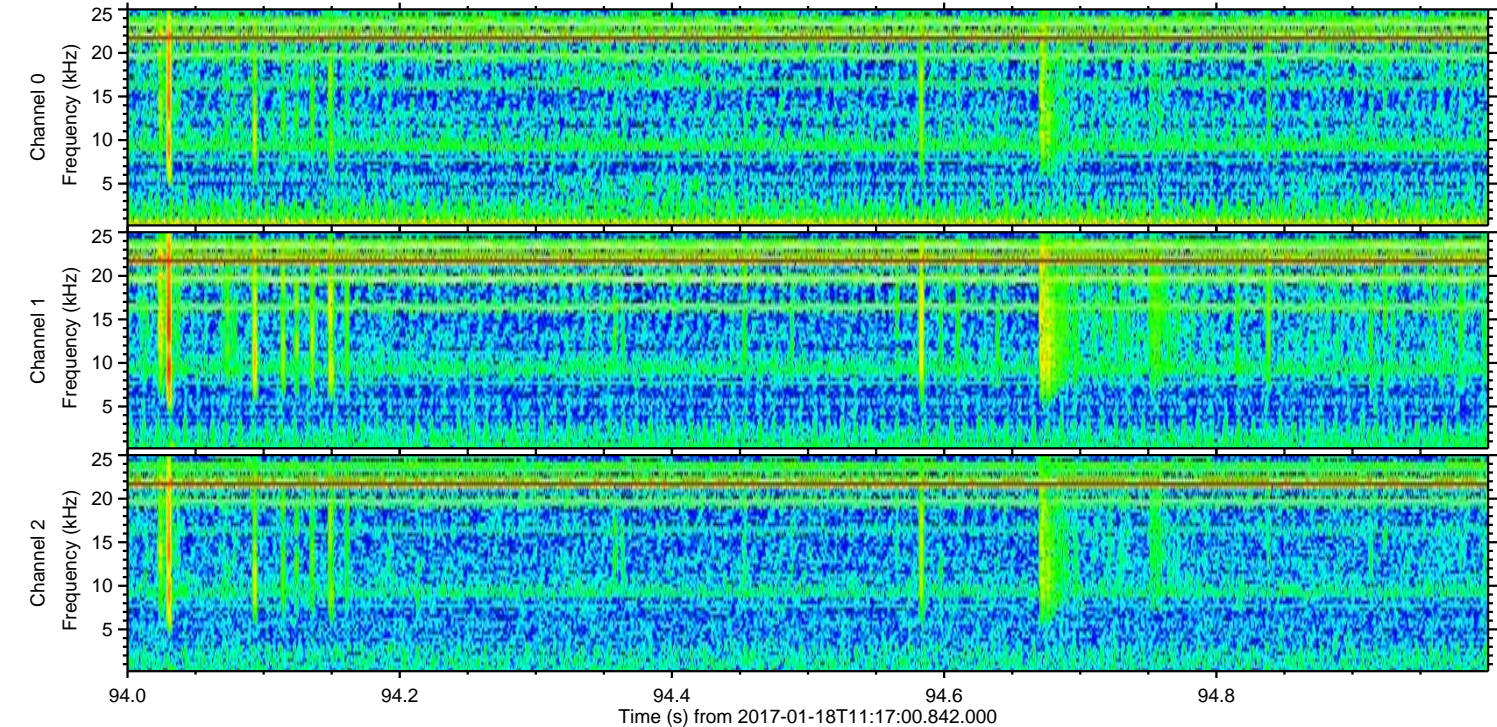
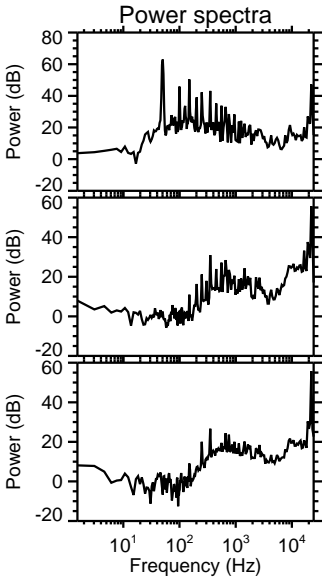
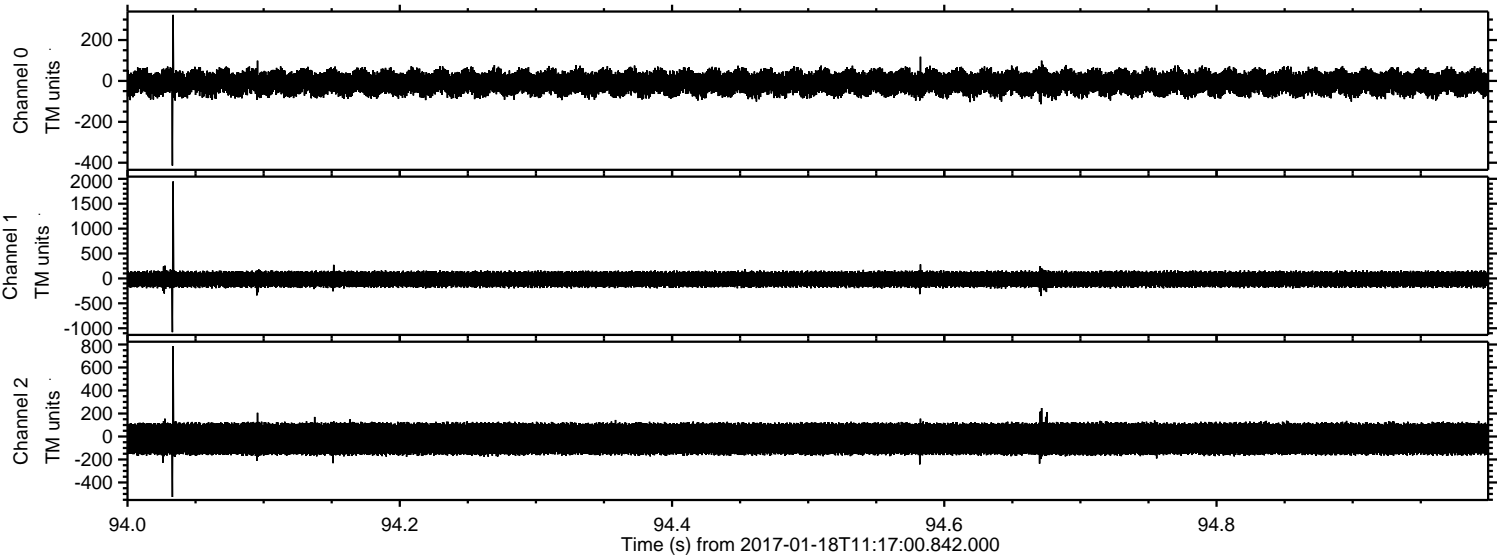


Channel 0
mn: -470
mx: 362
 μ : -9.5
 σ : 36.9

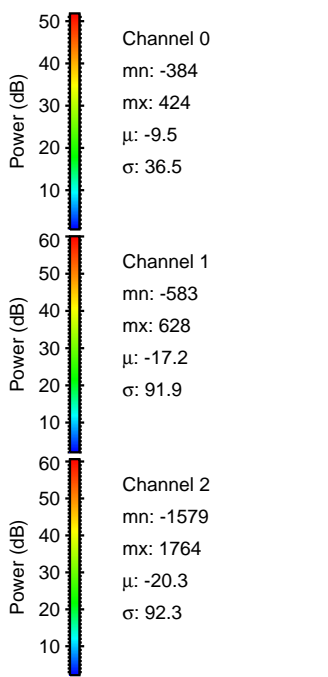
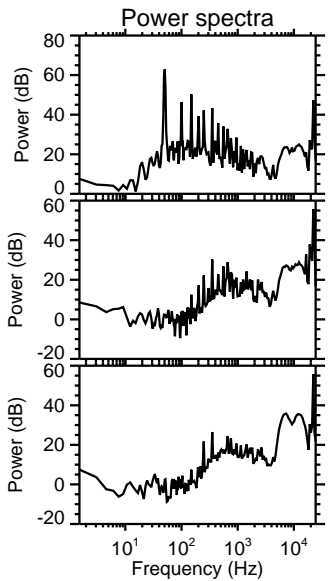
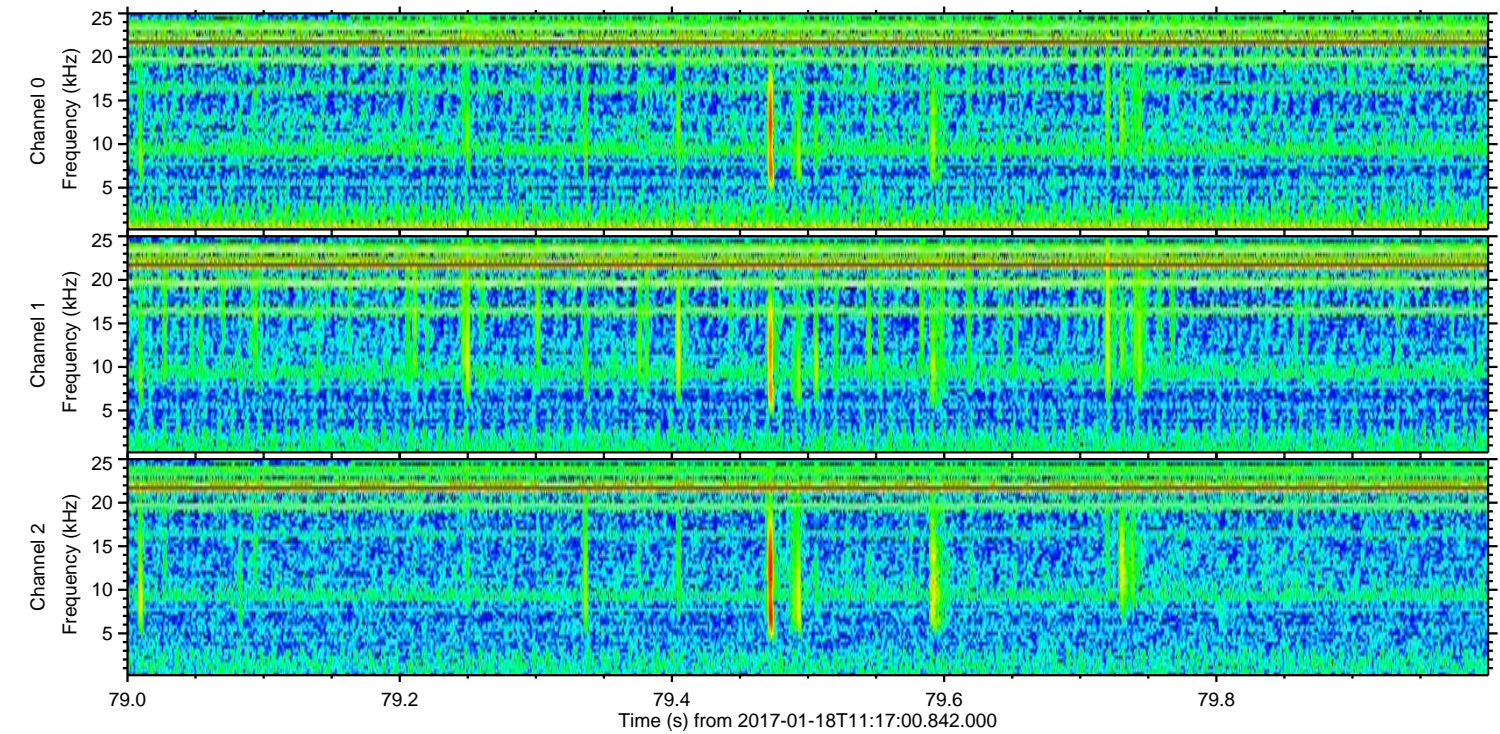
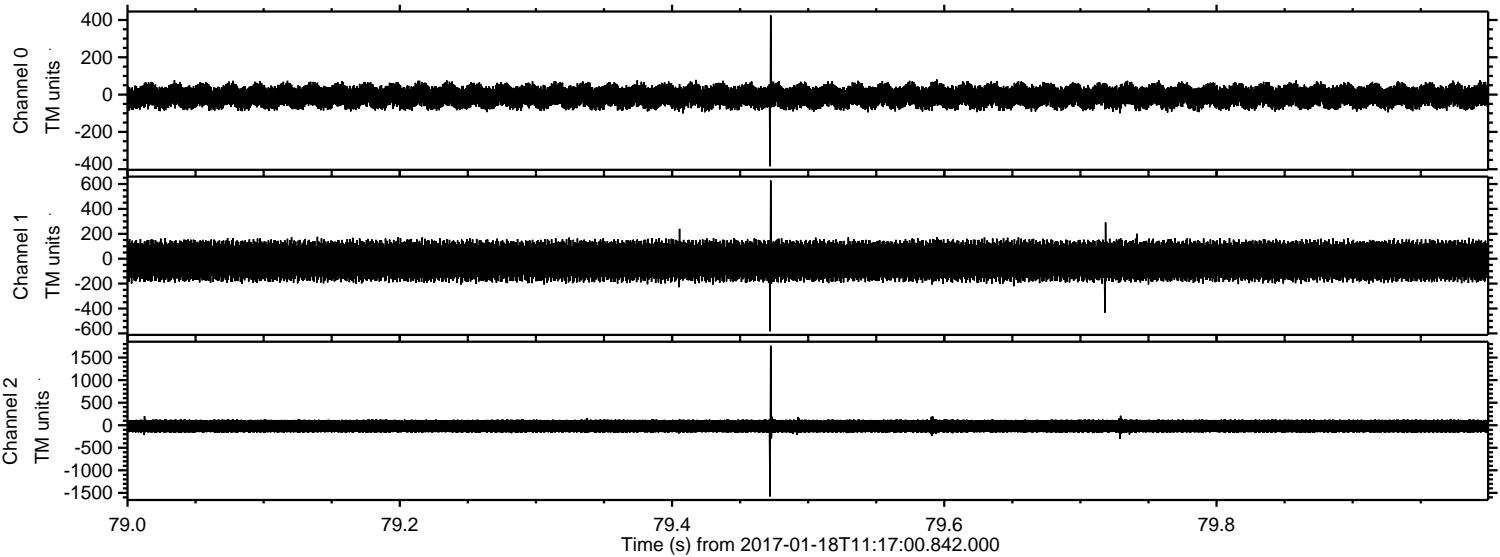
Channel 1
mn: -1217
mx: 1997
 μ : -17.2
 σ : 93.3

Channel 2
mn: -664
mx: 1032
 μ : -20.3
 σ : 91.3

Processed Wed Jan 18 12:25:21 2017 by ELM ver.2012-10-06 from 001__elm20170118_111659__dat00.bin



Processed Wed Jan 18 12:25:21 2017 by ELM ver.2012-10-06 from 001__elm20170118_111659__dat00.bin



Processed Wed Jan 18 12:25:22 2017 by ELM ver.2012-10-06 from 001__elm20170118_111659__dat00.bin

