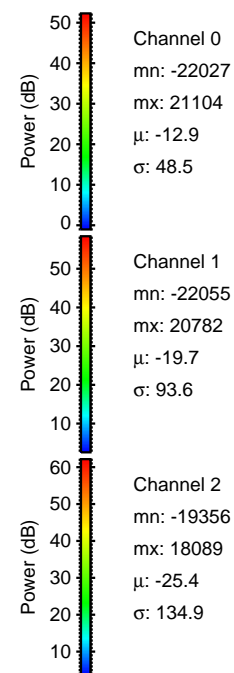
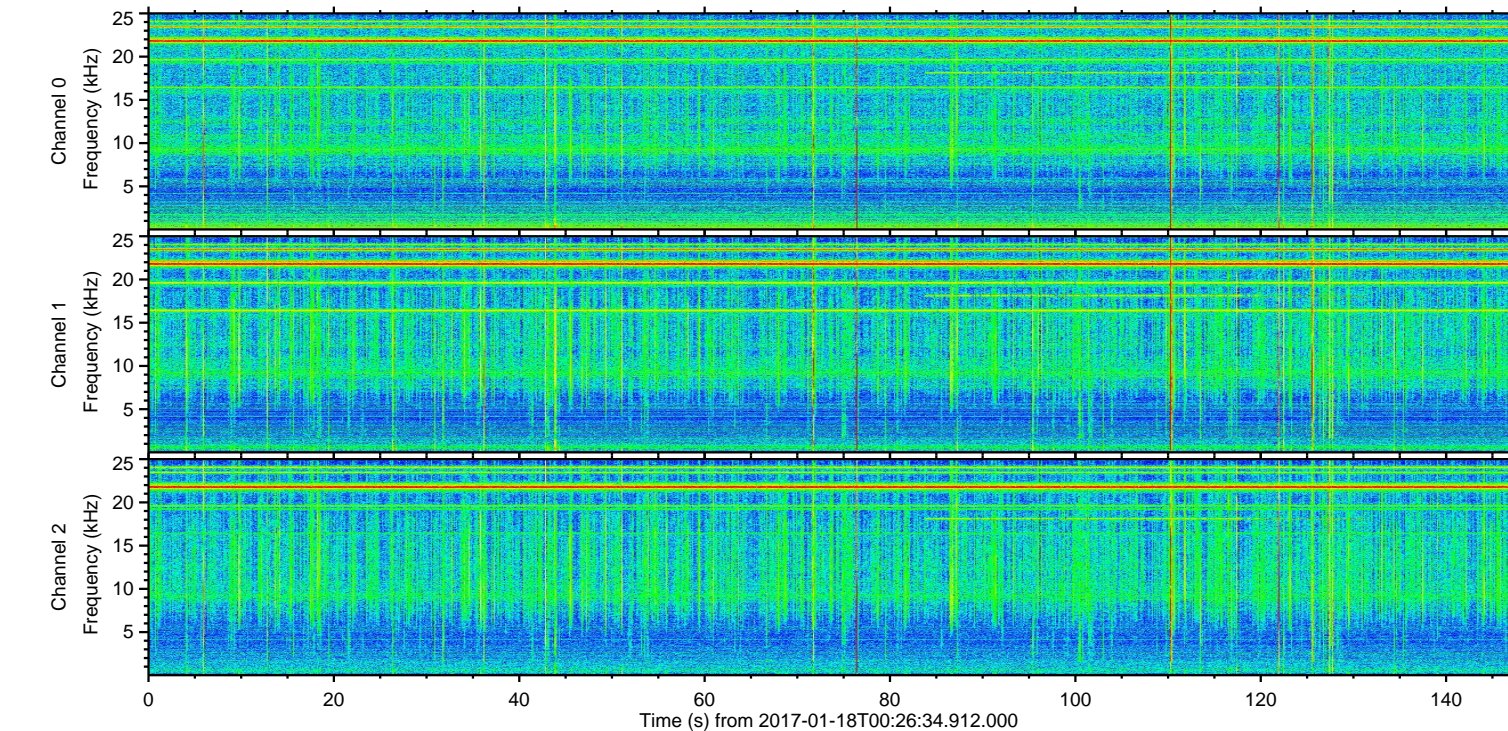
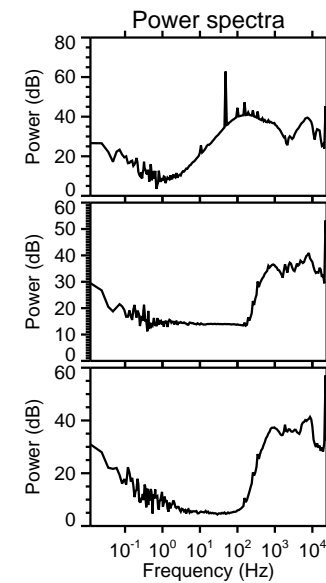
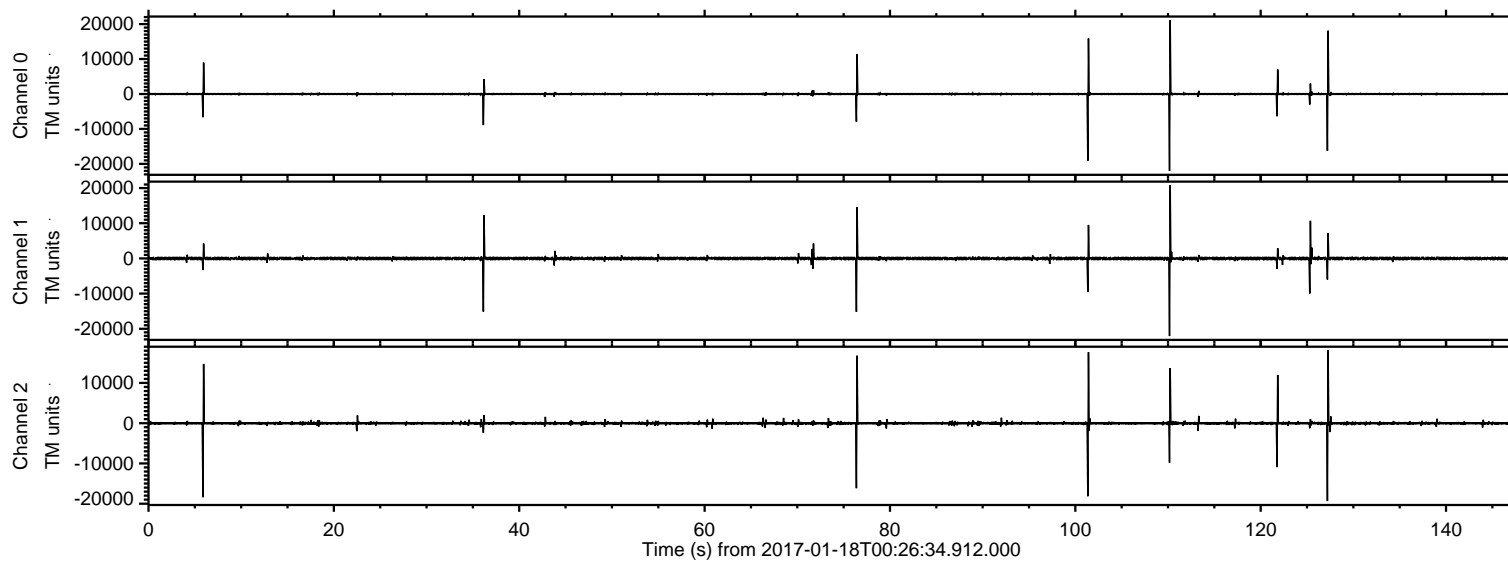


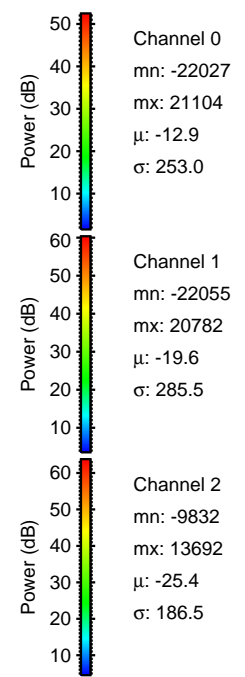
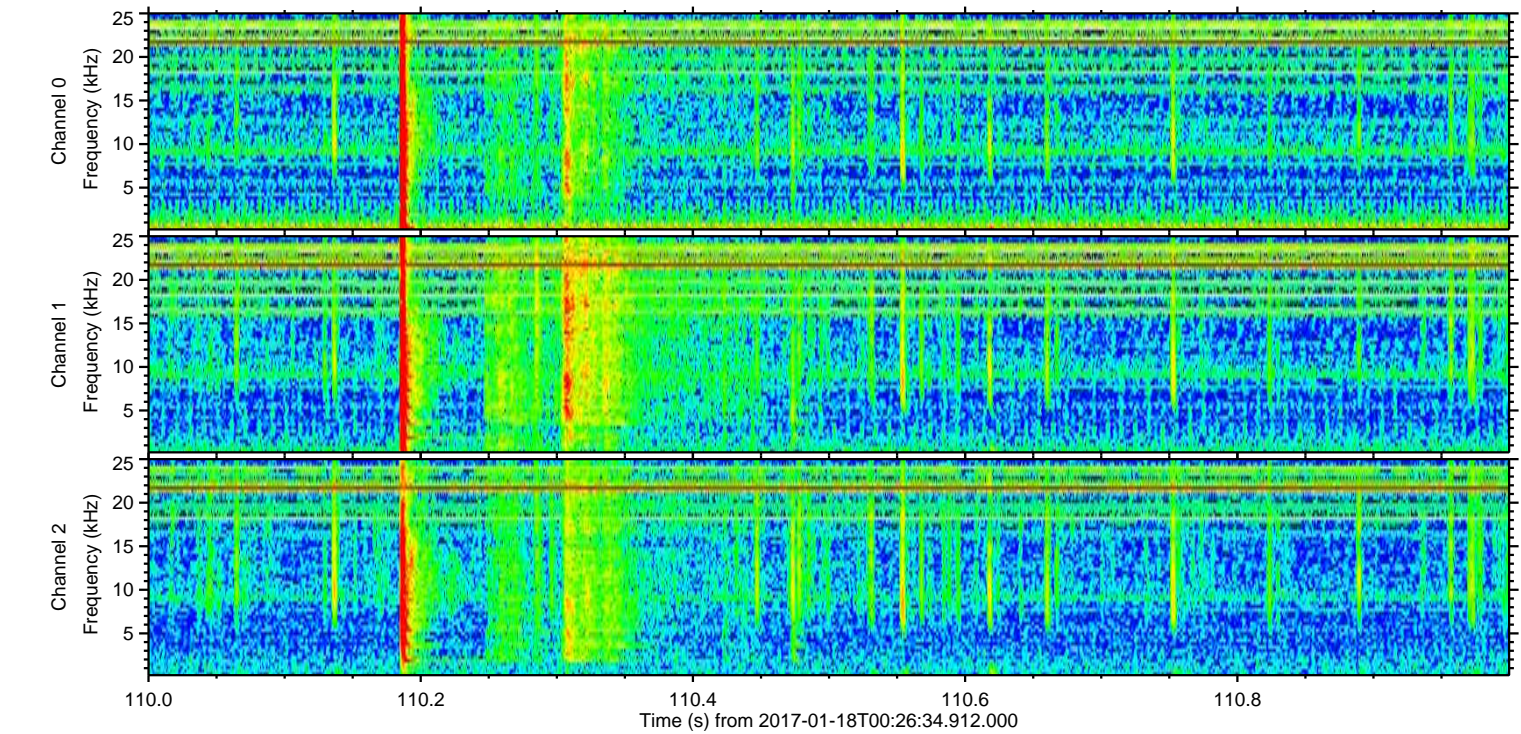
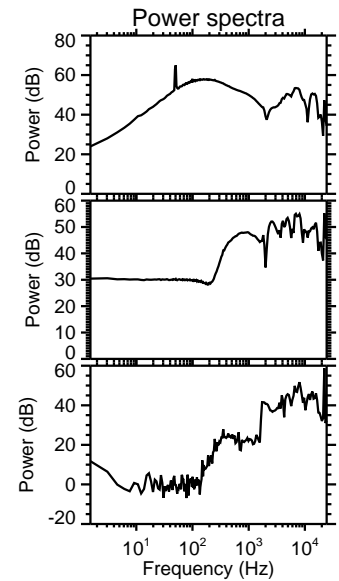
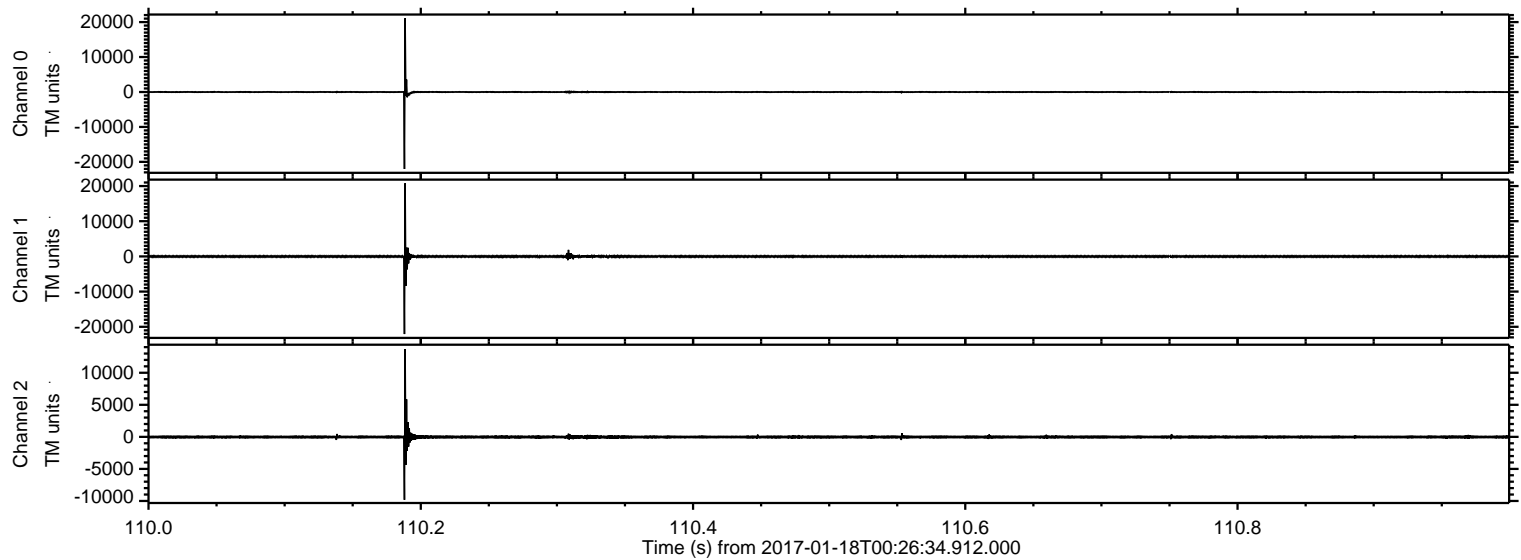
ELMAVAN 3D WAVEFORMS (Measured data sampled at 50 kHz) 51000 packets of 144 samples from 2017-01-18T00:26:34.912.000.

Processed Wed Jan 18 01:34:40 2017 by ELM ver.2012-10-06 from 001__elm20170118_002633__dat00.bin



ELMAVAN 3D WAVEFORMS (Measured data sampled at 50 kHz) 51000 packets of 144 samples from 2017-01-18T00:26:34.912.000. Part 111/147

Processed Wed Jan 18 01:34:52 2017 by ELM ver.2012-10-06 from 001__elm20170118_002633__dat00.bin



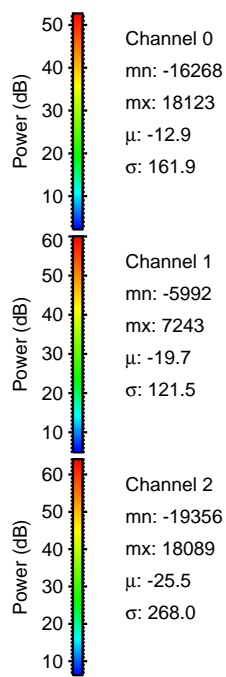
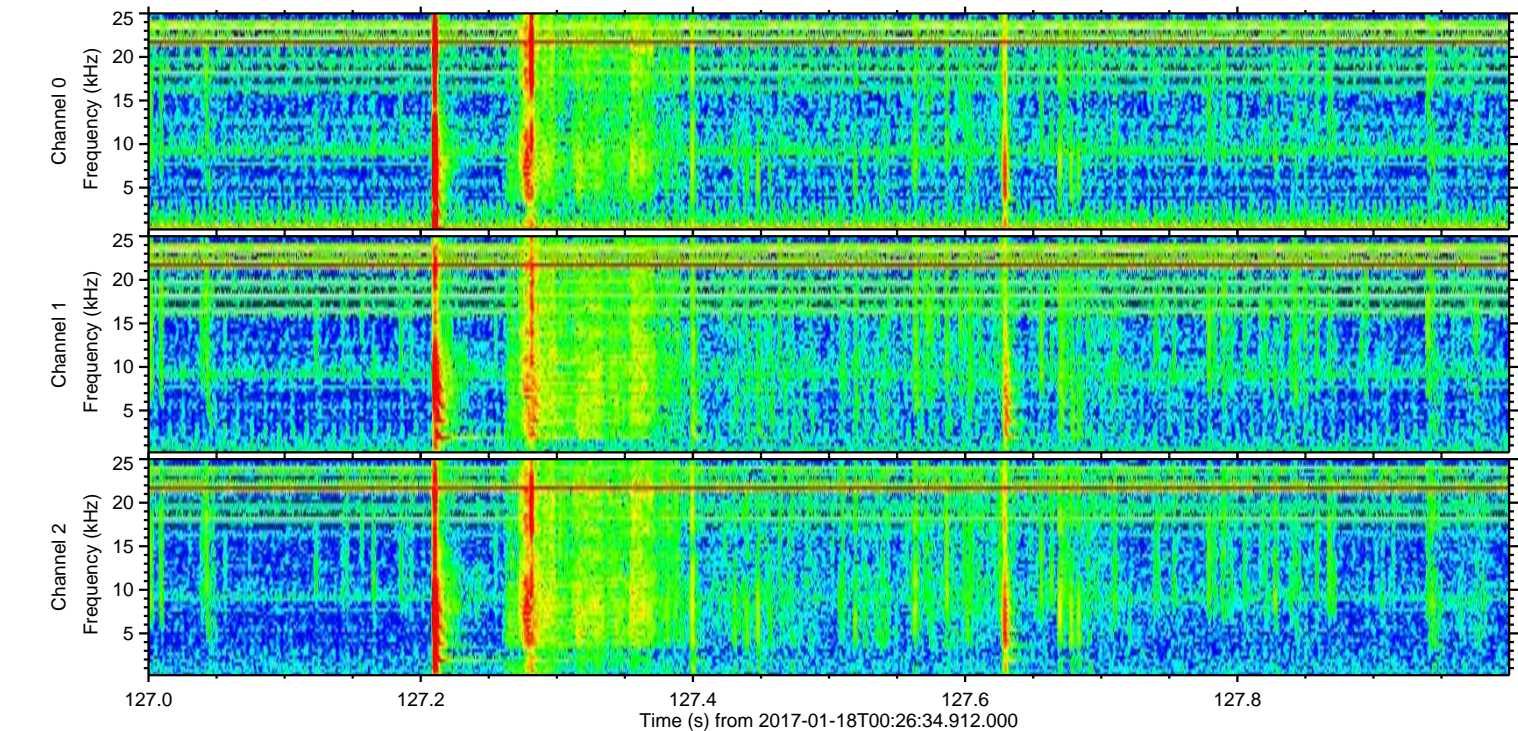
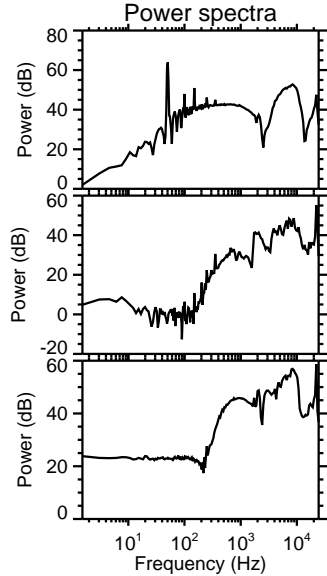
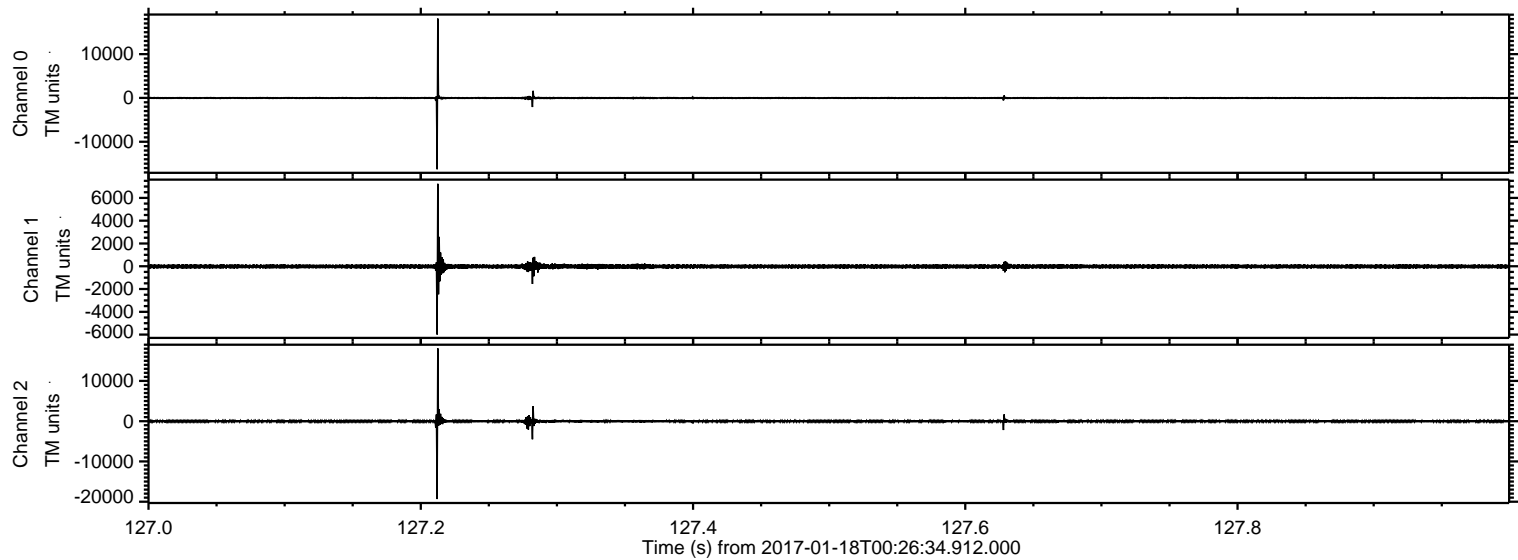
Channel 0
mn: -22027
mx: 21104
 μ : -12.9
 σ : 253.0

Channel 1
mn: -22055
mx: 20782
 μ : -19.6
 σ : 285.5

Channel 2
mn: -9832
mx: 13692
 μ : -25.4
 σ : 186.5

ELMAVAN 3D WAVEFORMS (Measured data sampled at 50 kHz) 51000 packets of 144 samples from 2017-01-18T00:26:34.912.000. Part 128/147

Processed Wed Jan 18 01:34:53 2017 by ELM ver.2012-10-06 from 001__elm20170118_002633__dat00.bin



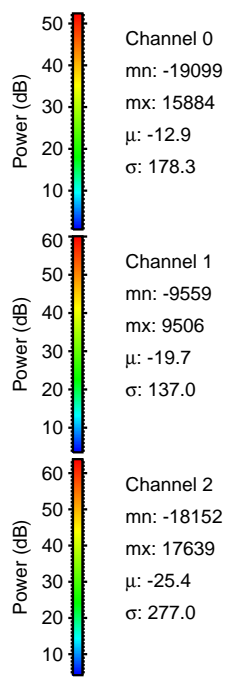
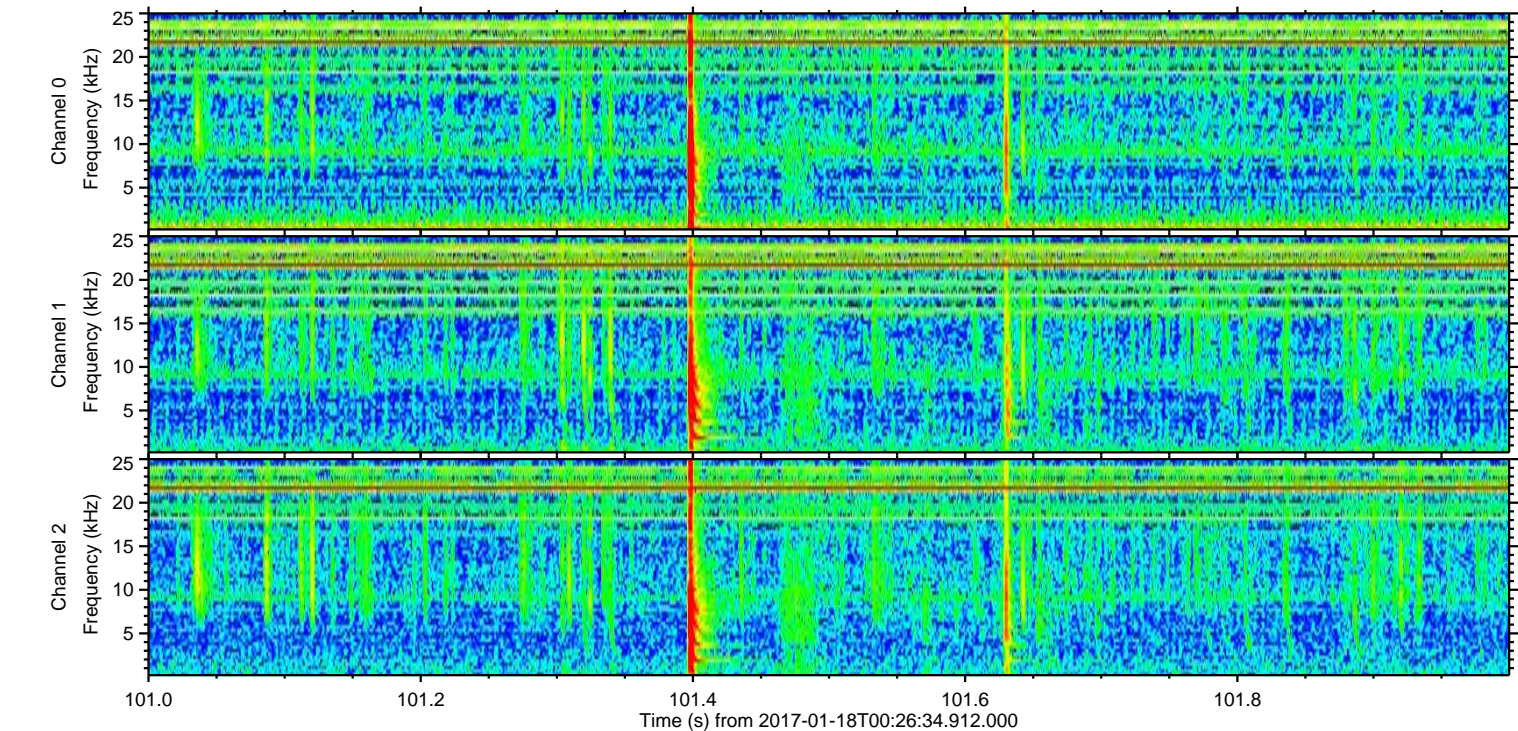
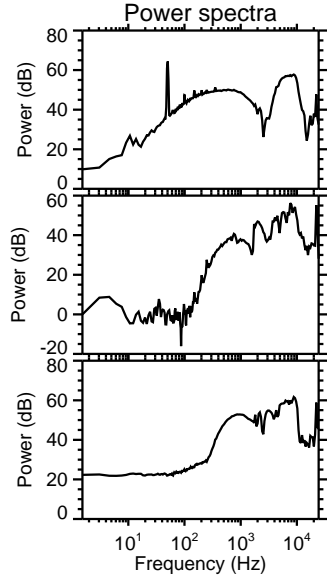
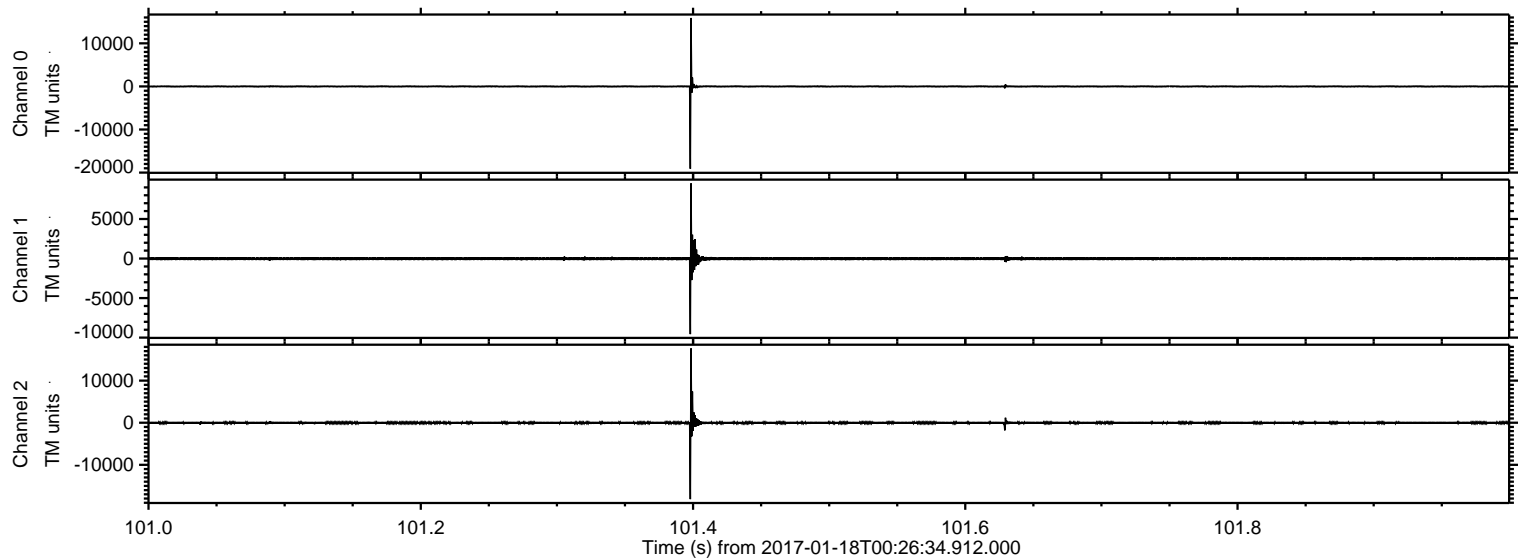
Channel 0
mn: -16268
mx: 18123
 μ : -12.9
 σ : 161.9

Channel 1
mn: -5992
mx: 7243
 μ : -19.7
 σ : 121.5

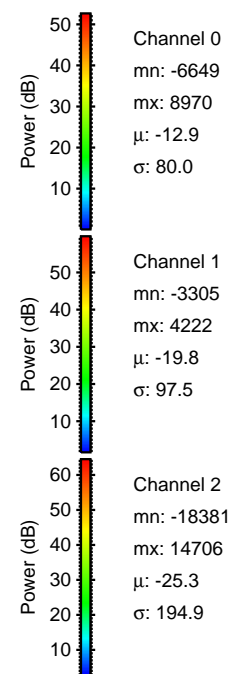
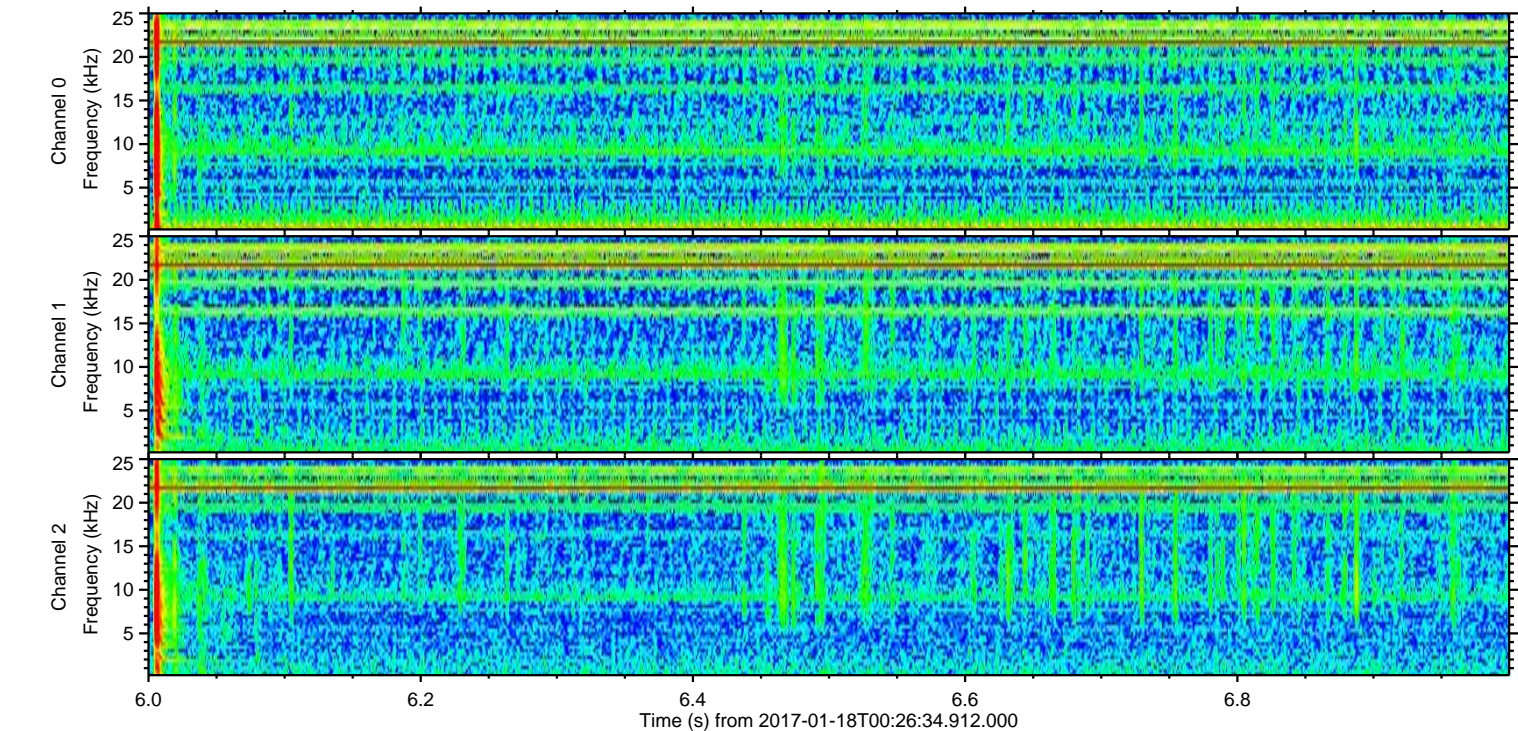
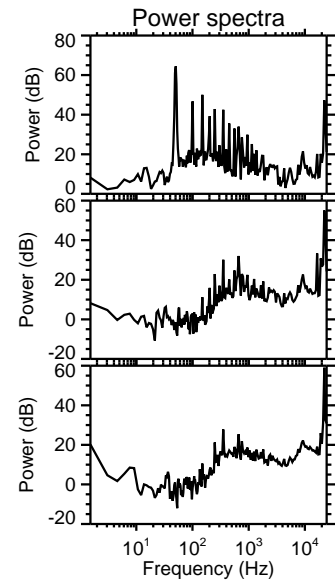
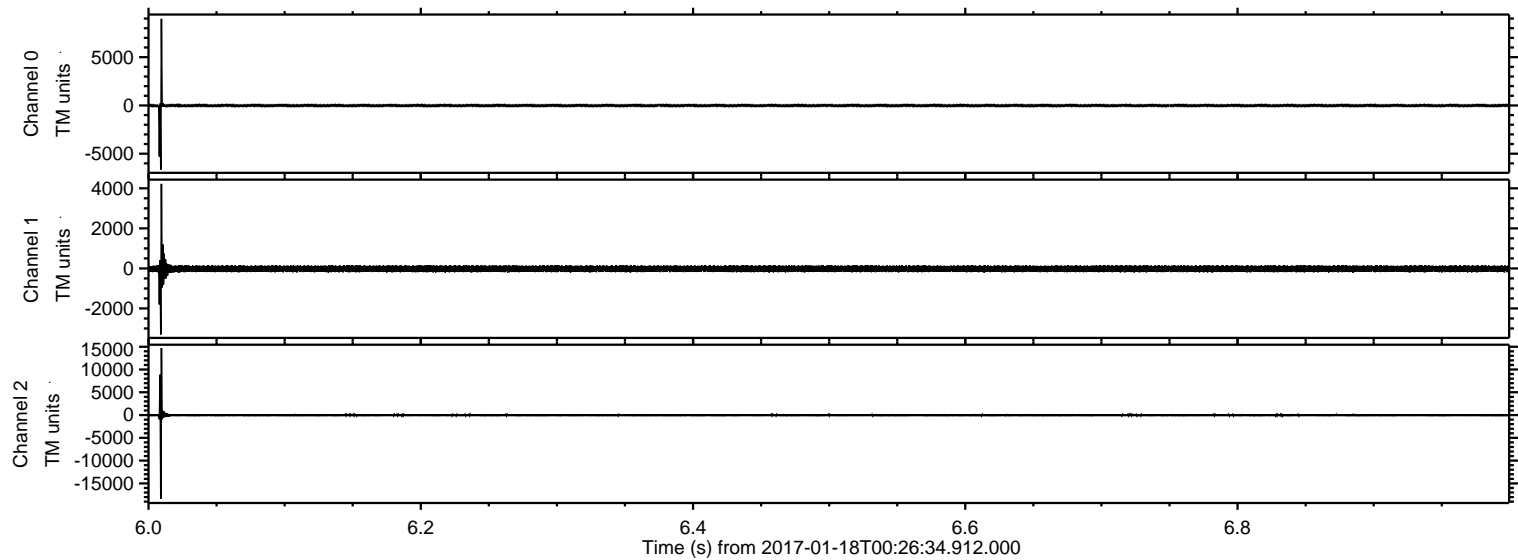
Channel 2
mn: -19356
mx: 18089
 μ : -25.5
 σ : 268.0

ELMAVAN 3D WAVEFORMS (Measured data sampled at 50 kHz) 51000 packets of 144 samples from 2017-01-18T00:26:34.912.000. Part 102/147

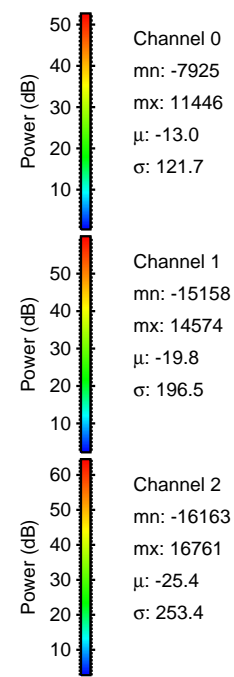
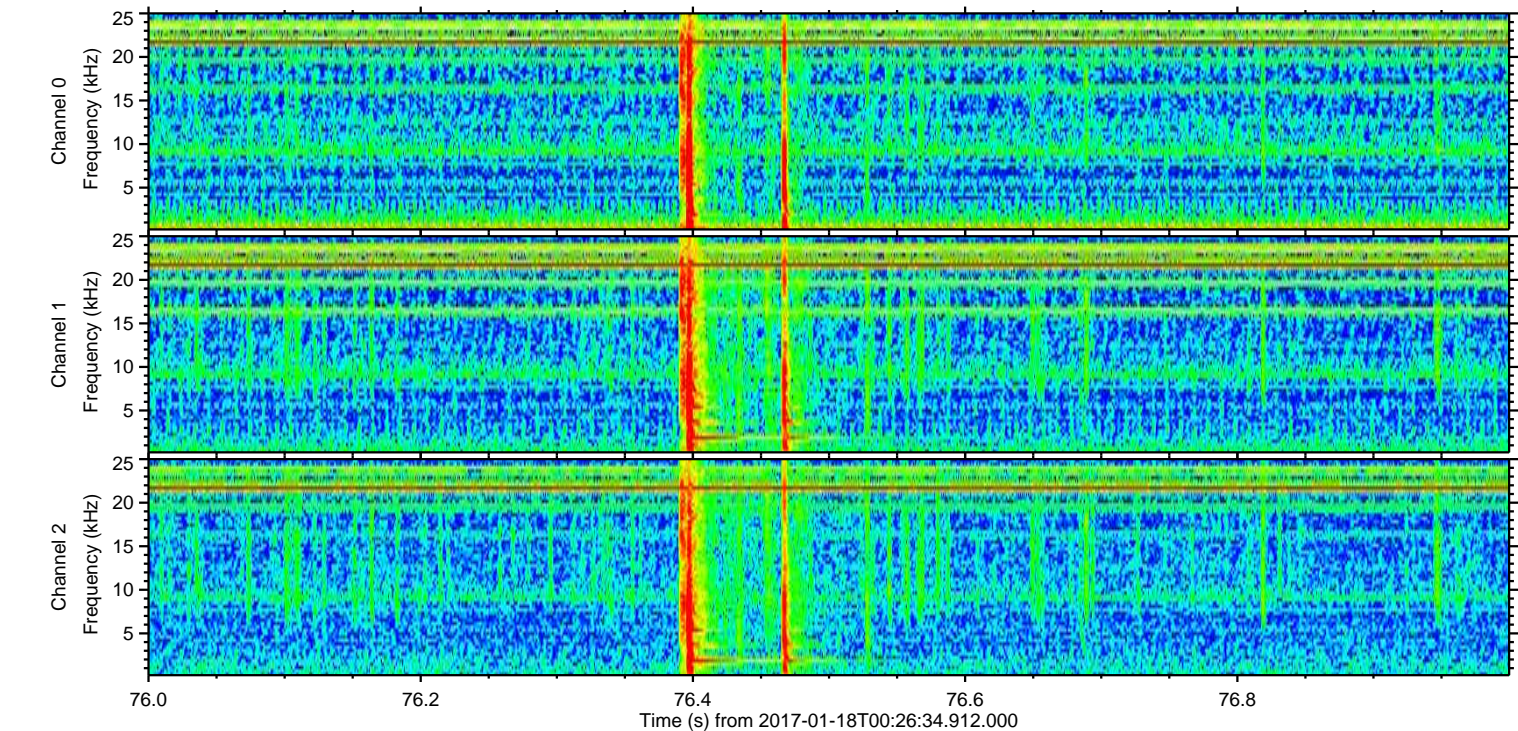
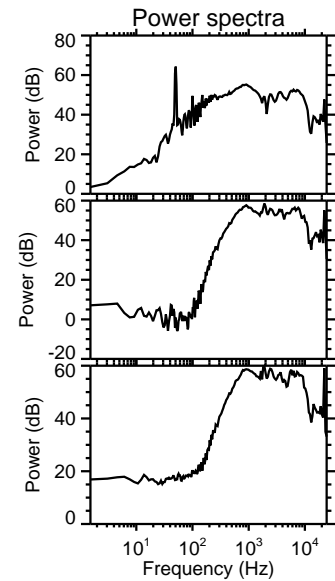
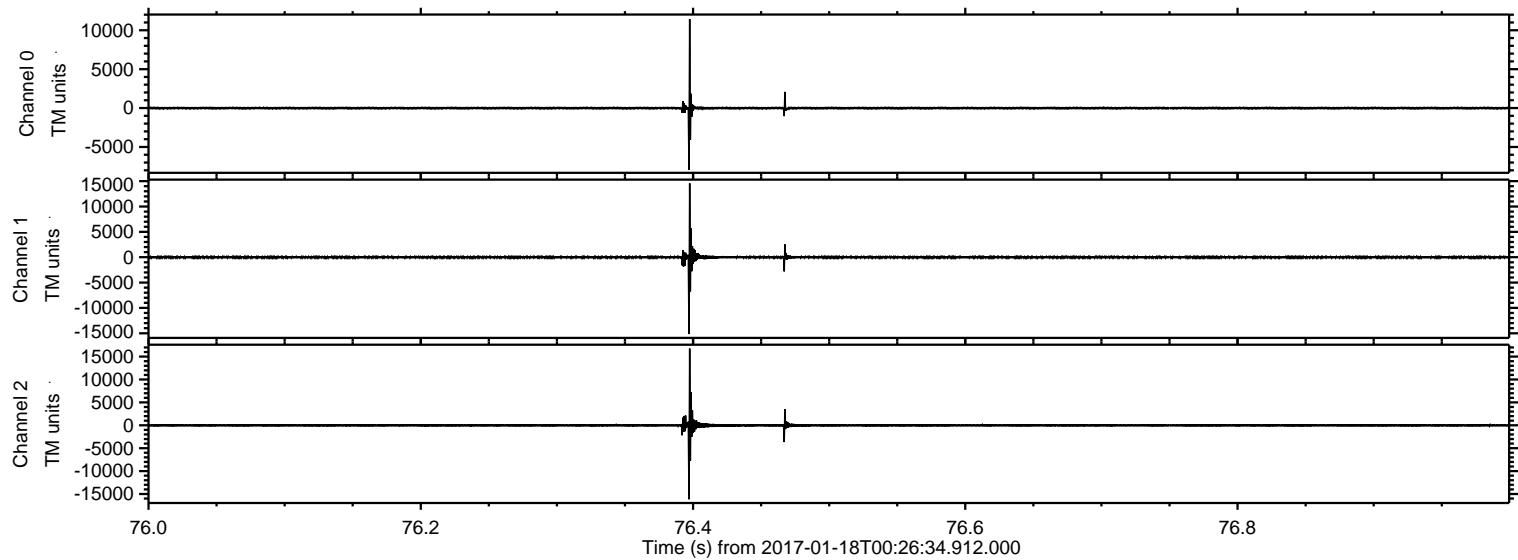
Processed Wed Jan 18 01:34:54 2017 by ELM ver.2012-10-06 from 001__elm20170118_002633__dat00.bin



Processed Wed Jan 18 01:34:55 2017 by ELM ver.2012-10-06 from 001__elm20170118_002633__dat00.bin

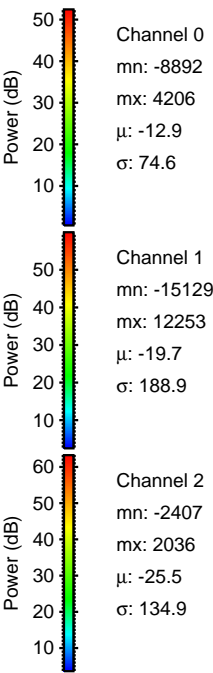
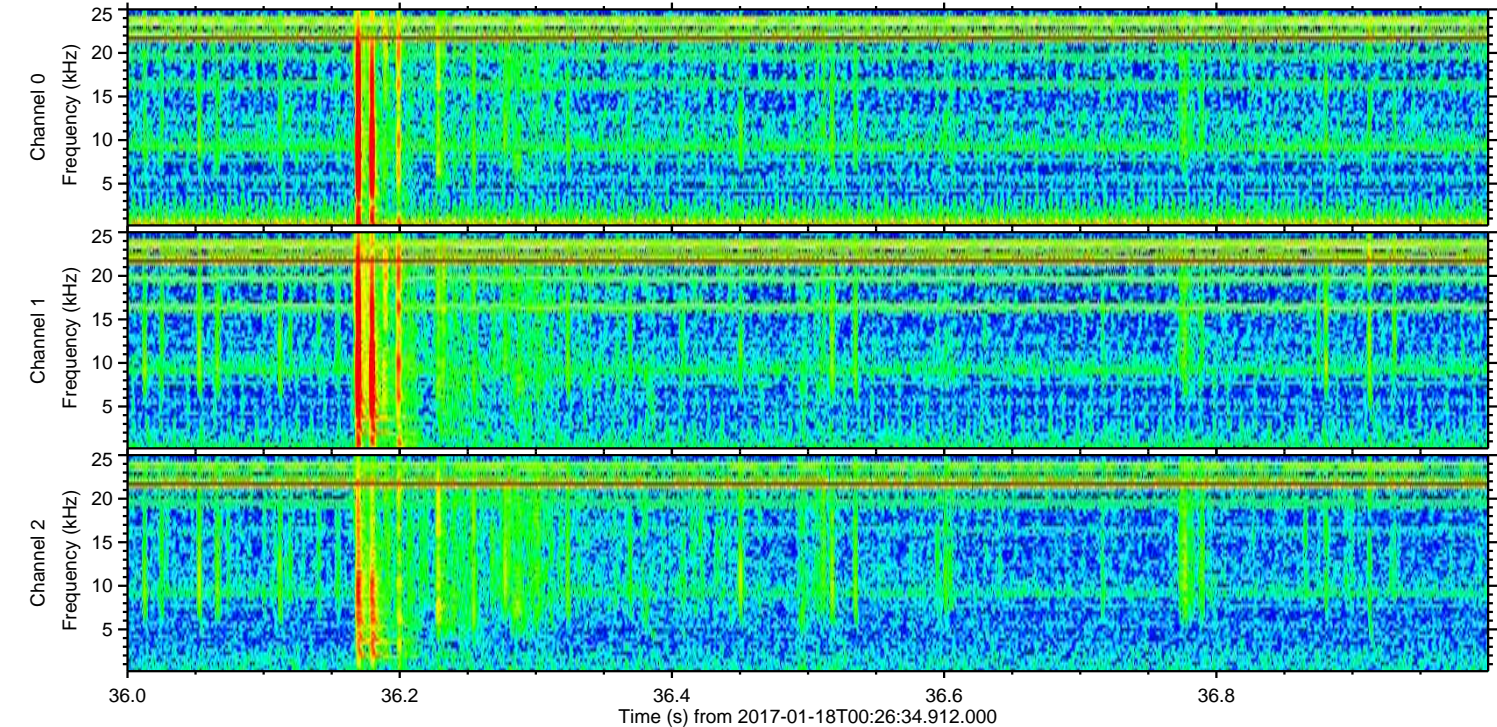
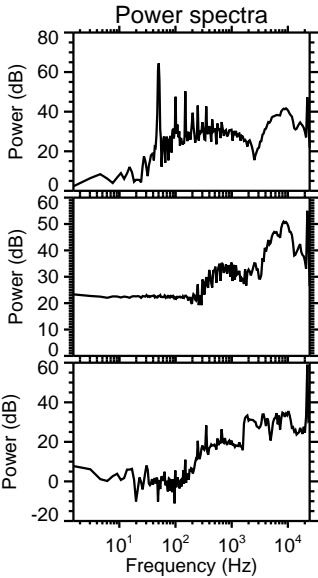
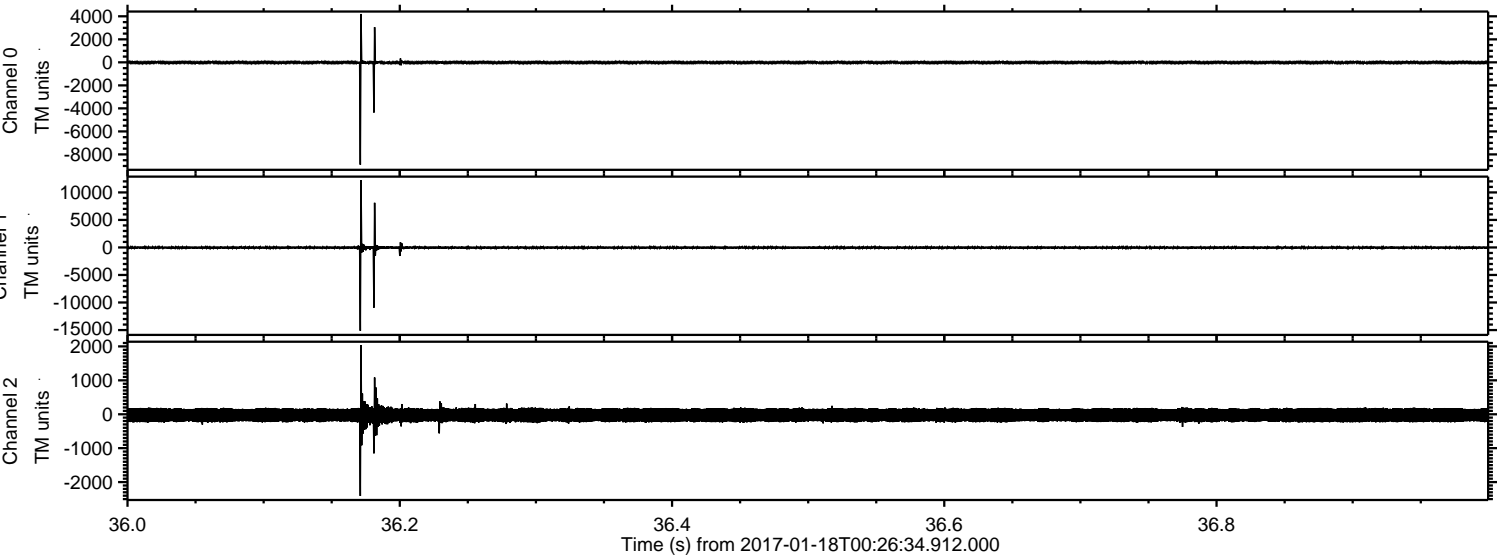


Processed Wed Jan 18 01:34:56 2017 by ELM ver.2012-10-06 from 001__elm20170118_002633__dat00.bin



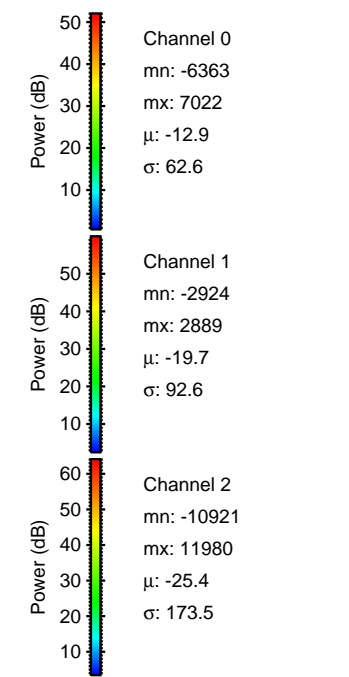
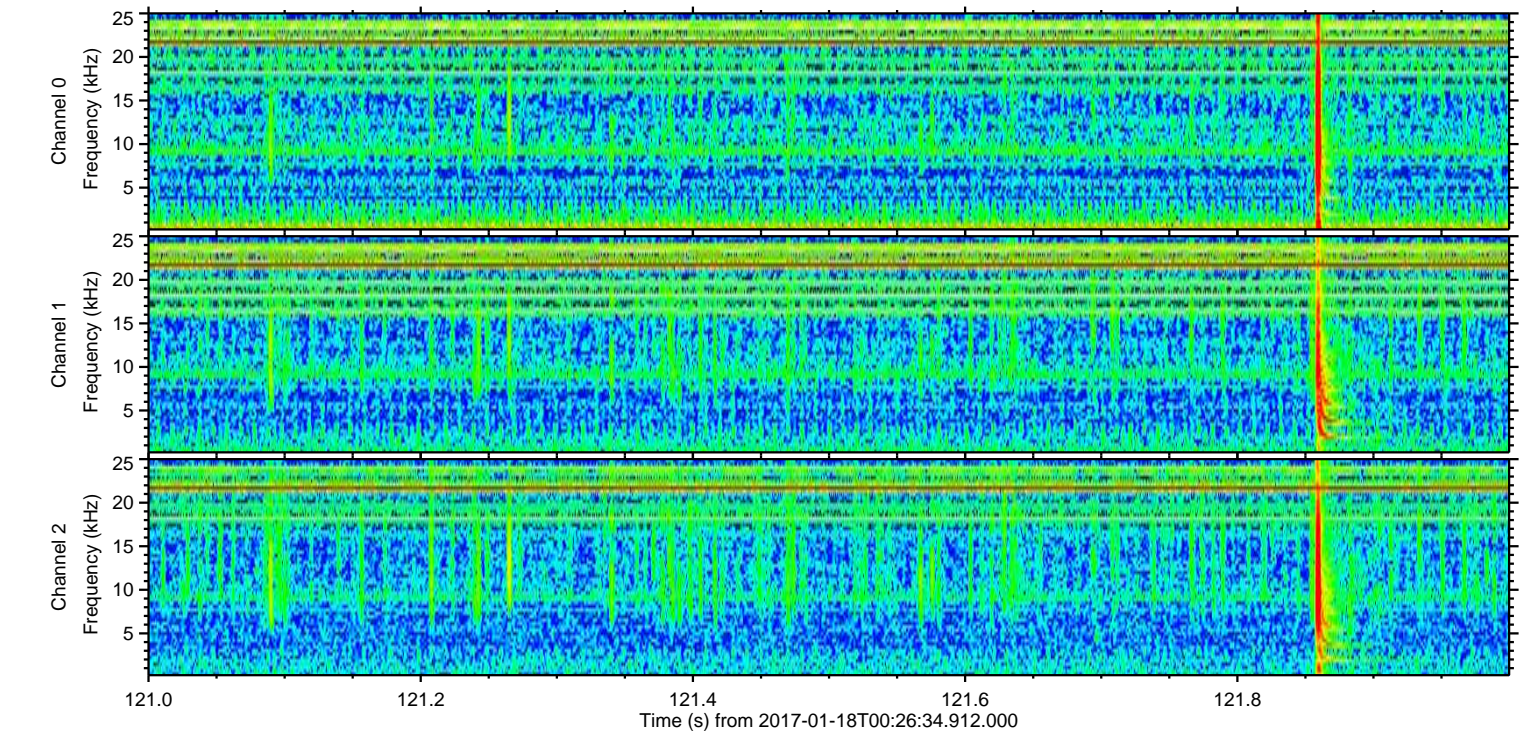
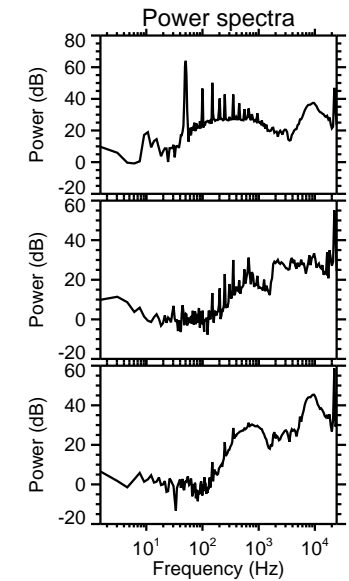
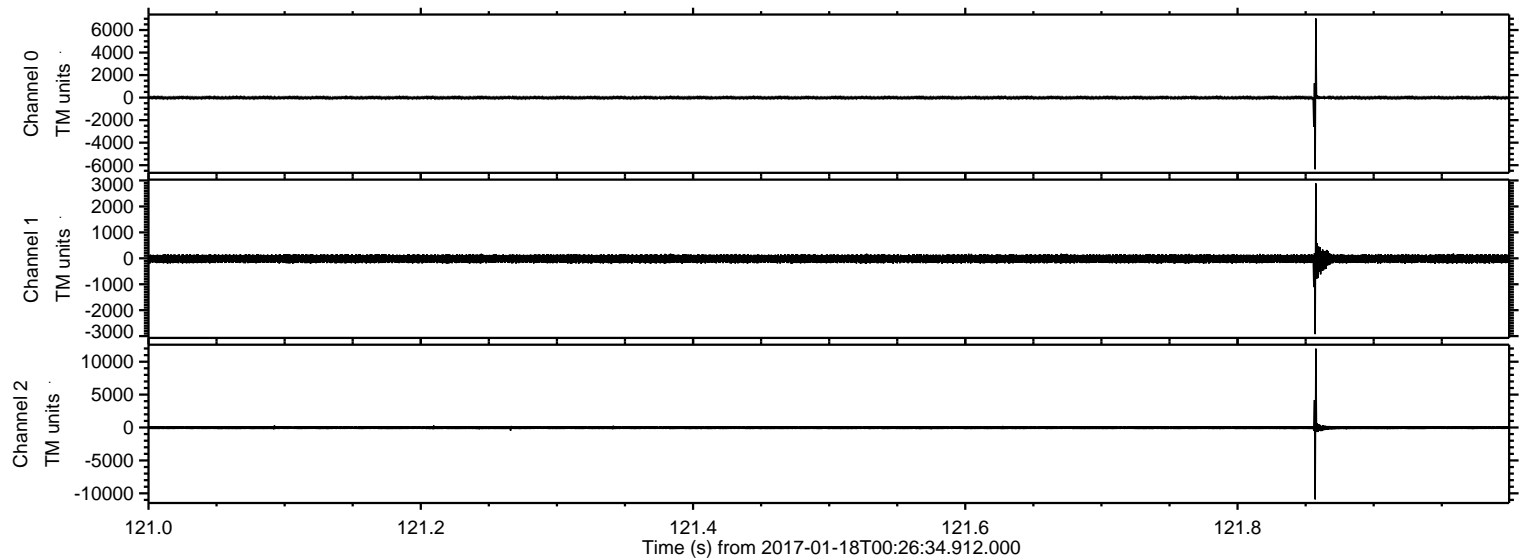
ELMAVAN 3D WAVEFORMS (Measured data sampled at 50 kHz) 51000 packets of 144 samples from 2017-01-18T00:26:34.912.000. Part 37/147

Processed Wed Jan 18 01:34:57 2017 by ELM ver.2012-10-06 from 001__elm20170118_002633__dat00.bin



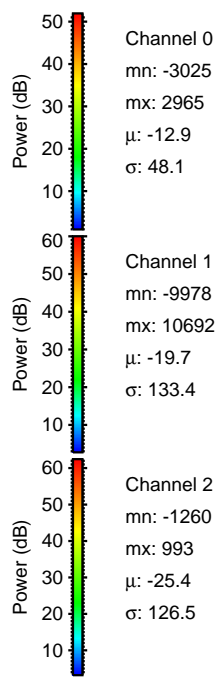
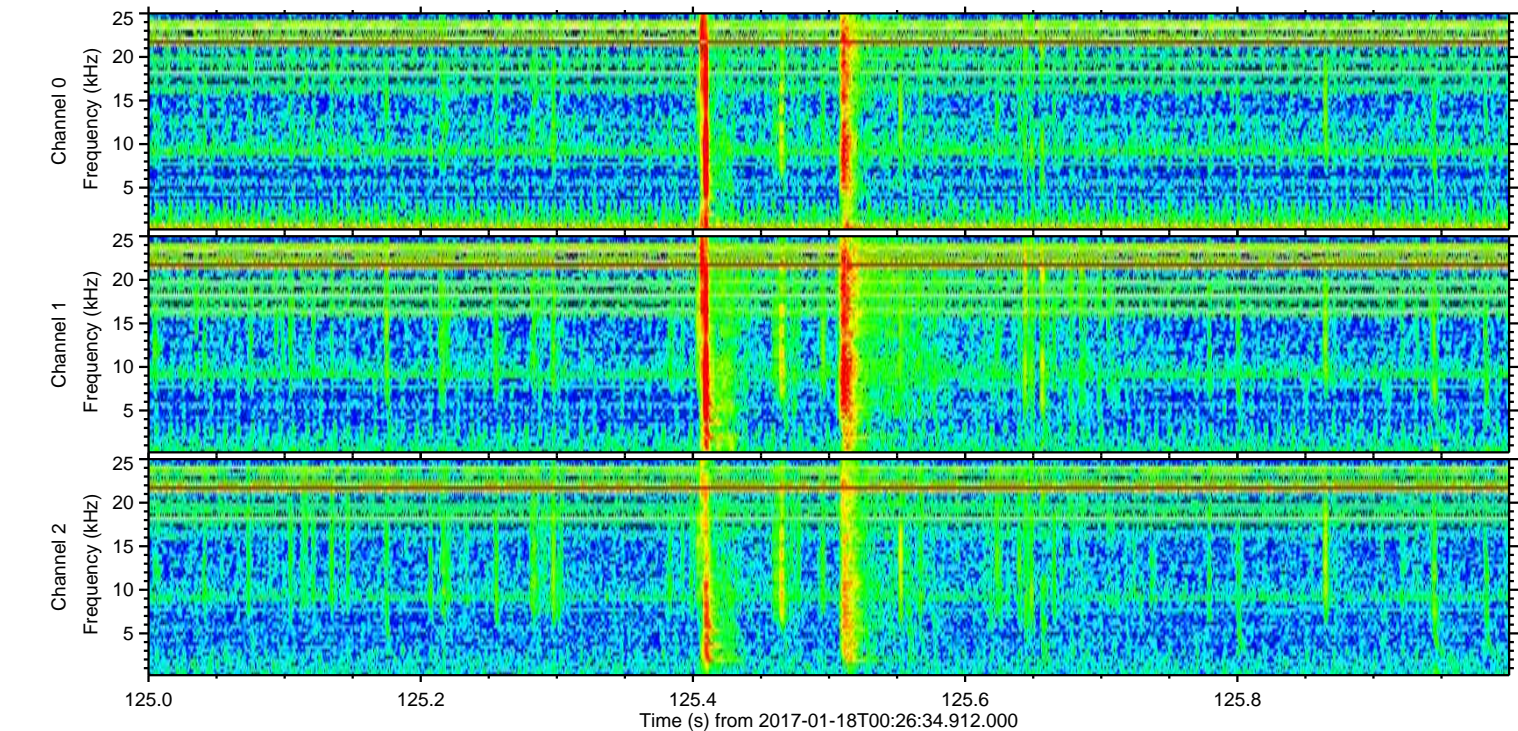
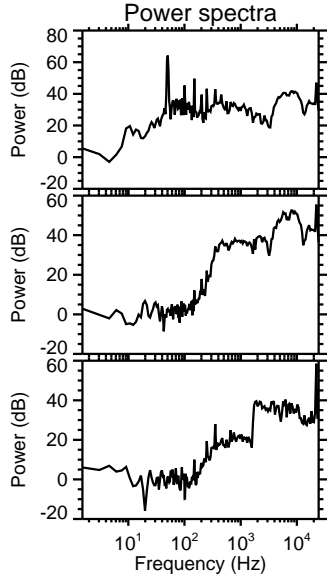
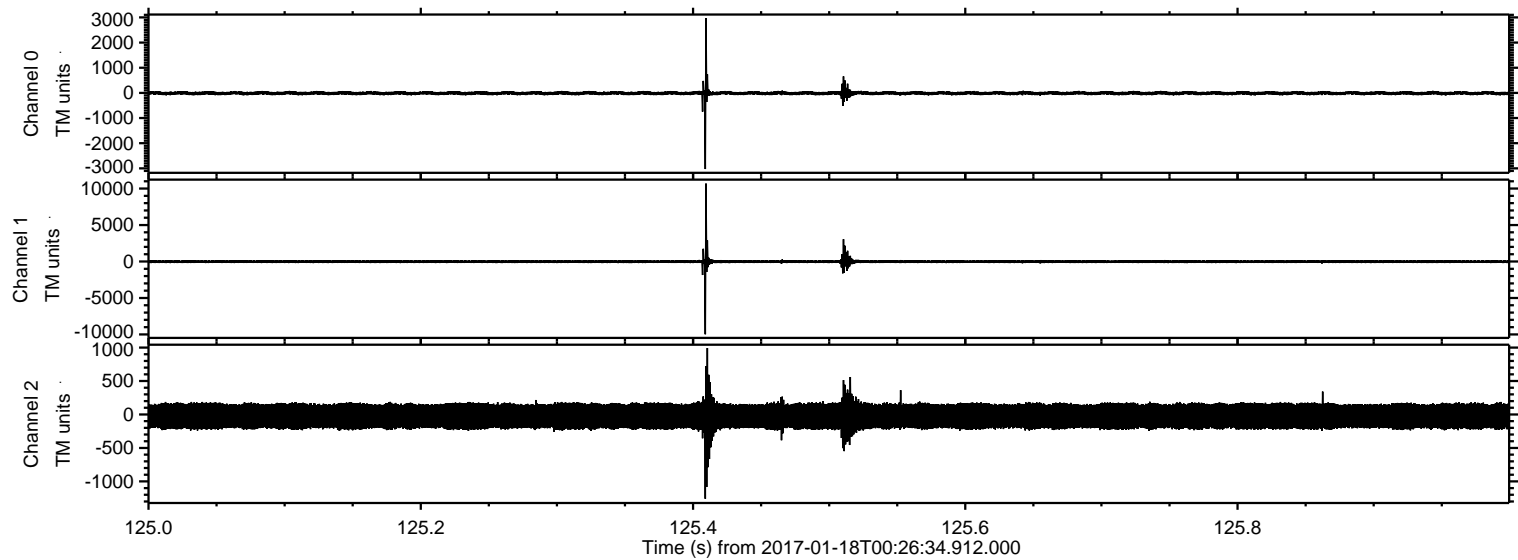
ELMAVAN 3D WAVEFORMS (Measured data sampled at 50 kHz) 51000 packets of 144 samples from 2017-01-18T00:26:34.912.000. Part 122/147

Processed Wed Jan 18 01:34:58 2017 by ELM ver.2012-10-06 from 001__elm20170118_002633__dat00.bin



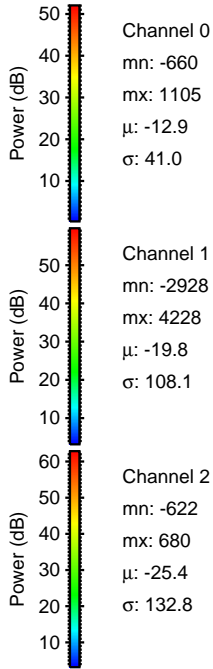
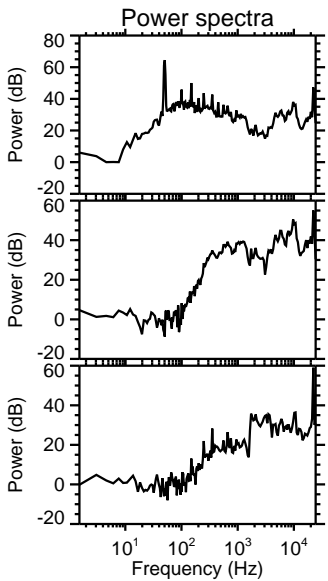
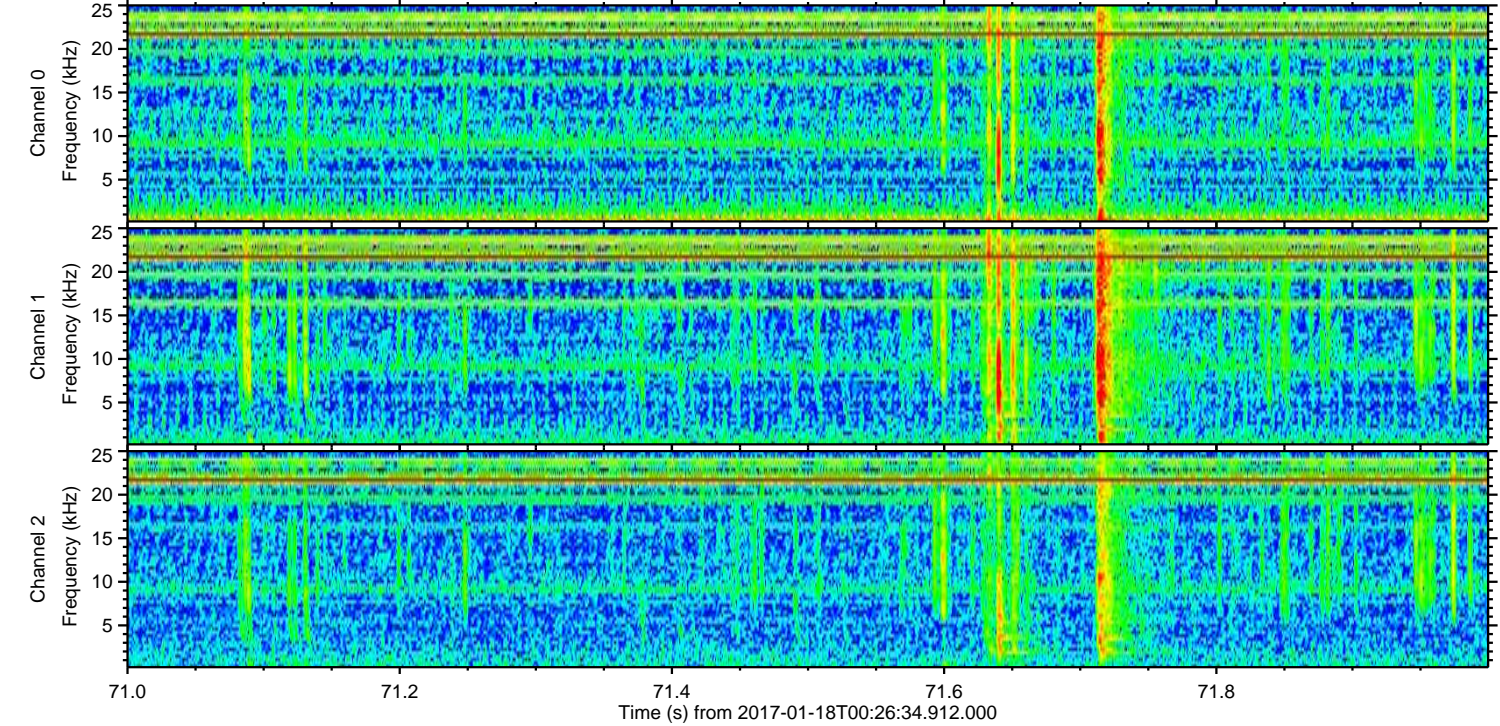
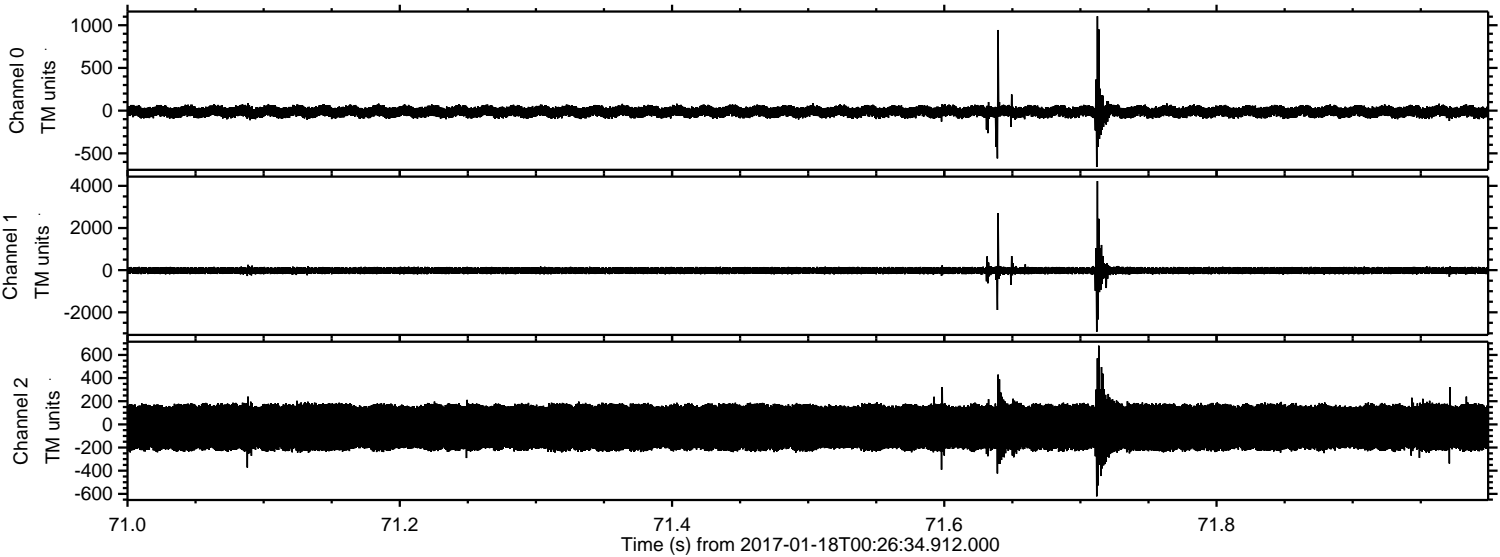
ELMAVAN 3D WAVEFORMS (Measured data sampled at 50 kHz) 51000 packets of 144 samples from 2017-01-18T00:26:34.912.000. Part 126/147

Processed Wed Jan 18 01:34:58 2017 by ELM ver.2012-10-06 from 001__elm20170118_002633__dat00.bin



ELMAVAN 3D WAVEFORMS (Measured data sampled at 50 kHz) 51000 packets of 144 samples from 2017-01-18T00:26:34.912.000. Part 72/147

Processed Wed Jan 18 01:34:59 2017 by ELM ver.2012-10-06 from 001__elm20170118_002633__dat00.bin



ELMAVAN 3D WAVEFORMS (Measured data sampled at 50 kHz) 51000 packets of 144 samples from 2017-01-18T00:26:34.912.000. Part 108/147

