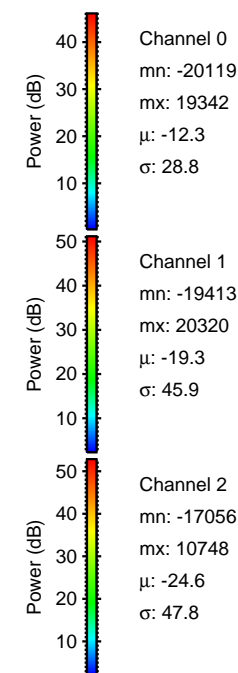
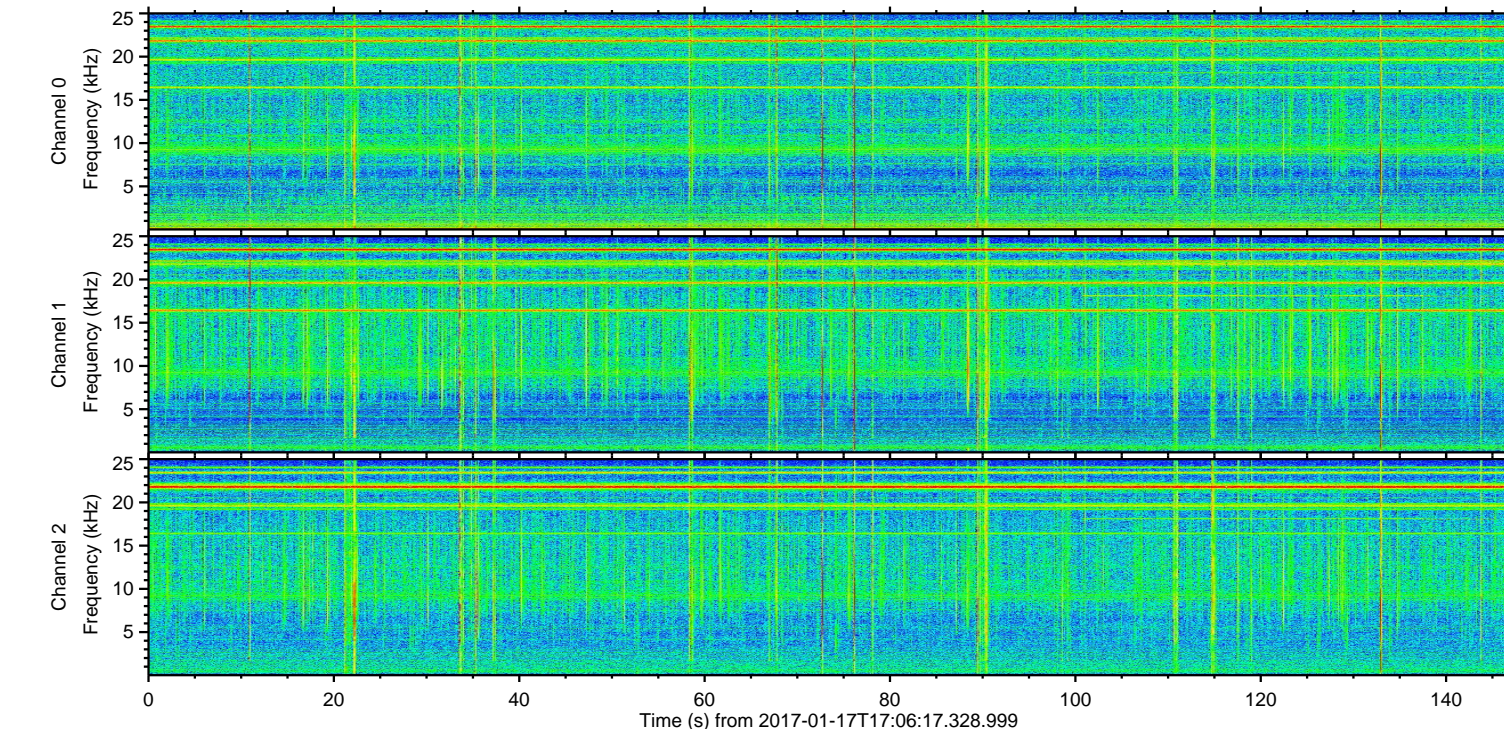
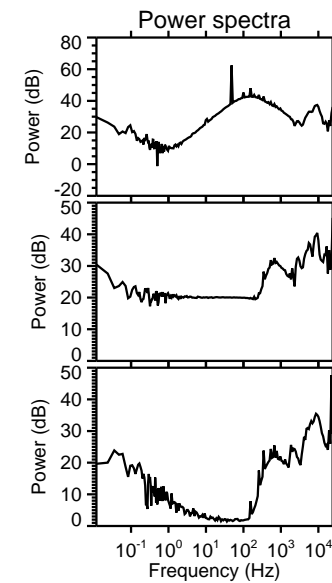
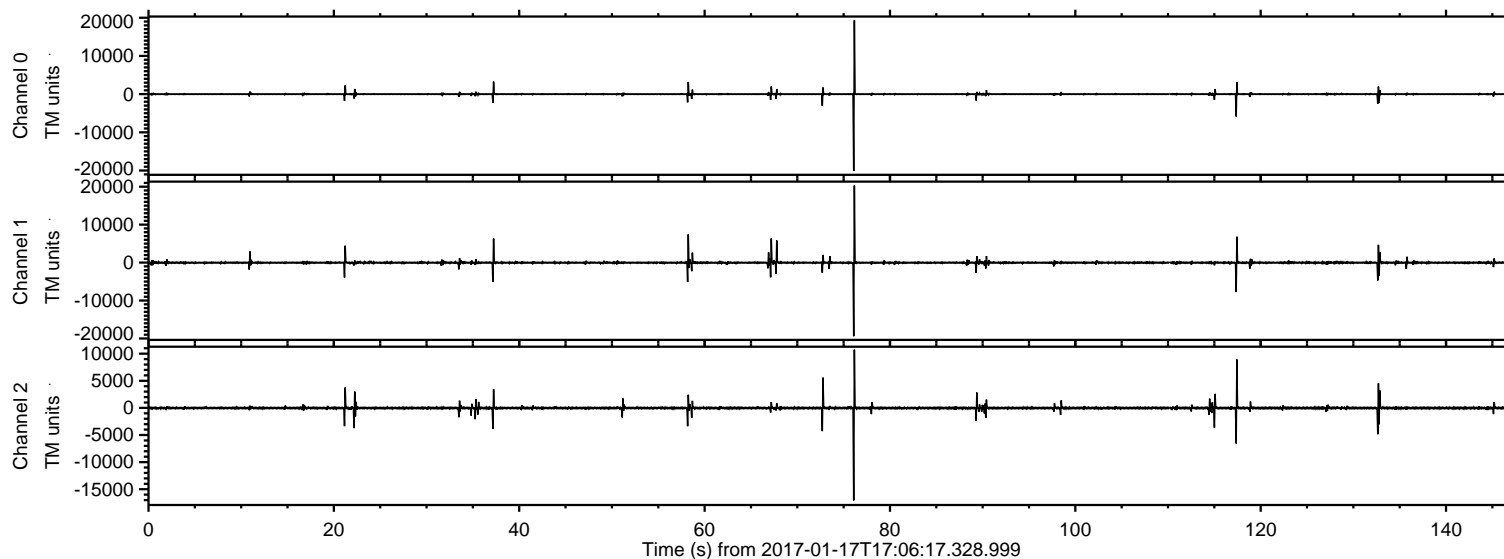


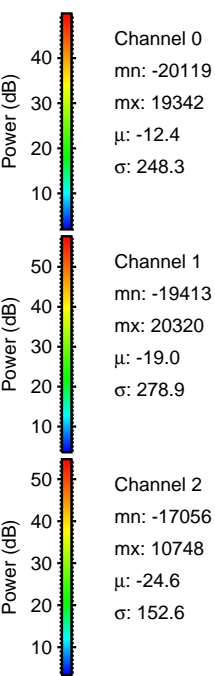
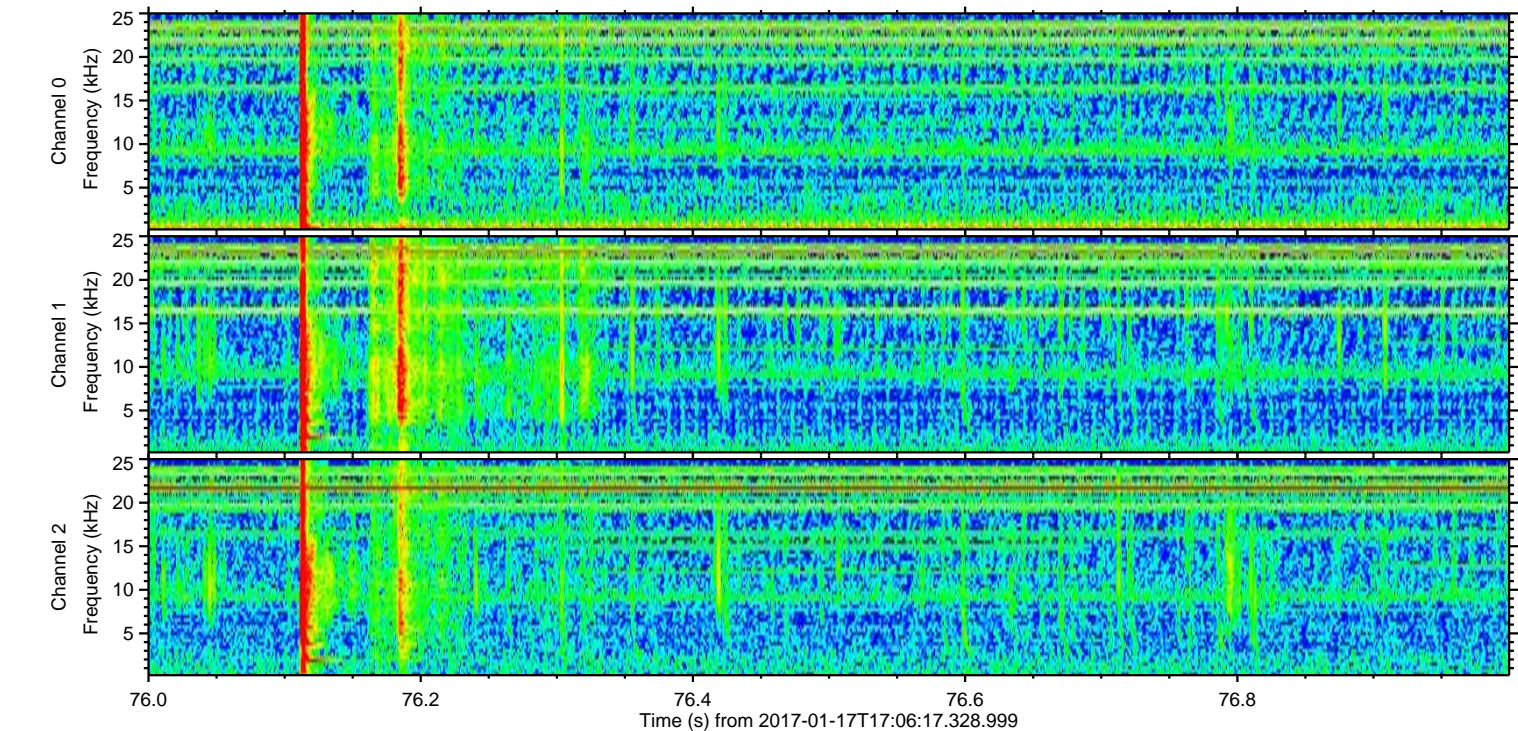
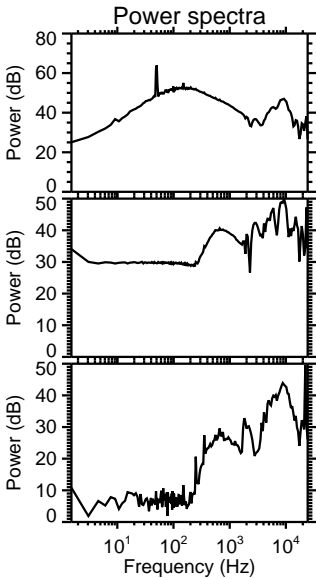
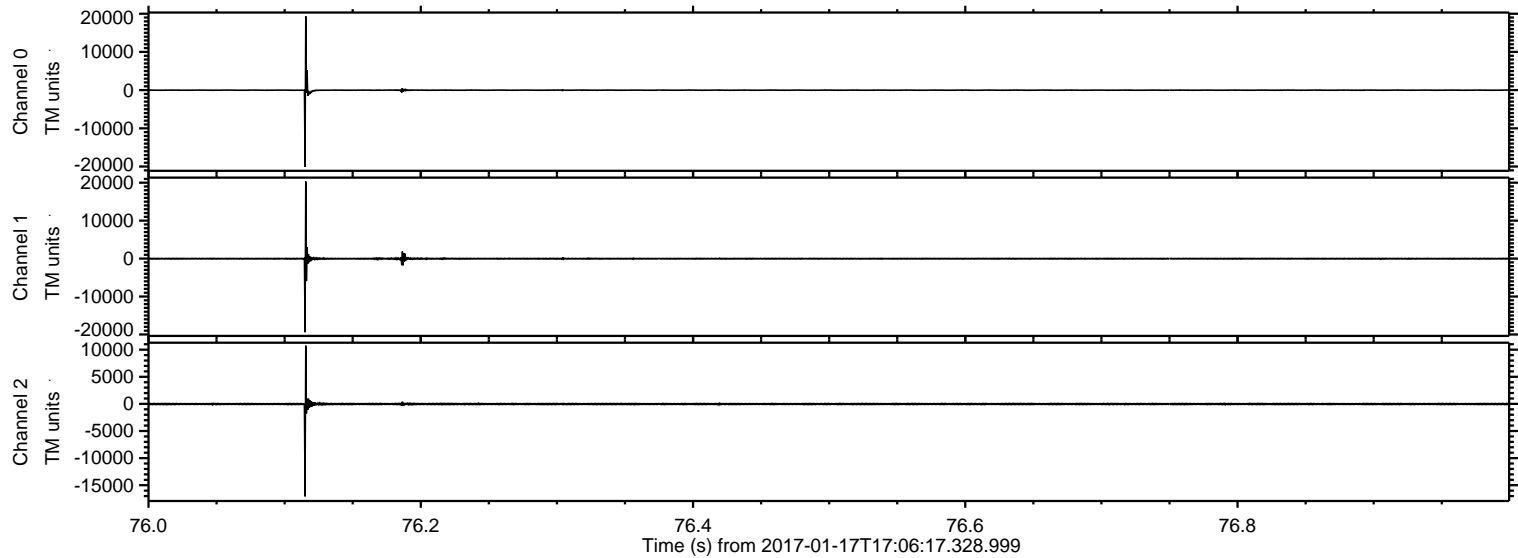
ELMAVAN 3D WAVEFORMS (Measured data sampled at 50 kHz) 51000 packets of 144 samples from 2017-01-17T17:06:17.328.999.

Processed Tue Jan 17 18:14:19 2017 by ELM ver.2012-10-06 from 001__elm20170117_170616__dat00.bin



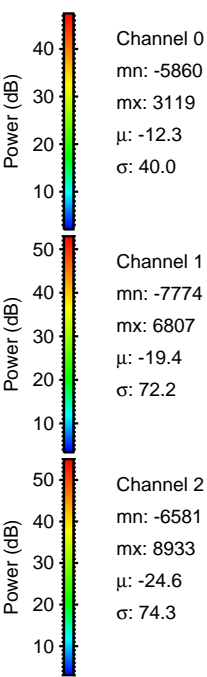
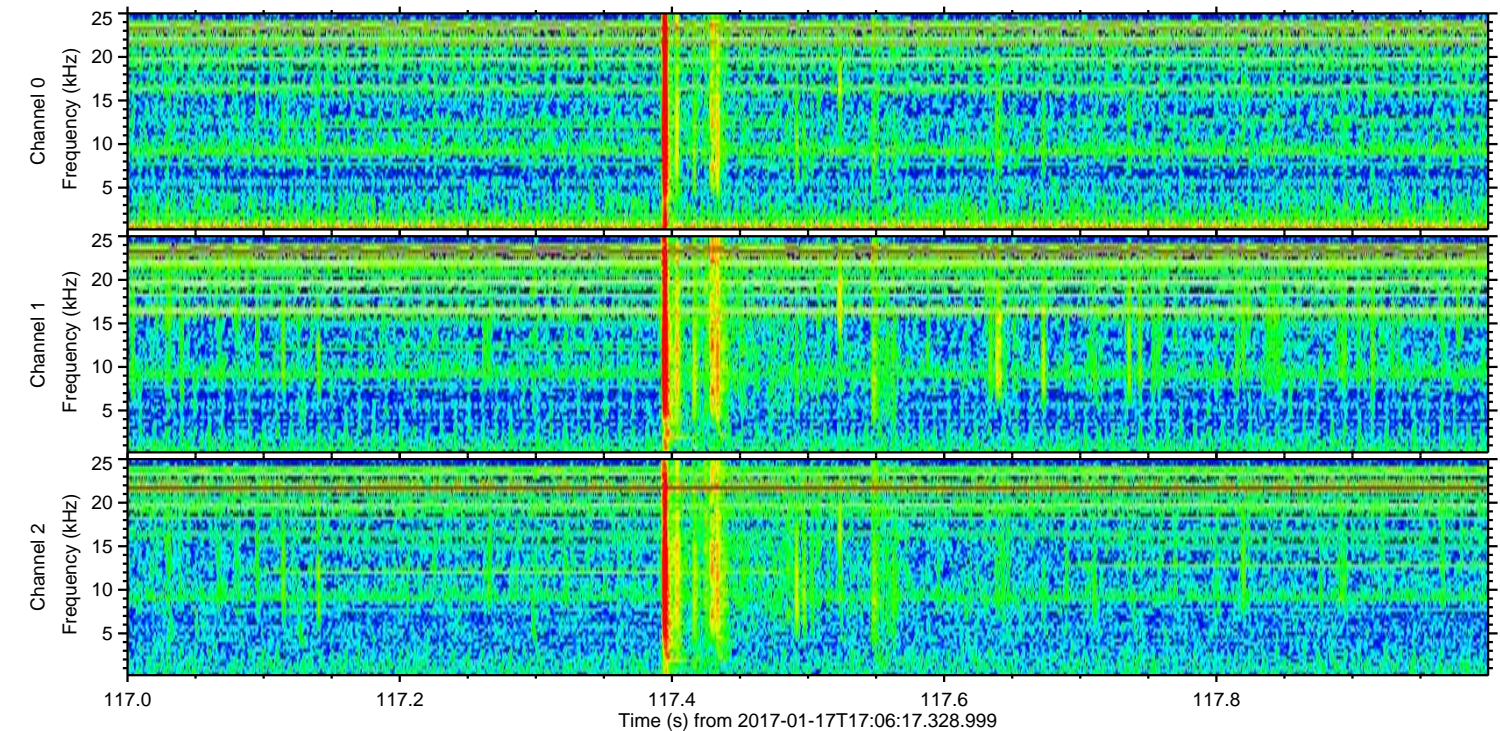
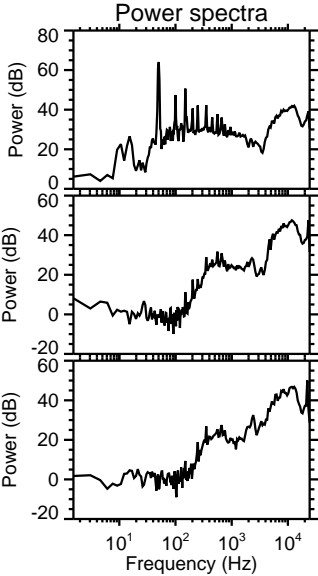
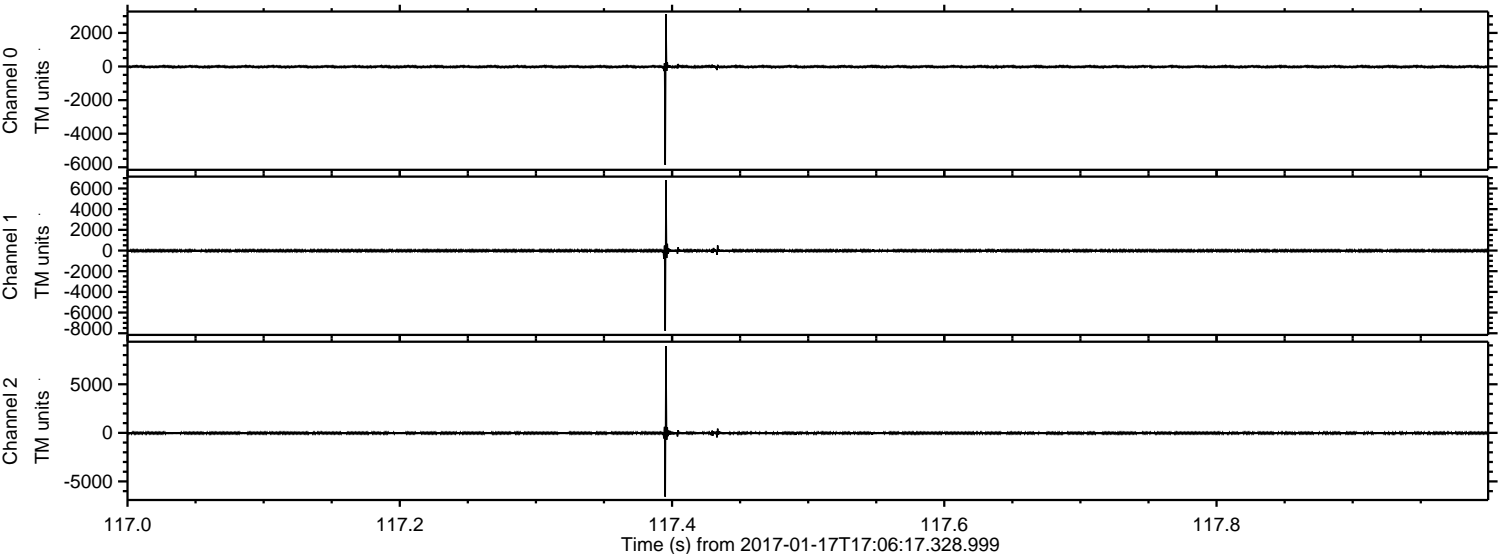
ELMAVAN 3D WAVEFORMS (Measured data sampled at 50 kHz) 51000 packets of 144 samples from 2017-01-17T17:06:17.328.999. Part 77/147

Processed Tue Jan 17 18:14:31 2017 by ELM ver.2012-10-06 from 001__elm20170117_170616__dat00.bin

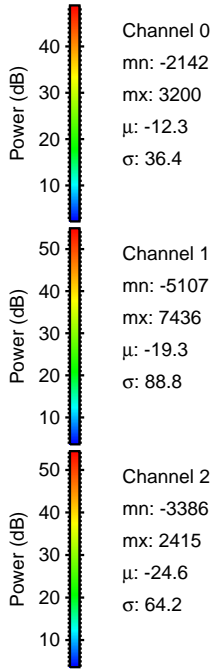
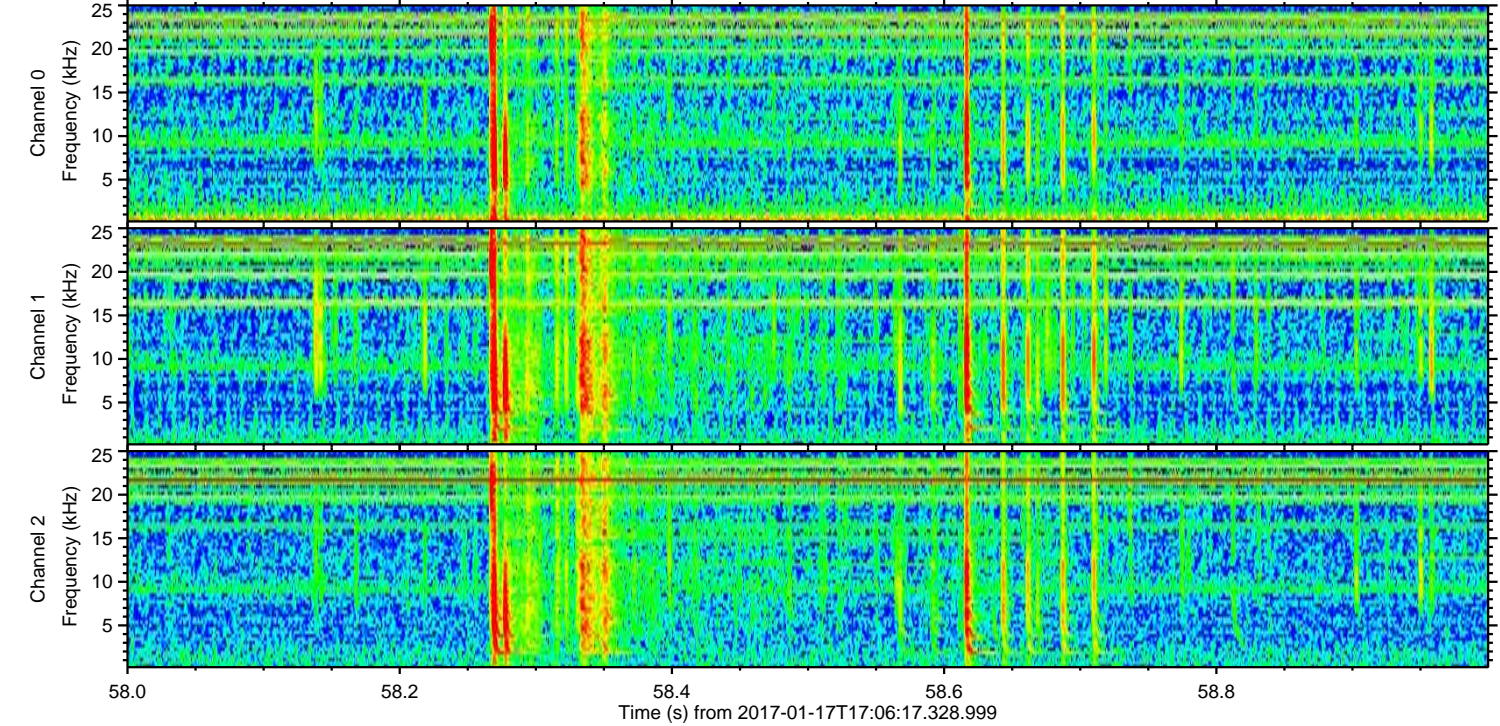
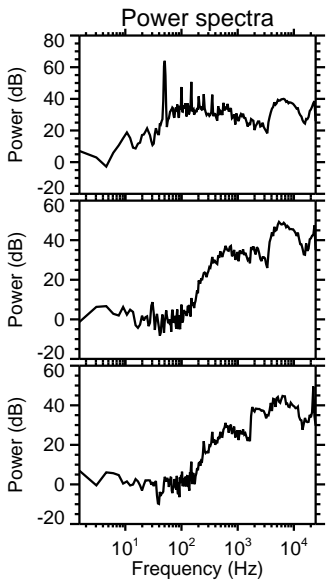
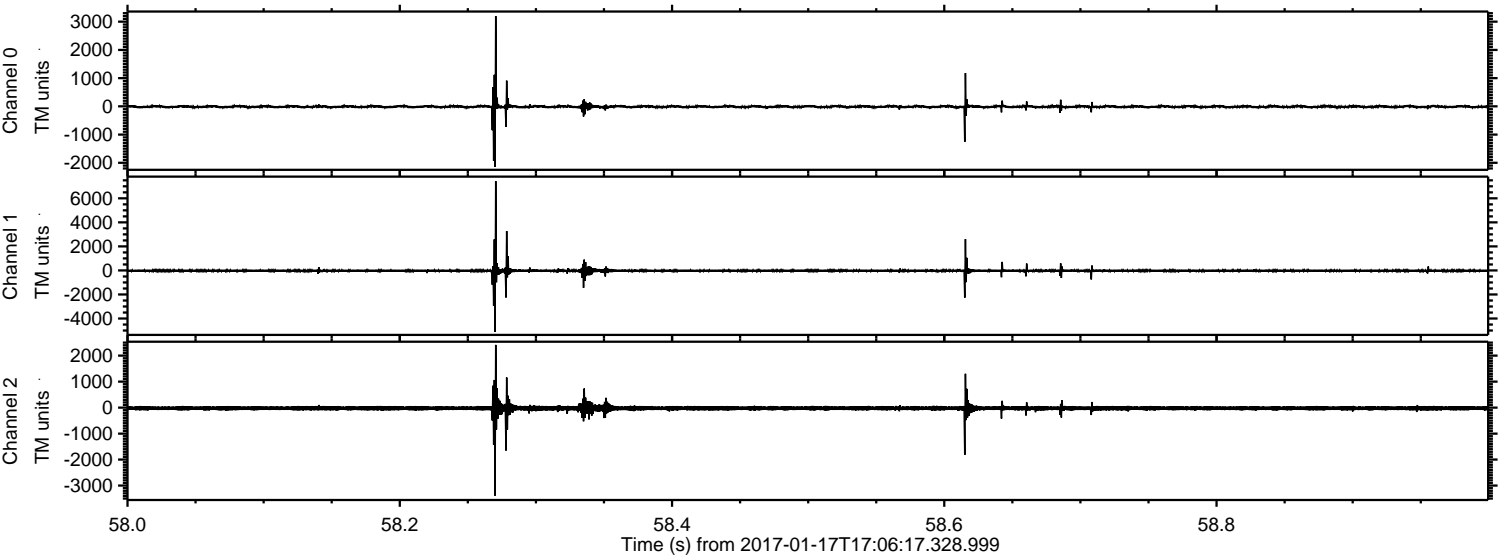


ELMAVAN 3D WAVEFORMS (Measured data sampled at 50 kHz) 51000 packets of 144 samples from 2017-01-17T17:06:17.328.999. Part 118/147

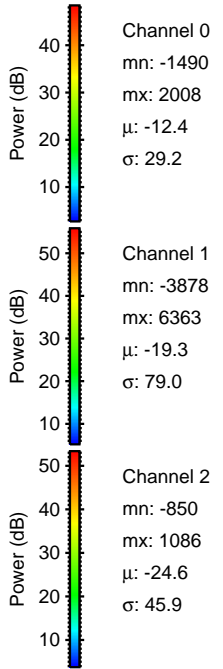
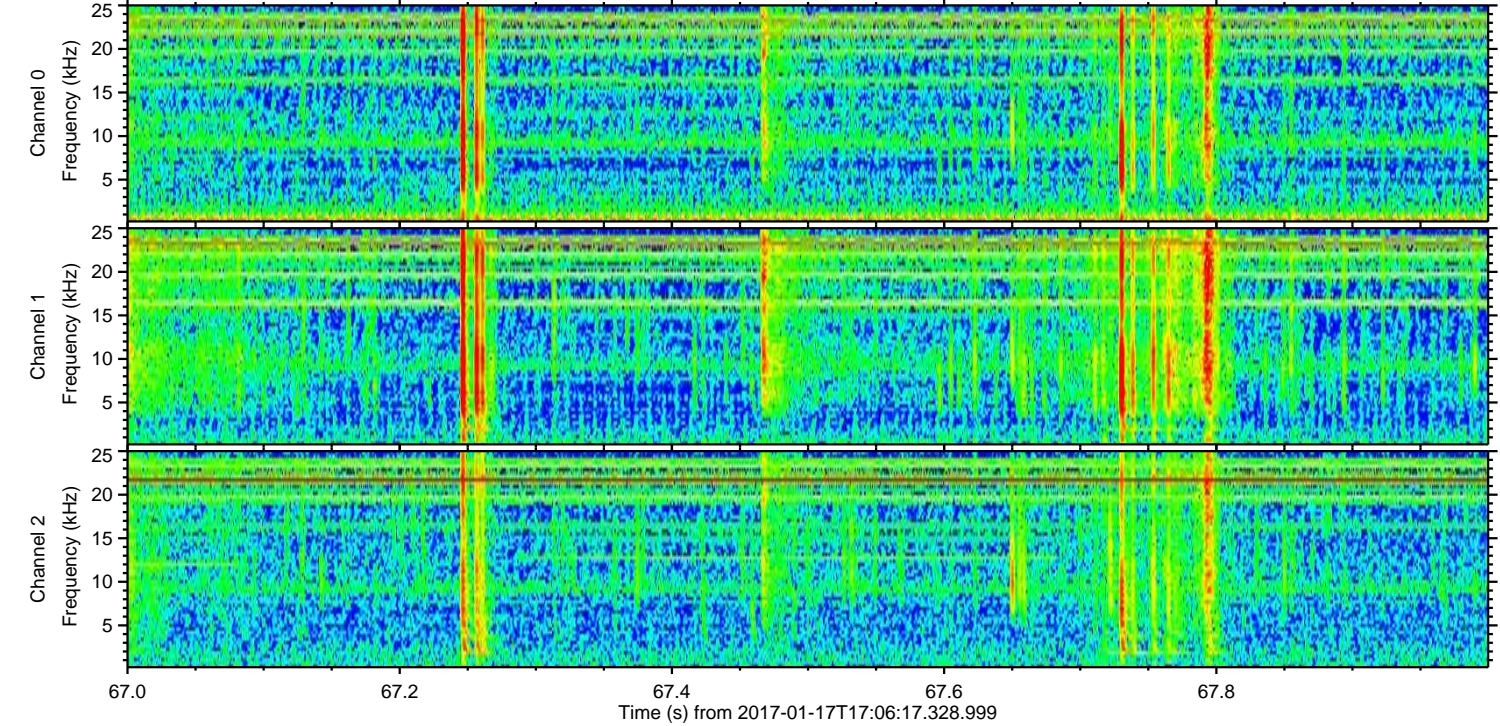
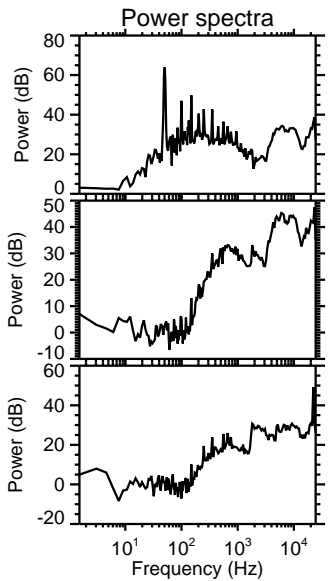
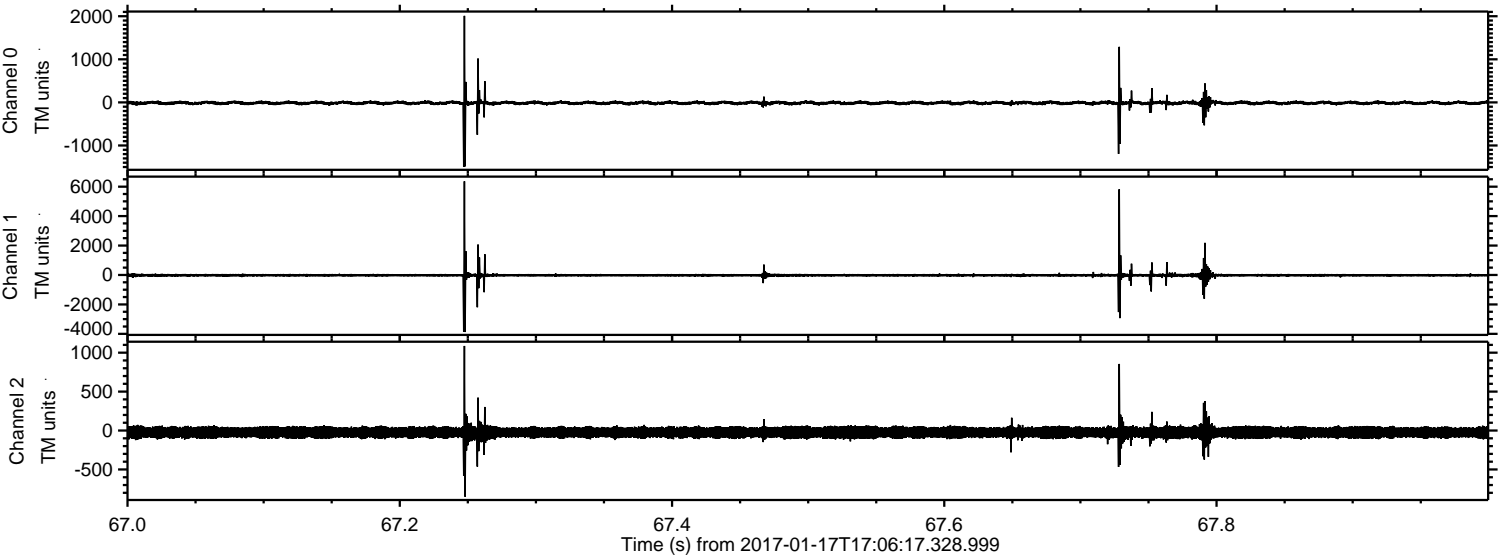
Processed Tue Jan 17 18:14:32 2017 by ELM ver.2012-10-06 from 001__elm20170117_170616__dat00.bin



Processed Tue Jan 17 18:14:33 2017 by ELM ver.2012-10-06 from 001__elm20170117_170616__dat00.bin

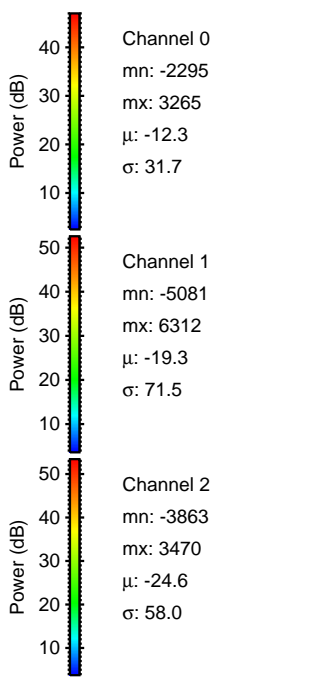
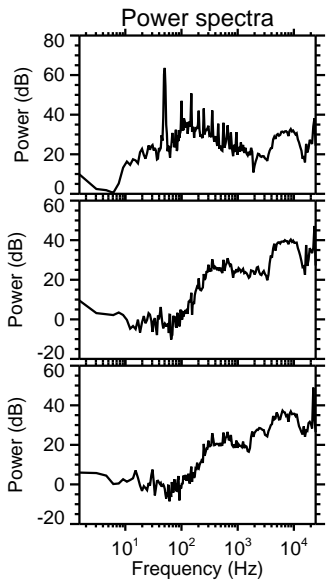
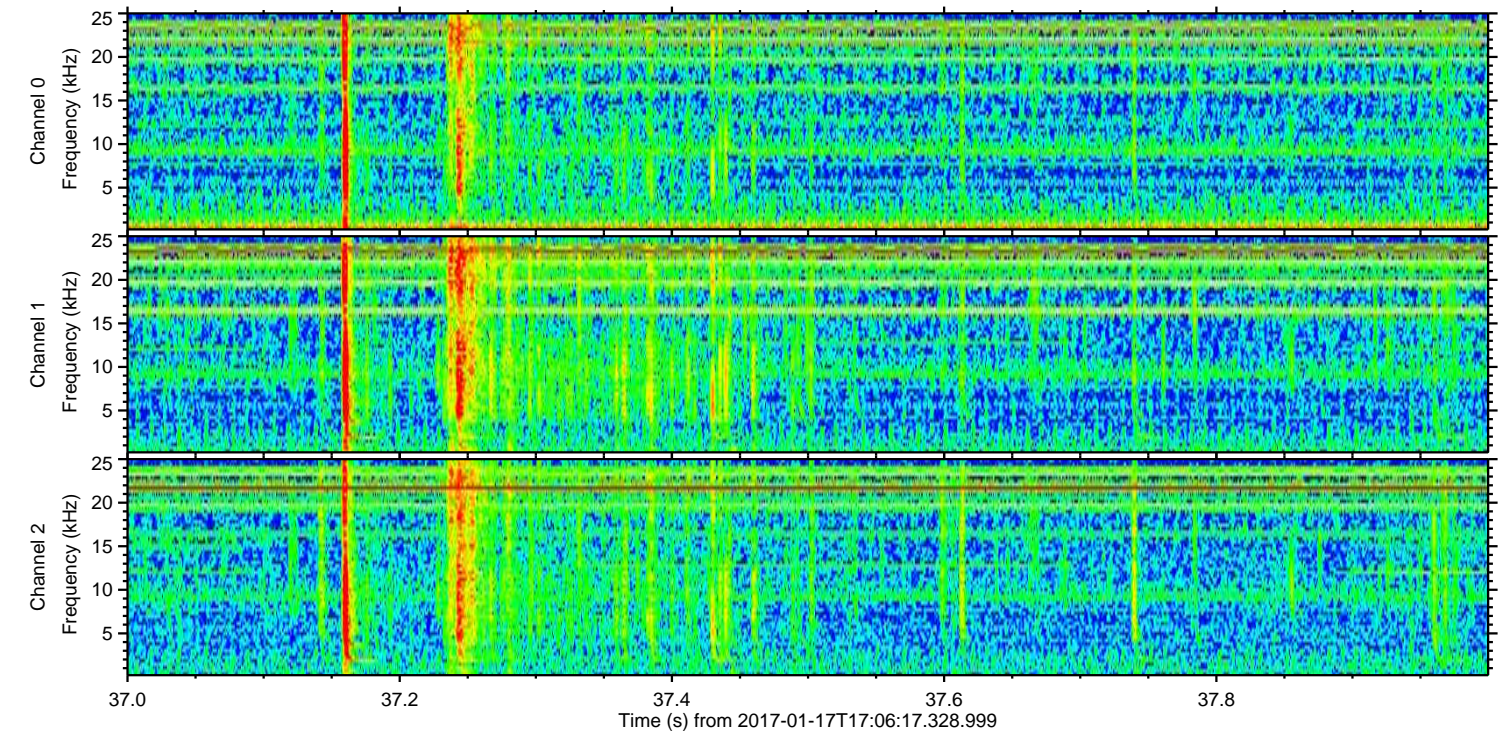
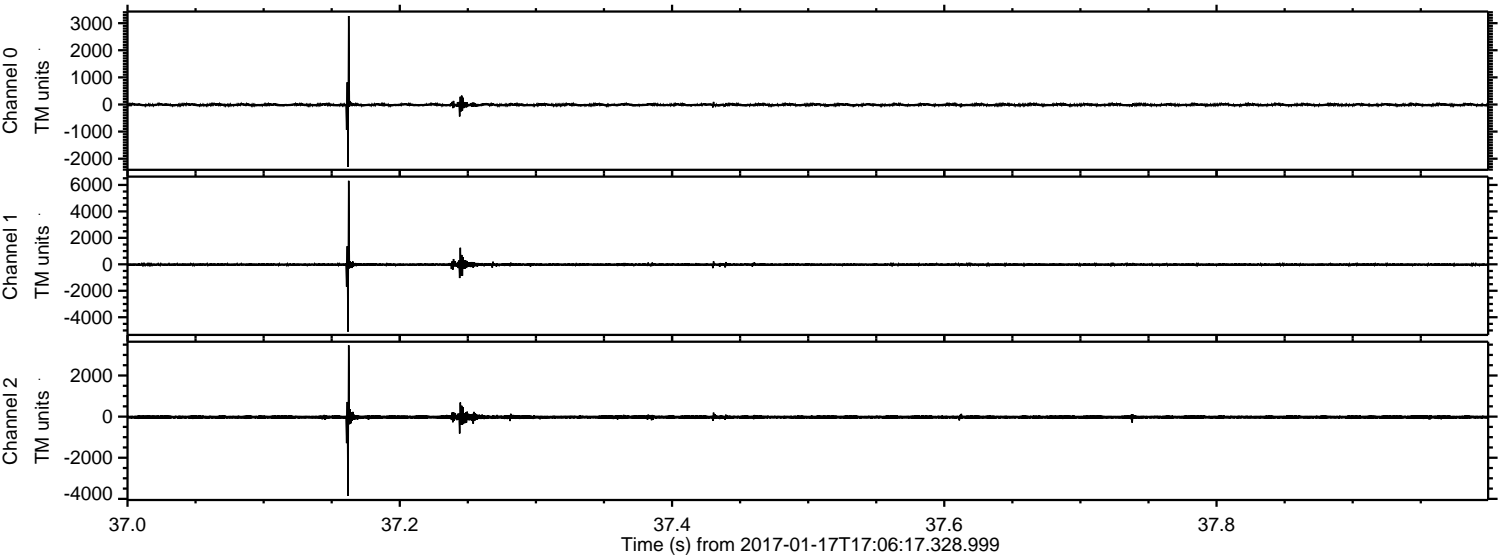


Processed Tue Jan 17 18:14:34 2017 by ELM ver.2012-10-06 from 001__elm20170117_170616__dat00.bin

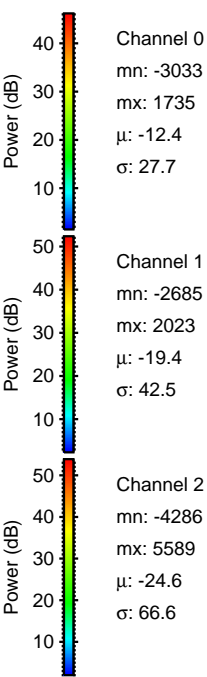
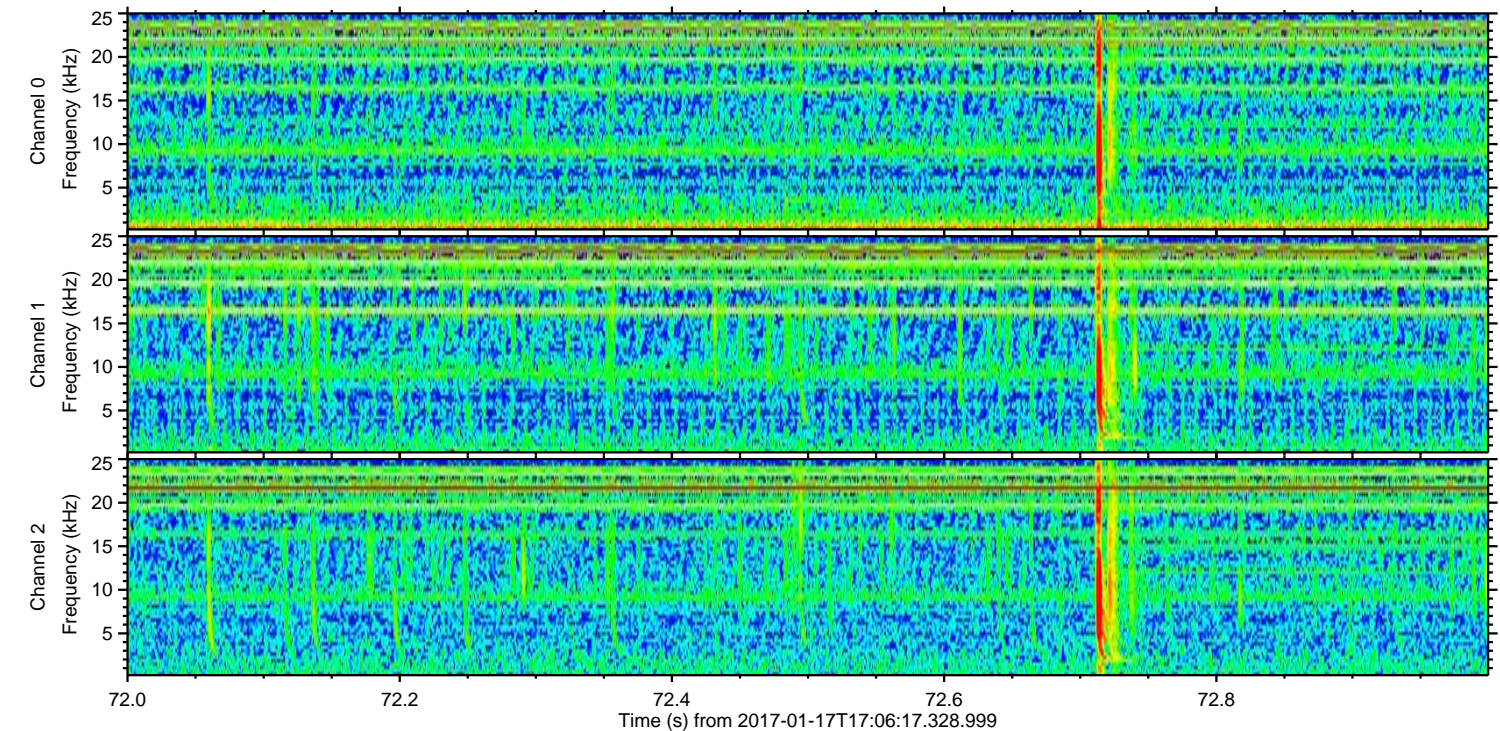
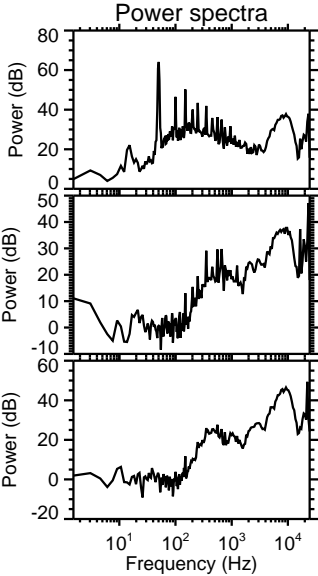
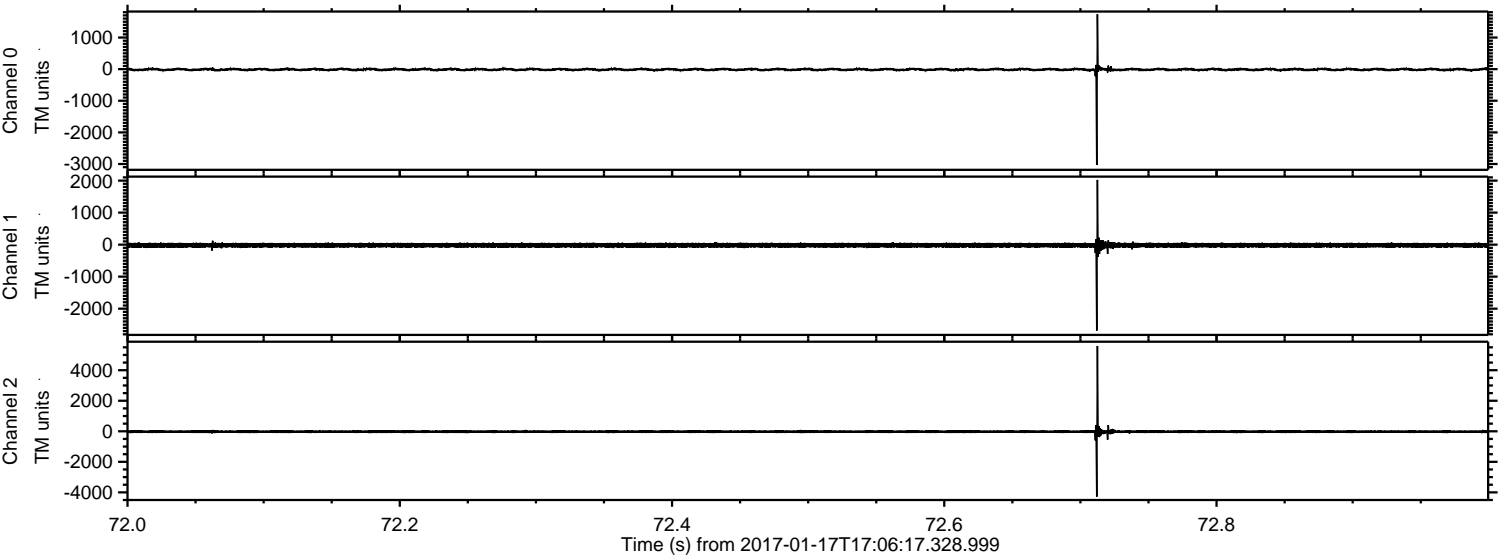


ELMAVAN 3D WAVEFORMS (Measured data sampled at 50 kHz) 51000 packets of 144 samples from 2017-01-17T17:06:17.328.999. Part 38/147

Processed Tue Jan 17 18:14:35 2017 by ELM ver.2012-10-06 from 001__elm20170117_170616__dat00.bin



Processed Tue Jan 17 18:14:36 2017 by ELM ver.2012-10-06 from 001__elm20170117_170616__dat00.bin



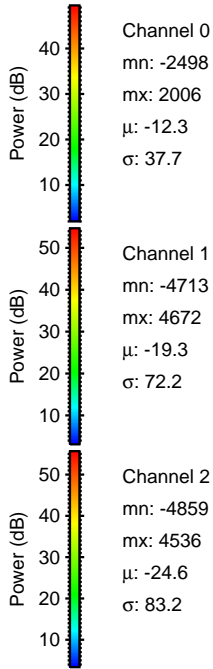
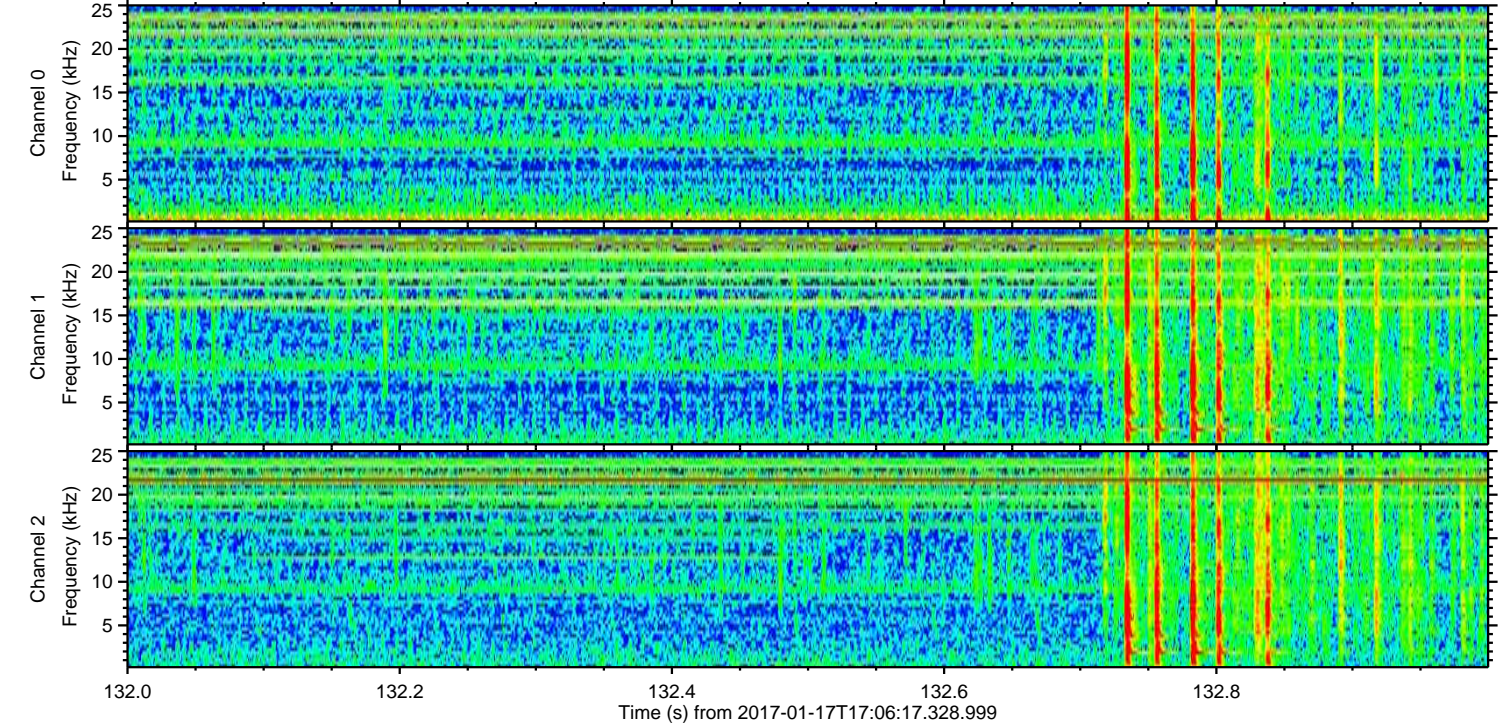
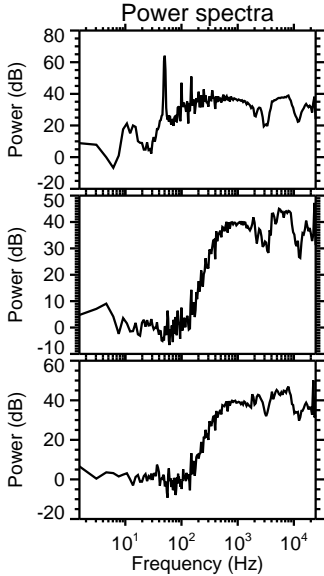
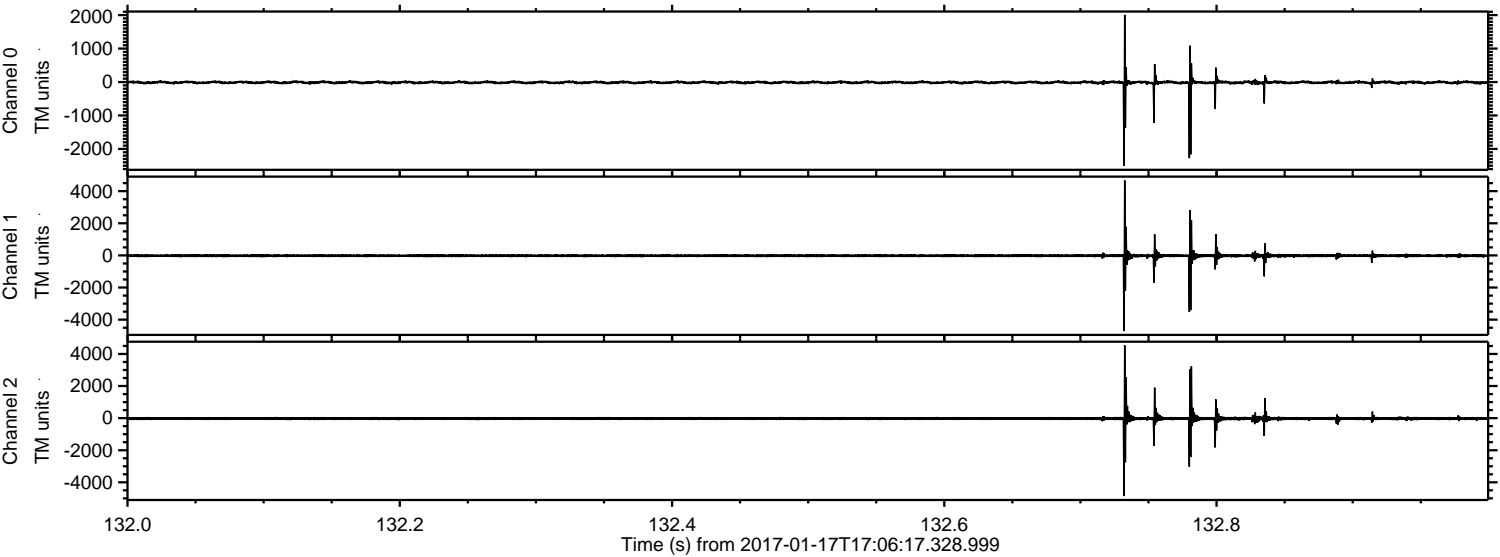
Channel 0
mn: -3033
mx: 1735
 μ : -12.4
 σ : 27.7

Channel 1
mn: -2685
mx: 2023
 μ : -19.4
 σ : 42.5

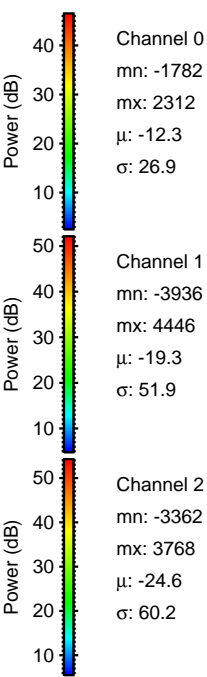
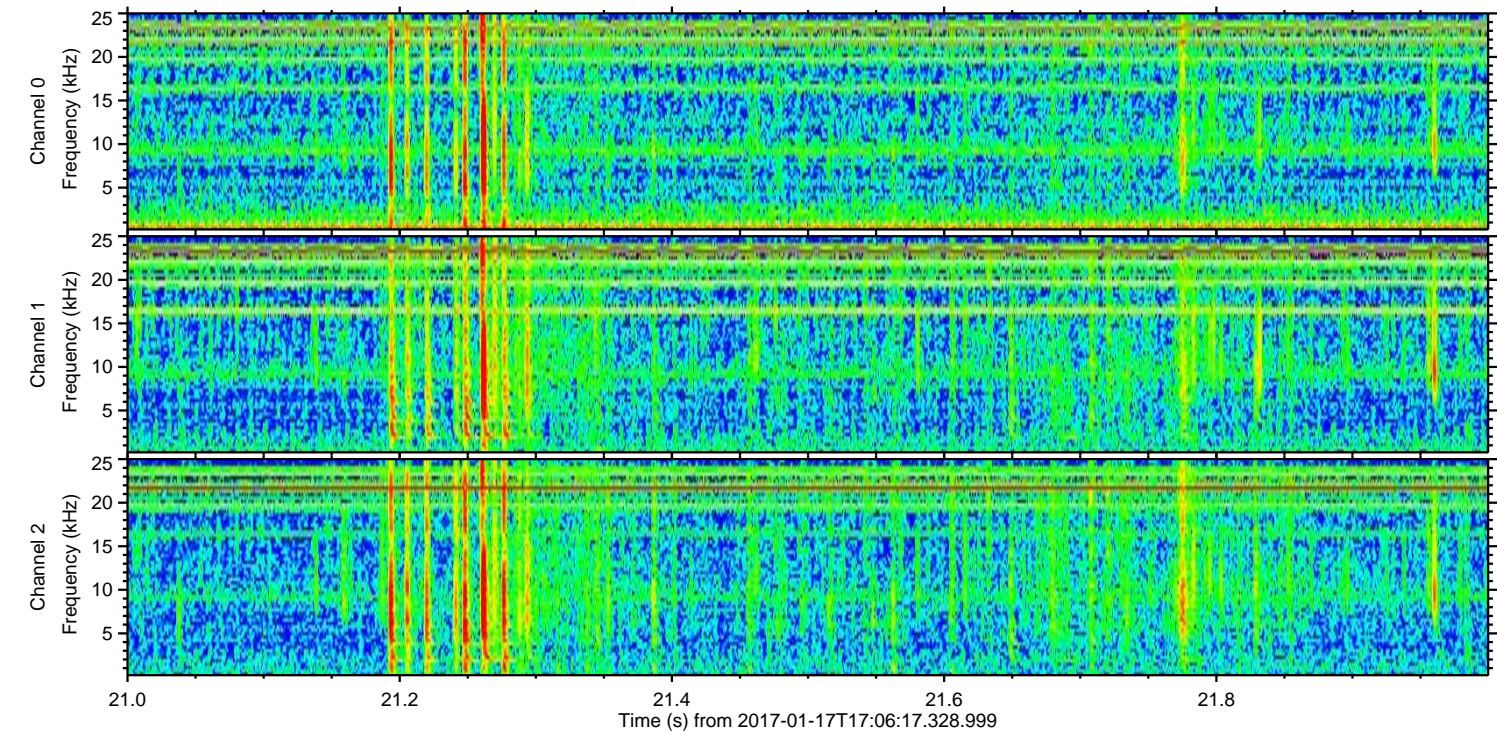
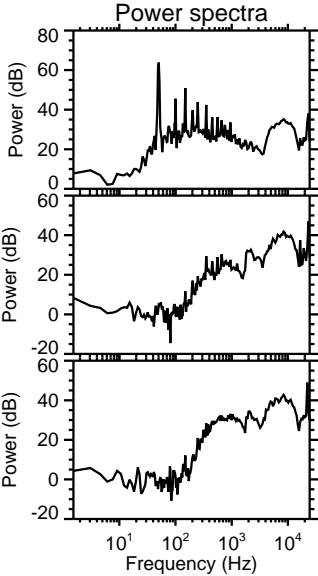
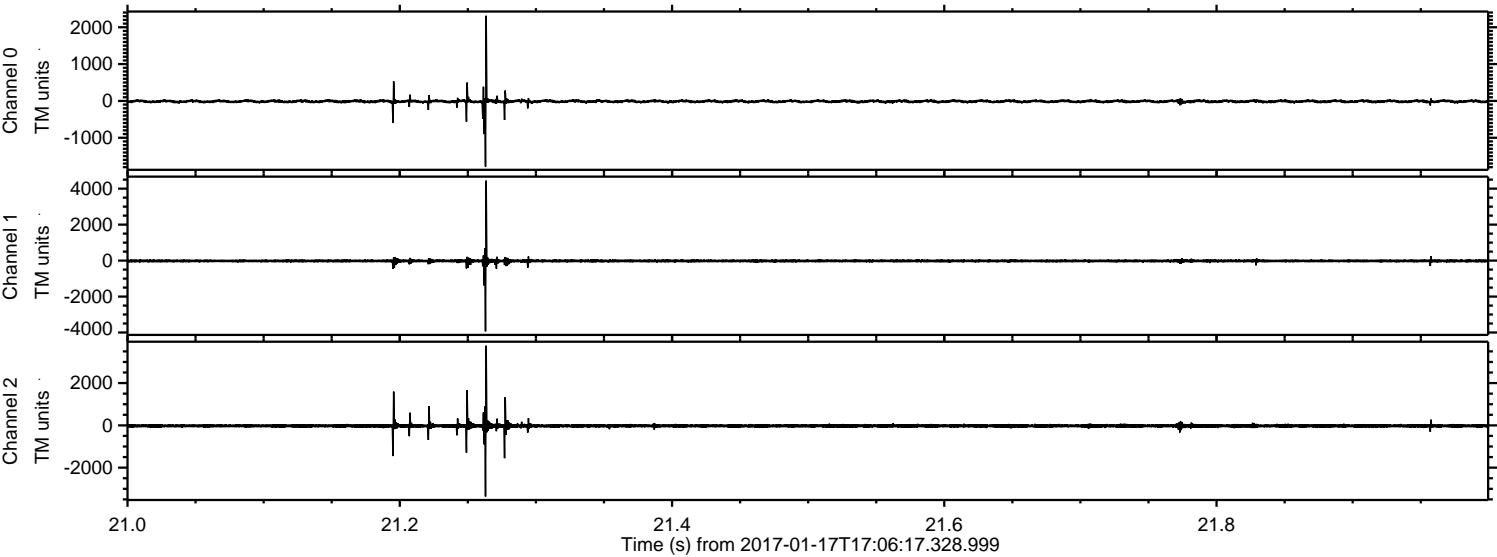
Channel 2
mn: -4286
mx: 5589
 μ : -24.6
 σ : 66.6

ELMAVAN 3D WAVEFORMS (Measured data sampled at 50 kHz) 51000 packets of 144 samples from 2017-01-17T17:06:17.328.999. Part 133/147

Processed Tue Jan 17 18:14:37 2017 by ELM ver.2012-10-06 from 001__elm20170117_170616__dat00.bin



Processed Tue Jan 17 18:14:38 2017 by ELM ver.2012-10-06 from 001__elm20170117_170616__dat00.bin

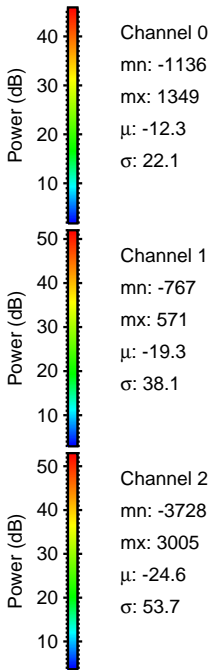
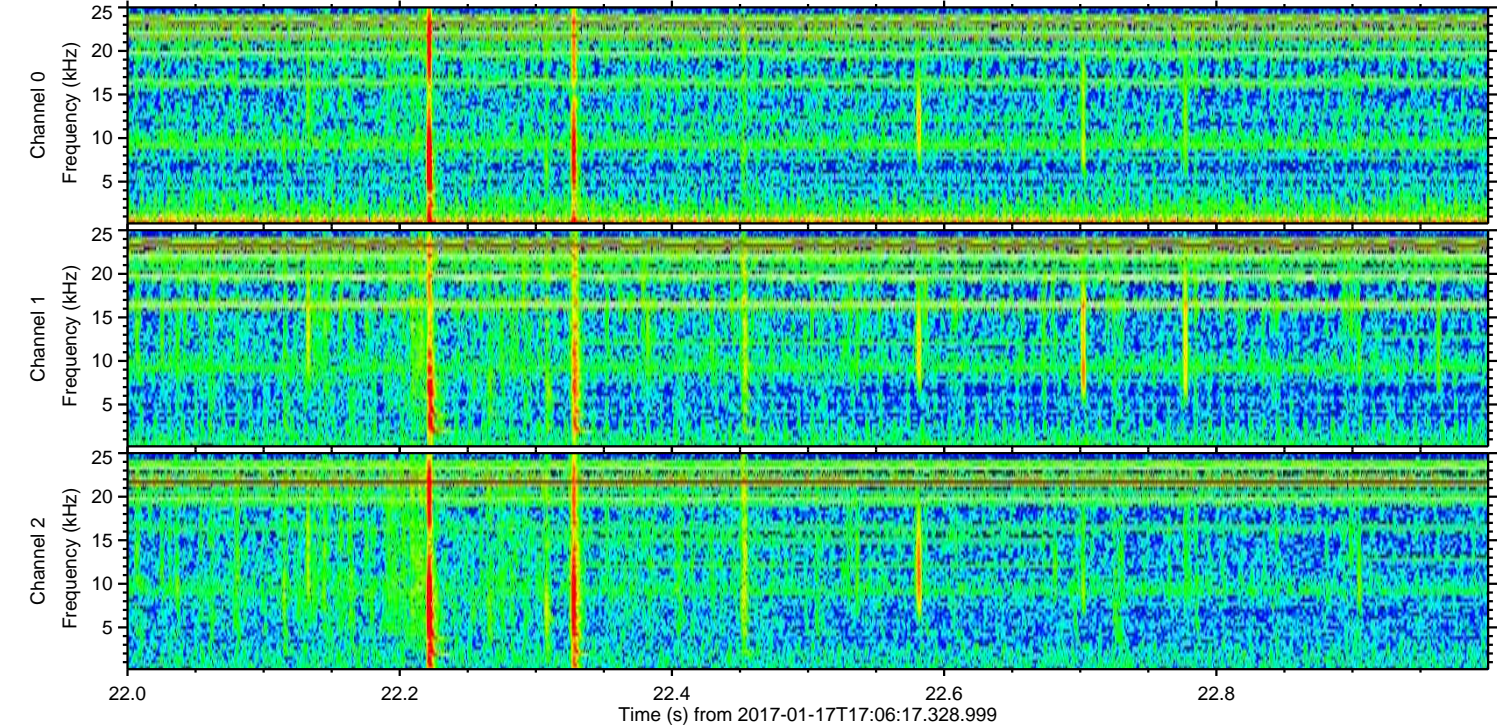
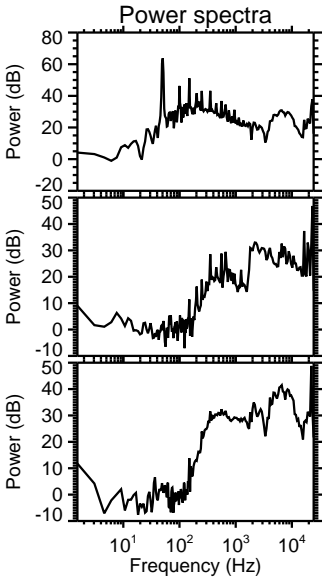
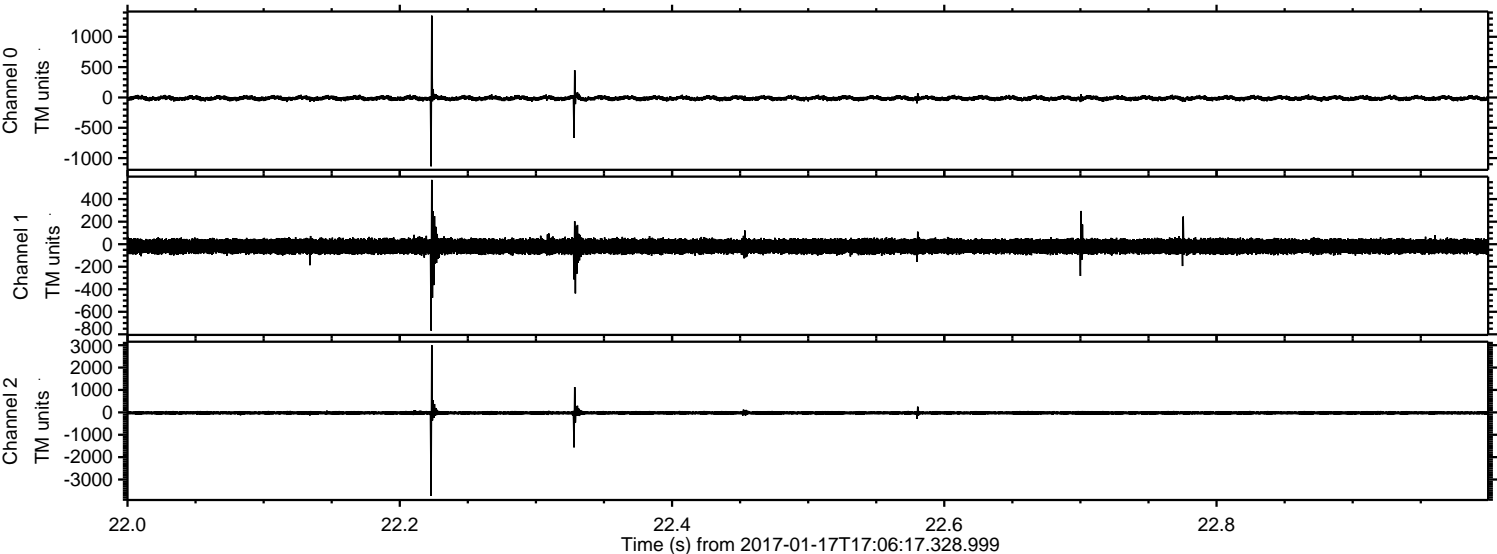


Channel 0
mn: -1782
mx: 2312
 μ : -12.3
 σ : 26.9

Channel 1
mn: -3936
mx: 4446
 μ : -19.3
 σ : 51.9

Channel 2
mn: -3362
mx: 3768
 μ : -24.6
 σ : 60.2

Processed Tue Jan 17 18:14:39 2017 by ELM ver.2012-10-06 from 001__elm20170117_170616__dat00.bin



Processed Tue Jan 17 18:14:39 2017 by ELM ver.2012-10-06 from 001__elm20170117_170616__dat00.bin

