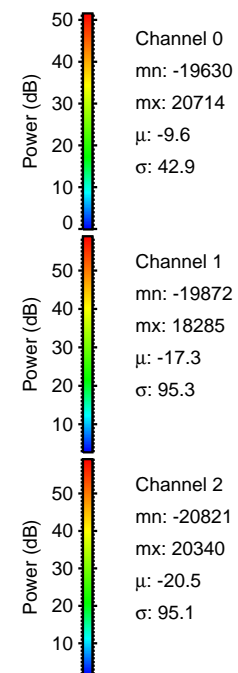
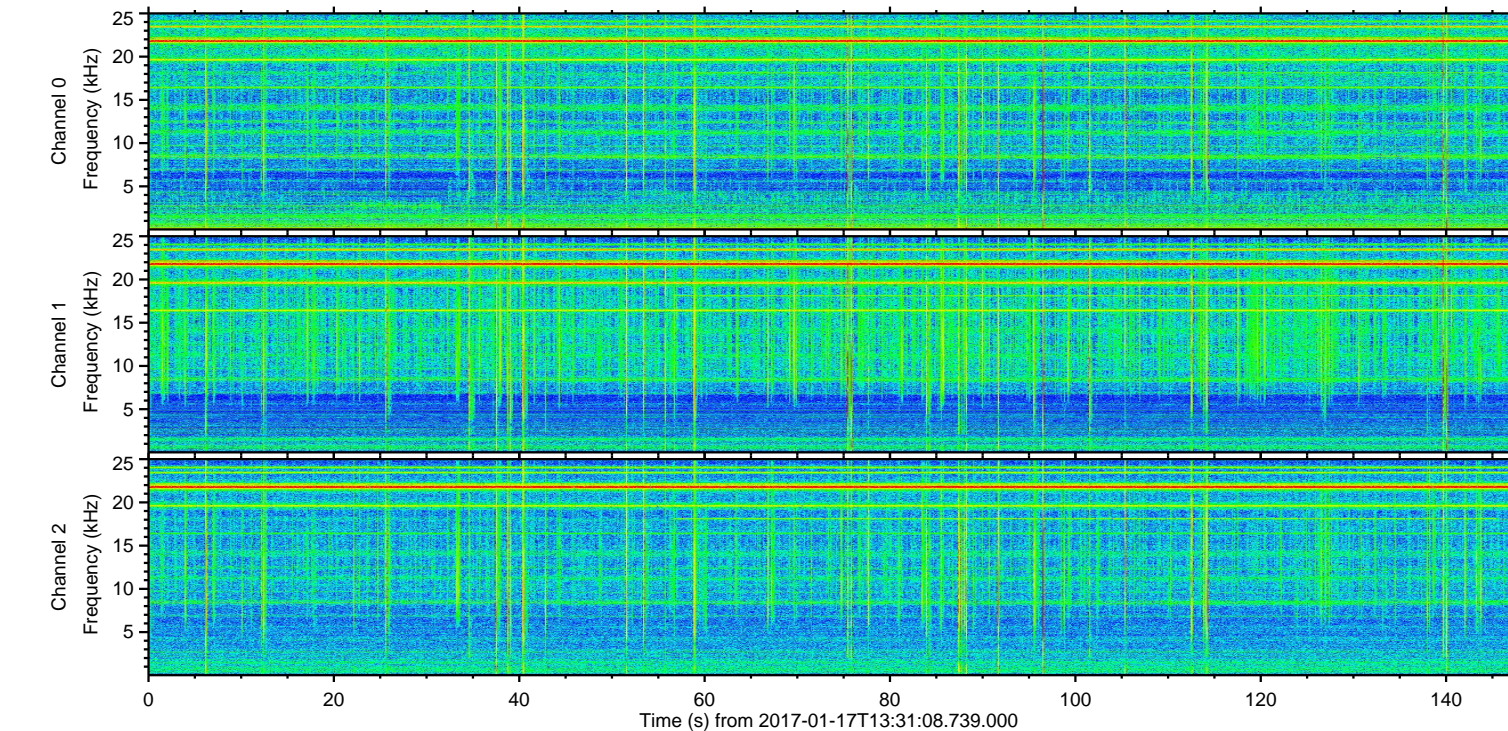
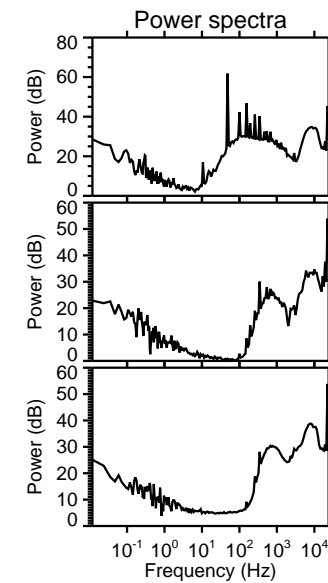
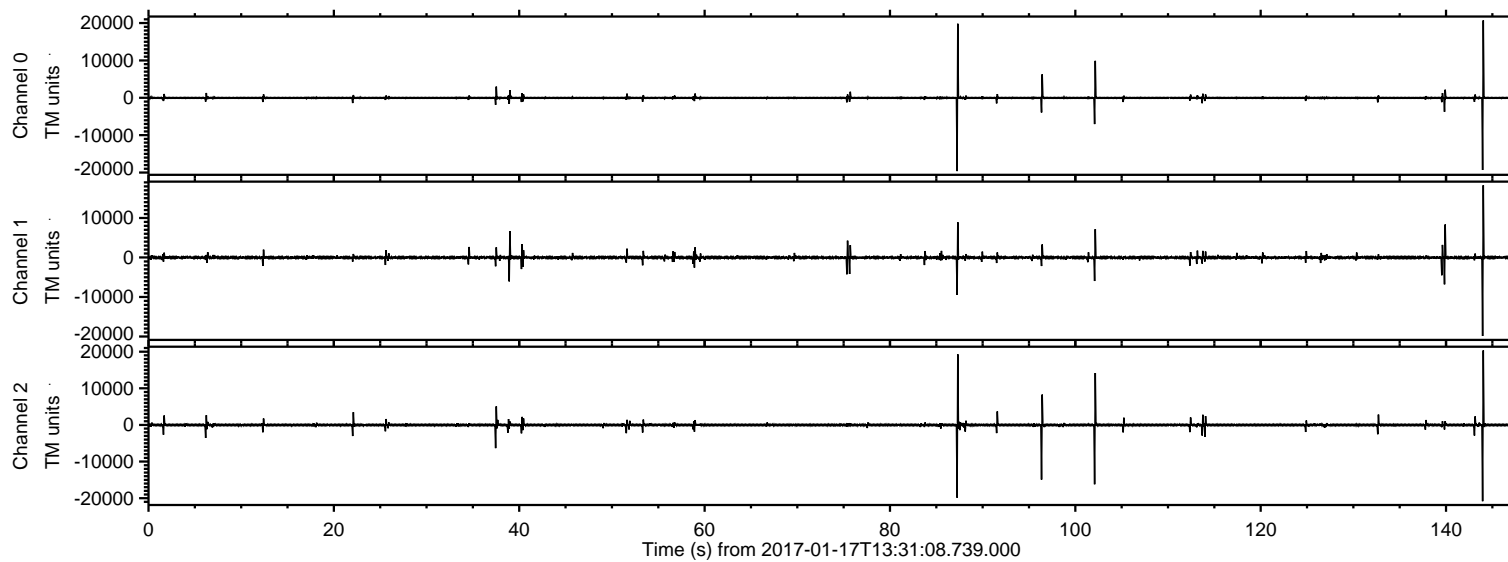


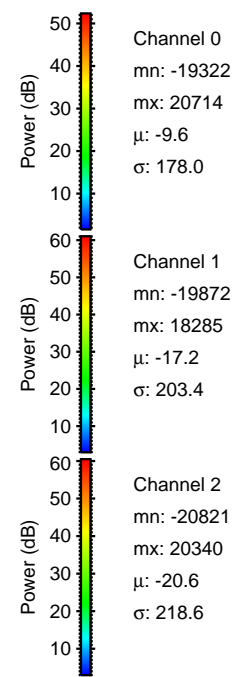
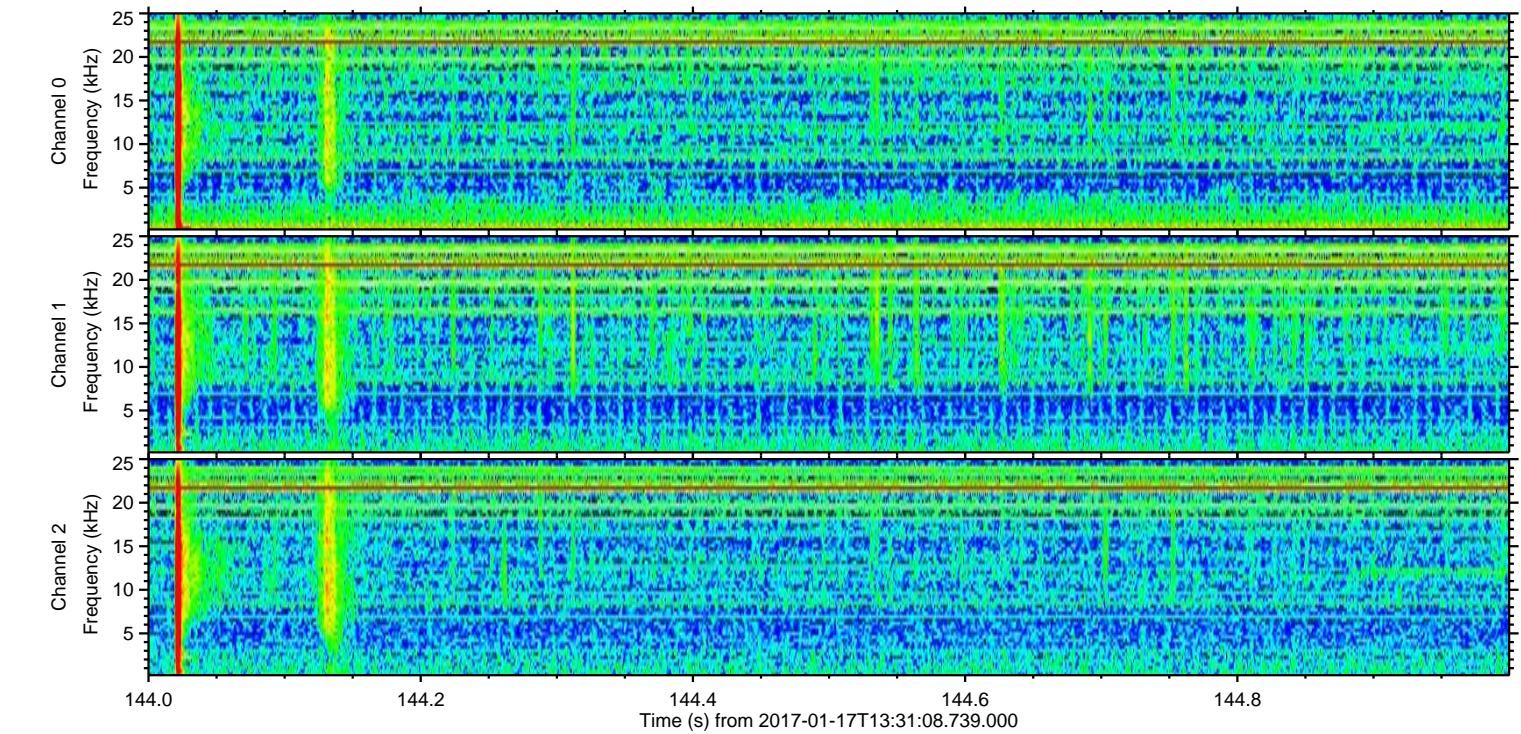
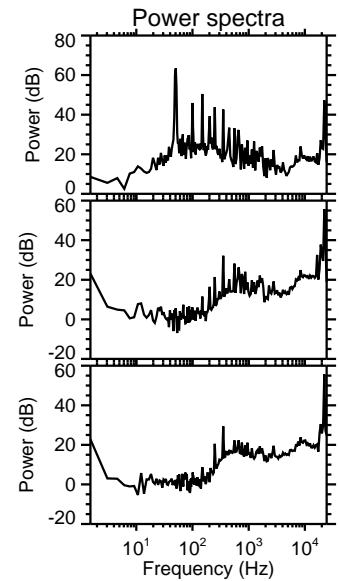
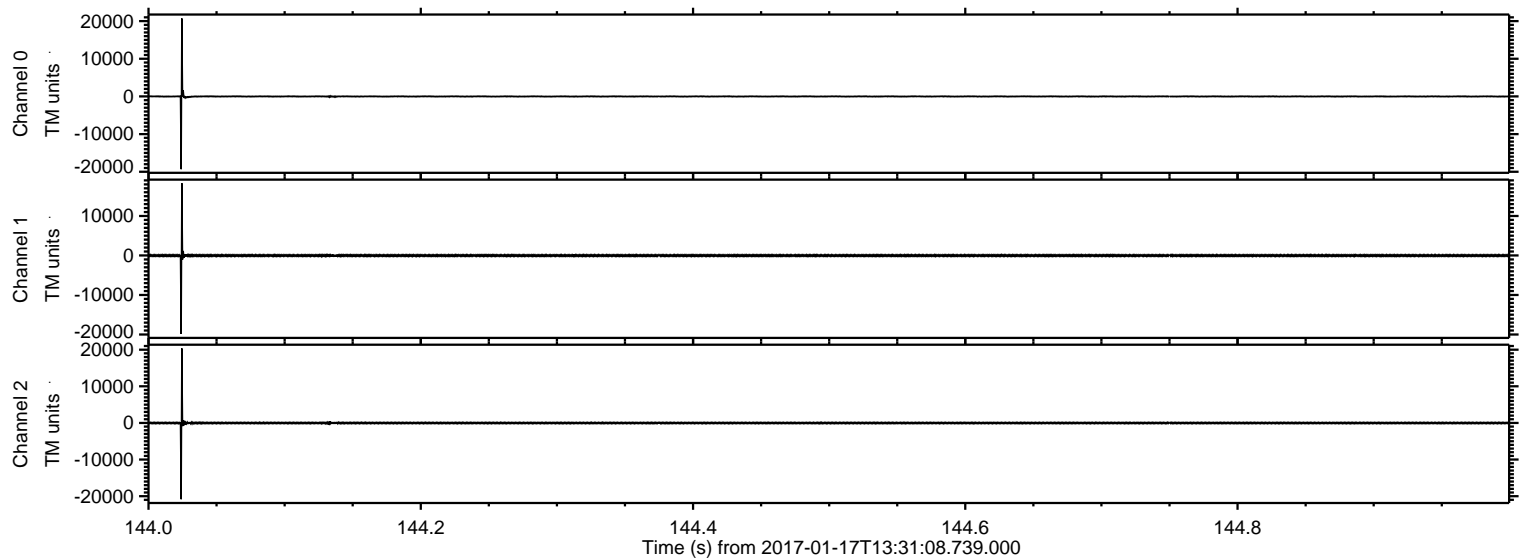
ELMAVAN 3D WAVEFORMS (Measured data sampled at 50 kHz) 51000 packets of 144 samples from 2017-01-17T13:31:08.739.000.

Processed Tue Jan 17 14:38:42 2017 by ELM ver.2012-10-06 from 001__elm20170117_133107__dat00.bin



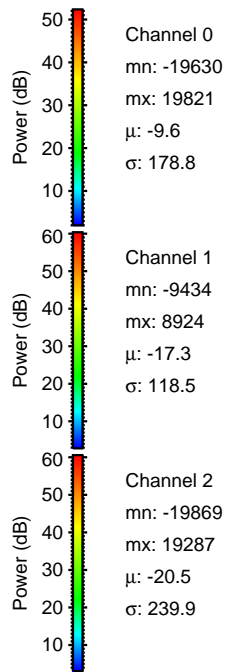
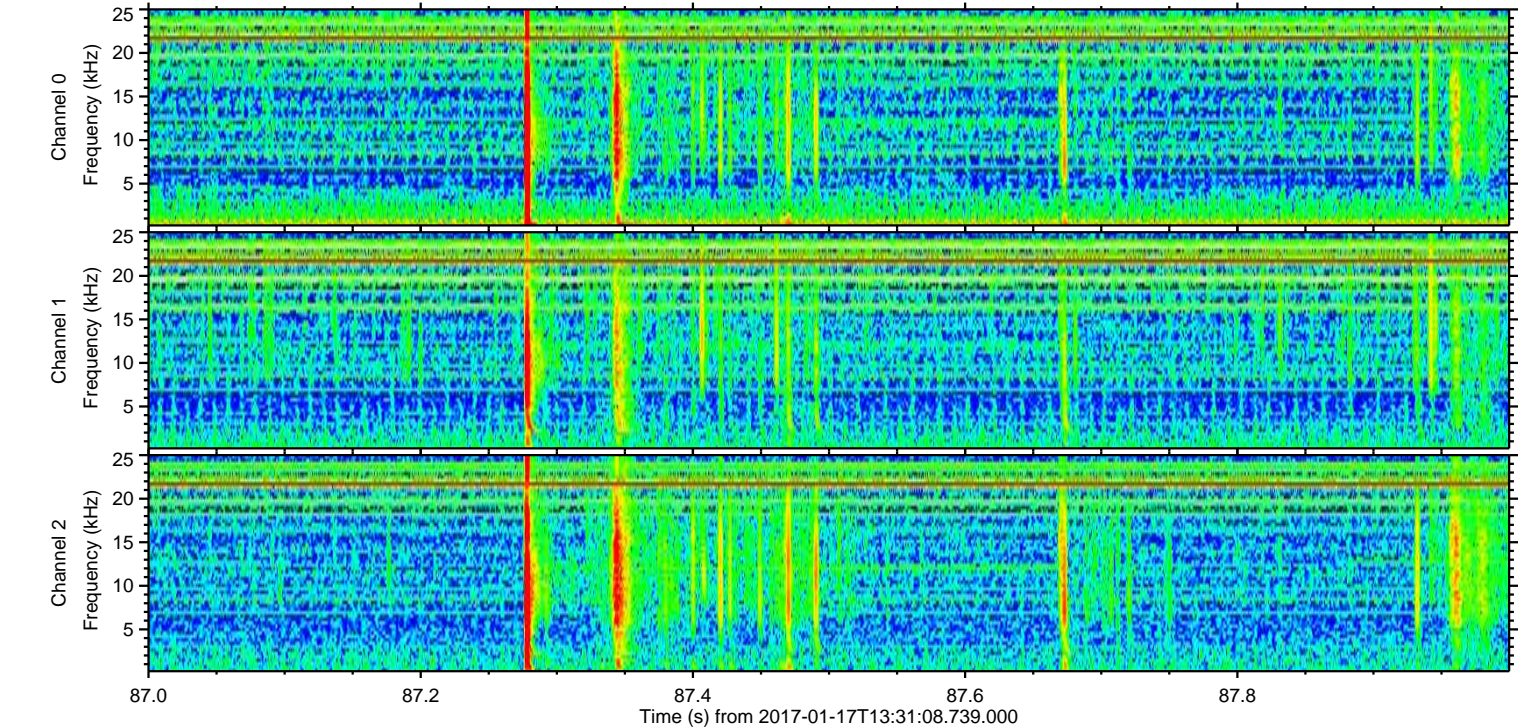
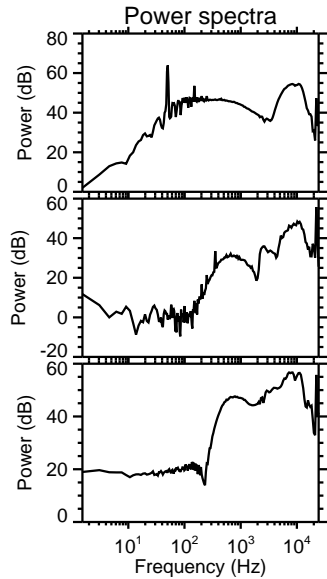
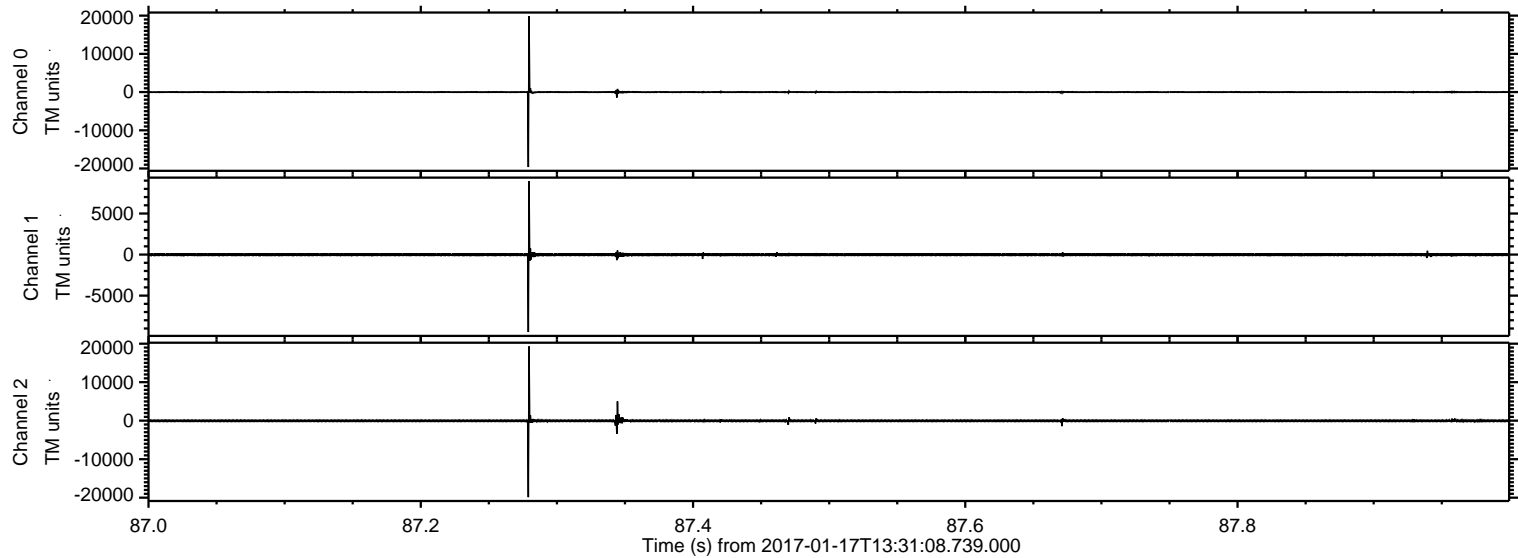
ELMAVAN 3D WAVEFORMS (Measured data sampled at 50 kHz) 51000 packets of 144 samples from 2017-01-17T13:31:08.739.000. Part 145/147

Processed Tue Jan 17 14:38:53 2017 by ELM ver.2012-10-06 from 001__elm20170117_133107__dat00.bin



ELMAVAN 3D WAVEFORMS (Measured data sampled at 50 kHz) 51000 packets of 144 samples from 2017-01-17T13:31:08.739.000. Part 88/147

Processed Tue Jan 17 14:38:54 2017 by ELM ver.2012-10-06 from 001__elm20170117_133107__dat00.bin



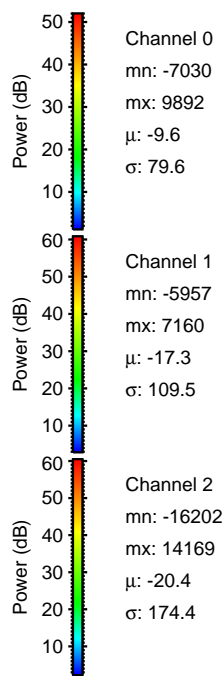
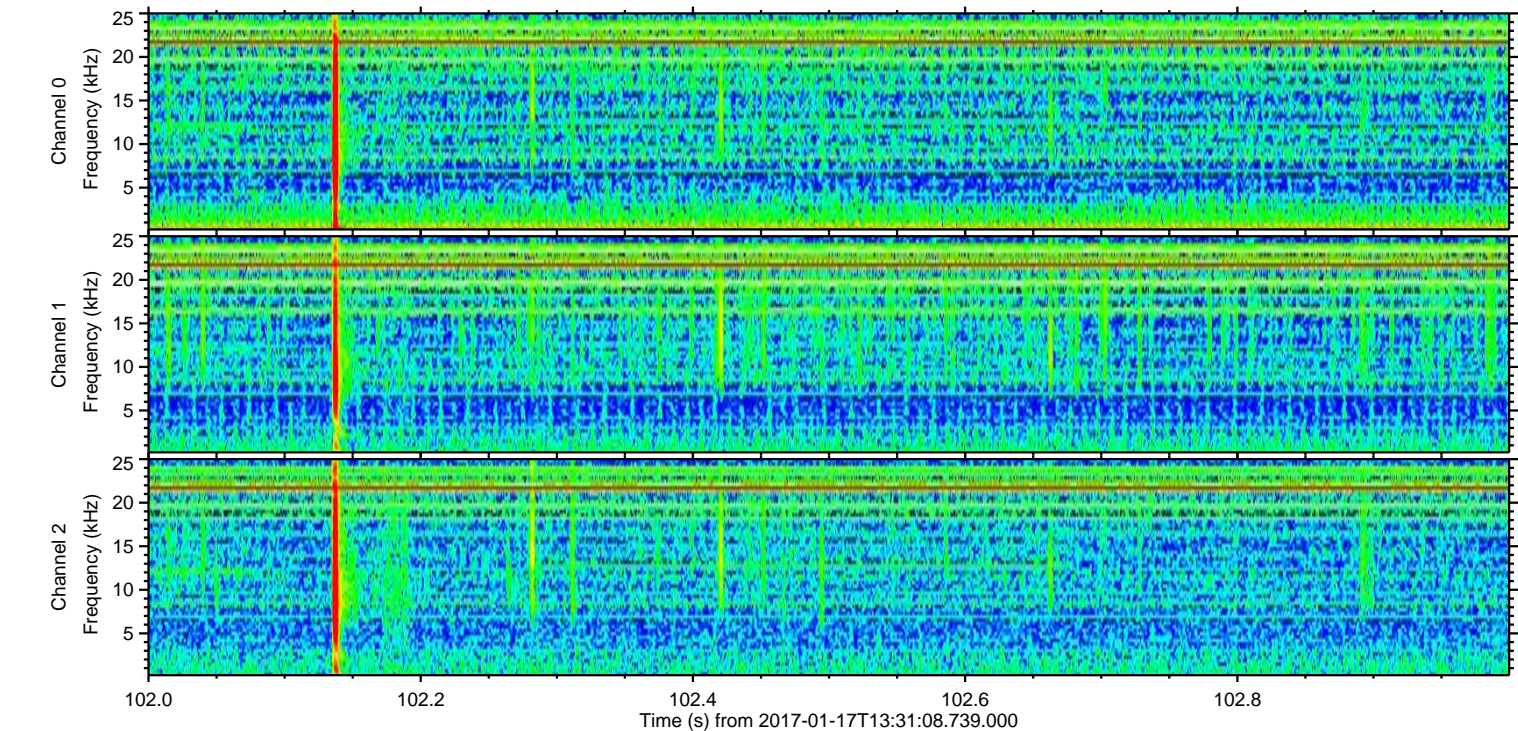
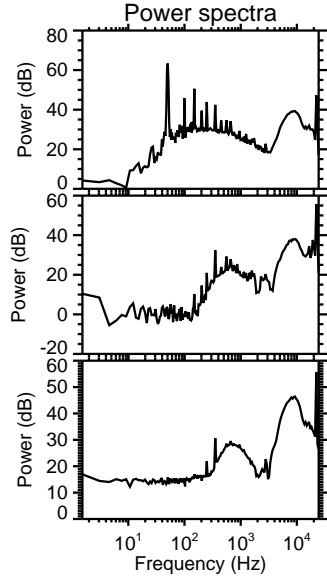
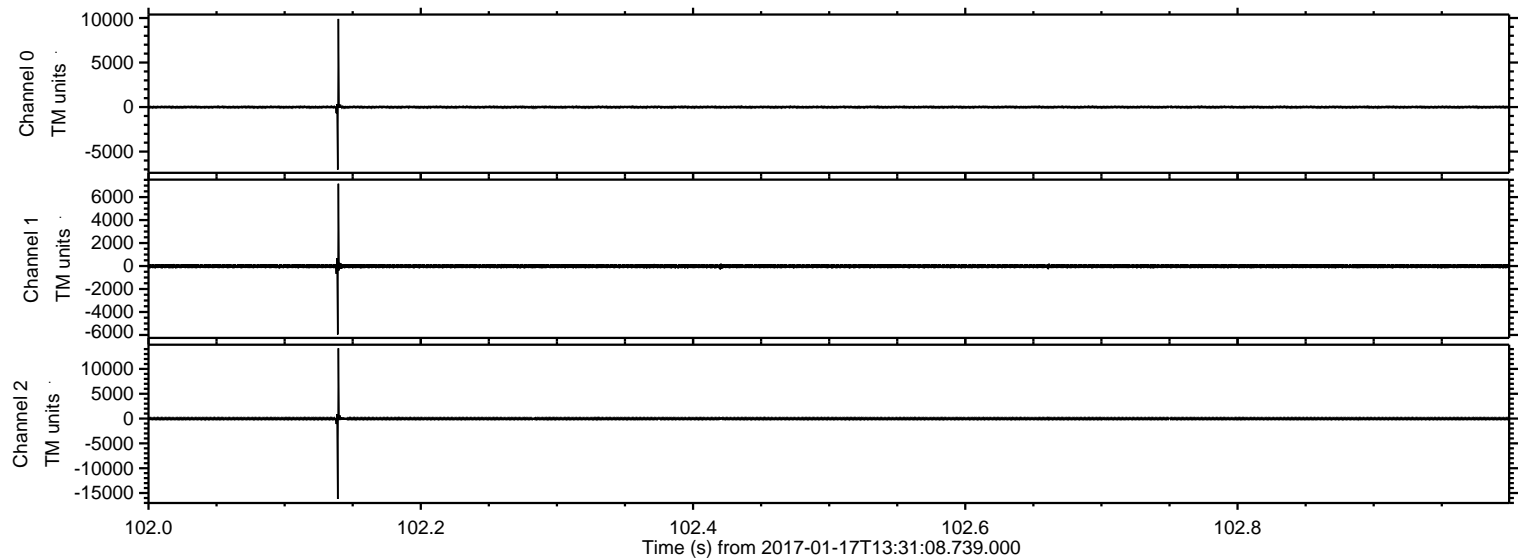
Channel 0
mn: -19630
mx: 19821
 μ : -9.6
 σ : 178.8

Channel 1
mn: -9434
mx: 8924
 μ : -17.3
 σ : 118.5

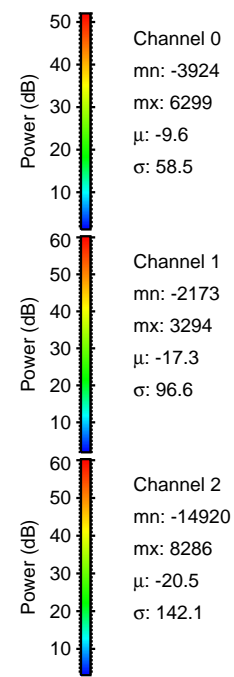
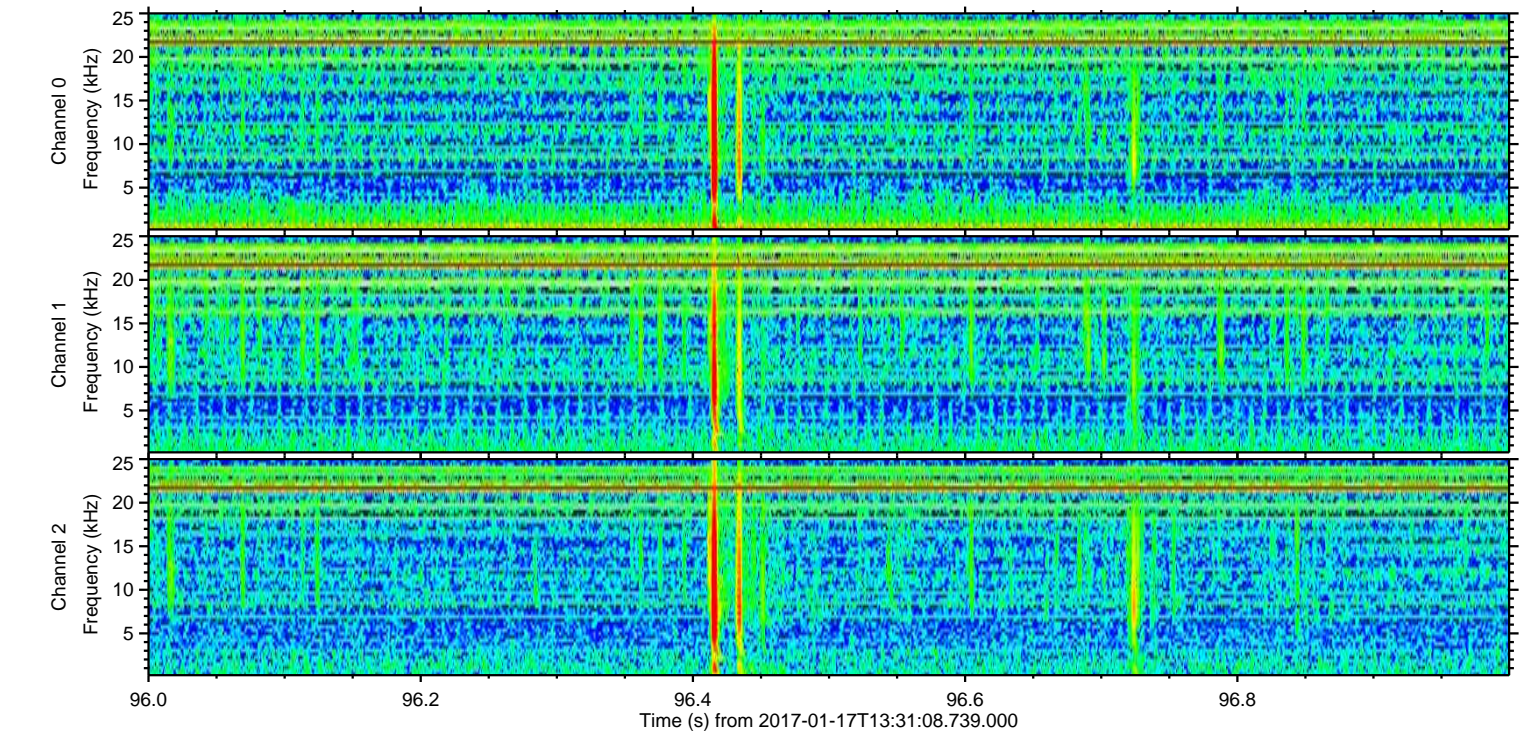
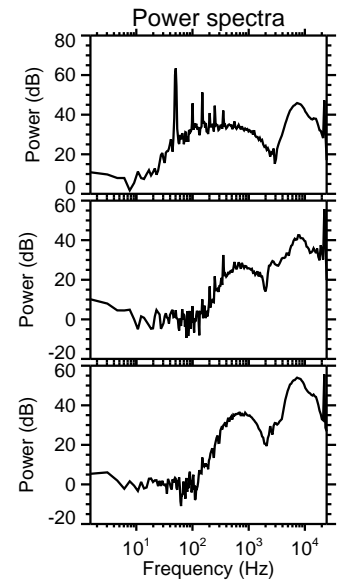
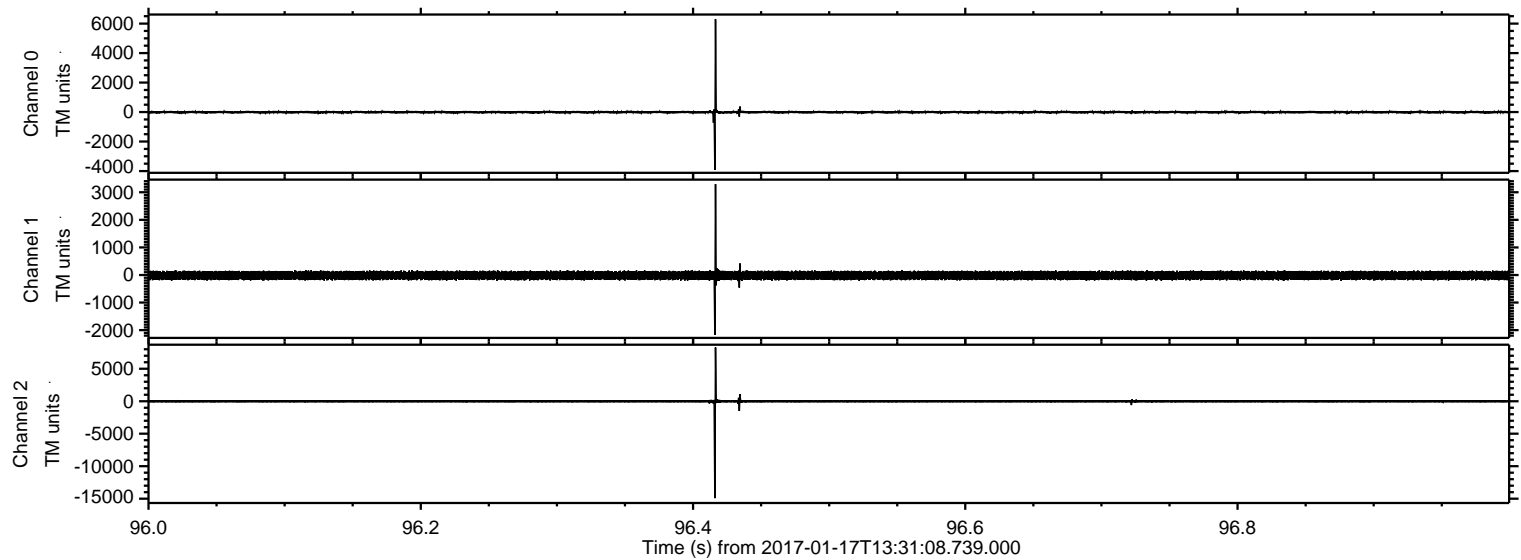
Channel 2
mn: -19869
mx: 19287
 μ : -20.5
 σ : 239.9

ELMAVAN 3D WAVEFORMS (Measured data sampled at 50 kHz) 51000 packets of 144 samples from 2017-01-17T13:31:08.739.000. Part 103/147

Processed Tue Jan 17 14:38:55 2017 by ELM ver.2012-10-06 from 001__elm20170117_133107__dat00.bin



Processed Tue Jan 17 14:38:56 2017 by ELM ver.2012-10-06 from 001__elm20170117_133107__dat00.bin



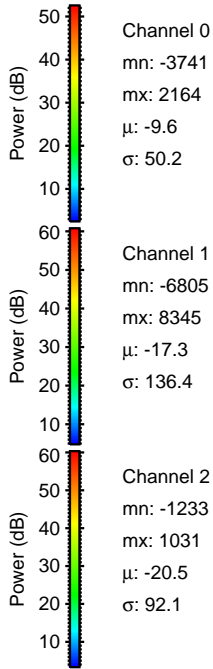
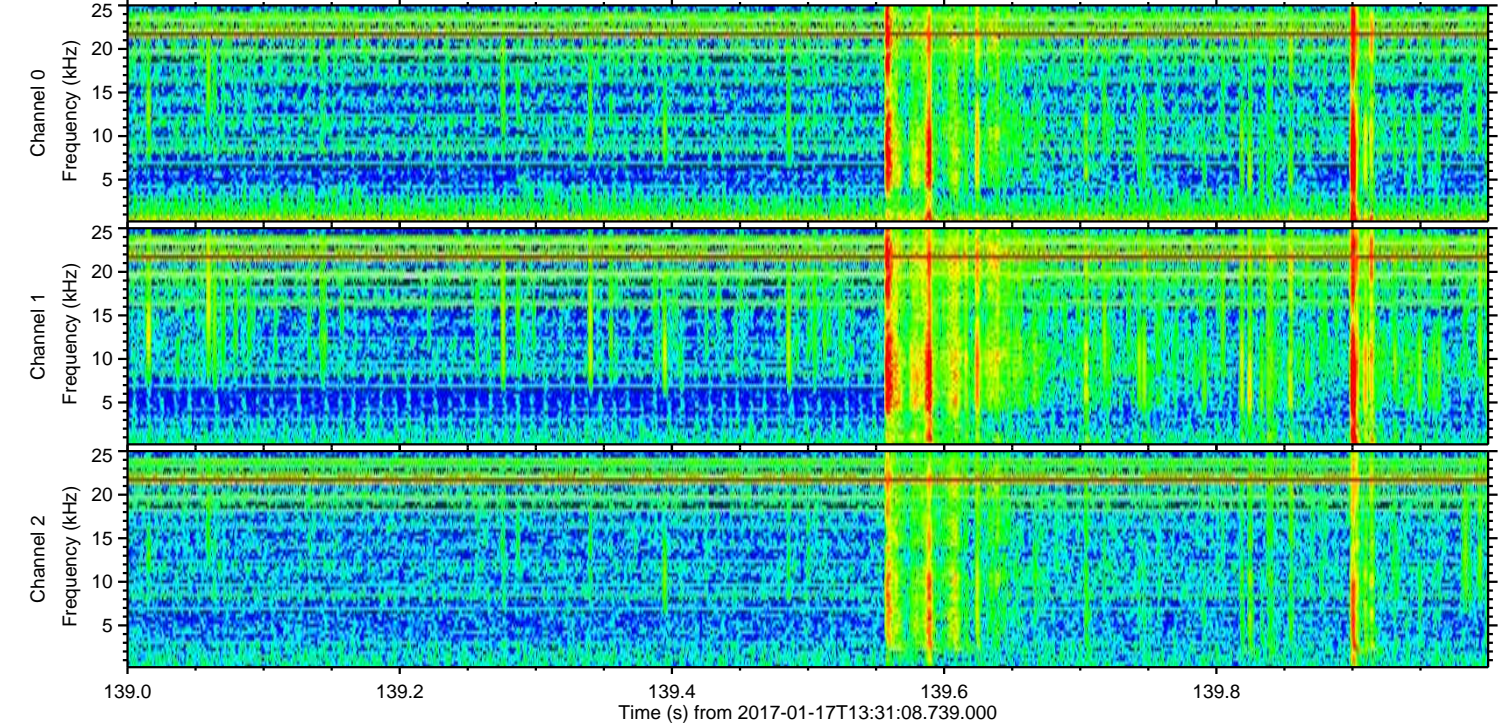
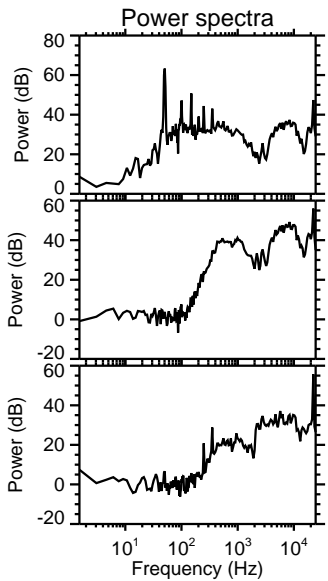
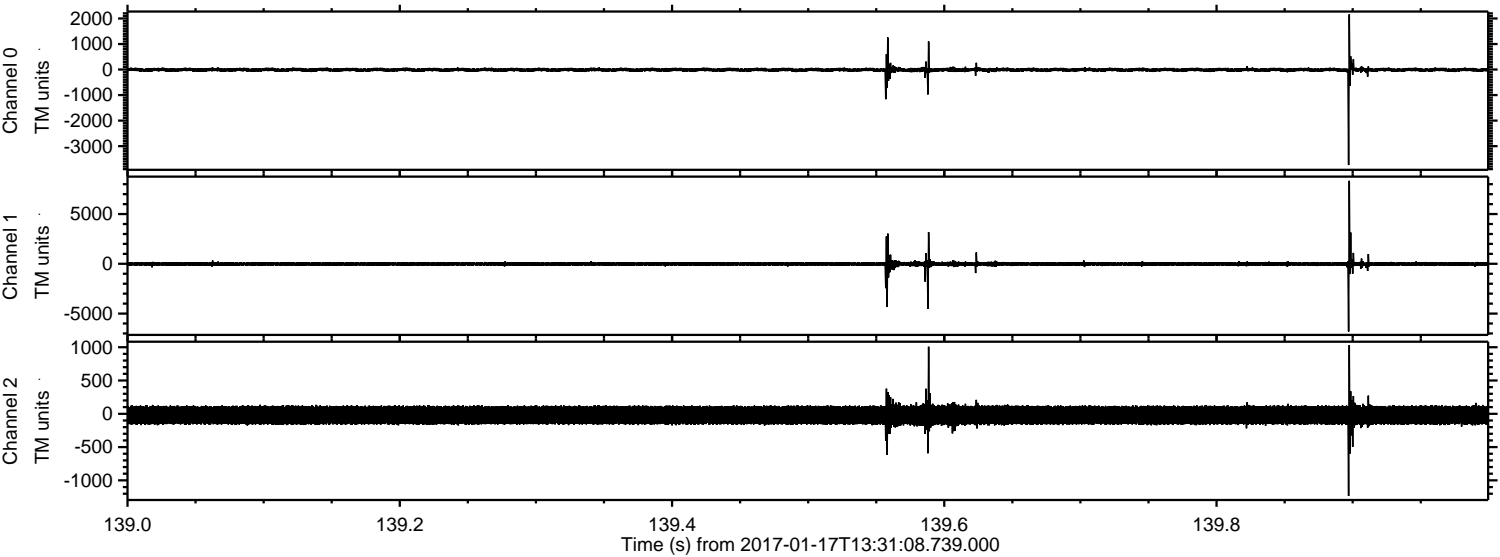
Channel 0
mn: -3924
mx: 6299
 μ : -9.6
 σ : 58.5

Channel 1
mn: -2173
mx: 3294
 μ : -17.3
 σ : 96.6

Channel 2
mn: -14920
mx: 8286
 μ : -20.5
 σ : 142.1

ELMAVAN 3D WAVEFORMS (Measured data sampled at 50 kHz) 51000 packets of 144 samples from 2017-01-17T13:31:08.739.000. Part 140/147

Processed Tue Jan 17 14:38:57 2017 by ELM ver.2012-10-06 from 001__elm20170117_133107__dat00.bin



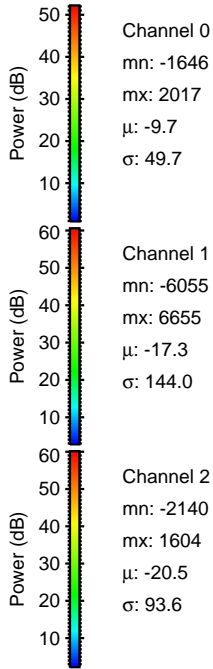
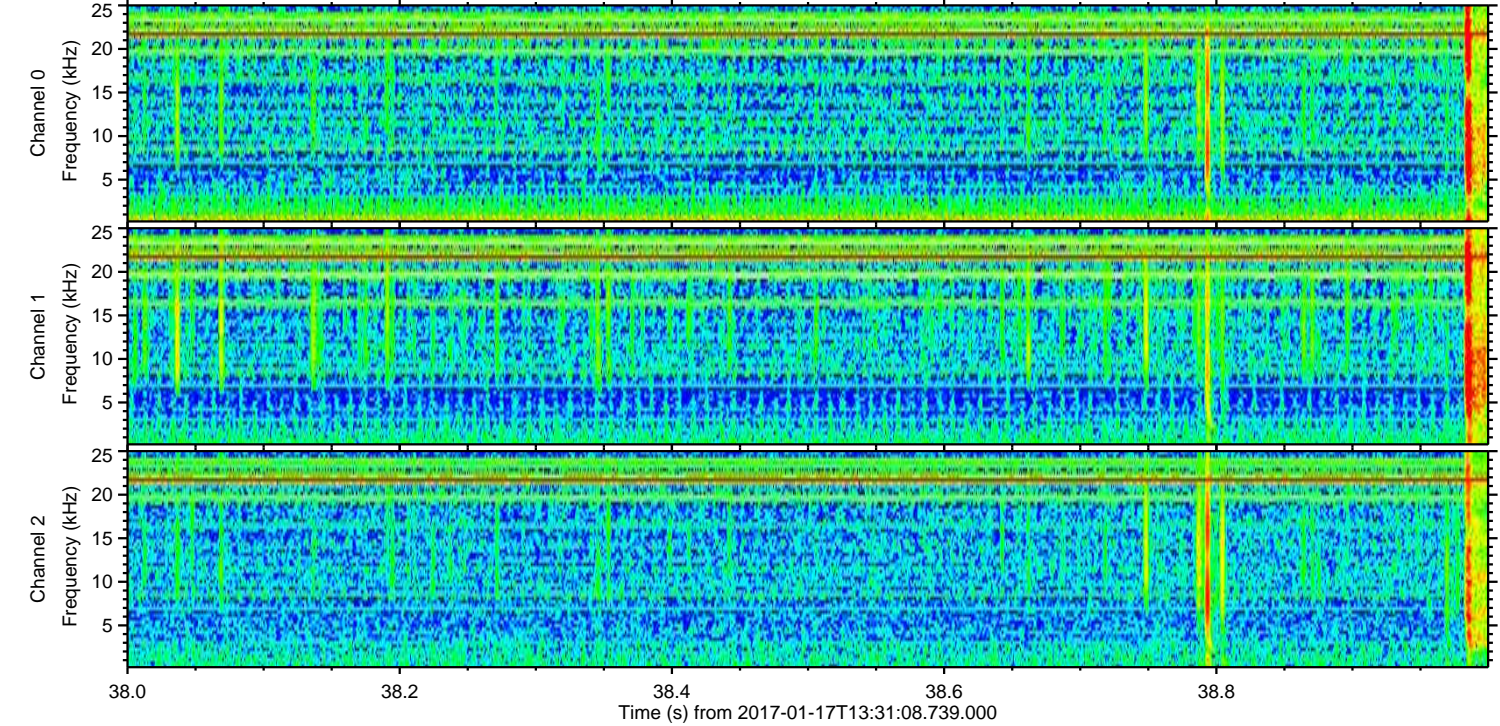
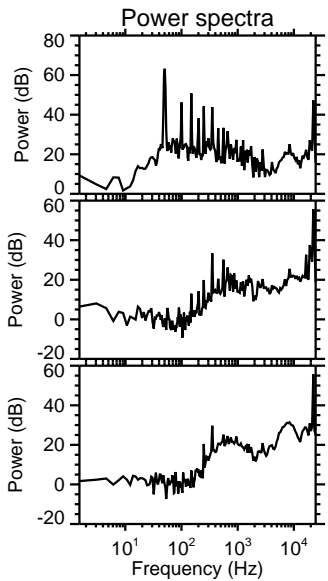
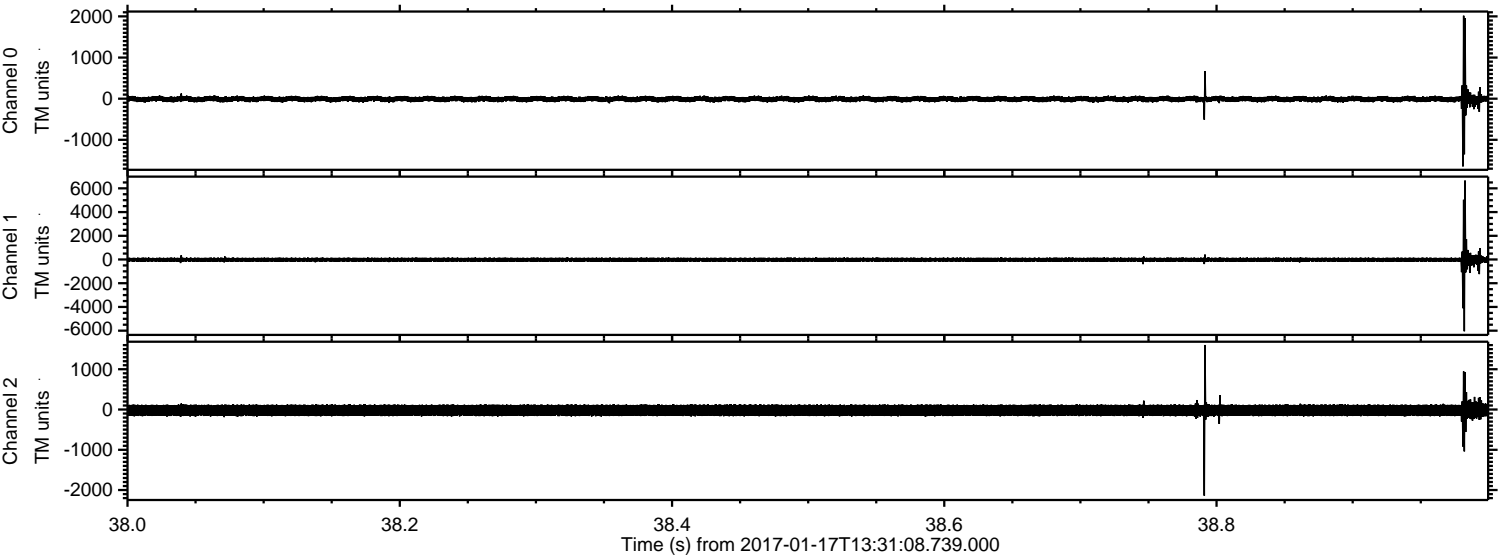
Channel 0
mn: -3741
mx: 2164
 μ : -9.6
 σ : 50.2

Channel 1
mn: -6805
mx: 8345
 μ : -17.3
 σ : 136.4

Channel 2
mn: -1233
mx: 1031
 μ : -20.5
 σ : 92.1

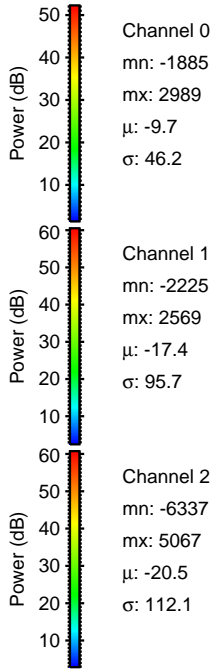
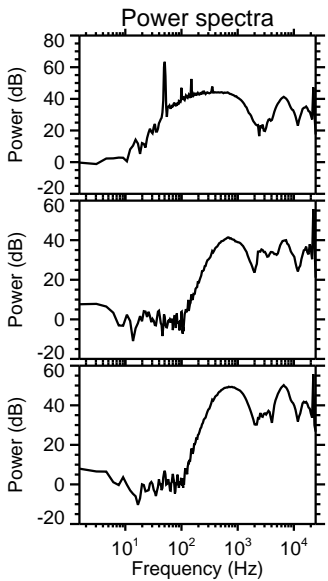
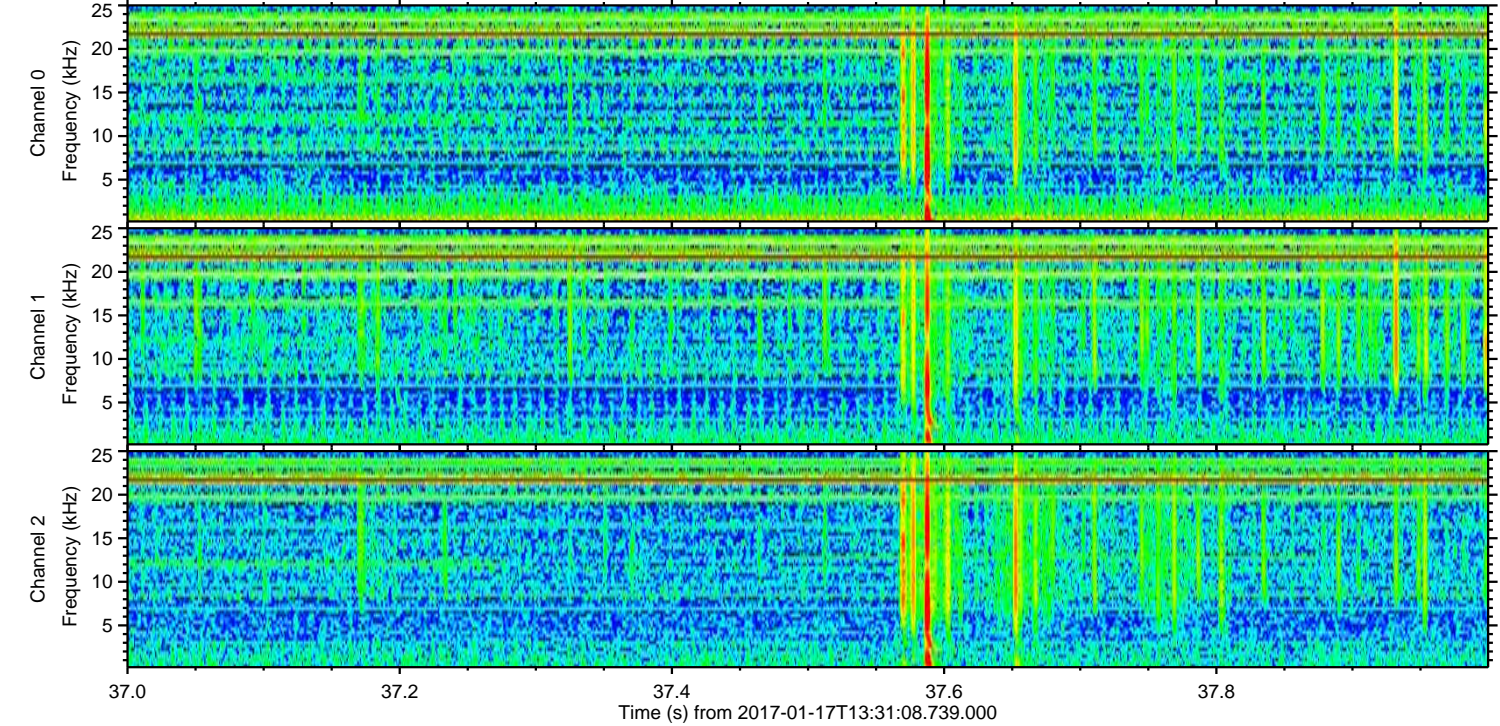
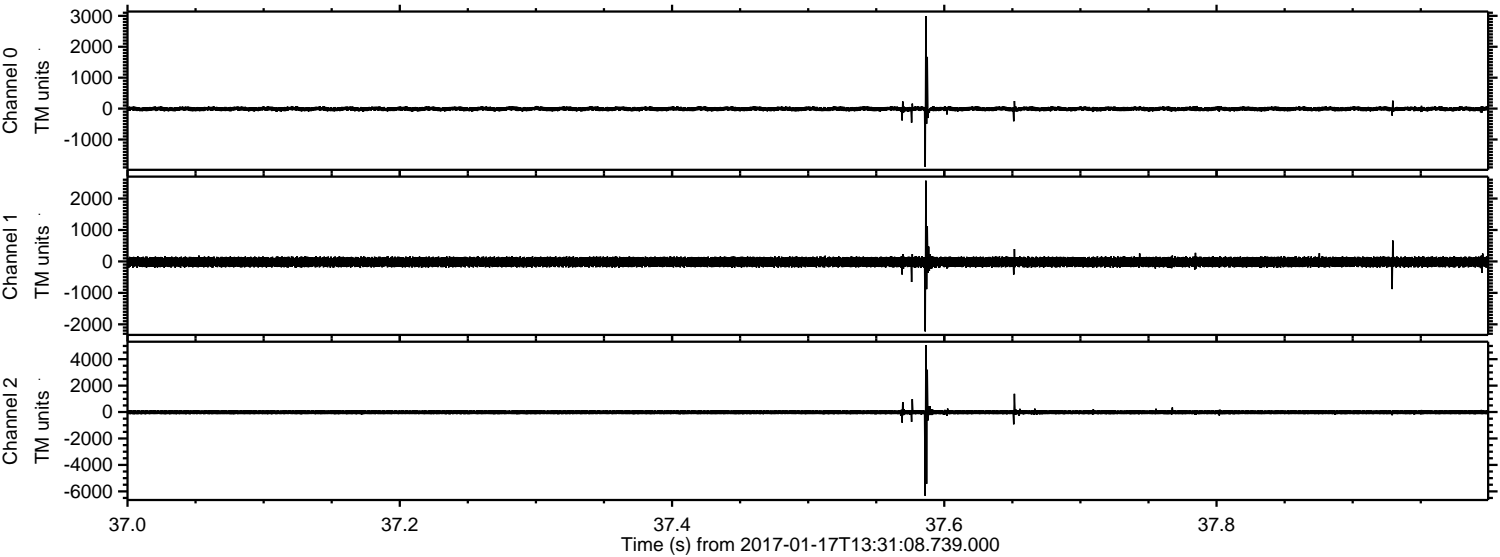
ELMAVAN 3D WAVEFORMS (Measured data sampled at 50 kHz) 51000 packets of 144 samples from 2017-01-17T13:31:08.739.000. Part 39/147

Processed Tue Jan 17 14:38:58 2017 by ELM ver.2012-10-06 from 001__elm20170117_133107__dat00.bin



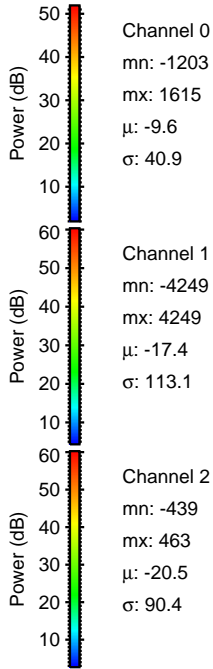
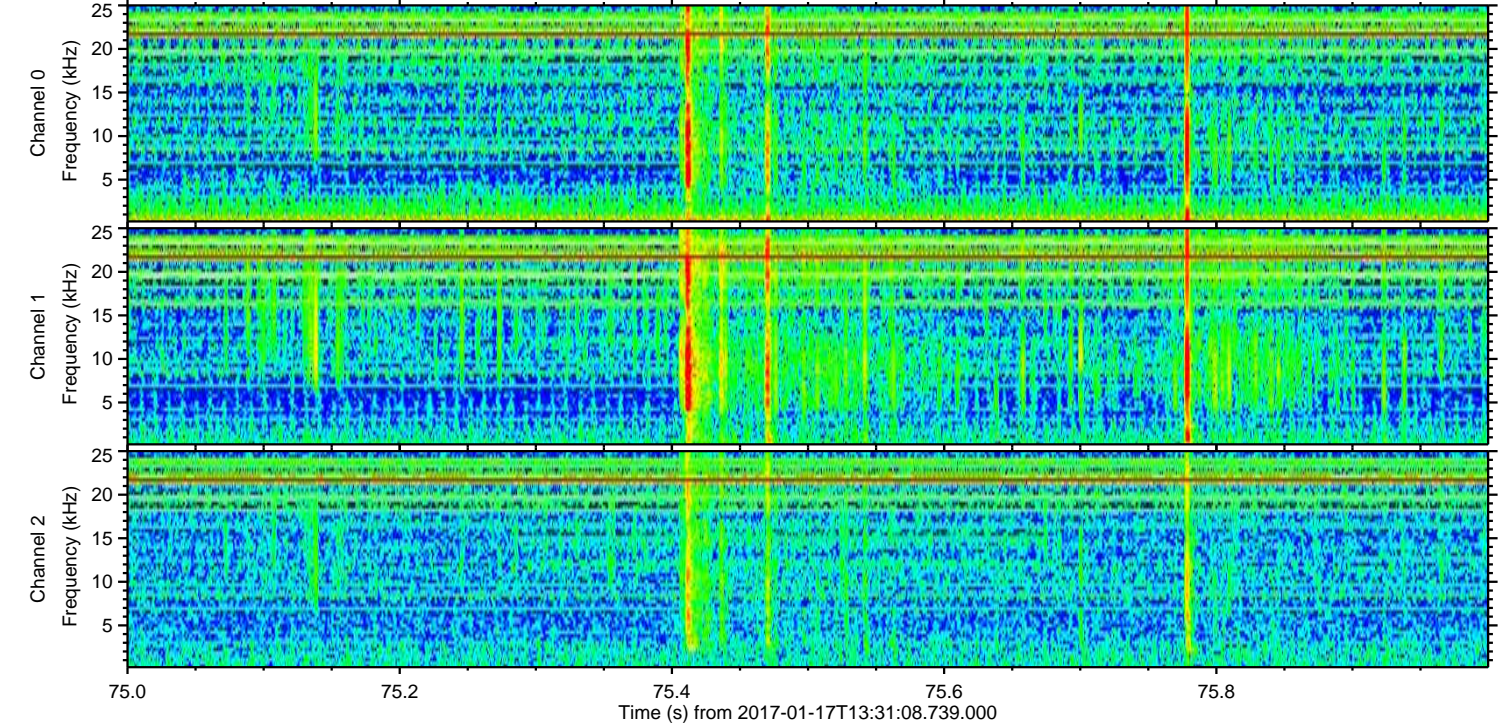
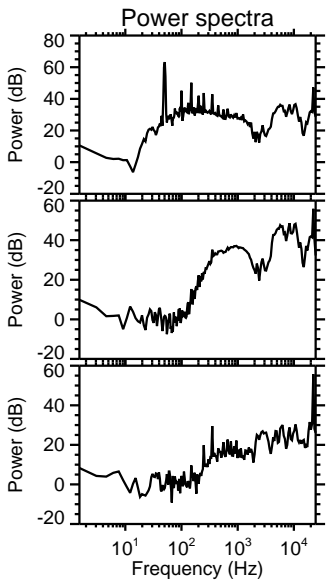
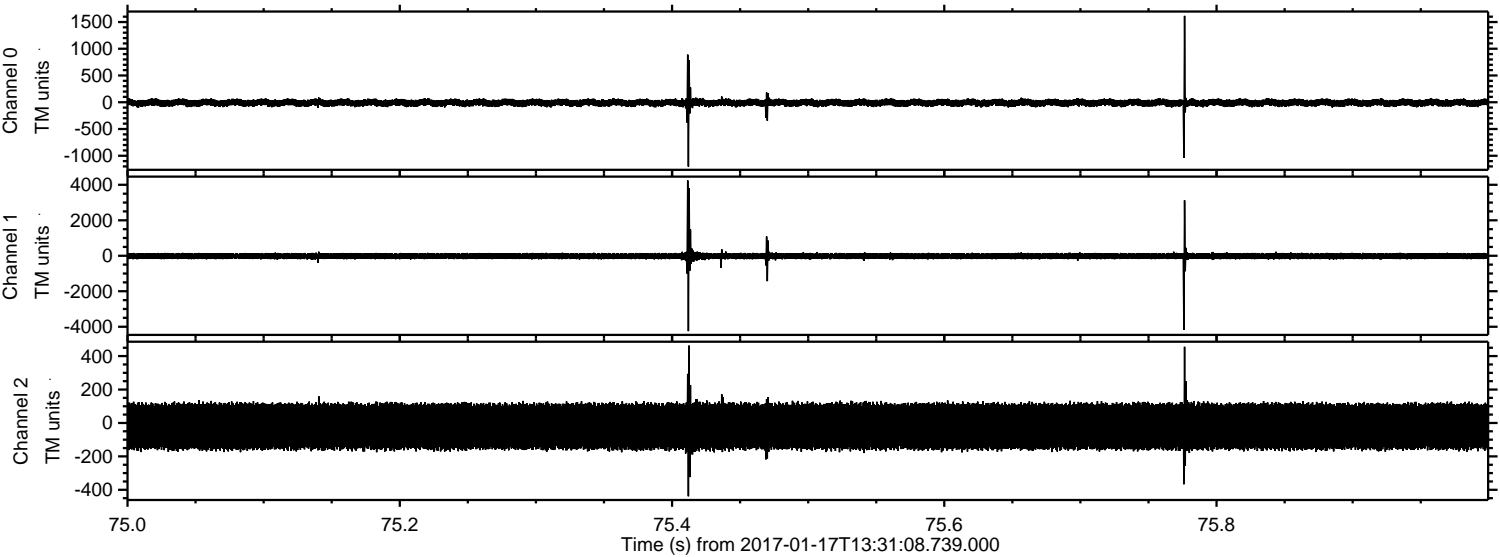
ELMAVAN 3D WAVEFORMS (Measured data sampled at 50 kHz) 51000 packets of 144 samples from 2017-01-17T13:31:08.739.000. Part 38/147

Processed Tue Jan 17 14:38:59 2017 by ELM ver.2012-10-06 from 001__elm20170117_133107__dat00.bin



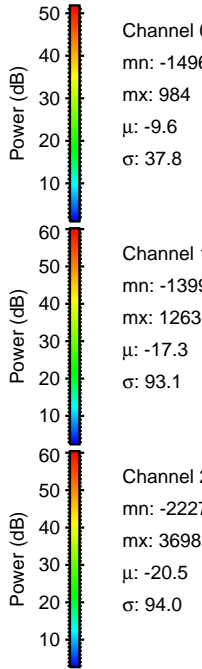
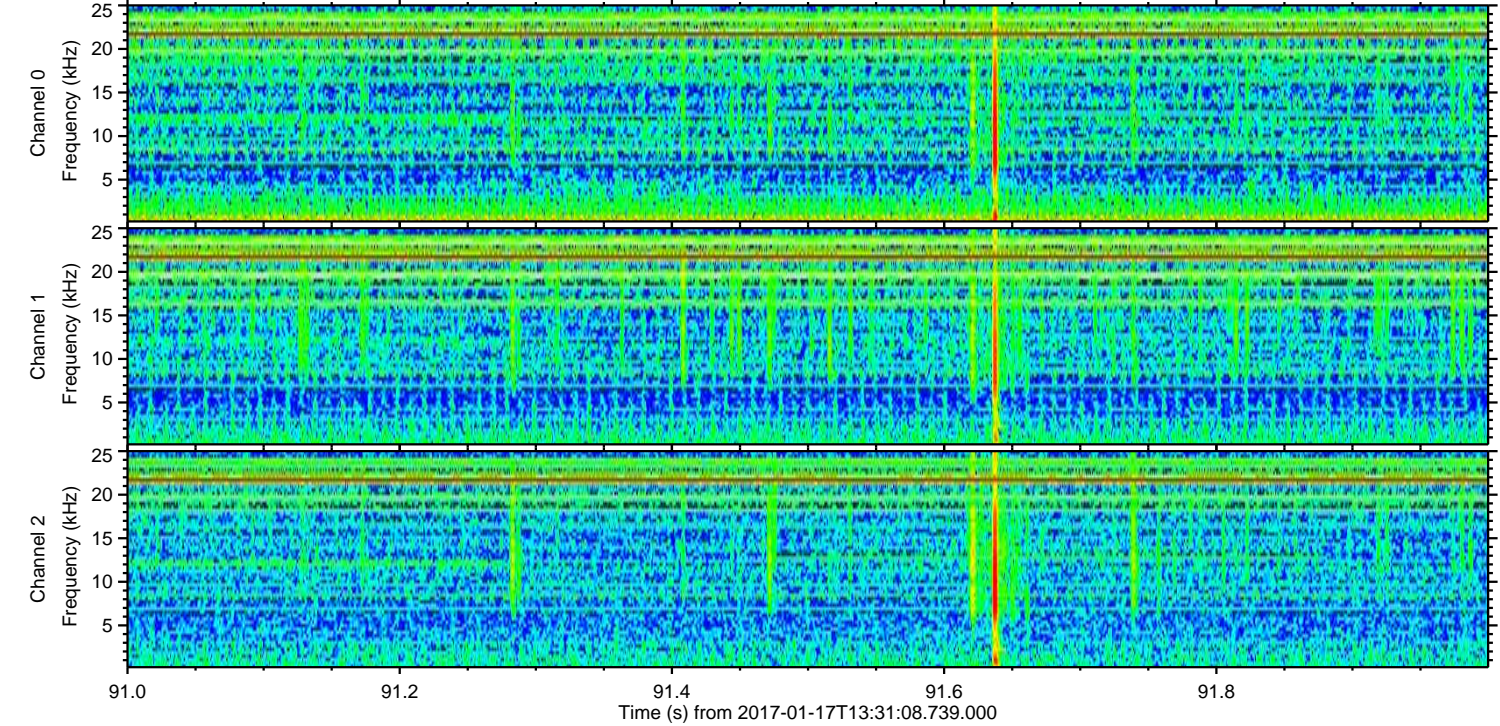
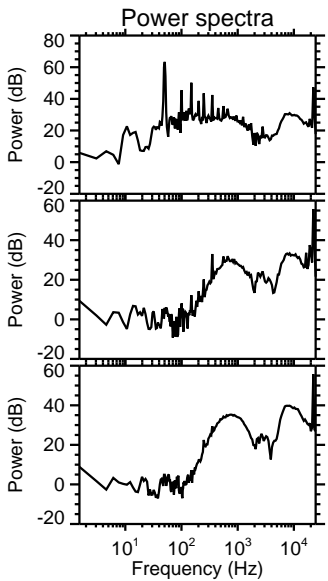
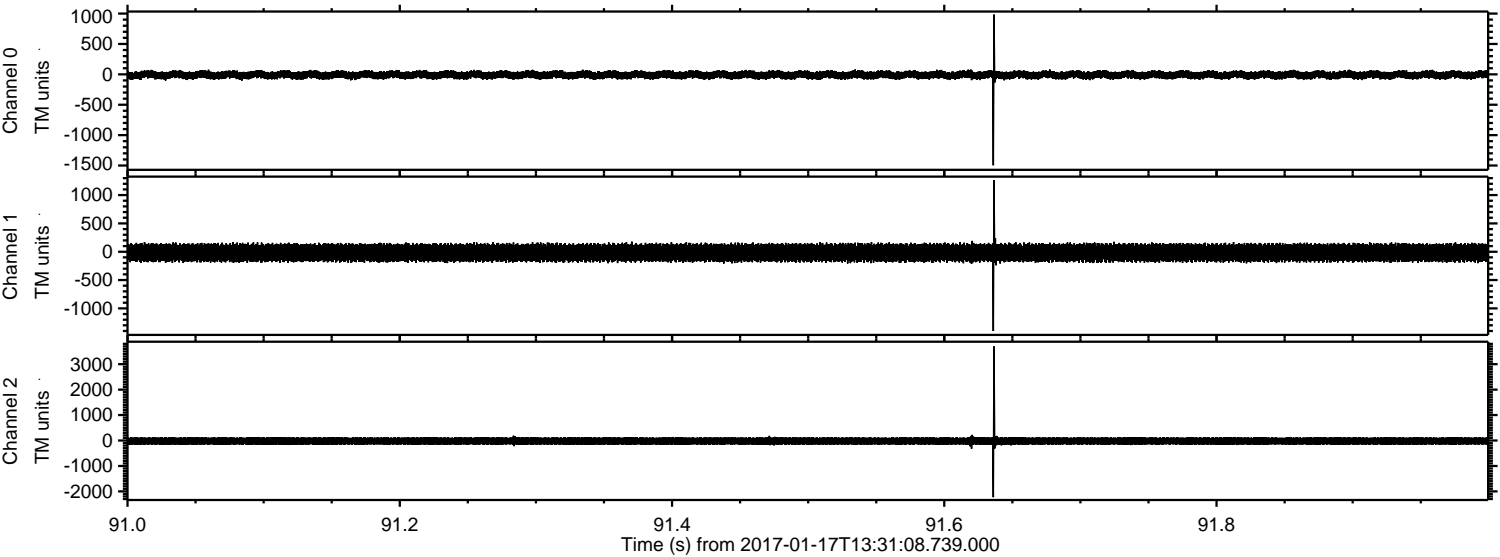
ELMAVAN 3D WAVEFORMS (Measured data sampled at 50 kHz) 51000 packets of 144 samples from 2017-01-17T13:31:08.739.000. Part 76/147

Processed Tue Jan 17 14:39:00 2017 by ELM ver.2012-10-06 from 001__elm20170117_133107__dat00.bin



ELMAVAN 3D WAVEFORMS (Measured data sampled at 50 kHz) 51000 packets of 144 samples from 2017-01-17T13:31:08.739.000. Part 92/147

Processed Tue Jan 17 14:39:01 2017 by ELM ver.2012-10-06 from 001__elm20170117_133107__dat00.bin



Channel 0
mn: -1496
mx: 984
 μ : -9.6
 σ : 37.8

Channel 1
mn: -1399
mx: 1263
 μ : -17.3
 σ : 93.1

Channel 2
mn: -2227
mx: 3698
 μ : -20.5
 σ : 94.0

ELMAVAN 3D WAVEFORMS (Measured data sampled at 50 kHz) 51000 packets of 144 samples from 2017-01-17T13:31:08.739.000. Part 136/147

Processed Tue Jan 17 14:39:02 2017 by ELM ver.2012-10-06 from 001__elm20170117_133107__dat00.bin

