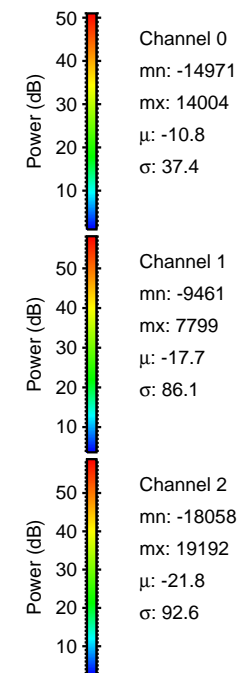
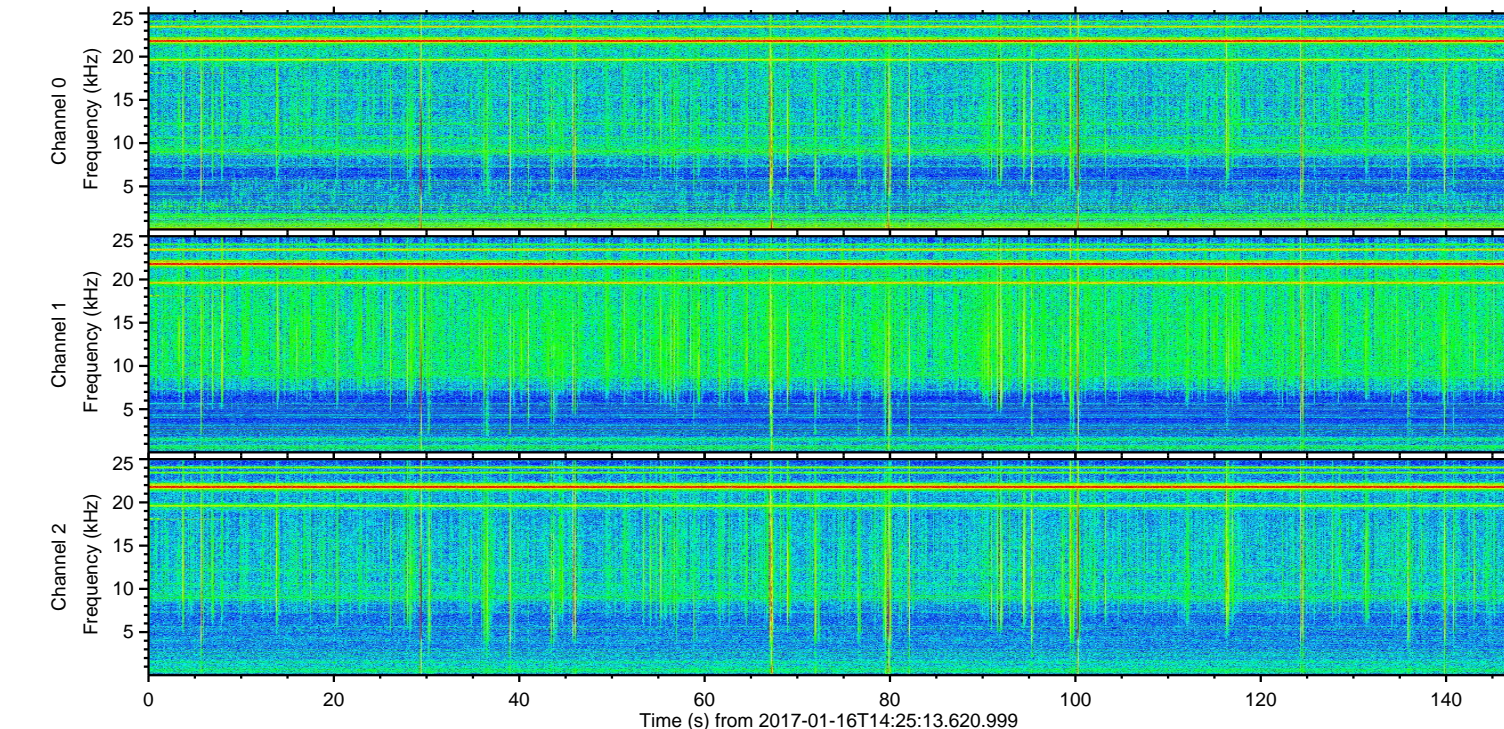
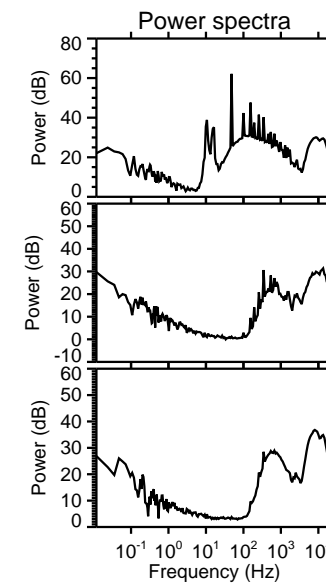
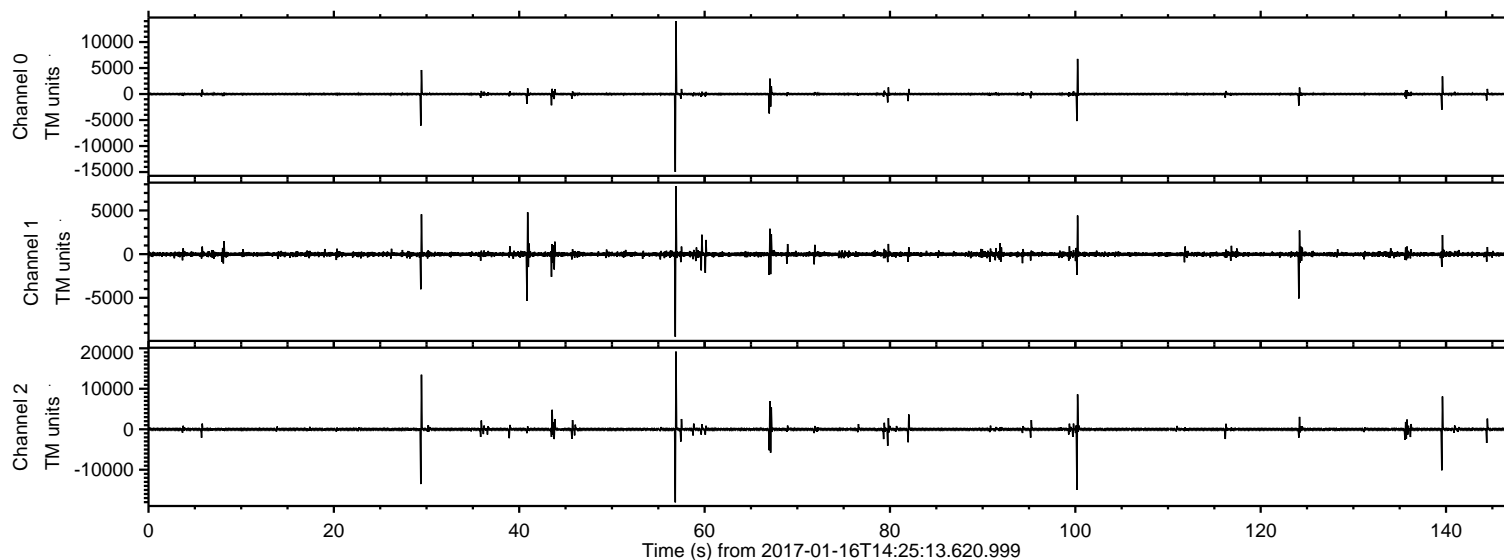


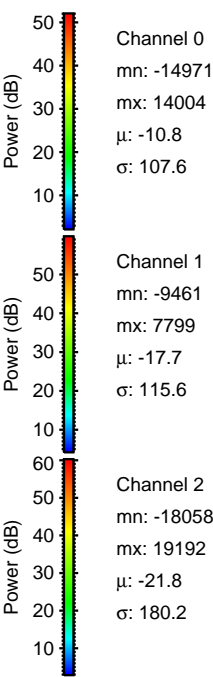
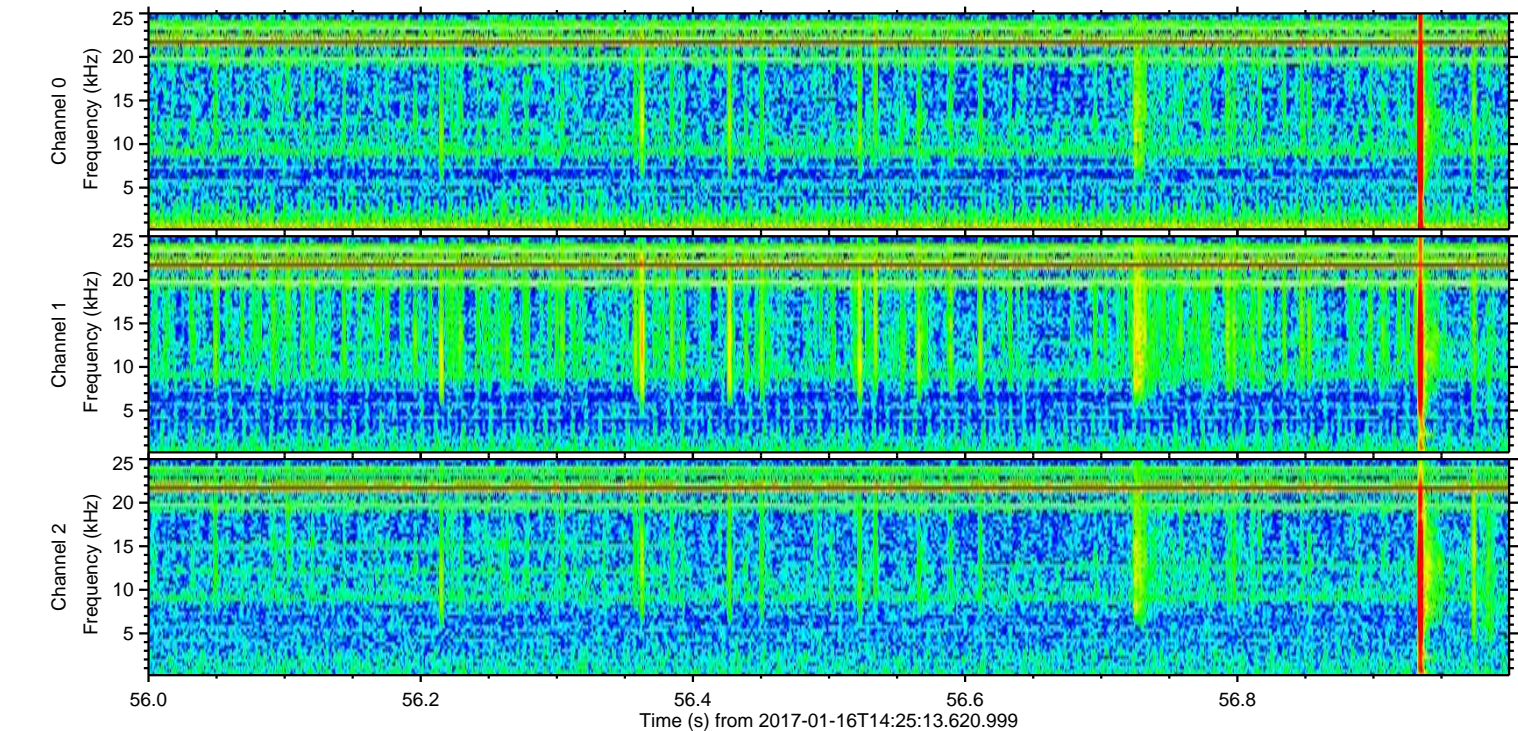
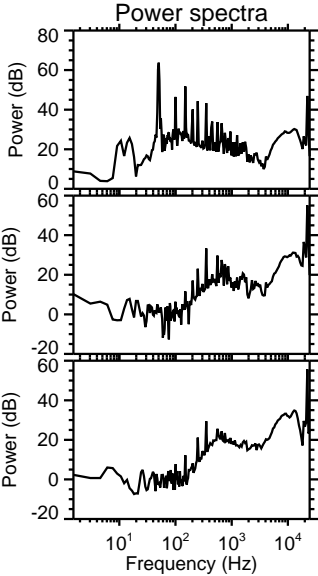
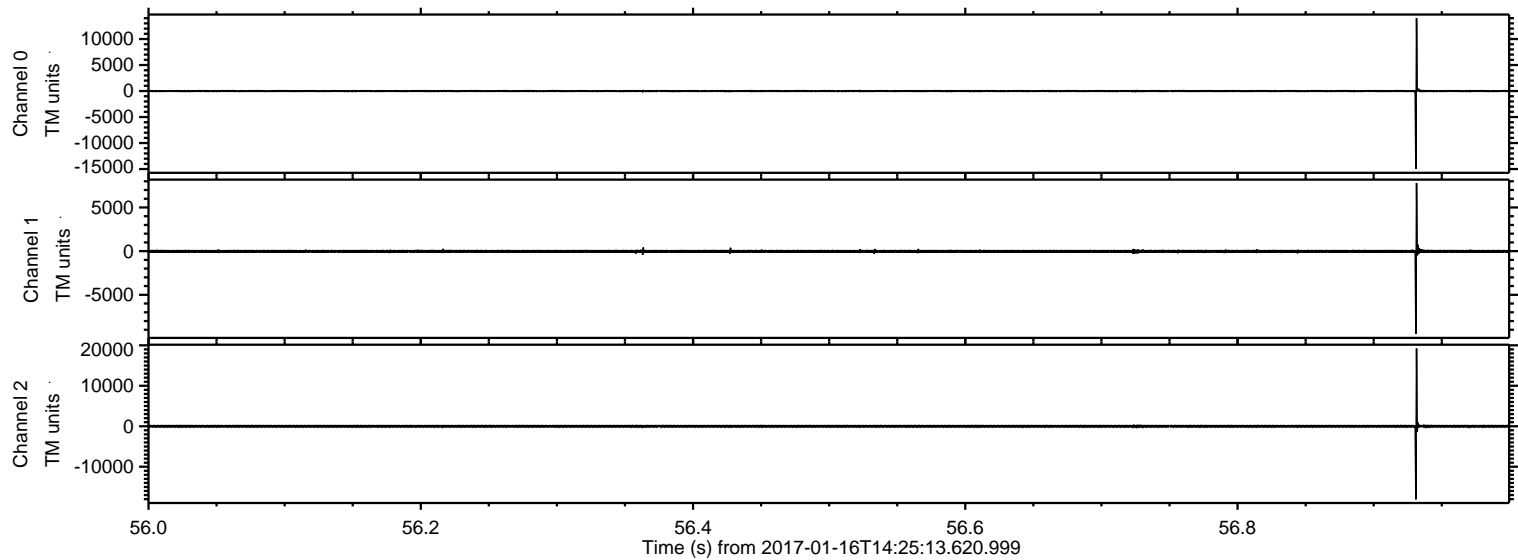
ELMAVAN 3D WAVEFORMS (Measured data sampled at 50 kHz) 51000 packets of 144 samples from 2017-01-16T14:25:13.620.999.

Processed Mon Jan 16 15:33:00 2017 by ELM ver.2012-10-06 from 001__elm20170116_142512__dat00.bin



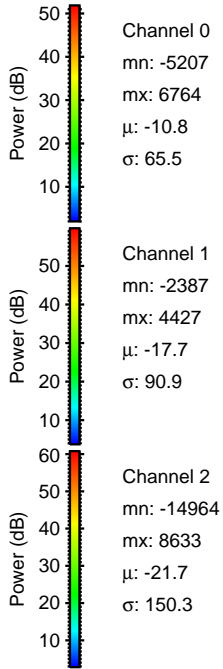
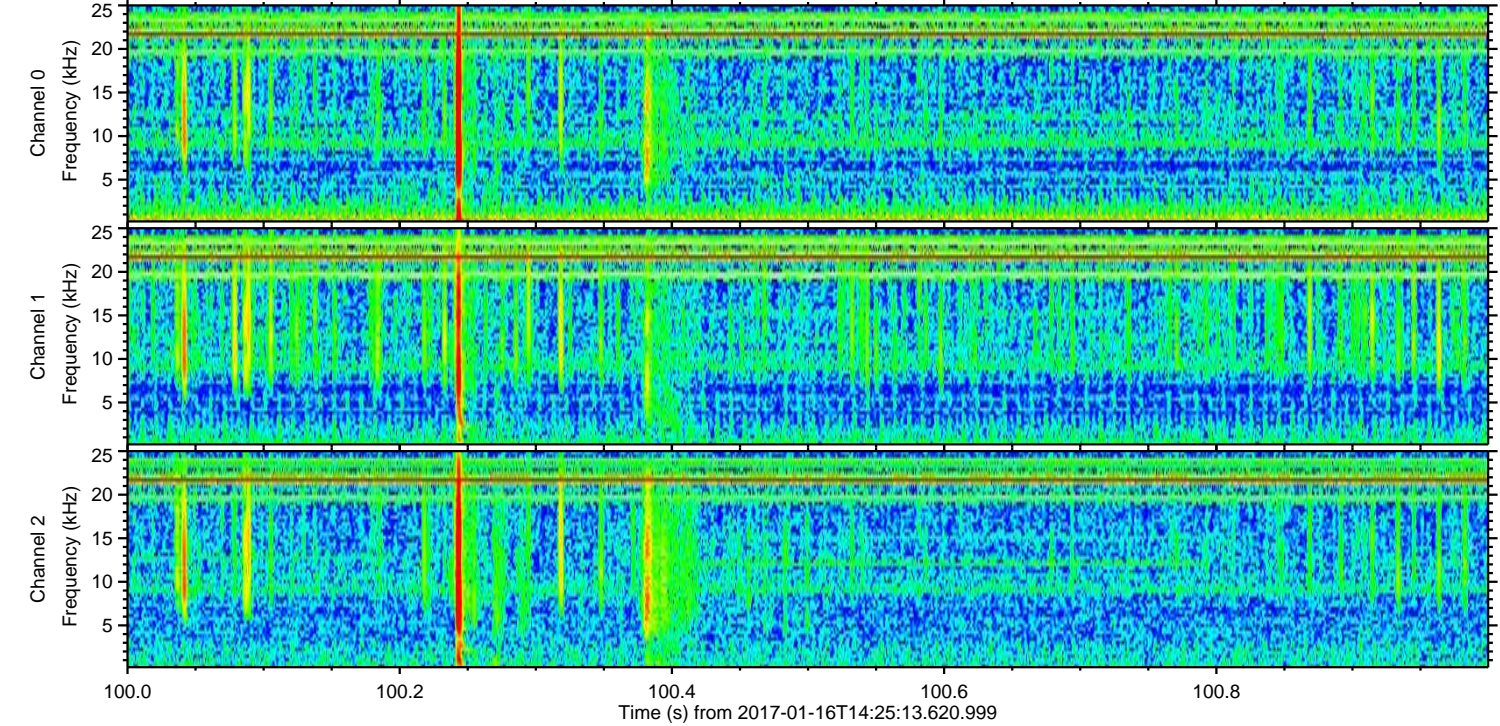
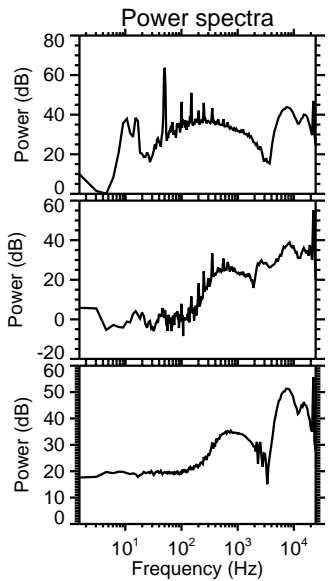
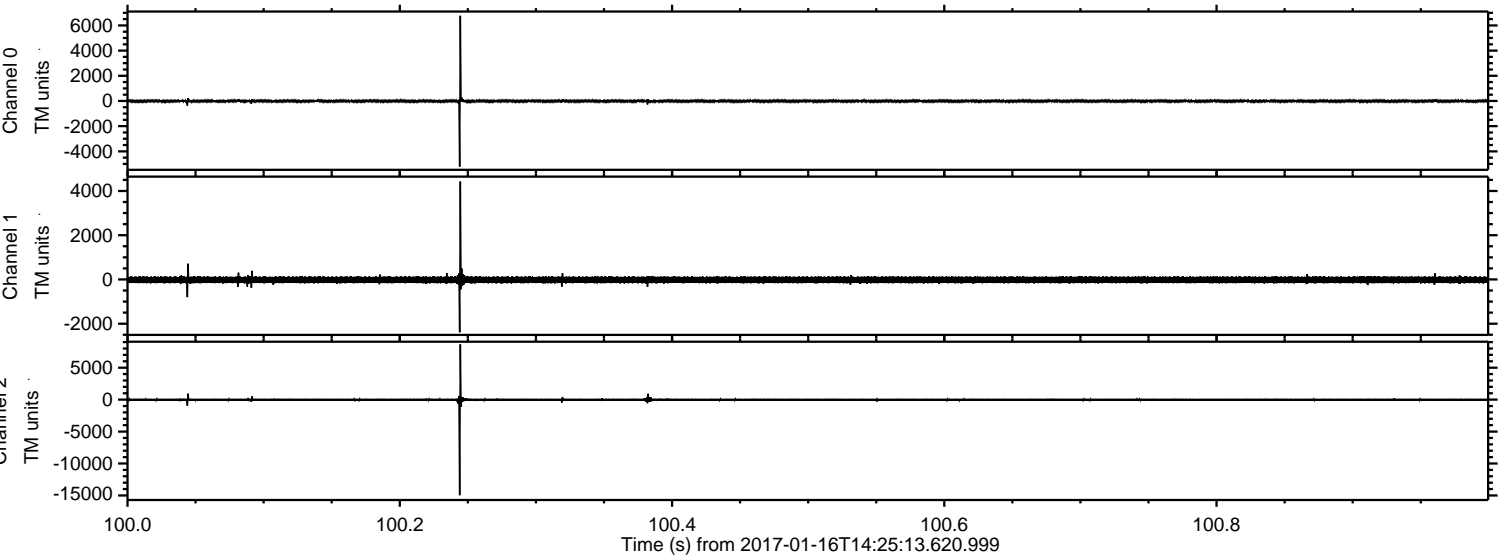
ELMAVAN 3D WAVEFORMS (Measured data sampled at 50 kHz) 51000 packets of 144 samples from 2017-01-16T14:25:13.620.999. Part 57/147

Processed Mon Jan 16 15:33:11 2017 by ELM ver.2012-10-06 from 001__elm20170116_142512__dat00.bin



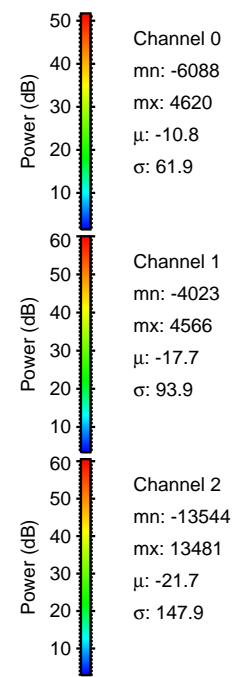
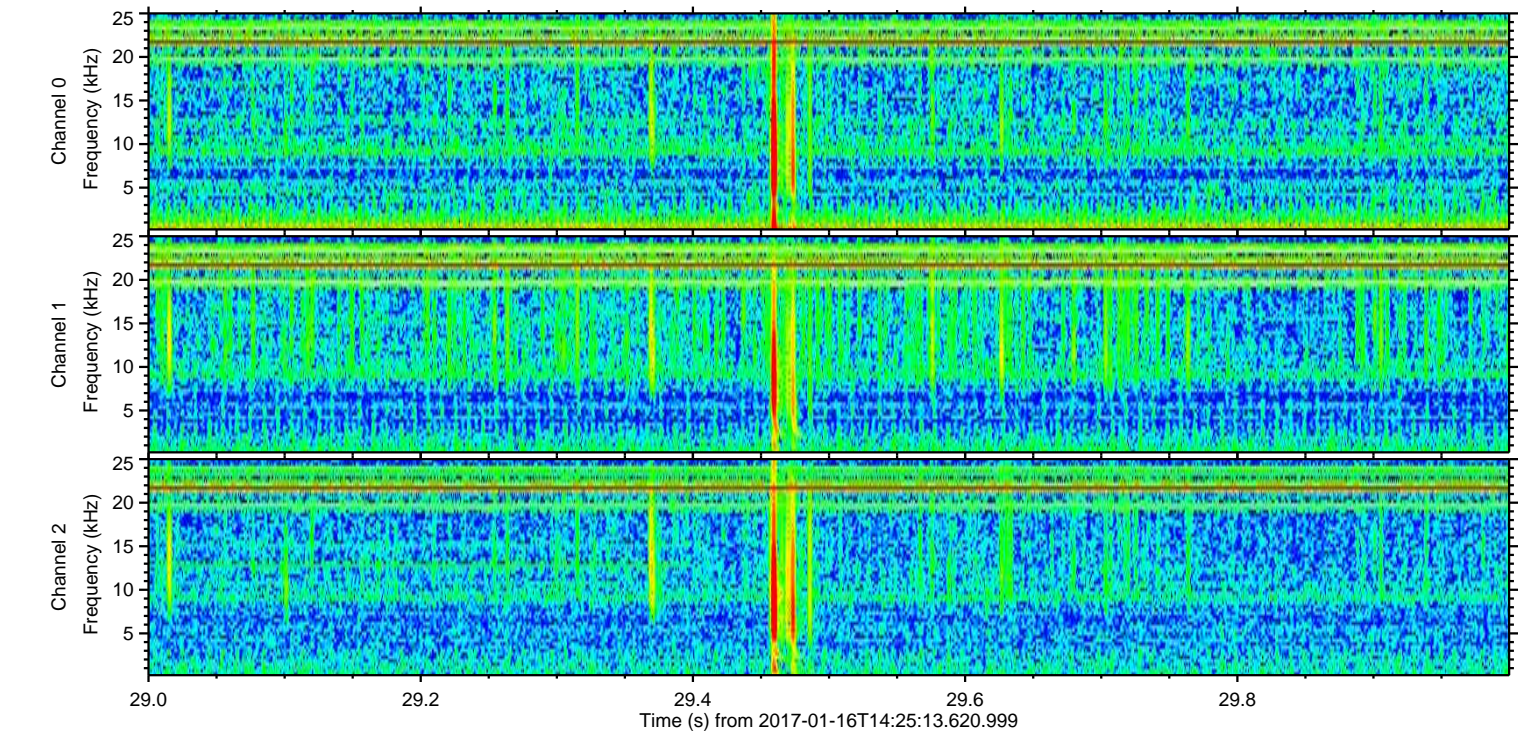
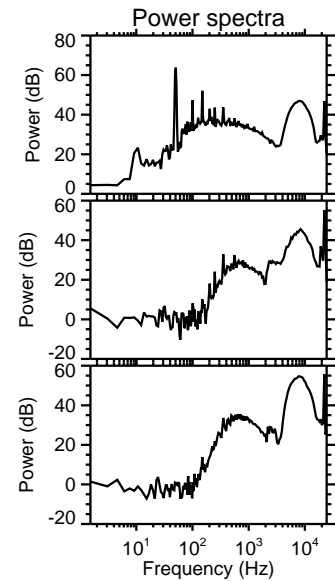
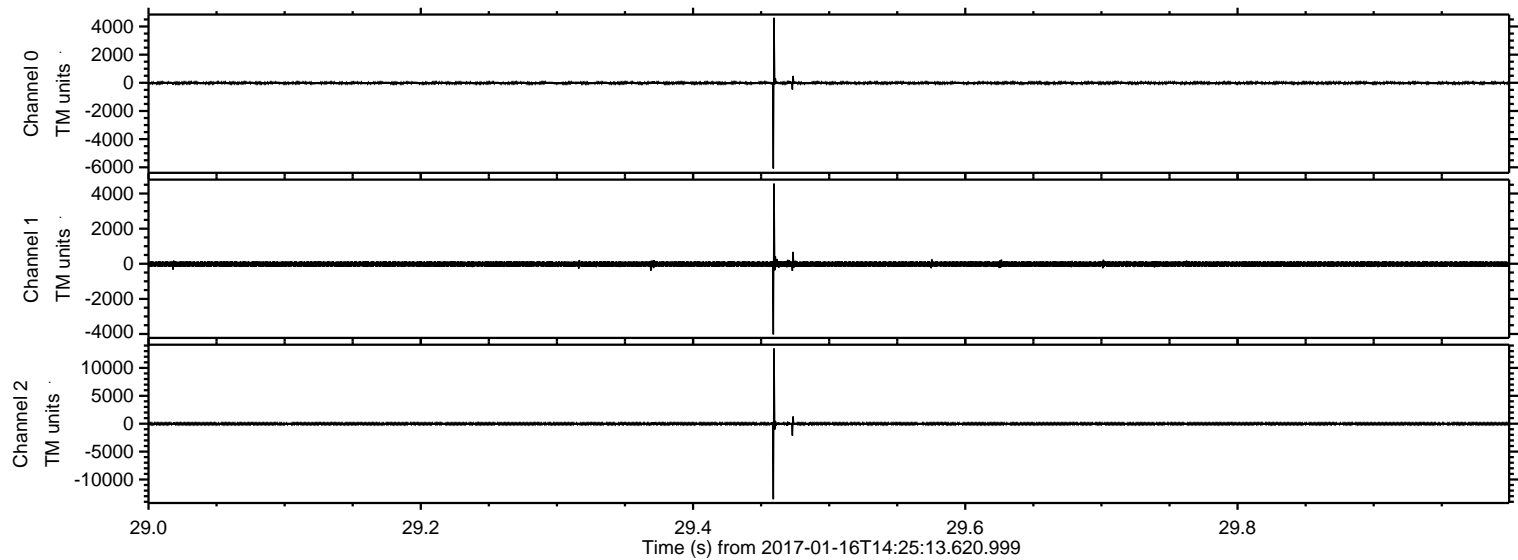
ELMAVAN 3D WAVEFORMS (Measured data sampled at 50 kHz) 51000 packets of 144 samples from 2017-01-16T14:25:13.620.999. Part 101/147

Processed Mon Jan 16 15:33:12 2017 by ELM ver.2012-10-06 from 001__elm20170116_142512__dat00.bin



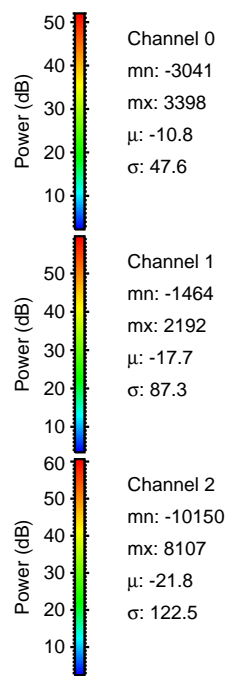
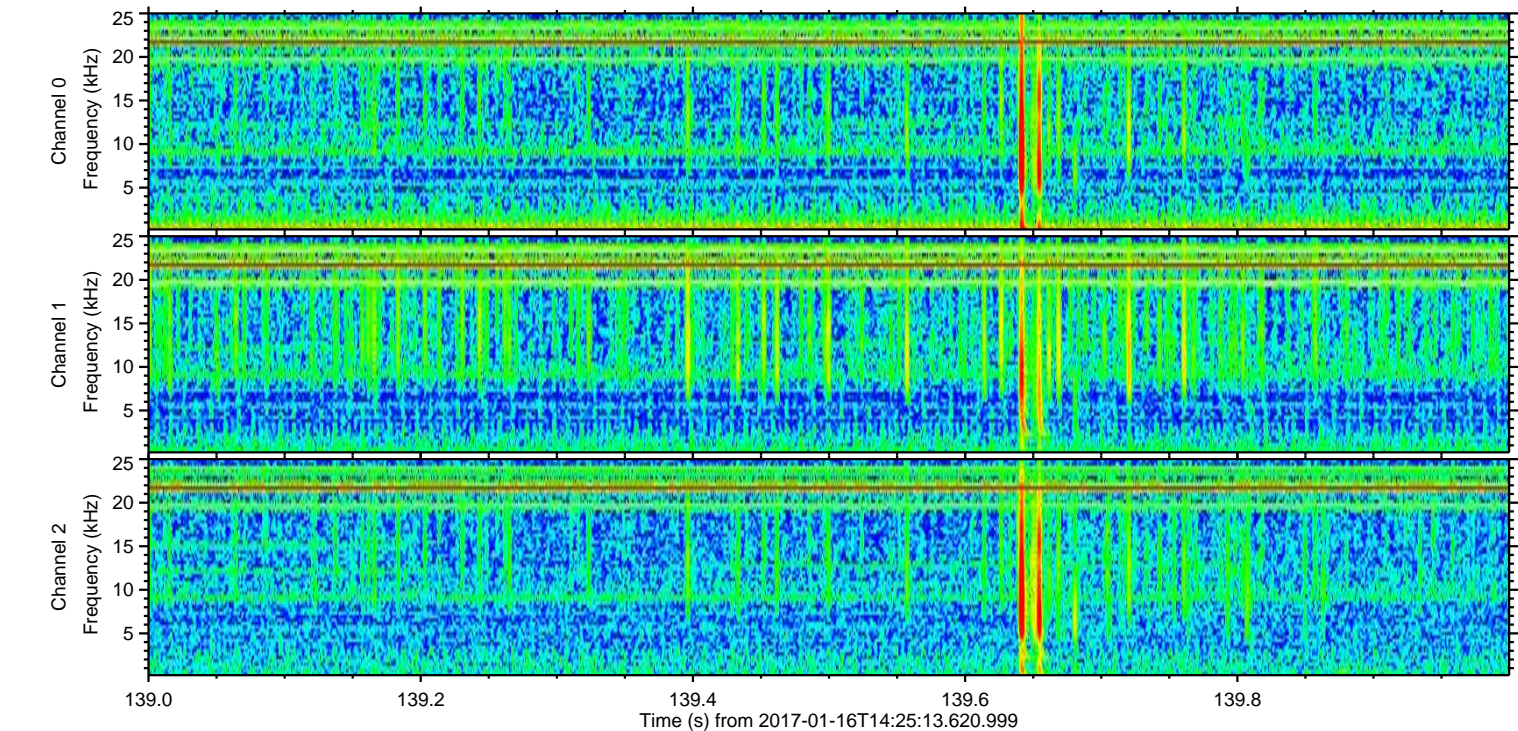
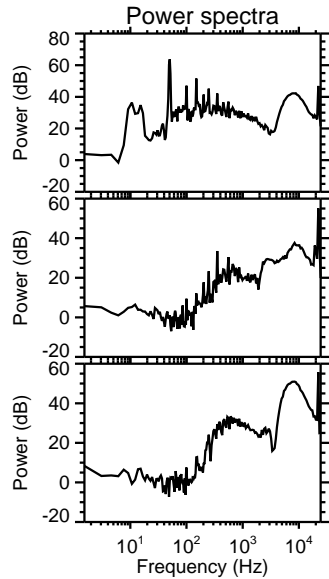
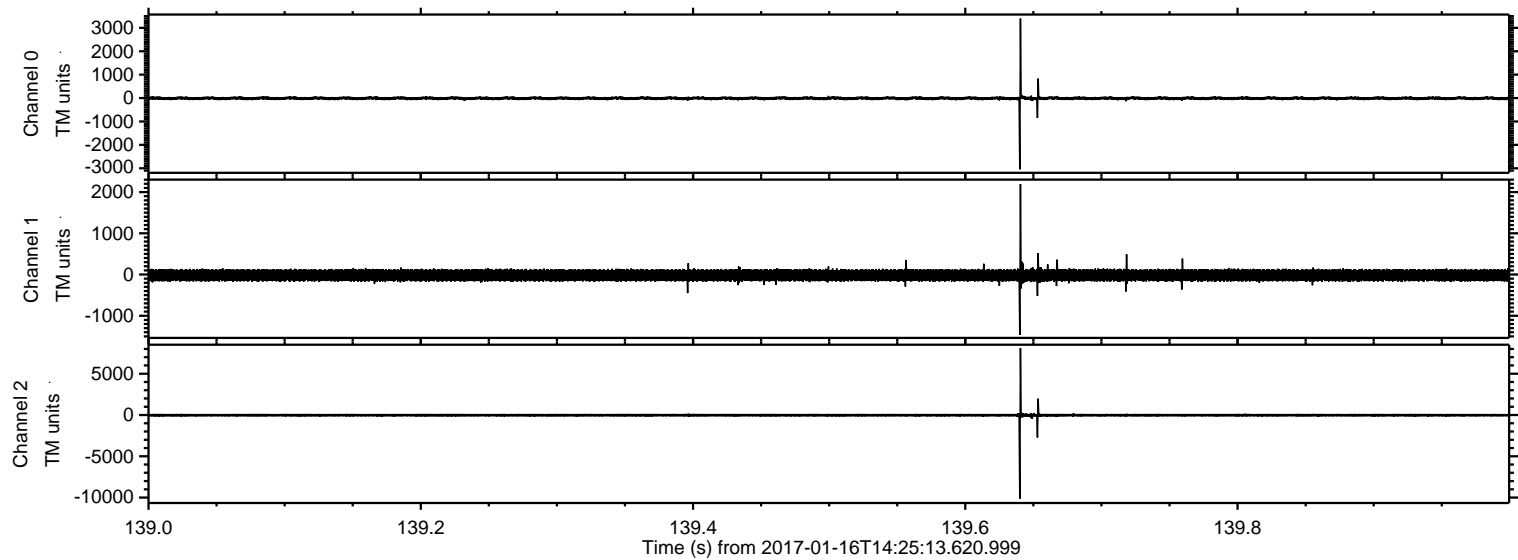
ELMAVAN 3D WAVEFORMS (Measured data sampled at 50 kHz) 51000 packets of 144 samples from 2017-01-16T14:25:13.620.999. Part 30/147

Processed Mon Jan 16 15:33:13 2017 by ELM ver.2012-10-06 from 001__elm20170116_142512__dat00.bin



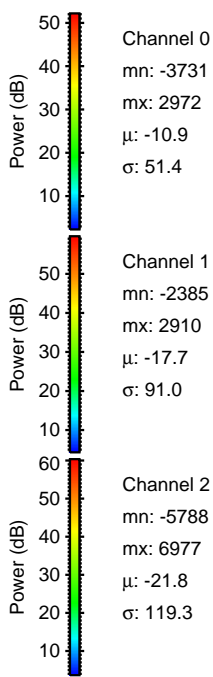
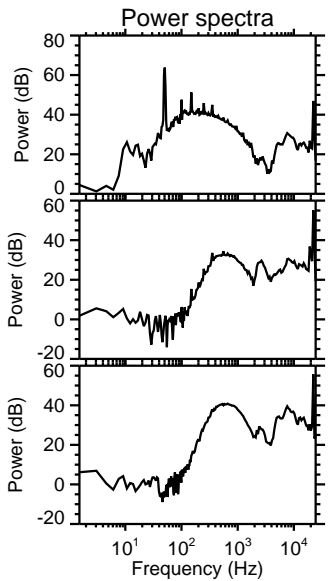
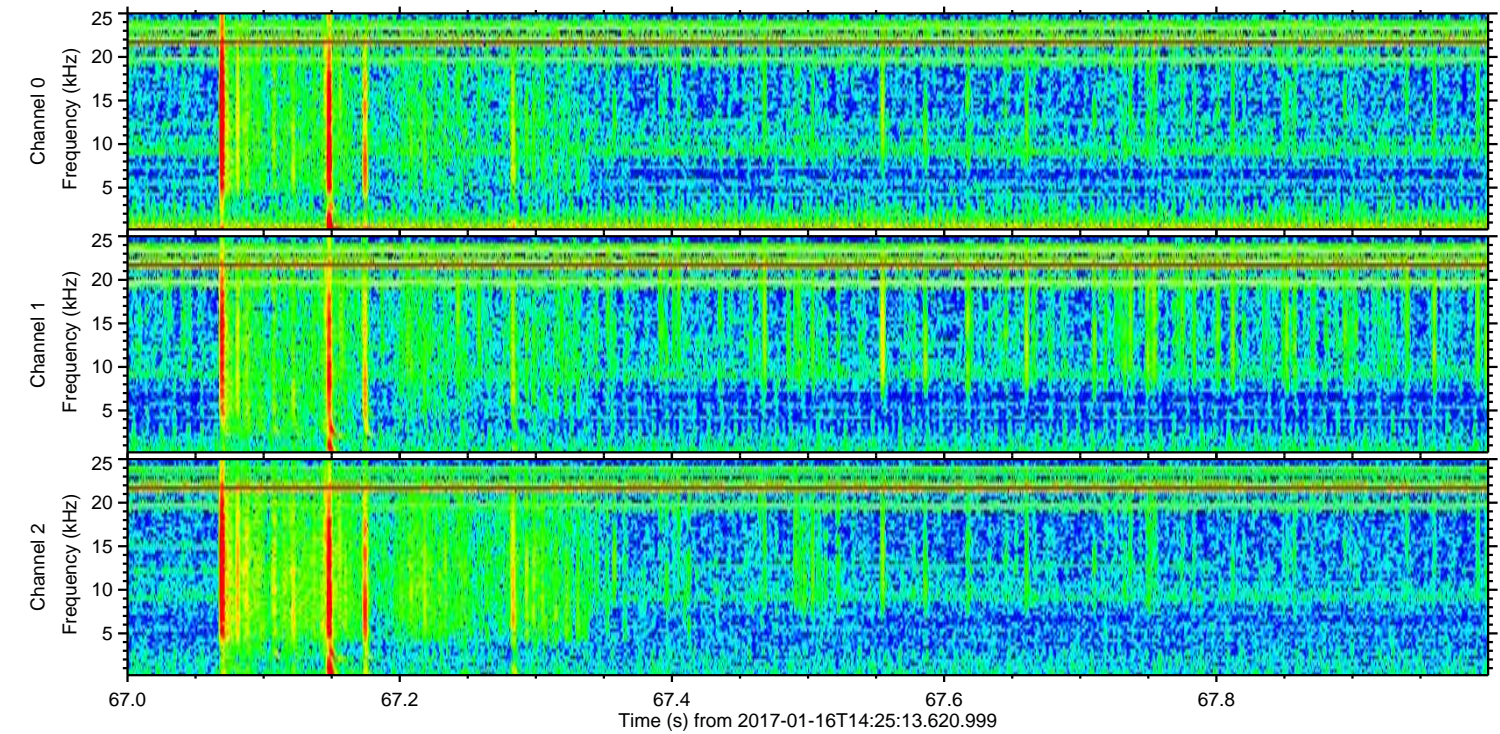
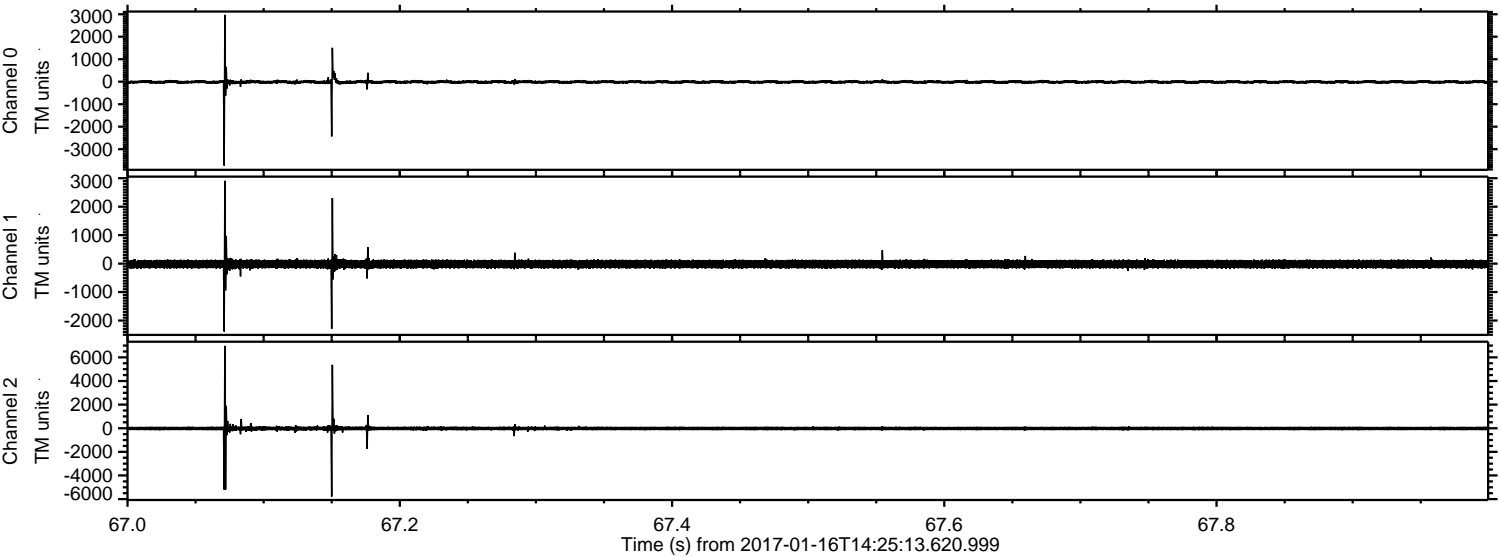
ELMAVAN 3D WAVEFORMS (Measured data sampled at 50 kHz) 51000 packets of 144 samples from 2017-01-16T14:25:13.620.999. Part 140/147

Processed Mon Jan 16 15:33:14 2017 by ELM ver.2012-10-06 from 001__elm20170116_142512__dat00.bin



ELMAVAN 3D WAVEFORMS (Measured data sampled at 50 kHz) 51000 packets of 144 samples from 2017-01-16T14:25:13.620.999. Part 68/147

Processed Mon Jan 16 15:33:15 2017 by ELM ver.2012-10-06 from 001__elm20170116_142512__dat00.bin



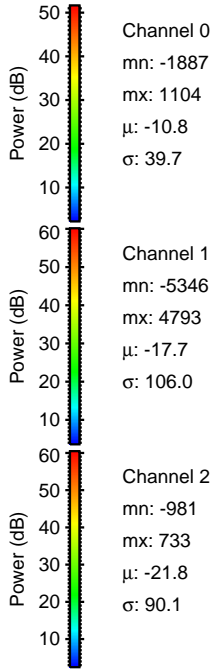
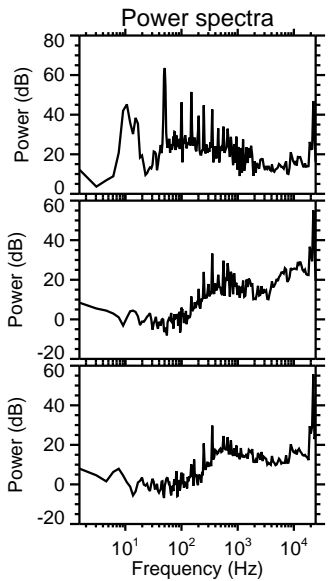
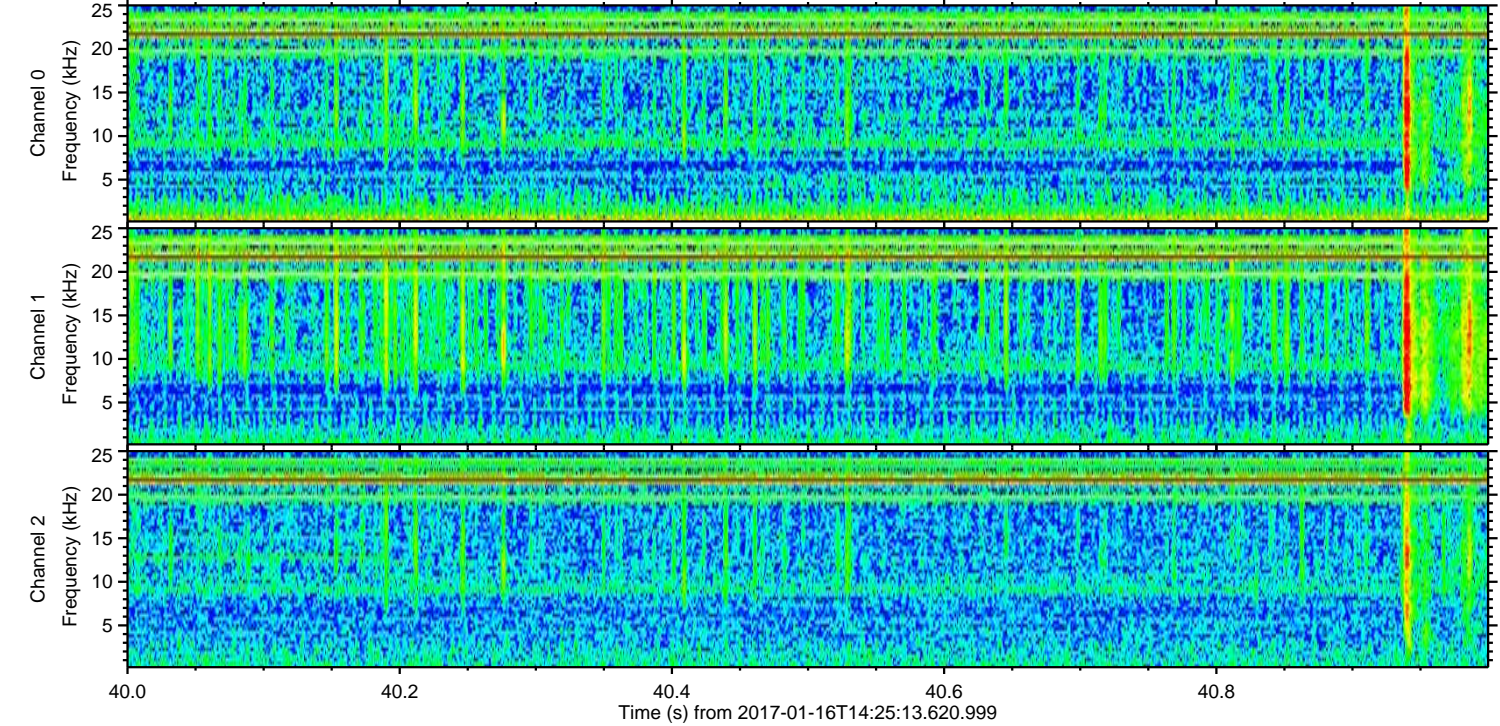
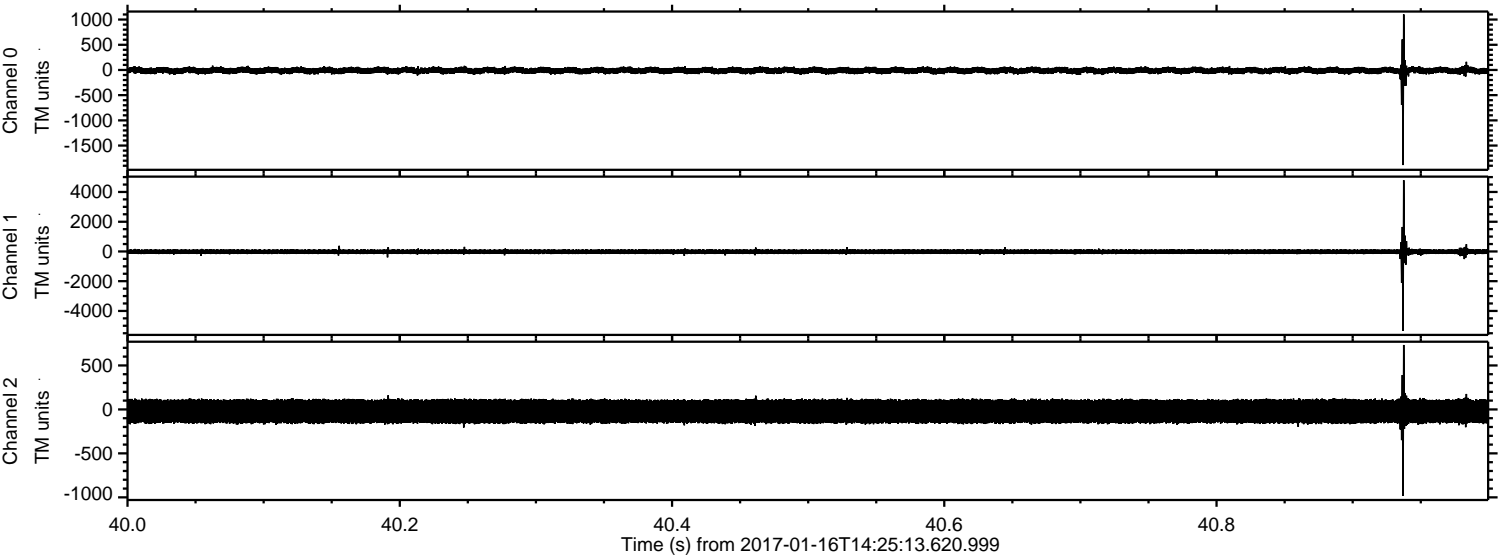
Channel 0
mn: -37.31
mx: 29.72
 μ : -10.9
 σ : 51.4

Channel 1
mn: -23.85
mx: 29.10
 μ : -17.7
 σ : 91.0

Channel 2
mn: -57.88
mx: 69.77
 μ : -21.8
 σ : 119.3

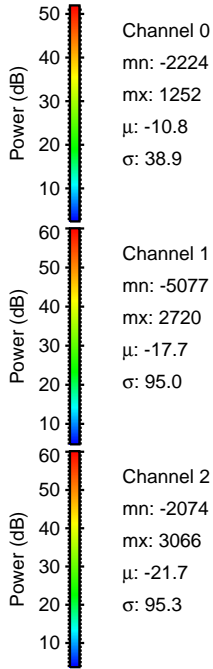
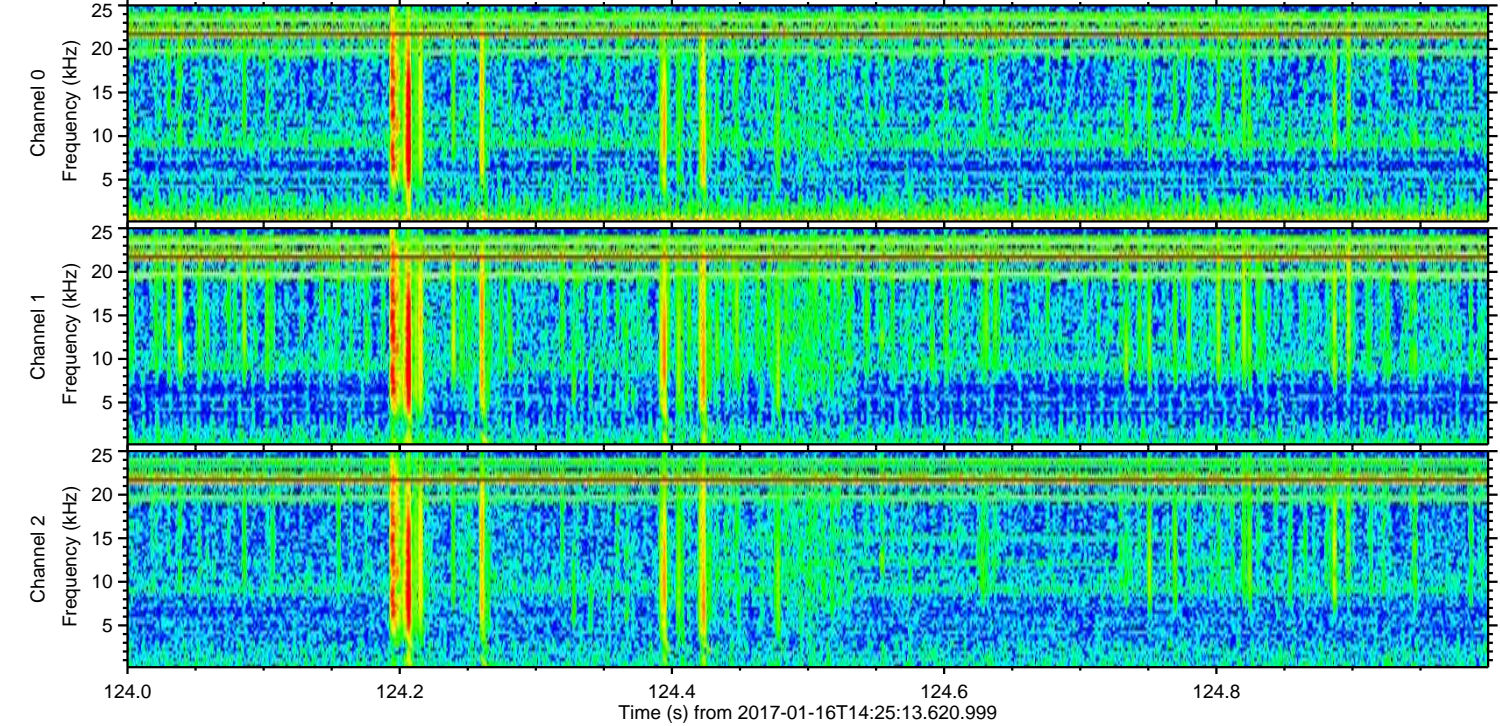
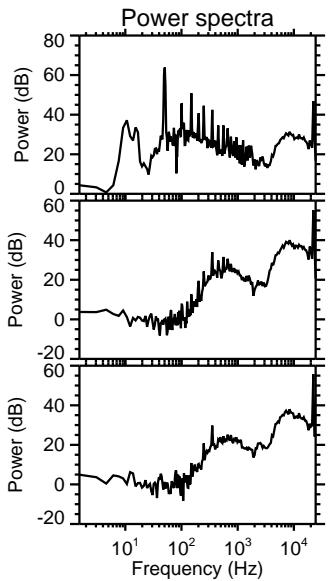
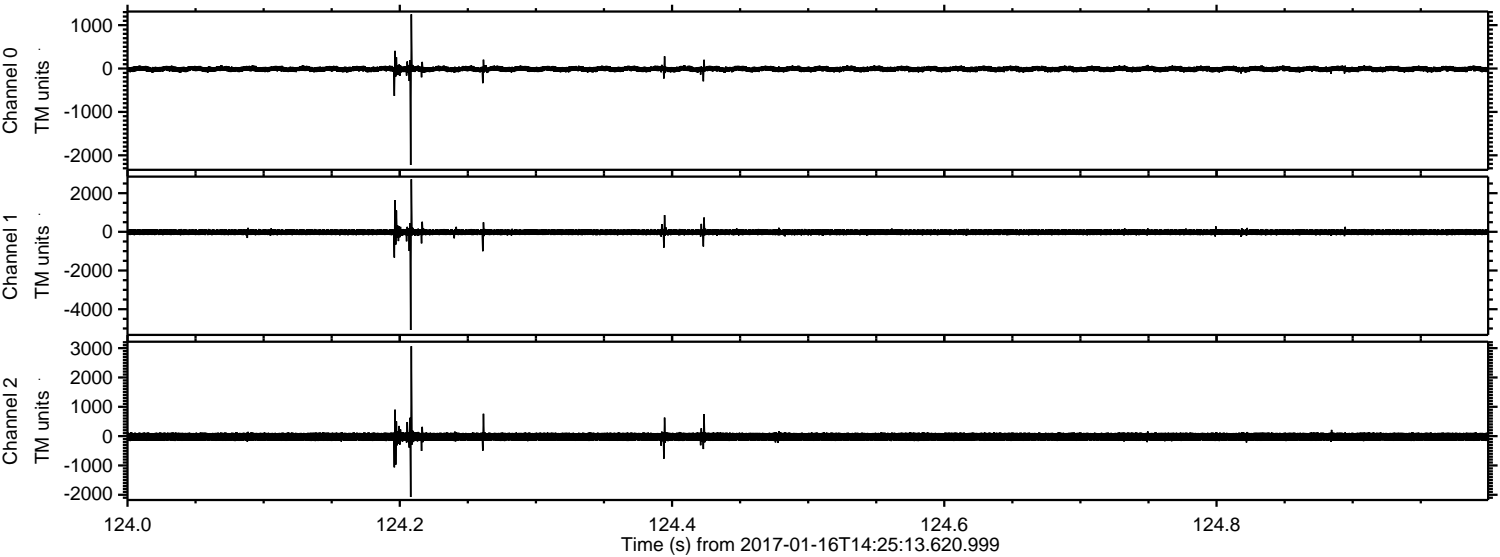
ELMAVAN 3D WAVEFORMS (Measured data sampled at 50 kHz) 51000 packets of 144 samples from 2017-01-16T14:25:13.620.999. Part 41/147

Processed Mon Jan 16 15:33:16 2017 by ELM ver.2012-10-06 from 001__elm20170116_142512__dat00.bin



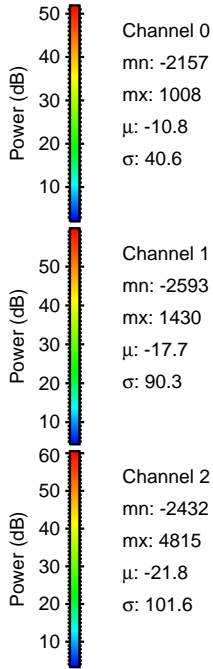
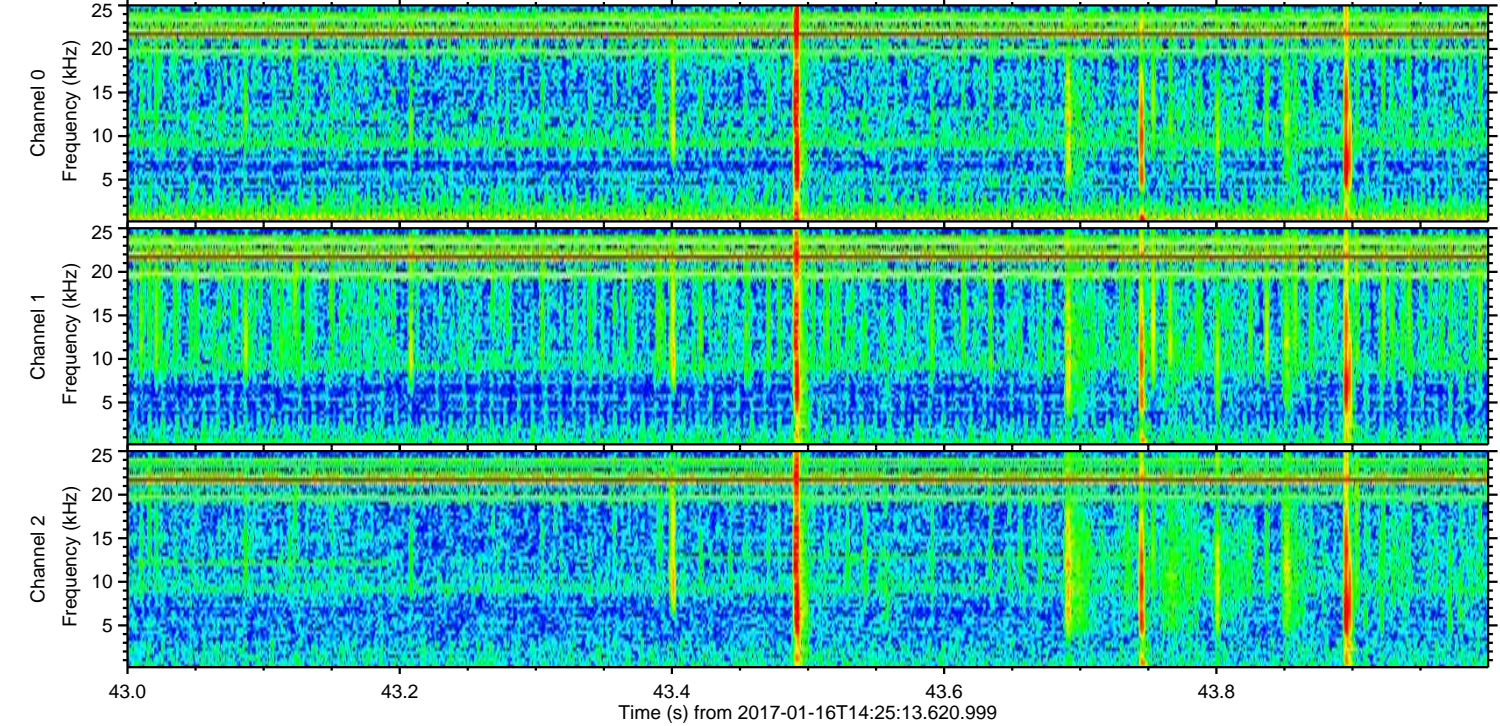
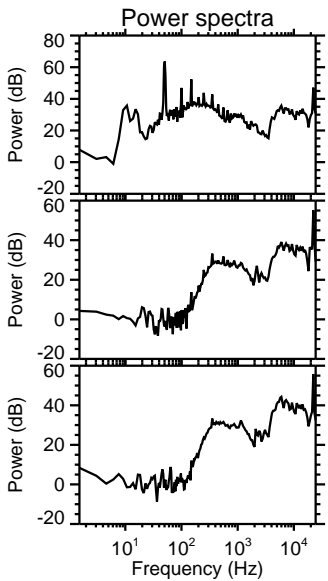
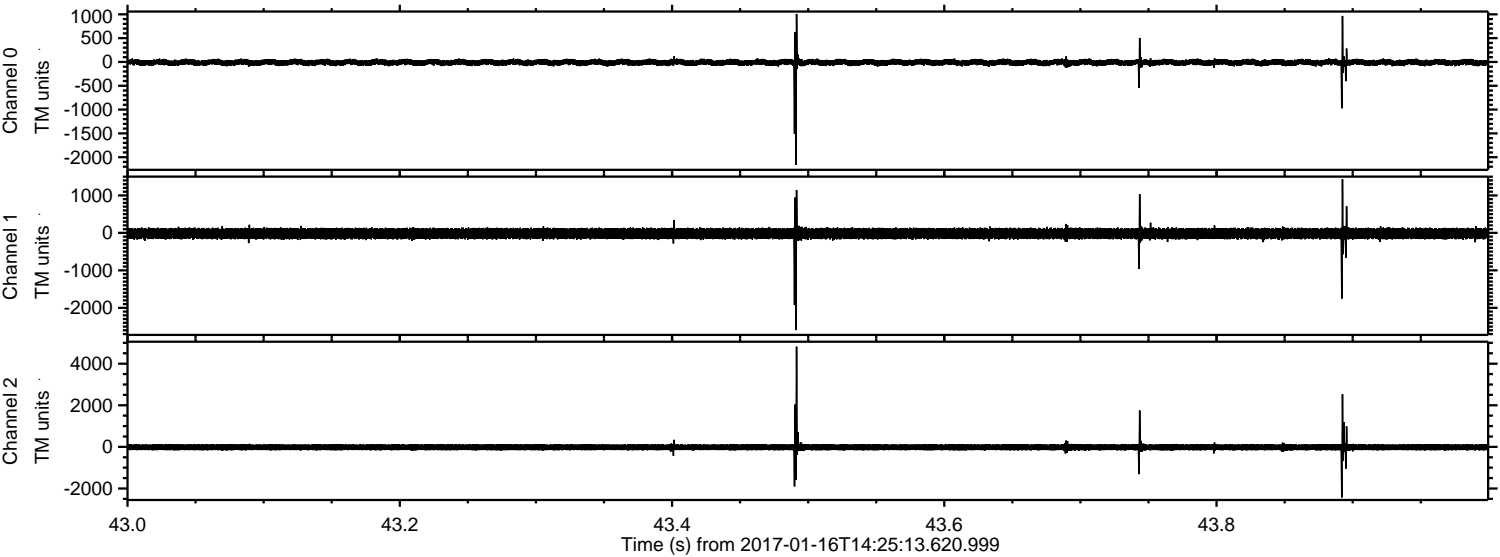
ELMAVAN 3D WAVEFORMS (Measured data sampled at 50 kHz) 51000 packets of 144 samples from 2017-01-16T14:25:13.620.999. Part 125/147

Processed Mon Jan 16 15:33:17 2017 by ELM ver.2012-10-06 from 001__elm20170116_142512__dat00.bin



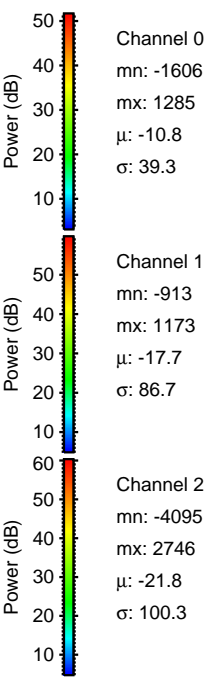
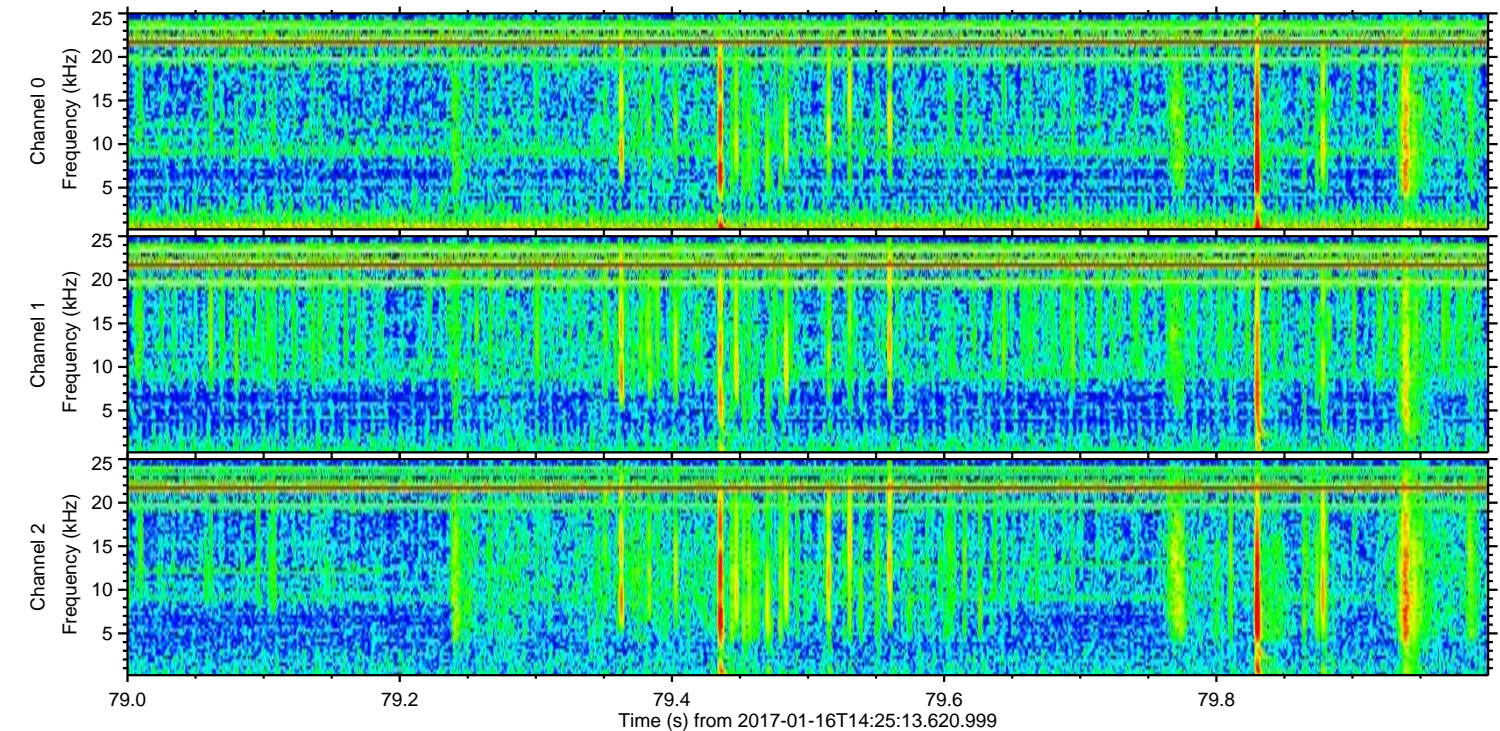
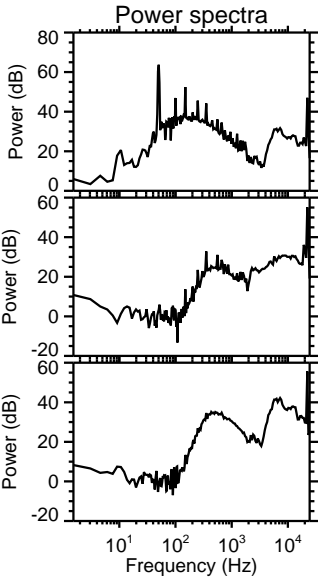
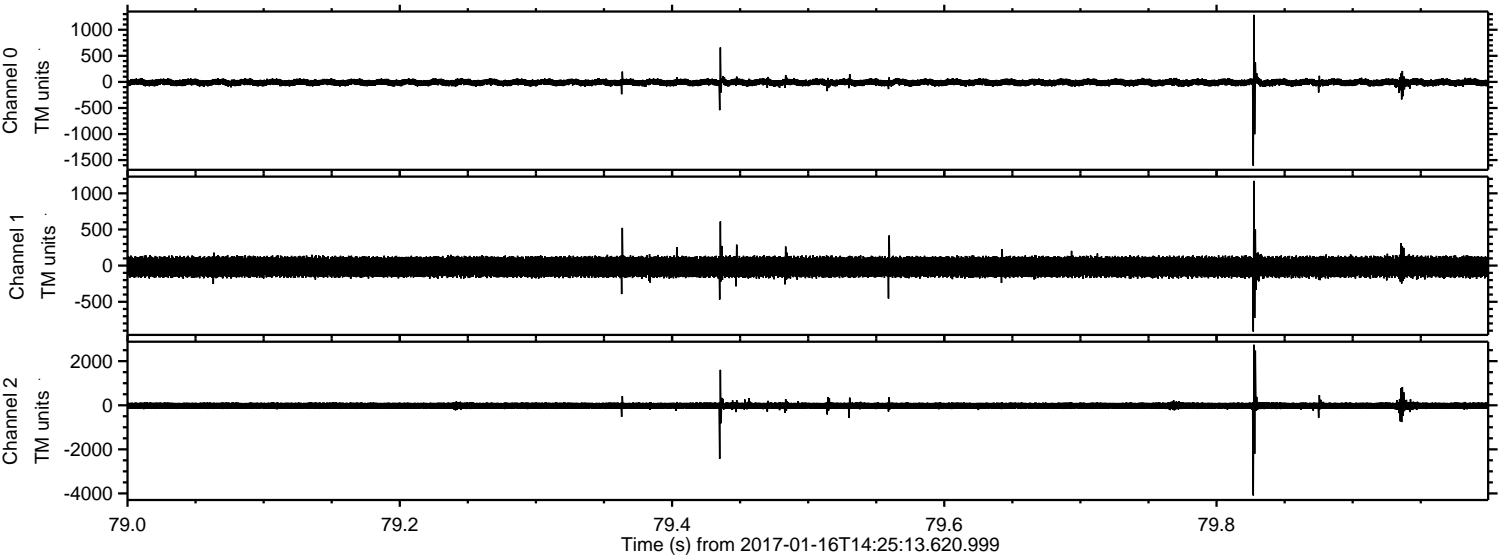
ELMAVAN 3D WAVEFORMS (Measured data sampled at 50 kHz) 51000 packets of 144 samples from 2017-01-16T14:25:13.620.999. Part 44/147

Processed Mon Jan 16 15:33:18 2017 by ELM ver.2012-10-06 from 001__elm20170116_142512__dat00.bin



ELMAVAN 3D WAVEFORMS (Measured data sampled at 50 kHz) 51000 packets of 144 samples from 2017-01-16T14:25:13.620.999. Part 80/147

Processed Mon Jan 16 15:33:19 2017 by ELM ver.2012-10-06 from 001__elm20170116_142512__dat00.bin



Power spectra

Channel 0
mn: -1606
mx: 1285
 μ : -10.8
 σ : 39.3

Channel 1
mn: -913
mx: 1173
 μ : -17.7
 σ : 86.7

Channel 2
mn: -4095
mx: 2746
 μ : -21.8
 σ : 100.3

ELMAVAN 3D WAVEFORMS (Measured data sampled at 50 kHz) 51000 packets of 144 samples from 2017-01-16T14:25:13.620.999. Part 10/147

Processed Mon Jan 16 15:33:20 2017 by ELM ver.2012-10-06 from 001__elm20170116_142512__dat00.bin

