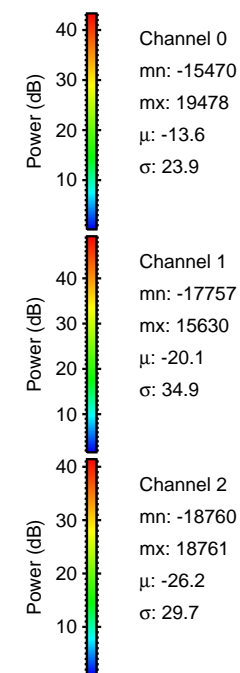
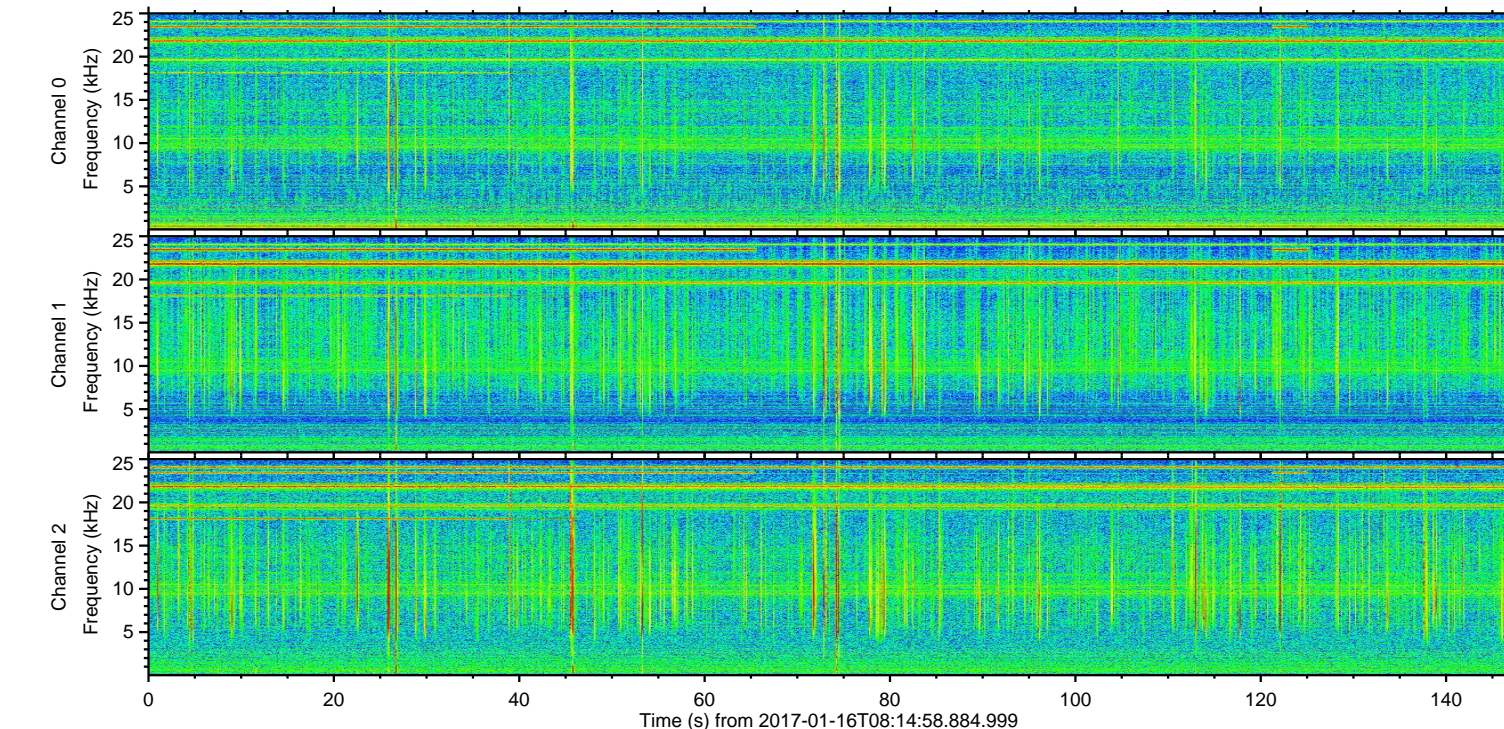
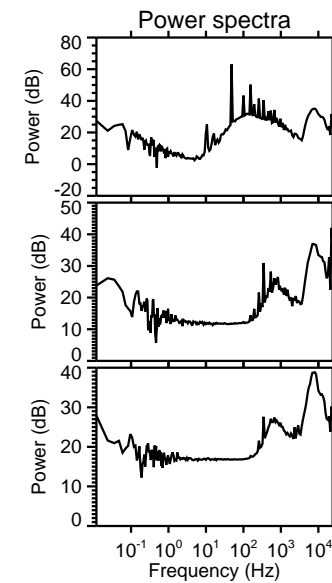
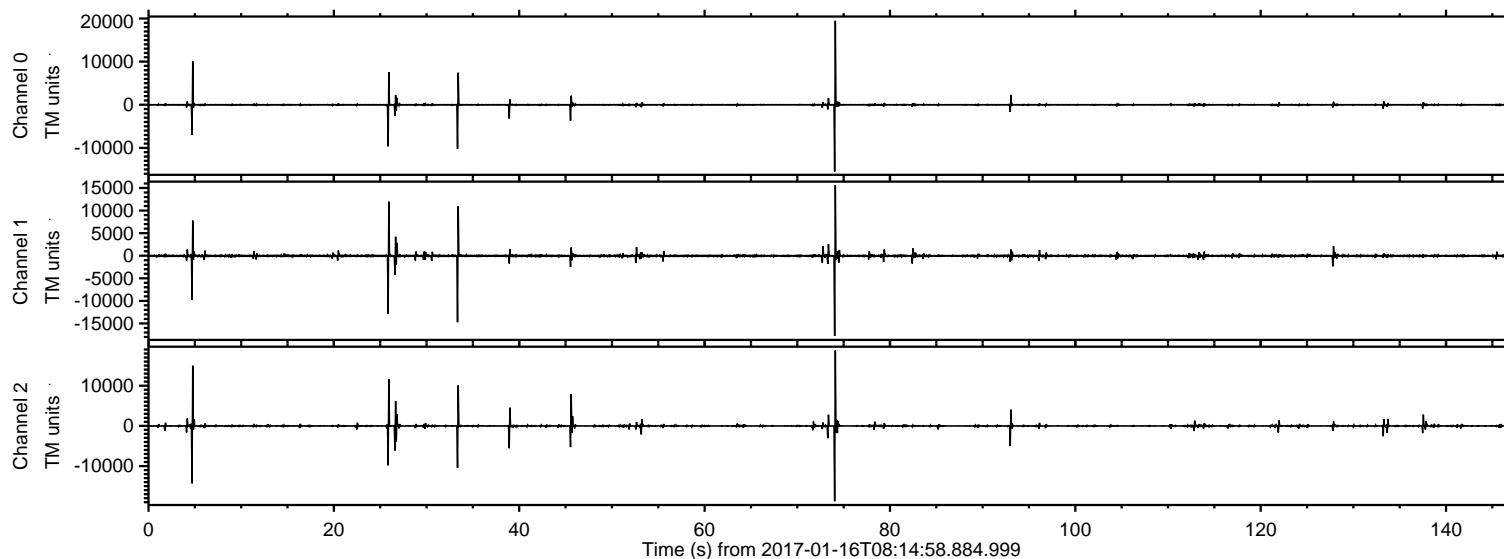
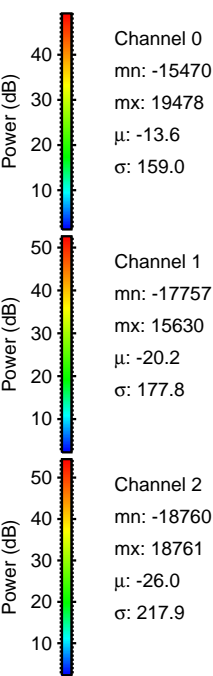
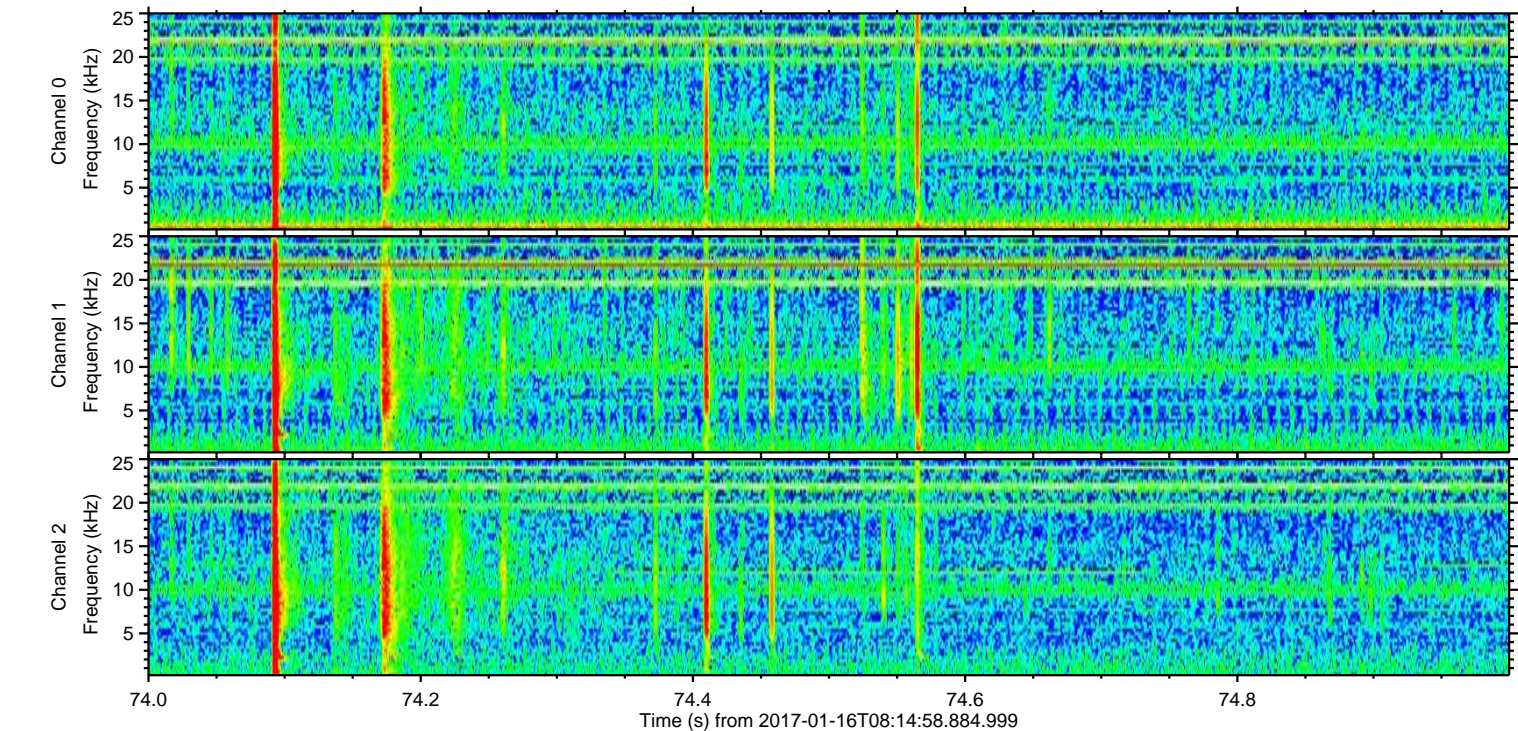
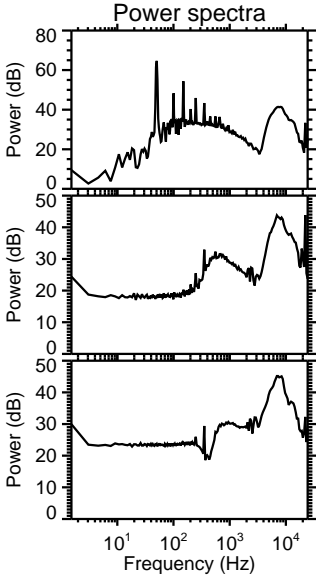
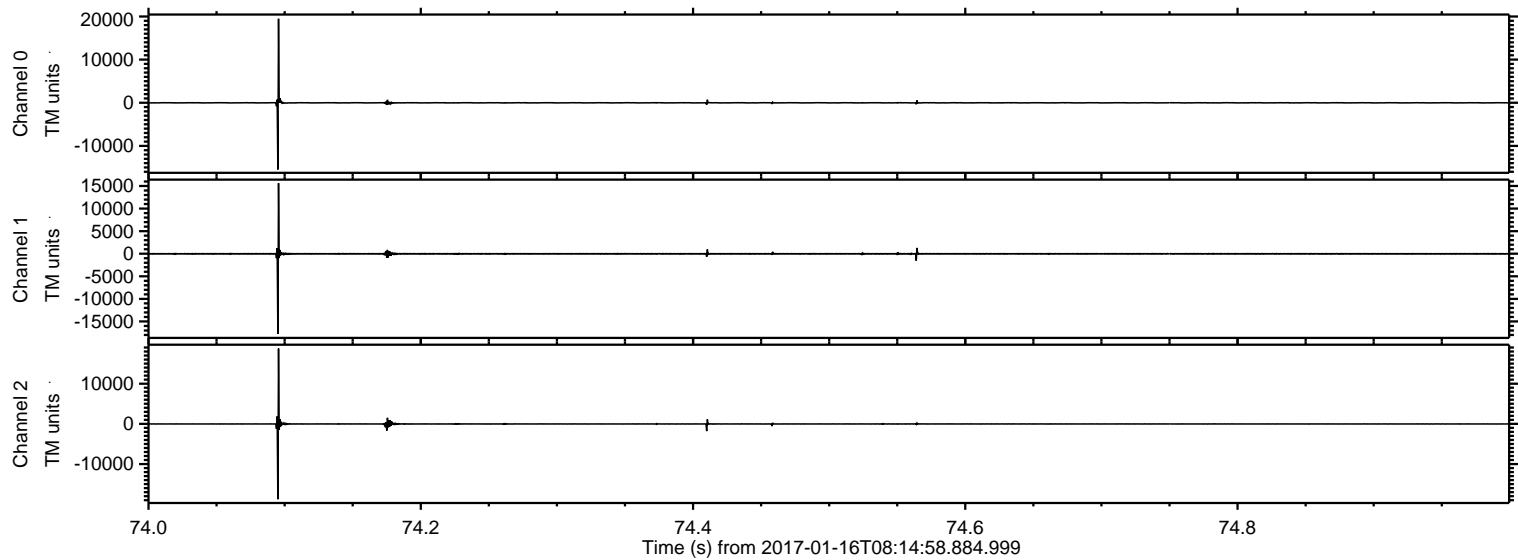


ELMAVAN 3D WAVEFORMS (Measured data sampled at 50 kHz) 51000 packets of 144 samples from 2017-01-16T08:14:58.884.999.

Processed Mon Jan 16 09:22:58 2017 by ELM ver.2012-10-06 from 001__elm20170116_081457__dat00.bin

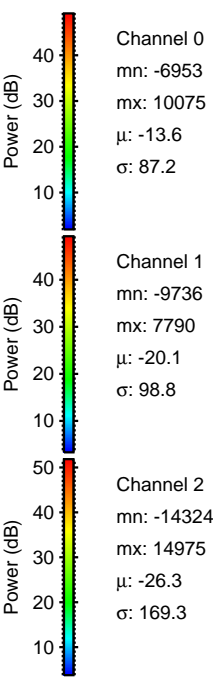
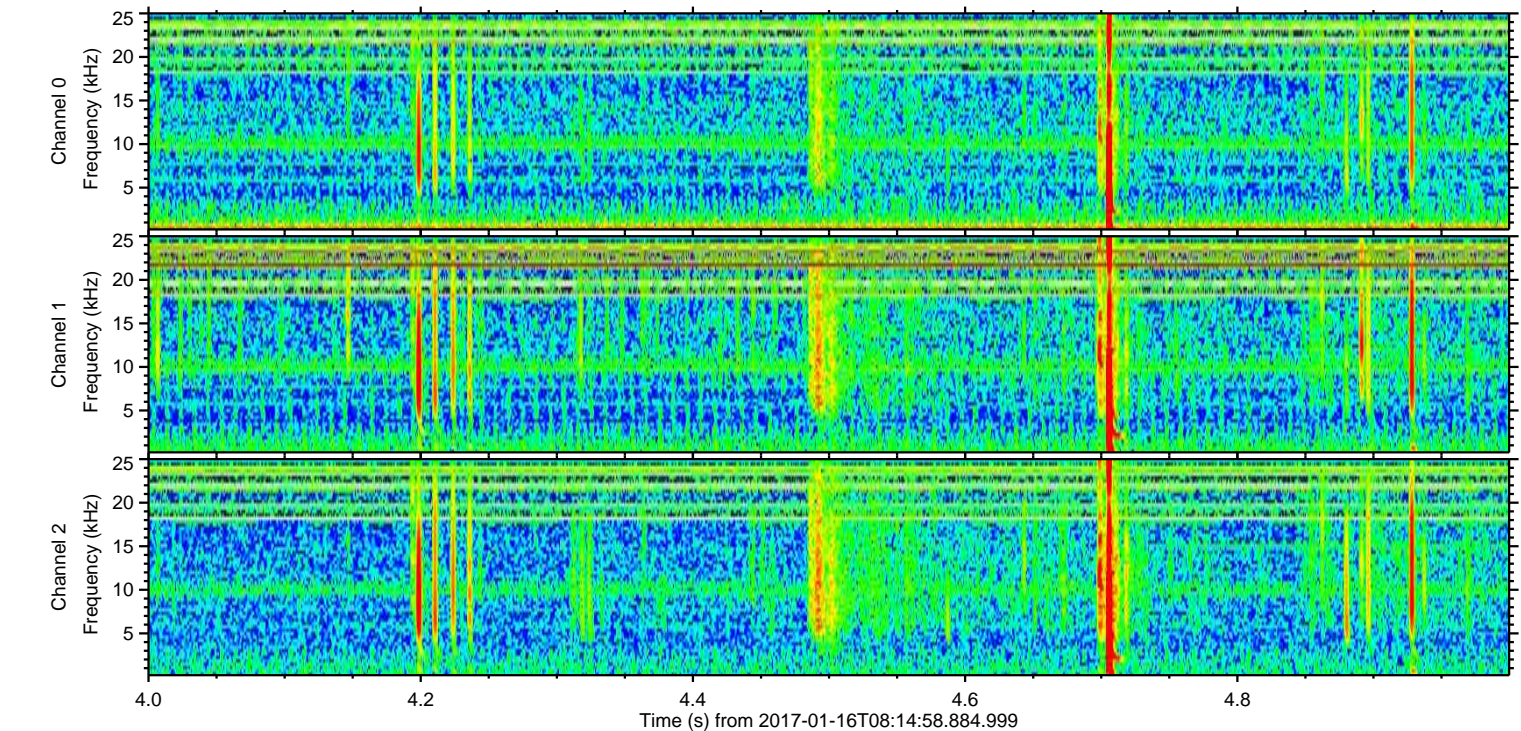
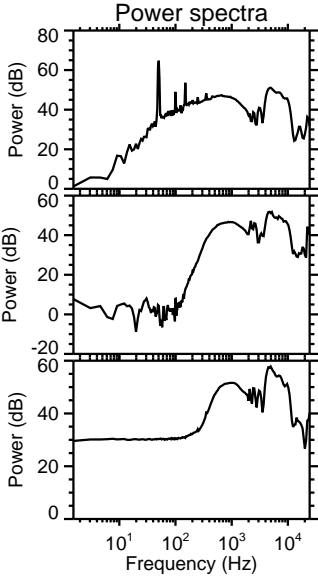
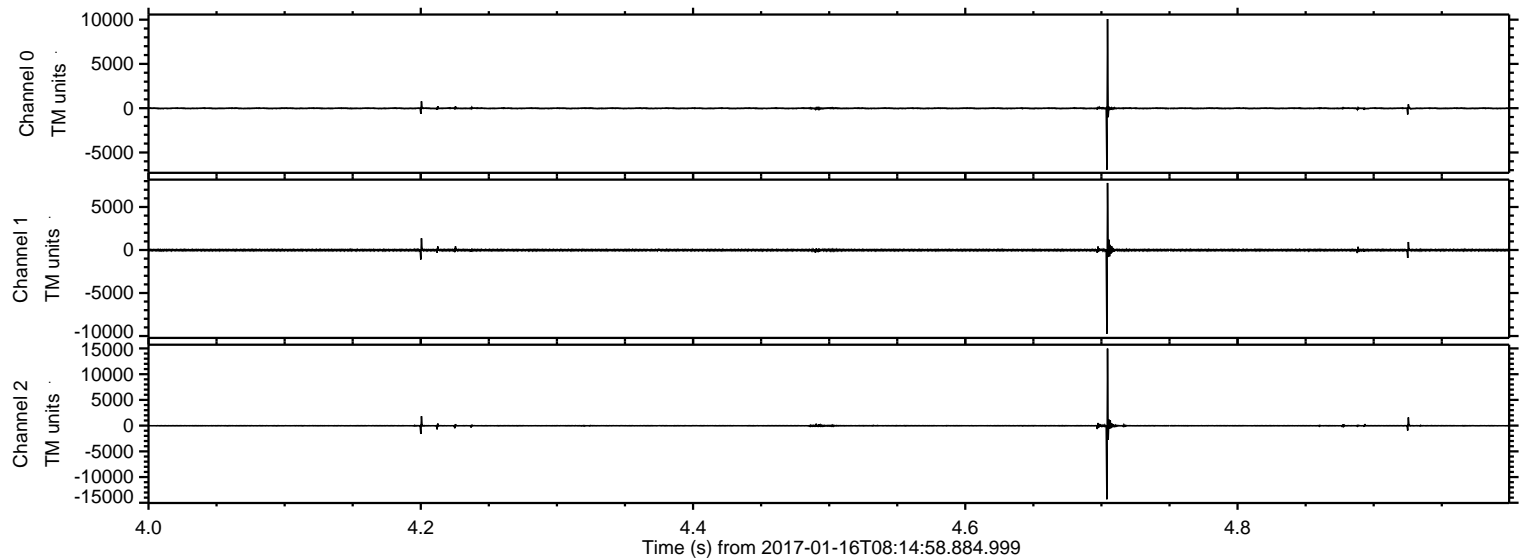


Processed Mon Jan 16 09:23:10 2017 by ELM ver.2012-10-06 from 001__elm20170116_081457__dat00.bin

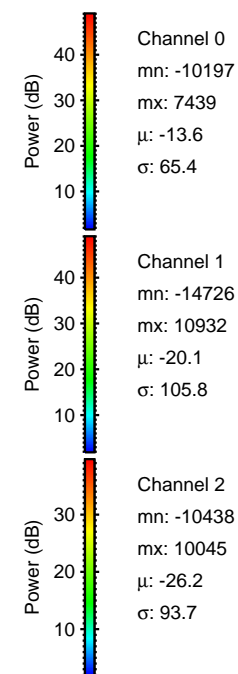
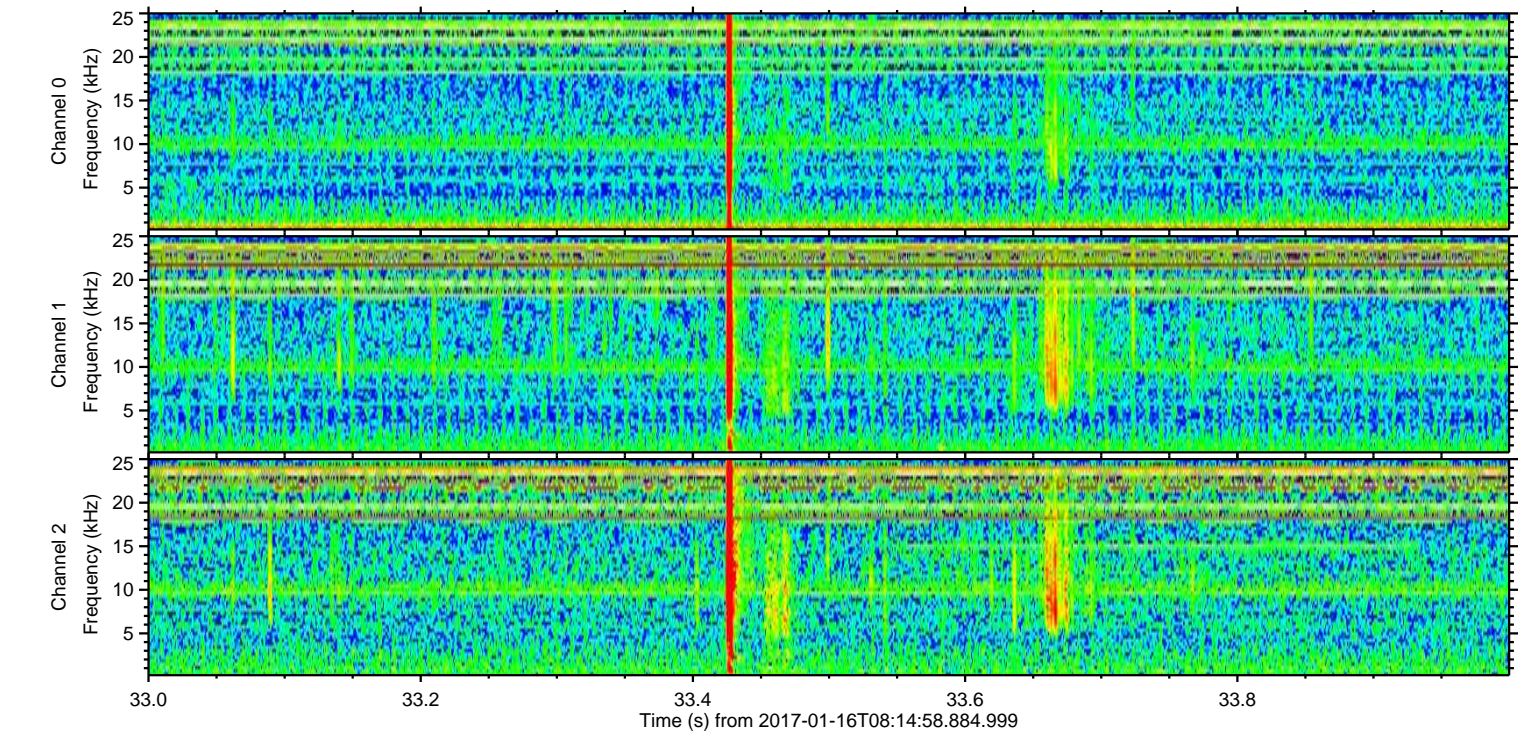
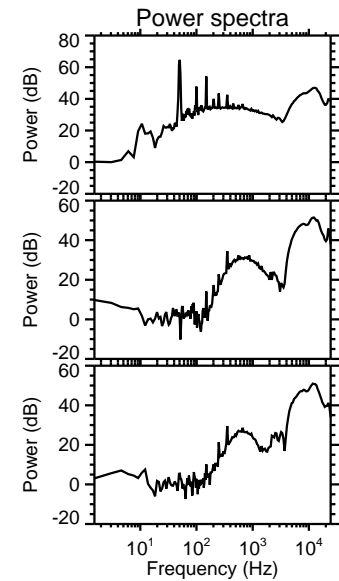
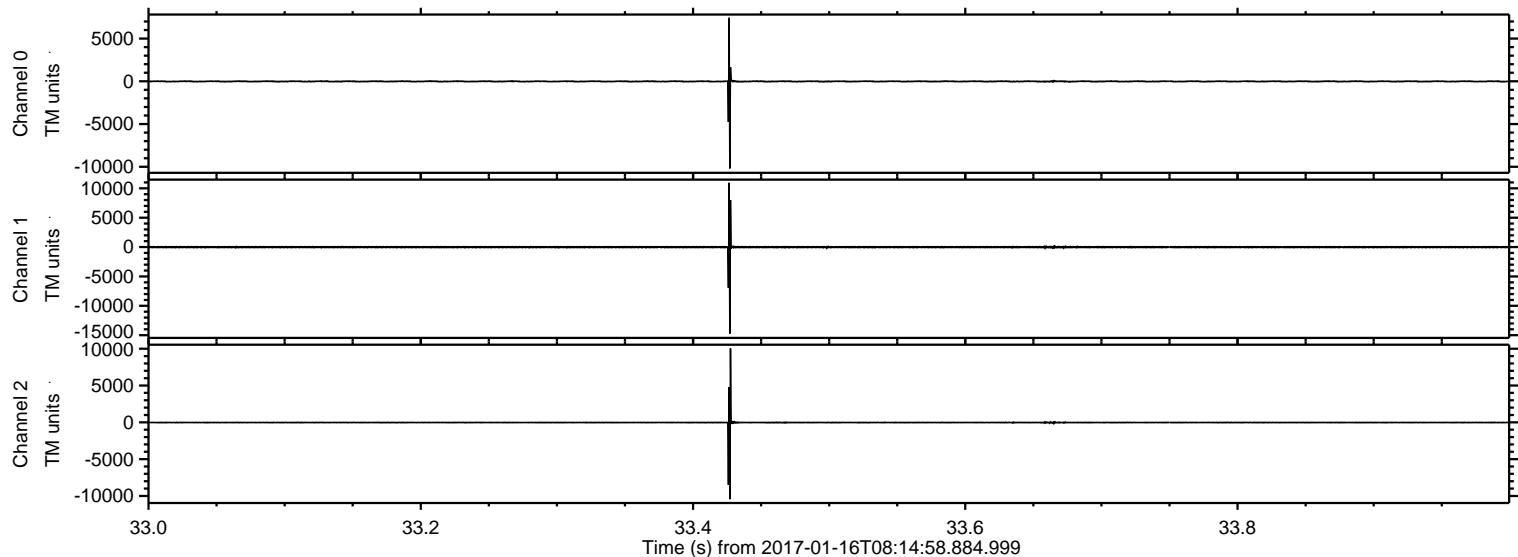


ELMAVAN 3D WAVEFORMS (Measured data sampled at 50 kHz) 51000 packets of 144 samples from 2017-01-16T08:14:58.884.999. Part 5/147

Processed Mon Jan 16 09:23:11 2017 by ELM ver.2012-10-06 from 001__elm20170116_081457__dat00.bin

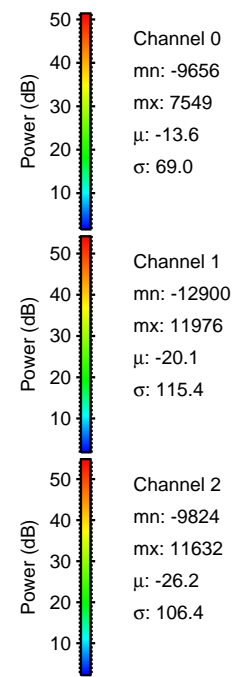
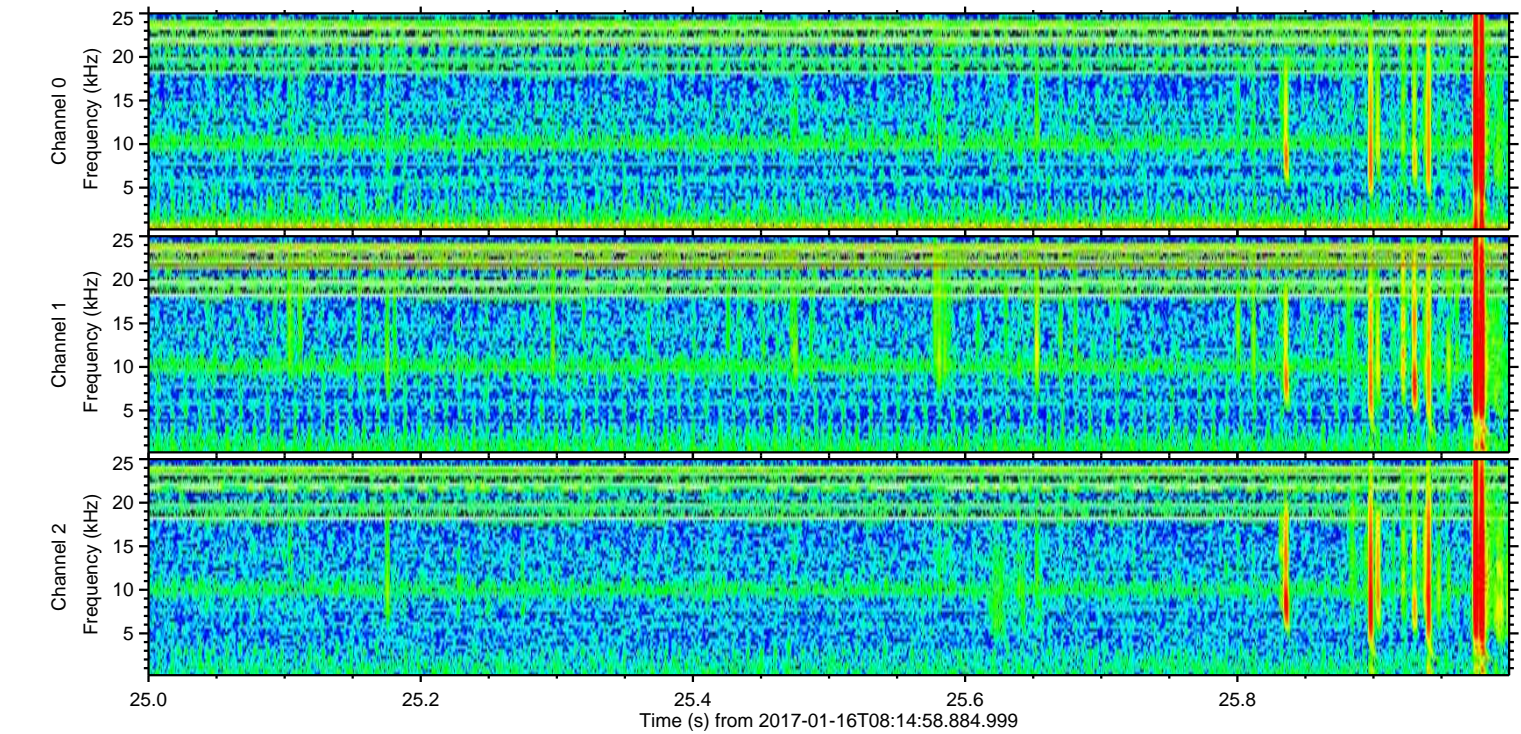
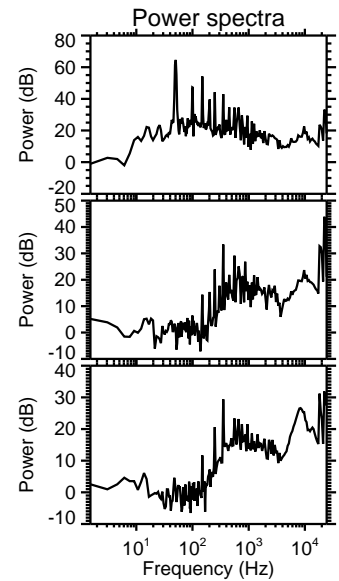
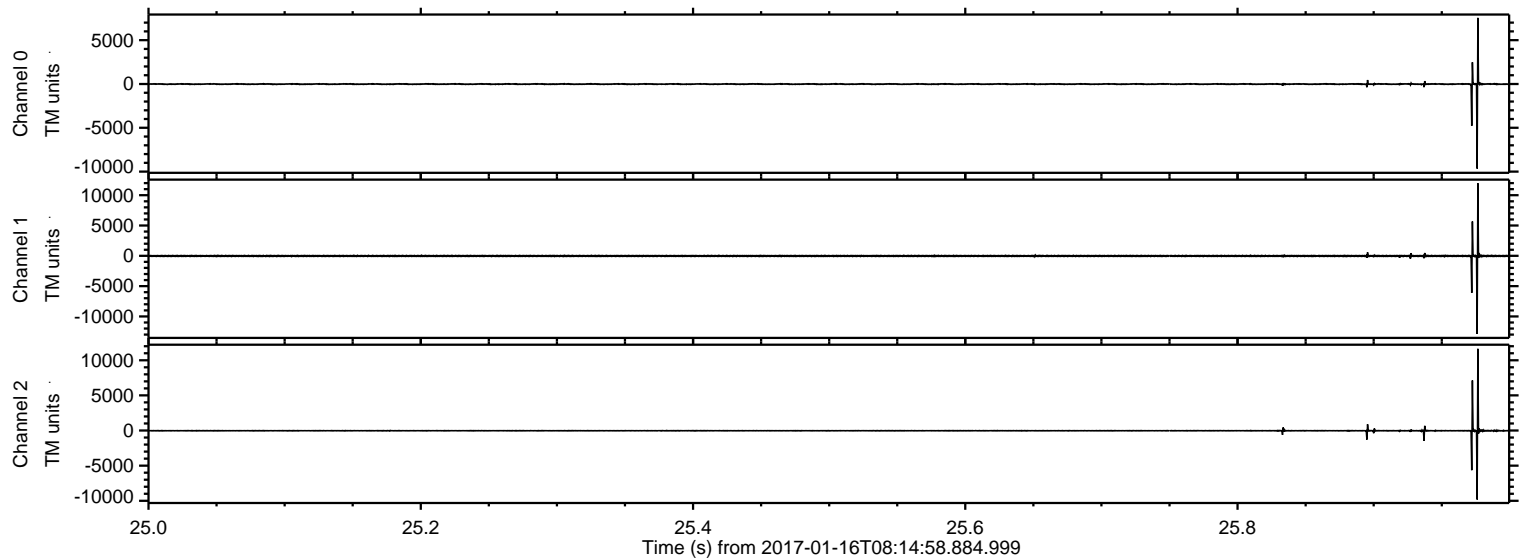


Processed Mon Jan 16 09:23:12 2017 by ELM ver.2012-10-06 from 001__elm20170116_081457__dat00.bin

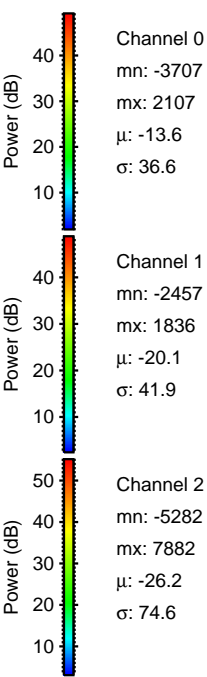
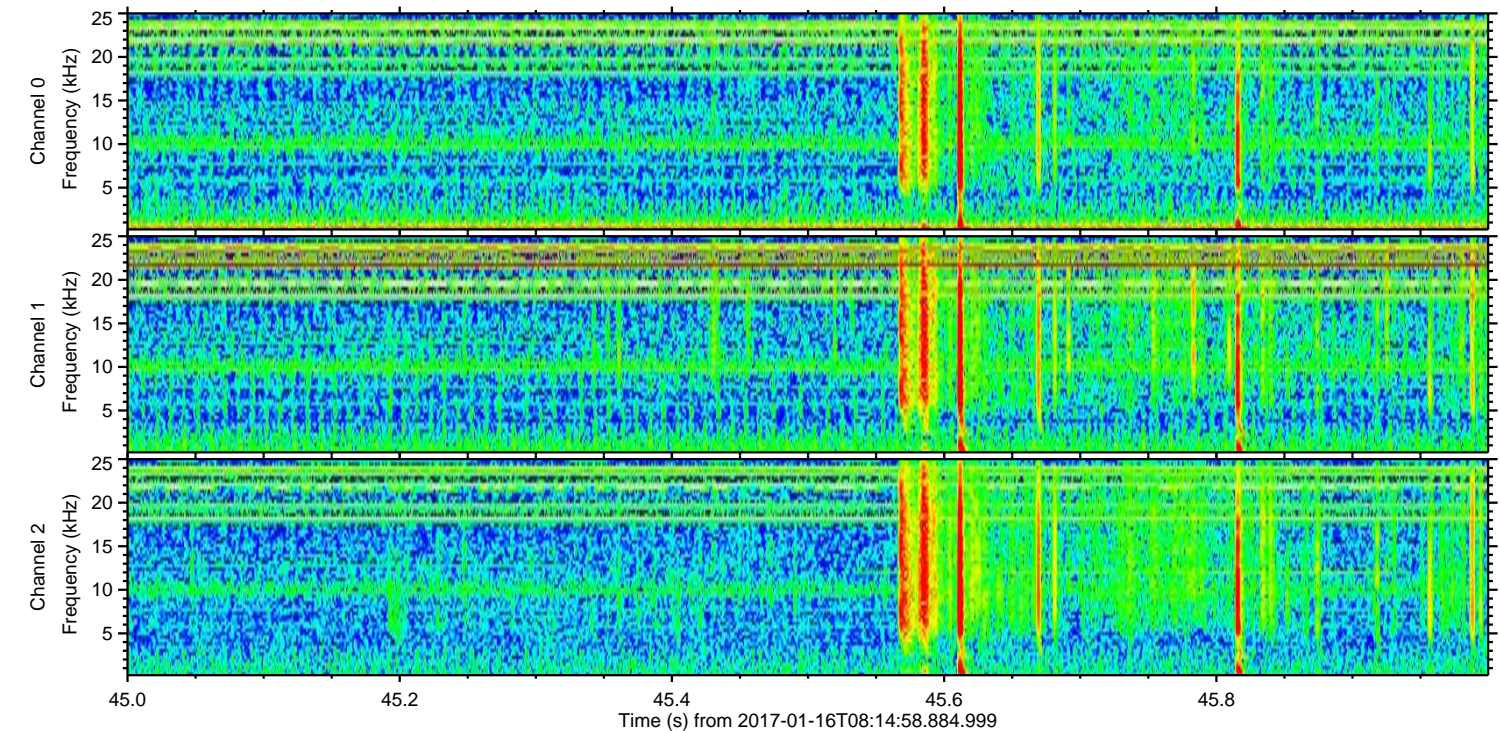
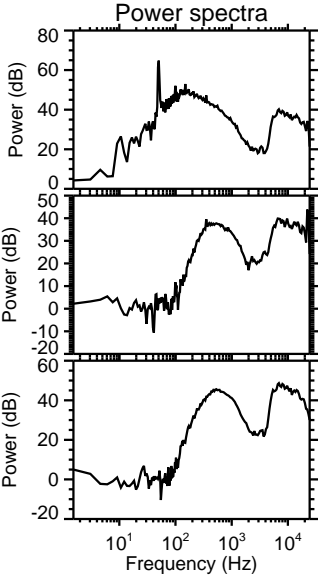
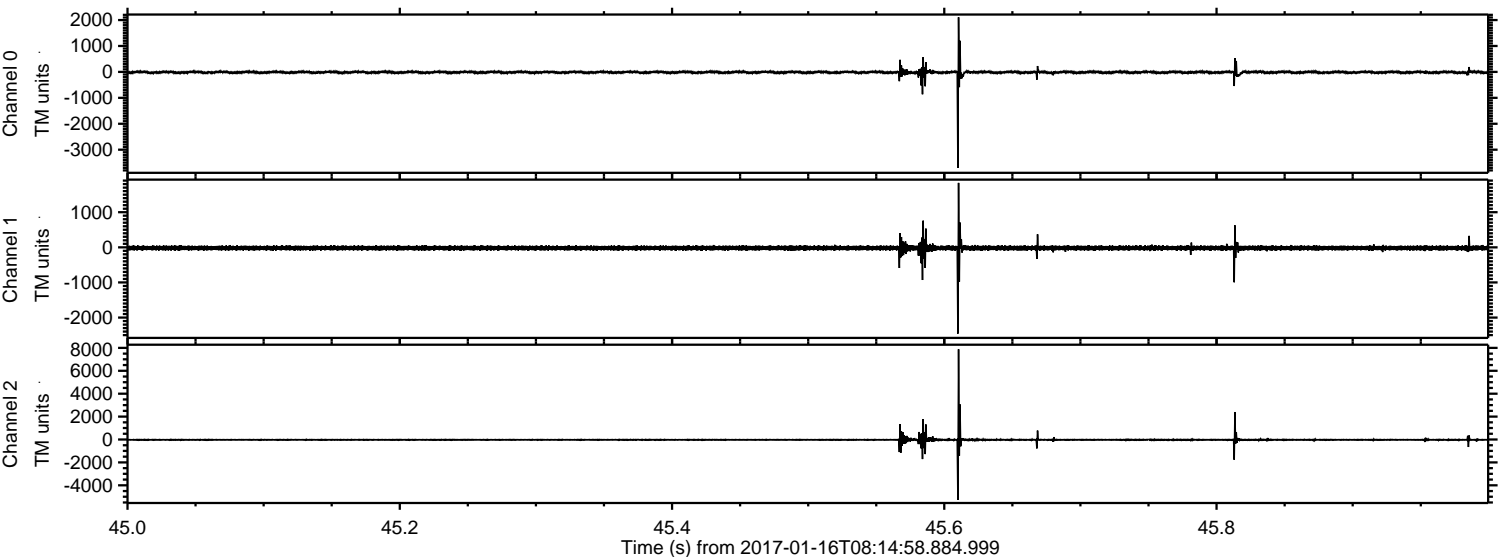


ELMAVAN 3D WAVEFORMS (Measured data sampled at 50 kHz) 51000 packets of 144 samples from 2017-01-16T08:14:58.884.999. Part 26/147

Processed Mon Jan 16 09:23:13 2017 by ELM ver.2012-10-06 from 001__elm20170116_081457__dat00.bin



Processed Mon Jan 16 09:23:14 2017 by ELM ver.2012-10-06 from 001__elm20170116_081457__dat00.bin

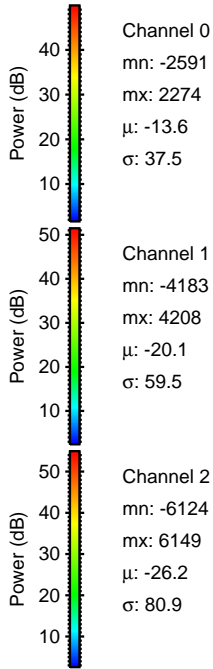
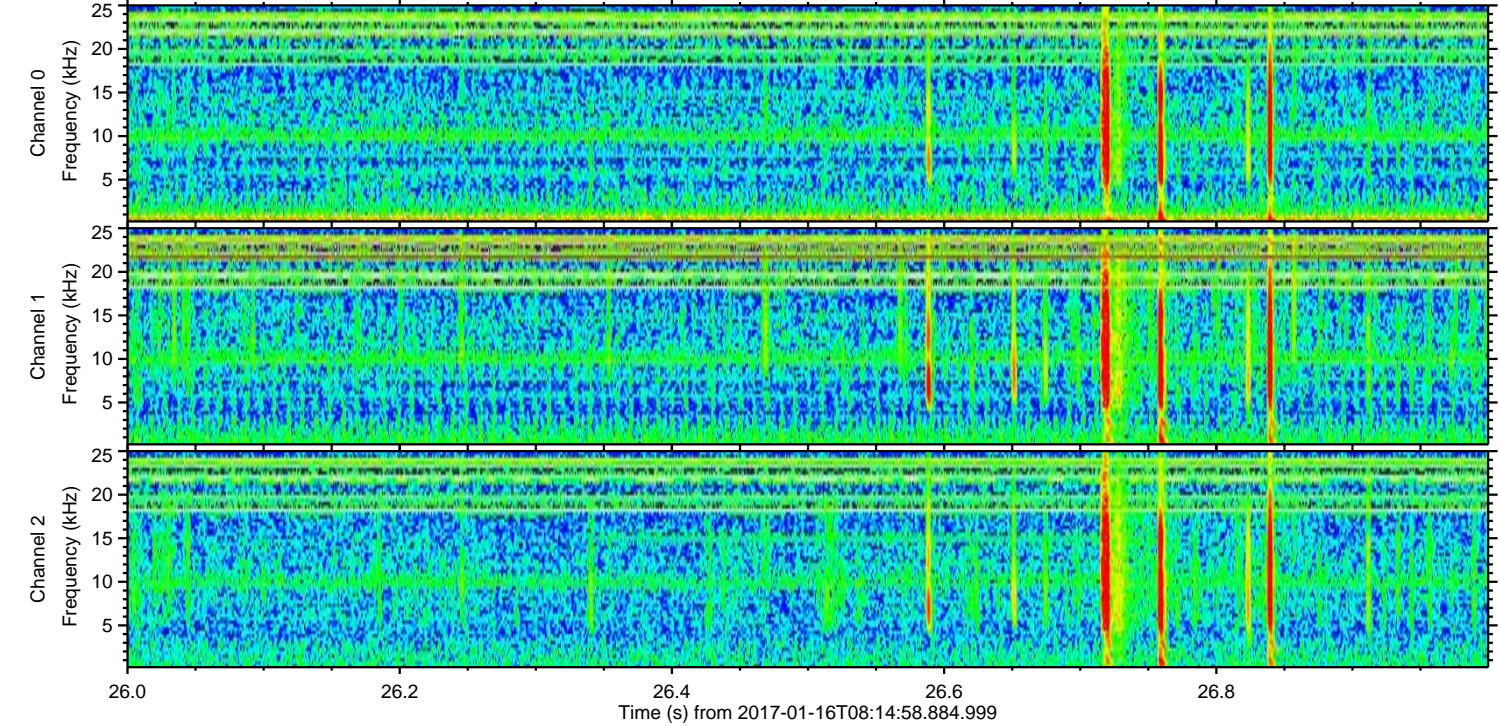
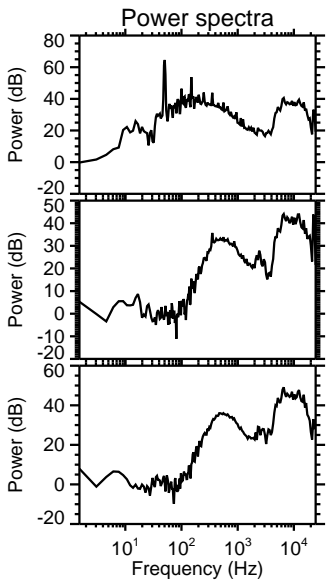
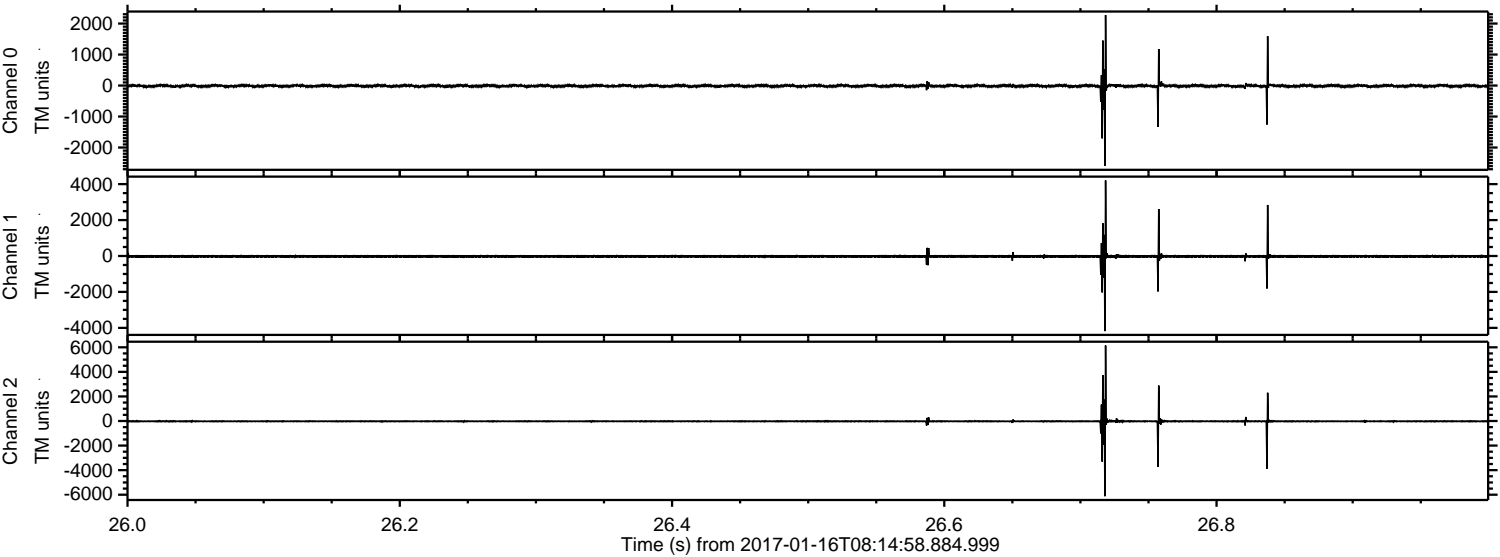


Channel 0
mn: -3707
mx: 2107
 μ : -13.6
 σ : 36.6

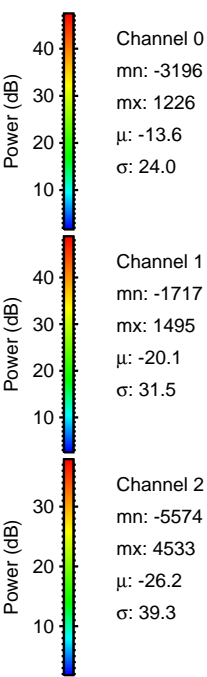
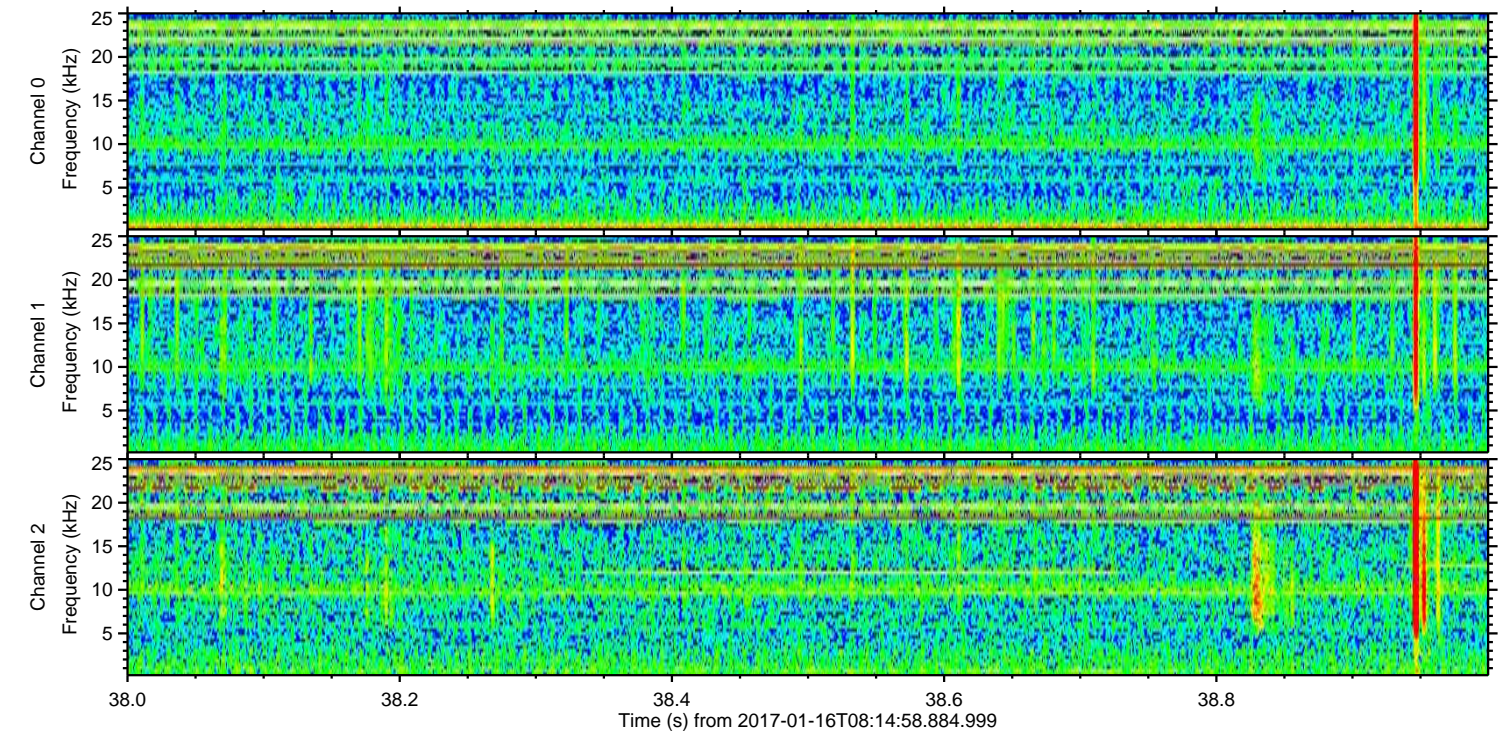
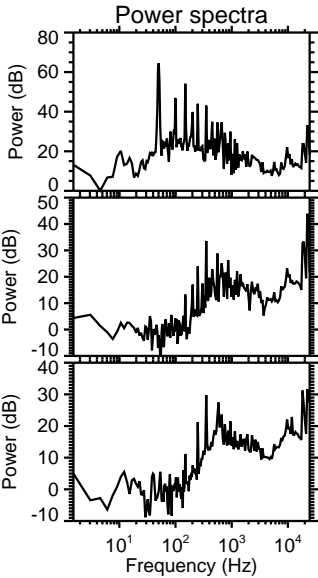
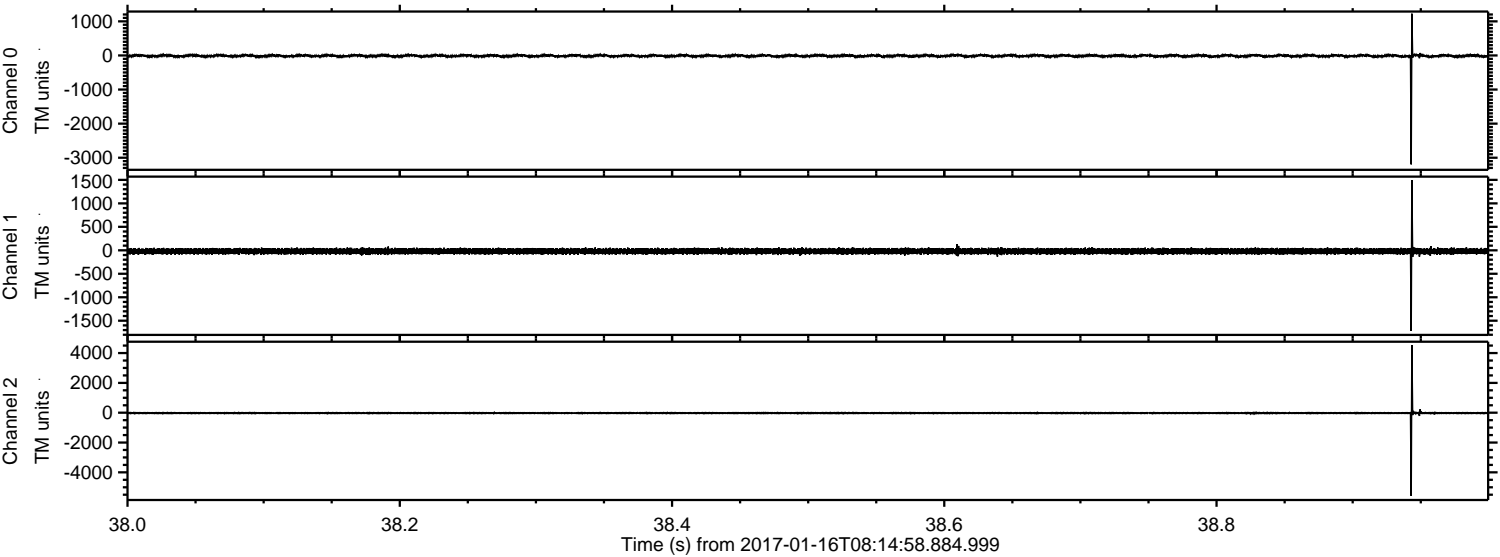
Channel 1
mn: -2457
mx: 1836
 μ : -20.1
 σ : 41.9

Channel 2
mn: -5282
mx: 7882
 μ : -26.2
 σ : 74.6

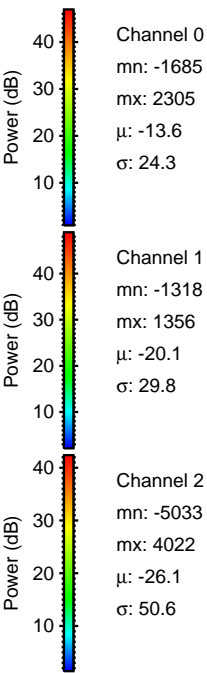
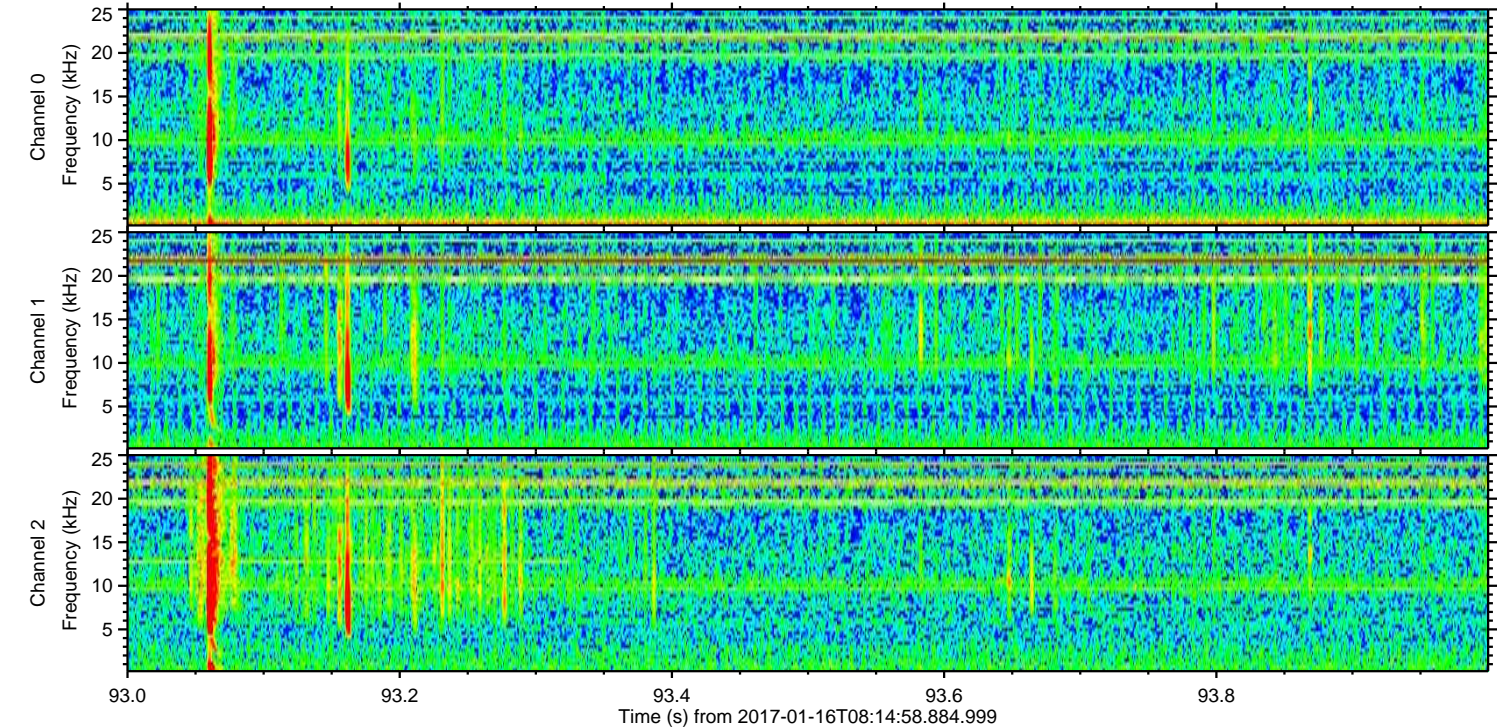
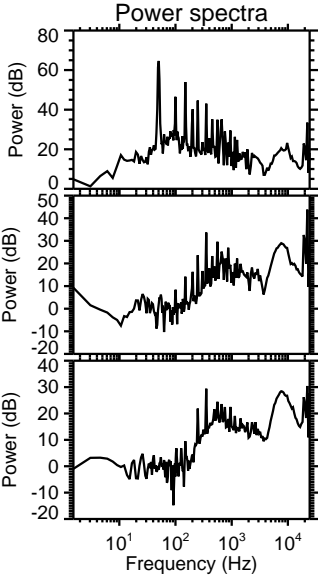
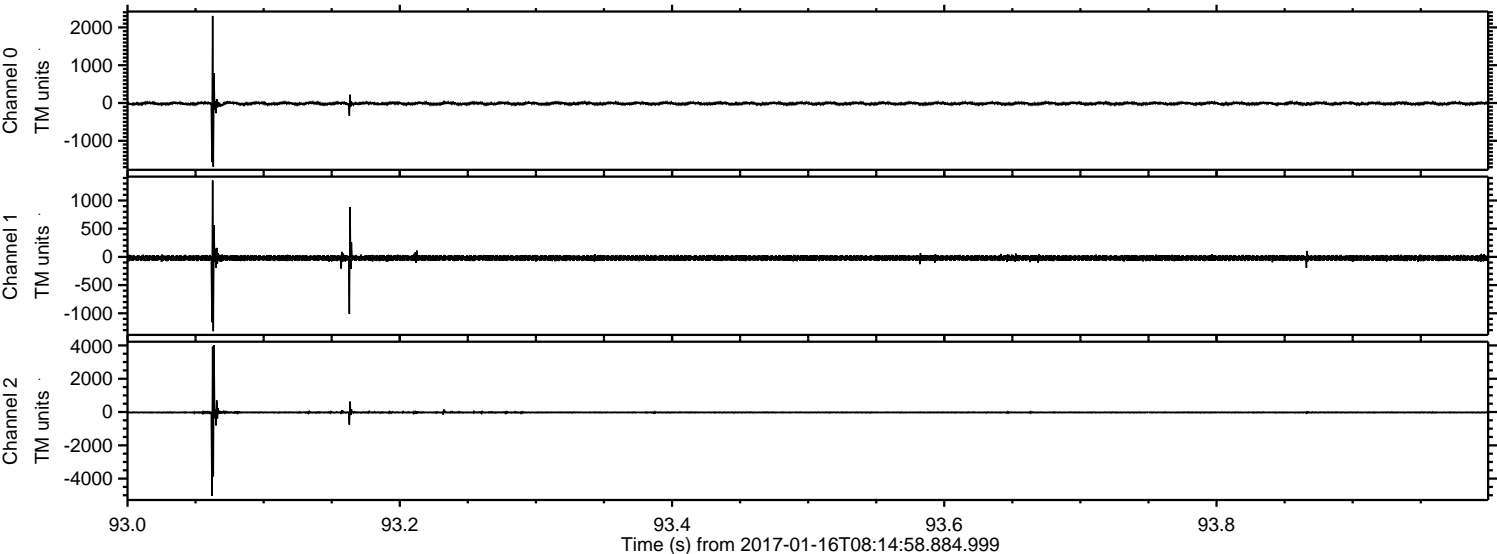
Processed Mon Jan 16 09:23:15 2017 by ELM ver.2012-10-06 from 001__elm20170116_081457__dat00.bin



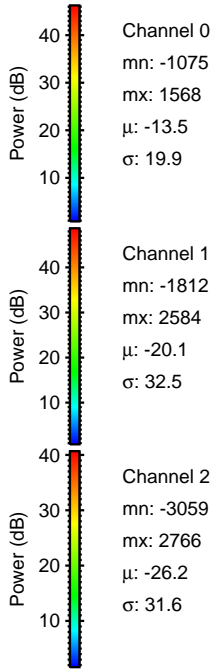
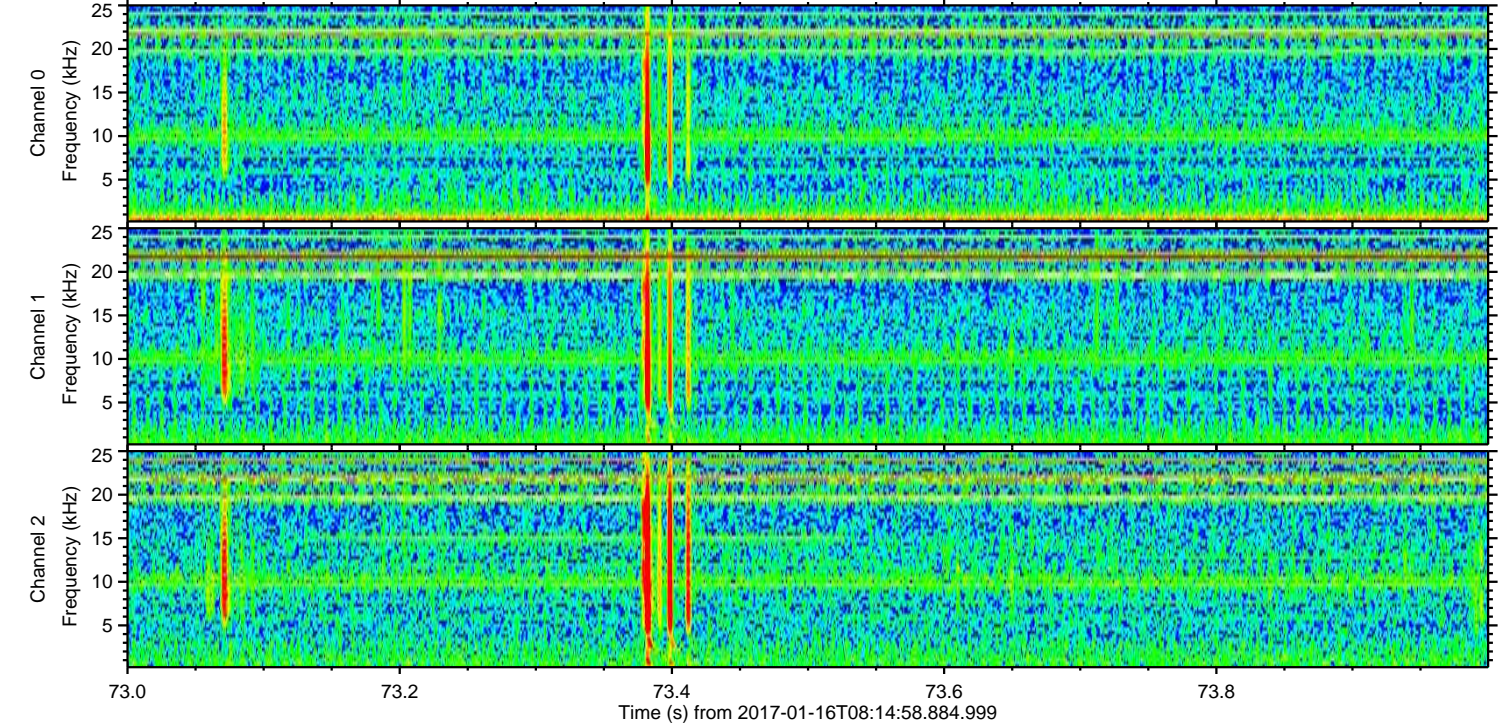
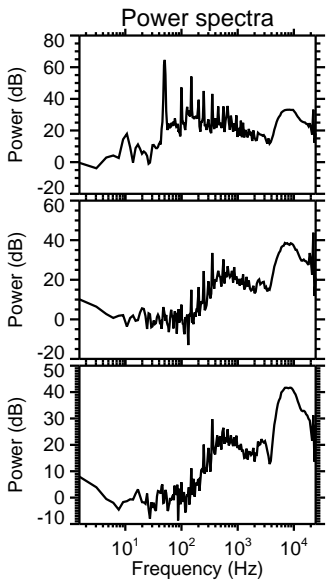
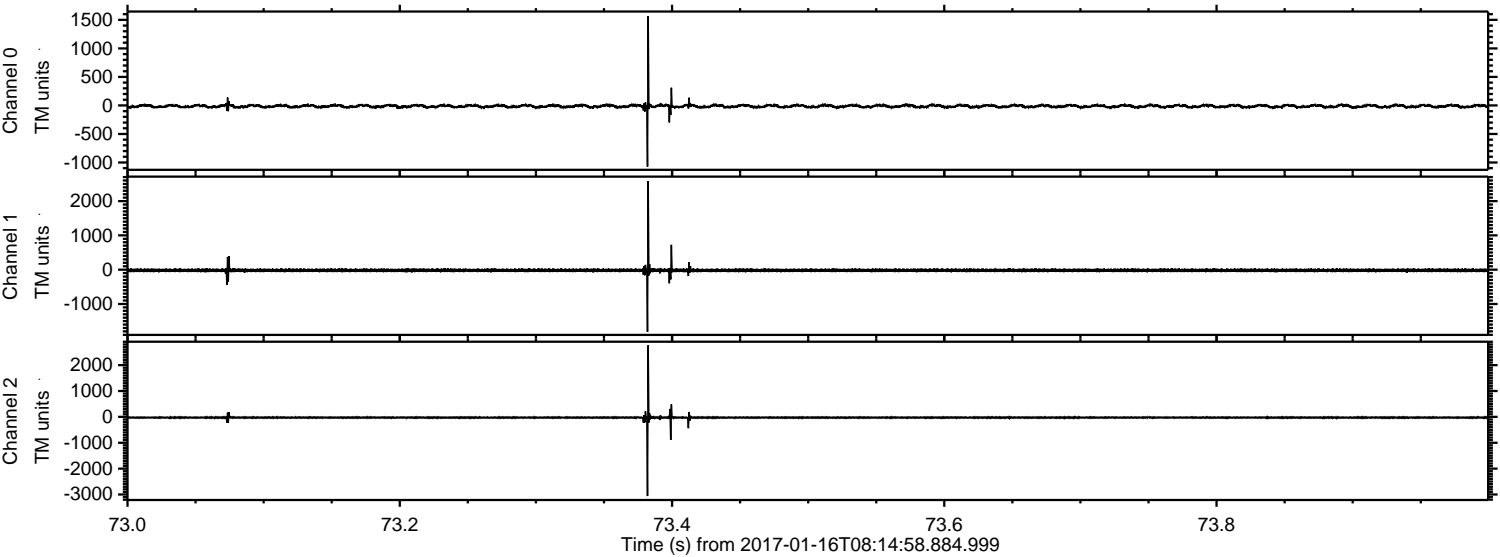
Processed Mon Jan 16 09:23:16 2017 by ELM ver.2012-10-06 from 001__elm20170116_081457__dat00.bin



Processed Mon Jan 16 09:23:17 2017 by ELM ver.2012-10-06 from 001__elm20170116_081457__dat00.bin



Processed Mon Jan 16 09:23:17 2017 by ELM ver.2012-10-06 from 001__elm20170116_081457__dat00.bin



Channel 0
mn: -1075
mx: 1568
 μ : -13.5
 σ : 19.9

Channel 1
mn: -1812
mx: 2584
 μ : -20.1
 σ : 32.5

Channel 2
mn: -3059
mx: 2766
 μ : -26.2
 σ : 31.6

Processed Mon Jan 16 09:23:18 2017 by ELM ver.2012-10-06 from 001__elm20170116_081457__dat00.bin

