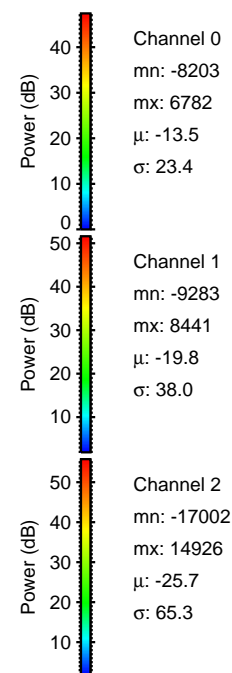
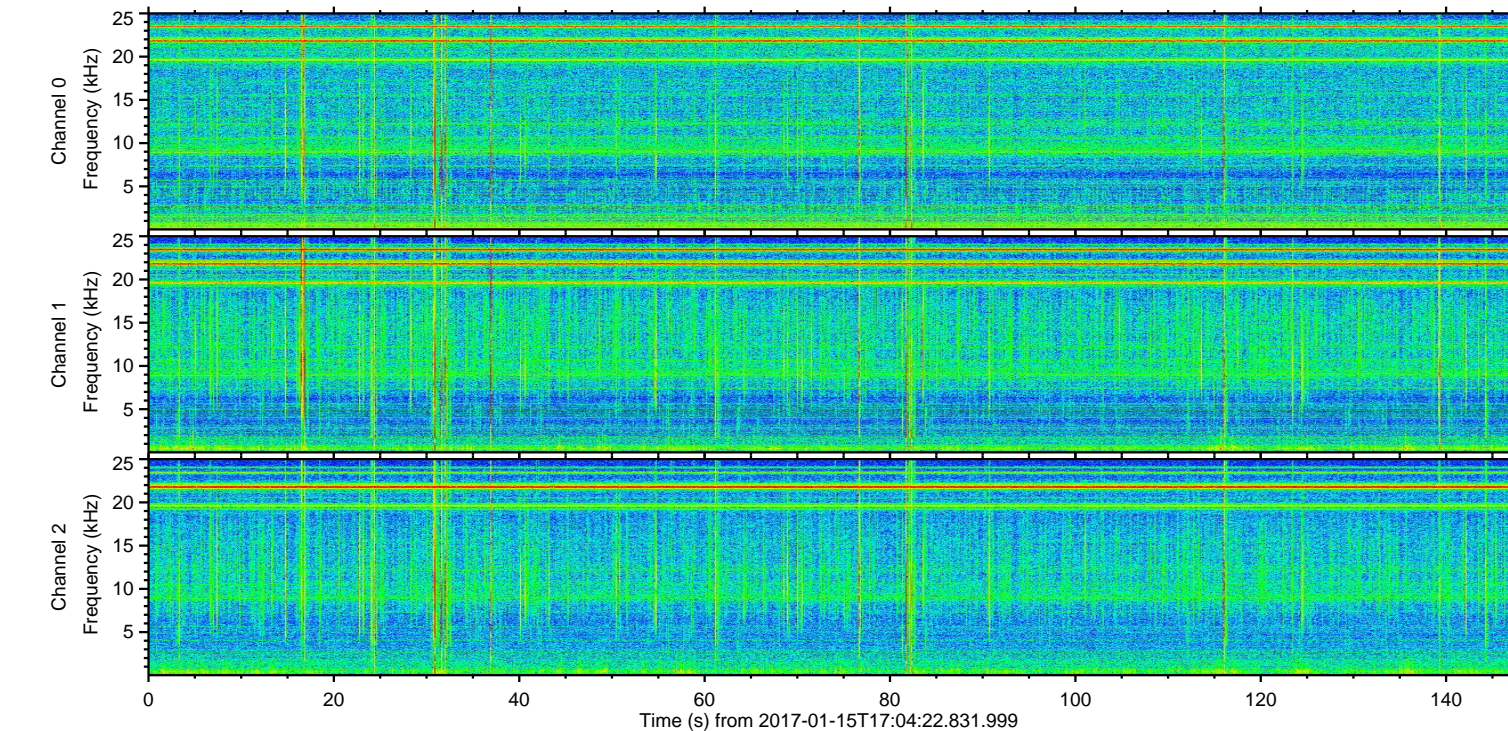
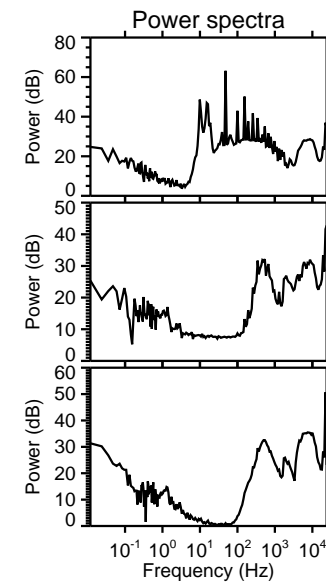
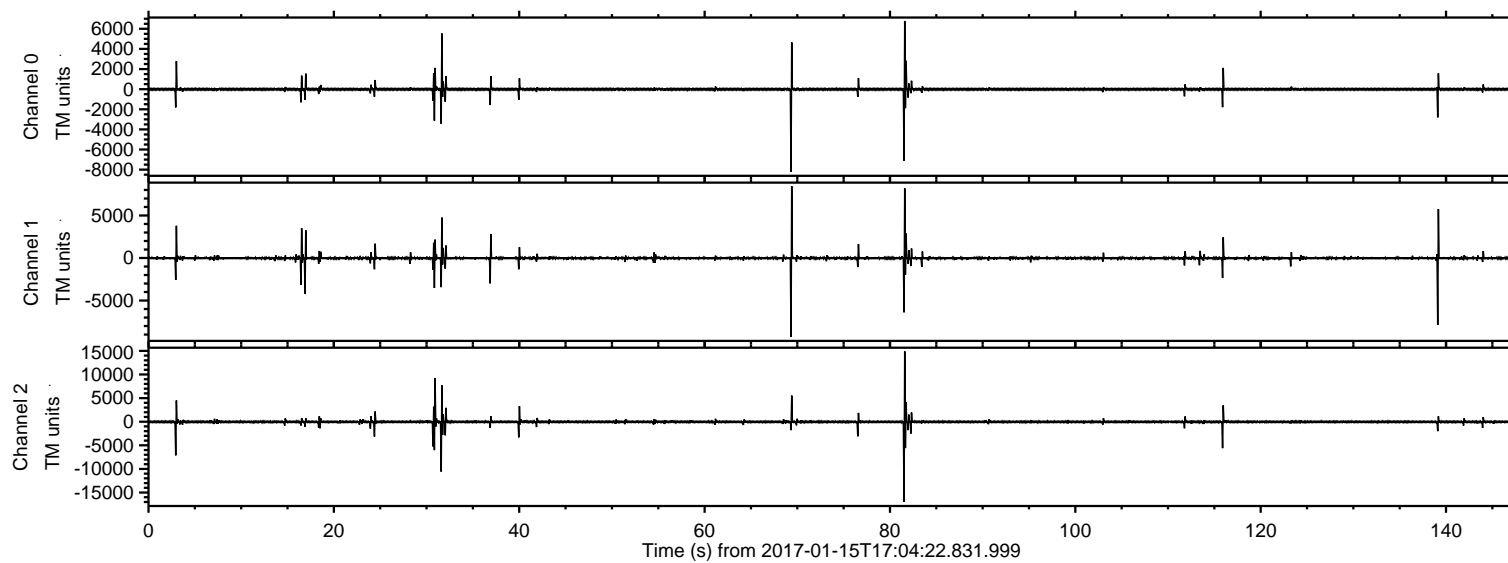


# ELMAVAN 3D WAVEFORMS (Measured data sampled at 50 kHz) 51000 packets of 144 samples from 2017-01-15T17:04:22.831.999.

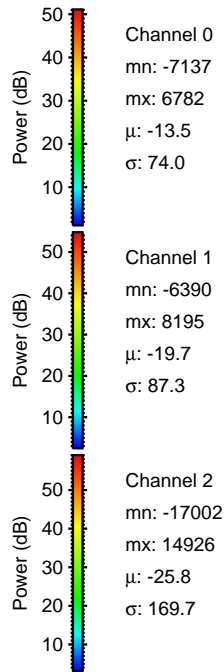
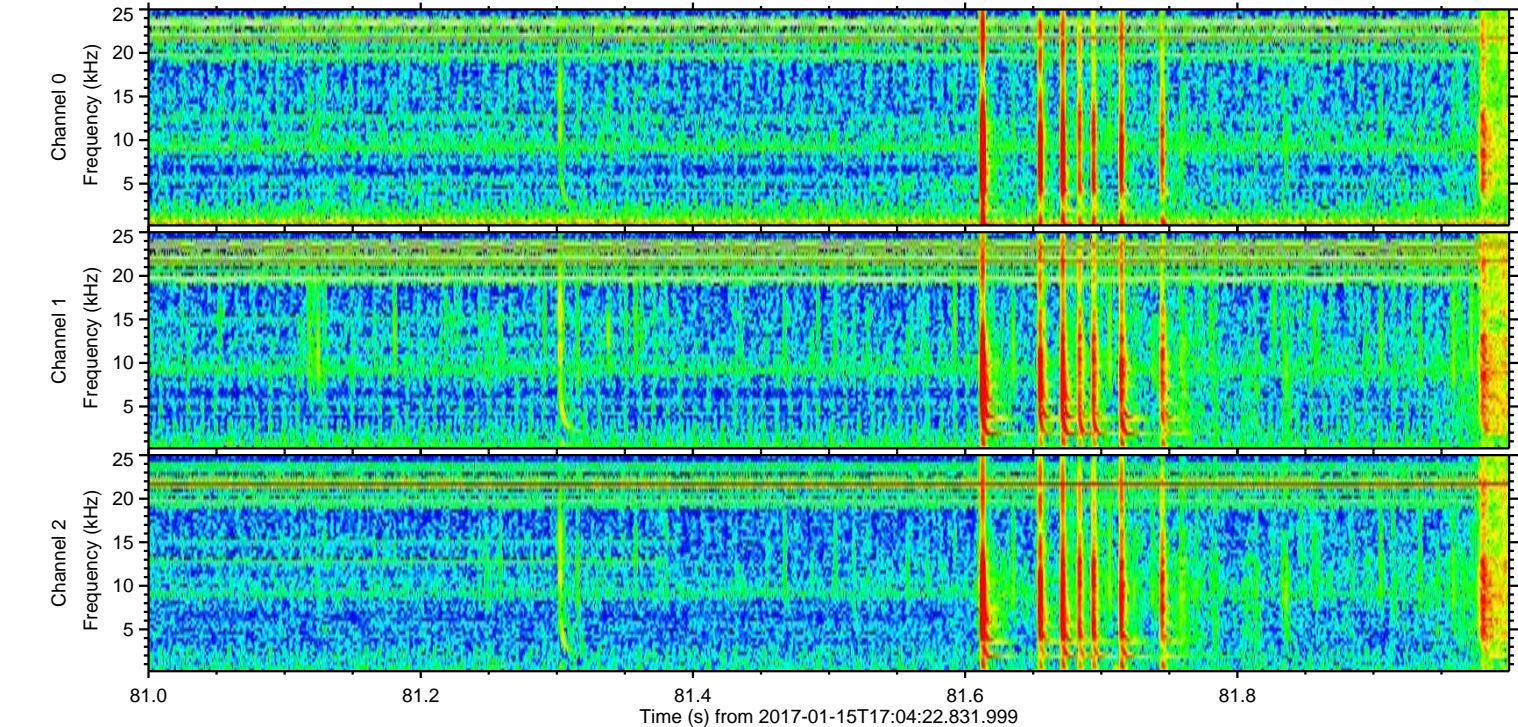
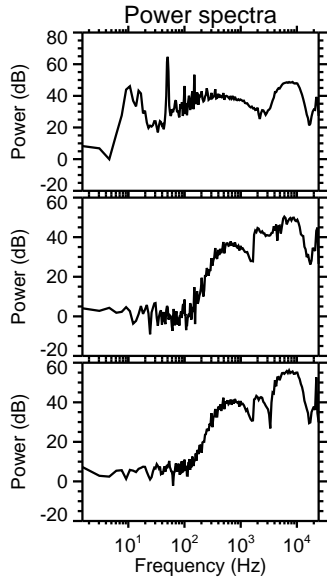
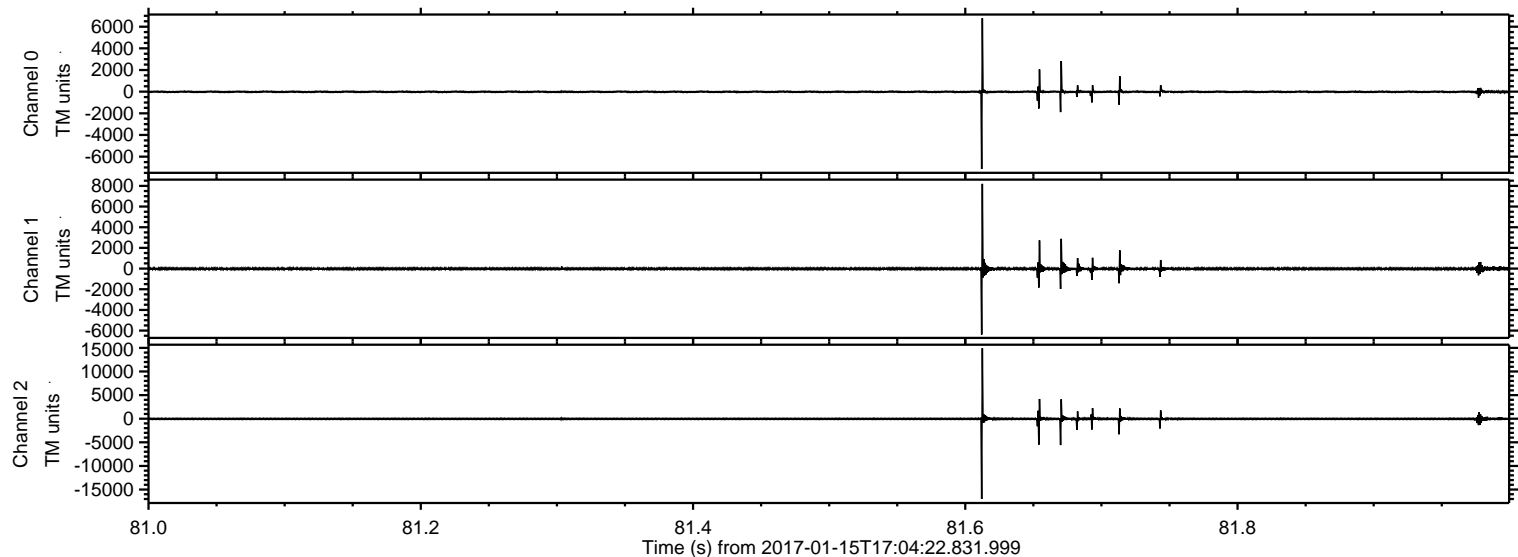
Processed Sun Jan 15 18:12:10 2017 by ELM ver.2012-10-06 from 001\_\_elm20170115\_170421\_\_dat00.bin





ELMAVAN 3D WAVEFORMS (Measured data sampled at 50 kHz) 51000 packets of 144 samples from 2017-01-15T17:04:22.831.999. Part 82/147

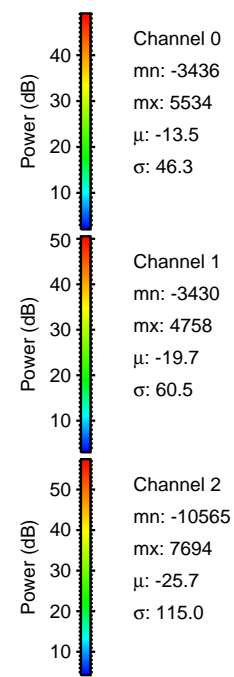
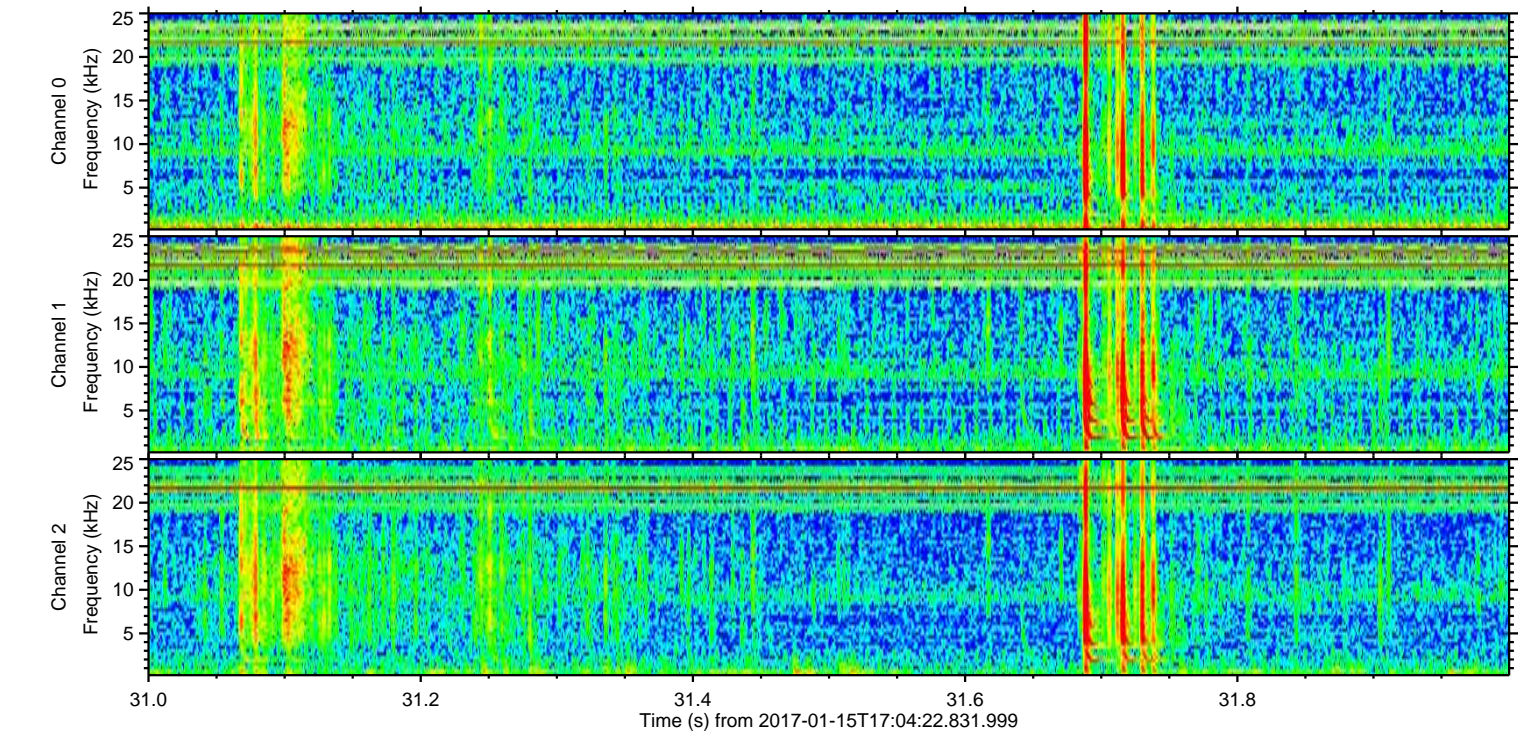
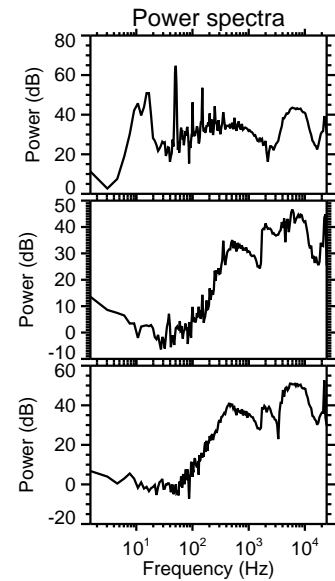
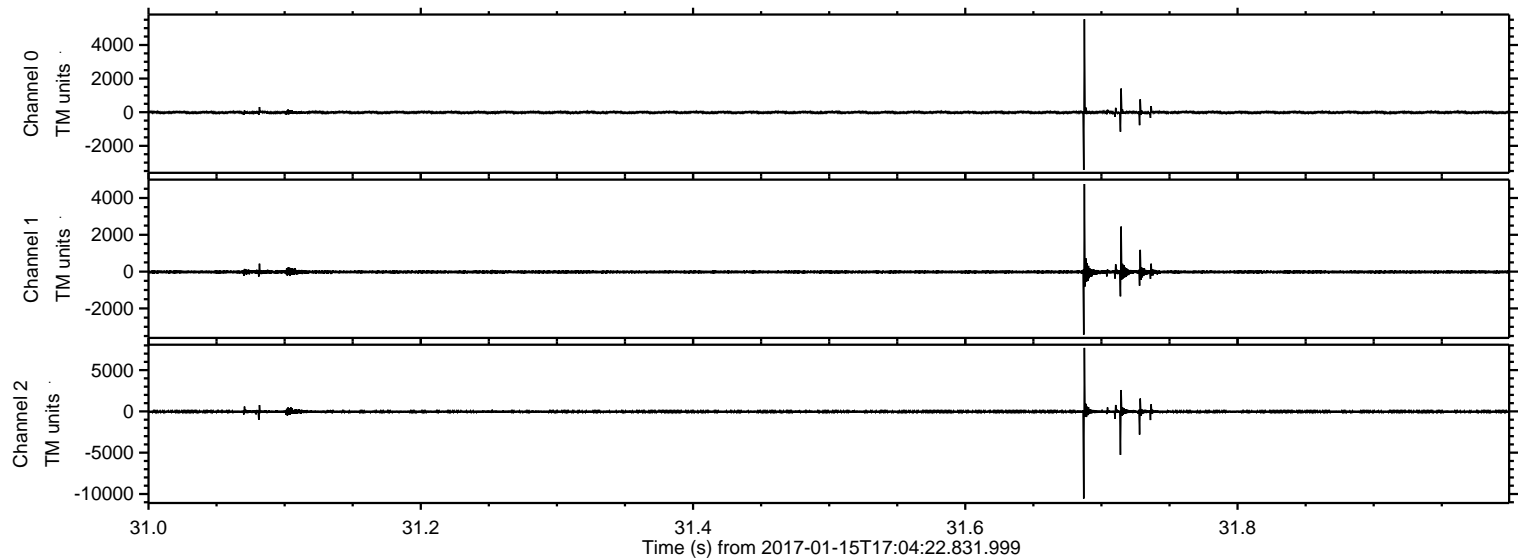
Processed Sun Jan 15 18:12:22 2017 by ELM ver.2012-10-06 from 001\_\_elm20170115\_170421\_\_dat00.bin





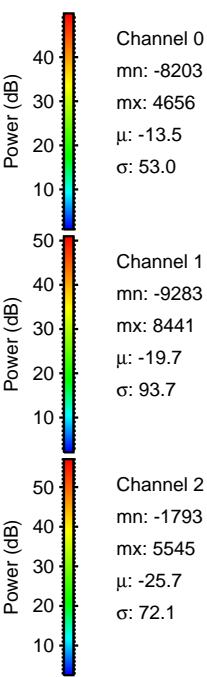
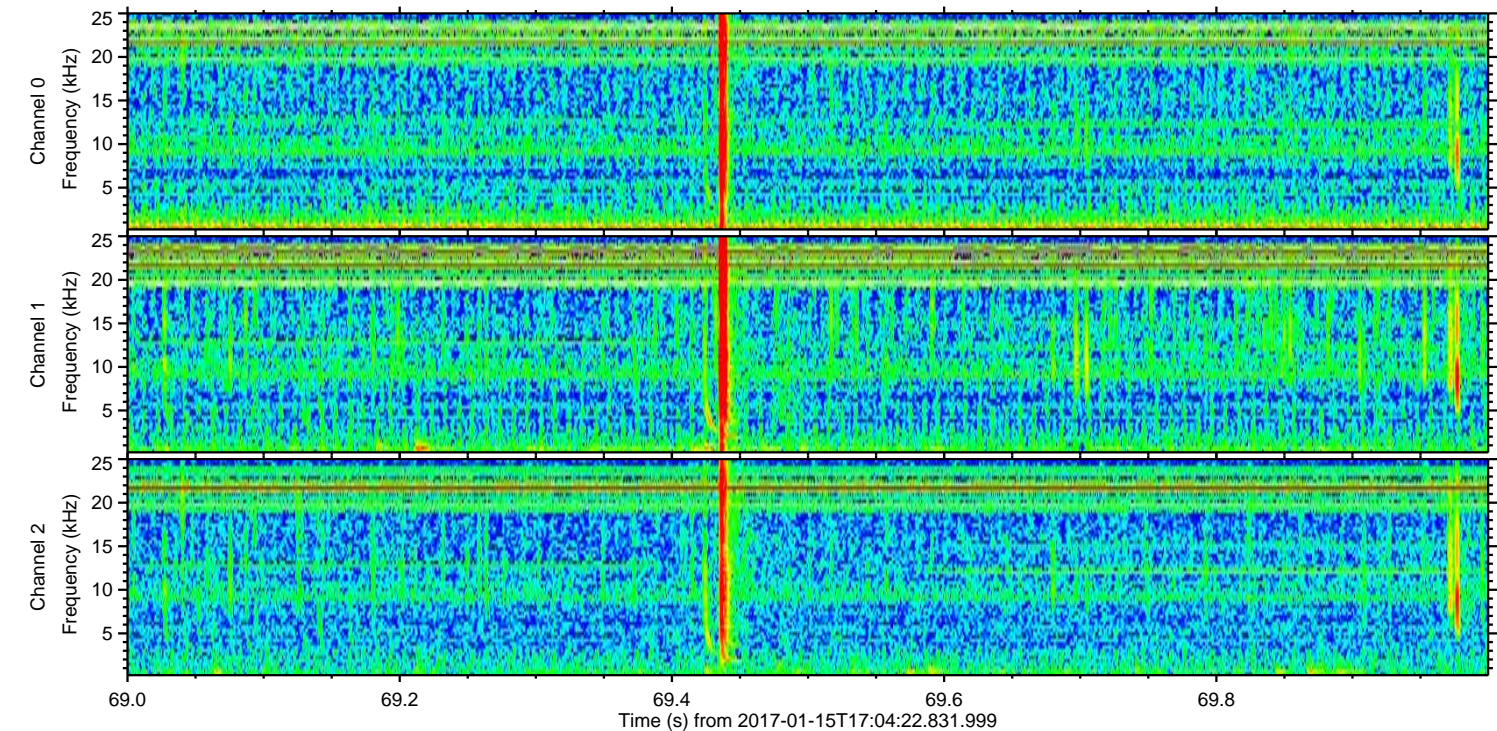
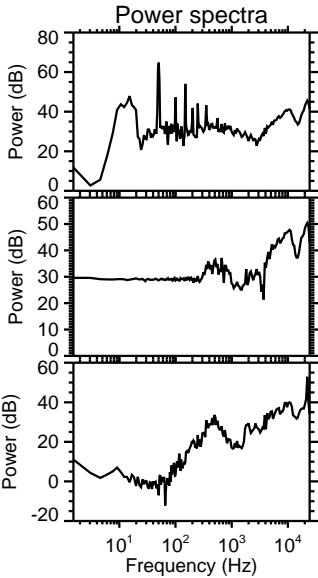
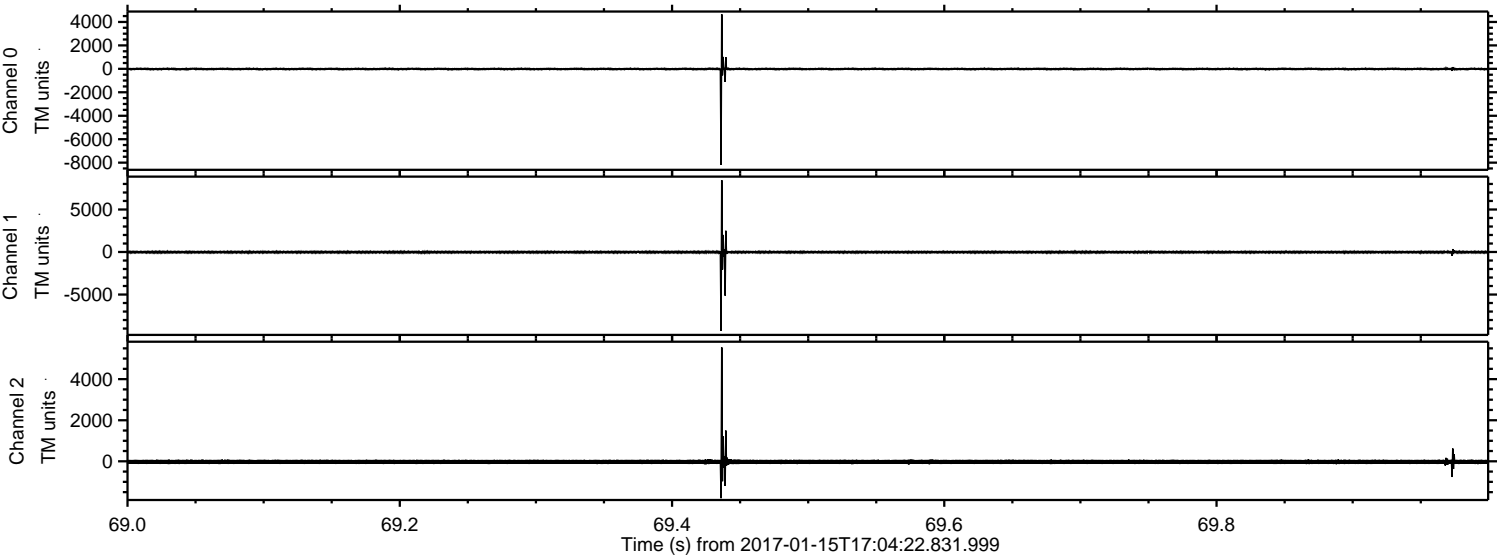
ELMAVAN 3D WAVEFORMS (Measured data sampled at 50 kHz) 51000 packets of 144 samples from 2017-01-15T17:04:22.831.999. Part 32/147

Processed Sun Jan 15 18:12:22 2017 by ELM ver.2012-10-06 from 001\_\_elm20170115\_170421\_\_dat00.bin





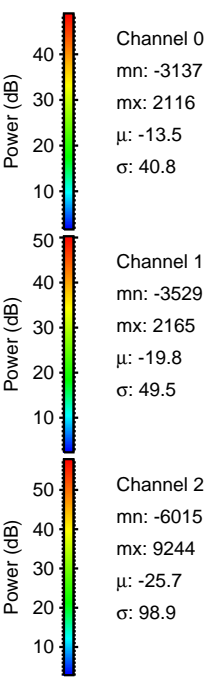
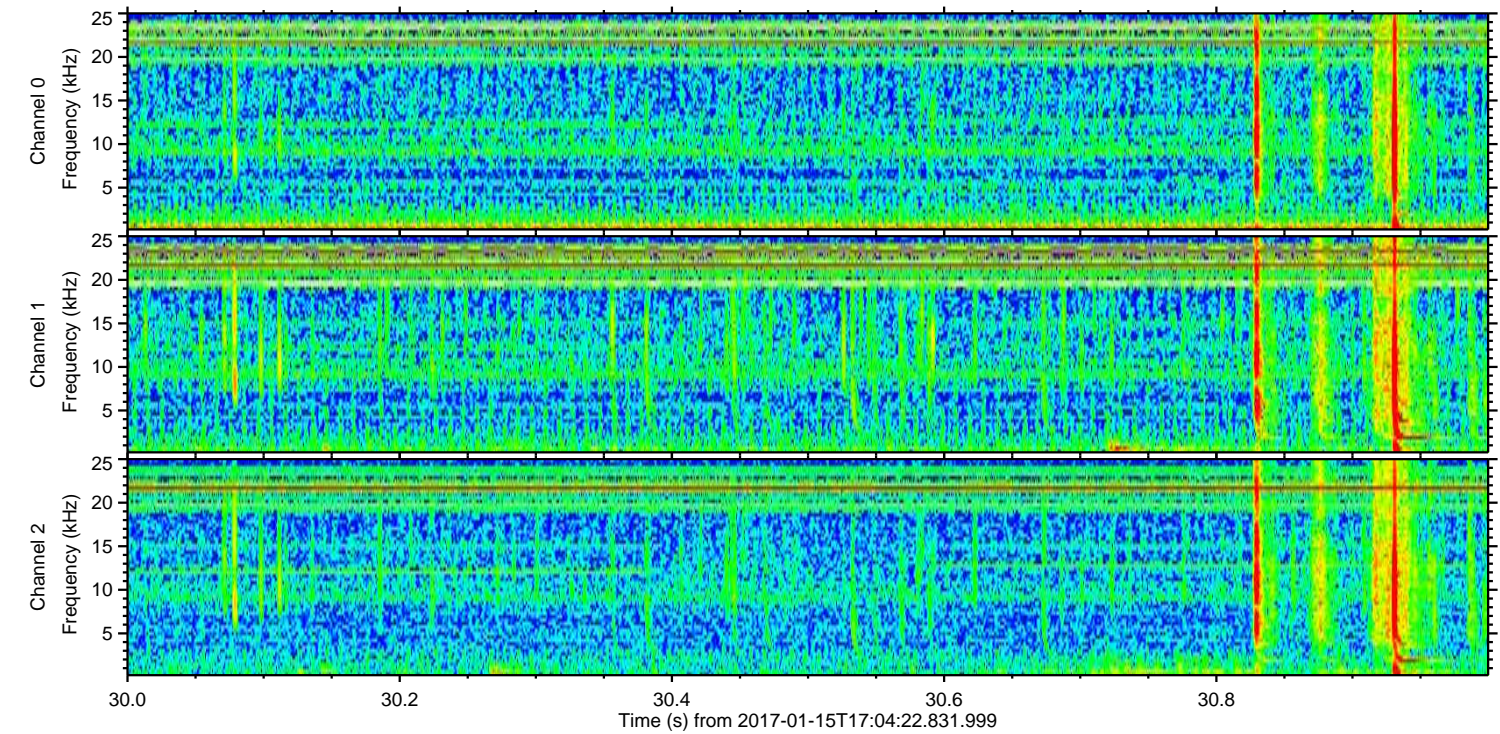
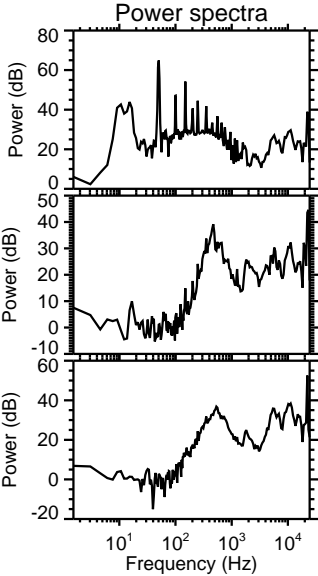
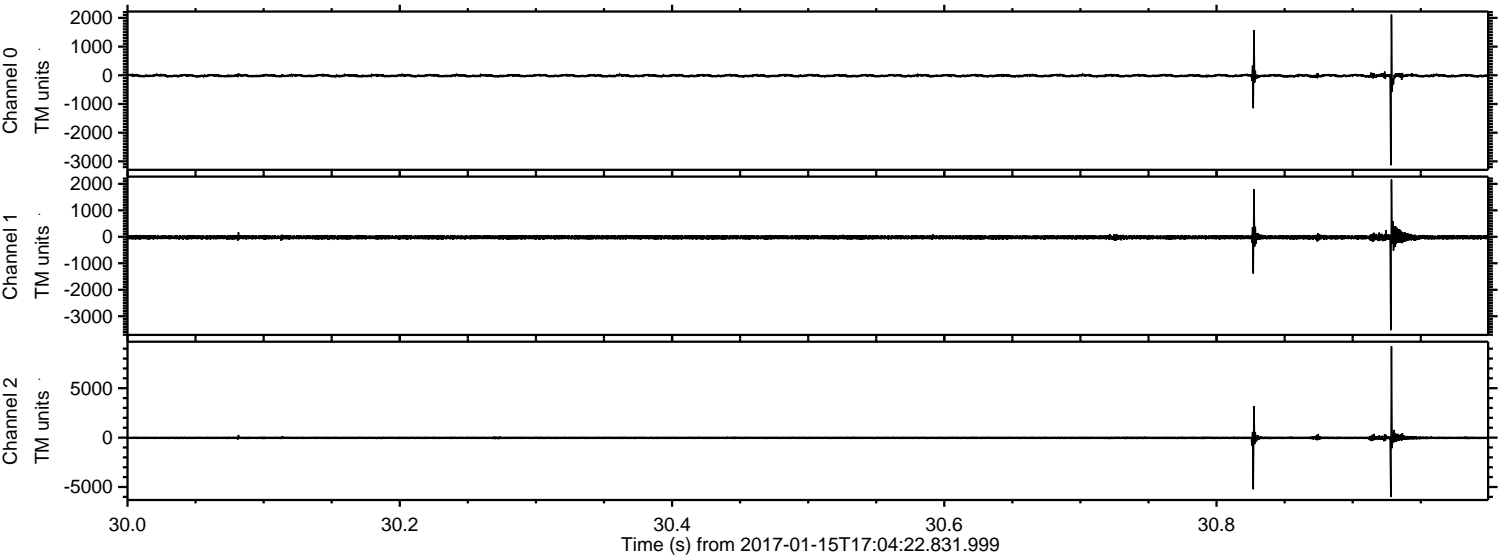
Processed Sun Jan 15 18:12:23 2017 by ELM ver.2012-10-06 from 001\_\_elm20170115\_170421\_\_dat00.bin





ELMAVAN 3D WAVEFORMS (Measured data sampled at 50 kHz) 51000 packets of 144 samples from 2017-01-15T17:04:22.831.999. Part 31/147

Processed Sun Jan 15 18:12:24 2017 by ELM ver.2012-10-06 from 001\_\_elm20170115\_170421\_\_dat00.bin



Channel 0  
mn: -3137  
mx: 2116  
 $\mu$ : -13.5  
 $\sigma$ : 40.8

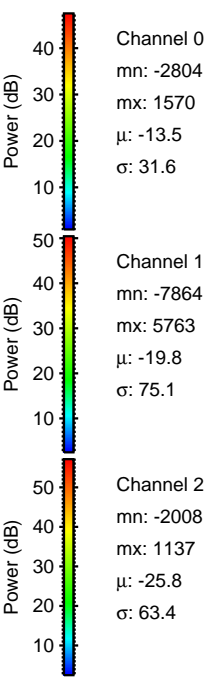
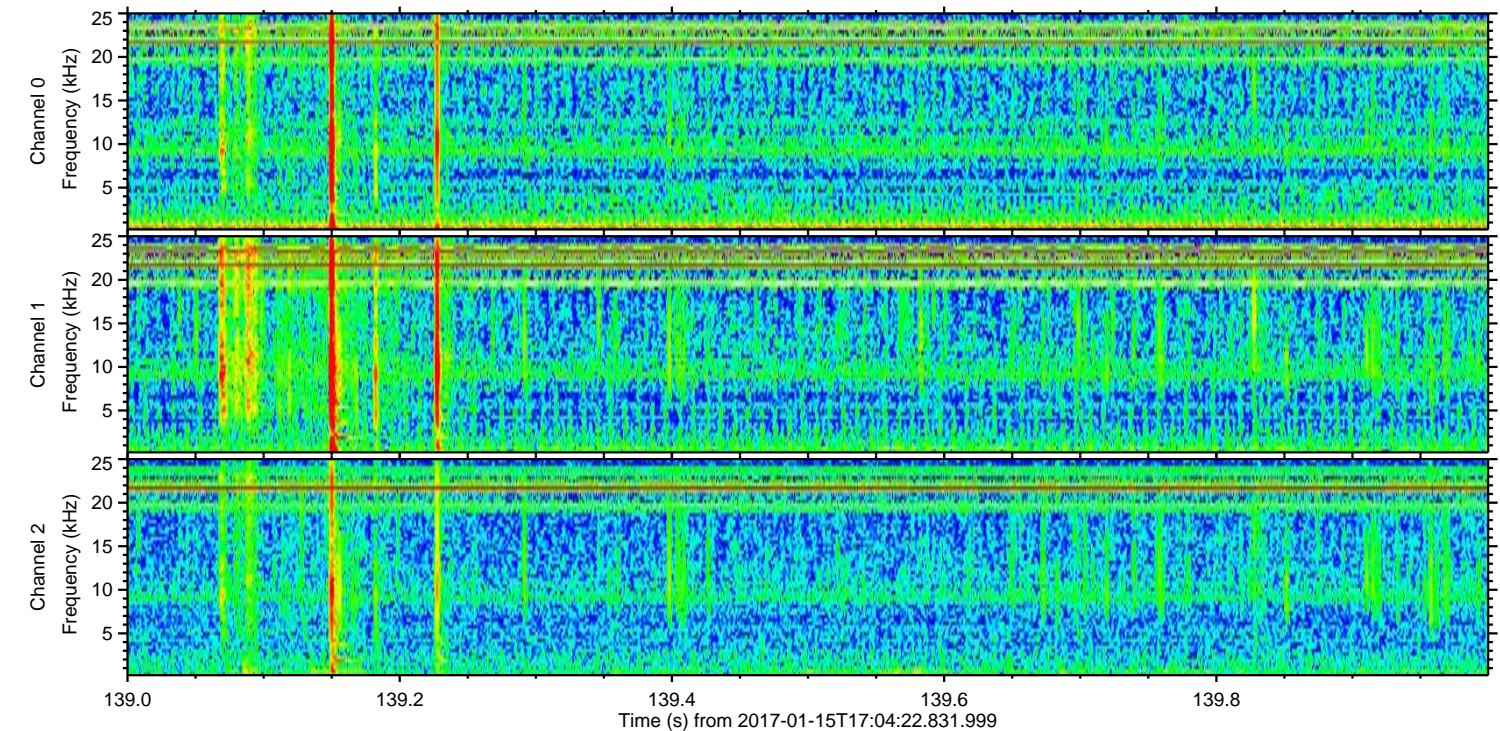
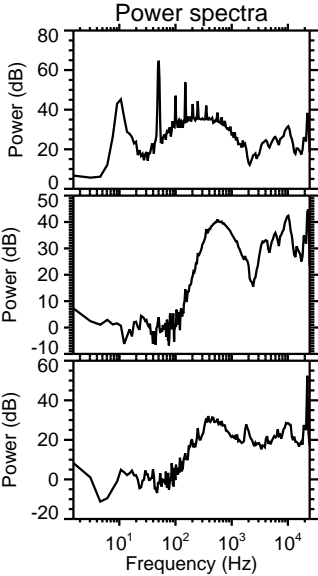
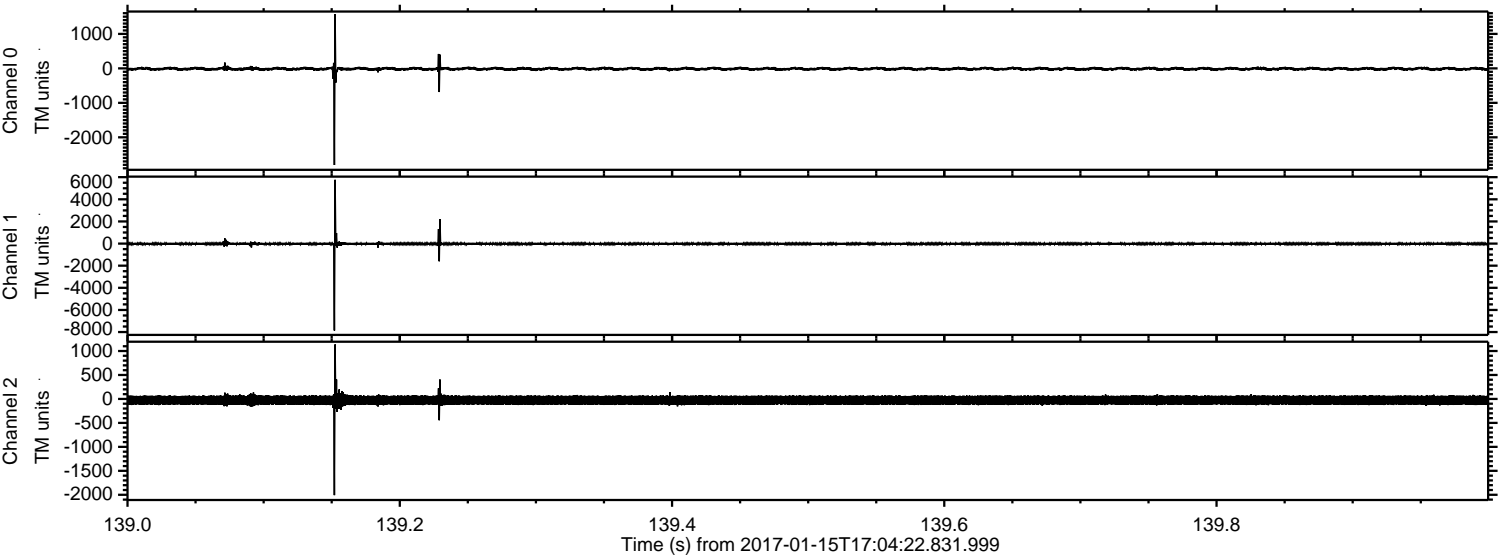
Channel 1  
mn: -3529  
mx: 2165  
 $\mu$ : -19.8  
 $\sigma$ : 49.5

Channel 2  
mn: -6015  
mx: 9244  
 $\mu$ : -25.7  
 $\sigma$ : 98.9



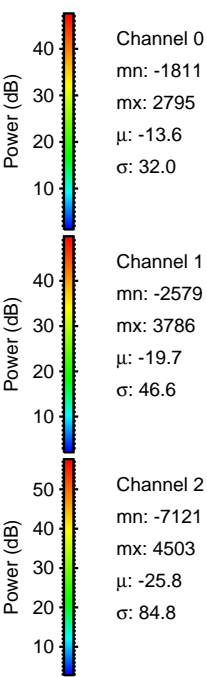
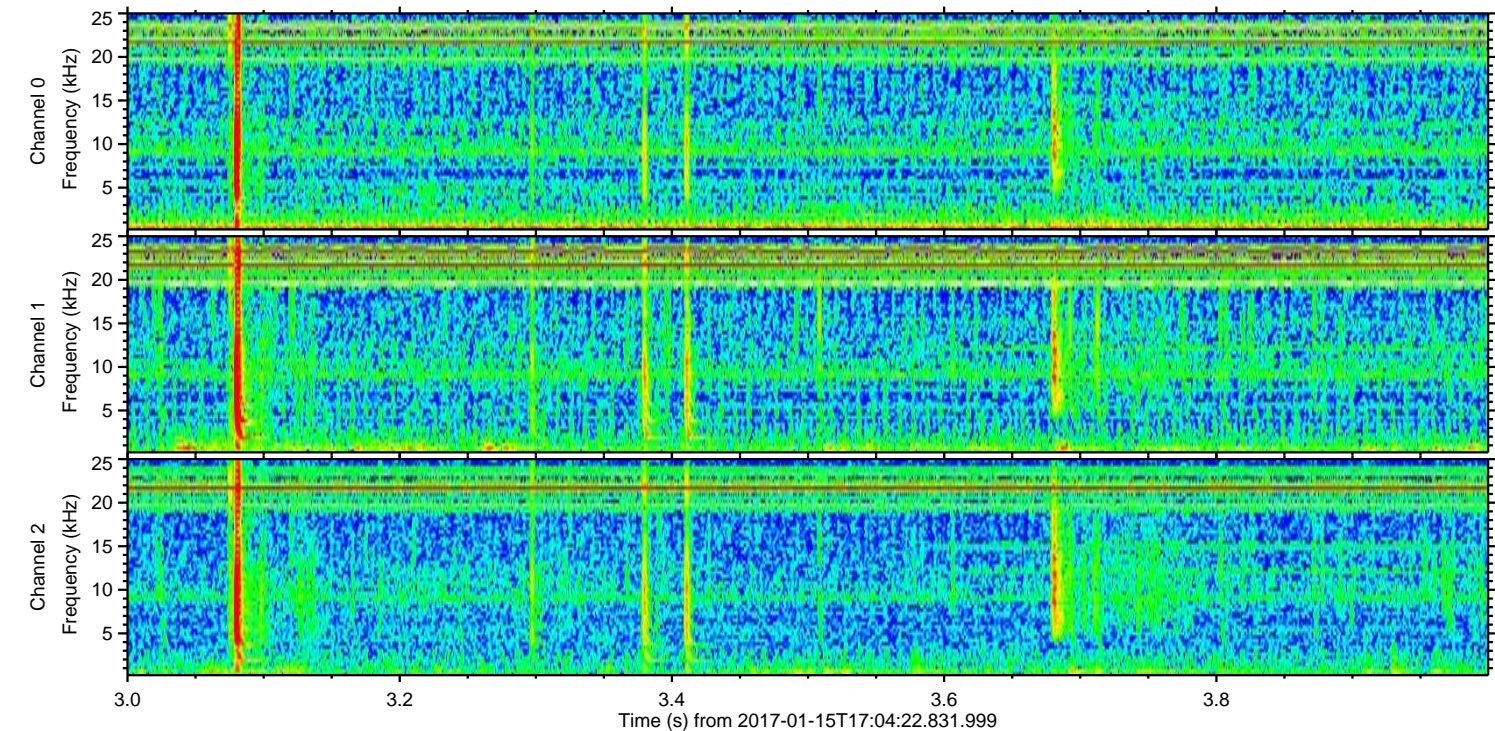
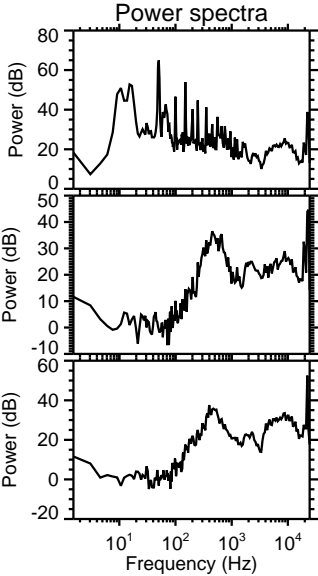
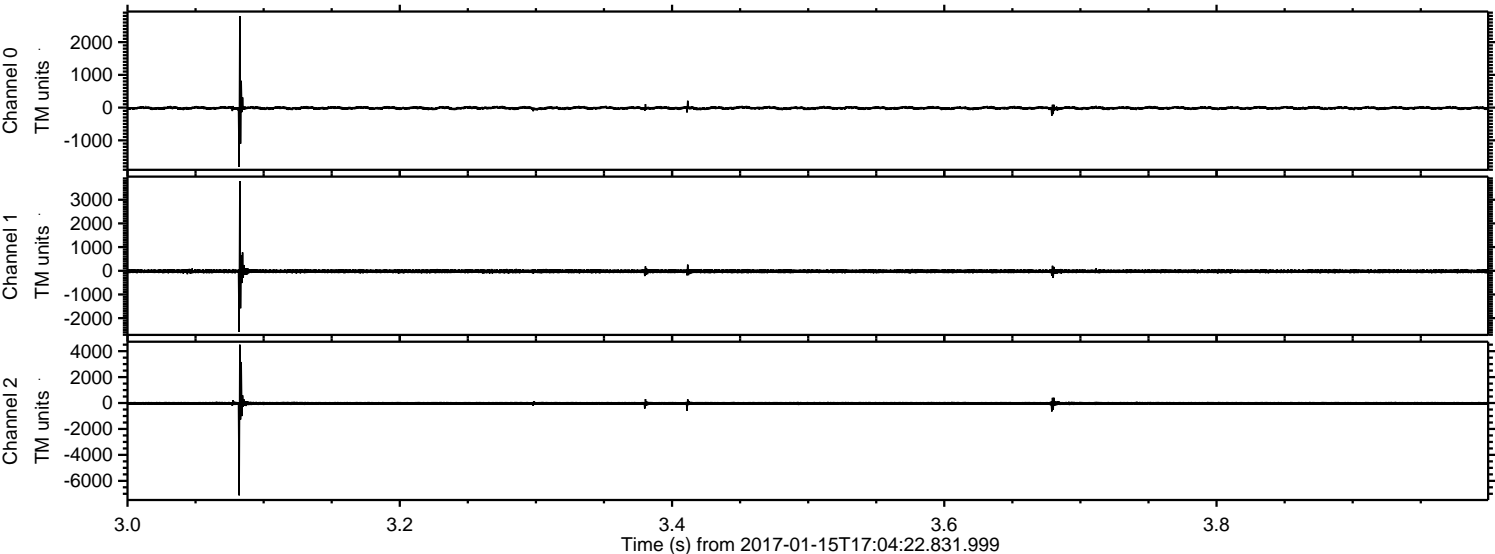
ELMAVAN 3D WAVEFORMS (Measured data sampled at 50 kHz) 51000 packets of 144 samples from 2017-01-15T17:04:22.831.999. Part 140/147

Processed Sun Jan 15 18:12:25 2017 by ELM ver.2012-10-06 from 001\_\_elm20170115\_170421\_\_dat00.bin





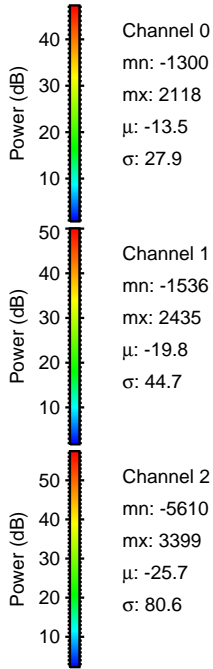
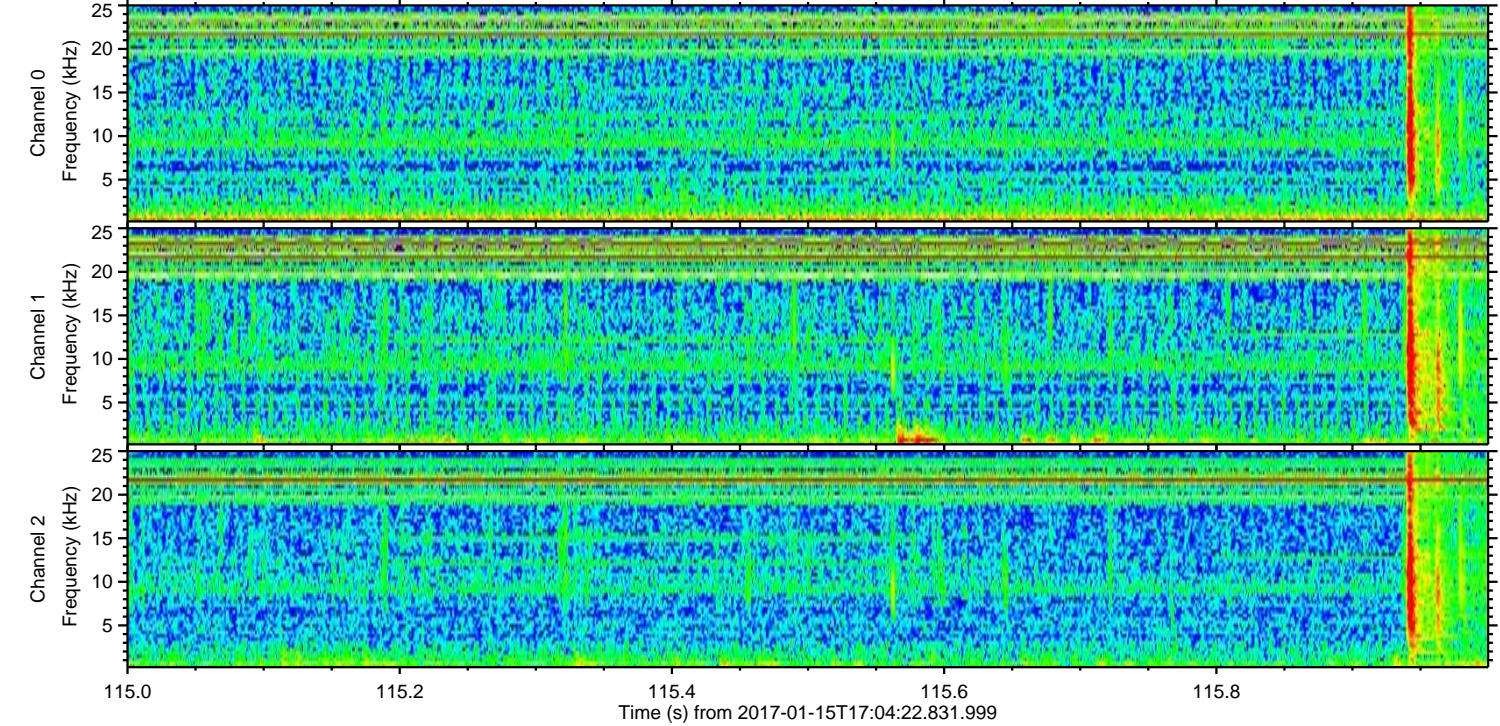
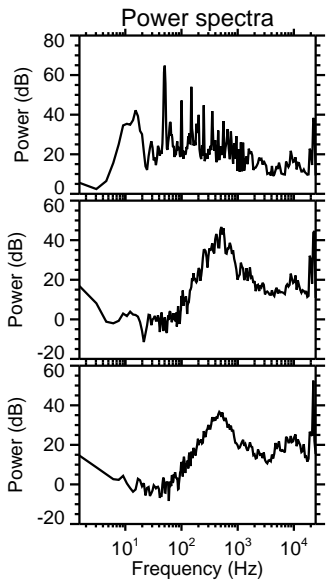
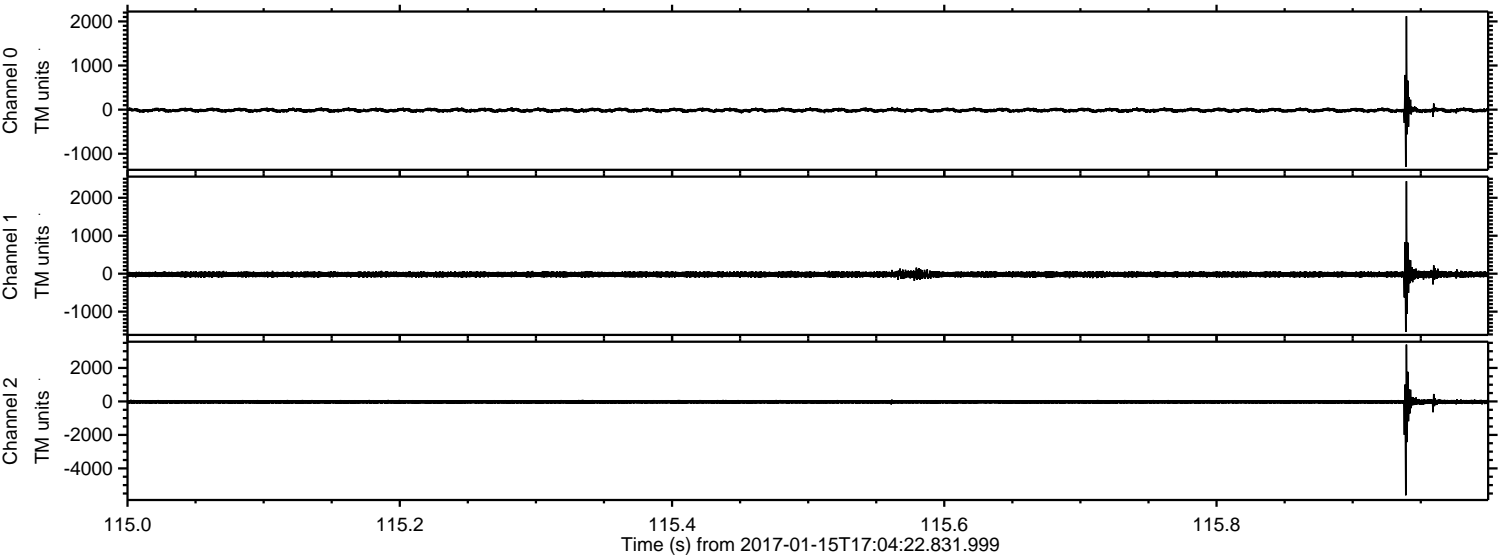
Processed Sun Jan 15 18:12:26 2017 by ELM ver.2012-10-06 from 001\_\_elm20170115\_170421\_\_dat00.bin





ELMAVAN 3D WAVEFORMS (Measured data sampled at 50 kHz) 51000 packets of 144 samples from 2017-01-15T17:04:22.831.999. Part 116/147

Processed Sun Jan 15 18:12:27 2017 by ELM ver.2012-10-06 from 001\_\_elm20170115\_170421\_\_dat00.bin



Channel 0  
mn: -1300  
mx: 2118  
 $\mu$ : -13.5  
 $\sigma$ : 27.9

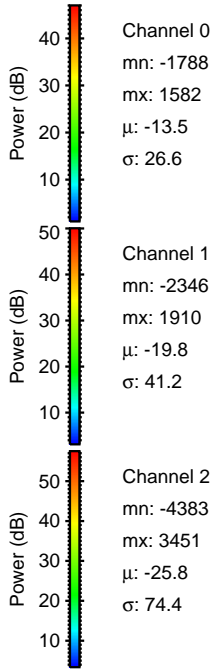
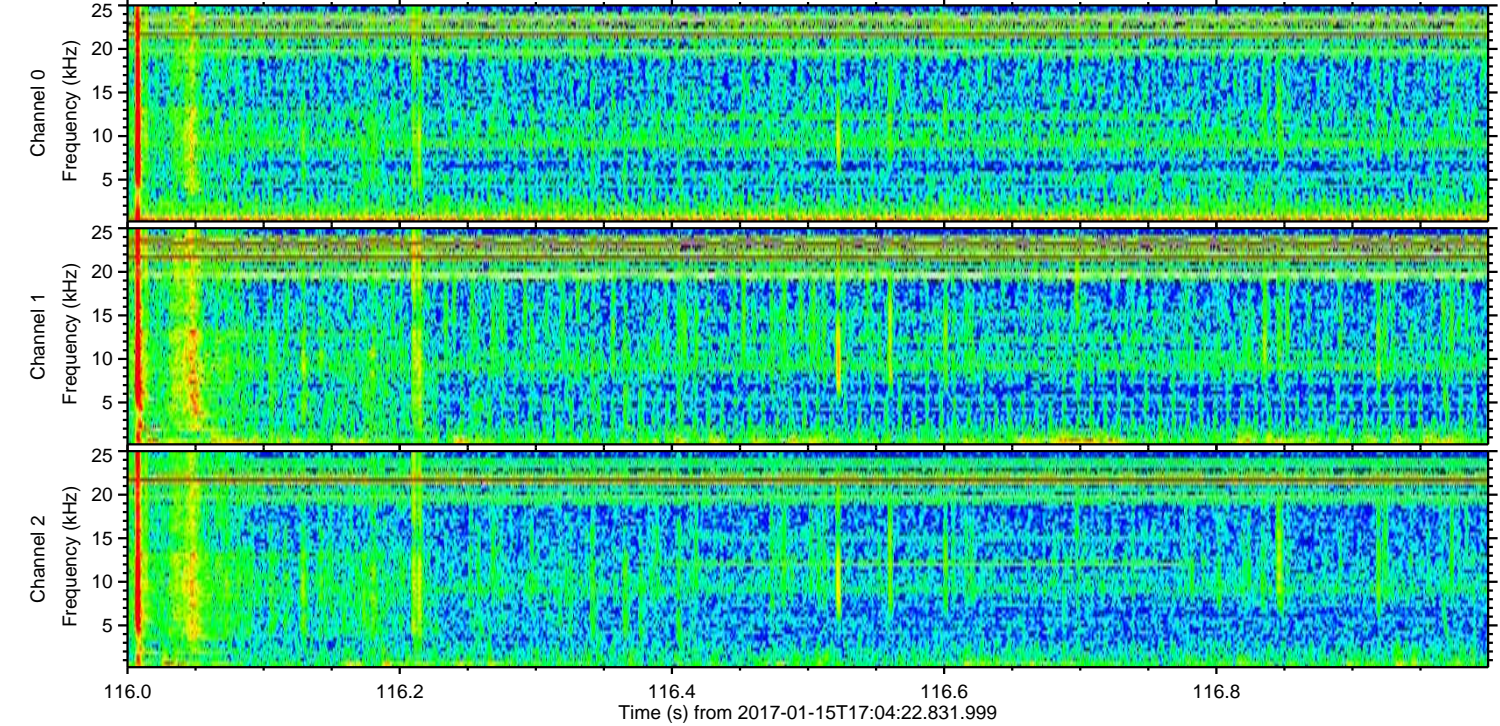
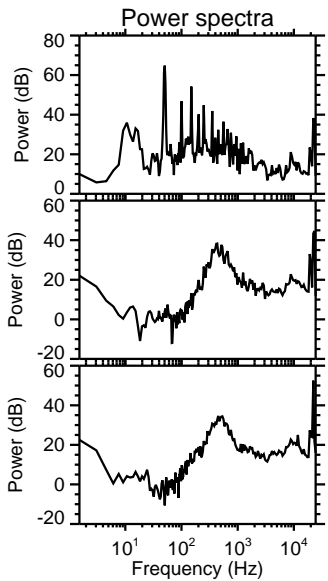
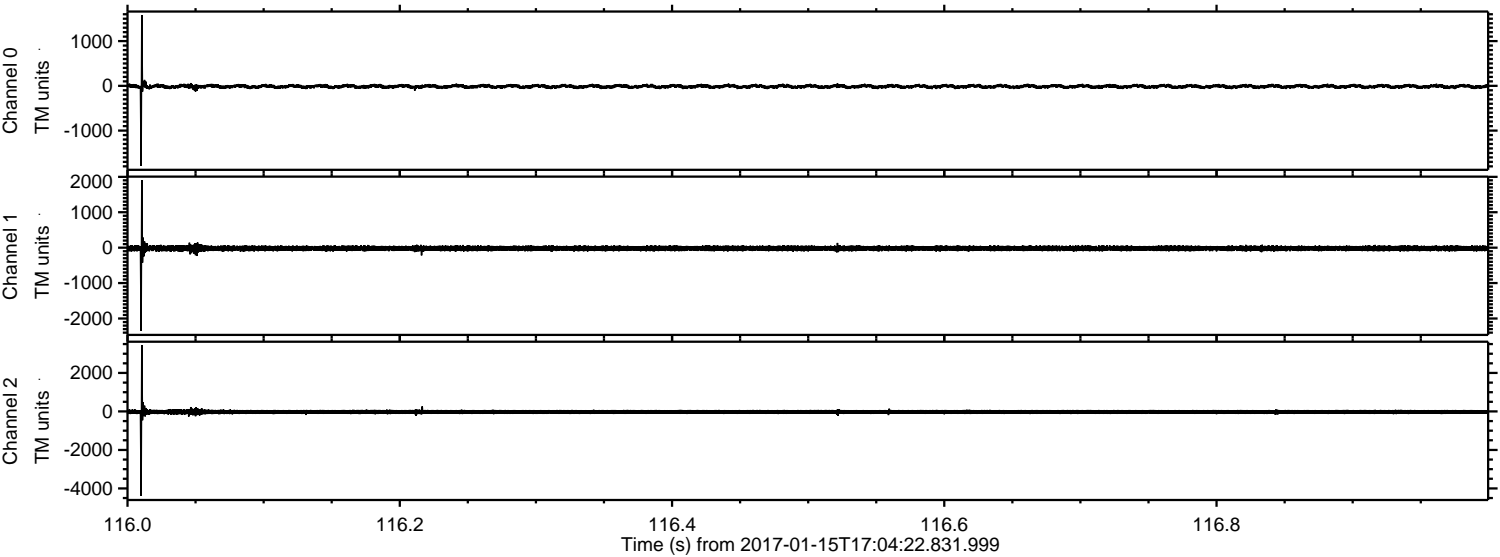
Channel 1  
mn: -1536  
mx: 2435  
 $\mu$ : -19.8  
 $\sigma$ : 44.7

Channel 2  
mn: -5610  
mx: 3399  
 $\mu$ : -25.7  
 $\sigma$ : 80.6



ELMAVAN 3D WAVEFORMS (Measured data sampled at 50 kHz) 51000 packets of 144 samples from 2017-01-15T17:04:22.831.999. Part 117/147

Processed Sun Jan 15 18:12:28 2017 by ELM ver.2012-10-06 from 001\_\_elm20170115\_170421\_\_dat00.bin



Channel 0  
mn: -1788  
mx: 1582  
 $\mu$ : -13.5  
 $\sigma$ : 26.6

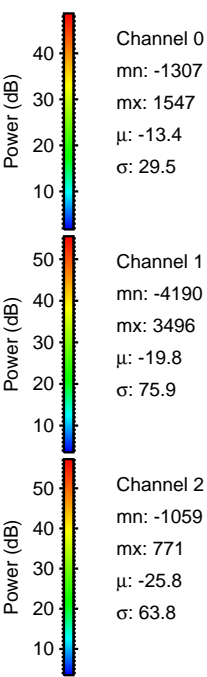
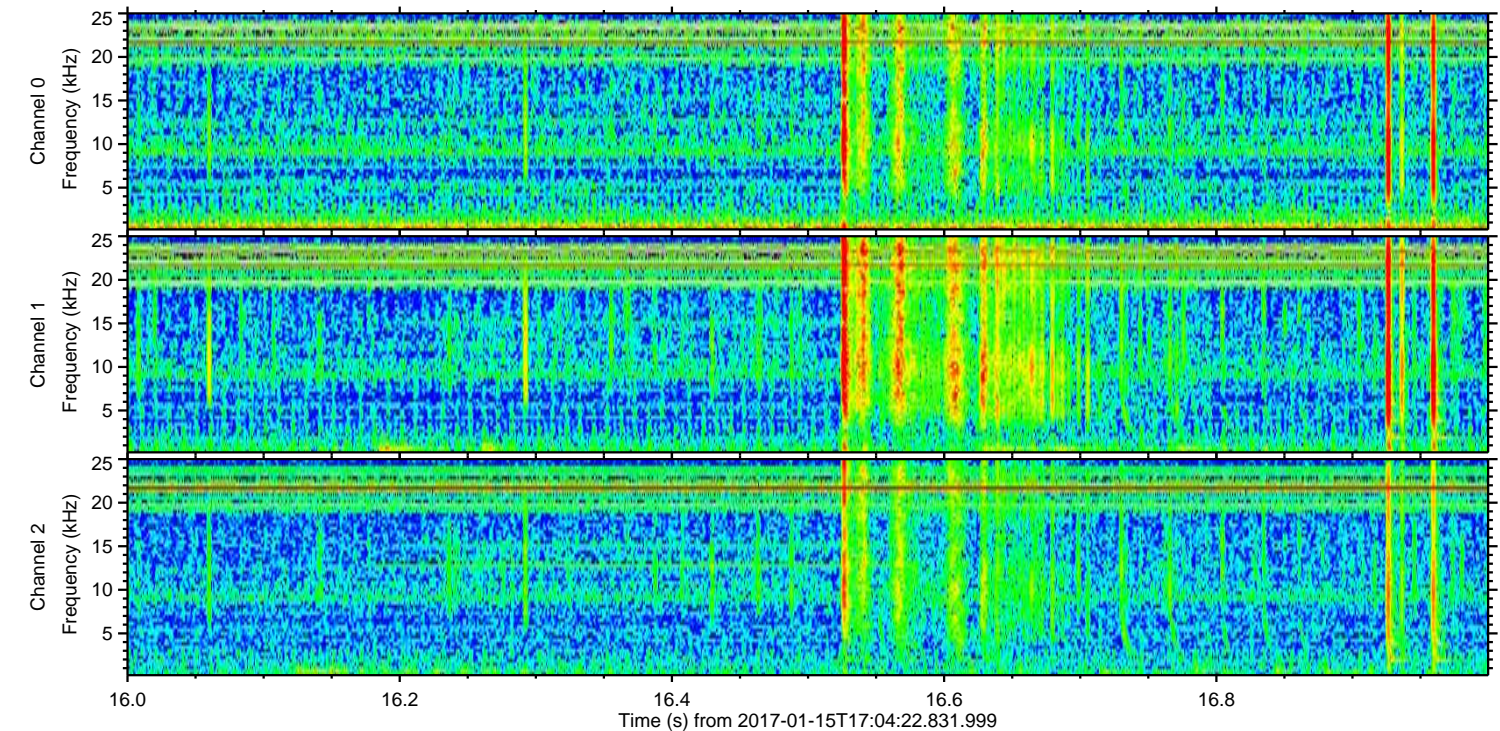
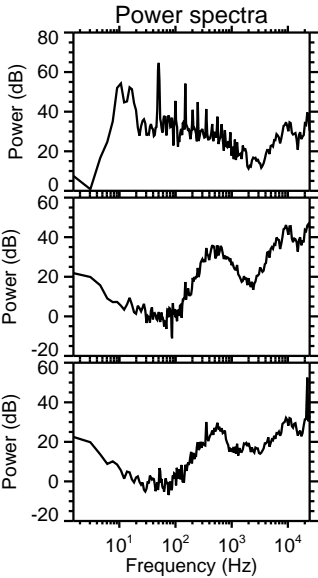
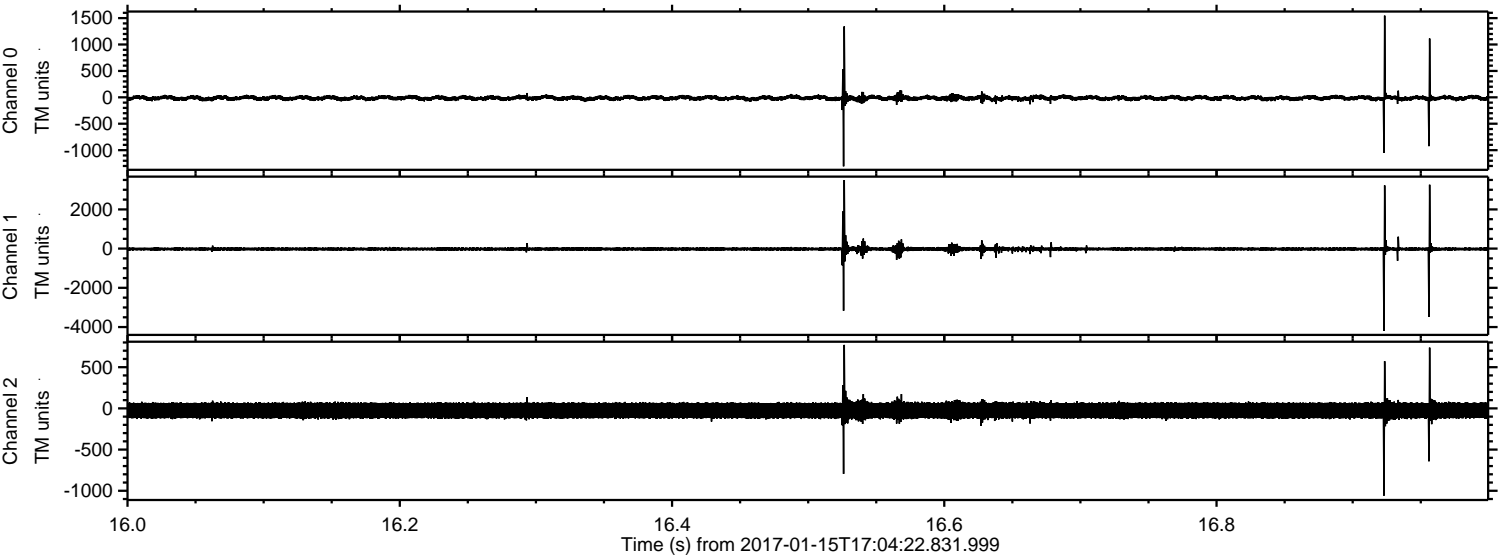
Channel 1  
mn: -2346  
mx: 1910  
 $\mu$ : -19.8  
 $\sigma$ : 41.2

Channel 2  
mn: -4383  
mx: 3451  
 $\mu$ : -25.8  
 $\sigma$ : 74.4



ELMAVAN 3D WAVEFORMS (Measured data sampled at 50 kHz) 51000 packets of 144 samples from 2017-01-15T17:04:22.831.999. Part 17/147

Processed Sun Jan 15 18:12:29 2017 by ELM ver.2012-10-06 from 001\_\_elm20170115\_170421\_\_dat00.bin





Processed Sun Jan 15 18:12:30 2017 by ELM ver.2012-10-06 from 001\_\_elm20170115\_170421\_\_dat00.bin

