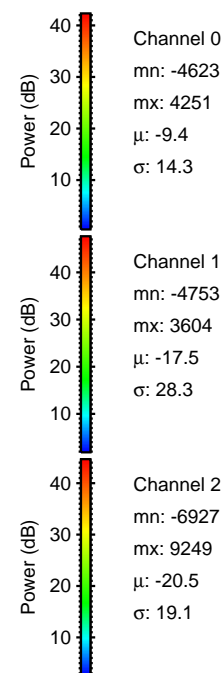
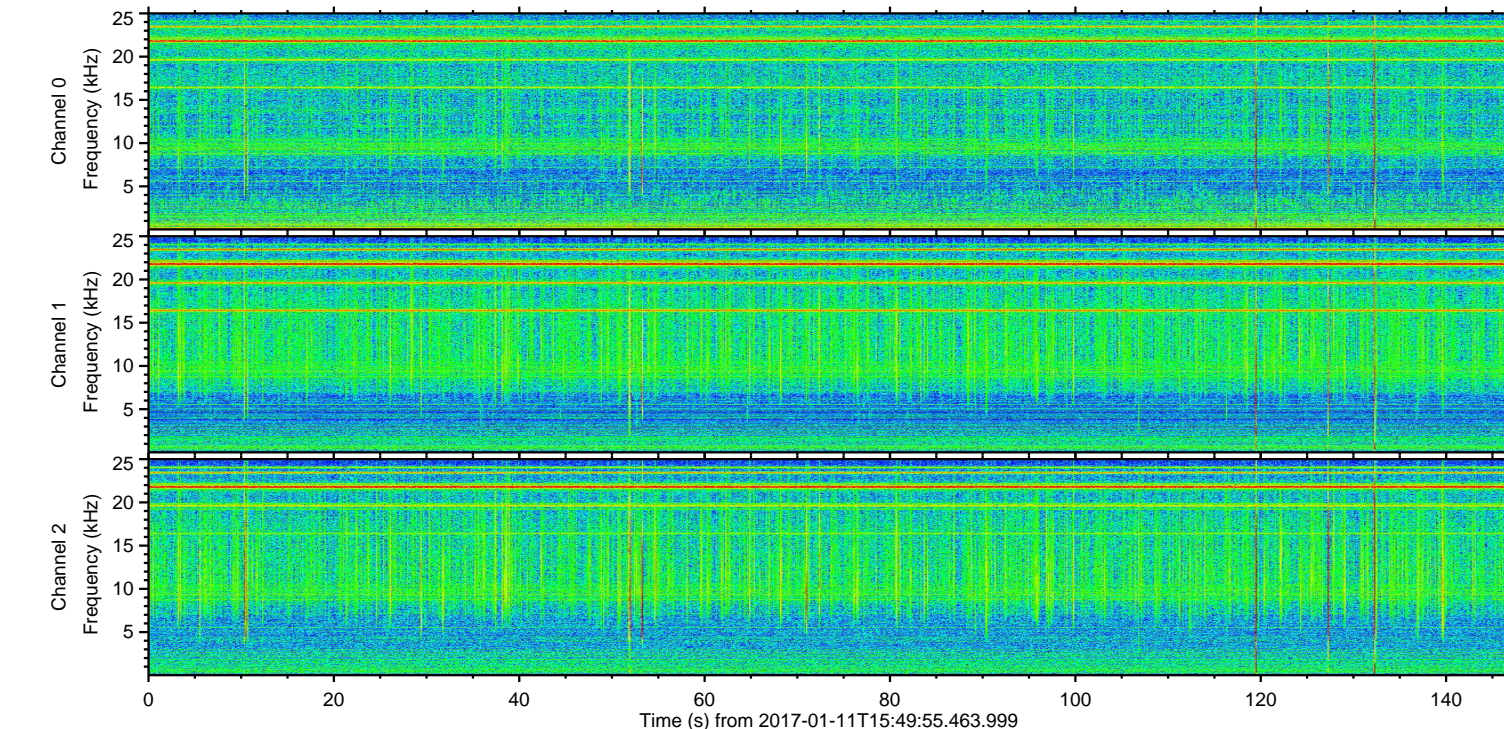
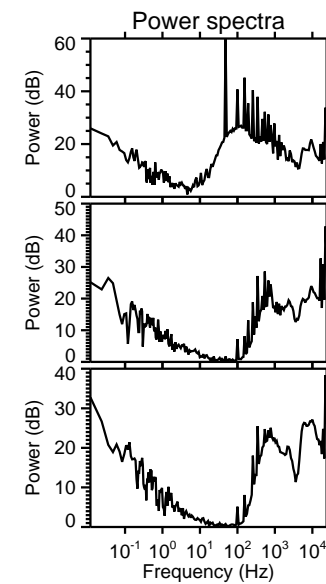
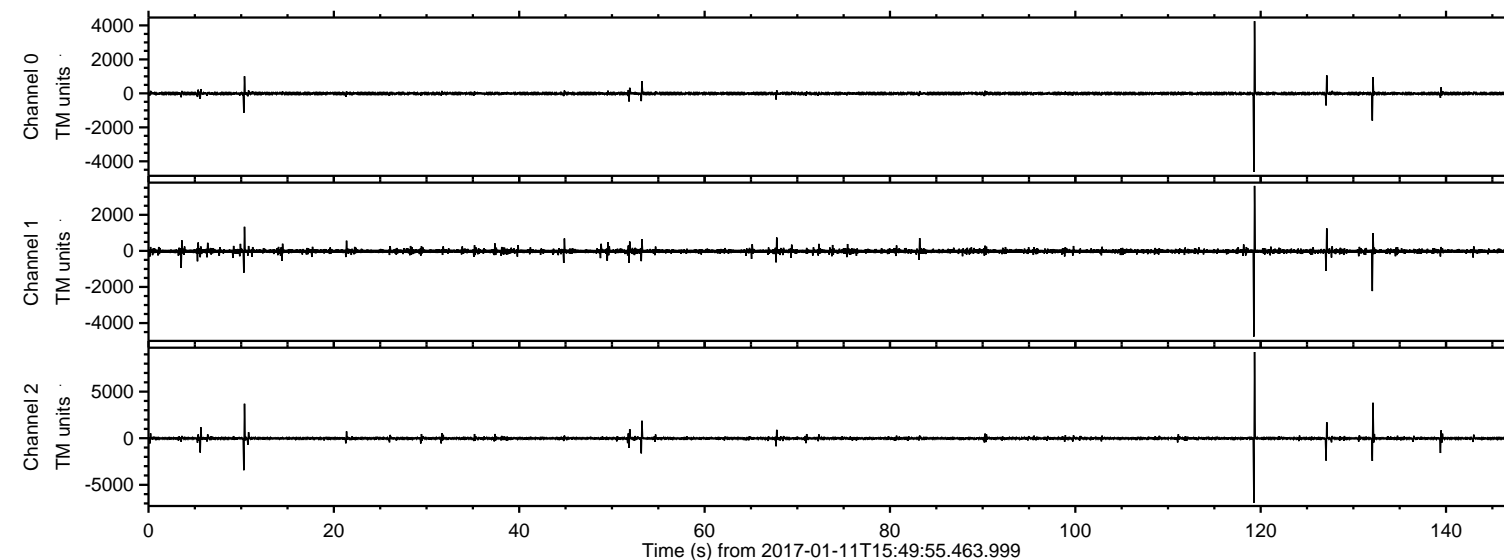


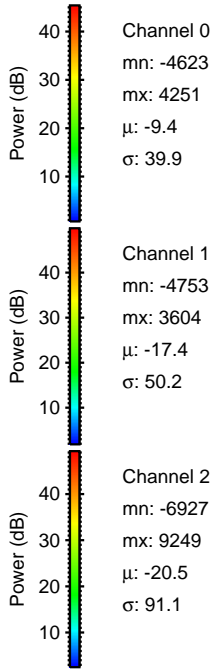
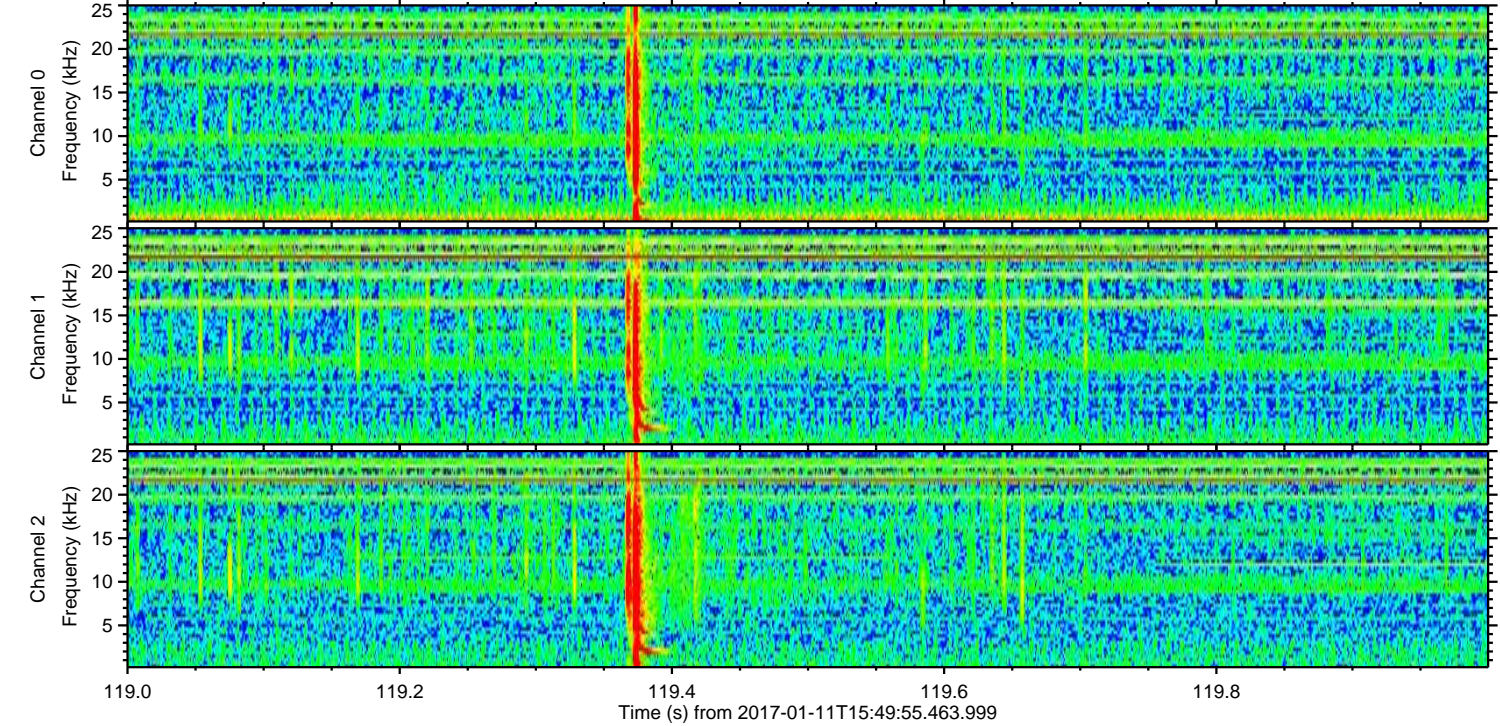
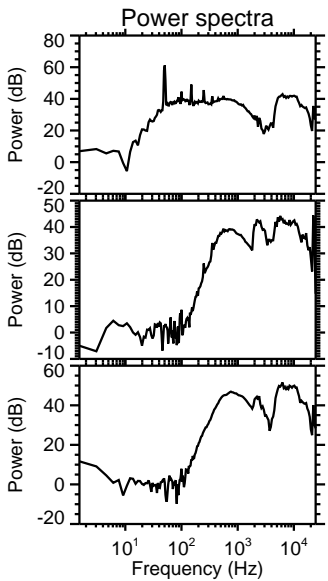
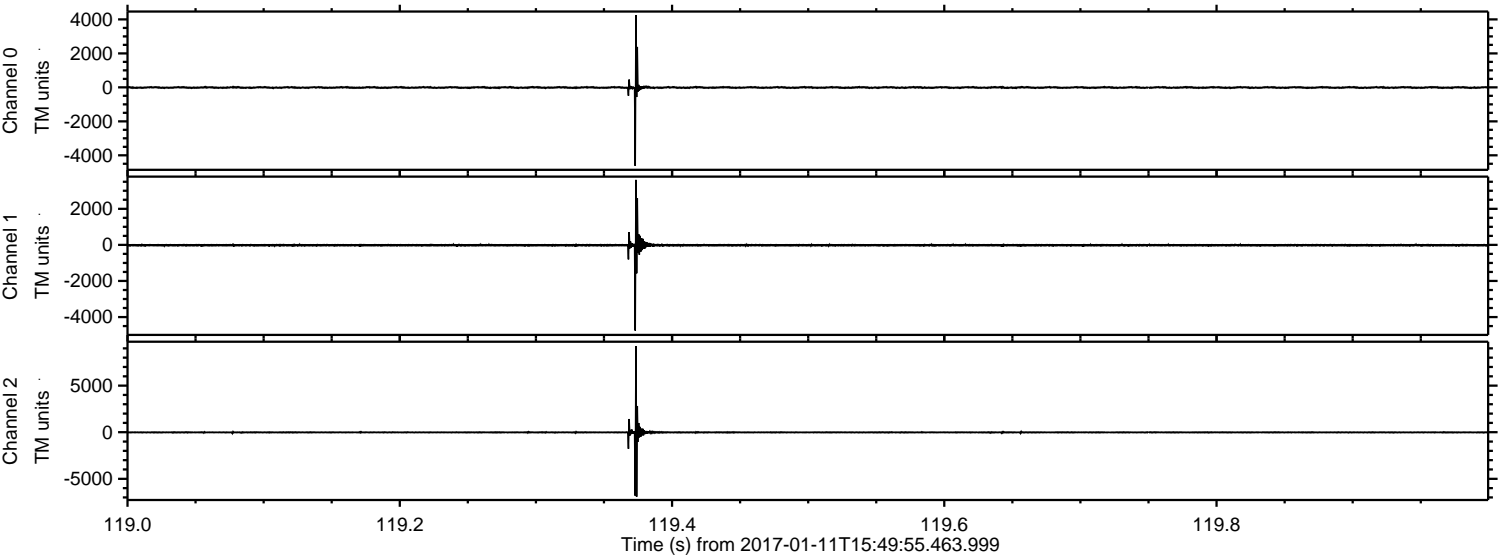
ELMAVAN 3D WAVEFORMS (Measured data sampled at 50 kHz) 51000 packets of 144 samples from 2017-01-11T15:49:55.463.999.

Processed Wed Jan 11 16:57:58 2017 by ELM ver.2012-10-06 from 001__elm20170111_154954__dat00.bin



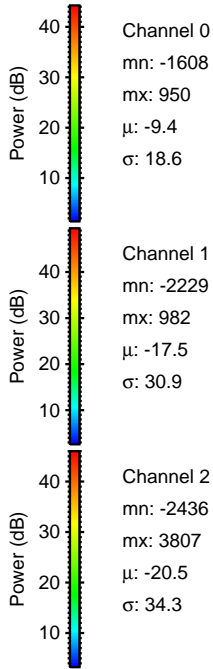
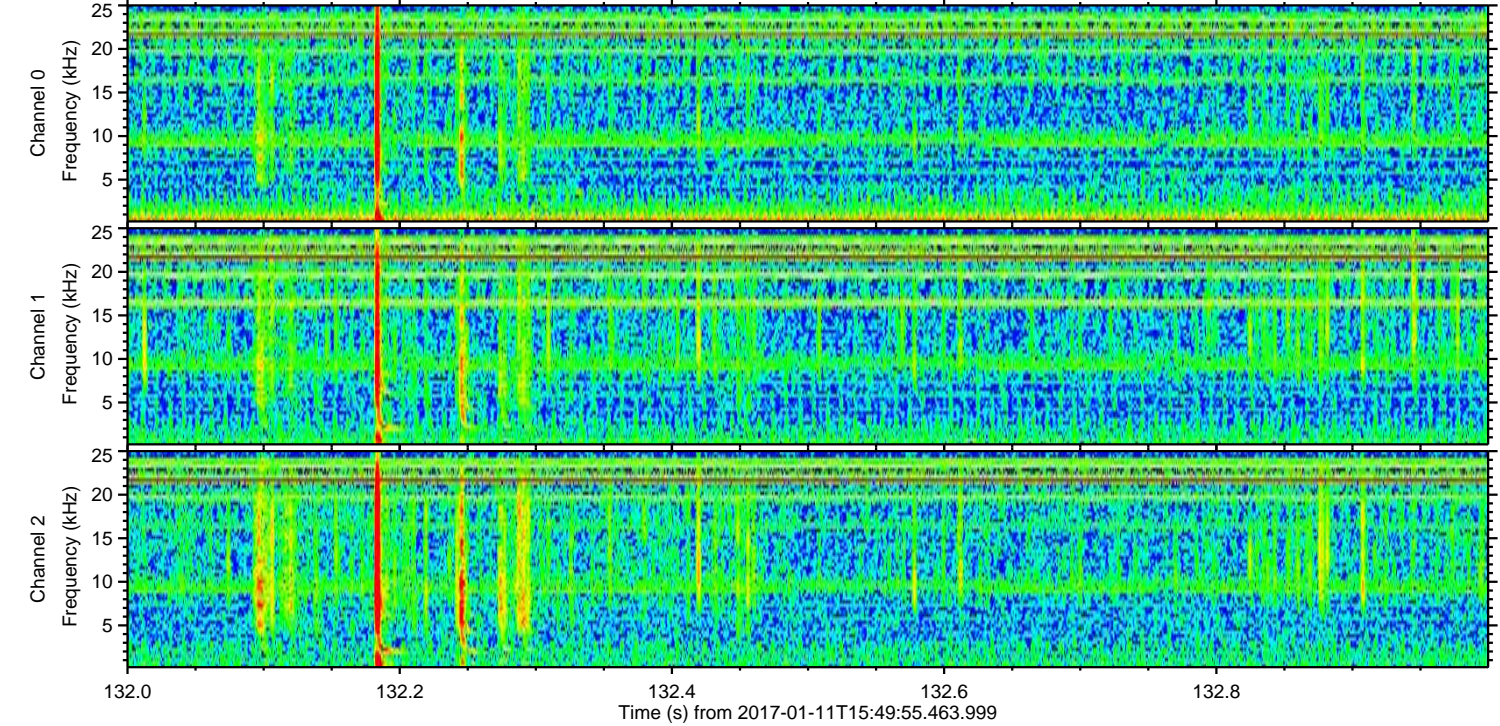
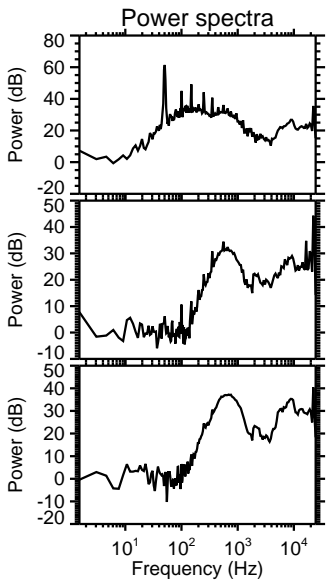
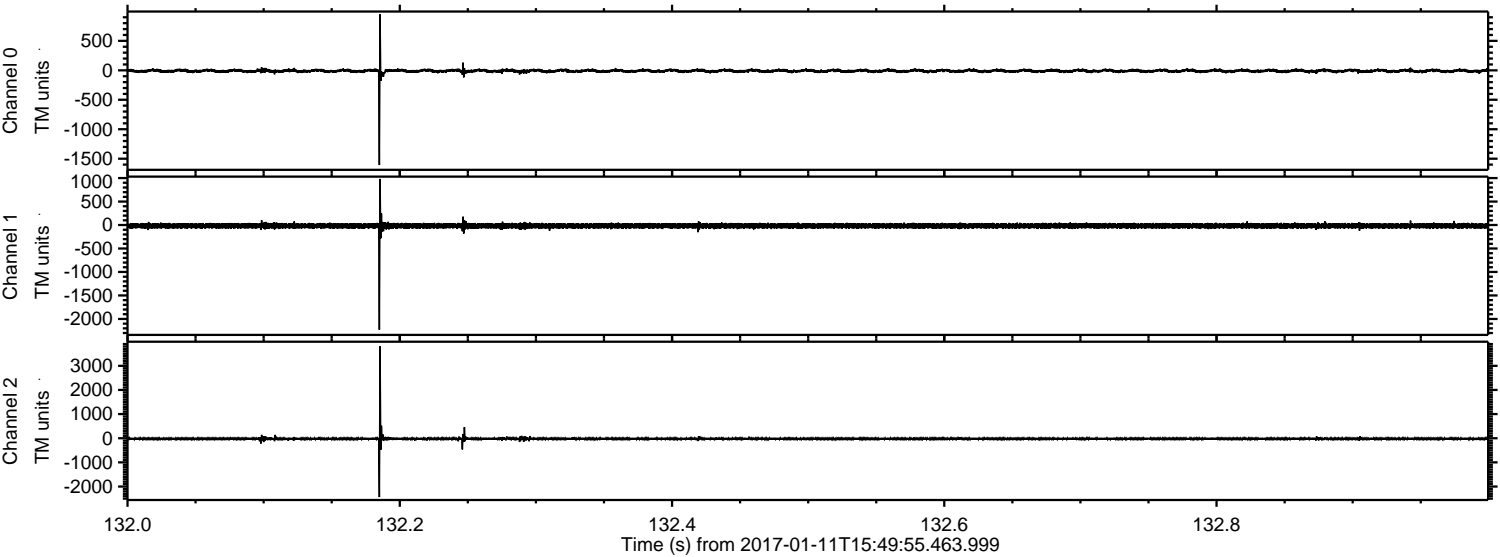
ELMAVAN 3D WAVEFORMS (Measured data sampled at 50 kHz) 51000 packets of 144 samples from 2017-01-11T15:49:55.463.999. Part 120/147

Processed Wed Jan 11 16:58:13 2017 by ELM ver.2012-10-06 from 001__elm20170111_154954__dat00.bin

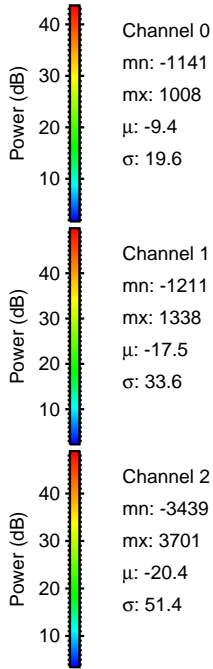
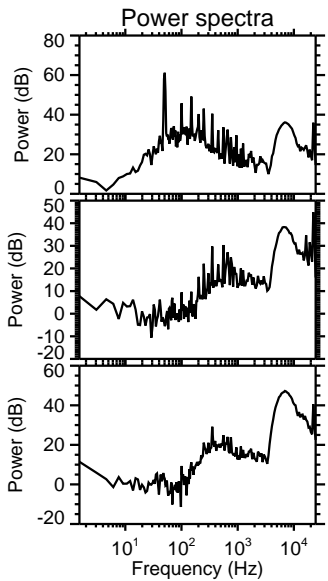
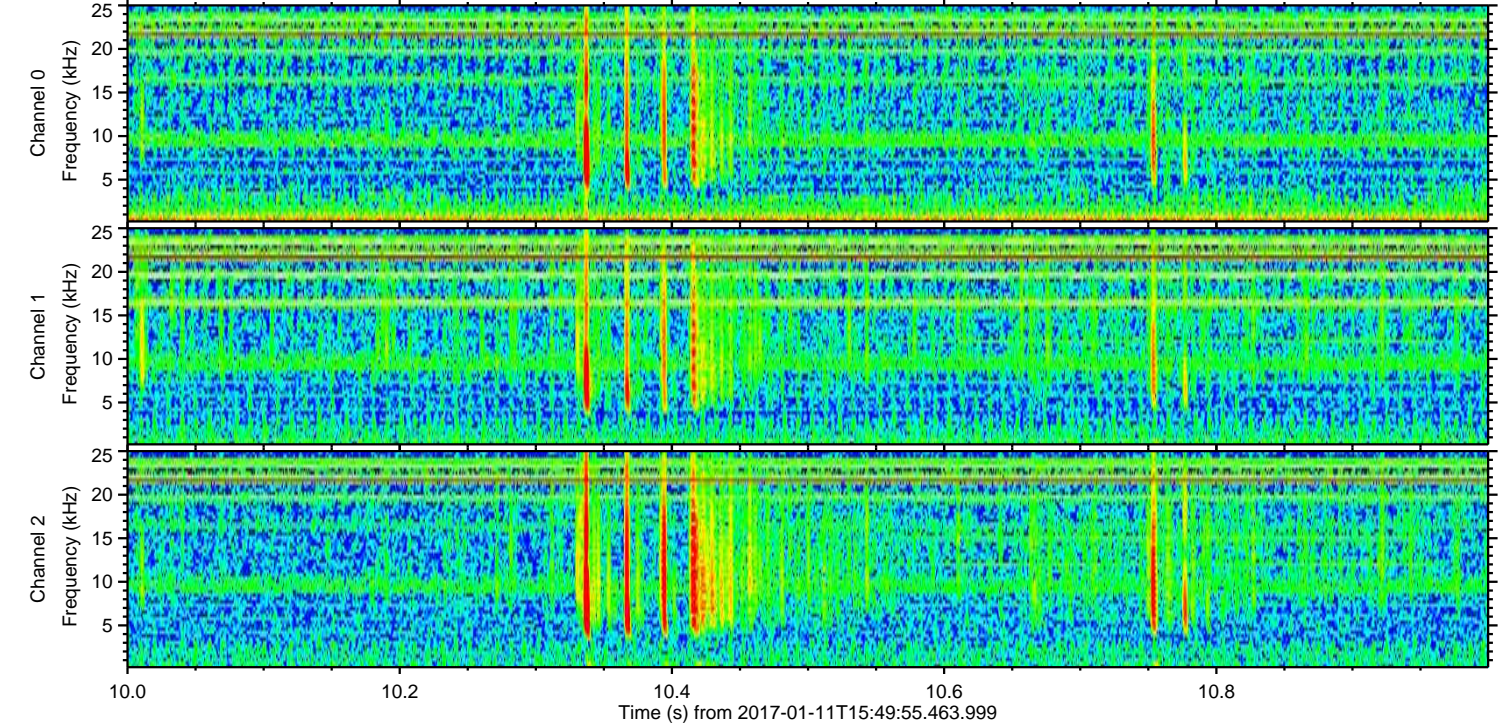
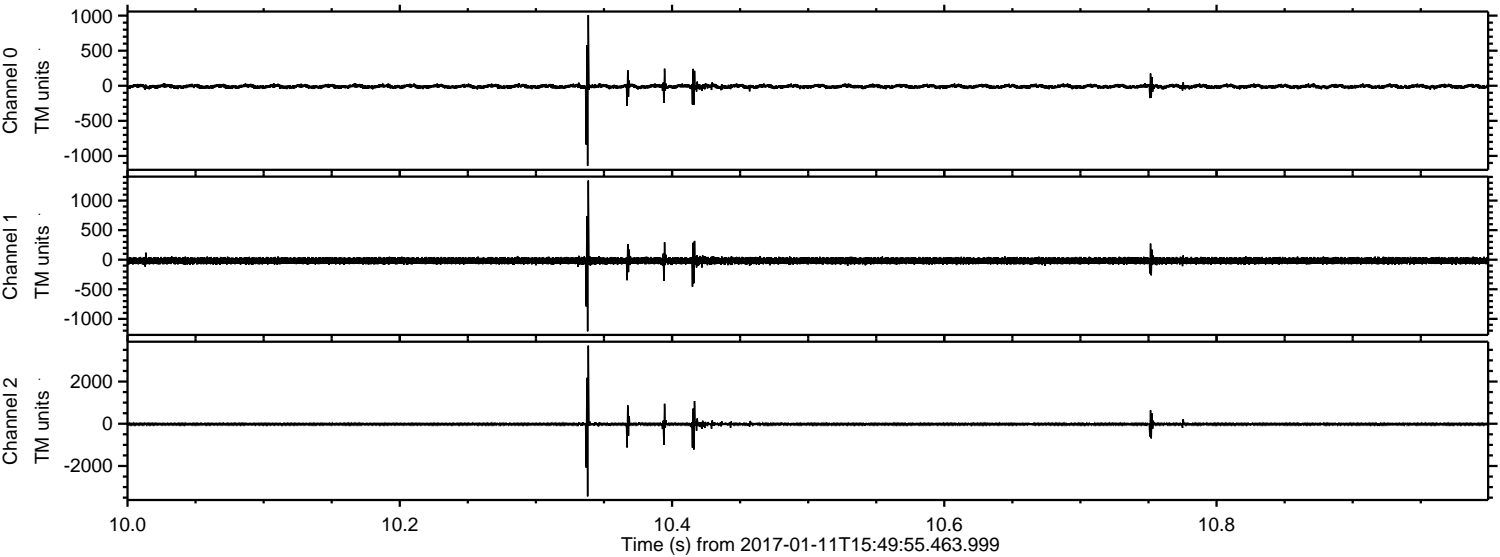


ELMAVAN 3D WAVEFORMS (Measured data sampled at 50 kHz) 51000 packets of 144 samples from 2017-01-11T15:49:55.463.999. Part 133/147

Processed Wed Jan 11 16:58:14 2017 by ELM ver.2012-10-06 from 001__elm20170111_154954__dat00.bin

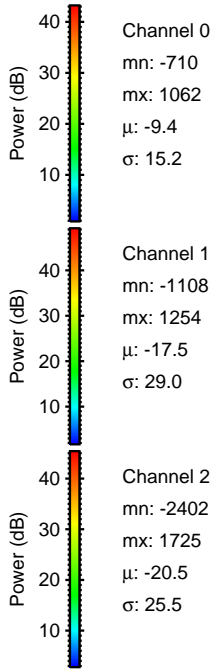
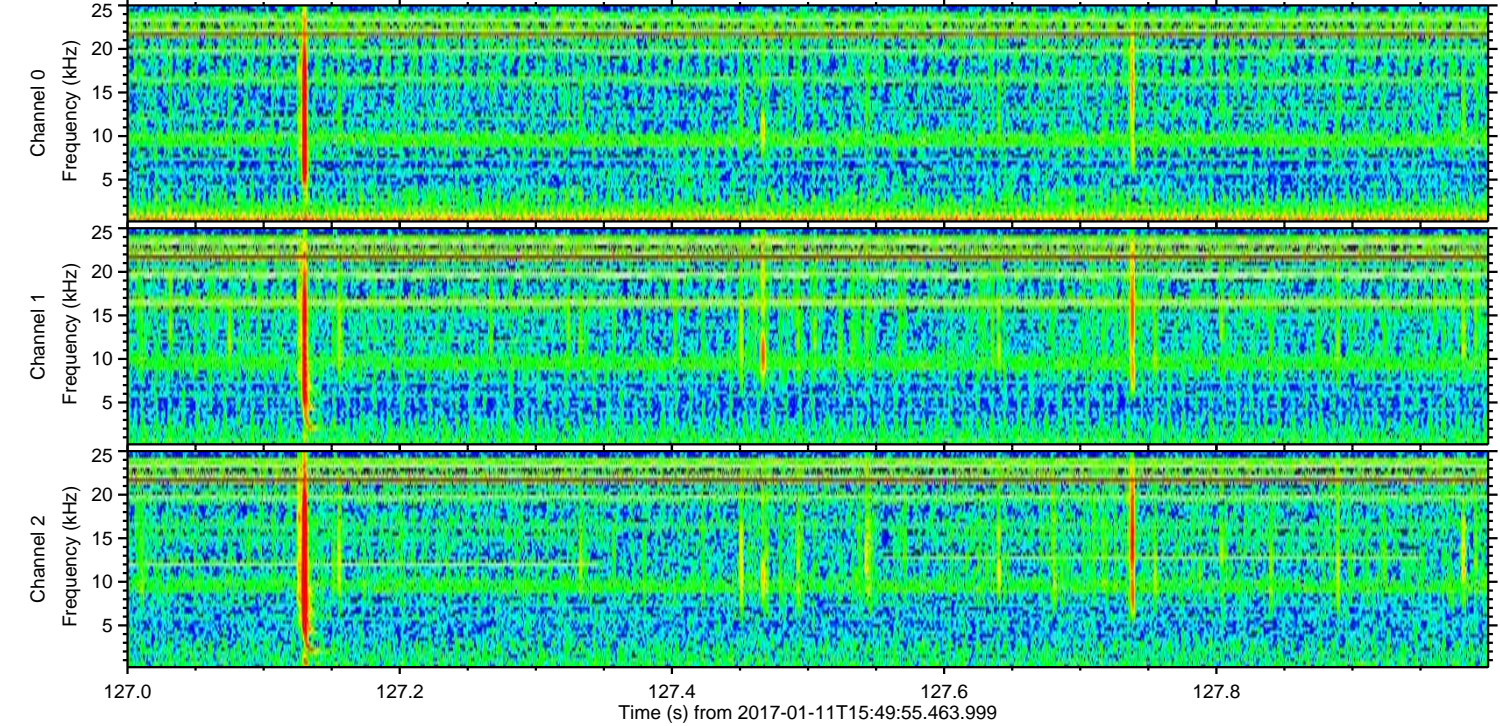
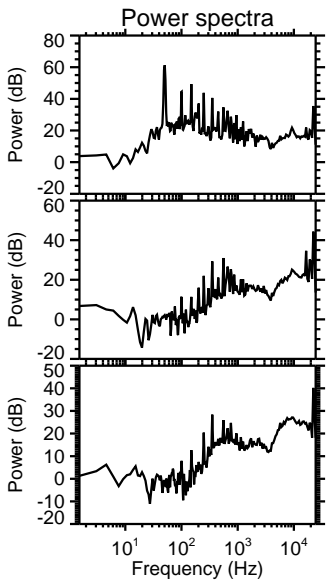
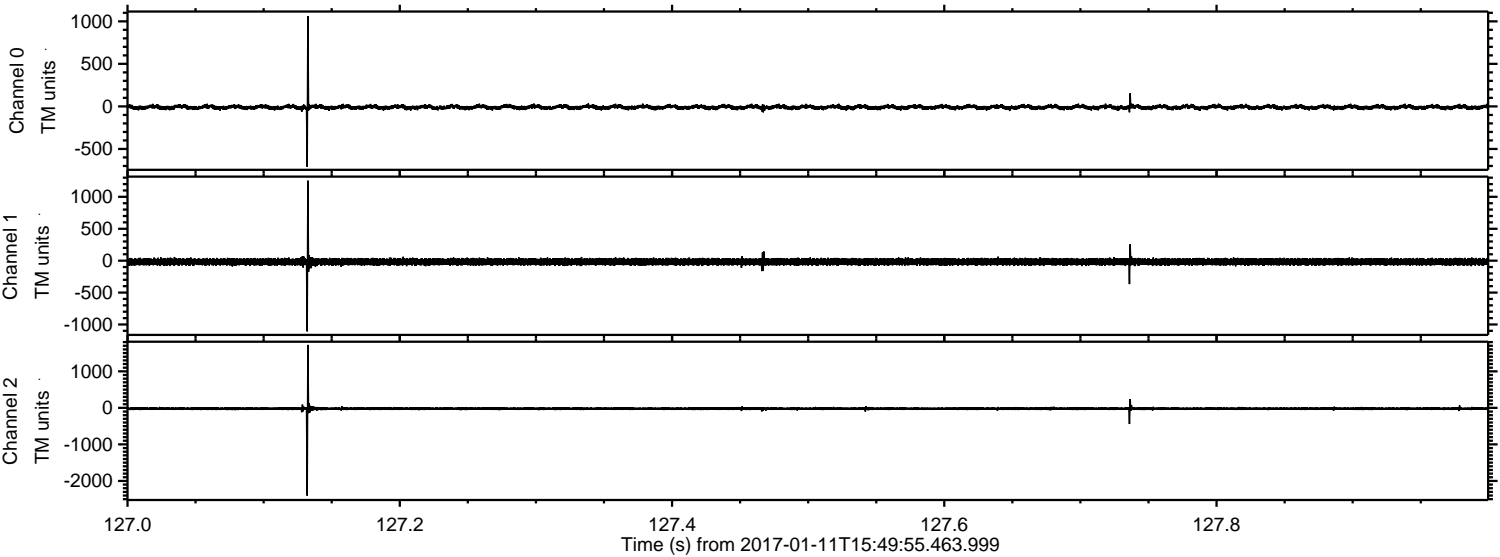


Processed Wed Jan 11 16:58:15 2017 by ELM ver.2012-10-06 from 001__elm20170111_154954__dat00.bin

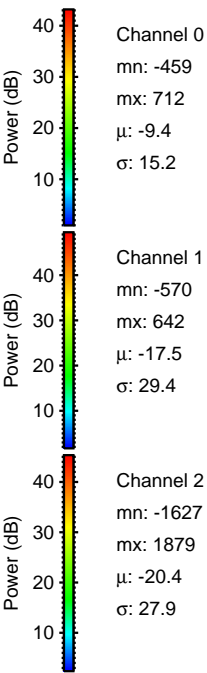
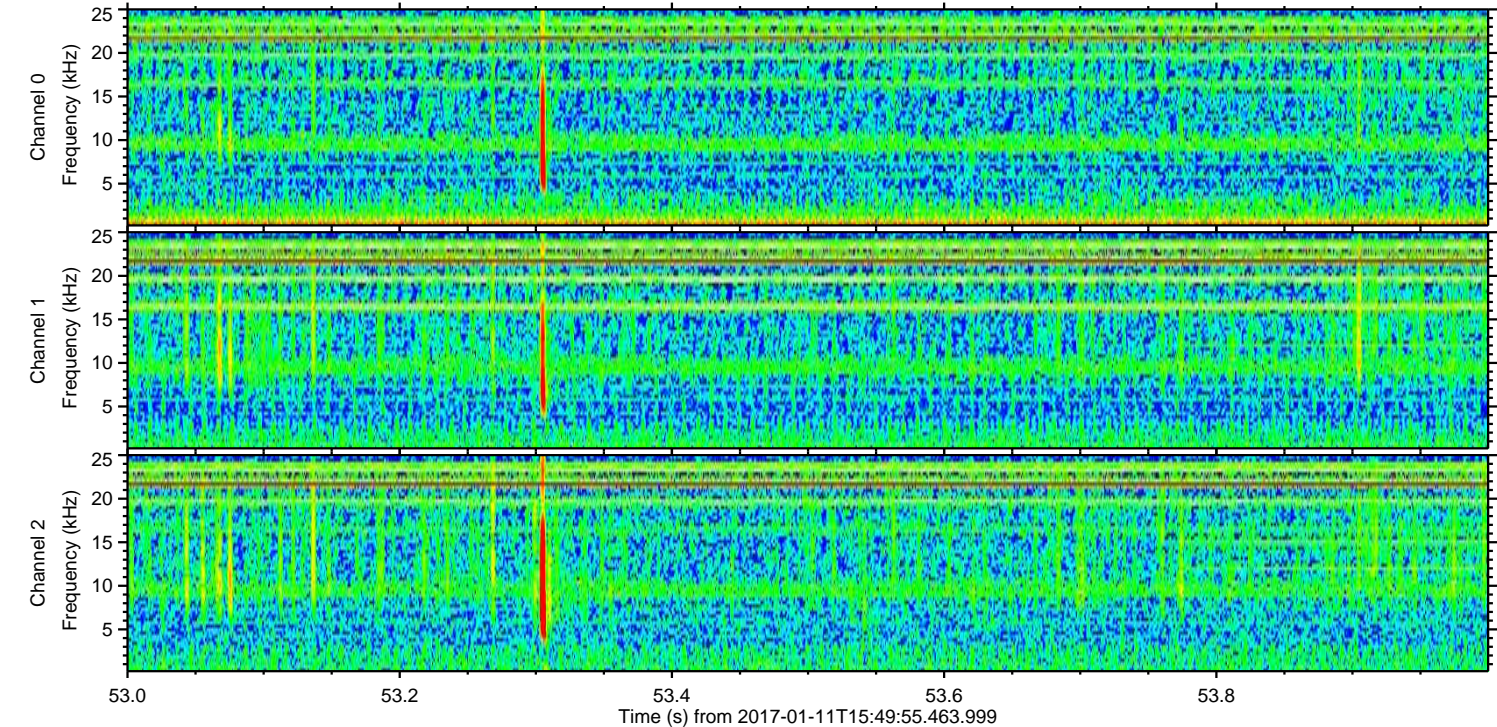
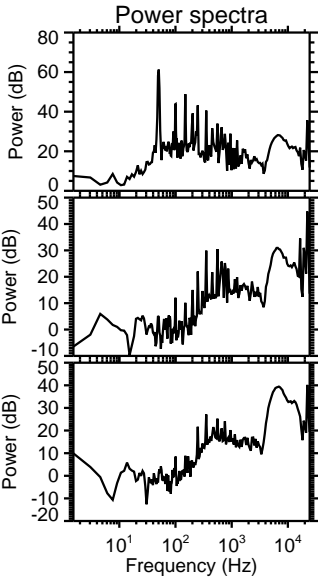
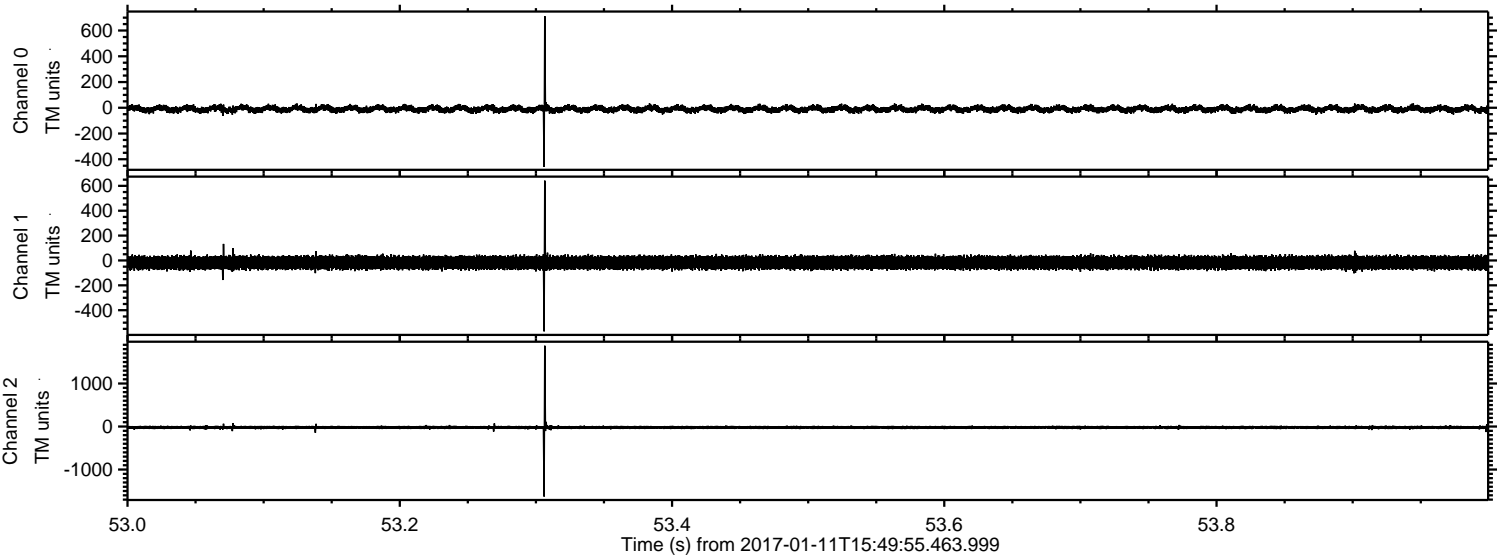


ELMAVAN 3D WAVEFORMS (Measured data sampled at 50 kHz) 51000 packets of 144 samples from 2017-01-11T15:49:55.463.999. Part 128/147

Processed Wed Jan 11 16:58:16 2017 by ELM ver.2012-10-06 from 001__elm20170111_154954__dat00.bin

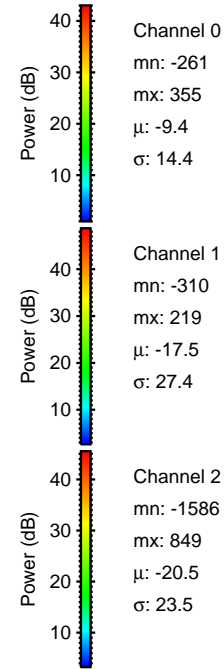
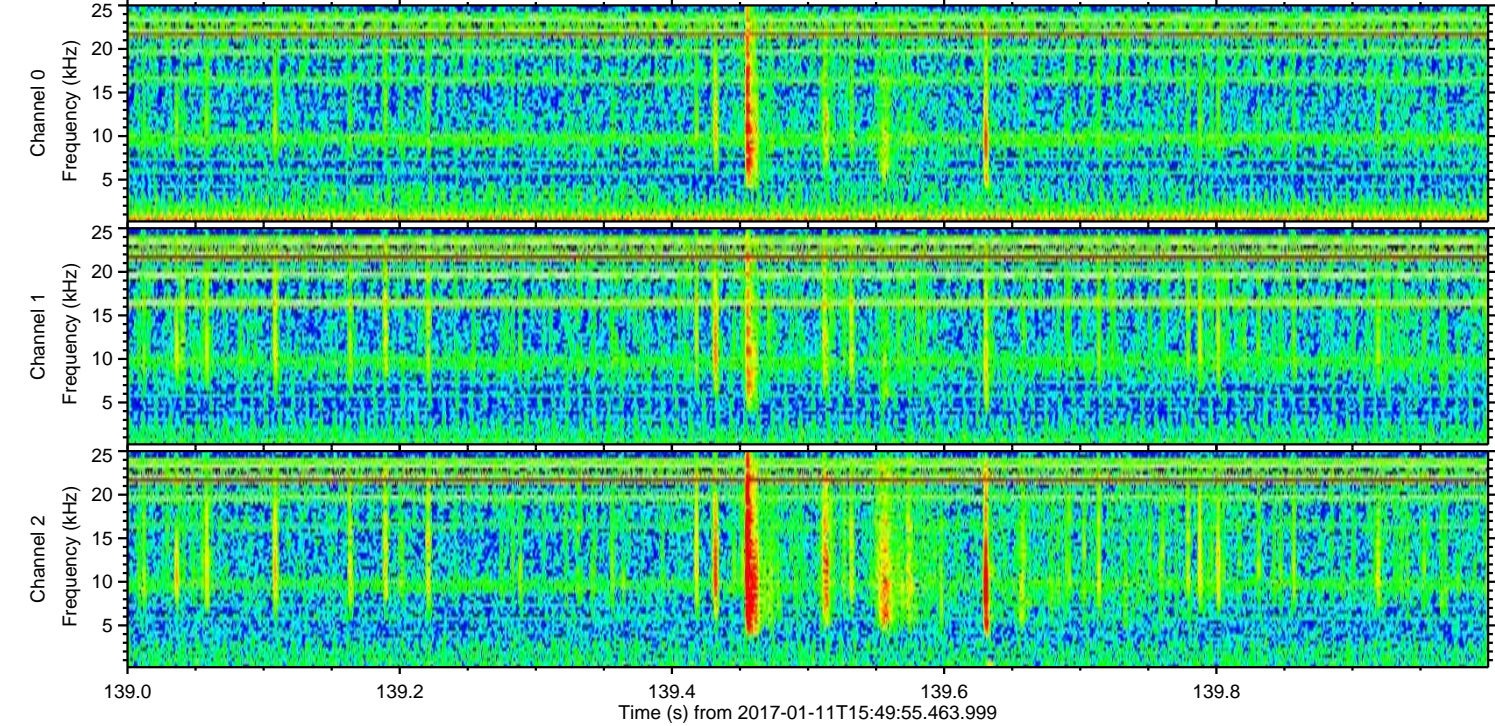
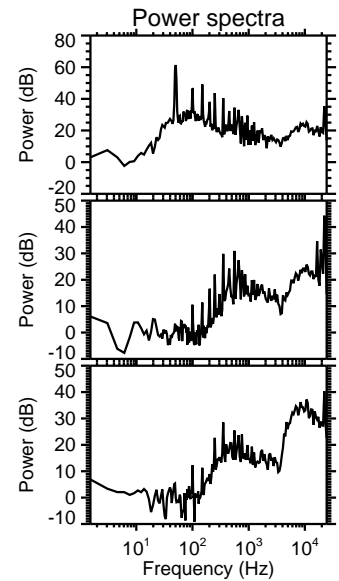
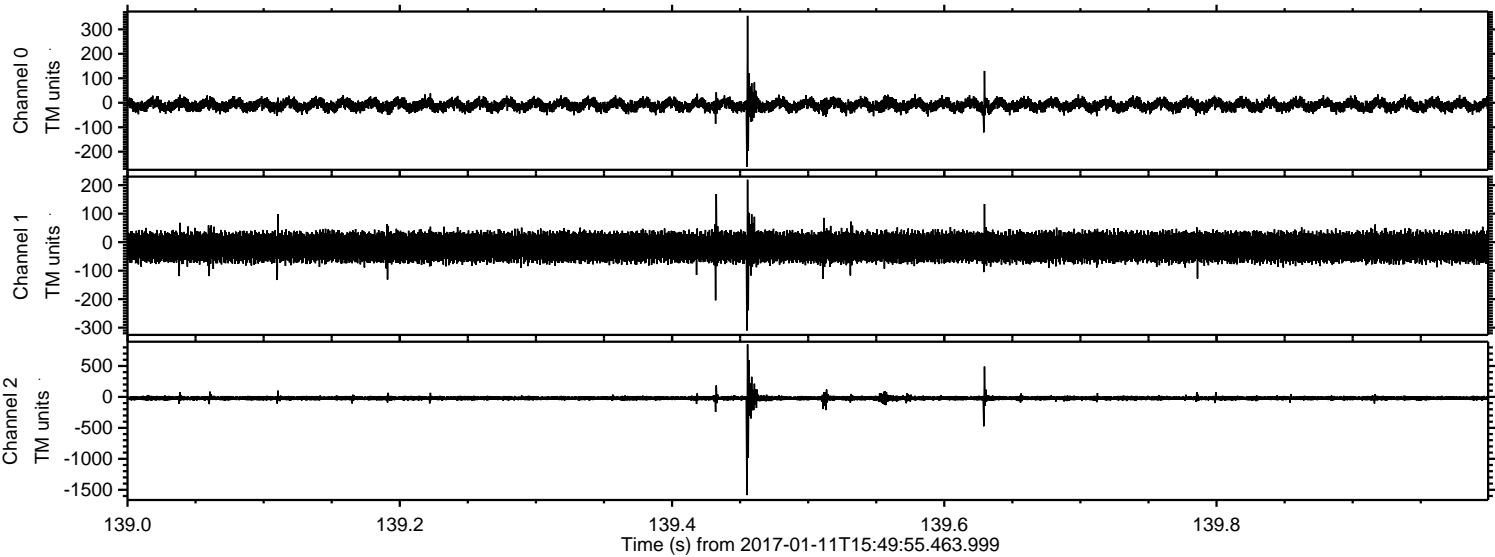


Processed Wed Jan 11 16:58:17 2017 by ELM ver.2012-10-06 from 001__elm20170111_154954__dat00.bin

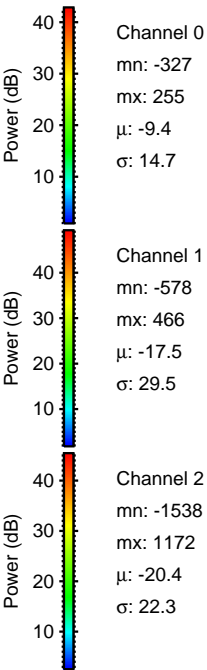
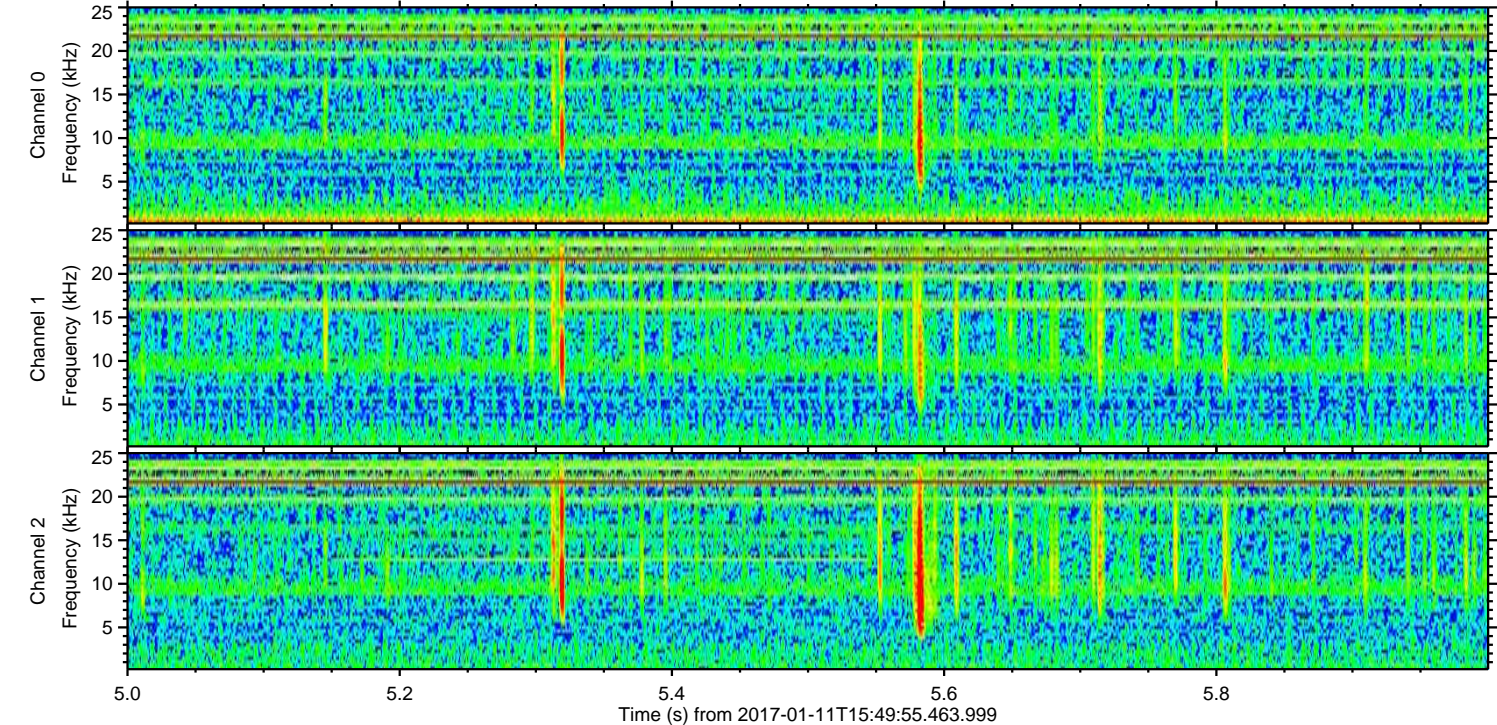
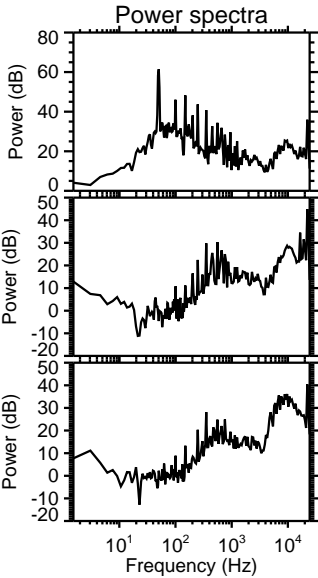
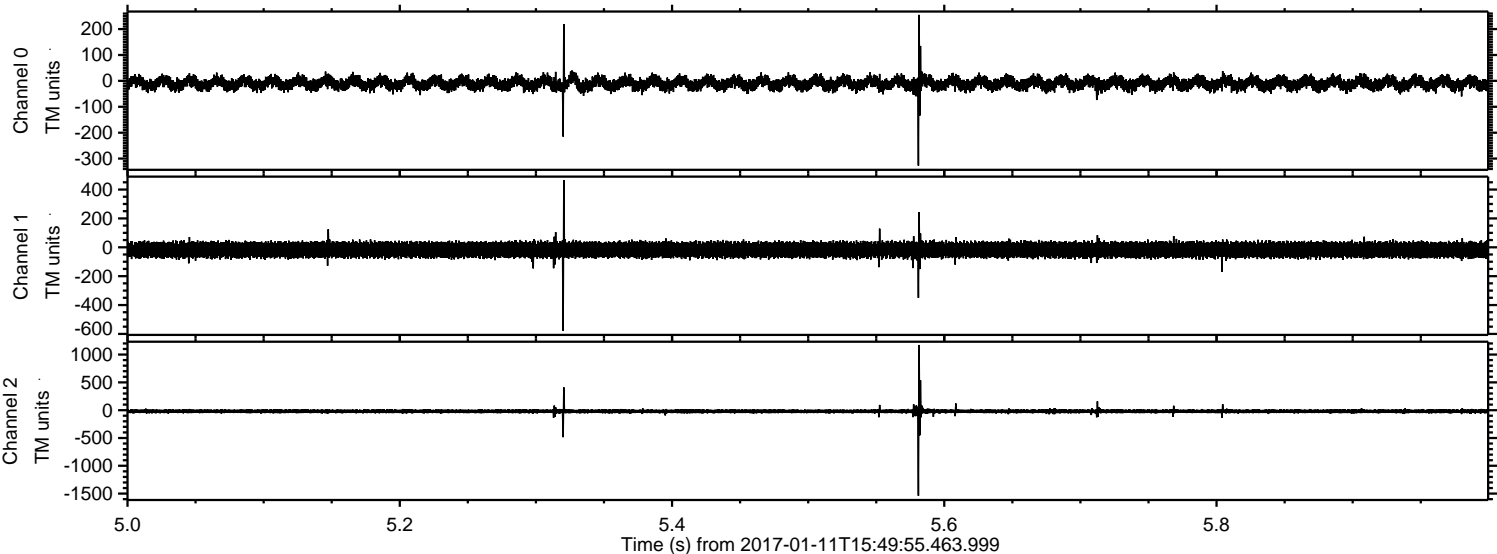


ELMAVAN 3D WAVEFORMS (Measured data sampled at 50 kHz) 51000 packets of 144 samples from 2017-01-11T15:49:55.463.999. Part 140/147

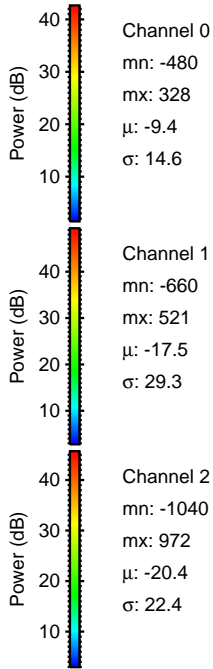
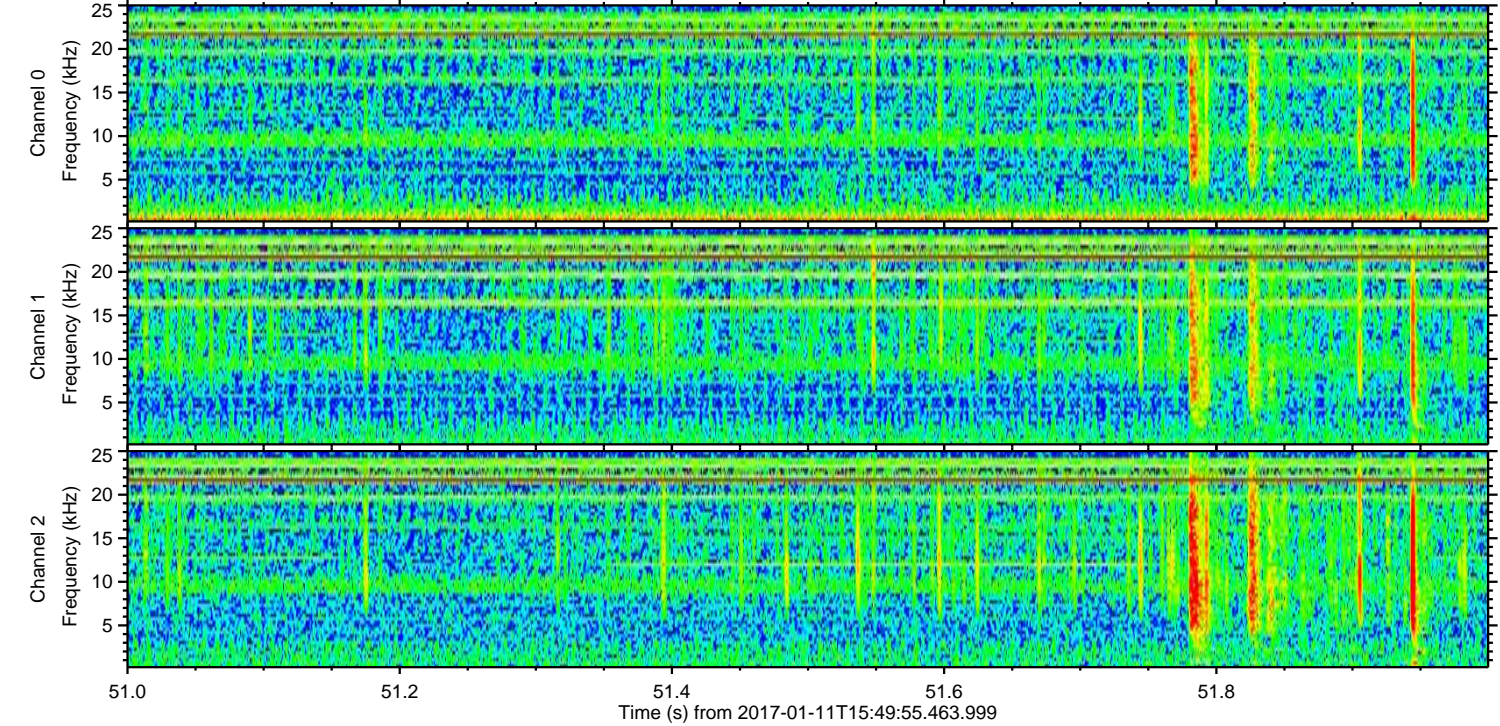
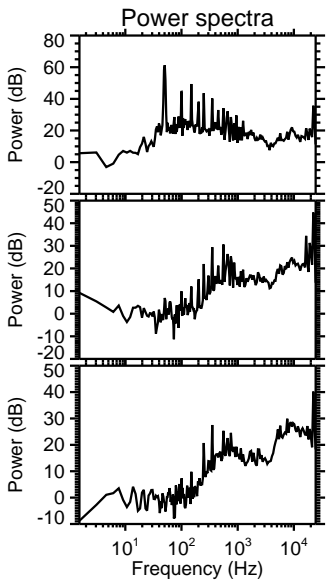
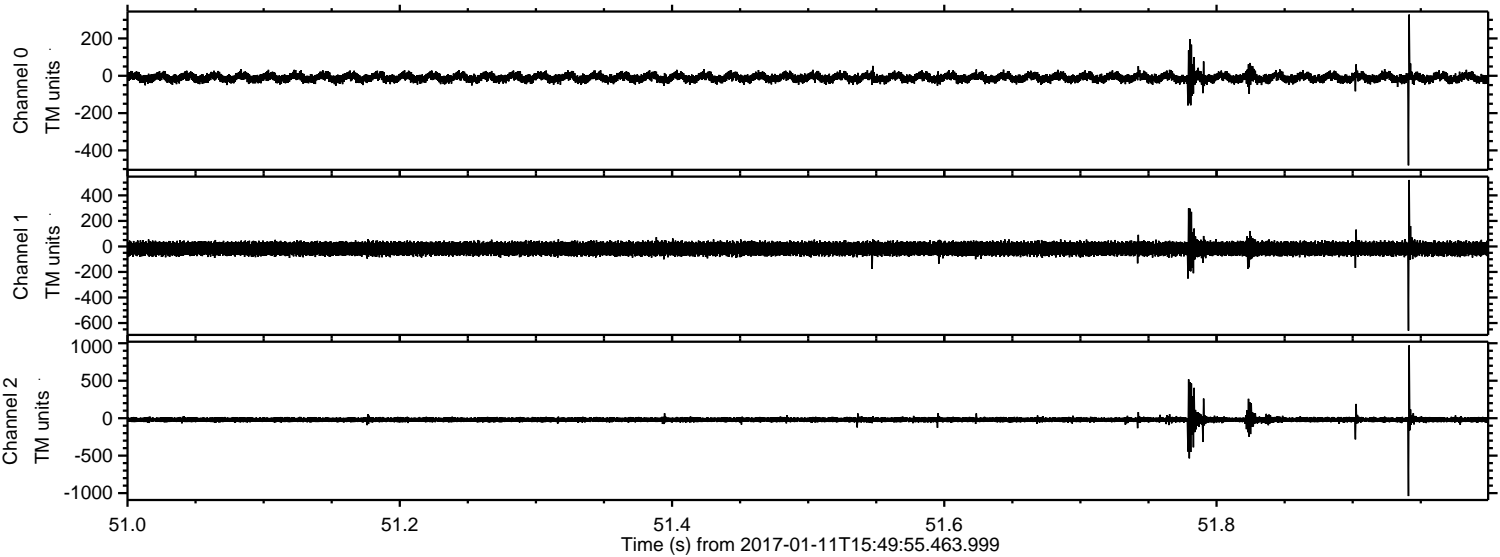
Processed Wed Jan 11 16:58:19 2017 by ELM ver.2012-10-06 from 001__elm20170111_154954__dat00.bin



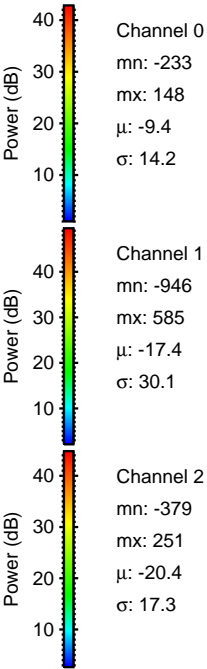
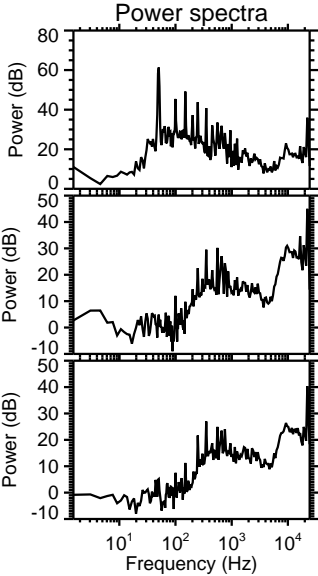
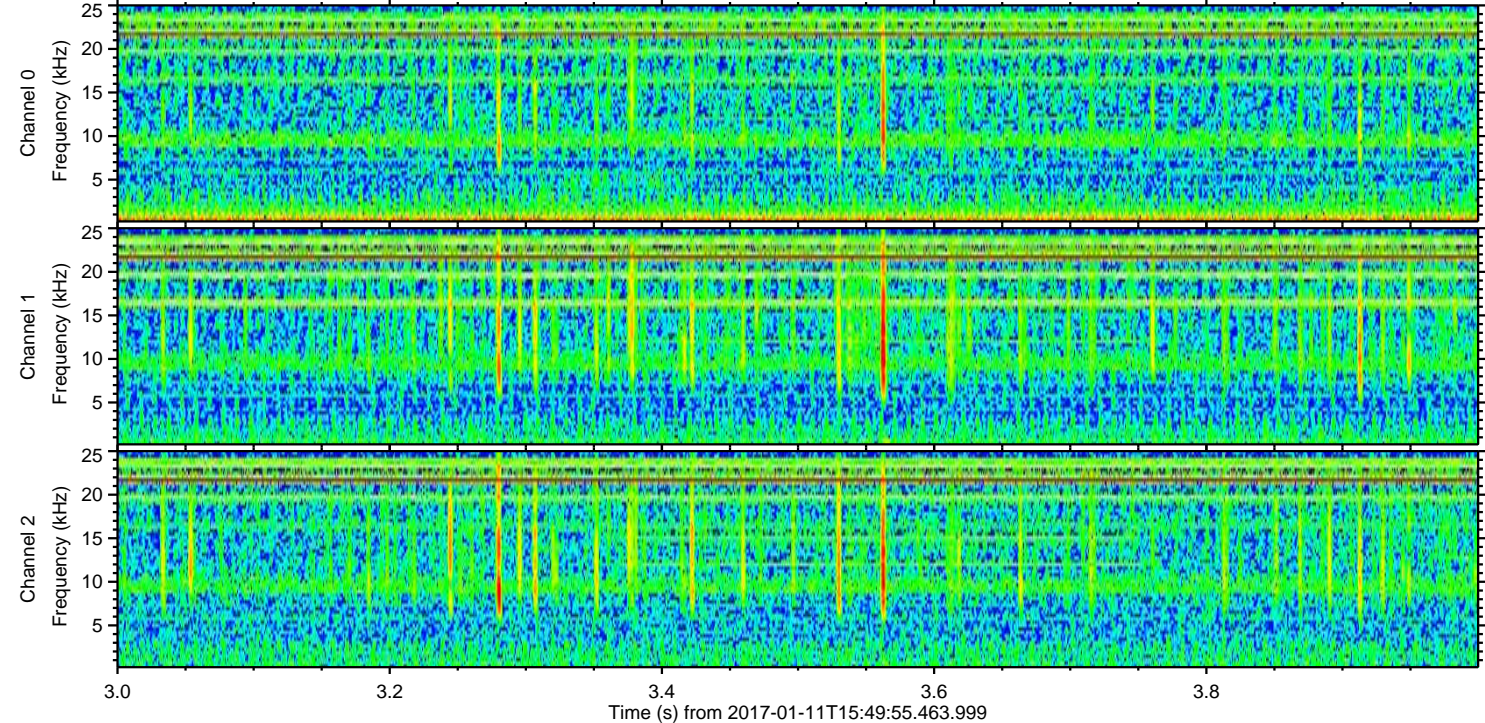
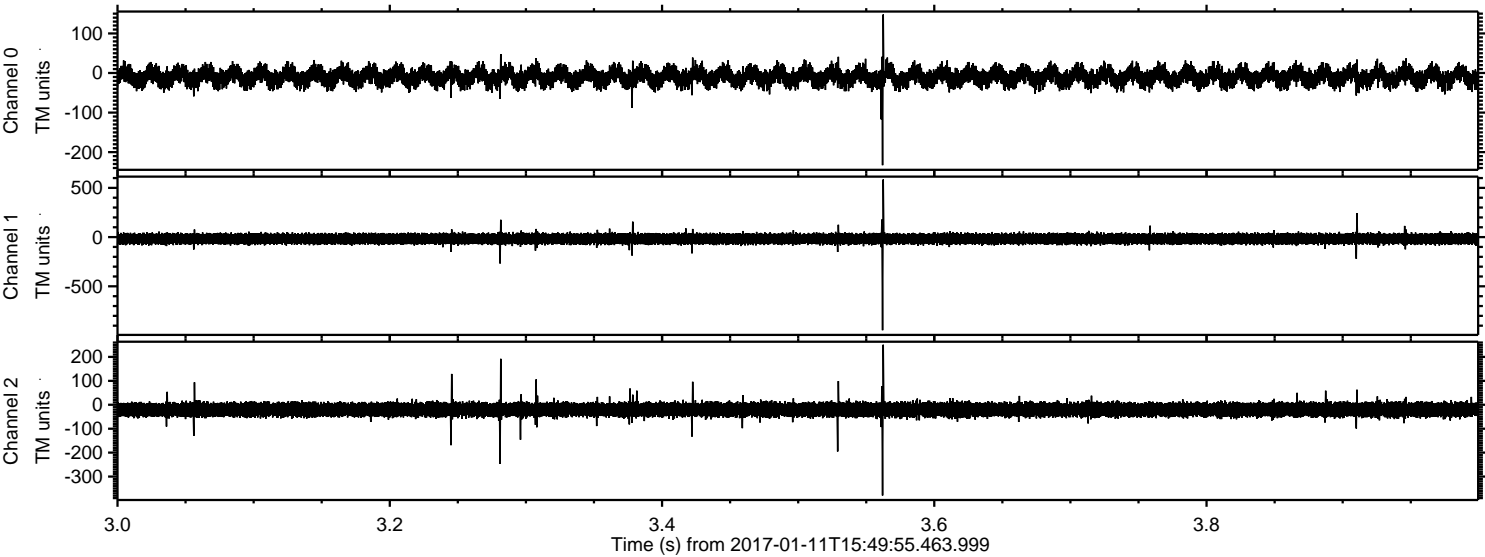
Processed Wed Jan 11 16:58:20 2017 by ELM ver.2012-10-06 from 001__elm20170111_154954__dat00.bin



Processed Wed Jan 11 16:58:21 2017 by ELM ver.2012-10-06 from 001__elm20170111_154954__dat00.bin



Processed Wed Jan 11 16:58:22 2017 by ELM ver.2012-10-06 from 001__elm20170111_154954__dat00.bin



Channel 0
mn: -233
mx: 148
 μ : -9.4
 σ : 14.2

Channel 1
mn: -946
mx: 585
 μ : -17.4
 σ : 30.1

Channel 2
mn: -379
mx: 251
 μ : -20.4
 σ : 17.3

