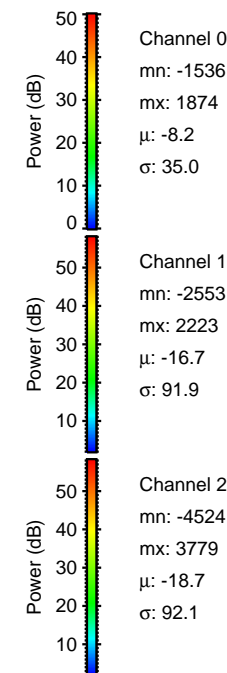
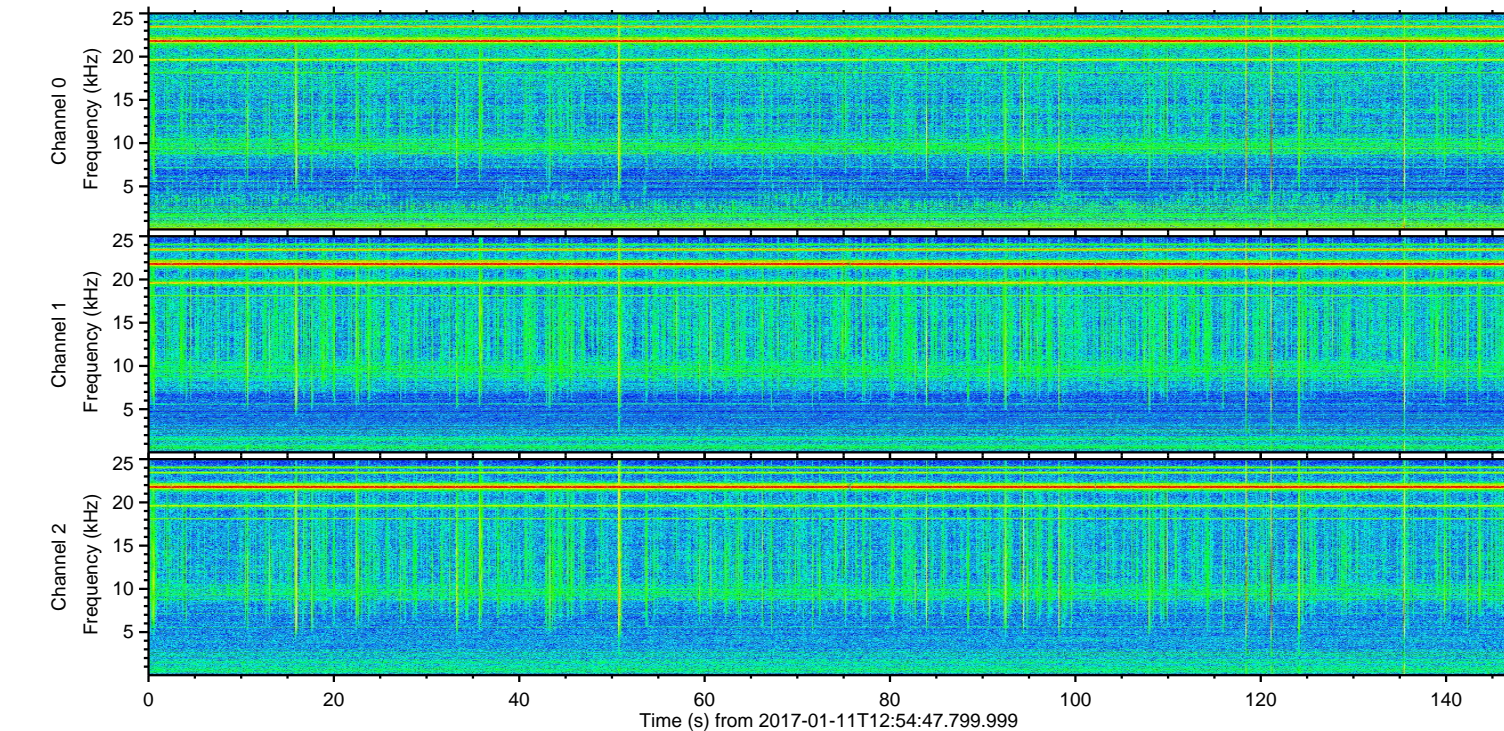
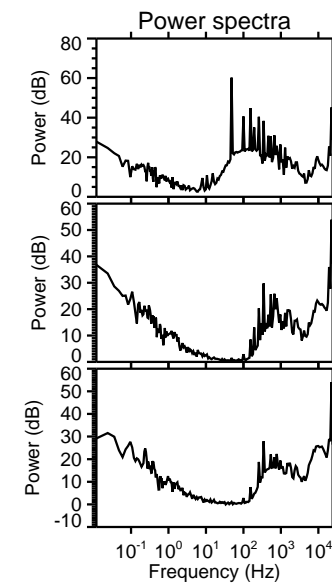
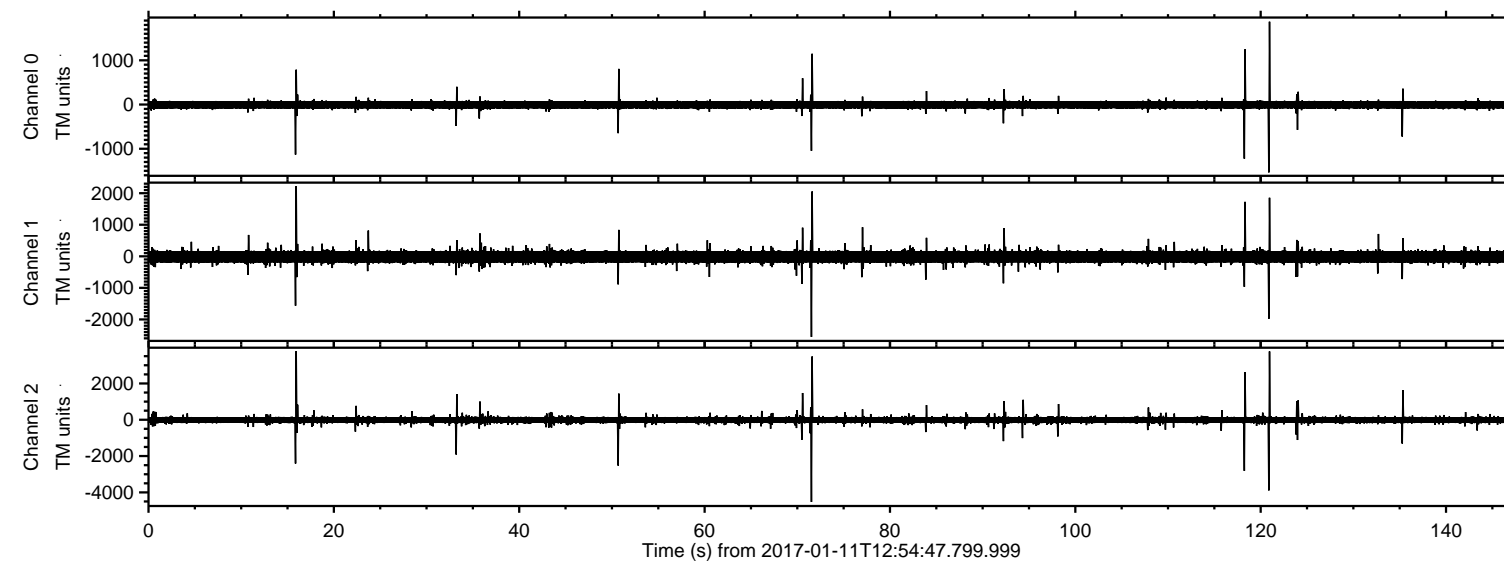


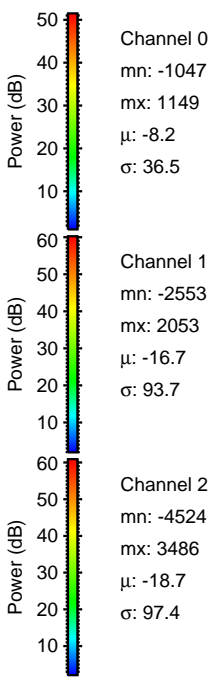
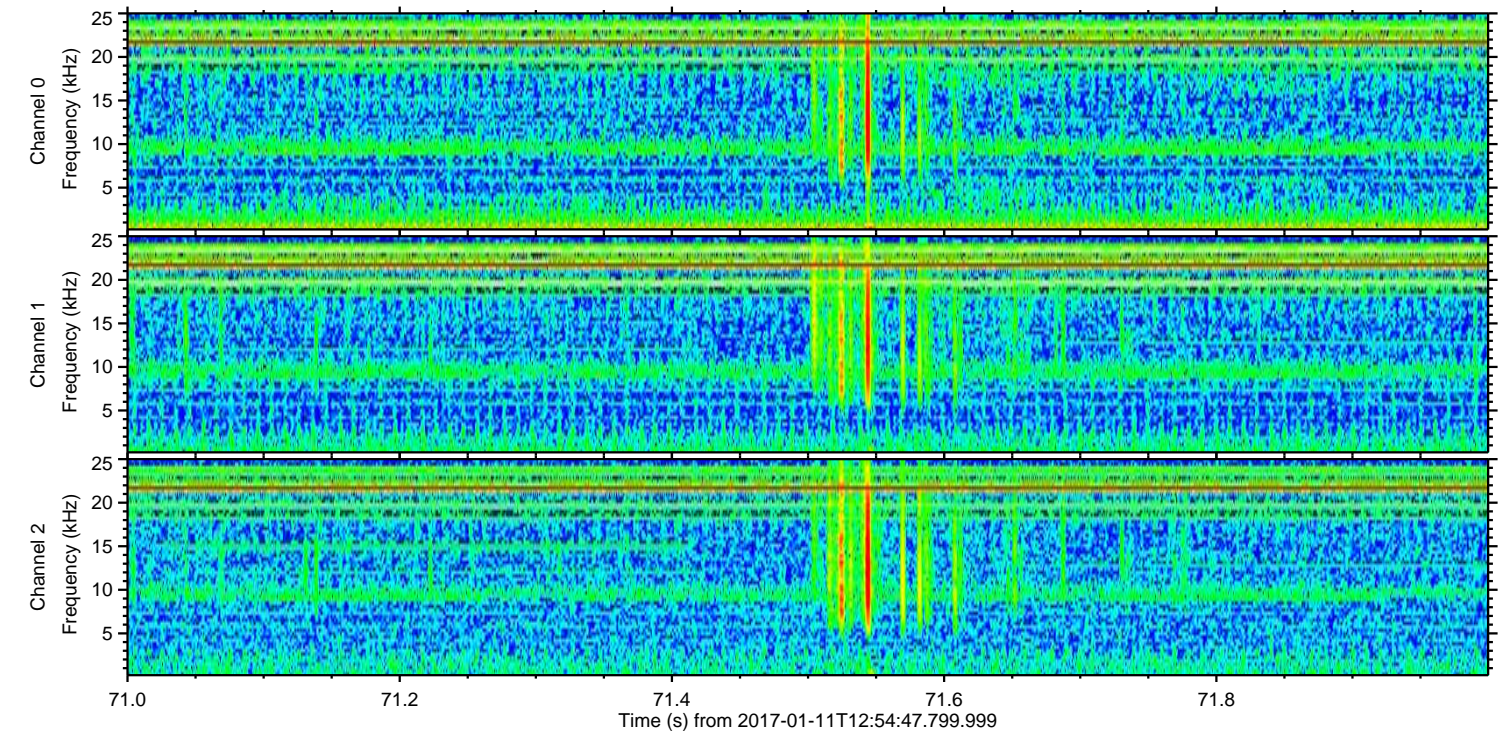
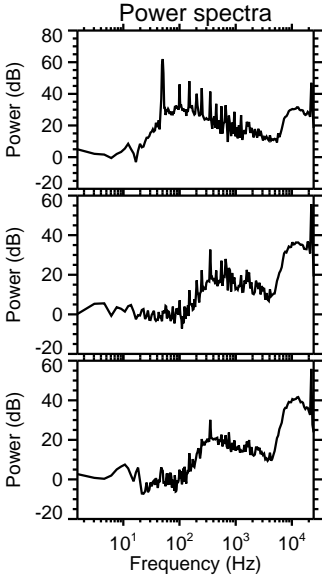
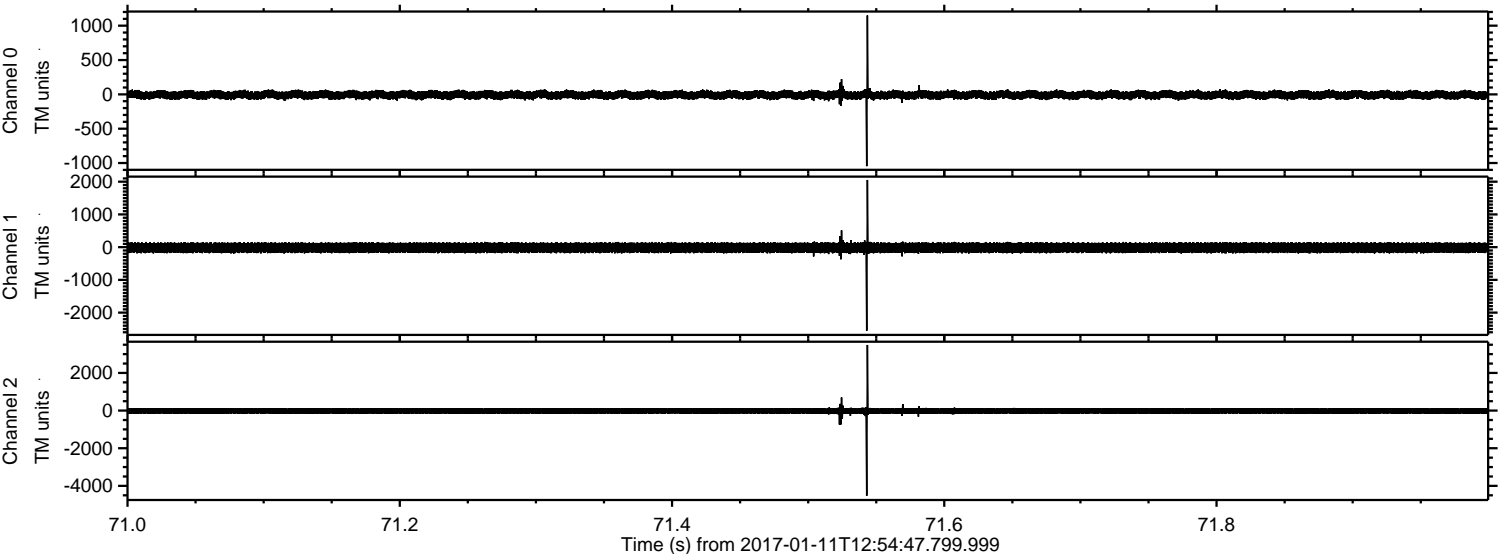
ELMAVAN 3D WAVEFORMS (Measured data sampled at 50 kHz) 51000 packets of 144 samples from 2017-01-11T12:54:47.799.999.

Processed Wed Jan 11 14:02:24 2017 by ELM ver.2012-10-06 from 001__elm20170111_125446__dat00.bin



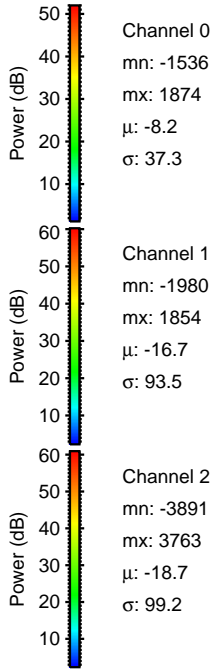
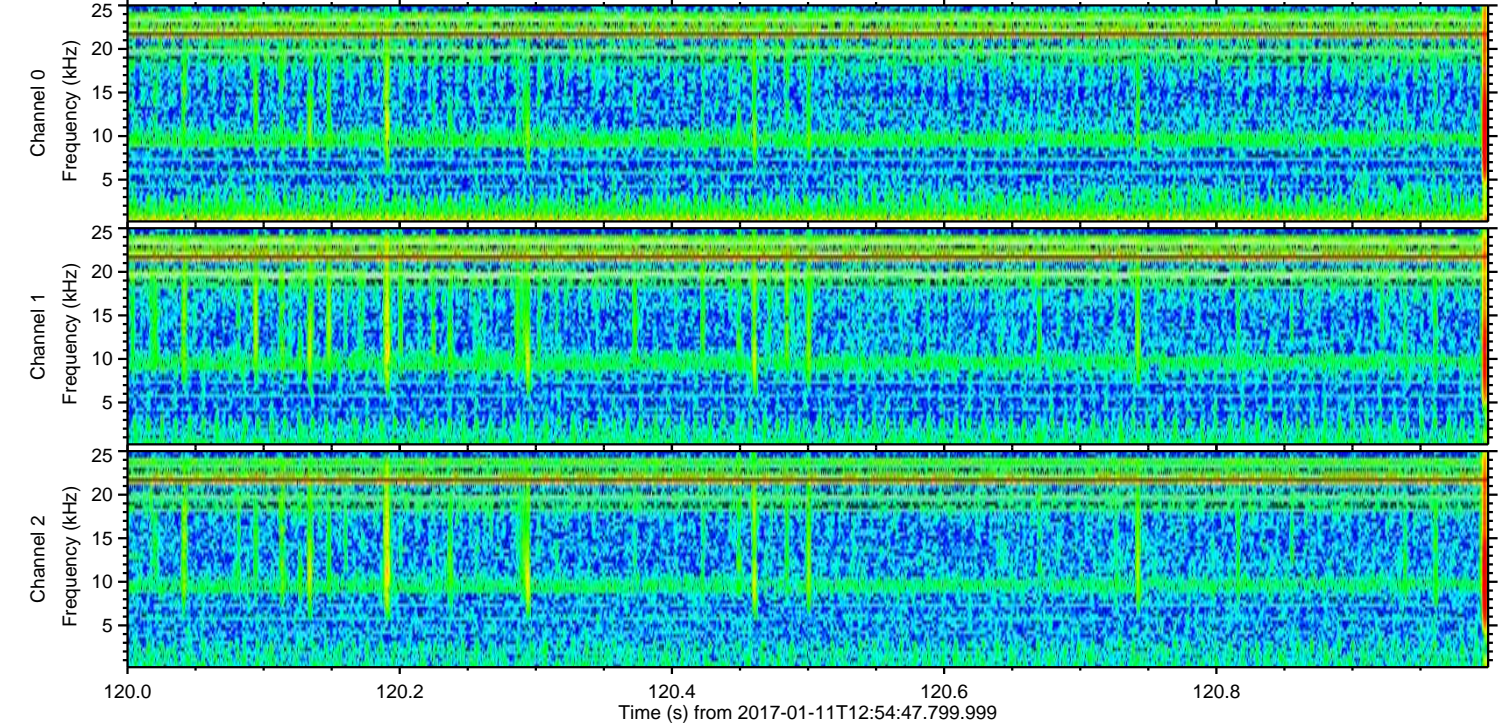
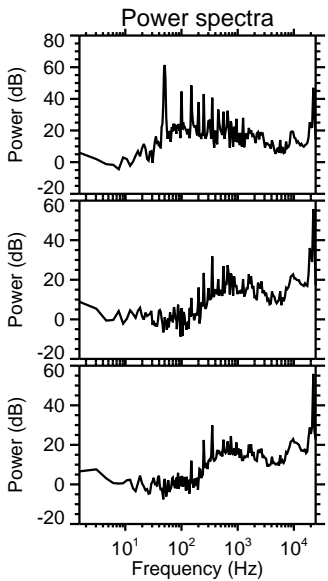
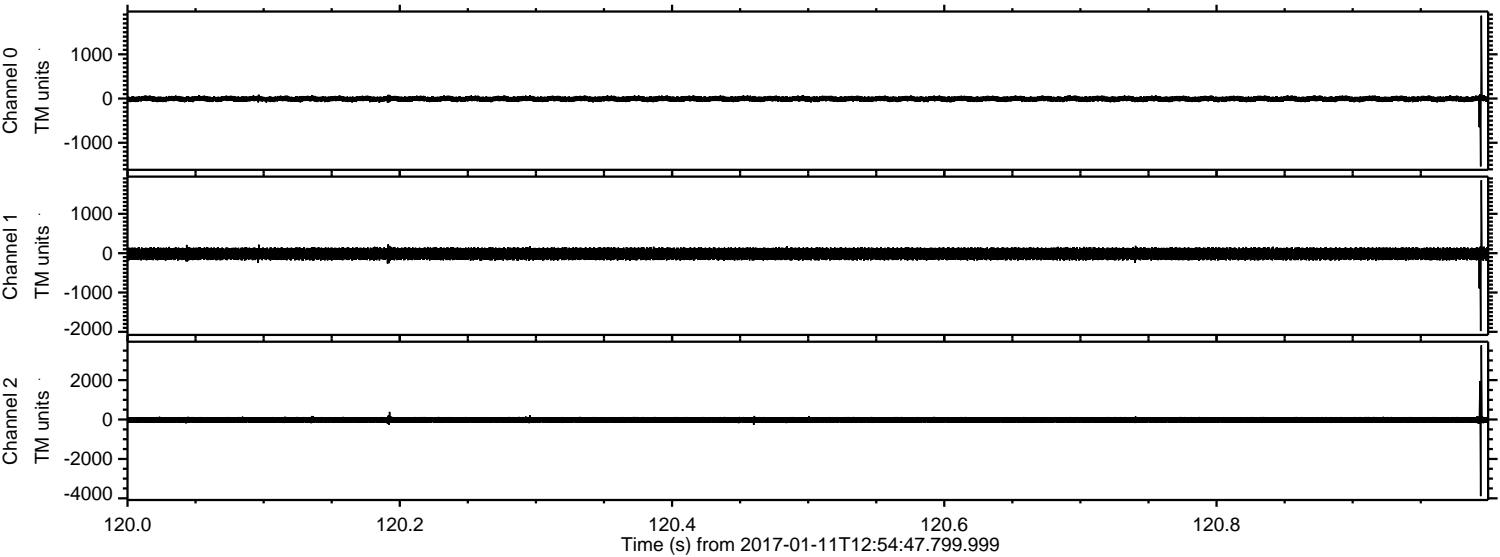
ELMAVAN 3D WAVEFORMS (Measured data sampled at 50 kHz) 51000 packets of 144 samples from 2017-01-11T12:54:47.799.999. Part 72/147

Processed Wed Jan 11 14:02:35 2017 by ELM ver.2012-10-06 from 001__elm20170111_125446__dat00.bin



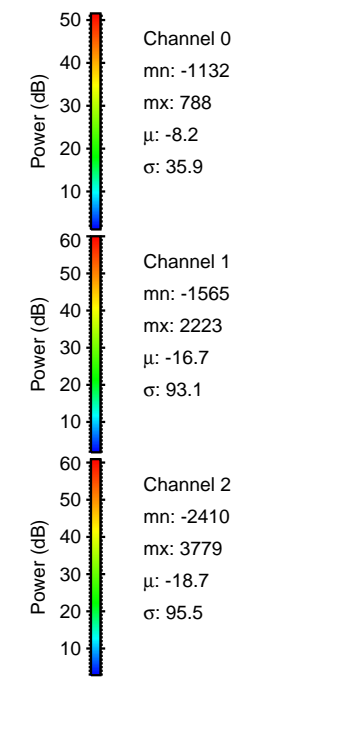
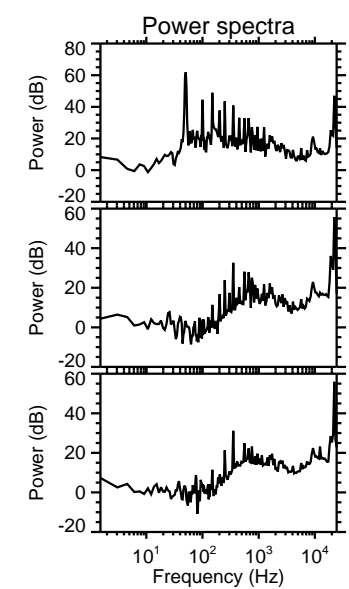
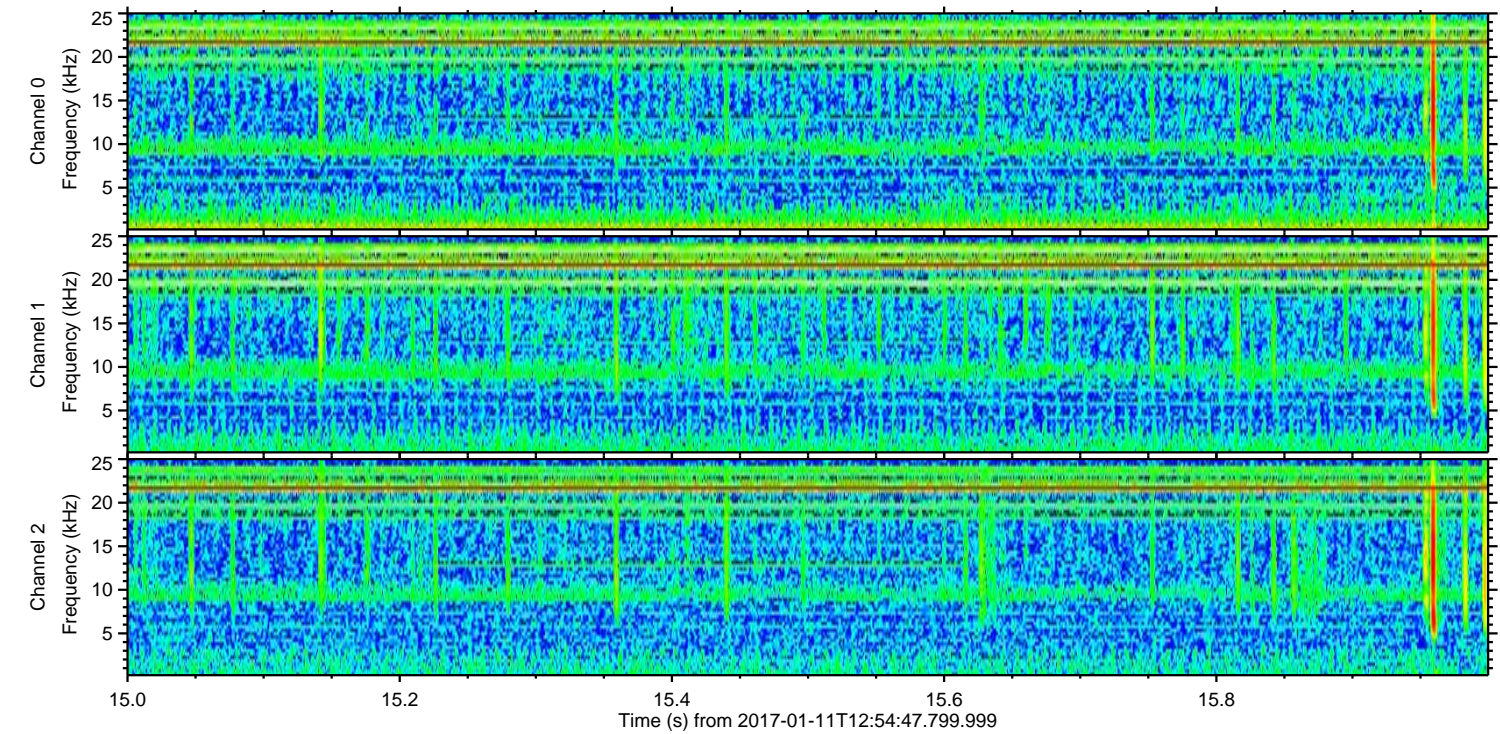
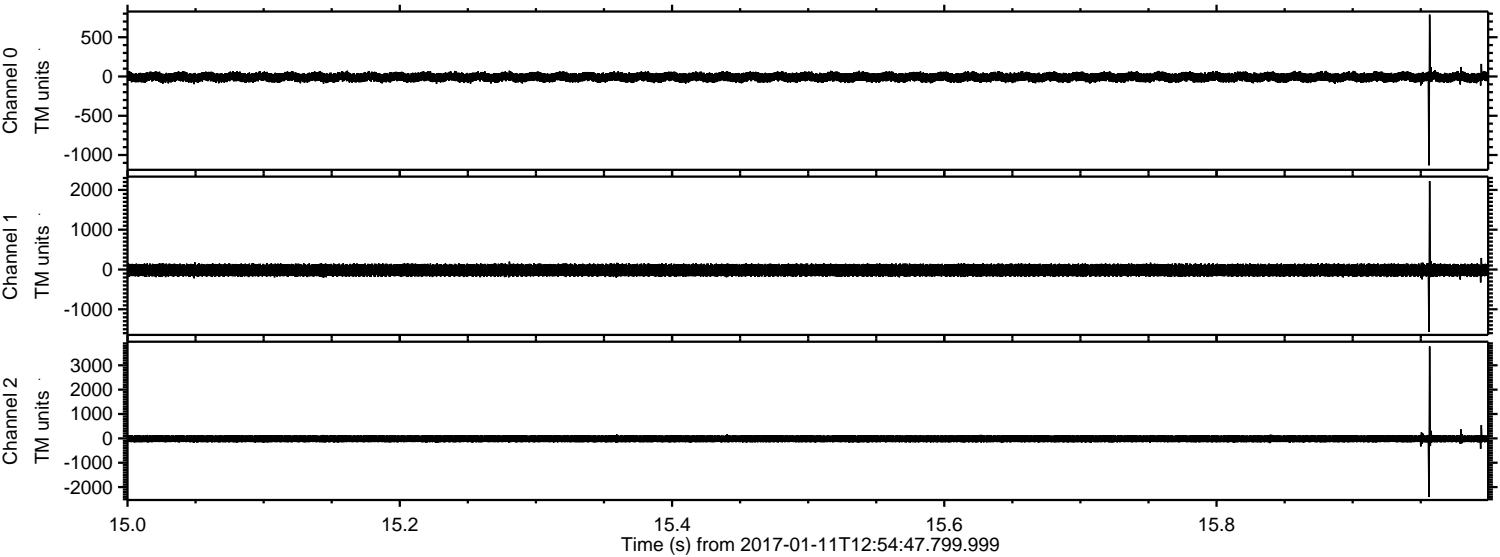
ELMAVAN 3D WAVEFORMS (Measured data sampled at 50 kHz) 51000 packets of 144 samples from 2017-01-11T12:54:47.799.999. Part 121/147

Processed Wed Jan 11 14:02:36 2017 by ELM ver.2012-10-06 from 001__elm20170111_125446__dat00.bin



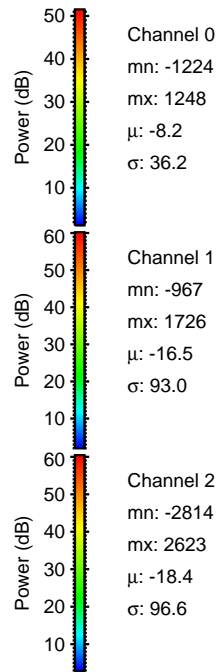
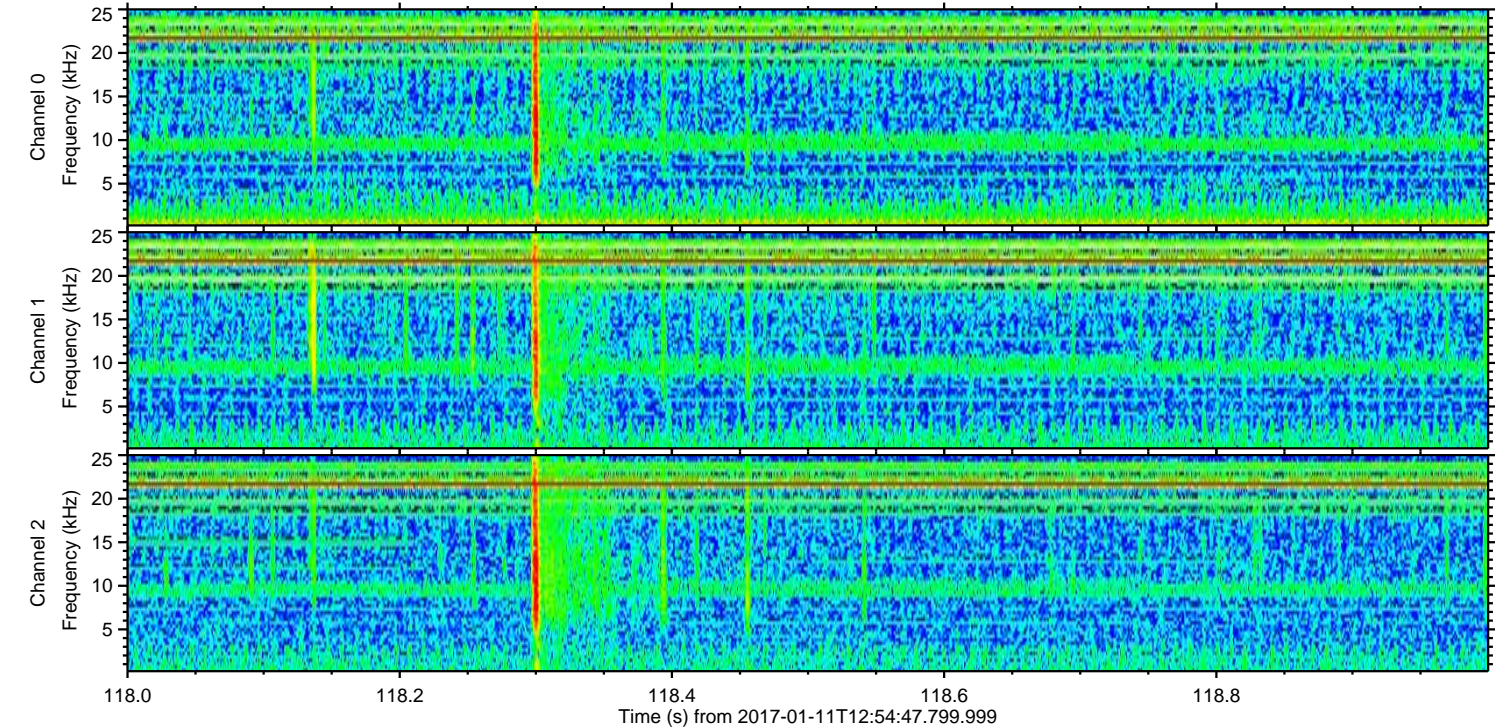
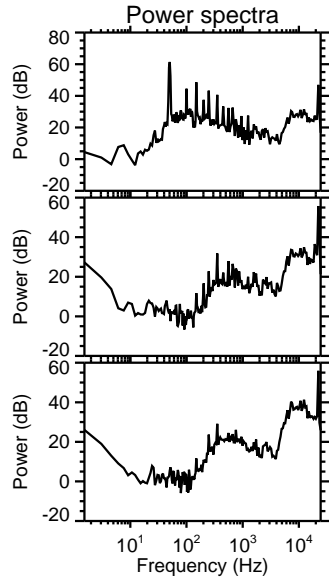
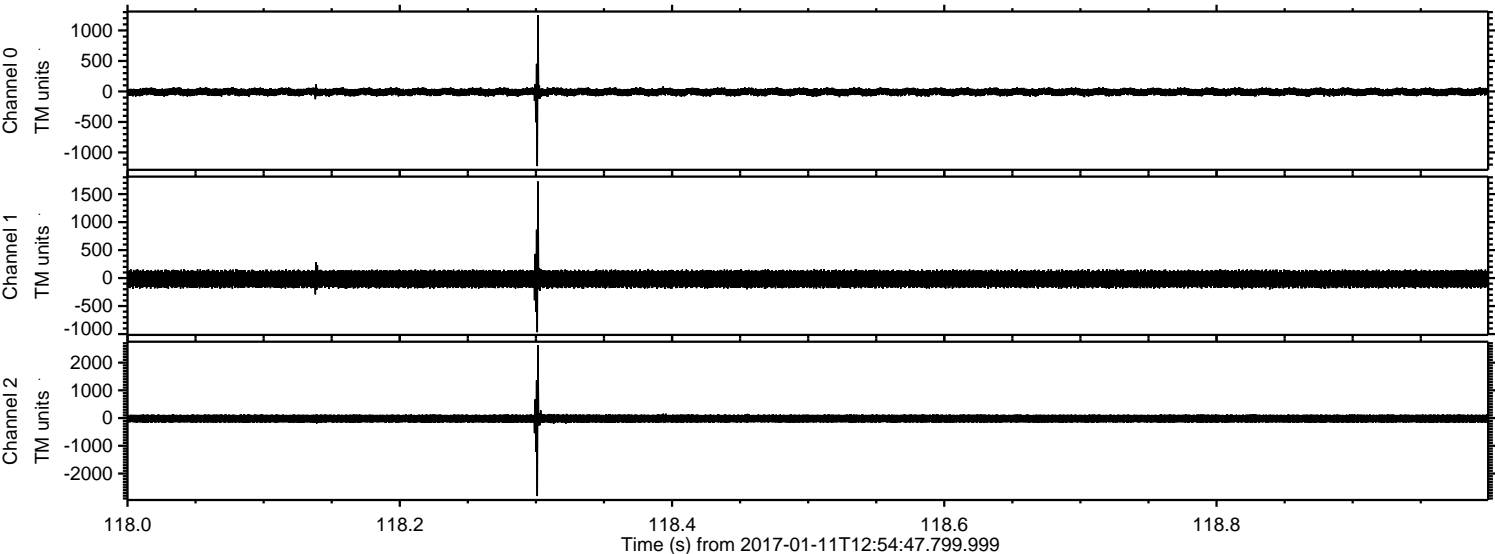
ELMAVAN 3D WAVEFORMS (Measured data sampled at 50 kHz) 51000 packets of 144 samples from 2017-01-11T12:54:47.799.999. Part 16/147

Processed Wed Jan 11 14:02:37 2017 by ELM ver.2012-10-06 from 001__elm20170111_125446__dat00.bin

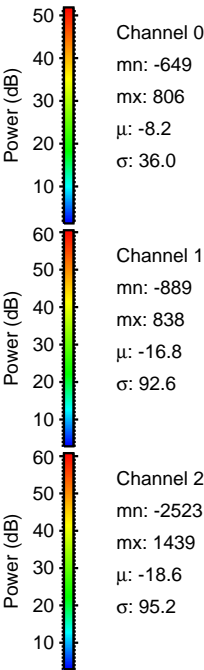
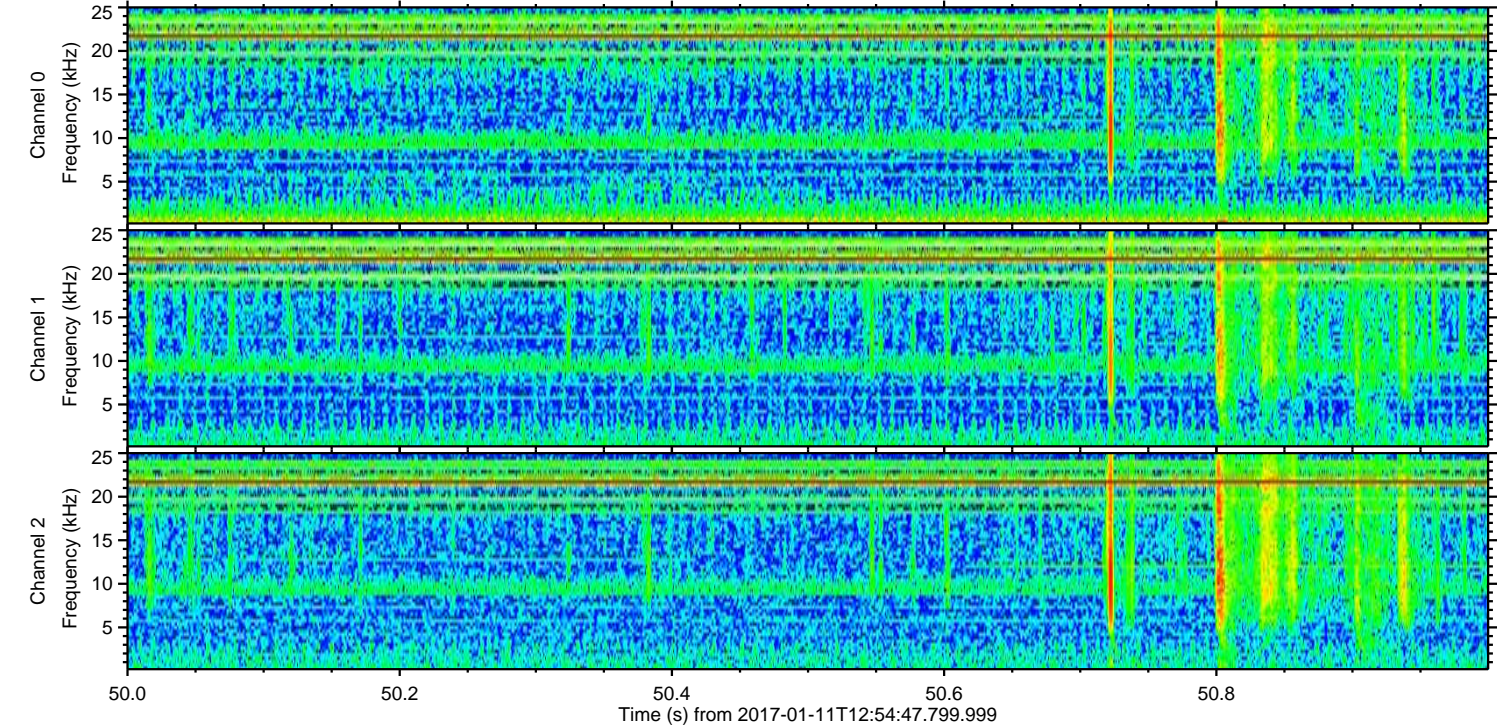
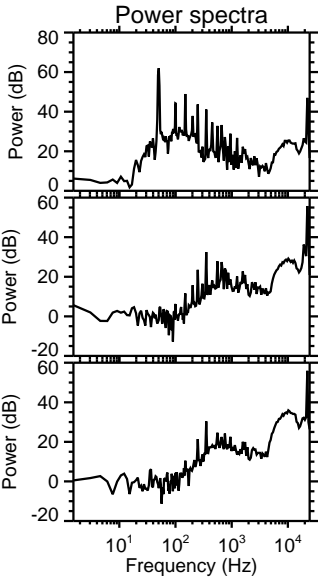
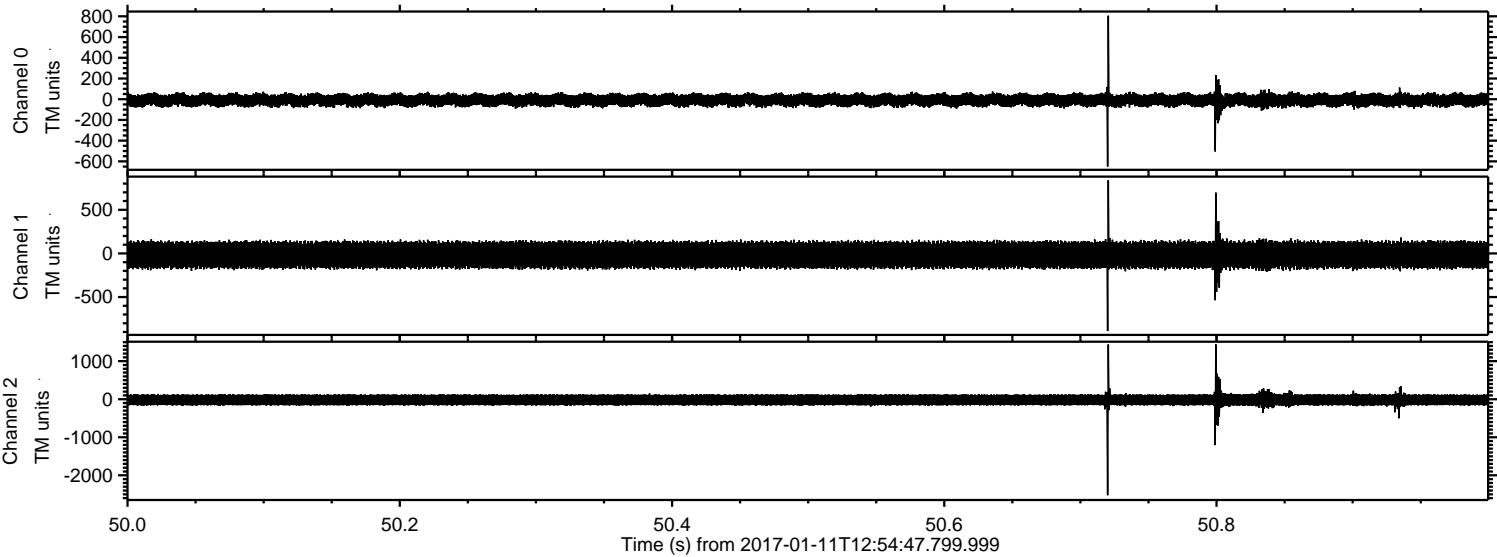


ELMAVAN 3D WAVEFORMS (Measured data sampled at 50 kHz) 51000 packets of 144 samples from 2017-01-11T12:54:47.799.999. Part 119/147

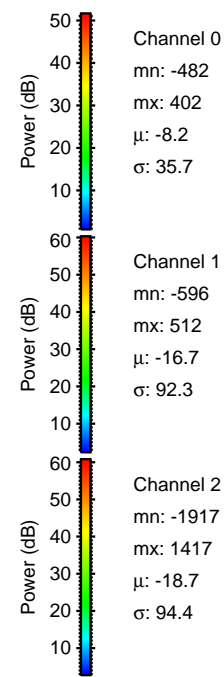
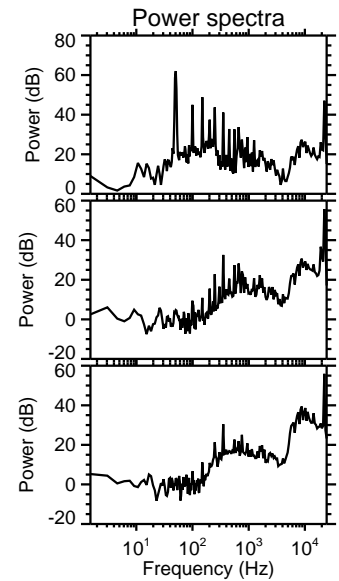
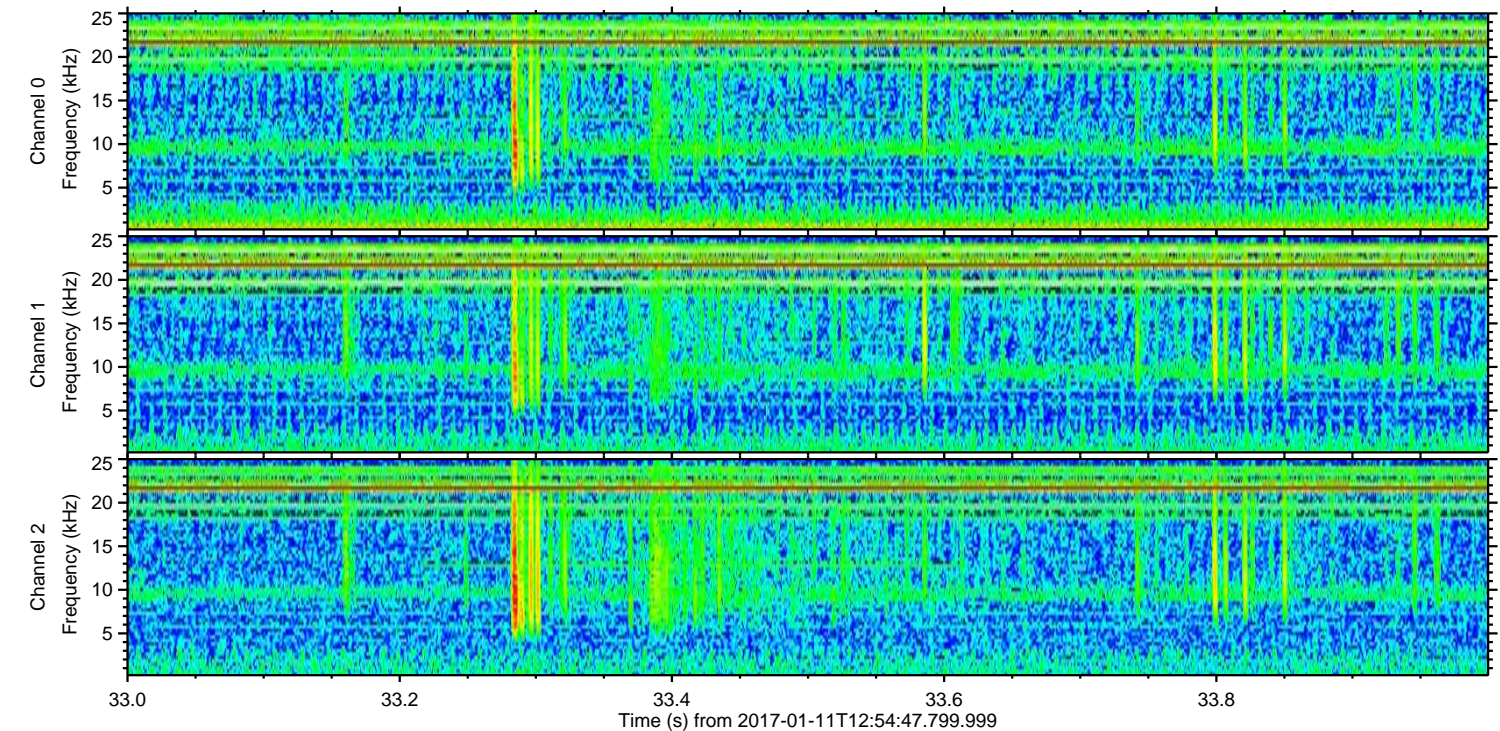
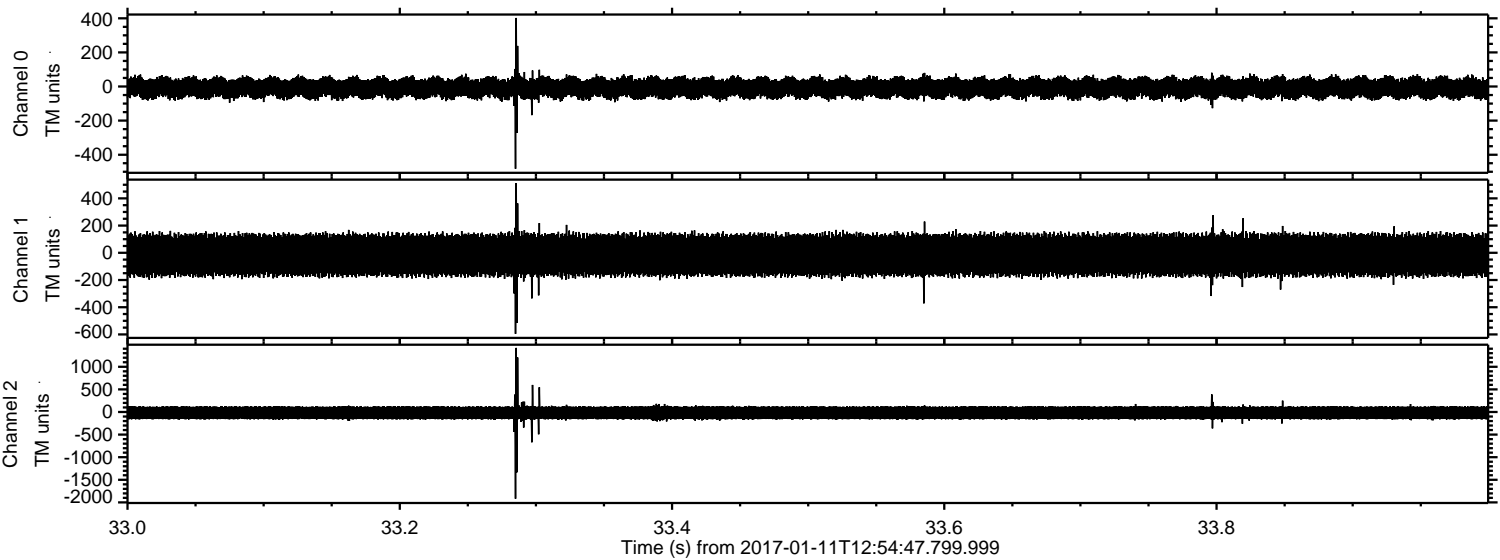
Processed Wed Jan 11 14:02:38 2017 by ELM ver.2012-10-06 from 001__elm20170111_125446__dat00.bin



Processed Wed Jan 11 14:02:39 2017 by ELM ver.2012-10-06 from 001__elm20170111_125446__dat00.bin

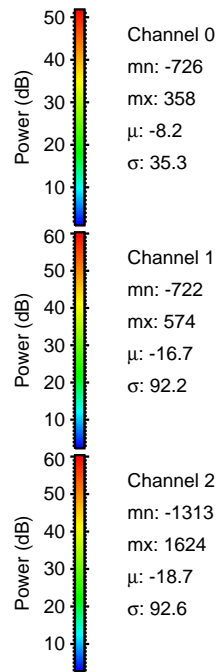
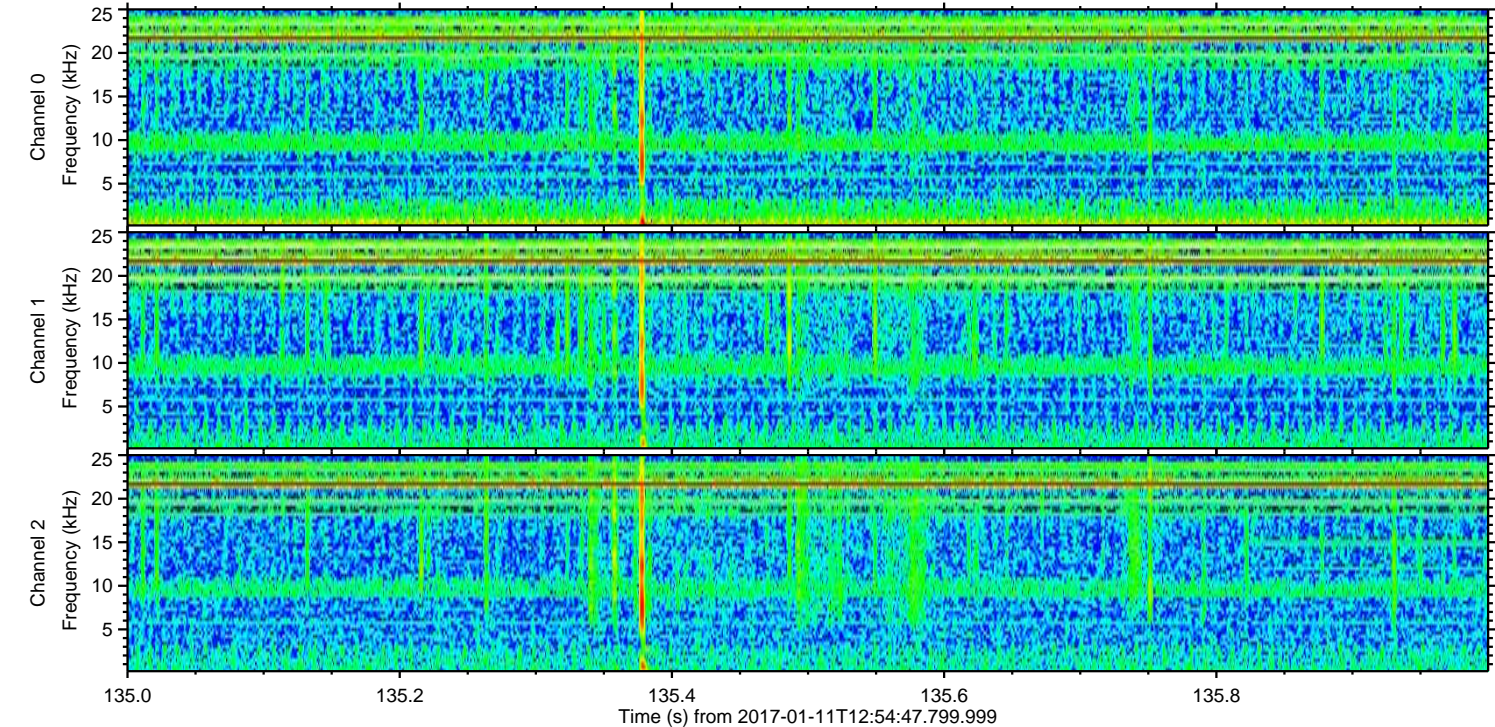
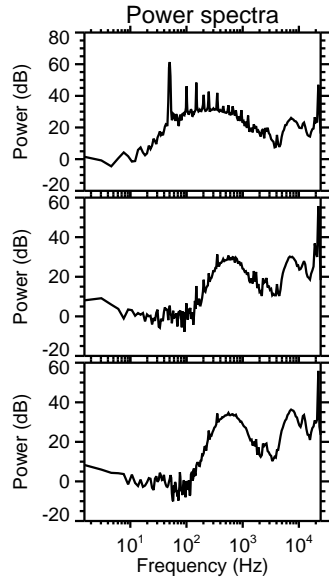
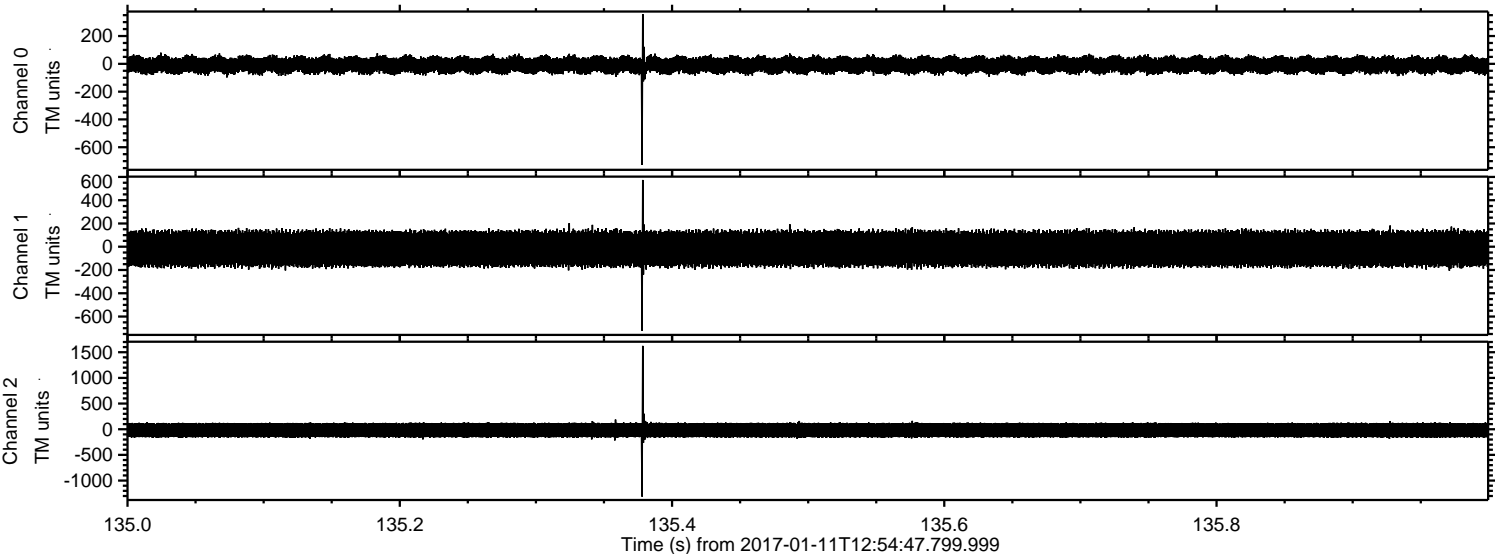


Processed Wed Jan 11 14:02:40 2017 by ELM ver.2012-10-06 from 001__elm20170111_125446__dat00.bin

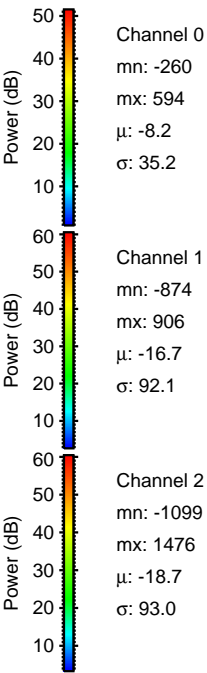
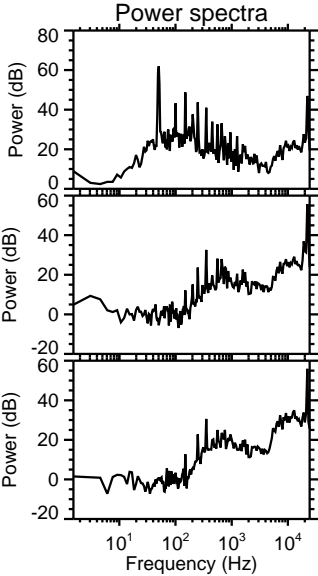
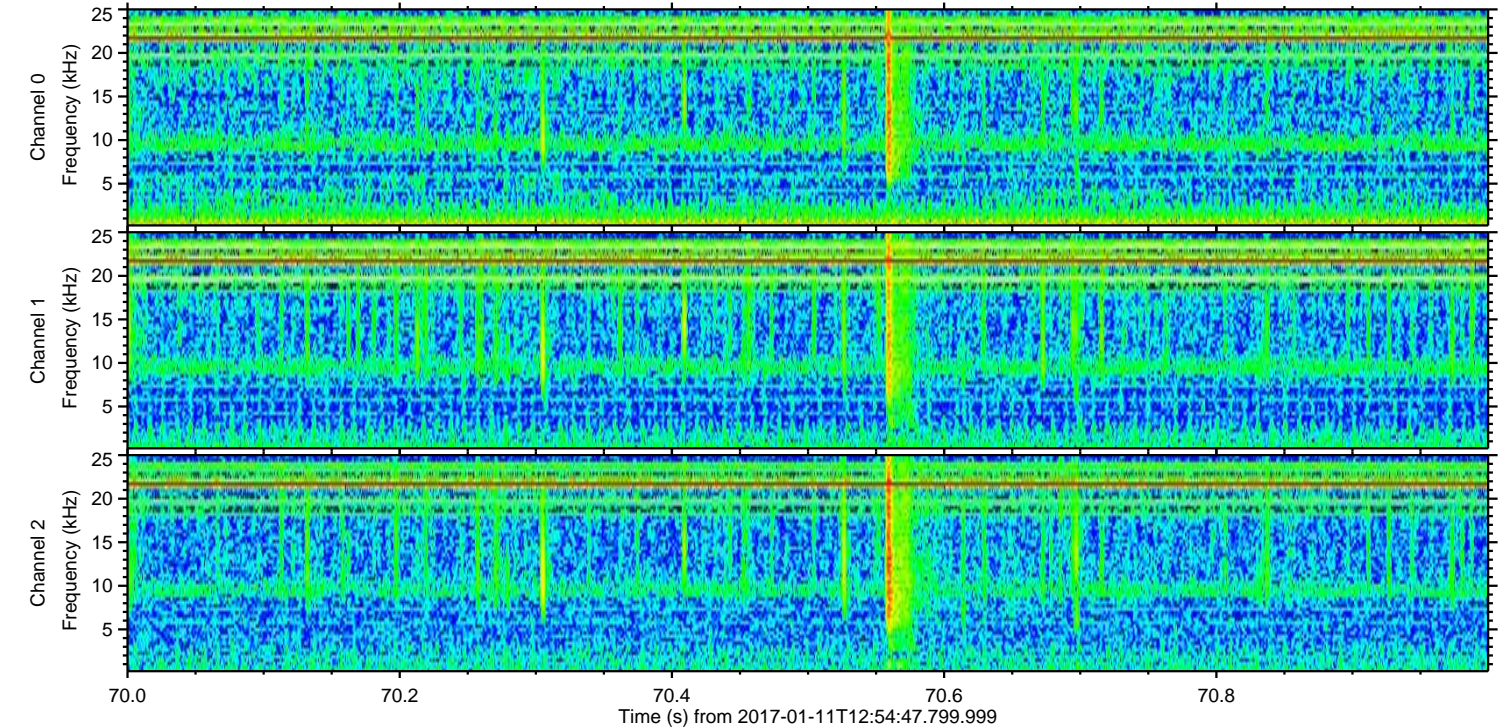
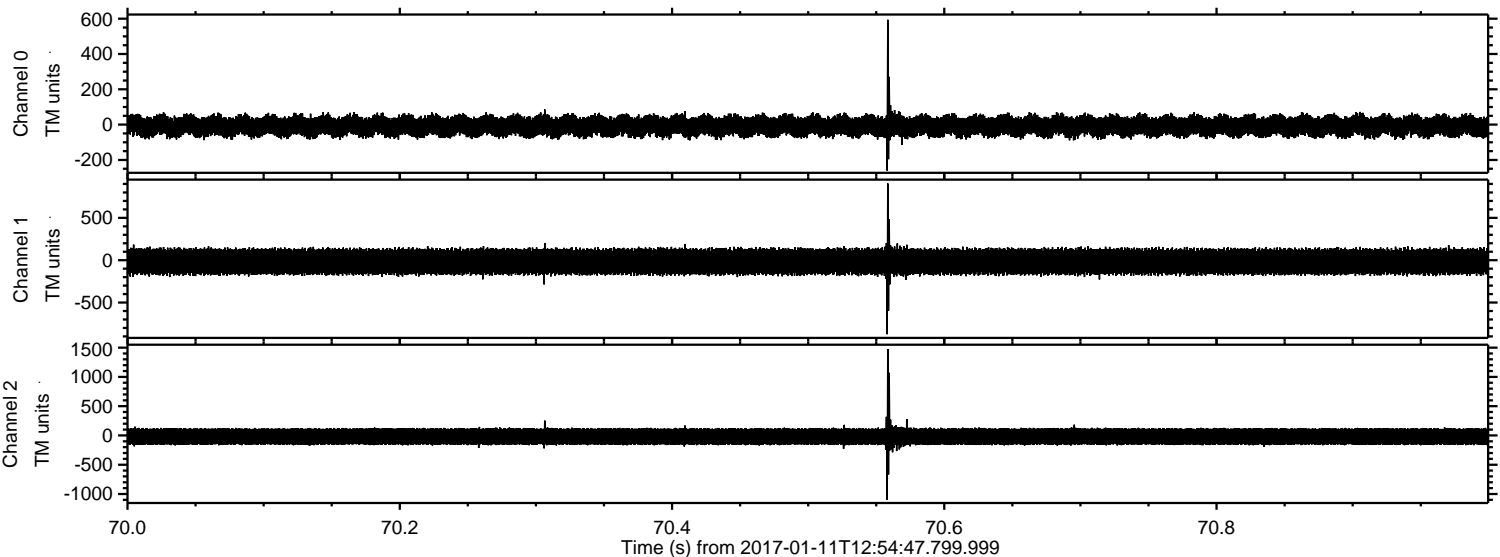


ELMAVAN 3D WAVEFORMS (Measured data sampled at 50 kHz) 51000 packets of 144 samples from 2017-01-11T12:54:47.799.999. Part 136/147

Processed Wed Jan 11 14:02:41 2017 by ELM ver.2012-10-06 from 001__elm20170111_125446__dat00.bin



Processed Wed Jan 11 14:02:42 2017 by ELM ver.2012-10-06 from 001__elm20170111_125446__dat00.bin

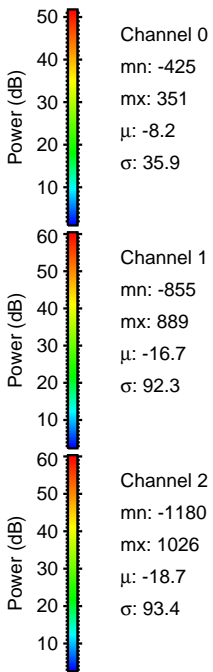
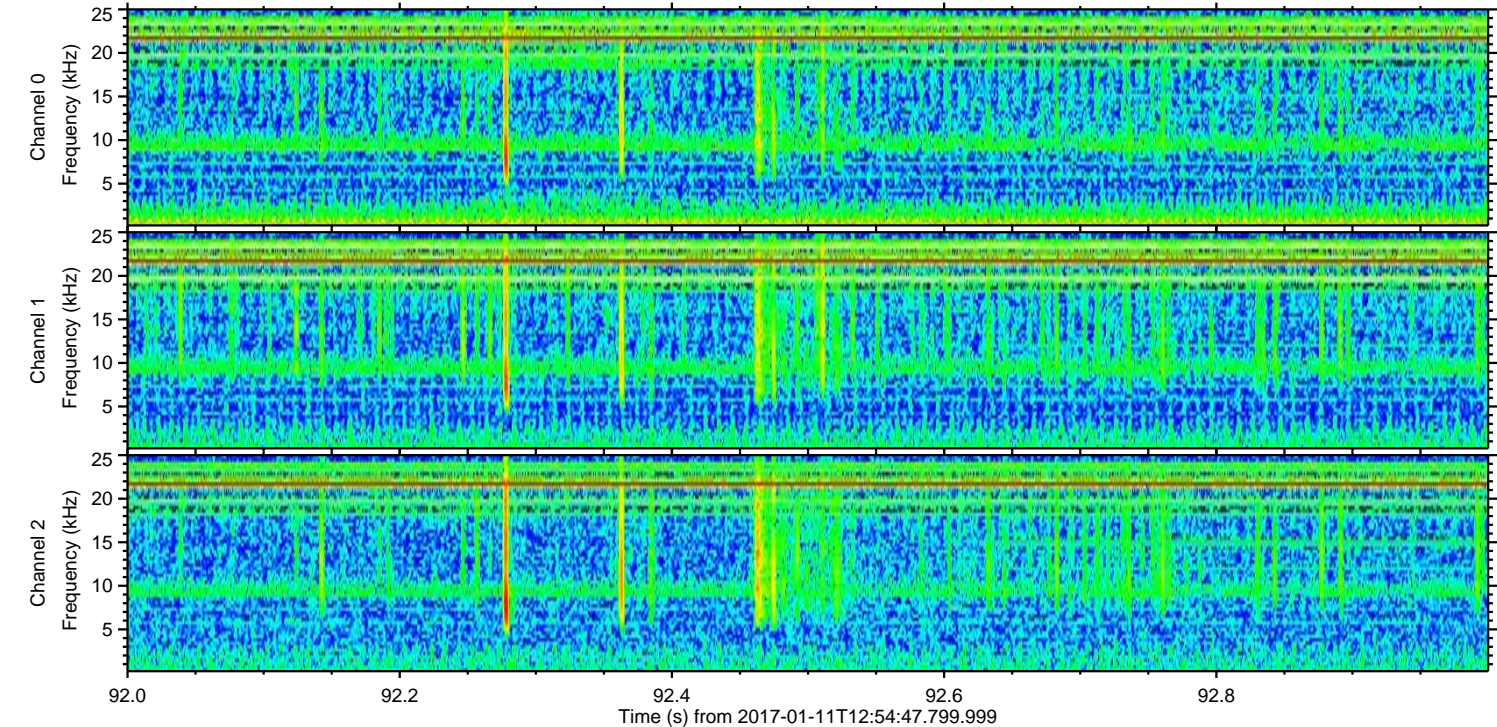
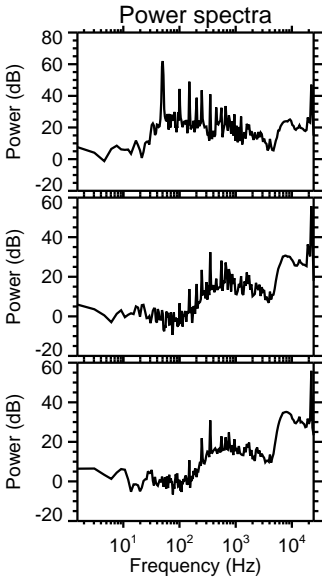
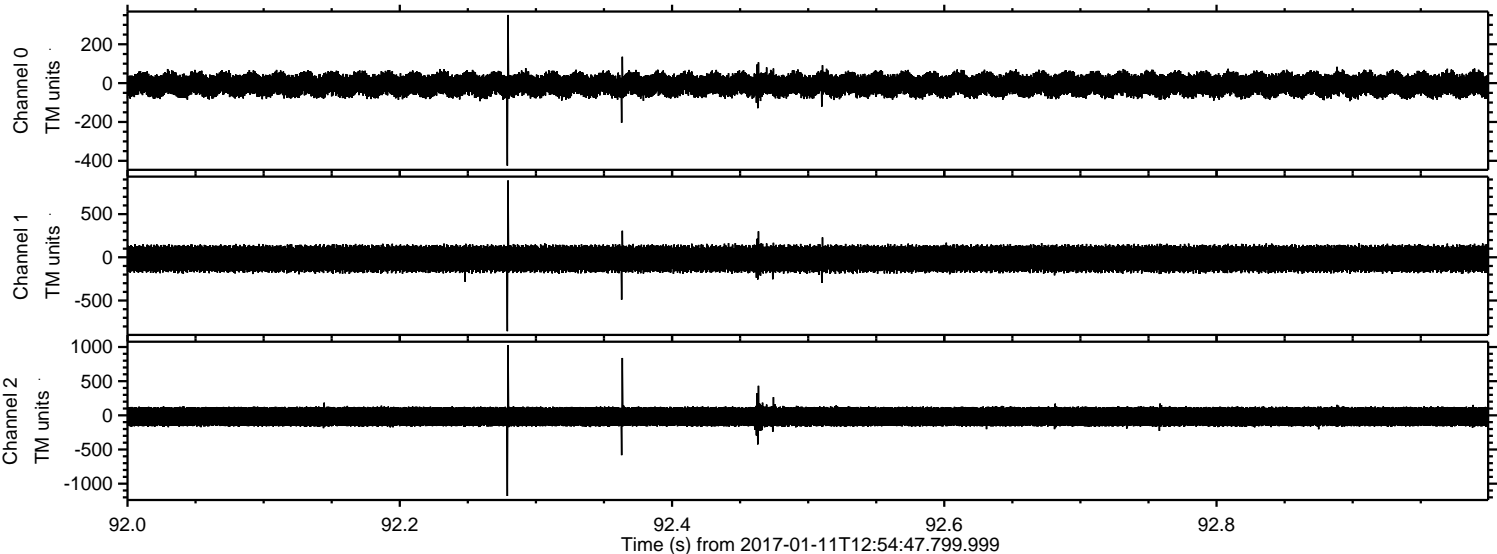


Channel 0
mn: -260
mx: 594
 μ : -8.2
 σ : 35.2

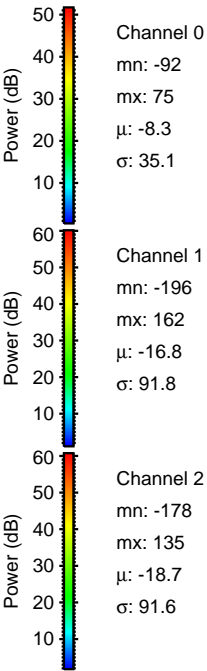
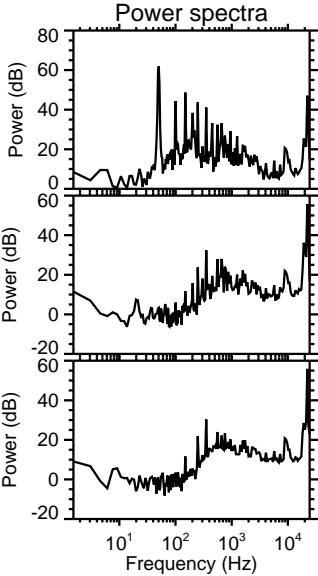
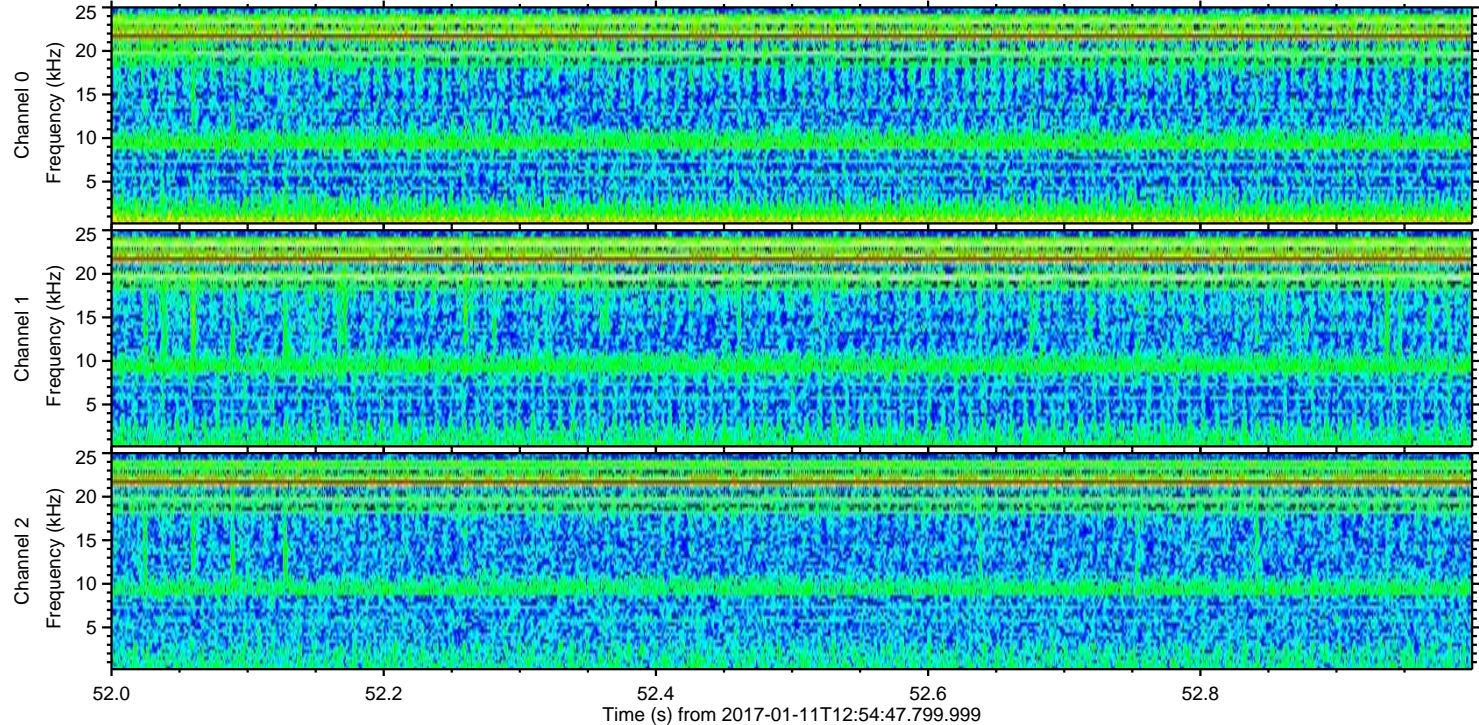
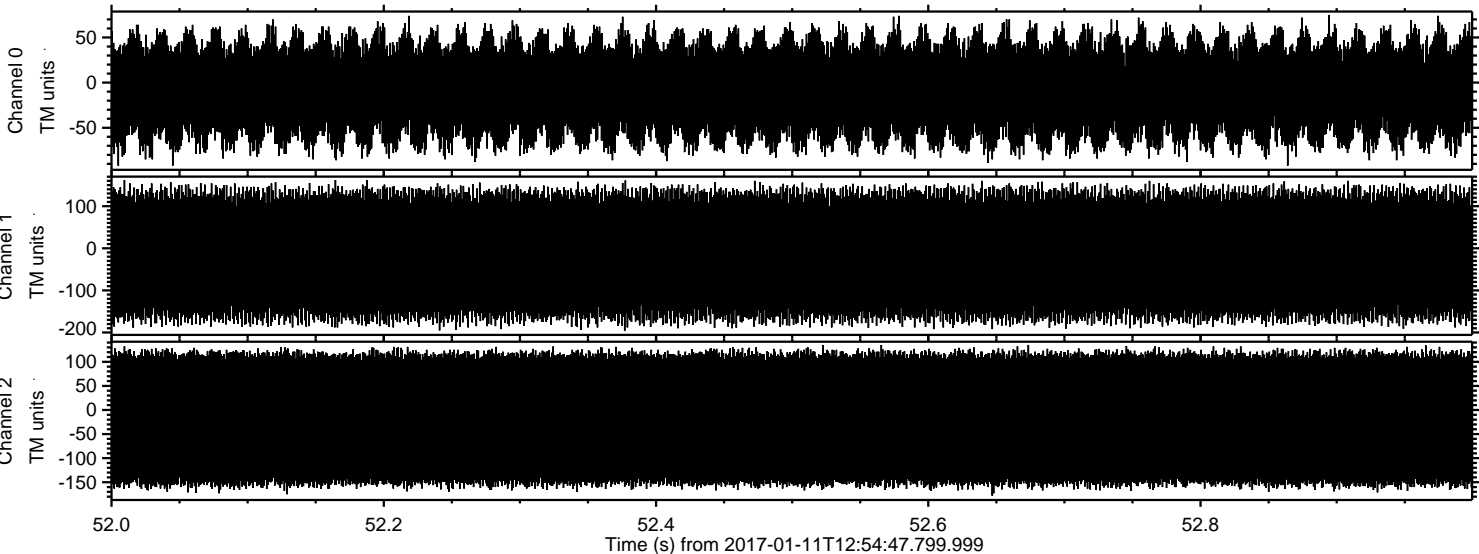
Channel 1
mn: -874
mx: 906
 μ : -16.7
 σ : 92.1

Channel 2
mn: -1099
mx: 1476
 μ : -18.7
 σ : 93.0

Processed Wed Jan 11 14:02:43 2017 by ELM ver.2012-10-06 from 001__elm20170111_125446__dat00.bin



Processed Wed Jan 11 14:02:44 2017 by ELM ver.2012-10-06 from 001__elm20170111_125446__dat00.bin



Channel 0
mn: -92
mx: 75
 μ : -8.3
 σ : 35.1

Channel 1
mn: -196
mx: 162
 μ : -16.8
 σ : 91.8

Channel 2
mn: -178
mx: 135
 μ : -18.7
 σ : 91.6