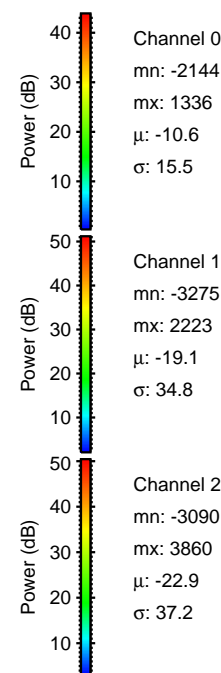
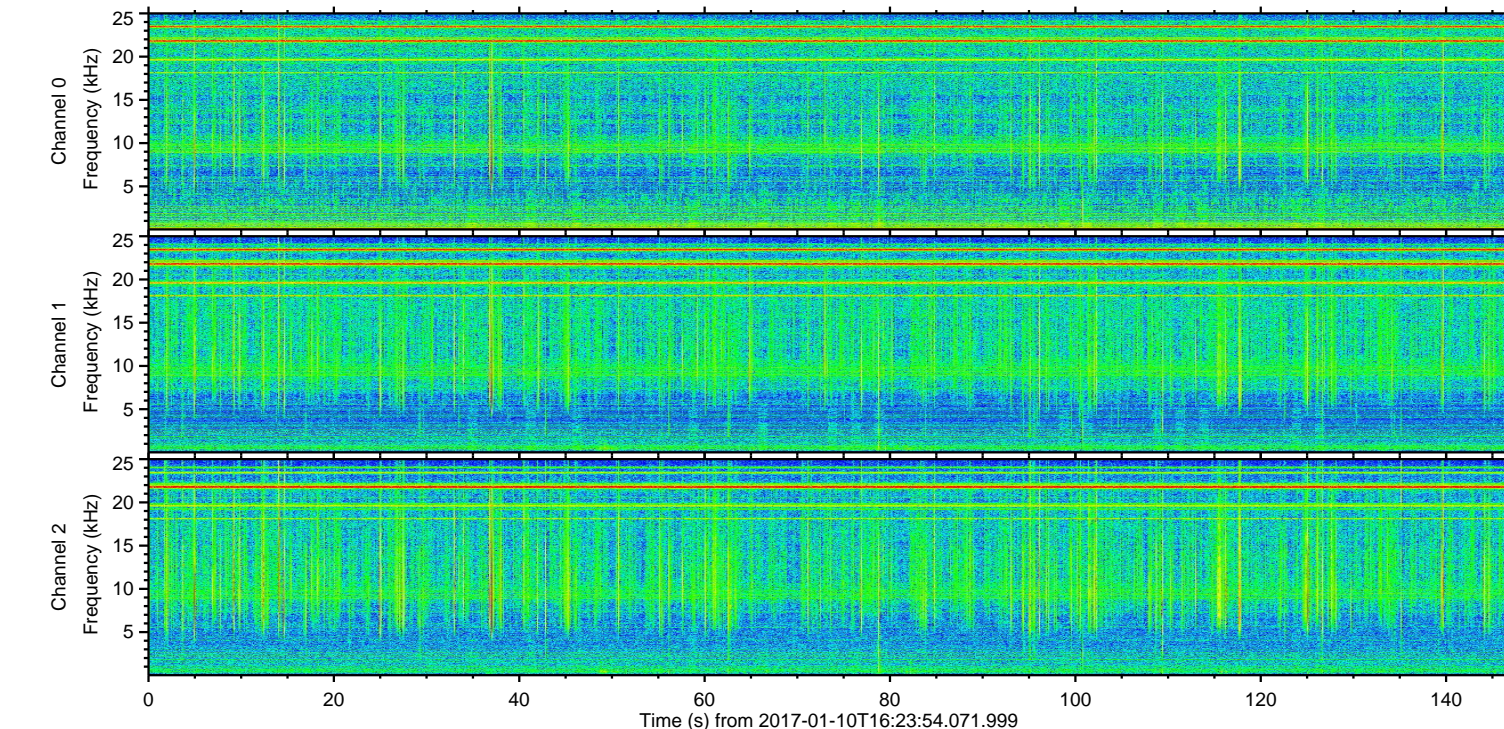
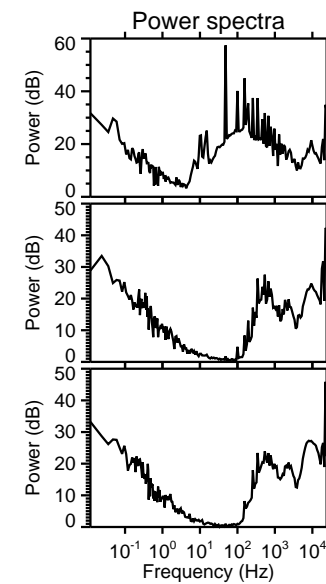
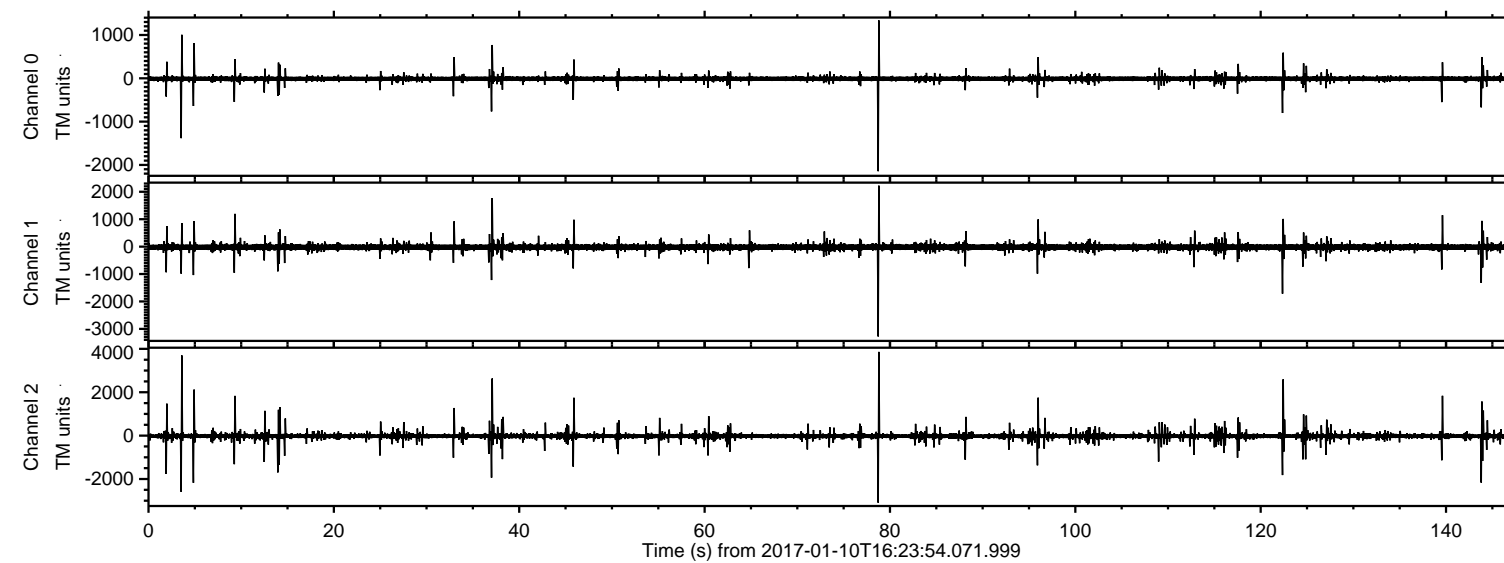


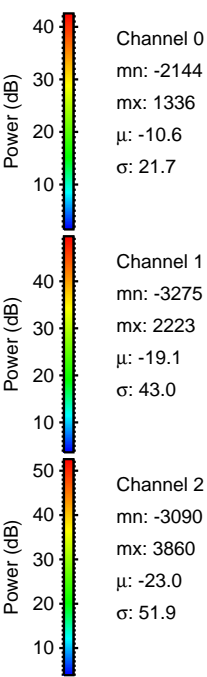
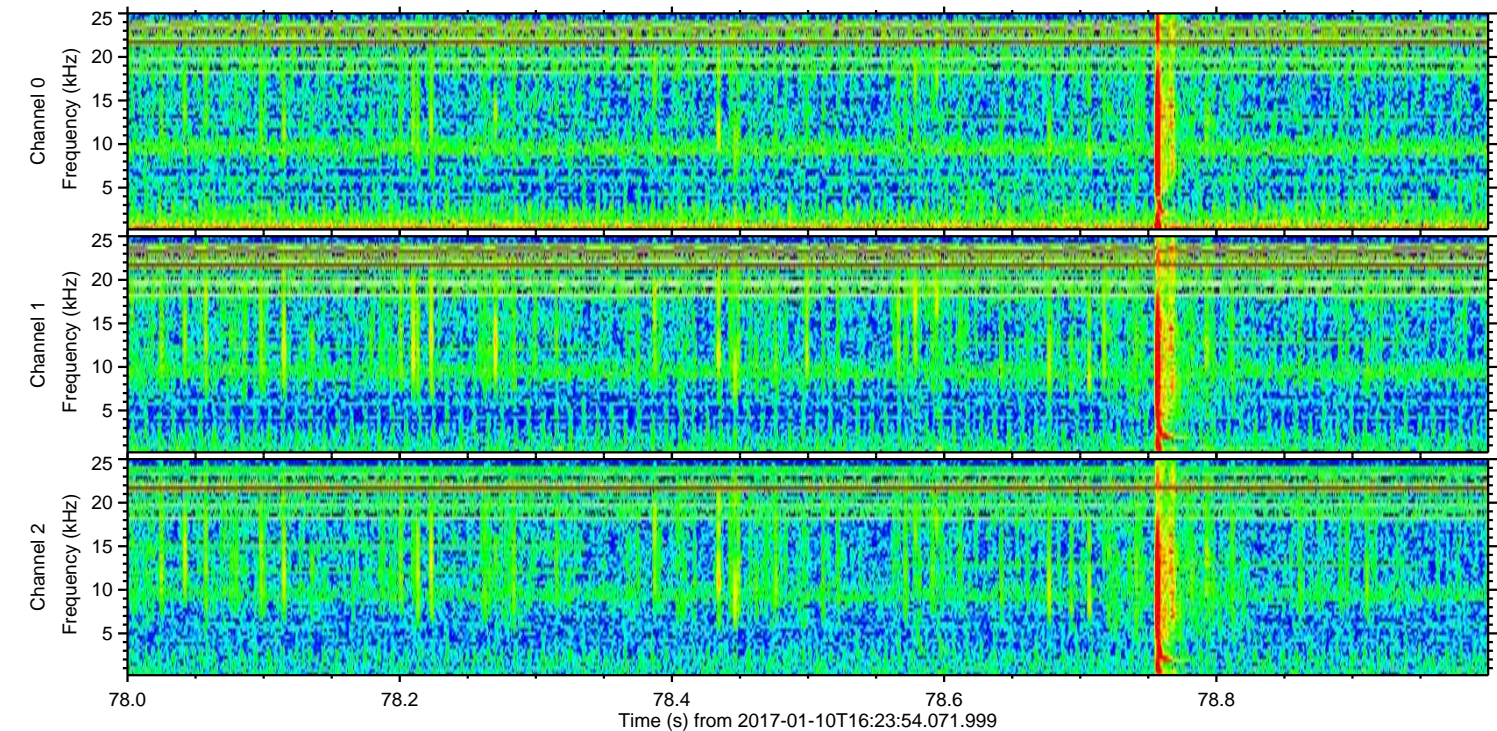
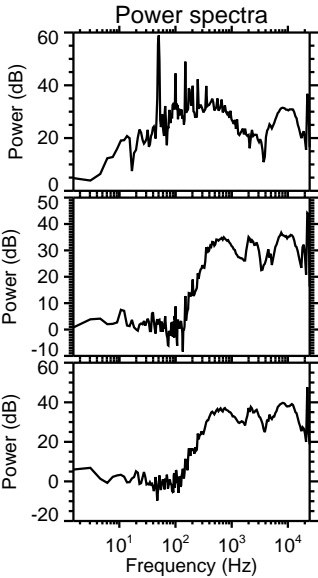
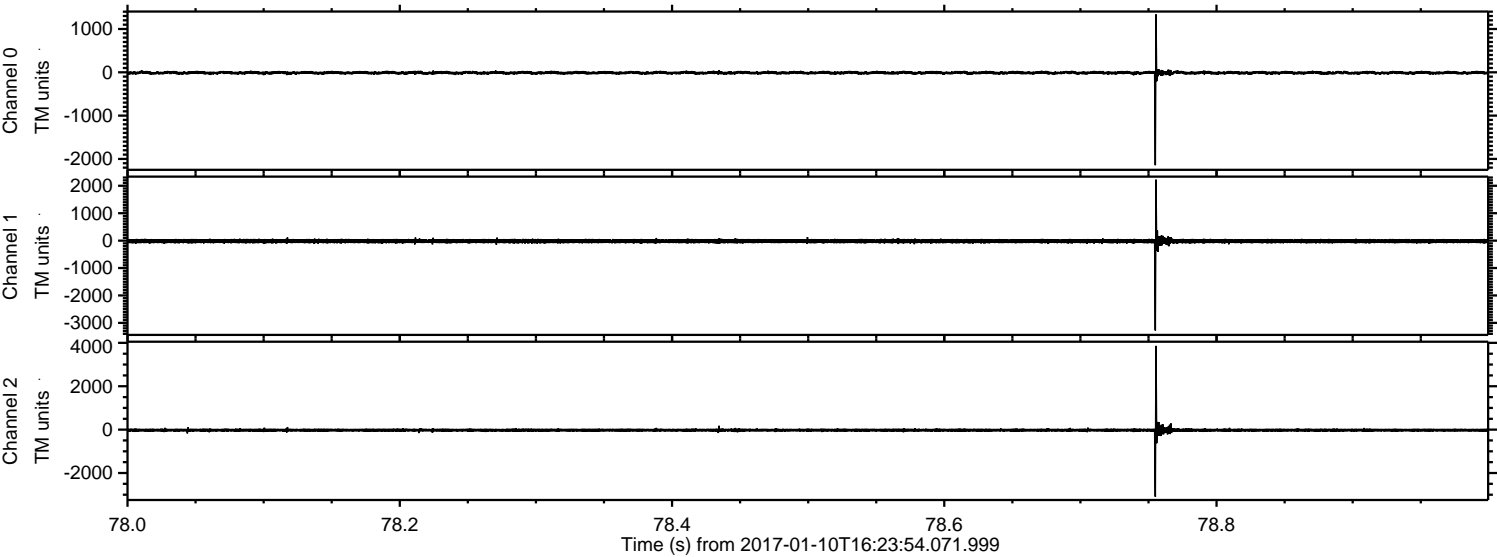
# ELMAVAN 3D WAVEFORMS (Measured data sampled at 50 kHz) 51000 packets of 144 samples from 2017-01-10T16:23:54.071.999.

Processed Tue Jan 10 17:31:36 2017 by ELM ver.2012-10-06 from 001\_\_elm20170110\_162353\_\_dat00.bin





Processed Tue Jan 10 17:31:47 2017 by ELM ver.2012-10-06 from 001\_\_elm20170110\_162353\_\_dat00.bin



Channel 0  
mn: -2144  
mx: 1336  
 $\mu$ : -10.6  
 $\sigma$ : 21.7

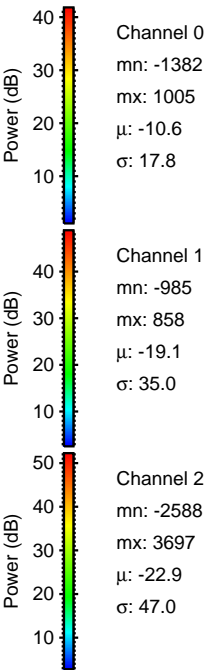
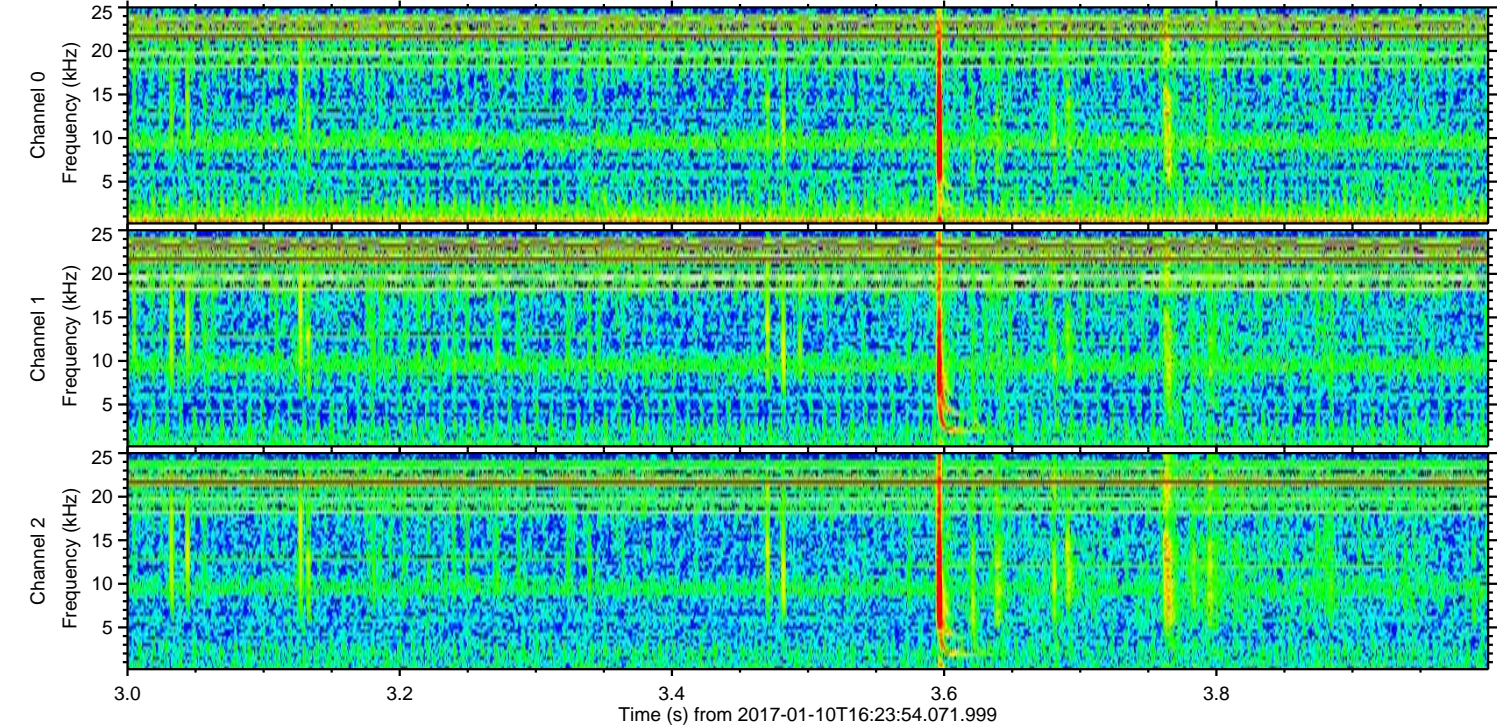
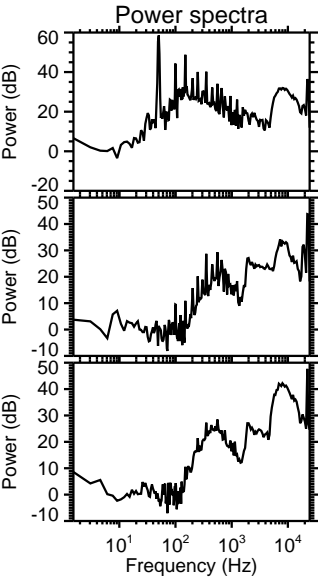
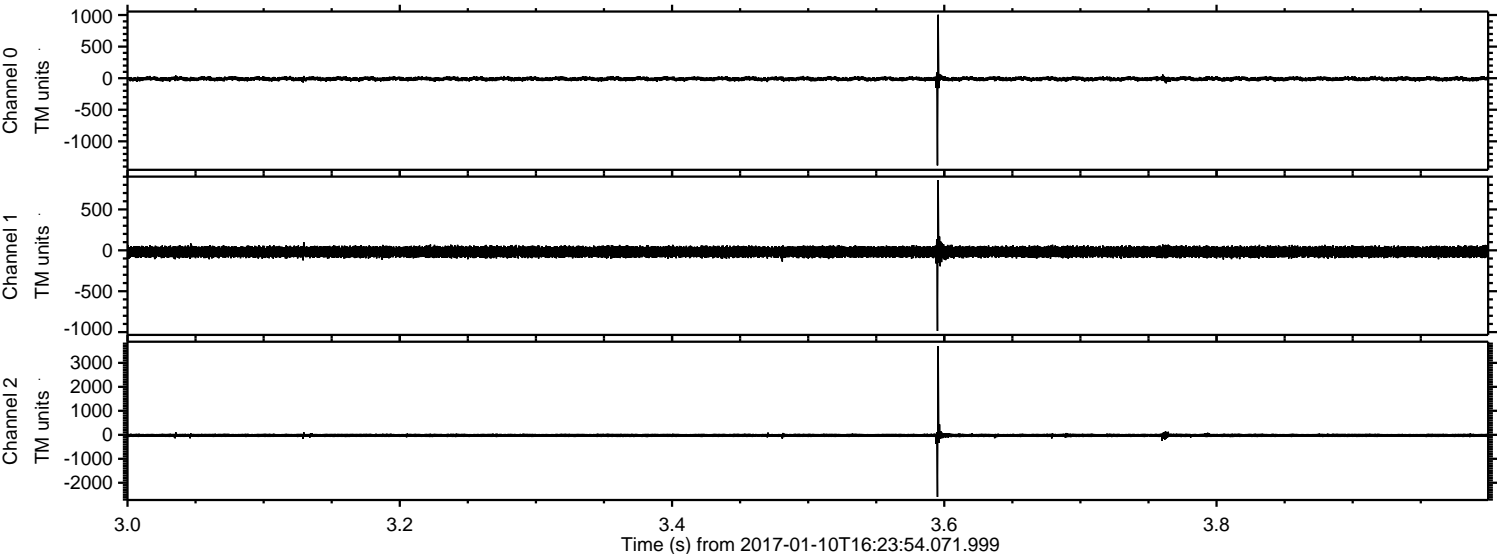
Channel 1  
mn: -3275  
mx: 2223  
 $\mu$ : -19.1  
 $\sigma$ : 43.0

Channel 2  
mn: -3090  
mx: 3860  
 $\mu$ : -23.0  
 $\sigma$ : 51.9



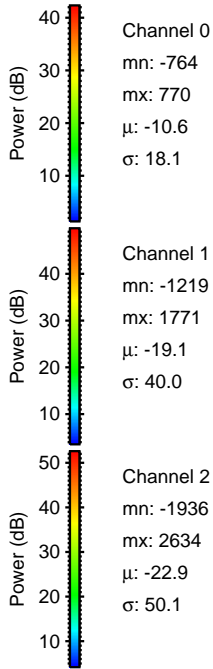
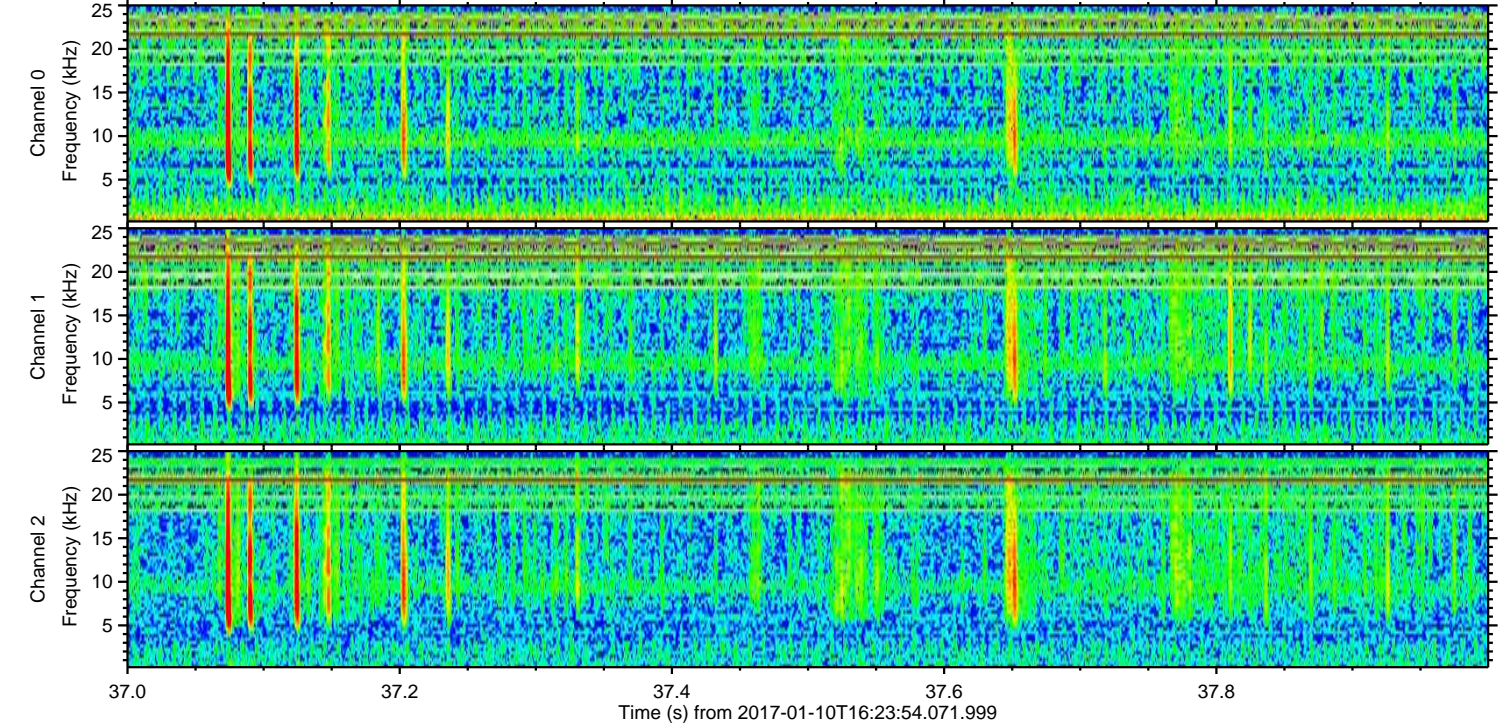
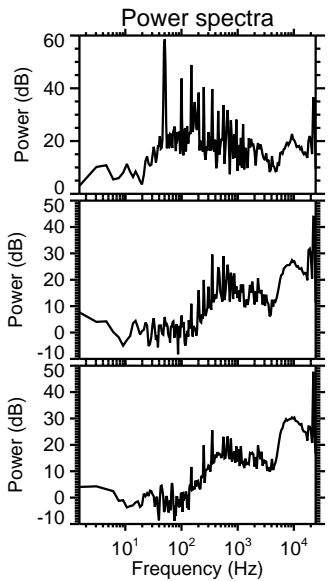
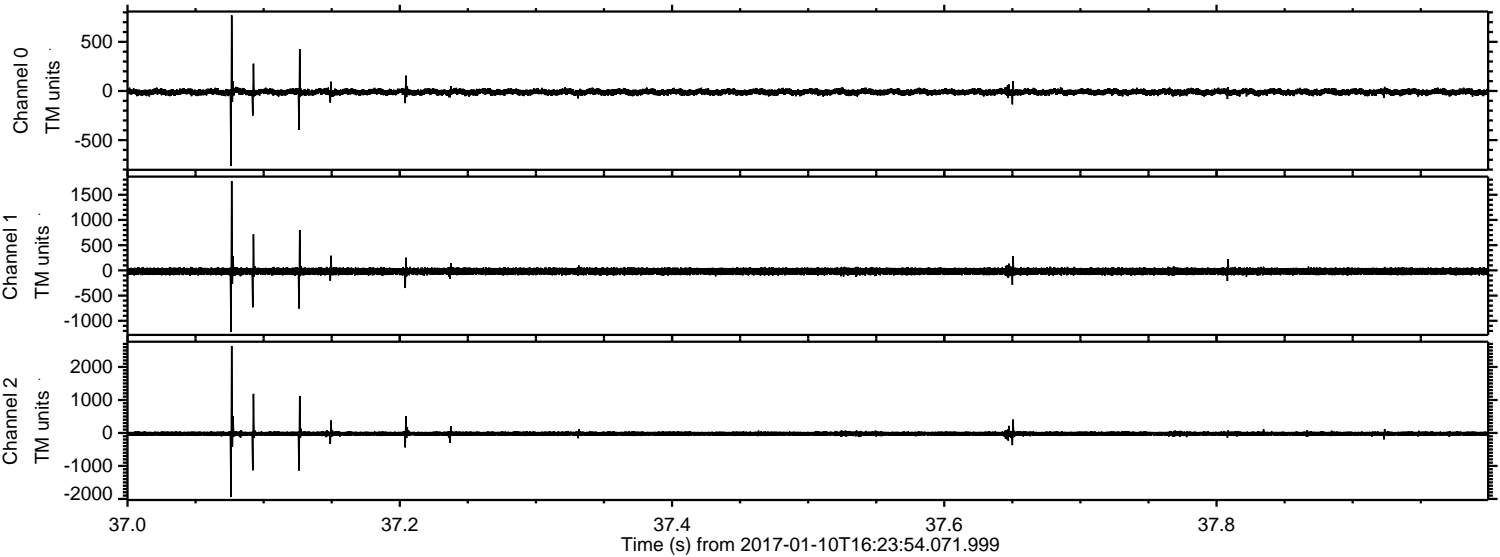
ELMAVAN 3D WAVEFORMS (Measured data sampled at 50 kHz) 51000 packets of 144 samples from 2017-01-10T16:23:54.071.999. Part 4/147

Processed Tue Jan 10 17:31:48 2017 by ELM ver.2012-10-06 from 001\_\_elm20170110\_162353\_\_dat00.bin





Processed Tue Jan 10 17:31:49 2017 by ELM ver.2012-10-06 from 001\_\_elm20170110\_162353\_\_dat00.bin



Channel 0  
mn: -764  
mx: 770  
 $\mu$ : -10.6  
 $\sigma$ : 18.1

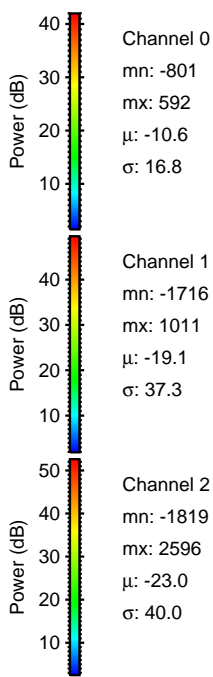
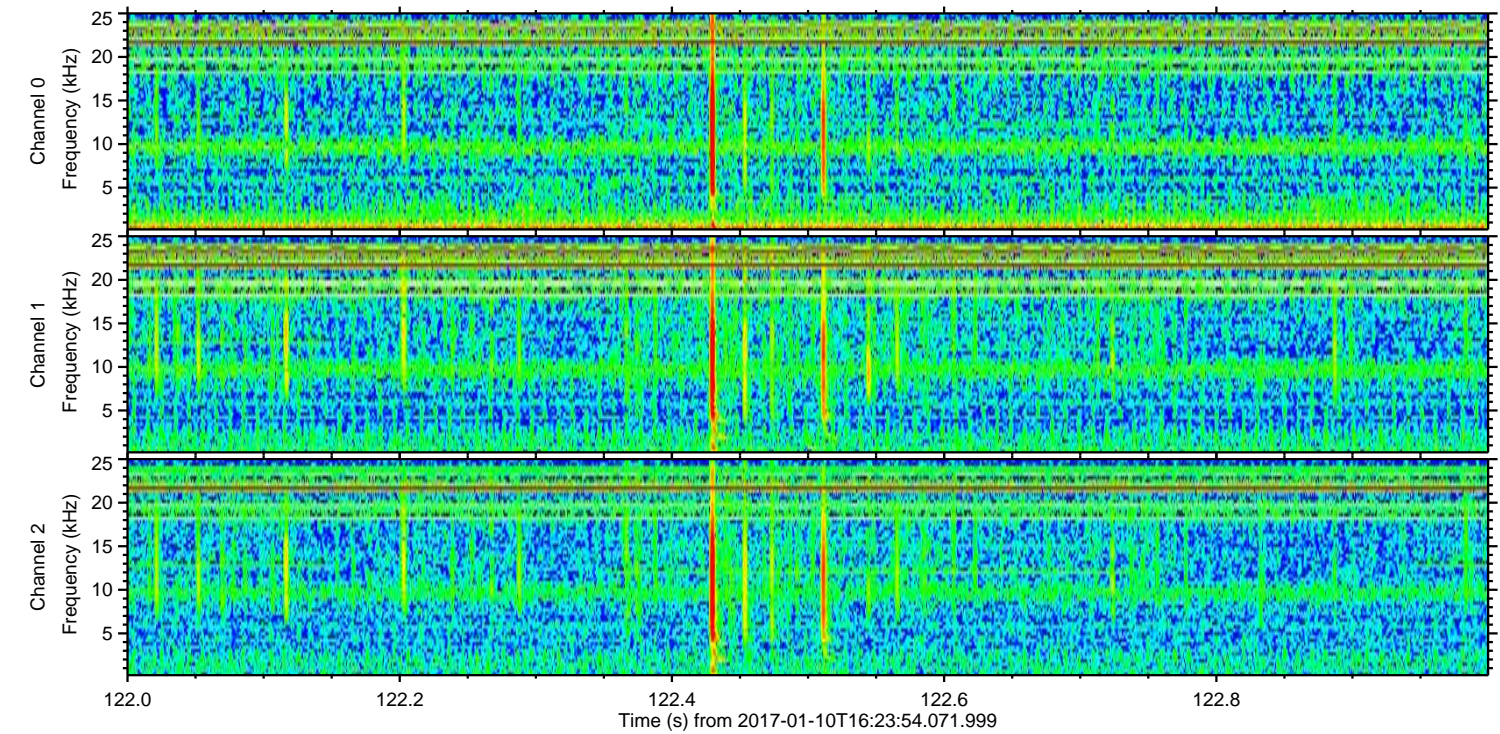
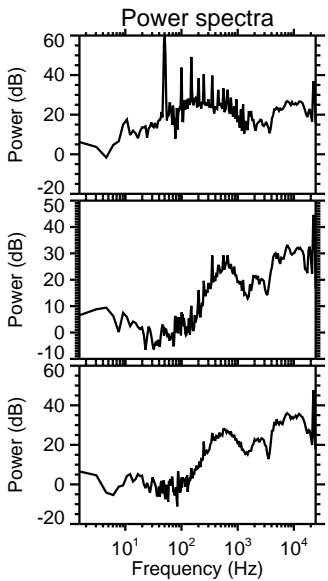
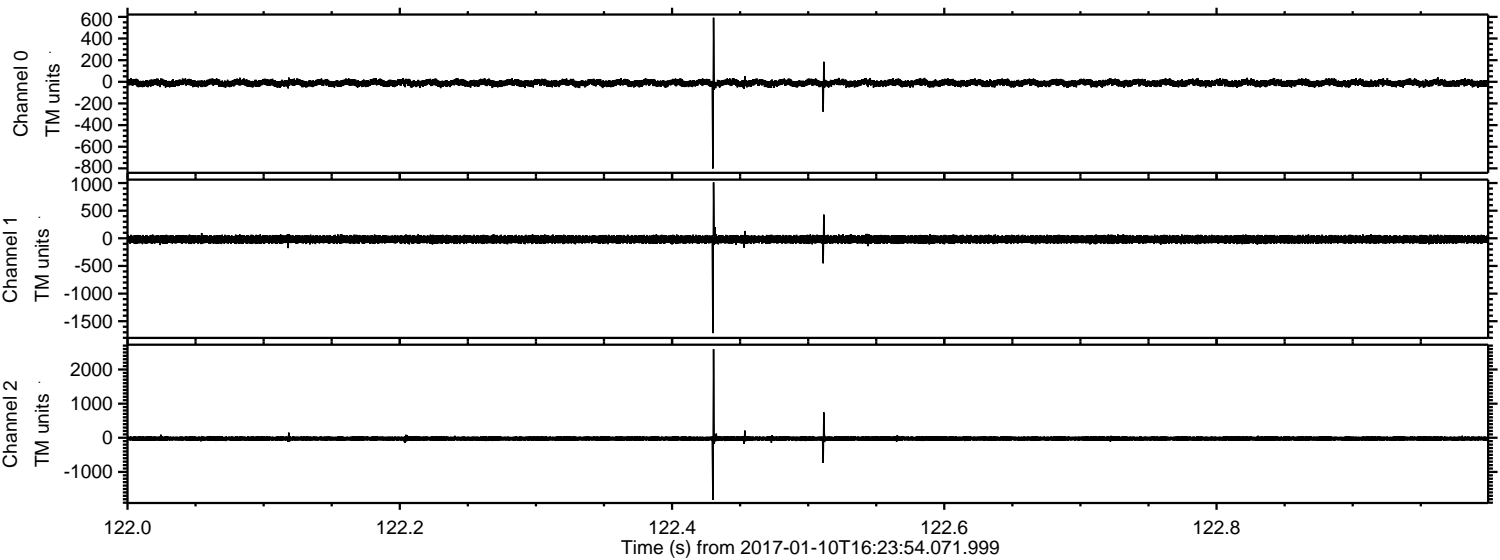
Channel 1  
mn: -1219  
mx: 1771  
 $\mu$ : -19.1  
 $\sigma$ : 40.0

Channel 2  
mn: -1936  
mx: 2634  
 $\mu$ : -22.9  
 $\sigma$ : 50.1



ELMAVAN 3D WAVEFORMS (Measured data sampled at 50 kHz) 51000 packets of 144 samples from 2017-01-10T16:23:54.071.999. Part 123/147

Processed Tue Jan 10 17:31:50 2017 by ELM ver.2012-10-06 from 001\_\_elm20170110\_162353\_\_dat00.bin



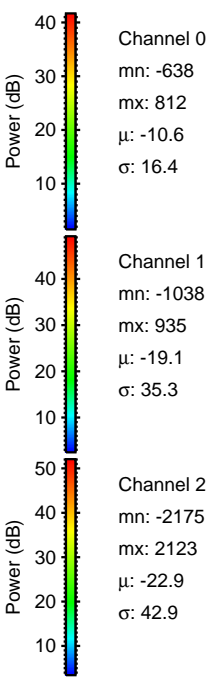
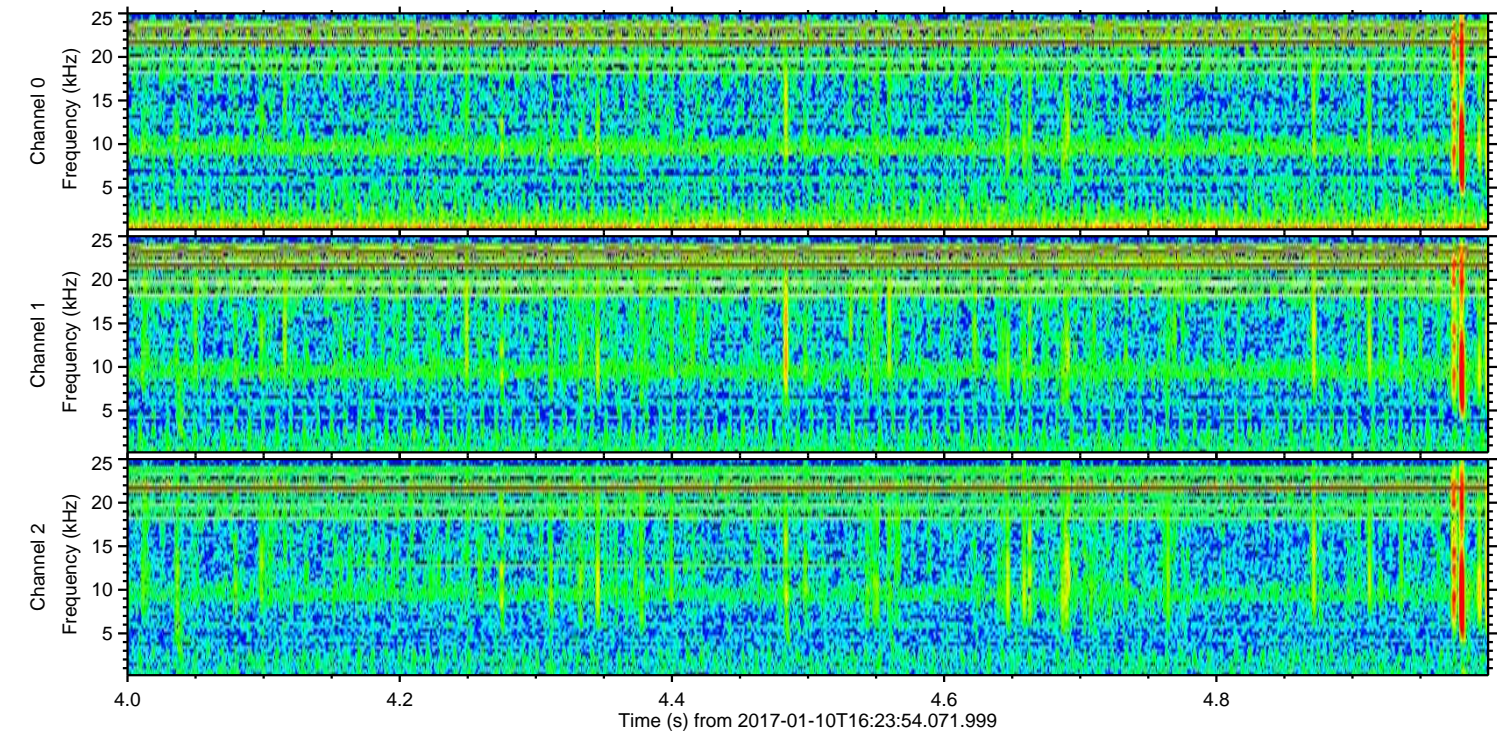
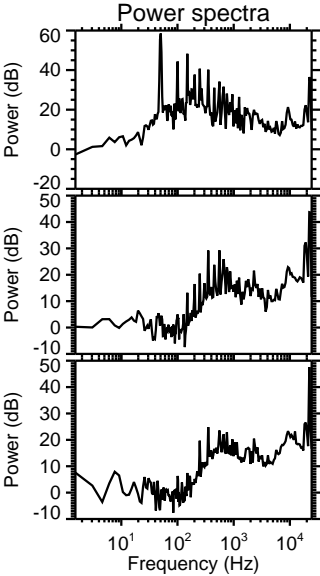
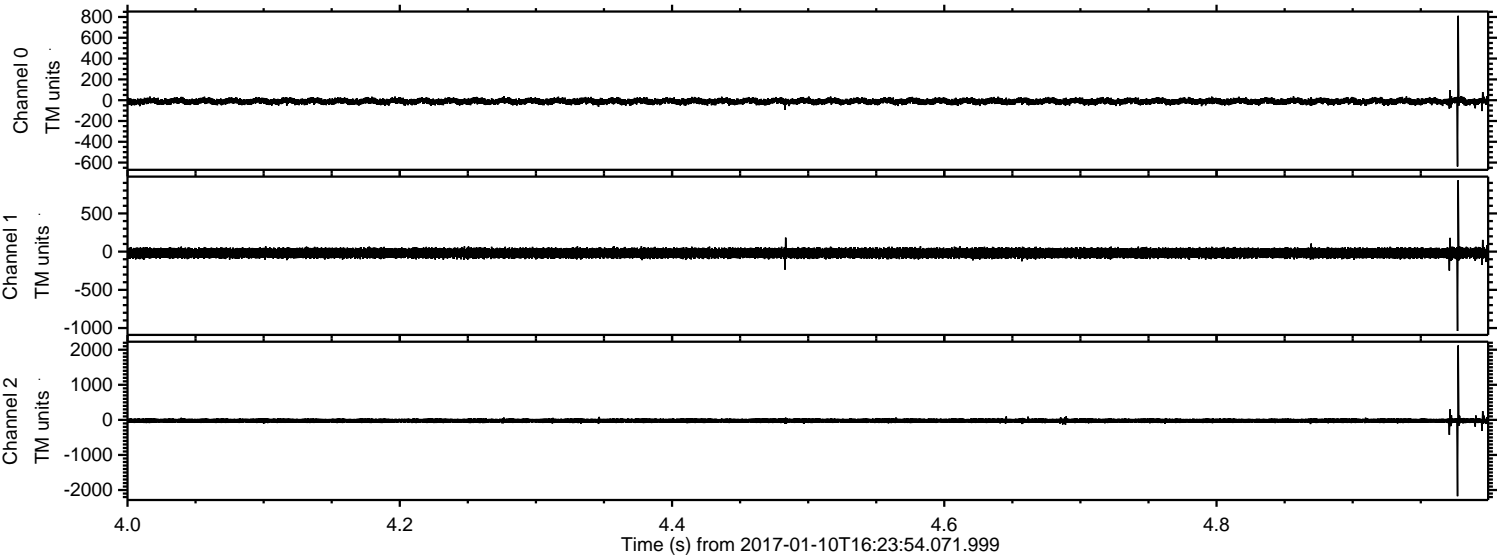
Channel 0  
mn: -801  
mx: 592  
 $\mu$ : -10.6  
 $\sigma$ : 16.8

Channel 1  
mn: -1716  
mx: 1011  
 $\mu$ : -19.1  
 $\sigma$ : 37.3

Channel 2  
mn: -1819  
mx: 2596  
 $\mu$ : -23.0  
 $\sigma$ : 40.0



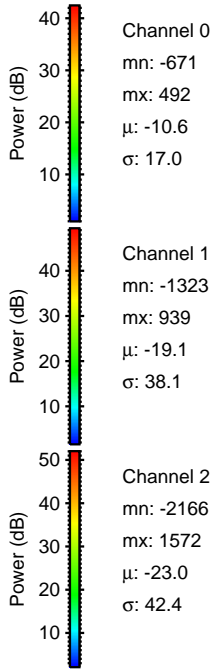
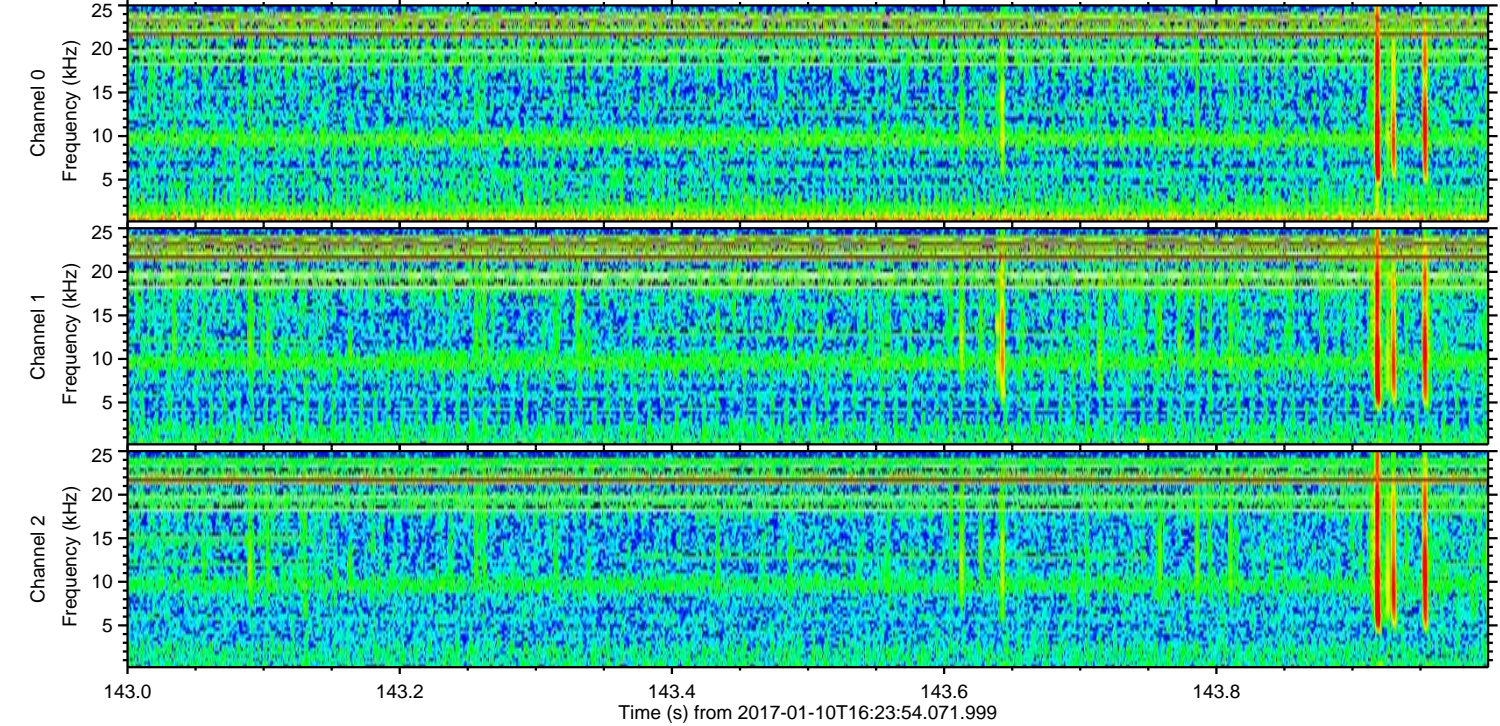
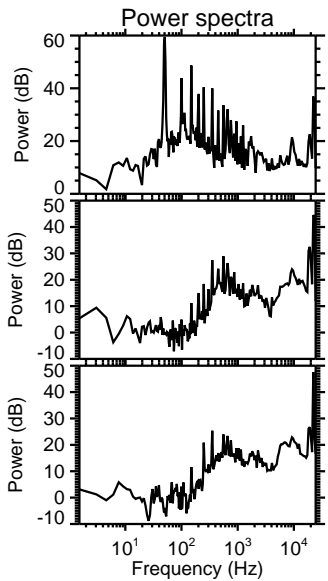
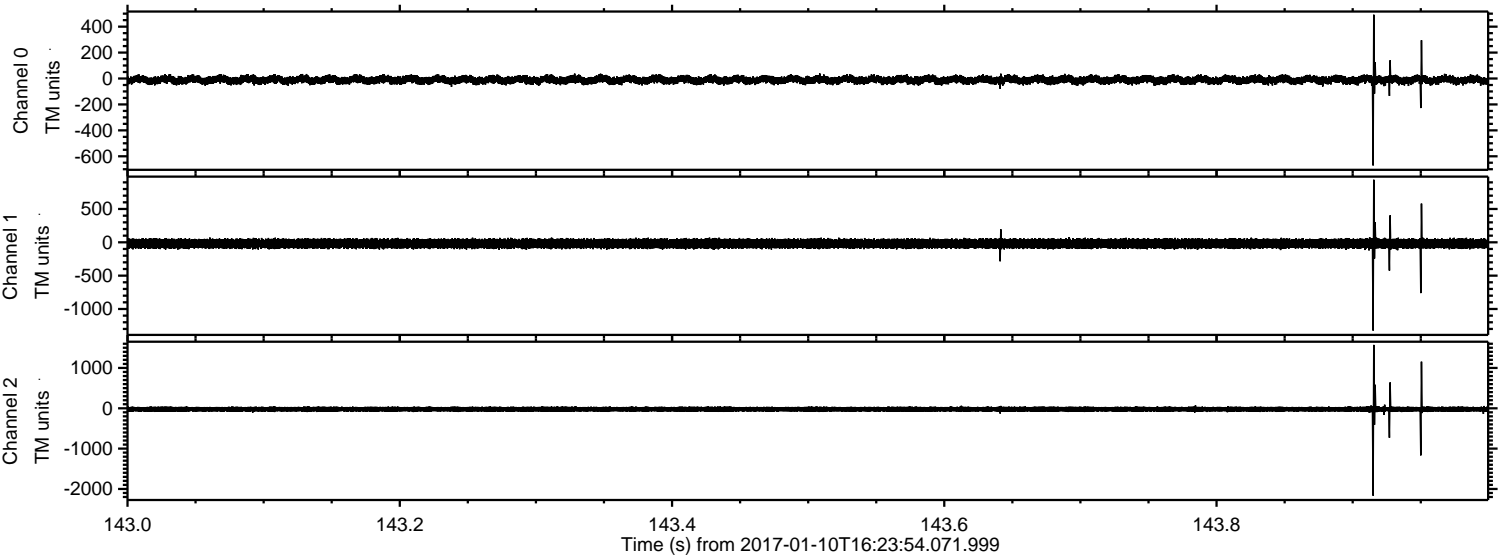
Processed Tue Jan 10 17:31:51 2017 by ELM ver.2012-10-06 from 001\_\_elm20170110\_162353\_\_dat00.bin





ELMAVAN 3D WAVEFORMS (Measured data sampled at 50 kHz) 51000 packets of 144 samples from 2017-01-10T16:23:54.071.999. Part 144/147

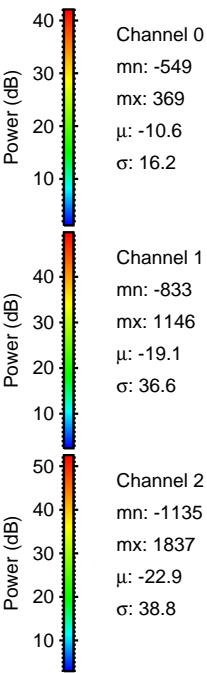
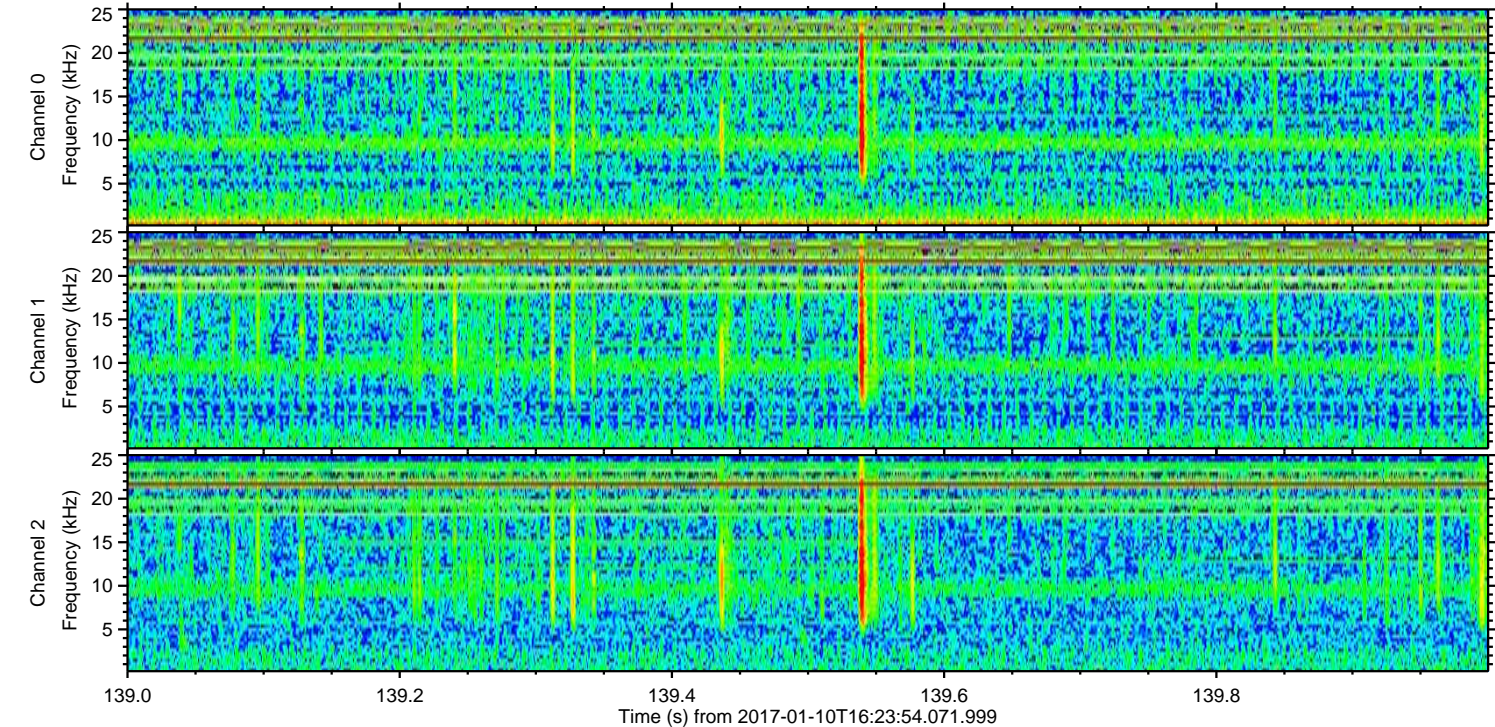
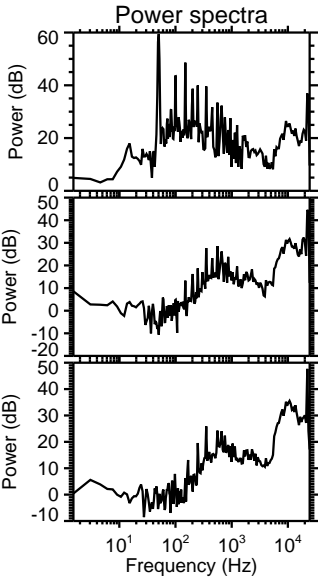
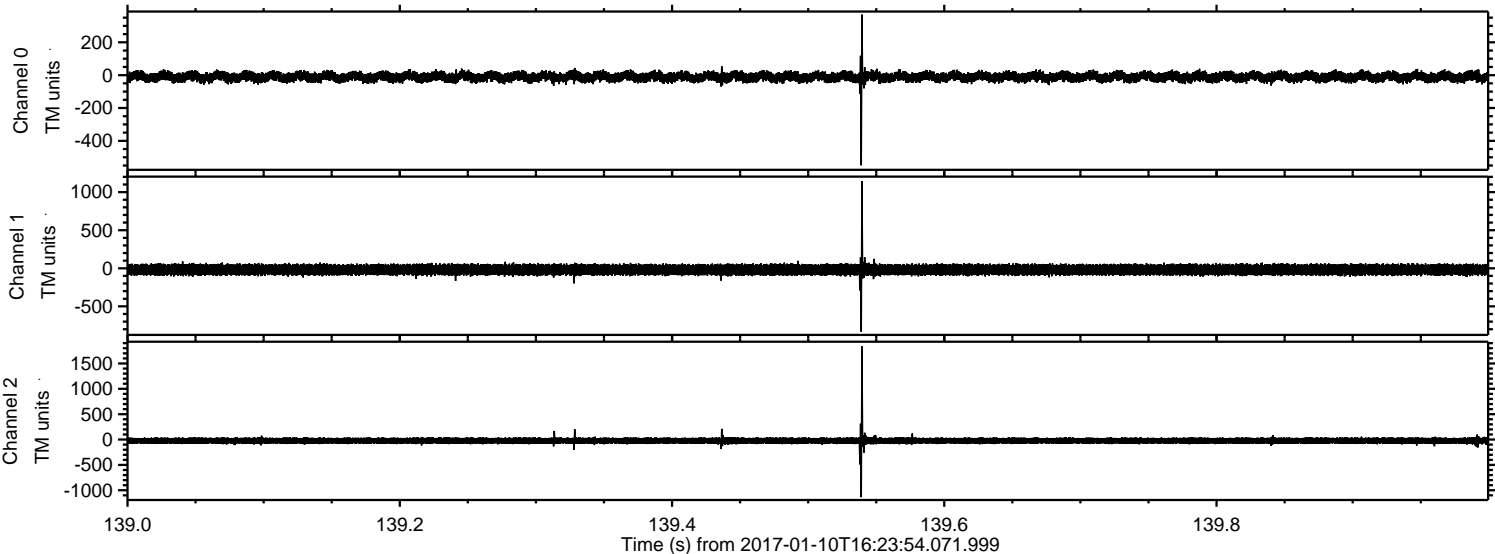
Processed Tue Jan 10 17:31:52 2017 by ELM ver.2012-10-06 from 001\_\_elm20170110\_162353\_\_dat00.bin





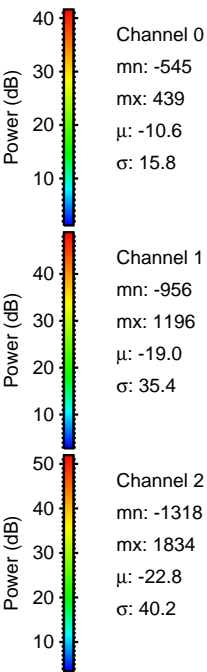
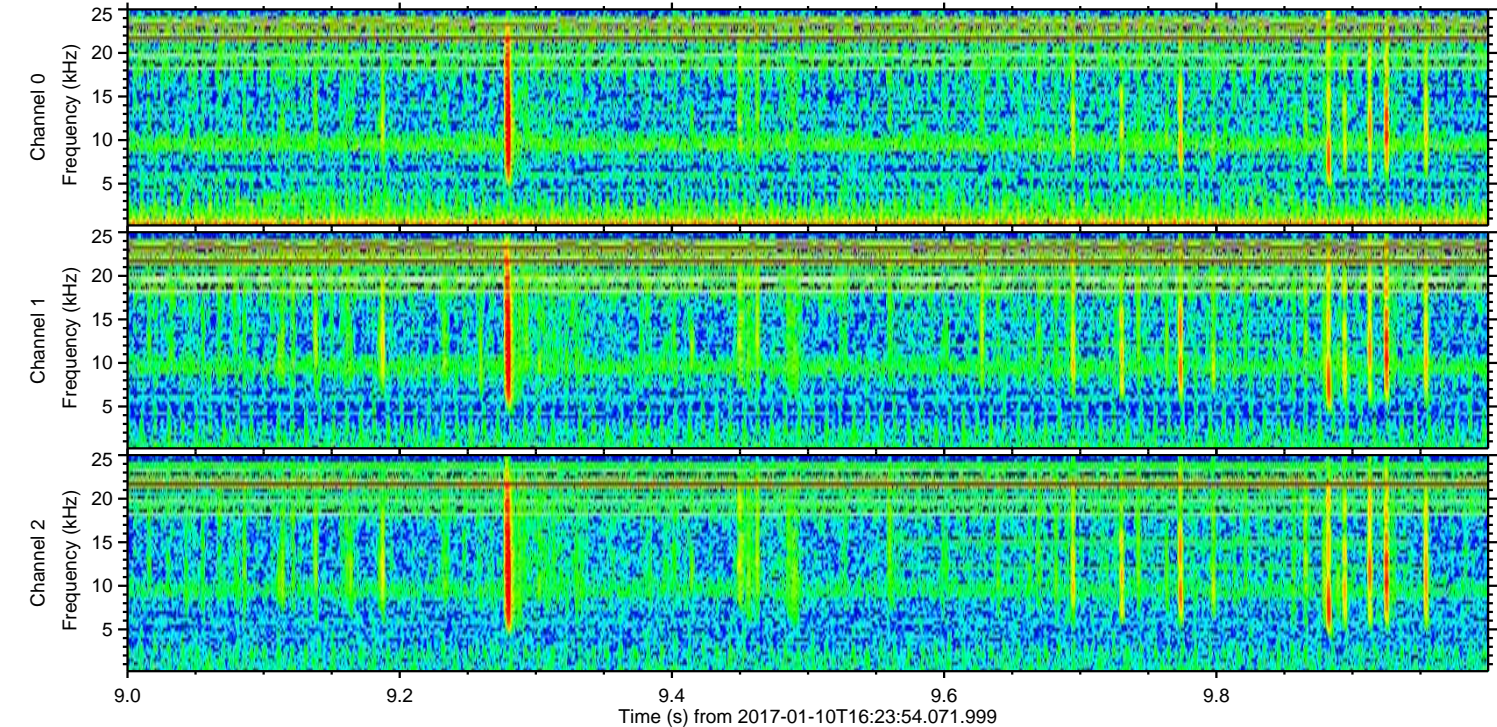
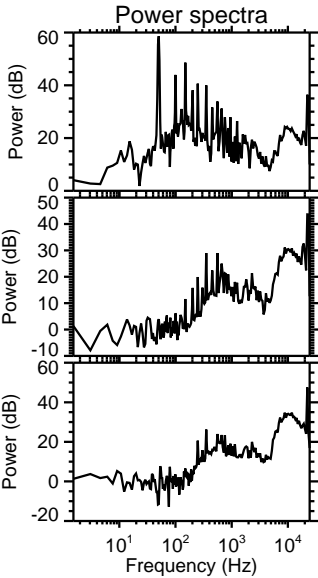
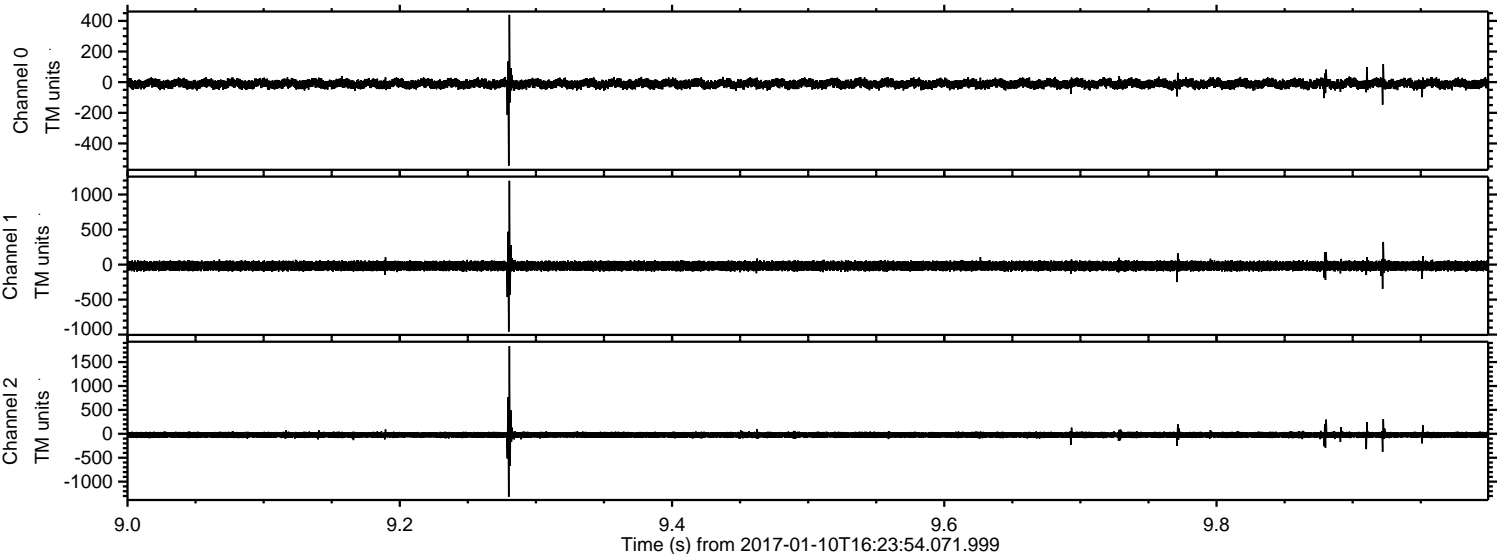
ELMAVAN 3D WAVEFORMS (Measured data sampled at 50 kHz) 51000 packets of 144 samples from 2017-01-10T16:23:54.071.999. Part 140/147

Processed Tue Jan 10 17:31:53 2017 by ELM ver.2012-10-06 from 001\_\_elm20170110\_162353\_\_dat00.bin





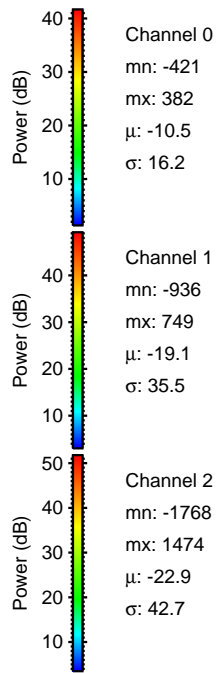
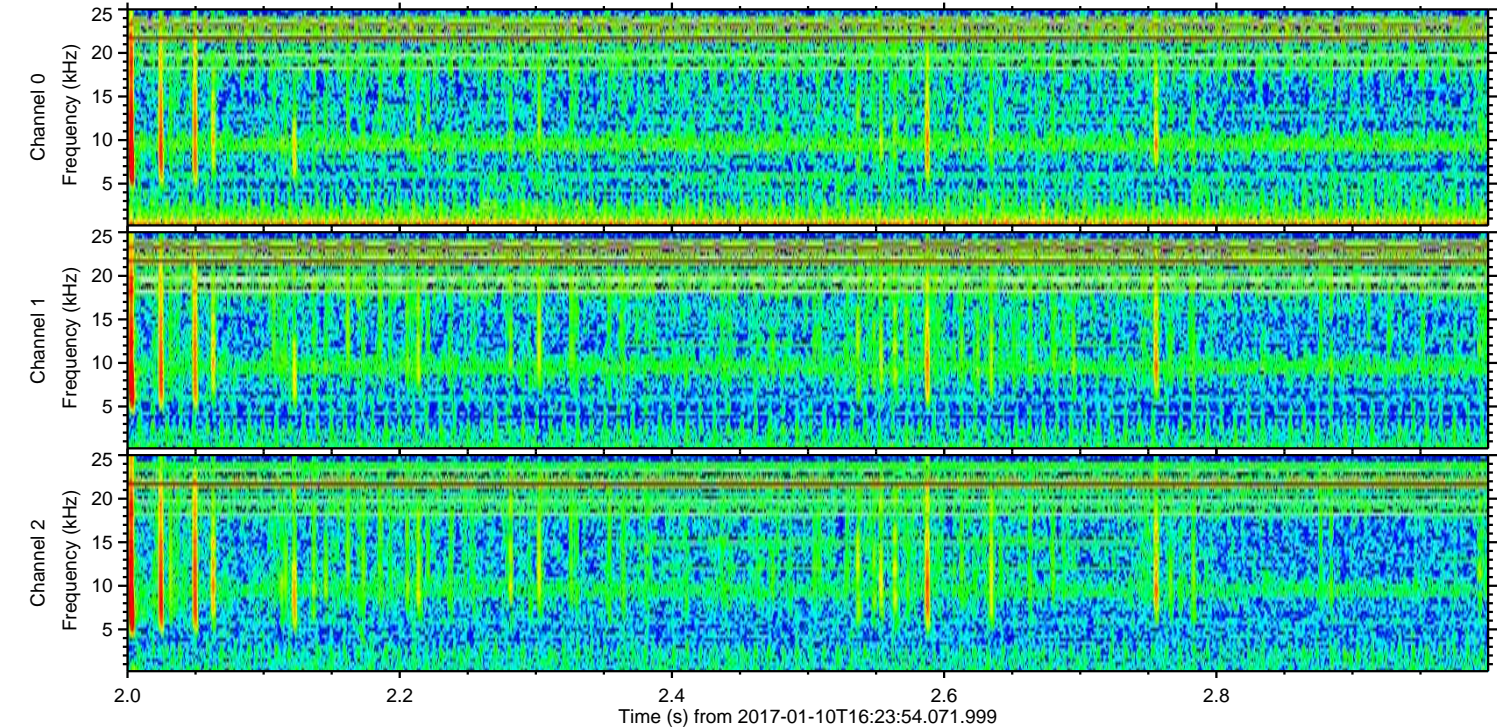
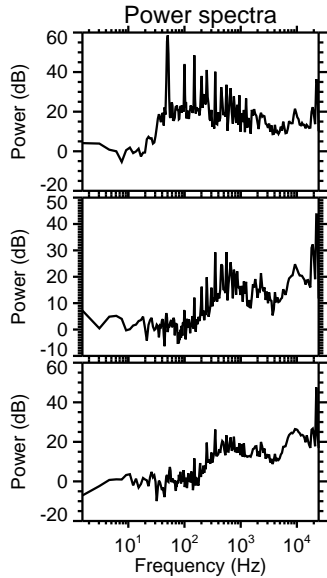
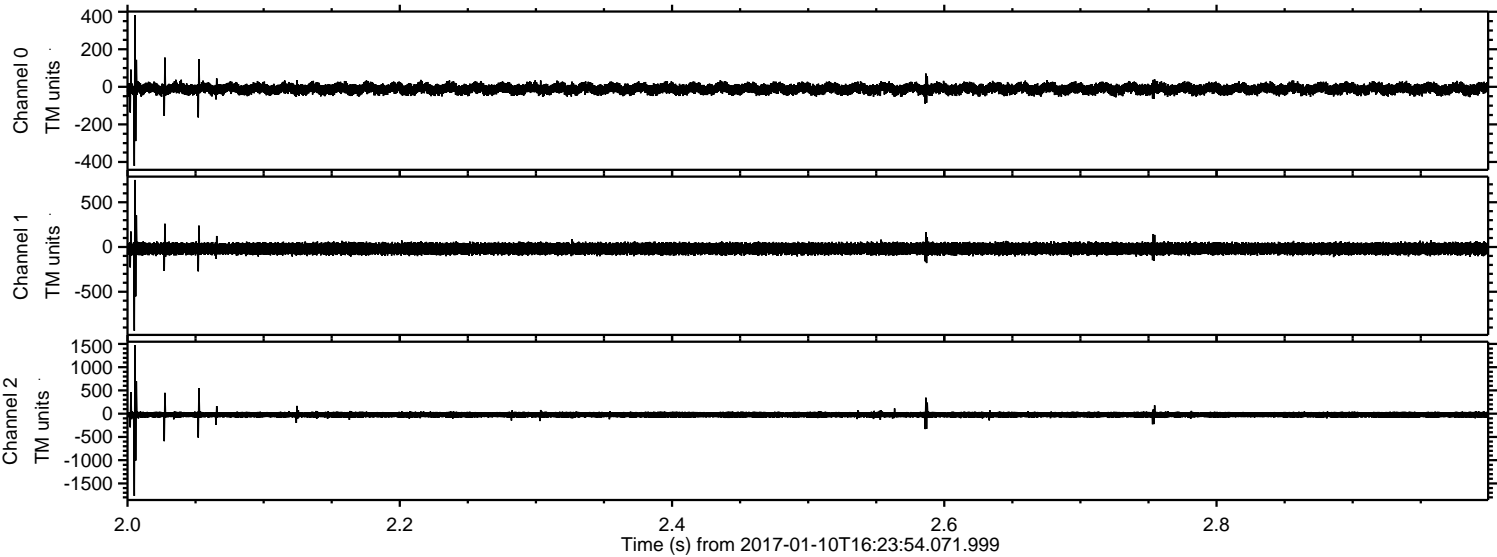
Processed Tue Jan 10 17:31:54 2017 by ELM ver.2012-10-06 from 001\_\_elm20170110\_162353\_\_dat00.bin





ELMAVAN 3D WAVEFORMS (Measured data sampled at 50 kHz) 51000 packets of 144 samples from 2017-01-10T16:23:54.071.999. Part 3/147

Processed Tue Jan 10 17:31:55 2017 by ELM ver.2012-10-06 from 001\_\_elm20170110\_162353\_\_dat00.bin





ELMAVAN 3D WAVEFORMS (Measured data sampled at 50 kHz) 51000 packets of 144 samples from 2017-01-10T16:23:54.071.999. Part 33/147

Processed Tue Jan 10 17:31:55 2017 by ELM ver.2012-10-06 from 001\_\_elm20170110\_162353\_\_dat00.bin

