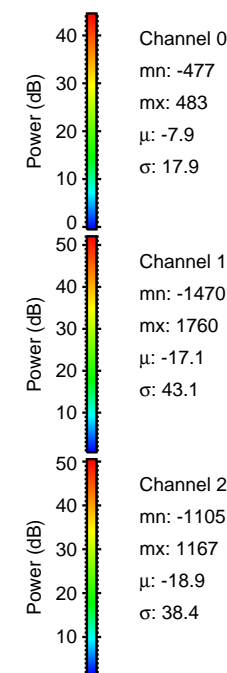
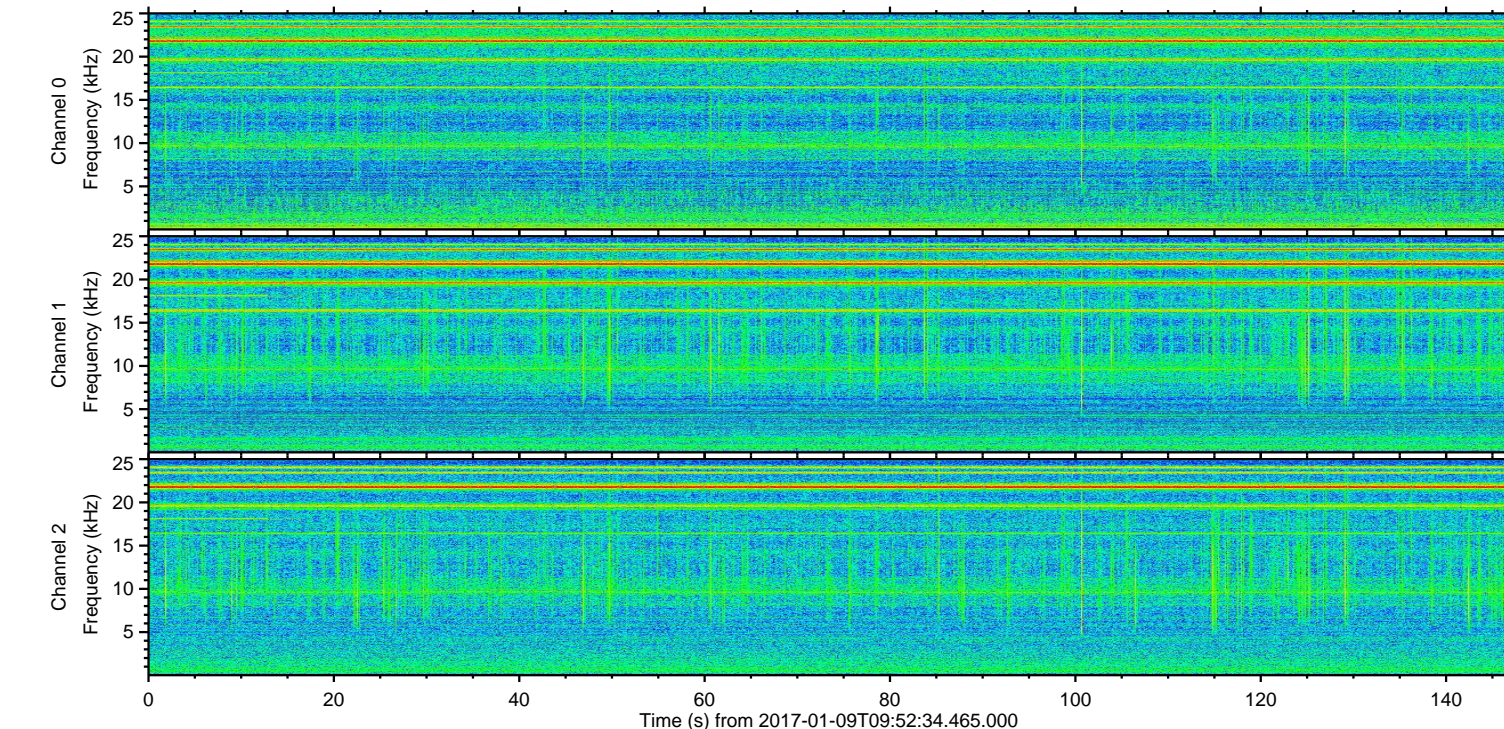
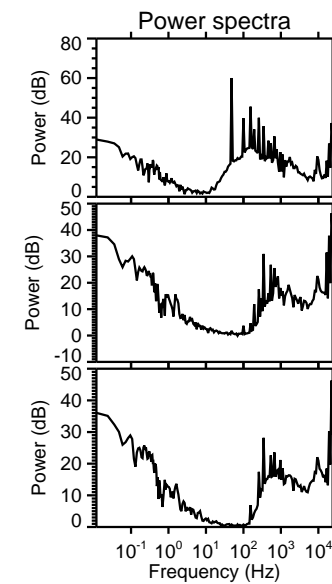
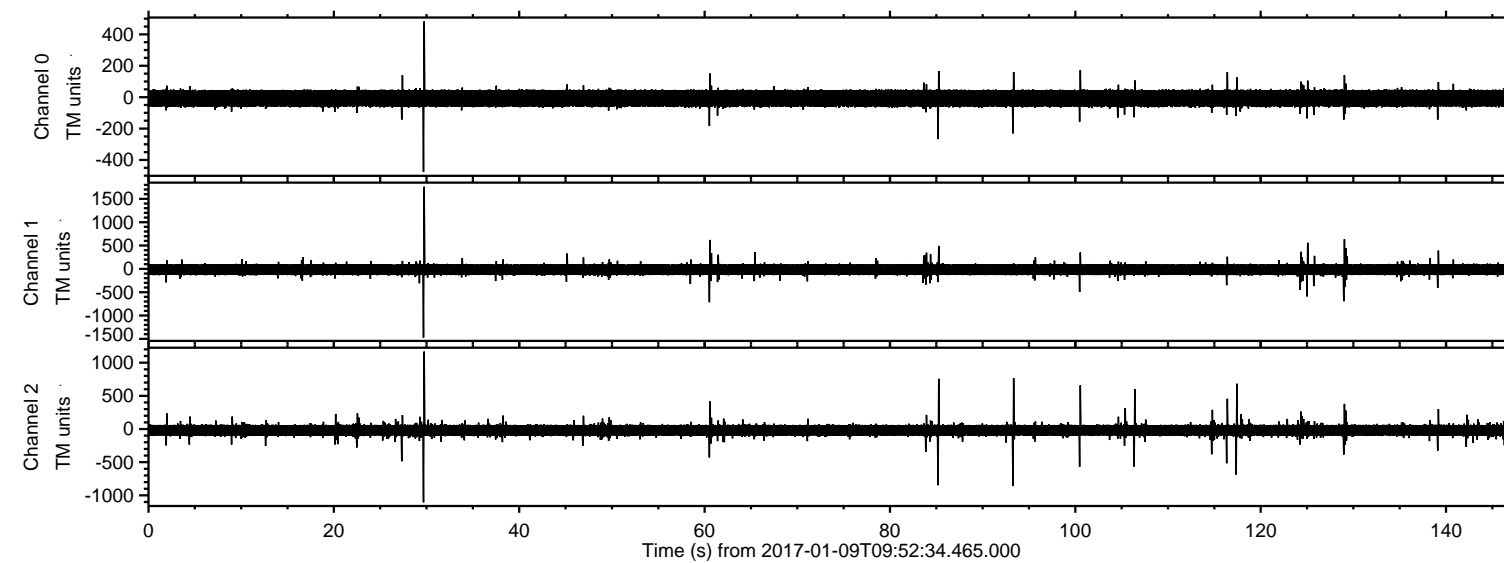
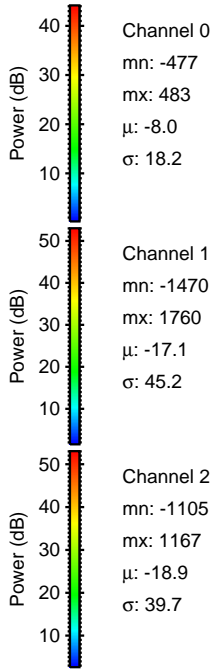
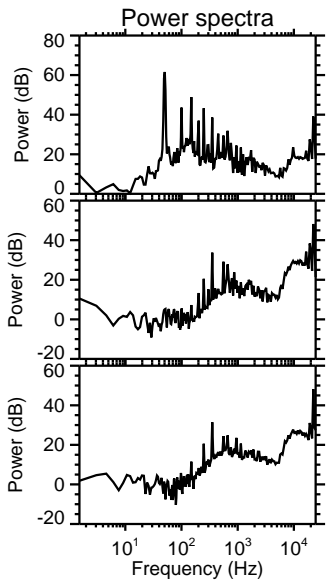
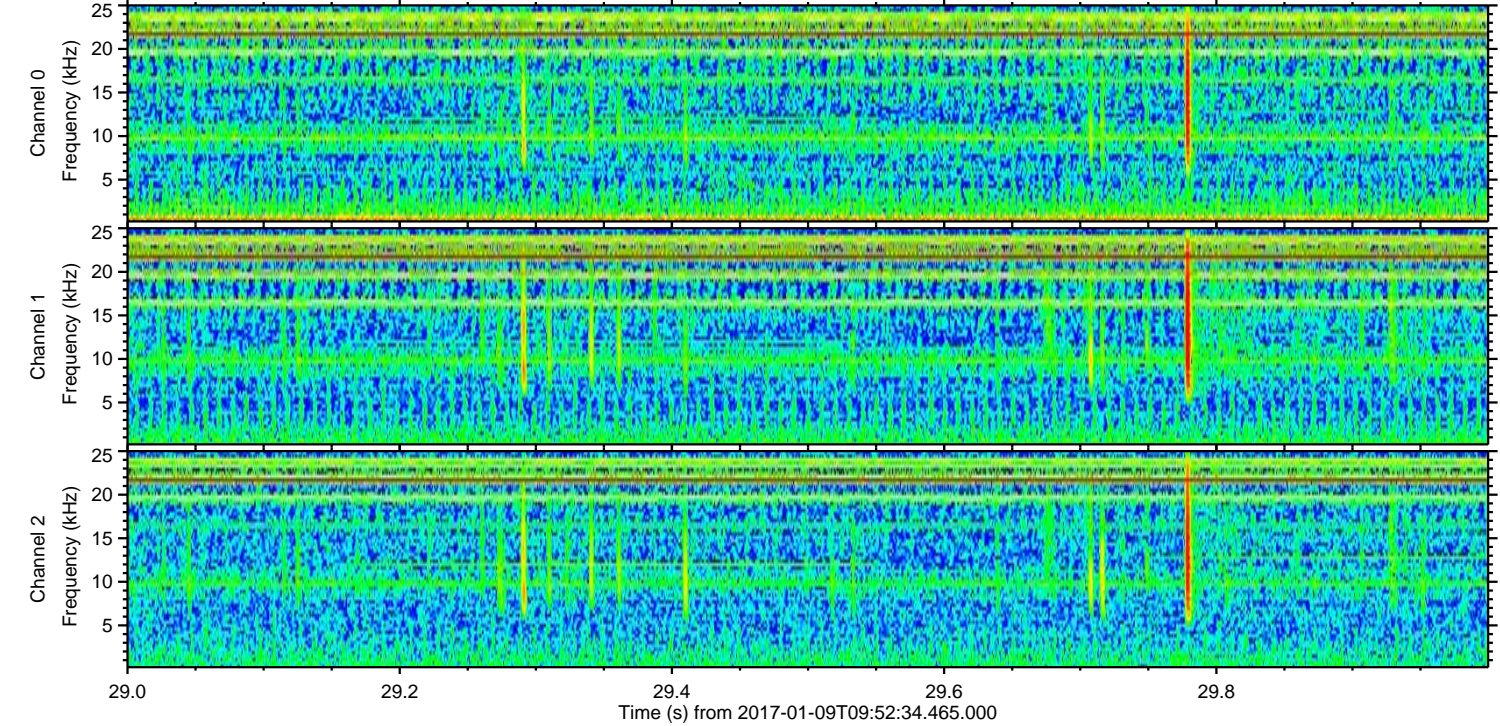
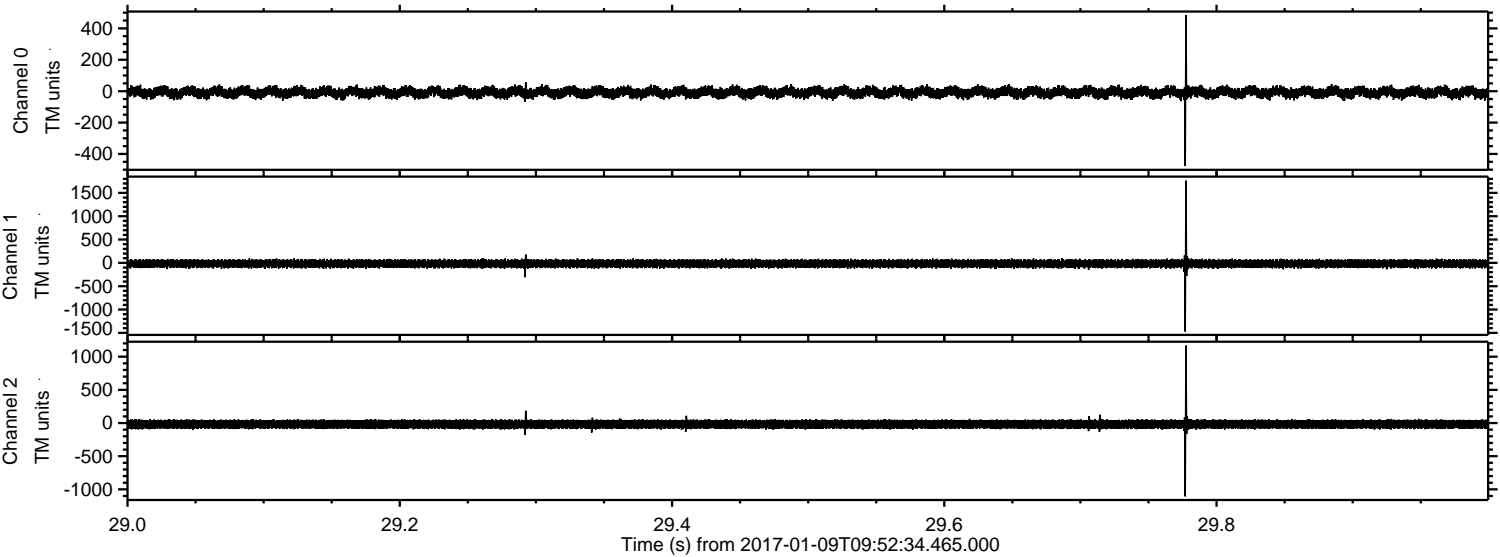


ELMAVAN 3D WAVEFORMS (Measured data sampled at 50 kHz) 51000 packets of 144 samples from 2017-01-09T09:52:34.465.000.

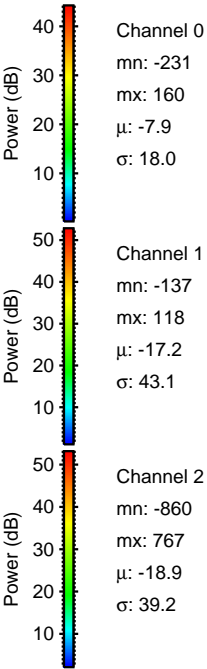
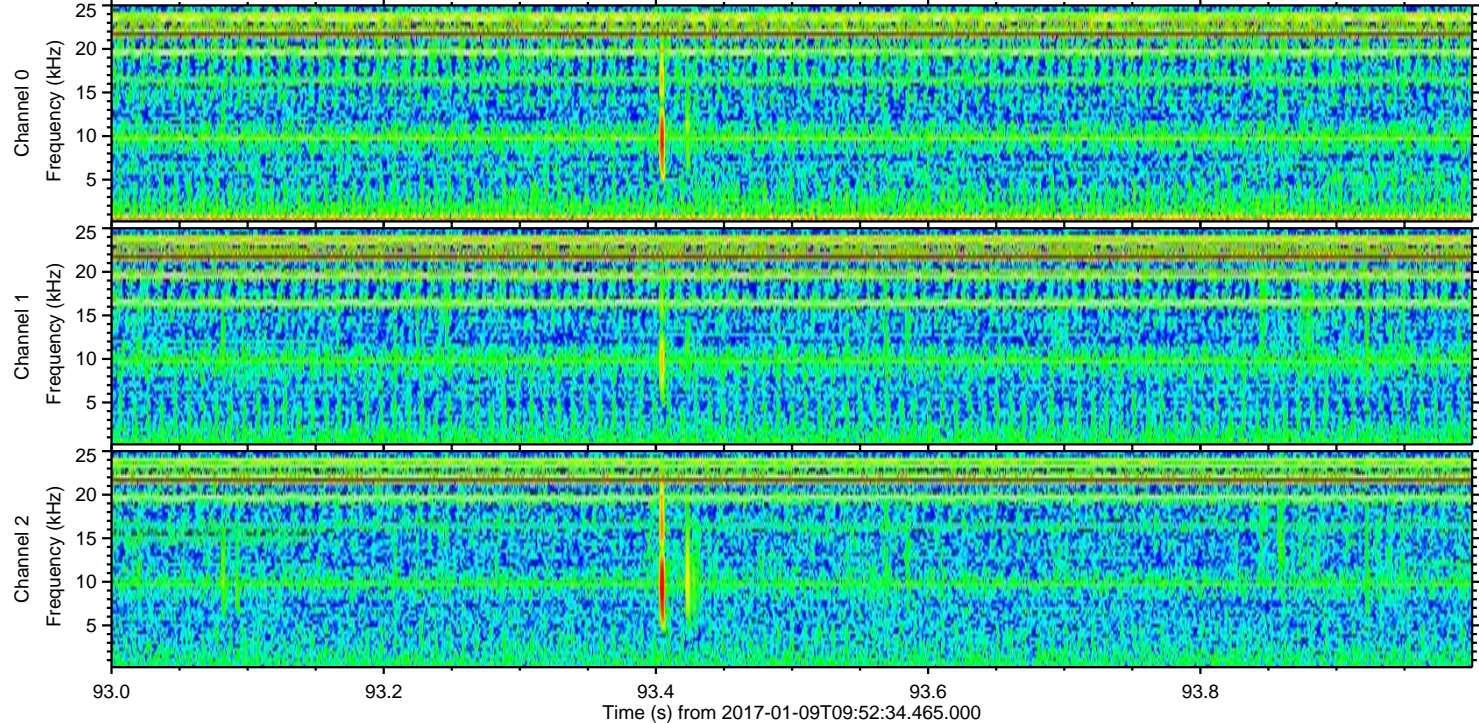
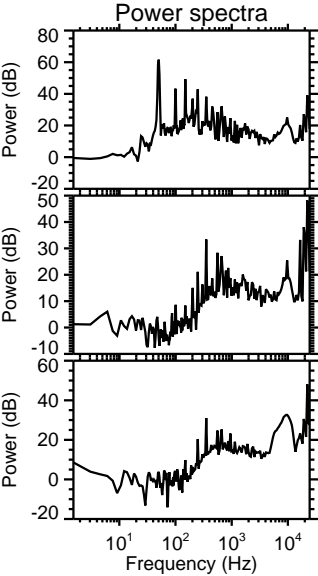
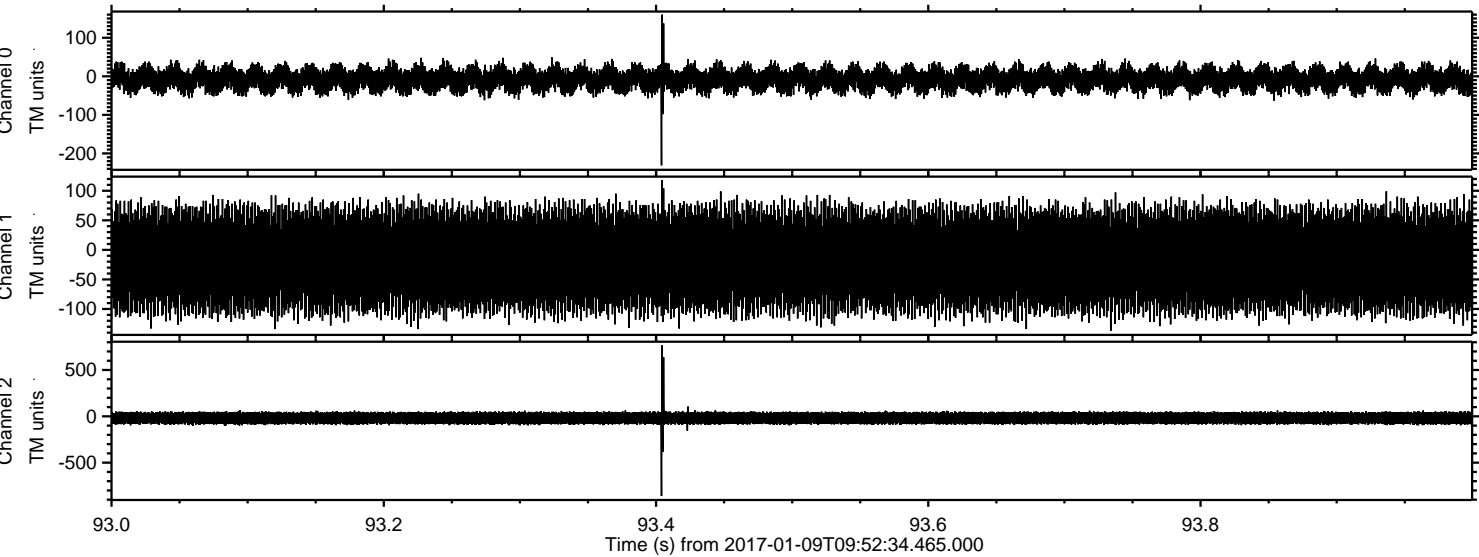
Processed Mon Jan 9 11:00:03 2017 by ELM ver.2012-10-06 from 001__elm20170109_095233__dat00.bin



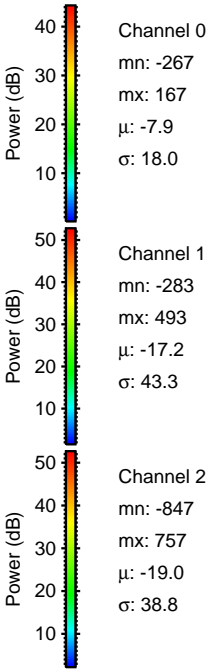
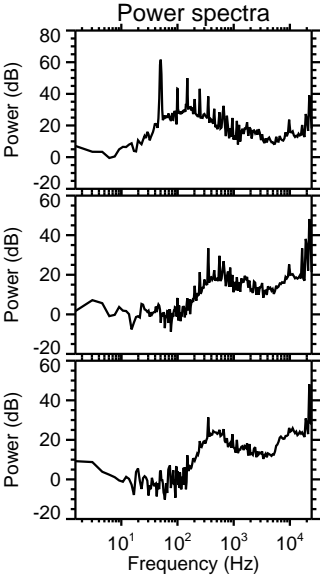
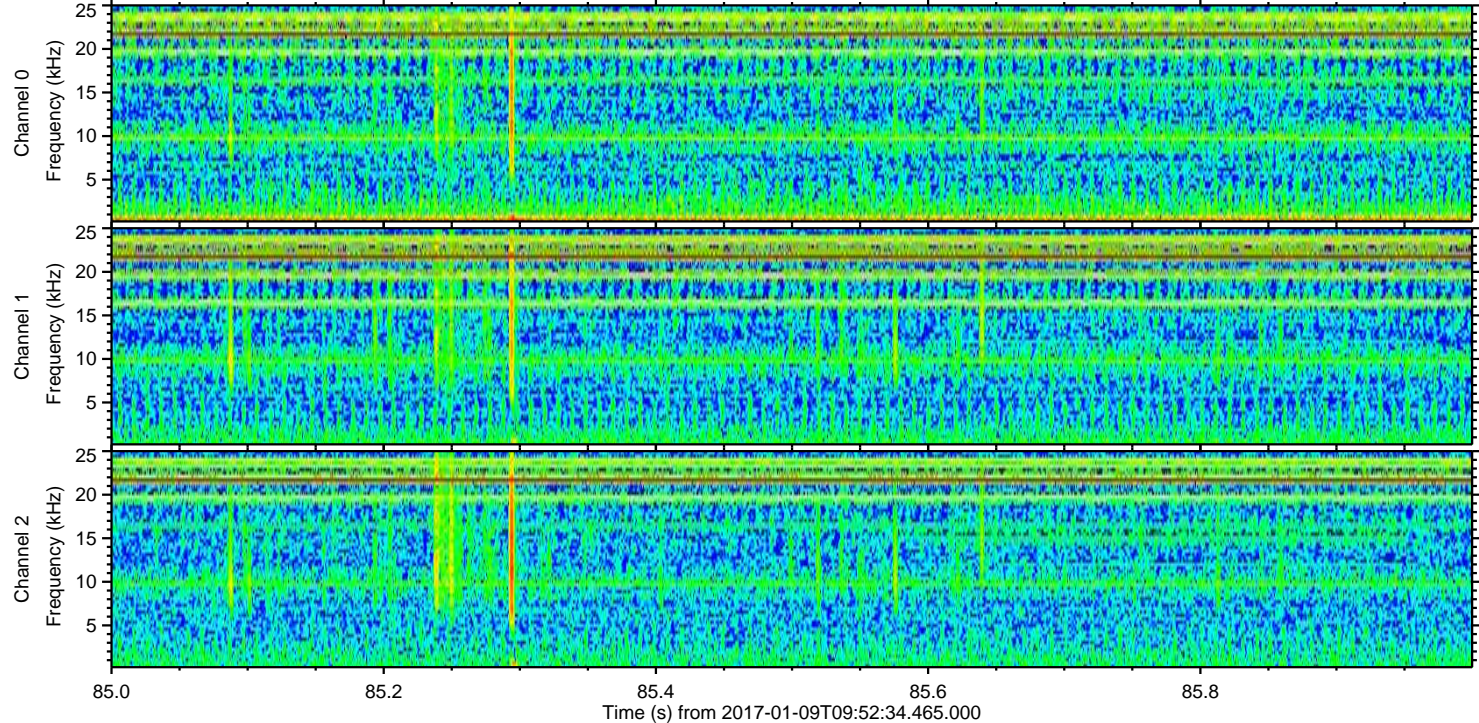
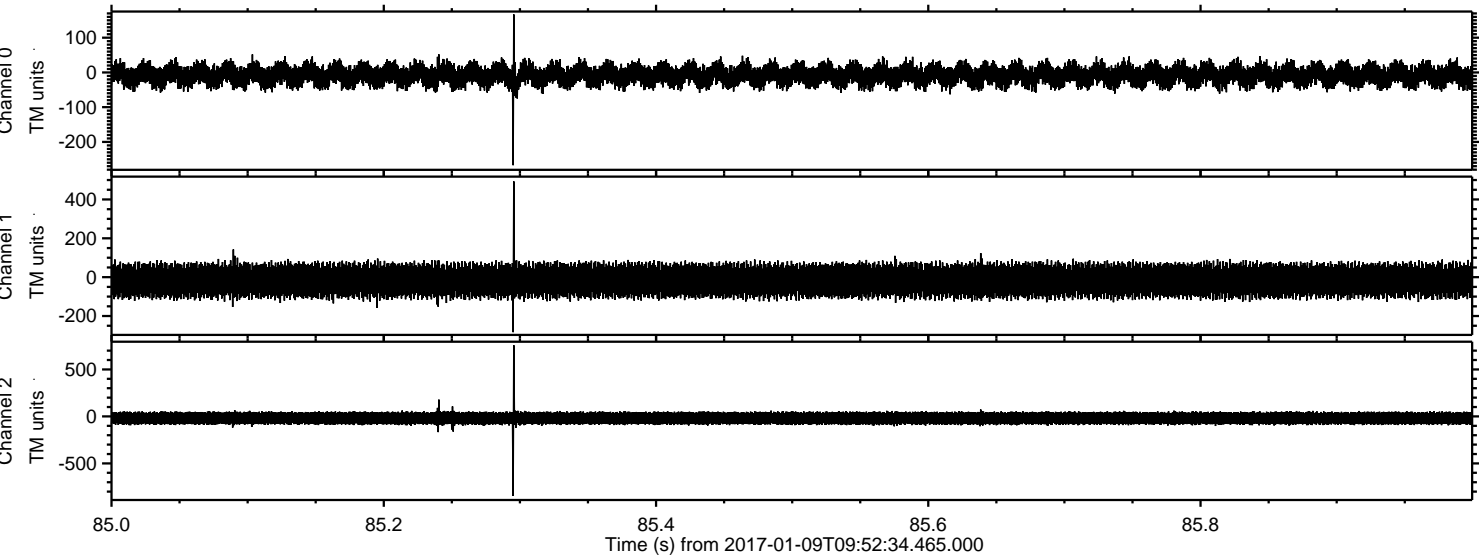
Processed Mon Jan 9 11:00:14 2017 by ELM ver.2012-10-06 from 001__elm20170109_095233__dat00.bin



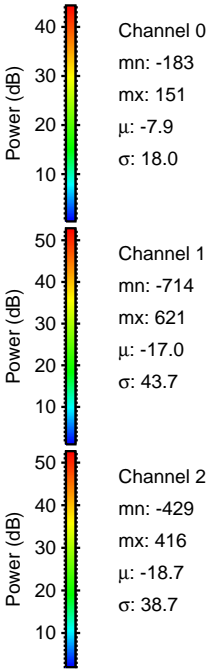
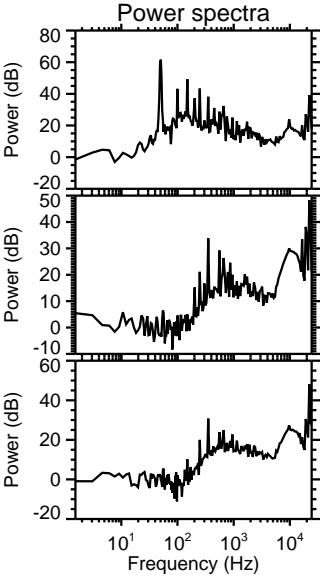
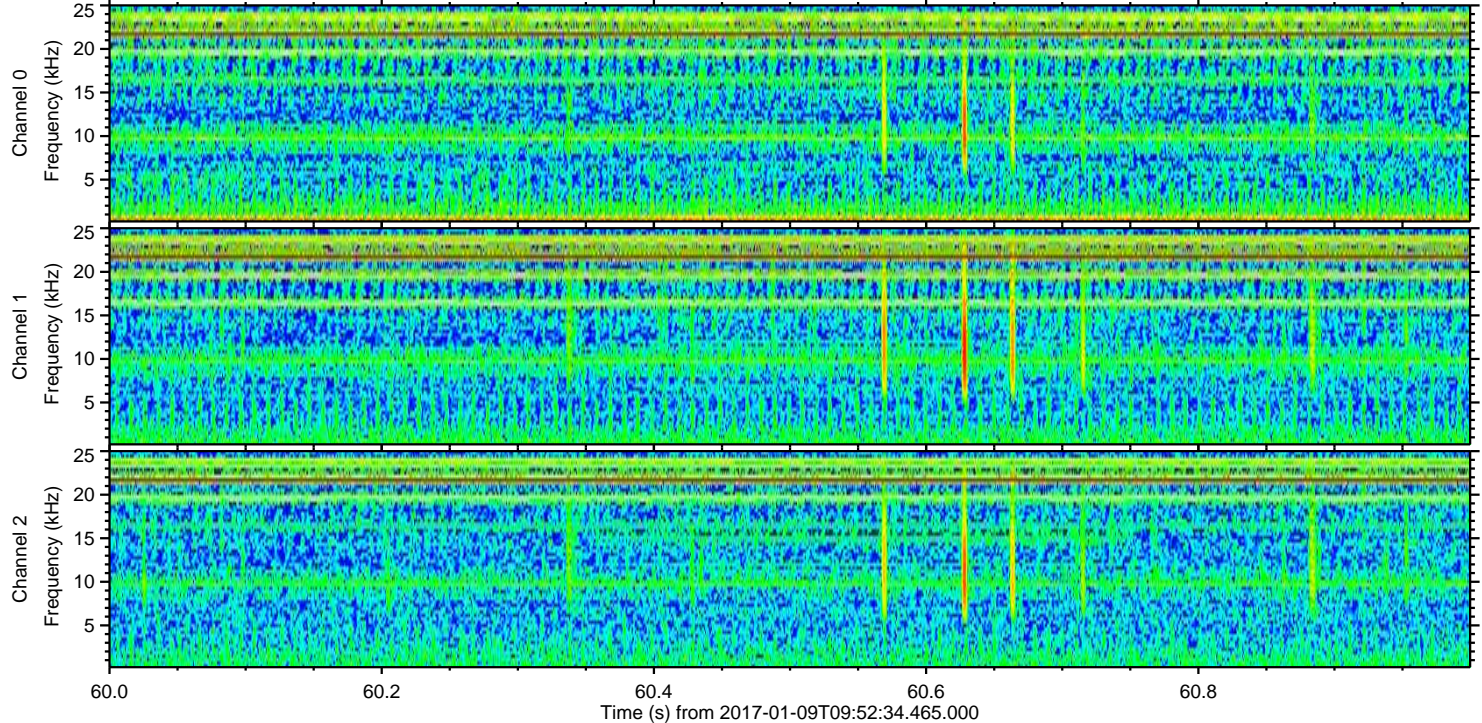
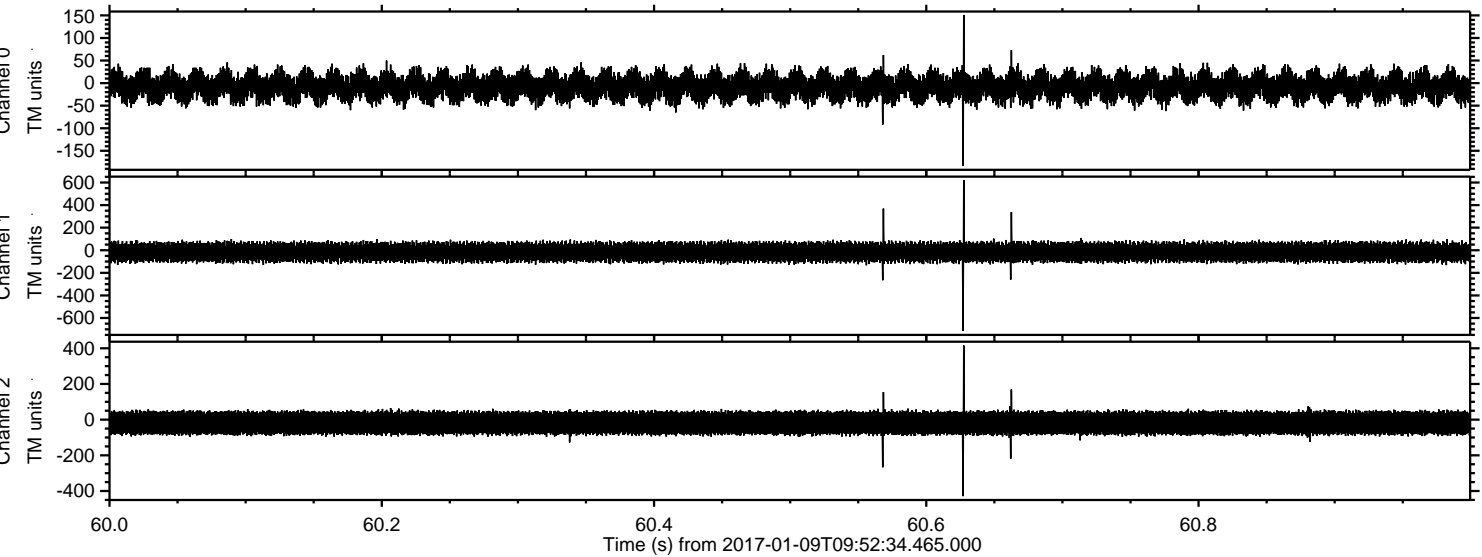
Processed Mon Jan 9 11:00:15 2017 by ELM ver.2012-10-06 from 001__elm20170109_095233__dat00.bin



Processed Mon Jan 9 11:00:16 2017 by ELM ver.2012-10-06 from 001__elm20170109_095233__dat00.bin

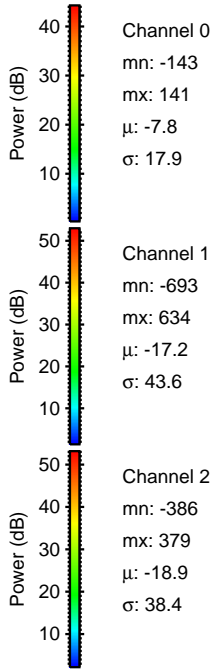
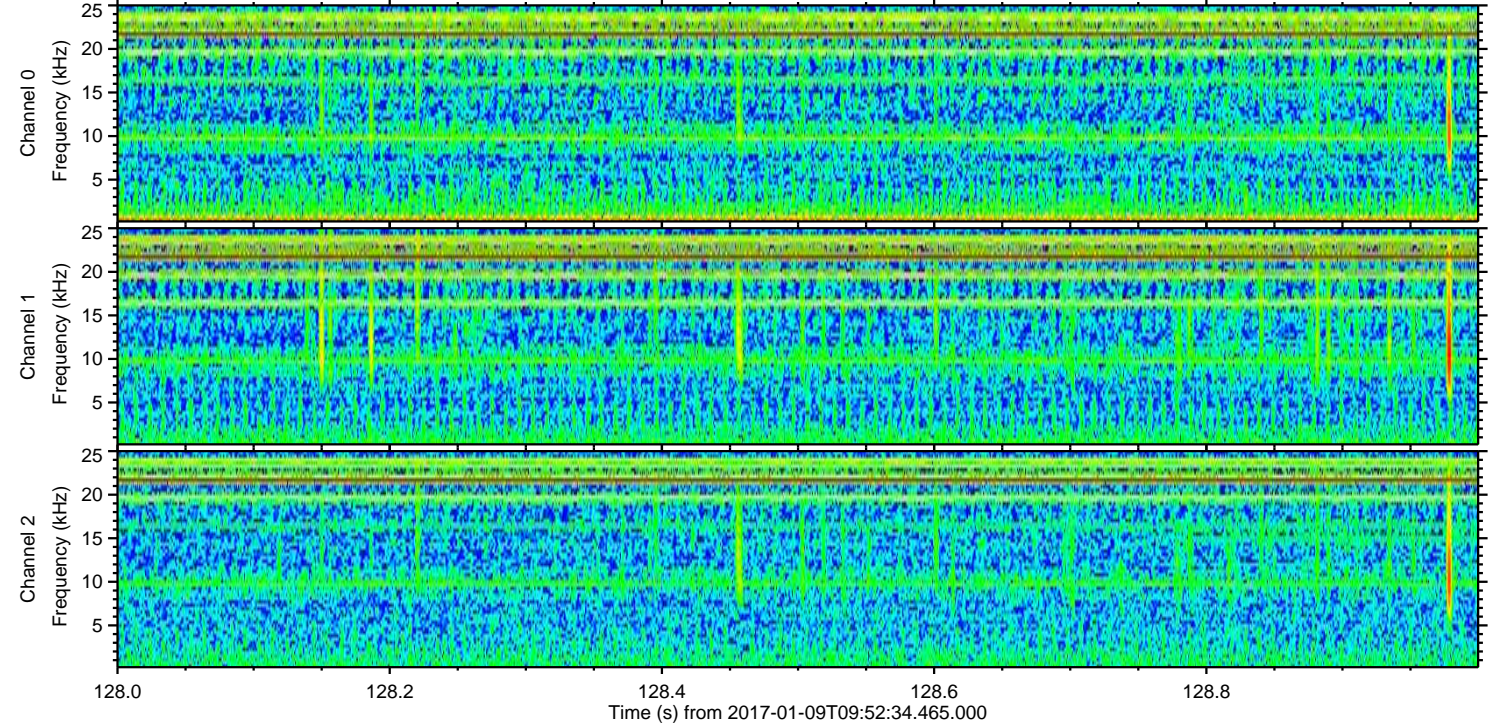
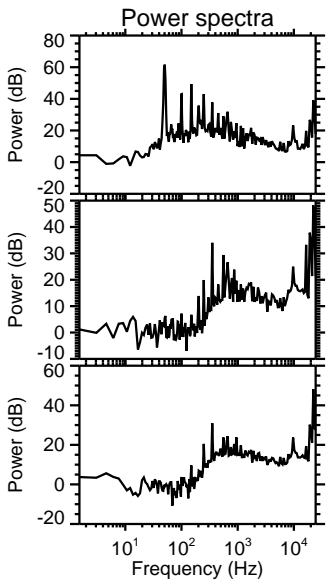
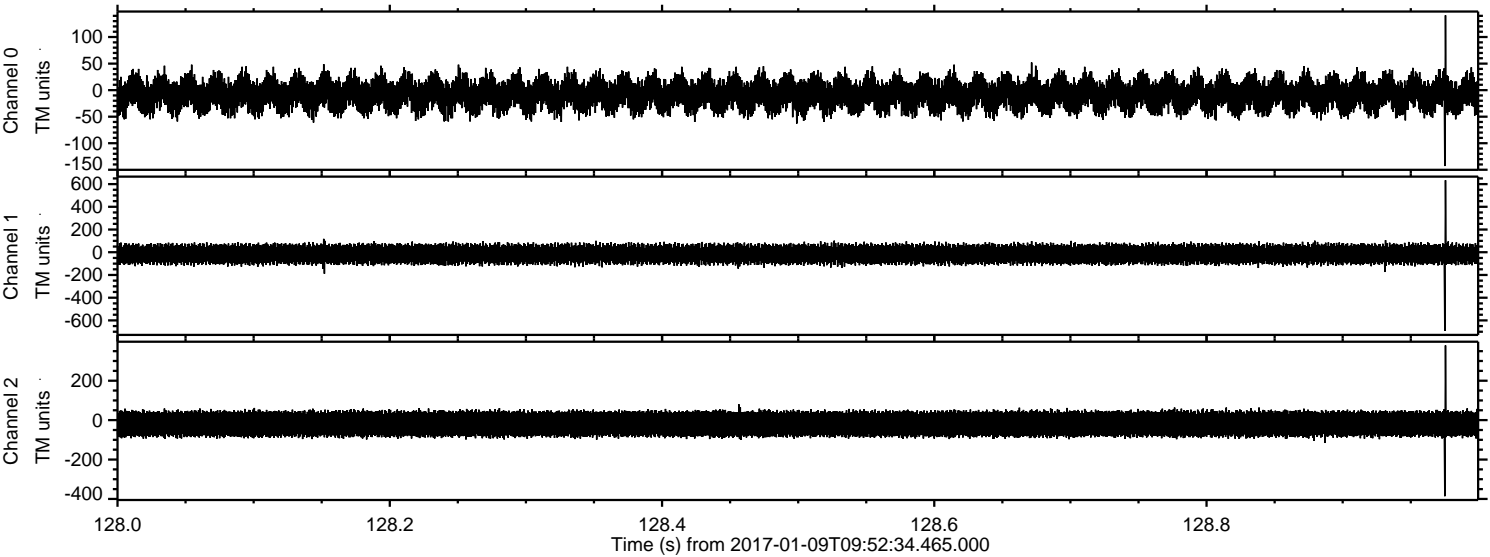


Processed Mon Jan 9 11:00:17 2017 by ELM ver.2012-10-06 from 001__elm20170109_095233__dat00.bin

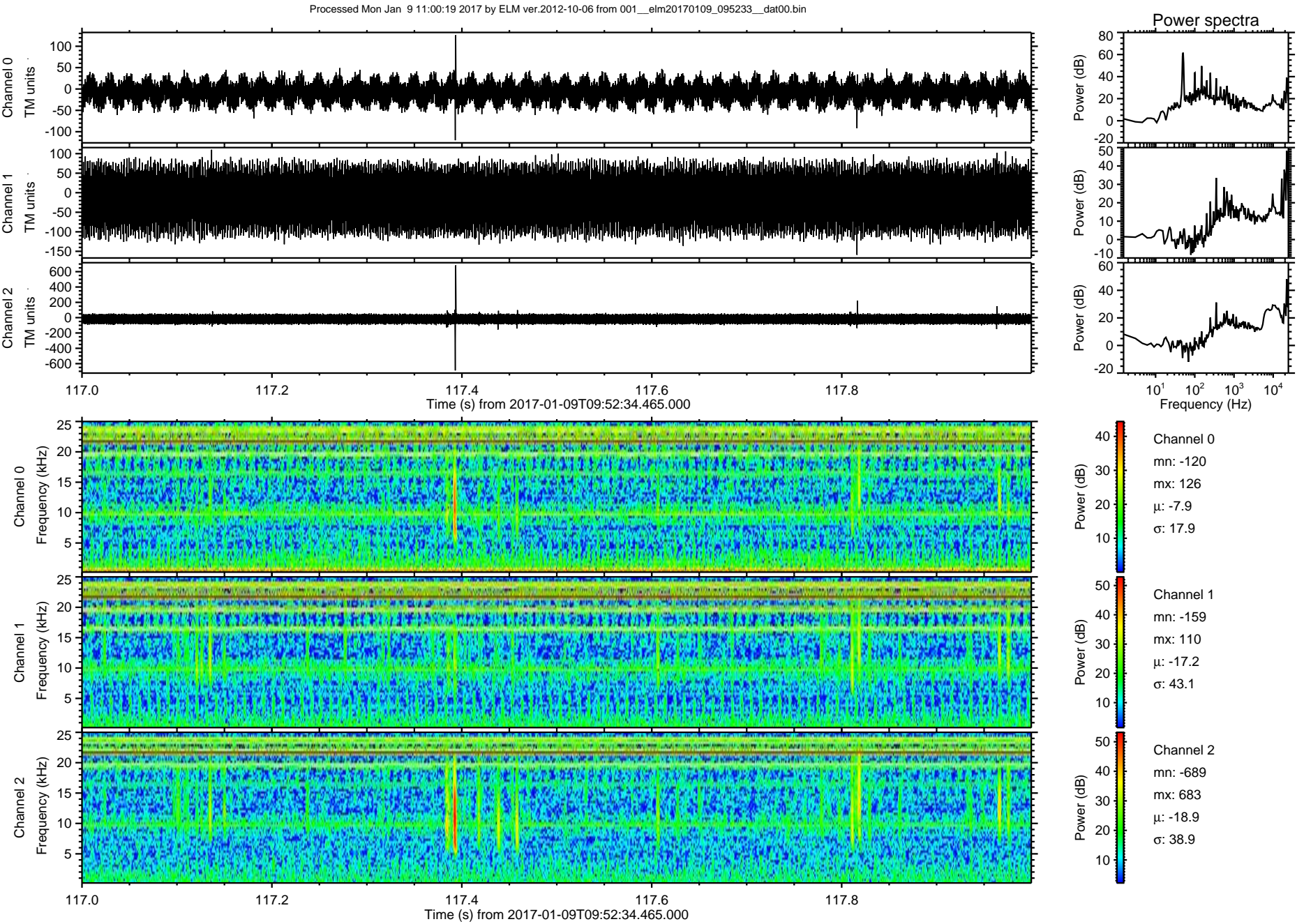


ELMAVAN 3D WAVEFORMS (Measured data sampled at 50 kHz) 51000 packets of 144 samples from 2017-01-09T09:52:34.465.000. Part 129/147

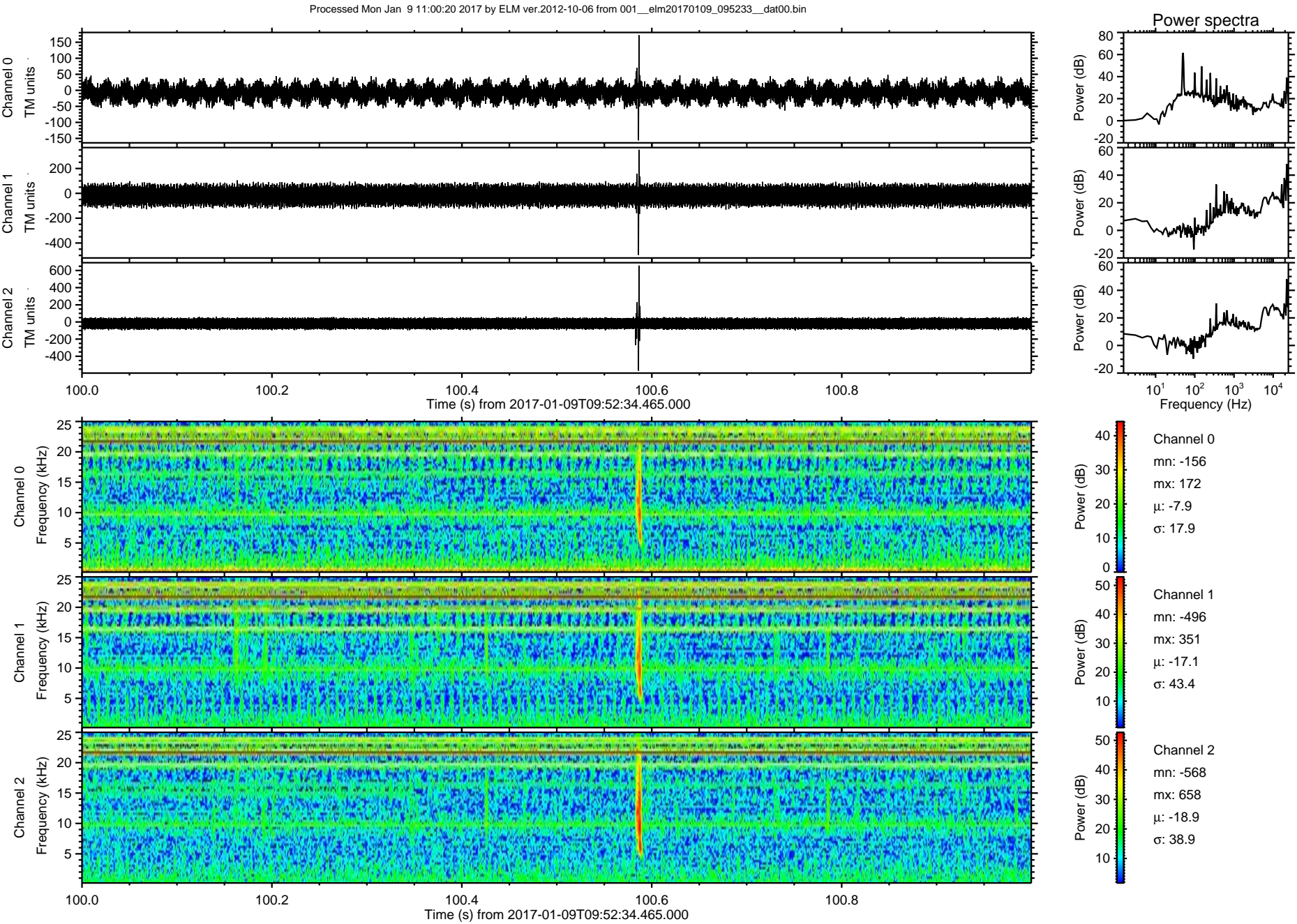
Processed Mon Jan 9 11:00:18 2017 by ELM ver.2012-10-06 from 001__elm20170109_095233__dat00.bin



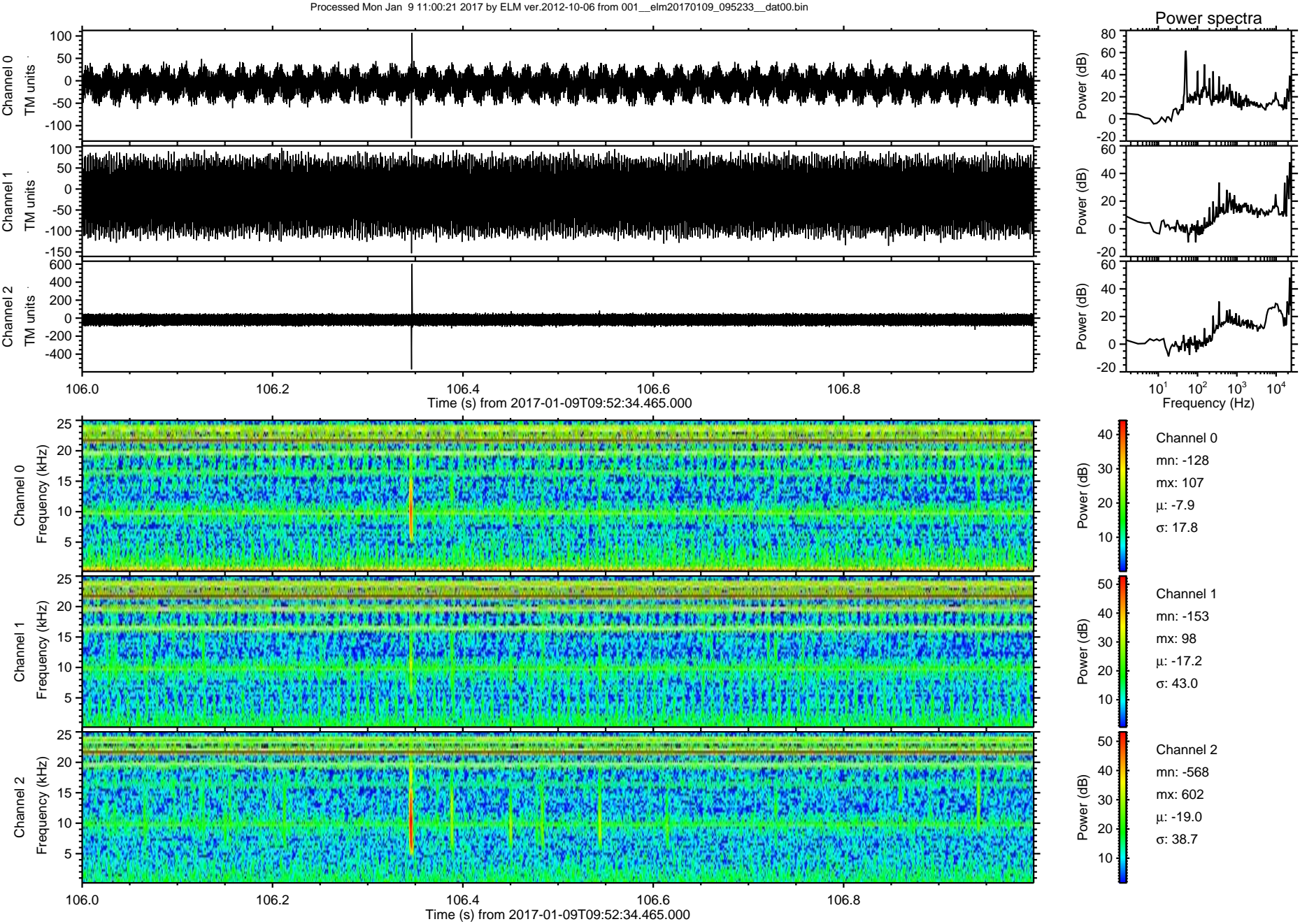
ELMAVAN 3D WAVEFORMS (Measured data sampled at 50 kHz) 51000 packets of 144 samples from 2017-01-09T09:52:34.465.000. Part 118/147



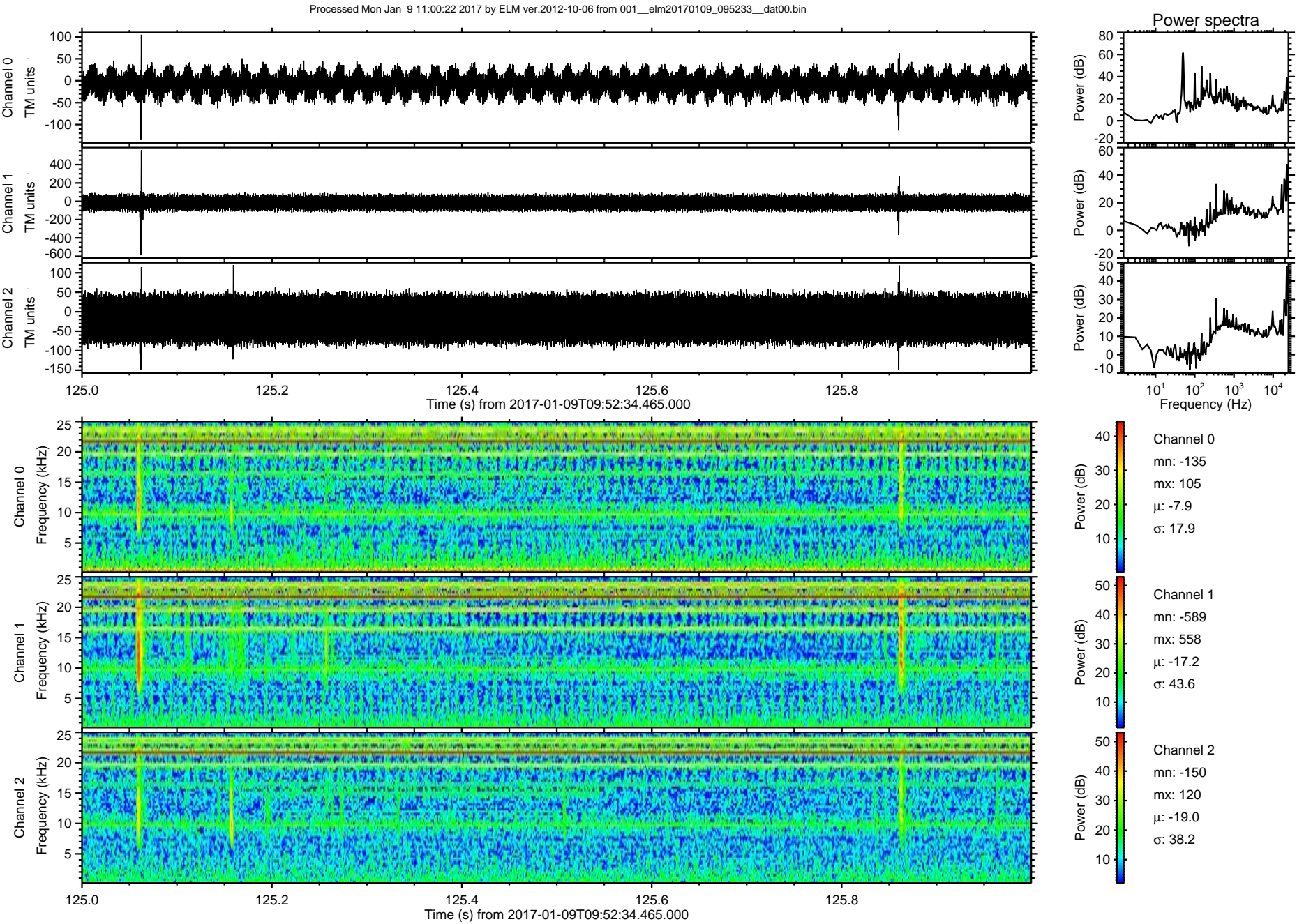
ELMAVAN 3D WAVEFORMS (Measured data sampled at 50 kHz) 51000 packets of 144 samples from 2017-01-09T09:52:34.465.000. Part 101/147



ELMAVAN 3D WAVEFORMS (Measured data sampled at 50 kHz) 51000 packets of 144 samples from 2017-01-09T09:52:34.465.000. Part 107/147

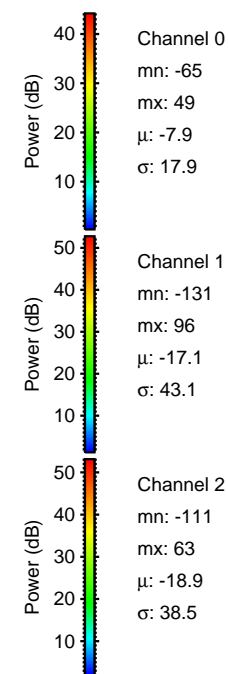
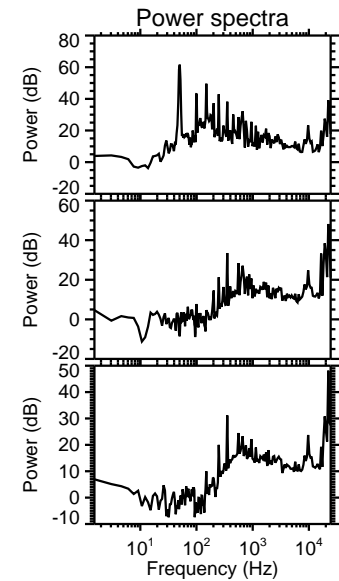
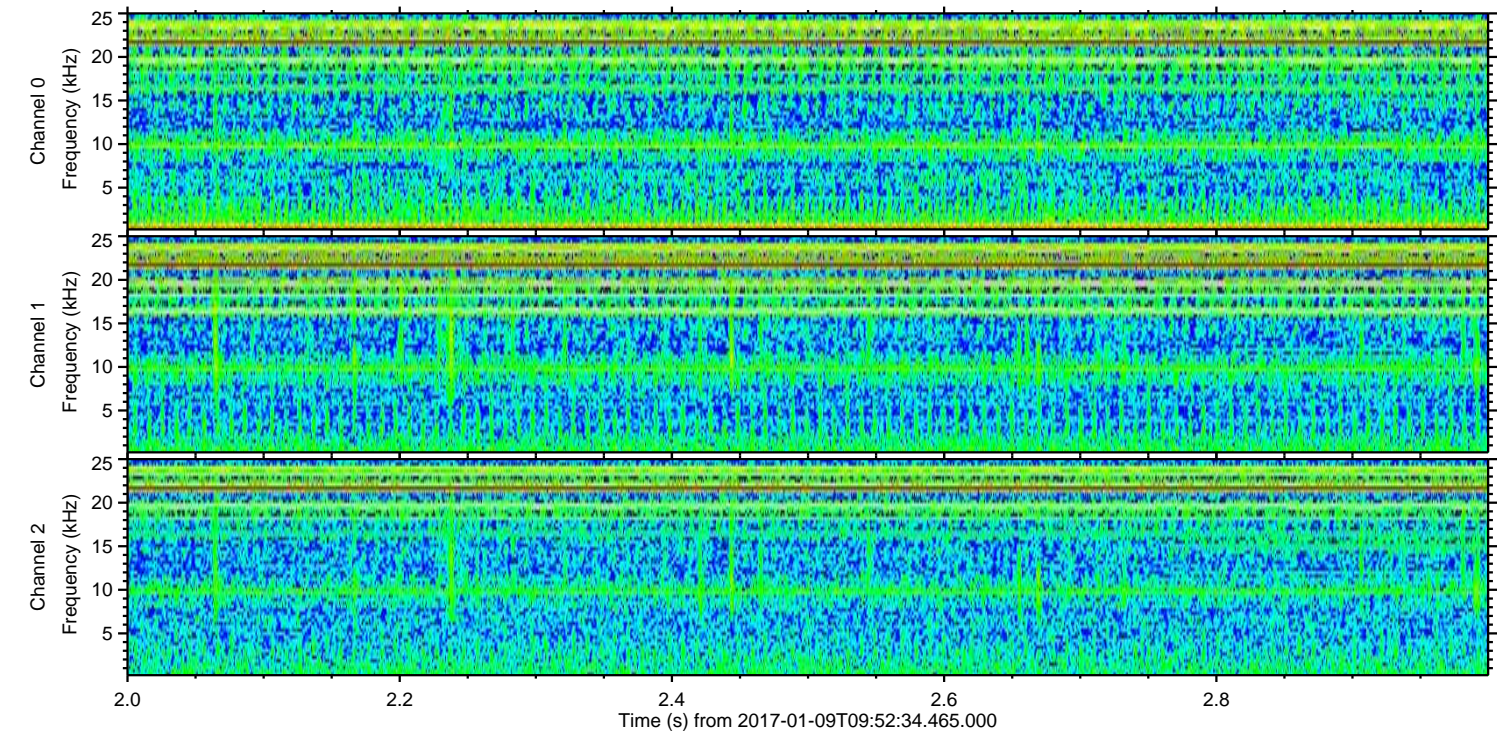
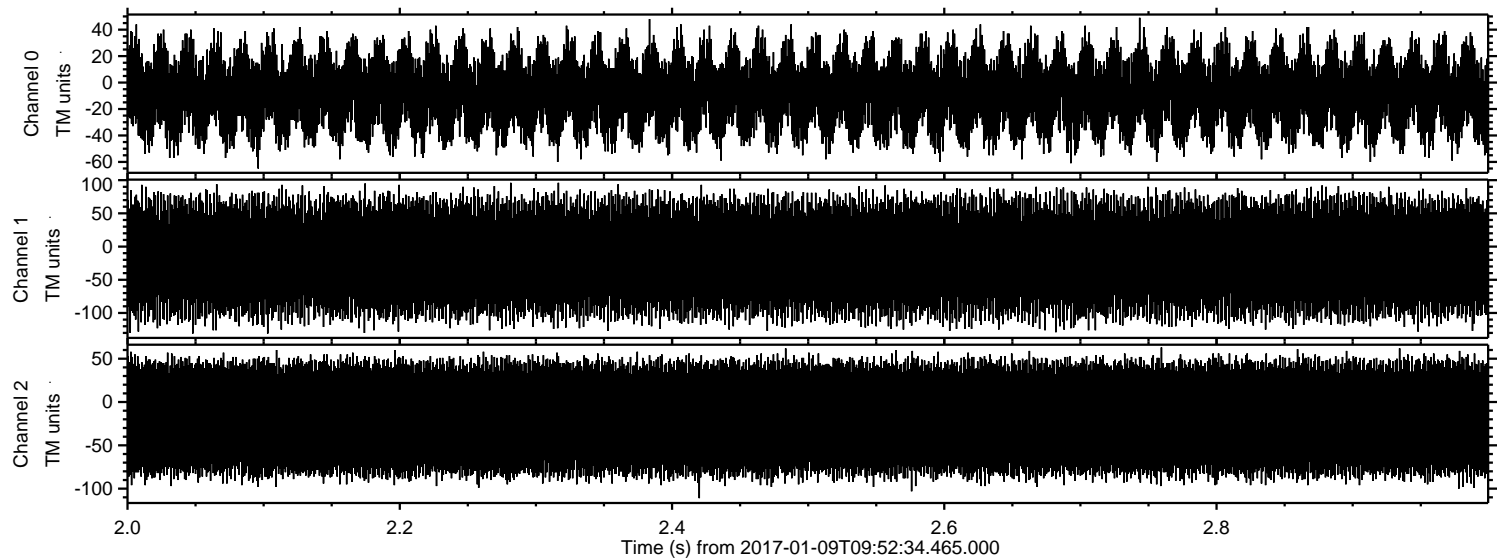


ELMAVAN 3D WAVEFORMS (Measured data sampled at 50 kHz) 51000 packets of 144 samples from 2017-01-09T09:52:34.465.000. Part 126/147



ELMAVAN 3D WAVEFORMS (Measured data sampled at 50 kHz) 51000 packets of 144 samples from 2017-01-09T09:52:34.465.000. Part 3/147

Processed Mon Jan 9 11:00:23 2017 by ELM ver.2012-10-06 from 001__elm20170109_095233__dat00.bin



Power spectra

Channel 0
mn: -65
mx: 49
 μ : -7.9
 σ : 17.9

Channel 1
mn: -131
mx: 96
 μ : -17.1
 σ : 43.1

Channel 2
mn: -111
mx: 63
 μ : -18.9
 σ : 38.5