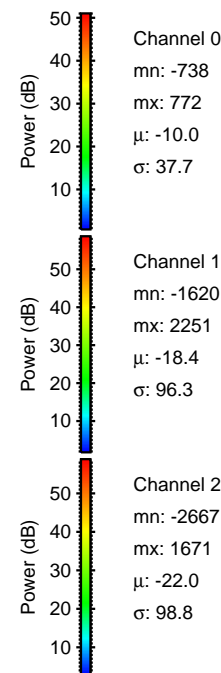
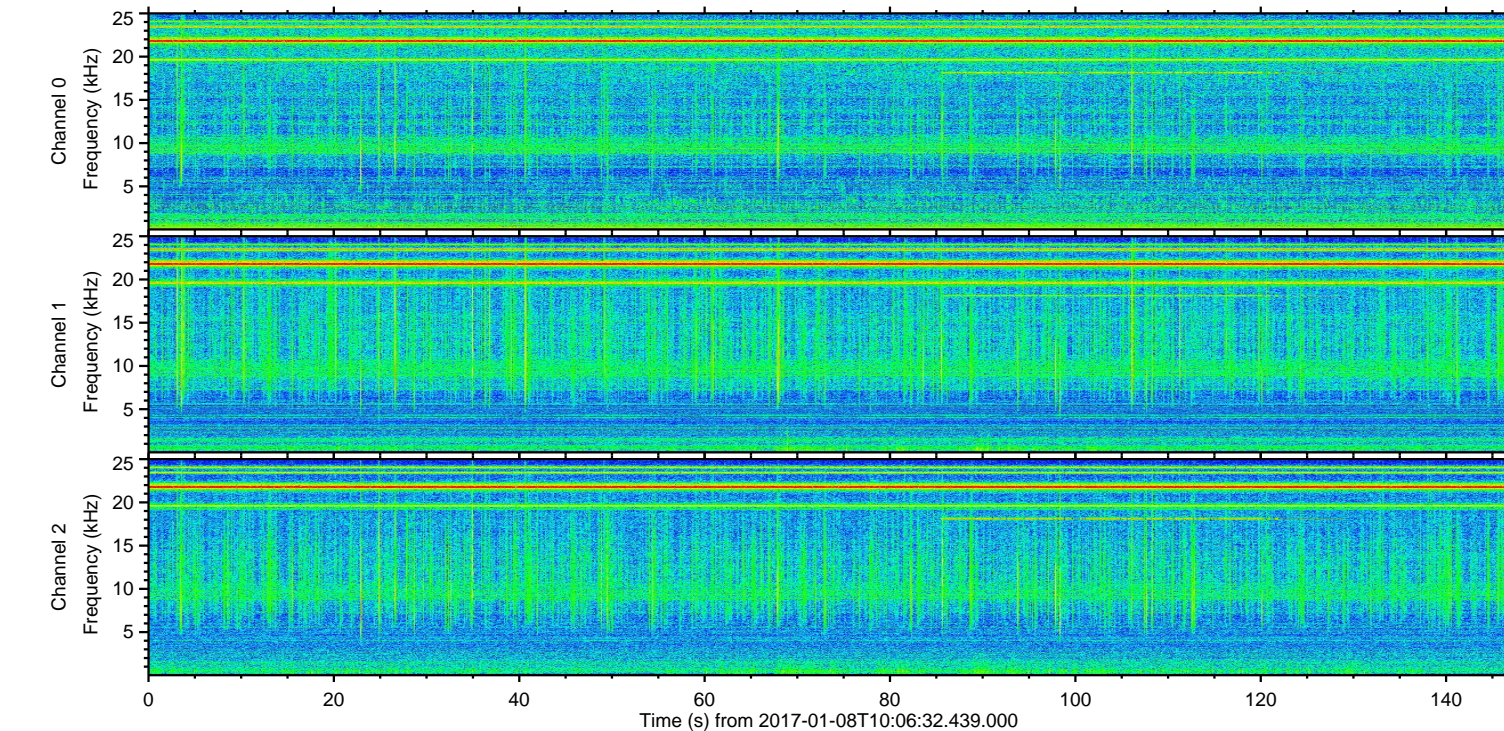
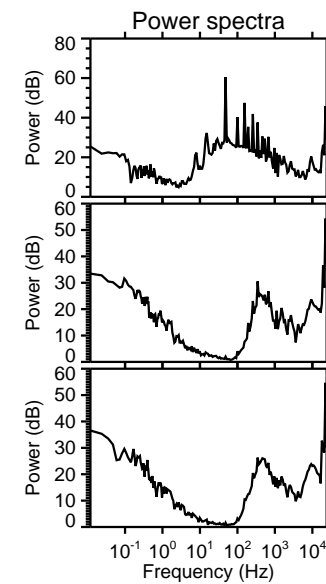
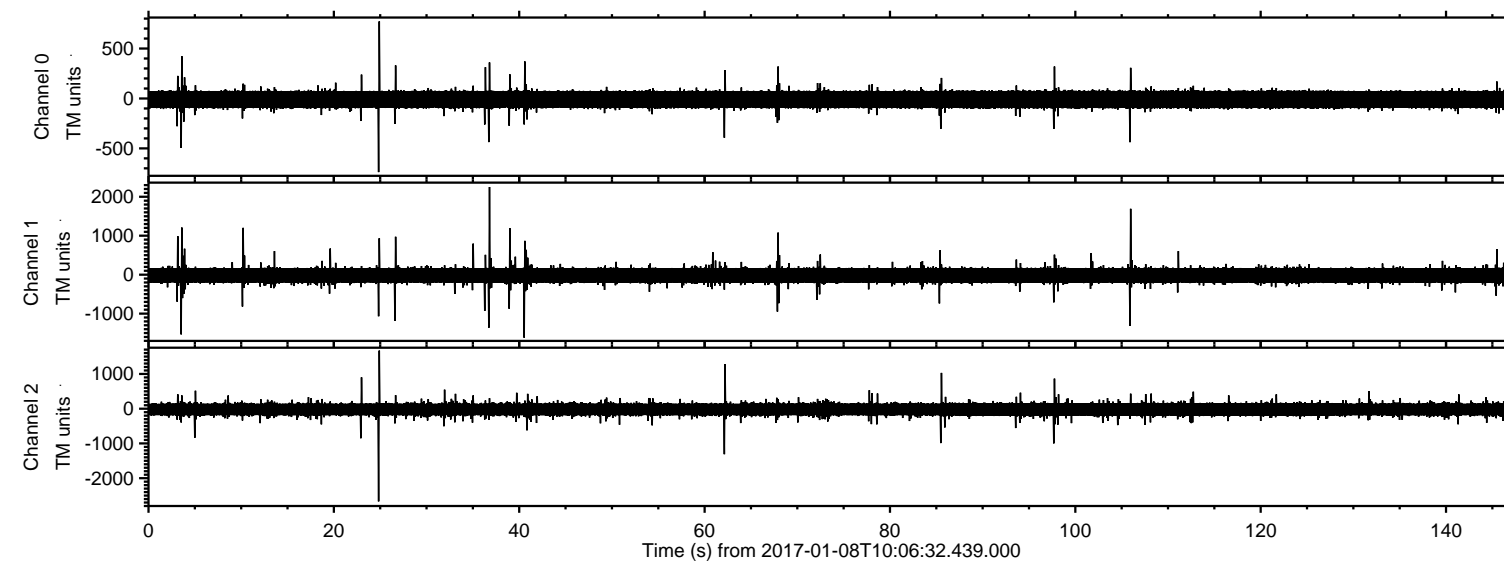


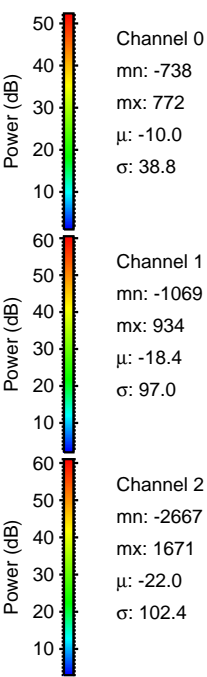
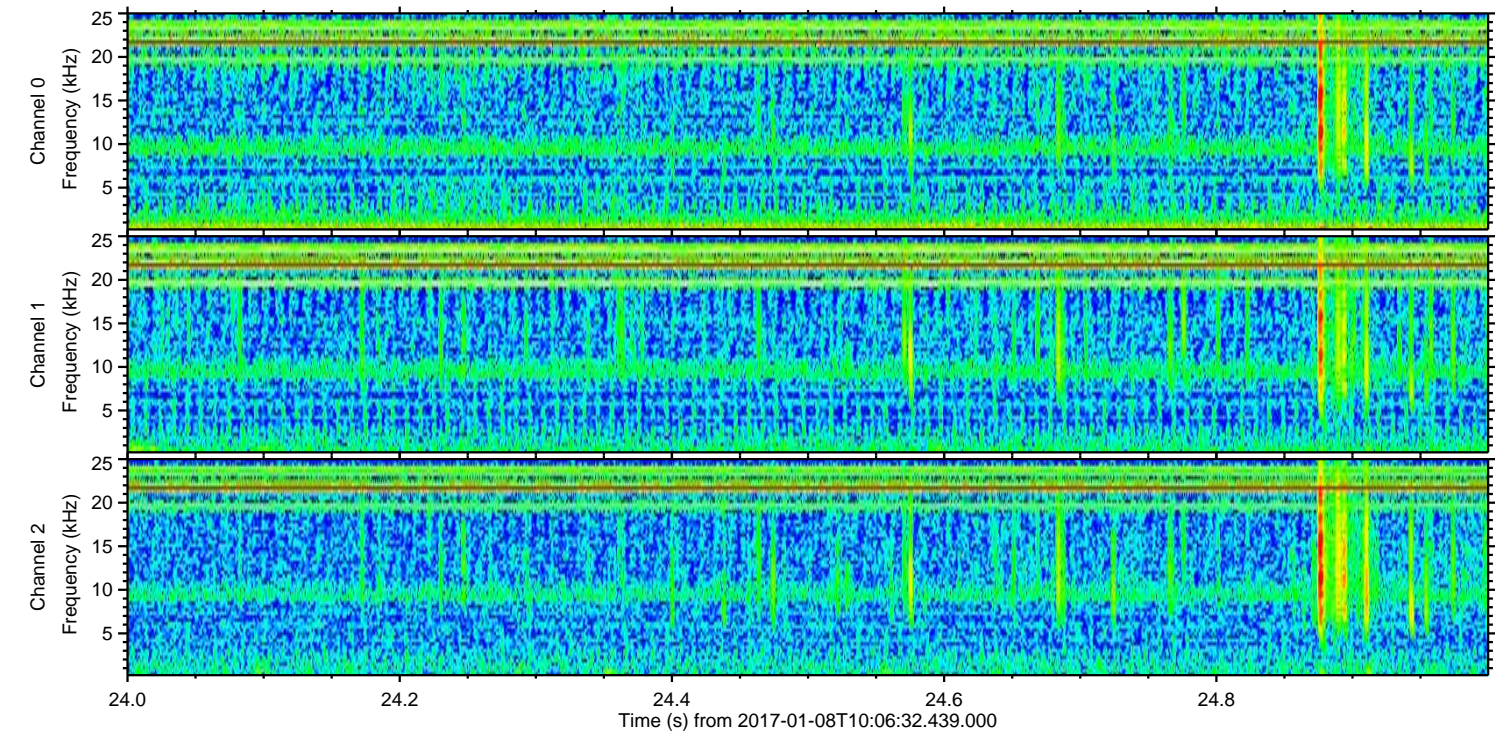
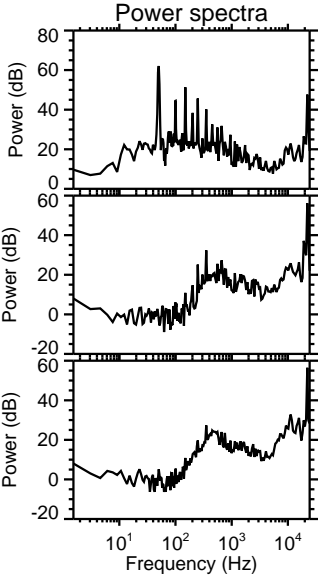
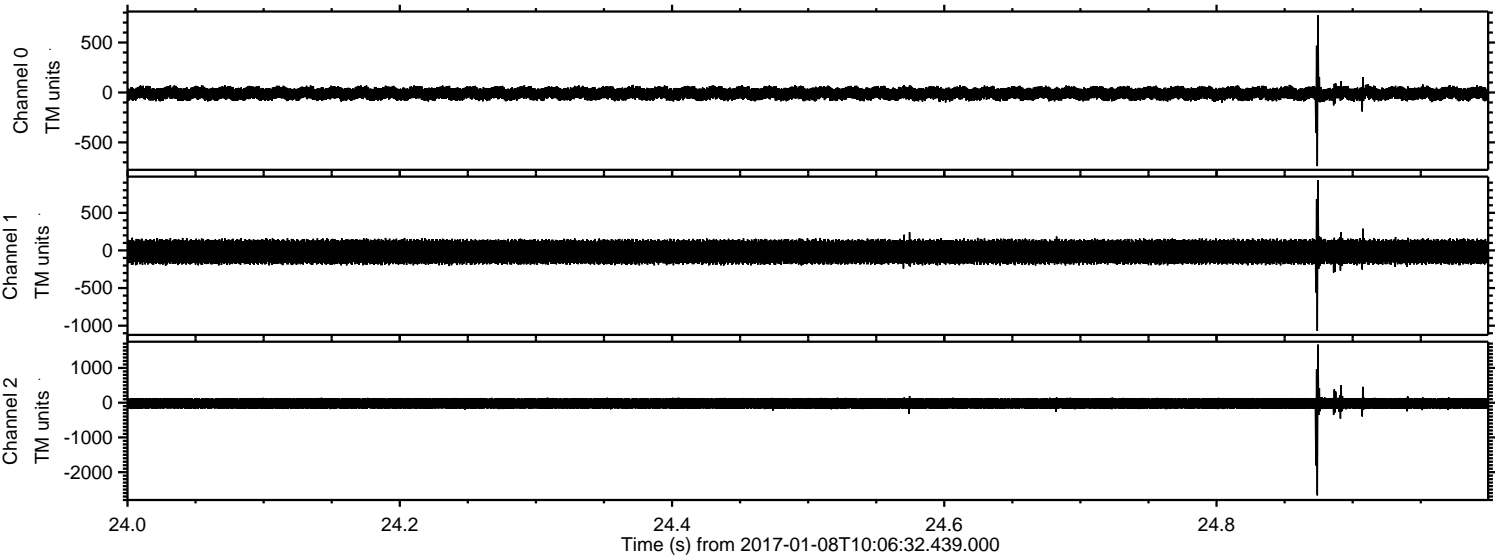
ELMAVAN 3D WAVEFORMS (Measured data sampled at 50 kHz) 51000 packets of 144 samples from 2017-01-08T10:06:32.439.000.

Processed Sun Jan 8 11:14:01 2017 by ELM ver.2012-10-06 from 001__elm20170108_100631__dat00.bin



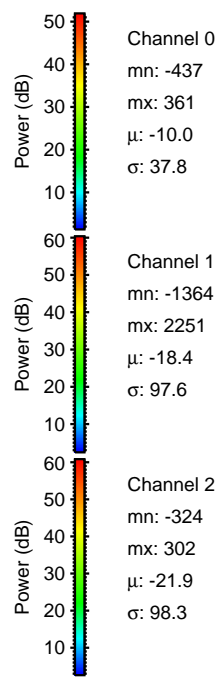
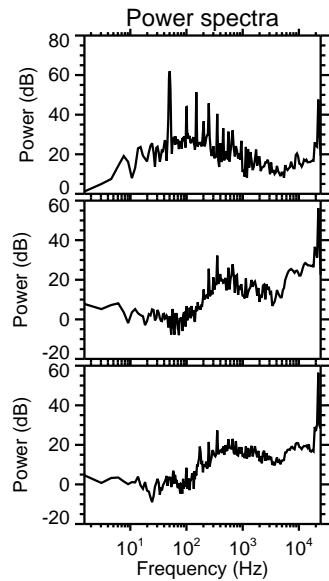
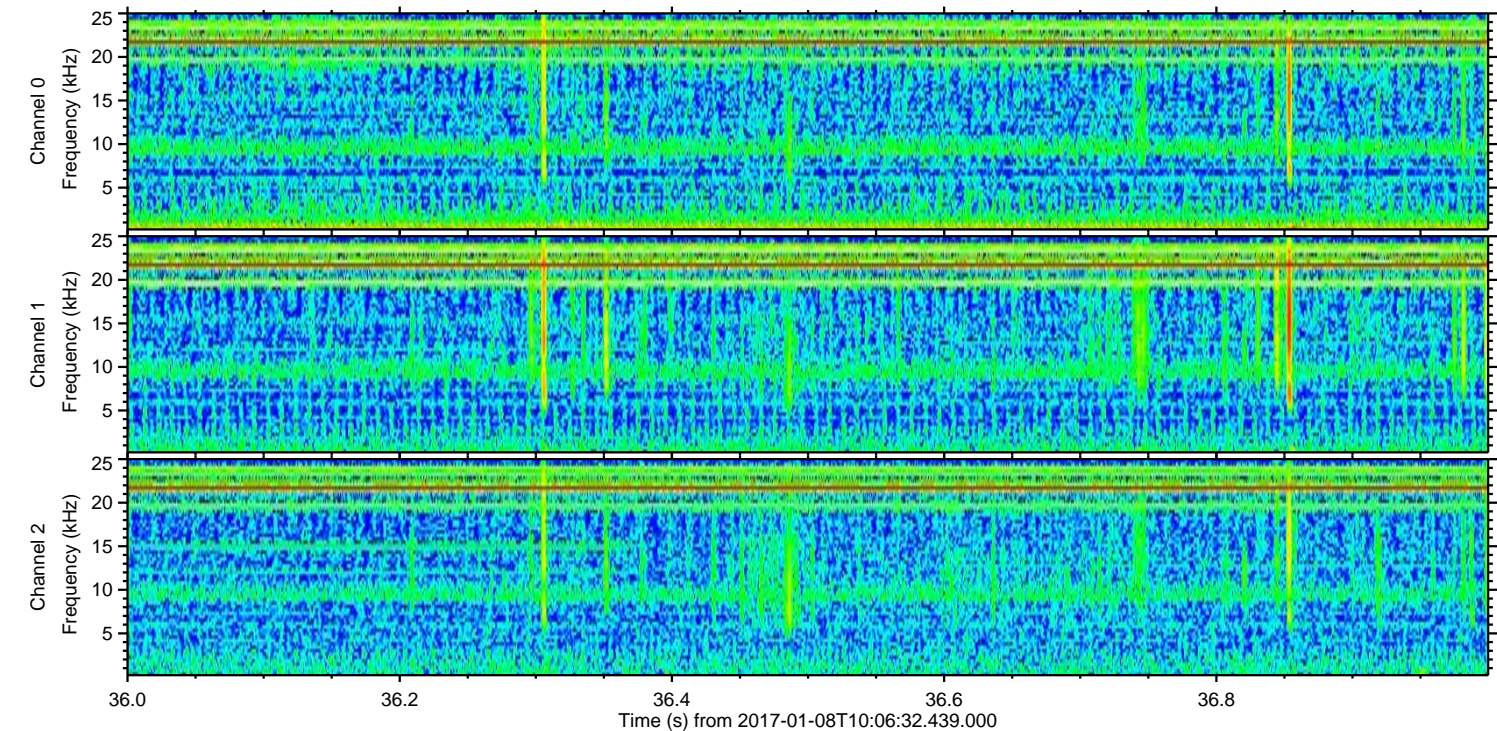
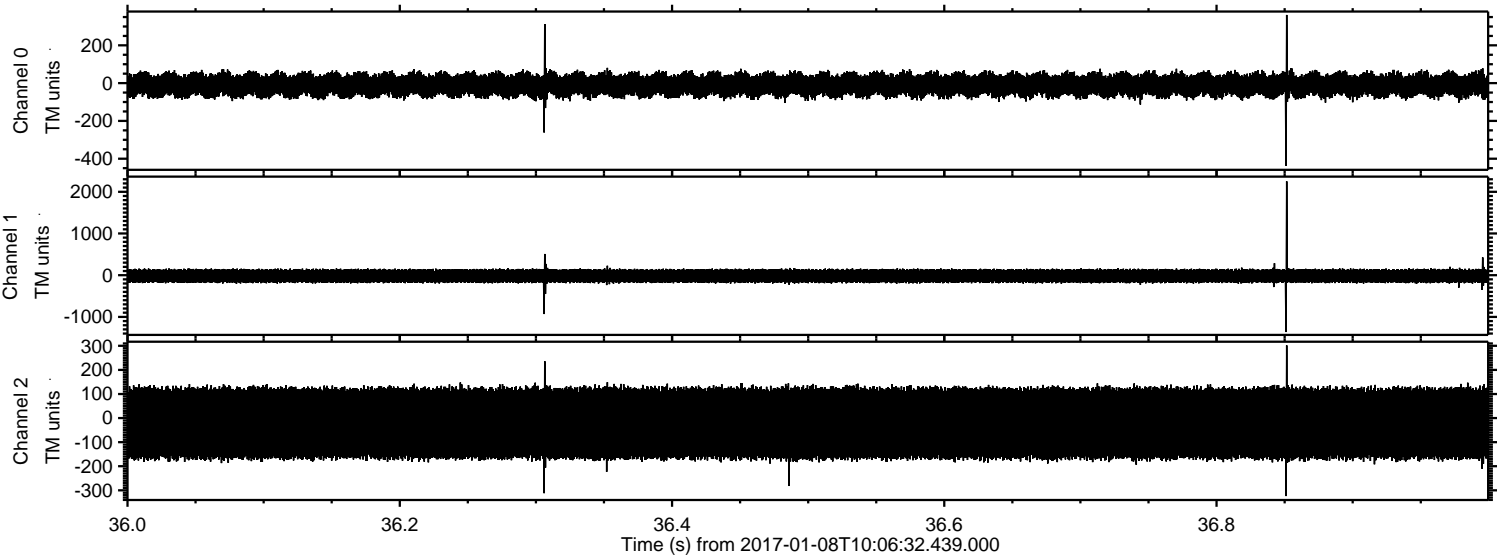
ELMAVAN 3D WAVEFORMS (Measured data sampled at 50 kHz) 51000 packets of 144 samples from 2017-01-08T10:06:32.439.000. Part 25/147

Processed Sun Jan 8 11:14:13 2017 by ELM ver.2012-10-06 from 001__elm20170108_100631__dat00.bin



ELMAVAN 3D WAVEFORMS (Measured data sampled at 50 kHz) 51000 packets of 144 samples from 2017-01-08T10:06:32.439.000. Part 37/147

Processed Sun Jan 8 11:14:14 2017 by ELM ver.2012-10-06 from 001__elm20170108_100631__dat00.bin



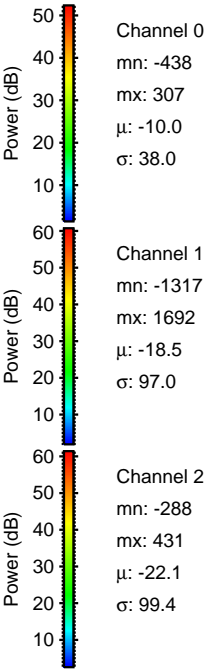
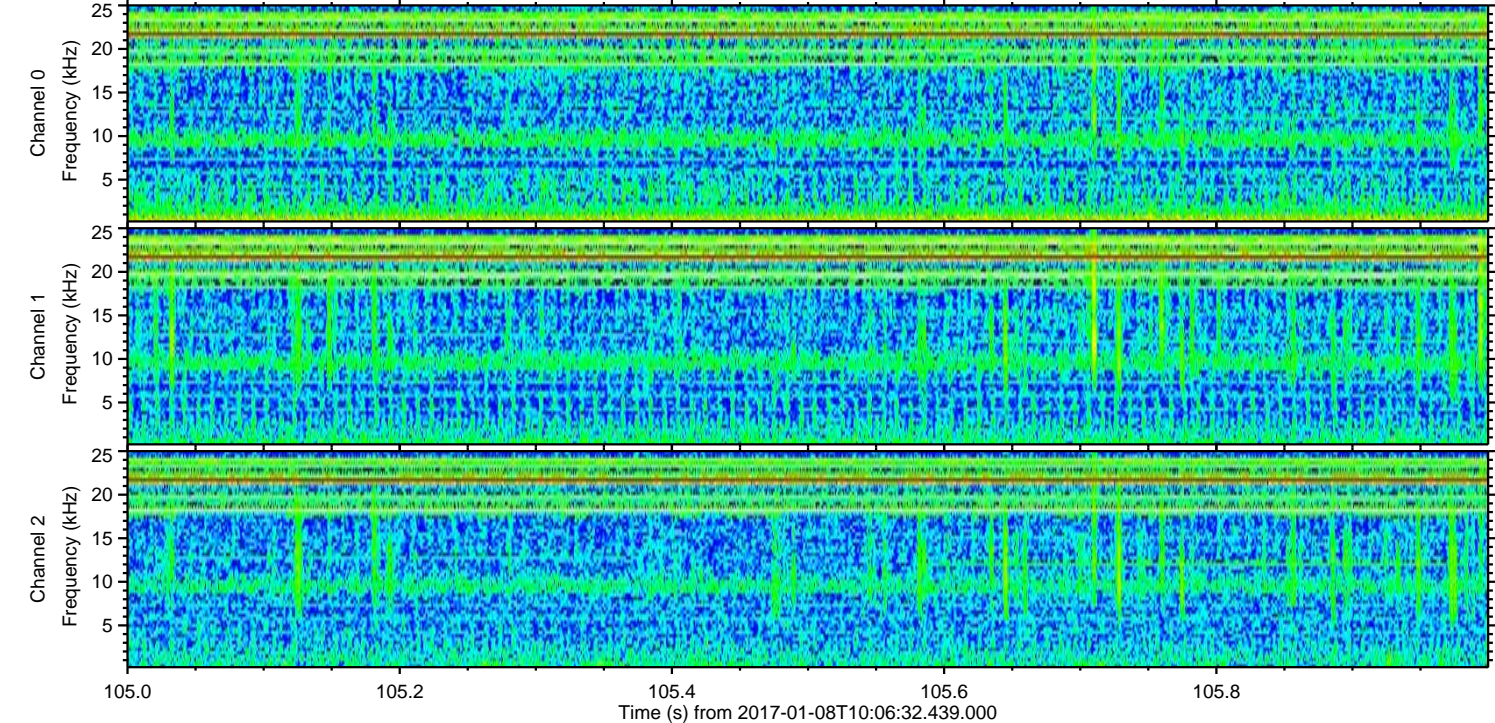
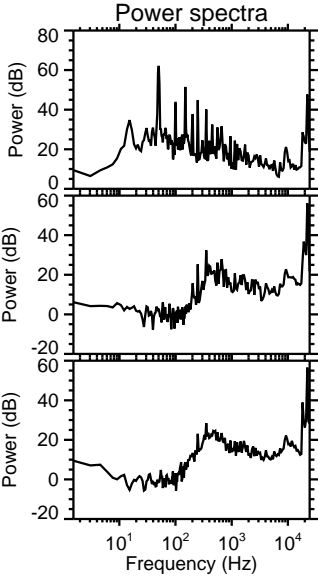
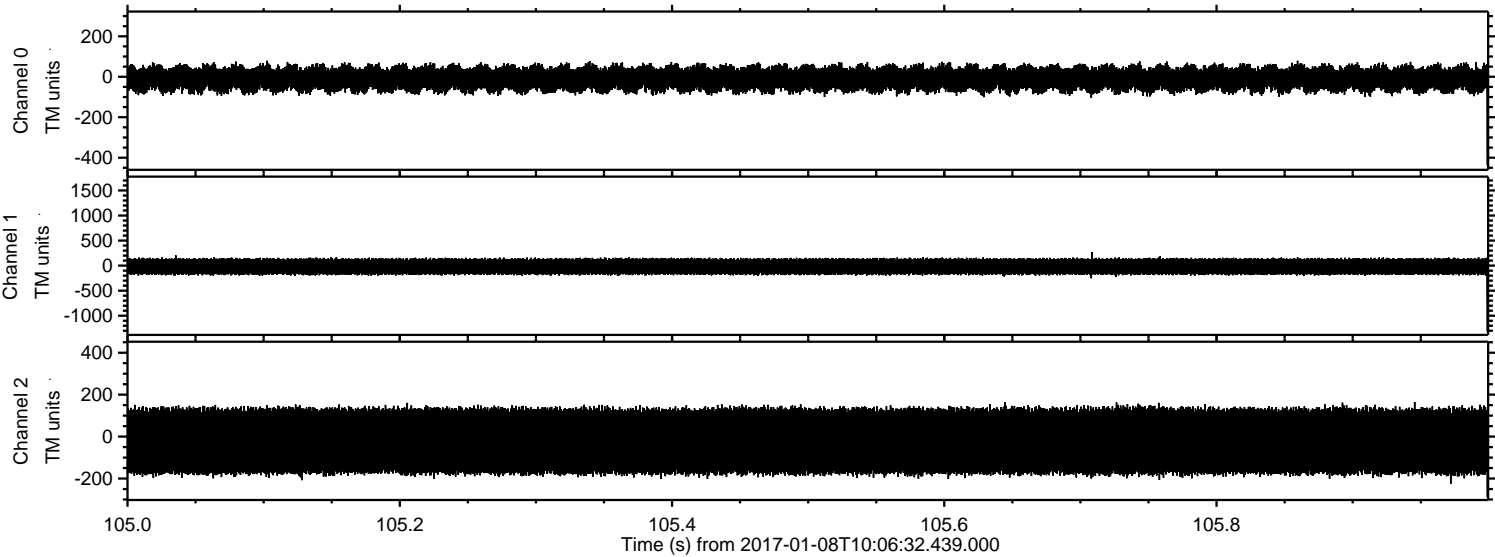
Channel 0
mn: -437
mx: 361
 μ : -10.0
 σ : 37.8

Channel 1
mn: -1364
mx: 2251
 μ : -18.4
 σ : 97.6

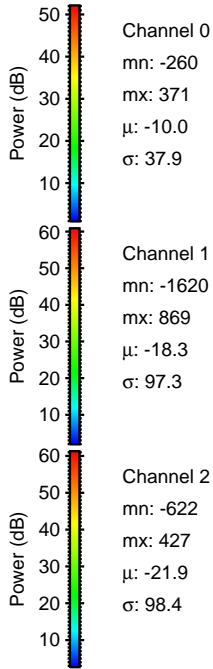
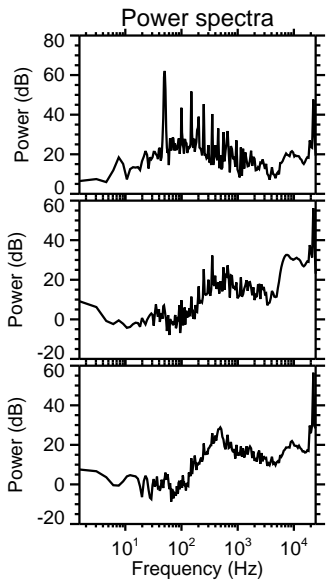
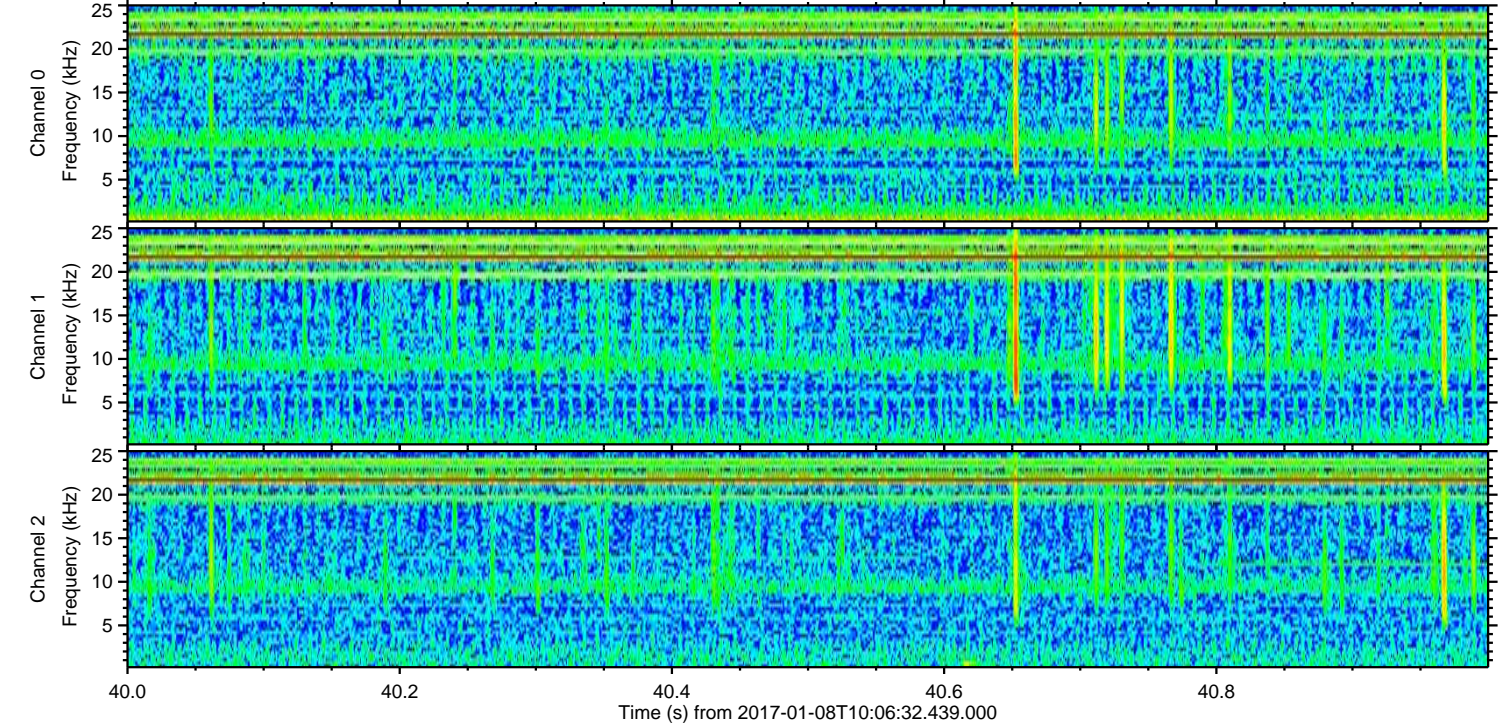
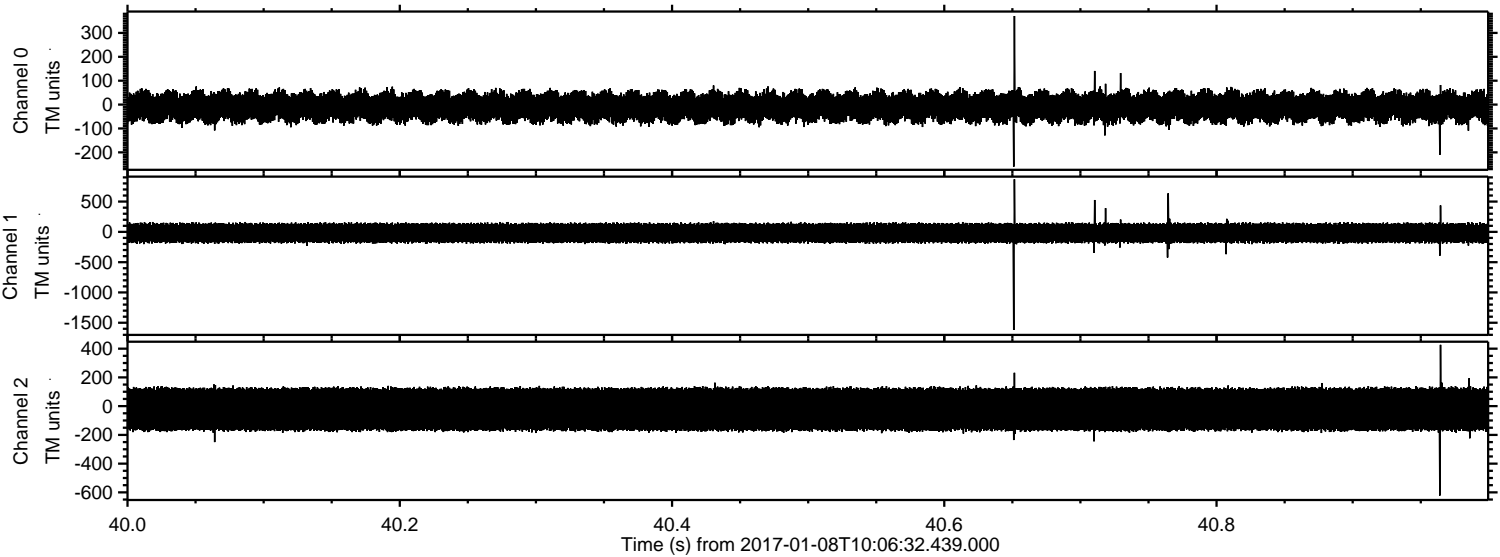
Channel 2
mn: -324
mx: 302
 μ : -21.9
 σ : 98.3

ELMAVAN 3D WAVEFORMS (Measured data sampled at 50 kHz) 51000 packets of 144 samples from 2017-01-08T10:06:32.439.000. Part 106/147

Processed Sun Jan 8 11:14:15 2017 by ELM ver.2012-10-06 from 001__elm20170108_100631__dat00.bin



Processed Sun Jan 8 11:14:15 2017 by ELM ver.2012-10-06 from 001__elm20170108_100631__dat00.bin

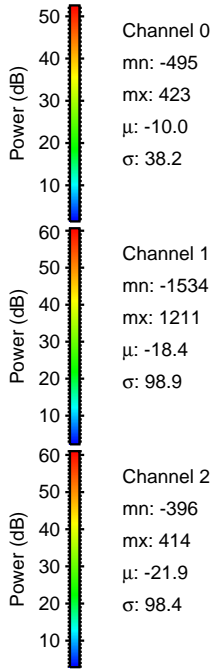
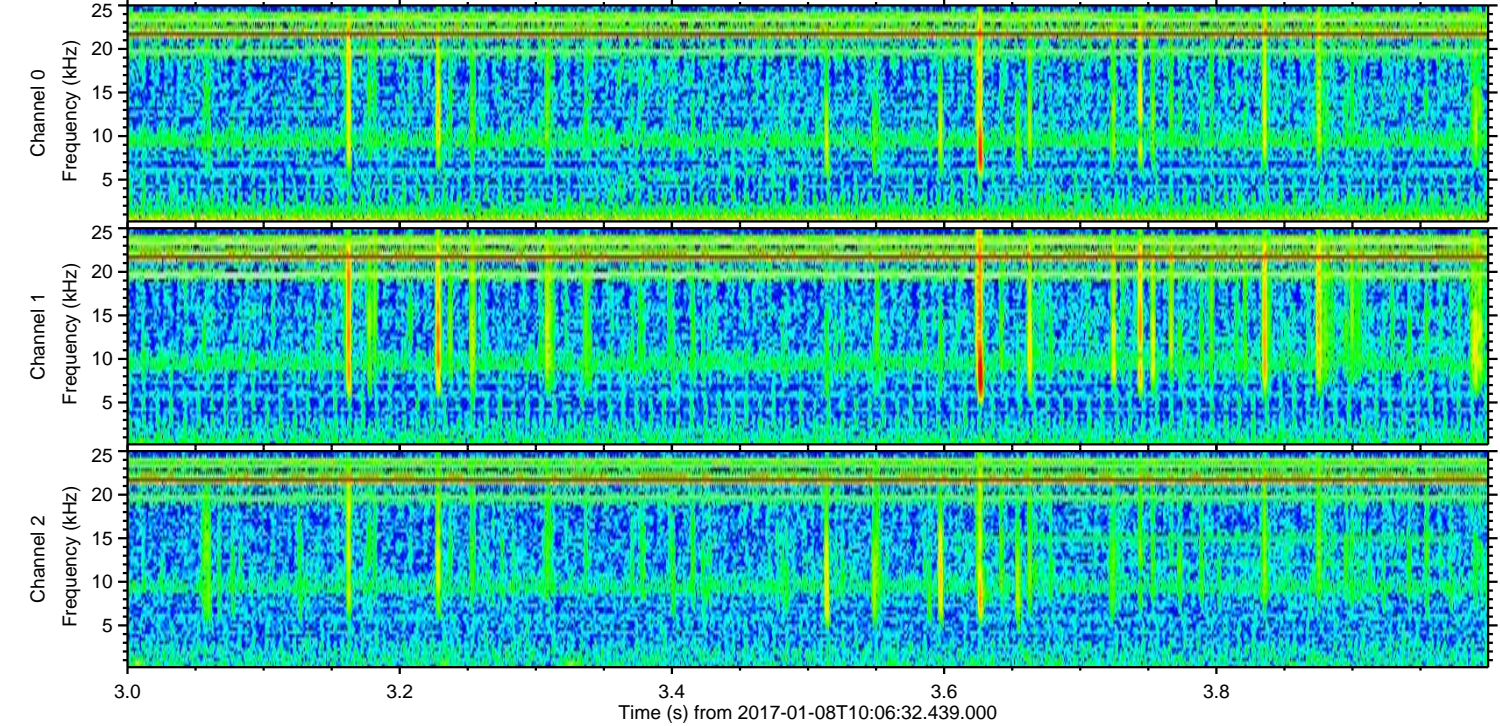
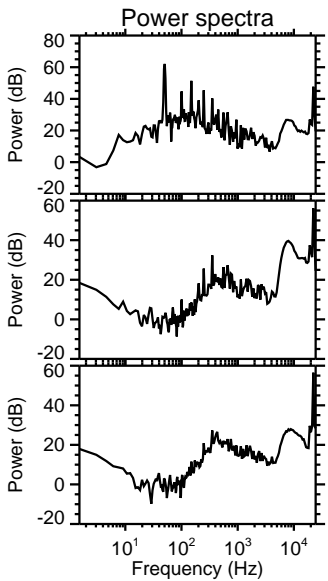
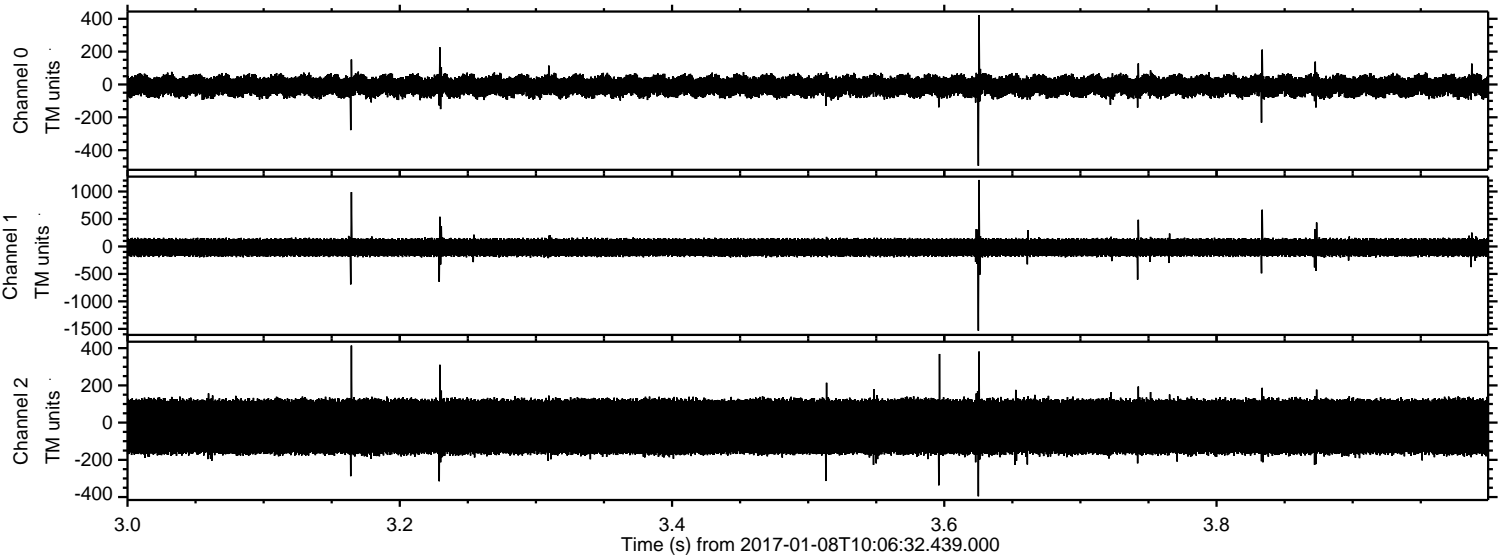


Channel 0
mn: -260
mx: 371
 μ : -10.0
 σ : 37.9

Channel 1
mn: -1620
mx: 869
 μ : -18.3
 σ : 97.3

Channel 2
mn: -622
mx: 427
 μ : -21.9
 σ : 98.4

Processed Sun Jan 8 11:14:16 2017 by ELM ver.2012-10-06 from 001__elm20170108_100631__dat00.bin



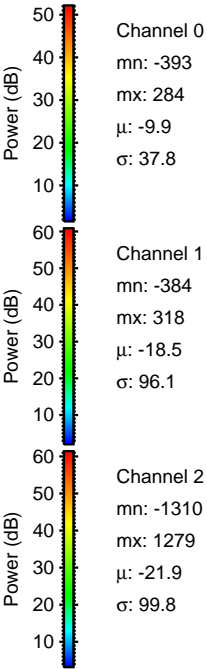
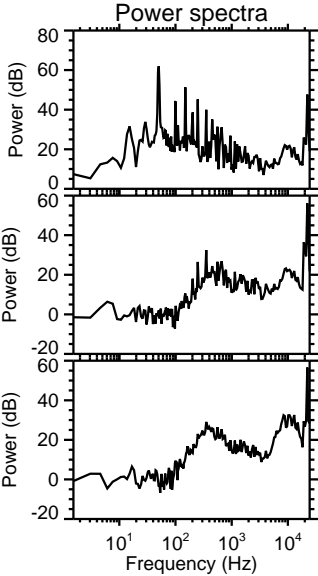
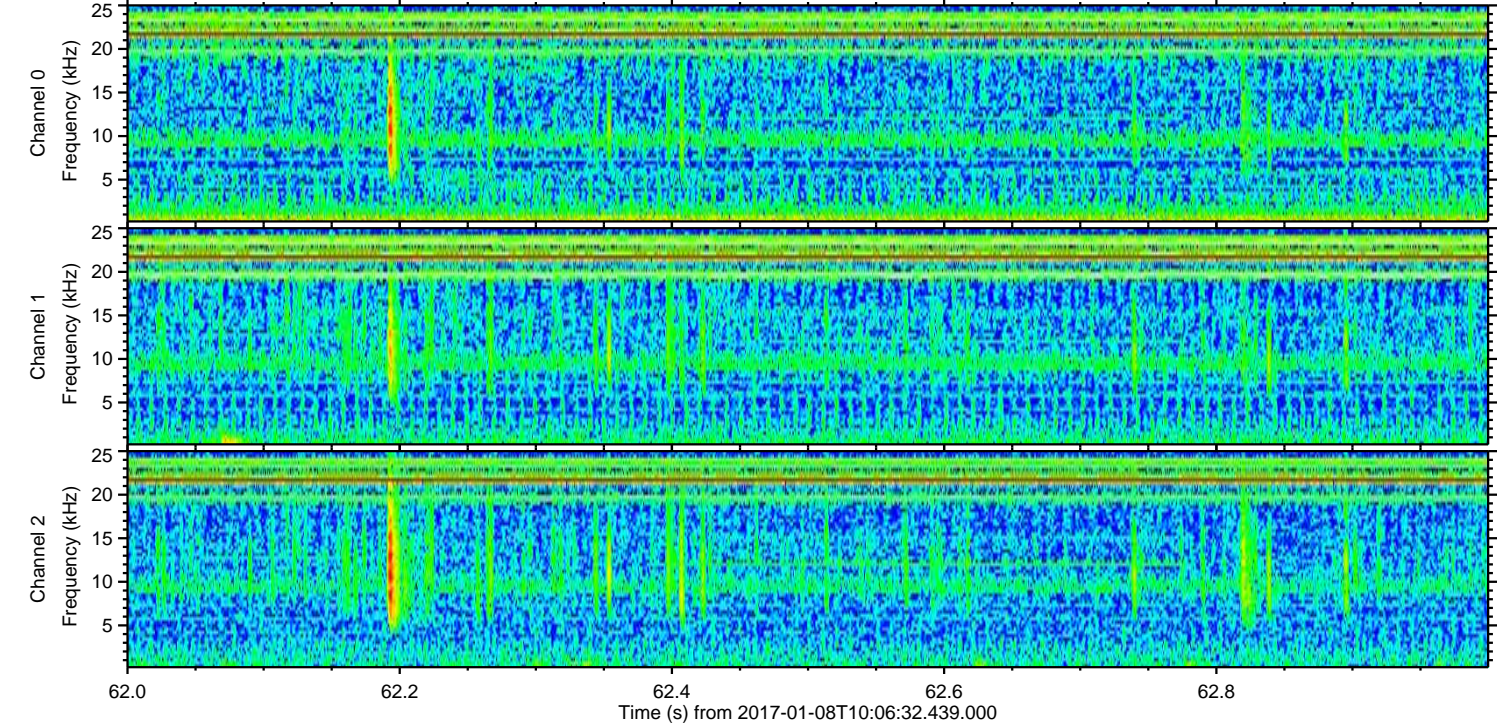
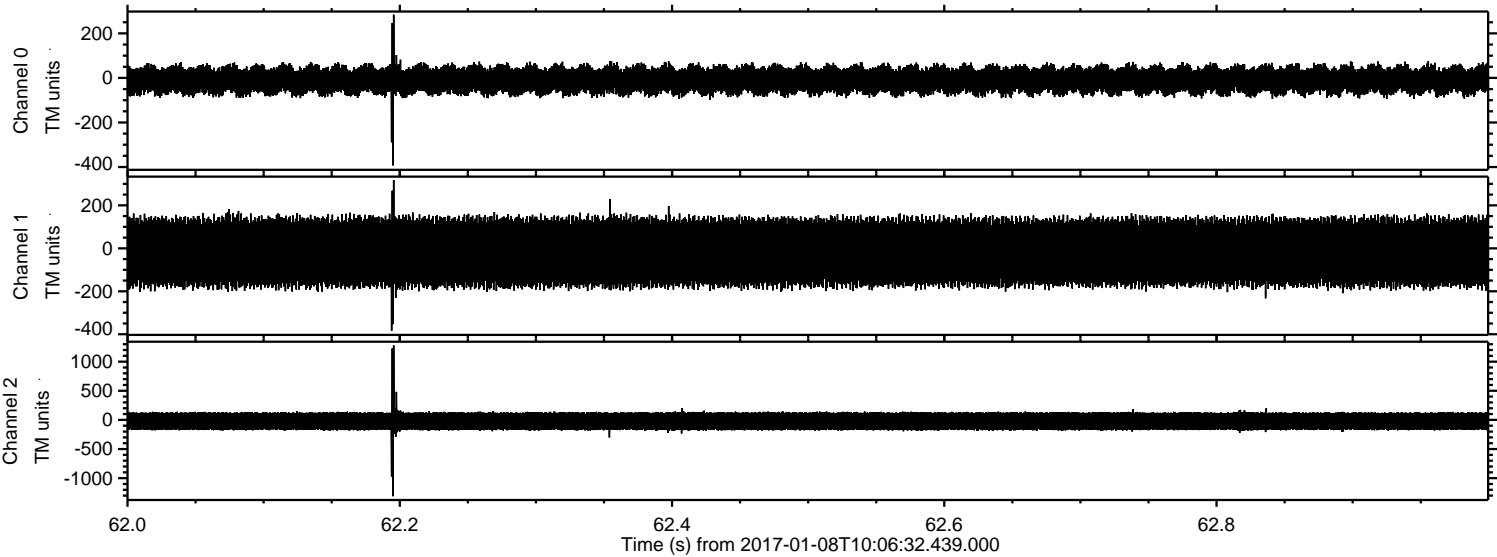
Channel 0
mn: -495
mx: 423
 μ : -10.0
 σ : 38.2

Channel 1
mn: -1534
mx: 1211
 μ : -18.4
 σ : 98.9

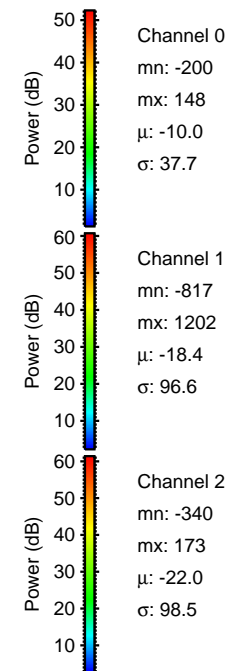
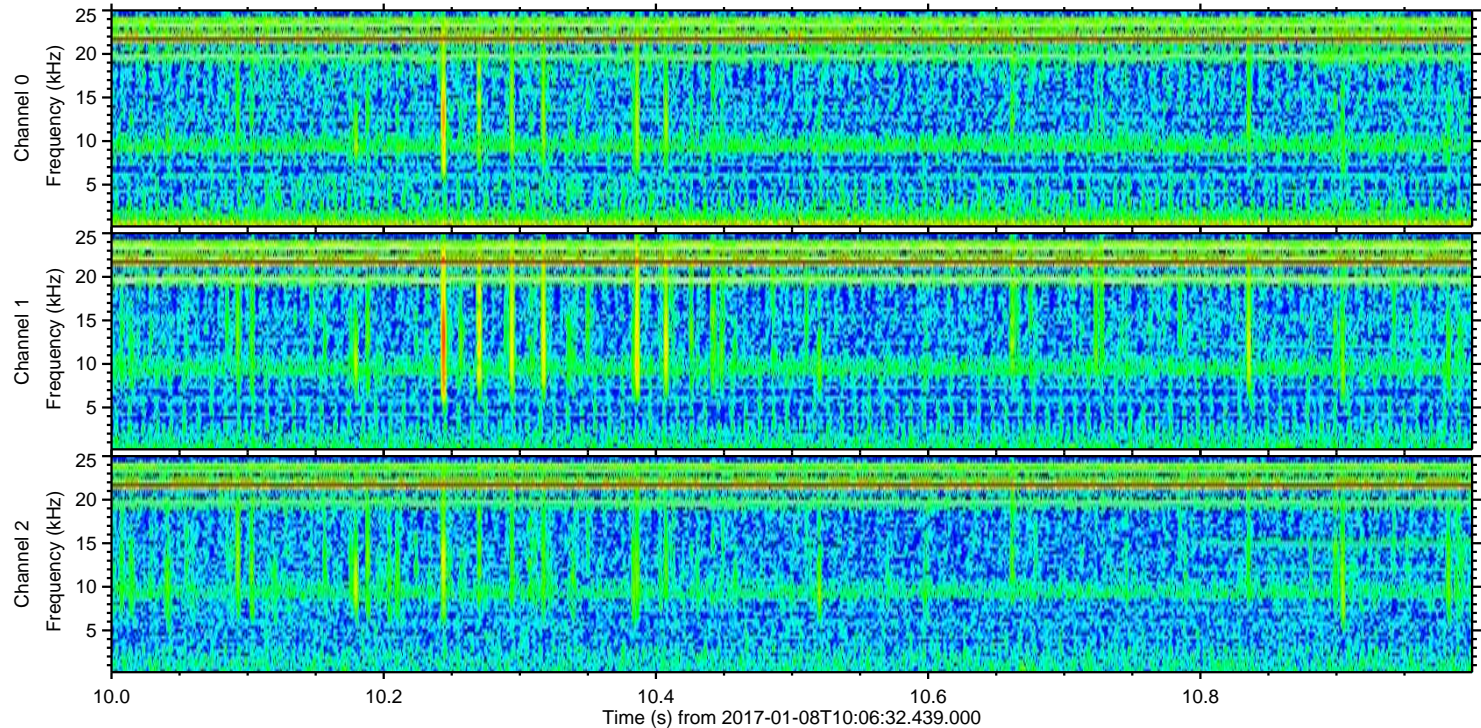
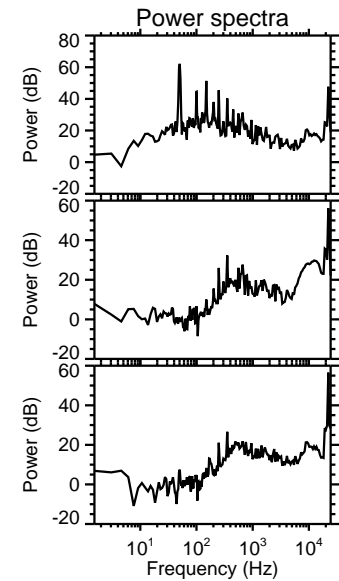
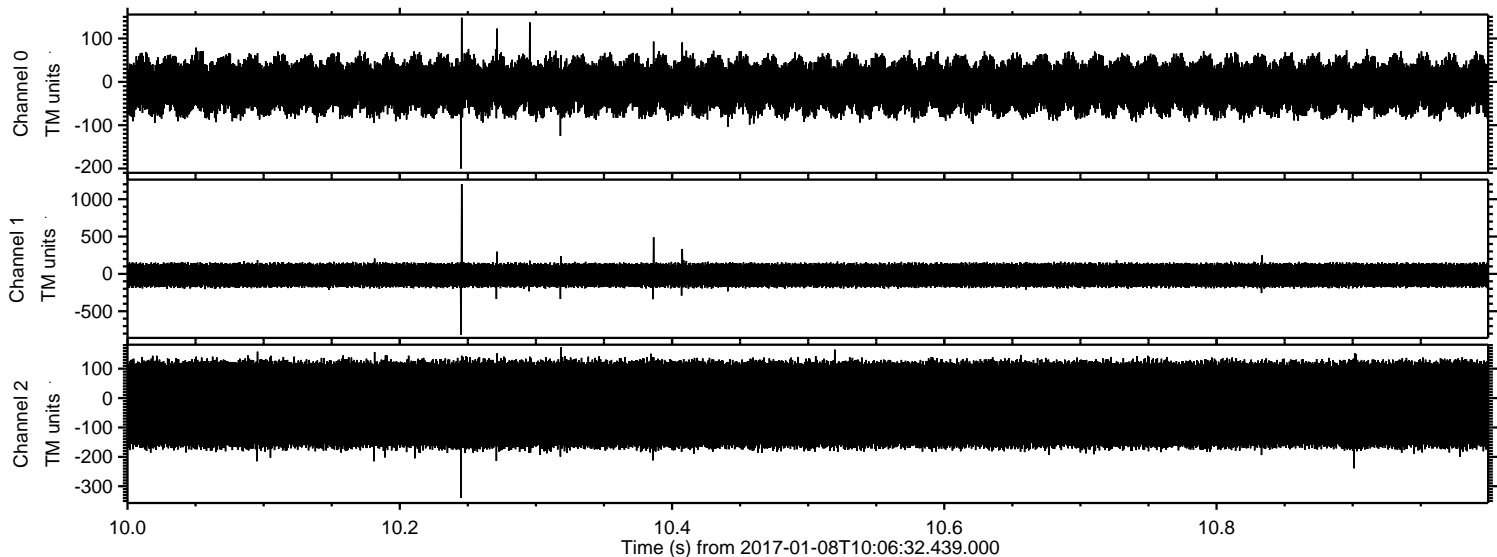
Channel 2
mn: -396
mx: 414
 μ : -21.9
 σ : 98.4

ELMAVAN 3D WAVEFORMS (Measured data sampled at 50 kHz) 51000 packets of 144 samples from 2017-01-08T10:06:32.439.000. Part 63/147

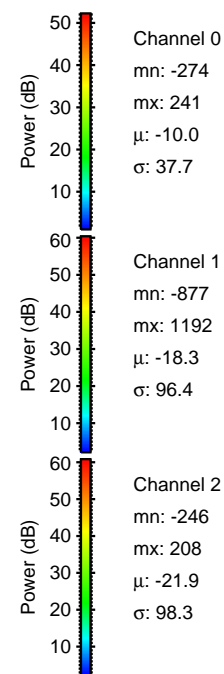
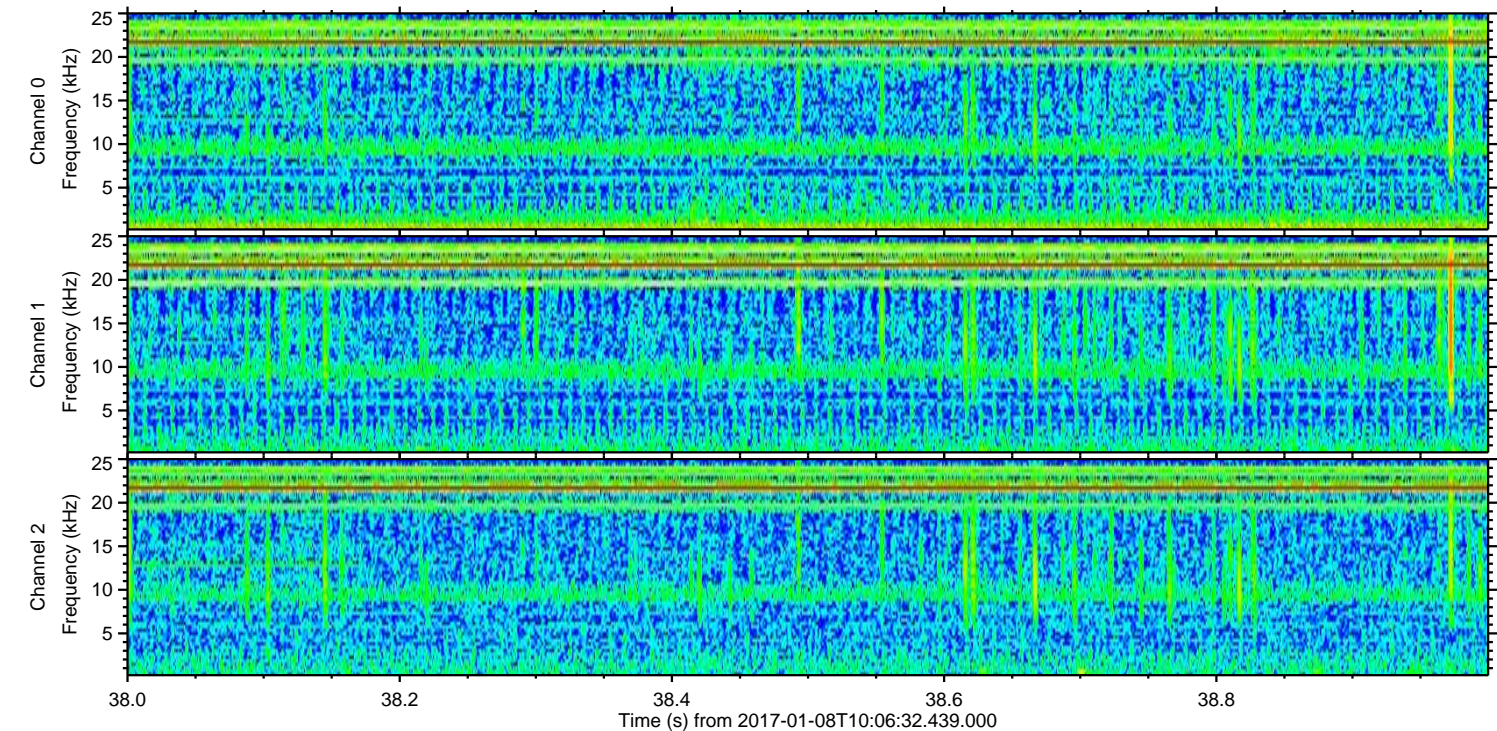
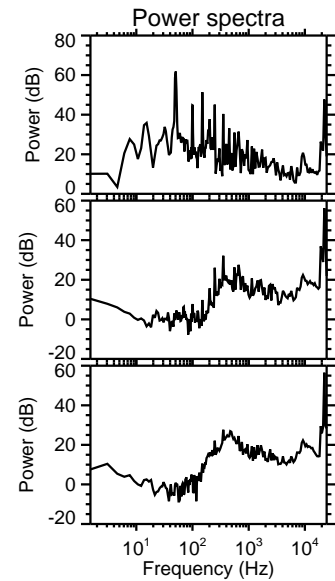
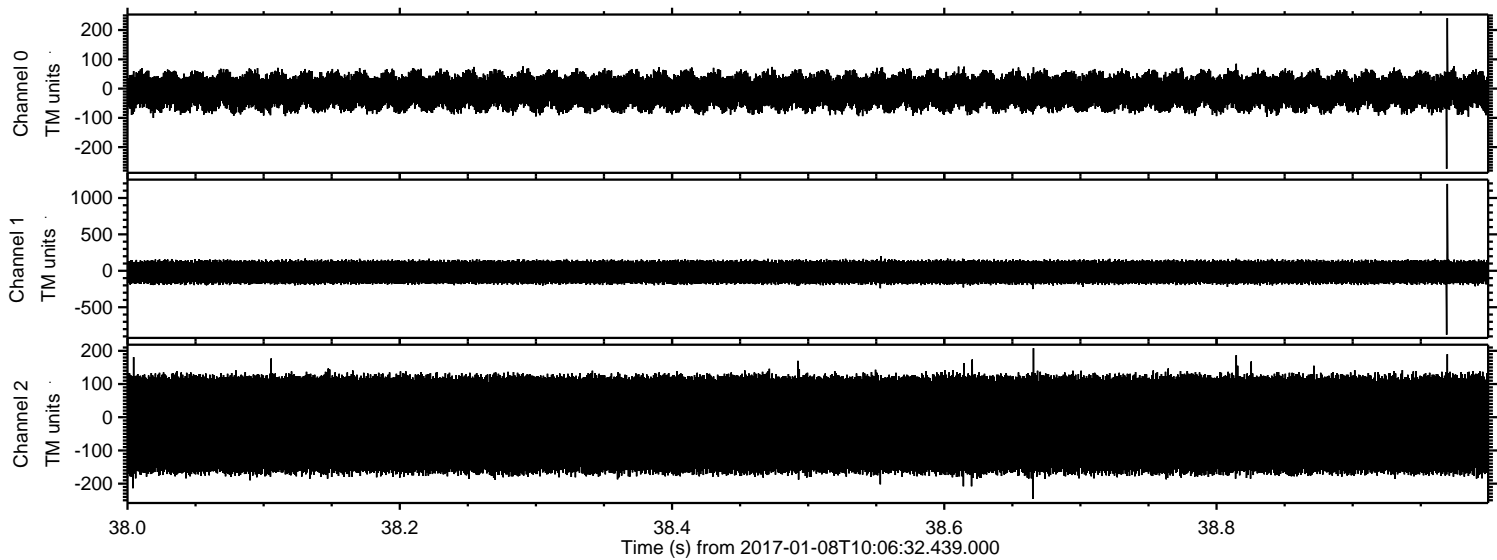
Processed Sun Jan 8 11:14:17 2017 by ELM ver.2012-10-06 from 001__elm20170108_100631__dat00.bin



Processed Sun Jan 8 11:14:18 2017 by ELM ver.2012-10-06 from 001__elm20170108_100631__dat00.bin

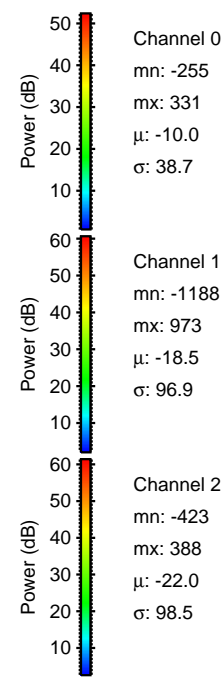
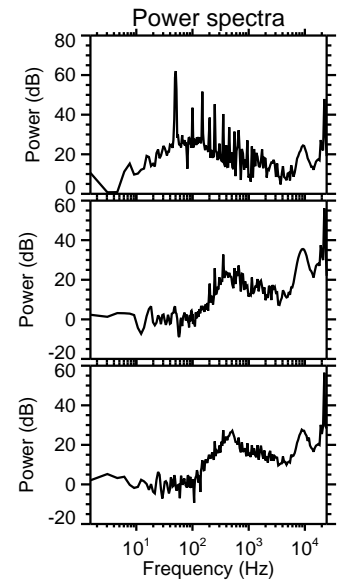
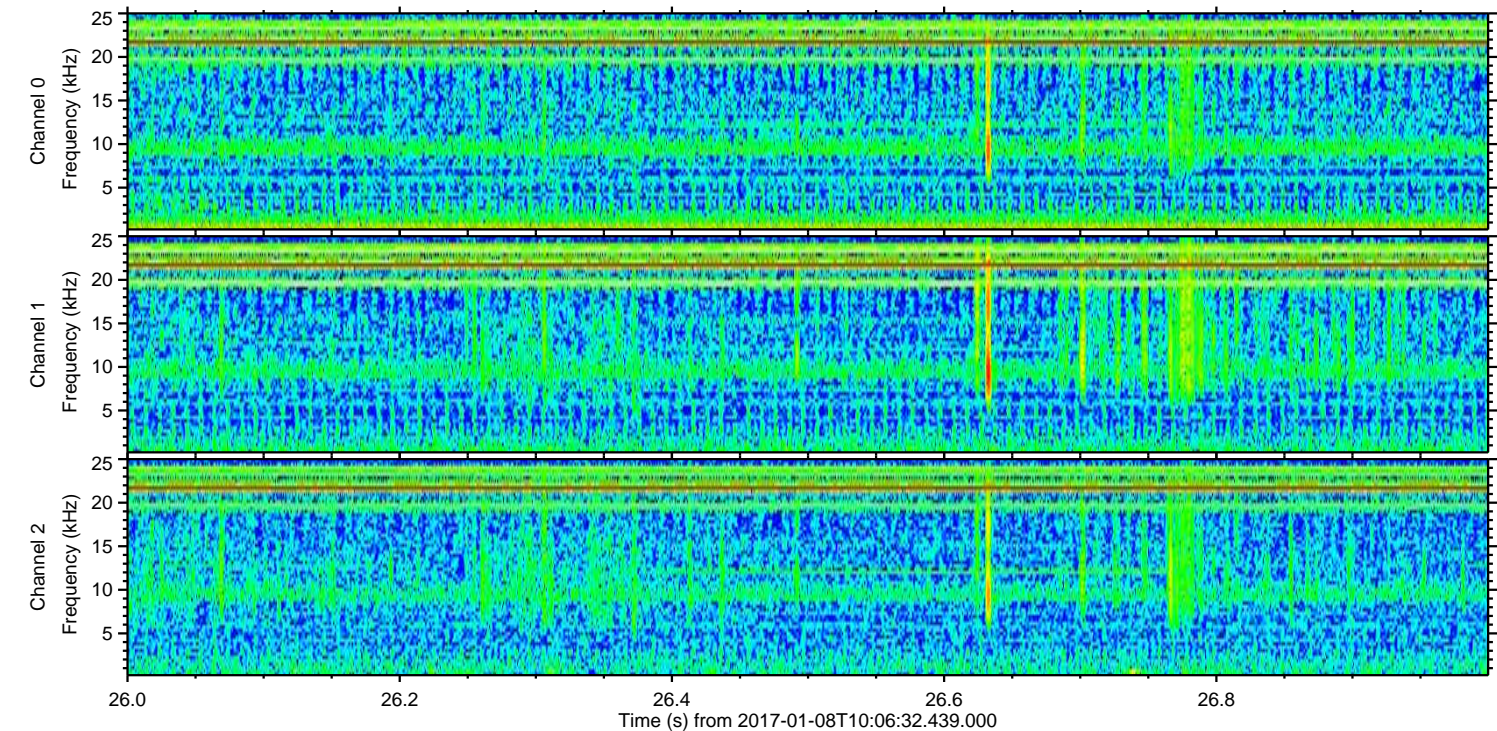
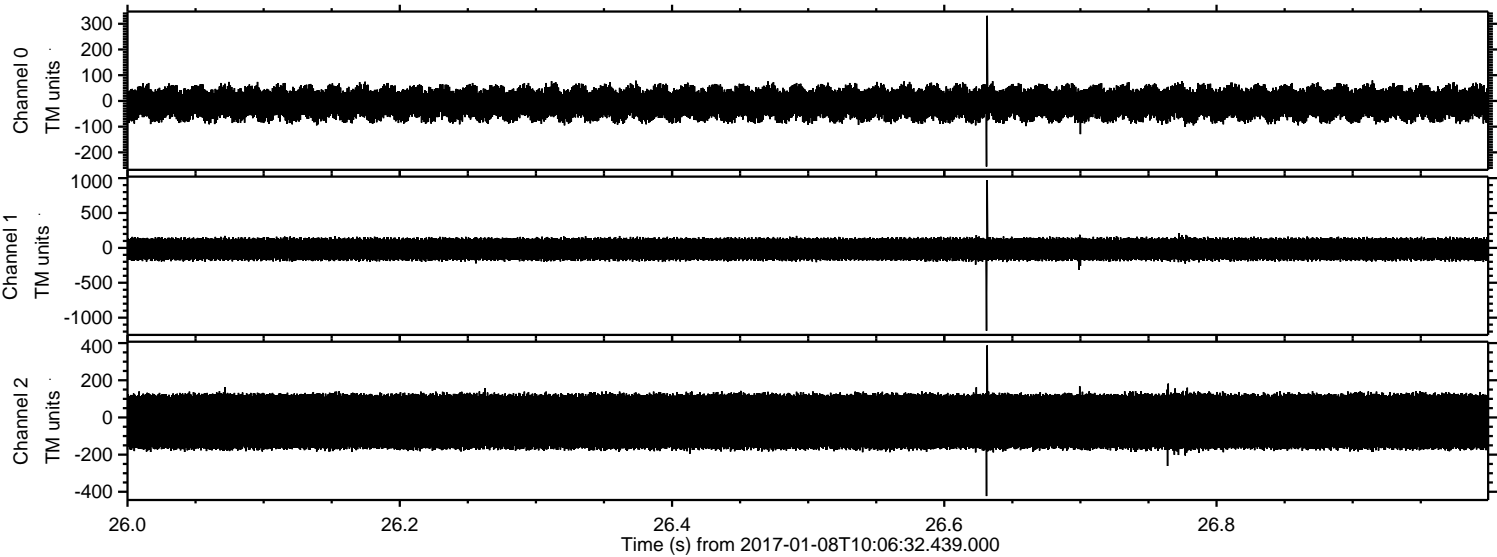


Processed Sun Jan 8 11:14:19 2017 by ELM ver.2012-10-06 from 001__elm20170108_100631__dat00.bin



ELMAVAN 3D WAVEFORMS (Measured data sampled at 50 kHz) 51000 packets of 144 samples from 2017-01-08T10:06:32.439.000. Part 27/147

Processed Sun Jan 8 11:14:20 2017 by ELM ver.2012-10-06 from 001__elm20170108_100631__dat00.bin



Channel 0
mn: -255
mx: 331
 μ : -10.0
 σ : 38.7

Channel 1
mn: -1188
mx: 973
 μ : -18.5
 σ : 96.9

Channel 2
mn: -423
mx: 388
 μ : -22.0
 σ : 98.5

ELMAVAN 3D WAVEFORMS (Measured data sampled at 50 kHz) 51000 packets of 144 samples from 2017-01-08T10:06:32.439.000. Part 57/147

Processed Sun Jan 8 11:14:21 2017 by ELM ver.2012-10-06 from 001__elm20170108_100631__dat00.bin

