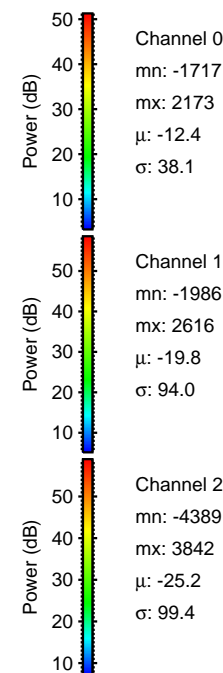
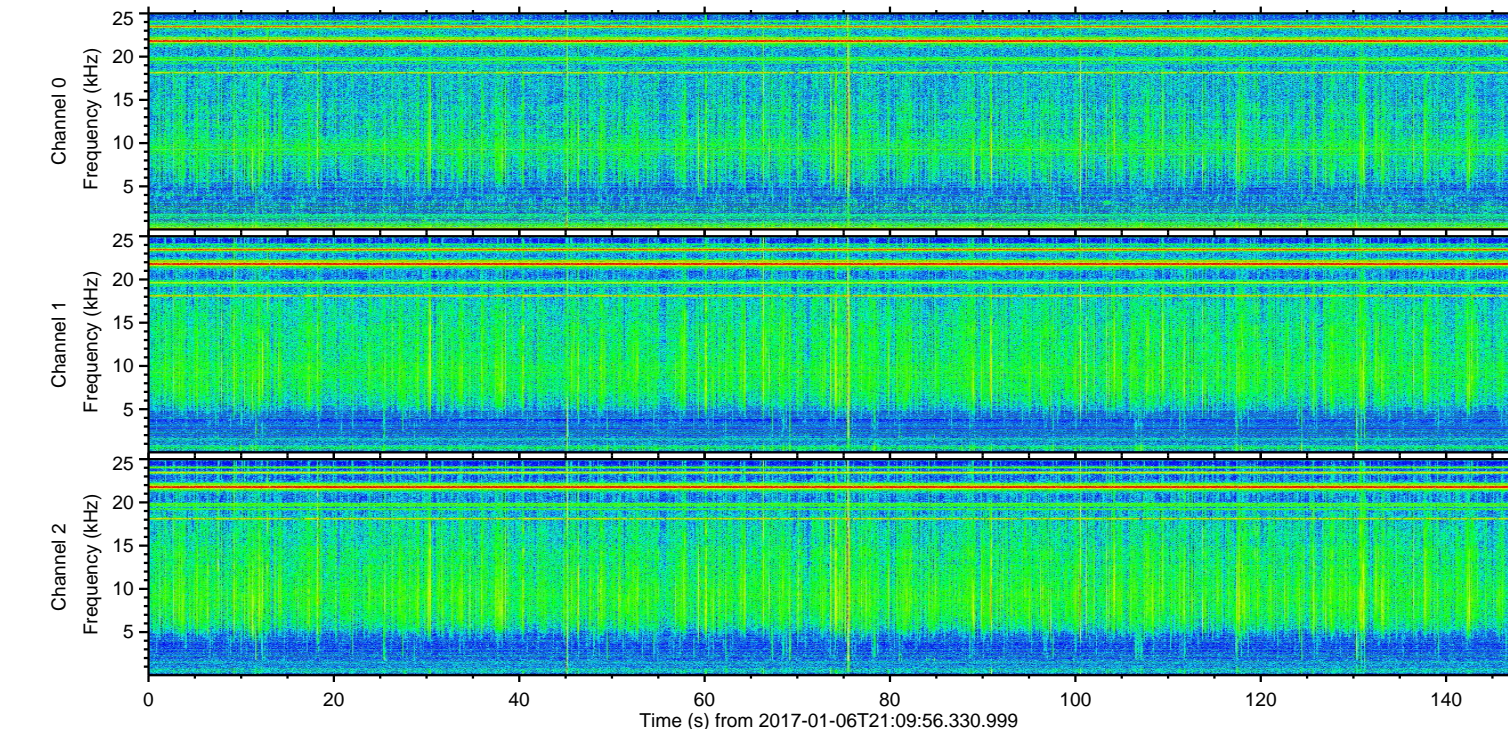
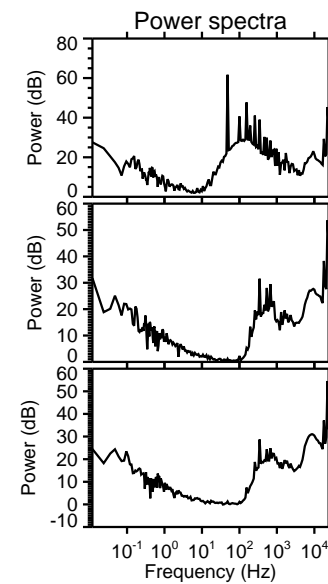
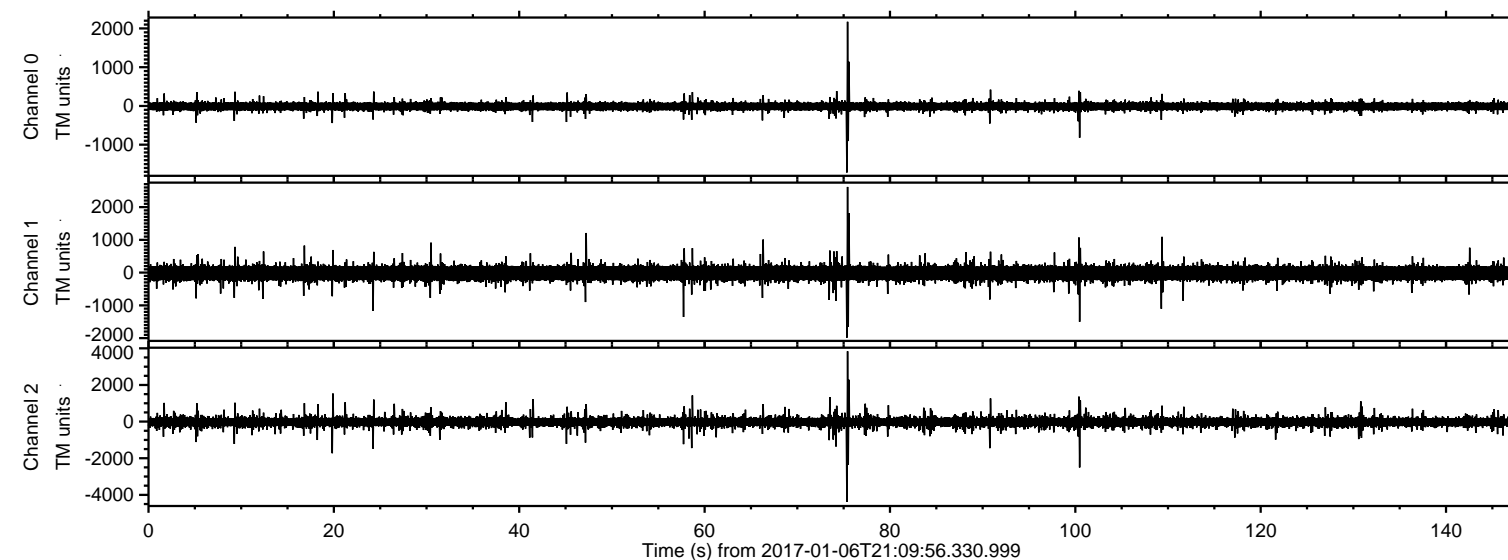


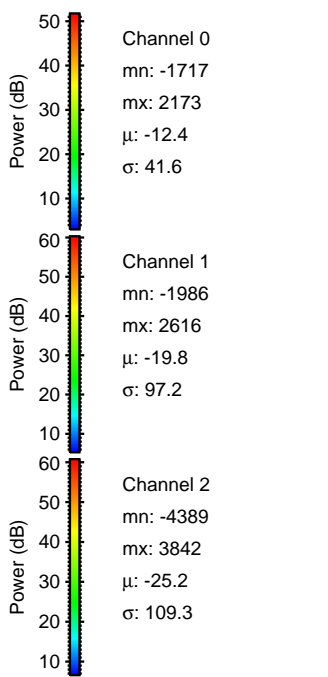
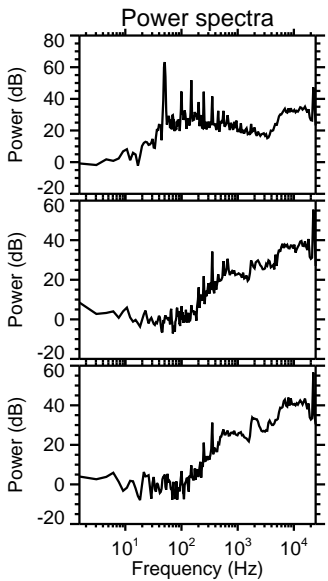
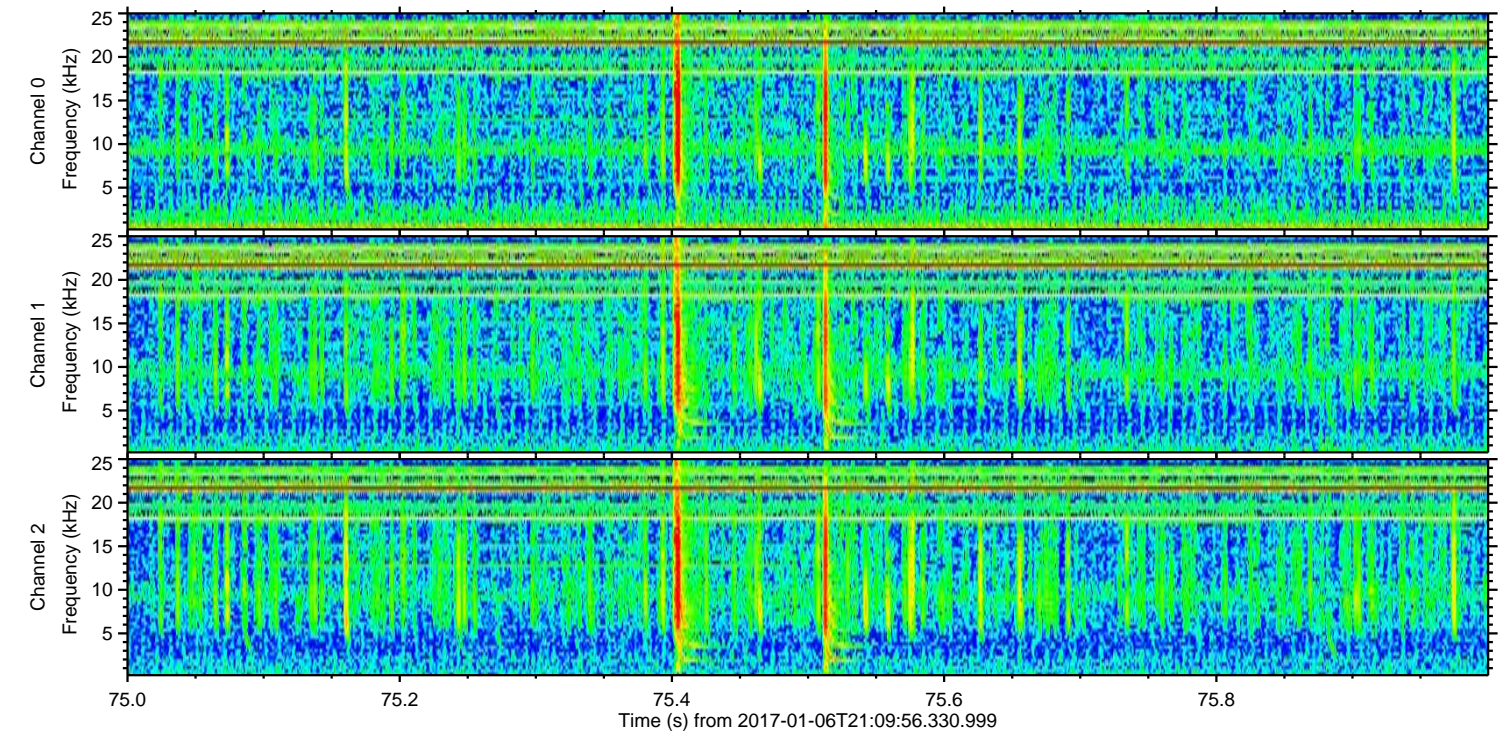
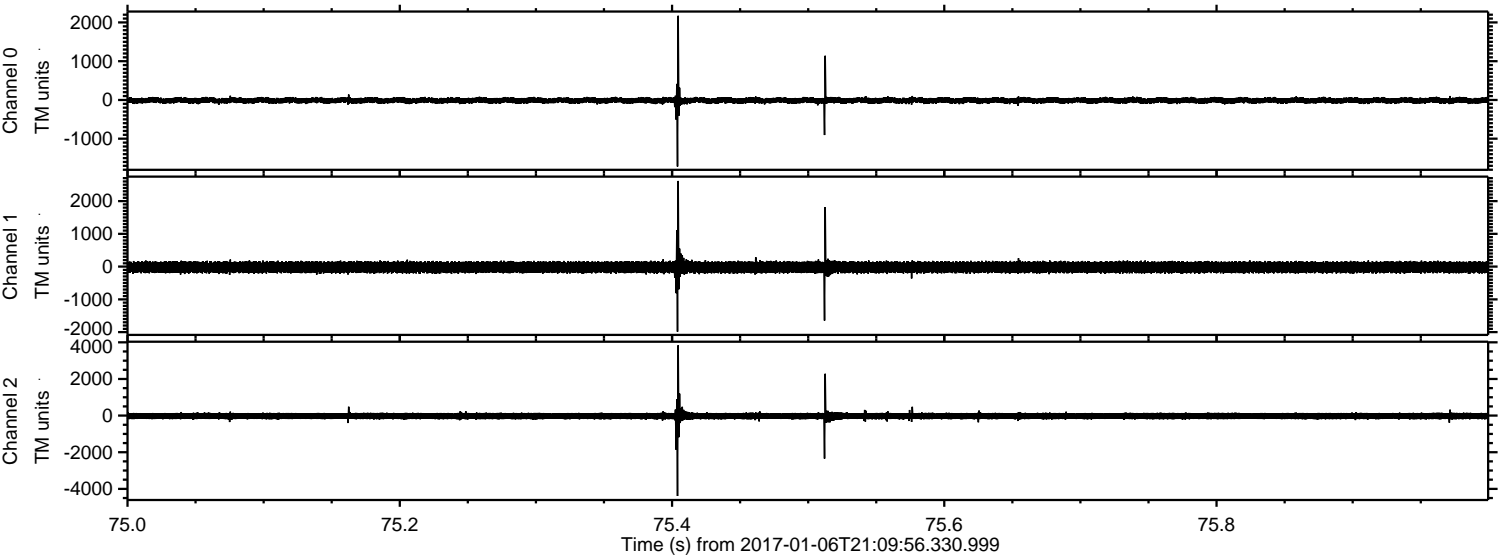
# ELMAVAN 3D WAVEFORMS (Measured data sampled at 50 kHz) 51000 packets of 144 samples from 2017-01-06T21:09:56.330.999.

Processed Fri Jan 6 22:17:52 2017 by ELM ver.2012-10-06 from 001\_\_elm20170106\_210955\_\_dat00.bin





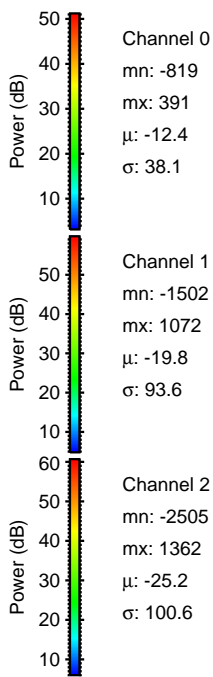
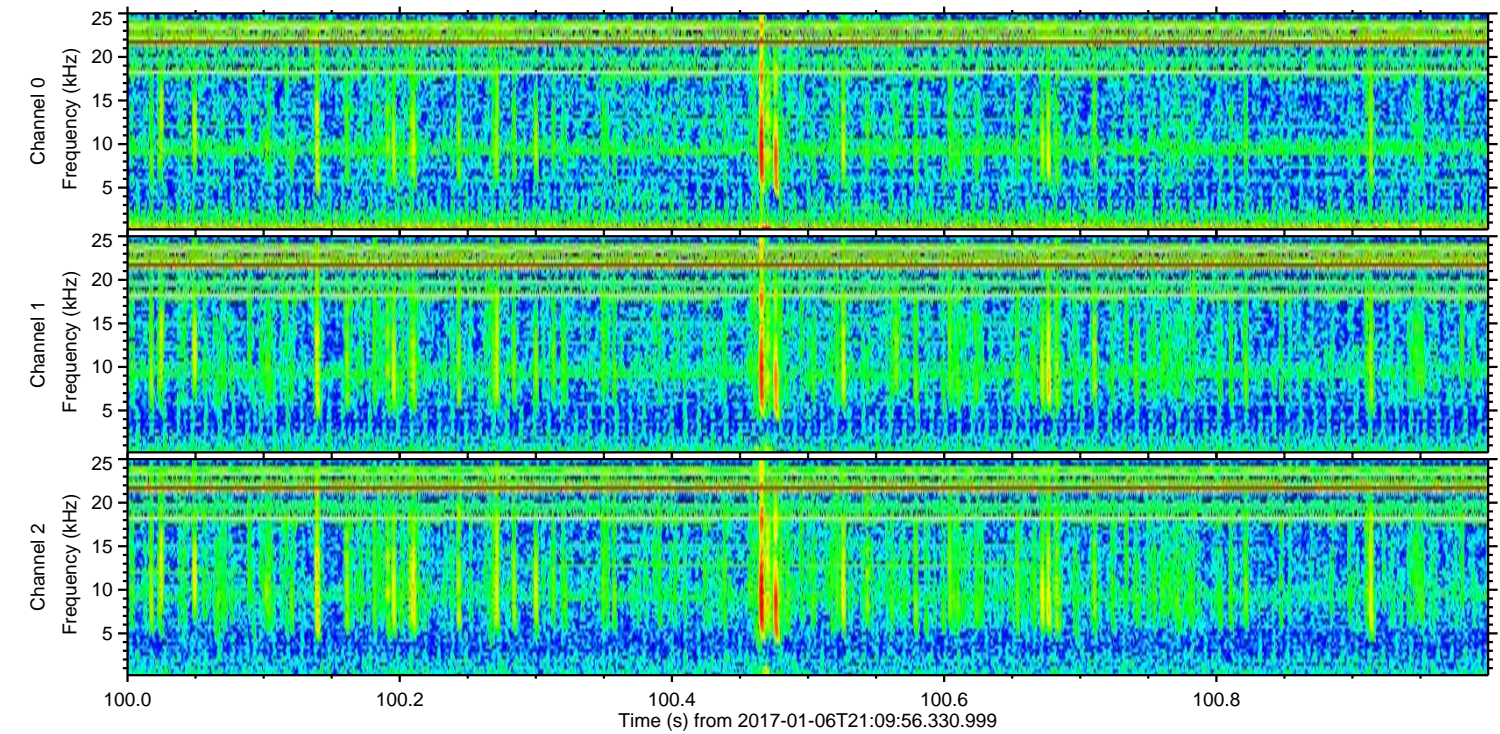
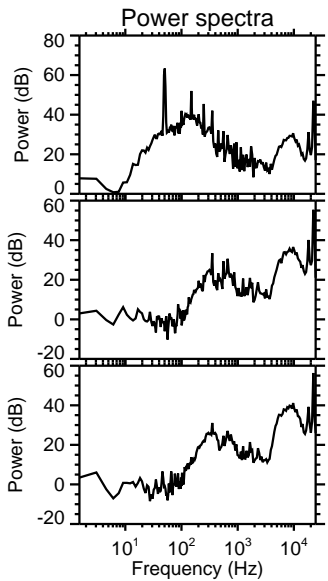
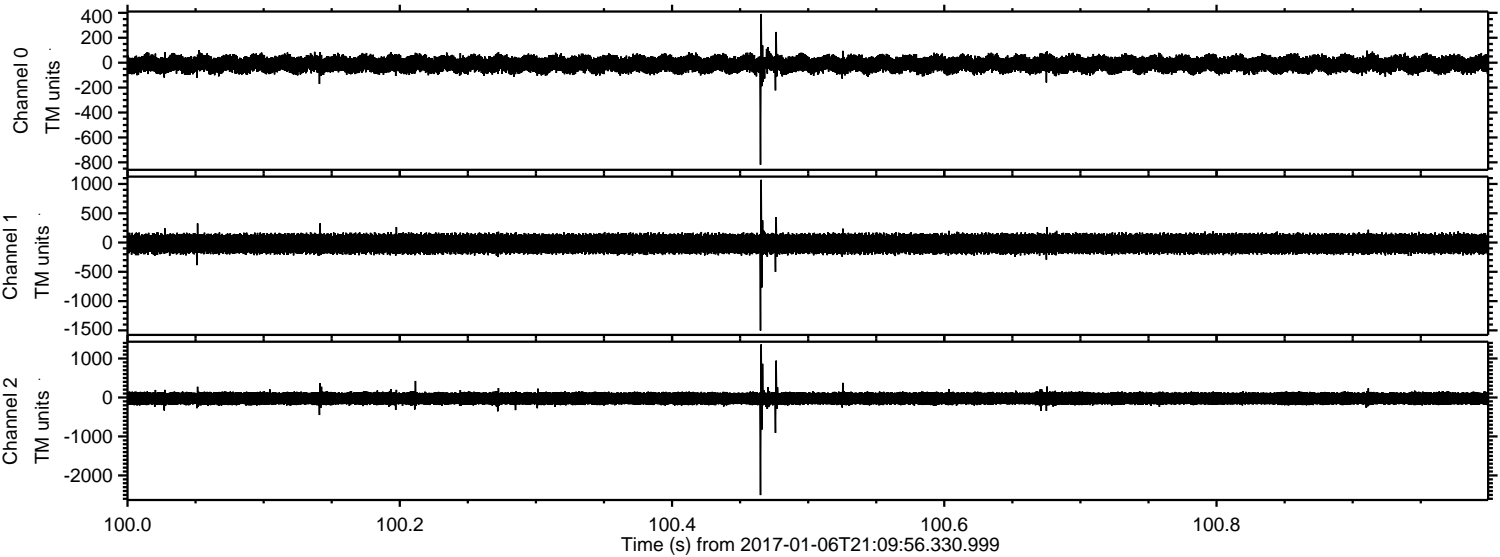
Processed Fri Jan 6 22:18:04 2017 by ELM ver.2012-10-06 from 001\_\_elm20170106\_210955\_\_dat00.bin





ELMAVAN 3D WAVEFORMS (Measured data sampled at 50 kHz) 51000 packets of 144 samples from 2017-01-06T21:09:56.330.999. Part 101/147

Processed Fri Jan 6 22:18:05 2017 by ELM ver.2012-10-06 from 001\_\_elm20170106\_210955\_\_dat00.bin



Channel 0  
mn: -819  
mx: 391  
 $\mu$ : -12.4  
 $\sigma$ : 38.1

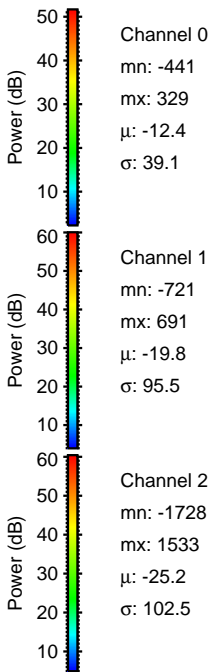
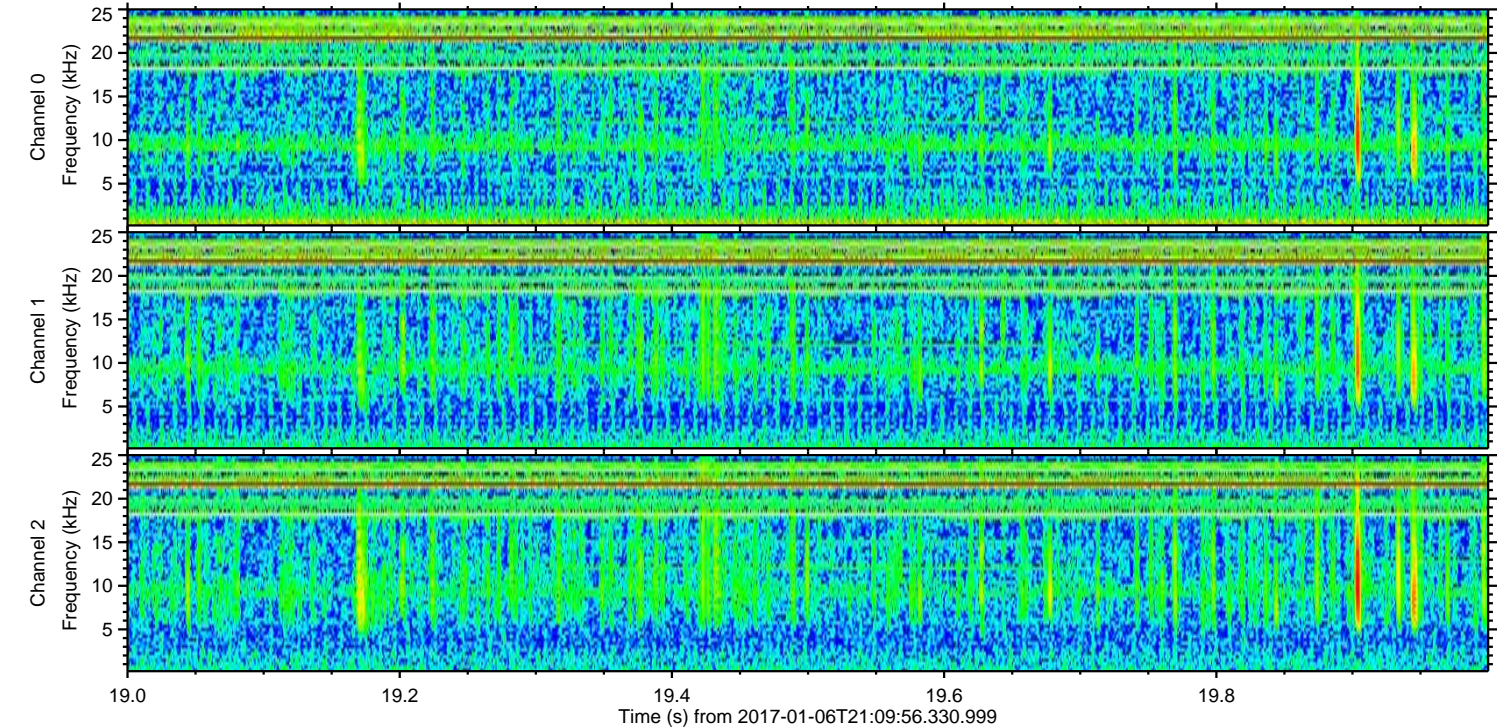
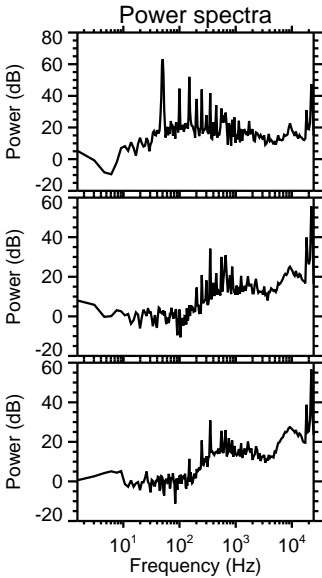
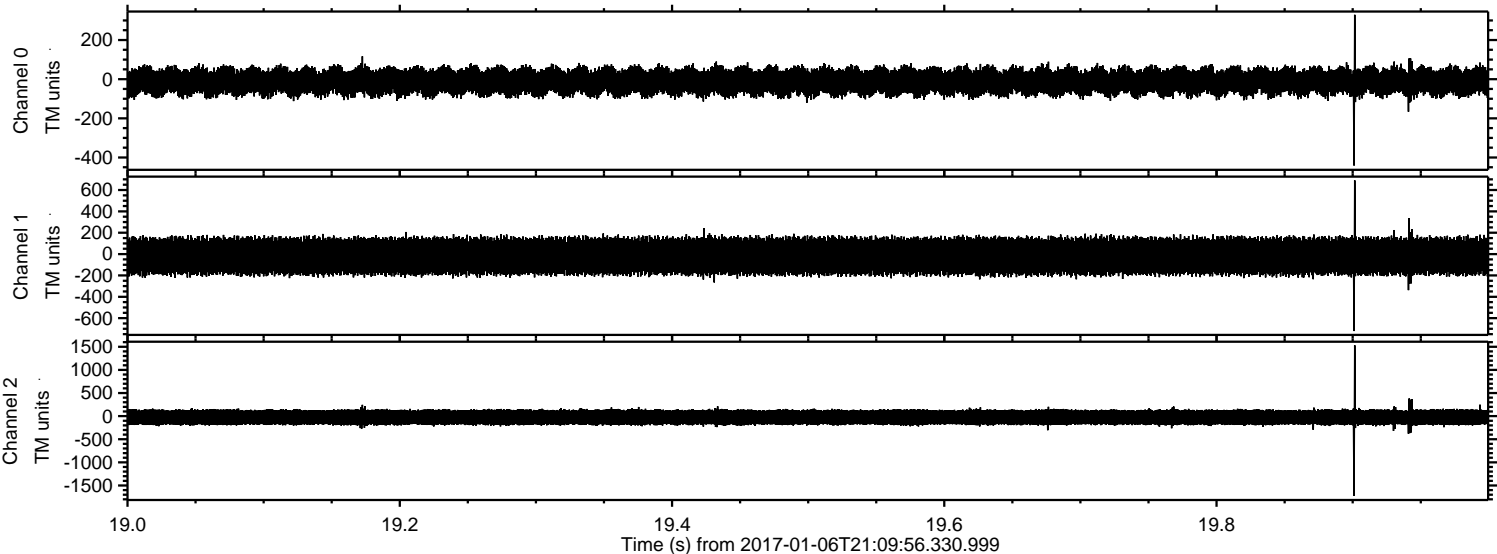
Channel 1  
mn: -1502  
mx: 1072  
 $\mu$ : -19.8  
 $\sigma$ : 93.6

Channel 2  
mn: -2505  
mx: 1362  
 $\mu$ : -25.2  
 $\sigma$ : 100.6



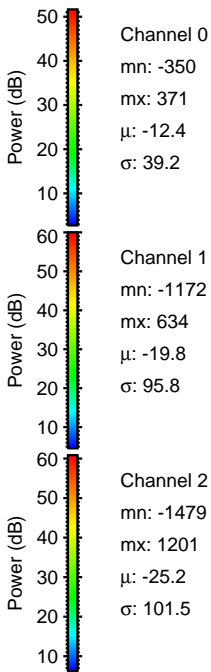
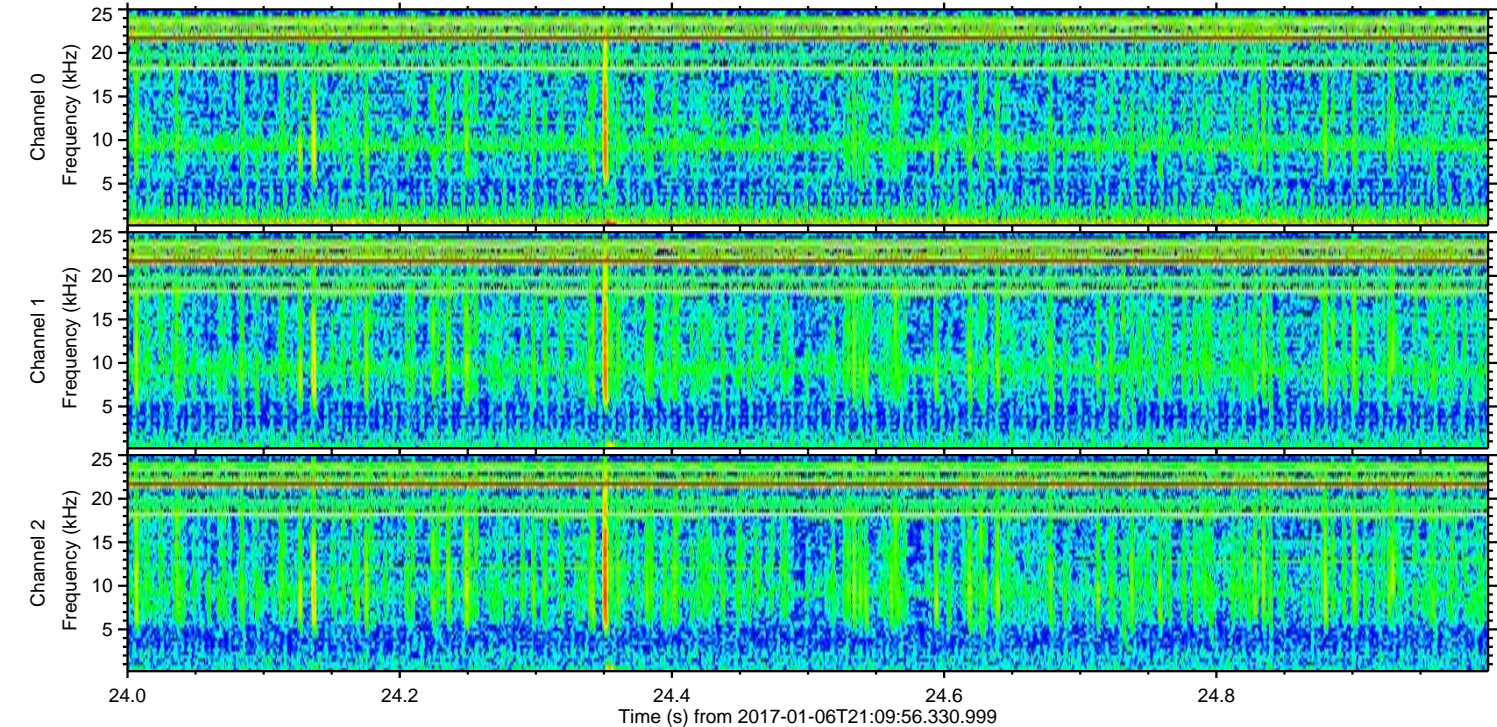
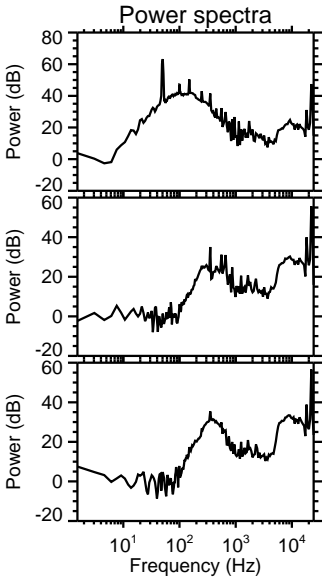
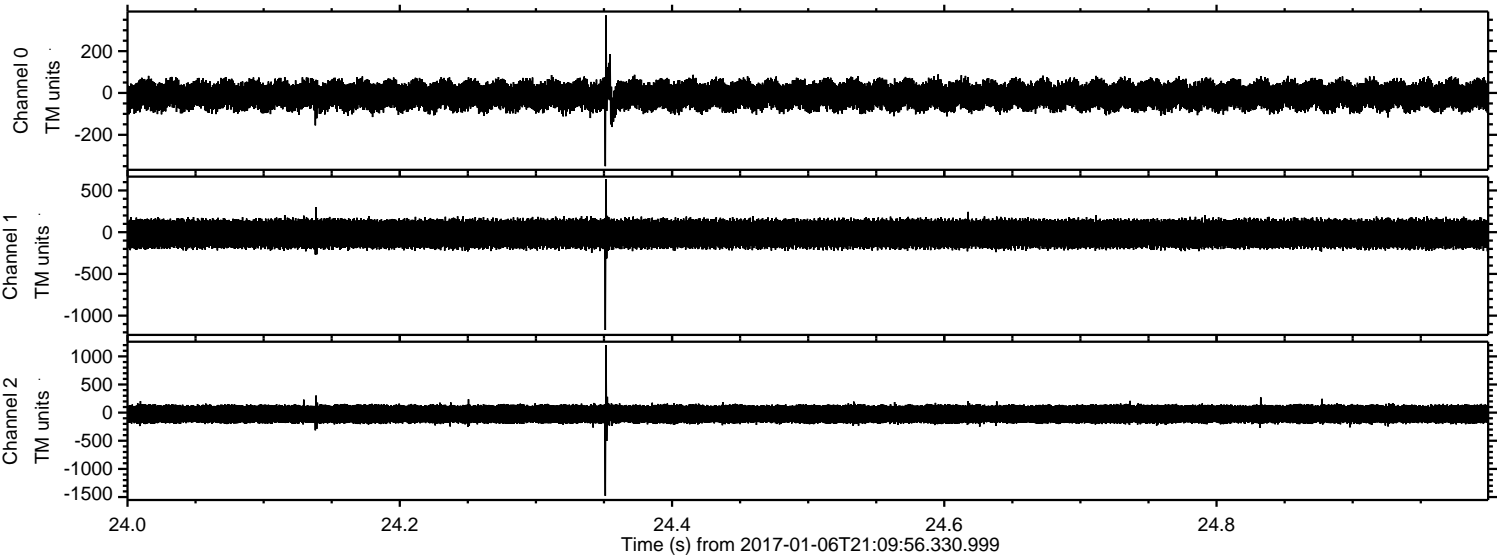
ELMAVAN 3D WAVEFORMS (Measured data sampled at 50 kHz) 51000 packets of 144 samples from 2017-01-06T21:09:56.330.999. Part 20/147

Processed Fri Jan 6 22:18:05 2017 by ELM ver.2012-10-06 from 001\_\_elm20170106\_210955\_\_dat00.bin



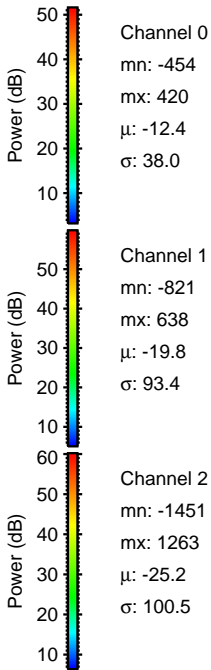
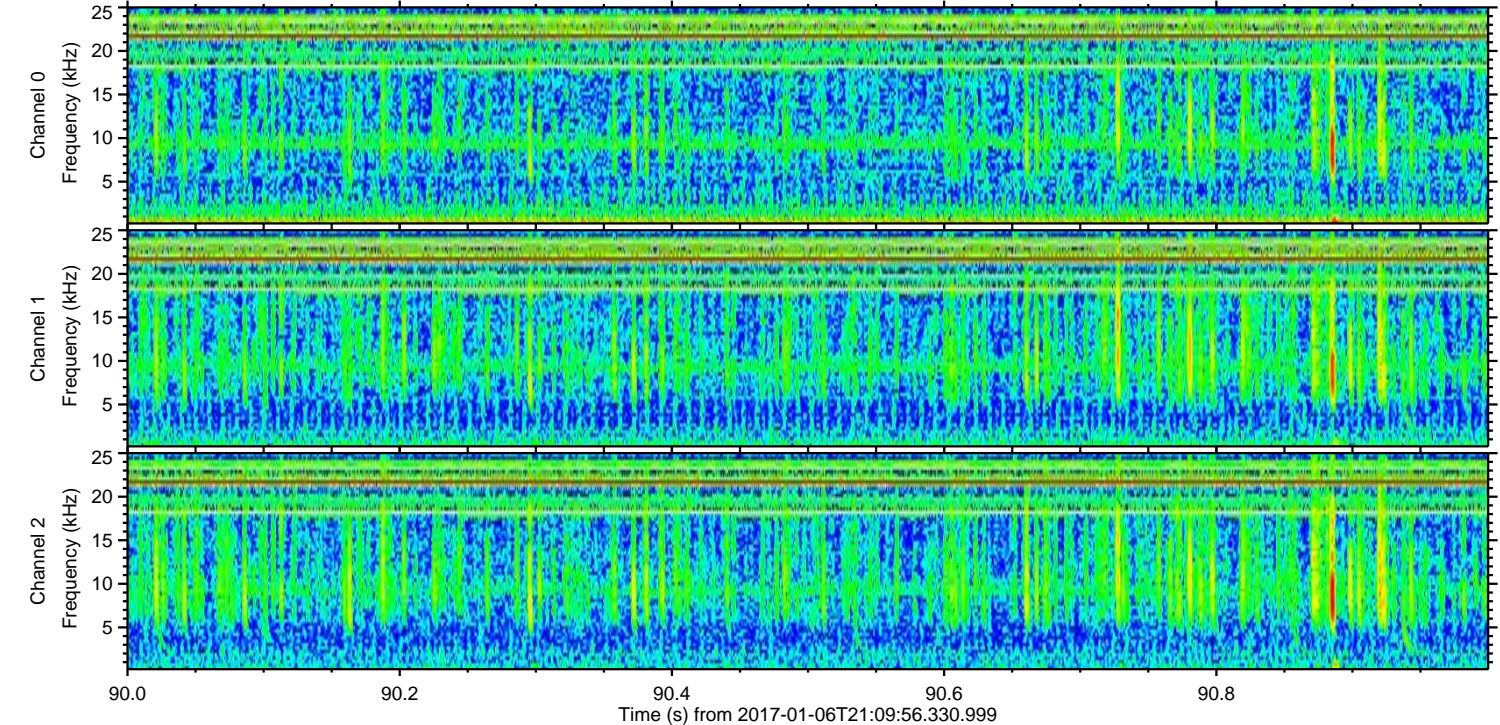
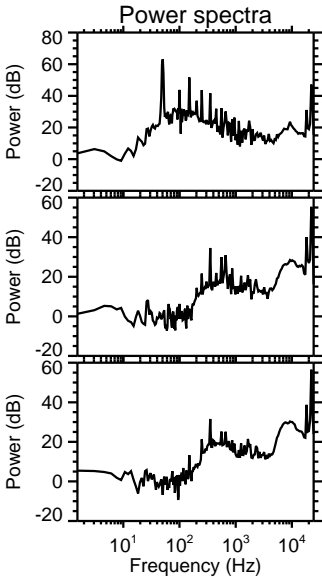
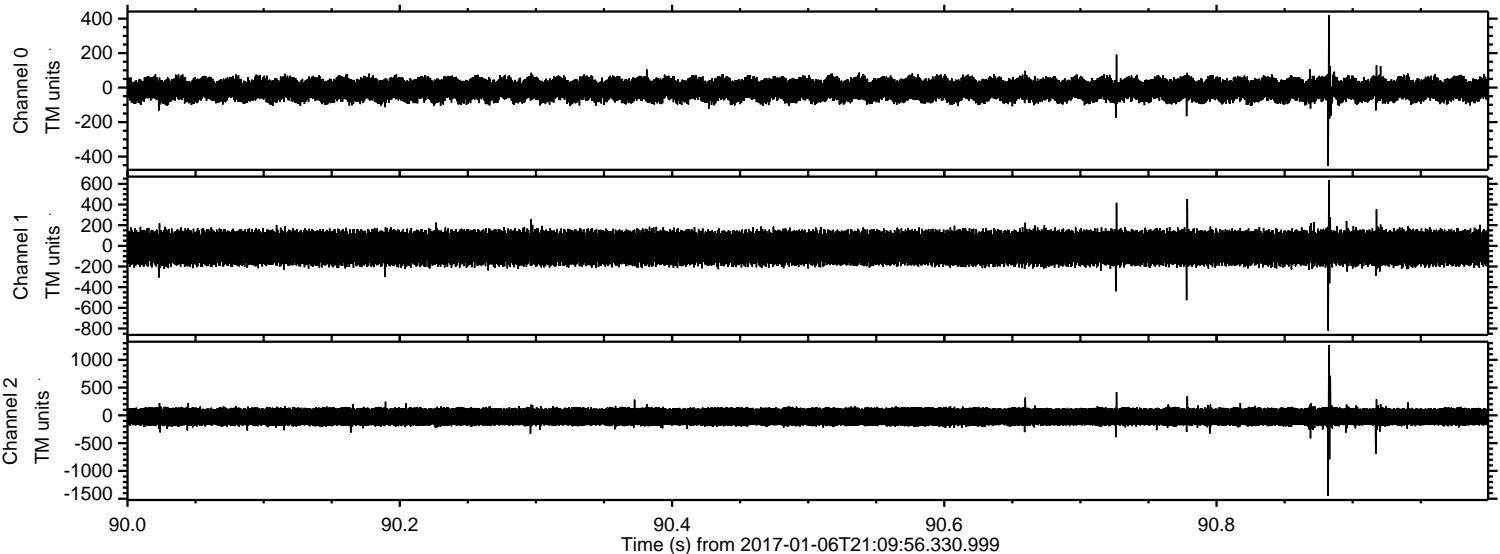


Processed Fri Jan 6 22:18:06 2017 by ELM ver.2012-10-06 from 001\_\_elm20170106\_210955\_\_dat00.bin



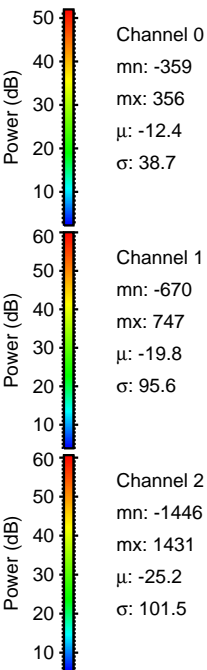
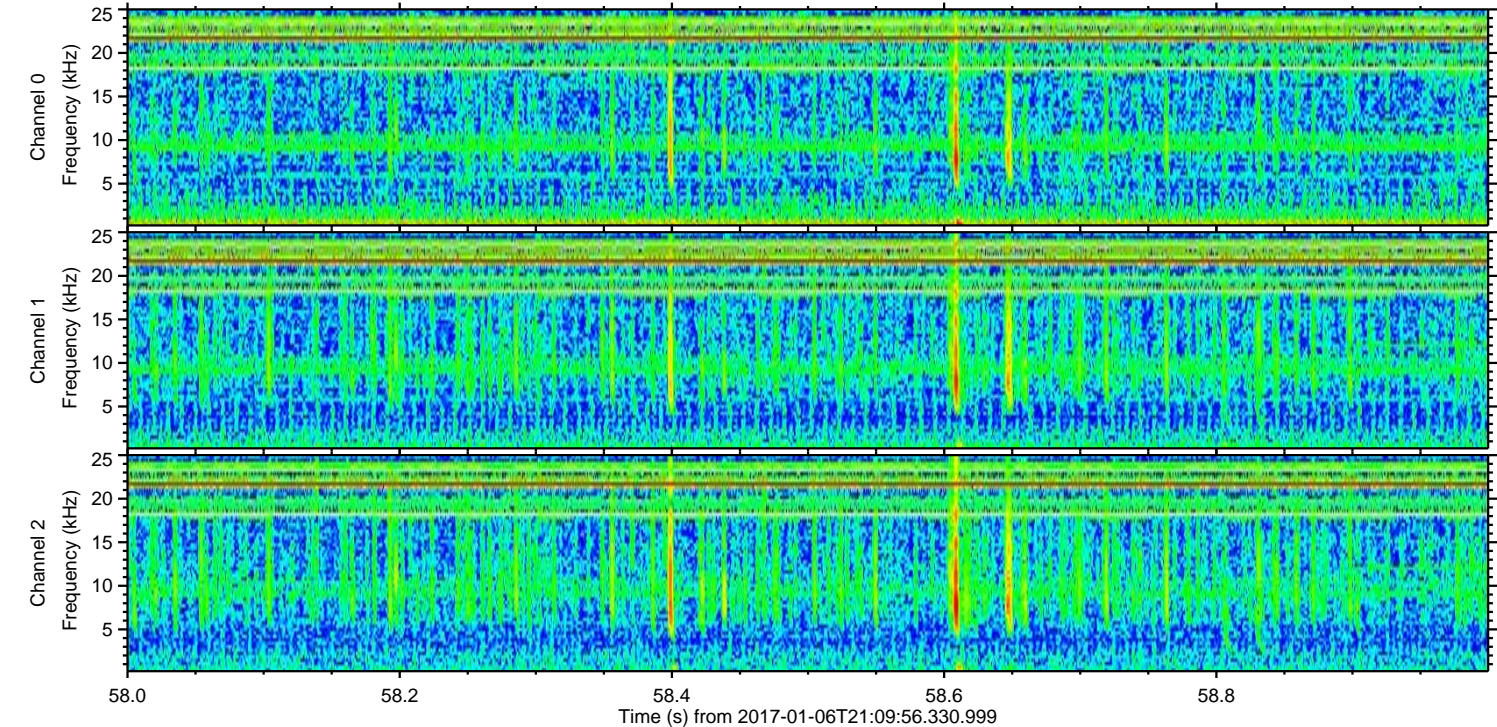
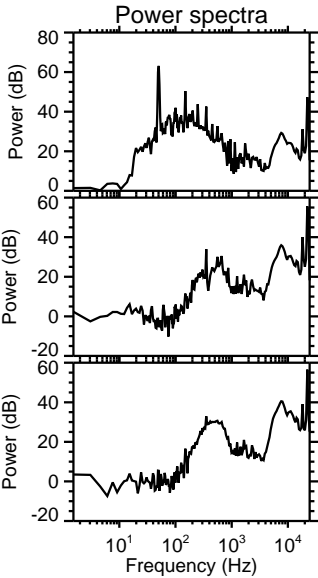
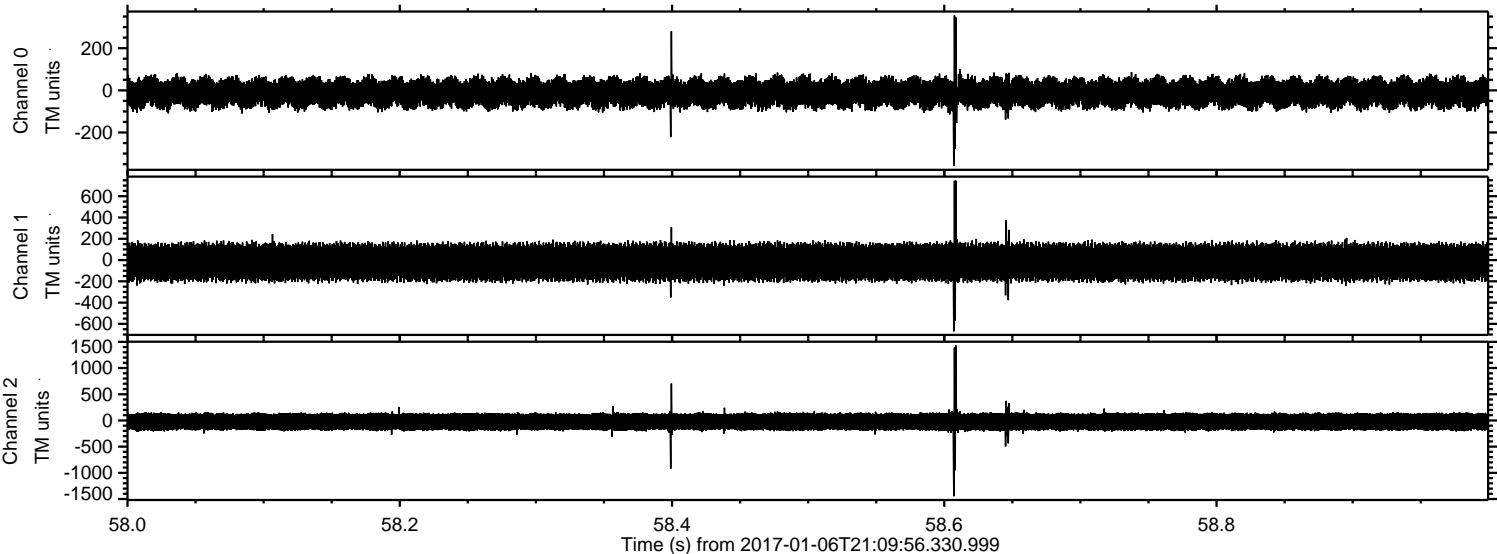


Processed Fri Jan 6 22:18:07 2017 by ELM ver.2012-10-06 from 001\_\_elm20170106\_210955\_\_dat00.bin



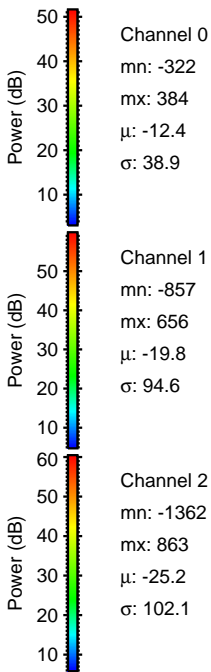
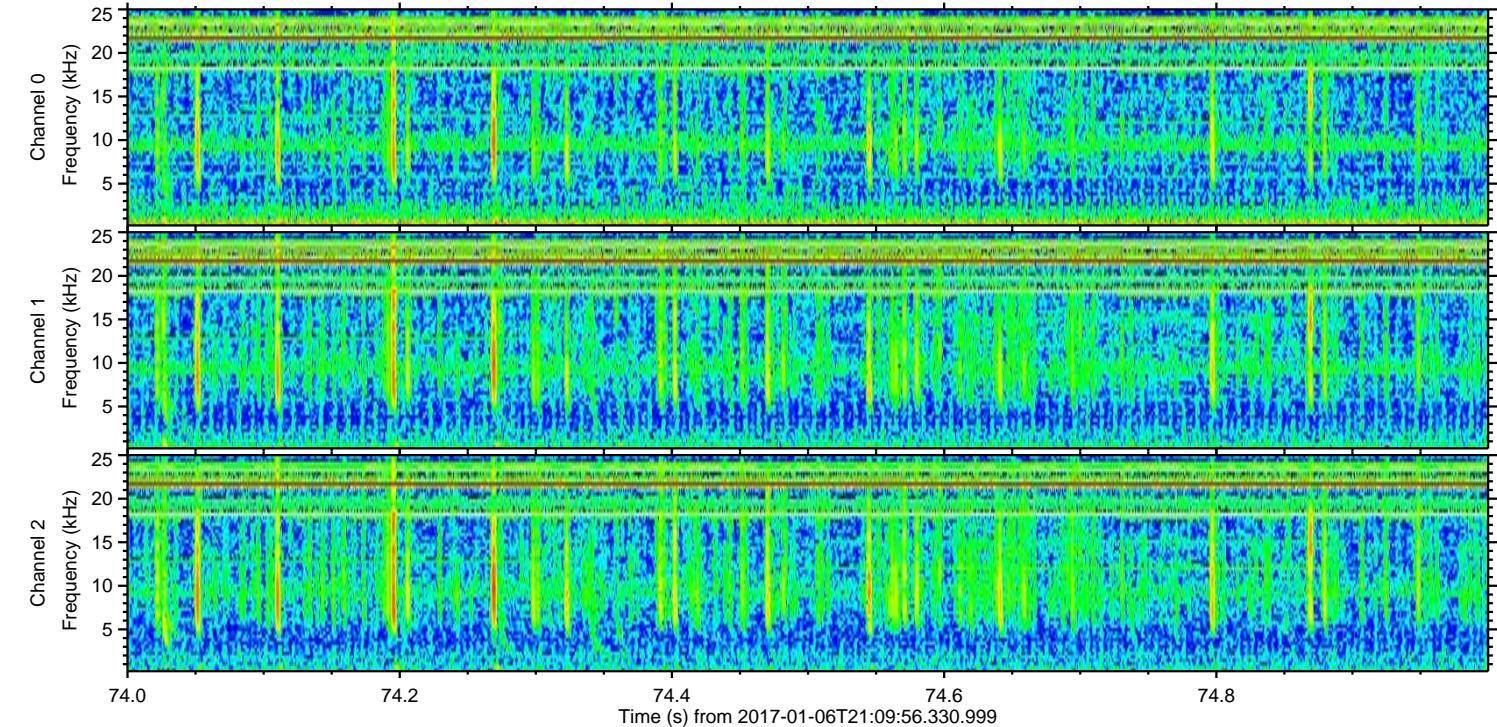
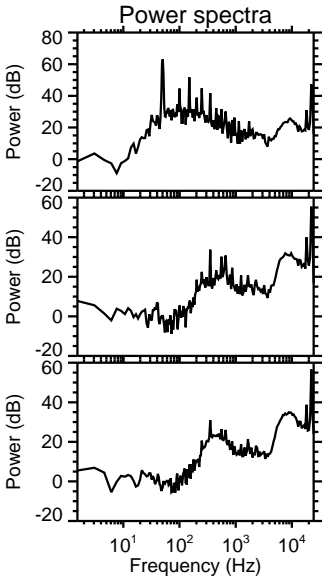
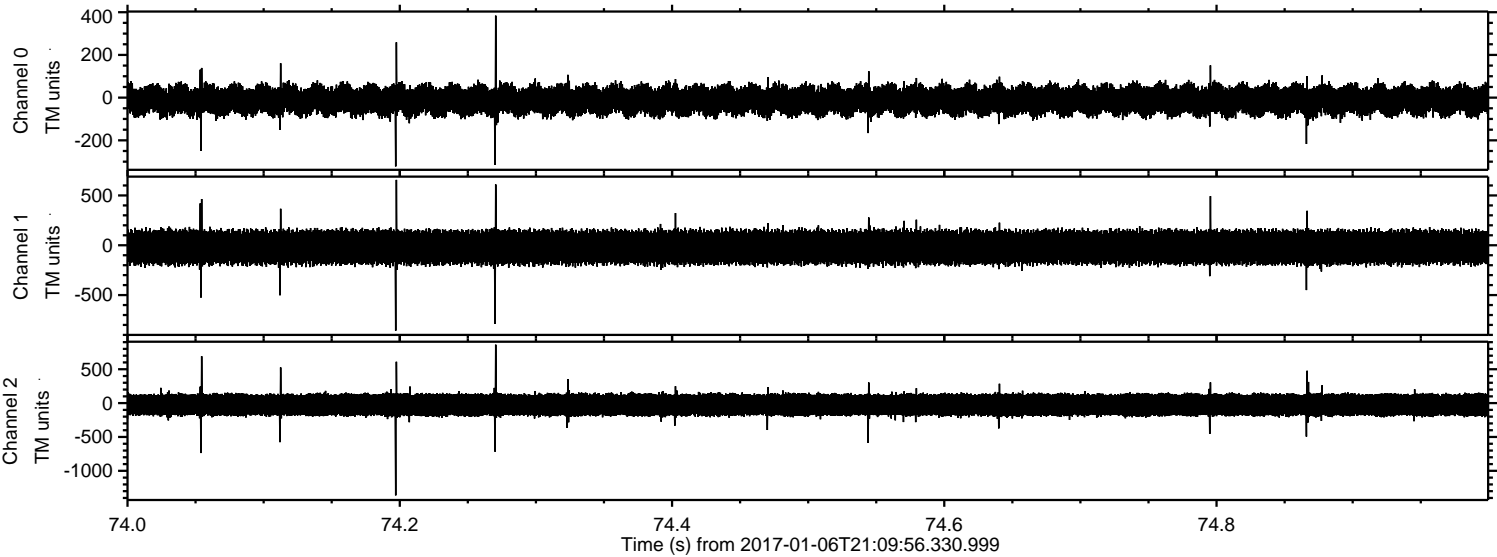


Processed Fri Jan 6 22:18:08 2017 by ELM ver.2012-10-06 from 001\_\_elm20170106\_210955\_\_dat00.bin



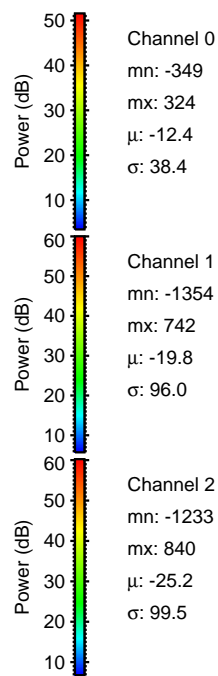
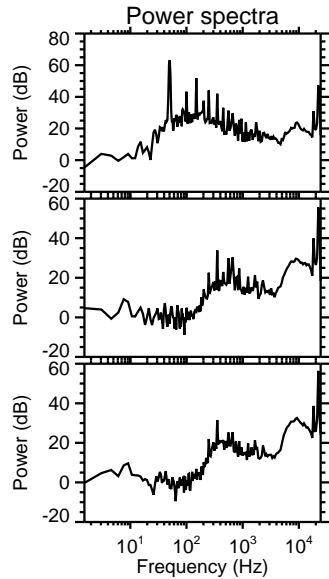
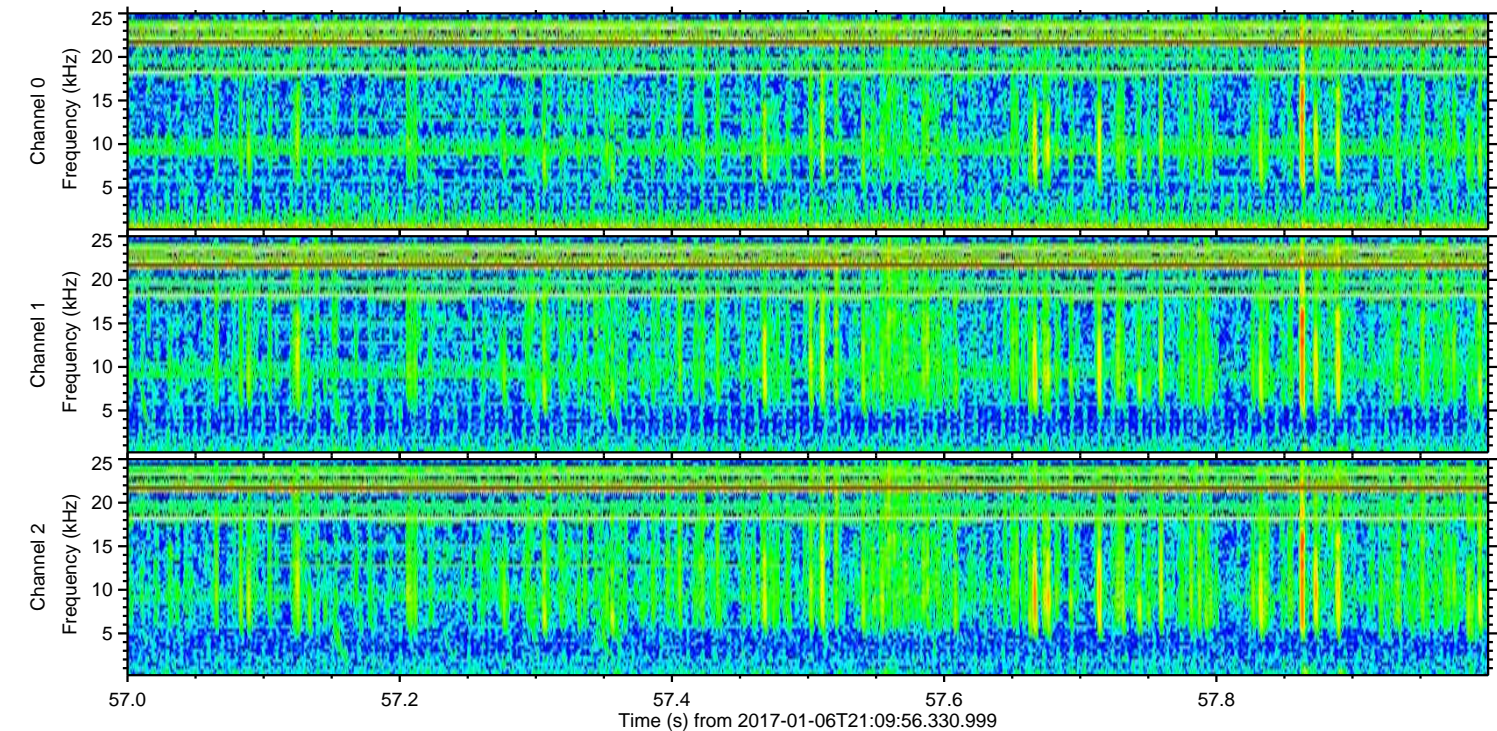
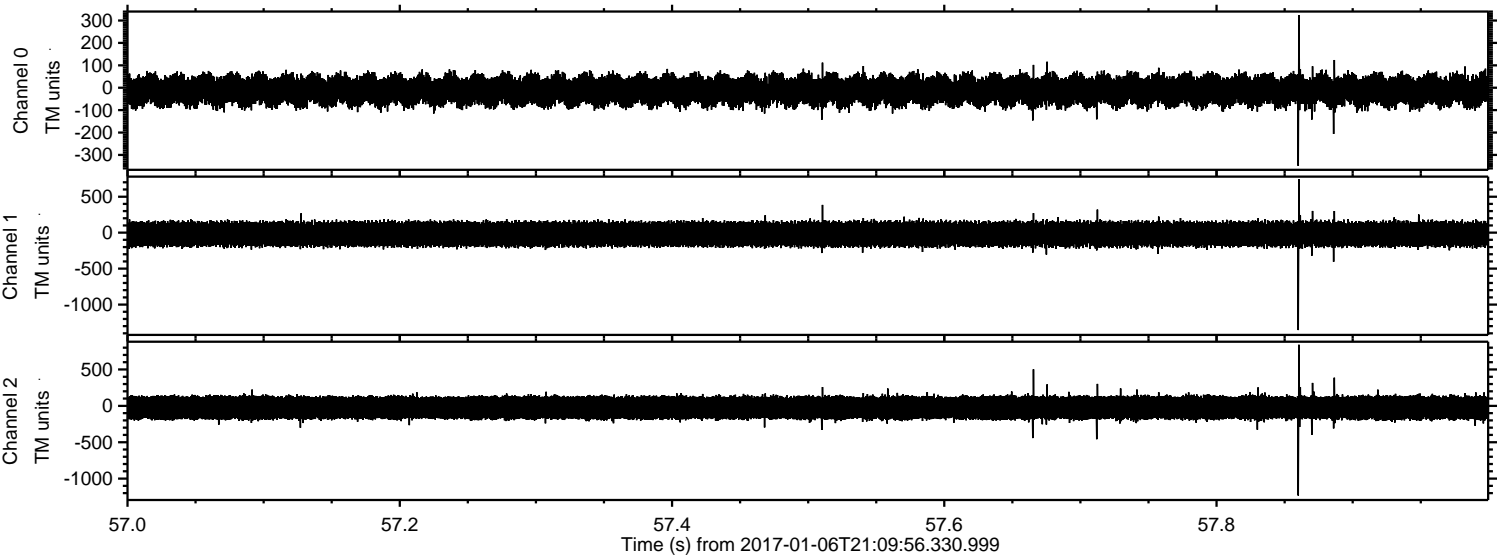


Processed Fri Jan 6 22:18:09 2017 by ELM ver.2012-10-06 from 001\_\_elm20170106\_210955\_\_dat00.bin



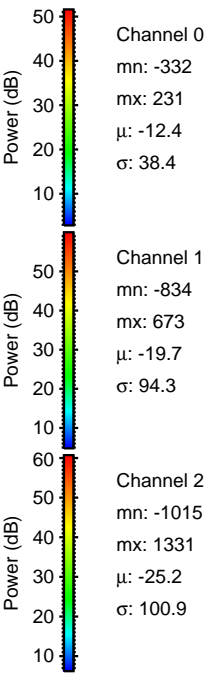
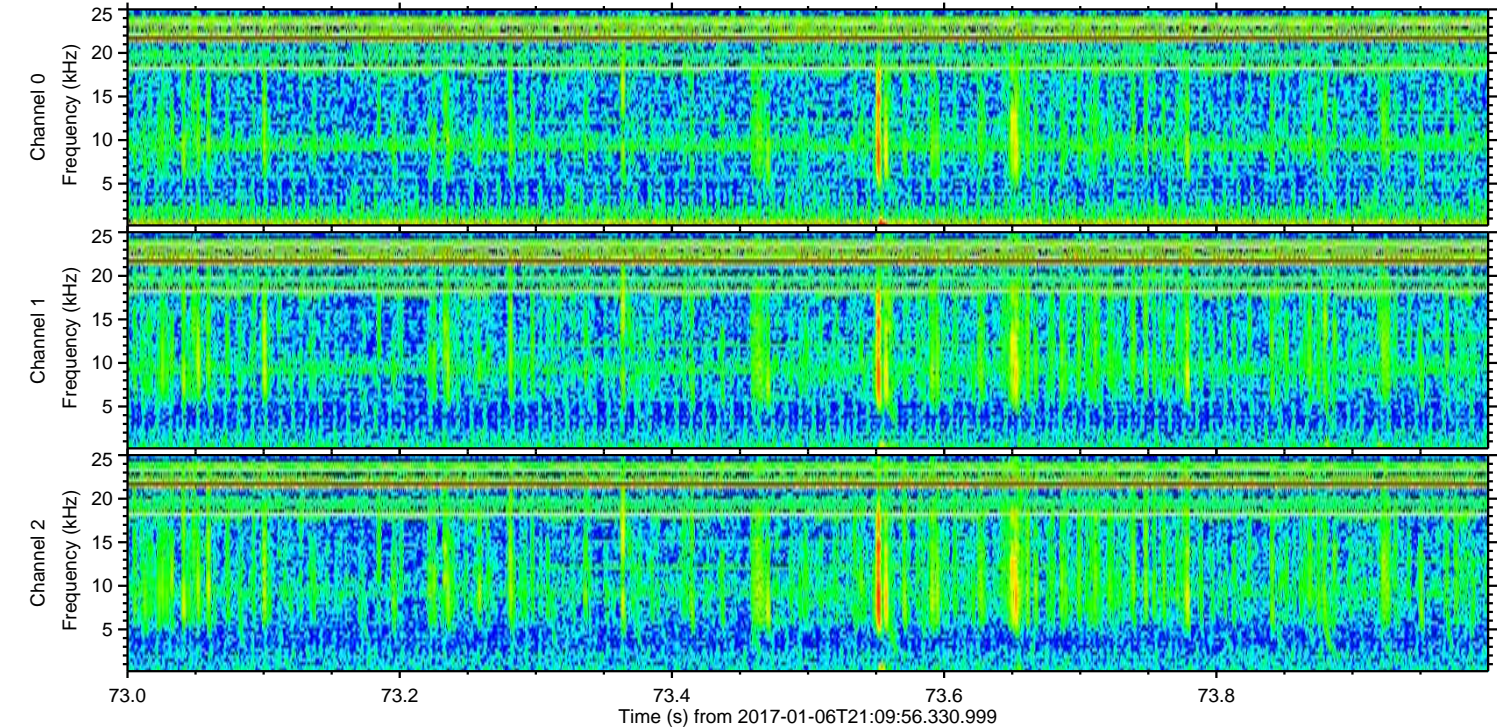
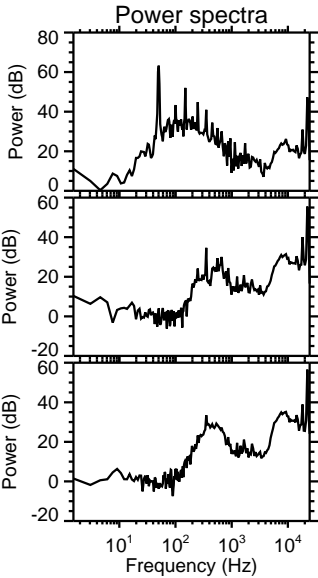
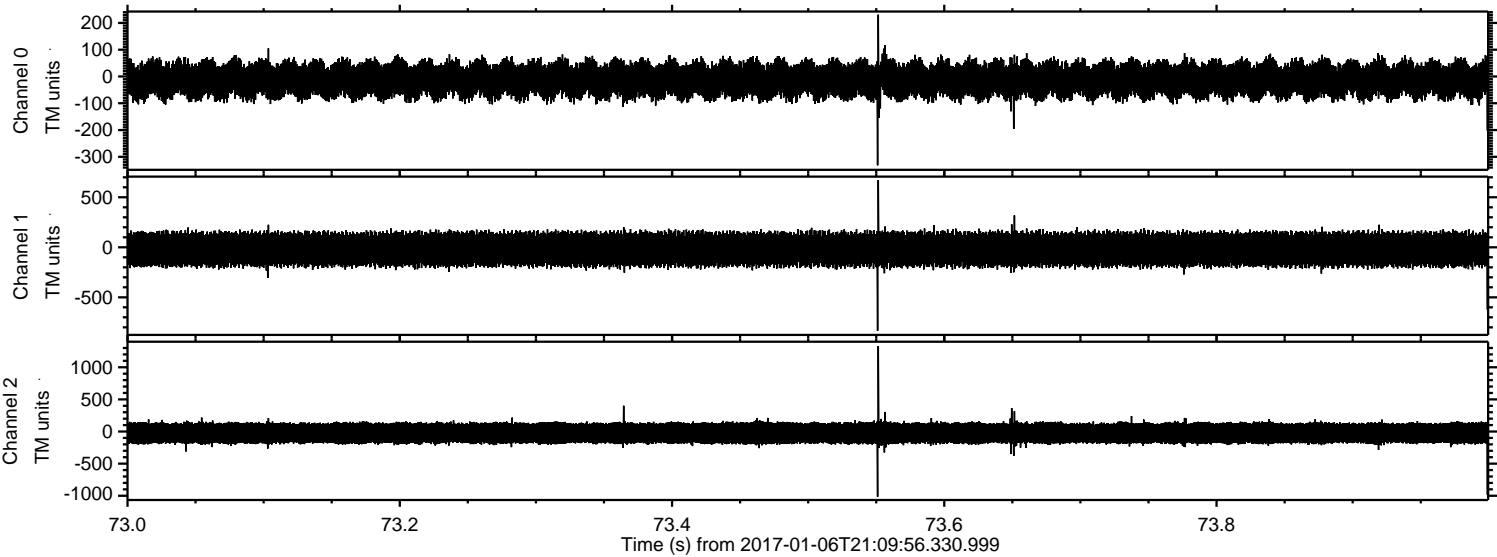


Processed Fri Jan 6 22:18:10 2017 by ELM ver.2012-10-06 from 001\_\_elm20170106\_210955\_\_dat00.bin





Processed Fri Jan 6 22:18:11 2017 by ELM ver.2012-10-06 from 001\_\_elm20170106\_210955\_\_dat00.bin



Channel 0  
mn: -332  
mx: 231  
 $\mu$ : -12.4  
 $\sigma$ : 38.4

Channel 1  
mn: -834  
mx: 673  
 $\mu$ : -19.7  
 $\sigma$ : 94.3

Channel 2  
mn: -1015  
mx: 1331  
 $\mu$ : -25.2  
 $\sigma$ : 100.9



Processed Fri Jan 6 22:18:12 2017 by ELM ver.2012-10-06 from 001\_\_elm20170106\_210955\_\_dat00.bin

