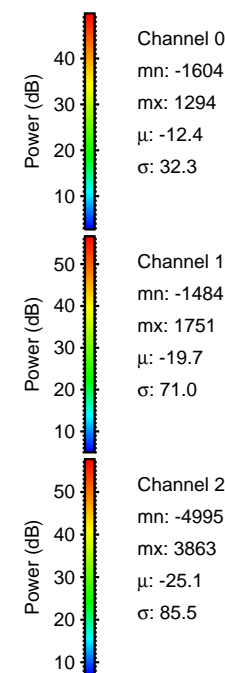
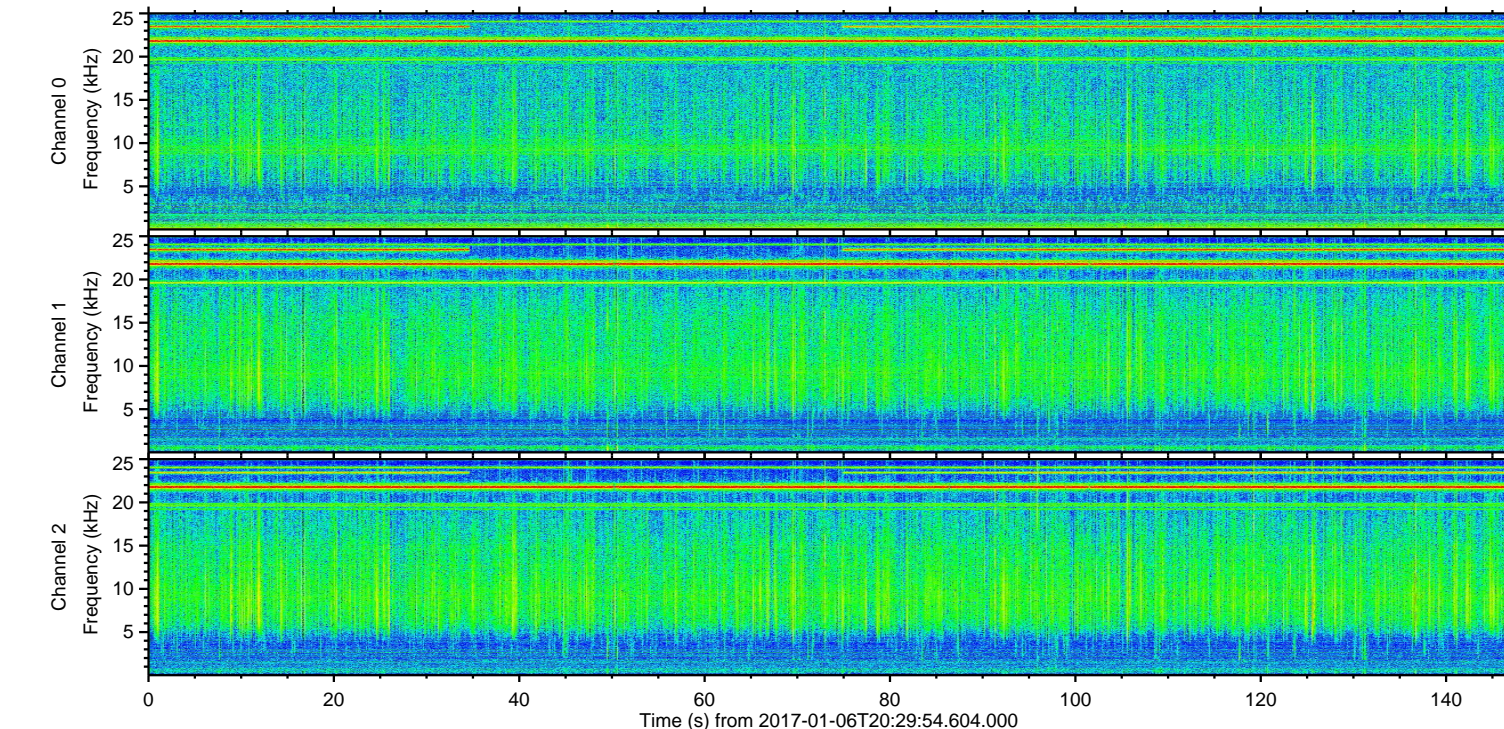
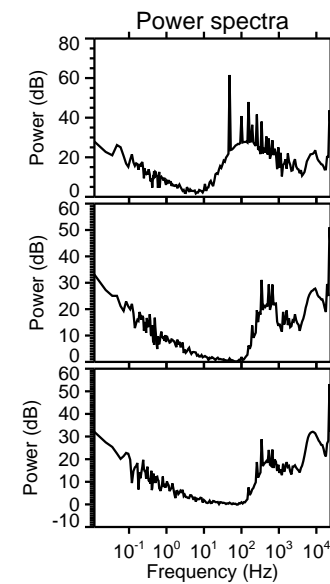
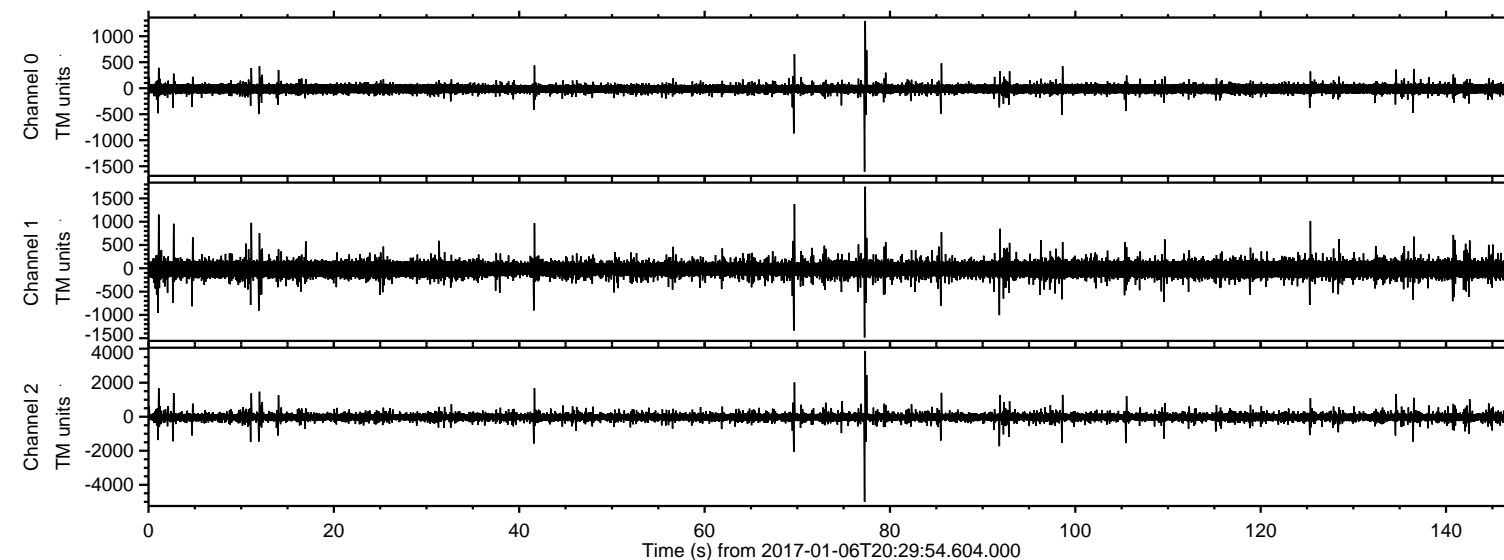


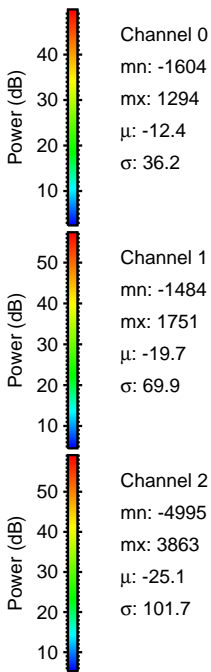
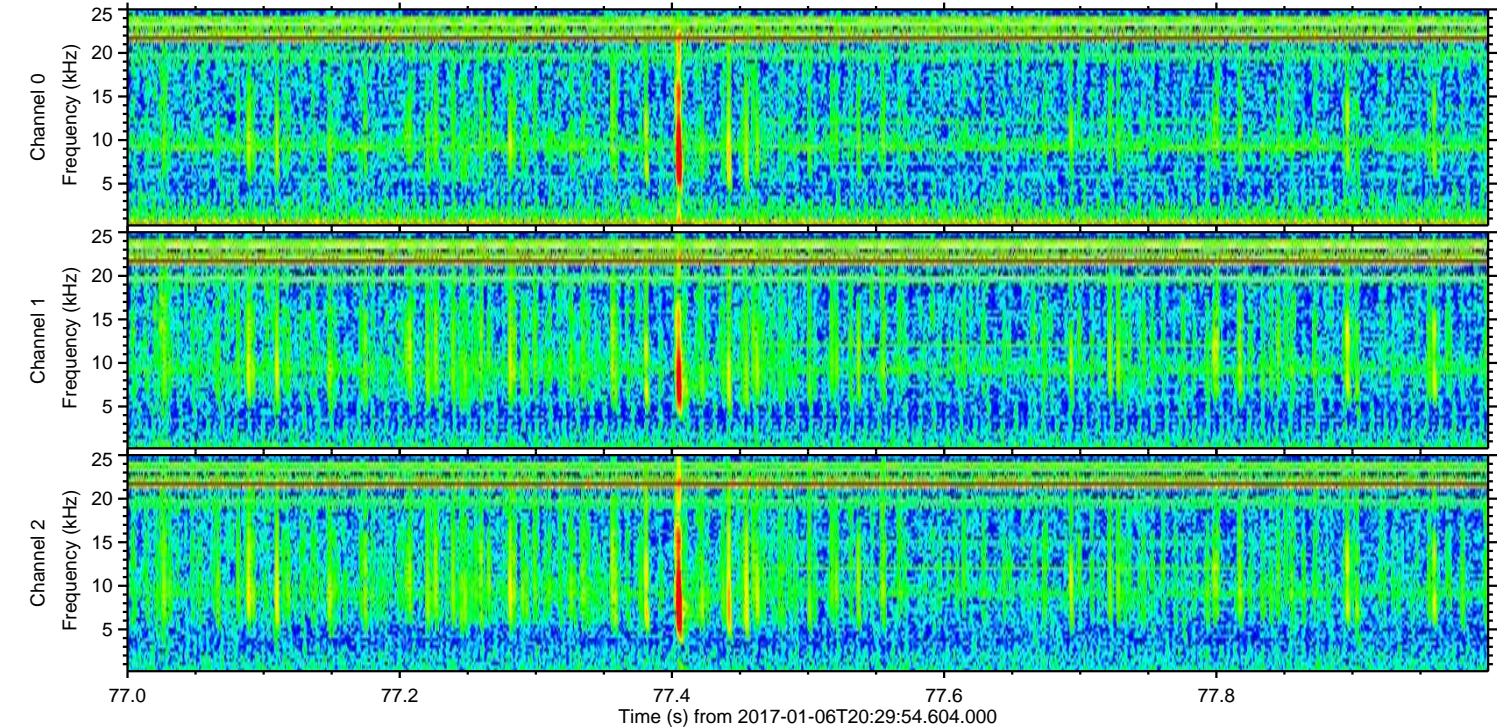
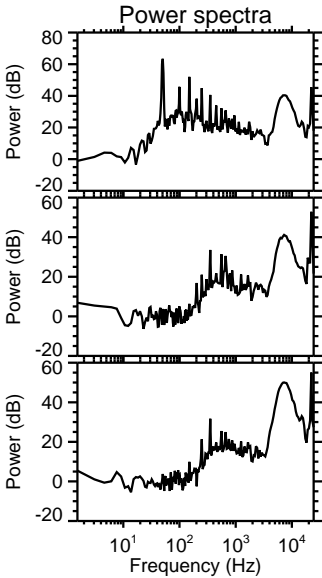
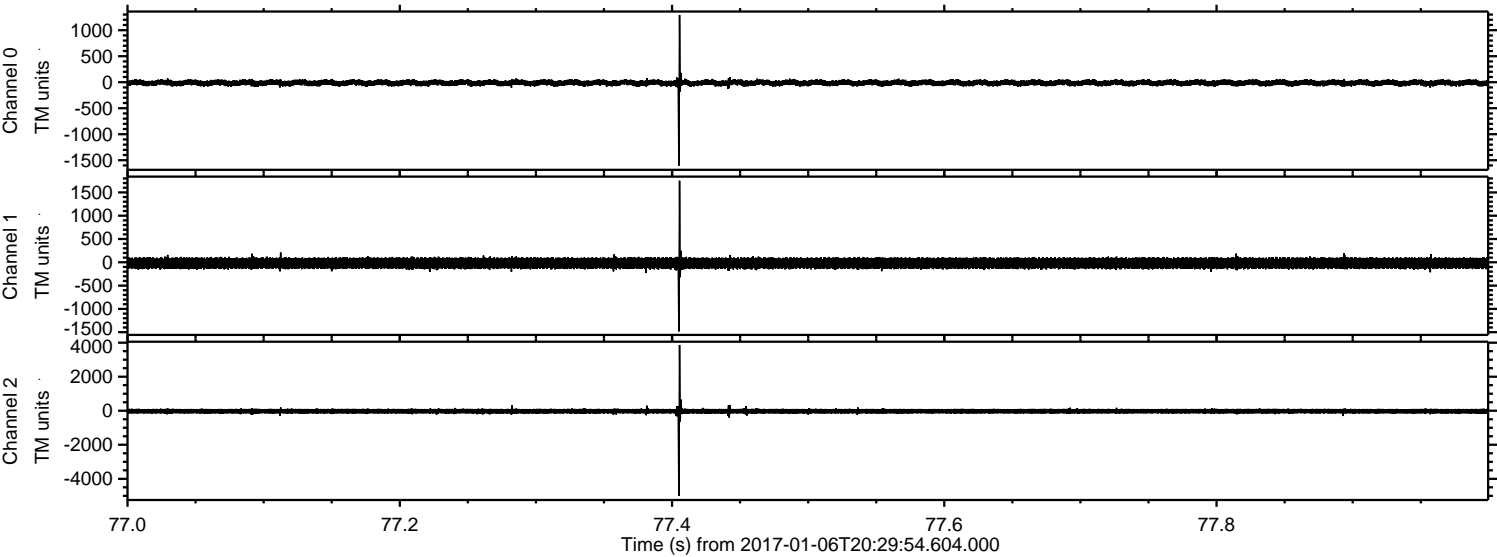
# ELMAVAN 3D WAVEFORMS (Measured data sampled at 50 kHz) 51000 packets of 144 samples from 2017-01-06T20:29:54.604.000.

Processed Fri Jan 6 21:38:09 2017 by ELM ver.2012-10-06 from 001\_\_elm20170106\_202953\_\_dat00.bin



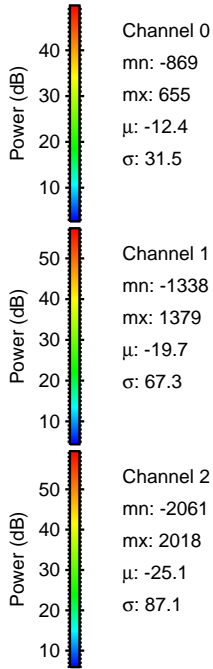
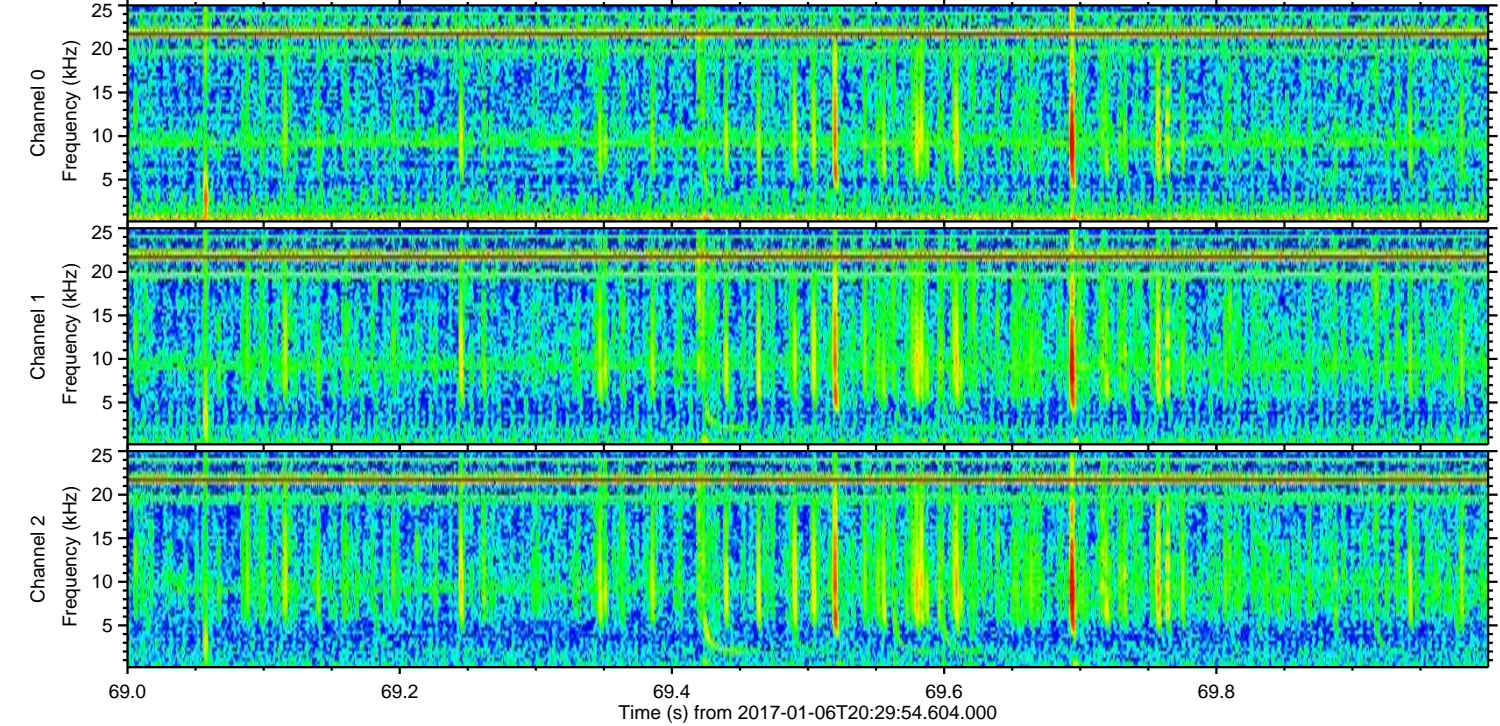
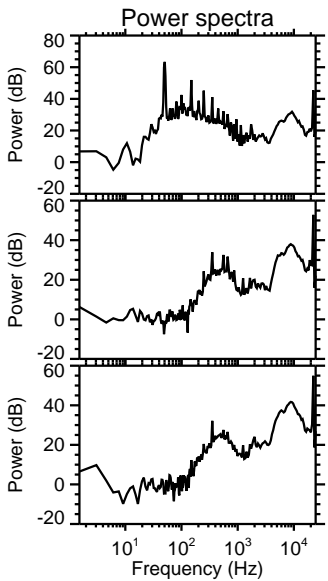
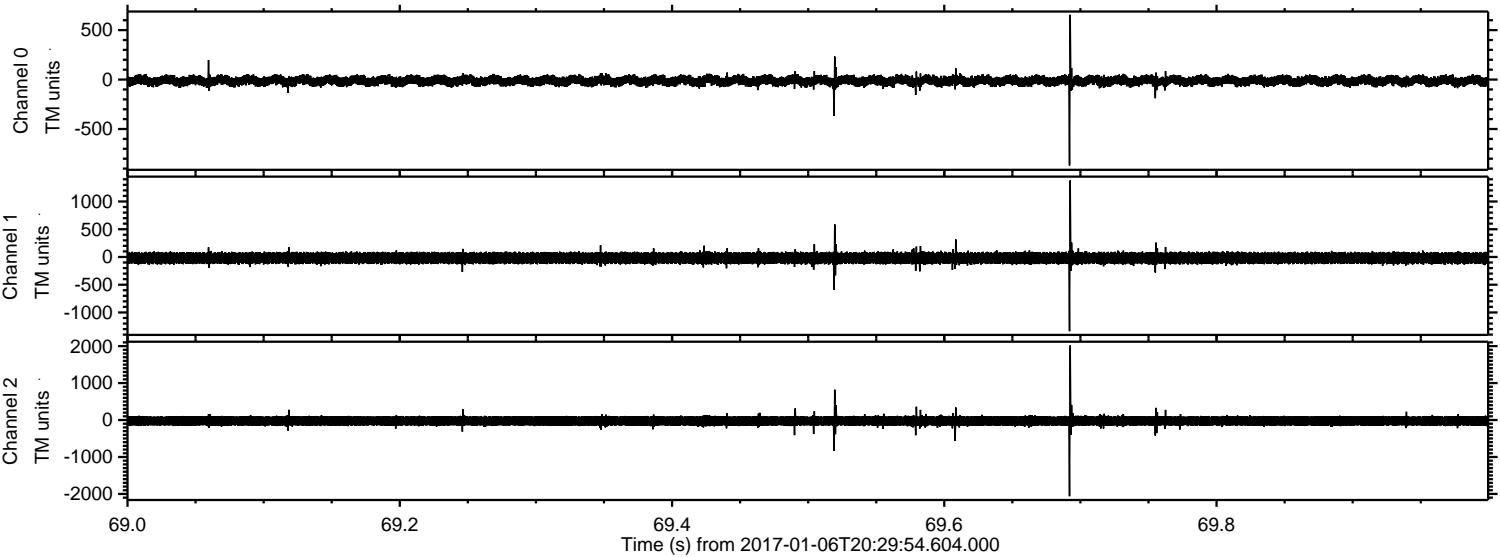


Processed Fri Jan 6 21:38:25 2017 by ELM ver.2012-10-06 from 001\_\_elm20170106\_202953\_\_dat00.bin



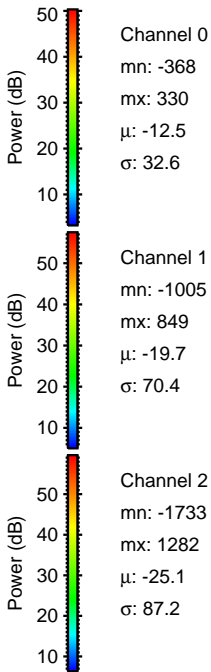
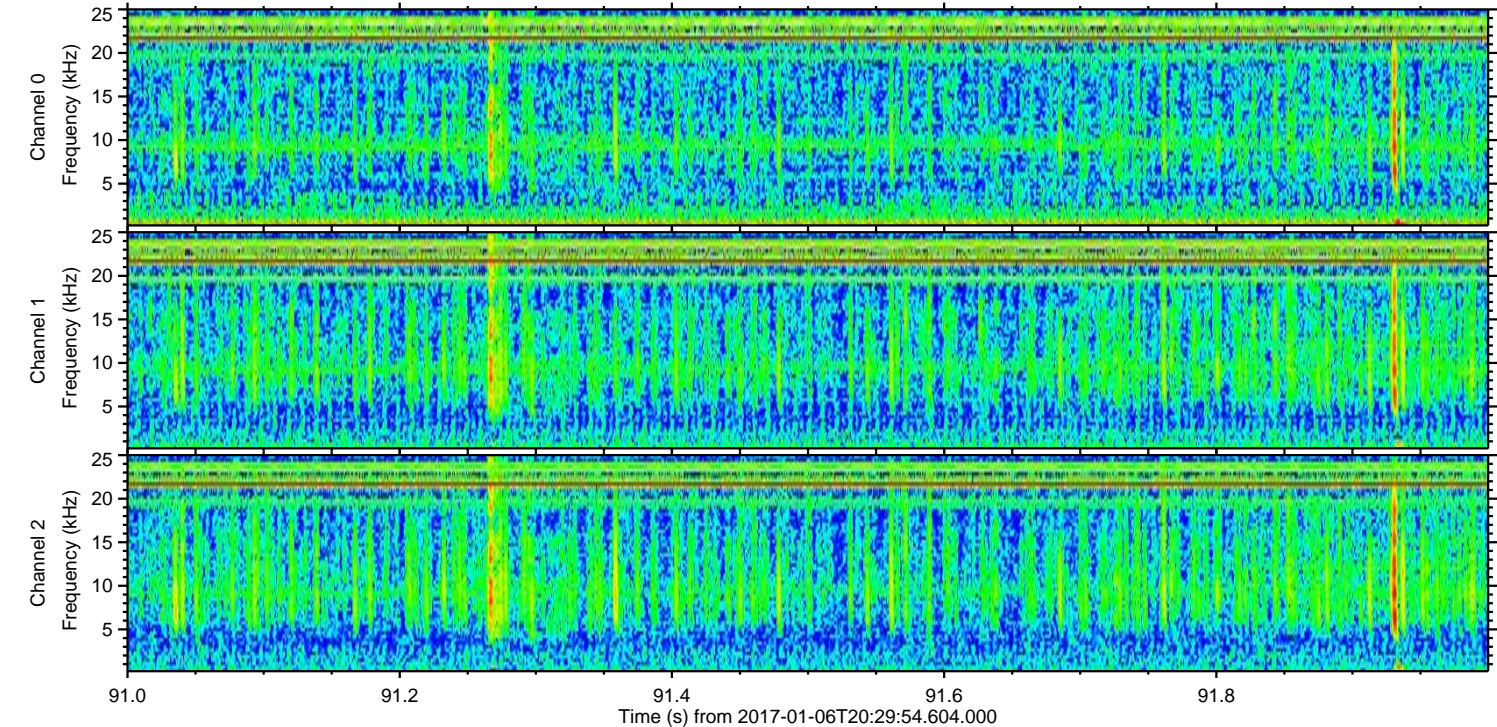
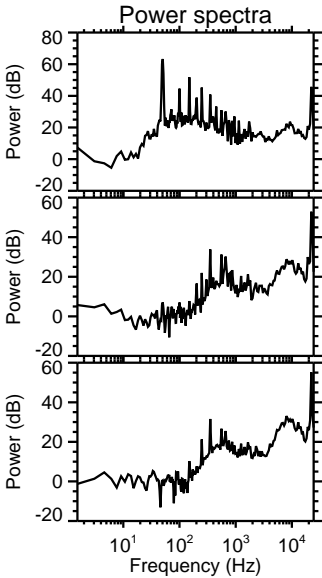
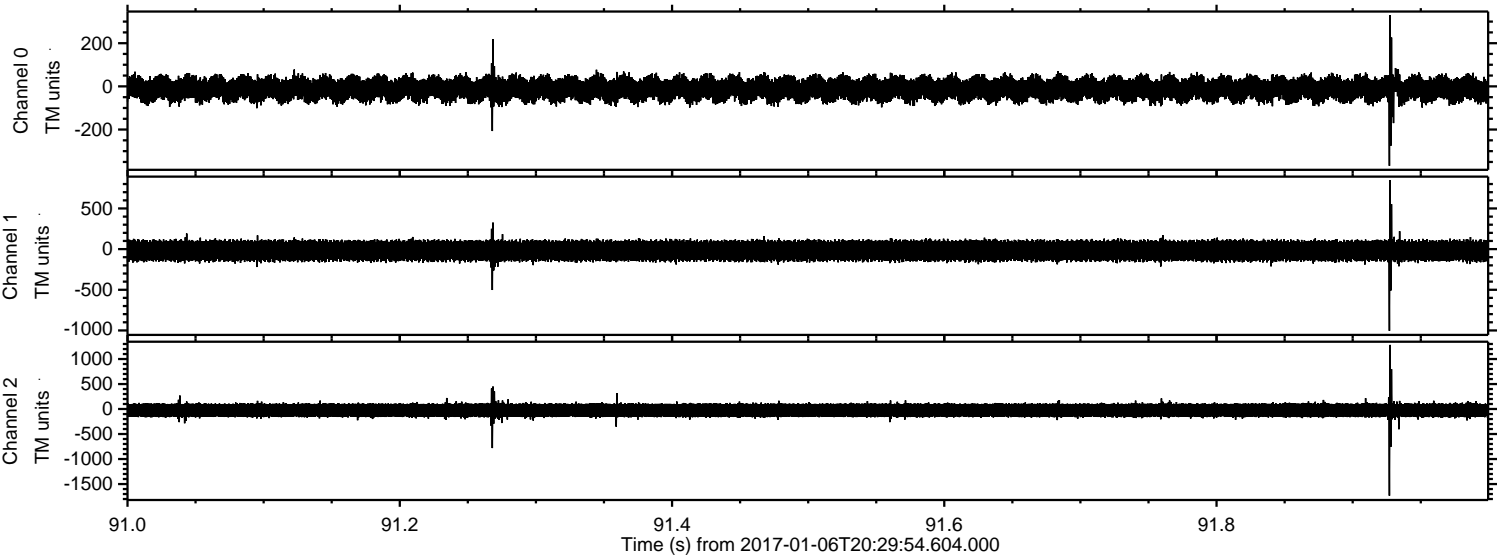


Processed Fri Jan 6 21:38:26 2017 by ELM ver.2012-10-06 from 001\_\_elm20170106\_202953\_\_dat00.bin



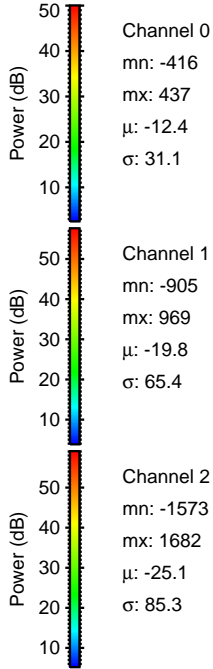
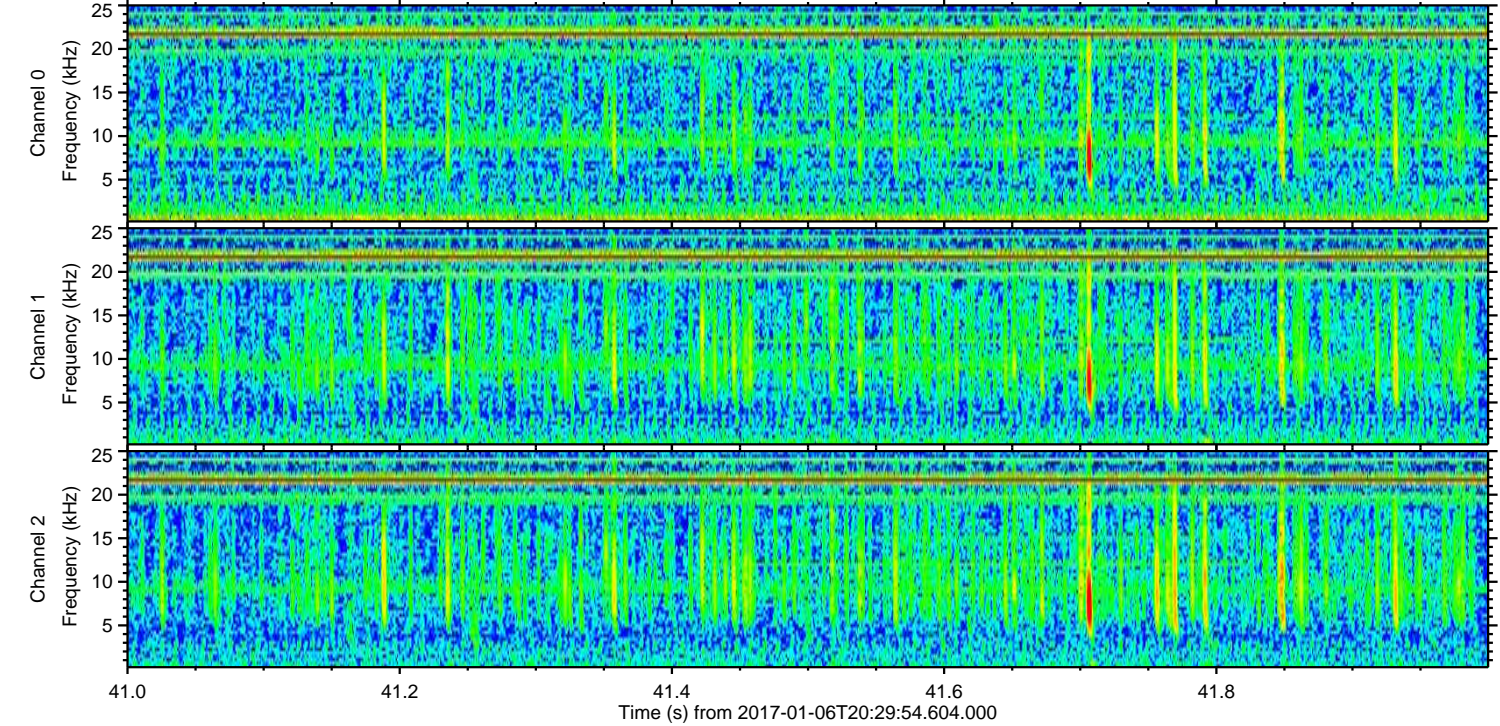
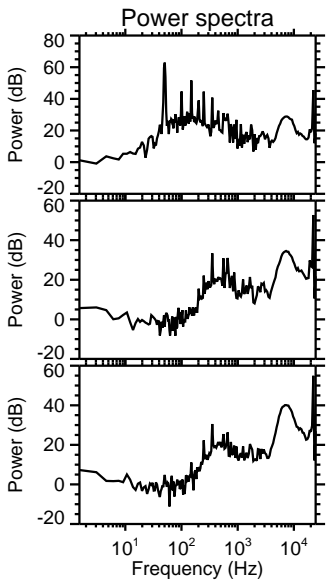
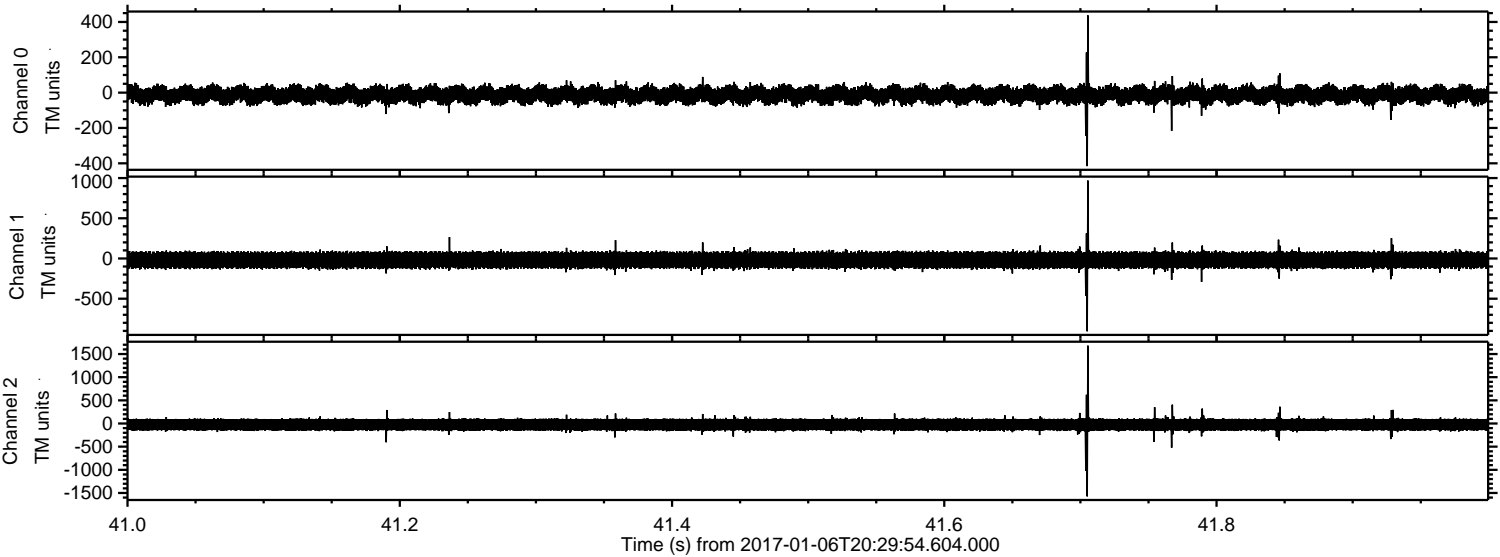


Processed Fri Jan 6 21:38:27 2017 by ELM ver.2012-10-06 from 001\_\_elm20170106\_202953\_\_dat00.bin



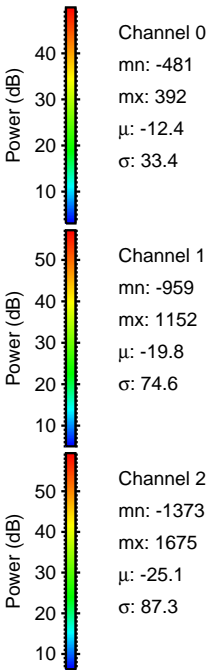
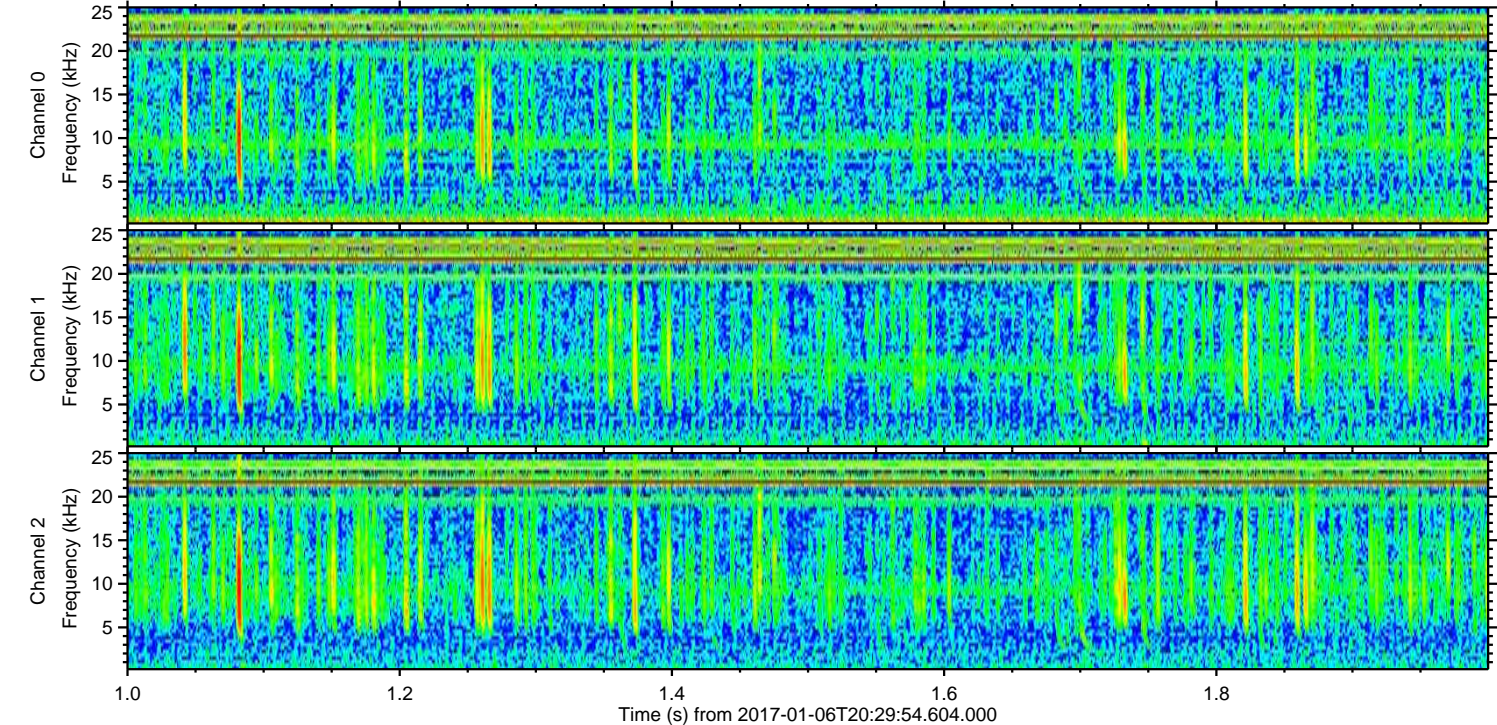
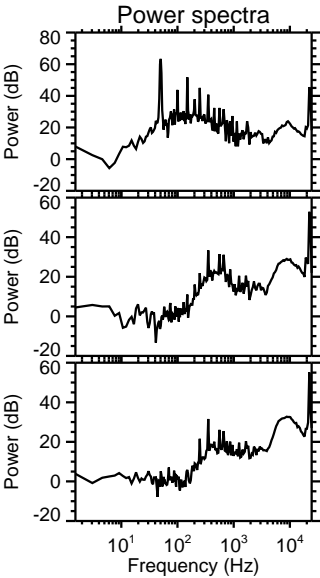
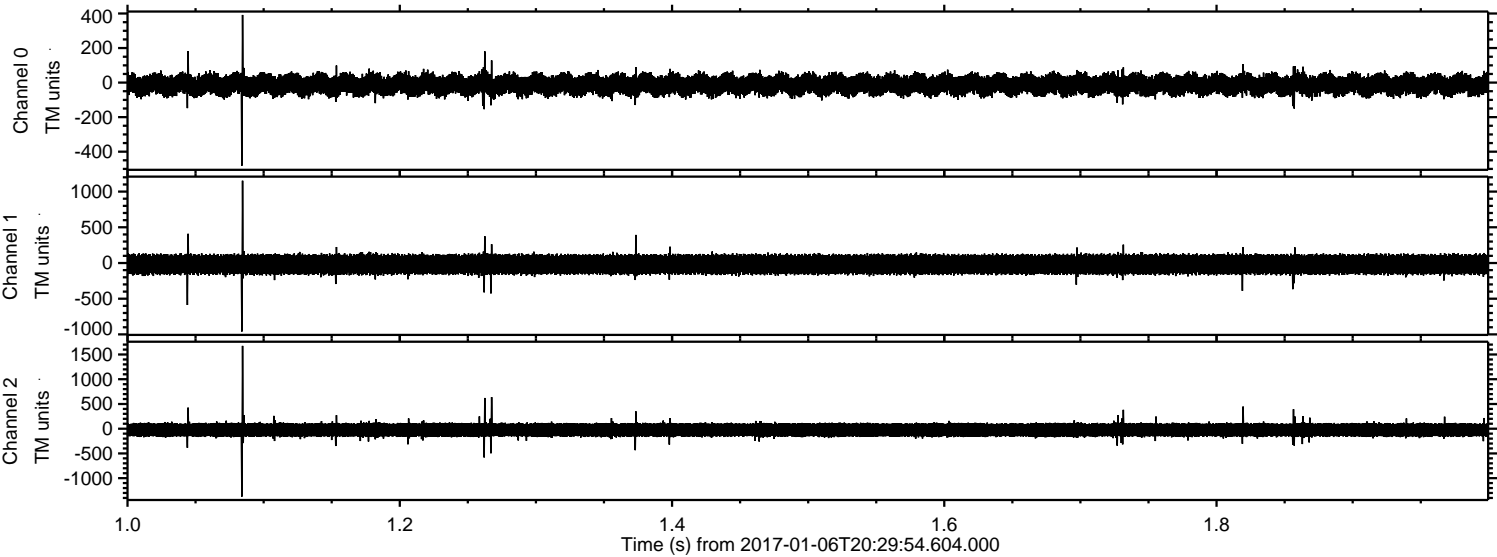


Processed Fri Jan 6 21:38:28 2017 by ELM ver.2012-10-06 from 001\_\_elm20170106\_202953\_\_dat00.bin





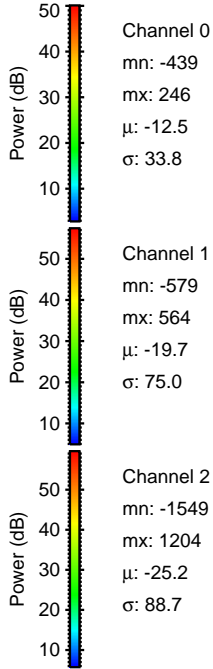
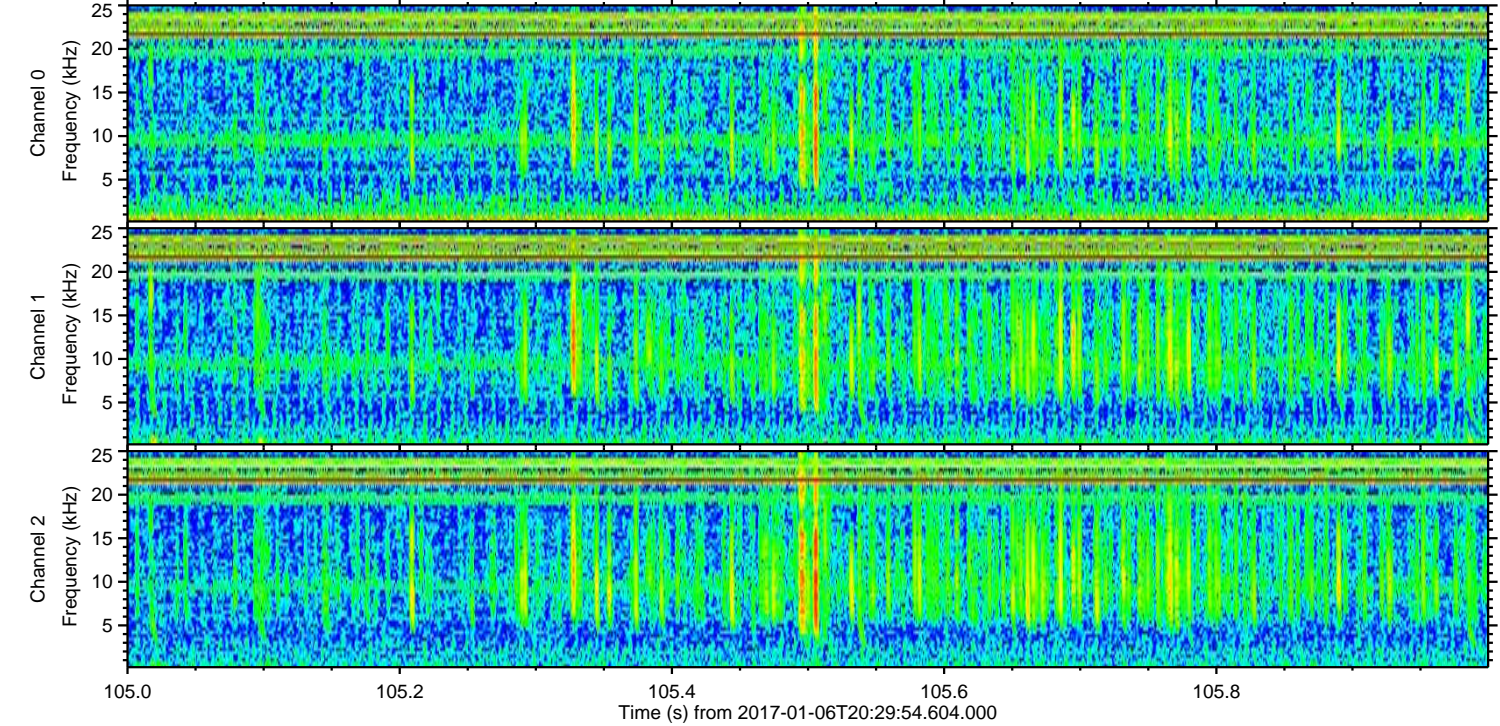
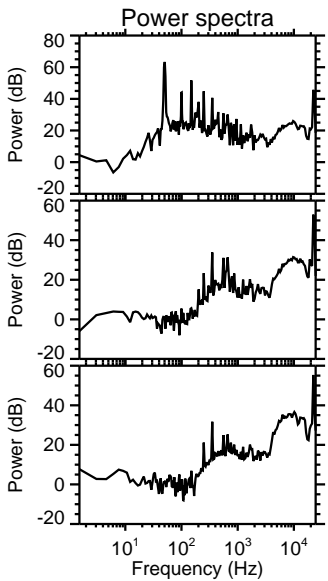
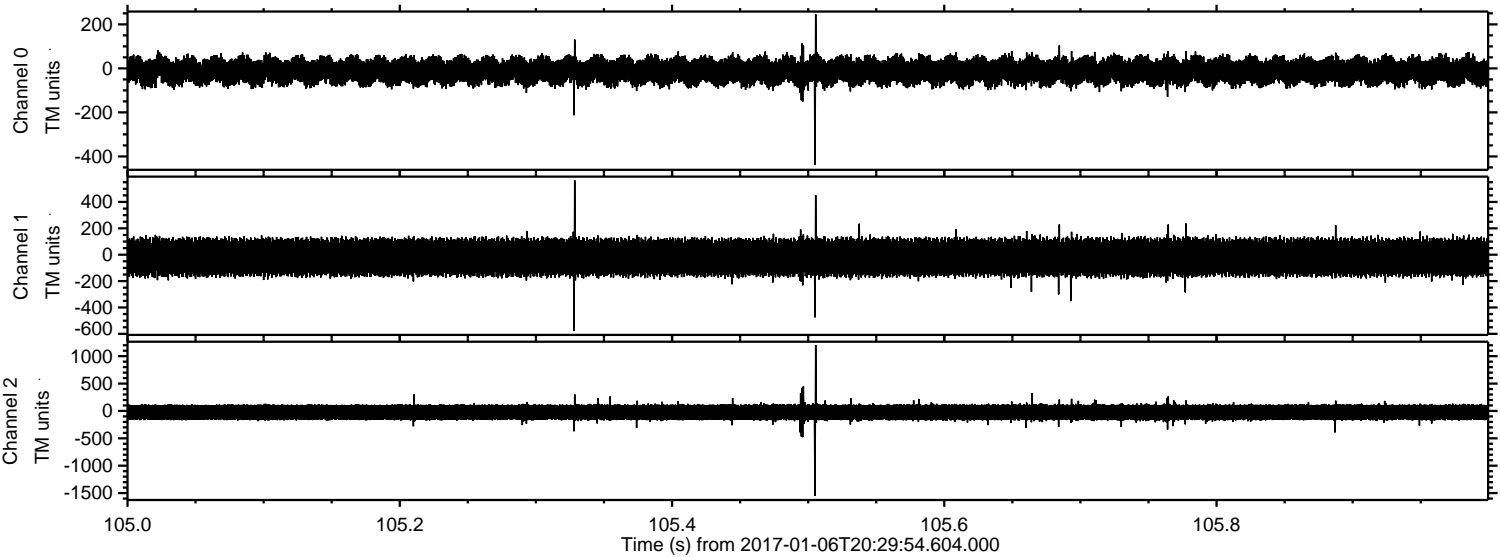
Processed Fri Jan 6 21:38:29 2017 by ELM ver.2012-10-06 from 001\_\_elm20170106\_202953\_\_dat00.bin





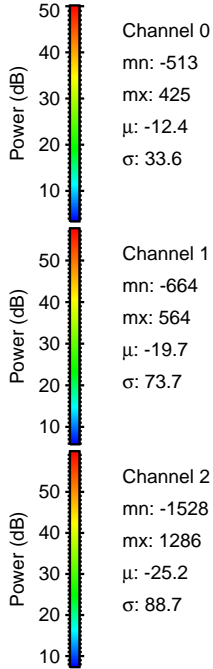
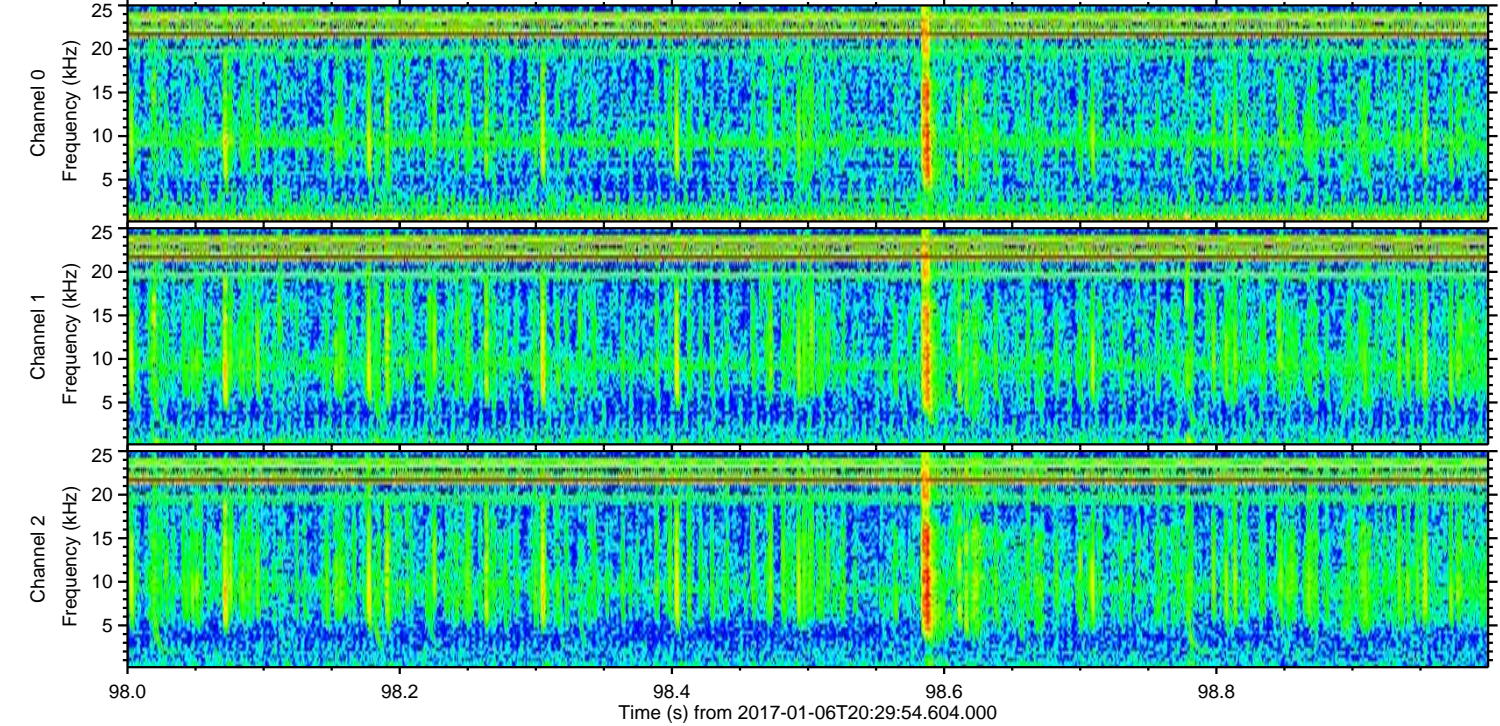
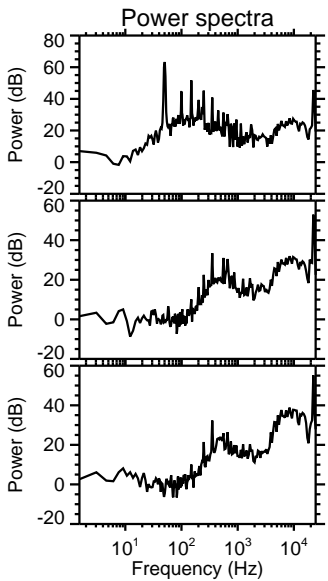
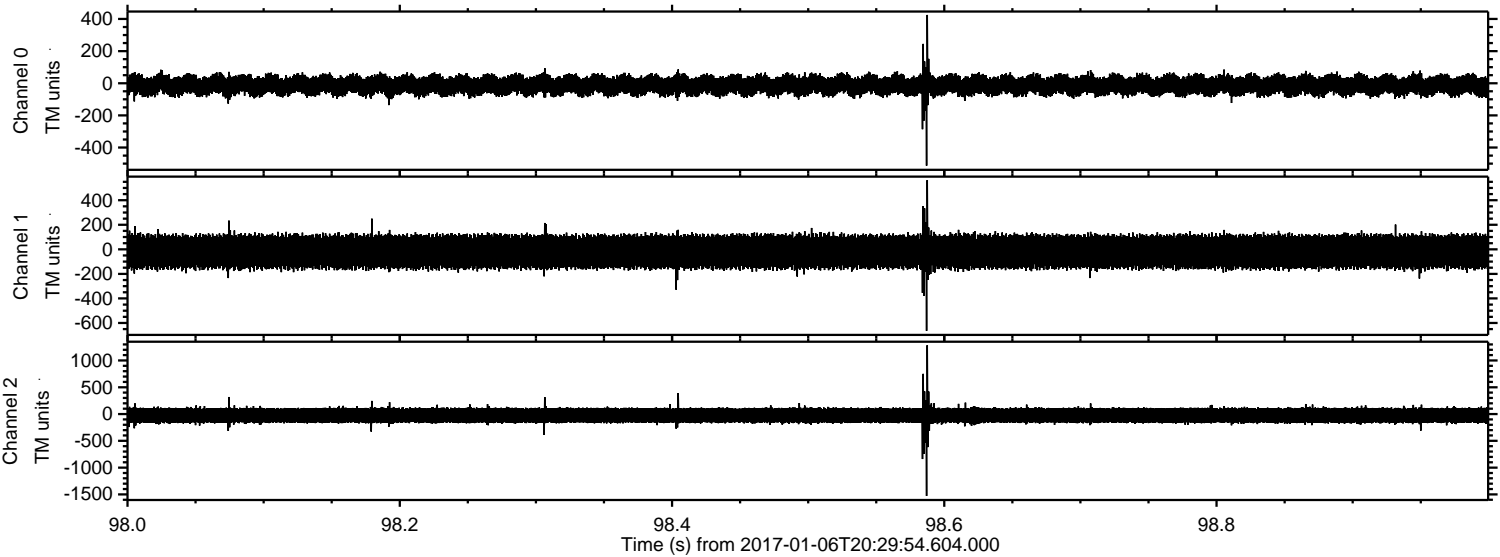
ELMAVAN 3D WAVEFORMS (Measured data sampled at 50 kHz) 51000 packets of 144 samples from 2017-01-06T20:29:54.604.000. Part 106/147

Processed Fri Jan 6 21:38:30 2017 by ELM ver.2012-10-06 from 001\_\_elm20170106\_202953\_\_dat00.bin



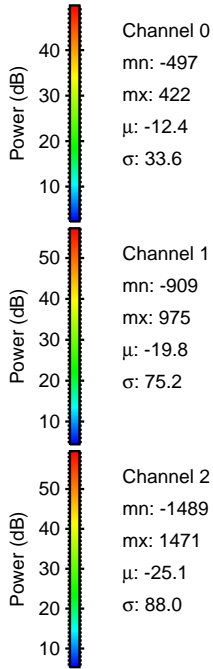
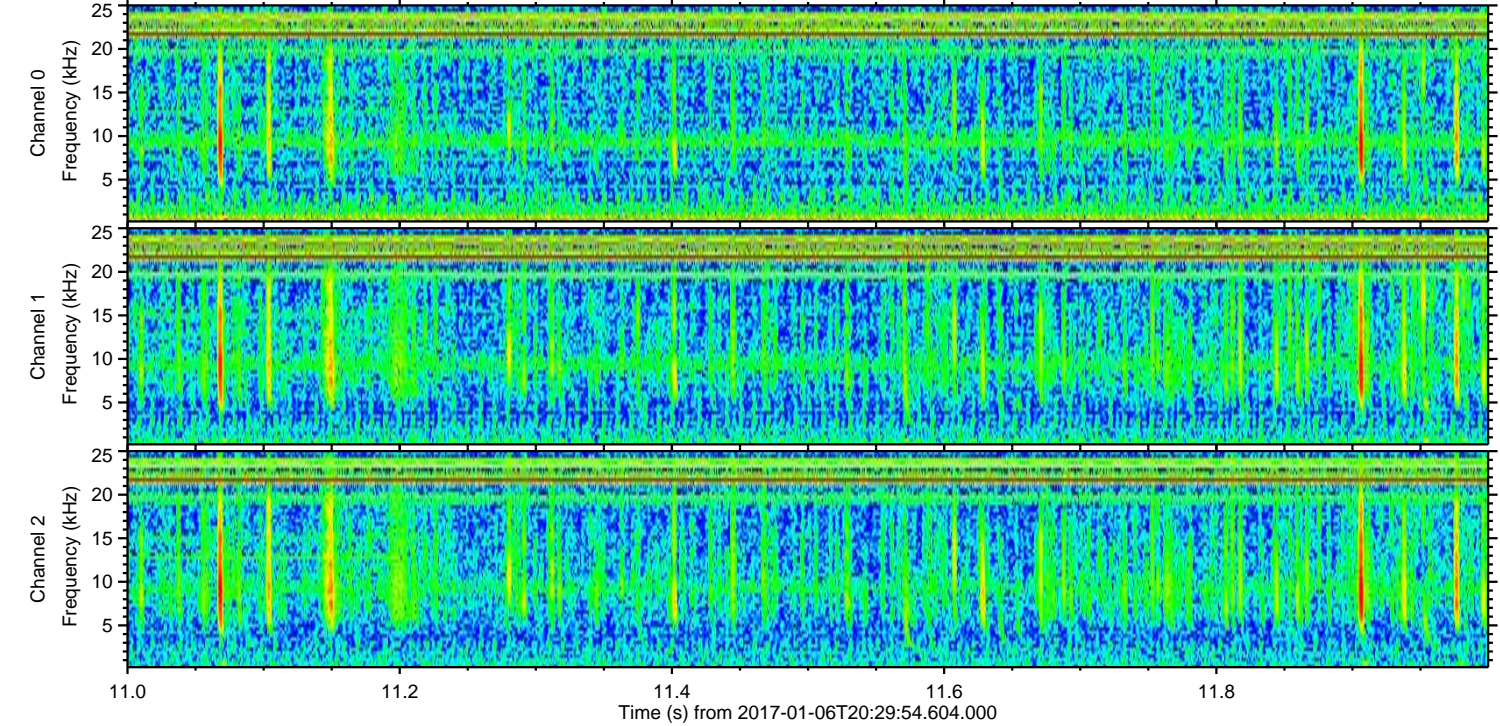
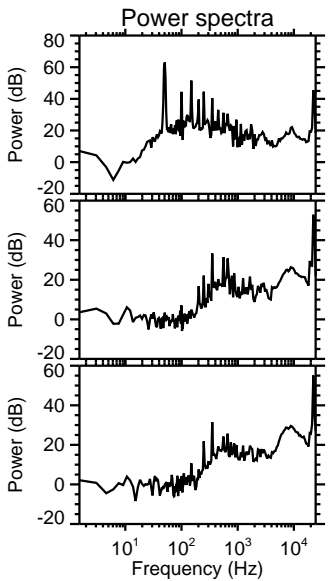
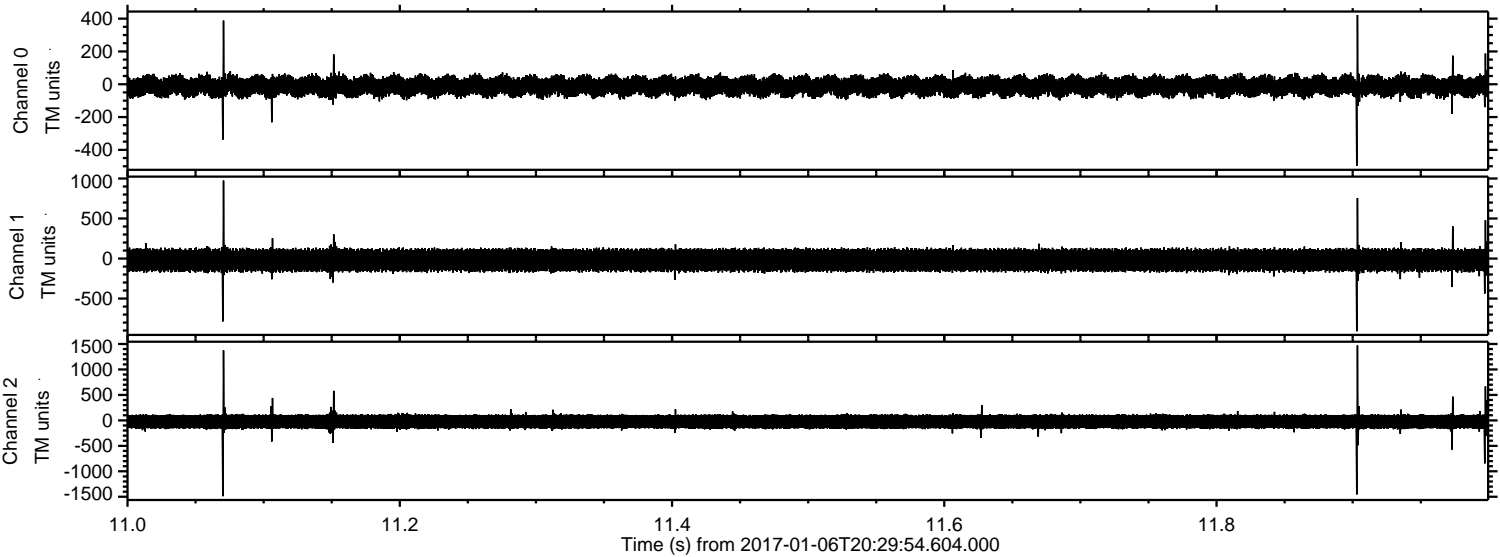


Processed Fri Jan 6 21:38:32 2017 by ELM ver.2012-10-06 from 001\_\_elm20170106\_202953\_\_dat00.bin





Processed Fri Jan 6 21:38:33 2017 by ELM ver.2012-10-06 from 001\_\_elm20170106\_202953\_\_dat00.bin





ELMAVAN 3D WAVEFORMS (Measured data sampled at 50 kHz) 51000 packets of 144 samples from 2017-01-06T20:29:54.604.000. Part 137/147

Processed Fri Jan 6 21:38:34 2017 by ELM ver.2012-10-06 from 001\_\_elm20170106\_202953\_\_dat00.bin

