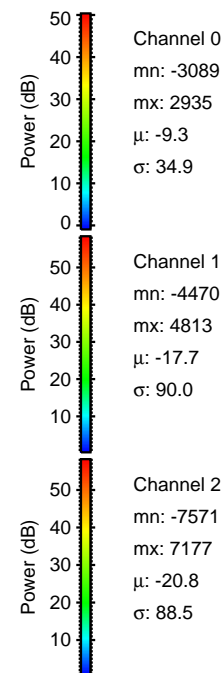
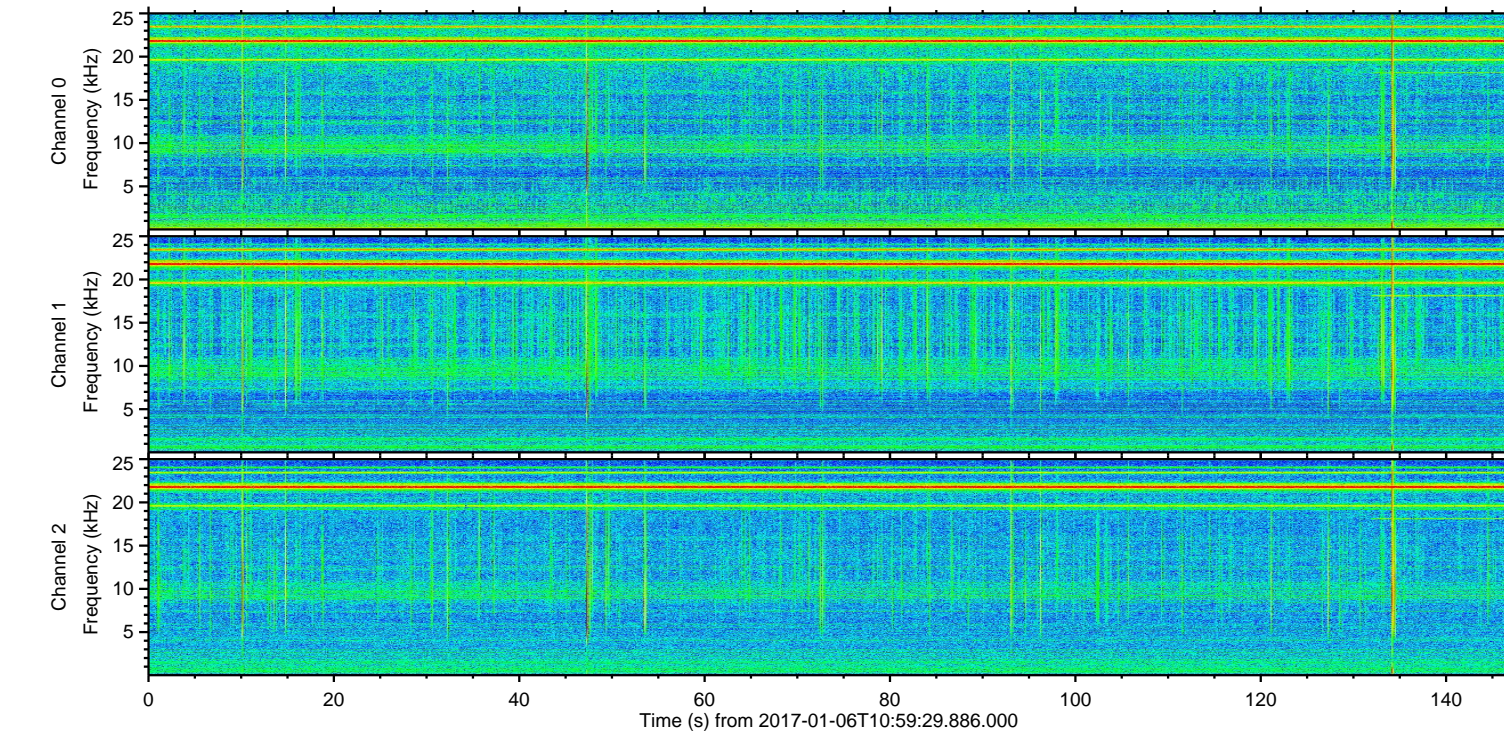
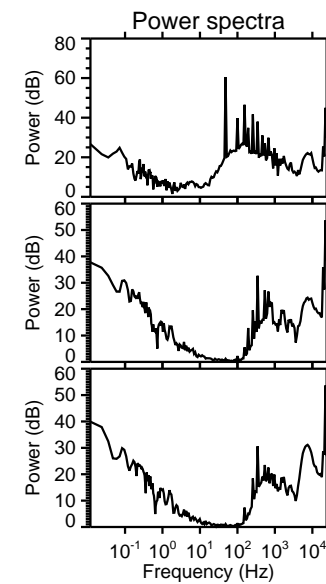
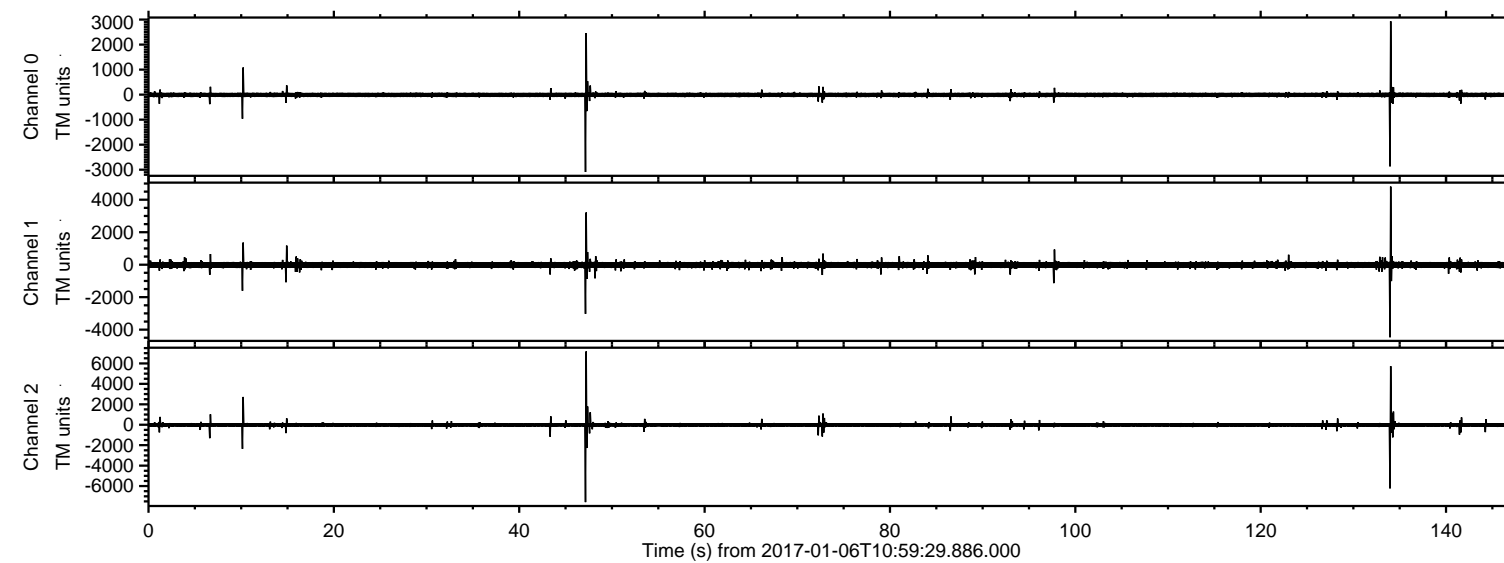


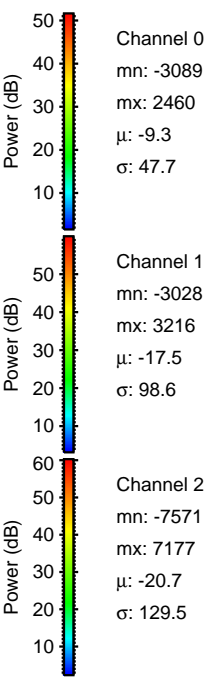
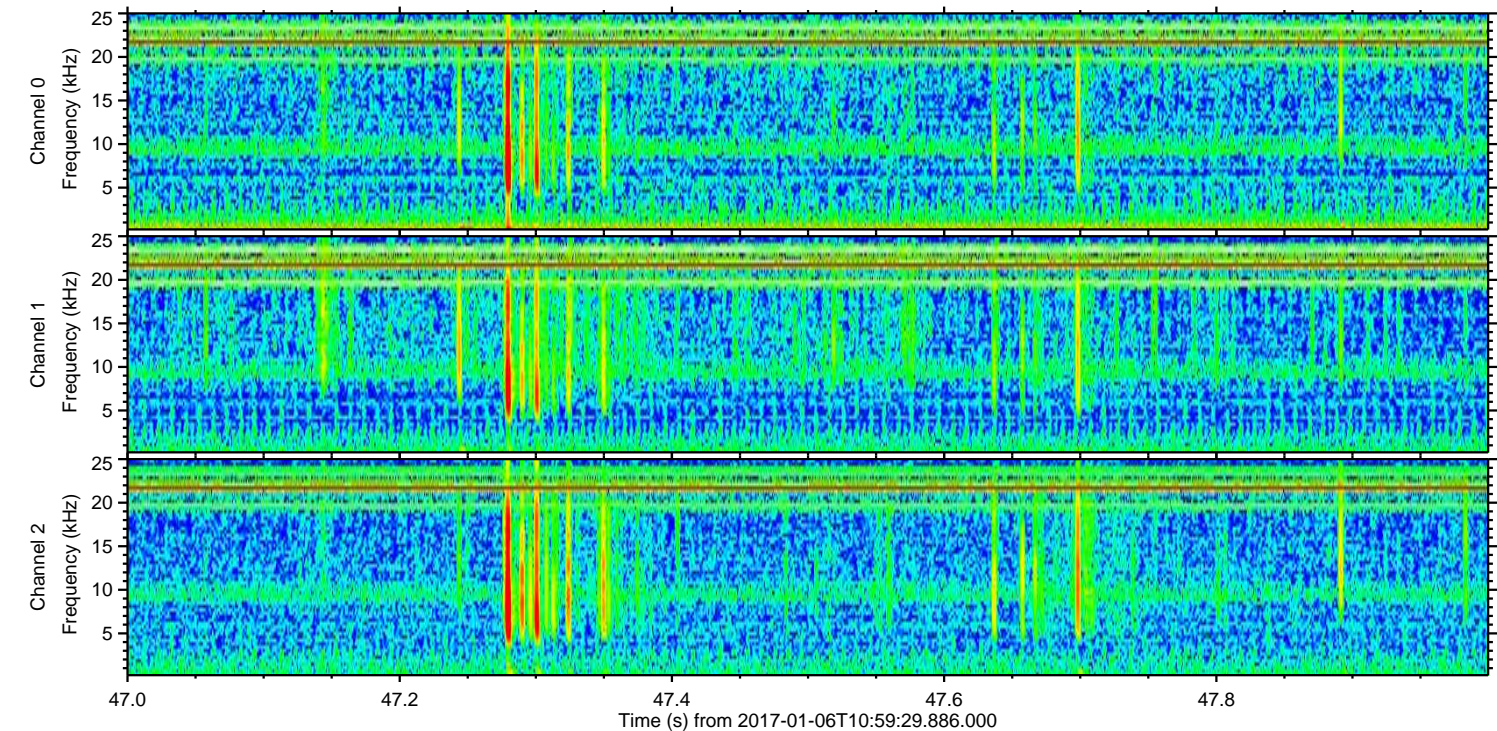
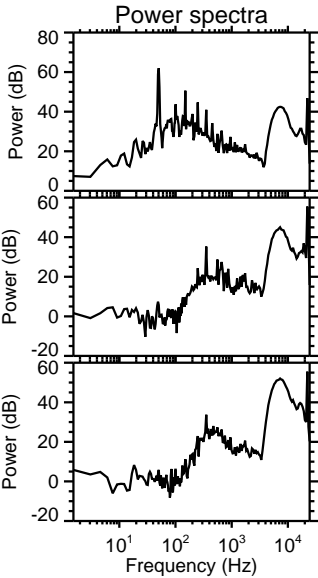
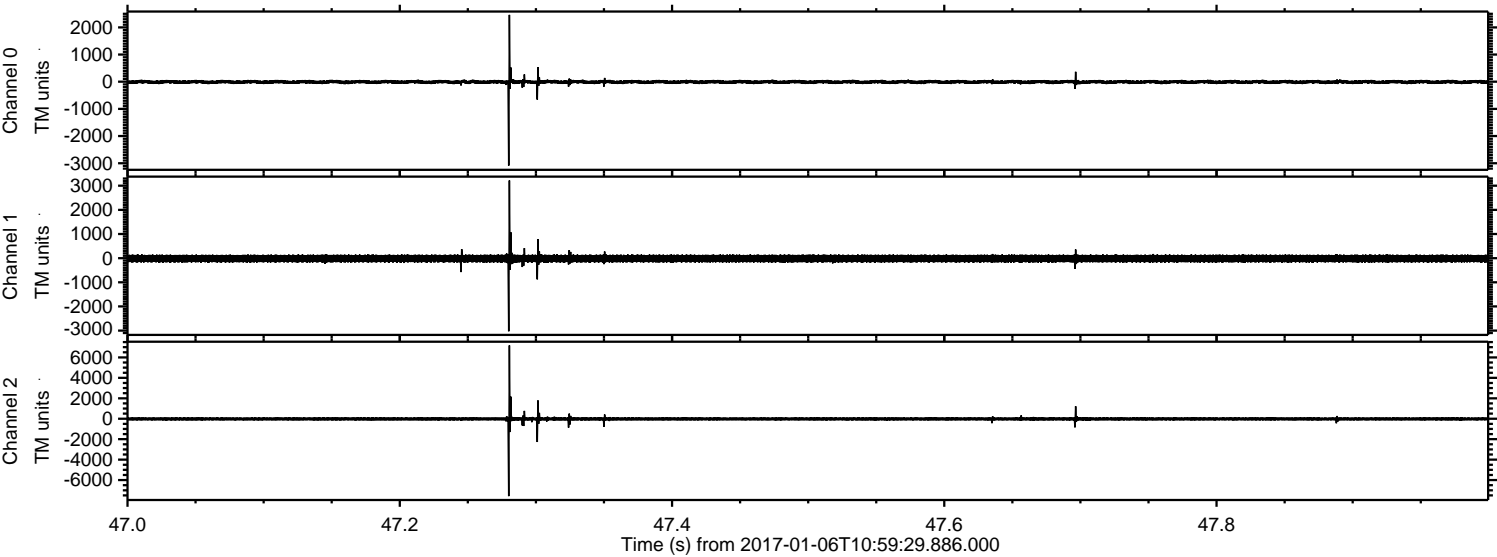
ELMAVAN 3D WAVEFORMS (Measured data sampled at 50 kHz) 51000 packets of 144 samples from 2017-01-06T10:59:29.886.000.

Processed Fri Jan 6 12:06:54 2017 by ELM ver.2012-10-06 from 001__elm20170106_105928__dat00.bin



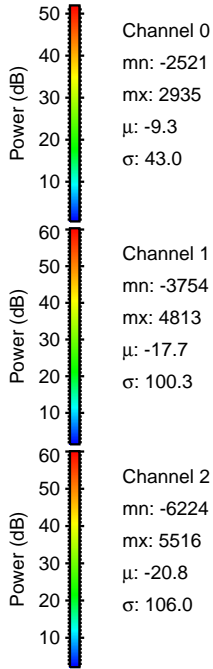
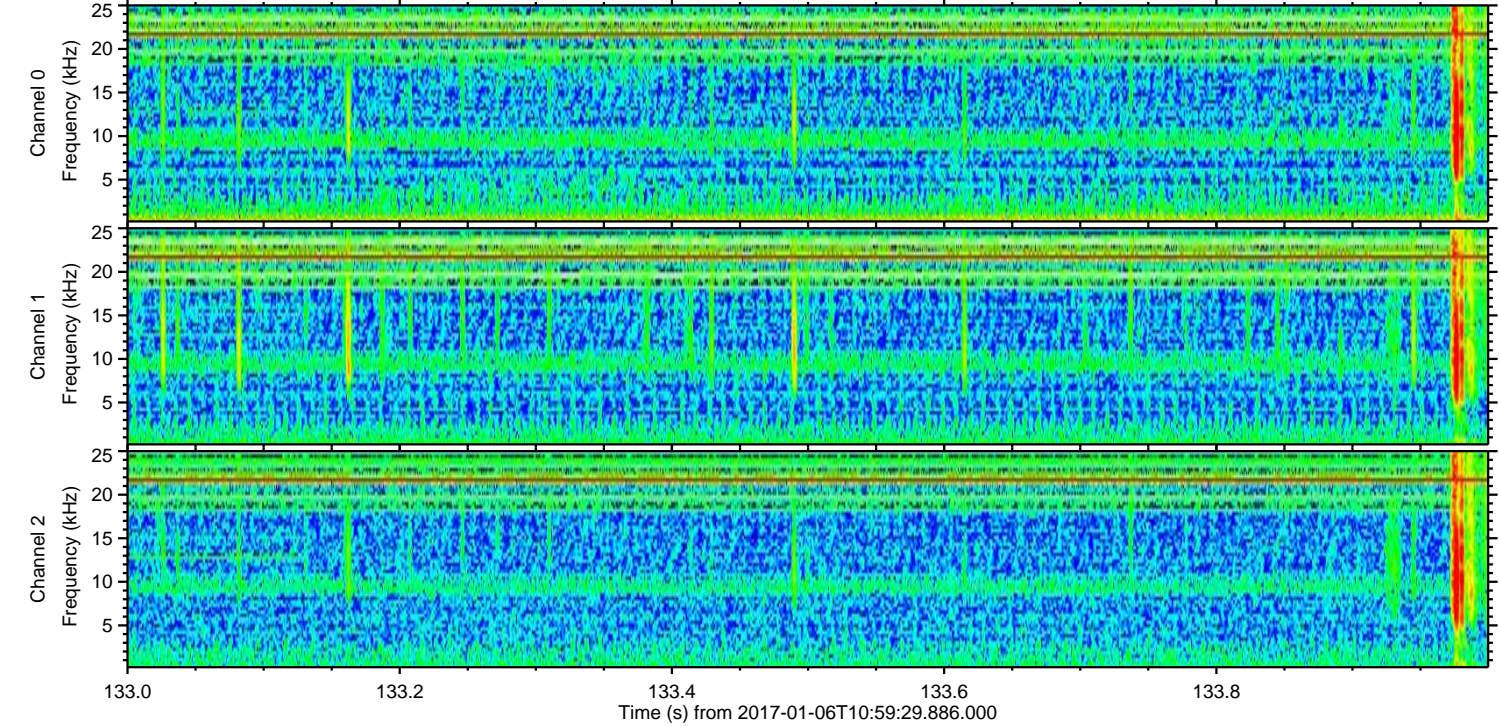
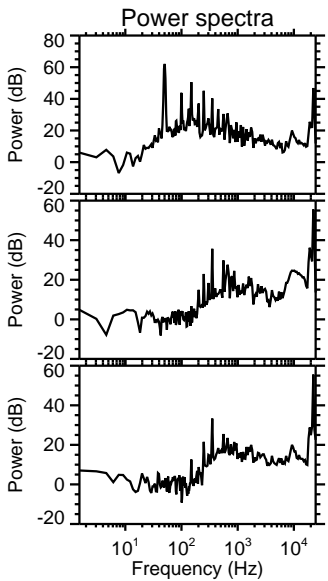
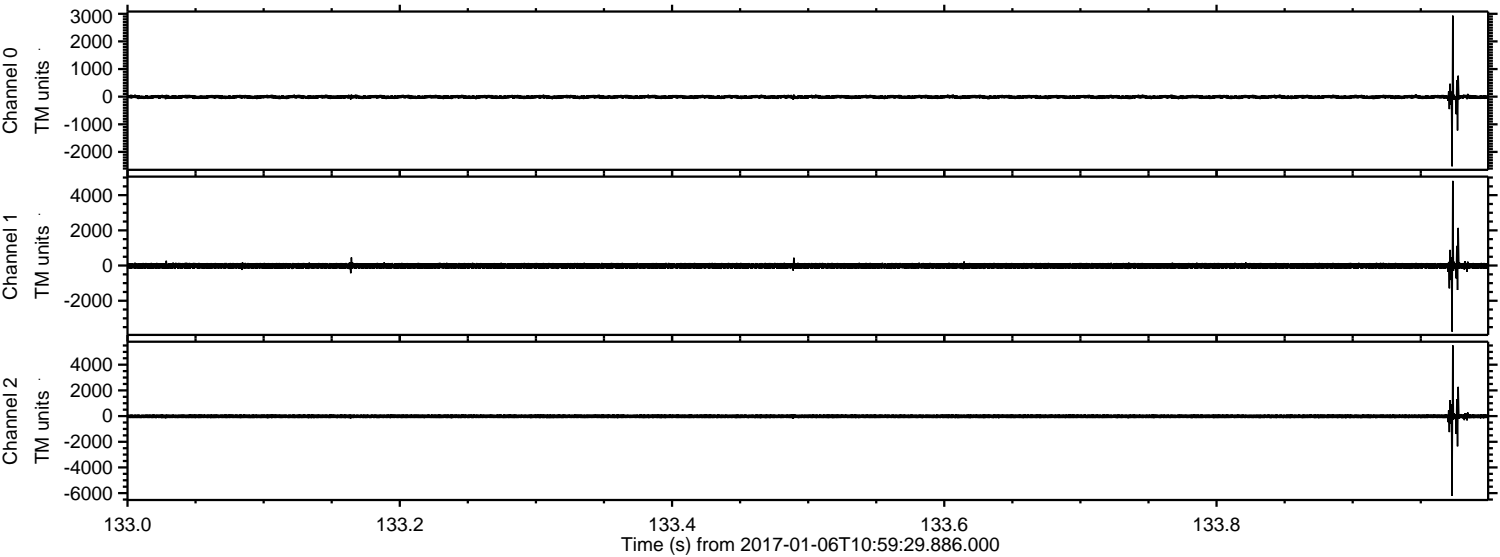
ELMAVAN 3D WAVEFORMS (Measured data sampled at 50 kHz) 51000 packets of 144 samples from 2017-01-06T10:59:29.886.000. Part 48/147

Processed Fri Jan 6 12:07:05 2017 by ELM ver.2012-10-06 from 001__elm20170106_105928__dat00.bin



ELMAVAN 3D WAVEFORMS (Measured data sampled at 50 kHz) 51000 packets of 144 samples from 2017-01-06T10:59:29.886.000. Part 134/147

Processed Fri Jan 6 12:07:06 2017 by ELM ver.2012-10-06 from 001__elm20170106_105928__dat00.bin



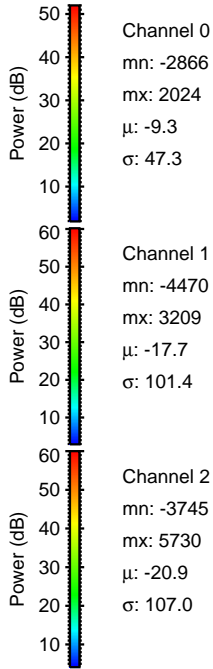
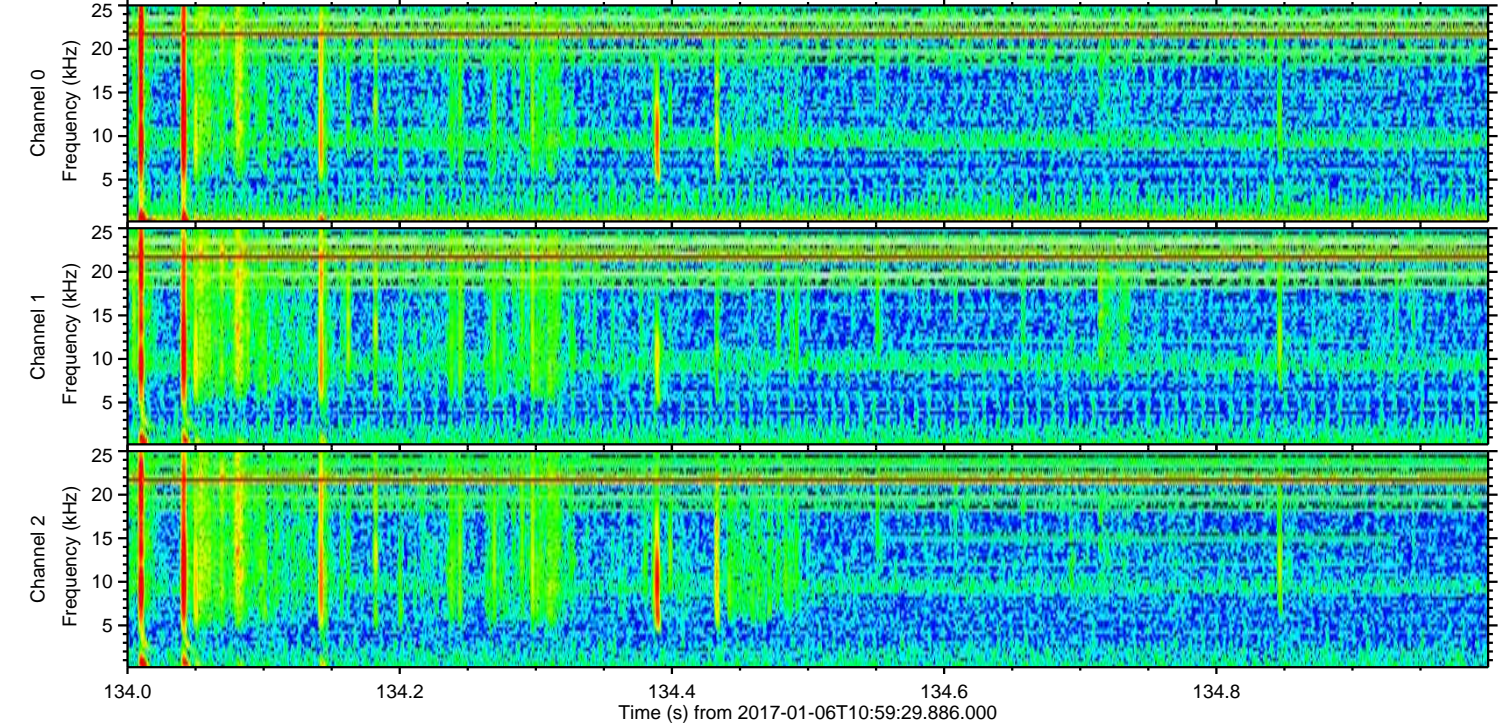
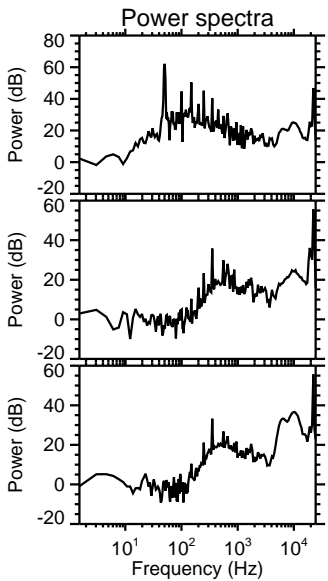
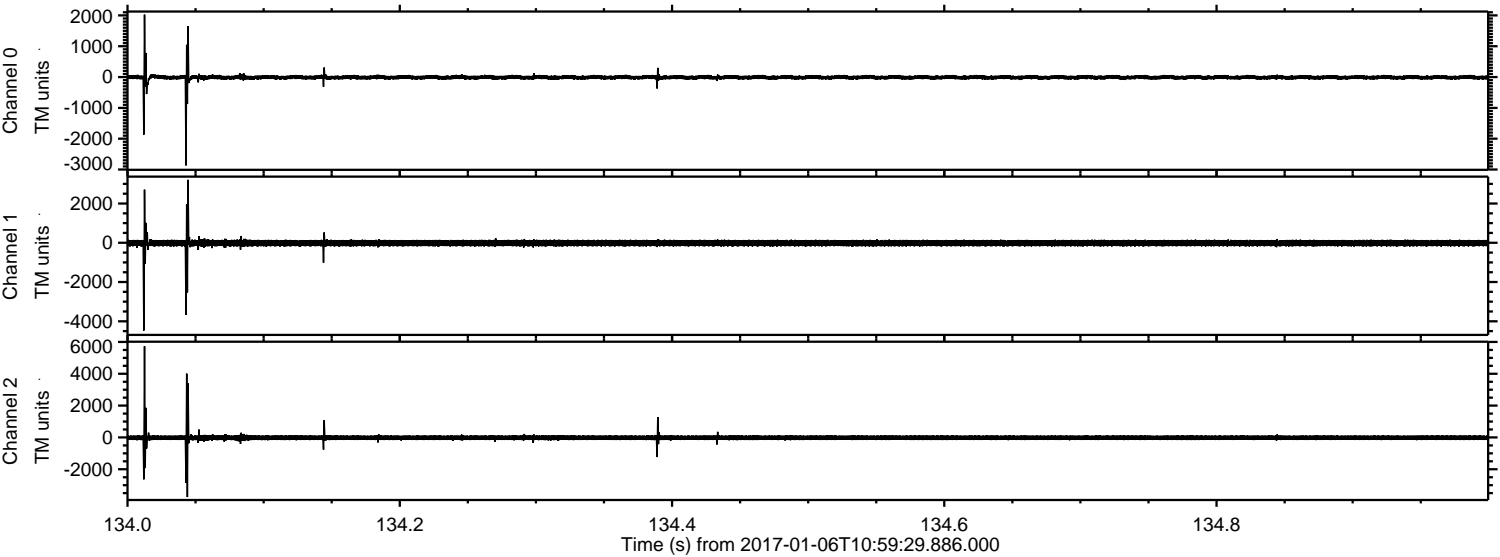
Channel 0
mn: -2521
mx: 2935
 μ : -9.3
 σ : 43.0

Channel 1
mn: -3754
mx: 4813
 μ : -17.7
 σ : 100.3

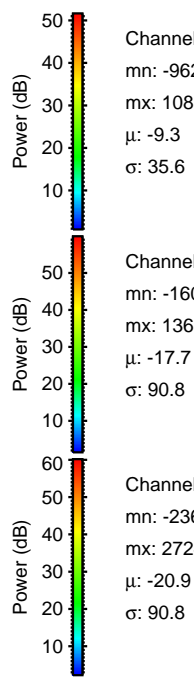
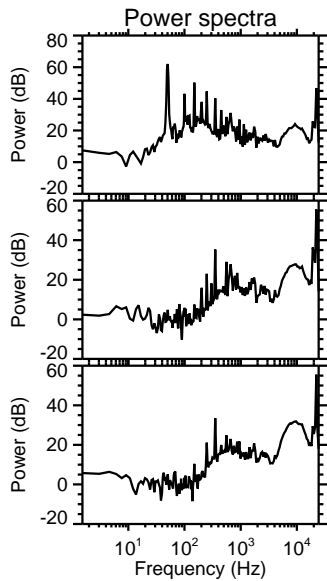
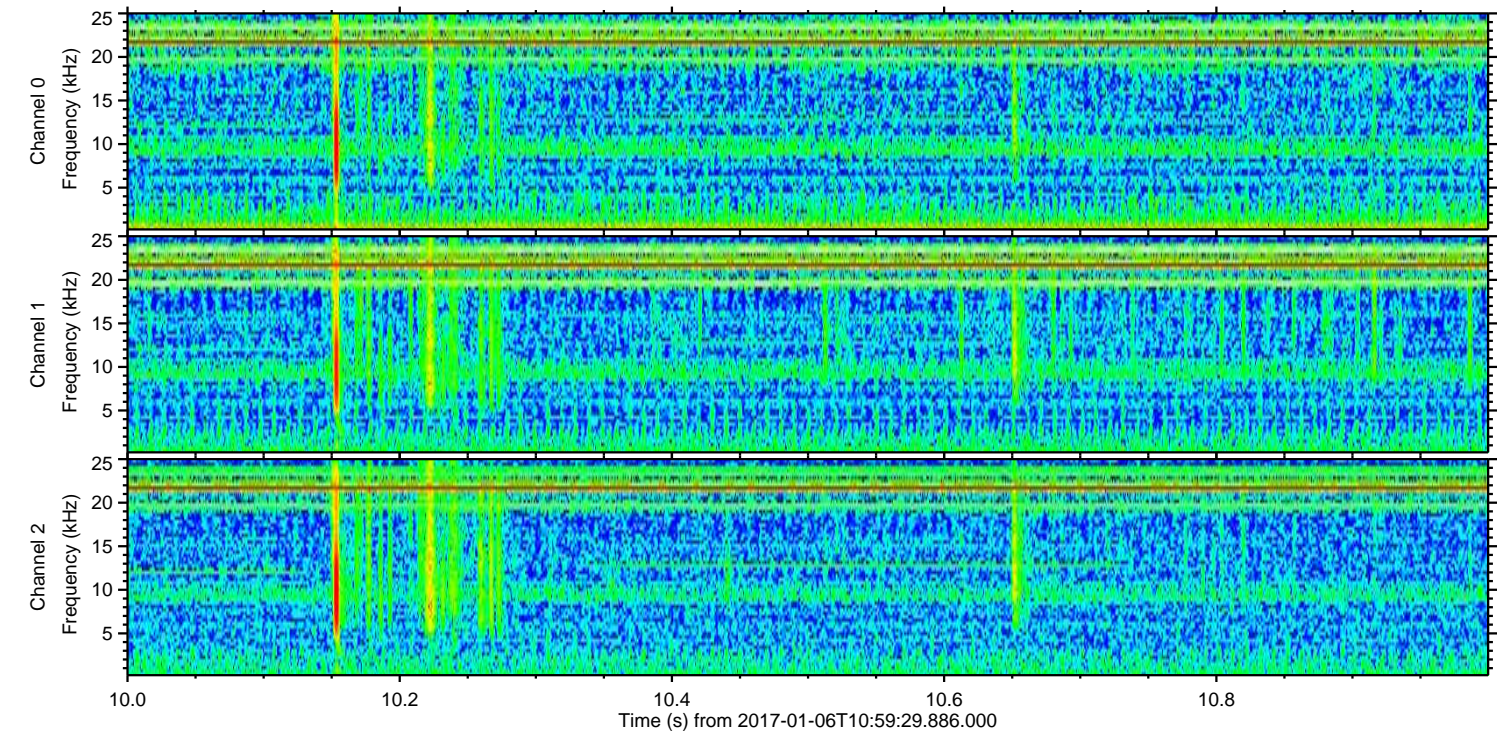
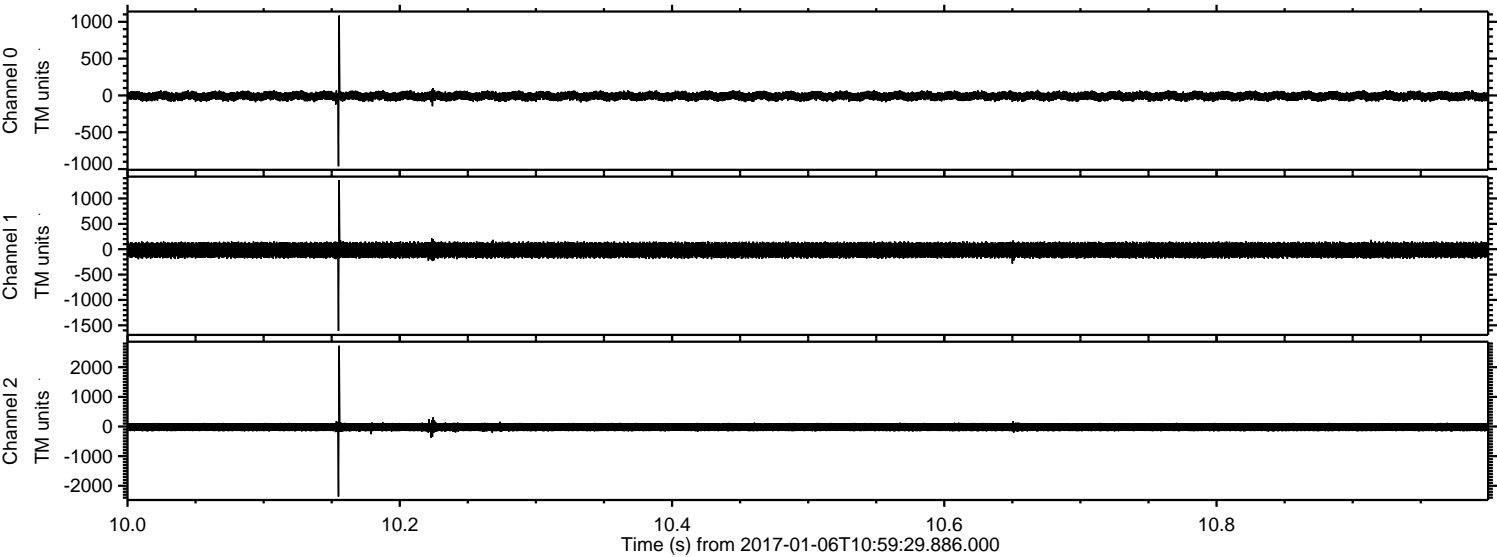
Channel 2
mn: -6224
mx: 5516
 μ : -20.8
 σ : 106.0

ELMAVAN 3D WAVEFORMS (Measured data sampled at 50 kHz) 51000 packets of 144 samples from 2017-01-06T10:59:29.886.000. Part 135/147

Processed Fri Jan 6 12:07:07 2017 by ELM ver.2012-10-06 from 001__elm20170106_105928__dat00.bin



Processed Fri Jan 6 12:07:08 2017 by ELM ver.2012-10-06 from 001__elm20170106_105928__dat00.bin

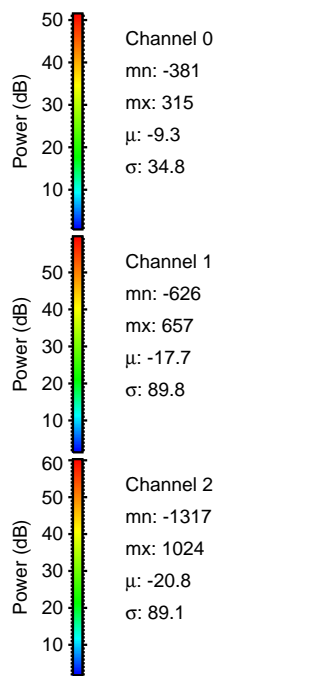
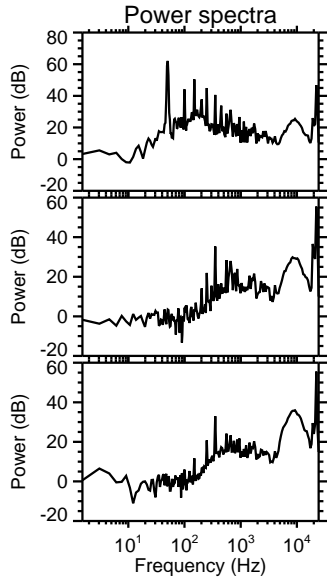
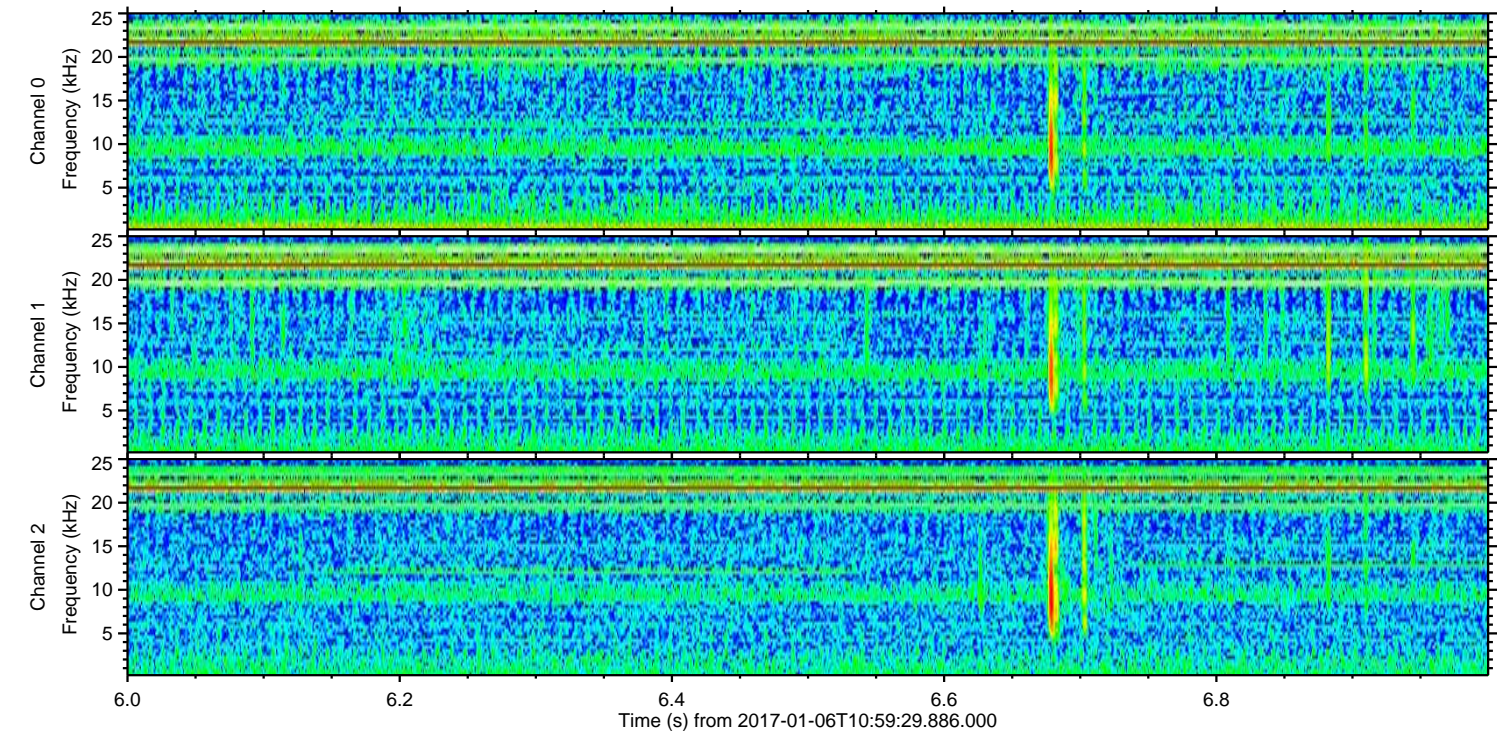
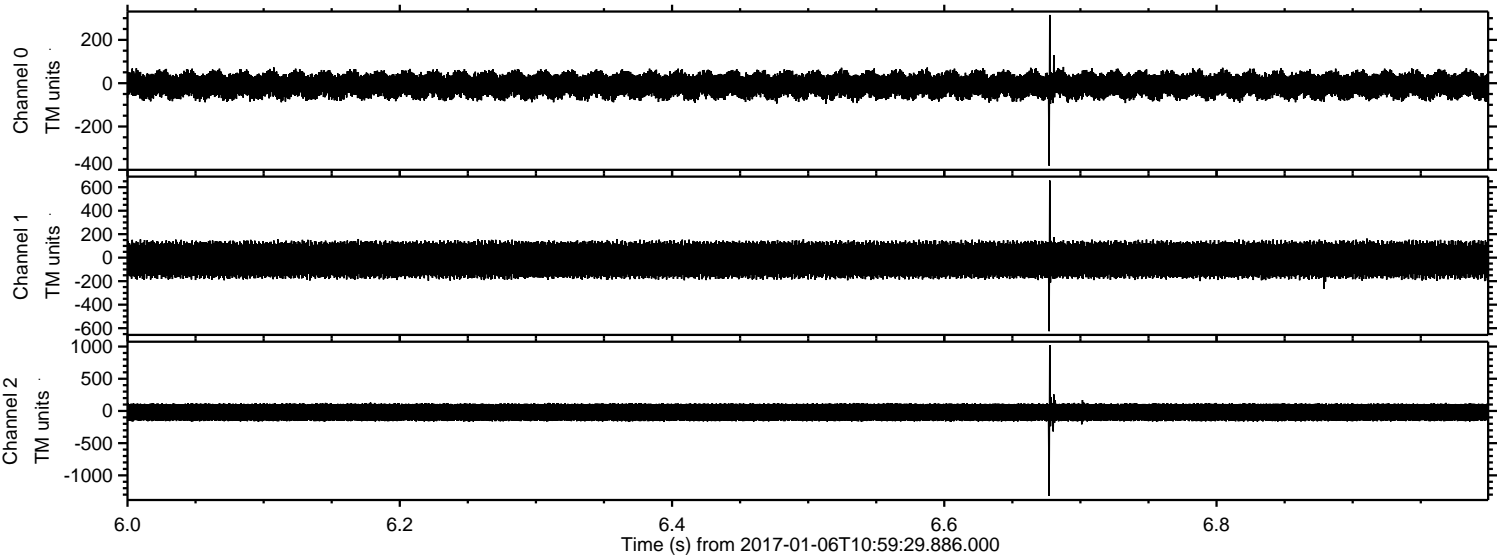


Channel 0
mn: -962
mx: 1085
 μ : -9.3
 σ : 35.6

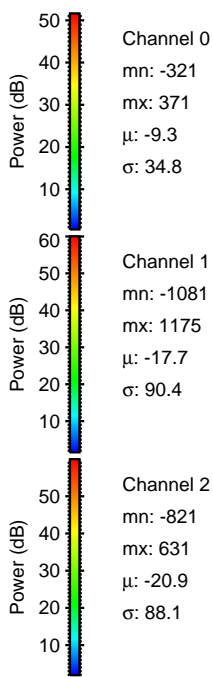
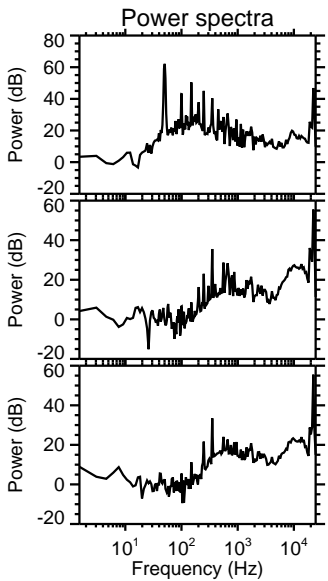
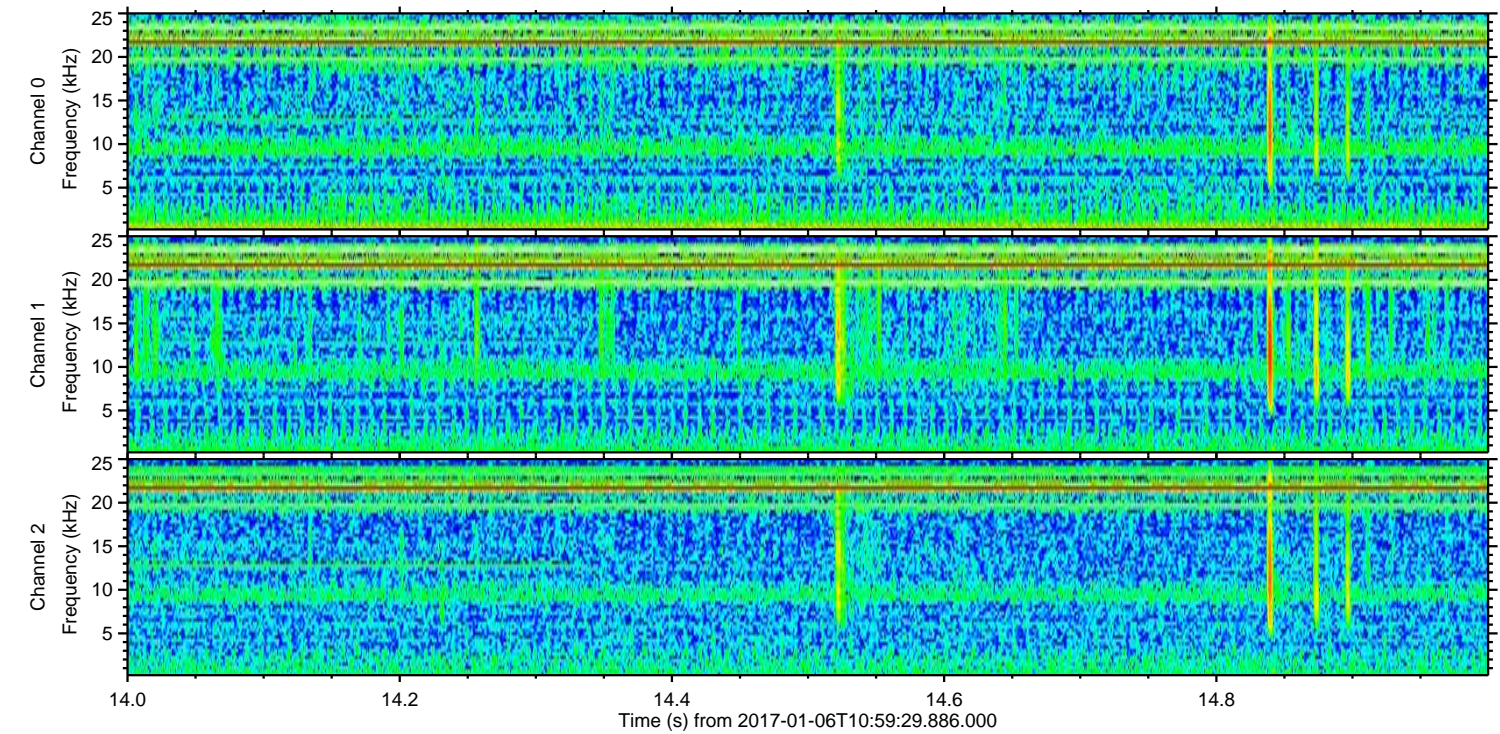
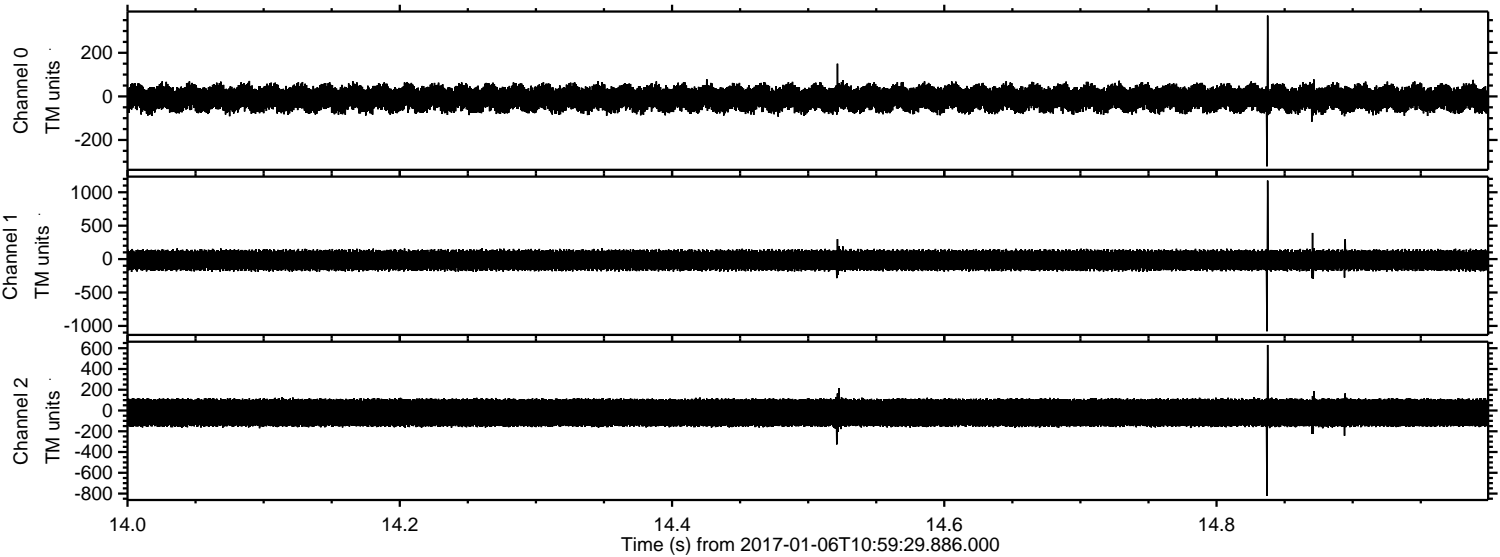
Channel 1
mn: -1609
mx: 1363
 μ : -17.7
 σ : 90.8

Channel 2
mn: -2361
mx: 2724
 μ : -20.9
 σ : 90.8

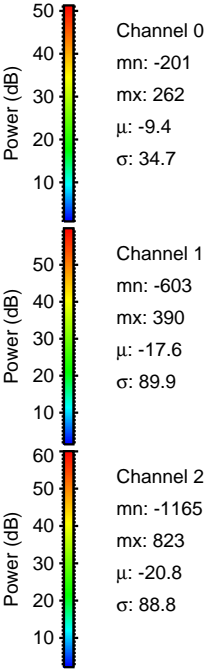
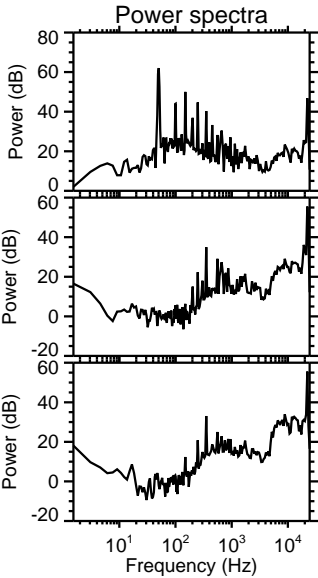
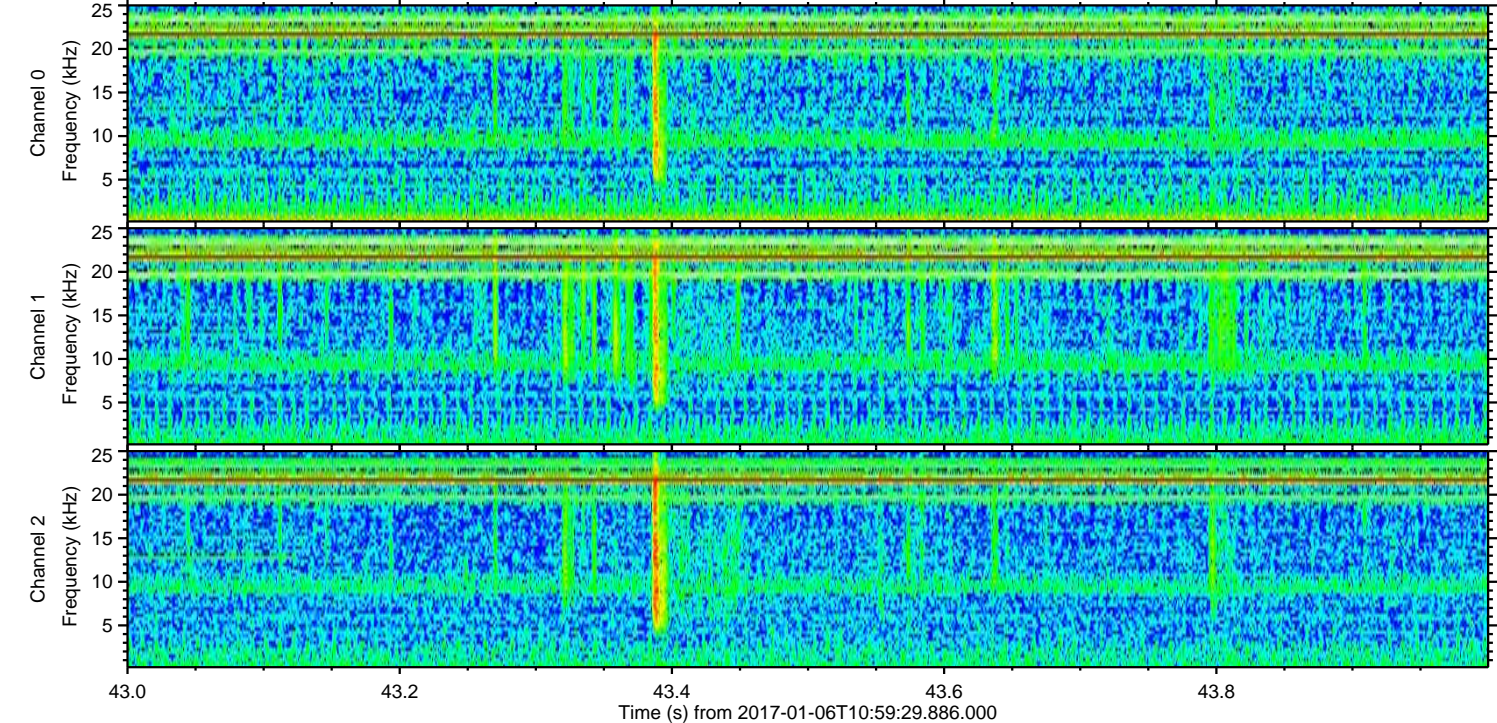
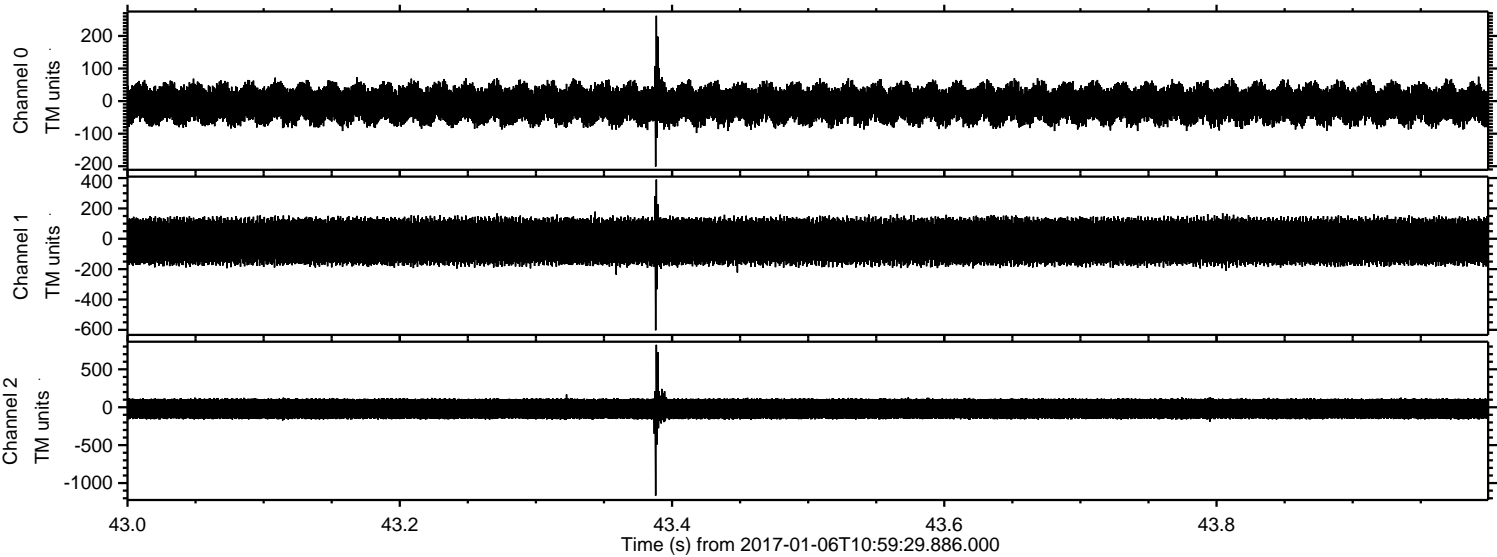
Processed Fri Jan 6 12:07:09 2017 by ELM ver.2012-10-06 from 001__elm20170106_105928__dat00.bin



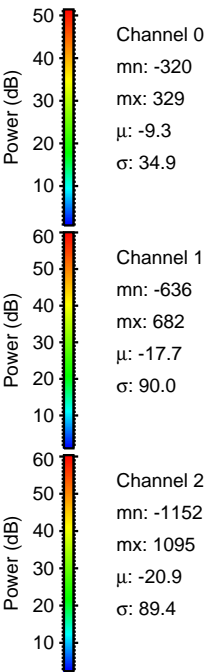
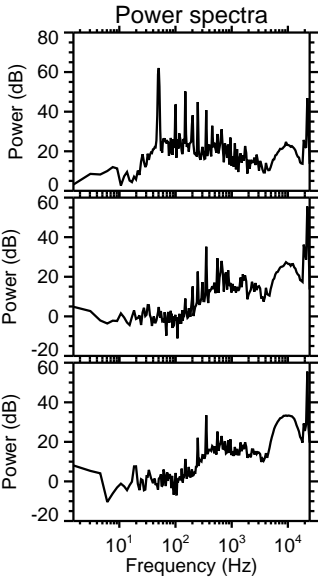
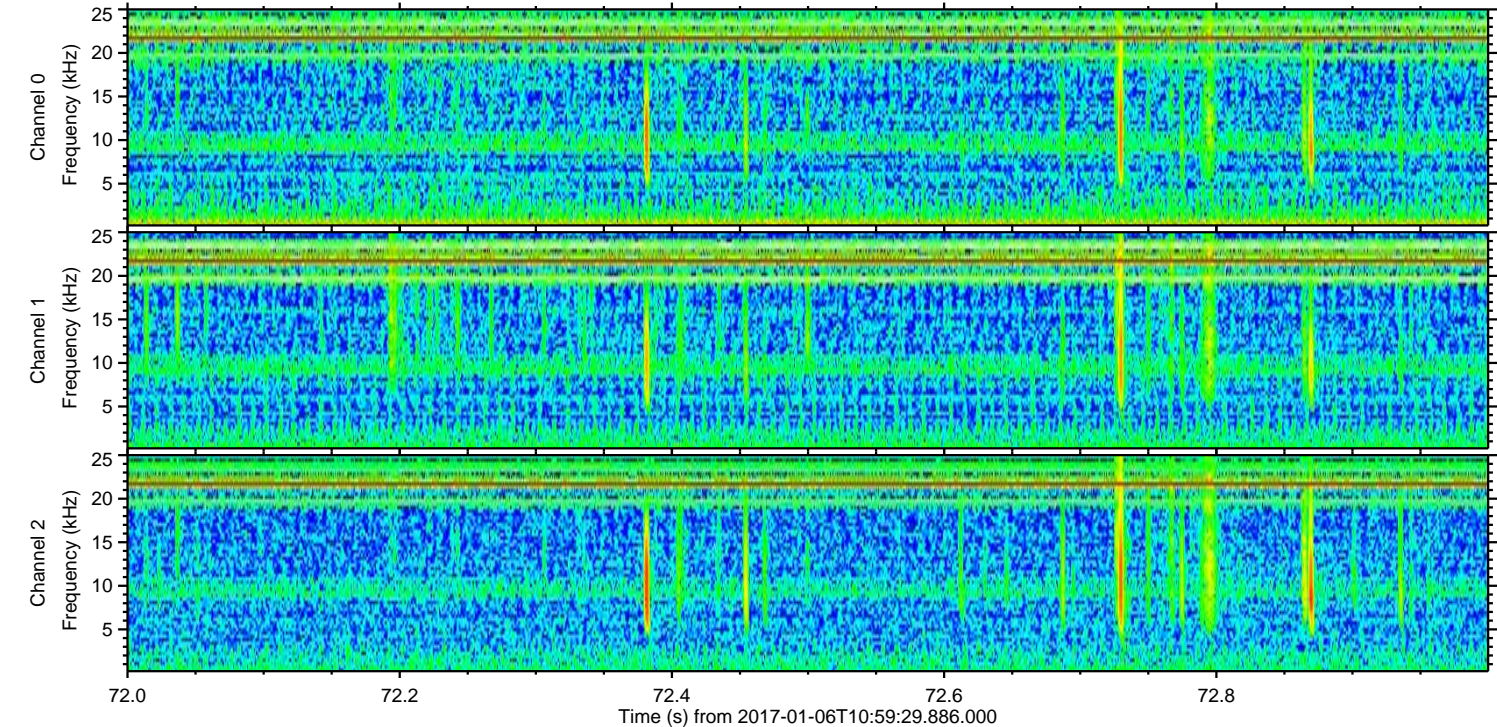
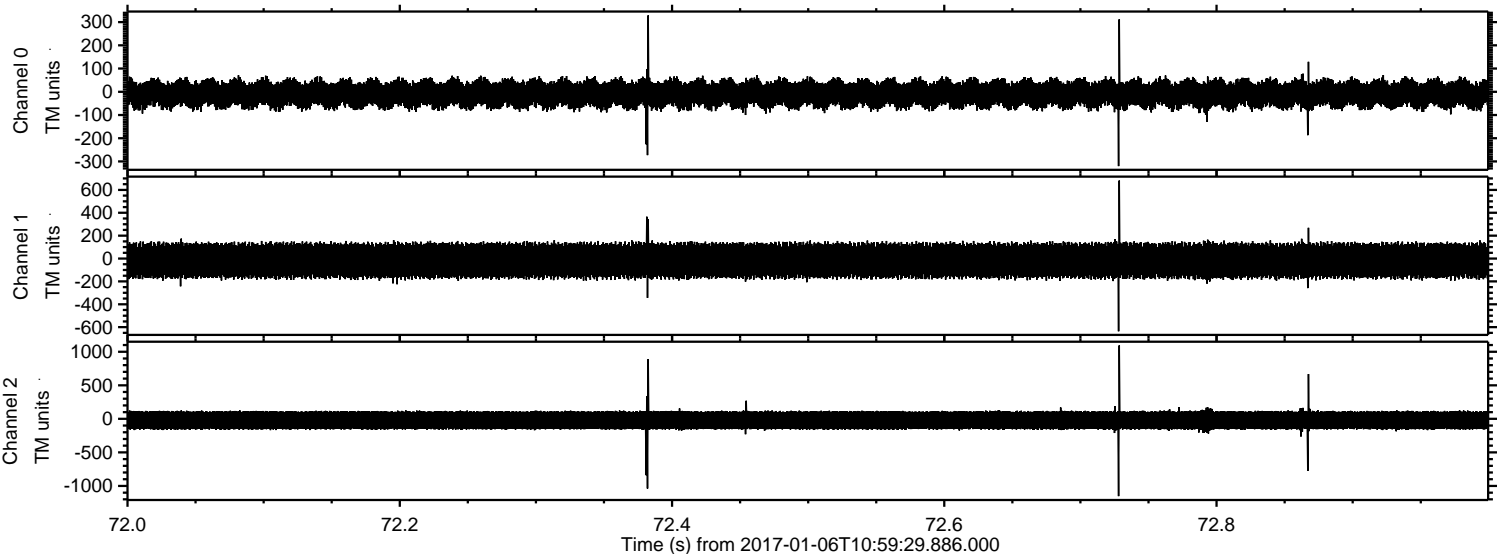
Processed Fri Jan 6 12:07:10 2017 by ELM ver.2012-10-06 from 001__elm20170106_105928__dat00.bin



Processed Fri Jan 6 12:07:11 2017 by ELM ver.2012-10-06 from 001__elm20170106_105928__dat00.bin



Processed Fri Jan 6 12:07:12 2017 by ELM ver.2012-10-06 from 001__elm20170106_105928__dat00.bin

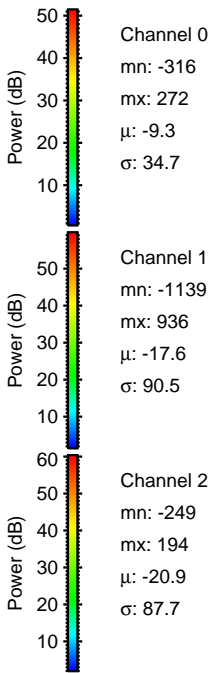
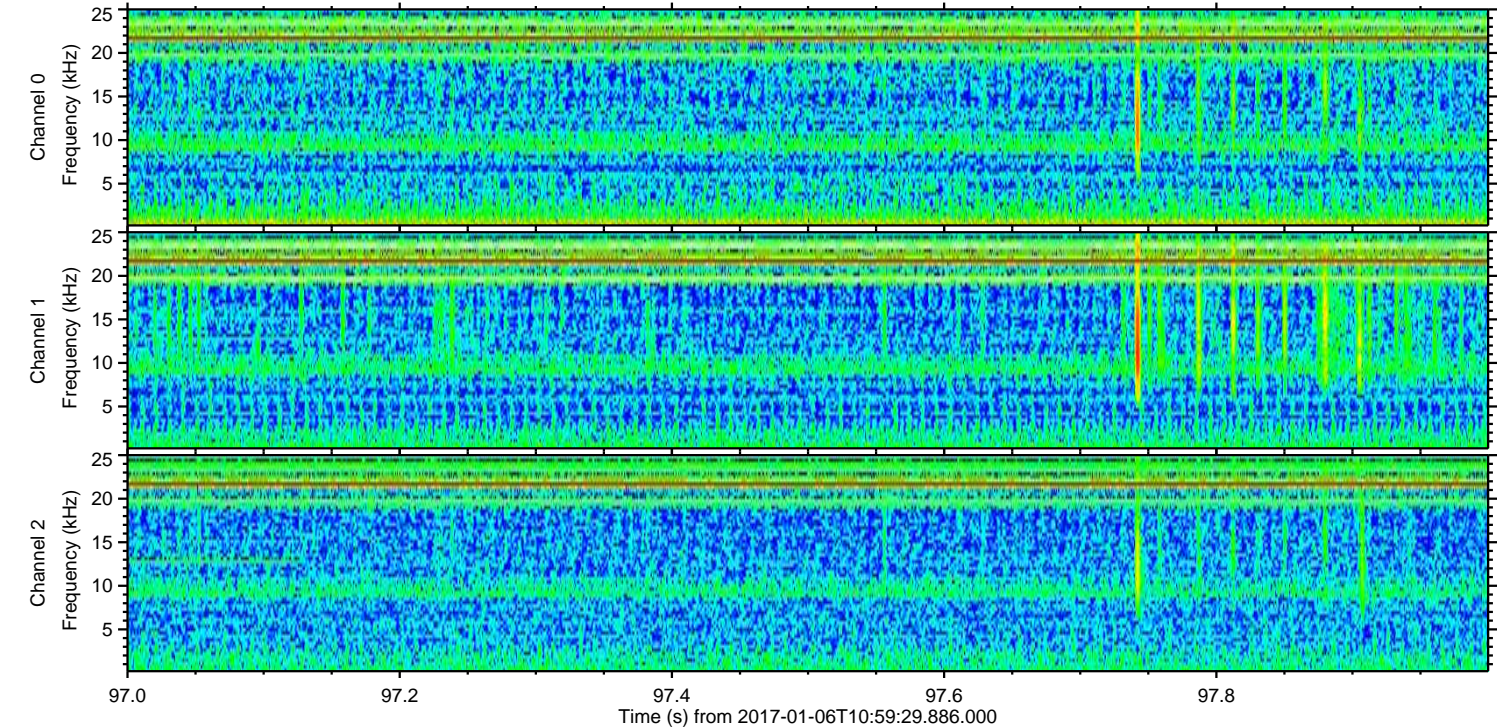
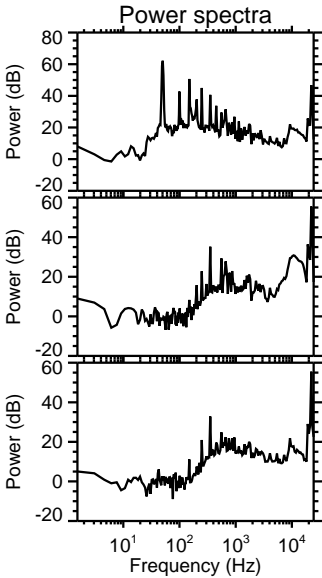
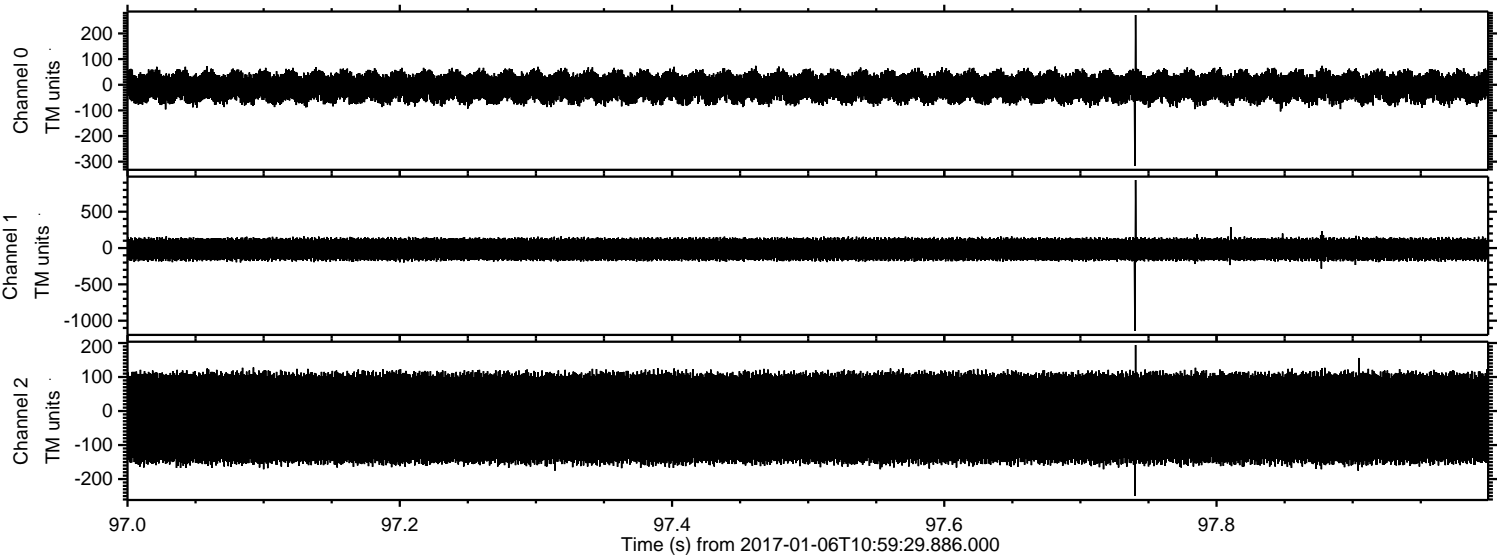


Channel 0
mn: -320
mx: 329
 μ : -9.3
 σ : 34.9

Channel 1
mn: -636
mx: 682
 μ : -17.7
 σ : 90.0

Channel 2
mn: -1152
mx: 1095
 μ : -20.9
 σ : 89.4

Processed Fri Jan 6 12:07:13 2017 by ELM ver.2012-10-06 from 001__elm20170106_105928__dat00.bin



Processed Fri Jan 6 12:07:14 2017 by ELM ver.2012-10-06 from 001__elm20170106_105928__dat00.bin

