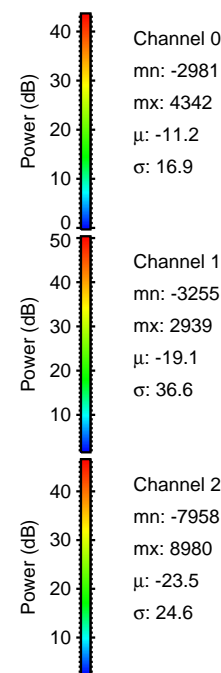
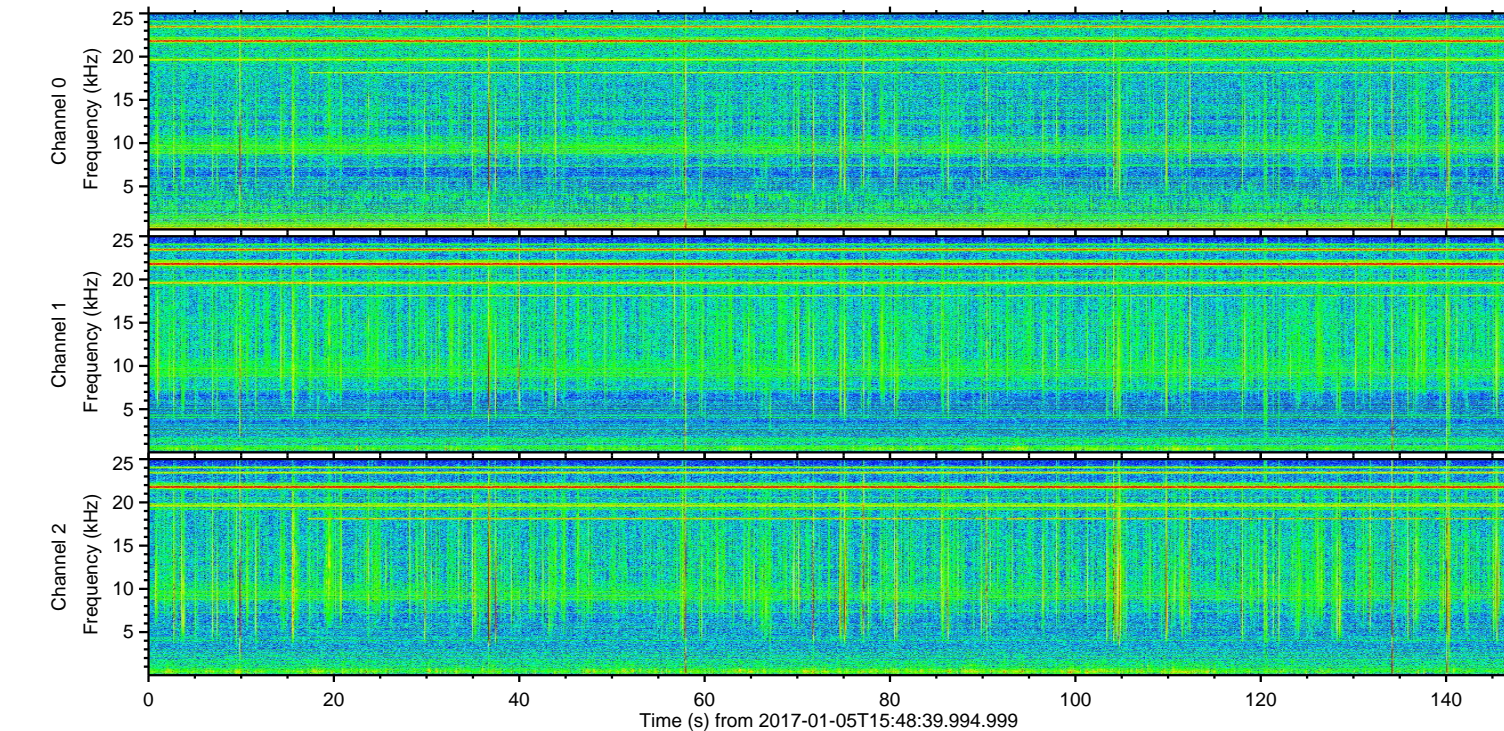
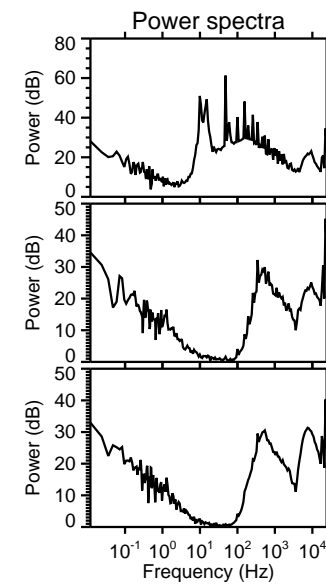
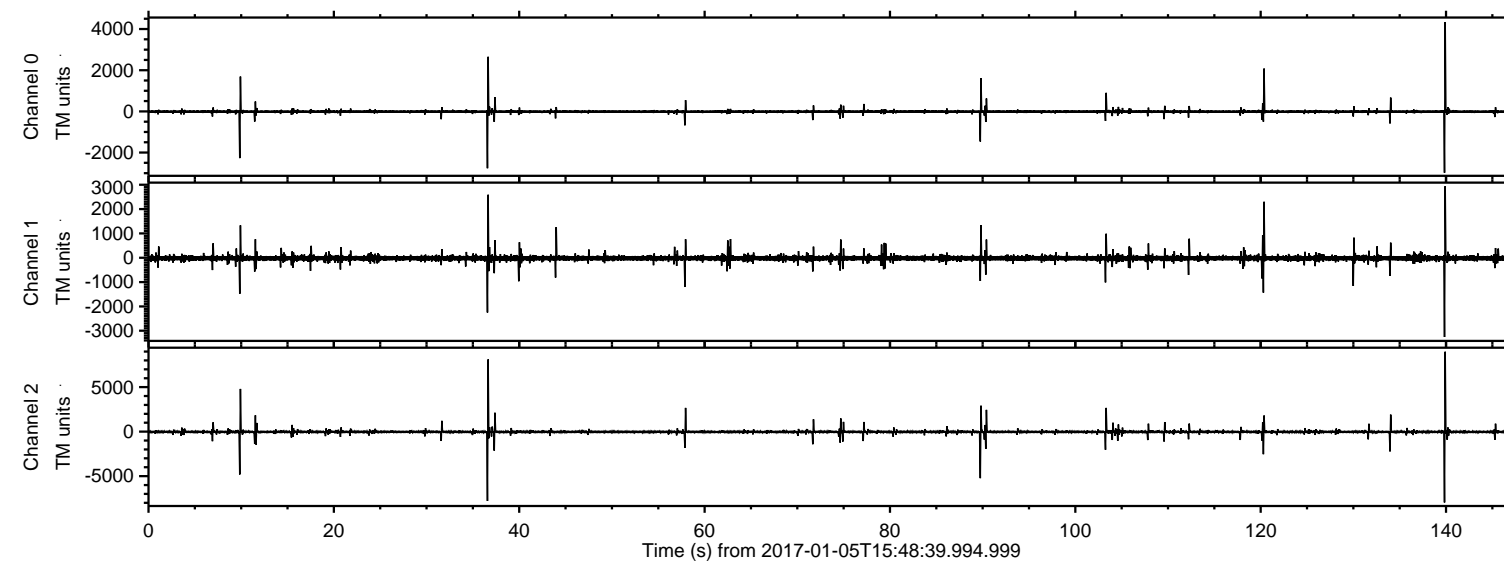


# ELMAVAN 3D WAVEFORMS (Measured data sampled at 50 kHz) 51000 packets of 144 samples from 2017-01-05T15:48:39.994.999.

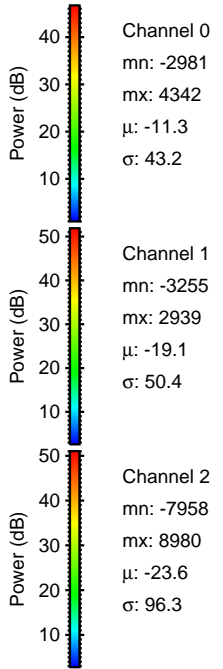
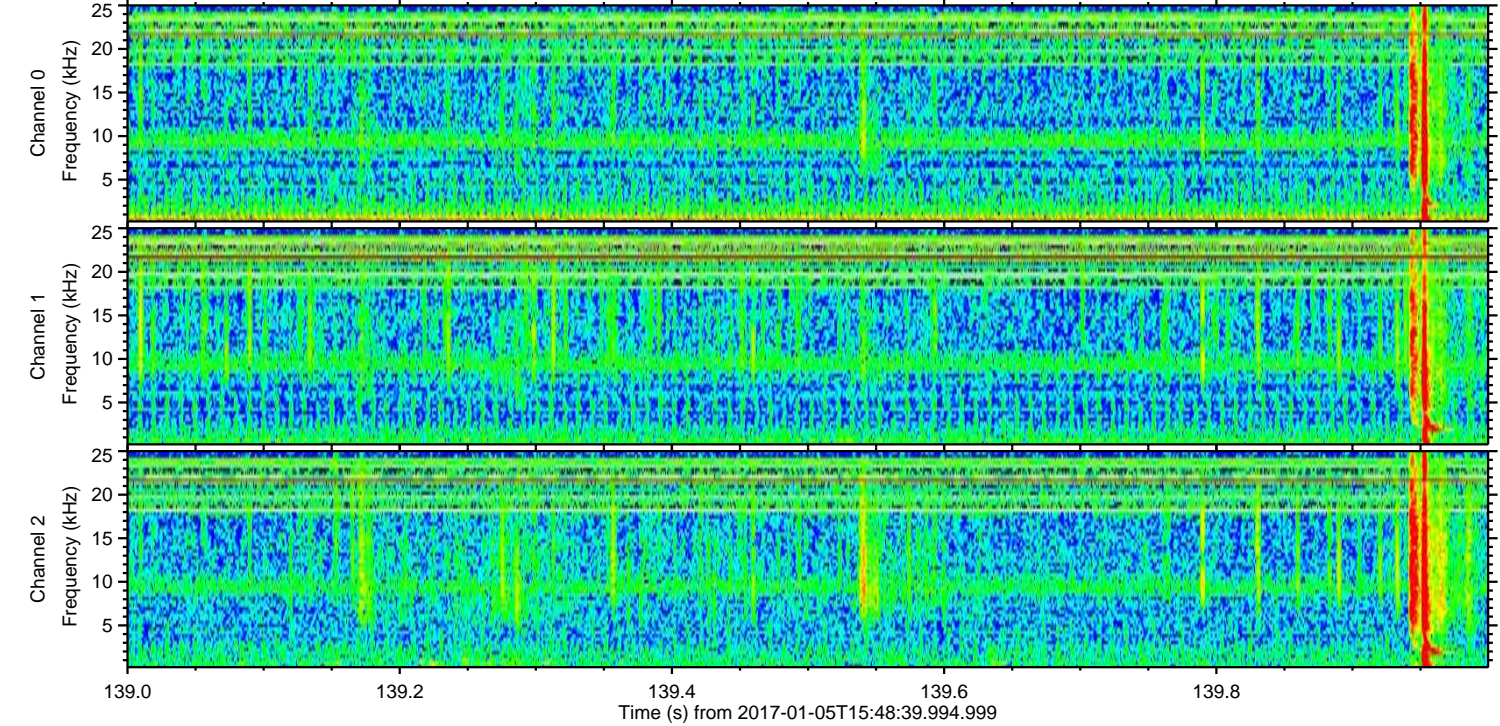
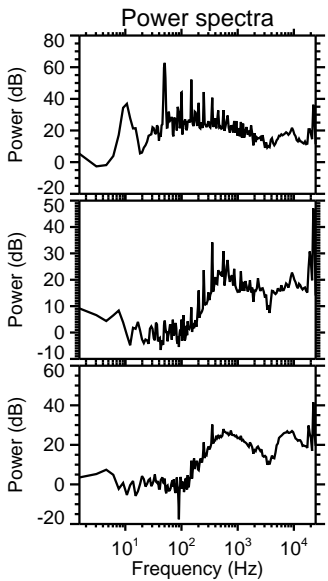
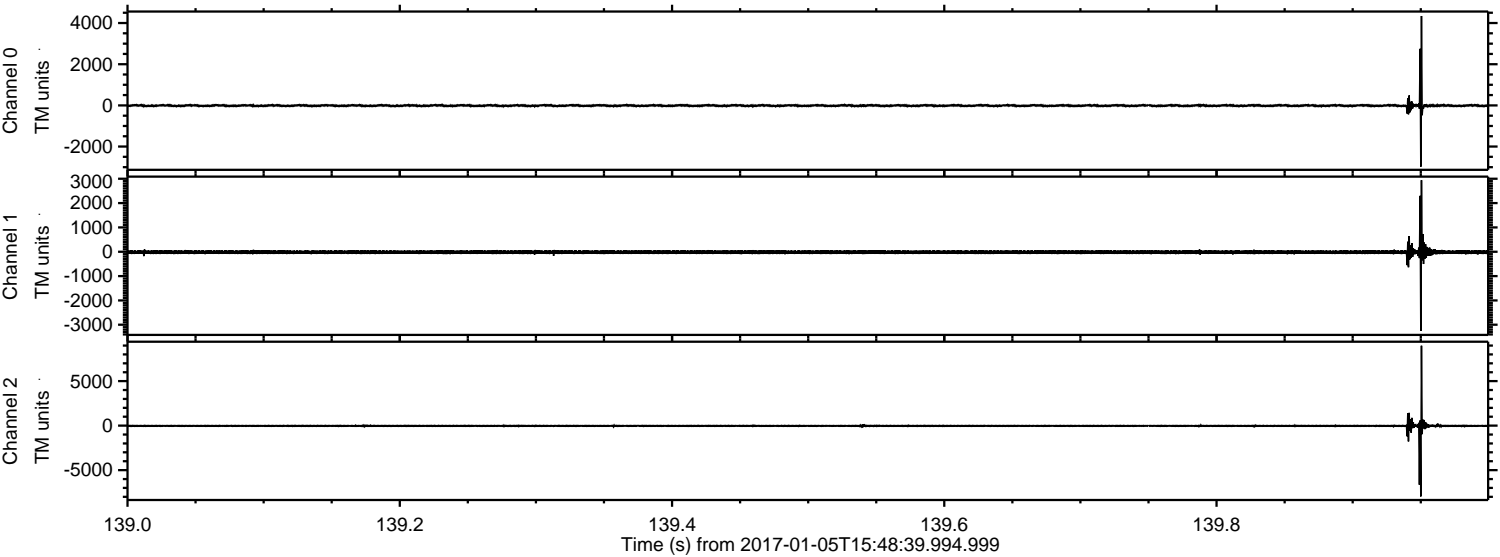
Processed Thu Jan 5 16:56:40 2017 by ELM ver.2012-10-06 from 001\_\_elm20170105\_154838\_\_dat00.bin





ELMAVAN 3D WAVEFORMS (Measured data sampled at 50 kHz) 51000 packets of 144 samples from 2017-01-05T15:48:39.994.999. Part 140/147

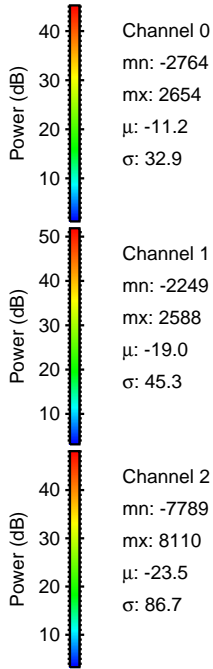
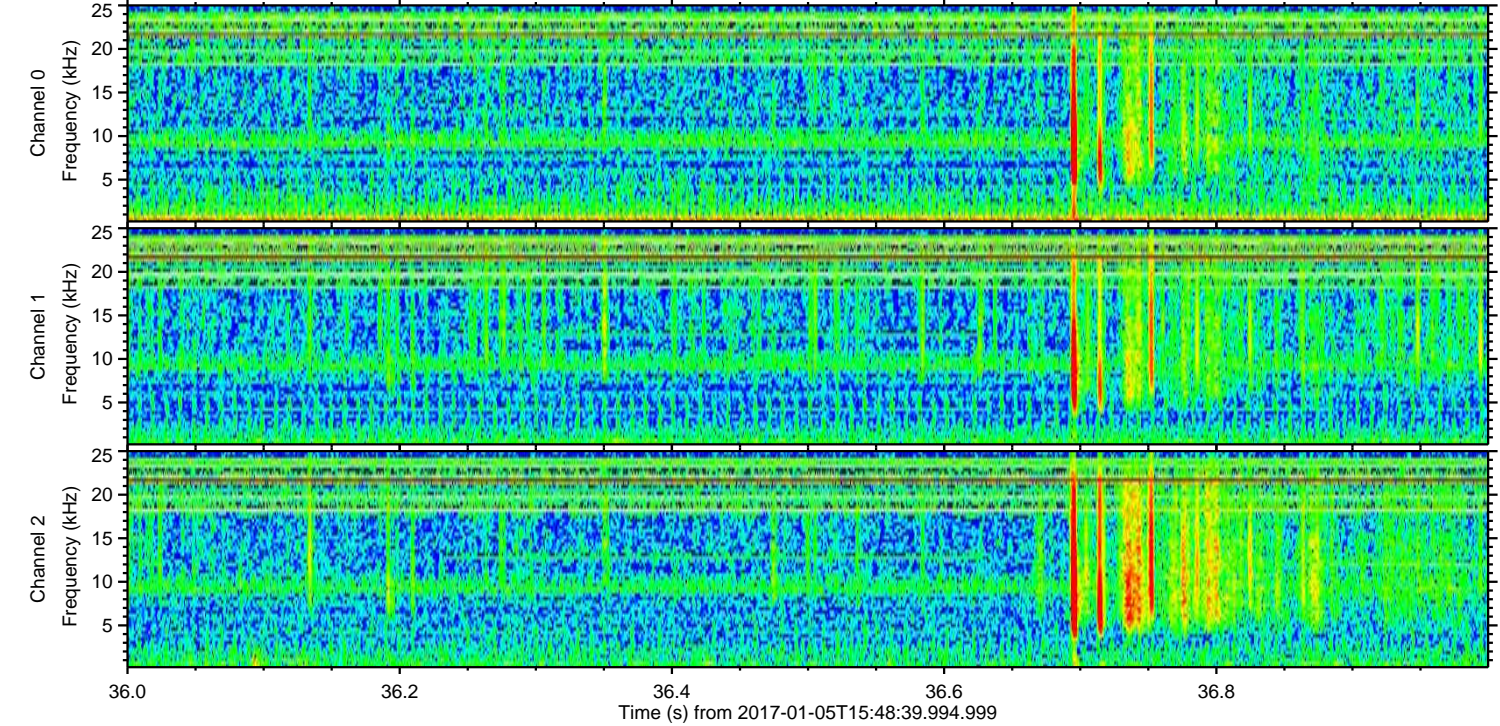
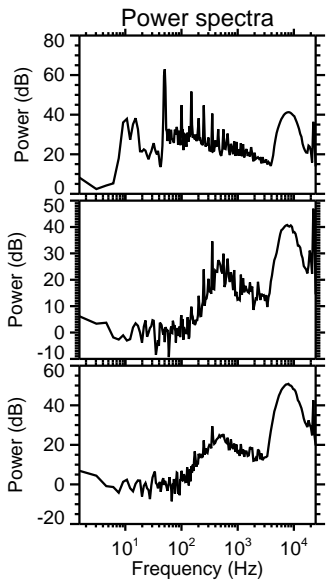
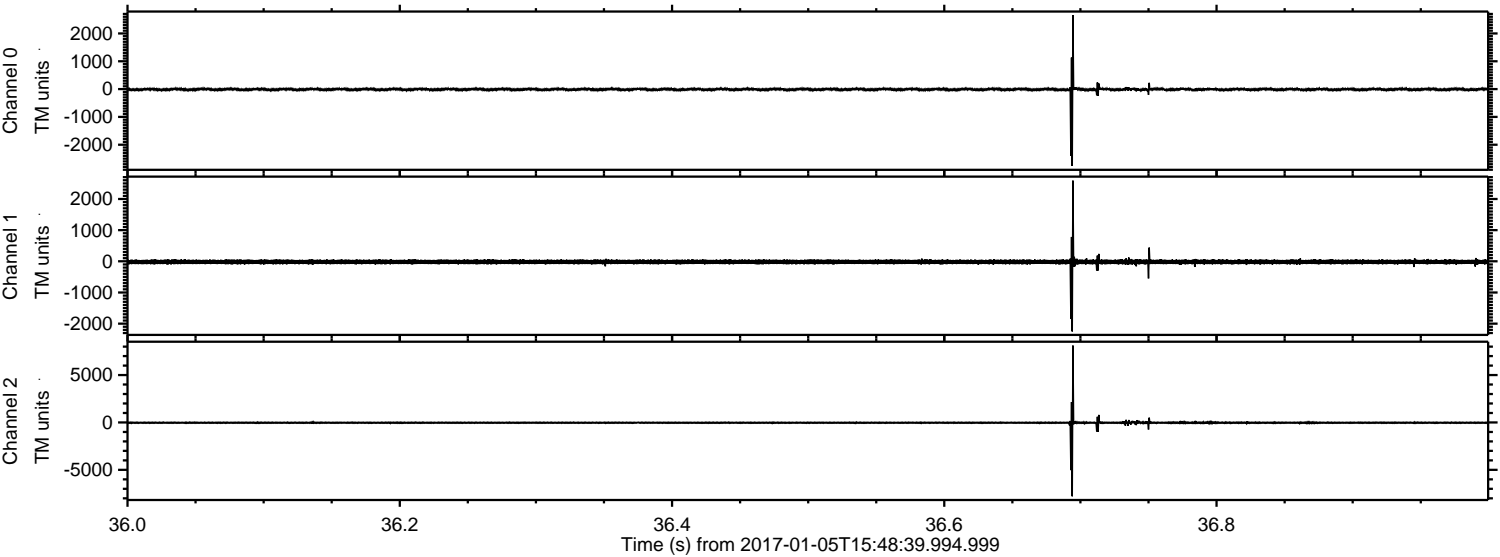
Processed Thu Jan 5 16:56:54 2017 by ELM ver.2012-10-06 from 001\_\_elm20170105\_154838\_\_dat00.bin





ELMAVAN 3D WAVEFORMS (Measured data sampled at 50 kHz) 51000 packets of 144 samples from 2017-01-05T15:48:39.994.999. Part 37/147

Processed Thu Jan 5 16:56:55 2017 by ELM ver.2012-10-06 from 001\_\_elm20170105\_154838\_\_dat00.bin



Channel 0  
mn: -2764  
mx: 2654  
 $\mu$ : -11.2  
 $\sigma$ : 32.9

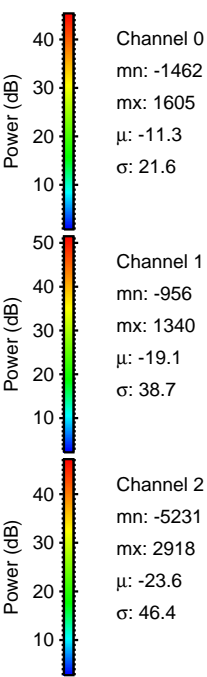
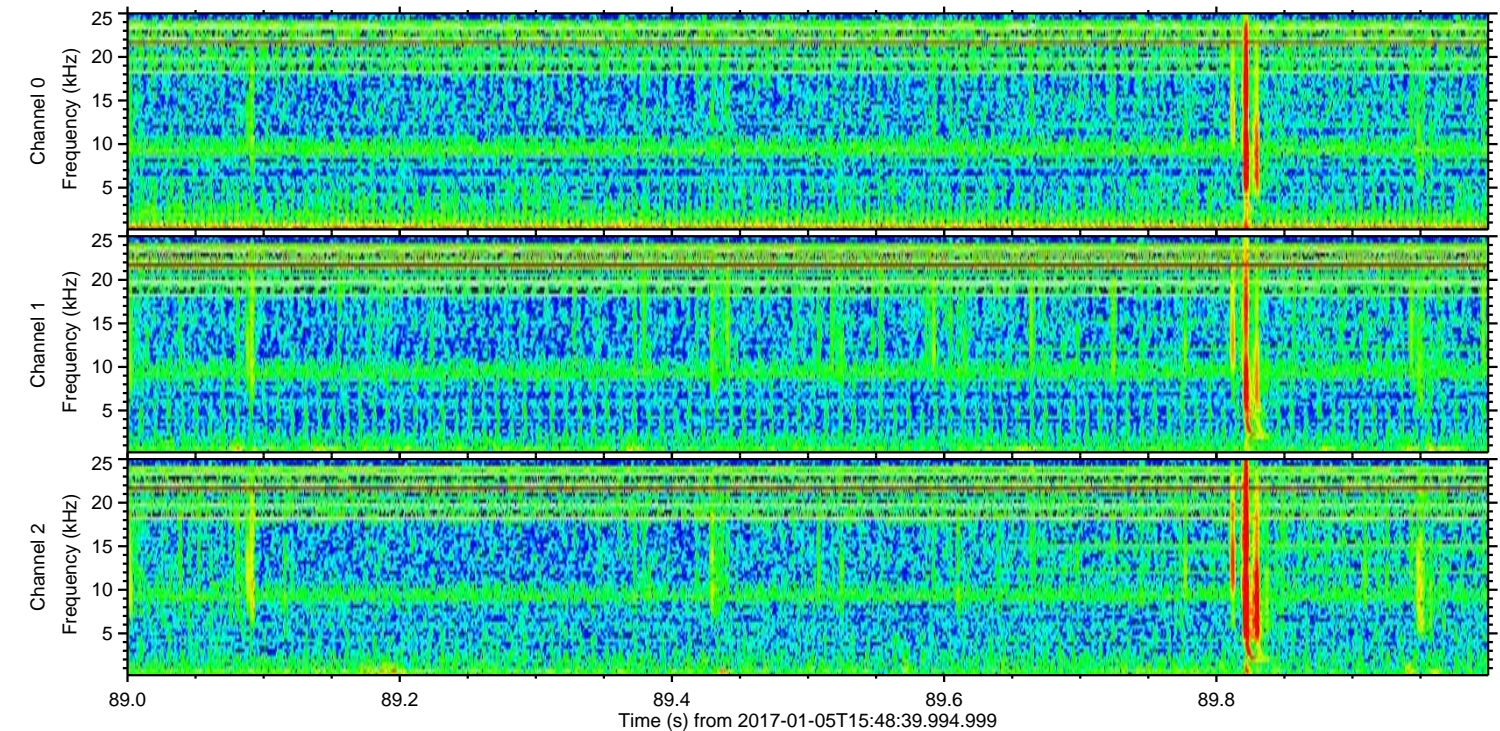
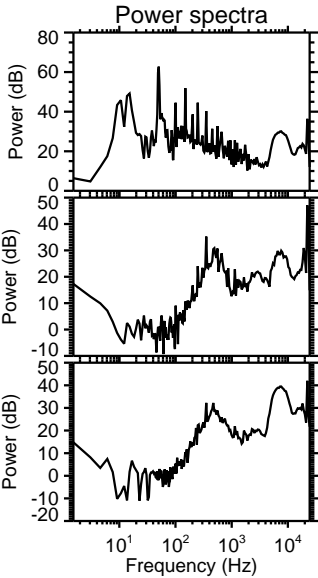
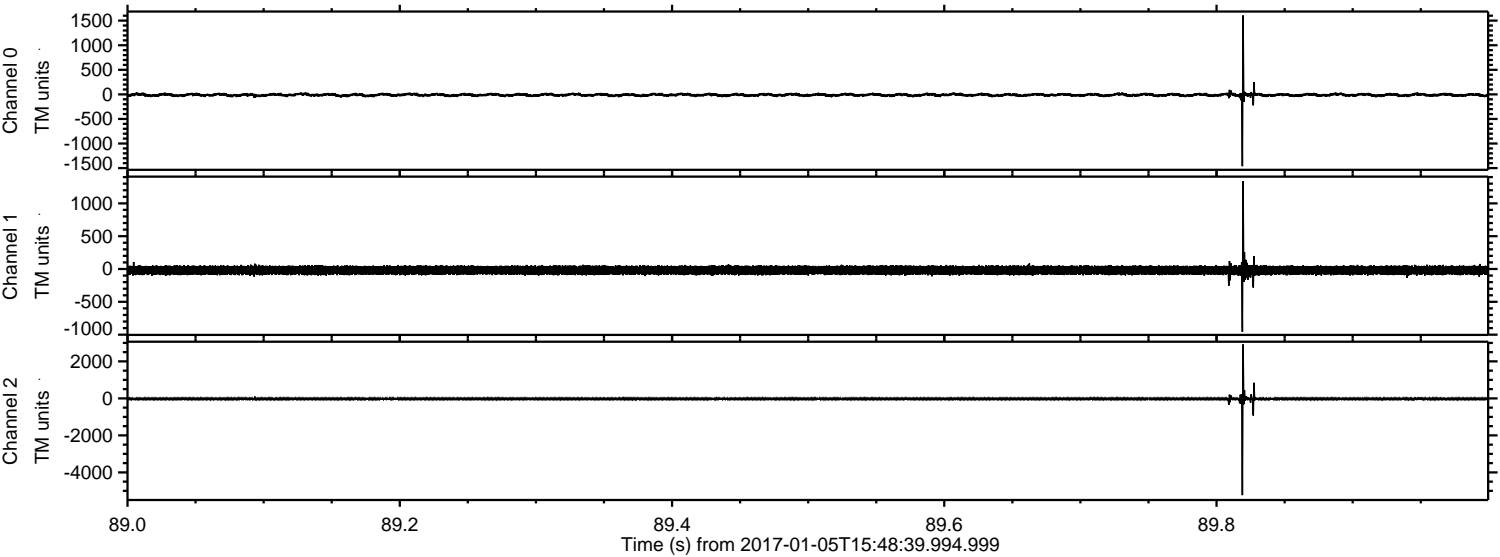
Channel 1  
mn: -2249  
mx: 2588  
 $\mu$ : -19.0  
 $\sigma$ : 45.3

Channel 2  
mn: -7789  
mx: 8110  
 $\mu$ : -23.5  
 $\sigma$ : 86.7



ELMAVAN 3D WAVEFORMS (Measured data sampled at 50 kHz) 51000 packets of 144 samples from 2017-01-05T15:48:39.994.999. Part 90/147

Processed Thu Jan 5 16:56:56 2017 by ELM ver.2012-10-06 from 001\_\_elm20170105\_154838\_\_dat00.bin



Channel 0  
mn: -1462  
mx: 1605  
 $\mu$ : -11.3  
 $\sigma$ : 21.6

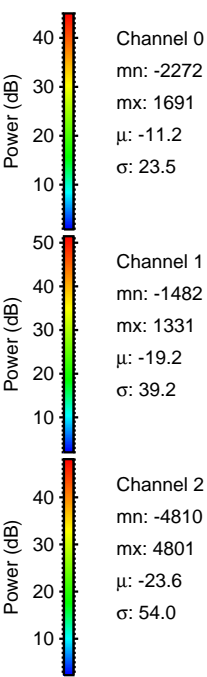
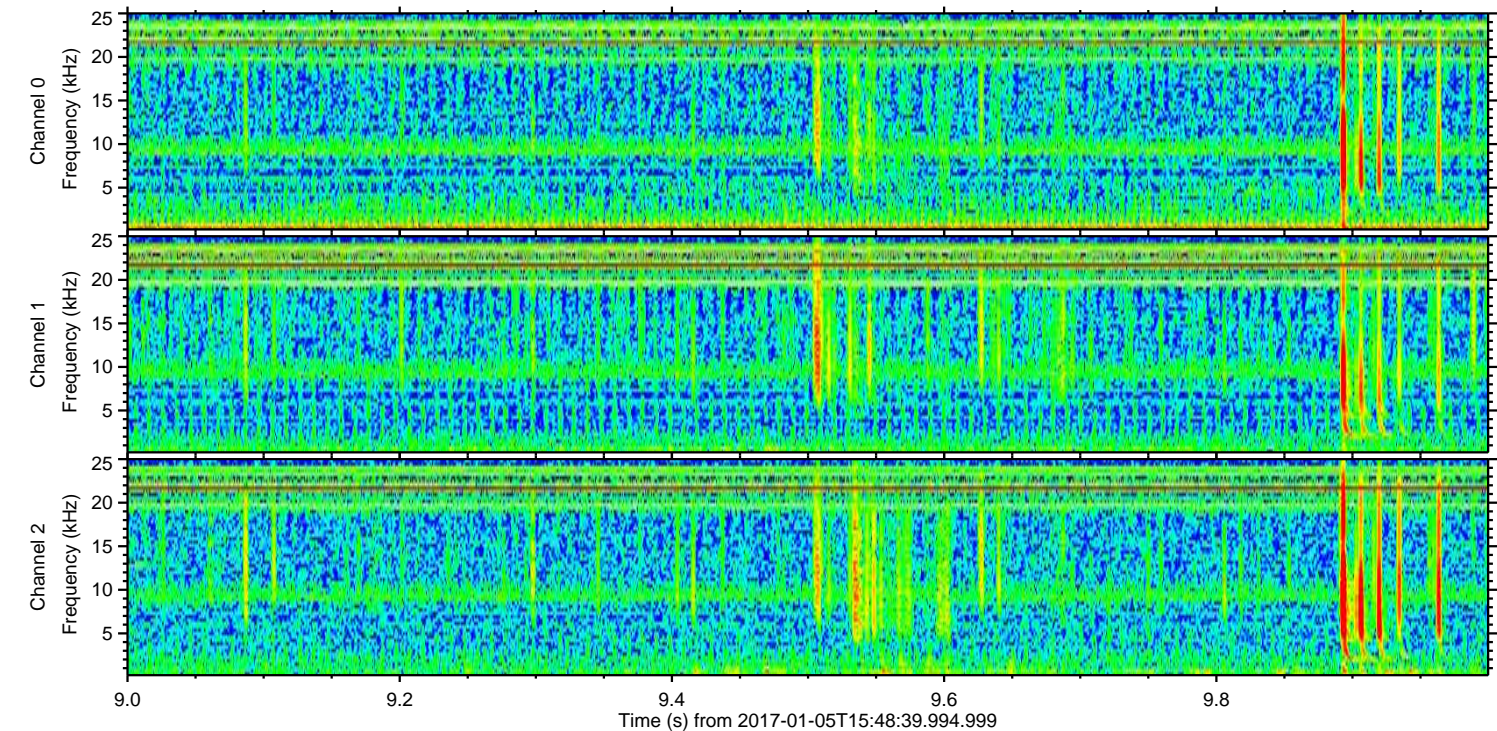
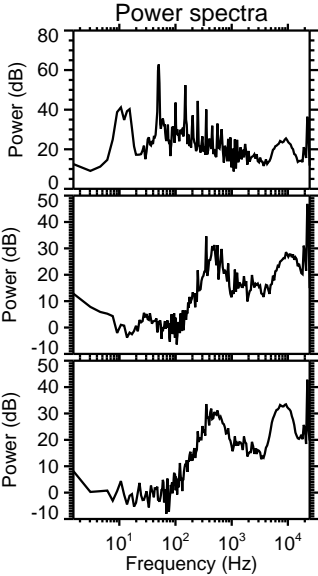
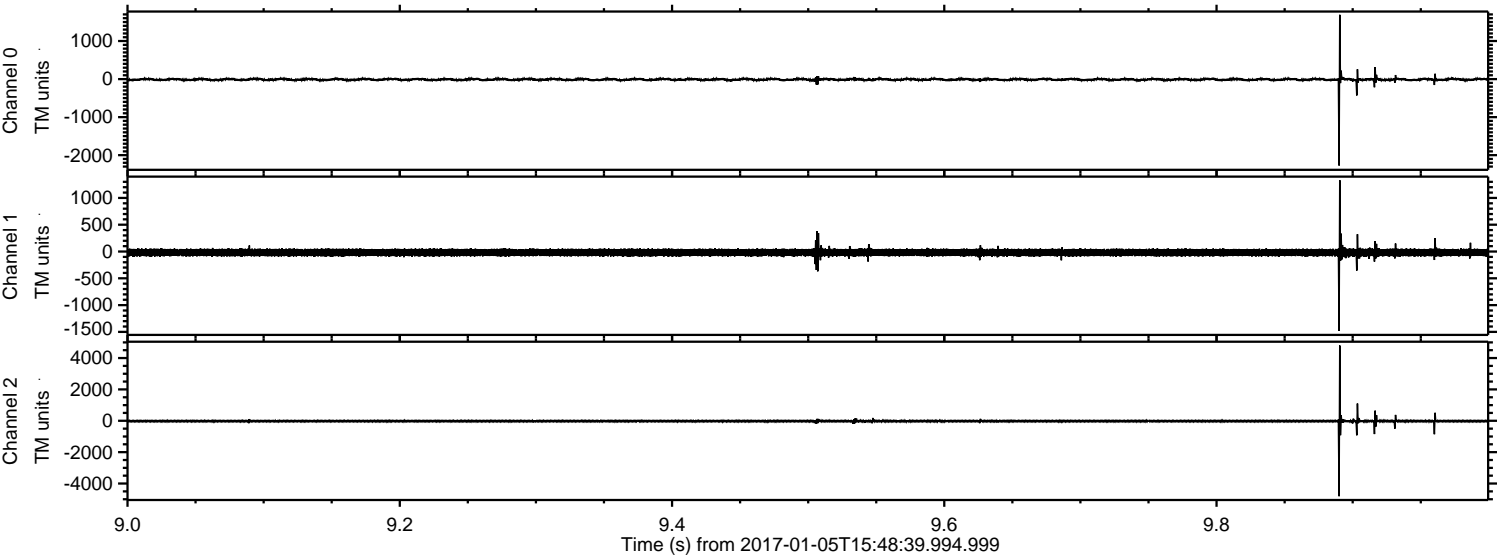
Channel 1  
mn: -956  
mx: 1340  
 $\mu$ : -19.1  
 $\sigma$ : 38.7

Channel 2  
mn: -5231  
mx: 2918  
 $\mu$ : -23.6  
 $\sigma$ : 46.4



ELMAVAN 3D WAVEFORMS (Measured data sampled at 50 kHz) 51000 packets of 144 samples from 2017-01-05T15:48:39.994.999. Part 10/147

Processed Thu Jan 5 16:56:57 2017 by ELM ver.2012-10-06 from 001\_\_elm20170105\_154838\_\_dat00.bin



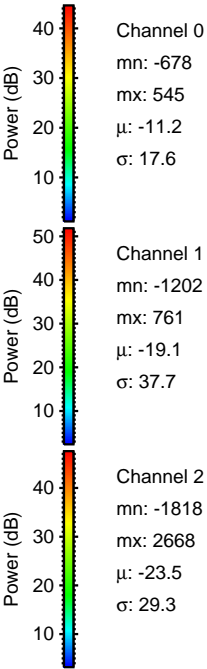
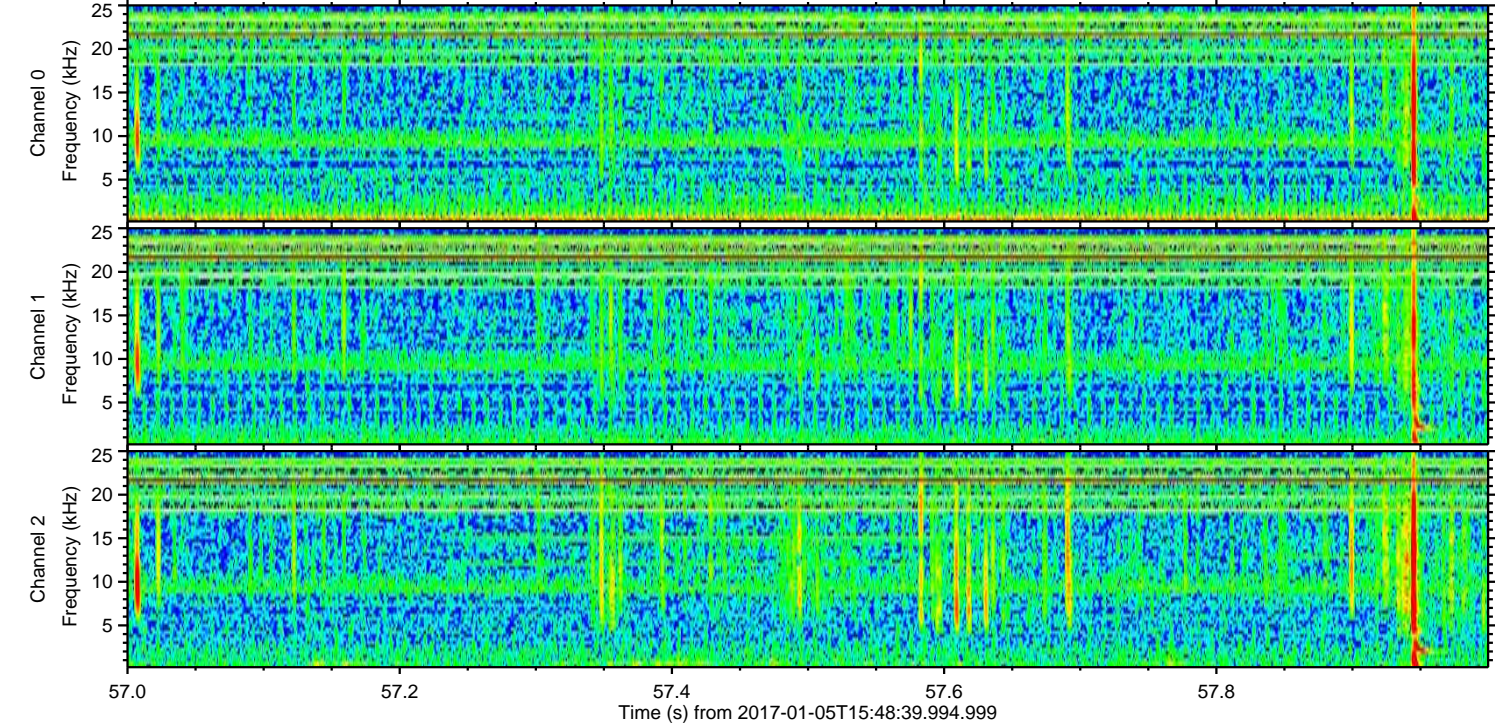
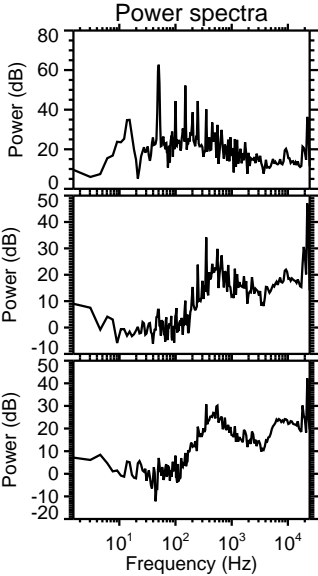
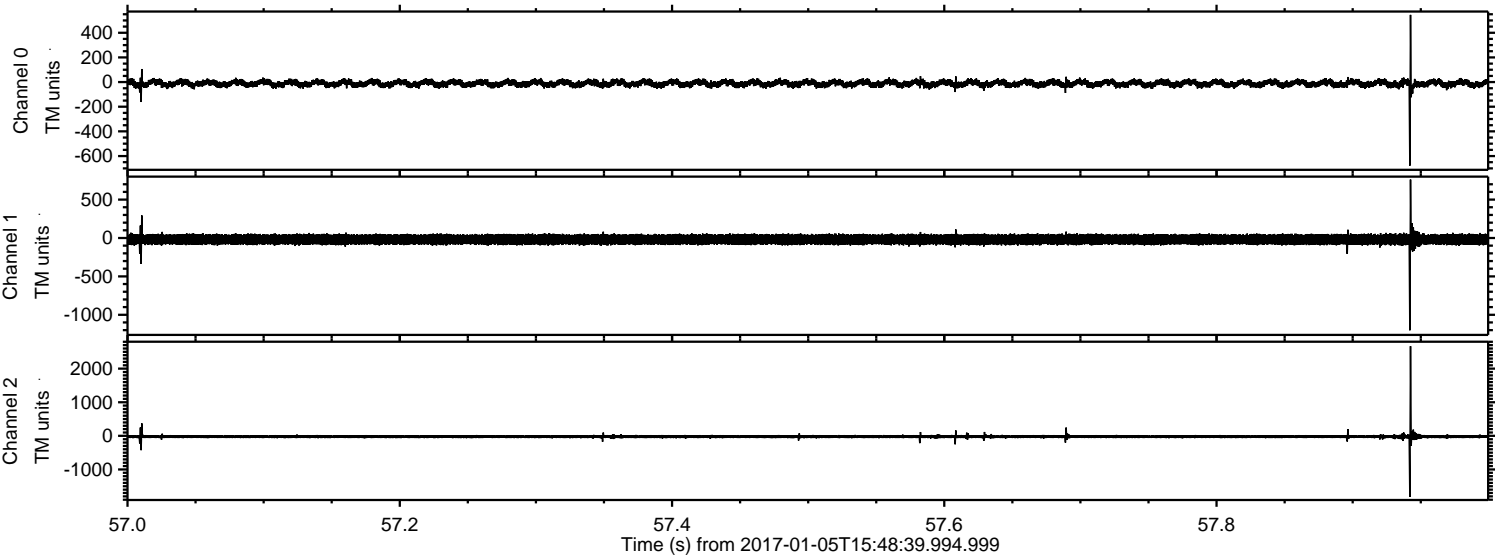
Channel 0  
mn: -2272  
mx: 1691  
 $\mu$ : -11.2  
 $\sigma$ : 23.5

Channel 1  
mn: -1482  
mx: 1331  
 $\mu$ : -19.2  
 $\sigma$ : 39.2

Channel 2  
mn: -4810  
mx: 4801  
 $\mu$ : -23.6  
 $\sigma$ : 54.0



Processed Thu Jan 5 16:56:58 2017 by ELM ver.2012-10-06 from 001\_\_elm20170105\_154838\_\_dat00.bin



Channel 0  
mn: -678  
mx: 545  
 $\mu$ : -11.2  
 $\sigma$ : 17.6

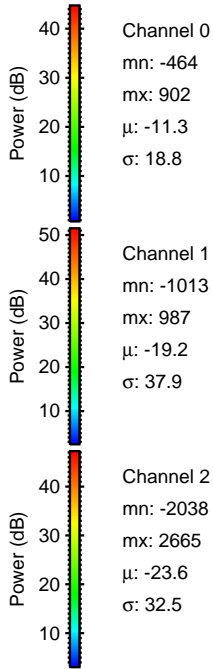
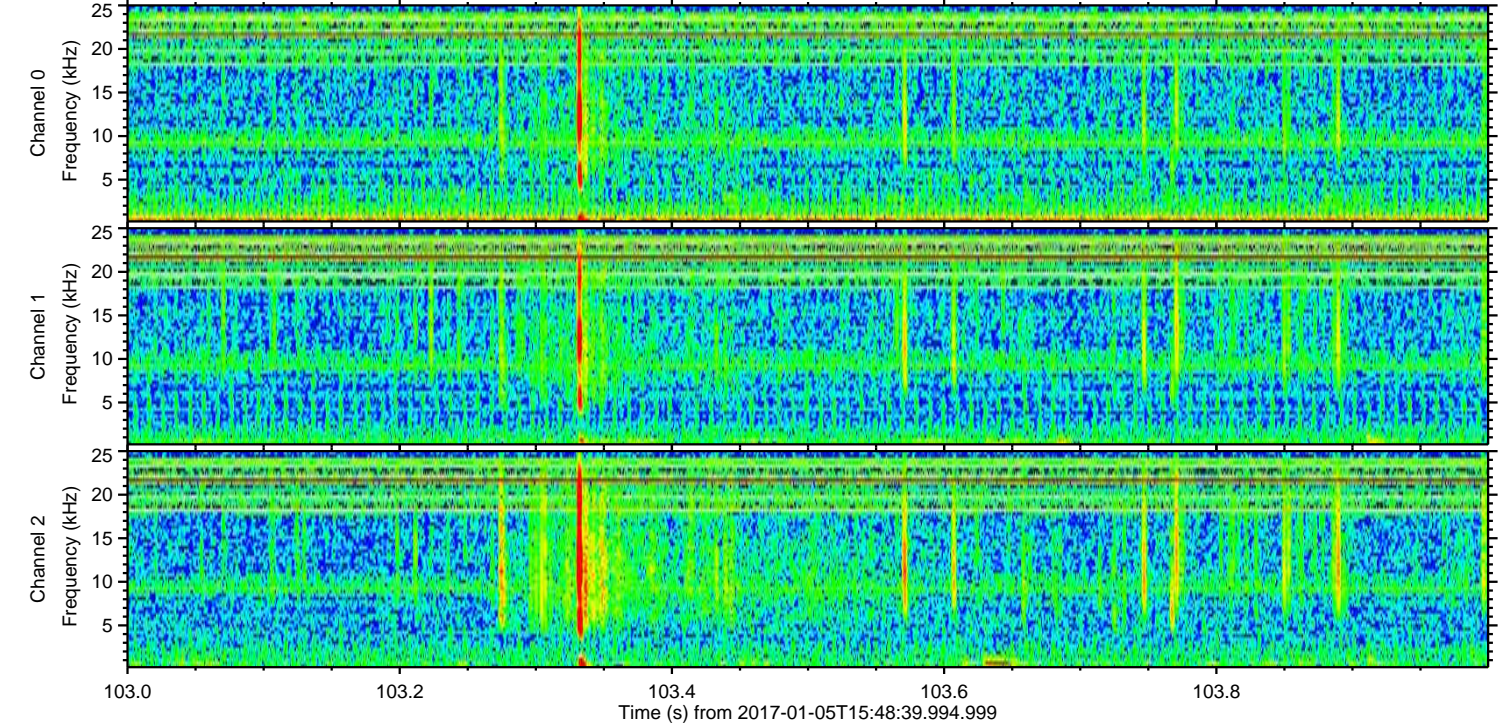
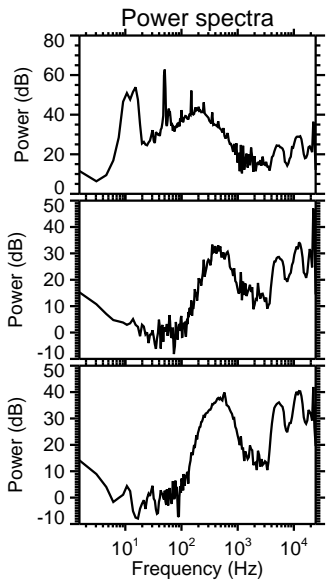
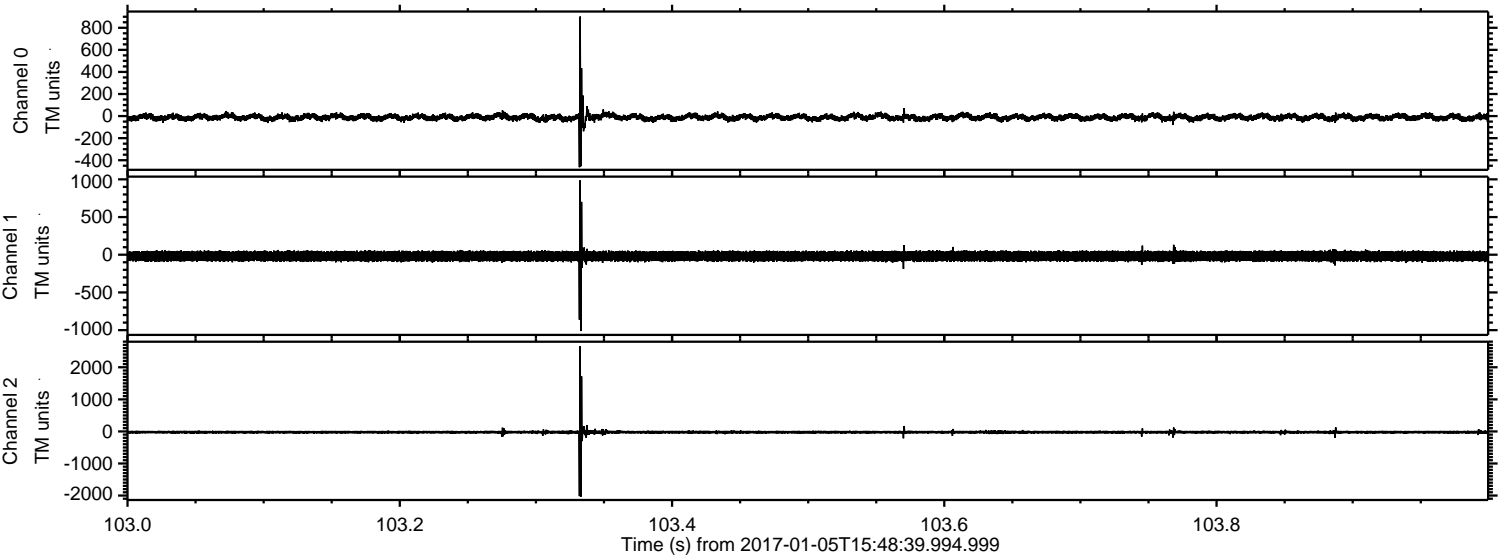
Channel 1  
mn: -1202  
mx: 761  
 $\mu$ : -19.1  
 $\sigma$ : 37.7

Channel 2  
mn: -1818  
mx: 2668  
 $\mu$ : -23.5  
 $\sigma$ : 29.3



ELMAVAN 3D WAVEFORMS (Measured data sampled at 50 kHz) 51000 packets of 144 samples from 2017-01-05T15:48:39.994.999. Part 104/147

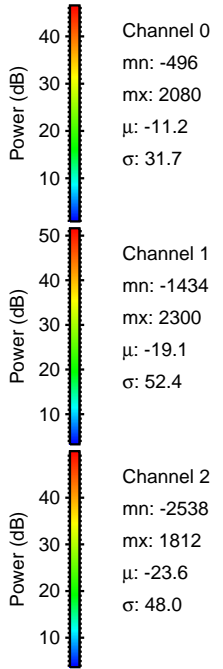
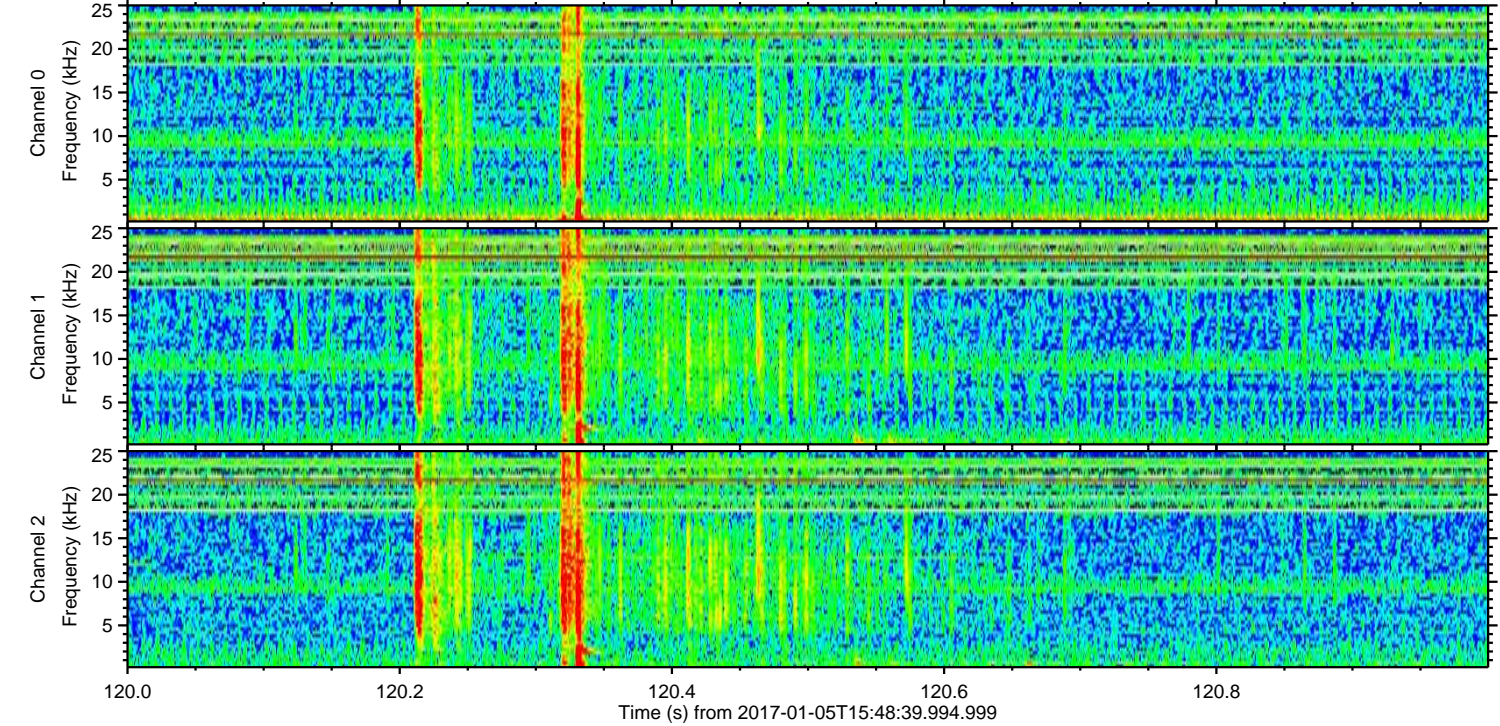
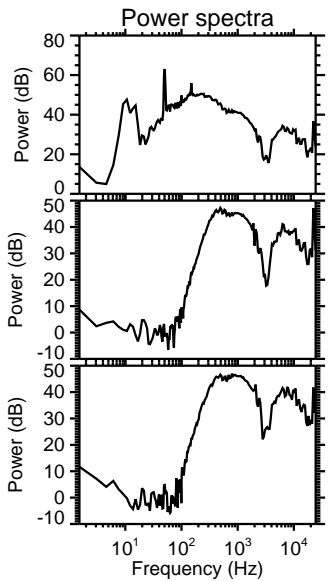
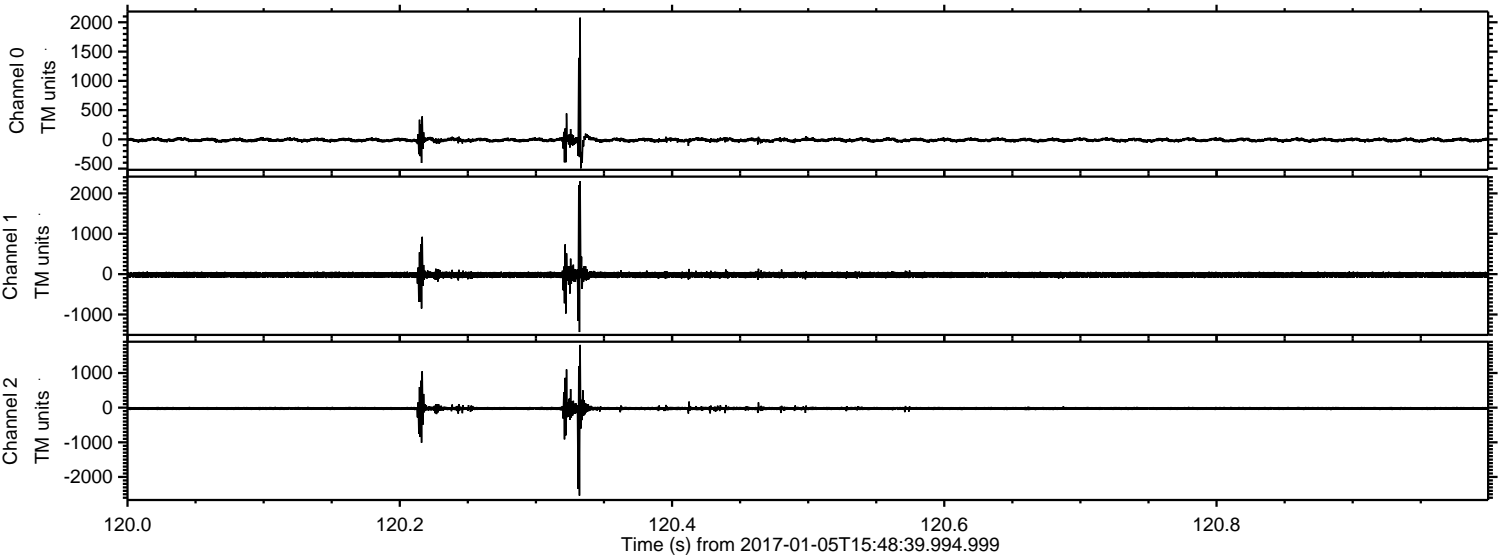
Processed Thu Jan 5 16:56:59 2017 by ELM ver.2012-10-06 from 001\_\_elm20170105\_154838\_\_dat00.bin





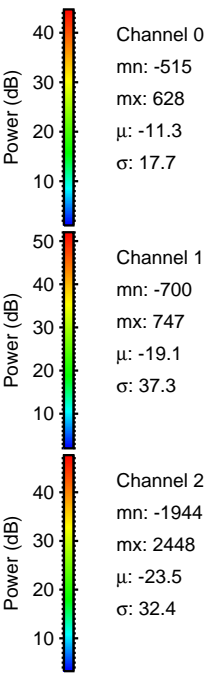
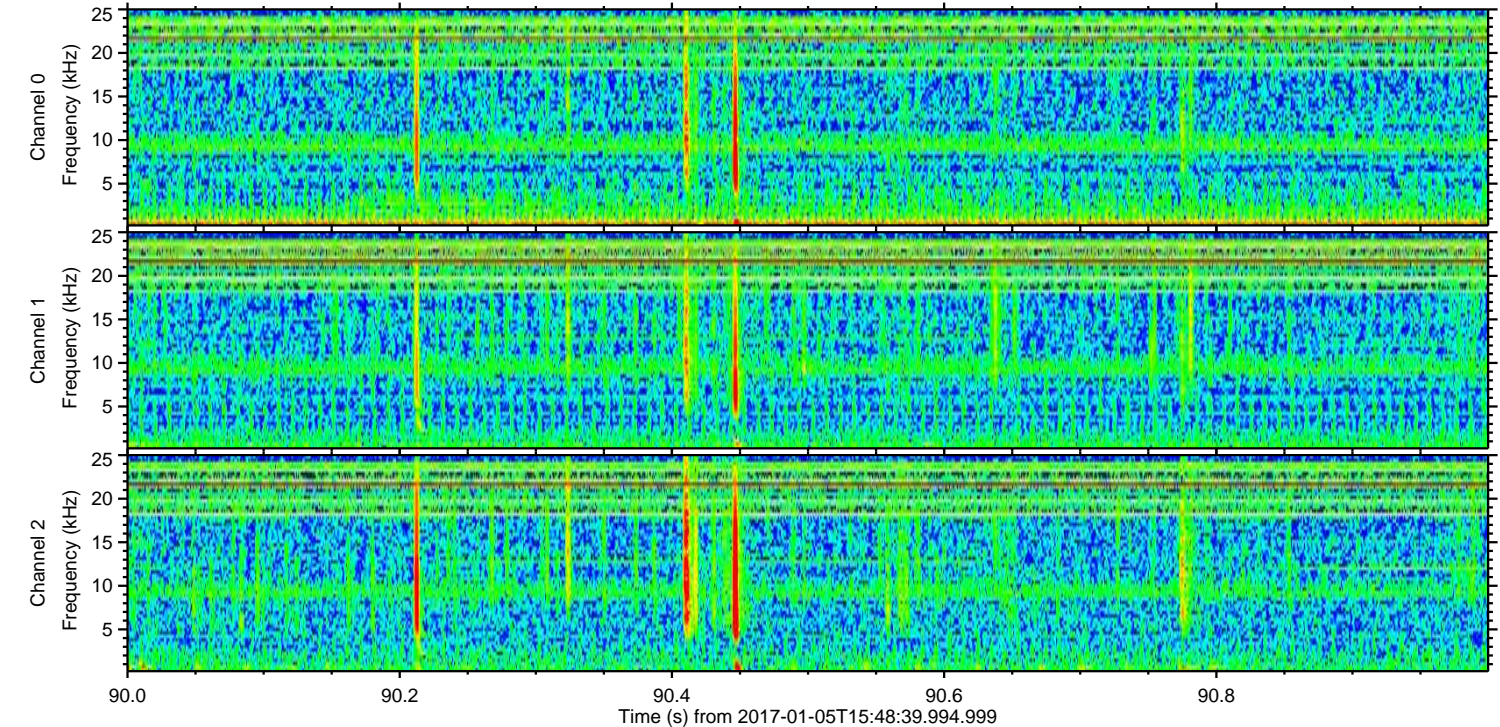
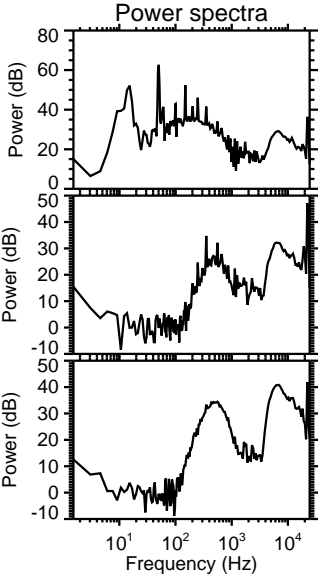
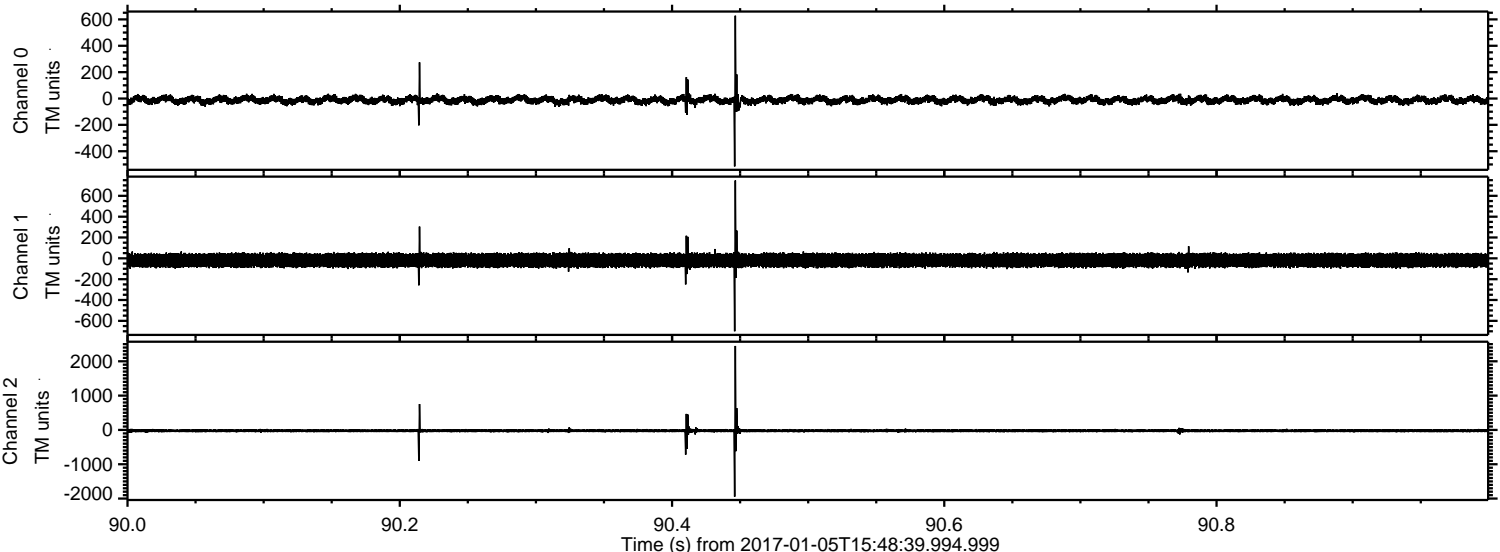
ELMAVAN 3D WAVEFORMS (Measured data sampled at 50 kHz) 51000 packets of 144 samples from 2017-01-05T15:48:39.994.999. Part 121/147

Processed Thu Jan 5 16:57:00 2017 by ELM ver.2012-10-06 from 001\_\_elm20170105\_154838\_\_dat00.bin





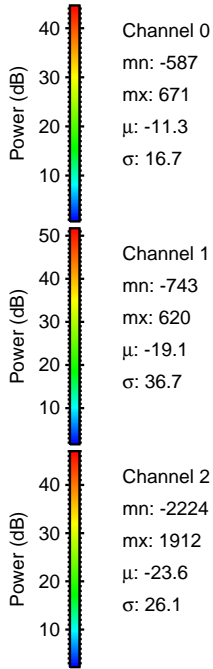
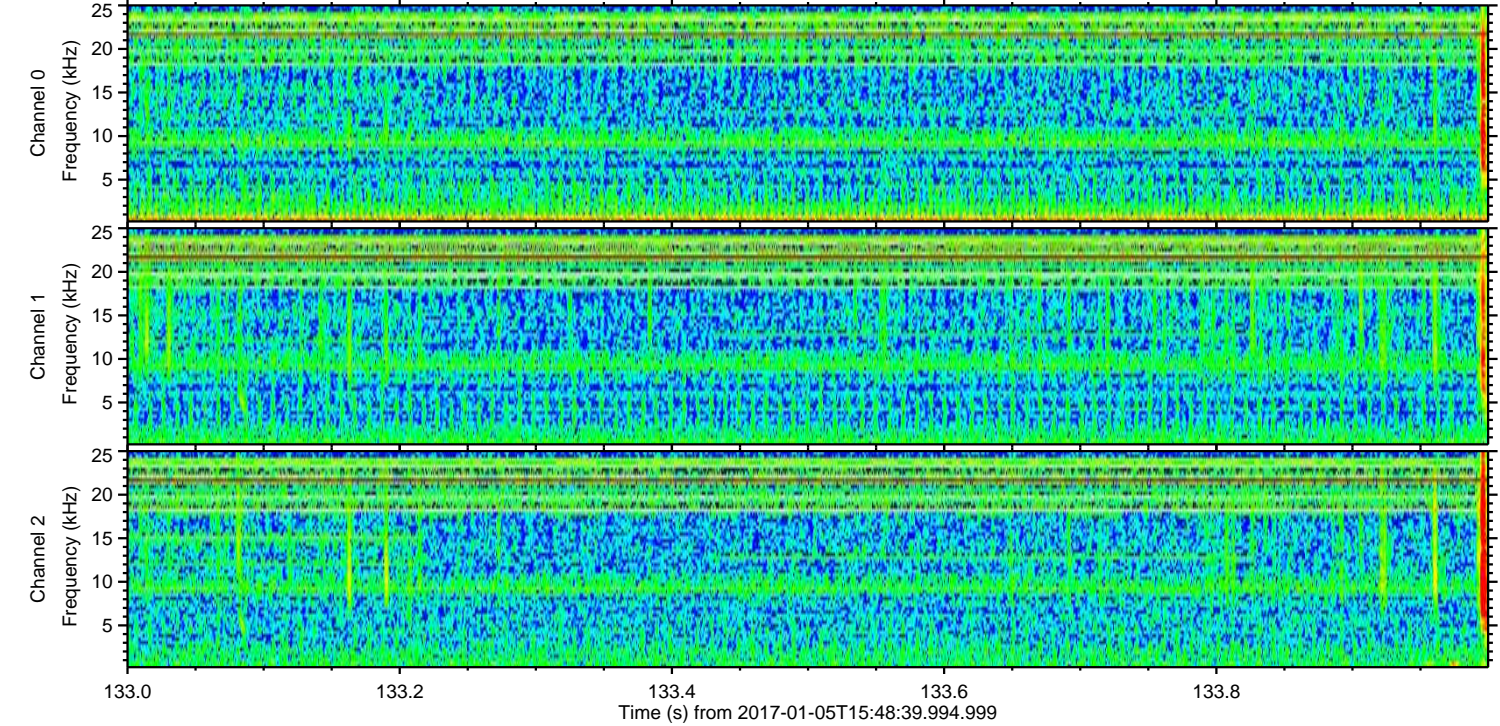
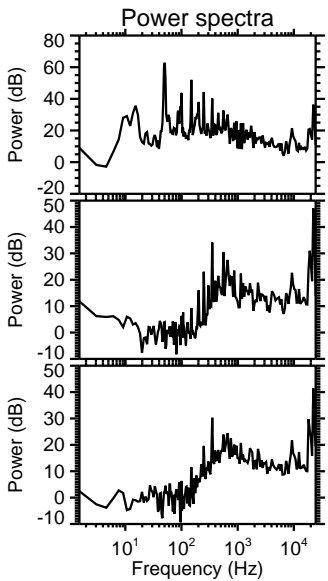
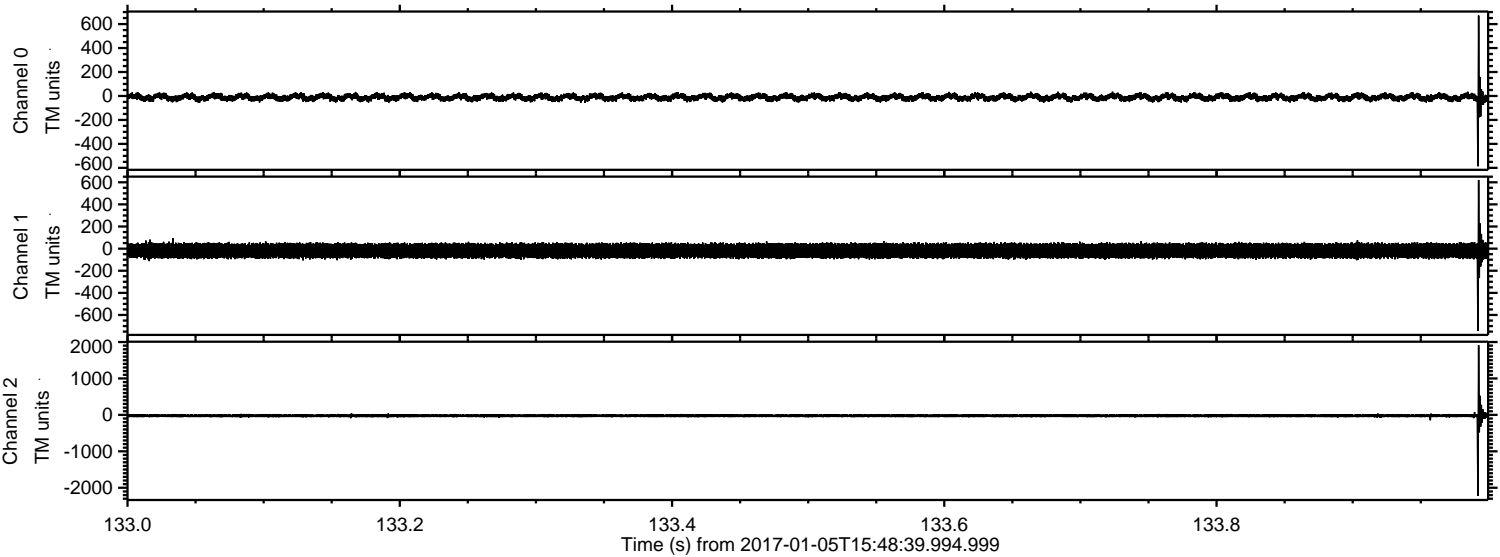
Processed Thu Jan 5 16:57:02 2017 by ELM ver.2012-10-06 from 001\_\_elm20170105\_154838\_\_dat00.bin





ELMAVAN 3D WAVEFORMS (Measured data sampled at 50 kHz) 51000 packets of 144 samples from 2017-01-05T15:48:39.994.999. Part 134/147

Processed Thu Jan 5 16:57:03 2017 by ELM ver.2012-10-06 from 001\_\_elm20170105\_154838\_\_dat00.bin



Channel 0  
mn: -587  
mx: 671  
 $\mu$ : -11.3  
 $\sigma$ : 16.7

Channel 1  
mn: -743  
mx: 620  
 $\mu$ : -19.1  
 $\sigma$ : 36.7

Channel 2  
mn: -2224  
mx: 1912  
 $\mu$ : -23.6  
 $\sigma$ : 26.1



Processed Thu Jan 5 16:57:04 2017 by ELM ver.2012-10-06 from 001\_\_elm20170105\_154838\_\_dat00.bin

