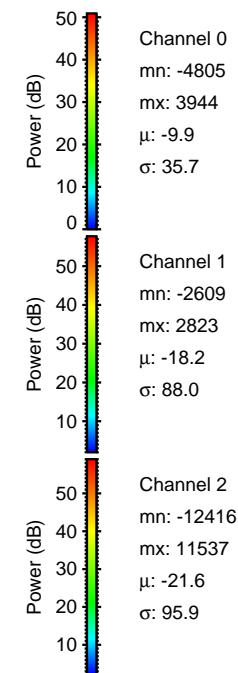
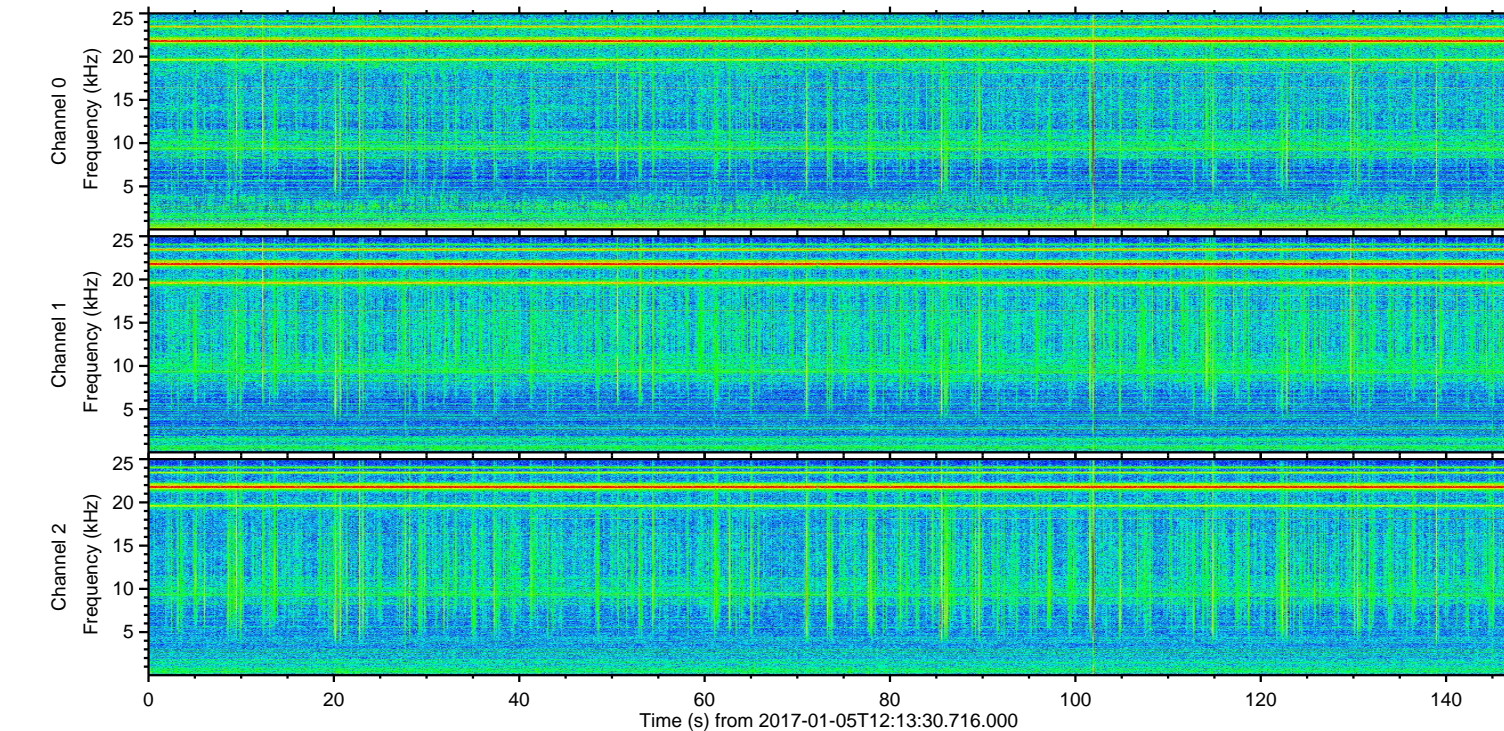
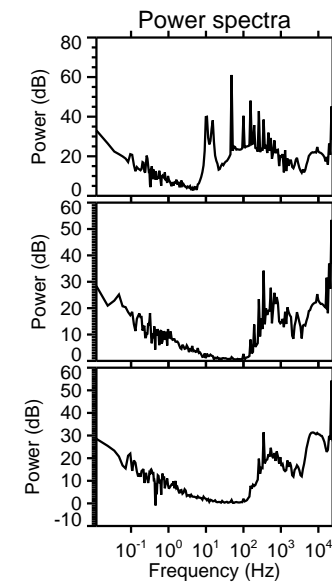
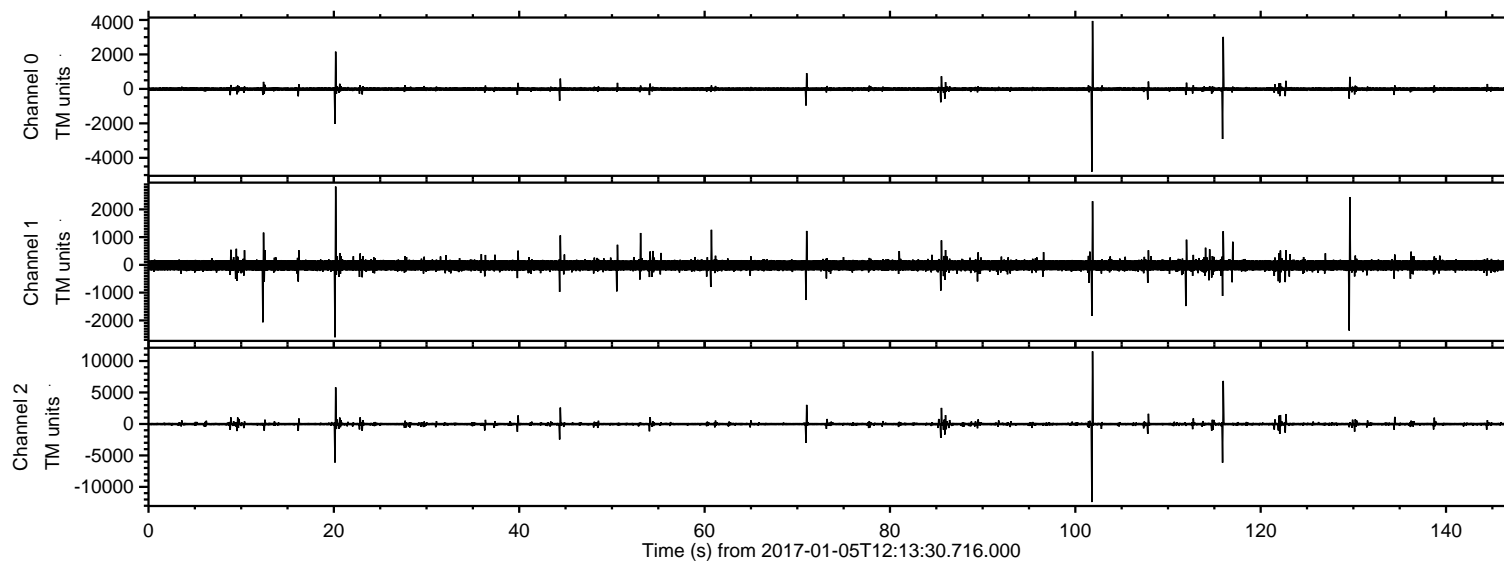


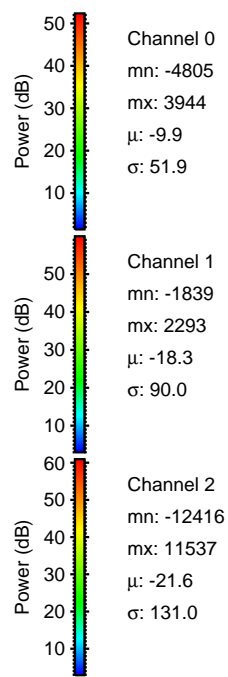
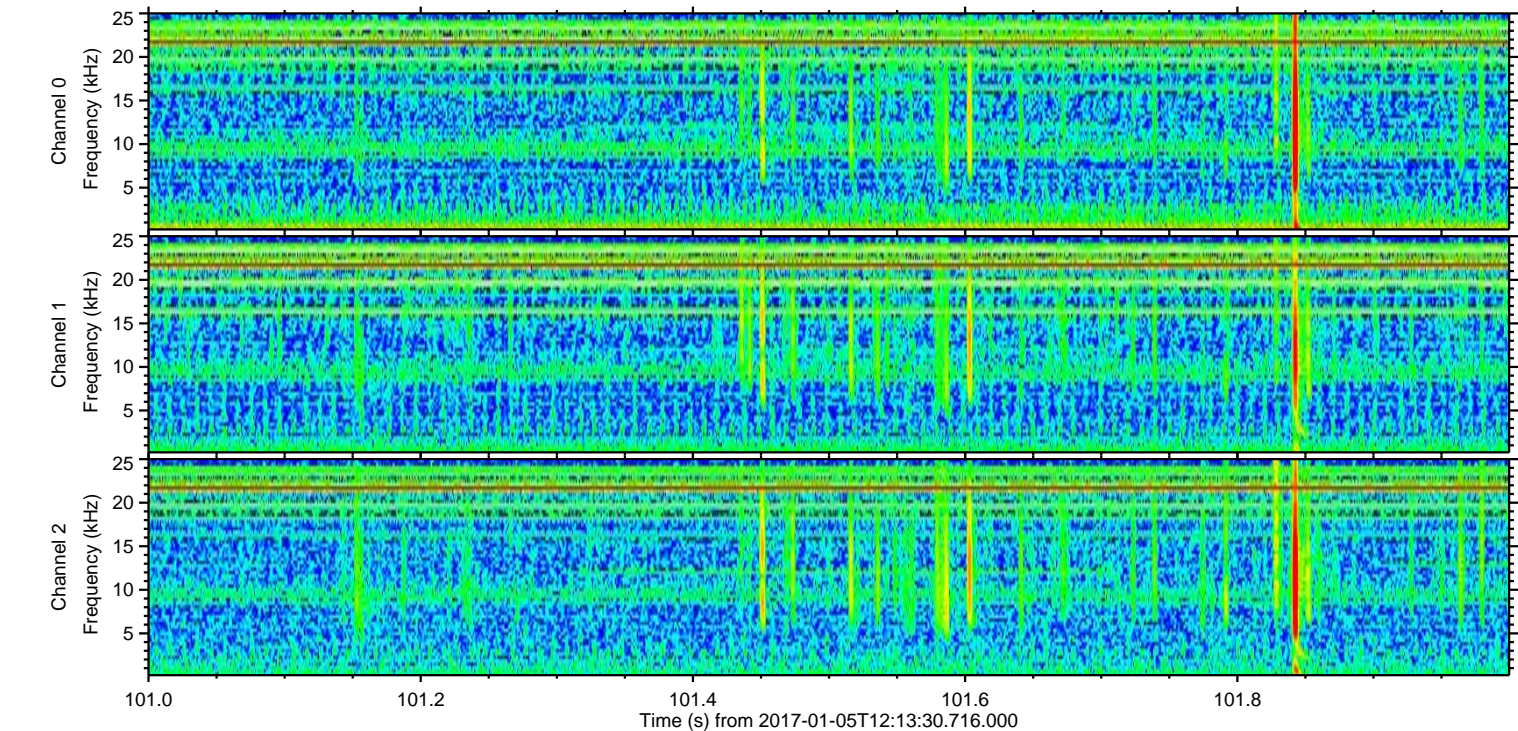
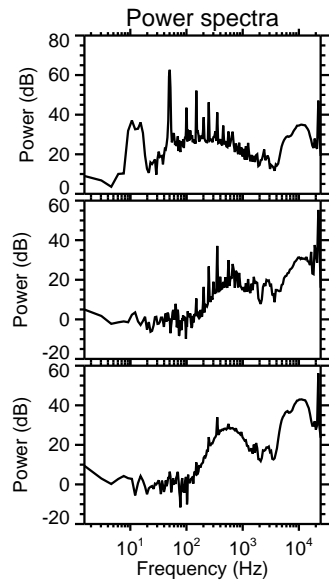
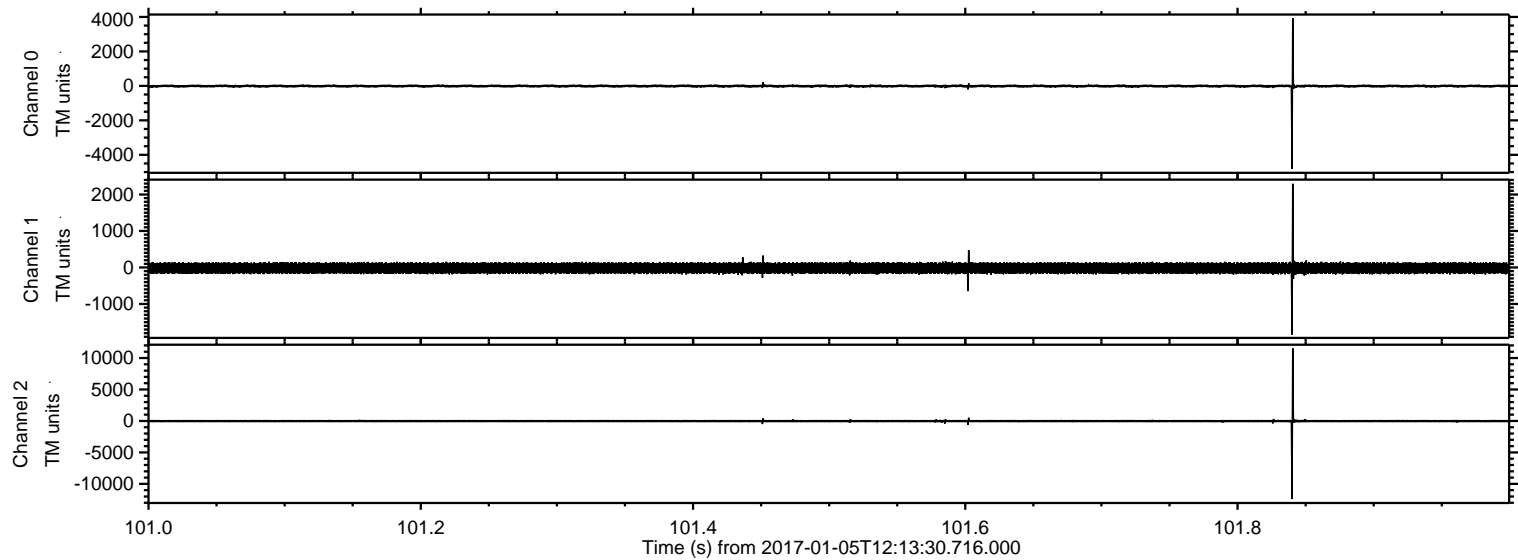
ELMAVAN 3D WAVEFORMS (Measured data sampled at 50 kHz) 51000 packets of 144 samples from 2017-01-05T12:13:30.716.000.

Processed Thu Jan 5 13:21:12 2017 by ELM ver.2012-10-06 from 001__elm20170105_121329__dat00.bin



ELMAVAN 3D WAVEFORMS (Measured data sampled at 50 kHz) 51000 packets of 144 samples from 2017-01-05T12:13:30.716.000. Part 102/147

Processed Thu Jan 5 13:21:23 2017 by ELM ver.2012-10-06 from 001__elm20170105_121329__dat00.bin



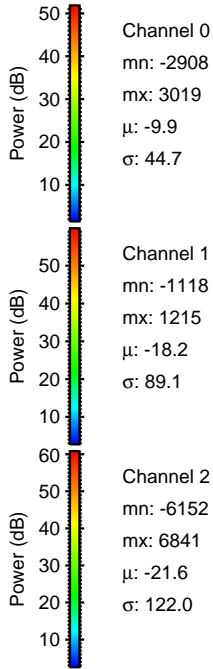
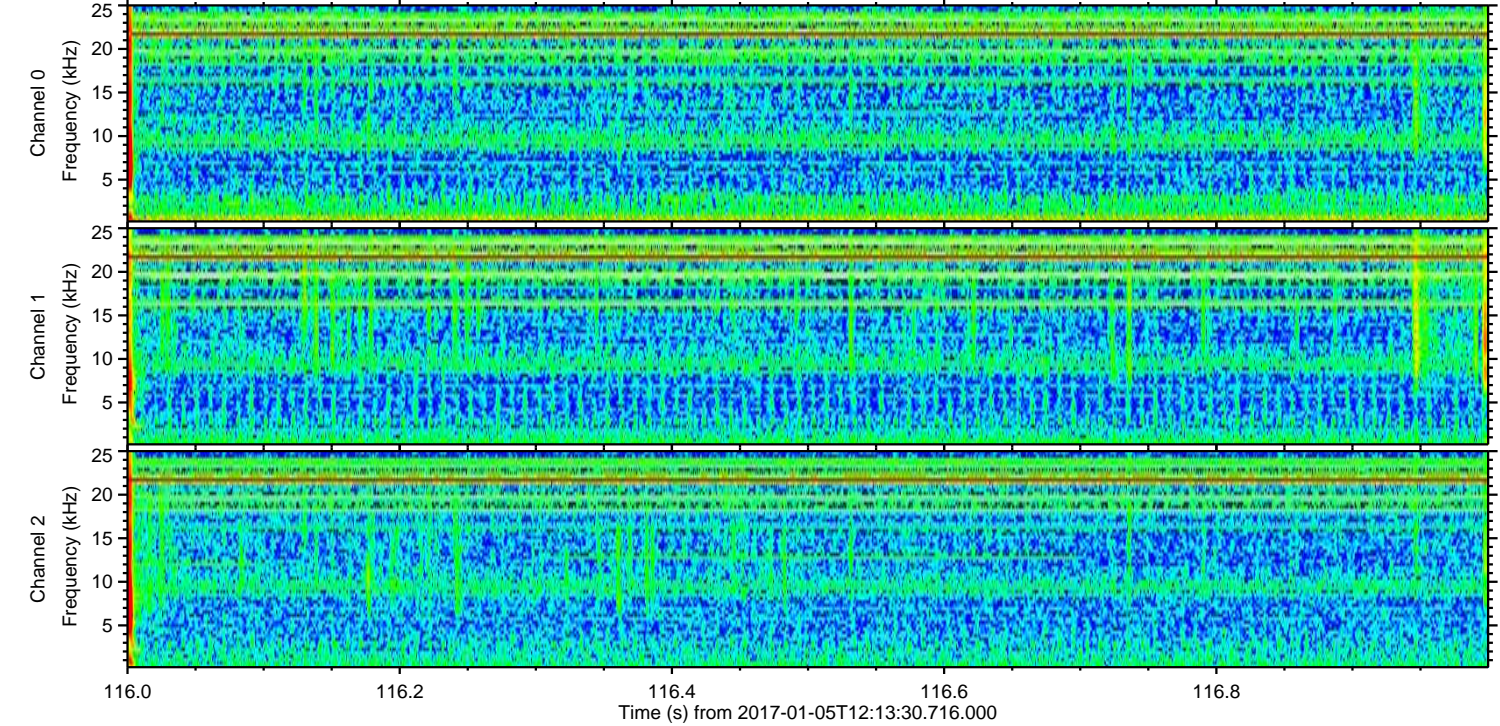
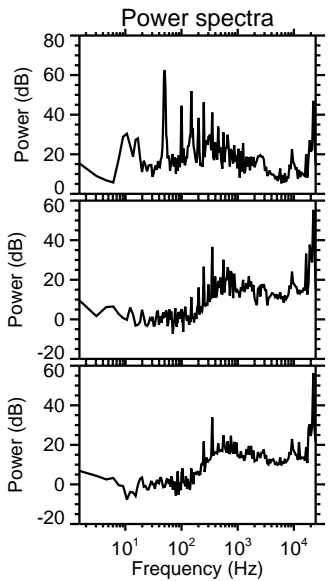
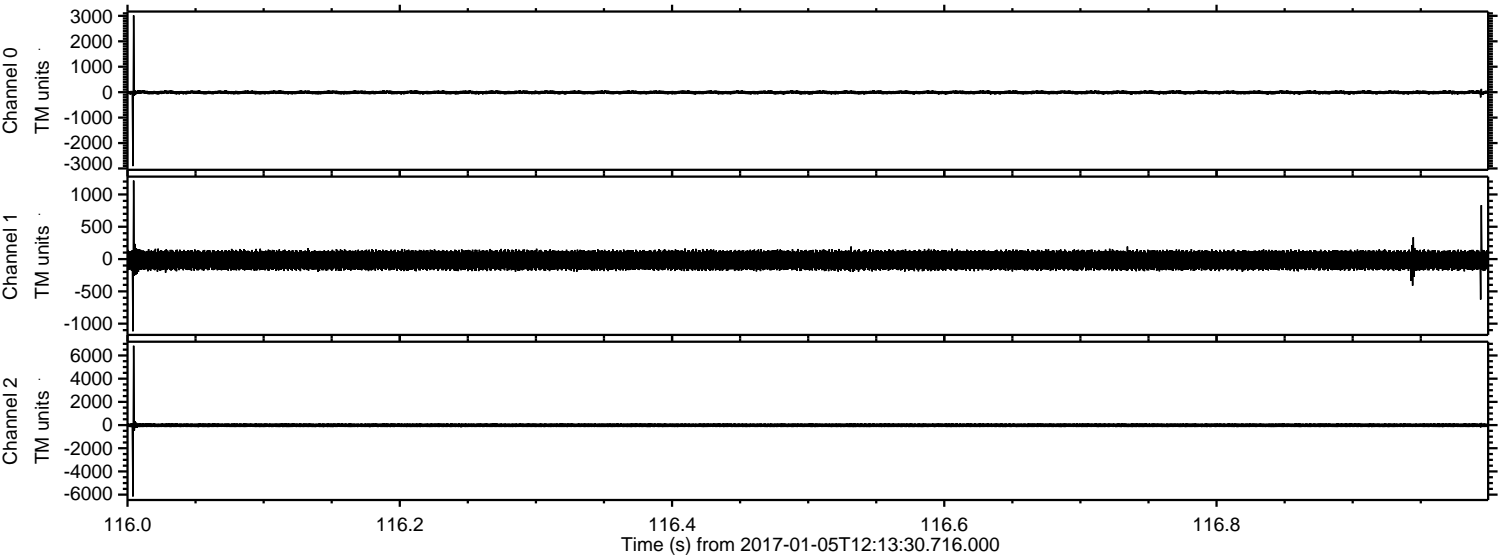
Channel 0
mn: -4805
mx: 3944
 μ : -9.9
 σ : 51.9

Channel 1
mn: -1839
mx: 2293
 μ : -18.3
 σ : 90.0

Channel 2
mn: -12416
mx: 11537
 μ : -21.6
 σ : 131.0

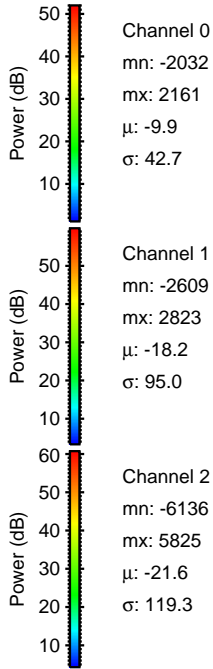
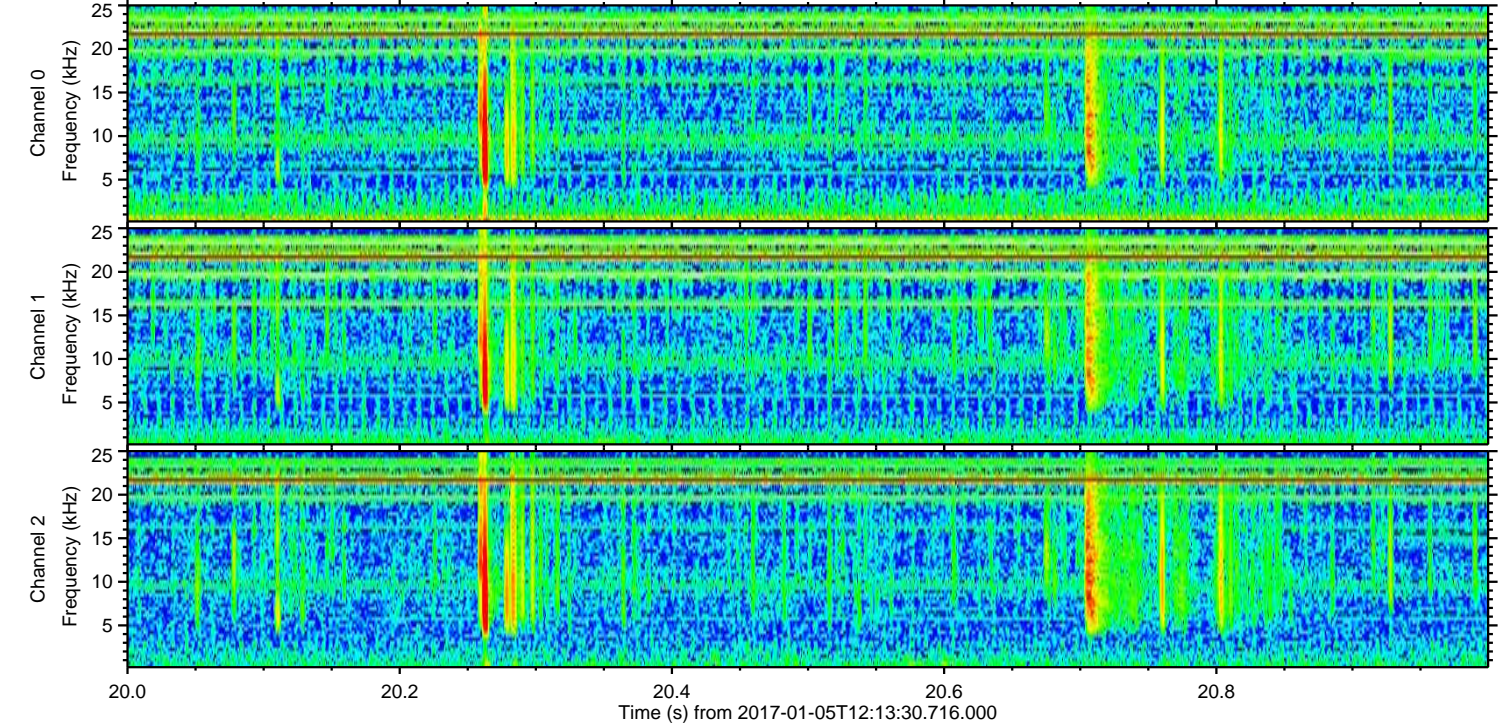
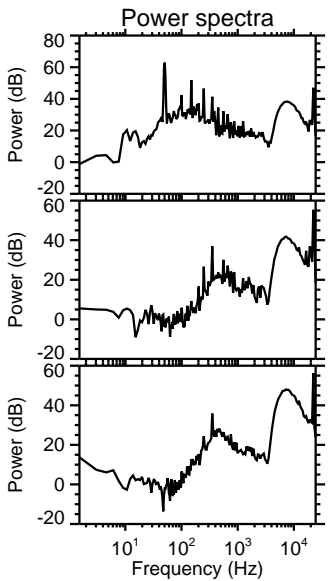
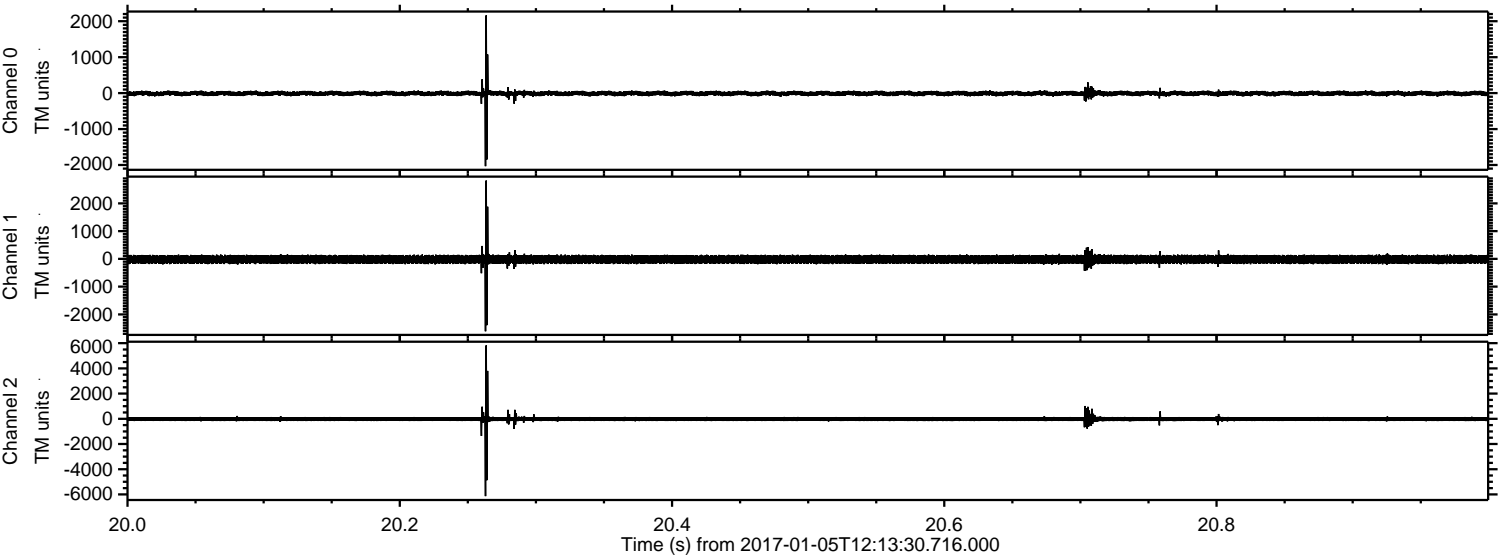
ELMAVAN 3D WAVEFORMS (Measured data sampled at 50 kHz) 51000 packets of 144 samples from 2017-01-05T12:13:30.716.000. Part 117/147

Processed Thu Jan 5 13:21:24 2017 by ELM ver.2012-10-06 from 001__elm20170105_121329__dat00.bin



ELMAVAN 3D WAVEFORMS (Measured data sampled at 50 kHz) 51000 packets of 144 samples from 2017-01-05T12:13:30.716.000. Part 21/147

Processed Thu Jan 5 13:21:25 2017 by ELM ver.2012-10-06 from 001__elm20170105_121329__dat00.bin

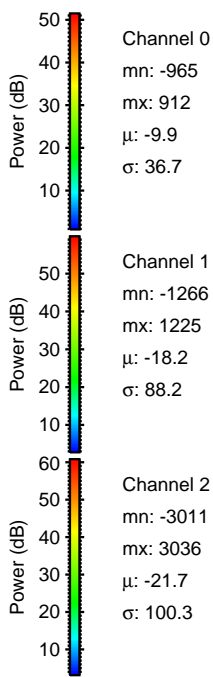
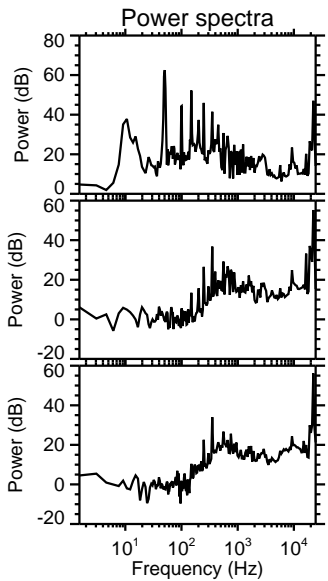
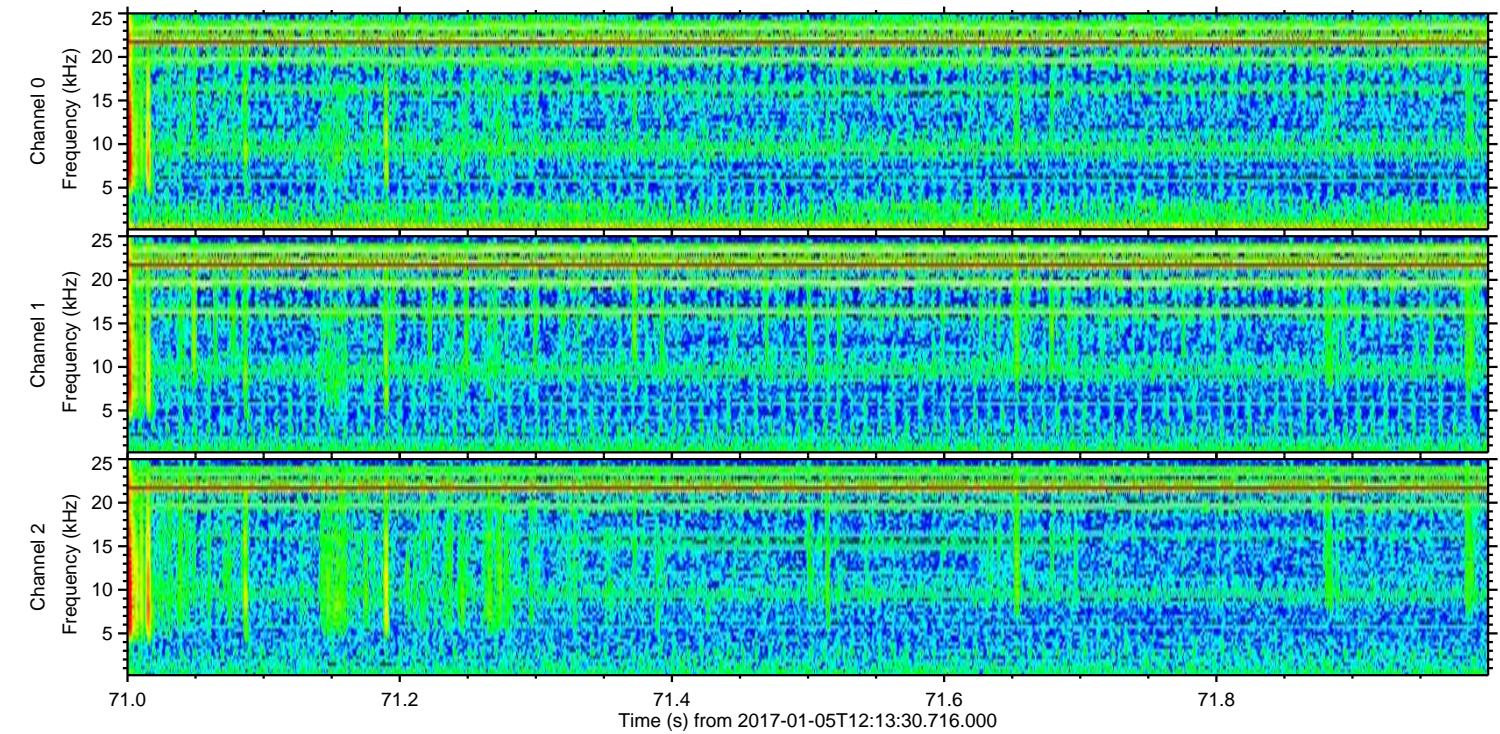
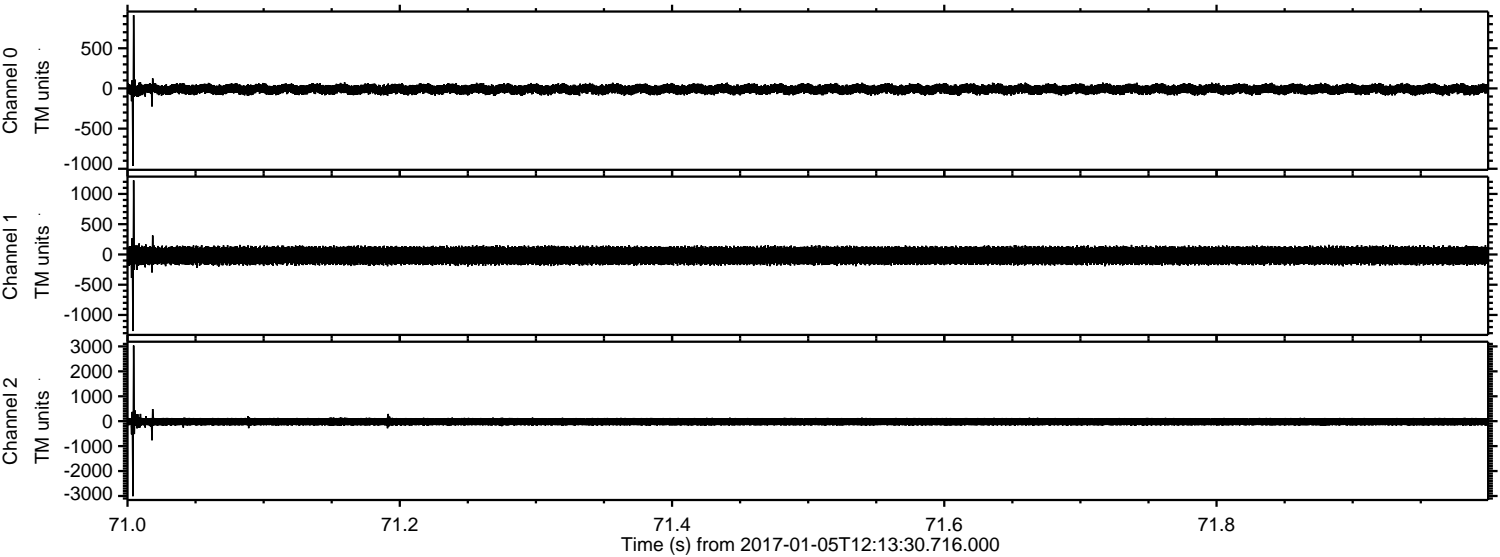


Channel 0
mn: -2032
mx: 2161
 μ : -9.9
 σ : 42.7

Channel 1
mn: -2609
mx: 2823
 μ : -18.2
 σ : 95.0

Channel 2
mn: -6136
mx: 5825
 μ : -21.6
 σ : 119.3

Processed Thu Jan 5 13:21:26 2017 by ELM ver.2012-10-06 from 001__elm20170105_121329__dat00.bin

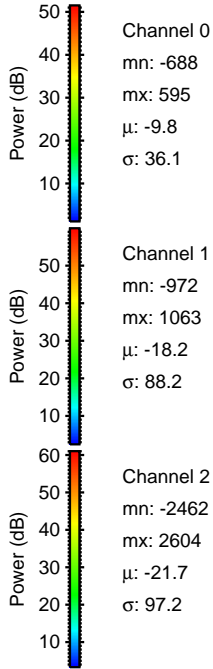
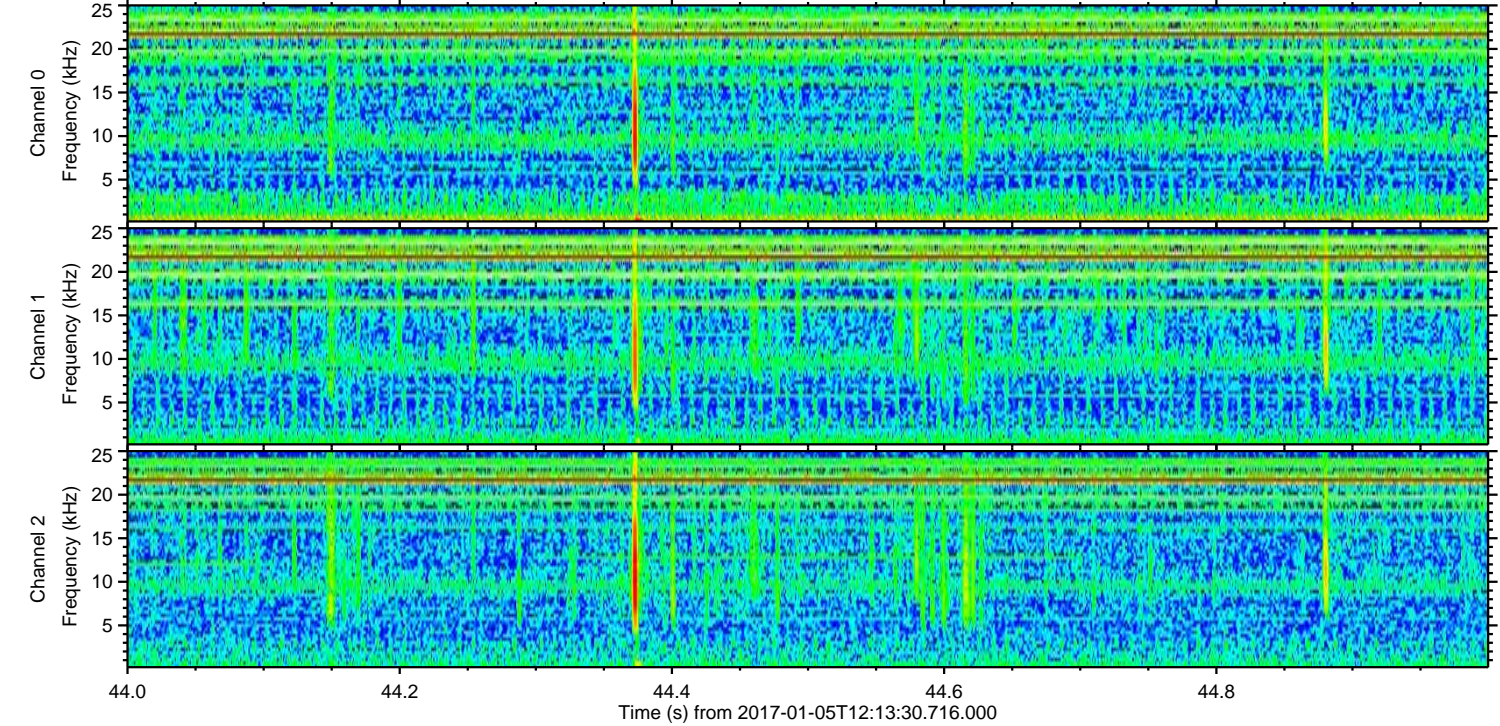
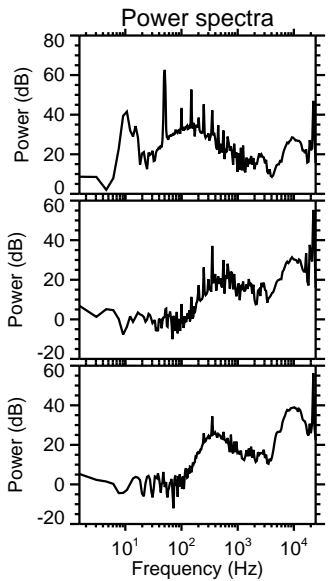
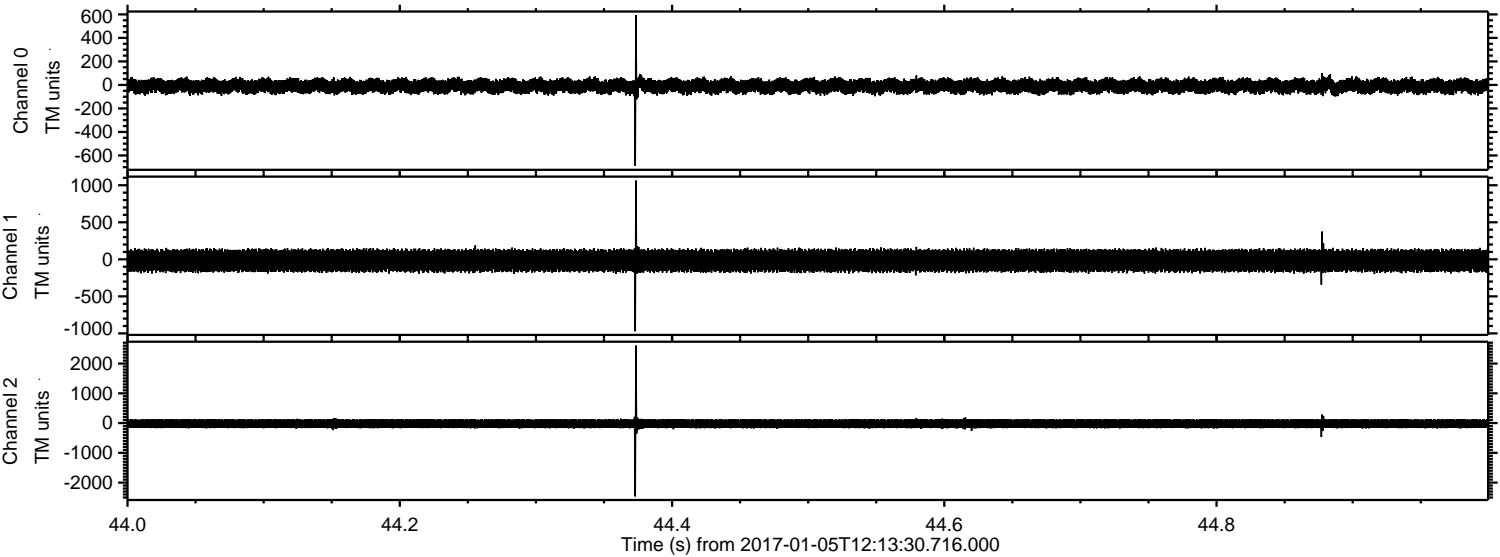


Channel 0
mn: -965
mx: 912
 μ : -9.9
 σ : 36.7

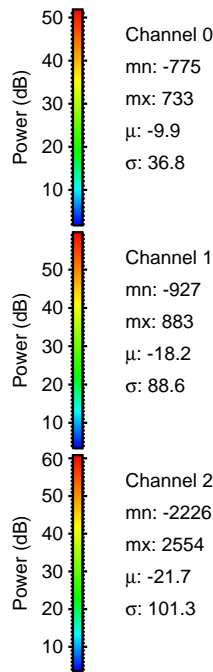
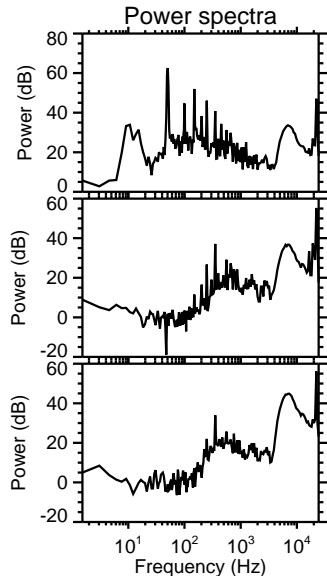
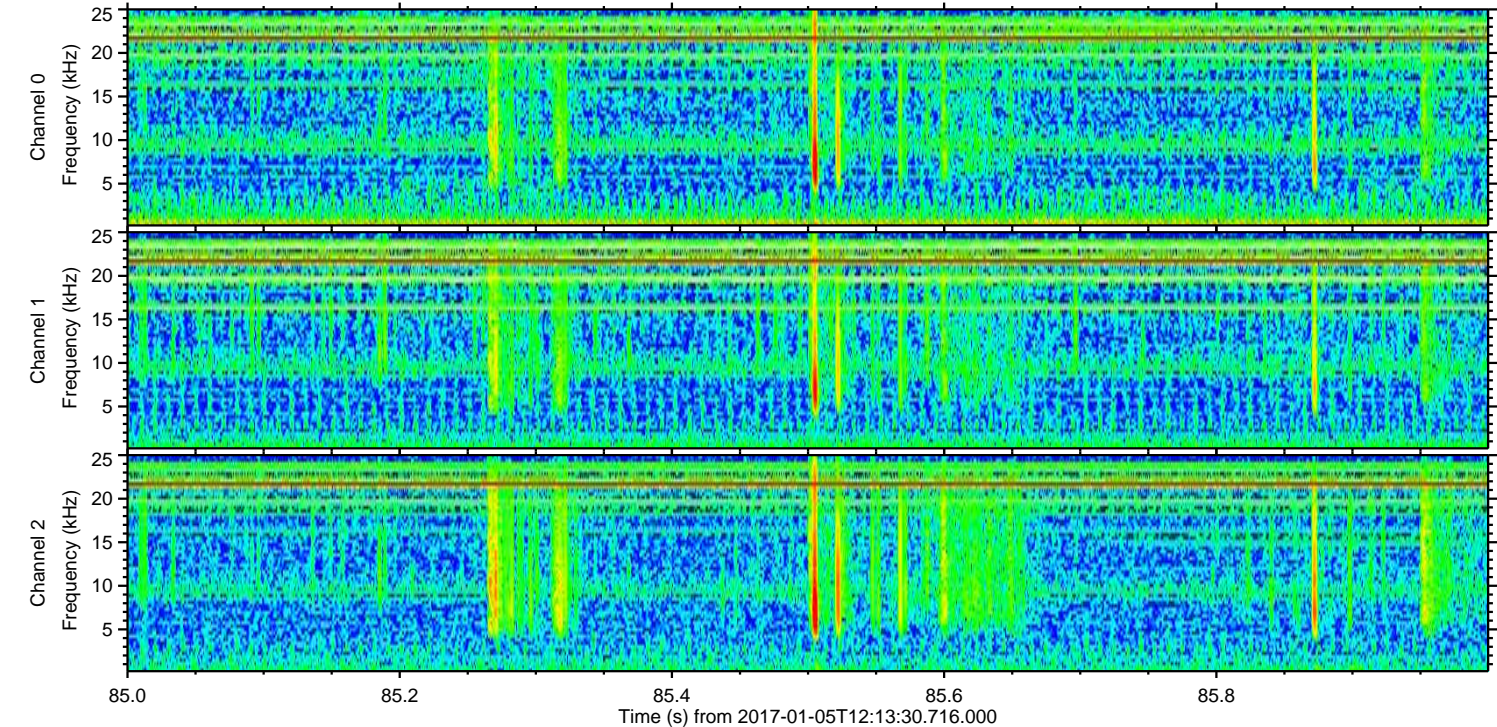
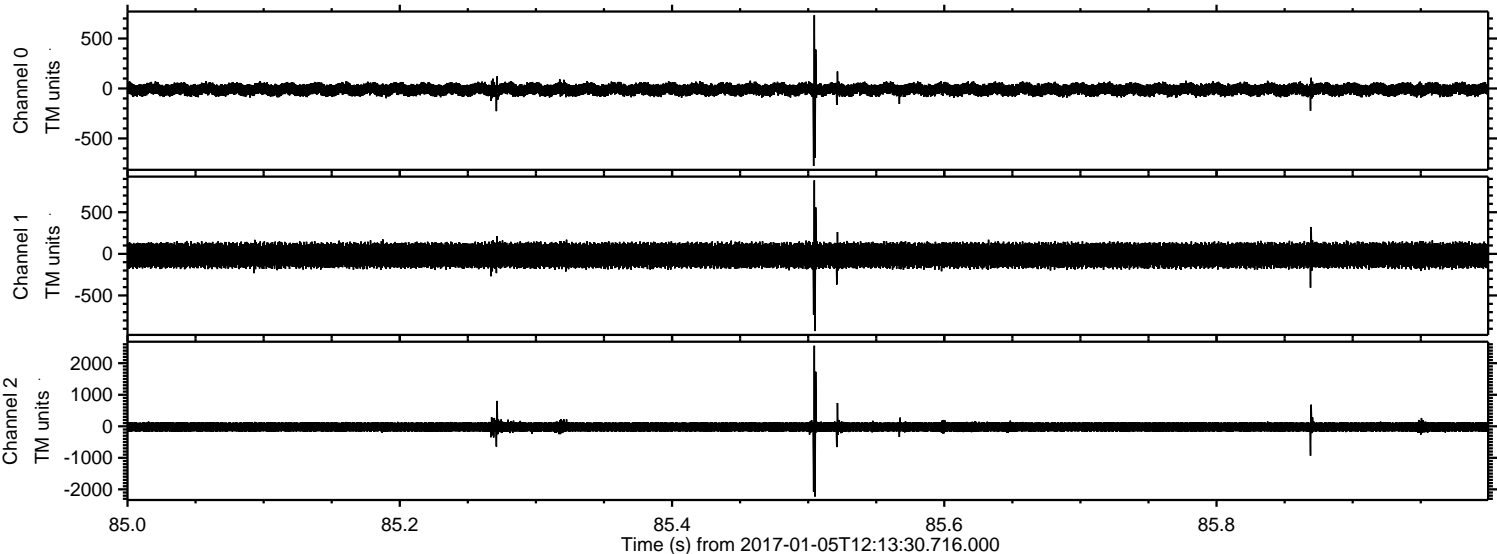
Channel 1
mn: -1266
mx: 1225
 μ : -18.2
 σ : 88.2

Channel 2
mn: -3011
mx: 3036
 μ : -21.7
 σ : 100.3

Processed Thu Jan 5 13:21:27 2017 by ELM ver.2012-10-06 from 001__elm20170105_121329__dat00.bin



Processed Thu Jan 5 13:21:28 2017 by ELM ver.2012-10-06 from 001__elm20170105_121329__dat00.bin



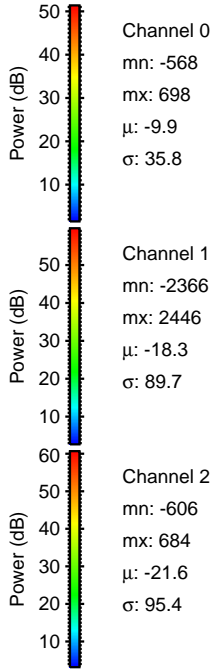
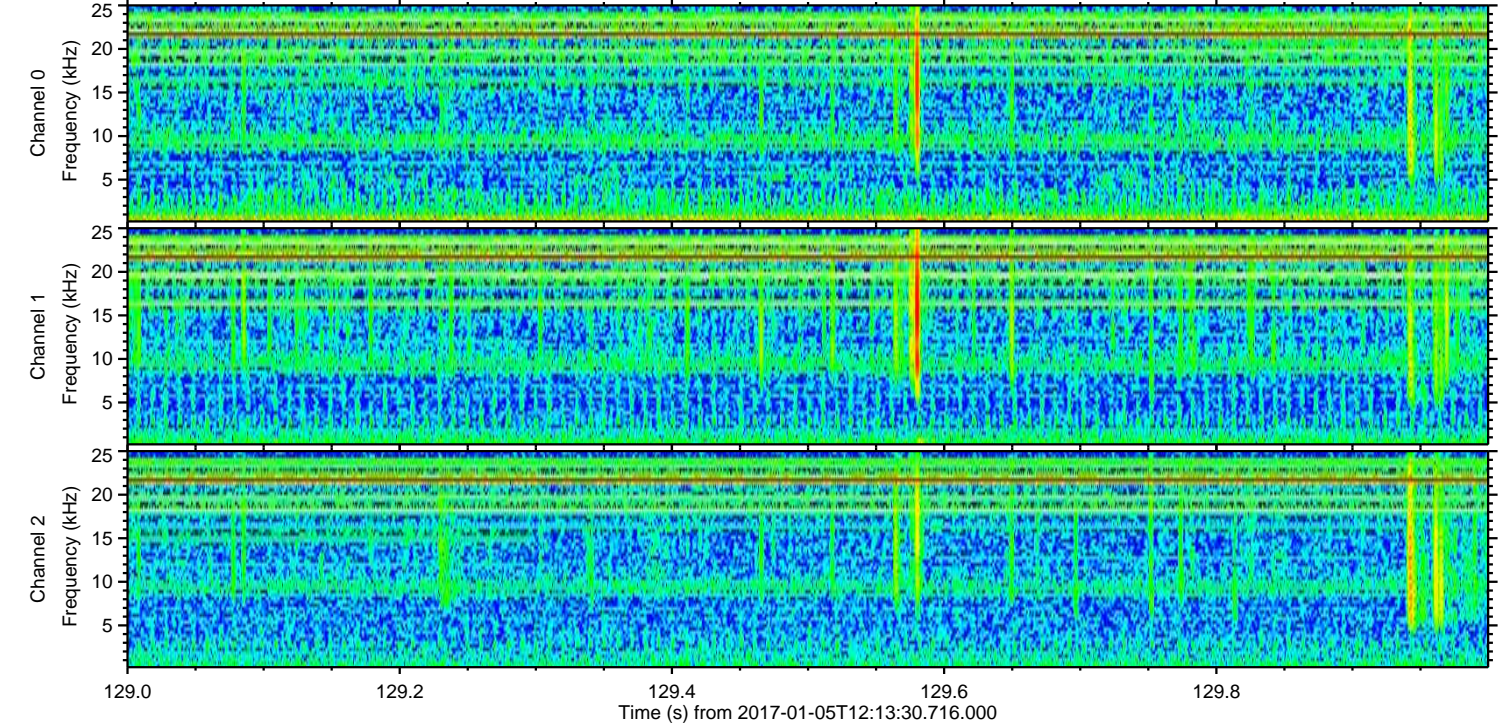
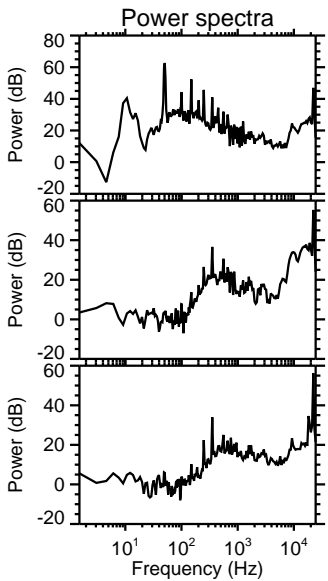
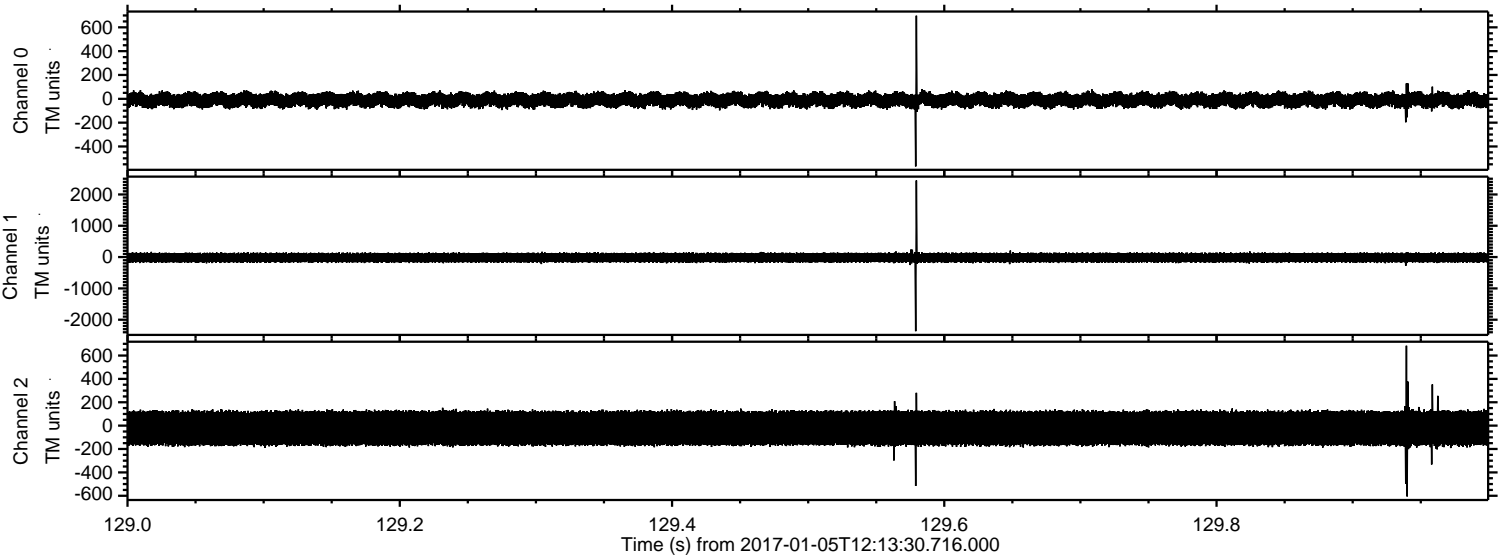
Channel 0
mn: -775
mx: 733
 μ : -9.9
 σ : 36.8

Channel 1
mn: -927
mx: 883
 μ : -18.2
 σ : 88.6

Channel 2
mn: -2226
mx: 2554
 μ : -21.7
 σ : 101.3

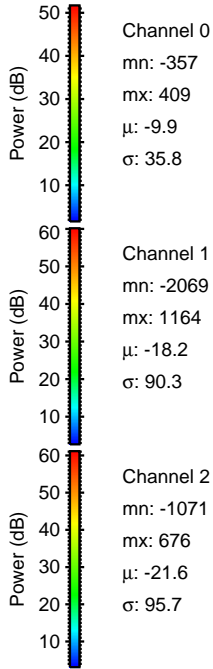
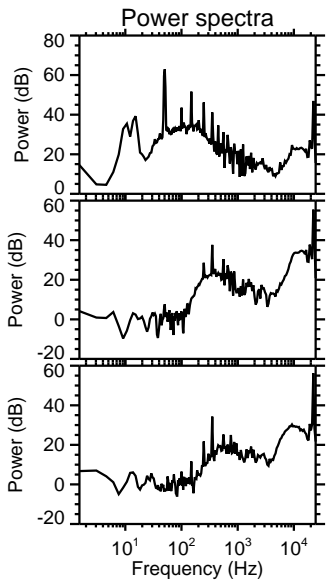
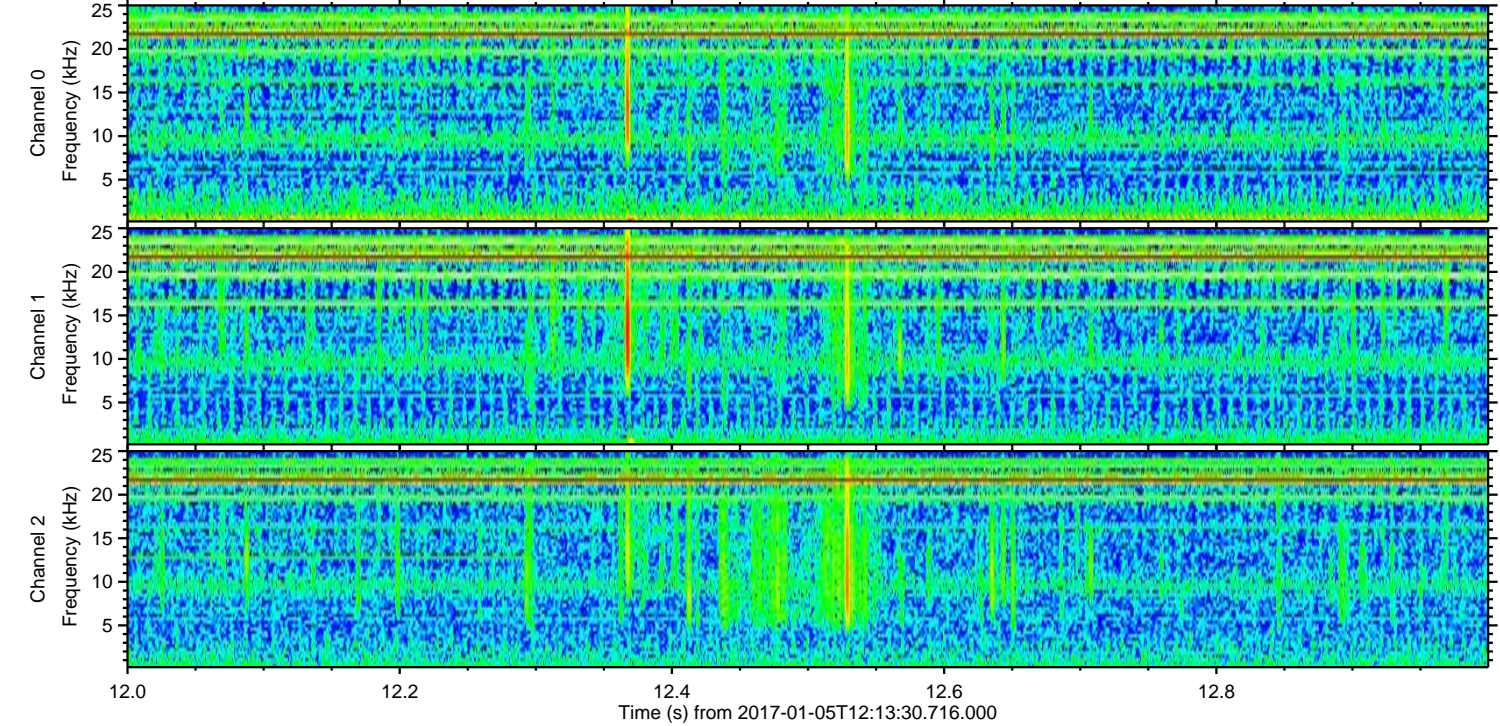
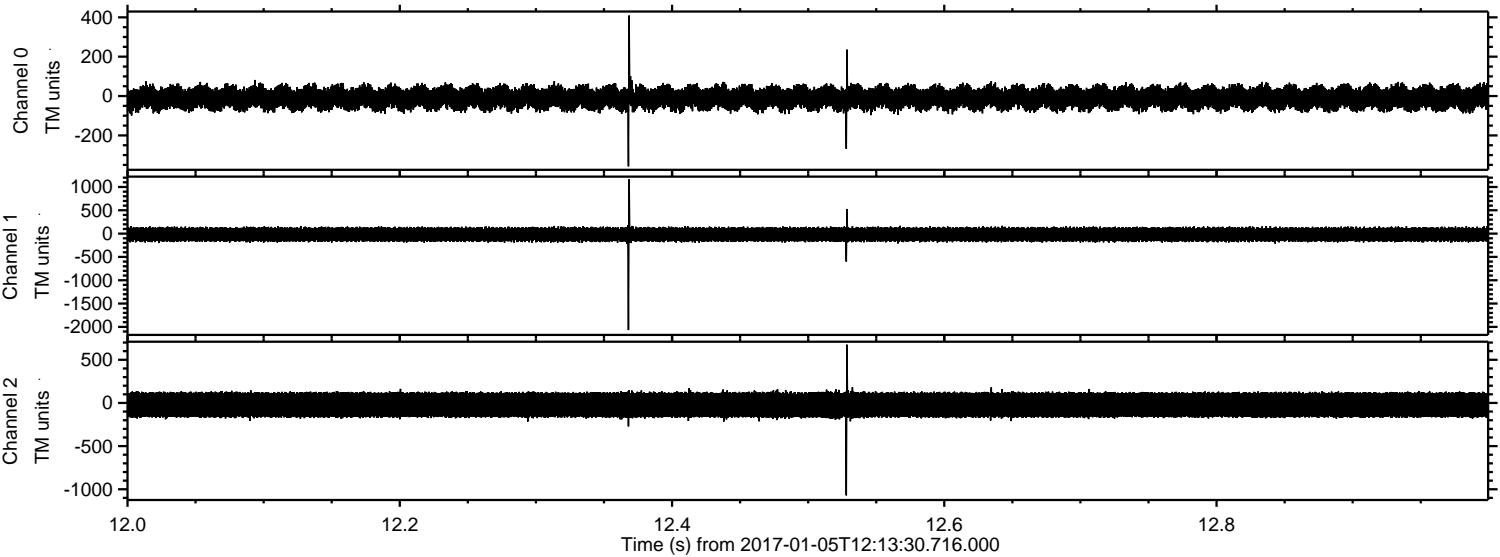
ELMAVAN 3D WAVEFORMS (Measured data sampled at 50 kHz) 51000 packets of 144 samples from 2017-01-05T12:13:30.716.000. Part 130/147

Processed Thu Jan 5 13:21:29 2017 by ELM ver.2012-10-06 from 001__elm20170105_121329__dat00.bin



ELMAVAN 3D WAVEFORMS (Measured data sampled at 50 kHz) 51000 packets of 144 samples from 2017-01-05T12:13:30.716.000. Part 13/147

Processed Thu Jan 5 13:21:30 2017 by ELM ver.2012-10-06 from 001__elm20170105_121329__dat00.bin



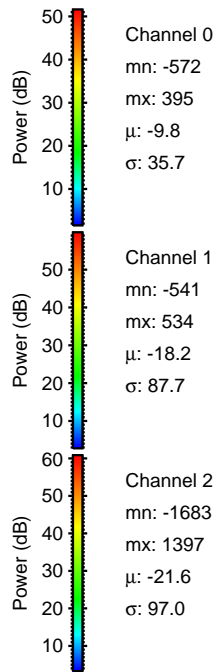
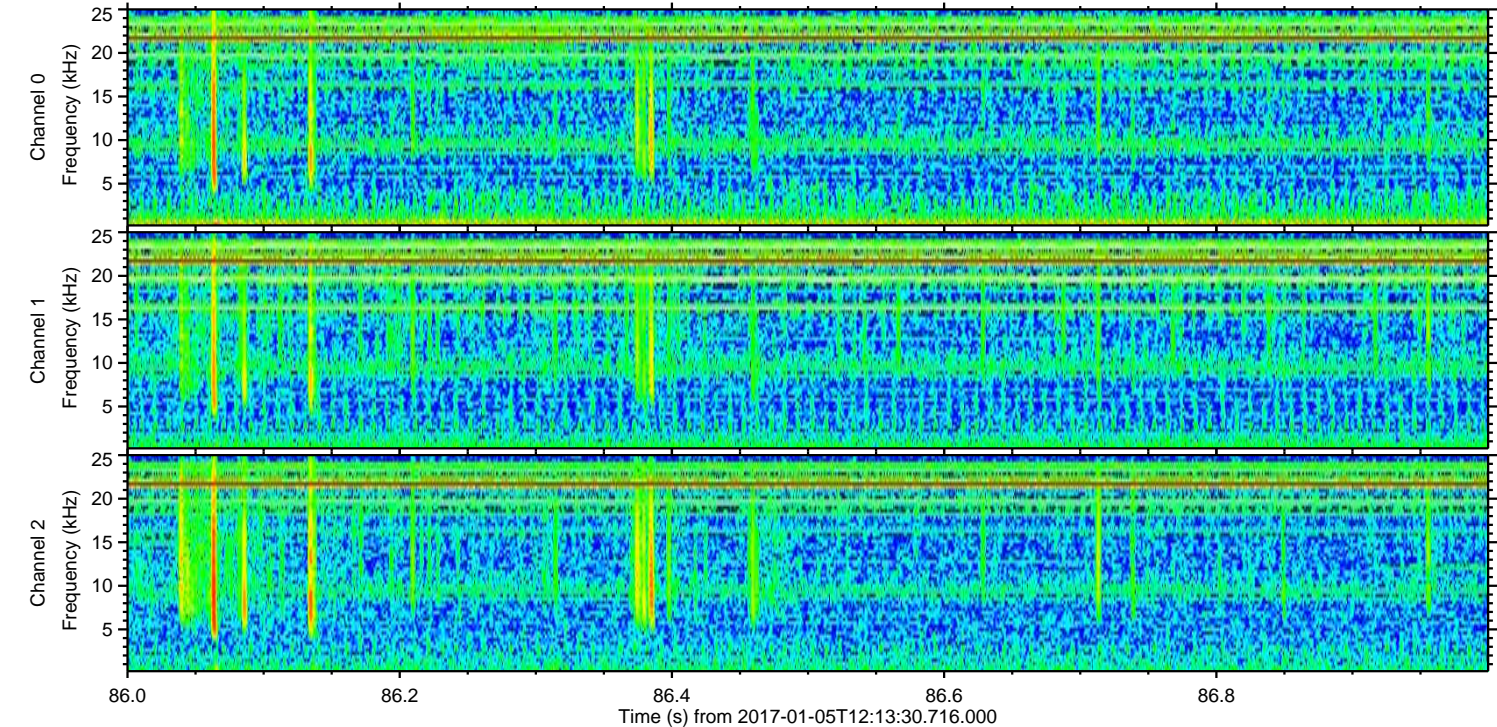
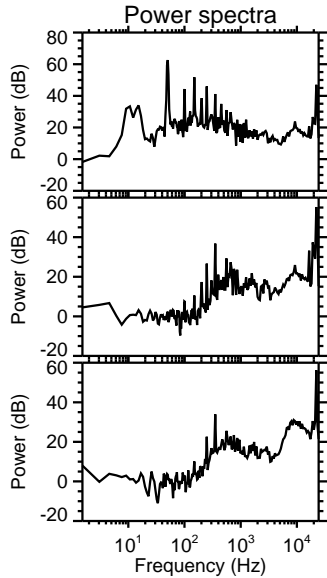
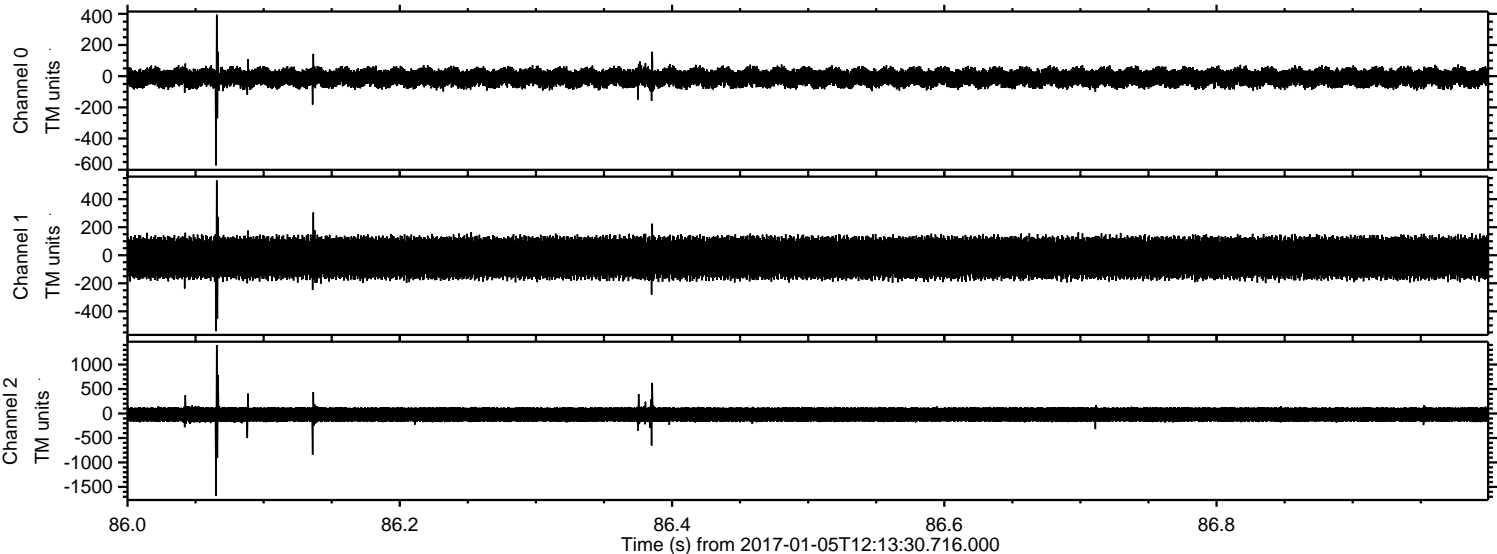
Channel 0
mn: -357
mx: 409
 μ : -9.9
 σ : 35.8

Channel 1
mn: -2069
mx: 1164
 μ : -18.2
 σ : 90.3

Channel 2
mn: -1071
mx: 676
 μ : -21.6
 σ : 95.7

ELMAVAN 3D WAVEFORMS (Measured data sampled at 50 kHz) 51000 packets of 144 samples from 2017-01-05T12:13:30.716.000. Part 87/147

Processed Thu Jan 5 13:21:31 2017 by ELM ver.2012-10-06 from 001__elm20170105_121329__dat00.bin



ELMAVAN 3D WAVEFORMS (Measured data sampled at 50 kHz) 51000 packets of 144 samples from 2017-01-05T12:13:30.716.000. Part 141/147

